

Historic, archived document

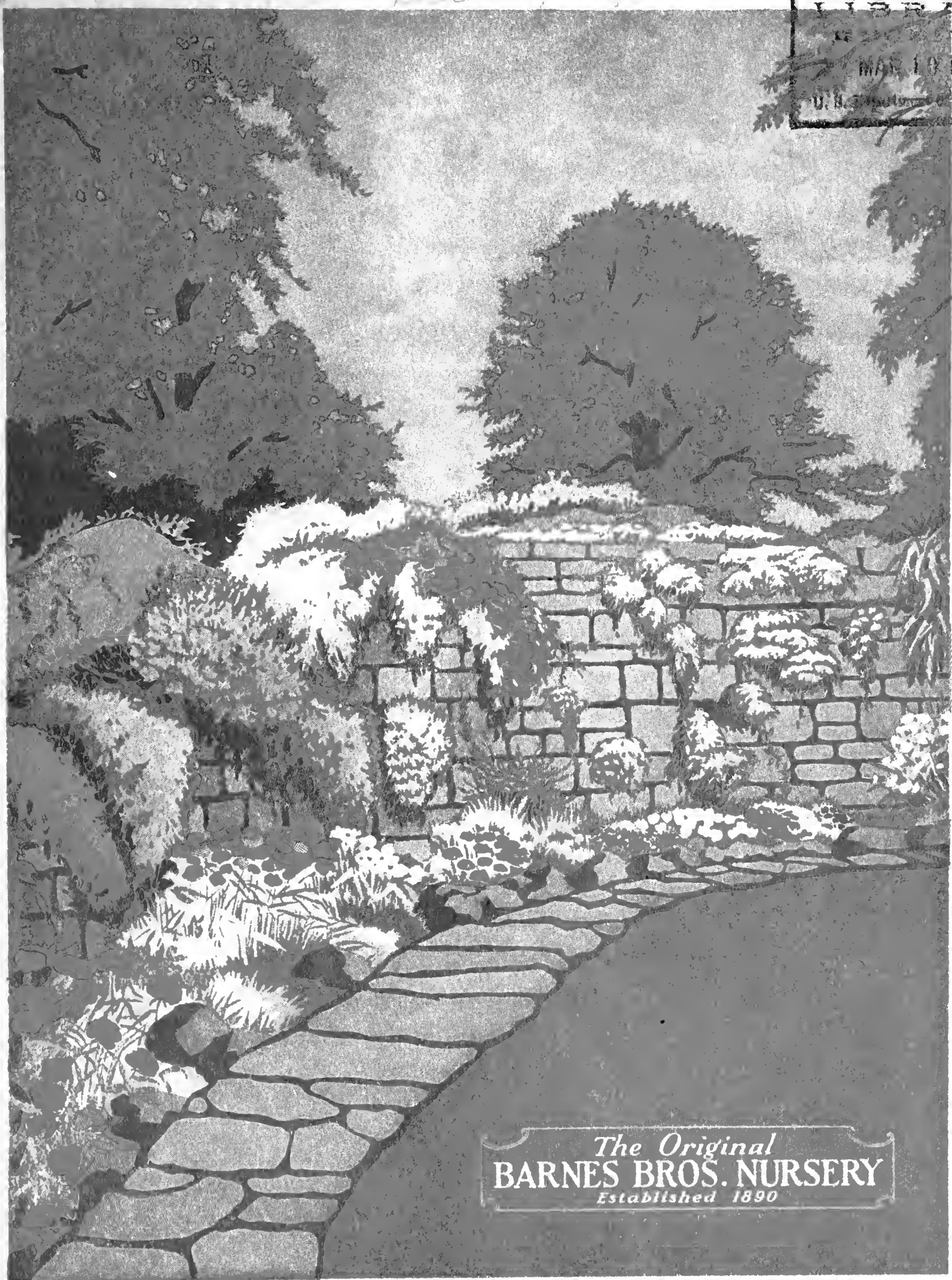
Do not assume content reflects current scientific knowledge, policies, or practices.

63.13

1026

INDEXED

LIBRARY
 RECEIVED
 MAR 10 1936 ☆
 U. S. Department of Agriculture



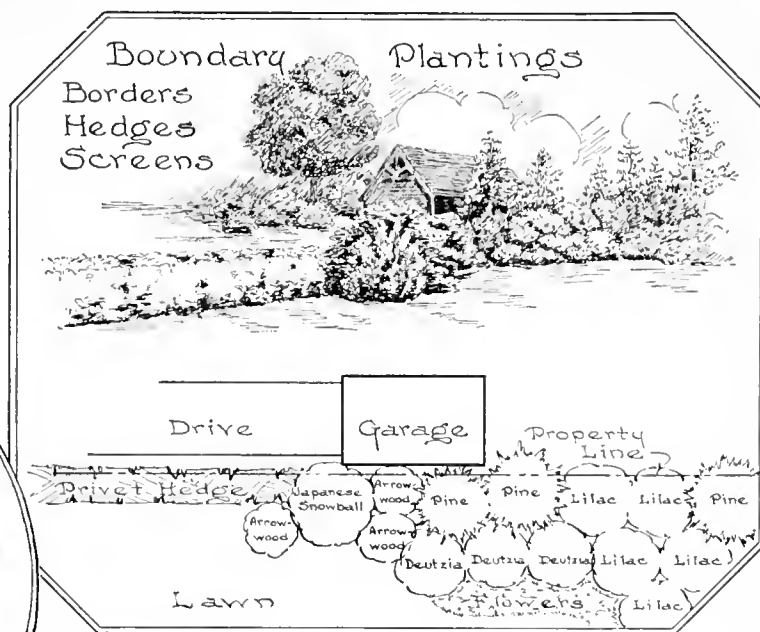
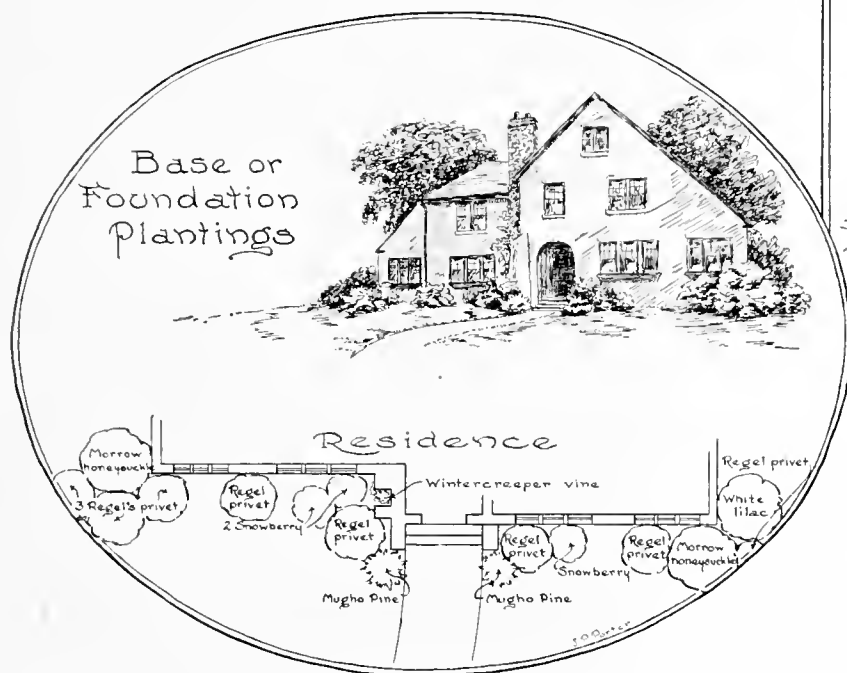
The Original
BARNES BROS. NURSERY
Established 1890

Barnes Bros. Nursery Co.

Office and Salesgrounds . . . Yalesville, Conn.

Let Us Help You...

*Make Your Home
More Beautiful*



*and Your Farm or
Garden More Fruitful*

FOR SPRING 1936

We offer thousands of New England grown plants. You have the widest choice from the new and rare to the well known old favorites. There are the best varieties for any type of planting:—a small berry patch to a large orchard; a modest rock garden to a formal landscape. . . . We are one of New England's largest retail nurseries, actually growing on our own land, with our own experienced help, our own fruit trees and ornamental plants from carefully selected strains. You may feel certain that you will obtain fresh plants of high quality from our nursery. . . . When you buy from us, you buy from the grower. That is why we can sell at such reasonable prices. This stock reaches you in perfect growing condition because it is shipped by us directly to you without any intermediate handling. . . . Compare our prices with any others. We do not believe that you will find true values to surpass those offered here. . . . Our 46 years of experience counts!

A Midsummer Garden's Need!

YOUR PERENNIAL GARDEN WILL NOT BE COMPLETE WITHOUT

Barnes' Collection of Superb Hardy Phlox

No plant grown in our northern gardens can equal the vivid display of color put on by the Hardy Phlox during the late summer and autumn. Almost overnight the flower buds burst wide open, flinging out their panicles of crimson and scarlet blossoms, together with glistening pinks and salmons, pure shining whites and here and there a lavender-blue, clothing the garden in a sheet of riotous color for a month or more.

From the confusing array of varieties offered by various originators we have carefully selected our Phlox, keeping only the best and newest varieties. It is not worth while to grow second rate sorts, and you will find this collection of named varieties contains only fine Phlox.

Barnes Brothers Superb Phlox Collection is being received with tremendous enthusiasm. It will make your garden more beautiful, too! Priced only \$1.98 for 12; 20 for \$3.00. Sent by Express. For Parcel Post add 10%.

The Original
BARNES BROS. NURSERY
Established 1890

NEWBURGH

Finest of the New Red Raspberries



Latham

Newburgh—The most promising new red raspberry. Its fruits are bright red and large as Latham and its quality even better. For keeping and shipping, it has no superior. Plants are vigorous, disease resistant, hardy and heavy bearers. Introduced by the New York Fruit Testing Association which is a high recommendation of its worth. 10 for 60c; 100, \$5.00.

Columbian—Dark purple red. Berries very large and yield tremendous. Mid-season. 10 for 60c; 100 for \$5.00; 1,000 for \$40.00.

Latham—Vigorous, hardy and reliable with an abundant yield. The berries are bright red, large and firm. A most profitable variety. 10 for 40c; 100, \$3.50; 1,000, \$25.00.

Plum Farmer—The most popular black raspberry. Berries large, firm, and early. Plants vigorous.

St. Regis—Red everbearing. Plants yield at usual time, but beginning in Sept. a secondary crop is produced. Quality good. Size medium.

Prices for Plum Farmer and St. Regis: 10 for 40c; 100 for \$3.50; 1,000 for \$25.00.

Every Home Should Have Its Own Raspberries

—because raspberries yield quickly and abundantly and the fruit is so delicious both for immediate use and for preserving. Grow them on any well drained soil; they take little space. After fruiting, cut out all the old canes (they will not bear again) and in the spring cut back the new canes to about 3'.

Is your patch old and overgrown? The size of the berries and the crop will be increased by setting new plants.

**Pick Your Own
Big, Luscious
Raspberries**

Eldorado—The vines are vigorous, hardy and prolific. Berries are large, jet black and borne in large clusters which ripen well together. Flavor is good. No hard core. Quality unsurpassed for home or market use. Midseason. 10 for 40c; 100 for \$3.50; 1,000 for \$25.00.

**BLACKBERRIES
SURE TASTE GOOD**



Asparagus

Asparagus will grow in any garden soil but to produce the largest, most tender stalks the soil must be rich and well fertilized. Set plants so that crowns are about 3" below the surface. Plant about 18" apart in rows 3' apart.

Mary Washington Asparagus—Is one of the finest varieties you can plant. Shoots are large, of good color and prolific. It starts growing early and continues over a long season. Rust resistant. 2 year roots: 25 for 50c, 100 for \$1.25, 1,000 for \$10.00. Extra heavy 4 year roots 25 for \$1.00; 100 for \$3.00; 1,000 for \$20.00.



Luscious GRAPES

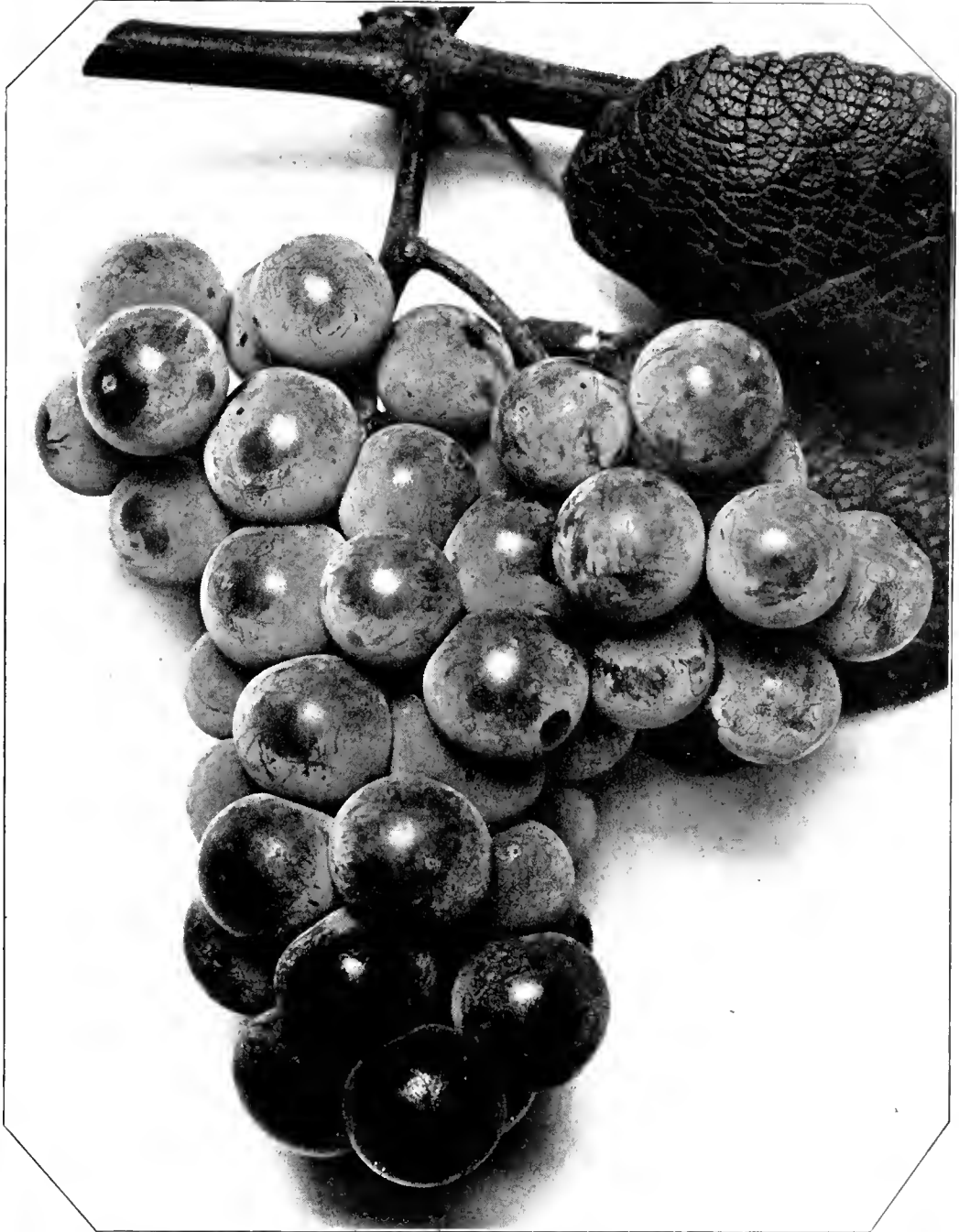
THRIFTY 2 YEAR VINES

Caco—Wine red. Sweet. Delicous flavor. Berries large, bunches compact. Slightly earlier than Concord. A Catawba-Concord cross with the good qualities of both. Each, 50c; 10, \$4.00.

Concord—Blue-black. Well known, practical and most widely planted variety. Each, 20c; 10, \$1.50; 100, \$10.00.

Niagara—White. Sweet. Large, compact bunches. Mid-season. The standard white grape. Each, 25c; 10, \$2.00.

Worden—Blue-black. Quality excellent. Ripens about a week before Concord. A fine table grape. Each, 25c; 10, \$2.00.



Concord

New Grapes

Introduced by New York Fruit Testing Assn.
Strong One Year Plants

Fredonia—The earliest good black grape. Ripens two weeks before Worden. Excellent quality. Each, 35c.

Golden Muscat—Very large, sweet and late with a fine muscat flavor. A grape for an epicure. Each, \$1.00

Keuka—Dark red, unsurpassed in flavor. European grape type. Each, 50c.

Portland—White and very early with a spicy delicious flavor. Each, 35c.

Sheriden—A fine blue-black grape ripening a week later than Concord. Each, 35c.



Mastodon

Strawberries for All

Strawberries pay best in the Home Garden. A few hundred plants, well cared for, will produce an abundant supply and will be a delight to the whole family.

Dorsett and Fairfax—Both of these are new varieties but have been thoroughly tested and proved superior. They are unquestionably the coming varieties. Plants are strong growers and heavy producers. Berries are large, firm, bright red, most attractive and they have an unusually delicious flavor. Fairfax is slightly darker. Dorsett, with high yield and excellent shipping qualities, is recommended for market use. Keep your planting up-to-date by adding Dorsett and Fairfax!

Howard 17 (Premier)—Ripens early and continues a long time. Berries large, bright red and firm. A thrifty grower, reliable and hardy. Well known and widely planted.

Mastodon—Large, bright red berries of good quality and delicious flavor, produced abundantly in June and again in the fall. This is the finest everbearing.

Prices

Mastodon: 100 for \$2.00; 1,000 for \$12.00. Dorsett, Fairfax, Howard 17: 100 for \$1.00; 1,000 for \$8.00.

APPLES

Hardy. Young Bearing. True to Name

Our apple trees are inspected annually, for trueness to name, by Dr. J. K. Shaw of Massachusetts Fruit Growers Assn. Insist on receiving inspected apple trees for your own protection. There is no extra cost to you. All of these are carefully selected and grown in our own nursery.

Apple Tree Prices

2 yr. $\frac{11}{16}$ " cal. and up.	Each	10	100
5-7'		\$8.75	\$6.50 \$50.00
2 yr. $\frac{9}{16}$ - $\frac{11}{16}$ ", 4-6'		.65	5.50 10.00
2 yr. $\frac{7}{16}$ - $\frac{9}{16}$ ", 1-5'		.50	1.00 30.00

SUMMER

- Astrachan, Red**—Crimson. Most popular all round summer apple.
- Gravenstein, Red**—Solid red. Subacid. Excellent for cooking and eating.
- McIntosh, Early**—McIntosh-like in color, flavor and texture.
- Yellow Transparent**—Pale yellow, juicy and subacid. Trees bear young.

AUTUMN

- Fall Pippin**—A large, yellow apple of splendid quality.
- Macoun**—Of the new apples, Macoun is unusually popular. It is like McIntosh in color, flavor and quality but ripens a little later.
- McIntosh, Red**—Dark red. White, juicy flesh. A true favorite.
- Wealthy**—Red. Large. Bears young. A good pollinizer for McIntosh.

WINTER

- Baldwin**—Red blushed. The standard winter apple.
- Cortland**—Large, dark red. Like McIntosh in flavor and quality. A good keeper.
- Delicious**—Nearly covered with brilliant dark red. An apple of highest quality and attractiveness.
- King**—A very large and showy red apple with a November to January season.
- Northern Spy**—Striped red. A rapid grower and good bearer.
- Red Spy**—Red form of the popular Northern Spy.
- R. I. Greening**—Yellowish green. Unexcelled cooking apple.
- Rome Beauty**—A handsome apple, yellow mottled red. Fine in quality and early to bear.
- Roxbury Russet**—An old favorite which keeps throughout the winter.

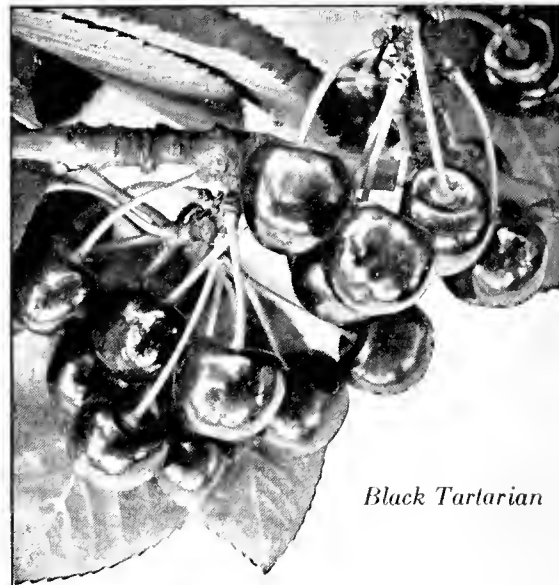
CRABAPPLES	
Hyslop —Yellow, red cheeked. Ripens in October.	
Transcendent —Dark red. Ripens in September.	



Abundance



Delicious, One of New England's Leading Apples



Black Tartarian

Cherries

- Black Tartarian**—A large purple-black, red fleshed cherry of excellent flavor. The most popular dark sweet cherry.
- English Morello**—Medium sized. Dark red. A very productive late sour cherry.
- Governor Wood**—Large, light yellow with red cheek. Sweet. Early. One of the best.
- Montmorency**—Light red. Midseason. Bears young. Largest, most productive and popular sour cherry.

Napoleon Bigarreau—A large yellow, red cheeked, sweet cherry which follows Governor Wood.

Windsor—A large, dark, sweet cherry of fine quality, ripening in July. Very hardy and productive.

	Each	10
2 yr. $\frac{11}{16}$ " and up, 5-7'	\$1.00	\$9.00

Plums

With a minimum of care, plum trees grow rapidly and bear their large tasty fruits heavily. They do not make large trees and are desirable to plant in a garden of small proportions.

Abundance—Red, yellow fleshed, of good quality. Fine for canning. August. Hardy and productive.

Burbank—Yellow, red blushed. August. Good keeper and shipper.

Red June—Vermillion red, yellow fleshed. Late July. Productive

Shropshire Damson—Purple. Fine for canning. Fruit medium sized and produced abundantly.

	Each	10
2 yr. $\frac{11}{16}$ " and up, 5-7'	\$.75	\$6.50

If you do not see the variety you want write us. We have many others not described here.

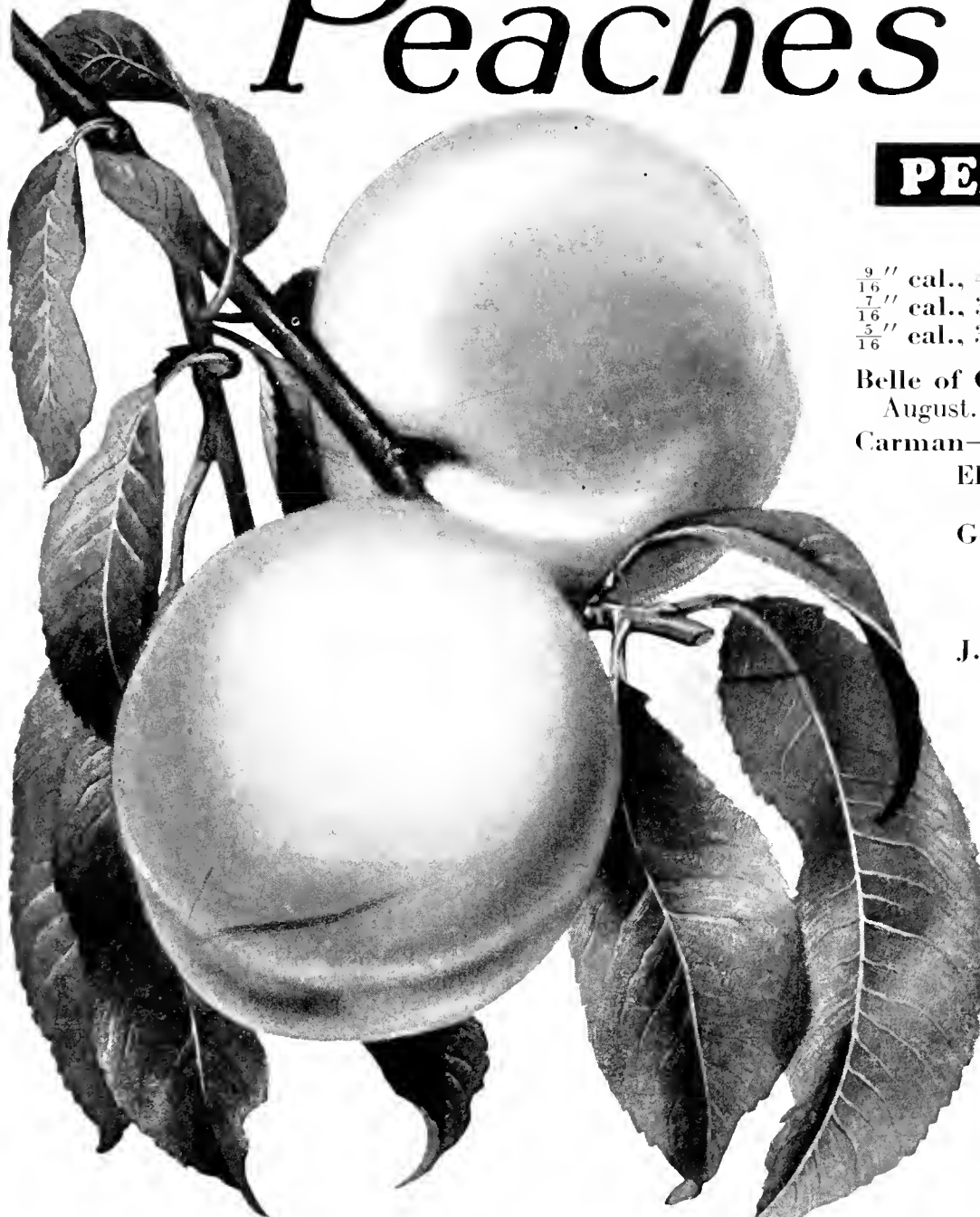
Five of one variety and size at ten rate; fifty at hundred rate. Write for prices on larger quantities.

Quantity and prices apply only when a quantity of one variety and size is ordered.

Peaches

Grow Your Own

Ripening periods mentioned are for average conditions in Connecticut



Elberta

PEACH TREE PRICES

	Each	10	100
$\frac{9}{16}$ " cal., 4-6'	\$.50	\$4.00	\$30.00
$\frac{7}{16}$ " cal., 3-4'	.40	3.00	20.00
$\frac{5}{16}$ " cal., 3-4'	.30	2.00	15.00

Belle of Georgia—White with red cheek. Freestone. Late August.

Carman—White, red cheek. Semi-freestone. Mid-August.

Elberta—Large, yellow with red cheek. Freestone. Early September. Standard commercial peach.

Golden Jubilee—Large golden yellow, red blushed. Freestone. Mid-August. Best early yellow. This is an outstanding new peach which is now extremely popular.

J. H. Hale—Very large, yellow flesh, red cheek, freestone. Early September. Excellent in quality and flavor.

Lizzie—Large, lemon yellow with nice red cheek. Freestone. Late September. A good shipper. Has little fuzz.

South Haven—An early yellow freestone which ripens about the middle of August following Golden Jubilee. An excellent bearer, fine flavored and hardy.

P E A R S

Here is a list of pears that will supply excellent fruit for market and home use from August well into the winter. Pears will grow on almost any good soil but thrive best in rather heavy loam or clay. Plant about 20' apart.

Bartlett—Most popular pear for home and market use. Fine quality and rich flavor. Sept.

Beurre Bose—Very large, deep yellow, overspread with russet. Unsurpassed in quality and flavor. Juicy. October and November.

Beurre d'Anjou—An excellent market pear for late fall and early winter. Fruit yellow with faint blush. Uniform in size. Quality good.

Clapp's Favorite—Large, red blushed. Quality good. Early. Precedes Bartlett.

Duchess d'Angouleme—Extremely large pears of rich buttery flavor. October.

Keiffer—Large, yellow with red cheek. Excellent for cooking and canning. Tree bears young and is productive. October and November.

Lawrence—A light yellow, sweet pear which ripens in November and December.

Seckel—Round, small russet colored pears. Fruit sweet and of finest quality. Tree productive and hardy. October.

Sheldon—Large, round, russet and red pears of first quality. September and October.

Wildcr—Ripens in early August. Quality high, flavor good and size medium.

PRICES

$\frac{11}{16}$ " cal. and up, 5-7'

Each	10	100
\$.75	\$6.50	\$50.00

$\frac{9}{16}$ - $\frac{11}{16}$ " cal., 4-6'

Each	10	100
\$.65	\$5.50	\$40.00

$\frac{7}{16}$ - $\frac{9}{16}$ " cal., 3-4'

Each	10	100
\$.55	\$4.50	\$30.00



Pear Trees Bear Young

Evergreens For Year Around Beauty



Canadian Hemlock

Tsuga canadensis (Canadian Hemlock)—This is one of the most adaptable and valuable trees for landscape uses as it will grow in sun or shade or on average soil, is beautiful whether sheared or allowed to grow naturally and retains good color throughout the year. Its pendulous branches give it rare grace. A rapid grower and very hardy. Unsurpassed for hedges. Fine bushy specimens 3-4', \$1.50; 4-5', \$2.50. Special prices for large quantities and quotations for larger sizes on request.

Rhododendron—Who doesn't love the Rhododendrons with their clusters of bright flowers in June and their handsome evergreen foliage all the year? Rhododendrons are long lived and not difficult to grow if there is no lime in the soil. They like acid food and water and thrive in semi-shade. Strong, bushy nursery grown plants, 12-15', \$1.50; 15-18'', \$1.75.

Rhododendron carolinianum—Pink flowers.
Rhododendron catawbiense—Orchid flowers, larger than above.



Catawba Rhododendron



Japanese Yew

Taxus cuspidata (Japanese Yew)—Here is an opportunity to purchase one of the finest evergreens that can be planted in our climate. It has rich dark green foliage through the year and scarlet fruits in the fall. It is easily trimmed and due to its ability to stand varied planting conditions, including dense shade, it has many uses in the landscape. It is low growing and wide spreading and certainly adds refinement and distinction to any planting. A truly aristocratic member of evergreen's Royal Family. Our plants are from an especially selected strain making them extra thick, bushy and dark. 12-15'', 80c; 15-18'', \$1.00; 18-24'', \$1.50. Special prices for large quantities and quotations for larger sizes on request.

Ornamental and Shade Trees

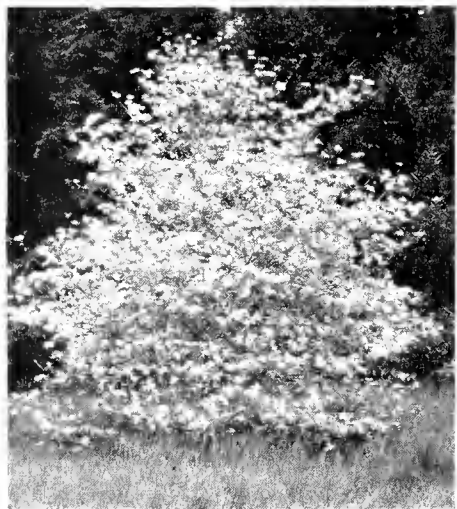
Acer saccharum (Sugar or Rock Maple)—80'. This native maple makes an excellent street or shade tree where there is room for one of its size. Leaves turn red and yellow in the fall. 8-10', \$2.00; 10-12', \$3.25. Prices on larger specimens on request.

Cornus florida (White Flowering Dogwood)—With white flowers in spring, splendid foliage dense enough to give shade in summer, bright scarlet berries and red leaves in fall, this makes one of the most handsome and satisfactory trees for lawn plantings. Balled and Burlapped. 3-4', \$1.25; 4-5', \$1.50; 5-6', \$2.00.

Cornus florida rubra (Red Flowering Dogwood)—Like above except for red flowers. B. & B. 3-4', \$2.25; 4-5', \$2.75; 5-6', \$5.00.

Crataegus oxyacantha coccinea (Paul's Scarlet Thorn)—Recommended for its rich luxuriant foliage and double, deep scarlet flowers which come in late May. 5-6', \$2.50.

Liquidambar styraciflua (Sweet Gum)—40'. A fine, clean, medium-sized tree for lawns, streets or parks. Its foliage is lustrous and star-shaped and in fall a deep crimson. It grows naturally in low, moist situations. 5-6', \$2.00; 6-8', \$3.00.



White Flowering Dogwood



Sugar Maple



Weeping Willow

Salix babylonica (Weeping Willow)—40'. Long, pendulous branches droop to the ground with matchless grace. They create exquisite effects beside water but thrive equally well in other locations. 5-6', \$1.00; 6-8', \$1.25; 8-10', \$2.00.

All trees and evergreens will be sent by express or freight.

Unusual and Worthwhile Shrubs



Berberis verna

Berberis verna—Long, slender branches sweep the ground and make this small shrub a fountain of delicate green. Its clusters of yellow flowers in June and pretty coral red fruits in September make it one of the most attractive shrubs we know. Furthermore, it is perfectly hardy, grows in almost any soil with no special care. It has no troublesome diseases but only the highest recommendations from those who know the plant. 18-24", 75c; 2-3', \$1.00 each.



Photo—Courtesy A. M. Leonard & Son
Stewartia

Stewartia pentagyna (Mountain Stewartia)—This rare and beautiful native plant has been difficult to obtain and expensive, but we have succeeded in growing some fine young specimens and have priced them modestly. Stewartia makes a tall shrub 10-12' high. During summer snowy white flowers, 3-4" across, with bright orange anthers at the center make a striking contrast with the handsome foliage. In autumn the leaves are brilliant with red and orange. It likes a woody location but is not hardy north of Mass. 12-18", 75c each.

Daphne mezereum (February Daphne)—Is a bright spot of color welcome the first warm days of spring? Here is a little shrub growing no higher than 4' whose branches are thickly set with reddish lilac, fragrant flowers as early as the Crocuses. It likes partial shade and a well drained soil. 9-12", 50c each.

Hypericum—For late summer bloom. Neat and densely massed shrubs 2-3' tall with dark green leaves which are held late in the fall. Single flowers, rich buttery yellow, with a mass of golden stamens at the center, bloom from July to Sept. These are not hardy north of Mass.

H. patulum henryi—A spreading shrub with flowers 2-2½" across. 18-24", 50c each.

H. patulum forrestii—A splendid new shrub with smaller leaves but larger flowers than above. 18-24", 50c each.

Cytisus scoparius (Scotch Broom)

—Lovers of the sun and wind, thriving anywhere, even on poor, sandy soil, provided drainage is good, with a wealth of flowers, mostly bright yellow, in May and June. Use them for seaside plantings or sunny, barren banks. They are not reliably hardy north of Mass. Cut back heavily, about two-thirds of the previous year's growth, after flowering.

C. scoparius—6-8'. Bright yellow, pea-shaped flowers. This is the variety often found naturalized along our eastern coast. 4" pot plants, 50c; 6" pots, 75c each.

C. scoparius andreanus hybrids—These new shrubs are a twiggy mass of green 5-6' high, and the flowers are ruby red, flaming orange, golden yellow, white, and marvelous combinations of all. They are very showy and so desirable that you must not let your garden lack a few of these lovely Brooms. 5" pot plants, 75c each.



Cytisus (Scotch Broom)

Ilex serrata (Finetooth Holly)—A holly with red berries in profusion during the fall and winter is a marvelous shrub to have both for winter color in the garden and for winter bouquets. Plant a group among your evergreens and you will be delighted. This is similar to our native Black Alder, but it does not grow quite as tall, and the berries are larger and more abundant, crowding the stems thickly. 12-18", 75c; 15-18", \$1.00; 18-24", \$1.50 each.

Magnolia stellata (Star Magnolia)—

This is one of the early shrubs, blooming just after the Forsythias, with an abundance of dainty white star-like flowers. The leaves are a dark, glistening green. It grows slowly, forms a spreading bush 6-8' high and will add beauty and distinction to any home. B & B, 18-24", \$2.50; 2-2½', \$3.00 each.

Vitex macrophylla (Chaste Tree)—A

fine, tall, and graceful shrub with long, terminal racemes of pretty lavender-blue flowers from July to frost. This is a choice and unusual shrub which will be welcomed for any shrub border. Strong 2 year plants, 50c each.

Rhus cotinus (Smoke Bush)—A large, picturesque shrub, which at maturity attains a height of 15 feet. In habit, it is round and bushy, often broader than high. The foliage is fine-textured, dense and dark green, and in autumn assumes various shade of yellow and purple. The plant also bears small, inconspicuous purple flowers in loosely arranged clusters. In July, the plant is enveloped in clouds of delicate, lavender, fluffy stems which look like swirls of smoke. 18-24", 50c; 2-3', 75c; 3-4', \$1.00 each.



Rhus cotinus

HARDY FLOWERING SHRUBS

for all season's bloom

Azaleas are among the most beautiful shrubs which we can have in our gardens, but they have not been used nearly as much as they deserve. It may be that some have erroneously believed them difficult to grow. They like a peaty soil and a half shaded place. While they will tolerate no lime in the soil, they are not bothered by insects or diseases nor do they require any extra care beyond a good watering at their flowering period.

Azaleas are slow growing, but they live a long time. Their flowers are large and showy and often cover the whole plant with their brilliancy. Some varieties bloom in April and others continue through the season to July. They are expensive to produce as it takes many years, besides great skill and care to handle them in an infantile stage, for they are as tiny and delicate as young orchids. Don't forget that Azalea flowers match the orchid's too in fragile beauty if not always in size.

Azalea calendulacea (Flame Azalea)—Yellow orange to flame red flowers in May and June. One of the most beautiful in brilliancy and abundance of bloom. 18-24", \$2.00; 2-2½', \$2.75 each.

Azalea mollis (Chinese Azalea)—Blooms in May with large yellow, orange or pink flowers. 12-15", \$1.50 each.

Azalea schlippenbachii—Large flowers, 2-3" across, of pale rose in May and June. A dwarf variety not reaching more than 3-5' at

maturity. A rare and beautiful Azalea. 12-15", \$3.00; 15-18" \$4.00 each.

Azalea vaseyi (Pinkshell)—In late April or early May before the leaves are grown pure pink flowers cover the slender stems. Irregular in outline and a matchless beauty in bloom. 15-18", \$2.00 each.

Bushy, well grown specimens with solid hall of earth—Will be sent by Express or Freight only.

Buddleia magnifica superba (Butterfly Bush)—You will hardly recognize the old-fashioned summer flowering lilacs in this beautiful and improved form. Long, thick spikes of glowing purple flowers are borne profusely through the summer and fall until frost ends the display. For best results cut old stems to the ground early each spring. Very fine, large, sure to bloom plants, 35c each, 3 for 89c.

Callicarpa purpurea (Beauty Berry)—A slender twigged, delicate shrub growing to 4'. Prettiest in the fall when its branches are laden with clusters of small, shiny, lavender berries. A handsome plant for any garden. 18-24", 35c; 2-3', 50c; 3-4', 75c each.

Calycanthus floridus (Sweet Shrub)—A neat compact shrub with fragrant double, mahogany colored flowers. Grows about 6' high. 18-24", 25c; 2-3', 35c; 3-4', 50c each.

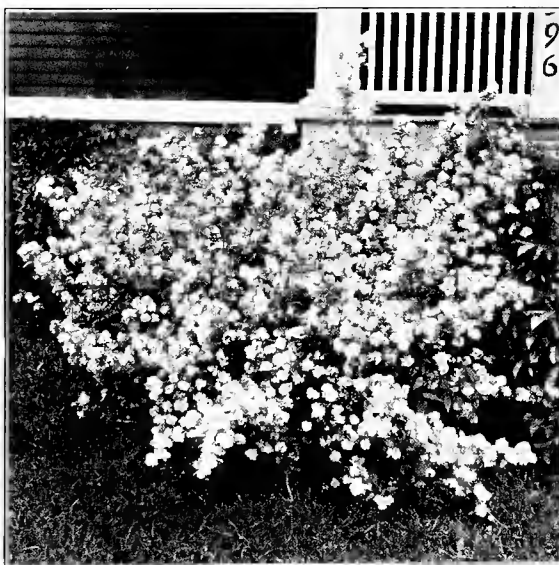
Cornus alba siberica (Red-branched Dogwood)—Attractive medium sized shrub. Blue and white berries in the fall. Bright coral red stems in the winter. 18-24", 25c; 2-3', 35c each.

Cornus kousa chinensis (Chinese Flowering Dogwood)—As fine a plant as our native Flowering Dogwood. The flower heads are much larger, measuring 5-6" across, and come later in June making a delightful contrast with the bright green foliage. Red berries, which the birds love, and scarlet foliage in the fall. A clean, vigorous, tall shrub, highly recommended for a lawn specimen or in a border. 2-3', B & B, \$1.98 each.

Cornus mas (Cornelian Cherry)—Clusters of bright yellow flowers in March or early April with glossy scarlet fruits in autumn. An upright shrubby grower to 10-15'. This is a grand thing to plant in city gardens for it thrives in a smoky atmosphere and in sun or shade. 2-3', 50c; 3-4', 75c each.

Cotoneaster horizontalis (Rock Cotoneaster)—A dwarf shrub for rockeries or the front row of a border. Bright red berries give color in winter. Leaves are dark and glossy. Outstanding at all times. Likes a sunny place. 5" pot plants, 60c each.

Cydonia japonica (Japan Quince)—Scarlet flowers in early May. Dark glossy foliage. Makes beautiful hedges or specimens. 12-18", 35c; 18-24", 50c each.



Deutzia — Pride of Rochester

Deutzia scabra Pride of Rochester—Earliest blooming Deutzia. Large double white flowers tinted pink outside. 8'. Showy. 18-24", 25c; 2-3', 35c; 3-4', 50c each.



Philadelphus virginalis

Deutzia gracilis rosea—Bushy and dwarf, a mass of pure pink flowers in May. Excellent for front of borders or small specimens. 18-24", 50c; 2-3', 75c each.

Deutzia scabra crenata—Double white flowers in June. Upright to 6'. 2-3', 35c; 3-4', 50c each.

Elsholtzia stauntoni (Mint Shrub)—Low shrubby plant, prized for its spikes of lilac purple flowers in late summer and fall. Give a sunny place. 2-2½', 55c each.

Enkianthus campanulatus (Redvein Enkianthus)—In May clusters of bell-shaped flowers, white with red veinings, adorn this compact, shiny leaved shrub. Foliage turns scarlet in the fall. The shrub likes a peaty soil with no lime. 2-2½', B & B, \$2.75 each.

Euonymus alatus (Winged Spindlewood)—A matchless beauty in autumn with orange-red fruit, like Bittersweet, and leaves deep rose, turning scarlet. Stiffly spreading, corky winged branches are picturesque. Grows easily. 18-24", 35c; 2-3', 50c each.

Euonymus yedoensis—Attractive all year and like the Spindlewood reaches the climax of its beauty in the fall when it is a mass of scarlet berries with bright pink outercoats, and brilliant scarlet leaves. Makes a fine compact specimen. 2-3', 75c each.

Exochorda grandiflora (Pearl Bush)—In early May showy masses of large, pure white flowers are displayed on this dainty slender shrub. Grows upright to 10'. 18-24", 35c; 2-3', 50c each.

Forsythia spectabilis—This makes the most handsome specimen. Branches covered with rich golden flowers. A compact and shapely shrub. 18-24", 25c; 2-3', 35c; 3-4', 50c each.

Forsythia suspensa—Very long drooping branches. Splendid for covering banks or training over trellises. Bright yellow flowers in spring. 18-24", 25c; 2-3', 35c each.

Hibiscus (Rose-of-Sharon)—Bright flowers in Aug. Double red or pink. 2-3', 50c each.

Hydrangea arborescens grandiflora (Hills of Snow)—Medium sized shrub with large snowy white flowers from early June to Sept. Very hardy. 18-24", 35c; 2-3', 50c; 3-4', 75c each.

Color and Fragrance All Summer Long

Hydrangea paniculata grandiflora—Pyramids of white, pink tinged flowers. Mid-July to Oct. Shrubs: 18-24", 25c; 2-3', 35c each. Tree form: 3-4', 50c; 4-5', 75c each.

Ilex verticillata (Black Alder)—This native shrub, a Holly, keeps its bright red berries all winter. Splendid for decorating and gives a touch of winter color to the garden. Grows about 9' high. Plant 2 or 3 together. 18-24", 35c; 2-3', 50c each.

Kolkwitzia amabilis (Beauty Bush)—A handsome shrub growing 8' high. Foliage fine and glossy. Branches arching, with pink flowers in June. 18-24", 35c; 2-3', 50c each.

Lespedeza formosa (Bush Clover)—Medium sized and bushy. Covered with rosy purple pea-like flowers in midsummer. Good among perennials. 2 yr. No. 1 plants, 50c each.

Lonicera tatarica (Tartarian Honeysuckle)—Bushy and tall. Flowers in June. Red and orange currant-like fruits in summer. Red, pink or white flowers. 18-24", 25c; 2-3', 35c; 3-4', 50c each.

Philadelphus Atlas—A handsome, tall growing hybrid Mockorange with enormous single flowers over 2½" wide in June. The broad petals are milk white. This variety has been honored by Award of Merit from the Royal Horticultural Society of England. 18-24", 35c; 2-3', 50c each.

Philadelphus coronarius (Garland Mockorange)—A fine, old shrub with delightfully scented, creamy flowers in May. Grows 10' high. 18-24", 25c; 2-3', 35c; 3-4', 50c each.

Philadelphus coronarius aureus—Its golden leaves are valuable for contrast in groups. Creamy white flowers in May. More dwarf than above. 15-18", 50c each.

Philadelphus virginialis (Virginal Mockorange)—A magnificent upright shrub. Flowers large, white, double and semi-double, fragrant, with long blooming period. 8'. 18-24", 35c; 2-3', 50c each.

Philadelphus hybrid Avalanche—A graceful dwarf Mockorange with a profusion of creamy white flowers in June. Fragrant. Mature height 4'. 2-3', 50c each.

Prunus glandulosa (Flowering Almond)—Low shrub with arching branches which in spring are covered with double pink flowers. Exquisite for front of border. 2-3', 75c each.

Rhodotypos kerrioides (Jetbead)—Bears showy white flowers in May. Shiny jet black fruit lasts all winter. Very vigorous and hardy. 18-24", 25c; 2-3', 35c each.

Spiraea Anthony Waterer—An old favorite among small garden shrubs. Flat clusters of bright rose pink flowers last all summer. Mature height 3'. 12-18", 25c; 18-24", 35c; 2-2½', 50c each.

Spiraea thunbergi—In April and May its delicate arching branches bear fine bright green foliage and a profusion of white flowers. 18-24", 35c; 2-3', 50c each.

Spiraea trichocarpa (Korean Bridal Wreath)—A handsome new shrub similar to S. Van Houttei but its flowers are two weeks later. 18-24", 25c; 2-3', 35c; 3-4', 50c each.

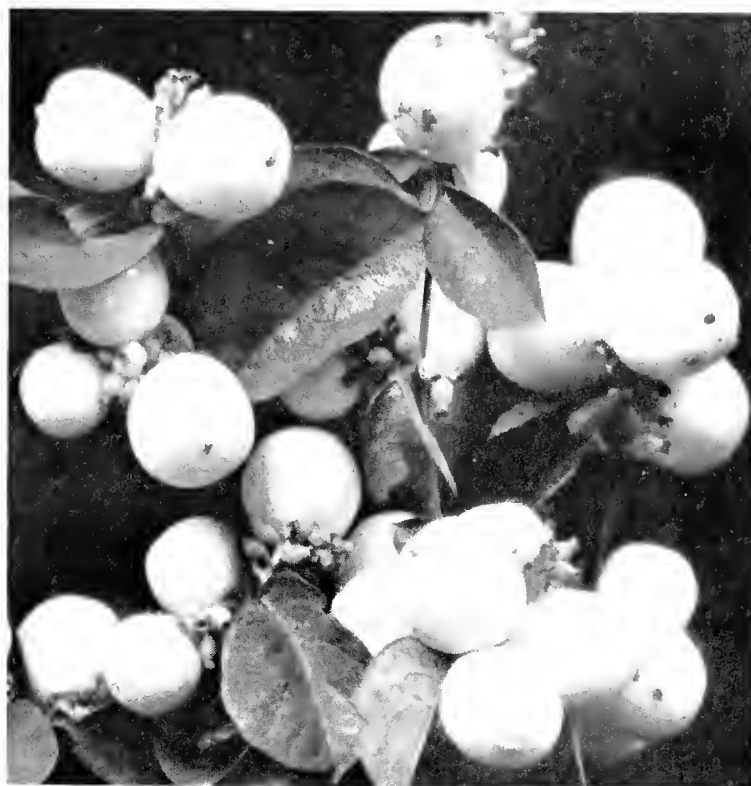
Spiraea Van Houttei—A popular medium sized shrub. Covered in late May and June with pure white flowers. Leaves dark and fine; branches arching. 18-24", 25c; 2-3', 35c; 3-4', 50c each.

Symphoricarpos racemosus (Snowberry)—This low plant bears pinkish white flowers in summer and large white berries in fall and winter. A superb, fine textured shrub for borders. Grows to 5' and doesn't mind shade. 18-24", 25c; 2-3', 35c; 3-4', 50c each.

Symphoricarpos Vulgaris (Coral Berry)—A small shrub that thrives in shade. Its small pink clustered berries last until late winter. 18-24", 25c; 2-3', 35c; 3-4', 50c each.

Syringa vulgaris (Purple Lilac)—The well known, old-fashioned lilac with real fragrance. Makes a fine specimen or hedge. 18-24", 35c; 2-3', 50c each.

Tamarix africana—Tall and slender with feathery foliage and plumes of pink flowers in early summer. Thrives in seaside soils. 18-24", 35c; 2-3', 50c; 3-4', 75c each.



Snowberry

Viburnum carlesi (Fragrant Viburnum)—Clusters of clove-scented flowers, rose pink in bud paling to white. Its sweetness makes it a delight in any garden. Still rare. Broad and round growing to 5'. 18-24", B & B, now only \$1.00 each.

Viburnum dentatum (Arrowwood)—Tall, erect. White flowers; black fruit. Richly colored in the fall. Fine for informal borders. 18-24", 35c; 2-3', 50c; 3-4', 75c each.

Viburnum tomentosum—Compact and upright to 10'. Beautiful foliage. Clusters of white flowers in May and June. For tall borders or screens. 18-24", 35c; 2-3', 50c; 3-4', 75c each.

Weigela Eva Rathke—A small spreading shrub to 5' with many dark red flowers during the summer. Makes a beautiful specimen. 18-24", 35c; 2-3', 50c each.

Weigela rosea (Pink Weigela)—This popular Weigela bears a mass of deep pink flowers tall in June. A tall shrub to 8' and very showy. 18-24", 25c; 2-3', 35c; 3-4', 50c each.



Weigela, Eva Rathke

H E D G E P L A N T S

Japan Barberry (Berberis Thunbergi)—Beautiful, familiar, ever useful, and above all entirely hardy. Red-berried. Space 1-2' apart depending on the size of plants. Heavy 3 year well-branched plants with fine roots that will give immediate results. 12-18", \$1.50 per 10; \$10.00 per 100. 18-24", \$2.00 per 10; \$14.00 per 100.

Box Barberry—A very dwarf form with small leaves. Makes a wonderful edging for walks or plant beds. 9-12", \$1.80 per 10.

California Privet—Famous for its bright green foliage. Not reliably hardy north of Conn. under average weather conditions. 12-18", 75c per 10; \$3.00 per 100. 18-24", 85c per 10; \$5.00 per 100. 2-3', \$1.00 per 10; \$7.00 per 100.

Ibodium Privet—An upright bushy privet that will stand cold winters. Widely used in Northern New England. Unexcelled for tall screens and formal hedges. 12-18", 80c per 10; \$6.00 per 100. 18-24", \$1.00 per 10; \$8.00 per 100. 2-3', \$1.50 per 10; \$12.00 per 100.

Vines for Shade and Beauty



Trumpet Vine

Actinidia arguta—This tall and rapidly growing vine is excellent for trellises, arbors, walls or porches. It is remarkably free from insects and diseases and grows well in sun or half shade. White flowers in June are followed by small, rounded, greenish-yellow fruits. 35c each; 3 for 89c.

Ampelopsis heterophylla (Porcelain Ampelopsis)—Here is a new Ivy which you will love for its bright color in September and October. Abundant clusters of china-like berries which change from pale lilac to turquoise and bright blue, fine foliage and its readiness to grow anywhere make it highly desirable. 50c each; 3 for \$1.35.

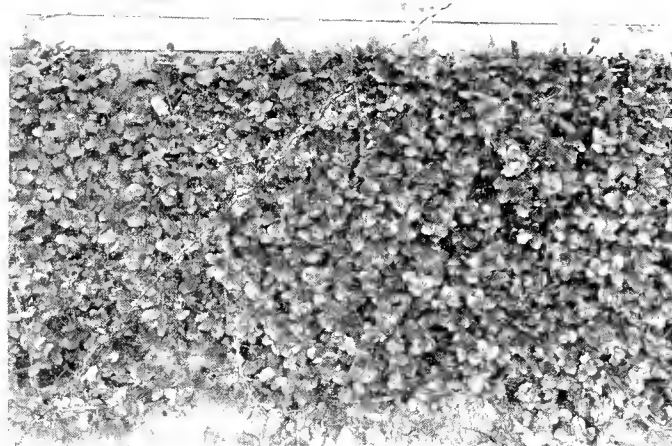
Ampelopsis tricuspidata (Boston Ivy)—Ideal for use in towns or cities for it is not fussy about soil, not troubled by insects or diseases, nor injured by smoke or dirt. Glossy dark green leaves, brilliant red in fall, make a perfect cover for brick or stones. 35c each; 3 for 89c.

Bignonia radicans (Trumpet Vine)—High climbing with large orange-scarlet flowers which bloom nearly all summer. Provide with rich soil. 35c each; 3 for 89c.

Celastrus orbiculatus (Bittersweet)—Valued for its orange yellow berries which open in the Autumn showing crimson seed coverings. These remain attractive all winter and are splendid for decorating. 35c each; 3 for 89c.

Clematis jackmani—The most popular of all the clematis hybrids. Its flowers are velvety purple and very large. It likes rich soil, needs lime, and should be protected in the winter. 1" pot plants, 85c each.

Clematis paniculata (Sweet Autumn Clematis)—You know this beautiful vine in Sept. when it is a mass of white fragrant flowers. Leaves stay green until winter. Splendid for trellises and porches. 35c each; 3 for 89c.



Evergreen Bittersweet

summer its seeds bear clusters of silvery plumes. 50c each; 3 for \$1.35.

Euonymus radicans vegetus (Evergreen Bittersweet)—A handsome and hardy evergreen vine with orange bittersweet-like berries in the fall. If planted against a wall, it will climb high. Without support it will form an irregularly spreading shrub 5' high. Easy to grow and always satisfactory. 15-18", 40c each.

Hedera helix baltica (Hardy English Ivy)—This is a hardy variety of English Ivy and is the same in appearance. With its dark, glossy evergreen leaves, it is one of the best plants for climbing on masonry. 35c each; 3 for 89c.

Lonicera japonica halliana (Hall Japan Honeysuckle)—An old favorite with dark, semi-evergreen leaves and yellow and white flowers from July to fall. 35c each; 3 for 89c.

Lonicera sempervirens (Trumpet Honeysuckle)—A high climbing vine which blooms from May till Sept. with clusters of small trumpet-shaped scarlet flowers. 35c each; 3 for 89c.

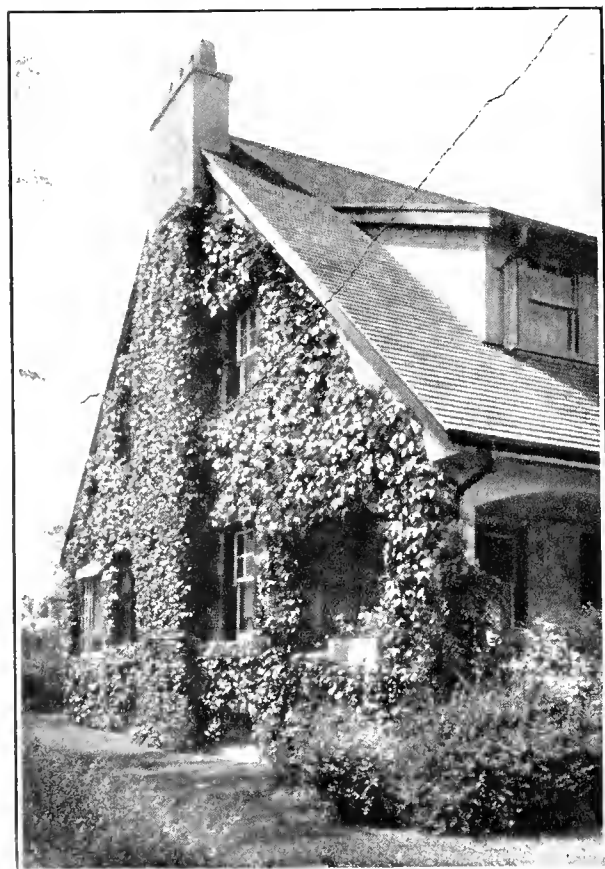
Wisteria sinensis (Wisteria)—This rapidly growing vine with light purple flowers in May prefers deep, rich, moist soil. These plants are grafted from those which have flowered to insure bloom for you within a short time. 75c each.



Hall Japan Honeysuckle

Clematis montana rubens (Pink Anemone Clematis)—Large, rosy pink flowers, 2-3" across, come in June. The vine is vigorous, hardy and easily grown. It was introduced from China by the late E. H. Wilson and is a real treasure for our gardens. 50c each; 3 for \$1.35.

Clematis tangutica (Golden Clematis)—Golden yellow stars, 1" across, against the bright green leaves make this an unusually handsome vine. It blooms in June and again in the fall. In the late summer its seeds bear clusters of silvery plumes. 50c each; 3 for \$1.35.



Boston Ivy



Clematis Jackmani

AMERICA'S FINEST
HARDY EVERBLOOMING ROSES
 GUARANTEED TO BLOOM THIS YEAR

HYBRID TEA OR EVERBLOOMING ROSES

Betty Uprichard—Salmon pink. Semi-double flower. A time tested favorite.
Charles K. Douglas—Scarlet and continually in flower. A time tested favorite.
Charles P. Kilham—A beautiful deep rose shading to yellow at the base of the petals.
Duchess of Wellington—Yellow which becomes a rich cream when fully blown.
Edel—Ivory white and very large. Free flowering.
Etoile de Hollande—A fine deep red. Well perfumed.
Francis Scott Key—Huge flowers of light crimson.
Gruss an Teplitz—Brilliant scarlet, fragrant flowers produced abundantly.
General MacArthur—Vivid crimson flowers. An old favorite.

Jonkheer J. L. Moek—Petals carmine pink on outside and silvery pink within.
K. A. Victoria—Large white flowers tinted yellow at center. Fragrant.
La France—Silvery pink with the real rose fragrance.
Mme. Butterfly—Very fragrant, bright pink flowers.
Mme. Edouard Herriot—Bright coral pink and semi-double.
Mme. Jules Bouche—White, blushed center. A reliable white rose for our gardens.
Mrs. E. P. Thom—A fine unfading yellow rose.
Pres. Herbert Hoover—Scarlet and yellow in bud, turning creamy yellow when open.

Radiance—Rose pink, rounded flowers. Dependable.
Red Radiance—Like above except for its deep red color.
Rev. F. Page-Roberts—Copper red in bud opening to large yellow flowers.
Souvenir de Claudius Pernet—An unfading yellow. Old, but one of the best.
Syracuse—Large crimson scarlet flowers. A good grower.
Talisman—Copper red and gold flowers.
Wm. F. Dreer—Soft yellow and orange tinged with pink. Semi-double.
Willowmere—A lovely, large pink with a yellow glow. A fine grower and persistent bloomer.

**Hybrid Perpetual
 Roses**

These roses are hardier and require less care than Hybrid Tea Roses. They flower abundantly in June and display a scattering bloom in the fall.
Everest—Enormous flowers of ivory white. New.
Frau Karl Druschki—Large snow white flowers of beautiful shape.
General Jacqueminot—Clear scarlet. A grand old favorite.
George Ahrends—A soft pink with long pointed buds.
Mme. Albert Barbier—Soft yellow, paling to white with pink tints at center. It blooms over a long season.
Mrs. John Laing—A large, fragrant, clear pink. Reliable producing an abundance of bloom.
Prince C. de Rohan—Very dark red shaded blackish maroon. An old reliable variety.



Frau Karl Druschki

Oakington Ruby

A New, Tiny, Bright Red Rosa Rouletti

Oakington Ruby is a dwarf rose, growing like the popular Rosa Rouletti, but its fully double flowers are deep crimson in bud and open a rich ruby-carmine. This color is maintained until the petals fall, even under strong sun and heat. The plant is hardy, not fussy about soil and blooms from May until late fall. 2 1/2" pot plants, \$1.00 each.

Rosa Rouletti

Rare Treasure for a Rock Garden

This miniature rose was found in a high Swiss village. None knew where it came from nor how it got there, but the villagers had grown it for many years in their window boxes. It was brought into France where it attracted instant attention and from there it was introduced to other countries. This elfin rose has perfect little pointed buds of bright pink which open into tiny, double roses. The flowering season extends from April to November and the plant is perfectly hardy. It grows very slowly and its charm, which lies in its small size, is never outgrown. These are truly dwarf plants that will fit into a tiny niche and stay in proportion, giving a profusion of flowers throughout the summer. 3" pot plants, 50c each.



Rosa Rouletti



Primrose

**Bring New Beauty to Your Home
 with Climbing Roses**

American Pillar—Single pink flowers, petals white at the center.
Dorothy Perkins—Shell pink flowers in large clusters. Very old but still popular.
Dr. Huey—Large, semi-double, maroon flowers which continue over a long period.
Dr. Van Fleet—Large pale pink flowers. A vigorous and beautiful climber.
Jacotte—Apricot-yellow. Semi-double. One of the best yellow climbers.
Mary Lovett—Pure waxy white flowers, large and fragrant.

Mary Wallace—Bright pink, large and borne on long, strong stems.
Mme. Gregoire Stacchelin—Double pearl pink flowers, huge in size and abundantly produced.
Paul's Scarlet—Large double and intensely red flowers lasting for a long season.
Primrose—Double yellow flowers and handsome shiny foliage.
Silver Moon—Large, white, nearly single, yellow centered flowers. A vigorous grower.

50c ea. All roses, alike or assorted, your selection, except Rosa Rouletti and Oakington Ruby. These roses are specially selected 2 yr., No. 1 plants; finest obtainable. **12 for \$5** Post Paid

New and Outstanding Perennials for 1936



Gaillardia, Barnes Ruby

From the abundance of new material which is constantly increasing the already oversized list of cultivated perennial plants, many of which are no improvement over existing varieties, we have attempted to cull a few of the best of the recent domestic and foreign offers. Below is a descriptive listing of twenty such perennials which we are presenting to our friends and customers this season. Nineteen of those described are new to our lists. One is an older variety, but of such outstanding merit that we are giving it a place among the new and outstanding perennials for the third consecutive season.

With the exceptions of *Gypsophila oldhamiana* and *Veronica incana rosea*, these new varieties have been tested for flowers, habit and hardiness in the trial grounds of this nursery. Such trials mean a considerable expense to us and a delay of from one to three years in offering a new perennial to the public, but due to the undeniable fact that many new introductions do not come up to the glowing descriptions of their originators under ordinary garden conditions and are insufficiently tested before being rushed into the market, we find the maintenance of a small trial ground and caution in listing a new perennial absolutely necessary.

The two exceptions to our general procedure, *Gypsophila oldhamiana* and *Veronica incana rosea* have not been tested for any length of time by us, but *Veronica incana rosea* was imported directly from a very reliable firm in the Netherlands and *G. oldhamiana* received so much favorable comment, both in this country and abroad, last year that we feel safe in offering it without further trial.

TWO FINE GAILLARDIAS

Gaillardia grandiflora, Barnes Ruby—(Our own raising). This is one of the finest plants we have ever had the pleasure of introducing. Barnes Ruby is a brilliant ruby-red *Gaillardia*, or Blanket Flower, having no hint of yellow or brown in its make-up. Blooming all summer long as do few other perennials, its vivid flowers make a continuous showing and furnish abundant cut flowers as well. Our plants are all cutting grown. 50c each.

Gaillardia grandiflora, Mr. Sherbrook—This English variety is the brightest of any yellow *Gaillardia* we have yet seen. The full, circular flowers are of a rich golden yellow with a pale yellow center, unstained by any other color. The large, self-colored blooms, supported by stout stems above the pale green foliage, continue from early summer until late into the fall. In common with every *Gaillardia grandiflora* it is so unmindful of the hardships of heat, dryness and poor soil that it is hard to imagine anyone having difficulty with it as long as it receives its share of sunlight. Mr. Sherbrook is a striking perennial and a fine companion for our brilliantly colored Barnes Ruby. 50c each.



Chrysanthemum, Pink Cushion

FALL FLOWERING HARDY ASTERS

Fall flowering hardy Asters, or Michaelmas Daisies, have become very popular the last few years, due to the finer, large flowered varieties now on the market and to an increasing realization that their tremendous masses of bloom, coming just after the Phlox have gone and before the Chrysanthemums begin, fill, in a most satisfactory manner, that period when there are few other blooms in the perennial garden. Then too their colors are entirely autumnal and harmonize well with those of the native plants in the fields and woodlands which fringe the homes of many true New Englanders. We are offering here three of the very newest and best.

Aster Col. F. R. Durham—3½'. This variety is characterized by very dark green, feathery foliage, which in the fall is almost hidden by masses of rich, clear mauve, double asters of medium size. The finest variety we have yet grown in this truly autumn color. 50c each.

Aster, Mount Everest—4-5'. The finest white hardy Aster. Mt. Everest, a creation of Ernest Ballard of England, forms glistening pyramids of pure white, large, double asters with a very small golden eye. Due to the abundance of lateral branches, this variety blossoms from the peak, down the sides, to the very base of the plant. Put it where it will have room to form its beautiful white cascade in the fall. 50c each.

Aster, Red Rover—3-4'. Nearest approach to pure red in the Hardy Asters. The deep rosy-red, double flowers with golden centers, small, but produced in profusion, will furnish cut flowers and a high spot of color in the garden during the early weeks of autumn. 50c each.

DIANTHUS

Dianthus, Rose Unique—15". (Our own raising.) In introducing this new Hardy Carnation we are offering a decided improvement over previous hardy varieties in beauty, hardiness, and habit. Rose Unique is a large flowered, deep pink, fully double carnation with broad, robust, blue-green foliage. It has the valuable trait of blooming its spicily fragrant flowers from early summer until, with buds still unfolded, the real hard freezes of late fall put an end to its activities. Rose Unique was flowering with us this fall long after all other hardy carnations and even the Perpetual flowering Clove Pinks had ceased to bloom. The long wiry flower stems are almost leafless, and surmounted by clusters of 3-4 buds which open one after the other, offer fine material for cut flowers. 50c each.

Dianthus plumarius, Double Ipswich Crimson—18". (Introduced by Thompson and Morgan of England.) This is a fine, new, double variety of the old fashioned Clove Pink. The carnation-like flowers are of a dark crimson color and abundantly produced, having all the fragrance of the Clove Pinks of our mothers' gardens and twice the beauty. Our stock has been grown from cuttings. 35c each.



Dianthus, Rose Unique

Every Garden Should Contain These Varieties

DWARF HARDY ASTERS

This is a new race of absolutely hardy, low growing Asters of great beauty and usefulness. Produced in Europe their abundance of bloom and neat, restricted growing habit rapidly brought them to the attention of the European growers. Soon they spread throughout that part of the world, made the inevitable jump across the ocean to this country, and now are available throughout the United States. The illustration of the variety Victor shows clearly their dwarf, compact habit of growth and flower. Each plant forms an individual clump ten to fifteen inches high and at least as broad. In the fall they burst into sheets of bloom, so dense that hardly a leaf shows through the flowers. For rock gardens, low borders, or any other location in which a plant of their height can be used, you will find them unexcelled. We believe this the finest group of new hardy plants that have been introduced for some time. We offer the following European varieties of Aster Hybridus.

- Countess of Dudley**—1'. Very deep pink. Latest to bloom, late September into October.
- Lady Henry Maddocks**—1'. Light pink. The flowers of this variety are very narrow petaled and star-like. Blooms from mid-September until the first of October.
- Marjorie**—10". Bright pink. Blooms from mid-September until the first of October.
- Nancy**—10". Pale pink. Very low and broad. Blooms from mid-September until the first of October.
- Ronald**—1'. The finest of all. Clear lavender. Blooms from mid-September until the first of October.
- Victor**—10". Light blue. First to bloom, late August until mid-September.

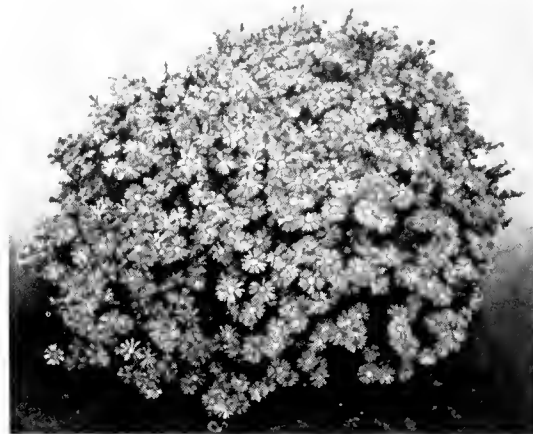
Price: 30c each; \$3.00 per 12.

CHRYSANTHEMUM

Chrysanthemum, Pink Cushion—12". Dwarf in growth this Chrysanthemum, which is now experiencing well deserved popularity, covers itself with wholesale quantities of bright pink double flowers during its blooming period which varies somewhat according to the season and location. It usually is one of the first Chrysanthemums to flower, thus escaping the late frosts which spoil the displays of many Chrysanthemums. For bedding out, rock gardens and borders it will give entire satisfaction. 35c each.

GYPHOPHILA

Gypsophila oldhamiana—2'. We are pleased to be among the first to offer this new, hardy, pink Japanese variety of Baby's Breath. Growing in much the same manner as the old fashioned Baby's Breath (*Gypsophila paniculata*), it spreads its



Aster, Victor

large panicles of pale pink, lacy flowers late in the fall, long after *G. paniculata* has gone to seed. You will admire the airy grace of its clouds of pale pink blooms and find it a valuable filler for your September and October bouquets. Exhibited in England for the first time last year, *Gypsophila oldhamiana* at once received the coveted Award of Merit of the Royal Horticultural Society and found favor everywhere. Doubtless it will soon become popular in our own country as well. 50c each.

Gypsophila paniculata Rosenschleier—2-3'. A new European, double flowered Baby's Breath, very similar to the well known Bristol Fairy except that its flowers are distinctly pink instead of white. *Rosenschleier* is absolutely hardy, and its free and long flowering habits will assure you of quantities of pink blooms throughout the summer and fall. Try the effect of its pink tones in your bouquets. Gardeners and florists have long wanted a double pink *Gypsophila*—here it is. 50c each.



Gypsophila Rosenschleier

IBERIS

Iberis jucunda—4-6". Little *Iberis jucunda*, obtained from Germany, is again included in our special listing to give its outstanding merits the prominence they deserve. It is a pretty, dwarf pink

flowered Candytuft with attractive, silvery blue, evergreen foliage. Throughout the winter the low tufts of leaves peep out among the snowdrifts in all the gleaming blue of the Koster's Blue Spruce. With the warmth of the early summer come the close clusters of bright pink flowers. If you wish a choice plant which is practically unknown to the general run of gardeners, try this grand little perennial. *Iberis jucunda* has withstood temperatures of -20 F. at this nursery without protection. 35c each.

VERONICA

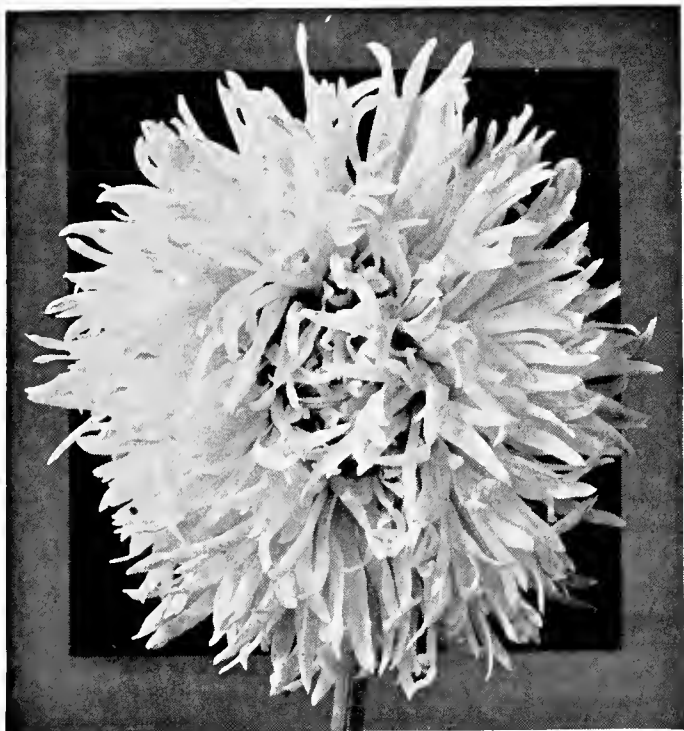
Veronica incana rosea—12-15". Most gardeners have long grown and admired the well known, silver leaved, blue flowered *Veronica incana*; it is a choice perennial. Now comes this new importation from Holland, a silver leaved *V. incana* with deep pink flowers. To describe it fully: *Veronica incana rosea* is a low growing, white leaved, hardy perennial, which, during July and August, sends up quantities of foot long spikes of deep rose colored flowers, making a striking contrast with the silvery gray of its foliage. 50c each.

SHASTA DAISIES

Shasta Daisies—2-3'. From Richard Diener of California come the two following strains of his new Shasta Daisies. He predicts that they will be a sensation for the next few years, and we are inclined to agree with him. From June until the fall frosts, on long sturdy stems the pure white daisies come, one after another in continuous succession. Among the several thousand plants which bloomed on our grounds last summer, no two seemed to have the same pattern of flower. As they came on we found long petals and short ones, broad petals and narrow ones, single daisies, semi-double ones, daisies with so many petals that they looked like large powder puffs—there seems no end to flower types in these hybrids. The culture of the Shasta Daisies is simple and their requirements are not exacting; just sunlight, a well fertilized bed and a little straw mulch in locations where the temperature goes below zero. We are offering the following two strains of these new perennials.

Double and semi-double mixed. 35c each.

Single "Earliest of All"—The flowers of these plants measure from 4-6" across. 35c each.



Double Shasta Daisy

Perennials

PRICES

25c each; 3 of any one variety or color, 60c; 12 of any one variety or color, \$2.25; 100 at least 10 of each variety or color, \$18.00 except where otherwise noted. 35c varieties are 3 for 90c.

Aethionema persicum (Persian Candytuft)—8". Neat gray foliage and slender spikes of rose colored flowers in June and July.

Ajuga genevensis (Bugleweed)—6". Shiny, dark green leaves and dense spikes of intense blue flowers in May and June. Will succeed in almost any location.

Alyssum saxatile compactum (Basket of Gold)—8-10". No plant can fill rockeries with a greater wealth of gold in the early spring.

Anchusa italica, Feltham Pride (Alkanet)—2'. A fine new *Anchusa* of very compact habit which in June bears extra large, forget-me-not flowers of a bright blue in racemes on a branching stem. 35c each.

Anchusa myosotidiflora (Alkanet)—12". A fine, low, broad leaved perennial from Siberia. In May and June it sends up a myriad of clusters of forget-me-not flowers which arise like a blue mist about the great, heart-shaped leaves.

Aquilegia caerulea, Dobbie's Imperial Long Spurred Hybrids (Long Spurred Columbine)—18-24". To our mind the finest Long Spurred strain being offered at present.

Aquilegia glandulosa vera—12-15". A most beautiful Columbine with very large, bright blue spurs and a pure white center. This *Aquilegia* is a little delicate, but well worth the attention of the better gardeners.

Arabis albida fl. pl. (Double Flowered Rock Cress)—8-10". Double flowered form of *Arabis* with larger, fragrant flowers, and stems long enough for cutting.

Armeria lauchiana (Sea Pink)—3-6". Forms a little tuft of grass-like leaves from which, all summer long, pincushion heads of bright rosy-red flowers arise in steady succession.



Aquilegia—Dobbie's Long Spurred Hybrids

Aquilegia, Pearson's Crimson Star—2'. Without doubt one of the most strikingly colored of all Columbines. The sepals and spurs of the large flowers are of the richest crimson, while the petals are pure white—a beautiful contrast of colors. Our seed of this variety was imported directly from the originator. 35c each.

Artemisia, Silver King (Ghost Plant)—2-3'. Silver leaves on long straight stems. Used for foliage effects and as a filler for bouquets. Dried it makes splendid winter bouquets.

Aster alpinus (Spring Flowering Rock Aster)—6-10". From a low leaf tuft come large, daisy-like flowers with blue or purple petals and bright orange centers in May and June. Easily grown.

A. Dark Beauty—Large, dark purple flowers with orange center.

A. Goliath—Showy, lilac-blue daisies on long stalks. Fine for early bouquets and the rock garden.

A. Nymph—Star shaped flowers of light blue. New. 35c each.

Aster Nova Anglae, Barr's Pink (Pink New England Aster)—1'. A strong, vigorous grower, with a mass of double, bright pink flowers in the fall. Give it plenty of room and take all the bouquets you like.

Aster, Novi Belgi—See next page.

Aster subcaeruleus, Wartburg Star—2'. Forms rosettes of leaves on the ground from which shoot 18-24" stems, bearing big lavender-blue, deep yellow centered marguerites 3-4" across.

Asclepias tuberosa (Butterfly Weed)—2'. During July and August this plant produces umbels of bright orange, peculiarly shaped flowers which last a long time when cut. Plants like sandy soil.



Asclepias tuberosa



Aster subcaeruleus—Wartburg Star

Aubrietia deltoidea Eyrei (Purple Rock Cress)—6-8". Very large flowered, rich violet purple.

Aubrietia hybrida grandiflora—6-8". Pink, reddish, lavender, purple, and blue shades are found in this mixture of hybrid *Aubrietias*.

Campanula carpatica (Carpathian Harebell)—3-10". The neat, compact tufts of this plant are continuously overhung with its large blue or white bells from June till frost.

Blue.

White Star—White.

Campanula glomerata acanthis—3". Tiny with large clusters of rich violet flowers just above the leaves in June and July.

Campanula glomerata dahurica—18". In June and July it is laden with large heads of deep violet blooms. Give a sunny location.

Campanula media calycanthema (Cup and Saucer Canterbury Bells)—2'. We offer this most showy type in pink, blue, and white, as separate colors or mixed.

Aster Novi Belgi (European Fall Flowering Hardy Asters)—3-4'. The newly developed varieties coming in delightful shades offer many possibilities for late summer color combinations. These Asters will grow in any soil, provided they receive abundant sunshine.

Blue Eyes—Nearest true blue. Double flowers. These potted plants will make up splendidly by fall and flower well the first season. 50c each.

Col. F. R. Durham—See Special List.

Diek Ballard—Dwarf. The whole plant is smothered in large double rosy-red flowers with bright rose-red centers.

Little Boy Blue—2½'. The earliest Aster to bloom and the most free flowering of all. A mound of blue in Sept. One of the best. 50c each.

Little Pink Lady—2½'. Pink companion to Little Boy Blue. 50c each.

Mt. Everest—See Special List.

Pink Royal—We still claim this is the finest pink Aster.

Red Rover—See Special List.

Royal Blue—Masses of good, double blue flowers.

Skylands Queen—Dense and spreading. Flowers large, light blue.

Hardy Chrysanthemums

Jean Treadway—Aster type. Clear pink with dark rose center.

Barbara Cumming—Decorative type. Large, clear yellow flowers shading to orange-bronze in the center. Early.

Brune Poitevine—Very large, velvety, reddish-bronze petals, golden underneath.

Jean Cumming—Large flowers of purest white.

Mrs. L. Birehard—Large, bright shell pink.

Old Gold—Late, bright golden button or Pompon type.

Gypsy Girl—Single, crimson shading into chestnut-crimson.

Crimson Splendor—Large, semi-double flowers of bright crimson-red.

Korean Chrysanthemums

Country Girl—4-5'. Single flowers 3½" or more across. Lovely shade of lilac-pink. Good for back of border. 35c each.

Hebe—2½'. Produces tremendous masses of clear, soft pink, single blooms. 50c each.

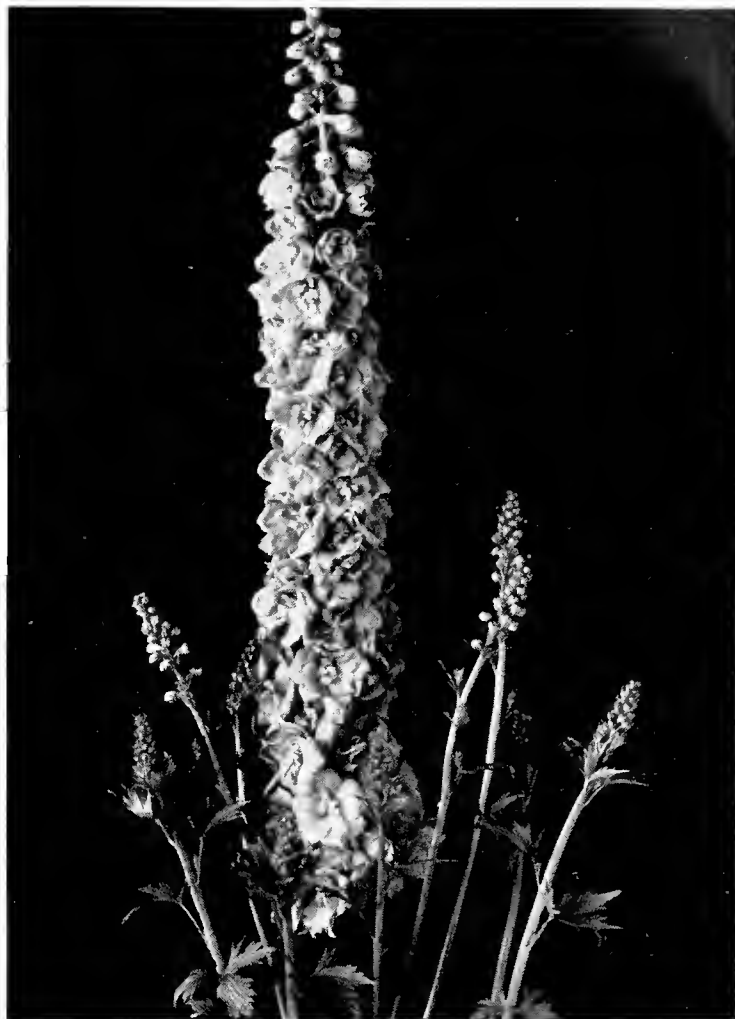
Orion—2½'. Bright canary yellow. Single. 50c each.

Vulean—2½'. Glowing carmine-red which shades to garnet-crimson. Bright golden center. 50c each.

Clematis integrifolia—18". A low shrubby plant with dark foliage and frosty blue bells from June through August. Very hardy.

Delphinium belladonna, Cliveden Beauty—5'. This is a greatly improved variety of the well known, light blue, hardy Larkspur. Its clear turquoise blue coloring, larger flowers and more sturdy growth serve to make it the finest D. belladonna variety on the market.

Delphinium bellamosum—3-4'. The lovely, old, dark blue Larkspur.



Delphinium—Hollyhock Strain

Hybrid Delphinium—

Benary's Large Flowered Hybrids—Large open flowers of pure colors, closely massed on tall, stately stems growing 5-6' high.

Benary's Hollyhock Strain—Enormous spikes of large, single and double blooms in shades of blue, violet and purple.

Dianthus, Rose Unique—See Special List.

Dianthus barbatus (Sweet William)—Old favorites in red with white eye, black-maroon, white, pink, scarlet, and purple.

Dianthus caryophyllus (Hardy Garden Carnations)—12-15". These double Vienna and Grenadin types furnish excellent carnations for the house and fine blue-leaved plants for the garden. We have selected the finest specimens of the following and from them have propagated a large stock by cuttings, thus insuring you true plants of the colors you order. Scarlet, White, King of Blacks (black-red), White Gold (soft yellow), Violet, and Rose.

Dianthus deltoides erecta—6". The great objection to the well-known Dianthus deltoides is its habit of spreading overmuch and crowding its neighbors. This forms compact tufts of erect growth with flower stalks held directly above, not scattered about the sides of the plant. The little pinks are bright red in color. Do not let these plants go to seed. They bloom very heavily and are apt to exhaust themselves in the effort of making seed. We recommend this newcomer. 35c each.

Dianthus Loveliness—"The flowers have large lacinated petals of a most exquisite mauve tint, but most fascinating of all is its gorgeous bouquet—the most alluringly perfumed flower we know. For its scent alone it will claim millions of adherents the world over."—that is the description by an enthusiastic English seedsman. We cannot better it. 50c each.

Dianthus plumarius, Double Ipswich Crimson—See Special List.

Doronicum caucasicum (Leopardbane)—2'. One of the best early flowering perennials. Bright green, heart shaped leaves and golden yellow, daisy-like flowers, which are fine for cutting. The plants die down to the ground during their resting period through July and August.



Geum, Fire Opal



Heuchera Shirley



Iberis Snowflake



Lilium regale

- Gaillardia grandiflora, Burgundy**—3'. One of the new Gaillardias. A brilliant coppery-scarlet sometimes faintly tipped with yellow. 35c each.
- Gaillardia grandiflora, "The King" Strain Mixed**—3'. A special large flowered strain. Gaillardias stand much heat and dryness. Try them in your summer garden.
- Gaillardia grandiflora, Barnes Ruby**—See Special List.
- Gaillardia grandiflora, Mr. Sherbrook**—See Special List.
- Geum Fire Opal**—3'. The finest of all Geums. The 2-3" blossoms are of an orange-scarlet with an overlaid opal sheen and are produced in abundance in July and August. Pictures were taken of a plant in a customer's garden last year which measured over three feet across and three feet high when in bloom. The variety is perfectly hardy. 50c each.
- Geum sibericum**—12-15". Fiery, orange-red, it will make a hot spot in your rock garden from April till June. Single. 50c each.
- Gypsophila oldhamiana**—See Special List.
- Gypsophila pacifica**—3-4'. A tall, single pink. Very hardy and satisfactory.
- Gypsophila paniculata, Bristol Fairy**—2-3'. Large panicles of double white flowers all summer. 50c each.
- Gypsophila paniculata Rosenschleier**—See Special List.
- Helianthemum (Sunrose)**—Prostrate. These plants form mats of dark, shiny leaves from which arise multitudes of double or single, brightly colored flowers. Give them plenty of room to spread and do not disturb after they are planted. They need plenty of sun.
- Ball of Fire**—Double. Balls of glowing red.
- Citrinum**—Large, single, yellow.

Heuchera (Coralbells)—2'. From neat tufts of attractive leaves, there arise continually all summer stems of brightly colored little bells. Very hardy and long lived.

H. brizoides—Early blooming (May). Pink bells in abundance.

H. sanguinea, Edge Hall—Large, pink bells in June and July.

H. sanguinea, Saturnale—Very dark red flowers in June and July.

H. sanguinea, Shirley—Very fine, free flowering, coral-scarlet variety. Exceedingly bright and attractive. Its vivid little bells are like drops of fire.

H. sanguinea, Splendens—Brilliant dark crimson.

- Hollyhocks**—6-8'. Chater's double hybrids, we believe, are the finest. Colors offered: white, scarlet, Newport pink, maroon, salmon-rose, and yellow.
- Hollyhock, Prince of Orange**—A new beautiful double orange variety. 35c each.
- Iberis (Hardy Candytuft)**—12". Low evergreen perennials having masses of pure white or lilac flowers in May and June.
- I. gibraltaria hybrida**—Lilac and purple.
- I. sempervirens, Snowflake**—This is the finest variety of the well known Hardy Candytuft.
- Liatris spicata (Blazing Star)**—2-3'. Very showy with rounded spikes of clear purple blossoms, both odd and beautiful, in August and Sept.
- Lilium regale (Regal Lily)**—3-5'. The finest garden lily grown. Very fragrant, white blooms tinged sulphur in the throat and pink on the outside.
- Linum flavum (Golden flax)**—1'. Dwarfish, and during the summer massed with golden yellow blooms 1" across.
- Linum perenne (Perennial Flax)**—18". Its graceful, slender stems and foliage and large, open, blue, cup-like blooms will attract attention the entire summer in the rock garden or border.

Lobelia cardinalis hybrids (Cardinal Flower)—2-3'. These are fine new hybrids of our native Cardinal Flower. They thrive in a damp location, but do not allow the water to stand on the crowns during the winter. Our supply of these is limited. Orders will be filled in the order received.

Illumination—Distinct and magnificent new variety attains the height of about 2½' and produces a monstrous single scape of large, glossy, scarlet flowers. The foliage is of a dark red color. 75c each.

The Bishop—4-5'. Splendid spikes of large, glistening vermilion-scarlet flowers with many lateral spikes. Blooming period lasts 8-10 weeks. 75c each.

- Mazus reptans**—Prostrate. Dwarf Alpine covered in the early spring with dainty lilac flowers, having a small white lip. Fine for the rockery.
- Myosotis palustris semperflorens**—6". A choice everblooming Forget-me-not.

Penstemon glaber (gordoni)—18". Clear blue, tubular flowers suffused pink on the tubes and in the throat. Covered with blossoms in May. This plant attracted considerable attention here, last year, and is worth your consideration.

- Phlox amoena**—6". This fine creeping Phlox blooms after the *P. subulata* (Moss Pink) show is over. Makes a dense carpet over the ground which is covered by a sheet of bright pink bloom in the late spring.

Choice Perennials at Popular Prices

Phlox arendsi—18". These commence flowering immediately after the spring phloxes have finished and produce their flowers continuously until fall. We are offering two fine new varieties.

Kathe—Purple-rose with dark eye. 50c each.

Marianne—Dark bluish-violet. 50c each.

Phlox divaricata laphami (Canadian Phlox)—1'. Large, fragrant, lavender-blue flowers in May. This is an improved form of a fine native plant.

Phlox ovata caroliniana (Mountain Phlox)—12-15". Very neat and dwarf. Vivid, rosy-red flowers brighten the rock garden in early summer.

Phlox paniculata (Hardy Garden Phlox)—A garden without these familiar Phlox is like a house without chairs—not quite furnished.

B. Comte—Dark amaranthus red. Still the darkest red.

Caroline Vandenburg—Nearest approach to blue.

Debs—New. Brilliant deep crimson-red. 50c each.

Elizabeth Campbell—Light salmon pink with a lighter eye.

Enchantress—An improved Elizabeth Campbell.

Europa—White with blush center and red eye.

Fiancee—Fine new white. 50c each.

Homeland—Brilliant orange-scarlet.

Jules Sandeau—Dwarf, watermelon pink.

Leo Schlageter—Tall trusses of bright scarlet. 50c each.

Maid Marion—Lilac.

Miss Verboom—June flowering, lavender-pink.

Mrs. Jenkins (Independence)—Free-flowering white.

Mrs. W. Van Bueningen—Salmon-red.

Pantheon—Good clear pink.

Painted Lady—Pink with red eye.

Rheinlander—Fine, large flowered salmon-pink.

Rijnstroom—Rose-pink.

Salmon Glow—New salmon.

Phlox subulata (Moss Pink)—Prostrate. The moss-like foliage and perfect sheets of flowers of these plants have endeared them to everyone.

Rosea—The old familiar rose-pink.

Atropurpurea—An entirely new color; deep red.

Lilacina—Lilac.

Vivid—Bright pink with dark pink eye.

Platycodon mariesii alba (White Chinese Bellflower)—15". Huge 2" white bells all summer.

Primula auricula—6". Rosettes of dark green leaves from which arise 6" flower stalks bearing large flowered, very fragrant clusters of blooms in various colors.



Lobelia The Bishop

Primula cashmiriana—8". Large globular heads of lavender.



Polyanthus, Unwin's Superb Mixture

Polyanthus, Unwin's Superb Mixture (Bunch Primrose)—This year we are offering an especially fine lot of these desirable Primroses. They are splendid large plants of exceptional substance, and colors range throughout the whites, yellows, pinks, oranges and reds and marvelous combinations of the same. These bright free-flowering plants do well in a partially shaded location which does not get real dry in the summer. You will be delighted with the marvelous color a bed of these will present in May and June.

Pyrethrum (Painted Daisy)—The neat tufts of finely cut foliage and long-stemmed daisies of these plants make them one of the choicest of border perennials and they are unexcelled for cutting purposes.

Single—White, light pink, deep pink, red.

Double Flowered—Mixed colors. 35c each.

Salvia pitcheri—2-3'. The large gentian-blue flowers of this variety are certain to attract attention; they do here during their blooming period in the early Autumn.

Scabiosa caucasica (Pin Cushion Flower)—2'. Large feathery flowers blooming all summer are among the finest for our gardens. They will thrive in any soil provided it is well drained, for they will rot when it is damp and heavy.

Isaac House Strain—An outstanding strain with extra large flowers in all shades of blue, lavender and white. Offered only in mixture. 35c each.

Perfecta alba—A pure white flowered variety. 35c each.

Columbaria pink—A new species from South Africa, with pink flowers 2-2½" across on long stems. 35c each.



Single Pyrethrum

Stokesia cyanea (Stoke's Aster)—18". Blooms its 3-4" flowers like huge China Asters from July till October. We offer blue, white and pale yellow.

Thalictrum aquilegifolium purpureum (Meadow-Rue)—2-3'. These plants have the graceful cut foliage of the Columbine and fluffy heads of rosy-purple flowers in June and July.

Thermopsis caroliniana—5'. Deep, rich green foliage surmounted in June and July by long spikes of sulphur-yellow flowers resembling Lupines.

Thymus (Thyme)—An aromatic Old World perennial, admired not only for its fragrance, but also for the beauty of its foliage.

T. citriodorus argenteus (Silver Thyme)—6". The low mound of silver leaves makes a fine display. 35c each.

T. citriodorus aureus (Golden Thyme)—6". Leaves inlaid with bright golden yellow. Both grown from cuttings to insure good color. 35c each.



Stokesia—Stoke's Aster

T. serpyllum album (White Thyme)—Prostrate. Forms a mat of dark green leaves, which, in the summer, are sprinkled with pure white flowers.

T. s. coccinea (Crimson Thyme)—Prostrate. Very dark mats of tiny foliage and glowing crimson flowers.

T. s. lanuginosus (Woolly Thyme)—Prostrate. Makes a carpet of grey foliage. One of the finest plants for growing along the stone steps of the rock garden.

Viola cornuta (Tufted Pansies)—These well known little plants are not particularly hardy, but if cut back in September to force new growth before winter and mulched with straw during the cold months, they will come through without trouble.

V. Apricot Queen—A large flowered, apricot colored variety.

V. Jersey Gem—The well known everblooming violet-purple.

V. White Perfection—The finest pure white variety.

V. Yellow Queen—An English introduction, having masses of very large golden yellow flowers all summer.

Trollius ledebouri, Golden Queen—3-4'. Very vigorous and tall growing plants bearing flowers up to 4" across. The outer petals are a rich gold and the small inner ones, bright orange. They are extremely floriferous and bloom well into the Autumn. Plant in a partially shaded place where the ground remains moist during the summer. 50c each.

Arkwright Ruby—A clear, glowing ruby-red Viola of English origin. It blooms continually from spring till fall, doing especially well the first cool weeks of autumn. Arkwright Ruby has a fine fragrance and a bowl of its flowers will pleasantly scent an entire room. 35c each.

Trollius europaeus (Globe Flower)—2'. Trollius are handsome perennials resembling large double golden buttercups. They bloom from May until September, thus furnishing fine cut flowers throughout the summer.

Veronica (Speedwell)—Fine blue flowers, ranging from tiny rock plants to tall border types.

V. hybrida, True Blue—12". Masses of intense blue blossoms in June and July. 35c each.

V. incana—1'. Silvery grey foliage and spikes of pale blue flowers.

V. incana rosea—See Special List.

V. longifolia subsessilis—2-3'. The most showy of all Veronicas. Its flowers are a clear, very dark blue and are born on long spikes, fine for cutting. 35c each.

V. pectinata rosea—One of the best creeping Veronicas, yet one of the scarcest. Beautiful soft greyish leaves and tiny spikes of deep rose colored blossoms. We like it. 35c each.

V. teucrium, Royal Blue—8". Low and bushy in habit, with sheets of blue flowers in the spring.

V. trehani—6". Blue flower spikes swaying over the golden foliage makes a pretty contrast in the rock garden.



Trollius ledebouri "Golden Queen"

Viola odorata rosina—6". This is a fine hardy, really pink violet. The flowers are very fragrant and are born profusely in the spring and in smaller quantities again in the fall. Will make dense mats of green foliage and grows equally well in the sun or shade.

PRICES

25c each; 3 of any one variety or color, 60c; 12 of any one variety or color, \$2.25; 100 at least 10 of each variety or color, \$18.00 except where otherwise noted. 35c varieties are 3 for 90c.

TERMS

Orders will be sent by Express collect. If you wish an order sent by Parcel Post, add 10% to the total amount of order for postage. Much larger plants can be sent by Express.

If you do not see the variety you want write us. We have many others not described here.

FOR SPRING 1936

TERMS—Net Cash. We will ship orders C. O. D., providing twenty-five per cent of total amount is is sent with order.

ORDER EARLY—Order immediately, if possible. Late orders are subject to the hazards of being handled in a rush. Moreover, some varieties or sizes may be sold out, causing disappointment.

NON-WARRANTY—(1) If any nursery stock shall prove untrue to the label under which it is sold, provided notice and proper proof thereof are furnished by the purchaser to the seller, the seller shall, at the option of the purchaser, either refill that portion of the order, which was mislabeled, by another delivery of stock, or refund the purchase price; but in any case, we are not to be held responsible for a sum greater than the original selling price of such stock. (2) All sales or agreements of sale are made subject to shortage of nursery stock, fire, frost, floods, drought, or other causes beyond the control of the seller.

TRANSPORTATION CONDITIONS—All goods, unless otherwise specified, are sold F. O. B. our nursery and travel at the purchaser's risk and expense. Where a customer is resident within 25 miles of our nursery, we shall be glad to deliver plants without charge on such days as we have trucks in that particular section. We cannot deliver on specific days or at particular hours.

SUNDAY HOURS—This nursery will be open on Sundays during April and May.

GUARANTEE—Prices do not include any guarantee of growth. However, if any of the plants purchased from us this spring should fail to grow, notify us not later than July 1, 1936, and we will replace the stock free. After July 1st, we will replace at half price.

CLAIMS—If there are any claims, they must be made on receipt of goods. Any error of ours will be promptly and satisfactorily adjusted. Claims made after ten days from receipt of goods, cannot be considered. We ship only best grades of stock and use great care in packing.

INSPECTION—Our nurseries are regularly and thoroughly inspected by the Connecticut Agricultural Experiment Station and found apparently free from injurious insects and diseases.

LOCATION—Our nursery is located on the Boston Post Road, Route 5, three miles south of Meriden, two miles north of Wallingford. Buses of the New England Transportation Company pass our office, leaving the Hartford R. R. Station from the north and New Haven R. R. Station from the south every hour on the hour.

Mail Your Order **TODAY!**

The Original
BARNES BROS. NURSERY
Established 1890