

Historic, archived document

Do not assume content reflects current scientific knowledge, policies, or practices.

5.09

WHOLESALE PRICE LIST

To the Trade

1935 -:- 1936



"ESTABLISHED 1878"

LEONARD COATES NURSERIES

INCORPORATED

WHOLESALE GROWERS OF

Evergreen and Deciduous Ornamentals - Conifers -
Lining-Out Stock - Rose Stocks - Budded Roses -
Budded Fruit Trees and Fruit Tree Seedlings - - -

Nurseries and Salesyards at
Oakland, Morgan Hill,
Santa Cruz and Brentwood



Main Office and Salesyard
SAN JOSE
CALIFORNIA

Member California Association of Nurserymen

-:-

Pacific Coast Association of Nurserymen

Central California Nurserymen's Association

Terms, Conditions and Organization

OUR POLICY

Is to grow the best. Quality nursery stock cannot be grown without extra care and expense. Therefore look out for cheap stock as quality, condition or cleanliness must be sacrificed. All our stock in "containers" is clean, healthy and not root bound. None of our "Balled" stock is too old or overgrown while our "Deciduous" stock is freshly grown each year. "Quality Stock Pays."

TERMS

All prices are net: 5% discount for cash with order. All bills due and payable 60 days from date of invoice, unless otherwise arranged. Interest at the rate of 7 per cent will be charged after 60 days.

RATE

Quotations in this list will be furnished 5 at ten rate, 25 at hundred rate and 250 at thousand rate.

PACKING

Packing is done in the most careful way and a charge is made to cover cost of materials only. Our packers have had many years' experience.

TRUCK DELIVERIES

With a fleet of four trucks we can make prompt deliveries to all parts of California. Charges will be very nominal and will save our customers boxing, freight and cartage, and also eliminate extra handling of plants.

GUARANTEE

While we exercise the greatest care to have all stock true to name, we give no warranty, express or implied, and in event that stock is

proven not true to name, we shall be liable only for the sum paid for such stock.

CLAIMS

Of any kind will not be allowed unless reported within 10 days after receipt of stock.

NATIVE TREES

The stock of Native Trees and Shrubs we carry cannot be equalled in California. Our nurseries are recognized Headquarters for this class of stock. The demand for native stock is increasing each year and wherever a shortage of water exists this type of plant can be suggested. All natives are preceded with an asterisk (*).

EXPLANATION OF ABBREVIATIONS

B—Balled; B. R.—Bare Root; P—Pot; Qt.—Quart Can; Gal.—One Gallon Can; 2½g—Two and one-half Gallon Can; 5g—Five Gallon Can; Ft.—Feet, and In.—Inches.

APPRECIATION

We wish to again express our appreciation for the increased patronage given us by our many wholesale customers. This increase has justified our feeling that there is still a market for High Grade, Quality Nursery stock at a fair price.

VISIT OUR NURSERIES

We have three principal growing grounds, or Nurseries, located at Morgan Hill, Santa Clara County; Santa Cruz, Santa Cruz County; and Brentwood, Contra Costa County, with our Main Office, Floral Store and Salesyard at 2201-2205 The Alameda, San Jose, on the main San Francisco Highway, between San Jose and Santa Clara. Also a recent addition at 3121 Fruitvale Avenue,, Oakland under the capable management of J. Vendes Mann.

At Morgan Hill we have our propagation houses for cuttings and seedage, as well as lathhouses where all the stock in containers is grown. At this nursery we grow over three hundred-thousand plants. The climate at Morgan Hill is warmer than most parts of Santa Clara Valley and with plenty of water is conducive to very favorable plant growth.

At Santa Cruz we have twelve acres where eighty thousand field grown, or "balled" plants are produced under most favorable growing conditions. This section was designated by the late Luther Burbank as being the best in California for the largest variety of plants.

At Brentwood, where we have three locations, all deciduous fruit stock, roses and fruit tree seedlings are grown. On the highlands we grow the budded fruit trees and roses in loamy soil, while the seedlings are grown under Delta peat conditions. The former with plenty of water and heat produces ideal fruit trees in a section free from Peach Root Borer, and the latter, which is sub-irrigated, develops a splendid fibrous branched root system.

Our location at San Jose is the main distributing point and acts as a hub in the center of the nursery locations. We believe the favorable conditions under which our stock is grown and the years of experience back of our employees put us in a position to cater to those who want the best.

LEONARD COATES NURSERIES, INC.

Established 1878

R. D. Hartman, Pres. and General Manager

Wm. Marken, Secty.-Treas.

Marion E. Gregory, Mgr. Fruit Tree Dept.

J. Vendes Mann, Mgr. Oakland Salesyard

Coniferous Trees and Shrubs

Nothing makes a richer or more satisfactory effect than conifers. Nurserymen should use more of them. We have a fine assortment of varieties suitable for almost every situation.



A VIEW OF CONIFEROUS PLANTING AT OUR SANTA CRUZ NURSERY

	10 rate Each	100 rate Each		10 rate Each	100 rate Each
*ABIES concolor (White Fir)			CEDRUS libani (Cedar of Lebanon)		
1 to 1½ ft. 4p.....	.35	.30	1 to 1½ ft. Qt.....	.25	.20
ABIES firma (Momi Fir)			4 to 5 ft. B.....	2.00	1.75
3½ to 4 ft. B.....	1.75		6 to 7 ft. B.....	3.25	
CEDRUS atlantica (Mt. Atlas Cedar)			*CHAMAECYPARIS lawsoniana (Lawson Cypress)		
1 to 1½ ft. Qt.....	.25	.20	2 to 3 ft. B.....	1.00	.85
2 to 3 ft. Gal.....	.40	.35	3 to 4 ft. B.....	1.15	1.00
3 to 4 ft. B.....	1.40	1.25	4 to 5 ft. B.....	1.75	1.60
4 to 5 ft. B.....	1.75	1.60	5 to 6 ft. B.....	2.25	
CEDRUS atlantica glauca (Blue Mt. Atlas Cedar)			CHAMAECYPARIS lawsoniana alumi (Blue Lawson)		
1½ to 2 ft. 6p.....	.50		An unusually fine stock of this popular variety, every one a specimen plant.		
2 to 3 ft. B.....	1.15	1.00	1 to 1½ ft. 4p.....	.25	.20
5 to 6 ft. B.....	2.25	2.00	1½ to 2 ft. B.....	.75	.65
6 to 7 ft. B.....	2.75	2.50	2 to 3 ft. B.....	1.15	1.00
7 to 8 ft. B.....	3.50	3.00	3 to 4 ft. B.....	1.60	1.40
CEDRUS deodara (Himalayan Cedar)			4 to 5 ft. B.....	2.25	
Extra fine well shaped trees.			CHAMAECYPARIS lawsoniana argentea nana (Dwarf Silver Lawson)		
8 to 12 in. 4p.....	.25	.20	1 to 1½ ft. B.....	1.00	.85
1½ to 2 ft. 6p.....	.35	.30	CHAMAECYPARIS elegans (Variegated)		
2 to 2½ ft. B.....	.85	.75	2½ to 3 ft. B.....	1.50	1.25
3 to 4 ft. B.....	1.40	1.25			
4 to 5 ft. B.....	1.75	1.60			
5 to 6 ft. B.....	2.25	2.00			
CEDRUS deodara prostrata (Creeping Deodar)					
1½ to 2 ft. B.....	1.25				

	10 rate Each	100 rate Each		10 rate Each	100 rate Each
CHAMAECYPARIS lawsoniana erecta viridis (Green Column Cypress) 2 to 3 ft. B.....		1.25	CHAMAECYPARIS pisifera plumosa (Plume Cypress) 1 to 1½ ft. B.....	.75	.65
CHAMAECYPARIS lawsoniana filifera (Thread Branch Cypress) 1½ to 2 ft. B.....	1.15	1.00	CHAMAECYPARIS pisifera plumosa aurea (Golden Plume Cypress) 1 to 1½ ft. B.....	.75	.65
CHAMAECYPARIS lawsoniana nidifera (Bird Nest Cypress) 1 to 1½ ft. B.....		1.00	2 to 2½ ft. B.....	1.15	1.00
CHAMAECYPARIS lawsoniana stuarti (Golden) The finest golden conifer, graceful habit of growth, and retains its golden color through the winter.			CHAMAECYPARIS pisifera squarrosa nana 1 to 1½ ft. B.....	.75	.65
1½ to 2 ft. 6p.....	.50	.45	CRYPTOMERIA japonica elegans (Plume Cryptomeria) 1½ to 2 ft. B.....	.85	.75
1½ to 2 ft. B.....	1.15	1.00	2 to 3 ft. B.....	1.15	1.00
2 to 2½ ft. B.....	1.40	1.25	3 to 4 ft. B.....	1.50	1.35
CHAMAECYPARIS lawsoniana wisseli Beautiful blue-green tufted foliage; growth irregular but upright. One of the choicest conifers.			4 to 5 ft. B.....	2.25	2.00
1½ to 2 ft. 6p.....	.50	.45	CRYPTOMERIA japonica nana (Dwarf Cryptomeria) 10 to 12 in. B.....	.85	.75
2 to 2½ ft. B.....	1.15	1.00	CUNNINGHAMIA lanceolata (Chinese Fir) 1½ to 2 ft. Gal.....	.40	.35
3 to 3½ ft. B.....	1.75	1.50	2 to 2½ ft. B.....	1.25	
			3 to 4 ft. B.....	1.75	
			CUPRESSUS arizonica (Arizona Cypress) 1 to 1½ ft. Qt.....	.20	.17½
			3 to 4 ft. Gal.....	.35	.30
			CUPRESSUS arizonica nana (Dwarf Arizona Cypress) 12 to 15 in. B.....	1.25	
			CUPRESSUS funebris (Mourning Cypress) 2 to 3 ft. Gal.....	.40	.35
			CUPRESSUS lusitanica glauca (Portuguese Cypress) 3 to 4 ft. Gal.....	.40	.35
			*CUPRESSUS macrocarpa (Monterey Cypress) 1 to 1½ ft. Qt.....	.20	.15
			1½ to 2 ft. Gal.....	.30	.25
			4 to 5 ft. B.....	1.25	1.00
			5 to 6 ft. B.....	1.50	1.25
			CUPRESSUS sempervirens (Italian Cypress) (Cutting Grown) 2 to 3 ft. Gal.....	.35	.30
			3 to 4 ft. B.....	.85	.75
			4 to 5 ft. B.....	1.15	1.00
			5 to 6 ft. B.....	1.40	1.25
			6 to 7 ft. B.....	1.75	1.50
			CUPRESSUS torulosa majestica (Bhutan Cypress) 2 to 3 ft. Gal.....	.40	.35
			JUNIPERUS bermudiana (Bermuda Juniper) 2 to 3 ft. B.....	1.25	
			JUNIPERUS chinensis alba (White Leaf Chinese Juniper) 1½ to 2 ft. B.....	.85	.75
			2 to 3 ft. B.....	1.15	1.00
			3 to 4 ft. B.....	1.75	



CHAMAECYPARIS LAWSONIANA WISSELI

	10 rate Each	100 rate Each
JUNIPERUS chinensis pfitzeriana		
12 to 15 in. Gal.....	.35	.30
1 to 1½ ft. B.....	.85	.75
1½ to 2 ft. B.....	1.00	.85
2 to 2½ ft. B.....	1.40	1.25

JUNIPERUS chinensis procumbens (Japanese Juniper)		
8 to 12 in. Gal.....	.35	.30
1 to 1½ ft. B.....	.85	.75

JUNIPERUS chinensis procumbens alba		
1 to 1½ ft. B.....	1.00	

JUNIPERUS communis depressa		
1 to 1½ ft. B.....	1.00	.85

JUNIPERUS communis depressa aurea		
1 to 1½ ft. B.....	1.00	.85

JUNIPERUS communis depressa plumosa (Andorra Juniper)		
Prostrate variety which assumes attractive purple coloring in Winter.		
1 to 1½ ft. B.....	1.00	.85

JUNIPERUS communis hibernica (Irish Juniper)		
2 to 3 ft. B.....	1.15	1.00
3 to 4 ft. B.....	1.40	1.25
4 to 4½ ft. B.....	1.75	1.50

JUNIPERUS excelsa stricta (Greek Juniper)		
1 to 1½ ft. B.....	.75	.65
2 to 2½ ft. B.....	1.15	1.00
2½ to 3 ft. B.....	1.50	1.35

JUNIPERUS horizontalis douglasi (Waukegan Juniper)		
1 to 1½ ft. B.....	1.00	.85

JUNIPERUS sabina		
1½ to 2 ft. Gal.....	.40	.35

JUNIPERUS sabina tamariscifolia		
8 to 12 in. Gal.....	.35	.30
1 to 1½ ft. B.....	.85	.75
1½ to 2 ft. B.....	1.00	.85

JUNIPERUS virginiana glauca		
1½ to 2 ft. B.....	1.00	

JUNIPERUS wilsoni		
1 to 1½ ft. B.....	1.00	
1½ to 2 ft. B.....	1.25	

LARIX leptolepis (Japanese Larch)		
The handsomest of the Larches, particularly attractive in Spring when the new growth appears and again in the late Fall when they turn a bright yellow.		
2 to 3 ft. B.....	1.25	
3 to 4 ft. B.....	1.50	
4 to 5 ft. B.....	2.00	

	10 rate Each	100 rate Each
*LIBOCEDRUS decurrens (Incense Cedar)		
1 to 1½ ft. Gal.....	.35	.30
4 to 5 ft. B.....	1.75	

LIBOCEDRUS decurrens compacta (Dwarf Incense Cedar)		
2 to 2½ ft. B.....	1.25	

PICEA excelsa (Norway Spruce)		
Nothing finer for a living Christmas tree. We have a fine stock of well shaped symmetrical trees.		
2 to 3 ft. B.....	1.15	1.00
3 to 4 ft. B.....	1.75	1.60
4 to 5 ft. B.....	2.25	2.00

*PINUS attenuata (Knobcone Pine)		
3 to 4 ft. Gal.....	.45	

PINUS canariensis (Canary Island Pine)		
2½ to 3 ft. B.....	1.00	.85
4 to 5 ft. B.....	1.50	
5 to 6 ft. B.....	2.00	

*PINUS coulteri (Coulter Pine)		
2 to 3 ft. Gal.....	.40	.35
4 to 5 ft. B.....	1.75	
5 to 6 ft. B.....	2.25	

PINUS excelsa (Himalayan Pine)		
1½ to 2 ft. Gal.....	.40	.35
2½ to 3 ft. B.....	1.00	

PINUS halepensis (Aleppo Pine)		
2 to 3 ft. Gal.....	.35	.30
6 to 7 ft. B.....	2.50	

PINUS montana mughus (Mugho Pine)		
8 to 12 in. Gal.....	.35	.30
1 to 1½ ft. B.....	1.00	.85
1½ to 2 ft. B.....	1.25	1.10

*PINUS muricata (Bishop Pine)		
2 to 3 ft. Gal.....	.40	

PINUS nigra (Austrian Pine)		
2½ to 3 ft. B.....	1.15	1.00

PINUS pinea (Italian Stone Pine)		
2 to 2½ ft. Gal.....	.40	.35
2½ to 3 ft. B.....	1.15	1.00

*PINUS ponderosa (Western Yellow Pine)		
1½ to 2 ft. Gal.....	.40	.35
2 to 2½ ft. B.....	1.15	1.00

*PINUS radiata (Monterey Pine)		
1 to 1½ ft. Qt.....	.20	.15
2 to 3 ft. Gal.....	.30	.25
3 to 4 ft. Gal.....	.35	.30
4 to 5 ft. B.....	1.40	1.25
5 to 6 ft. B.....	1.75	1.50
6 to 7 ft. B.....	2.25	

PINUS strobus (White Pine)		
2 to 2½ ft. 5p.....	.40	.35
4 to 5 ft. B.....	1.75	
5 to 6 ft. B.....	2.25	

PINUS sylvestris (Scotch Pine)		
1½ to 2 ft. 4p.....	.25	.20
1½ to 2 ft. B.....	.85	.75

	10 rate Each	100 rate Each		10 rate Each	100 rate Each
*PINUS torreyana (Torrey Pine)					
2 to 3 ft. Gal.....	.40	.35			
2½ to 3 ft. B.....	1.00				
PODOCARPUS macrophylla					
2 to 2½ ft. B.....	1.00				
PODOCARPUS totara					
2 to 2½ ft. B.....	1.00				
*PSEUDOTSUGA douglasi (Douglas Fir)					
2 to 3 ft. B.....	1.15	1.00			
3 to 4 ft. B.....	1.40	1.25			
4 to 5 ft. B.....	1.75	1.50			
5 to 6 ft. B.....	2.00	1.75			
RETINOSPORA ericoides					
1 to 1½ ft. B.....	.75	.65			
RETINOSPORA leptoclada					
1 to 1½ ft. B.....	.75	.65			
2 to 2½ ft. B.....	1.15	1.00			
*SEQUOIA gigantea (California Big Tree)					
1 to 1½ ft. Gal.....	.35	.30			
2 to 3 ft. B.....	1.15	1.00			
4 to 5 ft. B.....	2.00				
SEQUOIA gigantea pendula (Weeping Giant Sequoia)					
1½ to 2 ft. B.....	1.00				
2 to 3 ft. B.....	1.50				
3 to 4 ft. B.....	2.00				
*SEQUOIA sempervirens (Coast Redwood)					
2 to 3 ft. Gal.....	.35	.30			
3 to 4 ft. Gal.....	.40	.35			
3 to 4 ft. B.....	1.15	1.00			
4 to 5 ft. B.....	1.50	1.35			
TAXUS baccata fastigiata (Irish Yew)					
2 to 2½ ft. B.....	1.15	1.00			
2½ to 3 ft. B.....	1.40	1.25			
3 to 3½ ft. B.....	1.65	1.50			
TAXODIUM distichum (Swamp Cypress)					
3 to 4 ft. Gal.....	.45				
THUJA occidentalis pyramidalis (Pyramidal Arbor Vitae)					
One of the finest conifers for formal effects, deep green throughout the year, slender, erect growth, keeps its shape without any pruning.					
2 to 2½ ft. B.....	.85	.75			
3 to 4 ft. B.....	1.40	1.25			
4 to 5 ft. B.....	1.75	1.50			
5 to 6 ft. B.....	2.25	2.00			
THUJA occidentalis pyramidalis douglasi					
3 to 3½ ft. B.....	1.25				
THUJA orientalis aurea nana (Berckman's Dwarf Golden)					
10 to 12 in. B.....	.55	.50			
1 to 1½ ft. B.....	.75	.65			
THUJA orientalis bakeri (Pyramidal Green)					
2 to 3 ft. B.....	1.00	.85			
THUJA orientalis compacta					
1 to 1½ ft. B.....	.75	.65			
*THUJA plicata					
2 to 3 ft. B.....	1.00	.85			
THUJA plicata aurea					
1½ to 2 ft. B.....	.85	.75			
THUJA rosedale					
1 to 1½ ft. B.....	.75	.65			
THUJOPSIS dolobrata					
2 to 2½ ft. B.....	1.15	1.00			
*TORREYA californica (California Nutmeg)					
Dark green, shining foliage, symmetrical habit, should be used more as a specimen tree.					
1½ to 2 ft. Gal.....	.60	.50			
2 to 3 ft. B.....	1.50	1.25			



ANOTHER VIEW OF OUR SANTA CRUZ NURSERY



PARTIAL VIEW OF OUR SANTA CRUZ NURSERY

Evergreen Trees and Shrubs

We again offer this year a larger and we think better assortment of varieties than ever before. All of our stock both in the field and in containers is carefully grown, quality stock you can recommend to your customers without hesitation.

	10 rate Each	100 rate Each		10 rate Each	100 rate Each
ABELIA grandiflora (Glossy Abelia)			ACACIA cultriformis (Knife Blade Acacia)		
8 to 12 in. 4p.....	.20	.15	1 to 1½ ft. Qt.....	.20	.15
1 to 1½ ft. Gal.....	.30	.25	4 to 5 ft. Gal.....	.35	.30
2 to 3 ft. B.....	.60	.50	7 to 8 ft. 5g.....	1.00	
3 to 3½ ft. B.....	.80	.70			
ABUTILON megapotamicum			ACACIA decurrens (Green Wattle)		
(Japanese Lantern)			2 to 2½ ft. Qt.....	.20	.17½
2 to 2½ ft. Gal.....	.30	.25	5 to 6 ft. Gal.....	.40	.35
ACACIA armata (Kangaroo Thorn)			7 to 8 ft. 5g.....	1.00	
1 to 1½ ft. Qt.....	.20	.15	ACACIA decurrens dealbata (Silver Wattle)		
3 to 4 ft. Gal.....	.35	.30	1½ to 2 ft. Qt.....	.20	.15
ACACIA baileyana			5 to 6 ft. Gal.....	.40	.35
1 to 1½ ft. Qt.....	.20	.15	7 to 8 ft. 5g.....	1.00	
2 to 3 ft. Qt.....	.25	.20	ACACIA floribunda (Gossamer Wattle)		
4 to 5 ft. Gal.....	.35	.30	1½ to 2 ft. Qt.....	.20	.15
5 to 6 ft. Gal.....	.40	.35	4 to 5 ft. Gal.....	.30	.25
7 to 8 ft. 5g.....	1.15	1.00	5 to 6 ft. Gal.....	.35	.30
ACACIA baileyana purpurea			7 to 8 ft. 5g.....	1.15	1.00
New growth a decided purple. Stands out in any planting.			ACACIA latifolia (Broad Leaf Acacia)		
2 to 3 ft. Qt.....	.30	.25	1 to 1½ ft. Qt.....	.20	.15
4 to 5 ft. Gal.....	.45	.40	2½ to 3 ft. Qt.....	.25	.20
7 to 8 ft. 5g.....	1.25		4 to 5 ft. Gal.....	.30	.25
			5 to 6 ft. Gal.....	.35	.30
			7 to 8 ft. 5g.....	1.15	1.00

	10 rate Each	100 rate Each		10 rate Each	100 rate Each
ACACIA melanoxylon (Black Acacia)					
1 to 1½ ft. Qt.....	.20	.15			
3 to 4 ft. Qt.....	.25	.20			
4 to 5 ft. Gal.....	.30	.25			
5 to 6 ft. Gal.....	.35	.30			
6 to 7 ft. Gal.....	.40	.35			
7 to 8 ft. 5g.....	1.15	1.00			
ACACIA podalyraefolia (Pearl Acacia)					
Starts blooming in December, flowers large rich yellow. The earliest bloomer and has the most showy flowers of any Acacia.					
2 to 2½ ft. Gal.....	.35	.30			
5 to 6 ft. Gal.....	.45	.40			
ACACIA pravissima (Screwpod Acacia)					
Extremely hardy and graceful shrubby variety, fine for dry hillside plantings.					
4 to 5 ft. Gal.....	.40	.35			
7 to 8 ft. 5g.....	1.25				
ACACIA pycnantha (Golden Wattle)					
1 to 1½ ft. Qt.....	.25	.20			
2 to 3 ft. Gal.....	.35	.30			
4 to 5 ft. Gal.....	.40				
ACACIA saligna (Willow Acacia)					
2 to 2½ ft. Qt.....	.25	.20			
4 to 5 ft. Gal.....	.40	.35			
ACACIA verticillata (Star Acacia)					
1 to 1½ ft. Qt.....	.20	.15			
4 to 5 ft. Gal.....	.35	.30			
6 to 7 ft. 5g.....	1.00				
ACANTHUS mollis					
1 to 1½ ft. Gal.....	.30	.25			
1½ to 2 ft. 5g.....	.85				
*ADENOSTOMA fasciculatum (Chamise)					
1 to 1½ ft. Gal.....	.40	.35			
AGATHAEA coelestis (Blue Marguerite)					
1 to 1½ ft. Gal.....	.30	.25			
*ARBUTUS menziesi (Madrone)					
8 to 12 in. 4p.....	.30	.25			
ARBUTUS unedo (Strawberry Tree)					
1 to 1½ ft. Gal.....	.30	.25			
AZARA microphylla (Box Leaf Azara)					
1½ to 2 ft. Gal.....	.35	.30			
BERBERIS darwini					
12 to 15 in. Gal.....	.30	.25			
1½ to 2 ft. B.....	.65	.60			
2 to 2½ ft. B.....	.80	.70			
BERBERIS elegantissima					
1½ to 2 ft. Gal.....	.35	.30			
BERBERIS gagnepaini					
1½ to 2 ft. Gal.....	.35	.30			
2 to 2½ ft. B.....	.85	.75			
BERBERIS knighti					
1 ft. Qt.....	.20	.15			
1 to 1½ ft. Gal.....	.30	.25			
2 to 2½ ft. B.....	.80	.70			
BERBERIS sargentiana					
2 to 2½ ft. Gal.....	.35	.30			
BERBERIS stenophylla					
1 to 1½ ft. 4p.....	.25	.20			
1½ to 2 ft. Gal.....	.30	.25			
1½ to 2 ft. B.....	.65	.60			
BERBERIS tricanthophora					
1 to 1½ ft. Gal.....	.30	.25			
1 to 1½ ft. B.....	.65	.60			
BERBERIS wilsoni					
1 to 1½ ft. Gal.....	.30	.25			
1½ to 2 ft. B.....	.60	.50			
2 to 2½ ft. B.....	.75	.65			
BOUVARDIA coral gem					
1½ to 2 ft. Gal.....	.35	.30			
BUDDLEIA davidi veitchi					
2 to 2½ ft. Gal.....	.30	.25			
BUDDLEIA globosa (Yellow)					
1½ to 2 ft. Gal.....	.30	.25			
BUDDLEIA magnifica					
1½ to 2 ft. Gal.....	.30	.25			
BUDDLEIA superba					
1½ to 2 ft. Gal.....	.30	.25			
BUXUS sempervirens (Boxwood)					
1¼ to 2 ft. B (Cones).....	.75	.65			
CALLISTEMON rigidus (Bottle Brush)					
1½ to 2 ft. Qt.....	.20	.17½			
2 to 3 ft. Gal.....	.30	.25			
4 to 5 ft. 5g.....	1.00				
CAMELLIA Dbl. Shell Pink, Dbl. Bright Pink, Dbl. White, Dbl. Red.					
2 to 2½ ft. B.....	1.25				
2½ to 3 ft. B.....	1.50				
CASSIA artemesoides					
1 to 1½ ft. Gal.....	.30	.25			
CASSIA tomentosa					
3 to 4 ft. Gal.....	.30	.25			
CASUARINA stricta (Beefwood)					
2 to 2½ ft. Qt.....	.20	.17½			
3 to 4 ft. Gal.....	.30	.25			
4 to 5 ft. Gal.....	.35	.30			
7 to 8 ft. 5g.....	1.00				
*CEANOTHUS arboreus					
2 to 3 ft. Gal.....	.35	.30			
4 to 5 ft. 5g.....	1.00				
*CEANOTHUS arboreus hybrida					
2 to 3 ft. Gal.....	.35	.30			
4 to 5 ft. 5g.....	1.00				
*CEANOTHUS cyaneus					
Large clusters of brilliant blue flowers, blooms after most other varieties are through.					
2 to 3 ft. Gal.....	.35	.30			
4 to 5 ft. 5g.....	1.00				
*CEANOTHUS macrocarpus					
1 to 1½ ft. Gal.....	.40	.35			



CEANOTHUS PAPILLOSUS

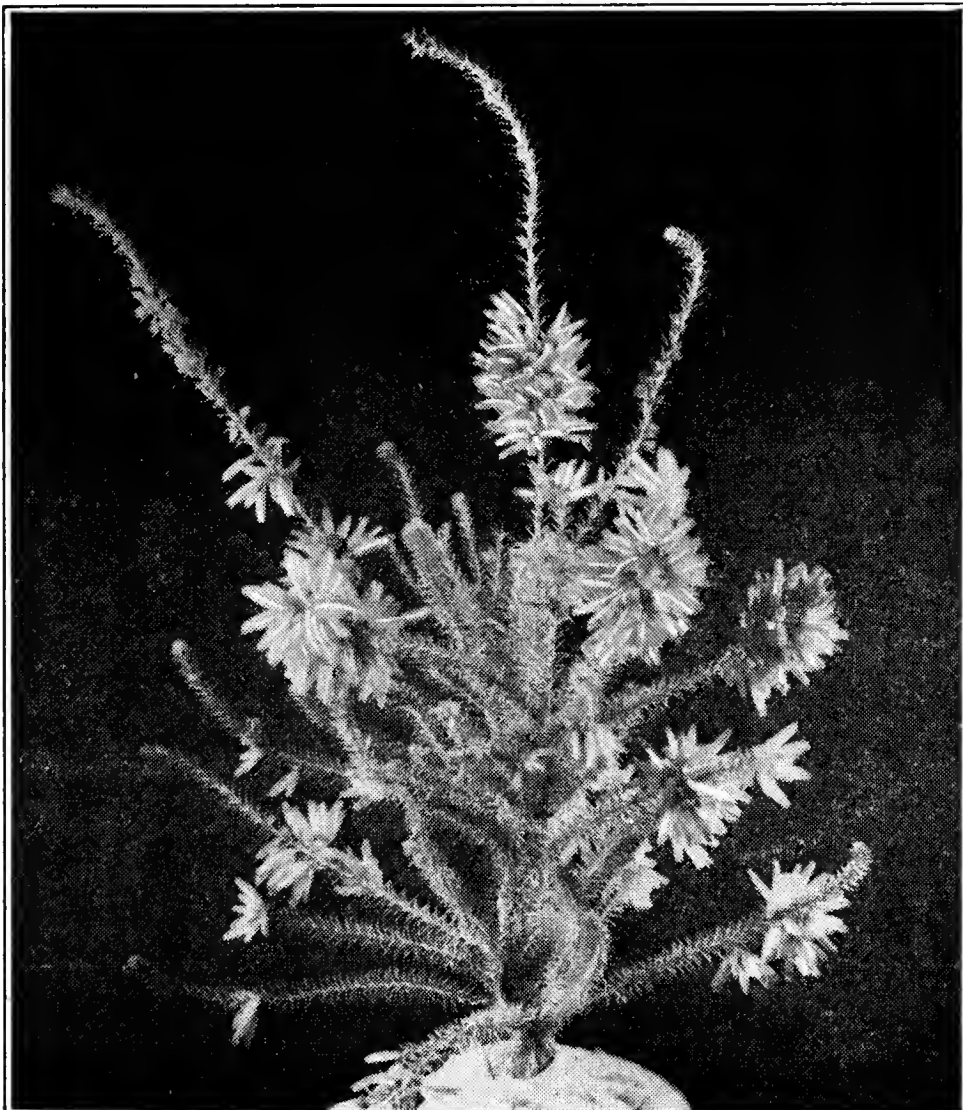
10 rate 100 rate
Each Each

*CEANOTHUS papillosus		
A dense bushy variety seldom growing over five feet, leaves dark green, thick and roughened. Flowers borne profusely, rich deep blue.		
1 to 1½ ft. Gal.....	.45	.40
*CEANOTHUS spinosus		
2 to 2½ ft. Gal.....	.35	.30
*CEANOTHUS thyrsiflorus		
2 to 3 ft. Gal.....	.30	.25
4 to 5 ft. 5g.....	1.00	.85
*CEANOTHUS thyrsiflorus griseus		
Lower growing and more dense than the type, leaves more rounded and deeper green. Flower panicles large and compact, deep blue.		
2 to 2½ ft. Gal.....	.40	.35
4 to 5 ft. 5g.....	1.25	
CERATONIA siliqua (Carob)		
1½ to 2 ft. Qt.....	.20	.17½
2 to 2½ ft. Gal.....	.35	.30
4 to 4½ ft. 5g.....	1.00	
*CERCOCARPUS betuloides (Mt. Mahogany)		
2 to 3 ft. Gal.....	.40	.35
4 to 5 ft. 5g.....	1.00	
CHOISYA ternata (Mexican Orange)		
10 to 12 in. Gal.....	.30	.25
1 to 1½ ft. B.....	.65	.60
1½ to 2 ft. B.....	.80	.70
CHORIZEMA ilicifolium		
1½ to 2 ft. B.....	.75	.65

10 rate 100 rate
Each Each

CINNAMOMUM camphora (Camphor Tree)		
The finest evergreen street tree for California. Hardy, symmetrical tree with clean bright foliage, new growth bronze.		
1 to 1½ ft. Qt.....	.20	.15
2 to 3 ft. Gal.....	.30	.25
4 to 5 ft. Gal.....	.40	.35
6 to 7 ft. 5g.....	1.25	1.00
7 to 8 ft. 5g.....	1.40	1.25
CISTUS ladaniferus maculatus (Spotted Rock Rose)		
1 to 1½ ft. Gal.....	.30	.25
CISTUS salvifolius (White Rock Rose)		
1 to 1½ ft. Gal.....	.30	.25
COPROSMA baueri (Mirror Plant)		
12 to 15 in. 4p.....	.20	.15
1 to 1½ ft. Gal.....	.30	.25
1½ to 2 ft. B.....	.65	.60
CORNUS capitata (Evergreen Dogwood)		
2 to 3 ft. Gal.....	.35	.30
2 to 2½ ft. B.....	.70	.65
CORONILLA emerus		
1½ to 2 ft. Gal.....	.30	.25
CORONILLA glauca		
1½ to 2 ft. Gal.....	.30	.25
CORREA alba		
1 to 1½ ft. Gal.....	.35	.30
COTONEASTER acuminata		
1½ to 2 ft. Gal.....	.30	.25
2½ to 3 ft. B.....	.80	.70
COTONEASTER dammeri (Humifusa)		
8 to 12 in. 4p.....	.25	.20
COTONEASTER franchetti		
1 to 1½ ft. Qt.....	.20	.15
1½ to 2 ft. Gal.....	.30	.25
2 to 3 ft. B.....	.65	.60
3 to 3¼ ft. B.....	.80	.70
COTONEASTER frigida		
3 to 4 ft. Gal.....	.30	.25
3½ to 4 ft. B.....	.80	
COTONEASTER heroveana		
1 to 1½ ft. Qt.....	.20	.15
2 to 2½ ft. Gal.....	.30	.25
3 to 3½ ft. B.....	.80	.70
COTONEASTER horizontalis		
8 to 12 in. 4p.....	.20	.17½
1 to 1½ ft. Gal.....	.30	.25
1½ to 2 ft. B.....	.65	.60
COTONEASTER microphylla		
12 to 15 in. 4p.....	.20	.17½
1 to 1½ ft. Gal.....	.30	.25
1½ to 2 ft. B.....	.65	.60
COTONEASTER microphylla thymifolia		
8 to 12 in. 4p.....	.20	.17½
12 to 15 in. Gal.....	.30	.25
1 to 1½ ft. B.....	.65	.60

	10 rate Each	100 rate Each		10 rate Each	100 rate Each
COTONEASTER <i>pannosa</i>			CYTISUS <i>canariensis</i> (Canary Island Broom)		
1 to 1½ ft. Qt.....	.20	.15	1½ to 2 ft. Qt.....	.20	.15
2 to 2½ ft. Gal.....	.25	.20	2 to 2½ ft. Gal.....	.30	.25
3 to 4 ft. Gal.....	.30	.25	CYTISUS <i>fragrans</i> (Sweet Broom)		
2 to 2½ ft. B.....	.55	.50	1½ to 2 ft. Qt.....	.20	.15
4 to 5 ft. B.....	.80	.70	2 to 2½ ft. Gal.....	.30	.25
5 to 6 ft. B.....	1.00	.85	CYTISUS <i>hispanica</i> (Spanish Broom)		
COTONEASTER <i>pannosa nana</i> (Dwarf Pannosa)			1½ to 2 ft. Qt.....	.20	.15
1 to 1½ ft. Gal.....	.35	.30	2 to 3 ft. Gal.....	.30	.25
COTONEASTER <i>parnayi</i>			3 to 4 ft. 5g.....	.85	
1½ to 2 ft. Gal.....	.30	.25	CYTISUS <i>monosperma</i> (Bridal Veil)		
2 to 2½ ft. B.....	.70	.65	2 to 3 ft. Gal.....	.40	.35
COTONEASTER <i>rotundifolia</i> (Prostrata)			3 to 4 ft. 5g.....	1.00	
1 to 1½ ft. Gal.....	.35	.30	CYTISUS <i>multiflorus alba</i> (Portugal Broom)		
1½ to 2 ft. B.....	.75	.70	1 to 1½ ft. Qt.....	.20	.15
COTONEASTER <i>salicifolia</i> (Willow Leaf Cotoneaster)			1½ to 2 ft. Gal.....	.30	.25
1½ to 2 ft. Gal.....	.35	.30	CYTISUS <i>racemosus</i> (Easter Broom)		
2 to 2½ ft. B.....	.70	.65	8 to 12 in, 4p.....	.20	.17½
COTONEASTER <i>schneideri</i>			1 to 1½ ft. Gal.....	.30	.25
1½ to 2 ft. Gal.....	.30	.25	CYTISUS <i>scoparius</i> (Scotch Broom)		
2 to 2½ ft. B.....	.70	.65	1½ to 2 ft. Qt.....	.20	.15
COTONEASTER standards <i>C. gracilis</i> , <i>C. heroveana</i> , <i>C. horizontalis</i> , <i>C. microphylla</i> , <i>C. thymifolia</i> , <i>C. rotundifolia</i> , <i>C. salicifolia</i> .			2 to 2½ ft. Gal.....	.30	.25
Gal.75		DAPHNE <i>cneorum</i> (Rock Daphne)		
5g.	1.50		10 to 12 in. B.....	.65	.60
CYTISUS <i>aetnensis</i>			DAPHNE <i>odora</i> (Pink)		
2 to 2½ ft. Gal.....	.30	.25	12 to 15 in. B.....	1.15	1.00
			15 to 18 in. B.....	1.40	1.25
			DEERINGEA <i>baccata variegata</i>		
			1 to 1½ ft. 4p.....	.20	.17½
			1½ to 2 ft. Gal.....	.30	.25
			*DENDROMECON <i>rigida</i> (Tree Poppy)		
			1 to 1½ ft. Gal.....	.60	.50
			DIOSMA <i>ericoides</i> (Breath of Heaven)		
			12 to 15 in. Gal.....	.30	.25
			1 to 1½ ft. B.....	.70	.65
			ECHIUM <i>roseum</i> (Tower of Jewels)		
			6 to 8 in. Qt.....	.15	.12½
			ELAEAGNUS <i>pungens</i>		
			1½ to 2 ft. Gal.....	.30	.25
			2 to 2½ ft. B.....	.75	.70
			ELAEAGNUS <i>pungens marginata</i> (Silver Edged)		
			1 to 1½ ft. Gal.....	.35	.30
			1½ to 2 ft. B.....	.75	.70
			ERICA <i>australis</i>		
			1½ to 2 ft. B.....	.75	.65
			ERICA <i>blanda</i>		
			The hardiest and most satisfactory of the tubular flowered heathers. Low growing, red flowers, in bloom a large part of the year.		
			1 to 1½ ft. B.....	.60	.55
			ERICA <i>Felix Faure</i>		
			10 to 12 in. B.....	.50	.45



ERICA BLANDA

	10 rate Each	100 rate Each		10 rate Each	100 rate Each
ERICA mediterranea					
1 to 1½ ft. B.....	.55	.50			
1½ to 2 ft. B.....	.70	.60			
ERICA mediterranea hybrida					
8 to 12 in. Gal.....	.30	.25			
1 to 1½ ft. B.....	.65	.60			
ERICA melanthera					
2 to 2½ ft. B.....	.85	.75			
3 to 3½ ft. B.....	1.15	1.00			
ERICA melanthera rosea					
A big improvement over E. melanthera, flowers much deeper and hold their color better.					
1½ to 2 ft. B.....	.65	.60			
2 to 2½ ft. B.....	.85	.75			
ERICA melanthera rubra					
1 to 1½ ft. B.....	.65	.60			
ERICA persoluta rosea					
12 to 14 in. B.....	.55	.50			
ERICA regerminans					
1 to 1½ ft. B.....	.55	.50			
ERICA regerminans rubra					
1 to 1½ ft. B.....	.65	.60			
ERIOBOTRYA japonica (Loquat)					
1 ft. Gal.....	.30	.25			
3 to 4 ft. B.....	.85	.75			
5 to 6 ft. B.....	1.25				
ESCALLONIA berteriana (White)					
1½ to 2 ft. Gal.....	.30	.25			
3 to 4 ft. B.....	.85				
ESCALLONIA ingrami (Red)					
1½ to 2 ft. Gal.....	.30	.25			
3 to 3½ ft. B.....	.85	.75			
ESCALLONIA rocki (Shell Pink)					
1½ to 2 ft. Gal.....	.35	.30			
ESCALLONIA rosea (Pink)					
1½ to 2 ft. Gal.....	.30	.25			
3 to 3½ ft. B.....	.80	.70			
ESCALLONIA rubra (Red)					
1 to 1½ ft. Gal.....	.30	.25			
1½ to 2 ft. B.....	.65	.60			
2 to 2½ ft. B.....	.80	.70			
EUCALYPTUS caesia					
Graceful semi-dwarf variety, weeping habit of growth, silvery foliage and rose pink flowers.					
1 to 1½ ft. Qt.....	.35	.30			
EUCALYPTUS citriodora (Lemon Gum)					
2 to 2½ ft. Qt.....	.25	.20			
3 to 4 ft. Gal.....	.30				
EUCALYPTUS corynocalyx (Sugar Gum)					
1½ to 2 ft. Qt.....	.20	.17½			
2 to 2½ ft. Gal.....	.30	.25			
8 to 12 in. Flats.....		2.00			
EUCALYPTUS eremophila					
A small shrubby tree not over fifteen feet with brilliant crimson flowers.					
1 to 1½ ft. Qt.....	.35	.30			
EUCALYPTUS ficifolia (Scarlet Gum)					
1 to 1½ ft. Qt.....	.25	.20			
2 to 3 ft. Gal.....	.35	.30			
3 to 4 ft. Gal.....	.40	.35			
EUCALYPTUS globulus (Blue Gum)					
2 to 2½ ft. Qt.....	.20	.15			
4 to 5 ft. Gal.....	.30	.25			
7 to 8 ft. 5g.....	1.25				
1 to 1½ ft. Flats (17.50 per 1000)		2.00			
EUCALYPTUS leucoxydon rosea (Pink Flowering)					
1½ to 2 ft. Qt.....	.25	.20			
3 to 4 ft. Gal.....	.35	.30			
4 to 5 ft. Gal.....	.40	.35			
7 to 8 ft. 5g.....	1.25				
8 to 12 in. Flats.....		2.50			
EUCALYPTUS polyanthemus (Round Leaf)					
1½ to 2 ft. Qt.....	.20	.17½			
3 to 4 ft. Gal.....	.30	.25			
4 to 5 ft. Gal.....	.35	.30			
7 to 8 ft. 5g.....	1.25				
8 to 12 in. Flats.....		2.25			
EUCALYPTUS pyraeformis					
Small slender tree, drooping clusters of very large deep crimson flowers.					
1 to 1½ ft. Qt.....	.35	.30			
EUCALYPTUS robusta (Swamp Mahogany)					
4 to 5 ft. Gal.....	.35	.30			
EUCALYPTUS rostrata (Red Gum)					
2 to 2½ ft. Qt.....	.20	.15			
4 to 5 ft. Gal.....	.35	.30			
7 to 8 ft. 5g.....	1.25				
8 to 12 in. Flats (17.50 per 1000)		2.00			
EUCALYPTUS rudis (Desert Gum)					
2 to 2½ ft. Qt.....	.20	.17½			
3 to 4 ft. Gal.....	.30	.25			
4 to 5 ft. Gal.....	.35	.30			
7 to 8 ft. 5g.....	1.25				
8 to 12 in. Flats.....		2.00			
EUCALYPTUS sideroxydon-rosea (Pink Flowering)					
1 to 1½ ft. Qt.....	.20	.17½			
3 to 4 ft. Gal.....	.35	.30			
4 to 5 ft. Gal.....	.40	.35			
7 to 8 ft. 5g.....	1.25				
8 to 12 in. Flats.....		2.50			
EUCALYPTUS viminalis (Manna Gum)					
2 to 2½ ft. Qt.....	.20	.17½			
5 to 6 ft. Gal.....	.35	.30			
7 to 8 ft. 5g.....	1.25				
8 to 12 in. Flats.....		2.00			

	10 rate Each	100 rate Each
EUGENIA apiculata (Myrtus Luma) 1 to 1½ ft. Gal.....	.30	.25
EUGENIA myrtifolia (Australian Brush Cherry) 2 to 2½ ft. Gal.....	.35	.30
2½ to 3 ft. B (Trimmed)....	.90	.80
EUONYMUS japonicus 8 to 12 in. 4p.....	.20	.15
1 to 1½ ft. Gal.....	.30	.25
1½ to 2 ft. B.....	.55	.50
EUONYMUS japonicus albo-marginata (Silver Margin) 8 to 12 in. 4p.....	.20	.15
1 to 1½ ft. Gal.....	.30	.25
1½ to 2 ft. B.....	.55	.50
EUONYMUS japonicus albo-variegata 8 to 12 in. 4p.....	.20	.15
1 to 1½ ft. Gal.....	.30	.25
1½ to 2 ft. B.....	.55	.50
EUONYMUS japonicus aurea marginata (Yellow Margin) 8 to 12 in. 4p.....	.20	.15
1 to 1½ ft. Gal.....	.30	.25
1 to 1½ ft. B.....	.55	.50
EUONYMUS japonicus aurea variegata (Yellow Center) 12 to 15 in. Gal.....	.30	.25
1 to 1½ ft. B.....	.55	.50
EUONYMUS japonicus microphyllus (Dwarf Euonymus) 4 to 6 in. 4p.....	.20	.15
8 to 12 in. Gal.....	.30	.25
EUONYMUS japonicus microphyllus variegata 6 to 8 in. 4p.....	.20	.17½



FREMONTIA MEXICANA

	10 rate Each	100 rate Each
EUONYMUS japonicus viridi variegata (Duc D'Anjou) 1 to 1½ ft. Gal.....	.30	.25
1½ to 2 ft. B.....	.55	.50
FABIANA imbricata 1½ to 2 ft. Gal.....	.30	.25
FATSIA japonica (Aralia Sieboldi) 1 to 1½ ft. Gal.....	.30	.25
FEIJOA sellowiana (Pineapple Guava) 1 to 1½ ft. Gal.....	.30	.25
*FREMONTIA californica 2 to 2½ ft. Gal.....	.55	.50
.....		
*FREMONTIA mexicana One of the world's showiest flowering shrubs. Blooms throughout the Spring and Summer. 2 to 2½ ft. Gal.....	.50	.45
.....		
*GARRYA elliptica (Silk Tassel Bush) 1½ to 2 ft. Gal.....	.35	.30
4 to 5 ft. 5g.....	1.00	
GREVILLEA robusta (Silk Oak) 1 to 1½ ft. Qt.....	.20	.17½
3 to 4 ft. Gal.....	.30	.25
7 to 8 ft. 5g.....	1.25	
GREVILLEA thelmaniana 1 to 1½ ft. Gal.....	.35	.30
HAKEA laurina (Sea Urchin) 1½ to 2 ft. Gal.....	.30	.25
HAKEA suaveleons 3 to 4 ft. Gal.....	.35	.30
HOHERIA sexstylosa 1½ to 2 ft. Gal.....	.45	.40
HYPERICUM moserianum (Gold Flower) 1 to 1½ ft. Gal.....	.30	.25
1 to 1½ ft. B.....	.55	.50
ILEX aquifolium (English Holly) 8 to 12 in. Gal. grafted.....	.45	.40
2 to 2½ ft. B ".....	1.15	1.00
2½ to 3 ft. B ".....	1.40	1.25
4 to 5 ft. B Seedling.....	1.40	1.25
ILEX aquifolium (Dutch Holly) 8 to 12 in. Gal. grafted.....	.45	.40
2 to 2½ ft. B ".....	1.15	1.00
ILEX aquifolium variegata (Variegated English Holly) 1½ to 2 ft. B.....	1.15	1.00
ILEX cornuta (Chinese Holly) 1 to 1½ ft. Gal.....	.35	.30
2½ to 3 ft. B.....	1.15	1.00
JACARANDA mimosaeifolia 1½ to 2 ft. 4p.....	.35	.30
LAGUNARIA pattersoni 3 to 4 ft. Gal.....	.40	.35
LAUROCERASUS caroliniana (Carolina Laurel) 2 to 2½ ft. Gal.....	.30	.25

	10 rate Each	100 rate Each
LAUROCERASUS lusitanica (Portugal Laurel)		
1½ to 2 ft. Gal.....	.30	.25
2 to 2½ ft. B.....	.80	.70
LAUROCERASUS officinalis (English Laurel)		
1 to 1½ ft. Gal.....	.30	.25
1½ to 2 ft. B.....	.60	.55
2 to 3 ft. B.....	.80	.70
3 to 4 ft. B.....	1.00	.90
LAURUS nobilis (Grecian Laurel)		
2 to 2½ ft. Gal.....	.35	.30
3 to 4 ft. B.....	1.00	.85
4 to 5 ft. B Standards.....	2.25	
5 to 6 ft. B ".....	2.50	
LAVANDULA dentata (Cut Leaf Lavender)		
1 to 1½ ft. Gal.....	.30	.25
LAVANDULA officinalis (Blue Lavender)		
12 to 15 in. Gal.....	.30	.25
LEONOTIS leonorus (Lion's Tail)		
1½ to 2 ft. Gal.....	.30	.25
LEPTOSPERMUM chapmani		
1 to 1½ ft. Gal.....	.30	.25
2 to 2½ ft. B.....	.70	.65
LEPTOSPERMUM floribunda		
1½ to 2 ft. Gal.....	.35	.30
LEPTOSPERMUM laevegatum (Australian Tea Tree)		
1 to 1½ ft. 4p and Qt.....	.20	.15
1½ to 2 ft. Gal.....	.30	.25
1½ to 2 ft. B.....	.55	.50
LIGUSTRUM acuminatum		
1½ to 2 ft. Gal.....	.30	.25
2 to 3 ft. B.....	.75	.65
LIGUSTRUM henryi		
8 to 12 in. Qt.....	.20	.15
2 to 2½ ft. Gal.....	.30	.25
2 to 2½ ft. B.....	.70	.60
LIGUSTRUM japonicum (Japanese Privet)		
2 to 3 ft. Gal.....	.30	.25
3 to 3½ ft. B.....	.80	.70
LIGUSTRUM ovalifolium (California Privet)		
12 to 15 in. Flats.....	.02	
1 to 1½ ft. B. R.....	.02½	
1½ to 2 ft. B. R.....	.03	
2 to 2½ ft. B. R.....	.03½	
LIGUSTRUM ovalifolium aurea (Golden Privet)		
1 to 1½ ft. Qt.....	.20	.15
2 to 2½ ft. Gal.....	.30	.25
2 to 3 ft. B.....	.70	.60
LIGUSTRUM sinense (Chinese Privet)		
3 to 4 ft. Gal.....	.35	.30
LIGUSTRUM vulgare (English Privet)		
1 to 1½ ft. B. R.....	.02½	
1½ to 2 ft. B. R.....	.03	
*LITHOCARPUS densiflora (Tan Bark Oak)		
1 to 1½ ft. Qt.....	.30	.25

	10 rate Each	100 rate Each
LONICERA nitida		
8 to 12 in. Qt.....	.20	.15
1½ to 2 ft. Gal.....	.30	.25
1 to 1½ ft. B. (Trimmed Cones)	.60	.55
MAGNOLIA grandiflora (Southern Magnolia)		
2 to 3 ft. B.....	.75	.65
3 to 4 ft. B.....	1.00	.85
4 to 5 ft. B.....	1.40	1.25
5 to 6 ft. B.....	1.75	1.60
6 to 7 ft. B.....	2.25	



MAHONIA AQUIFOLIUM (OREGON GRAPE)

*MAHONIA aquifolium (Oregon Grape)		
8 to 12 in. 4p.....	.20	.15
1 to 1½ ft. Gal.....	.30	.25
1½ to 2 ft. B.....	.65	.60

MAHONIA bealei (Leather Leaf Holly Grape)		
1 to 1½ ft. Gal.....	.30	.25
1½ to 2 ft. B.....	.65	.60

*MAHONIA pinnata (Holly Grape)		
Growth compact and dense, does well in either shade or sun; foliage Holly like bright green.		
6 to 8 in. 4p.....	.30	.25
1 to 1½ ft. Gal.....	.40	.35
2 to 2½ ft. B.....	.90	

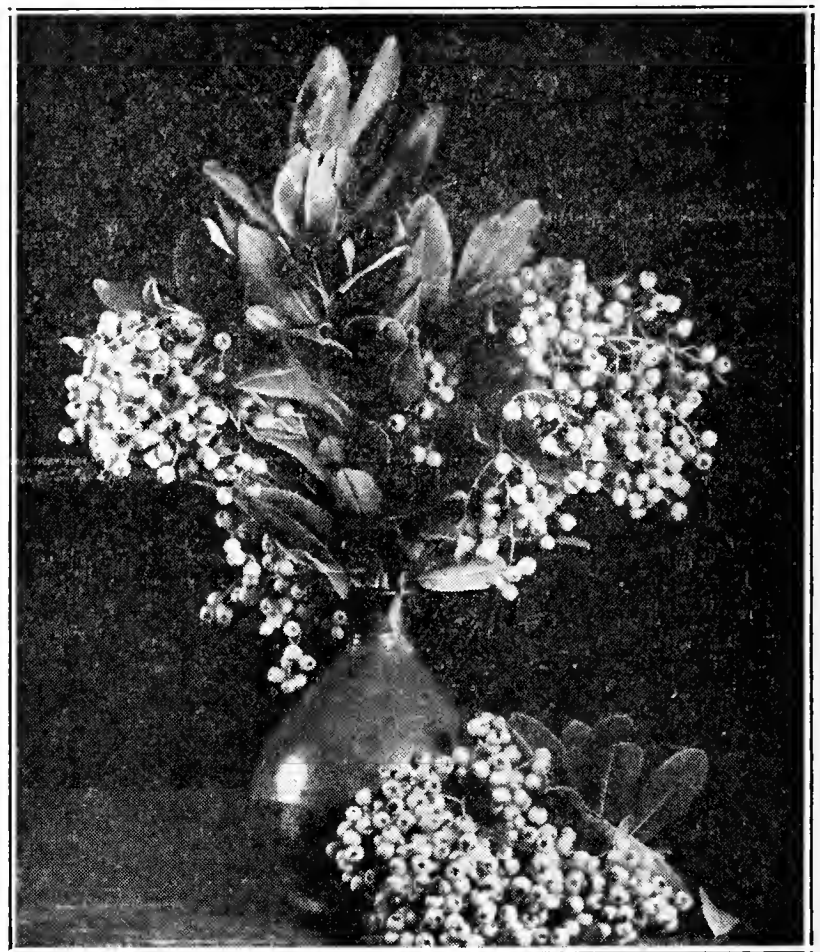
MALVA chinensis		
2 to 3 ft. Gal.....	.30	

MELALEUCA decussata (Lilac)		
2 to 2½ ft. Gal.....	.30	.25
2 to 2½ ft. B.....	.65	.60

MELALEUCA ericifolia (Heath Melaleuca)		
1½ to 2 ft. Gal.....	.30	.25

	10 rate Each	100 rate Each
MELALEUCA hypericifolia (Red)		
2 to 2½ ft. Gal.....	.30	.25
2½ to 3 ft. B.....	.80	.70
MELALEUCA nesophila (Pink)		
1½ to 2 ft. Gal.....	.30	.25
2½ to 3 ft. B.....	.80	.70
MENZIESIA polifolia (Heather Bell)		
12 to 15 in. B.....	.55	.50
MYRTUS communis		
8 to 12 in. 4p.....	.20	.17½
1 to 1½ ft. Gal.....	.30	.25
1 to 1½ ft. B.....	.60	.55
1½ to 2 ft. B.....	.70	.60
MYRTUS communis compacta		
6 to 8 in. 4p.....	.20	.17½
12 to 14 in. Gal.....	.30	.25
12 to 15 in. B.....	.60	.55
MYRTUS communis microphylla		
1 to 1½ ft. Gal.....	.30	.25
1 to 1½ ft. B.....	.60	.55
MYRTUS communis variegata		
1 to 1½ ft. Gal.....	.30	.25
1 to 1½ ft. B.....	.60	.55
MYRTUS ugni (Chile Guava)		
10 to 12 in. Gal.....	.30	.25
1 to 1½ ft. B.....	.70	.60
NANDINA domestica (Sacred Bamboo)		
8 to 12 in. 4p.....	.20	.15
12 to 15 in. 5p.....	.30	.25
15 to 18 in. 6p.....	.35	.30
1 to 2 ft. 2½g.....	.55	.50
2 to 2½ ft. B.....	.75	.65
NERIUM (Oleander)		
Dbl. Pink, Dbl. Salmon, Dbl. Red, Dbl. White, Single Deep Rose.		
1 to 1½ ft. Gal.....	.30	.25
2 to 2½ ft. B.....	.75	.65
OLEARIA forsteri (Daisy Tree)		
1½ to 2 ft. Gal.....	.35	.30
2 to 2½ ft. B.....	.85	
OLEARIA traversi		
2 to 2½ ft. Gal.....	.35	.30
3 to 3½ ft. B.....	.85	
OSMANTHUS fragrans (Sweet Olive)		
12 to 15 in. Gal.....	.45	.40
1 to 1½ ft. B.....	.85	
*PARKINSONIA aculeata (Jerusalem Thorn)		
1½ to 2 ft. Gal.....	.30	.25
*PENTSTEMON antirrhinoides (Snapdragon Pentstemon)		
8 to 12 in. Qt.....	.20	.17½
*PENTSTEMON cordifolius (Red Bush Pentstemon)		
1 to 1½ ft. Gal.....	.35	.30

	10 rate Each	100 rate Each
*PENTSTEMON heterophyllus (Blue Bedder)		
Low growing, attractive blue flowers, blooms continuously for several months, fine for mass plantings.		
8 to 12 in. Qt.....	.20	.15
1 to 1½ ft. Gal.....	.30	.25
*PENTSTEMON spectabilis		
8 to 12 in. Qt.....	.20	.17½
PERNETTYA mucronata (Pink)		
1½ to 2 ft. B.....	.75	
PHILADELPHUS mexicana (Evergreen Mock Orange)		
1½ to 2 ft. Gal.....	.35	.30
*PHOTINIA arbutifolia (Toyon)		
We have an unusually well grown stock of this ever popular shrub.		
10 to 12 in. 4p.....	.20	.17½
1 to 1½ ft. Gal.....	.35	.30
2 to 2½ ft. 2½g.....	.70	.60
2½ to 3 ft. 5g.....	1.15	1.00



PHOTINIA ARBUTIFOLIA (TOYON)

PHOTINIA serrulata		
2 to 3 ft. B.....	.75	.65
5 to 6 ft. 5g.....	1.25	
PHOTINIA serrulata nova		
2 to 3 ft. B.....	.75	.65
PHYLLERIA angustifolia		
1½ to 2 ft. Gal.....	.30	
*PICKERINGEA montana (Chaparral Pea)		
12 to 15 in. Gal.....	.50	.45

	10 rate Each	100 rate Each
PITTOSPORUM crassifolium		
2 to 2½ ft. Gal.....	.30	.25
2 to 2½ ft. B.....	.65	.60
2½ to 3 ft. B.....	.85	.75
PITTOSPORUM eugenoides		
10 to 12 in. Qt.....	.20	.15
1½ to 2 ft. Gal.....	.30	.25
2 to 3 ft. B.....	.65	.60
3 to 3½ ft. B.....	.80	.70
PITTOSPORUM phylleroides (Willow Pittosporum)		
1 to 1½ ft. Gal.....	.30	.25
PITTOSPORUM tenuifolium (nigricans)		
1½ to 2 ft. Gal.....	.30	.25
4 to 5 ft. B.....	1.00	.85
PITTOSPORUM tobira		
8 to 12 in. 4p.....	.20	.17½
1 to 1½ ft. Gal.....	.30	.25
1½ to 2 ft. B.....	.65	.60
2 to 2½ ft. B.....	.80	.70
PITTOSPORUM tobira variegata		
8 to 12 in. Gal.....	.30	.25
1 to 1½ ft. B.....	.65	.60
PITTOSPORUM undulatum (Orange Pittosporum)		
1½ to 2 ft. Gal.....	.30	
2½ to 3 ft. B.....	.85	
PITTOSPORUM viridiflorum (Cape Pittosporum)		
2 to 2½ ft. B.....	.85	
POLYGALA dalmaisiana		
1 to 1½ ft. Gal.....	.30	.25
1 to 1½ ft. B.....	.65	.60
POLYGALA virgata		
1½ to 2 ft. Gal.....	.40	.35
.....		
*PRUNUS ilicifolia (Wild Cherry)		
We have an especially fine stock of these in all sizes. One of the most satisfactory shrubs for either trimmed or informal hedges.		
1 to 1½ ft. Qt.....	.20	.15
1½ to 2 ft. Qt.....	.25	.20
2 to 2½ ft. Gal.....	.35	.30
3 to 4 ft. 2½g.....	.80	.70
4 to 4½ ft. 5g.....	1.00	.85
5 to 6 ft. 5g.....	1.15	
.....		
*PRUNUS lyoni (Catalina Cherry)		
1 to 1½ ft. Qt.....	.20	.15
1½ to 2 ft. Qt.....	.25	.20
2 to 2½ ft. Gal.....	.35	.30
3 to 4 ft. 2½g.....	.80	.70
5 to 6 ft. 5g.....	1.15	1.00
PSIDIUM cattleianum (Strawberry Guava)		
1 to 1½ ft. Gal.....	.35	.30
1 to 1½ ft. B.....	.65	.60
PUNICA granatum nana (Dwarf Pomegranate)		
8 to 12 in. Gal.....	.30	.25
PYRACANTHA angustifolia		
1 to 1½ ft. Qt.....	.20	.15
1½ to 2 ft. Gal.....	.30	.25
2 to 3 ft. B.....	.65	.60



PITTOSPORUM TENUIFOLIUM

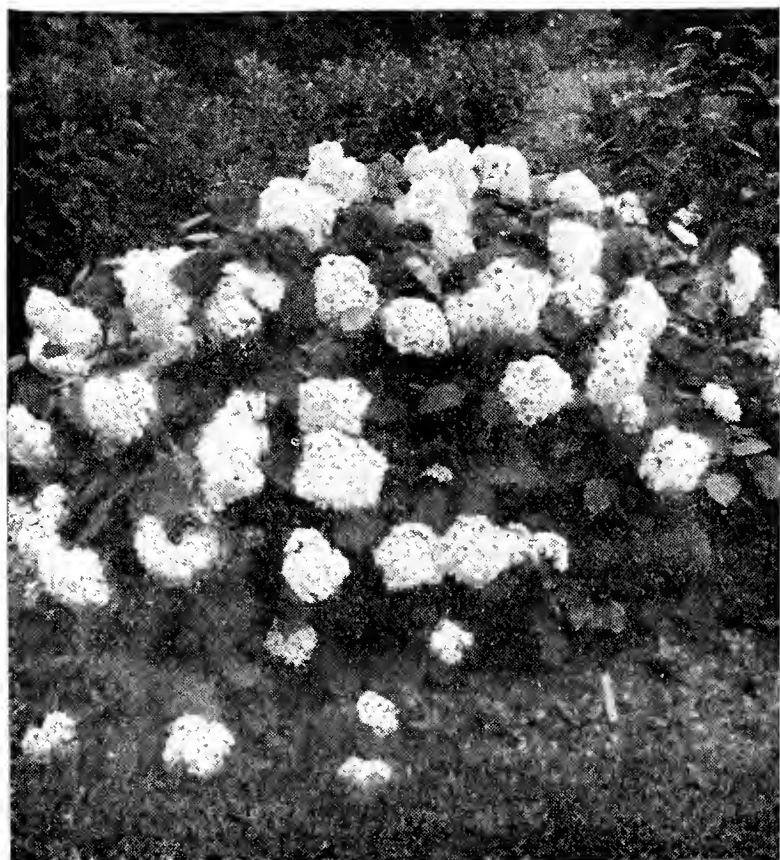
	10 rate Each	100 rate Each
PYRACANTHA coccinea		
1 to 1½ ft. Gal.....	.30	.25
PYRACANTHA coccinea lalandi		
1½ to 2 ft. Gal.....	.30	.25
2 to 2½ ft. Gal.....	.35	.30
2 to 3 ft. B.....	.65	.60
3 to 3½ ft. B.....	.85	.75
PYRACANTHA crenulata		
1½ to 2 ft. Gal.....	.30	.25
2 to 3 ft. Gal.....	.35	.30
2 to 3 ft. B.....	.65	.60
PYRACANTHA crenulata yunnanensis		
1 ft. Qt.....	.20	.15
1 to 1½ ft. Gal.....	.30	.25
2 to 2½ ft. B.....	.65	.60
3 to 3½ ft. B.....	.90	.80
PYRACANTHA formosiana		
1½ to 2 ft. Gal.....	.30	.25
2 to 2½ ft. B.....	.80	.70
*QUERCUS agrifolia (California Live Oak)		
1½ to 2 ft. Qt.....	.25	.20
2 to 3 ft. Gal.....	.35	.30
4 to 5 ft. 5g.....	1.15	1.00
5 to 6 ft. 5g.....	1.40	1.25
*QUERCUS chrysolepis (Canyon Live Oak)		
2 to 2½ ft. Gal.....	.40	.35
*QUERCUS durata (Leather Oak)		
1½ to 2 ft. Gal.....	.40	.35
QUERCUS suber (Cork Oak)		
2 to 2½ ft. Gal.....	.40	.35
*QUERCUS wislezni (Interior Live Oak)		
2 to 2½ ft. Gal.....	.40	.35

	10 rate Each	100 rate Each		10 rate Each	100 rate Each
RAPHIOLEPIS umbellata japonica					
1 to 1½ ft. Gal.....	.30	.25			
1 to 1½ ft. B.....	.65	.60			
RHAMNUS alaternus variegata					
1 to 1½ ft. Gal.....	.35	.30			
2 to 2½ ft. B.....	.80	.70			
*RHAMNUS californica (Coffee Berry)					
1½ to 2 ft. Gal.....	.35	.30			
*RHAMNUS californica crassifolium					
1½ to 2 ft. Gal.....	.45	.40			
2 to 3 ft. 5g.....	1.00				
*RHAMNUS crocea (Red Berry)					
1 to 1½ ft. Gal.....	.45	.40			
*RHAMNUS purshiana (Cascara)					
2 to 3 ft. Gal.....	.35	.30			
*RHUS integrifolia					
1½ to 2 ft. Gal.....	.35	.30			
*RHUS laurina					
1½ to 2 ft. Gal.....	.35	.30			
.....					
*RHUS ovata					
Attractive at all seasons, one of the handsomest and hardiest shrubs for dry plantings or bank covers.					
12 to 15 in. 4p.....	.30	.25			
.....					
ROSMARINUS officinalis (Rosemary)					
1 to 1½ ft. Gal.....	.30	.25			
SALVIA greggi (Crimson)					
2 to 2½ ft. Gal.....	.30	.25			
SALVIA leucantha					
2 to 2½ ft. Gal.....	.30	.25			
SCHINUS molle (Pepper Tree)					
1½ to 2 ft. Qt.....	.25	.20			
2 to 3 ft. Gal.....	.30	.25			
5 to 6 ft. Gal.....	.45	.40			
6 to 7 ft. 5g.....	1.15	1.00			
STERCULIA diversifolia (Bottle Tree)					
1 to 1½ ft. Qt.....	.20	.17½			
2 to 3 ft. Gal.....	.35	.30			
TEUCRIUM fruticans					
1½ to 2 ft. Gal.....	.30	.25			
2 to 3 ft. B.....	.75				
THYMUS vulgaris (Thyme)					
8 to 12 in. 4p.....	.20	.15			
ULEX europeus (Gorse)					
1½ to 2 ft. Gal.....	.30	.25			
2 to 2½ ft. B.....	.65	.60			
ULEX europeus nana (Dwarf Gorse)					
8 to 12 in. Gal.....	.35	.30			
1 to 1½ ft. B.....	.65	.60			
*UMBELLULARIA californica (California Laurel)					
2 to 2½ ft. Gal.....	.40	.35			
2 to 3 ft. B.....	.85	.75			
3 to 4 ft. B.....	1.15	1.00			
4 to 5 ft. B.....	1.50				
VERONICA andersoni					
12 to 15 in. Gal.....	.25	.20			
VERONICA andersoni variegata					
1 to 1½ ft. B.....	.55	.50			
VERONICA chatamica (Creeping)					
8 to 12 in. 4p.....	.20	.15			
12 to 15 in. Gal.....	.30	.25			
1 to 1½ ft. B.....	.55	.50			
VERONICA cupressoides					
12 to 15 in. B.....	.55	.50			
VERONICA decussata					
12 to 15 in. Gal.....	.25	.20			
1 to 1½ ft. B.....	.55	.50			
VERONICA glaucophylla					
12 to 15 in. B.....	.55	.50			
VERONICA hulkeana					
1 to 1½ ft. B.....	.65	.60			
VERONICA imperialis					
12 to 15 in. Gal.....	.25	.20			
1 to 1½ ft. B.....	.55	.50			
VERONICA pimeloides (Buxifolia)					
6 to 8 in. 4p.....	.20	.15			
12 to 15 in. Gal.....	.30	.25			
14 to 16 in. B.....	.65	.60			
VIBURNUM japonicum					
1½ to 2 ft. B.....	.70				
VIBURNUM odoratissimum					
1 to 1½ ft. B.....	.65	.60			
1½ to 2 ft. B.....	.75	.65			
VIBURNUM suspensum					
1 to 1½ ft. Gal.....	.30	.25			
1½ to 2 ft. B.....	.65	.60			
VIBURNUM tinus (Laurustinus)					
8 to 12 in. 4p.....	.20	.17½			
1 to 1½ ft. Gal.....	.30	.25			
1½ to 2 ft. B.....	.60	.55			
2 to 2½ ft. B.....	.75	.65			
VIBURNUM tinus lucidum					
1½ to 2 ft. Gal.....	.30	.25			
1½ to 2 ft. B.....	.70	.60			
VIBURNUM tinus strictum					
1½ to 2 ft. Gal.....	.30	.25			
VIBURNUM tinus variegatum					
1 to 1½ ft. Gal.....	.30	.25			
1 to 1½ ft. B.....	.65	.60			

Deciduous Trees and Shrubs

There are many varieties in this group which should be used more in California; some with gorgeous flowers in the Spring or Summer and others with red berries or colored foliage in the Fall and Winter.

	10 rate Each	100 rate Each		10 rate Each	100 rate Each
ACER dasycarpum (Silver Maple)			CERCIS chinensis (Chinese Red Bud)		
4 to 6 ft. B. R.....	.45	.40	1½ to 2 ft. Gal.....	.35	.30
6 to 8 ft. B. R.....	.55	.50			
ACER japonicum (Japanese Maple)			*CERCIS occidentalis		
1½ to 2 ft. Gal.....	.35	.30	(Western Red Bud)		
2 to 3 ft. Gal.....	.45	.40	Our beautiful native red bud which		
ACER platanoides (Norway Maple)			excites so much comment when in bloom.		
4 to 6 ft. B. R.....	.45	.40	1 to 1½ ft. Gal.....	.35	.30
6 to 8 ft. B. R.....	.55	.50	3 to 4 ft. 5g.....	.85	
ACER platanoides schwedleri			*CHILOPSIS linearis (Desert Willow)		
(Purple Leaf Norway Maple)			2 to 2½ ft. Gal.....	.50	.45
3 to 4 ft. B. R.....	.35	.30	3 to 4 ft. 5g.....	1.00	
4 to 6 ft. B. R.....	.45	.40	CORNUS florida (Flowering Dogwood)		
6 to 8 ft. B. R.....	.55	.50	1 to 1½ ft. Gal.....	.30	.25
ACER rubrum (Scarlet Maple)			CORNUS mas (Cornelian Cherry)		
4 to 5 ft. Gal.....	.50		2 to 3 ft. Gal.....	.35	.30
*AESCULUS californica (Buckeye)			CRATAEGUS carrieri		
2 to 3 ft. Gal.....	.35	.30	(Large Berried Hawthorne)		
AESCULUS hippocastanum			3 to 4 ft. B. R.....	.40	.35
(Horse Chestnut)			4 to 6 ft. B. R.....	.50	.45
1½ to 2 ft. Gal.....	.35	.30	6 to 8 ft. B. R.....	.65	.55
ALBIZZIA julibrissin (Pink Acacia)			CRATAEGUS cordata (Washington Thorn)		
1 to 1½ ft. Gal.....	.30	.25	2 to 3 ft. B. R.....	.30	.25
4 to 6 ft. B. R.....	.45		3 to 4 ft. B. R.....	.35	.30
ASIMINA triloba (Paw Paw)			4 to 6 ft. B. R.....	.45	.40
1 to 1½ ft. Gal.....	.40		CRATAEGUS oxycantha (Hawthorne)		
BERBERIS thunbergi (Japanese Barberry)			Dbl. Pink, Dbl. White, Paul's Scarlet		
1½ to 2 ft. Gal.....	.30	.25	3 to 4 ft. B. R.....	.35	.30
BERBERIS thunbergi atro-purpurea			4 to 6 ft. B. R.....	.45	.40
1 to 1½ ft. Gal.....	.30	.25	6 to 8 ft. B. R.....	.60	.50
BETULA alba (European White Birch)			CYDONIA japonica (Flowering Quince)		
3 to 4 ft. B. R.....	.30	.25	Red and Pink		
4 to 6 ft. B. R.....	.40	.35	1½ to 2 ft. Gal.....	.30	.25
BETULA alba laciniata			2 to 2½ ft. B. R.....	.40	.35
(Cut Leaf Weeping Birch)			DEUTZIA (Pride of Rochester)		
3 to 4 ft. B. R.....	.45	.40	1½ to 2 ft. Gal.....	.30	
4 to 6 ft. B. R.....	.60	.50	DIERVILLEA Eva Rathke (Red Weigela)		
CAESALPINIA gilliesi (Bird of Paradise)			1½ to 2 ft. Gal.....	.30	.25
2 to 2½ ft. Gal.....	.30	.25	DIERVILLEA rosea (Pink Weigela)		
CALYCANTHUS floridus (Sweet Shrub)			1½ to 2 ft. Gal.....	.30	.25
2 to 2½ ft. Gal.....	.30		EXOCHORDA grandiflora (Pearl Bush)		
*CALYCANTHUS occidentalis			2 to 2½ ft. Gal.....	.35	.30
(Western Sweet Shrub)			FORSYTHIA intermedia (Golden Bell)		
2 to 2½ ft. Gal.....	.35	.30	1½ to 2 ft. Gal.....	.30	.25
3 to 4 ft. 5g.....	.85		*FRAXINUS velutina (Arizona Ash)		
CARYOPTERIS incana (Blue Spirea)			3 to 4 ft. B. R.....	.35	.30
1½ to 2 ft. Gal.....	.30	.25	4 to 6 ft. B. R.....	.45	.40
CATALPA speciosa			GINKGO biloba (Maidenhair Tree)		
7 to 8 ft. 5g.....	.85		1½ to 2 ft. Gal.....	.35	.30
*CEPHALANTHUS occidentalis			HIBISCUS syriacus		
(Button Bush)			(Rose of Sharon, Dbl. Rose Pink)		
1 to 1½ ft. Gal.....	.35	.30	2 to 2½ ft. Gal.....	.30	.25
CERCIS canadensis (Red Bud)			*HOLODISCUS discolor (Ocean Spray)		
2 to 2½ ft. Gal.....	.35	.30	2 to 3 ft. Gal.....	.35	



HYDRANGEA HORTENSIS

	10 rate	100 rate
	Each	Each
HYDRANGEA hortensis, hortensis variegata, E. G. Hill, La Perle, Mme. Moulliere, Mousseline, Nigra, Radiant.		

1 to 1½ ft. Gal.....	.30	.25
----------------------	-----	-----

KERRIA japonica
(Japanese Rose Single and Double)

2 to 2½ ft. Gal.....	.30	.25
----------------------	-----	-----

KOELREUTERIA paniculata
(Goldenrain Tree)

3 to 4 ft. Gal.....	.35	.30
6 to 8 ft. 5g.....	.85	

LABURNUM vulgare (Golden Chain)

1½ to 2 ft. Gal.....	.30	.25
----------------------	-----	-----

LAGERSTROEMIA indica
(Crepe Myrtle Pink)

2 to 2½ ft. Gal.....	.30	.25
----------------------	-----	-----

LIQUIDAMBAR styraciflua
(Sweet Gum)

In California the Liquidambar colors much better than the maples or any other deciduous trees.

1½ to 2 ft. Gal.....	.35	.30
3 to 4 ft. Gal.....	.40	.35

MAGNOLIA hypoleuca (Silver Magnolia)

2 to 3 ft. Gal.....	.50	
---------------------	-----	--

MORUS tatarica (Russian Mulberry)

4 to 6 ft. B. R.....	.40	.35
6 to 8 ft. B. R.....	.55	.50

***OSMARONIA cerasiformis** (Oso Berry)

2 to 2½ ft. Gal.....	.35	.30
----------------------	-----	-----

***PHILADELPHUS lewisi**
(Western Mock Orange)

1½ to 2 ft. Gal.....	.35	.30
----------------------	-----	-----

	10 rate	100 rate
	Each	Each

PLATANUS orientalis
(European Sycamore)

3 to 4 ft. B. R.....	.35	.30
4 to 6 ft. B. R.....	.50	.45
6 to 8 ft. B. R.....	.70	.60
8 to 10 ft. B. R.....	.85	.75

POPULUS alba nivea (Silver Poplar)

4 to 6 ft. B. R.....	.40	.35
6 to 8 ft. B. R.....	.60	.50

POPULUS candicans (Balm of Gilead)

4 to 6 ft. B. R.....	.45	.40
6 to 8 ft. B. R.....	.55	.50

POPULUS eugenei (Carolina Poplar)

6 to 8 ft. B. R.....	.50	.45
8 to 10 ft. B. R.....	.70	.60

POPULUS nigra italica (Lombardy Poplar)

4 to 6 ft. B. R.....	.45	.40
6 to 8 ft. B. R.....	.55	.50

PUNICA granatum

(Flowering Pomegranate)

Dbl. Red and Mme. Legrelle-variegated

2 to 2½ ft. Gal.....	.35	.30
----------------------	-----	-----

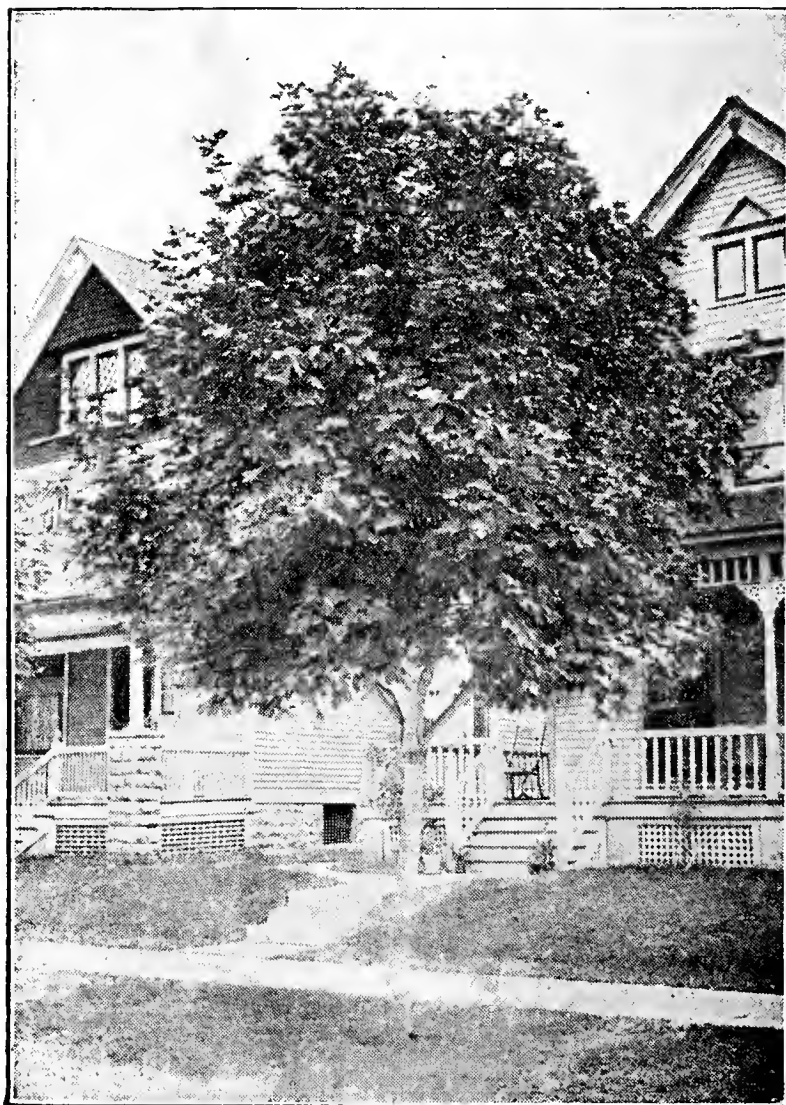
***QUERCUS kellogi** (Black Oak)

Has large deeply cut leaves which color beautifully in the Fall.

1½ to 2 ft. Gal.....	.45	.40
----------------------	-----	-----

QUERCUS palustris (Eastern Pin Oak)

2 to 2½ ft. Gal.....	.40	.35
----------------------	-----	-----

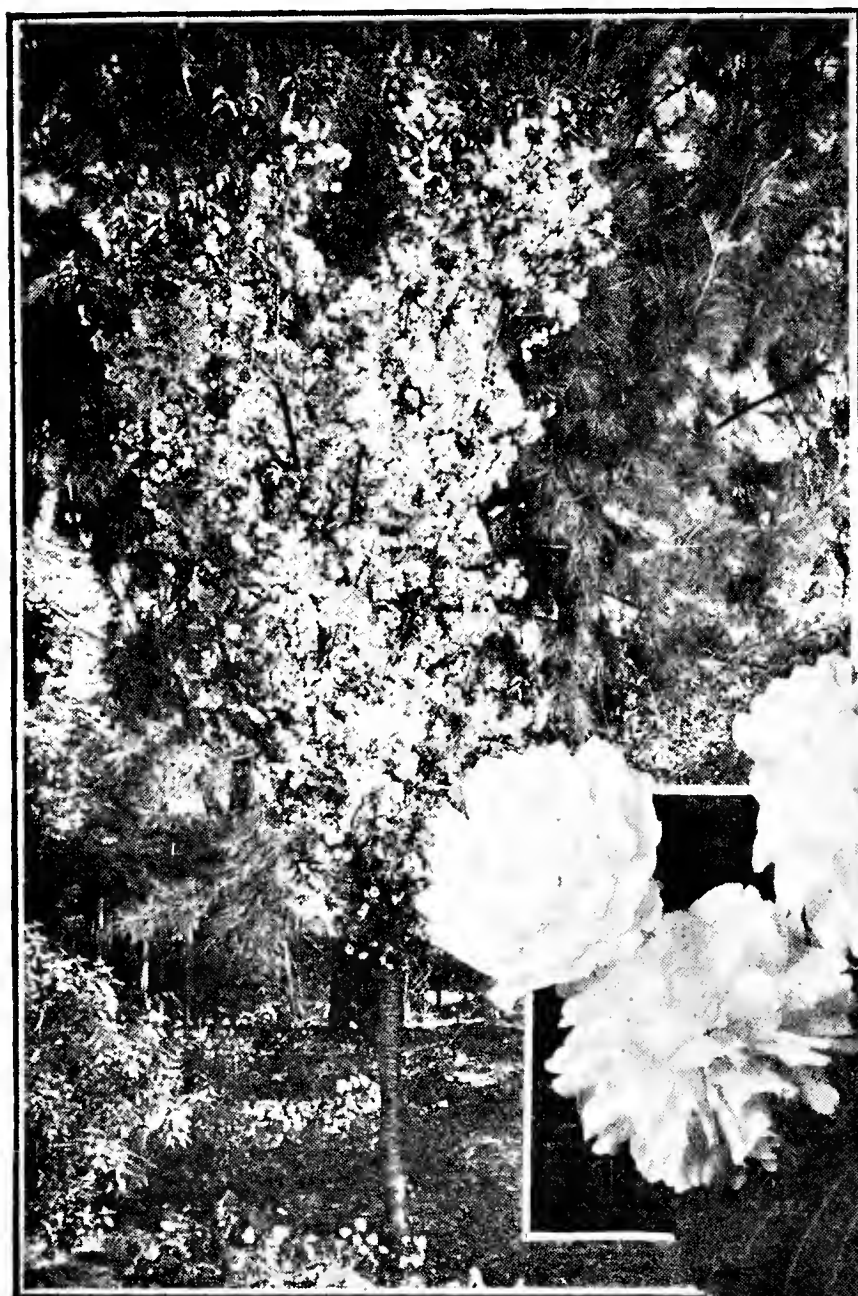


PLATANUS ORIENTALIS
(EUROPEAN SYCAMORE)

	10 rate Each	100 rate Each		10 rate Each	100 rate Each
RHUS cotinus (Smoke Tree) 2 to 2½ ft. Gal.....	.35	.30	SPIRAEA cantoniensis (Dbl. White) 2 to 2½ ft. Gal.....	.30	.25
*RIBES aureum (Golden Currant) 1½ to 2 ft. Gal.....	.35	.30	*SPIRAEA douglasi (Pink) 2 to 2½ ft. Gal.....	.35	.30
*RIBES sanguineum (Red Flowering Currant) 1½ to 2 ft. Gal.....	.35	.30	SPIRAEA Van Houttei (Single White) 2 to 2½ ft. Gal.....	.30	.25
2 to 2½ ft. B. R.....	.45	.40	*SYMPHORICARPOS racemosus (Snowberry) 2 to 2½ ft. Gal.....	.35	.30
ROBINIA hispida macrophylla (Rose Locust) 5 to 6 ft. 5g.....	1.25		SYMPHORICARPOS vulgaris (Indian Currant) 2 to 2½ ft. Gal.....	.30	
ROBINIA pseudoacacia decaisneana (Pink Locust) 8 to 10 ft. 5g.....	.85		SYRINGA (Lilacs) (Grafted Choice French Varieties Dbl. and Single) 2 to 2½ ft. B. R.....	.40	.35
<p>*ROMNEYA coulteri (Matilija Poppy) One of our finest native shrubs for dry situations. 8 to 12 in. 4p..... .30 .25 1 to 1½ ft. Gal..... .45 .40 2 to 3 ft. 5g..... 1.00</p>			SYRINGA persica laciniata (Cut Leaf Persian Lilac) 2 to 2½ ft. Gal.....	.35	.30
SALIX babylonica (Weeping Willow) 4 to 6 ft. B. R.....	.40	.35	SYRINGA vulgaris (Common Purple Lilac) 2 to 2½ ft. Gal.....	.30	.25
6 to 8 ft. B. R.....	.55	.50	TAMARIX africana 4 to 6 ft. B. R.....	.40	.35
SORBUS aucuparia (European Mt. Ash) 4 to 6 ft. B. R.....	.45	.40	<p>TAMARIX pentandra (Summer Blooming) Grey-green foliage, blooms in the Spring and again in the Summer. 4 to 6 ft. B. R..... .40 .35</p>		
6 to 8 ft. B. R.....	.60	.50	VIBURNUM carlesi (Fragrant Viburnum) 1½ to 2 ft. 5p.....	.45	.40
SPIRAEA anthony waterer (Red) 12 to 15 in. Gal.....	.30	.25			



PARTIAL VIEW OF OUR SANTA CRUZ NURSERY



PRUNUS PSUEDO CERASUS
(FLOWERING CHERRY)

Flowering Fruit Trees

We have made a specialty of flowering fruit trees and have an extremely large and varied assortment of worthwhile varieties. The flowering trees are becoming more popular every year and you should stock a complete assortment of them. Our trees are grown in a section free from Peach root borer and may be shipped anywhere.

	10 rate Each	100 rate Each
FLOWERING ALMONDS		
AMYGDALUS communis nana (Double Pink Dwarf Flowering Almond)		
2 to 3 ft. B. R.....	.35	.30
3 to 4 ft. B. R.....	.40	.35

FLOWERING PEACHES		
AMYGDALUS persica (Flowering Peach) Burbank (Dbl. Pink), Camelliaflora (Dbl. Red), Dbl. Cerise, Early Dbl. Red, Clara Meyer (Dbl. Pink), Genbei (Variegated), Late Dbl. Red, Purple Leaf, San Jose Early Pink, Dbl. White.		
3 to 4 ft. B. R.....	.35	.30
4 to 6 ft. B. R.....	.40	.35

AMYGDALUS persica nana (Chinese Dwarf Flowering Peach)		
1 to 1½ ft. B. R.....	.50	

FLOWERING APPLES		
MALUS atro-sanguinea (Carmine Crab)		
4 to 6 ft. B. R.....	.50	.45
MALUS floribunda (Japanese Flowering Crab)		
4 to 6 ft. B. R.....	.50	.45
MALUS floribunda purpurea		
4 to 6 ft. B. R.....	.50	.45

	10 rate Each	100 rate Each
MALUS halliana parkmani (Kido)		
4 to 6 ft. B. R.....	.60	.55
MALUS ioensis plena (Bechtels Crab)		
2 to 3 ft. B. R.....	.40	.35
3 to 4 ft. B. R.....	.45	.40
MALUS scheideckeri		
4 to 6 ft. B. R.....	.50	.45

FLOWERING PLUMS AND APRICOTS

PRUNUS Mme. Dorborn (Large Dbl. Pink Flowering Apricot)		
3 to 4 ft. B. R.....	.40	.35
4 to 6 ft. B. R.....	.45	.40
PRUNUS hessei (Variegated Leaf Plum)		
3 to 4 ft. B. R.....	.45	.40

PRUNUS moseri (Purple Leaf Dbl. Pink Flowering Plum)		
3 to 4 ft. B. R.....	.40	.35
4 to 6 ft. B. R.....	.50	.45

PRUNUS mume (Dawn Flowering Apricot)		
3 to 4 ft. B. R.....	.40	.35
4 to 6 ft. B. R.....	.45	.40

PRUNUS mume (Red Flowering)		
3 to 4 ft. B. R.....	.50	.45

PRUNUS pissardi (Purple Leaf Plum)		
3 to 4 ft. B. R.....	.35	.30
4 to 6 ft. B. R.....	.45	.40
6 to 8 ft. B. R.....	.55	.50

PRUNUS triloba plena (Dbl. Pink Flowering Plum)		
3 to 4 ft. B. R.....	.40	.35
4 to 6 ft. B. R.....	.50	.45

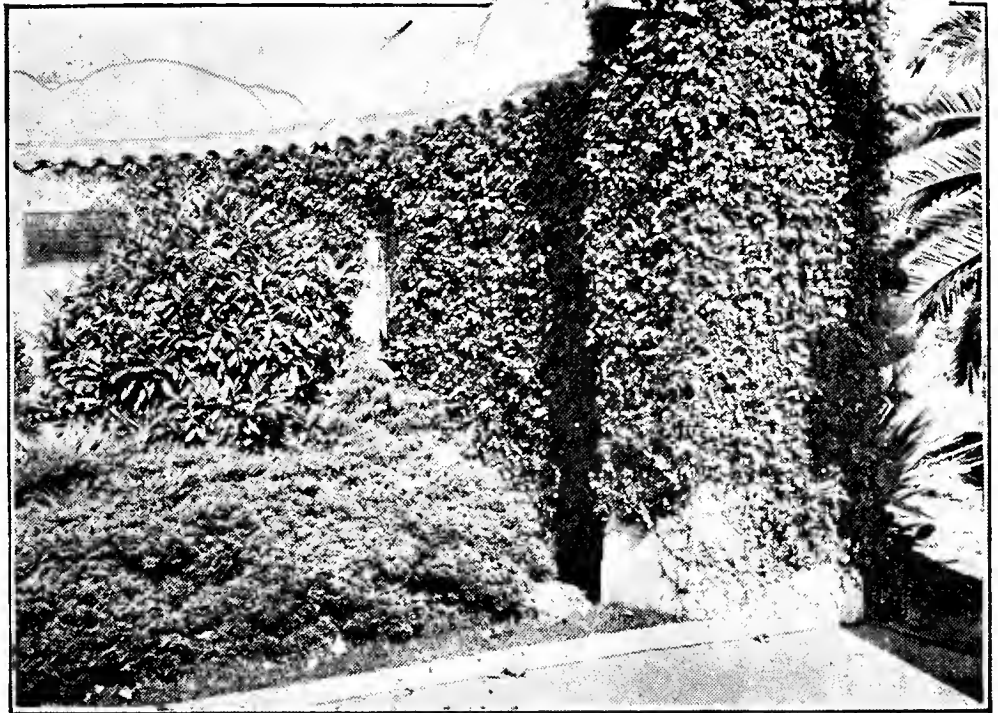
PRUNUS vesuvius		
3 to 4 ft. B. R.....	.40	.35
4 to 6 ft. B. R.....	.50	.45

FLOWERING CHERRIES

Campanulata (Single Red) Dbl. Pink, J. H. Veitch (Dbl. Rose). Dbl. White, Single White.		
2 to 3 ft.....	.40	.35
3 to 4 ft.....	.45	.40
4 to 6 ft.....	.65	.60

Climbing and Trailing Plants

	10 rate	100 rate
	Each	Each
AJUGA reptans (Carpet Bugle)		
Qt.20	.15
AKEBIA quinata		
Gal.30	
.....		
AMPELOPSIS inconstans-lowii		
An attractive variety of the Boston Ivy with small, finely cut leaves.		
Gal.35	.30
.....		
AMPELOPSIS quinquefolia (Virginia Creeper)		
Qt.20	.15
Gal.30	.25
AMPELOPSIS sempervirens (Evergreen Boston Ivy)		
Gal.35	.30
AMPELOPSIS veitchi (Boston Ivy)		
Qt.20	.15
Gal.30	.25
BIGNONIA unguis cati (Tweediana) (Yellow Trumpet)		
Gal.35	.30
CERATOSTIGMA plumbaginoides (Dwarf Plumbago)		
8 to 12 in. Qt.....	.20	.15
CLEMATIS montana (Anemone Clematis)		
Gal.30	.25
CLEMATIS paniculata (Sweet Autumn Clematis)		
Qt.20	.17½
Gal.30	.25
CONVOLVULUS mauretanicus		
8 to 12 in. Qt.....	.20	.15
ERIGERON mucronata (Mexican Daisy)		
8 to 12 in. Qt.....	.20	.15
EUONYMOUS radicans (Winter Creeper)		
8 to 12 in. 4p.....	.20	.17½
12 to 15 in. Gal.....	.30	.25
EUONYMOUS radicans variegata		
8 to 12 in. 4p.....	.20	.17½
12 to 15 in. Gal.....	.30	.25



FICUS PUMILA (CLIMBING FIG)

	10 rate	100 rate
	Each	Each
FICUS pumila (Repens) (Climbing Fig)		
4p20	.17½
Gal.30	.25
HARDENBERGIA comptoniana		
Gal.35	.30
HEDERA helix (English Ivy)		
Qt.20	.15
Gal.30	.25
HEDERA helix dentata aurea (Large Leaf Variegated Ivy)		
Qt.20	.15
Gal.30	.25
HEDERA helix emerald gem (Small Leaf Ivy)		
Gal.30	.25
HEDERA helix variegata		
Qt.20	.15
Gal.30	.25
HELIANTHEMUM (Sun Rose)		
Apricot, Bronze, Pink, Red, White, Yellow, Double Red.		
3p.15	.10



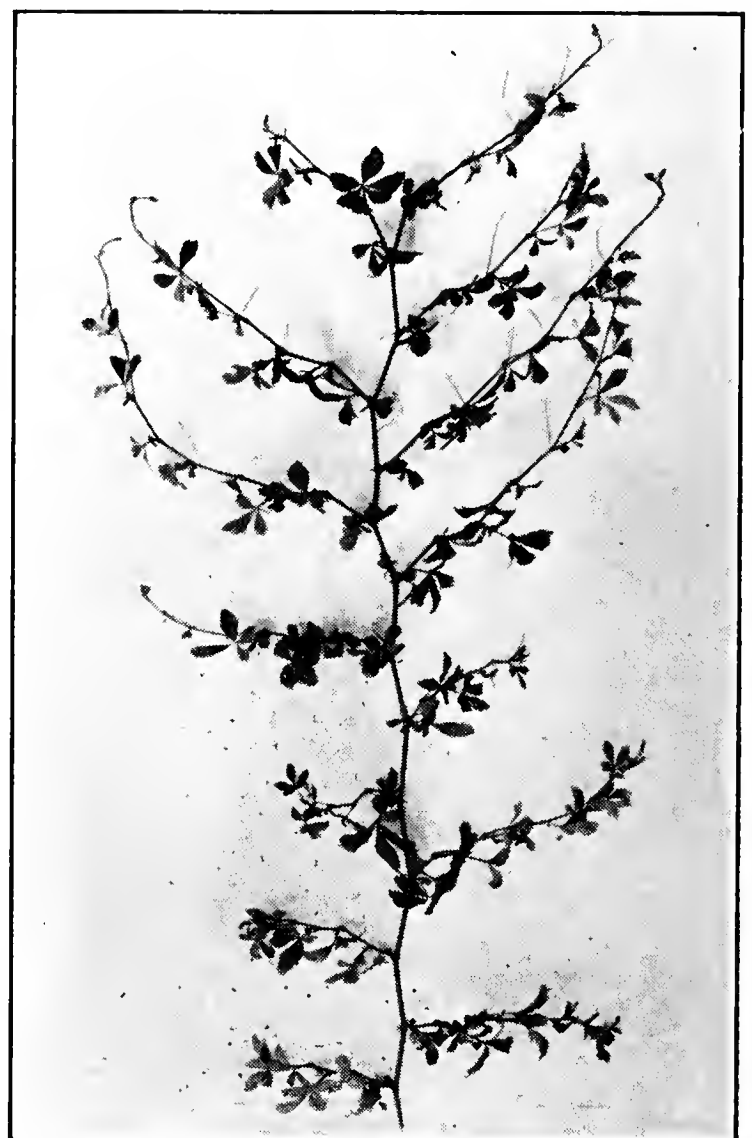
AMPELOPSIS INCONSTANS-LOWII



AMPELOPSIS QUINQUEFOLIA
(VIRGINIA CREEPER)

	10 rate Each	100 rate Each
HYPERICUM calycinum 8 to 12 in. Qt.....	.20	.15
JASMINUM grandiflorum (Spanish Jasmine) Gal.30	
JASMINUM humile (Italian Jasmine) Gal.30	.25
JASMINUM primulinum (Primrose Jasmine) Gal.30	.25
LONICERA confusa Gal.30	
*LONICERA hispidula californica (California Honeysuckle) Gal.35	.30
LONICERA japonica (Hall's Japanese Honeysuckle) Qt. Gal.20 .30	.15 .25
LONICERA japonica chinensis (Chinese Honeysuckle) Qt. Gal.20 .30	.15 .25
LONICERA japonica reticulata aurea (Golden Honeysuckle) Gal.30	.25
MANDEVILLA suaveolens (Chile Jasmine) Gal.30	
*MICROMERIA chamissonis (Yerba Buena) 8 to 12 in. Qt.....	.20	.17½

	10 rate Each	100 rate Each
*MONARDELLA villosa (Coyote Mint) 8 to 12 in. Qt.....	.20	.17½
MUEHLENBECKIA complexa (Wire Vine) Qt. Gal.20 .30	.15 .25
PANDOREA australis (Tecoma Australis) Gal.35	.30
PASSIFLORA incarnata (Passion Vine) Gal.30	.25
PASSIFLORA mollissima (Pink) Gal.35	.30
PLUMBAGO capensis Gal.30	.25
SOLANUM jasminoides (Potato Vine) Gal.30	.25
SOLLYA heterophylla (Australian Blue Bell) Gal.30	.25
TECOMA capensis Gal.40	.35
TECOMA mackeni Gal.35	.30
TRACHELOSPERMUM jasminoides (Star Jasmine) Gal.45	.40
VINCA minor (Small Leaf Periwinkle White) 8 to 12 in. Qt.....	.20	.15
WISTERIA multijuga (Blue, Pink, Purple, White) 2 to 3 ft. B. R.....	.55	.50



AMPELOPSIS SEMPERVIRENS



PARTIAL VIEW OF OUR ROCKERY AT SAN JOSE SALESYARD

Agaves, Bamboos and Palms

These plants are a characteristic feature of the California landscape; and are especially in demand now when there are so many houses of the Spanish and Mission type of architecture being constructed.

	10 rate Each	100 rate Each		10 rate Each	100 rate Each
AGAVE americana (Century Plant)			CORTADERIA (Lavender Plumes)		
12 to 15 in. Gal.....	.30	.25	2 to 3 ft. Gal.....	.35	.30
1½ to 2 ft. 5g.....	.75		FESTUCA glauca		
AGAVE americana variegata			6 to 8 in. 3p.....	.15	.12½
12 to 15 in. Gal.....	.30	.25	HESPERALOE englemanni (Red Flowers)		
1½ to 2 ft. 5g.....	.75		1 to 1½ ft. Gal.....	.35	.30
ARUNDO donax variegata (Striped Giant Reed)			PHORMIUM tenax (New Zealand Flax)		
4 to 5 ft. 5g.....	1.00	.85	2 to 2½ ft. Gal.....	.35	.30
BAMBOO dwarf			3 to 4 ft. 5g.....	1.00	
8 to 12 in. Gal.....	.35	.30	PHORMIUM tenax variegata		
BAMBOO metake			1½ to 2 ft. Gal.....	.35	.30
1½ to 2 ft. Gal.....	.35	.30	3 to 4 ft. 5g.....	1.00	
3 to 4 ft. 5g.....	.85		TRACHYCARPUS excelsa (Windmill Palm)		
CAREX grass striped			1 to 1½ ft. Gal.....	.40	.35
8 to 12 in. 3p.....	.15	.12½	*WASHINGTONIA filifera (California Fan Palm)		
CORDYLINAE australis (Dracaena Palm)			2 to 2½ ft. Gal.....	.45	.40
1½ to 2 ft. Qt.....	.20	.17½	WASHINGTONIA robusta (Mexican Fan Palm)		
2 to 2½ ft. Gal.....	.35	.30	1½ to 2 ft. Gal.....	.40	.35
3 to 4 ft. B.....	1.00	.85	*YUCCA arborescens (Joshua Tree)		
4 to 5 ft. B.....	1.25	1.00	6 to 8 in. Gal.....	.35	.30
5 to 6 ft. B.....	1.75		1 to 1½ ft. B.....	.75	
CORDYLINAE indivisa			YUCCA filamentosa		
1½ to 2 ft. Qt.....	.20	.17½	8 to 12 in. Gal.....	.30	.25
2 to 2½ ft. Gal.....	.35	.30	*YUCCA whipplei (Spanish Bayonet)		
3 to 4 ft. B.....	1.00	.85	8 to 12 in. Gal.....	.30	.25
4 to 5 ft. B.....	1.25	1.00	1 to 1½ ft. B.....	.75	.65
5 to 6 ft. B.....	1.75				
CORTADERIA argentea (Pampas Grass)					
2 to 2½ ft. Gal.....	.30	.25			
3 to 4 ft. 5g.....	1.00	.85			

Lining Out Stock

In order to produce strong, thrifty plants it is necessary to have the young "Lining Out" stock come to you in a clean healthy condition. All our stock in this class is young and thrifty, with a fibrous root system produced under the most favorable conditions.



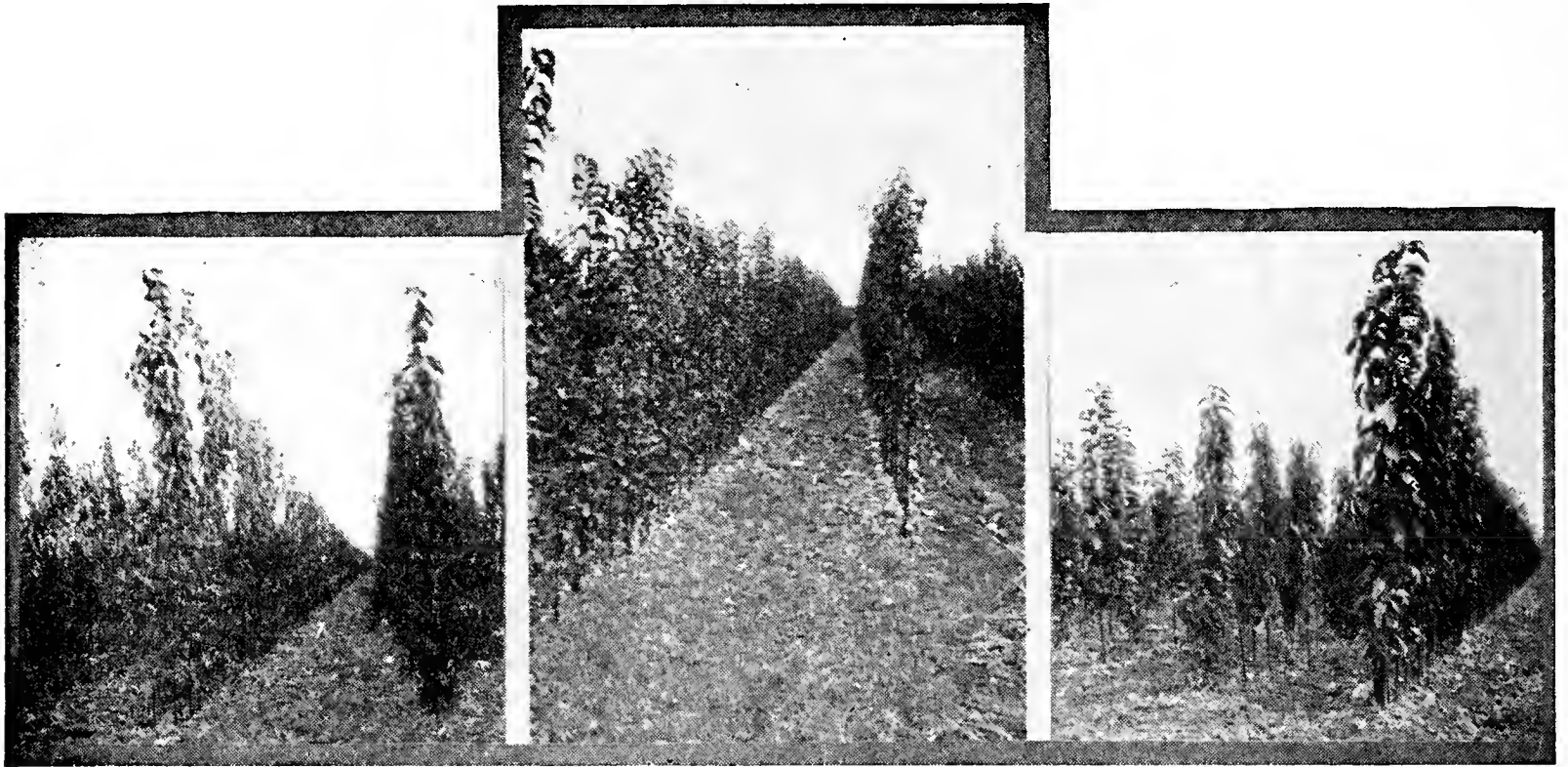
SAMPLE OF OUR "LINING OUT STOCK". LEFT TO RIGHT: MAHONIA AQUIFOLIUM, COTONEASTER PANNOSA, CHOISYA TERNATA, VIBURNUM TINUS STRICTUM, NANDINA DOMESTICA AND MYRTUS COMMUNIS COMPACTA.

	10 rate Each	100 rate Each		10 rate Each	100 rate Each
ABIES firma			CORDYLINE australis		
4 to 6 in. 2¼p.....		.10	6 to 8 in. 2¼p.....		.07
ACER japonicum			CORDYLINE indivisa		
6 to 8 in. 2¼p.....		.10	6 to 8 in. 2¼p.....		.07
BERBERIS knighti			CORNUS capitata		
4 to 6 in. 2¼p.....		.07	3 to 4 in. 2¼p.....		.07
CALLISTEMON rigidus			CORONILLA glauca		
4 to 6 in. 2¼p.....		.07	4 to 6 in. 2¼p.....		.07
CASUARINA stricta			COTONEASTER heroveana		
6 to 8 in. 2¼p.....		.07	4 to 6 in. 2¼p.....		.07
CEDRUS deodara			COTONEASTER horizontalis		
4 to 6 in. 2¼p.....		.10	3 to 4 in. 2¼p.....		.07
CHAMAECYPARIS lawsoniana alumi			COTONEASTER pannosa		
4 to 6 in. 2¼p.....		.10	4 to 6 in. 2¼p.....		.07
CINNAMOMUM camphora			CRYPTOMERIA elegans		
3 to 4 in. 2¼p.....		.07	6 to 8 in. 2¼p.....		.10

	10 rate Each	100 rate Each		10 rate Each	100 rate Each
ESCALLONIA rosea 4 to 6 in. 2¼p.....		.07	LEPTOSPERMUM nicholsi 3 to 4 in. 2¼p.....		.08
EUONYMUS japonicus albo variegata 4 to 6 in. 2¼p.....		.07	LIGUSTRUM ovalifolium aurea 4 to 6 in. 2¼p.....		.07
EUONYMUS japonicus aurea marginata 3 to 4 in. 2¼p.....		.07	LONICERA nitida 4 to 6 in. 2¼p.....		.07
HYPERICUM moserianum 4 to 6 in. 2¼p.....		.07	*MAHONIA aquifolium 3 to 4 in. 2¼p.....		.07
JUNIPERUS communis hibernica 4 to 6 in. 2¼p.....		.07	MYRTUS communis 4 to 6 in. 2¼p.....		.07
LAURUS nobilis 4 to 6 in. 2¼p.....		.07	NANDINA domestica 3 to 4 in. 2¼p.....		.07
LEPTOSPERMUM chapmani 4 to 6 in. 2¼p.....		.07	*PHOTINIA arbutifolia 3 to 4 in. 2¼p.....		.08
LEPTOSPERMUM laevegatum 6 to 8 in. 2¼p.....		.07	PICEA engelmanni 4 to 6 in. 2¼p.....		.10
			VIBURNUM tinus 4 to 6 in. 2¼p.....		.07



SAMPLES OF OUR BALLED EVERGREEN STOCK



PRUNES PEARs CHERRIES
THREE VIEWS OF "FRUIT TREES" AT OUR BRENTWOOD NURSERY

Fruit and Nut Tree Department

Our stock of fruit trees this year is unusually fine. We have all the varieties which should be included in home orchard plantings. Our fruit trees are all grown near Brentwood in Contra Costa County where conditions are unexcelled for the growing of **quality** stock. This section is absolutely free from "Peach Root Borer" and our stock can be shipped anywhere.

The following prices apply to fruit trees in lots of 10 or more of a variety, except apples and apricots.

3 to 4 ft.....	.15
4 to 6 ft.....	.20
Jumbo25

APPLES AND APRICOTS

3 to 4 ft.....	.17½
4 to 6 ft.....	.22½
Jumbo27½

APPLES

~~Alexander, Arkansas Black, Baldwin, Black Ben Davis, Delicious, Early Harvest, Gra-venstein, Jonathan, King David, Northern Spy, Red Astrachan, Red Delicious, Red-June, Red Pearmain, Rome Beauty, San-Jacinto, Skinner Seedling, Spitzenburgh, Stayman's Winesap, W. W. Pearmain, White Astrachan, Winter Banana, Yellow Bell-flower, Y. N. Pippin, Yellow Transparent, Hyslop Crab, Transcendent Crab, Yellow Siberian Crab.~~

APRICOTS

Blenheim, Hemskirke, Moorpark, Peach, Royal, Tilton.

✓ CHERRIES

Bing, Black Republican, Black Tartarian, Burbank, Chapman, Early Richmond, Lam-bert, Mayduke, Montmorency, Royal Anne, Thompson Seedling.

✓ FIGS

Black Mission, Kadota.

✓ NECTARINES

Boston, Gold Mine, Gower, Quetta, Spenser, Stanwick.

✓ PEACHES—Freestone

Alexander, Brigg's May, Early Crawford, Elberta, Early Elberta, Fay Elberta, Foster, Hale's Early, J. H. Hale, June Elberta, Krummel, Late Crawford, Lovell, Mayflower, Muir, Opulent, Pattison, Salway, Strawberry, Triumph, Vainquer, Yellow St. John.

PEACHES—Clingstone

Palora, Phillips, Tuscan, White Heath.

✓ PEARS

Bartlett, Beurre Bosc, Beurre Clairgeau, Beurre d'Anjou, Beurre Hardy, Dana's Hovey, Doyenne du Comice, Duchess d'Angouleme, Easter Beurre, Glout Morceau, Seckel, Winter Bartlett, Winter Nelis.

LEONARD COATES NURSERIES

PLUMS

Apex Plumcot, Beauty, Burbank, Climax, German, Gigantic, Green Gage, Hungarian, Jefferson, Kelsey, King of Damsons, Methley, President, Santa Rosa, Satsuma, Stanford Plumcot, Tragedy, Washington, Wickson, Yellow Egg.

PRUNES

Burton, Coates 1418, Imperial, Improved French, Robe de Sargent, Standard, Stuart, Sugar.

QUINCE

Pineapple, West's Mammoth.

ALMONDS

Drake, I. X. L., Long I. X. L., Jordan, Nonpareil, Ne Plus Ultra, Texas Prolific.

WALNUTS (On Northern California Black)

3 to 4 ft..... .35
 4 to 6 ft..... .50
 Jumbo60

Concord, Eureka, Franquette, Mautner, Mayette, Payne.

WALNUT SEEDLINGS
 (Northern California Black)

2 to 3 ft..... .10
 3 to 4 ft..... .15
 4 to 6 ft..... .20

Sub-Tropical Fruits

LOQUATS (Budded)

3 to 4 ft. 5g..... 1.00

Champagne.

MORUS NIGRA (Persian Mulberry)

3 to 4 ft..... .45
 4 to 6 ft..... .60

POMEGRANATE

3 to 4 ft..... .30

Wonderful

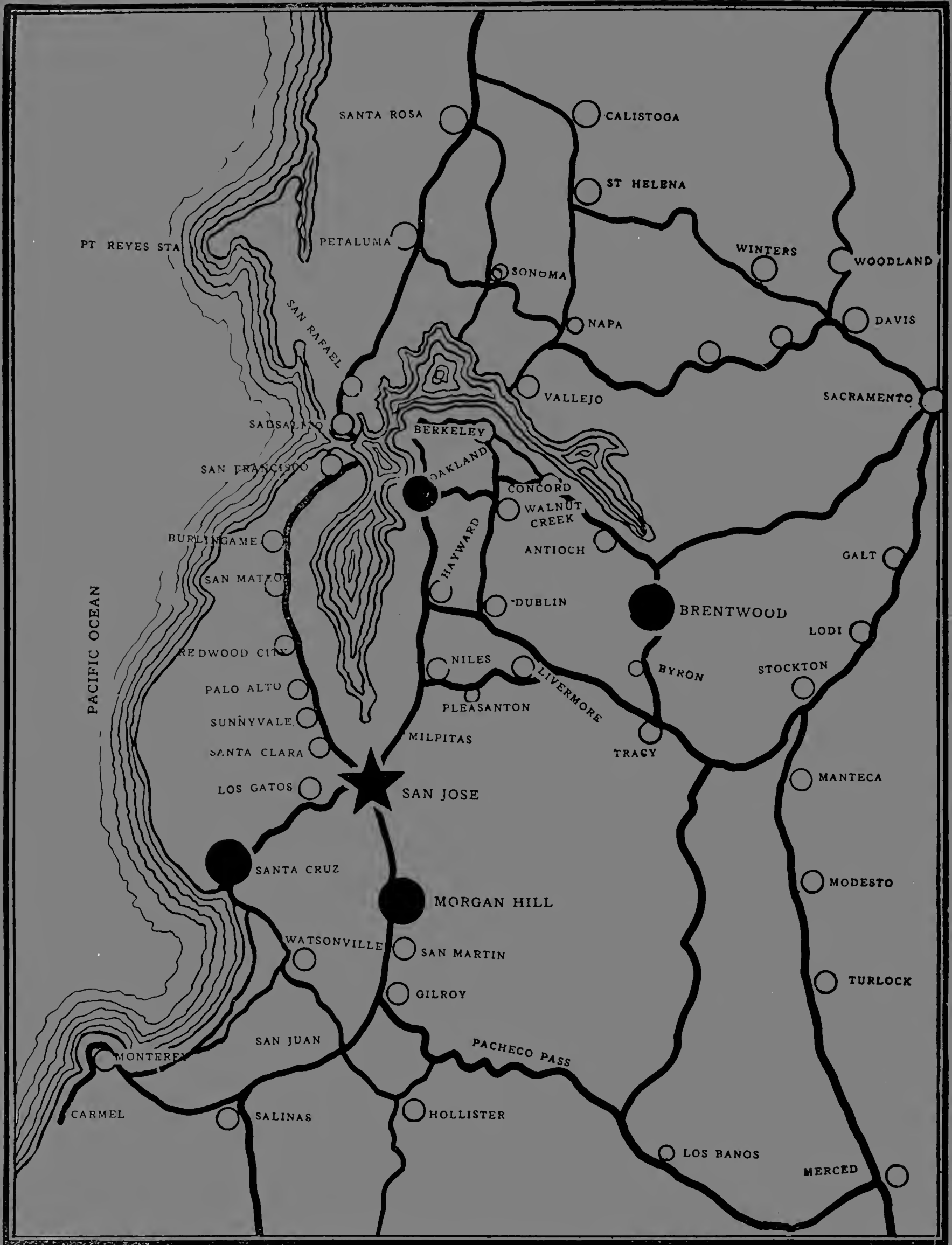


LEONARD COATES NURSERIES, INC.

NURSERYMEN - FLORISTS

2201-2205 THE ALAMEDA

SAN JOSE, CALIFORNIA



★ Main Office and Salesyard

● Growing Grounds and Salesyards

LEONARD COATES NURSERIES, INC.

NURSERYMEN - FLORISTS

2201-2205 The Alameda

San Jose, California