

Historic, archived document

Do not assume content reflects current scientific knowledge, policies, or practices.



(3)



(2)



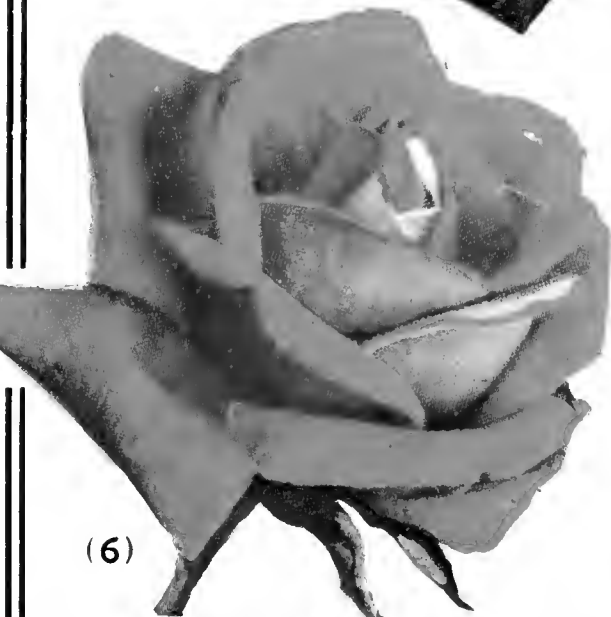
(1)



(4)



(5)



(6)

EVERBLOOMING
FIELD GROWN
GUARANTEED TO BLOOM

Six of the World's Choice Roses

- | | |
|----------------------|----------------------|
| (1) Padre | (4) Columbia |
| (2) Talisman | (5) Etoile de France |
| (3) President Hoover | (6) Golden Pernet |

35c Each, 3 for \$1.00

SEE PAGE 10

CALL'S NURSERIES

PERRY, OHIO



ESTABLISHED 1877

4 Popular Shrubs That Bloom All Summer

Full Grown Plants of Outstanding Quality

ENTIRE COLLECTION \$1.00

(Ask for: "Summer Varieties Collection")



Forsythia Fortunei

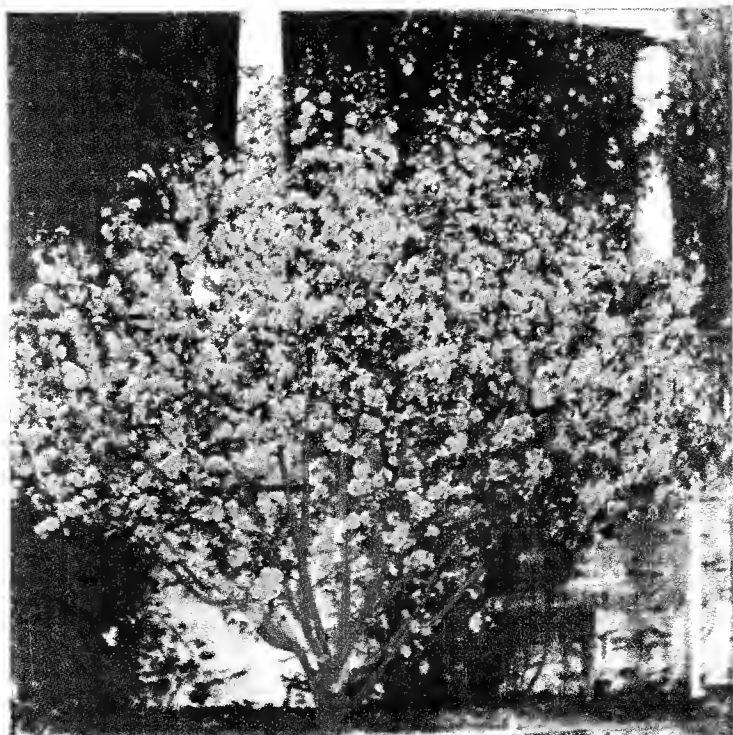
Ultimate Height, 5-6 Feet—Blooms in April

Do not confuse these large full grown shrubs, that will give immediate beauty effect, with small size stock which is being offered by other nurseries.



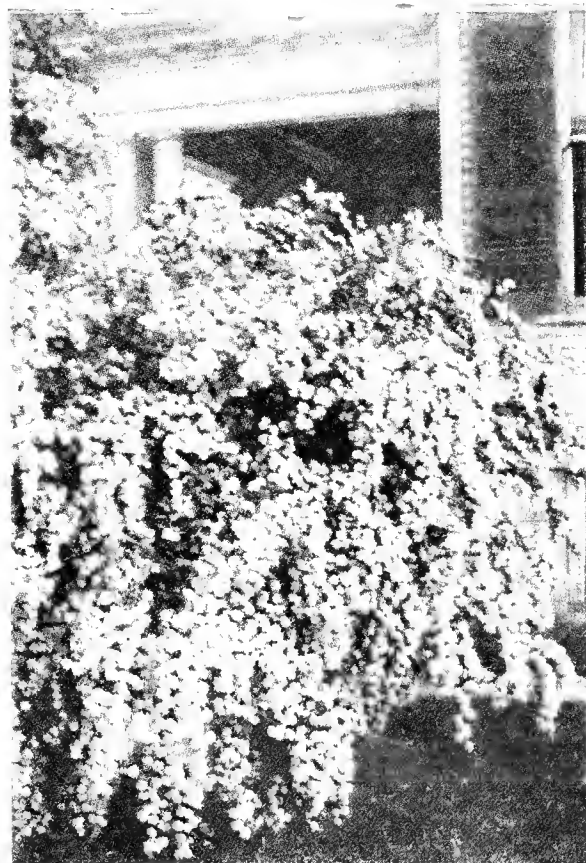
Deutzia—Pride of Rochester

Ultimate Height, 3-4 Feet—Blooms in May



Weigela Rosea

Ultimate Height, 4-5 Feet—Blooms in June



Spirea Van Houttei

Ultimate Height, 4-5 Feet
Blooms in May-June

CALL'S NURSERIES Offer You Over a Half Century of Practical Experience

The picture you see here is that of our founder, S. W. Call. From a humble beginning of one and one-half acres of fruit trees, Mr. Call started a business that has grown to 220 acres of Fruit Trees, Ornamental Trees, Evergreens, Roses, etc.

Call's Nurseries has been in continuous operation since its founding. During the fifty-nine years this nursery has acquired a "character", which surely marks its business relations with its customers.

We feel safe in trusting to an introduction by old customers but expect that new customers will have to be "shown." This very thing we are willing and eager to do. Should you desire any information not covered by our catalog, please feel free to write us. We shall be pleased to give you advice or help you select varieties of Fruit or Trees and Shrubs for beautifying your home grounds. We are interested in every tree we sell for upon their success depends our success. Our oldest customers are our warmest friends.

It is our aim to give individual service on each order we receive. We have expert field men who know how to select trees and plants that will please you.

We have worked long and hard for a good reputation among our customers and friends. We have kept faith with them for fifty-nine years.

May we serve you?

OUR SERVICES AND CUSTOMS Read Before Ordering

Policies—In our transaction of business with you a great desire for mutual satisfaction prevails. In order to make clear our customs we have endeavored in the paragraphs following to inform you of them so that there will be no misunderstanding.

Our Responsibility—We exercise the greatest care and give our personal attention to cutting buds and scions and packing orders. With all precaution mistakes and errors sometimes creep in. We guarantee any plant, tree or shrub we send out to be alive and in growing condition and true to name. We pack stock so that it will carry any distance. It may be on the road two or three weeks or longer and not suffer to any extent. We hold ourselves in readiness at all times to replace on proper proof any tree, plant, or shrub that may prove untrue to name or that arrives in damaged condition. It is also mutually agreed between ourselves and purchaser that our guarantee shall in no case make us liable for any sum greater than that originally paid for the trees, plants, or shrubs that are unsatisfactory for any of the reasons stated above.

Substitution—Occasionally we find ourselves out of a certain variety. In such cases



we always send the nearest match in color and season unless you instruct when placing your order to make **no substitution**.

To Avoid Errors—Write your name, post office and shipping address very plainly. If possible send your orders early. First orders as far as practicable will be sent first. We usually commence shipping in the spring about the first of April and in the fall about October 15th.

Prices—Our prices are for stock well packed f. o. b. Perry, Ohio. The expense of packing a small order is nearly as much as a large one, hence we prefer not to accept an order for less than \$1.00.

Terms—We expect cash with orders. In ordering goods to be sent C. O. D., one-quarter of the bill must accompany order. Planters requiring a large quantity of stock need not send all the money with the order. You can send enough to secure the order and the balance any time before shipment.

NOTICE—Due to the low prices contained in this catalogue for first class merchandise, we are unable to prepay any transportation charges, other than small packages that it is possible to send via Parcel Post. Do not be misled by other firms who offer to pay shipping charges, but at the same time raise the price of their merchandise enough to more than offset it. Our prices are rock bottom.

VIGOROUS NORTHERN GROWN APPLE TREES

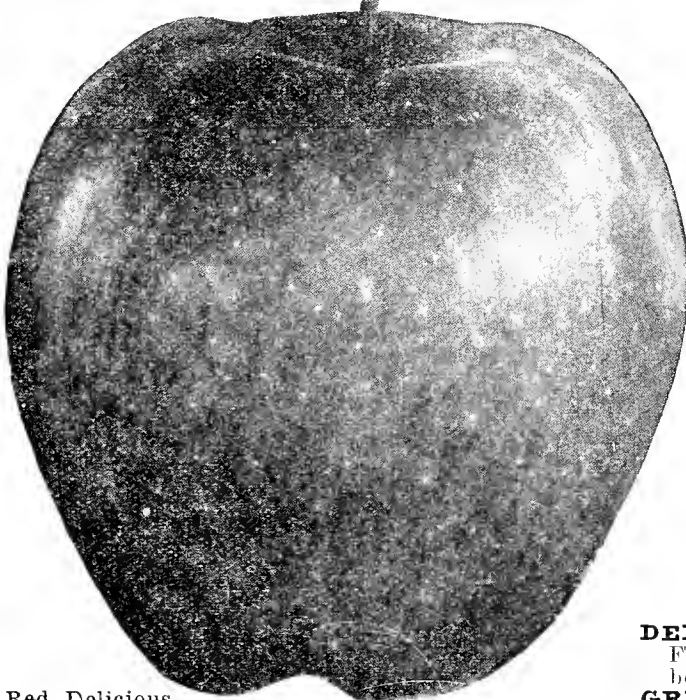
THE KING OF FRUITS

We have selected varieties from a large list which we believe to be the best suited for all sections. All trees have been grown along the shores of Lake Erie, which is the most fertile land in the country for raising fruit. By making selections from this list, you may obtain an orchard that will produce fruit for you practically the year around. It will be to your advantage to order early, so that you may obtain the varieties which you choose. Apples are always one of the largest selling fruits on the market, and are very healthful to you and your family.

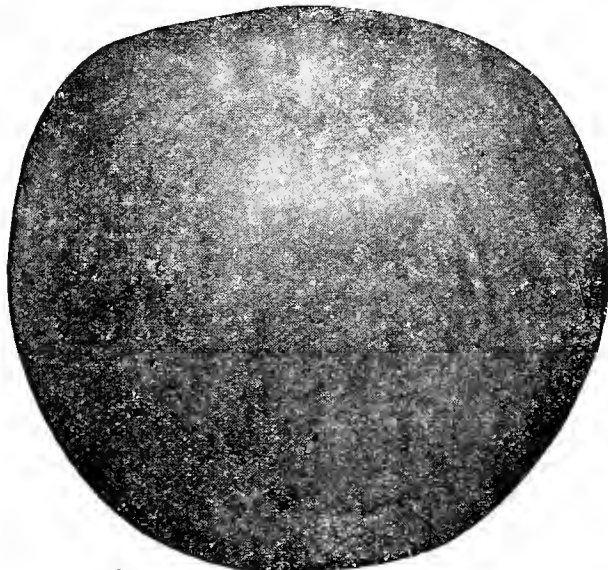
By mail, postpaid, 1 yr. old trees 35c each; \$3.25 per 10; \$30.00 per 100. By Express or Freight; 2 yr. old trees, 5 ft. size 65c each; \$6.00 per 10; \$50.00 per 100; 2 yr. 4 ft. size 60c each; \$5.00 per 10; \$45.00 per 100.

SUMMER APPLES

EARLY HARVEST—Medium to large, pale yellow, fine flavor, good grower and bearer, excellent for market and home use. August.

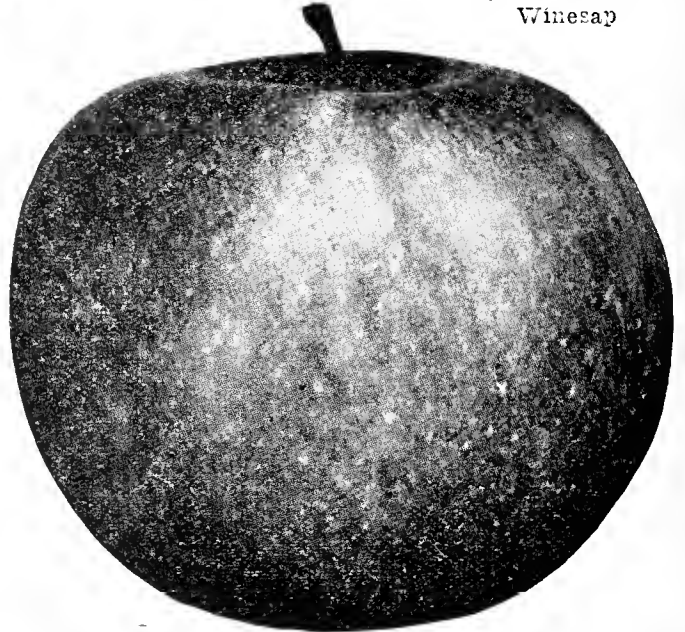


Red Delicious



Wealthy

Winesap



GOLDEN SWEET—Large, pale yellow, very sweet. Strong grower and good bearer. August.

RED ASTRACHAN—Large, deep crimson, best quality. Juicy, rich flavor. August.

YELLOW TRANSPARENT—Medium sized, white. One of the best early varieties. August.

AUTUMN APPLES

DUCHESS OF OLDENBURG—Large, yellow, streaked with red. Juicy, sub-acid, bears young. Commercial and home use. September.

FAMEUSE—Crimson, white fleshed, medium sized. Good home sort. September.

MAIDEN BLUSH—Medium, pale yellow, deep red cheek. Excellent for home use. Very productive. October.

WINTER APPLES

BALDWIN—Best known variety. Large, bright red. Excellent producer. Keeps and sells well. Best market variety. November.

BANANA—Early bearer. Yellow to bright crimson. Rich sub-acid, high quality. Good keeper. October.

CORTLAND—Deep red, one of the finest and best keepers. Unsurpassed for market. Very prolific, excellent taste. November.

DELICIOUS RED—Newer variety, large, dark red. Flesh white, rich and juicy. Good keeper, annual bearer. November.

GRIMES GOLDEN—Medium, yellow. Very productive, high quality. Good keeper. November.

McINTOSH RED—Large, deep crimson. Flesh, snow white, tender, juicy. Excellent for market and home use. November.

NORTHERN SPY—Very large, striped. Tender, extra rich flavor. Best eating and marketing. Nov.

RED SPY—Improved spy. Solid red without stripes. Very hardy and productive. Reliable bearer. Nov.

RHODE ISLAND GREENING—Large, greenish yellow. Tender, crisp and juicy. Best cooking. Nov.

ROME BEAUTY—Large, yellow, shaded red. Flesh, white. Juicy, sub-acid. Good keeper and market sort. November.

STAYMAN'S WINESAP—Best bearing and marketing. Medium size, deep red. Juicy and crisp. Keeps well, bears young. Extra good for eating. Nov.

YELLOW DELICIOUS—Similar to Delicious in shape. Rich yellow color. Sweet acid flavor. Very juicy. Splendid keeper.

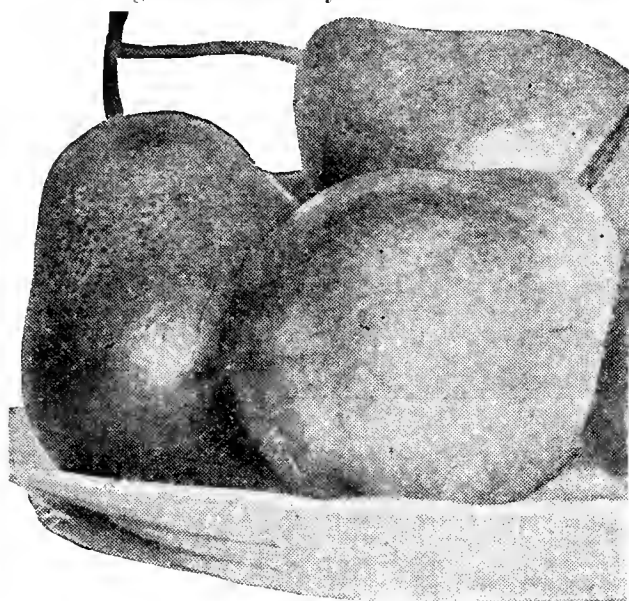
WEALTHY—Deep red. Flesh white, very juicy. Medium to large size. Smooth and round. Of highest quality for eating. September.

CRAB APPLES

HYSLOP—Large deep crimson. Most beautiful. Very popular. Best for jelly. October.

FLAVOR-SEALED PEAR TREES

Pears, unexcelled for canning and table use. They are easily grown and do well on any soil. Varieties we have chosen are most productive, and will give satisfactory returns.



Seckel, the "Sugar Pear"

PRICES

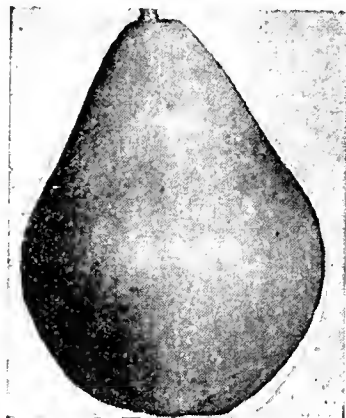
	Each	10	100
5 to 7 ft.	65c	\$6.00	\$50.00
4 to 5 ft.	60c	5.00	40.00

ANJOU—Large, yellow, red cheek. Highly flavored and very juicy. Good fall variety. November.

BARTLETT—Most popular for home and market use. Best market variety as it is unexcelled for canning. Large, golden yellow, rich and very juicy. Regular and heavy bearer. No orchard is complete without them. September.

BOSC—Finest quality, late fall variety. Extra large, highly flavored vigorous producer. Sept., Oct.

CLAPP'S FAVORITE—Very productive, resembles Bartlett. Ripening ten days earlier. Fruit juicy, and fine grained. Large pale lemon color, flushed with russet-red. August.



Bartlett

DUCHESS d'Angouleme—Very large, dull yellow. Juicy canning pear; best autumn variety. October.

FLEMISH BEAUTY—Large greenish yellow. Sweet and rich. Tree, very hardy, vigorous and productive. Exceptional variety. Sept.

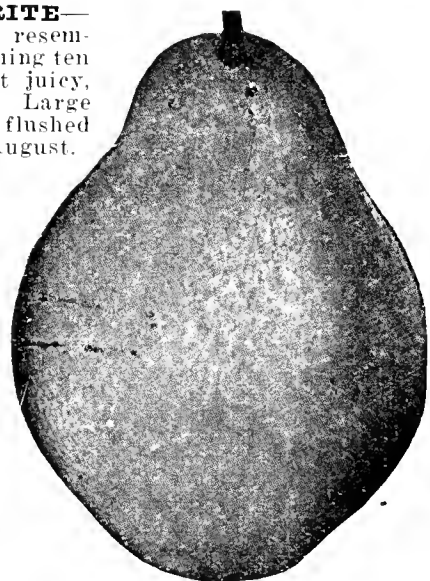
KEIFFER—Very large, very productive, unexcelled for shipping and keeping. Golden yellow in color. Fruit, though hard when picked, should be placed in cellar until Thanksgiving time, when it will be in fine shape for eating. October-November.

LAWRENCE—Medium to large, yellow and brown. One of the best early winter pears. Very productive. November.

SECKEL—Small, yellowish brown, russet. Very juicy, rich. Wonderful flavor. Unsurpassed for pickling. Good market variety. Sept.

SHELDON—Large round, yellow with shaded cheeks. Juicy and delicious, vigorous grower and bearer. October.

WORDEN—Similar to Seckel, equal in quality but larger in size. Very prolific. October.



Anjou Pear

QUINCE TREES

Quince trees are very adaptable to low, heavy, soil, where other fruits do not thrive so well. No special attention required in caring for them and they are very profitable for market. Should be planted 12 feet apart.

CHAMPION—Pear shaped, ripens late, good yielder. Best for general purposes. Sells well.

ORANGE — Large bright golden yellow. Excellent flavor, heavy yielder.

PRICES

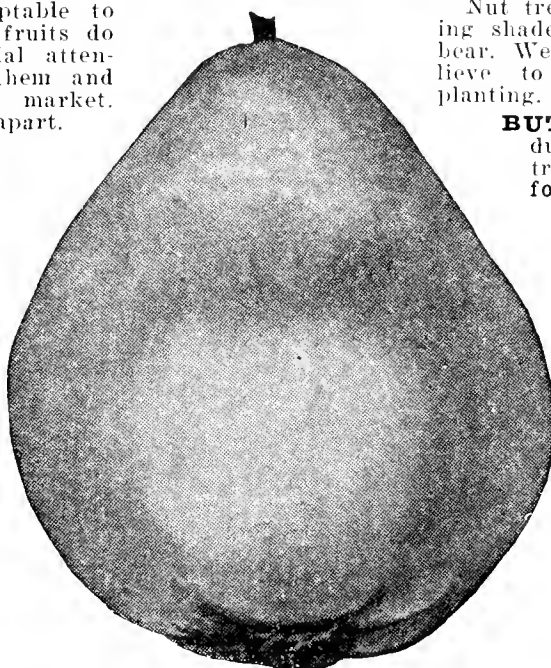
	Each	Per 10
4 to 5 ft.	65c	\$6.00
3 to 4 ft.	50c	4.50

APRICOTS

HUNGARIA'S BEST—Immense size. Deep yellow, fine flavor. Tree very hardy in northern climate.

MOORPARK — Yellow with red cheek. Juicy and rich, free stone. Very productive.

Prices 3 to 4 ft. 60c ea.



Champion Quince

NUT TREES

Nut trees are very valuable in producing shade and also for fruit which they bear. We are listing sizes which we believe to be the most satisfactory for planting.

BUTTERNUT—Native tree, produces long large fruit. Sweet, nutritious. 3 to 4 ft. 60c each, 6 for \$3.25.

CHESTNUT Spanish—All selected trees which produce excellent size, rich flavored nuts. 3 to 4 ft. 50c each, 6 for \$2.75.

FILBERT American (The common hazelnut)—Plant in rather moist soil as along streams. Nuts are tender and are fine flavored. 3 to 4 ft. 70c each, 6 for \$4.00.

WALNUT, Black—Beautiful native tree. Produces heavy crops of large round nuts. Tree is very valuable for timber. 3 to 4 ft. 65c each, 3 for \$1.75.

WALNUT, English—A fine lofty tree, produces large crop, thin shelled, delicious nuts. Can be grown in northern states. 3 to 4 ft. \$1.25 each.

SWEET CHERRIES

50¢ ea.

SOUR CHERRIES

35¢ ea.

SWEET VARIETIES

SWEET VARIETIES	each	Per 10	per 100
5 to 7 ft. -----	65c	\$6.00	\$55.00
4 to 5 ft. -----	55c	5.00	45.00
3 to 4 ft. -----	50c	4.50	40.00

BING—Very large, black, firm flesh, sweet and delicious. Very profitable. July.

BLACK TARTARIAN—Very large black, juicy, excellent flavor. Always bring good price. Late June.

GOV. WOOD—Large deep yellow, shaded red, rich and delicious. Very productive, excellent for canning. June.

LAMBERT—Very large dark red, jet black when fully ripe. Flesh firm, splendid shipping and canning. July.

NAPOLEON (Royal Anne)—Extra large, pale yellow, showing red. Firm, fine flavored. Sweet and productive. Good for market. July.

SCHMIDT—Enormous size, deep black, tender juicy, July.

WINDSOR—Large, liver colored, firm and of highest quality. July.

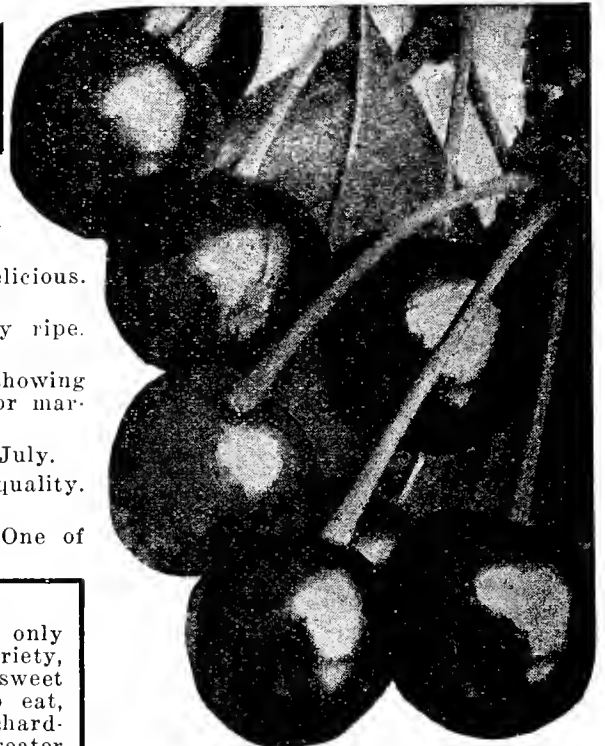
YELLOW SPANISH—Large, yellow with red cheeks. One of the best light colored cherries. June.

BRASSINGTON CHERRY

Our own introduction of 20 years ago. Obtainable only through our nursery. We have thoroughly tested this variety, and find it to be one of the finest varieties. It is sweet enough to be delicious when picked from the tree to eat, yet just sour enough to make a fine canning cherry. Orchardists who have purchased trees from us find there is a greater demand for this variety than any other on the market. Why not receive your share of this profit. The fruit is of dark red, sub-acid, and a heavy annual bearer.

5 to 6 ft. -----60c each, 10 for \$5.00, 100 for \$45.00

4 to 5 ft. -----50c each, 10 for \$4.50, 100 for \$35.00



SOUR VARIETIES

PRICES	each	10	100
5 to 6 ft. ----	45c	\$4.00	\$35.00
4 to 5 ft. ----	40c	3.50	30.00
3 to 4 ft. ----	35c	3.00	25.00

EARLY RICHMOND—Medium size, dark red, very productive. June.

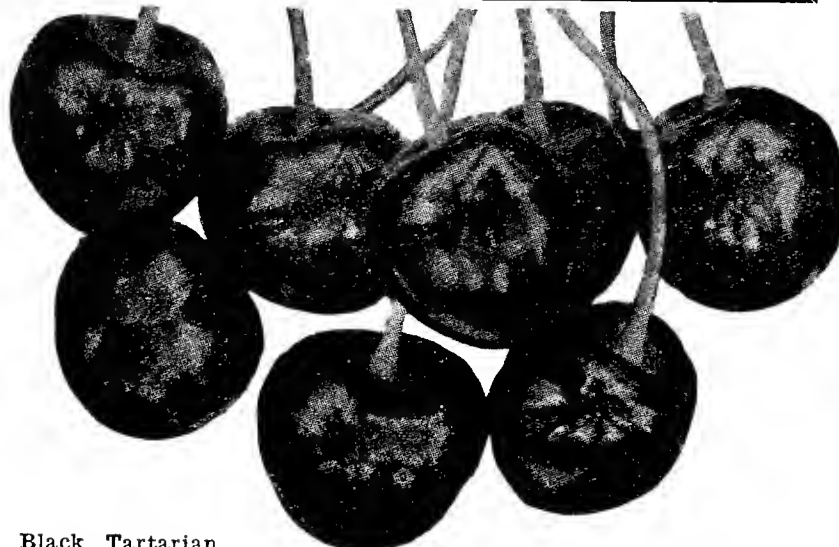
ENGLISH MORELLO—Medium to large, blackish in color, rich and juicy. Good late variety. August.

MONTMORENCY—Large red, firm and excellent for market and canning. Best flavor sour variety. June.

MAY DUKE—Large red, juicy and rich. Good early variety. June.

SPECIAL HOME-OWNERS ORCHARD

- 1 Red Delicious Apple
 - 1 Wealthy Apple
 - 1 Montmorency Cherry
 - 1 Black Tartarian Cherry
 - 1 Elberta Peach
 - 1 J. H. Hale Peach
- ALL 6 FOR \$2.00



Black Tartarian

FREE FLOWER SEEDS, SEE PAGE 15

CALL'S PEACH TREES UNSURPASSED

All trees are of our own growing, and each variety is especially adapted to the climate of our Northern states. CALL'S NURSERIES are one of the largest growers of peach trees in the state of Ohio and offer this list with the highest recommendation for orchard and home planting. As compared to other fruit trees, Peaches are always of much smaller size, even when full grown, thus it is not necessary to have a large lot to enjoy the delightful flavor and sweetness of your own tree-ripened fruit. Plant CALL'S trees for bigger profits and richer flavor.

PRICES	each	10	100
4 to 6 ft. -----	35c	\$3.00	\$27.00
3 to 4 ft. -----	30c	2.50	22.00
2 to 3 ft. -----	22c	2.00	18.00
Whips -----	20c	1.80	15.00

- ADMIRAL DEWEY**—Early freestone, good market variety. July.
BEER'S SMOCK—Large yellow, best late canner. September.
BELLE OF GEORGIA—Very large, white with red cheek, excellent flavor. Early September.
CARMAN—White with red cheek. Fine flavor, juicy. July.



Rochester

NEW PEACH VARIETIES

Outstanding new introductions proven to be excellent varieties for home and market use. All are free-stone and will withstand sub-zero weather without injury.

- GOLDEN JUBILEE**—Large yellow, red blush. Extra early, very juicy.
HALE-HAVEN—New yellow, crossed from J. H. Hale and South Haven, high color. Wonderful market peach.
ORIOLE—Very productive, fruit medium. Yellow, extra quality.
 2 to 3 ft. 30c ea., 3 to 4 ft. 35c each; 4 to 5 ft. 40c each.

ORCHARD PLANTERS GRADE

22¢ ea.

10 for \$2.00

Except: Golden Jubilee, Hale Haven, Oriole.

- CHAMPION**—Extra large very early, creamy white, red cheek. Sweet. August.
EARLY CRAWFORD—Large yellow, extra quality. September.
EARLY ELBERTA—Similar to Elberta, only larger. Ripens week earlier.
ELBERTA—Most popular peach. Large yellow, red cheeks, firm, highest quality. Sure bearer. Best market variety. September 15th.
FITZGERALD—Large deep yellow, productive. Early September.
HEATH CLING—Very large, white. Good for preserving and pickling. October.
HALE—Choice variety, extra size, earlier than Elberta. Fruit round, golden yellow. Excellent market sort. September.
KALAMAZOO—Large yellow, productive. Early September.
LATE CRAWFORD—Very large yellow. October.
LEMON FREE—Lemon color, medium to large, very productive. Best canner.
PROLIFIC—Large firm yellow. Fine flavor. September.
ROCHESTER—Large yellow, red. Good market variety, juicy delicious flavor. August 10th.
SALBERTA—Cross between Saloway and Elberta. Containing highest qualities of each. 2 weeks later.
SOUTH HAVEN—Large, prolific. Yellow cheek, blush red. Juicy. Ripens before Elberta.
WILMA—Elberta type, ripening 10 days later. Better flavor, better color.
YELLOW ST. JOHN—Early yellow, sure bearer. Medium to large, resembles Early Crawford.

FOR YOUR INFORMATION

DISTANCES FOR PLANTING

Apples -----	30 to 36 feet apart each way
Cherries -----	18 to 20 feet apart each way
Peaches -----	16 to 18 feet apart each way
Pears -----	18 to 20 feet apart each way
Plums -----	16 to 20 feet apart each way
Grapes -----	8 to 10 feet apart each way
Currants -----	4 to 6 feet apart each way
Gooseberries -----	4 to 6 feet apart each way
Raspberries -- 3 to 4 by 5 to 7 feet apart each way	
Blackberries -- 3 to 4 by 5 to 7 feet apart each way	
Strawberries -----	1 to 3½ to 4½ feet each way

NUMBER OF TREES TO AN ACRE

30 feet apart each way -----	50
20 feet apart each way -----	110
18 feet apart each way -----	135
16 feet apart each way -----	170
8 feet apart each way -----	680
5 feet apart each way -----	1210
4 feet apart each way -----	1742
3 feet apart each way -----	2723
2 feet apart each way -----	4840

RULE—Multiply the distance in feet between the rows by the distance the plants are apart in the rows and the product will be the number of square feet for each plant; which, divided into the number of feet in an acre (43,560) will give the number of trees to the acre.

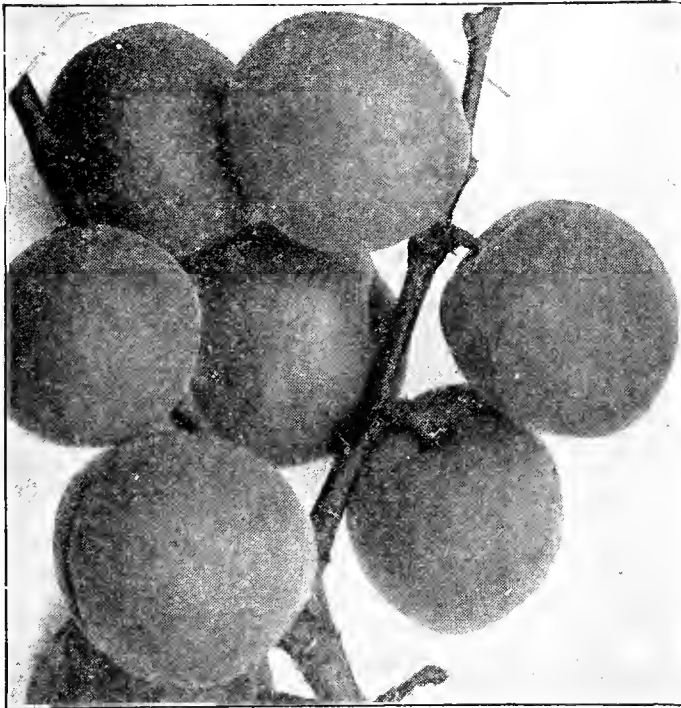
ESTABLISHED 1877

PLUM TREES

Plum trees will succeed in most any kind of soil, and are very easily grown. They can be planted in a very small space, and will thrive exceptionally well in poultry yards, will produce excellent fruit for canning and jellies that will add just the right zest to your meal. Very profitable for orchard planting.

50¢
each

PRICES			
	each	10	100
5 to 7 ft.	70c	\$6.50	\$55.00
4 to 5 ft.	60c	5.50	45.00
3 to 4 ft.	50c	4.50	40.00
On Prunes, add 10c each.			



Green Gage

BURBANK—Large fine fruit, bright red, sweet, excellent flavor.

GUEII—Fruit large, round, dark purple, flesh yellow, firm, juicy and sweet, free stone.

LOMBARD—Medium size, oval shape, violet red, juicy. Good canning, excellent for market.

RENE CLAUDE (Green Gage)—Large, greenish yellow, fine flavor. Highest quality best market sort.

SHIPPER'S PRIDE—Dark purple. Large fruit, good keepers, fine for canning.

SHROPSHIRE DAMSON—Small size, oval, dark blue, flesh firm. Used for preserving.

YELLOW EGG—Very large, egg shaped, rich yellow color. Very fine for eating and canning.

PRUNES

GERMAN PRUNE—Large, dark purple, sweet. Freestone. Excellent for home and market.

ITALIAN PRUNE (Fellenberg)—Large oval, dark purple, larger than German Prune, juicy and sub-acid. Excellent variety.



Burbank

*For Quick
Results
Plant Fruiting
Age Trees*

FRUITING AGE TREES

Trees of extra large size, many of which have fruited in the nursery row. Trees will bear one year after planting, thus saving from 4 to 6 years before you receive profits.

**ORDER EARLY,
SUPPLY LIMITED**

\$1.00 each, 5 for \$4.75,
10 for \$8.50. Trees 7 to 8 ft. tall.

APPLE

Yellow Transparent
Rome Beauty
McIntosh

CHERRY

Montmorency
Black Tartarian

PEAR

Bartlett
Clapp's Favorite
Bosc
Keiffer

PLUM

Burbank
German Prune

HOME CANNERS COLLECTION

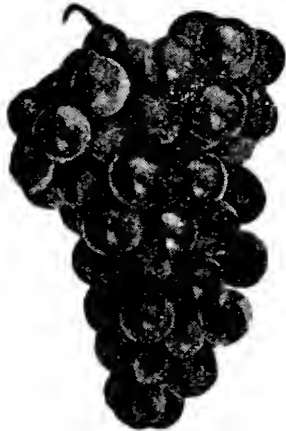
- 1 Yellow Egg Plum
 - 1 Lombard Plum
 - 1 Bartlett Pear
 - 1 Seckel Pear
 - 1 Elberta Peach
 - 1 Lemon Free Peach
 - 1 Montmorency Cherry
 - 1 Black Tartarian Cherry
- 8 2 year old trees \$3.90**

ORDER EARLY SAVE MONEY

SMALL FRUITS

GRAPES

Grape vines do well trained up the side of a building or along the garden. They are easily grown and bear at a very early age. A very few plants of each variety will keep the average family in this delicious fruit over a period of several months. All the varieties are highly recommended for home and market purposes. Grapes are always a desirable addition to the farm or home garden; requiring very little care; assuring the owner of a sure crop every season.



Moore's Early



Concord

GRAPES

\$5⁰⁰

per-100

AGAWAM —Large, sweet, red.	each	10	100
1 year	-----	\$0.10	\$8.00
2 year	-----	.15	12.00
BRIGHTON —Early, red.			
1 year	-----	.10	8.00
2 year	-----	.15	12.00
CACO —Fruit large, rich wine red.			
1 year	-----	.20	1.60
2 year	-----	.25	2.00
CONCORD —Standard black, late.			
1 year	-----	.06	.50
2 year	-----	.08	.75
DELAWARE —Small light red, early.			
1 yr.	-----	.10	.90
2 yr.	-----	.15	1.25
MOORE'S EARLY —Large blue, early.			
1 year	-----	.10	.90
2 year	-----	.15	1.25
NIAGARA —Large, standard, white.			
1 year	-----	.08	.75
2 year	-----	.10	.90
WORDEN —Large, very sweet, early blue.			
1 year	-----	.10	.90
2 year	-----	.15	1.25



Niagara

SPECIAL FAMILY GRAPE OFFER

Will fit in any back yard or across your back lot line. Enjoy the extra fine sweetness of home grown, vine ripened fruit. Offer includes 2 Agawam, 2 Niagara, 2 Concord.
All 6 2-year plants 75c

CURRANTS

Currants should be planted in rich ground and well cultivated. Old wood should be pruned out each year, so the remaining shoots will have plenty of room to grow. Unsurpassed for table use, jellies and jams.

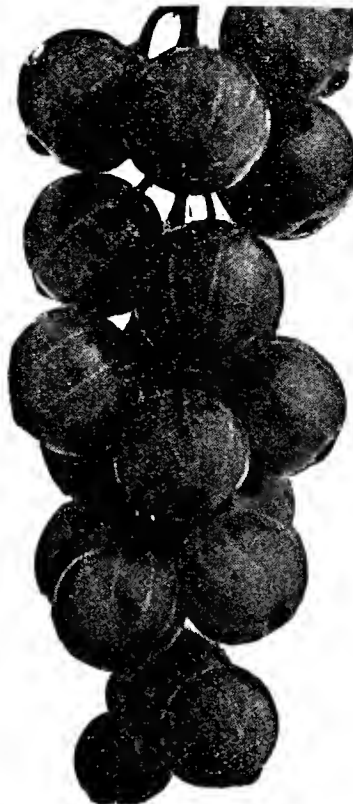
CHERRY—Bright red, short bunches, vigorous and productive. One of the best. 2 yr. 15c each, 10 for \$1.30.

FAY'S PROLIFIC—Leading market variety, long clusters, berries large and bright red. 2 yr. 15c ea., 10 for \$1.30.

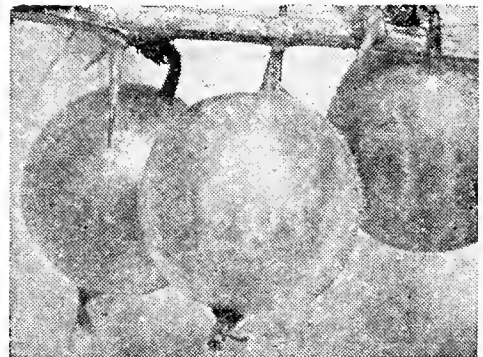
PERFECTION—Bright red, long stems, large berry, superior quality. 2 yr. 20c each, 10 for \$1.85.

WILDER—Most productive, bunches and berries very large, bright red. 2 yr. 15c each, 10 for \$1.30.

WHITE GRAPE—Heavy bearer, large clusters, berries white and good size. Mild in flavor. 2 yr. 15c each, 10 for \$1.30.



Perfection Currant



Downing

GOOSEBERRIES

Gooseberries should be planted in good rich soil and fertilized every year. Regular pruning is essential for good fruit.

DOWNING—Large, pale green, splendid quality. Fine for home and market use.

JOSELYN (Red Jacket)—Large size, prolific and hardy, red berries. Good quality. 2 yr. No. 1, 22c each, 10 for \$2.00.

FREE ROSES, SEE PAGE 15

BARGAINS IN RASPBERRIES SUPREME QUALITY

BLACK VARIETIES

CUMBERLAND—Healthy, large black cap, best of the mid-season varieties; of extra good quality.

PLUM FARMER—Berries large, thick meated and firm. Early.

NEW LOGAN—Early Black Cap. Excellent in quality and productiveness. Highly resistant of diseases. Early crop.

50c per 10, \$2.00 per 100; \$15.00 per 1000.

PURPLE VARIETIES

COLUMBIAN—Purplish red, finest originated. Large berries, pleasant flavor. Fine for canning and preserves. 50c per 10, \$2.00 per 100, \$15.00 per 1000.

RED VARIETIES

CHIEF—Bright red, ships well, tastes delicious. Ripens 10 days earlier than Latham. 65c per 10, \$2.25 per 100, \$16.00 per 1000.

CUTHBERT—Strong hardy variety, very large conical berries. Firm, excellent for shipping, flavor is sweet. 65c per 10, \$2.25 per 100, \$16.00 per 1000.

LATHAM (New Mosaic-free hardy red raspberry)—Out-yields all other varieties, berries large, round, brilliant red. Excellent shipping firmness. 65c per 10, \$2.25 per 100, \$16.00 per 1000.

RHUBARB

(Pieplant)

QUEEN—Extra large, quick growing. Pink in color, delicious for pies and canning. Mild flavor. Each 10c, 10, 80c; 100, \$5.00.



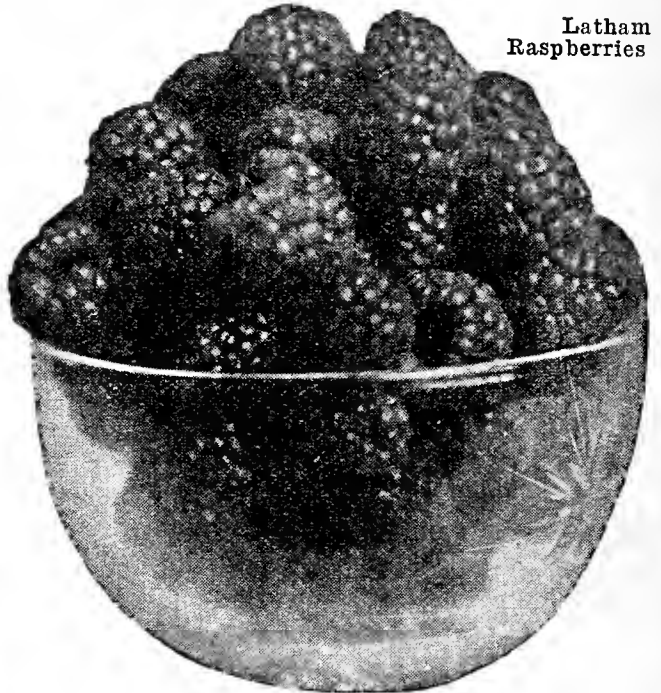
Washington



ASPARAGUS

The first vegetable of Spring, delicate and delightful in flavor. Plant in rich soil, 2 in. below surface, 12 to 18 in. apart.

WASHINGTON—Rust resistant, for home or market, tender and vigorous. 12 for 30c, 25 for 55c, 100 for \$1.00.



Latham Raspberries

DEWBERRIES

10 for 30c, \$2.00 per 100, \$18.00 per 1000.

LUCRETIA—Hardy, healthy and productive. Fruit ripens early, sweet and delicious. Can be trellised or let trail the ground.

BLACKBERRIES

10 for 30c, \$2.00 per 100, \$18.00 per 1000.

BLOWERS—Large size, jet black, best quality.
ELDORADO—Hardy, large fruit, black. Large clusters, very sweet, good keeper.

Popular Varieties Collection of Small Fruits

For pleasure and convenience the following list may be planted in any back yard, or small portion of the garden. Includes

- 10 Latham Raspberries.
- 25 Cumberland Raspberries
- 10 Concord Grapes
- 20 Rhubarb
- 25 Blakemore Strawberry

\$4.35 VALUE FOR \$3.95

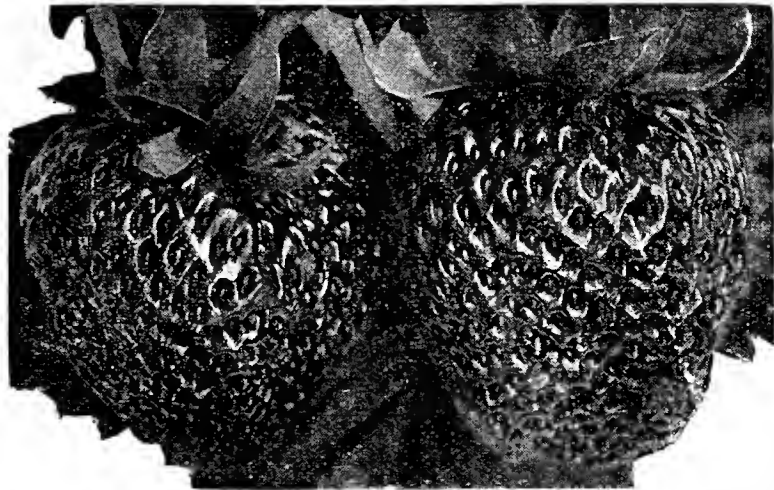


Blower

FRESHNESS is the main factor in selecting Strawberry plants. All plants ordered from us are dug and shipped the same day. No plant is kept in storage over night, which eliminates the drying out of the roots. Buy with the satisfaction of knowing that every plant you receive will be in first class planting condition and of finest quality grade. Do not be misled by lower prices. For growing, plant in rows about 3 feet apart, 15 to 18 inches apart in the rows. Keep ground clean and well cultivated. For a small amount of money, you can plant enough strawberry plants to insure you of a generous income because of the great demand on the market for home grown berries.

PRICE OF STANDARD PLANTS
By Mail, Postpaid

25 for -----	25c
100 for -----	85c
By Express	
100 for -----	\$0.75
500 for -----	3.25
1000 for -----	6.00



Premier

SENSATIONAL NEW INTRODUCTIONS

25 for 45c; 100 for \$1.10; 1000 for \$6.50

DORSET—Fruits early, heavy yielder, uniform, attractive, pinkish red, unusual flavor. Surpasses all other varieties for sweetness.

FAIRFAX—Similar to Dorset, produces heavy crops, large size. Conical in shape, deeper red. Extra returns.

EVERBEARING VARIETIES

25 for 45c; 100 for \$1.25; 1000 for \$10.00

GEM—Newest introduction, bears within 60 days after planting. Yields immense fall crop. Fruit glossy red, uniform size. Fine flavor. 3 big crops, Spring, Summer and Fall.

MASTODON—Immense size. Choice quality, very productive. Sure crop every year. Strongest everbearing variety ever developed.

VARIETY STRAWBERRY GARDEN OFFER

8 different kinds of delicious berries.

The best varieties, including

- | | |
|--------------|-------------------|
| 25 Blakemore | 25 Senator Dunlap |
| 25 Glen Mary | 25 Dorset |
| 25 Premier | 25 Fairfax |
| 25 Sample | 25 Mastodon |

200 PLANTS FOR \$1.90.

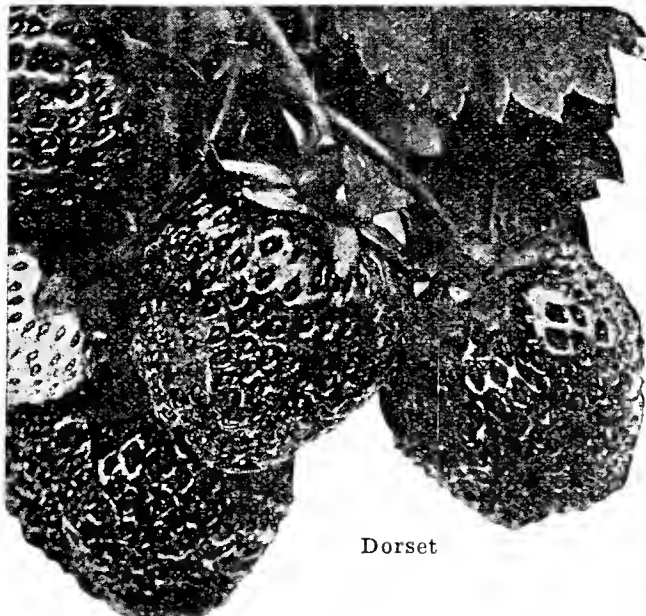
BLAKEMORE—Glossy, light red. Berries conical, good market size, small seeds, firm flesh. Excellent for preserving. Very productive.

GLEN MARY—Large, bright, deep red, sweet, rich and good flavor.

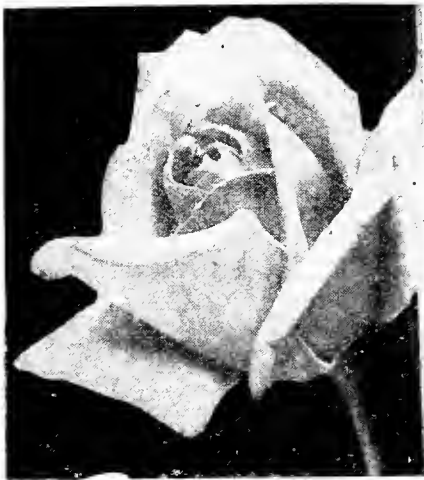
PREMIER—Very even formed, large. Most highly prized from the commercial standpoint. Strong, vigorous, productive.

SAMPLE—Good late sort for both home and market. Large dark colored berry, uniform size. Should always be planted with some "Perfect" variety.

SENATOR DUNLAP—Fruit large, beautiful bright red, excellent quality, fine for table use.



Dorset



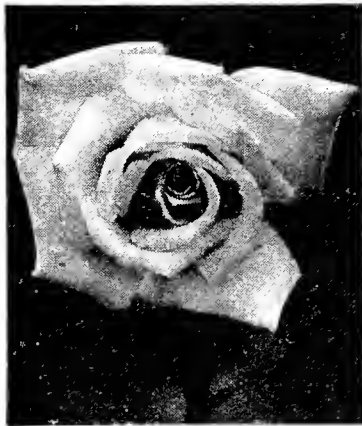
Etoile de Hollande



J. L. Mock



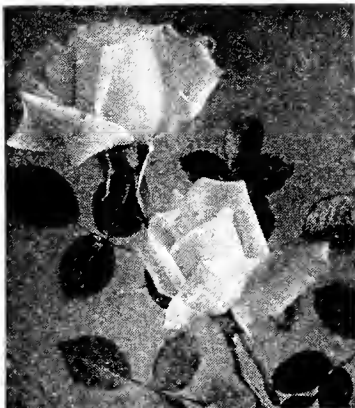
White Killarney



F. S. Key



Mme. Butterfly



Padre

Finest Roses Lowest-Prices

29¢
each

4 for \$1.00

We offer only the hardy varieties as we have found them to be the most satisfactory for the North Central states. All plants are hardy, FIELD GROWN and have been budded on multiflora, which produces an exceptionally strong, vigorous root. Each plant is of 2 YEAR old size. Plant these plants early, and watch them grow into beautiful budding bushes.

- BRIARCLIFF**—Bright, clear, rose pink, vigorous and hardy.
- RED RADIANCE**—Large globe shaped flower, with even shade of clear red. Exceptional bloomer.
- ETOILE DE HOLLANDE**—Flowers brilliant crimson red, very fragrant, profuse bloomer.
- GRUSS AN TEPLITZ**—Dark velvety scarlet. Medium size, free bloomer.
- MME. BUTTERFLY**—Bright light pink, shaded with gold, buds rich Indian red, yellow at base.

- J. L. MOCK**—Bright rich pink, large gigantic flowers.
- KILLARNEY WHITE**—Pure white. Long pointed buds.
- SOUV. DE CLAUDIUS PERNET**—Yellow, large buds, hardy grower and heavy bloomer, best yellow.
- WILLOWMERE**—Brilliant pink flowers, suffused with gold, pink.
- PINK RADIANCE**—Large, brilliant, rose pink blooms. Very fragrant, healthy grower, and always in bloom.

BIG-TEN BARGAIN COLLECTION EACH ABOVE \$2.49

- TALISMAN**—Fragrant bloom of glowing golden yellow, stained with copper red and orange rose. Multi-color.
- BETTY UPRICHARD**—Semi-double. Salmon pink flowers, stained with copper.
- PRES. HOOVER**—Vivid cerise pink, flamed with yellow, orange and scarlet.
- K. A. VICTORIA**—Double pure white, deliciously fragrant.
- ETOILE DE FRANCE**—Large dark crimson, very fragrant, flowers large and full.

- FRAU KARL DRUSCHKI**—Vigorous grower, with gigantic white buds and blooms.
- FRANCIS SCOTT KEY**—Large, wonderfully shaped double flowers of crimson.
- GOLDEN PERNET**—Rich yellow color, perfect cup shaped, opens to full rose.
- COLUMBIA**—Long stem, profuse bloomer, very fragrant.
- PADRE**—Crimson red, cup shaped flower, very lasting. Fine for cut flowers.

POPULAR 35¢ EACH VARIETIES \$1.00 for 3 COLLECTION 10 for \$2.98

WE GUARANTEE OUR STOCK



E. G. Hill



Caledonia



MISS Lolita Armour

NEW BEAUTIES 8 for \$3.69

This is our prize collection of the most outstanding varieties which are hardy and most beautiful. The same type of plant that would cost you three times as much elsewhere. Plant these "Beauties" and be assured of hundreds of blooms all summer.

CALEDONIA—Open ivory, changing to pure white. Large and double.

CRUSADER—Deep red, opens to full flower. Superior type.

GOLDEN OPHELIA—Yellow, tinged with bronze, slightly red in center. Buds long and pointed.

E. G. HILL—Flowers large, full and brilliant crimson. Most beautiful red rose. Very fragrant, fine for cutting.

MARGARET MCGREDDY—Orange scarlet, turning to carmine rose. Vigorous bloomer, outstanding. Fragrant.

JOHANNA HILL—Yellow with orange center, turning to cream color at edge of petal. Perfectly formed. One of the best for cutting.

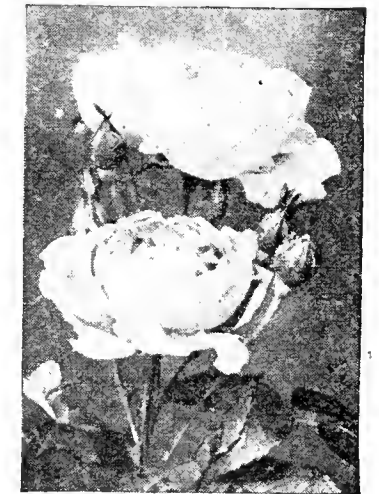
EDEL—Pure white, large double, very fragrant. One of the best.

MISS LOLITA ARMOUR—Coppery pink with reddish orange overcast. Large blooms, very beautiful and fragrant.

49¢
each



Crusader



Cl. American Beauty



Paul's Scarlet

HARDY CLIMBING ROSES

These varieties are especially valuable for the great quantity of bloom produced at one time. Can be grown on fences, arbors, or trellis, so that they may display their full array of beauty.

CLIMBING AMERICAN BEAUTY — Early, large, sweet scented. Deep rose pink, to light crimson. Fine for cutting.

DR. VAN FLEET — Early, flesh pink, very similar to the New Dawn, but blooms more profusely.

PAUL'S SCARLET — Most vivid scarlet. Large flowers in clusters, holds color, till through blooming. One plant will resemble a scarlet mass.

AVIATOR BLERIOT — Buds of orange pink and apricot. Blooms light yellow, changing to cream.

MME. GREGOIRE STAECH-ELIN—New Spanish. Pearl pink with crimson markings. Medium size.

GARDENIA—Early, bright yellow buds, changing to cream. Delightfully fragrant.

VIELCHENBLAU (Blue Rambler)—The only blue rose in cultivation. Very hardy, produces flowers in large clusters of lavender blue. Very attractive.

35¢ EACH, 3 FOR \$1.00

HARDY BEDDING ROSES

Specimen plants of brilliant beauty for bedding, edging, or use as a border; where a touch of most unusual color is desired.

CRIMSON BABY—Semi-double crimson flowers. Very showy.

GOLDEN SALMON—Flowers large, semi-double, clustered. Red salmon with orange gold.

ELLEN POULSEN — Bright cherry pink, free blooming, full flowers, sweet scented.

IDEAL—The finest dark red polyantha. Bushy, always in bloom.

GLORIA MUNDI — Orange scarlet. Flowers uniform, double, and will not fade.

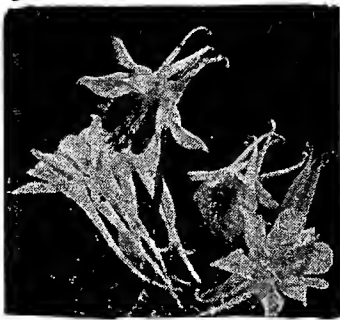
PINK GROOTENDORST — Hardy and vigorous. Light shell pink clusters fringed.

MISS EDITH CAVELL—Brilliant crimson, white center. Large full flowers.

35¢ EACH, 3 FOR \$1.00

SEE COVER SPECIALS

OUTSTANDING HARDY PERENNIALS



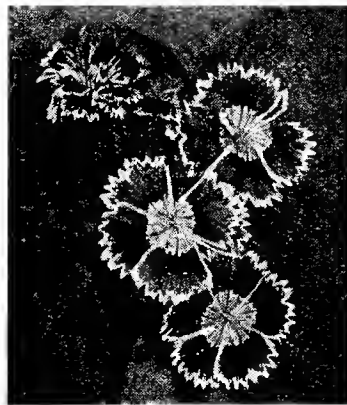
Aquilegia

AQUILEGIA (Columbine) — Produces long, graceful spurred flowers, stems about 2 feet long. Suitable for cutting. Attractive with other flowers. Assorted blue and pink.

BELLFLOWER (Campanula) — Blue flowers on tall spikes. Grows about 30 inches high. Good cut flower.

COREOPSIS (Tickseed) — Very attractive for border and cut flowers. Of golden yellow, blooms throughout the summer.

DELPHINIUM (Larkspur) — Long showy spikes of light and dark blue. Blooms from spring to fall.



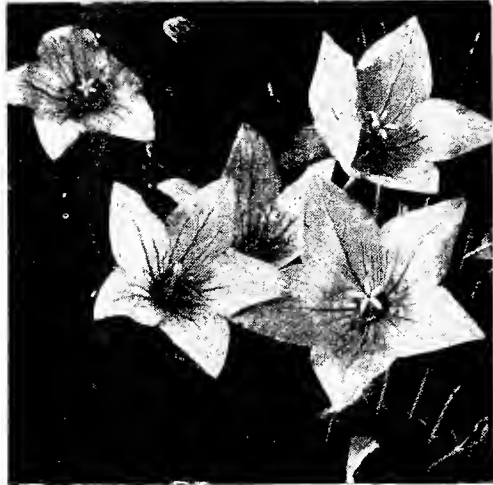
Dianthus

DIANTHUS (Pinks) — Very fragrant, outstanding variety of colors. Very attractive. Fringed lacy edges.



Dicentra

15¢ EACH
12 FOR \$1.50



Bellflower



Delphinium



Phlox

SWEET WILLIAM (*Dianthus Baubatus*) — Dwarf in habit of growth, mixed colors. Crimson, Pink, Scarlet and White.

BLAZING STAR (*Liatris*) — Blooms in mid-summer. Long maroon spikes of rich flowers. Very lasting and showy.

DICENTRA (Bleeding Heart) — An old fashioned favorite. Long racemes of graceful heart shaped pink flowers. Always attractive.

HARDY PHLOX

Used to advantage in borders, beds, and in front of new plantings. Will bloom until frosts.

B. COMPTE — French Purple.

LA VOGUE — Clear silvery rose.

LORD RALEIGH — Dark mauve, tinted purple.

RHEINLANDER — Beautiful salmon pink with red eye. Large size.

RIJNSTROOM — Rosy pink, fine for massed planting. Improved.

SUNSET — Bright rosy pink. Unusually free bloomer.

GRAFF ZEPPELIN — Pure white with vermilion eye. A new introduction. Very showy.



New Dianthus "Rose Cushion"

NEW DIANTHUS "Rose Cushion"

New, low, dense plant with erect rose colored blooms. Attractive all summer, and evergreen throughout the winter. Valuable for Rock garden or border.

25c EACH
3 FOR 65c



Shasta Daisy

SHASTA DAISY—Hardest of all daisies. Large petal flower with gold color center. Assorted white and white with rose tinged petal. Excellent for cutting.



Hibiscus

HIBISCUS—Mallow Marvel. Tall growing perennial, attaining height of about 5 ft. Flowers shaped like single hollyhocks. Assorted colors.



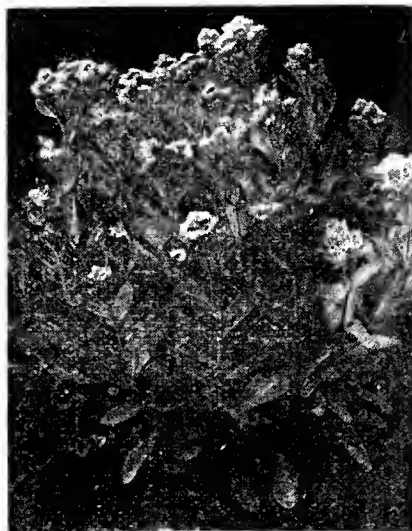
Gaillardia

GAILLARDIA (Blanket Flower)—Very attractive for border or cluster of plants. Blooms yellow, shaded with burnt orange near the center. Petals are very large. Excellent cut flower. Grows from 18 to 24 inches tall and blooms from June until frost.



Double Hollyhock

DOUBLE HOLLYHOCK—Tall growing perennial, 6 to 8 feet high. Used for background or border. Tall spikes covered with numerous blooms. Assorted pink, white, red, maroon, yellow, lilac, sunset.



Sedum

SEDUM

ACRE—Foliage green with yellow flowers. Grows along ground.

ALBUM—Dwarf, thick, waxed leaves. White flowers.

GLAUCUM — Smallest sedum, little round balls made up of beads. Gray blue.

SIEBOLDII — Rust stems, leaves alternating tiers, blue green. Blooms in August and September.

SPECTABILE—Leaves oblong, growing in tiers to 15 or 18 inches in height. Sage green. Blooms lavender flowers in September.

BRILLIANT — Same as Spectabile, but flowers pinkish red in color.



Veronica

VERONICA — Bluebird flower. Deep blue flowers, growing on spikes 2½ to 3 feet tall. Makes beautiful show in mixed bouquet.

TRITOMA**Red Hot Poker**

Bright orange cone shaped flowers, 2½ to 3 feet tall. Beautiful for massed planting or for border use. Excellent for cutting. 22c each, 3 for 60c.

GERMAN IRIS

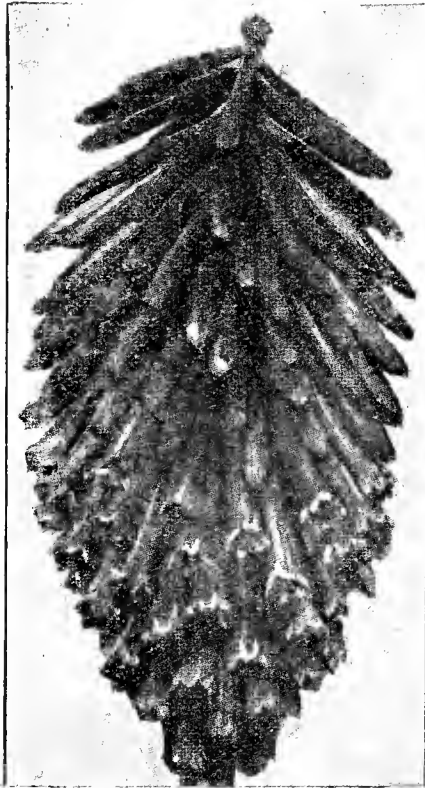
Long stems, with numerous blooms to a stem. flowers dainty and attractive. Used for borders and in clumps. Assorted colors. 20c each, 3 for 50c.

THYMUS

Splendid for covering surfaces where grass will not grow. Used in Rock Gardens or in beds of bulbs. 15c each, 3 for 40c.

YUCCA

Sword like Evergreen foliage. Pendant cluster. Creamy white bells, long thick 3 to 4 ft. spikes. 20c each, 3 for 50c.



Tritoma



Yucca

CHRYSANTHEMUMS

ALICE HOWELL—Yellow tinged with bronze. Early.

AUTUMN GLOW—Very large, rose crimson, medium early.

CRIMSON BEAUTY—Crimson, late.

GOLDEN QUEEN—Yellow, extra large. Medium early. Very hardy.

GOLD COIN—Bright yellow, pompon shape. Flowers large and regular.

INDIAN—Coppery red. One of the last to bloom.

IVA—Bronze. Late.

LILLIAN DOTY—Flowers shell pink, large, pompon type.

LITTLE BOB—Reddish bronze. Button type. Best of its kind.

MARIE ANTOINETTE—Profuse bloomer. Blooms when most other varieties are gone. Rosy-pink.

M. RAOUL—Deep gold color, upright in growth. One of the best.

OLD HOMESTEAD—Old Rose tinged with buff color. Very showy when mixed with other colors. A very good variety.

RUTH—Pinkish Rose, late.

SKIBO—Bright yellow tinged with bronze. Button type. Excellent for cutting.

PRICE—ALL ABOVE 12c each, 6 for 60c.

LILY BULBS

Best adapted to sandy soil. Set bulbs three times their own depth. Several varieties planted together will produce a beautiful array of color.

AURATUM (Gold Band)—Large flowers, broad petals. White thickly studded crimson. Gold band through center of each petal. 30c each, 3 for 85c, 2.50 doz.

REGAL—Very large clusters, long tubed and wide mouthed. Flowers white, stained with coral pink. 12c each, 3 for 30c, \$1.00 doz.

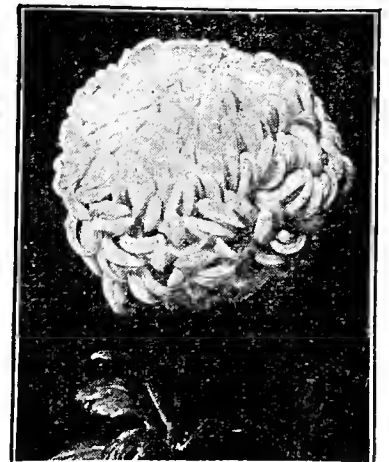
TIGER—Flower orange red, heavily spotted with black. Flower very showy. Profuse bloomer. 20c each, 3 for 45c, \$1.95 doz.



M. Raoul

PINK CUSHION MUM

Most spectacular Chrysanthemum. Quality and brightness add additional beauty to any garden. Flowers pink, streaked with white, with yellow centers. Massive bloom covering entire plant. A New Creation. 35c ea., 3 for 90c.



Gold Coin

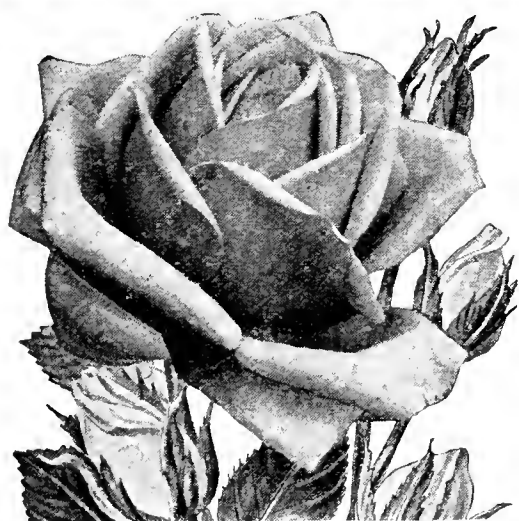
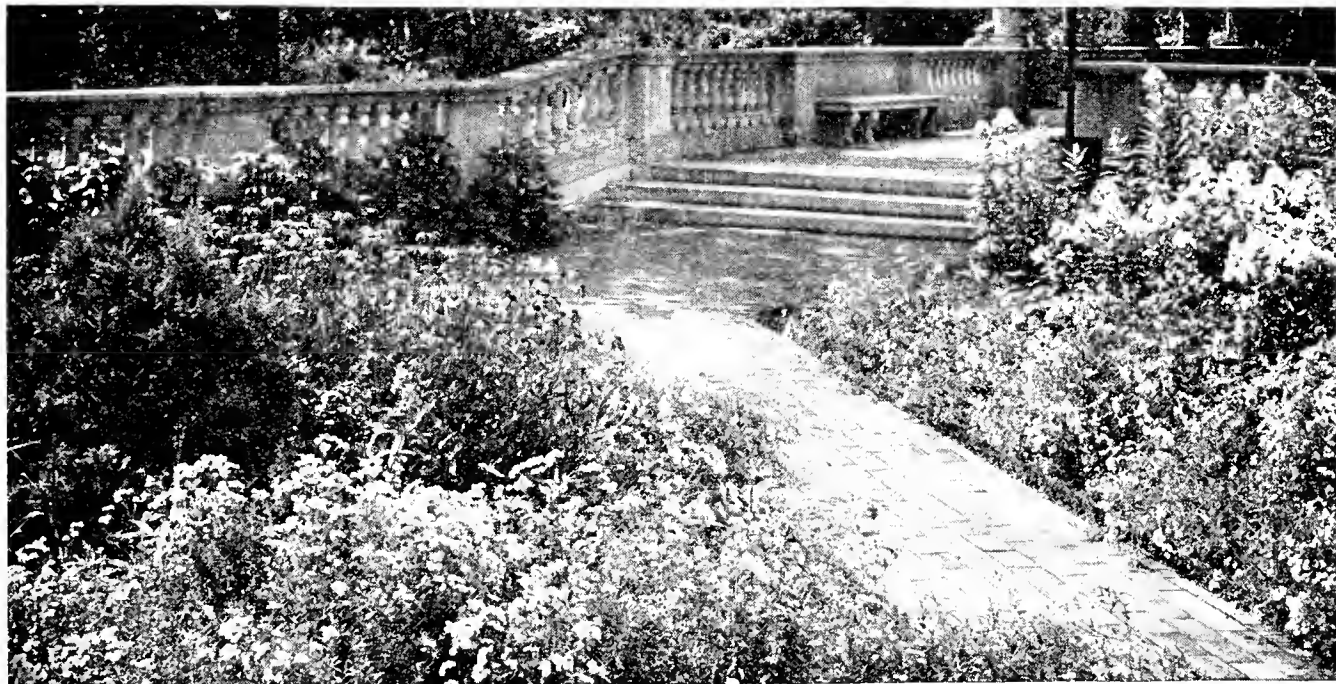
BEST PLANTS: LOWEST PRICES

Flower Free Seeds

A Complete Flower Garden A Riot Of Color and Bloom

Take advantage of this opportunity to bring Beauty and Cheerfulness to your yard and home. We are offering to our customers, FREE, with postage paid, a beautiful collection of Flower Garden Seeds, with each order amounting to \$2.50 or more. Included in this offer are, 1 package each of: Oriental Poppies, Delphinium, Gaillardia, Cosmos, Zinnia, Nasturtiums, Columbine, Sweet William. Each package worth 10c, making a total value of 80c, FREE, for your order. In making up your order make a notation on it that you want us to include the FREE GARDEN SEEDS IN YOUR ORDER.

8 Packages Flower Garden Seeds FREE, With Any Order Amounting to \$2.50.



2 ROSES FREE

**WITH QUANTITY ORDERS
THAT AMOUNT TO \$5.00**

To anyone sending an order amounting to \$5.00 or more, we will include, FREE OF CHARGE, 2 EVERBLOOMING HYBRID TEA ROSE BUSHES, customers selection, taken from our list of 49c ROSES on page 11 of this catalogue. (Customers notice; due to the remarkable value of these Rose Bushes, we cannot include the Free Flower Garden Seed with this offer).

READ THIS PAGE: FREE GIFTS

CALL'S HARDY SHRUBS

ALMOND—Beautiful double flowers of rose or white covering branches. Blooms before leaves appear. 2-3 ft. 45c ea., 3 for \$1.25.

ALTHEA (Rose of Sharon)—Blooms in August with large and brightly colored flowers. Very hardy. Each

Double red—2 ft. plants20c

Double white—2 ft. plants20c

Double pink—2 ft. plants20c

Double purple—2 ft. plants20c

AMORPHA FRUITICOSA (Indigo Bush)—Large spreading bush, bright green leaves. Flowers deep violet blue. 5 ft. specimens, 45c each, 3 for \$1.25.

AMYGDALUS (Flowering Peach)—A small tree, blossoms in May, brightening each branch with beautifully formed flowers of double red or double white. 3 to 4 ft. Red or White, 35c each.



Calycanthus

CARAGANA ARBORESCENS (Siberian Pea Tree)—Grows 10 to 12 foot high, with bright green fern like leaves. Flowers yellow, and in small clusters. 2 to 3 ft. 35c each; 3 for \$1.00.

CLETHRA ALNIFOLIA (Sweet Pepper Bush)—Beautiful dwarf shrub delightfully fragrant; covered with long creamy white flowers. 1½ to 2 ft., 35c each; 3 for \$1.00.

COLUTEA ARBORESCENS (Bladder Senna)—Fast growing shrub, flowers pea shaped in long racemes. Yellow and red, followed by red bladder shaped seed pods. 3 to 4 ft. 30c; 4 to 5 ft. 40c.

CORNUS ELEGANTISSIMA (Variegated Dogwood)—Grows 8 to 10 foot high with purplish red branches. Foliage variegated silver and green. Choice variety. 3 to 4 ft. 45c each; 3 for \$1.25.



Buddleia, Butterfly Bush

BUDDLEIA MAGNIFICA (Butterfly Bush)—Very hardy in all sections, flowers 10 inches in length. Fragrance attracts bees and butterflies. Color, deep violet rose, orange center. 2 year old plants 20c ea., 6 for \$1.00.

CALYCANTHUS (Spice Bush)—Tall grower, reddish brown shoots with large glossy leaves. Fragrant flower of chocolate red. 1½ to 2 ft. 25c ea.; 2 to 3 ft. 35c each.

CEPHELANTHUS OCCIDENTALIS (Button Bush)—Forms a dense rounded bush 4 to 6 foot in height. Fragrant ball shaped greenish white flowers. 18 to 24 inch. 25c each; 2 to 3 foot, 35c each.



Cornus Shrub Dogwood

NO BETTER SHRUBS CAN BE GROWN

HARDY SHRUBS—(Continued)**CORNUS LUTEA** (Yellow Twig Dogwood)

—Striking yellow, branched form. Beautiful contrast. 2 to 3 ft. 40c each; 3 for \$1.10.

CORNUS MASCULA (Cornelian Cherry) —

Tall grower, flowers of bright yellow. Scarlet fruits in fall. 4 to 5 ft. 50c each; 3 for \$1.25.

CORNUS PANICULATA (Grey Dogwood)

—Very compact, profusion of large white flowers and white berries on red stems. Leaves gray. 3 to 4 ft. 45c each; 3 for \$1.25.

CORNUS SIBERICA (Red Twig Dogwood)

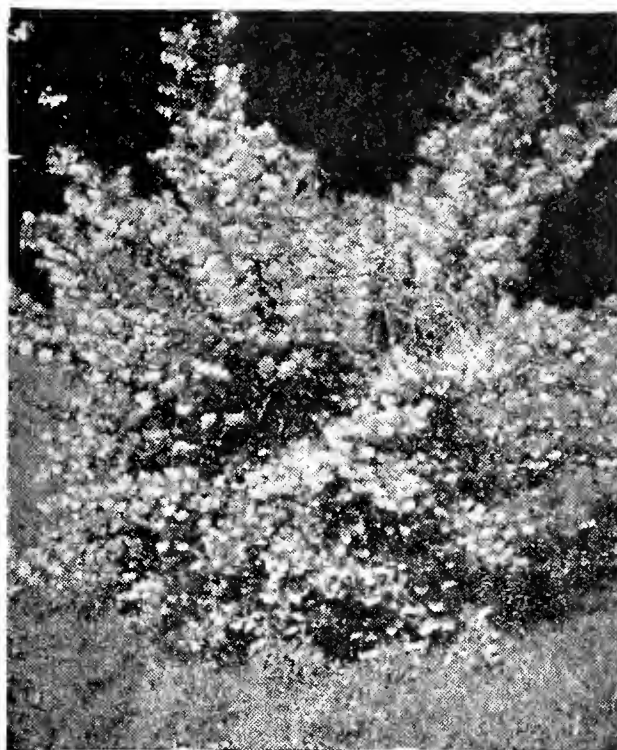
—Fine white flowers in clusters, white berries. Branches turning to blood red in winter. 2 to 3 ft. 35c each, 3 for \$1.00; 3 to 4 ft. 45c each; 3 for \$1.25.

CORNUS SPAETHI AUREA—Broad leaves,

margined with yellow. Spreading habit of growth. 2 to 3 ft. 35c each, 3 for \$1.00; 3 to 4 ft. 45c each, 3 for \$1.25.

CORNUS STOLONIFERA (Red Osier Dog-

wood)—Large spreading shrub of rapid growth. Dull red branches in winter. White fruit. 2 to 3 ft. 35c each, 3 for \$1.00; 3 to 4 ft. 45c each, 3 for \$1.25.



Deutzia Pride of Rochester

CYDONIA JAPONICA (Japan Quince)—

One of the earliest to bloom in the spring, completely covered with dazzling scarlet flowers; followed by small quince shaped fruits. Bushy growth with protecting thorns. 1½ to 2 ft. 40c each; 2 to 2½ ft. 50c ea.

DEUTZIA CRENATA—Single white. Beautiful single flowers, covered with a mass of white flowers in June. 1½ to 2 ft. 35c each; 3 for \$1.00; 2 to 3 ft. 45c each; 3 for \$1.25.

DEUTZIA CRENATA ROSEA—Similar to Crenata, same habit of growth with rose colored flowers. 2 to 3 ft. 30c each; 3 for 85c; 3 to 4 ft. 35c each; 3 for \$1.00.

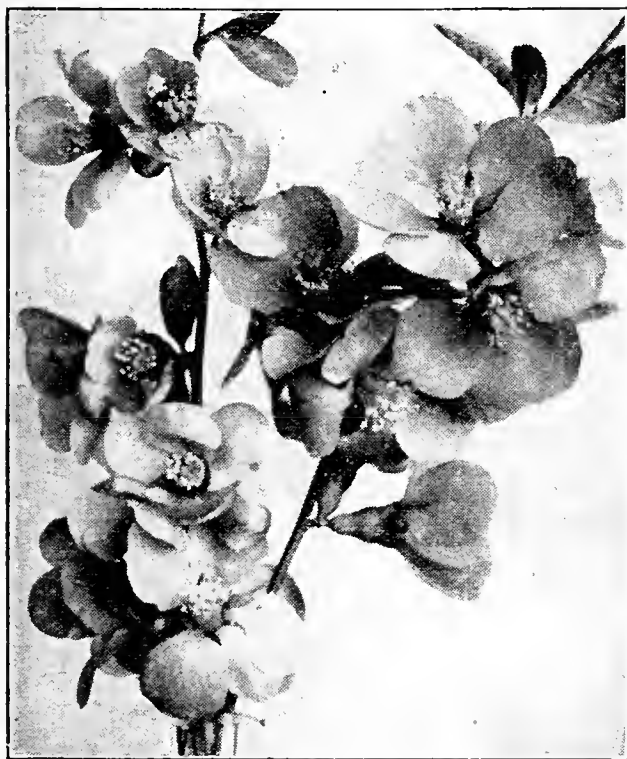
DEUTZIA GRACILIS (Slender Branched)—Dwarf variety. Very early flowering. Bushy with drooping branches, wreathed with pure white flowers in May. Valuable for hedging. 15 to 18 inch, 30c ea.; 3 for 85c; 18 to 24 inch, 35c ea.; 3 for \$1.00.

DEUTZIA GRACILIS ROSEA—Similar habit as gracilis, grows slightly taller. Deep rose colored flowers. 15 to 18 inch, 30c each, 3 for 85c; 18 to 24 inch, 35c each, 3 for \$1.00.

DEUTZIA LEMOINEI—Pure white flowers, borne in profusion on stout branches of upright growth. Dwarf habit. Free flowering. 18 to 24 inch, 30c each, 3 for 85c; 24 to 30 inch, 35c each, 3 for \$1.00.

DEUTZIA PRIDE OF ROCHESTER—Produces large double white flowers in June. Compact grower, profuse bloomer. Best variety. 2 to 3 ft. 35c each, 3 for \$1.00; 3 to 4 ft. 45c each, 3 for \$1.25.

ELAEAGNUS ANGUSTIFOLIA (Russian Olive)—Glittering silvery foliage. Yellow flowers. Fine for background. Grows 12 to 15 feet high. 2 to 3 ft. 35c each, 3 for \$1.00; 3 to 4 ft., 45c each, 3 for \$1.25.



Cydonia Japonica

**BARGAIN COLLECTION
SHRUB OFFER**

Hardy 2-year plants. An unusual opportunity to secure

7 FULL GROWN SHRUBS FOR \$2.00

- I Deutzia Pride of Rochester
- I Spirea Van Houttei
- I Honeysuckle Pink
- I Forsythia, Golden Bell
- I Weigelia Pink
- I Mock Orange (Philadelphus)
- I Spirea Anthony Waterer

SEE PAGE 15, FREE SEEDS



Forsythia Fortunei

green. Very conspicuous. 2 to 3 ft. 35c each, 3 for \$1.00; 3 to 4 ft. 45c each, 3 for \$1.25.

FORSYTHIA (Golden Bell) Fortunei—Upright growth. Deep green foliage; bright yellow flowers appearing before leaves.

FORSYTHIA SPECTABILIS — Hardy, early blooming. Growing 8 to 10 feet tall, flowers of golden yellow.

FORSYTHIA SUSPENSA—Very long curving branches; drooping to the ground. Bright yellow flowers, green foliage.

ALL VARIETIES OF FORSYTHIA

2 to 3 ft. 30c each, 3 for 85c.

3 to 4 ft. 35c each, 3 for \$1.00.

FRINGE, PURPLE (Rhus Cotinus)—Very beautiful mist or smoke tree. Drooping panicles of purple flowers, with dark green leaves. In autumn, foliage turns to reddish brown. 1½ to 2 ft. 45c each; 2 to 3 ft. 55c each.



Honeysuckle

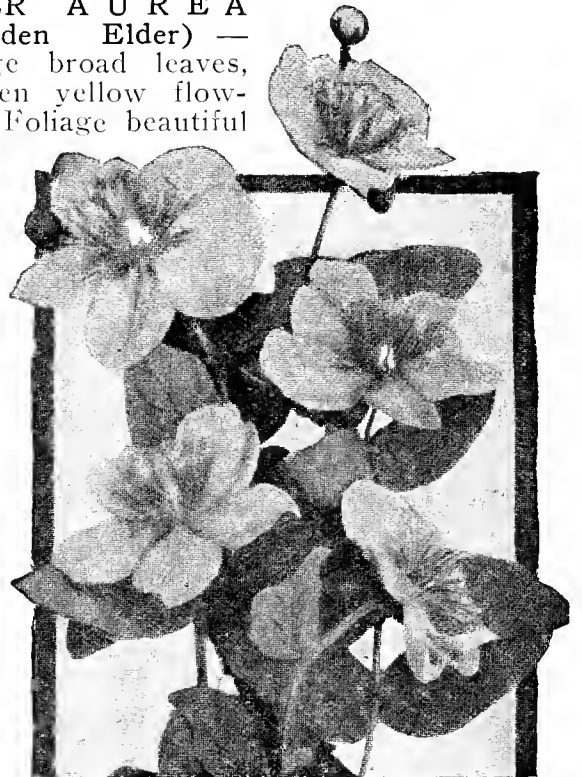
HARDY SHRUBS—Continued

EUONYMUS ALATUS (Winged Burning Bush)—Bushy shrub with corky winged branches. A fine shrub for specimen planting. Leaves very showy in autumn when they turn to rich red and crimson. 2 to 3 ft. 45c each, 3 for \$1.25; 3 to 4 ft. 55c each, 3 for \$1.50.

EUONYMUS ALATUS COMPACTA — Similar to Alatus, more compact grower, of cork bark type. 2 to 3 ft. 45c each, 3 for \$1.25; 3 to 4 ft. 55c each, 3 for \$1.50.

EXOCHORDA GRANDIFLORA (Pearl Bush)—Attains the height of 6 to 10 feet, can be trimmed to any desired shape. Vigorous grower. Buds resemble pearls, opening to gleaming white sprays; very showy. 2 to 3 ft. 35c each, 3 for \$1.00; 3 to 4 ft. 45c each, 3 for \$1.25.

ELDER AUREA (Golden Elder) — Large broad leaves, golden yellow flowers. Foliage beautiful



Hypericum Aureum

FRINGE, WHITE (Chionanthus Virginica)—Large showy shrub, shiny leaves with lace-like white flowers. Branches drooping; making a broad and rounded bush. 1½ to 2 ft. 45c each; 2 to 3 ft. 55c each.

MALESIA TETRAPTERA (Silver Bell) — Small tree like shrub, large dark green leaves. Flowers resemble white or pinkish drooping bells, followed by winged seeds. 18 to 24 inch 35c each; 2 to 3 ft. 45c each.

HYPERICUM AUREUM (Gold Flower) — Leathery leaves of bluish green. Flowers yellow, with golden center. 2 ft. 40c each.

HONEYSUCKLE (Bush Lonicera)—Tartarian red, Pink, White. Best known of all the honeysuckles. Grows upright, with somewhat spreading branches. Bright green foliage. Flowers in May and June, followed by showy red berries. Three colors as above. 2 to 3 ft. 30c each, 3 for 85c; 3 to 4 ft., 45c each, 3 for \$1.25.

EVERY PLANT GUARANTEED

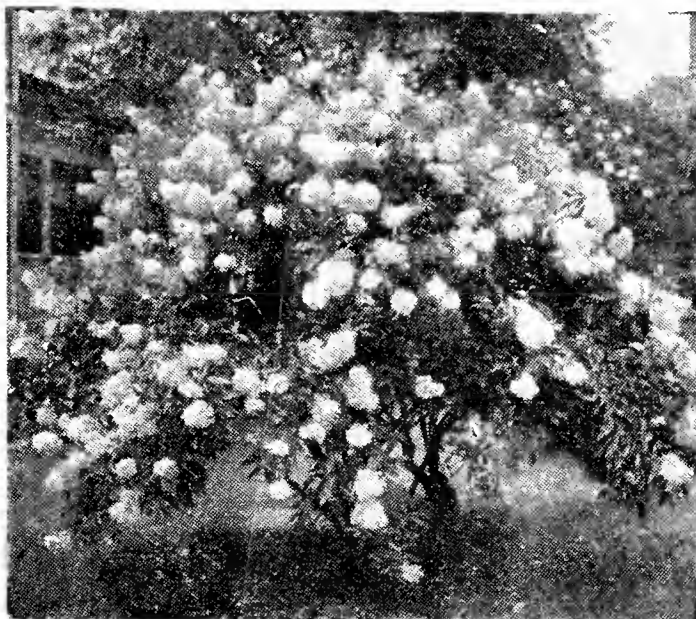
HARDY SHRUBS—Continued

HYDRANGEA ARBORESCENS GRANDIFLORA (Hills of Snow)—Flowers pure white, similar to snowballs. Makes good sized shrub, very showy. 1½ to 2 ft. 25c each, 3 for 65c; 2 to 3 ft. 35c each, 3 for \$1.00.

HYDRANGEA PANICULATA GRANDIFLORA—White flowers, extremely showy, turning to pink and reddish bronze in fall. Can be dried for winter use in home. 1½ to 2 ft. 25c each, 3 for 65c; 2 to 3 ft. 35c each, 3 for \$1.00.

HYDRANGEA P. G. (Tree Form)—Very desirable for backgrounds and formal lines. Similar to bush form except it is shaped as a tree. 2½ to 3 ft. 60c each, 3 for \$1.50.

ILEX VERTICILLATA (Winterberry)—Small flowers, dark and lustrous foliage. Masses of crimson berries. 2 to 3 ft. 40c each, 3 for \$1.10.



Hydrangea Paniculata Grandiflora

KERRIA JAPONICA (Globe Flower)—Handsome green leafed shrub, graceful slender drooping branches. Dark yellow flowers. 2 to 3 ft. 45c each, 3 for \$1.25.

KOLKWITZIA AMABILIS (Beauty Bush)—Flowers produced along entire length of branches in clusters. Deep pink, stained with yellow brown, clad with white bristle-like hairs which add to their attractiveness. 1½ to 2 ft. 30c each, 3 for 85c; 2 to 3 ft. 40c each, 3 for \$1.10.

LILAC (Syringa) Vulgaris Purple—Suitable for tall hedges, grow well in the shade. 2 to 3 ft. 30c each; 6 for \$1.75.

LILAC VULGARIS WHITE—Tall and slender and very fragrant, same as above, except for color. 2 to 3 ft. 30c each, 6 for \$1.75.

LILAC PERSIAN PURPLE—Medium grower, slender branches and narrow leaves. Profuse bloomer. 2 to 3 ft. 40c each, 3 for \$1.10.



Kolkwitzia Amabilis

FRENCH HYBRID LILACS

Special Blooming Size

- Alphonse Lavalley (D)—Violet blue.
- Belle de Nancy (D)—Satin rose white.
- Chas. Joly (D)—Purple.
- Congo (S)—Deep wine red.
- Ludwig Spaeth (S)—Deep red.
- Pres. Grevy (D)—Mauve rose.
- Marie Le Graye (S)—White.
- Mme. Abel Chatenay (D)—Snow white.

Any 3 of the above for \$1.00

Single Flowered marked (S); Double Flowered marked (D), each 35c

PHILADELPHUS (Mock Orange) **CORONARIUS** (Sweet scented)—Fragrant pure white, dense clusters. 2 to 3 ft. 30c each, 3 for 85c; 3 to 4 ft. 40c each, 3 for \$1.10.

PHILADELPHUS GRANDIFLORA — Beautiful shrub, arching and graceful, covered with large sized flowers. 3 to 4 ft. 30c each, 3 for 85c; 4 to 5 ft. 40c each, 3 for \$1.10.



French Lilacs

SEE OUR UNUSUAL FREE OFFER ON PAGE 15



Prunus Triloba

RHUS TYPHINA (Staghorn Sumac)
—Tall growing. Blooms in June and July. Covered with brilliant foliage and scarlet fruit in Autumn. 4 ft. 40c each, 3 for \$1.10.

SNOWBERRY, White—Blooms in July and August. Pink flowers followed by large clustered milk white seeds, which remain until after heavy frosts. Grows well in shaded places. 1½ to 2 ft. 30c each, 6 for \$1.75.

CORALBERRY, Red—Similar to Snowberry in habit, except the berries are red, and they cluster in thick ropes along the weighted down stems. 1½ to 2 ft. 30c each, 6 for \$1.75; 2 to 3 ft. 35c each, 6 for \$2.00.



White Kerria

HARDY SHRUBS—Continued)

PHILADELPHUS AUREA (Golden Mock Orange)—Very beautiful for contrast grouping. Bright gold leaves. 18 to 24 inch 35c each, 3 for \$1.00.

PHILADELPHUS MT. BLANC — Double flowers, one of the best types, medium height. Very close set bunches. 2 ft. 35c, 3 for \$1.00.

PHILADELPHUS VIRGINAL—New variety. Medium height, compact. Flowers double, large, sweetly fragrant. Long blooming season. 1½ to 2 ft. 25c, 3 for 65c; 2 to 3 ft. 35c, 3 for \$1.00.

PRUNUS TRILOBA (Double Flowering Plum)
—Blooms in early spring before leaves appear. Tree shaped. Covered with double light pink blossoms. 2 to 3 ft. 35c, 3 for \$1.00; 3 to 4 ft. 45c, 3 for \$1.25.

RHAMNUS CATHARTICA (Buckthorn)—Fine for background. Dark foliage, produces white flowers in midsummer, followed by red-black berries. Also valuable for hedge. 1½ to 2 ft. 30c each, 3 for 85c; 2 to 3 ft. 35c each, 3 for \$1.00.

RHODOTYPOS KERRIOIDES (White Kerria)—Grows well in semi-shade. Yellowish green foliage covered with white flowers in May followed by black seeds. 1½ to 2 ft. 30c each, 3 for 85c; 2 to 3 ft. 35c each, 3 for \$1.00.



Philadelphus Aurea

ORNAMENTAL SHRUBS ADD MUCH TO THE BEAUTY AND VALUE OF THE HOME

Shrubs are most ornamental when they are planted in masses, against buildings, fences or along property lines. However there are a few outstanding varieties of exceeding beauty which permits them to be planted as specimens. Any home planted with ornamental trees or shrubs increases from 15 to 25 percent in value. Our list is complete, which will enable you to very readily make a selection of these beautiful plants.

SEE NOTICE ON PAGE 31

HARDY SHRUBS—Continued

SPIREA ANTHONY WATERER (Dwarf)

—Free flowering shrub with upright branches growing about 2 feet tall. Brilliant rosy crimson corymbs at tips of branches. Fine for foundation plantings and borders.

SPIREA FROEBELI (Dwarf)—Similar to Anthony Waterer in habit, but a trifle larger and fuller.

Leaves bronze red in spring and fall. Has corymbs of deep pink in June and July. Both: 12 to 15 inches 25c ea.; 6, \$1.25; 25, \$3.75; 15 to 18 in., 30c; 6, \$1.50; 25, \$5.00; 18 to 24 in., 35c; 6, \$1.90; 25, \$6.25.

SPIREA OPULIFOLIA AUREA (Golden Spirea)—Upright in growth, tall.

Heavy clusters of white flowers cause branches to droop in June. New foliage is bright yellow, changing to bronze in fall. Red fruit. 2 to 3 ft. 30c each; 3 for 85c; 3 to 4 ft. 35c each; 3 for \$1.00.

SPIREA PRUNIFOLIA (Bridal Wreath)—

One of the earliest to bloom in spring. Branches covered with small, double white flowers. Medium height. 2 to 3 ft. 35c each; 3 for \$1.00.



Spirea Anthony Waterer

SPIREA THUNBERGI—First spirea to bloom in spring.

Leaves yellowish green, changing to red and orange in fall. Flowers white and small. Of Japanese variety, branches drooping. 2 to 2½ ft. 35c each, 3 for \$1.00.

SPIREA TRICHOCARPA (Korean Spirea)

—Splendid new shrub. The finest of Spireas. Large globe clusters of snowy white flowers. Blooms earlier than Van Houttei. 2 to 3 ft. 30c each, 3 for 85c; 3 to 4 ft. 35c each, 3 for \$1.00.



Spirea Van Houttei

SPIREA VAN HOUTTEI—Most popular flowering shrub.

Small white flowers, borne in clusters. Makes bush appear as snow white fountain during May and June. 1½ to 2 ft. 15c each; 10, \$1.25; 25, \$2.50; 2 to 3 ft. 20c each; 10, \$1.50; 25, \$3.00; 3 to 4 ft. 25c each; 10, \$2.00; 25, \$4.00.

STEPHENANDRA FLEXUOSA — Very attractive shrub, grows 3 feet in height.

Suitable for borders and rock garden. Foliage purplish red, with paniced white flowers. 1½ to 2 ft. 25c ea., 3 for 65c; 2 to 3 ft. 35c ea., 3 for \$1.00.

TAMARIX (Gallica)—Spreading branches, bluish green leaves.

Flowers white, paniced racemes. 2 to 3 ft. 30c each, 3 for 85c.

VIBURNUM CARLESI

Mayflower Viburnum—Wonderful new medium sized shrub. Highly prized for its delicate, spice scented flowers of waxy pink in bud form, opening to pure white. Very lasting, and thrives under all conditions. Attractive when used as border or foreground planting.

15 to 18 inch60c each, 3 for \$1.50
18 to 24 inch75c each, 3 for \$2.00



Tamarix Gallica

ORDER EARLY

HARDY SHRUBS Continued

VIBURNUM AMERICANUM (American Cranberry)—Fruits of bright scarlet, broad flower corymbs. Outer fringe fully opened. 2 to 3 ft. 30c each, 3 for 85c; 3 to 4 ft. 35c each, 3 for \$1.00.

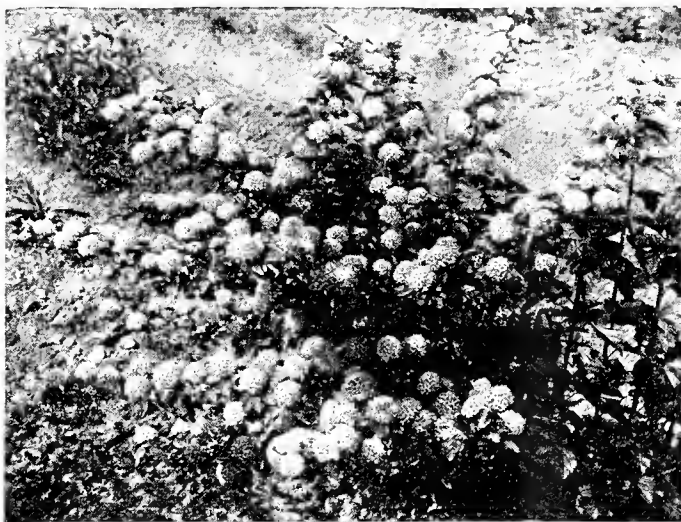
VIBURNUM DENTATUM (Arrowwood)—Bright green, heart shaped leaves, turning to purple and red. Flowers of creamy white. Black fruits. Blooms May and June. 2 to 3 ft. 35c each, 3 for \$1.00; 3 to 4 ft. 40c each, 3 for \$1.10.

VIBURNUM LANTANA (Wayfaring Tree)—Beautiful crinkly leaves, white flowers, blooming in May and June. Fruits crimson turning to black. 2 to 3 ft. 30c each, 3 for 85c; 3 to 4 ft. 35c each, 3 for \$1.00.

VIBURNUM OPULUS (European Cranberry bush)—Broad, brilliant green foliage. Large branches of crimson berries into the winter. Flowers pure white, orange across. 2 to 3 ft. 30c each, 3 for 85c; 3 to 4 ft. 35c each, 3 for \$1.00.



Viburnum (Snowball)



Japanese Snowball

VIBURNUM OPULUS STERILIS (Common Snowball)—The old fashioned Snowball. Large, globular, pure white flowers. Blooms in May and June. Grows 6 to 8 feet high. 2 to 3 ft. 30c each, 3 for 85c; 3 to 4 ft. 35c each, 3 for \$1.00.

VIBURNUM PLICATUM (Japan Snowball)—A rare and exceedingly beautiful species. Flowers round, blooming along the stem. Blooms in June. 2 to 3 ft. 50c each, 3 for \$1.25; 3 to 4 ft. 60c each, 3 for \$1.60.

VIBURNUM TOMENTOSUM—Erect and compact. Flowers white, round and flat. Attains a height of 6 feet. Blooms in June. 2 to 3 ft. 40c each, 3 for \$1.10; 3 to 4 ft. 45c each, 3 for \$1.25.

WEIGELA (Abel Carriere)—Blooms in May and June. Flowers of rose carmine spotted with orange. Very showy. 1½ to 2 ft. 30c each, 3 for 85c; 2 to 3 ft. 35c each, 3 for \$1.00.

WEIGELA ROSEA—Vigorous, tall growing, with deep pink flowers. Blooms profusely in June. 2 to 3 ft. 30c each, 3 for 85c; 3 to 4 ft. 35c each, 3 for \$1.00.

WEIGELA EVA RATHKE—One of the most distinctive and attractive varieties. Very showy, with its deep, carmine red flowers. Blooms in July. 1½ to 2 ft. 35c ea., 3 for \$1.00; 2 to 3 ft. 40c each, 3 for \$1.25.



Weigela Rosea

HARDY HEDGING

Nothing is more beautiful than a well grown, neatly trimmed hedge. Besides being very effective for protection of property, it adds grace and dignity to the otherwise bare borders. It is easily trimmed, and can be made to any desired shape or size.

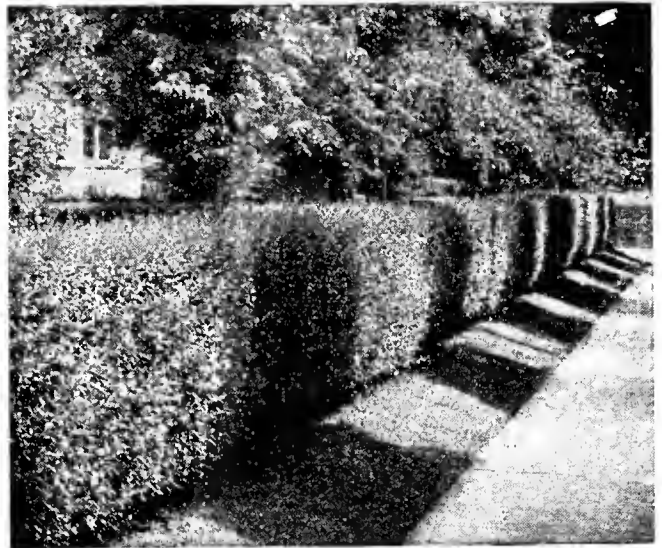
AMUR RIVER PRIVET—The hardiest and most formal grower. Similar to California, but does not winter-kill. Upright grower, growing dense. 18 to 24 inch, 25 for \$1.50, 100 for \$6.00.

CALIFORNIA PRIVET—Most popular hedge plant. Leaves oval, dark green and glossy. Rapid grower, very dense when trimmed. 18 to 24 inch, 25 for \$1.25; 100 for \$4.00.

IBOTA PRIVET—Spreading and tall growing, very hardy. Grayish green leaves. Black fruits. 18 to 24 inch, 10 for \$1.25, 25 for \$2.50.

REGEL'S PRIVET—Grows well in shade or sun. Dark green, glossy leaves. Plant uniform and spreading. Requires little pruning. Popular for foundation planting. 18 to 24 inch, 10 for \$2.00, 25 for \$3.50.

BERBERIS ATROPURPUREA (New Red-leaved Barberry)—Spring foliage of rich, bronze red, turning to orange scarlet and red during the summer. Bright scarlet berries all through the winter.



California Privet

18 to 24 inch, 30c each, 10 for \$2.50; 2 to 3 ft. 35c each, 10 for \$3.00.

BERBERIS THUNBERGI (Japanese Barberry)—Leaves small, bright green, turning to dazzling tones of orange scarlet and crimson in fall. Red berries appearing in fall and far into the winter. 15 to 18 inch, 10 for \$1.25, 25 for \$2.25; 18 to 24 inch, 10 for \$1.50; 25 for \$3.00.

EVERGREEN SHRUBS

This group contains plants which are very useful in foundation planting for balancing beds of Evergreens or lawn specimens. Outstanding for their evergreen foliage and very beautiful with their highly colored flowers. Should be planted in acid soil.

AZALEA MOLLIS (Flame Azalea)—Dwarf bushy, well branched. Flowers in colors of orange, tan, yellow and red. 12 to 15 inch, \$1.00; 15 to 18 inch \$1.25.

COTONEASTER DIVARICATA—Upright growth, leaves deciduous, broad and oval turning to crimson. Small pink flowers. Fruits bright red. 2 to 3 ft. \$1.00 each, 3 to 4 ft. \$1.25.

COTONEASTER HORIZONTALIS—Spreading horizontal branches, especially useful in rock gardens and for borders. Crimson leaves with scarlet fruit. 12 to 15 inch spread 75c, 15 to 18 inch spread \$1.00.

DAPHEN CNEORUM (Garland Flower)—Dwarf shrub of evergreen nature. Spreading branches. Small green leaves covering stems. Soft pink

flowers appear profusely during April and May, and slightly throughout the summer. Very fragrant. 9 to 12 inch, 85c each; 12 to 15 inch, \$1.00 each.

EUONYMUS RADICANS—Evergreen vine with narrow leaves. Compact with pink fruits. Fine for rock gardens or walls. 12 to 15 inch, 50c each; 15 to 18 inch 60c each.

EUONYMUS VEGETUS (Evergreen Bittersweet)—Shrub type with round leaves, glossy and evergreen throughout the winter. Orange red berries make it very showy. 12 to 15 inch 50c each; 15 to 18 inch, 60c.

MAHONIA AQUIFOLIA (Holly-leaved Mahonia)—Beautiful evergreen shrub, slow growing with smooth shiny holly leaves. Bright yellow flowers in clusters with blue berries. Leaves turn to bronze and crimson red in the fall. 15 to 18 inch 75c each; 18 to 24 inch, 90c each; 2 to 2½ ft. \$1.25.

PYRACANTHA Lalandi (Firethorn)—Almost evergreen. Leaves small, shiny, thickly set on slender branches which produce short thorns. Small white flowers, bright orange red berries. 1½ to 2 ft. \$1.50 each.

RHODODENDRON Catawbiense—Very hardy. Leaves attractive, shiny green on top, bluish green underneath. Flowers profusely in large trusses. Shades of lavender and purple. Early June. 1½ to 2 ft. \$1.75 each.

RHODODENDRON Maximum—Foliage large and smooth. Rosy bluish and white flowers during July. Very attractive. Best for massed planting. 2 to 3 ft. \$1.75 each.

EVERGREEN CREEPERS

PACHYSANDRA (Japanese Spurge)—Beautiful green leaved creeping vine. Very attractive and useful in bedding. 12 for \$1.30, 25 for \$2.50, 100 for \$9.00.

VINCA MINOR (Hardy Myrtle)—Trailing evergreen plant, used for ground cover under shrubs or trees, where it is too shady for grass to thrive. 12 for \$1.30, 25 for \$2.50, 100 for \$9.00.



Azalea

BEAUTIFUL CLIMBING VINES

Vines are adapted to covering undesirable spots, or for use on porches to insure privacy and shade. With their beautiful fragrant flowers, they become an asset to any home or garden.

AMPELOPSIS VEITCHI (Boston Ivy)—Leaves of deep green, changing to glorious crimson in autumn. Will cling to smooth surface. Outstanding variety. 2 yr. 35c each, 3 for \$1.00.

BIGNONIA RADICANS (Trumpet flower)—Strong, woody vine. Large compound leaves and large orange scarlet trumpet shaped flowers, borne in clusters. 2 yr. 25c each, 3 for 65c.

BITTERSWEET—Glossy foliage and large clusters of beautiful orange crimson fruits, which remain all winter. 2 yr. 25c each, 3 for 65c.

CLEMATIS JACKMANI—Very large. Intense violet flowers. Most popular variety. 2 yr. 50c ea.

CLEMATIS PANICULATA—Glossy leaf. Flowers medium size, fragrant and pure white. 2 yr. 30c each, 3 for 85c.

DUTCHMAN'S PIPE—Rapid growing, with light green leaves; 10 to 12 inches across. Flowers yellowish brown, pipe shaped. 2 yr. 65c each, 3 for \$1.80.

HONEYSUCKLE, Hall's Japan—Flowers white, changing to yellow. Very fragrant. One of the best for trellises and ground covering. 2 yr. 20c each, 3 for 50c.

KUDZU VINE—Large leaves of dense shade. Flowers of rosy purple, pea shaped, in August. 2 yr. 20c each, 3 for 50c.

MATRIMONY VINE—Purplish flowers, followed by scarlet berries. Good foliage, valuable as ground cover or climbing vine. 2 yr. 25c each, 3 for 65c.

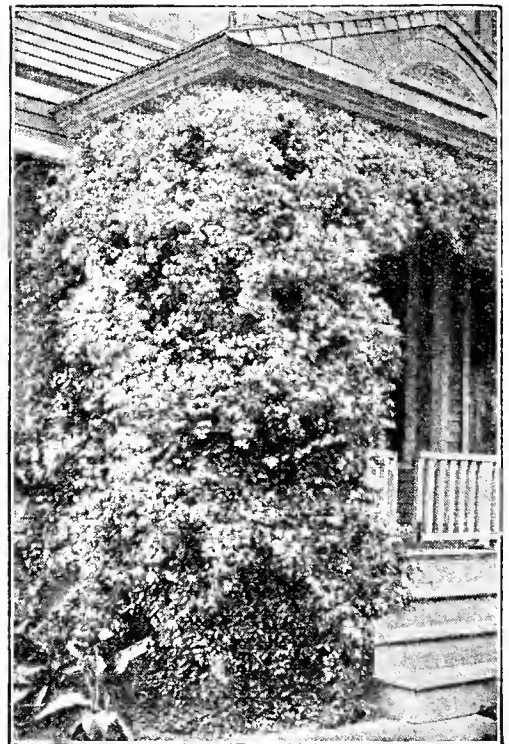
SILVER LACE VINE—A new introduction. Grows rapidly, with green foliage, slightly bronze at tips. Forms a cloud of misty white, shot with tints of cream and pale rose. 2 yr. 50c each, 3 for \$1.25.

WISTERIA, Purple—Leaves fern like, flowers appearing in May or June as dense drooping racemes a foot or more long, in clusters of pea shaped flowers. 2 yr. 30c each, 3 for 85c.

WISTERIA, White—Same as above except for color. 2 yr. 30c each, 3 for 85c.

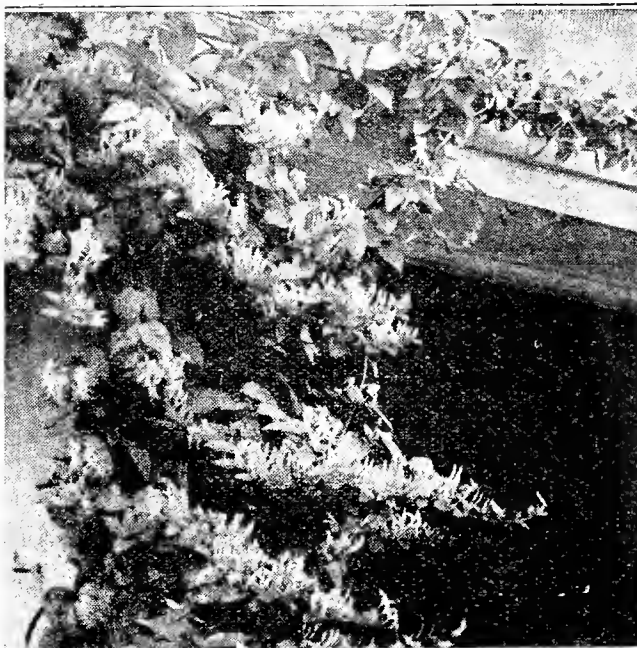


Boston Ivy



Clematis Paniculata

VARIETY VALUE		All for 98¢
1 Boston Ivy, value	35c	
1 Hall's Honeysuckle, value	20c	
1 Matrimony Vine, value	25c	
1 Silver Lace Vine, value	50c	



Hall's Japan Honeysuckle



Silver Lace Vine

PEONIES; INSIDE OF BACK COVER

PLANT ORNAMENTAL TREES FOR SHADE AND BEAUTY

AILANTHUS (Tree of Heaven)—An extremely rapid grower. Brilliant palm like leaves. Thrives in city lots exposed to gas and smoke, and in soil where other trees fail. 6 to 8 ft. 80c each, 8 to 10 ft. \$1.00 each.

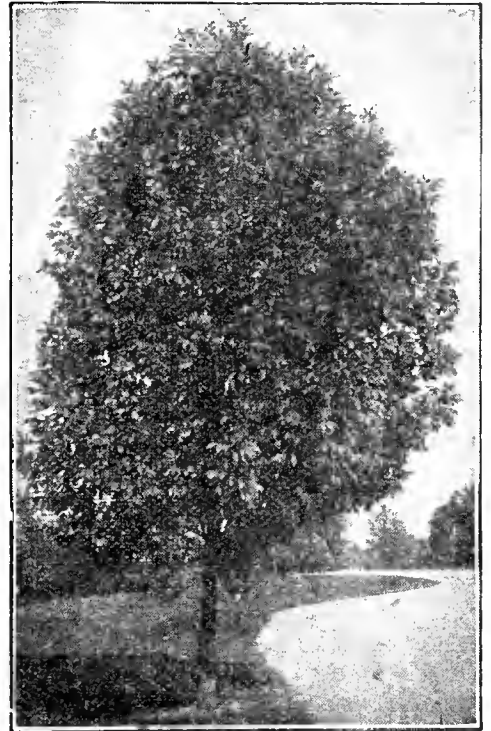
ASH, European Mt. (*Sorbus Aucuparia*)—A highly ornamental tree with beautiful foliage, which turns orange red in fall. Fruits are very showy in clusters of orange red, and often remain on tree all winter. 6 to 8 ft. \$1.25; 8 to 10 ft. \$1.75; 10 to 12 ft. \$2.25.

BIRCH, Cutleaf Weeping—Tall slender, graceful drooping habit, with silvery white bark and lacy leaves. Most popular for single lawn planting or grouping. 6 to 8 ft. \$1.00 each, 8 to 10 ft. \$1.50.

CATALPA BUNGEI (Umbrella Tree)—Has large leaves, glossy and heart shaped. Deep green in color, making symmetrical head. Perfectly hardy, flourishes in all soils and climates. Usually planted in pairs. 6 to 7 ft. 65c each, 2 for \$1.00.

CATALPA SPECIOSA—Tall growing, producing white blossoms, with large green leaves, very attractive. 5 to 6 ft. 50c each, 6 to 8 ft. 75c each.

ELM, American—A large stately tree, with long and graceful branches. Leaves dark green, turning pale in autumn. Excellent for lawn and landscape. 6 to 8 ft. 75c each, 3 for \$2.00; 8 to 10 ft. 95c each, 3 for \$2.50.



Ash



Catalpa Bungei

ELM, Chinese (*Pumila*)—Rapid growing to good height, foliage is small and dense. Growth symmetrical and compact. Adapted for street planting, where quick results are required. 6 to 8 ft. 75c each, 3 for \$2.00; 8 to 10 ft. \$1.00 each, 3 for \$2.75.

ELM, Moline—Valuable new type, obtainable through budding. Very compact and fast growing. Has large leaves of dark blue green shade. 8 to 10 ft. \$1.10 each, 3 for \$3.00; 10 to 12 ft. \$1.50 each, 3 for \$4.00.

ELM, Vase—Another recent introduction of similar type to the American elm. Tops uniformly shaped, so as to resemble a vase. 8 to 10 ft. \$1.10 each, 3 for \$3.00.

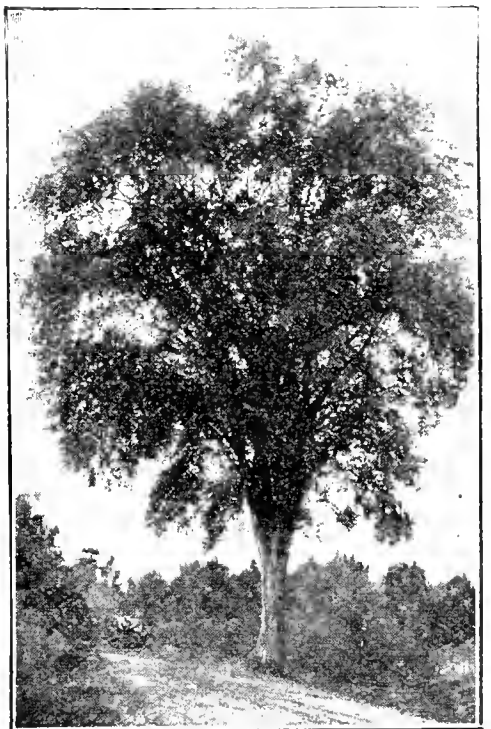
HONEY LOCUST — Large vigorous growing trees. Spreading branches feathery fern like leaf. Branches covered with thorns, making valu-

able hedge. 6 to 8 ft. 95c each, 8 to 10 ft. \$1.25 each.

BLACK LOCUST—Beautiful, straight, fast growing native tree. Excellent for fence line, or for use to cut in making posts. 6 to 8 ft. 75c each, 8 to 10 ft. \$1.00 ea.

FLOWERING CRABS

Bechtel's—Genuine double flowered crab. Grows to medium size. Perfectly hardy. When in bloom, it is covered with delicate pink rose like flowers, of delicious fragrance.



American Elm

PLANT SHADE TREES

Arnoldiana—Very popular variety. Semi-double and early flowering. Pink blooms, with splendid foliage and yellow fruit.

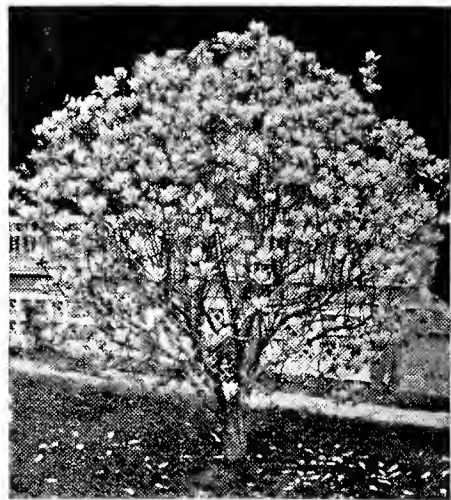
Floribunda—Small tree, often thorny. Rose red flowers, red fruit of small size.

Floribunda Purpurea—Similar to above, except for darker red flowers, purple leaves.

Parkmani—Dwarf growing. Long stemmed, semi-double flowers. Deep rose pink, covering its branches.

Scheideckeri—Free flowering variety. Branches upright and covered full length with double pink flowers. Orange fruits, excellent for jelly.

Spectabilis—Narrow foliage, glossy above, glabrous beneath. Coral red buds, opening to delicate rose colored flowers. Fruit yellow, small and round.



Magnolia

FLOWERING DOGWOOD

White Flowering (Cornus Florida) — Beautiful white flowers appearing in spring before leaves. Foliage of grayish green, turning to deep red in autumn. 2 to 3 ft. 45c ea., 3 to 4 ft. 75c ea., 4 to 5 ft. \$1.10 each.

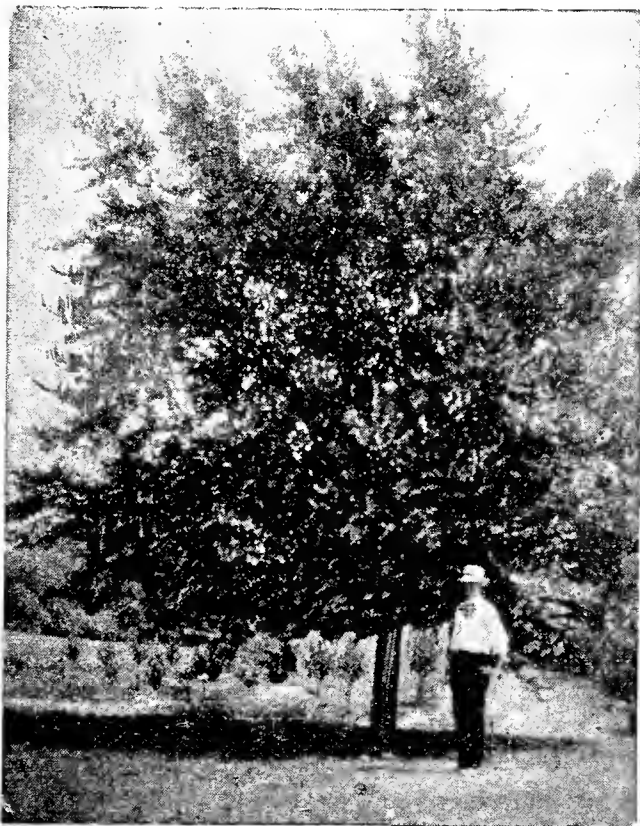
Red Flowering (Cornus Florida Rubra)—Slower growing than the white variety and more formally shaped. Handsome rose red flowers, making it an attractive lawn specimen. Most popular variety of flowering tree. 2 to 3 ft. \$1.00 ea., 3 to 4 ft. \$1.50 ea., 4 to 5 ft. \$2.75 each.

PRICES	Each	3
3 to 4 ft. ..	\$0.65	\$1.80
4 to 5 ft. ..	.85	2.40
5 to 6 ft. ..	1.10	3.00



Linden

JUDAS TREE (Cercis Canadensis, Red Bud)—A small growing tree of irregular form. Heart shaped leaves, covered with delicate pink blossoms early in spring before leaves appear. 4 to 5 ft. \$1.00 ea., 5 to 6 ft. \$1.25 each.



Chinese Elm

LINDEN, American — Outstanding rapid growing tree with large broad leaves and fragrant flowers. Extensively used as a lawn tree, and very valuable for park and street planting. Grows well in any good soil. 6 to 8 ft. \$1.00 each, 8 to 10 ft. \$1.50 ea.

LINDEN, European—Develops into beautiful round headed specimens with highly scented blooms. 6 to 8 ft. \$1.25 each, 8 to 10 ft. \$1.75 each.

LIQUIDAMBER (Sweet Gum)—Splendid tree of pyramidal growth. Leaves are lustrous dark green of star shape, turning to shades of crimson yellow, and orange in the fall. Picturesque in winter with cork winged red brown branches, covered with seed balls until spring. 4 to 5 ft. \$1.00 ea., 5 to 6 ft. \$1.50.

MAGNOLIA SOULANGEANA — One of the hardiest and finest flowering trees that grow. Produces cup shaped, white and rosy velvet blossoms, 3 to 5 inches across. Blooms before leaves appear. 2 to 3 ft. \$2.50 each, 3 to 4 ft. \$4.00 each.

MAPLE, Silver Leaved—One of the best for quick growing and good shade. Leaves of silvery green color, slightly cutleaf. Most popular of all maple. 6 to 8 ft. 50c each, 8 to 10 ft. 75c each.

ORDER EARLY WHILE STOCK IS COMPLETE

MAPLE, Norway—Large handsome tree with round head. Broad deep green shining foliage, very desirable for street, parks or lawn planting. 6 to 8 ft. \$1.00 ea., 6 for \$5.50; 8 to 10 ft. \$1.50 ea., 6 for \$8.00.

MAPLE, Scarlet or Red—The earliest blooming maple. Beautiful red flowers appearing in late winter. Red and scarlet colored leaves in fall. 6 to 8 ft. \$1.75 ea., 8 to 10 ft. \$2.50 each.

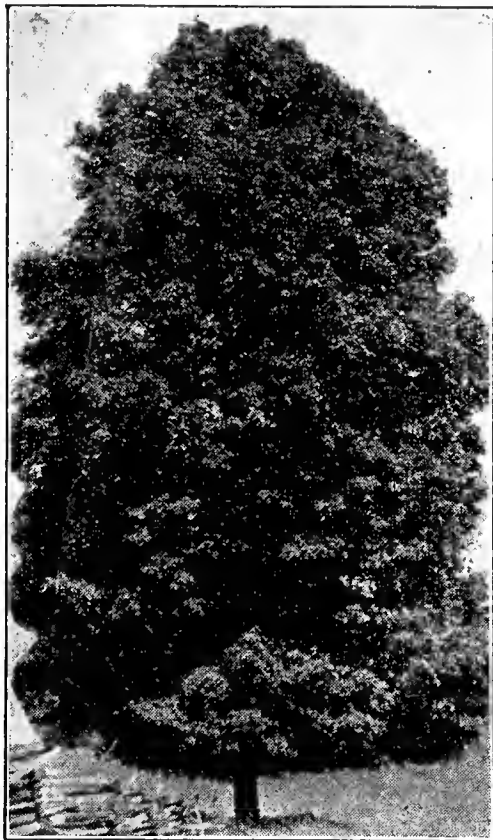
MAPLE SCHWEDLER'S—Produces beautiful leaves which are attractive in all seasons. Especially beautiful in the spring with their gleaming red and purple contrast, with the green of other trees. 6 to 8 ft. \$1.00 each, 8 to 10 ft. \$1.50.

MAPLE, Wier's Cut-Leaved—Very graceful silver maple, with remarkable cut leaves and drooping limbs. Of rapid growth and excellent for shade. 6 to 8 ft. 75c each, 8 to 10 ft. \$1.00 each.

MAPLE, Japanese Red-Leaved—Round, dwarf tree, seldom maturing over 10 foot in height. Tree massed with indented leaves of unrivaled brilliance and charm. Their early appearance is of brilliant blood red, turning to a bronzy purple red in the fall. Excellent for mixing with shrubs or foreground subjects. 2½ to 3 ft. \$2.25 each, 3 to 4 ft. \$3.75 each.

MAIDEN-HAIR TREE (Ginko Biloba)—A rare specimen tree. Fern-like foliage, different from any other tree. Slow growing, but of beautiful form. 3 to 4 ft. 85c each, 4 to 5 ft. \$1.00 each.

OAK, Pin—Almost pyramidal in habit, with darkly lustrous leaves, very sturdy and long lived. Leaves dark glossy green, turning to deep red and bronze in fall. 6 to 8 ft. \$1.25 each, 8 to 10 ft. \$1.75 each.



Maple

OAK, Red—Large tree, with unusually large leaf. Very quick growing. High colored leaves in fall. 6 to 8 ft. \$2.00 each, 8 to 10 ft. \$3.00 each.

POPLAR, Carolina—Vigorous native tree of spreading form and rapid growth, with large glossy leaves. Valuable for quick shade. 6 to 8 ft. 40c each, 8 to 10 ft. 50c each, 10 to 12 ft. 95c.

POPLAR, Bolleana—Useful in breaking the monotony of low round top trees. Leaves of glossy green, silvery beneath. Attains a height of 80 ft. 8 to 10 ft. \$1.00 each, 10 to 12 ft. \$1.50 each.

POPLAR, Lombardy—Remarkable for its picturesque tail, spike-like form. Useful in landscaping effects, for planting along drives or near a building. 6 to 8 ft. 40c each, 8 to 10 ft. 65c each.

SYCAMORE, European (Oriental Plane)—Erect growing, wide spreading tree. Bright green, 3 pointed leaves of large size. Extensively used for park and street planting as well as for shading the lawn. One of the best all around varieties. 6 to 8 ft. 75c ea., 8 to 10 ft. 90c ea., 10 to 12 ft., \$1.35 each.

TULIP TREE (Whitewood)—Of tall pyramidal growth, with broad glossy, fiddle-shaped leaves. Classed with the Magnolia, because of its beautiful, tulip-like flowers. Foliage bluish green, bright yellow in the fall. 4 to 5 ft. 75c each, 5 to 6 ft. \$1.00 ea.

FLOWERING THORNS

Crus-Galli (Cockspur)—Wide, horizontal branches, with a flat topped effect. Flowers, white, tinged with red. 3 to 4 ft. 85c each, 4 to 5 ft. \$1.00 each.

Oxycantha (English Hawthorn)—Single white flowers appearing when leaves are full grown, followed by scarlet fruits. 3 to 4 ft. 85c each, 4 to 5 ft. \$1.00.

Paul's Scarlet—Beautiful double flowers of deep crimson scarlet. An attractive small tree, producing showy fruits. 3 to 4 ft. \$1.00, 4 to 5 ft. \$1.35.



Lombardy Poplar

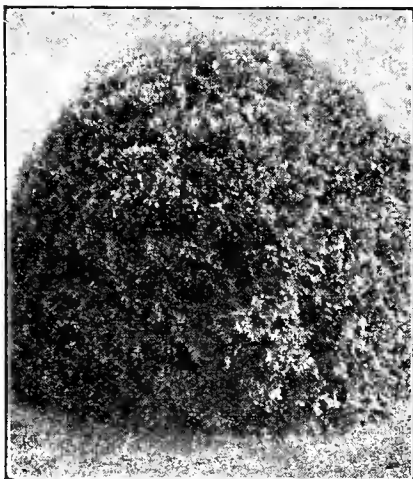
EVERY PLANT GUARANTEED

EVERGREENS YEAR 'ROUND

FOR BEAUTY

All of CALL'S NURSERIES Evergreens are carefully dug, to insure safe transplanting without loss. Nothing takes the place of these stately, ornamental trees, which will add grace and color throughout the year, with their beautiful green color in summer as well

as winter, when everything else is dormant and colorless. Many varieties can be beautifully arranged among shrub plantings, or as specimen subjects in the landscape.



Globe Arbor Vitae

ARBOR VITAE American—Pyramidal in shape, with soft green foliage in summer, changing to dark green and bronze during the winter months. Rapid grower, fine for screens. 3 to 4 ft. \$1.00 each, 3 for \$2.75; 4 to 5 ft. \$1.50 each, 3 for \$4.00.

ARBOR VITAE Douglas Golden—Very hardy, broad and bushy, with slender branches of bright green mixed with yellow. Very ornamental. 15 to 18 in. \$1.00 ea., 3 for \$2.90; 18 to 24 in. \$1.25 ea., 3 for \$3.30.

ARBOR VITAE Globe—Forms a dense, low, globe shaped tree. Handsome shade of green, very suitable for foundation planting, or planting in front of taller sorts. Requires very little trimming. 15 to 18 in. 75c ea., 3 for \$2.10; 18 to 24 in. 85c ea., 3 for \$2.35.

ARBOR VITAE Monumentalis—Very beautiful specimen. Foliage of bright green. One of the outstanding varieties of the Arbor Vitae family. 15 to 18 in. 75c ea., 18 to 24 in. \$1.00 each.

ARBOR VITAE Oriental—Comparatively low, broad, pyramidal tree. Color, yellowish green, similar to Hovey's, dulling to a bronzy green in winter. 2 to 3 ft. \$1.25 ea., 3 for \$3.15; 3 to 4 ft. \$1.75 ea., 3 for \$4.95.

ARBOR VITAE Orientalis Biota Aurea Nana—Golden Arbor Vitae—Very compact, slow growing, dwarf type. Especially adapted to foreground and edging. Color is of a rich yellow green, making a beautiful appearance. 18 to 24 in. \$1.50 ea., 24 to 30 in. \$2.00 ea., 30 to 36 in. \$2.45 each.

ARBOR VITAE Pyramidalis—Most compact and erect of the entire species. Foliage of deep green, retaining full color the year around. Grows close and compact in natural pyramidal form. 3 to 4 ft. \$1.25 ea., 4 to 5 ft. \$2.00 ea., 5 to 6 ft. \$2.50 ea.



American Arbor Vitae



Concolor Fir

EVERGREENS NOW SHIPPED VIA EXPRESS, AT LOW COST

**AS
LOW AS
10¢
each**

POSTPAID

more bushy. One of the hardiest and most reliable pillar type. Foliage dense, with drooping tips. 3 to 4 ft. \$1.75 ea., 4 to 5 ft. \$2.50.

JUNIPER Columnaris—Tall tree of pyramidal shape, with perpendicular sides, forming a broad, loose tree. Attains a height of 10 to 20 feet. Very desirable for informal effect. 18 to 24 in. 90c ea.; 2 to 3 ft. \$1.35 ea.

JUNIPER Irish—Erect, slender and formal in habit of growth. Foliage sage green, very compact, making a splendid column. Eventually 15 to 20 feet high. Much used in cemetery plantings. 18 to 24 in. 85c ea., 2 to 3 ft. \$1.00 ea., 3 to 4 ft. \$1.75 ea.

JUNIPER Pfitzer—One of the most striking of all Evergreens. Branches at 45 degree angle, making a fine, low growing filler. Foliage very dark green, thickly studded with silver beads. 15 to 18 in. spread \$1.00 ea., 18 to 24 in. spread \$1.25 ea., 2 to 3 ft. spread \$1.50 each.

JUNIPER Sabina—Useful for all low plantings, especially useful among Rock gardens, or as a filler in evergreen groups. Numerous short branches of trailing habit. Bright steel blue in color. 15 to 18 inch spread \$1.00 ea., 18 to 24 inch spread \$1.25 ea.

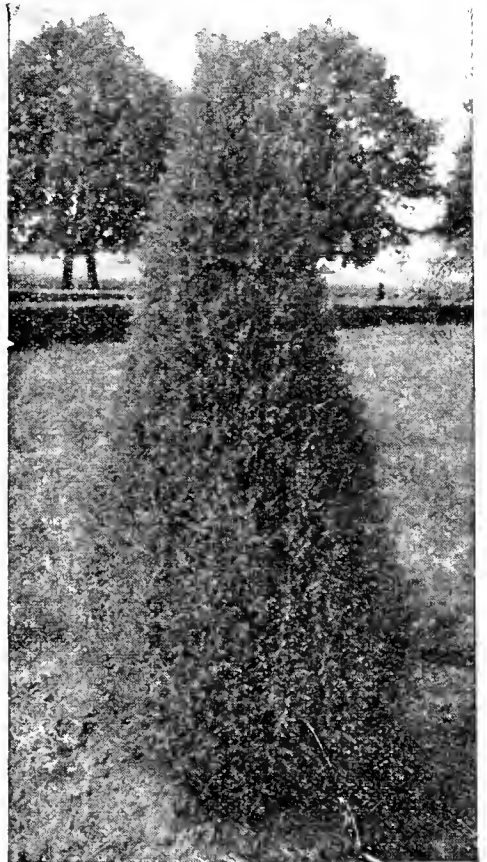
JUNIPER VIRGINIANA Red Cedar—Fine, dense foliage. Thickly columnar, varying in habit and color. Usually deep green foliage, makes a fine ornamental specimen. 2 to 2½ ft. 85c ea., 2½ to 3 ft. \$1.25 ea., 3 to 4 ft. \$1.75 ea., 4 to 5 ft. \$2.25 ea., 5 to 6 ft. \$2.75.

FIR Concolor—A picturesque Colorado species. Long leathery needles with glaucous tinge, turning to beautiful pale green with age. Branches horizontal, symmetrical form. 3 to 4 ft. \$3.00 ea., 4 to 5 ft. \$4.00 ea.

FIR Douglas—Resembles Blue Spruce, and is one of the finest of the Evergreen group. Leaves of light green above, glaucous beneath. Thickly conical in form. 2 to 3 ft. \$1.90 ea.

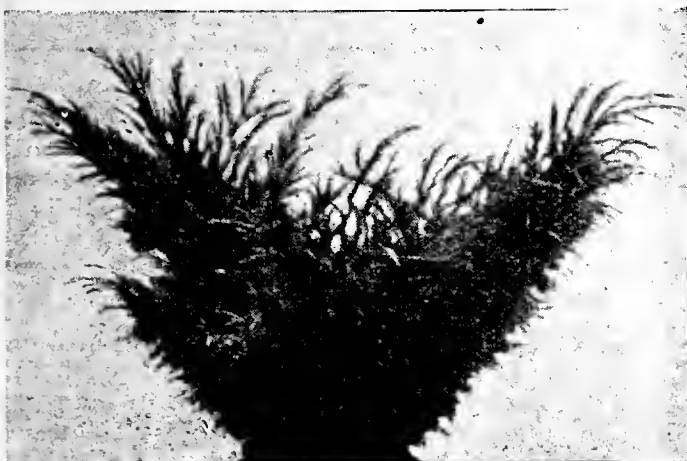
JUNIPER Cannarti—A new improved type, with yellowish, bronze foliage of feathery texture. 2 to 3 ft. \$2.00 ea., 3 to 4 ft. \$2.75 ea.

JUNIPER Swedish
—Similar to Irish in texture, but



Irish Juniper

JUNIPER VIRGINIANA GLAUCA — BLUE CEDAR—Compact conical habit, with beautiful glaucous blue foliage, makes it one of the choice varieties of junipers. Very contrasting in group plantings. 2 to 2½ ft. \$1.50 ea., 2½ to 3 ft. \$2.00 ea., 3 to 4 ft. \$2.75 ea., 4 to 5 ft. \$3.25 ea.



Pfitzer Juniper

**SMALL EVERGREEN
COLLECTION**

2 Colorado Blue Spruce All 10 for
2 Concolor Fir
3 Norway Spruce **\$1.00**
3 Hemlock

These are small Evergreens, all of which have been transplanted several times to insure a perfect root system. A real bargain for this type of evergreen, which is usually sold at \$1.00 or more. Plant these small trees and enjoy them while they are young.

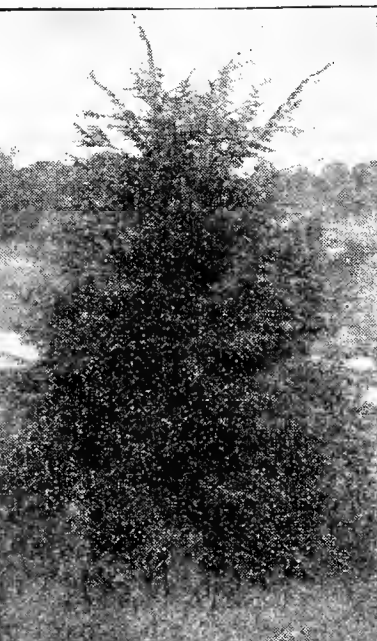
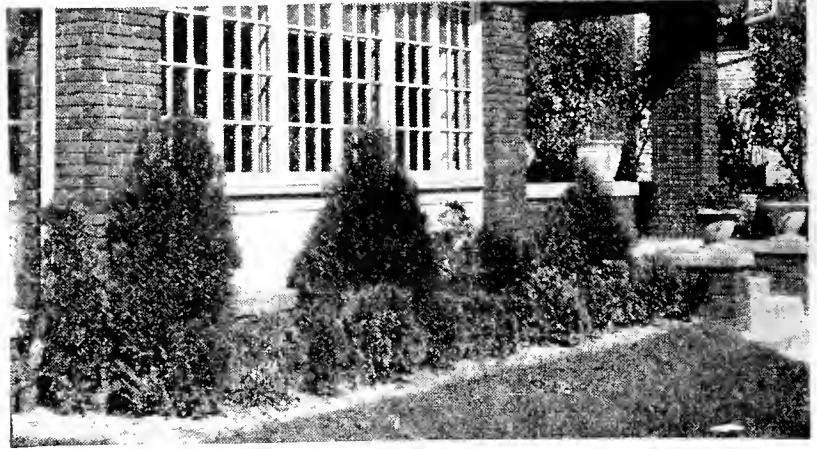
ORDER EARLY

JUNIPER SCHOTTI—Form of red cedar, yellowish bronze green foliage of feathery texture, with blue berries making it very attractive. 18 to 24 in. \$1.50 ea., 2 to 3 ft. \$2.25 ea.

PINE Austrian—Tree remarkably hardy and spreading; leaves long, stiff and dark green. Rapid growing, and evenly branched. New growth erect and silvery like candles. Will withstand wind, smoke, and gas. 2 to 3 ft. \$1.00 ea., 3 for \$2.75; 3 to 4 ft. \$1.75, 3 for \$4.75.

PINE Mugho—Of low dense spreading growth. Very dark green foliage, leaves short, stiff and formal, thickly distributed in tufts. Popular in foundation plantings. Dwarf growing. 12 to 15 in. 85c ea., 15 to 18 in. \$1.10 ea., 18 to 24 in. \$1.50 ea., 24 to 30 in. \$2.00 ea.

PINE Scotch—Similar to Austrian in habit of growth. Needles somewhat softer, and light green. Reddish brown bark, branches producing cones. Quick growing. Valuable for protective screens. 2 to 3 ft. \$1.00 ea., 3 to 4 ft. \$1.75 ea., 4 to 5 ft. \$2.50 ea., 5 to 6 ft. \$3.25 ea.



Hemlock

RETINOSPORA Plumosa Aurea (Golden Plume Cypress) — An exceedingly handsome acorn shaped evergreen, producing great beauty with its soft, plume like texture of golden yellow color. Very compact. 2 to 3 ft. \$1.50 ea., 3 to 4 ft. \$2.00 ea.

RETINOSPORA PLUMOSA (Plume Cypress) — Similar to above, except for foliage being light green in color. 18 to 24 in. \$1.00 ea., 2 to 3 ft. \$1.50 ea.

RETINOSPORA SQUARROSA VEITCHI (Gray Cypress)—Dense growth, soft beautiful silvery blue foliage, forming pyramidal type. 3 to 4 ft. \$2.75 ea., 4 to 5 ft. \$3.25 ea.

MODERN METHOD OF DIGGING EVERGREENS
(See page 31)



Colorado Blue Spruce

You can Plant Your Home to Evergreens at Low Cost with this

SPECIAL FOUNDATION PLANTING

2 Globe Arbor Vitae, 15 to 18 in.	\$7.15
2 Irish Juniper, 18 to 24 in.	
3 Pfitzer Juniper, 12 to 15 in.	
2 American Arbor Vitae, 3 ft.	
1 Blue Cedar, 2 ft.	

COMPLETE PLANTING

HEMLOCK (*Tsuga Canadensis*)—One of the finest evergreens, fully adapted to the shade, and with its lace-like foliage of dark lustrous green color, produces a beautiful contrast, when planted in groups of Evergreens of other varieties subject to hard needle like foliage. 18 to 24 inch \$1.00 ea., 2 to 3 ft. \$1.45 ea.

SPRUCE Black Hill—Growth upright and conical, retaining its branches well to the ground. Compact, slow growing tree of long life. Foliage of gray, bluish green. 18 to 24 in. \$1.00 ea., 2 to 3 ft. \$1.35 ea.

FREE ROSES; SEE ORDER BLANK

SPRUCE, Koster's Blue—The aristocrat of the Evergreen family. Uniform development, broadly pyramidal grace. Its color is of the truest and most beautiful blue to be found in any tree. 12 to 15 in. \$1.75 ea., 15 to 18 in. \$2.50 ea., 18 to 24 in. \$3.50 each.

SPRUCE, Norway (Excelsa)—A tall and grand tree of rapid growth. Widely used for wind breaks, and makes an excellent tree for the lawn. Exceedingly picturesque. Very popular in group planting. 1 to 1½ ft. 35c ea., 1½ to 2 ft. 50c ea., 2 to 3 ft. 75c ea., 3 to 4 ft. \$1.00 ea., 4 to 5 ft. \$1.25 ea., 5 to 6 ft. \$1.75 ea.

SPRUCE, White—One of the best conifers, especially adapted to cold climate. Compact, upright, long-lived, retaining its

branches to the ground. Aromatic, drought resisting. Varies in color from light green to glaucous blue. One of the best. 1½ to 2 ft. 60c ea., 2 to 3 ft. 85c ea., 3 to 4 ft. \$1.25 ea., 4 to 5 ft. \$1.75.

TAXUS CUSPIDATA (Japanese Yew)—Half upright, and irregular in habit. Waxy black green needles, which thickly cover the branches. 12 to 15 inch \$1.00 ea., 15 to 18 inch \$1.50 ea., 18 to 24 in. \$2.25 ea.

TAXUS PYRAMIDAL (Pyramidal Yew)—Taller growing, compact and somewhat narrow. Very outstanding because of its extremely heavy, dark green foliage. Truly a specimen in its own class. 18 to 24 inch \$1.90 ea., 2 to 3 ft. \$2.35 ea., 3 to 4 ft. \$3.00 each.



NOTICE

During the past year, many nurseries have introduced the new method of digging Evergreens, which has proven to be far superior and more satisfactory than the old-fashioned way of digging with a ball of earth. (Balled and Burlapped). All our evergreens are dug carefully to insure getting all the roots, which eliminates the necessity of chopping the greater share off, and leaving them in the ground, which is necessary the old way. After our trees are dug, the dirt is removed, and dipped in mud, after which they are wrapped in moss and burlap to prevent any drying out, and keep the air away. Heretofore it has been necessary to include a 40 to 80 pound ball of earth with each tree, making it very expensive to ship by express. Now, through our new method, it is possible to have evergreens shipped at a very nominal cost, besides insuring the growth of the tree.

COLORADO BLUE SPRUCE

A most beautiful evergreen for specimen planting. Growth upright and conical, yielding foliage of deep glaucous blue. Trees of this type have been scarce for many years, however, we have built up a supply of fine specimens, of which every tree is a selected shiner for its blue color. All trees that are not of this beautiful blue color have been classed below, under Colorado Green, assuring you of only the finest in our selected type. 1½ to 2 ft. \$1.75 ea., 2 to 2½ ft. \$2.00 ea., 2½ to 3 ft. \$3.00 ea., 3 to 4 ft. \$4.50 ea.

COLORADO GREEN SPRUCE

A beautiful, very hardy spruce. Regularly branched, very symmetrical, of pyramidal habit. Rigid, needle pointed leaves of silvery blue green. Identical to Colorado Blue, except for greenish colored foliage. 1½ to 2 ft. \$1.25 ea., 2 to 3 ft. \$1.75 ea., 3 to 4 ft. \$2.25 ea., 4 to 5 ft. \$3.00.

CALL'S

SPECIAL BARGAIN PAGE

Varieties you have always wanted, at remarkably low prices, that everyone can afford to pay.

TRIANGLE ROSE COLLECTION

6 Rose
Bushes

\$1⁸⁵

- 1 Briarcliff (pink)
- 1 Caledonia (pure white)
- 1 Padre (crimson-red)
- 1 Souv. de Cl. Pernet (yellow)
- 1 Climbing American Beauty (red)
- 1 Aviator Bleriot (orange-pink)

CALL'S EARLY BEARING ORCHARD

Fine, Standard, First Quality
Trees. Right From Our Stock

- 3 Yellow Transparent Apple
- 3 Cortland Apple
- 4 Elberta Peach
- 4 Lemon Free Peach
- 2 Brassington Cherry
- 2 Black Tartarian Cherry
- 2 Bartlett Pear

20 Assorted Fruit Trees **\$8⁵⁰**
\$10.50 Value

SHADE TREE COLLECTION

The best trees for your home

- 2 Catalpa Bungei (Umbrella Tree)
- 2 Silver Maple
- 1 Norway Maple
- 2 American Elm
- 1 Pin Oak
- 1 Flowering Crab
- 1 White Flowering Dogwood

Any tree in this offer is suitable
for planting as a specimen or in
groups.

10 Full Size Trees **\$7.50**

RAINBOW COLLECTION Hardy Shrubs

- 2 Double Red Althea
- 3 Cydonia Japonica (Jap. Quince)
- 5 Spirea Van Houttei
- 2 Hydrangea P. G.
- 2 Syringa, Mock Orange
- 1 Viburnum Plicatum (Jap. Snow-
ball)

A complete Landscape planting
of 15 beautiful, long blooming,
hardy shrubs.

15 plants **\$4.75**

PLEASE NOTE: Throughout this book we have listed various bargain offers. We wish you to bear in mind that these savings are for your benefit and not ours. The merchandise offered under these headings is of the same quality and the same size as any other items listed in this book. It is our aim to satisfy each customer, this can be done only by selling first quality plants.

PEONIES

The Rival of the Rose

When once planted, they become established and last for many years. Their deep green foliage is always an ornament in any style of planting. In addition to the foliage, in season, the peonies produce flowers that everyone really admires. The following list is of the better varieties, including many new introductions.



Peony *Officinalis*, Blood-red

L'INDISPENCIBLE—Red, Pink. 35c each, 3 for 75c.

LOUIS VAN HOUTTE—Semi-rose type, bright wine red, of dazzling effect. Fine shapely bloom. Late. 35c each, 3 for 75c.

MAGNIFICA—Pink. 50c each, 3 for \$1.00.

MARIE LEMOINE—Creamy white, gorgeous full flower blooms. Midseason. 35c each, 3 for 75c.

MONS JULES ELIE—Early, midseason. King of all peonies. Ideal glossy lilac pink, shaded to deep rose. 35c each, 3 for 75c.

OFFICINALIS PINK—Bright pink on edge of petals, turning to rich rose at the base. Large petals, full flowering. 35c ea., 3 for 75c.

OFFICINALIS RUBRA (Decoration Day Peony)—Rich deep crimson. Gorgeous blooms of large size at Decoration Day. 50c each, 3 for \$1.00.

QUEEN VICTORIA—White. 50c each, 3 for \$1.00.

RICHARD'S RUBRA SUPERBA—Rose type flower, very late. Of rich crimson color, considered best late red variety. 35c each, 3 for 75c.

SOLANGE—Unusually large flower, full and compact. Very delicate lilac white, tinged with amber and salmon. 75c each, 3 for \$2.00.

AMABILIS—Pink, white. 50c each, 3 for \$1.00.

DORCHESTER—Rose type, very late. Color, delicate hydrangea pink or salmon pink. Very rare. 35c each, 3 for 75c.

DUCHESS de NEMOURS—Large white, tinged with sulphur color. Very good for commercial purposes. Fall bloom. 35c each, 3 for 75c.

EDULIS SUPERBA—Very large, round flower, of white rosy pink, silvery reflex with crinkled petals. Early. 35c each, 3 for 75c.

FELIX CROUSSE—Midseason, large. Brilliant red. Strong vigorous plant of spreading habit. 35c each, 3 for 75c.

FESTIVA MAXIMA—Paper white, crimson markings in center. Very large, and full rose type. Early. 35c each, 3 for 75c.

FRAGRANS—Red, Silver. 75c each, 3 for \$2.00.

KARL ROSENFELD—Pure rich intense crimson, of half rose type. Valuable as cut flower or garden showing. 50c each, 3 for \$1.00.



Officinalis Pink

MIXED PEONY OFFER

We will send you our selection of 5 choice, large flowering peonies in five different varieties, including,

1 White, 2 Shades of Red, 2 Shades of Pink

An extra special offer for 3 to 5 eye blooming size divisions, 5, one of each **\$1.00**

Call's Fine Fruits



SOUTH HAVEN PEACH



BRASSINGTON CHERRY
(Our own Introduction)

COVER COLLECTION FRUIT TREES

South Haven Peach - Bartlett Pear
Brassington Cherry - Red
Delicious Apple

ONE OF EACH
EXPRESS ----- **\$2.00**



RED DELICIOUS APPLE



BARTLETT PEAR