

Historic, archived document

Do not assume content reflects current scientific knowledge, policies, or practices.

6270



Beautify with Trees and Shrubs

Franklin Forestry Company

89 State Street
Boston, Massachusetts



LIBRARY
RECEIVED
★ MAR 23 1936 ★
U. S. Department of Agriculture

Horticultural Crops & Diseases,
Bureau of Plant Industry, U.S.D.A.
Washington, D. C.
Miss Newman.

POSTMASTER:—
Return Postage Guaranteed.

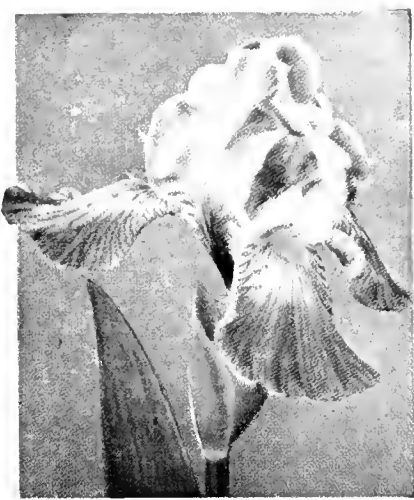




Madonna Lily



Delphinium



Iris



Tiger Lily

LILIES

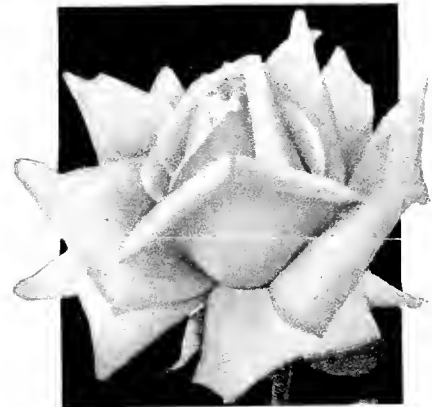
To grow lilies successfully they should have a well drained soil, be planted six to eight inches deep, with a little sand around each bulb to keep from rotting. They should be grown three or four years and then transplanted, preferably in September, and set at once to prevent drying out. It is well to plant them among evergreens or plants with heavy foliage, and cover the beds with leaves or like protection during the winter.

Our bulbs can be supplied in September or October, or early spring.

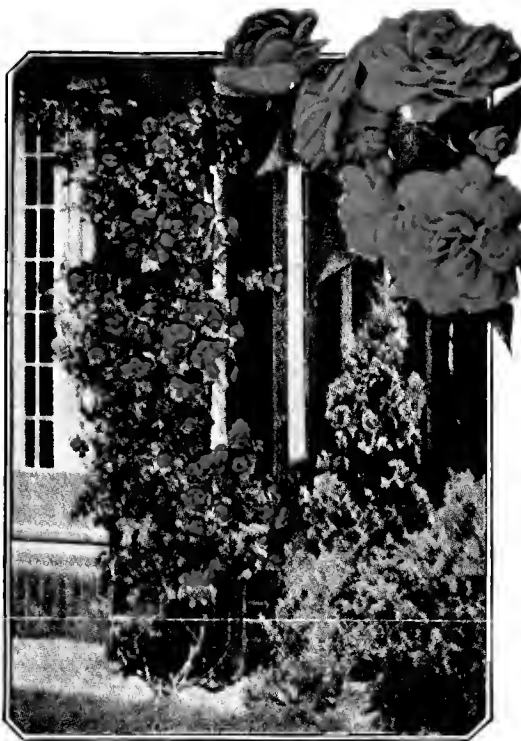
	Each
L. CANDIDUM—Madonna Lily—Large fragrant, pure white flowers—early July	\$.25
L. HANSONI—Reddish orange, three feet high. Flowers six to ten in cluster—June-July50
L. HENRYI—Orange yellow, four to five feet high. Flowers August, September60
L. SARGENTIAE—Milk white, yellow throat. Flowers July.....	1.00
L. SPECIOSUM RUBRUM—White, shaded with rose, medium height. Flowers August and September.....	.60
L. TENUIFOLIUM—Scarlet, small slender growing. Height eighteen inches. Flowers August and September.....	.25
L. TEN. GOLDEN GLEAM—Apricot shade, vigorous grower.....	.50
L. TIGRINUM—Tiger Lily—Blossoms July, August.....	.15
L. UMBRELLATUM—Red orange, tall, good grower. June, July....	.20
L. UMBRELLATUM YELLOW—Yellow.....	.50
L. WILLMOTTIAE—Orange shade, large number blooms on stem. Blossoms July	1.00
L. DAHURICUM—Reddish yellow, good size. Three to four feet. Blossoms June, July.....	.20



Red Radiance



Los Angeles



Climbing Roses



Souy. de Claudius Pernet

ROSES

Hardy Climbing Roses

75c Each

- DOROTHY PERKINS—Pink.
- EXCELSA—Scarlet crimson.
- PAUL'S SCARLET CLIMBER—Crimson.
- SILVER MOON—White.

Care in Planting

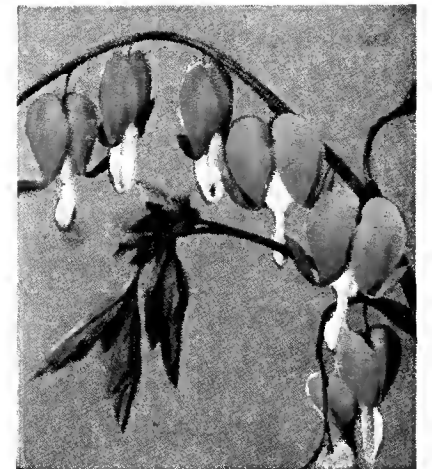
Roses require thorough cultivation of the soil and are gross feeders, necessitating rich ground or heavy fertilizing for best results. Plant all grafted joints at least three inches below ground level to prevent the strong root system of the rose stock from sending up shoots which will smother the budded top variety.

See other side for full list of Perennials.

Everblooming Roses (Hybrid Tea)

2-Year Stock
75c Each

- COLUMBIA—Bright pink.
- ETOILE DE FRANCE—Vivid crimson.
- FRAU KARL DRUSCHKI—White.
- GRUSS AN TEPLITZ—Crimson.
- J. L. MOCK—Crimson (large.)
- LOS ANGELES—Salmon pink—yellow shading.
- MME. BUTTERFLY—Light pink.
- PINK RADIANCE—Rose pink.
- RED RADIANCE—Rose red.
- SOUVENIR DE CLAUDIUS PERNET—Yellow.
- SUNBURST—Orange yellow.
- WHITE KILLARNEY—White.



Bleeding Heart



Gaillardia



Physostegia



Sweet William



Coreopsis



ANTHEMIS—Yellow, 2 ft., June-October.

AQUILEGIA (Columbine)—Pink, 2 ft., May-June.



Campanula Canterbury Bells

ECHINACEA PURPUREA (Purple Cone Flower)—Purple, 3 to 4 ft., July-August.

*ERYNGIUM AMETHYSTINUM—Blue, 2 to 3 ft., June-July.

*EUPHORBIA MYRSINITES—Yellow, 4 to 6 in., July.

GALLIARDIA (Blanket Flower)—Scarlet, yellow, 1 to 2 ft., May-November.

GYPSOPHILA (Bristol Fairy)—White, 2 to 3 ft., summer, 50c

HELENIUM

Riverton Gem—Yellow, 5 ft., August-September.

Riverton Beauty—Yellow, 5 ft., August-September.



Iris

JOHNNY JUMP-UP—Small, pansy-like flower, 8 in., May-November.

*LAVANDULA MUNSTEAD—Blue, 18 in., July-September.

LIATRIS Pycnostachya (Kansas Gay Feather)—Purple, 4 to 5 ft., July-September.

*LINUM (Flax)

Perenne—Blue, 18 in., May-August.

LYCHNIS (Campion)

*Rose Campion—Crimson, 2 ft., May-August.

Alpina—Pink.

*LYTHRUM SALICARIA (Loosestrife)

Roseum Superbum—Pink, 3 to 4 ft., June-September.



Lychalis

Hardy Perennials

*Suitable for Rock Gardens
25c Each
unless otherwise listed.

ACHILLEA (Yarrow)
Ptarmica—The Pearl—Pure white flowers, 2 ft., June-September.

*Tomentosa—Woolly Yarrow—Yellow, 1 to 2 ft., June-September.

AJUGA (Bugle)
*Genevensis—Geneva Bugle—Blue, 6 in., May-June.

ALTHEA (Hollyhock)
Single (Hollyhock)—Assorted, 5 ft., July-August.

Double (Hollyhock)—Assorted, 5 ft., July-August.

ANEMONE (Windflower)
*Huphensis—Pink, 1 ft., August-October.



Delphinium

CAMPANULA
*Persicifolia (Peach Leaved Bellflower)—Blue, 2 ft., May-June.

Persicifolia Alba—White, 2 ft., May-June.

*Turbinata—Violet blue, 6 ft., May-June.

COREOPSIS—Yellow, 2 ft., July-August.

DELPHINIUM (Larkspur)—Blue, 4 to 5 ft., June-October.

Hybrids, 3 ft., June-October.

DIANTHUS
*Deltoides (Maiden Pink)—Pink, 8 in., May-June.

*Furst Bismark—Pink, 1 ft., May-June.

DIGITALIS (Foxglove)
Giant Shirley—Pink, white, 5 to 6 ft., June-July.

ECHINACEA PURPUREA (Purple Cone Flower)—Purple, 3 to 4 ft., July-August.

*ERYNGIUM AMETHYSTINUM—Blue, 2 to 3 ft., June-July.

*EUPHORBIA MYRSINITES—Yellow, 4 to 6 in., July.

GALLIARDIA (Blanket Flower)—Scarlet, yellow, 1 to 2 ft., May-November.

GYPSOPHILA (Bristol Fairy)—White, 2 to 3 ft., summer, 50c

HELENIUM

Riverton Gem—Yellow, 5 ft., August-September.

Riverton Beauty—Yellow, 5 ft., August-September.

HEPATICA (Round Lobe)—Blue, 4 in., April.

*HEUCHERA SPLENDENS (Crimsonbells)—Crimson, 1 ft., July.

IBISUS—Mallow Marvels, 4 to 6 ft., August-September, 50c.

IRIS (German)—Small clumps, 25c. Large clumps, 50c.

IBERIS (Candytuft)
Sempervirens—White, 6 in., April-May.

*JASIONE PERENNIS—Blue, 5 in., July-August.

MONARDA (Bee Balm)—Red, 5 ft., June-August.

OENOTHERA—Yellow, 2 ft., June-July.

Plant Perennials
and Have a Constant Supply of Flowers from Spring Until Late Fall
Our Plants Are Selected Field-grown Stock.



Oenothera

TREE ACRES • Franklin Forestry Company

SHELBURNE FALLS, MASSACHUSETTS

RAYMOND F. BRUFFEE
Superintendent Tree Acres
Telephone: Shelburne Falls 260

RUSSELL S. LANGDELL, President
HARRY F. GOULD, Treasurer
Boston Office:
39 State Street



Plant Trees
They Will Add Beauty and Value to Your Home

Beautify With Shrubs

A Word About Tree Acres

THIS Nursery is located one mile east of Shelburne Falls, or about eight miles west of Greenfield, on the Mohawk Trail in sight of the Sweetheart Tea House. Stock will be dug fresh and may be taken with you, or we will ship by express, freight or truck, as preferred.

Stock not listed herein we will gladly procure on short notice, and shall be pleased to advise and quote prices on large or small orders. Many shrubs and plants can be safely moved during the summer, but April, May and first of June for spring planting, and last of August, September and October for fall planting, are the best months for this work.

The roots of evergreens will be balled and burlapped, if of sufficient size, while small transplants will be packed in damp moss. In either case they will stand shipment to any part of the country.

Nearby planting we can often do at a reasonable charge, but anyone can easily set stock out by following a few planting instructions, as printed on this page.

Conditions

Prices are net, F. O. B. cars, except as noted, packing added at cost. There will be no charge for packing when cash in full accompanies order. Twenty-five at the hundred rate; 250 at the 1,000 rate, unless noted. Lower prices on lots from 10,000 to 100,000 and up. All stock is listed subject to prior sale. We have larger sizes and various species other than those listed which we will gladly quote on application. In the case of all sizes, we reserve the right to decline any order for a quantity too small to make shipment profitable. The two white pines (strobos and flexilis) can be shipped anywhere in the New England states and New York.

Planting Instructions

On arrival the trees should be "heeled in" at once in a moist, shady place by digging a trench, putting the bunches of trees in it in a vertical position, then throwing dirt over the roots and firmly tamping down with the feet. If dry, the roots should be dipped in a puddle of mud and water before being heeled in. After heeling in, water occasionally. The planter must set the trees slightly deeper than they originally grow, and set them straight, plenty of fine dirt being placed about the roots and very firmly tamped down with the feet. The roots must not be allowed to become dry, even for a few minutes. In planting sod ground the sod should be taken off for about a foot square around the hole and not used again.

Ornamental Stock with Ball of Earth

Evergreens. The trees should be set a trifle lower than they stood in the nursery. Dig the hole a foot larger than the diameter of the ball. Place good loamy soil in the bottom, set tree at proper height, and fill in with good soil, packing firmly by tramping, or settling by filling hole with water. Burlap may be loosened at the top of ball and rolled back or cut off, but need not be entirely removed. Perennials are best planted with trowel or hand spade. Remove badly injured or dried leaves. Trim long straggling roots, or bruised or damaged part. Plant so that roots spread out naturally. Plants with crowns should be set just below the surface of the ground.

Display House

Our screened display-house is conveniently located at the roadside so that customers may examine stock either by day, or in the evening if more convenient, without walking over the grounds unless they wish. Ample parking space is provided, and balled and burlapped samples of the most popular varieties are always on display. Landscape Service. Provided your place is within a reasonable distance, we will gladly examine, advise, and make plans for beautifying your home, making no charge for this service if we carry out the work. Otherwise traveling expenses will be charged.

Supplies

PEAT MOSS	per bale	\$3.00
BIRD BATHS	\$5.50 to 17.00 each	
Sun Dials, Gazing Globes, Lawn Ornaments, Garden Furniture and Pottery		prices on request.

Lawn Specials

Bleeding Heart, large clumps	\$.50
Mayflowering Viburnum, 18 to 24 in.	1.25
American Mountain Ash, 2 to 3 ft.	1.00
European Mountain Ash, 8 ft.	2.00
Japanese Azalea, pink, 18 to 24 in.	3.00
Japanese Flowering Cherry, 4 ft.	2.50

Evergreen Shrubs

ADAMS NEEDLE (Yucca filamentosa)	Each \$.40
ANDROMEDA (Pieris floribunda) 15 to 18 in.	3.00
DAPHNE (D. eneorum) 6 to 9 in.	.75
9 to 12 in.	1.00
12 to 18 in.	2.00
MT. LAUREL (Kalmia latifolia) 12 to 15 in.	1.25
18 to 24 in.	2.50
JAPANESE SPURGE (Pachysandra terminalis) 2-year	.25
RHODODENDRON—Carolina 15 to 18 in.	3.00
RHODODENDRON—Catawbiense 18 to 24 in.	3.50
RHODODENDRON—Maximum 18 to 24 in.	3.00

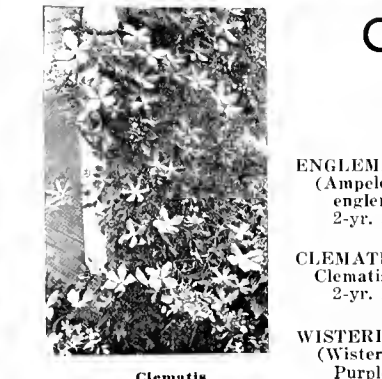
Collected Evergreens
MT. LAUREL (Kalmia latifolia)
Prices on request.



Rhododendron



Single Peony



Clematis

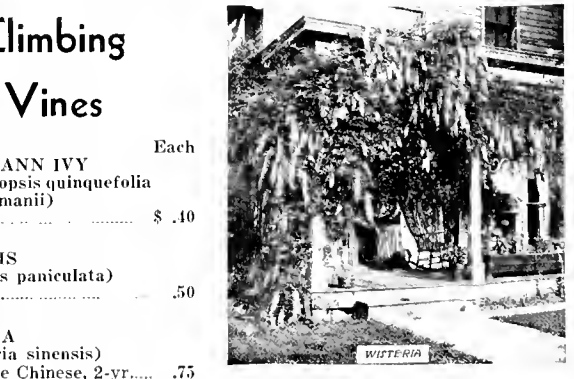
Peonies

Peonies may be planted almost any time of the year, but are usually planted in the fall, from September to November, and early in the spring before the new growth starts too much. The roots should be planted so that the buds are about two inches below the surface when the ground has settled but no blooms.

Adolph Rousseau—deep garnet	Each \$1.50
Albert Crousse—shell pink	1.50
Alsace Lorraine—white	1.50
Baroness Schroeder—white	1.50
Cherry Hill—deep garnet	2.50
Edulis Superba—deep rose pink	.50
Festiva maxima—ivory white	.75
Jules Clot—rose pink	1.00
Karl Rosenfeld—dark crimson	1.50
Reine Hortense—flesh pink	1.50
Whitely Major (Single)—blush white	1.50

Climbing Vines

ENGLEMANN IVY (Ampelopsis quinquefolia englemanni) 2-yr.	Each \$.40
CLEMATIS (Clematis paniculata) 2-yr.	.50
WISTERIA (Wisteria sinensis) Purple Chinese, 2-yr.	.75

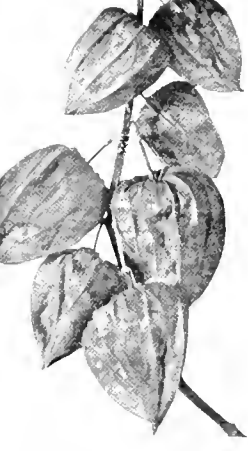


Wisteria

Hardy Perennials



*PACHYSANDRA TERMINALIS (Japanese Spurge)—White, 9 in., May-June.



Physalis Francheti

PHLOX
Camille Schneider—Scarlet, 2 to 3 ft.
Erechthites—Pink, 2 to 3 ft., June-October.
Karl Forester—Red, 2 to 3 ft., June-October.
Mrs. Jenkins—White, 2 to 3 ft., June-October.
Pantheon—White, 2 to 3 ft., June-October.
Rheinlander—Red, 2 to 3 ft.
Thor—Pink, 2 to 3 ft., June-October.
*Vivid—Red, 3 to 6 in., April-May.
*Subulata—Pink, 3 to 6 in., April-May.

PHYSALIS FRANCHETI (Chinese Lantern Plant)—Scarlet.
PHYSOSTEGIA (False Dragonhead).
Virginiana—Pink, 2 to 3 ft., June-July.
*Vivid—Pink.

*PLATYCODON (Balloon Flower)—Blue, 1 to 2 ft., June-July.
White, 1 to 2 ft., June-July.

POLEMONIUM (Jacob's Ladder)—Blue, 2 ft., June-July.
PYRETHRUM (Painted Daisy)
Single—Various, 2 ft., May-June.

*SANGUINARIA CANADENSIS (Bloodroot)—White, 6 in., April.

*SEBUM
S. Acre—Golden Moss—Yellow, 2 to 3 in., May-June
S. Forsterianum.
S. Glacium.
Hispanicum—Rose, blue foliage, 2 in.
*Kamtschaticum—Yellow, 6 in., July-August.
*Middendorffianum—Yellow.
*Nevieri—White, 3 to 5 in.
*Reflexum—Yellow, 8 to 10 in.
*Sarmatosum—Yellow, creeper, 2 in.
*Sexangulare—Yellow, 2 in.
*Sieboldi—Rose, 8 to 9 in., August-September.
*Sporium Coccineum—Rose, 3 to 4 in., June-July.
Spectabile Brilliant—Pink, 18 in., August-September.



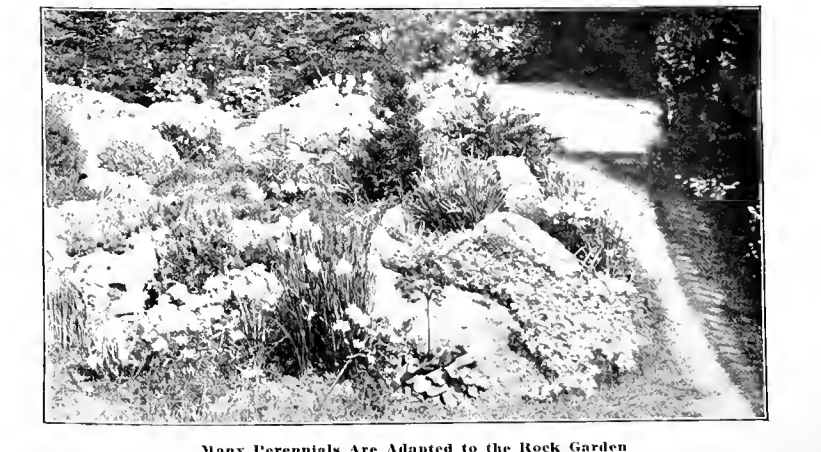
Pyrethrum

Prices of All Perennials, Unless Otherwise Stated, 25 Cents Each, 5 for \$1.00

Perennial Border

*SEMPERVIVUM (Houseleek) *Arachnoidum—Cotweb Houseleek, 50c. *Arenarium. *Cornutum. *Fimbriatum—Fringed Houseleek. *Soboliferum—Hen and Chickens. *Tectorum—Roof Houseleek.
SWEET WILLIAM—Various colors.
*THYMUS (Thyme) *Crimson—Crimson—creeper. *White—White, 2 in., June-July. *Woolly—Pink, 3 to 4 in., July-August.
*TUNICA SAXIFRAGA—White, pink, 6 in., June-September.
TROLLIUS (Orange Globe)—Orange, 18 in., May-June. 50c.
VERONICA *Incana (Woolly Speedwell)—Blue, 1 ft., July-August. *Prostrata—Blue, 4 in., May-June. *Repens—Blue, 1 in., April-May. *Rupestris Trehani—Blue, 2 in., April-May. *Subsessilis—Blue. *Spicata—Blue, 18 in., June-July.
VIOLA *Apricot—Orange yellow, 6 in., May-October. *Bosniaca—Rose pink, 4 in., May-October. *Bowles Black—Dark, 1 ft., May-October. *Cornuta—Yellow, 1 ft., May-October. *Jersey Gem—Violet blue, 1 ft., May-October. *White Perfection—White, 6 in., May-October.

Have a Rock Garden
Every home should have a rock garden. It is the most interesting of all flower gardens. The perennials marked with a star are especially suited to rock gardens.



Many Perennials Are Adapted to the Rock Garden



Madonna Lily



Delphinium



Iris



Tiger Lily

LILIES

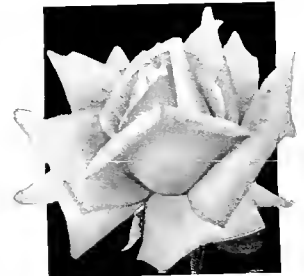
To grow lilies successfully they should have a well drained soil, be planted six to eight inches deep, with a little sand around each bulb to keep from rotting. They should be grown three or four years and then transplanted, preferably in September, and set at once to prevent drying out. It is well to plant them among evergreens or plants with heavy foliage, and cover the beds with leaves or like protection during the winter.

Our bulbs can be supplied in September or October, or early spring.

L. CANDIDUM—Madonna Lily—Large fragrant, pure white flowers—early July	Each \$ 25
L. HANSONI—Reddish orange, three feet high. Flowers six to ten in cluster—June-July50
L. HENRYI—Orange yellow, four to five feet high. Flowers August, September60
L. SARGENTIAE—Milk white, yellow throat. Flowers July	1.00
L. SPECIOSUM RUBRUM—White, shaded with rose, medium height. Flowers August and September60
L. TENUIFOLIUM—Scarlet, small slender growing. Height eighteen inches. Flowers August and September25
L. TEN. GOLDEN GLEAM—Apricot shade, vigorous grower50
L. TIGRINUM—Tiger Lily—Blooms July, August15
L. UMBRELLATUM—Red orange, tall, good grower. June, July20
L. UMBRELLATUM YELLOW—Yellow50
L. WILLMOTTIAE—Orange shade, large number blooms on stem. Blooms July	1.00
L. DAHURICUM—Reddish yellow, good size. Three to four feet. Blooms June, July20



Red Radiance



Los Angeles



Climbing Roses



Souv. de Claudius Pernet



Gaillardia



Physostegia



Sweet William



Coreopsis

ROSES

Hardy Climbing Roses

75c Each

- DOROTHY PERKINS—Pink.
- EXCELSA—Scarlet crimson.
- PAUL'S SCARLET CLIMBER—Crimson.
- SILVER MOON—White.

Care in Planting

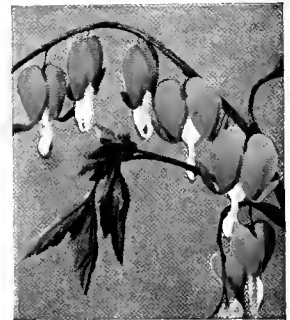
Roses require thorough cultivation of the soil and are gross feeders, necessitating rich ground or heavy fertilizing for best results. Plant all grafted joints at least three inches below ground level to prevent the strong root system of the rose stock from sending up shoots which will smother the budded top variety.

See other side for full list of Perennials.

Everblooming Roses (Hybrid Tea)

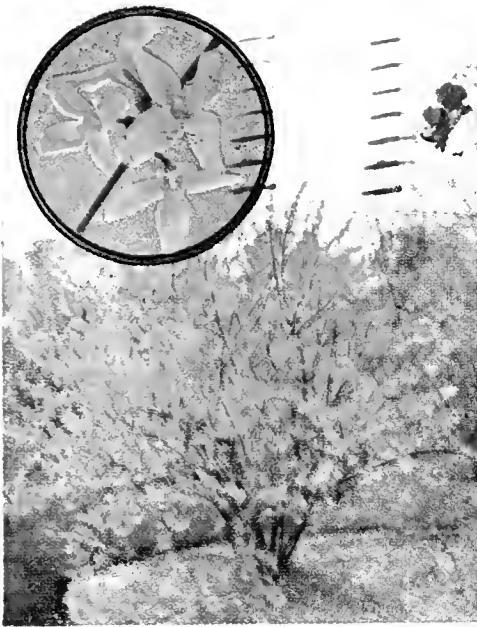
2-Year Stock
75c Each

- COLUMBIA—Bright pink.
- ETOILE DE FRANCE—Vivid crimson.
- FRAU KARL DRUSCHKI—White.
- GRUSS AN TEPLITZ—Crimson.
- J. L. MOCK—Crimson (large.)
- LOS ANGELES—Salmon pink—yellow shading.
- MME. BUTTERFLY—Light pink.
- PINK RADIANCE—Rose pink.
- RED RADIANCE—Rose red.
- SOUVENIR DE CLAUDIUS PERNET—Yellow.
- SUNBURST—Orange yellow.
- WHITE KILLARNEY—White.



Bleeding Heart

ORNAMENTAL Deciduous SHRUBS



Forsythia Intermedia

ALTHEA	Each
Hibiscus syriacus (Rose of Sharon).....	\$.50
AZALEA	
Azalea calendulacea (Flame Azalea).....	3.00
BARBERRY	
Berberis thunbergi (Japanese Barberry), 18 to 24 in.....	.25
Berberis thunbergi atropurpurea (Red Leaf Japanese Barberry), 12 to 15 in.....	.50
BEAUTY BUSH	
Kolwitzia amabilis, 2 to 3 ft.....	.60
DAPHNE	
Daphne mezereum, 12 to 18 in.....	1.00
EUONYMUS	
Euonymus alatus, 2 to 3 ft.....	.75
FORSYTHIA	
Forsythia intermedia (Golden Bells), 2 to 3 ft.....	.50
HYDRANGEA	
Hydrangea paniculata grandiflora (Pee Gee), 2 to 3 ft.....	.50
Hydrangea arborescens grandiflora (Hills of Snow), 2 to 3 ft....	.60
LIGUSTRUM	
Ligustrum ovalifolium (California Privet), 18 to 24 in.....	.15
Ligustrum amurense (Amur Privet), 18 to 24 in.....	.20
Ligustrum ibolium, 18 to 24 in.....	.20

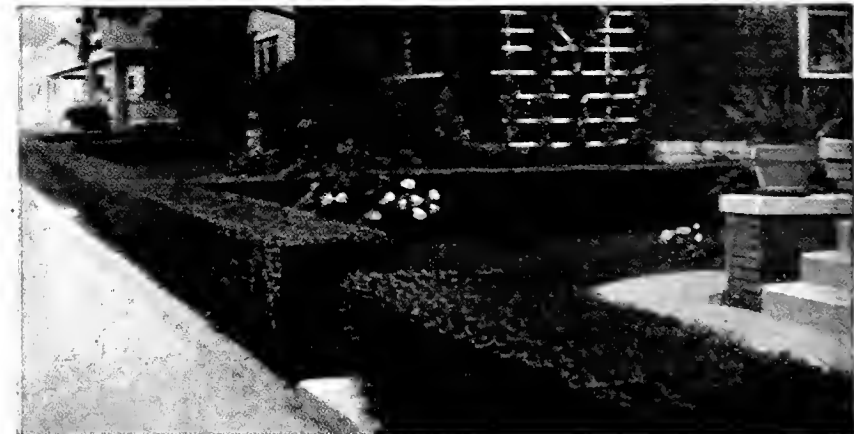


Spirea Van Houttei

LILAC	Each
Syringa vulgaris (Purple), 2 to 3 ft. \$.50
Syringa vulgaris alba (White), 2 to 3 ft.75
SNOWBERRY	
Symphoricarpos racemosus (Com- mon Snowberry), 2 to 3 ft.....	.50
SPIREA	
Spirea bumalda (Anthony Waterer), 12 to 15 in.....	.40
Spirea van houttei (Van Houtte), 3 to 4 ft.....	.60
SYRINGA	
Philadelphus coronarius (Mock Orange), 2 to 3 ft.....	.50
WEIGELIA	
Weigelia Eva Rathke, 18 to 24 in....	.50
Weigelia rosea, 2 to 3 ft.....	.50



Beauty Bush



Privet Hedge