

Historic, archived document

Do not assume content reflects current scientific knowledge, policies, or practices.

43

INDEXED

LIBRARY
RECEIVED
★ MAR 23 1936 ★
U. S. Department of Agriculture

"HOME
LANDSCAPES"

Spring 1936

HOLM & OLSON
St. Paul, Minnesota

HOW TO ORDER

Please Read Our Liberal Terms and Policies

When to Order. Make up your order and send it in as soon as this catalog reaches you. Early orders enable us to reserve for you the plants wanted and to give you the first selections. **Your order will be shipped just when the weather is most favorable** and at just the right time for planting.

How to Order. Send in your orders by whatever means you prefer and we assure you of prompt, careful attention. For your convenience a special addressed order blank is placed in this catalog, ready for your use. This can be mailed without an envelope and postage is prepaid by us.

Give Shipping Instructions. Tell us how you want shipments made; whether by Freight, Parcel Post (suitable only for small packages) or Express, and indicate any special routing. We recommend Express as most advantageous and desirable excepting on heavy, bulky shipments. When not instructed we will use our best judgment.

No Packing Charge. Catalogue prices are all based on stock F.O.B. St. Paul and no charge is made for packing. Deliveries are made free of charge to any St. Paul or Minneapolis address.

Terms. Cash with order is expected and money should be sent by check, post office order or bank draft. If credit is to be arranged please advise us in ample time and furnish the usual business references. All accounts are due by the 10th of the month following date of purchase.

We Offer A Very Liberal Guarantee

First. You are assured that you will receive the best quality of live, healthy plants, properly packed to reach you safely. **If any plant proves untrue to variety ordered it will be re-supplied without charge.**

Second. We agree to resupply any plants that may fail to become established the first season after planting at one-half of the purchase price. **Requests for any such replacements must reach us before October 1st of that season.**

Our very liberal replacement agreement is possible only because we have full confidence in the vitality and sturdiness of our plants and know they will succeed with normal care and attention.

Full Planting Instructions are sent with the acknowledgment of every order. Consult us freely for any further information you may need. We want the opportunity to help you and no expense will be spared to make every order we send you give entire satisfaction.

Your Correspondence Is Always Welcome

You Will Enjoy a Visit to Our Display Gardens

The lily pool, cascade and rock garden are new additions to our interesting plant and flower exhibits at the PARK NURSERIES at 1200 St. Clair Street (just beyond Lexington and St. Clair) in St. Paul. Beginning with a gorgeous display of spring flowers there follow attractions that will delight you throughout all the season.

You are cordially welcome at our Display Gardens and Nursery. Come often and bring your friends.



HOME LANDSCAPES

A catalog of the better varieties of choice, hardy plants that are adapted to the soils and climate of these North-Central States

Dedicated to the Gardening Season of 1936—

That its opportunities may bring to you a greater realization of satisfaction in the enjoyment of the grounds about your home.

As Nurserymen, Horticulturists and Landscape Architects for over 40 years our experience and assistance is at your service to help you in any manner of landscape and garden planting.

YOUR INQUIRIES ARE ALWAYS WELCOME

THE PARK NURSERIES, HOLM & OLSON, Inc.
20-22-24 W. 5th St. - - - - - SAINT PAUL

(Extension Landscape and Nursery Department at Rochester)

PRACTICAL LANDSCAPING ADVICE

We Will Help You — Select Your Plants and Arrange Them Properly

to make your yard more attractive and enjoyable. Ask us for landscape planting suggestions.

You are invited to consult with our Landscape Designers. We will offer suggestions and supply planting information so that you will get the most in beauty and attractiveness from your grounds. There is no need to make haphazard plantings or to trust to luck for results.

BEGIN WITH A CAREFUL PLANTING PLAN to suit your own requirements. With a well-designed, definite plan for the arrangement of your plantings you are sure of successful results at the minimum of expense. Our landscape designers can help you save both time and money.

Make Full Use of Our SPECIAL PLAN-BY-MAIL LANDSCAPE SERVICE

Your inquiries are invited.

The advice of our gardening experts is now readily available to all our out-of-town customers.

Send us a sketch and measurements of your grounds. We will outline ways of beautifying the property and help you make selections of the most suitable plants for your purpose.

For Twin-City Homes We Offer A DEPENDABLE LAWN and GARDEN SERVICE

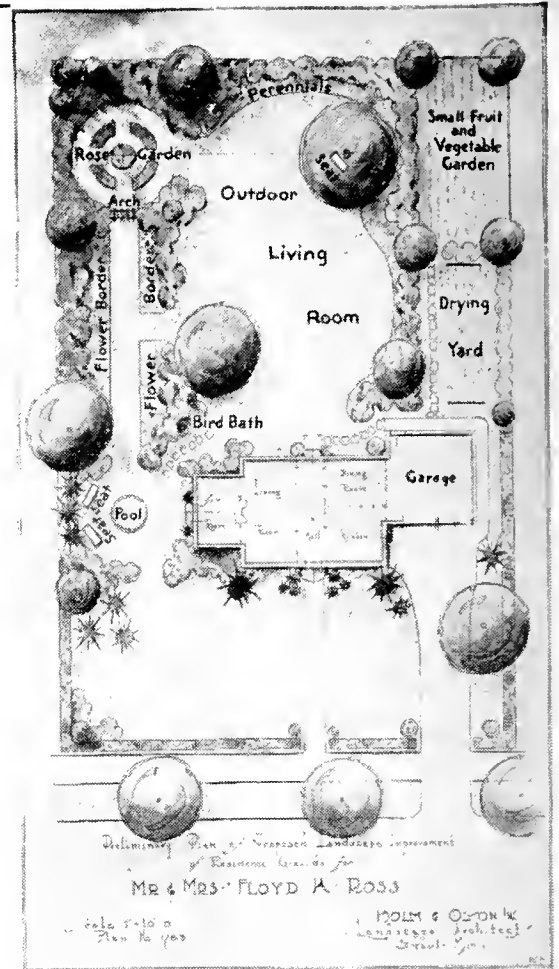
In the Twin Cities, Rochester and vicinity the services of our experienced gardeners are always available for all types of GARDEN CONSTRUCTION, LAWN MAKING, TREE REPAIR, SHRUB and TREE TRIMMING and GENERAL MAINTENANCE.

We have modern equipment and for your protection carry full liability insurance. **Careful Cost Estimates Given.**

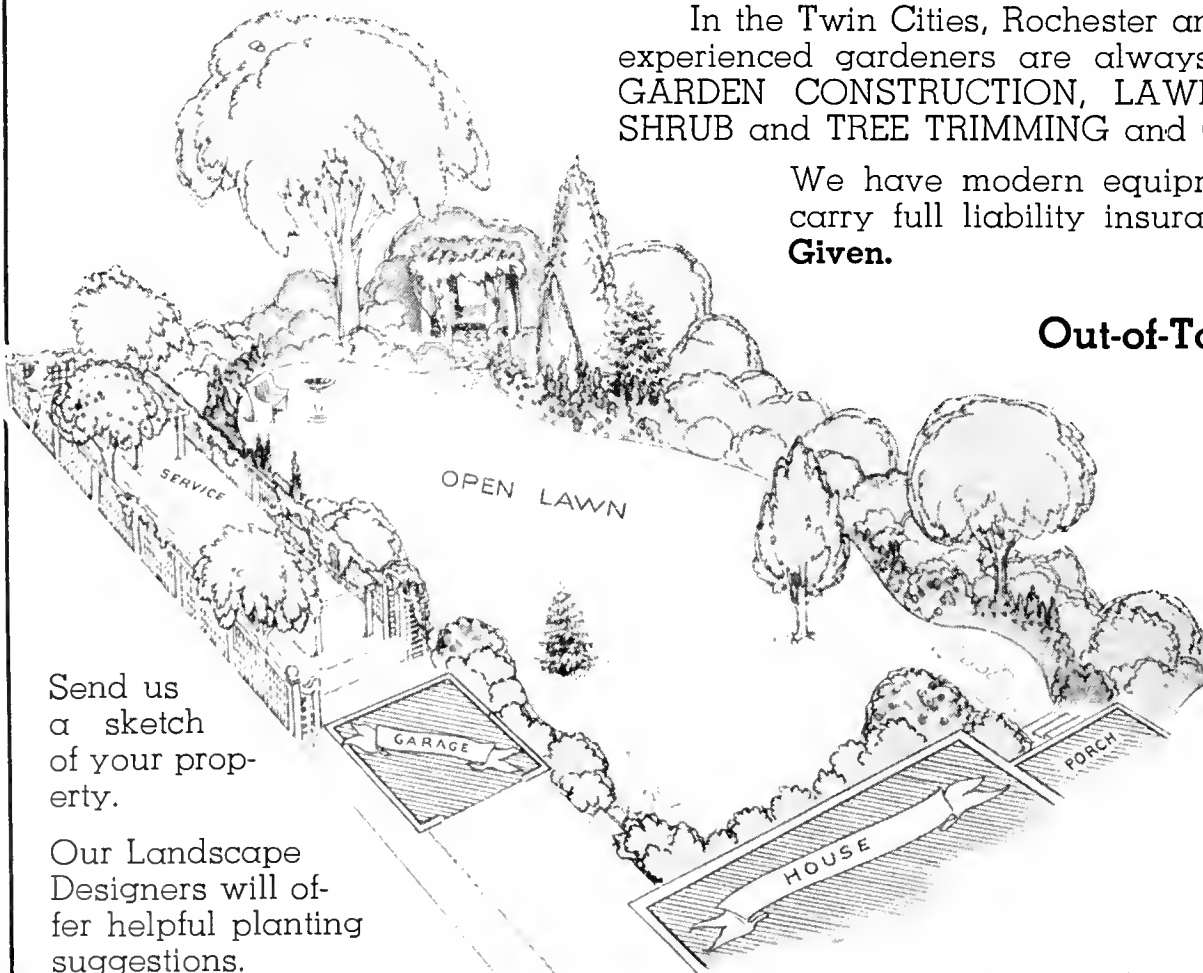
Out-of-Town Landscape Calls

For larger, out-of-town, public and private properties a personal call by our Landscape Architect may be to your advantage. These special trips can be arranged by appointment.

Our construction organization serves all the Northwest. Our skilled gardeners, tree-men and superintendents are available for all planting and gardening construction anywhere. Full information and terms given on request.



A landscape plan will show you just what and where to plant



Send us a sketch of your property.

Our Landscape Designers will offer helpful planting suggestions.

An informal plan of development

Well Planned and Well Planted Grounds

Are Always Admired

Throughout all parts of the Northwest there are today hundreds of pleasing home yards, parks and institutions whose attractive grounds are the result of our landscape planning and planting assistance.

Space permits naming here but a very few patrons, outside our own Twin Cities, that we have been privileged to serve:—

MINNESOTA

Alexandria,
Mr. P. J. Noonan
Austin,
Mr. B. F. Hormel
Benson,
Mr. A. L. Stone
Brainerd,
Dr. R. A. Beise
Cloquet,
Mr. Walter B. Driscoll
Crosby,
Mr. E. W. Hallett
Deer River,
Mr. Geo. Herried
Detroit Lakes,
Mr. Sidney T. Smith
Duluth,
Mr. H. C. Hornby
Mr. G. H. Crosby
Elk River,
Mr. L. D. Bailey
Mr. L. K. Houlton
Ely,
Dr. O. W. Parker
Forest Lake,
Mr. Grant Waldref
Grand Rapids,
Blandin Paper Co.
Henning,
Mr. C. L. Barker
Jeffers,
Mr. C. R. Duroe

Litchfield,
Mrs. E. W. Campbell
New Ulm,
Dr. O. J. Seifert
Pequot,
Fawcett's Breezy Pt.
Lodge
Princeton,
Mr. O. J. Odegaard
Rochester,
Mrs. J. H. Kahler
Dr. M. S. Henderson
Dr. A. W. Adson
St. Cloud,
Mrs. R. B. Brower
Dr. W. T. Wenner
Dr. J. J. Geltz
Winona,
Mrs. Paul Watkins



Newton,
Mr. L. F. Maytag
Sioux City,
Mrs. D. W. McAhren

IOWA

Clarion,
Mr. Hal E. Smith
Cresco,
Mrs. C. C. Burgess
Davenport,
Mrs. J. J. Reimers
Des Moines,
Mr. C. B. Stiver
Fort Dodge,
Mr. L. E. Armstrong
Iowa City,
State Univ. of Iowa

WISCONSIN

Antigo,
Mr. J. E. Collins
Ashland,
Ashland Co. Court
House
Boulder Jct.,
Mr. Harry Benham
Cable,
Mrs. Theo. Griggs
Eagle River,
Mr. E. W. Ellis

Eau Claire,
Mr. E. R. Hamilton
Mr. P. M. Beach
Dr. E. L. Mason
Mr. A. O. Ayres
Hudson,
Miss Essie Williams
LaCrosse,
Mr. F. W. Sisson
Neenah,
Mr. H. K. Babcock
Mr. J. N. Bergstrom
Rhineland,
Mrs. L. C. Donaldson
Stevens Point,
Mr. J. P. Jacobs
Wausau,
Mr. D. C. Everest
Wisconsin Rapids,
Mr. Isaac Witter
Dr. O. N. Mortensen

NORTH DAKOTA

Bismarck,
Mrs. G. D. Mann
Bowman,
Mr. C. J. Phelan
 Fargo,
Mr. G. W. Haggart
Mandan,
Dr. B. S. Nickerson
Oakes
Mr. J. F. Nichols

SOUTH DAKOTA

Aberdeen,
Mr. B. C. Lamont
Britton,
Mr. Howard Dakins
Centerville,
Mr. F. C. Berven
Chamberlain,
Mr. N. E. Fuller
Hot Springs,
Mr. F. O. Butler
Mobridge,
Mr. J. C. Webster
Watertown,
Mr. G. W. Hart

MONTANA

Butte,
Mr. F. M. Bell
Hamilton,
Mrs. M. F. Daly
Kalispel,
Dr. F. B. Ross

MICHIGAN

Gladstone,
Mrs. W. L. Marble
Iron River,
Mrs. L. E. Irvine
Ironwood,
Montreal Mining Co.
Marquette,
Mrs. Paul Carroll

You, too, will find our specialized Landscape Planning and Planting Service to be both economical and helpful. It is available to all residents of the Northwest. Your inquiries are invited.





The beauty of suitable Shrub and Evergreen plantings add permanently to the charm of this attractive home

Shrubs for Flower and Foliage

Sturdy Plants for Northern Gardens

Much of the beauty in the landscape planting of the home yard is supplied by shrubs. Their uses are many and their cost is nominal.

It is the softening grace of the dwarf and medium-height shrubs when planted about the house foundations that creates the transformation from bareness to beauty. The taller shrubs find their proper place in the border along the lot boundaries to give privacy or to screen out unattractive views.

A large area of our nursery and the skill of experienced gardeners is devoted to developing our shrubs into sturdy, handsome plants that will quickly bring attractiveness to your home grounds.

PLEASE NOTE: The figures following the shrub name show the approximate height of growth.

FLOWERING ALMOND

Double Flowering Almond (*Amygdalus rosea*). 4 to 5 ft. A symmetrical, upright shrub with a striking display of pink, rose-like flowers along the branches in early spring. One of the earliest shrubs to bloom. A white-flowering variety is also offered.

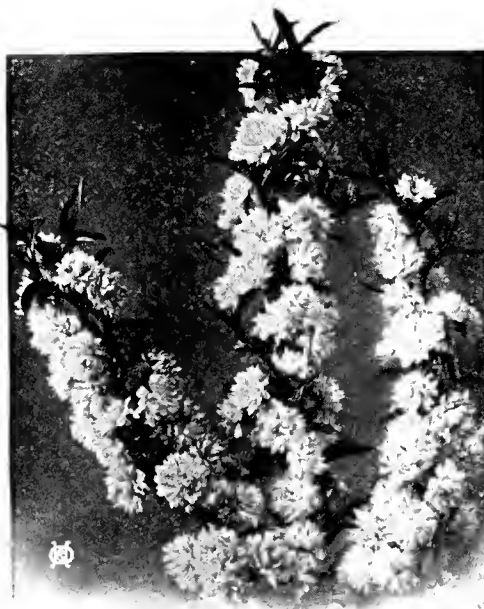
2 to 3 ft.....	\$0.70
3 to 4 ft.....	.90

BUCKTHORN

Buckthorn (*Rhamnus cathartica*). 8 to 10 ft. Very dependable dense-growing shrub with lustrous leaves and black berries. A twiggy growth that permits of trimming to any desired form or outline. (See page 17 for hedge prices and sizes.)

2 to 3 ft.....	\$0.30
3 to 4 ft.....	.50
4 to 5 ft.....	.75

CARAGANA. See Siberian Pea Tree, page 8.



The Flowering Almond is very colorful in early spring

BARBERRY

Japanese Barberry (*Berberis thunbergii*). 2½ ft. The most popular hardy dwarf shrub with low, spreading growth to form a dense bush. Red berries, brilliant fall foliage color. Grows most anywhere—in partial shade, sunny, moist or dry places.

12 to 18 in.....	\$0.25
18 to 24 in.....	.40
24 to 30 in.....	.50

THE NEW RED-LEAVED BARBERRY

Red-Leaved Barberry. 2½ ft. Similar in growth to the Japanese Barberry but has rich, bronze-red leaves that hold their red color all summer. A bright contrast to other shrubs. Plant in full sun for best leaf color.

12 to 18 in.....	\$0.45
18 to 24 in.....	.65

BRIDAL WREATH. See under Spiraea, page 8.

VISIT OUR DISPLAY GARDENS, ROCKERY AND POOL AT 1200 ST. CLAIR ST.



The unusual leaves of the Silver Dogwood

CORALBERRY

Coralberry (*Symphoricarpos vulgaris*). 3 to 4 ft. A medium height, graceful, native shrub that grows well in sun or shade. Red berries cluster the ends of the branches in late summer.

2 to 3 ft.-----\$0.50 3 to 4 ft.-----\$0.65

COTONEASTER

Cotoneaster acutifolia. QUINCE BERRY. 6 ft. A neat, clean shrub with dark, glossy green leaves. A dense-growing and highly ornamental bush all season with a striking, bright yellow fall coloration. (For hedges see page 17.)

18 to 24 in.-----\$0.30 2 to 3 ft.-----\$0.45
3 to 4 ft.-----\$0.65

CURRANTS—ORNAMENTAL

Mountain Currant (*Ribes alpinum*). 4 ft. Excellent, dense-growing, very hardy ornamental shrub. Stands shearing and will grow in shade. Probably the most generally useful of all the dwarf shrubs. (For hedges see page 17.)

12 to 18 in.-----\$0.40 18 to 24 in.-----\$0.60
24 to 30 in.-----\$0.80

Yellow-Flowering Currant (*Ribes aureum*). 6 ft. A substantial, spreading bush with large, yellow, fragrant flowers in spring. Stands shade. A very popular old-fashioned shrub.

2 to 3 ft. -----\$0.50
3 to 4 ft. -----\$0.75

SHRUBS FOR SHADE

A list of hardy varieties that will stand partial shade.

- Japanese Barberry
- Dogwood, in variety
- Currant, Yellow flowering
- Currant, Alpine
- Coralberry
- Snowberry
- Honeysuckle, in variety
- Hydrangea, Snowhill
- Elder, in variety
- Philadelphus, in variety
- Viburnum, in variety

Shrubs and lawns that are shaded are greatly improved by fertilizer. We recommend "LOMA," a plant food to increase growth and flowers—described on page 31.

DOGWOOD (Cornus)

Golden Dogwood (*Cornus siberica aurea*). 6 ft. Highly valued for its bright yellow branches in fall and winter and particularly attractive when planted near the red-barked variety. White flowers.

2 to 3 ft.-----\$0.50 3 to 4 ft.-----\$0.75

Red-Twigg'd Dogwood (*Cornus siberica*). 6 ft. A hardy, vigorous bush with bright coral-red branches which make this sturdy shrub attractive in all seasons. Strong and erect in growth.

2 to 3 ft.-----\$0.50 3 to 4 ft.-----\$0.75

Silver Dogwood (*Cornus elegantissima*). 6 ft. The green leaves are striped and margined with white. Red colored bark. An unusual plant making a bright spot of color in the shrub group. (See illustration.)

18 to 24 in.-----\$0.50 2 to 3 ft.-----\$0.75
3 to 4 ft.-----\$1.00

ELDERBERRY

Black-Fruited Elder (*Sambucus canadensis*). 6 ft. The old-fashioned favorite with large clusters of fragrant white flowers and edible black fruit. A rapid-growing, hardy shrub that stands partial shade.

2 to 3 ft.-----\$0.50 3 to 4 ft.-----\$0.80

Cut-Leaved Elder (*Sambucus nigra laciniata*). 6 ft. Lacy, fern-like leaves that make a pleasing contrast with other shrubs. The branches are spreading and gracefully drooping.

2 to 3 ft.-----\$0.50 3 to 4 ft.-----\$0.80

Golden Elder (*Sambucus aurea*). 7 ft. A handsome, wide-spreading shrub with bright yellow leaves all season. It shows its brightest color when planted in a sunny spot.

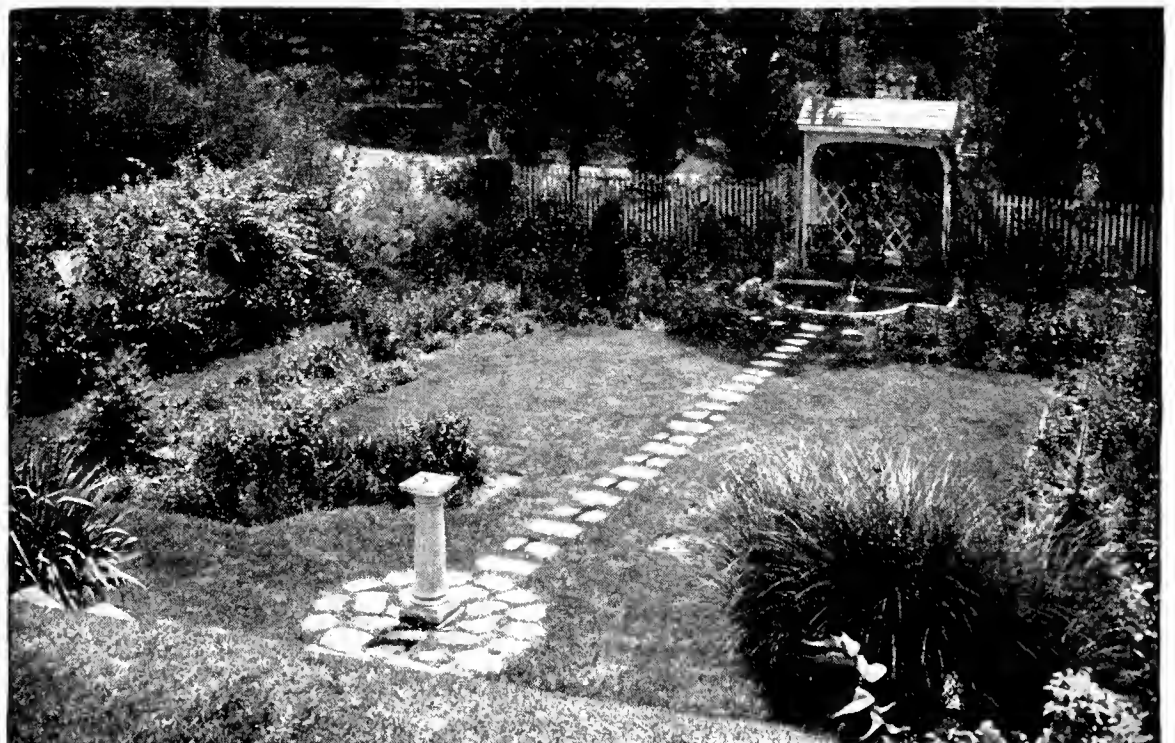
2 to 3 ft.-----\$0.50 3 to 4 ft.-----\$0.80

Red-Berried Elder (*Sambucus racemosa*). 7 ft. Big clusters of bright red berries in July. A large native shrub of spreading growth.

2 to 3 ft.-----\$0.60 3 to 4 ft.-----\$0.85
4 to 5 ft.-----\$1.00

THE WATER-LANCE

A new device for watering trees and shrubs. Fits on any hose. Saves water and gets the moisture directly to the roots. **Price \$1.50.** (Descriptive folder mailed on request.)



Skillful planting has made this home yard an inviting and delightful spot

FLOWERING SHRUBS—Continued

EUONYMUS (Strawberry Bush)

Euonymus alatus. WINGED STRAWBERRY BUSH. 6 to 8 ft. The bark on its horizontally-growing branches has a curious winged development. The leaves are clean and lustrous and have a brilliant fall color. Rose colored berries in fall.
 18 to 24 in.-----\$0.50 2 to 3 ft.-----\$0.80

Euonymus americana. STRAWBERRY BUSH. 8 ft. An admirable, hardy shrub with upright, slender, green branches; neat foliage and pink colored fruits. Bright fall foliage color.
 2 to 3 ft.-----\$0.60 3 to 4 ft.-----\$0.90
 4 to 5 ft.-----\$1.25

GOLDEN BELL (Forsythia)

FORSYTHIA, suspensa. GOLDEN BELL. 5 ft. Golden, bell-shaped flowers in spring. Needs winter protection in Minnesota.
 2 to 3 ft. ----- \$0.50

CRANBERRY, Highbush. See Viburnum, page 9.

HONEYSUCKLE

Pink Honeysuckle (*Lonicera tatarica rosea*). 8 ft. The popular pink to rose flowering Honeysuckle bush. Bright red berries follow the blossoms. Very hardy, rapid-growing shrub that thrives well in sun or partial shade.
 2 to 3 ft.-----\$0.50 3 to 4 ft.-----\$0.75
 4 to 5 ft.-----\$1.00

Morrow's Honeysuckle (*Lonicera Morrowi*). 5 to 6 ft. Compact yet spreading growth with gracefully curved branches. Cream-yellow flowers cover the stems in May followed by red berries in July.
 2 to 3 ft.-----\$0.50
 3 to 4 ft.----- .75

White Honeysuckle (*L. tatarica alba*). 8 ft. A hardy bush honeysuckle with white flowers. The general appearance and type of growth is similar to the Pink flowering variety.
 2 to 3 ft.-----\$0.50
 3 to 4 ft.----- .75

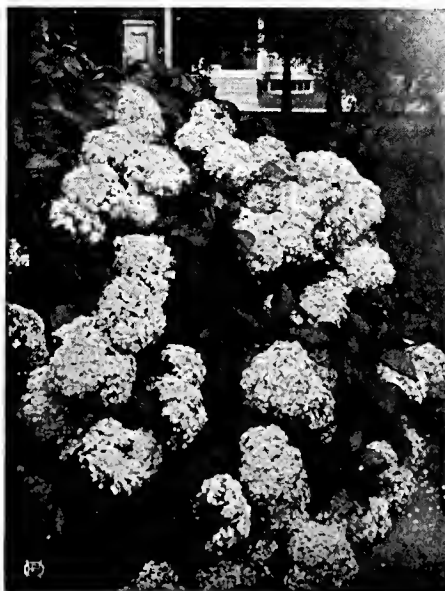
JUNEBERRY

Juneberry (*Amelanchier canadensis*). 15 ft. Good native shrub with white flowers early in spring and black fruit that attracts birds. A tall and desirable background shrub.
 2 to 3 ft.-----\$0.60
 3 to 4 ft.----- .75

HYDRANGEA

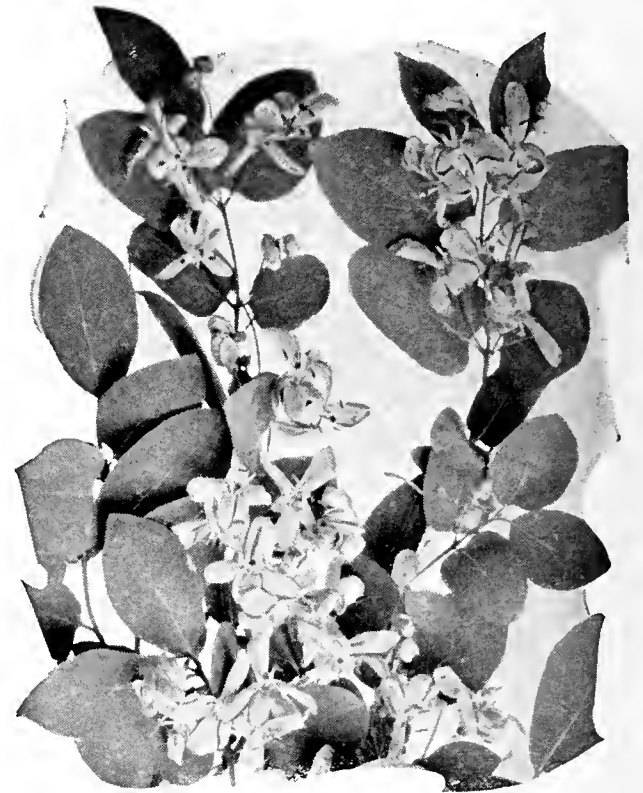
Hydrangea, Large Flowering (*H. paniculata grandiflora*). 4 ft. Magnificent, conical flowers of white that have a pink color in fall and are often cut for winter house decoration. The largest and most handsome flowers of all hardy shrubs.
 18 to 24 in.-----\$0.40
 2 to 3 ft.----- .55
 3 to 4 ft.----- .75

Tree Hydrangea. A single-stemmed, tree form of the large-flowering Hydrangea.
 3 to 4 ft.-----\$1.25



The Snowhill Hydrangea

VISIT OUR DISPLAY GARDENS, ROCKERY AND POOL AT 1200 ST. CLAIR ST.



The bush Honeysuckle gives an abundance of bright pink flowers

Hydrangea Snowhill (*H. arborescens grandiflora*). 3½ ft. Large, white snowball-like flowers from June to frost. A pleasing bush in every way with large leaves and spreading growth. Likes partial shade.
 18 to 24 in.-----\$0.40 2 to 3 ft.-----\$0.55
 3 to 4 ft.----- .75

MOCKORANGE (Syringa)

Double-Flowering (Virginal) Mockorange. 4 to 5 ft. Magnificent new variety with large, creamy-white and fragrant double flowers. Full bloom in spring followed by occasional flowers all season. Excellent foliage and a shrub that always attracts attention.
 2 to 3 ft.-----\$0.60
 3 to 4 ft.----- .80

Golden Mockorange (*Philadelphus aureus*). 3 ft. Bright golden-yellow leaves make this dwarf shrub very valuable to color shrub groups. Cheerful and attractive all through the summer.
 12 to 18 in.-----\$0.50
 18 to 24 in.----- .65
 24 to 30 in.----- .80

Lemoine's Mockorange (*Philadelphus Lemoinei*). 5 ft. A hardy, erect, fine-leaved shrub. Its slender branches bear an abundance of fragrant white flowers in June. Particularly desirable in house foundation plantings.
 18 to 24 in.-----\$0.40
 2 to 3 ft.----- .50
 3 to 4 ft.----- .75

Sweet Mockorange (*Philadelphus coronarius*). 8 ft. A popular, old-time favorite. Big, pure-white and delightfully fragrant flowers in June that give the plant its name. A splendid ornamental and hardy tall shrub.
 2 to 3 ft.-----\$0.50
 3 to 4 ft.----- .75
 4 to 5 ft.----- 1.00



The New Double-Flowering Mockorange SYRINGA (Philadelphus) VIRGINAL. (Page 6.)

Purple Lilac (*Syringa vulgaris*). 10 ft. The old-fashioned, fragrant lilac. A hardy and dependable shrub that everyone admires. Offered also in white-flowering variety.

2 to 3 ft.-----\$0.45 3 to 4 ft.-----\$0.65
4 to 5 ft.-----\$1.00

FLOWERING LOCUST

Locust, Pink Flowering or Rose Acacia (*Robinia hispida*). 5 ft. Always admired for its sprays of rose-colored flowers in clusters in June. Pea-like soft green foliage like the Locust tree.

2 to 3 ft.-----\$0.75 3 to 4 ft.-----\$1.00

NINEBARK (Physocarpus)

Dwarf Ninebark (*Physocarpus monogynus*). 3½ ft. A desirable addition to the list of hardy, dwarf shrubs. Native of Colorado. Makes a full bush of upright growth with small leaves. Bears white flowers in spring. Grows well in most any soil.

18 to 24 in.-----\$0.40 2 to 3 ft.-----\$0.60

Golden Ninebark (*Physocarpus aureus*). 6 ft. A full-branched bushy, golden-leaved shrub. Makes a pleasing color contrast in shrub groups.

2 to 3 ft.-----\$0.50 3 to 4 ft.-----\$0.75

Tall Ninebark (*Physocarpus opulifolius*). 7 ft. A vigorous, large-leaved shrub that is excellent for use as a screen or background planting. The white flowers of spring are followed by red seed pods.

2 to 3 ft.-----\$0.50 3 to 4 ft.-----\$0.75

FLOWERING PLUMS

Double-Flowering Plum (*Prunus triloba*). 5 ft. A great attraction in early Spring when the branches carry clusters of large, double, pink rose-like flowers. Similar to the Flowering Almond but a more desirable and hardier shrub.

2 to 3 ft.-----\$0.60 3 to 4 ft.-----\$0.75
4 to 5 ft.-----1.25

Purple-Leaf Plum (Newport). 10 ft. Has dark, purple-colored leaves all summer that make a striking color contrast in shrub plantings.

2 to 3 ft.-----\$0.60 3 to 4 ft.-----\$0.75
4 to 5 ft.-----1.25

NEW FRENCH LILACS

FRENCH HYBRID LILACS are modern improvements of the old-fashioned lilac. The flowers are gorgeous in coloring and much larger in size. The French Lilacs bloom when young and bear year after year a profusion of delightful blossoms.

The varieties that are listed are careful selections of the better free-blooming kinds of new French Lilacs.

- Alphonse Lavalley.** Large double flowers of blue violet.
- Belle de Nancy.** Double flowers of satiny-pink effect.
- Chas. Joly.** Double dark wine-colored flowers.
- Chas. X.** Single. Long trusses of large, reddish-purple flowers.
- Ludwig Spaeth.** Single. Long trusses of dark purplish red flowers.
- Marie Legraye.** Excellent single white. Plants bloom when young.
- Michael Buchner.** Double. Clear pale lilac.
- Madame Lemoine.** Double. Pure white flowers in profusion.
- President Grevy.** Double. Light blue. Individual flowers are very large.

Prices of new French Lilacs:

2 to 3 ft.-----\$0.70 3 to 4 ft.-----\$0.90
4 to 5 ft.—heavy plants -----1.50

Large full-grown specimens, \$2.50 to \$5.00

Late-Flowering Lilac (*Villosa*). 10 ft. Unusually ornamental in rich dark foliage with pinkish-lilac flowers in June. A choice Japanese variety that flowers two weeks later than the other types.

2 to 3 ft.-----\$0.60 3 to 4 ft.-----\$0.80
4 to 5 ft.-----1.00

Persian Lilac (*Syringa persica*). 7 ft. Has small leaves and open, graceful growth. Light purple flowers in May. Lacks the heavy, coarse appearance of the common lilac.

2 to 3 ft.-----\$0.60 3 to 4 ft.-----\$0.80
4 to 5 ft.-----1.00

Red Persian Lilac (*Rouen* or *Rothomagensis*). 7 ft. Produces a profusion of reddish-purple lilac flowers in May on a graceful, slender-branching plant.

2 to 3 ft.-----\$0.60 3 to 4 ft.-----\$0.80



Why not develop your yard so that it becomes your out-door living room? We can help you with plans and plants.

FLOWERING SHRUBS—Continued

NANKING CHERRY

Prunus Tomentosa. NANKING CHERRY. 6 ft. New hardy shrub, from China. Light-tinted flowers of spring are followed by globular red fruit that is relished by the birds and excellent for preserving.

3 to 4 ft.-----\$0.75 4 to 5 ft.-----\$1.00

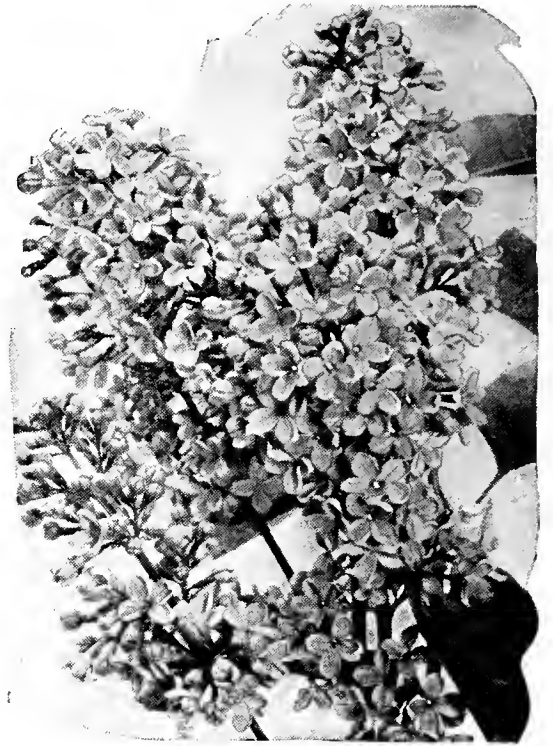
BUSH ROSES (other bush roses on page 30)

Rose, Red Leaved (*Rosa rubrifolia*). 3 ft. A hardy rose with red leaves all summer. Makes a beautiful contrast in the shrub groups. The blossoms are of a bright pink and are followed by red fruits. Upright in growth with slender, purple branches.

Strong Plants -----\$0.60 Extra size -----\$0.75

Rugosa Rose. 4 ft. A splendid shrub with the unusual attraction of large, pink flowers, handsome deep green foliage and bright fruit pods. Introduced from Japan and has proven extremely hardy and vigorous in growth.

Strong Plants -----\$0.60 Extra size -----\$0.75



The Lilacs bring both fragrance and beauty to the garden. (Page 7.)

The large-flowering garden roses, with many new varieties, are listed on pages 28 and 29.

RUSSIAN OLIVE (Oleaster)

Russian Olive (*Elaeagnus angustifolia*). 12 ft. A hardy tall shrub with willow-like leaves of rich silvery white. Suited for background plantings and very hardy. Yellow fruits follow the inconspicuous flowers of spring.

2 to 3 ft.-----\$0.50 3 to 4 ft.-----\$0.75
4 to 5 ft.-----\$1.00

SNOWBERRY

White Snowberry (*Symphoricarpos racemosus*). 4 ft. Slender, graceful shrub with large waxy white berries in September that remain far into the winter. Splendid for planting in front of larger shrubs and under trees.

2 to 3 ft.-----\$0.50 3 to 4 ft.-----\$0.65

SIBERIAN PEA

Siberian Pea Tree (*Caragana arborescens*). 8 ft. A tall shrub of upright growth with bright green pea-like leaves. Yellow flowers in May followed by ornamental seed pods. Stands poor soils and dry locations.

2 to 3 ft.-----\$0.45 3 to 4 ft.-----\$0.65
4 to 5 ft.-----\$1.00



Spiraea Snow-Garland (*Thunbergi*). Blooms before its leaves appear. (Page 9.)

SPIRAEAS

BRIDAL WREATH. S. Van Houttei. 5½ ft. Most admired of all shrubs. A graceful bush with arching branches that is a snowbank of flowers in late May. Grows well in most any situation.

18 to 24 in.-----\$0.25 2 to 3 ft.-----\$0.40
3 to 4 ft.-----.60 Specimen Shrubs----- 1.00

CALLOSA ROSEA SPIRAEA. 3 ft. A splendid medium height shrub. Rose colored flowers in flat-topped clusters all season.

18 to 24 in.-----\$0.40

CRIMSON SPIRAEA. S. Anthony Waterer. 2 ft. A free-flowering dwarf shrub of compact form. Rosy-crimson flowers in flat-top clusters all summer. A pleasing color combination planted with Snowhill Hydrangea.

12 to 18 in.-----\$0.40 18 to 24 in.-----\$0.60
24 to 30 in.-----\$0.75

GARLAND SPIRAEA. S. Arguta. 4 ft. A cloud of dainty white blossoms in May. Graceful and attractive all season with long light-green leaves.

2 to 3 ft.-----\$0.50 3 to 4 ft.-----\$0.75

GOLDEN SPIRAEA. Please see under NINEBARK, Golden; page 7.

JAPONICA SPIRAEA (*Callosa alba*). 2½ ft. A good dwarf shrub with white flowers all summer. A white-flowering companion plant to the Crimson Spiraea.

12 to 18 in.-----\$0.40 18 to 24 in.-----\$0.60



Pink Weigela blossoms. (Page 9.)

VISIT OUR DISPLAY GARDENS, ROCKERY AND POOL AT 1200 ST. CLAIR ST.



Spiraea Anthony Waterer with crimson flowers all summer. (Page 8.)

SPIRAEAS—Continued

- KOREAN SPIRAEA. S. Trichocarpa.** 5 ft. A new hardy shrub from China. Larger flowers and later blooming season than Bridal Wreath. Handsome glossy-green leaves.
2 to 3 ft.-----\$0.75
- PINK SUMMER SPIRAEA. S. Billardi.** 5 ft. Spikes of pink flowers at the end of the stems in July and August.
2 to 3 ft.-----\$0.50 3 to 4 ft.-----\$0.75
- PLUME SPIRAEA. S. Sorbifolia.** 4 ft. Leaves resemble a Mountain Ash. Flowers are in plummy spikes of white in July.
2 to 3 ft.-----\$0.50 3 to 4 ft.-----\$0.75
- NINEBARK. S. Opulifolia.** Please see NINEBARK, page 7.
- SNOW GARLAND. S. Thunbergi.** 3 ft. Light, feathery leaves on slender branches that are mass of white blossoms in early spring. A refined appearance all summer.
18 to 24 in.-----\$0.40 2 to 3 ft.-----\$0.60

SUMAC (Rhus)

- Fragrant Sumac (Rhus aromatica).** 3 ft. Excellent, medium-height hardy shrub. Three-parted, fragrant leaves and bright autumn color. Stands shade.
18 to 24 in.-----\$0.40
- Tall Fern-Leaved Sumac (Rhus typhina laciniata).** 9 ft. Has fronds of delicate, lacy leaves that turn crimson in fall. A hardy, tall shrub to make a pleasing foliage variation in shrub groups.
2 to 3 ft.-----\$0.50 3 to 4 ft.-----\$0.75

TAMARIX

Tamarix Pentandra. SUMMER TAMARIX. 7 ft. A striking plant with feathery leaves and open clusters of pink flowers at the end of the branches in June and July. Useful in bouquets. The foliage is unlike any other shrub.
2 to 3 ft.-----\$0.60 3 to 4 ft.-----\$0.80

THORN APPLE

Thorn Apple, Red Haw (Crataegus). 10 to 12 ft. A native white-flowering Hawthorn. Red fruits favored by the birds. A splendid specimen or background shrub.
3 to 4 ft.-----\$1.00 4 to 5 ft.-----\$1.50

WEIGELA

(Weigelas need favorable and protected positions.)

- Eva Rathke Weigela.** 4 ft. Well covered with crimson trumpet-shaped flowers in July. Very free blooming.
18 to 24 in.-----\$0.75 2 to 3 ft.-----\$0.85
- Weigela Rosea.** 5 ft. Well rounded bush that has a profusion of bright pink bell-shaped flowers in late June.
18 to 24 in.-----\$0.70 2 to 3 ft.-----\$0.80

VIBURNUMS (Snowball)

- The Viburnums are very hardy, tall and full-shaped bushes. Very ornamental in foliage, flower and fruit.
- Arrow-Wood (Viburnum dentatum).** 8 ft. An upright bush with glossy green leaves; creamy-white flowers and black berries. A handsome tall shrub.
2 to 3 ft.-----\$0.60 3 to 4 ft.-----\$0.75
- Highbush Cranberry (Viburnum opulus).** 8 ft. Named for its big clusters of edible red berries that follow the flat-topped white flowers. A full, handsome shrub with brilliant fall foliage color.
2 to 3 ft.-----\$0.60 3 to 4 ft.-----\$0.75
- Snowball (Viburnum opulus sterile).** 8 ft. The popular, familiar "snowball" bush with large white flowers.
2 to 3 ft.-----\$0.60 3 to 4 ft.-----\$0.75
- Wayfaring-Tree (Viburnum lantana).** 9 ft. Unusual, leathery, dark green, wrinkled leaves. Red berries that ripen to black follow the white flowers. An excellent, tall, full, border shrub.
2 to 3 ft.-----\$0.60 3 to 4 ft.-----\$0.75

OUR PRIZE-WINNING MODEL—MINIATURE HOME GROUNDS

Awarded First Prize, Minnesota State Fair—1935. Designed and Built by Our Landscape Department.

EXCERPT FROM EDITORIAL—Oct. 1, 1935

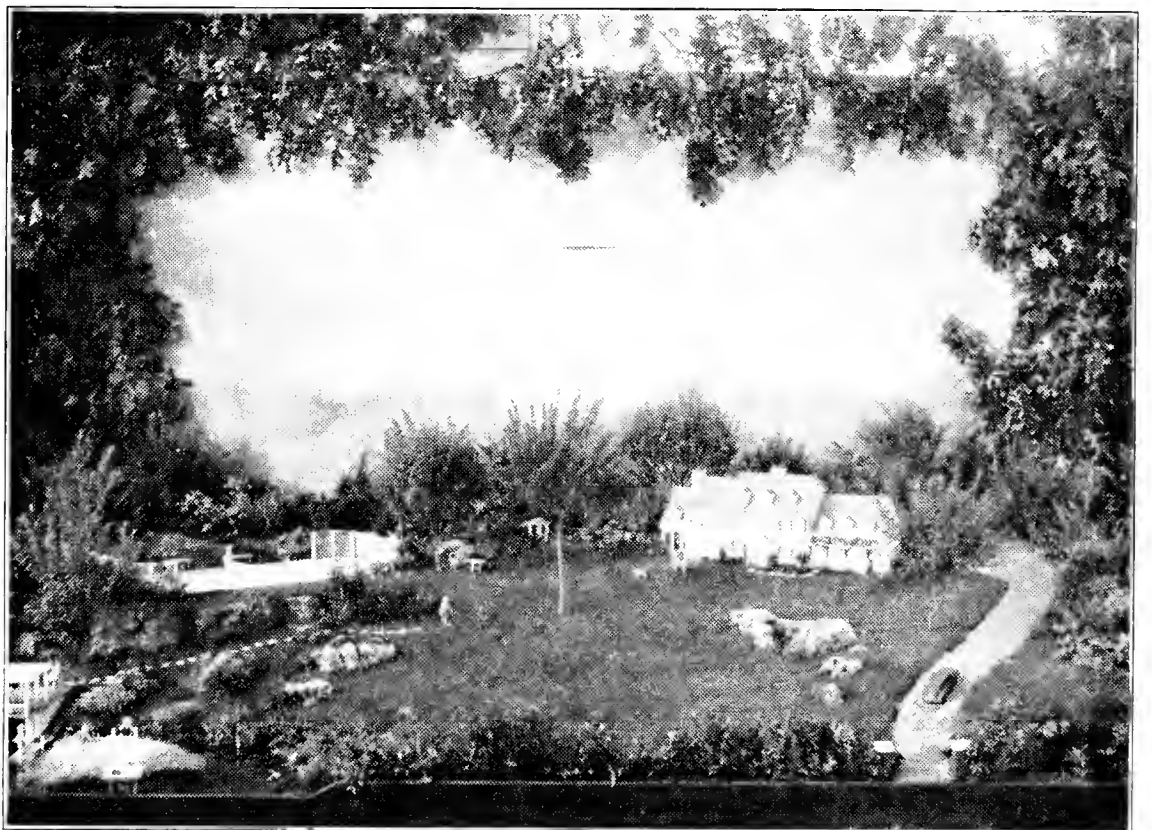
"THE AMERICAN NURSERYMAN"

"This model, awarded first prize, was made to a scale of one inch to a foot on a total exhibit area of 8x10 feet.

Landscape features of unusual interest were developed. The ground sloped to a lake at the lower left-hand corner with a boat house, diving board and live fish. Advantage was taken of the slopes to show rock outcrops which were planted with rock garden effect.

On the level area surrounding the house a flower garden with summer-house, a service area and a clothes yard and garage were featured.

All plantings, which were selected carefully for scale, were of growing material while miniature figures both of animals and humans enlivened the scene."



Modernize Your Plantings with Evergreens

EVERGREENS are the aristocrats of the plant world. They give dignity and charm to the home grounds.

Some years ago Evergreens were used but sparingly and one seldom saw them except as an occasional group on the lawn of some larger property.

Today the striking attractiveness that is so evident in the surroundings of the newly-landscaped homes is largely the result of the generous use of evergreens in the planting. The present moderate cost and the compelling beauty of the evergreens gives them this deserving popularity.

Fortunate we are indeed to have available many new evergreen varieties that were unknown in the past. By a wise selection and arrangement of these modern evergreen forms, a fresh interest and beauty can be given to older plantings and an unusual attractiveness to new ones.

Whether your yard plantings are now established or still to be placed you have equal opportunity to use evergreens to heighten the attractiveness of your home. We will be happy to help you make suitable selections.

The modern gardening mode favors evergreens.



A house planting in the modern mode—with Red Cedar, Arborvitae, Savin Juniper and Mugho Pines.

In foundation plantings the dwarf types are used directly around the building with taller sorts at the house corners and by the doorway. For lot boundaries and screen plantings and for lawn specimens the larger-growing kinds are adapted.

For the rockery, the flower garden, the cemetery lot and in fact wherever the charm, dignity and color of evergreen plants is desirable you will find types that are well suited for the purpose.

A view of the Park Nursery Evergreen Block

—Note the rows of shapely, full-branched trees. The inserts show the careful way in which the solid root balls are dug and wrapped for shipment.



VISIT OUR DISPLAY GARDENS, ROCKERY AND POOL AT 1200 ST. CLAIR ST.

Cheerful Evergreens

For All-Year-Around Beauty

EVERGREENS, in summer and winter alike, bring to the home grounds the freshness of the woods and lakes. They are a predominant part of the natural beauty of these northern states, native to our soils and climate and so are particularly well suited for use in the landscape plantings about our homes.

At the Park Nurseries the Evergreens are given particular attention to develop their full beauty of symmetrical growth. They are dug with solid root balls so that they can be moved without loss of vitality. Full planting directions are always given to assure you the best results.

Seldom does one realize how much growing-time can be saved by planting trees of substantial size so that finished results can be realized that much sooner. WE THEREFORE GIVE THE AGE AS WELL AS THE SIZE OF THE OLDER TREES TOGETHER WITH THE PRICE.

NOTE: The figures following the name show the approximate height at maturity.

SPECIAL BOOKLET—"How to Landscape Your Grounds with Evergreens." Describes the various types of evergreens with suggestions as to planting arrangements. Sent without charge on request.



American Arborvitae (Page 11)

ARBORVITAE—Thuya

American Arborvitae (*Thuya occidentalis*). 20 ft. A native evergreen with soft, lacy, fan-shaped foliage. The tree is bushy at the bottom and tapers toward the top. Stands trimming well.

3 to 4 ft., 10 yr.-----\$4.00	4 to 5 ft., 11 yr.-----\$ 5.50
5 to 6 ft., 12 yr.----- 8.00	6 to 7 ft., 13 yr.----- 11.00
7 to 8 ft., 14 yr.-----	14.00

Globe Arborvitae (*Thuya occidentalis globosa*). 4 ft. A dwarf, compact little evergreen that grows naturally into a ball-like form. Well suited for borders, foundation plantings, tubs and urns.

12 to 18 in. spread, 10 yr.-----\$2.50
18 to 24 in. spread, 11 yr.----- 4.00

Pyramidal Arborvitae (*Thuya occidentalis pyramidalis*). 18 ft. An attractive, solid pyramid of soft green that retains its outline without shearing.

18 to 24 in., 7 yr.-----\$2.00	2 to 2½ ft., 9 yr. ----- \$ 2.50
2½ to 3 ft., 10 yr.----- 3.25	3 to 4 ft., 12 yr.----- 4.50
4 to 5 ft., 13 yr.----- 7.00	5 to 6 ft., 14 yr.----- 11.00

Siberian Arborvitae (*Thuya wareana siberica*). 8 ft. A symmetrical, compact evergreen of conical outline with broad base. Rich green leaves. Very useful in foundation plantings.

18 to 24 in., 10 yr.-----\$2.50	2 to 2½ ft. 11 yr.-----\$4.00
2½ to 3 ft., 13 yr.----- 5.00	3 to 4 ft., 15 yr.----- 7.00

CEDARS—JUNIPERS

Bar Harbor Juniper (*Juniperus Sabina horizontalis*). 2 ft. A true creeper resting close to the ground of a beautiful greenish-blue color. A native of the coast of Maine it has unusual hardiness. Introduced by the Arnold Arboretum.

18 to 24 in., 9 yr. -----	\$3.50
---------------------------	--------

Chandler's Silver Cedar (*Juniperus scopulorum chandleri*). 15 ft. A new, pyramidal type Cedar of striking beauty. Bright silvery-green foliage that holds its color all year through. The growth is compact and symmetrical making it a superb, ornamental evergreen. Very hardy and drought resistant.

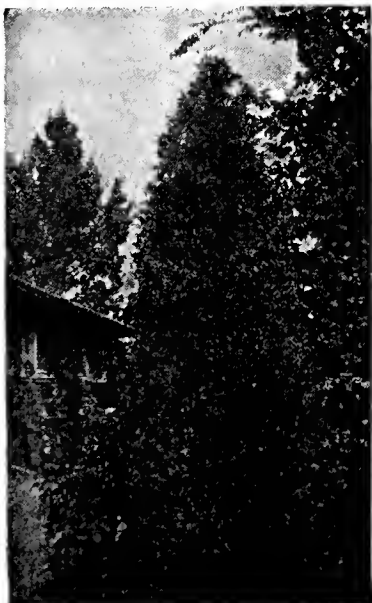
3 to 4 ft., 10 yr.-----\$6.25	4 to 5 ft., 11 yr.-----\$10.00
5 to 6 ft., 12 yr. -----	12.00

Chinese Cedar (*J. Chinensis*). 15 ft. A broad-based, pyramidal evergreen with bright green foliage. Native of Asia. Stands cold winter and summer drought. A splendid ornamental evergreen for planting on each side of the doorway, at the house corners or as background or accent points in the garden.

2 to 3 ft., 7 yr.-----\$3.50	3 to 4 ft., 9 yr.-----\$4.50
4 to 5 ft., 10 yr.----- 6.00	5 to 6 ft., 11 yr.----- 9.00

MODERNIZE WITH EVERGREENS

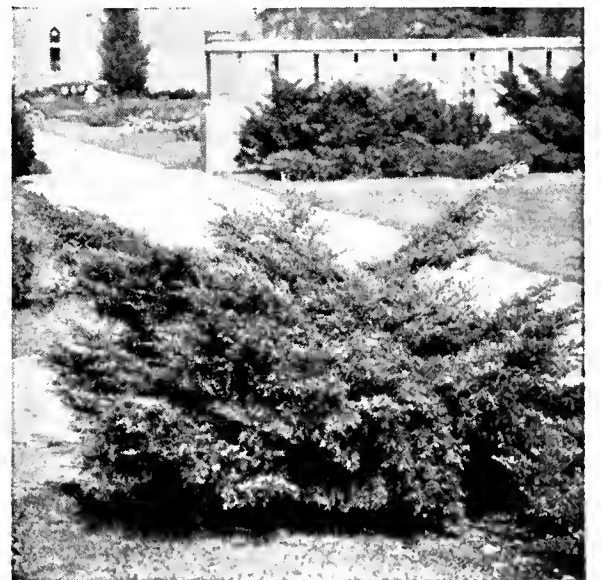
You can add fresh color and new interest to older plantings with a few choice Evergreens.



Red Cedar (Page 12)



Sargent's Juniper (Page 12)



Pfitzer's Juniper (Page 12)

CEDARS—JUNIPERS—Continued

Golden Juniper (*Juniperus communis depressa aurea*). 2 ft. A dwarf-growing evergreen with many erect, spreading stems. Its brilliant golden color makes it a bright spot in foundation plantings or in evergreen groups.
 12 to 18 in., 8 yr.-----\$2.75 18 to 24 in., 9 yr.-----\$3.50

Meyer Juniper (*Juniperus squamata meyeri*). 6 ft. A new evergreen novelty of irregular, upright growth. The color is a bright, shining blue-green. An unusual type that is appropriately planted in the rock garden or near a pool. Introduced from China.
 18 to 24 in., 10 yr. -----\$3.50

Pfitzer's Juniper (*Juniperus pfitzeriana*). 6 ft. A graceful, bushy evergreen suited to foreground plantings and particularly adapted to house foundation Evergreen groups. Foliage is an attractive greenish-blue. The branches are spreading and gracefully drooping. Stands the city's dust and soot well. Illustration page 11.
 18 to 24 in., 9 yr.-----\$3.00 24 to 30 in., 10 yr.-----\$4.00
 30 to 36 in., 12 yr.----- 5.50 3 to 4 ft., 13 yr.----- 7.00
 Large specimen plants -----\$8.00 to 15.00

Prostrate Juniper (*Juniperus canadensis depressa*). 3 ft. A low, much-branched evergreen shrub that grows closely to the ground. Excellent in the rock garden and for planting in the foreground of larger Evergreens.
 18 to 24 in. spread, 7 yr.-----\$3.00
 24 to 30 in. spread, 8 yr.----- 4.00
 30 to 36 in. spread, 10 yr.----- 5.00

Red Cedar (*Juniperus virginiana*). 25 ft. Useful wherever a pyramid of rich green is wanted. Probably the most useful of all evergreens because of its beauty, hardiness and adaptability. Can be kept trimmed and shaped to most any outline. Grows naturally to a tall pyramid with broad base. Illustrated page 11.
 24 to 30 in., 7 yr.-----\$2.50 30 to 36 in., 8 yr.-----\$ 3.50
 3 to 4 ft., 9 yr.----- 4.50 4 to 5 ft., 10 yr.----- 6.50
 5 to 6 ft., 11 yr.----- 9.00 6 to 7 ft., 12 yr.----- 11.00
 Large specimen Cedars -----\$15.00 to 50.00

Sargent's Juniper (*Juniperus sargentii*). 15 in. Makes a neat, low, wide-spreading growth of bright green. The most valuable of all junipers for a close ground cover. A rare variety of distinct character introduced from northern Japan by Prof. Sargent.
 18 to 24 in. spread, 10 yr.-----\$3.75

Savin's Juniper (*Juniperus sabinia*). 4 ft. A thickly branched, low-spreading shrub form. Quite hardy and very desirable wherever a low type evergreen is wanted. A native of Alpine mountain regions and thrives well under Minnesota conditions. Stands city atmospheric conditions and is a most useful and desirable dwarf evergreen.
 12 to 18 in. spread, 8 yr.-----\$ 2.00
 18 to 24 in. spread, 9 yr.----- 3.00
 24 to 30 in. spread, 10 yr.----- 4.00
 30 to 36 in. spread, 12 yr.----- 5.00
 Large, mature plants -----\$7.50 to 20.00



An Evergreen lawn group—Spruce, Arborvitae, Pfitzer's Juniper

FIR

Douglas Fir (*Pseudotsuga douglasi*). 40 ft. The large bluish-green needles are soft and fragrant. A dependable and handsome large-growing tree of conical shape.
 2 to 3 ft., 9 yr.-----\$4.00 3 to 4 ft., 11 yr.-----\$ 5.00
 4 to 5 ft., 13 yr.----- 8.00 5 to 6 ft., 14 yr.----- 12.00

PINES

Austrian Pine (*Pinus nigra*). 50 ft. A decorative, vigorous and tall-growing tree. Long, slender dark-green needles.
 2 to 3 ft., 8 yr.-----\$4.00 3 to 4 ft., 9 yr.-----\$ 5.50
 4 to 5 ft., 11 yr.----- 8.00 5 to 6 ft., 12 yr.----- 12.50

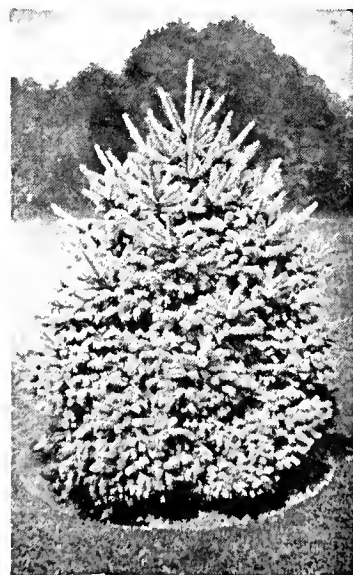
Dwarf Mugho Pine (*Pinus mughus*). 4 ft. Very popular compact and dwarf-growing evergreen. Unexcelled for planting about the foundation lines or in front of taller evergreens.
 12 to 18 in. spread, 8 yr.-----\$1.75
 18 to 24 in. spread, 9 yr.----- 2.50
 24 to 30 in. spread, 12 yr.----- 3.50
 30 to 36 in. spread, 13 yr.----- 4.50

Mountain Pine (*Pinus montana*). 6 ft. Taller and more open growing than the Mugho pine. Desirable as a lawn specimen or in the foreground of taller varieties.
 2 to 3 ft., 10 yr.-----\$4.25 3 to 4 ft., 12 yr.-----\$6.00

Scotch Pine (*Pinus sylvestris*). 60 ft. A hardy, tall pine of picturesque growth. Very suitable for background and windbreak plantings.
 2 to 3 ft., 8 yr.-----\$3.00 3 to 4 ft., 9 yr.-----\$4.00



Austrian Pine (Page 12)



Black Hills Spruce (Page 13)

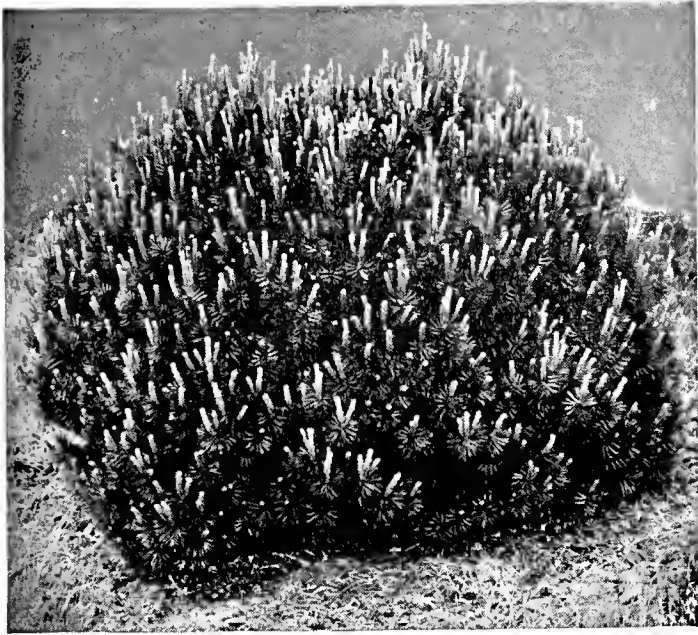


Chinese Juniper (Page 11)

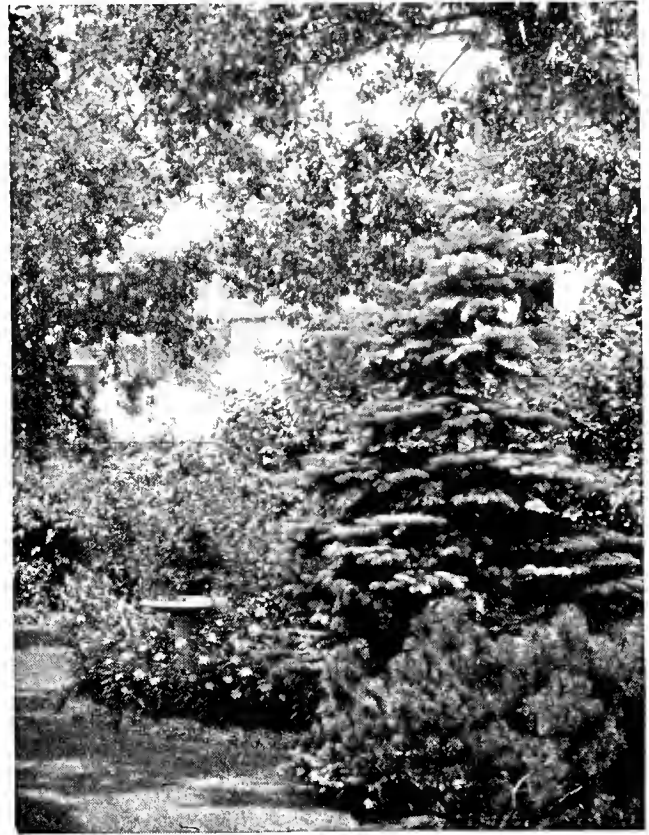


Colorado Blue Spruce (Page 13)

VISIT OUR DISPLAY GARDENS, ROCKERY AND POOL AT 1200 ST. CLAIR ST.



Dwarf Mugho Pine (Page 12)



Blue Spruce and Mugho Pines add color to this border planting

SPRUCE—PICEA

Black Hills Spruce (*Picea canadensis albertiana*). 30 ft. A native of the Black Hills and the hardiest of all spruces. The growth is a rounded, compact pyramid with branches low to the ground. Foliage is a bright fresh green. Stands dry soils and open exposures and is always an ornamental specimen.
 18 to 24 in., 10 yr.-----\$2.00 24 to 30 in., 11 yr.-----\$ 2.50
 30 to 36 in., 12 yr.----- 3.25 3 to 4 ft., 13 yr.----- 4.50
 4 to 5 ft., 15 yr.----- 6.50 5 to 6 ft., 17 yr.-----10.00

Blue Spruce "Shiners" (*Picea pungens glauca*). 35 ft. The most admired of all evergreens because of its luxuriant, rich, silvery-blue needles. Outstanding as a lawn specimen. Our Blue Spruce trees have an unusually bright color and are full branched and solid specimens.
 2 to 2½ ft., 11 yr.-----\$ 5.00 2½ to 3 ft., 12 yr.-----\$ 6.00
 3 to 4 ft., 14 yr.----- 8.00 4 to 5 ft., 18 yr.----- 12.50
 5 to 6 ft., 20 yr.----- 20.00 6 to 7 ft., 22 yr.----- 27.00
 Large Specimen trees ----- \$35.00 to 50.00

Colorado Spruce (*Picea pungens*). 35 ft. An attractive, hardy spruce of even full-branched growth. Similar to the Blue Spruce but with less blue color. Grows easily in most any situation and makes a shapely, sturdy tree.
 18 to 24 in., 10 yr.-----\$ 2.50 2 to 3 ft., 12 yr.-----\$ 4.50
 3 to 4 ft., 14 yr.----- 5.50 4 to 5 ft., 18 yr.----- 9.00
 5 to 6 ft., 20 yr.----- 17.00 6 to 7 ft., 22 yr.----- 22.00
 Large specimen trees ----- \$30.00 to 50.00

Norway Spruce (*Picea excelsa*). 40 ft. Rapid growing evergreen of open, graceful outline. Deep-green foliage; wide-spreading and drooping. A tall, picturesque tree.
 3 to 4 ft., 9 yr.-----\$4.00 4 to 5 ft., 11 yr.-----\$ 6.00
 5 to 6 ft., 12 yr.----- 10.00

White Spruce (*Picea canadensis*). 50 ft. A hardy, native tree of upright, compact growth. The foliage is a light blue green. A native of northern America it is thoroughly hardy.
 3 to 4 ft., 11 yr.-----\$ 4.50 4 to 5 ft., 13 yr.-----\$ 7.50
 5 to 6 ft., 15 yr.----- 10.00 6 to 7 ft., 17 yr.----- 15.00
 Large White Spruce ----- \$20.00 to 50.00

YEWS—TAXUS

Yew, Japanese, (*Taxus cuspidata*). 5 ft. A very ornamental, medium-size Evergreen with clean, waxy, dark-green leaves. Grows close, upright and compact. The fruit is a red berry.
 12 to 18 in., 9 yr.-----\$3.50 18 to 24 in., 10 yr.-----\$ 6.00

Yew, Dwarf Japanese (*Taxus cuspidata nana*). 2½ ft. A dwarf and very compact Yew with rich, dark-green foliage.
 10 to 12 in., 9 yr.-----\$3.50 12 to 15 in., 10 yr.-----\$5.00

3 SPECIAL EVERGREEN GROUPS

The trees are all "first quality" and the special prices make the collections real bargains.

HOUSE ENTRANCE

SPECIAL GROUP
 2 Chinese Junipers—30 ins.
 2 Savins Junipers—20 ins.

4 CHOICE EVERGREENS
 (Trees about 8 yrs. old)

SPECIAL GROUP PRICE—\$10.50

HOUSE CORNER

SPECIAL GROUP
 1 Chinese Juniper—30 ins.
 2 Savins Junipers—20 ins.

3 CHOICE EVERGREENS
 (Trees about 8 yrs. old)

SPECIAL GROUP PRICE—\$8.00

GARDEN GROUP*2

SPECIAL GROUP
 1 Colorado Spruce, 2 to 3 ft.
 2 Mugho Pines, 20 in. spread

3 CHOICE EVERGREENS
 (Trees 9 to 10 yrs. old)

SPECIAL GROUP PRICE—\$8.00



Shade Trees bring comfort and beauty to the home grounds.

Shade and Ornamental Trees

Sturdy Varieties for Shade, Shelter and Lasting Beauty

THE attractiveness and comfort that good trees bring to the home property is appreciated by everyone. The preservation of existing trees and the planting of new growth is truly of first importance in your landscape improvements. We will gladly help you select suitable varieties and plan their proper placing for your yard.

Since trees reach their maturity slowly you can save years of waiting by using larger sizes. That you may better judge the time saved by planting older stock we give both the size and the approximate age with the prices in our catalog listing.

PLEASE NOTE: The figures following the name indicate the approximate height of growth.

ASH

American White Ash (*Fraxinus americana*). 60 ft. A native tree of straight, clean growth. Splendid for lawn or boulevard.

6 to 8 ft. -----	\$1.00
8 to 10 ft. -----	1.50
10 to 12 ft., 7 yr.-----	2.50
2 in. diam., 8 yr.-----	3.00
2½ to 3 in. diam., 10 yr.-----	4.00

BIRCH

Cutleaf Weeping Birch. 35 ft. A graceful, white-barked, weeping tree. Tall and slender with branches bending to the ground. Delicately-cut leaves. Very popular for lawn planting.

6 to 8 ft. -----	\$3.50
8 to 10 ft. -----	4.50
10 to 12 ft. -----	5.00

White or Paper Birch. 40 ft. Upright and rapidly growing with grayish-white bark. Very attractive as a specimen or when planted near Evergreens.

6 to 8 ft. -----	\$1.75
8 to 10 ft. -----	2.50

CATALPA

Western Catalpa (*Catalpa speciosa*). 40 ft. Unusually large heart-shaped leaves and fragrant white flowers. An interesting lawn tree.

6 to 8 ft. -----	\$1.25
8 to 10 ft. -----	2.00
2 to 2½ in. diam., 7 yr.-----	3.50
2½ to 3 in. diam., 8 yr.-----	5.00

HACKBERRY

Hackberry (*Celtis occidentalis*). 50 ft. A hardy, native long-lived tree with rough bark. The foliage somewhat resembles the Elm. Wide spreading tops giving good shade.

6 to 8 ft. -----	\$1.25
8 to 10 ft. -----	1.75
10 to 12 ft. -----	2.75
2 to 2½ in. diam., 12 yr.-----	5.00
2½ to 3 in. diam., 14 yr.-----	7.00

HORSECHESTNUT

Horsechestnut (Buckeye) (*Aesculus hippocastanum*). 40 ft. Five-fingered leaves. Covered in May with white flowers that stand up like candles. A most unusual and desirable lawn tree.

6 to 8 ft. -----	\$ 4.00
8 to 10 ft. -----	8.00
2 to 2½ in. diam., 9 yr.-----	12.50
2½ to 3 in. diam., 11 yr.-----	15.00



BECHTEL'S DOUBLE FLOWERING CRAB
Beautiful rose-like flowers in Springtime

VISIT OUR DISPLAY GARDENS, ROCKERY AND POOL AT 1200 ST. CLAIR ST.

FLOWERING CRABS

Bechtel's Double Flowering Crab. 15 ft. Covered in spring with rose-like double pink flowers. A splendid, symmetrical, small lawn tree, and very attractive when planted with tall shrubbery.

3 to 4 ft.-----\$1.25 4 to 5 ft.-----\$2.00 5 to 6 ft.-----\$3.00

Dolgo Crab. A splendid lawn tree of symmetrical shape that is beautiful in both flower and fruit. The long, conical and edible fruits are an intense bright red and cover the tree.

3 to 4 ft.-----\$0.75 4 to 5 ft.-----\$1.25 5 to 6 ft.-----\$1.50

Flame Crab. New. A medium size profusely-flowering tree. The brilliant red, edible fruits cover the branches from September to January.

4 to 5 ft.-----\$2.50

NEW RED-FLOWERING CRAB

Hopa Crab. 15 ft. A good ornamental tree with abundant rose-colored flowers that cover the branches in May. Both leaves and branches tinted red. Strikingly ornamental red fruits that hang on until late fall.

3 to 4 ft.-----\$0.75 4 to 5 ft.-----\$1.25 5 to 6 ft.-----\$1.50

ELMS

American Elm (*Ulmus americana*). 60 ft. A gracefully-arching and wide-spreading tree that is unquestionably the most popular tree in America for shade, street and lawn planting. It is tough grained and fast growing which places it at the head of the "permanent" class of ornamental trees. Very hardy.

6 to 8 ft. -----\$1.00 8 to 10 ft. -----\$1.50
 10 to 12 ft., 7 yr.----- 2.25 2 in. diam., 9 yr.----- 2.75
 2½ in. diam., 11 yr.----- 4.00 3 in. diam., 12 yr.----- 6.00
 Larger specimen Elms priced on request.

Chinese Elm (*Ulmus pumila*). 40 ft. A new and valuable tree from Asia. Bushy head and smaller leaves than the American Elm. Suited for lawn planting and windbreaks. Grows rapidly and stands poor soils and dry conditions.

6 to 8 ft. -----\$1.00 8 to 10 ft. -----\$1.75
 10 to 12 ft., 5 yr.----- 2.50 2 in. diam., 7 yr.----- 3.50
 2½ in. diam., 9 yr. ----- 5.00

LINDEN—BASSWOOD

American Linden (Basswood) (*Tilia americana*). 70 ft. A stately tree with broad, heart-shaped leaves; fragrant white flowers. Quite hardy, native; fine for lawn or street planting.

6 to 8 ft.-----\$1.00 8 to 10 ft.-----\$1.50
 10 to 12 ft.----- 2.75 2 in. diam., 9 yr.----- 3.50
 2½ in. diam., 11 yr.----- 4.50 3 in. diam., 12 yr.----- 6.50
 Larger specimen Lindens priced on request.

MAPLES

Norway Maple (*Acer platanoides*). 50 ft. A handsome tree forming a perfect rounded head of broad, dark green leaves. The leaves stay green late in the fall turning yellow at last. A splendid lawn tree providing dense shade.

6 to 8 ft. -----\$2.25 8 to 10 ft. -----\$3.25
 10 to 12 ft. ----- 4.50 2 in. diam., 10 yr.----- 6.00
 2½ to 3 in. diam., 12 yr.-----\$7.50
 Larger Norway Maples priced on request.

Purple Leaf Maple (*Acer platanoides* Schwedler). 40 ft. Leaves are bright reddish-purple in spring toning to a deep purplish-green later. Highly prized for lawn planting.

6 to 8 ft. -----\$3.00 8 to 10 ft. -----\$4.50
 10 to 12 ft. ----- 6.00 2 in. diam., 12 yr.-----10.00
 2½ in. diam., 14 yr.-----\$12.50

Silver Maple (*Acer dasycarpum*). 60 ft. The leaves are light green and silvery green beneath. A native rapid-growing tree that succeeds anywhere.

6 to 8 ft. -----\$1.00 8 to 10 ft. -----\$1.25
 10 to 12 ft., 5 yr.----- 2.25 2 in. diam., 7 yr.----- 2.75
 2½ in. diam., 9 yr.-----\$4.00

Sugar Maple (Hard Maple) (*Acer saccharum*). 70 ft. A symmetrical tree of great beauty forming a dense oval head. Smooth bark. Hardy native. Deeply lobed, dark green leaves. Brilliant fall colors. Fine for streets, lawn and parks.

6 to 8 ft. -----\$2.00 8 to 10 ft. -----\$3.00
 10 to 12 ft. ----- 4.25 2 to 2½ in. diam., 12 yr.----- 6.00



Weeping Birch (Page 14)
 A graceful ornamental tree for the lawn.



A young American Elm
 The popular choice for lawn and boulevard



Norway Maple
 A dense top of large dark green leaves

SHADE AND ORNAMENTAL TREES—Continued

MAPLE—Continued

Maple Tatarian (*Acer tataricum Ginnala*). 15 ft. A. very hardy, shrub-like tree suited for back-ground planting with tall border-shrubs or as a single specimen. Beautiful red fall color.
 3 to 4 ft., bushy-----\$0.75 4 to 5 ft., bushy-----\$1.00
 5 to 6 ft., bushy ----- 1.50

MOUNTAIN ASH

Mountain Ash (*Sorbus aucuparia*). 30 ft. White flowers in May followed by bright orange-red berries, which hang on for months. Very ornamental. Used as a specimen on the lawn or as an accent in the border.
 6 to 8 ft.-----\$1.50 8 to 10 ft.-----\$2.25
 10 to 12 ft., 8 yr.----- 3.00 2 in. diam., 10 yr.----- 4.00

MULBERRY

Russian Mulberry (*Morus tatarica*). 20 ft. A bushy-topped small tree with lobed leaves. Useful as a lawn specimen or in the shrubbery border. The sweet, edible fruit is relished by the birds.
 6 to 8 ft.-----\$2.00

PLUM, Purple Leaf. Please see under shrubs—page 7.

POPLARS

Bolleana Poplar (*Populus bolleana*). 40 ft. Upright, columnar growth with smooth, gray-green bark. Glossy, green leaves with downy white undersides. Makes a strong vertical accent.
 6 to 8 ft.-----\$1.25 8 to 10 ft. ----- \$2.00
 10 to 12 ft. ----- 2.75 2 to 2½ in. diam., 6 yr. ----- 3.75
 2½ to 3 in. diam., 7 yr. ----- 5.00 3 to 3½ in. diam., 8 yr. ----- 6.00
 Larger Bolleana Poplars priced on request.

Carolina Poplar—Norway Variety (*Populus eugenei*). 50 ft. A hardy, quick-growing tree with bright-green and dense foliage. Grows anywhere.

6 to 8 ft.-----\$1.00 8 to 10 ft.-----\$1.25
 Large sizes ----- \$3.00 to 10.00

Lombardy Poplar (*Populus fastigiata*). 40 ft. A tall picturesque, spire-like tree. Erect and pyramidal in form. Planted for landscape effect, as an accent or for screening purposes. Grows quickly.

6 to 8 ft.-----\$1.00 8 to 10 ft.-----\$1.50
 10 to 12 ft. ----- 2.25

WALNUT

Black Walnut (*Juglans nigra*). The familiar nut-bearing tree. Grows slowly to majestic size.

6 to 8 ft. ----- \$2.00

WILLOWS

Golden Willow (*Salix vitellina aurea*). 35 ft. A symmetrical, round-topped tree. Rapidly growing with branches of rich golden yellow. Very hardy.

6 to 8 ft. ----- \$1.50 8 to 10 ft.----- \$2.00

Laureleaf Willow (*Salix pentandra*). 30 ft. Upright growing tree with glossy green leaves. Grows rapidly.

6 to 8 ft.-----\$1.50 8 to 10 ft.-----\$2.00

Niobe Weeping Willow. 30 ft. Golden bark and graceful weeping branches that sweep the ground. A much-admired lawn tree.

6 to 8 ft. ----- \$2.00 8 to 10 ft. ----- \$2.75

Wisconsin Weeping Willow. 30 ft. The hardiest of the weeping willows. Very desirable for a quick growing, ornamental lawn specimen. Dark colored bark.

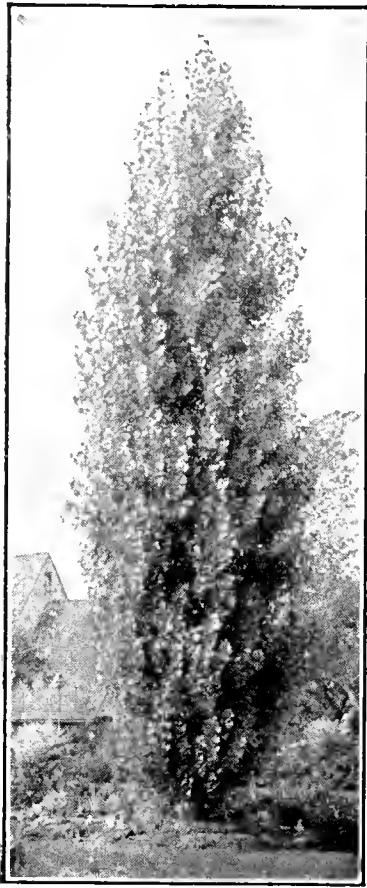
6 to 8 ft. ----- \$2.00 8 to 10 ft. ----- \$2.75

PROTECT YOUR TREES

Your old shade trees are priceless—give them proper attention in trimming, feeding and controlling disease and insect troubles and they will be preserved for years to come.

Our tree expert will call at any Twin City address, make an inspection and give you an estimate for any work your trees may need.

OUT-OF-TOWN customers are invited to correspond with us about the care and maintenance of their shade trees.



Use the Bolleana and Lombardy Poplar for this sky-line effect



Horse Chestnut (Page 14)



The Basswood or American Linden (Page 15)

Climbing Vines For Shade and for Beauty

Bring foliage and flowers to porch, house, fence and arbor.

- BITTERSWEET** (*Celastrus scandens*). A hardy rapidly-growing native climber with glossy leaves and often with red berries in the fall.
 Strong 2 yr. plants -----\$0.60 Extra size -----\$0.75
- BOSTON IVY** (*Ampelopsis veitchi*). A small leaved ivy that clings to walls closely. Needs protection in Minnesota.
 Strong 2 yr. plants -----\$0.70 Extra size -----\$1.00
- DUTCHMAN'S PIPE** (*Aristolochia siphon*). The heavy, heart-shaped, close-growing leaves make this vine unexcelled for shade and screens.
 Strong 2 yr. plants -----\$1.00 Extra size -----\$1.50
- ENGELMAN'S IVY** (*Ampelopsis engelmanni*). Clings without support to brick, stone or plaster. Absolutely hardy.
 Strong 2 yr. plants -----\$0.45 Extra size -----\$0.70
- GRAPE, Hardy Beta**. A rapid growing vine with handsome foliage for pergolas, arbors and fences. Desirable fruit.
 Strong 2 yr. plants -----\$0.50 Extra size -----\$0.75
- HONEYSUCKLE "New Golden Giant"** (*Lonicera Tellmanniana*). A strong-growing climber with long, tubular flowers of golden yellow tipped with bronzy-red in June. A choice, new vine. Strong 2 yr. plants -----\$1.00
- HONEYSUCKLE, Scarlet Trumpet** (*Lonicera sempervirens*). A graceful twining vine for small lattices. The bright, scarlet flowers are very attractive.
 Strong 2 yr. plants -----\$0.60 Extra size -----\$0.75
- MATRIMONY VINE** (*Lycium chinensis*). A good trailer to cover slopes. Large red berries follow the bright purple flowers.
 Strong 2 yr. plants -----\$0.50 Extra size -----\$0.75
- VIRGINIA CREEPER** (*Ampelopsis quinquefolia*). A useful native, vigorous vine for covering fences and arbors.
 Strong 2 yr. plants -----\$0.45 Extra size -----\$0.70



The large purple flowers of the Jackmani Clematis

CLEMATIS—Queen of Flowering Vines

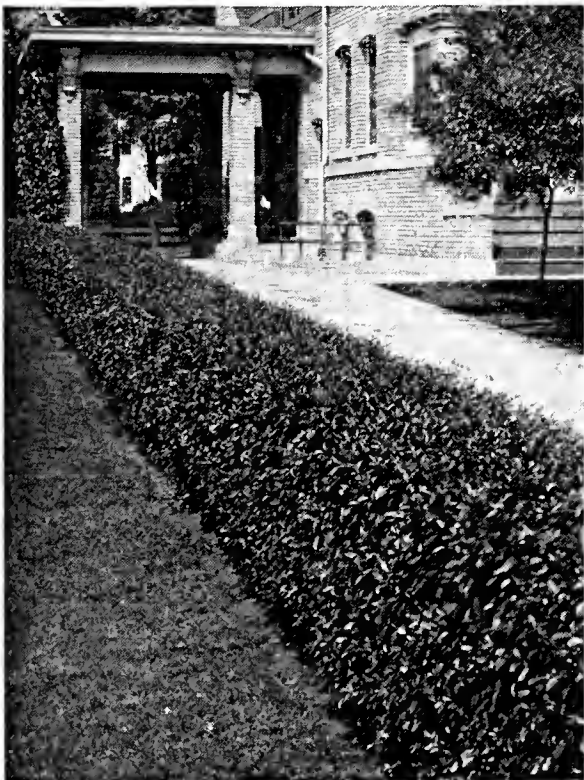
- Purple Clematis** (Jackmani). The popular, large-flowering clematis with gorgeous flowers of velvety, violet-purple. Beautiful on a trellis or lattice.
 Strong, potted plants -----\$1.25 Extra size -----\$1.50
- Red Clematis** (Mme. Ed. Andre). Large, rosy-carmine flowers.
 Strong potted plants -----\$1.25
- Scarlet Clematis** (Coccinea). Has bell-shaped, closed flowers of coral red. Delightful on a small trellis.
 Strong, potted growing plants -----\$1.25 each
- Sweet Clematis** (Paniculata). A dependable flowering vine for fence or lattice. In late summer it is covered with great sheets of fragrant, white starry flowers.
 Strong, growing plants -----\$1.00

We Start Your Clematis Vines for You

For your best results we supply all Clematis in strong 2 and 3 year plants that are potted and in active growth when delivered.
 Plant the earth balls three inches below the ground level.

Hardy Hedges For Ornament and Protection

A hedge makes an ornamental wall of green that will protect and give privacy to your yard. Space our strong, bushy plants 12 inches apart for immediate effect.



A hedge will make a wall-of-green

(25 or more plants sold at the 100 rate.)

	PRICES	
	Per 10	Per 100
BARBERRY, Japanese. Makes a neat low boundary. Small leaves. Red berries. Stands trimming.		
12 to 18 in.-----	\$2.50	\$20.00
18 to 24 in.-----	3.00	25.00
BUCKTHORN. A very hardy and dense tight ornamental hedge.		
2 to 3 ft.-----	2.50	17.50
3 to 4 ft.-----	3.00	20.00
COTONEASTER. A close growth of deep green, glossy foliage.		
2 to 3 ft.-----	3.00	25.00
3 to 4 ft.-----	4.00	35.00
ALPINE CURRANT. A dense, low and close-growing hedge. Stands shade and heavy shearing.		
12 to 15 in.-----	3.00	25.00
15 to 18 in.-----	4.00	35.00
HONEYSUCKLE (Tartarian). A rapid-growing tall hedge with pink flowers and red berries.		
2 to 3 ft. -----	3.50	30.00
SPIRAEA—Bridal Wreath. The most popular flowering hedge. Space plants 18 in. apart.		
2 to 3 ft. -----	3.00	25.00



You will enjoy the color and beauty of the hardy flowers when planted along your walk or in the foreground of the shrubbery border.

Flowering Perennials

The Hardy Garden Flowers That Bloom From Year to Year

A BORDER or bed of Perennials, selected to flower from spring until fall, will add greatly to your enjoyment of your yard. You will find listed here not only the older favorites but many new, choice varieties. The height, season and color of flower is given.

H. & O. Perennials are sturdy 2 year old, field-grown plants that are dug freshly to your order.

ROCK GARDEN PLANTS. Varieties marked with a star () are adapted to rockeries.

NEW PRICES FOR PERENNIALS

(unless otherwise noted)

Strong, 2 yr. plants 30 cents each; 4 for \$1.00
and

Extra size, 40 cents; 4 for \$1.50

ACHILLEA. PERRY'S BALL-OF-SNOW. 1½ ft. Pure white flowers like a small pompon chrysanthemum. Blooms June to September.

ACONTIUM fischeri. MONKSHOOD. 3 ft. Strong spikes of dark blue, helmet-shaped flowers. September and October. 35 cts.; 3 for \$1.00. Extra size 50 cts.

ALASKA DAISY. Large white and yellow daisy.

***ALYSSUM saxatile compactum.** GOLDEN TUFT. 12 in. Masses of yellow flowers in early spring. For rockery or border.

ANCHUSA italica, Dropmore. ALKANET. 4 to 5 ft. Turquoise blue flowers in June and July. Large heavy leaves.

***Anchusa Myosotidiflora.** 12 in. Unusual perennial from Russia. Light blue, forget-me-not flowers rise above the clump of heart-shaped leaves. Sun or shade. Blooms May and June.

***ANEMONE pulsatilla.** PASQUE FLOWER. 9 in. Cupped flowers of violet to purple in April and May. 35 cts.; 3 for \$1.00.

ANTHEMIS tinctoria kelwayi. HARDY MARGUERITE. 1½ ft. Daisy-like flowers of golden yellow. June to October.

***AQUILEGIA canadensis.** NATIVE CANADA COLUMBINE. 2 ft. Flowers red and yellow. June to August.

Aquilegia chrysantha. GOLDEN COLUMBINE. 2 ft. Yellow flowers with long spurs. June to August.

Aquilegia, "Crimson Star." 2 ft. Entirely new color in Columbines—crimson and white combination. Unusual and effective. Large flowers. 35 cts. each; 3 for \$1.00.

Aquilegia helenae. BLUE COLUMBINE. 1½ ft. June to August.

Aquilegia Hybrids. Long-spurred flowers in a variety of beautiful colors. A choice flower for garden display or cutting.

***ARABIS alpina.** ROCKCRESS. An early blooming dwarf border plant completely covered with white flowers in April and May.

***ARENARIA caespitosa.** SANDWORT. 3 in. A prostrate, low plant for use between stepping stones and in the rock garden. Dainty white flowers.

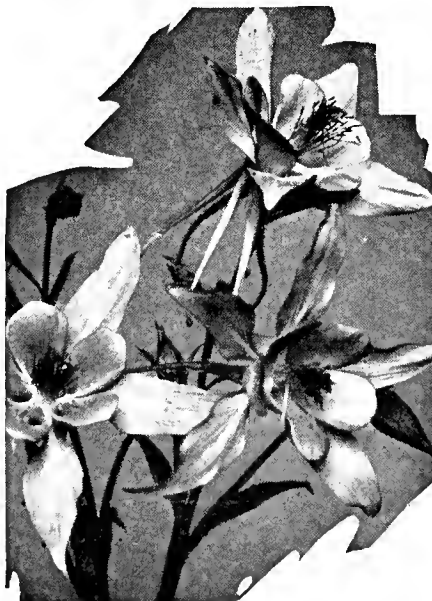
***ARMERIA Formosa.** SEA PINK. 20 in. Pink flowers on wiry stems rising from a grassy tuft of leaves. June.

***Armeria Lauchiana.** 9 in. A dwarf variety of Sea Pink with bright rosy-red flowers in May and June.

ARTEMISIA lactiflora. MOUNTAIN FRINGE. Plumes of sweetly scented creamy white flowers. August to September.

Artemisia, Silver King. 3 ft. A hardy perennial with silver-gray foliage.

ASTER Frikarti. New. 3 ft. Large, lavender-blue asters from July to frost. A delightful flower for display and cutting. Highly recommended. Price 50 cts.



Aquilegia or Columbine

VISIT OUR DISPLAY GARDENS, ROCKERY AND POOL AT 1200 ST. CLAIR ST.

FLOWERING PERENNIALS—Continued

Prices—unless noted—30 cts. each; 4 for \$1.00. Extra size—40 cts. each; 4 for \$1.50

ASTER novae-angliae. NEW ENGLAND ASTER (Michaelmas Daisy). 4 to 5 ft. Hardy purple Aster. September and October.

Aster, Lil Fardell. 4 to 5 ft. Showy flowers are rich, mauve pink. September and October.

ASTILBE, "Betsy Cuperus." (New.) 4 ft. Dainty flowers of white with pink centers in graceful flower spikes 18 inches long. June. 50 cts. each.

Astilbe, "Peach Blossom." (New.) 2 ft. Bears long plumes of delicate light-pink flowers. Excellent flower border plant. June. 50 cts. each.

Astilbe, Hybrids. 3½ ft. Showy garden plant of easy culture. Airy plumes of pink or white flowers. June and July. 50 cts.; 3 yr., 75 cts.

BABYSBREATH. See *Gypsophila*, page 20.

BLEEDING HEART (*Dicentra spectabilis*). 18 in. Rose-crimson heart-shaped flowers. The old garden favorite. April and May. 40 cts.; extra size, 75 cts.

B OCCONIA cordata. PLUME POPPY. 6 ft. Fine for background. Creamy white plummy flowers in August.

BOLTONIA asteroides. FALSE STARWORTH. 4 to 5 ft. Pure white, aster-like flowers. August and September.

***CAMPANULA carpatica.** CARPATHIAN HAREBELL. 8 to 10 inches. Bell-shaped, light blue flowers in July and August.

Campanula calycanthem. CUP-AND-SAUCER. 3 ft. The erect plants are a mass of large cup and saucer shaped flowers in June and July. Colors mixed in rose, white and blue.

***CAMPANULA garganica.** (New.) Compact rosettes of glossy foliage from which spread branches 10 to 15 inches long bearing light blue, star-shaped flowers. June. Excellent for the rock garden. 40 cts. each; 3 for \$1.00.

Campanula glomerata. CLUSTERED BELL-FLOWER. 18 in. Globular dark blue flowers topping each stem. June and July.

Campanula medium. CANTERBURY BELLS. 3 ft. A biennial. Large bell-shaped flowers of rose, blue and white. July.

CENTAUREA montana. PERENNIAL CORNFLOWER. 1½ ft. Violet blue flowers. July to September.

***CERASTIUM tomentosum.** SNOW-IN-SUMMER. 6 inches. Creeping, branching perennial with silvery-white leaves and a mass of snow white flowers. May. Attractive all season.

CLEMATIS davidiana and Clematis recta. 3 to 4 ft. Bush forms of Clematis with blue and white flowers respectively. Very desirable in the perennial border. 50 cts. each; extra size, 75 cts. each.

COLUMBINE. See *Aquilegia*, page 18.

COREOPSIS lanceolata grandiflora. TICKSEED. 2 ft. Golden yellow flowers on long graceful stems from June until frost. Fine for cutting.

DAY LILY. See *Hemerocallis*, page 20.

DAISY, Alaska. 12 to 15 in. An improved Daisy that blooms in middle to late summer. White flowers with yellow center.

Daisy, Korean. 2 ft. A new Daisy of great hardiness. White flowers with gold centers blooming in September and October. 35 cts. each.

Daisy, Shasta. 18 in. The popular June flowering white daisy.

DELPHINIUM Belladonna. LARKSPUR. 3 to 4 ft. Clear turquoise blue flowers of delicate beauty. Blooms freely over a long period.

Delphinium Bellamosum. 3 to 4 ft. A dark blue Larkspur of free-blooming habit.

Delphinium chinense. SLENDER LARKSPUR. 3 ft. Heads of bright blue flowers in open sprays from June until frost. Finely cut, fern-like foliage.

Delphinium chinense alba. White flowering form of the Slender Larkspur.

Delphinium, "H. & O. Hybrids." 4 to 5 ft. Our own selected strain of large flowering Larkspurs in a wide range of light and dark colors.

NEW HOLLYHOCK DELPHINIUMS. Very full spire-shaped (like a hollyhock) heads of single and double flowers in many shades of blue. Tall and sturdy growth. Unusual. The best of the English selections. Price 50 cts. each; \$4.50 for 10.

DIANTHUS barbatus. SWEET WILLIAM. 18 in. Flowers in variation of red, white and rose colors. May to July.

***Dianthus caesius.** CHEDDAR PINK. 7 in. Fragrant rose colored flowers cover this globular little plant in June.

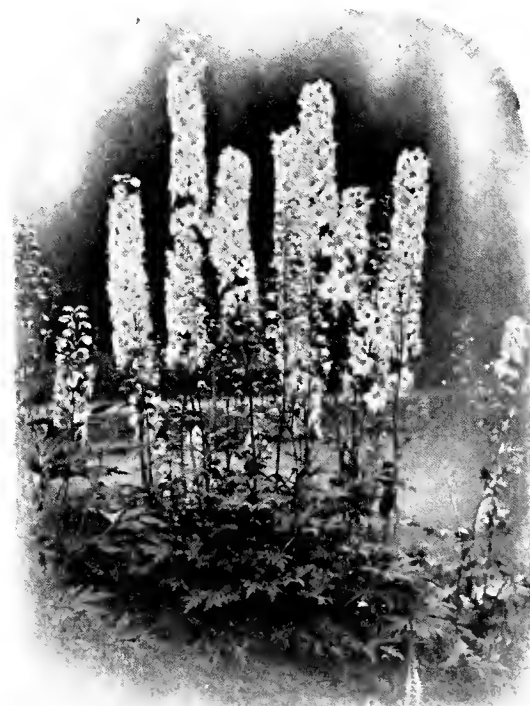
Varieties marked with a star () are adapted to rockeries.



Alaska Daisy
Popular garden cut flower



Coreopsis blooms all summer



Hardy Larkspur (Delphinium Hybrids)

FLOWERING PERENNIALS—Continued

Prices—unless noted—30 cts. each; 4 for \$1.00. Extra size—40 cts. each; 4 for \$1.50

- ***Dianthus deltoides.** MAIDEN PINK. 9 in. A profusion of small, crimson flowers cover the dwarf plant in June and July.
- ***Dianthus plumarius.** CLOVE PINK. 9 in. The fragrant white to scarlet flowers bloom in early summer. Grass-like leaves.
- DICTAMNUS fraxinella.** GAS PLANT. 3 ft. Heavy spikes of deep pink, purple-veined flowers in June and July. Flowers and foliage both fragrant. (White variety also offered.) 50 cts. each.
- ***DICENTRA eximia.** PLUMY BLEEDINGHEART. 9 to 12 in. Rosy pink heart-shaped flower in bloom from May through August. Delicate, finely cut foliage. 40 cts. each.
- Dicentra spectabilis.** BLEEDINGHEART. 18 in. 40 cts.; extra size, 75 cts.
- DIGITALIS.** GIANT SHIRLY FOXGLOVE. 4 ft. Long flower heads of bell-shaped blossoms. Colors, rose, shell pink and blue mixed. July.
- ECHINOPS ritro.** GLOBE THISTLE. 3 ft. Ball-shaped metallic blue flowers, thistle-like foliage. July to September.
- ***ERINUS alpinus.** 4 in. Invaluable rockery plant. Dwarf rosettes of leaves with many rosy-purple flowers. 35 cts.; 3 for \$1.00.
- ***EUPHORBIA polychroma.** A rare and beautiful border and rock garden plant. Grows to 1 ft. in compact form. Covered in June with lemon-yellow rose-like flowers. 40 cts. each.
- ***FERNS, Hardy.** We offer a selection of the best strong-growing native hardy ferns suitable for yard plantings.
- ***FORGET-ME-NOT** (*Myosotis semperflorens*). 10 in. Dainty blue flowers with yellow eye from May to September. Fine dwarf border plants.
- ***FUNKIA (Hosta) caerulea.** BLUE PLANTAIN LILY. 15 in. Drooping flowers of blue in July and August. Excellent border plant. Dark green glossy foliage. Stands shade.
- Funkia subcordata.** WHITE PLANTAIN LILY. 18 in. Fragrant, white, lily-like flowers in August and September. Bright glossy foliage. 50 cts.
- ***Funkia Variegata.** STRIPED PLANTAIN LILY. 15 in. Broad, waxy foliage, beautifully variegated with white. Very attractive border plant. Blue flowers in July. Stands shade.
- GAILLARDIA grandiflora.** BLANKET FLOWER. 2 ft. Rich red and crimson petals with broad border of yellow. June to October. Unsurpassed for cutting.
- ***GLOBULARIA.** GLOBE DAISY. 8 in. Dainty, tufted little plant from Asia with bright lavender-blue flowers June to September.
- GOLDEN GLOW.** See *Rudbeckia laciniata*, page 22.
- GYPSOPHILA paniculata.** BABYSBREATH. 2 to 3 ft. Unexcelled cut flowers. Tiny white blossoms cover the plant through July and August.

DOUBLE BABYSBREATH

- Gypsophila.** BRISTOL FAIRY. Full, double, snow-white flowers in large sprays. True, grafted variety 60 cts.; extra strong \$1.00.
- HELENIUM autumnale superbum.** YELLOW STAR. 4 to 5 ft. Golden-yellow flowers in August and September. Excellent cut flower. 35 cts.; 3 for \$1.00.
- Helenium Riverton Gem.** 3 ft. Old gold shaded with terra cotta and red. For cutting or garden show. August to frost. 35 cts. each; 3 for \$1.00.
- ***HELIANTHEMUM, Buff Beauty.** ROCK or SUN ROSE. 10 in. Attractive low-growing plant forming broad clumps of evergreen foliage, covered with bright flesh-pink flowers in June to July.
- HELIOPSIS pitcheriana.** ORANGE SUNFLOWER 3 ft. Single, thick-textured flowers of deep golden yellow. June to September.
- HEMEROCALLIS Dumortieri.** STRIPED DAYLILY. 20 in. A medium-height, rich cadmium yellow lily with brown stripes on the reverse. June.
- Hemerocallis flava.** LEMON DAYLILY. 2½ ft. Sweetly scented lemon-yellow flowers in June and July.
- Hemerocallis fulva.** TAWNY DAYLILY. 3 ft. Orange lily. July. Strong growing and sturdy.
- Hemerocallis, Judge Orr.** A large-flowering, tall, free-blooming golden yellow lily. June.
- Hemerocallis Middendorffi.** 2 ft. Rich yellow lilies in July. Follows Flava variety in blooming.
- Hemerocallis Thunbergi.** 2½ ft. A late, yellow-blooming lily. July.
- ***HEUCHERA Pleu-de-Feu.** ALUMROOT. 18 in. Tuft of handsome evergreen leaves with delicate, crimson flower bells on slender stems. July. 35 cts.; extra strong, 60 cts.
- ***Heuchera sanguinea.** CORALBELLS. 18 in. A variety of the above with bright coral-red flowers. 35 cts.; extra strong, 60 cts.

* Rock Garden Plants. Varieties marked with a star (*) are suitable to plant in rockeries.

VISIT OUR DISPLAY GARDENS, ROCKERY AND POOL AT 1200 ST. CLAIR ST.



Gaillardia—Rich red and yellow in color
Blooms continuously all summer



Platycodon or Balloon Flower
Described on page 21



Heuchera—Coral Bells—A dainty border
plant

FLOWERING PERENNIALS—Continued

Prices—unless noted—30 cts. each; 4 for \$1.00. Extra size—40 cts. each; 4 for \$1.50

- HIBISCUS. ROSEMALLOW.** 4 to 5 ft. Giant, funnel-shaped flowers of red, white or pink on sturdy plants. July and August. 35 cts.; 3 for \$1.00.
- HOLLYHOCK, single. ALLEGHENY MAMMOTH.** 5 to 7 ft. Single flowers of delicately fringed petals. Mixed colors. July and August.
- Hollyhock. DOUBLE FLOWERING.** 5 to 7 ft. Yellow, white, pink and red colors. July and August.
- IRIS. Fleur-de-Lis.** See list, page 26.
- LARKSPUR.** See *Delphinium*, page 19.
- LATHYRUS latifolius. PERENNIAL SWEET PEA.** Semi-climbing plants with showy pea flowers of deep pink over a long season. 35 cts.; 3 for \$1.00.
- LILY-OF-THE-VALLEY.** 8 to 10 in. Pure white, dainty bell-shaped flowers in May and June. Fragrant. Bulb clusters, 25 cts. each. Heavy clumps 50c.
- *LINUM perenne. BLUE FLAX.** 18 in. Graceful foliage with delicate flowers of pearly blue. May to August.
- LUPINUS Polyphyllus. LUPINE.** 3 to 4 ft. Azure blue, pea-shaped flowers in long spikes. Late May and June.
- LYCHNIS chalconica. JERUSALEM CROSS.** 2½ ft. Flowers of vermilion scarlet in immense heads. June to mid-July.
- *Lychnis viscaria splendens. GERMAN CATCHFLY.** 12 in. A bright, pink-flowering border perennial. Flowers of one-half inch size in loose clusters. June and July.
- LYTHRUM roseum. ROSE LOOSESTRIFE.** 3 to 4 ft. Tall spikes of rose-colored flowers. July to September.
- MONARDA didyma. OSWEGO TEA.** 3 ft. Compact heads of bright red flowers. Aromatic foliage. June to September.
- *OENOTHERA Fraseri. EVENING PRIMROSE.** 12 in. Large golden-yellow poppy-like flowers from June to August.
- PACHYSANDRA terminalis.** 6 to 9 in. A handsome trailing plant for ground cover. Stands shade. 25 cts. each; 12 for \$2.50.
- *Penstemon, "Blue Gem." BEARD TONGUE. (New)** 12 in. Attractive azure-blue flowers from June to September. Splendid border and rockery plant.
- PEONIES.** See list, page 24.
- PERSIAN DAISY.** See *Pyrethrum Hybridum*.
- PHLOX.** See list, page 25.
- PHYSALIS francheti. CHINESE LANTERN PLANT.** 2 ft. Brilliant orange colored seed pods or "lanterns" in September.
- PHYSOSTEGIA "vivid." FALSE DRAGON-HEAD.** 2 ft. Spikes of deep pink, bell-like flowers in September. Excellent cut flowers. 35 cts.; 3 for \$1.00.
- PLATYCODON grandiflorum. BALLOON FLOWER.** 18 in. Star-shaped blue or white flowers at the tip of each branch. Compact, bushy growth. June to September.
- POPPY, Oriental (Papaver orientale).** 2½ ft. Massive cup-shaped flowers of deep scarlet. May and June. (The New Hybrid Poppies described on Page 22.)

THE LARGE SUMMER FLOWERING LILIES

The Lilies look their best and are easily grown in flower borders. Their graceful growth, gorgeous flowers and unusual beauty endears them to everyone.

Our special potted plants will produce magnificent flowers.

- Auratum. GOLDBANDED LILY.** 3 ft. Fragrant white flowers spotted crimson with central yellow band. Red anthers. July and August. Started and potted plants 50 cts. each; 6 for \$2.50.
- Elegans. ORANGE CANDLESTICK LILY.** 18 in. Very hardy variety producing orange-red flowers in great numbers. July. 30 cts.; 4 for \$1.00.
- Regale. REGAL LILY.** Large fragrant white flowers that are striped pink outside and have yellow shadings within the cup. July. Large bulbs, 30 cts.; 4 for \$1.00. Started plants, 50 cts.; 6 for \$2.50.
- Speciosum album. WHITE SHOW LILY.** 3 ft. White flowers with recurved petals. August and September. Started, potted plants, 50 cts.; 6 for \$2.50.
- Speciosum rubrum. CRIMSON SPOTTED LILY.** 3 ft. A fragrant lily, under-color white, shaded and spotted with crimson. August and September. Started, potted plants, 50 cts.; 6 for \$2.50.
- *Tenuifolium. CORAL LILY.** 12 to 18 in. A graceful little plant bearing many coral-red lilies in June. Hardy. Fine for rock gardens. Large bulbs, 30 cts. each; 4 for \$1.00.
- Tigrinum, fl. pl. DOUBLE TIGER LILY.** 3 to 4 ft. An improved variety of this old favorite. Orange-red spotted black. July and August. Large bulbs, 30 cts. each; 4 for \$1.00.

* Varieties marked with a star (*) are adapted to rockeries.



Striped Plantain Lily (*Funkia*)
Described on page 20.



Hemerocallis (Daylily) will grow in shade
Described on page 20.



Rubrum Lily—White, spotted with rich
crimson

FLOWERING PERENNIALS—Continued

Prices—unless noted—30 cts. each; 4 for \$1.00. Extra size—40 cts. each; 4 for \$1.50

ORIENTAL POPPIES IN NEW COLORS

Poppy, Oriental. New Named Varieties—40 cts. each, as follows:

BEAUTY OF LIVERMORE. Crimson with dark shadings.

MRS. J. HARKNESS. Bright salmon pink.

MRS. PERRY. Orange apricot.

OLYMPIA. Brilliant flame-scarlet shaded with golden salmon. Semi-double.

***Poppy, Iceland** (*Papaver nudicaule*). 12 in. Cup-shaped flowers of clear colors, white, yellow and orange scarlet. Bloom all summer. June to September.

PYRETHRUM Hybridum. PERSIAN DAISY. 2½ ft. Daisy-shaped flowers in white to shades of pink, rose and red. Splendid for cutting. May and June.

Pyrethrum Uliginosum. GIANT DAISY. 4 to 5 ft. Large white flowers in August and September. Splendid for cutting.

RUDEBECKIA laciniata. GOLDEN GLOW. 5 to 6 ft. The popular double yellow blossoms of August and September.

Rudbeckia purpurea. PURPLE CONE FLOWER. 3 to 4 ft. Rose-purple flowers with tall, brown center. August to October.

SALVIA pitcheri. MEADOW SAGE. 3 to 4 ft. Every stem tipped with spikes of pretty sky-blue flowers. August and September.

***SCUTTELLARIA. SKULLCAP.** 12 in. A wiry plant with blue snapdragon-like flowers in July and August.

***SEDUM—Stonecrop** (See variety list below)

The best of the hardy plants for rock gardens and edgings. Grows easily.

***Sedum Acre. GOLDEN MOSS.** Bright yellow flowers cover the dwarf plant in June and July. 25 cts.

***Sedum Album.** 2 to 3 in. A spreading plant with thick, wavy, round leaves. White flowers in May. 25 cts.

***Sedum Eversi.** 8 in. Blue-gray leaves with large heads of rose-colored flowers. September and October. 25 cts.

***Sedum Kamtschaticum.** Prostrate plant with orange-yellow flowers. 25 cts.

***Sedum Sarmentosum.** Low and spreading. Excellent for filling seams between rocks. Yellow flowers in June. 25 cts.

***Sedum Stoloniferum.** Flat, succulent leaves on stems that cling to the ground. Pink flowers in August. 25 cts.

***Sedum spectabile. BRILLIANT STONECROP.** 18 in. Pink and rosy red flowers in heavy flat clusters. August and September.

***Sedum spurium. "BRONZE CARPET."** 6 in. Rapidly-spreading with rosy-crimson flowers. July and August. 25 cts.

***SEMPERVIVUM "Hardy Hen and Chickens."** Produces small rosettes of thick and rubbery leaves. A splendid rock garden plant.

STATICE latifolia. SEA LAVENDER. 2 ft. Delicate purple-blue flowers cover the branching top in August and September. 35 cts.; 3 for \$1.00.

THALICTRUM adiantifolium. MEADOW RUE. 2½ ft. Graceful foliage like a Maiden Hair fern. Clusters of open, white flower balls in June. 35 cts.; 3 for \$1.00.

Thalictrum dipterocarpum. 3½ ft. Dainty flowers of lilac mauve with yellow center, in graceful sprays. August and September. Unexcelled cut flowers. Likes partial shade and needs winter protection. 40 cts.; extra size 60 cts.

TROLLIUS, Asiaticus. YELLOW GLOBE FLOWER. 2 ft. A glorified Buttercup. Handsome dark green foliage with yellow cup-like flowers in May and June. 40 cts.; extra size 60 cts.

Trollius ledebouri. ORANGE GLOBE FLOWER. 2½ ft. Strong-growing, hardy perennial with handsome foliage and large orange flowers. 40 cts. each; extra size 60 cts. each.

VALERIAN officinalis. HARDY GARDEN HELIOTROPE. 3 ft. Sweetly fragrant, gray-pink flowers in June and July.

VERONICA longifolia. JAPANESE SPEEDWELL. 2 ft. Long spikes of attractive blue-violet flowers. August and September. A good garden and cut flower.

***Veronica rupestris.** Grows 3 in. high with thickly matted, deep green foliage. Excellent for rock garden plantings. Well covered with bright blue flowers in early June.

Veronica spicata. SPEEDWELL. 1½ ft. Spikes of blue flowers. June to September. Excellent garden plant.

***Viola. JERSEY GEM.** 8 in. Rich green foliage with blue flowers like small pansies. May to September. Splendid border plant.

***YUCCA filamentosa. ADAM'S NEEDLE.** 4 ft. Stiff, sword-shaped leaves with tall spikes of white drooping flowers in July. 50 cts. each; extra size 75 cts.

* **Rock Garden Plants. Varieties marked with a star (*) are suitable to plant in rockeries.**

VISIT OUR DISPLAY GARDENS, ROCKERY AND POOL AT 1200 ST. CLAIR ST.



Rudbeckia Purpurea—Purple Cone Flower



Trollius ledebouri (Orange Globe Flower)



VIOLA—JERSEY GEM
Lovely, large pure violet blooms

A ROCK GARDEN WILL ADD NEW INTEREST TO YOUR YARD



The Rock and Water Garden Display at our Nursery Grounds. Come and enjoy it—see its construction and planting.

A rock garden and pool need only take a moderate area and can be enjoyed in even a small yard. We can supply the rocks, soil, plants and helpful suggestions.

A SPECIAL ROCK GARDEN BOOKLET

Tells how to properly place, build and plant a rock garden on the home grounds. Sent on request—without charge.

A Specially Priced Collection HARDY ROCK GARDEN PLANTS

A careful selection of 15 choice perennials—3 each of 5 of the best rock-garden varieties.

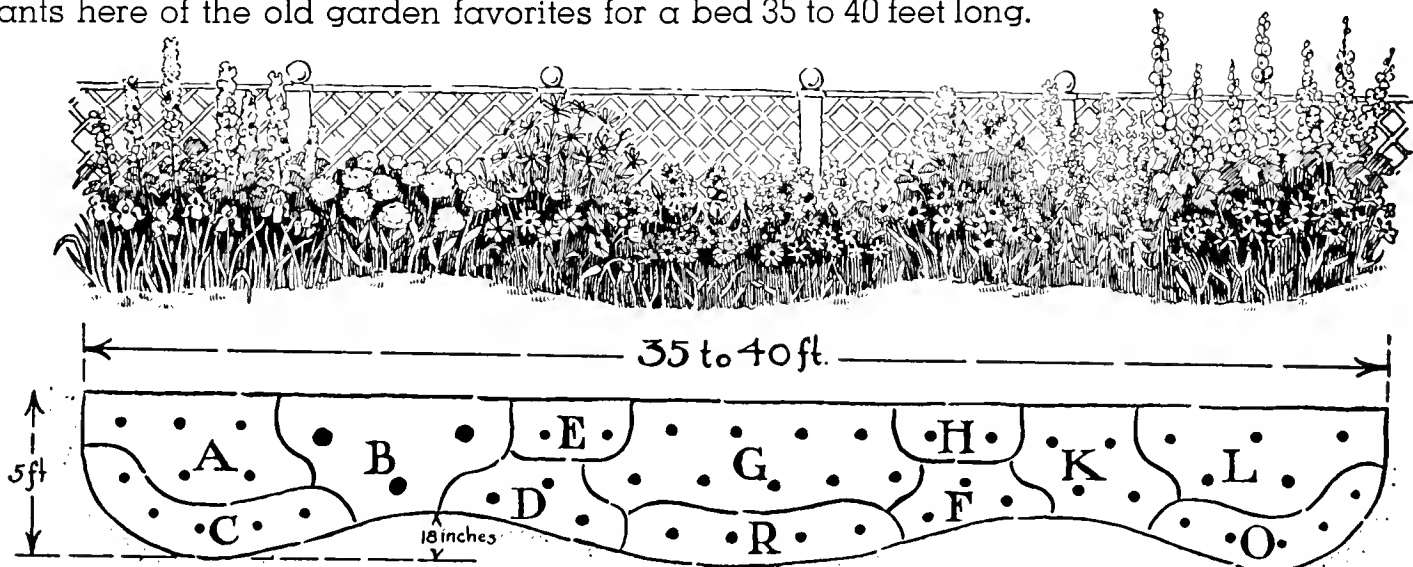
SPECIAL GROUP—15 Plants—Price.....\$3.00

(Please state if for sun or shade)

You Will Like This Popular Perennial Collection

A COMPLETE BACK YARD PERENNIAL BORDER TO GIVE YOU FLOWERS ALL SUMMER

Plant this border of hardy perennials along the property line and enjoy flowers from May to October. Enough plants here of the old garden favorites for a bed 35 to 40 feet long.



Key	No.	Variety	Color
A	5	Hybrid Larkspur	Blue Shades
B	3	Peonies—Asst.	Pink, white, red
C	5	Iris—Assorted colors	Many colors
D	3	Coreopsis	Golden yellow
E	2	Tall Fall Daisy (Pyrethrum)	White Daisy
H	2	Yellow Star (Helenium)	Bright yellow
G	9	Hardy Phlox—Assorted	Pink, white, red
R	4	Shasta Daisy	Yellow and white
F	3	Gaillardia (Blanket Flower)	Red with yellow
K	4	Belladonna Larkspur	Sky blue
L	5	Hollyhocks—Double Asst.	Many colors
O	5	Persian Daisy	Pink, white, red

This Colorful Garden—50 Hardy Perennials

All strong, field-grown stock—selected for a long season of bloom and harmonious colorings—

A \$15.00 Value Offered at a
SPECIAL COMBINATION PRICE OF
(with full planting instructions)

\$12.50

You can quite easily find a suitable place for this attractive flower border in your own yard. We suggest planting in the sunny foreground of a fence, hedge or boundary group of shrubs.

Gorgeous Peonies

PLANT PEONIES generously for they have the largest and most gorgeous flowers of all the perennials. The peony is truly an ideal flowering plant for the home yard garden. H. & O. QUALITY PEONIES are all strong, substantial roots of the best 3 to 5 eye planting size.

Quantity Rate—5 or more peonies (any kind) will be sold at a 10% discount from the single or each price. For parcel post shipments please add 6c per root.

Planting Peonies—Plant in an open, sunny location in good soil. Place roots so that the "eyes" or buds are 2 inches below the ground surface. **Peonies should be planted early—before the growth begins.**



The Peony rivals the rose in beauty

Peonies have attractive leaves and bush-like growth and so add foliage as well as flower value to the garden.

WHITE DOUBLE PEONIES

ALSACE LORRAINE. A rich, creamy white. Mid-season	\$0.75
AVALANCHE. Large cone-shaped ivory-white75
COURONNE d'OR. Snow white with golden stamens60
ENCHANTRESSE. Big, globular, late creamy-white	1.00
FESTIVA MAXIMA. Splendid white with crimson flakes60
FRANCES WILLARD. Mid-season, exquisite pure white.....	1.00
LE CYGNE. A large, perfect flower of pure white. The world's highest-rated peony..	3.00
MME. JULES DESSERT. Cream, with buff and salmon tints..	1.00
MONS. DUPONT. Large flower with crimson blotch. Tall....	.60
MRS. A. M. BRAND (New). A large pure white. Exquisite fragrance	3.50
PRIMEVERE. The best yellow-tinted peony	1.00

PINK DOUBLE PEONIES

BLANCHE KING (New). A glowing deep pink. Large.....	\$4.50
CLAIRE DUBOIS. A late globular clear violet-rose.....	.75
EDULIS SUPERBA. A very early deep pink60
FLORENCE MACBETH. Very large, soft blush-pink	2.50
KELWAY'S QUEEN. Large double, bright rose pink.....	2.00
LADY ALEXANDRA DUFF. Very large, soft pink. Fragrant	1.75
LA FEE. A strikingly beautiful soft pink blend.....	1.50
LA FRANCE. Fragrant apple-blossom pink. Tall, sturdy....	1.00
MARTHA BULLOCH. Enormous flowers of shell pink with deeper shadings. Rose fragrance	1.75
MME. EMILE GALLE. Sea-shell pink with lavender tones....	1.00
MONS. JULES ELIE. A giant pink chrysanthemum.....	1.00
MRS. JOHN KLEITSCH (New). A glorious, fragrant rose-type pink	4.00
MYRTLE GENTRY (New). Clear pink with salmon tint....	4.00
PHOEBE CARY. A large soft rose pink. Fragrant	1.00
PRESIDENT WILSON. A soft rose to shell pink	2.50
REINE HORTENSE. Delicate pink with crimson flecks75
SARAH BERNHARDT. Popular bright apple-blossom pink..	.75
SOLANGE. Cream with deep orange-salmon pink.....	1.00
SOUV. DE LOUIS BIGOT. A striking rich salmon pink.....	1.00
THERESE. Exquisitely lovely bright pink	1.25
WALTER FAXON. Vivid and outstanding salmon pink.....	1.50

RED DOUBLE PEONIES

AUGUSTE DESSERT. Velvety red with silver tips	\$1.50
CHARLES McKELLIP. A deep bright red	1.00
CHERRY HILL. Deep garnet with bright sheen	1.00
GROVER CLEVELAND. Large dark crimson	1.00
KARL ROSEFIELD. Rich glowing crimson75
LONGFELLOW. Cheery with crimson tones	1.00
LORA DEXHEIMER. A flaming crimson red75
MARY BRAND. Abundant blooming clear red75
MONS. MARTIN CAHUZAC. Darkest maroon-red peony....	1.50
TENUIFOLIA FL. PL. Fern-leaf peony. Very early double crimson with fern-like leaves	2.50

THE JAP and SINGLE PEONIES

Popular taste is rapidly responding to the charm and beauty of these striking flowers. The outer row of large petals surrounds a center of smaller petals or brilliant yellow stamens. The flowers are splendid for cutting or garden display.

ALBIFLORA. Silky white with yellow center	\$0.75
EXQUISITE (Jap). Pure white with white and yellow center..	1.25
FUYAJO (Jap). Rich mahogany red petals and center.....	2.00
LACINIATA. Early-flowering red with cut-leaf foliage.....	.75
LE JOUR. Largest single white peony. Gold center	1.50
L'ETINCELANTE. Deep clear pink with silvery tips	1.00
MIKADO (Jap). Crimson. Like a giant red poppy	1.00
PRIDE OF LANGPORT. Soft peach pink	1.50

HOME YARD PEONY COLLECTION

A selected assortment of six choice, large-flowering, double Peonies. 6 varieties, all different, all labeled—2 white, 2 pink, 2 red.

SPECIAL PRICE—6 Choice Plants..... \$2.50

(For parcel postage please add 20 cts.)

VISIT OUR DISPLAY GARDENS, ROCKERY AND POOL AT 1200 ST. CLAIR ST.

Hardy Phlox

For Brilliant Flowers in Mid-Summer

THE PHLOX is a very popular and colorful perennial for beds and borders. With ample height, good foliage and unusually showy flowers the Phlox is the brightest plant in the garden during middle and late summer.

Space the plants 15 to 18 inches apart and set them firmly. Ample watering is important for the best results.

The choice varieties that we offer are careful selections of the new improved types.

PRICES OF PERENNIAL PHLOX

(Unless otherwise noted)

STRONG, FIELD PLANTS—30 cts. each; 4 for \$1.00

EXTRA SIZE CLUMPS—40 cts. each; 4 for \$1.50



Phlox—a brilliant, showy flower

RED PHLOX

- B. Comte.** A deep shade of red-plum. Tall growing.
- Beacon.** A pleasing cherry-red. 35 cts.; 3 for \$1.00.
- Coquelicot.** A bright orange-scarlet. Unusual color.
- Comus (New).** Clear cherry-red overspread with bright scarlet. 35 cts.; 3 for \$1.00.
- Debs.** A bright fiery crimson. No other like it. 40 cts. each.
- Fireglow.** A new, brilliant color. Flaming scarlet that is often vermilion. Large flowers freely produced. 35 cts.; 3 for \$1.00.
- R. P. Struthers.** A choice soft red. Tall and free blooming.

WHITE PHLOX

- Bridesmaid.** White flowers with a crimson-carmine eye.
- Frau Anton Buchner.** Considered one of the finest white Phlox. The flowers are large and perfectly formed.
- Innocence (New).** A tall, sturdy plant with unusually large white flowers.
- Miss Lingard.** Very early blooming and fragrant. Glossy green foliage. Immense heads of white flowers.
- Mrs. Jenkins.** A dependable free-flowering pure white.

LAVENDER AND PURPLE PHLOX

- Champs Elysees.** Big clusters of dark crimson-purple flowers.
- Mrs. Chas. Dorr.** A beautiful shade of lavender. Very large conical-shaped flower heads.



Hardy Phlox make a colorful border

PINK PHLOX

- Betty Lou (New).** A bright orange-scarlet with claret center. Long season of bloom and outstanding in color. 35 cts. each; 3 for \$1.00.

Columbia (New, Plant Patent). A soft cameo-pink flower, long lasting and borne profusely. Very vigorous plant with rich green foliage resistant to insects and diseases. 50 cts. each.

- Enchantress.** A strong-growing plant with clear salmon-pink flowers that have a darker eye.
- Daily Sketch.** New English novelty. Grows to 3 ft. Big flower heads with extra large florets. A bright salmon pink with vivid crimson eye. 50 cts. each.
- Mrs. Harding (New).** A deep rose-pink with salmon shadings. Large heads of flowers. 35 cts. each; 3 for \$1.00.
- Pantheon.** Deep salmon-pink petals with lighter centers.
- Pink Beauty.** A clear mauve pink that blooms early with Miss Lingard variety—a month before the later Phlox. 35 cts. each; 3 for \$1.00.
- Rheinlander.** A very beautiful salmon-pink with deeper center. Flower heads are large and held on strong stems.
- Rijnstroom.** A lovely rose pink, much like Paul Neyron rose. Very large flower heads. Strong grower.
- Rising Sun.** A new variety of soft salmon-pink.
- Thor.** Rich, salmon-pink with crimson eye.

DWARF PHLOX

For Borders and Rockery

- Phlox Subulata.** A mass of bloom in early spring covers the delicate moss-like foliage. Excellent for rockery and border, and invaluable for carpeting the ground or covering graves. Pink or white—30 cts. each; 4 for \$1.00.
- Phlox "Vivid" (New).** An improved early, dwarf pink with unusually brilliant clear pink flowers. 35 cts. each; 3 for \$1.00.
- Phlox Divaricata (Wild Sweet William).** Large fragrant lavender flowers on 9 inch stems in April and May. Likes shade.

SPECIAL—HOME YARD PHLOX COLLECTION

Ten field-grown roots, 2 each of 5 popular varieties—light pink; white; deep pink; red and lavender.

SPECIAL GROUP PRICE—10 Plants -----\$2.25
(Postage 15 cts. extra.)

Iris—The Rainbow Flower

IRIS PLANTS are extremely hardy, easy to grow and give an abundance of showy, colorful flowers. They prefer a sunny location and a shallow planting. To help you make selections the varieties are grouped according to their prevailing color effect. In the description the "S" refers to the standards (upright petals) and "F" to the falls (lower petals).

Prices are for strong, sturdy root divisions. A 10% discount is allowed from the each price when 5 or more of a variety are ordered. (Please add 10% to prices for shipment by Parcel Post.)



Iris—the "Orchid of the Garden"

LIGHT BLUE IRIS

	Price Each
Lord of June. An immense clear lavender blue	\$0.25
Pallida Dalmatica. Bright lavender blue. Tall25
Princess Beatrice. Silvery blue-lavender25

DARK BLUES AND PURPLES

Blue Banner. A bright and cheery blue	\$0.35
Buto. A large flower of deep, rich royal purple30
Garmain Perthuis. (S) violet-purple; (F) royal purple30
Juniata. A tall, clear blue violet25
Lent Williamson. (S) soft violet; (F) royal purple25
Majestic. (S) blue violet; (F) velvety raisin purple25
Monsignor. (S) blue violet; (F) purple25
Morning Splendor. (S) Petunia violet; (F) red purple25
Parc de Neuilly. A reliable violet purple25
Perfection. (S) light blue; (F) rich dark velvet25
Souvenir de Mme. Gaudichau. Rich deep purple30
Swazi. (S) blue violet; (F) dark pansy-violet50
Tenebrae. Rich purple effect. Large flower25

BROWN-PURPLE

Ambassadeur. (S) red violet; (F) purple maroon	\$0.25
Bruno. (S) bronzy heliotrope; (F) rich, violet purple30

PINK-TONED IRIS

Dream. Lovely rose-pink with orange beard	\$0.25
Lohengrin. Silvery pink mauve in effect25
Susan Bliss. A deep pink tone30

PASTEL SHADES

Asia. A soft, silvery lavender-violet blend. Fragrant	\$0.25
Dolly Madison. Light mauve-lilac shaded gold40
Mother of Pearl. Soft lavender with pearly sheen25
Quaker Lady. A smoky-lavender in effect25

RED-TONED IRIS

Caprice. (S) red purple; (F) deeper claret	\$0.25
Cardinal. A remarkable crimson tone Iris35
Grace Sturtevant. Rich glowing chestnut-brown35
Medrano. Red maroon in effect25
Numa Roumestan. Rich reddish copper35
Seminole. Wine red in effect25

WHITE IRIS

Fairy. Soft white with blue glow	\$0.25
Taj Mahal. A tall white of pure color30
White Queen. A fragrant snow white30

YELLOW IRIS

Coronation. Large flowers of deep golden yellow	\$0.30
Gold Imperial. Clear yellow with bright orange beard30
Prairie Gold. A deep rich yellow30
Shekinah. Clear soft yellow25
Sherwin Wright. Intense yellow in effect25

CONTRASTING COLORS

	Price Each
Iris King. (S) buff yellow; (F) maroon	\$0.25
Loreley. (S) yellow; (F) violet25
Rhein Nixe. (S) white; (F) pansy violet25
Salonique. White standards, red purple falls25

IRIS PRIZE-WINNERS

Some new and unusual Iris varieties

Black Wings. Rich, velvety blue-black. Very dark	\$2.00
El Capitan. Soft lavender blue of majestic size60
Decennial. (S) mustard yellow; (F) deep electric blue50
Evolution. Bronze buff with heliotrope blue	1.50
Motif. Rich, glossy, pansy purple	1.50
Pres. Pilkington. Pastel blend of pale buff and rose flush	2.00
Rameses. A pink buff blend	1.00
Selene. Tall pearly white with soft yellow infusion75
Sensation. A remarkable crisp cornflower blue50
Talisman. A rich combination of yellow and rose pink	1.00
Wm. Mohr. A frilled flower of soft lilac and violet50

DWARF IRIS (Pumila). A very early-flowering, low-growing Iris. Particularly suited for rock gardens and to edge beds and borders. Blooms in April. **Yellow, Blue, Purple, White and Cream** colors: Each 25 cts.; 6 for \$1.25.

SIBERIAN IRIS. Very attractive for garden display and particularly for cutting. Flowers on graceful stems; foliage narrow and grass-like. **Siberian Blue** and **Siberian White:** Each 25 cts.; 6 for \$1.25.

JAPANESE IRIS. A large flowering Iris that blooms in July. Not as hardy as the Germanica type. We offer choice plants in **White, Light Blue, Violet Blue, Reddish Crimson.** Strong roots, 40 cts. each; 3 for \$1.00.

SPECIAL RAINBOW IRIS COLLECTION

A choice collection of colorful Iris. Eight strong roots—one each of pink-toned, white, red-toned, lavender, yellow, blue, purple and pastel.

A real "Rainbow Collection"—8 Plants, Price.....\$1.50
(Parcel post 15 cts. extra.)

VISIT OUR DISPLAY GARDENS, ROCKERY AND POOL AT 1200 ST. CLAIR ST.



HARDY APPLES

Price—Strong Trees, 4½ to 6 feet, \$1.00 each.

- Anoka.** Large yellow, red-striped fruit in August. Bears early—often has fruit second year after planting. \$1.25 each.
- Duchess.** Yellow with red stripes. Ripens early. A large size popular September fruit.
- Haralson.** Deep red winter apple. Fine quality. A new hardy and dependable Minnesota apple. \$1.25 each.
- Northwestern Greening.** Large fruit of pale green.
- Wealthy.** A fine quality red apple that fruits abundantly. A very popular Minnesota variety.
- Yellow Transparent.** An early table fruit of medium size. Yellow color and crisp flesh.

HARDY CRAB APPLES

Price—Strong Trees, 4½ to 6 feet, \$1.00 each.

- Early Strawberry.** An early, red-striped fruit.
- Whitney.** An early, large, red fruit. Crisp, pleasing flavor. Desirable for both eating and cooking.
- Dolgo.** Good flavored, highly ornamental bright red fruit. Makes excellent jelly. \$1.25.

HARDY PLUMS

The best from the Minnesota State Fruit-breeding farm.

Price—Strong Trees, 4½ to 6 feet, \$1.00 each.

- LaCrescent.** Our best quality yellow plum. Sweet and juicy fine-grained flesh.
- Monitor.** Large, dark red clingstone. Late.
- Superior.** (New introduction.) Large, conic-shaped, deep red juicy fruit. Small pit. \$1.25 each.
- Tonka.** Semi-freestone, red fruit, fine flavored. Mid-season.
- Underwood.** Early ripening attractive red plum. A very popular hardy variety.

CHERRY-PLUMS

Price—Strong Trees, \$1.00 each.

- Zumbra.** Large dark red fruit with small pit. Ripens in August. Often bears second year after planting.
- Nicollet.** Very close in color, size and flavor to a true cherry and much hardier.

Delicious Fruits

For the Home Garden

FRUITS ARE EASY TO GROW. KNOW THE DELIGHT OF EATING FRUIT FRESH FROM YOUR OWN GARDEN

CHERRIES

Price—Strong Trees, \$1.00 each.

- Wragg.** Heavy bearer of dark red, meaty fruit. The hardiest cherry.

GRAPES

Price—Strong Plants, 40 cts. each; \$3.50 per 10.

- Beta.** A medium size, black grape with sprightly flavor. Unusual hardness and a heavy bearer.
- Concord.** The large, black grape. Always popular.
- Pocklington.** An early, sweet white grape. Needs winter covering.

RASPBERRIES

Price—\$1.00 for 12; \$5.00 per 100.

- Chief.** The new Minnesota introduction. Early and heavy crops of firm, large, red berries. Very hardy.
- Latham.** Large red berries in abundance. Later than Chief. A hardy Minnesota variety with fruit of very attractive color.
- Older.** A juicy and sweet black raspberry. 10 for \$1.00.

CURRANTS

Price—Strong 2-year Plants, 60 cts.; \$5.00 per 10

- Perfection.** Heavy clusters of very large, red fruit.
- Red Lake.** New Minnesota currant. Erect bush. Large red fruit in heavy clusters. Excellent flavor.

GOOSEBERRIES

Price—Strong 2-year Plants, 50 cts.; \$4.00 per 10.

- Como.** Large, full berries that keep their green color even when ripe. A new, improved Minnesota fruit.

STRAWBERRIES

- Senator Dunlap.** June-bearing. Large crops of big, deep red berries. Price—Strong Plants, 30 cts. dozen; \$1.50 per 100.
- Mastodon.** Everbearing (New). Largest berries of any variety. Price—Strong Plants, 50 cts. dozen; \$2.50 per 100.
- Wayzata.** New Minnesota variety. Everbearing. Particularly large red berries over a long season. \$1.00 per doz.; \$5.50 per 100.

ASPARAGUS

- Washington Rust Proof.** An excellent green asparagus. Price—Strong Roots, 40 cts. dozen; \$3.00 per 100.

RHUBARB OR PIE PLANT

- Strawberry.** Early and tender. 20 cts. each; dozen \$2.00.
- McDonald.** (New). Highly colored red stalk, very succulent and tender. A splendid improved variety. Price 60 cts. each.

IMPROVED HANSEN BUSH CHERRIES EASY TO GROW — SURE TO PRODUCE FRUIT

An excellent, hardy ornamental shrub that produces attractive fruit useful for eating and preserving. In spring the bush is a snowbank of white flowers. The fruit resembles a small plum in size and shape but the plant grows in bush form branching and bearing from the ground up. Rarely grows over four feet high. Price—2 to 3 ft. size, 50 cts. each; \$4.00 for 10.



Everyone admires Roses and there is a place for them in your yard

Plant Roses—for Fragrance and Beauty

A choice assortment of the Better Roses for outdoor planting—all tested varieties

WHEN you plant H. & O. specially prepared roses—all sturdy two and three year old field plants that come to you GROWING IN POTS—you are sure of flowering results. These plants, not the usual dry roots, are growing when you get them and ready to go right into your flower beds.

Make your selections early from the wide assortment we offer of the Better Roses—all tested and recommended for outdoor planting—and all potted, growing plants.

THE HYBRID TEAS—Monthly Everblooming Roses

The popular garden and cutting Roses with rich coloring, fragrance and continuous bloom.

PRICES OF HYBRID TEA MONTHLY ROSES—Strong plants started and growing in pots
Each \$1.00; 5 for \$4.50—unless otherwise noted.

PINK AND ROSE SHADES

- BETTY UPRICHARD.** Very fragrant flowers of salmon-pink tinted with copper pink on outside.
- COLUMBIA.** A pleasing shade of rose-pink delightfully scented. Free in bloom and vigorous growth.
- DAME EDITH HELEN.** A brilliant soft pink. Long pointed buds and huge, full flowers. Highly perfumed.
- LOS ANGELES.** Luminous flame-pink, toned with coral and gold. Fragrant; pointed buds.
- RADIANCE.** Large, double blooms of bright rose pink. A popular variety that succeeds everywhere.
- ROSE MARIE.** Large clear rose-pink. Fragrant.
- WILLOWMERE.** Brilliant pink with golden tinge. Vigorous upright growth with continuous bloom.

SCARLET AND CRIMSON ROSES

- E. G. Hill.** Full double flowers of deep maroon red.
- ETOILE DE HOLLANDE.** Large bright crimson red. Free bloomer. The most popular red garden rose.
- GRUSS AN TIPLTZ.** Lovely, fragrant, bright crimson. Always in bloom and succeeds everywhere.
- RED RADIANCE.** Bright rosy red. Very large full flowers on a vigorous plant.
- SENSATION.** Sweet scented, double flowers of crimson-scarlet. Strong, vigorous grower.

WHITE MONTHLY ROSES

- KAISERIN AUGUSTE VIKTORIA.** Creamy buds developing into perfect snow-white blooms. Fragrant.
- KILLARNEY WHITE.** Long pointed buds with lovely, pure white, moderately fragrant flowers.

YELLOW AND COPPER SHADES

- GOLDEN DAWN.** Very double, fragrant lemon-yellow blossom. Remarkably fine foliage.
- HEINRICH WENDLAND.** Fragrant flowers of nasturtium-red with golden reverse on petals. Strong stems.
- JOANNA HILL.** Deep creamy white tinted with salmon and ochre-yellow. Strong stems.
- MME. ED. HERRIOT.** Coral-red, shaded yellow and rosy scarlet.
- MRS. AARON WARD.** Little buds of golden buff opening to double flowers of indian-yellow.
- MRS. E. P. THOM.** A superior yellow garden rose. Rich unfading lemon-yellow flowers.
- REV. F. PAGE ROBERTS.** Coppery-red buds opening to huge yellow flowers tinted buff.
- SOUVENIR DE CLAUDIUS PERNET.** One of the best of the modern yellow everblooming roses.
- TALISMAN.** Fragrant flowers of glowing golden-yellow, tinted copper, red and orange. The most vividly colored rose.

A SPECIAL COLLECTION 4 EVER-BLOOMING ROSES

1 each of Pink, White, Red and Yellow
4 Potted, Growing Plants

SPECIAL \$3.50

VISIT OUR DISPLAY GARDENS, ROCKERY AND POOL AT 1200 ST. CLAIR ST.

The New Rose Creations

SELECTED from the best of the NEW ROSES in America and Europe, these improved varieties will bring a refreshing note to old gardens and a thrill to the beginner.

Enjoy them this summer in your own garden.

WE SUPPLY THESE NEW ROSES IN POTTED, GROWING PLANTS SURE TO BLOOM FOR YOU THIS SEASON.

ALEZANE. (Plant Patent No. 116.) Urn-shaped, reddish brown buds unfurling to a full flower of rich apricot and yellow. Vigorous growth; dark green foliage. Potted plants \$1.70.

BLAZE. (Plant Patent No. 10.) A marvelous, everblooming scarlet red climbing rose, vigorous grower and blooms over a long season. Price, potted plants, \$1.50 each.

BETTER TIMES. (Plant Patent No. 23.) Large, double, fragrant flowers of brilliant cerise. Free and full bloomer. Long stems. Potted plants \$1.70.



CARILLON. (Patent No. 136.) A cheerful flower of flame and coral tones. Abundance of flowers on a branching plant. Potted plants, \$1.70.

COUNTESS VANDAL. (Plant Patent No. 38.) Lovely, coppery pink and gold with long, pointed buds. Potted plants \$1.25.

GLOAMING. (Patent No. 137.) Soft, satiny pink with salmon and amber markings. Large flowers with delightful fragrance. Potted plants \$1.70.

GOLDEN CLIMBER. (Patent No. 28.) Rich, golden blooms 4 to 5 inches in diameter, produced singly on long stems. Rich, glossy leaves. Price, potted plants, \$1.70 each.

MARY HART. (Plant Patent No. 8.) Deep blood-red with overglow of amber. The Red Talisman. Potted plants \$1.25.

MATADOR. (Patent Pending.) Large full flower of scarlet crimson with pleasing perfume. Vigorous, sturdy, healthy plant. Potted plants \$1.70.

NEW DAWN. (New, Plant Patent.) Everblooming climber; large exquisite flowers of delicate pink on long stems. Fragrant blossoms; bronze-green foliage. Potted plants, \$1.70.

NIGRETTE. (Plant Patent No. 87.) The Black Rose. Deep, rich, dark maroon. Fragrant. Slender growth but continuous in bloom. A European sensation. Potted plants \$2.20.

A Special Booklet—"ALL ABOUT THE NEW ROSES"—illustrated in full color. Send 10 cents in stamps to cover mailing costs.

The June Flowering Roses—"Hybrid Perpetuals"

These are the hardiest of the large-flowering Garden Roses, with blooming season largely in June and July. Their extremely large flowers on strong sturdy bushes make June the month of Roses.

PRICES—H. & O. Specially Prepared, Growing, Potted Plants—\$1.00 each; 5 for \$4.50.

Frau Karl Druschki. A large silvery white. The ideal white rose.

General Jacqueminot. Brilliant crimson. Very fragrant.

Magna Charta. Fragrant, bright pink tinted with carmine.

Mme. Albert Barbier (New). Full cupped flowers of fawn-yellow, shaded white and pink. Fragrant, strong growing and long season of bloom. A new and unusual color for a Hybrid Perpetual.

Paul Neyron. Beautiful deep rose. The largest of all.

Prince Camille de Rohan. Very dark red. Delicate fragrance.

Ulrich Brunner. Bright cherry crimson. An old favorite.

Climbing Roses

For House Wall and Garden Trellis

H. & O. SPECIALLY PREPARED POTTED PLANTS

PLANT Climbing Roses near the porch or on the house walls to have their fragrance and color close at hand. Use them in the garden also to decorate lattices, arbors or pergolas and as festoons over walls.

PRICES H. & O. POTTED, GROWING CLIMBERS

Each 80 cts.; 5 for \$3.50—unless otherwise noted

Climbing American Beauty. Large, double flowers of bright rose pink.

Dorothy Perkins. Big clusters of soft, shell-pink roses. Flowers profusely.

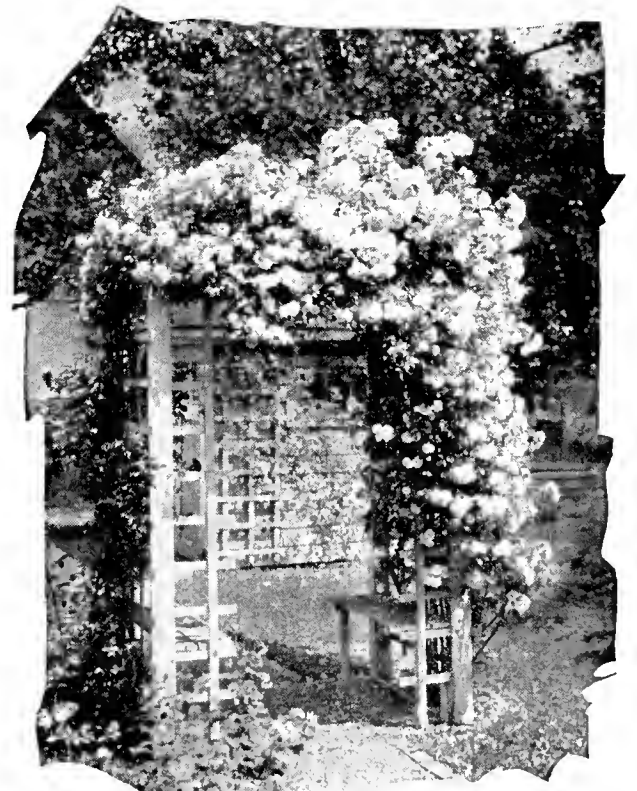
Dr. Van Fleet. Large, light pink flowers on long stems. Fragrant.

Excelsa. Double crimson flowers in clusters. (The improved "Crimson Rambler.")

Paul's Scarlet Climber. Double flowers of bright scarlet red. Unexcelled brilliance.

Primrose. Canary yellow roses of double form in profusion.

The new Climbers, "Blaze," "New Dawn" and "Golden Climber" are listed above under New Rose Creations.



Climbing Roses for the garden trellis.

New Double-Flowering Rugosa Roses

Dependable and Hardy All Through the North

THE new Rugosa Roses are full and double, sweetly fragrant and the flowers appear abundantly and almost continuously from June until October. The plants are hardy and survive without special winter covering.

We offer **strong, dormant plants** that will bloom this year.

The Rugosas are frequently called "Eskimo Beauties" because of their extreme hardiness in the north.

Amelia Gravereaux. Double, fragrant flowers of bright cerise red. Price, strong plants, 75 cts.; extra size, 90 cts.

Belle Poitvine. Clusters of double, magenta-pink roses over a long season. Price, strong plants, 75 cts.; extra size, 90 cts.

Dr. Eckener (New). Large semi-double flowers of salmon-pink with gold at base of petals. A new and unusual rugosa hybrid. Price, \$1.25 each.

F. J. Grootendorst. Full clusters of smaller, bright-crimson roses. Always in bloom. Price, strong plants, 75 cts.; extra size, \$1.00.

Hansa. Double, fragrant, wine-red flowers. Handsome dark green foliage. Sturdy growth and long season of bloom. Price, 70 cts.; extra size, 90 cts.

Hugonis. An early flowering shrub rose with sprays of light yellow roses along the graceful branches. Strong plants, 75 cts.

Rugosa Rubra. The original type from Japan. Crinkled leaves. Large, purple-red single flowers with yellow center. Price, 60 cts.; extra size, 75 cts.

Sarah Van Fleet (New). Semi-double, soft, rose-pink flowers. Continuous in bloom. Price, 75 cts.; extra size, \$1.00.



Clusters of red flowers all season on the hardy Grootendorst Rugosa Rose.

Sir Thos. Lipton. A free-blooming, fragrant double white. Price, 75 cts.; extra size, \$1.00.

BABY RAMBLER ROSES (Dwarf Polyantha)

The Baby Ramblers are small size bushes, very popular because of their dwarf size and heavy flowering. The roses are borne in full clusters and are in bloom continuously throughout the summer.

Plant the Baby Ramblers in beds alone or in front of the taller roses in the rose garden.

Pink Baby Rambler (Ellen Poulsen). Clusters of deep, brilliant-pink, quite fragrant flowers until frost. Potted, growing plants, \$1.00.

Red Baby Rambler (Miss Edith Cavell). Bears heavy, open clusters of crimson-scarlet roses. Potted, growing plants, \$1.00.



Baby Rambler cluster roses.

THE HARDY BUSH ROSES

These hardy bush or shrubby roses are very useful for planting in with the usual flowering shrubs in borders or in boundary groups. They are particularly suited for planting on banks, slopes and in locations where a naturalistic effect is desired. They give not only their foliage value but also the attractiveness of their showy rose flowers.

Blanda. Soft pink flowers on thornless stems 3 to 4 ft. high. Red fruit in fall. Price, strong plants, 60 cts.; extra size, 75 cts.

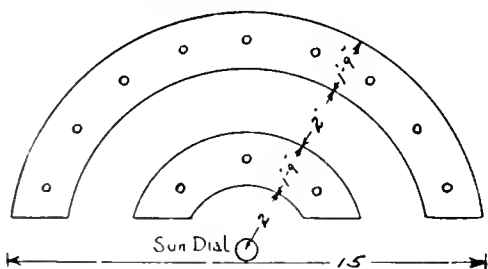
Harrison's Yellow. The best hardy yellow-flowering bush rose. Semi-double golden yellow. Price, strong plants, 75 cts.

Rubrifolia. Pink flowers. Reddish-purple leaves all summer. Price, strong plants, 60 cts.; extra size, 75 cts.

Sweet Briar, Rubiginosa. The old favorite Sweet Briar fragrant pink rose with aromatic leaves. Price, strong plants, 75 cts.

A COMPLETE HOME-YARD ROSE GARDEN OF MONTHLY ROSES

Plant this Special "Home-Yard Collection" and enjoy roses all summer. This group contains a careful selection of the more popular varieties in an assortment of pink, red, white and yellow colors. Our selection.



A semi-circular rose bed.

SPECIAL—"HOME-YARD ROSE GARDEN"—12 choice Roses.
In assorted colors. Potted, growing stock. Special Price,

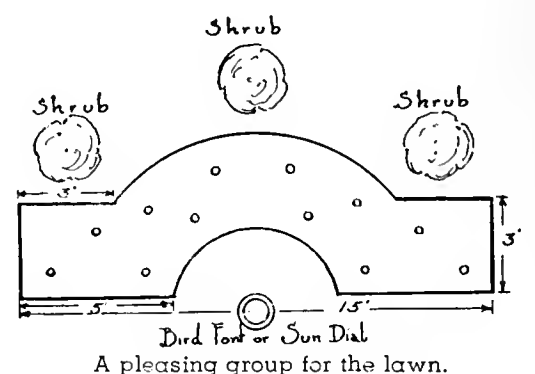
\$10.20

(Please see page 28 for descriptions of the Monthly Roses)

12 H. & O. POTTED ROSES

All growing and living plants ready to set right into the garden.

Use these plants and have a beautiful rose garden this summer.



A pleasing group for the lawn.

VISIT OUR DISPLAY GARDENS, ROCKERY AND POOL AT 1200 ST. CLAIR ST.

Plant Foods and Mulches

For Better Lawns and Flowers, Healthy Trees and Shrubs



We recommend "LOMA" as a perfect Plant Food
IT IS EFFICIENT—EASY TO HANDLE AND FREE OF ODOR



An ideal fertilizer for new lawns and for restoring old ones. "LOMA" contains all the necessary plant foods to properly nourish grass, flowers, trees, evergreens and shrubs. It will produce a luxuriant healthy growth and encourage flowering.

FOR THE LAWN—Allow 40 lbs. to 1000 sq. ft. Scatter evenly and water down thoroughly.

FOR THE GARDEN—Apply along the rows and around the plants following directions on the sack.

1936 LOMA PRICES
10 lbs., 85 cts.; 25 lbs., \$1.50; 50 lbs., \$2.50; 100 lbs., \$4.00.

HELPFUL INFORMATION—A special booklet telling how to use LOMA fertilizer sent on request.

BONE MEAL

BONE MEAL. A selected, finely-ground meal of animal bone that contains valuable nitrogen and phosphoric acid plant food. A safe and excellent fertilizer for peonies, roses and all garden plants. Our Bone Meal has been slightly steamed to soften it and to hasten its fertilizing action. Apply to flower borders one lb. to 15 sq. ft. and cultivate in. Use generously around trees and shrubs.

10 lbs., 65 cts.; 25 lbs., \$1.10; 50 lbs., \$1.75; 100 lbs., \$2.75.

SULPHATE OF AMMONIA

SULPHATE OF AMMONIA. A quick-acting plant growth stimulant containing about 25 per cent ammonia. Use sparingly about garden plants to stimulate rapid development. For lawns apply in a solution at rate of 5 lbs. per 1,000 sq. ft. Water down thoroughly. In the garden do not let it touch green growth.

10 lbs., 65 cts.; 25 lbs., \$1.10; 50 lbs., \$1.75; 100 lbs., \$2.75.

MELO-GROND—Prepared Sheep Manure



MELO-GROND. A balanced mixture of SHEEP MANURE and BONE MEAL (far superior to straight Sheep Manure). A natural, organic plant food that will stimulate the growth of all plants. For lawns use 50 lbs. per 1,000 sq. ft. and water well. Inexpensive and efficient.

50 lb. bag, \$1.75; 100 lb. bag, \$2.75.

VIGORO—A General Fertilizer

VIGORO. A prepared plant food for lawns, vegetable and flower gardens. Directions on package. Allow 40 lbs. per 1,000 sq. ft. for lawns. Odorless—easy to use.

An important aid to more attractive lawns and flower gardens. Contains all the needed plant foods and is free of weed seeds.

25 lbs., \$1.50; 50 lbs., \$2.50; 100 lbs., \$4.00.

NUTRIA PEAT—A needed Mulch for Lawn and Garden

NUTRIA PEAT is a prepared, granulated natural peat, dark in color, that is a splendid soil builder and conditioner. It is clean and odorless. Nutria Peat will lighten and aerate a heavy soil and add the needed humus and texture to sandy soils. It holds 15 times its weight in water.

Use it generously on old or new lawns and as a mulch in the flower beds and rose garden. Makes a perfect top dressing around evergreens, trees and shrubs.

PRICES OF NUTRIA PEAT

Per bag (about 3 bu.), 90 cts.; 2 bags, \$1.50; 3 bags, \$2.00.
(1 bag weighs 90 to 100 lbs. and covers 100 sq. ft. to depth of 1/2 inch.)

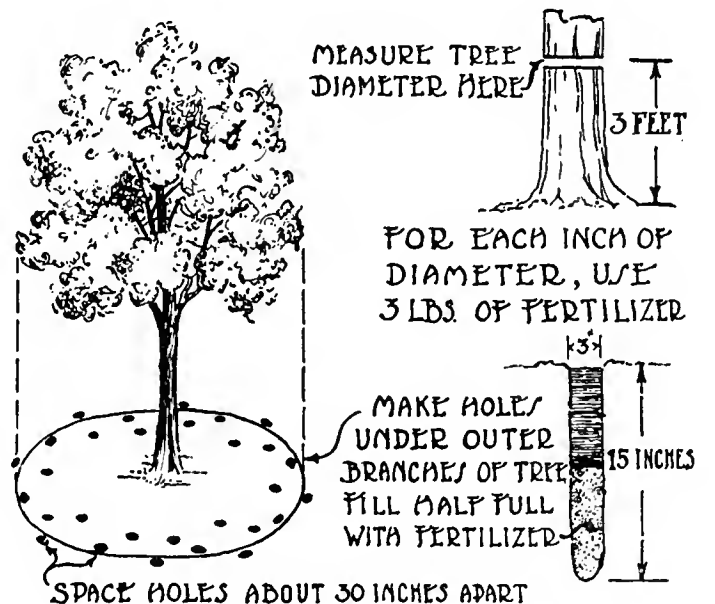
HOW TO FERTILIZE YOUR TREES

To Keep them in Healthy, Vigorous, Growth

This diagram shows how you can fertilize and feed your trees and shrubs. Note how holes are made in the ground underneath the spread of the branches and filled with fertilizer. This plant food can then directly reach the roots.

Keep your fine, old established trees in healthy growth and preserve their beauty by proper fertilizing. When a tree is in vigorous growth it is less subject to insect and disease attacks.

For tree and shrub fertilizing we use and recommend "LOMA"—The Perfect Plant Food. It is economical and efficient.



H. & O. "High Test" Lawn Grass Seed

The Best Seed for a Perfect Lawn

GOOD lawns logically follow the use of clean, pure seed of high germination test. H. & O. High Test Seed is dependably good—the best in quality that we can secure. Our special mixtures are the result of our experience of many years in the actual making of lawns.

There are no cheap annual or short-lived grasses such as Timothy in H. & O. mixtures. These undesirable cheap seeds are often used to make mixtures that can be sold at a low price and the purchaser learns too late that cheap seed can only mean a temporary, unsatisfactory lawn. Use the best seed obtainable and enjoy the proper results from your work and efforts.

Send for "HOW TO MAKE A LAWN." This booklet tells you how to make and care for a lawn. It gives practical and helpful information. Mailed on request.

AMOUNT TO SOW—Allow one pound of seed to every 200 square feet of new lawn area. For re-seeding on old lawns one pound of seed to 400 square feet will be sufficient.

Prices are given for seed packed and ready to ship. Please add 6c per lb. for parcel post if shipment of seed by mail is wanted.

VELVET SOD SEED

Velvet Sod Lawn Seed is an unusually high grade and careful mixture of permanent fine-bladed, rich green grasses. Specially prepared to meet the climatic conditions of our northern states. Its high weight of 27 lbs. per bushel indicates its purity and freeness from chaff and adulteration. We use this seed on all our own gardening work and recommend it as the best seed obtainable.

Velvet Sod contains Creeping Bent seed.

1 lb. 45c; 5 lbs. \$2.00; 10 lbs. \$3.60; 20 lbs. \$6.50.

SHADY-SIDE SEED

Where ordinary grasses will not grow we suggest sowing this special "shady-side" mixture which contains varieties naturally tolerant to shade. (Extra attention to fertilizing and watering is very important under these shade conditions and a light re-seeding each spring helps maintain the sod.)

1 lb. 55c; 5 lbs. \$2.50; 10 lbs. \$4.75; 20 lbs. \$9.00.

TERRACE SEED

On a slope the usual lawn mixtures are disappointing. For terraces we suggest this special mixture of spreading, deep rooting grasses that are resistant to drought and will thrive under unfavorable conditions.

1 lb. 55c; 5 lbs. \$2.50; 10 lbs. \$4.75; 20 lbs. \$9.00.

Fertilizers are necessary for the perfect lawn. Please see page 31.



Sow "Velvet Sod"—the best grass seed. "Velvet Sod" mixture contains creeping bent

WHITE CLOVER

The best imported white Dutch clover with small leaves and dense growth. Very often sown with other grasses, particularly in a new lawn, where it helps cover the ground, thicken the sod and so tends to crowd out weeds.

½ lb. 35c; 1 lb. 65c; 5 lbs. \$3.00; 10 lbs. \$5.50.

KENTUCKY BLUE GRASS

A beautiful grass that should be the main constituent of every good lawn here in the north. It is sometimes used alone but as it develops slowly, it becomes better established if sown in a mixture. Our seed is a very choice grade of carefully re-cleaned extra heavy seed with an average weight of 21 lbs. per bushel.

1 lb. 40c; 5 lbs. \$1.75; 10 lbs. \$3.25; 20 lbs. \$6.00.

RED TOP GRASS

Red Top is a fine-leaved grass that germinates and develops very quickly. It is of particular value in getting a new sod established. For a permanent lawn it should not be sown alone.

1 lb. 30c; 5 lbs. \$1.25; 10 lbs. \$2.25; 20 lbs. \$4.00.

CREEPING BENT GRASS

Sea Side Bent—a true, unmixed creeping bent seed. It produces a thick, low and close-growing turf for lawns and golf greens. (Creeping Bent sod requires often and close cutting and special attention in fertilizing.)

1 lb. \$1.50; 5 lbs. \$7.25; 10 lbs. \$14.00; 20 lbs. \$27.00

Your inquiries are invited on matters of lawn-making, seed and fertilizer. We have a special service for golf clubs and park properties.

CREEPING BENT GRASS STOLONS

The Improved Minnetonka Strain

For those who wish to introduce creeping bent into an old lawn or to establish it on a new lawn we offer special sod plugs. Set the plugs 12 inches apart and they will spread and meet after one season's growth. A special sealed carton containing 120 creeping bent plugs—enough for 120 sq. ft. of old or new lawn—Price \$1.25; 5 cartons \$5.00; 10 cartons \$9.00—(Shipping weight about 12 lbs. each.)

Bent Stolons in Bulk—\$5.00 per bushel

(4 bu. are required for 1000 sq. ft. of lawn.)
Full directions for planting and care given.

CATALOG INDEX

A	Page	D	Page	J	Page	R	Page
Acer	15	Daisy, Alaska, Shasta	18-19	Jerusalem Cross	21	Raspberries	27
Achillea	18	Daisy, Giant	22	Juglans	16	Regal Lily	21
Aconitum	18	Daisy, Persian	22	Juneberry	6	Rhamnus	4-17
Adam's Needle	22	Day Lily	20	Juniper	11-12	Rhubarb	27
Aesculus	14	Delphinium	19	L		Rhus	9
Alaska Daisy	19	Dianthus	19	Lantern Plant, Chinese		Ribes	5
Almond, Flowering	4	Dictamnus	20	(Physalis)	21	Robinia	7
Alyssum	18	Dicentra	19-20	Larkspur	19	Rock Gardens	23
Amelanchier	6	Digitalis	20	Lathyrus	21	Rock Rose	20
Ampelopsis	17	Dogwood	5	Lavender, Sea	22	Rosa Rugosa	8-30
Anchusa	18	Dutchman's Pipe	17	Lawn Grass Seed	32	Rose, Red Leaved	8
Anemone	18	E		Lilac	7	Roses	8-28-29-30
Anthemis	18	Echinops	20	Lilies	21	Rudbeckia	22
Apples	27	Eleagnus	8	Lily-of-the-Valley	21	Russian Olive	8
Aquilegia	18	Elderberry	5	Linden	15	S	
Arabis	18	Elm	15	Linum	21	Salix	16
Arborvitae	11	Engelman's Ivy	17	Locust, Flowering	7	Salvia	22
Aristolochia	17	Erinus	20	Lonicera	6-17	Sambucus	5
Arenaria	18	Euonymus	6	Loosestrife	21	Scutellaria	22
Armeria	18	Euphorbia	20	Lupinus	21	Sedum	22
Arrowwood	9	Evergreens	11	Lychnis	21	Sedum	22
Artemisia	18	F		Lycium	17	Sempervivum	22
Ash	14	Ferns	20	Lythrum	21	Shasta Daisy	19
Asparagus	27	Fertilizers	31	M		Shrubs	4
Asters	18-19	Fir	12	Mallow	21	Siberian Pea Tree	8
Astilbe	19	Flax	21	Maple	15	Snowball	9
B		Forget-me-not	20	Marguerite, Hardy	18	Snowberry	8
Babysbreath	20	Forsythia	6	Matrimony Vine	17	Sorbus	16
Balloon Flower	21	Foxglove	20	Mock Orange	6	Speedwell	22
Barberry	4-17	Fraxinus	14	Monarda	21	Spiraea	8-9-17
Basswood	15	Fruits	27	Monkshood	18	Spruce	13
Betula	14	Funkia	20	Mountain Ash	16	Statice	22
Birch	14	G		Morus	16	Stonecrop	22
Bittersweet	17	Gaillardia	20	Mulberry	16	Strawberries	27
Blanket Flower	20	Gas Plant	20	Myosotis	20	Strawberry Bush	6
Bleeding Heart	19-20	Globe Flower	22	N		Sumac	9
Bocconia	19	Globe Thistle	20	Nanking Cherry	8	Sweet William	19
Boltonia	19	Globularia	20	Ninebark	7	Symphoricarpus	5-8
Bone Meal	31	Golden Bell	6	O		Syringa	6-7
Boston Ivy	17	Golden Glow	22	Oenothera	21	T	
Bridal Wreath	8-17	Golden Tuft	18	Oleaster	8	Tamarix	9
Buckthorn	4-17	Gooseberries	27	Olive, Russian	8	Taxus	13
C		Grapes	17-27	Oswego Tea	21	Thalictrum	22
Campanula	19	Grass Seed	32	P		Thorn Apple	9
Canterbury Bell	19	Gypsophila	20	Pachysandra	21	Thuya	11
Caragana	8	H		Papaver	21	Tilia	15
Catalpa	14	Hackberry	14	Pea Tree, Siberian	8	Trees	14
Cedar	11	Harebell	19	Peat	31	Trollius	22
Celastrus	17	Hedges	17	Penstemon	21	U	
Celtis	14	Helenium	20	Peonies	24	Ulmus	15
Centaurea	19	Helianthemum	20	Perennials, Hardy	18	V	
Cerastium	19	Heliopsis	20	Philadelphus	6	Valerian	22
Cherries	27	Heliotrope, Garden	22	Phlox	25	Veronica	22
Chinese Lantern	21	Hemerocallis	20	Physocarpus	7	Viburnum	9
Clematis	17-19	Hen and Chickens	22	Physostegia	21	Vines and Creepers	17
Columbine	18	Heuchera	20	Physalis	21	Viola	22
Coneflower, Purple	22	Hibiscus	21	Picea	13	Virginia Creeper	17
Coral Bell	20	Hollyhocks	21	Pie Plant	27	W	
Coralberry	5	Honeysuckle	6-17	Pines	12	Walnut, Black	16
Coreopsis	19	Horsechestnut	14	Pinks	19-20	Wayfaring Tree	9
Cornflower, Perennial	19	Hydrangea	6	Plantain Lily	20	Weigela	9
Cornus	5	I		Platycodon	21	Willow	16
Cotoneaster	5-17	Iris	26	Plum, Flowering	7	Y	
Crab, Flowering	15	Ivy	17	Plum, Purple Leaf	7	Yellow Star	20
Cranberry, Highbush	9			Plums, Fruiting	27	Yew	13
Crataegus	9			Poplar	16	Yucca	22
Creeping Bent Grass	32			Poppy	21-22		
Currant, Flowering	5			Primrose, Evening	21		
Currant, Mountain	5-17			Pyrethrum	22		
Currants, Fruiting	27			Prunus Tomentosa	8		

THE PARK NURSERIES HOLM & OLSON, INC.

Offices—20-22-24 W. Fifth St.

Nurseries—1200 St. Clair St.

SAINT PAUL

H. & O. TREE, LAWN AND GARDEN CARE

A DEPENDABLE and RESPONSIBLE GARDENING SERVICE

Entrust the care of your valuable trees, lawn and landscape plantings to our skilled and experienced gardeners.

WE SPECIALIZE IN

TREE TRIMMING

TREE REPAIR WORK

HEDGE TRIMMING

SHRUB PRUNING

LAWN MAKING

LAWN FERTILIZING

ROCK GARDENS

GARDEN CONSTRUCTION

GENERAL SUMMER CARE OF LAWN AND GARDEN

ESTIMATES GIVEN

Phone. Mpls., Midway 2772

--

Saint Paul, Cedar 6083