

## **Historic, Archive Document**

Do not assume content reflects current scientific knowledge, policies, or practices.





# *APRIL in the Garden*

1848 - 1935

**HOYT NURSERIES**  
NEW CANAAN • CONNECTICUT





WHITE-FLOWERING DOGWOOD

## Cornus · Dogwood

These hardy plants are probably the most popular of the flowering trees or shrubs growing in the eastern part of our country. They usually blossom in early May.

### WHITE - FLOWERING

	Each	10
5 feet . . . . .	\$2 50	\$22 50
6 feet . . . . .	3 00	27 50
7 feet . . . . .	4 00	37 50
8 feet . . . . .	6 00	55 00
10 feet . . . . .	8 00	75 00
12 feet . . . . .	12 00	

### PINK - FLOWERING

	Each	10
3 feet . . . . .	\$2 00	\$17 50
4 feet . . . . .	3 00	27 50
5 feet . . . . .	3 50	30 00
6 feet . . . . .	6 00	50 00
7 feet . . . . .	10 00	
8 feet . . . . .	15 00	

## Taxus cuspidata nana

This popular Japanese Yew is particularly adaptable for dwarf hedges since it will form a compact hedge with very little trimming. It may also be used as a specimen plant or in a garden where it is most attractive when allowed to grow naturally without trimming, and to sprawl its branches among the other plants and rocks.

SEE OPPOSITE PAGE FOR PRICES



## Pinus Strobus

This Pine, considered by many the most beautiful of all the Pines, is noted for its artistic habit of growth in maturity. A fast-growing Pine, it is useful for windbreaks and screens. Its silvery foliage blends well with all other native trees. It prefers a light, well-drained soil.

2 to 3 ft., \$1.50 each,  
\$12.50 for 10.

3 to 4 ft., \$2.00 each,  
\$15.00 for 10.

6 to 7 ft., \$7.50 each,  
\$70.00 for 10.

7 to 8 ft., \$9.00 each,  
\$85.00 for 10.

8 to 10 ft., \$10 each,  
\$90.00 for 10.

10 to 12 ft., \$12 each.



PINUS STROBUS (WHITE PINE)

## Prices of Dwarf Japanese Yew

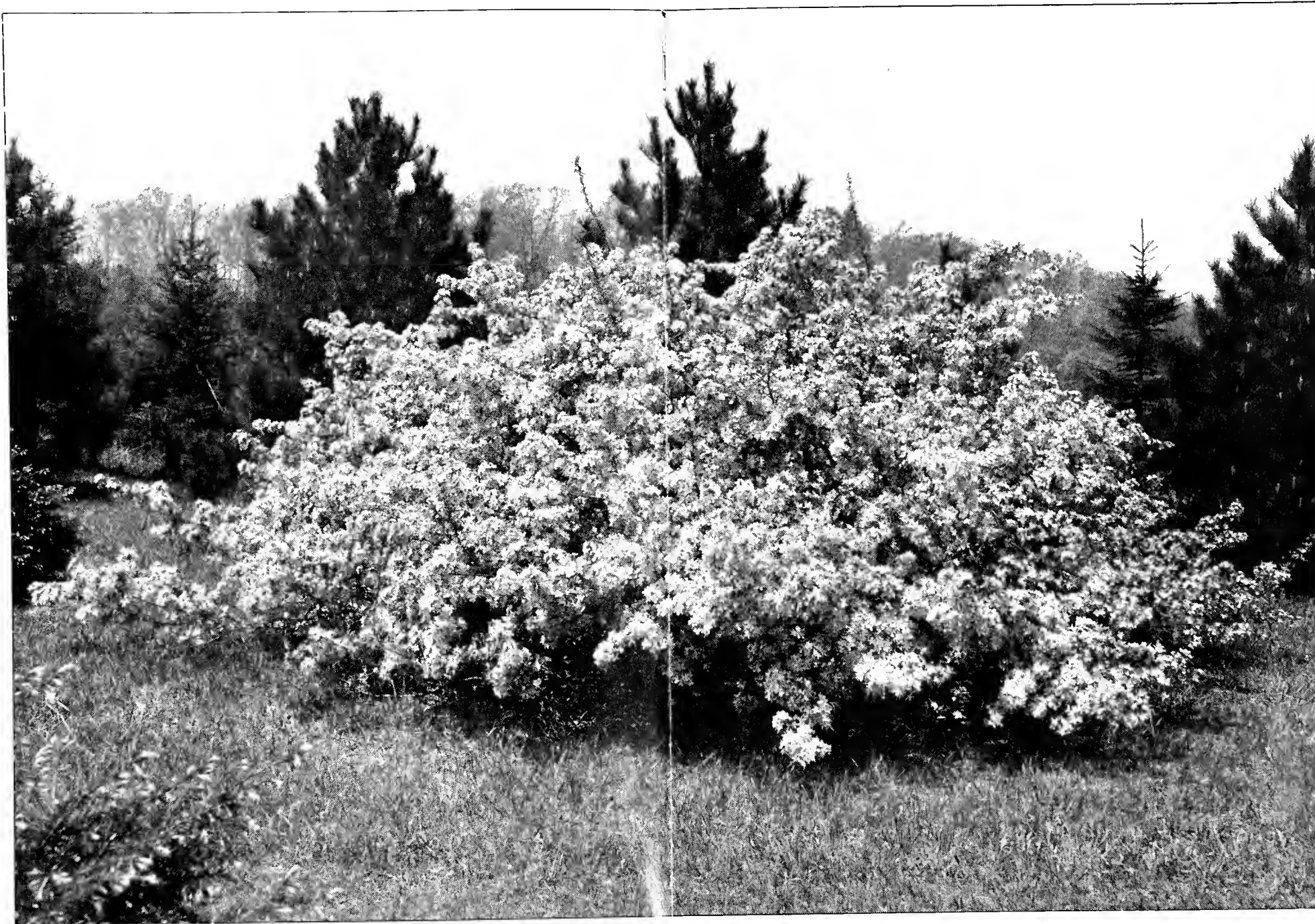
(*Taxus cuspidata nana*)

Spread	Each	10
9 to 12 inches .....	\$1 25	\$10 00
12 to 15 inches .....	1 50	12 50
15 to 18 inches .....	2 50	20 00
18 to 21 inches .....	4 00	35 00
21 to 24 inches .....	6 00	
2 to 2½ feet .....	7 50	

DESCRIBED ON OPPOSITE PAGE

I S G U A R A N T E E D





#### VARIETIES

- M. Arnoldiana.
- M. atrosanguinea.
- M. floribunda.
- M. ioensis Bechteli.
- M. Niedzwetzkyana.
- M. Parkmani.
- M. Sargenti.
- M. Scheideckeri.
- M. spectabilis.

#### PRICES

	Each	10
3 to 4 ft. . . .	\$1 50	\$13 50
4 to 5 ft. . . .	2 50	22 50
5 to 6 ft. . . .	3 50	30 00
6 to 7 ft. . . .	5 00	

## MALUS FLORIBUNDA

THIS lovely Flowering Crab-Apple is happily situated in full sunshine where it thrives best and is given plenty of room so that it may make its sprawly, naturalistic growth. It is very hardy and each May it produces its millions of pink and white blossoms in reckless profusion. These are followed in September by bright-colored fruit of yellow and red.

Behind, and acting as a background, are Red Pine (*Pinus resinosa*) just beginning to show their many candles of new growth amidst their dark green foliage. You are cordially invited to come to the Nursery and see our plants when they flower.

Flowering Crab-Apples are hardy and need little attention. They should be planted early to obtain best results.

EVERY PLANT IS GUARANTEED



CLIMBING ROSE, MME. GREGOIRE STAECHELIN

## Climbing Roses

Our 3-year Roses are exceptionally heavy, well-developed plants and are guaranteed to give satisfactory results. Most of the varieties listed bear flowers on long stems and are ideal for picking. Plant as early as possible.

75 cts. each, \$7.00 for 10, unless otherwise noted

AMERICAN PILLAR. Single; pink.  
 CLIMBING LADY ASHTOWN. Pink. \$1.25 each.  
 CLIMBING TALISMAN. Apricot. \$1.25 each.  
 DR. HUEY. Semi-double; maroon.  
 DR. W. VAN FLEET. Pale pink.  
 EMILY GRAY. Semi-double; yellow.  
 JACOTTE. Semi-double; orange-yellow.  
 MARY LOVETT. Double; white.

MARY WALLACE. Double; pink.  
 MME. GREGOIRE STAECHELIN. Pink.  
 PAUL'S SCARLET CLIMBER. Scarlet flowers.  
 PRIMROSE. Double; yellow.  
 SILVER MOON. Creamy buds.  
 SCORCHER. Crimson. \$1.25 each.  
 WICHURAIANA. Single; white.

### NEW CLIMBERS

MRS. ARTHUR CURTISS JAMES. Plant Patent No. 28. Yellow. \$2.00 each.	NEW DAWN. Plant Patent No. 1. Pale pink. \$1.50 each.
--	---

## Wisteria

Our Wisteria are especially fine, vigorous plants and all have blossomed in our nursery. We guarantee that they will give you flowers.

BLUE		WHITE	
	Each	Each	10
3-year, field-grown	\$1 25	\$1 00	\$9 00
3-year, 6-foot stems in 10-inch pots.	2 50	20 00	27 50
		3 00	





COTONEASTER HORIZONTALIS



## Cotoneaster horizontalis

Is especially suited for rock-garden planting.

	Each	10
10 to 12 inches, pot-grown . . . . .	\$1.00	\$7.50
12 to 15 inches, pot-grown . . . . .	1.25	11.00
15 to 18 inches, pot-grown . . . . .	2.00	17.50

## Lilacs

This loveliest of flowering shrubs is always beautiful, whether used as an individual specimen, in background plantings, or as a hedge.

### *Lilacs for Hedges*

3 to 4 feet, 75 cts. each, \$6.50 for 10, \$40.00 per 100.

4 to 5 feet, \$1.00 each, \$7.50 for 10, \$50.00 per 100.

### *French Varieties*

3 to 4 feet, \$2.00 each, \$17.50 for 10.

4 to 5 feet, \$2.50 each, \$22.50 for 10.

5 to 6 feet, \$3.50 each, \$30.00 for 10.



# Hemlock

Stately grace and dignity characterize the Hemlock, most beautiful and most adaptable of the larger North American evergreens.

They are hardy, have fine color, are free from diseases, and thrive in either moist or gravelly locations. They tolerate the shade of larger trees better than other evergreens except the Yew. However, the Hemlock prefers the sunlight and open spaces which give it a chance to develop.



## American Hemlock

*(Tsuga canadensis)*

	Each	10
2 to 3 feet .....	\$1 50	\$12 50
3 to 4 feet .....	2 50	20 00
4 to 5 feet .....	3 00	25 00
5 to 6 feet .....	5 00	45 00
6 to 7 feet .....	6 00	50 00
7 to 8 feet .....	8 00	75 00
8 to 9 feet .....	12 00	110 00