

## **Historic, archived document**

Do not assume content reflects current scientific knowledge, policies, or practices.



62.41

# *“Calo” Dahlias*

*... and ...*

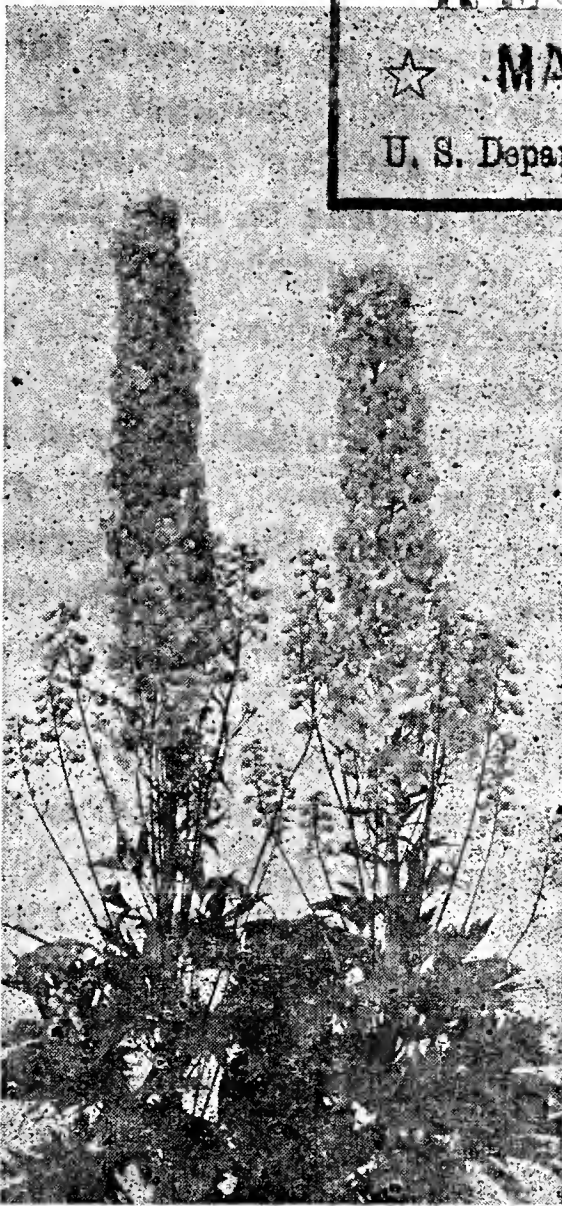
# *Delphiniums*

1936

LIBRARY  
RECEIVED

★ MAY 9 1936 ★

U. S. Department of Agriculture



Mon Pier Delphinium

**LOOP GARDENS**

907 College Avenue

ADRIAN, MICHIGAN

# Greetings

**A** GAIN I present a message of friendly greeting to my many friends, old and new, and to thank you one and all for your past patronage.

I believe we are filling a real need in offering our small flowering dahlias to you.

We were Pioneers in this line, being the first in the Midwest to make a specialty of small flowering dahlias. We have taken first prizes for three successive years on our Miniature Dahlia displays at the big Michigan shows. We are able to offer the proven best of small dahlias, whether needed for artistic arrangements for your home, masses of gay color for landscape effect, or only for your small garden.

Visitors to our gardens are always welcome. Be sure to come in June to see our outstanding Delphinium, in September and October for Dahlias. We have many more varieties than listed in this catalogue.

**CULTURE**—Miniature dahlias need no disbudding, very little, if any, pruning and can be planted closer than the larger varieties for landscaping. They should not be heavily fertilized or overwatered, but grown rather poor the same as pompons.

**TERMS**—Cash with order.

Postage paid on orders of \$2.00 or over.

Roots shipped after April 15th unless otherwise specified. Plants after May 15th; add 25¢ extra for special delivery of green plants.

All stock guaranteed true to name and all roots and plants in good growing condition upon arrival. I do not substitute.

**LOOP GARDENS**

CAROLINE A. LOOP, Prop.

---

**MEMBER**

---

CERTIFIED  
DAHLIA

---



---

COMMERCIAL  
GROWERS

---

*It's Your Guarantee of Quality*



**MINIATURE DAHLIAS**

**MINIATURE CACTUS  
and SEMI-CACTUS**

	ROOTS	PLANTS
<b>Baby Royal.</b> Salmon pink shaded apricot at the base of petals. A dainty Gold Medal dahlia from England.	\$ .50	
<b>Dahliadel Joy.</b> Clear lemon yellow		\$ .75
<b>Kitty Bellaire.</b> Rich amarath red	.75	.50
<b>Elisabeth Pape.</b> Rosy salmon pink with amber suffusion. Very artistic for arrangements	.50	
<b>Early Yellow.</b> Bright lemon yellow of artistic formation.	.35	
<b>Nesthackchen.</b> Buff suffused lilac. An artistic miniature where pastel shades are desired. Very free flowering.	.50	.50
<b>Samariteran.</b> Beautiful pure white cactus of artistic formation that is always very much admired. A good cut flower.		1.00
<b>Sanhicans Sweetheart.</b> Artistic and useful. One of the daintiest and finest of miniatures. Color ochreous buff, suffused rose red.	.75	.50
<b>Golden California.</b> 1934 Honor Roll. Yellow and amber, salmon shadings.	1.50	

**MINIATURE INFORMAL DECORATIVE  
DAHLIA**

	ROOTS	PLANTS
<b>Baby Bunting.</b> Violet rose shading to golden yellow at base of petals.	\$ 1.00	\$ .50
<b>Jean.</b> Apricot buff suffused violet rose. A free early bloomer, that is very satisfactory.	1.00	.50
<b>Rapture.</b> Pink shading to sulphur yellow at center with gold suffusion.	1.50	.75

## MINIATURE FORMAL DECORATIVE DAHLIAS

	ROOTS	PLANTS
<b>Baby Beauty.</b> Violet rose shaded bright rose pink. A small Jersey Beauty on strong stems.	\$ 1.00	\$ .50
<b>Blue Bird.</b> Unique Dahlia; color bluish lavender.	.50	.50
<b>Fairy.</b> Lovely shade of pink with slight mauve shading. Early and continuous bloomer. Considered a Miniature Jersey Beauty.	.50	
<b>Irine.</b> Exquisite old rose or coral pink.	.35	
<b>Jerry.</b> Coral Red, suffused carmine. Bright and showy.	.50	
<b>Kentucky Babe.</b> Salmon suffused gold.	1.00	
<b>Little Jewel.</b> Original miniature. Peach blossom pink.	.35	
<b>Little Nemo.</b> A striking crimson-tipped white.		.50
<b>Miss Vivian.</b> 1935 Honor Roll miniature. Beautiful rose pink, compact blossoms, very long stems.		1.50
<b>Orchid Lady.</b> Amarath pink to mallow pink.		1.00
<b>Paddy.</b> One of the most incessant blooming dahlias we have grown. Color flesh ground, heavily suffused deep rose pink on long stiff stems.	.50	.50
<b>Skippy.</b> White tipped carmine, attractive flower on long stiff stems. A profuse bloomer.	.50	
<b>Tricolor.</b> Similar in every way to Skippy, except the color is yellow shaded cardinal, with yellow petaloids.	.50	

## MINIATURE PEONY DAHLIAS

	ROOTS	PLANTS
<b>Bishop of Landaff.</b> Unusual and attractive flower, petals being bright scarlet with garnet center. Foliage is lacy and of reddish bronze color.	\$ .50	\$ .50
<b>Pink Pearl.</b> Lovely Rose Pink, showing a golden eye. Very desirable in landscape planting and useful for cutting and arrangements.	1.00	.50
<b>Tiny.</b> Yellow base suffused apricot. A fine companion to Pink Pearl	1.00	.50

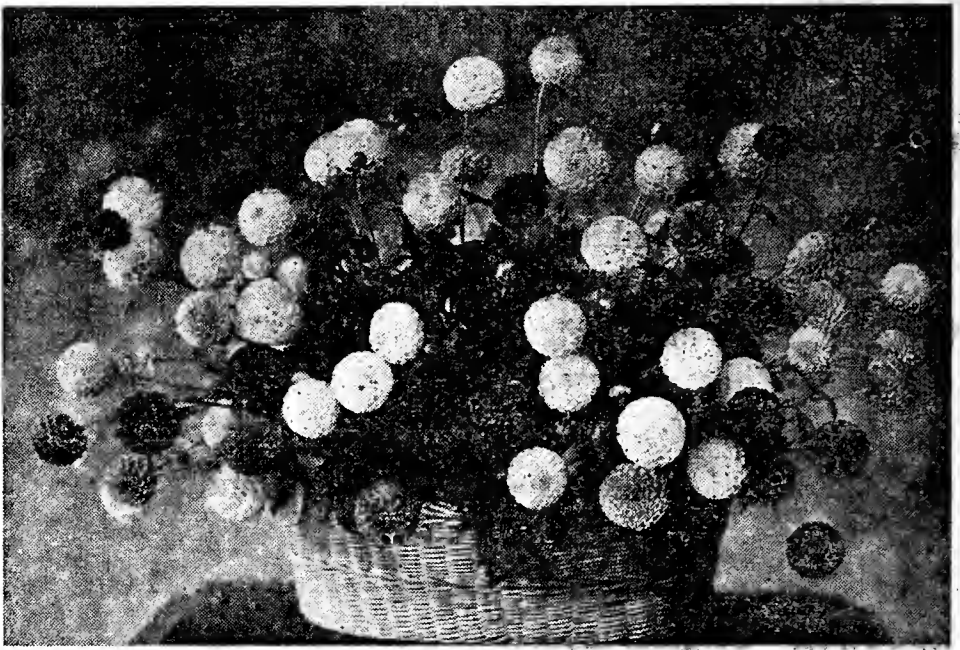
---

**Silva Quarta.** Ball. A double quilled novelty. Color pure lavender. Roots 50¢

## TWO LARGE FLOWERING DAHLIAS

	ROOTS
<b>Jack Curtis.</b> A Semi-Cactus, that has many awards to its credit. Color is very dark, rich, velvety maroon, of a most admirable shade. Very prolific and can be grown to eleven inches by disbudding properly.	\$ .50
<b>Wm. T. S. Curtis.</b> Informal Decorative, self color, clear light lavender that does not fade or burn. Plant habit and form of this large flower is very good. A splendid cut flower. It has two first prizes, as best keeper, to its credit.	.75





## POMPONS

**Peggy.** Our 1935 introduction. Bright orange scarlet. A large pompon recommended for garden or landscape. Brilliant color and prolific flowering. Plants 50¢, Roots 50¢ *Net*

**Pansy.** A perfect pompon that appeals to everyone. Its color is a beautiful dark clear purple and of good growing habits. Suitable for garden or exhibition. Stock limited. Plants 50¢  
Roots 50¢ *Net*.

	ROOTS
<b>Adelaide.</b> Lilac Pink free flowering and long stems	\$ .35
<b>Add Dott.</b> Pink with lavender tinges, very prolific	.35
<b>Belle of Springfield.</b> Fine tiny low growing brick red	.35
<b>Bobby.</b> Delicate plum shade.	.35
<b>Bronze Beauty.</b> Beautiful golden apricot, prolific bloomer	.35
<b>Dee Dee.</b> Small perfect pale lilac	.35
<b>Dot.</b> Pure White	.35
<b>Elisabeth.</b> Lemon yellow tipped carmine	.35
<b>Eunice.</b> A baby Maude Adams	.35
<b>Honey.</b> Honey yellow with light suffusion of red. We took first prize on this dahlia, as the smallest most perfect dahlia.	;50
<b>Little Edith.</b> Perfect primrose tipped carmine	.35
<b>Little David.</b> Perfect Russet Orange	.35
<b>Little Johnie.</b> Smallest Maroon red	.35
<b>Little Sunshine.</b> Light gold, good form and long stems. <i>Net</i>	.50
<b>Pothart.</b> Low growing, bright dark red	.35
<b>Sally.</b> Small shell-like petals, color deep cream, slightly flushed pink	<i>Net</i> .50
<b>Ty Tee.</b> Rose, blending to creamy peach	.50
<b>Sunny Daybreak.</b> Lemon yellow, heavily tipped cardinal	.35
<b>Queen of Whites.</b> White	.35
<b>Yellow Gem.</b> Pure Yellow,	.35

---

**ANY FOUR POMPONS for \$1.00** (Except those marked *Net*.)  
Large Flowering Special—Five Standard Varieties all Labeled \$1.



---

# "Calo" Delphinium

## PLANTS

Selected One-Year Old Plants

(In Light or Dark Shades)

One Dollar Each

\$10.00 Per Dozen

---

## SEEDS

from my best varieties only that will produce a large percentage of spikes, as shown on front page illustration

ONE DOLLAR PER PACKET

---

Visit Us in June  
See Our Delphinium Gardens  
at Their Best

NEW OUTSTANDING CLEAR BLUES  
STURDY GLISTENING PURE WHITES

---

Member

{ American Dahlia Society  
Dahlia Society of Michigan  
American Delphinium Society

