

## **Historic, archived document**

Do not assume content reflects current scientific knowledge, policies, or practices.



62,73

# MILLER & PATTON

— GROWERS AND IMPORTERS —

## 1936 Wholesale Seed Catalogue for Market Gardeners

• HIGHEST QUALITY SEEDS •

LIBRARY  
RECEIVED  
★ MAR 23 1936 ★  
U. S. Department of Agriculture



M. & P. New Castle Green Celery, Late Keeping (See Page 5 for Description)

3567 KENSINGTON AVENUE

PHILADELPHIA, PA.

MILLER—SEEDS—PATTON

**INTRODUCTORY**

**MILLER & PATTON**  
*Growers and Importers*  
*Highest Quality Seeds*

3567 Kensington Ave., Philadelphia, Penna.

**F**OR 40 years Miller & Patton have sold seeds to the market gardeners throughout the country. We have enjoyed the trust our market gardener friends have put in us and we have kept on our guard to furnish seeds that will hold their confidence in us. We have gained considerable business through the recommendations of our market garden friends to others and we take this means to thank you, one and all.

Sincerely and truly, we remain

MILLER & PATTON

We deliver to the Post Office designated, free of charge, seed orders, providing the order consists of small, fine seed in packets, ounces, quarter pounds and pounds.

We deliver to Express and Freight offices, seed orders designated free, providing the order is \$10 or more and consists of one-half in small seeds. Where Peas, Beans, Corn and other seeds in bulk are wanted a cost charge will be made for two-bushel seamless bags.

**NON-WARRANTY**

Miller & Patton give no warranty, express or implied, as to description, quality, productiveness, or any other matter, of any Seeds, Bulbs or Plants they sell, and will not be in any way responsible for the crop. If the purchaser does not accept the goods on these terms they are at once to be returned.

**SPECIAL LOW EXPRESS RATES**

As seeds are now taken when packed in boxes or bags, by Express Companies at the second-class rate, it is a great advantage to those ordering in quantities which are not offered post paid to have their orders shipped by express. Large quantities can be shipped cheapest by freight, but require a longer time in transit. If the manner of shipment is left to us, we will always use our best judgment in the matter and decide to the interest of the customer.

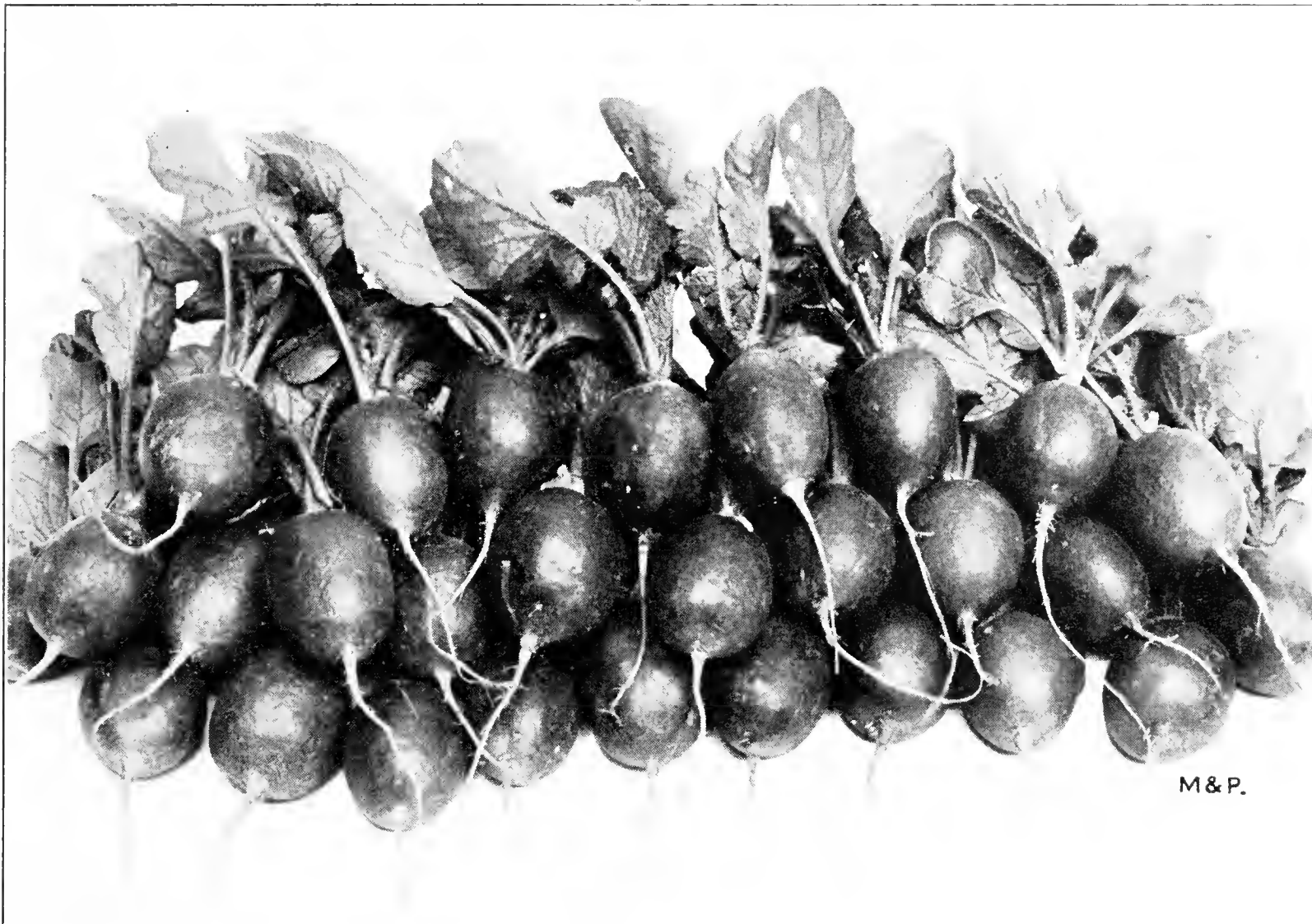
**PARCEL POST RATES**

Weight in pounds	Local	ZONES					
		First up to 50 miles	Second 50 to 150 miles	Third 150 to 300 miles	Fourth 300 to 600 miles	Fifth 600 to 1,000 miles	Sixth 1,000 to 1,400 miles
1	\$0.07	\$0.08	\$0.08	\$0.09	\$0.10	\$0.11	\$0.12
2	.08	.10	.10	.11	.14	.17	.19
3	.08	.11	.11	.13	.17	.22	.26
4	.09	.12	.12	.15	.21	.27	.33
5	.09	.13	.13	.17	.24	.33	.40
6	.10	.14	.14	.19	.28	.38	.47
7	.10	.15	.15	.21	.31	.43	.54
8	.11	.16	.16	.23	.35	.49	.61
9	.11	.17	.17	.25	.38	.54	.68
10	.12	.18	.18	.27	.42	.59	.75
11	.12	.19	.19	.29	.45	.64	.82
12	.13	.21	.21	.31	.49	.70	.89
13	.13	.22	.22	.33	.52	.75	.96
14	.14	.23	.23	.35	.56	.80	1.03
15	.14	.24	.24	.37	.59	.86	1.10
16	.15	.25	.25	.39	.63	.91	1.17
17	.15	.26	.26	.41	.66	.96	1.24
18	.16	.27	.27	.43	.70	1.02	1.31
19	.16	.28	.28	.45	.73	1.07	1.38
20	.17	.29	.29	.47	.77	1.12	1.45

# MILLER & PATTON

*1936 Wholesale Seed Catalogue for Market Gardeners*

## HIGHEST QUALITY SEEDS



### RADISH

#### CAVALIER

**Scarlet Globe, Extra Selection for Green Houses**

This variety develops very early a bright scarlet root and nice strong foliage, so that it may be easily bunched. The right strain for greenhouse culture.

In addition to an earlier maturity this strain is much improved in color, which is a rich brilliant scarlet. Its main advantage is the unsurpassed quality. Crisp as no other radish, thin-skinned and much longer standing before becoming pithy.

1 oz., \$0.10. ¼ lb., \$0.30. 1 lb., \$1.00.

**On large quantities prices will be quoted upon application**

**ASPARAGUS SEEDS**

	Oz.	¼ lb.	1 lb.
Washington . . . . .	\$0.25	\$0.60	\$2.00
Mary Washington . . . . .	.40	.75	2.50
Palmetto . . . . .	.15	.30	.85
Giant De Argentuil . . . . .	.15	.30	.85
Conover's Colossal . . . . .	.15	.30	.85

**BRUSSELS SPROUTS**

	Oz.	¼ lb.	1 lb.
Paris Market . . . . .	\$0.25	\$0.75	\$2.50
Long Island Improved . . . . .	.30	.75	2.50

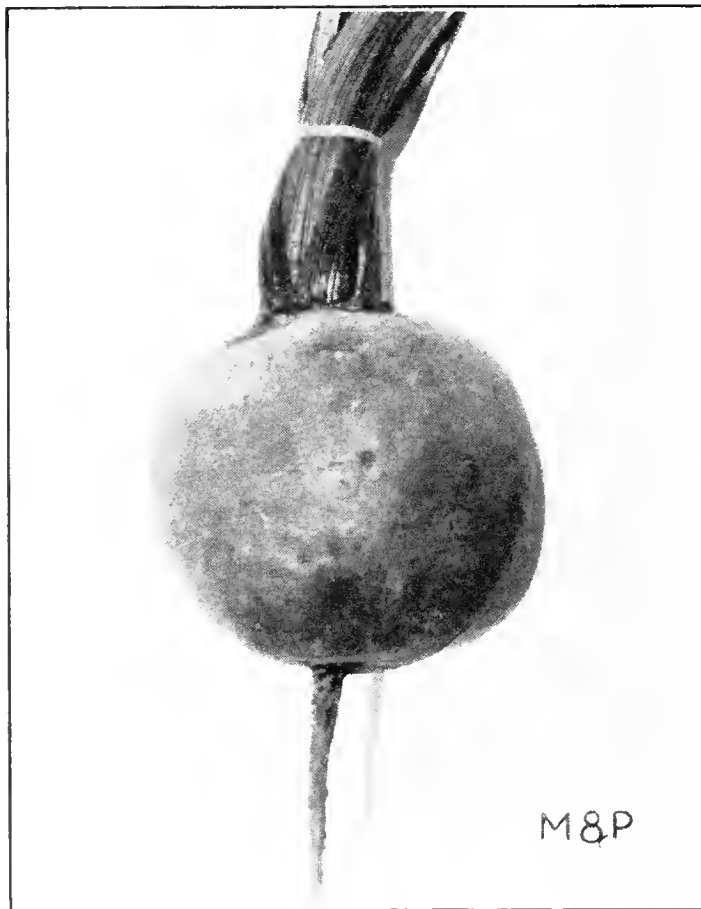
**BEET, DETROIT DARK RED**

**Detroit Dark Red.** This strain of Detroit Dark Red is as perfect as it can ever be grown. Roots are globe shaped, very smooth and of medium size; skin dark red, flesh intense deep red without zones, very tender and sweet. ¼ lb., \$0.30; 1 lb., \$1.00; 10 lbs., \$9.00.



**Broccoli Christmas Calabrese**

The green sprouting, exceedingly quickly maturing type, developing a large quantity of small heads on one plant. 1 oz., \$1.00; ¼ lb., \$3.00; 1 lb., \$10.00.



**Early Champion Beet**

**TABLE BEETS**

	¼ lb.	1 lb.	10 lbs.
Early Champion . . . . .	\$0.30	\$1.00	\$9.00
Crosby Boston Strain . . . . .	.30	1.00	9.00
Crosby Selected . . . . .	.30	.90	8.50
Early Wonder . . . . .	.30	.90	8.50
Edmands' Dark Blood . . . . .	.30	.90	8.50
Detroit Dark Blood . . . . .	.30	.90	8.50
Philadelphia Lentz . . . . .	.30	.90	8.50
Nuttings' Early Gem . . . . .	.30	.90	8.50
Egyptian Extra Early . . . . .	.30	.90	8.50
Philadelphia Half Long Blood Red . . . . .	.30	.90	8.50

**SWISS CHARD**

**Large Ribbed, Green Leaved.** Dark green leaves with broad white stems. Plant upright in growth; leaves fairly smooth. ¼ lb., \$0.25; 1 lb., \$0.90; 10 lbs., \$8.50.

**MANGLE WURZEL STOCK BEETS**

	¼ lb.	1 lb.	10 lbs.
Mam Long Red . . . . .	\$0.20	\$0.60	\$5.50
Golden Tankard . . . . .	.20	.60	5.50

**NEW EARLY MARVEL BEET**

A refined type of Flat Egyptian being still earlier and with less top. Flesh deep red. ¼ lb., \$0.35; 1 lb., \$1.25; 10 lbs., \$11.00.

**BEET, EARLY CHAMPION**

A handsome early dark blood beet, one of the most popular owing to its deep globe shape and small tap root and its fine eating qualities. ¼ lb., \$0.30; 1 lb., \$1.00; 10 lbs., \$9.50.

On large quantities of beets, price will be quoted upon application





**Fordhook Bush Lima Beans  
LIMA BEANS, POLE**

Varieties	1 lb.	2 lbs.	10 lbs.	100 lbs.
Dreer's Improved Pole . . . . .	\$0.35	\$0.65	\$2.75	\$25.00
Early Leviathan . . . . .	.35	.65	2.75	25.00
King of the Garden . . . . .	.35	.65	2.75	25.00
Evergreen Pole Lima . . . . .	.35	.65	2.75	25.00
Carpenteria . . . . .	.35	.65	2.75	25.00

**BEANS, GREEN POD**

	1 lb.	2 lbs.	10 lbs.	100 lbs.
Giant Stringless . . . . .	\$0.35	\$0.60	\$2.50	\$20.00
Burpee Stringless . . . . .	.35	.60	2.50	20.00
Bountiful Stringless . . . . .	.35	.60	2.50	20.00
Full Measure Stringless . . . . .	.35	.60	2.50	20.00
Black Valentine . . . . .	.35	.60	2.50	20.00
Horticultural Dwarf . . . . .	.35	.60	2.50	20.00

**LIMA BEANS, BUSH**

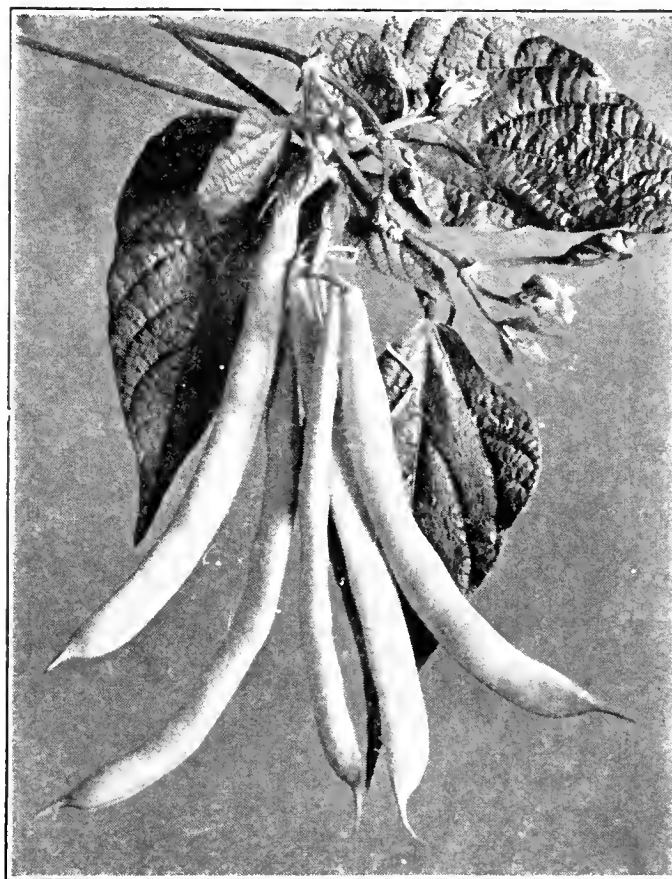
Varieties	1 lb.	2 lbs.	10 lbs.	100 lbs.
Fordhook Bush . . . . .	\$0.40	\$0.75	\$3.50	\$30.00
Burpee Improved Bush . . . . .	.40	.75	3.50	30.00

**BEANS, DWARF SHELL**

	1 lb.	2 lbs.	10 lbs.
White Marrowfat . . . . .	\$0.30	\$0.50	\$2.25
White Kidney . . . . .	.30	.50	2.25
Red Kidney . . . . .	.30	.50	2.25
Boston Pea or Navy . . . . .	.30	.50	2.25

**BEANS, WAX POD**

	1 lb.	2 lbs.	10 lbs.	100 lbs.
Pencil Pod . . . . .	\$0.35	\$0.60	\$2.50	\$20.00
Golden Wonder . . . . .	.35	.60	2.50	20.00
Webber or Crackerjack . . . . .	.35	.60	2.50	20.00
Round Pod Kidney . . . . .	.35	.60	2.50	20.00
Unrivalled Wax . . . . .	.35	.60	2.50	20.00
Wardwell Kidney Wax . . . . .	.35	.60	2.50	20.00
Currie's Rust Proof Wax . . . . .	.35	.60	2.50	20.00
Surecrop Wax . . . . .	.35	.60	2.50	20.00



**Webber or Crackerjack Wax**

Of first quality, bearing long, flat, broad pods, slightly curved, quite stringless. Same season as Wardwell's but slightly larger. 2 lbs., \$0.65; 10 lbs., \$2.50; 100 lbs., \$20.00.

**POLE OR RUNNING**

Varieties	1 lb.	2 lbs.	10 lbs.	100 lbs.
Kentucky Wonder or Old Homestead Green Pod . . . . .	\$0.35	\$0.60	\$2.50	\$20.00
Kentucky Wonder Wax Pod . . . . .	.35	.60	2.50	20.00
Lazy Wife Pole Green Pods . . . . .	.35	.60	2.50	20.00
Horticultural Pole . . . . .	.35	.60	2.50	20.00

On large quantities of beans, price will be quoted upon application



New Red Cored Chantenay  
Half Long Carrot

**CARROTS**

	1 oz.	¼ lb.	1 lb.
New Red Cored Chantenay . . . . .	\$0.20	\$0.75	\$1.50
Chantenay Half Long Regular Stock . . .	.15	.30	1.00
Danvers' Half Long, Re-selected . . . . .	.20	.35	1.25
Rubicom Half Long . . . . .	.15	.35	1.25
Nantes' Extra Early French Grown . . .	.20	.75	2.50
Amsterdam Extra Early Forcing . . . . .	.20	.75	2.50
Oxheart Early Scarlet, Stump Root . . .	.10	.30	1.00
St. Vallery Long Red . . . . .	.15	.30	1.00
Royal Danvers' Extra Fine . . . . .	.20	.75	2.00
Hutchinson Long Stump Rooted . . . . .	.20	.75	2.00
Coreless New . . . . .	.20	.75	2.00
Half Long Stump . . . . .	.10	.30	1.00

**MARKET GARDENERS STOCK**

**Nantes Half Long or Coreless.** Becoming more and more popular. It is always preferred on the markets on account of its handsome shape, fine color and excellent quality. 1 oz., \$0.25; ¼ lb., \$0.75; 1 lb., \$2.50.

On larger quantities of carrots price will be quoted upon application

**CAULIFLOWER,  
SNOW DRIFT (New)**

A more vigorous type of the Snow Ball class and will produce a larger head of Snow White Cauliflower. Our trials this past year proved it to be in a class that growers of Cauliflower want. 1 oz., \$3.00; 4 oz., \$10.00; 1 lb., \$35.00.

**CAULIFLOWER,  
SUPER SNOW BALL (New)**

Another wonderful strain of Snowball cauliflower, a giant snow white flower that heads up quickly and uniformly. 1 oz., \$3.00; ¼ lb., \$10.00; 1 lb., \$35.00.

**CAULIFLOWER, PIONEER**

**Pioneer** is remarkable for its vigorous constitution which enables it to withstand adverse growing conditions. It is such a sure header that it will produce first grade heads when other varieties fail or turn out mainly second grade.

Pioneer heads up very evenly over a period of about 3 weeks maturing each day about the same number of heads. Notwithstanding the heads are larger than those of other strains it is at least as early and the entire crop is cleared before the last half of the crop of Snowball is ready for cutting.

Pioneer is self-protecting to a high degree.

Until about half grown the heads are entirely wrapped in by the inner leaves.

Notwithstanding the rapid growth of the heads the curds are very solid, pure white, of a fine texture and entirely free from head leaflets. 1 oz., \$4.00; ¼ lb., \$12.00; 1 lb., \$40.00.



**White Wonder Cauliflower**

An improved strain developed and bred for critical Market Gardeners' Trade. The last word in Early Cauliflower. Exceptionally even, good sized, early. Plant compact, leaves medium sized. The heads are very solid and finely grained, and of a pure snowy-white which does not turn yellow even when exposed to bright sunlight. They are specially selected for keeping this compact solid curd even under the most unfavorable circumstances, so that they do not grow "ricy", or "soft" (as our market gardeners call it). 1 oz., \$4.00; ¼ lb., \$12.00; 1 lb., \$40.00.





Celery—Wonderful or Golden Plume

**CELERY**

	1 oz.	¼ lb.	1 lb.
Wonderful or Golden Plume . . . . .	\$1.00	\$4.00	\$15.00
Golden Self-Blanching, Tall Strain . . . . .	.75	2.50	10.00
White Plume . . . . .	.30	.85	3.00
Giant Paschal . . . . .	.30	.85	3.00
Winter King . . . . .	.50	1.50	5.00
Winter Queen . . . . .	.30	.85	3.00
Favorite Easy Blanching . . . . .	.75	2.50	10.00
Newark Market Easy Blanching . . . . .	.75	2.50	10.00
Sanford Easy Blanching . . . . .	.75	2.50	10.00
Emperor or Ford Hook . . . . .	.50	1.75	6.00
Full Heart Easy Blanching . . . . .	.75	2.50	10.00
Celery Improved Pride of the Market . . . . .	1.00	3.50	12.00

**CELERIAC, TURNIP-ROOTED CELERY**

	1 oz.	¼ lb.	1 lb.
Giant Prague . . . . .	\$0.25	\$0.75	\$2.50
Moonarehle . . . . .	.25	.75	2.50
Apple Shape . . . . .	.25	.75	2.50

**M. & P. NEW CASTLE GREEN CELERY**

Late Keeping Heavy Full Golden Hearted Broad Ribbed Variety that will satisfy growers who want to trench or winter store to get a good price later. This variety seems to be less susceptible to changing climate conditions. Growers using this variety this past year had less cause to complain about blight in our New Castle Green Celery than other kinds they grew. If you want to be assured of a good healthy acreage of Celery use M. & P. New Castle Green for late keeping. 1 oz., \$1.00; ¼ lb., \$3.50; 1 lb., \$12.00. Illustrated on front cover.



**Golden Acre Cabbage, Improved Strain, Grown from Fully Developed Heads  
Not to Be Confused with the Old Strain**

## CABBAGE

We consider Golden Acre as the best of all early Cabbage, and its present popularity is entirely justified.

It will average from 10 to 12 days earlier in maturity than the regular Copenhagen Market and a week earlier than Jersey Wakefield, maturing heads in eighty-five days. The evenness of this strain is surprising, every head being just alike. The outer leaves are very restrained, so that plants may be set from 12 to 14 inches apart in the row. Its fine quality and uniformity never fails to attract attention and has proved to be one of the most profitable early varieties on the market. 1 oz., \$0.75; ¼ lb., \$2.25; 1 lb., \$8.00.

**Improved Copenhagen Market.** The round, solid heads weigh 8 to 10 pounds each, are of fine quality and very uniform. The light green leaves fold tightly and compactly over one another. Plants are short-stemmed, with heads just above the ground. Almost as early as Early Jersey Wakefield. Can be planted as close as Charleston Wakefield. The inside of the head is fine-grained, tender, pure white and very compact. This variety is now grown very extensively. 1 oz., \$0.50; ¼ lb., \$1.50; 1 lb., \$6.00.

**Steadfast Cabbage.** Steadfast belongs to the early class of cabbage, heading practically along with All Head Early. It closely follows Copenhagen Market and advances Enkhuizen Glory about 2—3 weeks, and is resistant to cabbage disease, harbored in the soil.

In shape and type it reminds a somewhat later Copenhagen Market, being also a nearly round headed type. Its great advantage over Copenhagen Market is that it will stand a considerably longer time without cracking. 1 oz., \$0.75; ¼ lb., \$2.75; 1 lb., \$10.00.

**Marion Market.** Yellows resistant strain of Copenhagen Market. Larger and coarser in plant, and not so early nor so uniform as the original strain, but with the round head and crisp tenderness of the parent cabbage. Will produce a normal crop on yellows infected soil where non-resistant strains fail completely. 1 oz., \$0.75; ¼ lb., \$2.75; 1 lb., \$8.00.



Early Jersey Wakefield Cabbage

## CABBAGE

	1 oz.	¼ lb.	1 lb.
Early Jersey Wakefield . . . . .	\$0.30	\$0.85	\$3.00
Charleston or Large Wakefield . . . . .	.30	.85	3.00
Glory of Enkhuizen Improved . . . . .	.50	1.75	6.00
Early Summer . . . . .	.30	.85	3.00
All Head Early . . . . .	.30	.85	3.00
Suecession . . . . .	.30	.85	3.00
Late Flat Dutch . . . . .	.30	.85	3.00
Late Drumhead . . . . .	.30	.85	3.00
Danish Round Head, short stem . . . . .	.40	1.25	4.00
Savoy Cabbage, Iron Head . . . . .	.30	.85	3.00
Savoy Cabbage, Perfection Drum-head . . . . .	.30	.85	3.00
Mammoth Red Roek . . . . .	.40	1.00	3.50
Dark Red Erfurt Early . . . . .	.75	2.75	10.00
Chinese Cabbage (Chihli) . . . . .	.40	1.00	3.50

**Penn State Ballhead.** A very hard and tight-heading selection of Danish Ballhead which for this reason yields an increased tonnage per acre. It may be planted closer because of restricted leaf-growth. The heads are solid, uniform, fine-grained, on short stems and keep wonderfully well. 1 oz., \$0.75; ¼ lb., \$1.75; 1 lb., \$8.00

**Danish Ballhead Short-stem.** Most popular. This splendid variety is well known for its remarkable solidity and grand keeping qualities. The heads are very heavy and superb in quality, and the extra weight, in limited space, will be appreciated by those who grow for distant markets, ship in carloads and sell by weight. 1 oz., \$0.40; ¼ lb., \$1.25; 1 lb., \$4.00.

**Hollander.** An unusually fine strain of this very hardy, sure-heading, solid Cabbage. Resists cold and dry weather, and is one of the best for keeping till late spring. Remarkably uniform, medium-sized, very hard, round heads on short stems. Fine shipper. 1 oz., \$0.40; ¼ lb., \$1.25; 1 lb., \$4.00.

**Wisconsin Hollander No. 8.** A yellows-resistant strain of the Danish Ballhead, desirable for growing in sections infected with this disease. Plants are somewhat larger, more leafy and spreading than the Ballhead, but heads are fully as firm, compact and long keeping. 1 oz., \$0.75; ¼ lb., \$1.75; 1 lb., \$8.00.

## CUCUMBERS



Longfellow Close Pack

	1 oz.	¼ lb.	1 lb.
Longfellow Close Pack, originators' stock . . . . .	\$0.30	\$0.75	\$2.25
Early Fortune . . . . .	.30	.60	2.00
Davis Perfect . . . . .	.30	.60	2.00
Fordhook Famous . . . . .	.30	.60	2.00
Evergreen White Spine . . . . .	.30	.60	2.00
Long Green Improved . . . . .	.30	.60	2.00
Klondike White Spine . . . . .	.30	.60	2.00
Jersey (Pickling) . . . . .	.30	.60	2.00
Chicago Westerfield Pickle . . . . .	.30	.60	2.00
Boston or Green Prolific Pickle . . . . .	.30	.60	2.00

## CHERVIL

Curled Chervil. The light green, crisp finely cut leaves are aromatic and used for seasoning soups, etc. Oz., \$0.20; ¼ lb., \$0.60; lb., \$2.00.

WITLOOF CHICORY OR FRENCH  
ENDIVE

Witloof Chicory, French Endive. A very profitable crop. During winter this is sold by dealers in fancy fruits and vegetables as French Endive. Now well known and very popular and in constant demand by the finer hotels. Oz., \$0.20; ¼ lb., \$0.60; lb., \$2.00.

## COLLARD

Creole or Southern. Grows 3 feet high, forming clusters of leaves upon its long stem. Makes excellent greens in sections where difficulty is met in growing cabbage. Oz., \$0.15; ¼ lb., \$0.40; lb., \$1.25.

## CORN SALAD

Large Seeded. Makes a strong growth and produces an abundance of leaves which are used for salad. Oz., \$0.15; ¼ lb., \$0.40; lb., \$1.25; 10 lbs. \$11.00.

## CRESS

Extra Curled or Pepper Grass. Leaves are finely cut, crisp and pungent. Oz., \$0.10; ¼ lb., \$0.25; lb., \$0.80.

Upland Cress. Leaves and flavor resemble Watercress, and grows well on dry soil. Oz., \$0.25; ¼ lb., \$0.75; lb., \$2.50.

Water-Cress. Can be grown on the banks of ditches, or springs, etc., and when once established will yield a continuous supply of its finely flavored leaves, which find a ready and profitable market. Oz., \$0.40; ¼ lb., \$1.10; lb., \$4.00.

**CORN**

	1 lb.	2 lbs.	10 lbs.	100 lbs.
Golden Wonder, Bardens . . . . .	\$0.30	\$0.50	\$2.50	\$20.00
Extra Early Market . . . . .	.30	.50	2.50	20.00
Golden Giant . . . . .	.30	.50	2.50	20.00
Whippel's Early White . . . . .	.30	.50	2.50	20.00
Whippel's Early Yellow . . . . .	.30	.50	2.50	20.00
Golden Evergreen . . . . .	.30	.50	2.50	20.00
Howling Mob . . . . .	.30	.50	2.50	20.00
Early Evergreen . . . . .	.30	.50	2.50	20.00
White Evergreen . . . . .	.30	.50	2.50	20.00
Stowell's Evergreen . . . . .	.30	.50	2.50	20.00
Country Gentleman . . . . .	.30	.50	2.50	20.00
Late Mammoth . . . . .	.30	.50	2.50	20.00
Golden Sunshine . . . . .	.30	.50	2.50	20.00
Golden Alpha . . . . .	.30	.50	2.50	20.00



**DANDELION**

	1/4 lb.	1 lb.
Common . . . . .	\$1.00	\$3.50
Improved Thick Leaf or Cabbaging . . . . .	2.00	7.50

**EGG PLANT**

	1 oz.	1/4 lb.	1 lb.
Black Beauty . . . . .	\$0.50	\$1.50	\$5.50
New York Improved . . . . .	.50	1.50	5.50

**ESCAROLLE**

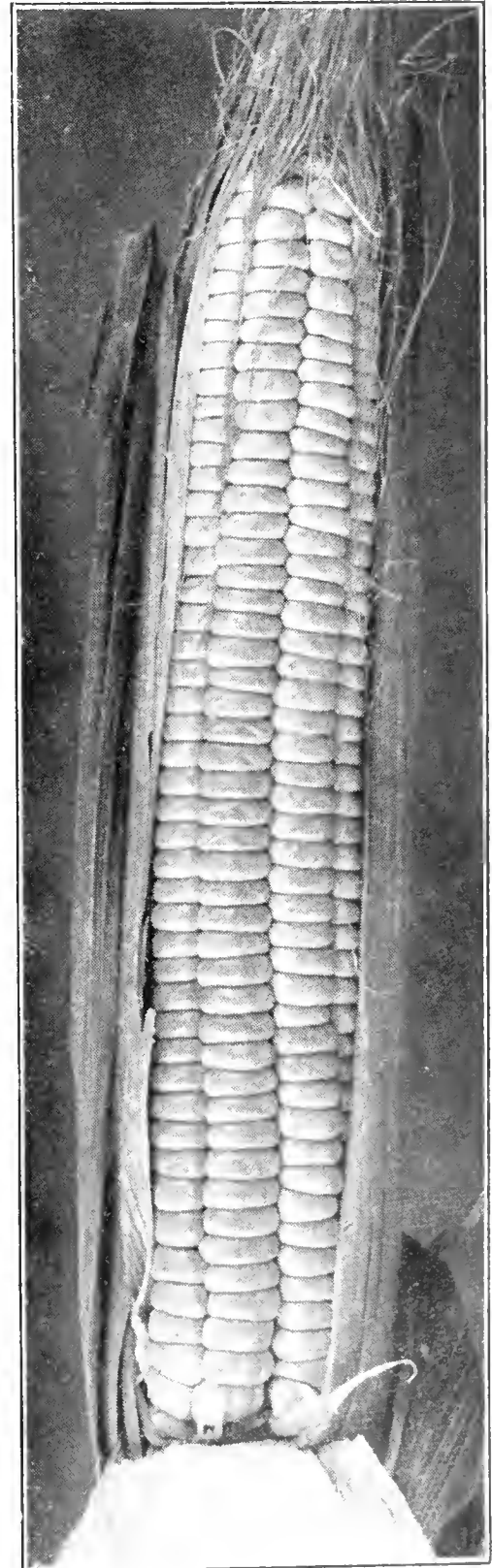
	1 oz.	1/4 lb.	1 lb.
Broad Leaf Batavian . . . . .	\$0.15	\$0.35	\$1.00
Broad Leaf Batavian Upright . . . . .	.20	.40	1.25
Market Gardeners Full Heart . . . . .	.25	.75	2.50

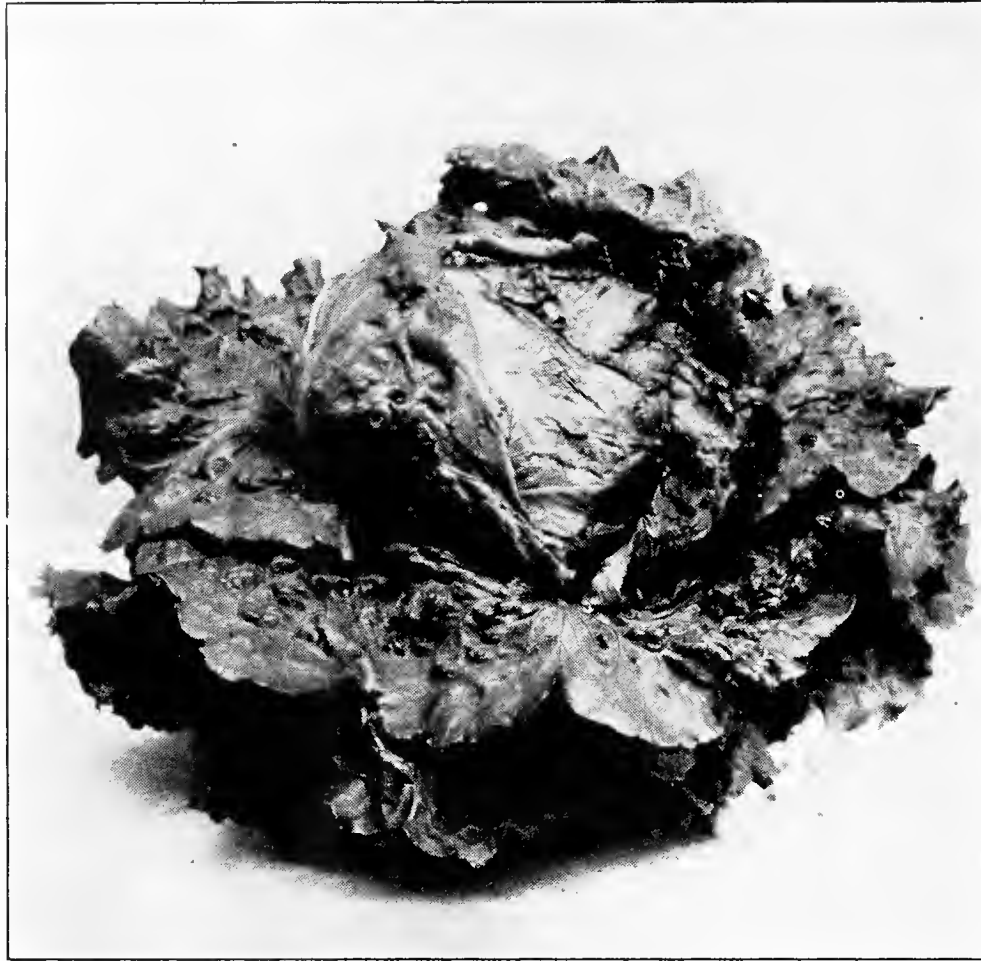
**ENDIVE**

	1 oz.	1/4 lb.	1 lb.
<b>Large Green Curled</b> . . . . .	\$0.20	\$0.60	\$2.00
Giant Fringed . . . . .	.20	.60	2.00
<b>Moss Curled</b>			
Imperial Golden Curled . . . . .	\$0.25	\$0.75	\$3.00

**KALE OR BORECOLE**

	1 oz.	1/4 lb.	1 lb.
Half Tall Green Curled Scotch . . . . .	\$0.15	\$0.50	\$1.50
Tall Green Curled Scotch . . . . .	.15	.50	1.50
Dwarf Siberian, Long Standing, Extra Curled . . . . .	.10	.30	1.00
Dwarf Blue, Extra Curled Jamaica . . . . .	.20	.60	2.00
Dwarf Green, Curled Scotch . . . . .	.15	.50	1.50





New York, Wonderful or Los Angeles Market

**NEW YORK, OR WONDERFUL**

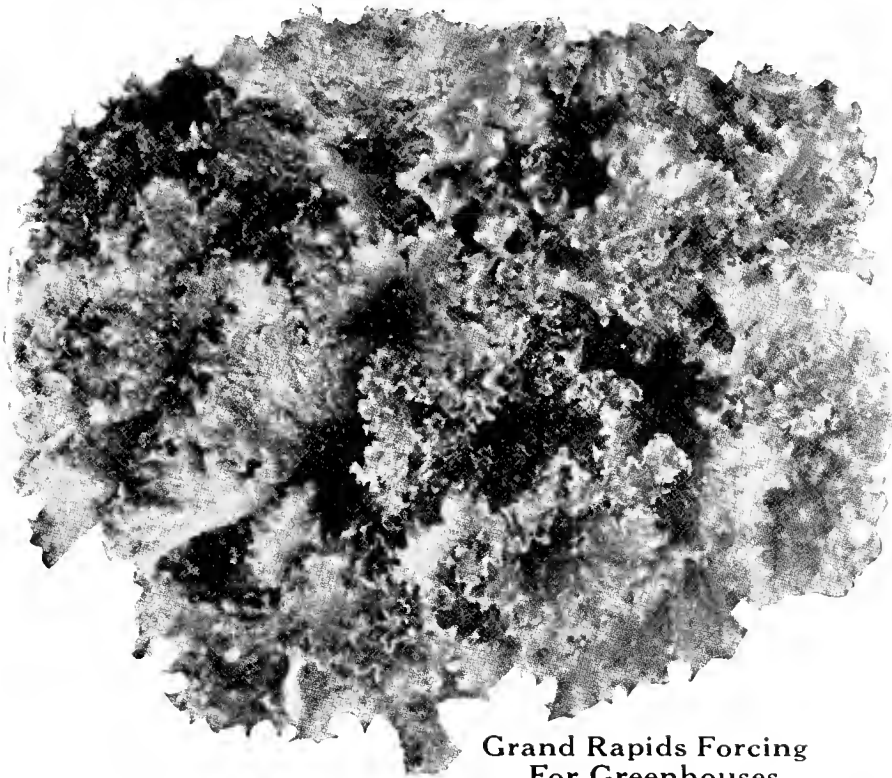
The most popular American head lettuce

A very large, late, globular heading variety; leaves broad of thick texture, fairly blistered and crumpled and the borders frilled; color clear dark green; quality good. Known in California and the west as "Los Angeles," and shipped to eastern markets under the misleading name of "Iceberg."

**LETTUCE**

	1 oz.	¼ lb.	1 lb.
Wonderful or New York or Los Angeles Market . . . . .	\$0.25	\$0.75	\$2.75
Ideal Summer Head . . . . .	.25	.85	2.50
All Heart Summer Head . . . . .	.25	.85	3.00
King of the Garden . . . . .	.20	.60	2.00
Big Boston, Selected Stock . . . . .	.15	.45	1.50
Cabbage Head . . . . .	.25	.85	3.00
Unrivalled . . . . .	.25	.85	3.00
Big Heart Summer, Stands the Heat Well . . . . .	.25	.85	3.00
Mammoth Black Seeded Butter . . . . .	.25	.60	2.00
Black Seeded Simpson Curled . . . . .	.20	.50	1.50





Grand Rapids Forcing  
For Greenhouses

## GRAND RAPIDS

(Selected Stock) (B. S.)

The favorite loose-leaved forcing lettuce, and does well in the North for early planting outside. Leaves short, spatulate in shape, excessively blistered and crumpled, and the border heavily fringed; color very light green, with no trace of brown. A most handsome and attractive lettuce of fair quality. Our stock of Grand Rapids is unsurpassed.

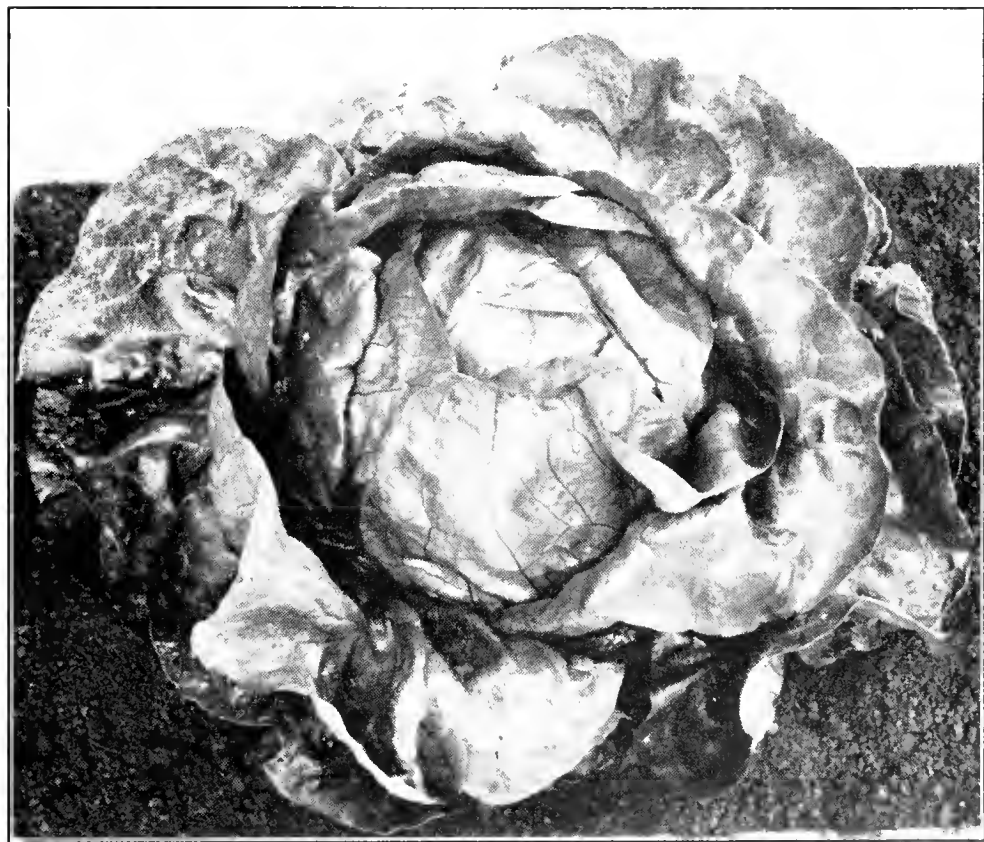
1 oz., \$0.20;  $\frac{1}{4}$  lb., \$0.50; 1 lb., \$1.50.

## COS OR ROMAINE

Dark Green, w. s. A medium large, dark green variety which forms a good sized, firm, well folded head. 1 oz., \$0.25;  $\frac{1}{4}$  lb., \$0.75; lb., \$2.50.

White Paris Self Folding, w. s. 77 days. Most popular variety for the home and market garden; likewise the best for forcing. Plants medium large and upright; medium light green with firm, spoon formed straight edged outer leaves and upright, loaf-shaped, well folded firm head 8—9 in. tall which is whitish-green inside with heavy, white brittle mid-ribs; hard and crisp in texture but very sweet and considered by some the standard of excellence in lettuce. 1 oz., \$0.25;  $\frac{1}{4}$  lb., \$0.75; lb., \$2.50.

Trianon. The same as White Paris Self Folding.



Improved White Big Boston

## IMPROVED WHITE BIG BOSTON (W. S.)

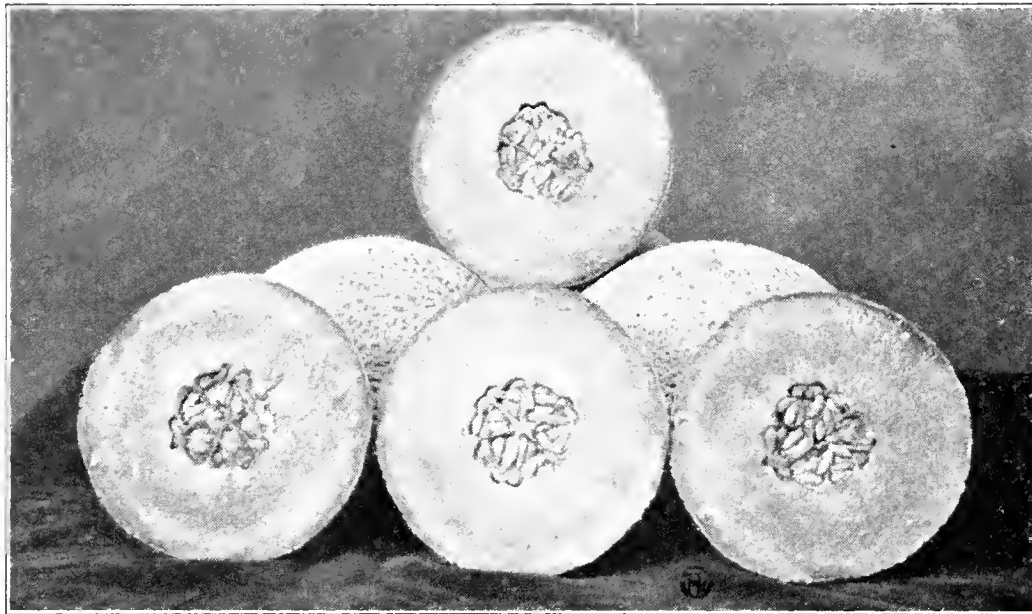
Quite similar to Big Boston in form and habit of growth, differing in being of a slightly lighter shade of green and without the brownish tinge at the borders. 1 oz., \$0.30; 4 oz., \$1.00; 1 lb., \$3.50.

## GIANT ITALIAN LEEK—WINTER

The largest and most hardy variety; leaves same length as American Flag but much thicker and darker green. 1 oz., \$0.25;  $\frac{1}{4}$  lb., \$0.75; 1 lb., \$2.50.

## MUSSELBURG

A hardy sort; leaves fan-shaped and dark green. 1 oz., \$0.25;  $\frac{1}{4}$  lb., \$0.75; 1 lb., \$2.50.



New Orange Flesh

**ORANGE FLESH (New)**

Undoubtedly the "last word" in the Rocky Ford type of shipping melons and has brought the highest price in every market shipped to. Its appealing deep orange flesh is its distinctive characteristic. It is the most solid, with the smallest seed cell of any type and will weigh more to the crate. Fruit very uniform in size, nearly round and densely covered with a hard gray netting. Recommended for its hardness, prolificness, deep flesh and excellent eating and shipping qualities. Originators stock, sealed pkgs., 1 lb., \$3.00.

**MUSK MELLON**

	1 oz.	¼ lb.	1 lb.
Green Fleshed, Sugar Sweet . . . . .	\$0.15	\$0.40	\$1.25
Jenny Lind . . . . .	.10	.30	1.00
Rocky Ford . . . . .	.10	.30	1.00
Baltimore or Aeme . . . . .	.10	.40	1.25
Haekensaek or Turkish Cap . . . . .	.15	.40	1.25
Honey Dew . . . . .	.15	.40	1.25

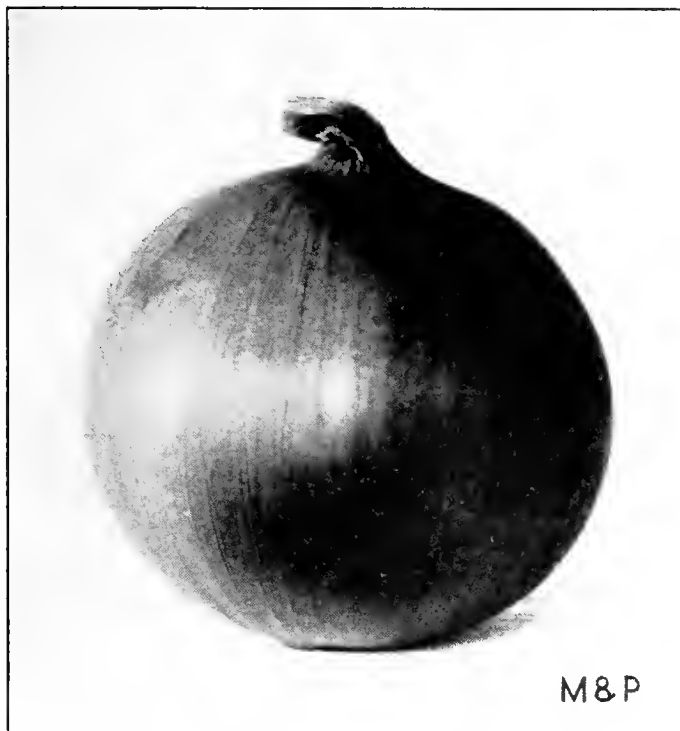
**SALMON FLESHED**

**Honey Rock** (or Sugar Rock). A rather new melon originating in Indiana and acquiring immediate popularity on account of high quality. Of medium size with a gray-green skin moderately covered with a heavy, coarse netting; rich salmon flesh. 1 oz., \$0.20; ¼ lb., \$0.35; 1 lb., \$1.25.

	1 oz.	¼ lb.	1 lb.
Hoodoo Hearts of Gold . . . . .	\$0.20	\$0.50	\$1.50
Polloek Salmon Flesh Rocky Ford . . . . .	.15	.40	1.25
Ford Hook . . . . .	.15	.40	1.25
Osage or Miller's Cream . . . . .	.15	.40	1.25
Lake Champlain . . . . .	.15	.40	1.50
Burrell's Gem . . . . .	.15	.40	1.25
Bender's Surprise . . . . .	.20	.50	1.50
Tip Top . . . . .	.15	.40	1.25
Extra Early Osage . . . . .	.20	.50	1.50
Hales Best . . . . .	.20	.50	1.50

**WATERMELONS**

	1 oz.	¼ lb.	1 lb.
Tom Watson . . . . .	\$0.10	\$0.30	\$1.00
Sweet Heart . . . . .	.10	.30	1.00
Kleekly Sweets or Monte Cristo . . . . .	.10	.30	1.00
Florida Favorite . . . . .	.10	.30	1.00
Georgia Rattlesnake . . . . .	.10	.30	1.00
Alabama Sweets . . . . .	.10	.30	1.00



Giant Yellow Prizetaker or Spanish



Long White Bunch Onion Knobless

ONIONS

	1 oz.	¼ lb.	1 lb.
Giant Yellow Prizetaker or Spanish . . . . .	\$0.40	\$1.25	\$4.00
Prizetaker . . . . .	.30	.85	3.00
Ohio Yellow Globe . . . . .	.30	.85	3.00
Southport Yellow Globe . . . . .	.30	.85	3.00
Yellow Dutch or Strasburg . . . . .	.30	.85	3.00
Yellow Globe Danvers . . . . .	.40	1.30	3.50
Southport White Globe, used for Bunching . . . . .	.30	.85	3.00
White Portugal or Silver Skin . . . . .	.30	.85	3.00
White Queen . . . . .	.30	.85	3.00
White Barletta . . . . .	.30	.85	3.00
Mammoth Silver King . . . . .	.30	.85	3.00
Southport Red Globe . . . . .	.30	.85	3.00
White Bunch Onion Knobless, Prosperity . . . . .	.30	1.00	3.50
White Lisbon Onion Used for Early Bunching . . . . .	.30	.85	3.00
Long White Bunching Onion Knobless . . . . .	.30	1.00	3.50

MUSTARD

	1 oz.	¼ lb.	1 lb.
Fordhook Fancy . . . . .	\$0.10	\$0.30	\$1.00
Southern Giant Curled . . . . .	.10	.30	1.00
Moss Curled, Extra Curled . . . . .	.10	.30	1.00

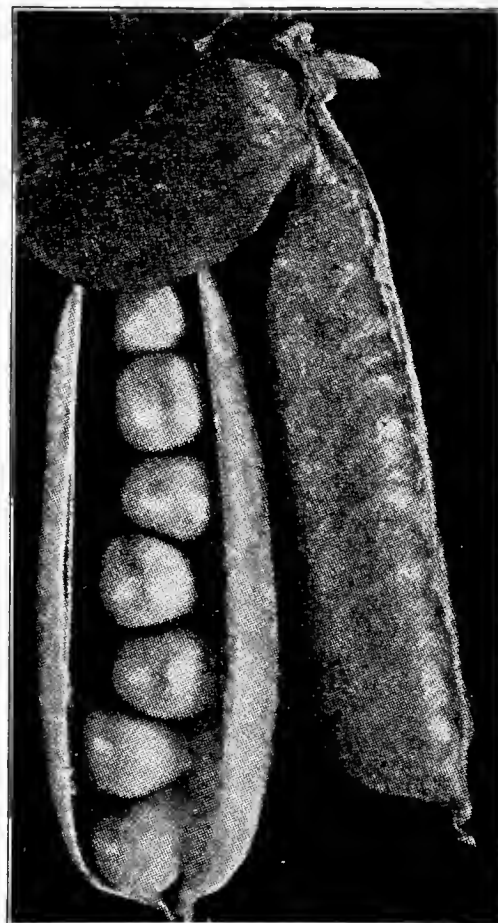
On large quantities of Mustard, prices will be quoted upon application.

OKRA OR GUMBO

	1 oz.	¼ lb.	1 lb.
Extra Early Dwarf Green . . . . .	\$0.10	\$0.25	\$0.75
Perkins Mam Long Podded Green . . . . .	.10	.25	.75

PEAS

	1 lb.	2 lbs.	10 lbs.	100 lbs.
Dwarf Giant . . . . .	\$0.30	\$0.50	\$2.50	\$20.00
Laxton's Progress . . . . .	.30	.50	2.50	20.00
Thomas Laxton . . . . .	.30	.50	2.50	20.00
Pioneer . . . . .	.30	.50	2.50	20.00
Laxtonian . . . . .	.30	.50	2.50	20.00
Little Marvel . . . . .	.30	.50	2.50	20.00
Hundredfold . . . . .	.30	.50	2.50	20.00
Gradus . . . . .	.30	.50	2.25	20.00
Ameer . . . . .	.30	.50	2.25	20.00



Dwarf Giant

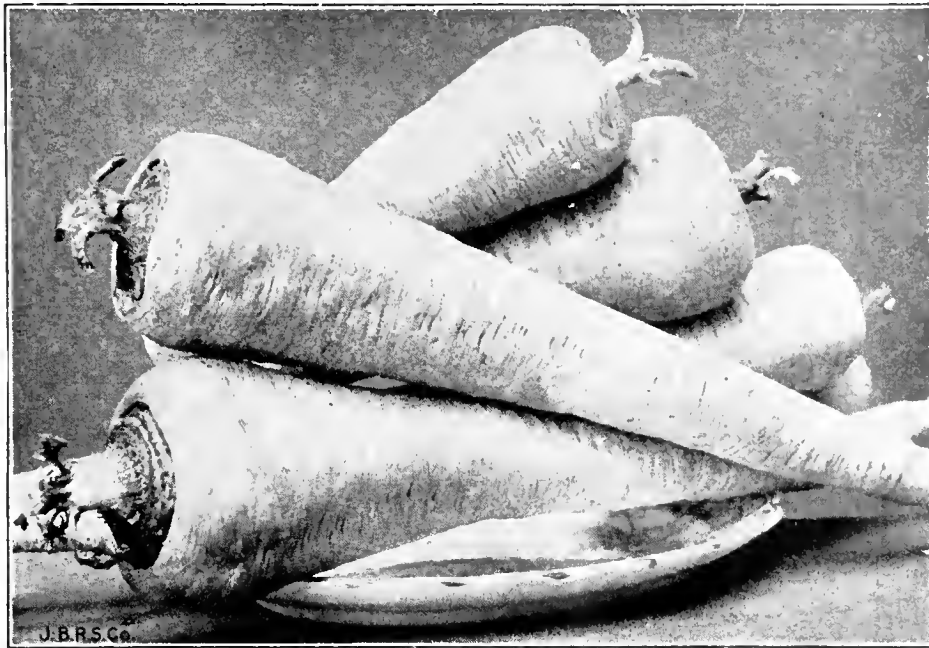
One of the most satisfactory and dependable peas for the home or market garden



Thomas Laxton

	1 lb.	2 lbs.	10 lbs.	100 lbs.
Dwarf Telephone . . . . .	\$0.30	\$0.50	\$2.25	\$20.00
Telephone, 4 feet . . . . .	.30	.50	2.25	20.00
Princee Edward . . . . .	.30	.50	2.25	20.00
Dwarf Gray Sugar, Edible Pod.	.35	.60	2.50	22.00
Tall Gray Sugar, Edible Pod. .	.35	.60	2.50	22.00
Dwarf White Sugar, Edible Pod	.35	.60	2.50	22.00

**Thomas Laxton.** A very popular variety. Height 3 feet; vine and foliage moderately stout, medium green; pods medium green 3½ inches long, straight, nearly round and square ended, containing 7 medium dark green peas of superior quality. Compared with Gradus, it is a little earlier, and more productive. 1 lb., \$0.30; 2 lbs., \$0.50; 10 lbs., \$2.50; 100 lbs., \$20.00.

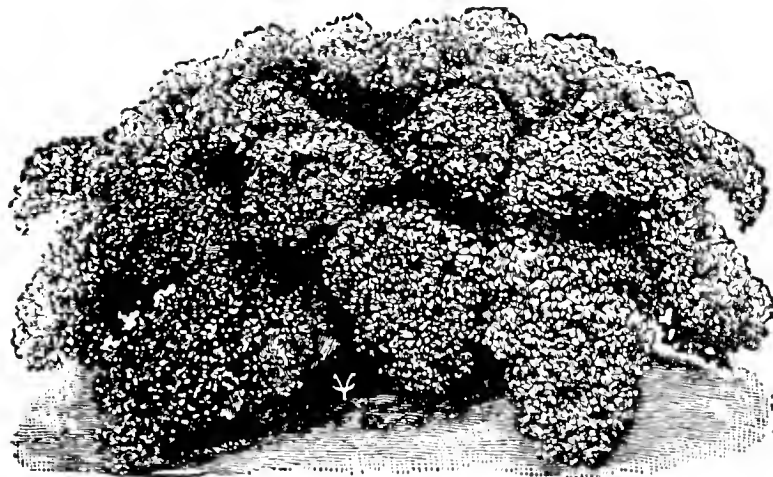


Peerless Hollow Crowned Parsnip, Extra Quality

**PARSNIPS**

	1 oz.	¼ lb.	1 lb.
Peerless Hollow Crown, Extra Quality . . . . .	\$0.20	\$0.75	\$2.00
Hollow Crown Improved . . . . .	.10	.30	1.00

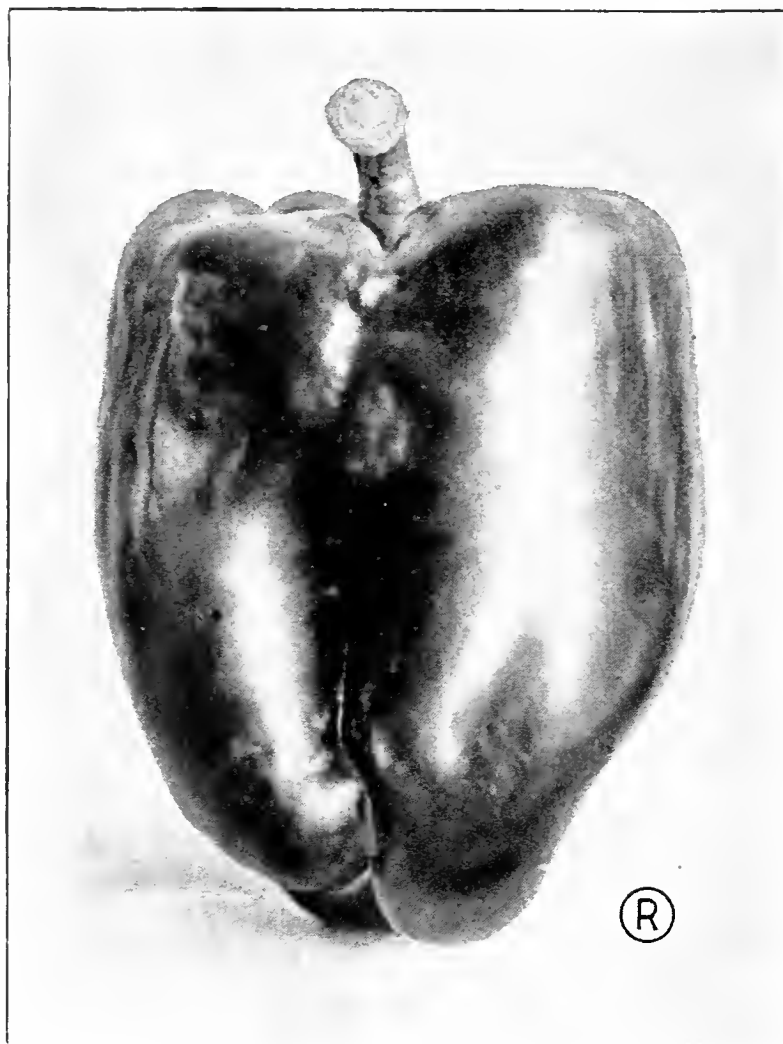
**PARSLEY**



**Peerless, Dark Green Curled Winter.** A fine selection of the Moss Curled Type. This strain is very hardy, will remain deep green, when other varieties have turned yellow. Right length for bunching. We recommend this variety to all Market Growers as it has the color and growing qualities desired for a market gardeners strain. 1 oz., \$0.15; ¼ lb., \$0.40; 1 lb., \$1.50.

	1 oz.	¼ lb.	1 lb.
Market Gardeners' Double Curled . . . . .	\$0.10	\$0.30	\$1.00
Champion Moss Curled . . . . .	.10	.30	1.00
Plain or Single . . . . .	.10	.30	1.00
Large Rooted Hamburg . . . . .	.15	.30	1.00
Emerald Green Tripled Curled . . . . .	.15	.40	1.50





**Early Giant (Harris).** This large scarlet Pepper measures 5 inches long by 3½ to 4 inches through; has thick, sweet flesh, and matures ahead of any other variety of such large size.

**PEPPERS**

	1 oz.	¼ lb.	1 lb.
Early Giant (Harris) . . . . .	\$0.75	\$2.25	\$8.00
California Wonder Pepper . . . . .	.75	2.25	8.00
Chinese Giant . . . . .	.75	1.75	6.00
Ruby Giant or World Beater . . . . .	.50	1.75	6.00
Ruby King . . . . .	.40	1.50	5.00
Bell or Bull Nose . . . . .	.40	1.50	5.00
Oshkosh., New Large Yellow . . . . .	.75	2.75	10.00
Long Red Narrow Cayenne . . . . .	.50	1.50	5.00
Sweet Pimento . . . . .	.50	1.50	5.00
Hungarian Long Yellow Pepper . . . . .	.75	2.75	10.00
Long Thick Red Hot Pepper . . . . .	.50	1.75	6.00

**CALIFORNIA WONDER PEPPER**

**California Wonder.** Resembles Chinese Giant in the large size and "blocky" form of its fruit, but having an extremely thick, mild, sweet flesh not possessed by that variety. Fruit indistinctly 4-lobed, upright, crimson, measuring 4½ inches in length by 4 inches in diameter. ¼ lb., \$2.25; 1 lb., \$8.00.

**PUMPKIN**

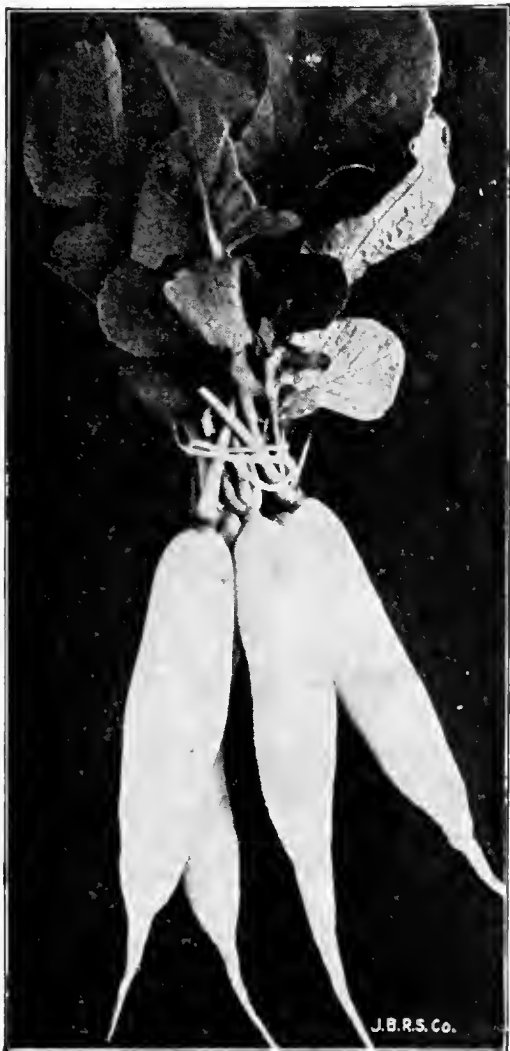
	1 oz.	¼ lb.	1 lb.
Connecticut Field . . . . .	\$0.10	\$0.25	\$0.80
Big Tom Field . . . . .	.10	.25	.80
Golden Oblong . . . . .	.15	.45	1.50
King of the Mammoth . . . . .	.15	.45	1.50
Mammoth Tours . . . . .	.15	.45	1.50
Winter Luxury . . . . .	.10	.35	1.25
Large Cheese . . . . .	.10	.30	1.00
Tennessee Sweet Potato . . . . .	.15	.45	1.50



**RADISH****Special Strain Icicle for Greenhouses**

A highly superior strain of this popular variety, the result of many years of rigid selection. Roots pure white with very slender tap root and short top. Flesh very crisp and remains in good condition very long. Equally as good for forcing under glass as for growing outdoors.

1 oz., \$0.10. ¼ lb., \$0.30. 1 lb., \$1.00.

**RADISH**

**Special Strain Icicle for Greenhouses**



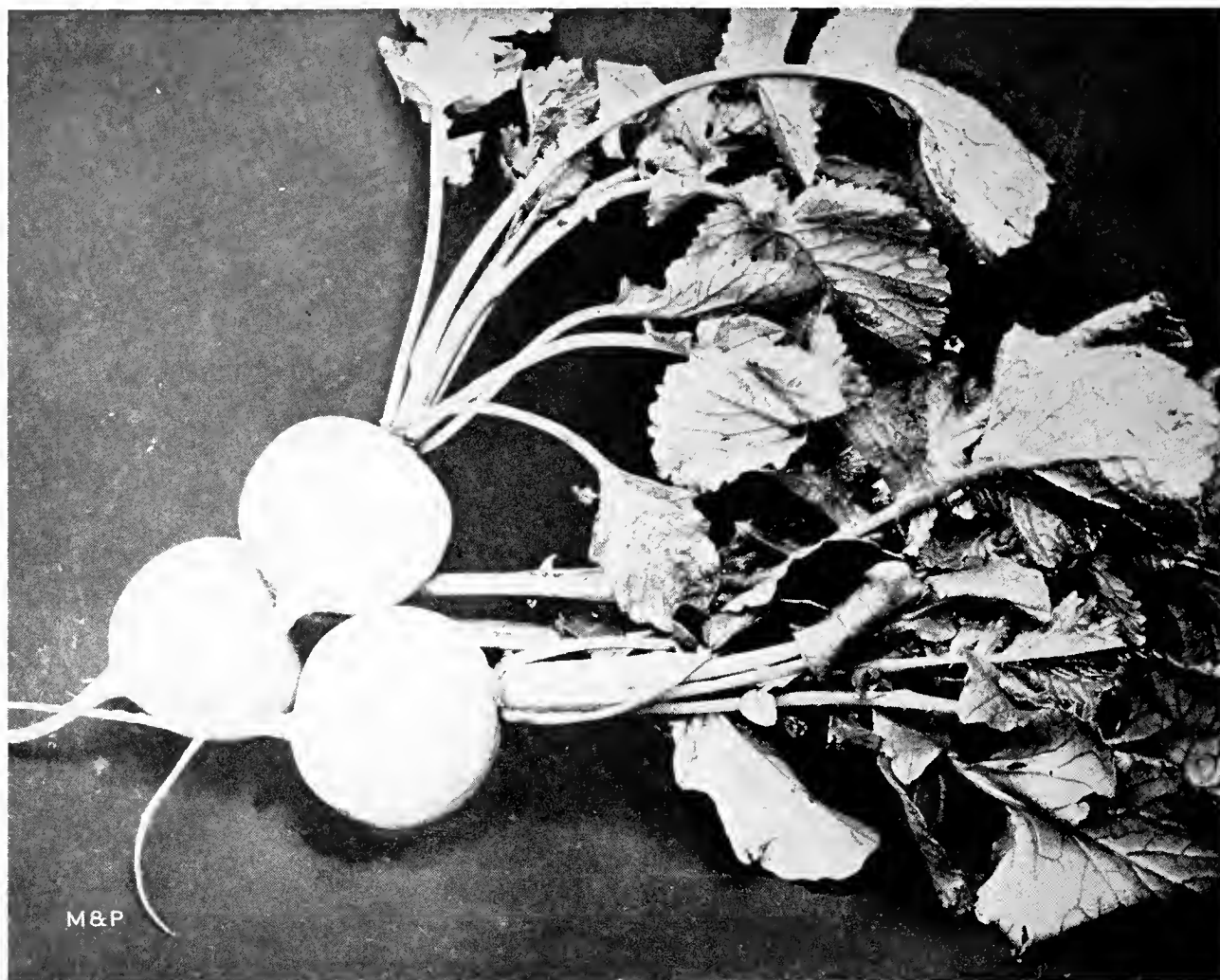
**Radish, Scarlet Globe, Extra Selection Standard  
For Outside or Greenhouses**

A perfect strain, result of individual plant selection. Surprisingly uniform, color brightest scarlet, shape perfect. A well-rounded bottom, with slender tap-root. Tops are of medium size and uniform. Flesh pure white, crisp and of a fine flavor. It remains very long in prime condition. Fine for Market-Gardeners as an early, good sized forcing-radish which does equally well outside. 1 oz., \$0.10; ¼ lb., \$0.30; 1 lb., \$1.00.

**TESTIMONIAL**

Please send me at once 10 pounds of Icicle Radish for green house sowing I want the same short top as I received from you last fall, as this is the best radish I've had for hot house.

FRED KOCH, Indianapolis, Ind.



Radish Cincinnati White Globe

	RADISH		
	1 oz.	¼ lb.	1 lb.
Re-selected Scarlet Globe Greenhouse Strain . . . . .	\$0.10	\$0.30	\$1.00
Vieks' Scarlet Globe . . . . .	.10	.30	1.00
Saxa Extra Early Scarlet . . . . .	.10	.30	1.00
Crimson Giant . . . . .	.10	.30	1.00
Sparkler White Tip . . . . .	.10	.30	1.00
Scarlet Globe White Tip Bicolor New . . . . .	.10	.30	1.00
Extra Early White Box . . . . .	.10	.30	1.00
Cincinnati White Globe, M. & P. Special Stock . . . . .	.10	.30	1.00
Cincinnati Market, M. & P. Special Stock . . . . .	.10	.30	1.00
Chartier or Shepherd . . . . .	.10	.30	1.00
Ieiele Long White . . . . .	.10	.30	1.00
White Strasburg . . . . .	.10	.30	1.00
White Vienna . . . . .	.10	.30	1.00
Half Long Coal Black Spanish . . . . .	.10	.30	1.00
China Rose Winter . . . . .	.10	.30	1.00
White, Chinese or Celestial . . . . .	.10	.30	1.00
White Giant Globe Radish . . . . .	.10	.30	1.00

On large quantities of Radish Seed, prices will be quoted upon application.

**Radish from Transplanted Roots.** All our Radishes are grown from transplanted stockseeds and undoubtedly will give entire satisfaction.

### TESTIMONIAL

Mr. Miller & Patton:—

Will you please send me 3 pounds of Cincinnati White Globe Radish seed. We have tried them in the Greenhouses and they were very good and the kind we like.

MRS. FRED BIERMAN,  
1052 Springfield Pike, Wyoming, Ohio.



M&P

Giant Summer Straight Neck Squash

SQUASH

	1 oz.	¼ lb.	1 lb.
Scallop Early White Bush . . . . .	\$0.15	\$0.35	\$1.25
Scallop Golden Custard Bush . . . . .	.15	.35	1.25
Crook Neck Giant Summer Yellow . . . . .	.15	.35	1.25
Boston Marrow . . . . .	.10	.30	1.00
Improved Hubbard . . . . .	.15	.45	1.50
Chicago Warty Hubbard . . . . .	.15	.45	1.50
Marrow Italian Vegetable or Cocazella . . . . .	.15	.45	1.50
Giant Summer Straight Neck . . . . .	.20	.65	2.00
Golden Custard Bush . . . . .	.15	.50	1.50
Blue Hubbard . . . . .	.15	.50	1.50



M&P

Early White Vienna Kohl Rabi

KOHL RABI

	1 oz.	¼ lb.	1 lb.
Early White Vienna . . . . .	\$0.25	\$0.75	\$2.50



New Long Standing Bloomsdale Spinach

**NEW LONG STANDING BLOOMSDALE SPINACH**

A new strain of outstanding merit, that, although recently introduced, has already become a favorite with commercial growers on account of its splendid performance. It is almost as early and quick growing as the old Bloomsdale, but it will stand in marketable condition 10 to 14 days longer before bolting. One of the advantages is that the inferior early shooting male plants are eliminated. It is intensely crumpled and blistered and very uniform. The color is a deep glossy green. Wherever Bloomsdale is grown, this improved strain will give far more satisfactory results. 1 lb., \$0.35; 10 lbs., \$3.00; per 100 lbs., \$25.00.

**Extra Dark Green Bloomsdale, New.** A better and darker strain of the well-known Reselected Bloomsdale. Its darker color gives the plants a fresh appearance for a longer time after being cut than ordinary Bloomsdale. Though not quite so long-standing as our New Long Standing Bloomsdale it remains much longer in prime marketable condition than the old Savoy-Leaved. Being just as early it entirely displaces the old stock. 1 lb. 35c; 10 lb. 30c; 100 lbs. \$25.00.

**Virginia Blight Resistant Savoy.** Extra fine strain, reproduced from the latest original stock. Our strain is almost as curled as our Reselected Bloomsdale and is far superior to the ordinary Blight Resistant offered by some houses. The only disadvantage Virginia Savoy has, is that it runs to seed rather quickly. 1 lb., \$0.35; 10 lbs., \$0.30; 100 lbs., \$25.00.

**Giant Thick Leaved (Nobel).** Decidedly the best of the round seeded thick leaved group. Because of the enormous yield, long standing character, and the deep green color and smooth character of the leaves, this is highly recommended for canning as well as for home and market garden. Leaves very large, thick, broad arrow-shaped with rounded tip. 1 lb., \$0.35; 100 lbs., \$30.00.

	1 lb.	100 lbs.
King of Denmark . . . . .	\$0.30	\$20.00
Long Seasons . . . . .	.30	20.00
Princess Juliana . . . . .	.30	20.00
Holland Giant . . . . .	.30	20.00
New Zealand . . . . .	.75	60.00

**Old Dominion New.** Blight resistant, late seeding. 1 lb., \$0.35; 10 lbs., \$3.50; 100 lbs., \$25.00.

Prices on large quantities of Spinach given on application

SALSIFY				SORREL				
		1 oz.	¼ lb.	1 lb.		1 oz.	¼ lb.	1 lb.
Mammoth	Sandwich				Large Leafed French . .	\$0.15	\$0.45	\$1.50
Island . . . . .		\$0.25	\$0.75	\$2.50	Mammoth Lyons . . . .	.15	.45	1.50



Marglobe Tomato

**TOMATO**

	1 oz.	¼ lb.	1 lb.
Marglobe . . . . .	\$0.50	\$1.75	\$6.00
Bonny Best . . . . .	.50	1.75	6.00
Chalks' Jewel . . . . .	.50	1.75	6.00
John Baer . . . . .	.50	1.75	6.00
Selected Stone . . . . .	.50	1.75	6.00
Matchless . . . . .	.50	1.75	6.00
Greater Baltimore . . . . .	.50	1.75	6.00
Big Bonny Best M. & P. Selected Stock (See Back Cover) . . . . .	1.00	3.00	10.00
Pritchard Scarlet Topper . . . . .	.50	1.75	6.00
Break of Day . . . . .	.50	1.75	6.00
Earliana Tomato . . . . .	.50	1.75	6.00

**TOMATO**

**Purplish-Pink Varieties**

	1 oz.	¼ lb.	1 lb.
Ohio Pink . . . . .	\$1.00	\$4.00	\$12.00
A globe-shaped early large purplish-pink Tomato. Fruits very solid and free from cracking and very productive. M. & P. selection.			
Royal Purple . . . . .	.50	1.75	6.00
Detroit Pink Early . . . . .	.50	1.75	6.00
Globe . . . . .	.50	1.75	6.00
Livingston Beauty . . . . .	.50	1.75	6.00
Ponderosa . . . . .	.50	1.75	6.00
Dwarf Champion . . . . .	.50	1.75	6.00





Tomato Break-of-Day

**THREE NEW DISEASE RESISTANT TOMATOES**

	½ oz.	1 oz.
Extra Selected Seed, For Greenhouses . . . . .	\$1.75	\$3.00
Marglobe, Extra Selected Seed, For Greenhouses . . . . .	1.75	3.00
Break-of-Day Early Marglobe, For Greenhouses . . . . .	1.75	3.00

**Marglobe.** One of the most popular of the new Wilt resistant varieties. It is second early in maturity. The plant is vigorous, large, and erect, its foliage shading the fruit and preventing sun scald. Fruits are red in color, large, smooth and globular. A very productive variety well adapted for truck gardening, shipping and as a canning variety.

**Break O'Day.** An early Wilt resistant variety with large, solid, globular scarlet fruits. One of the best of the disease resistant varieties developed by the late Dr. Pritchard. About ten days earlier than Marglobe.

**Pritchard (Scarlet Topper).** A mid-season scarlet fruited sort, which is resistant to Fusarium Wilt and to Nail Head rust. Vine vigorous and productive. Fruits nearly globular in shape.

**RUTA BAGA OR SWEDE**

	1 oz.	¼ lb.	1 lb.
American Yellow Purple Top, Extra Quality	\$0.25	\$0.85	\$3.00
Improved Purple Top Imported Seed . . . . .	.10	.30	1.00

**HERBS**

	1 oz.	¼ lb.	1 lb.
Basil Sweet . . . . .	\$0.20	\$0.50	\$2.00
Borage . . . . .	.20	.60	2.00
Dill, Mammoth Long Island . . . . .	.10	.30	1.00
Fennel, Florenee . . . . .	.15	.45	1.50
Sage . . . . .	.40	1.10	4.00
Summer Savory . . . . .	.25	.75	2.50
Broad Leaf Thyme English Imported . . . . .	.50	1.75	6.00
Sweet Marjoram Imported . . . . .	.40	1.25	4.00

**TURNIPS**

	1 oz.	¼ lb.	1 lb.
Red or Purple Top White Globe, Extra Quality . . . . .	\$0.15	\$0.30	\$1.00
Extra Early Purple Top Milan . . . . .	.15	.30	1.00
Golden Ball or Orange Jelly . . . . .	.10	.25	.75
Amber or Yellow Globe . . . . .	.10	.25	.75
Seven Top for Greens . . . . .	.10	.25	.75
Early Snowball . . . . .	.10	.25	.75

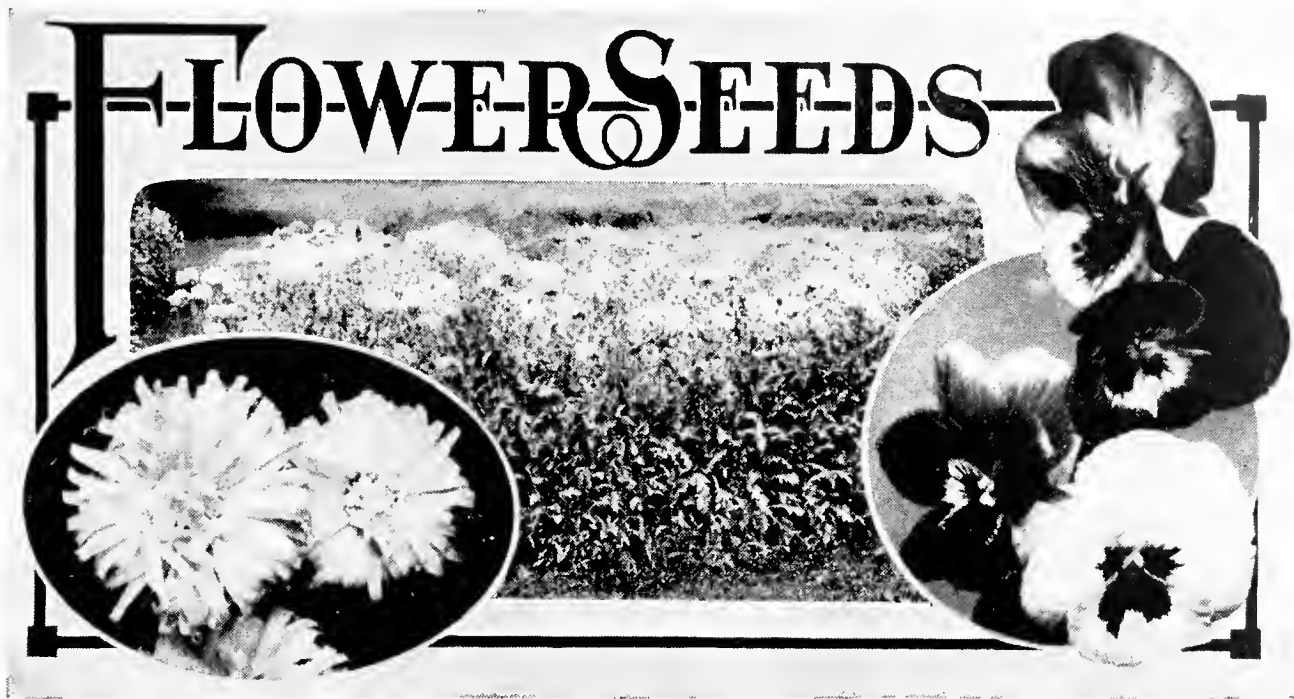
**Shogoin (Foliage Turnip).** A Japanese variety becoming very popular in the South for turnip greens, displacing the Seven Top. Bright green leaves grow upright, about 2 feet. Roots semi-globe, pure white, sweet and tender. Oz., \$0.20; ¼ lb., \$0.30; 1 lb., \$1.00.

On large quantities of Turnip Seeds, prices will be quoted on application.



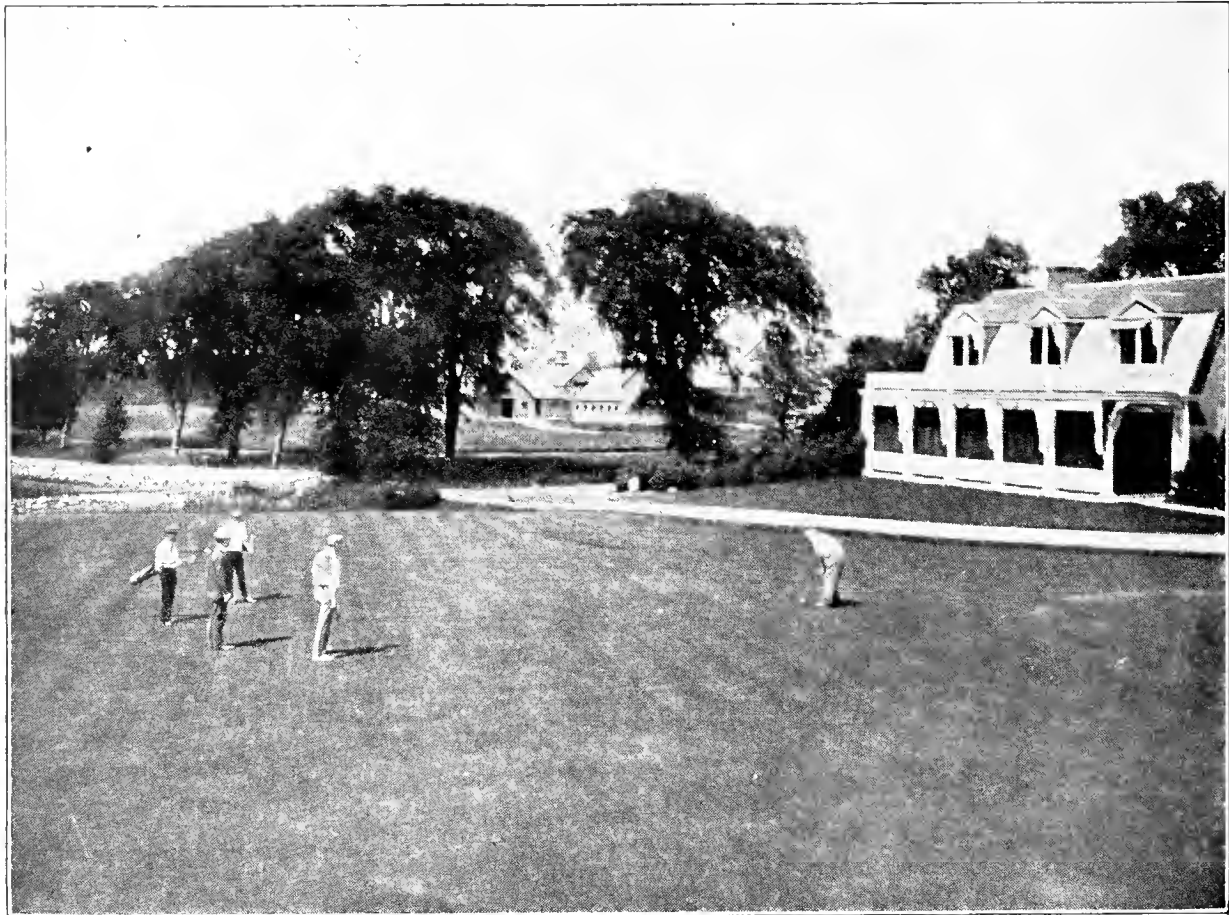
Shogoin (Foliage Turnip)





## A PARTIAL LIST OF OLD FASHIONED FLOWERS

	Pkt.	Oz.
Allysum, Sweet Carpet of Snow	\$0.10	\$0.60
Ageratum, Light Blue	.10	.50
Asters, Finest, Mixed	.10	.85
Balsam, Lady Slipper, Mixed	.10	.50
Coreopsis, Yellow	.10	.50
Calendula Pot Marigold, Mixed	.10	.30
Candytuft, Mixed	.10	.40
Canterberry Bell, Mixed	.10	.50
Cardinal, Climber Rapid Grower	.10	.80
Carnation, Finest Double, Mixed	.10	2.00
Celosia, Dwarf, Mixed	.10	2.50
Centaurea Corn Flower, Double Mixed	.10	.50
Cosmos, Early Flowering, Mixed	.10	.50
Cypress Vine, Mixed	.10	.50
Forget-Me-Not, Myosotis, Alpestris, Blue	.10	1.00
Forget-Me-Not, Myosotis, Red	.10	1.25
Four O'Clock, Marvel of Peru	.10	.20
Fox Glove, Digitalis, Mixed	.10	1.00
Gaillardia, Grandiflora	.10	1.00
Helichrysum Monstrosa, Mixed Straw Flower	.10	.75
Heliotrope, Choice, Mixed	.10	3.00
Hollyhock, Double Fine, Mixed	.10	1.25
Larkspur, Annual, Mixed	.10	1.00
Marigold, Dwarf, Mixed	.10	.75
Mignonette Machet, One of the Best	.10	1.00
Moon Flower	.10	.60
Morning Glory, Mixed, Giant Japanese	.10	.40
Morning Bride Scabiosa Fall, Double, Mixed	.10	.60
Nasturtium, Dwarf	.10	.15
Nasturtium, Trailing	.10	.15
Petunia, Single, Mixed	.10	1.25
Portulach, Single, Mixed	.10	.60
Phlox Drummond, Choice, Mixed	.10	1.25
Pinks Dianthus, Chinesis, Double, Mixed	.10	.50
Poppy, Finest, Mixed	.10	2.00
Salpiglossis, Fine, Mixed	.10	1.25
Salvia, Scarlet Sage, Bon Fire	.10	3.00
Snapdragon, Dwarf, Mixed	.10	.75
Snapdragon, Tall, Mixed, Finest	.10	.75
Zinnia Dahlia, Flowering, Mixed	.10	1.00
Sweet Peas, Eckfords, Mixed	.10	.15



### LAWN GRASS SEED FOR ALL PURPOSES

M. & P. Lawn Grass Mixture makes a velvety green lawn, beautifies the surroundings of your home and makes it a more cheerful place to live.

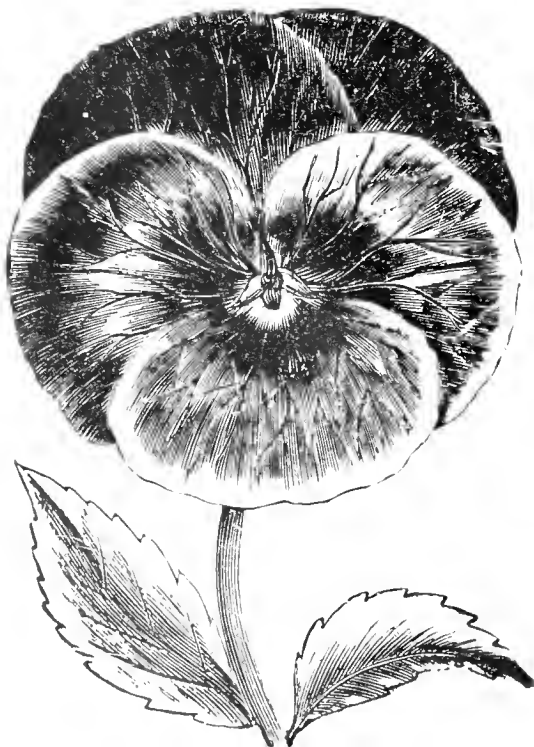
**M. & P. Lawn Grass Mixture.** Per pt., \$0.25; per qt., \$0.40; 4 qts., \$1.25; peck, \$2.25, prepaid. By express or freight, at purchaser's expense,  $\frac{1}{2}$  bushel (10 lbs.), \$4.00; bushel (20 lbs.), \$8.00; 100 lbs., \$37.50; 20 lbs. to bushel.

**Shaded Lawn Grass.** \$0.25 per pt.; qt., \$0.45; \$0.85 for 2 qts.; 4 qts., \$1.50; \$2.75 per pk.; bu., \$10.00; \$47.50 per 100 lbs.; 20 lbs. to bushel.

**"Seashore" Lawn Grass.** \$0.25 per pt.; qt., \$0.45; \$0.85 for 2 qts.; 4 qts., \$1.50; \$2.75 per pk.; bu., \$10.00; \$47.50 per 100 lbs.; 20 lbs. to bushel.

**Terrace or Embankment Grass Seed.** \$0.25 per pt.; qt., \$0.45; \$0.85 for 2 qts.; 4 qts., \$1.50; \$2.75 per pk.; bu., \$10.00; \$47.50 per 100 lbs.; 20 lbs. to bushel.

**White Dutch Clover Seed Recleaned.** 60 lbs. per bu., \$0.10; per oz.;  $\frac{1}{4}$  lb., \$0.25; \$0.45 per  $\frac{1}{2}$  lb.; lb., \$0.85; \$4.00 per 5 lbs.; 10 lbs., \$7.75; \$45.00 per bu. of 60 lbs.; 100 lbs., \$75.00.



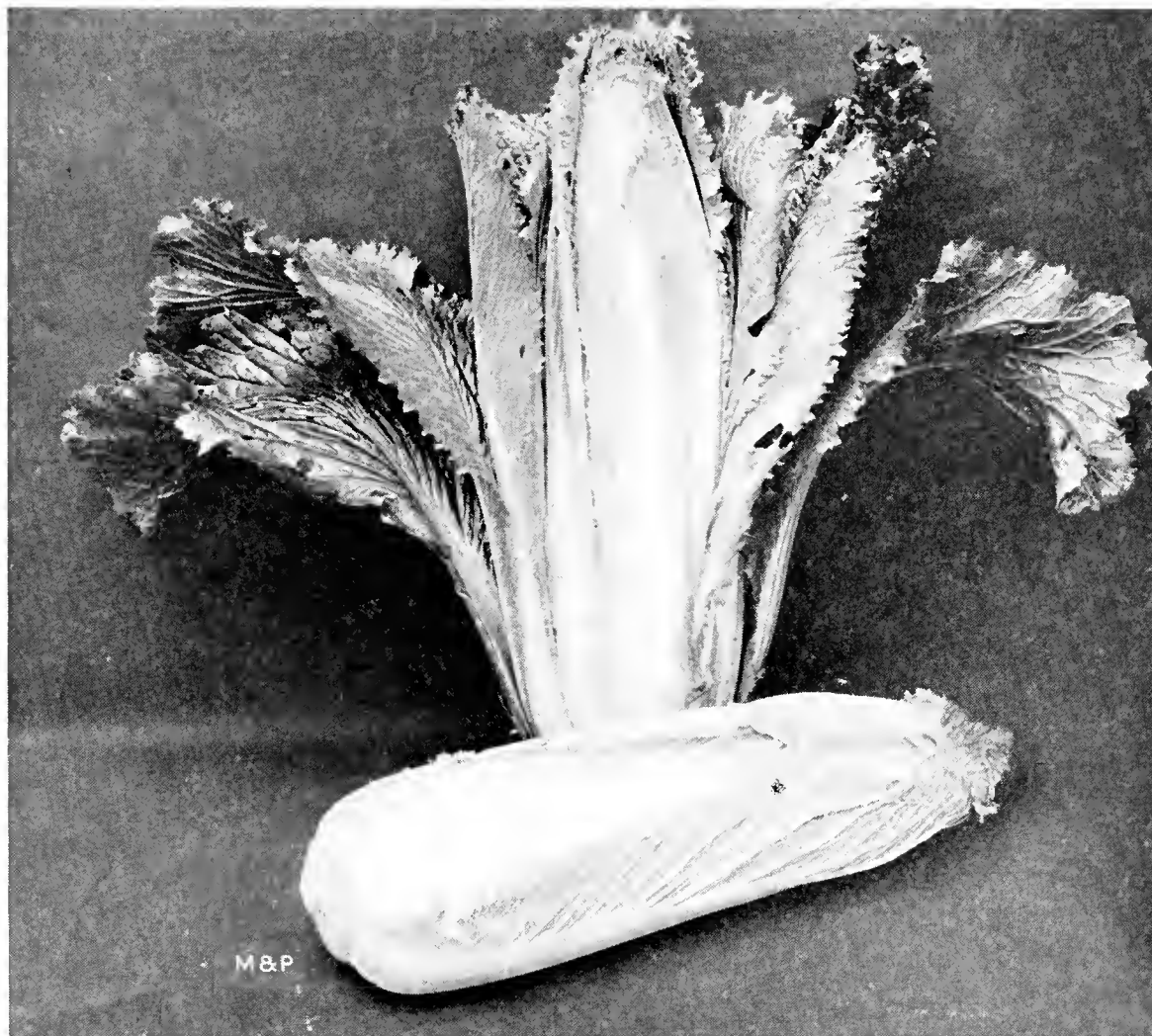
### PANSY SEEDS

#### Springfield Mixture Mammoth Flowers

A great variety of colors

$\frac{1}{4}$  oz., \$2.00;  $\frac{1}{2}$  oz., \$3.50; 1 oz., \$7.00

Select the coolest spot you can find for this sowing, preferably an outdoor bed on the ground where it is cooler and moisture is more uniform than in flats. Sow in a mixture of peat moss, light soil and sand. Keep uniformly moist but not wet. Excessive moisture combined with high temperature easily rots perfectly good seed.



**NEW CHINESE CABBAGE (CHIHLI)**

	1 oz.	¼ lb.	1 lb
<b>New Chinese Cabbage (Chihli)</b> . . . . .	<b>\$0.40</b>	<b>\$1.00</b>	<b>\$3.50</b>

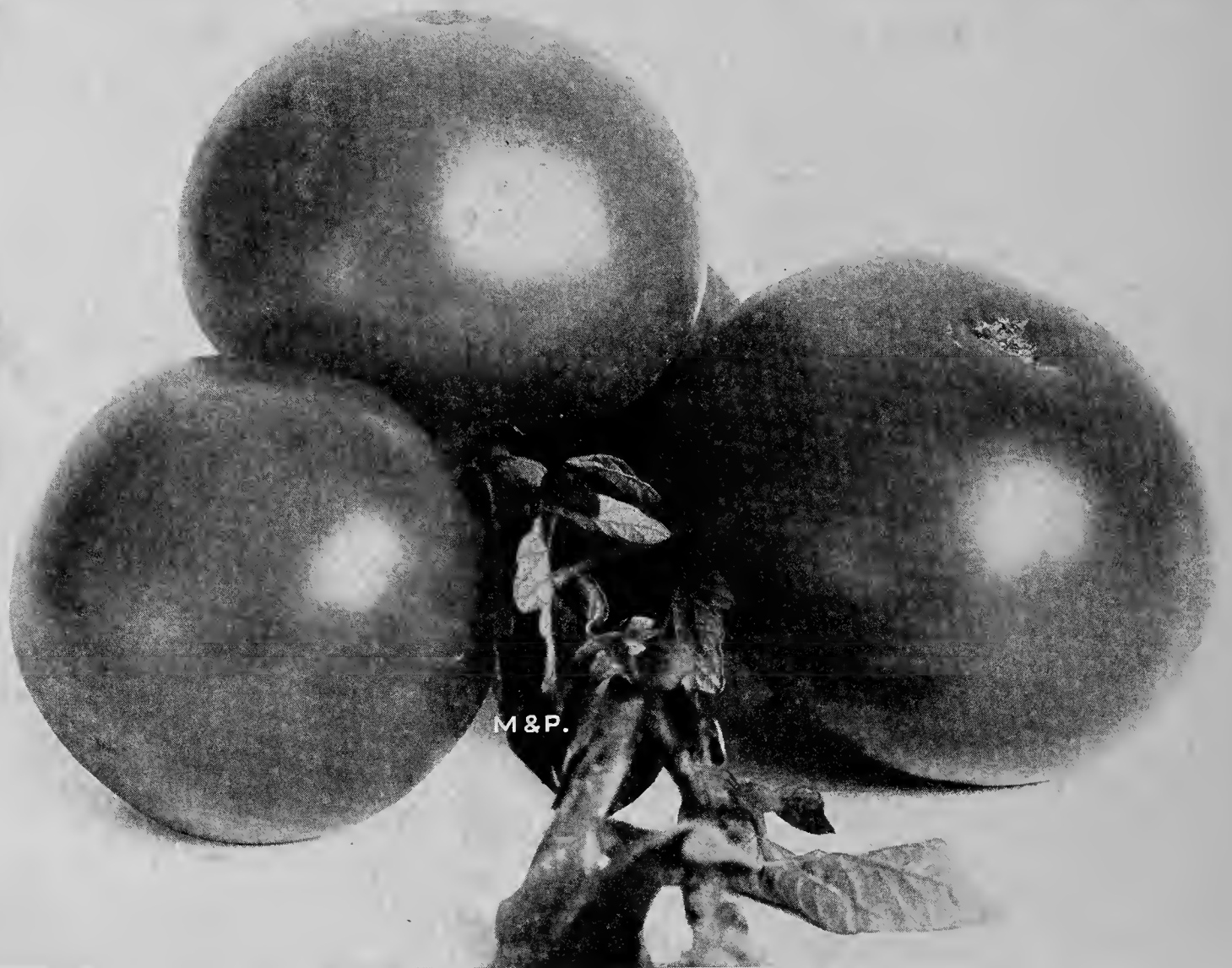
Earliest and most sure heading of the Chinese varieties. Plant of upright growth, producing long, solid white cylindrical heads, two feet in length. Leaves very broad, smooth, fringed on edge, with broad, white mid-rib; superior quality.

# MILLER & PATTON

---

GROWERS - HIGHEST QUALITY SEEDS - IMPORTERS

---



TOMATO, BIG BONNY BEST

(See Page 21)

3567 KENSINGTON AVENUE

PHILADELPHIA, PA.