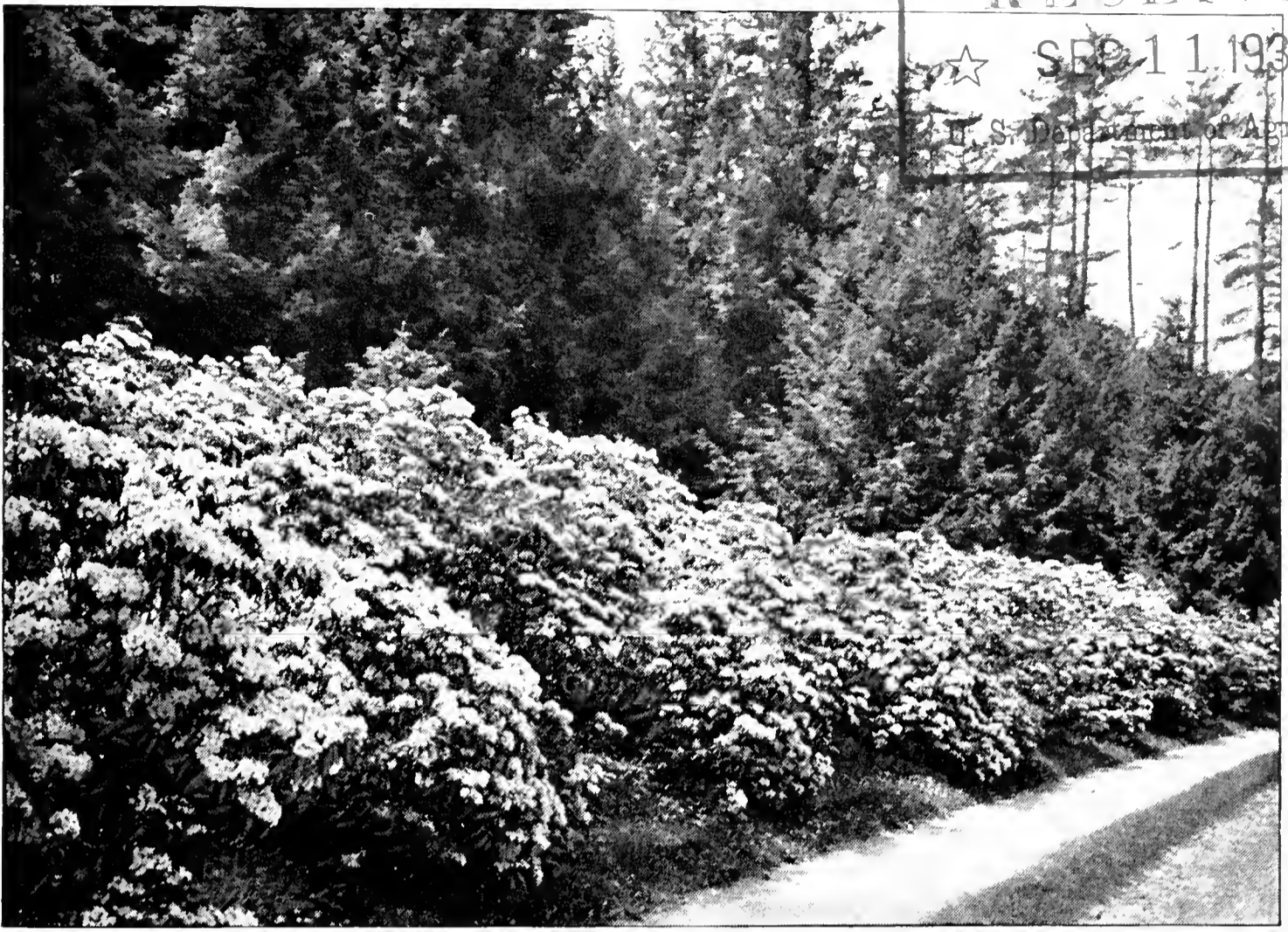


Historic, archived document

Do not assume content reflects current scientific knowledge, policies, or practices.

63

LIBRARY
RECEIVED
★ SEP 11 1936 ★
U. S. Department of Agriculture.



MOUNTAIN LAUREL. No more beautiful shrub can be used in woodland borders and mass plantings where native color effects are desired

Ornamental Plants

FOR IMMEDIATE EFFECTS

All Strong, Nursery-grown Plants unless otherwise stated

Autumn 1936

CASH DISCOUNT 10 PER CENT

Including free packing, on orders received before Sept. 15, 1936. Our long experience in the nursery business should recommend your careful consideration before buying elsewhere. Satisfaction guaranteed. Visitors are always welcome, and are invited to inspect our stocks.

GARDENS OF THE BLUE RIDGE

E. C. ROBBINS, Nurseryman

ASHFORD, McDowell County, NORTH CAROLINA



Our Main Packing-House at Ashford

Western Union Telegraph and Long Distance Connection. Wire Orders When in a Hurry, to Avoid Delay

NOTE TO CUSTOMERS

OUR LOCATION

Is in the heart of the Blue Ridge Mountains, "the most beautiful mountain region on the continent," in western North Carolina, nearly 4,000 feet above sea-level. My permanent headquarters is Ashford, McDowell County, North Carolina, on the scenic Clinchfield Railroad.

QUOTATIONS

This list cancels all previous offers. Please do not order from old catalogues

All offers of stock are made subject to conditions beyond my control

PACKING AND GRADING

Will be done in the most careful way. Orders will be packed to insure arrival in good condition. Shipments will be delivered to the local freight, express, or post office at prices named in this Catalogue. All shipments delivered at cost and risk of customer. Certificate of inspection attached to all shipments. We specialize in carload lots.

REMITTANCE OR REFERENCE

Should accompany orders from unknown correspondents. Discount of 5 per cent on cash orders. All bills due and payable 30 days from date of invoice. Interest charged after 30 days.

SHIPPING INSTRUCTIONS

Should always be given fully, unless you prefer to leave to our best judgment. In this we assume no risk, our responsibility ceasing upon receipt of signed bill of lading by forwarders. All claims for damages in transit must be handled by consignee.

CLAIMS

All claims for errors must be reported upon receipt of goods and will be rectified promptly. Unless this is done we can accept no responsibility of any kind.

No GUARANTEE is made that stock will grow, whether planted by us or not. As we have no control over after-treatment or weather conditions, the purchaser must assume all risks after stock leaves our Nursery in good condition.

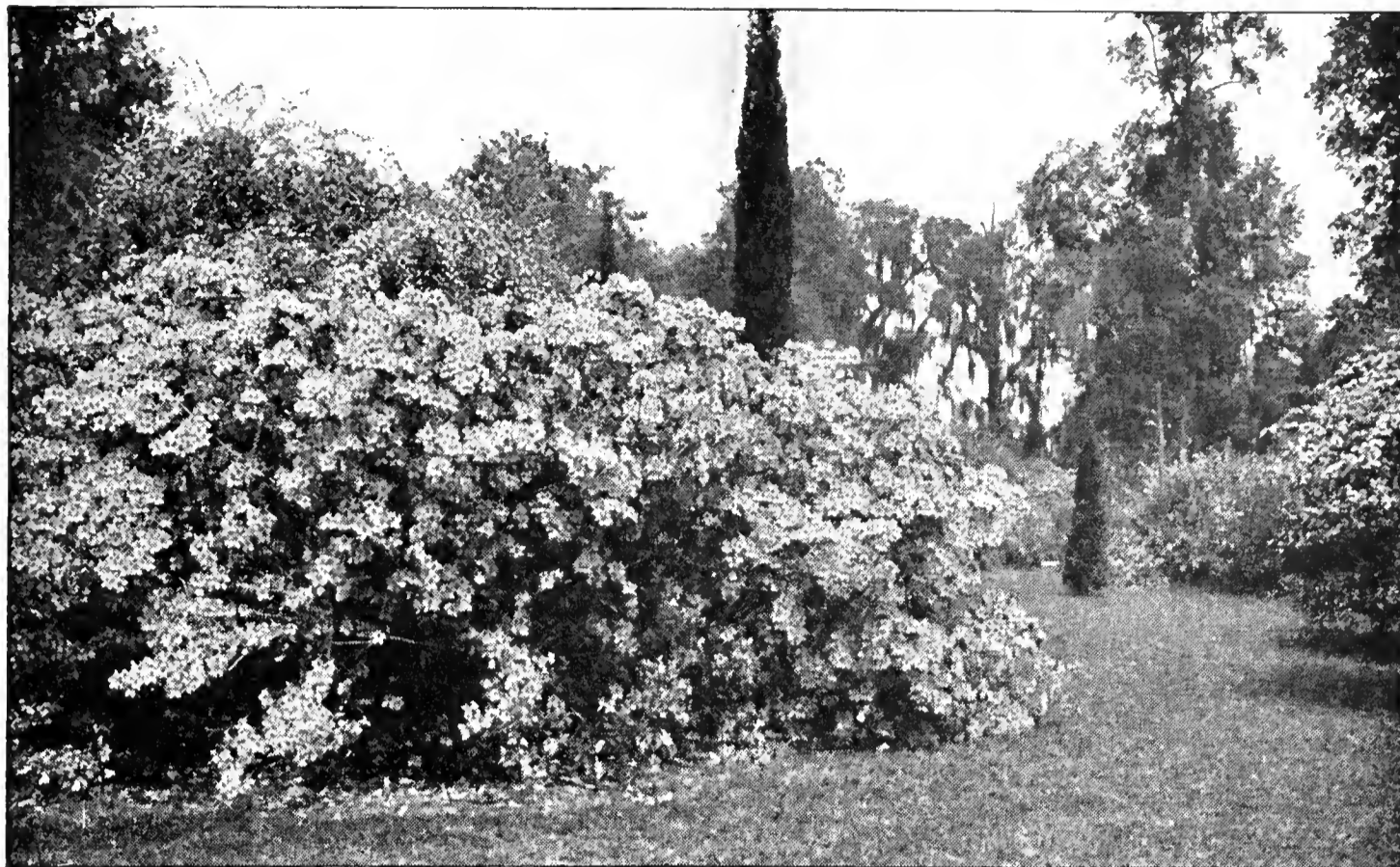
In no case shall we be held for damage exceeding original purchase price and only to this extent when proper proof is furnished that stock has been wrongly labeled.

All orders are accepted and filled on these terms, unless otherwise agreed

FALL SHIPPING SEASON begins late in August and extends usually till about December 1, according to weather conditions.

SPRING SHIPMENTS are forwarded according to customers' wishes and subject to conditions beyond our control, March 1 to May 15. PLEASE ORDER EARLY.

Send Us Your Want List for Quotations



Azalea calendulacea. See page 4

Hardy Native Deciduous Trees and Shrubs

Cultural Directions for Azaleas, Broad-Leaved Evergreens, and Similar Plants

Azaleas, Kalmias, Leucothoë, Pieris, and Rhododendrons are acid-soil plants and will not succeed well in limestone soils. A deep, porous soil is essential. The ground should be excavated to a depth of about 2 feet, working in leaf-mold, humus, or well-rotted stable manure. This mixture must be worked in carefully and packed tight around the roots. Fill in the excavation with rotted sods, muck or peat soil, mixed with a small quantity of sand.

The plants should be set the same depth as in the nursery, which is shown by the earth-line near the base. After planting, mulch with several inches of leaves or light litter, allowing this mulch to remain around the plants, and renew it annually in the autumn. A thin covering of rich soil may be used to advantage in holding mulch in place and to assist in decomposition. The mulch also tends to keep the soil cool in summer and protects against freezing in winter. If these simple instructions are observed, your planting of Broad-leaved Evergreens will be entirely successful.

For use in beds of Rhododendrons, Azaleas, and other similar plants we recommend the following: Galax, Shortia, Ferns, Orchids, Lilies, Trilliums, Cimicifugas, Iris, Polygonatum, Sanguinarias, and most of our other perennials.

ABBREVIATIONS — XX, specimens; B&B, balled and burlapped

ACER pennsylvanicum. Striped Maple. Small tree or large shrub. Good for lawn or group planting. Large foliage coloring beautiful yellow in late summer. Green and white striped bark very showy in winter.	10	100	1,000
1 to 2 feet.....			\$2 60
saccharum. Sugar Maple. Handsome, rapid-growing tree for general use. Splendid fall coloring of foliage.			
9 to 18 inches. Seedlings.....	1 00	\$5 00	\$40 00
3 to 4 feet.....	4 00	32 50	
4 to 6 feet.....	4 65	37 50	
6 to 8 feet.....	6 50	55 00	

Cash Discount 10 per cent, including free packing, on orders received before Sept. 15, 1936
All stock will be balled and burlapped (B&B) where necessary

HARDY NATIVE DECIDUOUS TREES AND SHRUBS, continued

	10	100	1,000
ÆSCULUS octandra. Yellow Buckeye. Medium size tree. Large, vigorous foliage. Cream-colored flowers in early spring.			
6 to 12 inches.....	\$1 25	\$9 00	\$80 00
1 to 2 feet.....	2 25	15 00	130 00
2 to 3 feet.....	3 75	30 00	
ALBIZZIA julibrissin. Silk Tree. Attractive tree of moderate size, with acacia-like foliage and clusters of fuzzy pink flowers followed by big pods.			
2 to 3 feet.....	4 20	36 50	
3 to 4 feet.....	6 00	50 00	
4 to 6 feet.....	7 50	65 00	
ALNUS viridis. European Green Alder. Low shrub with at- tractive foliage. From high altitudes.			
Heavy clumps cut back to ground.....	6 00	45 00	
AMELANCHIER lævis. Allegheny Shadblow. Very hand- some small tree, with snow-white flowers in early spring. The edible fruit ripens in July.			
2 to 4 feet. Collected.....	3 50	25 00	227 50
4 to 6 feet. Collected.....	6 00	45 00	400 00
6 to 8 feet. Collected.....	8 00	70 00	650 00
ARONIA melanocarpa. Black Chokeberry. A very desirable ornamental shrub with white flowers in early spring and clusters of black fruit in autumn and early winter. Foliage colors dark red in early fall.			
1½ to 2 feet.....	2 75	21 00	
AZALEA arborescens. Sweet Azalea. Large, fragrant, white flowers in early summer. Of easy culture and last- ing beauty.			
9 to 12 inches.....	6 75	60 00	
1 to 1½ feet. Heavy clumps B&B.....	15 00	130 00	
1½ to 2 feet. X heavy clumps B&B.....	24 50	220 00	
2 to 3 feet. XX heavy clumps B&B.....	35 00		
3 to 5 feet. XXX heavy clumps B&B.....	50 00		
calendulacea. Flame Azalea. The most beautiful and varied native species. Flowers vary from red-orange to canary. Conspicuous in early summer throughout the Carolina mountains.			
12 to 18 inches, bushy.....	6 60	50 00	450 00
1 to 1½ feet. Heavy clumps B&B.....	9 00	70 00	650 00
1½ to 2 feet. X heavy clumps B&B.....	12 50	100 00	900 00
2 to 3 feet. XX heavy clumps B&B.....	14 50	130 00	1250 00
3 to 4 feet. XX heavy clumps B&B.....	22 50	200 00	
2 to 3 feet. Collected clumps B&B.....	8 75	70 00	665 00
3 to 4 feet. Collected clumps B&B.....	12 50	90 00	800 00
Cut-back collected clumps.....	2 60	20 00	180 00
canescens. Piedmont Azalea. Excellent rare species. Very similar to <i>A. vaseyi</i> . We are headquarters for this splendid Azalea.			
1 to 1½ feet. Clumps B&B.....	10 00	85 00	760 00
1½ to 2 feet. Clumps B&B.....	12 50	100 00	900 00
2 to 3 feet. Clumps B&B.....	15 00	135 00	
3 to 4 feet. Collected clumps B&B.....		110 00	1000 00
Cut-back collected clumps.....	3 50	30 00	275 00

Write for prices on carload lots of *Azalea calendulacea*, Flame Azalea; *Azalea canescens*, Piedmont Azalea; *Azalea nudiflora*, Pinxter Bloom; *Kalmia latifolia*, Mountain Laurel; *Leucothoe catesbæi*, Drooping Leucothoe; *Rhododendron catawbiense*, Catawba Rhododendron; *Rhododendron maximum*, Rosebay Rhododendron.



Azalea nudiflora

HARDY NATIVE DECIDUOUS TREES AND SHRUBS, continued

Azalea nudiflora. Pinxter Bloom. Very handsome, free-flowering shrub, with showy, deep pink flowers in profusion in early spring. 6 to 12 inches. Strong...	10	100	1,000
	\$5 00	\$42 50	\$375 00
1 to 1½ feet. X heavy clumps B&B.....	10 00	85 00	775 00
1½ to 2 feet. XX heavy clumps B&B.....	12 50	100 00	900 00
2 to 3 feet. XX heavy clumps B&B.....	17 50	160 00	
Cut-back collected clumps.....	3 00	25 00	220 00
vaseyi. Pink-shell Azalea. A distinct and remarkably free-flowering hardy shrub of extreme rarity and beauty. The flowers are an exquisite shade of pink or rose and appear in profusion before the leaves unfold in early spring. In autumn the foliage assumes deep rich shades of red and crimson.			
6 to 12 inches.....	5 00	40 00	350 00
1 to 1½ feet. B&B.....	10 00	80 00	750 00
1½ to 2 feet. B&B.....	16 50	140 00	1300 00
2 to 3 feet. X heavy B&B.....	20 00	180 00	
viscosa. Small White Swamp Azalea. Fragrant; late bloomer. Thrives well along streams and in varied situations. 1 to 2 feet.....	9 00	75 00	675 00
2 to 3 feet. Clumps B&B.....	12 00	100 00	
BETULA lenta. Sweet Birch. Large tree. Shining green, thick foliage. Twigs and bark fragrant. Recommended for lawn or street planting. 1 to 2 ft.....	2 50	17 50	
2 to 3 feet.....	4 50	36 00	
6 to 8 feet.....	10 00	85 00	
8 to 10 feet. B&B.....	17 50	160 00	
lutea. Yellow Birch. Yellowish silvery bark and thin, finely cut leaves. 6 to 8 feet.....	10 00		
9 to 12 feet.....	17 50		
BUDDLEIA davidi magnifica. Oxeye Butterfly-Bush. Rose-purple flowers. 2 to 3 feet. Extra strong.....	5 00	40 00	
CARPINUS caroliniana. American Hornbeam. Leaves oval with sharp teeth on the edge; turn to golden in autumn. 6 to 8 feet.....	15 00		

HARDY NATIVE DECIDUOUS TREES AND SHRUBS, continued			
CEANOTHUS americanus. Jersey Tea. Low, spreading shrub. Leaves bright green. Flowers white.	10	100	1,000
1 to 2 feet. Collected.....	\$1 50	\$11 00	\$100 00
CHIONANTHUS virginica. White Fringe-Tree. Small tree. Free bloomer in early spring. Large white flowers in drooping panicles.			
6 to 12 inches.....	1 50	12 00	110 00
1 to 2 feet.....	4 50	30 00	
2 to 3 feet.....	7 50	60 00	
3 to 4 feet.....	10 50	90 00	
4 to 5 feet.....	12 50	110 00	
CLETHRA acuminata. Cinnamon Clethra. A tall shrub with dark green, long-pointed leaves. Cinnamon-colored bark. Flowers creamy white, fragrant, in erect-panicled racemes.			
2 to 3 feet. B&B.....	6 50	45 00	
3 to 4 feet.....	7 50	60 00	
alnifolia. Summersweet. Sturdy, compact shrub, 3 to 5 feet tall. Leaves dark green and lustrous. Flowers creamy white, fragrant, in erect, panicled racemes.			
2 to 3 feet. X B&B.....	7 50	50 00	
COMPTONIA asplenifolia. Sweetfern. Much-branched, with brown bark. Very effective and recommended for dry upland, in sun or partial shade.			
1½ to 2 feet. Strong collected.....	1 25	8 00	70 00
CORNUS florida. Flowering Dogwood. Most beautiful small flowering trees in early spring. 1 to 2 feet...	3 00	22 50	
2 to 3 feet.....	6 00	45 00	
3 to 4 feet.....	9 00	75 00	
4 to 5 feet.....	12 50	110 00	
5 to 6 feet. X B&B.....	15 00	125 00	1150 00
6 to 8 feet.....	17 50		
florida rubra. Red-flowering Dogwood. 2 to 3 feet.....	15 00	135 00	
3 to 4 feet. B&B.....	17 50	160 00	
5 to 6 feet. B&B.....	25 00	225 00	
6 to 8 feet.....	40 00	375 00	
CRATÆGUS coccinea. Thicket Hawthorn. Thorny shrub 10 feet high, with pretty leaves and clusters of fragrant white flowers followed by scarlet berries.			
1 to 2 feet.....	3 50	25 00	
2 to 3 feet.....	4 50	35 00	
punctata. Dotted Hawthorn. Small tree 30 feet high, with stout thorns and clustered white flowers followed by dull red fruits. 6 to 12 inches. Seedlings.			
1 to 2 feet.....	3 00	22 50	
CYTISUS scoparius. Scotch Broom. Leafless shrub of many bright green stems and twigs adorned with bright yellow pea-blossoms in late spring.			
6 to 12 inches. Seedlings.....	2 00	16 00	145 00
1 to 2 feet.....	4 50	30 00	
3 to 4 feet.....	5 50	45 00	
DIERVILLA sessilifolia. Southern Bush Honeysuckle. A shrub 4 feet high, with crowded clusters of tubular yellow flowers tinged with brown. 1 to 2 feet.....	4 00	35 00	
2 to 3 feet.....	7 75	62 00	
trifida. Dwarf Bush Honeysuckle. A similar species of about the same height with scattered yellow flowers.			
1 to 2 feet.....	3 00	27 00	260 00
FORSYTHIA suspensa. Weeping Forsythia. Extremely vigorous, half-climbing shrubs bearing myriads of bright yellow, ball-like flowers in early spring.			
2 to 3 feet.....	3 50	25 00	

Cash Discount 10 per cent, including free packing, on orders received before Sept. 15, 1936

HARDY NATIVE DECIDUOUS TREES AND SHRUBS, continued

Forsythia viridissima. Greenstem Forsythia. A shrub of erect habit with light green stems and deep yellow flowers.	10	100	1,000
1 to 2 feet.....	\$2 85	\$21 00	
2 to 3 feet.....	3 75	32 50	
HALESIA tetraptera. Great Silverbell. Bell-shaped flowers are carried in drooping clusters in early spring.			
6 to 12 inches.....	1 50	11 00	\$100 00
1 to 2 feet.....	2 50	16 00	150 00
2 to 3 feet. Heavy.....	4 50	35 00	
3 to 4 feet.....	6 00	47 50	
4 to 6 feet.....	10 00	85 00	
6 to 8 feet.....	20 00	175 00	
HAMAMELIS virginiana. Common Witch-hazel. Large shrub with heart-shaped leaves that are beautifully colored in the fall. Blooms in early autumn.			
2 to 3 feet.....	4 50	30 00	
3 to 4 feet.....	5 50	37 50	
4 to 6 feet.....	7 50	60 00	
HYDRANGEA arborescens grandiflora. Hills of Snow. Excellent low, summer-blooming shrub which produces its large, snow-white clusters of flowers in shady places. 1½ to 3 feet.....	2 70	21 00	
paniculata grandiflora. Large-panicked Hydrangea. Hardy, tall shrub with creamy white flowers and dark green leaves. Splendid for mass planting or single specimens. Very popular. 1 to 2 feet.....	2 25	15 00	122 00
2 to 3 feet.....	2 60	21 00	190 00
3 to 5 feet. XX heavy.....	3 50	27 50	250 00
radiata. Silverleaf Hydrangea. Leaves dark green above and silvery white beneath, becoming very noticeable at first touch of frost. 2 to 3 feet.....	4 50	35 00	



Azalea vaseyi makes a glorious show of color

HARDY NATIVE DECIDUOUS TREES AND SHRUBS, continued

HYPERICUM densiflorum. Common St. John's-wort. A widely distributed ornamental shrub, with narrow green leaves and clusters of bright yellow flowers.	10	100	1,000
1 to 2 feet. Collected.....	\$1 50	\$9 00	\$75 00
prolificum. Shrubby St. John's-wort. Vigorous, hardy shrub, with compact branches and dark green leaves. Flowers bright yellow, in terminal clusters in late summer.			
1 to 2 feet.....	1 75	12 00	110 00
2 to 3 feet. X strong.....	4 00	30 00	250 00
ILEX monticola. Mountain Winterberry. Deciduous small tree, with spreading branches, bright green leaves, and scarlet berries in autumn.			
3 to 4 feet.....	4 50	37 50	
4 to 6 feet.....	7 50	65 00	
verticillata. Common Winterberry. Large shrub with white flowers in May or June and red berries, similar to common holly, ripening in September and often remaining till late in winter, proving very attractive to birds.			
6 to 12 inches. X strong.....	2 50	20 00	
1 to 2 feet. X strong.....	3 25	27 50	
LARIX laricina. American Larch. This is the native Tamarack, a deciduous conifer which looks like an evergreen in summer, but the foliage turns yellow and drops completely each autumn.			
3 to 4 feet. B&B.....	6 50	50 00	
4 to 6 feet. B&B.....	7 50	60 00	
6 to 8 feet. B&B.....	10 00	85 00	
8 to 10 feet.....	12 00	100 00	
LYONIA ligustrina. He-Huckleberry. A much-branched shrub. Leaves oblong. Flowers in racemes, forming terminal panicles.			
1½ to 2 feet. Clumps B&B.....	6 00	45 00	
2 to 3 feet. Heavy clumps B&B.....	7 50	60 00	
MYRICA cerifera. Southern Wax-Myrtle. Leaves bright green. Berries bluish white, coated with wax.			
6 to 12 inches.....	3 75	32 50	
OSTRYA virginiana. American Hop Hornbeam. Slender tree; leaves oval, bright green, turning yellow in autumn; fruit clusters resembling hops.			
2 to 3 feet.....	5 00	37 50	
3 to 4 feet.....	6 50		
4 to 6 feet.....	10 00		
OXYDENDRUM arboreum. Sourwood. Handsome, hardy tree that succeeds well under varied conditions. Beautiful autumn foliage.			
1 to 2 feet.....	2 50	20 00	190 00
2 to 3 feet.....	3 50	25 00	235 00
3 to 4 feet.....	4 50	32 50	300 00
4 to 5 feet.....	6 00	45 00	
5 to 6 feet.....	9 00	80 00	
6 to 8 feet.....	12 50		

Landscape Architects, Nurserymen, and Large Planters

Find this stock particularly suited to their requirements. Those who have known us longest are the largest users of our products. Prices reasonable to the extreme, quality considered. Your correspondence is invited and your orders will be given prompt attention. Send your list of requirements as quickly as possible to insure getting the stock in good time for planting. *Prices named include all packing costs and delivery to our station.*

All claims for errors must be reported upon receipt of goods and will be rectified promptly. Unless this is done, we can accept no responsibility of any kind.

HARDY NATIVE DECIDUOUS TREES AND SHRUBS, continued

PLATANUS occidentalis. American Plane Tree. Large, lofty, rapid-growing tree. Splendid for planting along streams. 8 to 10 feet.	10	100	1,000
			\$15 00
POPULUS tremuloides. Quaking Aspen. A medium-sized tree, with very conspicuous drooping catkins in early spring. Its greatest charm is its leaves from late spring till early autumn. Strong cutback.	4 50	\$35 00	
PRUNUS maritima. Beach Plum. White flowers in May and June, followed by dull purple fruit.			
1 to 2 feet.	4 50		
2 to 3 feet.	6 00		
QUERCUS alba. White Oak. Noble forest tree of bold outline with attractively cut foliage. Stately and permanent.			
6 to 12 inches.	1 25	9 00	\$80 00
1 to 2 feet.	3 00	22 50	200 00
2 to 3 feet.	4 50	36 00	
phellos. Willow Oak. Handsome tree of moderate size with narrow, willow-like foliage.			
1 to 2 feet.	2 75	20 00	175 00
2 to 3 feet.	4 50	35 00	
prinus. Chestnut Oak. Very tall tree with large, soft leaves of downy appearance on the under sides.			
1 to 2 feet.	2 75	21 00	
RHUS canadensis. Fragrant Sumac. Shrub 3 to 5 feet in height. Very sweet-scented, compound leaves, consisting of three bright green leaflets. Flowers yellow, in short spikes or clusters along branches. Fruit bright red, covered with short, silky hairs. Succeeds under various conditions and especially recommended for rock-gardens. 1 to 2 feet.	2 75	22 50	210 00
2 to 3 feet. Heavy.	6 00	45 00	
3 to 4 feet.	8 00	67 50	
copallina. Shining Sumac. Strong shrub with dark green, compound foliage turning dark brown in autumn. Panicles of brilliant red flowers in late summer; bright red berries in autumn. 2 to 3 feet.	3 50	27 50	
1 to 2 feet. Collected.	1 25	9 00	75 00
cotinoides. American Smoketree. Big shrub or small tree with inconspicuous flowers in big clusters. Foliage attractive in autumn. 3 to 4 feet.	9 00	75 00	
typhina. Staghorn Sumac. Small tree or large shrub with compound, beautifully colored leaves in autumn; large spikes of crimson flowers. 2 to 3 feet.	2 00	15 00	
3 to 4 feet.	3 00	21 00	
ROBINIA hispida. Rose Acacia. Shrub about 10 feet tall, with drooping clusters of rose-colored, pea-blossom flowers in early summer. 1 to 2 feet.	2 50	18 00	170 00
2 to 3 feet.	3 00	26 00	245 00
ROSA setigera. Prairie Rose. A profusion of beautiful rose-pink flowers in June, sometimes climbing or covering the ground or walls. 9 to 18 inches.	2 50	18 50	170 00
RUBUS odoratus. Flowering Raspberry. Vigorous, upright shrub, with large leaves resembling those of the maple. Flowers rose-purple; berries light red, edible.			
1 to 2 feet.	1 25	8 00	70 00
2 to 3 feet.	1 75	12 00	90 00

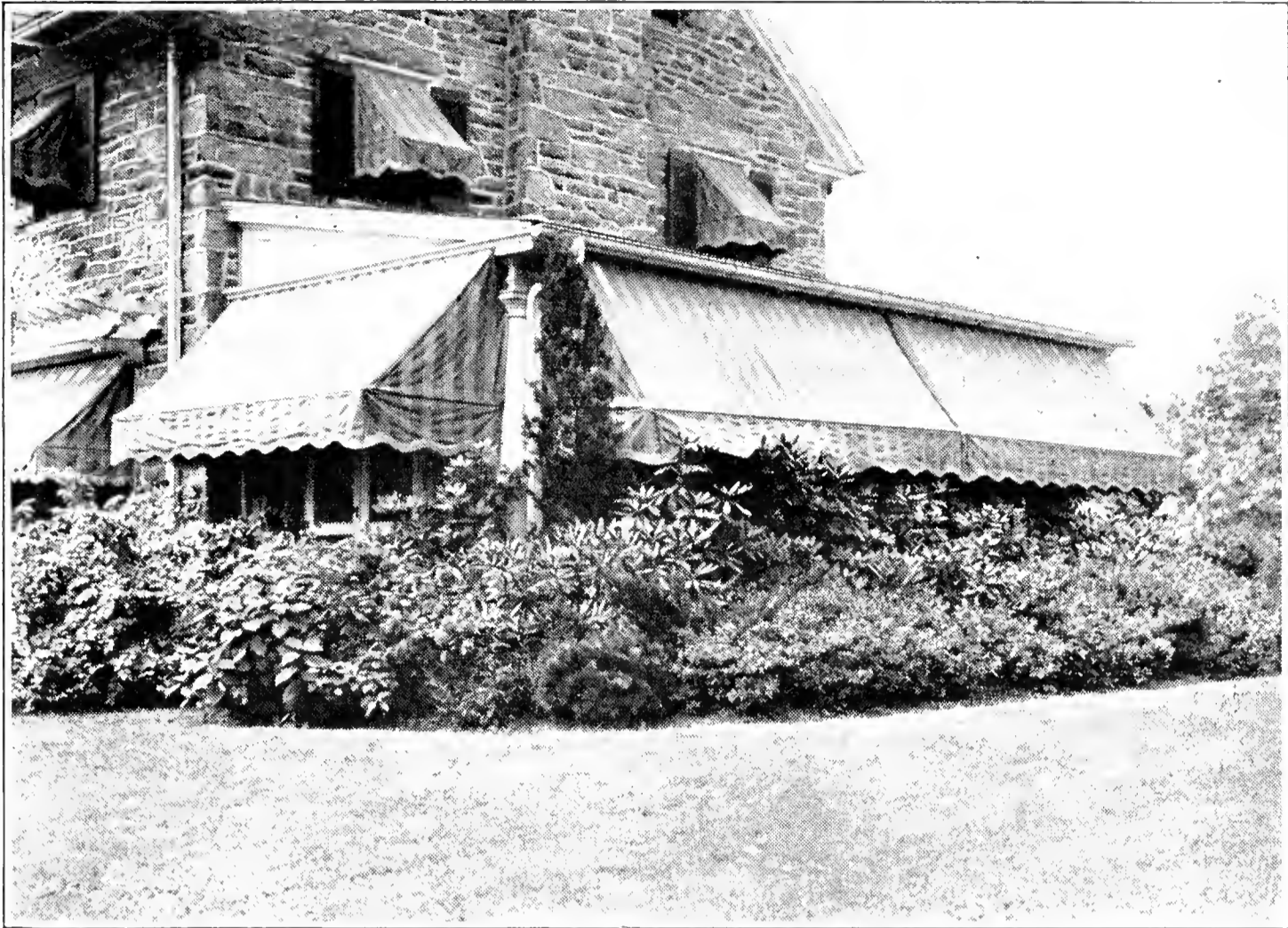
GET YOUR FALL ORDER IN EARLY for better selection. All the stock in this list is Nursery-grown, unless otherwise stated. Within certain limits it is a surplus made by the rapid development of seedlings and cuttings that now demand replanting. The stock is high-grade in every respect, and is ready for immediate shipment.

Cash Discount 10 per cent, including free packing, on orders received before Sept. 15, 1936

HARDY NATIVE DECIDUOUS TREES AND SHRUBS, continued

	10	100	1,000
SAMBUCUS canadensis. American Elder. A tall shrub with stout stems filled with white pith. Fragrant, white flowers in early summer; black fruit in August and September. Very showy. 2 to 3 feet.....	\$3 50	\$27 50	\$250 00
3 to 4 feet. Heavy.....	5 00	37 50	
pubens. Scarlet Elder. Shrub with warty branches and red pith. Large white flowers in late spring, followed by large red berries in clusters.			
1 to 2 feet.....	1 75	12 00	90 00
2 to 3 feet.....	2 75	21 00	190 00
STEWARTIA pentagyna. Mountain Stewartia. Bright green leaves. Large, showy white flowers with wavy rose-bordered petals and golden anthers, opening in summer. 2 to 3 feet.....	8 00		
3 to 4 feet.....	12 50		
4 to 6 feet.....	18 00		
VACCINIUM pallidum. Blue Ridge Blueberry. Best of all Blueberries and a desirable ornamental shrub.			
1 to 2 feet. Clumps.....	4 50	36 00	345 00
2 to 3 feet. Heavy clumps B&B.....	6 50	55 00	475 00
1½ to 3 feet. Collected clumps B&B.....	4 50	32 50	275 00
stamineum. Deerberry. 1 to 2 feet. B&B.....	4 50	36 00	
VIBURNUM cassinoides. Withe-rod. Very hardy flowering shrub that is widely distributed. The oval green leaves color beautifully in autumn. Flowers creamy white; berries pink to black. Desirable for planting along streams and in shrubbery border.			
1 to 2 feet. X strong.....	3 50	27 50	250 00
2 to 3 feet. Heavy.....	4 50	30 00	285 00
3 to 4 feet. X heavy.....	6 00	45 00	375 00
4 to 6 feet. X heavy.....	7 50	60 00	
dentatum. Arrowwood. A 15-foot shrub with white, long-stemmed flowers in clusters. Fruits blue-black.			
1 to 2 feet.....	2 50	20 00	180 00
2 to 3 feet.....	3 50	27 00	260 00
lentago. Nannyberry. Small tree with flat clusters of white flowers and dark bluish fruits. 1 to 2 feet....	2 75	24 00	
2 to 3 feet.....	4 00	36 00	
nudum. Smooth Withe-rod. Shrub about 15 feet tall with yellowish white flowers in broad, flat cluster; fruit black. 6 to 12 inches.....	2 00	16 00	
1 to 2 feet.....	3 50		
WEIGELA, Eva Rathke. Red Weigela. Drooping or arching shrub covered in early summer with dark crimson, tubular flowers enlivened with white anthers.			
1 to 2 feet.....	3 00	28 00	
2 to 3 feet.....	4 00	34 00	
rosea. Pink Weigela. Charming landscape plant producing masses of soft pink, tubular flowers in late spring.			
1 to 2 feet.....	2 50	18 00	
2 to 3 feet.....	3 50	27 00	
ZANTHORHIZA apiifolia. Yellow-root. Attractive shrub, usually 1 to 2 feet tall, with yellow wood and roots. Leaves compound, consisting of about five deeply lobed, bright lustrous green leaflets. Flowers brownish purple, in drooping racemes in early spring.			
4 to 6 inches.....	1 00	6 00	55 00
6 to 12 inches.....	1 50	11 00	100 00
1 to 1½ feet. Clumps.....	3 00	24 00	225 00

Combination Carload Shipments Will Be Made Up to Best Serve Customers



Foundation plantings of Broad-leaved Evergreens are both unusual and beautiful, giving color and character all the year

Hardy Native Evergreen Trees and Shrubs

	10	100	1,000
ABIES concolor. White Fir. Handsome, pyramidal tree with bluish green foliage. Hardy northern Fir.			
4 to 6 inches.....	\$1 25	\$9 00	\$80 00
6 to 12 inches.....	2 75	20 00	187 50
1 to 2 feet. B&B.....	6 50	50 00	475 00
fraseri. Fraser Fir. Southern species. Very handsome tree and extremely hardy. Foliage fragrant, dark green.			
6 to 12 inches. X quality.....	1 25	7 00	60 00
1 to 1½ feet. X quality.....	1 75	12 50	110 00
1½ to 2 feet. X heavy B&B.....	3 50	30 00	275 00
2 to 3 feet. X heavy B&B.....	6 50	45 00	370 00
3 to 4 feet. X heavy B&B.....	10 50	75 00	700 00
4 to 6 feet. X nice trees B&B.....	25 00	225 00	2100 00
6 to 8 feet.....	47 50	440 00	
8 to 10 feet. B&B.....	60 00	560 00	
AZALEA amœna. Amœna Azalea. Evergreen shrub 3 to 6 feet high, bearing a mass of bright crimson-purple flowers in spring. Very showy and the hardiest of the Evergreen Azaleas. 1 to 1½ feet.....	6 00	45 00	
1½ to 2 feet. B&B.....	15 00	135 00	
BUXUS sempervirens. Common Box. Used for single specimen plants and often trimmed to desired shapes.			
9 to 12 inches. B&B.....	10 00	85 00	
1 to 1½ feet. B&B.....	12 75	115 00	
1½ to 2 feet. B&B.....	20 00	185 00	
2 to 3 feet. B&B.....	30 00	275 00	
suffruticosa. Old English Box. Fine edging plant, or the larger sizes unsurpassed for specimens in conspicuous places. Boxwood becomes more valuable every year.			
4 to 6 inches. B&B.....	6 00	50 00	
6 to 9 inches. B&B.....	8 50	70 00	
9 to 12 inches. B&B.....	12 50	110 00	
1 to 1½ feet. B&B.....	20 00	185 00	
1½ to 2 feet. B&B.....	32 50	300 00	

HARDY NATIVE EVERGREEN TREES AND SHRUBS, continued

CHAMÆDAPHNE calyculata. Leatherleaf. Shrub about 5 feet high, with leathery evergreen foliage and small, urn-like white flowers.	10	100	1,000
12 to 18 inches.....	\$3 50	\$28 00	
1 ½ to 2 feet.....	5 00	37 00	
ILEX glabra. Inkberry. Upright, well-branched shrub with dark green, shining leaves retained throughout the winter. Berries black.			
6 to 12 inches. Clumps B&B.....	5 00	37 50	
1 to 2 feet. Clumps B&B.....	12 50	100 00	
2 to 3 feet. Clumps B&B.....	15 00	135 00	
opaca. American Holly. A handsome, broad-leaved evergreen, known to many as "Christmas Holly," and much used for holiday decorations. Easy of culture and adapts itself to varied soil conditions.			
6 to 12 inches.....	2 00	15 00	\$135 00
1 to 2 feet.....	4 00	30 00	270 00
2 to 3 feet.....	7 00	60 00	550 00
3 to 4 feet. B&B.....	15 00	130 00	
4 to 5 feet. B&B.....	60 00	550 00	
5 to 6 feet. B&B.....	70 00		
6 to 7 feet. B&B.....	85 00		
7 to 8 feet.....	125 00		
JUNIPERUS communis depressa. Prostrate Juniper. Very hardy shrub, with spreading, prostrate branches which curve upward at the ends. Foliage grayish green. Splendid for ground-cover or rock-garden.			
1 to 2 feet. Extra strong B&B.....	6 00	45 00	375 00
2 to 3 feet. B&B.....	12 50	90 00	
hibernica. Irish Juniper.			
6 to 12 inches.....	2 25	18 00	165 00
1 to 2 feet.....	4 00	35 00	
2 to 3 feet. B&B.....	20 00	175 00	
4 to 5 feet. B&B.....	30 00		
5 to 6 feet. B&B.....	37 50		
6 to 8 feet. B&B.....	45 00	425 00	
8 to 10 feet. B&B.....	65 00	595 00	
pfitzeriana. Pfitzer's Juniper. Plume-shaped branches covered with dull, bluish gray foliage. Useful in cities.			
1 to 1 ½ feet.....	5 50	47 50	
2 to 3 feet. X heavy B&B.....	15 50	135 00	
sabina. Savin. A trailing type with erect sprays of heather-like foliage 1 to 2 feet high.			
6 to 12 inches.....	3 50	27 00	250 00
virginiana. Redcedar. Beautiful lawn tree for border planting with other large evergreens.			
7 to 8 feet. Heavy B&B.....	50 00	450 00	
virginiana glauca. Silver Redcedar.			
3 to 4 feet. B&B.....	32 50		
4 to 5 feet. B&B.....	40 00		
LEIOPHYLLUM buxifolium. Box Sand Myrtle. Neat, attractive shrub. Splendid border plants. White or pinkish flowers in early spring.			
4 to 6 inches. Clumps B&B.....	3 00	22 50	
6 to 9 inches. Clumps B&B.....	4 50	36 00	
1 to 1 ½ feet. X heavy clumps B&B.....	7 50	60 00	
6 to 12 inches. Strong collected.....	2 00	15 00	135 00
buxifolium prostratum. Allegheny Sand Myrtle. Small, desirable border plant and rock-garden subject.			
4 to 6 inches. Spreading clumps.....	4 50	36 00	335 00
6 to 9 inches. Spreading clumps B&B.....	6 50	50 00	
2 to 4 inches. Strong collected for growing on.....	1 00	9 00	75 00

HARDY NATIVE EVERGREEN TREES AND SHRUBS, continued

MOUNTAIN LAUREL

KALMIA angustifolia. Lambkill; Narrow-leaved Laurel.	10	100	1,000
Flowers wheel-shaped, rosy purple with crimson marks.			
6 to 12 inches	\$3 50	\$27 50	
1 to 1½ feet. B&B	5 00	40 00	
latifolia. Mountain Laurel. This matchless Laurel is, without question, one of the most beautiful and attractive of the broad-leaved evergreen shrubs on account of its dark green, lustrous foliage and masses of glorious pink or rose-colored flowers, appearing in lavish profusion in late spring and early summer. Our stock is equal to the demand. We are able to make quick shipment.			
4 to 6 inches. X heavy	1 75	15 00	\$135 00
6 to 12 inches. X heavy	2 50	20 00	175 00
4 to 12 inches. Collected seedlings	1 00	5 00	40 00
1 to 1½ feet. X heavy clumps B&B	10 00	75 00	675 00
1½ to 2 feet. XX heavy clumps B&B	12 50	100 00	900 00
2 to 3 feet. XX heavy clumps B&B	17 50	150 00	1400 00
3 to 4 feet. XX heavy clumps B&B	22 50	200 00	1800 00
1½ to 2 feet. Collected clumps B&B	8 00	65 00	575 00
2 to 3 feet. Collected clumps B&B	10 00	75 00	665 00
3 to 4 feet. Collected clumps B&B	15 00	135 00	1250 00
4 to 5 feet. Collected clumps B&B	20 00	180 00	1700 00
Cut-back clumps	2 50	20 00	180 00

SPECIAL CARLOAD OFFERS

- A carload of Mountain Laurel containing 500 clumps, 2 to 4 ft., \$325.
- A carload of Rhododendron maximum, containing 400 clumps, 2 to 4 ft., \$300.
- A carload of Azalea calendulacea, containing 400 clumps, 3 to 5 ft., \$275.

LEUCOTHOE axilaris. Downy Leucothoe. Racemes short, dense-flowered; creamy white.			
6 to 12 inches	4 50	36 00	
catesbæi. Drooping Leucothoe. Hardy, graceful shrub of wide distribution. Very ornamental and much used for florist's trade. Flowers fragrant, showy creamy white.			
6 to 12 inches. Strong	2 00	16 00	150 00
1 to 1½ feet. X heavy clumps B&B	4 00	32 50	300 00
1½ to 2 feet. XX heavy clumps B&B	5 50	40 00	375 00
2 to 3 feet. XX heavy clumps B&B	9 00	75 00	675 00
Extra-quality cut-back clumps	1 75	16 00	150 00

MAGNOLIA glauca. Sweetbay. Slender tree or large evergreen shrub. Leaves oblong or oval, green on upper surface, pale or nearly white beneath. Flowers creamy white, very fragrant, cup-shaped, borne for several weeks in spring or early summer.			
1 to 2 feet. Strong	6 00	50 00	
2 to 3 feet	12 50		
3 to 4 feet. XX heavy B&B	17 50	160 00	
4 to 6 feet	32 50	300 00	

NANDINA domestica. Japanese Nandina. A pretty shrub for southern gardens, with willow-like foliage in great sprays, bearing great quantities of scarlet berries in autumn and throughout the winter.			
12 to 18 inches. B&B	5 50	40 00	
1½ to 2 feet. X heavy B&B	9 00	75 00	
3 to 4 feet. X heavy B&B	12 50	85 00	

HARDY NATIVE EVERGREEN TREES AND SHRUBS, continued

	10	100	1,000
PICEA canadensis. White Spruce. Native tree of dense habit. Foliage light bluish green. Cones 1 to 2 inches long, glossy brown, attractive, shapely.			
1 to 2 feet. B&B.....	\$4 75	\$36 00	\$325 00
2 to 3 feet. X nice B&B.....	7 25	60 00	
3 to 4 feet. X nice B&B.....	11 25	90 00	
4 to 6 feet.....	15 00	130 00	
6 to 8 feet. B&B.....	25 00	225 00	
excelsa. Norway Spruce. One of our best imported evergreen trees. Handsome, hardy, and very graceful, with large brownish cones.			
6 to 12 inches.....	1 00	8 50	70 00
1 to 2 feet.....	2 50	17 50	150 00
2 to 3 feet. B&B.....	6 00	45 00	400 00
3 to 5 feet.....	10 00	85 00	
5 to 6 feet.....	15 00	125 00	
6 to 8 feet.....	25 00	190 00	
mariana. Black Spruce. Medium-sized tree. Foliage dark bluish green. Very ornamental. 6 to 12 inches..	1 25	8 00	75 00
1 to 2 feet. B&B.....	4 50	32 50	300 00
2 to 3 feet. B&B.....	6 50	45 00	400 00
3 to 5 feet.....	10 00	85 00	
pungens. Colorado Spruce. Hardy, symmetrical tree. Very ornamental and highly recommended for general planting. 3 to 6 inches.....	1 00	8 00	70 00
6 to 12 inches.....	2 00	15 00	135 00
1 to 1½ feet. B&B.....	3 50	27 00	250 00
1½ to 2 feet. B&B.....	6 50	50 00	450 00
PIERIS floribunda. Mountain Andromeda. Extremely hardy ornamental evergreen, and a gem for any planting. Showy white flowers produced in clusters in early spring, lasting a long time.			
8 to 12 inches. Clumps B&B.....	9 00	67 50	645 00
1 to 1½ feet. X heavy clumps B&B.....	15 00	115 00	1000 00
1½ to 2 feet. Clumps.....	20 00	185 00	
2 to 3 feet. Collected clumps B&B.....		125 00	1100 00
3 to 4 feet. Collected clumps B&B.....		150 00	1350 00
Cut-back collected clumps for growing on.....	4 50	30 00	250 00
NOTE.—Special price promptly quoted for carload shipments in best collected stock from our special collecting-fields. We have approximately 100,000 extra-grade plants of this rare and beautiful evergreen shrub and solicit your orders for any quantity.			
PINUS mughus. Mugho Pine.	10		
1 to 1½ feet. B&B.....	\$10 00		
1½ to 2 feet. B&B.....	12 50		

	10	100	1,000
PINUS STROBUS. White Pine. Best known American evergreen tree. Tall and most beautiful.			
1 to 2 feet. B&B.....	\$4 00	\$30 00	\$275 00
2 to 3 feet. B&B.....	8 50	65 00	575 00
3 to 4 feet. B&B.....	10 00	75 00	650 00
4 to 6 feet. B&B. Bargain	12 50	90 00	800 00
6 to 8 feet. B&B. REAL BARGAIN	20 00	165 00	1500 00
8 to 10 feet. B&B.....	50 00	425 00	3700 00
10 to 12 feet. B&B.....	60 00	500 00	4900 00
12 to 15 feet. B&B.....	100 00	900 00	

**Very special carload prices will be made on 8 to 12-foot size. Prepaid to destination.
Let us quote on your requirements**

TAXUS canadensis. Canada Yew. A splendid evergreen rarely exceeding 2 to 3 feet in height. The slender branches are clothed with yellowish green foliage. Splendid for rock-gardens, especially in cold sections.			
4 to 6 inches.....	2 50	18 00	160 00
6 to 12 inches.....	3 50	26 00	220 00
1 to 1½ feet. B&B.....	7 00	55 00	



Pieris floribunda. See page 14

HARDY NATIVE EVERGREEN TREES AND SHRUBS, continued

	10	100	1,000
THUJA occidentalis. American Arborvitæ. A beautiful, symmetrical evergreen, extensively planted and too well known to need description. 6 to 12 inches. . . .	\$1 00	\$8 00	\$70 00
1 to 2 feet.	2 25	15 00	135 00
2 to 3 feet. B&B.	3 50	25 00	210 00
3 to 5 feet. B&B.	6 00	45 00	425 00
5 to 6 feet. B&B.	8 50	80 00	700 00
6 to 8 feet. B&B.	12 50	100 00	900 00
occidentalis globosa. Globe Arborvitæ. 1½ to 2 feet. B&B.	7 50		
2 to 3 feet. B&B.	9 00		
occidentalis pyramidalis. Pyramidal Arborvitæ.			
2 to 3 feet. B&B.	8 50	75 00	
3 to 4 feet. B&B.	12 00	110 00	
4 to 5 feet. B&B.	17 50	160 00	
5 to 6 feet. B&B.	37 50		
TSUGA canadensis. Canada Hemlock. Tall, graceful tree with spreading branches; beautiful for park or landscape. One of our best hedge products and becoming more popular for general planting.			
4 to 6 inches. Seedlings.	1 00	7 00	60 00
6 to 12 inches. X strong.	1 75	14 00	130 00
1 to 1½ feet. X strong.	3 00	22 50	200 00
1½ to 2 feet. XX quality B&B.	5 00	42 50	400 00
2 to 3 feet. XX quality B&B.	9 00	80 00	750 00
3 to 4 feet. XX quality B&B.	12 50	100 00	900 00
4 to 5 feet. Heavy B&B.	15 50	130 00	1250 00
5 to 6 feet. Heavy B&B.	20 00	175 00	1650 00
6 to 7 feet. Heavy B&B.	35 00	300 00	
7 to 8 feet. Heavy B&B.	45 00	400 00	
8 to 10 feet. Heavy B&B.	90 00	800 00	
caroliniana. Carolina Hemlock. Queen of American evergreen trees. One of the hardiest evergreens from the Carolina mountains.			
6 to 12 inches. X strong.	2 50	21 00	185 00
1 to 1½ feet. X strong B&B.	4 00	35 00	325 00
1½ to 2 feet. XX strong B&B.	6 50	52 50	500 00
2 to 3 feet. XX heavy B&B.	15 50	110 00	1000 00
3 to 4 feet. XX heavy B&B.	25 00	225 00	2150 00
4 to 5 feet. XX heavy B&B.	30 00	275 00	2600 00
5 to 6 feet. XX heavy B&B.	40 00	375 00	3600 00
6 to 7 feet. XX heavy B&B.	55 00	500 00	



This picture shows *Rhododendron catawbiense compacta*. Natural planting in the Carolina mountains. Altitude 6,000 feet. My collected plants come from these fields

Rhododendrons

RHODODENDRON CATAWBIENSE • Catawba Rhododendron

Probably the most vigorous, hardy, free-blooming variety, with gorgeous display of rosy purple flowers in early summer. Foliage dark green and exceedingly showy. Hardest of all Rhododendrons. We have the largest stock in existence of this variety. Special price on carload orders.

	10	100	1,000
4 to 8 inches. Strong transplanted	\$1 75	\$15 00	\$135 00
8 to 12 inches. Strong transplanted	2 50	21 00	200 00
1 to 1½ feet. Bushy B&B	4 75	36 00	340 00
9 to 18 inches. Heavy clumps B&B	9 00	70 00	650 00
1½ to 2 feet. X heavy clumps B&B	15 00	120 00	1100 00
2 to 3 feet. X heavy clumps B&B	20 00	170 00	1600 00
3 to 4 feet. X heavy clumps B&B	32 50	300 00	
Cut-back collected clumps	3 50	27 50	265 00
4 to 12 inches. Collected seedlings	1 00	5 00	40 00
2 to 3 feet. Collected clumps B&B	18 00	165 00	1500 00
3 to 4 feet. Collected clumps B&B	25 00	235 00	2250 00
4 to 5 feet. Collected clumps B&B	35 60	300 00	

RHODODENDRON CATAWBIENSE COMPACTA

A compact variety of Catawba Rhododendron from high altitude. Hardest of all Rhododendrons. Rosy purple to pink. Unlimited supply.

	10	100	1,000
4 to 6 inches. Bushy	\$2 75	\$22 50	\$200 00
6 to 12 inches. Bushy	3 65	32 50	300 00
9 to 12 inches. Clumps B&B	7 50	60 00	580 00
1 to 1½ feet. Bushy. X strong B&B	6 50	50 00	475 00
1 to 1½ feet. X heavy clumps B&B	12 50	100 00	900 00
1½ to 2 feet. X heavy clumps B&B	17 50	150 00	1400 00
Cut-back collected clumps	5 00	40 00	385 00
2 to 3 feet. Clumps B&B	23 50	200 00	1800 00
3 to 4 feet. X heavy clumps B&B	40 00	325 00	3150 00

Cash Discount 10 per cent, including free packing, on orders received before Sept. 15, 1936

RHODODENDRON CAROLINIANUM • Carolina Rhododendron

A species from the southern Alleghany Mountains. Earliest flowering native Rhododendron. It is a fine bloomer, with light to deep pink flowers.

	10	100	1,000
4 to 8 inches. X strong	\$2 35	\$18 00	\$160 00
8 to 12 inches. X strong	3 50	27 50	260 00
1 to 1½ feet. Heavy clumps B&B	11 50	90 00	850 00
1½ to 2 feet. XX heavy clumps B&B	15 00	125 00	1175 00
2 to 3 feet. X heavy clumps B&B	20 00	175 00	1650 00
3 to 4 feet. X heavy clumps B&B	25 00	225 00	2150 00
Cut-back clumps for growing on	3 50	27 50	260 00
4 to 12 inches. Collected seedlings	1 25	5 00	40 00
2 to 4 feet. Collected clumps B&B	23 50	200 00	1900 00

carolinianum album. White Carolina Rhododendron.

Dwarf, early-blooming variety from Piedmont Section. Rare and most beautiful.

1 to 1½ feet. Clumps B&B	16 50	125 00	
1½ to 2 feet. Heavy clumps B&B	18 50	160 00	
2 to 3 feet. Heavy clumps B&B	22 50	190 00	
Cut-back collected clumps	5 00	40 00	350 00
3 to 4 feet. Collected clumps B&B	40 00	350 00	3250 00

RHODODENDRON MINUS (punctatum). Piedmont Rhododendron. Bold shrub with pinkish white flowers curiously spotted with green dots.

2 to 3 feet. X heavy clumps B&B	20 00	175 00	
3 to 4 feet. X heavy clumps B&B	25 00	235 00	
4 to 5 feet. X heavy clumps B&B	35 00		

NOTE.—5 plants at the 10 rate, 25 at 100 rate, 250 at 1,000 rate. For less than 5, where unit price is not given, add 25 per cent

RHODODENDRON MAXIMUM • Rosebay

This is the most familiar and grandest species and most used for massing and naturalistic planting of all native broad-leaved evergreens. Flowers pinkish white, in large clusters in July. We are prepared to supply splendid plants in all sizes. Special quotations for carload shipments. Send in your list of requirements early to allow best opportunity of serving.

	10	100	1,000
4 to 6 inches. Bushy	\$1 35	\$10 00	\$85 00
6 to 12 inches. Bushy	2 25	17 50	160 00
1 to 1½ feet. Bushy B&B	4 50	36 00	325 00
1 to 1½ feet. X heavy clumps B&B	7 00	60 00	560 00
1½ to 2 feet. XX heavy clumps B&B	10 00	80 00	700 00
2 to 3 feet. XX heavy clumps B&B	14 50	130 00	1200 00
3 to 4 feet. XX heavy clumps B&B	20 00	170 00	1600 00
1½ to 2 feet. Collected clumps B&B	8 00	65 00	600 00
2 to 3 feet. Collected clumps B&B	12 50	100 00	900 00
3 to 4 feet. Collected clumps B&B	15 00	130 00	1250 00
4 to 5 feet. Collected clumps B&B	22 50	190 00	1850 00
5 to 6 feet. Collected clumps B&B	30 00	275 00	2600 00
4 to 12 inches. Collected seedlings	1 00	4 00	30 00
Cut-back extra-quality clumps	3 00	20 00	180 00

Native Mountain Wildings for Autumn Planting

Autumn is the logical time to move many of the native plants. In fact, all the natives in this list can be moved with entire safety in autumn, and when spring days come they will be ready to start off quickly.

Hardy Vines, Climbers, and Creepers

	10	100	1,000
AMPELOPSIS quinquefolia. Virginia Creeper. High-climbing vine, clinging to walls and trees, with beautifully colored foliage in autumn	\$1 50	\$11 00	\$100 00
quinquefolia engelmanni . Scarlet Virginia Creeper. Clinging form of the well-known Virginia Creeper. Splendid climber with brilliant-colored foliage in fall. Strong collected	1 00	5 00	40 00
ARISTOLOCHIA siphon. Dutchman's Pipe. Extra-strong, vigorous-growing vine. 1½ to 3 feet	4 50	30 00	
BIGNONIA radicans. Trumpet Creeper. Bold shrub with interesting foliage and partially climbing habit. The huge flowers are trumpet shaped and vary from bright brownish orange to vivid scarlet. 1 to 2 feet	1 50	12 00	110 00
CELASTRUS scandens. American Bittersweet. High-climbing vine; very ornamental. 1 to 2 feet	2 00	16 00	
2 to 3 feet. X strong	3 00	26 00	240 00
3 to 4 feet. X strong	4 00	30 00	275 00
CLEMATIS crispa. Curly Clematis. Graceful vine. Purple flowers in midsummer. Strong	1 50	12 50	
paniculata . Sweet Autumn Clematis. Strong	2 75	21 00	200 00
texensis (coccinea) . Scarlet Clematis. A small but graceful vine. Broad green leaflets. Scarlet flowers in late spring or summer. Strong	2 75	22 50	200 00
virginiana . Virgin's Bower. Popular for general planting. X strong	1 20	9 00	80 00
DIOSCOREA villosa. Yam. Showy vine, with leaves turning golden yellow in autumn. Strong	1 00	7 00	60 00

Cash Discount 10 per cent, including free packing, on orders received before Sept. 15, 1936

HARDY VINES, CLIMBERS, AND CREEPERS, continued

EPIGÆA repens. Trailing Arbutus. Charming plant, with very fragrant, white or pink flowers.	10	100	1,000
Strong clumps.	\$1 75	\$12 00	\$110 00
GALAX aphylla. Galax. One of our best ground-cover plants for shady locations. The very ornamental bronze and green leaves are much used in florist's trade.			
X heavy clumps.	1 35	11 00	100 00
GAULTHERIA procumbens. Wintergreen. Very desirable ground-cover, with brilliant green and bronze leaves. Bright red, edible fruit in winter.			
Strong clumps.	1 35	11 00	100 00
HOUSTONIA serpyllifolia. Creeping Bluets. 3 to 6 inches. Light blue or white, blooming about all summer. Splendid for rock-garden, potting, or border. Unlimited supply of this unusual ground-cover.			
Clumps.	1 75	15 00	140 00
IRIS cristata. Crested Iris. Splendid ground-cover for shady or open locations. Leaves green. Flowers blue.			
Strong clumps.	1 35	11 00	100 00
germanica. German Iris. Vigorous-growing species with large, showy flowers of assorted colors.	2 25	15 00	135 00
verna. Vernal Iris. Blue flowers Splendid ground-cover.			
Clumps.	1 35	11 00	100 00
LONICERA japonica halliana. Hall's Honeysuckle. Very strong-growing vine. Fragrant white and yellow flowers in summer and autumn. Best for trellises and ground-cover.			
X strong.	1 50	11 00	100 00
Second size. Bargain	75	5 00	45 00
MITCHELLA repens. Partridge Berry. A splendid evergreen ground-cover best suited to shady places. Flowers white or purple tinged. Berries bright red in winter.			
Clumps.	1 50	11 00	100 00
PACHYSANDRA terminalis. Japanese Pachysandra. Evergreen ground-cover. Recommended for shady locations. X strong.	1 75	12 00	110 00
PHLOX stolonifera. Creeping Phlox. A free-growing ground-cover. Reddish purple flowers in early spring.			
Strong. Collected.	1 35	11 00	100 00
subulata. Moss Pink. Splendid for ground-cover or rock-garden.			
Strong clumps.	1 65	12 00	110 00
RANUNCULUS repens. Creeping Buttercup. Splendid ground-cover. Best suited to damp, shady situations.			
Strong clumps.	1 25	8 00	65 00
SEDUM telephoides. Wild Live-forever. Fleshy leaves and flowers. Suitable for rockery and other dry situations.			
X strong.	1 75	14 00	130 00
ternatum. Mountain Stonecrop. Handsome creeping ground-cover with white flowers in early spring. Widely distributed.			
Strong clumps.	1 00	7 00	60 00
SHORTIA galacifolia. Oconee Bells. Esteemed rare evergreen ground-cover, best suited to shade.			
Heavy clumps.	1 75	15 00	135 00
Second size.	1 00	7 00	60 00
VINCA minor. Common Periwinkle. Hardy, old-fashioned evergreen vine, well adapted for ground-cover and rockery. Succeeds best in cool, shady locations. Blue flowers in midsummer. Foliage very dark green.			
Strong.	1 25	9 00	80 00
Second size.	85	6 00	45 00

Hardy Native Ferns

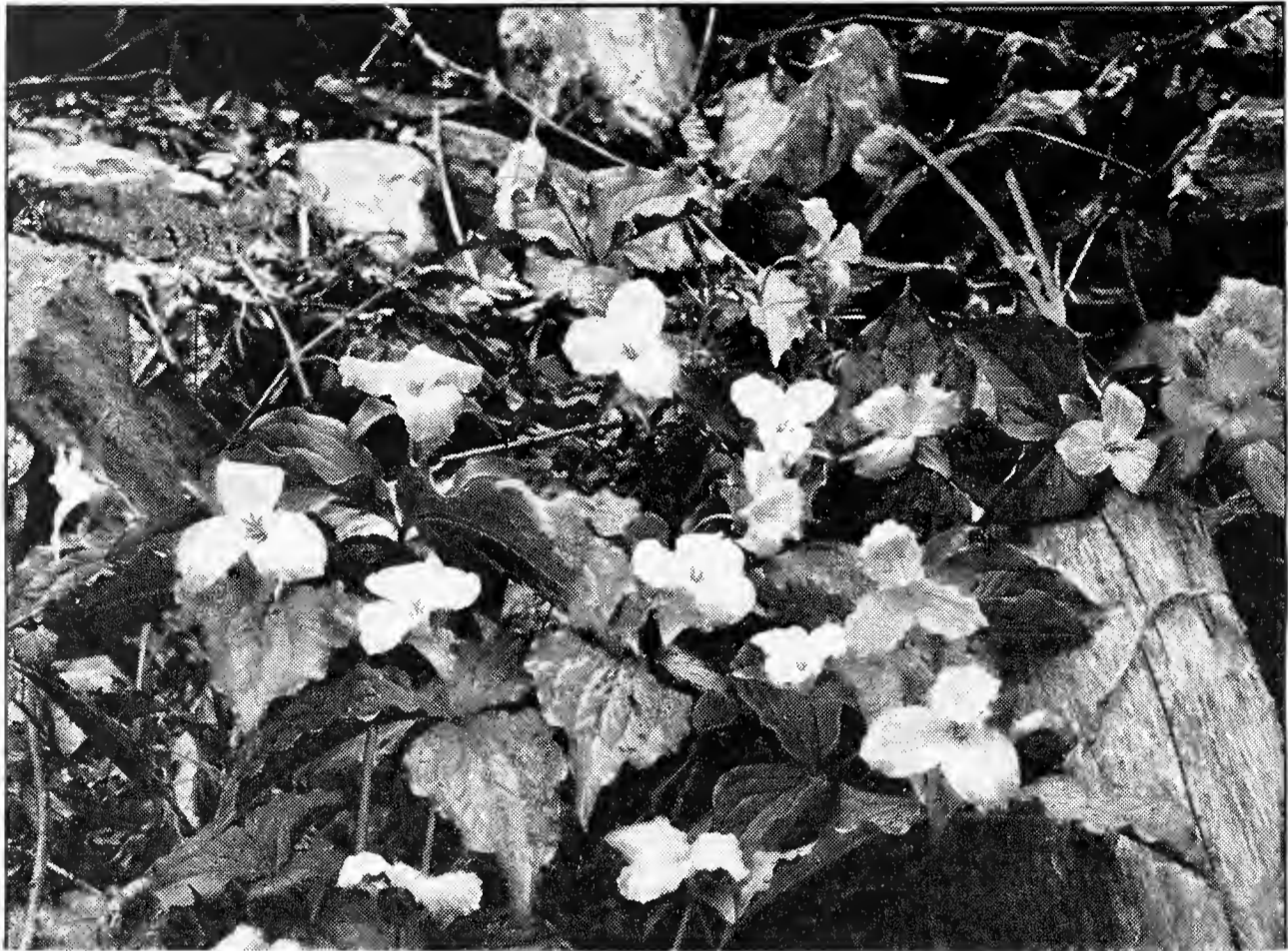
For shady locations, no class of plants can equal the Ferns. They are easily grown in ordinary soils and will often thrive where it is impossible to make flowering plants succeed. We handle large quantities of Ferns annually and recommend the following:

ADIANTUM pedatum. American Maidenhair Fern. Deciduous. One of the most distinct and beautiful.	10	100	1,000
Extra strong.....	\$1 25	\$7 00	\$60 00
ATHYRIUM filixfemina. Lady Fern. Large, deciduous Fern. Exceedingly showy.			
X strong.....	1 25	8 00	70 00
BOTRYCHIUM virginianum. Rattlesnake Fern. Deciduous. Triangular fronds, deeply cut. Showy.			
Strong.....	1 25	8 00	70 00
CYSTOPTERIS bulbifera. Berry Bladderfern. Deciduous.			
Strong.....	1 35	9 00	80 00
DICKSONIA punctilobula. Hay-scented Fern. A very handsome, vigorous-growing, deciduous species. Recommended for shade or open locations. Widely distributed.			
Extra-heavy clumps.....	1 25	6 50	60 00
DRYOPTERIS filix-mas. Male Fern. Delicate, finely cut fronds. Fine effects when massed.			
Strong.....	1 50	9 00	75 00
goldiana. Goldie Fern. Deciduous.			
X strong.....	2 00	16 00	145 00
hexagonoptera. Winged Woodfern. Deciduous. Broad, triangular fronds.			
Strong.....	1 25	9 00	80 00
marginalis. Leather Woodfern. Robust, evergreen, showy species.			
X heavy.....	1 25	8 00	70 00
spinulosa. Toothed Woodfern. Evergreen.			
Strong.....	1 15	7 00	60 00
thelypteris. Marsh Fern. Deciduous.			
Strong.....	1 25	8 00	70 00
ONOCLEA sensibilis. Sensitive Fern. Deciduous. Suitable for dry or moist locations.....	1 00	6 50	60 00
OSMUNDA cinnamomea. Cinnamon Fern. Deciduous; stately; very large.			
X strong.....	1 25	8 00	70 00
claytoniana. Interrupted Fern. Deciduous. Very bold, attractive species.			
X strong.....	1 25	9 00	80 00
regalis. Royal Fern. Large, deciduous Fern, bearing attractive foliage.			
Strong.....	1 25	9 00	80 00
POLYPODIUM vulgare. Common Polypody. A charming little evergreen Fern. Excellent for rockery.			
Clumps.....	1 25	9 00	80 00
POLYSTICHUM acrostichoides. Christmas Fern. Evergreen and extremely ornamental. Much used for florist's trade.			
Clumps.....	1 00	6 00	50 00
PTERETIS nodulosa. Ostrich Fern. Deciduous, bold-growing Fern of immense size.			
X strong.....	1 35	10 00	90 00
PTERIDIUM aquilinum. Bracken. Deciduous; tall-growing.			
Strong.....	1 00	6 00	50 00

SPECIAL COLLECTION. 100 assorted Ferns, \$6; 1,000 \$50

Hardy Aquatic and Bog Plants

ASTER novæ-angliæ. New England Aster. Narrow grayish leaves and many star-like lavender to purple flowers.	10	100	1,000
X heavy.....	\$1 35	\$10 00	\$85 00
punicus. Swamp Aster. Lilac-blue; tall-growing. Heavy clumps.....	1 00	6 00	50 00
CALTHA palustris. Marsh Marigold. Beautiful marsh plants. Leaves bright green, heart-shaped. Flowers bright yellow. Showy. Strong.....	1 35	9 00	80 00
CHELONE glabra. White Turtlehead. Strong grower. Flowers white to rose. Suitable for dry or wet locations. X strong.....	1 25	9 00	80 00
lyoni. Pink Turtlehead. Flowers red or rose. Splendid bog plant. X strong.....	1 25	9 00	80 00
CICUTA maculata. Spotted Waterhemlock. Height 3 to 5 feet. Finely cut leaves. Flowers white. Strong.....	1 00	7 00	60 00
DARLINGTONIA californica. California Pitcher Plant. A very interesting bog plant. Nodding purple flowers. Strong.....	4 75	37 50	
DIONÆA muscipula. Venus' Flytrap. A strong and most unusual plant that captures flies and other insects for food. Rare and very interesting. Strong.....	2 35	15 00	135 00
HEMEROCALLIS fulva. Tawny Day Lily. Stems 2 to 4 feet high. Flowers tawny orange, very showy. Strong..	1 25	9 00	80 00
IRIS pseudacorus. Yellow Flag. Stems 3 to 5 feet high. Large, sword-shaped leaves, yellow flowers. X strong.....	1 75	13 50	120 00
versicolor. Blue Flag. Height 2 to 4 feet. Suitable for border planting along ponds and streams. Strong.....	1 50	9 00	80 00
MERTENSIA virginica. Virginia Bluebells. Height 9 to 18 inches. Green foliage and showy blue flowers. XX largest.....	2 50	18 00	165 00
First size.....	1 50	12 00	110 00
Second size.....	1 00	8 00	70 00
MONARDA didyma. Oswego Bee-Balm. Height 3 to 5 feet. One of our most brilliant perennials. Leafy stems with bright scarlet flowers. Strong.....	1 25	8 00	70 00
SARRACENIA flava. Trumpet Pitcher Plant. Interesting bog plant. Height 1 to 2 feet. Yellowish green trumpet-shaped leaf. Flowers large, yellow, very conspicuous. X strong.....	2 25	18 50	170 00
purpurea. Common Pitcher Plant. Hardy plant 9 to 15 inches high. Succeeds best in mossy bogs. Flowers purplish yellow. Strong.....	2 25	18 50	170 00
SAXIFRAGA virginensis. Virginia Saxifrage. Height 6 to 18 inches. Lettuce-like foliage. Flowers white. Damp locations. Strong.....	1 35	9 00	80 00
SYMPLOCARPUS fœtidus. Skunk-cabbage. Leaves large, 1 to 2 feet long, heart-shaped. Flowers small, mottled purplish brown and greenish yellow, packed on fleshy stems. Very early spring-blooming plant. Strong.....	5 00	35 00	
VERATRUM viride. American False Hellebore. Height 2 to 4 feet. Yellowish green plant with large leaves. Succeeds well in either dry or moist soil. Flowers greenish white, in early spring. X strong.....	1 50	11 00	100 00
VERNONIA noveboracensis. Common Ironweed. Stems leafy, usually tall. Leaves alternate. Flower-heads an intense red-purple, loosely clustered. X strong..	1 00	7 00	60 00



Trillium grandiflorum

Hardy Native Lilies and Bulbous Plants

ARISÆMA triphyllum. Jack-in-the-Pulpit. Height 1 to 1½ feet. Strong, fleshy top and conspicuous greenish white flowers. First size	10	100	1,000
	\$1 00	\$8 00	\$70 00
CONVALLARIA majalis. Lily-of-the-Valley. Height 6 to 18 inches. Soft green leaves. Flowers fragrant, white. Prefers partial shade. Strong.....	1 00	7 00	60 00
DICENTRA canadensis. Squirrelcorn. Small plant growing best in shade. White flowers in early spring. Strong.	1 00	7 00	60 00
cucullaria. Dutchman's-Breeches. Oddly shaped yellow-white flowers in early spring. Strong.	1 00	7 00	60 00
eximia. Fringed Bleeding-Heart. Height 6 to 18 inches. Graceful fern-like foliage and deep rose flowers nodding in slender scape-like racemes all summer. A splendid rock-garden subject. Heavy clumps.....	3 00	24 00	225 00
First size.....	2 00	15 00	140 00
Second size.....	1 00	7 00	60 00
ERYTHRONIUM americanum. American Trout Lily. Height 5 to 10 inches. Green mottled leaves. Bright yellow flowers in early spring. Flowering size.....	90	6 00	45 00
LILIUM canadense. Canada Lily. Slender stems 2 to 4 feet high. Flowers in various shades of orange, yellow, and red. Very ornamental. First size	2 00	14 00	130 00
Second size.....	1 00	6 00	50 00
carolinianum. Carolina Lily. A showy Lily somewhat dwarfer than <i>L. superbum</i> , with flowers a little lighter in color, but enriched with a delicate and pervasive fragrance. It grows 2 to 4 feet high, and, in spite of its common name of Swamp Lily, thrives best in well-drained soil and in partial or even fairly dense shade. Its habit is peculiarly airy and graceful, the petals recurving sharply but not bent back so completely as <i>L. superbum</i> , so that the long, slender tips are frequently erect or barely touch each other. First size.	2 00	16 00	145 00
Second size.....	1 00	7 00	60 00

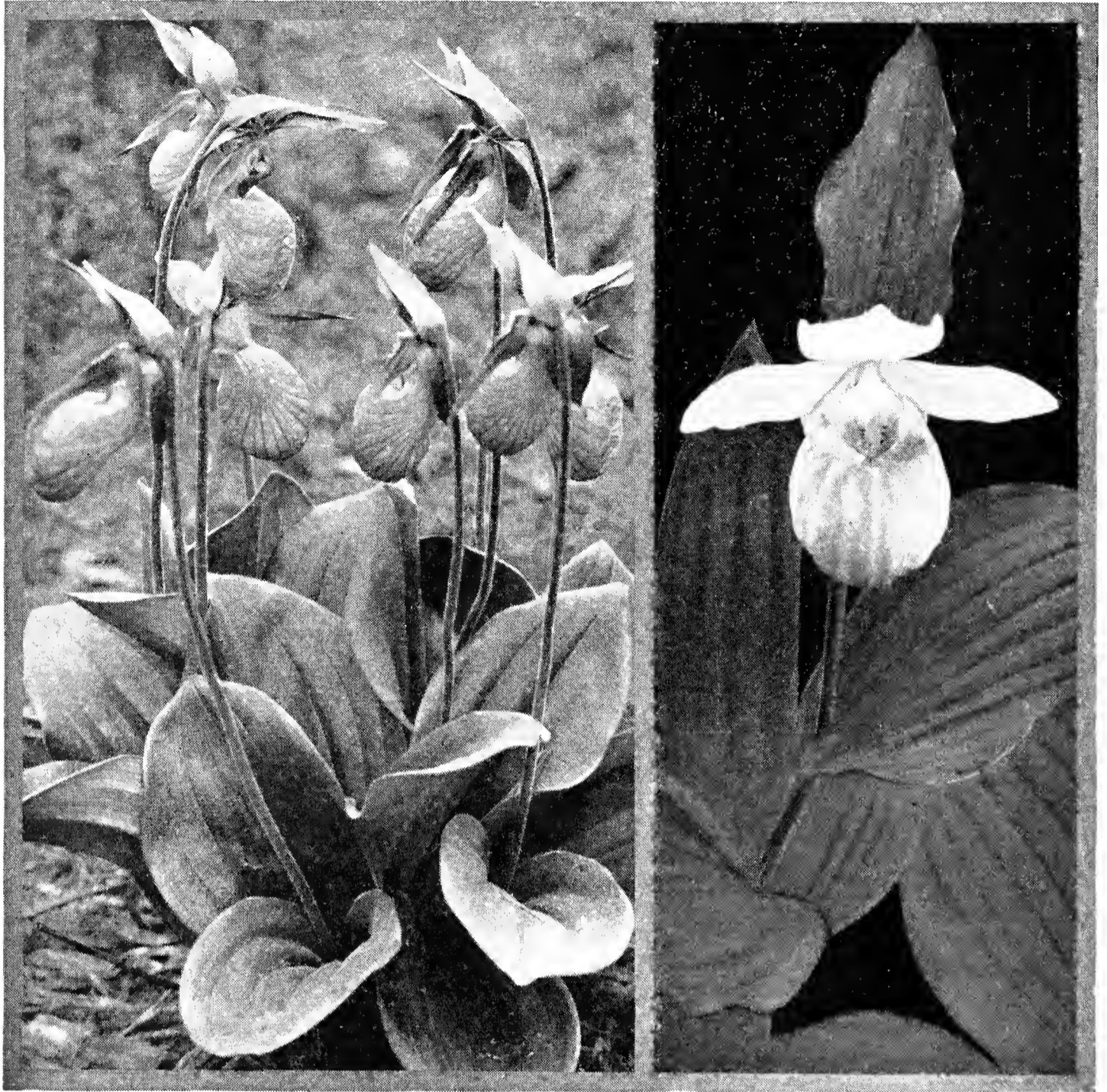


Trillium undulatum and Tiarella cordifolia

HARDY NATIVE LILIES AND BULBOUS PLANTS, continued

Lilium grayi. Gray's Lily. Height 2 to 4 feet. A beautiful Lily with deep reddish bell-shaped flowers, orange spotted within. Exceedingly showy and continues to grow in demand. We have a large stock on hand and solicit early orders. XX largest bulbs.....	10	100	1,000
First-size strong flowering bulbs	\$4 50	\$35 00	
Second-size mostly flowering bulbs.....	2 50	21 00	\$200 00
Third size.....	1 00	9 00	80 00
philadelphicum. Orange-cup Lily. Height 1 to 3 feet. Reddish orange flowers, with purple spots.			
Flowering-size bulbs.....	65	4 50	40 00
superbum. American Turk's-cap Lily. Under favorable conditions it reaches 8 feet, bearing scores of 3 to 4-inch flowers of brilliant orange-scarlet, shaded yellow and dotted and tinged with brown in the center. The petals form a turban-shaped flower which accounts for its common name, the "Turk's-cap Lily." It particularly likes to stick its head up through an opening in overhanging shrubs. Blooms in July, and is easily adaptable to garden conditions. Early orders solicited. XX largest bulbs	1 50	12 00	110 00
First size.....	2 50	20 00	180 00
Second size.....	1 50	10 00	90 00
Third size.....	90	5 00	40 00
NARCISSUS. Daffodil. Best assorted varieties. Home-grown.			
Strong.....	50	2 50	20 00
Second size.....	1 00	6 00	50 00
TRILLIUM cernuum. Nodding Trillium. White or pink flowers. April. Large broad leaves. First size.....	65	3 00	25 00
erectum. Purple Trillium. Large, very ornamental plants 9 to 18 inches high. Large red fruit. Flowers brown to purple. Early, vigorous spring bloomer. Large stock ready for prompt delivery. XX largest.....	1 25	8 00	65 00
First size.....	1 35	7 00	60 00
Second size.....	1 00	6 00	50 00
	65	3 00	20 00

Cash Discount 10 per cent, including free packing, on orders received before Sept. 15, 1936



Cypripedium acaule

Flower of *Cypripedium spectabile*

Trillium erectum album. Wax Trillium. Flowers white. Blooms in early May. First size.....	10	100	1,000
	\$1 00	\$7 00	\$60 00
grandiflorum. Snow Trillium. The finest and largest species. Flowers 2 to 3 inches across, in early spring, white turning to rose color. One of our best spring bloomers. We have more than 150,000 strong flowering bulbs for prompt shipment. This plant flourishes and blooms to perfection in woodland and border plantings. Early orders solicited. XX largest.....	1 35	9 00	80 00
First size. X quality.....	1 00	3 50	30 00
Second size.....	50	2 00	10 00
luteum. Yellow Trillium. Leaves large, broadly ovate, dark mottled green, 2 to 6 inches long. Flowers lemon-yellow, having a long blooming season from April to May. Recommended for shady borders and woodland. Strong first size.....	1 50	11 00	100 00
stylosum. Rose Trillium. Height 10 to 18 inches. Large, rose-pink, nodding flowers. First size.....	1 00	6 00	55 00
Second size.....	75	3 00	20 00
undulatum. Painted Trillium. Strong, vigorous grower. Height 8 to 15 inches. Earliest bloomer of all Trilliums. Large flowers with scarlet and white markings. XX largest.....	1 50	8 00	75 00
Strong first size.....	1 00	5 00	40 00

Hardy Native Orchids

CALOPOGON pulchellus. Grass-pink Orchid. Height 1 to 1½ feet. Grass-like foliage. Pink flowers. Showy and succeeds well in cultivation.	10 100 1,000
Strong.....	\$1 25 \$9 00 \$80 00
CYPRIPEDIUM acaule. Pink Lady's Slipper. Height 6 to 15 inches. Thick clusters of leaves flat on ground. Large, bright purple-pink, upright flowers in early spring. One of the most beautiful native Orchids.	
X strong. First size.....	2 50 21 00 190 00
Flowering second size.....	1 25 8 00 70 00
parviflorum. Small Yellow Lady's Slipper. Fragrant.	
First size.....	3 00 22 50 210 00
pubescens. Common Lady's Slipper. Height 12 to 20 inches. Flowers bright yellow in May.	
X first size.....	2 50 21 00 190 00
Flowering second size.....	1 25 8 00 70 00
spectabile. Showy Lady's Slipper. Height 1 to 2½ feet. Extra-strong grower in peat soils. White to rose-colored flowers in June and July. By far the best of all Cypripediums. We have splendid stock of several thousand strong clumps, and shipment can be made promptly.	
X first size, 1 to 3 crowns.....	4 00 30 00 270 00
Heavy clumps, 4 to 8 crowns.....	10 00 85 00 750 00
HABENARIA ciliaris. Yellow Fringe Orchid. Height 12 to 20 inches. Yellow flowers. Very handsome free bloomer. Suitable for rockery.	
Strong.....	1 50 11 00 100 00
psycodes. Small Purple Fringe Orchid. Height 9 to 18 inches. Best suited to shade.	
Strong.....	1 50 11 00 100 00
ORCHIS spectabilis. Showy Orchis. Best adapted to shady locations. Height 6 to 12 inches. Flowers showy, pink-purple, in early spring.	
Strong.....	1 50 11 00 100 00



Cypripedium spectabile



Cypripedium pubescens. See page 25

Hardy Native Herbaceous Perennials

This list contains a variety of Herbaceous Plants furnishing a succession of bloom from early spring to late autumn, all having been tried out with success in cultivation. The height indicates the approximate height of each plant as found in wild state. The time of blooming naturally depends on locality.

ACONITUM uncinatum. Clambering Monkshood. Height 3 to 6 feet. Blue, hood-shaped flowers. Strong	10	100	1,000
	\$1 75	\$12 00	\$110 00
ACTÆA alba. White Baneberry. Height 1½ to 3 feet. Flower-stalk red. White flowers and berries. Strong	1 35	10 00	
rubra. Red Baneberry. Height 1 to 3 feet. White flowers in May. Red berries. Strong	1 50	12 00	
AQUILEGIA canadensis. American Columbine. Height 1 to 2 feet. Showy, cut leaves. Reddish flowers with scarlet-yellow inside in May and June. Splendid for rock-garden. Strong.	1 25	9 00	
ARALIA racemosa. American Spikenard. Height 2 to 5 feet. Smooth stem; large compound leaves. White paniced flowers in July. Strong.	1 25	8 00	70 00
ARUNCUS sylvester. Goat's Beard. Height 4 to 6 feet. Cut leaves and white flowers in May and June. X strong.	1 20	9 00	80 00
ASARUM canadense. Canada Wild Ginger. Kidney-shaped leaves. Grows 2 to 4 inches high with single purplish flower close to the ground. Succeeds best in shady locations. Strong.	1 00	7 00	60 00
shuttleworthi. Mottled Wild Ginger. Evergreen. Leaves large, round, heart-shaped. X strong	1 50	12 00	110 00
ASCLEPIAS tuberosa. Butterfly Weed. Height 1 to 2 feet. Very showy orange or red flowers. X strong	1 50	11 00	100 00
Second size.	75	5 00	45 00
ASTILBE biternata. False Goatsbeard. Naturally 3 to 5 feet in height. Large, compound leaves. Yellowish white flowers. Very ornamental. Succeeds best in shady locations. X strong	1 00	5 00	40 00

NOTE.—5 plants at the 10 rate, 25 at 100 rate, 250 at 1,000 rate. For less than 5, where unit price is not given, add 25 per cent

HARDY NATIVE HERBACEOUS PERENNIALS, continued

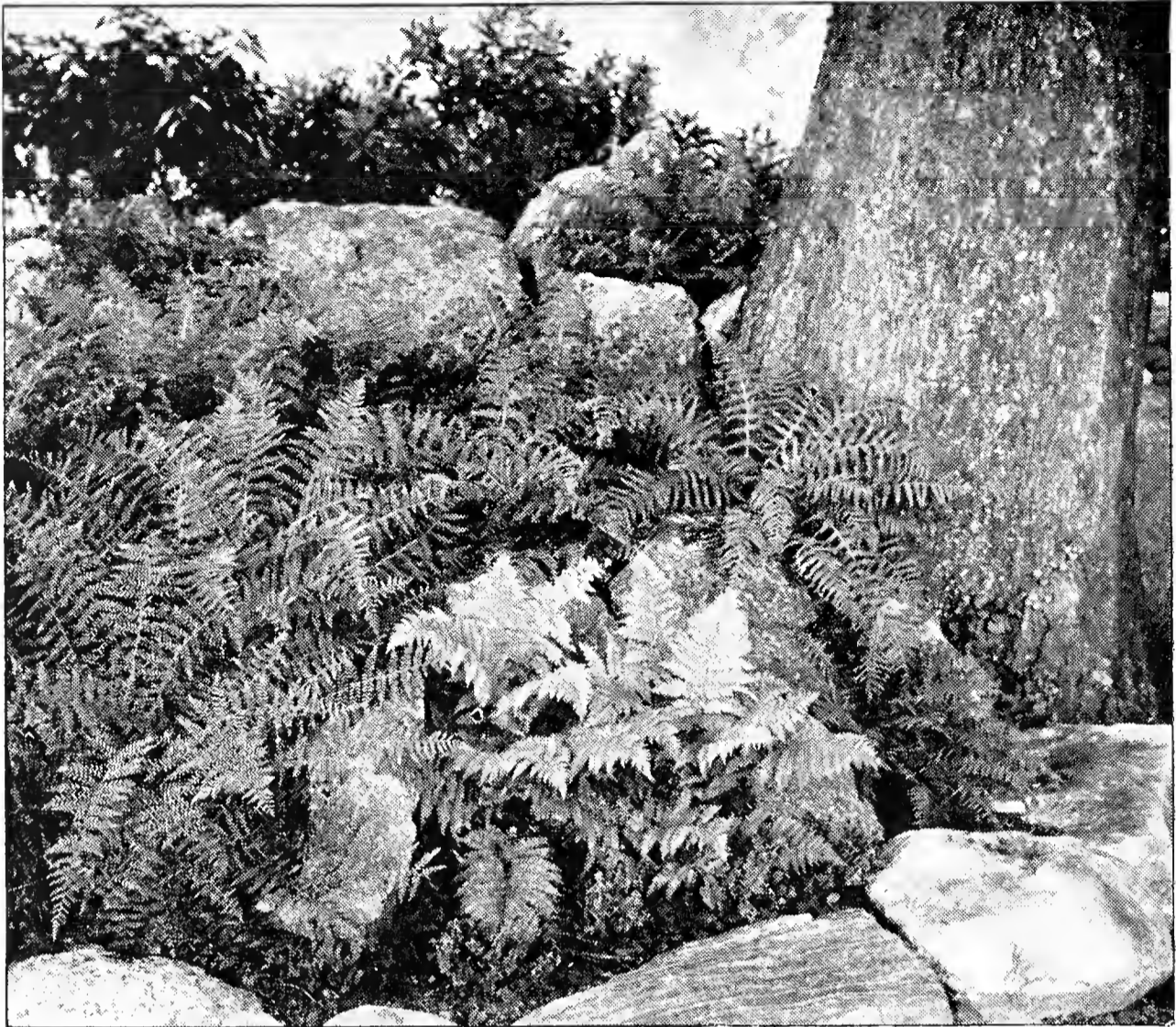
BAPTISIA tinctoria. Yellow Wild-Indigo. Height 2 to 3 feet. Abundant yellow flowers in June. Showy. X strong.	10 \$1 20	100 \$8 00	1,000 \$65 00
CAMPANULA divaricata. North Carolina Harebell. Height 1 to 2 feet. Pale blue, bell-shaped flowers in July. Good for rockery. Strong.	1 20	8 00	70 00
CAREX fraseri. Fraser Sedge. Height 9 to 18 inches. Rare, broad-leaved evergreen. White flowers in spikes, in March. Best suited for shade. Strong.	1 35	10 00	90 00
CAULOPHYLLUM thalictroides. Blue Cohosh. Height 2 to 3 feet. Yellowish green flowers in April. Fruit blue and showy. Strong.	85	6 00	45 00
CHAMÆLIRIUM luteum. Fairywand. Height 1 to 2 feet. Spike of small flowers in June. Showy. X strong.	1 20	7 00	60 00
CIMICIFUGA americana. American Bugbane. Height 3 to 6 feet. Snowy white flowers in August. Leaves divided. Strong.	1 20	7 00	60 00
racemosa. Cohosh Bugbane. Height 4 to 8 feet. Flowers white. Decompound leaves. X heavy.	1 00	6 00	50 00
CLINTONIA borealis. Bluebead. Height 6 to 12 inches. Greenish yellow flowers in June. Showy species. Strong.	1 00	7 00	60 00
umbellulata. Speckled Clintonia. Height 9 to 15 inches. Fragrant white flowers in June. Strong.	1 00	7 00	60 00
COREOPSIS lanceolata. Lance Coreopsis. Height 2 to 4 feet. Free bloomer. Yellow flowers in July. Strong.	1 00	7 00	60 00
DIPHYLLEIA cymosa. Umbrellaleaf. Height 1 to 3 feet. Large lobed leaves. White flowers in May. Purple showy fruit in bunches. Prefers moist locations. X strong.	1 00	8 00	70 00
DISPORUM lanuginosum. Fairy Bells. Height 1 to 3 feet. Greenish flowers in May. Fruit red and drooping. Strong.	1 20	8 00	70 00
DODECATHEON meadia. Common Shooting-Star. Very showy pink and purple flowers. Strong.	1 50	11 00	100 00
EPILOBIUM angustifolium. Blooming Sally. Tall plant with spire-like clusters of purple flowers. Strong.	1 25	9 00	80 00
EUPATORIUM purpureum. Joe-Pye-Weed. Height 4 to 8 feet. Purple flowers in large panicles in June. X strong.	1 20	8 00	70 00
EUPHORBIA corollata. Flowering Spurge. Height 1 to 4 feet. White flowers in August. Strong.	1 20	8 00	70 00

Plants for the Rock-Garden

- 5 *Leiophyllum buxifolium prostratum.* Allegheny Sandmyrtle.
- 10 *Sedum ternatum.* Mountain Stonecrop. White flowers in early spring.
- 5 *Habenaria ciliaris.* Yellow Fringe Orchid. Handsome yellow flowers suitable for the rock-garden.
- 5 *Dicentra eximia.* Fringed Bleeding-Heart. Deep rose flowers and fern-like foliage all summer. Height 10 to 18 inches.
- 5 *Campanula divaricata.* North Carolina Harebell. Pale blue, bell-shaped flowers in early summer. Height 12 to 18 inches.

- 5 *Asclepias tuberosa.* Butterfly Weed. Orange or red flowers. Height 15 to 24 inches.
- 5 *Heuchera americana.* American Alumroot. Greenish white flowers in June. Foliage mottled bronze in late fall.
- 5 *Houstonia purpurea.* Mountain Houstonia. Purple flowers all summer. Height 6 to 12 inches.
- 5 *Xerophyllum asphodeloides.* Turkey's-Beard. White flowers on spikes 3 to 5 feet tall.
- 5 *Yucca filamentosa.* Common Yucca. White bell-shaped flowers in July and August, on spikes that may be 6 feet or more in height.

Five to 10 plants of each variety (55 plants in all) for only \$7



Ferns in a Rock-Garden

HARDY NATIVE HERBACEOUS PERENNIALS, continued

GENTIANA andrewsi. Closed Gentian. Height 10 to 18 inches. Foliage green. Blue closed flowers in September. Strong.....	10	100	1,000
	\$1 00	\$7 00	\$60 00
GERANIUM maculatum. Wild Geranium. Large, showy perennial with cut leaves. Light blue flowers in April and May. Strong.....	1 20	8 00	70 00
GILLENIA trifoliata. Bowman's Root. Height 2 to 4 feet. Handsome cut foliage. Pure white or rose-tinted flowers in June. Splendid for massing among shrubbery. X strong.....	1 00	6 00	50 00
HELENIUM autumnale. Common Sneezeweed. Height 3 to 5 feet. Handsome yellow flowers in August. Strong clumps.....	1 00	6 00	50 00
HEPATICA acutiloba. Sharp-lobed Hepatica. Height 5 to 10 inches. White and purple flowers in March and April. X strong.....	1 00	7 00	65 00
triloba. Round-lobed Hepatica. Flowers vary in color from lovely blue to pink or white. Among the earliest flowers to appear in the spring. Strong.....	1 25	9 00	80 00
HEUCHERA americana. American Alum-root. Height 1 to 2 feet. Large-lobed leaves beautifully mottled bronze in early winter. Flowers greenish white in June. Splendid rock-garden subject. X strong.....	1 00	8 00	70 00
villosa. Hairy Alum-root. Height 12 to 18 inches. Good for rockery. White flowers in August. X strong.....	1 00	7 00	60 00

SPECIAL OFFER. 100 Assorted Perennials, furnishing a succession of flowers from early spring to fall, for only **\$7.50**

HARDY NATIVE HERBACEOUS PERENNIALS, continued

HOUSTONIA purpurea. Mountain Houstonia. Height 6 to 18 inches. Purple flowers in July.	10	100	1,000
Strong.....	\$1 00	\$6 00	\$50 00
HYDRASTIS canadensis. Golden Seal. Height 10 to 20 inches. A medicinal herb of great value. We have a large stock of this item on hand and can make prompt shipment on sizes named and seeds.			
First size.....	1 20	8 00	65 00
Second size.....	75	4 00	27 50
IRIS kaempferi. Japanese Iris. Assorted Colors.			
X strong.....	2 25	17 50	
LIATRIS pycnostachya. Cattail Gayfeather. X strong.....	1 25	9 00	80 00
scariosa. Large Button-Gayfeather. Strong.....	1 20	9 00	75 00
spicata. Spike Gayfeather. Height 3 to 5 feet. Spikes of purple flowers in August. Strong.....	1 00	8 00	70 00
LOBELIA cardinalis. Cardinal Flower. Height 3 to 5 feet. Showy scarlet flowers in August. Strong.....	1 20	8 00	70 00
syphilitica. Large Blue Lobelia. Height 1 to 3 feet. Large blue flower in late August. Strong.....	1 20	8 00	70 00
PANAX quinquefolium. American Ginseng. Root large, spindle-shaped, often forked. Stem 9 to 18 inches high. Leaves 3 in whorl, divided into leaflets. Flowers greenish white. Fruit bright red berry.			
XX largest.....	4 50	36 00	
Strong first-size plants.....	2 75	17 50	160 00
Second-size plants.....	1 25	8 00	75 00
PHLOX divaricata. Blue Phlox. Height 10 inches. Bears a profusion of large, fragrant, lavender flowers in May.			
Strong.....	1 50	11 00	100 00
pilosa. Downy Phlox. Hairy plant 18 inches tall. Purple or bluish flowers. Strong.....	1 25	8 00	70 00
PODOPHYLLUM peltatum. Common May Apple. Height 1 to 1½ feet. Large, light green leaves. White flowers in May. Prefers shade. Strong.....	1 00	6 00	50 00
POLYGONATUM biflorum. Dwarf Solomon's Seal. 12 to 18 inches. Shade or sun. Flowers greenish white underneath curved stems. Strong.....	1 00	8 00	70 00
commutatum. Great Solomon's Seal. Height 3 to 6 feet. Drooping greenish white flowers in June.			
X strong.....	1 00	7 00	60 00
POTENTILLA tridentata. Wineleaf Cinquefoil. Creeper plant with tiny, starry white flowers. Strong.....	1 50	12 00	
SANGUINARIA canadensis. Bloodroot. Height 5 to 8 inches. One of our best perennials. Large white flowers in early spring. Strong.....	1 00	6 00	50 00

LEAF-MOLD—NATURE'S PLANT-FOOD

This is the food nature provides for Azaleas, Rhododendrons, Kalmias, Leucothoe, Andromedas, Hemlocks, Pines, Ferns, Lilies, Trilliums, Native Orchids, and Perennials. Leaf-Mold gives the proper acid elements to the soil, insuring the best root-systems, foliage, and flowers. Valuable for old or new lawns. Leaf-Mold is collected from old Rhododendron beds, without artificial or chemical treatment.

200 lbs. \$2; ton \$12.50; carload (20 tons) \$185

HARDY NATIVE HERBACEOUS PERENNIALS, continued

SAPONARIA officinalis. Bouncing Bet. Stout grower 1 to 2 feet in height. Leaves oval, opposite. Rosy-tinged flowers in midsummer. Easy of cultivation and a choice perennial.	10	100	1,000
Strong.....	\$1 00	\$7 00	\$60 00
SILENE stellata. Starry Champion. Height 2 to 4 feet. White flowers in showy panicles in July.			
Strong.....	1 20	8 00	70 00
virginica. Fire Pink. Very showy crimson flowers in June.			
Strong.....	2 00	15 00	135 00
SMILACINA racemosa. False Solomon's Seal. Height 2 to 3 feet. White flowers in June. Red speckled berries in August.			
Strong.....	1 00	6 00	50 00
SOLIDAGO canadensis. Canada Goldenrod. Tall species growing in open places. Numerous small flowers in flat heads. One of the finest and most showy of all our garden friends.			
Strong.....	1 00	6 00	50 00
odora. Fragrant Goldenrod. Height 2 to 4 feet. Yellow flowers in August and early September.			
Strong.....	1 00	7 00	60 00
SPIGELIA marilandica. Pinkroot. A 2-foot perennial with clusters of red and yellow flowers.			
Strong.....	1 25	9 00	80 00
STENANTHIUM robustum. Feather Fleece. Long, white, delicate flowers on stems 3 to 5 feet high in late summer. Extremely ornamental and altogether one of our finest perennials. Thrives in damp situations as well as in drier soil. X heavy.....	1 75	13 00	120 00
STOKESIA lævis. Stokesia. Stems branched, 1 to 2 feet high, very leafy at base. Flowers blue, resembling China asters. Recommended for rock-gardens and other open situations. Strong.....	1 50	12 00	
STREPTOPUS roseus. Rosy Twisted Stalk. Stems stout and zig-zag. Leaves taper pointed, clasping. Flowers dull purplish pink. Fruit red. Strong.....	1 50	11 00	100 00
THALICTRUM dioicum. Early Meadowrue. Height 2 to 4 feet. Purple or greenish flowers, April, May. Elegant cut foliage. Plant in shaded spot where drainage is good. Natural rock-garden plant.			
Strong.....	1 25	9 00	80 00
polygamum. Tall Meadowrue. Height 4 to 8 feet. Leaves divided. Flowers white, in large clusters.			
Strong.....	1 25	9 00	80 00
THERMOPSIS caroliniana. Carolina Thermopsis. Grows 3 to 5 feet high. Yellow flowers in terminal racemes in May and June. Very showy for massing.			
X strong.....	1 50	11 00	100 00
TIARELLA cordifolia. Allegheny Foam Flower. Height about 10 inches. White flowers in May or June.			
Strong.....	1 00	8 00	70 00
TRADESCANTIA virginiana (montana). Virginia Spiderwort. Ribbon-like foliage and showy blue flowers.			
Strong.....	1 20	8 00	70 00
UVULARIA grandiflora. Big Merrybells. Largest species with bright yellow flowers. Strong.....	1 00	7 00	60 00
perfoliata. Wood Merrybells. Height 6 to 18 inches. Pale yellow flowers in early spring. Strong.....	1 00	7 00	60 00
sessilifolia. Little Merrybells. Height 10 to 20 inches. Yellow flowers in May. Strong.....	1 00	7 00	60 00

HARDY NATIVE HERBACEOUS PERENNIALS, continued

VERONICA virginica. Culver's-Physic. Showy; 2 to 4 feet in height with long spikes of white flowers in midsummer. Strong.....	10	100	1,000
	\$1 25	\$8 00	\$70 00
VIOLA blanda. Sweet White Violet. Height 2 to 4 inches. Fragrant white flowers in early spring. X strong...	1 20	8 00	70 00
canadensis. Canada Violet. Whitish flowers, tinged with purple. X strong.....	1 20	8 00	70 00
cucullata. Blue Marsh Violet. Height 6 to 10 inches. Blue flowers all summer. X strong.....	1 00	5 00	40 00
hastata. Halberd-leaved Yellow Violet. Long rootstock. Creeping. Strong.....	1 00	6 00	50 00
pedata. Bird's-foot Violet. Height 3 to 7 inches. Showy blue flowers in May. First size.....	1 00	7 00	60 00
Second size.....	80	4 00	35 00
pedata bicolor. Two-color Bird's-foot Violet. Height 4 to 6 inches. Velvety light blue and purple pansy-like flowers in May. Rare and beautiful. First size.....	1 25	8 00	70 00
Second size.....	85	4 00	37 00
rotundifolia. Round-leaf Violet. Height 3 to 4 inches. Large yellow flowers in early spring. Large prostrate shining leaves. Strong.....	1 00	8 00	70 00
sagittata. Arrowleaf Violet. Height 4 to 8 inches. Deep blue flowers in May. Strong.....	1 20	9 00	
XEROPHYLLUM asphodeloides. Turkey's-Beard. Height 3 to 5 feet. Long grass-like leaves. Tall spikes of very attractive white flowers. Rock-garden subject. Strong.....	1 50	11 00	100 00
YUCCA filamentosa. Common Yucca. Height 3 to 8 feet. Large panicles of white flowers in July and August. Strong, 2-year.....	2 50	20 00	180 00
flaccida. Weakleaf Yucca. Height 2 to 5 feet. Stiff narrow leaves. White flowers in June and July. Strong, 3-year.....	1 75	14 00	130 00
gloriosa (patens). Moundlily Yucca. Noble plant with flower-spike 8 feet high. Blooms rusty white or reddish. X strong.....	3 50	28 00	270 00
ZYGADENUS muscætoxicum. Crowpoison. Long grass-like leaves with attractive spikes of showy white flowers in early spring. X strong.....	1 20	8 00	70 00

We know how to pack to insure delivery in good condition, even to foreign countries.

Let us handle your orders for high-class native plant material

We specialize in filling orders promptly. Rush orders solicited. *Special Quotations on Carload Lots*



Pachysandra terminalis. See page 19



Special Collections of Foundation Plant Material

These collections are valuable to home-owners who are not entirely familiar with Broad-leaved Evergreens. The plants are from my regular stock, and I feel sure they will please you when they arrive—and for many seasons thereafter.

Special Collection No. 9

Azalea arborescens. Sweet Azalea. Fragrant white flowers in spring and early summer.

Azalea calendulacea. Flame Azalea. A native species. Color varies from orange to canary.

Azalea canescens. Piedmont Azalea. Pink and rose.

Azalea nudiflora. Pinxter Bloom. Deep pink flowers.

Five plants of each, 18 to 24 in. **\$19.90**
(20 plants in all), for only

Special Collection No. 10

Rhododendron carolinianum. Carolina Rhododendron. The earliest flowering variety. Color light to deep pink.

Rhododendron catawbiense. Catawba Rhododendron. Vigorous, hardy, free blooming. Color rosy purple.

Rhododendron maximum. Rosebay. Pinkish white flowers in July. The grandest of all.

Five plants of each, 18 to 24 in. **\$14.75**
(15 plants in all), for only

Special Collection No. 11

Kalmia latifolia. Mountain Laurel. A lovely native, with pink or rose flowers.

Leucothoe catesbæi. Drooping Leucothoe. Flowers creamy white, drooping and showy.

Pieris floribunda. Mountain Andromeda. White flowers in clusters in April and May.

Five plants of each, 18 to 24 in. **\$14.10**
(15 plants in all), for only

SPECIAL COMBINATIONS

Collections No. 9 and 10.....	\$32 50	Collections No. 10 and 11.....	\$27 50
Collections No. 9 and 11.....	32 00	Collections No. 9, 10, and 11.....	47 50

Gardens of the Blue Ridge

E. C. ROBBINS, Nurseryman

ASHFORD, McDowell County, NORTH CAROLINA