

Historic, archived document

Do not assume content reflects current scientific knowledge, policies, or practices.

62.11

e19365

Sup 3

LIBRARY RECEIVED

U. S. Department of Agriculture

Upton Gardens
Mrs G. R. Marriage
Colorado Springs, Colorado

TO NURSERYMEN:

20% discount on orders of \$10.00 to \$25.00.

33 1/3% discount on orders of \$25.00 to \$100.00.

Colorado Evergreens in car lots: ask for special quotations.

**ROCKY MOUNTAIN RARITIES
FROM COLORADO**

ROCKY

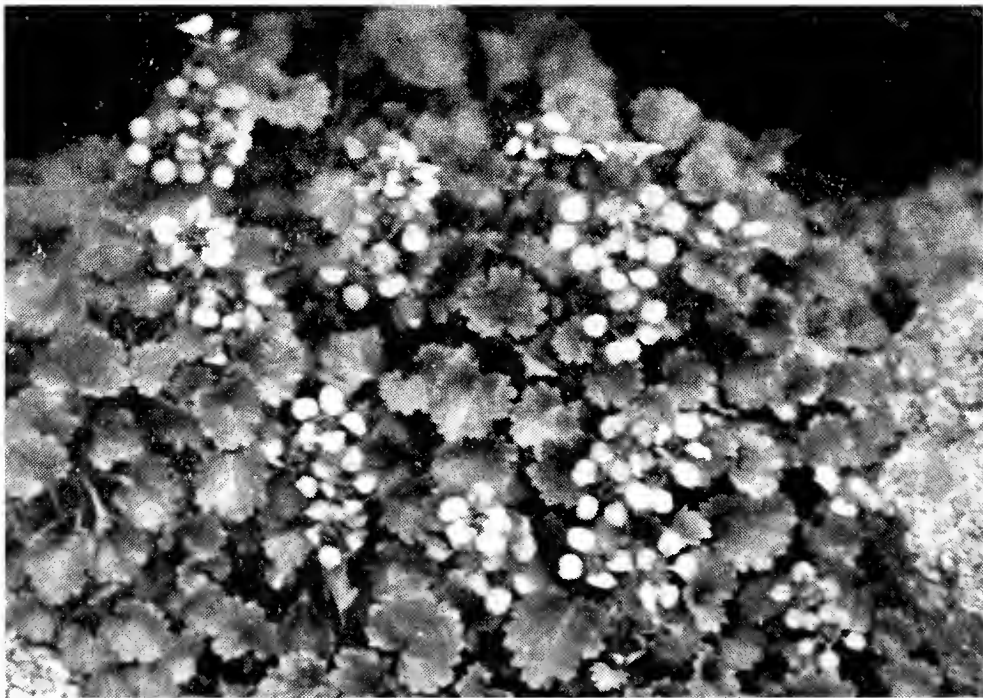
MOUNTAIN

RARITIES

FROM COLORADO



Pikes Peak—Gardens above the clouds



Boykinia jamesii—Brilliant deep rose

FOREWORD

ROCKY MOUNTAIN plants fall into two main groups: The first comprises Alpines, plants found near timberline and on up to the tops of the highest peaks.

About 12,000 ft. high on Pikes Peak are huge red granite boulders softened with silver-green lichen, their perpendicular crevices filled with complete and utterly satisfying gardens of *Boykinia jamesii*. At the base of these parent boulders are smaller rocks, tons of them broken loose, among which are ravishing alpine gardens: *Mertensia coriacea* with bluest blue bells chiming a full peal, *Saxifraga chrysantha* like delicate fairy buttercups, and that tantalizing untamable beauty, *Eritrichium argenteum*.

These grow in a coarse chip-rock of disintegrated granite containing varying amounts of peat. They hibernate under a thick blanket of snow, which as it melts provides an underflow of water at the toes of the plants below. Thus the air and ground about them is always cool. The greatest success in growing alpines in hot regions at sea level has been achieved by providing as nearly as possible these conditions. A make-believe moraine or scree with water piped or tiled underneath and a dappled shade to break the direct rays of the sun will work wonders; this for the more difficult ones. Then there's a number of both alpines and subalpines, obliging creatures, that grow anywhere the soil is poor and porous, *e. g.*, *Pentstemons*, *Artemisias*, *Antennarias*.

The second group comprises plants from the high dry plains 5,000 to 7,000 ft. elevation, where conditions are quite different from those in alpine regions.

Perhaps the only two conditions common to both groups are: (1) thorough drainage; (2) dryness after blooming. These plains are extremely dry except for occasional torrential rains in spring and midsummer. Winter is sunny with dry winds. Zero temperatures without the protection of snow is the usual lot of these plants. Typical of this group are *Melampodium cinereum*, many of the *Pentstemons*, *Townsendias*, *Yuccas*, *Galpinsia* and, of course the hardy cacti.

Directions and suggestions for growing new or little-known plants are rather futile. A condition moist for Colorado is usually dry for England; good garden soil may mean an infinity of things. Therefore a description of their habitat and its conditions will serve probably better than definite instructions.

In Colorado one finds within a radius of a hundred miles almost all the variations in climate and vegetation to be found between the tropics and the Arctic Circle. From hot dry plains to higher mesas and on up to arctic conditions on highest mountain peaks—14,000 to 15,000 ft. elevation. Obviously it won't do to try to grow plants from all of these zones under the same conditions.

In the following list I have indicated the conditions in which plants are found, or under which they grow well in our nursery where there's sunshine 360 days a year, zero temperatures without snow followed by balmy days—a severe test for plants. Here we cover the alpine garden with conifer branches during winter as a substitute for snow, and with a lath shade in summer. Those plants listed without such indications are tolerant of widely varying insults in their treatment.

Many alpine seeds germinate well only after they have been subjected to frost, and a snow-covering works wonders.

In introducing the rare plants from the Colorado Rockies, we offer only species of distinct horticultural value. Many requests come for plants (usually negligible cousins of desirable species) of botanical rather than of aesthetic interest. These we will endeavor to collect if required for botanical collections. Duplicate specimens from our herbarium are available. We offer also photographs of many of the varieties listed, colored by one of our most experienced collectors.

Our identification is mainly according to Coulter & Nelson's Manual of Rocky Mountain Botany.

Plants are supplied from our nursery.

We can supply collected plants at lower prices, but we do not recommend them.

Seed offered is subject to crop. Number of seeds per packet is determined by rarity of variety; some contain 200 seeds, some 20.

TERMS:

Minimum order, \$1.00.

Cash with order or satisfactory references.

Packing free.

Postage prepaid on seeds in U. S. A. only.

We guarantee our plants to be true to name, vigorous and healthy. If not satisfactory, please return at once and we will gladly refund money or make adjustment.

We can make no guarantee as to the behavior of plants or seeds once they have been accepted, since success depends on factors not under our control.

To our customers in Great Britain and Ireland, prices may be computed at:

Twenty-five cents (25c) = one shilling.

Five dollars (\$5.00) = one pound.

Accounts may be paid either to Lloyds Bank, New St. Birmingham, England, or to Upton Gardens, Colorado Springs, Colorado.

To those interested in Alpines and Rock Gardens:

The American Rock Garden Society, 522 Fifth Ave., New York City.

The Alpine Garden Society, 71 Newman St., Oxford St., London, England.

Publications of interest on Alpines and Native Plants:

National Horticultural Magazine, 821 Washington Loan and Trust Bldg., Washington, D. C.

Rock Garden Plants by Clarence Elliott, Edwin Arnold & Co.
Botany of the Central Rocky Mountains by Coulter & Nelson,
American Book Co.

Rocky Mountain Flowers by Clements and Clements, The H. W. Wilson Co.

ROCKY MOUNTAIN RARITIES

PLANTS AND SEEDS

PRICE: Plants, 50c each, unless otherwise noted; 3 for \$1.00, 10 for \$3.00, 100 for \$25.00.

Seeds, 25c per pkt., except where noted. Seeds are available of all varieties listed, except where "plants only" indicates that seed is scarce or unobtainable.

ABRONIA fragrans, Snowball. Cymes of strongly fragrant white flowers, semi-prostrate; lovely turned loose on dry sunny banks.

ACONITUM columbianum, Monkshood. Dark blue hoods, larkspur foliage; moist valleys; 3 feet.

ACTINELLA acaulis, Woolly Daisy. A well behaved, long season yellow daisy; soft gray foliage. Alpine, 4 inches.

ALLIUM, Wild Onion. Ordinary garden conditions.

cernuum. Rose pink flowers; graceful.

geyeri. Pink, like *A. textile*.

pikeana. A delicate fairy-like, erect edition of *cernuum* from Pikes Peak; peaty soil.

reticulatum. Rather like *A. cernuum*, but with erect head.

textile. White. A dwarf dry-plains species.

ANAPHALIS, Pearly Everlasting.

subalpina. Numerous white flowers on woolly white stems rising from flat silver foliage; gravelly soil.

ANEMONE, Windflower.

canadensis. Clear white flowers; moist shade.

globosa. Deep rose pink, also white. Round, fluffy white seed heads.

pulsatilla. See *Pulsatilla hirsutissima*.

zephyra, Alpine Anemone. Like *A. narcissiflora*. Lovely clear white flowers and good foliage; plants only; seed sometimes available.

ANOGRA, White Evening Primrose. Sunny open places, any soil.

albicaulis. Large silky white flowers, twisting up into pink as they fade, profuse on low coarse plants. 6 to 10 inches; annual. Seed only.

ANTENNARIA, Pussy-Toes.

rosea. Heads of white or pink flowers; forms the neatest, flattest carpet of silver gray; gravelly soil, sun.

AQUILEGIA, Columbine. Well-drained leafmold soil.

coerulea. The exquisite blue and white columbine of the Colorado Rockies. Large graceful long-spurred blooms, specially selected strain; seed 50c per pkt. Seed from the wild, 25c per pkt.

longissima. Pale yellow flowers with 5-inch spurs which add unusual grace and charm. Award of Merit, Chelsea 1934. Large field grown plants, \$1.00 each; seed scarce, 50c per pkt.

saximontana (*brevistyla*). A rare and lovely alpine miniature of *A. coerulea* with shorter spurs. Blooms profusely in spring, then trickles occasional blooms later. Most attractive foliage; easy to grow where their roots can burrow indefinitely under a rock. Seed 50c per pkt.

ARAGALLUS (*Oxytropis*), Rocky Mountain Loco. Deep, well-drained friable soil.

lambertii. Bright rosy purple; silky silvery foliage. 8 inches.

splendens. Large soft heads in pastel shades; pinnate silver foliage. 10 inches.

ARCTOSTAPHYLOS *uva ursi*, Kinnikinnik. A splendid evergreen ground cover, neat shiny leaves, scarlet berries. Balled and bur-lapped, \$1.00 each; 3-inch pots, \$3.00 per 10.

ARENARIA, Sandwort. Sandy soil.

aequicaulis. Tiny white stars rising above loose moss-like foliage.

macrantha. Like *A. sajanensis*, but looser and taller. Large white stars. Plants only; seed sometimes available.

sajanensis. Close green moss-like carpet dotted with clear white stars.

ARGEMONE, Prickly Poppy. Full sun, any soil.

intermedia (*platyceras*). Large clear white poppy flowers with a generous centerpiece of yellow stamens; ornamental glaucous foliage. 18 inches. Treat as an annual. Seed only.

ARGENTINA (*Potentilla*).

anserina, Silver Weed. Good for ground cover in bare difficult places. Plants only; seed sometimes available.

ARTEMISIA, Mountain Sage. Dry sunny situations.

frigida. Finely cut silver foliage, fragrant; unusually good as a neat shorn border.

pedatifida, Birdfoot Sage. Diminutive, caespitose, silver foliage; a find for the small rock garden. Plants only.

ASCLEPIAS, Butterfly Plant. Dry sunny situations.

pumila. Heads of small white flowers on six-inch stems, elbowing their way out of needle-like foliage. An attractive thing, easy to grow.

tuberosa. Flat heads of bright orange on stiff erect stems. Good as a cut flower. 1½ to 2 ft.

ASTER. Well-drained soil, sun.

canbyi. An aster which really is clear pink, no lavender or magenta. 12 to 18 inches.

laevis (*subalpinus*). Lavender blue. Erect habit, 1 to 2 ft.

porteri. Small white flowers along arching stems. A delicate, lovely thing for the perennial garden or large rock garden.

ASTRAGALUS, Vetch. Plants difficult, seed more successful. Requires well-drained friable humus soil.

aculeatus. A soft close cushion of miniature-lupin foliage and lavender flowers. Alpine.

drummondii. White flowered, feathery looking plant. 1½ ft.

BERBERIS. Any well-drained soil.

repens (*aquifolium*), Colorado Holly. An excellent dwarf evergreen mahonia. Yellow flowers, blue berries. Neat ground cover, spreads by underground runners. Plants 75c each. Rooted cuttings \$2.00 per 10 dozen.

BLITUM (*Chenopodium*).

capitatum, Strawberry Blite. Berry-like clusters of bright crimson blobs. Annual, seed only.

BOSSEKIA (*Rubus*).

deliciosa, Thimbleberry. Garlands of clear white wild-rose flowers on arching branches. Good foliage. A most attractive and valuable hardy shrub. 4 to 6 ft. Easy to grow. Young plants 75c each.

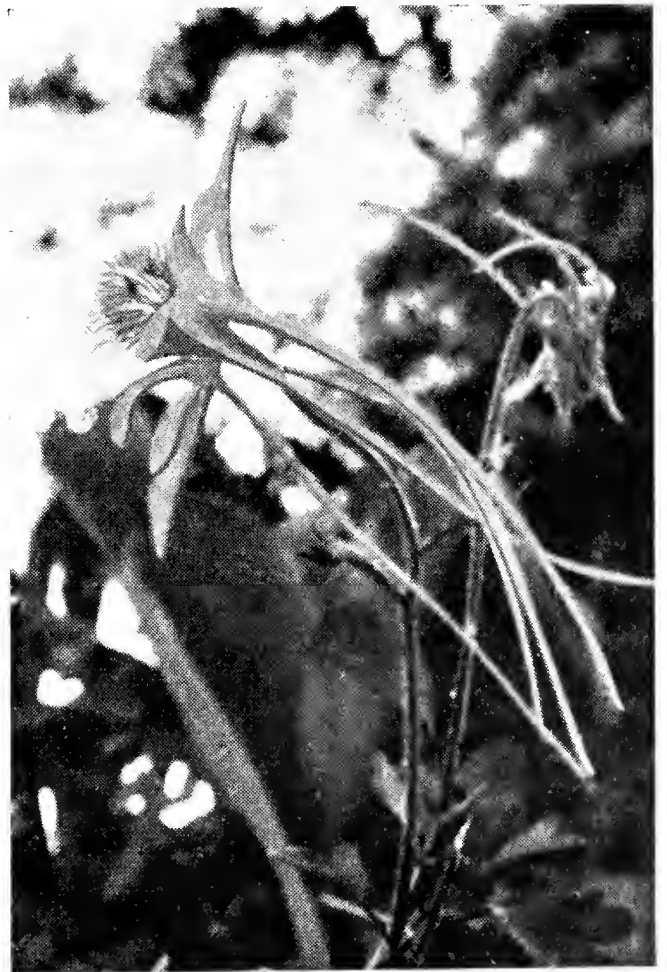
Keep crowns of alpines from winter wetness.



Blue Columbines from which we gather seed for you



Colorado Columbines
in Aspen woods



Aquilegia longissima
Award of Merit 1934



*Phlox
condensata*



Saxifraga chrysantha—a tiny alpine
Bright buttery yellow cups



Aquilegia saximontana
A charming miniature Columbine

BOYKINIA.

jamesii (*Saxifraga jamesii*). A rare alpine from Pikes Peak. Profuse bright rose pink flowers rising from neatly plaited heuchera-like leaves. Probably the most brilliant of the saxifrages. Seed 50c per pkt.

CACTI. Nomenclature on Colorado Cacti still vague. Well-drained soil or gravel; full sun.

Echinocereus, Hedgehog Cactus.

aggregatus. Orange-scarlet flowers with conspicuous green styles, followed by little russet apples. Large clumps \$2.50. Single balls 50c.

gonacanthus. Scarlet flowers. Plants similar to *aggregatus*, but clear blue-green of the succulent thick ribs is more evident than the spines. Large clumps \$2.50. Single balls 50c.

viridiflorus. Small knobs; primrose-yellow flowers.

Mamillaria, Ball Cactus.

vivipara (probably *Coryphantha vivipara*). A pin-cushion; bright rosy-purple flowers.

Opuntia.

arborescens (*imbricata*). Tree Cactus. Flowers vivid pinky-purple. Bright yellow conspicuous seed pods. Large plants \$1.00 each, small 50c each.

fragilis. Small roundish joints, caespitose, 2 to 4 inches. Yellow flowers, shy bloomer. Plants only.

humifusa. Clear yellow flowers, similar to *O. polycantha* but fewer spines.

polyacantha. Makes a large spreading mass; flowers yellow.

rhodantha. Like *O. polycantha*. Flowers rosy-red.

Pediocactus.

simpsonii (*Mamillaria missouriensis*). An interesting ball variety, subalpine. Lovely satin pink daisy-like flowers. Seed scarce, 50c per pkt.

We also offer a collection of cacti from the deserts of the Southwest. Five varieties \$2.00. Large ball cacti \$1.00 each and up.

CALLIRHOE, Poppy Mallow.

involucrata. Reddish purple mallow-like flowers, flat-growing hairy stems. Seed only.

CALOCHORTUS, Mariposa Lily. Well-drained, deep soil.

gunnisonii. Lavender to white cups on graceful stems. Bulbs \$1.00 per dozen. \$6.50 per 100.

CALTHA rotundifolia, Marsh Marigold. Clear waxy white petals, showy yellow stamens. Good in boggy places.

CALYPSO bulbosa, Fairy Slippers. Fascinatingly elf-like. A pink moccasin with spurs; 4 inches. Grows on a rotted log in dense shade. Plants only.

CAMPANULA, Harebell.

parryi. Large lavender blue upturned flowers on slender erect stems. A striking little thing.

petiolata. A dwarf, one-flowered *rotundifolia*. Alpine.

rotundifolia. Blue, nodding flowers on slender stems. Also a white form which is good.

CARDAMINE, Brook Cress.

cordifolia. Heads of white flowers like candytuft, but with better foliage. 1 ft. Plants only.

Cacti are singularly tolerant.

CASTILLEJA, Paint Brush. Probably parasitic, hence difficult to establish.

collina. Scarlet bracts, 1 ft. stems.

haydenii. Bright old-rose flowers; alpine.

occidentalis. Dwarf, yellow tinged with dark red; alpine.

sulphurea. Soft yellow; subalpine.

CEANOTHUS, Buckthorn.

fendleri. A dwarf spiny subalpine shrub, small white flowers. 2 ft. Plants 75c.

CERASTIUM, Mouse Ear.

arvense. Forms a green carpet from which rise quantities of white flowers. 4 inches. A really good thing in the rock garden.

CERCOCARPUS, Mountain Mahogany.

parvifolius. A subalpine shrub; thousands of spiral plumose seed-tails lend a silky haze to bleak stony hillsides. 5 ft. Young plants 75c.

CHAMAENERION (*Epilobium*). Tolerant of conditions, but resents being transplanted.

angustifolium, Fireweed. Brilliant purple-pink spikes, 2 to 3 ft.

CHIONOPHILA, Snowlover.

jamesii. Perky little spikes of white two-lipped flowers. Alpine; 4 inches. Scree with a dash of leafmold.

CHRYSOPSIS, Golden Aster.

villosa. A yellow daisy, roughish foliage. Dry sunny slopes. 10 in.

CLAYTONIA, Spring Beauty.

megarrhiza. Rosettes of shining succulent deep green, circled, as an after-thought, by a wreath of little white flowers pink backed. Scree.

CLEMATIS, Virgin's Bower. Tolerant of almost any condition.

douglasii. Attractive blue flowers. Clarence Elliott says, "Like a Paris hat." Pinnate foliage. 1 to 2 ft.

ligusticifolia. White flowers and fluffy seed heads in abundance; a rampant climber.

pseudoalpina. Lavender to blue; an obliging plant, grows flat or climbs. Semi-shade.

scottii. Thick blue-purple flowers. Shrubby to climbing habit. 2 ft.

CLEOME, Rocky Mountain Bee Plant.

serrulata. Pinky-purple heads. 2½ ft. Annual, seed only.

CORNUS canadensis. Suggests a dwarf, four-petal trillium; 6 inches. Shade. Plants only.

CORYDALIS aurea, Golden Smoke. Forms a little bouquet of dainty filigree in iridescent gray with half-hidden yellow flowers; early. Resents transplanting.

CRASSINIA grandiflora. Miniature single yellow zinnia, from sunny dry plains.

CRATAEGUS, Hawthorn.

coloradensis. A low, well-branched tree; clusters of scarlet berries lovely with large coarsely-toothed leaves. Exceptionally hardy. Seed only.

CYPRIPEDIUM parviflorum, Yellow Lady Slipper. Lovely butter-colored blobs, moccasin shaped. 6 to 10 inches.

DASYPHORA. see *Potentilla*.

Give *Cypripediums* and *Calypsos* leafmold and shade.

DELPHINIUM.

scopulorum, Mountain Larkspur. Deep blue. 3 ft. Grand in masses.

DODECATHEON, Shooting Star.

pauciflorum. Suggests a perky miniature cyclamen family on one erect stem. Floriferous, good. 8 inches. Moist, semi-shade.

DRABA, Rock Cress.

densifolia. Small yellow flower heads over dense hairy rosettes; alpine. 4 inches.

DROSACE *carinata* (*Androsace chamaejasme*). White forget-me-not flowers on short erect stems clasped by rosulate clusters of little bright green leaves. An alpine gem for the rock garden, easily grown.

DRYAS, Mountain Avens.

octopetala. Dwarf, spreading alpine shrub, 3 inches. Dense shining foliage, large white flowers. Fluffy silver seed heads.

DRYMOCALLIS, Leafy Cinquefoil.

fissa. Yellow, geum-like. 8 to 10 inches.

EPILOBIUM. see Chamaenerion.**ERIGERON, Daisy.**

compositus. Clear lavender, dwarf daisy. Fern-like foliage. 4 inches. A really good rock plant.

coulteri. Large white flowers, basal foliage. Seed sometimes available.

flagellaris. A slender semi-prostrate one. Pink to white. Apt to monopolize territory. 3 inches.

macranthus, Aspen Daisy. Clear lavender blue in clusters; a splendid garden daisy. Blooms in June and all summer if kept cut. 18 inches.

uniflorus. Pink to lavender; useful in the rock garden. 6 inches.

ERIOGONUM, Buckwheat.

subalpinum. Creamy-yellow to pink. Flat heads on 10-inch stems rising from low mats of leathery foliage. Makes a bright lasting mass of color.

umbellatum. Like above, but yellower and more floriferous.

ERITRICHIMUM, Alpine Forget-me-not.

argenteum. A miniature *E. nanum*. Farrer is right—"Irresistible wads of silver, hidden by a mass of little rounded faces of a pure clear celestial blue." Difficult to tame. Plants \$1.00 each. Seed 50c per pkt.

ERYSIMUM, Wallflower.

asperum. Yellow to orange. Slender, 1½ ft. Seed only.

nivale. Lemon yellow well-formed heads of fragrant flowers; found in alpine regions. 6 inches. Seed only.

ERYTHRONIUM, Snow Lily.

parviflorum. Little lilies of soft clear yellow that bloom as the snow melts off them.

EUROTIA *lanata*, White Sage. Attractive silver gray foliage; flowers inconspicuous.

FERNS.

Asplenium filix femina, Lady Fern. Quick grower, 2 ft.

Dryopteris filixmas (*Aspidium spinulosum*), Male Fern. Large fronds, vigorous.

Filix fragilis, Brittle Fern. A dainty little one, 6 to 8 inches.

Woodsia scopulina. Small, tufted. Found in exposed dry rock clefts.

FORESTIERA, Mountain Privet.

neo-mexicana. Good privet-like shrub, extremely hardy and drought resistant. \$1.00 each.

GALIUM, Lady's Bedstraw.

boreale. Lacy heads of tiny white flowers, excellent as an early cut flower. Fine linear foliage. 1 ft.

GALPINSIA (*Oenothera*).

lavandulaefolia. Yellow primrose-like puckered flowers turning to orange-red; of shrubby habit. Dry slopes. 6 inches.

GENTIANA, Gentian. Cool, moist, acid soil.

affinis. Elongated drops of deep blue wax above dark green lance-like leaves. Almost a closed gentian.

elegans. Rocky Mountain Fringed Gentian. Lovely in drifts, of intense blue. Likes to keep its feet wet. Annual, seeds only.

parryi. Brilliant deep blue flowers, several on a stem. Alternate, newly washed leaves. Good in dappled shade. 1 ft. *G. calycosa* is probably identical.

romanzovii (*frigida*). A chic little lady in second mourning. White with a black stripe at each corner. 4 inches.

GERANIUM, Cranesbill.

parryi. Lavender-pink; long blooming season. "Cranesbill" is apt for the arrangement for seed dispersal.

richardsonii. White flowers. Infrequent.

GILIA. Well-drained soil, sun.

aggregata, Skyrocket. Erect stems bearing quantities of flame-pink bugles. 2-3 ft. Makes lovely masses on a slope. Biennial.

globularis (*capitatum*). Small heads of white fragrant flowers in clusters. Alpine. 4 to 6 inches. Seed only.

nuttallii (*floribunda*). Clear white phlox-like flowers with yellow throats. Blooms all summer here; woody stems. Clean bright green needle-like foliage. 4 inches. Scree-ish conditions.

HALERPESTES, Trailing Buttercup.

cymbalaria. A miniature buttercup. A quick filler for moist shady corners.

HELENIUM (*Dugaldia*).

montanum. Large golden yellow daisies in loose clusters on 2 to 3 ft. stems. Bright patches of color, July and August.

HERACLEUM, Cow Parsnip.

lanatum. Large coarse leaves and white flowers; moist shade. Seed only.

HEUCHERA, Alumroot.

hallii. Slender graceful stems of creamy white flowers, good clean foliage. Enjoys perpendicular toe-holds; shade among rocks.

HOLODISCUS, Mountain Spiraea.

dumosus (*microphyllus*). Slender branched shrub bearing fluffy racemes of attractive creamy white flowers. Long blooming season. 4 to 5 ft. Young plants 75c each.

HYPERICUM, St. John's Wort.

formosum. Cymes of small waxy yellow to orange flowers; stamens in attractive clusters. 12 inches. Moist deep soil.

IPOMOEA leptophylla, Bush Morning Glory. Quantities of showy pink flowers, linear glabrous leaves. A slender wiry bush; enormous roots stretch China-ward. Grand on dry banks. Seed only.

IRIS.

missouriensis, Wild Iris. Clear lavender-blue flowers, the character of Spanish Iris. Blooms earlier than intermediates. Enjoys moist meadows. 1 to 2 ft.

missouriensis, Snowbird. Clean white flowers of good substance. Seed sometimes available.

JAMESIA, Wax Flower.

americana. A philadelphus-like shrub. Wax-white flowers in clusters amidst soft green leaves. Clings well to gravel slopes. 3 to 5 ft. Young plants 75c each.

KALMIA, Laurel.

polifolia nana (*microphylla*). A miniature alpine laurel. Clusters of delicious pink up-turned bells just above little shiny evergreen leaves. Insists upon moist acid soil. 3 inches.

LAVAUXIA flava. A flat-growing *Oenothera* with clear yellow flowers and the best behaved foliage of the family. Moist soil.

LEPIDIDIUM, Peppergrass. Dry slopes, sun.

alyssoides. Masses of small white Baby-Breath flowers. 1 ft. Annual, seed only.

LESQUERELLA, Bladderpod.

condensata. Rosettes of thickish gray leaves encircled by pale yellow flowers. 4 inches. Inflated papery pods of iridescent pink. Makes lovely silver saucers on gravel slopes. Subalpine.

stenophylla. A coarser one. Flourishes on dry mesas; plants only.

LEUCOCRINUM, Sand Lily.

montanum. Fragrant porcelain white star flowers, stemless, guarded by glaucous lance-like leaves. Blooms early spring. Beautiful and distinctive; dry sandy soil, sun.

LEWISIA, Bitterroot. Moist soil.

pygmaea. A very tiny neat one. Coy pink flowers. Alpine.

rediviva. Waxy geranium-pink blossoms among rosettes of succulent leaves which disappear after blooming season.

LIATRIS, Blazing Star.

punctata. Brilliant magenta spikes, linear leaves. In seed a feathery plume. Dry sandy soil. 1 ft.

LILIUM philadelphicum, Wood Lily. Rich orange red, a slender woody delight. Plants only.

LINARIA, Butter and Eggs. Sun.

vulgaris. Like a miniature snapdragon; clear yellow (really not vulgar). Easily grown; makes a yellow mass of nice texture.

LINNAEA, Twin Flower. Acid soil, shade.

americana. A slender trailing evergreen. Clear pink little flowers in pairs; clean roundish leaves. Plants only.

LINUM perenne, Blue Flax. Large flowered, 2 ft.**LITHOSPERMUM, Puccoon. Dry sandy soil.**

angustifolium. Attractive little yellow polyantha flowers, thin hairy leaves. Blooms early. 8 to 12 inches.

multiflorum. Flowers smaller, deeper yellow. Blooms a little later.

LLOYDIA serotina, Alpine Lily. Relatively large creamy white flowers touched with pinky purple. Alpine. 2 to 6 inches.

LONICERA involucrata, Twinberry. Native subalpine honeysuckle. Pairs of yellow flowers; large shiny black berries. Moist shade. 3 to 4 ft. Young plants 75c each.

Iris *missouriensis* makes lovely masses in the small garden.

- LUPINUS alpestris**, Mountain Lupine. Dignified spikes of blue-purple above soft green palmate foliage. Seed only.
- LYCHNIS montana**, Miniature Jack-o-lantern. Flower and seed pod attractively zebra-striped. Alpine, easy to grow.
- MALVASTRUM coccineum**, Prairie Mallow. Flowers of brilliant orange-red silky sheen, well set off by incised gray felt foliage. Sunny dry banks. 6 inches.
- MELAMPODIUM cinereum**, Colorado Rock Daisy. Clear white helianthem-like flowers. Small neat plants with aspirations toward shrubbiness. A really valuable find for the sunny rock garden; continuous bloom. 6 inches.
- MENTZELIA**, Evening Star. Dry sunny banks.
multiflora. Bright yellow pointed petals, decorative stamens.
nuda. Creamy white; also well branched white stems. Both species open late afternoon. 1 to 2 ft.
- MERTENSIA**, Chiming Bells. Moist shade.
ciliata, Languid Lady. Tall, graceful gray-green foliage remains attractive after light blue flowers have fallen. 1 to 2 ft.
coriacea (alpina). Pikes Peak Forget-me-not. One of the bluest blue flowers. Much neater than mertensias generally; caespitose, alpine. A glorious splash of the blue of Colorado sky in the rock garden.
lanceolata. A small, narrow-leaved *M. ciliata* from open hillsides; early, but shyly hangs its head. 10 inches.
- MIMULUS**, Monkey Flower.
langsдорffi. Two-lipped yellow flowers freakishly spotted with dark red; bright green foliage. 1 ft. At home along stream banks. Plants only; seed sometimes available.
- MIRABILIS**, Wild Four-o'clock.
multiflora. Magenta flowers, well-clothed stems, widely branched. 2 ft. Not so mirabilis.
- MONARDA**, Horsemint.
fistulosa (menthaefolia). Cluster of purple gaping mouths; a fragrant plant. 1½ ft. Plants only; seed sometimes available.
- MONESES uniflora**, Star Flowered Pyrola. A pert white star tipped on edge. Demands dense shade and is happy only on a rotted log. 4 inches. Plants only.
- MONTIA chamissonis**, Water Spring Beauty. A halo of white flowers; succulent foliage. Good bog plant; stoloniferous. Plants only.
- NYMPHAEA polysephala**, Water Lily. Clear lemon yellow flowers, 2 to 3 inches broad; on alpine lakes. Plants only.
- OENOTHERA**. see *Pachylophus*.
- ONAGRA strigosa**, Evening Primrose. Yellow-flowered spikes, 2 to 3 ft. Annual, seed only.
- OREOXIS** (*Cymopterus*).
alpina, Alpine Parsley. Cymes of buttery yellow and burnt orange flowers, dwarf.
- OXYRIA digyna**, Alpine Sorrel. Ruddy racemes, of sepals and seed pods, rising from small round leaves. A good little plant for moist shade.
- PACHYLOPHUS** (*Oenothera*).
caespitosus, Fragrant Primrose. Large white flowers fading to pink; good clean foliage; the flattest of the family. An excellent covering for sunny gravel slopes.

PACHYSTIMA myrsinites, Mountain Lover. Smooth opposite leaves; a dwarf evergreen shrub. Woodsy shade. Plants only.

PARNASSIA, Grass of Parnassus. Moist meadows.

parviflora. Small starry white flowers on slender stems, basal roundish leaves. 6 inches. Seed only.

PARONYCHIA pulvinata, Whitlow-wort. A gray-green cushion with inconspicuous white flowers, from a woody root; alpine. Plants only.

PEDICULARIS groenlandica (Elephantella). Staffs adorned with tiny reddish purple elephant heads; fern-like foliage. Bog plants, hard to establish.

PENTSTEMON, Beardtongue. Gravelly slopes, sun.

alpinus. A profusion of spikes lavishly showered with azure.

ambiguus, Prairie Fairy. Delicate pink flowers, flax-like. A graceful plant and strikingly different. 1 ft.

angustifolia. Flowers of dazzling deep turquoise intensified by linear gray-blue foliage.

barbatus, Fire Cracker. Flame red, fascinates the humming birds.

brandegii. A large edition of *P. alpina*, but less intense blue.

caespitosus. Flowers of sky-blue from flat mats of lacquered leathery leaves. Plants only.

crandallii. Brilliant with the loveliest turquoise upturned flowers, filiform gray-green foliage on wiry stems. A low spreading plant; fairest of the family for the rock garden.

glaucus stenosepalus. Interesting dull purple flowers, occasional off-white ones.

grandiflorus. Large lavender-blue flowers; a strong plant. 3 ft.

hallii. Relatively large lavender flowers tipped with blue; a gnome-like plant. Alpine, 6 inches.

humilis (*gracilis*). Small blue flowers with a touch of lavender, slender stems from dark green mats. Lovely in drifts emerging from pine woods.

jamesii. Pinky lavender; linear foliage; a dry plains variety. 1 ft.

procerus, Clustered Pentstemon, Small deep blue-violet whorls. 8 to 10 inches.

rydbergii. Similar to *procerus*, but more robust.

secundiflorus. Bright blue, open-faced flowers; now and again a pink variety. Another good one from dry plains.

spectabilis. Clear rose pink flowers, glaucous foliage. 2 ft.

unilateralis. Many flowered, blue-lavender, short tubes with broad lips.

PERICOME caudata. Small yellow heads, a bushy composite; from rocky canons. 3 ft. Seed only.

PERSICARIA (*Polygonum*).

rosea, Water Buckwheat. Pink spikelets sticking up from oblong water-lily leaves. Plants only.

PETALOSTAMEN purpureus, Prairie Clover. Dense terminal spikes of rosy purple. 1 ft.

PHACELIA, Purple Fringe.

sericea. Racemes of brilliant purple with extended bright yellow anthers. Alpine, 10 inches.

Pentstemons demand a dry, gravelly sunny place.

PHLOX.

- andicola.** Delightfully large white flowers; flat-growing sparse foliage. Dry sandy soil. 2 inches.
- bryoides,** Moss Phlox. Well thatched with snow white flowers; tufted gray foliage, evergreen. Rocky ridges.
- condensata.** Dense mats of sharp gray-green foliage displaying a "Milky way." Like a glorified arenaria. Alpine screes. Another enchanting if—
- depressa.** Like *P. condensata*, but less closely tufted, white to lavender flowers. Seed scarce.
- stansburyi (dasyphylla).** Rose-pink flowers, deep throated; wiry gray-green foliage. A prairie gem. 3 inches.

PHYSARIA, Double Bladderpod.

- didymocarpa.** Lovely little silver rosettes, even more attractive when surrounded by their large yellow flowers and puffy double pods. Gravel. Scarce.

POLEMONIUM. Leafmold soil.

- confertum,** Sky Pilot. Clusters of clear deep sky blue bell-shaped flowers with orange anthers, harmonious pinnate foliage. Alpine, 8 to 10 inches.
- pulcherrimum.** Jacob's Ladder. Fern-like foliage, well sprinkled with open light blue flowers. 6 to 8 inches.

POLYGONUM (Bistortoides), Bistort. Fuzzy white millet-like heads on jointed slim stems. Narrow smooth leaves. 1½ ft.**POPULUS tremuloides, Quaking Aspen.** White birch-like bark, tall slender trunks. The open tracery of light green leaves, which in autumn turn bright yellow and orange, makes lovely dappled shade. Nursery grown whips, \$1.00.**POTENTILLA (Dasyphora). Garden soil.**

- fruticosa,** Shrubby Cinquefoil. Numerous yellow flowers; an attractive shrub of good habit. Long blooming season. Young plants 75c.
- gracilis.** Small yellow flowers, silvery green foliage.
- monspeliensis.** Coarser than *gracilis*; many stamens. Impermanent.

PRIMULA.

- angustifolia,** Fairy Primrose. A choice alpine one, brave rose-pink flowers that greet a hailstorm open-faced. Companionable dark green leaves. 2 inches. Excellent for the rock garden if its toes are kept moist.
- parryi,** Queen of the Alpine Brooks. Brilliant clusters of large rose to rosy-purple flowers, oblong smooth green leaves. A handsome plant, of strong fragrance. 1 ft.

PRUNUS besseyi, Sand Cherry. A sturdy low spreading shrub bearing large dark red cherries. Plants 75c each.

- melanocarpa,** Chokecherry. A good shrub to form screens, easy to grow under adverse conditions. Young plants 75c each.

PSEUDOCYMOPTERIS. Well-drained soil.

- anisatus,** Anise. Refreshing, dark shiny green leaves, finely cut. Mustardy yellow flowers. 6 inches. On open dry mountainsides.
- montanus (like multifidus).** Pretty cymes of little yellow flowers on slender stems; parsley-like foliage.

PULSATILLA hirsutissima, Pasque Flower. Lavender to purple, like a downy crocus. Fairy-broom seed heads.**PYROLA, Wintergreen.** Acid leafmold or a rotting log; shade.

- secunda.** Whitish flowers. Basal leaves make a good small ground cover.
- uliginosa,** Bog Pyrola. Glossy roundish leaves. Spikelets of pink bells with their tongues hanging. Seed sometimes available.
- uniflora.** see *Moneses*.



Gentiana
romanzovii

A chic little lady



Pentstemon crandalli—Turquoise blue
An easy and lovely rock plant

Colorado
Blue Spruce





Melampodium cinereum
Colorado Rock Daisy



Cactus *Opuntia polyacantha*
Clear yellow silky flowers

QUERCUS gambellii, Scrub Oak. A shrubby tree, growing in interesting groups. Rough gray bark; shiny leaves brilliant in autumn. Plants 75c each; seedlings \$2.00 dozen.

RANUNCULUS, Buttercup.

acriformis. Many flowered, yellow. Subalpine meadows. 8 inches.

eximius, Snow Buttercup. Large yellow overlapping petals, a surprise at the edge of snow banks. Deeply cut foliage. Plants only; seed sometimes available.

macauleyi. Yellow petals slightly toothed. Spatulate bright green leaves also toothed. Scarce.

RHUS trilobata. Squaw Bush. Fuzzy red berries; diffusely branched shrub, good on bleak hillsides. Young plants 75c each.

RIBES cereum, Squaw Currant. Rounded clumps, much branched. 2 ft. Plants 75c.

ROSA woodsii, Rocky Mountain Rose. Many flowered, warm pink, fragrant. Ornamental bright red hips; leaves turn deep red late autumn.

RUDBECKIA hirta, Black-eyed Susan. Velvety brown buttons fringed with yellow rays.

RUMEX venosus, Rosy Dock. Puffy begonia-rose bracts; oblong leaves from running rootstocks. Dry sunny places.

RYDBERGIA grandiflora, Little Old Man of the Mountains. Large yellow daisy flowers, short shaggy-haired stems and downy leaves. An impish fellow; alpine.

SAMBUCUS, Elder.

microbotrys (racemosa), Red Berried Elder. Clusters of scarlet berries. A good compact shrub. 3 ft. Plants 75c.

SALIX, Willow. Moist soil.

chlorophylla. Semi-dwarf, broad leaves, bright brown twigs. Plants only.

glaucops. Gray-green foliage. Alpine, 1 to 3 ft.

saximontana (reticulata). Patches of new-leather leaves; flat creeping, alpine. An excellent shrub for the rock garden.

SAXIFRAGA, Saxifrage. Gravel and rocks.

arguta (punctata), Brook Saxifrage. Dainty white flowers on tall slender stems, notched round leaves.

austromontana, Dotted Saxifrage. Profuse small white flowers spotted with red on 3-inch stems from prickly dense rosettes. A good rock garden standby.

chrysantha, Golden Alpine Saxifrage. Myriads of tiny clear yellow cups enclosing orange anthers, from carpets of snug miniature rosettes, bright green. Doubly precious, after other high alpiners are over. A specialty of Pikes Peak.

flagellaris. Fewer yellow flowers; leafy stem and red tipped rosettes outlined with short bristles; stoloniferous. 3 inches. Alpine, rare.

nivalis, Snowball Saxifrage. Close white heads on the thickish stems, flat leathery leaves.

SCUTELLARIA brittonii. A cute little blue skullcap.

SEDUM, Stonecrop.

integrifolia (rhodiola), King's Crown. Flat dense heads of bright crimson; excellent foliage. 6 inches.

rhodanthum, Queen's Crown. Racemes of pink flowers. Similar to *S. integrifolia*, but taller; likes stream sides. 10 inches.

stenopetalum. Tawny yellow flowers from tidy tufts of succulent glabrous leaves. One of the most distinctive of the sedums. 3 inches.

- SENECIO fendleri.** Open rosettes of crinkly gray foliage, lovely in winter, too; should not be allowed to bloom. Gravelly slides.
- SHEPHERDIA canadensis,** Buffalo Berry. A subalpine shrub, deep green leaves, rusty silver underneath. Clusters of red berries. Happy in moist woods. 3 ft. Young plants 75c each.
- SIEVERSIA (Geum).**
ciliata, Pink Plumes. Strawberry pink gargoyles in threes, fuzzy in seed.
turbinata (Geum rossii). Open bright yellow flowers; dark green or purplish foliage, finely cut. Alpine, 10 inches.
- SILENE acaulis,** Moss Champion. Bright rose-pink needlepoint on lovely green cushions. Alpine; easy to grow.
- SISYRINCHIUM angustifolium,** Blue Eyed Grass. Little bright blue flowers coyly hidden by linear leaves and bracts; one of the iris family. Moist meadows. 6 inches.
- STANLEYA,** Yellow Plume.
bipinnata (glauca). Erect yellow torches in moist swales on the plains. 3 ft.
- SYNTHYRIS,** Kittentails.
alpina. Purplish-blue flowers on racemes, dwarf phacelia-like. Alpine. 3 inches.
plantaginea. A grown-up alpina. Thick basal leaves.
- THALICTRUM,** Meadow Rue.
alpinum. Low-lying foliage; miniature. On grassy bog humps.
fendleri, Maiden's Hair. Columbine-like foliage, flowers inconspicuous. Moist aspen woods. Plants only.
- THERMOPSIS montana,** Golden Banner. Showy heads of pea-like yellow flowers; easy to grow. Light shade. 1 ft.
- THLASPI coloradense,** Alpine Candytuft. A dwarf baby candytuft, white; early on granite gravel slopes.
- TOWNSENDIA,** Easter Daisy. Dry sandy open slopes.
exscapa. Early pale pink flowers nestling in narrow gray foliage. 2 inches.
grandiflora. Large white daisies, lavender backed; attractive, low growing. 4 inches.
- TRADESCANTIA virginiana,** Spiderwort. Three cornered, clear blue flowers with bright yellow stamens. 15 inches.
- TRIFOLIUM,** Alpine Clover. A home-sick family; better grow them from seed.
dasyphyllum. Lavender tinted flowers in heads; low tufted foliage. 3 inches.
nanum. Diminutive, violet purple pea-flowers nestling at the edges of the tufts.
parryi. Large clover heads, rose purple. 6 inches.
- TROLLIUS albiflorus,** Alpine Globe Flower. Paper white flowers with conspicuous stamens; deeply cleft foliage. Acid bogs.
- TROXIMON purpureum.** Cinnamon discs; an educated dandelion. 1 ft.
- VALERIANA acutiloba,** Valerian. Cymes of pinky white; bright green basal foliage. Shade. 1 ft.
- VERBENA bipinnatifida.** Blue-violet clusters, sturdy foliage; a dash of color on dry plains. Annual, seed only.

VIOLA, Violet. Moist, leaf-moldy soil generally.

bellidifolia. Small deep lavender flowers; tufted foliage, short stems.

biflora. Perky little yellow flowers with tiny dark markings; round leaves. Alpine.

blanda, White Sweet-Violet. Fragrant white blossoms slightly veined; somewhat stoloniferous.

canadensis. White, purple-veined flowers; large heart-shaped leaves, leafy stems; stoloniferous. 8 inches. Seed sometimes available.

nuttallii, Prairie Violet. Bright yellow; long leaves. One of the few violas to thrive on prairies. 3 inches. Seed sometimes available.

pedatifida (delphinifolia), Bird-Foot Violet. Large blue flowers; finely cut foliage. 4 inches.

YUCCA glauca, Soapweed. Tall strong spikes of primrose-white flowers; evergreen sword-like foliage. A good foil in cactus gardens.

ZYGADENUS, Wand Lily. Moist loam.

elegans. Creamy white flowers clustered along 18-inch stems; lily-like foliage.

intermedius. A dwarf alpine form of above.

COLORADO EVERGREENS, Coniferous Group.

Abies concolor, White Fir.

Juniper communis depressa, Ground Juniper.

Juniper monosperma, Green Cedar.

Juniper scopularum, Silver Cedar.

Picea englemanii, Engleman Spruce.

Picea pungens glauca, Blue Spruce, especially selected, 50c per pkt.

Pinus aristata, Foxtail Pine.

Pinus contorta, Lodgepole Pine.

Pinus flexilis, Limber Pine.

Pinus ponderosa, Yellow Pine.

Pseudotsuga douglasii, Douglas Fir.

Seed of above, 25c per pkt.

Little trees of many of above varieties, 4 to 8 inches, 10 for \$1.50.

Trees to 20 ft.: quotations on request.

COLLECTIONS

For Your First Attempt

Two each of:

Dodocatheon pauciflorum, Shooting Star
Galium boreale, Lady's Bedstraw
Scutellaria brittoni, Skullcap
Pachylophus caespitosus, Fragrant Primrose
Aquilegia coerulea, Colorado Blue Columbine
Campanula parryi
Pentstemon humilis
Leucocrinum montanum, Sand Lily
Sedum stenopetalum
Silene acaulis, Moss Champion

Collection: \$4.50

For the Connoisseur

Two each of:

<i>Boykinia jamesii</i>	<i>Saxifraga chrysantha</i>
<i>Mertensia coriacea</i>	<i>Phlox condensata</i>
<i>Aquilegia saximontana</i>	<i>Primula angustifolia</i>
<i>Eritrichium argenteum</i>	<i>Kalmia polifolia nana</i>
<i>Gentiana romanzovii</i>	<i>Primula parryi</i>

Collection: \$7.00

For Your Sunny Wall Garden

Two each of:

<i>Pentstemon crandalli</i>	<i>Cerastium arvense</i>
<i>Melampodium cinereum</i>	<i>Phlox stansburyi</i>
<i>Townsendia grandiflora</i>	<i>Crassinia grandiflora</i>
<i>Malvastrum coccineum</i>	<i>Galpinsia lavandulaefolia</i>
<i>Viola nuttalli</i>	<i>Penstemon caespitosus</i>

Collection: \$5.00

Silver Foliage Rock Plants

Two each of:

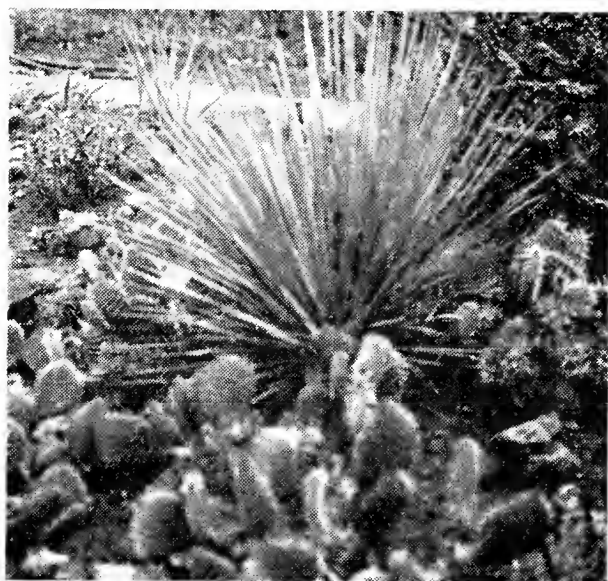
<i>Antennaria rosea</i>	<i>Malvastrum coccineum</i>
<i>Lesquerella condensata</i>	<i>Senecio fendleri</i>
<i>Aragallus splendens</i>	<i>Anaphalis subalpina</i>
<i>Physaria didymocarpa</i>	<i>Artemisia frigida</i>
<i>Artemisia peditifida</i>	<i>Actinella acaulis</i>

Collection: \$5.00

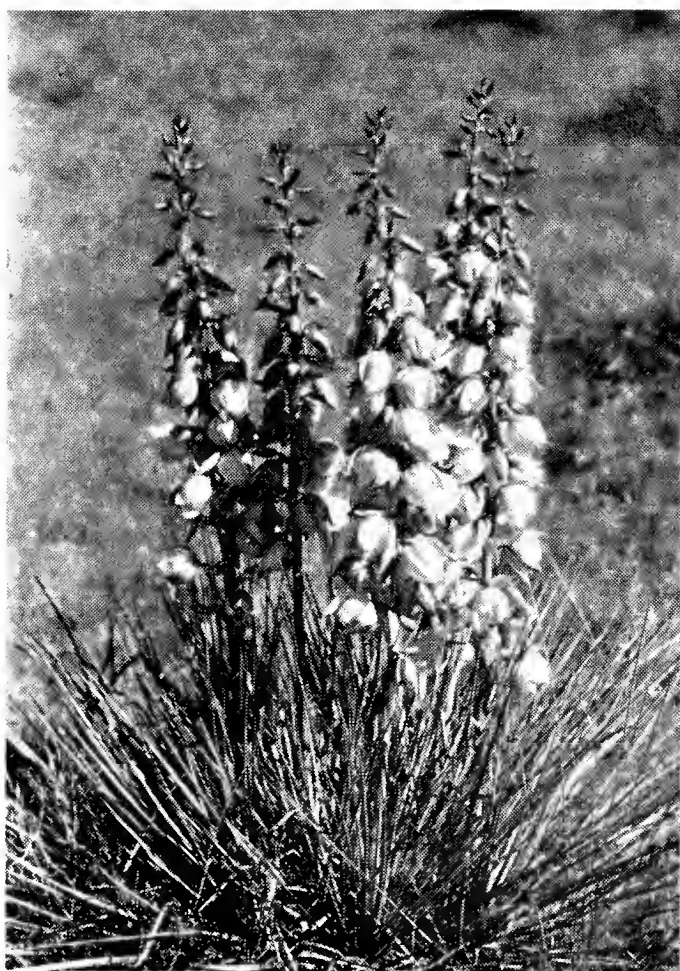


Leucocrinum montanum
Sand Lily

Refined and lovely



Yucca glauca
and
Opuntia polyacantha



Yucca glauca
Stiff soldiers in military helmets

N O T E S
