

## **Historic, archived document**

Do not assume content reflects current scientific knowledge, policies, or practices.



12.61

FEBRUARY 1st, 1936

# A Message to the Progressive Dealer

PLAY SAFE — USE SEED OF KNOWN ORIGIN ONLY

USE SUHR'S TESTED SEED

TRUE  
TYPE  
SURE  
CROP

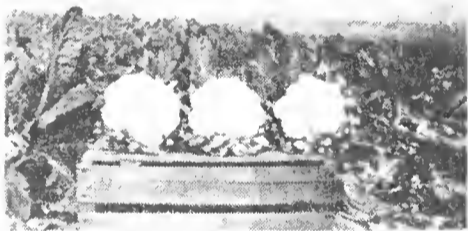
SUHR'S *carefully bred*  
CAULIFLOWER STRAINS

SUHR'S  
SEED  
SURE  
SUCCESS



*Please Note* the uniform self protecting quality

SUHR'S  
SEED  
SURE  
SUCCESS



*Please Note* the superior ready market product

Above actual photographs show what careful breeding will do. Grown by Mr. K. DeJong, East Kildonan, Manitoba, Canada, from seed produced by us on our own farms in 1933 -- SUHR'S EXPRESS ERFURTER STOCK #18. We are the sole owners of our strains.

**E. SUHR CO.**  
JOHN MOSBELL  
CAULIFLOWER and CABBAGE SEED GROWERS  
96-98 LIBERTY STREET  
NEW YORK, N. Y.

WORTH-WHILE PRICES

# E. SUHR COMPANY

JOHN MOSBELL

SUHR'S Originally Sealed Garden Seed Specialties

135 LIBERTY STREET

NEW YORK, N. Y.

SUHR'S  
SEED  
SURE  
SUCCESS

TRUE  
TYPE  
REAL  
TESTED

HIGH  
GERM-  
INA-  
TION

U. S. Department of Agriculture



# E. SUHR CO.

JOHN MOSBELL

Garden Seed Growers and Merchants

135 LIBERTY STREET

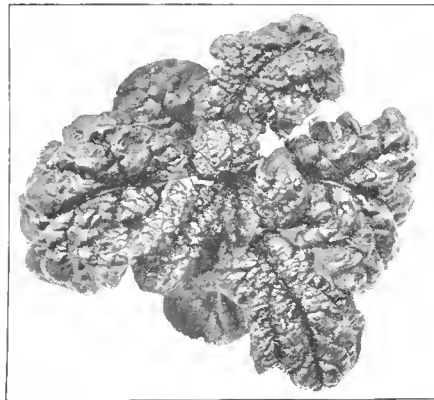
New York, N. Y.

E. Suhr Co. gives no warranty, express or implied as to description, quality, productiveness or any other matter of any seeds they send out and will not in any way be responsible for the crop.

... 1936 ...  
**PRICE LIST**  
PROMPT AND  
SPRING DELIVERY

THIS CANCELS ALL PREVIOUS QUOTATIONS

Prices Now Ready for after  
1936 Harvest Delivery



**BLOOMSDALE SAVOY No. 1**  
Dark Green Strain A



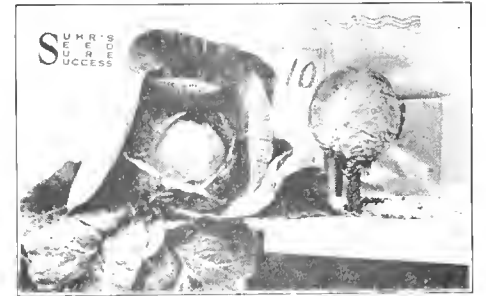
Early Jersey Wakefield No. 2

## NEW CROP SEED

# SUHR'S ORIGINAL SEED

In devoting all our time to the production of a LIMITED number of strains, we are able to furnish these super selections

BEETS:		Per lb.	100 lbs.	PUMPKIN:		Per lb.	100 lbs.
Crimson Globe		\$.35	\$.32	Cushaw Green Striped		.35	.30
Detroit Dark Red		.45	.42	Connecticut Field		.35	.30
Early Wonder		.35	.32	Small Sugar		.35	.30
Early Model		.35	.32	<b>RADISH:</b>			
Crosby's Egyptian		.30	.28	Ea. Scarlet Globe		.22	.20
Early Blood Turnip		.30	.28	Icicle		.22	.20
<b>BROCCOLI:</b>				Long Island Improved Mammoth		.25	.23
Calabrese Improved (No. 1735)		1.25	1.15	<b>DILL:</b>			
<b>BRUSSELS SPROUTS:</b>				<b>EGG PLANT:</b>			
Long Island Improved (Original)		.90	.85	Black Beauty		3.00	
<b>CABBAGE:</b>				Florida High Bush		3.00	
Golden Acre		1.05	.95	New York Purple		2.50	
Extra Early Exp. Round		.85	.75	<b>KOHL RABI:</b>			
Ea. Copenhagen Market		.75	.70	Early White Vienna		1.00	.90
Early Jersey Wakefield		.80	.75	Early Purple Vienna		1.00	.90
Large Charleston Wakefield		.80	.75	<b>KALE:</b>			
Early Flat Dutch		.70	.65	Dwarf Green Curled Scotch		.30	.28
Glory of Enkhuizen		.70	.65	Blue Curled Siberian		.30	.28
Winnigstadt		.70	.65	<b>LEEK:</b>			
All Head Early		.70	.65	American Flag		1.10	
All Season		.70	.65	<b>LETTUCE</b>			
Succession		.70	.65	N. Y. or Wonderful		.45	.40
Danish Ballhead s/s		.75	.70	Iceberg		.45	.40
Danish Ballhead tall/s		.75	.70	Hanson		.15	.40
Danish Ballhead med/s		.75	.70	Big Boston		.75	.40
Danish Roundhead s/s		.75	.70	Black Seeded Simpson		.45	.40
Danish Summer Ballhead		.70	.65	<b>MANGEL WURZEL:</b>			
Late Fat Dutch		.70	.65	Danish Sludstrup		.20	.18
Penn State Ballhead		2.50	—	Mammoth Long Red		.20	.18
<b>CABBAGE RED:</b>				Giant Half Sugar Rose		.20	.18
Danish Stonehead		1.05	.90	Golden Tankard		.20	.18
Mammoth Red Rock		1.05	.90	<b>SUGAR BEET:</b>			
<b>CABBAGE CHINESE:</b>				Klein Wanzleben		.20	.18
Pointed Chihli		.65	.60	<b>MUSTARD SPINACH:</b>			
Round Wong Bok		.65	.60	"Tendergreen"		.18	.16
<b>CABBAGE SAVOY:</b>				<b>MUSTARD:</b>			
American Drumhead		.70	.65	Southern Giant Curled Long Standing		.16	.15
<b>CAULIFLOWER:</b>				"All America Gold Medal Winner"		.16	.15
Success Novelty		12.00		Southern Giant Curled Standard		.16	.15
Express Erfurter Stock No. 18 (most self-protecting)		10.00		Florida Broadleaf		.16	.15
Express Snowball "J. M."		8.50		Chinese Smooth Leaf		.16	.15
Superior Early Snowball "H. S."		8.50		Fordhook Fancy		.16	.15
Snowball No. 200		8.50		<b>ONION:</b>			
Late Snowball		8.50		Superior Bunching		1.10	
Earliest Dwarf Erfurter		9.00		Yellow Bermuda, Imported		1.75	
Danish Giant or Dry Weather (Emdruphoj)		9.50		Crystal Wax, Imported		2.00	
Snowball No. 72		8.50		Imported Sweet Spanish Valencia		3.00	
Snowball No. 81		8.50		Domestic Prizetaker		1.50	
Snowball No. 125		8.50		Domestic Sweet Spanish Riveride		1.45	
Six Weeks No. 215		8.50		<b>PARSLEY:</b>			
<b>CARROT:</b>				Plain		.20	.18
Chantenay (also Red Cored)		.30	.28	Champion Moss Curled		.20	.18
Danvers Half Long		.30	.28	Hamburg Rooted		.22	.20
Oxheart		.30	.28	<b>PARSNIP:</b>			
<b>CELERY:</b>				Hollow Crown		.23	.20
Golden Selfblanching		2.50		<b>PEPPER:</b>			
Giant Pascal		1.25		Ruby King		1.35	1.25
White Plume		1.25		California Wonder		3.00	
<b>CUCUMBER:</b>				Worldbeater		1.75	1.60
Davis Perfect		.50	.45	Bell or Bullnose		1.35	1.25
Pieling		.50	.45	Long Red Cayenne		2.00	
Klondike		.50	.45	Pimento		1.35	1.25



Early Copenhagen Market No. 10



**BEET:—Super Detroit**  
Dark Red No. 305



Early Flat Dutch No. 6

# E. SUHR COMPANY

JOHN MOSBELL

SUHR'S Originally Sealed Garden Seed Specialties

135 LIBERTY STREET

NEW YORK, N. Y.

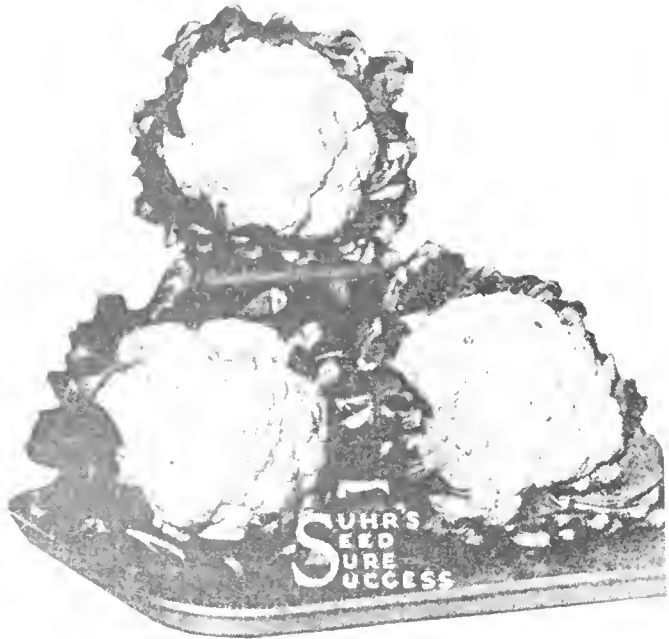
**SUHR'S**  
SEED  
**SURE**  
SUCCESS

**T** RUE  
TYPE  
TRIAL  
ESTED

PER LB. F. O. B. NEW YORK, DUTY PAID

All quotations are made against immediate bookings and subject to stock being unsold.

Bags or other containers are charged for at cost and are not returnable for credit.



EXPRESS SNOWBALL  
J. M. Strain

SUHR'S  
SEED  
SURE  
SUCCESS

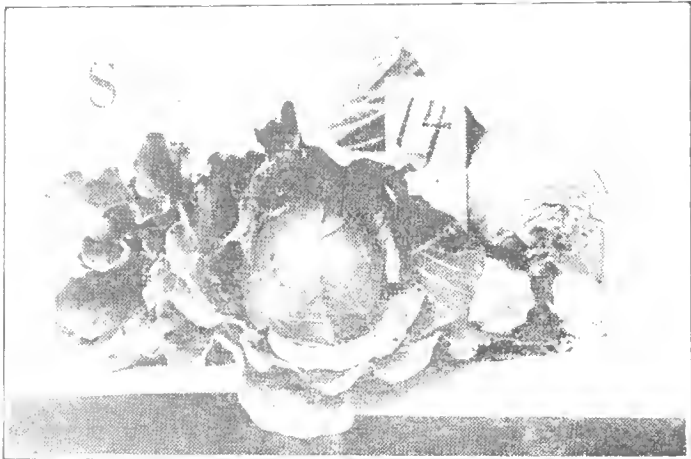


Spraying of Cauliflower Seed Field Suhr's Seed Farm, Denmark

SUHR'S  
SEED  
SURE  
SUCCESS



View of one of SUHR'S CABBAGE SEED Fields in Denmark



Danish Ball Head Short Stem No. 14

**E. SUHR COMPANY**  
JOHN MOSBELL

*Seed Growers & Merchants*

135 Liberty Street

NEW YORK, N. Y.

MEMBERS:

American Seed Trade Association

Southern Seedmen's Association

New York State Seedmen's Assoc'n

SUHR'S  
SEED  
SURE  
SUCCESS

From  
Address

U. S. DEPARTMENT OF AGRICULTURE,

WASHINGTON, D. C.

BUREAU OF PLANT INDUSTRY  
Fruit and Vegetable Crops and Diseases

8-3591