

Historic, archived document

Do not assume content reflects current scientific knowledge, policies, or practices.

2,43

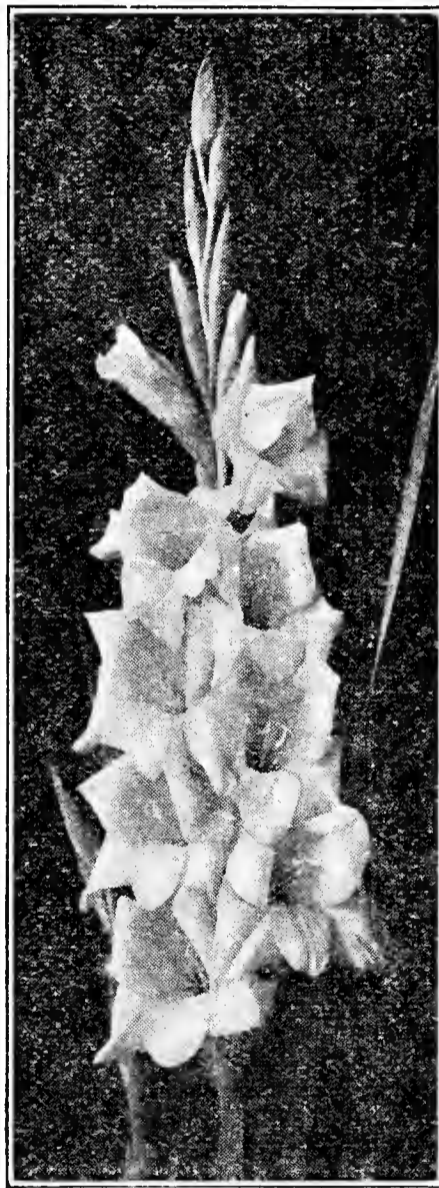
RECEIVED
★ JAN 29 1937 ★
U. S. Department of Agriculture.

GLADIOLUS

*From the Home of the
World's Finest Glads*



**PRICE
LIST**



**SEASON
1937**



A. J. ANDERSON
WHITE BEAR LAKE · MINNESOTA

FOREWORD

Another year has passed since we had the privilege of sending you our annual catalogue. The first and foremost thought is to take advantage of this opportunity to thank all our friends and customers for the liberal support you have given us in the past, for which we are sincerely grateful. Our one regret is that we have been unable to get time to answer the hundreds of letters we have received expressing delight and satisfaction with our way of filling your orders. The satisfaction so expressed adds so much to our own happiness. Multitudes of questions regarding different varieties, prices, and various problems have had to be laid aside for lack of time to make replies. We hope you will not think that this seeming negligence is only indifference on our part. By a little explanation we hope you understand, and trust this catalogue will at least answer some questions.

The existing economic conditions, the seemingly unwarranted lowering of prices of our product that represents a considerable investment, the ever-increasing cost of production, unfavorable weather conditions, increase of cost of our very existence, all seem to work hand in hand to make it more difficult for us to carry on.

This season we have the pleasure of offering many new and rare varieties. In fact, many of the most meritorious introductions of all time. The stock of the newest varieties is naturally very limited but of other kinds that have been on the market two or three or more years we have a fair supply. We are naming fifty varieties among the 333 listed that deserve special notice. Some are not among the newest but among the "best," as we have found them to be. Any one wishing to secure any of the rarer kinds better place order at the earliest possible date, as many items will soon be sold out.

BLUE ADMIRAL, BOB WHITE, CAP. BRANDT, D. A. HAY, DOROTHY DELL, FLAMING METEOR, GLADNESS, GOLDEN GODDESS, GRUENES LICHT, GYPSY GIRL, HEALSVILLE GLORY, ISOLA BELLA, JOHN S. BACH, LOUIS D' OR, LUCIFER, MAID OF ORLEANS, MAORILAND, MARY ELIZABETH, MAX REFGER, MILADY IMOGENE, MILDRED LOUISE, MILFORD, MISS MARION, MOLLY DOUGLAS, MRS. E. J. HEATON, MRS. G. WADE, MY DELIGHT, NEW ERA, NINTH SYMPHONY, NOEL L. REEVE, OH BOY, ORANGE PRINCESS, PARADISE, PHYLLIS McQUISTON, PICARDY, POLAR ICE, PROF. VAN SLOGTEREN, PURPLE VICTORY, RED LORY, SALMON EMPEROR, SEESTERN, SHIRLEY TEMPLE, SIR CHAS. FERGUSON, SMILING MAESTRO, SOLVIG, SOUTHERN CROSS, STAR OF BETHLEHEM, TAKINA, TOA, WHERO, YELLOW EMPEROR.

We hope you will have no difficulty in selecting such assortment of varieties from this catalogue to give the maximum of enjoyment at blooming time. We wish to assure you of our deep appreciation of your orders, and we will always do our part to merit your continued patronage.

Sincerely yours,

A. J. ANDERSON.

OUR GUARANTEE

We guarantee every bulb we sell to be true to name, up to size, free from disease and Gladiolus Thrips. Should any error occur in filling an order, we will gladly make adjustment if notified at blooming time. We cannot, however, assume any responsibility for results, as weather conditions are beyond our control. Our stock has been inspected by the proper state authorities. We hold certificate No. 3539. A copy will be attached to each shipment.

ORDER BLANK

A. J. Anderson, White Bear Lake, Minn., U.S.A.
GLADIOLUS GROWER

Send to _____ Date _____
(Ladies please write Miss or Mrs.)

Postoffice _____ State _____

St. and No., R.F.D. _____ County _____

Express Office _____ Ship when _____

Amount enclosed—Bank Draft, Check, Money Order _____

Please write name and address plainly, and fill in all blanks carefully, attach price to each article and add up accurately. If sold out of a certain size ordered, can I fill this order with the next available size of the same variety?..... Please insert yes or no to save correspondence. For any part of an order I am unable to fill, your money will be promptly refunded, unless advised to substitute a similar or better kind for the price.

Quantity	Variety	Size	Rate	Amount

1910

A. J. Andrew

Send to

Postoffice

St. and No.

Express Office

Amount enclosed

Please write me

each article

order with the

to pay for

the price

Country

DISCOUNTS

For cash in full, with orders up to February 15th, 1937.

Orders for \$ 3.00 to \$ 10.00—take 10% off.

Orders for \$11.00 to \$ 25.00—take 15% off.

Orders for \$26.00 to \$100.00—take 20% off.

The above discounts are effective on all listings in this catalogue, except GOLDEN GODDESS, MAUNGA, NEW ERA, SHIRLEY TEMPLE and WHERO, which are strictly NET.

Add up your order correctly and subtract the cash discount.

After February 15th, 1937, and until April 15th, 1937, take off one-half of the above discounts.

After April 15th, 1937, ALL PRICES ARE NET.

A liberal overcount will always be made, in proportion to the size of orders.

OPTIONAL—Customers who prefer EXTRA BULBS, in place of CASH DISCOUNT, will be allowed liberal extra count, as far as we have the stock.

TERMS

CASH with order to get the benefit of discounts. If not convenient to send full amount on orders over \$5.00, a deposit of 25% will hold early orders till shipping time, balance to be remitted before shipping, or sent C. O. D. A little money can be saved by remitting the balance by saving the C. O. D. fees. While not entitled to the Cash Discount on these orders, we will be liberal in over-count or extras in proportion to size of order.

REMITTANCE

Remittance in the form of Postal or Express Money Orders preferred, especially in amounts of less than \$5.00, for larger amounts good personal checks will be acceptable. Postage stamps not accepted. **Minimum order \$1.00.**

ORDERS with a deposit can be held until April 1st or later if necessary. Our shipping season generally ends May 1st.

EARLY ORDERS

There are many advantages in ordering early, as our stock is then complete and you can get just what you want. Some scarce varieties may be soon sold out, later on it is well to name a second choice, as we never substitute varieties without being instructed to do so. Most of our customers are agreeable to substitute sizes in same varieties of equal value. If unable to fill an order complete we make refund promptly. **All stock offered subject to prior sale.**

SIZES OF BULBS

In common with most leading growers we offer the bulbs in three sizes: LARGE BULBS, designated in this list with Capital L, means bulbs 1 1/4 inches in diameter and larger, which is generally termed as large blooming size. (Some varieties will run greatly oversize or Jumbo bulbs.)

MEDIUM BULBS, designated by M, means bulbs 3/4 to 1 1/4 inches in diameter, which are also blooming size but come into bloom later than the large bulbs.

SMALL BULBS, designated by S, means bulbs from 1/4 to 3/4 inch in diameter and are intended mainly for growing on. However, if planted early, some of these small bulbs will bloom and make good blooming size for next season's planting.

For best immediate results we recommend the large size.

BULBLETS

The results with bulblets are more or less uncertain. Some varieties are easy to germinate and grow nearly 100%. Others again, are more difficult to get to grow, and still others seem to be very difficult to start at all, and 10% germination of some varieties is a good percentage. Much depends on weather and moisture conditions. Bulblets need lots of moisture to get well started. We offer bulblets in small quantities in this list, all **selected** for size and soundness to give best results. But we cannot guarantee that they will all grow.

PLEASE NOTE

Bulblets offered in small quantities are all hand selected, but in larger lots they are mixed sizes.

PLEASE NOTICE

In making up an order, kindly mark the size of bulbs plainly with the letters **L** for large, **M** for medium, and **S** for small. It is a great help to us in writing up the order and prevents making of mistakes.

Five bulbs or bulblets may be had at the 10 rate, 25 bulbs or bulblets at the 100 rate. But no single item less than 10c, and no order for less than \$1.00.

EXTRA BULBS WITH YOUR ORDER

When you send us your bulb order, try to think of some friend or neighbor that you think would like to get our catalogue, someone who is interested in growing fine Glads that might become a good customer. Send their names and addresses along with your order. Your co-operation will be appreciated and well rewarded.

TRANSPORTATION

We prepay all shipping charges on all orders from this catalogue for over \$1.00 that are fully paid for. Our choice of Express or Parcel Post as we deem safest. However, state your preference.

REFERENCE: First State Bank, White Bear Lake, Minnesota.

Discounts apply to listing in this catalogue only.

Growers and Dealers who want to buy in larger quantities, send for our whole-sale list priced F. O. B. here. It's free for the asking.

GLADIOLUS BULBS

Descriptive List of Choice Varieties and Latest Novelties

These prices include Free Delivery

L-Large; M-Medium; S-Small; Blts.-Bulblets

ALFLAME (Hornberger). Large begonia rose red. L. 2 for 12c, 10 for 50c; M. 10 for 30c; Blts. 100 for 25c.

A. H. WOODFULL (Errey). A clear, pale Mauve with violet blotch. L. 1 for 20c, 10 for \$1.60; M. 1 for 10c, 10 for 80c.

AIDA (Pfitzer). Rich, deep violet-blue. Large, tall, straight, early. L. 2 for 12c, 10 for 50c; M. 10 for 25c; S. 10 for 15c.

ALBATROSS (Pfitzer). Very large, pure white. L. 2 for 15c; 10 for 60c; M. 2 for 10c, 10 for 40c; S. 10 for 25c; Blts. 100 for 25c.

ALEC (Douglas). Medium violet blue, unusual and beautiful. L. 1 for 30c; M. 1 for 20c.

ALICE (Douglas). Huge hermosa pink. Rose feather, extra large and fine, 6 to 8 open. L. 1 for 25c, 10 for \$2.00; M. 1 for 15c, 10 for \$1.20; Blts. 100 for \$2.00.

ALLEN V. BUNCE (Bill). Vivid orange. Red throat lines. L. 2 for 10c, 10 for 40c; M. 4 for 12c, 10 for 25c; S. 10 for 15c; Blts. 100 for 15c.

ALPHEUS (Errey). Fine salmon pink, small scarlet blotch, 8 to 10 flowers open. L. 1 for 25c; M. 1 for 15c; S. 1 for 10c; 10 for 80c.

ANGELS' DREAM (Ellis). Beautiful LaFrance pink. L. 2 for 12c, 10 for 50c; M. 10 for 30c; S. 10 for 20c.

APACHE (Doney). Very unusual color combination of metallic red and orange cromo, a real novelty. L. 1 for 50c, 10 for \$4.00; M. 1 for 30c, 10 for \$2.50; S. 1 for 20c, 10 for \$1.50.

APRICOT (Mair). Tall shrimp pink, many open, decorative type. L. 1 for 15c, 10 for \$1.20; M. 1 for 10c, 10 for 80c; S. 10 for 50c.

AUTHAI (Doney). Large salmon pink. Overlaid slate. Very unusual. L. 1 for 15c, 10 for \$1.30; M. 1 for 10c, 10 for 80c; S. 10 for 50c; Blts. 10 for 15c.

AVE MARIA (Pfitzer). Large, near blue. Tall, straight spike. Many large blooms open, facing one way. Early. L. 2 for 12c, 10 for 50c; M. 3 for 10c, 10 for 30c; S. 10 for 20c; Blts. 100 for 20c.

BAGDAD (Palmer). A magnificent smoky old rose. Very large. L. 2 for 12c, 10 for 50c; M. 3 for 12c, 10 for 30c; Blts. 100 for 25c.

BARON VON WYNBERGEN (Alkemade). Tall, stately. Deep salmon pink. Very large. L. 1 for 25c, 10 for \$2.00; M. 1 for 15c, 10 for \$1.20.

BATTLE CREEK (Kunderd). An attractive, deep violet, nearly self color. L. 2 for 15c, 10 for 60c; M. 1 for 10c, 10 for 40c.

BEAT ALL (Alkemade). Large salmon rose of a satiny gloss. Extra heavy substance. L. 1 for 25c, 10 for \$2.00; M. 1 for 15c, 10 for \$1.20.

BEAUFORD (Douglas). Light red, with white blotch. Tall, strong grower, with many flowers open. L. 1 for 25c, 10 for \$2.00.

BELINDE (Pfitzer). Large, soft, creamy yellow. L. 2 for 10c, 10 for 40c; M. 10 for 25c.

BERTY MAIR (Mair). Very beautiful lavender-pink. Slightly ruffled. Extra fine. L. 1 for 25c, 10 for \$2.00; M. 1 for 15c, 10 for \$1.20.

BERTY SNOW (Mair). Large lavender-mauve pink, often 8 to 10 flowers open at the time. L. 2 for 12c, 10 for 50c; M. 3 for 10c, 10 for 25c; S. 10 for 15c; Blts. 100 for 25c.

BETTY CO-ED (Briggs). Soft, creamy pink. "That schoolgirl complexion." L. 2 for 12c, 10 for 50c; M. 10 for 30c; S. 10 for 20c; Blts. 50 for 20c.

BETTY JOY (Bill). Creamy white, blushed pink. Tall, straight, well set spike. L. 2 for 12c, 10 for 50c; M. 10 for 30c; S. 10 for 20c; Blts. 50 for 20c.

BETTY NUTHALL (Salbach). Large coral to orange pink. L. 2 for 12c, 10 for 50c; M. 3 for 10c, 10 for 25c; S. 10 for 15c; Blts. 100 for 15c.

BILL SOWDEN (Fallu). Large, deep red. A great favorite. L. 2 for 12c; M. 3 for 10c, 10 for 25c; S. 10 for 15c.

BLEEDING HEART (Brown). Grand light pink with prominent red blotch. L. 2 for 12c, 10 for 50c; M. 10 for 30c; S. 10 for 15c.

BLONDE (Gilrey). Choice apricot, shaded peach and cream. Very decorative. L. 1 for 10c, 10 for 80c; M. 2 for 10c, 10 for 40c; S. 10 for 25c, Blts. 50 for 25c.

BLUE ADMIRAL (Christ). Clear, deep violet blue. Tall and straight. Extra fine. L. 1 for 25c; M. 1 for 15c, 10 for \$1.20; S. 1 for 10c, 10 for 80c; Blts. 10 for 25c.

BLUE DANUBE (Pfitzer). Amethyst blue. Tall and straight. Very fine. L. 2 for 12c, 10 for 50c; S. 10 for 20c; Blts. 25 for 10c.

BLUE FLAG (Douglas). A fine blue violet, with white throat. Very dainty. L. 1 for 40c, 10 for \$3.00; M. 1 for 25c, 10 for \$2.00.

BLUE PEACOCK (Salbach). Bluest of the "blues." The dark purple blotch is edged with cream, resembling the peacock's eye. L. 1 for 20c, 10 for \$1.80; M. 1 for 15c, 10 for \$1.40; S. 1 for 10c, 10 for 80c; Blts. 10 for 40c.

BLUE TORCH (Hornberger). A pale violet blue. Medium size flowers. Tall, slender stems. L. 2 for 12c, 10 for 50c; S. 10 for 15c.

BOBBY DOUGLAS (Douglas). Large, deep rose pink. Pinkish cinnamon throat. Very beautiful. L. 1 for 25c.

BOB WHITE (Zimmer). A very tall, large white, with violet throat marking. Tall, strong grower. Fine exhibition and commercial variety. L. 1 for 25c, 10 for \$2.00; M. 1 for 15c, 10 for \$1.20; S. 2 for 15c, 10 for 60c; Blts. 25 for 25c.

BUFFALO (Hornberger). Very large, massive deep red. L. 1 for 75c.

CALIOPE (Douglas). Soft lavender blue. Cream blotch. Very nice spike. L. 1 for 25c; M. 1 for 15c; S. 1 for 10c; Blts. 10 for 25c.

CANBERRA (Errey). Large, tall, outstanding yellow. Strong grower. L. 2 for 12c, 10 for 50c; M. 3 for 12c, 10 for 30c.

CAPT. BRANDT (Douglas). Large scarlet, overlaid with carmine. Tall and fine, a splendid red. L. 1 for 40c, 10 for \$3.60; M. 1 for 25c, 10 for \$2.00; S. 1 for 15c, 10 for \$1.20; Blts. 10 for 40c.

CARA MIA (Miller). An early, deep shrimp pink. Medium size flowers, tall grower. Fine florist's variety. L. 2 for 10c, 10 for 40c; M. 10 for 25c; S. 10 for 15c; Blts. 50 for 15c.

CARMENEA (Mair). Tyrian rose, blushed carmine, white blotch. A great favorite with the Glad fans. L. 1 for 15c, 10 for \$1.20; M. 1 for 10c, 10 for 80c; S. 10 for 50c; Blts. 15 for 15c.

CAROLUS CLUSIUS (Velthuys). Deep, rich shrimp pink. A beautiful early variety. L. 2 for 10c, 10 for 40c; M. 10 for 25c; S. 10 for 15c; Blts. 100 for 20c.

CASSANDRA (Errey). Large white, flushed pink. L. 1 for 12c, 10 for \$1.00; M. 2 for 15c, 10 for 60c; S. 10 for 40c.

CATHERINE COLEMAN (Coleman). Beautiful coral pink, tall grower, large flower. L. 2 for 12c, 10 for 50c; M. 3 for 12c, 10 for 30c.

CENTURY (Groff). Extra fine lavender. Very scarce. L. 1 for 25c; M. 1 for 15c.

CHARMEUSE (Moir). Large scarlet, with white blotch. A beautiful Glad. L. 1 for 20c, 10 for \$1.60; M. 1 for 12c, 10 for \$1.00; S. 10 for 60c; Blts. 100 for \$1.50.

CHAS. DICKENS (Pfitzer). Large aster-purple, tall grower. Best in this color. L. 2 for 12c, 10 for 50c; M. 3 for 12c, 10 for 30c; S. 10 for 15c; Blts. 50 for 15c.

CHAS. LINDBERG (Prestgard). Large pure pink, white throat, tall and charming. L. 1 for 20c, 10 for \$1.60; M. 1 for 12c, 10 for \$1.00; Blts. 10 for 20c.

CHICAGO (Kunderd). Deep geranium red, edges bluish shade. L. 1 for 25c, 10 for \$2.00; M. 1 for 15c, 10 for \$1.20.

CHRISTABEL (Mitch). Shrimp pink, with cream throat, 6 to 8 flowers at the time open. L. 1 for 12c, 10 for \$1.00; M. 2 for 15c, 10 for 60c.

CLEOPATRA (Bill). Large yellow, good substance, strong grower. L. 1 for 15c, 10 for \$1.20; M. 1 for 10c, 10 for 80c.

COMMANDER KOEHL (Pfitzer). Immense dark scarlet of glowing brilliancy. L. 2 for 14c, 10 for 60c; M. 10 for 30c; S. 10 for 16c.

CONSTANCY (Arenius). A rosy lavender, large flowers, well set spike. L. 1 for 15c, 10 for \$1.20; M. 2 for 15c, 10 for 60c; S. 10 for 30c.

CORONATION (Palmer). Light salmon pink, shading to cream. L. 1 for 10c, 10 for 60c; M. 2 for 10c, 10 for 30c; S. 10 for 20c; Blts. 50 for 15c.

CORYPHEE (Pfitzer). Soft pink with white throat. Very beautiful. L. 2 for 16c, 10 for 60c; M. 2 for 10c, 10 for 40c.

CRINKLES (Kunderd). Intensely ruffled, deep rose pink, very popular. L. 2 for 12c, 10 for 50c; M. 4 for 12c, 10 for 25c; S. 10 for 15c; Blts. 25 for 15c.

D. A. HAY (Whiteley). Beautiful pink, with cream throat. Many championships to its credit in New Zealand. L. 1 for 40c, 10 for \$3.20; M. 1 for 20c, 10 for \$1.60; S. 1 for 12c, 10 for \$1.00; Blts. 10 for 25c.

DECORATION (Prestgard). A very beautiful pink, decorative, of medium size. L. 1 for 10c, 10 for 80c; M. 2 for 12c, 10 for 50c; S. 10 for 30c; Blts. 10 for 10c.

DIABLO (Salbach). Velvety scarlet, with almost black blotch, very showy. L. 1 for 10c, 10 for 80c; M. 2 for 10c, 10 for 40c; S. 10 for 25c; Blts. 25 for 15c.

DIENER'S LILAC (Diener). Delicate lilac, with canary yellow throat. Large flowers of fine substance. A real refined variety. L. 1 for 12c, 10 for \$1.00; M. 2 for 15c, 10 for 60c; Blts. 10 for 10c.

DIRECTOR (Crow). Deep mauve-pink, with deeper rich blotch. L. 1 for 25c, 10 for \$2.00; M. 1 for 15c, 10 for \$1.20; S. 1 for 10c, 10 for 80c; Blts. 10 for 20c.

DOROTHY DELL (Carpenter). Chrome-orange, blending to lighter throat. Strong grower and very beautiful. L. 1 for 25c, 10 for \$2.00; M. 1 for 15c, 10 for \$1.20; S. 1 for 10c, 10 for 80c; Blts. 100 for \$1.00.

DREAM O'BEAUTY (Zimmer). Large rose red, very popular. L. 1 for 15c; M. 1 for 10c, 10 for 80c; S. 10 for 50c; Blts. 50 for 40c.

DR. DICK (Kelway). Large grenadine red, creamy white throat. L. 1 for 25c, 10 for \$2.00; M. 1 for 15c, 10 for \$1.20; S. 1 for 10c, 10 for 60c; Blts. 100 for \$1.00.

DR. DURR (Pfitzer). New white, with cream throat, very early. L. 1 for 10c, 10 for 80c; M. 2 for 10c, 10 for 40c; S. 10 for 25c; Blts. 20 for 10c.

DR. F. E. BENNETT (Diener). Large, bright red, well known. L. 2 for 12c, 10 for 50c; M. 4 for 12c, 10 for 25c; S. 10 for 15c; Blts. 100 for 20c.

DR. GLADYS MONTGOMERY (Whiteley). Deep lavender, many open, well ruffled. An improved King Arthur. L. 1 for 30c; M. 1 for 20c; S. 1 for 15c; Blts. 5 for 15c.

DR. MOODY (Kinyon). Large lavender, early bloomer. L. 2 for 12c, 10 for 50c; M. 4 for 12c, 10 for 25c.

DR. NELSON SHOOK (Kunderd). Large Tyrian rose, flowers well ruffled, strong plant and spike. L. 2 for 12c, 10 for 50c; M. 4 for 12c, 10 for 25c; S. 10 for 15c.

EARL GRAY (Kelway). Large Carnelian red, tips aster-purple, unusual. L. 1 for 40c, 10 for \$3.00; M. 1 for 25c, 10 for \$1.80; Blts. 10 for 25c.

EDELFRAU (Graetz). A choice old ivory colored Glad. Dainty and beautiful. L. 1 for 25c, 10 for \$2.00; M. 1 for 15c, 10 for \$1.20; S. 1 for 10c, 10 for 80c; Blts. 10 for 20c.

EDITH MASON (Vaughn). Delicate geranium pink, extra fine. L. 1 for 15c, 10 for \$1.20; M. 1 for 10c, 10 for 80c; S. 10 for 40c; Blts. 15 for 10c.

EDITH ROBSON (Brown). Peach pink, with crimson blotch, up to 10 and 12 flowers open at the time. L. 1 for 15c, 10 for \$1.20; M. 1 for 10c, 10 for 80c; S. 10 for 40c; Blts. 15 for 10c.

ELIZABETH SWARTLEY (Swartley). Salmon pink, white throat, early bloomer. L. 2 for 12c, 10 for 50c; M. 3 for 15c, 10 for 30c; S. 10 for 15c; Blts. 100 for 25c.

ELLA DAY (Carpenter). Large LaFrance, pink, shading to yellow throat. L. 2 for 12c, 10 for 50c; M. 3 for 10c, 10 for 30c; S. 10 for 15c; Blts. 25 for 10c.

EMMA (Velthuys). Deep rose pink, with deeper velvety blotch, extra showy. L. 2 for 15c, 10 for 60c; M. 1 for 10c, 10 for 40c; S. 10 for 20c.

EMILE AUBRUN (Lemoine). Smoky rose red, with cherry blotch. L. 2 for 12c, 10 for 50c; M. 3 for 10c, 10 for 30c; S. 10 for 15c; Blts. 100 for 25c.

ENSEMBLE (Stevens). Daintiest little pure yellow, ruffled and lacinated. Very decorative. L. 1 for 50c; M. 1 for 30c.

ERICA MORINI (Pfitzer). A most distinctive scarlet of superior quality. L. 1 for 20c, 10 for \$1.60; M. 1 for 15c, 10 for 1.20.

EUGENE LEFEBVRE (Lemoine). Deep rose pink, darker blotch. L. 2 for 12c, 10 for 50c; M. 3 for 10c, 10 for 30c; S. 10 for 15c.

EUREKA (Brown). Large salmon pink, red blotch, strong grower. L. 1 for 15c, 10 for \$1.20; M. 1 for 10c, 10 for 80c; S. 10 for 40c.

EVE (Whiteley). Extra tall, yellow suffused pink, medium sized flowers. L. 1 for 15c, 10 for \$1.20; M. 1 for 10c, 10 for 80c; S. 10 for 40c; Blts. 20 for 15c.

Prices Are for Prepaid Delivery.

FANNY CROSBY (Carpenter). Large cream flowers, deeper throat, extra fine, with good culture. L. 2 for 16c, 10 for 60c; M. 2 for 10c, 10 for 40c; S. 10 for 20c; Blts. 25 for 15c.

FATA MORGANA (Pfitzer). Peach blossom pink, yellow throat. A beautiful Glad. L. 2 for 15c, 10 for 60c; M. 2 for 10c, 10 for 40c; S. 10 for 20c.

FERN KYLE (Kunderd). Ruffled creamy white flowers, of medium size. L. 2 for 12c, 10 for 50c; M. 3 for 10c, 10 for 30c; Blts. 25 for 10c.

FLAMING METEOR (Mitsch). Extra large red. Tall, strong grower, a most spectacular Glad in this color. L. 1 for 12c, 10 for \$1.00; M. 2 for 15c, 10 for 60c; S. 10 for 20c; Blts. 25 for 15c.

FLAMING SWORD (Krelage). A real vermilion red—a great many flowers open at once. L. 2 for 10c, 10 for 40c; M. 10 for 25c; S. 10 for 15c; Blts. 100 for 25c.

FRANK J. McCOY (Briggs). Large tall pink, a great prize winner. L. 1 for 10c, 10 for 80c; M. 2 for 12c, 10 for 50c; S. 10 for 30c; Blts. 15 for 15c.

FRANK M. SHICK (Salbach). Clear geranium pink, very decorative. L. 2 for 10c, 10 for 40c; M. 10 for 25c; S. 10 for 15c; Blts. 100 for 20c.

GATE OF HEAVEN (Pfitzer). Rich, pure yellow, nicely ruffled, extra fine. L. 1 for 10c, 10 for 80c; M. 2 for 12c, 10 for 50c; S. 10 for 30c; Blts. 50 for 25c.

GAY HUSSAR (Salbach). Orange red to strawberry pink. L. 2 for 12c, 10 for 50c; M. 3 for 12c, 10 for 30c; S. 10 for 20c; Blts. 50 for 20c.

GEORGE ARENDS (Pfitzer). Salmon pink, long spike, early and fine cut-flower. L. 2 for 10c, 10 for 40c; M. 10 for 25c; S. 10 for 15c; Blts. 100 for 25c.

GEORGE MEGERNEY (Whiteley). Rose red, cream throat, with maroon blotch. L. 1 for 16c, 10 for \$1.20; M. 1 for 10c, 10 for 60c; S. 10 for 30c; Blts. 25 for 20c.

GERALDINE FARRAR (Diener). Fine lavender blue, good sized flowers. L. 1 for 10c, 10 for 80c; M. 2 for 12c, 10 for 50c.

GERTRUDE SWENSON (Swenson). Beautiful mauve, with white throat, up to 10 and 12 flowers open at the time. L. 1 for 60c; M. 1 for 40c; S. 1 for 20c.

GLADDIE BOY (Bill). Grenadine pink, deep yellow throat, ruffled, very attractive cut-flower. L. 2 for 12c, 10 for 50c; M. 4 for 12c, 10 for 25c; S. 10 for 15c; Blts. 100 for 20c.

GLADNESS (Frietsch). Clear, bright orange scarlet, self color. The cleanest and finest red we know. L. 1 for 25c, 10 for \$2.00; M. 1 for 15c, 10 for \$1.20; S. 1 for 10c; Blts. 15 for 25c.

GLORIANA (Betscher). Golden salmon, shading to yellow throat. Very beautiful, decorative. L. 2 for 12c, 10 for 50c; M. 3 for 12c, 10 for 30c; S. 10 for 15c.

GOLD EAGLE (Austin). Extra early yellow, medium size flowers. L. 2 for 10c, 10 for 40c; M. 4 for 12c, 10 for 25c; S. 10 for 15c; Blts. 100 for 15c.

GOLDEN CHIMES (Ellis). Medium yellow, large florets, nicely ruffled and quite early. L. 1 for 15c; M. 1 for 10c.

GOLDEN DREAM (Groff). Deep yellow, tall grower, finest late cut-flower variety. L. 2 for 12c, 10 for 50c; M. 3 for 12c, 10 for 30c; S. 10 for 15c; Blts. 100 for 15c.

GOLDEN GODDESS (Salbach). Many experts believe this is the finest yellow to date, only large bulbs sold this year. Prices net, not included for discounts. L. 1 for \$1.00, 3 for \$2.50.

GOLDEN SALMON (Kunderd). Golden yellow, blended with salmon, ruffled. L. 2 for 12c, 10 for 50c; M. 3 for 12c; 10 for 30c.

GREAT HEART (Stevens). Very large, deep pink, with white throat. L. 1 for 15c, 10 for \$1.20; M. 1 for 10c, 10 for 80c.

GRUENES LICHT (Pfitzer). Green Light is most unusual and beautiful, the milky white, large, well formed ruffled florets are overcast with a peculiar greenish gloss. L. 1 for \$4.00.

GYPSY GIRL (Carpenter). Extra early, large scarlet with light yellow blotch, tall and straight, extra fine. L. 1 for 25c, 10 for \$2.00; M. 1 for 15c, 10 for \$1.20; Blts. 25 for 50c.

HAMBURG PINK (Hornberger). Large, bright pink, strong grower, 6 to 8 flowers open. L. 2 for 12c, 10 for 50c; M. 3 for 12c, 10 for 30c; S. 10 for 15c.

HEALSVILLE GLORY (Brown). A very nice, dark wine color, deeper throat, many flowers open. In a class by itself. L. 1 for 35c, 10 for \$3.00; M. 1 for 20c, 10 for \$1.80; S. 1 for 10c, 10 for 80c; Blts. 10 for 30c.

HEAVENLY BLUE (Pfitzer). A light, violet blue, good sized flowers, but will fade in the sun. L. 1 for 15c; M. 2 for 15c, 10 for 50c.

Our Satisfied and Enthusiastic Customers Are Many.

HELEN HOWARD (Austin). Soft, light yellow, overlaid pink and amber, very fine when well grown. L. 2 for 12c, 10 for 50c; M. 3 for 10c, 10 for 30c.

HELEN JACOBS (Salbach). Jasper to salmon pink, lower petals cream. L. 2 for 12c, 10 for 50c; M. 3 for 10c, 10 for 30c; S. 10 for 15c.

HELEN WILLS (Salbach). Large, creamy white, splendid substance. L. 2 for 12c, 10 for 50c; M. 3 for 10c, 10 for 30c; S. 10 for 15c.

HERBSTZAUBER (Pfitzer). Orange salmon, large flower, late bloomer. L. 2 for 12c, 10 for 50c; M. 3 for 10c, 10 for 25c; S. 10 for 15c.

HERITAGE (Ristow). Very large pink, white mid-ribs on lower petals. L. 1 for 40c, 10 for \$3.20; M. 1 for 30c, 10 for \$2.40; Blts. 25 for 65c.

HERODIAN (Errey). Fine pink, flaked deeper. L. 1 for 10c, 10 for 80c; M. 2 for 12c, 10 for 50c; S. 10 for 30c; Blts. 100 for 50c.

HINEMOA (Doney). Deep rose, flecked dark red, with cream blotch. A fine novelty. L. 1 for 15c, 10 for \$1.20; M. 1 for 10c, 10 for 80c; S. 2 for 12c, 10 for 50c.

HOPE (Douglas). Large, pure white with lilac blotch. Very attractive. L. 1 for 20c, 10 for \$1.60; M. 1 for 12c, 10 for \$1.00.

H. W. TAFT (Ogrodnichek). New deep purple, medium sized flowers. L. 1 for 25c, 10 for \$2.00; M. 1 for 15c, 10 for \$1.20.

INSPIRATION (Palmer). Deep shrimp pink, ruffled and lacinated. Very fine when well grown. L. 1 for 15c, 10 for \$1.20; M. 1 for 10c, 10 for 80c; S. 2 for 12c, 10 for 50c.

IRENE (Mair). Salmon, rose, edged blue-gray, creamy throat, much admired. L. 1 for 10c, 10 for 80c; M. 2 for 12c, 10 for 50c; S. 10 for 30c; Blts. 15 for 10c.

ISOLA BELLA (Pfitzer). Cattleya pink, with soft, lilac hue, slightly ruffled, new. L. 1 for \$4.00; Blts. 1 for 40c.

IVERNIA (Errey). Pale pink, with flaking of rose, opens up to 10 flowers at the time. L. 1 for 25c, 10 for \$2.00.

JAMES WM. KELWAY (Kelway). Large, spectrum red, shaded carmine. L. 1 for 20c, 10 for \$1.60; M. 1 for 10c, 10 for 80c.

JANE ADDAMS (Prestgard). Very large lavender, white in the throat. L. 2 for 10c, 10 for 40c; M. 10 for 25c; S. 10 for 15c.

JANET (Crow). Smoky peach-pink, ruffled and very attractive. L. 2 for 12c, 10 for 50c; M. 4 for 12c, 10 for 25c; S. 10 for 15c; Blts. 25 for 15c.

JAN VAN WERTH (Gretz). Large mid-season lavender, very good. L. 1 for 20c, 10 for \$1.60; M. 1 for 10c, 10 for 80c; S. 10 for 40c; Blts. 10 for 15c.

JEANETTE (Whiteley). Pale yellow, self color, medium size, nicely ruffled, many open. L. 1 for 10c, 10 for 80c; M. 2 for 12c, 10 for 50c; S. 10 for 30c; Blts. 20 for 15c.

JEAN PHYLLIS (Carpenter). Large LaFrance pink, sulphur yellow throat. L. 1 for 15c, 10 for \$1.20; M. 1 for 10c, 10 for 80c; S. 2 for 12c, 10 for 50c; Blts. 25 for 30c.

JENNIFER (Douglas). Reddish raisin purple, cream lines on lower petals. L. 1 for 30c; M. 1 for 20c.

JERULA (Douglas). Deep salmon pink with crimson blotch. L. 1 for 30c, 10 for \$2.50; M. 1 for 20c, 10 for \$1.60; S. 1 for 10c, 10 for 80c.

JOHN RAMSEY (Mair). Deep salmon rose, flaked deeper, long spike, opening 10 or more flowers at one time, splendid exhibition. L. 1 for 15c, 10 for \$1.20; M. 1 for 10c, 10 for 80c; S. 2 for 12c, 10 for 50c; Blts. 15 for 15c.

JOHN S. BACH (Pfitzer). Immense salmon orange, white median lines open up 10 to 12, 5½ to 6-inch flowers, tall, strong grower, the largest and finest early Glad in existence. L. 1 for 35c, 10 for \$3.00; M. 1 for 20c, 10 for \$1.60; S. 1 for 15c, 10 for \$1.20; Blts. 10 for 35c.

JONKHEER VAN TETS (Pfitzer). Grand, immense white. L. 1 for 10c, 10 for 80c; M. 2 for 12c, 10 for 50c.

JUANITA (Kemp). Exquisite pink, white throat, greatly admired. L. 2 for 15c, 10 for \$1.20; M. 1 for 10c, 10 for 80c; S. 10 for 50c.

KING ARTHUR (Arenius). Grand rose-lavender, large flowers, ruffled. L. 1 for 12c, 10 for \$1.00; M. 2 for 12c, 10 for 50c; S. 10 for 30c; Blts. 25 for 20c.

KING GEORGE (Mair). Deep red, attractive, creamy white throat. L. 2 for 15c, 10 for 60c; M. 2 for 10c, 10 for 40c; S. 10 for 20c.

Our Quality and Service Are Unsurpassed.

KING OF GLADIOLI (Kelway). Bright scarlet, pinard yellow throat, tall, strong grower. L. 1 for 25c, 10 for \$2.00; M. 1 for 15c, 10 for \$1.20; S. 1 for 10c, 10 for 80c; Blts. 15 for 25c.

KIRCHOFF'S VIOLET (Kirchoff). True violet, medium size flowers. L. 2 for 12c, 10 for 50c; M. 4 for 12c, 10 for 25c; S. 10 for 15c.

LADY LORENE (Ellis). Exquisite pink, with yellow throat. L. 2 for 12c, 10 for 50c; M. 4 for 12c, 10 for 25c; S. 10 for 15c.

LADY LOVE (Roozen). Very large pink, deeper throat, wide open, large flowers, extra fine. L. 1 for 15c, 10 for \$1.20; M. 1 for 10c, 10 for 80c.

LA PALOMA (Dusinberre). Vivid orange, tall grower, quite early. L. 2 for 12c, 10 for 50c; M. 3 for 10c, 10 for 30c; S. 10 for 15c.

LEANDER (Errey). Salmon rose, crimson purple blotch. L. 1 for 25c, 10 for \$2.00; M. 1 for 15c, 10 for \$1.20; S. 1 for 10c, 10 for 80c.

LIBELLE (Pfitzer). Heliotrope blue, violet feather in throat. L. 1 for 10c, 10 for 80c; M. 2 for 10c, 10 for 40c; S. 10 for 25c; Blts. 20 for 15c.

LICKETY SPLIT (Carpenter). Geranium pink, flesh pink in throat, very early bloomer. L. 2 for 12c, 10 for 50c; M. 4 for 12c, 10 for 25c; S. 10 for 15c; Blts. 100 for 25c.

LIGHTHOUSE (Gilrey). Orange flame, flaked steel blue, cream lip, very unusual. L. 1 for 15c, 10 for \$1.20; M. 1 for 10c, 10 for 80c; S. 2 for 12c, 10 for 50c; Blts. 20 for 15c.

LILLYDALE (Gilrey). Fine white, good size, opens up to 10 flowers at one time. L. 1 for 25c; M. 1 for 15c; S. 1 for 10c.

LITTLEJOHN (Stevens). Ruffled deep rose-pink, tall and straight. L. 2 for 12c, 10 for 50c; M. 10 for 30c; S. 10 for 15c.

LORD ALVERSTONE (Kelway). Spectrum red, flushed ox-blood red. L. 1 for 20c, 10 for \$1.60; M. 1 for 15c, 10 for \$1.20; S. 1 for 10c, 10 for 80c; Blts. 20 for 15c.

LORD ERROLL (Kelway). Coral pink, blending to light jasper pink, cream throat. L. 1 for 15c, 10 for \$1.20; M. 1 for 10c, 10 for 80c; S. 2 for 12c, 10 for 50c; Blts. 25 for 15c.

LOUIS D'OR (Pfitzer). Brownish yellow, with apricot shading, new and beautiful. L. 1 for \$2.00; M. 1 for \$1.25; Blts. 1 for 20c.

LOYALTY (Austin). Excellent deep yellow, late bloomer. L. 2 for 12c, 10 for 50c; M. 2 for 12c, 10 for 25c; S. 10 for 15c; Blts. 100 for 20c.

LUCIFER (Errey). Bright orange, amaranth crimson blotch, up to 10 open flowers. Fine exhibition sort. L. 1 for 10c, 10 for 80c; M. 2 for 10c, 10 for 40c; S. 10 for 25c; Blts. 25 for 15c.

MADAM NORENA (Prestgard). Large, beautiful buff. L. 2 for 12c, 10 for 50c; M. 10 for 30c.

MAID OF ORLEANS (Pfitzer). Large, lovely milky white, cream throat, tall, straight spike, very fine. L. 2 for 16c, 10 for 80c; M. 2 for 10c, 10 for 40c; S. 10 for 25c; Blts. 50 for 25c.

MAINE (Vos). A late white, medium size, fine cut-flower. L. 2 for 12c, 10 for 50c; M. 10 for 30c.

MAMMOTH WHITE (Pfitzer). One of the very largest pure white, well named. L. 2 for 12c, 10 for 50c; M. 4 for 12c, 10 for 25c; S. 10 for 15c.

MAORILAND (Whiteley). A fine, smoky old rose, deeper at edges, striped steel blue, cream throat blotch. L. 1 for 16c, 10 for \$1.20; M. 1 for 10c, 10 for 80c; S. 2 for 12c, 10 for 50c; Blts. 20 for 20c.

MARGARET FULTON (Ogrodnichek). Coral pink, shaded lighter in throat. Very good. L. 2 for 12c, 10 for 50c; M. 10 for 30c; S. 10 for 15c; Blts. 100 for 25c.

MARIE KUNDERD (Kunderd). Pure white, with soft pink lines, early. L. 2 for 12c, 10 for 50c; M. 10 for 30c.

MARION LOUISE (Carpenter). Clear white, with a touch of cream in the throat. L. 1 for 25c, 10 for \$2.00.

MARMORA (Errey). Immense grayish lavender, petunia purple blotch. L. 2 for 12c, 10 for 50c; M. 10 for 30c; S. 10 for 15c; Blts. 100 for 20c.

MARNIA (Kemp). A rich, brilliant orange, late bloomer. L. 2 for 10c, 10 for 40c; M. 10 for 25c; S. 10 for 15c; Blts. 100 for 20c.

MAROLEE (Carpenter). Jasper pink, buff yellow throat, wide open flowers. L. 1 for 15c, 10 for \$1.20; M. 1 for 10c, 10 for 80c; S. 2 for 12c, 10 for 50c.

MARVEL (Mair). Salmon rose, yellow throat, tall and straight. L. 2 for 10c, 10 for 40c; M. 10 for 25c.

You, Too, Will Prefer Anderson's Gladiolus.

MARY ELIZABETH (Stevens). Fine white, with yellow throat, 8 or more well ruffled flowers open at one time. Very beautiful. L. 1 for 12c, 10 for \$1.00; M. 2 for 15c, 10 for 60c; Blts. 50 for 25c.

MARY JANE (Kunderd). Silvery pink, with light lavender sheen. L. 2 for 12c, 10 for 50c; M. 10 for 30c; S. 10 for 15c; Blts. 25 for 15c.

MARY LOCKWOOD (Kenyon). Shell pink, scarlet pencilling, many flowers open. L. 2 for 12c, 10 for 50c; M. 10 for 30c.

MAUNGA (Burns). Possibly the largest pure white to date, very heavy texture. L. 1 for \$2.00; M. 1 for \$1.50.

MAX REEGER (Pfitzer). Light lavender blue, darker throat markings, extra fine. L. 1 for 50c; M. 1 for 30c; S. 1 for 20c; Blts. 10 for 40c.

MERLE NORRIS (Gilrey). Light pink, throat is cream pencilled with violet. L. 1 for 15c, 10 for \$1.20; M. 1 for 10c, 10 for 80c; S. 2 for 12c, 10 for 50c; Blts. 20 for 20c.

MILADY IMOGENE (Austin). Pure white, shaded to cream in throat, many open flowers, finest florist's variety. L. 2 for 12c, 10 for 50c; M. 3 for 10c, 10 for 30c; S. 10 for 15c; Blts. 100 for 40c.

MILDRED LOUISE (Wentworth). Immense strawberry pink, won highest honor at the M. G. S. Show in 1936. L. 1 for 10c, 10 for 80c; M. 2 for 12c, 10 for 50c; S. 10 for 30c; Blts. 100 for 60c.

MILFORD (Rides). A delicate shade of blue violet, tall spike, 8 open. L. 1 for 80c; M. 1 for 50c.

MILKMAID (Gilrey). Very large, milky white, with mauve feather, tall spike, about 10 open. L. 1 for 10c, 10 for 80c; M. 2 for 12c, 10 for 50c; S. 10 for 30c; Blts. 25 for 20c.

MINUET (Coleman). The most popular of all lavenders. L. 2 for 12c, 10 for 50c; 10 for 30c.

MISS GLADYS CLARK (Carpenter). Eosine pink, tall, straight spike, fine. L. 1 for 10c, 10 for 80c; M. 2 for 10c, 10 for 40c; Blts. 30 for 20c.

MISS GREELEY (Briggs). Similar to Phipps, but much earlier. L. 2 for 14c, 10 for 60c; M. 10 for 30c.

MISS JOY (Blake). A delicate pure pink, shading to creamy throat, medium size, beautiful. L. 2 for 10c, 10 for 40c; M. 10 for 20c; S. 10 for 10c; Blts. 100 for 20c.

MISS MARION (Zimmer-Fischer). Beautiful lavender, with white throat, early. L. 1 for \$3.00; M. 1 for \$2.00.

MISS NEW YORK (Hornberger). Peach pink, extra fine color. L. 2 for 12c, 10 for 50c; M. 10 for 30c.

MISS NEW ZEALAND (Julyan). "The sensational Glad." Huge, salmon-apricot suffused rose. L. 1 for \$1.25; M. 1 for 80c; S. 1 for 50c; Blts. 2 for 25c.

MISS W. HOOD (Whiteley). Fine red, dark blotch, stands heat well. L. 1 for 15c, 10 for \$1.20; M. 1 for 10c, 10 for 80c.

MOIRA (Moir). A large scarlet, with cream blotch, very attractive. L. 1 for 15c, 10 for \$1.20; M. 1 for 10c, 10 for 80c; S. 2 for 12c, 10 for 50c.

MOLLIE DOUGLAS (Douglas). Color, old rose, tinged grayish lavender, with crimson blotch, strong grower, very good. L. 1 for 40c, 10 for \$3.00; M. 1 for 25c; 10 for \$2.00.

MOORISH KING (Pfitzer). Deep, rich velvety red, almost black, heavy texture. L. 1 for 25c; M. 1 for 15c; S. 1 for 10c.

MOTHER MACHREE (Stevens). Soft, smoky lavender, orange and gold. L. 2 for 12c, 10 for 50c; M. 10 for 30c.

MOROCCO (Pfitzer). Very dark maroon, buds nearly black. L. 2 for 12c, 10 for 50c; M. 10 for 30c; S. 10 for 20c.

MR. FREDERICK CHRIST (Diener). Wonderful combination of LaFrance pink and yellow. L. 1 for 25c; M. 1 for 15c; S. 1 for 10c.

MR. H. A. HYDE (Diener). White overlaid pink, splendid substance. L. 2 for 12c, 10 for 50c; M. 10 for 30c.

MR. W. H. PHIPPS (Diener). Large pink, a popular, very late variety. L. 2 for 12c, 10 for 50c; M. 10 for 30c.

MR. WM. CUTHBERTSON (Mair). Cherry rose, white center, intensely ruffled, a very beautiful variety. L. 2 for 12c, 10 for 50c; M. 10 for 30c; S. 10 for 20c.

MRS. E. J. HEATON (Heaton). Deep salmon pink, with cream throat, many flowers open, tall, strong and straight. L. 1 for 20c, 10 for \$1.60; M. 1 for 12c, 10 for \$1.00; S. 2 for 12c, 10 for 50c; Blts. 30 for 20c.

Transportation Prepaid.

MRS. F. C. HORNBERGER (Hornberger). Pure white, flowers well set on tall spike, late bloomer. L. 10 for 25c; S. 10 for 15c.

MRS. GERTRUDE PFITZER (Pfitzer). Medium blue, strong grower. L. 2 for 15c; M. 2 for 10c.

MRS. G. WADE (Whiteley). A fine, light yellow, many nicely ruffled flowers open, early bloomer. L. 1 for \$1.00; M. 1 for 75c; S. 1 for 50c; Blts. 3 for 25c.

MRS. JOHN S. WOOD (Metzger). Coral pink, broken throat markings. L. 2 for 12c, 10 for 50c; M. 10 for 25c.

MRS. LEON DOUGLAS (Diener). Begonia rose, flaked scarlet. L. 2 for 12c, 10 for 50c; M. 10 for 30c; S. 10 for 15c.

MRS. OLNEY WITTBECK (Ferris). Large eosine pink, tips flaked scarlet. L. 1 for 10c, 10 for 80c; M. 2 for 12c, 10 for 50c; S. 10 for 25c.

MRS. P. W. SISSON (Coleman). Soft cameo pink, large flowers on fine spike. L. 2 for 12c, 10 for 50c; M. 10 for 25c.

MRS. S. A. ERREY (Errey). Large, fine orange, will fade in hot sun. L. 2 for 12c, 10 for 50c; M. 10 for 30c.

MURIEL (Pfitzer). Light blue, deeper blotch, nicely formed flowers, always in good demand. L. 2 for 12c, 10 for 50c; M. 10 for 30c; S. 10 for 20c.

MY DELIGHT (Douglas). Large, white flower, with carmine feather on fine spike. Extra fine. L. 1 for 25c, 10 for \$2.00; M. 1 for 15c, 10 for \$1.20; S. 1 for 10c, 10 for 80c.

NAOMI (Errey). Clear salmon pink, nicely ruffled flowers, with powdered crimson center, very decorative. L. 1 for 30c, 10 for \$2.50; M. 1 for 18c, 10 for \$1.60; S. 1 for 10c, 10 for 80c; Blts. 10 for 20c.

NERO (Douglas). Deep red, with dark veinings and white throat. L. 1 for 25c, 10 for \$2.00; M. 1 for 15c, 10 for \$1.20; S. 1 for 10c, 10 for 80c.

NETHERLAND PRINCE (Stevens). Extra tall spike, with large, bright, salmon pink flowers. L. 1 for 12c, 10 for \$1.00; M. 2 for 15c, 10 for 60c; S. 10 for 40c.

NEW ERA (Ellis-Majeski). Eosine pink, blended with LaFrance pink, soft cream throat, white mid-ribs, extremely ruffled, 8 open florets of 18 buds to the spike, good placement, heavy texture, under subdued light it has no equal. 1 No. 2 for \$7.50. 1 No. 4 for \$6.00. 1 No. 6 for \$4.00. Blts. 1 for 60c, 10 for \$4.80.

NINTH SYMPHONY (Pfitzer). New. A first class exhibition variety. Color, vivid salmon red with silky sheen, without any markings. The florets are very large, wide open, of good lasting substance and excellently placed. L. 1 for \$3.00; M. 1 for \$2.00; S. 1 for \$1.25.

NOEL L. REEVE (Phillips). Beautiful, rich rose pink, with 10 or more open, classed as exhibition. L. 1 for 25c, 10 for \$2.00; M. 1 for 15c, 10 for \$1.20; S. 1 for 10c, 10 for 80c; Blts. 50 for 60c.

NORMANDA (Carpenter). Nice orange colored Glad, strong grower. L. 2 for 12c, 10 for 50c; M. 10 for 25c; S. 10 for 15c.

ODALISQUE (Errey). Creamy white, with prominent scarlet blotch, many large flowers open. L. 1 for 25c, 10 for \$2.00; M. 1 for 15c, 10 for \$1.20; S. 1 for 10c, 10 for 80c.

OH BOY (Bill). Large, brilliant red, self color, magnificent. L. 1 for 30c, 10 for \$2.50; M. 1 for 20c, 10 for \$1.60.

OLIVE GOODRICH (Goodrich). Delicate blending of white and pink to cream throat. L. 2 for 12c, 10 for 50c; M. 10 for 25c; S. 10 for 15c.

ONEIDA JANE (Carpenter). Geranium pink, red feather on white in throat. L. 2 for 10c, 10 for 40c; M. 10 for 25c.

ORANGE PRINCESS (Roozen). Large, brilliant orange salmon with 5 or more well expended flowers open. L. 1 for 12c, 10 for \$1.00; M. 2 for 15c, 10 for 60c; S. 10 for 40c; Blts. 30 for 25c.

ORANGE QUEEN (Pfitzer). A beautiful, coppery orange yellow. L. 2 for 10c, 10 for 40c; M. 10 for 25c; S. 10 for 15c.

ORANGE WONDER (Kemp). Tall, rich, clear orange. L. 2 for 12c, 10 for 50c; M. 10 for 25c; S. 10 for 15c.

ORCHID LADY (Spencer). A sensational early lavender, flowers unusually large, well placed on a tall, straight spike. L. 2 for 12c, 10 for 50c; M. 10 for 30c; S. 10 for 15c.

OREGON SUNSET (Piper). Pure, soft yellow, large flowers. L. 1 for 15c, 10 for \$1.20; M. 1 for 10c, 10 for 80c.

OTHELLO (Pfitzer). Beautiful violet-purplish blue, stems will curve quite a bit in hot weather. L. 1 for 15c, 10 for \$1.00; M. 1 for 10c, 10 for 60c.

OUR SELECTION (Ball). Salmon red, flecked deeper shades, often marked with slate. A blotch of cerise bordered cream on lower petals. L. 2 for 12c, 10 for 50c; M. 10 for 25c; S. 10 for 15c.

PATRICIA CARTER (Kunderd). A delicate shrimp-pink, most beautiful, small decorative prim. L. 2 for 12c, 10 for 50c; M. 10 for 30c; S. 10 for 15c; Blts. 50 for 25c.

PARADISE (Pruitt). A seedling of Picardy, which it resembles, but of an apricot shade, very fine. L. 1 for 35c, 3 for \$1.00; M. 1 for 25c, 3 for 70c; Blts. 50 for \$1.00.

PAULINE KUNDERD (Kunderd). Clear, rose pink, blending to cream, one of the most beautiful Glads there is. L. 1 for 15c, 10 for \$1.20; M. 1 for 10c, 10 for 80c; S. 2 for 12c, 10 for 50c.

PAUL PFITZER (Pfitzer). Tall, velvety purple, the most popular in this color. L. 2 for 12c, 10 for 50c; M. 10 for 30c; S. 10 for 15c; Blts. 40 for 25c.

PEARL OF CALIFORNIA (Kingsley). Most delightful, pure pink, very large number of flowers and buds to the spike. L. 2 for 12c, 10 for 50c; M. 10 for 30c; S. 10 for 15c; Blts. 30 for 15c.

PEERLESS PINK (Roozen). Deep salmon pink, large rounded flowers on tall spike. L. 1 for 20c; M. 1 for 15c; S. 1 for 10c.

PELARGONIUM (Douglas). Large, rosaline pink, edging of rosaline purple, with purple blotch. L. 1 for 15c, 10 for \$1.20; M. 1 for 10c, 10 for 80c; S. 10 for 30c; Blts. 25 for 15c.

PELEGRINA (Pfitzer). The richest and deepest of the blues. L. 1 for 10c, 10 for 80c; M. 2 for 15c, 10 for 50c.

PERSIA (N. B. Co.) Medium sized flowers of a very dark maroon, a so-called "black red." L. 2 for 12c, 10 for 50c; M. 10 for 25c; S. 10 for 15c.

PETER (Douglas). Clear purple, grandiflora type, classed as exhibition. L. 1 for 25c; M. 1 for 15c.

PETER GILHOLY (Douglas). A very choice scarlet, with white throat, good placement. L. 1 for 25c; M. 1 for 15c, 10 for \$1.20; S. 2 for 15c, 10 for 60c.

PFITZER'S TRIUMPH (Pfitzer). Huge, wide open flowers of salmon-orange red. L. 2 for 12c, 10 for 50c; M. 10 for 30c.

PHYLLIS McQUISTON (Stewart). Deep, glowing, shrimp pink, lighter throat, tall spike with 18 to 20 buds, with many open flowers. Exceedingly beautiful. L. 1 for 20c, 10 for \$1.60; M. 1 for 15c, 10 for \$1.20; S. 1 for 10c, 10 for 80c; Blts. 50 for 80c.

PICARDY (Palmer). Soft, shrimp pink, large and fine. Most outstanding Glad in this color. L. 2 for 12c, 10 for 50c; M. 10 for 25c; S. 10 for 15c; Blts. 50 for 25c.

PILGRIM (Miller). Finest LaFrance pink, with yellow throat. Very beautiful. L. 1 for 25c, 10 for \$2.00; M. 1 for 15c, 10 for \$1.20.

POLAR ICE (Pfitzer). Easily the most outstanding early, pure white of large size. L. 1 for 12c, 10 for \$1.00; M. 2 for 15c, 10 for 70c; S. 2 for 12c, 10 for 50c; Blts. 50 for 30c.

PRIMATE (Crow). A very tall robust Glad, good yellow and an early bloomer. L. 2 for 12c, 10 for 50c; M. 10 for 30c; S. 10 for 15c; Blts. 30 for 15c.

PRIMROSE PRINCESS (Salbach). Good primrose yellow, very popular. L. 2 for 12c, 10 for 50c; M. 10 for 25c; S. 10 for 15c; Blts. 100 for 25c.

PRINCE OF INDIA (Childs). Most unusual combination of orange, buff, salmon, slate, crimson, cream. L. 2 for 15c, 10 for 60c; M. 2 for 10c, 10 for 30c; S. 10 for 20c.

PROF. VAN SLOGTEREN (Alkemade). A beautiful, soft, flesh pink that is different from any other, the spike is straight, flowers large and well placed. Extra fine. L. 2 for 15c, 10 for 60c; M. 1 for 10c, 10 for 40c; S. 10 for 25c; Blts. 100 for 25c.

PURPLE QUEEN (Kunderd). Deep violet purple, medium size. Very decorative. L. 2 for 12c, 10 for 50c; M. 10 for 30c.

PURPLE VICTORY (Gilrey). A very large flower of deep maroon, more near purple than Purple Glory. Massive plant and spike. L. 1 for 25c, 10 for \$2.00; M. 1 for 15c, 10 for \$1.20; S. 1 for 10c, 10 for 80c; Blts. 15 for 25c.

QUEEN OF BREMEN (Zimmer). Fine, lavender pink, medium size flowers, on long slender spike. Very early. L. 2 for 10c, 10 for 40c; M. 10 for 25c; S. 10 for 15c.

QUEEN HELEN II (Salbach). Grenadine pink, pinard yellow blotch in throat, perfect placement. L. 1 for 15c, 3 for 30c; M. 1 for 10c.

QUEEN MARY (Mair). Large, creamy white flowers, blushed pink, exhibition type. L. 1 for 15c, 10 for \$1.20; M. 1 for 10c, 10 for 80c; S. 2 for 12c, 10 for 50c.

RAMESSES (Stevens). Red-purple, with deep crimson blotch, very unusual. L. 2 for 12c, 10 for 50c; M. 3 for 12c, 10 for 30c; S. 10 for 20c.

REAH (Salbach). Light purple, prominent dark blotch. L. 2 for 12c, 10 for 50c; M. 10 for 25c; S. 10 for 15c.

RED ADMIRAL (Roozen). Large, clear scarlet, with deeper blotch, strong grower, extra fine. L. 1 for 25c, 10 for \$2.00; M. 1 for 15c, 10 for \$1.20; S. 1 for 10c, 10 for 80c; Blts. 10 for 20c.

RED FIRE (Kunderd). Rich, pure, bright red, much admired. L. 2 for 12c, 10 for 50c; M. 10 for 30c; S. 10 for 15c.

RED GLORY (Piper). Rich, velvety red. L. 2 for 12c, 10 for 50c; M. 10 for 30c.

RED LORY (Errey). Very large, striking, rose red, deeper red blotch, up to 12 flowers open. L. 2 for 16c, 10 for 60c; M. 2 for 10c, 10 for 40c; S. 10 for 25c; Blts. 100 for 25c.

RED PHIPPS (Briggs). Florets not so large as Phipps, but much earlier, color a glowing red. L. 2 for 14c, 10 for 60c; M. 2 for 10c, 10 for 40c; Blts. 50 for 20c.

REDWOOD BEAUTY (Piper). Flame red, flecked darker, deep scarlet throat, bordered cream, intensely ruffled, heavy texture. A great novelty. L. 1 for \$1.20; M. 1 for 75c; S. 1 for 50c; Blts. 5 for 50c.

RICHARD DIENER (Diener). Geranium pink, with yellow throat, a very pretty Glad of the older varieties. L. 2 for 12c, 10 for 50c; M. 10 for 25c.

RITA BECK (Fischer). Clear shell pink, with delicate pencilling of scarlet on lower petals, exhibition Glad. L. 1 for 16c, 10 for \$1.20; M. 1 for 10c, 10 for 80c; S. 2 for 12c, 10 for 50c.

ROI ALBERT (Lemoine). Coppery salmon, creamy yellow markings in throat, a fine smoky. L. 2 for 12c, 10 for 50c; M. 10 for 30c; S. 10 for 15c; Blts. 20 for 15c.

ROSEMARIE PFITZER (Pfitzer). One of the very finest of recent years, extra large flowers of cream color with pink edges. Sometimes the whole flower is blushed pink, always beautiful. L. 1 for 25c, 10 for \$2.00; M. 1 for 15c, 10 for \$1.20; S. 1 for 10c, 10 for 80c.

ROZAN (Austin). Large flower of delicate rose pink, with creamy throat. L. 2 for 12c, 10 for 50c; M. 10 for 25c; S. 10 for 15c.

RUFFLED GOLD (Goodrich). An exceedingly fine ruffled yellow. L. 2 for 15c, 10 for 60c; M. 2 for 10c, 10 for 40c.

SALBACH'S ORCHID (Salbach). Colored the same lavender pink as a Cattleya orchid, similar in form to Minuet. L. 2 for 12c, 10 for 50c; M. 10 for 30c; S. 10 for 20c; Blts. 100 for 35c.

SALBACH'S PINK (Salbach). Large geranium pink, wide open flowers. L. 2 for 12c, 10 for 50c; M. 10 for 30c.

SALMON EMPEROR (Roozen). Salmon orange, deeper feather, 5 or more 5-inch flowers open, nicely ruffled. L. 1 for 15c, 10 for \$1.20; M. 1 for 10c, 10 for 80c; S. 10 for 40c; Blts. 50 for 30c.

SALMON ROSE (Miller). A very attractive salmon rose, good sized flowers on a nice spike. L. 2 for 12c, 10 for 50c; M. 10 for 30c.

SCHUBERT (Pfitzer). Creamy yellow, with rich, scarlet blotch, unusually attractive. L. 1 for 16c, 10 for \$1.20; M. 1 for 10c, 10 for 80c; Blts. 20 for 15c.

SCHWABEN GIRL (Pfitzer). A pure pink, no markings, large flowers and surprisingly early. L. 1 for 10c, 10 for 80c; M. 2 for 12c, 10 for 50c.

SEESTERN (Pfitzer). Large, pure pink, with red feather, six or more 5-inch flowers open on a straight spike. L. 1 for 20c, 10 for \$1.60; M. 1 for 15c, 10 for \$1.20; S. 1 for 10c, 10 for 80c; Blts. 20 for 25c.

SENATOR (Mair). Salmon pink, with slate flecking, cream blotch, one of Mair's grandest varieties. L. 1 for 25c; M. 1 for 15c.

Prices Are for Prepaid Delivery.

SENORITA (Salbach). Large flower of true orange, with carmine tongue and pencilling. L. 2 for 12c, 10 for 50c; M. 3 for 12c, 10 for 30c; S. 10 for 15c; Blts. 100 for 20c.

SENTINEL (Errey). Large salmon pink, blotched crimson on white, tall and very showy. L. 1 for 20c, 10 for \$1.60; M. 1 for 15c, 10 for \$1.20; S. 1 for 10c, 10 for 80c.

SHIRLEY TEMPLE (Pruitt). A very fine, brand new gladiolus, the entire flower is light cream, with the throat of deeper cream, beautifully ruffled, large, wide open blooms, with six of the 18 florets open at once, heavy substance. A real "comer." L. 1 for \$10.00; M. 1 for \$7.50; S. 1 for \$5.00; Blts. 1 for \$1.00. Prices net, not included for discounts.

SHOW FLOWER (Kunderd). Rose-red, large, white blotch, very showy. L. 2 for 15c, 10 for \$1.20; M. 2 for 10c, 10 for 80c.

SIR CHAS. FERGUSON (Martin). Clear, deep salmon pink, cerise lines, large flowers on well set spike, early bloomer. L. 1 for 16c, 10 for \$1.20; M. 1 for 10c, 10 for 80c; S. 2 for 12c, 10 for 50c; Blts. 50 for 35c.

SMILING MAESTRO (Christ). Deep salmon rose, many huge florets open at once. One of the world's finest. L. 1 for 40c, 10 for \$3.20; M. 1 for 25c, 10 for \$2.00; S. 1 for 15c, 10 for \$1.00; Blts. 10 for 15c.

SNOWDEN (Ball). A large white, with slight purple pencilling, well formed flowers and spike. L. 2 for 16c, 10 for 60c; M. 2 for 10c, 10 for 40c; S. 10 for 25c.

SOLVEIG (Prestgard). Large, ruffled white, with carmine feather, wide open flowers of heavy texture and fine form. Extra fine. L. 1 for 40c, 10 for \$3.20; M. 1 for 30c, 10 for \$2.60; S. 1 for 20c, 10 for \$1.60; Blts. 10 for 25c.

SOUTHERN CROSS (Whiteley). Fine, deep red, no markings, the tall spike carries 7 to 8 large open flowers out of 20 buds, doesn't burn in the hottest weather. L. 1 for 10c, 10 for 80c; M. 2 for 12c, 10 for 50c; S. 10 for 30c; Blts. 50 for 25c.

SPRING (Hoeg). Eosine pink, white throat, very beautiful Glad. L. 1 for 25c, 10 for \$2.00; M. 1 for 15c, 10 for \$1.20.

STAR (Douglas). A scarlet-red, creamy white medial lines, maroon throat, stippled white. Unusual and pretty. L. 1 for 40c; M. 1 for 25c; S. 1 for 15c.

STAR OF BETHLEHEM (Pfitzer). New, pure white, very large flower, fine exhibition Glad. A sure winner. L. 1 for 25c, 10 for \$2.00; M. 1 for 15c, 10 for \$1.20; S. 1 for 10c, 10 for 80c; Blts. 10 for 35c.

ST. BRUNO (Mair). Color, brownish salmon. Distinctive blue edging, giving a smoky orange effect. L. 1 for 15c, 10 for \$1.20; M. 1 for 10c, 10 for 80c; S. 2 for 12c, 10 for 50c; Blts. 10 for 20c.

ST. CUTHBERT (Mair). Dark red, with white center. Tall, well set spike. L. 1 for 15c, 10 for \$1.20; M. 1 for 10c, 10 for 80c; S. 2 for 12c, 10 for 50c.

STUTTGARDIA (Pfitzer). A large, brilliant, orange-scarlet, no blotch or markings. L. 2 for 15c, 10 for 60c; M. 2 for 10c, 10 for 40c; S. 10 for 25c.

SULTAN (Crow). Large, velvety rose-red, nicely ruffled, many open. L. 1 for 10c, 10 for 80c; M. 2 for 15c, 10 for 60c; S. 2 for 10c, 10 for 40c; Blts. 25 for 20c.

SUNSHINE GIRL (Stevens). Clear pink, with lovely yellow throat, very beautiful and early. L. 2 for 12c, 10 for 50c; M. 10 for 30c; S. 10 for 20c; Blts. 100 for 25c.

TAIAROA (Miller). Salmon pink, flaked slate, with purple blotch. Many large well placed flowers open. L. 1 for 30c; M. 1 for 20c; S. 1 for 10c.

TAKINA (Burns). Another giant from New Zealand, color rosaline purple, lightly flaked darker, massive plant and flower. L. 1 for \$2.00; M. 1 for \$1.40; S. 1 for 85c; Blts. 3 for 50c.

TARO (Kunderd). Deep, rich rose, uncommon shade, tall and strong. L. 2 for 12c, 10 for 50c; M. 10 for 30c; S. 10 for 15c.

THAIS VALDINAR (Diener). Old rose, shaded vermilion red, clear color, an unusual shade. L. 2 for 12c, 10 for 50c; M. 10 for 30c.

THALIA (Douglas). Rose doree, with white throat, has been highly recommended. L. 1 for 25c; M. 1 for 15c.

THE ORCHID (Sprague). Orchid type and color of a delicate and refined lavender shade. L. 2 for 12c, 10 for 50c; M. 10 for 25c; S. 10 for 15c.

THOS. A. EDISON (Kunderd). Very dark, velvety red, intensely ruffled. L. 1 for 15c, 10 for \$1.20; M. 1 for 10c, 10 for 80c; S. 2 for 12c, 10 for 50c; Blts. 15 for 15c.

TIP TOP (Pfitzer). A flashing, large red. L. 1 for 30c, 10 for \$2.40.

Our Satisfied and Enthusiastic Customers Are Many.

TOA (Miller). Another large, husky Glad from New Zealand. Tall, straight spikes, florets large, of a rosy salmon color with darker blotch. L. 1 for 40c, 10 for \$3.20; M. 1 for 30c, 10 for \$2.40; S. 1 for 20c; Blts. 5 for 20c.

TOBERSUN (Austin). A tall, deep, rich yellow, late bloomer. L. 2 for 12c, 10 for 50c; M. 10 for 30c.

TRIUMPHATOR (Krelage). A magnificent early variety, with up to 8 large, well formed flowers of a glowing orange red, throat slightly dusted sulphur. L. 1 for 16c, 10 for \$1.20; M. 1 for 10c, 10 for 80c; S. 2 for 12c, 10 for 50c; Blts. 50 for 50c.

TROUBADOUR (Pfitzer). Large flower of a clear, deep purple, many open. L. 1 for 10c, 10 for 80c; M. 2 for 12c, 10 for 50c.

TUTANIKAI (Doney). This great New Zealand Glad is capable of producing a monstrous spike. Large flowers of bitter-sweet orange, base flecked russet brown, with cream blotch. L. 1 for 25c, 10 for \$2.00; M. 1 for 15c, 10 for \$1.20; S. 1 for 10c, 10 for 80c; Blts. 10 for 20c.

VEILCHENBLAU (Pfitzer). This violet blue is the most popular of the older "blues." L. 2 for 12c, 10 for 50c; M. 10 for 30c; Blts. 25 for 10c.

VICTOR (Errey). A brilliant, lively scarlet, with clear white throat. L. 2 for 12c, 10 for 50c; M. 10 for 30c; S. 10 for 20c.

WAIRANGI (Doney). Large, light purple, with creamy throat, tall, well set spike. L. 2 for 12c, 10 for 50c; M. 10 for 30c; S. 10 for 15c; Blts. 100 for 40c.

WASAGA (Palmer). Buff prim grand, with wide open waved blooms. L. 1 for 10c, 10 for 80c; M. 2 for 12c, 10 for 50c; S. 10 for 25c.

WEDGEWOOD (Austin). Dark, rich, violet blue, with satiny lustre, medium sized flower. L. 2 for 16c, 10 for 60c; M. 2 for 10c, 10 for 30c.

WHEREO (Burns). Immense, scarlet red, up to 10 large flowers open at one time, good lasting substance. Not included for discounts. L. 1 for \$2.00; M. 1 for \$1.25; S. 1 for 75c; Blts. 1 for 20c.

WHITE BEAUTY (Kelway). Medium, large, white flowers, throat apricot buff, with feather of rosaline pink. L. 1 for 16c, 10 for \$1.20; M. 1 for 10c, 10 for 80c.

WHITE ORCHID (Bill). Most refined creamy white, nicely frilled, florets resembling an orchid. L. 1 for 10c, 10 for 80c; M. 2 for 12c, 10 for 50c; S. 10 for 25c; Blts. 100 for 60c.

WINKLE (Douglas). Clear, light lavender blue, with white blotch in throat, medium size flowers. L. 1 for 25c; M. 1 for 15c; S. 1 for 10c; Blts. 10 for 25c.

WURTEMBERGIA (Pfitzer). Very large red, with white throat, one of Pfitzer's best. L. 1 for 10c, 10 for 80c; M. 2 for 12c, 10 for 50c; S. 10 for 25c; Blts. 20 for 15c.

W. VON GOETHE (Pfitzer). Rich salmon red, very large flower, extra fine. L. 1 for 16c, 10 for \$1.20; M. 1 for 10c, 10 for 80c; S. 2 for 12c, 10 for 50c; Blts. 15 for 20c.

YELLOW EMPEROR (Ellis). An extra fine soft yellow, florets of good size, well placed on a massive spike. L. 1 for 25c, 10 for \$2.00; M. 1 for 15c, 10 for \$1.20; S. 1 for 10c, 10 for 80c; Blts. 25 for 20c.

YELLOW PERFECTION (Pfitzer). Medium colored yellow, every spike straight and fine. L. 2 for 14c, 10 for 60c; M. 2 for 10c, 10 for 40c; S. 10 for 25c; Blts. 25 for 15c.

YELLOW ROSE (Stevens). A most refined small decorative. Color, lemon yellow, opening buds resemble a rose on account of an extra petal to each flower. L. 1 for 25c, 10 for \$2.00; M. 1 for 15c, 10 for \$1.20; S. 1 for 10c, 10 for 80c; Blts. 15 for 25c.

YVONNE (Velthuys). Large white, tinted pink, cerise throat markings. L. 2 for 12c, 10 for 50c; M. 10 for 30c; S. 10 for 15c.

ZEPHIA (Gilrey). Large lavender pink, to creamy white, lemon and violet throat markings, unusual. L. 1 for 25c, 10 for \$2.00; M. 1 for 15c, 10 for \$1.20; S. 1 for 10c, 10 for 80c.

ZILLAH (Douglas). Begonia-rose, blended pale rose-pink, velvety burned lake on cream blotch. L. 1 for 50c, 10 for \$4.00; M. 1 for 30c, 10 for \$2.40; S. 1 for 20c, 10 for \$1.60.

We are forced to reduce our plantings, due to the ever-increasing difficulty in securing reliable labor needed for our industry. We must close out two to three hundred varieties, and will offer small lots at such Bargain Prices that any one interested could not afford to resist them.

We will try to get out a Special Bargain List, in late April, when we will know just what we have to offer.

If you are interested in buying the whole stock, of any variety, we want to close out, send us a card for this list. We want to reduce our plantings to about one hundred varieties, if this is possible.

Wholesale Prices - "Prepaid"

25 at 100 rate 250 at 1000 rate	Per	Large 1 1/4 up	Medium 3/4-1 1/4	Small 1/4-3/4	Per	Bullets Price
BETTY JOY	100	\$3.60	\$2.20	\$1.60	1000	\$2.50
BETTY NUTHALL	100	3.00	1.60	.90	1000	1.00
BOB WHITE	100	6.00	4.00	1000	3.00
CARA MIA	100	3.00	2.00	1.00	1000	1.00
CAROLUS CLUSIUS	100	3.00	1.80	.90	1000	.60
CHAS. DICKENS	100	2.00	1.00	1000	.75
COMMANDER KOEHL	100	2.40	1.20	1000	1.50
CONSTANCY	100	4.00	2.00
CRINKLES	100	3.75	2.00	1.00	1000	1.00
DR. MOODY	100	3.20	2.00
ELIZABETH SWARTLEY	100	3.20	2.50	1.25	1000	1.00
EMMA	100	5.00	3.00
FLAMING SWORD	100	3.00	2.00	1.00	1000	.75
FRANK J. McCOY	100	4.00	2.40
GEORGE ARENDS	100	3.00	2.00	1.00	1000	.75
GLADDIE BOY	100	3.75	2.25	1.25	1000	1.10
GOLD EAGLE	100	2.80	1.60	.90	1000	.50
GOLDEN DREAM	100	3.00	2.00	1.00	1000	.60
HELEN HOWARD	100	3.00	2.00
JANE ADDAMS	100	2.00	1.00	1000	.75
JOHN S. BACH.....	100	26.00	16.00	10.00	100	4.00
LOYALTY	100	3.20	2.00	1.00	1000	.80
MAMMOTH WHITE	100	4.00	2.40	1.25
MAORILAND	100	6.00	4.00	1000	4.00
MILADY IMOGENE	100	4.00	2.50	1.30	1000	2.50
MRS. F. C. HORNBERGER	100	1.60	.90
MURIEL	100	3.60	2.00
NETHERLAND PRINCE	100	8.00	5.00	3.00
NOEL L. REEVE	100	8.00	5.00	1000	8.00
NORMANDA	100	4.00	2.00	1.00
OLIVE GOODRICH	100	4.00	2.00
ORANGE PRINCESS	100	8.00	5.00	3.00	1000	6.00

WHOLESALE PRICES - PREPAID

(Continued)

25 at 100 rate 250 at 1000 rate	Per	Large 1¼ up	Medium ¾-1¼	Small ¼-¾	Per	Bulblets Price
ORANGE QUEEN	100	3.20	2.00	1.00
ORANGE WONDER	100	4.00	2.25
PAUL PFITZER	100	2.20	1.00
PEARL OF CALIFORNIA	100	4.00	2.20	1.00
PICARDY	100	3.50	2.00	1.00	1000	.60
PICARDY	1000	14.00	8.00
POLAR ICE	100	8.00	1000	5.00
PRIMROSE PRINCESS	100	3.50	1.80
PROFESSOR VAN SLOGTEREN..	100	4.00	2.80	1.60	1000	2.00
QUEEN OF BREMEN	100	3.00	1.80	.90	1000	.80
RED LORY	100	5.00	3.20	2.00	1000	2.00
ROZAN	100	3.20	1.80	1.00
SALMON EMPEROR	100	8.00	5.00	3.00	1000	5.00
SEESTERN	100	10.00	6.00	4.00	1000	5.00
SIR CHAS. FERGUSON	100	10.00	6.00	4.00	1000	5.00
SMILING MAESTRO	100	15.00	9.00	1000	8.00
SOUTHERN CROSS	100	5.00	3.00	1000	3.00
SUNSHINE GIRL	100	3.80	2.20	1.40	1000	.80
TARO	100	4.00	2.40	1.20
THAIS VALDIMAR	100	4.00	2.20
THE ORCHID	100	1.80
TRIUMPHATOR	100	8.00	5.00
WHITE ORCHID	100	6.00	3.20
YVONNE	100	4.00	2.40

SPECIAL COLLECTIONS

For the many "Home Gardeners" that want a lot of nice flowers and don't care particularly about the name of each variety, we will make up well-balanced collections of all named varieties to include all the principal colors and shades of such kinds as we would want to grow ourselves for our own enjoyment. **But they are not labeled** as to varieties, which enables us to make a substantial saving in labor and materials. This saving we pass on to our customers. The phenomenal increase in our sales from year to year of these **unlabeled collections** proves our customers' appreciation of super-values. For a longer blooming season, we would recommend the planting of both large and medium bulbs.

No. 1—Unlabeled Collection:

100 large bulbs, 1 $\frac{1}{4}$ -inch and up, in all the principal colors and shades.

100 for.....\$3.00 50 for.....\$1.75 25 for.....\$1.00

No. 2—Same collection as above in medium size bulbs, $\frac{3}{4}$ to 1 $\frac{1}{4}$ -inch:

100 for.....\$2.00 50 for.....\$1.25 25 for.....\$0.75

No. 3—Unlabeled—Special Collection:

This collection will contain more of the newer varieties and includes all most desirable colors and shades. A wonderful collection at a moderate price.

100 large bulbs for \$5.00 50 bulbs for \$2.75 25 bulbs for \$1.50

No. 4—Same as above, medium size bulbs:

100 for.....\$2.75 50 for.....\$1.50 25 for.....\$0.80

No. 5—Unlabeled Collection De Luxe:

This collection contains still a larger percentage of the newer and finer varieties, including many exhibition types, and of imported varieties. Many pleasant surprises can be expected from this collection at blooming time. Matchless value for the money. Would cost much more than double if labeled.

100 large bulbs for \$10.00 50 bulbs for \$5.50 25 bulbs for \$3.00

No. 6—100 medium size bulbs as above for \$6.00; 50 medium bulbs for \$3.50.

These collections are subject to same discount as all other listings in this catalogue.

Shipping Charges Prepaid.

GLADIOLUS COLLECTIONS

\$3.00 Labeled Collection "A", Prepaid

All Large Bulbs 1 1/4-inch or over Labeled.

2 Aida	3 Gloriana
2 Bertie Snow	3 Golden Dream
3 Betty Joy	2 Helen Howard
3 Blue Torch	2 King George
3 Carolus Clusius	2 Mammoth White
2 Chas. Dickens	3 Marnia
3 Crinkles	3 Miss Joy
3 Ella Day	2 Mrs. P. W. Sisson
2 Emma	2 Olive Goodrich
3 George Arends	3 Picardy

\$1.75 Labeled Collection "AA", Prepaid

Same kinds and same number of bulbs as in collection "A", but **medium** size, 3/4 to 1 1/4.



\$5.00 Labeled Collection "B", Prepaid

All Large Bulbs 1 1/4-inch or larger Labeled.

1 Beat All	2 Paul Pfitzer
1 Capt. Brandt	2 Polar Ice
2 Constancy	2 Prof. Van Slogteren
2 Dorothy Dell	2 Ruffled Gold
2 Janet	2 Salmon Emperor
2 Libelle	2 Seestern
2 Mary Elizabeth	2 Sir Chas. Ferguson
1 Naomi	2 Triumphator
2 Netherland Prince	2 White Orchid
2 Orange Princess	2 Yellow Perfection

\$2.75 Labeled Collection "BB", Prepaid

Same kinds and number of bulbs as in collection "B", but bulbs are **medium** size, 3/4 to 1 1/4.

GLADIOLUS COLLECTIONS

\$10.00 Labeled Collection "C", Prepaid

All Large Bulbs 1 1/4-inch or over Labeled.

2 Chas. Lindberg	2 Mildred Louise
2 D. A. Hay	2 Moorish King
2 Edith Robson	2 Mrs. E. J. Heaton
3 Gate of Heaven	2 Noel L. Reeve
3 Gladness	2 Oh Boy
2 Gypsy Girl	2 Phyllis McQuiston
3 Jean Phyllis	2 Purple Victory
2 John S. Bach	2 Solveig
2 King Arthur	2 Star of Bethlehem
2 Maoriland	2 Zillah

\$6.00 Labeled Collection "CC", Prepaid

Same kinds and same number of bulbs as in Collection "C", but **medium** size,
3/4 to 1 1/4-inch.



SECOND CHOICE, PLEASE

Sooner or later, some kinds and sizes of glad bulbs will be sold out. It will save a lot of time and correspondence if you will kindly name a few varieties that we may send in case we are out of any on your order, or say we may send some other size, or if you wish, permit us to send you something good of our own selection. In appreciation of your help, we will slip in a few extra bulbs in your order as our thanks.

PEONIES

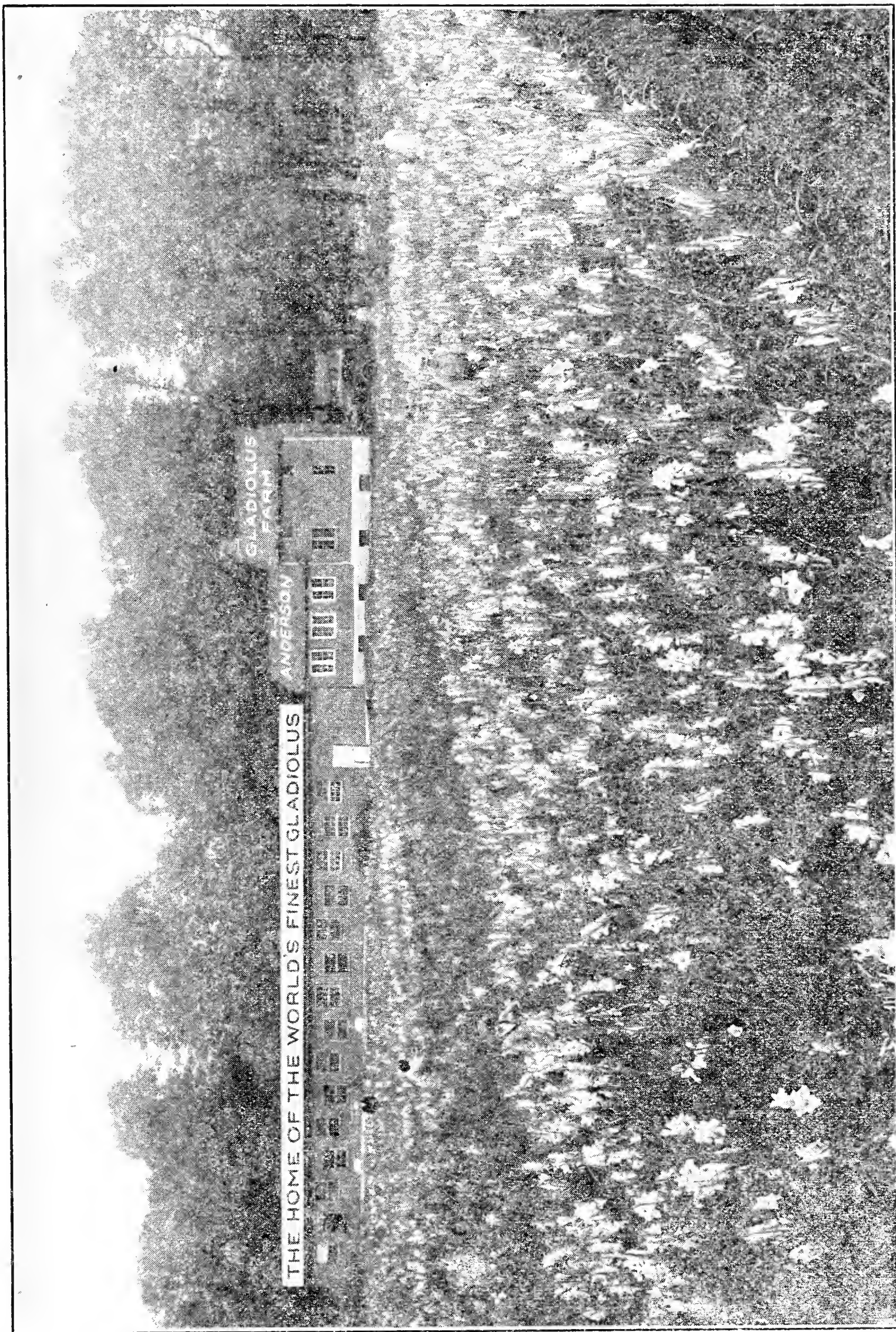
We have quite a large planting of Peonies coming three years old that will be ready to divide next September, consisting of the very choicest of the newer and near new varieties and a number of the finest of recent introductions that are very rare. Any one interested in getting a start with this beautiful flower in the most outstanding varieties, make a note of it on your order or send us a card for list of offerings. It will be to our mutual advantage. List will be out in August.



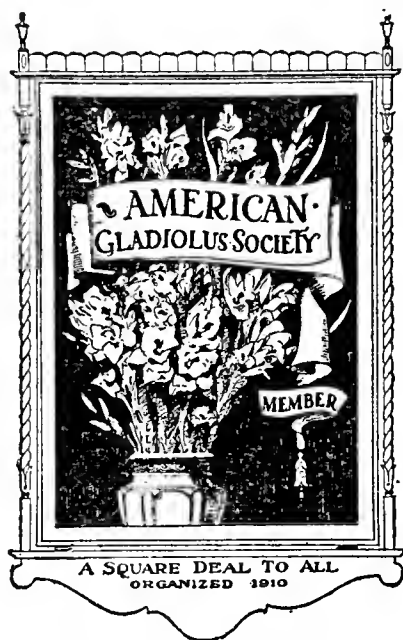
Gladiolus

Golden Goddess

As this variety is patented it cannot be sold or transferred without the written consent of Mr. Carl Salbach.



Above is a picture of our drying shed and our cleaning and packing room, with one of our two bulb storage basements under buildings.



Every Glad Lover

ought to belong to a Gladiolus Society, the cost is small and the benefits great. AMERICAN GLADIOLUS SOCIETY welcomes you, send \$2.00 to the secretary, Roscoe Huff, Goshen, Ind.

MINNESOTA GLADIOLUS SOCIETY (a fast growing organization) invites you to become a member. The cost is \$2.00 per year and worth more to any Glad lover. Send your remittance to: A. J. Mandehr, 1134 Palace St., St. Paul, Minn. Or if you wish you may include the \$2.00 with your bulb order and I will forward it for you.

FREE MEMBERSHIP OFFER in the Minnesota Gladiolus Society in place of discounts offered elsewhere with an order for \$10.00 or more (for new members only). You will get full value in bulbs for your money. We want more new members, your gain.

Cordially yours,

A. J. ANDERSON

White Bear Lake,

Minnesota
