

## **Historic, archived document**

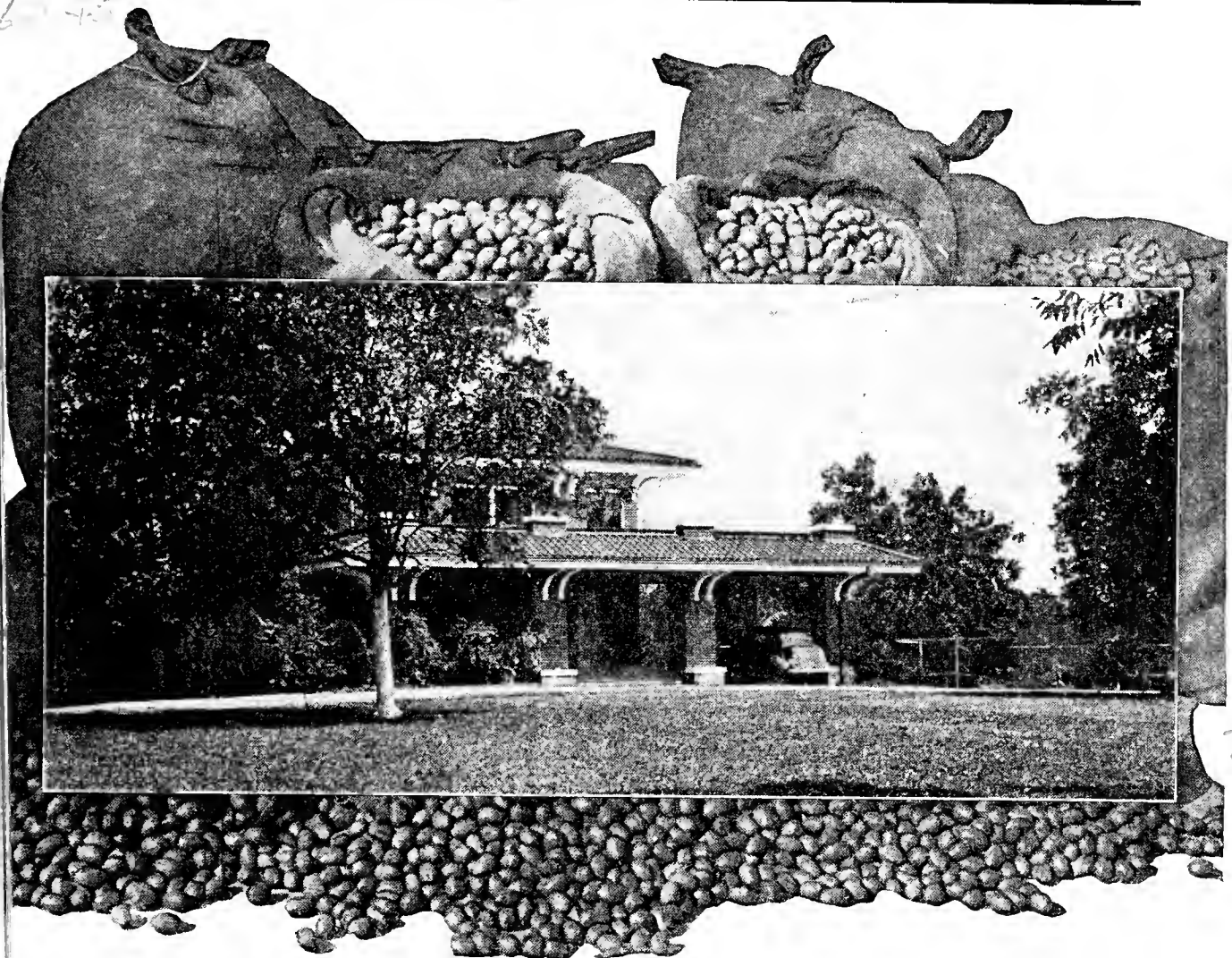
Do not assume content reflects current scientific knowledge, policies, or practices.



Pecans Paid for This Home! They Can Bring an Income for Life, Too!

1000000

Sec. 562, P. L. & R.  
U. S. POSTAGE  
**1c Paid**  
Lumberton, Miss.  
Permit No. 1



**NOW** You Can Plan For Your  
**Near Future Independence**  
**In a Delightful Way!**

From **BASS PECAN COMPANY**, Lumberton, Mississippi  
The Largest Growers of Pecan Trees in the World

*Fruit & Vegetable Crops &  
Diseases.  
Bureau of Plant Indust.  
U. S. Dept. of Agri.  
Washington  
112.*



I. H. BASS  
President, Bass Pecan Co.

# “Pecans Saved Us!”

## A Personal Message from Our President

**W**ERE it not for pecans, I don't know what would have happened to our firm and family during the depression. They proved to be our lifesaver! Many people did not buy pecan trees as they wished, for they just did not have the money. Consequently our business, like everyone else's, dropped considerably. And rather than let our trees and grounds go down, as did many other nurserymen, we took the same fine care of our property and growing trees as ever before. This cost us plenty of money.

Also, in spite of the fact that pecans have been cheap in price, and even though we have had droughts and other calamities during the years of the depression, we got lots of pecans and they made money for us at a time when we could not sell much of anything else for cash. They enabled us to provide a living, pay taxes, keep our business going, and educate our children (four in school—three in college).

So with pecans, we were not only **PREPARED FOR THE DEPRESSION**, but we made more on them than we could have with anything else.

At the same time, our orchards kept growing, adding to their own value, as well as to the value of our land, and in each year to come, they will yield us an even greater income.

We could have stopped all efforts during the depression and simply coasted without further sale of trees. We could quit now and retire, but we love our work and have pride in the name and extent of our firm which has been carried on for twenty-eight years, and a third generation is now growing up to continue our life work.

We owe everything to pecans. Give them a chance to become your friends, too. And since times are better — **“NOW YOU CAN PLAN FOR YOUR FUTURE INDEPENDENCE IN A DELIGHTFUL WAY!”**

I. H. BASS



Here reigns contentment—and ever growing prosperity. A good-paying pecan grove.



Cows and pecans mix nicely—to their owner's profit.

## Pecans and Cattle---

**A great combination that provides immediate and future income and complete INDEPENDENCE**

**O**UR OWN orchards and nurseries make excellent proving grounds. First, by experiment, and then by actual practice we have learned that pecans and cattle make a most profitable combination. The land between the rows of trees is thus utilized and, as the livestock graze, keeping down the grass and weeds, they fertilize that land. We have saved thousands of dollars on fertilizer alone through this method. Also we do not need extra grazing land, nor do we have to tie up land solely for pasture, keeping it otherwise idle. Good clover will produce good milk and good meat and thus bring in an immediate income while your pecan trees are growing, and as they bear nuts there will be that double income.

### **Nature's Insurance that Pays Dividends from the very beginning!**

**W**HEN you plant pecan trees and plan to give them the attention they deserve, you are really taking out an Insurance Policy with Nature! This policy will start maturing in just a few years time and provide a regular income for you. It will prove to be a trust fund, furnishing you with a steady income whereby you may retire and become completely independent.

The only "premium" to be paid, after planting the finest of trees, is to keep the ground properly cultivated, and by planting crops between the rows, or clover for cattle, you will be paying that premium in an easy way, the income from which crop or cattle will produce immediate revenue.

From the very beginning, Nature starts paying dividends, for your land increases in value *as soon as trees are planted*, and the older they become the greater its value. Nature is kind to those who have the foresight to look ahead—to plan—and to plant!

*"A Stuart pecan tree bought of you hasn't less than 500 or 600 pounds of pecans this year. One limb has at least 25 to 30 pounds."*—DR. G. A. MOORE, EUTAW, ALA.





Pecan trees growing in our nursery. Note size and uniformity of our straight healthy stock.

## An Investment That's Better than Bonds, Safer than Stocks

**I**T'S MUCH better and healthier to clip your own "coupons" from pecan trees. Stocks and bonds are subject to someone else's management—the honesty and ability of strangers. How many instances there are of people who have invested their life earnings in worthless paper, whereby an even smaller investment in *papershell pecans* would have made it possible for them to retire early in life, be independent, care-free and happy!



One of our three-year-old trees heavily loaded with blooms!

Stocks and bonds fluctuate in value, and there's always that risk of them going down, whereby a pecan orchard is ever *increasing in value*. And they grow for centuries!

We could cite many instances of marvelous investments in pecans. Just a few typical ones may be found on Page 17. Pecan trees have withstood the test of time, depression and the elements, and many southern fortunes have been begun, and built, with these precious nuts.

## Pecans Paid Better than Any other Crops During the Depression

**P**ECANS proved to be the only crop during the depression that paid well. *You didn't hear any talk about plowing up the third row of pecans or cutting down every third tree!*

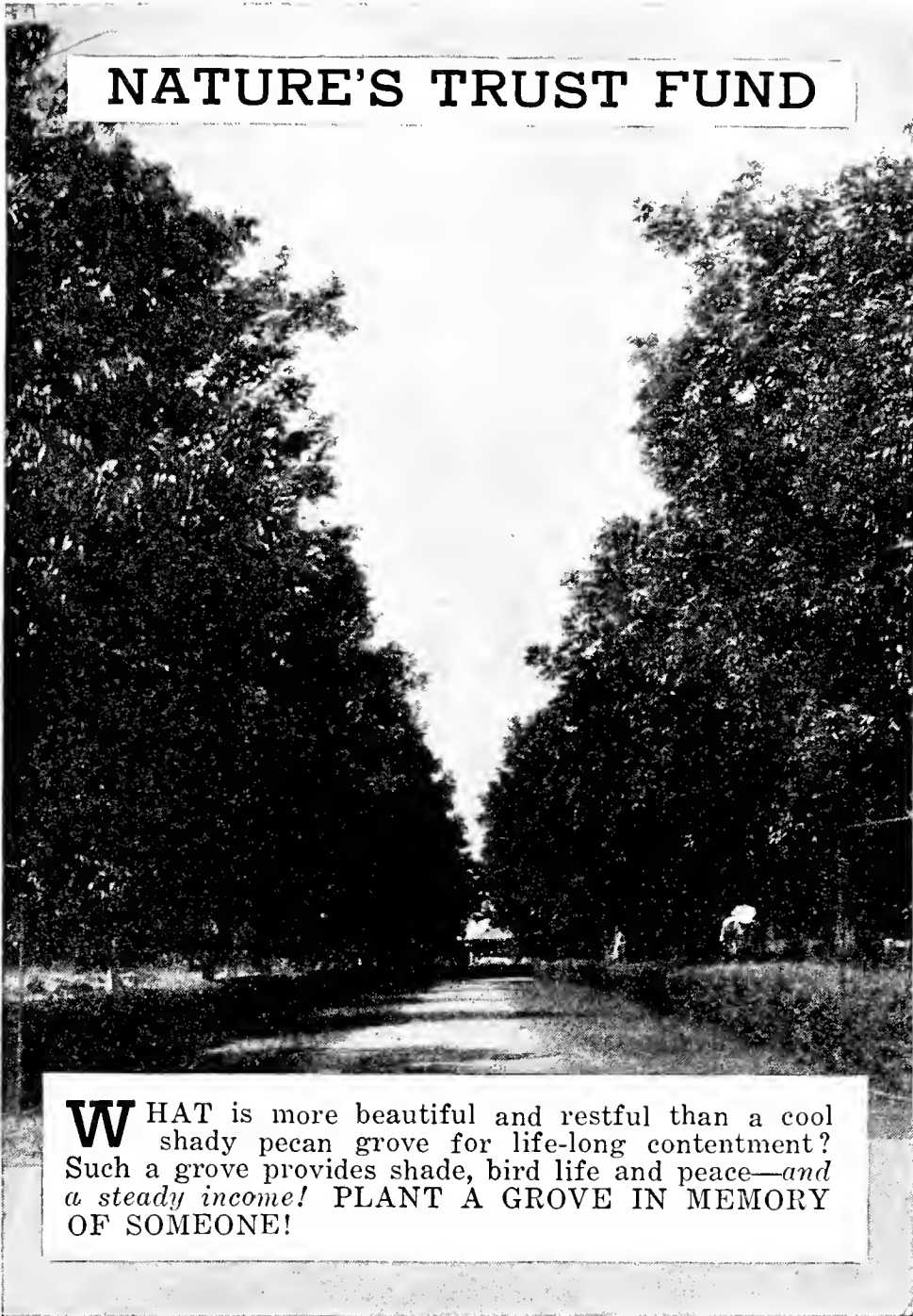
It is true that the growers didn't get the price they had been getting, but other things were low, too—cotton, corn, wheat, hogs, etc. At the same time, labor costs were lower—don't forget that!

And remember this! All during that time, the trees were growing, thus adding to their own productiveness and value for the forthcoming years, and increasing the value of the land.

We'd rather grow pecans at 10c a pound than cotton at 25c.

*"The 50 pecan trees bought from you ten years ago have been a blessing. They are now bearing large pecans which I am selling at a good price."*—ROBT. DESELLE, CHENEYVILLE, LA.

## NATURE'S TRUST FUND



**W**HAT is more beautiful and restful than a cool shady pecan grove for life-long contentment? Such a grove provides shade, bird life and peace—and a steady income! PLANT A GROVE IN MEMORY OF SOMEONE!

## A Living Memorial and a Valuable Legacy to Leave Behind

**A**N ESTATE to leave your family and children (and future generations) is a pecan grove. It is more valuable than actual gold. Stocks and bonds may fluctuate, and money may be quickly spent—so a fortune may be soon gone forever. But with a pecan grove, growing all the time, and increasing in productiveness with age, there is a regular income, like a trust fund, to insure revenue, college education, etc. Each year the dividends grow larger.

So leave, as an heirloom, a pecan grove. *At the same time it will prove to be a living monument that will carry your name and foresight down through the ages!*

*"Your pecan trees had a very heavy crop this year. I gathered nearly 500 pounds. All were well filled out. Your Stuart has no superior."*—HON. GEO. B. NEVILLE, MERIDIAN, MISS.

# We are Selling Happiness, Income, Independence, Peace, Old Age Ease

**O**UR PECAN trees are only the means to the end. We are not seeking to sell you merely some trees, but to supply what those trees may mean for you and what they can provide. We know by our own experience and that of thousands of our customers, over a period of twenty-eight years, that our pecan trees may yield for you a steady income, ultimate independence, retirement and happiness. And this applies not only to your immediate family but for future generations as well.

## How Pecans Fit In With Current Affairs

**W**E HEAR a lot of talk these days about Sharing the Wealth, but no legislation is needed as long as there are pecans. These nuts are nuggets from Nature's Gold Mine and with them you can share in her storehouse of wealth.

Nor need you worry about an Old Age Pension, for with pecans you are assured independence in your old age.

We hear a lot these days about Soil Control. A few pecan trees will do much to prevent erosion. Also, planted in that gully already formed, these trees will add value to otherwise worthless land.

You don't have to worry about Unemployment Insurance when you can have pecan trees working for you day and night. In just a few years you may be able to retire.



Cattle and pecans go hand in hand.



## How You Can Profit In This Aftermath of the Depression

**Y**OU may have some idle land or even farm land which produces hardly enough to pay taxes. It would pay you to plant that land in pecans! The very minute the land is planted in growing trees you will have increased its value. Then the older the trees, the more valuable the land. You could do as we do here at Lumberton, not only grow pecan trees, but crops between the rows, along with fruits and berries, and have livestock grazing among the trees.

It would even pay you to buy up cut-over or other idle land and plant it in pecans for resale. *Land is cheap now and before values increase* you could make considerable money by following our suggestion. Meanwhile, an additional source of revenue.

## Your Land will Do Double Duty

**W**HY devote a piece of land to just one crop? With pecans you can put your land on a double shift. If you have growing crops, pecan trees won't interfere.

Even on land just set out with pecans, crops can be planted between the rows. Peas, beans, clover and other leguminous crops will enrich the soil. Cotton, corn, sweet potatoes, watermelons and all kinds of truck, as well as strawberries and other fruits may be grown. After the trees are a few years old, cattle, hogs, mules, horses and other livestock, which is the most profitable type of farming, can be handled.

*"My five year old trees are doing fine and have a right fair crop of nuts this year."*—JOS. A. J. STANFORD, SNOW HILL, MD.



## You Won't Have To Work or Worry *all your life with trees like these*

**W**ITH such vigorous trees as ours you, too, may be able to retire early in life. For example, one of our \$1.00 trees, now produces over 240 pounds of nuts each season (see illustration, Page 10). What an investment! Suppose you had a hundred such trees!

With healthy, thrifty trees, bred-up from early and heavy bearing parents, with our experience in selection and inspection, dug by our experts—all with a wonderful root system—and our proper packing and shipping, we know what our trees can do for you. We know, too, what they have done for others. With such fine trees as we will ship you, you can rest assured of early production, and a vigorous growth and increasing yield, if the trees are properly cared for.

Then you can depend on a steadily growing income, and in time, with a grove of these fine trees you will be able to retire, as others have done.



This young tree, full of blooms, will be loaded with nuts in the Fall

## Create a College Fund with Pecans!

**P**ECANS made it possible for our president and his brothers and sisters to attend and complete college. Pecans are now putting three of the Bass children of the present generation through college and two more will attend, there having been created a special college fund for them. All this through the income from pecans.

This is therefore not simply theory nor a dream about possibilities. It is happening constantly throughout the South and has affected our own children as it may affect yours.

Create a college fund for your children with Pecans!

## Make Pecans Your Hobby!

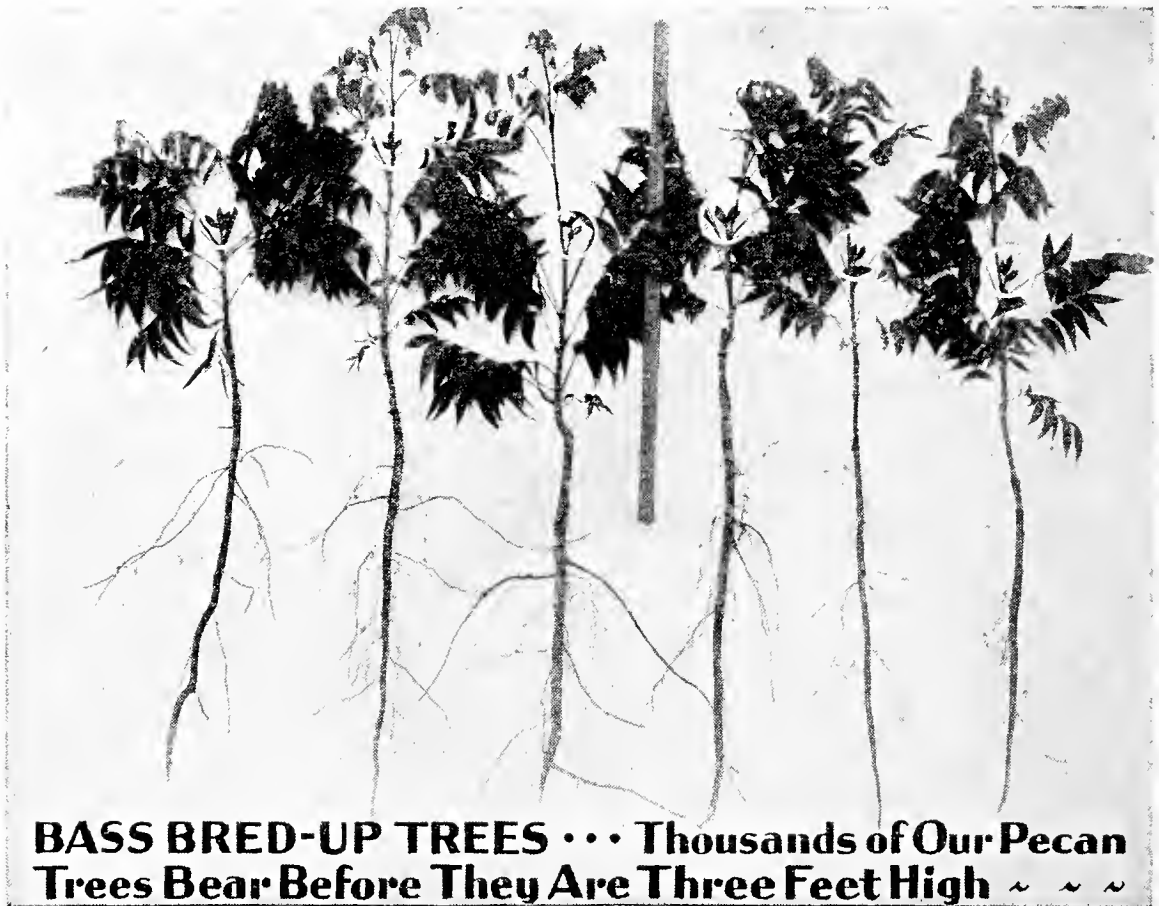
**A** BUSINESS man, banker or professional man needs an avocation—a hobby—"a safety valve" to take his mind from his work. Perhaps you have idle land. Why not plant it in pecans? Then you'll have something to interest you and at the same time will reap a wonderful dividend each year, enough to allow for retirement. Better than life insurance, considering an income for posterity. This is not merely a painted picture of wealth. Facts are facts.

---

Perhaps you are a professional or business man, especially in the city, and your hope is to retire some day in a quiet place in the country. Pecans may make it possible.

---

"It might interest you to know that I have just gathered 162 pounds fine Success pecans from one of your 4-5 ft. trees planted Nov. 1922."—W. A. ELLIOTT, BRICKEYS, ARK.



**BASS BRED-UP TREES . . . Thousands of Our Pecan Trees Bear Before They Are Three Feet High ~ ~ ~**

## Bass Pecan Trees are Early Bearing and Heavy Bearing Bred Up From **Known** Bearing Parents!

**N**OW listen to these superlatives *but each one is true*. The Bass pecan trees will live better, grow faster, bear earlier, bear bigger and finer pecans, bear more heavily, bring more money and sell more quickly than other nuts, not as good, and will prove to be the cheapest in the end, all because they are the finest trees.

We, ourselves, have one among the largest groves in the entire country and know exactly what our own trees will do. From these *known* bearing parents we breed up our seedlings by taking buds and grafts from our early and heavy-bearing trees. Many nurserymen take their buds and grafts from young nursery trees that have never borne, so they do not know just what kind of parent tree they are from. But with us, each tree from which we get our buds and grafts has a fine bearing record.

When you buy Bass trees you get pedigreed trees, so to speak!

### *And Here's Another Result of our superlative Trees:*

"I am more than satisfied with the trees I bought from you six and seven years ago. Every one has proved true to name, and I have gathered quite a few of them. They are nicer and larger than any around this country anywhere. Some of them with the hull on them were larger than the average hen egg. I sold some of my Stuart pecans for 35c per pound and will not have enough to supply the demand."—*Luke Hopkins, Bremond, Texas, Oct. 28, 1935.*

"The five acres planted in your pecans in 1930 exceeded my expectations. We got pecans the second year. Some of the trees are higher than my house."

THOS. B. DICKSON, PIEDMONT, S. C.

# It Will Pay You To Plant Only the Finest Trees

## Why Take a Chance on "Bargains"?

**Y**OU have much at stake when you plant pecan trees. If you buy what looks like a bargain because the price is less, or from an agent who may be a perfect stranger to you, you take a great chance. You won't know whether those trees will live (or bear if they do) until long after he has gone and until you may have wasted several years of valuable growing time. When you can buy Bass trees, you get proved early and heavy bearing pedigreed stock, backed by guarantees that protect you. (See Page 28.)



We measure our trees from ground up.  
You pay only for this!

You do not pay for the roots.

A Bass bred-up tree, less than three feet high, already bearing pecans

### BASS TREES HAVE WELL DEVELOPED ROOT SYSTEMS!

**Y**OU are definitely assured well-developed roots, good, strong, straight trunks and bred-up stock from known bearing parents.

This typical Bass tree (see illustration), growing vigorously in our Nursery, has a heavy foliage, a healthy look, and is even bearing nuts. Note the root system—a good hardy tap root with a fine spread of lateral roots. Furthermore, we do not charge you for the roots, as some do. Our trees are all measured from the ground up instead of from the tip of the tap root to the top of the tree. Our three-to-four-foot trees, therefore, are often as large as others' "five-to-six-foot trees". You pay us for a smaller sized tree, you see! See reference to pruning, Page 20.

### Healthy, Hardy, Happy Trees Plus Careful Packing

**A**FTER good trees are grown they must be treated with kindness and not killed by carelessness. Trees may be fine in the nursery, but when they reach you, their roots may be dried out, or they may have been bruised or damaged in transit unless properly packed and shipped. No other nursery anywhere, packs trees as we do! We dig deeper to get a fine root system and then we pack them carefully with damp moss. The upper parts of the trees are packed so as to protect them from being skinned or bruised. The

roots of the trees are then wrapped in waterproof and airproof paper to keep the moisture in and the air out, and are then securely covered with burlap to keep out the sun, wind and air. Such packing requires experts. Thus the trees are well protected to reach you in excellent condition.

## WARNING!

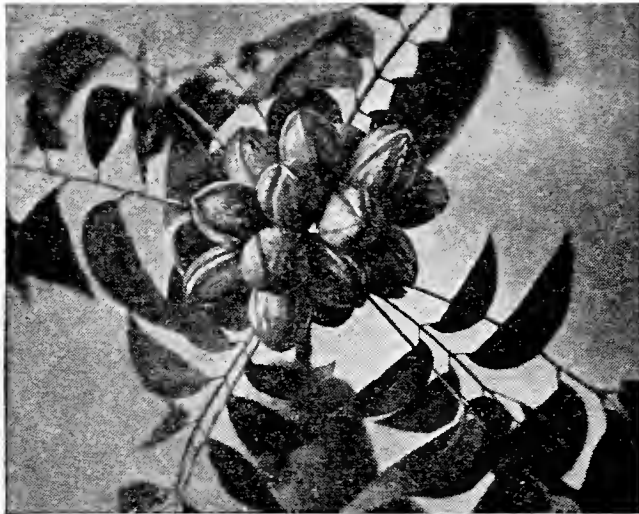
**C**ALL for trees as soon as they arrive, as we pack them to reach you in excellent condition if taken out immediately upon arrival. Inspect trees at the station, and refuse if in bad order, so we may make claim against railroad. If any damage has been done in shipping, have agent write on express receipt that they were damaged. Send us Damage Receipt and we'll promptly replace trees.



Trees ready for shipment.

"Our pecans are doing wonderfully well. The three year old trees have a good crop considering their age. The nuts are enormous and hang in bunches of three, four and five."—PAUL H. STONE, ALAMOGORDO, NEW MEX.

Plant Once  
For Always!



Look at these  
Beauties! Sixteen  
nuts in this  
cluster!

## The World's Largest Cluster of Stuart Pecans

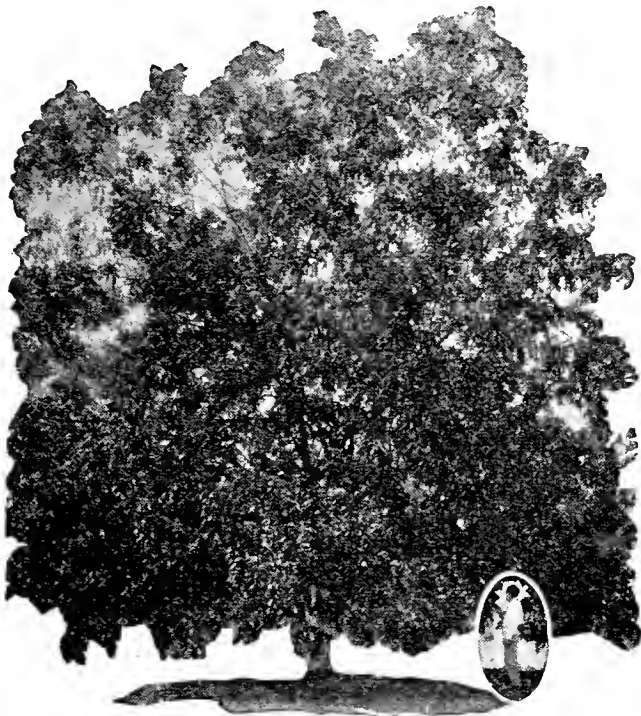
**T**HIS cluster of nuts is, in our opinion, the world's largest cluster of Stuart pecans. We have never been able to learn of a larger cluster of this variety.

This bunch of nuts was grown from one of our own trees, sold to a customer at Purvis, Miss., the county seat of Lamar County.

There were sixteen nuts in this cluster. Compare the size of the bunch to the hand holding them.

## A Pecan Grove or Even a Few Trees Is An Asset To Any Farm

**E**VERY farm should have a pecan grove to serve as insurance for later on and provide a "reserve" for independence and old age. Or certainly each farm should have at least a few trees. The nuts will furnish food for the family and friends and also be a fine cash crop and bring in some ready money. If these trees are planted near the house they will insure lots of shade and beautify the grounds, also attract the birds. So if you don't want to grow pecans in a big way, even a few trees on your place will prove to be a valuable asset.



This \$1.00 Bass tree now produces over 240 pounds of nuts annually, with a steadily increasing yield.

## This Is Good Farm Logic

**P**ECAN trees will assure you a good income. Should you have a short crop you will be out virtually nothing, for the trees are constantly growing and will produce heavier the following year so one doesn't lose in the end. Trees need occasional rest periods anyway. It would be much better if we could control their production—and then heavier crops would be had the next season.

Each year your land becomes more valuable with pecans, whereby with other crops you will have been depleting the soil!

"The trees arrived on time and in perfect condition and I am more than pleased with them."—W. E. CONRAD, LEXINGTON, N. C.



## Bass Trees Grow While You Sleep.



Bass trees planted one year, two years, three years and longer.

## Drought, Flood, or Windstorms, Prosperity or Depression--- Pecans Go On Forever!

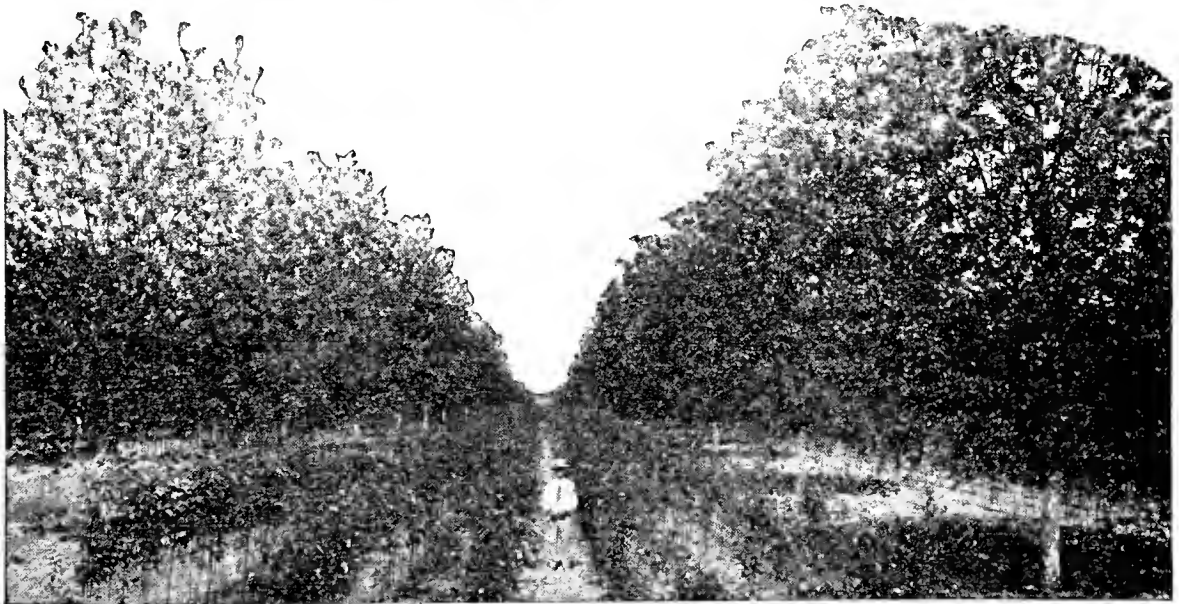
**D**URING the recent drought, pecan trees were least affected. Though other crops failed, pecans continued to produce. During floods, pecan trees have withstood the surging waters better than any other tree.

Have you ever seen or heard of pecan trees being blown down? In addition to their use for shade, pecan trees are planted about a home since they don't blow down easily. These trees become deeply rooted and are able to hold on, during heaviest winds.

Nature seems to favor pecan trees, for we have record of them living for centuries.

## More Nourishment in Pecans than Other Foods

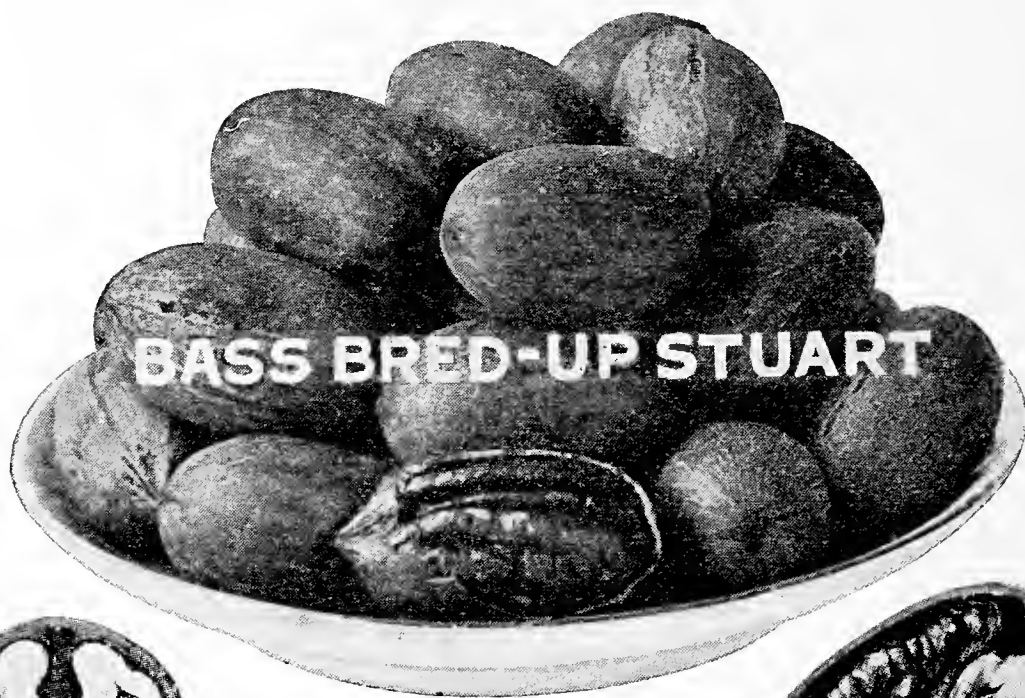
**T**HERE is more nutritive value in a pound of pecans than two pounds of pork chops, three pounds of salmon, two and a half pounds of turkey or five pounds of veal. Pecans are rapidly becoming recognized as a meat substitute. Thus a greater demand and higher prices. Since it takes sometime to get into production of pecans, plant now to be prepared for the growing demand on this great food crop.



Another of our groves with young pecan trees growing between the rows.

*"I have ten pecan trees I bought from you several years ago and they have grown wonderfully and are bearing nicely."*—DR. W. E. WOFFORD, CARTERSVILLE, GA.





**Bass Bred-Up  
STUARTS**



*Are Big Producers*

**T**HE STUART is our first choice, and incidentally it is the most popular of the improved variety of pecans. This nut has been planted more extensively than any other. The trees are vigorous, bear regularly, and resist scab. They are early and heavy bearers. The nuts are large and well filled, the kernels being plump, with a meat content of 49%, and of good flavor. Note the actual photographs of the inside of the STUART pecan.

These nuts are the easiest to grow, sell well on the market, and bring a higher market price. We recommend the Bass Bred-Up Stuarts, as the most profitable and satisfactory of the pecan trees. We have an unusually fine stock of our large trees in this variety—it would pay you to plant them in preference to others.

For Prices See Page 26.

---

---

*Pecan Trees Planted By Washington  
Are Still Bearing*

**J**UST to show you how long pecan trees will live and grow—and bear—and to further prove the foresight and wisdom of the Father of our Country, about the year 1785, and when George Washington lived at Mt. Vernon, he planted some pecan trees which *are still alive, in fine condition, and bearing.* Washington was a wise man in planting trees that were to become permanent.

◆◆◆◆◆

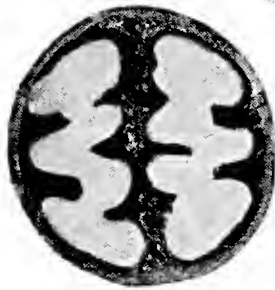
“If I had my way I would straightway deed an acre of these magnificent, generous food-bearing trees to every worthy, ambitious young man and woman in this country. It would prove a solid foundation for life’s success—both as an investment for pecuniary profit and an investment in health and happiness.”

—Said a Georgia Bank Director.

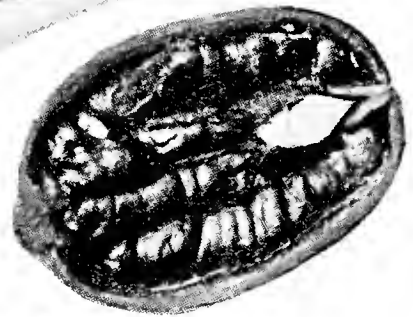
---

---

*No orders for less than \$5.00 — Please!*



Another Successful  
Variety



## Bass Bred-Up SUCCESS

OUR second choice is the SUCCESS Pecan, and a mighty popular variety, 40 to 45 to the pound. This tree is also an excellent grower, and heavy bearer in fertile soil. It bears early, too. The nuts, as you can see, are large, though are not the largest, but the kernel has proved to be the heaviest in a test of 14 varieties made recently. The meat is plump, and of excellent flavor. The nut itself is ovate in form, has a thin shell, and cracks easily. This variety does well in most sections, and the nuts bring a high market price. The Bass Bred-Up SUCCESS Trees are among our biggest sellers of our fine Papershell Pecan Trees. Plant our larger size trees and save that initial growing period.

Plant Fruit Trees Between the Rows

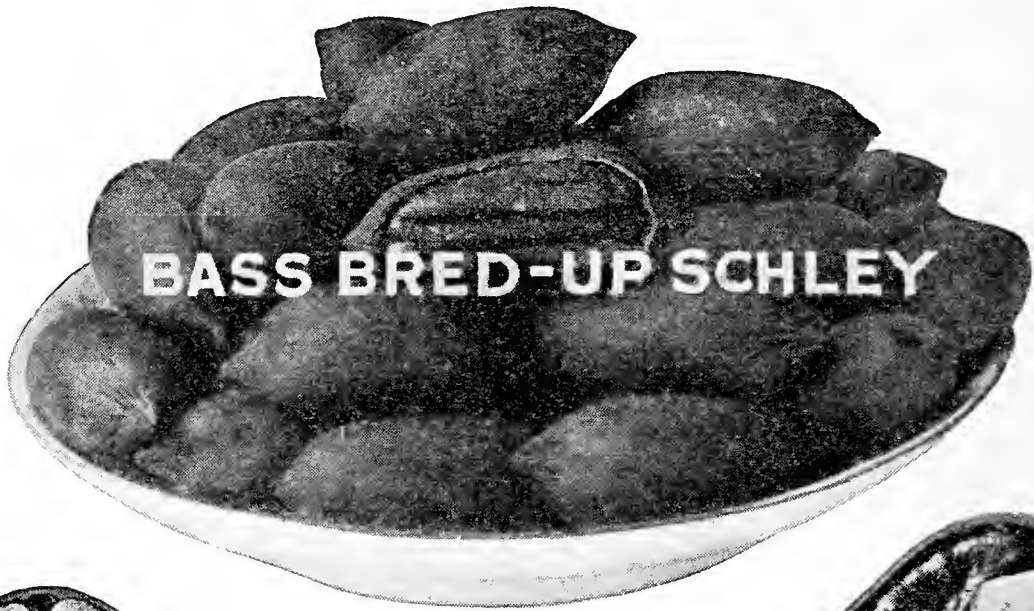
See Pages 21, 22, 23, 24

### The World's Largest Nursery Will Remain Such !

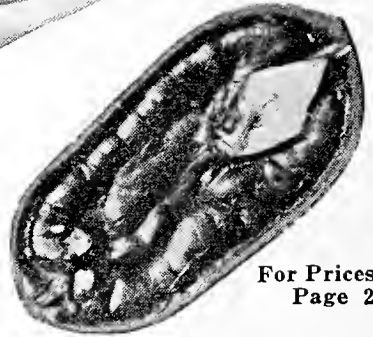
OURS is not only the largest pecan nursery in the world but we believe we have more fine young pecan trees growing than all other pecan nurserymen put together. There are over 2,000,000 trees growing in our nursery at all times.

We intend to retain our title. During the depression, when some nurseries didn't even plant any trees or take care of the ones they had, we continued to plant and cultivate as in normal times, regardless of the sale of trees. We were building ahead and now that conditions are rapidly becoming normal, we still have the kind we can sell you with a clear conscience and those which you may buy with full confidence.

"I have thirteen of your trees. I picked as many as a bushel and a half from one tree this fall. Am very much pleased with them."—R. P. RAWLS, FRANKLIN, VA.



**Bass Bred-Up  
SCHLEY**



For Prices See  
Page 26

*Pay Big Dividends*

OUR third choice is the SCHLEY. This is also a popular nut on account of its thin shell, excellent cracking qualities, beautiful color, and unusual flavor, and the market price is very satisfactory. The fact that we grow and sell this nut shows our confidence and our recommendation.

In some localities, however, the SCHLEY has a tendency to scab a little, so before purchasing this variety be sure that they grow in your section without this disease. If so, you will find these to be profitable nuts; excellent and full nuts with 61% meat, and a kernel that can be easily removed without breaking. The tree itself while an early bearer is a slender grower—smaller than STUART or SUCCESS, and not quite as hardy.

---

**REPLACEMENTS**

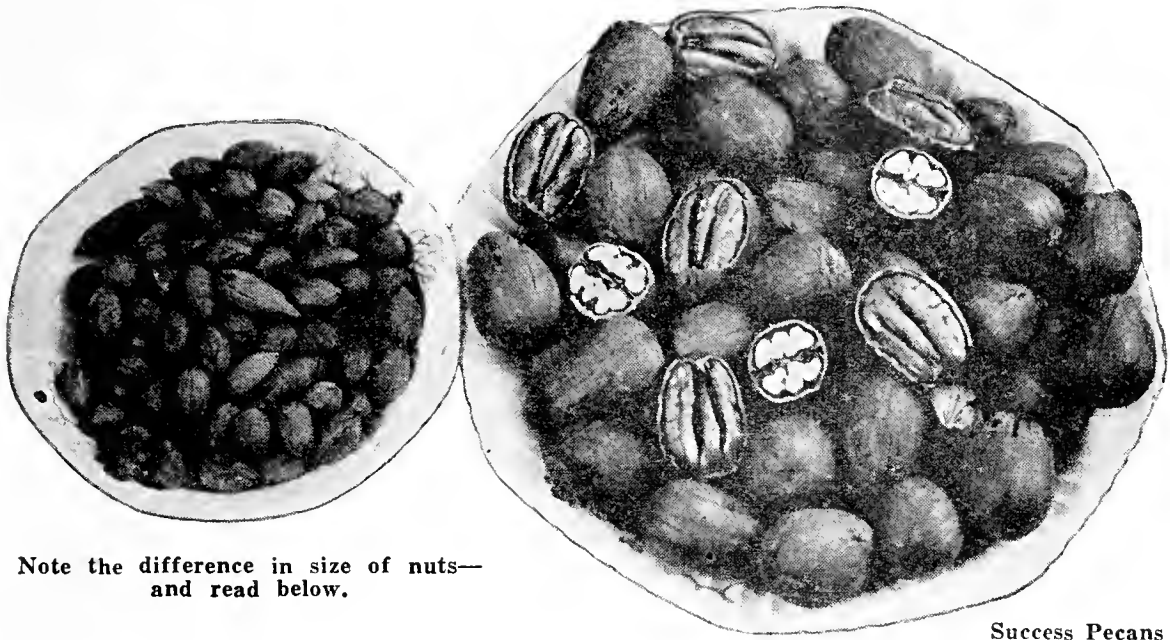
OF COURSE, we cannot say that every tree will grow, for all trees don't grow, just as all baby chicks you buy don't grow; and, in fact, all babies don't grow (most do!). But should any of our No. 1 pecan trees fail to grow, we are willing to share the loss, and will replace within one year, at half catalog price, any pecan trees that die, *where properly planted and cared for*. The average nursery doesn't replace any at all, but this shows our confidence, and our willingness to aid even after the sale has been made.

Let us suggest that you order our Extra Special size trees. The little difference in price justifies the extra time you would have to wait for your trees to bear.

---

*No orders for less than \$5.00 — Please!*

Plant Pecan Trees On Your Idle Land. If You Sell, You Profit; If Not,  
You Profit More!



Success Pecans

## All Bass Trees are Budded or Grafted

**T**HESE two saucers of nuts show another reason why Bass trees are such sure and heavy producers. Pecan trees have that natural tendency to revert back to the way they were produced ages ago, and even a large pecan planted is almost certain to bear a tiny nut later. Ordinarily, a nurseryman will plant these tiny nuts, depending upon their buds or grafts to produce *the larger nuts*.

In our nursery we plant the larger nuts, which cost us *several times* as much as the smaller ones. We get the proper start for our trees assuring quality for you.

To produce large and profitable pecans, the young trees must be budded or grafted. Some prefer the budded, and other the grafted, but each method is equally as valuable and productive, and we do both. We do not buy buds or grafts from unknown sources, but produce them ourselves from heavy bearing parents in our own orchards. Therefore, we know their history. We take the grafts and buds, not from prunings off nursery stock, as is often customary, *but from branches of our own bearing trees*, thereby causing us to lose thousands of pounds of nuts each year from our own crop.

## Three Generations of Culture

**I**T TAKES years of training, cultivation, experiments and experience to produce thrifty pecan trees. The Bass Nursery has behind it two generations, with a third ready to carry on. These trees are a science and a life business with us. For 28 years we have served the south, and trees sold even in our first year are now in great producing groves.

### Bass Trees Not Confined to the South!

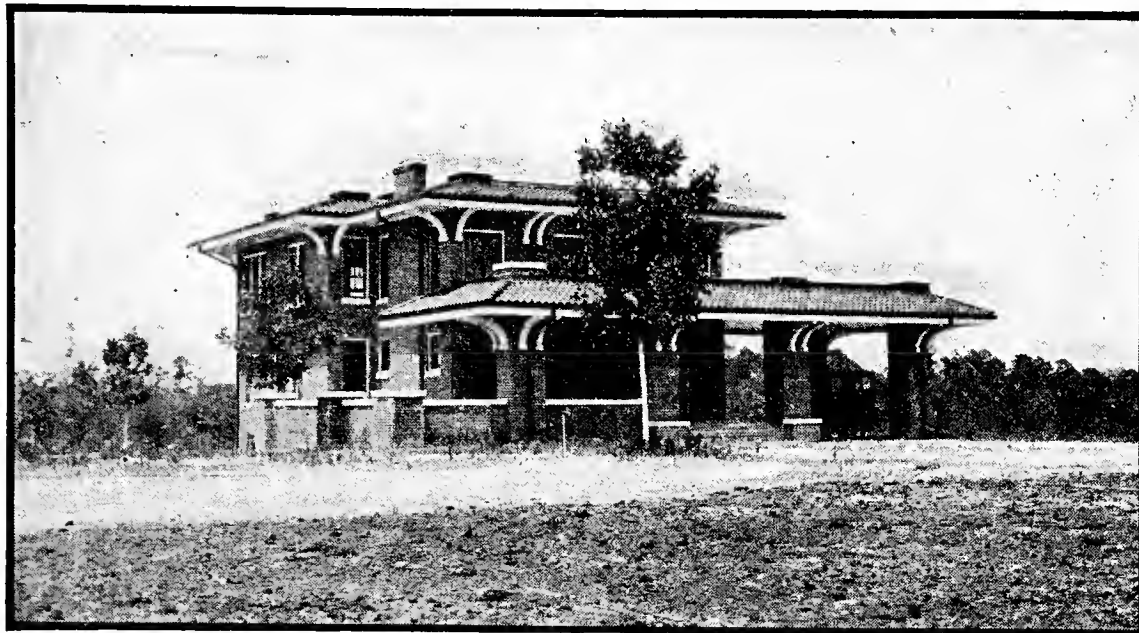
“Have been buying pecan trees from various nurseries for the past five years but have had rather bad luck in getting good trees. Have never bought from you because was afraid your trees grown too far South for this climate. Have changed my mind since seeing the trees here you sold to W. M. Carruth of this city. They are now heavy producers and the fruit is good quality.”—*The One Gallas Farmer, Cushing, Okla., Oct. 22, 1935.*

“We take this opportunity to testify as to the quality of your trees. In 1929 we set two of the 7-ft. to large trees and they have been bearing now three years.”

—C. E. FONDAW, BARLOW, KY. (Written in 1935.)



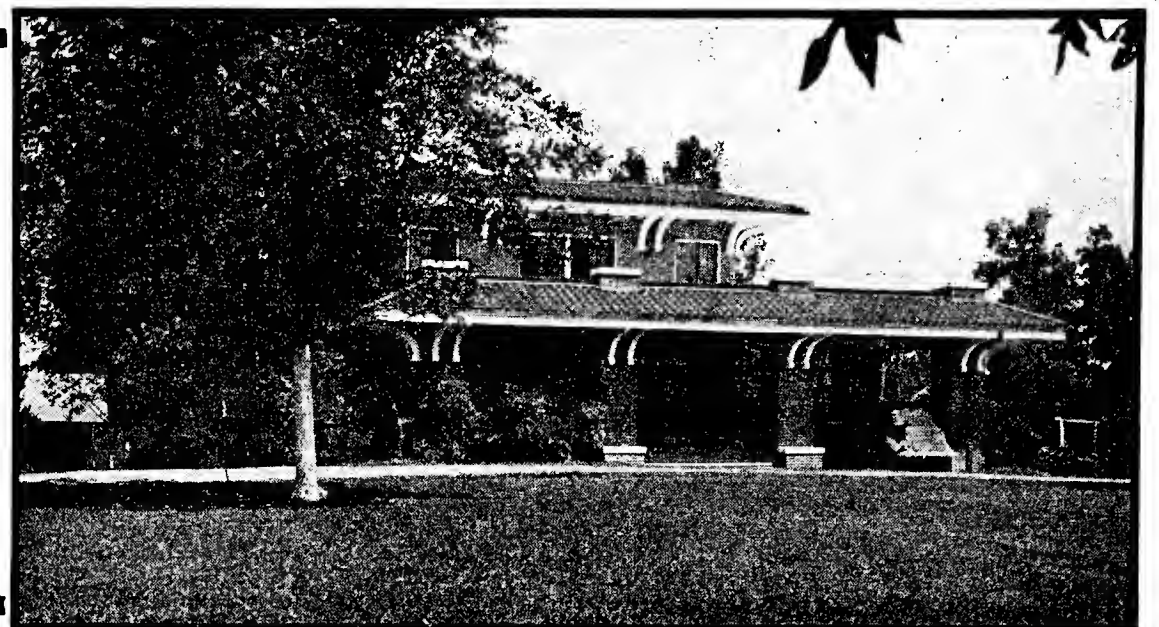




The home of I. H. Bass, shortly after a few pecan trees were planted. Note absence of shade.

“Pecans  
Built My  
Home.  
They can  
Build  
Yours  
Too!”

I. H. Bass



Eight years later. Note the growth of the trees and the improved appearance of the home.

## How Pecan Trees Made a House a Home

**I**T HAS been rightfully said that “it’s not a home until it’s planted.” Shrubbery certainly adds life, beauty and “hominess” to one’s dwelling. The house on the left is the way the home of our president looked before the pecan trees got big enough to furnish shade. The photograph on the opposite page, although taken at a slightly different angle, shows the same trees and how they provide considerable shade and adorn the place and how much cooler it is now! You can tell that by the picture and almost feel the breeze.

### Visitors Welcome

#### ---and a Most Unusual Proposition!

**V**ISITORS are always welcome, and we have hundreds of them each year. We’ll gladly take you over our place, show every operation and the many details of precaution in growing, grafting, budding, caring, packing and shipping our trees.

If you will visit us, in order to be sure about the trees you buy, and you do not find our nursery to have more and better trees, we shall pay all expenses and liberally for your time. You might thus care to visit around to make comparisons.

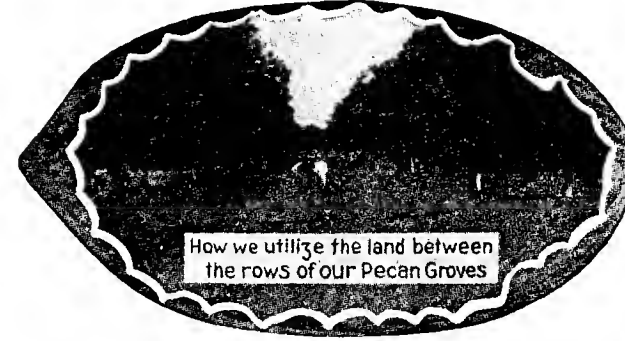
If we were not positive about our own trees, would we dare make such an offer?



Another Crew Coming from Work



One of Our Crews at Work



How we utilize the land between the rows of our Pecan Groves



Our President on Daily Inspection Tour

## Pecans have Paid Others Big Money They Could Pay You, Too!

**A** COLORED farmer in Texas has averaged 800 pounds of nuts from one tree bringing about \$300 and as much clear money as all the rest of his sandy farm of 120 acres. He has refused \$1000 for the tree.

The tree shown on Page 10, planted 18 years before, produced \$80 worth of nuts in its 18th year alone, although it started bearing the third year. Now the tree produces more than 240 pounds each year. It was one of our \$1 trees.

A tree in San Saba, Texas, more than 1000 years old, it is claimed by tree experts, produces an annual crop of from \$500 up to even \$1000.

In Hollandale, Miss., there is a 38-year-old tree that produced in one year 1200 pounds of nuts which sold for \$480.

*Numerous other instances of specific profits could be cited!*

Twenty years ago an acquaintance bought 5 acres of land for \$20 per acre. After planting in Bass trees he refused the price of \$1000 per acre a few years later.

A Mississippian got 200 pounds of nuts from an 18-year-old tree, and another produced 273 pounds one year on an 18-year-old tree, and two years later 330 pounds off the same tree.

It is said five dollars invested in 5 trees produced in 18 years \$6,336.41.

One of our customers bought two trees for shade, and eight years later got 100 pounds of nuts off the two trees, selling half of them for \$25.

A woman customer wrote she would not take less than \$30,000 for her pecan grove of Bass bred-up trees.

“Trees opened O.K. best packed lot of trees I ever saw come from any nursery.”

—E. D. RICHMOND, MEMPHIS, TENN.

“I don’t think I could have found a more honest and prompt company to deal with.”

—CARTERET, N. J.

To Answer Your Questions:---

# How to Plant Pecan Trees

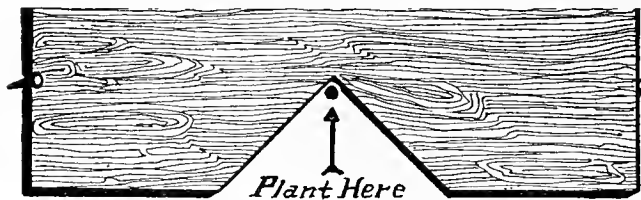
(We Recommend 12 Pecan Trees to the Acre).

**T**WO usual questions asked us are how many trees to plant to the acre, and what kind of soil in which to plant them.

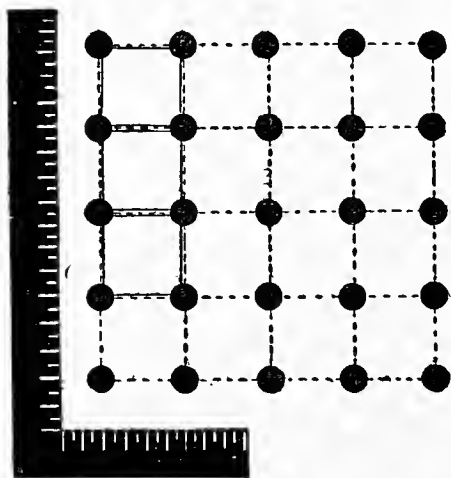
On land of only fair fertility, plant trees every 50 feet, but we generally recommend 60x60. If the ground is very rich, plant farther apart, such as 70x70, but for the average, figure on every 60 feet—12 trees to the acre. Please refer just below. You can get more trees to the acre by the triangle method of planting (14 as against 12).

As to soils—land that will grow hickory or oak trees will grow fine pecans. It has been well said that any land that will grow cotton will grow pecans. Well drained land is needed for best results. Practically any average land in the South will grow fine pecans.

The sooner you set out your pecan trees the better will be your prospects for them living, the more vigorous will they grow up, and the earlier they will begin to bear. Set out pecan trees as soon as possible after the leaves shed in the Fall, in November, December, January, February or March. Even if you cannot set your trees early, *book your order now so we may reserve some of our finest trees for you.*

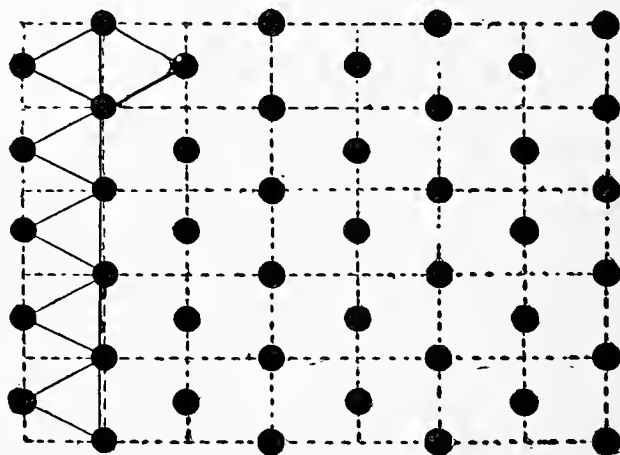


Use a planting Board in setting your trees. This is easily made by taking any board or plank about six feet long and cutting a V-shaped groove in the center of it. This groove in the planting board is made to fit down over the stake you have driven down in the ground where the tree is to be planted. Then at each end of the planting board place a small peg. When you dig the hole for the tree, all you will have to do is lay this planting board across the hole dug so that each end will be against the pegs and your tree will come right in the groove and be exactly in line. If you do not use a planting board it is hard to get trees in line again after holes are dug, even if lined up exactly right to start with.



**Square Method**

To plant the square method, take an ordinary L-square and place on ground in order to get your lines true. Sight and place a stake sixty (preferably) feet away on each line until you reach the ends of the field. Then stake off on parallel lines at every sixty feet and plant trees at each stake. Planting sixty feet apart, you have 12 trees to the acre.

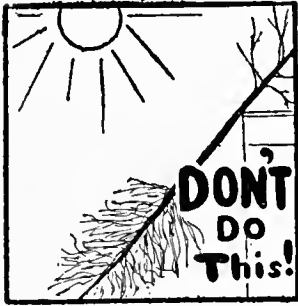


**Triangle Method**

By planting the triangle method you get more trees to the acre, and besides all trees are exactly sixty feet apart in ALL directions. To get a true equilateral triangle easily, drive a stake in the corner of the field. Then with the aid of an L-square find stakes along the outside lines. In order to get proper and exact distance inward toward the field, get a wire sixty feet long. Attach to stake. Get another wire of same length and attach to next stake. Let one man make an arc with his wire, and another man an arc with his. When the two wires meet, properly taut, drive stake for tree. Work from that stake and so on until field is covered.

*Plant Fruit Trees Between the Rows. See Pages 21, 22, 23, 24.*

# Rules for Setting Pecan and Fruit Trees RIGHT



## Protect the Roots

Never allow the roots of the trees to become dry or exposed to the atmosphere for any length of time from the time they reach you until they are set in the ground.

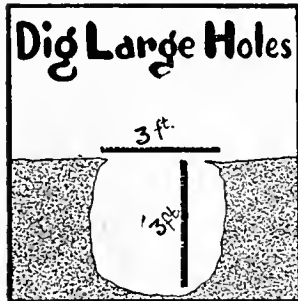
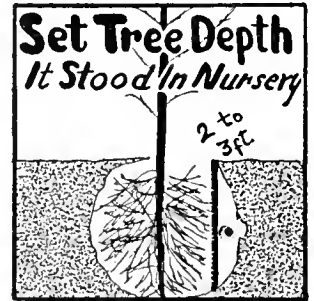
Wet the bundle just as soon as you can and if not ready to set out at once, dig a hole and put roots in and cover up well. Place in a shady place if possible.

Set your trees at once upon arrival or heel-in promptly as above.

## Plant as Deep as in the Nursery

Set the tree about the same depth it stood in the nursery.

Fill in the hole with the best top soil, packing the dirt well around the roots, especially the tap root. Keep the roots of the trees out straight in their natural position and do not bend them down by the tree.



## Dig Large Holes — Protect the Roots

Have a large hole for your tree. Three feet wide and three feet deep will not be too large for pecans. Holes about 12 inches wide and one to two feet deep will do for fruit trees.

Mix thoroughly with the soil to be used to fill in the hole a peck or half bushel of well-rotten manure or compost or some good guano, being very careful not to allow it to come into contact with the roots in ANY QUANTITY, for if it does it will scald them and do more harm than good.

## Fertilize Properly

If you desire to plant on land rather poor in fertility, thoroughly mix with the soil two or three shovelful of well-rotted compost when you plant the tree, or one or two pounds of bone meal. The best fertilizer after the tree is planted is to scatter manure around the trees. The more the better—one-half to one bushel to the tree, if possible. Do not bank it up around the tree, but scatter it around for two or three feet. When it rains the substance will be taken down to the roots. Put this around your trees in the late winter, if possible, so that the trees will be able to get a fine growth in the spring. When the trees are old enough to bear, use potash in some form—wood ashes will do.



## If Soil Is Dry

If the soil is dry when the trees are set, it is a good idea to pour a bucketful of water to each tree when the hole is nearly filled, and then fill the hole completely up.

Pour one bucketful of water to each tree once a week during very dry spells in Summer. Make a basin-like hole at the base of the tree. Pour water and as soon as it is soaked in good, fill completely up with dry dirt. This holds in the moisture and also keeps the ground from baking. If you cannot pull soil back, covering the wet earth well, DO NOT water at all. Water poured



on top of the ground and left this way does more harm than good, as it causes the earth about to bake and the tree to scald.

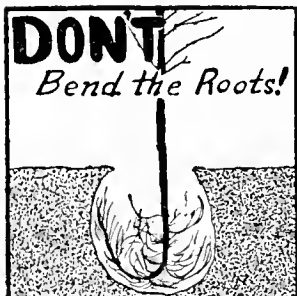
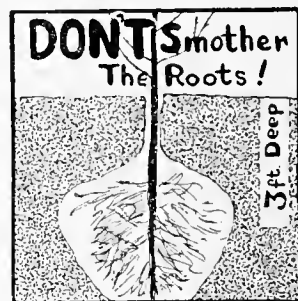
Cultivate for four to six feet around each tree thoroughly all during the Summer. Never let grass or weeds grow up around your trees. Keep the ground dug up and soft at all times.

"While in Arkansas I bought two trees from your nursery, about twenty years ago. They are the finest I have ever seen today."—WICHITA, KANSAS.

## If They're Bass Trees—They'll Produce.

### Cultivate the Ground

Cultivate for four to six feet around each tree thoroughly all during the Summer. Pecan trees do best where the land is cultivated well. Our own experience has taught us that no tree responds to care and cultivation better than the papershell pecan. Frequent shallow cultivation is best. Keep the weeds and grass down, for they take the moisture and nourishment needed badly by the young growing pecan trees.



### Special Notice About Fertilizer

Recent experiments in our own orchards have shown us that one pound of Nitrate of Soda or Sulphate of Ammonia for each year the tree has been planted will be of great benefit and cause the trees to grow very fast. Merely spread it around the trees for two or three feet and hoe or dig in well. This can be done at any time from April 1st to last of June, usually the earlier the better.

### Care of Young Trees

No pruning is necessary after you once get the trees branching high enough. The larger trees we sell will branch high enough anyway, but the smaller trees have to have sprouts cut off occasionally that come out on the body of the tree until the branches get high enough. This may be done at any time required, either summer or winter. We do not let our own pecan trees start branching lower than shoulder high. They look better and you can work around them where they are not allowed to head too low.



### Bass Trees Come Pruned, Ready to Plant

We endeavor to send out properly pruned trees, just as if we were going to plant them ourselves, leaving the planter nothing to do but to set them out. The taller grades of trees should be top-trimmed, as it balances the top against unavoidable loss of some roots when the tree is transplanted. Proper pruning insures the tree living and a good growth. Where trees are properly pruned, handled and planted, there is no reason why any of them should die. *Our prices are made on the height of the trees when dug. When properly top-trimmed, the height is often materially reduced. Therefore if the height of a trimmed tree, when received, is less than the catalog height, this is the explanation.* We measure our trees from the ground up and not from the top of the tap roots as many nurserymen do. Our 3 to 4 feet trees are often as large as their "5 to 6 feet" trees—we don't charge for roots. You pay us for a smaller size tree. See Page 9.



### Advice on Pecan Culture

Ask us all the questions you wish to in regard to pecan growing. We will gladly give you our opinion. And as experts, let us advise you not to put off setting out your pecans. Remember the loss of a year's time in getting started means the loss of a year's splendid income later on, at a time when you may appreciate it most. And speaking of the time element, it would pay you to buy and plant our larger trees, for you would save that initial growing period. Let Bass solve your pecan problems.

For further information or definite instructions on Pecan growing, write the U. S. Dept. of Agriculture, Washington, D. C., for free Farmers' Bulletin Number 700, on "Pecan Culture," and Number 1501, on "Nut-Tree Propagation," and other available bulletins on Pecans.

It will pay you to plant our Extra Special or large sizes for earlier and heavier bearing. A better start. See prices on Page 26.

"From three of your pecan trees, will get close to 200 pounds of nuts. This year the pecans in this section were not filled out but mine were 98% good."

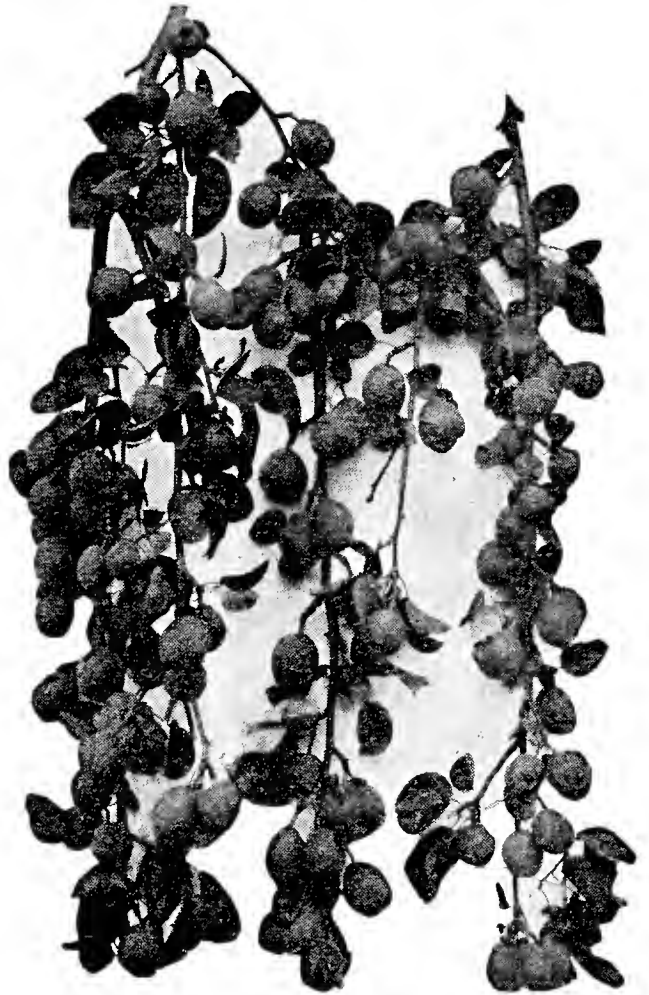
—H. H. FELTMAN, MARSHALL, TEXAS.



## You can Prosper with Bass **BLIGHT-PROOF** Pineapple Sand Pears

**A**NOTHER profitable fruit to grow, and yet one which has not been sufficiently publicized to be more in demand, is the Pineapple Sand Pears. We first grew Pineapple Sand Pears for our own use, and finding them of such prolific growth, such fine fruit, such a ready market, and such a splendid profit, we decided to pass on our experience to our customers and grow these trees for them. 40 to 75 bushels per year from many of the older trees in our section is nothing unusual and some orchards yield over 1,000 bushels to the acre. One orchardist produced 400 bushels on 2½ acres, one year, and two years later gathered over 3,000 bushels which sold for \$2,520—over \$800 per acre.

Have you ever seen an orchard of pears in bloom? Was there anything more beautiful than these graceful trees in their mantle of white? Even when the blooms and fruit are gone, the trees are ornamental as well as useful and will beautify any home or land along a roadside. They take up but little room and require no cultivation.



Branches of our Blight-Proof Pineapple Pears loaded to capacity.



One of our beautiful Blight-Proof Pineapple Pear orchards in full bloom.

**S**O WE NOW produce these pear trees for our customers, and have thousands of young, thrifty growing trees ready for shipment. These trees, when mature, will be better than our own old trees, since they have been propagated from our producing trees; thus fine parent stock, and a better start than our own trees had.

The Bass Pineapple Sand Pears grow rapidly—they are extremely hardy. All trees have a well developed root system.

We suggest that you plant our Extra Special size, so beautifully headed.

### **GUARANTEE**

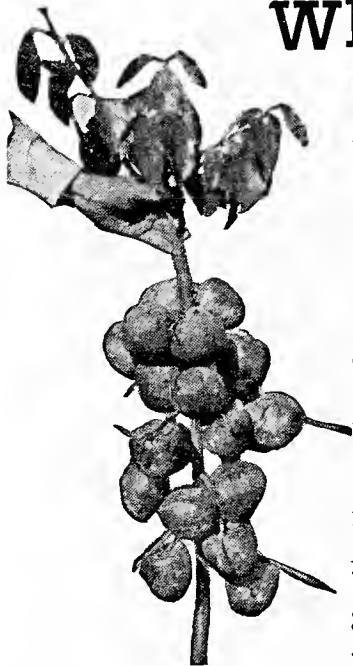
The Bass Pineapple Sand Pears are guaranteed not to blight in any section.

#### PINEAPPLE SAND PEARS

	Each	10	100
3 to 4 feet.....	\$.45	\$ 4.00	\$ 30.00
4 to 5 feet.....	.55	5.00	40.00
5 to 6 feet.....	.70	6.00	50.00
6 to 7 feet .....	.90	7.00	60.00
Large size.....	1.15	10.00	75.00
Extra Special size.....	1.50	12.50	100.00

"My trees are very pretty and paying dividends. They were planted in January, 1928. I am one more satisfied customer and a booster for Bass pecans."—WETUMKA, OKLA.





## Why We Sell Fruit Trees, Too

**B**ECAUSE we were asked so often to recommend or buy fruit trees for our customers who wanted to plant them along with pecans—or otherwise—we decided for their accommodation to handle a few fruits. This is good, strong, hardy stock, with well-developed root systems. We can relieve you of much trouble and extra expense if you order fruit trees along with pecans. The selection may be left to our judgment. Write for **SPECIAL PRICES ON LARGE QUANTITIES.**

## Japanese Persimmons

**T**HE JAPANESE PERSIMMON can be grown on as wide a range of soil as the native Persimmons, and will succeed with the minimum care and attention. The trees are vigorous, prolific, and have few enemies. As the fruit keeps and ships well, it can be placed on the market in good condition. It meets with ready sale.

We recommend the **TANE-NASHI** variety. In high favor. Large fruit, flesh yellow and seedless. Vigorous, prolific; uniform size—most desirable to market.

	Each	10	
3 to 4 feet.....	\$ .50		\$4.50
4 to 5 feet.....	.60		5.00

**Please!** Because of our care in inspecting, packing and shipping, and the huge expense to which we are put, it hurts to fill orders that amount to less than \$5.00. So please order enough, even for friends, to make at least that much of an order. However, we will fill your order amounting to less than \$5.00 if you cannot increase it, rather than disappoint you.

## Plums

**R**ED JUNE. Early market plum, large size, deep vermilion red color. Good variety, very firm. Flesh light yellow. Free from rot. Very heavy bearer and easy to grow. A wonderful plum, in our estimation.

	Each	10	100
3 to 4 feet.....	\$ .50	\$4.50	\$30.00
4 to 5 feet.....	.65	6.00	40.00

..❖❖❖..  
*Let your land do double duty—Plant Pecan Trees between the rows.*  
..❖❖❖..



## BASS GUARANTEE ON FRUITS

Some of our fruit trees and berry plants are supplied by reputable nurseries. We guarantee them to be true to name, high in quality, good healthy stock, free from disease. Stock damaged in transit, if notified immediately, will be replaced, if express or freight receipt indicates damage. Should any stock prove not true to name, we will return money or replace it with our other stock, but are not liable for any damages beyond this.

**NOTICE.** If your order calls for a variety we do not have on hand, we shall, unless advised to the contrary, substitute another which should prove as satisfactory. Thus we save you disappointment and loss of time. Ask for our special prices on large orders.

..❖❖❖..

It takes as much land, time, handling and experience, on “sorry” trees as it does on Bass Trees. The only savings you make if you buy so-called cheaper trees is in buying. But you may be wasting time, effort and money in not getting the finest trees to start with.

**W**E BELIEVE that our prices offered are low, considering our early and heavy bearing pedigreed trees and that their quality merits your confidence. We will not compete with so-called “cheap trees” offered by itinerant agents. You may feel that you are paying us a little more but you will be getting more, and if something *should* be wrong you will know where you can reach us, so we can make it right.

..❖❖❖..  
*“I have ordered trees from you for the last 15 years. I have never been disappointed—they are everything you claim for them.”*  
..❖❖❖..

JNO. W. TISDALE, CLARKSVILLE, VA.



Big Fruit Tree Shortage This Year. May Have to substitute in Peaches and Apples.

## Peaches

**W**E need not elaborate on the eatability and marketability of Peaches. Plant this profitable fruit between the rows of your pecan orchard or in your garden.

**RED BIRD.** Very early, hardy grower, good bearer; has large fruit of bright glowing color and splendid quality. Ripens last of May or early June. Cling.

**HILEY BELLE.** Very rapid grower, prolific bearer, with a fresh, firm, excellent creamy white flesh and real peach flavor. Ripens in June. Freestone.

**ELBERTA.** Large, yellow, with red cheeks; juicy and of good flavor; flesh yellow. Ripens middle of July. This is an excellent shipping variety. Freestone.

### PRICES—ALL VARIETIES

	Each	10	100
June buds 1 to 2 feet.....	\$.20	\$1.50	\$12.50
3 to 4 feet.....	.30	2.50	20.00
4 to 5 feet.....	.60	5.00	35.00

## Apples

**R**ED JUNE. A choice fruit of a well-known variety—medium conical; deep red; juicy. Very productive.

**DELICIOUS.** No new variety gained popularity in so many different sections so quickly. Fruit large, nearly covered with brilliant dark red; flesh fine grained; crisp, melting, juicy, with delightful aroma; highest quality. Splendid keeper and shipper. Tree one of hardiest, vigorous grower, with good foliage. Regular annual bearer.

	Each	10	100
3 to 4 feet.....	\$.30	\$2.50	\$20.00
4 to 5 feet.....	.60	5.00	35.00



## Bass Grapes

**G**ROW your own Grapes for the table or your own grape juice, wine, or jelly.

**CONCORD.** The most widely grown, most popular of all grapes, for vineyards. Black. Healthy, hardy, vigorous vine, large bunch and berry, and a good yielder. Grows quickly. Our Concord's this year are extra fine.

**NIAGARA.** Leading white grape. Widely planted. Bunch large; handsome, juicy and fine flavor.

	Each	10	100	1000
2-Year No. 1 .....	\$.25	\$2.00	\$15.00	\$100.00

## Bass Figs

**T**HE fig-canning industry is gradually extending throughout the South. Since several tons of figs can be produced on an acre of ground, it is profitable to give them intensive culture. The fresh fig is quickly finding its way into market, and meeting with ready sale.

Figs require little or no cultivation. Our favorite is the **CELESTE**, one of the hardiest varieties. Very desirable for canning and preserving. Small to medium, pear-shaped, ribbed. Flesh firm, juicy, sweet, excellent quality.

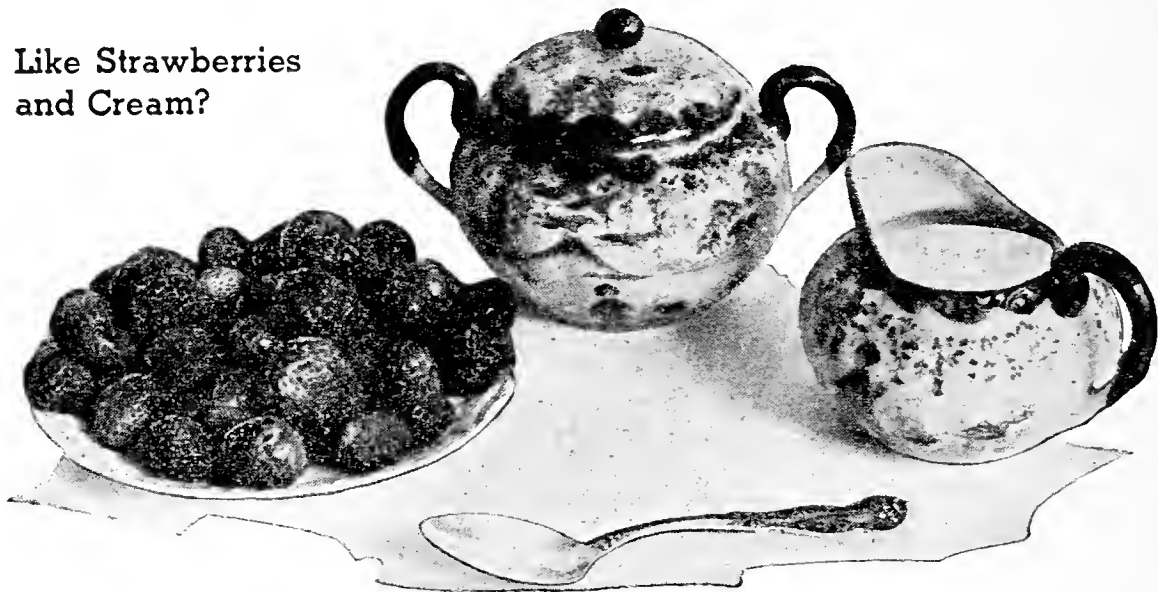
	Each	10	100
3 to 4 feet.....	\$.35	\$3.00	\$20.00
4 to 5 feet.....	.50	4.50	35.00



*"The trees arrived this morning and they are all beautiful specimens and shipped in perfect condition. If they do not do wonderfully it will be entirely my fault."*

—CARL LAY, GADSDEN, ALA.

Like Strawberries  
and Cream?



## Here's a Crop that Brings in the Cream

**T**HERE is nothing like having strawberries growing about the home for pleasure and PROFIT. Besides home use and the market for strawberry preserves, the sale of strawberries themselves is enormous. Whole communities have been built by their profits. On one acre, an Arkansas man made \$422.80 net. One farmer made more than \$5,000 net on 17 acres. A Mississippi county sold \$80,000 worth of berries from 140 acres, netting each farmer an average of \$571 per acre. And so on.

Grow berries for your own use or for market. Set out 16 to 18 inches apart in 3½ foot rows. It will require about 7,500 plants per acre—and will pay you to follow these planting instructions. Ours are healthy plants with good established root systems. We ship plants from October 15th to April 1st, from our grower in Tennessee or Arkansas.

### The New Blakemore Strawberry

This is a new berry that has been recommended highly by the Department of Agriculture at Washington, D. C. It is claimed that ninety per cent of the fruit will run as No. 1's. The Blakemore is firm, well colored, deliciously flavored—very productive and marketable fruit.

#### Mastodon

**EVERBEARING.** This is the finest ever-bearing strawberry. New large fall-bearing berry. Mammoth berries. Eighteen of the larger ones fill a quart. Big strong plants. Firm berries, highly flavored, very sweet. Most productive and profitable of all everbearers. We recommend them above all everbearers.

#### Improved Klondike

This variety is planted more in the southwest than any one variety grown today. Season is second early, and the Improved Klondike is bred up and is more productive than the old original Klondike.

	POST PAID			EXPRESS COLLECT				
	25	50	100	250	500	1000	5,000	10,000
Imp. Klondike .....	\$ .60	\$ .75	\$1.25	\$1.50	\$2.50	\$ 3.50	\$13.50	\$ 25.00
Blakemore .....	.75	1.00	2.00	3.00	5.00	9.00	40.00	75.00
Mastodon .....	1.00	1.75	3.00	4.00	7.50	15.00	65.00	125.00

## Youngberries

**H**ERE'S a unique berry that is becoming most popular. It is a cross between a Loganberry and a Dewberry. This berry is remarkable for its dessert, beverage, preserving and cooking qualities. Fruit is large, deep wine-color, sweet, juicy. The plants are vigorous, propagate freely and resist disease. The U. S. Department of Agriculture recommends this variety. Keep up with the times and plant Youngberries for the increasing market. We grow our own Youngberries for our customers.

Single lots.....	25c each	50 plants .....	15c each
10 plants .....	20c each	100 plants .....	10c each

*"I received the trees. They came well wrapped, in fact, I've never seen trees and plants better wrapped and preserved than the ones you shipped me."*

—RAYMOND L. ROACH, SARDIS, MISS.

## Other Bass Services:

### Large Orchard Planting

We are in position to not only sell you our choice bred-up trees, but to set out and care for large orchards by our own experts. Thus a positive assurance of not only good trees, but the attention they need to get a good start. Write us for our very reasonable terms.

### Tree Topping

Poor trees are high at any price. Many have bought them elsewhere that won't bear a nut, and we've had to come in to save the wreck by tree-topping and budding with our bred-up stock.

Top-grafting and budding is a special craft and we are prepared to perform this service, going anywhere to rejuvenate non-bearing orchards, provided there is a large number of trees to topwork.

### Pecan Buds and Grafts for Sale

**T**HOUSANDS of grafts and buds are cut and sold by us each year from our early and heavy bearing pecan trees. Do not top-work your trees with poor scions—insure success in your work with our buds, grafts, and prepared wax. Grafts furnished during December, January, February and March not kept on cold storage are \$2.00 per 100, or \$15.00 per 1,000. In lots of 5,000 and up at \$10.00 per 1,000. Cold storage grafts kept for late top-working in April, May and June are \$3.00 per 100, or \$25.00 per 1,000. Buds furnished during July, August and September are \$1.50 per 100 or \$10.00 per 1,000. Varieties are Stuart, Success, Schley, Bass Papershell, Nelson, Hale, Frotscher's Eggshell, Pabst, Dependable, Money-maker. No less than 100 of a kind sold.

Prepared Wax, ready to use, 50c per pound.

## We Have 15,000 Acres of Fine Land For Sale

Here at Lumberton, where pecan growing conditions are so ideal, we have for sale 15,000 acres of fine land. This land is well located—lots of it right along gravel highways that are soon to be concreted at no extra cost to the landowner. It is extra fine land for Papershell pecans, peaches, pears, plums, grapes, figs, Satsuma oranges, all kinds of early and late vegetables and truck growing, and also excellent land for cotton, corn, peas, beans and other farm crops. This is a wonderful climate, being warmed in the winter by a breeze from the warm Gulf stream and cooled in the summer by light winds most all the time. No finer section can be found for cattle, sheep and horse grazing—ample rainfall to make grasses grow fast and stay tender. Green feed for stock can be had every day in the year. Health conditions are unusually fine—Lamar County ranking right among the healthiest counties in the United States. Fine schools, churches, good gravel roads, good citizens and as fine water as you can find in the country—water is pure, odorless, tasteless and clear and soft—most ideal. This land is cheap—priced at from \$5.00 to \$15.00 per acre for uncleared land. This land is easy to clear—usually costing from \$5.00 to \$10.00 per acre. *Easy terms are offered by us.*

### If You Have Land For Sale

Perhaps you have land that you want to sell. Plant it in pecan trees! You will immediately increase the value of your land and, anyway, make it more salable. Twenty years ago a person of our acquaintance bought five acres of land at \$20.00 per acre. A few years later he planted the land in Bass trees and was offered \$1,000 per acre, which price was refused. He realized that by planting pecan trees he had increased the value of his land by \$950 per acre, for he could have got only \$50 an acre for the land as he bought it. His land, taxes, and trees were readily paid for in the actual increased value, and it was worth a big difference besides.

*"I received the pecan trees. They are the finest trees I have ever seen for the price paid. My neighbors ordered some elsewhere and paid \$1.25 each; they are just switches compared to mine."*—MRS. EARL BROOKS, LAGRANGE, GA.

# PRICES

## Top-Grade (No. 1) Pecan Trees — All Varieties

	Each	Six	Twelve	Sixty	100	1000
2-3 Feet .....	\$.80	\$ 4.20	\$ 7.80	\$ 36.00	\$ 60.00	\$ 500.00
3-4 Feet .....	.90	5.10	9.60	45.00	70.00	600.00
4-5 Feet .....	1.00	5.70	10.80	51.00	80.00	700.00
5-6 Feet .....	1.20	6.90	13.20	60.00	100.00	900.00
6-7 Feet .....	1.35	7.80	15.00	72.00	120.00	960.00
7 Feet to Large.....	2.00	10.80	19.80	90.00	150.00	1200.00
Large .....	2.50	14.40	27.00	120.00	200.00	1600.00
Extra Large .....	3.50	20.40	36.00	165.00	275.00	2200.00
Extra Special .....	4.00	22.80	42.00	195.00	325.00	2600.00

We recommend the planting of our large trees. They bear earlier.

## Special Price on Large Orders

One to five trees take the each rate price; six to eleven trees take the six rate price, twelve to forty-nine take the twelve rate price; fifty and up take the one hundred rate price; 500 and up take the 1,000 rate price. Special prices cheerfully quoted on larger lots.

All Prices F. O. B. Lumberton, Miss.

For prices on Bass Pecan buds, grafts and prepared wax, see page 25.

### PLUM — RED JUNE

	Each	10	100
3 to 4 feet.....	\$.50	\$4.50	\$30.00
4 to 5 feet.....	.65	6.00	40.00

### FIGS

	Each	10	100
3 to 4 feet.....	\$.35	\$3.00	\$20.00
4 to 5 feet.....	.50	4.50	35.00

### PEACHES

All Varieties

	Each	10	100
June buds 1 to 2 feet	\$.20	\$1.50	\$12.50
3 to 4 feet.....	.30	2.50	20.00
4 to 5 feet.....	.60	5.00	35.00

### GRAPES

Both Varieties

	Each	10	100	1,000
2-Year No. 1.....	\$.25	\$2.00	\$15.00	\$100.00

### JAPANESE PERSIMMONS

	Each	10
3 to 4 feet.....	\$.50	\$4.50
4 to 5 feet.....	.60	5.00

### PINEAPPLE SAND PEARS

	Each	10	100
3 to 4 feet.....	\$.45	\$ 4.00	\$30.00
4 to 5 feet.....	.55	5.00	40.00
5 to 6 feet.....	.70	6.00	50.00
6 to 7 feet.....	.90	7.00	60.00
Large size .....	1.15	10.00	75.00
Extra Special size....	1.50	12.50	100.00

### APPLES

All Varieties

	Each	10	100
3 to 4 feet.....	\$.30	\$2.50	\$20.00
4 to 5 feet.....	.60	5.00	35.00

### STRAWBERRIES

	POST PAID			EXPRESS COLLECT				
	25	50	100	250	500	1000	5000	10,000
Imp. Klondike .....	\$.60	\$.75	\$1.25	\$1.50	\$2.50	\$ 3.50	\$13.50	\$ 25.00
Blakemore .....	.75	1.00	2.00	3.00	5.00	9.00	40.00	75.00
Mastodon .....	1.00	1.75	3.00	4.00	7.50	15.00	65.00	125.00

### YOUNGBERRIES

Single Plants .....	25c each	50 plants .....	15c each
10 plants .....	20c each	100 plants .....	10c each

We urge you not to wait until the last minute to order, as many people do, and after our better trees have been selected. Place an order now for shipment later. If you want to plant your trees on a holiday or week-end, we can time the shipment to reach you then.

"The trees came in good condition. Such nice large trees."

MRS. E. A. MEWBORN, MACON, TENN.



It's advisable to plant our larger trees—You save the initial growing period.

PLEASE MAKE YOUR ORDER FOR \$5.00 OR MORE IF POSSIBLE

# ORDER BLANK

TO  
**BASS PECAN COMPANY**  
*Largest Pecan Nursery in the World*  
**LUMBERTON, MISSISSIPPI**

For prices, see page 26 and for complete descriptions, please refer to the following pages

Pecans ..... Page 12 Pears ..... Page 21 Plums ..... Page 22 Peaches ..... Page 23 Apples ..... Page 23	Japanese Persimmons ..... Page 22 Grapes ..... Page 23 Figs ..... Page 23 Strawberries ..... Page 24 Youngberries ..... Page 24
---	---

KIND	QUANTITY	SIZE	PRICE
<b>PECANS</b>			
Stuart .....			
Success .....			
Schley .....			
<b>PEARS</b>			
Pineapple Sand Pear .....			
<b>PLUMS</b>			
Red June .....			
<b>JAPANESE PERSIMMONS</b>			
Tane-Nashi .....			
<b>PEACHES</b>			
Red Bird .....			
Hiley Belle .....			
Elberta .....			
<b>FIGS</b>			
Celeste .....			
<b>APPLES</b>			
Red June .....			
Delicious .....			
<b>GRAPES</b>			
Concord .....			
Niagara .....			
<b>STRAWBERRIES</b>			
Blakemore .....			
Improved Klondike .....			
Mastodon Everbearing .....			
<b>YOUNGBERRIES</b>			
Pecan Buds .....			
Pecan Grafts .....			
Prepared Wax .....			

**SEE OPPOSITE PAGE FOR PRICES—Also Terms and Conditions of Sale (Page 30)**

Total Amount of Bill.....

**I Guarantee to Take This Order and Pay For It.**

Signed .....

  Post Office .....

  Express Office .....

  Date to Ship.....

*"The shipment reached me in first class condition and such fine trees they are. I feel I did the right thing by purchasing them from you."*—L. T. CORELL, PORTSMOUTH, VA.



## These Guarantees Fully Protect You

**I**T'S EASY for anyone to make any guarantee, but have you assurance that the guarantee will be carried out? No other nursery has dared duplicate our guarantee above or any of our other guarantees or propositions listed on this page. It pays to deal with the largest Pecan Nursery in the world.

**S**HOULD any of our No. 1 pecan trees die within one year—if properly cared for—we'll share the loss with you and replace the trees for one-half the regular catalog prices.

If you're in doubt as to the quality of our trees, we'll ship them to you in competition with any others and allow you to select the trees with the finest developed root systems. Does anybody else have such confidence in their trees? **WE KNOW OUR TREES AND THOSE OF OTHERS.**

If you will visit us, especially in order to be sure about the trees you buy, we shall pay all expenses and pay you liberally for your time if you do not find our nursery to have more and better pecan trees than any nursery anywhere. You might care to visit around to make comparisons.

If we were not positive about our own

trees, would we dare to make such an offer?

Our Pineapple Sand Pears are positively blight-proof. They are guaranteed not to blight in any section.

We grow most all our fruit trees, but some are supplied by reputable nurseries. We guarantee them all to be true to name, high in quality, good healthy stock, free from disease. Stock damaged in transit, if notified immediately, will be replaced, if express or freight receipt indicates damages. Should any stock prove not true to name we will return money or replace it with other stock, but are not liable for damages beyond this.

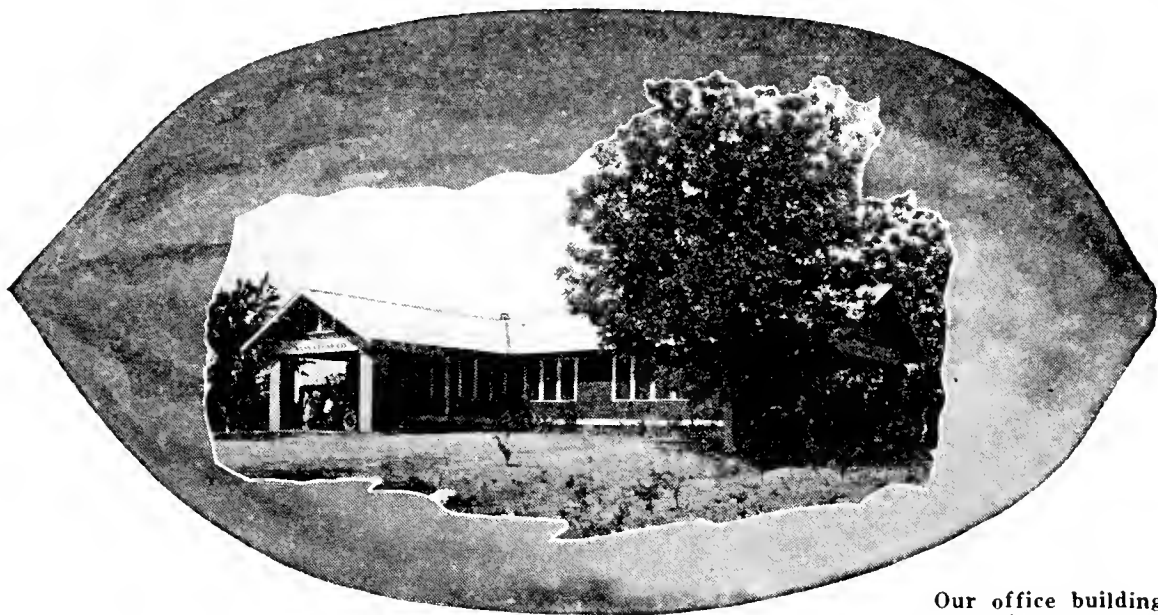
**REFERENCES:** Dun or Bradstreet; Lamar County Bank, Purvis, Miss.; First National Bank of Hattiesburg, Miss., and thousands of our customers.

## WARNING

**F**OR YOUR sake, beware of the nurseryman who calls at your door with a truckload of pecan trees for sale and offers to plant them for you. Sun and wind quickly dry out roots, and trees in trucks, unprotected, also previously half dug and poorly packed, are often dead before they are set in the ground. Don't lose that money and the time in waiting for them to grow.

Ask that traveling agent if he will make the same written guarantee that we do; then ask yourself if there is a firm back of him that will make the guarantee good. Suppose the guarantee is made good, what about the five years you have wasted to learn your mistake, and what insurance have you that the new trees will be any better? Why take the chance?

"About ten years ago I purchased some Success pecan trees from you. They have borne fruit for several years—they are simply fine."—MRS. ORA ROBINSON, LAKE, MISS.



Our office building.  
Notice the pecan trees.

## An INSTITUTION To Serve You!

**O**UR SOLE business, which has been our life's work, is the growing and selling of pecan trees. It requires our attention 365 days a year. This is not a company which buys trees each year for resale, or sends out agents to peddle them, but a large organization operating throughout the year, and selling our own trees direct to the customer and for cash only. Nor is it a one-man, one-truck concern, nor a backyard "nursery". This nursery comprises 15,000 acres, of which 1,000 is planted in orchards and nurseries, and in which over 2,000,000 trees are growing at all times.

From 50 to 100 men are employed the year round, many of whom have been with us since we began business. They live in their own homes, which we furnish, and are happy, contented labor, who take pride in our trees and whose hearts are in their work. Thirty mule teams and all kinds of farm machinery are used on our place.

## Each Tree Individually Inspected

**B**ELOW is a familiar scene. The man in the foreground does nothing but inspect trees. This official inspector is a trained and expert nurseryman, and it is his job not to let a single tree pass that is in any way inferior, defective in root system or trunk. The trees are first placed in the vat of water to wash the dirt off the roots, so they may be inspected and properly packed for shipment. The other men gather and tie the trees carefully, packing as described on page 9. As the trees are growing the entire nursery is inspected every week. The inspection is daily, but it requires a week to walk through all the rows of all the fields. Trees are carefully watched to keep free of any pests and diseases, and to see that they are in fine growing condition.

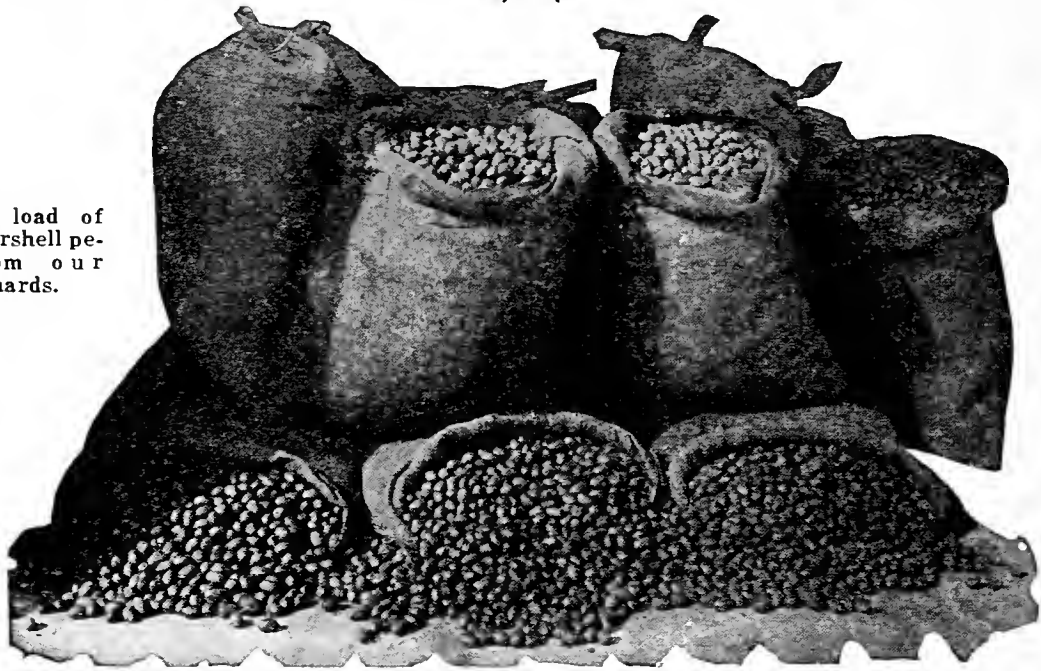


Each tree individually inspected. Imperfect trees are thrown out AND BURNED.

*"I want to thank you for sending me such fine trees and filling my order so promptly."*

—POPLAR BLUFF, MO.

A truck load of fine papershell pecans from our own orchards.



## Is There a Market for Pecans? Always!

**T**HE MOST popular nuts are pecans. Because growers realize that the market has hardly been scratched, cooperative associations have been formed to further their sale. Pecans have sold on their own merits because of their delightful taste and flavor, and food value. There is no telling what the demand will be when they are advertised.

But regardless of the future market, the immediate consumption is enormous. Confectioners, Hullers and Salters use them by the carload. Fruit cakes, so popular in the Fall, require tons. Bakeries use them all year round. Cracking companies—and by the way, that is a comparatively new industry which can be carried on in the home—cannot always secure enough nuts. Chain and grocery stores sell them. Pecans and Pecan Pralines may be advertised and sold by mail from the home.

So there is already a tremendous and ever increasing market for pecans, *and the industry is yet in its infancy!* Grow along with it as the consumption increases.

### Papershell Pecans For Sale!

**O**UR OWN pecan groves produce thousands of pounds of papershell pecans each season which we offer for sale. Prices are as follows: 5-pound box of fine Papershell nuts delivered by Parcel Post, \$2.50; 10-pound box as above \$4.00, and 100 pounds delivered by express, \$30.00 prepaid.

#### Terms and Conditions of Sale

**Terms Are Cash With Order.** We pay spot cash for everything and sell the same way. It saves us a lot of bookkeeping and annoyance and enables us to sell our high-grade, bred-up trees cheaper. Some prefer to have goods sent C. O. D., but why pay that extra collection fee? Why not send money with order? Prices are F. O. B. Lumberton, unless otherwise stated.

**How to Send Money.** Send money any way that is most convenient for you. Why not send the money and save the C. O. D. fee? We prefer money order.

We cannot ship trees by mail except small-est pecans and fruits.

**Our Shipping Facilities** are exceptionally good. We are near the depots of two railroads and have open stations both day and night. Also have long distance telephone and telegraph service at all times. You can get us over telephone any time.

We are not connected with any other nursery. We do not employ agents.

**Our Trees Always Freshly Dug.** We can dig and ship your trees any day.

**Order Early.** The demand for our high-grade, bred-up trees far exceeds the supply, and it is very imperative that you send in your order early. Those who order early naturally receive the choicest stock.

**Time of Shipment.** Unless otherwise instructed, orders received during the shipping season, November 1st to April 1st, will be forwarded as soon as possible after receipt of the order.

**Substitution.** If out of the varieties ordered, we will send the ones we think to be the equal or superior unless instructed not to substitute.

**No Charge for Packing.** We carefully pack and tag all trees free of charge.

**Our Trees Free of Disease.** A certificate of inspection of the Mississippi State Entomologist certifying our trees to be free of disease accompanies each bundle of trees. All inspection laws of other States are complied with.

*"Two or three of the pecan trees purchased of you in 1921 (Stuart variety) are breaking down with fruit."—ITTA BENA, MISS.*



# BASS TREES

## Hold World Record!

This is the remarkable bearing record of nine of our Extra Special pecan trees set out the last of February, 1923, by Dr. D. B. Stevenson, of Lumberton, Miss. Most all of these trees bore pecans the first year set out. They were our largest size trees and have been given the very best of attention by Dr. Stevenson. He has fertilized the trees very heavily with barnyard manure and worked around them often, so that weeds and grass would not get the fertilizer. Results have been remarkable.

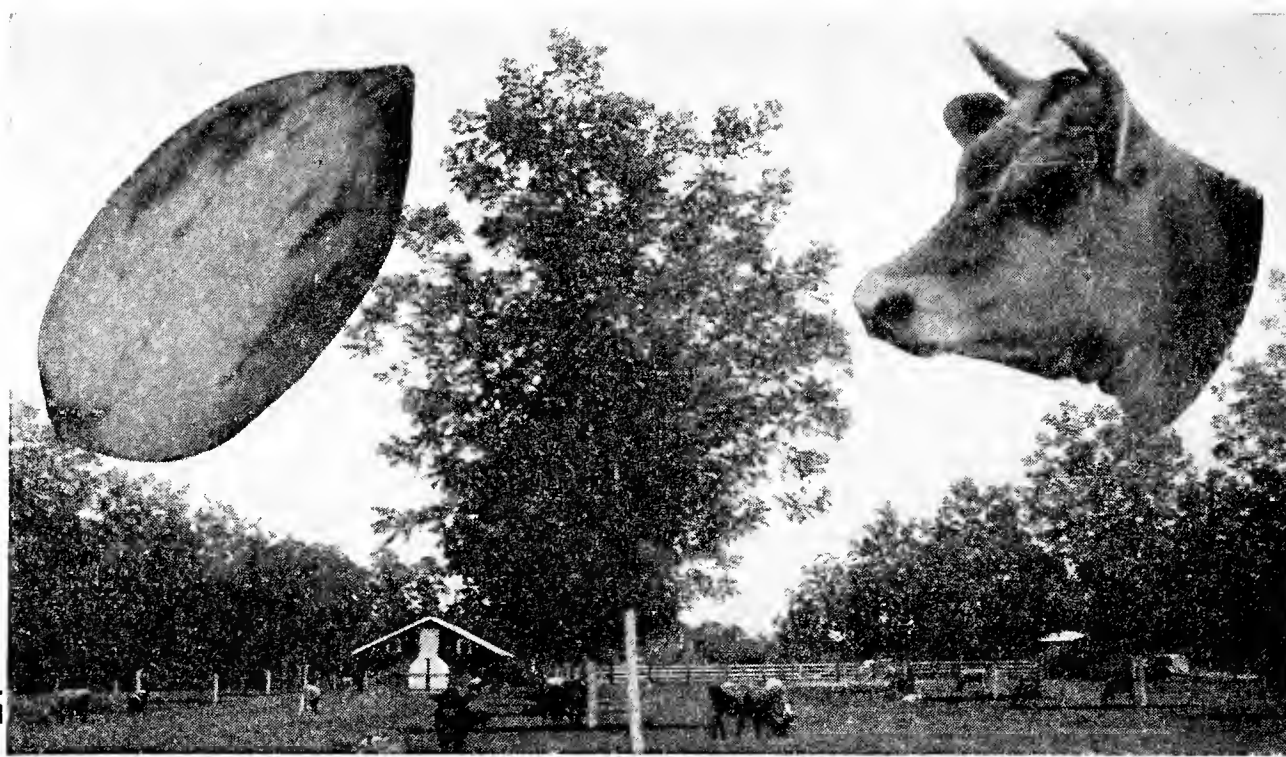
The record that follows was carefully kept by Dr. Stevenson, who is one of the best known physicians as well as loved and respected citizens of South Mississippi, and is absolutely authentic as he gathered and weighed the pecans himself. The trees bearing the heaviest crops were the ones most favorably located. Trees with smallest yields were greatly handicapped by being near big oaks, sidewalks, etc. The nuts were gathered in October and November of 1925—actually before the trees had been set in the ground three years.

Trees No.	Age	Yield
1 Bass Papershell	2 years 8 mos.	25½ lbs.
2 " "	2 years 8 mos.	15 "
3 " "	2 years 8 mos.	16 "
4 Success	2 years 8 mos.	17½ "
5 "	2 years 8 mos.	28¼ "
6 Nelson	2 years 8 mos.	12 "
7 "	2 years 8 mos.	10 "
8 Success	2 years 8 mos.	4½ "
9 "	2 years 8 mos.	4 "

Plant our Extra Special Sizes for Earlier and Heavier Bearing!



●  
*Grow Your Own  
Old-Age  
Pension!*



●  
*Share the Wealth  
Program  
of Nature!*

*Pecans and Cattle Produce a Ready and Steady Income,  
They let your Land Do Double Duty,  
and Eliminate Soil Erosion!*

**BASS PECAN CO.**

*"The Largest Pecan Nursery in the World"*

**LUMBERTON-MISSISSIPPI**