

## **Historic, archived document**

Do not assume content reflects current scientific knowledge, policies, or practices.



MAR 23  
U. S. Department of Agriculture



# **BANNING'S**

## **Seed & Nursery House**

**Wholesale and Retail**  
**T. G. BANNING, PROP.**

**914 Mead, Phone 141, Brookfield, Mo.**

**Seventeenth Annual List of Banning's Dependable  
Seeds, Plants, Nursery Stock, Onion Sets,  
Fertilizer, Spray Materials and Garden Tools.**

**1937**



# Landscape Gardening

The interest in beautifying private and public grounds is nation wide. Every one knows that the proper use of plant materials greatly enhances the attractiveness, comfort and value of a home. These results can only be obtained by the proper selection and arrangement of plants and shrubs according to correct principles of landscape architecture and gardening. That calls for a knowledge of trees and plants, their form, color and season of bloom and habits of growth.

Let us advise with you about your planting problems.

No matter how small or how large your place, we are glad to help you. The smallest home deserves attractive planting. Good landscaping often increases values as much as 20 per cent. We draw planting plans which insures pleasing effects. There are no charges for this service provided we sell to purchaser the trees, vines, or shrubs to set the plan.

We can render an exceptional planting service where customer desires to have us plant their order. Planting service includes application of fertilizer and careful setting of all trees and shrubs by experienced help. All trees and shrubs are edged in setting, which adds to the attractiveness of the complete plan.

Our main specialty is Landscape Material and Landscape Planting. May we assist you?

# Dependable Seeds, Plants, Onion Sets and Nursery Stock

## TO OUR FRIENDS, OUR CUSTOMERS:

We wish to thank our friends and customers for their liberal patronage and hope our services have been such as to merit a continuance of your orders during the coming year.

We have endeavored to have but one thought in mind and that was to build our business on square dealing and giving our customers full measure of true to name seeds, plants and nursery stock. We are proud of our mailing list of three thousand names, many of whom we have known personally for many years. During all these years, it has been a source of pride to feel that by our business dealings, we have been able to merit that confidence and respect that can only be built up by faithful service. "We endeavor to fill all orders correctly, but errors sometime occur. If an error occurs in your order, notify us and it will be promptly corrected."

We have just been through the worst growing year that we have ever known. The drought has caused a serious shortage in many varieties of seeds, plants, shrubs and trees.

Seeds, trees and other stock are higher this year but we have not allowed price to cause a **lower standard of quality, productiveness and trueness to name.**

We do not attempt to handle cheap seed but do give **high quality at a moderate cost.** We solicit your orders and know we can give satisfaction.

Yours very truly,

T. G. BANNING

January 1, 1937.



## A REQUEST

Our business has grown so much that it is all we can do to take care of it on week-days by working from 15 to 17 hours a day during the rush season, and on *Sunday, No Business, Please.*

### FREE SEEDS

When you make out your order for Seeds, Onion Sets or Plants, if it amounts to \$1.00 or more, you may include, free a package of pop corn, mixed gourds, nasturtiums, asters, cypress vine, pinks, sweet peas or mixed zinnias.



Trees Growing

## NURSERY STOCK

Nursery stock handled and sold by us, is high quality, well rooted and full of stored up vitality. We offer strong full sized trees, shrubs, vines and roots. **No culls or small trashy material** but stock that is well rooted, that will start off quickly, and add beauty and usefulness to your home the first season.

Prices on nursery stock includes delivery to customers in Brookfield or immediate territory and we will replace at **ONE HALF OF ORIGINAL COST** of any stock that does not grow the first growing season.

A few places that we have sold and have planted are the Brookfield High School, the Adams School, the Baptist church and the First Church Scientist.

We have sold and delivered thousands of trees, shrubs, and other stock the last ten years and have pleased our customers. No order too small for careful attention. We can please you. Let us prove it!

## SALES TAX

Our business is subject to the Missouri Sales Tax of 1%. Please add the amount to your order. Thank you.

## OUR GUARANTEE

If any stock proves untrue to description under which it is sold, we hold ourselves in readiness, on proper proof, to replace such seed, nursery stock or plants or refund the amount paid, but we shall in no case be liable for any sum greater

than the amount originally received for said seeds, nursery stock or plants.

We further agree: Any nursery stock that does not grow, we will replace at one-half the original cost, if notified by September 1st, following planting.

## POSTAGE ON PLANT ORDERS

Postal rates on plant orders as follows and postage should be added as given below: The postal department collects a service charge on all parcel post packages over eight ounces in weight. To all plant orders under \$1.00 please add 10 cents. Orders over \$1.00, add 12 cents.

All seeds delivered postpaid at prices quoted.

## MAIL ORDERS

Annually we ship many thousands of plants by mail to customers throughout North Missouri. We guarantee their safe arrival. If any plants are damaged in transit, notify us by return mail and we will make good the loss by return mail.

## SEED ORDERS

We attempt to promptly fill them by return mail. We can often deliver mail orders in less than thirty-six hours after customer mails order. Always keep a copy of your order. "We sometimes make errors in filling orders. If an error is made in your order, let us know at once and the error will be corrected by return mail. If you have the slightest complaint, we are more than anxious to make it right. But please remember, we cannot know about it, unless you tell us."



## LAWN GRASS

Under the law, a certified analysis on all lawn grass seed must be furnished to customers. Then the buyers know just what is in it. When you buy grass seed from us, you get this analysis and also germination test. You can see just what is in our *Shady Nook* and *Chicago Parks Mixture* which we consider the best possible seed blends of their kinds. Most cheap grass mixtures consist chiefly of timothy and rye grass. These quick growing grasses make a quick green growth but do not produce a permanent lawn.

**CHICAGO PARKS MIXTURE**—A blend of lawn grass seeds which is positively the highest grade mixture that can be prepared. Composed of seed of the finest English and American grasses with white clover so that with even ordinary care it cannot fail to make a beautiful lawn. One pound will cover about 300 square feet of soil. The ground should be thoroughly pulverized and raked until it is fine and the surface level. If the soil is not naturally rich, it should be fertilized by sowing ten to fifteen pounds of fine sheep manure to each 200 square feet. After sowing the seed, rake or brush the seed in and finish with a roller. For quickly producing a permanent and velvety sward, this lawn seed cannot be excelled. Seed in bulk, ½ lb., 25c; 1 lb., 45c. Seed in 15 oz. sifter top cans, 45c each.

**SHADY NOOK LAWN GRASS**—Usually it is quite difficult to obtain a good growth of grass under trees and in shady places. For sowing in such places this blend of lawn grass seed is recommended. It will quickly produce an abundant and even growth of beautiful grass. ½ lb., 30c; 1 lb., 55c.

**SPECIAL LAWN MIXTURE**—This is all high grade lawn seed but does not contain some more expensive varieties that are used in the Chicago Parks blend of lawn grass seed. Pound, 35c; 2 pounds 65c.

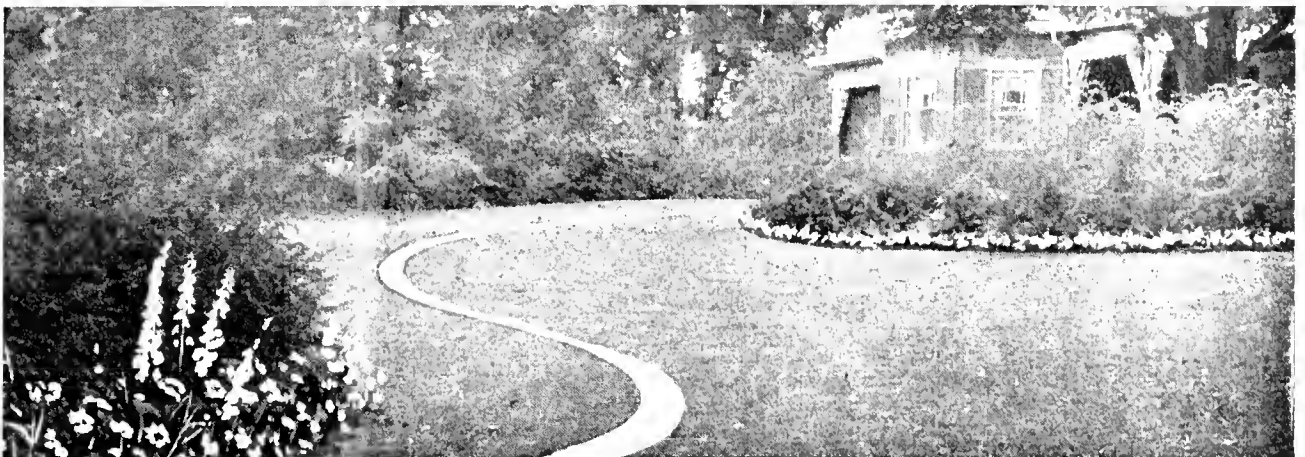
**BENT**—Will grow a thick turf on any acid soil unless it is very sandy or shady. The Bents are low growing, dark green in color, long lived and very hardy. Ideal for lawn, fairway or putting greens. Per lb., \$1.50.

**BLUE GRASS**—The one best grass for northern Missouri. Nothing finer than a well seeded and closely clipped blue grass lawn. A fine grass to use on fairly rich, well drained soil. We offer two grades.

Fancy, heavy, plump seed—Per lb., 35c; 3 lb., for 99c.

Fine seed but not so heavy as the fancy grade; Per lb., 27c; 3 lb., 75c.

**WHITE CLOVER**—Low growing with white blossoms on short stems. Always volunteers in alkaline soils and has as its single excuse for being in a lawn the fact that it is "green in dry weather". Per lb., 60c.



# VEGETABLE SEED

Many varieties of garden seed were very short crops during the growing season of 1936, caused by drought conditions in many agricultural sections.

Our seed is grown by contract growers of long experience in producing quality strains that are truly fresh and reliable.

We test our seed for purity and growth. No seed is offered for sale that does not come up to our high standards. We do not sacrifice quality in order to sell at a cheap price, nor do we sell seed that is old or of poor germination. Our seed is fresh, reliable and reasonably priced. "The cost to plant a garden is only a few cents more for good seed than it is for cheap seed of unknown quality".

"Our seed is cheap insurance for a full crop". No order too small for careful attention. All seed mailed postpaid.

## BEANS

**BURPEE'S STRINGLESS GREEN POD**—The best of all green podded bush beans. Pods are round, entirely stringless and of the best quality. Plants are strong growers and produce tender pods early in the season. The seed is quite hardy and does not rot in cool spring weather nearly as easy as seed of wax varieties. 4 oz., 10c; ½ lb., 15c; 1 lb., 24c; 2 lb., 45c.

**GIANT STRINGLESS GREEN POD**—Pods grow six inches long and meaty, nearly round, brittle, and stringless. Slightly later than Burpee's Stringless Green Pod. Pods are straight, long and slender. Plants are of strong growth and bear a fine crop. 4 oz., 10c; ½ lb., 15c; 1 lb., 24c; 2 lb., 45c.

**PENCIL POD BLACK WAX**—Grows a tall, strong and vigorous bush with long, slender, straight, handsome pods, shaped much like a pencil. 4 oz., 10c; ½ lb., 15c; 1 lb., 24c; 2 lb., 45c.

**BOUNTIFUL**—Finest of flat podded stringless beans. Tender and of excellent flavor. Early and a heavy yielder. 4 oz., 10c; ½ lb., 15c; 1 lb., 24c; 2 lb., 45c.



**GOLDEN WAX**—An early stringless, wax podded variety of high quality producing a good crop of straight flat pods. This variety has proved to be practically free from rust. An old variety, greatly improved in quality. 4 oz., 10c; ½ lb., 15c; 1 lb., 24c; 2 lb., 45c.

**RED SPECKLED CUT SHORT** (or corn hill)—One of the best varieties to plant in hills of corn. A heavy cropper. 4 oz., 10c; ½ lb., 15c; 1 lb., 24c; 2 lb., 45c.

**KENTUCKY WONDER POLE BEANS**—The one best bean, as dry weather does not burn up the vine as it does the bush variety. Not as early as the bush beans but is a heavy yielder of fine beans, either to snap when young or hull later. Often will get two full crops in a season. 4 oz., 10c; ½ lb., 15c; 1 lb., 24c; 2 lb., 45c.

**MISSOURI WONDER**—Pole beans that originated in Missouri. A hardy variety that yields a heavy crop in spite of adverse weather conditions. Pods are green, tender and almost stringless if the pods are picked while young. A great yielder of hulling beans. 4 oz., 10c; ½ lb., 15c; 1 lb., 24c; 2 lb., 45c.

**RED KIDNEY**—One of the best dry shell beans; hardy and vigorous grower; heavy yielders of red beans. 4 oz., 10c; ½ lb., 15c; 1 lb., 24c; 2 lb., 45c.

**SMALL WHITE NAVY**—A strain of seed developed in Western New York. A sure cropper and not only more prolific than the common white bean but of better quality. 4 oz., 10c; ½ lb., 15c; 1 lb., 24c; 2 lb., 40c; 5 lb., 85c.

**MAMMOTH FLORIDA BUTTER**—Large pole butter bean with speckled red and white seed. Quick growing, climbing variety that yields an abundant crop. 4 oz., 10c; ½ lb., 15c; 1 lb., 25c.

**HENDERSON'S BUSH LIMA**—A very productive bush variety of small lima beans. Vines are literally covered with pods, holding two to four beans. 4 oz., 10c; ½ lb., 15c; 1 lb., 25c; 2 lb., 45c.

**BURPEE'S FORDHOOK BUSH LIMA**—After a test of this variety for three years I believe it is the best and most productive of the large bush lima beans. It sets a good crop of pods with three to five large beans to a pod. Has the same good qualities of the large pole limas. 4 oz., 10c; ½ lb., 15c; 1 lb., 25c; 2 lb., 45c.

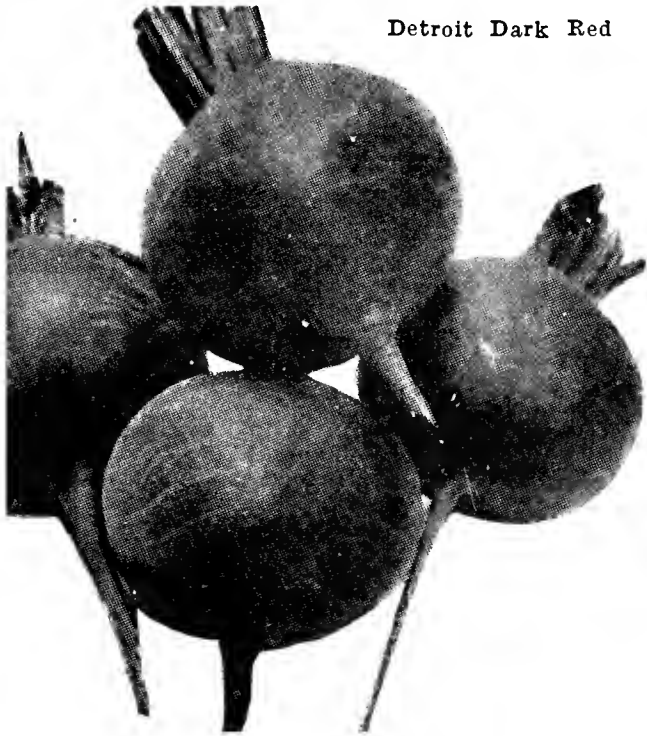
**JACKSON WONDER**—Calico colored bush limas. Most prolific of all bush lima beans. 4 oz., 10c; ½ lb., 15c; 1 lb., 25c; 2 lb., 45c.

**POLE LIMA**—King of the garden. Strong grower with pods of four to five large beans of excellent quality. One of the best tall growing lima beans. 4 oz., 10c; ½ lb., 15c; 1 lb., 25c; 2 lbs., 45c.

**CAROLINA SMALL LIMA**—Vines vigorous with many branches. Early and productive, bearing short pods with two to three beans. This pole variety is similar in size to Henderson's Bush Lima. 4 oz., 10c; ½ lb., 15c; 1 lb., 25c.



Detroit Dark Red



### BEETS

**DETROIT DARK RED**—Medium early, dark red in color, round with a small tap root. Beets are round, smooth and quality is of the best. Beets remain tender even when of large size. Fine for canning. Pkt., 5c; oz., 12c;  $\frac{1}{4}$  lb., 40c;  $\frac{1}{2}$  lb., 65c.

**EGYPTIAN DARK RED**—A strain of beets developed after several years' selection. Dark red free from light zones, early and an excellent beet in every way. Pkt., 5c; oz., 12c;  $\frac{1}{4}$  lb., 35c;  $\frac{1}{2}$  lb., 65c.

### SWISS CHARD

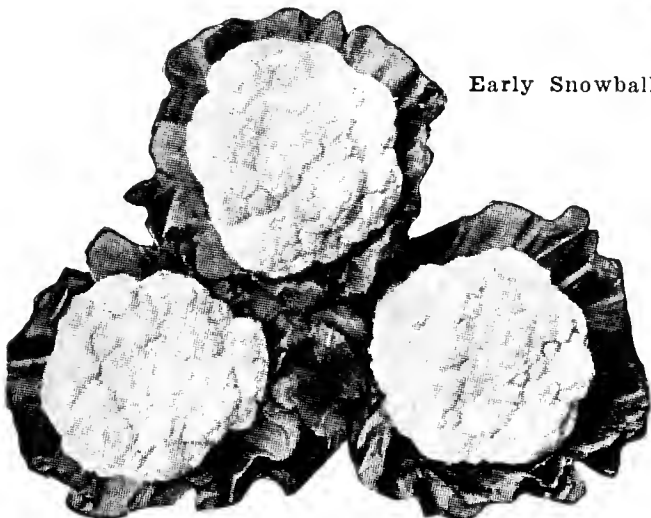
Does not make a bulb but is grown for the leaves and stalks which are used for greens. Can be used all summer after spinach is gone. Pkt., 5c; oz., 12c;  $\frac{1}{4}$  lb., 45c.

### CARROT

**DANVERS**—The smooth roots are deep orange color; flesh is sweet and tender and are easily pulled. Pkt., 5c; oz., 15c;  $\frac{1}{4}$  lb., 45c.

**CHANTENAY RED CORELESS**—Tops medium sized, roots uniformly smooth, color a deep orange red, flesh crisp and tender and almost coreless. Medium early, a heavy cropper and is a fine winter keeper. Roots grow about six inches long and are easy to pull. Pkt., 5c; 1 oz., 15c;  $\frac{1}{4}$  lb., 45c.

Early Snowball



### CABBAGE

All cabbage seed we offer this year are wilt resistant strains. This seed has been developed to grow and produce crops in gardens that have been affected by wilt diseases as well as in disease free soils. The seed is far more expensive than the standard strains but we offer it to you at no advance in prices. We have many customers who tell us they were unable to grow cabbage until they planted these strains of seed.

**EARLY JERSEY WAKEFIELD**—Standard early pointed heads of medium size. Heads early, but does not stand long without bursting. Pkt., 5c; oz., 35c.

**COPENHAGEN MARKET**—A fine early cabbage. Round heads, large and solid with few outside leaves. Heads will stand a long time without bursting. Can be set as close as Jersey Wakefield. Pkt., 5c; oz., 45c.

**ALL SEASONS**—A second early variety that is suited to every growing season. Even when planted late, it keeps well. Heads large and solid, with small ribbed leaves. Pkt., 5c; oz., 40c.

**EARLY ALL HEAD**—Second Early variety with large flattened heads. The core is decidedly small and it is similar to and has the same fine quality of Early Flat Dutch. Pkt., 5c; oz., 40c.

**WISCONSIN HOLLANDER**—A fine cabbage developed from the famous Danish Ball Head. A winter variety. Hard heading and long keeping. Heads round as a ball, solid, fine grained and fine flavor. Pkt., 5c, oz., 40c.



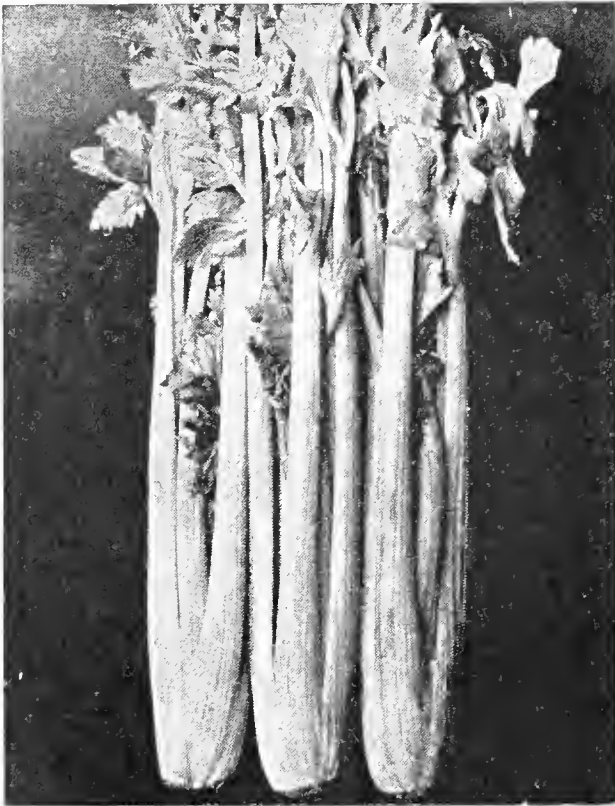
Copenhagen Market

### CAULIFLOWER

**EARLY SNOWBALL**—Good for either early or late, but to make good heads cauliflower needs plenty of moisture. This is an extra good strain. Pkt., 5c.

### DILL

**MAMMOTH**—The seed and foliage of this annual herb are used for flavoring. Grow some of it and put up your own dill pickles. Pkt., 5c; oz., 15c;  $\frac{1}{4}$  lb., 45c.



Golden Self Blanching

## CELERY

**GOLDEN SELF BLANCHING**—Almost as early as White Plume, but stalks are larger and better quality. Pkt., 5c; oz., 50c.

**EASY BLANCHING**—Excels in qualities that give self blanching celeries their value. It blanches earlier and easier than most other varieties but if put away green, it is the longest keeping variety known. Pkt., 5c; oz., 40c.

**GIANT PASCAL**—Winter variety with large bunches of heavy ribbed stalks. Plants grow large and when blanched are tender and of fine flavor. Pkt., 5c; oz., 40c.

## SWEET CORN

**GOLDEN BANTAM**—Extra early, 8 rowed ears with golden yellow kernels of fine quality. Ears are medium size, just right for the table. 4 oz., 10c; ½ lb., 15c; 1 lb., 25c; 2 lb., 45c.

**LEONARD'S EARLY**—A new early variety first offered in 1926. The large ears are a beautiful white with a fine sweet flavor and is ready for the table much ahead of many early varieties. This new variety is strongly recommended and growers will want to plant it again after once trying it. 4 oz., 10c; ½ lb., 15c; 1 lb., 25c; 2 lb., 45c.

**STOWELL'S EVERGREEN**—A favorite main crop variety excelling in productiveness and quality. Makes a large ear of sugary sweetness. 4 oz., 10c; ½ lb., 15c; 1 lb., 25c; 2 lb., 45c.

**COUNTRY GENTLEMAN**—A productive variety of high quality with deep, slender grains, irregularly arranged on the cob. 4 oz., 10c; ½ lb., 15c; 1 lb., 28c; 2 lb., 50c.

**HOWLING MOB**—One of the finest second early, large eared, very productive and excellent quality. Ears white, 7 to 9 inches long, 10 to 12 rowed. 4 oz., 10c; ½ lb., 15c; 1 lb., 25c; 2 lb., 45c.

## POP CORN

**JAPANESE HULLESS or BABY BUSTER**—Small white grained popping corn. A good yielder and a fine popper. Grains when popped are large and tender. Pkt., 10c; ½ lb., 15c; lb., 25c.

**SOUTH AMERICAN or DYNAMITE**—Usually two ears to stalk. Large yellow kernels, 12 to 14 row ears, six inches long. Pops to large size, without any hard center. Pkt., 10c; ½ lb., 15c; 1 lb., 25c.



Improved Long Green

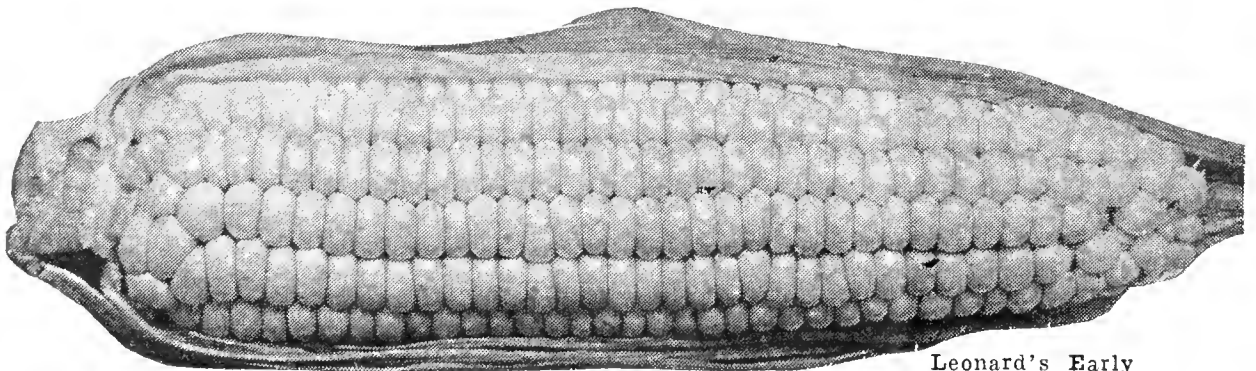
## CUCUMBER

**IMPROVED LONG GREEN**—Fruits are long, green. Fine for slicing. Pkt., 5c; oz., 12c; ¼ lb., 40c; ½ lb., 70c.

**CHICAGO PICKLE**—Small fruits, grown mostly for pickling. Pkt., 5c; oz., 12c; ¼ lb., 40c; ½ lb., 70c.

**EARLY WHITE SPINE**—Vines vigorous, early and productive. One of the best sorts for table use. Pkt., 5c; oz., 12c; ¼ lb., 40c; ½ lb., 70c.

**EGG PLANT Black Beauty**—Earliest and best of the large fruited egg plants. The rich purplish black fruits are tender and tasty in all stages of growth. Pkt., 5c.



Leonard's Early

## LETTUCE

**BLACK SEEDED SIMPSON**—A loose, fluffy headed variety of quick growth and good quality. The best variety for outdoor planting. Pkt., 5c; oz., 12c; ¼ lb., 45c.

**PRIZE HEAD**—Crisp, tender leaves, shaded a reddish brown. Grows rapidly. A valuable sort for the home garden. Pkt., 5c; oz., 12c; ¼ lb., 45c.

**HANSON**—A quick growing lettuce with green curly leaves. This lettuce is classed as a head lettuce. Stands hot weather well and stands a long time before going to seed. Pkt., 5c; 1 oz., 12c; ¼ lb., 45c.

**LEONARD'S HEAD**—A cabbage head variety for early and late summer planting. Small ribbed leaves, tender and crisp. Withstands heat well. Pkt., 5c; oz., 12c; ¼ lb., 45c.

**GRAND RAPIDS**—Especially adopted for greenhouse culture. Also good to sow outside early in the spring. Makes large attractive, curly leaves. Pkt., 5c; 1 oz., 12c; ¼ lb., 45c.

**BIG BOSTON**—Popular early Lettuce with large green leaves. Big Boston heads well during cool weather, forming a tightly folded heart which consists of beautifully blanched tender leaves. Equally as valuable for growing in the home garden as for market. Pkt., 5c; oz., 12c; ¼ lb., 45c.

## MELON SEED

Our melon seed comes from seed growers who grow melons for seed purposes only. The seed is only taken from melons that are true to type and quality and will produce high yields of fine fruit.

**ROCKYFORD**—The netted green fleshed cantaloupes shipped in large quantities from the growing centers. Vines productive and melons are sweet to the rind. Pkt., 5c; oz., 12c; ¼ lb., 40c; ½ lb., 70c.

**HACKENSACK**—A very large, green fleshed melon. Vines are hardy, vigorous and productive. Fruit is nearly round, usually somewhat flattened and densely covered with coarse netting. Pkt., 5c; oz., 12c; ¼ lb., 40c; ½ lb., 70c.

**HOODOO or HEARTS OF GOLD**—An orange fleshed melon of medium size, covered with fine netting and slightly ribbed. Flesh is extremely thick and delicious. Pkt., 5c; oz., 12c; ¼ lb., 40c; ½ lb., 70c.

**TIP TOP**—Muskmelon of large size with fine flavored salmon flesh. Pale green skin distinctly ribbed and slightly netted. A melon that is tip top in quality, appearance and productivity. Pkt., 5c; oz., 12c; ¼ lb., 40c; ½ lb., 70c.

**BANANA**—Long salmon fleshed variety of good flavor, growing about 15 inches long. Pkt., 5c; oz., 12c; ¼ lb., 40c; ½ lb., 70c.



Rockyford



**KLECKLEY'S SWEET WATERMELON**—Vines vigorous and productive. Fruit medium size. This is the fine dark green melon which is grown so much in the Missouri bottoms. Pkt., 5c; oz., 10c; ¼ lb., 30c; lb., 75c.

**DIXIE QUEEN**—An excellent new variety. Fruit round or blunt oblong, gray with prominent dark green stripes. Flesh richly colored, firm and juicy with small white seeds. Pkt., 5c; oz., 12c; ¼ lb., 30c; 1 lb., 75c.

**GOLDEN HONEY**—Best of yellow fleshed melons. Oblong in shape with white seeds. Rind is dark green. Pkt., 5c; oz., 10c; ¼ lb., 30c; 1 lb., 75c.

**STONE MOUNTAIN**—Large, medium dark green, round melon of excellent quality. Flesh highly colored, solid with few seeds. Rind is tough enough to stand handling for nearby markets. Pkt., 5c; oz., 10c; ¼ lb., 30c; 1 lb., 75c.

**PEANUTS Virginia**—Productive variety of rich flavor with 2 to 3 kernels to the pod. ¼ lb., 10c; 1 lb., 35c.

## MUSTARD

**GIANT CURLED**—Used for greens. Plant some in your garden for greens. Hoe up any left before blooming and you will have no trouble with it seeding itself. Pkt., 5c; oz., 10c; ¼ lb., 30c.

## OKRA

Largely used in the south for soups, etc. Pods should be gathered and used when still young and tender. Seed should be sown after weather is settled and nights are quite warm. Pkt., 5c.

## ONION SEED

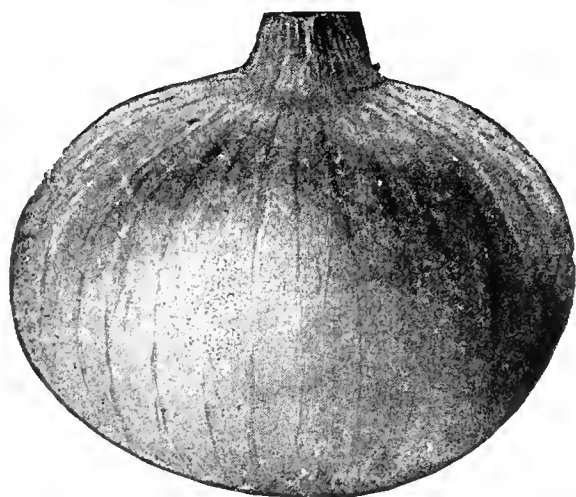
Good onions of first quality can be grown by careful attention in preparing the soil, planting and cultivation, but above all else, the seed planted must be of high quality.

**RED GLOBE**—Dark red onions of a globe shape. Planted thinly they will make large size bulbs. An extra good strain. Pkt., 5c; oz., 20c; ¼ lb., 70c; ½ lb., \$1.25; 1 lb., \$2.25.

**WHITE GLOBE**—A perfect globe shaped white onion of large size. Skin is a clear white. Pkt., 5c; oz., 20c; ¼ lb., 70c; ½ lb., \$1.35; lb., \$2.45.

**PRIZETAKER**—Large yellow onion with firm white flesh. Ripens up hard and firm, is fine grained and mild in flavor. A fine onion for fall market. Pkt., 5c; oz., 20c; ¼ lb., 70c; ½ lb., \$1.25; 1 lb., \$2.25.

**CRYSTAL WHITE** and **YELLOW BERMUDA**—Grow your own Bermuda onions right from seed. Plant the seed early and you can transplant or thin them out and raise fine, mild onions for fall use. Pkt., 5c; ½ oz., 20c; 1 oz., 35c.



**WHITE PORTUGAL**—American Silver Skin. Best sort to sow for growing small white pickling onions. Sown thickly, the small onions ripen small hard bulbs. Pkt., 5c; oz., 20c; ¼ lb., 70c; ½ lb., \$1.25

## ONION SETS

Our sets are small, sound and clean. Sets were a short crop last season on account of wet weather at harvest time in September. Our supply for spring is short and we cannot guarantee price only on sets that we contracted for last June.

**JAPANESE SETS**—Mild variety of onions that make fine green onions for table use or large long keeping bulbs for winter use. Plant these mild flavored sets. You will like them. Qt. 13c. By mail 2 qt., 40c; 4 qt., 65c.

**Red**—Standard variety, small and free from dirt. Qt., 12c. By mail 2 qts., 37c, 4 qts., 60c.

## PARSLEY

**MOSS CURLED**—Rich, green color, with leaves curled and twisted. One of the best varieties for garnishing. Pkt., 5c; oz., 12c.

## PARSNIPS

**HOLLOW CROWN**—Roots long, tender and sweet. The most popular parsnip. Pkt., 5c; oz., 10c; ¼ lb., 35c; ½ lb., 55c.

**GUERNSEY**—Roots tender with smooth, clear skin. I grew this variety last year on the recommendation of a customer and found it to be a fine variety. Pkt., 5c; oz., 10c; ¼ lb., 35c; ½ lb., 55c.



Moss Curled Parsley

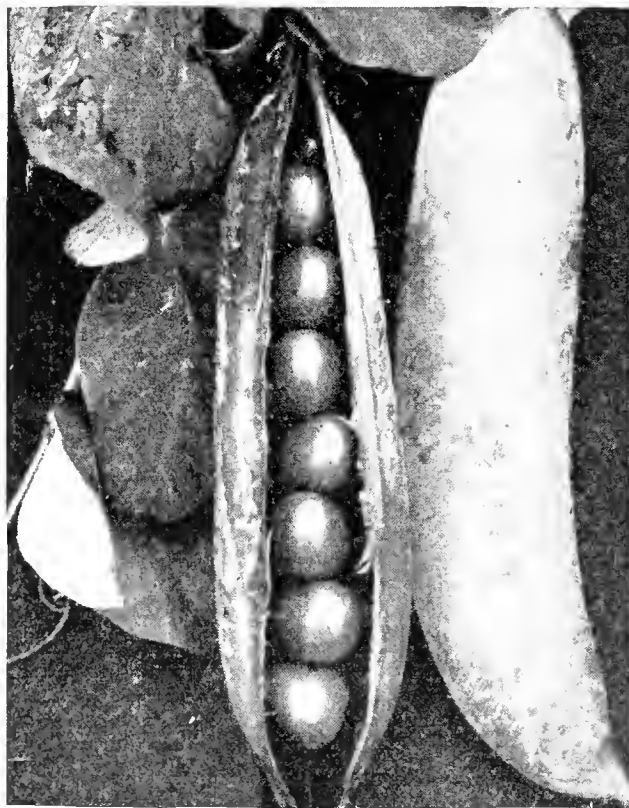
## PEAS

**CLAUDET OR LARGE ALASKA**—Extra early with smooth seed. Vines light green in color, dwarf growing and bear a heavy crop of medium sized pods, packed full of peas. A hardy variety that can be planted real early in the Spring. 4 oz., 10c; ½ lb., 15c; 1 lb., 23c; 2 lb., 40c.

**LEONARD'S POTLATCH**—Strong, vigorous vines, twenty to twenty-four inches in height, dark green foliage with large pods three to four inches in length. Potlatch is a variety from which anyone may expect great things. No variety will produce more pods or shell out more peas. Peas are large and fit for the table early. 4 oz., 10c; ½ lb., 15c; 1 lb., 23c; 2 lb., 40c.

**LAXTONIAN**—Largest podded of the dwarf growing varieties. Vines vigorous and productive, growing fifteen inches high. Foliage dark green with pods about four inches long. An early variety but as the seed is wrinkled, it should not be planted too early. 4 oz., 10c; ½ lb., 15c; 1 lb., 23c; 2 lb., 40c.

**AMERICAN WONDER**—Esteemed for earliness, productiveness and quality. Robust vines about ten inches high which produce quantities of good sized pods, closely packed with peas. 4 oz., 10c; ½ lb., 15c; 1 lb., 23c; 2 lb., 40c.



Claudet Peas

**LITTLE MARVEL**—A pea rightly named. Vines grow 12 to 15 inches high. No earlier wrinkled peas and the quality satisfies everybody. Pods dark green, about three inches long, filled with six to seven peas. 4 oz., 10c; ½ lb., 15c; 1 lb., 23c; 2 lb., 40c.

**TELEPHONE**—Foliage large and coarse, light green in color. Height 3 to 4 ft., an early, tall growing variety. Seed large and wrinkled. One of the best climbing peas. Pods large and full. 4 oz., 10c; ½ lb., 15c; 1 lb., 23c; 2 lb., 40c.

**WHITE MARROWPAT**—Vines hardy, strong and vigorous. Height 4 feet, foliage light green in color, pods three inches long, filled with large peas. 4 oz., 10c; ½ lb., 15c; 1 lb., 23c; 2 lb., 40c.

**EVERBEARING**—Vines vigorous and branching in habit. Height thirty to thirty-six inches. Pods broad, light colored and about three inches in length. 4 oz., 10c; ½ lb., 15c; 1 lb., 23c; 2 lb., 40c.

## PEPPERS

**RUBY KING**—Large, sweet mangoes. Green at first, turning to deep crimson when ripe. Mangoes are always smooth, even in the largest ones. Pkt., 5c; oz., 35c.



**CHINESE GIANT**—The largest sweet mango grown. Does not bear as much fruit as the Ruby King. Its mammoth size always commands attention. Pkt., 5c; oz., 45c.

**GOLDEN QUEEN MAMMOTH**—Very large green peppers turning to a rich golden yellow when

ripe. Sweet, an early variety. Pkt., 5c; oz., 35c.

**HOT CAYENNE**—Peppers are two to three inches long, half inch in diameter and fiery hot. Pkt., 5c; oz., 35c.

**PIMENTO**—Flesh sweet and thicker than any other pepper. Fruits are glossy green, turning to a beautiful dark red when ripe. Fruits measure two to three inches in diameter and one to two inches in depth. Many customers are now canning these sweet thick meated peppers each fall. Pkt., 5c; oz., 35c.

**NEAPOLITAN**—A medium size sweet pepper that is early and a sure cropper. Always sweet. This variety can always be counted on to ripen most of its crop early in the fall, thereby giving plenty of red mangoes for pickles. Pkt., 5c; oz., 35c.

**HARRIS'S EARLY GIANT**—Earliest and most prolific of all large peppers. Fruit is size of Ruby King. Plants often have 12 or more large peppers on them at a time. A sure bearer even in dry weather. Pkt., 5c; oz., 40c.

**CALIFORNIA WONDER**—A mild sweet variety, very large with heavy thick flesh. One of the heaviest peppers grown. Pkt., 5c; oz., 45c.

## PUMPKIN

**LARGE CHEESE** or **KENTUCKY FIELD**—One of the best for table use and very productive. Shape of fruit is flat, flesh yellow, thick and tender. Pkt., 5c; 1 oz., 10c; ¼ lb., 30c.

**SUGAR** or **PIE**—A rather small but handsome variety. Shape round, skin deep orange colored, flesh fine grained, sweet and superior for pies. Pkt., 5c; 1 oz., 10c; ¼ lb., 35c.

**GREEN CUSHAW**—Fruit large with crooked necks. Color creamy white, irregularly striped with green. Flesh light yellow, thick and sweet. Pkt., 5c; 1 oz., 10c; ¼ lb., 35c.

**WHITE CUSHAW**—Fruit large with crooked necks. Color creamy white, flesh yellow, thick and sweet. Pkt., 5c; oz., 10c; ¼ lb., 35c.

**CONNECTICUT FIELD**—Standard cornfield variety; producing large orange colored pumpkins, averaging 25 lbs. in weight. Flesh is thick, dry and sweet. Pkt., 5c; oz., 10c; ¼ lb., 30c.

## RADISH

**CRIMSON GIANT**—A large early variety of the round red type. Grows about twice the size of the early turnip type of radishes but is not as early. Remains solid longer than other round varieties. Pkt., 5c; 1 oz., 12c; ¼ lb., 30c; lb., 75c.

**FRENCH BREAKFAST**—Olive shaped, scarlet radish with white tip. Tender and early. Pkt., 5c; oz., 12c; ¼ lb., 30c; 1 lb., 75c.

**ICICLE**—Early, long white radish. Flesh tender and crisp. Pkt., 5c; oz., 12c; ¼ lb., 30c; 1 lb., 75c.

**SAXA**—An extremely early round red radish of fine quality and no radish makes a prettier bunch than any radish that we have ever grown. They are ready to pull when the tops are small and are very crisp and tender. Pkt., 5c; oz., 12c; ¼ lb., 30c; 1 lb., 75c.

**WHITE TIPPED SCARLET TURNIP**—Early round radish with white tap root. Flesh tender and snappy. Pkt., 5c; oz., 12c; ¼ lb., 30c; 1 lb., 75c.

**WHITE STRASBURG**—A popular summer radish with long, thick, white roots. Remains solid for some time after reaching full size. Pkt., 5c; 1 oz., 12c; ¼ lb., 30c; lb., 75c.

**WHITE CHINA** or **CELESTIAL WINTER**—Roots are long with beautiful white skin and flesh is so white as to attract attention even among other white varieties. Radishes grow large but even in the largest size they are sweet, tender and solid. Plant seed at late turnip planting time. Use them through the fall and dig and store balance the same as potatoes and turnips. I never grew them until last fall but they are certainly fine. Pkt., 5c; oz., 12c.

## SAGE

Mammoth Broad Leaved Garden Sage used for seasoning. Makes a good sized bush the first season and will live over the winter if protected from severe cold. Pick the leaves before frost and cure in the shade. Pkt., 5c.

## SALSIFY

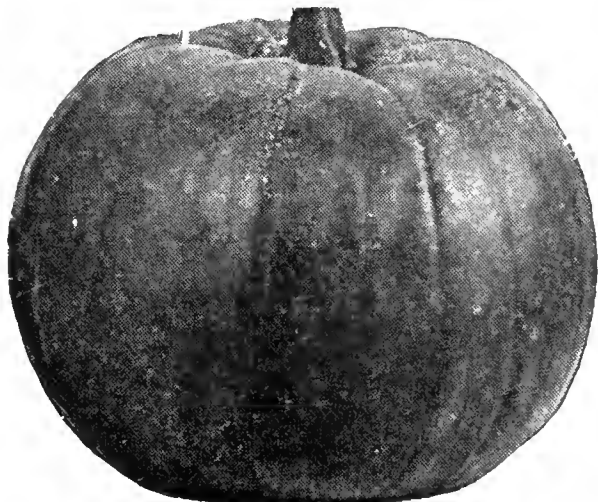
**SALSIFY** or **OYSTER PLANT**—This is grown for fall and winter use and is highly esteemed for the fine flavor of the roots. The name of oyster plant has been given to Salsify because the roots have an oyster-like flavor. Sow the seed thinly in shallow drills early in the spring. Pkt., 5c; oz., 20c.

## SPINACH

**VICTORIA**—Early large leaved variety. Should be planted early. Pkt., 5c; oz., 10c; ¼ lb., 30c; ½ lb., 50c.

**BLOOMSDALE**—A variety of spinach that stands a long time before it goes to seed. Leaves crumpled, dark glossy green and tender. Pkt., 5c; oz., 10c; ¼ lb., 30c; ½ lb., 50c.

**NEW ZEALAND**—A new type of spinach. The plants grow in branching form. Leaves and stems can be gathered anytime after they are large enough and the plants will put out a new growth. Thrives in hot weather in any soil. Pkt., 5c; oz., 10c; ¼ lb., 30c; ½ lb., 50c.



Sugar or Pie

## SQUASH

**WARTY HUBBARD**—Large size winter squash with a hard, warty skin. Splendid for baking. Pkt., 5c; oz., 15c; ¼ lb., 50c.

**FORDHOOK**—A squash small in size that is fine for cutting in halves and baking. Fruits are 6 to 8 inches long, slightly ridged, and a light lemon in color. Flesh fine grained, free from fiber and of a buttery flavor. Pkt., 5c; oz., 15c; ¼ lb., 50c.

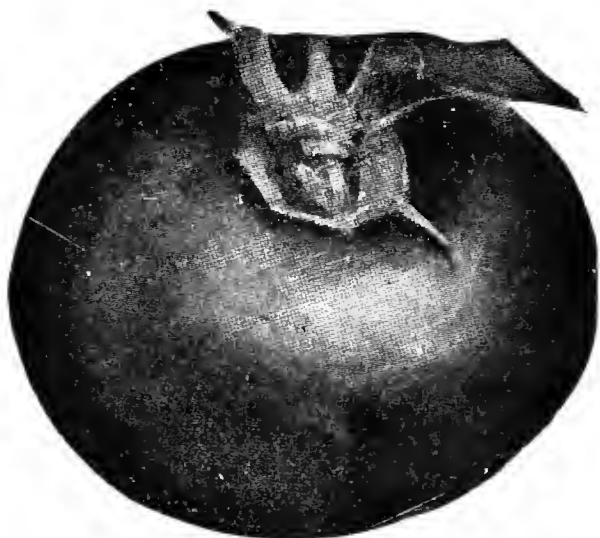
**BANANA**—A winter squash delicious for pies or baking. Tough shell, grayish green in color with orange flesh. Pkt., 5c; oz., 15c; ¼ lb., 50c.

**GIANT SUMMER CROOKNECKS**—A fine early type with vines of bush habit, large and vigorous. The fruits are curved at the neck with warted golden surface. Pkt., 5c, oz., 15c, ¼ lb., 50c.

## TURNIP

**PURPLE TOP WHITE GLOBE**—An early turnip of globe shape which is rapidly taking the market away from all other varieties. Pkt., 5c; oz., 10c; ¼ lb., 30c; 1 lb., 75c.

**WHITE MILAN**—Roots flat and attractive white. Tops small and upright. Very best for early spring planting. Quality fine. Skin smooth and almost transparent. Pkt., 5c; oz., 10c; ¼ lb., 30c; 1 lb., 75c.



## TOMATO

**EARLIANA**—Extra early tomatoes. The first fruits are the best but the size soon runs small. Plant a late variety to come on when the best fruits are gone. Pkt., 5c; oz., 35c.

**CHALK'S EARLY JEWELL**—Not quite as early as Earliana, but far better quality. Fruit is smooth and ripens up evenly to the stem. Pkt., 5c; oz., 35c.

**OXHEART**—A large tomato growing in the form of a beef heart. Skin is pink and flesh is mild and sweet. Fruit is large and almost seedless. It is not a heavy bearer. Pkt., 5c; ½ oz., 40c.

**JUNE PINK**—Best described as a pink Earliana. Ripens with Earliana but fruit is better quality. Pkt., 5c; oz., 35c.

**MARGLOBE**—Wilt and rust resistant, a new widely known tomato. One of the best varieties for producing a crop under adverse weather conditions. A fine second early and main crop tomato. Pkt., 5c; oz., 35c.

**PONDEROSA**—Large, meaty variety of tomato with few seeds. No garden complete without this tomato. Ripens early for such large fruit. Pkt., 5c; oz., 50c.

**BREAK O' DAY**—A new wilt resistant tomato that is nearly as early as Earliana, but far superior in size and quality. Fruits are large, smooth, meaty, red and nearly globe shaped. We have fruited this variety for two years and know it will please any one planting it. Pkt., 5c; oz., 35c.

**PRITCHARD** Scarlet Topper—New extra early, large, smooth and extremely solid tomato of an intense scarlet color. Productive and very attractive. Of a solidity that is truly remarkable with small seed pockets and no core. Its productiveness, especially in rich soil is amazing. It is a wilt resistant variety, with plenty of vine to protect the fruit from sun scald. Pk. 5c; oz., 40c.

**STONE**—A leading variety for main crop, with large smooth fruit. Color bright scarlet. Ripens evenly to stem. One of the best varieties for canning. Pkt., 5c; oz., 30c.

**BEEFSTEAK**—A large red tomato of few seeds and much meat. A great favorite with many customers. Fruit ripens mid-season. Pkt., 5c; oz., 60c.

**RED HEAD**—A fine early red tomato ripening as early as Chalk's Early Jewell. Fruit is large and smooth. A production variety of solid quality tomatoes. Pkt., 5c; oz., 35c.

**GOLDEN PONDEROSA**—Similar in size to Ponderosa except fruit is golden yellow tinged on blossom side with pink. Pkt., 5c.

**GOLDEN QUEEN**—Fruit large and smooth; color a golden yellow with a slight blush of red. Smooth and as well shaped as the best red varieties. Fine flavor. Pkt., 5c.

## RUTABAGA

**IMPROVED PURPLE TOP**—Hardy and productive. Roots are globular with a small tap root and a small neck. Color bright yellow. Pkt., 5c; oz., 10c.

## SELECT VARIETIES

**BROCOLI**—Green sprouting, forms large head consisting of a cluster of bluish green flower heads. Cooked and served like cauliflower. Pkt., 5c; oz., 40c.

**RUSSELL SPROUTS Dwarf Improved**—Tiny heads like cabbage that grow on the side of the plant stem. A delicious vegetable. Pkt., 5c; oz., 35c.

**ENDIVE Green Curled**—Beautifully curled, tender and crisp. Leaves a rich green color which blanch to an attractive creamy white. Pkt., 5c; oz., 15c.

**KOHL-RABI Early White Vienna**—Popular, early short topped variety with firm flesh. The bulbs are best when 2 to 3 inches in size. Pkt., 5c; oz., 15c.

**KALE or BORECOLE Dwarf Curled**—Grows low and compact with leaves so crimped and curled that the whole plant looks like moss. Pkt., 5c; oz., 15c.

**LEEK Broad London**—Mild sweet form of onion, excellent for soups, stews or creamed. Pkt., 5c; oz., 25c.

**RED CABBAGE**—Leaves red in color, heads are firm and solid. Used for pickling. Pkt., 5c.

**CHINESE or CELERY CABBAGE**—A fine, tender vegetable, may be served like lettuce or shredded in cole slaw. Boiled, it is more palatable than cabbage. Fine substitute for head lettuce. Pkt., 5c; oz., 25c.

**HERBS**—Listed are several that should be found in every garden. Pkt., 5c.

**True Lavender**—Leaves used for perfume for linens.

**Sweet Majoram**—Used as seasoning.

**Summer Savory**—Used for flavoring salads, etc.

**Thyme**—Used in soups, stews etc.

# FLOWER SEEDS

A Home can hardly be called a home without some bright colored flowers blooming in the yard, and adding cheer to the surroundings. Flowers, when care is exercised, are not hard to grow, and every home and every farm should abound in them.

## ASTERS

**QUEEN OF THE MARKET, MIXED**—Early flowers double and large on stems of good length. Fine for cutting. The best colors blended in this mixture. Pkt., 10c.

**AMERICAN BRANCHING**—Plants grow 2½ to 3 feet high, branching and robust habit. Flowers large and double. Mixed colors. Pkt., 10c.

## CALENDULA

**DOUBLE ORANGE KING**—Seeds may be sown in shallow drills in flower beds when trees are starting to leaf out. Excellent for beds or borders and they last a long time as cut flowers in water. Pkt., 10c.

## CASTOR BEANS

Large variety, often growing ten to twelve feet high. Leaves are extra large. Seed should not be planted in the open ground until maples are leafing out. Pkt., 10c.

## COSMOS

**EXTRA EARLY MAMMOTH FLOWERING**—Mammoth flowers in pink, white and crimson are produced by this mixture. One of the best flowers for cutting. Pkt., 10c.

## CYPRESS VINE

Beautiful and popular tender climbing vine with fern-like foliage and many scarlet and white star-shaped flowers. Pkt., 10c.

## GOURDS

Mixed varieties. Fast growing climbers with ornamental foliage and singular shaped fruit. Pkt., 10c.

## GYPSOPHILA

(Baby's Breath). Pretty, free-flowering plants. Their misty white panicles of bloom are used for mixing with other cut flowers. Pkt., 10c.



Asters

## HYACINTH BEAN

(Delichos). Mixed. Annual climber of rapid growth with Wistaria-like clusters of flowers followed by bronzy-purple seed pods. Pkt., 10c.

## HELICHRYSUM

(Strawflower). Finest mixed. Flowers are round, flat and very full of short incurved petals. Their chief value is for winter use in vases and baskets. Cut blossoms with long stems when they are about a third open. Hang bunch, head down in a cool place until dry. Pkt., 10c.

## HOLLYHOCKS

Fine mixed varieties of old time flowers. Seed should be sown in June or July to have flowering plants the next summer. If sown in the house early in the spring, they will bloom the first year. Pkt., 10c.

## LARKSPUR

Double mixed. Free flowering annuals with fine spikes of flowers. They do best in cool and moist soil. Pkt., 10c.

## MARIGOLD

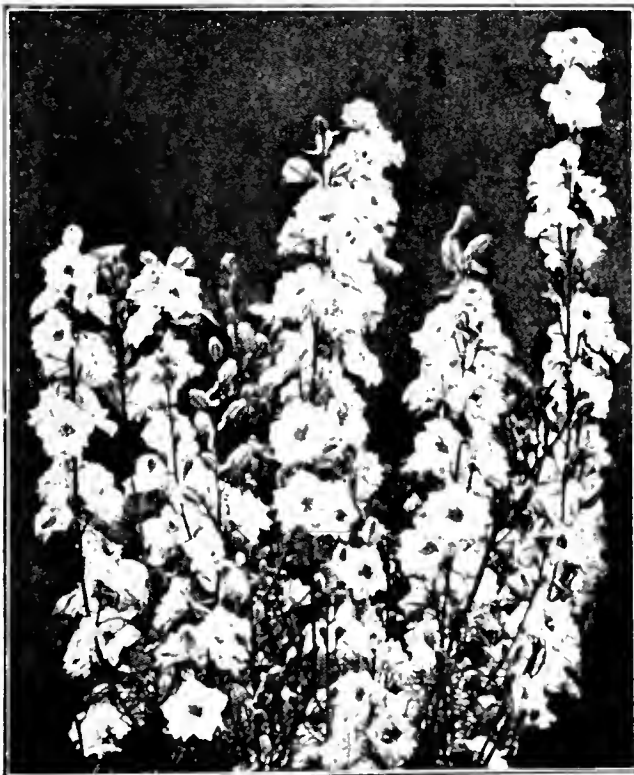
This is an old favorite free flowering annual of easiest culture. They have uniformly large, yellow orange colored flowers. They do best when grown with full exposure to the sun. Pkt., 10c.

## NASTURTIUMS

**DWARF MIXED**—One of the best for plenty of flowers. Bright colored flowers are borne with profusion. Fine for edging beds. There is no flower that will give such an abundance of bloom for the little care they take. Pkt., 10c; oz., 20c.

**TALL MIXED**—These are fine for growing in solid masses. Will grow on fences or can be let trail loose on the ground. Pkt., 10c; oz., 20c.

**PANSY**—Giant Trimordeau. Blossom large, colors from the lightest shade to the darkest purple. Pkt., 10c.



Larkspur

**PETUNIAS**

**GOOD HYBRIDS MIXED**—For out door planting few plants are equal to this class of flowers. They bloom early and continue to flower through the summer. Give them rich soil and a sunny location. Pkt., 10c.

For planting in porch or window boxes or open beds. Many customers prefer petunias in separate colors. Rosy morn, pink, for beds; balcony blue, red and pink for boxes and beds. Pkt., 10c.

**PINKS**

**CHINESE DOUBLE MIXED**—Flowers of these double pinks are borne on upright strong stems from mid-summer until frost. Pkt., 10c.

**PORTULACA**

**MIXED COLORS**—Brilliant garden annual, six inches high, blooming profusely from spring until fall. Colors range through red, yellow, pink, white and variegated. When in bloom there is nothing prettier than a bed of these low growing plants. Pkt., 10c.

**SALPIGLOSSIS**

(Painted Tongue). A fine annual of easiest culture. They like a sunny position in any good soil. Grow two feet high. Splendid for cut flowers. In rich coloring, flowers vie with orchids. Mixed colors. Pkt., 10c.

**SUMMER CYPRESS**

(Burning Bush). A fine annual-growing plant with light green foliage turning to red early in fall. Makes a fine hedge as it grows fast and can be trimmed to any shape desired. Pkt., 10c.

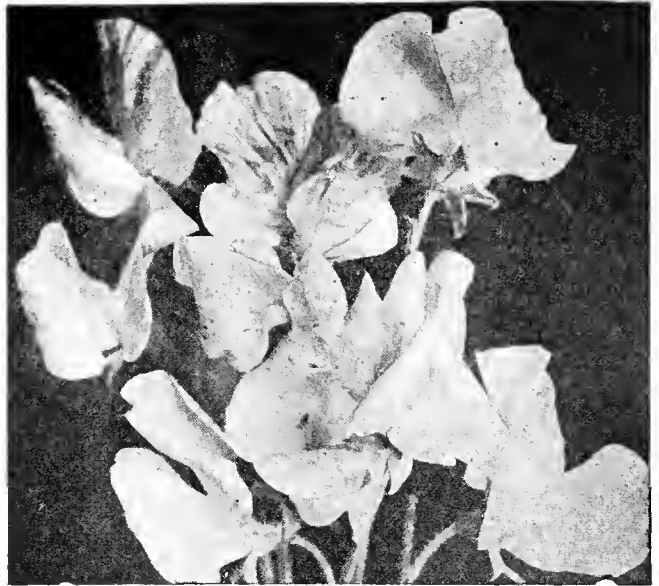
**SWEET ALYSSUM**

**LITTLE GEM**—A dwarf compact plant covered with a mass of small white flowers from spring until fall. Only grows a few inches tall, and is fine for edging beds or walks. Pkt., 10c.

**SWEET PEAS**

**SPENCER VARIETIES MIXED**—An extra good mixture of fine Spencer Sweet Peas. This seed produces large flowers on good stems. Many customers have been pleased with the quality of this seed. Pkt., 10c; oz., 25c.

**CHOICE MIXED**—A carefully made mixture of standard sweet peas of many colors. No better seed sold anywhere at the price quoted. Pkt., 10c; oz., 15c.

**VERBENAS**

**MAMMOTH CHOICE MIXED** — Verbenas thrive in almost any situation or soil. They make attractive borders and beds and are continuous bloomers. Pkt., 10c.

**ZINNIAS**

**ZINNIAS MIXED**—A blend of large dahlia flowered Zinnias in several colors. An old-fashioned flower which has been greatly improved. Zinnias will stand more neglect and drought and produce more flowers than most any other flower. Pkt., 10c.

**GIANT ZINNIA**—This is a strain of large Zinnias. Flowers are large, with very few single blossoms. No better strain of this seed can be produced anywhere. For largest blossoms the plants should be thinned to stand one foot apart. The small plants can be easily transplanted. Have this seed in two colors, red and rose. Pkt., 10c.

**DOUBLE POMPON or LILLIPUT ZINNIAS**—Plants grow only 15 to 18 inches high and are covered all summer with small double blossoms. Fine to plant along walks or in beds. Mixed colors, pkt., 10c.

## VEGETABLE PLANTS

**VEGETABLES OF QUALITY.** The only way to get really good vegetables is to raise a garden. It may be more trouble to raise than to buy, but if you want crisp fresh vegetables, **RAISE YOUR OWN.**

Our early plants this year are all transplanted with heavy stems and tops and big roots. They are far superior to seedlings pulled from rows. All cabbage plants are grown from wilt resistant strains of seed. We give our customers this added value at no advance in plant prices. After June 1st, we will have open bed grown plants in all varieties on which we can make very reasonable prices by the thousand.

Our plants guaranteed to reach customers in good condition. If damaged in transit, we will replace them without charge, if notified by return mail. After plants are set in your garden, we cannot be expected to guarantee them against storms, drought or failure to set them properly. Plants ready from April 1st to July 15th.

**POSTAGE ON PLANTS**

Postal rates on plant orders are as follows and postage should be added as given below. The postal department collects a service charge on all parcel post packages over eight ounces in weight. To all plant orders under \$1.00, please add 10 cents. Orders over \$1.00 add 12 cents. All plants are guaranteed to reach customers in good order or any damage will be made good on receipt of a postal card giving amount of loss.

**SEED DISINFECTION**

All seed used to grow plants is disinfected before planting. We use Semesan to sterilize the seed against all disease spores that possibly might be on the seed coats. Seed thus treated sprouts quickly, comes up clean and disease free, grows rapidly when set out in your garden and produces earlier and better crops.



## TOMATO

**PRITCHARD Scarlet Topper**—New extra early, large, smooth and extremely solid tomato of an intense scarlet color. Productive and very attractive. Of a solidity that is truly remarkable, with small seed pockets and no core. Its productiveness, especially in rich soil is amazing. It is a wilt resistant variety, with plenty of vine to protect the fruit from sun scald.

**EARLIANA**—Extra early variety with small, slender vines. Sets fruit early. Tomatoes good size at first but last of crop is small. Do not plant all of your garden to this variety.

**CHALK'S EARLY JEWELL**—A second early variety from a week to ten days later than Earliana. Fruits large and smooth. Bears over a long season and last fruits are of the same high quality as the first.

**RED HEAD**—An early tomato possibly a little earlier than Jewell. Fruit smooth, of medium size and of fine quality.

**JUNE PINK**—Best described as a pink Earliana. Ripens as early as Earliana, but fruit is of better quality.

**STONE**—A large, smooth red tomato and main crop variety for canning. Vines bear a heavy crop over a long season.

**BUCKBEE'S BEEFSTEAK**—An extra large smooth tomato, fine for slicing and canning. Few seeds.

**MARGLOBE**—Wilt and rust resistant, new widely known tomato. One of the best varieties to produce a crop under adverse weather conditions. Is a second early and main crop tomato.

**OXHEART**—Large tomato, shaped like a beef heart. Sweet flavor and few seeds. Not a heavy yielder but an attractive sort.

**PONDEROSA**—Very large, purple colored fruit. The large fruits are extra fine for slicing. No garden complete without this variety.

**GOLDEN PONDEROSA**—Fruit large and solid. Color a beautiful golden yellow, sometimes with a blush of red. Superior quality.

**BREAK O' DAY**—A new wilt resistant tomato that is nearly as early as Earliana, but far superior in size and quality. Fruits are large, smooth, meaty, red and nearly globe shaped. We have fruited this variety for three years and know it will please any one planting it.

All tomato plants 15c per dozen, 2 dozen for 25c, 100 for 89c.

## POTTED TOMATO PLANTS

Break O' Day, Earliana, Jewell, Red Head, June Pink, Stone, Oxheart, Beefsteak, Ponderosa and Marglobe, 45c per dozen. By mail 60c per dozen.

## CABBAGE

**WILT RESISTANT**—Cabbage plants all grown from wilt resistant strains of seed. Last year we could not supply the demand for them. Our plants are all transplanted and are sturdy frame-grown and well hardened to spring weather conditions. Plants ready April 1st.

All cabbage plants 12 for 10c, 3 doz., for 25c, 50 for 30c, 100 for 50c.

**JERSEY WAKEFIELD**—Standard early pointed head of medium size. Heads extremely early. Does not stand long without bursting.

**COPENHAGEN MARKET**—Large, early round heads of superior quality. No cabbage more crisp or tender. The solid heads stand a long time before bursting or rotting off the stems.

**EARLY ALL HEAD**—Second Early variety with large flattened heads. The core is decidedly small and it is similar to and has the same fine quality of Early Flat Dutch.

**WISCONSIN HOLLANDER**—A fine cabbage developed from the famous Danish Ball Head. A winter variety. Hard heading and long keeping. Heads round as a ball, solid, fine grained and fine flavor.

**ALL SEASONS**—A second early variety that is suited to every growing season. Even when planted late, it keeps well. Heads large and solid, with small ribbed leaves.

## CAULIFLOWER

**EARLY SNOWBALL**—10c per dozen.

## SWEET POTATOES

We grow our own sweet potato plants from select seed. Our plants are all grown in cold frames, being heavier, better rooted, and sturdier than hot bed grown plants. Many customers have told us that our plants are better and yield better than any other ones that they can buy.

**NANCY HALL**—A fine yellow vineless variety that yields well in our north Missouri soil.

**RED BERMUDA**—An early variety, yielding a good crop of good sized red potato.

**SHORT STEM JERSEY**—Fine quality, yellow potatoes that are shorter and heavier than the old variety. Yields a good crop of fine roots.

Each variety, 50 for 20c; 100 for 35c; 300 for \$1.00; 1000 for \$3.25.

## PEPPERS

Sweet peppers grow in popularity each year for use in salads, cooking and pickles. A few plants will usually supply all the peppers a family will use. Chinese Giant, Ruby King, Golden Queen Mammoth and Harris's Early Giant are all large sweet peppers. Neapolitan is early but smaller than the later kinds. Pimentoes are small but meat is much thicker. Hot cayenne are small hot peppers used for seasoning chilli sauce and pickles. All varieties, 15c doz.; 2 doz., 25c; 100 for 89c.

## EGG PLANT

**BLACK BEAUTY**—Fruits early, large and fine quality. 15c per dozen, 2 dozen for 25c.

## SAGE

Plants of Mammoth Broad Leaved Sage grown in pots. Ready about the middle of May. 6 for 25c.

## CELERY

Many home owners think celery is a very difficult vegetable to grow in our North Missouri soil. It may not be possible to grow celery on a large commercial scale, but no home garden owner need deprive himself of this luxury. Celery can be classed as a luxury when you grow it at home and get that fine flavor which is completely lacking in the shipped article. Any garden soil that will grow good lettuce and cabbage may easily produce a family supply of this welcome delicacy. Last year we sold 30,000 celery plants and will have 100,000 for sale this year. Set the plants 4 to 6 inches apart in a straight row. Keep them hoed clean. When celery is a foot high toward the last of August gather each stalk up straight and tie it at the top with a string. To blanch it use boards against the rows or tie paper around each stalk, or use a tile or anything else that will exclude the light from the stalks and the self-blanching kinds will be ready to use in a short time.

Golden Self Blanching and Henderson's Easy Blanching for fall use. Giant Pascal for winter use. Plants ready in May and June. 25 plants, 15c; 50 plants 25c; 100 for 45c.

# FLOWERING PLANTS and BULBS

These plants ready about May 1 for setting out.

## CANNAS

Three varieties ready early in May. These cannas are the best dwarf kinds. All free bloomers and strong growers. Grow 3 to 4 feet tall.

**KING HUMBERT**—Bronze leaves. Large scarlet flowers. Height 4 feet.

**YELLOW KING HUMBERT**—Large green foliage with deep yellow flowers spotted with red. Height 4 feet.

**THE PRESIDENT**—Large green foliage growing to a height of 4 feet. Flowers a rich glowing red.

**CITY OF PORTLAND**—Best all around pink Canna. Flowers large borne well above the green foliage.

Any variety, dry bulbs 3 for 25c; 12 for 90c; Plants each 20c; 3 for 50c.

## GLADIOLI

More gladioli are planted each year. Easy to grow. Just plant the bulbs, four or five inches deep, hoe them a little and you cannot help having flowers for your home. No. 1 blooming size bulbs, mixed colors, 12 bulbs for 35c; 25 bulbs for 65c; 50 bulbs for \$1.00.

## FLOWERING PLANTS

The flowering plants listed are all transplanted, strong, sturdy, heavy foliage and good roots.

**PANSIES**—A cheerful flower because of their happy up-turned faces of many colors. We offer blooming plants of two strains.

**Maple Leaf Giants**—Large leaves and blossoms of giant size and substance. 12 for 29c.

**Swiss Giants**—Flowers large size, perfectly round, borne on long stems. 12 for 29c.

**SALVIAS** or **SCARLET SAGE**—Ornamental plants, two feet high, completely covered with long spikes of red flowers, all summer and fall. One of the best annual flowering plants. 12 for 29c.

**SNAP DRAGONS**—Within the last few years, this fine flower has become immensely popular. Used for cutting or show in the garden, they are one of the best. Blooms freely if seed pods are not allowed to ripen. 12 for 29c.

**VERBENAS**—Will thrive in almost any situation and in all good garden soils. Make attractive borders and beds and blooms from June until frost. 12 for 29c.

**PETUNIA**—Elk's Purple, Balcony Red and Pink, Rosy Morn, Dwarf, Giants and Variegated. These varieties give a large range of colors for bedding or porch boxes. 12 for 29c.

## PEONIES

Prices Delivered.

The most widely planted and popular of all hardy flowers. Easy to grow, all they ask is good soil and winter mulch. Plant only 2 to 3 in. deep. Plant in Sept. and Oct. and real early in spring.

Strong two and three year clumps that have bloomed. In three colors, red, white and pink. Pink and white, 49c each; Red, 49c each. Strong 3-5 eye divisions, red, white and pink, 35c each; 3 for \$1.00, choice of colors.

**PEONY COLLECTION \$1.00 POSTPAID**  
1 white, 1 pink, 1 red. Strong 3-5 eye divisions.

## BLEEDING HEART (DICENTRA)

**SPECTABILIS**—Old fashioned Bleeding Heart. Its long racemes of graceful, heart-shaped pink flowers are always attractive. It is perfectly at home in any part of the hardy border and especially valuable for planting in the shade. Strong roots. Each 40c.



Gladiolus

## IRIS

### PREPAID PRICES

These exquisite flowers are easily grown. They pay big dividends in any garden. Be careful not to plant them too deep. The crown should be covered only 2 inches deep.

### GERMANICA VARIETIES

May-June, 15-36 in.

**AUREA**—S. and F. crome yellow.

**CAPRICE**—S. rosy red, F. deeper rosy red.

**ELDORADO**—S. bronze, F. violet purple.

**FLAVESCENS**—Pure yellow.

**FLORETINE ALBA**—White, blue shading.

**FREDERICK**—S. pale lavender, F. pale lavender and brown.

**HONORABLE**—S. golden, F. rich mahogany brown.

**JUNIATA**—S. and F. clear blue.

**LOHENGRIN**—S. and F. Cattleya rose, very large.

**MME. CHEREAU**—S. white, F. frilled blue.

**PALLIDA DALMATICA**—S. and F. delicate lavender.

Above varieties: Each 15c; per 8, \$1.00; per 12, \$1.45. Your choice of colors.

### JAPANESE IRIS

#### KAEMPFERI, JULY

**MAHOGANY**—Dark red.

**PATICOLE**—Dark reddish violet.

**PURPLE** and **GOLD**—Purple petals, tipped with violet, golden throat.

**REINE DE BULGARIS**—Spotted white and blue.

Above varieties: Each 40c; per 3, \$1.00; per 12, \$3.50. Assorted colors, our selection, per 12, \$2.95.

**CHRYSANTHEMUM**—Hardy perennial and one of the best. Blooming in September and October. With slight protection they will bloom after hard frost. Coming late in the fall they are fine for cutting. Colors: yellow, crimson, rose, bronze, and white. Fine sturdy plants, each 25c.

**PHLOX**—Grand heads of blossoms produced over a long season. Nothing more beautiful than one of these plants in full bloom. They become more beautiful as plants increase in age. Colors in a wide variety of shades such as red, purple, pink, white, rose, and violet. Some varieties have light eyes and even more beautiful than the straight colors. Strong field grown plants, each 25c.

# PERENNIALS

We are growing some of the best and hardiest kinds. We had nearly all these varieties growing in our garden in 1936 and they lived and bloomed in spite of the intense heat and drought.

Our plants are not small seedlings but strong transplanted field grown specimens with heavy roots and are sure to grow with only a little care.

Perennial plants are an essential part in any flower garden. Plant more of them and have flowers for your home all through the summer and fall seasons. Heavy plants in the following varieties.

Each 10c, 15c, 20c and 25c.

**AQUILEGIA or COLUMBINE** — Beautiful spring blooming perennial of graceful habit with fine long spurred flowers; fine for cutting. 1½ to 2 ft.

**HARDY ASTER HYBRIDS**—Easily grown perennial. Large flower heads in many bright colors during late summer and fall. 3 to 4 ft.

**CANTERBURY BELLS**—Showy bell-like blooms in blue, rose and white. Fine for cutting. 1½ to 2 ft.

**HARDY CARNATIONS**—Flowers with delightful spicy fragrance. Large double blossoms in several colors. Wonderful flowers for cutting. 1½ ft.

**COREOPSIS**—One of the most popular and easiest grown hardy plants. Large showy, rich golden blossoms. Blooms profusely from May to Autumn if not allowed to go to seed. 2 ft.

**DELPHINIUM**—One of the most beautiful and widely used perennials for garden display and cutting. Blossoms in June and if spikes are cut close to ground after blooming, new flowering growth will be produced. Light and dark blue. 2-3 ft.

**GAILLARDIA**—Blanket Flower; Gorgeous long stemmed daisy-like flowers from June to Autumn, easily grown, fine for cutting. 1-2 ft.

**HARDY PINKS** Crimson Bedder—Glowing velvety red. Single and semi-double fringed blossoms in heavy clusters. May to September. 1 ft.

**HARDY POPPIES** Orientale—Huge bright colored scarlet flowers, borne profusely during May and June. 2 ft.

**PLATYCODON** Balloon or Bellflowers—Large deep violet blue bell-shaped flowers. When in bud, they are inflated like balloons. For borders, cutting and rock gardens. 1½ ft.

**PYRETHRUM** Painted Daisy—Large daisy like blooms in May and June. Colors, red, rose, pink and white. Splendid cut flower. 1 ft.

**SAPONARIA** Rock Soapwort—During May and June, the broad densely matted plants are covered with small bright rose-pink blossoms. Semi-trailing plants. 6-8 inches. Fine for rock gardens.

**SWEET WILLIAMS**—Old fashioned favorite with large showy flower heads in many combinations of colors. 1-1½ ft.

**SHASTA DAISY**—Extremely hardy perennial of easiest culture. Large white flowers in May and June. 2 ft.

## SPRING FLOWERING BULBS

Tulips, Hyacinths, Narcissus, Jonquils, Crocus, Hardy Lillies

Of all blooming plants, none are as dependable or more satisfying than these bulbs. Planted in October or November, they give their owner a rich reward early the following spring with their brilliant flowers in a wide range of colors.

Plan now to set out a bed this fall. Complete list of varieties and prices ready September 1, 1937. Please ask for a list and copy will be mailed when ready this fall.

## LILIES

**AURATUM** (Gold Banded Lily)—White with crimson spots striped through with yellow. Blooms July-August. Large size, each 35c; 3 for 99c.

**REGAL** (Lilium Regale)—Ivory white striped on outside with pink, splashed yellow at base. Large size, each 35c; 3 for 99c.

**JAPONICUM** (Krameri)—A true pink lily. Grows two to three feet tall, blooms in June. Large size 35c; 3 for 99c.

## HYBRID VARIETIES

**NASTURTIUMS** Burpee's Double Hybrids—All colors. The large, double and semi-double flowers, 2 to 3 inches across, are exquisitely sweet scented. A new strain of flowers that has been a sensation since their introduction. Pkt. 10c; oz., 25c.

**HYBRID SWEET CORN**—New productive and drought resisting strains of sweet corn. Produced by controlling the pollination of the growing corn and seed is only saved from de-tasseled rows. Hybrid seed roots deeply which protects growing plants from wind, heat and drought. Excels in yield over standard strains of seed. On account of their heavy yields, canning companies are now using hybrid seed strains. We cannot recommend this too highly for table or canning.

**TENDERGOLD**—Four days earlier than Golden Bantam and generally twice as productive. The 8 inch, 12 rowed ears command a premium for their tenderness and sweetness. Pkt. 10c; ½ lb., 25c; 1 lb., 40c.

**GOLDEN CROSS**—Bright yellow, 12 rowed corn with 8 inch ears borne well upon sturdy stalks. Quality is fully equal to Golden Bantam, matures six days later and is two or three times more productive. Pkt., 10c; ½ lb., 25c; 1 lb., 40c.



# SELECT NURSERY STOCK

Nursery stock handled and sold by us is high quality, and each specimen is full sized according to its habit of growth. Some varieties grow faster and make larger growth than other kinds.

We offer full sized trees, shrubs, vines, and roots. No culls or trashy material, but stock that is ready to grow and make an excellent growth the first year, adding more value to your home than several times the expense.

This stock is not to be compared with the small sizes often advertised by radio and sent out by mail.

We put our personal guarantee behind any stock we sell and know we can please you.

**OUR GUARANTEE**—If any stock proves untrue to description under which it is sold, we hold ourselves in readiness, on proper proof, to replace such seed, nursery stock or plants or refund the amount paid, but we shall in no case be liable for any sum greater than the amount originally received for said seeds, nursery stock or plants.

We further agree—Any nursery stock that does not grow, we will replace at one-half the original cost, if notified by September 1st following planting.

**PRICES**—All nursery stock except Evergreens is delivered by mail, express or our truck to any point in the second postal zone (150 miles from Brookfield). Evergreens delivered in Brookfield or close immediate territory.

**FRUIT TREES**—Apple, Cherry, Peach, Pear and Plum. Select, well branched, two year trees. 9-16 to 11-16 size four to six feet high according to variety. Splendid roots and tops. Quick to bear and true to name. We list varieties that do best in North Missouri soil and climate. Order early as there is a great shortage of fruit trees for 1937. Your choice of any variety 59c each, 3 or more assorted trees at 10 per cent discount. Prices on larger quantities on request.



Delivering Nursery Stock

## NURSERY INSPECTION CERTIFICATE MISSOURI STATE DEPARTMENT OF AGRICULTURE

Jefferson City

No. 140

Issued Oct. 22, 1936

This is to certify that, in accordance with the Missouri Plant Law, the nursery and premises belonging to the Banning Seed & Nursery House, Brookfield, Missouri, have been inspected by a duly authorized inspector and were found to be apparently free of injurious insect pests and plant diseases. This Certificate is not transferable and is subject to revocation and other penalties under the provisions of the laws relating thereto.

Expires Sept. 1, 1937

J. Carl Dawson  
Plant Officer.

## APPLES AND CRAB APPLES

We guarantee you satisfaction upon arrival of your order. If you should receive any unsatisfactory stock heel it in subject to our disposal and we will replace it free. All claims must be made on arrival of goods.

**EARLY SUMMER**—Liveland Raspberry and Yellow Transparent.

**MID-SUMMER**—Red Astrachan, Wilson, Red June, Duchess of Oldenberg, Early Harvest.

**FALL**—Double worked Grimes Golden, Jonathan.

**WINTER**—Delicious, Winter Banana, Ben Davis, Rome Beauty, Winesap, Stayman Winesap, York Imperial, Willow Twig, Northern Spy.

**CRAB APPLES**—Florence, Excelsior, Hyslop, Whitney.

## PLUMS

**JAPANESE VARIETIES**—Abundance, Burbank, Red June.

**NATIVE VARIETIES**—\*Omaha, Wild Goose.

**HYBRID VARIETIES**—Wickson.

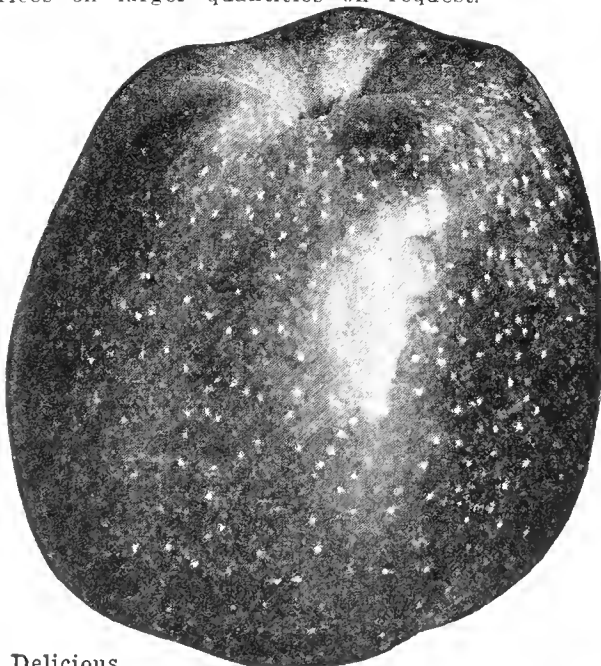
**DOMESTICA VARIETIES**—Bradshaw, Green Gage, (Reine Claude), \*Lombard.

**DAMSON VARIETIES**—\*French, \*Shropshire.

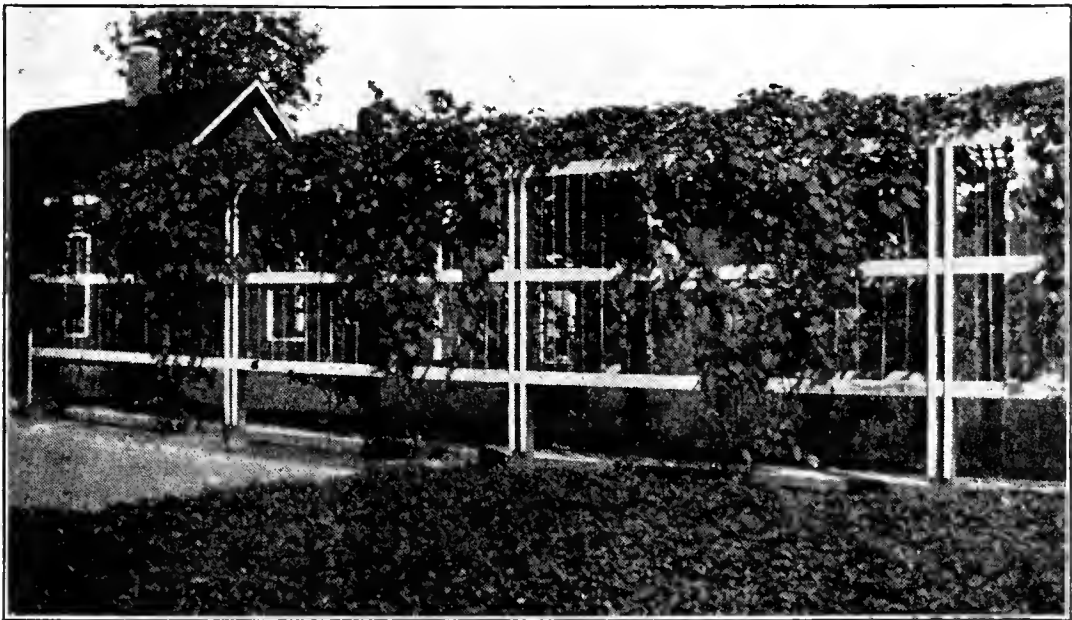
**HANSEN HYBRIDS**—\*Waneta.

\*Very hardy.

**CHERRY-PLUM**, Compass, is very hardy, bears young. Fruit bright red, sweet, juicy.



Delicious



Brookfield Grape Arbor

**CHERRIES**

Early, Early Richmond (May); Midseason, Montmorency; Late, English Mareello.

**PEACHES**

	Early	Days ahead of Elberta
Mayflower—White Semi-Cling .....	50	
Early Rose—Red and White Cling .....	35	
Carmen—White Semi-Free .....	24	
Midseason		
Champion—White Free .....	15	
Belle of Georgia—White Free .....	8	
J. H. Hale—Yellow Free .....	5	
Early Elberta—Yellow Free .....	3	
Elberta—Yellow Free		
Late		
Late Crawford—Yellow Free.		
Heath Cling—White Cling.		

**STANDARD PEARS**

**STANDARD**—Anjou, Bartlett, Flemish, Garber, Kieffer, Seckel, Douglass.

Pears are the highest quality fruits, should be picked before ripe. Bartlett, mid August; Flemish, mid August; Garber, early September; Anjou, mid September; Duchess, late September; Seckel, late September; Kieffer, late September. Douglass, late September, blight proof.



**CURRENTS**

Two-Year, No. 1 Plants  
Cherry (Red), Perfection (Red Large), each 30c; 5 for \$1.25.

**GOOSEBERRIES**

Two-Year, No. 1 Plants  
Downing, Champion, each 35c; 3 for 99c.

**GRAPES**

One of the best fruits to eat right from the vine and one of the easiest to grow. How would you like to have a grape arbor like the one shown in the photograph? This is an actual photograph of a grape arbor right here in Brookfield. The camera was small so only five vines show, but there are six on each side. These one-year vines were set out in April, 1922, and the photograph was taken in October, 1923, or a little less than eighteen months after planting. In 1923 the arbor bore all the grapes one family could use. Twelve Concord grape vines to plant an arbor like this cost only \$1.40. There is a place for grape vines in every yard.

Concord (black), Niagara (white), Agawam (red), Worden (black), Moore's Early. Select vines, 2-yr. No. 1, 20c each; 4 for 60c; 8 for 99c; 25 for \$2.50.

**BLACKBERRIES**

Early Harvest, Eldorado, Snyder, Lucretia Dewberry. Per 10, 75c; 25, \$1.19; 100, \$3.98.

**RASPBERRIES**

Cumberland (black), Cuthbert (red), St. Regis Everbearing (red). Per 10, 75c; 25, \$1.19; 100, \$3.79.

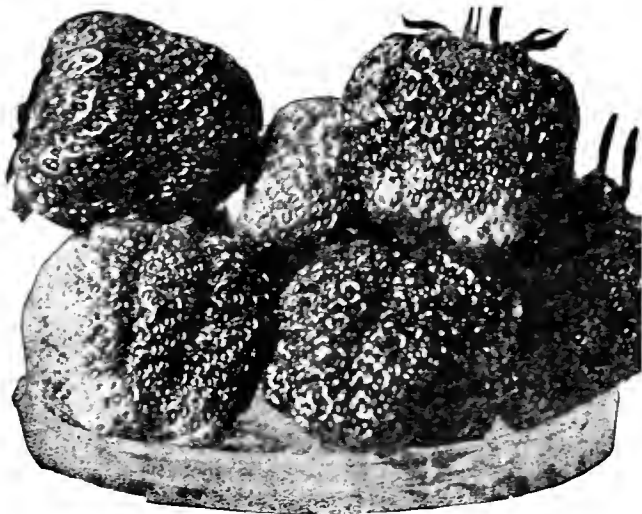
**ASPARAGUS**

**WASHINGTON**—This strain of asparagus was selected by Department of Agriculture, Washington, D. C., and has proved to be almost immune to rust, a disease that has weakened and killed much asparagus. It is now considered the best in asparagus. To set roots, dig a small trench, deep enough so that the roots can be spread out, and the crowns three inches deep. Any good black garden soil is all right to set asparagus in. Plant roots a foot apart and make rows two to three feet apart.

2 yr. roots, 12 for 40c; 25 for 65c; 100 for \$2.00.

**RHUBARB**

Strong divisions, 2 sizes, Each 10c; 3 for 25c, 12 for 99c. Each 15c; 2 for 25c; 12 for \$1.29.



Mastodon Strawberries

## STRAWBERRIES

Finest of all fruits. A very small plot of ground will furnish all the berries a family can use on the table and some to preserve. With strawberries in your garden you can have fresh berries whenever you want them. To plant a bed, make rows 2½ feet apart and set the plants 15 inches apart in the rows. If you want to put out a patch large enough to cultivate with horse tools, make rows 3½ feet apart and set plants 15 inches apart in the rows. When cold weather comes the following December, cover the strawberries two inches deep with straw or prairie hay.

**PREMIER**—A large, high colored early berry. Fine quality. This variety will often put out a second crop of buds, if the first are frosted. A week earlier than Dunlap, 25 for 25c; 100 for 85c; 200 for \$1.60; 500 for \$3.50.

**BLAKEMORE**—One of the finest of the new strawberries. Produces heavy crops of quality fruit, red clear through with a wonderful flavor all of its own. A hardy, drought resisting variety that has been tested over a wide territory. 25 for 25c, 100 for 85c, 200 for \$1.60, 500 for \$3.50.

**FAIRFAX**—Originated by the U. S. Department of Agriculture and was given out for planting about 1930. The plants are immense, standing 7 to 8 inches above the ground when mature. It has thrived on all kinds of soil in every part of the country. The large fruit is of high quality having fine color and firmness, and the fruit is fully matured until the last berries are picked. An early variety. 25 for 25c, 100 for 85c, 200 for \$1.60, 500 for \$3.50.

**SENATOR DUNLAP**—The old variety that grows everywhere and produces big crops of fruit on all soils. Fruit is dark red, delicious in flavor and one of the finest for preserving. An old variety that never fails to produce a crop. Mid-season. 25 for 25c, 100 for 85c, 200 for \$1.60, 500 for \$3.50.

**AROMA**—Late, favorite market and shipping variety. Berries are large, solid to the center with a rich and delicious flavor. 25 for 25c, 100 for 85c, 200 for \$1.60, 500 for \$3.50.

**MASTODON**—A new everbearing variety which I believe is the best and largest strawberry of the everbearers. It has been tried out generally and proved its good qualities. We can fill orders for a limited quantity. 25 for 40c; 100 for \$1.50.

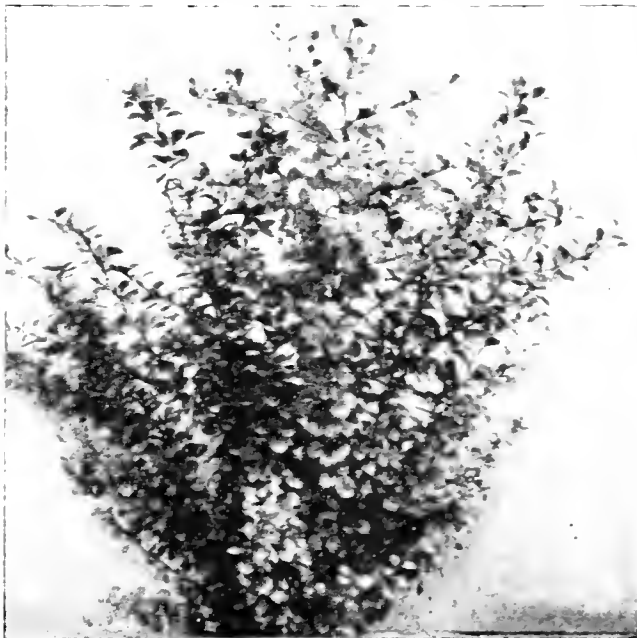
# ORNAMENTAL SHRUBS

## SHRUBS—Prices Delivered

This list contains the best grades, well branched and well rooted. 3 or more at 10 percent discount. Figures following names of varieties are the heights when full grown.

**ALTHEA or ROSE OF SHARON**—Upright shrub, flowering in August-September. Pink purple, red or white. Large, each 49c. Medium, each 39c.

**BARBERRY, RED LEAVED**—New variety of Japanese Barberry with red foliage all season. Large, each 49c. Medium, each 39c.



Red Leaved Barberry



Althea or Rose of Sharon

**BARBERRY, JAPANESE (Thunbergi)**—Splendid for hedges or massing. Delicate yellow flowers in Spring. Brilliant fall foliage, followed by red berries all winter. Large, each 49c. Medium, each 39c.

**BUTTERFLY BUSH**—Lilac panicles of bloom. June to October. 2 yr. No. 1, each 49c. Medium, each 39c.

**CORALBERRY or SNOWBERRY (Indian Currant)**—4-6 ft. Red berries in great masses, fall and winter. Very hardy. Large, each 49c. Medium, each 39c.

**DESMODIUM**—Hardy herbaceous shrub. Rosy purple flowers in September. 2 yr., No. 1, each 49c.

**DEUTZIA, LEMOINEI**—5-6 ft. Very graceful shrub. Large white flowers. May. Large, each 49c. Medium, each 39c.

**DEUTZIA GRACILIS**—3 ft. Very free blooming dwarf shrub, white flowers in May. Large, each 49c. Medium, each 39c.

**DEUTZIA, PRIDE OF ROCHESTER**—6-8 ft. Robust growing shrub. Double white flowers, tinged pink. June. Large, each 49c. Medium, each 39c.

**DOGWOOD, RED TWIGGED**—6-10 ft. Valuable for bright red bark. Large, each 49c. Medium, each 39c.

**HONEYSUCKLE JAPAN BUSH**—6-8 ft. (Lonicera Morrowi) Heavy, spreading shrub with attractive foliage. White flowers. May-June. Bright red berries. Large, each 49c. Medium, each 39c.

**HONEYSUCKLE, TARTARIAN**—6-10 ft. Pink, white, or red flowers. April-May. Bright red berries. Large, each 49c. Medium, each 39c.

**HONEYSUCKLE, FRAGRANT**—6-8 ft. Dark green leaves, almost evergreen. White fragrant flowers. Large, each 49c. Medium, each 39c.

**HYDRANGEA, ARBORESCENS GRANDIFLORA**—3-6 ft. (Hills of Snow) Double white flowers, almost ball shaped. June-July. Light green foliage. Good in shady places. Hardy. Large, each 49c. Medium, each 39c.



Fragrant Honeysuckle

**MOCK ORANGE VIRGINALIS**—6-8 ft. Large white partially double, fragrant flowers in May and June. Large, each 49c. Medium, each 39c.

**MOCK ORANGE, GOLDEN**—3-5 ft. Dwarf form, compact grower. Yellow berries all summer. Large, each 49c. Medium, each 39c.

**MOCK ORANGE, LEMOINE**—4-5 ft. Good compact habit, semi-dwarf. Sweetly scented flowers in dense racemes. May-June. Large, each 49c. Medium, each 39c.

**SNOWBALL (Viburnum Opulus Sterilis)**—10-12 ft. Large double white flowers April-May. Profuse bloomer and very hardy. Large, each 49c. Medium, each 39c.



Hydrangea, P. G.

**HYDRANGEA PANICULATA GRANDIFLORA**—Bush form 6-10 ft. Large cone-shaped white blooms, changing to pink and bronze. July-October. Hardy. Large, each 49c. Medium, each 39c.

**JAPAN QUINCE (Cydonia Japonica)**—3-5 ft. Scarlet flowers early in April. Large, each 49c. Medium, each 39c.

**LILAC, FRENCH BUDDED (Bush Form)**—Height varies from 6 to 10 ft. according to variety and location. Dark purplish red, double white or double blue. Large flowers in late April. Large, each \$1.25. Medium, each 99c.

**LILAC, WHITE or PURPLE (Syringa Vulgaris)**—8-12 ft. Light purple or white single flowers. April-May. Large panicles. Very hardy. Large, each 49c. Medium, each 39c.

**MOCK ORANGE or SYRINGA (Vulgaris)**—8-12 ft. Fragrant white flowers in May in great abundance. Strong grower. Large, each 49c. Medium, each 39c.



Mock Orange



Spirea, Bridal Wreath

**SPIREA THUNBERGI**—3-5 ft. Semi-dwarf. Slender arching branches covered during April with pure white flowers. Light green feathery foliage. Large, each 49c. Medium each 39c.

**SPIREA CRIMSON** (Anthony Waterer)—3-4 ft. Bright red flowers all summer. Dwarf growing. Large, each 49c. Medium, each 39c.

**SPIREA BILLARD'S**—4-5 ft. Terminal spikes of bright pink flowers, July-September. Large, each 49c. Medium, each 39c.

**SPIREA BRIDAL WREATH** (*S. Prunifolia*)—5-6 ft. Very early bloomer. White button like flowers in great profusion. Leaves bright shining green. Hardy. Large, each 49c. Medium, each 39c.



Weigela Eva Rathke

**SPIREA, DWARF WHITE and PINK**—2-3 ft. Very dwarf growing with white or pink flowers. June-September. Large, each 49c. Medium, each 39c.

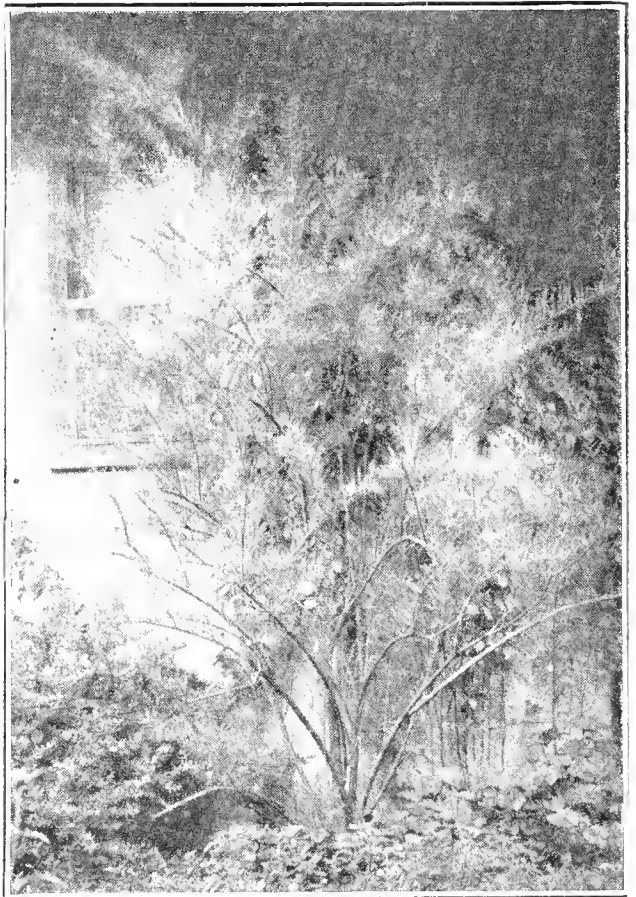
**SPIREA FROEBEL'S**—3-4 ft. Bright pink flowers. June-September. Spreading habit. Rich fall coloring, also bright colored in spring. Large, each 49c. Medium, each 39c.

**SPIREA VAN HOUTTI**—The most popular shrub. Valuable to plant as specimens in groups or used as hedge. The branches are slender, drooping and covered with white flowers in late April and May. Grows to a height of 6-8 ft. and is unsurpassed in gracefulness and beauty. Large 3 yr. specimens, each 49c; Large 2 yr. size, each 39c. Large 1 yr. size, each 20c; 3 for 50c. Medium 1 yr. size, each 15c; 3 for 35c.

**TAMARIX** (*Africana*)—8-10 ft. Pink flowers early in the spring before foliage. Feathery green foliage. Large size 49c. Medium size 39c.

**WEIGELA** (*Rosea*)—6-8 ft. Rose pink bell shaped flowers in May. Popular shrub. Large, each 49c. Medium, each 39c.

**WEIGELA** (*Eva Rathke*)—3-5 ft. Brilliant crimson flowers May-June. Very free bloomer. Large, each 49c. Medium, each 39c.



Tamarix

### IMPORTANT NOTICE

Due to the drought of the last two years, hardly any seedlings of apple, pear, plum, cherry and peach trees survived and there is a great shortage of all fruit trees for planting in 1937. We are fortunate in having contracted for a supply of good trees to offer to early buyers this spring.

There is room in your yard or near your farm home for trees. Even if you need only one tree, plant it this spring. We deliver trees to you at prices quoted.





Amoor River Hedge

**HEDGE**

**HEDGE PLANTS**—Prices Delivered.

Hedge plants with many canes are worth more and give quicker and better results. We offer the best.

**PRIVET** (Amoor River, North)—Very hardy hedge plant. Attractive foliage. The most popular hedging in this latitude.

	25	100
18-24 in., 3 canes up -----	\$2.50	\$9.50
12-18 in., 3 canes up -----	2.25	8.00
10-12 in., 3 canes up -----	1.75	6.50

**REGAL**—Low, dense hedge plant with horizontal spreading branches. Hardy. 2-2½ ft., each 35c; 5 for \$1.40. 18-24 in., each 25c; 5 for \$1.00.

**BARBERRY, JAPANESE**—Lighter than regular grade of shrubs. Suitable for hedging

12-18 in., transplanted and bushy ....	\$3.00	\$10.00
9-12 in., transplanted and bushy ...	2.00	7.50
2 yr. seedlings branched .....	1.50	5.50

**SPIREA VAN HOUTTI**—

18-24 in. ....	\$2.50	\$9.00
12-18 in. ....	1.75	6.75

**ROSES**

**ROSES**—Prices Delivered.

Two year field grown plants of first grade. \*Everbloomers. The Climbers have 3 canes or more, but Dorothy Perkins, Excelsa and Wichuraiana have 4 canes or more. Baby roses, 4 canes or more. Teas, Hybrid Teas and Hybrid Perpetuals, 3 canes or more will give satisfactory blooms the first season. All the roses listed are acclimated to this latitude. All roses 49c each; 3 for \$1.39, your selection.

**CLIMBING ROSES:**

- Gruss an Teplitz, scarlet crimson; ever-bloomer.
- Meteor, red; everbloomer.
- American Pillar, bright crimson, white eye, yellow stamens.
- Climbing American Beauty, rosy crimson, long stems, suitable for cut flowers.
- Dr. Van Fleet, flesh pink.
- Dorothy Perkins, shell pink.
- \*Flower of Fairfield, crimson, everblooming.
- Gardenia, bright yellow shading to cream.
- Paul's Scarlet Climber, scarlet, shaded crimson.
- Silver Moon, silvery white, yellow stamens.
- Wichuraiana, single white, trailing habit.

**BABY ROSES**—Dwarf Polyantha:

- \*Crimson.
- \*Pink.

**HYBRID PERPETUALS:**

- Marshall P. Wilder, bright cherry-red.
- \*Frau Karl Druschki (Snow Queen), purest white, large.
- Paul Neyron, bright ruddy pink.
- General Jacqueminot, rich crimson scarlet.

**TEAS AND HYBRID TEAS:**

- \*Gruss an Teplitz, bright crimson scarlet, very fragrant.
- \*Kaiserin Augusta Victoria, creamy white.
- \*Killarney Pink, clear bright pink, hardy.
- \*LaFrance, bright pink.
- \*Los Angeles, flame pink with gold.
- \*Madame Cochet, pink.
- \*Ophelia, light salmon flesh blending to yellow at base.
- \*Radiance, pink.
- \*Red Radiance, red.
- \*Sunburst, bronze-yellow.
- Talisman, new rose, golden yellow and copper.
- Lady Hillingdon, apricot yellow.
- Souvenir de G. Pernet, oriental red.



Climbing Roses

**CLIMBING VINES**

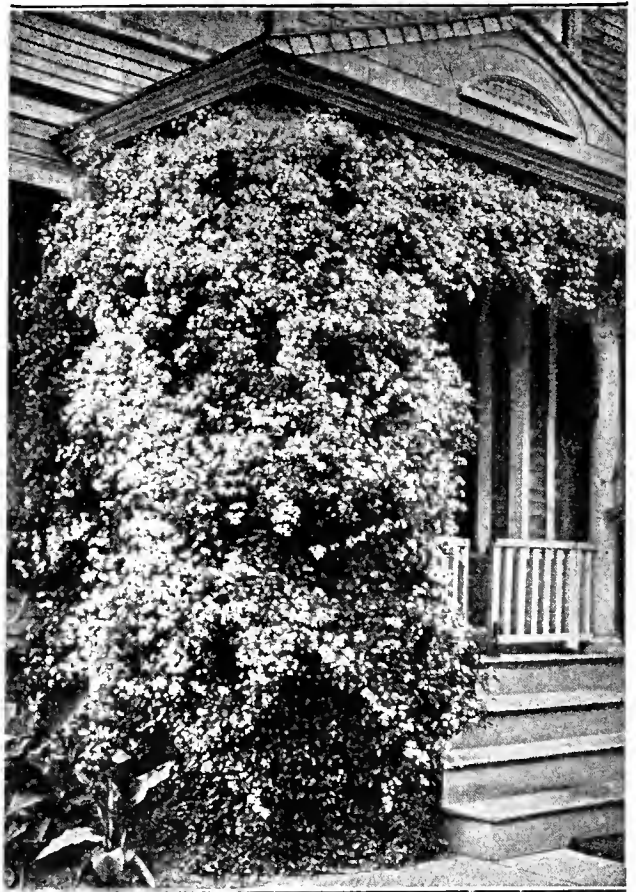
All good heavy plants. Field grown stock, 2 yr., No. 1.

<b>AMERICAN IVY</b> (Ampelopsis Quinquefolia) -----	Each \$0.49
<b>BOSTON IVY</b> (Ampelopsis Veitchi) 3 yr. -----	.49
<b>ENGLISH IVY</b> (Evergreen) (Hedera Helix) -----	.49
<b>CLEMATIS, JAPANESE</b> (C. Paniculata), White -----	.49
<b>BITTERSWEET</b> —Hardy vine producing bright orange berries in the fall -----	.49
<b>CLEMATIS, JACKMANI</b> Purple -----	.99
<b>HALL'S HONEYSUCKLE</b> (Lonicera Halliana) -----	.49
<b>SCARLET TRUMPET HONEYSUCKLE</b> (Lonicera Sempervirens) Scarlet -----	.49
<b>TRUMPET VINE</b> (Bignonia Radicans) Scarlet and Orange -----	.49
<b>WISTERIA JAPANESE</b> (Grafted) Blue -----	1.49
<b>WISTERIA</b> -----	.49

**ORNAMENTAL TREES**

The shade and ornamental trees listed have been grown for critical home owners who desire the best. They have good, smooth bodies, evenly branched heads and good roots. Especially can we furnish trees for cemetery, park, boulevard and estate planting. We can make special prices on large orders. All trees at 10 per cent discount in orders of three of any variety.

<b>ASH, Green</b> —50-60 ft. A clean, hardy tree of reasonable fast growth. Succeeds everywhere.	Each
6-8 ft. -----	\$0.99
8-10 ft. -----	1.29



Clematis Paniculata

<b>ASH, Mountain (European)</b> —20-40 ft. Very attractive ornamental tree with fern-like foliage. Orange scarlet berries in August.	Each
6-8 ft. -----	\$1.79
5-6 ft. -----	1.49
<b>BIRCH, Cutleaf Weeping</b> —30-40 ft. White barked tree with drooping limbs and cut leaf foliage. Good lawn specimen.	
6-8 ft. -----	2.29
5-6 ft. -----	1.79
<b>WHITE BIRCH</b> —Native, erect growing tree with slender branches and white bark on the old wood. One of the very finest trees for individual planting.	
5-6 ft. -----	.99
6-8 ft. -----	1.49
<b>ELM, Chinese</b> —40-50 ft. Hardy and an unusually fast growing tree with no insect enemies. A tree that has grown in public favor for its splendid qualities. Grows well even in dry locations. Desirable for street planting.	
10-12 ft. -----	1.79
8-10 ft. -----	1.49
6-8 ft. -----	.99
5-6 ft. -----	.59
<b>MOLINE (Budded Stock)</b> —80-100 ft. A remarkable new variety. Strong pyramidal habit. Very desirable for street and drive planting.	
8-10 ft. -----	1.39
6-8 ft. -----	1.19
<b>VASE (Budded Stock)</b> —80-100 ft. A distinct improvement in American vase shaped Elm, having uniformly spreading heads. Rapid grower.	
8-10 ft. -----	1.29
6-8 ft. -----	.99
<b>LINDEN, American (Filia Americana)</b> —60-90 ft. Rather rapid growing tree, forming spreading heads. Fragrant yellow flowers in June.	
8-10 ft. -----	1.49
6-8 ft. -----	1.29



Chinese Elm



Norway Maple

**MAPLE, Hard or Sugar (Acer Saccharinum)**—50-75 ft. Dense pyramidal head. Hardy and very popular on account of its highly colored foliage in the fall.

5-6 ft. ----- Each \$1.39  
6-8 ft. ----- 1.79

**MAPLE, Ginnala (Amur)**—Graceful small tree with bright green foliage turning to brilliant red in Autumn.

5-6 ft. ----- 1.29  
6-8 ft. ----- 1.59

**MAPLE Rubrum (Red or Scarlet Maple)**—A silver maple with brilliant red Autumn coloring.

8-10 ft. ----- 2.49

**MAPLE NORWAY**—A very popular, hard-wood street or lawn tree of broad pyramidal growth and dark green foliage.

5-6 ft. ----- 1.39  
6-8 ft. ----- 1.79  
8-10 ft. ----- 2.49

**CAROLINA (Norway Poplar)**—75-100 ft.

8-10 ft. ----- .99  
6-8 ft. ----- .79  
5-6 ft. ----- .49

**LOMBARDY (Populus Nigra Italica)**—60-80 ft. Columnar grower. Useful for landscape work and as a screen or background.

8-10 ft. ----- .99  
6-8 ft. ----- .79  
5-6 ft. ----- .59

**WALNUT, Black (Juglans Nigra)**—80-100 ft. Valuable timber tree. Nuts edible.

8-10 ft. ----- 1.79  
6-8 ft. ----- 1.49  
5-6 ft. ----- 1.19

**SMALL ORNAMENTAL TREES**

**ARALIA SPINOSA (Devil's Walking Stick)**—18-20 ft. Most tropical effect of all hardy plants. Clusters of white flowers June-July.

4-5 ft. ----- 1.79  
3-4 ft. ----- 1.49

**CRAB, Bechtel (Double flowering)**—10-15 ft. Beautiful double pink flowers late in May and June.

4-5 ft. ----- 1.79  
3-4 ft. ----- 1.29

**CATALPA, Umbrella Bungei**—12-18 ft. Useful for formal planting. They have straight stems and evenly balanced heads.

Each  
5-6 ft., 2 yr. heads ----- \$1.79  
5 ft., 1 yr. heads ----- 1.29  
4 ft., 1 yr. heads ----- 1.19

**RED BUD (Judas Tree)**—20-30 ft. Very ornamental. Rosy pink flowers in April before leaves.

4-5 ft. ----- 1.49  
3-4 ft. ----- 1.19

**THORN**—Paul's Double Scarlet—15-20 ft. Brilliant scarlet flowers in June.

5-6 ft. ----- 1.98  
4-5 ft. ----- 1.49

**WILLOW, Weeping Wisconsin**—One of the finest varieties. Long, slender, drooping branches with beautiful green bark.

6-8 ft. ----- 1.49  
5-6 ft. ----- 1.29  
4-5 ft. ----- .99

**WILLOW, Weeping (Niobe Weeping)**—30-35 ft. A yellow barked, drooping, graceful willow, absolutely hardy.

6-8 ft. ----- 1.49  
5-6 ft. ----- 1.29  
4-5 ft. ----- .99

**PUSSY**—15-20 ft. Very ornamental in early spring when catkins appear before the leaves.

3-4 ft. ----- .79  
2-3 ft. ----- .59

**EVERGREENS**

Evergreens remain green in spite of winter and frost. Their ornamental value is outstanding but especially in winter, adding a friendly note of cheer and warmth. Their great diversity in form, texture, color and habit of growth makes it possible to select varieties for any landscape effect. They can be used for foundation or border plantings, as individual specimens, as hedges and in rock gardens. Our evergreens are field grown specimens of select strains, hardened to soil and climatic conditions. They are dug with a generous ball of earth and carefully burlapped to insure delivery in good condition. Prices on evergreens include delivery to customers in Brookfield. On out of town orders a small delivery fee will be charged.

Directions—Submerge the earth ball in water 30 minutes in a shady place out of the wind. Set the tree slightly deeper than it stood in the nursery. Leave the burlap around the earth ball, but cut the strings after placing the tree in position. Tramp good dirt firmly around the tree. When the space around the ball is nearly filled, pour in several pails of water. Then fill in with loose dirt. Don't put any fertilizer in the holes. Loose straw or well rotted leaves spread around the tree make a good fertilizer and help protect against winter injury. Evergreens should be well watered during the summer, and also in late fall.

**PRICES ON EVERGREENS**

We quote only the hardiest evergreens that will grow if properly watered and cared for during the first year. We do not guarantee the growth of evergreens as we have found that many neglect to care for them after they are set out. We have reduced our prices greatly on them for 1937.



Evergreen Planting



**AMERICAN ARBOR VITAE** (*Thuja Occidentalis*)—Very hardy in almost any location. Grows bushy at the bottom tapering at the top with deep green foliage. Useful as specimens or for hedges.

2-3 ft. -----	Each \$1.49
3-4 ft. -----	2.59

**CHINESE ARBORVITAE** (*Thuja Orientalis*)—Deep green, grows bushy at bottom, tapering towards top. 20-25 ft.

2-3 ft. -----	1.49
3-4 ft. -----	1.98
4-5 ft. -----	3.79
5-6 ft. -----	5.95

**ORIENTALIS AUREA NANA** (Golden Arborvitae)—Of compact and symmetrical habit of growth. Attractive light green color. Plant in protected place, east or south exposure.

18-24 in. -----	2.25
24-30 in. -----	2.99

**COLORADO BLUE** (*Picea Pungus Glauca*)—60-80 ft. Select seedling type. Foliage ranging from blue to silvery white. Very popular for lawn planting.

18-24 in. -----	3.29
2-2½ ft. -----	4.25
2½-3 ft. -----	6.50
3-3½ ft. -----	7.50

**JUNIPER COLUMN CHINESE** (*Jun. Chinensis* Pyr.)—15-20 ft. A narrow pyramidal form with green needle shaped foliage; very attractive.

5-4 ft. -----	3.45
4-5 ft. -----	4.95

**JUNIPER COMMUNIS HIBERNICA** (Irish Juniper)—7-8 ft. Foliage glaucous green. An old well known favorite.

18-24 in. -----	1.49
2-3 ft. -----	1.98
3-4 ft. -----	3.49

**JUNIPER, GREEK** (*Juniperus Excelsa Stricta*)—4-5 ft. Grayish green glaucous foliage. Decidedly cone shaped. Very compact. Easily adapted to tubs or urns. Good as a specimen.

2-2½ ft. -----	Each \$3.79
18-24 in. -----	2.79
15-18 in. -----	1.79
12-15 in. -----	1.49

**JUNIPER SAVIN** (*Sabina*)—Low growing evergreen with spreading fan shaped dark green foliage. Useful for planting around foundations or in rock gardens.

18-24 inch -----	1.99
12-18 inch -----	1.49

**PINES, Austrian and Scotch**—Fairly fast growing trees having foliage of long, green needles. Will stand a good deal of smoke and gas in the air. Very hardy.

3-4 ft. -----	2.75
4-5 ft. -----	3.95

**RED CEDAR** (*Juniper Virginiana*)—20-30 ft. Upright growing native tree. Dark green foliage. Sometimes silvery purple winter color. Should be kept sheared to symmetrical form. Very hardy.

3-4 ft. -----	2.79
4-5 ft. -----	3.89
5-6 ft. -----	5.98

**PFITZER'S JUNIPER** (*J. Chinensis Pfitzeriana*)—Deep green with grayish cast. Stands shade. Irregular, flat spreading growth.

15-18 in. -----	1.99
18-24 in. -----	2.49
2-2½ ft. -----	3.49
2½-3 ft. -----	4.29
3-3½ ft. -----	4.99

## Garden Books

By arrangement with The Macmillan Company, we can fill orders for garden books that tell you how—

To plan your garden  
To control colors and blooms  
To raise vegetables  
To feed plants

To select flowers and plants  
To design gardens and home gardens  
To control pests  
To care for trees and shrubs

We can furnish books on any garden subject; mailed postpaid.

Catalog of books mailed to anyone. If you want one, just write or telephone for a copy.

# GARDEX "Soil-Flow" GARDEN TOOLS

**THE GREATEST TIME AND LABOR-  
SAVING GARDEN TOOLS MADE!**

## GARDEX PULL HOE

With an easy pull, the sharp V-Shaped Blade bites into the ground. As you walk along, the soil flows over and through the side guards which also protect plants when doing quick, close work. Thus it weeds and cultivates in one operation, leaving soil finely mulched just where you want it, without exposing moist soil to sun. No weeds can escape and it gets most of them out by the roots. Handle fits socket perfectly—a firm tamp and it's in to stay—no bolts, screws or wedges to bother with. Made of special High Carbon Steel for lasting service. Polished Blade.

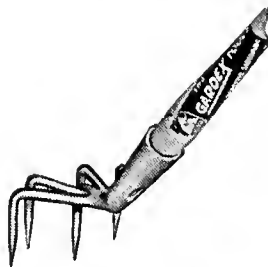
No. 1004—4 in. wide, 4½ ft. handle, price ---\$0.95  
No. 1005½—5½ in. wide, 5 ft. handle, price -- 1.10

## GARDEX CULTI-CLAW

Just the tool for Flower and Rock Gardens. With the long handle, you can get at those inaccessible places—close to plants—in between rocks—under shrubbery. You don't have to stoop, bend or get down on your knees and it cultivates thoroughly.

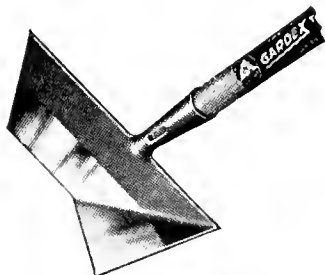
Every gardener will want this labor-saving tool that gets in places where others fail.

No. 180—4½ ft. handle  
Complete price ----95c



## GARDEX TURF EDGER

Now you can edge your lawns, flower beds or borders as fast as walking and do a neater job. This New Edger cuts turf vertically and horizontally in one operation working forward or backward. By tilting to 45 degree angle, it cuts clean V-shaped groove between sidewalk and lawn. Wing blade also used to lift sod out as it cuts. Made of Special High Carbon Steel—polished blade and sharpened on all sides except top.



No. 400—4½ ft. handle, price --\$1.15

## GARDEX JR. WEEDER

Gets Between Plants 1 inch apart

Ideal for apartment dwellers—small home gardens. Handy tool for flower boxes, hot beds, flower beds, cold frames, borders, hedges, etc. Blade sharpened both sides up to handle. Weeds and tills soil either forward or backward, on straight edge or on angular edge.

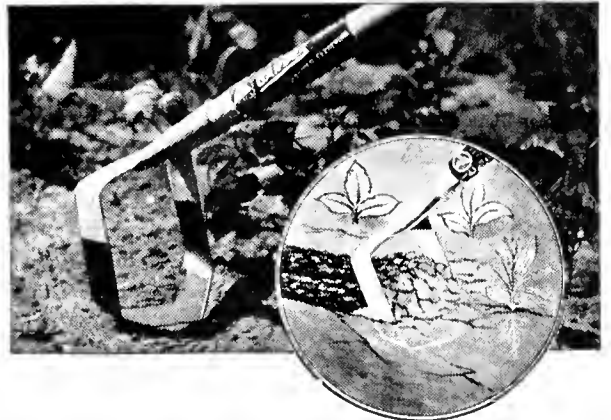
No. 700—4 in. wide, 7 in. handle, price only 25c



**WEED AND CULTIVATE  
5 TIMES FASTER**

**END BACK BREAKING  
CHOPPING MOTIONS**

**GIVE BETTER  
SOIL PREPARATION**



## GARDEX CULTIVATOR

3 PRONG

For large or small gardens, this easy to operate tool is unsurpassed. The position and construction of the High Carbon Steel Tines cause them to penetrate any soil with ease as they loosen and cultivate the ground thoroughly. Even a child can do perfect work with this New Cultivator. Excellent quality and attractive low price.



No. 150-3—4½ ft. handle, complete price 75c

## GARDEX ROW MARKER

For lining up rows, seed beds and marking out squares for Creeping Bent. Blades adjustable to any spacing—just tap out or in—no screws, bolts or wedges needed. High Carbon Steel Blades. Frame strong and durable.

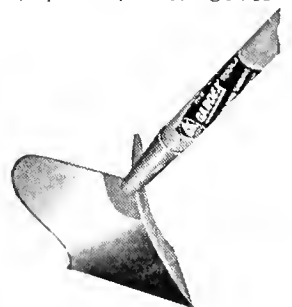
No. 4006—24 in. wide, 6 blades, 5 ft. handle.  
Price ----- \$1.75

## GARDEX HAND PLOW

For hilling corn, potatoes, plants, etc. Covering furrows and making irrigation ditches around gardens. With an easy pull it digs in and works well in light or heavy soil. Made of High Carbon Steel, polished mold boards.

No. 2006—6 in. wide,  
5 ft. handle.

Price ----- \$1.60



### MONEY BACK GUARANTEE

You will make no mistake by ordering these fine time and labor saving tools. They are all sold on an Iron-Clad MONEY BACK GUARANTEE. If you are not delighted and more than satisfied you can return in 10 days and get refund.

### ORDER NOW!

Be the first to use these fine tools in your neighborhood. Have the finest looking garden in town—do the work without backaches and in 1-5 the time it takes with old-fashioned tools. Send in your order today! You be the judge. We know you will be pleased and surprised with the results.

# INSECTICIDES

We offer to our customers a complete line of insecticides so necessary for the protection of all planting material that goes to make up a beautiful garden.

**BORDEAUX MIXTURE**—Prevents or controls fungous diseases, such as potato blight, tomato blight and rot, mildew, apple scab, bitter rot and blotch. Per lb., 29c.

**ARSENATE OF LEAD**—The quality of our Arsenate is of such a uniform fineness that it will adhere in a thin coat to every part of a branch, affording protection after several rains, this fineness makes it easier for an insect to devour. The best stomach poison for insects that we know of. Per lb., 25c.

**BLACK LEAF 40** (Nicotine Sulphate)—This compound is highly recommended as a check and cure for all kinds of APHIDS and PLANT LICE, checking them by suffocation. Per oz., 35c.

**DUSTING SULPHUR**—This sulphur is a fine sulphur for dusting purposes only, we use it extensively in the combating of RED SPIDER, and find it successful. Should be applied during the hottest part of the day. Price per lb. 20c.

**LIME SULPHUR**—This spray is one of the best dormant and growing period sprays for fruit that can be obtained. Try a pound of it and you will agree with us. Per lb. 39c.

**PARIS GREEN**—Paris Green needs no introduction as a poison for all types of chewing insects. Price, ¼ lb., 25c.

**POTATO SPRAY**—This spray is a product of Sherwin Williams Co. and is one of the best general sprays that can be found anywhere for potato vines. Greatly needed just when the vines are in their most vigorous growth. Per lb., 35c.

**ROSE AID**—The most efficient dusting compound ever developed for the control of Black Spot, Mildew and Chewing insects on all types of hardy roses. Directions are included with each package. Price per package, 40c.

## FERTILIZER

**BONE MEAL**—Our brand of bone meal is ground fine and acts quickly. Valuable for lawns, flowers, vegetables, shrubs, roses, and trees. We have it put up in convenient size sacks, 5 lb. sack 25c; 25 lb. sack \$1.00; 50 lb. sack, \$1.75; 100 lb. sack \$3.25.

**SHEEP MANURE**—A pure dry pulverized natural fertilizer whose effect is immediate. Fine to broadcast on lawns to produce a vigorous growth of grass, thus choking out weeds and annual grasses. 25 lbs. 90c; 50 lbs., \$1.50; 100 lbs. \$2.50.

## HAMMOND'S SLUG SHOT DUST

The safe, non-poisonous, dusting Insecticide. Kills chewing insects and controls fungus. Harmless to humans, plants and vegetables. Kills Mexican bean beetles, Cabbage worms, beetles, potato bugs, green flies, slugs, etc. 1 lb. 25c; 5 lbs. \$1.00; 25 lbs. \$4.00; 125 lbs. \$18.00; 250 lbs. \$34.00.



## CROP INSURANCE

Insect pests increase from year to year. Spray and fertilize your garden. Vigilance is the price of fine vegetables.



Keeps dogs, cats and other animals away from trees, evergreens, roses, shrubbery, etc. Tube releases vapor offensive to animals, but not noticeable to humans. One large tube lasts a year. Large tube 30c; small tube 15c.

## EARLIER TO MARKET WITH HOTKAPS

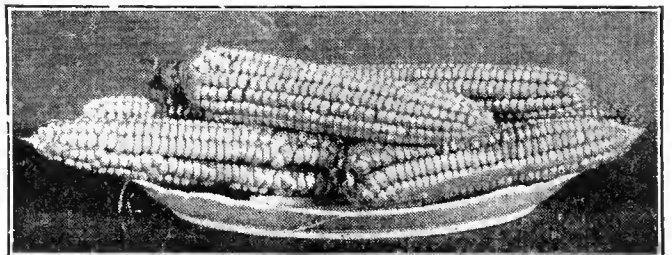


Mature your crops 2 to 3 weeks earlier. Get premium prices and bigger yields by protecting your plants with HOTKAPS. HOTKAPS are patented wax paper cones—miniature hothouses—that keep out frost, rain, wind, birds and insects. They maintain a perfect mulch around each plant, promoting sturdy growth.

Protect crops. Save work and worry.

Millions of HOTKAPS are used every season. Inexpensive to buy. One man can set out 2000 or more per day.

Prices: 1,000 lots, \$9.75; 5,000 lots, \$9.65 per M; 10,000 lots, \$9.55 per M; 250 trial package, including Garden Setter with Tamper, \$3.65; 100 trial package, including Garden Setter with Tamper \$2.40; HOTKAP Home Garden Package, 50c; Germaco HOTKAP Steel Setter with Tamper, \$1.50; Garden Setter, 50c. Postage extra.



## HYBRID SWEET CORN

New productive strains of sweet corn that have proven their worth during the three past years of drought. Heavy strong roots that go deeply into the ground making it drought and wind proof. Hybrid seed is now almost exclusively planted in the great canning sections of Iowa, Illinois and Indiana. Two fine varieties are listed on page 17.



Number or Quantity	NAME OF ARTICLE WANTED	Dollars	Cents
	Amount Forward		
	Amount of Order		
	Sales Tax		
	Total Amount		

Our seeds and nursery stock come from firms of known business integrity and we use every care to sell only True to Name Stock.

**OUR GUARANTEE**—If any stock proves untrue to description under which it is sold, we hold ourselves in readiness, on proper proof, to replace such seed, nursery stock or plants or refund the amount paid, but we shall in no case be liable for any sum greater than the amount originally received for said seeds, nursery stock or plants.

**WE FURTHER AGREE**—To replace without charge, any tree, shrub or plant that does not reach customer in good condition, provided we are notified within ten days of receipt of goods and such stock is held subject to our disposal.

**WE FURTHER AGREE**—Any nursery stock that does not grow, we will replace at one-half the original cost, if notified by September 1st following planting.

If you think your neighbor would care for a copy of this list write his name and address.

---



---



---

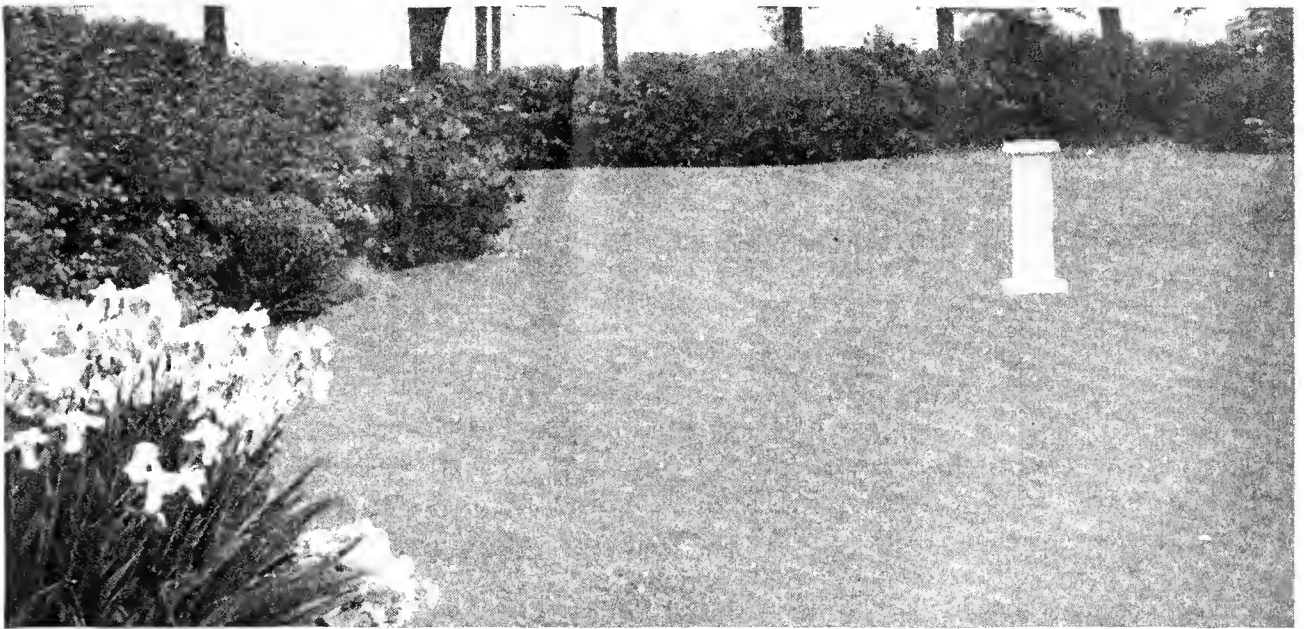


---



---





## Have Beautiful Lawns and Flowers



*A Product of Swift*

Millions of enthusiastic users are enjoying real gardening success since feeding their plants with Vigoro. Vigoro is especially made to meet the need of the home gardener. It contains all 11 of the plant food elements scientists have proved plants must get from the soil.

Why not stop trusting to luck? Feed your lawn, flowers, shrubs, trees, and vegetables with Vigoro. Incomplete materials, that is, plant foods lacking in one or more necessary elements, can't give you best results. The photograph below shows what happens when even one element is lacking in the plant's diet.

This year feed everything you grow with Vigoro. It's clean, odorless, and sanitary, and because you need so little, it is the most economical plant food.

- 100-lb. bag ....\$4.00
- 50-lb. bag .... 2.50
- 25-lb. bag .... 1.50
- 10-lb. pkg. .... .85
- 5-lb. pkg. .... .50
- 1-lb. pkg. .... .10

Plant on left received all 11 elements; others received 10. Element indicated was withheld.



# Banning's Seed and Nursery House

## BROOKFIELD, MO.

Postmaster—Return Postage Guaranteed.

For \_\_\_\_\_



U. S. DEPARTMENT OF AGRICULTURE,

WASHINGTON, D. C.

BUREAU OF PLANT INDUSTRY  
Fruit and Vegetable Crops and Diseases

GPO 8-3591

M. R. N.

### TRANSPLANTED PLANTS

Our early tomato, cabbage and pepper plants are transplanted. Seed is sown in beds. While very small, they are transplanted an equal distance apart in a plant flat which gives each one an even chance to grow into a strong, well rooted plant. Plants grown this way have strong stems and heavy roots which makes them easy to set in the open garden.

We are growing some tomatoes and peppers in small containers holding two dozen plants which allows purchaser to take plants home without disturbing the roots in the soil.

### HARDY PLANTS IN POTS

Hardy Perennials, Roses and Bleeding Hearts growing in large pots. No loss in setting out. Many of them blooming. They are fine gifts for Mother's Day as they will be a permanent reminder of the love of the donor.

### FLOWERS FOR MEMORIAL DAY

We will have a large supply of flowers to cut the last week in May. We can furnish large fine bouquets of many hardy flowers for Memorial Day.

