

Historic, archived document

Do not assume content reflects current scientific knowledge, policies, or practices.



1937

Garden Novelties

B RISTOL · NURSERIES · INC.
B RISTOL, CONN.

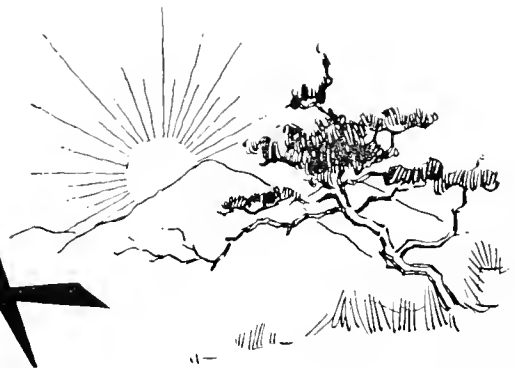
ORIGINATORS OF HYBRID **KOREAN** CHRYSANTHEMUMS



A
Gorgeous
October
Display
of
Bristol
Korean
Chrysanthemums

—
*A Wealth of
Lovely Cut-flower
Material*

KOREA



Land of Enchantment

Birthplace of the Original *Chrysanthemum coreanum*



Glorious New CHRYSANTHEMUMS for Your Garden

Each season we note a greatly increasing interest in Chrysanthemums for the garden. Over fifty thousand visitors came to Bristol during the 'Mum season of 1936 to see our display. Perhaps we are justified in believing that in originating and introducing, first, the Single Korcan Hybrids, followed more recently by the Double Korcan Hybrids, we have contributed substantially to this rejuvenation of the Chrysanthemum as a worthy garden subject.

From thousands of cross-bred seedlings we select for introduction only those that are thoroughly tested and of proved merit. The three new Double Korean Hybrids offered here, with Indian Summer and Romany (last year's introductions), represent a real advance. They are hardier, easier to grow, and altogether more lovely and desirable than the majority of the older type.

Reports from various sections of the country indicate that the Korcan Hybrid type is not only hardier but also resists summer heat better in the Southern States where Chrysanthemums are not altogether happy. This is due to a more robust and vigorous habit. Try some of these new Aristocrats. They will prove delightful additions to your garden and simply lovely for cut-flower purposes.

Romany

A lovely flower that truly defies accurate description. Fairly glowing in the subdued autumn sunshine; again different, but equally beautiful, under artificial light. The dominant color (according to Ridgway's Chart) is between carmine and nopal red. In effect it is a soft glowing red with bronze tone, enhanced or illumined somewhat by the gold petal reverse appearing in the center of the flower. The blooms are full, double, perfect as a cut-flower, remaining in good condition at least three weeks with ordinary care. Height, 2½ feet. In flower about October 5.

These two varieties were exhibited at the "Garden of the Nations" October exhibition and received a "Special Award."

Indian Summer

Vivid, glowing orange (Mars orange, Ridgway). The unfurled central petals add a luminous golden orange reflection that immediately captures attention. It is a large flower, 3 inches across, many-petaled, somewhat shaggy, but altogether attractive and distinct in form. It blooms about October 15, terminal flowers first, followed by a succession of side buds, somewhat candelabra-like in effect, thus prolonging its effective display. Growth is distinct, erect, and sturdy, never requiring support of any kind. More frost-resistant in the flower than any double kind that we know. It fills the need perfectly for a late-flowering Chrysanthemum that will not be marred or destroyed by late October frosts. Height, 2 to 2½ feet.

Prices of above two varieties, 50 cts. each, \$5 per doz.

New Double Korean Hybrid Introductions for 1937



The Moor

King Midas

Ember

King Midas (7-34CK). There is no double hardy Chrysanthemum comparable to this lovely variety. In late September and throughout October the plants are covered with fully double flowers that average 4 inches in diameter, of a charming shade of soft yellow with a faint bronze shading appearing occasionally. Very hardy. Height, 2½ feet. 75 cts. each.

The Moor (51-34CK). An introduction that has been greatly admired. It is best described as amaranth-purple or port-wine-red—very intense and brilliant in the garden. Flowers 3 inches in diameter, fully double, produced freely and of excellent keeping qualities as a cut-flower. In full flower in late September. Very hardy. Height, 2 feet. Received Award of Merit at the Boston Orchid Show, October, 1936. 75 cts. each.

Ember (43-34CK). A remarkably hardy and rugged Chrysanthemum which withstands all weather conditions. Double flowers of excellent form, 2½ inches in diameter, of a glowing bronze that stands out conspicuously—a combination of coral and orange shades that cannot be described accurately—always compelling. Flowering mid-October, it will be particularly desirable if a midseason variety is wanted. Height, 2½ feet. 75 cts. each.

SPECIAL OFFER A:

1 each of the 5 varieties illustrated . . . \$3

SPECIAL OFFER A1:

3 each of the 5 varieties illustrated (15 plants) . . . \$8



Indian Summer



Romany

New Single Korean Hybrid Introductions for 1937



Nancy Copeland

Pink Lustre

Agnes Selkirk Clark

Agnes Selkirk Clark (ASC No. 4)

A very lovely blending of bronzy pink, apricot, and salmon, producing an exquisite touch of autumn color in the garden. The single flowers are 3 inches across. Plants rugged yet compact and graceful in habit and remarkably free in flowering. This new variety, selected from a number of hybrids by Mrs. Clark, a prominent landscape architect, is so delightfully charming that we feel sure it will prove worthy of its distinguished name. In full flower in late September. Height, 2 to 2½ feet.

Nancy Copeland

Spectrum-red is the dominant color, having an opalescent sheen which varies with the autumn light, producing changeable color effects, always delightful, but impossible to describe accurately. A strong, upright plant with branching sprays of large, single flowers 3 to 3½ inches across, attaining perfection in late September. Altogether distinct and lovely. Very hardy. Height, 2 to 2½ feet.

Pink Lustre (15-34CK)

Fine single flower, 3 to 3½ inches across, with several rays of petals and good substance. A delightful shade of orchid (Lælia)-pink, distinct among other pink kinds. Remarkably free, producing strong, branching sprays in profusion throughout October. A sturdy variety, so hardy it will prove invaluable for difficult garden conditions. In full flower in late September. Height, 2½ to 3 feet.

The Urchin

Here is an interesting departure from any known type. A veritable "Raggedy Ann" among its more lovely sisters, it attracted much attention in our display-grounds simply by being so altogether different. Its sharply serrated petals and odd, ball-shaped blossoms, semi-pompon in type, combined with a peculiar color blending of soft crushed strawberry and gold, present a whimsical appearance. Height, 2½ feet. October 10.



The Urchin

Prices of varieties on this page: Strong-growing plants from 3-inch pots, 50 cts. each, \$5 per doz.

SPECIAL OFFER B:

1 each of the above 4 varieties . . \$1.75

SPECIAL OFFER B1:

3 each of the above 4 varieties (12 plants) . \$4.75

KOREAN HYBRID CHRYSANTHEMUMS

A BRISTOL Contribution to the American Garden

①



②

④

③

⑤

⑥

KOREAN HYBRIDS—*Aristocrats of the Fall Garden*

1. APOLLO 2. DIANA 3. CERES 4. MARS 5. LOUISE SCHLING 6. DAPHNE

Prices of varieties illustrated above: Strong-growing plants from 3-inch pots, 25c. each, \$2.50 per doz.

SEE SPECIAL OFFERS AND DESCRIPTION ON PAGE 5

HYBRID KOREAN CHRYSANTHEMUMS



Saturn

Venus

Aphrodite

INTRODUCTIONS OF 1936

Aphrodite

Imagine a compact, billowy mound 3 feet or more across, tinted with ivory and delicate pink, so completely covered with flowers that only blossoms are visible, and you have a picture of this splendid variety. The color is a soft tint of pink in the opening flowers, changing to ivory-white with the slightest mingling of delicate pink in the fully developed gerbera-like blossoms. Individual flowers are 3 to 3½ inches across. A single plant will make a gorgeous background in the average rockery. It is equally effective grouped in the garden or massed on a slope or bank. Height, 2 feet; spread, 3 feet. October 5.

Saturn

Brilliant sparkling orange and bronze, enhanced by a soft orange ring or halo surrounding the golden yellow center. A gorgeous autumn color-effect. It is tremendously free and effective, due to its splendidly robust, branching habit. Flowers are of excellent texture, almost 3 inches across, and are produced in large, graceful sprays. Delightfully fragrant. Height, 2½ to 3 feet. In flower October 5.

Venus

A new and attractive shade (Rhodanthe pink, Ridgway), the general effect of which is lilac-pink with rose-lavender shading. The flower is single, 2½ inches across, with three or four rows of petals. It is remarkably free, with slender, wiry branches that carry a multitude of blossoms on generous sprays. Commencing to flower in late September, it remains effective for a long period, and will appeal to those who like lavender and lilac tones in the garden. Delightfully fragrant. Height, 2½ feet. October 1.

Prices of varieties on this page: Strong-growing plants from 3-inch pots, 35 cts. each, \$3.50 per doz.

SPECIAL OFFER C:

1 each of the above 6 varieties . . . \$1.75

INTRODUCTIONS OF 1935

Orion

First Class Certificate, Massachusetts Horticultural Society, 1935.

Another new color, brilliant canary-yellow which fairly glitters in the autumn sunlight. Having that lustrous quality peculiar to the Hybrid Korean type, it immediately commands attention among older varieties of similar color. The flowers are single, 3 inches across. Excellent for cutting and a grand garden color. October 5. Height, 2½ feet.

Vulcan

Glowing carmine-red which shades to garnet-crimson and finally to an attractive bronze-crimson as the flower matures. It has a double row of ray-like petals with a conspicuous golden center and is delightfully fragrant. October 5. Height, 2½ feet.

Hebe

A profusion of delightfully fragrant, silvery pink blossoms completely covers the plant from late September on. Its remarkable freedom and unusual hardiness are invaluable traits, particularly in northern sections where Chrysanthemums are difficult. Enthusiastic reports from Minnesota and Maine—even from far China—more than substantiate all our claims for this fine early variety. Growing to a height of 2½ feet, it presents a lively color mass in the fall garden.

To secure full advantage of the dozen rate where quantities between 1 and 12 of a kind are ordered, refer to the scale of prices shown on order blank.

SPECIAL OFFER C1:

3 each of the above 6 varieties (18 plants) . \$5

HYBRID KOREAN CHRYSANTHEMUMS



VULCAN. Fine erect growth—many flowers



ORION. Remarkable for its brilliance



HEBE. A grand early variety

INTRODUCTIONS OF 1934

APOLLO

Truly magnificent bronze-red variety. October. Height, 2½ feet.

CERES

A lovely combination of old-gold, chamois-yellow, and soft coppery bronze. October 10. Height, 2 to 2½ feet.

DIANA

Chatenay-rose-pink, mingled with lilac-rose and soft salmon. October 12. Height, 2 feet.

DAPHNE

An exquisite blending of daphne-pink, with an underlying sheen of lilac-rose. October 12. Height, 2½ feet.

MARS

Deep amaranth-red, changing to wine-red, overlaid with a velvety sheen. October 15. Height, 2½ feet.

LOUISE SCHLING

Glowing salmon-red. In full flower October 5. Height, 2½ feet.

See color cut of above varieties, page 3

INNOCENCE

It seldom exceeds 18 inches in height, spreads about 2 feet, and is so completely covered with flowers that the plant is obscured when in bloom. The flowers are single, 2½ inches across, pure white on opening, changing later to an attractive soft pink. October 5. Awarded First Class Certificate, Massachusetts Horticultural Society, 1935.

Prices of varieties on this page: Strong-growing plants from 3-inch pots, 25 cts. each, \$2.50 per doz.

SPECIAL OFFER D:

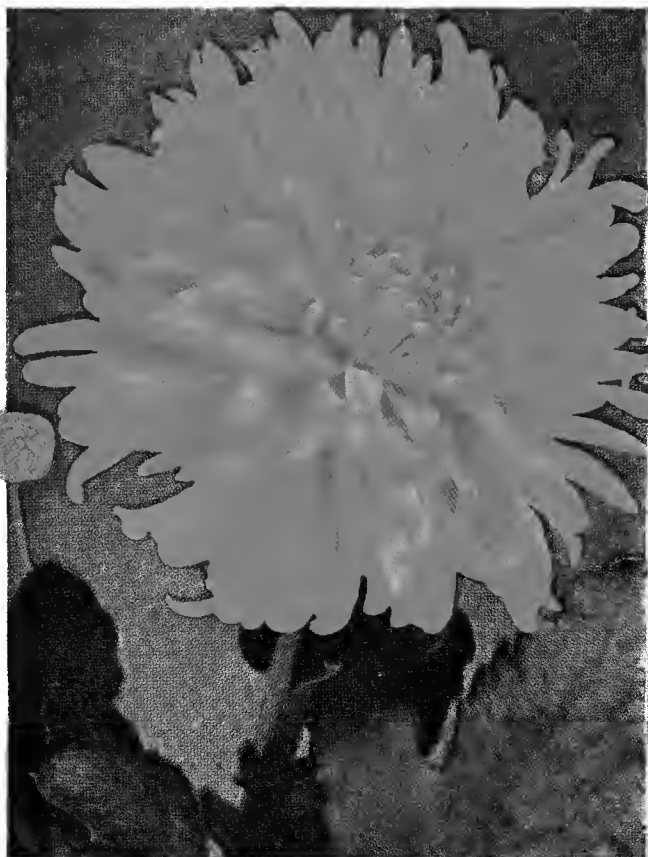
1 each of above 7 varieties \$1.50

SPECIAL OFFER D1:

3 each of above 7 varieties (21 plants) . \$4.25

FAVORITE GARDEN CHRYSANTHEMUMS

(OTHER THAN KOREANS)



Granny Scovill. For the connoisseur



Daybreak. Earlier than Seashell—just as attractive



Jean Treadway. Distinct and charming

Granny Scovill

Bristol Nurseries, Inc., 1934

A Chrysanthemum that instantly appeals to the connoisseur. It is a lovely, large flower, fully $4\frac{1}{2}$ inches across, and of nice, fluffy form. The color, a warm coral-bronze, fairly glows under artificial light. In growth it is dwarf and branching, with fine healthy foliage. While a trifle less hardy than the average Chrysanthemum, it is sufficiently outstanding in other respects to merit additional winter care. October 10. Height, 2 feet.

Jean Treadway

Bristol Nurseries, Inc., 1933

The flower is large—fully 3 inches across—of perfect Decorative or Aster formation, with excellent substance. On opening, the color is a lovely sparkling pink with a dark rose-pink center, but when fully open it becomes a nice soft lilac-pink shading to white. Of medium height, bushy in growth, and very free. In full flower September 30. Award of Commendation, Massachusetts Horticultural Society, 1935.

Daybreak

Bristol Nurseries, Inc., 1932

Virtually a duplicate of the lovely and popular Seashell. Daybreak will flower with us about October 10, two weeks before Seashell, and can be depended on for a fine display each season. The flower is of single type, almost 3 inches across, soft shell-pink in color, and has a noticeable sweet fragrance. Splendid variety for cutting or garden display. Strong and free growing. Height, 2 feet.

Prices of varieties on this page: Strong-growing plants from 3-inch pots, 25c. each, \$2.50 per doz.

FAVORITE GARDEN CHRYSANTHEMUMS

(OTHER THAN KOREANS)



Frances Whittlesey. Resistant to frost when in bloom; very popular



Jean Cumming. The best pure white

Frances Whittlesey

Bristol Nurseries, Inc., 1931

A very decided improvement in this particular color. Habit is stocky and dwarf, averaging 18 inches in height. Color, rich bronze and garnet—just right for the fall garden. It commences to flower in late September and makes a gorgeous showing through October, having the ability to resist considerable frost in the open flowers.

Jean Cumming

Bristol Nurseries, Inc., 1931

This variety is regarded as a very great improvement on older white varieties. Large flowers of purest white, with the softest yellow and blush shading at the center of the buds. Growth erect and wiry; height medium. Commences flowering about September 15, and having exceptional keeping qualities, is undoubtedly the best white variety to date.

R. Marion Hatton

Bristol Nurseries, Inc., 1931

For mass color-effect in the garden we know of no variety comparable to this yellow. The flower is of the Decorative Pompon type, not large or impressive in itself, but in addition to exceptional freedom in blooming, it is one of the earliest to flower, and certainly the brightest canary-yellow available, flowering from late September on. It is remarkably resistant to frost.

Pot-plants of above varieties, 25 cts. each,
\$2.50 per doz.



R. Marion Hatton. Effective in masses

Favorite Garden Chrysanthemums (OTHER THAN KOREANS)



Ruth Hatton. Very prolific and showy



Barbara Cumming. One of the earliest

Ruth Hatton

Bristol Nurseries, Inc., 1929

An exceptionally prolific variety of vigorous and bushy growth. This Decorative Pompon type when fully opened is clear ivory-white; when partially open, a delicate shade of lemon-yellow. Resists light frosts and is normally in full flower about October 10.

Barbara Cumming

Bristol Nurseries, Inc., 1928

Very attractive, large, full flower of the Decorative type, over 3 inches across, and clear yellow in color, shading to orange-bronze toward the center. It commences flowering in late August and continues until late October. Vigorous and branchy, attaining 2 feet.

October Girl

Bristol Nurseries, Inc., 1929

This most prolific flowering variety is of vigorous and branchy habit. The flowers are single or semi-double, fully 2 inches across, pink on opening, becoming shaded lavender when fully opened. In full flower October 1.

Pot-plants of varieties on this page, 25 cts. each,
3 for 65 cts., \$2.50 per doz.



October Girl. Vigorous in growth and early

SPECIAL OFFER E	
12 pot-plants, our selection of distinct varieties	..\$2 50
SPECIAL OFFER E1	
Same as above in field-plants 3 50
SPECIAL OFFER F	
100 pot-plants (10 or more distinct kinds)12 75
SPECIAL OFFER F1	
Same as above in field-plants20 00

Cultural instructions will be included with each shipment of Chrysanthemums

Outstanding Chrysanthemums—General List

Pot-plants of varieties on this page, 25 cts. each, 65 cts. for 3, \$2.50 per doz., unless otherwise noted



Amelia. Lovely dwarf variety

Decorative Type

ALBERT MULLER. Soft apricot, shading to light pink. Good habit and form. October 10.

AMELIA. Dwarf, compact, cushion-like growth; flowering freely from late September on and varying from light to deeper pink. Apparently identical to Pink Cushion and the Azaleamum. In any case, it is very useful for color mass in the garden.

JACK BANNISTER. Very good light yellow, flowering in early October.

L'ARGENTUILLAIS. A showy, full flower of vivid red, with distinct gold markings at the petal tips. October 10.

MADUSE. A large, terra-cotta-bronze flower. Medium growth. Early October.

MRS. PHIL PAGE. Bronze, at times deepening to bronzy red. Flowers are large and produced over a long period. One of the earliest. Very similar to Aladdin. Pot-plants only, 35 cts. each, \$3.50 per doz.

MRS. J. WILLIS MARTIN. The color is a blending of crimson and crushed strawberry, altogether distinct. October 10.

NORMANDIE. Opens creamy white; delicate pink when mature. Early and good. Medium growth. Late September.

OCTOBER DAWN. Lovely shade of soft daybreak-pink. Of medium height, but well branched, busily, and very free and effective in the garden or as a cut-flower. Commences flowering about October 5

PROVENCE. Soft pink, blended with yellow. Compact in growth; very free. First-rate in every way. October 1

RUTH CUMMING. The color is rich reddish bronze with terra-cotta shades, aging to an even, soft bronze tone. October 10.

DECORATIVE CHRYSANTHEMUMS, cont.

VIVID. A rosy crimson or amaranth shade new to the earlier flowering Chrysanthemums. Flowering about October 1, it is extremely vigorous and very free.

YELLOW NORMANDIE. Light bronzy yellow, of the same good habits as Normandic, flowering freely from early October. Nice for cutting.

Single Type

ALICE HOWELL. Large, single flowers of a rich bronzy orange-yellow shade. Very free flowering and will appeal to those who like the dainty charm of this type. October 5.

CAVALIER. This dazzling single Chrysanthemum will prove a most desirable addition. The color is a rich vermilion-red that does not fade. Free flowering October 15 on. Height, 2½ ft.

CRIMSON SPLENDOR. Rich crimson-maroon flowers, intensified with deep garnet tones, and contrasting with a prominent golden yellow center. The flowers are large, fully 4 inches in diameter, with exceptional keeping qualities. Blooms in late September.

GRENADIER. An extremely free-flowering variety of good, sturdy growing habit, producing masses of large, single flowers 3 to 3½ inches across in clusters. The color is a bright crimson-red with an underlying sheen of bronze which is more pronounced as the flowers mature. In full flower in early October.

DAZZLER. Brilliant cardinal-red. Fine growing habit. Should have a protected location owing to lateness. October 10.

SENSATION. Large, pure yellow flowers. Very free. October 12.



Crimson Splendor. A grand early crimson

Outstanding Chrysanthemums—General List

Pot-plants of varieties on this page, 25 cts. each, 65 cts. for 3, \$2.50 per doz., unless otherwise noted

Button or Pompon Type

ADELAIDE. Beautiful, rich mahogany blooms of fine form in early October.

EARLY BRONZE. Extremely early variety which came to us under this name, although its true identity is in doubt. Flowers freely from late August on. Color is a lively bronze-yellow.

ERMALINDA. Lovely old-rose with silvery sheen; medium size. Quite hardy. October 15.

ETHEL. A splendid bright red miniature Pompon.

IRENE. Pure white. Neat, compact habit. Early October.

LILIAN DOTY. Light pink. Large. October 10.

BROWN BESS. Small, button-like flowers of bright red. Blooms about mid-October.

METZI. Very small yellow flowers, with deeper center. Mid-October.

MRS. L. BIRCHARD. Flowers are large, clean cut, bright shell-pink. Very free. October 10.

RED FLARE. Large, fine bright red flowers. Good growing habit. October 15.

SILVER BALL. Large, silver-white Pompon. October 10. Pot-plants only.

SKIBO. Medium size; yellow. Mid-October.



Judith Anderson

Judith Anderson

An outstanding new Pompon. Introduced by us last year, this variety was the sensation in our Pompon section during the display season. Seldom exceeding a height of 1½ feet, it makes a spread of from 2 to 2½ feet. The plants are covered from the ground up with nicely formed, well-rounded, button-type flowers 1½ inches across, clear butter-yellow in color. Praised highly by those who have grown it, Judith Anderson easily excels any Pompon we know for garden effect where its dwarf habit makes it desirable for massing or edging. Remarkably fine also when grown as a pot-plant. 3-in. pot-plants, 50 cts. each, \$5 per doz.



Innocence. For rockery or bordering. See page 5.

Country Girl (Korean Type)

Attaining a height of from 4 to 5 feet, with an equal spread, this lovely variety is altogether too lusty for the average garden. Used as a background subject, or as a hedge-row in the rear of the garden where blooms can be cut by the armful, it will prove a serviceable acquisition. The flower is single, 3½ inches or more across, and a lovely shade of glistening pink with soft lilac tones. Occasionally a plant will produce blind wood the first season, but when established it flowers consistently, and is a veritable "Iron-clad." October 15. Strong 3-in. pot-plants, 35 cts. each, 90 cts. for 3, \$3.50 per doz.

Astrid (Arcticum Type)

The first authentic hybrid offered of the hardy Arcticum species. Like its prototype, it is of dense growing habit, very free flowering and extremely hardy. The single blossoms are soft pink with apricot tints harmonizing nicely with the prominent yellow centers. A fine dependable Chrysanthemum. Strong 3-in. pot-plants, 50 cts. each, \$1.25 for 3.

Mercury

Similar to Louise Schling in color—it has, however, developed a tendency to produce poor foliage, due to nematode infection to which it is susceptible where this pest is prevalent. Where it is free from this, it is a lovely, worth-while variety. Louise Schling is recommended as a substitute. Strong 3-in. pot-plants, 35 cts. each, 90 cts. for 3, \$3.50 per doz.

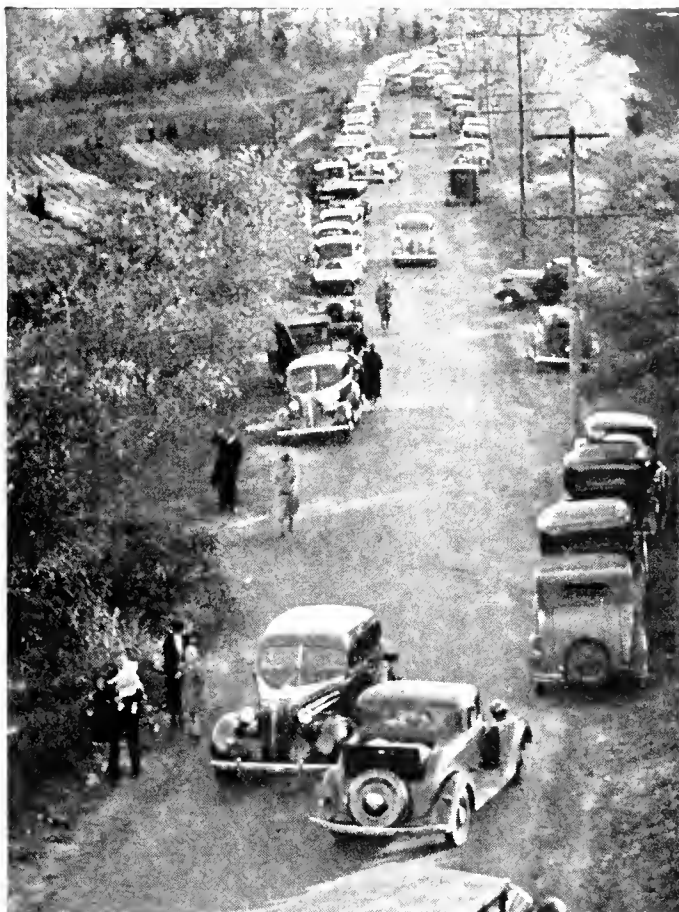
Chrysanthemum-Time at Bristol

Thousands of flower-lovers visit Bristol each year during the Chrysanthemum season, which extends from early October until killing frosts occur. Nowhere else in the civilized world will you find as great a display or as many new varieties and types, most of which, incidentally, originated here in Bristol.

Over 40 varieties of Chrysanthemums have been developed and introduced by us within the last ten years, including the distinct Hybrid Korean type already proclaimed as the greatest single advance in the development of the garden Chrysanthemum.

Other Bristol introductions, such as the universally popular double Baby's Breath, Bristol Fairy; Gaillardia, Sun God; the Bristol Double June Pinks and the earlier-flowering Japanese Anemones, will indicate that our plant-breeding efforts are not confined to any one group. Throughout the entire growing season there are many things of interest to see.

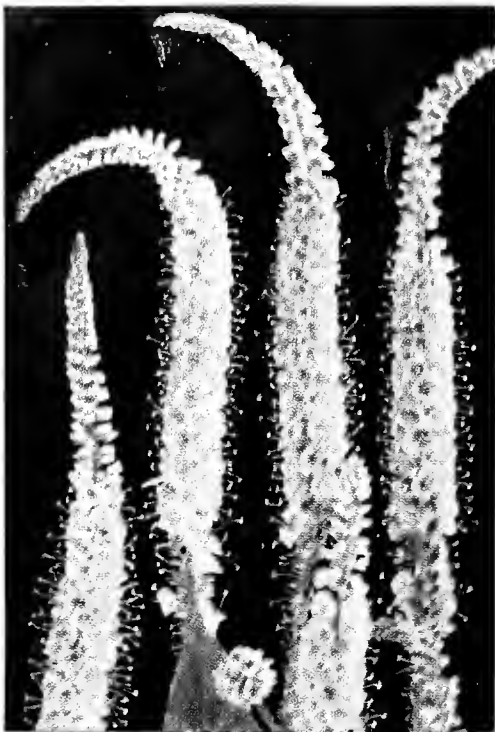
You are cordially invited to visit the Nursery at any time. Visitors are always welcome.



Visiting cars crowd adjoining highways during "Mum" season



Our display grounds on a glorious October morning



VERONICA LONGIFOLIA SUBSEVILIS
See page 33

Forget-me-not-flowering Anchusa is the finest blue-flowering subject for early spring.



Veronica subsevilis for August—fine cut-flower.



ECHINACEA PURPUREA. See page 22

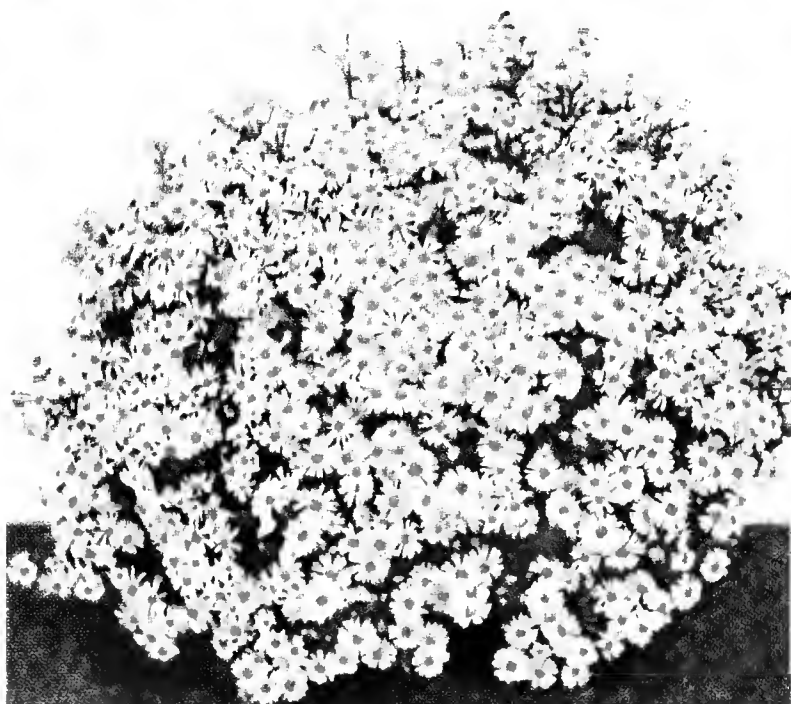


ORIENTAL POPPY, ORANGE KING
See page 29



FORGET-ME-NOT ANCHUSA. See page 17

Dwarf Asters are valuable for the border or rock-garden in late summer.



HARDY DWARF ASTER, LADY HENRY MADDOCKS. See page 19



ANEMONE, SEPTEMBER CHARM. See page 18



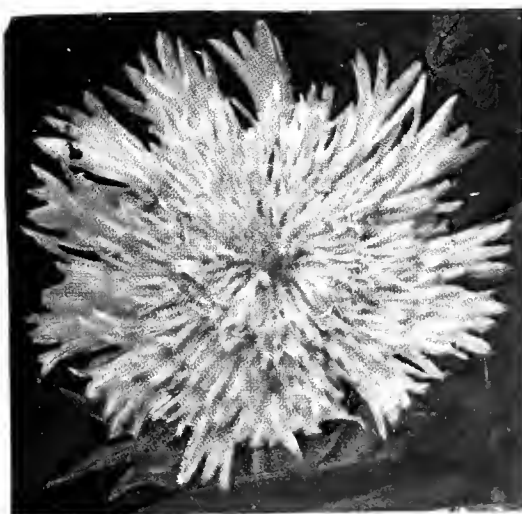
ASTER FRIKARTI. See page 19



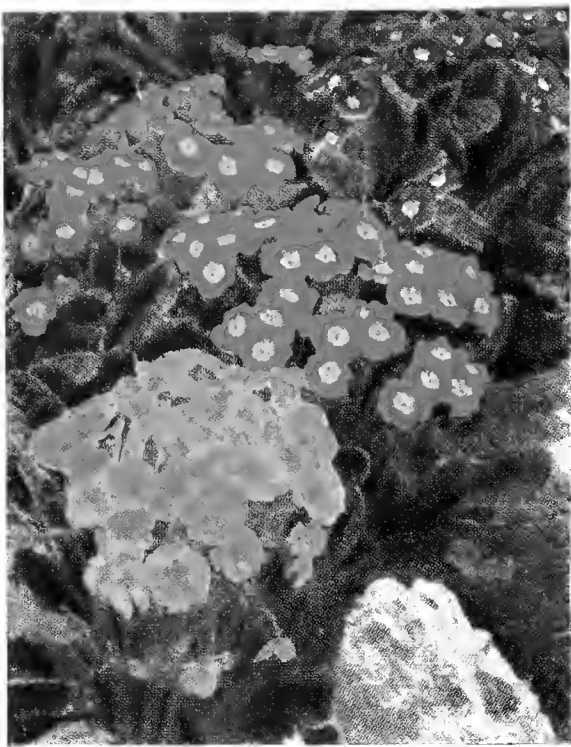
ASTER HYBRIDUS LUTEUS. See page 19



AQUILEGIA, LONG-SPURRED. See page 18



STOKESIA LAEVIS LILACINA GRANDIFLORA
See page 32



HARDY PRIMROSE, MRS. BERKLEY'S STRAIN. See page 31



PYRETHRUM HYBRIDUM
See page 31



LUPINES, REGAL HYBRIDS
See page 28



DICENTRA SPECTABILIS. See page 22



VIOLA, JERSEY GEM. See page 33

Dicentra spectabilis (Bleeding-Heart) a splendid old-fashioned favorite.



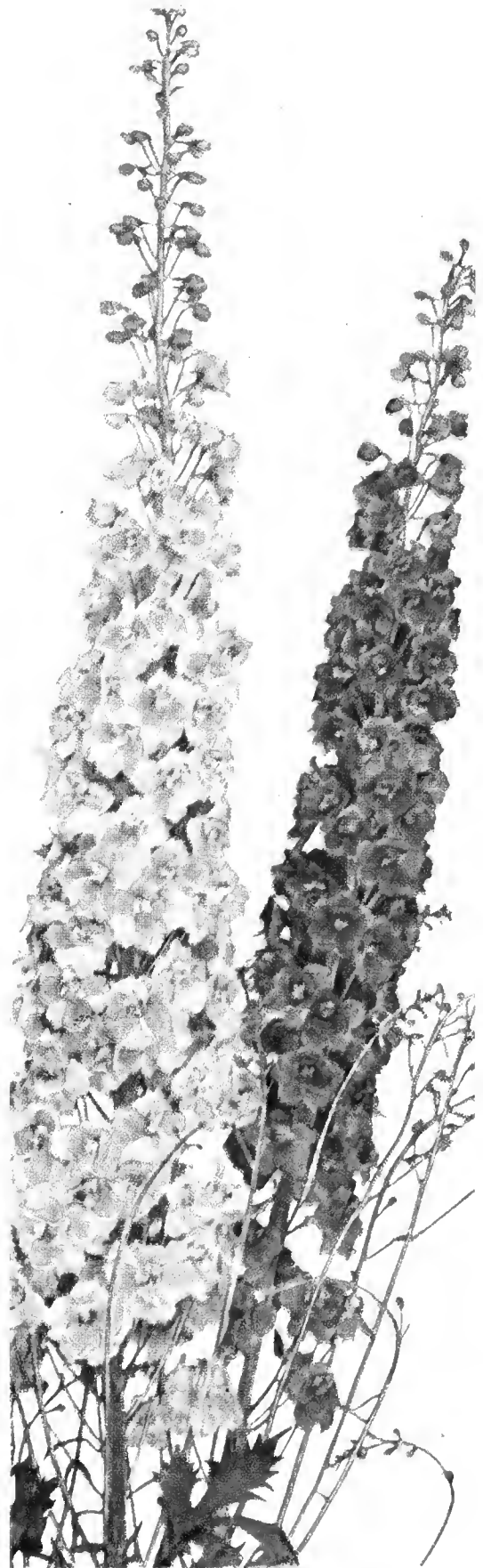
LILIAM
TENUIFOLIUM
See page 27



HEMEROCALLIS GOLDENI. See page 24



TROLLIUS EUROPÆUS. See page 32



DELPHINIUMS, WREXHAM TYPE
See page 21

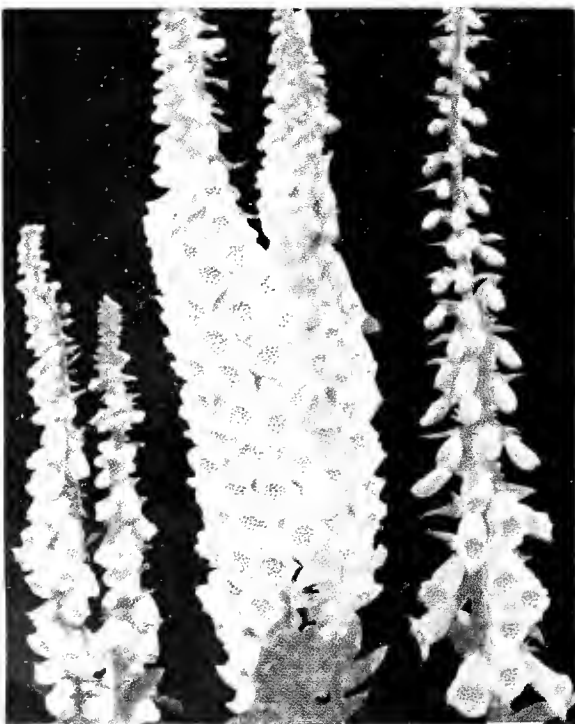
The gay Trollius are most colorful in May and June.

The stately Delphiniums in June and July.

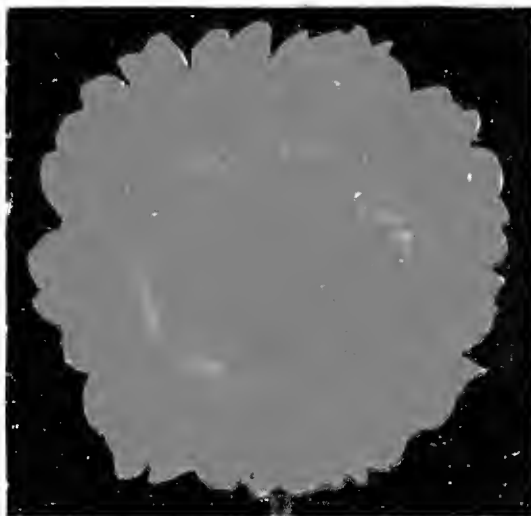
In August and September the Betscher Day Lilies are indispensable.



CAMPANULA (CUP AND SAUCER). See page 21



DIGITALIS, THE SHIRLEY
See page 22



GAILLARDIA, SUN GOD. See page 23



GYPSOPHILA REPENS BODGERI. See page 23

GAILLARDIA, SUN GOD
Originated and Introduced by Bristol
Nurseries, 1934
*Unexcelled as a garden plant
and a lovely cut-flower*



Choice Hardy Perennials

ACONITUM. *Monkshood.* A splendid family of plants resembling in habit the delphiniums, but flowering during late summer and fall. They are very adaptable to grouping and most useful where blue is desired as a late garden color. Perfectly hardy but slow to establish and for that reason should remain undisturbed as long as possible. Aconites can be grown in partial shade or full sun.

Autumnale. *Autumn Monkshood.* Large spikes of rich, dark blue, hooded flowers. Height, 4 to 5 feet. September, October. 35 cts. each, \$3.50 per doz.

Fischeri. *Azure Monkshood.* Compact habit; attractive, glossy leaves; bright blue flowers, carried in short, stocky spikes. Height, 2 to 3 feet. September, October. 35 cts. each, \$3.50 per doz.

Fischeri Wilsoni. *Violet Monkshood.* A more recent addition from China. It is of tall, stately habit, strong growth, and has deep violet-blue flowers. 5 to 6 feet. September, October. 50 cts. each, \$5 per doz.

Napellus. One of the earliest. Fine, rich dark blue flowers on tall irregular spikes. Height, 3 to 4 feet. July, August. 35 cts. each, \$3.50 per doz.

Napellus bicolor. Cleanly marked white and blue flower-spikes. Quite distinct. Height, 2 to 2½ feet. 50 cts. each, \$5 per doz.

Spark's Variety. Deep blue flowers on long, branching spikes. Height, 4 to 5 feet. July, August. 35 cts. each, \$3.50 per doz.

***ADENOPHORA polymorpha.** *Ladybell.* Erect, wiry, campanula-like spikes of fine blue flowers 2½ feet high in midsummer. 35 cts. each, \$3.50 per doz.

SPECIAL ROCK-PLANT OFFER

OFFER K. 12 plants, distinct named varieties, our selection \$2.50

OFFER K1. 25 plants, 12 distinct named varieties \$3.75

***ETHIONEMA schistosum.** *Stone-cress.* One of the most attractive rock-garden subjects for midsummer blooming. Clean-cut, bluish green foliage at all times, and covered during June and July with lovely rose-colored spikes. Height, 9 inches. 35 cts. each, \$3.50 per doz.

***AJUGA reptans.** *Carpet Bugle.* A sturdy, creeping plant splendid for carpeting in poor soils and dry areas. Numerous blue flowers on 6-inch stems during May and June.

***Reptans rubra.** Attractive form of above with metallic red foliage and deep blue flowers.

***ALYSSUM rostratum.** *Yellow-head Alyssum.* Dense heads of golden yellow flowers. Dwarf, shrub-like habit. At home in an open, dry situation. Height, 1 foot. June, July.

***Saxatile compactum.** *Dwarf Golden Tuft; Basket of Gold.* More compact than preceding and earlier. Useful for planting in between crevices. Height, 9 to 12 inches. April, May.

ANCHUSA italica. *Dropmore.* *Bugloss.* Gentian-blue flowers on 4 to 5-foot spikes. June, July.

Italica, Morning-Glory. Darker than Dropmore and more effective.

***ANCHUSA myosotidiflora.** *Forget-me-not-flowering Anchusa.* Height, 1½ feet when in bloom during April and May, making a tidy, compact plant, entirely lacking the coarseness of the taller Anchusas, forming a mound of dainty blue flowers resembling the forget-me-not, but borne in branchy sprays. Foliage is robust and has a healthy, attractive appearance throughout the entire season. It is best located where the cold winds of early spring are avoided. Strong plants, 25 cts. each, \$2.50 per doz. Field clumps, 35 cts. each, \$3.50 per doz. Illustrated in color on page 12.

All Perennials on this page, 25 cts. each, 65 cts. for 3 of one kind, \$2.50 per doz., unless otherwise noted
Varieties marked * are suitable for the rock-garden

Anemones

These lovely fall-blooming Anemones are somewhat difficult to establish and are worthy of some special attention in their culture. Anemones dislike an exposed, wind-blown location, extreme heat, and clay soil. A mellow garden soil to which leaf-mold and thoroughly decayed barnyard manure has been added is best. A background of evergreens or a wall is also desirable. Growing plants from pots planted in May or early June will give good results. Winter covering of leaves and evergreen branches should be applied in late November. Do not uncover too early.

SEPTEMBER CHARM. (Bristol Nurseries, Inc., 1932.) A very lovely addition that will prove valuable because it is in full flower by September 20, early enough to escape the injurious frosts of New England. The individual flower is of medium size, 2 inches or more in diameter. Delicate silvery pink, shaded with rose and mauve, a beautiful color mass when grouped. Height, 2 feet. Illustrated in color on page 13.

SEPTEMBER QUEEN. (Bristol Nurseries, Inc., 1933.) A desirable semi-double variety that will appeal immensely to those who like the old favorites, Rubra or Prince Henry. It is an improvement on both, being earlier, more erect in habit, and ever so much more free in flowering. The color is an attractive shade of rosy red. In full flower September 15. It supplies an effective bit of color. Height, 2 feet.

***SEPTEMBER SPRITE.** (Bristol Nurseries, Inc., 1933.) A miniature Anemone producing myriads of single flowers resembling *Hupchensis* in form, but smaller and more dainty. Due to its neat, compact habit and extreme freedom, it will be very useful in the garden or rockery if planted closely in group effect, three or more plants to a cluster. In color it is a pretty blending of soft pink and rosy mauve. Flowering in early September, it will prove a charming addition to this group. Height, 1 foot.

Above varieties, 35 cts. each, 90 cts. for 3 of a kind, \$3.50 per doz.

***Hupchensis.** *Chinese Anemone.* A gem for the rockery or border, growing from 18 to 24 inches high, with an abundance of mauve-rose flowers 1½ inches in diameter. Flowers freely from mid-September on.



Anthemis tinctoria

All Perennials on this page, 25 cts. each, 65 cts. for 3 of one kind, \$2.50 per doz., unless otherwise noted

Varieties marked * are suitable for the rock-garden

Anemone japonica alba. *White Japanese Anemone.* Pure white, single flowers from late September on, attaining a height of 2 to 3 feet. Excellent for cutting.

Japonica, Louise Uhink. Large, pure white, semi-double flowers from mid-September on. Height, 2 to 3 feet.

Japonica, Queen Charlotte. The best variety of its color. Large, semi-double, deep pink flowers carried on 2 to 3-foot stems in September. Desirable for cutting.

Japonica rosea superba. Large, single, light silvery pink flowers in late September. Height, 2½ feet.

Japonica rubra. Semi-double, reddish pink flowers. Very free in late September. Height, 2½ feet.

Japonica, Stuttgartia. (New.) Large, brilliant dark pink, semi-double flowers in abundance. Height, 1½ feet. September. A strong grower. 35 cts. each, \$3.50 per doz.

Japonica, Whirlwind. Semi-double, large, snowy white flowers with a circle of green leaves around base of petals. Blooms profusely from late September on.

***Pulsatilla.** *European Pasque Flower.* Downy buds appear in April and May and unfold to miniature tulip-like flowers of violet-purple. Height, 9 inches.

***Pulsatilla alba.** A fine white form of the preceding.

***Pulsatilla, Lavender.** A lovely light lavender form. Somewhat stronger in growth than Pulsatilla.

***Pulsatilla rubra.** Good reddish violet.

***Sylvestris.** *Snowdrop Anemone.* Pure white, sweetly scented, nodding flowers in May and June. At home in partial shade and requires good drainage. Height, 1 foot.

Prices, unless otherwise noted, are 30 cts. each, 75 cts. for 3 of one kind, \$3 per doz.

Anemones will be supplied from pots, as they are safer

ANTHEMIS tinctoria. *Yellow Camomile.* Golden yellow, daisy-like flowers. Weedy but good for poor soils. Height, 1 to 2 feet. July, August.

Tinctoria, Perry's Variety. Like above, but larger and better in every way.

***AQUILEGIA alpina.** *Alpine Columbine.* A beautiful true blue, short-spurred form of dwarf habit from Switzerland. Fine for the rock-garden. Height, 1 foot.

Cærulea. *Colorado Columbine.* Blue and white long-spurred flowers. Strong plants, will bloom this season. May, June.

Canadensis. *American Columbine.* Our native scarlet-and-yellow Columbine, and one of the showiest. Superb in sun or half-shady places. Height, 1½ to 2 feet.

Chrysantha. *Golden Columbine.* Golden yellow, fragrant flowers, with slender spikes. Height, 3 feet. June to August.

***Double White.** Lovely double white variety about 18 inches high.

Hensol Harebell. Vivid, deep violet-blue flowers with short spurs. Follows Alpina. Height, 1½ feet.

Long-spurred Hybrids. An unusually choice strain of lovely hybrids, ranging in color tones from creamy white and yellow to bronze-red and blue shades. No two plants resemble each other in color. Illustrated in color on page 13.

Long-spurred, Crimson Star. An entirely new color in the Long-spurred Columbines—rich, dark crimson. The plant is vigorous and flowers are produced freely. 35 cts. each, \$3.50 per doz.

Long-spurred Blue Shades. Slightly variable but attractive shades of blue.

Long-spurred Pink Shades. A selected strain, somewhat variable, but pink, cerise and bright rose-tinted shades predominate.

***Oxysepala.** *Early Columbine.* An extremely hardy kind from Siberia, very similar to *A. cærulea*, but more compact and earlier to flower. Very fine. Height, 1 foot.

***ARABIS alpina.** *Alpine Rock Cress.* Masses of pure white flowers in April and May. Splendid for massing or under-planting for bulbs. Height, 9 inches.

***Alpina flore-pleno.** A double white form of the preceding, and more showy, flowering over a longer period. 30 cts. each, \$3 per doz.

***ARENARIA montana.** *Mountain Sandwort.* A very desirable evergreen trailing plant. Large white flowers in May and June. Height, 4 to 6 inches.

ARTEMISIA vulgaris lactiflora. *White Mugwort.* A very desirable and attractive cut-flower subject. Tall sprays of creamy white, fragrant flowers and attractive foliage. Does best in a rather moist rich soil. Height, 3 to 4 feet. August, September.

Silver King. A striking, white-leaved variety of great value for mixing with old-fashioned bouquets, and, in fact, any floral combination. The general color effect is that of silver frosting. Plants attain a height of 3 feet and are also of great value for foliage effect alone in the border or garden. 30c. each, \$3 per doz.

ASCLEPIAS tuberosa. *Butterfly Weed.* Umbels of gorgeous orange in midsummer. Sandy, well-drained soil. Height, 2 feet.

***ASPERULA odorata.** *Sweet Woodruff.* Familiarly known to Europeans as Waldmeister. Fragrant white flowers. Nice ground-cover for semi-shade.

* Dwarf Hybrid Asters

This charming race of really Dwarf Asters, introduced last season, is of the greatest value for late summer and early fall color in the rock-garden or hardy border. All are compact, seldom over 1 foot in height, and densely covered with small, dainty, single blossoms. Perfectly hardy and easy to grow.

Recent Introductions

CONSTANCE. Pure shell-pink—a new and delightful color. Graceful habit. Height, 9 inches.

LAVANDA. Lavender-blue flowers. Very free flowering and early, commencing to bloom about September 10. Height, 12 to 15 inches.

LILAC-TIME. Lovely soft lilac blooms. Free flowering, of bushy habit. September and October. Height, 15 to 18 inches.

NIOBE. Pure white. Very free. Growth compact. September 15. Height, 12 inches.

Above Asters, 35 cts. each, 90 cts. for 3, \$3.50 per doz.

Previous Introductions

COUNTESS OF DUDLEY. A very charming clear pink with yellow eye. Late September. Height, 9 inches.

LADY HENRY MADDOCKS. Clear, pale pink flowers. Very free. September. Height, 1 foot. Illustrated in color on page 12.

MARJORIE. A charming plant of compact habit, bearing large flowers of a bright rose-pink. Mid-September. Height, 1 foot.

NANCY. Very free. Pale flesh-pink flowers toward the end of September. Height, 1 foot.

RONALD. A dwarf bush with lilac-pink flowers.

SNOW SPRITE. Cushions of pure white flowers. Very effective and clean. Dwarf, compact, and bushy. September. Height, 1 foot.

VICTOR. Flowers are beautiful clear pale lavender-blue. Early September. Height, 1 foot.

Above varieties, 25 cts. each, 65 cts. for 3, \$2.50 per doz.

All Perennials on this page, 25 cts. each, 65 cts. for 3 of one kind, \$2.50 per doz., unless otherwise noted

Varieties marked * are suitable for the rock-garden



Arenaria montana

Hardy Asters

(Michaelmas Daisies). *Choice Kinds*

These are improved forms of our beautiful wild Asters, flowering so profusely throughout New England in late summer and fall. Those marked "N.A." are of the *Novae-angliae* type and are tall and erect in habit; "N.B.," the *Novi-belgi* type, are more profuse in branching and flowering.

Barr's Pink. N.A. Undoubtedly the best Aster of this type so far introduced. Strong-growing, shapely plant 5 feet in height and flowering profusely from early September on. Individual flowers are large, pure bright pink in color, and carried on rigid, branching stems.

Blue Bouquet. Violet-blue flowers of fine size, with attractive golden yellow eye. Habit is compact and very free. Healthy foliage. A fine addition. October. Height, 18 inches. 35 cts. each, 90 cts. for 3, \$3.50 per doz.

Blue Gem. N.B. A profuse bloomer in September and October, with large, double flowers of rich true blue. Height, 3 to 4 feet.

Burbank's Charming. Differs from the type in growth and habit. A loose, graceful, vigorous plant entirely covered with dainty rosy white flowers in feathery sprays. Late September on. Height, 5 feet. 35 cts. each, 90 cts. for 3, \$3.50 per doz.

Freedom. N.B. Plant is completely covered with large flowers of a rich violet-blue shade. It blooms fully two weeks earlier than *Queen Mary*. Height, 3 feet.

Frikarti (Wonder of Staefa). Large flowers of a wisteria-violet shade with large yellow centers. Has a longer blooming period than any other variety, flowering from late July to frost. Excellent for cutting. Height, 2 to 2½ feet. 50 cts. each, \$1.25 for 3, \$5 per doz. Illustrated in color on page 13.

Hybridus luteus. This Aster resembles a glorified goldenrod in its flowering habit. During late August and early September it is a gorgeous mass of small golden yellow flowers, produced in long, densely covered sprays. Height, 2½ feet. 30 cts. each, 75 cts. for 3, \$3 per doz. Illustrated on page 13.

Maid of Athens. N.B. A vigorous, branching beauty, completely covered with large, single flowers of a glorious shade of rose-pink in late September and early October. Best pink. Height, 3½ feet.



Astilbe, White Gloria

HARDY ASTERS, continued

- Mulberry.** N.B. A distinct and new color—mulberry-red. It is both unique and attractive, commanding much attention when in flower. A mass of bloom from late September on. Height, 2½ feet. 50 cts. each, \$5 per doz.
- Queen Elizabeth.** An improved white variety. From early September on the plant is a mass of glistening, snow-white, semi-double blooms. Height, 3 feet.
- Queen Mary.** N.B. Very large individual flowers averaging 2½ inches across, rich, glistening, brilliant blue in color. Flowers carried in loosely conical trusses form an attractive, shapely, compact plant. Flowers in late September. Height, 3 feet.
- Red Rover.** N.B. (New.) The nearest approach to a true red—glowing red buds, opening wine-red. Medium-sized flowers in immense sprays. An acquisition. Height, 3 to 4 feet. 35 cts. each, 90 cts. for 3, \$3.50 per doz.
- Royal Blue.** N.B. A mass of rich deep blue flowers covers the plant from early September on; golden disk at center adds to its attractiveness. Height, 2½ to 3 feet.
- Royal Pink.** N.B. Compact-growing plant carrying a profusion of soft pink flowers during September and early October. Height, 2½ to 3 feet.
- Skylands Queen.** Flowers are large, an attractive shade of light blue, completely covering the plant, which is dense and spreading in habit. From late August on; splendid for cutting. Height, 2½ feet.
- “Winchell Variety.”** N.B. Not unlike Skylands Queen but earlier, flowering by mid-August and remaining effective for a long time. Somewhat stronger in growth. Highly desirable. Height, 3 to 3½ feet. 50 cts. each, \$1.25 for 3, \$5 per doz.
- Ypres.** N.B. Neat rosy red flowers; compact growth. September and October. Height, 2 to 3 feet.
- *ASTER alpinus.** *Rock Aster.* Neat tufts of purplish blue flowers during May and June. Height, 6 to 9 inches.
- *Alpinus albus.** Fine white-flowering form of Alpinus. Height, 6 inches.
- *Alpinus, Dark Beauty.** Rich dark violet-blue flowers. Height, 6 inches.
- *Alpinus, Goliath.** A desirable stronger-growing form of Alpinus.
- *Hybrida, Lutetia.** A semi-dwarf variety of informal habit, covered with lilac-blue flowers in August. Height, 1½ feet.

HARDY ASTERS, continued

- *Amellus, King George.** Large trusses of violet-blue flowers with fine golden disk. Flower 3 inches across. The best of this dwarf group. Height, 1½ feet. 50 cts. each, \$5 per doz.
- *Amellus, Ultramarine.** A very attractive variety with bright violet-blue flowers. Height, 1½ feet.
- *Subcæruleus, India Aster.** Resembles Alpinus but somewhat stronger. Luminous, bright blue flowers with vivid orange center. Dwarf growth; blooms in late May and June. Height, 1 foot.
- *Subcæruleus, Apollo.** A lovely shade of sky-blue. Large flowers.
- *Subcæruleus, Artemis.** A new and distinct shade—light rosy lilac. Large flowers.

ASTILBE. The feathery, branching, colorful flower-trusses rise well above the majority of flowering plants in late June and July, adding style and grace to the garden. All Astilbes are at home in partial shade or full sun, and thrive in average garden soil. Splendid for cutting if first allowed to open full to the tips.

Avalanche. White flowers on stalky stems 2 feet in height. Much the best white.

Gertrude Brix. Splendid novelty producing brilliant dark crimson-red flower-spikes in late June and July. Height, 2 feet. 75 cts. each, \$7.50 per doz.

Gloria. Dense, feathery plumes of a brilliant dark pink, shaded soft lilac. Dwarf habit. Height, 2 feet.

Granat. A handsome new variety with rich deep crimson flowers. Vigorous growing. Height, 2 feet.

White Gloria. A counterpart of the well-known Gloria, with strong, creamy white flowers. Excellent in the garden or as a cut-flower.

All Astilbes, 50 cts. each, \$5 per doz., unless otherwise noted

AUBRIETIA hybrida. Charming little plants, semi-trailing in habit, completely covered during April and May with small but showy flowers that vary from lavender to violet. Needs a well-drained spot and light soil.

BAPTISIA australis. *Wild Indigo.* Dark blue, lupine-like spikes. An attractive, husky, wild-garden plant. Height, 2 feet. June.

BOLTONIA asteroides. *White Boltonia.* Star-like white flowers. Blooms from July to September—a good filler for shady spots. Height, 5 to 6 feet.

Latisquama. *Violet Boltonia.* Lavender-pink form of Boltonia and better than the white for the border. Height, 4 feet.

To secure full advantage of the dozen rate where quantities between 1 and 12 of a kind are ordered, refer to the scale of prices shown on order blank.



Aubrietia hybrida

All Perennials on this page, 25 cts. each, 65 cts. for 3 of one kind, \$2.50 per doz., unless otherwise noted

Varieties marked * are suitable for the rock-garden

CAMPANULA Medium. *Canterbury Bells.* Ever-popular favorites. White, Pink, Lavender, Blue, and Mixed Colors.

Medium calycanthema. *Cup and Saucer.* White, Pink, and Blue. Illustrated in color on page 16.

Medium calycanthema, Dean's Hybrids. A very choice strain of mixed colors of the Calycanthema type.

Persicifolia. *Peachleaf Bellflower.* The Persicifolia group is valuable because it flowers about mid-June, earlier than the Canterbury Bells, and being perennial is reasonably permanent. Fine for cut-flowers.

Persicifolia alba. Nice white form.

Persicifolia, Blue. Large, cup-shaped flowers on wiry stems. Height, 2 feet.

Persicifolia, Lady Evelyn. Lovely lilac, bell-like flowers. Growth wiry and more branched and free than the type. 35 cts. each, 90 cts. for 3, \$3.50 per doz.

Persicifolia, Telham Beauty. Very large, rich blue, saucer-shaped flowers. Easily the best of the Peach Bells. Height, 2 to 2½ feet. 35 cts. each, \$3.50 per doz.

***Rotundifolia.** *Harebell; The Bluebell of Scotland.* Desirable for the wild garden or for colonizing among rock-crevices, with its dainty clear blue bells and wiry stems. Height, 12 to 18 inches. June to August.

***CAMPANULA carpatica.** *Carpathian Bellflower.* Bright blue, cup-shaped flowers. Dwarf, creeping habit.

***Carpatia alba.** Pretty white form of preceding.

***Garganica.** A gem for the rockery. Tufts of starry blue flowers in June. Trailing habit. 35 cts. each, \$3.50 per doz.

CENTAUREA dealbata. Large, striking, rose-pink flowers in June and July. Height, 2 feet.

Montana. *Mountain Bluet.* Blue flowers from June to August. Height, 1½ feet.

Montana alba. White form of above.

***CERASTIUM tomentosum.** *Snow-in-Summer.* A spready plant with silvery leaves and covered with masses of white flowers in June. Fine among stonework or for dry-wall planting. Height, 6 inches.

***CHEIRANTHUS Allioni.** *Siberian Wallflower.* Small plants averaging 9 inches in height, completely covered with fragrant flowers of a vivid orange-yellow color from May until July. Biennial, but seeds itself readily, so fairly permanent.

CHRYSANTHEMUM maximum. See Shasta Daisy.

CIMICIFUGA racemosa. *Cobosh Bugbane.* Fragrant white spikes, good for cutting. Best in a moist soil and part shade. Height, 4 to 5 feet. July, August. 30 cts. each, 75 cts. for 3, \$3 per doz.

CLEMATIS Davidiana. *Fragrant Tube Clematis.* Fine, shrubby, non-climbing plant for the garden. Lavender-blue cluster. Blooms in August and September. Height, 2½ feet.

Recta. *Ground Clematis.* Great clusters of snowy white flowers. Height, 2½ to 3 feet. June, July.

Integrifolia cærulea. Porcelain-blue flowers. Height, 2 feet. July, August.

All Clematis, 35 cts. each, 90 cts. for 3, \$3.50 per doz.

***CONVALLARIA (Lily-of-the-Valley) majalis.** This dainty, fragrant favorite, so essential to every garden, needs no description. Everyone knows and wants it. Single leads, 15 cts. each, \$1.25 per doz., \$7.50 per 100; strong clumps, 50 cts. each, \$5 per doz., \$35 per 100.

***Majalis, Fortin's Giant.** A splendid garden strain, with distinctly larger foliage and flowers than the well-known type and much superior for garden purposes. Fine for massing near shrubs or along shaded borders. Single leads, 20 cts. each, \$2 per doz., \$15 per 100; clumps, 60 cts. each, \$6 per doz., \$42 per 100.

COREOPSIS lanceolata. *Lance Coreopsis.* Rich golden yellow flowers all summer. Height, 2 feet.

Mayfield's Giant. Somewhat better and larger than *Lanceolata*.

***CYPRIPEDIUM pubescens.** *Common Yellow Lady's Slipper.* Does well in moist, yet well-drained soil, enriched with leaf-mold. Height, 1 foot. May, June.

DELPHINIUM. *Larkspur.* The Delphinium is, we believe, the most satisfactory of all border plants, and is deserving of special care. It does not do well under congested conditions. A rich soil is desirable, but the roots must not come in contact with manures. Bonemeal should be well mixed into the soil before planting, and a light application made after each crop of flowers is cut. If these are cut close to the ground, new flowering growths will appear from the base of the plant, and, with proper care will produce a second crop of blooms and continue until frost.

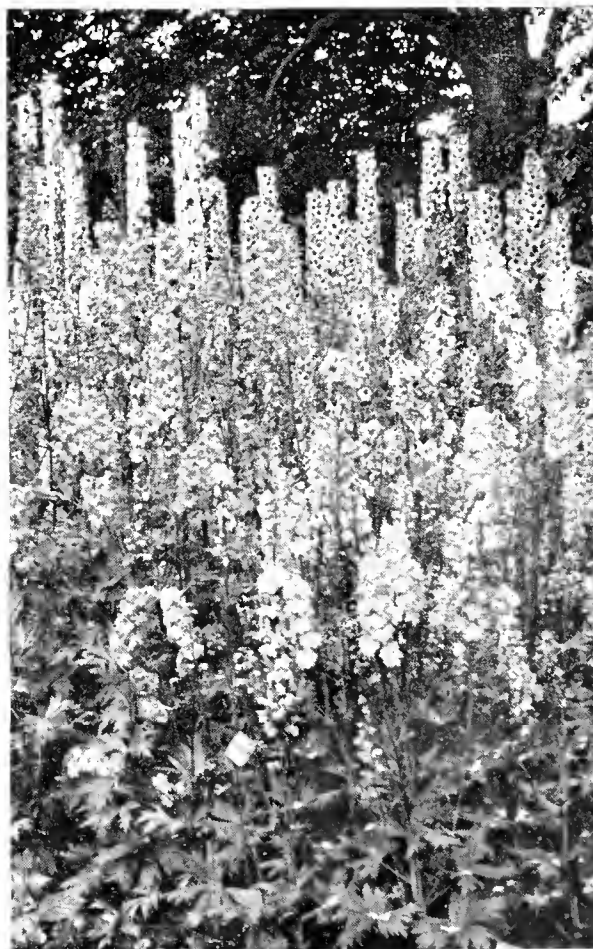
Bristol Hybrids. This hybrid strain includes a range of lovely colors varying from azure-blue to deepest purple, mauve-pink to rosy lavender. Many are semi-double with distinct centers. Strong and vigorous, and when well established, stately spikes attaining a height of 7 feet are not unusual. 35 cts. each, \$3.50 per doz., \$25 per 100.

Hollyhock or Wrexham Type. Spikes of unusual length and beauty, and including lovely color tints and shades. This type will flower late, following the hybrids, and thus prolong the Delphinium season. They are remarkably fine. 50 cts. each, \$5 per doz., \$35 per 100. Illustrated in color on page 15.

Belladonna Improved. The most continuous blooming of all, producing numerous spikes throughout the season, varying from 3 to 4 feet in height. Clear turquoise shade of blue.

***Chinensis, Blue Butterfly.** Dark blue. Nice for massing. Height, 18 inches.

***Chinensis grandiflorum album.** A good white form.



Bristol Hybrid Delphiniums

All Perennials on this page, 25 cts. each, 65 cts. for 3 of one kind, \$2.50 per doz., unless otherwise noted
Varieties marked * are suitable for the rock-garden



Top flowers, *Dianthus*, Bristol Jewel
Lower, Bristol Maid

DIANTHUS (Hardy Garden Pinks), *Beatrix*. Semi-double flowers of an attractive salmon-pink shade. Everblooming and of distinct habit. 35 cts. each, \$3.50 per doz.

Bristol Beauty (Seedling No. 6). (Bristol Nurseries, Inc., 1931.) Very large flowers, almost carnation size, of rich pink color and very fragrant.

Bristol Jewel. (Bristol Nurseries, Inc., 1929.) Seldom without bloom from June until frost. Semi-double, nicely formed, fragrant flowers; white prettily flaked crimson, distinct crimson eye. Growth somewhat spreading; cut back after flowering.

Bristol Maid. (Bristol Nurseries, Inc., 1929.) A very large, double flower of excellent form; rose-pink with a faint lavender shading. Free flowering in June; occasional flowers in late summer. Delightfully clove-scented.

Bristol Purity. (Bristol Nurseries, Inc., 1929.) Absolutely pure white, double flowers and very fragrant. Good, compact-growing habit; extremely free, with occasional flowers in fall.

Furst Bismarck. A distinct shade of cerise-red. Extremely free and persistent.

**Plumarius*, *Annie Laurie*. Single, delicate pink flowers of extraordinary size, produced freely throughout the season.

**Plumarius semperflorens*, *Perfection*. *Old-fashioned June Pinks*. Pretty shades of red. Flowers from June on. Height, 1 foot.

Winteri. (New.) A valuable new type similar to the old-fashioned June Pink but more tidy in habit and quite attractive as a plant when not in bloom. The flowers are single, white, with bold crimson center, delightfully fragrant, and carried on wiry stems. Height, 1 foot. 35 cts. each, \$3.50 per doz.

**Cæsius Hybrids*. *Dwarf Cushion Pinks*. A gem for the rockery. Dense, true cushion formation. Flowers light to bright pink in early May.

**Dianthus deltoides*, *Wisley Strain*. A pretty trailing plant carrying dark red and crimson-eyed flowers in June and July. Height, 6 inches.

**Graniticus*. Resembling *Deltoides*, with neat, branching habit. Bright red flowers.

**Liboschitzianus*. Bright pink. Dwarf, compact-growing habit. Very free. Height, 6 inches. 35 cts. each, \$3.50 per doz.

DIANTHUS barbatus. *Sweet William*. We can supply this line old-fashioned favorite in plants grown from the choicest European strains available and almost true to color.

Nigrescens. Deep crimson. Dark bronzy foliage.

Pink Beauty. A lovely salmon-pink shade.

Pure White. Very large flowers.

Mixed. Including all colors.

DICENTRA (*Dielytra*) *spectabilis*. *Bleeding-Heart*. This line old favorite has been almost unobtainable for several years. A good stock now of strong roots. 50 cts. each, \$5 per doz. Illustrated in color on page 14.

**Formosa*. *Western Bleeding-Heart*. A variety with finely cut leaves and slightly smaller, pretty rose-purple flowers which are borne on and off all summer. 35 cts. each, \$3.50 per doz.

**Eximia*. *Fringed Bleeding-Heart*. Dainty rose-pink flowers in drooping racemes. Fernlike foliage. Height, 1 foot. 35 cts. each, \$3.50 per doz.

DICTAMNUS Fraxinella. *Gas Plant*. A splendid old garden favorite and one of the most permanent of hardy garden plants. Spikes, approximately 2½ to 3 feet high, of rosy pink flowers during June and July; fragrant foliage. An interesting feature of this plant is that if a lighted match is held at the base of the flower-stem, a flash of light will appear through the flower-stalk. This ignites best in the late afternoon and during close weather, when the odor is most pronounced.

Fraxinella alba. A very desirable clear white form.

Above two, 35 cts. each, \$3.50 per doz.

DIGITALIS (*Foxglove*), *The Shirley*. Those who admire the old-fashioned Foxglove will delight in this greatly improved strain of *Gloxiniæflora*. The flowers, unusually large in size, varying in color from white to deep rose-pink, are spotted crimson and maroon. Illustrated in color on page 16.

Gloxiniæflora. White, Pink, Purple, and Spotted.

Isabellina. A desirable yellow form of above.

Lutea grandiflora. Attractive shade of soft yellow.

Monstrosa. *Mammoth Foxglove*. Mixed colors.

***DODECATHEON** *Meadia*. An interesting rock variety bearing clustered, rose-colored flowers on wiry stems 1 foot or more in height.

DORONICUM (*Leopard-bane*) *caucasicum*. A splendid garden plant with conspicuous, daisy-like flowers of bright golden yellow colors, flowering in May and June. An excellent cut-flower.

Mme. Mason. Fine improvement on *Caucasicum*, which it resembles, but much easier to grow, withstanding hot summer conditions better.

Plantagineum excelsum. A fine clear yellow form attaining a height of 2 feet, flowering in mid-May.

Above *Doronicums*, 30 cts. each, \$3 per doz.

ECHINACEA *purpurea*. *Purple Coneflower*. Reddish purple, prominent golden brown center. Height, 2½ to 4 feet. July to October. Illustrated in color on page 12.

ECHINOPS *Ritro*. *Steel Globe Thistle*. Good background plant. Fine for cutting. Height, 2 to 2½ feet. July, August.

***EPIMEDIUM** *macranthum niveum*. *Snowy Epimedium*. Masses of white blossoms during May and June. Prefers semi-shade. Height, 9 inches. 35 cts. each, \$3.50 per doz.

All Perennials on this page, 25 cts. each, 65 cts. for 3 of one kind, \$2.50 per doz., unless otherwise noted

Varieties marked * are suitable for the rock-garden

***ERINUS alpinus.** *Alpine Fleabane.* Attractive rosettes of reddish purple blossoms. Dwarf, evergreen growth. Nice for crevices. Height, 4 inches. May, June.

ERYNGIUM amethystinum. *Amethyst Erynga.* Steel-blue flowers, valuable for cutting. Good wild-garden plant. Height, 2½ feet. July, August.

EUPATORIUM cœlestinum. *Mist Flower; Hardy Ageratum.* Fine cut-flower. Needs well-drained soil and protection. Height, 2 feet. August, September.

Urticæfolium (ageratoides). *Snow Thoroughwort.* Dense heads of white flowers. Good cut-flower. Height, 3 feet. August, September.

EUPHORBIA corollata. Showy and useful plant growing about 2 feet high and bearing, from June till August, umbels of pure white flowers much like the *Baby's Breath* and excellent for cutting. 30 cts. each, \$3 per doz.

***Epithymoides (polychroma).** *Cuscion Spurge.* Chrome-yellow flower-bracts. Very effective as a specimen plant for the rockery. Height, 1½ feet. April, May. 35 cts. each, \$3.50 per doz.

***Myrsinites.** A pretty prostrate form. Blue-green foliage. Yellow flower-heads. Height, 6 inches. April, May.

FUNKIA. See *Hosta*.

GAILLARDIA, Sun God. Introduced in 1934, the demand was so persistent that we were obliged to withdraw it until sufficient stock could be propagated. It is pure golden yellow throughout, free from marking of any kind. The flower is very large—almost 4 inches across—with broad, overlapping petals. Clean-cut, wiry stems, often 2 feet or more in height. A free-flowering, handsome garden plant and an excellent cut-flower. Pot-plants, 50 cts. each, \$1.25 for 3, \$5 per doz. Illustrated in color on page 16.

Grandiflora Hybrids. Pretty, daisy-like flowers with crimson, orange, and vermilion petals; centers dark brown. Blooms from July on. Height, 1½ to 2 feet.

Portola Hybrids. Coppery scarlet flowers margined golden yellow. July on. Height, 1½ feet.

GALIUM verum. *Yellow Bedstraw.* Erect, thin stems about 2 feet high, bearing beautiful, pale yellow, feathery flowers. Good for the perennial border. Excellent as a cut-flower accessory, particularly with delphiniums. 35 cts. each, \$3.50 per doz.

***GERANIUM sanguineum.** *Blood-red Cranesbill.* Bright crimson flowers all summer. Good border plant. Height, 1 to 1½ feet.

***GEUM (Avens) chilense, Mrs. Bradshaw.** A dwarf plant with strawberry-like foliage and showy scarlet-red, semi-double flowers during summer. Height, 1 foot.

***Chilense, Lady Stratheden.** A rich golden yellow counterpart of the above.

GYPSOPHILA, Bristol Fairy. *The Popular Baby's Breath.* (Bristol Nurseries, Inc., 1927.) This is regarded as one of the outstanding introductions among garden plants of recent years, and has enjoyed a tremendous sale, particularly among professional plantsmen, both here and abroad, where it received the coveted Award of Merit of the Royal Horticultural Society. Its double flowers are pure white, fully three times larger than the old *Double Baby's Breath*, and its growth is more vigorous, established plants averaging 3½ feet in height and 4 to 5 feet across. *Bristol Fairy* has the added fine trait of producing occasional side sprays after the first crop in late June and July, continuing sporadically until severe frost. Good garden soil, enriched with well-decayed barnyard manure, and an open, shade-free location are its chief requirements. Avoid strong chemical fertilizers and wet soil. A light mulch or covering applied to the heavy root-crown over winter is advised, and this covering should not be removed

GYPSOPHILA, continued

too early in spring. Pot-plants, 35 cts. each, \$3.50 per doz., \$25 per 100. Field roots, 50 cts. each, \$5 per doz.

Oldhamiana. Many flowers of lovely soft pink color. Excellent because of its late flowering in September. Height, 2½ feet. 35 cts. each, 90 cts. for 3, \$3.50 per doz.

Pacifica. A beautiful single pale pink form like *Paniculata* but more branchy. Height, 2½ to 3 feet. July, August. 35 cts. each, 90 cts. for 3, \$3.50 per doz.

Paniculata. Baby's Breath. Mist-like flowers in large sprays. A cut-flower favorite. Height, 3 feet. July, August.

Repens Bodgeri. Distinct from the familiar *Baby's Breath* in habit of growth, making a spreading plant about 1½ feet in height. It flowers very freely in July and more or less throughout the summer, providing a supply of dainty sprays that are excellent for cutting. The flowers are double, pure white on opening, changing to soft pink when developed. Plants from pots, 50 cts. each, \$1.25 for 3, \$5 per doz. Illustrated in color on page 16.

***Repens rosea. Creeping Gypsophila.** A desirable, low-growing *Baby's Breath* covered during July and August with minute pink flowers.

Rosy Veil. Like *Repens Bodgeri* in habit, growing to a height of 18 inches and producing quantities of blossoms of a delightful soft pink shade. The outstanding European novelty of the year. 50 cts. each, \$1.25 for 3, \$5 per doz.

HELENIUM autumnale superbum. Sneezeweed. Fine background subject. Pure yellow. Height, 3 to 4 feet. September.

Autumnale, Riverton Gem. Old-gold changing to wallflower-red. Height, 3 to 4 feet. September.

Autumnale rubrum. Terra-cotta-red. Height, 3 to 4 feet. September.

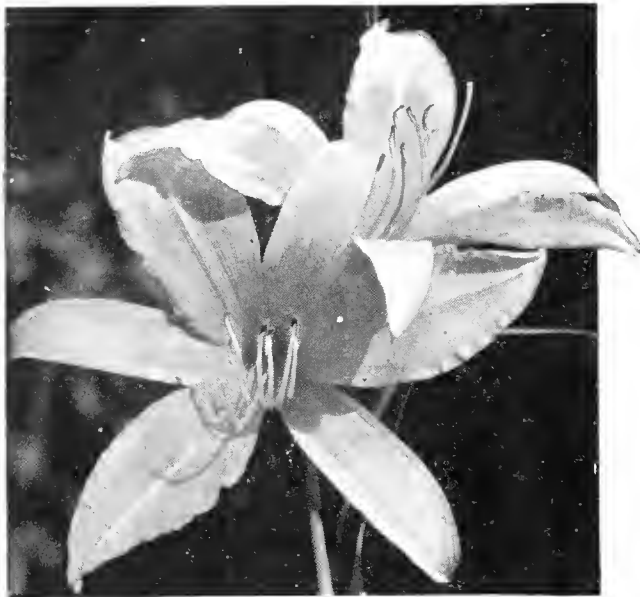
SPECIAL ROCK-PLANT OFFER

OFFER K. 12 plants, distinct named varieties, our selection	\$2.50
OFFER K1. 25 plants, 12 distinct named varieties	\$3.75



Gypsophila, Bristol Fairy

All Perennials on this page, 25 cts. each, 65 cts. for 3 of one kind, \$2.50 per doz., unless otherwise noted
Varieties marked * are suitable for the rock-garden



Hemerocallis, Vesta

Hemerocallis

New and Choice Day Lilies

Much interest has been aroused recently by splendid new developments in this lovely lily-like flower. The new varieties have greatly extended the blooming season of the popular old Lemon Lily so that continuous bloom may be secured almost every growing month.

AJAX. Large, rich orange flowers carried several to a stem. Not unlike Goldeni, but more compact, attaining a height of 2 feet. June and July.

ANNA BETSCHER. (Betscher.) A magnificent variety, producing many rich golden yellow flowers of perfect form during late July and August, and growing to a height of 2½ feet. One of the finest Day Lilies.

BAY STATE. (Betscher.) Very large, glistening, pure yellow flowers carried on tall, stately stems. July and August.

CINNABAR. (Stout.) Cinnabar-yellow, shaded with rose-brown. Good size and quite distinct. Height, 2½ feet. July, August. \$2 each.

GOLCONDA. (Farr.) Large flowers of a fine pure chrome-yellow color; very fragrant. Tall and stately in growth. Height, 4 feet. July, August. 75 cts. each.

GOLD STANDARD. (Perry.) A free-flowering variety carrying an abundance of large, pure canary-yellow flowers in July and August. Height, 2½ feet. 50 cts. each, \$5 per doz.

GOLDEN FULVA. (Betscher.) Rich orange-yellow with just a trace of the Fulva tawinness. Good-sized flowers, freely produced. Height, 3 feet. July, August. \$1.50 each.

GOLDENI. (Betscher.) Well named. The many fine, deep golden orange flowers are produced freely in early July. It grows to a height of 3 feet. 50 cts. each, \$5 per doz. Illustrated in color on page 15.

J. A. CRAWFORD. (Betscher.) One of the finest Day Lilies. The flowers are of splendid size and a brilliant combination of apricot and cadmium-yellow. July, August.

LEMONA. (Betscher.) An extremely vigorous, upright-growing variety, attaining a height of 5 feet and producing quantities of flowers of a delightful shade of light or pale lemon-yellow. July, August.

HEMEROCALLIS, continued

MARGARET PERRY. (Perry.) Brilliant orange-scarlet with conspicuous yellow line through each petal; bold yellow base. Height, 3 feet. July, August. 50 cts. each, \$5 per doz.

MRS. W. H. WYMAN. (Betscher.) A late-flowering variety, the blooms appearing in late July and August. They are clear yellow and blend nicely with blue-flowering perennials. 4 feet.

OPHIR. (Farr.) Dark golden yellow flowers on stems 3½ to 4 feet high. July and early August.

RADIANT. (Yeld.) Pure orange of an exceptionally clear tone. Fine quality and texture. Height, 3 feet. July, August. \$1.50 each.

VESTA. (Stout.) Deep orange flowers with a glistening gold sheen. Very lovely and most desirable. Height, 2½ to 3 feet. July. \$1.50 each.

WINSOME. (Yeld.) A charming sort with daintiness as its chief appeal. Medium-sized creamy yellow flowers of delightful fragrance. Height, 3 feet. July, August. \$1.50 each.

All New and Choice Day Lilies, \$1 each, \$10 per doz., unless otherwise noted

Special Offer G: One each of above 16 varieties, \$15

STANDARD VARIETIES

Apricot. A very beautiful light orange variety. Height, 2 feet. May.

Dr. Regel. Fragrant orange-yellow flowers in May and June. Height, 2 to 3 feet.

Flava. Lemon-yellow flowers in May and June. Height, 2 feet.

Kwano fl.-pl. Distinct and interesting form with double bright orange flowers. Height, 2 to 3 feet.

Gracilis. A dwarf lemon-yellow variety. Height, 12 to 15 inches. June, July.

Ochroleuca. Clean, erect habit of growth and clear citron-yellow flowers in July and August. Excellent for background massing. Height, 4 feet.

Thunbergi. *Japanese Day Lily.* Primrose-yellow flowers in July and August. Height, 3 feet.

All Standard Varieties of Hemerocallis, 30 cts. each, 75 cts. for 3, \$3 per doz.

Hybrid Seedlings. Excellent material for economical grouping, background planting, or for the semi-wild garden. Clear yellow colors and of the *Ochroleuca* type—tall, erect growth. Extremely colorful during July and August. 35 cts. each, 90 cts. for 3, \$3.50 per doz.



Helianthemum mutabile. See page 25

***HELIANTHEMUM mutabile.** Dainty, rose-like flowers varying from pink and white to yellow. An indispensable plant for the rockery, if a well-drained situation is used and plants sheltered with evergreen branches over winter. Height, 8 to 12 inches.

***Fireball.** Double, bright scarlet flowers; very free.

HELIOPSIS scabra zinniaeflora. *False Sunflower.* Orange-yellow, semi-double flowers. Height, 3 feet. July to September.

HELLEBORUS niger. *Christmas Rose.* Large, pure white flowers, with evergreen foliage, blooming in February and March if planted in a sunny, sheltered spot, between rocks or tucked in among or under evergreens. Pot-plants, \$1 each, \$2.50 for 3, \$10 per doz.

HERBS. See page 33.

HEUCHERA. *Coral Bells.* Dainty plants of compact, bushy habit, 1½ to 2 feet in height when in bloom. Graceful flower-spikes of minute, bell-shaped flowers on wiry stems during July and August. Excellent for cutting.

***La Perle.** Pretty red Coral Bells. Good garden variety.

***Miss Greenhall.** (New.) Rich, glowing red, producing its dainty flowers on stems often 2½ feet in height. Flowers freely well into midsummer. Very distinct and good for cutting. 50 cts. each, \$5 per doz.

***Rosamunde.** A lovely shade of coral-pink.

***Sanguinea alba.** Milky white. Very free.

***Sanguinea maxima.** Coral-red. Improved form.

All Heucheras, 30 cts. each, \$3 per doz., unless otherwise noted

HIBISCUS. *Mallow Marvels.* A more gorgeous form of our native Mallow. Fine for moist soils but good in any soil. Separate colors: White, Pink, or Red. 2-yr. plants, 35 cts. each, 90 cts. for 3, \$3.50 per doz.; 4-yr. plants, 50 cts. each, \$1.25 for 3, \$5 per doz.

HOLLYHOCK (Althæa rosea), Double. Fine strong roots in White, Pink, Rose, Newport Pink, Yellow, Mauve, Scarlet, and Mixed Colors.

Single. These are apt to vary from the color parent, but can be depended on as reasonably true to color. Mixed Colors.

Allegheny, Mixed. Mammoth flowers with fringed petals.

All Hollyhocks, 25 cts. each, 65 cts. for 3, \$2.50 per doz.

HOSTA (Funkia) cærulea. *Blue Plantain Lily.* Broad, green leaves. Blue flowers in July and August. Height, 1½ feet.

Fortunei robusta. Immense glaucous leaves. 35 cts. each, 90 cts. for 3, \$3.50 per doz.

Lanceifolia variegata. Attractive green and white flowers in June and July. Height, 1½ feet.

Plantaginea (subcordata; grandiflora). Better known as the "August Lily." It is the best of the group. Fragrant, pure white, Lily-like flowers during August and September. Attractive foliage. Fine in partial shade. Height, 2 to 2½ feet. 30 cts. each, 75 cts. for 3, \$3 per doz.

***IBERIS gibraltaria.** *Gibraltar Candytuft.* White flowers tinged rose. Very showy and desirable.

***Sempervirens.** *Evergreen Candytuft.* A splendid little plant for edging which, after flowering, can be trimmed to a definite line, and will retain its attractive foliage over winter. Pure white flower-heads cover the plant during May and early June.

***Sempervirens, Little Gem.** A compact miniature form of above; a rockery subject.

All Iberis, 30 cts. each, \$3 per doz.

All Perennials on this page, 25 cts. each, 65 cts. for 3 of one kind, \$2.50 per doz., unless otherwise noted

Varieties marked * are suitable for the rock-garden



German Iris

German Iris of Special Merit

35 cts. each, 90 cts. for 3, \$3.50 per doz.

ALAMEDA. White, suffused bright blue. Very pretty.

AMBASSADEUR. A striking combination of smoky lavender and violet-red, emphasized by a rich orange beard. Large flowers on strong, well-branched stems. One of the best.

ANDREW JACKSON. Rich violet-red. Fine form and of excellent size.

ANNDELIA. Light lilac and white, rose-purple border. Beautifully ruffled.

BEAU SABREUR. A beautiful variety in a blend of dull yellow, purple-red, and ox-blood.

CORONATION. Deep golden yellow. Very large flowers on tall, branching stems. A lovely variety.

FLAMING SWORD. Fine Iris of the King type, but more vigorous in growth. Color a gorgeous combination of bright yellow and red-brown.

FRIEDA MOHR. Large, deep pink-toned Iris of brilliant coloring and exceptional texture. Flowers freely for a long period.

LINDBERGH. Light and deep pansy-violet. A choice variety.

MONTEREY. Entirely distinct. A combination of bronze and reddish violet. Tall and stately.

OMAHA. Soft rose-pink, combined with coppery tones. Quite distinct. Vigorous habit.

TAJ MAHAL. Pure white. Fine form and excellent substance. Very strong stems and most desirable.



Japanese Iris

German Iris—Select Varieties

20 cts. each, 50 cts. for 3, \$2 per doz.

- Afterglow.** Soft grey-lavender shading to buff, rich yellow at the center. Strong grower. Height, 3 feet.
- Alcazar.** Light violet standards; falls deep purple. Large.
- B. Y. Morrison.** Pale lavender-violet standards with velvety purple falls, bordered lavender.
- Dalija.** Standards white, lightly tinted lilac; falls rich violet-red. An unusually effective garden Iris.
- Lent A. Williamson.** Broad, soft lavender standards; falls royal purple and very large. An exceptional Iris.
- Lord of June.** Light lavender-blue standards; falls of a deeper lavender-blue, showing a brownish veining at the base. Very large flowers and heavy, strong growth.
- Midwest.** Flushed and peppered bright rose over white ground.
- Pallida Dalmatica (Princess Beatrice).** Large flowers of a clear lavender-blue, shaded pale silvery blue at the base; sweetly scented.
- Prospero.** Soft lavender standards; deep reddish purple falls.
- Quaker Lady.** Smoky lavender, yellow shadings; falls blue and gold.
- Rhein Nixe.** Pure white standards; violet-blue falls.
- Seminole.** Dark reddish purple, shaded violet-rose; orange beard.
- Shekinah.** Pale yellow, shaded golden yellow. Vigorous and fine. Height, 3 feet.
- Sherwin Wright.** Golden yellow; very free and vigorous.
- Susan Bliss.** Lovely pinkish lavender.

Iris Kaempferi (Japanese Iris)

The tall, blade-like foliage alone is of real decorative value, and the orchid-like flowers appear in late June, after all other Iris have passed. Cut in the bud stage, the flowers open perfectly and keep well. A rich, moist location is best, but average garden conditions will suit this Iris.

- Caprice.** Single. Large, reddish purple flowers with white and blue blotches; yellow centers.
- Carlton Childs.** Single. Ivory-white, veined plum; inner petals pink.
- Catherine Parry.** Double. Blue, overlaid rosy red.
- Dominator.** Single. Strikingly handsome flower of a rich violet-purple color with a yellow center.
- Doris Childs.** Double. Pearl-white blooms, veined rosy plum; center petals deep plum, edged white.

IRIS KAEMPFERI, continued

- Eleanor Parry.** Double. Claret-red, veined white and blue.
- Fascination.** Large, double, blue flower, lightly veined white and tinged with pink. A lovely variety.
- Gold Bound.** Double. Pure white, creamy glow with gold-banded center.
- Kuro-Komo.** Double. A fine, solid purple, overlaid with dark blue.
- La Favorite.** Double. Large, fine, white, freely veined with blue and with a rich purple center.
- Lilla Cox.** Double. Light blue; white veins in center with yellow blotches.
- Mahogany.** Double. Large, mahogany-red flowers with prettily crested petals.
- Mars.** Single. Reddish purple, striped and blotched pink. Quite unique.
- Morave.** Single. White ground, veined deep blue.
- Mrs. J. Alexander Hayden.** Double. White ground, edged and shaded pale violet.
- Purple and Gold.** Double. Rich violet-purple, gold center; enormous flowers.
- Pyramid.** Violet-blue, veined, with white center; large.
- Red Riding Hood.** A showy, three-petaled variety of amaranth color, veined and suffused white.
- Schenley.** Double. Rose-red, with bluish center.

All Japanese Iris, 35 cts. each, \$3.50 per doz.

Special Offer H: Collection of 12 named Japanese Iris, our selection, \$3.50

SIBERIAN IRIS

- Sibirica.** A fine waterside type, with erect, lance-like foliage and showy purple-blue flowers during May and June. Good cut-flower. Height, 2 to 3 feet.
- Sibirica, Butterfly.** Very pretty shade of light blue with white undertone. Very free.
- Sibirica, Florrie Ridler.** Rich blue flowers of excellent substance, produced freely over a long period.
- Sibirica, Papillon.** Light blue. Larger than Perry's Blue.
- Sibirica, Peggy Perry.** Dark violet-purple, somewhat ruffled in effect. Grand garden color.
- Sibirica, Perry's Blue.** One of the finest of the Siberians. The color is a very beautiful shade of sky-blue. Free and vigorous.
- Sibirica, Snow Queen.** Similar in habit to above, but with pure white flowers.
- Sibirica, Sunnybrook.** A distinct and lovely soft Alice-blue shade. Strong, sturdy-growing habit. Late flowering.

INTERMEDIATE IRIS

This group will flower after the dwarfier *Pumila* section, usually about Darwin tulip season, and are very desirable for garden color at that time. All are of medium, compact growth, quite free in flowering, and effective for grouping.

- ***Bluet.** A neat-growing variety of fine true blue color.
- ***Firmament.** Light blue, with deeper falls. Rather tall, growing to a height of 30 inches, but the flowers are large, freely produced and very lovely.
- ***Helge.** Fine clear yellow. One of the best. Height, 18 inches.

MISCELLANEOUS IRIS

- ***Cristata. Crested Iris.** Dainty little lavender Iris with yellow patch on petals. Very dwarf and early.
- ***Pumila aurea.** Very dwarf habit. Bright yellow.
- ***Pumila, Bride.** A showy pure white.
- ***Pumila cyanea.** Deep blue, shaded purple.
- ***Pumila, Jean Siret.** New fall-flowering Iris. Dainty flowers of clear canary-yellow with slight violet reticulation in the falls, appearing freely from early September on. Blooms freely in spring also. Height, 9 inches. 35 cts. each, \$3.50 per doz.
- ***Pumila, Souvenir de Lieut. Xavier de Chavagnac.** Like above but an effective shade of violet with deeper purple shading in the falls. 35 cts. each, \$3.50 per doz.

All above Iris, 65 cts. for 3, \$2.50 per doz., \$15 per 100, unless otherwise noted

Garden Lilies (*Lilium*)

No garden is fully planted without a generous quota of Lilies, and where specially prepared beds are not available, they can be used to splendid advantage in combination with perennial groups, interspersing the late-flowering Lilies among early-flowering subjects such as Lupines, Oriental poppies, Canterbury bells, and others that require a little bolstering after flowering, using the earlier-flowering *Candidum* and *Regale* among the late-flowering kinds, such as *chrysanthemum*, *phlox*, or in combination with *delphiniums*. The Lilies offered here are not difficult to grow, but should have a good rich, deep soil that is well drained. In preparing the soil, barnyard manure should be used only if thoroughly decomposed. A winter mulch of this is also advised.

Auratum. *The Gold-banded Lily of Japan.* The favorite among all of the Lilies, and the most impressive in every respect when it is in happy surroundings. Very large white flowers, spotted with deep crimson and marked with a distinct gold band through each petal. The height is apt to vary from 2½ to 5 feet or even taller in rare instances. Plant in clusters, setting the bulbs 5 to 6 inches deep. 40 cts. each, \$4 per doz., \$30 per 100; extra large, 50 cts. each, \$5 per doz., \$35 per 100.

Auratum platyphyllum (macranthum). A stronger growing *Auratum*. The stem is stouter and attains a greater height. Enormous, broad-petaled, white flowers, richly spotted yellow. 60 cts. each, \$6 per doz., \$42 per 100; extra large, 75 cts. each, \$7.50 per doz., \$52.50 per 100.

Canadense. *Wild Yellow or Canada Lily.* Drooping, bell-like flowers, varying from orange-yellow to a tawny red, and growing from 4 to 6 feet high. Does well in partial shade. 20 cts. each, \$2 per doz., \$12 per 100.

Croceum. *Orange Lily.* A free-flowering, sturdy Lily attaining a height of 4 to 5 feet and flowering in late June. Color orange-yellow, with minute dark brown spots. We offer the true stock which is scarce. 50 cts. each, \$5 per doz.

Elegans. A dwarf Lily of easy culture and very desirable. Erect flowers, varying from orange-yellow to red, during June and July. Height, 1½ to 2 feet. 30 cts. each, \$3 per doz., \$18 per 100.

Elegans aureum. Pure apricot-yellow. 35 cts. each, \$3.50 per doz.

Elegans sanguineum. Deep red, spotted black. 35 cts. each, \$3.50 per doz.

Elegans, Mahony. Fine deep mahogany-brown. 50 cts. each, \$5 per doz.

Hansoni. The reddish orange flowers, usually in clusters of six to ten, are thick-petaled and durable. Stems reach a height of 4 to 6 feet. Splendid for mingling with shrubbery. June. 75 cts. each, \$7.50 per doz.

Henryi. Similar to the *Speciosum* Lilies in habit and very easily grown. Orange-yellow flowers, banded with green, during July and August. Height, 4 to 5 feet. 50 cts. each, \$5 per doz.

Martagon. The familiar purple *Martagon* Lily. Often attains a height of 6 feet. Early June. 35 cts. each, \$3.50 per doz.

Martagon album. A very beautiful and useful Lily for July flowering. The pure white, reflexing flowers are wax-like in substance and produced on strong, pyramidal, branching stems. Height, 4 feet. 75 cts. each, \$7.50 per doz.

Pardalimum. *Leopard or Panther Lily.* A handsome Lily bearing many recurving flowers on strong, 4-foot stems during July. Color, bright orange, spotted dark crimson and brown. 35 cts. each, \$3.50 per doz.

Pride of Charlotte. Raised in northern Vermont, this superb new Lily has the stamina to withstand extremes of heat and cold that affect even the sturdy *Regale*. It is a glorified form of *Sargentiae*, white, with a soft sulphury suffusion, the outside of the petals reddish brown. Flowering in July, it is sturdy and easy to grow. A coming Lily. \$2 each.



Lilium speciosum

Pyrenaicum. *Yellow Turk's-Cap Lily.* Medium-sized yellow flowers, showily marked with brown spots. A Lily of the easiest culture. Height, 3 feet. June. 60 cts. each, \$6 per doz.

Regale. *The Royal Lily.* One of the hardiest and most beautiful garden Lilies. Its large, fragrant, trumpet-shaped white flowers carry a suffusion of pink and primrose-yellow, contrasting with the rich brown on the reverse of the petals, making a blend that is truly delightful. Plant in any good, free garden soil that is well drained, avoiding green manure, setting the bulbs fully 6 inches deep. 20 cts. each, \$2 per doz., \$12 per 100; extra large, 35 cts. each, \$3.50 per doz., \$25 per 100.

Shelburne Hybrid. Like *Regale* but later and much stronger, producing large, gorgeous flowers on stiff, 3 to 4-foot stems through August. Should be in every garden. \$1.50 each.

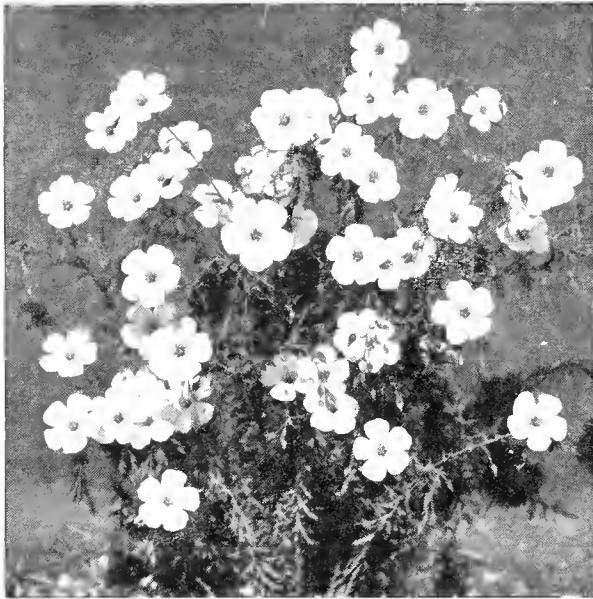
Speciosum album. The *Speciosum* Lilies are the most satisfactory and reliable of the late summer-flowering sorts. Bulbs are imported from Japan, arriving in fall, usually too late for planting. Spring-planted bulbs give good results, however, and we advise planting from April until mid-May. *Album* is a pure white form, very fragrant and effective. Plant 6 to 8 inches deep. Height, 2½ to 3 feet. August to September. Medium bulbs, 60 cts. each, \$6 per doz., \$42 per 100.

Speciosum Kratzeri. A glorified form of *Speciosum album*. Pure white flowers of better size and splendid growing habit. 60 cts. each, \$6 per doz.

Speciosum rubrum or magnificentum. Light pink, spotted and marked crimson; very effective. Height, 2½ to 3 feet. August, September. Large bulbs, 40 cts. each, \$4 per doz., \$30 per 100; extra large, 50 cts. each, \$5 per doz., \$35 per 100.

***Tenuifolium.** *Coral Lily.* Drooping flowers of medium size, on slender stems. The color is a bright coral-scarlet. A dainty Lily of easy culture that does best when grown under a low, spready cover-plant, such as *ncpeta* or *violas*. The bulbs are naturally small, but bloom readily the first season. 20 cts. each, \$2 per doz. Illustrated in color on page 15.

Tigrinum splendens. The best form of the old-fashioned *Tiger Lily* but better in growth and color than the type. Very easily grown. 25 cts. each, \$2.50 per doz., \$15 per 100.



Linum perenne

LATHYRUS latifolius. *Perennial Pea.* Valuable trailing cover for rough banks or stonework, producing many flowers during July and August. Pink or White.

***LAVANDULA vera.** The true Sweet Lavender. Delightfully fragrant blue flowers in July and August. 30 cts. each, 75 cts. for 3, \$3 per doz.

LIATRIS graminifolia. *Grass-leaf Gayfeather.* Purple-red spikes, excellent for cutting. Height, 2½ feet. July, August.

Pycnostachya. *Kansas Gayfeather.* Giant, 5-foot spikes of rosy purple flowers opening from the top down.

Scariosa. A good clear purple. Height, 3 to 4 feet.

LINARIA cymbalaria. *Kenilworth Ivy.* A pretty, trailing plant, carrying lavender and purple flowers.

***LINUM flavum compactum.** *Golden Flax.* Fine glowing yellow from June to August. Height, 6 inches.

***Perenne.** *Perennial Flax.* An attractive, bushy plant with pretty pale blue flowers during June and July, appearing to advantage in clusters or as individual plants in the rockery. Height, 1½ feet.

***Perenne album.** A desirable white. Height, 1½ feet.

LOBELIA cardinalis. *Cardinal Flower.* Cardinal-red spikes. Biennial and likes a moist, partially shaded spot. Height, 2½ to 3 feet. July, August.

LUPINUS. *Lupine.* In June, just before the delphiniums flower, the Lupines dominate the garden picture. Planted in substantial groups, they are at their best in early summer, and if interplanted with Auratum or Speciosum lilies for late summer effect, a permanent and effective all-summer display is assured. A deep, well-drained soil and sunny situation are the chief requirements. If affected with aphids, spraying with Black-Leaf 40 combined with soap, is recommended, and if blight is apt to appear, a thorough spraying with Bordeaux Mixture in late May and again in midsummer will prove effective.

Polyphyllus. *Washington Lupine.* Deep blue, pea-shaped flowers in sturdy spikes 2½ to 3 feet in height.

Polyphyllus alba. A splendid clear white form.

Polyphyllus roseus. Beautiful shades of rose-pink. Charming if combined with blue.

Polyphyllus, Regal Hybrids. A noted European strain, containing many new shades and colors, varying from white to deepest blue, light to dark pink, and from pale amber to bronze-yellow. Bicolors also appear occasionally; altogether a beautiful and interesting group. Illustrated in color on page 14.

Above Lupines, strong 2-year roots, 30 cts. each, \$3 per doz., \$18 per 100

***LYCHNIS Arkwrightii.** A showy form of Ragged Robin doing well in dry soils. Brilliant shades of cardinal and orange-red prevail. Height, 10 to 12 inches. July, August.

Chalcedonica. *Maltese Cross.* Fiery scarlet flower-heads all summer. Height, 2½ feet.

Chalcedonica, Salmon Queen. A good salmon-pink form.

***Forresti Hybrids.** Bright carmine, crimson, pink, and white shades. Blooms from end of April until late June. Valuable for cutting. Height, 15 inches. 35 cts. each, \$3.50 per doz.

***Viscaria splendens flore-pleno.** Tufted evergreen foliage. Vivid double crimson-red blossoms through June. Height, 1 foot. 35 cts. each, \$3.50 per doz.

LYSIMACHIA clethroides. *Clethra Loosestrife.* Graceful, recurving white spikes. Grows anywhere. A good cut-flower. Height, 2 feet. July, August.

***Nummularia.** *Moneywort or Creeping Jenny.* A rapidly spreading, creeping plant with small, bright yellow, bell-like flowers in midsummer.

***MERTENSIA virginica.** *Virginia Blue Bells.* A delightful spring-flowering subject that naturalizes perfectly, forming dainty masses and flowering profusely if planted in sheltered borders. Light blue, nodding, bell-shaped flowers, changing to pink on stems. The foliage disappears in midsummer. Height, 1 to 1½ feet.

MONARDA didyma, Cambridge Scarlet. *Oswego Tea.* Brilliant scarlet-crimson. Useful as a filler. Height, 2 to 3 feet. July, August.

Mrs. Perry. The finest of all Monardas, with bold heads of brilliant rosy scarlet blooms. Brighter and more effective than Cambridge Scarlet.

***MUEHLENBECKIA complexa.** *Wire Vine.* Good rock-shrub with wiry growth and small leaves of metallic hue.

***MYOSOTIS palustris semperflorens.** *Swiss Forget-me-not.* The best variety for naturalizing, preferring a moist location. Quite permanent when established. 40 cts. for 3, \$1.50 per doz., \$10 per 100.

***NEPETA Mussini.** *Catnip.* Produces cloudy masses of lavender-blue flowers from May until late fall if the early summer flowers are clipped off as they mature. The soft grey foliage, when massed, produces a cool, restful effect in the garden, and as it does well in dry situations or poor soil, it is used extensively also for major effects in the rock-garden. **Souvenir d'Andre Chaudron.** Large light mauve-blue flowers on long, wiry stems attaining a height of 20 to 24 inches. Quite distinct from Mussini and better adapted for the mixed planting, flowering from midsummer on. 35 cts. each, \$3.50 per doz.

***NIEREMBERGIA rivularis.** *White Cup.* A charming creeping alpine plant bearing large, creamy white, cup-shaped flowers from June until September.

***ENOTHERA glauca Fraseri.** *Evening Primrose.* Pale yellow. Very free. Height, 1 foot.

***Missouriensis.** *Ozark Sundrops.* Prostrate habit. Bright yellow individual flowers 5 inches across. June to August.

***PACHYSANDRA terminalis.** *Japanese Spurge.* The best ground-cover for massing in shaded areas where grass will not grow. If planted 6 to 8 inches apart, the bright glossy green foliage will soon form perfect mats, particularly if the soil is well enriched before planting and a winter mulch of well-decayed manure 1 inch deep is applied each season. We suggest the use of pot-grown plants except where large quantities are required. Field-grown plants or plants from 3-in. pots, 25 cts. each, \$2.50 per doz., \$15 per 100; 250 plants or more at \$12 per 100.

PENTSTEMON barbatus Torreyi. Bright scarlet, slender spikes. Height, 3 feet. July, August.

Barbatus Torreyi Hybrids. Attractive shell-pink shades. Good cut-flower. Height, 3 feet. July, August. **Unilateralis.** Opalescent blue. Very fine. Height, 3 feet. July, August.

All Perennials on this page, 25 cts. each, 65 cts. for 3 of one kind, \$2.50 per doz., unless otherwise noted

Varieties marked * are suitable for the rock-garden

Pæonia (Peony)

In planting this fine old favorite, provide a good soil, deeply dug and enriched with well-decayed manure to which a sprinkling of bonemeal should be added. The fertilizer should not come in direct contact with the roots, and the plants should be set just deep enough to cover the crowns. While the large two-year plants should bloom the first season, it requires from two to three years before the flowers appear in their true form.

DOUBLE PEONIES

- Albatre.** Pure white, edged carmine. Fine. Midseason.
Asa Gray. Flesh-color, sprinkled carmine. Midseason.
Cherry Hill. Double; maroon with a glistening sheen. Very early. \$1 each.
Couronne d'Or. White; golden stamens. Late midseason.
Duchesse de Nemours. Pure white; large, fragrant. Early.
Edulis Superba. Deep rose-pink. Early.
Eugenie Verdier. Very large, flat, pale hydrangea-pink flowers, with lighter collar; fragrant. Good growth; free bloomer. Midseason.
Festiva Maxima. Waxy white, flecked carmine. Early.
Felix Crousse. A fine bright red. Midseason.
Karl Rosenfield. Rich velvety crimson; large flower of perfect formation. Rich, healthy foliage and stout stems. About the finest red Peony. Midseason. 75 cts. each, \$7.50 per doz.
Marguerite Gerard. Pale hydrangea-pink, minutely marked dark crimson. Medium; free flowering. Late.
Meissonier. Brilliant red and deep crimson. Midseason.
Mons. J. Elie. Lilac-rose, silvery reverse. Very large. Midseason. 75 cts. each, \$7.50 per doz.
Sarah Bernhardt. Very large, fragrant flowers of unusual substance. The color is a lovely apple-blossom-pink, with silver markings at the petal edge. A prize-winner. Late. \$1 each.
Solange. The very large, full flowers are waxy white, suffused with a golden amber shade. Entirely distinct. Late flowering. \$1.50 each.
Therese. Enormous, full flowers of a pure, rich satiny pink shade, delicately fragrant, and borne on strong, upright stems. Rated among the best three Peonies. Midseason. \$1 each.
Triomphe de l'Exposition de Lille. Pale pink, splashed rose. Midseason.
Walter Faxon. Rich, vivid shell-pink. \$1 each.
All Double Peonies, 50 cts. each, \$5 per doz., unless otherwise noted

SINGLE AND JAPANESE PEONIES

- Far more effective for garden display than the double forms. The artistic flowers retain their poise during wet periods which affect the heavier double blossoms.
Clothos. A large flower of splendid form. Rose-pink.
Defiance. Bright crimson petals, showing golden stamens, forming a distinct contrast. A large flower and showy as a poppy.
Dorothy. Broad pink petals with bright golden center make this a most desirable border variety.
Hermes. A splendid shade of even seashell-pink.
La Fraicheur. Delicate pink, turning almost white. Free and good for mass effect. Very early.
Marie Jacquin. Very large, semi-double, rose-white flowers. The open center is filled with stamens, resembling a water-lily.
Mikado. An early-blooming, deep rose variety carried on tall stems. Splendid laterals which give it a long blooming season. \$2 each, \$20 per doz.
The Moor. Rich purplish garnet. Strong-growing, free, and striking in effect.

All Single Peonies, \$1 each, \$10 per doz., unless otherwise noted

OLD-FASHIONED PEONIES

- Officinalis rosea superba.** Brilliant deep rose-pink flowers. Early and very fragrant.
Officinalis rubra. An early-flowering variety. Large, full, deep crimson flowers; very fragrant.

All Old-fashioned Peonies, 75 cts. each, \$7.50 per doz.

SPECIAL OFFER I

Collection of 6 distinct Peonies, our selection, \$2.25



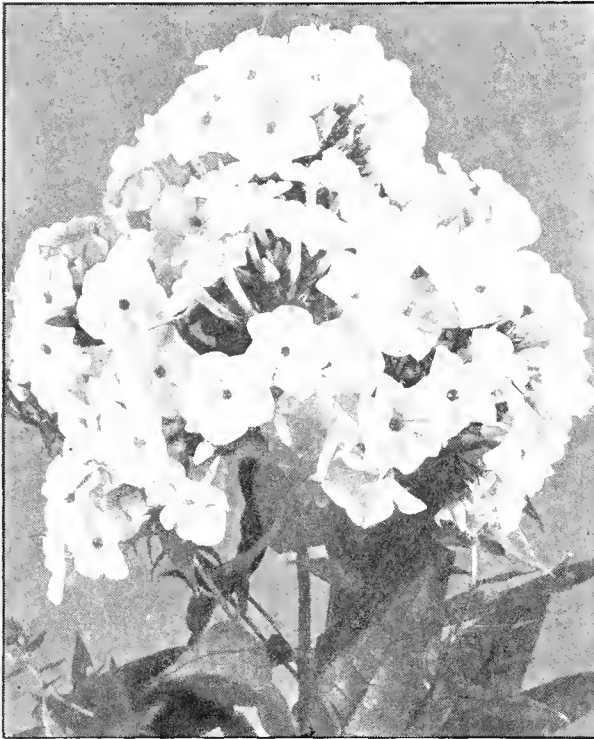
Papaver nudicaule

- PAPAVER orientale.** *Oriental Poppy.* Poppies, after flowering in June, die down until early fall, when the foliage reappears, and they require two seasons to get properly established.
Cerise Beauty. Lovely cerise-pink, blood-crimson center, dark blotch at base of petals.
E. A. Bowles. Lovely pale apricot, shading to shell-pink.
Gerald Perry. Uniform shade of apricot-pink, conspicuously blotched crimson.
Lulu A. Neeley. A magnificent Poppy of splendid growing habit, producing very large, brilliant ox-blood-red flowers. 50 cts. each, \$5 per doz.
May Queen. A new double Poppy. Rich scarlet, shaded salmon. Really attractive for a flower so double. Blooms fully two weeks earlier than other kinds.
Mrs. Perry. Soft salmon-rose. An effective garden color.
Mrs. Stobart. Rose-cerise, with silky sheen. Very distinct. If cut before opening and placed in hot water for a short time, the flowers will keep for several days. 50 cts. each, \$5 per doz.
Orange King. Large, well-formed brilliant orange-scarlet flowers. Illustrated in color on page 12.
Oriental King. Large, dazzling scarlet flowers on strong stems. A magnificent variety.
Perry's White. Pure satiny white, marked crimson-maroon at base of petals. 50 cts. each, \$5 per doz.
Royal Scarlet. Vivid red, dark center.
Wunderkind. Very distinct novelty, producing very large carmine-pink flowers on strong stems often 3 feet in height. Desirable in every way. 50 cts. each, \$5 per doz.
Above varieties, 30 cts. each, 75 cts. for 3, \$3 per doz., unless otherwise noted

SPECIAL OFFER J

Collection of 6 distinct Poppies, our selection, \$1.25

- ***Papaver nudicaule.** *Iceland Poppy.* Low, tufted plants of neat habit, from which a profusion of wiry-stemmed, cup-shaped flowers are produced profusely in early summer and more or less throughout the season. At home in a well-drained, light soil and full sun. White, Yellow, or Orange.
 ***Nudicaule, Coonara Hybrids.** Large, dainty flowers of exquisite texture and form. Beautiful shades of salmon and pink predominate, but other colors appear and all are very attractive.
 ***Nudicaule, Fakenham Hybrids.** Various colors. Sturdy stems and extra-vigorous growth.



Phlox, Enchantress

Hardy Phlox

Given good soil and divided every two or three years, these splendid Hardy Phlox will not deteriorate. Their gorgeous colors are invaluable to the garden from midsummer until late in the season. During dry periods water should be applied copiously. If mildew appears, indicated by a white powdery substance on the leaves, during changeable weather, spray with liver of sulphur (sulphide of potassium), 1 ounce to 3 gallons of water to which a little soap should be added, or apply a good brand of fine dusting sulphur in early June, using a duster to insure a coating beneath as well as above the foliage. Repeat every two weeks if needed. Plant 1½ to 2 feet apart.

New or Choice Varieties

AFRICA. Carmine-red, with deep blood-red eye; large flower-heads. Very showy.

COLUMBIA. (New.) Plant Patent 118. We are pleased to offer this new Phlox introduced by Wayside Gardens, using their description. Gorgeous cameo-pink with faint blue eye. Massive flower-heads in great abundance. Excellent foliage, mildew and insect free. Rugged growth. A glorious Phlox in every way. 50 cts. each, \$1.25 for 3, \$4 per doz.

CAMILLO SCHNEIDER. Brilliant scarlet-red—always pure in color. Individual flowers are large and carried in well-shaped trusses. Height medium; good robust growth.

DAILY SKETCH. An excellent addition with very large individual florets 2½ inches across, forming colossal trusses. Rose-pink with light salmon shading, crimson eye. Fine growing habit. Height, 3 feet.

FIREBRAND. Orange-scarlet and vermilion. Very free and showy. Medium height.

LEO SCHLAGETER. Huge, pyramidal trusses of scarlet-carmine, with dark center. Strong and showy.

NEW BIRD. Heads of deep crimson-red flowers, with purple eyes, are carried well above the foliage in well-branched spikes. Brilliant and excellent.

All Perennials on this page, 25 cts. each, 65 cts. for 3 of one kind, \$2.50 per doz., unless otherwise noted

Varieties marked * are suitable for the rock-garden

NEW PHLOX, continued

ORCHID ROSE. Orchid-rose with pale lavender shadings. Large individual flowers. Height, 2 feet.

SALADIN. Brilliant orange-scarlet flowers of such vivid color as to vie with the geranium; carried well in large trusses. The individual florets are of unusual texture and do not scald or sunburn as do the older varieties in this color. A real acquisition.

SALMON GLOW. (Bristol Nurseries, Inc., 1932.) Lively flame-pink, with salmon shades, softened with lilac and white tints at the center, the effect as a whole being a rich salmon. This new variety is not only extremely free but, like its parent Jules Sandeau, it improves with age. Three- and four-year-old plants produce perfectly huge trusses from early July throughout the season. 50 cts. each, \$5 per doz. Extra-heavy plants, 60 cts. each, \$6 per doz.

All new Hardy Phlox, 35 cts. each, 90 cts. for 3 of one kind, \$3.50 per doz., unless otherwise noted

GENERAL LIST

Antonin Mercier. Lilac, with white center. Blooms from July to October. Height, 2½ feet.

B. Comte. Brilliant French purple.

E. I. Farrington. Splendid variety of erect habit and vigorous growth. Bright salmon-pink, shaded to soft pink. Always attractive; excellent for cutting.

Enchantress. Fine salmon-pink, not unlike Elizabeth Campbell but a shade lighter; stronger in every way in growth. Quite distinct.

Ethel Pritchard. Very large trusses of lavender-blue flowers, shaded with mauve or lilac. Attractive.

Frau A. Buchner. Extra-good white.

Fraulein G. von Lassburg. Pure white flowers from July to October. Vigorous growth. Height, 2 to 2½ feet.

Jules Sandeau. Very large individual flowers of good pure pink. Splendid trusses carried on stems averaging 18 inches. Forms a compact plant of excellent habit.

Margaret Gavin Jones. Soft pink, with deep carmine eye; very large.

Mia Ruys. Compact habit but branches freely. Large individual white flowers. Height, 15 inches.

Miss Lingard. Pure white flowers from May on. Glossy foliage.

Milly (Mrs. Milly van Hoboken). Very large flowers of soft pink with mauve suffusion. Strong, erect spike.

Mrs. W. Van Beuningen. Medium height but robust in growth, with healthy-appearing foliage. Large, rich salmon-red flowers without eye. Very free; compact growth.

Ornament. A splendid bright pink flowering over a long period.

Painted Lady. Strong, upright growth, with many trusses of silver-pink flowers having salmon shadings and cherry-red eyes.

Riverton Jewel. Mauve-rose, red eye. Height, 2 feet. July to October.

All above General List Phlox, 65 cts. for 3, \$2.50 per doz., \$15 per 100

PHLOX, Dwarf Varieties

***Amœna.** A low, creeping variety covered with sheets of bright pink flowers in early spring.

***Divaricata (canadensis).** *Early Blue Phlox.* Masses of these splendid, low-growing, lavender flowers add charm and color to the garden in early May. Combines nicely with spring bulbs. Height, 1 foot.

***Divaricata Laphami.** The finest of all spring-flowering Phlox. A lovely shade of pale blue. Beautiful in association with tulips and other spring subjects. Producing masses of flowers in early May, it continues well into June. Should be planted in groups of four or more or used as a broad edging or border. After flowering, if trimmed back just enough to remove flower-heads, the plants remain attractive. Height, 15 inches when in bloom. 30 cts. each, \$3 per doz.

- ***Phlox subulata**. *Moss Pink*. Excellent ground-cover, flowering in early spring. White, Lavender, and Pink.
- ***Subulata, Camla**. A distinct alpine form of low Subulata habit, but more loose and graceful in habit. Lovely shade of glistening salmon-pink. It flowers freely in May and more or less through summer. Very fine novelty. 50 cts. each, \$1.25 for 3, \$5 per doz.
- ***Subulata, Brilliant**. Showy crimson-red. Easily the most effective in this group.
- ***Subulata, Fairy**. Soft lilac; deep eye. Very compact.
- ***Subulata, George M. West**. A distinct addition. Fine shade of light blue. Tidy, compact-growing habit. A fine new color.
- ***Subulata, Sampson**. (New.) Very large flowers of a deep rose-pink. Unusually striking and distinct novelty. 35 cts. each, 90 cts. for 3, \$3.50 per doz.
- ***Subulata, Vivid**. Bright fiery rose. Compact habit.

PHYSALIS Francheti. *Chinese Lantern Plant*. Orange-scarlet, lantern-like fruits. Good winter decorative material. Requires a rich light soil. Height, 2 to 3 feet. September on.

PHYSOSTEGIA virginiana alba. *False Dragonhead*. White flower-spikes in July and August. A good wild-garden subject and useful cut-flower. Height, 2½ to 3 feet.

Virginiana gigantea. Tall spikes of mauve-pink blooms. Height, 4 to 5 feet.

***Virginiana, Vivid**. Deep pink. Dwarf form. Height, 1½ feet. August, September.

PLATYCODON grandiflorum. *Balloon Flower*. Bright blue, bell-shaped flowers. Height, 2 to 2½ feet.

Grandiflorum album. Pure white. A reliable border plant. Height, 2 to 2½ feet. July to October.

***POLEMONIUM reptans**. *Creeping Polemonium*. Dwarf, bushy plant, well covered with showy, blue, bell-like flowers with prominent white centers from April to June. A fine cover-plant for rockwork. Height, 6 to 9 inches.

***PRIMULA auricula alpina**. A treasure requiring a sheltered spot and well-drained, mellow soil. The flower-stalks arise from fleshy rosettes of mealy leaves which are attractive in themselves and bear heads of fragrant velvety flowers, varying from yellow to crimson.

***Beesiana**. Velvety purple flowers with yellow eye, carried in whorls. Quite free in May and June.

***Bulleyana Hybrids**. Erect-growing plants of many unique colors, varying from purple to orange. 2 feet.

***Denticulata cachemiriana**. *Kashmir Primula*. Deep violet flowers in dense heads. Very early.

***Denticulata cachemiriana alba**. White form of above.

***Japonica Hybrids**. *Japanese Primula*. Strong, handsome plant, producing clustered flowers on 1 to 1½-foot stems. Prefers a moist soil and partial shade. Quite hardy. Colors vary from white to crimson.

***Japonica atrosanguinea**. A fine dark blood-crimson form of the above. Very showy.

***Polyantha, Mrs. Berkley's Strain**. This choice exhibition strain has been carefully selected for size of bloom, habit, and fine range of color. Illustrated in color on page 14.

***Veris, Elatior**. *Giant Yellow Primula*. Splendid strain of rich yellow shades.

All Primulas, 30 cts. each, \$3 per doz.

PYRETHRUM hybridum. *Colored Daisy*. A good old favorite, producing a wealth of cut-flower material. Mixed colors. Height, 2 feet. June, July. Illustrated in color on page 14.

RUDBECKIA Golden Glow. Double yellow flowers in July and August. Useful for background. Height, 5 to 6 feet.

SALVIA azurea. *Great Azure Sage*. Light blue flowers in August and September. Fine for border. Height, 3 to 4 feet.

Pitcheri. A dark blue form flowering in September and October. Height, 3 to 3½ feet.

Pratensis. Violet-blue flowers. Good border plant. Height, 2 feet. July, August.

All Perennials on this page, 25 cts. each, 65 cts. for 3 of one kind, \$2.50 per doz., unless otherwise noted
Varieties marked * are suitable for the rock-garden

***SAPONARIA ocymoides**. *Rock Soapwort*. Semi-trailing plants bearing masses of bright pink flowers during summer. Height, 6 inches.

***SAXIFRAGA cordifolia**. *Heartleaf Saxifraga*. Decorative foliage. Rose-pink flowers in April and May. Height, 1 foot.

SCABIOSA caucasica, Isaac House Strain. *Blue Bonnet*. The soft lilac-blue flowers are more dainty and effective than the annual kinds, resembling in a way the popular Blue Lace Flower. They bloom from June until September. Should have a well-drained, rich soil. Height, 1½ feet.

Caucasica alba. Pure white variety of the Caucasian Scabiosa.

Japonica. *Japanese Scabiosa*. Clear blue flowers and of stronger habit than above. Height, 2 to 3 feet. June to September.

All Scabiosas, 30 cts. each, 75 cts. for 3, \$3 per doz.

SEDUM Stonecrop. The creeping forms are ideal for massing as a ground-cover in dry, exposed locations where other plants will not thrive, or for rock-planting, while the Spectabile are effective in the open border or as a bedding subject.

***Acra**. *Gold Moss*. Low, spready ground-cover completely obscured by a mass of golden yellow flowers during late May and June.

***Album**. *White Stonecrop*. A dwarf, spreading plant with thick, waxy foliage. Pure white flowers in July.

***Altissimum**. Glaucous foliage arranged in spirals. Distinct yellow flower-heads. Height, 1 foot.

***Ruprestre**. Bluish green leaves. Trailing habit. Golden yellow flowers.

***Sarmentosum**. *Stringy Stonecrop*. More rapid-growing than *S. acra*; bright yellow flowers. June, July.

***Sexangulare**. *Hexagon Stonecrop*. Very much like *S. acra*, but with brown foliage. Vivid yellow flowers.

***Sieboldi**. Tidy individual plants with broad grey leaves and showy pink flowers during August and September. Height, 6 inches.

***Spectabile**. *Showy Stonecrop*. Broad green leaves and immense heads of rose-pink flowers. A fine border plant. Height, 1 foot. September, October.

***Spectabile, Brilliant**. Rosy crimson. Should be in every garden.

***Stoloniferum splendens**. Reddish purple foliage. Bright red flowers in late summer. Creeping habit.

SHASTA DAISY, Alaska. Large, single, pure white flower. Height, 2 feet. July to October.

King Edward. Taller and later than the above. July to October.



Phlox subulata



Tritoma Pfitzeri

STACHYS lanata. *Woolly Betony.* Decorative silvery grey foliage. Purple-red flowers in July. Height, 1½ feet.

***STATICE dumosa.** *Armeria.* (New.) Valuable for grouping in rockery, making a fine display through July and August. Pure silvery grey flowers. Excellent and everlasting when cut. Height, 1½ feet.

Gmelini. Deep lilac-blue flowers on stems 2 feet high, in August and September.

Latifolia. Lilac-blue form; fine for cutting and desirable for the border.

***STOKESIA laevis** (*S. cyanca*). *Cornflower Aster.* Lavender-blue flowers. Height, 1½ to 2 feet. June to October.

***Laevis alba.** White flowers. Height, 1½ to 2 feet. June to October.

***Laevis lilacina grandiflora.** Quite distinct from the well-known *S. cyanca*. The color is a very attractive shade of silvery blue with a lilac-blue suffusion at the center. Flowers are very large, often 5 inches across, and can readily be cut with stems 18 to 20 inches in length. Flowers freely and is a very useful all-purpose plant. 35 cts. each, 90 cts. for 3, \$3.50 per doz. Illustrated in color on page 13.

***TALINUM calycium.** A most interesting rock-plant with cylindrical, succulent, wiry stems and pretty rose-pink flowers. They bloom each afternoon throughout the summer. Height, 8 to 10 inches.

***TEUCRIUM Chamædrys.** *Germander.* Very valuable for the rockery or as an edging plant in the hardy border. Glossy green foliage, practically evergreen, resembling dwarf boxwood. Can be clipped to suit any height. Flowers are a pretty shade of pink with lavender tones. 30 cts. each, 75 cts. for 3, \$3 per doz.

THERMOPSIS caroliniana. Bright yellow flowers in June and July on tall stems. Very desirable for the hardy border. Height, 4 to 5 feet.

THALICTRUM aquilegifolium. *Columbine Meadow-Rue.* Cream-white flowers from May to July. Fine for hardy border. Height, 2 to 3 feet.

Dipterocarpum. *Yunnan Meadow-Rue.* Violet-mauve flowers in August and September. Height, 3 to 4 feet.

Dipterocarpum album. A pure white variety 3 to 4 feet high. August, September.

Glaucum. Habit like *Aquilegifolium*. Finely cut foliage; sulphur-yellow flowers.

***Minus adiantifolium.** *Maidenhair Meadow-Rue.* A dwarf-growing variety good for the rockery. White flowers in June and July. Height, 1 to 1½ feet.

All *Thalictrums*, 30 cts. each, 75 cts. for 3, \$3 per doz.

***THYMUS carnosus.** *Thyme.* Beautiful flesh-colored flowers with delightful fragrance. Creeping habit.

***Citriodorus.** A densely matted creeper with strongly lemon-scented foliage.

***Serpyllum.** *Mother of Thyme.* Small lilac flowers and fragrant foliage.

***Serpyllum coccineum.** *Crimson Thyme.* Another creeping form with showy, bright crimson flowers. Height, 2 to 4 inches.

***Vulgaris.** A distinct variety with grey foliage. Very sweetly scented. Height, 9 inches.

TRITOMA Pfitzeri. *Kniphofia; Torch Lily.* Rich orange-scarlet spikes in late summer. Requires special winter protection. 35 cts. each, 90 cts. for 3, \$3.50 per doz.

Towers of Gold. Unquestionably the finest and most worth-while *Tritoma* introduced since *Pfitzeri*. Its bold, compact, rich yellow flowers are profusely produced in August and early September when good flowers are hard to get. Particularly fine for cutting and very impressive in the border. A line plant and should be in every garden where its stateliness and color will make it one of the most outstanding subjects. 75 cts. each, \$1.80 for 3.

TROLLIUS. *Globe Flower.* The globular, buttercup-like flowers appear from early May until July, on 1½ to 2-foot stems. Desirable for garden effect or cutting purposes. Occasionally flowers appear during fall also. The foliage is a handsome, glossy, dark green. A mellow soil is desirable, but the plants are at home in partial shade or full sun.

***Earliest of All.** Early and free flowering. Light orange-yellow flowers on 18-inch stems.

***Europæus.** *Common Globe Flower.* Clear, bright yellow. Very free flowering. Illustrated in color on page 15.

Ledebouri. Very large orange flowers. Strong, upright growth. Blooms later than the type. Height, 2½ to 3 feet.

Ledebouri, Golden Queen. Splendid new early-flowering variety with large, orange-yellow flowers. Very strong-growing habit.

***Orange Globe.** Large. Distinct orange flowers of excellent substance.

All *Trollius*, 35 cts. each, 90 cts. for 3, \$3.50 per doz.

***TUNICA Saxifraga.** *Saxifrage Tunic Flower.* Tufted plant of spready habit, with light pink flowers blooming throughout the summer.

VALERIANA officinalis. Heads of showy rosy crimson flowers in June and July. Height, 3 to 4 feet.

Officinalis alba. A white-flowering form. Good wild-garden subject. Height, 3 to 4 feet. June, July.

Special Rock-Plant Offer

OFFER K. 12 plants, distinct named varieties, our selection \$2.50

OFFER K1. 25 plants, 12 distinct named varieties \$3.75

OFFER K2. 100 plants, 20 distinct named varieties 14.00

All Perennials on this page, 25 cts. each, 65 cts. for 3 of one kind, \$2.50 per doz., unless otherwise noted

Varieties marked * are suitable for the rock-garden

SEMPERVIVUM. *Houseleek.* Interesting plants forming rosettes of succulent leaves.

***Arachnoideum.** *Spiderweb Houseleek.* Rosettes cobwebbed. Flowers pale purple.

***Brownii.** Red flowers. Large rosettes of dark green foliage, tipped red-brown. 25 cts. each, \$2.50 per doz.

***Fauconnetti.** Bright rose flowers. Small rosettes; spidery webs at top of leaves. 25 cts. each, \$2.50 per doz.

***Fimbriatum.** *Fringed Houseleek.* Red flowers. Green foliage that turns brown; slightly hairy. 25 cts. each, \$2.50 per doz.

***Globiferum.** *Globe Houseleek.* Pale yellow flowers. Neat-growing habit. Height, 6 to 9 inches.

***Laggeri.** Rose flowers. Medium rosettes; cobwebby. 25 cts. each, \$2.50 per doz.

***Rubicundum.** Violet-tinged rosettes; good-sized foliage. 25 cts. each, \$2.50 per doz.

***Tectorum.** *Roof Houseleek.* Thick leaves, often tinted with pink and purple.

All Sempervivums, 20 cts. each, \$2 per doz., unless otherwise noted

***VERONICA corymbosa stricta.** This is a splendid alpine variety with dense plumes of azure-blue flowers in late spring. Height, 6 inches. 35 cts. each, \$3.50 per doz.

***Incana.** *Woolly Speedwell.* Good bedding plant with pretty silvery foliage and violet flowers.

Longifolia subsessilis. *Clump Speedwell.* One of the most desirable blue garden flowers and, no doubt, the best of this extensive group. Long, dense, deep blue spikes from July to September. An extra-good garden subject. 35 cts. each, \$3.50 per doz. Illustrated in color on page 12.

***Pectinata rosea.** A lovely rock-garden form completely covered with bright pink flowers in early summer. Nice, tidy, spready habit. Height, 4 to 6 inches. 50 cts. each, \$5 per doz.

***Repens.** *Creeping Speedwell.* Low spready-growing kind, clinging closely to ground and very useful as ground-cover. Tiny blue flowers in early spring.

***Rupestris.** Dwarf and spreading, with deep blue flowers in May and June. Height, 4 inches.

***Shirley Blue.** Beautiful clear blue flowers. Very compact habit. Height, about 1 foot.

Spicata. *Spike Speedwell.* Compact habit, growing about 1½ feet in height. Attractive spikes of bright blue flowers in June and July. Very free.

***Spicata alba.** White form of the above. Height, 15 inches.

***Spicata rosea.** Delicate pink flowers. Height, 15 inches.

***Teucrium, Royal Blue.** Rich dark blue. Neat, bushy habit. Height, 9 inches. 30 cts. each, \$3 per doz.

***VINCA minor.** *Common Periwinkle; Trailing Myrtle.* Creeping ground-cover with pretty blue flowers in April and May. 50 cts. for 3, \$2 per doz., \$12 per 100.

***Minor, Bowles' Variety.** We believe this European form is better in every respect than the Periwinkle now so much in demand. The foliage is broader, a rich glossy green of wonderful texture, and the plant is inclined to branch more from the crown, making a dense mass of luxuriant foliage. The flower is a trifle larger and a shade deeper in its rich blue color, blooming profusely in early spring, and intermittently in autumn. 30 cts. each, 75 cts. for 3, \$3 per doz., \$18 per 100.

***VIOLA, Apricot.** A splendid hybrid bedding pansy with large, rich apricot-yellow flowers borne freely throughout the summer. Excellent for bordering or rock-gardens.

***Arkwright Ruby.** Rich crimson, suffused mahogany. A conspicuously brilliant variety. 35 cts. each, 90 cts. for 3, \$3.50 per doz.

***Beauty of Larone.** Very dark blue; large as a pansy. Free and continuous. Very fine. 35 cts. each, 90 cts. for 3, \$3.50 per doz.

***Cornuta alba.** White flowers from May until October, if sheared to prevent flowers from seeding. 20 cts. each, \$2 per doz.

***Cornuta lutea splendens.** Rich golden yellow. Nice compact habit; very showy. 20 cts. each, \$2 per doz.

***Cornuta, Papilio.** *The Butterfly Pansy.* Dainty blue and white flowers. 20 cts. each, \$2 per doz.

***Viola, Purple Glory.** A very fine shade of purple, better than Jersey Jewel. Flowers are of excellent size, rounded and of splendid substance, insuring good keeping qualities; tidy growing, never out of bloom. An excellent variety for edging and good for the rock-garden. 30 cts. each, 75 cts. for 3, \$3 per doz.

***Jersey Gem.** The pure violet-blue flowers are produced very freely on 6-inch stems. It is perfectly at home in full sunshine, flowering profusely in early spring and late summer, and intermittently during midsummer. The finest Viola for American gardens. Illustrated in color on page 14.

***Odorata, Double Russian.** Perfectly hardy anywhere, producing double, deep purple, sweet-scented flowers in abundance. A splendid variety for the rock-garden or that troublesome shady place. 30 cts. each, 75 cts. for 3, \$3 per doz.

***Odorata, Rosina.** *Pink Hardy Violet.* A novelty of unusual interest to the hardy-plant lover, producing not only in spring but again in late autumn, quantities of dainty flowers, deliciously fragrant and of a charming new color—a combination of pink and old-rose shades. 30 cts. each, 75 cts. for 3, \$3 per doz., \$18 per 100.

***York Gem.** Plant Patent No. 83. This new Viola has clear mauve flowers with bold yellow eyes, purple rays radiating from the eyes into the lower petals. Sturdy long flower-stems, and compact, neat foliage. Very hardy. 45 cts. each, \$1.25 for 3, \$4.50 per doz.

YUCCA filamentosa. *Adam's Needle.* Sword-like foliage. Drooping, creamy white, bell-like flowers carried on immense, branchy spikes. Height, 4 to 6 feet. July, August.

Filamentosa variegata. Foliage green and white. Height, 4 to 6 feet. July, August. 50 cts. each, \$1.25 for 3, \$5 per doz.

Herbs

American Pennyroyal (*Mentha pulegium*). Used medicinally and for seasoning.

Applemint (*Mentha rotundifolia*). Rough, woolly leaves. Excellent for flavoring or for bouquets.

Calamint (*Calamintha alpina*). A fragrant ground-cover for sunny spots.

Chives (*Allium Schoenoprasum*). Onion-like plants, the leaves of which are used in salads for seasoning and flavoring.

Common Balm (*Melissa officinalis*). Lemon-scented leaves for flavoring tea and beverages.

Dill (*Anethum graveolens*). Both the foliage and seeds are used for flavoring.

Hoarhound (*Marrubium vulgare*). Perennial with bitter-tasting leaves, used medicinally and also for flavoring.

Hyssop (*Hyssopus officinalis*). Grows to a height of 1½ feet. Nice for an informal edging in the garden. Used for medicinal purposes and for seasoning vegetables.

Lavender (*Lavandula spica*). Used for flavoring and for its fragrant dry leaves.

Mint (*Mentha piperita*). Excellent in making mint sauces or as a flavoring.

Rosemary (*Rosmarinus officinalis*). Very fragrant. Used for seasoning meats and soups. A decorative, hardy, and vigorous shrub.

Sage, Garden (*Salvia officinalis*). Very essential in flavoring dressings and sauces.

Sweet Woodruff (*Asperula odorata*). A favorite European woodland herb. Useful for flavoring when dried.

Tarragon (*Artemisia Dracunculus*). The genuine French Tarragon. Leaves give a very delicious flavoring to salads. 35 cts. each, 90 cts. for 3, \$3.50 per doz.

Thyme, Citron (*Thymus citriodorus*). The well-known "Lemon Thyme." Very pungent odor.

Thyme, Common (*Thymus vulgaris*). Leaves are used for flavoring dressings and in sauces.

Winter Savory (*Satureia montana*). Delicious as a condiment and for flavoring liqueurs. Quite decorative in the garden.

Wormwood (*Artemisia Absinthium*). Used for medicinal purposes and for flavoring.

Special Offer L: One each of 15 Herbs, our selection, \$3

Dependable Garden Roses

By all means have Roses in your garden
—Roses to cut and bring indoors where
they may be enjoyed more intimately



Mme. Cochet-Cochet

this stock.

Roses are not difficult to grow. Ordinary garden conditions, a soil that will grow good vegetables, and reasonable care will produce surprisingly good blossoms from June until late October. No flower approaches the Rose in continuity of bloom or has its appeal as a cut-flower.

Many new varieties have been added in recent years, increasing the color-range and at the same time making it possible to select varieties that can be grown without too much cultural attention. The beginner, however, will do well to consult one of the many good books available, such as "How to Grow Roses" or "The Rose in America."

Multiflora Japonica is the best rootstock; it produces strong, fibrous root-systems and is thoroughly at home under our New England conditions. With few exceptions, our plants are grown on

Choice Newer Varieties

Better Times. Plant Patent No. 23. Very large, full, double flowers of a brilliant cerise-red color that is altogether distinct. Extremely free, producing deliciously fragrant flowers on long, straight stems. \$1.25 each.

Carillon. (J. H. Nicolas.) Plant Patent No. 136. Long-pointed, orange-scarlet buds, opening into large, well-formed Rose, coral and orange when fully open. Not unlike Mme. Edouard Herriot but far superior as a garden Rose. \$1.50 each, \$15 per doz.

Carrie Jacobs Bond. Plant Patent No. 158. A lovely new Rose with large, double, rich deep rose flowers enhanced by a luminous coral sheen. Moderately fragrant and fine throughout the season. \$1.25 each, \$12.50 per doz.

Condesa de Sagato. Won certificates and medals in American and European shows since its introduction in 1932. It has Radiance vigor of growth, abundant, healthy foliage, and freedom of bloom. Richly perfumed and lasts long when cut. The color is striking—the entire back of each petal is golden yellow while the inside is reddish copper. You should have this captivating, easy-to-grow Rose in your garden. \$1 each.

Countess Vandal. Plant Patent No. 38. This new Rose has been a consistent medal-winner in Europe. It is a lovely blending of bronze, coppery salmon, and gold. The long-pointed buds develop into large, sweetly perfumed flowers, always retaining their excellent form. Very free and vigorous. A grand Rose for cutting. \$1 each.

Crimson Glory. Plant Patent No. 105. Lovely in the bud form, it opens to a large, perfectly shaped flower, deep crimson in color with a velvety sheen which adds a quality of richness that is different from any other Rose in this color. Growth is branching but symmetrical; quite free. \$1.25 each.

Dicksons Centennial. Plant Patent pending. A marvelous new Rose with gorgeous, deep, glowing crimson blooms, having a velvety shading of brilliant red. Beautiful, long-pointed buds; very fragrant, peony-shaped blooms. Strong and vigorous. \$2 each, \$20 per doz.

Mme. Cochet-Cochet. Plant Patent No. 129. Long-pointed buds of coppery pink, flushed orange, open to 4½-inch flowers of fine form; delightfully fragrant. Free habit and healthy foliage make this one of the most desirable Roses. Gold Medal, Bagatelle, 1932. \$1.25 each.

Rochester. (J. H. Nicolas.) Plant Patent No. 131. A serviceable variety that will appeal to those who want an unfailling supply of cut Roses all through the summer. The flowers are large, carried many to a cluster, but can be cut individually with 8 to 9-inch stems. Color blush-yellow, with carmine markings on the petal reverse. Lusty-growing habit. Almost equal to Radiance. Foliage luxuriant and disease-resistant. An outstanding Rose that has a future. \$1.25 each, \$12.50 per doz.

Symphony (Pink Frau Karl Druschki). Plant Patent No. 79. An everblooming Hybrid Perpetual, bearing handsome, massive, perfect flowers, often 6 inches in diameter, on stout, sturdy stems. The buds are blush-pink, opening to pale rose, deep pink in the center of the flower, shading white to the edges. Open flowers are full, symmetrical in shape. A truly magnificent Rose that will become very popular when better known. \$1.25 each.

Texas Centennial. Plant Patent No. 162. A sport of President Herbert Hoover. Bud is long-pointed, opening into a large, moderately fragrant flower carried on a long, strong stem. The color of the open flower is nopal-red, with a dainty shade of gold. \$1 each, \$2.50 for 3.

Hybrid Tea Roses, General List

All the following Hybrid Tea Roses, 2-yr. dormant plants, 75 cts. each, \$7.50 per doz.
Growing plants from pots, ready for delivery May on, add 15 cts. each.

- Betty Uprichard.** Brilliant coppery red in the bud; orange-carmine with salmon-pink shadings; fragrant and free.
- Briarcliff.** Large, long-pointed bud; flowers deep rose-pink at center, lighter on outer petals; moderately fragrant.
- Duchess of Wellington.** The most popular yellow garden Rose. Lovely golden orange buds of long, tapering form, opening to very large, sweet-scented flowers, saffron-yellow in color, mingled with deep crimson markings.
- E. G. Hill.** Dazzling scarlet-crimson in color. Strong, vigorous grower and very free.
- Etoile de Hollande.** A good crimson-red. Flowers are large and fragrant. Altogether one of the most reliable red Roses.
- Frau Karl Druschki.** Pure white—the best of its color.
- Golden Dawn.** A lovely shade of light lemon-yellow, with old-rose markings; full, double, fragrant flowers of exquisite form and a nice habit of flowering.
- Gruss an Teplitz.** For garden purposes alone this is undoubtedly the most showy red Rose. The medium-sized flowers are produced with utmost freedom; color, velvety crimson, and intensely fragrant.
- Imperial Potentate.** An easy-growing Rose, with large, fragrant flowers of sparkling dark rose-pink color.
- Joanna Hill.** Very large, full flowers of clear yellow on opening, shading to orange-yellow in the center when fully expanded. The flowers are fragrant and particularly valuable for cutting.
- Julien Potin (Golden Pernet).** A fine golden yellow, which grows richer and deeper as the flower matures. The blossoms are very large, beautifully formed, and delightfully fragrant. A strong, upright grower with foliage of a fine, glossy, bronzy green, healthy tone, and a very free bloomer.
- Kaiserin Auguste Viktoria.** This is the sweetest of all the white Roses. The bud is a creamy white, developing slowly to large, snow-white flowers that are absolutely perfect in form. Notwithstanding its tendency to winter-kill unless heavily protected, it should be in every collection.
- Lady Alice Stanley.** A lovely coral-rose, shading toward the center to flesh-pink. Strong, upright growth; healthy, attractive foliage; very free flowering.
- Margaret McGredy.** A rich, brilliant shade of Turkish or Oriental red, passing, as the flowers mature, to an attractive carmine-rose. Plants vigorous and bushy, retaining their fine disease-resistant foliage.
- McGredy's Scarlet.** An outstanding Rose. It is rich brilliant velvety scarlet on an orange background. Growth is perfect.
- Mme. Butterfly.** Light, soft pink, tinted with gold near the base of petals; highly perfumed and perfect in shape. Free flowering.
- Mme. Edouard Herriot (The Daily Mail Rose).** Sparkling coral-red and orange, at times shaded with yellow and reddish scarlet.
- Mrs. Charles Bell.** A Radiance variety with all of the splendid growing features of the parent plant, but a lovely shell-pink in color, shaded with salmon.
- Mrs. Henry Morse.** Two-tone pink. One of the most popular of all the pink Roses. The buds are perfect in form, long, very artistically formed, of a rich carmine-pink, and open to a high-pointed, two-toned, pink flower of great beauty. The outside of the petals is a clean, lustrous pink, while the inside is pinkish flesh with a lovely sheen.
- Mrs. Pierre S. du Pont.** This is the outstanding yellow Rose of the day. A rich golden yellow; reddish gold tints while in the bud stage. The easiest grown yellow Rose.
- Ophelia.** So thoroughly established as one of the good garden Roses that a description is hardly necessary. Color is a delicate salmon-flesh, shaded with rose. Very free and altogether desirable.
- President Herbert Hoover.** A striking combination of cerise-pink, flame, scarlet and yellow; large, fragrant, well-formed flowers. Strong and floriferous.



© Texas Centennial

- Radiance.** The most free flowering and easiest to grow under average garden conditions. Color, brilliant carmine-pink, with salmon-pink and yellow shadings.
- Red Radiance.** Color, a bright cerise-red. The flowers, during the fall months, are really outstanding.
- Rev. F. Page-Roberts.** The long, pointed buds are coppery red and open golden yellow, with red markings on the outside. Remarkably free in flowering.
- Souvenir de Claudius Pernet.** Sunflower-yellow, deeper in the center but without any tendency to fade. At its best during late summer.
- Souvenir de Georges Pernet.** Long-pointed buds of rich Oriental red, tipped with deep carmine. Flowers when open are a shimmering cochineal-old-rose.
- Talisman.** Yellow, gold, burnt-orange, and apricot, rose, pink, scarlet, and crimson are the colors which Talisman assumes under favorable conditions.
- Ville de Paris.** A gorgeous yellow. Long, well-formed buds and large flowers.



Condesa de Sagato



Mme. Gregoire Staechelin
See page 37

New Climbing Roses

BLAZE. Plant Patent No. 10. The everblooming Paul's Scarlet Climber. This new climber has all the fine points of Paul's Scarlet, with the added trait of flowering more or less throughout the season. As a pillar Rose it is a valuable addition; if pruned back to a height of 2½ to 3 feet, it makes an excellent shrub. \$1.25 each.

EASLEA'S GOLDEN RAMBLER. Plant Patent No. 114. The flowers are of good size, excellent form, rich golden yellow color, and carried in very large trusses. Having the outstanding quality of fragrance—a trait not usual in the Climbing Roses—makes it distinct. The yellow climber that Rose-lovers have been waiting for. \$1.25 each.

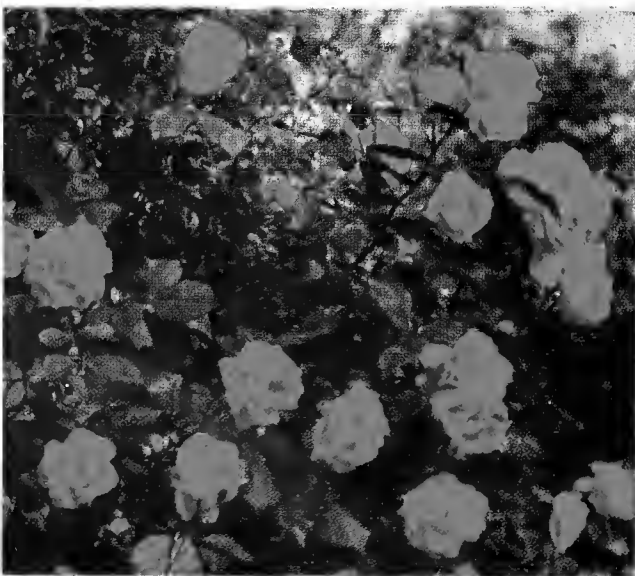
GOLDEN CLIMBER (Mrs. Arthur Curtiss James). Plant Patent No. 28. Rich golden yellow that holds remarkably when open, producing large, luscious scented blossoms over a long period. The growth is vigorous and luxuriant. The hardiest yellow climber. \$1.50 each.

NEW DAWN. Plant Patent No. 1. A sport from Dr. W. Van Fleet, and identical with it in size and formation of its flowers and color, but it blooms intermittently throughout the summer and fall months. Since it has the hardiness of Dr. W. Van Fleet, we regard it as the first worthwhile ever-blooming climber ever introduced. \$1.50 each.

CLIMBING ROSES

Strong 2-yr. plants, 60 cts. each, \$6 per doz., unless otherwise noted

- American Pillar. Rose-pink, distinct white eye.
- Christine Wright. Large, double, apple-blossom-pink flowers.
- Climbing American Beauty. Large, rosy crimson flowers.
- Crimson Rambler. The well-known crimson climber.
- Dorothy Perkins. Soft shell-pink, double flowers in good clusters.
- Dr. W. Van Fleet. Full, double, flesh-pink flowers. Extra good.
- Excelsa. Crimson-scarlet. Healthy, glossy foliage.
- Gardenia. Rich yellow flowers in clusters, shading to pale yellow as they mature. Attractive, glossy foliage. A reliably hardy Rose.
- Hiawatha. Brilliant carmine, distinct white eye. Single.
- Jacotte. Large, fragrant flowers, fully 2½ inches across, in color a lovely combination of shrimp-pink, salmon-orange, and golden yellow. Winter protection is advised. 75 cts. each.



©

Blaze

CLIMBING ROSES, continued

Mary Wallace. Very large, bright pink flowers, shaded with salmon. Free flowering; very hardy; fine healthy foliage. Better than the Dr. W. Van Fleet Rose.

Mme. Gregoire Staechelin (Spanish Beauty). In the early stage the long-pointed buds are crimson; the outer petals on opening show splashes of carmine on the outside and a lovely soft pearl-pink on the inside.

Paul's Scarlet Climber. A climber of exceptional merit. Vivid scarlet, semi-double flowers.

Purity. Pure white, cupped flowers, similar to, but more hardy than Silver Moon. \$1 each.

Silver Moon. Large, silvery white, single flowers.

Tausendschon (Thousand Beauties). Carmine buds passing to soft pink.

White Dorothy Perkins. A white duplicate of Dorothy Perkins.

Wichuraiana. (Japan.) The "Memorial Rose." A very handsome trailing Rose bearing abundant white flowers, set in lovely glossy foliage.

HUGONIS ROSE. One of our loveliest shrubs. It is a strong, vigorous-growing plant, well-developed specimens attaining a height of 6 feet or more and about an equal spread. Its dainty, single, soft yellow flowers are produced on long, arching sprays in early May. The first Rose to bloom. Strong 2-yr. plants, 60 cts. each, \$6 per doz. Extra-strong 3-yr. plants, \$1 each, \$10 per doz.

ROSA Rouletti. A miniature variety of interest. Small, double pink flowers produced profusely throughout the season. Own-root plants from 3-inch pots, 50 cts. each, \$5 per doz.

Tom Thumb. Plant Patent No. 169. A new miniature Rose. More dainty even than Rouletti and much more effective. The color is a bright crimson in the bud state, opening a shade lighter, with a light eye in the center. The little blossoms, no larger than a grain of wheat in the bud, are produced all summer on tiny plants less than 6 inches high. Perfectly hardy, it will prove a gem for the rockery if planted in groups of three or more. \$1 each.



Tom Thumb

HYBRID PERPETUALS

These are of the more sturdy type of Roses, and for cold climates are the most desirable. Protect as advised for Hybrid Teas in late November. In spring from one-half to two-thirds of the wood should be cut away, and the weak branches removed in early spring. Those marked * will flower again in autumn.

Strong 2-yr. plants, 75 cts. each, \$7.50 per doz.

***Frau Karl Druschki.** Pure white.

General Jacqueminot. Popular scarlet "Jack Rose."

***Georg Arends.** Rose-pink Frau Karl Druschki.

***Gloire de Chedane-Guinoisseau.** Velvety red.

***Henry Nevard.** Very large, deep red flowers.

Hugh Dickson. Crimson-scarlet.

***Mme. Albert Barbier.** Soft salmony flesh, opening into full, imbricated flowers, golden apricot in the center, and of glorious form. Very free.

***Mrs. John Laing.** Soft pink. Extra good.

***Paul Neyron.** Dark rose; enormous size. Very free, and fine in late summer.

Prince Camille de Rohan. Deep crimson.

***Ulrich Brunner.** Cherry-red. Vigorous and free.

POLYANTHAS OR BABY RAMBLERS

60 cts. each, \$6 per doz., unless otherwise noted

Chatillon. Double, bright pink flowers, shading to rose-crimson, borne in immense sprays that are not unattractive, even when fading. Vigorous habit.

Ellen Poulsen. Bright rose-pink flowers, fairly double and large for this type. Compact habit.

Else Poulsen. Lovely single flowers of a pure rose-pink shade, carried in clusters throughout the season.

Erna Teschendorff. Bright red, semi-double flowers in good-sized clusters. Dwarf habit and very free.

Gloria Mundi. A striking orange-scarlet. The flowers are quite double, well formed, carried in good-sized trusses throughout the season. 75 cts. each, \$7.50 per doz.

Gruss an Aachen. Properly a Bourbon Hybrid. A most attractive clean-growing Rose having large flesh-pink flowers with salmon and yellow shadings.

Ideal. Medium-sized, double, dark velvety crimson flowers in large trusses and very lasting in quality.

Kirsten Poulsen. A vivid scarlet, single Rose. 75 cts. each, \$7.50 per doz.

Miss Edith Cavell. Vivid scarlet-red with deeper crimson shadings. Strong, sturdy plant. One of the best.

Orleans. Brilliant geranium-red with white center, shading to rose as the flowers mature.



Gloria Mundi

MISCELLANEOUS ROSES

- Harison's Yellow.** Similar to Persian Yellow in flowering habit, but bright golden yellow. A fine old early-flowering bush Rose. 75 cts. each, \$7.50 per doz.
- Persian Yellow.** Deep yellow. The old-fashioned, early-flowering bush Rose. 75 cts. each, \$7.50 per doz.
- Rosa rugosa.** Single, rosy carmine blooms. Sturdy. Desirable as a shrub Rose. 60 cts. each, \$6 per doz.
- Rosa rugosa alba.** Pure white. 75 cts. each, \$7.50 per doz.
- F. J. Grootendorst.** H. Rug. Strong, shrubby grower with everblooming Baby Rambler habit. A fine hedge Rose. 90 cts. each, \$9 per doz.
- Pink Grootendorst.** H. Rug. A first-class clear pink form of the preceding. 90 cts. each, \$9 per doz.
- Rosa rugosa, Max Graf.** A Hybrid Rugosa that should prove of great value for massing or bank planting. The plants are covered with bright pink, single flowers which have a distinct golden center. Foliage attractive at all times. Semi-trailing habit. 75 cts. each, \$7.50 per doz.
- Rosa setigera.** *Prairie Rose.* A semi-climbing native Rose with large, single pink flowers and healthy foliage. Flowering late, it is especially useful for bank planting or for massing in the shrubbery. 50 cts. each, \$5 per doz.
- Rosa spinosissima.** Valuable for its finely divided foliage and dense, shrubby growth. Flowers usually white, occasionally pinkish or yellowish. Fine for dwarf massing or broad hedge use. 75 cts. each, \$7.50 per doz.

TRI-OGEN

Combined Spray Treatment

Fungicide—Insecticide—Plant Stimulant

Complete Protection against Plant Insects and Diseases

In the past, Mildew and Black-Spot have been most difficult to combat. However, these diseases are now easily controlled with the Tri-ogen Spray Treatment, which gives COMPLETE protection against all diseases and insect pests. It is easily applied and also acts as a plant stimulant—producing vigor in growth with resultant luxurious blooms, heretofore considered impossible. The Tri-ogen Spray Treatment applied weekly, from early season until late frost, makes it possible for the amateur to achieve success comparable, in many cases, to that of the professional grower.

TRI-OGEN was officially adopted for the exclusive protection of the Garden of 16,000 Roses at the CENTURY OF PROGRESS, Chicago World's Fair.

PRICES

- A. Small Kit (makes 16 quarts) \$1.50
- B. Medium Kit (makes 64 quarts) 4.00
- C. Large Kit (makes 32 gallons) 6.00
- D. Estate Kit (makes 128 gallons) 20.00

Evergreen Shrubs

- ANDROMEDA (Pieris) floribunda.** Each Doz.
Mountain Andromeda. A really fine evergreen shrub, with nodding, lacy panicles of white flowers which open in late winter and spring. Dwarf, compact habit; quite hardy.
15 to 18 in. \$2 00 \$20 00
18 to 24 in. 3 00 30 00
- japonica.** *Japanese Andromeda.* A more branchy and somewhat stronger-growing form, with large, pendent panicles of pure white flowers. The younger leaves are bronzy green.
15 to 18 in. 1 50 15 00
18 to 24 in. 2 50 25 00
- ARCTOSTAPHYLOS Uva-ursi.** *Bearberry.* Neat, evergreen ground-cover. Light sandy soil.
Plants from 3½-in. pots. 50 5 00
- CALLUNA vulgaris.** *Scotch Heather.* Bushy shrub with slender spikes of small pink flowers in late summer.
9 to 12 in. 75 7 50
- vulgaris alba pilosa.** *Silky Heather.* Nice white form with slender foliage.
12 to 15 in. 75 7 50
- vulgaris Alporti.** *Alport Heather.* Rosy crimson flowers with grey foliage.
12 to 15 in. 75 7 50
- COTONEASTER apiculata.** Spready branches, glossy leaves, and large brilliant red fruits in autumn. More hardy than Horizontalis.
15 to 18 in. 2 50 25 00
- horizontalis.** *Rock Cotoneaster.* A charming low evergreen shrub of spready habit with glossy leaves and showy red berries.
15 to 18 in. 1 50 15 00
Plants from 5-in. pots. 75 7 50

- Cotoneaster horizontalis perpusilla.** Small, Each Doz.
neat foliage. More compact habit and larger berries than Horizontalis. An excellent ground-cover for the rockery.
15 to 18 in. \$1 75 \$17 50
 - horizontalis Wilsoni.** *Wilson's Cotoneaster.* A somewhat stronger form with graceful arching branches eventually forming a strong, spreading shrub with showy red berries.
15 to 18 in. 1 50 15 00
Plants from 5-in. pots. 1 00 10 00
- See page 41 for Deciduous varieties.



Max Graf. A fine Rose for embankments



Rhododendron carolinianum

EVERGREEN SHRUBS, continued

DAPHNE Cneorum. *Rose Daphne* or *Garland Flower*. The most charming evergreen shrub in cultivation. A lovely, low-growing plant at all times, but at its best during May and June, when it is completely covered with clustered bright pink blossoms as sweet and deliciously scented as the arbutus. It thrives in full sunshine and in a rich, well-drained, light soil.

2-yr. plants.....	\$0 75	\$7 50
3-yr. plants, extra large.....	1 00	10 00
Specimens, 12 to 15-in. spread....	1 50	

EUONYMUS. See Vines, page 44; Shrubs, page 42.

ILEX crenata. *Japanese Holly*. Small, glossy green leaves and black fruits. A rapid grower, forming a dense, compact bush. 12 to 15 in.....

1 1/2 to 2 ft.....	2 00	20 00
2 to 2 1/2 ft.....	2 50	25 00
2 1/2 to 3 ft.....	3 50	35 00
3 to 3 1/2 ft.....	5 00	50 00

glabra. *Inkberry* or *Winterberry*. An upright, much-branched shrub seldom growing more than 2 to 4 feet high. Leaves dark green, retaining their brilliancy throughout the winter.

1 to 1 1/2 ft.....	2 00	20 00
1 1/2 to 2 ft.....	2 75	27 50

See page 42 for Deciduous varieties.

KALMIA latifolia. The well-known *Mountain Laurel*. Fine as specimens, or combined with evergreens.

1 1/2 to 2 ft.....	2 25	22 50
2 1/2 to 3 ft.....	4 00	40 00
Specimens 3 to 4 ft.....	\$5 to	6 00
Specimens 4 1/2 to 5 ft....	\$7.50 to	10 00

LEIOPHYLLUM buxifolium. *Box Sand Myrtle*. A splendid ground-cover plant with minute foliage and little sprays of pink flowers in spring.

6 to 9 in.....	75	7 50
9 to 12 in.....	1 00	10 00

LEUCOTHOE Catesbaei. *Drooping Andromeda*. A semi-drooping plant having attractive bronze-green leaves. Flowers white, borne in racemes.

12 to 15 in.....	1 50	15 00
1 1/2 to 2 ft.....	2 00	20 00
3 to 4 ft., Specimen clumps.....	5 00	50 00

PACHISTIMA Canbyi. A dainty, low shrub excellent for carpeting.

8 to 12 in.....	\$0 75	\$7 50
-----------------	--------	--------

RHODODENDRON maximum. *Great Laurel*. The best for massing in deep shade. 1 1/2 to 2 ft.....

2 to 2 1/2 ft.....	3 00	30 00
2 1/2 to 3 ft.....	3 50	35 00
3 to 3 1/2 ft.....	5 00	50 00
4 to 5 ft., heavy clumps.	\$7.50 to	10 00

carolinianum. Easily the most attractive of the native kinds, and highly desirable for foundation planting, for interspersing among evergreens, massing, or for prominent points in the rockery.

1 1/2 to 2 ft.....	2 25	22 50
2 to 2 1/2 ft.....	3 50	35 00
3 to 4 ft.....	\$6 to	7 50

catawbiense. *Catawba Rhododendron*. Rosy purple. Very hardy.

1 1/2 to 2 ft.....	2 50	25 00
2 to 2 1/2 ft.....	3 00	30 00
3 to 3 1/2 ft.....	6 00	60 00



Daphne Cneorum

New and Choice Shrubs



Beauty Bush

AZALEA Kaempferi. *Torch Azalea.* A fine Azalea for naturalizing in slightly shaded areas where vivid coloring is wanted. Colors vary from salmon to orange—all are gorgeous. 15 to 18 in., \$2 each; 2 to 2½ ft., \$3 each; 2½ to 3 ft., \$4 each.

A. mollis, Louisa Hunnewell. A new and perfectly hardy hybrid of *Azalea mollis*. Vigorous and very free. Color shades from salmon-red to deep orange. 15 to 18 in., \$2.50 each.

A. Poukhanensis. Finest lavender variety and one of the first to flower. The compact, spready growing plants are entirely covered with the lovely single blossoms in spring before the leaves develop. Very hardy. 15 to 18-in. spread, \$2.50 each; 1½ to 2 ft., \$3.50 each.

A. Schlippenbachi. *Royal Azalea.* A rare Azalea that in time attains a height of 8 to 10 feet. The flowers are large and vary in color from pale rose to lavender, the upper lobes faintly spotted reddish brown. Bushy plants, shipped with ball of soil, 15 to 18 in., \$3 each; 1½ to 2 ft., \$4.50 each; 2 to 2½ ft., \$6 each.

BUDDLEIA, Ile de France. *Butterfly Bush.* The flowers are a very distinct red, with violet shadings. Somewhat smaller than the type but very free in flowering. Excellent for cutting. Strong 2-yr. plants, 50 ets. each, \$5 per doz.

B., Fortune. Plant Patent pending. A fine variety for the hardy border as well as in front of the shrub border. Spikes 1 to 1½ feet long, well-rounded racemes in full bloom from base to tip at one time. No other Buddleia equals it as a cut-flower. The color is true lilac, a shade which blends so well with all other colors. One of the really worth-while novelties. Pot-plants, \$1 each.

B. Hartwegi. This fine new variety is a real improvement, not only in color, but equally important in the matter of hardiness, having survived temperatures of 25 degrees below zero. The color is a lovely shade of bright rose-lavender, quite distinct from the original type, and the flowers are closely arranged on the large panicles. A beautiful cut-flower. Strong plants from pots, 75 ets. each, \$2 for 3, \$7.50 per doz.

BEAUTY BUSH. *Kolkwitzia amabilis.* Entirely hardy and of strong-growing habit, in time attaining a height of 9 to 10 feet and a spread fully equal. Beautiful pink flowers. 2 to 3 ft., 50 ets. each; 3 to 4 ft., extra heavy, 75 ets. each.

DAPHNE Mezereum. *February Daphne.* A lovely and interesting shrub often in flower in February. At home in a sheltered, partially shaded location. Flowers appear in clusters and are of an attractive rosy purple shade. 15 to 18 in., \$1 each; 1½ to 2 ft., bushy, \$1.50 each.

ENKIANTHUS campanulatus. *Redvein Enkianthus.* A splendid shrub from Japan, 12 to 15 feet high. Clusters of bell-shaped flowers in May, shading from yellow to pale orange. Bright red foliage. 2 to 2½ ft., \$1 each; 3 to 4 ft., \$1.50 each.

FRAGRANT VIBURNUM. *Viburnum Carlesi.* Clusters of deliciously fragrant, clove-scented flowers, pale rose in color, tinted white. Bushy plants, 1½ to 2 ft., \$1 each; 2 to 2½ ft., \$1.50 each; own-root, nice, stocky 15 to 18-in. plants without flower-buds, \$1 each.

SEMI-EVERGREEN BARBERRY. *Berberis Mentorensis.* Plant Patent No. 99. Rich, glossy foliage stays green practically all year. Ultimate height, 3½ to 4 feet. Thrives in acid or alkaline soils. Ideal for foundation planting. Upright in growth, requiring practically no trimming. 15 to 18 in., 50 ets. each, \$3.50 per doz., \$25 per 100; 1½ to 2 ft., 60 ets. each, \$4 per doz., \$30 per 100.

TRUEHEDGE COLUMNBERRY. *Berberis Thunbergi pluriflora erecta.* Plant Patent No. 110. Upright growth, with extra-heavy foliage, giving a splendid upright hedge of rich green that changes to brilliant autumn tints. Perfectly hardy, bearing an abundance of berries. Immune to rust. 9 to 12 in., \$3 per doz., \$20 per 100; 12 to 15 in., \$3.50 per doz., \$25 per 100; 15 to 18 in., \$4.50 per doz., \$35 per 100.



Daphne Mezereum

Flowering Shrubs

Owing to the impossibility of adequately describing shrubs in the limited space available, we are omitting entirely any descriptive matter. We grow, however, a large quantity of the best varieties and will welcome the opportunity to quote on large or small lots and furnish any information required concerning their growing habits and culture.



Buddleia Hartwegii. See page 40

ACANTHOPANAX pentaphyllum. <i>Five-leaved Aralia.</i> 3 to 4 ft.....	Each \$0 50	Doz. \$5 00
ACER palmatum atropurpureum. The true blood-red Japanese Maple.		
15 to 18 in.....	3 00	
2 to 3 ft.....	4 00	
AMELANCHIER alnifolia. <i>Saskatoon.</i>		
2 to 2½ ft.....	75	7 50
<i>canadensis (botryapium).</i> <i>Downy Shadblow.</i> 2½ ft.....	75	7 50
AMYGDALUS communis. <i>Almond.</i>		
3 to 4 ft.....	1 00	10 00
ARONIA arbutifolia. <i>Red Chokeberry.</i>		
2 to 3 ft.....	75	7 50
<i>melanocarpa.</i> <i>Black Chokeberry.</i>		
2 to 3 ft.....	75	7 50
3 to 4 ft.....	1 00	10 00
AZALEA arborescens. <i>Fragrant Azalea.</i>		
1½ to 2 ft.....	3 00	30 00
<i>Kaempferi.</i> <i>Torch Azalea.</i> See page 40.		
<i>lutea (calendulacea).</i> <i>Flame-colored Azalea.</i> 1½ to 2 ft.....	2 50	25 00
2½ to 3 ft.....	4 00	40 00
<i>mollis</i> Hybrids. 1½ to 2 ft.....	3 50	35 00
<i>Poukhanensis.</i> <i>Korean Azalea.</i> See page 40.		
<i>Schlippenbachi.</i> See page 40.		
<i>Vaseyi.</i> <i>Pinkshell Azalea.</i> 15 to 18 in..	2 25	22 50
<i>viscosa.</i> <i>Swamp Azalea.</i> 1½ to 2 ft...	1 75	17 50
4 to 5 ft.....	4 00	40 00
<i>Yodogawa.</i> 1 to 1½ ft.....	2 50	25 00
BERBERIS Thunbergi. See Hedge Plants.		
<i>emarginata.</i> Densely branched. Deep red fruit. 1½ to 2 ft.....	75	7 50
<i>Thunbergi atropurpurea.</i> <i>Red-leaved Japanese Barberry.</i>		
1½ to 2 ft.....	\$35 per 100..	50 5 00

BUDDLEIA alternifolia. 2 to 3 ft.....	Each \$0 50	Doz. \$5 00
3 to 4 ft.....	75	7 50
<i>magnifica.</i> <i>Butterfly Bush.</i>		
2-yr. plants.....	50	5 00
<i>Davidi superba.</i> 2 to 3 ft.....	75	7 50

See page 40 for other varieties

CALLICARPA purpurea. <i>Chinese Beauty Berry.</i> 2 to 3 ft.....	75	7 50
CALYCANTHUS floridus. <i>Sweet Shrub.</i>		
2 to 3 ft.....	60	6 00
3 to 4 ft.....	75	7 50

CLETHRA alnifolia. <i>Summer Sweet.</i>		
1½ to 2 ft.....	60	6 00
2 to 2½ ft.....	75	7 50
3 to 3½ ft.....	1 00	10 00

CORCHORUS (Kerria) japonica.		
3 to 4 ft.....	75	7 50
<i>japonica flore-pleno.</i> 2 to 3 ft.....	75	7 50

CORNUS alternifolia. <i>Pagoda Dogwood.</i>		
2 to 3 ft.....	60	6 00
<i>Amomum (sericea).</i> <i>Silky Dogwood.</i>		
3 to 4 ft.....	60	6 00
<i>paniculata.</i> <i>Grey Dogwood.</i> 2 to 2½ ft.	50	5 00
2 to 3 ft.....	60	6 00
<i>stolonifera.</i> <i>Red-twigged Dogwood.</i>		
3 to 4 ft.....	50	5 00
5 to 6 ft.....	75	7 50
<i>stolonifera flaviramea.</i> <i>Golden-twigged Dogwood.</i> 3 to 4 ft.....	60	6 00

CORYLUS americana. <i>American Hazelnut.</i> 4 to 5 ft.....	1 00	10 00
--	------	-------

COTONEASTER acutifolia. <i>Peking Cotoneaster.</i> 3 to 4 ft.....	75	7 50
<i>Dielsiana.</i> <i>Diel's Cotoneaster.</i>		
2 to 3 ft.....	75	7 50
3 to 3½ ft.....	1 00	10 00

See page 38 for Evergreen varieties



Viburnum Carlesi

See page 40



Azalea Kaempferi. See page 40

CYDONIA japonica. Japanese Quince.	Each	Doz.
2 to 3 ft.....	\$0 60	\$6 00
3 to 3½ ft.....	1 00	10 00
DAPHNE Mezereum. See page 40.		
DEUTZIA crenata magnifica. 3 to 4 ft...	60	6 00
crenata plena, Pride of Rochester.		
3 to 4 ft.....	60	6 00
4 to 5 ft.....	75	7 50
crenata rosea. 3 to 4 ft.....	60	6 00
4 to 5 ft.....	75	7 50
gracilis. 15 to 18 in.....	60	6 00
1½ to 2 ft.....	75	7 50
Lemoinei. 1½ to 2 ft.....	60	6 00
2 to 2½ ft.....	75	7 50
EUONYMUS alatus. Winged Burning Bush.		
4 to 4½ ft.....	1 00	10 00
6-ft. specimens.....	1 50	15 00
alatus compacta. 3 to 4 ft.....	1 00	10 00
yedoensis. Yeddo Euonymus.		
3 to 4 ft.....	1 00	10 00
See page 44 for Vine and Evergreen varieties.		
FORSYTHIA intermedia. Golden Bell.		
3 to 4 ft.....	50	5 00
4 to 5 ft.....	75	7 50
intermedia spectabilis. Showy Golden Bell.		
3 to 4 ft.....	75	7 50
suspensa. Weeping Forsythia.		
2 to 3 ft.....	50	5 00
HAMAMELIS virginiana. Common Witch-hazel.		
3 to 4 ft.....	75	7 50
4 to 5 ft.....	1 00	10 00
HIBISCUS syriacus. Althea or Rose of Sharon. Red, Pink and White.		
2 to 3 ft.....	50	5 00
3 to 4 ft.....	75	7 50
HYDRANGEA arborescens grandiflora. Snowball Hydrangea.		
2 to 3 ft.....	60	6 00
paniculata grandiflora. Peegee Hydrangea.		
2 to 3 ft.....	60	6 00
3 to 4 ft.....	75	7 50
4 to 4½ ft.....	1 00	10 00
Tree forms, 3 to 4 ft.....	1 00	10 00
ILEX verticillata. Winterberry.		
1½ to 2 ft.....	60	6 00
2 to 2½ ft.....	75	7 50
4 to 4½ ft.....	1 50	15 00
See page 39 for Evergreen varieties.		
KOLKWITZIA. Beauty Busb. See page 40.		
LILAC. See Syringa, page 43.		

LONICERA fragrantissima. Winter Honeysuckle.	Each	Doz.
3 to 4 ft.....	\$0 60	\$6 00
Korolkowi floribunda. Blue-leaf Honeysuckle.		
1½ to 2 ft.....	60	6 00
Maacki. Shrub Honeysuckle.		
2 to 3 ft.....	60	6 00
3 to 4 ft.....	75	7 50
5 to 6 ft.....	1 00	10 00
Morrowi. Japanese Bush Honeysuckle.		
2 to 3 ft.....	60	6 00
3 to 4 ft.....	75	7 50
Ruprechtiana. Manchurian Honeysuckle.		
3 to 4 ft.....	60	6 00
5 to 6 ft.....	1 00	10 00
tatarica alba. Tatarian Honeysuckle.		
3 to 4 ft.....	50	5 00
4 to 5 ft.....	75	7 50
tatarica rosea. Rosy Tatarian Honeysuckle.		
3 to 4 ft.....	60	6 00
tatarica sibirica. Red Tatarian Honeysuckle.		
3 to 4 ft.....	60	6 00
MYRICA carolinensis. Northern Bayberry.		
1½ to 2 ft.....	75	7 50
2 to 2½ ft.....	1 00	10 00
PHILADELPHUS Lemoinei, Avalanche.		
Mock Orange. 3 to 4 ft.....	60	6 00
coronarius. 3 to 4 ft.....	60	6 00
coronarius foliis aureis. Golden Mock Orange.		
2 to 2½ ft.....	75	7 50
coronarius grandiflorus. Large-flowering Mock Orange.		
3 to 4 ft.....	60	6 00
4 to 5 ft.....	75	7 50
5 to 6 ft.....	1 00	10 00
purpurascens. Purple-cup Mock Orange.		
5 to 6 ft.....	1 25	12 50
Virginal. Superb Mock Orange.		
3 to 4 ft.....	75	7 50
PHOTINIA villosa. 8 to 10 ft.....	2 00	20 00
PHYSOCARPUS opulifolius aurea. Golden Ninebark.		
3 to 4 ft.....	60	6 00
POTENTILLA fruticosa. 1½ to 2 ft....	60	6 00
PRIVET. See Hedge Plants, page 44.		
PRUNUS tomentosa. Nanking Cherry.		
2 to 2½ ft.....	60	6 00
3 to 3½ ft.....	75	7 50
4 to 5 ft.....	1 25	12 50

See page 46 for other varieties.



Planting of Lilacs



Vitex macrophylla

RHODOTYPOS <i>kerrioides</i> . <i>White</i>	Each	Doz.
<i>Kerria</i> . 2 to 3 ft.....	\$0 60	\$6 00
3 to 4 ft.....	75	7 50
RHUS <i>canadensis</i> (<i>aromatica</i>). <i>Fragrant</i>		
<i>Sumac</i> . 1½ to 2 ft.....	50	5 00
<i>copallina</i> . <i>Shining Sumac</i> . 5 to 6 ft... 1 25		12 50
<i>Cotinus</i> . <i>Smoke Tree</i> . 3 to 3½ ft..... 1 00		10 00
ROBINIA <i>hispida</i> . <i>Rose Acacia</i> .		
2 to 2½ ft.....	75	7 50
SNOWBALL . See <i>Viburnum</i> and <i>Hydrangea</i> .		
SPIRÆA <i>arguta</i> . <i>Garland Spirea</i> .		
3 to 4 ft.....	60	6 00
4 to 5 ft.....	1 00	10 00
<i>Bumalda</i> , <i>Anthony Waterer</i> .		
1½ to 2 ft.....	60	6 00
<i>Bumalda Froebeli</i> . <i>Froebel's Spirea</i> .		
2 to 3 ft.....	60	6 00
<i>callosa</i> <i>alba</i> . 1 to 1½ ft.....	60	6 00
2 to 2½ ft.....	75	7 50
<i>prunifolia</i> . <i>Bridal Wreath</i> . 3 to 4 ft... 75		7 50
<i>Reevesiana</i> . <i>Reeves' Spirea</i> . 3 to 4 ft.. 75		7 50
<i>Thunbergi</i> . 2 to 3 ft.....	60	6 00
3 to 4 ft.....	75	7 50
<i>trichocarpa</i> . <i>Korean Spirea</i> .		
3 to 4 ft.....	75	7 50
<i>Vanhouttei</i> . <i>Van Houtte Spirea</i> .		
3 to 4 ft.....	60	6 00
4 to 5 ft.....	75	7 50
SYMPHORICARPOS <i>Chenaulti</i> .		
2 to 3 ft.....	60	6 00
<i>racemosa</i> . <i>Snowberry</i> . 2 to 3 ft..... 50		5 00
3 to 4 ft.....	75	7 50
<i>vulgaris</i> . <i>Coral Berry</i> . 2 to 3 ft..... 50		5 00
3 to 4 ft.....	75	7 50

SYRINGA <i>chinensis</i> (<i>rothomagensis</i>). Each	Doz.
<i>Chinese Lilac</i> . 3 to 4 ft.....	\$0 75 \$7 50
<i>japonica</i> . <i>Japanese Tree Lilac</i> .	
3 to 4 ft.....	1 00 10 00
<i>Josikæa</i> . <i>Hungarian Lilac</i> . 4 to 5 ft... 1 00	10 00
<i>persica</i> . <i>Persian Lilac</i> . 3 to 4 ft..... 75	7 50
<i>persica alba</i> . 3 to 4 ft.....	75 7 50
<i>villosa</i> . <i>Himalayan Lilac</i> . 3 to 4 ft.... 75	7 50
<i>vulgaris</i> . <i>Common Purple Lilac</i> .	
2 to 3 ft.....	60 6 00
3½ to 4 ft.....	75 7 50
4 to 5 ft.....	1 00 10 00
<i>vulgaris alba</i> . <i>Common White Lilac</i> .	
2 to 3 ft.....	75 7 50
3½ to 4 ft.....	1 00 10 00
4 to 5 ft.....	1 50 15 00

Hybrid Lilacs

2 to 3 ft., \$1 each, \$10 per doz.

- Alphonse Lavallee*. Double. Light blue.
- Belle de Nancy*. Double. Soft satiny pink.
- Congo*. Single. Wine-red. Very handsome.
- Dr. von Regel*. Single. Lilac, pinkish buds.
- Jan van Tol*. Single. Pure white. Nicely scented.
- Marie Legraye*. Single. Fine white.
- Michel Buchner*. Double. Pale lilac.
- Mme. Lemoine*. Double. White.
- Reaumur*. Single. Dark carmine.
- Souv. de Ludwig Spæth*. Single. Purplish red. Heavy panicles.

VACCINIUM <i>corymbosum</i> . <i>High-bush</i>		
<i>Huckleberry</i> .	Each	Doz.
2 to 3 ft.....	\$1 00	\$10 00
3 to 4 ft.....	1 50	15 00
5 to 6 ft.....	3 50	35 00

VIBURNUM <i>acerifolium</i> . <i>Maple-leaved</i>		
<i>Viburnum</i> .		
2 to 3 ft.....	75	7 50
<i>americanum</i> . <i>American Cranberry</i>		
<i>Bush</i> .		
3 to 4 ft.....	75	7 50
<i>Carlesi</i> . See page 40.		
<i>dentatum</i> . <i>Arrow-wood</i> .		
2 to 3 ft.....	50	5 00
3 to 4 ft.....	75	7 50
4 to 4½ ft.....	1 00	10 00

<i>dilatatum</i> . <i>Linden Viburnum</i> .		
3 to 4 ft.....	1 00	10 00
<i>Lantana</i> . <i>Wayfaring Tree</i> .		
2 to 3 ft.....	60	6 00
3 to 4 ft.....	75	7 50
<i>Lentago</i> . <i>Nannyberry</i> .		
2 to 3 ft.....	60	6 00
3 to 4 ft.....	75	7 50
<i>molle</i> . <i>Kentucky Viburnum</i> . 3 to 3½ ft. 75		7 50
4 to 5 ft.....	1 00	10 00

<i>Opulus</i> . <i>High-bush Cranberry</i> .		
3 to 4 ft.....	60	6 00
4 to 5 ft.....	75	7 50
<i>Opulus nanum</i> . <i>Dwarf Cranberry Bush</i> .		
12 to 15 in.....	75	7 50
<i>plicatum</i> . <i>Japanese Snowball</i> .		
2 to 3 ft.....	75	7 50
<i>tomentosum</i> . <i>Double-file Viburnum</i> .		
2 to 3 ft.....	60	6 00
3 to 4 ft.....	75	7 50

VITEX <i>macrophylla</i> . <i>Bigleaf Chaste-Tree</i> .		
2 to 3 ft.....	75	7 50
3 to 4 ft.....	1 00	10 00

WEIGELA <i>amabilis</i> . <i>Rose Weigela</i> .		
2½ to 3 ft.....	50	5 00
3 to 4 ft.....	75	7 50
<i>candida</i> . <i>White Weigela</i> .		
3 to 4 ft.....	60	6 00
4 to 5 ft.....	75	7 50
<i>hybrida</i> <i>Desboisi</i> . 3 to 4 ft..... 60		6 00
<i>hybrida</i> , <i>Eva Rathke</i> . 2 to 3 ft..... 50		5 00
<i>rosea</i> . 3 to 4 ft.....	60	6 00
4 to 5 ft.....	75	7 50

ZANTHORHIZA <i>apiifolia</i> . <i>Yellow-root</i> .		
1 to 1½ ft.....	\$35 per 100..	50 5 00



Wisteria sinensis

Vines

	Each	Doz.
ACTINIDIA arguta. <i>Bower Actinidia</i> . Rapid growing. 3-yr.	\$0 75	\$7 50
AKEBIA quinata. <i>Fiveleaf Akebia</i>	75	7 50
AMPELOPSIS lowi. <i>Geranium Creeper</i> . Small-leaved form of Veitchi. Close clinging. 2-yr.	75	7 50
3-yr.	1 00	10 00
quinquefolia. <i>Virginia Creeper</i> . The well-known Woodbine. 2-yr. plants	40	4 00
quinquefolia Engelmanni. <i>Engelmann Creeper</i> . Smaller and neater foliage than the preceding. Inclined to cling more closely. 2-yr. plants	40	4 00
Veitchi. <i>Japanese Creeper</i> . The best vine for covering walls. 2-yr. plants. 3-yr. plants	50 75	5 00 7 50
BIGNONIA radicans. <i>Trumpet Creeper</i> . 3 to 4 ft.	60	6 00
CELASTRUS orbiculatus. <i>Oriental Bittersweet</i> . Small, shrub-like. Attractive crimson fruit in fall and winter	50	5 00
Extra-heavy, fruiting-size plants.	75	7 50
scandens. <i>American Bittersweet</i>	50	5 00
Extra-heavy, fruiting-size plants.	75	7 50
CLEMATIS paniculata. <i>Sweet Autumn Climber</i> . Small, white, sweetly scented flowers. 2-yr. plants	35	3 50
Extra-heavy plants	50	5 00
Henryi. Large creamy white flowers.	1 00	10 00
Jackmani. Large; purple. 3-yr. plants	1 00	10 00
Hybrid, Mme. Baron Veillard. Large lavender flowers. Extra choice.	1 25	12 00
Montana undulata. <i>Anemone Clematis</i> . White, flushed mauve. Very early.	75	7 50
Ramona. Single pale blue flowers.	1 25	12 00
EUONYMUS radicans. <i>Winter-creeper</i> . Evergreen foliage. 3-yr. plants	50	5 00
radicans coloratus. <i>Bronze Winter-creeper</i> . Strong-growing; bronzy red foliage late in the season. 3-yr. plants.	75	7 50

Euonymus radicans minimus (kewensis). Each <i>Baby Winter-creeper</i> . Very minute dark green leaves. Plants from 3½-in. pots	\$0 35	\$3 50
4-yr. field plants.	50	5 00
radicans variegata. <i>Silver-Edge Winter-creeper</i> . A form of the above with showy white-and-green leaves. 3-yr. plants	50	5 00
radicans vegetus. <i>Bigleaf Winter-creeper</i> . Glossy evergreen leaves. Fine for rough stonework. 3-yr. plants	60	6 00
See page 42 for Shrub varieties.		
HEDERA helix. The well-known English Ivy. 1½ to 2 ft.	50	5 00
helix baltica. Small foliage. Good hardy ground-cover. 4-in. pots.	50	5 00
HYDRANGEA petiolaris. <i>Climbing Hydrangea</i> . Plants from 4-in. pots.	1 00	10 00
See page 42 for Shrub varieties.		
LONICERA Halliana. <i>Hall's Japanese Honey-suckle</i> . Very fragrant. 2-yr. plants	35	3 50
3-yr. plants	50	5 00
sempervirens. <i>Scarlet Trumpet Honey-suckle</i> . 3-yr. plants	60	6 00
LYCIUM chinense. <i>Chinese Matrimony Vine</i> . 2 to 3 ft.	50	5 00
POLYGONUM Auberti. <i>China Fleece-vine</i> or <i>Silver Lace Vine</i> . Rapid-growing. White, lacy flower-sprays in late summer. 2-yr. plants	75	7 50
Extra-strong plants	1 00	10 00
SCHIZOPHRAGMA hydrangeoides. <i>Japanese Hydrangea</i> . From 4-in. pots. Field plants.	1 00 1 50	10 00 15 00
WISTERIA sinensis. <i>Purple Wisteria</i> . 2 to 3 ft.	75	7 50
3 to 4 ft., grafted plants, sure to bloom.	1 00	10 00
sinensis alba. <i>White Wisteria</i> . 3 to 4 ft.	1 00	10 00

Hedge Plants

25 or more of a kind at the 100 rate		
BARBERRY, Japanese (<i>Berberis Thunbergi</i>). An ironclad hedge plant entirely immune from disease. 12 to 18 in., heavy	\$2 50	\$15 00
18 to 24 in., heavy	3 50	25 00
Red-leaved Japanese. See page 41.		
Box (<i>B. Thunbergi minor</i>). Smaller leaves than the Japanese and more compact and desirable for dwarf edging. 12 to 15 in. 50 cts. each.	5 00	35 00
PRIVET, California. Perhaps the most popular hedge plant, but not entirely dependable in severe climate. 1½ to 2 ft.	75	5 00
2 to 3 ft.	1 25	8 00
3 to 4 ft.	1 75	12 00
Amur River. A splendid hedge plant. Entirely hardy. 1½ to 2 ft., bushy.	2 00	12 00
2 to 2½ ft., bushy.	2 50	15 00
Ibodium. Rich, luxuriant growth of the California Privet. Entirely hardy. 1½ to 2 ft., bushy.	1 00	6 00
2 to 3 ft., bushy.	1 50	10 00
3 to 4 ft., bushy.	2 50	15 00
Ibota. Branches arch gracefully. Flowers white. Desirable for informal hedging or for grouping. 2 to 3 ft.	3 00	20 00
Regel's. Spreadly growth. Very hardy. 1½ to 2 ft.	5 00	40 00

Shade and Flowering Trees

ACER Ginnala. Amur	Each	Doz.
Maple. Very bushy.		
Specimens, 8 to 10 ft...	\$10 to	\$15 00
platanoides. Norway		
Maple.		
8 to 10 ft.....	2 00	\$20 00
10 to 12 ft., well branched.....	3 00	30 00
14 to 16 ft., well branched.....	5 00	50 00
platanoides Schwedleri.		
8 to 10 ft.....	3 00	30 00
10 to 12 ft.....	5 00	50 00
rubrum. Red Maple.		
6 to 8 ft.....	2 00	20 00
dasyarpum. Silver		
Maple.		
10 to 12 ft.....	2 50	25 00
14 to 16 ft.....	3 50	35 00
dasyarpum Wieri.		
Wier's Maple. Cut-leaf, weeping variety.		
15 to 18 ft.....		
	\$7.50 to	10 00
saccharum. Sugar		
Maple. 8 to 10 ft...		
8 to 10 ft.....	2 50	25 00
10 to 12 ft.....	3 50	35 00
12 to 14 ft.....	\$5 to	7 50

AMYGDALUS. Flowering Peach.		
White. 3 to 4 ft.....	1 00	10 00
Pink. 3 to 4 ft.....	1 00	10 00

ARALIA spinosa. Devil's Walking-stick.		
10 to 12 ft.....	5 00	50 00

BETULA alba. White Birch.		
6 to 8 ft.....	\$2 50	\$25 00
lenta. Sweet Birch. 10 to 12 ft.....	4 00	40 00
nigra. River Birch. 10 to 12 ft., heavy.	7 50	
papyrifera. Canoe or Silver Birch.		
6 to 8 ft.....	2 00	20 00
10 to 12 ft.....	3 50	
pendula gracilis. Cut-leaf Weeping Birch.		
4 to 5 ft.....	1 50	15 00
6 to 8 ft.....	2 00	20 00
CATALPA bignonioides nana. Umbrella		
Catalpa. 2-yr. heads.....		
2 yr. heads.....	2 00	20 00
Heavy 4 to 6-yr. heads.....	\$5 to	7 50
CERCIS canadensis. American Red-bud.		
4 to 5 ft.....	1 25	12 50
5 to 6 ft.....	2 00	20 00
6 to 8 ft.....	3 00	30 00



Cornus florida rubra (Pink-flowering Dogwood)

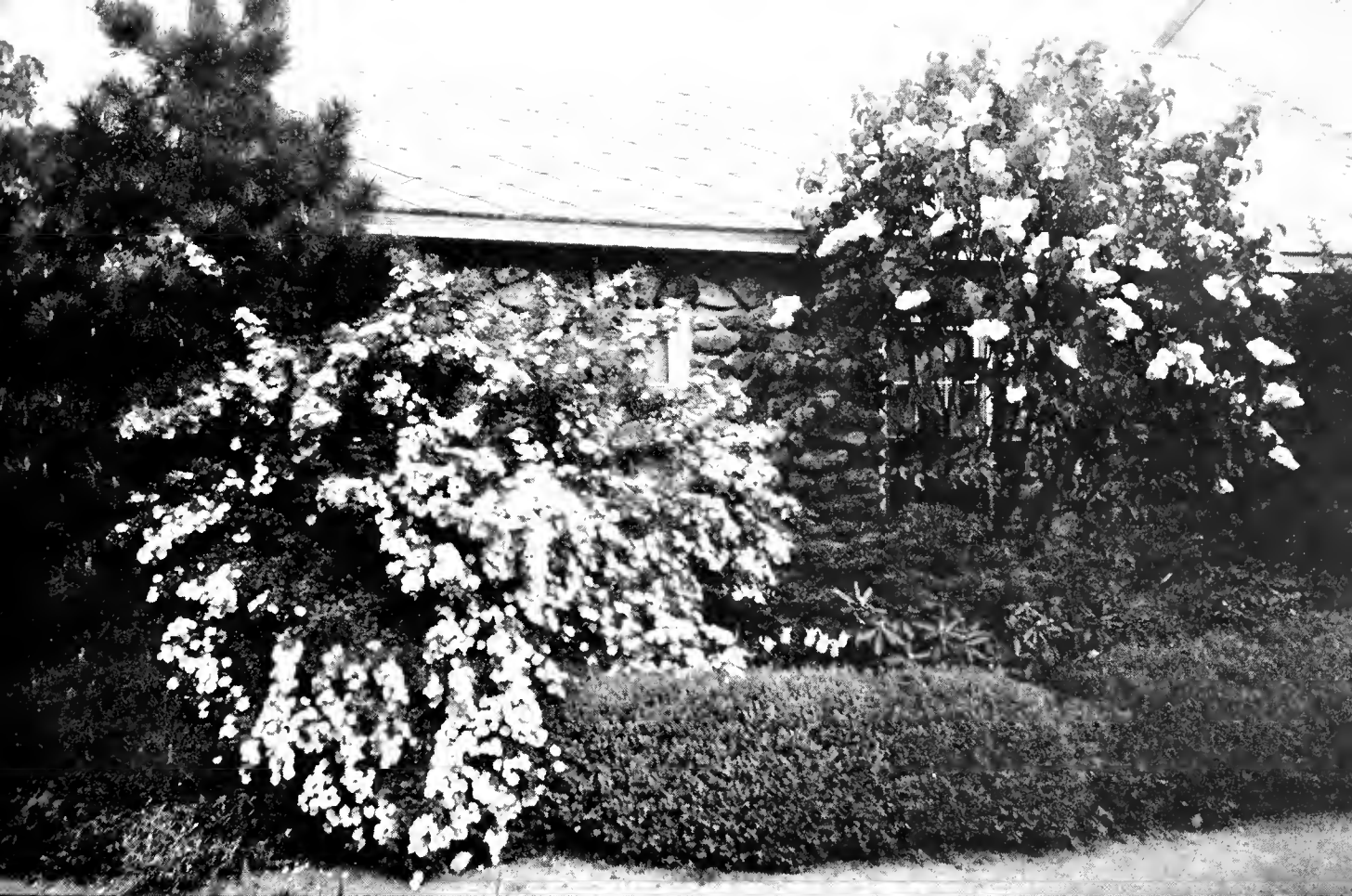
CHERRY, Flowering. See Prunus, page 46.		
CHIONANTHUS virginica. White Fringe.	Each	Doz.
3 to 4 ft.....	\$1 50	\$15 00
CORNUS florida. White-flowering Dogwood.		
4 to 5 ft.....	1 75	17 50
5 to 6 ft.....	2 50	25 00
Larger specimens.....	\$7.50 to	15 00
florida rubra. Pink-flowering Dogwood.		
3 to 4 ft.....	2 50	25 00
4 to 5 ft.....	4 00	40 00
5 to 6 ft.....	6 00	60 00
Specimens, 7 to 8 ft.....	\$12 to	15 00
CRATAEGUS cordata. Washington Thorn.		
4 to 5 ft.....	1 50	15 00
Oxyacantha. English Hawthorn.		
3 to 4 ft.....	1 00	10 00
Oxyacantha splendens. Paul's Double Scarlet Thorn.		
5 to 6 ft.....	2 50	25 00
7 to 8 ft.....	4 00	40 00
MULBERRY, Tea's Weeping.		
5 to 6-ft. stems, 2-yr. heads.	2 50	25 00
5 to 6-ft. stems, 4-yr. heads.	4 00	40 00



Cercis canadensis (American Red-bud)

Flowering Crab-Apples

MALUS atrosanguinea. Carmine	Each	Doz.
Crab. Single; red.		
4 to 5 ft.....	\$1 50	\$15 00
floribunda. Japanese Flowering		
Crab. Single; pink.		
4 to 5 ft.....	1 50	15 00
5 to 6 ft., well branched...	3 50	35 00
ioensis plena. Bechtel's Crab.		
Double; pink. 4 to 4½ ft....		
4 to 4½ ft....	1 25	12 50
5 to 6 ft., well branched...	3 00	30 00
Niedzwetzkyana. Red-vein Crab.		
Purple foliage.		
5 to 6 ft., well branched...	3 00	30 00
Parkmani. Parkman's Crab.		
Semi-double; rose-pink.		
4 to 5 ft.....	1 50	15 00
5 to 6 ft., well branched...	3 50	35 00



The Lovely Hugonis Rose

Jan van Tol Lilac. The finest single white variety

PARTIAL VIEW OF OUR OFFICE IN MAYTIME

Lawn Grass Seed

FINE LAWNS. The essential feature of the well-developed home-ground is unquestionably the lawn. Proper fertilization and preparation of the soil is just as important as the use of high-grade grass seed. No possible economy can be obtained in skimping these requirements nor can a permanent lawn be established without them. Sow at the rate of 1 pound per 400 square feet; 100 pounds per acre for early spring. Use a slightly larger application as the season advances.

Bristol Permanent Lawn Mixture

A mixture composed only of fine-leaved permanent grasses blended in the correct proportions necessary to produce a rich velvety lawn under average New England conditions. It is the result of several years' experimentation of our Landscape Department. We use and recommend it with confidence. Lb. 55 cts., 2 lbs. \$1.05, 5 lbs. \$2.25, 10 lbs. \$4.35, 100 lbs. \$40.

Bristol Quick Lawn Mixture

The same fine grasses offered in our Permanent Mixture but with the addition of the right proportion of quick-growing varieties to produce more immediate results. A splendid permanent lawn remains after the short-lived grasses disappear. We recommend this mixture where large areas are being seeded. Lb. 55 cts., 2 lbs. \$1.05, 5 lbs. \$2.25, 10 lbs. \$4.10, 100 lbs. \$37.

Bristol Shade Mixture

A combination of grasses blended to produce a most satisfactory lawn in partial shade, in dry, impoverished soil or anywhere that grass could reasonably be expected to grow. Lb. 60 cts., 2 lbs. \$1.20, 5 lbs. \$2.50, 10 lbs. \$4.85, 100 lbs. \$45.

THE HANDY HOE is an excellent tool for all garden work. The narrow blade permits deep or shallow cultivation in close quarters; used flatwise, it is as effective for shallow cultivating as a hoe and ever so much easier to use. Not just another garden gadget—it is a sturdy, durable tool that will appeal to the ladies who like to work in the garden—men like it, too. 60 cts. each, mailing charge 10 cts. extra.



Handy Hoe



*Plan to Visit
Bristol in
'Mum Season*
A Glorious
Display



Perennials
Flowering
Shrubs and Trees

Roses
Reliable kinds

Vines

Evergreens
A fine collection
Make your selection at
the Nursery

Also

A Complete
Landscape
Service



HARDY AZALEAS
DESIRABLE FOR
NEW ENGLAND

See page 40

Colorful Azaleas in the Spring Border

B RISTOL • NURSERIES • INC •
BRISTOL, CONN.

