

Historic, archived document

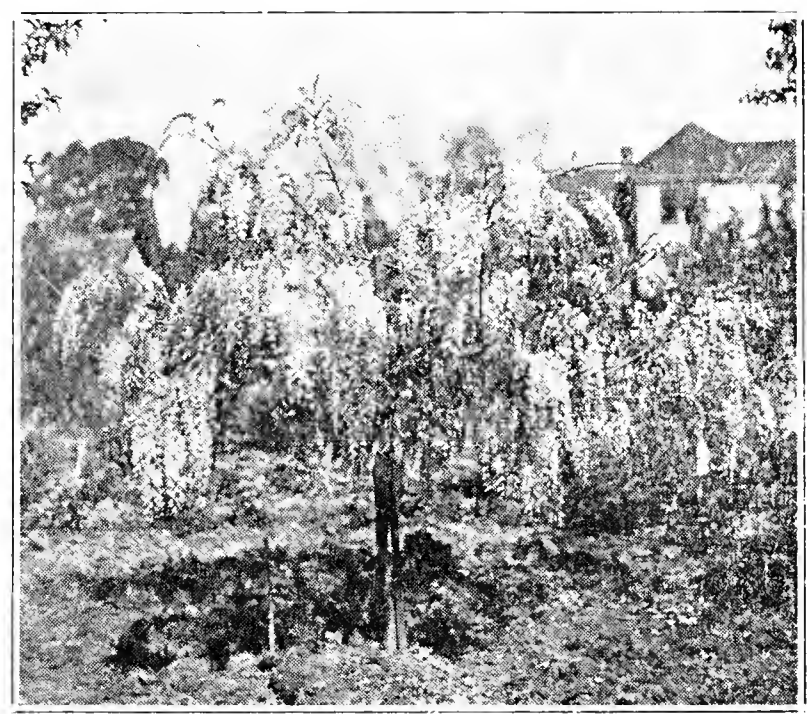
Do not assume content reflects current scientific knowledge, policies, or practices.

62.03

GARDEN ARISTOCRATS

1937

LIBRARY
RECEIVED
☆ JUL 29 1937 ☆
U. S. Department of Agriculture.



STANDARD WISTERIA

CLARKE NURSERY

W. B. CLARKE & CO., Owners

SAN JOSE, CALIFORNIA

FOREWORD

Those who have received previous "Garden Aristocrats" (1934, 1935 and 1936) are familiar with our desire to avoid the usual nursery catalog style. Our idea is to describe in each issue as accurately as possible a limited number of the best things, omit all "ballyhoo" and make the booklet worth saving for reference. It is very gratifying to observe how many have done this.

By the way, we still have a fair supply of "Garden Aristocrats, 1936" and will send a copy upon request.

For convenience we have this year divided it into three sections:

Part I is devoted to novelties of very recent introduction, some being offered this season for the first time.

Part II covers noteworthy plants, some of which are comparatively new.

Part III is simply a price list, without descriptions, of our principal items which are not covered in the first two parts. It is assumed that these are well enough known so that we do not need to describe them.

Our attention is devoted almost entirely to woody plants. We again emphasize the important point that these make up the **permanent** part of the garden; you live with them "year in and year out" so why not have the finest things?

It will be a pleasure for us to have you visit our nursery which is located on the Oakland-San Jose Highway, a little over a mile north of the city limits of San Jose. Coming down the Peninsula you should cross the Southern Pacific tracks at Santa Clara S. P. Station; this (Brokaw) road ends at the nursery. When the Bay Shore Highway is finished to San Jose it will cross the Brokaw Road at the magnificent row of old Elms. Turn to the left there.

PART I.

BROAD LEAVED EVERGREENS

RED ABELIA (*Abelia floribunda*). Remarkable for its astonishingly long rosy red flowers which are 1½ to 2 inches in length and are borne in unbelievable profusion. Close to the sea it blooms all the year around; otherwise for quite a long period in spring. In sunny districts it must have at least partial shade and plenty of water. At first its growth is almost prostrate but later it makes erect but arching shoots which enable it to gain height gradually, but it will probably never get more than four feet tall. We do not yet know whether it will be hardy in Oregon and Washington, but it seems to be anywhere in the settled parts of California. Gal. can 1½-2 ft. \$1.00, 1-1½ ft. 75c; pot grown 1½-2 ft. 60c.

ABUTILON VITIFOLIUM. Grows quickly to a large shrub which bears a profuse crop of large, bell shaped, light blue flowers up to 3½ in. wide. Pot grown 4-6 in. 25c.

ASTER FRUTICOSA. This dainty slender-branched rather compact shrub grows only about 3 ft. tall and bears a profusion of daisy-like pinkish lavender flowers in late spring and early summer. One of those things that are universally admired. Pot grown 8-12 in. 50c.



BLUE ATLAS CEDAR
Cedrus atlantica glauca

BAUHINIA GALPINI. Unlike the more familiar Bauhinias, this is a half climbing shrub with flowers ranging from terra cotta to brick red. It is from South Africa and we do not yet know whether it is fully hardy here or not, but it surely is attractive. Pot grown 6-8 in. 35c.

BOWKERIA GERRARDIANA. This is a fairly vigorous South African shrub which may attain as much as 6-8 ft. The leaves are suggestive of Heliotrope; flowers are white, tubular and borne very freely. It is reported to stand considerable frost. Pot grown 6-8 in. 75c.

BRUNFELSIA MACRANTHA (*B. grandiflora*). This is a decided improvement on *B. calycina* which is described in the second part of this booklet. This form has larger leaves, more open habit, and much larger flowers up to as much as 2½ in. wide. Grafted plants in gal. cans 8-12 in. \$1.50.

CALOTHAMNUS RUPESTRIS. This loose growing shrub has its branches densely covered with needle like leaves. The flowers are somewhat like those of "Bottle Brush" with brilliant crimson stamens. It has the appearance of being perfectly hardy here. Pot grown 1-1½ ft. 60c, 8-12 in. 50c.

CHIRONIA LINOIDES (C. ixifera). This beautiful little half-shrub is suitable for rock gardens or for any place in the garden where a small plant is appropriate. It does not get more than 1½ ft. tall with a compact rounded outline. Leaves are about like those of carnations. In summer it literally covers itself with rose pink flowers about ¾ in. wide. We have noticed that everyone who sees this likes it. Pot grown 8-12 in. 60c.

CISTUS CORBARIENSIS. A beautiful addition to our lists of small evergreen shrubs, which is attractive at any time for its crinkly foliage and especially so in spring with its wealth of dainty pure white flowers with golden stamens. All who see it admire it. Pot grown 12-15 in. 50c.

CISTUS LADANIFERUS MACULATUS. After many years it develops that the plants which have masqueraded under this name are really *Cistus cyprius*. The genuine article is larger, stronger growing, and with flowers about twice as wide, up to 3 or 4 in., which also are white with a red blotch at the base of each petal. Pot grown 1-1½ ft. 50c, 8-12 in. 25c.

SPOTTED ORCHID ROCKROSE (Cistus purpureus). It is hard to understand why this beautiful Rockrose which has been popular in England for a century has just reached California. It is very strong and vigorous and at blooming time practically covers itself with satiny orchid-colored flowers nearly three inches wide. They have five petals, each with a deep red spot near the base. We recommend this unreservedly. Gal. cans 1-1½ ft. 75c; pot grown 1-1½ ft. 60c.

CISTUS SILVER PINK. This has recently been imported from England where it has quickly attained great popularity. It makes a rather compact shrub of only medium growth with grayish-green leaves. The flowers are superb; of good size and a charming silver pink color without any spots at the base of petals. We have an idea that it will become as popular here as in England. Pot grown 8-12 in. 85c.

CONVOLVULUS CNEORUM. Highly valued for its remarkably beautiful foliage. The green leaves are well covered with silky white hairs so that the general effect is glistening silver. This color is maintained throughout the year. The flowers are of the usual Morning Glory type, a little over an inch wide; white with yellow eye and pinkish on the outside. It blooms very persistently. Pot grown strong plants 75c, smaller 30c.

COTONEASTER GLABRATA. This is a vigorous strong growing Cotoneaster which will probably make a large bush. The leaves are 2 or 3 inches long. When it carries its crop of bright red berries, it is simply gorgeous. They are produced in large clusters all along the branches which arch with their weight. Seedlings, pot grown 8-12 in. 50c.

COTONEASTER RUBENS. Imported from France under government permit. Growth is almost prostrate. Leaves small and evergreen. In a general way it is like *C. buxifolia*, but the red berries have a better color which is developed as early as June. Grafted plants, pot grown 1-1½ ft. 75c.

MITCHELL BROOMS (Cytisus hybrids). For more complete information see, in February, 1936 number of *Sunset Magazine*, an article by their originator, the well known horticulturist, Sydney B. Mitchell. Out of a large number of beautiful seedlings Mr. Mitchell selected the five he considered best and named them for various colleges in the State. The following are his verbatim descriptions:

CALIFORNIA. Of medium height, about 3 to 4 ft. and rather spreading; standards rosy white, reverse rose. Wings glowing rose, deepening to the top of the keel. Exceptionally attractive and clean in its brilliant pink effect.

POMONA. Very tall and vigorous, running to 8 ft. high with arching stems. Standards yellow paling to white, reverse rose. Wings amber orange, keel yellow.



FOUNTAIN DEODAR
Cedrus deodara fontinalis

ST. MARY'S. Medium height, spreading. Whole flower pure white.

SAN FRANCISCO. In growth between California and Pomona. Standards rosy red, reverse somewhat darker. Wings same color, but deepening to rich velvety red towards the keel. The reddest in effect I have seen, more so than any of the English or Irish hybrids. Very free flowering with long season.

STANFORD. Quite upright and more rigid in growth than the others. Standards bronze yellow to flesh, reverse bronze rose. Wings bright orange red, very prominent golden keel. Quite the largest flower of the set. Mid-season to late. These brooms bloom so profusely as to show almost no stem when in flower. Flowering season from March to May.

Cultural Note. When once established these brooms require no summer watering at all with me. They move very badly indeed after they get growing in the open ground so should always be sold in pots. I strongly recommend pruning back the growth which has flowered in May, not only to keep them in good form but to prevent the heavy setting of seed which tends to weaken the plants and is not beautiful, as the pods are black. Pot grown 85c (but no California this season.)

NEW EUROPEAN BROOMS. In addition to the Mitchell Brooms, we have imported from England some of their latest and best varieties.

BURKWOODI. Flowers are almost solid garnet red with no yellow on the standard and only at the very tips of keel and wings. Plant is erect and vigorous, blooms freely, and is decidedly precocious. In England this is considered one of the best hybrids. Pot grown \$1.25.

LORD LAMBOURNE. The flowers are a brilliant blend of scarlet, primrose, and rose-pink; standards are yellow tipped pink, wings deep crimson. Grows only moderately, but is a free bloomer. Pot grown 85c.

MARIA BURKWOOD. The flowers are remarkably large and have a brilliant coloring. Standards are red on back, creamy-rose on face, and yellowish at the base. The wings are reddish-bronze outside, cream within. It is moderately early and the plant is of spreading habit. This is one of the newest from England where it is held in very high esteem. Grafted, pot grown plants \$1.75.

ESCALLONIA DONARDENSIS. This is a quick growing rather slender-branching shrub which bears a profusion of attractive flowers having the pleasing combination of pink and white usually termed "appleblossom." Pot grown 1-1½ ft. 50c.

EUCALYPTUS CAESIA. Small tree; grows to only 12 or 15 ft. tall bearing beautiful pink flowers. Pot grown 1½-2 ft. 75c.

EUCALYPTUS GROSSA. Makes a large shrub about 10 ft. tall with dark glossy-green leaves. The golden-yellow flowers are borne freely. In Australia called Phillips River Gum. Pot grown 4-6 in. 50c.

EUCALYPTUS NUTANS. Very dwarf and bushy shrub usually not growing over 6-8 ft. tall. Has brilliant red flowers which keep well when cut. Pot grown 4-6 in. 50c.

EUCALYPTUS PREISSIANA. Small tree with very striking lemon-yellow flowers. Pot grown 4-6 in. 50c.



PYRAMIDAL ARBORVITAE
Thuja occidentalis pyramidalis

EUCALYPTUS SEPULCRALIS. This is the only true weeping Eucalyptus. It will grow 20 to 25 ft. and bears a profusion of yellow flowers highly decorative both in natural state when cut. Pot grown 4-6 in. 50c.

EUCALYPTUS TETRAPTERA. Small tree or large shrub with very leathery, dark leaves and bearing large, brilliant red flowers. Gal. can 1½-2 ft. \$1.00.

EUCALYPTUS TORQUATA. Rather vigorous grower but making only a small tree with usual type of foliage. Flowers of good size, bright red overlaid with gold. Gal. can 2½-3 ft. \$1.50.

EUGENIA SMITHI. Known in Australia as the Lilli Pilli tree. It makes a large shrub or small tree which is highly esteemed for its enormous crop of lavender berries. They keep well when cut and are very beautiful for decorations. It will probably stand about the same amount of cold as the other Eugenias; possibly a little more. Pot grown 6-8 in. 50c.

GREVILLEA OBTUSIFOLIA. Easily one of the finest ground covers ever introduced. It

Please Write Your Name and Address Plainly

From _____

Put
3 Cent
Stamp
Here

CLARKE NURSERY,

SAN JOSE,

Box 343

CALIF.



lies perfectly flat on the ground, grows rapidly and covers the ground completely. Leaves are small and narrow. Even when very young, it blooms profusely. Flowers are red and of the same peculiar shape as all other Grevilleas. It should become enormously popular as it becomes known. Pot grown 4-6 in. 60c.

GREVILLEA ROSMARINIFOLIA. An erect shrub attaining 5 or 6 ft. Habit is bushy and compact; leaves linear; flowers are pink and white. Said to withstand as low as 20 degrees Fahrenheit. Pot grown 8-12 in. 75c.

HELIANTHEMUM LASIANTHUM (H. formosum). Low growing shrub with grayish green leaves. The extremely attractive flowers are formed like Rockroses but are bright yellow with a red spot at the base of each petal. Prefers full sun and will thrive in limy soils. Pot grown 8-12 in. 50c.

ILEX LATIFOLIA. Called "Tarayo" in Japan. Has remarkably handsome foliage suggesting English Laurel. Leaves up to 6 inches or more long and 2 inches wide, rich dark green. Berries red. This is said to be the finest of the Japanese Hollies and certainly looks very promising. Gal. can 1½-2 ft. \$1.50, 1-1½ ft. \$1.25; pot grown 8-12 in. 75c, 6-8 in. 60c.

PERNY HOLLY (Ilex pernyi). We again call attention to this gem among the Hollies. Small, slow growing and dainty in every way. Leaves very small and prickly. The female plants bear a profuse crop of light, bright red berries. Hardly known in the gardens as yet, but we cannot recommend it too highly. Grafted female plants; balled and with berries, 1½-2 ft. \$2.50; gal. cans 8-12 in. \$1.25.

MYRTUS COMMUNIS MINIMA. This is a most minute little dwarf shrub with tiny leaves. What its ultimate growth may be we can not say but apparently it will take years to reach any very great size. Pot grown 2-4 in. 60c.

NIEREMBERGIA HIPPOMANICA. This is more of a herbaceous perennial than a shrub and in England it is considered one of the best novelties of recent years. It only grows 6-8 in. tall and is smothered with flowers 1-1½ inches in diameter which are delicate lavender with a yellow eye. It blooms over a long season. Considered particularly fine for rock gardens. Pot grown 25c.

CATALINA TOYON (Photinia arbutifolia macrocarpa). The variety of Toyon or California Holly which grows on Catalina Island is distinguished by larger leaves, more vigorous growth and particularly by the larger size of its berries. Pot grown 12-15 in. 50c, 8-12 in. 40c.

ORANGE BERRIED TOYON (Photinia arbutifolia chrysocarpa). Briefly this is a Toyon with orange-yellow instead of red berries. Our plants are seedlings and can not be absolutely guaranteed but being grown from yellow berries, they are reasonably certain to reproduce the type. Pot grown 8-12 in. 50c.

PROTEA COMPACTA. The Proteas are from South Africa and will stand moderate frost and plenty of heat but do not like limy soil. The flower heads are large and very peculiarly formed. This form has them about 4 inches long with pink to carmine bracts. Pot grown 8-12 in. 75c.

PROTEA SUSANNAE. This one has large leaves about 5 inches long and 4 inch flower heads which were strikingly illustrated on the cover of Sunset Magazine for June, 1936. Pot grown 2-4 in. 75c.

PSORALEA APHYLLA. One of the "Blue Brooms". It is a vigorous upright grower; branches have green bark and almost no leaves. Flowers are exactly like those of Broom but light blue and produce over a long season. Pot grown 2-3 ft. 75c.

TURRAEA OBTUSIFOLIA. A small South African shrub which probably will not attain over 3 ft. in height. The flowers are rather large, star shaped, pure white, and borne in profusion over quite a long season. It probably is very averse to lime in the soil, but is a beautiful thing where it can be made to grow. Pot grown 8-12 in. \$1.00.

VIBURNUM BURKWOODI. This can be briefly described as an evergreen Viburnum *carlesi* with larger clusters of intensely fragrant flowers. This was mentioned in G. A. 1936 and we had expected to distribute it this year but although we grew a reasonable number of plants, we regard it as such an unusually fine novelty, far out of the ordinary, that we decided to use the entire stock this year for grafting wood and in-



ROGERS ORANGE FIRETHORN
Pyracantha rogersiana aurantiaca

roduce it on a large scale next season. However, if you want to get started early on this and are willing to take plants from which grafting wood has been taken, we can supply a limited number of field grown, balled plants at \$2.00 or from 5 in. pots at \$1.25.

FLOWERING FRUIT TREES

FLOWERING APPLE (*Malus adstringens*). As to the flower of this tree we quote from a recent bulletin of the Morton Arboretum: "Attention is now focussed on the Flowering Crabapple collection (*Malus* in variety). While every species has contributed generously to the mass color effect, all honors for individual beauty belong to the hybrid form, *Malus adstringens*, whose soft rose pink flowers of such a rare shade, have attracted the notice and admiration of all who have seen it. It is a cross between the common Apple, *M. pumila* and the Siberian Crab, *M. baccata*." 6-7 ft. \$2.00, 5-6 ft. \$1.50.

APRICOT Chas. Abraham. All the other flowering apricots are varieties of *Prunus mume* but this is a form of *Prunus armeniaca* from which our orchard apricots are derived. The very double flowers are borne before the leaves and as they appear serially, it has a long blooming habit. The blossoms are deep pink shading into pure red on the outside. Named in honor of the very well known nurseryman and horticulturist, the late Charles Abraham of San Francisco, who introduced this variety from the Orient many years ago. We believe, however, that this is the first time it has been offered generally. 6-7 ft. \$2.00, 5-6 ft. \$1.75, 4-5 ft. \$1.50.

AURORA PEACH. A few years ago we selected seed from all our flowering peaches; grew about 500 seedlings and carried them on until they bloomed. This variety, in our opinion, was the best of the lot. The flowers are a lovely shade of very soft pink entirely free from the harsh tones which some profess to find in the other flowering peaches. It is an extremely free grower. Blooms early in the season and flowers keep very well indeed when cut. Although a secondary matter, we can add that it bears a moderate crop of delicious free-stone fruit with white skin and white flesh. While this variety was under test, we showed the flowers to a good many visitors and found that it was invariably admired. 6-7 ft. \$2.00.

PEACH Blushing Bride. The large saucer shaped flowers are often pure white but generally are more or less marked with soft rose; occasionally there is a flower which is entirely rose color. Growth is vigorous and habit very spreading but not drooping. Quite early. 6-7 ft. \$2.00.

DECIDUOUS TREES

CERASUS CAPULI. The seed from which we raised our plants was brought from the mountains of Equador where it is highly esteemed as a fruiting cherry and is said to reproduce itself correctly from seed. The leaves are willow-like and so far seem to be evergreen. We suspect it may be *Prunus salicifolia*. The foliage and general appearance is quite attractive and the fruit should be at least interesting. Gal. can. 1-1½ ft. \$1.00.



PINK INDIA HAWTHORN
Raphiolepis indica rosea

BOUGAINVILLEA TREE (*Koeleruteria bipinnata*). This is considered one of the most showy and beautiful trees that can be grown in this climate. Its general appearance is like that of the common Golden Rain Tree, *K. paniculata*, but it has deeper green, glossier and more acute leaflets on the very large leaves which are fully bipinnate. The yellow flowers are numerous but small. Its striking feature is the large bladder like pods which contain the seeds and assume intensely brilliant tints in late summer and early fall. 3-4 ft. \$1.50, 2-3 ft. \$1.25.

DECIDUOUS SHRUBS

HORSE CHESTNUT. While generally thought of as trees the following striking forms are merely shrubs which start blooming when only a foot or so tall.

AESCULUS DISCOLOR MOLLIS. Blooms in late spring. Flowers a mixture of yellow and scarlet. Grafted plants 1-1½ ft. \$1.00.

AESCULUS MUTABILIS. Flowers yellow and red. Grafted 1-1½ ft. \$1.00.

AESCULUS NEGLECTA TOMENTOSA. Flowers bright red. Grafted 1-1½ ft. \$1.00.

DWARF LAVENDER CREPEMYRTLE (Lagerstroemia). This charming variety is sufficiently described by its name. It makes only a small shrub and blooms very profusely. Pot grown 12-15 in. 60c.

MERATIA PRAECOX GRANDIFLORA. This is a rare large flowering form of the plant generally known as *Calycanthus praecox*, so greatly esteemed for its very early and intensely fragrant yellowish flowers which are among the first to appear in the spring. 4-5 ft. \$2.00, 3-4 ft. \$1.50.

PHILADELPHUS ATLAS. One of Lemoine's varieties recently imported from France. The pure white, usually four-petaled flowers are enormous, single and exceed 2½ inches wide. This was justly given the Award of Merit of the Royal Horticultural Society. 8-12 in. 85c.

VIBURNUM FRAGRANS. In England this is considered superior even to *Viburnum carlesi* which it resembles in its flowers but not in any other particular as it is of slender, erect habit with entirely different foliage. Here it often starts blooming during the winter as early as January; occasionally even in the fall. It is a magnificent thing but scarce and hard to propagate so we are able to offer only small pot grown grafts about 6 inches tall at \$1.25.

WEIGELA. The following varieties were recently imported from France where they were originated by Lemoine:

IDEAL. Flowers brightly carmine outside and carmine-rose within. Unlike *Eva Rathke* it is a well formed rounded shrub and an extremely free bloomer. 8-12 in. \$1.00.

MAJESTEUX. Erect and vigorous. The medium sized rose pink flowers are very freely produced. 8-12 in. \$1.00.



LONG-CLUSTERED GOLDENCHAIN
Laburnum vossii

CLIMBERS

BILLARDIERA LONGIFLORA. Slender climber highly valued for its large metallic blue berries. Pot grown 2-2½ ft. \$1.00.

JASMINUM STEPHANENSE. This recently introduced vine is of extremely vigorous growth, quickly making an attractive flowering screen. The flowers are soft lavender-pink and very fragrant. Pot grown 3-4 ft. 75c, 1½-2 ft. 50c.

PILEOSTEGIA VIBURNOIDES. This new evergreen vine might be briefly described as a climbing *Laurustinus*. Thrives best in full shade where so few vines do well. Leaves are of good size, leathery, and glossy. White flowers are borne freely in large clusters in Autumn. Looks very promising. Gal. can 1½-2 ft. \$1.25.

EXTRA LONG CLUSTERED WHITE WISTERIA (Wisteria longissima alba). Last year we promised to introduce this fine novelty this season. It is by far the longest clustered white variety we have ever seen, attaining as much as 30 inches in length. Grafted plants grown one year in the field \$2.00.

ROYAL PURPLE WISTERIA. This is being offered now for the first time in this country. It belongs in the Japanese group but instead of the usual very pale color of the Japanese types this is a deep purple. This color is far out of the ordinary and is very striking. The foliage is also noteworthy, being dark green and somewhat glossy, looking almost evergreen. Fortunately it blooms much younger than most of the Japanese varieties so buyers should not have to wait long to see the flowers. This year we are unable to supply anything except grafts which were made last spring and will not of course be very large. \$2.00 each.

PART II.

CONIFERS

COMPACT DEODAR (*Cedrus deodara compacta*). The common Deodar is easily one of our finest trees but as it is extremely variable and soon attains great size it is unsuitable for ordinary grounds. On the other hand this charming variety is much more compact, very silvery and grows only about half as fast. Furthermore, its "leader" is always perfectly straight and erect which is so rarely the case in the common form. Being grafted there is no variation. Where space is limited it is one of the best outdoor Christmas trees. Balled 7-8 ft. \$8.00, 5-6 ft. \$5.50, 4-5 ft. \$4.00; gal. can 2-3 ft. \$1.00; pot grown 1½-2 ft. 75c.

FOUNTAIN DEODAR (*Cedrus deodara fontinalis*). A gem for those who appreciate the unusual. The most striking variant of the Deodar, it produces a mass of very long, slender, drooping, rope-like branches which give it a unique fountain-like appearance. The illustration of the original tree tells more than a longer description. Balled 6-7 ft. \$7.00, 5-6 ft. \$5.50, 4-5 ft. \$4.50; gal. can 3-4 ft. \$2.00; pot grown 1½-2 ft. \$1.00, 1-1½ ft. 75c.

FLETCHER CYPRESS (*Chamaecyparis lawsoniana fletcheri*). This is hardly known at all but it is a beauty. A large shrub, not a tree. Foliage is finely cut, lacy and rich silvery blue. It does not seem to thrive in full sun here but does admirably in partial or moderate shade. Balled 2-3 ft. \$3.50; pot grown 1-1½ ft. 85c.

CRIPPS CYPRESS (*Chamaecyparis obtusa crippsi*). An intensely golden, shrubby conifer with rather fine graceful foliage. Its growth is not rapid and it probably will not attain any very great size. One of the best of its color. Balled 2-2½ ft. \$2.50; pot grown 1-1½ ft. \$1.25.

HOLLYWOOD JUNIPER (*Juniperus chinensis torulosa*). One of our finest conifers which thrives well from Canada to the Mexican border. Color is one of the richest greens seen in any conifer; growth often narrowly erect or sometimes furnished with long branches near the base which can be removed if narrow form is desired. In any case the trunk is never like a pole but always gracefully wavy or slightly twisted, which is the reason for the varietal name "torulosa". In Japan where it is known as Kaizuka Juniper it is becoming one of their most popular conifers and will unquestionably do the same here Balled 7-8 ft. \$8.00, 5-6 ft. \$5.00, 4-5 ft. \$4.00, 3-4 ft. \$3.00; gal. can 1-1½ ft. \$1.00

MEYER JUNIPER (*Juniperus squamata meyeri*). Although we have described this in previous editions it will do no harm to call attention again to such a splendid newcomer which seems to be almost universally admired. Like the preceding variety it is of somewhat irregular growth which frees it from any suggestion of stiffness. Color is a striking blend of gray and silver with a slight violet shading during the winter months. Balled 2½-3 ft. \$3.00, 2-2½ ft. \$2.50, 1½-2 ft. \$2.00; gal. can 1-1½ ft. \$1.25.

DWARF ALBERTA SPRUCE (*Picea glauca conica*). A delightful miniature tree whose growth is so exceedingly slow that it does not make more than an inch or two a year. Always retains a slender conical shape and is highly attractive in rock gardens and other suitable locations. Balled 12-15 in. \$4.00, 10-12 in. \$3.50, 8-10 in. \$3.00.



SMOOTH ROSEACACIA
Robinia hispida macrophylla

HIMALAYAN WEEPING SPRUCE (*Picea smithiana*). A rare and very striking conifer. Its main growth is perfectly erect but the branches and branchlets are decidedly drooping. Foliage is somewhat silvery. Quite rare. Balled 1-1½ ft. \$2.00.

SILVER REDWOOD (*Sequoia sempervirens argentea*). A very rare form of Coast Redwood having brightly silver colored foliage. Grows as vigorously as common Redwood and contrasts pleasingly when planted with it. Gal. can 3-4 ft. \$2.00, 2-3 ft. \$1.50; pot grown 1-1½ ft. 85c.

BLUE REDWOOD (*Sequoia sempervirens glauca*). This natural variety is of-

ten seen in the Santa Cruz Mountains but rarely in the northern range of the Redwood. Foliage has a pronounced bluish tint making it less somber than the common type. Gal. can 3-4 ft. \$1.50; pot grown 1-1½ ft. 75c.

GOLDEN IRISH YEW (*Taxus baccata fastigiata aurea*). An exact counterpart of the well known Irish Yew except that in spring and early summer the leaves are brilliantly variegated with gold. Balled 5-6 ft. \$7.50, 4-4½ ft. \$6.00, 3-3½ ft. \$4.50.

SPREADING GOLDEN YEW (*Taxus baccata repandens aurea*). An excellent conifer of decidedly prostrate habit. Has the typical Yew foliage which is strongly golden in the spring but becomes green in the latter part of the season. Grows slowly. Very fine for rock gardens. Balled 8-12 in. \$1.25, 6-8 in. 75c.



SAUCER MAGNOLIA
Magnolia soulangeana

Balled 8-12 in. \$1.25, 6-8 in. 75c.

BROAD LEAVED EVERGREEN SHRUBS

FRAGRANT ABELIA (*Abelia triflora*). Grows tall and slender with arching branches. Bears dense terminal clusters of long-tubed nearly pure white flowers whose intense fragrance resembles Bouvardia. Pot grown 1½-2 ft. 65c.

WINTER-SWEET (*Acokanthera spectabilis*). This rare shrub has leathery purple leaves and large clusters of very fragrant flowers. It isn't any too hardy but can withstand light frosts outside or is suitable for conservatory culture. Pot grown 4-6 in. 50c.

WARTY BARBERRY (*Berberis verruculosa*). Why such an unpleasant name should have been wished on this delightful shrub is more than we can see. If it has warts they are not in evidence! Of slow growth and makes a compact shrub. Leaves small and holly-like, very silvery beneath. Some plants take on a strong bronze hue as winter approaches; others display many leaves colored brilliant red. Bears a good crop of golden yellow flowers in early spring. Pot grown 8-12 in. 50c, 6-8 in. 40c.

BORONIA ELATIOR. This charming little plant seems to have no common name. Foliage is very finely cut and also very fragrant. Flowers are produced very profusely over a long period in early summer. They are rose colored and look exactly like rather large heather blooms. In fact the plant could be mistaken for a heather, but is totally unrelated and neither requires nor likes acid soil. It is very dainty and attractive. Pot grown 8-12 in. 60c, 6-8 in. 50c.

BRUNFEISIA FLORIBUNDA (*B. calycina*). This shrub is really a wonder. Foliage is about the size and shape of California Privet. Growth slow and generally upright. The flowers are about the size and shape of Vinca and are borne in the greatest profusion through spring and early summer with a scattering crop the rest of the year except during the cold months. When the buds are fully opened the flowers are deep violet. Each flower lasts about a week and in this period slowly changes to pure white with the result that when in bloom the shrub always shows violet, lavender and white flowers at the same time. This would be plenty, but "for good measure," it also has a delightfully rich and powerful fragrance which will perfume an entire garden. Curiously the fragrance intensifies as the color lightens. It is of slow growth and will probably remain scarce for a good many years. Gallon can 2-2½ ft. \$1.75, 1½-2 ft. \$1.50.

CAMELLIA. We carry quite a stock of these beautiful plants but there is such a wide variation in size and varieties that we cannot list them in detail here. Prices on balled plants carrying flower buds range from \$1.50 to \$10.00 each.

CHORIZEMA CORDATUM. Although "Hortus" says this is the same as the well known *C. ilicifolium* we find it distinct. Leaves are rounded and more or less heart-shaped. The Pea shaped flowers are similar but have a more scarlet effect. Pot grown 4-6 in. 25c.

NECKLACE COTONEASTER (*Cotoneaster decora*). Growth is low and spreading, almost prostrate. Leaves are very small, about like those of *Lonicera nitida* and evergreen. Berries are bright red, of good size and borne all along the slender branches. A rather shy bearer at first but later it loads itself with enormous crops. Balled 3-4 ft. wide \$3.00, 1½-2 ft. wide \$1.50; pot grown 8-12 in. 50c.

ROSE QUEEN DAPHNE. This is a distinct variety of the old favorite Pink Daphne of California gardens. Leaves are dark green with no variegation. Flowers are larger than in the common yellow-edged form, have the usual rich fragrance, are deep rose outside, light pink within and produced in much larger clusters. Also the plant is of more compact habit. Very fine. Balled 18-24 in. \$3.50, 15-18 in. \$2.50, 12-15 in. \$2.25; gal. can 6-8 in. \$1.00; pot grown 4-6 in. 75c.

GOLDENLEAF ELEAGNUS (*Eleagnus pungens maculata*). The common *Eleagnus* with slight variegation around the edges is common and not particularly esteemed. This is decidedly different as all the central part of leaves is golden yellow with green margin. It is very difficult to propagate so is rare and no large stock available at this time. Gal. can 1½-2 ft. \$1.00, 1-1½ ft. 75c; pot grown 1-1½ ft. 60c.

BANANA SHRUB (*Michelia fuscata*). This has been a favorite for many years but being difficult to propagate always has been and still is very scarce. It is of very slow growth, does not like full sun and bears small Magnolia-like flowers which are yellow marked with ruddy brown. These have a strong but very agreeable banana-like fragrance. Balled 1-1½ ft. \$2.50; pot grown 8-12 in. 85c, 6-8 in. 75c.

ORANGE JASMINE (*Murraea exotica*). Related to and slightly resembles *Choisya*. Growth is slower and leaves and leaflets smaller. Bears fragrant white flowers followed by clusters of red berries. It blooms very freely over a good portion of the year. Pot grown 6-8 in. 60c.

ROGERS ORANGE FIRETHORN (*Pyracantha rogersiana aurantiaca*). Berries are orange not red, borne all along the slender, long, willowy branches which, the second year, bear clear to the tips. This point makes this Firethorn about the best of all berry bearing plants as a source of cut material for decoration. Flowers are white and borne so profusely that it would be worth planting as a good flowering shrub even if it never fruited at all. Cutting the berried branches is beneficial to the plant as this leaves the way clear for the new wood to bear in turn the following year. 5 gal. can 3-4 ft. \$2.00; gal. can 3-4 ft. \$1.25, 2-3 ft. \$1.00, 1½-2 ft. 85c; pot grown 2-3 ft. 85c, 1½-2 ft. 75c.

RHODODENDRONS. We have a nice stock of Pink Pearl and other grafted varieties. Excellent plants well set with flower buds from \$3.35 to \$7.00.

SKIMMIA JAPONICA. A very dwarf and slow growing Japanese plant which requires both shade and acid soil. The male plants have attractive white flowers which are as fragrant as Lily of the Valley. The female plants bear a fine crop of orange-red berries. Pot grown 8-12 in. \$1.00, 6-8 in. 75c, 4-6 in. 60c.

SPARMANNIA AFRICANA. Grows very rapidly and makes a large shrub. It is related to the Lindens and has somewhat similar foliage. Produces a fairly good crop of white flowers in clusters. Entire effect is quite tropical. Pot grown 1½-2 ft. 50c.

TEMPLETONIA RETUSA. Australian shrub of unusual appearance. Belongs to the pea family and has long slender red flowers. Gal. can 8-12 in. 75c.

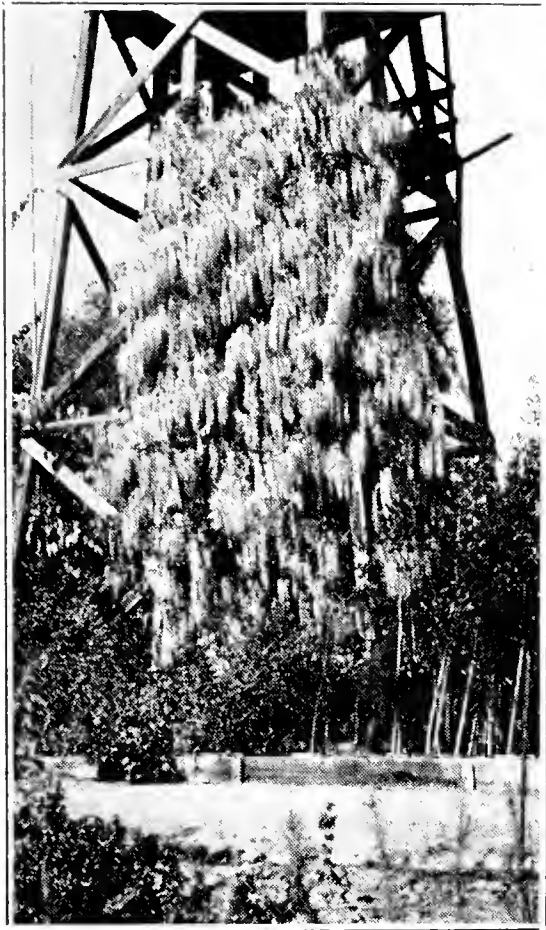
DECIDUOUS TREES

DAVIDIA INVOLUCRATA. This is the famous and extremely rare Dove Tree of China. We have only a very few plants; 20 in. \$10.00, 12 in. \$7.50, 10 in. \$6.00, 8 in. \$4.00.

RED HORSECHESTNUT (*Aesculus*). It seems to us that the Horsechestnuts are not planted as widely as they should be in California. The red or pink forms are particularly esteemed as they make trees of medium size which in spring are covered with showy erect panicles which contrast beautifully with the deep green leaves. Growth is rather slow. Top grafted 4-5 ft. \$3.00; seedlings 3-4 ft. \$1.25, 2-3 ft. \$1.00.

PURPLE LEAVED BEECH. We have some very fine trees this season not only in the usual erect type but also in the very rare weeping form at prices ranging from \$5.00 to \$20.00 for erect and \$7.50 to \$10.00 for weeping.

LONG-CLUSTERED GOLDEN CHAIN (*Laburnum vossii*). A small tree with green bark and foliage like exaggerated clover leaves. Flowers are pure golden yellow and formed exactly like those of *Wisteria*. The hanging clusters attain as much as 18 to 20 inches length and are borne very profusely in late spring. Very beautiful and even the smallest size will usually bloom the first year. Having a large stock we are making unusually low prices this season. 8-10 ft. \$2.50, 6-8 ft. \$2.00, 3-4 ft. \$1.00.



**JAPANESE LONG-CLUSTERED
WISTERIA**
W. floribunda longissima

SMOOTH ROSE-ACACIA (*Robinia hispida macrophylla*). Also called Large Flowering Pink Locust. To make a tree it has to be top-grafted on suitable straight stems. Bears a great profusion of large clusters of flowers in late spring. Individually they are exactly like large lavender-pink sweet peas. They always bloom the first season planted and every spring thereafter. When young the trees look somewhat artificial but as the head develops this effect entirely disappears and the result is a beautiful round headed tree with a perfectly straight trunk. We have them with heads of various ages and development and on stems of different height as shown in the following price schedule:

	extra heavy heads	heavy heads
8 ft. stem	\$6.00
7 ft. stem	5.00	\$3.50
6 ft. stem	4.00	3.00
5 ft. stem	2.50

At first the heads balance better with the shorter stems but this is only temporary and in the long run the taller stems are far better. We also have specimen trees from \$7.50 to \$10.00 each.

JAPANESE MAPLES (*Acer palmatum* vars.). We have an excellent stock of much finer plants of Purple Leaved Japanese Maples than are usually available in

both the finely cut-leaved and broader leaved forms. Prices range from \$4.00 to \$15.00.

DECIDUOUS SHRUBS

MAGNOLIA MACROPHYLLA. This large shrub or small tree is a native of the South-Eastern States and is probably the most striking tree that can be grown in the temperate climates. The huge leaves are sometimes almost 3 ft. long and over a foot wide. The flowers are proportionately large, commonly a foot across and sometimes up to 18 or 20 inches wide. Stock limited. Gal. can 1½-2 ft. \$2.00.

JAPANESE FLOWERING QUINCES

(*Chaenomeles*, formerly called *Cydonia*.)

Few are aware of the great range of types and colors found in these beautiful and very early blooming plants. No matter how small, they usually bloom from first season on.

CORAL GLOW (*Ch. japonica corallina*). One of our finest kinds. Growth moderate and will not get as large as the common form. Habit somewhat spreading so will usually be about as wide as tall. An extremely heavy bloomer sometimes covering the bush almost completely with its beautiful coral or salmon-apricot colored flowers. 3-4 ft. \$1.50, 2-3 ft. \$1.25, 1½-2 ft. \$1.00, 1-1½ ft. 75c.

JAPANESE SCARLET (*Ch. lagenaria*). The old favorite and really rose pink. 4-6 ft. \$1.25, 1-1½ ft. 60c.

BLOOD RED (*Ch. lagenaria rubra grandiflora*). Very early, very large flowers, deep red. 1-1½ ft. 75c, 8-12 in. 60c.

Assorted Varieties

Letters indicate which sizes are available of each kind.

A 3 -4 ft.	\$1.25	D 1 -1½ ft.60
B 2 -3 ft.	1.00	E 8 -12 in.50
C 1½-2 ft.75		

PYGMAEA (*Ch. japonica alpina*). Very dwarf flowers; orange. C-D
Varieties of *Chaenomeles lagenaria*:

APPLE BLOSSOM. Growth vigorous; flowers pink and white. B-C

ATROCOCCINEA. Flowers deep red, semi-double. E

CARDINALIS. Flowers large brilliant scarlet. E

COLUMBIA. Flowers elongated, rosy red. B-C-D

GRANDIFLORA. Flowers large. At first lemon, tinted pink, but deep rose when old. A-B-C

KERMESINA SEMIPLANA. Flowers large, often semi-double, varying from "Apple-blossom" to brilliant clear red. Usually has a second crop. C-D-E

MACROCARPA. Flowers of medium size, bright orange red. Practically thornless. Fruit very large. C-D-E

MARMORATA. Similar to Grandiflora but a little lighter and softer colored. The old flowers assume a lovely soft rose hue. B-D-E

SEMPERFLORENS. Deep rose pink. Bears on new wood as well as old. E

VERSICOLOR. Buds "appleblossom". Open flowers usually rose-pink. B-D-E

WHITE. White as snow entirely without any tinting. A-B-C-D-E

The following are varieties of *Chaenomeles superba* which is a hybrid between *Ch. japonica* and *Ch. lagenaria*. All have dark green leathery leaves and growth is compact.

ATROSANGUINEA. Flowers fiery scarlet. D

PERFECTA. Buds pale lemon; flowers light rose. Blooms well in the fall. Slow growing and almost dwarf. E

ROSEA. Flowers deep rose. D-E

LILACS

CHRISTOPHER COLUMBUS. Buds mauve; flowers pure blue, single. Exquisite. The most beautiful single blue to date. Grows very slowly. 1-1½ ft. \$1.25, 8-12 in. \$1.00.

EDEN. An excellent single dark purple variety originated by A. A. Oliver of Mt. Eden, California. 1½-2 ft. \$1.00, 1-1½ ft. 75c.

LUCIE BALTET. Single coppery-rose color entirely different from any other variety. blooms young and freely. Very fine. 1½-2 ft. \$1.25, 1-1½ ft. \$1.00.

PRESIDENT LINCOLN. A very beautiful Wedgewood blue lilac with large single flowers in clusters of good size. It is early, vigorous and very fragrant. 1½-2 ft. \$1.25, 1-1½ ft. \$1.00.

SUNOL. This is merely a provisional name for an unidentified variety. Buds are purple, open flowers blue-lilac with strong fragrance. Extremely double having a greater number of petals than we have ever seen on any other variety. 1½-2 ft. \$1.25, 1-1½ ft. \$1.00.

VESUVE. One of the very darkest single lilacs known. Growth very slow; almost dwarf. 8-12 in. 75c.

General Collection

Customers will please confine their orders to the sizes specified. Lilacs are very scarce this season so it will be well to state whether we may substitute the nearest available thing in case we should be sold out of any particular item. More complete descriptions are given in "Garden Aristocrats 1936" which will be mailed on request.

Price Schedule

A 6-7 ft.....	\$5.00 to \$7.50	E 2 -3 ft. None available in named varieties.	
B 5-6 ft.....	4.00 to 5.00	F 1½-2 ft.....	1.00
C 4-5 ft.....	2.50	G 1 -1½ ft.....	.75
D 3-4 ft.....	1.75		

Double Varieties

ADELAIDE DUNBAR. Violet-red. G	MME. LEMOINE. Creamy White. G
CHAS. SARGENT. Blue-mauve. A-B-C	MONTAIGNE. Pinkish-mauve. G
CLAUDE BERNARD. Lavender. A also 8-10 ft. \$7.50.	MRS. EDWARD HARDING. Pink approaching red. F
EMILE GENTIL. Blue. G	MY FAVORITE. Dark purple. B-C
GEORGES BELLAIR. Reddish-purple. G	PRES. FALLIERES. Lavender. G
HIPPOLYTE MARINGER. Mauve-purple. C-G	PRINCESS CLEMENTINE. White. G
KATHERINE HAVEMEYER. Mauve-lilac. B-C-F	VAUBAN. Mauve-pink. Semi-double. A-B-C
LEON GAMBETTA. Soft lilac. A-B	

Single Varieties

ALINE MOCQUERIS. Purplish-lilac. G	LOUVOIS. Blue-purple. C
CAPT. BALTET. Lilac. G	LUDWIG SPAETH. Deep purple. C
DR. BREITSCHNEIDER. Clear pink; late. F-G	MIRABEAU. Mauve-blue; very early. A-B-C-G
DR. LINDLEY. Lilac-purple. G	MME. R. GOYER. Violet-lilac. F-G
EDMOND BOISSIER. Deep purple. A-B-C	REAUMUR. Violet-purple. C
JAN VAN TOL. White. G	RUHM VON HORSTENSTEIN. Purple-lilac. G
LAMARTINE. Mauve-pink; very early. A-B-C	SINAI. Lilac-rose. G

Species Lilacs

SYRINGA CHINENSIS. Usually called Persian Lilac. E	SYRINGA REFLEXA. (Nodding Lilac). Buds deep rose; flowers rosy pink in drooping clusters 9-12 inches long, literally covering the bush. G
SYRINGA JAPONICA. (Japanese Tree Lilac). Really makes a tree and is latest of all to bloom—in late May or June here. Flowers are white in immense compound panicles 18-24 in. long. Blooms when other flowers are scarce. C-D	SYRINGA TOMENTELLA (Feltz Lilac). Discovered in Tibet by the late Ernest Wilson who considered it the most beautiful Lilac he had ever seen. Flowers rose lilac in medium clusters. F-G

CLIMBERS

EVERGREEN WISTERIA (Lonchocarpus sp.). This is a remarkable vine which instead of blooming in the spring has an extremely heavy crop of deep purple colored flowers in late fall. In very mild climates it probably continues to bloom through the winter but here it is finally stopped by severe frost before all the buds have opened. It seems to be plenty hardy enough for our district. Freezing often causes it to drop a good proportion of its leaves although it is probably perfectly evergreen in Southern California. Gal. can 1-1½ ft. \$1.50.

SNAIL VINE (Phaseolus caracalla). An old favorite which is scarce. The very large pea shaped flowers are coiled in a peculiar manner which accounts for the common name. They are cream color marked with purple and very fragrant. Pot grown 2½-3 ft. \$1.00, 2-2½ ft. 75c.

WISTERIAS

We believe we grow the most complete collection in this country. Varieties were very completely described in "Garden Aristocrats 1936" (copy will be sent on request). All our stock is grafted. Sizes available for each variety are indicated by letters. "From beds" indicates bench grafts made last spring; 1 year, 2 year, etc., shows how long these have been grown in the nursery rows.

Novelties

W. floribunda longissima alba.

W. floribunda Royal Purple.

For descriptions and prices of these two see Part I.

Special List

B 3 years \$3.00
 C 2 years 2.25
W. floribunda "Issai". Deep purple. D-E
W. floribunda kyushaku. Very long clusters. D-E
W. sinensis Jako. White. Very fragrant. C-D
W. sinensis nankinensis (Miniature Wisteria). Very dwarf. B-C-D-E

D 1 year 1.50
 E from beds 1.00

W. venusta violacea. This is the purple counterpart of the SILKY WHITE WISTERIA. It is a tremendous bloomer and has the general appearance of *W. sinensis* but the flower clusters are even more massed. Blooms young and freely. We believe this is the first time this has been offered in this country. D-E

General List

A 4 years \$4.00
 B 3 years 2.50
 C 2 years 1.50
W. floribunda (Japanese Wisteria). Commonly called *W. multijuga*. B-C-D-E
W. floribunda alba (White Japanese Wisteria). D-E
W. floribunda carnea. Flesh pink. A-C-D
W. floribunda longissima (Extra Long Clustered Wisteria). B-C-D-E
W. floribunda rosea (Pink Japanese Wisteria). A-B-C-D-E

D 1 year 1.00
 E from beds65

W. floribunda violacea plena. Double dark purple. A-B-C-D-E
W. sinensis (Chinese Wisteria). Lavender. B-D-E
W. sinensis alba (White Chinese Wisteria). D-E
W. venusta alba (Silky White Wisteria). D-E
W. sp. Mrs. McCullagh. Lavender-purple. B-C-D

STANDARD WISTERIAS

These are grown like Standard Roses but with a taller stem, about 4½ to 5 ft. This method prevents the growth of long climbing shoots and makes them bloom tremendously as illustration shows. Nothing is more beautiful in a garden. The "heavy" stock consists of strong plants several years old.

The "regular" stock has strong stems and well developed heads.

The "light" stock is simply a start in the right direction but with stem of full height and head commencing to form.

Novelty

ROYAL PURPLE. Described in Part I. Light grade only. \$3.00.

General List

Letters show grades available for each variety. Descriptions above.

A heavy \$5.00 B regular \$3.50 C light \$2.50
W. FLORIBUNDA ALBA. C
W. FLORIBUNDA ISSAI. C
W. FLORIBUNDA KYUSHAKU. C
W. FLORIBUNDA ROYAL PURPLE. C
W. FLORIBUNDA LONGISSIMA. BC. We also have specimens in this variety.
W. FLORIBUNDA ROSEA. BC. We also have very strong old specimens in this variety ranging from \$10.00 to \$35.00 each.
W. FLORIBUNDA VIOLACEA PLENA. ABC.
W. SINENSIS. BC
W. SINENSIS ALBA. C

PART III.

PRICE LIST OF ITEMS NOT DESCRIBED AND PRICED IN PART I.

SPECIMEN PLANTS. We have a large number of beautiful specimen plants in various lines, some in containers, others in open ground. As it is not practical to include them here, prices on such material will be quoted upon request, but the best way is to come to the nursery and see them if at all possible.

OTHER PLANTS. If you are looking for anything in woody plants and do not find it in this Booklet, we suggest that you inquire of us as we have many things in rather limited quantities, some of them very scarce, which are not mentioned herein.

CONIFERS

- ABIES cephalonica**, GREEK FIR. Balled 3-3½ ft. \$3.50, 1½-2 ft. \$2.00; pot grown 1-1½ ft. 85c.
- concolor**, WHITE FIR. Pot grown 1-1½ ft. \$1.00.
- nordmanniana**, NORDMANN FIR. Balled 2-2½ ft. \$3.00, 1½-2 ft. \$2.50.
- pinsapo**, SPANISH FIR. Balled 1½-2 ft. \$3.00, 15-18 in. \$2.25; pot grown 1-1½ ft. \$1.00.
- pinsapo glauca**, BLUE SPANISH FIR. Balled 1½-2 ft. \$3.00, 15-18 in. \$2.50; pot grown 12-15 in. \$1.00.
- ARAUCARIA bidwilli**, BUNYA-BUNYA. Balled 4-5 ft. \$5.00; pot grown 2-3 ft. \$1.00.
- CEDRUS atlantica aurea**, GOLDEN ATLAS CEDAR. Balled 2½-3 ft. \$3.00, 2-2½ ft. \$2.50; pot grown 1-1½ ft. 85c.
- atlantica glauca**, BLUE ATLAS CEDAR. Balled 8-9 ft. \$10.00, 7-8 ft. \$9.00, 4-5 ft. \$4.00, 3-4 ft. \$3.00.
- deodara**, DEODAR. Balled 10-20 ft. \$15.00 to \$50.00, 3-4 ft. \$2.75; gal. cans 3-4 ft. \$1.00; pot grown 2-3 ft. 60c, 1½-2 ft. 50c.
- deodara aurea**, GOLDEN DEODAR. Balled 4-5 ft. \$5.00, 3-4 ft. \$3.50, 2-3 ft. \$2.50; gal. cans 2-3 ft. \$1.50; pot grown 1½-2 ft. \$1.00.
- libanotica (libani)**, CEDAR OF LEBANON. Balled 10-20 ft. \$15.00 to \$50.00, 8-10 ft. \$10.00; gal. cans 2-3 ft. \$1.00; pot grown 1½-2 ft. 50c.
- libanotica compacta**, COMPACT CEDAR OF LEBANON. Pot grown 1-1½ ft. 75c.
- libanotica nana**, DWARF CEDAR OF LEBANON. Balled 10-15 in. \$1.25; pot grown 8-12 in. 75c.
- CHAMAECYPARIS lawsoniana**, LAWSON CYPRESS. Balled 6-8 ft. \$6.00, 4-6 ft. \$4.00; pot grown 4-5 ft. \$1.00.
- lawsoniana allumi**, SCARAB CYPRESS. Balled 5-6 ft. \$6.00, 4-5 ft. \$4.00, 3-4 ft. \$3.00; pot grown 1½-2 ft. 85c.
- lawsoniana erecta viridis**, GREEN COLUMN CYPRESS. Balled 5-6 ft. \$5.00 up, 4-5 ft. \$3.50.
- lawsoniana nidiformis**, BIRNNEST CYPRESS. Balled 3-4 ft. \$3.50, 2½-3 ft. \$3.00, 1½-2 ft. \$2.00; gal. cans 1-1½ ft. \$1.00.
- lawsoniana stewarti**, WINTERGOLDEN CYPRESS. Pot grown 1½-2 ft. 75c.
- lawsoniana wisseli**, WISSEL CYPRESS. Balled 2½-3 ft. \$3.25, 1½-2 ft. \$2.25; pot grown 1-1½ ft. 75c.
- nootkatensis glauca**, SILVER NOOTKA CYPRESS. Balled 8-10 ft. \$10.00, 5-6 ft. \$6.00.
- CUPRESSUS macrocarpa lutea**, GOLDEN MONTE-REY CYPRESS. Gal. cans 4-5 ft. \$1.50; pot grown 1½-2 ft. 75c.
- JUNIPERUS chinensis albovariegata**, WHITELEAF CHINESE JUNIPER. Balled 4-5 ft. \$4.00, 3-4 ft. \$3.00; gal. cans 1-1½ ft. 75c.
- chinensis columnaris**, COLUMNAR CHINESE JUNIPER. Balled 8-10 ft. \$9.00, 6-8 ft. \$6.00, 5-6 ft. \$4.00; gal. cans 1½-2 ft. \$1.00.
- chinensis pfizeriana**, PFITZER JUNIPER. Balled 2-2½ ft. \$2.50.
- conferta**, SHORE JUNIPER. Balled 2½-3 ft. \$3.00, 1½-2 ft. \$1.75, 12-15 in. \$1.25; pot grown 6-8 in. 75c.
- japonica (chinensis procumbens)**, JAPANESE CREEPING JUNIPER. Gal. cans 1-1½ ft. 75c.
- japonica albovariegata**, SILVER DWARF JAPANESE JUNIPER. Balled 1½-2 ft. \$2.50, 1-1½ ft. \$2.00.
- japonica aureovariegata**, GOLDEN DWARF JAPANESE JUNIPER. Balled 2-2½ ft. \$3.00, 1½-2 ft. \$2.50.
- virginiana glauca**, SILVER REDCEDAR. Balled 6-8 ft. \$5.00, 5-6 ft. \$3.00, 4-5 ft. \$2.50.
- virginiana lebretoni**, LEBRETON REDCEDAR. Balled 5-5½ ft. \$6.00, 3-4 ft. \$4.00, 2½-3 ft. \$2.50, 2-2½ ft. \$2.00.
- sp.**, WILSON'S WEEPING JUNIPER. Balled 5-6 ft. \$8.00, 4½-5 ft. \$6.00, 3-4 ft. \$4.00; gal. cans 1½-2 ft. \$1.00.
- LIBOCEDRUS chilensis**, CHILEAN INCENSE-CEDAR. Gal. cans 1½-2 ft. \$1.00; pot grown 1-1½ ft. 75c.
- decurrens**, CALIFORNIA INCENSE-CEDAR. Gal. cans 1-1½ ft. 75c.
- decurrens compacta**, COMPACT CALIFORNIA INCENSE-CEDAR. Gal. cans 1-1½ ft. \$1.00.
- PICEA pungens**, COLORADO SPRUCE. Balled 4-5 ft. \$5.00, 3-4 ft. \$4.00, 2-2½ ft. \$2.50, 1½-2 ft. \$2.00.
- pungens glauca**, COLORADO BLUE SPRUCE. Balled 1½-2 ft. \$3.50.
- PINUS coulteri**, COULTER PINE. Balled 4-5 ft. \$3.50; pot grown 1-1½ ft. 60c.
- densiflora**, JAPANESE RED PINE. Pot grown 1½-2 ft. 50c.
- mugo mughus**, MUGHO PINE. Balled 1½-2 ft. \$3.00; gal. cans 6-8 in. 75c; pot grown 4-6 in. 50c.
- pinca**, ITALIAN STONE PINE. Balled 6-8 ft. \$6.00; gal. cans 5-6 ft. \$1.00, 4-5 ft. 75c; pot grown 2-3 ft. 60c, 1-1½ ft. 50c.
- ponderosa**, WESTERN YELLOW PINE. Balled 6-8 ft. \$6.00, 5-6 ft. \$4.00, 4-5 ft. \$3.00; pot grown 2-3 ft. \$1.00, 1½-2 ft. 75c.
- thunbergi**, JAPANESE BLACK PINE. Pot grown 1½-2 ft. 50c.
- torreyana**, TORREY PINE. Gal. cans 3-4 ft. \$1.00; pot grown 4-5 ft. 75c, 3-4 ft. 60c, 1½-2 ft. 50c.
- PODOCARPUS macrophylla**, YEW PODOCARPUS. Pot grown 2-3 ft. \$1.00.
- nagi**, JAPANESE PODOCARPUS. Pot grown 1-1½ ft. \$1.00.
- PSEUDOTSUGA taxifolia (douglasi)**, DOUGLAS-FIR. Pot grown 1½-2 ft. 60c.
- SEQUOIA gigantea**, GIANT SEQUOIA. Gal. cans 3-4 ft. \$1.25.
- sempervirens**, REDWOOD. Balled 6-8 ft. \$5.00; 5-gal. cans 5-6 ft. \$3.00, 4-5 ft. \$2.50, 3-4 ft. \$2.00; pot grown 1½-2 ft. 60c, 1-1½ ft. 50c.
- TAXUS baccata**, ENGLISH YEW. Balled 5-6 ft. \$6.00, 4-5 ft. \$5.00, 3-4 ft. \$4.00, 2-3 ft. \$3.00.
- baccata fastigiata**, IRISH YEW. Balled 6-7 ft. \$8.00, 4½-5 ft. \$6.00, 4-4½ ft. \$5.00, 3½-4 ft. \$4.50, 3-3½ ft. \$4.00, 2½-3 ft. \$3.50.
- THUJA occidentalis pyramidalis**, AMERICAN PYRAMIDAL ARBOR-VITAE. Balled 9-10 ft. \$10.00, 8-9 ft. \$8.00, 7-8 ft. \$6.50, 5-6 ft. \$4.00; Gal. cans 1½-2 ft. 85c.
- orientalis aurea nana**, BERCKMAN'S GOLDEN ARBOR-VITAE. Balled 24-28 in. \$2.50, 20-24 in. \$2.00.
- orientalis beverleyensis**, BEVERLEY HILLS GOLDEN ARBOR-VITAE. Balled 7-12 ft. \$7.50 to \$20.00.
- orientalis pyramidalis**, ORIENTAL PYRAMIDAL ARBOR-VITAE. Balled 4-5 ft. \$5.00.
- THUJOPSIS dolobrata variegata**, GOLDEN FALSE ARBOR-VITAE. Pot grown 1-1½ ft. 75c.
- TORREYA californica**, CALIFORNIA-NUTMEG. Gal. cans 1½-2 ft. \$1.00; pot grown 1-1½ ft. 60c.

BROAD LEAVED EVERGREEN TREES

- ACACIA baileyana**, COOTAMUNDRA WATTLE. Gal. cans. 3-4 ft. 60c.
- baileyana purpurea**. Pot grown 1-1½ ft. 50c.
- podalyriaefolia**, PEARL ACACIA. Pot grown 1-1½ ft. 50c.
- CINNAMOMUM camphora (Camphora officinalis)**, CAMPHOR TREE. Gal. cans 3-4 ft. 75c; pot grown 2-3 ft. 50c.
- EUCALYPTUS erythronema**, REDTHREAD EUCALYPTUS. Gal. cans 4-5 ft. \$1.25, 2-3 ft. 75c.
- MAGNOLIA grandiflora**, SOUTHERN MAGNOLIA. Balled 5-6 ft. \$4.50.
- QUERCUS agrifolia**, CALIFORNIA LIVE-OAK. Gal. cans 5-6 ft. \$1.00; pot grown 4-5 ft. 75c, 3-4 ft. 60c, 2-3 ft. 50c.
- chrysolepis**, GOLDENCUP OAK. Pot grown 2-3 ft. 75c.
- suber**, CORK OAK. Gal. cans 2-3 ft. 75c; pot grown 1½-2 ft. 60c.
- SCHINUS molle**, CALIFORNIA PEPPERTREE. Gal. cans 5-6 ft. 85c; pot grown 3-4 ft. 40c, 2-3 ft. 30c.
- ULMUS sp.**, EVERGREEN ELM. Gal. cans 2-3 ft. 75c.
- UMBELLULARIA californica**, CALIFORNIA LAUREL. Gal. cans 2-3 ft. \$1.00; pot grown 1½-2 ft. 60c, 1-1½ ft. 50c.

BROAD LEAVED EVERGREEN SHRUBS

- ABELIA schumanni**, PINK ABELIA. Pot grown 8-12 in. 50c.
- ARBUTUS menziesii**, MADRONE. Pot grown 2-2½ ft. \$1.25, 1½-2 ft. \$1.00, 1-1½ ft. 75c.
- unedo**, STRAWBERRY-TREE. Balled 5-6 ft. \$5.00.
- AUCUBA japonica variegata**, GOLDDUST AUCUBA. 5-gal. cans 1½-2 ft. \$1.50; gal. cans 15-18 in. \$1.00, 12-15 in. 85c; pot grown 8-12 in. 50c.
- japonica**, Gold Blotched (male). Gal. cans 6-8 in. 60c; pot grown 4-6 in. 40c.
- AZARA microphylla**, BOXLEAF AZARA. Gal. can 1½-2 ft. 60c.

- BERBERIS darwini**, DARWIN BARBERRY. Gal. cans 1½-2 ft. 60c; pot grown 8-12 in. 30c.
- julianae**, WINTERGREEN BARBERRY. Pot grown 1½-2 ft. 75c, 1-1½ ft. 60c.
- knighti**. Gal. cans 1½-2 ft. 75c, 1-1½ ft. 60c; pot grown 1-1½ ft. 50c.
- BUDDLEIA Ile de France**. Pot grown 1½-2 ft. 50c.
- CANTUA buxifolia**, INCA SHRUB. Gal. cans 2-3 ft. 60c; pot grown 1½-2 ft. 50c, 6-8 in. 35c.
- CARMICHAELIA williamsi**. Pot grown 1½-2 ft. 50c.
- CEANOTHUS Charles Detriche** (deep blue). Pot grown 1-1½ ft. 50c.
- cyaneus**, LAKESIDE WILD LILAC. Gal. cans 3-4 ft. \$1.00, 2-3 ft. 75c; pot grown 1½-2 ft. 50c, 1-1½ ft. 40c.
- Marie Simon** (pink). Pot grown 1-1½ ft. 60c.
- thyrsiflorus**, BLUEBLOSSOM. Gal. cans 1½-2 ft. 50c.
- CERATOSTIGMA willmottianum**. Gal. cans 1½-2 ft. 75c.
- CITRUS limonia** var., DWARF LEMON. Gal. cans 1½-2 ft. \$1.50; pot grown 8-12 in. \$1.00.
- COLEONEMA pulchrum**, PINK DIOSMA. Gal. cans 1½-2 ft. \$1.00; pot grown 8-12 in. 50c.
- COLQUHOUNIA vestita**. Pot grown 6-8 in. 25c.
- COTONEASTER apiculata**, CRANBERRY COTONEASTER. Grafted. Pot grown 8-12 in. 65c.
- buxifolia vellea** (called *C. pannosa nana*). Pot grown 1½-2 ft. 60c, 1-1½ ft. 50c.
- francheti**, FRANCHET COTONEASTER. Gal. cans 3-4 ft. 75c.
- harroviana**. Balled 6-8 ft. \$3.00 to \$4.00; gal. cans 3-4 ft. 75c; pot grown 1-1½ ft. 50c.
- henryana**. Pot grown 2-3 ft. 60c.
- horizontalis minor**. Balled 2-2½ ft. \$1.50; pot grown 1-1½ ft. 75c.
- microphylla**, ROCKSPRAY. Balled 3-4 ft. wide \$3.00, 2-3 ft. wide \$2.00.
- microphylla thymifolia**, THYME ROCKSPRAY. Pot grown 1-1½ ft. 50c.
- pannosa**, SILVERLEAF COTONEASTER. Balled 8-10 ft. \$5.00; pot grown 1½-2 ft. 50c.
- parnayi**, PARNAY COTONEASTER. Balled 4-6 ft. \$3.00, 3-4 ft. \$2.25; pot grown 2-2½ ft. 60c, 1½-2 ft. 50c.
- praecox**, EARLY COTONEASTER. Balled 2-3 ft. \$2.00; pot grown 1-1½ ft. 60c.
- pyrenaica**, PYRENEES COTONEASTER. Pot grown 8-12 in. \$1.00.
- salicifolia**, WILLOWLEAF COTONEASTER. Balled 6-8 ft. \$5.00, 5-6 ft. \$4.00; gal. cans 2-3 ft. 75c; pot grown 1½-2 ft. 60c.
- CYTISUS praecox albus**. Pot grown 8-12 in. 60c.
- racemosus**, EASTER BROOM. Gal. cans 1½-2 ft. 60c; pot grown 50c.
- sceparius andreanus**, PARADISE BROOM. Pot grown 8-12 in. 60c.
- DAPHNE cneorum**, ROSE DAPHNE. Balled 15-18 in. \$1.75, 12-15 in. \$1.50; pot grown 4-6 in. 50c.
- odora marginata**, PINK DAPHNE. Gal. cans 6-8 in. 85c; pot grown 4-6 in. 75c.
- DIOSMA ericoides**, BREATH-OF-HEAVEN. Pot grown 1½-2 ft. 50c.
- ELAEAGNUS pungens variegata**, YELLOWEDGE ELAEAGNUS. Gal. cans 2-3 ft. 75c; pot grown 1½-2 ft. 50c, 1-1½ ft. 40c.
- EUONYMUS japonicus aureomarginatus**, GOLDEN EUONYMUS. Gal. cans 2-3 ft. 75c.
- EUPATORIUM cannabinum**, HEMP AGRIMONY. Pot grown 1-1½ ft. 50c.
- FATSIA papyrifera**, PAPERBERRY. 5-gal. cans 3-4 ft. \$1.50; gal. cans 1-1½ ft. 60c; pot grown 1-1½ ft. 30c.
- FREMONTIA mexicana**. Gal. cans 2-3 ft. 85c; pot grown 1½-2 ft. 60c, 1-1½ ft. 50c.
- GARRYA fremonti**. Gal. cans 3-4 ft. \$1.00.
- HAKEA laurina**, SEA URCHIN. Gal. cans 3-4 ft. \$1.00.
- HEDERA conglomerata**, BUNCHLEAF ENGLISH IVY. Pot grown 4-6 in. 50c.
- HYMENANTHERA crassifolia**. Pot grown 1-1½ ft. 50c.
- HYPERICUM calycinum**, Root divisions \$7.50 per 100.
- patulum**, JAPANESE HYPERICUM. Pot grown 2-3 ft. 50c.
- ILEX aquifolium**, ENGLISH HOLLY. Balled 6-7 ft. \$3.50; pot grown 1½-2 ft. 60c, 1-1½ ft. 50c.
- aquifolium femina**, FEMALE ENGLISH HOLLY. Gal. cans 2-2½ ft. \$1.50; pot grown 1-1½ ft. 75c.
- aquifolium**, DUTCH HOLLY. Balled 2½-3 ft. \$2.00, 2-2½ ft. \$1.75; gal. cans 2-3 ft. \$1.50, 1½-2 ft. \$1.25.
- aquifolium**, VAN TOL HOLLY. Gal. cans 2-3 ft. \$1.75, 1½-2 ft. \$1.50, 8-12 in. \$1.00.
- aquifolium**, GOLDEN VARIEGATED HOLLY (female). Gal. cans 1½-2 ft. \$1.75, 15-18 in. \$1.25, 12-15 in. \$1.00; pot grown 8-12 in. 75c.
- aquifolium**, SILVER VARIEGATED HOLLY (female). Gal. cans 1½-2 ft. \$2.00; pot grown 4-6 in. 75c.
- cornuta**, CHINESE HOLLY (female grafted). Gal. cans 15-18 in. \$1.50, 12-15 in. \$1.25; pot grown 8-12 in. 75c, 1-1½ ft. (seedlings) 50c.
- integra** (Mochi-no-ki). Pot grown 1½-2 ft. 75c.
- oldhami** (Nanami-no-ki; Kurogane-nochi). Pot grown 1½-2 ft. 75c.
- pedunculosa**. Pot grown 6-8 in. 75c.
- rotunda** (Fukura-shiba). Pot grown 1-1½ ft. 75c.
- LAURUS nobilis**, GRECIAN LAUREL; BAY TREE. Gal. cans 3-4 ft. \$1.25; pot grown 2-3 ft. 75c, 1½-2 ft. 60c.
- LAVATERA olbia**. Pot grown 8-12 in. 20c.
- LEPTOSPERMUM laevigatum**, AUSTRALIAN TEA-tree. Gal. cans 4-5 ft. 75c; pot grown 3-4 ft. 60c, 2-3 ft. 50c.
- LIGUSTRUM ovalifolium variegatum**, GOLDEN PRIVET. Gal. cans 4-5 ft. 75c; pot grown 2-3 ft. 50c.
- MAHONIA aquifolium**, OREGON HOLLY-GRAPE. Balled 2-3 ft. \$1.75; gal. cans 1-1½ ft. 50c.
- bealei** (*M. japonica*), LEATHERLEAF HOLLY-GRAPE. Gal. cans or pot grown 1-1½ ft. 60c.
- MYROXYLON santicosum**. Pot grown 1-1½ ft. 60c.
- MYRTUS communis**, TRUE MYRTLE. Gal. cans 1½-2 ft. 50c.
- communis compacta**, COMPACT MYRTLE. Balled 12-15 in. \$1.25, 8-12 in. \$1.00.
- communis microphylla**, ROSEMARY MYRTLE. Gal. cans 1-1½ ft. 50c.
- communis tarentina**, TARENTINE MYRTLE. Pot grown 1-1½ ft. 40c.
- communis variegata**, VARIEGATED MYRTLE. Balled 3-4 ft. \$2.50, 2-3 ft. \$2.00, 1½-2 ft. \$1.50; gal. cans 8-12 in. 60c.
- NANDINA domestica**, NANDINA. Balled 3-4 ft. \$2.00; gal. cans 1½-2 ft. 60c.
- NERIUM oleander**, OLEANDER. Double Pink. 4-6 ft. \$3.00; pot grown 3 ft. 75c.
- Double Red**. Balled 2-3 ft. \$2.00.
- Double White**. Balled 2-3 ft. \$2.00; pot grown 2-3 ft. 75c.
- Mrs. Roeding**. Balled 3-4 ft. \$2.50, 2-3 ft. \$2.00; pot grown 2-3 ft. 60c.
- Prof. Bodkin**. Balled 4-5 ft. \$2.50.
- NIEREMBERGIA gracilis (calycina)**. Pot grown 8-12 in. 20c.
- frutescens**. Pot grown 8-12 in. 20c.
- OSMANTHUS aquifolium**, HOLLY OSMANTHUS. pot grown 1-1½ ft. 75c, 8-12 in. 60c.
- fortunei**. Gal. cans 1-1½ ft. \$1.25.
- PHIALDELPHUS mexicanus plenus**, MEXICAN MOCKORANGE. Pot grown 2-3 ft. 50c.
- PHOTINIA arbutifolia**, TOYON; XMAS BERRY; CALIFORNIA HOLLY. 5-gal. cans 5-6 ft. \$3.00; gal. cans 3-4 ft. \$1.00, 2-3 ft. 85c; pot grown 2-3 ft. 60c, 1½-2 ft. 50c, 1-1½ ft. 40c.
- glabra**. Gal. cans 1-1½ ft. 75c.
- serrulata nova**, CHINESE TOYON. Balled 3-4 ft. \$3.00, 1½-2 ft. \$1.50.
- PITTIOSPORUM phillyraeoides**, WILLOW PITTIOSPORUM. Pot grown 3-4 ft. 75c, 2-3 ft. 50c.
- tobira**, TOBIRA. Gal. cans 1-1½ ft. 50c; pot grown 1-1½ ft. 40c.
- tobira variegatum**, WHITESPOT TOBIRA. Balled 3-4 ft. \$3.50; gal. cans 1-1½ ft. 75c.
- POLYGALA dalmatisiana**, DALMAIS POLYGALA. Gal. cans 1½-2 ft. 50c; pot grown 1½-2 ft. 40c, 1-1½ ft. 35c.
- PRUNUS lyoni (integrifolia)**, CATALINA CHERRY. Gal. cans 2-3 ft. 75c, 1½-2 ft. 60c; pot grown 1-1½ ft. 40c.
- PYRACANTHA coccinea lalandi**, LALAND FIRETHORN. Gal. cans 2-2½ ft. 75c; pot grown 1-1½ ft. 50c.
- crenulata**, NEPAL FIRETHORN. Pot grown 1-1½ ft. 40c.
- crenulata flava**, YELLOW NEPAL FIRETHORN. Gal. cans 3-4 ft. 75c, 2-3 ft. 60c.
- formosana splendens**, SPLENDID FIRETHORN. 5-gal. cans 3-4 ft. \$2.00; gal. cans 3-4 ft. \$1.50, 1½-2 ft. \$1.00; pot grown 1-1½ ft. 75c.
- formosana** Miller Type (orange-red berries). Gal. cans 1½-2 ft. \$1.00; pot grown 1-1½ ft. 75c.
- kansuensis**, KANSU FIRETHORN. Gal. cans 2-3 ft. \$1.00; pot grown 1½-2 ft. 60c.

microcarpa. Pot grown 2-3 ft. 75c.
 yunnanensis, YUNNAN FIRETHORN. 5-gal.
 cans 3-4 ft. \$1.50; gal. cans 4-5 ft. \$1.00, 3-4
 ft. 75c; pot grown 3-4 ft. 60c, 2-3 ft. 50c,
 1½-2 ft. 30c, 1-1½ ft. 25c.
RAPHIOLEPIS indica rosea, PINK INDIA-HAW-
 THORN. Balled 3-4 ft. \$3.00, 2-3 ft. \$2.50;
 pot grown 8-12 in. 85c, 6-8 in. 75c.
RHAMNUS alaternus variegatus, VARIEGATED
 ITALIAN BUCKTHORN. Gal. cans 3-4 ft.
 \$1.00, 2-3 ft. 75c; pot grown 1½-2 ft. 50c,
 1-1½ ft. 40c.
RHAMNUS californica, CALIFORNIA BUCKTHORN;
 COFFEE BERRY. Gal. cans 2-3 ft. 75c; pot
 grown 1½-2 ft. 50c, 1-1½ ft. 40c.
STRANVAESIA davidiana. Pot grown 1-1½ ft. 60c.
VIBURNUM odoratissimum, SWEET VIBURNUM.
 Balled 3-4 ft. \$2.25, 2-3 ft. \$1.50; pot grown
 1-1½ ft. 60c.
 suspensum, SANDANQUA VIBURNUM. Gal.
 cans 2-3 ft. 60c.
 tinus, LAURUSTINUS. Balled 3-4 ft. \$2.25, 2-3
 ft. \$1.50.
 tinus lucidum, SHINING LAURUSTINUS. Balled
 4-5 ft. \$3.00, 3-4 ft. \$2.25.
 tinus variegatum, VARIEGATED LAURUSTINUS.
 Pot grown 1-1½ ft. 50c.

FLOWERING FRUIT TREES

APPLES

ARNOLD CRAB (*Malus arnoldiana*). 6-8 ft. \$2.00, 4-6
 ft. \$1.50, 3-4 ft. \$1.25.
 Assorted Varieties (Letters show sizes available for
 each kind).
 A 6-8 ft. \$1.50
 B 4-6 ft. 1.25
 C 3-4 ft. 1.00
 Floribunda BC
 Floribunda purpurea ABC
 Scheideckeri ABC
 Spectabilis grandiflora AC
BECHTEL CRAB (*ioensis bechteli*). 5-6 ft. \$1.50, 2-3
 ft. 75c.

APRICOTS

Dawn, 6-7 ft. \$1.25.
 Double Red, 5-6 ft. \$1.25, 4-5 ft. \$1.00.
 Mme. Dorbon, 5-6 ft. \$1.00.
 Praecox, 5-6 ft. \$1.00, 4-5 ft. 75c.

PLUMS

Blerieana, 6-8 ft. \$1.25, 2-3 ft. 60c.
 Pissardi, 6-8 ft. \$1.25.

DECIDUOUS TREES

ACER dasycarpum, SILVER MAPLE. 10-12 ft. \$2.00.
 platanoides, NORWAY MAPLE. 8-10 ft. \$1.50,
 6-8 ft. \$1.25.
 platanoides schwedleri, SCHWEDLER PURPLE
 MAPLE. 8-10 ft. \$1.75, 6-8 ft. \$1.35.
BETULA alba, EUROPEAN WHITE BIRCH. 10-12
 ft. \$2.50, 6-8 ft. \$1.35, 5-6 ft. \$1.00, 4-5 ft. 75c.
 pendula youngi, YOUNG'S WEEPING BIRCH.
 4-5 ft. \$1.50.
CRATAEGUS oxyacantha DOUBLE PINK. Branched
 12-14 ft. \$3.00, 10-12 ft. \$2.50, 8-10 ft. \$1.50.
 oxyacantha, DOUBLE WHITE. Branched 12-14
 ft. \$3.00, 10-12 ft. \$2.50, 8-10 ft. \$1.50, 6-8 ft.
 \$1.25, 4-6 ft. \$1.00.
 oxyacantha splendens, PAUL'S DOUBLE SCAR-
 LET HAWTHORN. Branched 12-14 ft. \$3.00,
 8-10 ft. \$1.50, 6-8 ft. \$1.25, 4-6 ft. \$1.00.
 oxyacantha, SINGLE WHITE. Branched 6-8 ft.
 \$1.00, 4-6 ft. 75c.
FRAXINUS velutina, ARIZONA ASH. 8-10 ft. \$1.50.
GINKGO biloba, MAIDENHAIR TREE. 8-10 ft.
 \$3.00, 6-8 ft. \$2.00.
LIQUIDAMBAR styraciflua, SWEETGUM. 5-gal.
 cans 3-4 ft. \$1.25; pot grown 2-3 ft. 75c.
MORUS alba pendula, WEEPING MULBERRY. Spec-
 mens 7 ft. stems \$3.50, 1 year head 7 ft. stems
 \$2.00.
PLATANUS orientalis, EUROPEAN PLANE-TREE;
 EUROPEAN SYCAMORE. 12-14 ft. \$2.50, 10-
 12 ft. \$2.00, 8-10 ft. \$1.50, 6-8 ft. \$1.25, 5-6 ft.
 \$1.00.
POPULUS alba bolleana, SILVER LOMBARDY POP-
 LAR. 8-10 ft. \$1.50, 6-8 ft. \$1.25.
ROBINIA kelseyi, KELSEY LOCUST. 8-10 ft. \$2.50.
SALIX babylonica, COMMON WEEPING WILLOW.
 12-14 ft. \$2.50, 10-12 ft. \$1.75, 8-10 ft. \$1.25.
 babylonica annularis, RINGLEAF WEEPING
 WILLOW. 10-12 ft. \$2.00, 8-10 ft. \$1.50.

DECIDUOUS SHRUBS

ARONIA arbutifolia, RED CHOKEBERRY. Pot
 grown or gal. cans 1½-2 ft. \$1.00.
BERBERIS orthobotrys. Pot grown 8-12 in. 60c.
BUDDLEIA alternifolia. Pot grown 2-3 ft. 75c, 1½-
 2 ft. 50c.
CHAENOMELES cathayensis. 3-4 ft. \$1.00, 2-3 ft.
 75c, 1½-2 ft. 50c.
CLERODENDRON trichotomum fargesii. 2-3 ft. \$1.00.
CORNUS florida rubra, PINK DOGWOOD. 5-gal.
 cans 2-3 ft. \$2.50, 1½-2 ft. \$2.00.
DAPHNE mezereum, FEBRUARY DAPHNE. Balled
 12-15 in. \$1.25, 8-12 in. \$1.00.
EXOCHORDA grandiflora, PEARLBUSH. Pot grown
 8-12 in. 35c.
FORSYTHIA intermedia spectabilis, SHOWY BOR-
 DER FORSYTHIA. 4-6 ft. \$1.00, 3-4 ft. 85c.
KOLKWTZIA amabilis, BEAUTYBUSH. Gal. cans
 1-1½ ft. 75c.
MAGNOLIA campbelli. Gal. cans 12-15 in. \$7.50.
 hypoleuca, SILVER MAGNOLIA. Pot grown 1½-
 2 ft. \$1.00, 1-1½ ft. 75c.
 soulangeana, SAUCER MAGNOLIA. Balled 4-4½
 ft. \$7.50, 3½-4 ft. \$5.00, 3-3½ ft. \$4.00.
PUNICA granatum, POMEGRANATE.
 Double Scarlet. 3-4 ft. 75c.
 Improved Double Orange. 3-4 ft. \$1.00.
 nana, DWARF POMEGRANATE. Pot grown 1½-
 2 ft. 40c.
SPIREA reevesiana lanceolata, DOUBLE REEVES
 SPIREA. 3-4 ft. \$1.00, 1½-2 ft. 60c, 1-1½
 ft. 50c.
 Vanhouttei. 2-3 ft. 75c, 1-1½ ft. 50c.
VIBURNUM carlesi, FRAGRANT VIBURNUM. 2-3
 ft. \$2.00, 1½-2 ft. \$1.25, 1-1½ ft. \$1.00.
VITEX macrophylla, LARGELEAVED CHASTE-
 TREE. 2-3 ft. 75c; gal. cans 1½-2 ft. 50c.
WEIGELA Eva Rathke. 2-3 ft. \$1.00, 1½-2 ft. 75c.
 praecox Floreal. 1½-2 ft. 75c.
 rosea. 3-4 ft. 75c.

CLIMBERS

AKEBIA quinata, FIVELEAF AKEBIA. Pot grown
 1½-2 ft. 50c.
AMPELOPSIS aconitifolia, MONKSHOOD-VINE. Pot
 grown 1-1½ ft. 50c.
CISSUS striata (*Ampelopsis sempervirens*), STRIPED
 TREEBINE. Pot grown 8-12 in. 25c.
CLIANTHUS puniceus, RED PARROTBEAK. Pot
 grown 8-12 in. 25c.
DIOCLEA glycinoides, SCARLET WISTERIA. Pot
 grown 1½-2 ft. 75c.
FICUS punila (*repens*), CLIMBING FIG. Pot grown
 6-8 in. 35c, 4-6 in. 20c.
GELSEMIUM sempervirens, CAROLINA-JESSA-
 MINE. Gal. cans 2-3 ft. 60c; pot grown 1½-2
 ft. 50c, 1-1½ ft. 40c.
HARDENBERGIA comptoniana. Pot grown 1½-2 ft.
 60c.
 "Hardy Violet". Gal. cans 1-1½ ft. \$1.00; pot
 grown 8-12 in. 60c.
 monophylla lilacina. Gal. cans 2-3 ft. 60c.
 monophylla rosea. Pot grown 2-3 ft. 60c.
HEDERA canariensis variegata, YELLOWEDGE AL-
 GERIAN IVY. Pot grown 1-1½ ft. 60c.
 helix marmorata, MARBLED IVY. Pot grown
 1½-2 ft. 50c.
JASMINUM grandiflorum, SPANISH JASMINE. Pot
 grown 3-4 ft. 60c, 2-3 ft. 50c, 1½-2 ft. 40c.
 humile, ITALIAN JASMINE. Pot grown 2-3 ft.
 60c.
KADSURA japonica, SCARLET KADSURA. Gal.
 cans 3-4 ft. \$1.00; pot grown 1-1½ ft. 60c.
PANDOREA australis, (*Tecoma australis*). Pot grown
 1½-2 ft. 50c.
TRACHELOSPERMUM jasminoides, CONFEDERATE
 JASMINE. Gal. cans 1-1½ ft. \$1.00; pot
 grown 4-6 in. 50c.

MISCELLANEOUS

AGAPANTHUS umbellatus. Undivided clumps \$1.25;
 divided clumps 75c.
CORDYLIN—DRACENA. Balled 10-12 ft. \$15.00 to
 \$20.00, 8-10 ft. \$8.00 to \$12.00, 6-8 ft. \$6.00.
 "Triplets" (three plants grown together). Balled
 8-10 ft. \$8.00 to \$12.00, 6-8 ft. \$6.00 to \$8.00,
 5-6 ft. \$5.00.
MUSA arnoldiana, ARNOLD BANANA. Pot grown
 1-1½ ft. \$1.00; pot grown 8-12 in. 75c.
PHORMIUM tenax variegatum, VARIEGATED NEW
 ZEALAND FLAX. Large undivided clumps
 \$3.00, small divided clumps \$1.25.