

## **Historic, archived document**

Do not assume content reflects current scientific knowledge, policies, or practices.



Important  
Price Changes

**WUWUWU**



DIANA KASNER

TULIPS • HYACINTHS  
DAFFODILS • ANEMONES  
RANUNCULUS • DUTCH IRIS  
and MISCELLANEOUS BULBS

*Autumn*  
1937



DICK WELLBAND

**CALIFORNIA NURSERY CO.**

NILES, CALIFORNIA



FIRETAIL

## THE DAFFODILS ON OUR COVER

**DICK WELLBAND.** One of the finest recent introductions, being an exceptionally strong grower. Perianth is pure white and the cup flame orange. One of its most remarkable qualities is that the color does not fade with age. Its greatest beauty lies in the startling contrast between petals and cup which makes it stand out in any collection of daffodils. Each \$2.25.

**DIANA KASNER.** With its pure white perianth and large fluted yellow cup with red frill, we consider this one of our most worth while varieties. It has been tested in our gardens for six years and we find it unusually well suited for growing under California conditions. Each 15c; 10 for \$1.20; 100 for \$10.00.

**FIRETAIL.** The broad petalled, creamy-white perianth and orange-red cup of Firetail attract attention wherever grown. It increases nicely in California gardens and is a fine variety in every way. Each 30c; 10 for \$2.50; 100 for \$20.

### SPECIAL COVER VARIETIES OFFER

In these varieties we are offering three fine new daffodils that are distinctly different. Our special offer consists of

**3 DIANA KASNER**

**3 FIRETAIL**

**1 DICK WELLBAND**

. . . all big, double-nose bulbs that will give you two or three beautiful flowers each next spring . . . for \$3.00  
(Plus State Sales Tax 9c)

## INSTRUCTIONS FOR ORDERING

**QUALITY.** You can be sure of success in growing spring flowering bulbs if you plant large, vigorous bulbs. Our Daffodils are all No. 1 grade, "Double-Nose" bulbs which produce 50 to 100 per cent more flowers the first year than "round" bulbs. Our tulips are "top size" which is the best grade obtainable. The other bulbs in our list are of equally good grades.

**ORDER EARLY.** The Cape Bulbs (Freesias, Ixias, etc.) are ready for shipment in September; Narcissi, Tulips, Dutch Iris and Hyacinths are ready in October.

**TERMS.** Our terms are cash unless other arrangements are made.

**SALES TAX.** When remitting, customers must add to their orders the following amounts for STATE SALES TAX: Orders from 15 to 49 cents, 1 cent tax; 50 cents to 83 cents, 2 cents tax; 84 cents to \$1.16, 3 cents tax; \$1.17 to \$1.49, 4 cents tax; \$1.50 to \$1.83, 5 cents tax. For each \$1.00 thereafter, 3 cents additional tax.

**SHIPPING CHARGES.** There is no charge for packing and we will prepay shipping charges on all bulbs to points within the 4th zone, **except on orders for less than \$1.00 a handling charge of 25c will be made.**

**QUANTITY RATES.** 50 bulbs (of one variety) take the 100 rate; 500 to 1000 (assorted varieties) take a discount of 5% from the 100 rate; 1000 or more, 10% discount.

## CALIFORNIA NURSERY COMPANY

GEORGE C. ROEDING, Jr., President

Established 1865

NILES, CALIFORNIA

## HOW TO GROW DAFFODILS

Daffodils are very easy to grow, requiring no summer care and, as they are not eaten by gophers and have few diseases they are an excellent garden investment.

Plant daffodils deeply. Most varieties thrive when put four to six inches under ground. The actual depth depends on the size of the bulb, a safe depth being three times the largest diameter of the bulb.

Dig the soil eighteen inches deep before planting if possible. This allows for ample development of the roots. Do not allow manure to come into contact with the bulbs although well rotted manure may be dug in deeply just below where the bulbs will be planted, or may be used as a mulch on top of the soil after planting has been done. In heavy soils the addition of sand and peat will be found beneficial.

Planting should be done in October or November. Irrigate the soil thoroughly as soon as the bulbs are planted so as to start root growth at once. Natural rainfall is normally sufficient to keep daffodils growing up to blooming season. They should never be allowed to become dry, however.

After blooms have withered, cut off dead flowers, cultivate the soil and stir in bone meal, Gaviota, or any good commercial fertilizer. Irrigate often enough to keep the foliage green and growing for four to six weeks longer. During this period the bulb is storing away plant food for the next crop of blooms. **Do not cut foliage until it turns yellow.** To do so will weaken the bulbs and seriously reduce the number of flowers for next year.

Daffodil bulbs do not need to be divided oftener than once in three to five years. They may be safely left in the ground all summer and covered over with shallow rooted summer-flowering annuals. Most daffodils are natives of countries having heavy summer rains and any amount of moisture will not rot them.

Our Narcissi bulbs are of the largest size and are all "Double-nose"; that is, each bulb will produce two or more flower stalks.

## GIANT TRUMPET DAFFODILS

This class includes those varieties with cup or trumpet longer than the outer petals or perianth segments. The figures following the names refer to the relative time of flowering: (1) being early and (5) being latest.

**AEROLITE** (2). A golden daffodil of the newest type; broad flat petals of deep primrose, trumpet medium yellow; beautifully proportioned and the most graceful of the large trumpet types. Each 15c; 10 for \$1.35; 100 for \$11.00.

**CLEOPATRA** (4). Latest yellow trumpet; splendid large flower of uniform lemon-yellow. Each 15c; 10 for \$1.35; 100 for \$12.00.

**EMPEROR** (3). Perianth primrose, trumpet darker; flower of medium size. 10 for 85c; 100 for \$7.50.

**KING ALFRED** (2). For length of stem, vigor and dark golden color this regal variety cannot be surpassed. Large size, double-nose bulbs. Each 15c; 10 for \$1.10; 100 for \$10.00.

**LA VESTALE** (2). Early white trumpet type with ivory perianth and cream trumpet; long lasting when cut and fine for naturalizing in shade. Each 35c; 10 for \$3.00; 100 for \$24.00.



**LOVENEST** (The Pink Daffodil) (2). Amongst the daintiest of trumpet daffodils; starry white perianth, trumpet saffron yellow turning to apricot pink. Ea. \$1.



# PRICE CHANGES

With the exception of the varieties listed below, we are booking orders now at last year's prices. We guarantee you against any increase in prices, but will give you the benefit of any decrease in price before delivery. Prices listed below supersede prices shown in catalog.

	10	100
Daffodils:	Rate	Rate
Aerolite	\$1.50	\$12.50
Barrii conspicuus	.85	7.00
Bulbocodium conspicuus	.85	7.00
Buttercup	1.25	10.00
Diana Kasner	1.25	11.00
Early Surprise	.90	7.50
Edwina	1.50	12.00
Emporer	.95	8.00
February Gold	3.00	25.00
Firetail	3.00	24.00
Gertie Miller	6.00	50.00
John Evelyn	2.50	20.00
J. odorus campernelle	.80	6.50
King Alfred	1.25	11.00
Lord Kitchener	1.25	10.00
Medusa	2.00	16.00
Mrs. Nettie O'Melveny	1.25	10.00
Poeticus ornatus maximus	.85	7.00
Red Cross	5.00	40.00
Rupert Brooke	1.50	12.00
Snowsprite	1.50	12.50
Spring Glory	1.10	9.00
Sylvanite	3.00	24.00
The Pearl	1.25	10.00
Tresserve	1.25	10.00
Twink	3.00	24.00
Mixture No. 1	.65	5.00
Mixture No. 2	.75	6.00
<b>Tulips:</b>		
Albino	1.00	8.50
Bleu Aimable	.75	6.50
Bronze Queen	.65	5.50
Carrara	1.00	8.50
City of Haarlem	1.00	8.50
Clara Butt	.65	5.25
Clusiana	.75	6.50
Dido	.75	6.25
Eichleri	.75	6.50
La Tulipe Noire	.85	7.00
Moonlight	.80	6.75
Mrs. Moon	.75	6.50
Pride of Haarlem	.65	5.25
Princess Elizabeth	.70	6.00
Rosabella	.85	7.00
Venus	.85	7.50
Yellow Giant	1.00	8.50
Zwanenberg	1.00	8.50

## SPECIAL SAVING

10% Discount will be given on bulb orders in excess of \$2.50 placed at Bulb Show.

Orders for varieties not shown in catalog must be accompanied by deposit of 25%.

**CALIFORNIA  
NURSERY COMPANY**



**MRS. E. H. KRELAGE** (2). Opens as a pale bi-color but fades to even ivory white; good texture and form. Each 25c; 10 for \$2.00; 100 for \$17.50.

**MRS. R. O. BACKHOUSE** (3). The best pink daffodil. Snow-white perianth; trumpet opens apricot changing to clear, delicate pink. Each \$2.50.

**SPRING GLORY** (2). Perianth deep cream; beautifully formed trumpet of clear yellow; very large flowers on sturdy stems. Double-nose bulbs. 10 for 85c; 100 for \$7.50.

**STATENDAM** (3). Extremely large golden yellow flower of superb yet graceful proportions. Each \$1.75.

**SYLVANITE** (3). Striking new variety with creamy-white perianth and trumpet of clear, unfading canary-yellow; exquisitely proportioned flower. Each 25c; 10 for \$2.00; 100 for \$16.00.

**TRESSERVE** (2). The most popular daffodil at our Spring shows. Perianth and trumpet deep canary yellow; trumpet broad and deeply lacinated; flowers often more than 4 inches across. Double-nose. 10 for \$1.00; 100 for \$9.00.

**VAN WAVEREN'S GIANT** (3). Enormous flower with deep yellow trumpet, perianth pale yellow. The largest daffodil on our list. Each 15c; 10 for \$1.50; 100 for \$13.50.

## INCOMPARABILIS NARCISSI

Cup or chalice one-third to three-fourths the length of the perianth segments.

**CROESUS** (3). A fine, large new variety; light canary-yellow perianth with thick overlapping petals; broad fluted cup of rich orange. Each 20c; 10 for \$1.60; 100 for \$14.00.

**DICK WELLBAND** (3). One of our finest daffodils. Pure white perianth and cup of flame orange. (See color plate on front cover.) Each \$2.25.

FRANCISCA DRAKE



MRS. E. H. KRELAGE

**DONATELLO** (3). Pale primrose perianth with flat, overlapping petals; deep yellow trumpet of beautiful form; medium late. Each 15c; 10 for \$1.25; 100 for \$11.00.

**FRANCISCA DRAKE** (3). Wide white perianth tinted gold at base; deep cup of flame orange; strong growing. Each \$1.00.

**GALLIPOLI** (3). Extra large, showy new variety; citron yellow perianth, fluted cup of yellow and orange. Each 60c; 10 for \$5.00; 100 for \$40.00.

**HELIOS** (2). An early daffodil with overlapping golden perianth and flat cup of golden orange. Each 20c; 10 for \$1.50; 100 for \$12.50.

**JOHN EVELYN** (2). Pure white flat perianth 4 to 5 inches across; flat cup unfading lemon-yellow nearly 2 inches in diameter heavily fluted and shirred; outstandingly different. (See color plate on page 6). Each 60c; 10 for \$5.00; 100 for \$40.00.

**LUCINIUS** (4). Exceptionally fine flower of uniform golden yellow. Broad, flat perianth and fairly large, beautifully modeled trumpet held upright on strong stem; very late. Each 20c; 10 for \$1.75; 100 for \$14.00.

**RED CROSS** (3). A famous daffodil with extra large flower. Flat primrose-yellow perianth; deeply frilled cup of glowing orange. Each \$1.00.

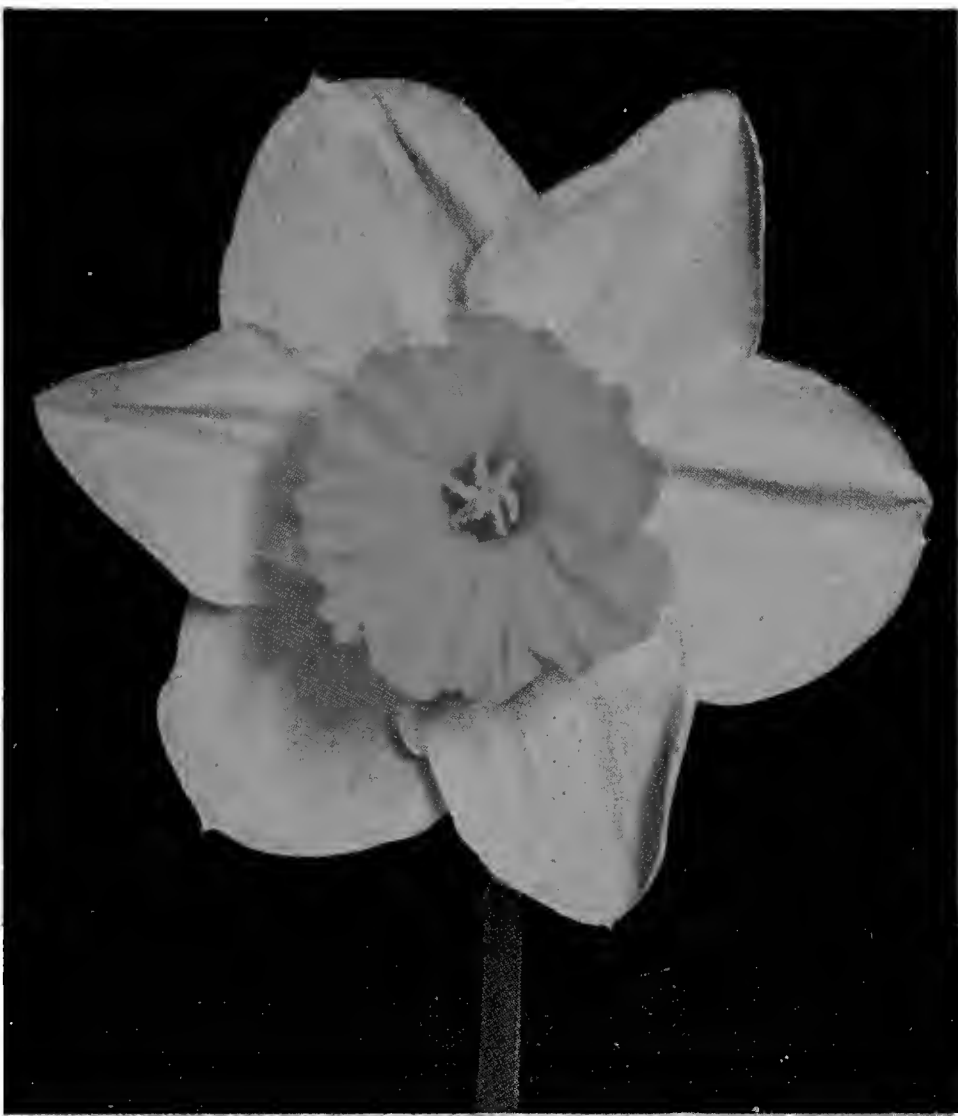
**SIR WATKIN** (3). A standard variety. Perianth sulphur yellow; cup yellow tinged with orange. 10 for 85c; 100 for \$7.50.

**STELLA PRATT** (3). Star-shaped perianth of light primrose; long yellow trumpet shaded to reddish-orange; very striking. Outsold all other Incomparabilis varieties at our 1937 Bulb Show. Each 25c; 10 for \$2.00; 100 for \$16.00.

**WHITEWELL** (3). Pure white, starry perianth; primrose cup edged with orange; flowers fragrant and held upright on strong stems. (See color plate on page 6). 10 for 85c; 100 for \$7.50.

Our Prices Include Postage Within the 4th Zone





CROESUS

## BARRII NARCISSI

Short cup, usually one-third or less the length of the perianth segments.

**ALCIDA** (5). Somewhat drooping, giant flowers, pure white perianth, broad yellow cup with darker frill; strong growing, extra late. Each 25c; 10 for \$2.00; 100 for \$16.00.

**BARRII CONSPICUUS** (4). Perianth pale yellow; short, yellow cup edged orange scarlet. 10 for 75c; 100 for \$6.00.

**BATH'S FLAME** (2). Outstandingly strong and brilliant. Bright yellow perianth with darker cup edged orange-scarlet. Each 20c; 10 for \$1.50; 100 for \$13.50.

**DIANA KASNER** (5). A magnificent flower of great beauty; creamy-white perianth, large fluted yellow cup with orange-red frill. (See color plate on outside front cover.) Each 15c; 10 for \$1.20; 100 for \$10.00.

**DOSORIS** (5). Perianth white; flat cups of orange red; medium length stems; often two flowers on a stalk; plant in partial shade. Each 10c; 10 for 60c; 100 for \$5.00.

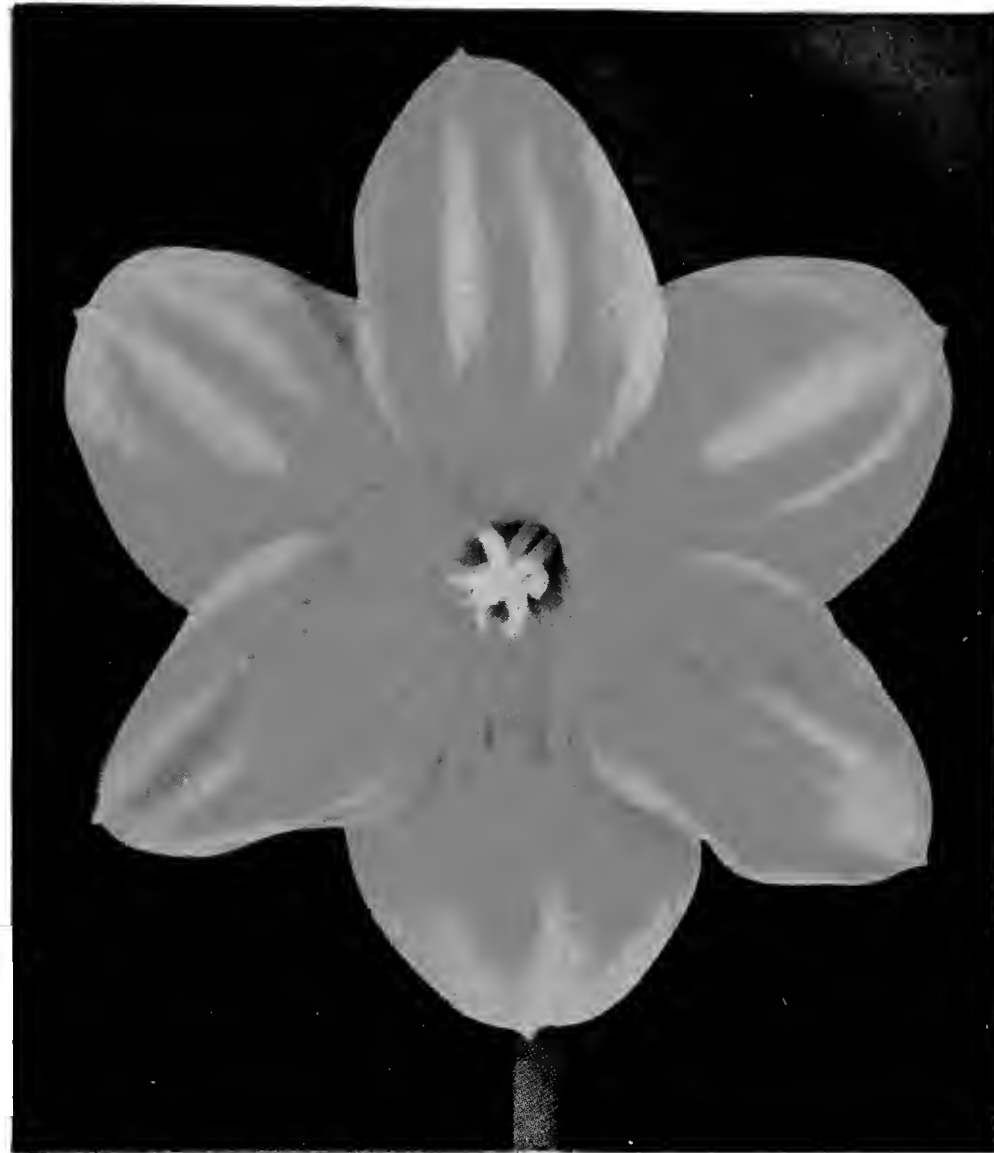
**EARLY SURPRISE** (2). Very lovely, early variety. White perianth; orange cup with red edge. 10 for 75c; 100 for \$6.00.

**FIRETAIL** (5). Sensationally bright new variety. Broad, creamy-white perianth; large cup of bright scarlet. (See color plate on inside front cover.) Each 30c; 10 for \$2.50; 100 for \$20.00.

**RED SHADOW** (6). Our latest daffodil and the finest Barrii for California conditions. Creamy-yellow, overlapping perianth with large orange and red cup. Extra strong grower with heavy foliage. Each \$1.00.

**SHACKLETON** (4). Very tall, graceful flower; broad, pure white perianth; wide, flat cup, yellow shading to scarlet; extra fine. Each 35c; 10 for \$3.00; 100 for \$25.00.

**SUNSTAR** (5). A very beautiful new daffodil, offered by us for the first time this year. Creamy-white, broad petaled perianth; flat yellow cup with broad orange margin; fine stem. Each \$1.75.



RED CROSS

## TRIANDRUS AND CYCLAMINEUS HYBRIDS

**AGNES HARVEY** (4). A beautiful chalice-cupped Triandrus hybrid. Flowers snow-white; 4 to 5 flower stalks to each bulb and 1 to 3 flowers on each stalk. Each 30c; 10 for \$2.50; 100 for \$20.00.

**FEBRUARY GOLD** (1). Very early Cyclamineus hybrid with long, straight orange trumpet and golden-yellow reflexed perianth. Flower as large as Emperor on 8-inch stem but exquisitely graceful. Fine rock garden variety. (See illustration on page 13). Each 25c; 10 for \$2.00; 100 for \$16.00.

**MOONSHINE** (4). A lovely Triandrus hybrid; creamy-white flowers, drooping gracefully, 2 to 3 to a stem; large bell-shaped trumpets. A beauty for planting near water in the rock garden. Each 45c; 10 for \$3.75; 100 for \$30.00.

**PEARLY QUEEN** (3). Pearly-white perianth and widely flaring, large trumpet of lemon-yellow; 1 to 2 flowers to each stem; habit drooping; very unique. Each 35c; 10 for \$2.50; 100 for \$20.00.

**QUEEN OF SPAIN** (3). A wild Triandrus hybrid unexcelled for rock garden planting. Reflexing perianth and long slender trumpet of soft canary-yellow; height 8 to 12 inches. Each 25c; 10 for \$2.00; 100 for \$17.50.

**THALIA** (4). A dainty Triandrus hybrid; snow-white flowers borne in drooping clusters of 2 or 3 on tall, slender stems. Each 40c; 10 for \$3.50; 100 for \$30.00.

Our Prices Include Postage Within the 4th Zone

## JONQUIL HYBRIDS

**BUTTERCUP** (2). Clear buttercup yellow with straight trumpet and flat, overlapping perianth. Each bulb throws 3 to 6 flower stalks and has a long blooming period; fragrant. Each 10c; 10 for 90c; 100 for \$8.00.

**GOLDEN SCEPTRE** (2). Slightly darker than Buttercup and with a flaring trumpet. A very free-flowering daffodil, double-nose bulbs throwing from 4 to 6 flower stalks and sometimes having two flowers to a stalk; fragrant. Each 10c; 10 for 85c; 100 for \$7.50.

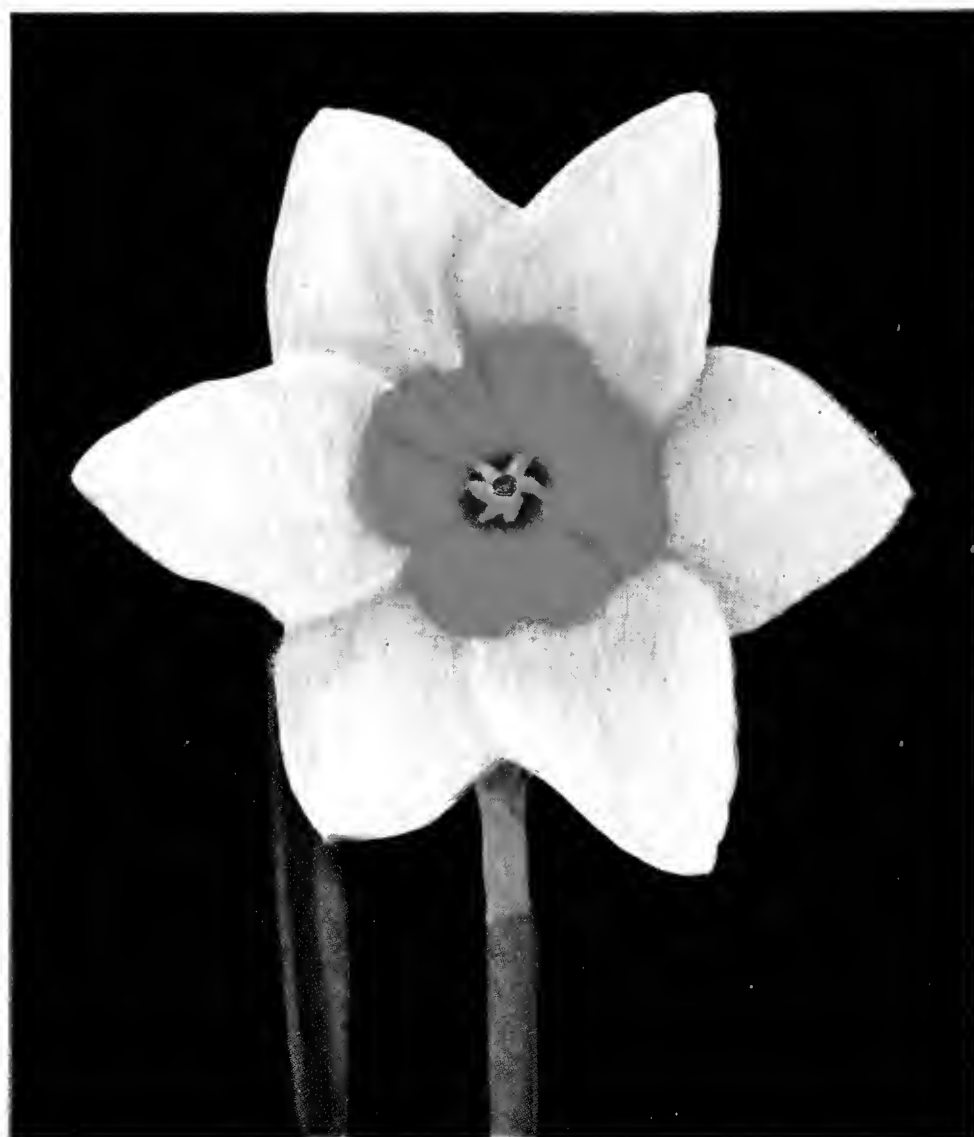
**TULLUS HOSTILIUS** (3). Golden-yellow flowers of trumpet type two-thirds the size of Emperor, 3 to 5 flower stalks to each bulb and 2 to 3 flowers to each stalk; typical jonquil fragrance. An improvement over Buttercup and Golden Sceptre. (See color plate on page 9). Each 15c; 10 for \$1.20; 100 for \$10.00.

**ODORUS CAMPERNELLI** (1). Rush-like foliage and clusters of bright yellow, fragrant flowers beginning to bloom in January and continuing into March. Double-nose bulbs. 10 for 75c; 100 for \$5.50.

**ODORUS ORANGE QUEEN** (2). Striking variety, 2 to 3 flowers on a stem, color intense golden-orange, the darkest color to be found in Daffodils, cup prettily fluted, jonquil fragrance. Each 15c; 10 for \$1.25; 100 for \$10.00.

**Note:** For other Jonquils see Miniature Daffodils on page 8.

JOHN EVELYN



WHITEWELL

## POLYANTHUS NARCISSI (TAZETTA)

**CHINESE SACRED LILY** (1). Perianth white, cup golden-yellow; flowers in large clusters; very fragrant. 10 for 85c; 100 for \$7.50.

**PAPER WHITE** (1). Small, sweet-scented flowers borne in clusters. Excellent for growing in water for indoor decoration. 10 for 60c; 100 for \$5.00.

**SOLEIL D'OR** (1). Form similar to Chinese Sacred Lily; perianth golden-yellow, cup orange. Blooms very early. Each 10c; 10 for 90c; 100 for \$8.00.

## POETAZ NARCISSI

Hybrids between Poeticus and Tazetta (Polyanthus) Narcissi. Flowers are midway in type between the two parents.

**CHEERFULNESS** (5). Flowers in clusters; very double and as symmetrical as little camellias; white marked with lemon. Each 15c; 10 for \$1.35; 100 for \$12.00.

**GOLDEN PERFECTION** (4). A new Giant Poetaz of surpassing beauty; overlapping citron-yellow perianth; pure gold cup of perfect proportions; fragrant. Each \$2.75.

**KLONDYKE** (1). Yellow perianth with golden cup; flowers large and borne in large clusters. 10 for \$1.00; 100 for \$8.50.

**LAURENS KOSTER** (2). Perianth pure white, yellow eye. Flowers in nice clusters on long, strong stems. 10 for 75c; 100 for \$6.50.

**MEDUSA** (3). A new type of Poetaz; large, graceful, poeticus-like perianth with flat, fluted crown of orange scarlet; 2 or 3 flowers to a stem. Each 50c; 10 for \$4.00; 100 for \$30.00.

**ORANGE CUP** (3). Yellow perianth, cup yellow with bright red picotee; very brilliant; flowers in clusters; nice fragrance. Each 15c; 10 for \$1.35; 100 for \$12.00.



SILVER STAR

## POETICUS NARCISSI

This class is characterized by a pure white perianth and a brightly colored flat cup or eye. Very fragrant.

**ORNATUS MAXIMUS** (3). Larger than the old Ornatus. Very broad, snowy petals; brilliant cup of saffron edged rosy-red. Double-nose bulbs. 10 for 75c; 100 for \$6.00.

**RUPERT BROOKE** (5). The finest of the new Poeticus varieties. Very broad, snowy-white petals, small pheasant's eye, red rimmed cup. (See color plate on page 8). Each 25c; 10 for \$2.00; 100 for \$16.00.

**EDWINA** (4). Purest white perianth with broad, overlapping petals; flat yellow eye, edged red; highly recommended. Each 25c; 10 for \$2.00; 100 for \$16.00.

Our Narcissi bulbs are of the largest size and are all "Double-nose"; that is, each bulb will produce two or more flower stalks.

### GARDEN LECTURES

Our Garden Lecturer is prepared to give programs on a number of interesting subjects for Garden Clubs and similar organizations. The only charge in connection with this service is a nominal mileage charge to locations more than 25 miles distant from Niles. Colored Motion Pictures are used in connection with many of these talks. Reservations for dates should be made at least one month in advance.

## LEEDSII NARCISSI

Medium length cups of white or pale yellow with white perianth.

**GERTIE MILLER** (3). Large flower with pure white perianth 4 inches across; primrose cup fluted and frilled; exquisitely dainty. Each \$1.00.

**HERA** (3). Overlapping petals of creamy-white; frilled chalice of white edged with primrose, fading to pure white. A flower of exquisite charm. Each 10c; 10 for 95c; 100 for \$8.50.

**LORD KITCHENER** (2). Pure white perianth; frilled cup of lemon yellow; large flowers of lovely form on good stems. Fine for naturalizing under trees. Each 10c; 10 for 95c; 100 for \$8.50.

**MRS. NETTE O'MELVENY** (3). A dancing daffodil with pure white perianth and lemon cup borne on a long, graceful stem; a most delightful flower. Each 20c; 10 for \$1.50; 100 for \$13.50.

**SILVER STAR** (2). Cream-white perianth with finely proportioned wide-mouthed trumpet of primrose changing to cream-white. Each 25c; 10 for \$1.35; 100 for \$12.50.

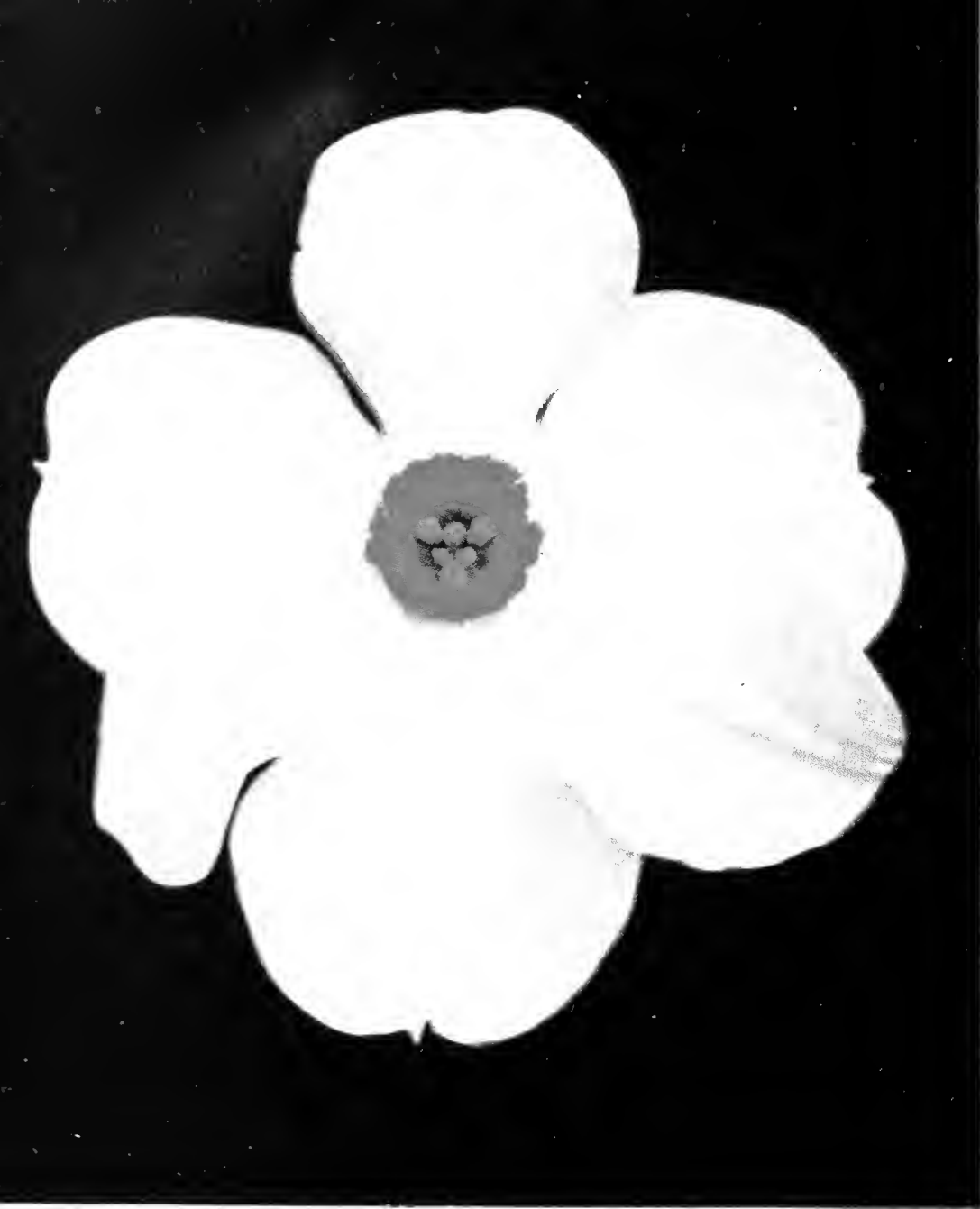
## DOUBLE NARCISSI

**SNOWSPRITE** (5). The loveliest of the double types. Flowers pure white with palest lemon shading, delightfully fragrant; borne on tall stems; very late. Each 20c; 10 for \$1.75; 100 for \$14.00.

**THE PEARL** (3). Moderately double, creamy white interspersed with sulphur yellow; nice fragrance. Each 10c; 10 for 85c; 100 for \$7.50.

**TWINK** (2). The sensational new double. Petals alternate soft primrose and clear orange giving it a most unique appearance. Very early and exceptionally vigorous. Each 35c; 10 for \$2.50; 100 for \$20.00.





RUPERT BROOKE

## MINIATURE NARCISSI FOR ROCK GARDENS

**BULBOCODIUM CITRINUS.** Sulphur Hoop Petticoat Daffodil. Pale citron flowers, 6 to 8 inches; plant in sandy soil in full sun. Each 15c; 10 for \$1.35; 100 for \$12.00.

**BULBOCODIUM CONSPICUUS.** Yellow Hoop Petticoat. Rich golden-yellow flowers; rush-like foliage; 6 to 8 inches. Prefers sandy peat soil in full sun with moisture when growing but keep fairly dry in summer. Each 10c; 10 for 75c; 100 for \$6.00.

**CANALICULATUS.** A dainty little Polyanthus Narcissus suitable for sunny situations in the rock garden. Perianth white; cup golden, borne in clusters, sweetly scented; height 6 inches. Each 15c; 10 for 80c; 100 for \$7.00.

**JONQUILLA SIMPLEX.** The true, single, sweet jonquil. Charming clusters of numerous small, rich yellow flowers of delicious scent. Each 15c; 10 for \$1.25; 100 for \$10.00.

**JUNCIFOLIUS.** A miniature jonquil. Rich yellow flowers on 3 to 4 inch stems; fragrant. Give it a well drained but moist and lightly shaded spot in the rock garden. Each 35c; 10 for \$3.00; 100 for \$25.00.

**TRIANDRUS ALBUS.** "Angel's Tears." Reflexing creamy-white perianth; creamy-white bell-shaped trumpet; drooping flowers, 2 to 3 on a stem; height 4 to 5 inches; prefers shade, gritty soil and well-drained position. Each 25c; 10 for \$2.25; 100 for \$20.00.

### SPECIAL MINIATURE DAFFODIL COLLECTION

2 each of the 6 above-named varieties—12 bulbs, \$2.00  
(plus state sales tax 6c)

## DAFFODILS FOR NATURALIZING

Daffodils planted in drifts in the foreground of shrubbery or through woodlands, along hillsides, or in meadows give a most pleasing natural effect. They will increase in beauty and number without special care and become permanently established.

**MIXTURE No. 1.** Made up of standard varieties in a well balanced mixture to provide a long season of bloom. 100 for \$4.50; 1,000 for \$40.00.

**MIXTURE No. 2.** Contains a large percentage of novelties and large flowered types. 100 for \$5.50; 1,000 for \$50.00.



NARCISSUS CANALICULATUS  
Thrives in a warm, sunny location.

## Daffodil Collection No. 1 \$2.75

This collection contains many novelties and will give a succession of bloom from late February to mid-April. Because of their rapid increase these varieties are an exceptionally good garden investment.

2 AEROLITE	2 HERA
2 HELIOS	2 LUCINIUS
2 DONATELLO	2 CLEOPATRA
2 DIANA KASNER	2 TULLUS HOSTILIUS
2 EDWINA	2 CHEERFULNESS

2 each of the above-named varieties—20 large, double-nose bulbs, \$2.75—plus State Sales Tax 8c. (Regular price \$3.10.)



---

---

BULBOCODIUM CONSPICUUS  
The Yellow Hoop Petticoat Daffodil.

---

---

## Daffodil Collection No. 2 \$4.60

This collection will give the maximum amount of bloom for the minimum of cost, providing a succession of blooms from late February to April.

10 EARLY SURPRISE	10 SIR WATKIN
10 GOLDEN SCEPTRE	10 TRESSERVE
10 LORD KITCHENER	10 WHITEWELL

10 each of the 6 above-named varieties—60 large, double-nose bulbs, \$4.60—plus State Sales Tax 14c. (Regular price \$5.20.)



---

---

TULLUS HOSTILIUS  
(Described on page 6.)

---

---

## Collection of Rarest New Daffodils — \$10.00

From more than 100 varieties in our test garden we have selected the 7 listed below as being outstandingly beautiful. Our big double-nose bulbs will give you a rapid increase in a few years' time and prove an exceptionally profitable investment.

1 DICK WELLBAND	1 RED CROSS
1 GOLDEN PERFECTION	1 RED SHADOW
1 MRS. R. O. BACKHOUSE	1 STATENDAM
1 SUNSTAR	

1 each of the 7 above-named rare varieties—7 large double-nose bulbs, \$10.00—plus State Sales Tax 30c. (Regular price, \$13.00.)



## DUTCH IRIS

Dutch iris are rapidly gaining in popularity because of their beauty, ease of culture, early flowering, and long lasting qualities when cut. Early varieties flower the last of February and late varieties in April. Plantings may be made from October to January to prolong the blooming season. This type of iris is invaluable for interplanting with tulips. Plant bulbs 4 to 6 inches apart and 2 to 3 inches deep. They may either be left in the ground or lifted each year when ripe.

**ADRIAN BACKER** (2). Of a uniform purple-lilac; petals of good substance; 24 inches. 10 for 70c; 100 for \$6.00.

**BLUE HORIZON** (S. de Vlieger) (2). Light violet-blue standards, falls sky blue, narrow orange stripe; large, beautiful flowers, 26 inches. 10 for 60c; 100 for \$5.00.

**BLUE SKIES** (J. Matham) (3). An outstandingly beautiful variety. Standards and falls pale cornflower blue; similar to Wedgewood but a month later; excellent to plant with tulips; 26 inches. 10 for 70c; 100 for \$6.00.

**GOLDEN BRONZE** (4). A new and rare variety. Standards dark violet, edged bronze; falls attractive golden bronze; 22 inches. 10 for 90c; 100 for \$8.00.

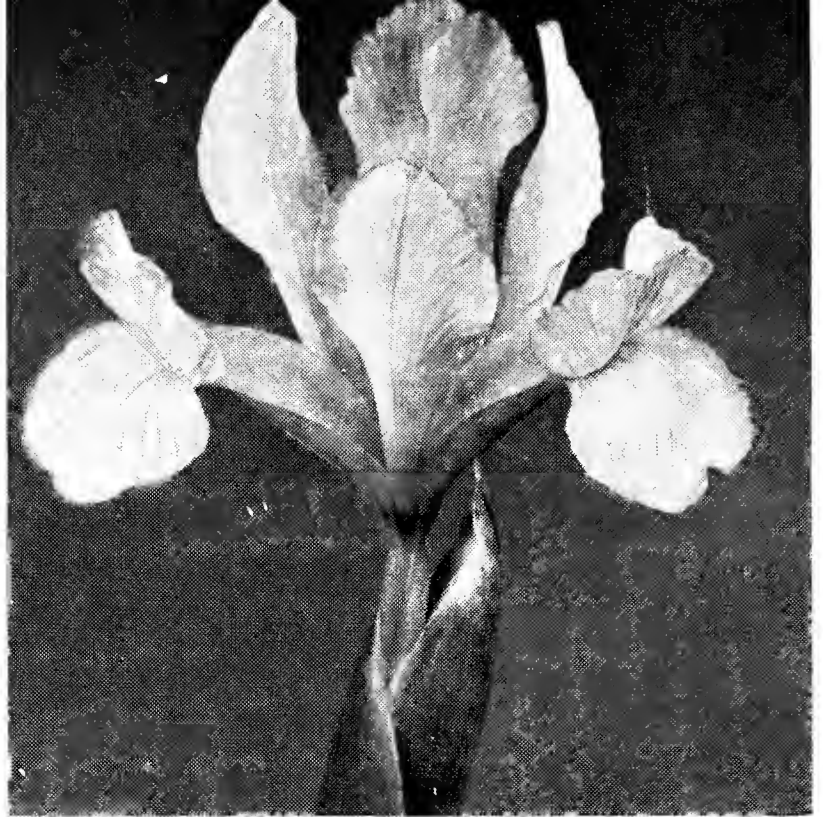
**GOLDEN GLORY** (4). A darker and later Yellow Queen; 26 inches. 10 for 70c; 100 for \$6.00.

**IMPERATOR** (4). Beautiful dark blue; late blooming; 30 inches. 10 for 45c; 100 for \$4.00.

**INDIAN CHIEF** (W. Verschuur) (4). Standards violet, tinged bronze; falls bronze. 10 for 75c; 100 for \$6.50.

**J. W. DE WILDE** (3). Standards and falls golden yellow. A larger and later flower than Yellow Queen; 28 inches. 10 for 70c; 100 for \$6.00.

POGGENBEEK



YELLOW QUEEN

**LEONARDO DA VINCI** (3). Standards cream, falls canary-yellow with orange stripe; very large flower. Lovely planted with yellow or white tulips; 28 inches. 10 for 60c; 100 for \$5.00.

**MORNING MIST** (Jan Weenix) (3). Standards and falls soft sky blue; the lightest blue in our list and lovely to combine with other flowers; 24 inches. 10 for 90c; 100 for \$8.00.

**POGGENBEEK** (2). An improved Emperor. Standards and falls dark, uniform blue; 30 inches. 10 for 50c; 100 for \$4.50.

**THE FIRST** (1). (Tingitana Hybrid) Standards and falls beautiful marine-blue; very early; 24 inches. Plant with late daffodils or early tulips. 10 for 90c; 100 for \$8.00.

**THERESE SCHWARTZE** (3). Standards pale cornflower blue, falls white with narrow orange stripe; 24 inches. 10 for 70c; 100 for \$6.00.

**VIOLET QUEEN** (W. Zuiderveld) (4). Color lilac and violet, similar to Adrian Backer but 2 weeks later; very fine. 10 for 80c; 100 for \$7.00.

**WEDGEWOOD** (1). (Tingitana Hybrid) Standards medium blue, falls lighter blue; large flower; blooms with late daffodils; 24 inches. 10 for 90c; 100 for \$8.00.

**WHITE EXCELSIOR** (2). Standards pure white, falls extra wide, white with orange stripe; 22 inches. 10 for 70c; 100 for \$6.00.

**YELLOW QUEEN** (2). Standards and falls brilliant golden yellow. A striking addition to the garden and exceptionally beautiful for a cut flower; 28 inches. 10 for 50c; 100 for \$4.50.

### COLLECTION OF DUTCH IRIS

5 each of the 17 above-named varieties—

85 bulbs ..... \$5.00

(Plus Sales Tax 15c)—Regular Price, \$6.00

### A NEW SPANISH IRIS

**GOLDEN LION** (5). A new variety that blooms very late. Standards and falls heavily frilled; uniform golden yellow. Each 35c; 10 for \$3.00; 100 for \$27.50.



## LILIES

**LILIUM AURATUM.** Gold Banded Lily. Gloriously fragrant, white flowers with gold band surrounded by tiny red dots running down the center of each petal. Plant 8 to 10 inches deep in sharply drained, gritty soil with little humus. Each 30c; 10 for \$2.50.

**L. CANDIDUM.** Madonna Lily. Pure white, fragrant flowers on 3 to 4 ft. stems. Plant 2 inches deep in well drained soil in sun or very light shade. Blooms in May. Each 25c; 10 for \$2.00.

**L. HENRYI.** Orange speciosum. Orange-yellow flowers on 4 to 6 ft. stems; requires staking. Plant 8 to 10 inches deep in soil mixed with peat or leaf mold; requires shade or only morning sun. Very easy and increases rapidly. Each 30c; 10 for \$2.50.

**L. PARDALINUM.** California Leopard Lily. Orange flowers with orange scarlet shading at ends of petals, dotted with purple; 3 to 4 ft. high. Plant 4 to 5 inches deep in friable soil; medium shade. Increases if left undisturbed. Each 25c; 10 for \$2.00.

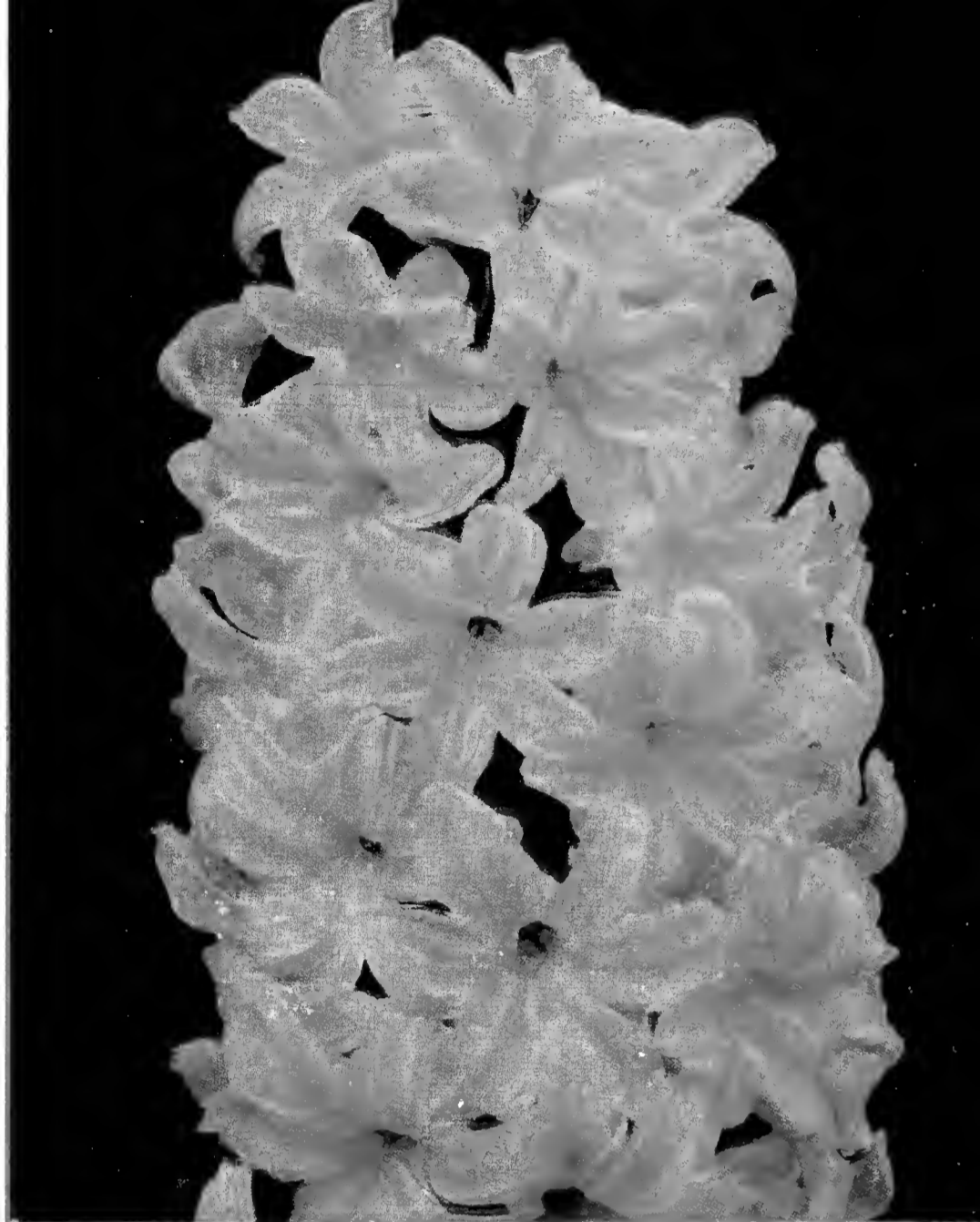
**L. PHILIPPINENSE FORMOSANUM.** Philippine Lily. Pure white, fragrant flowers, 6 inches long on 18-inch stems. Plant 5 to 6 inches deep in peaty soil; prefers shade. Excellent for growing in pots or greenhouse. Each 20c; 10 for \$1.75.

**L. REGALE.** Regal Lily. Trumpet-shaped white flowers with yellow throats and reverse of russet-pink on 3 to 5 ft. stems; fragrant. Plant 8 to 9 inches deep in well-drained garden soil; full sun or very light shade; easy to grow. Blooms in June. Each 25c; 10 for \$2.00.

**L. SPECIOSUM RUBRUM.** Lance Leaf Lily. Carmine-pink flowers with rose-red dots; delicately fragrant. Plant six inches deep in sharply drained soil; provide light shade and stake to prevent toppling. Each 30c; 10 for \$2.50.

**L. TENUIFOLIUM.** Coral Lily. Small, brilliant coral-red flowers on 14 to 18-inch stems. Plant 3 to 4 inches deep in morning sun; lovely in the rock garden; faintly fragrant. Each 15c; 10 for \$1.25.

**L. TIGRINUM SPLENDENS.** Tiger Lily. Rosy orange with purple dots; 3 to 4 ft. Plant 6 to 8 inches deep in light shade or in sun with low growing annuals. An easy variety to grow. Each 20c; 10 for \$1.75.



## HYACINTHS

Set bulbs 5 to 6 inches deep and same distance apart. Plant in full sun or moderate shade; soil should be light, rich and well drained. Bulbs may be left in the ground for several years. A top dressing of bone meal or well-rotted manure should be given each summer or early fall.

The figures following the names refer to the relative time of flowering; (1) being earliest, (4) being latest. PRICES: 17/18 ctm, extra large garden size or for potting; each 20c; 10 for \$1.50; 100 for \$13.00.

PRICES: 15/16 ctm, for general garden use, each 15c; 10 for \$1.00; 100 for \$9.00.

**CITY OF HAARLEM** (4). Creamy-yellow, large spike, late blooming. Very lovely interplanted with dark blue forget-me-nots or Radio violas.

**FURST BISMARCK** (2). Brilliant medium blue, exceptionally large, broad spikes.

**KING OF THE BLUES** (4). Dark blue, compact spikes; late.

**LADY DERBY** (2). Blush pink, large individual flowers and good spikes; one of the finest.

**L'INNOCENCE** (1). The best pure white. Flowers large and of excellent substance.

**ORANJE BOVEN** (2). A new color in hyacinths; rich salmon pink with delicate orange sheen; very effective combined with blue flowers.

**PERLE BRILLIANTE** (1). Light lavender-blue; similar to Queen of the Blues, but earlier.

**QUEEN OF THE BLUES** (2). Most popular lavender-blue variety. Strong growing with large spikes on good stems.

**QUEEN OF THE PINKS** (3). Beautiful rosy-pink; long spikes.

**YELLOW HAMMER** (2). Lovely creamy-yellow; quite early.

# Scenes from Our 1937 Bulb Show at Niles



Spring Glory Daffodil is aptly named—an early variety, it is a forerunner of a glorious season of bloom.



The California Nursery Company invites you to visit its spacious gardens at any season of the year. A special invitation is extended during the Spring months when the gardens are filled with Spring flowering bulbs and scenes such as those shown on this page are in evidence on every hand.

Our Seventh Annual Outdoor Bulb Show will be held from early March till mid-April. Cards of invitation, giving the exact dates, are mailed to our customers and friends before the formal opening of the show.

Daffodils dominate the opening weeks with thousands of cheery blooms in more than a hundred varieties. Each year we show the latest introductions of the world's most skillful daffodil breeders as well as the standard varieties. Miniature daffodils for rock garden use are featured in one section, while in another, the giants of the race are displayed.

Flowering with the Daffodils are early Dutch Iris, Anemones, Ranunculus, Species Tulips and many rare Cape and Dutch Bulbs. A background planting of flowering trees and shrubs adds to the colorful scene.

The latter part of the show features Tulips and Dutch Iris. The new Mendel and Triumph Tulips as well as the newest and rarest varieties of Cottage, Breeder and Darwin Tulips are shown. In all, 164 varieties of tulips will be planted for the 1938 show.

Tours of our gardens under the direction of well informed guides and bus trips through the extensive growing grounds where acres of beautiful and interesting shrubs are in evidence are additional attractions. The flower arrangement section is a popular feature of our show, providing practical and interesting demonstrations of the use of Spring flowers.

A special invitation is extended to Garden Clubs to hold their March and April meetings in the garden of "Old Adobe", our century-old Guest Lodge.



A section of our Daffodil Test Garden with Tresserve, a fine Yellow Trumpet, in the foreground.





February Gold defies the weather from its stronghold high in the rock garden.

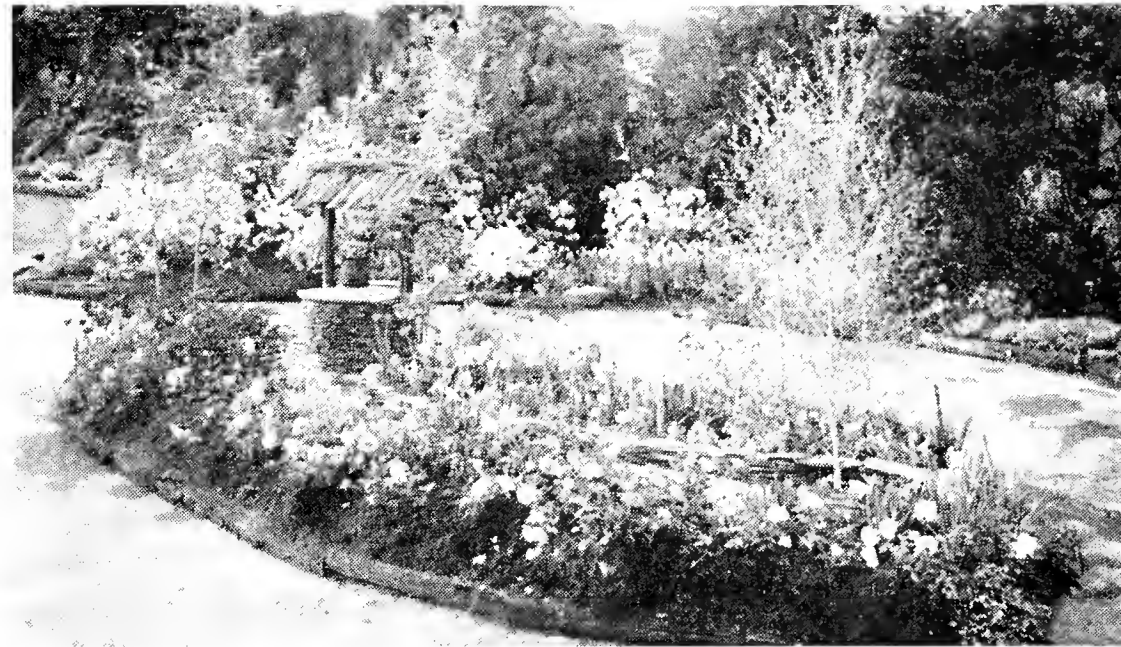


Our visitors are entertained with true California hospitality at "Old Adobe" our 100-year old Guest Lodge.

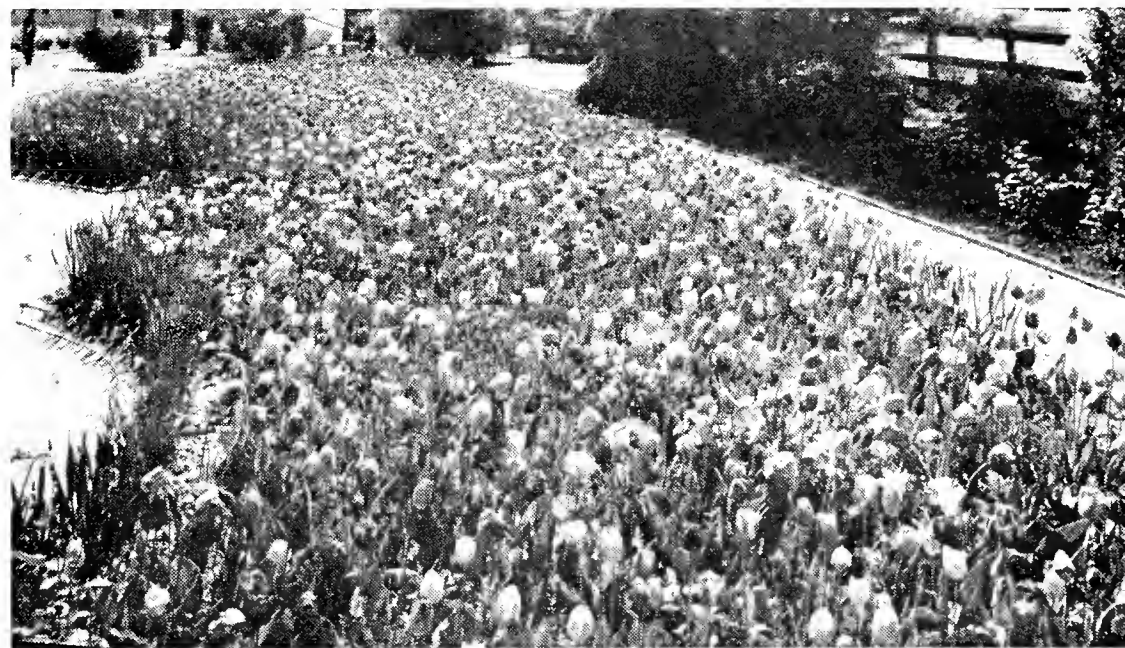


Albino, a white Cottage Tulip, borders a path beneath poplar trees.

Our exhibit at the California Spring Garden Show, Oakland, 1937.



Tulips in a riot of color bring a full measure of beauty to the spring garden.



Another section of our Daffodil Test Garden with sales office in the background.





CITY OF HAARLEM

**WHISTLER** (3). Most popular red tulip at our 1937 Bulb Show. Blazing crimson, nice form, large flowers; 26 inches. 10 for 75c; 100 for \$6.75.

**YELLOW GIANT** (4). A true Darwin Tulip; very dark yellow; dark stamens; extra large and tall; 30 inches. 10 for \$1.10; 100 for \$9.50.

**ZWANENBURG** (3). Very large, pure white flowers with dark stamens; the tallest white tulip; 28 inches. 10 for 95c; 100 for \$8.25.

### SPECIAL DARWIN COLLECTION

5 each of the 18 above-named varieties—  
90 top size bulbs.....\$7.25  
(Plus State Sales Tax, 22c)

ECLIPSE



## DARWIN TULIPS

The figures following the names refer to the relative time of flowering; (1) being early, (4) being latest.

**BLEU AIMABLE** (3). Bright violet-purple shaded steel-blue; 26 inches. 10 for 70c; 100 for \$6.00.

**BLUE PERFECTION** (2). Medium violet-blue with heliotrope margin; petals pointed; graceful flower. 10 for \$1.25; 100 for \$11.00.

**CITY OF HAARLEM** (3). Pure scarlet with steel-blue center and white ring; 26 inches. 10 for 90c; 100 for \$8.00.

**CLARA BUTT** (4). Clear pink becoming darker with age; 26 inches. 10 for 65c; 100 for \$5.50.

**DREAM** (2). Soft, uniform lilac, nicely formed flowers; 28 inches. 10 for 65c; 100 for \$5.75.

**ECLIPSE** (3). The darkest, clear red tulip; magnificent form; 26 inches. 10 for \$1.40; 100 for \$12.50.

**FEU BRILLIANT** (3). Brilliant, fiery red with no rose or purple shading; 28 inches. 10 for 80c; 100 for \$7.00.

**GIANT** (2). Very large rich purple flowers; 28 inches. 10 for 90c; 100 for \$8.00.

**LA TULIPE NOIRE** (2). (The Black Tulip) Dark maroon, approaching black; 26 inches. 10 for 85c; 100 for \$7.50.

**MELICETTE** (2). Lilac-lavender, nicely formed flowers; 28 inches. 10 for 85c; 100 for \$7.50.

**PRIDE OF HAARLEM** (2). Dark, rosy-scarlet; exceptionally large flowers; 30 inches. 10 for 65c; 100 for \$5.50.

**PRINCE OF WALES** (2). Fiery rose-scarlet, inside vivid cherry-scarlet; extra large flowers; 30 inches. 10 for 75c; 100 for \$6.75.

**PRINCESS ELIZABETH** (4). Old rose pink, white center; 26 inches. 10 for 65c; 100 for \$5.75.

**PRINCESS MARY** (3). Old rose pink, slightly lighter than Princess Elizabeth; very fine, large flowers on strong stems; 30 inches. 10 for \$1.45; 100 for \$13.25.

**VENUS** (2). Dark rose with blue center; very large; opens wide; 26 inches. 10 for 80c; 100 for \$7.25.

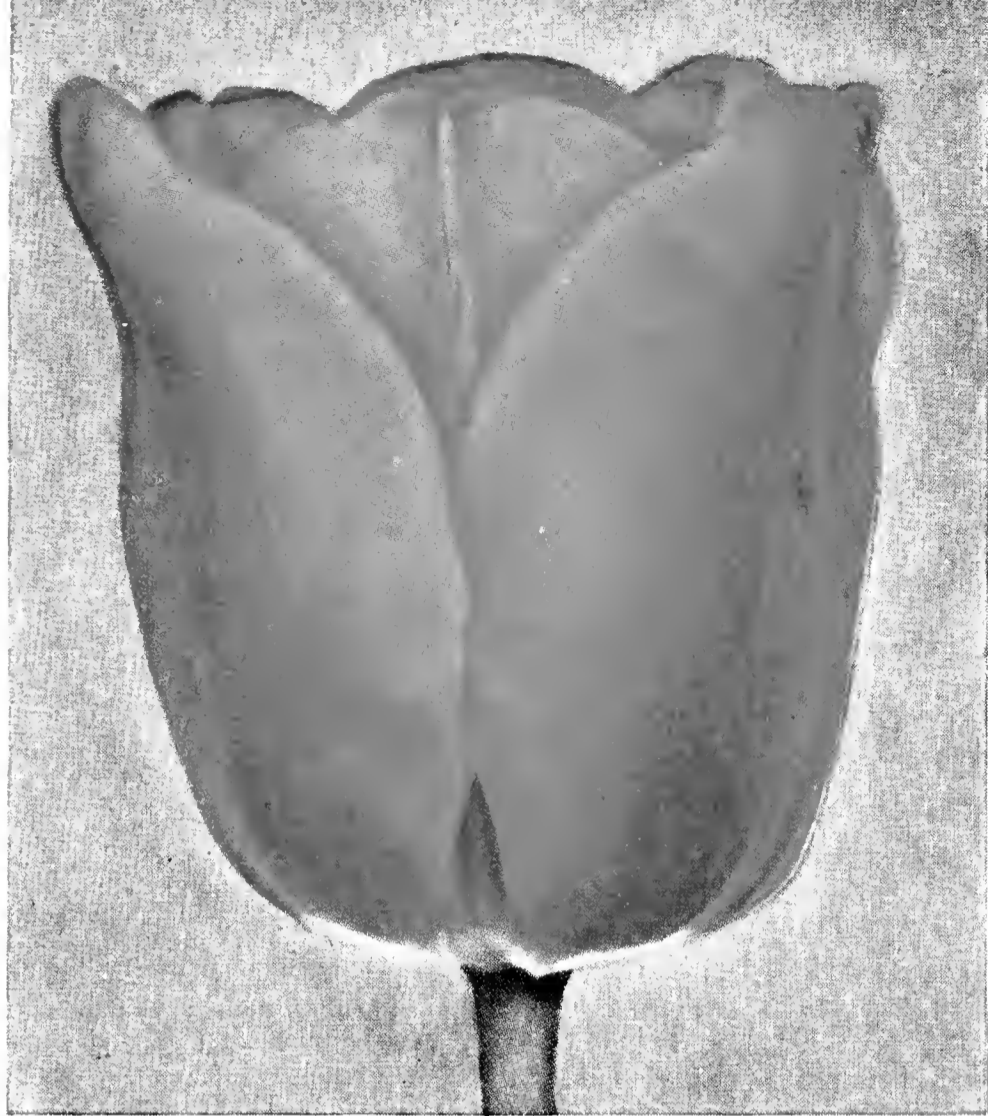
## HOW TO GROW TULIPS

From late October till the end of November is the most favorable planting time although planting may be done as late as early January. Early and shallow planting will often result in short stems and inferior blooms since warm weather at planting time will start top growth before roots are formed.

Peat is a valuable addition to any kind of soil in which bulbs are to be planted and is essential for retaining moisture in very heavy or very light soils.

Plant tulip bulbs six inches deep in sandy soil and five inches deep in heavy soil. Good drainage is essential and it is often advisable to raise the level of tulip beds above the surrounding garden if drainage is doubtful. Place a handful of sand under each bulb when planting to aid in drainage. Do not allow fresh manure or commercial fertilizer to come in contact with the bulbs. Dig it down below where the bulbs are to be planted, or apply it as a top-dressing after planting has been done.

Water thoroughly as soon as bulbs are planted. Do not allow soil to become dry after young leaves are through. Tulips need lots of water when growing. As soon as blooms have fallen, remove the seed pods and keep the beds well watered and cultivated for a month. When foliage is ripe and dry, dig the bulbs, dry them thoroughly in the shade, clean them and store in a cool, wellventilated place until the next planting season.



PRINCESS MARY

## BREEDER TULIPS

**BRONZE QUEEN** (2). Purplish-fawn, interior buff yellow; stout stem, good form; a reliable old favorite. Blends nicely into the colors of Cottage Tulip Ambrosia. 10 for 70c; 100 for \$6.00.

**DILLENBURG** (3). A popular new variety of excellent form; orange and gold with a rosy bloom. Matches the color of Orange King, but is a week later. 10 for \$1.00; 100 for \$9.00. (Color plate on next page).

**DOM PEDRO** (3). Coffee-brown, interior reddish-mahogany. Combines beautifully with gold and maroon wall flowers and yellow Swiss Giant Pansies. 10 for 80c; 100 for \$7.25.

**HELOISE** (2). Exactly the color of old copper; remarkably large flowers; 22 inches. 10 for 95c; 100 for \$8.75.

**INDIAN CHIEF** (3). Reddish-mahogany flushed rosy-bronze; extra large flower of beautiful form on a tall, strong stem. Our favorite bronze tulip. 10 for \$1.25; 100 for \$11.00.

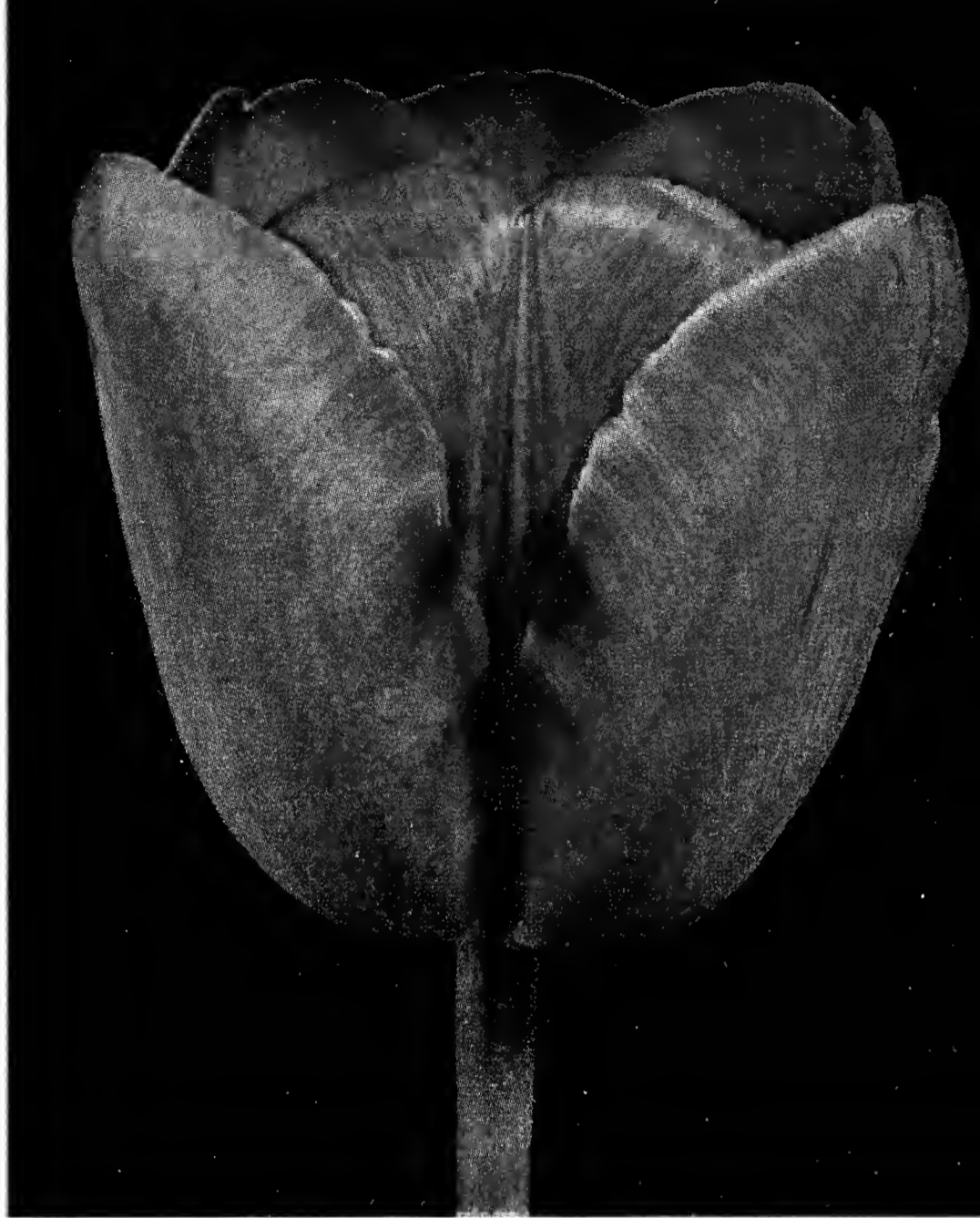
**LUCIFER** (3). Dark but brilliant orange with rosy bloom, interior scarlet-orange; pointed petals. 10 for \$1.00; 100 for \$9.00.

**OLD GOLD** (Yellow Perfection) (2). Light bronze-yellow with bronze marks at outer tips of petals, olive green center; large, beautifully formed flowers on strong stems; 28 inches. Strikingly modernistic in its unusual coloring. 10 for 80c; 100 for \$7.00.

**PRINCE ALBERT** (2). Glowing chestnut brown; long flower with pointed petals; darker than Bronze Queen; 28 inches. 10 for 80c; 100 for \$7.25.

**PRINCE OF ORANGE** (2). Terracotta, edged orange-yellow; very large with fine, strong stems; 26 inches. 10 for 75c; 100 for \$6.50.

**SUNBEAM** (2). Burnt sienna, merging into chrome-yellow; very brilliant and much admired; 24 inches. 10 for \$1.20; 100 for \$10.75.



GIANT

**VELVET KING** (2). Dark royal purple; cup-shaped flower of large size; 28 in. 10 for 90c; 100 for \$8.25.

PRINCE OF ORANGE

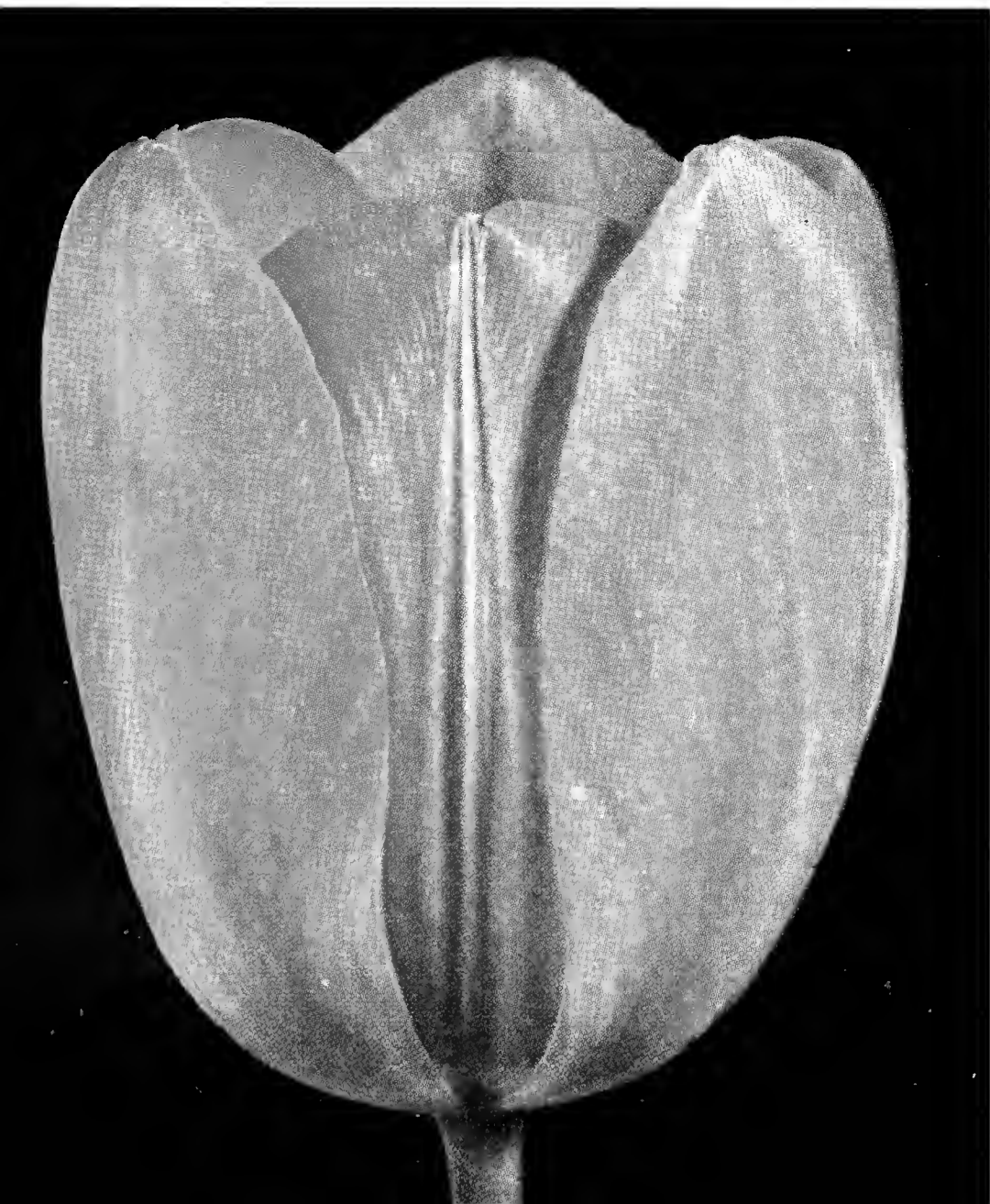




ARETHUSA

Our Prices Include Postage Within the 4th Zone

DIDO



DILLENBURG

(Described on page 15)

## COTTAGE TULIPS

**ADELGAR** (2). Clear lemon yellow with nicely modeled bloom. Charming planted with ground cover of Forget-me-nots or Baby Blue Eyes. 10 for 75c; 100 for \$6.75.

**ALBINO** (2). Strong growing, pure white tulip with extra good stems and fine form; 26 inches. 10 for 90c; 100 for \$7.75.

**AMBROSIA** (3). Salmon-carmine, shaded amber, yellow center; beautifully proportioned; very large and tall; 28 inches. 10 for 80c; 100 for \$7.00.

**ARETHUSA** (2). Medium yellow, exquisitely graceful; the most popular yellow tulip in our gardens; 26 inches. 10 for 90c; 100 for \$7.75.

## SPECIAL TULIP OFFER

This collection provides a variety of colors and a long flowering season. It is especially suitable for planting in a small garden.

<b>Adelgar</b> —Light yellow	<b>Mrs. Moon</b> —Dark yellow
<b>Albino</b> —White	<b>Orange King</b> —Orange
<b>Bronze Queen</b> —Fawn	<b>Prince Albert</b> —Chestnut
<b>Clara Butt</b> —Pink	<b>Princess Elizabeth</b> —Rose
<b>Dido</b> —Pink and amber	<b>Pride of Haarlem</b> —Rose-red
<b>Dream</b> —Lavender	<b>Whistler</b> —Fiery red

5 each of the above 12 varieties—  
 60 top size bulbs .....\$4.00  
 (Plus State Sales Tax 12c)

**AVIS KENNICOTT** (3). Chrome-yellow with black center; very graceful; 28 inches. 10 for 65c; 100 for \$5.75.

**CARRARA** (1). Pure white with yellow anthers; full round flowers; 20 inches. 10 for 90c; 100 for \$8.00.

**DIDO** (3). Cochineal-carmine edged salmon-pink and amber, yellow center; flower very long on a strong stem. Those who visited our 1937 Tulip Show will remember the magnificent bed of Dido Tulips in Mrs. Roeding's garden. 10 for 70c; 100 for \$6.00.

**GRENADIER** (2). Immense flowers of flaming orange-scarlet on rather short stems; most brilliant of all tulips. Try planting it with a background of dark blue Dutch iris or with a ground cover of blue Swiss Giant Pansies. 10 for 70c; 100 for \$6.00.

**INGLESCOMBE PINK** (1). Opens salmon-rose fading to lavender pink; tall and early; 28 inches. Effective with a background of old-rose and white stocks and a border of white scillas. 10 for 65c; 100 for \$5.75.

**INGLESCOMBE YELLOW** (4). Canary-yellow, feathered with red on old flowers; 20 inches. 10 for 65c; 100 for \$5.50.

**MISS BLANCHE** (2). Creamy-white paling to pure white; an excellent variety for cutting; plant with forget-me-nots and primrose violas. 10 for 70c; 100 for \$6.25.

**MOONLIGHT** (1). The earliest Cottage Tulip, blooms with late daffodils. A graceful and charming variety; 24 inches. 10 for 70c; 100 for \$6.00.

**MRS. MOON** (3). Dark golden-yellow; long, slender petals slightly reflexing; 24 inches. 10 for 70c; 100 for \$6.00.

**ORANGE KING** (2). Brilliant rosy-orange; very showy; effective when planted with blue nemesias. 10 for 70c; 100 for \$6.00.

**PICOTEE** (2). Opens white or cream faintly feathered with pink, becoming heavily margined with rose. Petals pointed, sharply reflexing; 16 inches. 10 for 65c; 100 for \$5.75.

**ROSABELLA** (4). Apple blossom pink flushed with salmon. Color does not fade and flowers are very lasting. Stems extra strong. Groups nicely with Blue Excelsior Scillas and pink English Daisies. 10 for 85c; 100 for \$7.50.

**RETROFLEXA** (2). A pale yellow, lily-flowered tulip; long slender flower with pointed and reflexed petals opening wide in full sun. Try planting it against a white Spiraea Van Houttei with a border of white and yellow English Primroses. 10 for 75c; 100 for \$6.75.

**SIRENE** (3). Brilliant satin-rose. A lily-flowered tulip with sharply reflexing petals; 24 inches. 10 for 70c; 100 for \$6.25.

**W. T. WARE** (3). Rich orange yellow entirely free from red feathering; the darkest tulip of its color; petals reflex. More permanent in the garden than most varieties. 10 for 85c; 100 for \$7.75.

## SPECIAL COTTAGE TULIP COLLECTION

5 each of the 19 above-named varieties—

95 top size bulbs .....\$6.40

(Plus State Sales Tax 19c)



MRS. MOON

Our tulips are imported from one of the best Holland growers and are all of the largest, "selected top" size.

ADELGAR





TULIP KAUFMANNIANA

## TULIP NOVELTIES

**BLUE FLAG** (4). Late Double. Light violet-blue, very double flowers on tall, strong stems. Group with Therese Schwartz Dutch Iris and blue columbines, edge with Purity Freesias. 10 for \$1.10; 100 for \$9.25.

**FANTASY** (3). Parrot Tulip. This is a sport of the popular Clara Butt. Color is soft carmine with reverse of petals marked with pale green, flushed with bronze; petals serrated and lacinated in a beautiful manner. 10 for \$1.00; 100 for \$9.00.

## BOTANICAL TULIPS

These wild tulips are excellent for planting in rock gardens. They need not be taken up each year and if given good drainage will thrive and increase for years.

**CLUSIANA** (The Lady or Candy Stick Tulip). Outer petals white, striped with cherry red, inner petals white; slender and graceful; very early. Try planting in front of Bleeding Heart or next to a group of Gladiolus tristis or Peacock Iris. 10 for 80c; 100 for \$7.00.

**EICHLERI**. A grand tulip from Turkestan; crimson flowers with black centers; fairly early. Striking when planted against a grey stone or with a dark green background. 10 for 80c; 100 for \$7.00.

**KAUFMANNIANA** (Water Lily Tulip). Creamy white with carmine on reverse of petals; opens flat on sturdy, short stems. Blue aubrietia is a charming neighbor for this tulip. 10 for \$1.10; 100 for \$10.00.

**SYLVESTRIS**. The wild tulip of Europe; fragrant yellow flowers blooming very early. We plant it under drifts of Crocus where it flowers after the Crocus are through. 10 for \$1.10; 100 for \$10.00.

TULIP CLUSIANA



# MISCELLANEOUS BULBS

## ANEMONES

Plant in full sunshine but provide an ample supply of water and good drainage. Add peat or humus and sand if soil is very heavy. Soak bulbs over night before planting. Set 2 inches deep with points or prongs down. Plant from October to January.

**BLUE POPPY**. A strain of deep blue singles with very large flowers. 10 for 50c; 100 for \$4.50.

**HIS EXCELLENCY**. Very large blooms of vivid scarlet on extra long stems. 10 for 50c; 100 for \$4.50.

**MONARCH DE CAEN**. Large, single blooms in brilliant colors produced very freely. 10 for 50c; 100 for \$4.50.

**ST. BRIGID**. Double and semi-double flowers in mixed shades. 10 for 50c; 100 for \$4.50.

## BABIANAS

Freesia-like flowers in brilliant shades of dark blue and violet blooming in March and April; foliage downy and heavily ribbed. Bulbs multiply rapidly; give same culture as Freesias. 10 for 50c; 100 for \$4.00.

## BABY GLADIOLUS

**PEACH BLOSSOM**. Uniform delicate pink; very lovely. 10 for 45c; 100 for \$4.00.

**RED BRIDE**. The best red in this class. 10 for 45c; 100 for \$4.00.

**THE BRIDE**. Pure white blooms on graceful spikes; fine for cutting. 10 for 45c; 100 for \$4.00.

**TECOLOTE LAVENDER-BLUE**. A new strain with extra large flowers. 10 for 50c; 100 for \$4.50.

**TECOLOTE ORANGE**. Brilliant shades in a new color class for this flower. 10 for 50c; 100 for \$4.50.

**TECOLOTE SALMON**. Attractive blooms in various shades of salmon. 10 for 50c; 100 for \$4.50.

**TECOLOTE MIXED HYBRIDS**. Extra large flowers in a wide range of colors. 10 for 45c; 100 for \$4.00.

## CALLAS

**BABY CALLA**. This new, pure white, dainty Calla is a perfect miniature of the large Calla aethiopica. Flowers borne on stems 12 to 18 inches tall. Prolific bloomer. Each 35c; 10 for \$3.00; 100 for \$25.00.

**YELLOW CALLA**. Brilliant yellow flowers that are unexcelled for cutting. Each 35c; 10 for \$3.00; 100 for \$25.00.

## BRANCH NURSERIES

Send mail orders direct to our main office at **Niles, California**. Shipments will be made as early as bulbs are available. We also carry stocks of bulbs at our various branch nurseries. In **Sacramento** at 3149 Folsom Blvd., in **Fresno** at Belmont and Thorne, in **Modesto** at our nursery on the Crows Landing Highway, in **Menlo Park** at Allied Arts Nursery, Creek Drive and Arbor Road.

## CALOCHORTUS (Mariposa Tulip)

Plant from October to December 15th, 2 to 2½ inches deep in ordinary garden soil. Drainage must be perfect; use no manure. Keep ground moist till blooming season, then allow to dry out. Bulbs may be left in soil if dry, otherwise dig and store. Plant *C. venustus* in full sun; *C. albus*, *amoenus* and *amabilis* are best in light shade.

**CALOCHORTUS ALBUS.** Fairy Lantern. White, globe-shaped flowers on many-branched stems. 10 for 50c; 100 for \$4.00.

**C. AMABILIS.** Yellow Globe Tulip. Golden yellow, pendant flowers on 12-inch, branched stems. A real treasure. 10 for 50c; 100 for \$4.00.

**C. AMOENUS.** Pink Globe Tulip. Rose-pink flowers on slender, branching, 8-inch stems. Exquisite in the rock garden. 10 for 50c; 100 for \$4.00.

**C. VENUSTUS CITRINUS.** Yellow Mariposa Tulip. Rich yellow flowers, 2 to 3 inches across, with black eye. A hardy, easy variety. 10 for 50c; 100 for \$4.00.

**C. VENUSTUS ELDORADO.** Butterfly Tulip. White, pink or lavender flowers, 2 to 4 inches across with lilac to purple eyes; branched stems, 1 to 2 feet tall; prefers a rather sandy soil. 10 for 50c; 100 for \$4.00.

## CHIONODOXA (Glory of the Snow)

Lovely, early flowering bulb for rock gardens. Spikes of waxy blue flowers with white centers on 4 to 6 inch stems. Small, hyacinth-like foliage. 10 for 45c; 100 for \$4.00.

## CHLIDANTHUS

**CHLIDANTHUS FRAGRANS.** Yellow, trumpet-shaped, fragrant flowers 3 to 4 inches long on 12 to 15 inch stems. Grows in full sun; blooms in June and July. Bulbs must be dug each fall and kept dry through the winter. Plant in late February. Each 25c; 10 for \$2.00.

## CROCUS

**CROCUS VERNUM.** Dutch Crocus. This type of crocus cannot be naturalized in grass in California as is done in colder sections but may be grown in beds or borders as well as in pots. We have found it beautiful when planted in thick drifts of separate colors in the rock garden.

PRICE OF THE VARIETIES LISTED BELOW:  
10 for 35c; 100 for \$3.00.

**ENCHANTRESS.** Soft blue with darker base; extra large.

**KATHLEEN PARLOW.** A large, strong growing, pure white.

**MAMMOTH YELLOW.** Rich buttercup yellow; many flowers from each bulb.

**QUEEN OF THE BLUES.** Delicate lavender-blue.

**SIR WALTER SCOTT.** Striped white and lavender-blue.

**WHITE LADY.** A fine white with very showy orange stigmata.



ANEMONES

### SHIPPING CHARGES

There is no charge for packing and we prepay charges on bulbs to points within the Fourth Zone, except on orders for less than \$1.00 a handling charge of 25c will be made.

BABY GLADIOLUS





CROCUS IN OUR ROCK GARDEN

## SPECIES CROCUS

The species Crocus which flower in winter and early spring are well suited to California conditions. They are especially lovely in the rock garden where they may be allowed to remain undisturbed for several years. Set bulbs in drifts, 3 inches deep.

PRICE OF VARIETIES LISTED BELOW: 10 for 45c; 100 for \$3.50.

**SIEBERI.** This is the earliest variety; starting to flower in January. Flowers are soft lavender with golden-yellow base.

**SUSIANUS** (Cloth of Gold). Golden-yellow, striped with brown on outer petals.

**TOMMASINIANUS.** Inside pale sapphire, outside lavender, stigmata brilliant orange.

## DIERAMA

**DIERAMA PENDULA.** Has numerous sprays of delicate lavender-pink flowers on pendulous 4 to 5 foot stems. Give the same culture as for Watsonias. Each 15c; 10 for \$1.00.

## FREESIAS

Plant in September and October in a sunny location in soil made light by addition of sand or humus. Set two or three inches deep and a like distance apart. Our bulbs are of large size and will give uniformly good results.

**GOLDEN DAFFODIL.** Giant golden-yellow; nearly twice as large as Purity; early. 10 for 35c; 100 for \$3.00.

**MARIE LOUISE FISCHER.** The best new lavender-blue variety. 10 for 40c; 100 for \$3.50.

**MRS. MARC PETERS.** Brilliant coppery-rose; superior to all other dark pink freesias. 10 for 40c; 100 for \$3.50.

**SUNSET.** Color is a combination of gold and rich red-dish-orange. 10 for 40c; 100 for \$3.50.

**PURITY.** This strain produces very large, white flowers; very fragrant. 10 for 35c; 100 for \$3.00.

**SPECIAL MIXTURE.** This is a blend of 15 colored varieties; contains no white. 10 for 40c; 100 for \$3.50.

## ERANTHIS HYEMALIS (Winter Aconite)

Cherry yellow flowers like small Anemones; bloom in January and February. Charming planted in clumps or drifts in the rock garden. 10 for 35c; 100 for \$3.00.

## ERYTHRONIUM (Dog Tooth Violets)

Plant bulbs soon as received; do not allow to dry out. Plant 3 inches deep in loose, loamy soil; light shade is required. Good drainage is essential, but soil must be moist at all times. Not recommended for hot, dry locations.

**ERYTHRONIUM GRANDIFLORA.** A superb variety with buttercup-yellow flowers. 10 for 50c; 100 for \$4.50.

**E. HENDERSONI.** Dark rosy-lavender flowers with lighter centers and maroon eye. Exceptionally beautiful. 10 for 50c; 100 for \$4.50.



FREESIAS

## GALANTHUS (Snowdrop)

Pure white, pendant blooms, centers tipped with delicate green. Plant 2 inches deep in a cool shady location where they will be undisturbed.

**ELWESI.** Large, single flowers. 10 for 45c; 100 for \$4.00.

**NIVALIS FLORE PLENO.** Double flowers. 10 for 50c; 100 for \$4.50.

## GALTONIA CANDICANS (Summer Hyacinth)

Spikes of white bells on 3 to 4 foot stems; bulbs are planted in March or April and flower in mid-summer. Very effective planted in groups in a perennial border. Plant 6 inches deep. 10 for \$1.00; 100 for \$9.00.



## GLADIOLUS SPECIES

**GLADIOLUS ALATUS** ("Little Roosters"). Interesting terra-cotta flowers with green lower segments. Blooms in spring on 6 to 12 inch stems. Suitable for rock gardens or pot culture. Each 15c; 10 for \$1.25.

**GLADIOLUS TRISTIS CONCOLOR.** (Night Scented Gladiolus). Lemon-yellow flowers on slender, wiry stems; blooms in March. Very fragrant in evening and early morning. A suitable companion for Tulipa clusiana and Moraea g'aucopis. 10 for \$1.00; 100 for \$9.00.

## IXIAS (African Corn Lilies)

**IXIA BLOEM-ERF.** A recent hybrid quite unlike all other varieties. Blooms in May on 3 to 4 foot stems; 20 to 40 flowers in a spike with many branches; lavender-pink with an occasional white bloom. Increase rapidly if left in ground for two or three years. Most effective when closely massed. 10 for \$1.00; 100 for \$9.00.

**IXIA INCARNATA.** Fragrant, lavender-blue flowers on slender 18 to 24 inch stems. Flowers do not close at night. Blooms in February and is effective planted in groups with white crocus. Each 20c; 10 for \$1.50; 100 for \$13.50.

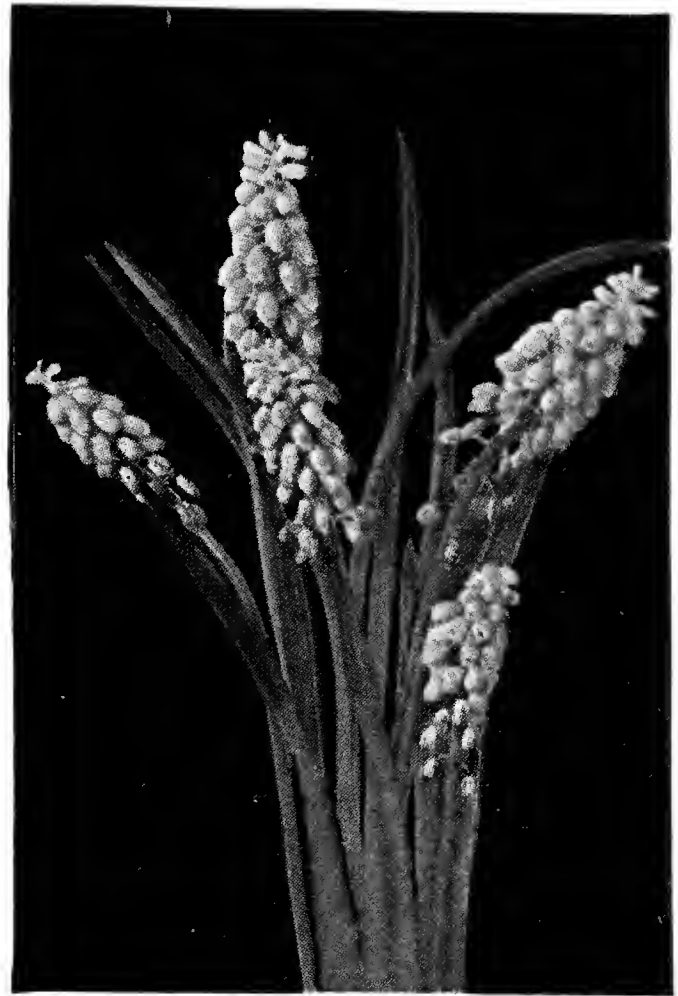
**HYBRID IXIAS.** Brilliant flowers valuable for interplanting with Tulips as they flower just after Tulips are through. 12 to 18 inches. Plant in early fall; set bulbs 2 inches deep. We can supply separate colors of carmine, orange, purple, white and yellow or mixed. 10 for 45c; 100 for \$3.50.

## LEUCOCORYNE (Glory of the Sun)

Recent introduction from Chile, flowering in April. Must be planted early in well drained soil and given an abundance of water from planting time until flowers appear. Failure to supply these conditions will result in the bulbs remaining dormant in the soil. Flowers lavender-blue with white centers and golden stamens, carried on thin wiry stems. 10 to 12 inches tall. Lasts 10 to 12 days when cut. Foliage consists of two very narrow, grass-like leaves which lie flat on the ground. Each 35c; 10 for \$3.00; 100 for \$25.00.



LEUCOCORYNE (GLORY OF THE SUN)



MUSCARI

## LEUCOJUM (Snowflake)

Pendant white flowers with green tips; usually borne in clusters of three on 8 to 10 inch stems. Foliage resembles that of Daffodils. Leave undisturbed and quality of bloom improves each year. Plant 3 inches deep in sun or light shade. 10 for 60c; 100 for \$5.00.

## MILLA BIFLORA (Estrellita)

Recent introduction from Mexico. Snowy-white flowers, 2 inches in diameter opening out flat; faint stripe of green on reverse of each petal; waxy texture, nice fragrance. Blooms from July to September; excellent for cutting. Hardy in coastal California but should be lifted in winter in colder climates. Delivery in late January. Each 30c; 10 for \$2.50; 100 for \$20.00.

## MUSCARI (Grape Hyacinths)

Very pretty, hyacinth-like flowers produced in clusters like a bunch of grapes. Plant 3 inches deep where they may remain undisturbed and they will increase very rapidly.

**ARMENIACUM.** Flowers like Heavenly Blue but foliage is shorter and neater. 10 for 40c; 100 for \$3.50.

**AZUREUM.** Small, sky-blue sort for rock gardens. 10 for 40c; 100 for \$3.50.

**BOTRYOIDES ALBA** (Pearls of Spain). Pure white, small flowers; best in rock gardens. 10 for 40c; 100 for \$3.50.

**HEAVENLY BLUE.** The largest variety and most generally satisfactory. Ours is the true, large-flowering strain. 10 for 35c; 100 for \$3.00.



RANUNCULUS

## MORAEA

Plant 2 to 3 inches deep in light, well drained soil in full sun. Excellent for pockets in rock garden.

**MORAEA GLAUCOPIIS.** Peacock Iris. Flowers in March; light blue with brilliant peacock eye at base of each petal; 10 to 15 inches high. 10 for \$1.00; 100 for \$9.00.

**M. POLYSTACHYA.** A recent introduction. Slender plant 18 to 24 inches with many branches. Flowers lavender with bright yellow spot at base. Starts blooming in 8 to 10 weeks after planting and remains in bloom for several weeks. Each 15c; 10 for \$1.35; 100 for \$12.00.

## ORNITHOGALUM

**ARABICUM.** Milk-white flowers with black centers; borne in large heads on strong stems 12 to 18 inches high. 10 for 50c; 100 for \$4.50.

**AUREUM.** An outstanding novelty. Excellent for rock gardens or for pots. Rich apricot-orange flowers in heads on 6 to 8 inch stems. Bulbs sometimes remain dormant in the soil the first year but if left undisturbed will grow and bloom the second season. Each 15c; 10 for \$1.35; 100 for \$10.00.

**THYRSOIDES FLORE PLENUM** (Double Ornithogalum). A very new and distinct variety with flowers similar to double tuberose. Stays in bloom for a very long time and is exceptionally fine as a cut flower. Each 15c; 10 for \$1.35; 100 for \$10.00.

## RANUNCULUS

Culture same as for Anemones. Soak bulbs over night before planting and plant with prongs down; cover firmly with 2 inches of soil; perfect drainage is essential for best results. We offer only two-year, top-size bulbs.

**GOLD SHADES.** Flowers the same color as those of Darwin's Barberry; mostly double blooms. 10 for 60c; 100 for \$5.00.

**PINK SHADES.** We offer these this year for the first time. Colors in varying shades of rosy-pink. 10 for 75c; 100 for \$6.00.

**RED SHADES.** Mostly double flowers in shades of red and very dark rose. 10 for 60c; 100 for \$5.00.

**WHITE AND CREAM SHADES.** Double flowers running 60% to 75% white. A very fine strain. 10 for 75c; 100 for \$6.00.

**YELLOW SHADES.** Mostly double flowers in attractive shades of cream and yellow. 10 for 60c; 100 for \$5.00.

**TECOLOTE GIANTS MIXED.** Large, two-year bulbs of double and semi-double varieties in solid and variegated colors of red, yellow and orange. 10 for 50c; 100 for \$4.00.

## SCILLAS (Squills)

Beautiful, little campanula-shaped flowers resembling small hyacinths. They bloom in early spring and should be planted in October and November. Plant about 2 inches deep in clumps. They succeed best in shade.

**CAMPANULATA ALBA.** Pure white flowers; 12 to 15 inches. 10 for 45c; 100 for \$4.00.

**CAMPANULATA EXCELSIOR.** Spikes of bell-like, porcelain-blue flowers; 12 to 15 inch stems. 10 for 45c; 100 for \$4.00.

**CAMPANULATA ROSEA.** Pinkish-lavender flowers. 10 for 45c; 100 for \$4.00.

**NUTANS COERULEA.** The true English Bluebell or Harebell; fragrant. 10 for 45c; 100 for \$4.00.

**SIBERICA SPRING BEAUTY.** Much larger than the common type with flowers of the most brilliant blue imaginable. Plant in moist, but well drained soil with not too much sun. 10 for \$1.25; 100 for \$10.00.

## SPARAXIS

**SPARAXIS BULBIFERA.** Lovely, light yellow flowers on 8 to 12 inch stems; very free flowering. 10 for \$1.00; 100 for \$9.00.

**NEW TECOLOTE HYBRIDS.** Flowers larger and in much better color range than the common strain and include the famous Bloem-Erf Hybrids; 8 to 10 inch stems. 10 for \$1.00; 100 for \$9.00.



SCILLA CAMPANULATA EXCELSIOR

## STREPTANTHERA CUPREA

Brilliant, new Cape Bulb. Foliage like Tritonia; flowers open flat; brilliant orange red with violet eye. Each bulb produces several spikes of bloom on 6 inch stems. Culture same as Freesias; blooms in March. 10 for \$1.00; 100 for \$9.00.

## TIGRIDIAS (Mexican Shell Lilies)

Plant February to April. Provide plenty of sun and water. Brilliant flowers of rose, orange and yellow with dark spots, produced over a long season. Mixed colors only. 10 for \$1.50; 100 for \$12.50.

## TRITELIA UNIFLORA

Pale violet-blue flowers with lighter centers. Excellent for border plantings as bulbs increase rapidly. 10 for 65c; 100 for \$5.50.

## TRITONIA

Cultural directions same as Freesias. Flowers larger and later than Freesias, following after Tulips. Leave in ground to increase until mass display is obtained. Excellent rock garden flowers.

**PINK PRINCESS.** A beautiful, clear pink variety offered for the first time this season. 10 for 75c; 100 for \$6.50.

**PRINCE OF ORANGE.** A striking variety with dark orange blooms. 10 for 45c; 100 for \$4.00.

**SALMON KING.** Large flowers of brilliant salmon. 10 for 45c; 100 for \$4.00.

**MIXED HYBRIDS.** Attractive shades of pink, salmon and orange. 10 for 45c; 100 for \$4.00.

## WATSONIA

Plant bulbs as soon as received, setting them 3 to 4 inches deep. They may be left in the soil for years or until they become crowded. Late planted bulbs will usually grow but may not flower the first season.

**BULLARD'S WHITE.** A magnificent, tall, pure white variety. 10 for 90c; 100 for \$8.00.

**DAZZLER.** New hybrid originating in Australia. Brilliant orange-red flowers on 3 foot stems. In mild climates it is practically evergreen and blooms over a long period. An outstanding novelty. Each 35c; 10 for \$2.50; 100 for \$20.00.

**EUNICE.** A very fine, clear, light salmon. 10 for 90c; 100 for \$8.00.

**J. J. DEAN.** Rose color with violet tints; broad-petaled flowers. 10 for 70c; 100 for \$6.00.

**MIXED HYBRIDS.** Contains a wide assortment of colors. 10 for 60c; 100 for \$5.00.

## ZEPHYRANTHES (Zephyr Lilies)

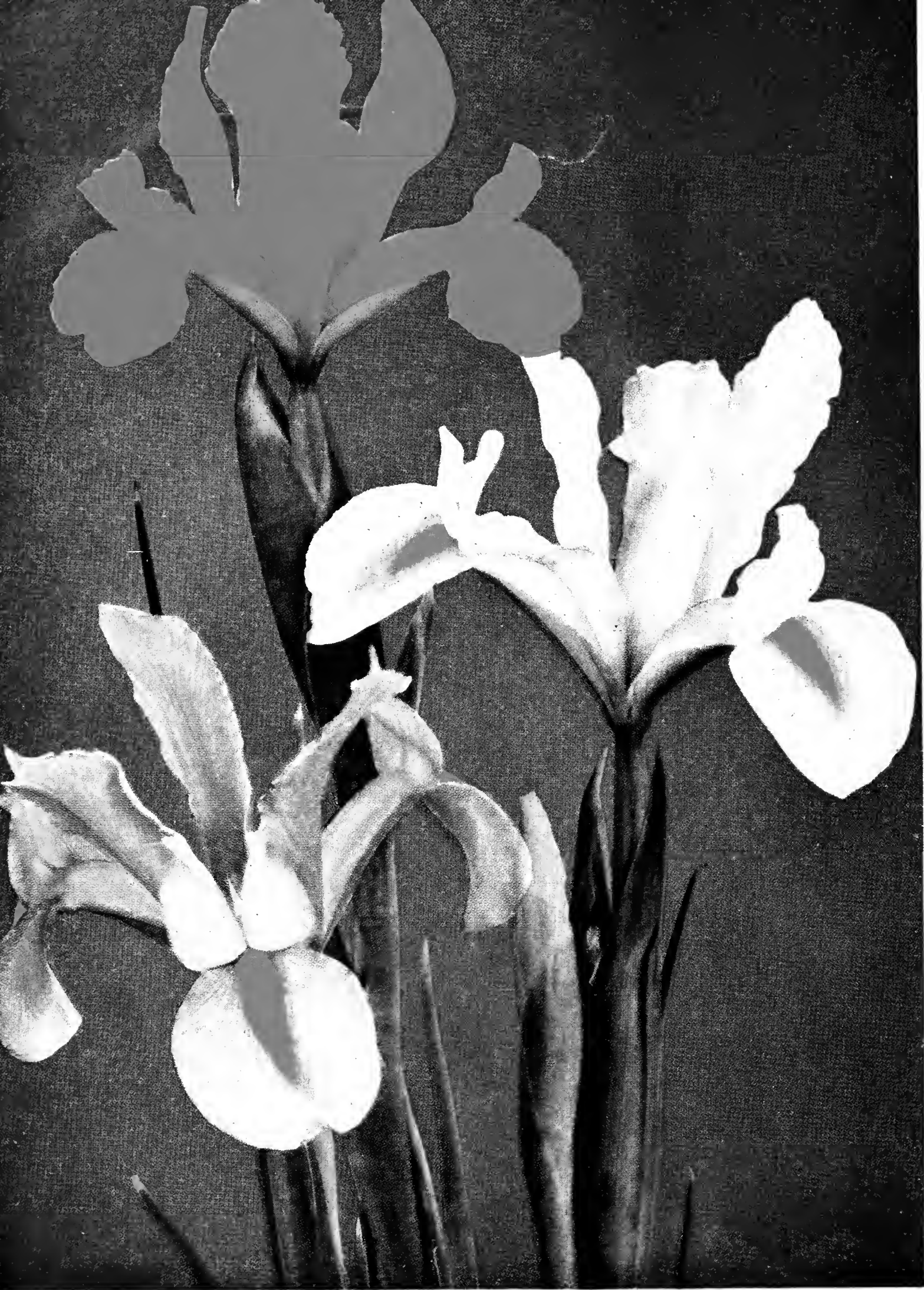
Hardy, easily grown flowers that increase very rapidly. Foliage is produced during winter and spring; flowers are produced in late summer.

**ZEPHYRANTHES AJAX.** Light yellow flowers on 6 to 8 inch stems. Has a long blooming period. 10 for \$1.00; 100 for \$9.00.

**Z. ROBUSTA.** Large pink flowers appearing in late summer on 6 to 10 inch stems. Suitable for culture in pots and rock gardens. 10 for \$1.00; 100 for \$9.00.

TRITONIA CROCATA, PRINCE OF ORANGE





## Dutch Iris

● Used either for garden decoration or as cut flowers, Dutch Irises are the supreme spring flowering bulbs. Their wide range of colors and long blooming period make them indispensable in working out spring color schemes, and their simple cultural requirements allow growing them in every garden. ●

YELLOW QUEEN

THERESA SCHWARTZE

ADRIAN BACKER

LORD KITCHENER DAFFODILS

