

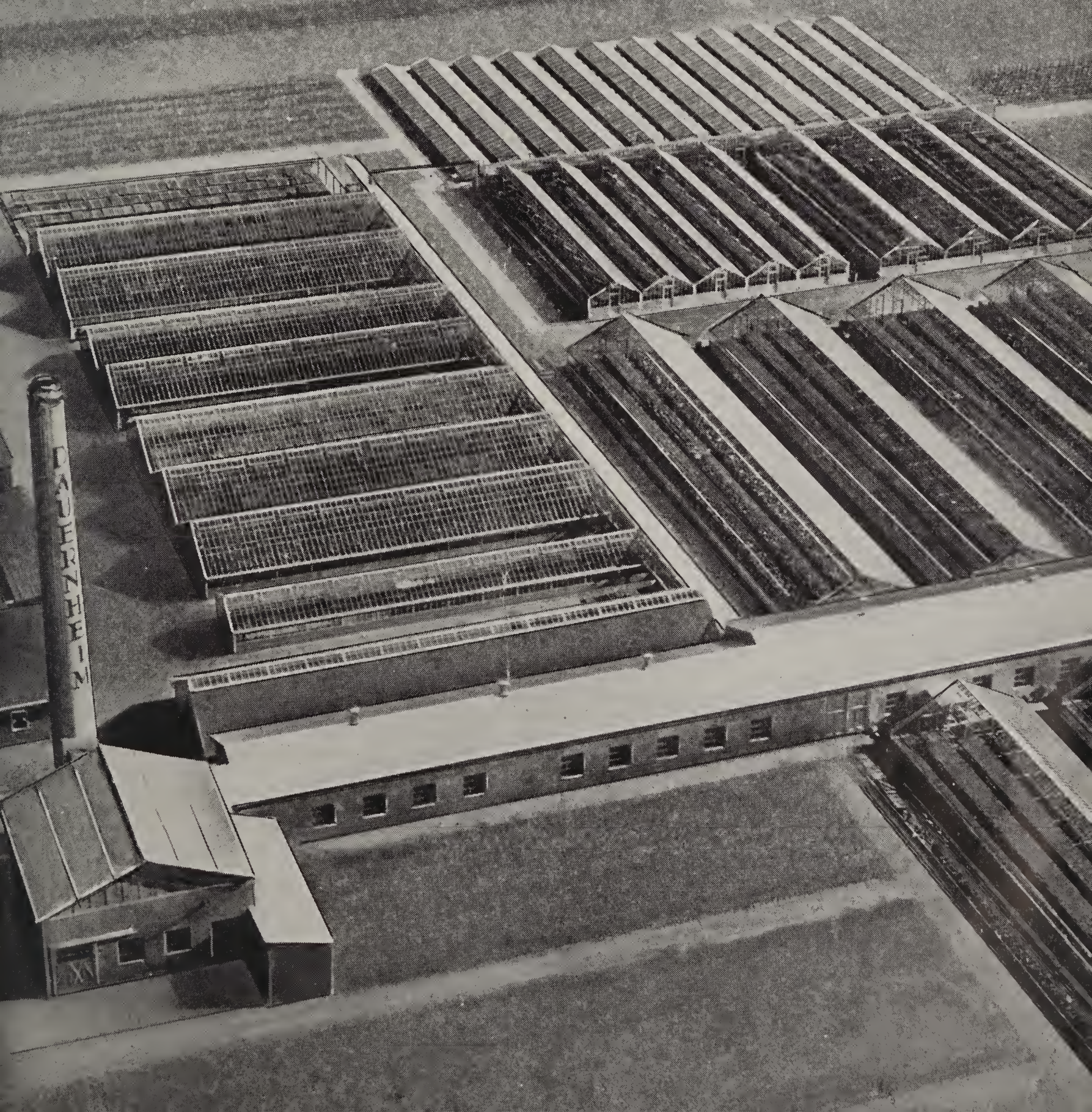
## **Historic, archived document**

Do not assume content reflects current scientific knowledge, policies, or practices.



PLANT EXPLORATION  
AND INTRODUCTION  
Rec'd APR 26 1937 ★  
Answered \_\_\_\_\_

# DAUERNDHEIM INC.





GREENHOUSES AND GARDENS OF DAUERHEIM, INC., FLORISTS, WANTAGH AND JERUSALEM AVENUES, WANTAGH, LONG ISLAND, N. Y.

## *Wherein We Offer an Explanation* ~

•

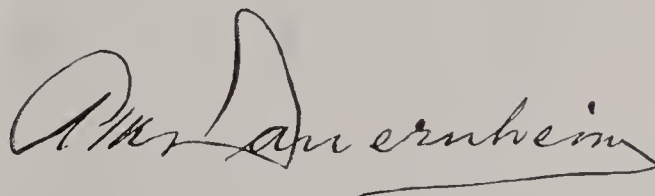
**F**OR some time we have been anxious to tell the “story” of Dauernheim, Inc., but invariably as we proceeded to unfold the facts ourselves, we became acutely self-conscious. Then came a morning when the letter carrier really carried a letter.

Following the reading of this communication, we telephoned our kind patron and quickly received permission to use it. And here it is.

Of course, we are proud of our organization and justifiably so, we believe. In an endeavor to have you become more fully acquainted with the thoroughness and completeness of our service, we are presenting on the following pages additional data regarding Dauernheim, Inc., which reveal the wide scope of our firm and thus, we hope, will prompt your fullest consideration on all occasions.

Sincerely,

DAUERNHEIM, INC.,



PRESIDENT.

*One of several greenhouses producing thousands of potted Easter Lilies.*



*Cacti and Succulent Plants are grown throughout the year.*

*A greenhouse producing Otaheite Oranges for the Christmas Season.*



## *A Customer jots down a few impressions—and we pass them along to you*

“I do not know quite why I am writing this, except that this happens to be one of those mean January days with a high wind blowing and the air penetratingly cold. My apartment is cozy and warm and it is possible that my present mood is largely due to an old favorite song of mine which has just come over the radio. The tune and the words have stirred old memories which will not be denied and seem to demand of me that I find expression for my thoughts in writing.

“First of all my mother and father lived the greater part of their lives in Brooklyn but a year or two after I was born my dad realized a long-cherished dream of his and moved to Nassau County on Long Island. I regard this as a most fortunate circumstance in my life because I grew up in the wide open spaces, with trees, lawns, wild vegetation and dogs as my companions. In the course of time, necessitated by the demands of progress, I saw gradual changes in my home town which, in many ways, had a tendency to destroy much of the beautiful country surrounding our home. This progress brought many families to Long Island from Brooklyn and New York City, for whom thousands of homes were erected. While all this building was going on I almost began to think that Long Island had lost its charm forever. However, I was wrong, because there came a time when those in authority saw the imperative need of saving Long Island for Long Islanders and all others whose love of nature still lived within them.

“Probably the greatest civic improvement of our times is that of the development of Jones Beach. Here, thanks to

engineering skill, we saw vast stretches of swamp land and uncontrolled inlets changed to beaches and causeways which beckoned all to one of the finest shore developments in the world.

“As we journeyed to Jones Beach, through the town of Wantagh, I noticed a change in the landscape at the corner of Jerusalem and Wantagh Avenues, where there came into view the greenhouses and gardens of Dauernheim, Inc., and as I witnessed a marvelous change from what had been sheer farm land to the housing of what appeared to be a modern greenhouse establishment and because of the natural attraction flowers hold for me I began to make it a habit to wander among the Annuals and Perennials where efficient salesmen extended all the courtesies possible and gave freely of their time and knowledge.

“I also had the privilege of tours through the greenhouses at various seasons of the year, which brought home to me in vivid fashion the deliberate planning, patience and skill that enter into the production of those beautiful plants and flowers which are made available to the public throughout the year.

“I shall never forget the sight of twenty-five thousand pots of Easter Lilies timed, as my informant told me, almost to the split second. On that same day I saw over fifteen thousand pots of Hydrangeas in flower, and then stepping into another greenhouse there was revealed the exquisite beauty of over twenty thousand plants of Azaleas in flower with a grand array of Tulips, Gardenias, Hyacinths and Roses completing a perfect Easter picture.

“Later on in the year I could not resist the temptation of visiting the Dauernheim establishment just prior to Christmas when thousands of Poinsettias dazzled the eye with their red brilliance. There were plants of small size for the mod-



*A greenhouse of growing  
Cyclamen.*



*One of many  
greenhouses de-  
voted to potted  
Poinsettias.*



*Pots of Begonia,  
Dorothy Gibbs,  
ready for Christ-  
mas.*



*A scene on the premises.*



*Another scene at Wantagh.*



*The Dauernheim homestead at Wantagh, with Mrs. A. M. Dauernheim in circle. She is Past President of the Ladies Society of American Florists.*

erate pocketbook to those with blooms of at least twenty-two inches in diameter. I noticed, too, a grand display of Cyclamen with their pastel shades, also the decorative Orange plant, holding amazing fruit, but not to be eaten I'm told.

"In between seasons I have noticed that the greenhouses always had for immediate sale such foliage plants as Ferns, Pandanas, Crotons as well as Succulent plants and Cacti. These last two are made up in the most unique dishes imaginable, furnishing attractive table centers.

"However, my first love is for the garden and all that grows therein and the acres of Delphiniums, Oriental Poppies and thousands of other perennials to me are breathtaking in their beauty. On one of my visits last year I saw the birth of a rock garden featuring the plants most adaptable in these surroundings and which have become so much in vogue in recent years.

"Incidentally, I have promised myself a visit to the Tulip garden this Spring, which I know in advance will present a riot of color contributed by the various types of Tulips and Hyacinths. One could not see all of this without one's curiosity being aroused and I learned that your progressive florist today must be ever on the lookout for the newer things which the horticultural world is constantly introducing, much as your leading fashion expert catches the changing mood of the public.

"Inquiring about those plants, especially raised for Easter and Christmas, I discovered that this was part of the firm's wholesale business and that they were sold to the leading flower stores not only in the five boroughs of New York City and Long Island but to cities as far distant as three hundred miles away.

"I could well understand that the rush during Easter and Christmas does not permit visitors at the greenhouses



*The classic gateway to historic Greenwood Cemetery.*

at that time but I did see about twenty huge moving vans in addition to the firm's own auto equipment being loaded for rapid delivery and I could not fail to notice the painstaking effort required in the selecting and wrapping of these plants—truly a monumental task in itself.

“I learned, too, that the firm's vast collection of annuals and perennials is largely sold to the small home owner, although the Dauernheim organization has been responsible for plantings of this material on a large scale on some of the most famous private estates on Long Island.

“As I write this I see in my mind's eye an area of about twenty-five acres devoted to the production of cultivated sod, truly forming a sea of green grass of the finest texture. One needs not to be an expert to realize the care that must go into the preparation of the soil and the selection of special grass seeds to produce such fine sod, so much in demand by private estates and also small home owners. Further I was given to understand that much of this sod had been used in beautifying the famous Greenwood Cemetery and further discovered the Dauernheim sod had been used almost exclusively on the roofs of Rockefeller Center.

“Looking around I noticed (as who hasn't) the huge smoke stack bearing the Dauernheim name and was told

that this stack now constitutes one of the guiding marks for Army and other aviators connected with the various flying fields nearby. Truly a lighthouse on land, lit up at night to assist the pilots of the air to a safe landing.

“I noticed, too, the boiler room of this establishment as “clean as a whistle” and yet over fifteen hundred tons of coal are fed automatically into the hungry furnaces which maintain the various temperatures required for the different types of plants in the greenhouses.

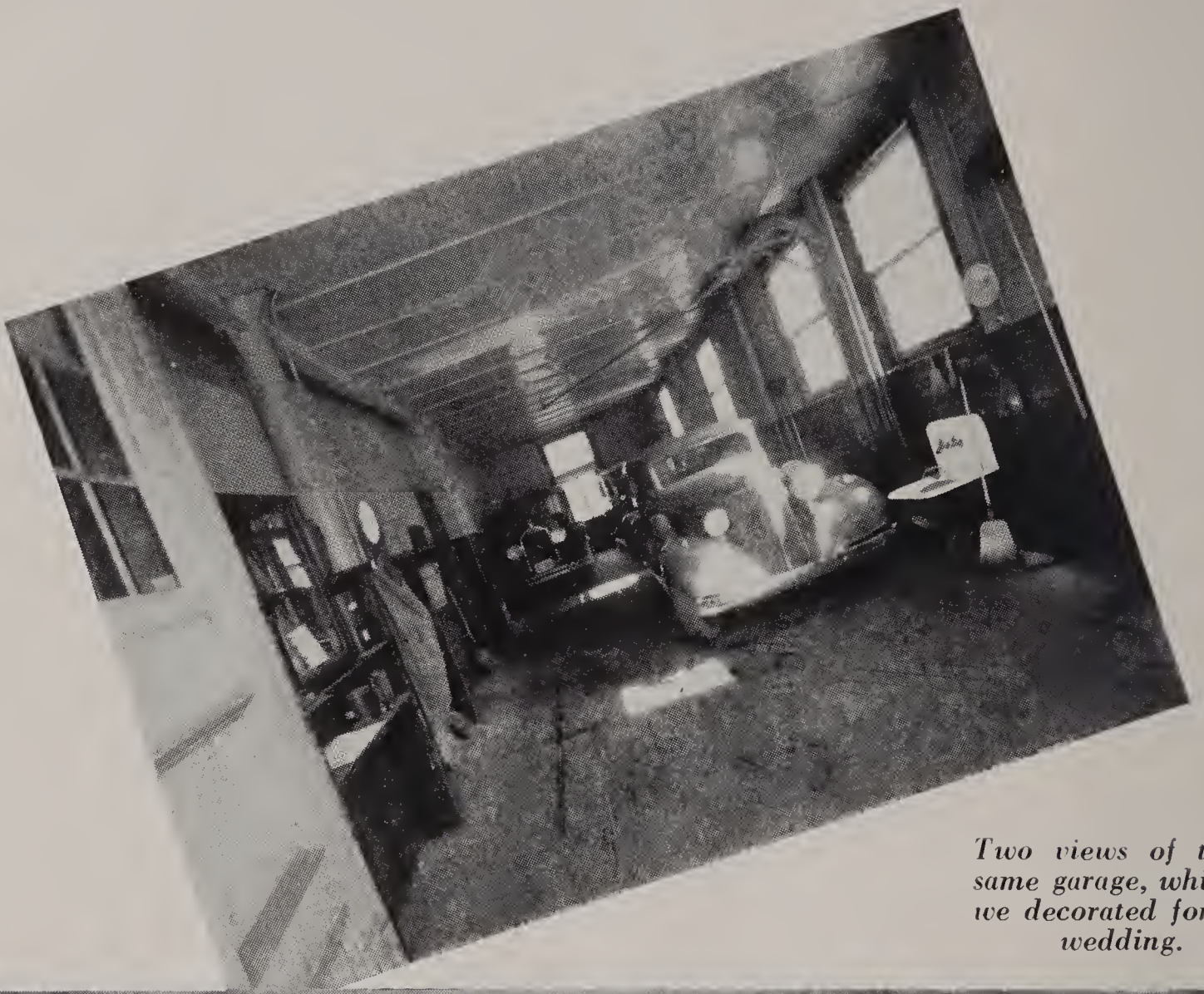
“Having gone thus far I was desirous of knowing something of the personnel of this corporation and had the pleasure of meeting Mr. A. M. Dauernheim, its President, whose ability has been largely responsible for the development of this organization.

“I discovered that Mr. Dauernheim is a protege of the late Commodore James Weir, from whom he received his first employment in 1898 in the firm which is now known as J. Ebb Weir & Co., Inc., at Fifth Avenue and Twenty-fifth Street, Brooklyn.

“This firm in its early days specialized primarily in gardening and landscaping in Greenwood Cemetery, acquiring a large clientele among the first people of New York City whose plots were in that cemetery.

*Establishment of  
J. Ebb Weir & Co., Inc.  
at 5th Ave. at 25th St.  
Brooklyn, N. Y.*





*Two views of the same garage, which we decorated for a wedding.*



“After all these years the firm of J. Ebb Weir & Co., Inc., still conducts an extensive business in Greenwood Cemetery of planting, decorating and caring for plots. They are gratified that the present recovery again permits many plot owners to give expression to their sentiments in this way.

“There is carried on at this establishment at Fifth Avenue and Twenty-fifth Street, Brooklyn, that high type of business which one finds in the better flower shops. Some of the finest wedding bouquets, decorations, and other exquisite creations of the floral arts are a daily routine as well as floral arrangements for funeral occasions, including the most pretentious of casket blankets.

“I noticed that the firm was a member of the Florists Telegraph Delivery Ass’n, whereby flower orders are taken for



*Floral piece delivered to the Nautilus at Spitzbergen in 1931.*



*A glimpse of Spitzbergen—where the floral tribute was delivered*

delivery the world over, and learned that the Weir Company was one of the original members of the Association.

“This delivering of flowers by wire is one of the most fascinating sides of the flower business filled with interesting experiences, and on inquiring of Mr. Dauernheim he assured me that one of the most difficult commissions his firm had received, was the occasion when one of their customers placed an order to deliver a floral tribute to an officer of the submarine “Nautilus” just prior to its proposed trip in 1931 under the North Pole. He found on inquiry that the florist nearest the North Pole was located in Trondhjem, Norway, who caught the spirit of the occasion and furnished a suitable floral basket which was presented while the submarine was in King’s Bay, Spitzbergen. As the world knows, the Nautilus did not achieve its mission, but the order for flowers was filled.

“It has just occurred to me as I conclude these rambling thoughts, that I might as well pass them on to the Dauernheim organization as a slight return for the pleasure which I have derived from a close contact with the broad service which it is in a position to render the public and also for the many courtesies extended to me in all my business dealings with them.”

★ ★ ★ ★

**DAUERNHEIM**  
- INC. -  
**FLORIST**

**WEIR & CO.**  
- florists -  
INC.

*These two trade marks represent the utmost in courtesy,  
service and fine plant-material.*

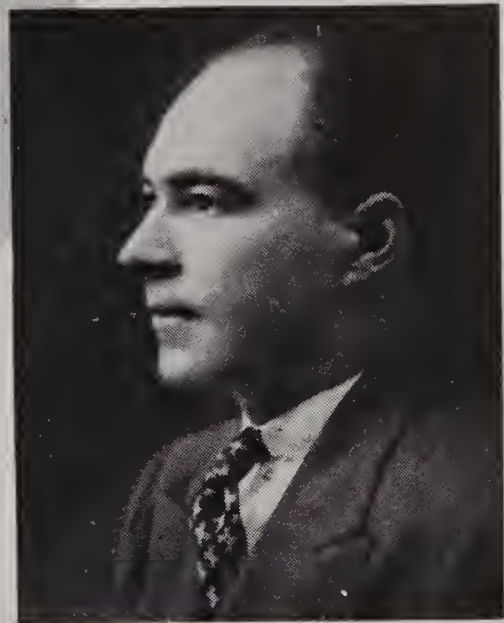


## OFFICERS AND PRINCIPALS



A. M. DAUERNHEIM  
*President*

Past President of Society of American Florists.  
Past President of New York Florists' Club.  
Member of International Flower Show Committee.  
Member of National Flower Show Committee.  
Member Rotary Club.  
Member Crescent Athletic Club.  
Member Brooklyn Lodge of Elks.  
Member St. Albans Country Club.



MEL A. DAUERNHEIM, *Vice President-General Manager of Wantagh Plant. President of New York Florists' Club. Joined organization on leaving Cornell University, nine years ago.*



LORETTA F. MORTON,  
*Assistant Treasurer.*  
With organization for the past 20 years.



FRANK P. CUE,  
*Treasurer.*  
With organization for the past 14 years.



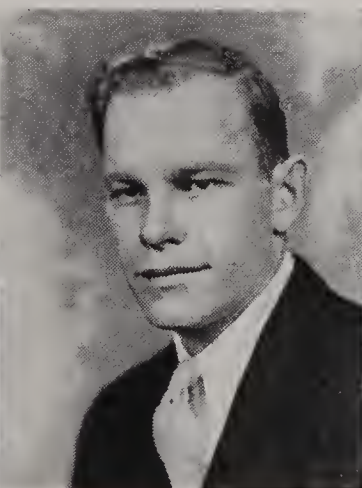
WILLIAM T. YOUNG,  
*Superintendent, Greenwood Cemetery Activities.* With firm for 25 years.



ROBERTA DAUERNHEIM,  
*General Sales Manager at Wantagh.* Graduate of Skidmore College, 1933.



HAROLD S. MABIE,  
*Superintendent at Wantagh.*  
In charge of personnel. With organization 5 years.



HENRY B. SCHROEDER,  
*Plant Pathologist and Garden Consultant at Wantagh.*  
With organization 5 years.



ARTHUR H. KNICKMAN,  
*Manager, Floral Art Department, J. Ebb Weir & Co., Inc.* With firm 5 years.



VINCENT HANHART,  
*Superintendent, Landscape Department.* With organization for the past 6 years.

*Exhibit at International Flower Show, 1934, which won a special award.*



*A naturalistic garden, awarded gold medal at 1935 International Flower Show.*



*Special award was accorded this garden at the 1936 International Flower Show.*

# What We Grow

In presenting the following list of what we grow, in Annuals, Perennials, etc., we derive a great satisfaction, for it will be apparent to all who read this list carefully, that we have, through painstaking selection, gathered under one roof a collection of plants to satisfy the most exacting requirements. These are offered as sturdy, matured plants in pots, clumps, etc., as the conditions require.

Furthermore, we would be failing in our duty if we were to omit reference here to the awards listed elsewhere, of the various high honors which we have received for our plant displays in the keen competition at outstanding Flower Shows and important club meetings.

## HARDY PERENNIALS

Achillea millefolium, Cerise Queen	Baptisia australis ( <i>False Indigo</i> )	Dianthus barbatus ( <i>Sweet William</i> )
“ ptarmica, The Pearl ( <i>Milfoil</i> )	Boltonia latisquama	“ caesius ( <i>Cheddar Pink</i> )
Aconitum fischeri ( <i>Monkshood</i> )	Calamintha alpina ( <i>Calamint</i> )	“ deltoides, Brilliant
Agrostemma coronaria ( <i>Rose Campion</i> )	Callirhoe involucrata	“ plumarius ( <i>Hardy Garden Pinks</i> )
Ajuga reptans ( <i>Bugle</i> )	Campanula glomerata superba ( <i>Clustered Bellflower</i> )	Dicentra eximia ( <i>Fringed Bleeding-Heart</i> )
“ reptans purpurea	“ medium ( <i>Canterbury Bells</i> )	“ spectabilis ( <i>Bleeding-Heart</i> )
Althaea rosea fl.-pl. ( <i>Hollyhoek</i> )	“ persicifolia ( <i>Peach Bell</i> )	Dictamnus fraxinella ( <i>Gas-Plant</i> )
Alyssum argenteum ( <i>Basket of Gold</i> )	“ rotundifolia ( <i>Blue Bells of Scotland</i> )	Digitalis ( <i>Foxglove</i> )
“ saxatile ( <i>Basket of Gold</i> )	Centaurea argentea ( <i>Hardy Dusty Miller</i> )	Doronicum caucasicum ( <i>Leopard's Bane</i> )
Anchusa italica, Dropmore	Cerastium argenteum ( <i>Snow-in-Summer</i> )	Erica carnea ( <i>Heather</i> )
“ myosotidiflora	Cheiranthus allioni ( <i>Wallflower</i> )	“ vagans
Anemone hupehensis ( <i>Early Anemone</i> )	Chrysanthemum articum ( <i>The Arctic Daisy</i> )	Erigeron speciosum
“ japonica alba	“ coreanum ( <i>Korean Chrysanthemum</i> )	Erinus alpinus
“ japonica, Queen Charlotte	“ Korean Hybrids	Eryngium amethystinum ( <i>Sea Holly</i> )
Anthemis kelwayi ( <i>Golden Marguerite</i> )	“ Hardy Varieties for the Border	Euonymus japonicus argenteus
Aquilegia alpina ( <i>Columbine</i> )	Amelia	“ japonicus aureus
“ canadensis ( <i>Wild Columbine</i> )	Cavalier	“ radicans variegatus
“ chrysantha	Granny Scovill	Eupatorium coelestinum ( <i>Hardy Ageratum</i> )
“ Mrs. Scott Elliott's Hybrids	Grenadier	Festuca glauca
Arabis alpina ( <i>White Rock-Cress</i> )	Jean Cumming	Funkia variegata ( <i>Plaintain-Lily</i> )
“ alpina flore-pleno	Jean Treadway	Gaillardia, Burgundy ( <i>Blanket Flower</i> )
Arenaria balearica ( <i>Sandwort</i> )	Louise Schling	Geum chiloense, Lady Stratford
Armeria cephalotes ( <i>Thrift; Sea-pink</i> )	R. Marion Hatton	“ chiloense, Mrs. Bradshaw
“ formosa	“ maximum, Mrs. C. Lothian Bell ( <i>Shasta Daisy</i> )	“ chiloense, Orange Queen
Artemisia abrotanum ( <i>Old Man</i> )	Coreopsis lanceolata	Gypsophila ehrlei
“ Silver King	Delphinium belladonna	“ repens
Aster alpinus	“ bellamosum	Helenium, Riverton Gem ( <i>Sneezewort</i> )
“ Hardy Hybrids ( <i>Michaelmas Daisies</i> )	“ hybridum	Helianthemum mutabile ( <i>Rock-Rose</i> )
“ Mauve Cushion	Wrexham Strain	Heliopsis pitcheriana
“ subcaeruleus	Blackmore & Langdon Strain	Hemerocallis flava ( <i>Yellow Day-Lily</i> )
Aubrietia deltoides	Sutton's King of Delphiniums	Heuchera sanguinea ( <i>Coral Bells</i> )
“ leichtlini	“ chinensis alba	
	Dianthus arenarius ( <i>Hardy Carnation</i> )	

## HARDY PERENNIALS (Continued)

Hibiscus moscheutos ( <i>Mallow</i> )	Pachysandra terminalis ( <i>Japanese Spurge</i> )	Sedum campestre
Hypericum repens	Paeonia ( <i>Peony</i> )	“ hispanicum
Iberis sempervirens ( <i>Hardy Candytuft</i> )	Papaver nudicaule ( <i>Iceland Poppy</i> )	“ lydium
Iris germanica ( <i>German Iris</i> )	“ orientale ( <i>Oriental Poppy</i> )	“ sarmentosum
“ ochroleuca	Pentstemon barbatus torreyi ( <i>Beard-Tongue</i> )	“ sieboldi
“ prismatica	“ glaber	“ spectabile
“ pumila	Phlox decussata	“ spectabile, Brilliant
“ sibirica ( <i>Siberian Iris</i> )	“ divaricata	Sempervivum arachnoideum ( <i>Hen and Chickens</i> )
Lavandula vera	“ subulata ( <i>Mountain Pink</i> )	“ funcki
Leontopodium alpinum ( <i>Edelweiss</i> )	“ suffruticosa	“ globiferum
Liatris pycnostachya ( <i>Kansas Gayfeather</i> )	Physalis francheti ( <i>Japanese Lantern</i> )	“ tectorum
Linum perenne ( <i>Flax</i> )	Physostegia virginica ( <i>False Dragonhead</i> )	Sidalcea, Rose Queen
Lobelia cardinalis ( <i>Cardinal Flower</i> )	“ virginica, Vivid	Silene schafta ( <i>Catchfly</i> )
Lupinus polyphyllus ( <i>Lupine</i> )	Platycodon grandiflorum ( <i>Balloon Flower</i> )	Stachys lanata
Lychnis alpina	“ mariesi	Statice latifolia
“ chalconica	Plumbago larpentae ( <i>Leadwort</i> )	Stokesia cyanea
“ haageana	Prunella webbiana	Thalictrum dipterocarpum ( <i>Meadow-Rue</i> )
“ viscaria	Pyrethrum hybridum roseum ( <i>Painted Daisy</i> )	Thymus citriodora ( <i>Lemon Thyme</i> )
Lysimachia nummularia ( <i>Creeping Jenny</i> )	Rosmarinus ( <i>Rosemary</i> )	“ serpyllum
Lythrum roseum ( <i>Loosestrife</i> )	Salvia argentea	Tritoma pfitzeri ( <i>Red Hot Poker</i> )
Matricaria capensis ( <i>Feverfew</i> )	“ azurea grandiflora ( <i>Meadow Sage</i> )	Tunica saxifraga
Monarda didyma ( <i>Oswego Tea</i> )	“ turkestanica	Veronica ( <i>Speedwell</i> )
Myosotis palustris ( <i>Forget- Me-Not</i> )	Saponaria ocymoides ( <i>Soapwort</i> )	“ chamaedrys
Oenothera youngi ( <i>Evening Primrose</i> )	Scabiosa caucasica ( <i>Pin- cushion Flower</i> )	“ gentianoides
	“ japonica	“ incana
	Sedum acre ( <i>Golden Moss</i> )	“ longifolia subsessilis
		“ repens
		“ spicata
		“ teucrium, Royal Blue
		Viola cornuta alba ( <i>Tufted Pansy</i> )
		“ cornuta, Jersey Gem
		Yucca filamentosa ( <i>Adam's Needle</i> )

## BEDDING PLANTS AND ANNUALS

Acalypha	Dahlia, Mignon, Coltness	Nasturtium, Golden Gleam
Achyranthes	Hybrids	“ Scarlet Gleam
Ageratum, Irwin's Beauty	“ Unwin's Hybrids	“ Golden Globe
“ White	Dracaena indivisa	
Alyssum	Euphorbia marginata ( <i>Snow-on-the- Mountain</i> )	Pansies. Mixed or Separate Colors
Alternanthera, Golden- leaved, Bright Red and Dark Red	Fuchsia, Black Prince	Petunias, Double
Anthericum mandaianum Variegatum	“ Little Beauty	“ Fringed Single
Antirrhinum Tom Thumb	Gazania longiscapa	“ Dwarf Bedding
Aster, Wilt-resistant Invin- cible Branching	Geraniums	“ Blue Bedder
Begonia semperlorens	Heliotrope, Royal Fragrance	“ Balcony Type
“ Tuberos-rooted	Impatiens holsti	Phlox, drummondii, Fireball and Salmon
Browallia speciosa major	Ipomoea ( <i>Morning Glory</i> )	Portulaca, Double
Calendula, Ball's Gold	Ivy, German	Salvia splendens, Bonfire
“ Radio, Golden Beam	Lantanas	“ Blue Bedder
Candytuft, Umbellata	Lobelia, Crystal Palace	Santolina
Canna, King Humbert	Marguerite	Scabiosa
“ President	Marigold, Sinuata pumila	Thunbergia, Mixed
“ Yellow King Humbert	“ French Legion of Honor	Torenia fournieri
Celosia plumosa, Dauern- heim's Strain ( <i>Coxcomb</i> )	“ Guinea Gold	Tradescantia ( <i>Wandering Jew</i> )
Centaurea ( <i>Dusty Miller</i> )	Mesembryanthemum cordi- folium ( <i>Ice-Plant</i> )	Verbena
Cobaea scandens	Mimosa pudica ( <i>Sensitive Plant</i> )	“ Lemon
Coleus		Vinca major
“ Brilliancy		“ rosea
Cosmos, Orange Flare		Zinnias

**CHRISTMAS FLOWERING PLANTS**

Poinsettias  
 Begonia, Marjorie Gibbs  
 Cyclamen  
 Kalanchoe  
 Indica Azaleas  
 Oranges  
 Erica melanthera,  
 Heather  
 Jerusalem Cherries

**EASTER FLOWERING PLANTS**

Lilium giganteum  
 Hydrangeas  
 Darwin Tulips  
 Hyacinths  
 Kurume Azaleas—  
 7 varieties  
 Gardenias  
 Polyantha Roses  
 Hybrid Perpetual Roses  
 Shaped Roses:  
 Eugene Jacquet  
 Gouchault  
 Roserie  
 Calla Lilies

**MISCELLANEOUS FLOWERING PLANTS**

Amaryllis  
 Eucharis amazonica  
 Gloxinias  
 Celosia  
 Chrysanthemums  
 Saintpaulia  
 Calceolarias

**FOLIAGE PLANTS**

Boston Ferns  
 Pandanus veitchii  
 Dracaena massangeana  
 Birds Nest Ferns  
 Crotons  
 Cibotium Ferns  
 Dieffenbachia  
 Chinese Evergreens  
 Tableferns  
 Dracaena sanderiana  
 Adiantum  
 Peperomia  
 Kentia Palms

**VINES AND TRAILING PLANTS**

Philodendron cordatum  
 Pothos aurea  
 Vitis rhomboidia  
 Pittsburgh Ivy  
 English Ivy  
 Variegated Ivy  
 Hedera conglomerata  
 Japanese Ivy  
 Ficus repens  
 Nephthytis liberica

**BROMELIADS**

Billbergia nutans  
 Billbergia irritiflora  
 Billbergia albertii  
 Aechmea discolor  
 Airplants  
 Cryptanthus rosea picta

**BROMELIADS (Continued)**

Cryptanthus acaulis  
 Cryptanthus acaulis  
 rubra  
 Cryptanthus diversifolia  
 Cryptanthus Bankeril  
 Cryptanthus zebrina  
 Cryptanthus bromeloides  
 Cryptanthus terminalis

**SUCCULENTS AND CACTI**

Agave frazasinii  
 Aloe davianna  
 Aloe denticulata  
 Aloe ferox  
 Aloe gloviosa  
 Aloe humilis  
 Aloe nobilis  
 Aloe picta variegata  
 Aloe variegata  
 Cereus bookii  
 Cereus peruvianus  
 Cereus serpentinus  
 Cereus specianus  
 Chamaecereus silvestri  
 Crassula aborescens  
 Crasula portulacaria  
 Dumartieri  
 Dykia  
 Echinocactus grussonii  
 Echinopsis multiplex  
 Euphorbia lactea  
 Euphorbia splendens  
 Gasteria  
 Haworthia coartata  
 Haworthia margaritifera  
 Opuntia brasiliensis  
 Opuntia microdasys  
 Opuntia missouriensis  
 Opuntia monocantha  
 Opuntia monocantha  
 variegata  
 Opuntia ventura  
 Peperomia  
 Puya  
 Sansevieria laurentii  
 Sansevieria zeylonica  
 Sedum adolphii  
 Sempervivum  
 haworthia  
 Stapelia

**PLANTS FOR MINIATURE GARDENS**

Vitis rhombifolia  
 Dwarf Ivy  
 Self-branching Ivy  
 Variegated Ivy  
 Hagenburger's miniature  
 Ivy  
 Hedera conglomerata  
 Japanese miniature Ivy  
 Ficus repens  
 Philodendron  
 Pothos aurea  
 Pothos aurea wilcoxii  
 Nephthytis liberica  
 Nephthytis variegata  
 Maranta  
 Chinese Evergreens  
 Podocarpus  
 Phoenix roebellina

**AZALEAS**

Kurume Azaleas  
 Coral Bells  
 Flame  
 Pink Beauty  
 Pink Pearl  
 Snow  
 Cattleya  
 Peachblow  
 Sunstar  
 Hinomayo  
 Hinodegiri  
 Kaempferi Hybrids

**HARDY FLOWERING SHRUBS**

Buddleia variabilis  
 (*Butterfly Bush*)  
 Cornus lutea  
 Deutzia gracilis  
 " Pink  
 Forsythia (*Golden Bell*)  
 Hypericum patulum  
 Philadelphus (*Mock-Orange*)  
 Rhododendron Hybrids  
 Spiraea vanhouttei (*Bridal  
 Wreath*)  
 Syringa (*Lilac*), Named  
 Varieties  
 " vulgaris (*Common  
 Lilac*)  
 Vitex macrophylla

**GROUND COVERS**

Hedera helix (*English Ivy*)  
 Pachysandra terminalis  
 Vinca minor

**BULBS**

Amaryllis Hybrids  
 Hardy Lilies  
 Lilium candidum  
 " henryi  
 " regale  
 " speciosum  
 rubrum  
 " tigrinum  
 " tenuifolium  
 " umbellatum  
 Narcissi  
 Hyacinths  
 Tulips

Darwins  
 Early Flowering  
 Cottage  
 Breeders

**MISCELLANEOUS**

Dauernheim's Special Mixture  
 Grass Seed  
 Dauernheim's Shady Mixture  
 Grass Seed  
 Cultivated Sod  
 Bent Stolons  
 Fertilizers  
 Bone Meal  
 Acid Phosphate  
 Lime  
 Dauernheim's Spe-  
 cial Organic Dress-  
 ing

# Awards

## *Cultural Skill of Dauernheim, Inc. Receives Highest Recognitions*

- 1932—New York Florists' Club.....Silver Medal  
*Group of Cyclamen, Oranges, and Japanese Gardens.*
- 1933—New York Florists' Club....Cultural Certificate  
*Clerodendron balfouri.*
- 1934—Brooklyn Fall Flower Show.....1st Prize  
*Group of Bromeliaceae.*
- 1934—Brooklyn Fall Flower Show.....Special Prize  
*Mill Garden.*
- 1934—National Flower Show.....Silver Medal  
*Exhibit of Bromeliad Combination.*
- 1934—International Flower Show.....Special Award  
*Water Wheel Scene.*
- 1934—New York Florists' Club.....Silver Medal  
*Christmas Flowering and Foliage Plants.*
- 1935—New York Florists' Club.....Gold Medal  
*Exhibition of Poinsettias.*
- 1935—International Flower Show.....Gold Medal  
*Naturalistic Garden.*
- 1935—New York Florists' Club.....Silver Medal  
*Hydrangea "Gus."*
- 1935—New York Florists' Club....Cultural Certificate  
*Group of Hydrangeas, Including New Variety "Gus."*
- 1935—Horticultural Society of N. Y.....Silver Medal  
*Display of Dish Gardens.*
- 1936—Horticultural Society of N. Y..Cultural Certificate  
*Mrs. Paul Ecke Poinsettias.*
- 1936—National Flower Show.....Silver Medal  
*Group of Lilies.*
- 1936—National Flower & Garden Show....First Prize
- 1936—International Flower Show.....Special Award  
*Well Head Garden.*
- 1937—New York Florists' Club....Cultural Certificate  
*Christmas Plants in Bloom—Cyclamen, Poinsettias, Cherries and Heather.*
- 1937—New York Florists' Club.....Silver Medal  
*Specimen Poinsettia Plant in Bloom.*