

Historic, archived document

Do not assume content reflects current scientific knowledge, policies, or practices.

79 **CARL A. HANSEN NURSERY**

Hardy Plants for the Northwest

BROOKINGS, SOUTH DAKOTA

Forwarding and Return Postage Guaranteed

1937

SPRING SALE

CATALOGUE

Choice Offering of Quality Stock at Low Prices

LIBRARY RECEIVED	Sec. 562, P. L. & R.
★ MAR 19 1937 ★	U. S. POSTAGE
U. S. Department of Agriculture	PAID
BROOKINGS, S.D.	PERMIT NO. 5

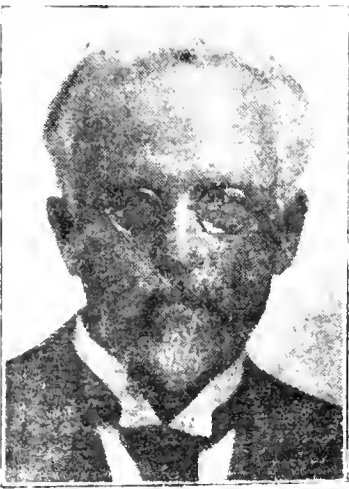
Miss [unclear]

E. C. Auchter,
Assistant Chief Horticulture
Dept.
Washington,
D.C.

HANSEN BUSH CHERRIES

The New, Quick-Bearing Cherry—So Easy to Grow, So Sure to Produce
Highly Productive—Good Flavor—Hardy Everywhere

Hansen Bush Cherries are the result of nearly 40 years of untiring selection
 work by the great plant wizard, Prof. N. E. Hansen of South
 Dakota State College at Brookings



DR. N. E. HANSEN
 Who has been improving these
 Bush Cherries for nearly
 40 years.

This new fruit is a new development in fruit culture that is gradually changing the method of plum and cherry fruit production throughout the northwest, because of the immense amount of choice quality fruit that can be produced on such small trees on such a very small area of ground.

The fruit which is of large size, good flavor and quality to eat fresh also makes the most wonderful, rich flavored, dark purple-red jam of high flavor. The juice makes splendid jelly as well as a not to be forgotten cordial that won't keep long.

Though the fruit of this new cherry much resembles a plum in size and shape, it comes massed in clusters and at times almost completely covers the limbs. The tree itself grows in a sort of dwarf bush-like shape rarely getting over four or five feet tall, branching and bearing from the ground up, usually bearing the year after planting, though often even the year they are set out and annually thereafter. This dwarf stature is of fine value for planting in the garden as it does not take up near the room of an ordinary plum tree yet often bears more. They should be planted two to four feet apart in rows four to six feet apart, twelve to twenty-five or more in every home garden.

In landscape planting these Bush Cherry are also desirable as they are of striking ornamental value and their dwarf bushy nature is of great aid in foundation planting work, or they may be planted close enough together for a low fruiting hedge on the lawn or in the garden. The foliage which is a beautiful silvery green, turns to a rich red and gold color in fall and adds a very desirable touch to any landscape planting. The profuse masses of large fragrant white flowers in the spring, which completely cover the branches, are a glorious sight.



Masses Of Fruit Completely Cover Branches

FRUITS IN ONE YEAR!

EXTRA SPECIAL!!!
 Large Three-Year Old
BUSH CHERRIES
 Ready to bear this year
 Prices, Postpaid
 50c Each; 3 For \$1.00

Plant These Hansen Bush Cherries Because;

- 1—They are so easy to grow and are perfectly hardy everywhere.
- 2—Are good to eat fresh, and make delicious preserves.
- 3—Bear from the ground up, early, heavy, and annually.
- 4—Are dwarf growing, bushy and take up little room.
- 5—Excellent for hedges, ornamental shrubs and erosion control.

New Reduced Prices On Hansen Bush Cherries

Size	All Heavy, Well Branched, Strong Rooted, Bushy Trees				
	Each	Per 3	Per 6	Per 12	Per 25
Large	\$.35	\$.75	\$1.45	\$2.75	\$5.00
Medium	.25	.60	1.10	2.00	3.75
Small	.15	.40	.75	1.40	2.50

Special!

Small One Year Lineouts For Mass Planting—
 And Large Orchards
 6 For 35c Postpaid 25 For 75c Postpaid
 12 For 50c Postpaid 100 For \$2.50 Postpaid.

SIBERIAN BLACK CURRANT

The Best Currant for the Northwest
 Hardy Everywhere — Very Vigorous
 Excellent Eating

Fruits of enormous size, black-red inside and out, and of a particular sweet mellow desirable taste. Excellent for eating or cooking, and make wonderfully colored dark rich red jam, jelly, or sauce of superb flavor and beauty.

Prof. N. E. Hansen has improved and perfected these Siberian Black Currants till they are equal in quality and flavor to some of the choice large European Black Currants and yet they are hardy everywhere in the Northwest. Prices For Strong 2 yr. & 3 yr. Bushes: 35c Each; 4 For \$1.00; 12 For \$2.50; Small Bushes: 20c Each; 6 For \$1.00.

SMALL FRUITS

PERFECTION RED CURRANTS—Best all around red currant. 25c Each; 3 For 65c; 12 For \$2.00.

CARRIE GOOSEBERRY—One of the best and most productive. 25c Each; 3 For 65c; 12 For \$2.00.

OHTA RED RASPBERRY—Productive, vigorous. Hardy far north. Mosaic free. Fruits firm, keep well. 5 Plants 35c; 25 For \$1.50; 100 For \$5.00.

BETA GRAPE—Good sized. Hardy. Splendid for jelly, etc. 20c Each; 3 For 50c; 12 For \$1.50.

VICTORIA RHUBARB—The best for pie and sauce. 15c Each; 3 For 35c; 6 For 65c; 12 For \$1.00.

WASHINGTON ASPARAGUS—The best for general planting. 25 For 65c; 50 For \$1.00; 100 For \$1.75.

STRAWBERRIES

PROGRESSIVE EVERBEARING—The very best all around of the everbearing varieties. A good producer of fine large berries of excellent quality from early spring till fall. Prices: 25 Plants 75c; 100 Plants, \$2.50; 500 Plants, \$10.00.

SENATOR DUNLAP—The favorite and largest and best of the June bearing strawberries. Very hardy and gives a wonderful yield of big juicy berries. Price: 25 Plants, 65c; 100 Plants \$2.00; 500 Plants \$8.50.

MASTODON EVERBEARING—The Biggest and Best of the hardy everbearing strawberries, a tremendous bearer and very sweet. A splendid berry for market because of its enormous size and good keeping qualities. Prices: 25 Plants, \$1.00; 100 Plants, \$3.50; 500 Plants, \$12.50.

FRUIT TREES

ANOKA—The Wonder Apple. One of Prof. N. E. Hansen's greatest introductions. Fruit large size, good color and flavor. A big producer. Hardy everywhere. And most important of all usually bears on one year wood. Each 75c; 3 For \$2.00.

WEALTHY APPLE & WHITNEY CRAB—Two Old Favorites of all good fruit lovers. Large Size: 60c Each; 3 For \$1.50. Medium Size: 40c Each; 3 For \$1.15.

OKA CHERRY—The Best Of Them All! Considered the best and sweetest of all of Prof. N. E. Hansen's cherry-hybrid fruit introductions. Deliciously sweet. Beautiful intense dark wine-red flesh. Dwarf stature. Bears very early, often the same year set out. Large Size: \$1.00 Each; 3 For \$2.50. Medium Size: 75c Each; 3 For \$2.00. Grafts: 25c Each; 5 For \$1.00.

OPATA PLUM—Earliest in season of the Hansen Plums. Wonderfully delicious flavor.

HANSKA PLUM—The superb plum of Apricot flavor and fragrance. Excellent keeper.

Prices for Waneta, Opata, Sapa, Hanska.
 Large—Each 65c; 3 For \$1.65; 12 For \$5.50
 Medium—Each 50c; 3 For \$1.25; 12 For \$4.50

NORTH CHINA PEAR—Grown from seed of some of the hardiest pears of North China. Of the Sand Pear type. Strong growth. Fruit good size, juicy and of a pleasant good quality. Good keepers. Small Trees: 35c Each; 4 For \$1.00.

WANETA PLUM—The Giant of Hardy Plums. Highly flavored. Richly colored red skin.

SAPA PLUM—Usually the most productive. Large, fine sweet flavored purple-red flesh.

POLLENIZER PLUMS—Selected for their superior fruit and abundant production of virile pollen which assures a good setting of fruit among your hybrid plums and cherries. For heavier fruit production every orchard should have a few. Small Trees: 20c Each; 6 For \$1.00.

JELLY CRABS—Seedlings of Dolgo and/or other similar large hardy crabs. Selected for their large size and better production. Fine for jams, jellies, pickles and other preserves. Contain an over abundance of pectin. Small Trees: 15c Each; 6 For 75c; 25 For \$2.00; 100 For \$6.50.

LAWN TREES AND HEDGES

MAY DAY—The Beautiful Flowering Lawn Tree. First to leaf out and bloom in spring. Very large, long clustered, wonderfully fragrant, pure white flowers of complete loveliness. Small Trees 25c Each; 3 For 65c; 12 For \$2.25.

SIBERIAN FLOWERING CRAB—Huge fragrant flowers. The hardiest of all flowering crabs and earliest to bloom. Large Trees: 65c Each; 3 For \$1.35. Small Trees: 25c Each; 3 For 65c.

BLACK HILLS SPRUCE—Most beautiful green thruout the entire year. Adds just that touch of steadfast beauty to make a landscape planting complete. Balled and Burlapped Specimen Trees—12-18 Inch \$1.25 Each; 3 For \$3.50; 12 For \$12.00. 18-24 Inch \$1.75 Each; 3 For \$5.00; 12 For \$17.00.

CARAGANA—The hardiest and best all around hedge plant. Very drought resistant. Feathery foliage.

HEDGE ROSES—Most beautiful of hedges. New and distinctive. Ex-

Size	Prices	Per 10	Per 25	Per 100
9 to 15 in.	\$.50	\$1.00	\$3.50	
12 to 24 in.75	1.50	5.50	
1½ to 2½ ft. ...	1.00	2.00	7.50	

Newest Plant Introductions

Each year we propagate a very limited number of a few of the newest plant creations and introductions of Prof. N. E. Hansen, and also some of the new ones we introduce.

This year, due to the great shortage of fruit tree stocks, we are offering our Newest Plant Introductions as first year whole root grafts only. This will enable our customers to obtain these new plants at a good deal less than regular prices for the large trees, and will also give them a bigger start than if the same amount were spent for the large trees. Full instructions will be sent with each order telling how to properly plant and care for the grafts for the best results.

PRICE: 35c EACH; 4 OF A KIND \$1.00

GOLDO APPLE—The best winter apple for the Northwest. Giant size, excellent flavor. Long keeper. Golden color.

DOLGO CRAB—The best brilliant red jelly crab. Superb flavor. Wonderful producer. Makes a very large amount of jelly per pound of fruit. Often as high as 45 glasses of jelly and 8 pints of jam from a single peck of the fruit.

MAGA APPLE—Early winter apple with the McIntosh flavor. Very hardy. A good Northern commercial possibility.

RUSSIAN WHITE—Largest and hardest white fleshed, large summer apple. Excellent flavor and a vigorous grower and wonderful producer.

RED FLESH CRAB—Newest Novelty Fruit introduction and forerunner of a race of red-fleshed apples and crabs. Real hardy. Fruit good sized and tasty but its most remarkable quality is that its flesh is red, dark red clear through. Be the first in your community to get one of these remarkable new fruits.

YELLOW SWEET APPLE—About the earliest of all summer apples. Excellent eating, a very heavy producer. Large size.

HOPA FLOWERING CRAB—Remarkable for its large red flowers which almost completely cover the tree in early spring. A leading ornamental.

RED SILVER CRAB—Completely red. Large red flowers, red fruit, red bark, and red foliage slightly tinged with silver underneath. A most remarkable combination. Highly praised by leading specialists.

ALEXIS CRAB—Brilliant red, jelly crab. Similar to Dolgo but usually larger size and a better annual producer.

MING PEAR—Best of Prof. Hansen's hybrid pears. Fruit of good size and flavor. Mellow flesh. Hardy.

TOM THUMB CHERRY—A most delicious red fleshed fruit. Tree very dwarf, bushy growth, scarcely knee high. A special favorite far North.

KAHINTA PLUM—Fruit up to 2 1/8 inches in diameter and very good eating. Red skin, yellow flesh.

SANOBA CHERRY—Choice red fleshed cherry plum, similar to Oka Cherry, but hardier and especially for the far North in Canada.

TAWENA PLUM—Another sister to Waneta and Kahinta Plums and somewhat similar in great size and flavor, but because of its excellent annual bearing and well forked branches may eventually prove the best and most outstanding of the three sisters.

SPECIAL FOR THE EXPERIMENTER

To those of you who would like a real collection of these new plant introductions we offer: One Each of The Complete 14 Above Listed Grafts of Apples, Crabs, Pears, Plums and Cherries Only \$2.75 Postpaid.

POPULAR NEW KINDS

In addition to the newest fruit introductions, we have some Anoka, Waneta, Sapa, Opata and Hanska to offer as grafts. Each 25c; 6 Of One Kind \$1.00.

HARDY ROSES

To many there is no flower in the garden lovelier than a rose, yet contrary to the opinion of many, they are easy to grow and their culture can be successful if the proper and simple care and attention is given them. We sell only the hardiest sorts.

SPECIAL—Our Hardest, Best Double Varieties, by color only; Large 2 yr. & 3 yr. Bushes, 40c Each; 3 For \$1.00; 6 For \$1.75.

HANSEN SIBERIAN ROSE—The plant is covered with beautiful blooms all summer long. The hardy rose for prairie homes. Large 2 to 3 Year Plants, 25c Each; 6 For \$1.00.

MINA LINDELL ROSE—The largest, hardest, doublest, prettiest wild rose ever discovered. Dark pink. Native of Butte County, S. Dak. Each 40c; 3 For \$1.00.

HANSA ROSE—Hardest double red rose. Very large flowers. Long bloomer. Large Plants: Each 50c; 3 For \$1.25.

THORNLESS ROSE—The newest developed hardy western bush-rose, that is completely thornless on stems and branches. Has large pretty pink flowers which bloom late into the summer. Each 35c; 3 For \$1.00; 6 For \$1.75.

ALIKA ROSE—Brightest cerise and very showy. Up to 47 petals. Extra hardy. Each 60c; 3 For \$1.50.

TEGALA ROSE—A Prof. N. E. Hansen hybrid rose. Deep pink. Each 75c; 3 For \$2.00.

CRIMSON RAMBLER—Not completely hardy but the hardest red climbing rose. Each 65c; 3 For \$1.35.

ORNAMENTALS

	Size	Each	For 3
SPIREA VAN HOUTTE —Most popular hardy shrub. Long sprays of white flowers in early spring. Plant abundantly everywhere	Large	25c	.60
	Medium	20c	.50
	Small	15c	.35
SPIREA A. W. —Dwarf red flowering. Summer blooming	Large	35c	.85
SIBERIAN BUSH HONEYSUCKLE —Large, Vigorous, growing. Pink flowers. Orange and red berries	Large	40c	1.00
	Small	25c	.65
SNOW BALL —Showy. Very hardy. Distinctive.	Large	40c	1.00
MOCKORANGE —Delightfully fragrant large white flowers.	Large	35c	.90
JAPANESE BARBERRY —Dwarf. Yellow flowers. Red berries.	Large	35c	.90
CUTLEAF ELDER —Beautiful fern-like foliage.	Large	40c	1.00
SIBERIAN FLOWERING ALMOND —Earliest blossoming, dwarf.	Small	25c	.65
ENGELMANNI IVY —Hardest climbing vine.	Large	35c	.75

CHINESE ELM—Fastest Growing Permanent Tree Known

IN BIG DEMAND EVERYWHERE. This remarkable elm for street and lawn is fast becoming the leading elm thruout America. It grows faster, is more drouth resistant, longer lived, grows larger, and is hardier than any other shade tree grown.

3-5 Ft. Trees—25c Ea.; 3 For 65c; 12 For \$2.00. Seedling Stock for Groves & Windbreaks
4-6 Ft. Trees—35c Ea.; 3 For \$1.00; 12 For \$3.00. 6-12 In.—25 For \$.75; 100 For \$2.25.
5-7 Ft. Trees—65c Ea.; 3 For \$1.50; 12 For \$5.00. 12-18 In.—25 For \$1.00; 100 For \$3.50.
6-8 Ft. Trees—\$1 Ea.; 3 For \$2.75; 12 For \$10.00 18-30 In.—25 For \$1.50; 100 For \$4.50.

HANSEN PROSO

The Dryland Wonder Grain!

The Best Catch Crop For the Northwest—Matures In 60 Days

Can Be Planted Later And Will Stand More Dry Weather Than Any Other Grain

Hansen Proso was introduced from Siberia by Prof. N. E. Hansen. It has been selected for largest white kernels, and greatest productiveness.

Because of its extreme drouth resistance, Hansen Proso is extremely valuable as a catch crop, for it will mature in 60 days and may be sown after other crops are planted or after they show signs of failure. Though it does best when planted in June, it may be sown late in July and still mature a good crop of grain. Often yields 300 to 500 fold of good clean grain, weighing 60 to 64 pounds per bushel.

The seed is round and several times the size of millet, growing in a sprangley head, resembling oats. Hansen Proso is valuable when fed whole or ground, as a fattening grain for hogs or a good general feed for cattle, horses, and chickens. Chickens prefer it to corn or wheat. The U. S. Dept. of Agric. in their "Proso Bulletin" give many valuable statistics in this regard.

Proso straw, which usually remains somewhat green even though the grain is ripe, makes a good hay for winter feeding. When hulled and ground, Proso grain may be used as a breakfast cereal, similar to wheat or rice, and as a flour.

This year we have some new advanced selections to offer of the grain grown from the larger and better kernels of whitest color, and they should not be confused with the common run quality offered on the market.

Sow 15 to 25 Lbs. of Proso Per Acre

PRICES FOR THE LATEST ADVANCE SELECTIONS

Large Pkt. 10c Postpaid. 4 oz. Sample 25c Postpaid.

By Express or Freight Collect: 10 Lbs. \$1.75; 25 Lbs. \$2.75; 100 Lbs. \$6.50.

PRICES FOR REGULAR TYPE HANSEN PROSO

By Express or Freight Collect: 10 Lbs. \$1.00; 25 Lbs. \$1.75; 100 Lbs. \$5.00.

Flowering Bulbs and Perennials

Gladiolus, Queen of Summer Flowers

The true glory of the garden and flower supreme. Desirable and very easy to grow anywhere. We grow hundreds of different varieties in a wide range of many gorgeous colors.

Our assortments are sure to please you for they contain a wonderful array of many colors and kinds and will produce many glorious blooms from early in the season till late in the summer.

EXTRA SPECIAL ASSORTMENTS

Contain 8 to 12 of Our Better Varieties

12 Large Bulbs, Prepaid To You 35c

25 Large Bulbs, Prepaid To You 65c

100 Choicest Large Size Bulbs, Only \$2.50 Prepaid

PHLOX

A hardy and very desirable perennial. Gives a vivid, alluring touch of color to the home grounds that is so much in demand by all lovers of flower beauty. No flower garden is really complete without Phlox. Choice Hardy Assorted Phlox: Each 20c; 3 For 50c; 12 For \$1.75.

IRIS

In Iris, one is able to get rare choice of many hues just at a time when the garden or lawn would be without much color. They are very hardy and do well on even the poorest soil. Best Large Assorted Iris: Each 10c; 3 For 25c; 12 For 75c.

IRIS PUMILA—The prettiest dwarf blue Iris. Grows readily anywhere. Prices: Each 5c; 3 For 10c; 12 For 25c; 100 For \$1.35.

PEONIES

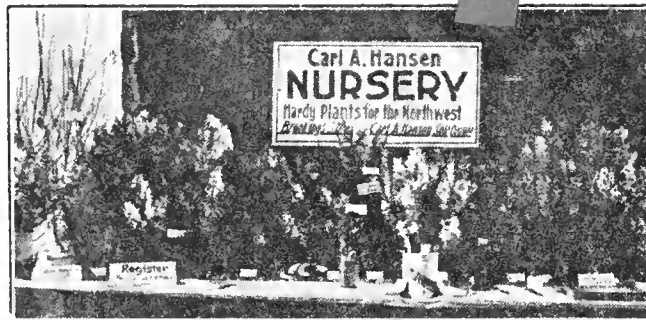
The most gorgeous of flowers, which gives the garden the effect of a fairyland. Hardy everywhere. Will grow and bloom for years with little care or attention. Peonies are a priceless pleasure that all should have.

Prices For Strong 3 to 5 Eye Divisions

By Colors—Red, White, Pink, Choice Assorted

35c Each; 3 For 75c 25c Each; 3 For 50c;

6 For 85c; 12 For \$1.50



"Part of a collection of over 400 varieties" Picture of one of our Fair Exhibits

DAKOTA PENSTEMON—One of the most beautiful native perennials. Reigns serenely in queenly beauty on the driest hills. Its large cup-shaped flowers are a pretty lilac-blue. Each 25c; 3 For 65c; 12 For \$2.25.

SIBERIAN LAVATERA—A pretty lavender shell-pink perennial. Blooms profusely most of the summer. Each 35c; 3 For 75c.

WESTERN YUCCA—One of the easiest plants to start. Has beautiful long stalks of cream-colored, bell shaped flowers. Especially nice for rock gardens. Native of Western South Dakota. Very drought resistant. Each 20c; 3 For 50c; 12 For \$1.65

CRESTED WHEAT GRASS

Crested Wheat is fast becoming the leading forage grass in dry areas thruout our central and northwest States for it will establish a permanent pasture for good forage in our driest seasons.

Seed offered here is from the original strain first imported into America by Prof. N. E. Hansen, of South Dakota State College, and is from a farther north and drier region than some of the later importations.

Large Pkt., 25c Postpaid. 4 Oz., 50c Postpaid. By Express Collect: 1 lb., \$1.25; 10 lbs., \$10.00.

ORDER BLANK

CARL A. HANSEN NURSERY

Brookings, South Dakota

Date:.....

Gentlemen: For the enclosed \$.....please ship the following order this spring.

Name

Address

Quantity	Name of Variety	Amount

TERMS: Packing Free. Payment by cash or money order, or if by check or draft please add 5c extra for float charges. All shipments sent collect for delivery charges unless otherwise stated or can be sent prepaid for 10% of the amount of the order additional. South Dakota customers please add the 2% Sales Tax.

Chee Grass

A New Forage Grass That Defies Drouth

Introduced by Prof. N. E. Hansen of South Dakota State college, from one of the driest spots of Siberia.

The leaves are quite wide, somewhat resembling a marsh hay. It will grow to a height of 8 to 10 feet in a season with even less than 8 inches annual rainfall on an almost pure alkali soil. Something in its nature makes it like what we might consider a poor type of soil, though this does not in any way effect its feed value or growth on good soil. On ordinary soil it grows with equal vigor though not quite as tall but more bushy. It makes excellent hay if cut two or three times, though it gets rather tough if left uncut all season.

It may be pastured, but will produce more forage if grown and cut for hay. It is perennial, and will last for years after once being started. It is established best by the plant method as root stolons soon make a solid field of it, though it is readily plowed under when the field is to be put into other crops.

We offer plants only, as the seed is very light and does not germinate well. We recommend setting the plants about 6 to 12 inches apart and in rows 12 inches to 3 feet apart. With one year's cultivating like corn, the result will be a much greater growth the following season, soon making a solid field.

PRICES;

12 Plants 50c

100 Plants \$3.00

50 Plants \$1.65

1000 Plants \$25.00

Bargain Specials!!

March 15, 1937

Alfalfa Seed

Lot 1—Our Top Grade Grimm per cwt.	\$34.00
Lot 2—Our Medium Grade Grimm per cwt.	\$30.00
Lot 3—Our Special Grade, a blend of Grimm, Cossack, Dak. 12, etc., per cwt.	\$25.00

Sweet Clover Seed

Lot 1—Our Top Grade per cwt.	\$17.50
Lot 2—Our Medium Grade per cwt.	\$15.00
Lot 3—Our Special Grade per cwt.	\$13.75

Special Pasture Mixture

Consisting of Alfalfa, Sweet Clover, Timothy, Medium Red, Alsike, Blue Grass, etc., to make a permanent pasture. per cwt.	\$20.00
--	----------------

These lots must be seen to be appreciated. Send for samples of what you want before you purchase if you wish to make sure of the type of seed you are buying. Due to the great scarcity of seed this year, all lots are offered subject to prior sale and priced for immediate acceptance only or increase in price.

Carl A. Hansen Nursery
Brookings S. Dak.

