

Historic, Archive Document

Do not assume content reflects current scientific knowledge, policies, or practices.

LIBRARY
RECEIVED

☆ FEB 17 1937 ☆

U. S. Department of Agriculture.

1937 Dahlias



"JIMMIE FOXX"



STANLEY JOHNSON

Pennypack Gardens

Cheltenham, Pa.

GREETINGS.—It is certainly a pleasure to send you this folder containing in my belief the best in up-to-date dahlias. Most any variety will win for you at our best shows or attract much attention in your garden.

Many thanks to every one of you who have sent fine letters stating that Milton J. Cross and Betty Anne are really very great exhibition dahlias. This is most gratifying to any grower. I feel confident that my new dahlia Jimmie Foxx will be just as satisfactory.

STOCK.—Every root or plant will reach you in good growing condition. Not responsible for roots secured before April 1st. Many conditions beyond my control will cause losses when propagating dahlia roots. Considering high quality my prices are indeed reasonable.

Introducing For 1937

JIMMIE FOXX (Johnson) I. D. a truly spectacular dahlia of giant size: new color coppery red tinged with henna. The flowers easily obtain a size of 13" in diameter by 8" depth and are supported by strong straight stems. The plant is an exceptionally sturdy grower having very heavy foliage, and keeps on growing despite adverse weather conditions. You will obtain exhibition flowers from early September until the killing frost. This fine dahlia won the American Home Achievement Medal as the best worthy undissemintated dahlia at the New York Show; the Derrill W. Hart Memorial Medal, offered for the first time at this show and two blue ribbon awards. The Derrill W. Hart Medal is considered by the American Dahlia Society as the highest award in the seedling class. Further winnings are the American Home Achievement Medal and the Michell Achievement Medal as the best seedling and the best dahlia at the Burholme Show. In the championship seedling class at the Philadelphia Show it won the Pennsylvania Horticultural Society Medal. Here is a real dahlia that should be in your garden. It is featured on the honor rolls as the top ranking new dahlia. The new champion that was not defeated at any show; named in honor of "Jimmie Foxx" the popular baseball player of the Boston "Red Sox."

ROOT \$15.00 net **PLANT** \$7.50

Introductions Of 1936

	Root	Plant
MILTON J. CROSS, I. D. Beautiful coloring of apricot peach with a bright golden face. The flowers obtain a size of 12 inches in diameter by eight inches in depth and are held well above the foliage by long strong stems. This dahlia is a very strong grower. Winner of 5 medals during the 1935 show season including 3 American Home Achievement medals at the New York, Burholme-Phila. and Camden shows. Already has become famous. This champion was named in honor of the popular N. B. C. radio announcer of New York	10.00	5.00
BETTY ANNE POM, Exhibition type, shows no center. A new color in pompons. Soft clear pink. Winner as the best seedling pompon at the Mid West show in Cleveland, Camden and Phila. Shows in 1935. Very free flowering. Fine for cutting and in demand by florists	1.00	.50

Other 1937 Novelties

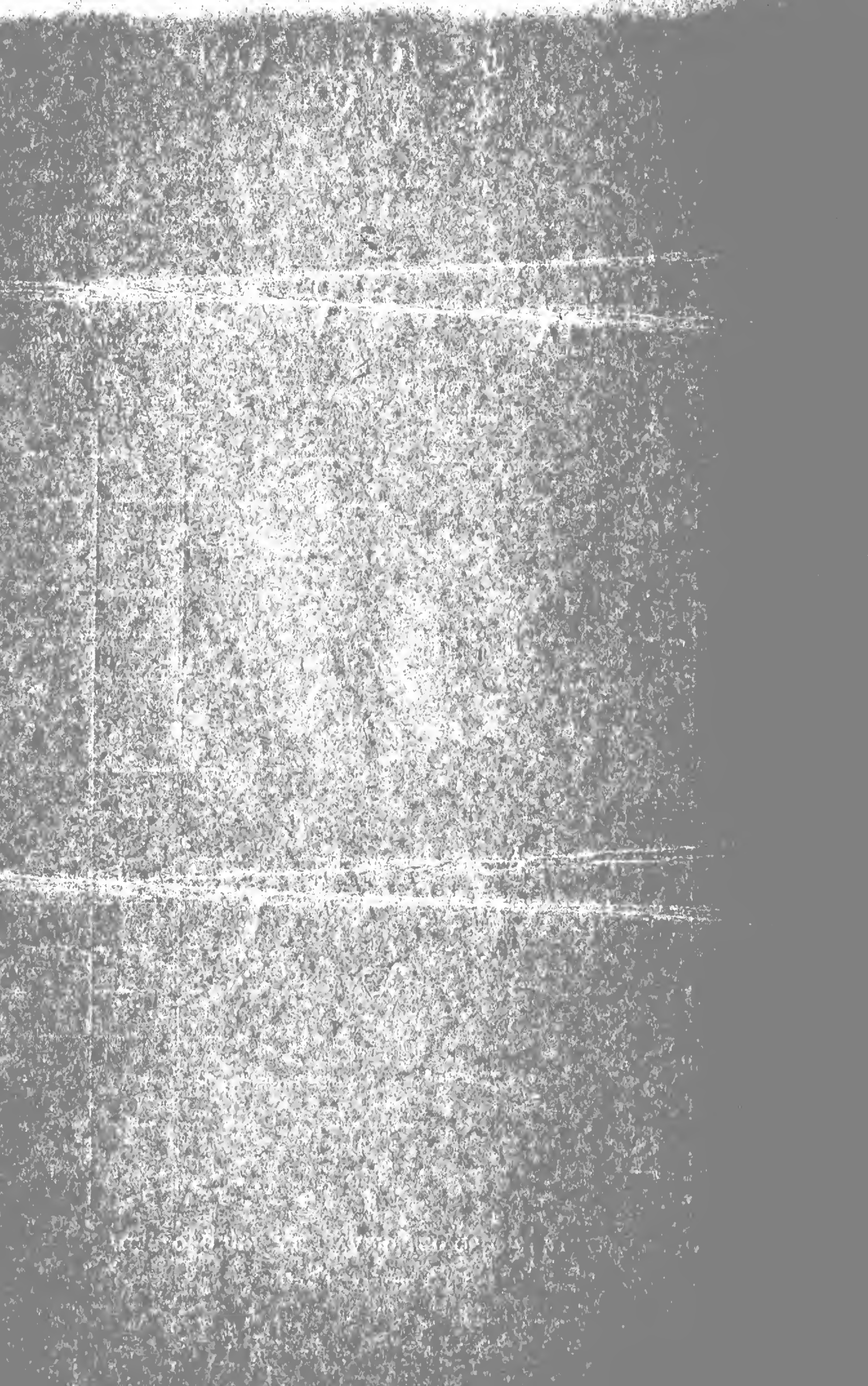
	Root	Plant
DREAM GIRL, I. D. (Lee) Beautiful Pink. Strong Stems. Blooms 11" diameter. Winner of Achievement Medal in Washington		5.00
MARYLAND DIXIE QUEEN, I. D. (Quick) A rich buff with pink suffusion. Blooms 11x6". Plant has fine growth. Winner of the Achievement medal at the Baltimore show	15.00	7.50
MARYLAND'S MELODY, I. C. (Quick) A splendid French purple cactus. Size of flowers 6 to 8" diameter. A very promising cut flower variety	10.00	5.00
MISS OAKLAND, F. D. (Hook-Koenig) Pure white. Prolific Bloomer. Long stems, holding blooms erect		5.00
ROBERT L. RIPLEY, I. D. (Salem) Large flowers of Rhodamine purple with deep rose. A fine exhibition dahlia		10.00

Recent Introductions

ANGELO ROSSI, I. D. (Redfern) Orange buff one of the best		1.50
BETTE DAVIS, S. C. (Cordes) An attractive color, deep violet rose. A winner in many semi-cactus classes		1.75
CALIFORNIA IDOL, I. D. (Balley) Clear bright yellow, A fine grower with blooms obtaining a large size	2.50	1.25
CALIFORNIA PEACH, S. C. (Balley) A pink "Satan." Rather late bloomer		5.00
CLARA CARDER, I. D. Large flowers of bright pink. Strong grower.	5.00	2.50
FRAU. O. BRACHT, S. C. (Berger) Perfect formed flowers of light yellow. My stock comes from the originator. Produces wonderful flowers	1.50	
GOLDEN SWEEPSTAKE, I. D. (Lee) A light buff flushed with apricot	7.50	3.75
HON. HARRY BACKARACH, I. D. Beautiful Dahlia. Very large size. Color, scarlet red slightly tinted with bronze	2.50	1.25
JESSICA DRAGONETTE, S. C. Very pretty buff, suffused peach. Similar in form and size to Amelia Earhart but an entirely different color	3.00	1.50
LORD OF AUTUMN, I. D. (Almy) A champion show flower. Great lemon yellow dahlia	2.50	1.25
MARGRACE, I. D. (Bissell) Very strong growth with a good flowering habit, color yellow overlaid with scarlet	5.00	2.50
MARYLAND'S DELIGHT, I. D. A true pink on long strong stems. Early and prolific grower		5.00
MIRIAN HOPKINS, S. C. (Cordes) Similar to Amelia Earhart, but color is Copper Orange	5.00	2.50
MISS GLORY, S. C. (Ballay) Outstanding pale apricot semi-cactus. One of the very best 1936 Calif. dahlias. Extra good		3.50
MISS H. O'CONNOR, I. C. (Dahliadel) Bright rose pink supported by strong stems		2.50
MURPHY'S MASTERPIECE, I. D. Sensational exhibition dahlia	3.00	1.50
OAKLEIGH MONARCH, F. D. Bright Red. Vigorous grower. Excellent exhibition variety	5.00	2.50
RED JUG, S. C. (Preas) Dark cardinal red with gold tips	5.00	2.50

New Foreign Dahlias

	Root	Plant
AMHERST PHEASANT, I. D. Color, old rose striped with red and bright gold edged petals. A rare novelty	2.00	1.00
ARTHUR SIMMONDS, I. D. A Giant. Color light orange with reddish tints in center. Early bloomer	4.00	2.00
BAERNE, S. C. A fine variety of salmon rose	4.00	2.00
BALLEGO'S SURPRISE, S. C. One of the finest white cactus to date	4.00	2.00
BAUER'S IDEAL, I. D. Strong grower producing brilliant red exhibition flowers. Very good and highly recommended	4.00	2.00
BAUER'S MASTERPIECE, I. D. A Seedling of Jane Cowl. Golden bronze. Blooms to 12" in diameter		3.00
CYRIEL VASCHAEVE, S. C. A Dark Red, Frau O. Bracht. Very outstanding	5.00	2.50
DULCINEA, Cac. Well formed flowers of coral red. Extra fine for cutting	3.00	1.50
ENID CRANE, I. D. Large blooms of the deepest yellow color. Perfectly and neatly reflexed	4.00	2.00
FIERY DAWN, One of the best exhibition scarlet cactus	4.00	2.00
GOLDEN PRINCE, I. D. Gold flushed with garnet. Champion of the recent shows in Australia. A great prize winner and an exhibition dahlia which should become very popular in this country. A great foreign acquisition	5.00	2.50
HANSI KNOTEK, I. D. A striking glowing bronze. Fine form and large in size. A real exhibition dahlia		5.00
JOE MUELLER, I. D. A fine bi-color, bright tan flecked with a usual indian red		3.50
KOONGARRA PRINCE, I. D. One of Australia's giant dahlias. Color, gold flushed salmon with bronze center	5.00	2.50
KOONGARRA MAJESTIC. F. D. Very attractive canary yellow flower. Fine Grower	4.00	2.00
LEWIS G. BOLTON, I. D. Huge flowers of deep rich crimson. Very attractive formation	4.00	2.00



	Root	Plant
MISS ANNE LILE, D. A beautiful flower with unique ribbon like florets of curling and interlacing form. Color, Rose-Pink	2.00	.75
MRS. L. BREGAZZI, I. C. A very fine petal exhibition cactus. Yellow at base suffused pink. Strong stems	1.50	.75
MRS. R. FEIDLER, Cac. Very narrow petals of the type cactus. Color, autumn red. Strong grower	2.50	1.25
MUTSUNOHIKARI, I. D. An extra fine pure white dahlia from Japan. Good grower having flowers 12" in size. A leading exhibition variety		3.75
PETUNIA, Cac. Beautiful lilac color, very strong stems. One of the finest exhibition cactus. England's great prize winning dahlia ...	4.00	2.00
PINK DAILY MAIL, I. D. A great exhibition dahlia. Pure cyclemen pink sport of Daily Mail with an added advantage of greater size	2.50	1.25
PINK SPIRAL, S. C. An excellent semi-cactus variety of large size and perfect formation; color, lovely peach pink	2.00	1.00
PHANTOM, I. D. Striking color of violet purple with each petal tipped white. A great novelty	1.75	.75
REIMEI, I. C. Color is soft rose. A much admired variety that is fine for exhibition		3.00
RUBY TAYLOR, I. D. (South Africa) One of the largest dahlia grown. Autumn color, golden bronze	5.00	2.50
SENSHIN, Cac. Japans leading white cactus. Perfect form with good stems. Has been grown to 14" in diameter		4.00
SHIROKANE, S. C. Another good Japanese white dahlia. A new variety in this country		2.50
REICHARDTS MASTERPIECE, I. D. Distinctive variety. Yellow with each petal having a violet coloring	2.00	1.00
SEVERINS TRIUMPH, I. D. Pink coloring. Jersey beauty in a large form	2.00	1.00
SCHINTENCHI (Japan) A perfectly formed cactus of the "Mum" type. An exceptional dahlia of art red shade	3.00	1.50
WHITE ABUNDANCE, I. D. Pure white on long strong stems. Very fine cutting variety	2.50	1.25
YELLOW GIANT, I. D. A huge bright yellow flower with attractive foliage. Australia's leading dahlia of merit	4.00	2.00

New Pompon Dahlias

BETTY ANNE. Soft, clear, pink	1.00	.50
FUNKE. A very strong grower producing many bright red flowers. Extra fine for cutting but a little too large for exhibition purpose	1.00	.50
RUD. Amaranth red. A beautiful variety that has been winning at many of the large shows75
THELMA. (Weiss-Australia) Perfect exhibition type. White lightly tipped with purple. Appeared on the honor roll last year	2.00	1.00

New Miniature Dahlias

	Root	Plant
*BABY ROYAL, Salmon pink shaded apricot. Very free flowering. Long stiff stems50	
BALLEGO'S MINIATURE, S. C. A pretty little flower. Color, pink and white. Extra fine for exhibition		1.00
BEECHLANDS GEM. S. C. (Jarman-England) Refined flowers of cherry-peach with yellow at base. Extremely free flowering producing quantities of spiky double blooms. Makes a fine plant and a favorite with me. J. W. Johnston rates this as an outstanding variety in his honor roll	2.00	1.00
CHARD VANITY. Exceptionally fine rose pink carried on extra long stiff stems, size 3". One of the finest miniature in commerce to date. This dahlia will be a winner at most any show	1.50	.75
*CURSOE. F. D. (Cheal-England) Orange-scarlet and form of flower is good and true to type. Very striking plant	1.50	.75
EDITH CARTWRIGHT. I. D. (Burrell-England) Scarlet shaded with crimson. Semi-dark foliage	1.50	.75
ETHEL WINDIBANK. I. D. (Hay-England) A pretty small decorative. Color tinted and flushed rosy pink on a fawn ground. Height 2 ft.	1.50	.75
*GLORIOUS. I. D. (West-England) Very distinct Raspberry red. Remarkably free flowering with twisted and quilled petal	1.00	.50
LITTLE DREAM. Cactus type. Lovely color, pink and white. Very attractive	1.00	.50
MARJORIE EMBERSON. S. C. (West-England) A Baby Royal seedling producing blooms about 2½ inches in diameter. Color—soft pink. A bedding variety	1.50	.75
*POPPY. I. D. (Stredwick-England) This variety has neatly formed beautiful flowers with florets slightly rounded to points—Color: yellow at centre, changing to a deep coral and rosy tints.	1.50	.75
*TORQUAY GEM. (Treseder-England) Semi-double flowers of bright crimson. Deep bronze foliage and rated by the introducer as an improvement on his "Bishop of Llandaff." Grows 3 feet high	1.50	.75

All varieties marked with an * were awarded a gold medal as the outstanding dahlia of the season at the Wisley trial grounds in England. Each year about 75 new varieties both large and small flowering types are selected to be grown in this trial garden and the dahlia performing the best during the entire season is awarded the gold medal. For the last six consecutive years the medal has gone to a miniature dahlia.