

Historic, archived document

Do not assume content reflects current scientific knowledge, policies, or practices.



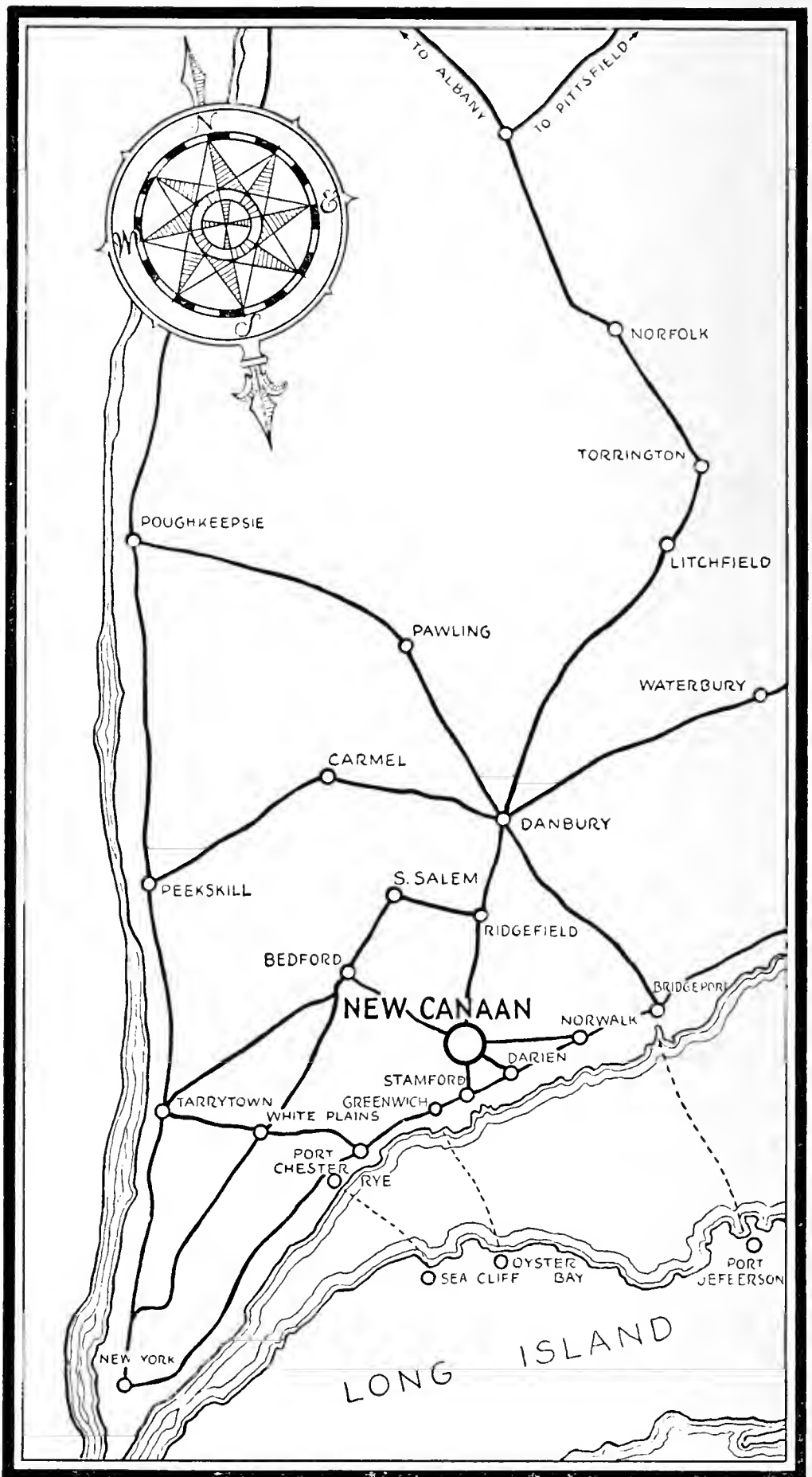
1848-1937

—The—

HOYT NURSERIES

NEW CANAAN • • CONN.

Telephone 1333



LOCATION

Our 600-acre Nursery has been located in the town of New Canaan, Connecticut, for 89 years. It is easily accessible by motor over state highways from all points.



White Dogwood in Nursery, February, 1937

Foreword

PLANTING-TIME

The spring season starts as soon as the frost is out of the ground and extends throughout April, May, and June.

Our material is so grown that late planting can be done successfully. Since most of our plant material comes balled and burlapped, it is possible for us to move plants in late spring, and even through early summer.

The fall season starts in August and extends through December, or as long as the ground is open.

LANDSCAPE SERVICE

Our Landscape Department will be glad to be of assistance to you, without charge, in advising you about your plantings. However, if plans and specifications are furnished, a charge will be made to cover these expenses. This charge will be deducted if our Nursery furnishes the plant material.

LARGE-TREE MOVING

Our Nursery is equipped for the moving of large trees. For the last thirty years we have moved thousands of these trees successfully and they have been a satisfaction to their owners. Fall or winter is the best time for moving large trees, since it is then possible to do this heavy work with less injury to lawns.

When trees and plants are moved on our client's property, there may be a service charge for burlap, guying material, rope, and the like.

While we move with greatest care plants and trees growing on our client's property, we, however, do not guarantee them to live, nor will we replace them if they should be injured and should die as the result of the moving.

RESERVATIONS

Plants marked in the Nursery for future delivery will be held over for one season only, or six months' time, unless payment is made. Plants are held at the buyer's risk.

DELIVERIES

Deliveries are made free within a radius of 15 miles. Distant deliveries will be charged for at the rate of 20 cents a mile in one direction. Plant material will be delivered to your grounds but **will not be carried to planting locations** unless arrangements have been made in advance.

PACKING

Packing will be charged for at cost on freight and express shipments.

PRICES

Prices in this list are f.o.b. New Canaan, Conn., and are for our selection only. Plants selected by our customers will be charged for according to their individual value. All quotations offered are subject to prior sale. These prices supersede all others and are subject to change without notice.

TERMS

Cash or satisfactory references must accompany all orders, unless the person ordering is known to us.

GUARANTEE

It is our policy to guarantee our nursery products for a full year, and to replace without charge any plant or tree which dies or is unsatisfactory to the owner within that time, provided payment is received within 30 days. If our **clients disregard instructions** as to the **care and watering** of our material and otherwise **neglect their plantings**, we will **not fulfil** the terms of our guarantee. **The cost of planting and transportation of replaced trees** is borne by the **purchaser**, and replacement is done at our convenience.

The Stephen Hoyt's Sons Co.

INCORPORATED

NEW CANAAN, CONN.

Phone: 1333



Juniperus chinensis columnaris, the taller varieties in this planting

Evergreens

Evergreens in some variety are necessary in almost all landscape work. They offer a richness of color to the garden in summer as well as a good background for your flowers. During the winter they continue to lend charm to the landscape when all deciduous plants have lost their leaves.

Abies • Fir

<i>Abies concolor</i> . <i>White Fir</i> . 50 to 60 ft.	Each
3 to 4 ft.....	\$4 00
4 to 5 ft.....	6 00
5 to 6 ft.....	7 50
6 to 8 ft.....	10 00
8 to 9 ft.....	15 00

Abies fraseri. <i>Fraser Fir.</i> 30 to 40 ft.	Each
5 to 6 ft.....	\$6 00
6 to 8 ft.....	7 50
8 to 10 ft.....	12 00
A. homolepis (brachyphylla). <i>Nikko Fir.</i> 100 to 120 ft.	
1½ to 2 ft.....	2 50
2 to 3 ft.....	3 00
3 to 4 ft.....	4 00
CEDRUS atlantica glauca. <i>Blue Atlas Cedar.</i>	
60 to 70 ft.	
5 to 6 ft.....	10 00
6 to 8 ft.....	12 00

Chamaecyparis (Retinospora) • Cypress

This large family of evergreens, originating in Japan, is extensively used both for foundation plantings and other ornamental work. All varieties are hardy and thrive in almost any soil.

Chamaecyparis obtusa gracilis. <i>Hinoki Cypress.</i>	Each
12 to 15 ft.	
2 to 3 ft.....	\$3 00
3 to 4 ft.....	4 00
4 to 5 ft.....	6 00
5 to 6 ft.....	8 00
C. obtusa nana. <i>Dwarf Cypress.</i> 2 to 3 ft.	
6 to 12 in.....	3 00
C. pisifera. <i>Sawara Cypress.</i> 40 to 50 ft.	
2 to 3 ft.....	2 50
3 to 4 ft.....	3 00
4 to 5 ft.....	4 00
5 to 6 ft.....	5 00
6 to 8 ft.....	8 00
8 to 10 ft.....	12 00
10 to 12 ft.....	20 00
12 to 14 ft.....	25 00
C. pisifera aurea. <i>Golden Sawara Cypress.</i> 30 to 40 ft.	
2 to 3 ft.....	2 50
3 to 4 ft.....	3 00
4 to 5 ft.....	4 00
5 to 6 ft.....	5 00
6 to 8 ft.....	8 00
8 to 10 ft.....	10 00
10 to 12 ft.....	20 00
C. pisifera filifera. <i>Thread Cypress.</i> 20 to 25 ft.	
2 to 3 ft.....	3 00
3 to 4 ft.....	4 00
4 to 5 ft.....	7 50
5 to 6 ft.....	10 00
6 to 8 ft.....	12 00
8 to 10 ft.....	20 00
10 to 12 ft.....	25 00
C. pisifera plumosa. <i>Plume Cypress.</i> 35 to 40 ft.	
2 to 3 ft.....	2 50
3 to 4 ft.....	3 00
4 to 5 ft.....	4 50
5 to 6 ft.....	8 00
6 to 8 ft.....	10 00
8 to 10 ft.....	15 00
10 to 12 ft.....	20 00
12 to 14 ft.....	25 00
C. pisifera plumosa aurea. <i>Golden Plume Cypress.</i>	
25 to 30 ft.	
2 to 3 ft.....	2 50
3 to 4 ft.....	3 00
4 to 5 ft.....	4 50
5 to 6 ft.....	8 00
6 to 8 ft.....	10 00
8 to 10 ft.....	15 00



Juniperus chinensis sargentii. See page 6

Chamaecyparis pisifera squarrosa. *Moss Cypress*.

	Each
25 to 30 ft.	
2 to 3 ft.....	\$2 00
3 to 4 ft.....	3 00
4 to 5 ft.....	4 50
5 to 6 ft.....	8 00
6 to 8 ft.....	10 00
8 to 10 ft.....	20 00
10 to 12 ft.....	25 00
12 to 14 ft.....	30 00

CRYPTOMERIA japonica lobbi compacta. 50 to 60 ft.

4 to 5 ft.....	5 00
5 to 6 ft.....	8 00
6 to 8 ft.....	12 00
8 to 10 ft.....	20 00
10 to 12 ft.....	25 00

Juniperus • Juniper; Cedar

The Junipers are another large group of evergreens which grow in almost all parts of this country as well as in many parts of the world. These plants are used extensively for garden work due to their varying types and interesting habits of growth. All varieties are extremely hardy, have attractive foliage, and some have showy berries in the fall.

Juniperus chinensis columnaris. *Columnar Juniper*.

	Each
20 to 25 ft.	
4 to 5 ft.....	\$4 00
5 to 6 ft.....	5 00
6 to 7 ft.....	7 50
7 to 8 ft.....	10 00
8 to 10 ft.....	15 00
10 to 12 ft.....	25 00
12 to 15 ft.....	30 00
15 to 18 ft.....	40 00

J. chinensis fortunei. *Fortune's Juniper*. 20 to 25 ft.

4 to 5 ft.....	4 00
5 to 6 ft.....	5 00
6 to 7 ft.....	7 50
7 to 8 ft.....	10 00
8 to 10 ft.....	15 00

J. chinensis pfitzeriana. *Pfitzer Juniper*. 5 to 6 ft.

1½ to 2 ft.....	3 00
2 to 2½ ft.....	3 25
2½ to 3 ft.....	3 50
3 to 4 ft.....	5 00
4 to 5 ft.....	10 00
5 to 6 ft.....	15 00
6 to 8 ft.....	30 00

Juniperus chinensis sargentii. Sargent Juniper.	
2 to 3 ft.	Each
12 to 15 in.....	\$1 50
15 to 18 in.....	2 00
1½ to 2 ft.....	3 00
J. communis cracovica. Polish Juniper. 7 to 8 ft.	
4 to 5 ft.....	4 00
5 to 6 ft.....	5 00
6 to 8 ft.....	10 00
8 to 10 ft.....	15 00
J. communis depressa plumosa. Andorra Juniper.	
2 to 3 ft.	
1½ to 2 ft.....	3 00
2 to 3 ft.....	3 50
J. communis hibernica. Irish Juniper. 7 to 8 ft.	
2 to 3 ft.....	2 50
3 to 4 ft.....	3 00
4 to 5 ft.....	3 50
J. excelsa stricta. Spiny Greek Juniper.	
1½ to 2 ft.....	2 50
2 to 2½ ft.....	3 00
J. horizontalis. Creeping Juniper.	
15 to 18 in.....	2 00
1½ to 2 ft.....	3 00
J. sabina. Savin Juniper. 5 to 6 ft.	
1½ to 2 ft.....	2 00
2 to 2½ ft.....	2 50
2½ to 3 ft.....	4 00
3 to 3½ ft.....	5 00
J. squamata meyeri. Meyer's Juniper. 6 to 8 ft.	
1½ to 2 ft.....	3 00
2 to 2½ ft.....	4 00
2½ to 3 ft.....	5 00
3 to 4 ft.....	7 50
4 to 5 ft.....	10 00
J. virginiana cannarti. Cannart Juniper. 20 to 25 ft.	
3 to 4 ft.....	3 50
4 to 5 ft.....	5 00
5 to 6 ft.....	6 00
6 to 8 ft.....	10 00
8 to 10 ft.....	15 00
J. virginiana glauca. Blue Cedar. 20 to 25 ft.	
3 to 4 ft.....	3 50
4 to 5 ft.....	5 00
5 to 6 ft.....	6 00
6 to 8 ft.....	10 00
8 to 10 ft.....	15 00
10 to 12 ft.....	18 00
J. virginiana keteleeri. Keteleer Cedar. 18 to 20 ft.	
3 to 4 ft.....	3 50
4 to 5 ft.....	5 00
5 to 6 ft.....	6 00
6 to 8 ft.....	10 00
8 to 10 ft.....	15 00
10 to 12 ft.....	18 00
J. virginiana kosteri. Spreading Koster Juniper.	
1½ to 2 ft.....	3 00
2 to 3 ft.....	3 50
J. virginiana schotti. Schott Juniper. 20 to 25 ft.	
3 to 4 ft.....	3 50
4 to 5 ft.....	5 00
5 to 6 ft.....	6 00
6 to 8 ft.....	10 00
8 to 10 ft.....	15 00
10 to 12 ft.....	18 00

Picea • Spruce

Picea excelsa. Norway Spruce. 80 to 100 ft.	Each
4 to 5 ft.....	\$3 00
5 to 6 ft.....	5 00
6 to 8 ft.....	6 00
8 to 10 ft.....	10 00
10 to 12 ft.....	15 00
P. orientalis. Oriental Spruce. 60 to 70 ft.	
7 to 8 ft.....	25 00
10 to 12 ft.....	30 00
12 to 15 ft.....	35 00
15 to 18 ft.....	40 00
P. pungens. Colorado Spruce. 70 to 80 ft.	
2 to 3 ft.....	2 50
3 to 4 ft.....	3 00
4 to 5 ft.....	5 00
P. pungens kosteri. Koster Blue Spruce. (Grafted.) 50 to 60 ft.	
2 to 3 ft.....	5 00
3 to 4 ft.....	7 50
4 to 5 ft.....	10 00
5 to 6 ft.....	15 00

Pinus • Pine

Most of these well-known evergreens grow rapidly into large, rugged trees. They are hardy, have attractive, colorful foliage, and are particularly well suited for windbreaks or screens, but also grow into beautiful specimen trees. They enjoy a light, well-drained soil.

Pinus flexilis. Limber Pine. 30 to 40 ft.	Each
5 to 6 ft.....	\$7 50
6 to 7 ft.....	10 00
7 to 8 ft.....	12 00
8 to 10 ft.....	15 00



Mugho Pine

P. montana mughus. Mugho Pine.	Each
1½ to 2 ft.....	\$3 00
2 to 3 ft.....	4 00
3 to 4 ft.....	7 50
4 to 5 ft.....	10 00

Pinus nigra (austriaca). Austrian Pine. 50 to 60 ft.	Each
3 to 4 ft.....	\$5 00
4 to 5 ft.....	6 00
5 to 6 ft.....	7 50
6 to 8 ft.....	\$10 to 12 00
8 to 10 ft., heavy specimen.....	25 00
10 to 12 ft., heavy specimen.....	30 00
12 to 14 ft., heavy specimen.....	35 00

P. resinosa. Red or Norway Pine. 60 to 70 ft.	
2 to 3 ft.....	1 50
3 to 4 ft.....	4 00
5 to 6 ft.....	6 00
6 to 8 ft.....	8 00
8 to 10 ft.....	15 00
10 to 12 ft., heavy specimen.....	25 00
12 to 14 ft., heavy specimen.....	30 00
14 to 16 ft., heavy specimen.....	35 00

White Pine. See page 9





Douglas Fir (*Pseudotsuga*)

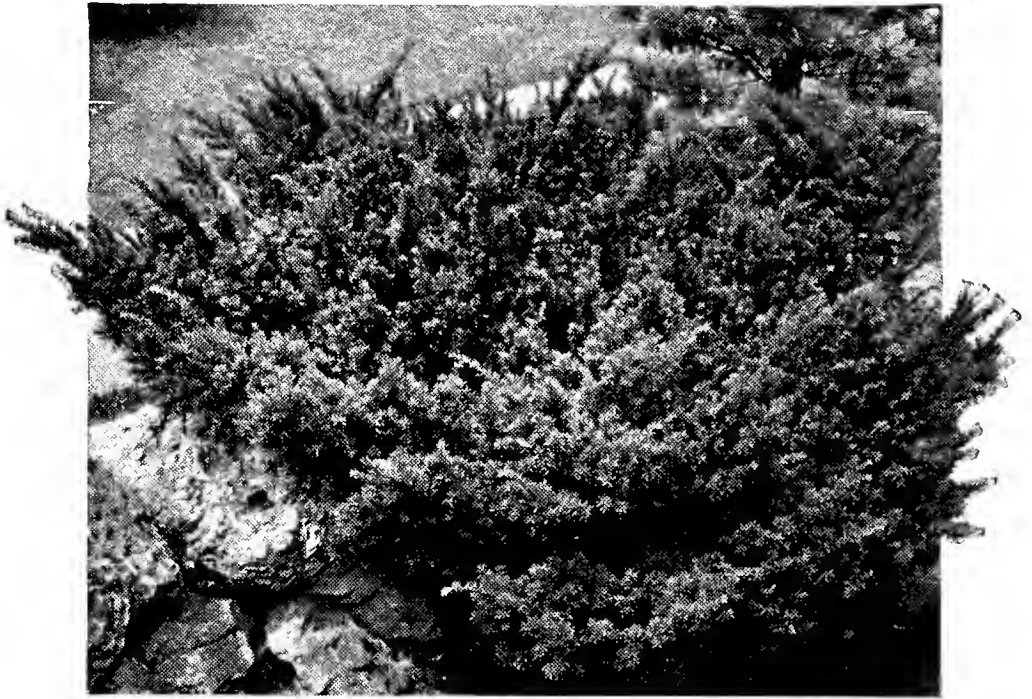
Pinus strobus. <i>White Pine.</i> 80 to 100 ft.	Each
4 to 5 ft.....	\$4 00
5 to 6 ft.....	5 00
6 to 8 ft.....	7 50
8 to 10 ft.....	15 00
10 to 12 ft., heavy specimen.....	25 00
12 to 14 ft., heavy specimen.....	30 00
14 to 16 ft., heavy specimen.....	35 00

P. sylvestris. <i>Scotch Pine.</i> 40 to 50 ft.	
6 to 8 ft.....	8 00
8 to 10 ft.....	15 00
10 to 12 ft., heavy specimen.....	20 00
12 to 14 ft., heavy specimen.....	30 00
14 to 16 ft., heavy specimen.....	35 00

Pseudotsuga • Douglas Fir

This evergreen is a rapid, graceful grower. Its foliage varies from light to dark green and in some types even to a bluish green. It is perfectly hardy, transplants easily, and becomes more beautiful as it grows older. It is a very worthy evergreen.

Pseudotsuga douglasi. <i>Douglas Fir.</i> 70 to 80 ft.	Each
4 to 5 ft.....	\$5 00
5 to 6 ft.....	7 50
6 to 8 ft.....	10 00
8 to 10 ft.....	15 00
10 to 12 ft., heavy specimen.....	20 00
12 to 14 ft., heavy specimen.....	25 00
14 to 16 ft., heavy specimen.....	30 00
16 to 18 ft., heavy specimen.....	35 00



Taxus cuspidata nana

Taxus • Yew

The Yews belong to one of the most ancient families of trees on earth and have been highly valued in England and Japan for their dark green beauty and permanence. Most varieties grow into handsome plants and trees. Some are adorned with red berries in the late summer and fall. The varieties listed are hardy and transplant easily.

Taxus baccata repandens. <i>Spreading English Yew.</i>	Each
15 to 18 in.....	\$2 50
1½ to 2 ft.....	3 50
2 to 2½ ft.....	5 00
T. cuspidata. <i>Japanese Spreading Yew.</i>	
15 to 18 in.....	2 00
1½ to 2 ft.....	3 00
2 to 2½ ft.....	3 50
2½ to 3 ft.....	4 50
3 to 4 ft., regular.....	6 00
3 to 4 ft., heavy specimen.....	10 00
4 to 5 ft., heavy specimen.....	15 00
5 to 6 ft.....	25 00
T. cuspidata capitata. <i>Pyramidal Japanese Yew.</i>	
20 to 25 ft.	
2 to 3 ft.....	3 50
3 to 4 ft., seedling.....	6 00
3 to 4 ft., grafted.....	7 50
4 to 5 ft., seedling.....	10 00
4 to 5 ft., grafted.....	12 00
5 to 6 ft., seedling.....	15 00
5 to 6 ft., grafted.....	20 00
6 to 7 ft.....	40 00
7 to 8 ft., specimen.....	\$50 to 60 00
8 to 10 ft., specimen.....	\$75 to 100 00
10 to 12 ft., specimen.....	\$100 to 150 00
12 to 14 ft., specimen.....	\$150 to 200 00
T. cuspidata nana (brevifolia). <i>Dwarf Japanese Yew.</i>	
5 to 6 ft.	
10 to 12 in., bare root.....	1 35
12 to 15 in.....	2 00
15 to 18 in.....	3 00
1½ to 2 ft.....	4 50
2 to 2½ ft.....	10 00
2½ to 3 ft., heavy.....	15 00
T. hicksi. <i>Hick's Yew.</i> 10 to 12 ft.	
3 to 4 ft.....	6 00
4 to 5 ft.....	15 00
5 to 6 ft.....	20 00
6 to 7 ft.....	25 00

Thuja • Arborvitæ

This large group is among the best known of all our evergreens. The tall-growing varieties are widely used for hedges and windbreaks and for specimens in landscape designs. The more dwarf types are useful for foundation plantings and rock-gardens.

Thuja batemani. *Bateman Arborvitæ.* 5 to 6 ft. Each
 3 to 4 ft.....\$3 50

T. lobbi atrovirens. *Giant Arborvitæ.* 35 to 40 ft.
 5 to 6 ft..... 4 00
 6 to 8 ft..... 6 00
 8 to 10 ft.....10 00
 10 to 12 ft.....12 00
 12 to 14 ft.....15 00

T. occidentalis. *American Arborvitæ.* 30 to 35 ft.
 4 to 5 ft..... 3 00
 5 to 6 ft..... 4 00
 6 to 8 ft..... 5 00
 6 to 8 ft., heavy specimen..... 8 00
 8 to 10 ft., heavy specimen.....10 00
 10 to 12 ft., heavy specimen.....12 00
 12 to 14 ft., heavy specimen.....15 00



Thuja occidentalis (American Arborvitæ)

Thuja occidentalis douglasi pyramidalis. Douglas	
<i>Pyramidal Arborvitæ.</i> 20 to 25 ft.	Each
3 to 4 ft.....	\$2 50
4 to 5 ft.....	3 00
5 to 6 ft.....	5 00
6 to 8 ft.....	7 50
8 to 10 ft.....	10 00
10 to 12 ft.....	12 00
T. occidentalis globosa. Globe Arborvitæ. 3 to 4 ft.	
15 to 18 in.....	2 00
1½ to 2 ft.....	3 00
2 to 3 ft.....	4 00
T. occidentalis, Little Gem. Little Gem Arborvitæ.	
2 to 3 ft.	
8 to 10 in.....	1 50
10 to 12 in.....	2 00
T. occidentalis lutea. George Peabody Arborvitæ.	
12 to 15 ft.	
4 to 5 ft.....	2 50
5 to 6 ft.....	3 50
6 to 7 ft.....	4 00
7 to 8 ft.....	5 00
T. occidentalis pyramidalis. Pyramidal Arborvitæ.	
25 to 30 ft.	
3 to 4 ft.....	3 00
4 to 5 ft.....	4 00
5 to 6 ft.....	5 00
6 to 7 ft.....	6 00
7 to 8 ft.....	8 00
8 to 10 ft.....	10 00
T. occidentalis riversi. Rivers' Arborvitæ. 8 to 10 ft.	
2 to 2½ ft.....	2 00
2½ to 3 ft.....	3 00
3 to 4 ft.....	4 00
4 to 5 ft.....	5 00
5 to 6 ft.....	6 00
T. occidentalis rosenthali. Rosenthal Arborvitæ.	
8 to 10 ft.	
3 to 4 ft.....	3 00
4 to 5 ft.....	4 00
5 to 6 ft.....	5 00
6 to 7 ft.....	6 00
7 to 8 ft.....	8 00
T. occidentalis sempaurea. 15 to 20 ft.	
4 to 5 ft.....	3 00
5 to 6 ft.....	4 00
6 to 8 ft.....	6 00
8 to 10 ft.....	10 00
10 to 12 ft.....	12 00
12 to 14 ft.....	15 00
T. occidentalis wareana. Siberian Arborvitæ.	
12 to 15 ft.	
1½ to 2 ft.....	1 50
2 to 2½ ft.....	2 00
2½ to 3 ft.....	3 00
3 to 4 ft.....	4 00
4 to 5 ft.....	6 00
T. occidentalis woodwardi. Woodward Arborvitæ. 4 to 5 ft.	
1½ to 2 ft.....	2 00
2 to 3 ft.....	3 00
3 to 4 ft.....	4 00
T. standishi. Standish Arborvitæ. 12 to 15 ft.	
4 to 5 ft.....	2 50
5 to 6 ft.....	4 00
6 to 8 ft.....	5 00
8 to 9 ft.....	8 00



Tsuga • Hemlock

Stately grace and dignity characterize the Hemlock which we consider the most beautiful of the larger North American evergreens. Its attractive dark green foliage weeps gracefully and is tipped with the bright green of new growth during the spring. Hemlocks are hardy and thrive in almost any soil. They tolerate the shade better than other evergreens and may be used for hedges, backgrounds for gardens, or as specimens.

Tsuga canadensis. Canadian Hemlock. 70 to 80 ft.	Each
2 to 3 ft.....	\$1 75
3 to 4 ft.....	3 00
4 to 5 ft.....	4 50
5 to 6 ft.....	6 00
6 to 7 ft.....	7 50
7 to 8 ft.....	10 00
7 to 8 ft., specimen.....	12 00
8 to 9 ft., specimen.....	15 00
9 to 10 ft., specimen.....	18 00
10 to 12 ft., specimen.....	20 00
T. caroliniana. Carolina Hemlock. 40 to 50 ft.	
2 to 2½ ft.....	2 50
2½ to 3 ft.....	3 00
3 to 4 ft.....	4 00



Hardy Evergreen Shrubs

The importance of this class of plant material has long been recognized by many garden-lovers. These plants present an attractive appearance, both summer and winter. Most of these grow well in almost any soil. Since they are slow growers and therefore easy to keep in bounds, they grow more beautiful with age.

ABELIA grandiflora. *Glossy Abelia.* 5 to 6 ft. Each
 1½ to 2 ft. \$1 25

AZALEAS. See page 17.

BERBERIS julianæ. *Wintergreen Barberry.* 5 to 6 ft.
 1½ to 2 ft. 2 00
 2 to 3 ft. 2 50

B. verruculosa. *Warty Barberry.* 3 ft.
 12 to 15 in. 1 50
 15 to 18 in. 2 00
 18 to 20 in. 2 50

See Berberis, pages 29 and 30.

BUXUS sempervirens arborescens. *Boxwood Edging.*
 6 to 8 in. \$30 per 100
 8 to 10 in. \$35 per 100
 10 to 12 in. \$50 per 100

B. sempervirens arborescens. *Specimen Boxwood.*
 8 to 10 ft.
 12 x 12 in. 2 00
 14 x 14 in. 3 00
 15 x 15 in. 4 00
 16 x 16 in. 5 00
 18 x 18 in. 6 00
 20 x 20 in. 8 00

B. sempervirens arborescens. *Pyramidal Boxwood.*
 8 to 10 ft.
 2 to 2½ ft. 4 00
 2½ to 3 ft. 6 00
 3 to 3½ ft. 7 50
 3½ to 4 ft. 8 00
 4 to 5 ft. 10 00

COTONEASTER divaricata. *Upright Spreading Cotoneaster.* 5 to 6 ft.
 1½ to 2 ft. 1 50
 2 to 2½ ft. 2 00
 2½ to 3 ft. 2 50

C. horizontalis. *Rock Cotoneaster.*
 10 to 12 in., pot-grown 1 00
 12 to 15 in., pot-grown 1 25

Cotoneaster zabeli. <i>Zabel's Cotoneaster.</i>	Each
2 to 2½ ft.....	\$2 00
2½ to 3 ft.....	2 50
DAPHNE cneorum. <i>Garland Flower.</i> 1 to 2 ft.	
9 to 12 in.....	1 25
12 to 15 in.....	1 35
ILEX crenata. <i>Japanese Holly.</i> 12 to 15 ft.	
2 to 3 ft.....	3 50
I. glabra. <i>Inkberry.</i> 4 to 6 ft.	
12 to 15 in.....	2 00
15 to 18 in.....	2 50
1½ to 2 ft.....	3 00
I. opaca. <i>American Holly.</i> 25 to 30 ft.	
Prices on application.	
KALMIA latifolia. <i>Mountain Laurel.</i> 6 to 8 ft.	
15 to 18 in.....	1 50
1½ to 2 ft.....	2 00
2 to 3 ft.....	2 50
3 to 4 ft.....	5 00
4 to 5 ft.....	7 50
5 to 6 ft.....	\$12 00 and up
Larger quantities priced on application.	
LEIOPHYLLUM buxifolium. <i>Box Sandmyrtle.</i>	
10 to 15 in.....	2 50
1½ to 2 ft.....	3 50
LEUCOTHOE catesbaei. <i>Drooping Leucothoe.</i>	
2½ to 3 ft.	
15 to 18 in.....	1 50
1½ to 2 ft.....	2 00
PIERIS (Andromeda) floribunda. <i>Mountain Andromeda.</i>	
4 to 5 ft.	
12 to 15 in.....	1 50
15 to 18 in.....	2 50
1½ to 2 ft.....	3 00
P. japonica. <i>Japanese Andromeda.</i> 6 to 7 ft.	
12 to 15 in.....	1 50
15 to 18 in.....	2 50
1½ to 2 ft.....	3 00
2 to 2½ ft.....	4 00
PYRACANTHA coccinea lalandi. <i>Laland Firethorn.</i>	
8 to 10 ft.	
2 to 3 ft.....	3 50

Cotoneaster horizontalis. See page 14.





Hybrid Rhododendrons

Rhododendrons

Rhododendron carolinianum. *Carolina Rhododendron.*

	Each
5 to 6 ft.	
1½ to 2 ft.....	\$3 00
2 to 3 ft.....	4 50
2 to 3 ft., heavy specimen.....	7 50
3 to 4 ft.....	7 00
3 to 4 ft., heavy specimen.....	\$10 to 15 00

R. catawbiense. *Catawba Rhododendron.* 8 to 10 ft.

2 to 3 ft.....	4 50
3 to 4 ft.....	7 00

R. maximum. *Rosebay Rhododendron.* 12 to 15 ft.

2 to 3 ft.....	3 00
3 to 4 ft.....	4 00
4 to 5 ft.....	5 50
5 to 6 ft.....	7 50

Special prices on larger quantities and sizes

Hybrid Rhododendrons

Prices and sizes on application

Rhododendron, Album Elegans. Blush, fading to white. Tall-growing.

R., **Amphion.** Bright rose, white center.

R., **Charles Dickens.** Vivid scarlet.

R., **Delicatissima.** Blush, fading to white.

R., **H. W. Sargent.** Crimson.

R., **Mrs. C. S. Sargent.** Clear rose-pink.

R., **Roseum Elegans** Rose-pink.

Azaleas

These plants, like Rhododendrons, want a somewhat acid soil and should be planted with protection from winter winds. Happily situated, these plants produce brilliant blossoms of many colors. They need plenty of moisture during blossom-time. Some of our native types grow into fairly large bushes but most Azalea varieties seldom attain a height of more than 3 to 4 feet.

Azalea arborescens. Sweet Azalea. 6 to 10 ft. White. Each	
1½ to 2 ft.....	\$2 50
2 to 3 ft.....	3 50
A. calendulacea. Flame Azalea. 8 to 10 ft.	
1½ to 2 ft.....	2 50
2 to 3 ft.....	3 50
A. kaempferi. Torch Azalea. 4 to 5 ft. Salmon to orange-red.	
1½ to 2 ft.....	3 00
2 to 2½ ft.....	3 50
A. mollis. 4 to 5 ft. Burnt-orange.	
15 to 18 in.....	3 00
1½ to 2 ft.....	4 00
A. schlippenbachi. 3 to 8 ft. Rose-pink.	
12 to 15 in.....	2 50
15 to 18 in.....	3 50
A., Van Tol. 4 to 5 ft. Orange-red.	
1½ to 2 ft.....	4 00
A. vaseyi. 3 to 4 ft. Shell-pink.	
1½ to 2 ft.....	3 00
2 to 2½ ft.....	3 50
A. yodogawa. 4 to 5 ft. Lavender-pink.	
1½ to 2 ft.....	2 50
2 to 2½ ft.....	3 50



Azalea vaseyi



White-flowering Dogwood

Flowering Trees

There is probably no group of deciduous plants as popular or well known as this one. Their interesting habits of growth, with glossy foliage combined with gorgeous blossoms in the spring and followed by attractive fruit of many colors in late summer and fall, make them an all-year-round satisfaction. Trees in this group thrive in almost all kinds of soil, and most varieties are very hardy. They should be allowed plenty of room for full development in years to come.

ÆSCULUS hippocastanum. *White Horse-Chestnut.*

50 to 60 ft.	Each
6 to 8 ft.....	\$3 00
8 to 9 ft.....	4 00

Æ. hippocastanum rubicunda. *Pink Horse-Chestnut.*

30 to 40 ft.	
8 to 10 ft.....	5 00
10 to 12 ft.....	6 00

CERCIS canadensis. *Red-bud; Judas Tree.*

20 to 25 ft.	
4 to 5 ft.....	1 50
5 to 6 ft.....	3 00
6 to 8 ft.....	5 00

CHIONANTHUS virginica. *White Fringe.* 20 to 25 ft.

3 to 4 ft.....	1 50
4 to 5 ft.....	3 00

CORNUS florida. *White-flowering Dogwood.*

25 to 50 ft.	
4 to 5 ft.....	3 00
5 to 6 ft.....	4 00
6 to 7 ft.....	6 00
7 to 8 ft.....	8 00

Cornus florida, continued	Each
8 to 10 ft.....	\$10 00
10 to 12 ft., heavy.....	20 00
12 to 14 ft., heavy.....	25 00
14 to 16 ft., heavy.....	30 00
C. florida rubra. <i>Red-flowering Dogwood.</i> 20 to 25 ft.	
4 to 5 ft.....	4 00
5 to 6 ft.....	7 50
6 to 8 ft.....	10 00
6 to 8 ft., heavy.....	15 00
8 to 10 ft., heavy.....	20 00
C. kousa. <i>Japanese Flowering Dogwood.</i> 15 to 20 ft.	
5 to 6 ft.....	6 00
6 to 7 ft.....	7 50
C. mascula. <i>Cornelian Cherry.</i> 15 to 20 ft.	
3 to 4 ft.....	1 50
CRATÆGUS carrierei. <i>Carriere Hawthorn.</i> 15 to 20 ft.	
Large flowers. Orange fruits.	
4 to 5 ft.....	4 00
Larger sizes on application.	
C. coccinea. <i>Thicket Hawthorn.</i> 10 to 12 ft. White flowers. Large red fruits.	
4 to 5 ft.....	4 00
C. cordata. <i>Washington Hawthorn.</i> 10 to 12 ft. White flowers. Brilliant red berries.	
4 to 5 ft.....	3 00
5 to 6 ft.....	4 00
6 to 8 ft.....	7 50
C. crus-galli. <i>Cockspur Thorn.</i> 20 to 25 ft. White flowers.	
4 to 5 ft.....	4 00
C. monogyna albo-plena. <i>Paul's Double White Hawthorn.</i> 8 to 10 ft.	
4 to 5 ft.....	4 00
C. monogyna plena. <i>Paul's Double Scarlet Hawthorn.</i> 8 to 10 ft.	
5 to 6 ft.....	5 00
6 to 7 ft.....	6 00
C. monogyna rosea. <i>Paul's Double Pink Hawthorn.</i> 8 to 10 ft.	
5 to 6 ft.....	5 00
6 to 7 ft.....	6 00
KOELREUTERIA paniculata. <i>Golden Rain.</i> 25 to 30 ft.	
5 to 6 ft.....	3 50
6 to 8 ft.....	5 00
LABURNUM vulgare. <i>Golden Chain.</i> 15 to 20 ft.	
5 to 6 ft.....	3 00
6 to 8 ft.....	4 00
MAGNOLIA soulangeana. 18 to 20 ft. Blush-pink flowers.	
4 to 5 ft.....	7 50

Malus • Flowering Crab-Apple

These hardy flowering Crab-Apples thrive in almost all locations and exposures. No other flowering trees give such a profusion of bloom in the springtime. In the autumn they are adorned with clusters of fruits in many colors.

Malus arnoldiana. 12 to 15 ft. Semi-double. Deep pink. Each	
4 to 5 ft.....	\$4 00
5 to 6 ft., heavy.....	5 00
6 to 7 ft., heavy.....	10 00



Flowering Crab-Apples (Malus)

Malus atrosanguinea. 12 to 15 ft. Single. Dark pink.	Each
5 to 6 ft.....	\$5 00
6 to 7 ft., heavy.....	10 00
7 to 8 ft., heavy.....	15 00
M. floribunda. 15 ft. Single. Light pink.	
4 to 5 ft.....	4 00
5 to 6 ft.....	5 00
6 to 7 ft., heavy.....	10 00
M. ioensis bechteli. 15 ft. Double. Pink; rose-shaped.	
3 to 4 ft.....	2 00
4 to 5 ft.....	2 50
M. niedzwetzkyana. 12 to 15 ft. Single. Very dark pink.	
5 to 6 ft.....	5 00
6 to 7 ft., heavy.....	7 50
7 to 8 ft., heavy.....	10 00
M. parkmani. 12 to 15 ft. Hanging clusters of pink blossoms.	
4 to 5 ft.....	5 00
5 to 6 ft., heavy.....	6 00
6 to 7 ft., heavy.....	10 00
M. sargentii. 8 to 9 ft. Pure white.	
2 to 3 ft.....	4 00
3 to 4 ft.....	5 00
4 to 5 ft., standard.....	5 00

Malus scheideckeri. 12 to 15 ft. Semi-double. Pink.	Each
4 to 5 ft.....	\$5 00
5 to 6 ft.....	6 00
6 to 8 ft., heavy.....	10 00

M. spectabilis. 12 to 15 ft. Double. Light pink.	
5 to 6 ft.....	5 00
6 to 8 ft., heavy.....	10 00

OXYDENDRUM arboreum. <i>Sorrel Tree.</i> 20 to 25 ft.	
3 to 4 ft.....	1 50
4 to 5 ft.....	3 00
5 to 6 ft.....	4 00
6 to 7 ft.....	6 00

Prunus • Japanese Flowering Cherry

This worthy contribution to flowering trees from Japan thrives in this locality. The weeping variety blossoms early and is very attractive in its habit of growth. The blooms of the Upright Cherry come later and last longer. They are single or double, depending on variety, and their colors range from pure white through light and deep pink.

Prunus alba. <i>White Single Japanese Flowering Cherry.</i>	Each
20 to 25 ft.	
4 to 5 ft.....	\$3 00
5 to 6 ft.....	5 00
6 to 8 ft.....	7 50
8 to 10 ft.....	12 00

P., Beni Higan. <i>Blush-Pink Single Japanese Flowering Cherry.</i>	
4 to 5 ft.....	3 00
5 to 6 ft.....	5 00



Japanese Flowering Cherries (Prunus)



Weeping Flowering Cherry

Prunus, Hisakura. Japanese Double Pink-flowering Cherry.

	Each
30 to 35 ft.	
4 to 5 ft.....	\$3 00
5 to 6 ft.....	5 00
6 to 8 ft.....	7 50
8 to 10 ft.....	12 00

P., Kwanzan. Large Double Pink-flowering Cherry.

30 to 35 ft.	
4 to 5 ft.....	3 00
5 to 6 ft.....	5 00
6 to 8 ft.....	7 50
8 to 10 ft.....	12 00

P., Naden. Double Pink Siebold Cherry. 25 to 30 ft.

4 to 5 ft.....	3 00
5 to 6 ft.....	5 00
6 to 8 ft.....	7 50

P. rosea pendula. Weeping Japanese Pink-flowering Cherry. 10 to 12 ft.

6-ft. stem, 3-yr. head.....	6 00
6-ft. stem, 8-yr. head.....	\$20 to 25 00

P. rosea pendula flore-pleno. Weeping Japanese Double Pink-flowering Cherry. 10 to 12 ft.

5 to 6-ft. stem, 3-yr. head.....	6 00
----------------------------------	------

Prunus tomentosa. <i>Nanking Cherry.</i> 6 to 8 ft. White flowers. Red fruit.	Each
3 to 4 ft.....	\$1 50
P. cerasifera pissardi. <i>Purple-leaved Plum.</i> 10 to 12 ft.	
4 to 5 ft.....	2 00
6 to 8 ft.....	10 00
8 to 10 ft.....	15 00
P. triloba plena. <i>Double-flowering Plum.</i> 7 to 8 ft.	
3 to 4 ft.....	2 00
4 to 5 ft.....	2 50
P. glandulosa albo-plena. <i>Double White-flowering Almond.</i> 4 to 5 ft.	
2 to 3 ft.....	1 50
3 to 4 ft.....	2 50
4 to 5 ft.....	3 50
P. glandulosa rosea plena. <i>Double Pink-flowering Almond.</i> 4 to 5 ft.	
2 to 3 ft.....	1 50
3 to 4 ft.....	2 50
RHUS cotinus. <i>Smoke Tree; Purple Fringe.</i>	
12 to 15 ft.	
3 to 4 ft.....	2 00
4 to 5 ft.....	2 50
STYRAX japonica. <i>Japanese Snowball.</i> 18 to 20 ft.	
4 to 5 ft.....	2 50
5 to 6 ft.....	3 00

Rhus cotinus. (Smoke Tree or Purple Fringe)





Canadian Hemlock gro

Ornamental and Shade Trees

Possibly the most attractive features in many of our New England towns are the large shade and ornamental trees. The importance of these trees is becoming more evident every year, and when one of these beautiful old timers dies or is destroyed, it seems as if we have lost an old friend.

It takes years to develop a beautiful specimen. Therefore, plant a few trees of medium size each year. Don't wait or you may pay ten times as much for the same tree years later.

ASH, Mountain. <i>Sorbus aucuparia.</i> 25 to 30 ft.	Each
8 to 10 ft.....	\$5 00
10 to 12 ft.....	6 00

BEECH, American Green. <i>Fagus americana.</i>	
80 to 100 ft.	
7 to 8 ft.....	10 00

BEECH, Copper. <i>Fagus sylvatica atropurpurea.</i> 80 to 90 ft.	
1½ to 2-in. cal., 6 to 8 ft. high.....	10 00
2-in. cal., 8 to 10 ft. high.....	12 00
2½ to 3-in. cal., 10 to 12 ft. high.....	25 00
3 to 4-in. cal., 12 to 14 ft. high.....	30 00
4 to 5-in. cal., 12 to 15 ft. high.....	\$40 to 50 00
5 to 6-in. cal., 15 to 18 ft. high.....	\$60 to 75 00
6 to 7-in. cal., 15 to 18 ft. high.....	\$100 to 125 00
7 to 8-in. cal., 25 to 30 ft. high.....	\$150 to 200 00

Larger sizes on application.

BEECH, European Green. <i>Fagus sylvatica.</i> 80 to 90 ft.	
4 to 5 ft. high.....	5 00
5 to 6 ft. high.....	7 50
4 to 5-in. cal., 12 to 15 ft. high.....	50 00
5 to 6-in. cal., 15 to 20 ft. high.....	\$75 to 100 00
6 to 7-in. cal., 15 to 20 ft. high.....	\$100 to 150 00
7 to 8-in. cal., 20 to 25 ft. high.....	\$150 to \$200 and up

Larger sizes on application.

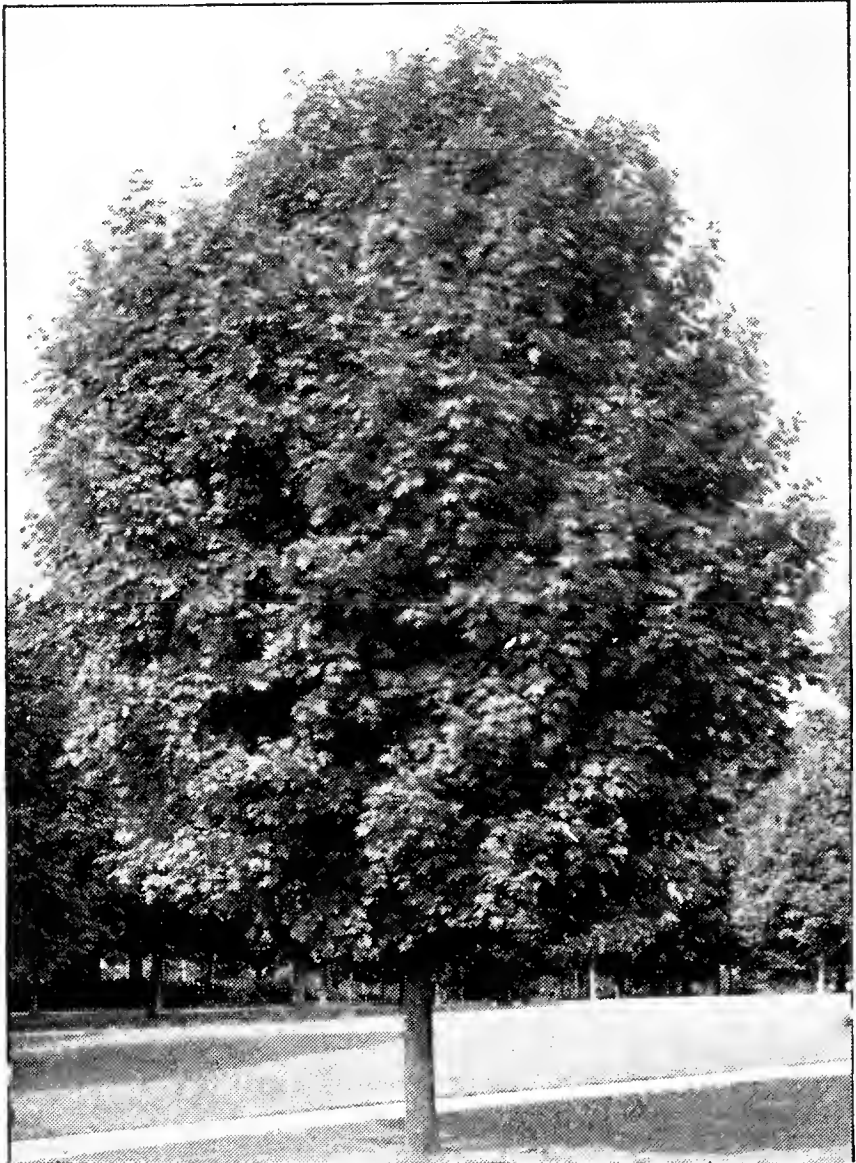
BEECH, Fern-leaf. <i>Fagus sylvatica heterophylla.</i> 40 to 50 ft.	
6 to 7-in. cal., 12 to 14 ft. high.....	\$100 to 125 00
7 to 8-in. cal., 12 to 14 ft. high.....	\$125 to 150 00

Larger sizes on application.



g in Nursery 19, 1937

BIRCH, Canoe. <i>Betula papyrifera</i>. 80 to 90 ft.	Each
6 to 7 ft.....	\$2 50
7 to 8 ft.....	3 50
8 to 10 ft.....	5 00
BIRCH, Cut-leaf Weeping. <i>Betula alba laciniata</i>. 30 to 40 ft.	
6 to 8 ft.....	3 50
10 to 12 ft.....	8 00
12 to 15 ft.....	10 00
BIRCH, White. <i>Betula alba</i>. 40 to 50 ft.	
2 to 2½-in. cal., 8 to 10 ft. high.....	8 00
2½ to 3-in. cal., 10 to 12 ft. high.....	12 50
3½ to 4-in. cal., 12 to 15 ft. high.....	20 00
Larger sizes on application.	
CATALPA. <i>Catalpa bungei</i>. 8 to 10 ft.	
3-yr. head, 5 to 6-ft. stem.....	3 00
ELM, American. <i>Ulmus americana</i>. 75 to 100 ft.	
2 to 3-in. cal., 12 to 14 ft. high.....	10 00
3 to 4-in. cal., 18 to 20 ft. high.....	18 00
4 to 5-in. cal., 18 to 20 ft. high.....	35 00
5 to 6-in. cal., 20 to 22 ft. high.....	50 00
6 to 7-in. cal., 20 to 25 ft. high.....	\$75 to 100 00
7 to 8-in. cal., 25 to 30 ft. high.....	\$150 and up
Larger sizes on application.	
ELM, Camperdown. <i>Ulmus camperdowni</i>. 8 to 10 ft.	
3-yr. head, 6-ft. stem.....	5 00
ELM, Moline Type. <i>Ulmus americana</i>. 50 to 60 ft.	
3 to 4-in. cal., 20 to 22 ft. high.....	18 00
4 to 5-in. cal., 25 ft. high.....	35 00
KATSURA TREE. <i>Cercidiphyllum japonicum</i>. 70 to 80 ft.	
6 to 8 ft.....	7 50
8 to 10 ft.....	10 00
LARCH, Japanese. <i>Larix leptolepsis</i>. 40 to 60 ft.	
8 to 9-in. cal., 25 to 30 ft. high.....	150 00
LINDEN, European. <i>Tilia vulgaris</i>. 70 to 80 ft.	
2 to 2½-in. cal., 8 to 10 ft. high.....	5 00
2½ to 3-in. cal., 10 to 12 ft. high.....	6 00
MAIDENHAIR TREE. <i>Ginkgo biloba</i>. 100 ft.	
2 to 2½-in. cal., 12 to 15 ft. high.....	10 00
2½ to 3-in. cal., 12 to 15 ft. high.....	15 00



Norway Maple (*Acer platanoides*)

MAPLE, Japanese Red. *Acer palmatum atropurpureum*.

12 to 15 ft.	Each
1½ to 2 ft.....	\$3 00
2 to 3 ft.....	4 00
3 to 4 ft.....	6 00
4 to 5 ft.....	8 00
5 to 6 ft.....	20 00
6 to 8 ft.....	25 00

MAPLE, Japanese Red Cut-leaf. *Acer palmatum dissectum atropurpureum*. 5 to 6 ft.

12 to 15 in.....	3 50
15 to 18 in.....	5 00

MAPLE, Japanese Green Cut-leaf. *Acer palmatum dissectum*. 5 to 6 ft.

15 to 18 in.....	4 00
1½ to 2 ft.....	6 00
2½ x 3 ft., specimen.....	15 00
3 x 4 ft., specimen.....	25 00
4 x 4 ft., specimen.....	30 00
5 x 5 ft., specimen.....	40 00
5½ x 8 ft., specimen.....	50 00

MAPLE, Norway. *Acer platanoides*. 60 to 80 ft.

1½ to 1¾-in. cal., 8 to 10 ft. high.....	3 50
1¾ to 2-in. cal., 10 to 12 ft. high.....	5 00
2 to 2½-in. cal., 12 to 14 ft. high.....	6 00
2½ to 3-in. cal., 12 to 14 ft. high.....	8 00
3 to 3½-in. cal., 15 to 18 ft. high.....	12 50
3½ to 4-in. cal., 15 to 18 ft. high.....	18 00
4 to 4½-in. cal., 15 to 18 ft. high.....	25 00
4½ to 5-in. cal., 18 to 20 ft. high.....	35 00
5 to 6-in. cal., 20 to 25 ft. high.....	50 00
6 to 7-in. cal., 20 to 25 ft. high.....	\$75 and up

MAPLE, Schwedler. *Acer platanoides schwedleri*.

60 to 80 ft.	Each
1½ to 2-in. cal., 8 to 10 ft. high.....	\$5 00
2½ to 3-in. cal., 12 to 14 ft. high.....	10 00
3 to 3½-in. cal., 12 to 14 ft. high.....	15 00
3½ to 4-in. cal., 12 to 14 ft. high.....	20 00

MAPLE, Silver. *Acer dasycarpum*. 60 to 80 ft.

1½ to 2-in. cal., 8 to 10 ft. high.....	3 50
2 to 2½-in. cal., 10 to 12 ft. high.....	5 00
2½ to 3-in. cal., 10 to 12 ft. high.....	7 50
3 to 3½-in. cal., 12 to 14 ft. high.....	12 00
3½ to 4-in. cal., 12 to 15 ft. high.....	15 00

MAPLE, Sugar or Rock. *Acer saccharum*. 100 ft.

1¾ to 2-in. cal., 12 ft. high.....	5 00
2 to 2½-in. cal., 12 to 14 ft. high.....	7 50
2½ to 3-in. cal., 12 to 14 ft. high.....	12 00
3 to 3½-in. cal., 15 to 18 ft. high.....	25 00
3½ to 4-in. cal., 15 to 18 ft. high.....	30 00
6 to 7-in. cal., 20 to 25 ft. high.....	\$100 and up
7 to 8-in. cal., 25 to 30 ft. high.....	\$150 and up

Larger sizes on application.

MULBERRY, Weeping. *Morus alba pendula*.

6 to 8 ft.	
5 to 6-ft. stem, 3-yr. head.....	3 00

OAK, Pin. *Quercus palustris*. 70 to 80 ft.

1¾ to 2-in. cal., 8 to 10 ft. high.....	6 00
2 to 2½-in. cal., 8 to 10 ft. high.....	10 00
2½ to 3-in. cal., 10 to 12 ft. high.....	15 00
3 to 3½-in. cal., 15 to 18 ft. high.....	25 00
4 to 5-in. cal., 15 to 18 ft. high.....	\$50 to 60 00
5 to 6-in. cal., 18 to 20 ft. high.....	\$60 to 75 00
6 to 8-in. cal., 18 to 20 ft. high.....	\$100 to \$150 and up

Larger sizes on application.

OAK, Red. *Quercus rubra*. Prices on application.



Pin Oak (*Quercus palustris*)

OAK, Scarlet. <i>Quercus coccinea.</i> 50 to 60 ft.		Each
2 to 3-in. cal., 12 to 15 ft. high.....	\$25 to 30	00
3 to 4-in. cal., 15 to 18 ft. high.....	\$30 to 40	00
4 to 5-in. cal., 18 to 20 ft. high.....	50	00
PLANE, European. <i>Platanus orientalis.</i> 70 to 80 ft.		
2-in. cal., 8 to 10 ft. high.....	5	00
2 to 2½-in. cal., 10 to 12 ft. high.....	10	00
2½ to 3-in. cal., 12 to 14 ft. high.....	12	00
3 to 4-in. cal., 16 to 18 ft. high.....	15	00
5 to 6-in. cal., 20 to 25 ft. high, B&B.....	60	00
6 to 7-in. cal., 25 to 30 ft. high, B&B.....	\$75 to 100	00
POPLAR, Simon. <i>Populus simoni.</i> 30 to 35 ft.		
5 to 6 ft.....	1	50
WILLOW, Babylon Weeping. <i>Salix babylonica.</i> 25 to 30 ft.		
2 to 2½-in. cal., 6 to 8 ft. high.....	5	00
2½ to 3-in. cal., 7 to 8 ft. high.....	6	00
WILLOW, Golden Weeping. <i>Salix vitellina pendula.</i>		
40 to 50 ft.		
5 to 6 ft.....	1	25
6 to 8 ft.....	2	00
1½ to 2-in. cal., 8 to 10 ft. high.....	3	00
2 to 2½-in. cal., 8 to 10 ft. high.....	5	00
WILLOW, Thurlow Weeping. <i>Salix elegantissima.</i>		
50 to 60 ft.		
6 to 8 ft.....	1	50
1½ to 2-in. cal., 8 to 10 ft. high.....	2	50
2 to 2½-in. cal., 10 to 12 ft. high.....	5	00
2½ to 3-in. cal., 10 to 12 ft. high.....	6	00
3 to 3½-in. cal., 10 to 12 ft. high.....	8	00
YELLOW-WOOD. <i>Cladrastis lutea.</i> 40 to 50 ft.		
8 to 9 ft.....	8	00
2½ to 3-in. cal., 9 to 10 ft. high.....	15	00
2½ to 3-in. cal., 10 to 12 ft. high.....	20	00
3 to 3½-in. cal., 12 to 14 ft. high.....	25	00
3½ to 4-in. cal., 12 to 14 ft. high.....	30	00



Oriental Plane Tree (*Platanus orientalis*)



Specimen, *Forsythia viridissima*. See page 31

Flowering Shrubs

Included among the Flowering Shrubs are those old favorites well known to all, as well as some worthy new varieties. Our Shrubs are particularly well grown and are considerably heavier than the regular nursery-grown shrubs usually offered. They will blossom the first year if planted early.

Larger specimen shrubs listed on pages 36 to 38.

ABELIA grandiflora. <i>Glossy Abelia.</i> 5 to 6 ft.	Each
1½ to 2 ft.....	\$1 25
AMELANCHIER canadensis. <i>Downy Shadbush.</i>	
20 to 25 ft.	
2 to 3 ft.....	1 00
3 to 4 ft.....	1 25
ARALIA pentaphylla. <i>Five-leaf Aralia.</i> 7 to 8 ft.	
3 to 4 ft.....	1 00
ARONIA arbutifolia. <i>Red Chokeberry.</i> 8 to 10 ft.	
2 to 3 ft.....	1 00
A. melanocarpa. <i>Black Chokeberry.</i> 8 to 10 ft.	
2 to 3 ft.....	1 00
AZALEA. See page 17.	
BENZOIN æstivale (<i>Lindera Benzoin</i>). <i>Spice Bush.</i>	
6 to 8 ft.	
2 to 3 ft.....	1 00
BERBERIS thunbergi. <i>Japanese Barberry.</i> 5 to 7 ft.	
1½ to 2 ft.....	\$20 per 100.. 25
2 to 2½ ft.....	\$25 per 100.. 30

BERBERIS thunbergi pluriflora erecta. <i>Truehedge Columberry.</i> Plant Patent No. 110. Propagation rights reserved.			
	Each	10	100
12 to 15 in.....	\$0 50	\$4 00	\$35 00
15 to 18 in.....	60	5 00	45 00
1½ to 2 ft.....	80	7 00	60 00

BUDDLEIA davidi magnifica. *Ox-eye Butterfly Bush.*

8 to 10 ft.

Each

3-yr.....\$0 75

CALLICARPA purpurea. *Chinese Beauty Berry.*

4 to 5 ft.

2 to 3 ft..... 1 00

CALYCANTHUS floridus. *Sweet Shrub.* 8 to 9 ft.

2 to 3 ft..... 1 00

3 to 4 ft..... 1 25

CLETHRA alnifolia. *Sweet Pepperbush.* 7 to 8 ft.

2 to 3 ft..... 75

3 to 4 ft..... 1 25

CORNUS alba sibirica. *Coral Dogwood.* 8 to 10 ft.

3 to 4 ft..... 1 00

C. amomum. *Silky Dogwood.* 6 to 8 ft.

3 to 4 ft..... 1 00

C. paniculata. *Gray Dogwood.* 10 to 12 ft.

2 to 3 ft..... 1 00

C. stolonifera. *Red Osier Dogwood.* 8 to 10 ft.

3 to 4 ft..... 75

4 to 5 ft..... 1 00

C. stolonifera flaviramea. *Golden-twig Dogwood.*

6 to 8 ft.

2 to 3 ft..... 1 00

CYDONIA japonica. *Japanese Flowering Quince.*

3 to 4 ft.

1 to 1½ ft..... 75

DAPHNE mezereum. *February Daphne.* 4 ft.

12 to 15 in..... 1 25

DEUTZIA gracilis. *Slender Deutzia.* 3 to 4 ft. White.

15 to 18 in..... 75

1½ to 2 ft..... 1 00

D. lemoinei. *Lemoine Deutzia.* 4 to 5 ft. Creamy white.

1½ to 2 ft..... 1 00

D. scabra crenata. *Double-flowering Pink Deutzia.*

6 to 7 ft.

3 to 4 ft..... 1 00

D. scabra, *Pride of Rochester.* 6 to 7 ft. Pale pink.

3 to 4 ft..... 1 00

ENKIANTHUS campanulatus. *Redvein Enkianthus.*

12 to 15 ft.

2 to 3 ft..... 1 50

EUONYMUS alatus. *Winged or Corky-barked Euonymus.* 7 to 8 ft.

3 to 4 ft..... 1 00

4 to 5 ft..... 1 25

E. alatus compactus. *Dwarf Winged Euonymus.*

4 to 5 ft.

2 to 3 ft..... 2 00

EXOCHORDA grandiflora. *Pearlbush.* 10 to 12 ft.

3 to 4 ft..... 1 25



Kolkwitzia (Beauty Bush). See page 32.

FORSYTHIA spectabilis. Showy Border Forsythia.

8 to 9 ft.	Each
3 to 4 ft.....	\$0 75
4 to 5 ft.....	1 00

F. suspensa. Weeping Golden Bell. 6 to 8 ft.

2 to 3 ft.....	75
3 to 4 ft.....	1 00

F. suspensa fortunei. Fortune's Golden Bell. 8 to 9 ft.

3 to 4 ft.....	75
4 to 5 ft.....	1 00

F. viridissima. Green-stem Forsythia. 6 to 8 ft.

2 to 3 ft.....	75
----------------	----

HALESIA tetraptera. Silverbell. 20 to 25 ft.

4 to 5 ft.....	1 50
5 to 6 ft.....	2 00

HAMAMELIS virginiana. Witch-Hazel. 12 to 15 ft.

3 to 4 ft.....	1 00
4 to 5 ft.....	1 25
5 to 6 ft.....	1 50

Hibiscus Syriacus • Althea; Rose of Sharon

H. anemonæflorus. Double. Pink.

3 to 4 ft.....	Each
	\$1 50

H. cœlestis. Single. Blue.

3 to 4 ft.....	1 50
----------------	------

H., Jeanne d'Arc. Double. White.

3 to 4 ft.....	1 25
4 to 5 ft.....	1 50

H., Lady Stanley. Double. Blush-pink.

3 to 4 ft.....	1 25
4 to 5 ft.....	1 50

Hibiscus rubis. Single. Red.	Each
3 to 4 ft.....	\$1 50
H., Totus Albus. Single. White	
3 to 4 ft.....	1 25
4 to 5 ft.....	1 50
HYDRANGEA paniculata grandiflora. <i>Peegee Hy-</i> <i>drangea</i> . Bush form. 4 to 5 ft.	
2 to 3 ft.....	75
3 to 4 ft.....	1 00
H. paniculata grandiflora. <i>Peegee Hydrangea</i> .	
Tree form.	
4 to 5 ft.....	1 00
ILEX verticillata. <i>Black Alder; Winterberry</i> .	
8 to 10 ft.	
2 to 3 ft.....	1 00
KERRIA japonica. <i>Double-flowering Globe Flower</i> .	
4 to 5 ft.	
2 to 3 ft.....	1 00
KOLKWITZIA amabilis. <i>Beauty Bush</i> . 5 to 6 ft.	
2 to 3 ft.....	1 00
3 to 4 ft.....	1 25
LIGUSTRUM ibolium. <i>Ibolium Privet</i> . 8 to 10 ft.	
3 to 4 ft.....	25
L. ibota regelianum. <i>Regel's Privet</i> . 4 to 6 ft.	
1½ to 2 ft.....	75
2 to 3 ft.....	1 00
L. ovalifolium. <i>California Privet</i> . 10 to 15 ft.	
2 to 3 ft.....	\$8 per 100.. 10
3 to 4 ft.....	\$12 per 100.. 15
4 to 5 ft.....	\$20 per 100.. 25
5 to 6 ft.....	\$25 per 100.. 30



Philadelphus, Virginal



Flowers of *Rhodotypos kerrioides*

LONICERA fragrantissima. Winter Honeysuckle.	
6 to 8 ft.	Each
3 to 4 ft.....	\$0 75
4 to 5 ft.....	1 00
L. korolkowi. Round Blueleaf Honeysuckle. 8 to 10 ft.	
2 to 3 ft.....	1 50
L. morrowi. Morrow's Bush Honeysuckle. 7 to 8 ft.	
3 to 4 ft.....	75
4 to 5 ft.....	1 00
L. tatarica alba. White Tatarian Honeysuckle.	
8 to 10 ft.	
3 to 4 ft.....	75
4 to 5 ft.....	1 00
L. tatarica rosea. Pink Tatarian Honeysuckle.	
8 to 10 ft.	
3 to 4 ft.....	75
4 to 5 ft.....	1 00
5 to 6 ft.....	1 50
PHILADELPHUS coronarius. Sweet Mock Orange.	
8 to 10 ft.	
3 to 4 ft.....	75
4 to 5 ft.....	1 00
5 to 6 ft.....	1 25
P. coronarius aureus. Golden Mock Orange. 8 to 10 ft.	
1½ to 2 ft.....	1 00
P., Virginal. Double-flowering Philadelphus. 6 to 8 ft.	
3 to 4 ft.....	1 00
PHOTINIA villosa. Christmas Berry. 12 to 15 ft.	
2 to 3 ft.....	1 00
RHODOTYPOS kerrioides. Jetbead. 5 to 6 ft.	
2 to 3 ft.....	75
3 to 3½ ft.....	1 00
ROBINIA hispida rosea. Rose Acacia. 6 to 8 ft.	
3 to 4 ft.....	75
4 to 5 ft.....	1 00
ROSA hugonis. Father Hugo's Rose. 6 to 8 ft.	
2 to 3 ft.....	75
SAMBUCUS pubens. Scarlet Elder. 6 to 8 ft.	
2 to 3 ft.....	1 00
SPIRÆA bumalda, Anthony Waterer. Crimson Ever-	
blooming Spirea. 3 ft.	
2 to 2½ ft.....	75
2½ to 3 ft.....	1 00
S. douglasi. Douglas Spirea. 6 to 8 ft.	
3 to 4 ft.....	1 00

<i>Spiræa prunifolia. Bridal Wreath.</i> 6 to 8 ft.	Each
3 to 4 ft.....	\$1 00
<i>S. thunbergi. Thunberg's Spirea.</i> 4 to 5 ft.	
2 to 3 ft.....	75
3 to 4 ft.....	1 00
<i>S. trichocarpa. Korean Spirea.</i> 6 to 7 ft.	
3 to 4 ft.....	75
4 to 4½ ft.....	1 00
<i>S. vanhouttei. Vanhoutte Spirea.</i> 6 to 7 ft.	
3 to 4 ft.....	75
4 to 5 ft.....	1 00
STEPHANANDRA flexuosa. Cutleaf Stephanandra.	
5 to 6 ft.	
2 to 3 ft.....	1 00
SYMPHORICARPOS racemosus. Snowberry.	
4 to 5 ft.	
2 to 3 ft.....	75
3 to 4 ft.....	1 00
<i>S. vulgaris. Coralberry.</i> 4 to 5 ft.	
2 to 3 ft.....	75
SYMPLOCOS paniculata. Asiatic Sweetleaf.	
4 to 5 ft. Blue-berried.	
2 to 3 ft.....	1 50
SYRINGA. All Lilacs listed on pages 39 and 40.	
VIBURNUM americanum. American Cranberry.	
10 to 12 ft.	
3 to 4 ft.....	1 00
4 to 5 ft.....	1 25
<i>V. carlesi. Fragrant Viburnum.</i> 4 to 5 ft.	
1½ to 2 ft., B&B.....	1 50
2 to 3 ft., B&B.....	2 00
3 to 3½ ft., B&B.....	3 00
<i>V. cassinoides. Withe-Rod.</i> 6 to 8 ft.	
2 to 3 ft., B&B.....	1 50
3 to 4 ft., B&B.....	2 00



Fragrant Viburnum (*Viburnum carlesi*)



Specimen, *Viburnum tomentosum plicatum*

<i>Viburnum dentatum</i> . <i>Arrow-wood</i> . 10 to 15 ft.	Each
3 to 4 ft.....	\$1 00
4 to 5 ft.....	1 25
5 to 5½ ft.....	1 50
<i>V. dilatatum</i> . <i>Linden Viburnum</i> . 8 to 10 ft.	
1½ to 2 ft.....	75
2 to 3 ft.....	1 25
<i>V. lentago</i> . <i>Nannyberry</i> . 15 to 20 ft.	
3 to 4 ft.....	75
4 to 5 ft.....	1 25
5 to 6 ft.....	1 50
<i>V. opulus</i> . <i>High-bush Cranberry</i> . 10 to 12 ft.	
3 to 4 ft.....	1 00
4 to 5 ft.....	1 25
<i>V. rhytidophyllum</i> . <i>Leatherleaf Viburnum</i> . 8 to 10 ft.	
2 to 3 ft., B&B.....	2 00
3 to 4 ft., B&B.....	2 50
<i>V. tomentosum</i> . <i>Single Japanese Snowball</i> . 8 to 10 ft.	
3 to 4 ft.....	1 00
4 to 5 ft.....	1 25
5 to 6 ft.....	1 50
<i>V. tomentosum plicatum</i> . <i>Double Japanese Snowball</i> .	
7 to 8 ft.	
3 to 4 ft.....	1 00
4 to 5 ft.....	1 25
VITEX <i>agnus-castus</i> . <i>Lilac Chaste Tree</i> . 5 to 6 ft.	
2 to 3 ft.....	1 00
WEIGELA <i>floribunda</i> . <i>Crimson Weigela</i> . 6 to 8 ft.	
3 to 4 ft.....	75
4 to 5 ft.....	1 00
W. <i>rosea</i> . <i>Pink and White Weigela</i> . 6 to 8 ft.	
3 to 4 ft.....	75
4 to 5 ft.....	1 00



Specimen, *Viburnum sieboldi*

Specimen Transplanted Shrubs

These plants are several years older than our regular line of shrubs offered on pages 29-35 and are considerably larger and, of course, more costly. Since they have been properly trimmed and developed in the nursery, they will continue to grow into beautiful specimens and produce better blooms and foliage. They are particularly useful for background work and for screens.

Delivered balled and burlapped

CALYCANTHUS floridus. <i>Sweet Shrub.</i> 8 to 9 ft.	Each
3 to 3½ ft.	\$2 50
CLETHRA alnifolia. <i>Sweet Pepperbush.</i> 7 to 8 ft.	
3 to 4 ft.	2 50
4 to 5 ft.	3 50
CYDONIA japonica. <i>Japanese Flowering Quince.</i>	
3 to 4 ft.	
2 to 3 ft.	2 50
DEUTZIA, in variety. 6 to 7 ft.	
5 to 6 ft.	2 50
6 to 7 ft.	3 00
D. lemoinei. <i>Lemoine Deutzia.</i> 4 to 5 ft. Creamy white.	
2½ to 3 ft.	2 50
3 to 3½ ft.	3 00

EUONYMUS alatus. Winged or Corky-barked	
<i>Euonymus.</i> 7 to 8 ft. Each	
4 to 5 ft.....	\$2 50
5 to 6 ft.....	3 00
6 to 7 ft.....	3 50
FORSYTHIA, in variety. Golden Bell. 8 to 10 ft.	
5 to 6 ft.....	2 50
6 to 7 ft.....	3 00
7 to 8 ft.....	3 50
HAMAMELIS mollis. Chinese Witch-Hazel.	
12 to 15 ft.	
2 to 3 ft.....	3 00
HIBISCUS syriacus. Althea; Rose of Sharon.	
10 to 12 ft.	
5 to 6 ft.....	2 50
6 to 7 ft.....	3 00
KOLKWITZIA amabilis. Beauty Bush. 5 to 6 ft.	
3 to 4 ft.....	2 50
LIGUSTRUM ibota regelianum. Regel's Privet.	
4 to 6 ft.	
2 x 2½ ft.....	2 00
2½ x 3 ft.....	2 50
4 x 3½ ft.....	3 00
LONICERA tatarica. Tatarian Honeysuckle. 8 to 10 ft.	
4 to 5 ft.....	2 50
PHILADELPHUS coronarius. Sweet Mock Orange.	
8 to 10 ft.	
5 to 6 ft.....	2 50
6 to 7 ft.....	3 00
7 to 8 ft.....	3 50
P. grandiflorus. Big Mock Orange. 8 to 10 ft.	
7 to 8 ft.....	3 50
8 to 9 ft.....	5 00
P., Virginal. Double-flowering Philadelphus.	
4 to 5 ft.....	2 00
5 to 5½ ft.....	2 50
RHODOTYPOS kerrioides. Jetbead. 5 to 6 ft.	
3 to 4 ft.....	2 00
4 to 5 ft.....	2 50
SPIRÆA thunbergi. Thunberg's Spirea. 5 to 6 ft.	
3 to 4 ft.....	2 00
4 to 5 ft.....	2 50
5 to 6 ft.....	3 00
S. vanhouttei. Vanhoutte Spirea. 6 to 7 ft.	
4 to 5 ft.....	2 00
5 to 6 ft.....	3 00
6 to 7 ft.....	3 50
STEPHANANDRA flexuosa. Cutleaf Stephanandra.	
5 to 6 ft.	
3 to 4 ft.....	2 50
SYMPHORICARPOS racemosus. Snowberry.	
4 to 5 ft.	
3 to 4 ft.....	2 50
4 to 5 ft.....	3 00
SYRINGA. All Lilacs listed on pages 39 and 40.	
VACCINIUM corymbosum. High-bush Blueberry.	
5 to 6 ft.	
2 to 3 ft.....	2 00
3 to 4 ft.....	2 50

VIBURNUM americanum. American Cranberry.

	Each
10 to 12 ft.	
4 to 5 ft.....	\$2 50
5 to 6 ft.....	3 00
6 to 8 ft.....	3 50

V. carlesi. Fragrant Viburnum. 4 to 5 ft.

1½ to 2 ft.....	1 50
2 to 3 ft.....	2 00
3 to 3½ ft.....	3 00

V. cassinoides. Withe-Rod. 6 to 8 ft.

2 to 3 ft.....	1 50
3 to 4 ft.....	2 00

V. dentatum. Arrow-wood. 10 to 15 ft.

5 to 6 ft.....	2 50
6 to 7 ft.....	3 00
7 to 8 ft.....	4 00
8 to 9 ft.....	5 00

V. dilatatum. Linden Viburnum. 8 to 10 ft.

4 to 5 ft.....	3 00
----------------	------

V. lentago. Nannyberry. 15 to 20 ft.

4 to 5 ft.....	2 00
5 to 6 ft.....	2 50
6 to 7 ft.....	3 00
7 to 8 ft.....	4 00
8 to 9 ft.....	5 00

V. opulus. Highbush Cranberry. 10 to 12 ft.

4 to 5 ft.....	2 50
5 to 6 ft.....	3 00
6 to 8 ft.....	3 50

V. opulus sterile. Common Snowball. 8 to 10 ft.

5 to 5½ ft.....	3 00
-----------------	------

V. sieboldi. Siebold Viburnum. 8 to 10 ft.

4 to 5 ft.....	2 50
5 to 6 ft.....	3 00
6 to 8 ft.....	4 00

V. tomentosum. Single Japanese Snowball. 8 to 10 ft.

4 to 5 ft.....	2 50
5 to 6 ft.....	3 00
6 to 9 ft.....	5 00

V. tomentosum plicatum. Double Japanese Snowball.

7 to 8 ft.	
4 to 5 ft.....	2 50
5 to 6 ft.....	3 00

WEIGELA candida. White Weigela. 6 to 8 ft.

6 to 7 ft.....	3 00
----------------	------

W. floribunda. Crimson Weigela. 6 to 8 ft.

5 to 6 ft.....	2 50
6 to 7 ft.....	3 00

W. hybrida nana variegata. Variegated-leaf Weigela.

5 to 6 ft.	
3 to 4 ft.....	2 50
4 to 5 ft.....	3 00

W. rosea. Pink and White Weigela. 6 to 8 ft.

4 to 5 ft.....	2 50
5 to 6 ft.....	3 00

W. vanhouttei. Red Weigela. 6 to 8 ft.

5 to 6 ft.....	3 00
----------------	------



Specimen, Double Lilac

Syringa • Lilacs

Spring is at its height when the Lilacs are in flower. Of the many flowering shrubs, the Lilac is surely the most reliable, lasts longer, and annually bears the handsomest flowers. Lilacs are hardy, thrive almost anywhere, and have very attractive foliage.

The Hybrid varieties are most popular with their large single or double flower-heads. They are equally as fragrant as the old-fashioned type and have exactly the same growing characteristics. Our Hybrids are all grown on Lilac roots, a necessity for proper development of the plant. We believe these plants the most worthy of all flowering shrubs.

HYBRID LILACS. 8 to 15 ft.

Charles X. Single. Reddish purple.	Each
2 to 3 ft.....	\$1 50
3 to 4 ft.....	2 00
4 to 5 ft.....	3 00
5 to 6 ft.....	3 50
Diderot. Single. Claret-violet.	
2 to 3 ft.....	1 50
3 to 4 ft.....	2 50
4 to 5 ft.....	3 00
Hugo Koster. Single. Lilac with reddish tint.	
2 to 3 ft.....	2 00
3 to 4 ft.....	2 50
4 to 5 ft.....	3 00
5 to 6 ft.....	5 00
Jan Van Tol. Single. Large; pure white.	
2 to 3 ft.....	2 00
3 to 4 ft.....	2 50
4 to 5 ft.....	3 00
5 to 6 ft.....	5 00
Jean Mace. Double. Bluish mauve.	
2 to 3 ft.....	2 00
3 to 4 ft.....	2 50

HYBRID LILACS, continued

Ludwig Spæth. Single. Dark red.	Each
2 to 3 ft.....	\$1 50
3 to 4 ft.....	2 50
4 to 5 ft.....	3 00
5 to 6 ft.....	5 00
Marie Legraye. Single. White.	
2 to 3 ft.....	1 50
3 to 4 ft.....	2 00
4 to 5 ft.....	2 50
Mme. Casimir-Perier. Double. White.	
2 to 3 ft.....	1 50
3 to 4 ft.....	2 00
4 to 5 ft.....	3 00
Mme. Lemoine. Double. Large white flowers.	
2 to 3 ft.....	1 50
3 to 4 ft.....	2 00
4 to 5 ft.....	2 50
5 to 6 ft.....	4 00
6 to 7 ft.....	5 00
7 to 8 ft.....	6 00
Mont Blanc. Single. White; very beautiful.	
2 to 3 ft.....	2 00
3 to 4 ft.....	2 50
President Grevy. Double. Blue.	
2 to 3 ft.....	1 50
3 to 4 ft.....	2 00
4 to 5 ft.....	3 00
5 to 6 ft.....	5 00
Reaumur. Single. Violet-carmine.	
2 to 3 ft.....	2 00
3 to 4 ft.....	2 50
4 to 5 ft.....	3 00

OLD-FASHIONED LILACS • Persian Lilacs

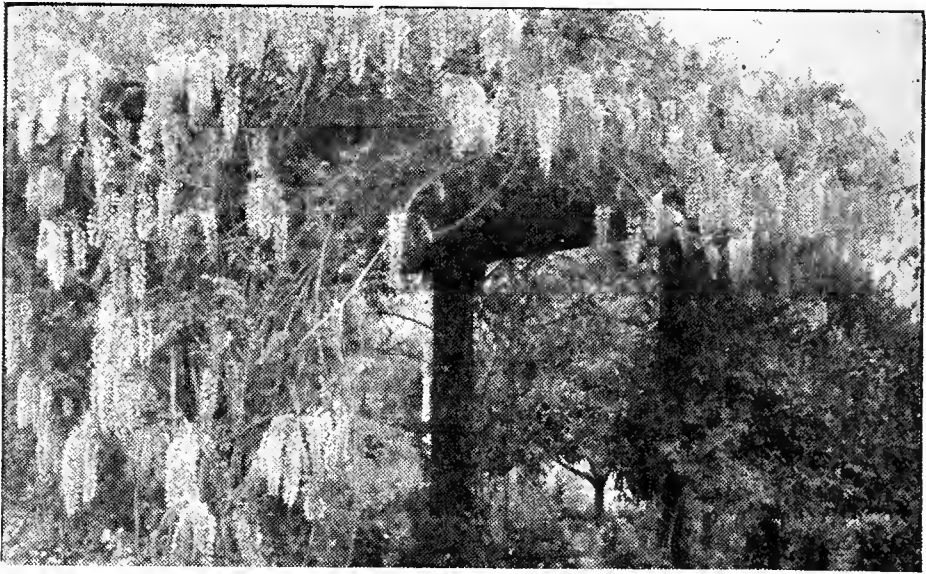
Syringa vulgaris. <i>Common Purple Lilac.</i> 12 to 15 ft.	
3 to 4 ft.....	75
4 to 5 ft.....	1 50
5 to 6 ft., specimen.....	3 00
6 to 7 ft., specimen.....	4 00
S. vulgaris alba. <i>Common White Lilac.</i> 12 to 15 ft.	
4 to 5 ft.....	1 50
5 to 6 ft., specimen.....	3 00
S. persica. <i>Persian Lilac.</i> 8 to 10 ft.	
2 to 3 ft.....	75
3 to 4 ft.....	1 00
4 to 5 ft.....	2 00



Common Purple Lilac

Hardy Vines

ACTINIDIA arguta. <i>Bower Actinidia.</i>	Each
3-yr., field-grown.....	\$1 00
AKEBIA quinata. <i>Five-leaf Vine.</i>	
3-yr., field-grown.....	1 00
AMPELOPSIS heterophylla. <i>Porcelain Vine.</i>	
2-yr.....	1 00
A. lowi. <i>Geranium Creeper.</i>	
2-yr.....	90
A. quinquefolia. <i>Virginia Creeper; Woodbine.</i>	
2-yr., field-grown.....	60
A. tricuspidata veitchi. <i>Japanese or Boston Ivy.</i>	
2-yr., field-grown.....	75
ARISTOLOCHIA siphocampylodes. <i>Dutchman's Pipe.</i>	
2-yr.....	1 00
BIGNONIA grandiflora. <i>Chinese Trumpet Vine.</i>	
3-yr., field-grown.....	1 25
B. radicans. <i>Trumpet Creeper.</i>	
3-yr., field-grown.....	75
CELASTRUS scandens. <i>Bittersweet.</i>	
3-yr., field-grown.....	60
CLEMATIS, Duchess of Edinburgh. Large; double; white.	
2-yr., field-grown.....	1 00
C. henryi. <i>Winter Clematis.</i> Large white flowers.	
2-yr., field-grown.....	1 00
C. jackmani. <i>Jackman Clematis.</i> Large purple flowers.	
2-yr., field-grown.....	1 00
C., Mme. Baron Veillard. Large; pink.	
2-yr., field-grown.....	1 00
C., Mme. E. Andre. Large; red.	
2-yr., field-grown.....	1 00
C. paniculata. <i>Small White-flowered Clematis.</i>	
3-yr., field-grown.....	75
C., Ramona. Large; blue.	
2-yr., field-grown.....	1 00
EUONYMUS colorata. 3-yr.....	75
E. radicans. <i>Winter Creeper.</i>	
3-yr., field-grown.....	75
E. radicans carrierei. <i>Glossy Winter Creeper.</i> Red berries.	
3-yr., field-grown.....	75
E. vegetus. <i>Big-leaf Winter Creeper.</i> Red berries.	
3-yr., field-grown.....	75
HEDERA baltica. <i>Hardy English Ivy.</i>	
12 to 18-in. stems, pot-grown.....	75
H. helix. <i>English Ivy.</i>	
3 to 3½-ft. stems, pot-grown.....	75
HYDRANGEA petiolaris. <i>Climbing Hydrangea.</i>	
3-yr., potted.....	1 50
LONICERA japonica halliana. <i>Hall's Japanese Honey- suckle.</i> 2-yr., field-grown.....	60
POLYGONUM Auberti. <i>Silver Lace Vine.</i>	
2-yr., field-grown.....	1 00
ROSES, Climbing. See page 42.	



Wisteria sinensis

Wisteria

We are particularly pleased to offer extra-heavy, well-grown Blue Wisteria. All plants were grafted from selected, large-flowering vines and are guaranteed to bloom.

Wisteria sinensis. <i>Blue Wisteria.</i>	Each
4-yr., 8-ft. stems.....	\$2 50
4-yr., 8-ft. stems, 10-in. pots.....	3 50
W. sinensis alba. <i>White Wisteria.</i>	
2-yr.....	1 00
5-yr., bushy.....	3 00
W., sinensis. <i>Blue standard.</i>	
3-ft. stems.....	3 50
4-ft. stems.....	5 00

Climbing Roses

3-yr. plants, 75 cts. each

- Dr. Huey. Semi-double; crimson-maroon.
- Dr. W. Van Fleet. Double; pale pink.
- Jacotte. Semi-double; orange-yellow.
- Mary Lovett. Double; white.
- Mary Wallace. Double; bright pink.
- Mme. Gregoire Staechelin. Delicate pink.
- Paul's Scarlet Climber. Scarlet flowers.
- Wichuraiana. Single; white. Late bloomer.

Ground-Cover Plants

COTONEASTER horizontalis. <i>Rock Cotoneaster.</i>	Each
10 to 12 in., pot-grown.....	\$1 00
12 to 15 in., pot-grown.....	1 25
HEDERA helix. <i>English Ivy.</i>	
3 to 3½-ft. stems, pot-grown.....	75
JUNIPERUS chinensis sargentii. <i>Sargent Juniper.</i>	
12 to 15 in.....	1 50
15 to 18 in.....	2 00
1½ to 2 ft.....	3 00
J. horizontalis. <i>Creeping Juniper.</i>	
15 to 18 in.....	2 00
1½ to 2 ft.....	3 00
LONICERA japonica halliana. <i>Hall's Japanese Honey-suckle.</i> 2-yr., field-grown.....	60
PACHYSANDRA terminalis. <i>Japanese Spurge.</i>	
3-in. pots.....	\$15 per 100.. 25
ROSA wichuraiana. White.	
3-yr.....	75
VINCA minor. <i>Myrtle; Periwinkle.</i>	
3-in. pots.....	\$18 per 100.. 25

Fruit Department

We offer fruit trees in those varieties which thrive and produce best in this locality.

During the past few years many of our fruit trees have been sold for ornamental purposes. The artistic habit of growth, combined with spring blossoms, make some varieties very beautiful ornamental trees.

We offer Apple Trees in bearing sizes up to 10 inches in diameter, 15 to 18 feet high, and 15 to 25-foot spread.

Apples, Standard

2-yr., 5 to 6 ft. high, $\frac{11}{16}$ -in. cal., \$1.50 each

SUMMER VARIETIES

Red Astrachan. Flesh, tinged with red.

Yellow Transparent. Pale yellow.

AUTUMN VARIETIES

Duchess of Oldenburg. Large; streaked with yellow and red.

Fall Pippin. Tender; juicy.

Gravenstein. High flavor.

Macoun. Red. Fine-grained. Good keeper.

McIntosh Red. Delicious; juicy.

Wealthy. Dark red.

WINTER VARIETIES

Baldwin. Large; dark red.

Delicious. Red; juicy.

King. Large; red.

Northern Spy. Large; striped red.

Rhode Island Greening. Large; greenish yellow.

Roxbury Russet. Dull green russet. Appetizing.

Stayman's Winesap. Medium to large; dark red.

Larger-sized Apple Trees priced on application.

Crab-Apples

2-yr., 5 to 6 ft. high, $\frac{11}{16}$ -in. cal., \$1.50 each

Hyslop. Crimson fruit. October.

Transcendent. Yellow and red. September.

Apples, Dwarf

2-yr., 3 to 4 ft. high, $\frac{5}{8}$ -in. cal., \$1.50 each

VARIETIES AS FOLLOWS:

Delicious. Red; juicy. Winter.

McIntosh. Delicious; juicy. Autumn.

Red Astrachan. Flesh, tinged with red. Summer.

Wealthy. Dark red. Early autumn.

Yellow Transparent. Pale yellow. Summer.

Cherries, Sour

4 to 5 ft., \$1.25 each

Early Richmond. Medium; red. June.

Montmorency. Large; red. June.

Cherries, Sweet

5 to 6 ft., \$1.50 each

Black Tartarian. Large; purplish black. June.

Governor Wood. Yellow. June.

Napoleon Bigarreau. Fine yellow. July.

Peaches

4 to 5 ft., 75 cts. each

Belle of Georgia. Large; white. Early September.

Carman. White flesh. August.

Crawford's Early. Yellow. September.

Elberta. Large; yellow. Early September.

Pears, Standard

2-yr., 5 to 6 ft. high, $\frac{1}{8}$ -in. cal., \$1.50 each

SUMMER VARIETIES

Bartlett. Yellow and red fruit.

Clapp's Favorite. Yellow and crimson.

AUTUMN VARIETIES

Beurre Bosc. Yellow-russeted.

Seckel. Small; sweet; juicy; brown.

Sheldon. Yellow and red fruit.

WINTER VARIETIES

Beurre d'Anjou. Greenish yellow; juicy.

Kieffer. Greenish yellow.

Pears, Dwarf

2-yr., 3 ft. high, $\frac{5}{8}$ -in. cal., \$1.50 each

Bartlett. Yellow and red fruit. Summer.

Clapp's Favorite. Yellow and crimson. Summer.

Seckel. Small; sweet; juicy; brown. Autumn.

Plums

5 to 6 ft., \$1.50 each

Abundance. Japanese. Yellow. August.

Bradshaw. Purple. September.

Burbank. Japanese. Large, red fruit. August.

German Prune. Blue. September.

Lombard. Purplish red. August.

Quince

4 to 5 ft., \$1.50 each

Champion. Fruit very large, fair. October.

Grapes

3-yr., 60 cts. each

Brighton. Large; red. September.

Concord. Best black. September.

Delaware. Small; red. September.

Green Mountain. Green. Late August.

Niagara. Fine white. Late September.

Worden. Large; blue. Late August.

Raspberries

2-yr. transplants, 15 cts. each, \$1.50 per doz.

Cuthbert. Rich crimson.

Latham. Everbearing. Red.

Plum Farmer. Blackcap.

Blackberries

2-yr. transplants, 15 cts. each, \$1.50 per doz.

Blowers. Very large. Ripens early.

Peat Moss (Horticultural Grade)

Excellent for mulching broad-leaf evergreens and general garden use. Size of bale, 22 to 23 bushels. Per bale, \$3.50; 5 bales, \$3 per bale; 10 bales, \$2.75 per bale.

Approximate areas covered by Peat Moss: 1 bale covers 250 sq. ft. 1 in. deep; 125 sq. ft. 2 in. deep; 80 sq. ft. 3 in. deep.

Bone Meal

Excellent quality Bone Meal, high nitrogen content. Per bag, \$3.50; 5 bags, \$3 per bag; 10 bags, \$2.75 per bag.

Top Soil, per yard, \$3.

Manure, per yard, \$5.

Berry-Bearing Shrubs

Red Berries

Time of Fruit
or Berries

<i>Aronia arbutifolia</i> . <i>Red Chokeberry</i>	Sept., Oct.
<i>Benzoin æstivale</i> (<i>Lindera benzoin</i>). <i>Spice Bush</i>	Sept.
<i>Berberis thunbergi</i> . <i>Japanese Barberry</i>	Sept., Oct.
<i>B. vernæ</i> . <i>Verna Barberry</i>	Sept., Oct.
<i>Cotoneaster divaricata</i> . <i>Upright Spreading Co-</i> <i>toneaster</i>	Sept., Oct.
<i>C. horizontalis</i> . <i>Rock Cotoneaster</i>	Sept., Oct.
<i>C. zabeli</i> . <i>Zabel's Cotoneaster</i>	Sept., Oct.
<i>Euonymus alatus</i> . <i>Corky-barked Euonymus</i>	Sept., Oct.
<i>Ilex opaca</i> . <i>American Holly</i>	Sept., Oct.
<i>I. verticillata</i> . <i>Black Alder; Winterberry</i>	Sept., Oct.
<i>Lonicera korolkowi</i> . <i>Blueleaf Honeysuckle</i>	Aug., Sept.
<i>L. morrowi</i> . <i>Morrow's Bush Honeysuckle</i>	Aug.
<i>L. tatarica</i> . <i>Tatarian Honeysuckle</i>	Aug., Sept.
<i>Photinia villosa</i> . <i>Christmas Berry</i>	Oct.
<i>Pyracantha coccinea lalandi</i> . <i>Laland Firethorn</i>	Sept., Oct.
<i>Sambucus pubens</i> . <i>Red Elder</i>	Aug., Sept.
<i>Symphoricarpos vulgaris</i> . <i>Coralberry</i>	Oct., Nov.
<i>Viburnum dilatatum</i> . <i>Linden Viburnum</i>	Sept., Oct.
<i>V. opulus</i> . <i>High-bush Cranberry</i>	Aug., Sept.

White Berries

<i>Cornus paniculata</i> . <i>Gray Dogwood</i>	Sept., Oct.
<i>C. stolonifera</i> . <i>Red Osier Dogwood</i>	July, Aug.
<i>Symphoricarpos racemosus</i> . <i>Snowberry</i>	Sept., Oct.

Mauve Berries

<i>Callicarpa purpurea</i> . <i>Chinese Beauty Berry</i>	Sept., Oct.
--	-------------

Blue Berries

<i>Cornus amomum</i> . <i>Silky Dogwood</i>	Sept.
<i>Symplocos paniculata</i> . <i>Asiatic Sweetleaf</i>	Sept., Oct.

Black Berries

<i>Amelanchier canadensis</i> . <i>Downy Shadbush</i>	June, July
<i>Aronia melanocarpa</i> . <i>Black Chokeberry</i>	Sept., Oct.
<i>Berberis verruculosa</i> . <i>Warty Barberry</i>	Sept., Oct.
<i>Ilex crenata</i> . <i>Japanese Holly</i>	Oct., Nov.
<i>I. glabra</i> . <i>Inkberry</i>	Oct., Nov.
<i>Ligustrum ibota regelianum</i> . <i>Regel's Privet</i>	Sept.-Dec.
<i>Rhodotypos kerrioides</i> . <i>Jetbead</i>	Oct., Nov.
<i>Viburnum acerifolium</i> . <i>Mapleleaf Viburnum</i>	Sept., Oct.
<i>V. sieboldi</i> . <i>Siebold Viburnum</i>	Sept., Oct.

Blue-Black Berries

<i>Berberis julianæ</i> . <i>Wintergreen Barberry</i>	Sept., Oct.
<i>Viburnum cassinoides</i> . <i>Withe-Rod</i>	Aug., Sept.
<i>V. dentatum</i> . <i>Arrow-Wood</i>	Sept.
<i>V. lentago</i> . <i>Nannyberry</i>	Oct.

Berry-Bearing Trees

Red Berries

<i>Cornus florida</i> . <i>White Dogwood</i>	Sept., Nov.
<i>C. kousa</i> . <i>Japanese Dogwood</i>	Sept., Nov.
<i>C. mascula</i> . <i>Cornelian Cherry</i>	Aug., Sept.
<i>Cratægus coccinea</i> . <i>Thicket Hawthorn</i>	Sept., Oct.
<i>C. cordata</i> . <i>Washington Hawthorn</i>	Oct.
<i>C. crus-galli</i> . <i>Cockspur Thorn</i>	Late Oct.
<i>Sorbus aucuparia</i> . <i>European Mountain-Ash</i>	Sept., Oct.
<i>Malus</i> . <i>Flowering Crab-Apple</i> . In variety. Fruits mostly yellow to red; very decorative	Sept., Nov.

Berry-Bearing Vines

- Actinidia arguta*. *Bower Actinidia*. Yellow Berries. Oct.
Akebia quinata. *Five-leaf Vine*. Purple Berries. Sept., Oct.
Ampelopsis heterophylla. *Porcelain Vine*. Blue Berries. Sept., Oct.
Celastrus scandens. *Bittersweet*. Red Berries. Oct., Dec.
Euonymus vegetus. *Big-leaf Winter Creeper*. Scarlet Berries. Oct.

Rock-Garden Suggestions

- Acer palmatum dissectum*. *Green Cut-leaf Japanese Maple*.
A. palmatum atropurpureum. *Red Cut-leaf Japanese Maple*.
Azalea amoena. *Amoena Azalea*.
A. hinodegiri. *Hinodegiri Azalea*.
A. yodogawa. *Yodogawa Azalea*.
Berberis julianæ. *Wintergreen Barberry*.
B. verruculosa. *Warty Barberry*.
Buxus sempervirens arborescens. *Boxwood*.
Celastrus scandens. *Bittersweet*.
Chamæcyparis obtusa gracilis. *Hinoki Cypress*.
C. obtusa nana. *Dwarf Cypress*.
Cotoneaster divaricata. *Spreading Cotoneaster*.
C. horizontalis. *Rock Cotoneaster*.
Daphne cneorum. *Garland Flower*.
Euonymus colorata.
E. radicans. *Winter Creeper*.
E. radicans vegetus. *Big-leaf Winter Creeper*. Red Berries.
Ilex glabra. *Inkberry*.
Juniperus chinensis pfitzeriana. *Pfitzer Juniper*.
J. chinensis sargentii. *Sargent Juniper*.
J. communis depressa plumosa. *Andorra Juniper*.
J. communis hibernica. *Irish Juniper*.
J. horizontalis. *Creeping Juniper*.
J. sabina. *Savin Juniper*.
J. squamata meyeri. *Meyer's Juniper*.
J. virginiana kosteri. *Spreading Koster Juniper*.
Kalmia latifolia. *Mountain Laurel*.
Leucothoe catesbæi. *Drooping Leucothoe*.
Pieris floribunda. *Mountain Andromeda*.
P. japonica. *Japanese Andromeda*.
Pinus montana mughus. *Mugho Pine*.
Pyracantha coccinea lalandi. *Laland Firethorn*.
Taxus baccata repandens. *Spreading English Yew*.
T. cuspidata nana. *Dwarf Japanese Yew*.
Thuja occidentalis, *Little Gem*. *Little Gem Arborvitæ*.
Viburnum carlesii. *Fragrant Viburnum*.



Index

	Page		Page
Abelia	14,29	Crab-Apple, Flowering	19-21,45
Abies	3,4	Cranberry	34,35,38,45
Acer	26,27,46	Cratægus	19,45
Actinidia	41,46	Cryptomeria	5
Æsculus	18	Cydonia	30,36
Akebia	41,46	Cypress	4,5,46
Alder, Black	32,45	Daphne	15,30,46
Almond, Flowering	23	Deutzia	30,36
Althea	31,32,37	Dogwood	18,19,30,45
Amelanchier	29,45	Dutchman's Pipe	41
Ampelopsis	41,46	Elder	33,45
Andromeda	15,46	Elm	25
Apples	43	Enkianthus	30
Aralia	29	Euonymus	30,37,41,45,46
Arborvitæ	11,12,46	Evergreen Shrubs	14-17
Aristolochia	41	Evergreens	3-13
Aronia	29,45	Exochorda	30
Arrow-Wood	35,38,45	Fagus	24
Ash	24	Fir	3,4
Azaleas	17,46	Fir, Douglas	9
Barberry	14,29,45,46	Firethorn	15,45,46
Beauty Berry	30,45	Five-Leaf Vine	41,46
Beauty Bush	32,37	Flowering Shrubs	29-35
Beech	24	Flowering Trees	18-23
Benzoin	29	Forsythia	31,37
Berberis	14,29,30,45,46	Fringe, Purple	23
Berry-Bearing Shrubs	45	Fringe, White	18
Berry-Bearing Vines	46	Fruits	43,44
Betula	25	Garland Flower	15,46
Bignonia	41	Geranium Creeper	41
Birch	25	Ginkgo	25
Bittersweet	41,46	Globe Flower	32
Blackberries	44	Golden Bell	31,37
Blueberry, High-bush	37	Golden Chain	19
Bone Meal	44	Golden Rain	19
Boxwood	14,46	Grapes	44
Bridal Wreath	34	Ground-Cover Plants	42
Buddleia	30	Halesia	31
Butterfly Bush	30	Hamamelis	31,37
Buxus	14,46	Hawthorn	19,45
Callicarpa	30,45	Hedera	41,42
Calycanthus	30,36	Hemlock	13
Catalpa	25	Hibiscus	31,32,37
Cedar	4,5,6	Holly	15,45
Cedrus	4	Honeysuckle	33,37,41,42,45
Celastrus	41,46	Horse-Chestnut	18
Cercidiphyllum	25	Hydrangea	32,41
Cercis	18	Ilex	15,32,45,46
Chamæcyparis	4,5,46	Inkberry	15,45,46
Chaste Tree	35	Ivy	41,42
Cherries	43	Jetbead	33,37,45
Cherry, Cornelian	19,45	Judas Tree	18
Cherry, Flowering	21-23	Juniper	5,6,42,46
Chionanthus	18	Juniperus	5,6,42,46
Chokeberry	29,45	Kalmia	15,46
Christmas Berry	33,45	Katsura Tree	25
Cladrastis	28	Kerria	32
Clematis	41		
Clethra	30,36		
Cockspur Thorn	45		
Columnberry, Truehedge	30		
Coralberry	34,45		
Cornus	18,19,30,45		
Cotoneaster	14,15,42,45,46		
Crab-Apples	43		

	Page		Page
Kœlreuteria	19	Rhodotypos	33,37
Kolkwitzia	32,37	Rhus	23
Laburnum	19	Robinia	33
Larch	25	Rock-Garden Plants	46
Larix	25	Rosa	42
Laurel, Mountain	15,46	Rosa Hugonis	33
Leiophyllum	15	Rose Acacia	33
Leucothoe	15,46	Rose, Father Hugo's	33
Ligustrum	32,37,45	Rose of Sharon	31,32,37
Lilacs	39,40	Roses, Climbing	42
Linden	25	Salix	28
Lindera	29,45	Sambucus	33,45
Lonicera	33,37,41,42,45	Sandmyrtle, Box	15
Magnolia	19	Shadbush	45
Maidenhair Tree	25	Shadbush, Downy	29
Malus	19-21,45	Shrubs, Specimen	36
Manure	44	Silverbell	31
Maple	26,27,46	Silver Lace Vine	41
Mock Orange	33,37	Smoke Tree	23
Morus	27	Snowball	38
Mountain-Ash	45	Snowball, Japanese	23,35
Mulberry	27	Snowberry	34,37,45
Myrtle	42	Sorbus	24,45
Nannyberry	35,38,45	Sorrel Tree	21
Oak	27,28	Spice Bush	29,45
Ornamental and Shade Trees	24-28	Spiræa	33,34,37
Oxydendrum	21	Spruce	7
Pachysandra	42	Spurge, Japanese	42
Peaches	43	Stephanandra	34,37
Pearlbush	30	Styrax	23
Pears	44	Sweetleaf	45
Peat Moss	44	Sweet Pepperbush	30
Pepperbush, Sweet	36	Sweet Shrub	30,36
Periwinkle	42	Symphoricarpos	34,37,45
Philadelphus	33,37	Syringa	39,40
Photinia	33,45	Taxus	10,46
Picea	7	Thorn, Cockspur	19
Pieris	15,46	Thuya	11,12,46
Pine	7-9,46	Tilia	25
Pinus	7-9,46	Top Soil	44
Plane	28	Trumpet Creeper	41
Platanus	28	Trumpet Vine	41
Plum, Flowering	23	Tsuga	13
Plums	44	Ulmus	25
Polygonum	41	Vaccinium	37
Poplar	28	Viburnum	34,35,38,45,46
Populus	28	Vinca	42
Porcelain Vine	41,46	Vines, Hardy	41,42
Privet	32,37,45	Virginia Creeper	41
Prunus	21-23	Vitex	35
Pseudotsuga	9	Weigela	35,38
Pyracantha	15,45,46	Willow	28
Quercus	27,28,36	Winterberry	32,45
Quince	44	Winter Creeper	41,46
Quince, Flowering	30,36	Wisteria	42
Raspberries	44	Witch-Hazel	31,37
Red-bud	18	Withe-Rod	34,38,45
Retinospora	4,5	Woodbine	41
Rhododendrons	16	Yellow-Wood	28
		Yew	10,46



Dogwood Time



Guaranteed Plants at

—The—

HOYT NURSERIES

NEW CANAAN • • CONN.