

## **Historic, Archive Document**

Do not assume content reflects current scientific knowledge, policies, or practices.



LIBRARY  
RECEIVED

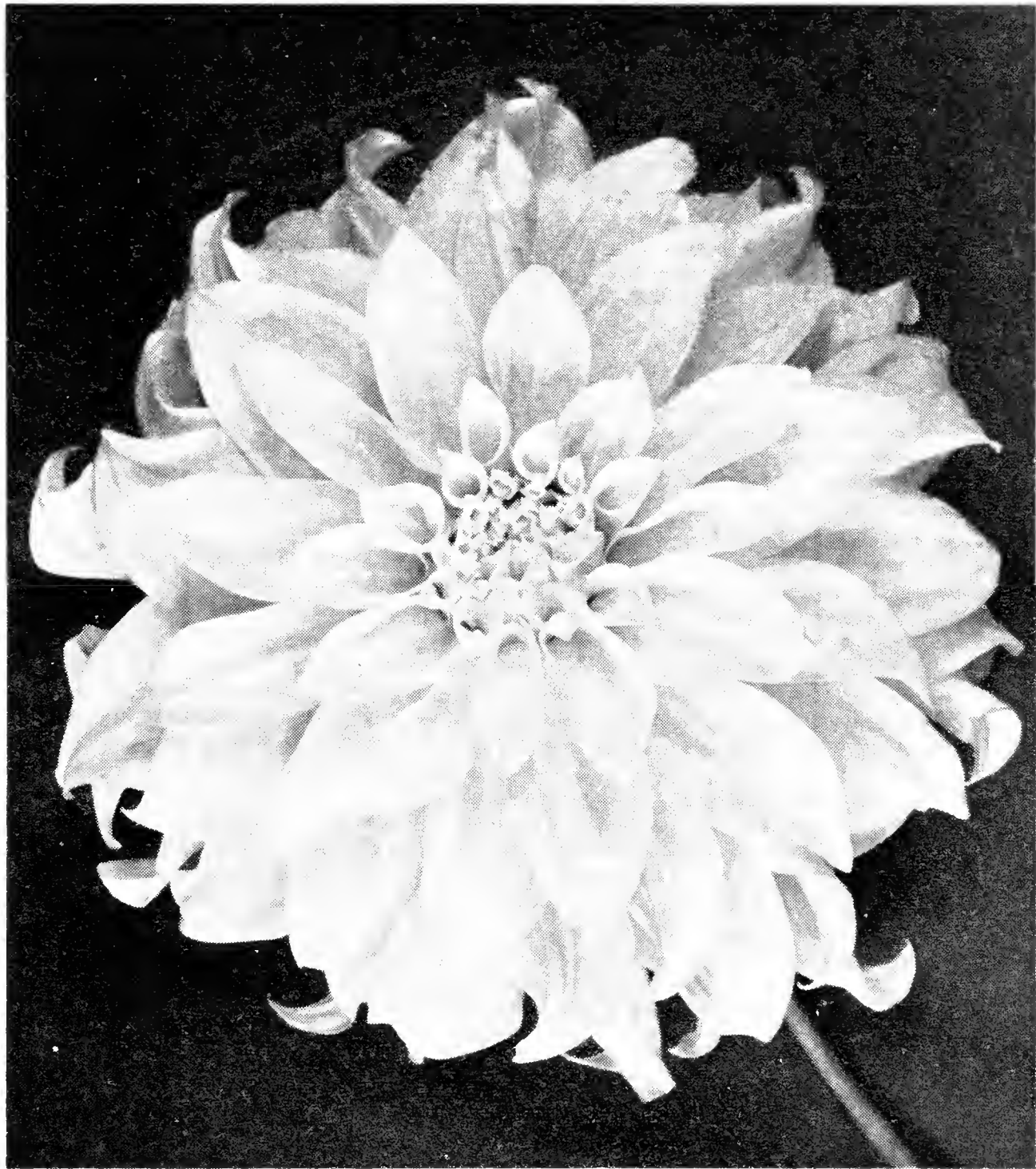
☆ APR 17 1937 ☆

U. S. Department of Agriculture.

# Lakeside Gardens

CERTIFIED DAHLIAS

1937



AUTUMN SUNSET

**GROWERS OF FINER DAHLIAS**

Nick Koenig & Sons

New Baltimore, Michigan

## INDEX

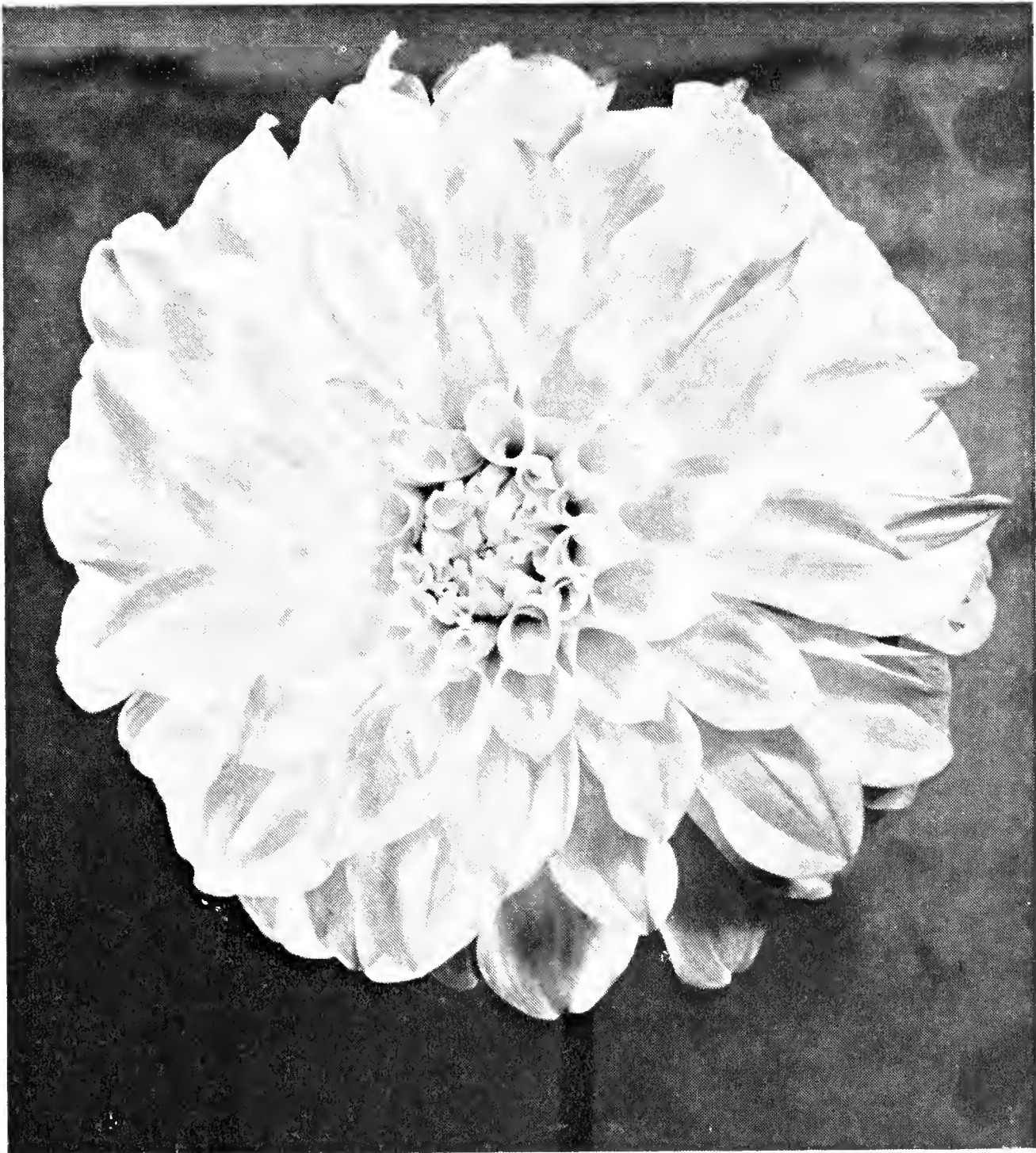
|   | PAGE  |
|---|-------|
| Miss Oakland .....                                      | 1     |
| Foreword .....  | 2     |
| Our 1937 Introductions .....                            | 3     |
| Other 1937 Varieties .....                              | 4-5-6 |
| Join a Dahlia Society .....                             | 6     |
| A Message to Our Friends .....                          | 7     |
| Mid-West Dahlia News .....                              | 7     |
| The Flower Grower .....                                 | 7     |
| The 100 Best Dahlias .....                              |       |
| ..... 8-9-10-11-12-13-14                                |       |
| Foreign Varieties .....                                 | 15-16 |
| Terms and Discounts .....                               | 16    |
| Miniatures .....  | 17-18 |
| Pompoms .....   | 19    |
| Please Note Carefully the Fol-<br>lowing .....          | 20-21 |
| Early Flowering Dahlias .....                           | 21    |
| Collections .....                                       | 22    |
| It's a Gift .....                                       | 23    |
| Dahlia Culture .....                                    | 24    |
| Map Showing Location of<br>Our Garden .... Inside Cover |       |
| Our Prize-Winning Display.. Cover                       |       |

\* \* \*

### Variety Index

|                    |                     |
|--------------------|---------------------|
| Form. Dec. ....    | Formal Decorative   |
| Inf. Dec. ....     | Informal Decorative |
| Semi-Cac. ....     | Semi-Cactus         |
| Str. Cac. ....     | Straight Cactus     |
| Incurved Cac. .... | Incurved Cactus     |
| Min. ....          | Miniature           |

## Miss Oakland



Grow this pure white formal decorative dahlia this year. It has been grown and tested during the past years by scores of reputable amateur and commercial growers from coast to coast. A prolific bloomer. Perfectly formed flowers 7" to 9" in diameter by disbudding. Stems: 12" to 30" long, holding the flower in an erect facing position. Unexcelled for cut flowers or for exhibition, with full-centered blooms always. Plant growth healthy, vigorous, and the foliage is very insect-resistant.

**This is the finest white introduced to date.**

**Roots, \$10.00 Net**

**Plants, \$5.00 Net**

# Foreword

• • •

## GREETINGS, CUSTOMERS AND FRIENDS!

LAKESIDE GARDENS takes great pride in presenting this list of fine dahlias of 1937. With each season the selection of such a list becomes a matter of increasing difficulty because of the enormous number being brought about by the ever-increasing number of growers, who are growing more and more seedlings each season.

We are sending this catalogue out to introduce our dahlia wares, with the confident belief that it represents the greatest list of good dahlias ever gotten together. We do not pretend to offer all the good dahlias. We do, however, offer the cream of them, selecting, where there are several very much alike among the new ones, the variety that seems most vigorous and free blooming.

The year 1936 was a good one for dahlias with us, and we harvested the huskiest crop of fine roots that we have put in storage. They are all fine field grown roots that have developed normally without hard feeding or forcing, and will produce the finest plants ever.

We are introducing this season for our initial introduction the dahlia featured on the Cover Page, namely, AUTUMN SUNSET. It has been thoroughly tested, was the highest scoring dahlia at the East Lansing Trial Grounds in 1935, with a score of 87 and, in the opinion of many real dahlia critics throughout the country, is the finest autumn colored dahlia to be introduced since Jane Cowl. Every dahlia fan will eventually own this fine flower.

Among the dahlias which have been introduced during the past few years, the following were outstanding in our garden and fields this past season and will, we believe, remain in public favor for some time to come: MARGRACE, from Walter Bissell, was one of the finest bright reds. CALIFORNIA IDOL, still perhaps one of the finest informal self-colored yellows. HILLCREST NUGGET, a real performer in the nugget bronze group. LORD OF AUTUMN, another of the real performers with great size among the yellows. MRS. GEO. LE BOUTILLIER, a big strong growing red that will make your heart glad. MURPHY'S MASTERPIECE, one of the real thrills for every grower.

Then to get back to some of the older varieties, where would we be without good old reliable JANE COWL, and JIM MOORE, and BUCKEYE BRIDE, all of which go strong with the florists and will always find a place in every well-organized planting. Coming back to the more recent creations, we still find that, bloom for bloom and plant for plant, CAVALCADE stands almost at the head of the list for cut flowers, for florists in and around Detroit take all we can supply.

# OUR 1937 INTRODUCTIONS



**AUTUMN SUNSET** (Lakeside) Inf. Dec.—This flower is well named, for it really looks like an autumn sunset. The color is a lemon yellow lightly tinted spinel red. The blossoms are carried on stiff stems and the flowers are erect, medium to large. It is of good commercial form. It is the dahlia you have been waiting for. It was the highest scoring dahlia on the East Lansing Trial Grounds in 1935. The foliage is deep green and very vigorous. The plant grows to a height of six feet. **Roots \$15.00; Plants \$7.50**

**MISS OAKLAND** (Lakeside-Oakleigh)—See Page 1 for illustration and description. **Roots \$10.00 net; Plants \$5.00 net**

**A. F. GRMELA** (Lakeside-Jones) Inf. Dec. — Color, picric yellow streaked and tinted peach-red. Flowering habit, good. Substance, excellent. Stems, stiff and strong. Habit of growth is vigorous. Health, excellent. Height of plant, 4½ to 6 feet. This dahlia received a certificate at the East Lansing Trial Grounds, 1936. **Roots \$5.00 net; Plants \$2.50 net**

**HASLEROVA** (Lakeside-Jones) Form. Dec.—Won first as most outstanding bi-color. Most unusual in coloring, being a delicate shade of cream, freckled royal purple. This is a foreign introduction. It is a prolific bloomer. **Roots \$5.00 net; Plants \$2.50 net**

**LEGIONAR ALOIS STORCH** (Lakeside-Jones) Inf. Dec.—Color, light autumn, florets tinted carnelian red after expanding. Flowering habit, good; stem, long and stiff. Flowers facing to half-facing. Foliage, large and heavy. Health, excellent. Height of plant, 4 ft. A large exhibition. This dahlia received a certificate at the East Lansing Trial Grounds, 1936. **Roots \$5.00 net; Plants \$2.50 net**

# Here Are Other 1937 Varieties

This is the list of our choice of the 1937 originations as selected from this season's HONOR ROLLS, and we have made up this list after careful consideration based either on our own personal inspection of the flower and plant or through the co-operation of other authoritative dahlia critics from other parts of the country.

## We Believe These Are All Good

**AMERICAN PURITY** (American Farms) Semi-Cac. — Glistening white, straight stems. Having good substance. Received the American Home Achievement Medal for the most meritorious new seedling. At Baltimore it was the largest semi-cactus and largest flower in the show. **Plants only, \$7.50**

**BETTY LINDGREN** (Ruschmohr) Semi-Cac.—Color, pale lemon-yellow and peach pink. Flowering habit abundant with excellent substance. Stems are stiff, straight, strong. Flowers half-facing. Flowers, 6½-8½. Height of plant about 4 ft. Excellent as a basket type dahlia in view of its unusual color and formation. **Plants only, \$2.50**

**FIREBALL** (Hillside)  
For. Dec.—Color, a brilliant scarlet which does not burn or fade. The foliage is heavy and absolutely insect-resistant. Winner of three blue ribbons in formal decorative classes; winner of the Charles H. Ruscher Memorial Cup at the National Show

**Roots, \$10—Plants, \$5**





## THE 1937 VARIETIES

(Continued)

**BUCKEYE GLORY** (Golden Rule) Inf. Dec.—A shining orchid pink. Eight to 11 inches. Useful for cutting as well as exhibition. It produces very strong growth and is free with blooms early and late. Won three certificates.

**Plants only, \$5.00**

**BUCKEYE STAR** (Golden Rule) Semi-Cac.—The long, lasting-pink and yellow so much admired. It can readily be grown for exhibition; although its greatest use is for a high-grade cut-flower of great beauty. Won certificates of merit at East Lansing and in Georgia.

**Plants only, \$5.00**

**CAPTAIN RITTER** (American Farms) Inf. Dec.—Beautiful pastel shades of amber yellow and pink. The blossoms have huge proportion, good substance and are held on strong, straight stems.

**Plants only, \$3.75**

**DREAM GIRL** (Lee) Inf. Dec.—Beautiful form and color, which is a very pleasing shade of salmon and coral pink, blending to pale gold at base of petals which are lightly tipped with gold. Stems are long and hold the big, deep blooms perfectly erect well above the foliage. Plants medium tall, good habits.

**Plants only, \$5.00 Net**

**FRECKLES** (Kemp) Inf. Dec.—Chrome yellow background on which there is striped, blotched, and speckled, irregularly bright scarlet. Large blooms and habit of growth is vigorous.

**Plants only, \$5.00**

**GOLDEN BEAUTY** (Oakleigh) Inf. Dec.—An ideal form within its type. Just naturally a large flower up to full exhibition size, and a seedling of Jane Cowling Crosby. Received a Certificate at Storrs Trial Grounds.

**Plants only, \$7.50**

**KEMP'S GREAT EASTERN** (Kemp) Inf. Dec. — A spectacular combination of golden orange and reddish bronze. It is a large flower, full exhibition size. Plant grows to a height of five feet. It is a healthy, sturdy grower and an early bloomer. Good root maker.

**Plants only, \$5.00**

**LEMON-GLO** (Lee) Semi-Cac.—Blooms are very large; good depth and stems are long. Color is a very lovely lemon-yellow without shading.

**Plants only, \$2.50**

**MARY TALLMADGE**—Inf. Dec.—The color of this variety is decidedly different from existing varieties. For the most part it is a peculiar old rose which is enhanced under artificial light. It is a very strong grower and produces very large blooms on the finest of stems.

**Roots, \$10.00—Plants, \$5.00**

**MASON'S PURPLE BEAUTY** (Mason) For. Dec.—A very fine velvety purple, formal decorative, having good substance to the petals with a silver reverse showing at the center of the blooms.

**Plants only, \$2.50**

**MISS ENGLEWOOD** (Englewood) Inf. Dec.—Spectrum red and carmine. Back of center petals, buff yellow showing plainly at center and upper side of petals. Flowering habit prolific. Stem 9 inches, heavy to medium flowers facing. Flowers 7 to 12 inches in diameter and 2½ to 4½ inches deep. Height 5 feet.

**Plants only, \$3.75**

**MISS INDIANA** (White) For. Dec.—Baby pink. The ideal florists' flower. Won a certificate at the O. V. D. A. trial grounds. It is a wonderful keeper

**Plants only, \$5.00**

**MISS OHIO** (Franks) Incurved Cac.—Lilac rose color. It is an easy grower, early bloomer, good root maker. Blooms may be cut with 3 to 4 feet stems and will keep for days. An ideal variety for exhibition and cutting.

**Plants only, \$5.00**

## THE 1937 VARIETIES

(Continued)

**MOTHER MAYTROT** (Dahliadel) Inf. Dec.—Artistic white informal decorative. Good grower, healthy dark foliage, strong erect stems. Early and of remarkable keeping qualities. A profuse bloomer. Won the American Home Achievement Medal. **Plants only, \$7.50**

**MRS. IDA CHASE** (Kemp) Str. Cac.—The colors are combination of bright lemon yellow and spinel pink, reverse pale lavender pink. Blooms have good depth, perfect stems, plant growth is all that could be desired in a dahlia. **Plants only, \$5.00**

**OPAL** (Dahliadel) Inf. Dec.—This will be a great favorite in pastels, as it is of a soft salmon rose with lighter shadings and centers of lemon yellow. A beautiful large informal decorative of unique form, a good keeper and easily grown. This dahlia should meet competition successfully on the show table **Plants only, \$5.00**

**PURPLE MIST** (Emmons-Ruschmohr) For. Dec.—Color, dark violet carmine. Blooms have excellent substance. Stems are strong and straight. Habit of plant erect, averaging about 5 feet in height. Excellent. Dark green foliage. Highly spoken of by some leading dahlia authorities in the Middle West, particularly for keeping qualities. **Plants only, \$5.00**

**ROYAL PENNANT** (Kemp) For. Dec.—Color, a rich purple, could be called purplish-violet. The bush is a tall, strong grower. Blooms average 8 to 9 inches in width and are held out of the foliage on stiff stems 8 to 10 inches long. **Plants only, \$5.00**

**TELEVISION** (Dahliadel) Inf. Dec.—Apricot suffused and shaded cardinal gives a general tone of reddish apricot. Flowers can be grown 12 by 5 inches. Stems, form, foliage and growing habits are all that could be desired. **Plants only, \$5.00**

**WHIRLWIND** (Dixie) Inf. Dec.—Apricot buff on face with strawberry reverse. A good keeper and excellent for basket work. Long stems on 5 foot bushes. **Plants only, \$3.75**

**WILLIAM J. WYLLIE** (Ruschmohr) For. Dec.—Color, sulphur yellow, shading to a buff with outer petals taking on a pinkish tone as the flower matures. Good flowering habit with a stem measuring from 10 to 17 inches; heavy to medium stiff flower on side. Size of flowers average 10 inches in diameter and 5 inches in depth. Winner as the best formal decorative in the undisseminated seedling class in the New York Show in 1936. This dahlia has been highly commented on by the leading dahlia authorities. **Plants only, \$5.00**

### JOIN A DAHLIA SOCIETY

If you are not already a member, join and support your local or State Dahlia Society. You can also join the American Dahlia Society. The dues of \$2.00 yearly include a year's subscription to the A. D. S. quarterly bulletin. This bulletin is well informed with helpful hints given by well known growers, amateur and commercial. The membership dues should be sent to C. Louis Alling, 251 Court Street, West Haven, Connecticut.

# A Message to Our Friends and Customers

Last year we started to list what we considered the 100 Best Dahlias in commerce. We are continuing this in this year's catalogue, making changes, of course. We are doing this largely because we find that 98 per cent of our business comes from these 100 varieties.

With the ever-increasing number of good dahlias being put on the market yearly, it seems only proper that someone should list what he considers the 100 BEST, and in this way the amateur who is making a start with dahlias or adding to his stock yearly does not have to peruse a list of 500 to 600 varieties to make his selection.

This list may not, and perhaps will not, agree with your ideas 100 per cent, but the selection has been made, after a very careful analysis of the 1936 and previously listed varieties. If you do not agree with us, and are really interested in helping us make a better list for 1938, send us your criticisms and suggestions during the year, and it will assist us in putting together a still better selection in 1938.

Thank you,

LAKESIDE GARDENS,  
Nick Koenig & Sons,  
Proprietors.



## The Mid West Dahlia News

The Mid West Dahlia News is published for the purpose of advancing the dahlia by disseminating news and information to the dahlia fan. The Mid West Dahlia News publishes all the happenings of the dahlia world, being devoted exclusively to dahlias. Every amateur should have this bulletin in order to be well informed about the new introductions and the articles written by many outstanding men of the dahlia world. This bulletin is edited by D. O. Eldridge, 170 Talmadge street, Madison, Wis., the cost is very little and one that everyone can afford—one dollar a year. It is published quarterly.



## The Flower Grower

The Flower Grower is valuable to every gardener, whether he grows dahlias or not. It is devoted entirely to flowers. The Flower Grower is signified by its name. Page after page has valuable statistics which cannot be found elsewhere. The Flower Grower is published monthly by the Lyon Company, 99-129 North Broadway, Albany, N. Y. Leonard Barron, whose Honor Roll was published in the December issue, is editor of this magazine. The subscription price is only \$2.00 a year; a reasonable price for such a valuable magazine.

# The 100 Best Dahlias

**ADORABLE**—Inf. Dec.—Color, a vivid peach, shading to an orange yellow glow at the center. A fine clean open grower of self-branching habit, of medium height. This dahlia will attract everyone. **Roots, \$2.50—Plants, \$1.25**

**ADIRONDACK SUNSET**—Inf. Dec.—A glorious sunset dahlia of vivid scarlet shading to a bright canary yellow, while the tips and reverse are a clear gold. A strong grower of wide spreading habit. **Roots, \$2.50—Plants, \$1.25**

**AMELIA EARHART**—Semi-Cac.—Color, a combination of apricot-buff, with primrose at base of petals, and suffused with salmon tints. A dahlia of great merit that never fails to win. **Roots, \$2.00—Plants, \$1.00**

**AMERICA'S SWEETHEART**—Inf. Dec.—A wonderful clear yellow of huge size and depth. **Roots, \$5.00—Plants, \$2.50**

**ANDREA ERICSON**—Inf. Dec.—Color, pure white. Wonderful bloomer; stems 3 feet long. Petals are pointed and irregularly placed **Roots, \$1.00—Plants, .50**

**ARELDA LLOYD**—Ind. Dec.—Color is a soft shade of yellow, reverse a clear yellow with pink veinings. This is your yellow Jane Cowl in growth and habits. **Roots, \$1.50—Plants, .75**

**ALLAN A**—For. Dec.—Color is an ivory white, with lilac suffusions. The base of the petals show a slight trace of Martins yellow. One of the best keepers when cut **Roots, \$1.50—Plants, .50**

**ANGELI ROSSI**—Inf. Dec.—Orange buff. A free and early bloomer, making a plant of strong, rugged growth. **Plants only, \$2.50**

**BLUE TRAIN**—For. Dec.—A blue dahlia! Not quite. A fine shade of blue-purple. A dahlia that will grow any place. A free bloomer. A good keeper when cut. **Roots, \$1.00—Plants, .50**

**BUCKEYE BRIDE**—For. Dec.—A wonderful pink. The best cut flower of them all. Three feet stems **Roots, .75—Plants, .50**

**BUCKEYE KING**—For. Dec.—A very large amber-yellow dahlia. Fair, strong stem which can be improved by disbudding. **Roots, \$1.00—Plants, .50**

**DAUGHTER OF VENUS**—Inf. Dec.—It is rosy mauve with center petals of a delicate orchid which gives it unusual beauty in day or artificial light. The blooms range from 7 to 9 inches. Stems are long and stiff. The plant itself is a profuse bloomer. **Plants only, \$2.50**

**BLUE RIVER**—For. Dec.—Early blooming variety that is as near to a blue dahlia as we have ever seen. It has size and a good stem. **Roots, \$4.00—Plants, \$2.00**

**CLARA BARTON**—Inf. Dec.—An immense bloom of light lavender, held slightly up on good stem. A very free bloomer. **Roots, \$1.50—Plants, .75**

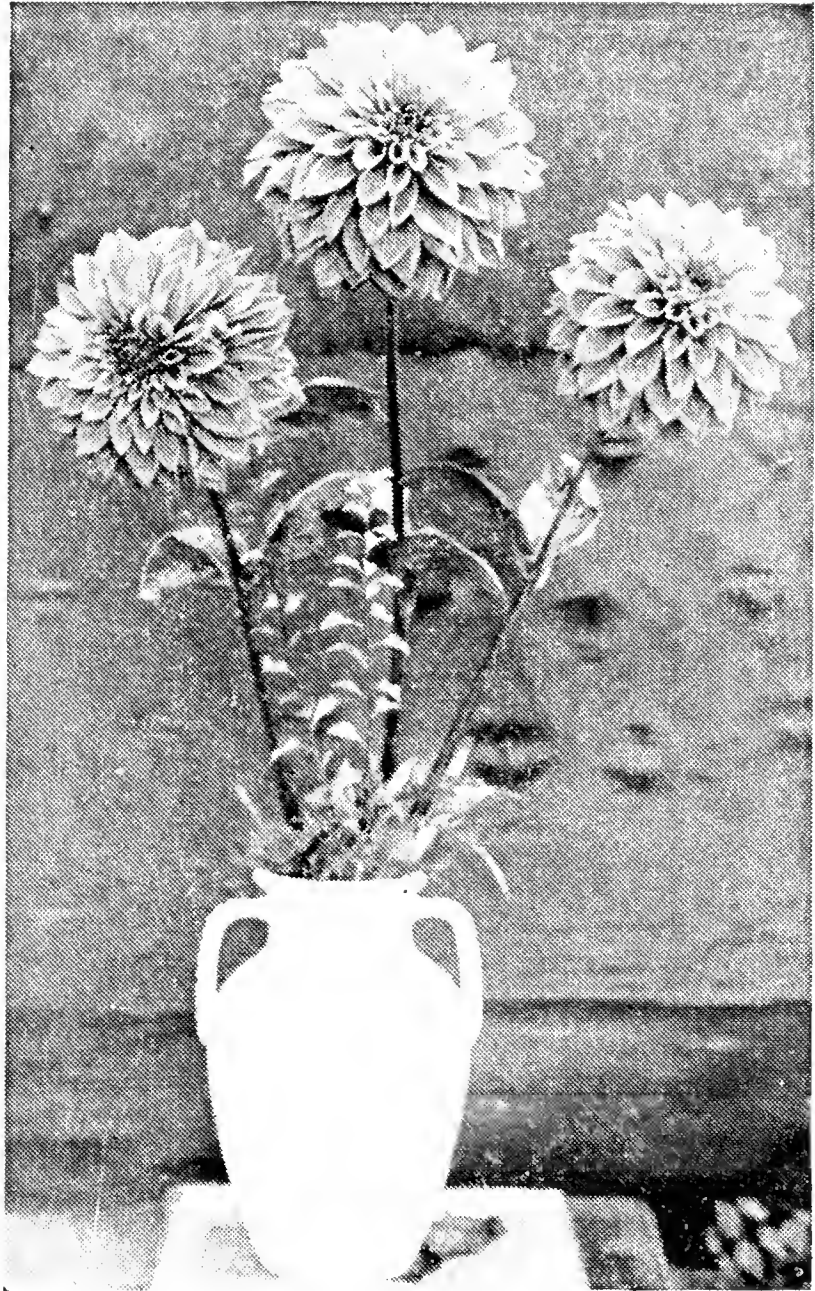
**CLARA CARTER**—For. Dec.—Pink decorative, a beautiful shade of clear pink. The blooms are large **Roots, \$5.00—Plants, \$2.50**

**CALIFORNIA IDOL**—Inf. Dec.—Clear, bright, self-colored yellow. Keeps well when cut. It is a fine grower **Roots, \$5.00—Plants, \$2.50**

## THE 100 BEST DAHLIAS

(Continued)

**CAVALCADE** — For. Dec. — A beautiful shade of old rose or mulberry - pink. A good bloomer. Wonderful keeper after being cut. **Roots, \$2.00—Plants, \$1.00**



**CALIFORNIA ROSE**—Inf. Dec.—Clear, bright rose. Exquisite coloring. Flowers are large, but extremely graceful. **Roots, \$2.50—Plants, \$1.25**

**CHAUTAUQUA SUNSET**—For. Dec.—Color, gold, orange and peach-red. Must be disbranched; must also be disbudded for best results. **Roots, \$1.00—Plants, .50**

**CITY OF CLEVELAND**—Inf. Dec.—Color is a scarlet splashed with orange; flowers being held on good stems. A good root maker. **Roots, \$2.50—Plants, \$1.25**

**DETROITER**—For. Dec. A nice red. A wonderful cut flower. One red that does not burn. It is not one of those so-called giants, but still it is good. **Roots, \$1.50—Plants, .75**

**ELISSA LANDI**—For. Dec. Bright coral self color; very attractive; held on long straight stem well out of the foliage. **Roots, \$1.00—Plants, .50**

**FIREMAN**—Inf. Dec.—A striking cardinal red, lightly touched with gold tips. A good bloomer and good root maker. **Roots, \$1.50—Plants, .75**

**FLORENCE FLORY**—Semi-Cac.—Large, dark velvety red. Good stems. Almost black. Fine cut flower. **Roots, .50—Plants, .50**

# LAKESIDE DAHLIA GARDENS, NEW BALTIMORE, MICH.

---

## THE 100 BEST DAHLIAS

(Continued)

- FORT MONMOUTH**—Inf. Dec.—This is still one of the giants of the garden. Color is a rich crimson maroon, shading to a bluish violet at the tips.  
**Roots, .50—Plants, .50**
- FRANK SERPA**—Inf. Dec.—Pale pink shaded rose at edges of the petals. The two-toned effect gives the flower an interesting appearance. Bloom is of good size on a long stem.  
**Plants only, \$1.00**
- GIRL OF HILLCREST**—Inf. Dec.—Color is a bright Mikado orange; large blooms which have good depth. A little tricky sometimes.  
**Roots, .50—Plants, .50**
- GOLDEN STANDARD**—Str. Cac.—Color, a golden tan, blushed with tints of amber and bronze. Long, straight and stiff stems.  
**Roots, \$2.50—Plants, \$1.25**
- HILLCREST NUGGET**—Inf. Dec.—The color is nugget bronze with troubadour red reverse; and most unusual and attractive combination. One of the best growers and bloomers in our gardens.  
**Roots, \$3.00—Plants, \$1.50**
- HUNTS VELVET WONDER**—Inf. Dec.—The color, a blending of violet-purple and burgundy, and in some lights a true purple. Must be disbudded and dis-branched for best results  
**Roots, \$3.00—Plants, \$1.50**
- JANE COWL**—Inf. Dec.—An old flower! Yes, but still good. It wins over many of the new introductions. The flowers are massive in size and deep. Color, a glistening bronzy buff and gold, blending to a deeper shade towards the center of the flower.  
**Roots, .50—Plants, .50**
- JEAN KEEFER**—Inf. Dec.—Color, a pleasing pink, shading to silver and mauve pink. A very good cut flower.  
**Roots, .50—Plants, .50**
- JERSEY'S DAINTY**—Str. Cac.—A dainty flower? Why yes, that is why it was called "Jersey's Dainty." Color, white with a faint overtone of pink; at times some of the flowers are pure white.  
**Roots, \$1.50—Plants, .75**
- JERSEY'S BEAUTY**—Dec.—Salmon-pink. A very good cut flower.  
**Roots, .35**
- JEROME KERN**—Inf. Dec.—Color, a soft shrimp-pink with gold shadings at the center; reverse, bright old rose. The outer petals curl in a most unusual manner, giving the flower a striking effect. This dahlia attracted many visitors in our gardens.  
**Plants only, .75**
- JIM MOORE**—Inf. Dec.—The blooms are large and of good depth; strong, stiff stems. An early bloomer. The color, pale yellow, suffused strawberry-pink.  
**Roots, .50—Plants, .50**
- JOSEPHINE G.**—Semi-Cac.—A bright rose-pink is the color of this gorgeous flower. The center petals being tipped a pinard-yellow. An unusually free bloomer. Always in bloom and a very good root maker.  
**Roots, .50—Plants, .50**
- JUDGE SEABURY**—Inf. Dec.—A very large dahlia of unusual color; a blending of heliotrope on a white ground. The blooms average 10 inches.  
**Roots, \$4.00—Plants, \$2.00**
- KARL BONAWITZ**—Semi-Cac.—The brilliant velvety carmine flowers are artistic and gracefully formed. A wonderful keeper.  
**Roots, .50—Plants, .50**
- KITTY MAC**—Inf. Dec.—Color, reddish-purple. Blooms recurve to the stems which are strong and rigid.  
**Roots, \$7.50—Plants, \$3.75**
- KAY FRANCIS**—Semi-Cac.—Light lemon-yellow. A fine keeper. A free bloomer.  
**Roots, \$2.50—Plants, \$1.25**

## THE 100 BEST DAHLIAS

(Continued)



MARGRACE

**LA REINA**—For. Dec.—A giant flower of gold suffused red. Sometimes the flower is too large for the stem. **Roots, \$1.00—Plants, .50**

**LORD OF AUTUMN**—Inf. Dec.—One of the finest yellow dahlias we have grown. A deep golden-yellow. It is another super dahlia. **Plants only, \$1.25**

**MARGRACE**—Inf. Dec.—Color, bright red, tipped gold with light reverse. Medium early bloomer. An outstanding dahlia and the best cut flower in our gardens last season. It attracted everyone that saw it. Growth is excellent. **Roots, \$5.00—Plants, \$2.50**

## THE 100 BEST DAHLIAS

(Continued)

- MAN-O-WAR**—Inf. Dec.—Color, an ox-blood red. A good keeper. A strong robust growing plant. **Roots, \$2.00—Plants, \$1.00**
- MARY RETZER**—Semi-Cac.—Color, pink. A sport of Edna Ferber. Size of bloom slightly larger than Edna Ferber. This flower was our best cut flower in our garden last season. **Roots, \$4.00—Plants, \$2.00**
- MISS GLORY** — Semi-Cac. — Large apricot-yellow semi-cactus as deep as its diameter. Perfect long, stiff stems carrying the large blooms well out of the foliage; erect and facing. **Roots, \$7.50—Plants, \$3.75**
- MILTON J. CROSS**—Inf. Dec.—Beautiful coloring of apricot-peach with a bright golden face. The dahlia is a very strong grower. **Roots, \$10.00—Plants, \$5.00**
- MIRIAM HOPKINS**—Semi-Cac.—A copper-orange. The flower is a long petaled one of bold, star-like shape. A tall grower and splendid exhibition dahlia. An early and free bloomer. **Plants only, \$2.50**
- MONMOUTH CHAMPION**—For. Dec.—A brilliant scarlet of immense size, the petals are long and wave slightly near the tips to further enhance its beauty. A marvelous dahlia. **Roots, .50—Plants, .50**
- MONMOUTH QUEEN**—For. Dec.—A giant dahlia. Color, the center is picric-yellow, graduating to light primrose with cream-yellow reverse. A free bloomer. **Roots, \$2.00—Plants, \$1.00**
- MRS. GEO. LE BOUTILLIER**—Inf. Dec.—This dahlia is a bright carmine-red, shading to a rich cardinal-red. It can be grown very large. **Roots, \$3.00—Plants, \$1.50**
- MRS. I. DE VER WARNER**—For. Dec.—Deep mauve-pink. One of the finest dahlias. It is an old flower, but still a wonderful performer in any garden. **Roots, .35**
- MURPHY'S MASTERPIECE**—Inf. Dec.—This gigantic dahlia is a dark red. Long, strong and very sturdy cane-like stems; high and aloft. The plant has very heavy foliage and it is a vigorous grower. **Roots, \$2.00—Plants, \$1.00**
- MYRA HOWARD**—Inf. Dec.—This is naturally a big flower. The color is a pure gold with a rose sheen which glistens in the sunlight. **Roots, \$1.00—Plants, .50**
- MRS. HERBERT O'CONNER**—Inc. Cac.—A soft rose-pink, deepening at center. Dark healthy open foliage and a profuse and continuous bloomer. **Roots, \$5.00—Plants, \$2.50**
- MISS ELSIE JANE**—Semi-Cac.—A winner in our gardens. It is medium in size. Excellent for cut and vase arrangements. The color is an appealing shrimp-pink, with cream shading at center, and tipped violet rose. It is certain to please in the garden where it has already proven its merit and also on the exhibition tables. **Roots, \$1.50—Plants, .75**
- NANCY DUNE**—Inf. Dec.—Shrimp-pink or rose. Heavy dark foliage. Excellent stems. Blooms are facing, and average 8 to 9 inches in diameter. **Roots, \$5.00—Plants, \$2.50**
- NEW DEAL**—For. Dec.—Color, brilliant orange-red. Chosen by Derrill Hart and others as being worthy of honor roll selection in 1935. Highly recommended. **Roots, \$2.00—Plants, \$1.00**
- NORA KNIGHTON**—Dec.—Medium sized flowers of compact circular form with broad reflexed florets. Its color is the charm of this variety, being soft pink with deeper pink at the base to almost white at tips. Erect stems and very healthy plants. **Plants only, \$1.50**



## THE 100 BEST DAHLIAS

(Continued)

**MRS. BRUCE COLLINS** — Str. Cac. — Light canary - yellow in color, shading lighter toward the tips. It is one of the most prolific bloomers with very good stems. **Roots, \$2.00—Plants, \$1.00.**



**OMAR KHAYYAM**—For. Dec.—Chinese-red at the base of the petals, shading to a bright orange and tipped lighter, giving the blooms a wonderful, soft color effect. **Roots, .50**

**OAKLEIGH MONARCH**—For. Dec.—Exhibition type, cerise-red in color; blooms 10 to 14 inches; heavy stems; tough foliage. Blooms early. Blooms keep well when cut. **Roots, \$5.00—Plants, \$2.50**

**PRIDE OF AUSTINBURG**—Inf. Dec.—A giant informal decorative. The color, a grenadine-pink and light yellow; center and reverse light purple. Strong, open plant growth, with long cane-like stems, requiring a minimum of disbudding. A profuse bloomer; the blossoms averaging more than 10 inches throughout the season. **Plants only, \$2.50**

**RED VICTOR**—Inf. Dec.—A brilliant rose-red informal decorative, large. A strong grower, blooming heavily throughout the season. **Plants only, \$2.50**

**REX**—Inf. Dec.—A combination of buff and golden yellow, suffused with peach-pink; 10 to 12 inch flowers on strong stems. **Roots, \$10.00—Plants, \$5.00**

## THE 100 BEST DAHLIAS

(Continued)

**ROBERT EMMETT**—Inf. Dec.—This dahlia is cardinal-red, with a velvet texture. The flowers are of good size on long, stiff stems. The plant is a good grower.  
**Roots, \$1.50—Plants, .75**

**ROCKLEY MOON**—For. Dec.—Beautiful yellow, broad petaled bloom on exceptionally strong stems; tall grower and good foliage. A large flower of bright yellow with bronze tints at the center. This really is a grand dahlia.  
**Roots, \$1.00—Plants, .50**

**ROYAL ROBE**—Inf. Dec.—Having Jane Cowl as its parent, the flowers are large and of good depth; the color is a rich royal-purple with a reverse of shadings that blend most admirably. The petals are long and have a slight wave to them, to further enhance this flower. Good, strong, stiff stems. Makes small roots.  
**Plants only, \$1.50**

**RUDOLF'S GIANT**—Inf. Dec.—Bright buff-apricot. This dahlia is signified by its name. While the bush is not a tall grower, it produces excellent foliage and good stiff stems. The flower in addition to having width has depth and the centers are tight and compact.  
**Plants only, \$5.00**

**ROYAL PURCHASE**—Incurved Cac.—Color is a deep straw-yellow with outer petals suffused with pink. The petals twist and turn, giving the bloom a shaggy appearance.  
**Roots, \$7.50—Plants, \$3.75**

**RUBY TAYLOR**—Inf. Dec.—It is a clear carmine with a velvet texture. The flowers are large and deep, of wonderful formation and very striking as well. Long, strong, stiff stems. It is a strong thrifty grower.  
**Roots, \$1.00—Plants, .50**

**SALEM STREAMLINE**—Inf. Dec.—An informal decorative that has about everything a good dahlia should have. In color it is an old rose suffused with carmine rose.  
**Roots, \$7.50—Plants, \$3.75**

**SATAN**—Semi-Cac.—Flaming red with a slight touch of gold at the center. No garden is complete without this dahlia. Petals are pointed and long, a strong grower.  
**Roots, \$1.00—Plants, .50**

**THE WORLD**—For. Dec.—The unusual coloring of this dahlia is a rich, deep, rosy magenta, overlaid garnet with silver shadings on edge of petals; a rich and beautiful combination of colors. The flowers are large, deep and are held on good, strong, straight stems. Sturdy grower of wide-spreading and self-branching habits, as well as being a good bloomer.  
**Roots, .50—Plants, .50**

**TOWER'S EMPIRE**—Inf. Dec.—The flowers which are of a clear golden color, with amber shading in the center are of good size and are held on long, strong, stiff, rigid stems, high up and well out of the foliage of the tall-growing bush; the foliage is very odd, being thick and of a fern-like pattern. It is an early and very free bloomer. Strong, vigorous grower.  
**Roots, \$2.00—Plants, \$1.00**

**WENOKA**—For. Dec.—Deep orchid rose. It is a real giant of sturdy growth and great beauty. One of the finest stemmed dahlias we have ever seen. Never defeated in the northwest.  
**Roots, \$3.00—Plants, \$1.50**

**W. H. T.**—For. Dec.—Rich old rose and begonia rose with shades on the reverse of petals. It is a tall grower, producing good flowers on strong stems.  
**Roots, .50—Plants, .50**

## Foreign Varieties

As stated in the FOREWORD, we are importing the best of the European originations each year, and this past season we had a marvelous planting of all foreign varieties that were the admiration of every visitor in our gardens. Europe had gone to work on the dahlia in a big way. Almost every yard in Germany, France, Belgium, Austria, Great Britain, and Czecho-Slovakia has its dahlia planting, and some beautiful creations are coming from across the water. We have arranged with the outstanding growers in each of the European countries to send us the best of their stock in the newer creations each season, and as such we are able to offer you the cream of the European stock, in as large an assortment as can be offered anywhere on this continent. Here is the list for 1937.

- ALTMARK**—Str. Cac.—Color, with lilac suffusion. The blooms are on fine, stiff stems and well out of the foliage. Plants grow medium height.  
**Roots, \$1.00—Plants, .50**
- ANDENKEN AN WILHELM LINDENSCHMIDT**—Semi-Cac.—Giant blooms with fine color, salmon on light cream ground with lacinated tips. The blooms are carried on long stems well out above the foliage.  
**Roots, \$3.00—Plants, \$1.50**
- BAUER'S IDEAL**—Dec.—Glowing red. The very large flowers are carried on long erect stems. One of the best red dahlias.  
**Plants only, \$1.00**
- BALLEGO'S SURPRISE**—Cac.—This pure white dahlia beats all existing white flowering varieties in the cactus class. Long wavy petals. An early and prolific bloomer.  
**Plants only, \$2.00**
- CORALLINA**—Cac.—Brick-red with violet reflex and bronzy center. Large and elegently formed.  
**Plants only, .75**
- ENTRUP'S MONARCH**—Inf. Dec.—A brilliant cherry carmine, on a white ground; the colors blend in a most enhancing manner. The petals are long and broad, and twist gracefully near the tops.  
**Roots, \$1.00—Plants, .50**
- FRANZ BERGER**—Str. Cac.—This dahlia's habits of growth, size and formation of bloom are the same as Frau O. Bracht. The only difference being its color, which is a bright, coral-red.  
**Roots, \$1.00—Plants, .50**
- FRAU O. BRACHT**—Str. Cac.—One toned color of yellow. The blooms are held on long, stiff stems. Makes a beautiful sight when in bloom.  
**Plants only, .75**
- FRAU IDA MANSFIELD**—Cac.—One of the most striking and admired dahlias in our gardens. Color is clear, pale yellow.  
**Roots, \$1.00—Plants, .50**
- FRAU MARIE KIPKE**—Semi-Cac.—Vivid orange; tipped yellow. A beauty. Very good for cut flower purposes.  
**Roots, \$1.00—Plants, .50**
- JUGENDPRACTH**—Semi-Cac.—Beautiful sport of the well known Golden Sun; dull yellow suffused with pink.  
**Plants only, .50**
- LEMONIA**—Semi-Cac.—Color, a brilliant clear lemon-yellow that is very striking in effect. The blooms will keep for a long time when cut.  
**Roots, \$1.50—Plants, .75**
- MAJOR C. C. MESSERVY**—Dec.—The flowers are truly massive and are composed of numerous florets of medium width. The plants are dwarf and sturdy with strong flower stems.  
**Plants only, \$1.50**
- MEUNCHHAUSEN**—For. Dec.—A very striking bi-color of salmon-red, largely tipped white. Very free blooming. Stems are long and strong. Bushes are of medium height.  
**Roots, \$1.50—Plants, .75**

## FOREIGN VARIETIES

(Continued)

- MISS BELGIUM**—Str. Cac.—This beautiful flower of bright orange, is a perfect cactus type with free blooming habits. Strong, erect, wiry stems. **Roots, \$1.00—Plants, .50**
- OTTO VON SCHLUMBERGER**—Inf. Dec.—Color is outstanding; a pure lilac. Long, strong stems. A great dahlia for the garden or exhibition purposes. **Plants only, \$2.50**
- PEACH BLOSSOM**—Cac.—The huge flowers are wonderful, and are made up of very long, narrow, tubular petals which incurve and interlace. The color is a beautiful shade of peach-pink. **Plants only, \$2.50**
- PETUNIA**—Cac.—The color is a beautiful lilac shade. It keeps for a long time when cut and it is a great acquisition for the garden or exhibition. The plant is full of vigor, throwing up rod-like stems. **Plants only, \$2.50**
- PINK DAILY MAIL**—For. Dec.—The color is bright lavender-pink. Deep full centers are a shade darker, adding to the beauty. A free bloomer. **Plants only, \$1.00**
- PINK SPIRAL**—Cac.—This is a lovely pink cactus. The flowers are fairly large with fine claw petals which curve in making it very lovely. Stems are long and stiff. **Plants only, \$1.00**
- SACRED FIRE**—Inf. Dec.—A cherry-red bloom on a good stem. Very attractive. A very good flower for cutting purposes. **Roots, \$2.00—Plants, \$1.00**
- TANNENBERG**—For. Dec.—Red with golden tips. Very outstanding and also fine for cutting **Roots, \$1.50—Plants, .75**
- TYRUS**—Cac.—A lively deep magenta-pink. Medium sized flowers. Long and thin, but strong stems. Keeps well when cut. **Roots, \$1.50—Plants, .75**



## TERMS

Cash with order. Money orders and checks should be made payable to Nick Koenig.

No C.O.D. Orders unless 50% deposit is made.

Orders will be filled with good healthy divisions with at least one or more eyes showing or strong hardy plants in 3 inch pots.

We do not substitute. We will notify you if unable to supply any variety.

To guarantee safe arrival of green plants, 25c must be added to all plant orders to cover "special delivery" if there is such service at your P. O. Otherwise 15c for "special handling." We pay the regular parcel post charges.

Add 15c to all orders of \$1.50 or less to cover packing and shipping charges.

## QUANTITY DISCOUNTS

|  |     |
|--|-----|
| 3 roots or plants of any one variety—deduct  | 10% |
| 6 roots or plants of any one variety—deduct  | 20% |
| 12 roots or plants of any one variety—deduct | 25% |

**No Discounts on "Specials"**

Less than 3 of any variety or orders of less than \$6.00 net.

## On All Orders Extra Stock Will Be Given as Follows:

|   |  |
|---|--|
| On orders of \$ 5 to \$10.....10% extra | On orders of \$25 to \$50....20% extra |
| On orders of \$10 to \$25.....15% extra | On orders over \$50 ..... 25% extra    |

This offer cannot be taken as a cash discount; and does not include collections or 1937 introductions.

# MINIATURES

## Old and New Introductions

Miniatures are coming to the front as never before. You are passing up one of the real joys and pleasures of growing dahlias when you do not plant some of these miniatures. They make wonderful cut flowers; bloom profusely; are usually fool-proof; take less space in your garden, and if friend wife is not as crazy about dahlias as you are, plant a half-dozen good miniatures this season, and see if she does not at least have patience with you. We have tested every miniature listed here, and can guarantee them to you.

- BABY ROYAL**—Min. Cac.—Salmon-pink shaded apricot. Long, stiff stems. **Roots, .75—Plants, .50**
- BABY BEAUTY**—Min. For. Dec.—Bright Rose pink. **Roots, .75—Plants, .50**
- BISHOP OF LANDAFF**—Min. Peony—Bright scarlet; early. Three feet **Plants only, .50**
- BUCKEYE BABE**—Min. For. Dec.—A very small flower. Color, gold-buff; lightly shaded red on reverse. Dwarf height. The plants are all free and rapid blooming and vigorous growers. All the stems are long and straight. Will bloom and grow well under all sorts of conditions. **Roots, \$1.50—Plants, .75**
- BULLFINCH**—Min. For. Dec.—An erect, very free flowering variety with formal small flowers, quite round in form and carried boldly erect. Color, crimson, heavily tipped white. Very useful for cutting. **Plants only, \$1.00**
- CHANCELLOR**—Min.—Brown-red with luminous red flame towards the edge of the petals shading to salmon. A cut flower of great distinction. **Plants only, \$1.00**
- CHARD VANITY**—Min. Cac.—Exceptionally long wiry stems. Pink, with a size of 3 inches. Winner of the "Plant Breeding Trophy." **Roots, \$1.50—Plants, .75**
- CHARLOTTE CALDWELL** (Caldwell-Goodacre) Ball—A new dahlia with a much-needed color, bright orange, slightly shaded terra cotta. **Plants only, \$5.00**
- CORONNE**—Min. For. Dec.—White. **Plants only, .50**
- DAHLIADEL JOY**—Min. Cac.—Lemon-yellow. **Plants only, .50**
- DR. HELMUTH SPAT**—Min. Cac.—Clear light lilac. **Plants only, .50**
- FAITH**—Min. For. Dec.—An upright, wiry stemmed, small, decorative of neat and pretty form with slightly reflexed medium floret. Color, white; delicately banded crimson-scarlet. Quite distinct. **Plants only, \$1.00**
- FAIRY**—Min. For. Dec.—Soft rose-pink, tinted with lavender. One of the nicest miniatures to be used for any purpose. **Roots, .75—Plants, .50**
- FIXLER'S COLLARETTE**—Cac.—Color, a bright glowing red with yellow collar. Bush about 5 feet tall. **Roots, .50—Plants, .50**
- GLORIOUS**—Min. Inf. Dec.—Raspberry-red. Equally as fine as Baby Royal and as free blooming. Channeled florets. **Plants only, .50**
- GRACE O'NEIL**—Min. Str. Cac.—A delicate shade of shrimp-pink with silver tips. Always covered with blooms; has very good habits. **Roots, \$1.00—Plants, .50**
- HADLEY**—Min.—This excellent cut flower resembles the well-known Hadley rose in form and color. Early and free. The general public may easily take them to be roses. **Plants only, \$1.00**
- HARMEN DE BOER**—Min. Dec.—A small decorative, brilliant red. Very good for cutting. **Roots, \$1.00—Plants, .50**

## MINIATURES

(Continued)

- HONEYBIRD**—Min. Semi-Cac.—Color, yellow at center to bright orange or honey color. Natty, neatly formed type flowers; full in center. Free flowering on wiry stems. **Plants only, \$1.00**
- JEAN**—Min. Semi-Cac. or Inf. Dec.—Apricot-buff, suffused lilac. Very good cut flower. **Plants only, .50**
- JEAN HOBBY**—Min. Dec.—A low growing miniature that has won a place on the honor roll. The plants are strong and literally covered with flowers of glowing scarlet. **Roots, .50—Plants, .50**
- LAKESIDE BABE** (Lakeside 1937) Min. For. Dec.—The finest canary-yellow formal decorative miniature ever seen. Visitors in our gardens raved over it this season and we are putting it out, even with a limited stock. This one is really good. **Plants only, \$1.50**
- LITTLE DREAM**—Min. Semi-Cac.—Bright pink with paler center. The regular formed flowers are carried on long thin stems. Recommended for cutting. **Plants only, .50**
- LITTLE JEWEL**—Min. For. Dec.—Peach blossom pink, very good for cutting. **Plants only, .50**
- LITTLE SNOW QUEEN**—Min. Semi-Cac.—Color, pure snow-white. Recommended for every purpose. **Roots, \$1.00—Plants, .50**
- LITTLE NEMO**—Min. For. Dec.—Rich crimson tipped white, very attractive. Good cut flower. **Roots, .75—Plants, .50**
- MISS VIVIAN**—Min. For. Dec.—A beautiful rose-pink; compact flower on long stems. It is a good keeper and a prolific bloomer. **Roots, \$1.00—Plants, .50**
- NESTHACKCHEN**—Min. Semi-Cac.—Creamy chamois in color with amethyst shadings; long stems. A good flower. **Plants only, .50**
- ORCHID LADY**—Min. For. Dec.—Here is a little champion. The color is orchid-pink. It is a wonderful little dahlia all the way around. **Roots, \$1.00—Plants, .50**
- OSTERGRUSZ**—Min. Semi-Cac.—Dwarf white semi-cactus; very useful as a pot plant. Easy forcer. **Plants only, \$1.00**
- PINK PEARL**—Min. Peony—Rose-pink. A very good cut flower. **Plants only, .50**
- RALEIGH**—Min. Inf. Dec.—Salmon-rose. Recommended for cutting purposes. **Plants only, .75**
- RED HEAD**—Min. Inf. Dec.—Orange scarlet, the shape of a camellia. Very good for cutting purposes. **Plants only, .50**
- RAPALLO**—Min. For. Dec.—Dark-red blooms, edged with gold. One of the best for cutting and table decoration. Flowers on long, strong stems, on medium open growing plants during the entire season. **Roots, .75—Plants, .50**
- REINE CAYEUX**—Min. Cac.—Scarlet, a very good cut flower. We call it "Baby Satan," because it really looks like Satan in a small form. **Roots, .75—Plants, .50**
- ROSE BEAUTY**—Min. For. Dec.—Soft peach and coral. Recommended for cutting. **Plants only, .75**
- SHIRLEY TEMPLE**—B.—Yellow. A very vigorous free blooming sort. **Plants only, .75**
- SCHWIETER'S BABY**—Min.—A cut flower, color, begonia-rose; changing into dark tints towards the yellow little heart. Thin, wiry stems. Keeps a long time when cut. **Plants only, \$1.00**
- TROJAN**—Min. Semi-Cac.—Mikado-red with a picric yellow at the base of the petals. **Plants only, \$1.00**
- TIGER**—Collarette—Dark red with white. Very good for cutting. **Roots, .50—Plants, .50**

# Pompons

Pompons are also coming to the front along with the miniatures, and this past season our lady visitors in the garden were thrilled with the beautiful pompon blooms. New and better varieties are replacing the older open-centered varieties, and your planting should include at least a dozen of these little gems of dahlialand.

|   |                         |
|---|-------------------------|
| <b>AIMEE</b> —A small yellow-shaded apricot.....  | <b>Roots 25c</b>        |
| <b>ATOM</b> —Fiery red .....  | <b>Roots 35c</b>        |
| <b>BOBBY</b> —Plum color .....  | <b>Roots 25c</b>        |
| <b>BOB WHITE</b> —White .....   | <b>Roots 25c</b>        |
| <b>BRONZE BEAUTY</b> —Bronze color.....   | <b>Roots 25c</b>        |
| <b>BELLE OF SPRINGFIELD</b> —Strawberry.....  | <b>Roots 25c</b>        |
| <b>BETTY ANNE</b> —Exhibition type. Soft pink.....  | <b>Plants only, 50c</b> |
| <b>DEE DEE</b> —Lilac color .....   | <b>Roots 35c</b>        |
| <b>ELFINE</b> —Fine light creamy yellow.....  | <b>Roots 25c</b>        |
| <b>GOLDBLOCKS</b> —Gold, deepening at center.....   | <b>Roots 25c</b>        |
| <b>HONEY</b> —Primrose yellow, red edged.....   | <b>Roots 35c</b>        |
| <b>JACK</b> —Purple garnet .....  | <b>Roots 35c</b>        |
| <b>JILL</b> —Yellow-tipped carmine .....  | <b>Roots 35c</b>        |
| <b>JESSICA</b> —A combination of amber and salmon-tinted red.<br>Very showy; blooms freely and continually..... | <b>Roots 25c</b>        |
| <b>JOE FETTE</b> —White .....   | <b>Roots 25c</b>        |
| <b>JOHNNIE</b> —Dark red or maroon.....   | <b>Roots 35c</b>        |
| <b>LITTLE BEAUTY</b> —Soft pink.....  | <b>Roots 25c</b>        |
| <b>LITTLE DAVID</b> —Russet orange .....  | <b>Roots 25c</b>        |
| <b>MIKE</b> —Burnt orange .....   | <b>Roots 25c</b>        |
| <b>MINNIE MOUSE</b> —Rich burgundy red with white tips .....  | <b>Roots 25c</b>        |
| <b>PRINCE CHARMING</b> —Lavender, heavily tipped white .....  | <b>Roots 25c</b>        |
| <b>YELLOW GEM</b> —Yellow .....   | <b>Roots 25c</b>        |

**Visit Our Gardens . . . See Them In Bloom**

## Please Note Carefully the Following

With the ever-increasing list of the newer and better dahlias being placed on the market yearly, we are forced to catalog some of the fine dahlias which, in some point, did not merit the 100 BEST list, and some which we are giving a try for the first time and others which we are testing out for a second season. Maybe next year they will be good enough to be among the 100 BEST. Some of these dahlias may be your favorites, and may do well in your locality.

### HERE THEY ARE:

|   | ROOT   | PLANT |
|---|--------|-------|
| ABE LINCOLN—SC—Spectrum red .....             | \$ .50 |       |
| ALYCE M. GALVIN—FD—White with pink .....      | 1.00   | .50   |
| ARTHUR SIMMONDS—ID—Light Orange .....         |        | 1.50  |
| AZURA—ID—Rosy lilac .....                     | 10.00  | 5.00  |
| BALLEGO'S GLORY—FD—Red with gold .....        |        | .50   |
| BAUER'S MASTERPIECE—ID—Buff and gold .....    |        | 1.00  |
| BETTY COLTER—ID—Salmon red .....              | .50    |       |
| BAERNE—C—Pink with red and yellow .....       |        | 1.50  |
| BLUE JERSEY—FD—Bluish salmon pink .....       |        | .50   |
| BING CROSBY—ID—Bright golden yellow .....     |        | 1.00  |
| BOSPHORUS—ID—Scarlet tipped orange .....      | 1.00   |       |
| BUNDER FOGLE—C—Red and white .....            | .50    |       |
| CAPE MAY—IC—Violet rose .....                 | 1.00   |       |
| CLOUDLAND GEM—FD—Cream and pink .....         | .50    |       |
| CAMEO QUEEN—D—Cameo shade .....               | 2.00   | 1.00  |
| CHIEF WHIP—C—Primrose yellow .....            | 2.50   |       |
| C. B. PINCHOT—ID—Burgundy wine .....          | 2.00   | 1.00  |
| CALIFORNIA BEAUTY—C—Pure copper .....         |        | .50   |
| DADDY KEMP—FD—Rich purplish red .....         | 2.00   |       |
| DOKOUPIL'S GIANT—FD—Orchid pink .....         | .50    |       |
| DULCINEA—C—Carmine Red .....                  |        | 1.00  |
| ED. RINDFLEISH—FD—Red and yellow .....        | .50    |       |
| ELITE SPORT—FD—Buff striped red .....         |        | .50   |
| ELEGANCE—SC—Yellow and coral .....            | 1.00   | .50   |
| ENID CRANE—ID—Deep yellow .....               |        | 1.00  |
| ENTRUP'S SULTAN—ID—Red .....                  | .50    |       |
| EXNAR'S GIANT—ID—Peach; large .....           | .50    |       |
| EDELWEIS—MC—Snowwhite .....                   |        | .75   |
| FLAMING SONNE—D—Old Gold with red .....       |        | 1.00  |
| FLAMING TORCH—C—Orange red .....              |        | 2.50  |
| FOREST FIRE—ID—Yellow-tipped scarlet .....    | 2.50   | 1.25  |
| GENESSE—ID—Burnt Orange .....                 | 1.00   | .50   |
| GOLDEN ECLIPSE—FD—Gold .....                  | 1.00   | .50   |
| GOLDEN PRINCE—ID—Gold and peach .....         |        | 2.50  |
| GOLDEN AGE—SC—Amber orange .....              |        | 1.00  |
| HEATHERBLOOM—FD—White and lavender .....      | 1.00   |       |
| HONOR BRIGHT—FD—Peach-red .....               | 1.00   | .50   |
| HILL, MANDARIN—ID—Scarlet and yellow .....    | .50    | .50   |
| INDIANA MOON—ID—Autumn shade .....            | .50    |       |
| IRENE ANDERSON—ID—Red and white .....         | .50    |       |
| IDA PERKINS—FD—Clear white .....              | .50    |       |
| JOE E. MILLER—D—Red and gold variegated ..... |        | 1.50  |
| JOGER—SC—Coral red and carmine .....          | .50    |       |
| JERSEY'S BEACON—FD—Orange scarlet .....       | .35    |       |



# LAKESIDE DAHLIA GARDENS, NEW BALTIMORE, MICH.

---

|  | ROOT | PLANT |
|--|------|-------|
| KENTUCKY—FD—Light salmon orange                        | .35  |       |
| KATHLEEN NORRIS—ID—Pink                                | .50  | .50   |
| LOUISE BATES—SC—Mallow pink                            | 1.00 | .50   |
| LILAC GLORY—IC—Light lavender                          |      | .50   |
| LITTLE PEARL—S—Bright salmon pink                      |      | .75   |
| LUCRETIA—ID—Light buff with rose                       | 5.00 | 2.50  |
| LUGDUNUM BATAVORUM—FD—Crimson                          | .50  |       |
| MAY ROBSON—SC—Bright pink                              |      | 1.50  |
| MONA GOLD—ID—Old gold                                  | 1.00 |       |
| MRS. RUFUS DAWNES—ID—Pale lemon-yellow                 |      | 2.00  |
| MARYLAND GLORY—FD—Tyrian rose and crimson              |      | .50   |
| MISS ANTWERP—SC—Pink and yellow                        | 1.00 | .50   |
| MASTADON—ID—Rich amber or apricot                      | .50  |       |
| MRS. A. T. BOSS—ID—Pink and white                      | .50  |       |
| MARKET JEWEL—SC—Velvet red                             |      | 2.50  |
| MAD. FLORENTINE BRAEM—C—Salmon and yellow              |      | 1.00  |
| MAD. GERMAINE V. D. BOGARET—C—Salmon and yellow        |      | 1.00  |
| MRS. RICHARD TWYFORD—C—Scarlet with yellow             |      | 1.00  |
| MAD. SIMONE STAPPERS—MS—Carmine red with black foliage |      | 1.50  |
| MR. J. GORIS—MS—Orange with black foliage              |      | 1.50  |
| MR. JULES BUYSENS—Yellow orange with black foliage     |      | 1.00  |
| OLYMPIC SUNSET—SC—Apricot and coral                    | 1.00 |       |
| ORANGE WONDER—SC—A Real orange                         | 2.50 |       |
| PANHANDLE PINK—SC—Rose Pink                            |      | .50   |
| PAULINE JAMES—C—Reddish terra-cotta                    |      | 1.00  |
| PALO ALTO—ID—Salmon and gold                           | 1.00 |       |
| PEPPERMINT CANDY—Cream with red strips                 | .50  |       |
| PINK AMBASSADOR—C—Pink with paler center               | .50  |       |
| QUEEN CITY—FD—Scarlet pink                             |      | 3.75  |
| RED FAVORITE—SC—Fiery red                              |      | 3.75  |
| REV. PERE DE DEKEN—S—Copper with black foliage         |      | 1.50  |
| RENATE MUELLER—C—Salmon pink and yellow                | .50  |       |
| REV. GEO. GARNER—D—Deep yellow                         |      | 1.00  |
| R. P. RUTHERFORD—ID                                    |      | 1.00  |
| SHALIMAR—ID—Carmine red                                | 1.00 |       |
| SONNY BOY—D—Old rose with gold                         | 1.00 |       |
| STAR O FBETHLEHEM—ID—White                             | .50  |       |
| TEDDY BEAR—S—Blood red                                 |      | 1.00  |
| TRAUER UM LANGEMARK—Nearly black                       | 1.00 | .50   |
| THOMAS EDISON—D—Royal purple                           | .75  | .50   |
| TREASURE ISLAND—FD—Apricot                             | .50  | .50   |
| VLAMMENSPEL—SC—Bright orange                           |      | 3.75  |
| WHITE ABUNDANCE—ID—Ivory white                         |      | 1.25  |
| WEISSER HIRSCH—SC—White                                |      | .50   |
| YELLOW SATAN—SC—Deep yellow                            | .50  |       |
| YELLOW SURPRISE—SC—Sulphur yellow                      | 1.00 | .50   |



## EARLY FLOWERING DAHLIAS

This Collection is Useful for Dwarf Pot Culture.

When Forced Indoors They Bloom About Easter.

|  | PLANT  |
|--|--------|
| CHRISTEL—Pure white                            | \$2.00 |
| KATE—Deep scarlet                              | 2.00   |
| LENA—Salmon, suffused sulphur yellow at center | 2.00   |
| LISEL—Golden yellow                            | 2.00   |
| EASTER GREETINGS—Creamy white                  | 1.00   |
| ROSEL—Rosy lilac with white center             | 2.00   |
| TRAUDEL—Sulphur yellow                         | 2.00   |
| URSEL—Red                                      | 2.00   |

# COLLECTIONS

## ROOT COLLECTION

JANE COWL  
JEAN KEEFER  
JERSEY'S BEAUTY  
JOSEPHINE G.  
RUBY TAYLOR  
KENTUCKY  
MRS. I. DE VER WARNER  
MYRA HOWARD  
BUCKEYE KING  
THE COMMODORE  
JERSEY'S BEACON  
HILL. MANDARIN  
IRENE ANDERSON  
CAPE MAY  
JERSEY'S DAINTY

Any Six for . . . . \$2.50  
Or any 10 for . . . \$4.00  
Or All for . . . . . \$5.50

## PLANT COLLECTION

LORD OF AUTUMN  
ROBERT EMMETT  
MRS. BRUCE COLLINS  
DETROITER  
AMELIA EARHART  
CITY OF CLEVELAND  
ADIRONDACK SUNSET  
HUNT'S VELVET WONDER  
GENESSE  
DADDY KEMP  
KAY FRANCIS  
JERSEY'S DAINTY  
MURPHY'S MASTERPIECE  
WENOKA  
CAVALCADE

Any Six for . . . . \$5.00  
Or any 10 for . . . \$6.50  
Or All for . . . . . \$9.00

---

## Foreign Plant Collections

ALTMARK  
CORALLINA  
ENTRUP'S MONARCH  
FRANZ BERGER  
FRAU IDA MANSFIELD  
FRAU MARIE KIPKE

Any Six for . . . . . \$3.00  
Or All 12 for . . . . . \$5.00

LEMONIA  
MEUNCHAUSEN  
PINK DAILY MAIL  
SACRED FIRE  
TANNENBERG  
MISS BELGIUM

---

## Super Collections

NANCY DUNE  
MRS. GEO LeBOUITILLIER  
CALIFORNIA ROSE  
MARY RETZER  
HILLCREST NUGGET  
OAKLEIGH MONARCH

Any Six for . . . . . \$10.00  
Or All 12 for . . . . . \$15.00

ROYAL PURCHASE  
MISS GLORY  
KITTY MAC  
ADORABLE  
CLARA CARTER  
BLUE RIVER

## *It's A Gift...*

This catalogue is yours, with our compliments, and we are happy to have you own a copy. Each year we endeavor to improve upon it, and to make it as attractive and authoritative as anything in its field.

## *But...*

like most good things in life, it costs real money. We'll go further than that, and tell you exactly what it costs: 25 cents per copy. Now, our files show that several thousand people on our mailing list have never favored us with a single order. Some of them are either catalogue collectors, or have long since given up flowers and taken up golf, or have gone into the chicken business. Thus, we are annually spending a lot of money which is wasted on blind eyes and deaf ears. Economy and sound business demand that we do something about it.

## WHAT THEN?

*If I knew you and you knew me,  
'Tis seldom we would disagree;  
But never having yet clasped hands,  
Both often fail to understand  
That each intends to do what's right,  
And treat each other "honor bright."  
How little to complain there'd be  
If I knew you and you knew me.*

*Whene'er we ship you by mistake,  
Or in your bill some error make,  
From irritation you'd be free,  
If I knew you and you knew me.  
Or when the checks don't come on time,  
And customers send us "nary" a line,  
We'd wait without anxiety,  
If I knew you and you knew me.*

*Or when some goods you "fire" back  
Or make a kick on this or that,  
We'd take it in good part, you see,  
If I knew you and you knew me.  
With customers hundred thousand strong,  
Occasionally things go wrong—  
Sometimes our fault, sometimes theirs—  
Forbearance would decrease all cares.  
Friends, how pleasant things would be,  
If I knew you and you knew me.*

*Then let no doubting thoughts abide  
Of firm good faith on either side;  
Confidence to each other give,  
Living curselves, let others live.  
But any time you come this way,  
That you will call, we hope and pray;  
Then face to face we each shall see  
And I'll know you and you'll know me.*

## *And So...*

The time has arrived when we are obliged to place a limitation on the number of seasons that we can send our catalogue gratis to those who do not respond in any manner. Henceforth, we shall withdraw from our files the names of all those who have not ordered after the second catalogue has been mailed to them.

To our host of customers and friends who, through loyal and continued patronage have made possible this and prior catalogues, we extend warm and sincere appreciation.

LAKESIDE GARDENS.

---

11

R. O. Printing Company  
510 S. Washington Avenue  
Royal Oak, Mich.

# Dahlia Culture

. . . .

**SOIL.** Dahlias will grow in any soil provided there are sufficient plant foods in the soil to supply the needs for proper growth. Many soils can be improved to grow better dahlias. A heavy soil or clay soil may be improved by the addition of sand and the use of quantities of rotted manure and peat.

**FERTILIZER.** Before adding plant foods, have your soil tested to determine deficiencies. Generally, 5 to 10 pounds per 100 square feet of a fertilizer analyzing 2-12-8, or thereabouts, will meet most requirements, if the soil has already had organic material added to it. After the first of August, when the plants are beginning to show flower buds, "feeding" with small amounts of nitrogenous fertilizers, once or twice, will favor the development of larger flowers and more vigorous plants.

**DIVISION.** Never plant a "clump" of roots. Divide the clump carefully into a number of parts so that each division will have one sound, healthy tuber, and one or two plump buds.

**PLANTING.** For exhibition flowers, dahlias should be planted at least 3 feet apart each way. Dwarf varieties for bedding and varieties used for landscape effect may be planted closer. Dwarf singles, as Coltness Gem, should be planted 12 to 14 inches apart for best bedding effects. Dig the holes at least 6 inches deep. Place the tuber horizontally in the bottom of the hole with the bud an inch or so from the stake. Cover the roots with about 2 to 3 inches of soil. As the plants grow the hole may be filled in by cultivating.

**STAKING.** Five to 7 foot stakes will be required to support tall growing varieties. The stakes should be set in at the time of planting. If you wait until later to drive in the stakes, much damage may be done to the roots of the plants.

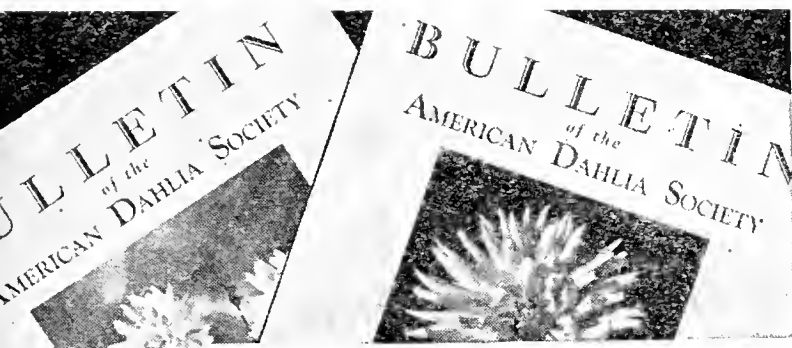
**PRUNING.** Large-flowered types and bedding types should have the tips of the plants cut out when they have reached a height of 8 to 12 inches. Cactus varieties are often permitted to grow until the first buds appear. These are then pinched out to encourage the growth of the laterals. For exhibition flowers, allow only 3 or 4 branches to develop. Remove side buds and all laterals, except those at the bottom, from each of the branches.

**WATERING.** If "green plants" are planted, water carefully for the first 2 weeks. Through July never allow the soil to dry out sufficiently to cause a checking of the growth. After the first of August and until early or mid-September, dahlias will require plenty of water. If the soil is well drained, there is not much danger of overwatering. Throughout the summer on dry hot days, the plants will be much benefited by a thorough syringing in the early afternoon.

**DIGGING.** After the first heavy frost, the tops of the plants will blacken and dry. A few days to a week after a frost the tops should be cut off and the clumps dug up. They should be carefully dried off in the sun for several hours before being stored.

**STORAGE.** Store the tubers in dry granulated peat in a cool place. The best storage temperature is about 45 degrees Fahrenheit. The storage atmosphere should be moist enough to prevent excess drying of the roots and at the same time not so moist as to encourage mold or storage rots.

In the fall when your dahlias are blooming, enter some blooms in the Dahlia Shows near you. You will have lots of pleasure and will learn much about dahlias at the exhibitions.



## JOIN THE AMERICAN DAHLIA SOCIETY

**W**e invite our friends and customers to join the American Dahlia Society and become a part of this great National organization whose interest is devoted solely to the improvement of the Dahlia.

The Quarterly Bulletin—a real Dahlia Magazine—gives all the up to date Dahlia news, information about, and illustrations of new varieties, the latest cultural hints and is a real worth while guide to any lover of Dahlias. The Bulletin alone is worth many times the cost of the annual dues.

Trial Gardens are maintained at Connecticut College, Storrs, Connecticut, and The Michigan Agricultural College, East Lansing, Michigan, where new varieties are tested and scored each year. A test garden is also maintained at Cornell University, Ithaca, New York, for research work on insect and disease control. Full reports from all these gardens are published from time to time.

Dahlia “fans” in every state of the Union and many foreign countries are members and frequently contribute news to the Bulletin. Membership includes admission, and the privilege of exhibiting at all our National exhibitions which are held each September in some National center.

Dues \$2.00 per year  
Payable in advance

JOIN NOW—and we know  
you will not regret doing so

Proposed by

**LAKESIDE GARDENS**

---

### APPLICATION FORM

---

To C. Louis Alling, Secretary of The American Dahlia Society, Inc.,  
251-37 Court Street, West Haven, Connecticut.

Enclosed find \$2.00 for which please enroll me as a member of your Society. Send copy of the current Bulletin.

Name .....

Address .....

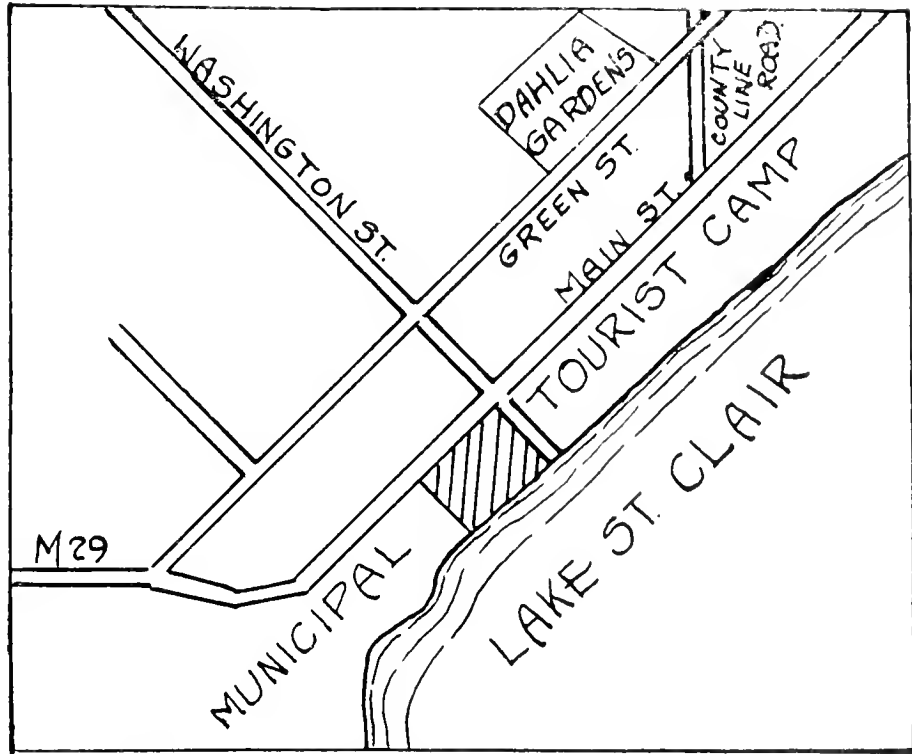
.....



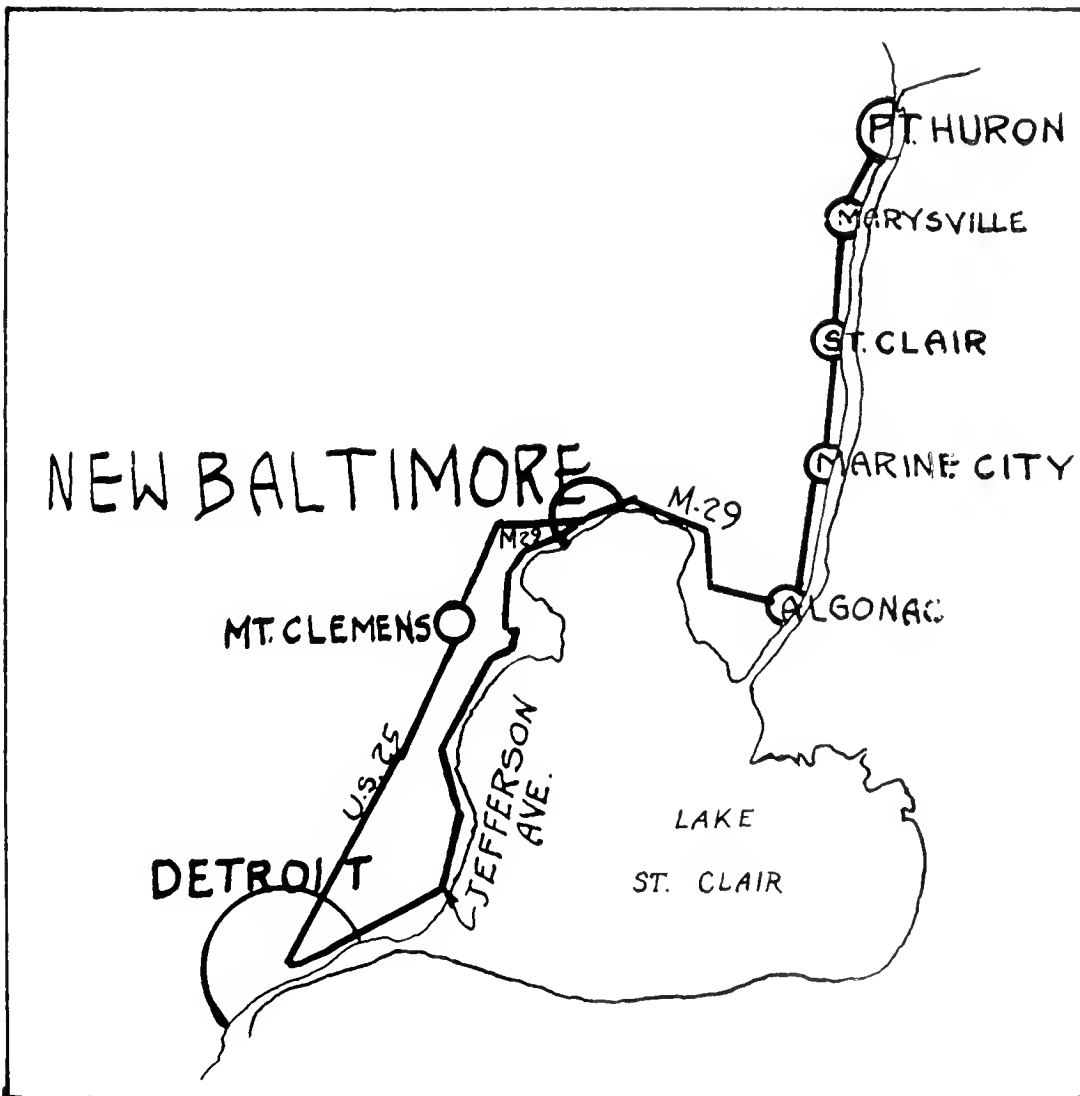
LAKESIDE DAHLIA GARDENS, NEW BALTIMORE, MICH.

Directions

From Detroit; north on U. S. 25 through Mt. Clemens five miles to junction of Michigan 29; turn right four miles to New Baltimore; take left fork to gardens—three blocks beyond stop light.



NEW BALTIMORE





This 450 square foot display won for us first prize at the National Dahlia Show in 1936 and also helped us win both Grand and Professional Sweepstakes, which we have won for the past three years.



# LAKESIDE GARDENS

NICK KOENIG & SONS, Proprietors

NEW BALTIMORE

MICHIGAN

