

Historic, Archive Document

Do not assume content reflects current scientific knowledge, policies, or practices.

LIBRARY
RECEIVED

☆ JAN 29 1937 ☆

U. S. Department of Agriculture

1937

DAHLIAS



Mr. Lee In Partial View of Main Gardens

LEE'S DAHLIA GARDENS

"Oldest in the State"

University Place

Route 5, Box 600

TACOMA, WASHINGTON, U. S. A.



MEMBER OF

Washington Dahlia Society of Tacoma

American Dahlia Society

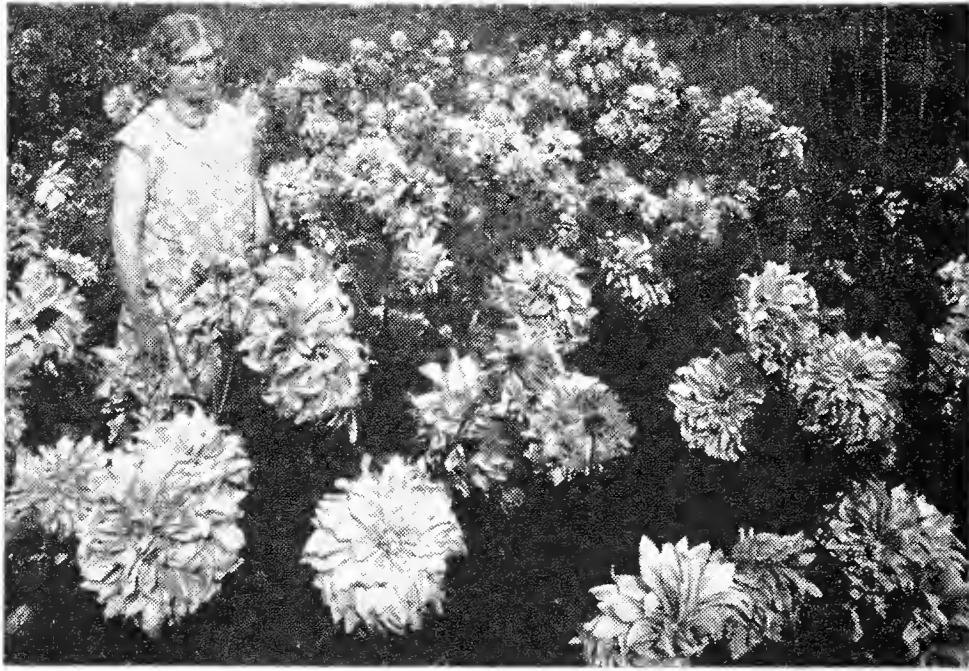
Columbia Valley Dahlia Society

Central States Dahlia Society

Dahlia Society of Indiana

“1937 FLASH”

From “Our Friendly Gardens”



MRS. LEE IN FIELD OF “WASHINGTON GIANT”

It is a pleasure to present you with our very modest catalog for this season. And it is our intention to make real friends of all who entrusts us with an order.

We have many hundreds of such friends now and we trust that if your name is not already on this list, that we may have the pleasure of adding it on this season.

To do this we must be truthful and trustworthy and this is our aim at all times, and we have done our best to correctly, and briefly, describe the colors, stems and habits of the Dahlias just as they grow here in the Gardens for us, and we have carefully tested and selected only varieties we believe will give best results in your own gardens.

We had a wonderful growing season, and the soil and location of our Gardens on the shore of Puget Sound is ideal for Dahlias and the roots we send out are all well matured, and full of “pep.” No stunted stock. This year we have the finest list of Dahlias we have ever offered; (see picture on front and we believe you will agree this is true); our own new introductions, other outstanding American, and many new rare imported varieties, which won us 85 prizes, plus 7 SWEEP-STAKES and 2 ACHIEVEMENT MEDALS. All blooms entered were from field grown stock, which was not forced in any way and only lightly disbudded. So we know if they can win prizes for us they can for you also. We are both true garden “fans,” and we are always glad to help our friends in their Dahlia problems; we do not claim to “know it all,” but we are glad to pass on any of our 30 years’ experience in Dahlias. We had a good business last year, and brighter prospects for this season, and **WE SINCERELY WISH TO THANK** our many friends who made this possible, and we trust our Dahlias pleased you and that you will favor us with your orders again this season.

We cannot “sign off” without thanking all who wrote us such fine letters. We enjoyed them all, and we appreciate all favors of those who so kindly recommended us to their friends.

We wish you all the best of Health, Happiness and Success.

Yours sincerely,

J. W. AND MRS. J. W. LEE.



DAHLIAS FREE, WITH CASH ORDERS

We send a surprise gift Dahlia with orders of \$2.00 and over, the value of the gift according to the size of the order.

TERMS: CASH with order or before shipping. Order early and avoid disappointment.

DELIVERY: We pay postage on all retail orders, and all orders paid in full are sent out April 15th to 20th unless otherwise directed. Orders sent before April 1st at purchaser’s risk of drying up, freezing or rotting.

FULL CULTURAL DIRECTIONS are sent with your order.

WE GUARANTEE all our Dahlias true to name, with live eyes or sprouts.

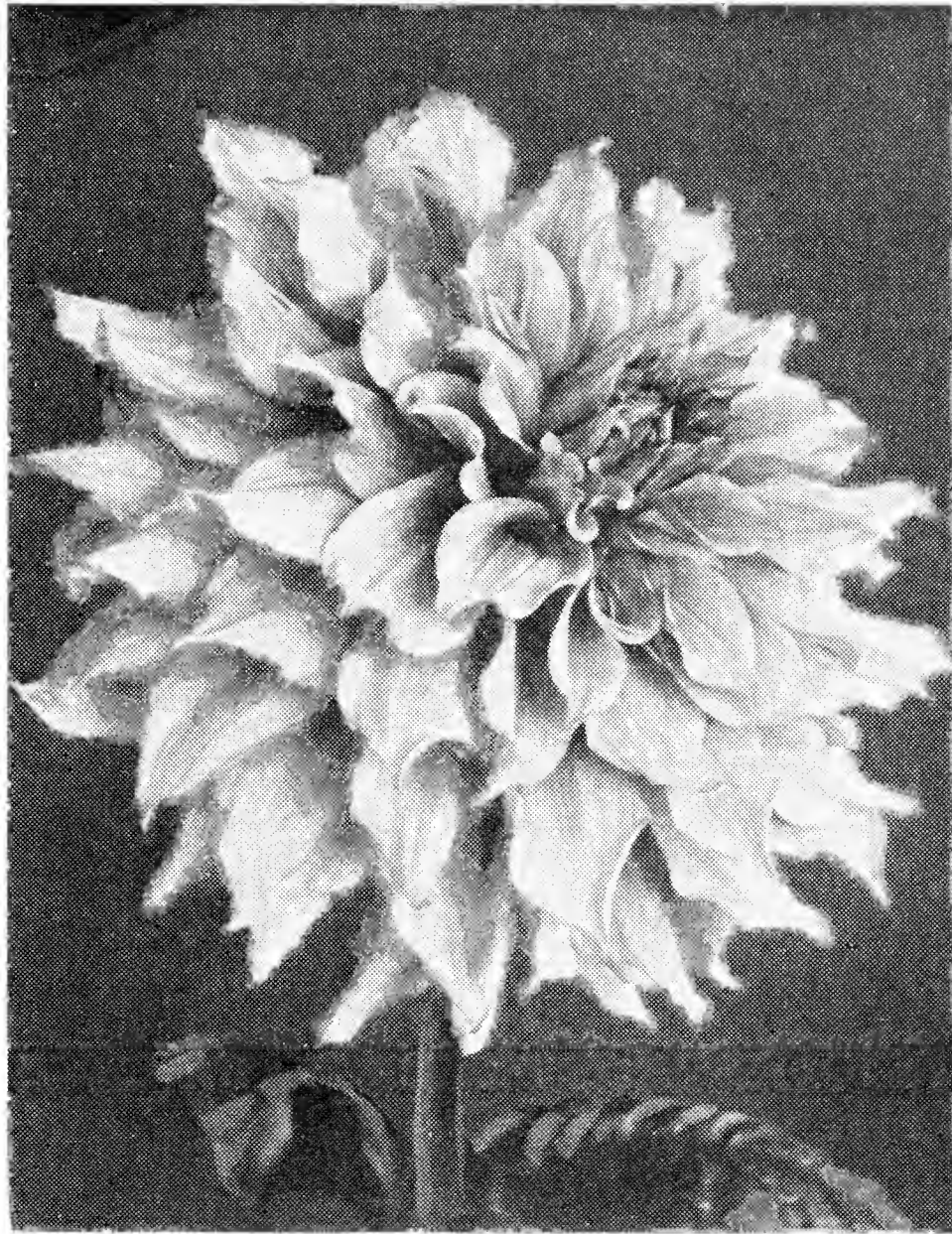
Write us at once if the shipment should not arrive in satisfactory condition. We carefully inspect each root before it is shipped. If you have any complaint, make it to us first, and give us a chance to correct any mistake. We believe in a Square Deal for all.

If we may substitute, please give second choice.

REFERENCES: National Bank of Tacoma and Dun & Bradstreet.

Write your name and address plainly.

OUR 1937 INTRODUCTIONS



DREAM GIRL

Sorry we are too limited on stock to release "**SILVERWING**" this season, but look for it and other very outstanding varieties we will have for you next season. We have some dandy ones, watch for them.

***DREAM GIRL**—Informal Decorative. Outstanding on the leading HONOR ROLLS of the Country and the most outstanding new Dahlia in the Northwest. Winning 2 AMERICAN HOME ACHIEVEMENT MEDALS, one at Washington State Show, Tacoma, and one at Portland, Oregon, where it also won sweepstake for the best undesiminated large Dahlia, and has also won other prizes.

Blooms are very large (11x6 in. deep) and are held perfectly erect well above the foliage on splendid stems. Color is a very pleasing Salmon-rose with a warm glow of gold at center; petals lightly tipped with gold, a very live, sparkling Dahlia. To quote Mr. Barron, who is a well known authority, and who has seen it in bloom: "The petals have a pleasing wave and the flower, as a whole, tends toward a graceful formality which is quite welcome." Plants medium tall, fine habits and profuse blooming. We had splendid reports where we sent it for trial in the Mid-West. Mr. Robens, of Ohio, exhibited a 11-inch bloom at the Cleveland Show, where it attracted much favorable attention. Another well known authority in Wisconsin wrote us: "It was wonderful in my garden, very beautiful and exceedingly attractive." You will enjoy growing this grand Dahlia. Stock limited. Plant, **\$5.00** net. Roots, **\$10.00** net.

***LE'JOY**—Another of our HONOR ROLL and outstanding prize winners. Won first prize for best Informal Decorative and SWEEPSTAKE for best undesiminated Dahlia at Washington Capital Dahlia Show at Olympia. We also had a splendid report on it from the Mid-West. A rare new color, very deep bluish orchid, with many of the blooms tipped pure white, making a striking effect. Blooms are large, good depth, and stems are long and always perfectly erect. Medium tall plants with good habits. Petals are broad with just enough wave to take it gracefully out of the formal class. Plants, **\$5.00**. Roots, **\$10.00**.

***LEMON-GLO**—Won first prize for best Semi-Cactus at Washington Show, Tacoma, and has won other prizes. Blooms are very large, good depth, and stems are long, and hold the blooms perfectly erect at all times. Color is a very lovely lemon-yellow without shading. Blooms are very full and one of the most perfectly formed S. C. we have ever seen. Very profuse blooming, and a splendid keeping cut flower. Tall plants of good habits. Do not miss growing this fine Dahlia. A very large stock enables us to sell it at this low price for a new Dahlia. Roots ----- **\$5.00**

- ***IVRALEE**—Received its name at a contest in the Washington Show, Tacoma, where it received much publicity and praise, as well as its descriptive name. Another very fine Semi-Cactus, much like Lemon-Glo except the color is a beautiful ivory, blending to a creamy yellow at the base of petals. Makes a fine companion for the above variety. Blooms are very large, full, and have good depth. Stems are splendid, and hold the blooms well above the foliage. Tall plants, good habits, and profuse blooming. Roots-----\$5.00
- ***GREETING**—Semi-Cactus. A wonderful cut flower variety, good keeper on bush or when cut. Very profuse blooming and has long, strong, erect stems. Color is a warm salmon-pink blended with buff and tinted with apricot at center. Blooms medium to large size, good depth and fine form. Medium height, good habits. Roots -----\$3.00
- ***JUNGLE QUEEN**—Informal Decorative. A very clear, rich velvety red with darker shadings, and without a tint of purple, lighter reverse. Blooms are large, good depth, and fine form. Stems good. Medium height, good habits. Dandy red. Roots -----\$3.00
- ***ORCHID KING**—Informal Decorative. A very beautiful, clear orchid lavender, without shading. Fine form, with broad pointed petals, good depth, large size, and stems are always erect. Profuse blooming and good keeping on plant or when cut. Tall plants. A fine Dahlia. Roots-----\$3.00
- ***SWEET SIXTEEN**—Informal Decorative. Every one who has seen this Dahlia says "well named." A very lovely coral rose blending to lemon yellow at base of petals. Blooms large, fair depth, and good, long, erect stems. A wonderful keeping cut flower, and profuse bloomer. We are sure you will love this beautiful Dahlia, both on the plant and for cutting. Roots-----\$2.50
- ***ETHELIN**—See miniature Dahlias.

OTHER 1937 INTRODUCTIONS

We had the privilege of growing all three of these very fine Dahlias in our Gardens last season, and can heartily recommend them, and we have been given permission to catalog them, and we know you will enjoy growing them. Stock limited.

- CHEMAR'S CURLEY LOCKS (Caldwell Chemar-Lee)—I. D.** One of the grandest autumn colored Dahlias we have ever seen. Fine 12-inch blooms of good depth, beautiful form, broad waving petals. Color is bright gleaming gold with apricot orange blend. Splendid stems, holding the giant blooms well above the dark insect resisting foliage. Medium tall, good habits.----Plants, \$7.50. Roots, \$15.00
- GREATER GLORY (Salem-Lee)—S. C.** Very beautiful, artistic form with waving petals, which are rather fine for a Semi-Cactus. Deep rose pink with tint of cream at center. Very large, long, erect stems. Tall grower, good habits and very profuse bloomer. Won 11 first prizes and A. D. S. Medal in shows last year. A grand Dahlia. -----Plants, \$10.00. Roots, \$20.00
- LEHMAN'S MADONNA—(PEACE?)—(Lehman-Chemar-Lee).** I believe the name of this fine white has been changed to Peace, which is a very fitting name. A very pure white of very large size on the very best stems. Informal Decorative of lovely form and good depth. Scored 89 in Trial Garden, and won Cup at O. V. D. A. Show. Won Achievement Medal at Rockville Centre, N. Y. Tall and has Good habits.-----Plants, \$12.50. Roots, \$25.00

DAHLIAS OF REAL MERIT

NEW AND STANDARD

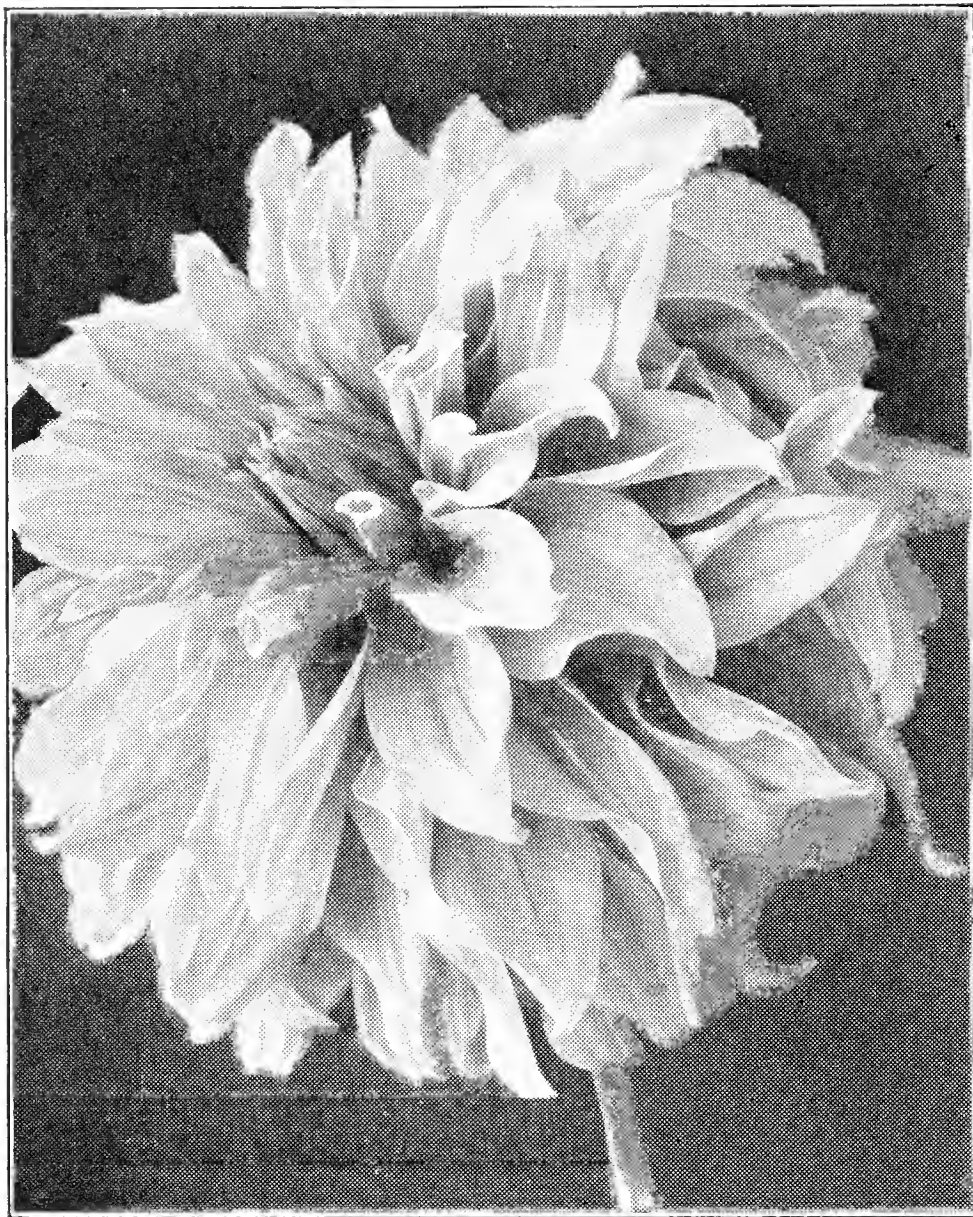
Notice—The letters following the name indicate the type and those with our name (Lee) are our own introductions.

Cactus, Cac., Intermediate Cactus, Int. Cac. This type of cactus is too wide in petal to be classed with the true cactus and too fine to be classed with the Semi-cactus, but belongs in a class of its own between Cactus and Semi-Cactus—Semi-Cactus, S. C., Informal Decorative, I. D., Formal Decorative, F. D., Peony, P., Show or Ball, Ball. Those preceded by * are Washington Introductions.

Roots each

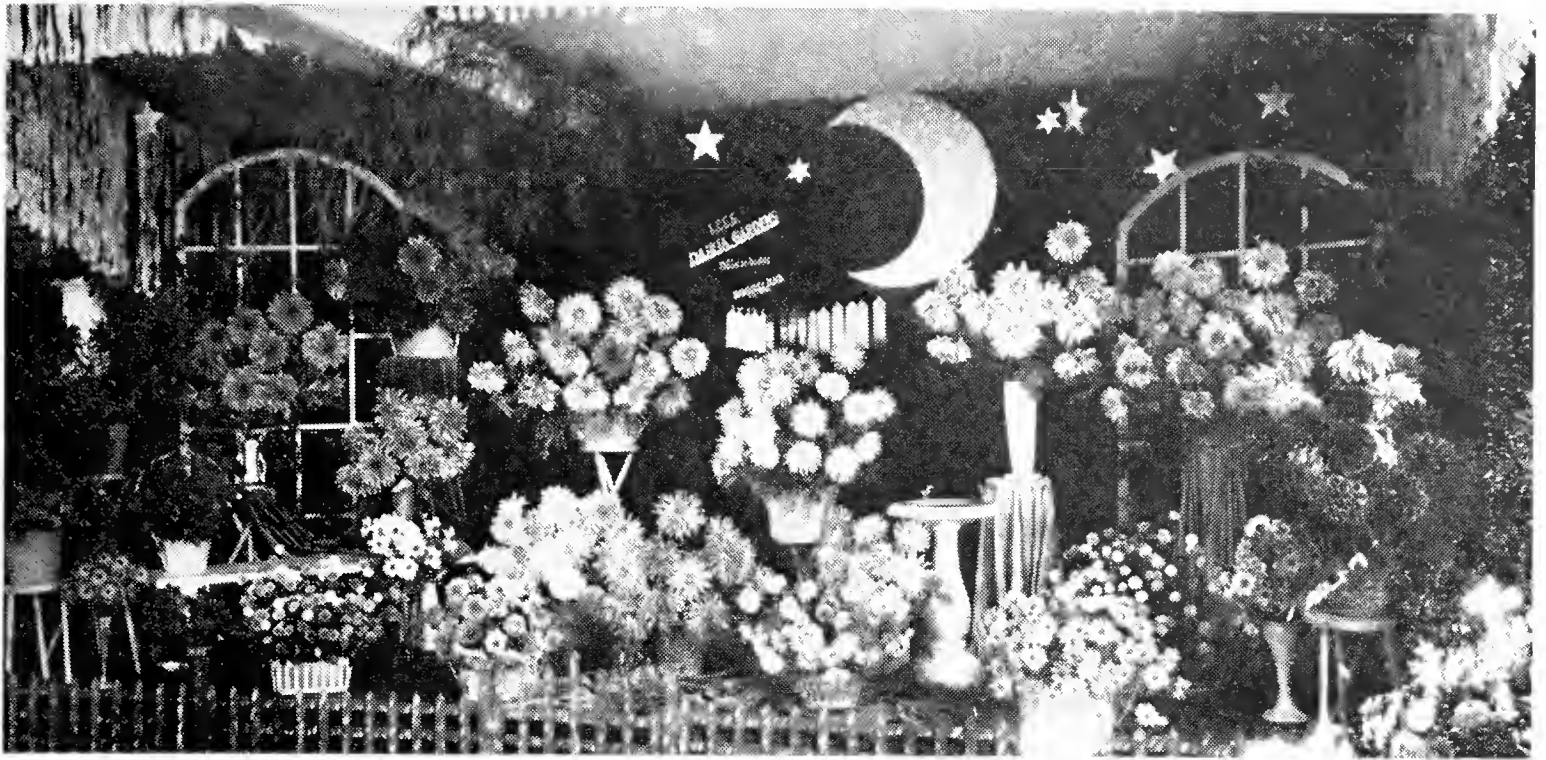
- ABSOLUTE—I. D.** A large and very beautiful, bright clear rose, very fine for cutting. Long, strong stems and profuse blooming-----75c
- ADORABLE—I. D.** On the 1935 Honor Roll and won many prizes in the east and is also a Certificate of Merit winner. Blooms are very large and full and stems are splendid. Color is a very beautiful peach pink with a blend of gold. A very fine variety -----\$1.50
- ADIRONDACK SUNSET—I. D.** One of the most outstanding 1935 introductions and a very large bloom of beautiful form and great depth. One of the big prize winners you should grow. Color is a very spectacular blend of vivid scarlet, shading to canary yellow at base; tipped with gold, reverse deep gold. Long cane-like stems -----\$2.00
- ***ALVARO—I. D.** Large, rich, velvety cerise, silvery reverse, strong stems-----35c
- ***AIR MAIL—I. D.** Blooms very large, on strong cane-like stems which hold the big blooms in the air. Fine cut flower. Color pink tinted with lavender-----50c

- ALEX CRAIG—Int. C.** A large and very beautiful pink with creamy center. Stems excellent. Free bloomer. A very lovely variety-----\$1.00
- AMELIA EARHART—S. C.** A very outstanding variety and one of the largest grown. Giant blooms are held erect above the foliage on strong stems. Fine autumn coloring of apricot buff. Grand Dahlia -----\$1.00
- AMERICA'S SWEETHEART—I. D.** An immense variety which was one of the outstanding 1935 introductions. Color is clear, pure yellow. Blooms very full and petals fall back to the stem, like a huge Chrysanthemum. The blooms are held almost on top of the absolutely stiff stems. An outstanding prize winner and can be grown to 12 inches across-----\$5.00
- AMERICAN TRIUMPH—Cac.** Large, rich bright red, good stems-----50c
- BAERNE—Int. Cac.** New imported. A very lovely deep coral pink, medium size, profuse blooming, splendid stems. Wonderful cut flower-----\$3.00
- BAGDAD—I. D.** Big flaming scarlet red, strong stems-----50c
- BALLEGO'S SURPRISE—Int. Cac.** New Imported. Large, pure white, profuse bloomer, good stems -----\$4.00
- BETTY COULTER—I. D.** Large, redish salmon, lovely form, strong stems. A fine variety -----75c
- BLACK DIAMOND—Ball.** Large, dark velvety red, good stems-----25c
- *BLUE HARMONY (Lee)—I. D.** Very attractive, fringed petals, high full center, color deep lavender tinted with blue. Good stems-----75c
- BLUE RIVER—F. D.** This was one of the most outstanding of the new eastern Dahlias in our Gardens and displays the past season and we highly recommend it. Very large, bright mauve with decided blue shading. Stems splendid, profuse blooming -----\$4.00
- BUCKEYE KING—F. D.** Large glowing amber yellow, splendid stems-----75c
- CADET—S. C.** Very large, creamy yellow, form of Satan. Strong, upright stems-\$2.00
- CALVACADE—F. D.** Large blooms good stems, good cut flower. Color mulberry and old rose -----\$2.00
- CAMEO—**See Sanhican's Cameo.
- CANARY—I. D.** Bright canary yellow. Large, good stems-----25c
- CORALLINA—S. C.** Very large, brick red, beautiful wavy petals. Strong stems. New Imported -----\$1.50
- *CHAMPOEG—I. D.** Very beautiful and always attracts lots of attention. A rare color of waxy yellow overlaid at outer end of petals with a bright salmon pink. Blooms very large on long, fairly strong stems-----50c
- CITY OF CLEVELAND—I. D.** Blooms very large, stems strong and erect. Orange red, described as "rust red." Profuse bloomer. Very good-----\$2.50
- CLARA CARDER—I. D.** New Imported, originated in New Zealand. This was a big prize winner for us last season. Won First Prize for best Foreign Decorative, Sweepstake for best Informal Decorative, and Grand Sweepstake for most perfect Dahlia in the Washington Show at Tacoma, Sept. 11th, 1936. Extremely large size, stem always strong and erect, holding the big blooms well above the foliage. Color a lovely cyclamen pink, beautiful form, petals slightly waving. We highly recommend this Dahlia. Our stock of this Dahlia is very high quality but very limited, so order early to avoid disappointment-----\$5.00
- CLARA CLEMENS—Ball.** Large, deep, rich red tipped with pure white. Stems strong and erect -----50c
- COL. GREEN—Cac.** Large bright red, good stems-----50c
- COL. LEWIS—I. D.** Very large blooms on stout stems, color is a very deep rose pink. A grand new Dahlia -----\$1.50
- CORNELLIA BRYCE PINCHOT—I. F.** Large bloom on good stem, color burgundy wine -----\$2.00
- *CURLYHEAD (Lee)—P.** Outer petals are broad and wavy while the center is filled with a mass of auburn curls, hence the name. Color is a blending of gold and orange. Blooms are large, stems perfect. Profuse blooming-----50c
- CREAM OF GOLD—I. D.** Very large, creamy yellow shading to gold. Strong, erect stems. Very fine -----\$7.50
- D. JUBILYNE—I. D.** A very unusual shade of deep old rose with golden sheen, very large, splendid stems -----\$1.50
- *DAD SMITH—I. D.** Soft red blended and tipped with golden yellow. Medium size, good stems -----\$2.00
- DAILY MAIL—I. D.** One of the largest Dahlias grown, and stems are long and always hold the giant blooms perfectly erect at all seasons. Color deep yellow blending to golden orange. A wonderful Dahlia with splendid habits-----50c
- DAINTY ROSE—I. D.** Delightful shade of light rose pink, with blend of cream. Good stems -----50c
- DOKOUILOVA OBROVSKA—I. D.** A very large, soft lavender, good stems, profuse blooming -----\$1.00



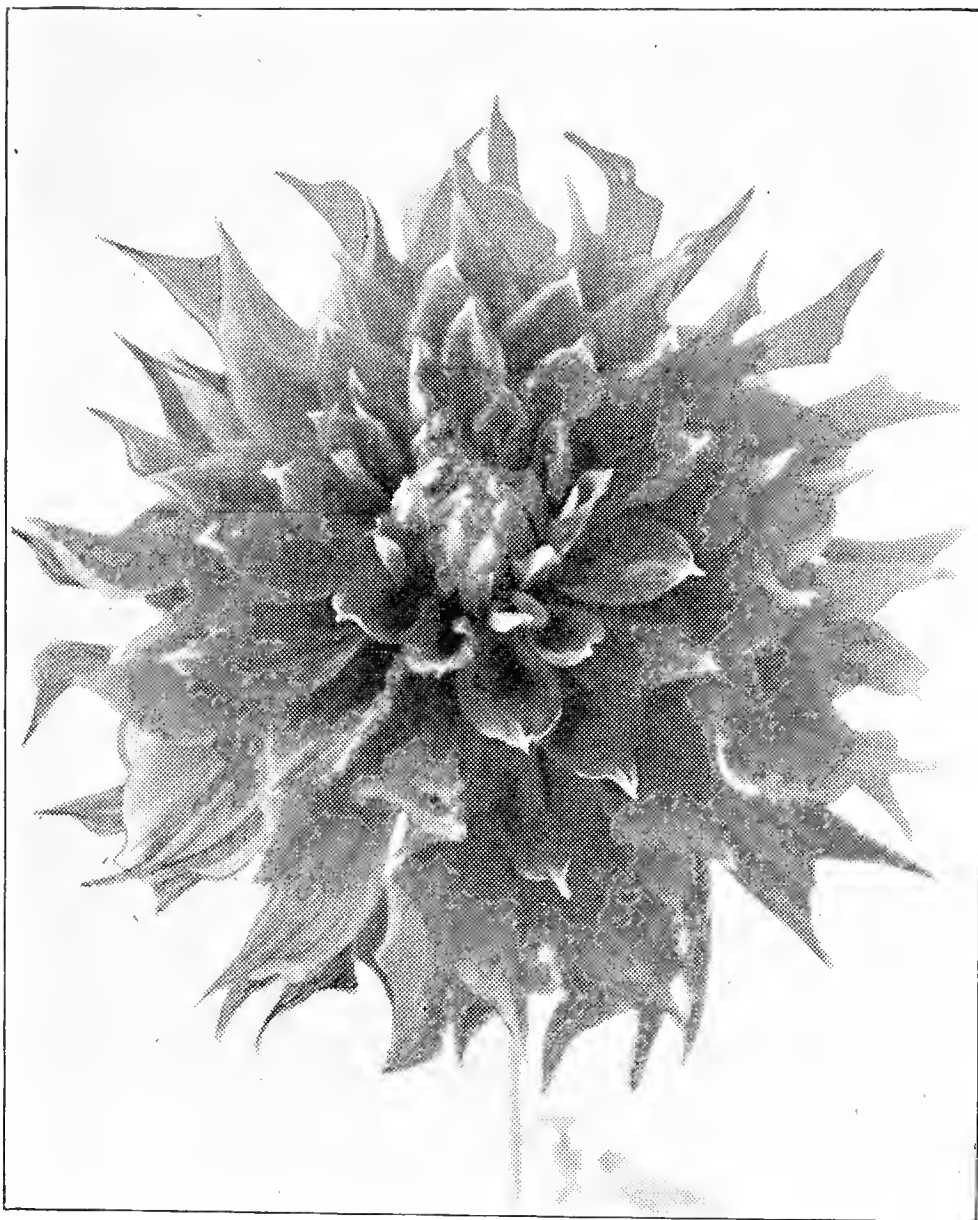
GOLDEN SWEEPSTAKE

- DOREEN—S. C.** New Imported. One of the grandest Dahlias we have ever grown in the autumn coloring. A rich golden brown, blended with orange. Blooms extremely large, long stems holding the big blooms perfectly erect at all times, well above the foliage. Blooms very full and deep, lovely form. We very highly recommend this wonderful Australian Dahlia.....\$7.50
- EAGLE ROCK FANTASY—I. D.** Has won many prizes for the largest Dahlia in Shows all over the U. S. Lavender pink, stems strong and erect.....75c
- EDGAR JACKSON—Cac.** Large, clear salmon coral, a very beautiful color and lovely formation of incurving petals. Very profuse blooming and stems are strong and erect. Fine cut flower50c
- EDNA FERBER—S. C.** Extremely large, good stems, beautiful apricot coral and gold, fine variety50c
- EHRENPREISS—S. C.** Imported. Very lovely shade of salmon-rose, medium size, early and free blooming, strong erect stems, splendid cut flower.....75c
- ELDON—I. D.** Very pure white, pointed petals, good stems.....35c
- ELLISA LANDI—F. D.** Beautiful shade of salmon-orange, large blooms, good stems\$1.50
- EVELYN—F. D.** New Imported. Soft begonia rose shading lighter to edge of petals, rose pink reverse. Good stems\$1.50
- FABENWUNDER—S. C.** Truly a wonder, bright orange, tipped snow white. Good stems75c
- FAY BEATON.** A very large white informal decorative from Canada. Good stems.....50c
- FITCHE—Int. Cac.** A rare imported variety that is a favorite with us. Medium size, strong erect stems, lovely pure pink with a blend of cream at center, ends of petals fringed. Very beautiful cut flower.....\$2.50
- FLAMING SUNSET—I. D.** A very brilliant shade of intense flaming orange. Blooms large, good stems. Very good\$1.00
- FLAMING SONNE—I. D.** A very brilliant flame scarlet and orange, wonderful color. Splendid stems. Large size. Beautiful.....\$1.50
- *FORT NISQUALLY (Lee)—I. D.** Large golden orange with a border of soft Indian red on the edges of petals. Lovely form, strong erect stems.....\$3.50
- FRANZ BERGER—Int. Cac.** Large, very bright coral red. Splendid stems. Profuse blooming. Very fine\$1.50
- FRAU O'BRACHT—Int. Cac.** Large light primrose yellow on best of stem.....50c



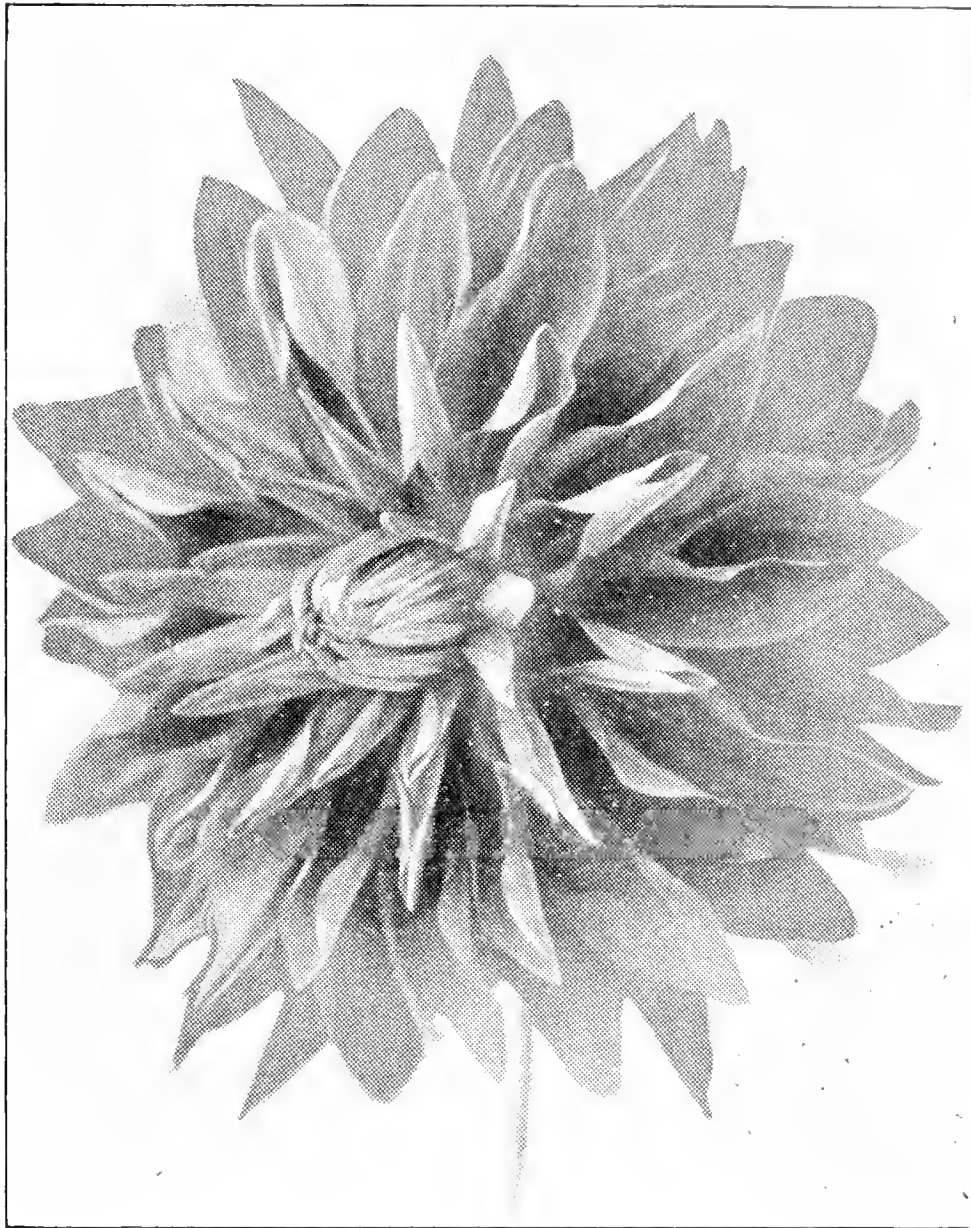
One of Our Prize Winning Displays

- FRIGATE—Cac.** Very large, incurving petals, strong erect stems. Lovely salmon tinted rose, lightening to yellow at base of petals. New and very fine-----\$1.00
- GARDNER ANLAUF—I. D.** New Imported. An entirely new color that is very attractive. Rose red, tipped deeply with pure white. Very large, well formed blooms on the best of stems-----\$1.50
- GALAXY—Int. Cac.** Large, bright yellow heavily penciled with red. Fine form. Strong stems. Very showy -----\$1.00
- GARTH HARRY—I. D..** Large, rich crimson maroon, wavy petals. Best dark Dahlia we have seen. Strong erect stems -----\$2.50
- GEO. L. FARNHAM—Cac.** Large, crimson scarlet, good strong stems. Very fine Dahlia -----\$1.00
- GIANT CERISE—I. D.** Extremely large, deep bright cerise, blended over white and having silvery reverse. Very striking. Stems fair-----\$1.00
- GIRL OF HILLCREST—I. D.** Very large, good, strong stems, bright golden orange. A very good Dahlia -----50c
- GOLDEN ECLIPSE—F. D.** Large golden yellow with tint of salmon, long erect stems. Good habits -----50c
- GOLDEN HOARD—I. D.** Very large, splendid habits. Beautiful shade of old gold. Strong stems -----\$2.50
- *GOLDEN SWEEPSTAKE (Lee)—I. D.** Outstanding winner of the American Home Achievement Medal, 1935, and has won many prizes all over the Country. Blooms very large and great depth, petals waving back to stem like a huge mum. Good habits and insect resisting foliage. Color pleasing golden buff tinted with apricot at center. Stems long, and perfectly erect at all times. A grand Dahlia -----\$7.50
- GRACE CURLING—I. D.** Very large, good stems. Beautiful lavender blending to white at base of petals, which fringe at outer ends in a pleasing way-----50c
- GROLL'S CARNIVAL—I. D.** Extremely large, strong stems, very deep yellow splashed and penciled with red. Very showy-----\$3.00
- *HAPPINESS (Lee)—F. D.** A very rare new color, bright begonia rose with distinct zone of lemon yellow at base of petals, which fold forward showing reverse of silvery pink. A most attractive Dahlia. Stems always erect, holding blooms well out of foliage. Blooms large, good habits. Have had many fine reports from Mid-West and East -----\$5.00
- HAPPY CHOICE—I. D.** Very large, strong stems, light salmon orange, with tint of pink -----\$2.50
- HELEN B.—I. D.** Very large, lavender with a blend of white. Strong stem. Good variety -----75c
- HILLCREST MANDARIN—I. D.** Very large, oriental scarlet, with shading of golden yellow and having golden yellow reverse. Good form and depth. Splendid stems -----\$1.00
- HILLCREST NUGGET—I. D.** Wonderful variety, good habits, extremely large size, strong stems. Color nugget bronze with a tint of red in reverse of wavy petals -----\$2.50
- *HI-LITE (Lee)—I. D.** One of our most outstanding prize winners of last year's introduction, a grand Dahlia of extremely large size, perfect stems. Very rich velvety carmine, shaded with rose red, lightly tipped with gold, reverse of petals silvery white. Splendid form and great depth. Good habits. We have many letters praising this Dahlia. Do not miss it -----\$5.00



HI-LITE

- HONOR BRIGHT—F. D.** Very large, beautiful peach red, to light jasper red. Splendid stems, good cut flower ----- **75c**
- *HONEYMOON (Lee)—I. D.** Beautiful two toned Dahlia, center petals bright yellow, outer petals apricot. Narrow waving petals, recurving like "mum." Splendid stems, good habits. One of our 1935 Prize Winners ----- **\$5.00**
- JAMES KIRBY—I. D.** Large, rich crimson red of great brilliance. Very fine. Perfect stems ----- **75c**
- JANE COWL—I. D.** Very large, good stiff stems, warm buff and golden orange. Grand Dahlia ----- **35c**
- *JEAN AARON—I. D.** Extremely large, warm, primrose yellow, flushed with pink. Grand stems ----- **\$1.00**
- JEAN TRIMBEE—S. C.** Very large purple, good stems ----- **50c**
- JERSEY'S BEAUTY—F. D.** Large true pink. Good keeping cut flower ----- **35c**
- JOYCE LAWRENCE—I. D.** Large, perfect form and depth, deep rose, strawberry shadings. Good stems. New Australian Dahlia ----- **\$2.00**
- KATHLEEN OSBOURNE—Cac.** A very wonderful imported cactus that looks like a large incurving Chrysanthemum, with curling petals. Reddish orange with yellow at base of petals. Stems fairly good ----- **\$1.50**
- KATHLEEN NORRIS—I. D.** This well known and very beautiful prize winner is still one of our best pure pink Dahlias. Blooms are very large and stems good ----- **50c**
- KATHLEEN VALENTINE SMITH—Cac.** One of the most beautiful cactus grown. Very fine habits, and strong erect stems all season which hold its large blooms well above the foliage. Color is lovely pure pink with a suggestion of white at center. Fine petals and form. Profuse blooming. One of the favorites ----- **75c**
- KAWEAH—I. D.** One of largest Dahlias grown. Color rich fuchsia rose, or perhaps best understood, a light purple shaded with reddish darker tones. Has very long, erect stems which hold the giant blooms far above the foliage ----- **\$1.50**
- KAY FRANCES—S. C.** New 1935 Dahlia that won very highly in the east. Color is light lemon yellow, large size, stems fairly good ----- **\$2.00**
- KEMP'S VIOLET WONDER—I. D.** Large, violet purple, good stems ----- **50c**
- KENTUCKY RED—I. D.** Very brilliant, showy, scarlet red, large size on good strong stems. Fine Dahlia ----- **50c**
- *KENO (Lee)—F. D.** Blooms large, stems long, strong and always erect. A new color best described as a very brilliant begonia rose, reverse a lighter shade. Fine keeping cut flower ----- **\$2.00**



MARVELOUS

- KING OF BLACKS—F. D.** Very dark rich, velvety red. Large, good stems-----50c
- *KING OF THE GARDEN (Lee)—I. D.** Very large bright canary yellow flushed with soft orange red. Good form and habits. Strong stems-----\$3.00
- *KISSABLE (Lee)—S. C.** Color is a very beautiful creamy pink with blend of ivory at the base of petals. Fine incurving form and has splendid stems. Wonderful cut flower and won first prize for best keeper at Washington Show, 1934. Has received much praise -----\$1.50
- LADY MOYRA PONSONBY (Elder-Lee)—I. D.** A very outstanding variety that has made good in all parts of the world, and one of the best pure yellow Dahlias. Extremely large size, on long, strong, erect stems. Good habits and a splendid keeper when cut -----\$1.00
- LA FIESTA—I. D.** Extremely large, curly, lacey petals. Stems fair. Color is deep yellow penciled with red. Very showy -----75c
- LAURANTIC—I. D.** One of the most beautiful imported Dahlias. Has won us a number of fine prizes. Beautiful mauve pink blended with white. Blooms extremely large, fine form, splendid stems. Profuse blooming-----\$3.00
- *LEE'S PERFECTION (Lee)—Cac.** One of the best Cactus grown and has splendid habits. Color clear mauve pink, fine incurving petals. Blooms good form and never show open centers. Stems strong and hold the large blooms erect above the foliage. Profuse blooming. Won Sweepstake for best lavender cactus in the entire show at the Washington State Dahlia Show, Tacoma, 1935-----75c
- LEMONIA—S. C.** Very large, bright, clear lemon yellow, beautiful form. Stems not always upright -----\$2.00
- *LILLIAN B. LEE (Lee)—Cac.** One of the largest cactus, color is ivory white. Extreme heat sometimes will cause stems to bend -----75c
- LORD OF AUTUMN—I. D.—**One of the best Dahlias ever introduced and has been an outstanding Prize winner wherever shown. Blooms are extremely large and at the same time are graceful and refined, petals are wavy and reflex to the stem making a bloom of great depth. Color is a lovely clear yellow. Stems are long, and hold the giant blooms erect far above the foliage all season. We like this Dahlia -----\$2.00

- LUCRETIA—I. D.** We imported this giant size Dahlia from Australia. Blooms have great depth, color light buff flushed with begonia rose. Stems long and always erect. Fine exhibition Dahlia -----\$2.00
- MAGICIAN—I. D.** Large yellow flushed with orange and tipped with pure white. Good stems -----75c
- MAJOR C. C. MESSERVY—I. D.** A new English Dahlia that is very fine. Gigantic size, stout stems, a very beautiful clear lemon yellow, tint of bronzey gold at center. Lovely form, profuse blooming -----\$3.00
- MARION BROOMALL—S. C.** Very large, pink and white, good stems, profuse blooming -----50c
- MARY MURRAY—Cac.** Large orange scarlet. Strong erect stems, profuse blooming -----75c
- *MARVELOUS (Lee)—F. D.** One of our most outstanding Honor Roll Dahlias which has won us a number of prizes. Size of blooms 10x4 inches. The brightest orange we have ever seen, best described as flaming gennedine orange, lemon yellow at base of petals and on tips. Center petals folding forward showing the reverse of pale lemon yellow. This is one of the most striking Dahlias we have ever seen and at once attracts attention in the Gardens and at the Shows, and so many people exclaim, "What a marvelous Dahlia!" so this was how it came to have the name. Long, strong stems hold the big blooms perfectly erect at all times. Do not miss this grand Dahlia-----\$7.50
- MARTHA—S. C.** Deep lavender with tint of rose pink, large, fair stems, profuse blooming -----25c
- MIDWEST—Straight Cactus.** Blooms very large, fine form, stems good. Color new and unusual, but I think light purple with tints of rose describe it best. A fine Dahlia. Mid-West Prize winner -----\$7.50
- MID-WEST CHAMPION—I. D.** Blooms very large, stems splendid and it blooms profusely. I think best described as a lovely lavender tinted with rose. A very fine outstanding Dahlia -----\$5.00
- MILTON J. CROSS—I. D.** A very outstanding 1936 introduction that won many prizes. Color clear gold at center blending to light orange buff on outer petals. Blooms very large and stems are good. Very fine Dahlia. Blooms profusely. No roots for sale, plants only -----\$5.00
- MISS BELGIUM—Cac.** Large, very bright orange, stems good. Profuse bloomer. A fine imported variety -----50c
- MISS TOLMIE—Int. C.** A very fine new cactus. Color pure mauve. Blooms large, stems perfect, profuse blooming, good cut flowers-----75c
- MONMOUTH QUEEN—F. D.** Beautiful light/creamy yellow. Blooms are extremely large, stem long, strong and hold the giant blooms erect far above foliage---\$1.50
- *MOONLIGHT BEAUTY (Lee)—F. D.** 10-inch blooms with extra long erect stems. Good form. Color a glistening creamy yellow without shading. Won 1st Prize for best Formal Decorative 1934 Washington Show -----\$1.50
- MRS. C. CLARKE—I. D.** An imported Dahlia that we think the best of its color. Very bright scarlet red, tipped pure white. Good stems -----\$1.00
- MRS. CHAS. G. REED—F. D.** One of the best, pure glistening white, very large. Stems, long and strong. Splendid keeper when cut-----50c
- MRS. E. BRADLEY—Cac.** The best pure white cactus we have ever seen. Strong erect stems. Profuse bloomer. Very fine -----50c
- MRS. E. HOWELL—I. D.** Extremely large and a very rare coloring of purplish mulberry and rose which is very beautiful. Very popular in our Gardens. Stems strong and always erect. Profuse bloomer-----50c
- MRS. GEO. Le BOUTELIER—I. D.** The largest red Dahlia we have ever grown. Deep crimson red. Stems fairly good. A grand variety-----\$2.50
- MRS. L. BREGAZZI—Cac.** On one of the Honor Rolls of Foreign Dahlias 1935, and has been a big Prize winner with us. One of the finest petalled cactus grown, color is salmon pink suffused with yellow at base of petals. Always attracts lots of favorable attention. Good stems. Very fine -----\$1.00
- MRS. FLEM SAMPSON—S. C.** Very large light lemon yellow, perfect stems. A grand Dahlia -----\$1.50
- MRS. HEATH SPENCER—S. C.** A very fine new Dahlia from Australia. Blooms extremely large, full, and has good depth. A very lovely light lemon yellow. Stems long, and hold the big blooms perfectly erect at all times. Fine form. Do not miss growing this fine Dahlia -----\$5.00
- NANCY WALTON—I. D.** New Imported. Very large, beautiful salmon pink with a blend of golden apricot. Perfect stems, always erect, blooms profusely and has good habits. One of the most beautiful. Do not miss it-----\$7.50
- NEW GLORY—S. C.** Large, incurving petals, dark, rich, velvety red tipped pure white. Good stems. Fine -----50c
- OAKLEIGH MONARCH—I. D.** Blooms very large on splendid stems. One of the best, bright cerise red. Profuse blooming, good keeper when cut. One of the outstanding Honor Roll Dahlias for 1936-----\$5.00
- OAKLEIGH PRINCESS—S. C.** Another fine Honor Roll Dahlia for 1936. Lemon yellow overcast scarlet red. Blooms large on good stems-----\$5.00
- OLIVER TWIST—I. D.** Grand Dahlia, large size and very beautiful. Deep lavender with bright sheen. Stems long and always erect -----\$1.50
- OLYMPIAN—I. D.** Very large, bright orange.e Tall plants, good habits. Splendid stems -----\$3.00



OLYMPIC SUNSET

- *OLYMPIC SUNSET (Lee)—S. C.** One of the most outstanding winners in the Northwest and also won many prizes in the Mid-West and Eastern Shows. On outstanding Honor Rolls for 1935 season and one of the most beautiful both in color and form. Color is apricot orange and coral with a blending of pale lemon yellow and having a distinct yellow zone at base of petals, reverse of petals rose. Perfect semi-cactus form with very full high centers, which always remain closed. Stems strong and erect 4 to 6 inches, needs disbudding for longer stems, this seems its only fault. We have received many letters of praise for this Dahlia, and it was highly complimented by those who saw it growing in the Gardens ----- \$2.50
- OMAR KHAYYAM—F. D.** Very large Chinese red shaded with bright orange. A fine Dahlia on good stems ----- 50c
- ORANGE DUCHESS—S. C.** This Dahlia came to us from Canada for The Duchess, but is a very beautiful bright orange with white tips, while the true Duchess from England is yellow. But it is a grand Dahlia and has long, erect stems and good habits. You should like this one ----- \$1.00
- ORIENTAL BEAUTY—Int. Cac.** Large bright rose pink, good stems and habits. Very beautiful ----- 75c
- ORIENTAL GLORY—I. D.** Large, brilliant orange, good stems ----- \$1.00
- PALO ALTO—S. C.** Very large, color a blending of apricot and salmon bronze. Very fine. Strong stems. Good habits ----- \$1.50
- PAUL PFITZER—Int. Cac.** Large, light creamy pink, incurving petals. Good stems. Fine ----- \$1.50
- PATTY WAUGH—F. D.** New Australian. Large fine pure white, good form and habits. Good cut flower on splendid stems ----- \$3 00
- *PINK BEAUTY—Int. Cac.** Much like its parent, Oriental Beauty, but a lighter shade of pink, with a more graceful wave in petals. Large, and has good stems ----- \$1.50
- PINK FRINGE—I. D.** Large, bright mauve pink, with narrow folded petals, very unusual and pretty. Long, stout stems ----- 35c
- PINK DAILY MAIL—I. D.** New Imported and one of the best we have grown. A sport from Daily Mail and like it in form, but it is extremely large and is even better, and color is a very lovely cyclamen pink. Splendid habits. Perfect stems. You will like this grand Dahlia ----- \$2.00
- PINK THEVELIN—I. D.** New Imported. Large, pointed petals, fine form. Very bright, rich pink, strong stems. Good habits ----- \$1.50
- PINK SPIRAL—Cac.** Beautiful peach pink, incurving petals, lovely form. Large, on long, erect stems ----- \$2.00

- PRESIDENT FRANKLIN D. ROOSEVELT—F. D.** Very large, Chinese red with buff edge and creamy reverse. Splendid stems. A fine Dahlia.-----\$1.00
- PRIDE OF AMERICA—S. C.** An outstanding 1936 Honor Roll Dahlia of large size, on good strong stems. Light lemon yellow. Very good.-----\$7.50
- PRINCE OF PERSIA—I. D.** Extremely large, deep rich, velvety red. Stems good. Splendid variety -----50c
- RED BEAUTY—I. D.** Large, bright scarlet red, good stems, profuse blooming. Good habits -----25c
- RICHARD TROUGHTON—Cac.** Large imported cactus, very lovely salmon pink blending to yellow at base of petals. Stems strong and always erect. Profuse bloomer -----75c
- ROBIN ADAIR—I. D.** Very large, strong upright stems, color is deep yellow with reverse and closed petals at center reddish bronze. Achievement Medal winner in 1932, and a very outstanding variety in any garden.-----\$2.50
- ROCKLEY MOON—F. D.** Large, light lemon yellow blending darker shade at center. Stems splendid, good habits -----\$1.00
- RONDO—Int. C.** Very large, light lemon yellow, splendid stems. Profuse blooming and a very fine Dahlia -----50c
- ROUGE BOQUET—S. C.** Unusual color of blended shades of orange red with tints of purple. Good stems and profuse bloomer.-----50c
- R. R. RUTHERFORD—S. C.** New imported. One of the finest S. C. Dahlias we have seen. Extremely large, strong erect stems at all times. Color is a very bright henna orange. Fine form, great depth. One of our own favorites.----\$2.00
- ROYAL BLACK—S. C.** New from Holland. Very dark, rich velvet maroon. Large, strong stems. Very fine -----\$5.00
- ROYAL SALUTE—I. D.** Very huge blooms on strong erect stems. Rich red, with tiny white petaloids all through the deep blooms. Very good.-----\$4.00
- ROYAL PURCHASE—Int. Cac.** Large, incurving petals, fine form. Deep primrose yellow with tint of pink. Good stems. New Honor Roll Dahlia in 1936.----\$7.50
- RUBY TAYLOR—F. D.** Very large, and stems are strong and erect. Color purplish carmine or an Indian Lake red. Very good.-----\$1.00
- RUDY VALLEE—S. C.** Very large, soft chrome yellow blended with soft red. Good form, good stems -----75c
- SALLY B.—F. D.** Extremely large, very beautiful pure bright pink. Stems strong and erect. Early and profuse blooming. Extra good.-----75c
- SALEM CARNELIAN—I. D.** New, last season Dahlia and very good rich dark red. Large, good stems -----\$2.50
- SALEM STREAMLINE—I. D.** Another one of last season's new outstanding Dahlias. Large recurving form, good stems. Beautiful old rose shaded carmine rose.----\$7.50
- SANHICAN'S CAMEO—F. D.** Won us 2 Sweepstakes and 1st Prize in 1934 and has won prizes in many other shows. Extremely large, long, strong stems which hold the big blooms perfectly erect far above the foliage. Color is a very beautiful coral rose with a glistening sheen, deep rose pink reverse. Do not miss this Honor Roll variety -----75c
- SALBACH'S WHITE—F. D.** Not new, but one of the best white Dahlias for cutting. Very pure waxy white, good form, splendid stems, good habits.-----50c
- SATAN—S. C.** Extremely large variety on very long stems, which are very good. Has won a great many prizes for largest Dahlia in the show. Bright flaming red, slight touch of gold, horn-like petals which are very perfectly rolled, fine form. An extra good one -----75c
- SCHINTENCHI—Cac.** New from Japan. A very wonderful variety which won the Sweepstake for the best cactus Dahlia in the Washington Dahlia Show, 1936, and has won several other high prizes for us. Blooms are large, petals fine and very incurving and interlace in a very pleasing way. Color is a rich maroon red described as an art red. Stems are long and erect. A grand Cactus you will enjoy growing. Stock limited.-----\$3.00
- SHAHRAZAD—I. D.** Extremeley large, good strong stems, a very lovely bright pink. Often called the pink Jane Cowl.-----50c
- SHOWA—Cac.** Another new Japanese Cactus that is very attractive. Large, incurving petals, deep cerise, tipped with pure white. A very profuse bloomer and rare color. Stems fairly good -----5.00
- SILVA QUARTA (Ball)—**Large lavender with good strong stems.-----25c
- SONNY BOY—**Extremely large, Informal Decorative. Color is a beautiful old rose tinged with old gold. Good stems and lovely form. Fine.-----75c
- SPINNING WHEEL—I. D.** Large, deep cardinal red, white tips, reverse side white runs nearly entire length of petals. A 1st Prize winner in the 1934 Show Cleveland, Ohio. Waving petals and good form. Strong stems but needs disbudding for length. Good keeper when cut -----5.00
- *SPOTLIGHT—I. D.** Very large, strong erect stems. Color sulphur yellow shading lighter at the tips. Achievement Medal and Roll of Honor Dahlia in 1933. Very fine -----2.00
- SULTAN OF HILLCREST—F. D.** Extremely large, strong erect stems. Deep yellow, reverse rose pink. Very deep blooms with petals recurving back to the stems. Extra good -----1.50
- SUNFLOWER—I. D.** Imported. Large bright canary yellow, lovely, glistening, waxy petals which are pointed. Good form and depth. Stems good. Profuse blooming -----75c
- SUPT. AMHRYN (Ball)—**Large, bright rose pink, with good stems.-----25c



WASHINGTON GIANT

- *TACOMA'S BEAUTY (Lee)—F. D.** One of our most outstanding introductions, which has won us many Prizes in the Northwest Shows and was one of the 6 most outstanding Dahlias in August Garden Magazine in Australia, 1935, and was the most outstanding American Dahlia in England in 1933, and we have had very fine reports on it from other countries. Blooms are large, and stems are long, strong and perfectly erect, holding the blooms well above the foliage. Color is deep salmon pink blending with strawberry pink and shading to gold at base of petals. Type of Jersey's Beauty but better habits and is a very fine cut flower -----75c
- THE COMMODORE—I. D.** One of the largest Dahlias grown, clear sulphur yellow, strong erect stems. Low growing. Very good ----- 50c
- THE DUCHESS—S. C.** New imported. A very large beautiful Dahlia of a very pleasing color of deep yellow, tipped pure white, petals incurved. Stems long, strong and erect -----\$1.00
- THE FIREMAN—I. D.** Blooms are large, stems splendid and color is a very flashy shade of scarlet red with golden flushes. Very fine -----\$1 00
- THE OREGONIAN—I. D.** A large, rich, golden bronze, with rose reverse. Stems strong and erect -----\$2.50
- THOS. A. EDISON—F. D.** A gorgeous royal purple of large size, good stems, profuse blooming -----50c
- UMBRIA—I. D.** Large, very bright apricot orange. Good stems. Early, and profuse bloomer -----\$1 00
- UNCLE TOM—F. D.** Large, black velvety red, good stems and habits -----50c
- UNA SNELL—S. C.** Australian. Large old rose, blended with strawberry, shading to gold at base of petals. Good stems -----75c
- VALINDA—F. D.** Medium size, splendid cut flower on best of stems, profuse blooming. Creamy yellow with a blending of orchid pink. Lovely -----50c
- VARIO—I. D.** Large, good stems and one of the best variegated combinations I have seen. It is tan, pink and white, in various blendings -----\$1 00
- *WASHINGTON GIANT (Lee)—I. D.** One of the most outstanding 1934 introductions in U. S. and has made good all over the world, as we have had many letters telling us of its success, and it was among the 1st Prize winners in most of the big Shows all over the U. S., and it won Sweepstake for the largest Dahlia in the Show at Portland, Ore., 1935, it also won the Achievement Medal at Portland, 1933. The late Mr. Derrill Hart, whose opinion is valued high in the Dahlia World, grew this variety in the east and wrote of it: "Unusual in form and in a color group not overburdened with varieties, a large flower on extra good stems and with good growing habits." Color is lavender with

- orchid tints and blended with silver. Petals are broad and waving and curling petaloids between them. Blooms are giant in size, 12 inches and over across and 7 inches or more deep. Always has closed centers. Stems hold the giant blooms perfectly erect far above the foliage even to the last blooms in the fall. Plants are medium tall, strong erect growing with splendid habits and insect resisting foliage. Our stock has never been forced and our roots are strong and full of "pep." Do not miss ordering this fine Honor Roll variety-----\$1.50
- *WENOKO—F. D.** Very large, long, strong, erect stems and splendid growing habit with insect resisting foliage. Color is rosy mauve and deep magenta. Won Certificate of Merit 1934 and a prize winner in many Shows. Very good----\$5.00
- WHITE ABUNDANCE—F. D.** A new Holland Dahlia that is a grand addition to the white varieties and it has large size, long, strong stems, and is very profuse blooming. Tall plants with good habits. Very fine-----\$2.50
- WHITE DUCHESS—F. D.** Imported. Very large pure white, stout stems, profuse blooming -----\$1.00
- WHITE WONDER—I. D.** Very large, pure white. Lovely form, waving petals. Splendid stems and profuse blooming. Very good-----50c
- *WYNOLIA—F. D.** Very large, long, erect stems, splendid cut flower. Very beautiful golden apricot -----\$1.00
- YORK & LANCASTER—F. D.** Large, deep red, pure white tips. Good stems, profuse blooming -----50c

• • •

POMPON DAHLIAS

Type the same as Ball Dahlias except the size should not be more than 2 inches across and most of these we list are best exhibition size, 1 to 1¾ inches. All have strong stems and are splendid keeping cut flowers. Plants average about 2½ to 3 feet tall.

- COLLECTION—**Our choice 12 Varieties labeled with name-----\$2 50
Roots each
- AIMEE—**Splendid small bronze -----25c
- ALEX—**Cerise pink tipped silver -----35c
- ATOM—**Tiny bright red -----25c
- BABY—**White tipped lavender -----25c
- *BRIGHTEST OF ALL (Lee)—**The brightest colored pompon we have ever seen. Brilliant scarlet, very fine -----35c
- BRITU—**New Bright yellow from Australia. Very good-----\$1.50
- BURWOOD—**Another fine Australian small, fine, perfect ball form, deep yellow with tint of red. Splendid habits, long stems-----\$1.50
- CHALLENGE—**New. Deep red, flesh pink and white, in various combinations. Some solid color -----50c
- CHICKIE—**New. Unusual color, carmine and rose red-----35c
- DEE DEE—**Lilac lavender -----25c
- DORIA—**New Australian. Most perfect form pom we have ever seen. Each bloom is very full, petals recurve to the stem, making perfect balls, about 1½ inches across. Stems long and perfect. Color rich maroon red. If you want a winner in the Pompon class do not miss this one. We have had many reports of this pom winning in many Shows. They all say it was an easy winner-----\$1.50
- EDITH MUELLER—**Creamy yellow and salmon orange -----35c
- GRAFIN ANNA VON SCHWERIN—**Lovely shell pink -----50c
- HAAKE'S GLOW—**Beautiful, rich old rose -----25c
- HAZEL-DEL—**Fine pink, edged rose pink -----25c
- HELEN ANITA—**Small orchid pink, white center-----25c
- HILDA PUPPA—**New imported. Very small raspberry red. Quilled petals, long stems. Very good -----\$1.50
- LITTLE JENNIE—**Light cream yellow -----25c
- LITTLE JIM—**Dark, rich, wine red -----25c
- LOBEE—**New. Rose red -----35c
- MRS. J. J. KYNN—**Small, deep salmon orange -----25c
- MRS. V. BRITTIAN—**New imported. Lovely light pink -----75c
- MYRA—**Yellow tipped with raspberry red -----25c
- NELLIE FRAZIER—**Light pink shaded with rose pink -----25c
- NERRISA—**Lovely rose pink. Very fine -----50c
- PEGGY ANN—**Yellow edged, brownish red -----25c
- REGULAS—**Small deep purple -----35c
- STRATFORD—**Another very fine new Australian with same form as Doria. Small, new color hard to describe, reddish carmine pink. Lovely, good habits. Stock limited. Do not miss this one but order early to avoid disappointment-----\$2.00
- *TEENY WEENY—**See Miniature Dahlias.
- *TENCY (Lee)—**Lovely, small, creamy yellow flushed with pink. Very fine----50c
- TOM THUMB—**Very small red. A dandy -----25c
- VERIDA FLORA—**Real green pom. Novelty. Stock scarce -----50c
- *WEE WHITE (Lee)—**Very small white with notched petals, long stems, profuse blooming. Very fine -----25c
- YELLOW GEM—**Splendid, pure canary yellow -----50c

SPECIAL COLLECTION

12 roots, large varieties, **postpaid \$2.00**

For those who want some good Dahlias and are not particular as to the named varieties, we will make this "get acquainted offer" for untagged varieties, all different colors and worth three times the price. Will make a fine show of color in the garden.

SINGLE DAHLIAS

- *FLASH (Lee)—1934. Very brilliant orange scarlet with a striking yellow zone at center. One of the most attractive singles grown, and one which always attracts attention. Has won many prizes for best single. Good stems, profuse blooming. Very fine -----50c
- RED INDIAN—Indian red, brownish gold center. Fine -----50c
- *UNION BEAUTY—Won Certificate of Merit 1935. Bright scarlet with white stripe through center, blend of orange at center -----75c
- UNION JACK—Attractive red and white -----50c

COLLARETTE DAHLIAS

- BETTY—New. A very beautiful new color, rich, salmon cerise, with cream collar. Splendid habits, and stems. One of the most beautiful I have ever seen of this type. Wonderful keep when cut -----\$1.00
- *GRANITE FALLS—Very fine, showy red with bright yellow collar. Tall plants, profuse bloomer. Won us many prizes -----50c
- SWALLOW—Pure white, with white collar. Attractive -----50c
- *YELLOW BUTTERFLY (Lee)—Beautiful bright yellow, large blooms, profuse bloomer. Very lovely -----50c
- TUSKAR—Deep rose red, white tips, cream collar -----50c
- ZENDA—The largest Collarette we have ever seen, blooms 5 to 6 inches across; star shape. Deep maroon, purple, with white collar -----50c

ANEMONE DAHLIAS

- ALPHA—New imported. New form, having petals rolling forward to form pointed stars, color is very rich red, with anemone center same color but tipped lightly with gold. Good habits, and stems. A rare Dahlia we know you will want to grow. Very fine -----\$2.50
- *ALTA MAY (Lee)—Blooms large, 4 inches across. Color bright pure pink, center creamy yellow. Some blooms come single but all are lovely -----75c
- *FLIT (Lee)—Very attractive deep rose red, with gold cushion center -----50c
- GRAZIELLA—Deep red penciled with white, center gold -----50c
- *PURPLE BEAUTY (Lee)—Very fine pure purple, with center tipped lightly with gold. A fine variety -----75c
- *TWINKLE (Lee)—New 1935. Pale pink tipped light yellow, cushion pale yellow. Blooms very small, 1½ to 2 inches across, notched petals. A fine, dainty, little cut flower for table decorations. Plants are strong growing and always full of blooms -----50c

SPECIAL—Your selection of any five 50c varieties of Miniatures, Collarettes or Single Dahlias for -----\$2.00

MINIATURE DAHLIAS

Types like the larger varieties but small blooms not over 3½ inches across. Plants are most of them 2½ to 3 feet tall except those described as tall. All are very profuse blooming, and wonderful cut flowers, especially fine for table decorations. All have splendid stems.

Roots each

- BABY ROYAL—S. C. Gold Medal winner from England and has won many Prizes wherever exhibited. A beautiful little flower of salmon pink and apricot with gold shading. Extra fine -----50c
- BALDRE—I. D. New, rosy salmon, fine form. Lovely -----50c
- BISHOP OF LANDAFF—P. Brilliant, rich, velvety red. Unusual dark, bronzy lacy foliage. Very attractive -----50c
- CARRIE HAMMOND—Cac. A lovely deep, bright pink. Extra fine keeper when cut. Plant tall, 5 to 6 feet -----50c
- CORONNE—F. D. A very beautiful waxy white, resembling a Gardenia. A grand little Dahlia -----50c
- EDNA—P. Deep bright pink, heavily tipped white -----50c
- EFFECTIVE—S. C. Soft buff yellow, tint of pink -----50c
- ELIZABETH PAPE—S. C. Soft yellow, blended with salmon pink. Lovely -----50c
- ERNEST HEWITT—I. D. New imported. Lovely deep rose pink -----\$1.50
- *ETHELIN (Lee)—P. New 1937. This was our 1st Prize winner for best table decoration, and it received high praise. Very lovely pure pink with blend of yellow at center. Graceful waving petals, splendid, long stems, and very fine habit of plant, blooming profusely all season. Grand, do not miss it -----\$1.00
- FAIRY—F. D. Soft pink, tint of lavender. Fine -----50c
- GLORIOUS—I. D. Very fine, raspberry-red, wavy petals -----75c
- IRENE—F. D. Lovely old rose. Tall -----35c
- LADY MARY HOPE—I. D. Very unusual color of amber and orange, tipped with white. Very good -----50c
- LITTLE DREAM—Cac. Clear bright pink, tipped with white. New imported and very fine variety -----35c
- LITTLE JEWEL—F. D. Beautiful pink, very popular -----35c
- LITTLE LOUIE—Cac. Small, pure pink. Tall -----50c
- LITTLE NEMO—F. D. Rich red, tipped pure white -----50c
- LITTLE PEARL—S. C. New imported. Beautiful rose pink similar to E. Pape, but more pink, finer variety. One of the best -----50c
- LITTLE SNOW QUEEN—S. C. New imported. A grand pure white, good habits, very profuse blooming. Very lovely -----75c
- *LORAIN MAE—I. D. Very showy bright orange, tipped pure white -----50c
- MRS. SCRIMGEOUR—F. D. New. Very lovely bright orange, suffused with apricot. Tall plants. Very fine -----50c
- NAIN—Cac. Bright orange -----50c
- ONAH—I. D. A miniature Jane Cowl, golden orange. A little beauty -----50c
- *ORIENTAL GEM—S. C. New. A miniature Oriental Beauty but a deeper shade of bright rose pink. One of the most beautiful of all. Tall -----75c
- PHOENIX—I. D. New English. Lovely old gold, with reverse of petals crimson -----\$1.00



TEENY WEENY

- PINK PEARL—P.** Rose pink, with wavy petals, lovely.....50c
REDHEAD—F. D. A fine scarlet orange, very good.....50c
RHODA—I. D. Soft old rose with blend of soft orange.....50c
ROBIN—Cac.. Very bright red, fine petals.....50c
SELBOURNE—I. D. An unusually fiery scarlet, with yellow zone at center, very fine.....50c
SHOT SILK—P. Bright cerise with blend of yellow at base. New and stock is scarce.....75c
***TEENY WEENY (Lee)—Pom Anemone.** On Mr. Barron's Honor Roll December, 1936, Flower Grower. This variety is without doubt the smallest Dahlia in the world. Blooms $\frac{1}{2}$ to 1 inch across, plants 12 to 15 inches tall and always covered with blooms. This is a new type, having pompon petals around the outside while center is filled tight with tiny tubular Anemone petals, a very unique little flower. Won Sweepstake for most perfect small Dahlia at the Dahlia Show at Chicago World's Fair 1933, and was awarded a beautiful Silver Medal. It was also in Mr. Berlet's collection of winning Miniatures and Pompons in Chicago 1935 and 1936. Won Sweepstake for smallest Dahlia in the Show at Portland, Ore., 1935 and 1936, also 2 Sweepstakes at our two Washington Dahlia Society Shows 1936, and has won many other Sweepstake Prizes for smallest Dahlia in other Northwest Shows. Color is a bright salmon. A little beauty and novelty you should not miss growing.....75c
TINY—P. Another new Prize winner that is lovely for cutting. Wavy petals, lovely form, color apricot blended with gold. Very fine.....50c
TOYA—P. New English. Won 1st for best table decoration 1935 Washington Show. Long narrow petals, good form. Orange buff, deeper reverse. Very good.....75c
VERITY WADSWORTH—F. D. This is the Dahlia you have been wanting. A very bright yellow miniature. Fine form, profuse bloomer. Splendid cut flower...\$1.00

DAHLIA SEED

Again we have a surplus of our extra high grade seed, which we are offering to our customers. This seed is all saved from the very finest of Exhibition and Honor Roll varieties from seed parents which we have found produce the best results. This is all raised in our own Gardens and is the same quality seed which we plant; and have raised our Prize Winning, Achievement Medal, Honor Roll Dahliahs. We have had many letters telling us of the fine varieties that have been raised from our seed. If you have not tried raising from seed, you are missing a good thrill, of course they do not come true to the parent but you get some wonderful colors and types. Plant seed in flats indoors and plant out into garden when all danger of frost is over, most of them will bloom first season. Our surplus is limited so order early to avoid disappointment.....

-20 Seed finest mixed. \$1.00; 50 for \$2.25; 100 for \$4.00
MINIATURE DAHLIA SEED—Saved from finest varieties such as Baby Royal, Little Pearl and others as good.....40 Seed, \$1.00; 100 Seed, \$2.00
POMPON Dahlia Seed—All saved from small, choice varieties.....35 Seed, 50c; 100 for \$1.00

Seed prices all net.

WASHINGTON DAHLIA SOCIETY

Join the Washington Dahlia Society. They are a fine lot of real Dahlia Fans and they have a real live Society. They deserve your support. You will enjoy the meetings. Dues, \$1.00 a year. 3001 So. 14th St., Tacoma, Wn.

Also join the American Dahlia Society, 251 Court St., West Haven, Conn. Dues \$2.00 per year. 4 Dahlia Bulletins a year.

If you want the latest Dahlia News from everywhere, send \$1.00 subscription to Mid-West Dahlia News, Madison, Wis., 4 issues a year.