

Historic, Archive Document

Do not assume content reflects current scientific knowledge, policies, or practices.



A SHORT GUIDE

CATALOG 120—A
SIXTIETH YEAR
SPRING 1937



RARE BEAUTY IN AN AMERICAN FOREST—But these plants in nature do not bloom all at one time. 1. *Rhododendron maximum*. 2. *Stewartia pentagyna*. 3. *Azalea viscosa*. 4. *Clethra*. 5. *Leucothoe*. 6. *Rhododendron catawbiense*. 7. *Cornus florida*. 8. *Cercis*. 9. *Tsuga canadensis*. 10. *Ilex opaca*. 11. *Kalmia*. 12. *Oxydendron*. 13. *Pieris floribunda*. 14. *Azalea nudiflora*. 15. *Magnolia glauca*. 16. *Chionanthus*. 17. *Gordonia*.

Terms of Sale

PACKING COSTS—Free if cash accompanies order, except stock dug with a ball of earth. Otherwise, packing is charged at cost (usually 10% of cost of stock). Balled, heavy evergreens: we will estimate costs in advance if you wish.

LIMITED RESPONSIBILITY—We disclaim responsibility for any reason in amounts greater than invoiced.

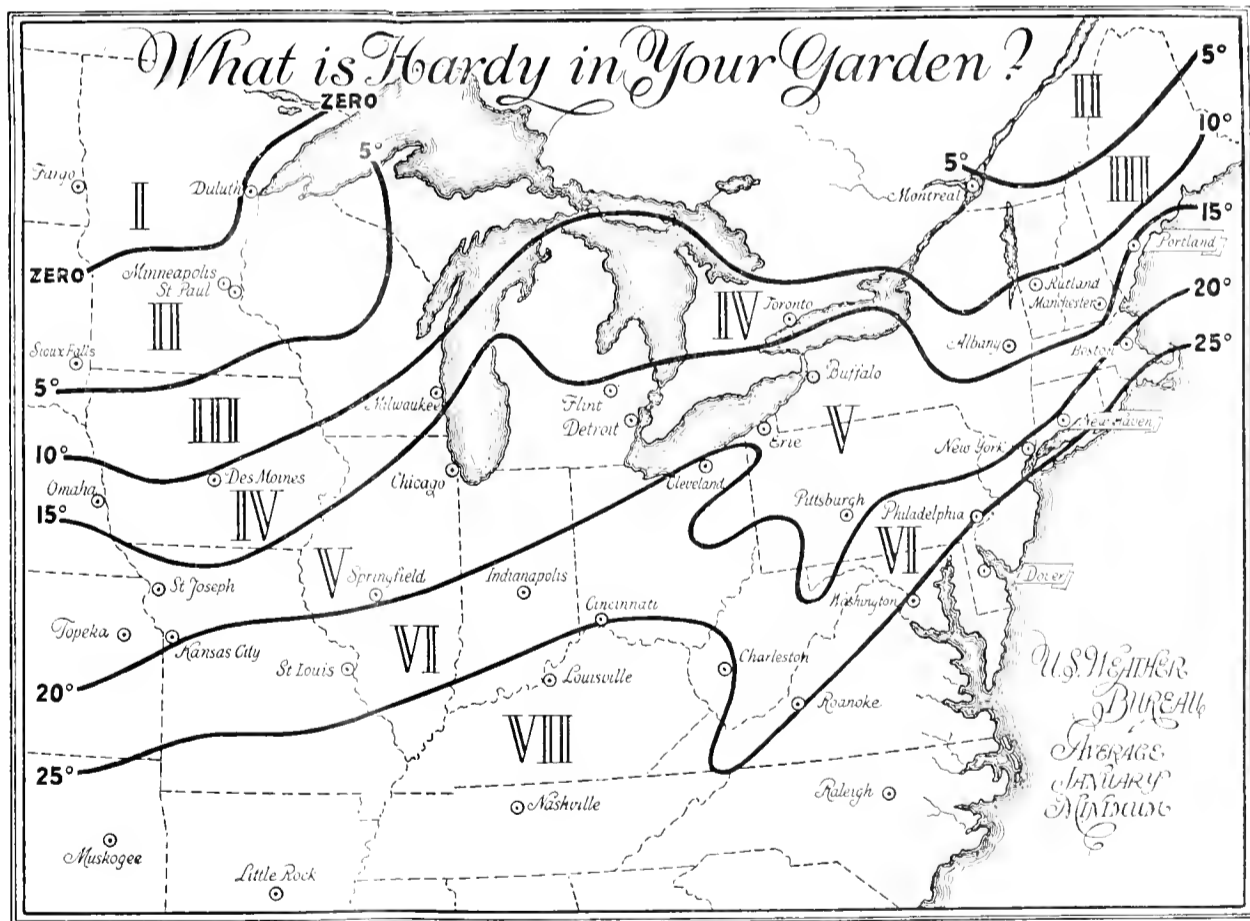
PRICES—Net at the nursery. Transportation to be added at actual cost. Usually 5 sold at rate per 10, 50 at 100 rate.

CLAIMS—for errors, shortages or other causes must be made within 10 days.

PARCEL POST—Must be prepaid. We prefer express but will send by post if instructed and charge you at cost.

FREIGHT AND EXPRESS—Charges are extra (except in a few prepaid Special Offers). They are paid by you to the Railroad or Expressman. We will estimate these costs in advance if you wish.

OUR GUARANTEE—Stock to be in good condition when furnished. We will, however, replace any and all losses at half price.



All plants in this catalog are zoned for hardiness. The Zone Number is a Roman Numeral following the description. It refers to the zones in the above map. Example:—Mountain Laurel (*Kalmia*) on page II is hardy in Zone IV, or anywhere south of Zone IV. The system of zoning is the best we know, but is not perfect. Sheltered localities may enable you to grow trees one or two zones colder than shown.

Kelsey Nursery Service

50 CHURCH STREET • • NEW YORK CITY

BEAUTY IN FOLIAGE

Four of the best foliage trees and shrubs are shown. *Betula alba laciniata* at left (page 5). *Fagus purpurea* in center (page 8). At right: Above, *Acer palmatum atropurpureum* (this page); below *Berberis Thunbergii atropurpurea* (page 5).



GENERAL LIST: EVERGREENS, TREES, SHRUBS AND VINES — ALL SIZES

ABELIA (Arbutus Bush)

Grandiflora (Glossy Abelia)

5 ft. Zone V, evergreen to Zone VI. Almost perfect shrub. Small bright leaves, graceful growth. Any soil. Sun. Pinky-white bells from June to October. Leaves bronze in winter.

(Each) (10) (100)
* 6 to 12 inches..... \$ 1.60 \$ 11.00
Heavy cut-back plants.\$1.00 \$ 9.00 80.00

ABIES (Fir) All Evergreen

(Photos on page 5)

Balsamea (Balsam Fir)

60 ft. Zone II. Dark, shapely pyramid. Needs cool moist soil. Best in North.

* 6 to 12 inches XX..... \$ 6.50
*12 to 18 inches XX..... 8.00
2 to 3 feet, B. & B. \$2.00 \$13.00 120.00
3 to 4 feet, B. & B. 3.00 20.00 170.00

Concolor (White Fir)

50 ft. Zone IV. Dense pyramid silver green. Drainage. Tolerant in cities.

* 2 year S..... \$ 4.50
* 4 to 7 inches X..... 10.00
* 7 to 10 inches X..... 15.00
*10 to 12 inches XX..... 25.00
*15 to 18 inches XX
(bushy)..... 35.00
2 to 3 feet, B. & B. \$1.75 \$12.50 130.00

Douglas (See Pseudotsuga, p. 15)

Firma (Momi Fir)

90 ft. Zone (V). Grass-green pyramid.

* 5 to 8 inches..... \$ 10.00

Fraseri (Southern Balsam Fir)

70 ft. Zone IV. Dark pyramid. Rich odor. Drainage and humus.

* 4 to 7 inches X..... \$ 6.50
*12 to 18 inches X..... \$ 3.50 30.00
18 to 24 inches, B. & B. 9.00 80.00

Homolepis (Nikko Fir)

60 ft. Zone IV. Stately and classic. Leaves dark above, white beneath. Moist rich loam.

* 4 to 7 inches X..... \$ 1.25 \$ 9.00
* 8 to 10 inches XX..... 2.00 16.00
*12 to 15 inches XX..... 3.00 20.00
1½ to 3 feet, B. & B. \$1.75 15.00
4 to 5 feet, B. & B. 3.00 27.50 250.00

Nordmanniana (Nordman Fir)

120 ft. Zone IV. Handsome. Dark needles, white bands below. Any garden soil.

* 3 to 5 inches X..... \$ 11.00
18 to 24 inches, B. & B.\$3.00 \$25.00

Pectinata (Silver Fir)

120 ft. Zone IV. "Silver" only below, shiny dark green above. Majestic. Any good soil.

*12 to 15 inches XX..... \$ 4.00 \$ 28.00

Veitchii (Veitch Fir)

50 ft. Zone III. Narrow pyramid, with soft effect, though needles are long and dark green. Damp loam.

* 4 to 6 inches X..... \$ 7.00
* 6 to 10 inches X..... 8.00
15 to 18 inches, B. & B. \$13.00 120.00
2 to 3 feet, B. & B. \$2.50 22.00 200.00

ACANTHOPANAX

Pentaphyllum (Five-leaved Aralia)

8 ft. Zone V. Good, arching foliage. Rocky banks. Uninteresting flowers.

*12 to 18 inches..... \$ 9.00

ACER (Maple)

Dasycarpum (Silver Maple)

100 ft. Zone IV. Good quick shade. Leaves bright silver below. (Each) (10) (100)

*12 to 18 inches..... \$ 3.50
5 to 6 feet..... \$ 4.00 35.00
8 to 10 feet.....\$1.25 10.00 80.00

Palmatum (Japanese Maple)

20 ft. Zone V. Graceful, bushy.

*15 to 18 inches..... \$ 12.00
2 to 3 feet..... \$ 2.25 16.00

—atropurpureum (Red-Leaved)

10 ft. Wine-red leaves. Bushy, compact. Any sheltered soil. (Photo above.)

* 8 inch 1-year grafts... \$.75 \$ 6.50 \$ 60.00
12 inch 2-year grafts... 1.10 9.50 90.00
15 inch 3-year grafts... 1.75 16.00 150.00

—dissectum purpureum (Cut - Leaved Purple)

6 ft. Billowy mound of lacy color. The dwarfest. (Same prices as above)

—dissectum (Green)

Also dwarf. (Same prices as above)

Platanoides (Norway Maple)

60 ft. Zone IV. Dense, round-headed. Excellent for city streets.

*12 to 15 inches S..... \$ 10.00
* 4 to 5 feet X..... \$ 4.00 30.00
* 6 to 7 feet X..... 50.00

8 to 10 feet.....\$2.00 17.00 150.00
10 to 12 feet..... 2.50 25.00 200.00
12 feet (2 in. caliper)... 4.50 40.00 370.00

—schwedleri (Schwedler)

60 ft. Zone IV. The same with colored leaves—purplish-red.

* 4 to 5 feet X..... \$ 65.00
6 to 8 feet.....\$2.00 \$19.00 185.00
8 to 10 feet..... 3.00 27.50 250.00

Rubrum (Red or Swamp Maple)

80 ft. Zone IV. Majestic drooping pyramid. Red flowers in April. Wet land, but tolerant of drainage.

*12 to 18 inches..... \$ 5.00
* 4 to 5 feet..... \$ 3.00 25.00
10 to 12 feet.....\$3.00 25.00 160.00

Saccharum (Sugar Maple)

100 ft. Zone III. Hates city air. Heavy dense, regular pyramid. Autumn color.

*12 to 18 inches..... \$ 5.00
* 4 to 5 feet X..... \$ 3.00 25.00
6 to 8 feet..... 6.50 55.00
8 to 10 feet.....\$1.75 15.00 100.00

AESCULUS (Horse-chestnut)

Hippocastanum (Flowering Horse-chestnut)

50 ft. Zone V. Stately pyramid. White flowers in late May. Deep damp soil.

*12 inches..... \$ 11.00
6 to 8 feet.....\$2.50 \$22.50

—rubiunda (Carmel) (Red-Flowering)

Slightly smaller, flowers pink.

*12-inch, 2-year grafts... \$15.00 \$125.00
5 to 6 feet.....\$3.50 34.00

Ocota (Yellow Buckeye)

60 ft. Zone V. Yellow in June. Humus. (Each) (10) (100)

*18 to 24 inches..... \$ 7.00

ALBIZZIA (Mimosa)

Julibrissin rosea (Hardy Mimosa)

6 ft. Zone VI. Very rare. Interesting pink flower for two summer months.

* 6 to 8 inches.....(3 for \$1.50 postpaid)

ALMOND—Prunus (p. 15)

ALTHEA—Hibiscus (p. 9)

AMELANCHIER (Shadblow)

Canadensis (Downy Shadblow)

20 ft. Zone IV. Thin, bushy shrub or tree. Pure white show in early May.

*12 to 18 inches..... \$ 6.00
*18 to 24 inches..... 7.00

AMPELOPSIS (Ampelopsis)

Quinquefolia (Woodbine)

Vine. 30 ft. Zone V. Vigorous. Fall color.

*12 to 18 inches..... \$ 5.50
2-year No. 1.....\$.35 \$ 3.00 25.00

—Englemannii (Englemann Ivy)

The same with smaller leaves.

*18 to 24 inches..... \$ 9.00

Triacanthata (Veitchii) (Boston Ivy)

Vine. 40 ft. Zone V. The most popular. Self-clinging. Dense. Fall color.

*12 to 18 inches..... \$ 5.00
2-year No. 1.....\$.50 \$ 4.50 40.00

AMORPHA (Amorpha)

Fruticosa (Indigo-bush)

12 ft. Zone V. Tiny bloom. June. Tolerant.

*12 to 15 inches..... \$ 4.00
2 to 3 feet..... \$ 1.50 11.00

AMYGDALUS (Peach)

(See also page 21)

Persica rubra (Red-flowering)

6 ft. Zone V. Straggling shrub, but beautiful in May. Profuse bloomer.

4 to 5 feet.....\$1.30 \$12.00

ARBORVITAE (See Thuja, page 19)

ARCOSTAPHYLOS

Uva-ursi (Bearberry)

6-inch creeper. Zone II. White, sparse all summer, red fruits follow. Sandy, acid. Makes beautiful mat. Evergreen.

3-inch pots.....\$.50 \$ 4.50 \$ 40.00

ARONIA (Chokeberry)

Arbutifolia (Red Chokeberry)

8 ft. Zone IV. Pink-white blooms in May, bright red berries in fall. Moist.

*12 to 18 inches..... \$ 4.50

Melanocarpa (Black Chokeberry)

4 ft. Zone III. Dwarfier, denser. Showier flowers, but black berries.

*12 to 18 inches..... \$ 4.50
2 to 3 feet.....\$.90 \$ 8.00 70.00

ASH (See Fraxinus, p. 9)



Top left: Hybrid Kaempferi, Lower left: Kurume "Hinodigiri"



At right: Mass of Mollis seedlings showing color range.

A Z A L E A S

THESSE preposterously floriferous shrubs are the gayest, brightest and most satisfactory that can be planted in gardens—formal or natural. In masses they blend with any landscape. Many of them stand dense or slight shade. With all, acid soil is needed—easily obtained by mulch of Oak leaves or humus.

Arborescens (Tree Azalea)

15 ft. Shade, acid, humus, loose. White in June. Fragrant. Zone V. (Each) (10) (100)
 *12 to 18 in. with ball... \$ 5.00 \$ 35.00
 12 to 18 inches, B. & B\$2.25 20.00

Arnoldiana (Amoena x Kaempferi)

6 ft. Bushy. Sun, acid, humus, loose. Various in May. Zone V. Evergreen.

- Briareliffe—Deep, rich reddish-pink.
- Cardinalis—Dark red. New leaves with blooms.
- Dexter's Pink—Bright, glistening pink. Fine.
- Early Dawn—Soft pink, fading silvery.
- Mello-Glo—Cerise pink, suffused golden.
- Mossiciana—Rich orchid. Strong grower.
- *2-inch pots..... \$ 4.00 \$ 35.00
- *2-year XX.....\$.80 6.00 45.00
 (Can Quote some 18-inch in quantity)

Atlantica (Native Dwarf)

2 ft. Spreads. Acid, humus, loose. Pink to white, late May. Zone V.
 12 to 15 inches.....\$1.25 \$11.00

Calendulacea (Flame Azalea)

10 ft. Bushy. Acid, humus, loose. Yellow to red in June. Zone V.
 *12 to 18 in., with ball... \$ 5.00 \$ 35.00
 15 to 18 inches, B. & B\$2.25 20.00 150.00

Ghent Hybrids (Gandavensis)

5 ft. Acid, humus, loose. Various in late May. Zone (V) VI.
 15 to 18 inches, B. & B \$20.00 \$160.00
 2 to 3 feet, B. & B. \$4.00 35.00

—Altaclarensis—Intense yellow. Zone V.

*1 year X..... \$ 1.60 \$ 12.50
 18 to 24 inches, B. & B\$4.25 42.50

Japonica (Japanese Azalea)

6 ft. Bushy. Any garden soil. Yellow to vermilion in late May. Zone IV. Rare.

* 4 to 6 inches X..... \$ 14.50
 12 to 18 inches, B. & B\$1.50

Kaempferi (Torch Azalea)

Semi-evergreen. 8 ft. Acid, humus. Showy salmon-red, May. Zone V.

*12 to 18 inches S..... \$ 3.50 \$ 25.00
 * 8 to 10 inches X..... 4.50 35.00
 10 to 12 inches, B. & B\$1.00 9.50 85.00

—Mikado Brilliant-red. Lusty.

* 6 to 8 inches XX..... \$ 40.00
 10 to 12 inches, B. & B\$1.50 \$13.50 110.00
 15 to 18 inches, B. & B 3.00 22.00 180.00

Kaempferi Hybrids (Malvatica)

Semi-evergreen. 8 ft. Flowers larger and better color. May. Zone V.

—Othello—Brick-red to orange.

—Fedora—Large salmon. Vigorous.

—Carman—Large rose. Bushy.

—Cleopatra—Shell-pink. Lusty.

* 6 to 8 inches X..... \$ 3.50 \$ 30.00
 * 8 to 10 inches XX..... 6.00 50.00
 12 to 15 inches, B. & B\$1.00 9.00 80.00
 15 to 18 inches, B. & B 1.50 13.50 120.00
 18 to 24 inches, B. & B 2.50 22.50 200.00
 (12 others available in various sizes)

Kurumes (Obtusum)

Evergreen. 2 to 4 ft. Acid, humus. Various in May. Varying hardness.

—amoena

Almost a species. Type is rosy purple. Hardy in Zone V.

* 2-inch pots..... \$ 1.60 \$ 13.00
 * 2-year XX (beds)..... 2.70 22.00
 * 3-year XX (beds).....\$.70 3.80 35.00
 6 to 8 inches, B. & B 1.00 7.00 60.00
 8 to 10 inches, B. & B 1.25 9.00 80.00
 10 to 12 inches, B. & B 1.50 12.00 90.00
 12 to 15 inches, B. & B 1.80 14.00 120.00

—amoena carminata splendens

Deep pink. Zone VI. (Each) (10) (100)
 * 2-year XX..... \$ 2.50 \$ 20.00
 * 3-year XX.....\$.55 3.75 32.00
 10 to 12 inches, B. & B 2.10 15.00 125.00

—amoena coccinea

Brings the hardy Amoena strain into the fiery reds. New. Zone V.

* 2-year XX..... \$ 2.75 \$ 22.00
 6 to 8 inches, B. & B\$1.40 11.00 80.00
 8 to 10 inches, B. & B 1.75 13.00 100.00
 10 to 12 inches, B. & B 2.00 16.00 130.00
 12 to 15 inches, B. & B 2.30 19.00 160.00

—amoena Mrs. Carmichael

Larger, rosy purple blooms than others. Zone VI.

* 2-inch pots..... \$ 2.25

—Benigiri

Bright, deep red. Compact. Zone VI.
 (Same price as Amoena coccinea)

—Hinodigiri

Brilliant scarlet. Zone VI.
 (Same price as Amoena)

—Hinamayo

Beautiful soft pink. Zone VI.
 (Same price as Amoena coccinea)

—macrostenion

Salmon-red, late May. Zone VI.
 (Same price as Carminata splendens)

—yayegiri

Salmon-red. Narrow leaf. Zone VI.
 (Same price as Amoena coccinea)

Tender Varieties—Zone VIII—The Kurume Azaleas of the florists. We can offer a list of thirty kinds or more at very low prices, smallest size 2 inch pots at \$2.50 for 10 of a kind.

Ledifolia (Mucronatum)

Evergreen. 6 ft. Bushy. Acid, humus, loose. White in late May. Zone (V) VI. Also called "Indica alba."

—Rosea (Magnifica)—Rose flowers.

—Damask Rose—White, red spot.

—Fujimanyo—Double, purple.

—Suishoren 77131—Dark pink, double.

* 2-inch pots..... \$ 2.20 \$ 17.00
 * 2-year XX..... 3.30 26.00
 * 3-year XX..... 4.50 38.00
 8 to 10 inches, B. & B\$1.50 \$12.00 95.00
 10 to 12 inches, B. & B 1.90 15.00 125.00
 12 to 15 inches, B. & B 2.30 19.00 160.00

Macrantha (Indicum)

Evergreen. 3 ft. Dense. Acid, loose. Red in June. Zone V.

—Beni Kirishima—Large pink.

—J. T. Lovett—Double salmon-red.

—Satsuki 77087—Pink, dark blotch.

—Satsuki 77104—Large pink-rose.

—Tamanoito—Light purple-rose.

—Waraigishi—Deep rose. Robust.

* 2-year XX..... \$ 2.70 \$ 22.00
 * 3-year XX..... 3.80 32.00
 6 to 8 inches, B. & B\$1.30 11.00 80.00
 8 to 10 inches, B. & B 1.80 13.50 100.00
 10 to 12 inches, B. & B 2.25 19.50 120.00

Mollis (Seedlings)

2 to 5 ft. Sun, acid, loose. Yellow to red in May. Zone (V).

* 4 to 6 inches X..... \$ 2.00 \$ 15.00
 10 to 15 inches, B. & B 10.00 75.00
 15 to 18 inches, B. & B\$1.50 13.50 95.00
 18 to 24 inches, B. & B 2.50 20.00

—Hugo Hardyzer—Brilliant scarlet.

* 4 to 6 inches X..... \$ 13.00
 8 to 10 inches, B. & B\$1.75

—Louise Hunnewell—Yellow in June.

18 to 24 inches, B. & B\$6.50

COLLECTED NATIVE AZALEAS

Perhaps the three best: Calendulacea arborescens and viscosa. Small 12 inch plants with earth on roots. Any one kind: 25 for \$10.00, 50 for \$17.50. (Larger: too, quoted in carload lots.)

—J. C. Van Tol—Clear vivid red.

(Each) (10) (100)
 * 4 to 6 inches X..... \$ 14.00

Mucronulata (Mongolian)

7 ft. Bushy. Acid, humus, loose. Rose-purple, large, April. Zone IV.

* 6 to 8 inches X..... \$ 22.00
 6 to 8 inches, B. & B\$.90 \$ 7.00 55.00
 10 to 12 inches, B. & B 1.50 12.00

Nudiflora (Pinxterbloom)

6 ft. Acid, humus, loose. Pinkish or white in late May. Zone V. Fragrant.

*12 to 18 inches S..... \$ 10.00
 12 to 18 inches, B. & B\$1.50 \$13.50

Phoenicia Hybrid (Maxwelli)

Evergreen. 3 ft. Spreads. Carmine in late May. Zone IV.

* 6 to 8 inches X..... \$ 4.00 \$ 35.00
 10 to 15 inches, B. & B\$1.35 12.00 100.00
 15 to 18 inches, B. & B 1.75 16.00 150.00

Pontica (Luteum)

12 ft. Acid, humus, loose. Fragrant yellow in June. Zone V.

1½ to 2 feet, B. & B. \$2.50 \$23.00

Poukhanense (Yedoense var.)

4 ft. Acid, humus, loose. Purplish in May. Zone V. Fragrant.

* 2-year XX..... \$ 3.00 \$ 22.00
 12 to 15 inches, B. & B\$2.25 18.00 150.00
 18 to 21 inches, B. & B 3.00 25.00

—Yodogawa

Garden form, larger double flowers bright lilac. Semi-evergreen.

* 2-year XX..... \$ 3.60 \$ 30.00
 10 to 12 inches, B. & B\$1.75 11.00 90.00

Poukhanense x Hinodigiri

(?) ft. Compact. Large purple flowers in May. Zone V.

12 to 18 inches.....\$1.50

Poukhanense x Kaempferi

6 ft. (?) Vigorous. Many colors in May. Zone V.

18 to 24 inches, bushy. \$1.50

Poukhanense x Hexe

(?) ft. Dwarf. Large, double deep red-purple in May. Zone V.

18 to 24 inches.....\$2.00

Reticulatum (Rhombicum)

20 ft. Branchy. Acid, humus, loose. Rosy-purple in late April. Zone VI.

*10 to 12 inches X.....\$.75 \$ 6.50

12 to 18 inches, B. & B 1.25 11.00

—dilitata Deep rose. Dwarf.

* 6 to 8 inches XX.....\$.60 \$ 4.00 \$ 35.00
 8 to 12 inches, B. & B 1.00 7.00 45.00

Roseum (Downy Pinxterbloom)

12 ft. Any soil. Pink in late May. Hardy Zone III. Native. Fragrant.

*12 to 18 inches..... \$ 3.00 \$ 20.00
 18 to 24 inches, B. & B 15.00 130.00

Schlippenbachi (Royal Azalea)

12 ft. Thin shade, acid, humus. Clear pink in May. Fragrant. Zone V.

* 4 to 8 inches X..... \$ 2.50 \$ 20.00
 8 to 10 inches, B. & B\$1.50 10.00

Vaseyi (Pinkshell)

12 ft. Upright. Acid, humus, loose. Sun. Pink in early May. Profuse. Zone V.

*10 to 12 inches X..... \$ 26.00
 15 to 18 inches, B. & B\$2.50 \$20.00

Viscosa (Swamp Azalea)

8 ft. Acid, humus, swampy or dry. Very fragrant white in July. Zone IV.

*12 to 18 in., with ball... \$ 5.00 \$ 35.00
 12 to 15 inches, B. & B\$1.25 10.00 80.00
 3 to 4 feet, B. & B. 2.75 25.00



Two fine Concolor Firs

Three old Nikko Firs

Douglas Fir (*Pseudotsuga*)

Veitch's Fir—8 feet

Sargent's Weeping Hemlock

Tsuga canadensis

Nikko Fir

BEECH (See *Fagus* p. 8)

BENZOIN (Benzoin)

Aestivalis (Spice Bush)

12 ft. Zone V. Damp. A mist of pale yellow in April. Red berries. (Each) (10) (100)
 *12 to 18 inches S..... \$ 7.00
 *18 to 24 inches X..... 25.00
 2 to 3 feet.....\$.65 \$.55 35.00

BERBERIS (Barberry)

Aggregata Pratti (Salmon Barberry)

9 ft. Zone V. Long panicles of salmon-red berries. A show. Sun.
 * 6 to 8 inches..... \$ 2.50 \$ 17.00
 *15 to 18 inches.....\$.90 6.50

Juliana (Wintergreen Barberry)

6 ft. Zone V. Evergreen. Photo page 17. Sun or shade. Flower small, fruit black.
 * 8 to 10 inches..... \$ 3.00 \$ 22.50
 12 to 18 inches, B. & B\$.95 8.00 65.00

Sargentiana (Sergeant Barberry)

6 ft. Zone VI. Spreading evergreen. Flower and fruit like above. Handsome.
 *10 to 12 inches..... \$ 3.00 \$ 22.50
 12 to 15 inches, B. & B\$1.50 12.00 100.00

Thunbergi (Japanese Barberry)

5 ft. Zone IV. Very tolerant. Bushy and dense, red berry in autumn. Fine hedge.
 * 9 to 12 inches..... \$ 3.00
 *12 to 15 inches..... 4.50
 18 to 24 inches..... \$ 2.00 15.00
 2 to 3 feet.....\$.40 3.00 22.50

atropurpurea (Red-Leaf)

The same except for color. Photo p. 3.
 * 8 to 12 inches..... \$ 9.00
 15 to 18 inches.....\$.50 \$ 4.50 30.00
 18 to 24 inches..... .60 5.00 35.00

minor (Box Barberry)

A dwarf form.
 6 to 10 inches..... \$ 3.75 \$ 27.50

erecta (Column Berry)

A new form much more valuable for hedges. Erect.
 * 9 to 12 inches..... \$ 2.30 \$ 16.50
 15 to 18 inches.....\$.45 3.50 27.00
 2 to 2½ feet..... .75 6.00 50.00

Triacanthophora (Three-spine Barberry)

5 ft. Zone V. Long narrow leaves. Photo page 17. Evergreen. Fruit black. Sun.
 10 to 12 inches, B. & B\$1.50 \$12.00 \$100.00

Verruculosa (Warty Barberry)

3 ft. Zone V. Gorgeous dense dwarf. Evergreen. Photo page 17. Yellow bloom all summer. Leaf like tiny holly.
 * 4 to 6 inches X..... \$ 3.00 \$ 22.50
 10 to 12 inches, B. & B\$1.50 12.00 100.00

BETULA (Birch)

Alba (European White Birch)

40 ft. Zone III. Good bark. Spreading.
 * 9 to 12 inches S..... \$ 7.00
 3 to 4 feet.....\$.90 \$ 6.00 45.00
 6 to 8 feet..... 2.25 20.00 150.00

laciniata (Cutleaf Weeping)

Photo page 3. Like above, but drooping branches and lacy, drooping leaves.
 5 to 6 feet.....\$3.00 \$25.00 \$225.00
 6 to 8 feet..... 3.50 30.00 250.00

Lenta (Sweet Birch)

75 ft. Zone III. Humus, drainage. Fine pyramidal specimen, or for woods.
 (Each) (10) (100)

*18 to 24 inches..... \$ 6.00

Lutea (Yellow Birch)

75 ft. Zone III. Similar, but for cool, moist places.

*18 to 24 inches..... \$ 6.50

Nigra (River Birch)

80 ft. Zone III. Brown papery bark, graceful form. Moist, sandy soil.

*12 to 18 inches..... \$ 3.00
 6 to 8 feet..... \$12.00 100.00

Papyrifera (Canoe or Paper Birch)

80 ft. Zone I. Whitest bark of all, but yellowish when young. Handsome.

* 8 to 10 inches..... \$ 4.50
 *12 to 18 inches..... 5.50
 4 to 6 feet..... \$10.00 70.00

Populifolia (Gray Birch)

30 ft. Zone III. The common clump of "white" birch in woods. Poor soil.

*18 to 24 inches..... \$ 5.00

BIGNONIA

Radicans (Trumpet Vine)

60 ft. Vine. Zone V. Scarlet flowers, July to Sept. Humus. Photo p. 20.

* 8 to 12 inches X..... \$ 8.00
 2-year No. 1.....\$.40 \$ 2.50 \$ 18.00

BRUCKENTHALIA

Spicata (Spike Heath)

12 inch. Zone V. Pink, June to Aug. (Culture as *Calluna*, *Erica*.)

* 2-inch pot-plants..... \$ 2.00 \$ 16.00

BUDDLEIA (Summer Lilac)

Davidii (Butterfly Bush)

10 ft. Zone V. Lavender pink from June to August. Rapid. Drainage.

*12 to 18 inches..... \$ 15.00
 2-year (bushy).....\$.50 \$ 3.00 25.00

de France

5 ft. Dwarf. Longer spikes, more vivid color. 2-year (strong).....\$.50 \$ 4.00 \$ 30.00

Hartwegi (NEW)

Hardier than any other *Buddleia* and blooms showier and neater.

2½ inch pots.....\$.75 \$ 5.50 \$ 50.00

BUXUS (Boxwood)

Microphylla Koreana (Korean Box)

1½ ft. Zone V. Very compact and dense. Any soil. Photo page 17.

* 4 to 6 inches X..... \$ 2.25 \$ 17.00
 6 to 8 inches, B. & B\$.85 7.00 55.00
 8 to 10 inches, B. & B .95 8.00 70.00

Sempervirens (Bush, Common Box)

10 ft. Zone VI. Quicker growth and more open than its famous variety.

* 6 to 8 inches X..... \$ 2.50 \$ 16.00
 15 to 18 inches, B. & B\$1.25 10.00 90.00

Handsworthii Upright, larger leaf.

* 6 to 8 inches X..... \$ 2.50 \$ 17.00

suffruticosa (Dwarf Old English)

6 ft. Zone (V). A billowy dense mass of dark green. This is the box of collectors. Small plants used for formal edging. Photo page 17.

(Each) (10) (100)

* 6 to 8 inches X..... \$ 3.00 \$ 22.00
 6 to 8 inches, B. & B\$.80 7.50 60.00

CALLICARPA (Beautyberry)

Americana (Native Beautyberry)

6 ft. Zone VI. Red-violet fruit in October. Tolerant.

*12 to 18 inches S..... \$ 5.00
 18 to 24 inches..... \$ 3.00 18.00

Purpurea (Chinese Beautyberry)

5 ft. Zone (V). Lilac-purple berries.
 18 to 24 inches..... \$ 4.00 \$ 32.00

CALLUNA (Heather)

Vulgaris (Scotch Heather)

2 ft. Zone V. Likes drainage, acid, wind. Photo page 16. Evergreen. Rosy-purple, July and August.

2-year.....\$.50 \$ 3.50 \$ 30.00
 3-year clumps..... .65 5.00 40.00

alba (White Heather)—Early white.

alba erecta—Taller form, white.

alba minor—Dwarf form of white.

alporti—Crimson, tall.

aurca—Yellow leaf, pink flower.

hammondi—Robust growth. White.

rosea—Pink, delicate form.

rubra (Red Heather)—Good. Red.

scarlii—Tall, late white. Loose.

Above nine varieties:—

2-inch pots..... \$ 2.00 \$ 15.00

3-year clumps.....\$.75 6.00 50.00

CALYCANTHUS (Sweet Shrub)

Floridus (Strawberrybush)

8 ft. Zone V. Rich, damp, part shade. Brown pineapples, fragrant, July.

18 to 24 inches..... \$ 1.50 \$ 10.00

CARPINUS (Hornbeam)

Caroliniana (Blue Beech)

30 ft. Zone IV. Handsome, bushy. Leaves turn scarlet in autumn.

*12 to 18 inches..... \$ 5.50

*18 to 24 inches..... 7.00

CASTANEA (Chestnut)

Mollissima (Chinese Chestnut)

55 ft. Zone V. Bushy tree, practically immune to blight. Good nuts. See also page 22.

*12 to 15 inches X..... \$ 3.75 \$ 26.00

*15 to 18 inches X.....\$.90 6.00 40.00

CATALPA (Catalpa)

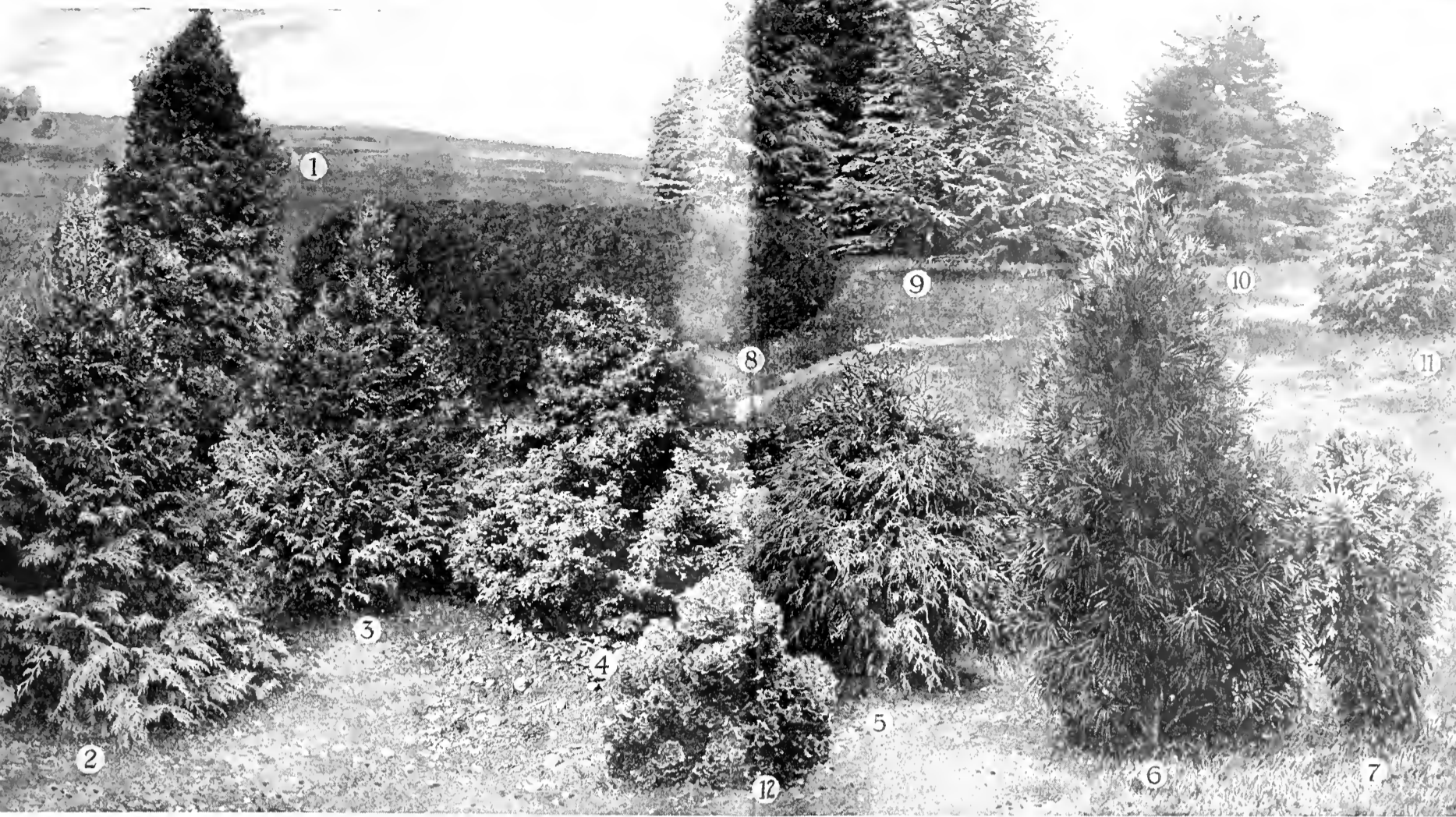
Speciosa (Western Catalpa)

80 ft. Zone IV. Handsome pyramid. Spotted white in June. Showy. Timber durable in water.

*18 to 24 inches..... \$ 4.00

9 to 10 feet..... \$12.00 100.00

UNUSUAL EVERGREENS



1. *Retinospora obtusa gracilis*
2. *Retinospora pisifera*
3. *Retinospora plumosa*

4. *Retinospora squarrosa veitchii*
5. *Retinospora filifera*
6. *Sciadopitys verticillata*

7. *Cryptomeria Lobbi*
8. Hedge of *Retinospora plumosa*
9. *Cedrus atlantica glauca*

10. *Cedrus Libani*
11. *Cedrus deodara*
12. *Retinospora obtusa nana*

CEANOTHUS (Ceanothus)

Americana (New Jersey Tea)
3 ft. Zone III. Dry, humus, sun. White panicles, July to Oct. (Each) (10) (100)
*12 to 18 inches..... \$ 7.00
18 to 24 inches.....\$.50 \$ 4.50 35.00

CEDRUS (True Cedar) Evergreen

Atlantica (Atlas Cedar)
60 ft. Zone VI. Long, open branches in a pyramid. Light green needles. All cedars need perfect drainage.

* 8 to 10 inches X..... \$ 25.00
Atlantica glauca (Silver Atlas)
A gorgeous form with silver foliage. Unique. Photo above.
*10 to 12 inches, B. & B\$.90 \$ 8.00 \$ 70.00
24 to 30 inches, B. & B 2.95 27.50 250.00

Deodara (Deodar of India)
120 ft. Zone (VI). Dark blue-green drooping pyramid. Photo above.
* 8 to 12 inches X..... \$ 32.00
*12 to 18 inches XX..... \$4.50 40.00
15 to 18 inches, B. & B\$.90 7.00

Libani (Cedar of Lebanon)
80 ft. Zone (V). A light green pyramid when young (Photo above). Age brings majesty and dignity. Drain.
* 8 to 12 inches X..... \$ 3.50 \$ 30.00

CELASTRUS (Bittersweet Vine)

Orbiculatus (Oriental Bittersweet)
30 ft. Vine. Zone V. Brilliant red and yellow fruit in autumn. Vigorous.
*12 to 18 inches..... \$ 7.00
18 to 24 inches..... \$ 2.75 20.00

Scandens (American Bittersweet)
20 ft. Zone IV. Similar, but more dwarf. Photo page 20. Easily grown.
* 2-year..... \$ 6.50
2 to 3 feet.....\$.70 \$ 5.50

CELTIS (Hackberry)

Occidentalis (Northern Hackberry)
100 ft. Zone II. Good straight timber, handsome shade. Moist. Stands city.
*12 to 18 inches..... \$ 5.00
6 to 8 feet.....\$2.50 \$22.00 180.00

CEPHALANTHUS

Occidentalis (Buttonbush)
12 ft. Zone IV. Fragrant white buttons in July and August. Moist.
*12 to 18 inches..... \$ 5.50
*18 to 24 inches X..... \$ 2.00 10.00

CERCIS (Judas-tree)

Canadensis (Red Bud)
20 ft. Zone V. Rosy pink buds cover bare branches in April. Humus. Beautiful. Photo on front cover.
*12 to 18 inches..... \$ 4.00
*18 to 24 inches..... 5.00
3 to 4 feet..... \$ 7.00 50.00
4 to 5 feet.....\$1.25 3.50 60.00

CHAMAECYPARIS (*Retinospora*) (Japanese Cypress)

EASILY grown evergreens, at present much misused. Hardier than realized. Mostly trees of medium size, a few true dwarfs are excellent for foundation planting. Several photographs above.

Lawsoniana (Lawson's Cypress)
120 ft. Zone (V). Huge, tall tapered column of green. Moist climate. (Each) (10) (100)
* 8 to 10 inches X..... \$ 3.00 \$ 22.00
18 to 24 inches, B. & B\$1.25 9.50 85.00

Lawsoniana Triomphe de Boskoop
Dwarfer with steel-blue foliage. Gorgeous.
18 to 24 inches, B. & B\$2.00 \$14.00 \$120.00

Obtusa (Hinoki Cypress)
35 ft. Zone III. Acid, humus, moist. Ornamental, slow. Dark green column.
* 6 to 12 inches X..... \$ 7.50
18 to 24 inches, B. & B \$15.00 90.00
3 to 4 feet, B. & B..\$2.00 17.00

Obtusa gracilis (Slender Hinoki)
15 ft. Almost black, slow, rugged, dense. Photo above.
* 8 to 10 inches X..... \$ 3.50 \$ 26.00
18 to 24 inches, B. & B\$2.50 18.00 150.00

Obtusa nana (Dwarf Hinoki)
3 ft. And looks ancient. Photo above.
* 4 to 6 inches X..... \$ 3.50 \$ 26.00
8 to 10 inches, B. & B\$1.50 12.00 100.00
12 inches, B. & B..... 2.00 15.00 130.00

Pisifera (Sawara Cypress)
35 ft. Zone III. Small plant photo above. Any good soil. Loose growth.
* 4 to 6 inches, R. C..... \$ 7.00
* 6 to 8 inches X..... 11.00
* 8 to 10 inches X..... 16.00
18 to 24 inches, B. & B\$1.30 \$10.00 80.00
2 to 3 feet, B. & B.. 1.75 15.00 120.00
6 to 8 feet, B. & B.. 3.50 30.00

Pisifera aurea (Golden)—Shining yellow.
* 4 to 6 inches R. C..... \$ 11.00
* 6 to 8 inches X..... 13.00
* 8 to 10 inches X..... 15.00
18 to 24 inches, B. & B\$1.00 \$ 8.00 70.00
5 to 6 feet, B. & B.. 2.75 25.00 200.00

—filifera (Thread)
20 ft. Stringy leaves. Compact broad pyramid.
* 6 to 8 inches X..... \$ 15.00
* 8 to 10 inches X..... 17.00
18 to 24 inches, B. & B\$1.75 \$13.50 120.00
3 to 4 feet, B. & B.. 2.50 22.00

—filifera aurea (Gold-Thread)
Only 12 ft. Yellow. Photo above.
* 8 to 10 inches X..... \$ 3.00 \$ 25.00
18 to 24 inches, B. & B\$3.50 30.00

—plumosa (Plumed)
35 ft. Feathery pyramid. Photo above. Good hedge.
* 4 to 6 inches R. C..... \$ 7.00
* 6 to 8 inches X..... 12.00
* 8 to 10 inches X..... 14.00
*10 to 12 inches X..... 17.00
18 to 24 inches, B. & B\$1.00 \$ 8.00 70.00
3 to 4 feet, B. & B.. 2.00 16.00 150.00
4 to 5 feet, B. & B.. 2.50 22.00 200.00

—plumosa aurea (Gold-Plume)
25 ft. Good yellow color at tips.
(Each) (10) (100)

* 4 to 6 inches R. C..... \$ 7.50
* 6 to 8 inches X..... 13.00
* 8 to 10 inches X..... 15.00
18 to 24 inches, B. & B\$1.00 \$ 8.00 70.00
4 to 5 feet, B. & B.. 2.50 22.00 200.00

—plumosa lutescens (Dwarf Yellow Plume)
4 ft. Low, broad bush, tips yellow.
* 6 to 8 inches XX..... \$ 30.00
12 to 15 inches, B. & B\$2.00 \$14.00 120.00

—plumosa squarrosa Veitchii (Veitch Moss)
Unusual. Photo above. 25 ft. Dense, woolly foliage, silver-gray.
* 4 to 6 inch R. C..... \$ 8.00
* 6 to 8 in. X..... 12.00
18 to 24 inches, B. & B\$1.00 \$ 8.00 70.00
3 to 4 feet, B. & B.. 2.00 18.00 150.00

CHERRIES—See Prunus (p. 15) Fruits (p. 21)

CHIONANTHUS

Virginica (White Fringe)
25 ft. Zone V. Fragrant white tassels in May. Photo front cover. Damp, loose.
* 6 to 10 inches..... \$ 12.00
*18 to 24 inches X..... \$ 7.00 42.00
4 to 5 feet.....\$2.00 15.00

CLADASTRIS

Lutea (Yellow-wood)
50 ft. Zone IV. Fragrant, white in June. Stands drought. Deep roots.
* 2 to 3 feet..... \$ 2.50 \$ 18.00
8 to 10 feet.....\$5.00 45.00

CLEMATIS (Clematis Vine)

Large-Flowered Hybrids
3 ft. Zone (V). Bloom through July and August. Light loam, very rich, drain well. Photo page 20.
Henry—Single creamy-white.
Duchess Edinburgh—Fragrant white.
Jackmanni—Popular rich violet.
Mme. Andre—Bright crimson-pink.
Mme. B. Veillard—Large satin pink.
2-year plants.....\$1.00 postpaid.
Montana rubens (Anemone Clematis)
20 ft. Vine. Zone VI. Vigorous. Rosy flowers, June and July. Rare.
2-year plants.....\$1.00 postpaid.
Paniculata (Sweet Autumn Clematis)
25 ft. Zone V. Woody and vigorous. Fragrant White, Sept.-Oct. Photo p. 20.
2-year No. 1.....\$.50 \$ 3.50 \$ 30.00

CLETHRA

Alnifolia (Summer sweet)
7 ft. Zone IV. White fragrant spikes vary from July to August. Acid.
*18 to 24 inches X..... \$ 3.00 \$ 20.00
2 to 3 feet..... \$.75 6.00 55.00

FLOWERING TREES

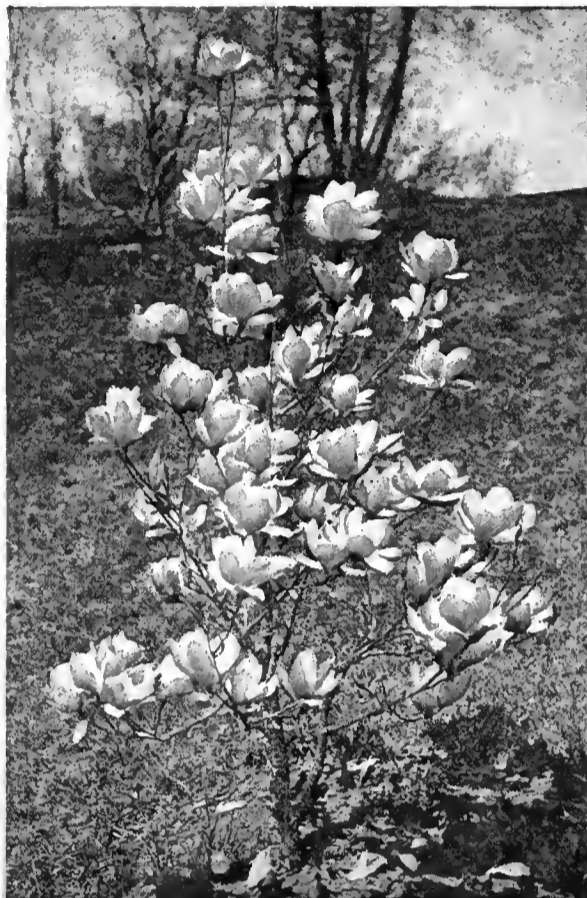
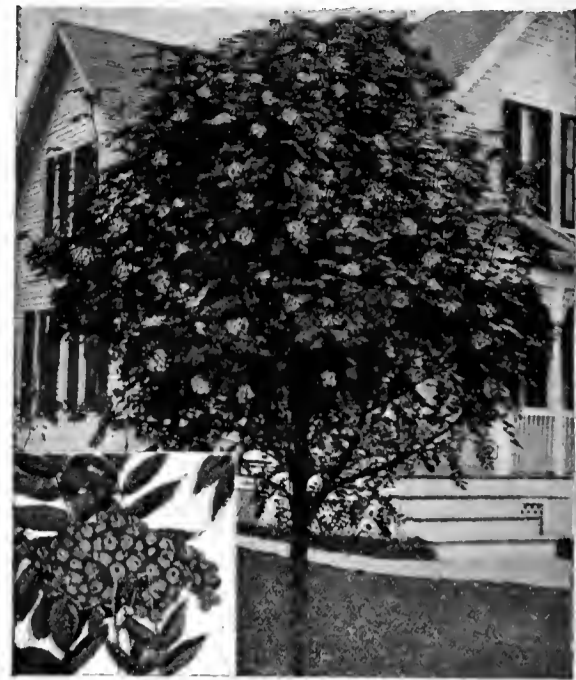
ON this and the next two pages are photographed the best of the rare and beautiful flowering trees. Add a few not pictured—Tree Lilac (under Syringa) and Tree Azalea (*Azalea arborescens*) for instance, and you have almost a complete list of the choicest kinds. Planted in masses, no more gorgeous effect for a tall border could be imagined.

Red-flowering Dogwood in full bloom

Magnolia soulangeana lennei

(Right)
*Sorbus
aucuparia
(Mt. Ash)*

(Lower
Right)
*Crataegus
(Paul
Scarlet)*



CORNUS (Dogwood)

Alba (Siberica) (Tatarian Dogwood)
8 ft. Zone I. Flower and berry slight in effect. Vivid red bark. Tolerant.

	(Each)	(10)	(100)
*12 to 18 inches.....			\$ 6.50
3 to 4 feet.....	\$.75	\$ 6.50	50.00

Amonum (Silky Dogwood)
8 ft. Zone V. Damp soil. Good blue berries in autumn. Purplish bark.

*18 to 24 inches X.....			\$ 13.00
3 to 4 feet.....	\$.75	\$ 6.00

Florida (Flowering Dogwood)
25 ft. Zone IV. Very showy white in May, large red berries October on. Acid, humus. Photo front cover.

*6 to 12 inches.....			\$ 4.50
*12 to 15 inches.....			7.50
2 to 3 feet.....	\$ 6.00		45.00
3 to 4 feet.....	\$1.50	10.00	55.00
5 to 6 feet.....	3.50	20.00	125.00

—rubra (Pink Flowering)
Bright pink flowers. Photo above.

* 1-year graft, 6 inches.....	\$ 5.50	\$ 45.00	
18 to 24 inches, B. & B.....	\$1.10	9.50	30.00
2 to 2½ feet, B. & B.....	1.50	14.00	110.00
2½ to 3 feet, B. & B.....	1.80	17.50	160.00
3 to 4 feet, B. & B.....	2.75	26.50	250.00

Kousa (Japan Flowering Dogwood)
20 ft. Zone V. Quite like our native, but in June and more tolerant.

* 1-year S.....		\$ 6.50	
2 to 3 feet.....	\$1.00	\$ 9.00	70.00
3 to 4 feet.....	1.50	13.50	100.00

Mas (Cornelian Cherry)
20 ft. Zone V. A yellow cloud in April. Scarlet cherries August. Tolerant.

3 to 4 feet.....	\$1.50	\$12.50	\$115.00
------------------	--------	---------	----------

Sanguinea (Bloodtwig Dogwood)
10 ft. Zone IV. Sun, damp. Flower and fruit poor. Deep red bark in winter.

*12 to 18 inches.....			\$ 6.00
-----------------------	--	--	---------

Stolonifera (Red Osier)
8 ft. Zone I. Sun, damp, spreading. Again, valued for bright red winter bark.

*18 to 24 inches.....		\$ 2.00	\$ 13.00
-----------------------	--	---------	----------

Stolonifera lutea (Goldtwig)
Smaller and a really bright yellow bark.

*12 to 18 inches.....			\$ 9.00
3 to 4 feet.....	\$.75	\$ 2.00	60.00

CORYLUS (Filbert)

Americana (American Hazelnut)
9 ft. Zone IV. Broad, bushy. The nuts attract squirrels. Sun, damp.

*12 to 18 inches.....			\$ 6.00
-----------------------	--	--	---------

COTONEASTER (Rockspray)

Culture: Sun, well-drained.

Adpressa (Creeping Cotoneaster)
12 inches. Zone V. Red berries.

	(Each)	(10)	(100)
* 3-inch pots.....	\$.75	\$ 6.00	\$ 37.00

Apiculata (Cranberry Cotoneaster)
5 ft. Zone V. Pink bloom, June. Large red fruit October.

* 3-inch pots.....	\$.75	\$ 6.00	\$ 37.00
--------------------	-------	---------	----------

Dammeri (Humifusa)
12 inches. Long trailer. Evergreen. Zone V. Bright red berries.

* 2-inch pots.....	\$.60	\$ 4.00	\$ 30.00
--------------------	-------	---------	----------

Divaricata (Spreading Cotoneaster)
6 ft. Zone V. Strong open growth. Scarlet fruit.

* 3-inch pots.....	\$.75	\$ 6.00	\$ 37.00
--------------------	-------	---------	----------

Franchetti (Franchet Cotoneaster)
6 ft. Zone V. Spreading. Orange fruit remains nearly all winter.

* 2½-inch pots.....	\$.60	\$ 4.00	\$ 30.00
* 3-inch pots.....	.75	6.00	37.00

Henryana (Henry Cotoneaster)
5 ft. Zone VI. Half-evergreen. Large leaves. Red berries last late.

12 to 15 inches, B. & B.....	\$.75	\$ 6.00
------------------------------	-------	---------	-------

Horizontalis (Rock Cotoneaster)
3 ft. Zone (V). Flat arching, densely twigged branches, half-evergreen. Pink flowers, scarlet berries. Photo p. 17.

* 2-inch pots.....	\$ 3.75	\$ 26.00	
* 3-inch pots.....	\$.75	5.25	37.00
15 inches, B. & B.....	6.50	55.00	

—perpusilla (Dwarf)
Neater and hardy to Zone V. A better shrub.

* 4-inch pots.....		\$ 4.00	\$ 37.00
--------------------	--	---------	----------

Hupehensis (Hupeh Cotoneaster)
5 ft. Zone V. Showy white bloom, June. Heavy with October red fruit.

* 2-inch pots.....	\$.60	\$ 3.75	\$ 27.00
* 3-inch pots.....	.75	5.50	37.00

Microphylla (Rockspray Cotoneaster)
3 ft. Zone V. Evergreen. Tiny leaves, dense growth. Scarlet fruit.

* 2-inch pots.....	\$.60	\$ 3.75	\$ 27.00
* 3-inch pots.....	.75	5.50	37.00
15 inches, B. & B.....	1.25	7.50	65.00

Salicifolia floccosa (Willow-leaf)
8 ft. Zone (V). Evergreen, bushy. Showy in mass. Red fruit. Photo p. 17.

* 4 to 6 inches X.....	\$ 3.50	\$ 22.00	
3 to 4 feet.....	\$1.25	10.00

Zabelli miniata
4 ft. Zone V. Most profuse in fruit of any. Slender branches. Vivid red fruit.

* 2½-inch pots.....	\$1.10	\$ 8.50
---------------------	--------	---------	-------

CRATAEGUS (Hawthorn)

Coccinea (Thicket Hawthorn)
10 ft. Zone III. White in May. Berries dull red. Relished by birds. (Each) (10) (100)

*12 to 18 inches.....			\$ 7.00
2 to 3 feet.....	\$.90	\$ 8.00

Cordata (Washington Thorn)
20 ft. Zone V. Round head, bushy. Red fruit all winter. Good fall color.

*12 to 18 inches.....			\$ 8.00
-----------------------	--	--	---------

Crugalli (Cockspur Thorn)
20 ft. Zone IV. Fine hedge. Red berries all winter. Very thorny. Drain.

* 6 to 12 inches.....			\$ 6.00
2 to 3 feet.....	\$.90	\$ 8.00
5 to 6 feet.....	1.75	14.00

Mollis (Downy Hawthorn)
20 ft. Zone IV. Fairly showy white bloom in May. Large red haws.

*10 to 15 inches.....			\$ 8.00
-----------------------	--	--	---------

Oxyantha (May Tree; English Haw)
20 ft. Zone V. Showy white flower in May, fragrant. Red autumn fruit. An excellent hedge plant.

* 4 to 8 inches S.....			\$ 7.00
*10 to 15 inches S.....			9.00
2 to 3 feet.....	\$.80	\$ 7.00	45.00
3 to 4 feet.....	1.00	8.00	55.00

—splendens (Paul Scarlet)
Form with showy red flowers. Photo above.

*12-inch 1-year grafts...\$.75	\$ 7.00	
4 to 5 feet.....	2.00	17.50	\$140.00
5 to 6 feet.....	2.25	20.00	180.00

—Double White—Rose-like flowers.

4 to 5 feet.....	\$2.00	\$19.50
------------------	--------	---------	-------

—Double Pink—Free-flowering.

4 to 5 feet.....	\$2.25
------------------	--------	-------	-------

CRYPTOMERIA Evergreen

Japanica (Common Cryptomeria)
80 ft. Zone (VI). Strange juniper-like leaves. Tall, narrow pyramid.

* 3 to 6 inches S.....			\$ 5.00
------------------------	--	--	---------

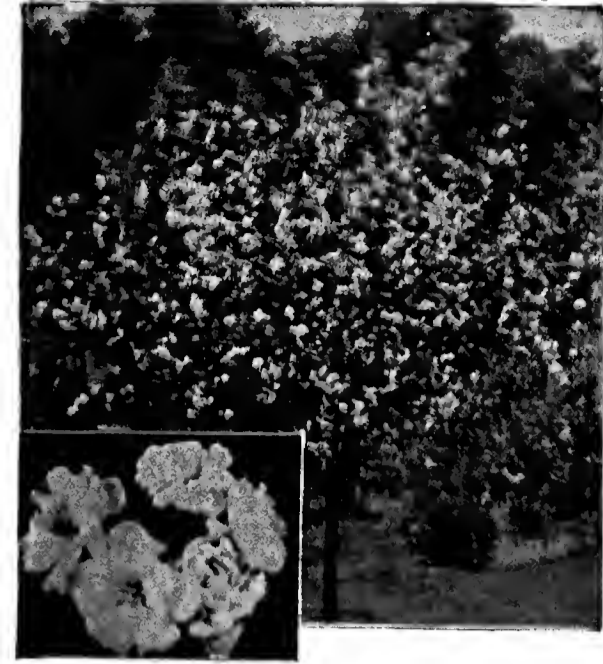
—Lobbi (Lobb's)
Hardier, denser, somewhat dwarfed. Better. Photo p. 6.

*12-inch 2-year grafts...\$1.10	\$10.00	\$ 90.00	
18 to 24 inches, B. & B 1.60	15.00	120.00	
2 to 3 feet, B. & B.. 2.50	20.00	
5 to 6 feet, B. & B.. 4.00	37.50	350.00	

CYDONIA (Flowering Quince)

Japanica (Japanese Quince)
4 ft. Zone V. Sun. Bushy dwarf. Scarlet flowers, April. Photo p. 11.

*12 to 18 inches.....			\$ 5.50
18 to 24 inches.....	\$.50	\$ 3.50	30.00
3 to 4 feet.....	.75	5.50	50.00



Malus ioensis



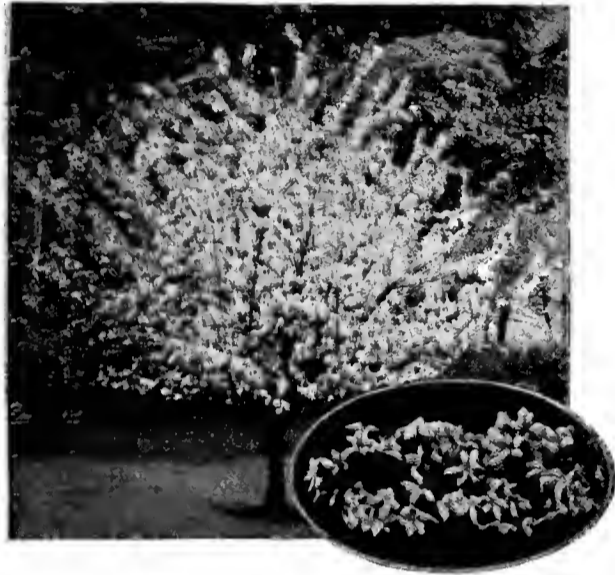
(Circle)
Prunus glandulosa



(Above)
Prunus subhirtella



Prunus pissardi



(Left)
Malus atrosanguinea



(Right)
Prunus serrulata Kwanzan

DAPHNE (Daphne)

Cneorum (Garland Flower)

1 ft. Zone V. Perhaps the finest rock-garden evergreen. Very fragrant rose flowers (large) in May and again in September. Needs sun. Spreads. Our special strain tends to bloom through the summer. Photo page 15.

	(Each)	(10)	(100)
* 2-inch pots.....			\$ 25.00
6 to 9 inches, B. & B	\$ 7.25		60.00
9 to 12 inches, B. & B \$1.15	10.00		90.00
15 to 18 inches, B. & B 1.70	15.00		140.00

Mezereum ("February" Daphne)

3 ft. Upright. Zone IV. In April has lilac-red fragrant masses of bloom. Sun, lime.

12 to 15 inches, B. & B \$.80 \$ 6.50 \$ 50.00

2 to 2½ inches, B. & B 1.35 12.00 100.00

DAVIDIA (Dove Tree)

Involucrata

50 ft. Zone VI. Wilson says: "The most beautiful tree in north temperate regions." White in May and June. Photo page 9. Rare.

18 to 24 in., B. & B. \$15.00

DEUTZIA (Deutzia)

Gracilis (Slender Deutzia)

3 ft. Zone V. Drain. Mass of gleaming white, May. Photo page 12.

* 9 to 12 inches..... \$ 8.50

12 to 18 inches.....\$.50 \$ 4.50

Scabra crenata

7 ft. Zone V. In June whitish-pink blooms on stiff stem.

*12 to 18 inches X..... \$ 7.00

—candidissima (Snowflake)

Pure white and more free-flowering.

*12 to 18 inches..... \$ 5.00

—fortunei—Larger flowers.

*12 to 18 inches X..... \$ 7.00

—Pride of Rochester

Very large, pinkish white blooms. Vigorous.

*12 to 18 inches X..... \$ 7.00

2 to 3 feet.....\$.40 \$ 3.00 16.50

DIOSPYROS (Persimmon)

Virginiana (Native Persimmon)

50 ft. Zone V. Handsome woods tree, edible fruit in October-November.

*18 to 24 inches..... \$ 5.00

5 to 6 feet.....\$1.50 \$13.50

ELEAGNUS (Eleagnus)

Angustifolia (Russian Olive)

20 ft. Zone IV. Drought-resisting. Yellow berries in Sept.

*12 to 18 inches..... \$ 5.00

2 to 3 feet.....\$.50 \$ 4.00 32.00

Umbellata (Autumn Eleagnus)

8 ft. Zone V. Silver leaves, scarlet fruit in Sept. Very tolerant.

* 9 to 12 inches..... \$ 6.00

DOGWOOD—See Cornus (p. 7)

ENKIANTHUS

Campanulatus (Redvein Enkianthus)

12 ft. Clean, shapely. Large leaves brilliant in fall. Red-veined, white bells in May. Acid, humus.

(Each) (10) (100)

*12 to 18 inches X..... \$ 4.00 \$ 33.00

18 to 24 inches, B. & B \$1.75 13.00

ELM—See Ulmus (p. 20)

EPIGAEA (May-flower)

Evergreen

Repens (Trailing Arbutus)

1 ft. Trailing. Zone III. Acid, humus. Gorgeous waxy pink fragrant blooms in May. Evergreen.

Strong clumps..... \$ 2.50 \$ 12.00

3-inch pots..... (3 for \$1.00)

ERICA (Heath) Evergreen

Carnea (Spring Heath)

1 ft. Zone V. A show of rose in the snow, lasts to May. Acid, sandy, humus.

* 2-inch pots..... \$ 2.00 \$ 15.00

3-year clumps.....\$.60 4.50 37.50

—King George—Dark red flowers.

* 2-inch pots.....\$.60 \$ 4.50 \$ 37.50

—vivella—Carmine red flowers.

* 2-inch pots.....\$.60 \$ 4.50 \$ 37.50

—Winter Beauty—Rosy pink. Profuse.

* 2-inch pots.....\$.60 \$ 4.50 \$ 37.50

Hybrida (Darleyensis) (Mediterranean)

A hybrid of E. Carnea and like it except larger flowers and more.

* 2-inch pots..... \$ 2.00 \$ 15.00

2-year plants.....\$.50 4.00 30.00

3-year clumps..... .65 5.00 40.00

Vagens (Cornish Heath)

1½ ft. Zone V. Acid, sandy, humus. Many purplish flowers July to Sept.

* 2-inch pots..... \$ 2.00 \$ 15.00

2-year plants.....\$.50 4.00 30.00

—St. Keverne—Crisp flowers. Profuse.

* 2-inch pots.....\$.60 \$ 5.00 \$ 40.00

EXOCHORDA

Grandiflora (Pearl Bush)

12 ft. Zone V. Show of pearl white in May. Drain. Avoid lime.

*18 to 24 inches..... \$ 8.00

2 to 3 feet.....\$.60 \$ 4.00 30.00

4 to 5 feet..... .90 7.00 45.00

EUONYMUS (Euonymus)

Alatus (Winged Euonymus)

8 ft. Zone V. Pink-erimson autumn leaves. Interesting shrub. (Each) (10) (100)

* 6 to 10 inches..... \$ 9.00

Alatus compacta

Best broad hedge. 6 ft. Very dense and shapely. New.

12 to 18 inches.....\$.50 \$ 4.50 \$ 35.00

2 to 2½ feet..... .85 7.50 60.00

Radicans (Wintercreeper)

20 ft. Vine, self-elinging. Zone V. Evergreen. Dainty clean leaves.

* 2-year light..... \$ 10.00

3-year heavy.....\$.60 \$ 5.00

—coloratus—Dwarf, rosy-purple form.

*10 to 12 inches X..... \$ 2.00 \$ 12.00

—kewensis—Tiny dwarf to 3 ft. Vine.

* 6 to 8 inches X..... \$ 3.25 \$ 22.00

—vegetus

Large leaves, vigorous bush. A few climbing leaders. Orange fruit.

* 6 to 12 inches X..... \$ 2.00 \$ 13.00

18 to 24 inches.....\$.90 8.00 75.00

FAGUS (Beech)

Americana (Ferruginea) American Beech

80 ft. Zone V. Lime, drainage. Gray bark, majestic drooping form. Slow.

*12 to 18 inches S..... \$ 4.50

*12 to 18 inches X..... \$ 1.60 9.00

5 to 6 feet, B. & B. \$5.00 48.00

Sylvatica (European Beech)

80 ft. Zone V. Smaller, darker leaves. Lime, drain. Very slow. Dense shade.

* 8 to 12 inches S..... \$ 11.00

5 to 6 feet, B. & B. \$5.00 \$58.00

2 to 3 feet..... 1.75

—asplenifolia (Fernleaf)

Large, deep cut leaves. Handsome. Grafts only.

*10 to 12 inches, B. & B \$.80 \$ 7.50 \$ 60.00

*12 to 15 inches, B. & B 1.10 10.00 90.00

18 to 24 inches, B. & B 1.75 16.50 150.00

2 to 3 feet, B. & B. 3.00 27.50

—pendula (Weeping)

A 50-foot mound of green leaf and gray branchlet. Unique and striking. Picturesque.

* 1-year, 10 in., B. & B \$.80 \$ 7.50 \$ 60.00

* 2-year, 12 in., B. & B. 1.10 10.00 90.00

18 to 24 inches, B. & B 1.75 16.50 150.00

2 to 2½ feet, B. & B. 2.50 22.50 200.00

—purpurea (Purple)

Like the type but with rich color. Photo page 3.

*12 to 15 inches, 2 year \$1.50 \$13.50

3 to 4 feet, B. & B. 7.00 60.00

FIR—See Abies (p. 3) Pseudotsuga (p. 15)

FIRETHORN—See Pyracantha (p. 15)

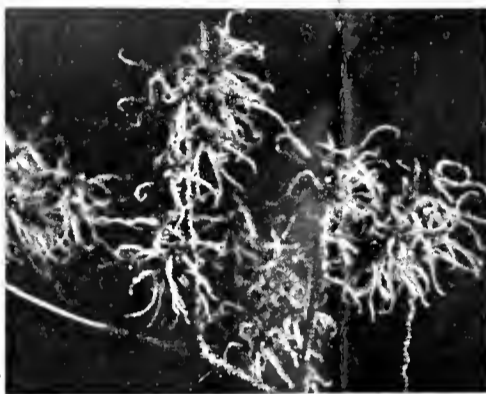
Also Stranvaesia (p. 17)



Davidia (page 8)



Stewartia pentagyna (insert): pseudocamellia



BEAUTIFUL TREES

Rare and Unusual

Along the bottom: (left) Gordonia, the Franklin tree; next, flowers of Hamamelis (Witch-Hazel); next Prunus amagawa (P.15). Right: Laburnum Vossii (p. 11).



FORSYTHIA (Golden Bell)

- Intermedia (Border Golden Bell)**
9 ft. Zone V. Familiar yellow blooms in April. Almost fool-proof. (Each) (10) (100)
- | | |
|-----------------------|---------|
| *15 to 18 inches..... | \$ 6.50 |
|-----------------------|---------|
- spectabilis (Showy)**
More, larger, yellower flowers. Photo p. 11.
- | | |
|-----------------------|----------------|
| *12 to 18 inches..... | \$ 7.50 |
| 2 to 3 feet..... | \$.50 \$ 4.00 |
| 3 to 4 feet..... | .75 5.00 36.00 |
- Ovata (Korean Forsythia)**
6 ft. Zone IV. Less showy, a week earlier. But decidedly hardier.
- | | |
|----------------------|--------|
| 12 to 15 inches..... | \$1.30 |
|----------------------|--------|
- Suspensa (Weeping Golden Bell)**
6 ft. Zone V. Good May show. Drooping branches root and hold banks.
- | | |
|-----------------------|---------|
| *18 to 24 inches..... | \$ 9.00 |
|-----------------------|---------|
- fortunei**—Not quite so drooping.
- | | |
|-----------------------|---------|
| *18 to 24 inches..... | \$ 9.00 |
|-----------------------|---------|
- Viridissima (Greenstem Forsythia)**
10 ft. Zone VI. Bushier and lustier than the others, but not so hardy.
- | | |
|-----------------------|---------|
| *12 to 18 inches..... | \$ 9.00 |
|-----------------------|---------|

FRANKLINIA (See Gordonia)

FRAXINUS (Ash)

- Americana (White Ash)**
100 ft. Zone II. Handsome, vigorous good autumn color. Damp or dry.
- | | |
|-----------------------|---------------|
| *18 to 24 inches..... | \$ 4.00 |
| 5 to 6 feet..... | \$ 6.00 40.00 |

GENISTA (Broom)

- Tinctoria (Woadwaxen)**
3 ft. Zone IV. Sandy, sunny, barren. June to August, showy yellow.
- | | |
|--------------------|------------------|
| * 2-inch pots..... | \$ 3.50 \$ 27.50 |
|--------------------|------------------|
- Tinctoria floreplesna**—Double, showier bloom.
- | | |
|--------------------|------------------|
| * 2-inch pots..... | \$ 3.50 \$ 27.50 |
|--------------------|------------------|

GINGKO (Maidenhair Tree)

- Biloba (Salisburia adiantifolia)**
100 ft. Zone V. Slow, but tolerant of any condition—including smoke. Stately, ancient specimen tree.
- | | |
|----------------------|----------------|
| * 6 to 8 inches..... | \$ 10.00 |
| * 2½ to 3 feet..... | \$1.25 \$10.00 |
| 8 to 10 feet..... | 5.00 45.00 |

GLEDITSIA

- Triacanthos (Honey-Loeust)**
100 ft. Zone V. Rich-sun. Good timber and the pods have high sugar content. Good stock feed.
- | | |
|-----------------------|---------------|
| *18 to 24 inches..... | \$ 5.50 |
| 4 to 5 feet..... | \$10.00 80.00 |
| 6 to 8 feet..... | \$1.50 13.50 |

GORDONIA (Franklinia Tree)

- Alatamaha**
Photo above. 35 ft. Zone VI. Large white and yellow blooms fragrant from August to frost. Damp, humus, blooms best in sun. Blooming starts on small plants.
- | | |
|------------------------------|-------------------------|
| *10 to 15 inches..... | \$1.00 \$ 9.00 \$ 80.00 |
| 18 to 24 inches, B. & B..... | 2.00 17.50 120.00 |
| 3 to 4 feet, B. & B..... | 3.00 25.00 |
| 4 to 5 feet..... | 4.00 35.00 |

HALESIA (Silverbell)

- Tetraptera (Great Silverbell)**
25 ft. Zone V. Profusion of white bells nod in May. Acid, humus. (Each) (10) (100)
- | | |
|------------------|----------------|
| 3 to 4 feet..... | \$1.00 \$ 9.00 |
| 5 to 6 feet..... | 1.75 16.00 |

HAMAMELIS (Witch-hazel)

- Japonica (Japanese Witch-hazel)**
25 ft. Zone V. Spreading, shrubby tree. Woodsy conditions, but tolerant. Yellow in February snows. Showy.
- | | |
|------------------------|----------|
| * 6 to 9 inches X..... | \$ 11.00 |
| 2 to 3 feet..... | \$1.80 |
- Mollis (Chinese Witch-hazel)**
20 ft. Zone V. Better than the Japanese—fragrant, more showy, red within. Blooms also in February. Photo above.
- | | |
|------------------|--------|
| 2 to 3 feet..... | \$2.00 |
|------------------|--------|
- Vernalis (Spring Witch-hazel)**
6 ft. Zone V. Pure yellow in early March. More fragrant. Bushy, suckering clumps. Prefer damp soil.
- | | |
|------------------------------|-------------------|
| 15 to 18 inches, B. & B..... | \$ 7.50 \$ 65.00 |
| 18 to 24 inches, B. & B..... | 1.50 13.50 110.00 |
- Vernalis rubra**—Blooms red, but not fragrant. (Same prices as the yellow)
- Virginiana (Common Witch-hazel)**
20 ft. Zone III. Small fragrant pale yellow blooms in October. Shade.
- | | |
|-----------------------|------------------|
| *12 to 18 inches..... | \$ 2.50 \$ 17.00 |
|-----------------------|------------------|
- HAWTHORN**—See Crataegus (p. 7)
HEATH, HEATHER—See Calluna (p. 5)
ERICA (p. 8) and Bruckneria (p. 5)

HEDERA (True Ivy) Evergreen

- Helix (English Ivy)**
60 ft. Vine. Zone (V). Apt to discolor in winter north of (VI), though hardy. Self-clinging. Any soil.
- | | |
|---------------------|---------------|
| * 2½-inch pots..... | \$ 11.00 |
| 2-year field..... | \$ 2.50 16.00 |
| 3½-inch pots..... | \$.75 6.00 |
- baltica (Baltic)**
Smaller leaf and fully hardy in Zone V. The best.
- | | |
|--------------------|------------------|
| * 2-inch pots..... | \$ 2.00 \$ 13.00 |
| 3-inch pots..... | 3.00 20.00 |
- corcaea (Heart)**
Smaller leaf. Good in Zone VI.
- | | |
|--------------------|------------------|
| * 2-inch pots..... | \$ 3.25 \$ 27.50 |
|--------------------|------------------|
- pittsburgh (Self Branching)**
New, useful to make bushy plants.
- | | |
|--------------------|------------------|
| * 2-inch pots..... | \$ 2.00 \$ 14.00 |
|--------------------|------------------|

HELIANTHEMUM (Sun-rose)

- Mutabile (Variable Sun-rose)**
12-inch. Zone V. The best cover for dry sunny banks. Barren, no shade. Many colors in June and July.
- | | |
|-------------|------------------|
| 2-year..... | \$ 2.25 \$ 17.00 |
|-------------|------------------|
- Buttercup**—Single yellow.
—**Fireball**—Double red.
- | | |
|-------------|------------------|
| 2-year..... | \$ 2.50 \$ 20.00 |
|-------------|------------------|
- (2 of one kind for \$.60)
HEMLOCK—See Tsuga (p. 19)

HIBISCUS (Althea)

- Syriacus (Rose-of-Sharon)**
12 ft. Tree-like. Zone V. Heavy soil. Various colors in July and August.
- | | |
|-----------------------|---------|
| (Each) (10) (100) | |
| *18 to 24 inches..... | \$ 3.50 |
- Syriacus Named Colors**
Double pink, double red and double white. Photo p. 12.
- | | |
|-----------------------|----------------|
| 2 to 3 feet..... | \$.50 \$ 4.50 |
| 4 to 5 feet (Tree)... | 1.25 11.50 |
- ardens**—Bluish-purple, red center.
—**Boule de Feu**—Double, violet-pink.
—**Jeanne de'Arc**—Free-blooming white.
—**Lady Stanley**—Single pale pink.
—**Totus albus**—Single white flowers.
—**Rubus**—Single, violet-pink.
- Prices on above 6 kinds:—
- | | |
|-----------------------|---------------|
| *12 to 18 inches..... | \$ 6.50 |
| 2 to 3 feet..... | \$ 2.50 20.00 |

HICORIA (Carya) (Hickory)

(See also page 22)

- Laciniosa (Shellbark Hickory)**
100 ft. Zone V. Wet, rich soil.
- | | |
|-----------------------|---------|
| *6 to 12 inches..... | \$ 7.00 |
| *18 to 24 inches..... | 11.00 |
- Ovata (Shagbark Hickory)**
80 ft. Zone IV. Light, drained soil.
- | | |
|-----------------------|---------|
| * 6 to 12 inches..... | \$ 7.00 |
| *18 to 24 inches..... | 11.00 |
- HOLLY**—See Ilex (p. 10)
HONEYSUCKLE—See Lonicera (p. 11)

HYDRANGEA

- Arborescens grandiflora (Snow Hill)**
4 ft. Zone V. Straggling unless cut to ground. Huge white bunches, July to August. Photo page 12. Manure.
- | | |
|-----------------------|---------------------|
| *12 to 18 inches..... | \$ 4.00 |
| 2 to 3 feet..... | \$.60 \$ 5.00 40.00 |
- Paniculata grandiflora (Peegee)**
10 ft. Zone IV. Similar to above, but a month later, and blooms turn pink. Photo page 12. Same culture.
- | | |
|-----------------------|----------------|
| *10 to 15 inches..... | \$ 9.00 |
| 5 to 6 feet heavy.... | \$1.50 \$13.50 |
- Petolaris (Climbing Hydrangea)**
35 ft. Vine. Zone III. Self-climbing. Handsome white show in June.
- | | |
|-------------------------|----------------|
| * 8 to 12 inches X..... | \$ 25.00 |
| 4-inch pots..... | \$1.00 \$ 9.00 |

HYPERICUM (St. Johnswort)

- Aureum (Golden St. Johnswort)**
4 ft. Zone V. Handsome dense dwarf with showy yellow bloom. August.
- | | |
|-------------------|---------------|
| *12 inches S..... | \$ 5.00 |
| 2 to 3 feet..... | \$ 3.50 25.00 |
- Mooserianum (Goldflower)**
1 ft. Evergreen dwarf. Zone (VI). Large yellow show in July. A hybrid of H. calycinum, replacing it.
- | | |
|-----------------|------------------|
| * 1-year X..... | \$ 2.20 \$ 16.00 |
|-----------------|------------------|

THE BEST FLOWERING SHRUBS

PICTURE-GROUP ON
THIS PAGE
SPRING-FLOWERING

All 3 kinds pictured will be
furnished in 2 to 3 feet size, postpaid **\$7.00**

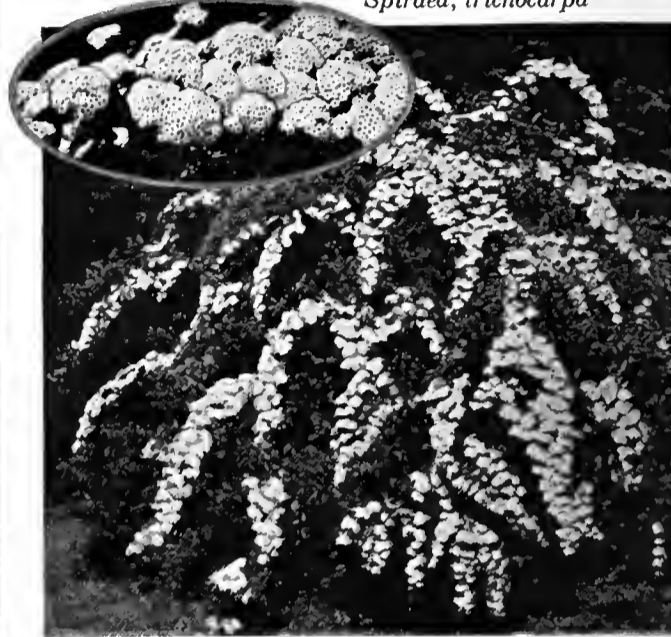
(*Syringa*) French Filices—Left: Mme. Perier;
Right: Pres. Grey; Bottom: Souv. L. Spaeth

Forsythia

Cydonia japonica



Spiraea, trichocarpa



Kolkwitzia

Weigelia Rosea (Page 20)



KALMIA

Latifolia (Mountain Laurel)

8 ft. Zone IV. The best evergreen shrub in the north. Compact, with firm thick leaves. A Show of pinky white in June. Acid, humus, damp, loose soil. Photo page 15 and cover.

	(Each)	(10)	(100)
* 9 to 12 inches S.....			\$ 7.00
* with ball.....	\$ 3.50		20.00
* 12 to 15 inches S.....			9.00
* with ball.....	4.00		25.00
Large collected clumps (2 to 4 feet)			
(See page 16)			
Nursery grown:			
15 to 18 inches, B. & B	1.80	17.50	165.00
2 to 2½ feet, B. & B.	2.00	27.50	265.00

KERRIA

Japonica (Globe-flower)

5 ft. Zone V. Thicket of upright green stems. Large golden blooms in May and a few all summer.

* 12 to 15 inches.....		\$ 13.00
18 to 24 inches.....	\$.75	\$ 6.50

KOELREUTERIA (Varnish Tree)

Paniculata (Golden Rain Tree)

25 ft. Zone V. Sun, lime, dry. Large golden clusters in July. Showy.

* 6 to 12 inches.....	\$ 4.50
5 to 6 feet.....	\$2.50 \$20.00

KOLKWITZIA

Amabilis (Beauty Bush)

6 ft. Zone V. Sun, loose. A light green fountain, flushed with a cascade of pink in June. Photo page 11.

* 12 to 15 inches.....	\$ 12.00
18 to 24 inches.....	\$.60 \$ 4.50 42.00
4 to 5 feet.....	1.25 10.00

LABURNUM (Cytissus)

Vulgare (Golden Chain)

25 ft. Zone (V). Like yellow Wisteria in June. Drain, shelter.

* 6 to 12 inches.....	\$ 7.50
* 12 to 18 inches.....	10.00
3 to 4 feet.....	\$2.00 \$18.00 150.00

Vossi (Hybrid Golden Chain)

30 ft. Zone V. Hardier and freer to bloom. A few days later. Photo on page 9. An aristocrat.

4 to 5 feet.....	\$3.75 \$35.00
5 to 6 feet.....	4.75 45.00

LARIX (Larch)

Europaea (European Larch)

60 ft. Zone II. Sandy soil. Light green pyramid.

* 18 to 24 inches X.....	\$ 12.50
6 to 8 feet.....	\$3.00

Leptolepis (Japanese Larch)

50 ft. Zone V. Quicker growth.

* 12 to 18 inches X.....	\$ 9.00
8 to 10 feet.....	\$3.50 \$30.00



LAUROCERASUS (Prunus)

Schipkaensis (Hardy English Laurel)

6 ft. Zone V. A gorgeous evergreen shrub, with dark, large, shiny leaf. Tolerant. Sun. Photo page 17. Rarc.

(Each)	(10)	(100)
18 to 24 inches, B. & B	\$2.50	\$22.00 \$200.00

LEIOPHYLLUM (Sand Myrtle)

Buxifolium (Box Sand Myrtle)

1 ft. Zone V. Pink-white in June. Neat compact evergreen bush. Acid, humus.

8 to 12 inches, B. & B	\$ 7.00	\$ 60.00
(3 plants for \$2.50)		

Prostratum (Trailing Sand Myrtle)

6 inch. Spreading. Zone V. A dwarf replica of above. Blooms all summer.

8 to 10 inches.....	\$1.10	\$10.00	\$ 90.00
---------------------	--------	---------	----------

LESPEDEZA (Bush Clover)

Bicolor (Shrub Bushclover)

8 ft. Zone IV. Pink-purple August to Sept. Sun. Very easily grown.

* 12 to 18 inches.....	\$ 4.00
------------------------	---------

LEUCOTHOE

Catesbaei (Drooping Leucothoe)

4 ft. Zone V. Evergreen with large leaves bronzed and purpled in winter. Acid, humus, shade. White, fragrant, May.

* 9 to 12 inches.....	\$ 10.00
* 12 to 15 inches.....	15.00
* with ball.....	\$ 5.00 30.00
12 to 18 inches, B. & B	\$.75 6.50 60.00
18 to 24 inches, B. & B	1.00 9.00 80.00

LIGUSTRUM ("Hedge") (Privet)

Amurensis (Amur Privet—"North")

12 ft. Zone V. Almost fool-proof.

* 12 to 18 inches.....	\$ 6.00
18 to 24 in. (branched).....	9.00
3 to 4 feet.....	\$.50 \$ 4.00 35.00

Ibodium (Hybrid Privet)

10 ft. Zone IV. Hardy and compact. The best Privet hedge for the north.

* 12 to 15 inches.....	\$ 5.50
2 to 3 feet.....	\$ 2.00 15.00

Ovalifolium (California Privet)

15 ft. Zone (V). Kills back in severe winters. Also fool-proof to grow.

* 6 to 12 inches.....	\$ 2.00
2 to 3 feet.....	\$ 1.25 5.50

LILAC—See Syringa (page 17)

LIQUIDAMBER

Styraciflua (Sweet Gum)

90 ft. Zone V. Leaf like maple and turns ablaze in autumn. Damp, heavy.

* 12 to 18 inches.....	\$ 5.00
* 3 to 4 feet.....	\$ 2.50 12.00

LIRIODENDRON (“Tulip Poplar”)

Tulipifera (Tulip Tree)

150 ft. Zone V. Majestic giant, with yellowish tulips in June. Humus. (Each) (10) (100)

* 12 to 18 inches.....	\$ 3.50
* 18 to 24 inches.....	4.50
* 2 to 3 feet.....	6.00
* 3 to 4 feet.....	9.00
8 to 10 feet.....	\$2.50 \$22.50 175.00

LONICERA (Honeysuckle)

Bella albida (White Belle)

8 ft. Zone V. Bushy. White in June, and scarlet fruit in August.

* 12 to 18 inches.....	\$ 6.00
18 to 24 inches.....	\$ 2.50 16.00

Fragrantissima (Winter Honeysuckle)

6 ft. Zone V. Yellow, fragrant, April; red berries, July. Semi-evergreen.

* 12 to 18 inches S.....	\$ 6.00
18 to 24 inches.....	\$ 2.50 16.00
2 to 3 feet.....	\$.50 4.00 22.00

Henryi (Evergreen Honeysuckle Vine)

20 ft. Vine. Zone (V). Reddish from June to July. Good, narrow, neat foliage.

* 2-inch pots.....	\$ 2.50
--------------------	---------

Japonica Halleana (Japan Honeysuckle)

20 ft. Vine. Zone V. Quick cover for walls or ground. Fragrant, yellow, June. Photo page 20.

* 6 to 12 inches S.....	\$ 4.50
* 12 to 18 inches X.....	11.00
2-year No. 1.....	\$.45 \$ 3.00 15.00

Korolkowi floribunda (Broad Blueleaf)

9 ft. Zone V. Intricate gray shrub. Pink in June, scarlet fruit in July.

* 12 to 15 inches.....	\$ 2.25 \$ 16.00
2 to 3 feet.....	\$.90 7.50 50.00

Morrowi (Morrow Bush Honeysuckle)

7 ft. Zone IV. Spreading, bushy. Cream in June, scarlet fruit in July.

* 12 to 18 inches.....	\$ 6.00
18 to 24 inches.....	\$ 2.50 16.00

Sempervirens (Trumpet Honeysuckle)

30 ft. Vine. Zone V. Semi-evergreen. Scarlet trumpets all summer long.

* 12 to 18 inches.....	\$ 5.00
2-year No. 1.....	\$.50 \$ 4.00 20.00

Tatarica (Tatarian Honeysuckle)

8 ft. Zone V. Bushy. Flower, June; red berry, July. Order: Red, White, or Pink.

* 12 to 18 inches.....	\$ 5.50
2 to 3 feet.....	\$.50 \$ 4.00 30.00

LYCIUM (Matrimony Vine)

Chinense

12 ft. Sprawling shrub or vine. Zone V. Purple flower all summer; scarlet fruit all autumn.

2-year No. 1.....	\$.50 \$ 4.00
-------------------	----------------

MACLURA

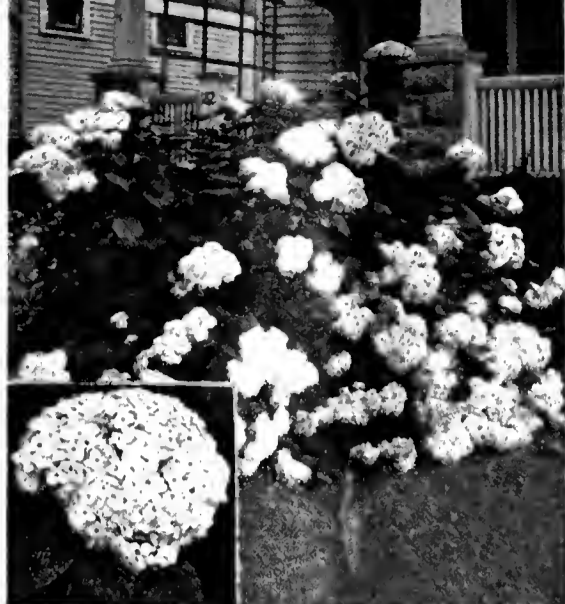
Pomifera (Osage Orange)

50 ft. Zone (V). A tolerant, bushy hedge for the middle west.

* 12 to 18 inches.....	\$ 3.00
* 2 to 3 feet.....	6.00



Viburnum opulus (page 20)



Hydrangea arborescens



Hibiscus (Red)

Picture Group Offer of These

SUMMER-FLOWERING SHRUBS

All 8 kinds pictured, 2 to 3 feet, \$5.00 postpaid East of Iowa for

Deutzia gracilis

Symphoricarpos racemosus

Hydrangea P. G.

Spiraea Anthony Waterer

Philadelphus, virginal



MAGNOLIA (Magnolia)

Acuminata (Cucumber Tree)

80 ft. Zone V. Handsome pyramid with yellowish flower, May; handsome red fruit September.

Humus, manure.	(Each)	(10)	(100)
* 3 to 6 inches S.....			\$ 7.50
* 2 to 3 feet X.....			\$ 6.00 35.00

Conspicua (Yulan Magnolia)

30 ft. Zone V. Huge, white, fragrant flowers in April. An aristocrat.

*10-inches, 1 yr. grafts..	\$1.25	\$11.00	\$100.00
12 to 18 inches, B. & B	2.00	17.50	150.00

Glaucia (Swamp Laurel) (Sweet Bay)

16 ft. Zone V. Prefers moist, but tolerant. Semi-evergreen. White blooms scattered from June to August. Very fragrant. Photo front cover.

*15 to 18 inches X.....	\$ 3.50	\$ 30.00
18 to 24 inches, B. & B	\$1.00	6.00 45.00
2 to 3 feet, B. & B..	1.25	7.50 70.00
3 to 4 feet, B. & B..	1.50	12.00 90.00

Soulangiana (Saucer Magnolia)

20 ft. Zone V. Late April show of large, pink blooms, white inside.

15 to 21 inches, B. & B	\$1.50	\$12.50	\$120.00
21 to 30 inches, B. & B	2.50	22.50	200.00
30 to 36 inches, B. & B	3.50	28.00	250.00

—lennei

May 1st, red outside. Photo page 7. Striking.

*10-inch, 1-yr. grafts. . .	\$1.10	\$10.00	\$ 90.00
15 to 21 inches, B. & B	1.50	13.50	120.00
21 to 30 inches, B. & B	2.50	22.50	200.00

—nigra

May 15, dark purple cups.

*10-inch, 1-yr. grafts. . .	\$1.10	\$10.00	\$ 90.00
15 to 21 inches, B. & B	1.50	13.50	120.00
21 to 30 inches, B. & B	2.50	22.50	200.00

Stellata (Star Magnolia)

12 ft. Zone (V). Early April sees ribbony, white, fragrant blooms.

*10-inch, 1-yr. grafts. . .	\$1.10	\$10.00	\$ 90.00
15 to 21 inches, B. & B	2.25	21.00	190.00
21 to 24 inches, B. & B	2.75	26.00	250.00

Stellata rosea—form colored soft pink.

*10-inch, 1-yr. grafts. . .	\$1.50	\$12.50	\$100.00
15 to 18 inches, B. & B	2.50	22.50	200.00
2 to 2½ feet, B. & B.	4.50	42.50

Tripetala (Umbrella Magnolia)

40 ft. Zone V. Huge, 2-foot leaf, 10-inch white blooms, May. Damp.

* 2 to 3 feet X.....	\$ 6.00	\$ 35.00
----------------------	---------	----------

MAHONIA (Holly-grape)

Aquifolium (Oregon Holly-grape)

5 ft. Zone V. Holly-like evergreen leaf. Yellow in May, purplish "grape" in August. Dry, part shade. Photo p. 17.

* 4 to 8 inches.....	\$ 12.00
15 to 18 inches, B. & B	\$1.25 \$10.00

MALUS (Flowering Crabs)

Bushy trees very easy to grow. All bloom in May. Photos page 8. Prices of all varieties:—

	(Each)	(10)	(100)
A—1-yr. grafts.....	\$ 3.00	\$ 25.00	
B—18 to 24 inches....	.60	4.00	35.00
C—2 to 3 feet.....	.75	6.00
D—3 to 4 feet.....	1.00	8.00
E—4 to 5 feet.....	1.50	12.00
F—6 to 8 feet.....	2.50	20.00

Arnoldiana—15 ft. Zone IV. Rosy-white. Sizes ACF.

Atrosanguinea—15 ft. Zone V. Shapely show of carmine. Sizes: ADEF. Photo p. 8.

Baccata—40 ft. Zone II. Profuse white. Sizes AD.

Baccata Mandshurica—15 ft. Zone I. Fragrant, large white. Red crabs. Sizes: ABD.

Coronaria—20 ft. Zone IV. June, fragrant blush. Sizes ABC.

Eleyi—20 ft. Zone IV. Profuse red flowers, red leaves. Sizes: ABDEF.

Dawsoniana—20 ft. Zone IV. White. Sizes: ABCDF.

Floribunda—20 ft. Zone V. Pink, opening white. Very profuse. Sizes: ABDEF.

—**purpurea**—Purple leaf form. Sizes: ABDEF.

Halliana parkmanni—15 ft. Zone V. Picturesque double rosy-red. Slow. Sizes: ABF.

Hopa—15 ft. Zone IV. Pink bloom, red crabs, remarkable tree. Sizes: ABCE.

Ionensis plena (Bechtel)—15 ft. Zone III. June. Fragrant pink. Photo p. 8. Sizes: AD.

Niedzwetzkyana (Redvein)—15 ft. Zone III. Reddish flower, leaf, fruit. Sizes: ABCDE.

Prunifolia rinki—18 ft. Zone IV. Storm of snow, red-yellow crabs hang late. Sizes: ADF.

Robusta—20 ft. Zone III. Early, white, fragrant. Sizes: ABCDEF. Red fruit.

Sargentii—6 ft. dwarf. Zone V. Late show of white. Red berries hang bright all winter. Sizes: ACD.

Schideckeri—15 ft. Zone V. Early, profuse, bright rose. Pyramidal shape. Sizes: AE.

Spectabilis—20 ft. Zone V. Fragrant blush pink. Showy. Pyramidal. Sizes: AD.

Zumi—15 ft. pyramid. Zone III. Late. Pink open white. Red fruit. Sizes: AD.

MAPLE—See Acer (p. 3)

MORUS (Mulberry)

Alba (Russian Mulberry)

30 ft. Zone IV. Round-topped tree. Fruit, white to purple, edible.

*18 to 24 inches.....	\$ 4.00
* 4 to 5 feet X.....	\$ 5.00 35.00

MYRICA

Carolinensis (Bayberry)

6 ft. Zone IV. A shapely rounded bush. Good foliage. Barren, sandy soils—sea-shore—dry banks. Spicy foliage, gray, waxy berries for birds.

* 6 to 12 inches.....	\$ 12.00
18 to 24 inches.....	\$.90 \$ 7.50 60.00

NYSSA (Sour Gum)

Sylvatica (Tupelo)

60 ft. Zone IV. Beautiful, interlaced, drooping. Early autumn color. Moist.

	(Each)	(10)	(100)
*12 to 18 inches.....			\$ 5.00
* 2 to 3 feet.....			7.00

OAK—See Quercus (p. 15)

OSAGE ORANGE—See Maclura (p. 11)

OSMANTHUS

Aquifolium (Holly-leaf Osmanthus)

Evergreen to 12 ft. but very slow. Zone VI. Looks like a holly. Humus.

* 2-inch pots.....	\$ 16.00
12 to 15 inches, B. & B	\$1.50 \$13.50

OXYDENDRON (Sourwood)

Arborcum (Sorrel Tree)

30 ft. Zone V. Peach-leaves turn red in autumn. Long clusters of white in July and August. Acid. Photo, cover.

*12 to 18 inches.....	\$ 5.00
*18 to 24 inches X.....	17.00
6 feet (light).....	\$25.00 225.00

PACHISTIMA

Canbyi

Evergreen clump, 9-inch. Zone V. Wonderful rock plant. Moist.

* 2-inch pots.....	\$ 15.00
6 to 8 inches, B. & B	\$.90 \$ 7.50 60.00

PACHYSANDRA

(Japanese Spurge)

Terminalis

Evergreen, fast spreading low plant. Shade. Tolerant in poor soil. Zone V. Plant 3 to 1 square ft. The best ground cover in shade.

* 1-year light.....	\$ 5.00
2-year X.....	\$ 2.00 8.50
3-year X.....	2.50 12.50

PHILADELPHUS ("Syringa")

(Mock-Orange)

Coronarius (Sweet Syringa)

9 ft. Zone IV. White in June. Very fragrant. Needs lime.

*12 to 18 inches.....	\$ 6.00
2 to 3 feet.....	\$.45 \$ 3.50 20.00

Grandiflorus (Scentless Mock-Orange)

9 ft. Zone V. Large white blooms. June.

*12 to 18 inches.....	\$ 6.00
2 to 3 feet.....	\$.45 \$ 3.50 20.00

Lemoine Hybrids:

—**Mt. Blanc**, 4 ft. Zone V. A dwarf that dazzles with white in June. Lime.

*12 to 18 inches.....	\$6.00
2 to 3 feet.....	\$ 3.50 20.00

—Virginal

8 ft. Zone V. Photo page 12. Double, fragrant, translucent white blooms load the bush in June. Then more sparsely through summer. Lime.

* 8 to 15 inches.....	\$ 7.00
2 to 3 feet.....	\$.50 \$ 3.50 30.00
4 to 5 feet.....	.75 4.50 40.00

PHYSOCARPOS—See Spiraea opulifolia (p. 17)



1. Engelmann Spruce
2. Omorika Spruce

3. White Spruce
4. (Dwarf) Gregoriana

5. Pygmy Spruce
6. Norway Spruce

7. (Dwarf) Alberta Spruce
8. (Dwarf) Maxwell's Spruce

9. Colorado and Koster Spruce

PICEA (Spruce) Evergreen

PHOTOS ABOVE

HARDY and tolerant—easily grown. Usually prefer moist, rich soil, being shallow rooted. Range from black to yellow to silver, from two feet dwarfs to hundred foot, tapering giants. Photos above.

Alcoekiana (Bicolor) (Alcock Spruce)

70 ft. Zone IV. Broad pyramid with white stripes on dark needles.

(Each) (10) (100)

10 to 12 inches, B. & B \$1.25 \$12.00

Canadensis (Alba) (White Spruce)

80 ft. Zone I. Photo of young tree above. Quick growing and shapely. In the north-east generally more satisfactory than Norway for forest planting.

*2-year S. \$ 4.50
* 6 to 8 inches X. 3.00
*12 to 18 inches XX. 20.00
18 to 24 inches XX. 25.00
18 to 24 inches, B. & B. \$ 3.00 70.00
3 to 4 feet, B. & B. \$2.00 15.00 130.00

—albertiana (Black Hills)

120 ft. Zone III. Better suited to dry climates than White Spruce. A majestic, bushy pyramid.

* 4 to 6 inches \$ 6.00
18 to 24 inches, B. & B \$1.20 \$10.00 90.00

—conica (Dwarf Alberta)

Miniature in height and leaf. 6 ft. Zone III. Tiny and slow. Probably the best true dwarf conifer. Photo above.

* 6 to 8 inches XXX. \$.35 \$ 7.50 \$ 70.00
12 to 15 inches, B. & B 2.00 17.00 150.00
18 to 24 inches, B. & B 4.50
24 to 30 inches, B. & B 5.50 50.00

Englemanni (Englemann Spruce)

75 ft. Zone I. Wonderful native. Varies from green to steel blue. Dense and shapely. Heavy soil. Photo above.

* 8 to 12 inches X. \$ 19.00
2½ to 3 feet, B. & B. \$3.00 \$27.00
4 to 5 feet, B. & B. 5.00 45.00

Excelsa (P. Abies) (Norway Spruce)

80 ft. Zone II. A dark green, drooping pyramid. Shallow roots enable planting on thin soils. Enormously popular for quick growth. Used in forests, landscapes and for Christmas trees.

* 4 to 6 inches. \$ 4.50
* 6 to 10 inches X. 8.50
* 7 to 16 inches X. 10.00
*12 to 15 inches XX. \$ 3.00 18.00
2 to 2½ feet, B. & B. \$1.00 8.00 70.00
3 to 4 feet, B. & B. 1.50 12.00 100.00
5 to 6 feet, B. & B. 3.00 25.00 200.00

—aurea (Golden)

Rather uncommon and a good yellow. Part shade.

(Each) (10) (100)

* 2-year grafts. \$1.25 \$10.00

—gregoriana (Gregory)

2 ft. Tiny needles on a pale green mound. Photo above.

6 to 8 inches, B. & B \$1.25 \$10.00
8 to 10 inches, B. & B 1.50 12.50

—maxwelli (Maxwell)

2 ft. Greener, and more spreading. Photo above.

* 4 to 6 inches X. \$ 3.00 \$ 20.00

—nidiformis (Bird Nest)

3 ft. Grotesque rock-garden dwarf.

* 4 to 6 inches XX. \$ 25.00
4 to 6 inches, B. & B \$.90 \$ 7.50
6 to 8 inches, B. & B 1.25 11.00

—pygmaea (Pygmy)

3 ft. Compact small upright, irregular pyramid. Photo above of 12-inch plant.

* 4 to 6 inches X. \$.70 \$ 5.00 \$ 45.00
6 to 8 inches, B. & B 1.50 13.50
12 to 15 inches, B. & B 3.25 30.00

Hondoensis (Hondo Spruce)

90 ft. Zone V. Spreading branches. Dull blue-green needles.

* 4 to 6 inches X. \$ 6.50

Koyamai (Koyamai Spruce)

50 ft. Zone V. Dignified from babyhood. A narrow pyramid with white stripes on dark needles.

* 6 to 8 inches. \$ 6.00

Omorika (Serbian Spruce)

90 ft. Zone IV. Dense narrow pyramid. Slow growth. One of the best. Moist soil. Photo above.

* 6 to 8 inches X. \$ 8.50
12 to 15 inches, B. & B \$1.00 \$ 9.00 75.00
15 to 18 inches, B. & B 1.50 13.50 100.00
18 to 24 inches, B. & B 2.00 18.00

Orientalis (Oriental Spruce)

80 ft. Zone IV. Slow, compact, graceful. Humus. Dark needles.

* 8 to 10 inches X. \$ 12.00
12 to 15 inches, B. & B \$2.50 \$20.00

Polita (Tigertail Spruce)

60 ft. Zone V. Graceful pyramid. Stiff, spiny needles with soft yellow growth in spring. Moist.

(Each) (10) (100)

* 9 to 12 inches XXX. \$ 30.00
* 6 to 9 inches X. 15.00

Pungens (Colorado Spruce)

80 ft. Zone I. Best spruce for dry climates. Photos above. Varies from green to silver, as offered here, except larger (B. & B.) sizes which have been selected.

* 4 to 7 inches. \$ 4.00
* 4 to 8 inches X. 9.00
* 7 to 14 inches X. 12.00
*10 to 12 inches XX. 29.00
*18 to 24 inches XXX. 50.00

—Selected Blue

18 to 24 inches, B. & B \$2.25 \$20.00 \$190.00
3 to 4 feet, B. & B. 4.50 40.00 390.00

—Kosteri (Koster Blue)

A grafted form of uniform silver sheen.

* 6 to 12 inch grafts. \$1.20 \$10.00 \$ 95.00
10 to 15 inches, B. & B 1.50 13.00 125.00
15 to 18 inches, B. & B 2.25 20.00 195.00
18 to 24 inches, B. & B 3.00 27.00 250.00
2 to 2½ feet, B. & B. 4.00 35.00 330.00
3 to 3½ feet, B. & B. 6.50 60.00 550.00

—Moerheimi (Moerheim Blue)

Another grafted form. New. Slightly better.

* 6 to 8 inches, B. & B \$1.00 \$ 9.00 \$ 80.00
*10 to 15 inches, B. & B 1.75 15.00 140.00
15 to 18 inches, B. & B 2.25 20.00 195.00

Rubra (Red Spruce)

100 ft. Zone I. Narrow pyramid. Needs cool, moist soil.

* 4 to 6 inches X. \$ 6.00
3 to 4 feet, B. & B. \$1.75 \$15.00

PIERIS (Andromeda)

Evergreen

Floribunda (Mountain Fetterbush)

4 ft. Zone V. Evergreen, close-set mound. Upright clusters of wax-white plumes, May. Acid, humus, half shade. Photo front cover.

* 2-inch pots. \$ 1.50 \$ 12.50
* 6 to 8 inches X. 20.00
10 to 12 inches. \$.80 6.00 50.00
18 to 24 inches, B. & B 3.25 30.00 260.00

Japonica (Japanese Andromeda)

6 ft. Zone (V). Evergreen, upright shrub, with drooping wax-white bells in plumes, May. June growth is rosy-wine, mature leaf light green. Hardy aristocrat. Acid.

* 6 to 8 inches X. \$ 3.00 \$ 20.00
*10 to 12 inches XX. 40.00
12 to 15 inches, B. & B \$1.00 80.00 75.00
15 to 18 inches, B. & B 1.50 12.00 100.00
18 to 24 inches, B. & B 2.50 22.00 200.00



1. Ancient White Pine
2. Red Pine (*resinosa*)
3, 4. White Pine planting

5. *Excelsa* (Bhotan or Himalaya)
6. *Pinus cembra*
7. Austrian Pine
8. Japan Red (*densiflora*)

9. Table Pine (*Tanyosho*)
10. *Pinus strobus nana*
11. *Pinus strobus*

12. *Mugho* Pine
13. Scots Pine
14. Red Pine (*Resinosa*)

PINUS (Pines) PHOTOS ABOVE Evergreen

HERE are the trees for wind and exposure—also for natural effects. They all prefer good drainage, sun, normal soil (exceptions are noted in descriptions). There are huge, spreading trees and neat, dwarf bushes.

- Ayacahuite (Mexican White Pine)**
60 ft. Zone V. Green leaves dangle like *P. Excelsa*. Huge cones. (Each) (10) (100)
*10 to 15 inches, B. & B \$1.35 \$12.50 \$110.00
- Banksiana (Jack Pine)**
60 ft. Zone I. Broad tree with short and twisted needles. Dry, sandy soil.
* 6 to 12 inches. \$ 6.00
- Cembra (Swiss Stone Pine)**
30 ft. Zone IV. Slow. Dense pyramid. Photo above. A fine small specimen tree.
*10 to 12 inches, B. & B \$1.10 \$10.00 \$ 90.00
- Densiflora (Japan Red Pine)**
90 ft. Zone IV. Broad irregular head. Good near sea-shore. Photo above.
* 6 to 12 inches. \$ 4.50
3 to 4 feet, B. & B. \$24.00 200.00
- umbraiculifera (Japan Table Pine)**
8 ft. Zone IV. Slow and dwarf. Photo above. Also called "Tanyosho."
12 to 15 inches, B. & B \$2.00 \$15.00
18 to 24 inches, B. & B 3.00 28.50
- Excelsa (Himalayan Pine)**
100 ft. Zone (V). Large and handsome. Big drooping needles. Photo above.
* 2 to 4 inches X. \$ 15.00
- Flexilis (Limber Pine)**
50 ft. Zone V. Narrow pyramid while young.
*15 to 24 inches X. \$ 22.00
4 to 5 feet, B. & B. \$3.00 \$29.00 270.00
- Koreana (Korean Pine)**
50 ft. Zone III. Slow and dense. Handsome.
* 1-year S. \$ 4.50
15 to 18 inches, B. & B \$2.00 \$17.00
- Koreana glauca (Silver Korean)**
Dwarfer form with bluish needles.
24 to 30 inches, B. & B \$4.00
- Montana (Mountain Pine)**
5 to 25 ft. Zone II. A picturesque bushy mound.
* 9 to 12 inches X. \$ 9.00
*12 to 18 inches X. 12.00
2½ to 3 feet, B. & B. \$3.00 \$25.00 200.00
- mughus (Mugho)**
Best known form. Broad, low, bushy. Photo above. Grown from seed, but larger sizes carefully selected low and compact.
* 6 to 9 inches XX. \$ 20.00
18 to 24 inches, B. & B \$2.25 \$15.00 80.00
2 to 2½ feet, B. & B. 2.50 20.00 150.00

- Nigra (Austriaea) (Austrian Pine)**
70 ft. Zone IV. Compact for a large tree. Neat. Likes lime. Seashore, but not on the water. Photo above. (Each) (10) (100)
* 4 to 7 inches X. \$ 5.00
* 8 to 12 inches X. 11.00
18 to 24 inches, B. & B \$1.50 \$12.00 100.00
2 to 3 feet, B. & B. 15.00 120.00
3 to 4 feet, B. & B. 3.00 20.00 160.00
- Parviflora glauca (Japan Silver Pine)**
20 ft. Zone V. Small spreading bush with blue, twisted needles. Rare.
*18 to 24 inches, B. & B \$2.00 \$17.50 \$150.00
2 to 2½ feet, B. & B. 2.50 22.50 200.00
- Ponderosa (Western Yellow Pine)**
120 ft. Zone V. Huge tapered pyramid.
* 8 to 10 inches XX. \$ 20.00
- Resinosa (Red or Norway Pine)**
80 ft. Zone I. Photos above. A fine native with long dark needles and spreading habit. Very easily grown. Few insect pests. Most popular.
* 4 to 6 inches X. \$ 5.50
* 6 to 9 inches X. 7.00
3 to 4 feet, B. & B. \$3.00 \$20.00 170.00
4 to 5 feet, B. & B. 3.50 25.00 200.00
5 to 6 feet, B. & B. 6.00 35.00 250.00
- Rigida (Pitch Pine)**
60 ft. Zone IV. Dry, rocky soil. Irregular.
* 8 to 12 inches. \$ 4.50
- Strobus (White Pine)**
90 ft. Zone IV. The noblest native evergreen. Prefers rich soil. Photos above. Light green needles, soft and dense. Subject to special interstate quarantines. We have growers in a dozen states and can ship almost anywhere but prices vary. Therefore:—
* 2 to 4 inches X. \$ 4.50
2 to 3 feet, B. & B. \$15.00 125.00
Other sizes on request.
- fastigiata (Pyramidal)**
Small narrow form with ascending branches. Zone IV.
* 6-inch grafts. \$1.00 \$ 9.00 \$ 70.00
12 to 18 inches, B. & B 1.35 12.50
- nana (Dwarf White)**
6 ft. Zone IV. Photo above. A neat round dwarf. Very dense.
* 4 to 6 inch grafts. \$1.00 \$ 9.00 \$ 70.00
12 to 15 inches, B. & B 3.25 31.00

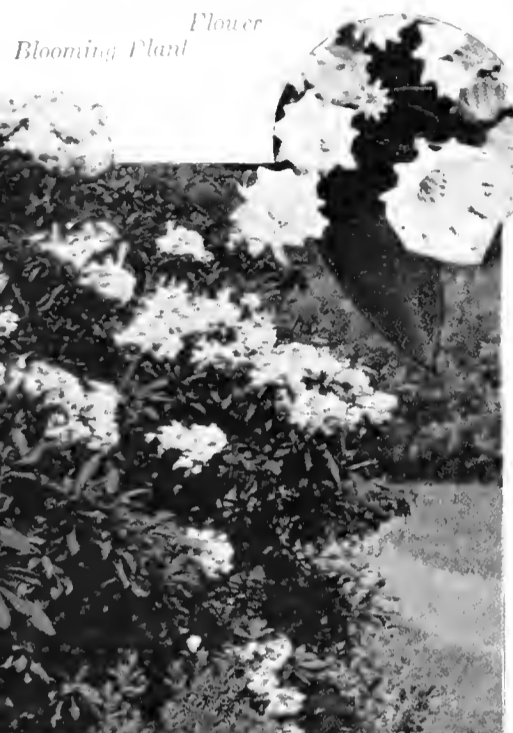
- Sylvestris (Scots Pine)**
90 ft. Zone I. Large, stately tree. Useful for sandy, barren soils, but grows well in gardens. Prefers acid. Popular in small sizes for forest plantings. (Each) (10) (100)
* 4 to 7 inches X. \$ 5.50
* 7 to 14 inches X. 7.00
*12 to 15 inches XX. 25.00
2 to 3 feet, B. & B. \$1.50 \$12.00 100.00
3 to 4 feet, B. & B. 2.50 20.00 170.00
- wateriana (Silver Dwarf)**
10 ft. Zone II. Dense, dwarf column. Blue.
* 4-inch, 1-yr. grafts. \$.90 \$ 8.50 \$ 70.00
* 6-inch, 2-yr. grafts. 1.25 11.50 100.00
- Thunbergii (Japan Black Pine)**
70 ft. Zone IV. The picturesque pine you see in Japanese prints. Most valuable Pine for seashore planting. Can be set in sandy soil near spray.
* 6 to 8 inches. \$ 5.00
* 6 to 8 inches X. 10.00
*12 to 15 inches XX. 26.00
*15 to 18 inches XX. 32.00
2 to 3 feet, B. & B. \$3.50 \$30.00 250.00
3 to 4 feet, B. & B. 4.00 35.00 300.00

- PLATANUS (Plane Tree)**
Occidentalis (Sycamore) (Buttonwood)
120 ft. Zone IV. Giant, dignified native shade tree. Tolerant, but prefers moist, humus. Patchy bark.
*12 to 18 inches. \$ 5.00
6 to 8 feet. \$ 9.00 70.00
2 to 2½ inch cal. \$3.50 30.00 250.00
- "Orientalis" (Acerifolia) (Plane)**
90 ft. Zone (V) VI. A confusion of names, but Oriental Plane in this country means the hybrid London Plane Tree—about the best resister of city conditions there is.
*12 to 18 inches. \$ 7.50
5 to 6 feet. \$ 9.00 75.00
8 to 10 feet. \$2.00 18.00 150.00
10 to 12 feet. 2.50 20.00 190.00

- POPULUS (Poplar)**
Bolleana ((Bolleana Poplar)
40 ft. Zone III. Narrow column, hardy and disease-free. Better than Lombardy. Green leaf, white beneath.
* 3 feet S. \$ 9.00
6 to 8 feet. \$18.00 150.00
- Eugenei (Carolina Poplar)**
50 ft. Zone I. Quick grower, but too rank in habit for garden or city.
* 3 to 4 feet. \$ 6.50
6 to 8 feet. \$ 4.50 35.00
- Nigra Italica (Lombardy Poplar)**
60 ft. Zone I. Quick column. Popular.
*18 to 24 inches. \$ 4.50
* 3 to 4 feet. 7.00
3 to 4 feet, branched 12.00
6 to 8 feet. \$.75 \$ 6.50 45.00
8 to 10 feet. 1.00 8.50 70.00
- Tremuloides (Quaking Aspen)**
90 ft. Zone I. Perpetually moving leaves. Forest tree only. Stately.
*12 to 18 inches. \$ 4.50
* 4 to 6 feet. \$ 2.50 18.00

THE BEST FLOWERING EVERGREENS

PLANTS that in addition to a brave show of flower, possess rich evergreen leaves! "Two-in-one" plants, they might be termed and they are the most valuable for creating garden effects. On these two pages appear some photographs—also see page 17 for Broad-leaved Evergreens. We refer you to unpictured items: Erica, Pieris, Azalea, Leiophyllum, Pyracantha, Viburnum.



Gorgeous Mountain Laurel (Kalmia page 11)



Abelia (page 3) flowers all summer



Daphne cneorum (page 8)

(Right)
The
showyleaves
of
Rhododen-
dron maxi-
mum—with
large flowers
(see below)

Flower
Blooming Plant

PRUNUS (Cherry, Plum, Almond)

(See also page 21)

- Glandulosa (Flowering Almond)**
5 ft. Pink, April. Photo page 8. Zone V.
(Each) (10) (100)
*12 to 18 inches X..... \$ 16.00
2 to 3 feet.....\$.85 \$ 7.00 50.00
- Pennsylvanica (Wild Red Cherry)**
30 ft. Zone II. White, May; red fruit July.
Excellent bird attraction.
*18 to 24 inches..... \$ 7.00
- Pissardii (Purple-leaf Plum)**
12 ft. Zone V. Photo page 8. Pink in May,
foliage strong purple.
4 to 5 feet.....\$1.25 \$10.00
- Serotina (Black Cherry)**
80 ft. Zone V. Fine timber, like Mahogany.
Heavy soil forest tree.
*18 to 24 inches..... \$ 7.50
- Serrulata (Japan Flowering Cherry)**
Easy to grow, tolerant. Zone V.
- Amanogawa**
20 ft. Narrow column. May. Semi-double pink.
Photo page 9.
5 to 6 feet.....\$3.50 \$25.00 \$200.00
- Fugenzo (Kofugen) (Veitch)**
The latest. Large double pink. Spreading.
- Kwanzan**
Photo page 8. Deep pink.
- Mt. Fuji (Shirotae)**
The best white. Profuse. 30 ft. tree.
- Naden (Siebold)**
40 ft. tree smothered in pale pink flower clusters.
Prices on above four:—
5 to 6 feet.....\$2.50 \$22.00 \$200.00
6 to 8 feet..... 3.00 25.00 210.00
- Subhirtella pendula (Weeping Cherry)**
15 ft. Zone V. Delicate hanging branches loaded
with pink in May. Unusual and easily grown.
Drainage. Photo page 8.
1-year heads.....\$3.00 \$29.00 \$250.00
2-year heads..... 3.75 35.00 325.00
- Subhirtella flore plena (Double)**
Larger bloom.
2-year heads.....\$3.75 \$35.00
- Virginiana (Choke Cherry)**
30 ft. Zone I. Red fruit for birds in summer.
*12 to 13 inches..... \$ 6.50
- PSEUDOTSUGA (Douglas Fir)**
Douglasi
70 ft. Zone IV. Evergreen tree. Shapely, hand-
some, popular pyramid. Prefers rich soil, but
tolerant. Good in garden or forest. Photo page 5.
* 3 to 5 inches X..... \$ 4.50
* 6 to 8 inches X..... 6.00
* 8 to 12 inches XX..... 18.00
*12 to 15 inches XX..... 35.00
*15 to 18 inches XX..... \$ 5.00 40.00
2 to 3 feet, B. & B. \$1.75 13.50 95.00
(Larger sizes quoted on request)

PYRACANTHA (Firethorn)

- Lalandi (Laland Firethorn)**
Evergreen shrub to 15 ft. Zone VI. A fuzz of
white in May and then orange-red berries in
profusion, lasting to January. Drain, lime.
(Each) (10) (100)
* 3-inch pots..... \$ 3.50 \$ 25.00
*15 to 18 inches X..... 4.00 30.00
18 to 24 inches, B. & B. \$1.00 8.00 75.00
2 to 3 feet, B. & B. 1.50 12.00 95.00
4 to 5 feet, B. & B. 2.50 22.50 150.00

QUERCUS (Oak)

- Alba (White Oak)**
90 ft. Zone IV. Noble, spreading tree.
*12 to 18 inches..... \$ 8.50
4 to 6 feet..... \$ 6.50 55.00
6 to 8 feet.....\$2.50 16.00 110.00
- Bicolor (Swamp White Oak)**
60 ft. Zone III. Narrow head. Moist.
* 8 to 12 inches..... \$ 6.00
*12 to 18 inches..... 8.00
- Coccinea (Scarlet Oak)**
75 ft. Zone IV. Round, open head. Dense,
handsome. Leaves color in autumn.
* 3 to 6 inches..... \$ 5.00
* 6 to 10 inches..... 11.00
6 to 8 feet..... 3.50 30.00 290.00
- Macrocarpa (Burr Oak)**
75 ft. Zone I. Pyramid. Handsome.
* 6 to 12 inches..... \$ 8.00
6 to 8 feet.....\$3.95 \$37.50
- Nigra (Black or Water Oak)**
75 ft. Zone VI. Avenue tree. Pyramid.
*12 to 15 inches..... \$ 7.00
- Palustris (Pin Oak)**
90 ft. Zone V. Rapid growth. Streets. Good in
swamps or upland.
* 6 to 12 inches..... \$ 6.00
*12 to 18 inches X..... 8.00
5 to 6 feet.....\$2.00 \$15.00 \$120.00
6 to 8 feet..... 2.50 20.00 150.00
8 to 10 feet..... 3.25 22.50 200.00
- Robur (English Oak)**
80 ft. Zone V. Short stem. Spreads.
*18 to 24 inches..... \$ 2.00 \$ 10.00
* 2 to 2½ feet..... 3.00 15.00
- Rubra (Common Red Oak)**
60 ft. Zone IV. Rapid growth. Heavy branches.
Likes clay. Handsome.
*12 to 18 inches..... \$ 8.00
4 to 6 feet..... \$ 8.00 50.00
6 to 8 feet.....\$2.50 17.00 110.00
- RETINOSPORA**—See Chamaccyparis (p. 6)

RHAMNUS (Buckthorn)

- Cathartica**
15 ft. Zone I. Fine, bushy, dense, thorny hedge.
Very hardy.
*12 to 15 inches..... \$ 5.00
- Frangula**
15 ft. Zone I. Like above, but add shiny leaves
and in August a load of red-purple fruit.
*18 to 24 inches..... \$ 6.00

RHODODENDRON (Evergreen)

- Brachycarpum**
12-foot shrub. Blush pink in June. Heavy, good
foliage. (Each) (10) (100)
6 to 8 in. hvy. plants.. \$1.00
- 10 to 12 inches..... 2.00
- Carolina**
Zone V. 8 to 10 feet. Fine native with light to
deep pink bloom in June.
*Small sizes (See next page)
12 to 18 inches, B. & B. \$1.00 \$ 7.50 \$ 60.00
18 to 24 inches, B. & B 1.50 12.00 95.00
- Catawbiense**
Zone V. 6 to 8 feet. Compact, rosy purple
bloom in June.
*Small sizes (See next page)
12 to 15 inches, B. & B. \$1.25 \$11.00
- 18 to 24 inches, B. & B 3.00 27.50 \$250.00
2½ to 3 feet, B. & B. 5.50 50.00
- Chrysanthum**
Foot-high dwarf, with pale yellow flowers in
May. Zone IV.
3 to 6 inches.....\$1.00
- Decatros Hybrids (Decorum x Atrosang.)**
Large fragrant pink blooms in June. A new
race. Zone VI. Free-flowering.
12 to 18 inches.....\$2.00
- Fortunei**
12 ft. shrub with fragrant rosy blooms in May
and June.
6 to 12 inches.....\$1.00
- 12 to 18 inches..... 2.00
- Keiskei**
Variable; 2 to 5 feet. Light yellow blooms in
May.
12 to 15-inch spread...\$2.00
- Loderi**
Seedlings of this finest of English hybrids that
wintered 1934 in Zone VI. Huge white fragrant
flowers in May.
8 to 12 inches.....\$1.00
- Maximum**
Zone IV. 12 feet. Blush-white. July. Photo
above.
*Small sizes (See next page)
12 to 15 inches, B. & B. \$1.25 \$11.00 \$100.00
18 to 21 inches..... 2.00 17.50 165.00
Large Collected Clumps (next page)
- Micranthum**
Upright to 8 feet. Many small white blooms
freely produced in late May. Zone V.
12 to 18 inches.....\$1.50
- Racemosum**
A hardy dog of this fine rock-garden evergreen.
Pink flowers in May. Grown from seed collected
in the last Rock expedition. Zone V.
6 to 12 inches.....\$2.00
- Smirnowii**
Rosy red in May. Large growing. Bushy.
6 to 8 inches.....\$1.00
- 8 to 12 inches..... 2.00
- Smirnowii Hybrids (New, unnamed)**
Bushy. Should have large pink flowers in May-
June. Zone V (?).
8 to 12 inches.....\$.75
- 12 to 18 inches..... 1.50



Hybrid Rhododendrons: Above, Dresselhuys
Below, center: Roseum Elegans
Below, right: America

Group of Rhododendrons, Hardy Hybrids in Rochester, N. Y.

Beneath: Heather (Calluna) (p. 5)



NAMED HARDY RHODODENDRONS

For years a specialty with us. Dense, slow, handsome evergreen shrubs all aristocrats in every sense. Photos above. Prices below.

- | SIZES | VARIETIES |
|--------|---|
| ABCDEF | Album elegans—V—white. Late. |
| ABCDEF | America—V—deep red. |
| ABCDEF | Amphion—V—pink, white eye. |
| ABCDEF | Catawbiense album—V—white. |
| ABCDEF | Catawbiense grandiflorum—VI—rose. |
| ABCDEF | Dresselhuys—V—fine analine red. |
| ABCDEF | Dr. H. V. Rutgers—V—fiery red. |
| ABCDEF | Everestianum—V—compact lilac. |
| ABCDEF | Ignatius Sargent—V—good rose. |
| ABC | Kettledrum—V—rich crimson. |
| ABCDEF | Lee's Dark Purple—V—good purple. |
| ABCDEF | Mrs. C. S. Sargent—V—best pink. |
| B | Mrs. D. Den Ouden—V—crimson. |
| ABCDEF | Pres. Lincoln—V—lilac pink. |
| B | Prof. F. Bettex—V—scarlet dwarf. |
| ABCDEF | Purpureum elegans—V—late purple. |
| ABCDEF | Roseum elegans—V—rose, dwarf. |
| B | Van der Broeke—V—dark carmine. |
| B | Van Weerden Poelman—V—huge crimson flowers. |

REAL BARGAIN PRICES

- | | (Each) | (10) |
|--|-------------------|---------|
| "A"—1-year grafts (8 in.) B. & B. | \$1.25 | \$10.00 |
| "B"—2-year grafts (12 in.) B. & B. | 2.00 | 17.50 |
| "C"—12 to 15 inches, B. & B. | 2.50 | 22.50 |
| "D"—18 to 24 inches, B. & B. | 3.50 | 30.00 |
| "E"—24 to 30 inches, B. & B. | 4.00 | 35.00 |
| "F"—20 to 30 inches, B. & B., imperfect, fine for mass plantings, mixed, | \$250.00 per 100. | |

Mixed Hybrid Seedlings:

- | | | |
|--------------------------|----------|--------|
| * 6 to 8 inches X | \$ 22.00 | |
| 6 to 8 inches, B. & B. | \$ 6.50 | 55.00 |
| 8 to 10 inches, B. & B. | 8.00 | 70.00 |
| 10 to 12 inches, B. & B. | 10.00 | 90.00 |
| 12 to 15 inches, B. & B. | 12.00 | 110.00 |
| 15 to 18 inches, B. & B. | 14.00 | 125.00 |

RHODODENDRON CULTURE

Acid, humus, damp, loose

1. The roots feed at the surface—do not hoe or rake. Plant them properly and thereafter water and mulch as needed.

2. Light shade, airy and open, gives best results. Only certain trees will do. The best are Oaks, Cherries, Magnolias and Birch. Their leaves make the best mulch. Avoid Beech and Maple.

RHUS (Sumach)

All are barren soil plants, easily grown; leaves blaze in autumn.

- | | | | |
|---|--------|---------|---------------|
| Canadensis (Fragrant Sumach)
3 ft. Trailing. Zone IV. Yellow, April. | (Each) | (10) | (100) |
| *12 to 18 inches | | | \$ 7.00 |
| Copallina (Shining Sumach)
25 ft. Zone IV. Crimson fruit cluster. | | | |
| *12 to 18 inches | | | \$ 3.50 |
| 2 to 3 feet | | | \$ 4.00 25.00 |
| Cotinus (Smoke Tree) (Purple Fringe)
15 ft. Zone V. Gnarled, bold effect. July to September a purple cloud. | | | |
| * 6 to 12 inches X | | \$ 2.50 | \$ 17.00 |
| 2 to 3 feet | | \$.90 | 8.50 |
| 3 to 4 feet | | 1.25 | 11.00 |
| Glabra (Smooth Sumach)
15 ft. Zone II. Scarlet fruit clusters. | | | |
| *12 to 18 inches | | | \$ 3.50 |
| 2 to 3 feet | | | \$ 4.00 25.00 |
| Typhina (Staghorn Sumach)
25 ft. Zone IV. Crimson showy fruit. | | | |
| *12 to 18 inches | | | \$ 3.50 |
| 2 to 3 feet | | | \$ 4.00 25.00 |

ROBINIA (Locust)

- | | | | |
|--|-------|-------|---------------|
| Pseudacacia (Black Locust)
70 ft. Zone IV. Dry, sandy soil. The drought tree! Showy, fragrant white flowers in June. | | | |
| * 2 to 18 inches | | | \$ 3.00 |
| * 2 to 3 feet S | | | 5.00 |
| 4 to 5 feet | | | \$ 4.00 35.00 |

ROSE—See page 23

SALIX (Willow)

- | | | | |
|---|-------|---------|----------------|
| Babylonica (Babylon Weeping Willow)
30 ft. Zone V. Familiar green fountain. Near, but not in water. | | | |
| * 2 to 3 feet | | \$ 2.50 | \$ 11.00 |
| * 3 to 4 feet | | 3.00 | 17.00 |
| 6 to 8 feet | | \$2.00 | 13.00 100.00 |
| Niobe (Golden Weeping)
40 ft. Zone II. Drooping yellow branches. | | | |
| * 2 to 3 feet | | | \$ 10.00 |
| 6 to 8 feet | | \$1.50 | \$13.50 125.00 |
| Vitellina aurca (Russian Golden)
40 ft. Zone I. Branches are bright startling yellow. | | | |
| * 2 to 3 feet | | \$ 3.00 | \$ 15.00 |
| 6 to 8 feet | | \$1.50 | 12.00 100.00 |

SAMBUCUS (Elder)

- | | | | |
|---|-------|-------|---------|
| Canadensis (Elderberry)
12 ft. Zone IV. Coarse, but red-purple fruits in July. Birds. | | | |
| *12 to 18 inches S | | | \$ 4.50 |
| *18 to 24 inches X | | | 11.00 |
| —acutifolia (Cutleaf)
Form with handsome deep-cut leaves. | | | |
| * 1 to 2 feet | | | \$ 6.00 |

Collected Native Rhododendron

Easily transplanted, these may be shipped and planted safely. About 1000 will make an acre of gorgeous beauty at low cost.

Maximum and Kalmia (p. 11)

	(25)	(100)	(1000)
9 to 12 inches S	\$ 7.00	\$ 45.00
12 to 15 inches S	\$3.00	9.00 55.00
9 to 12 inches (Ball)	..	7.00	20.00 160.00
12 to 15 inches (Ball)	..	8.50	25.00 180.00

Carolina and Catawbiense

	(25)	(100)	(1000)
6 to 9 inches S	\$2.50	\$ 8.50 \$ 60.00
9 to 12 inches S	3.00	10.00 70.00
12 to 15 inches S	4.50	12.50 90.00
9 to 12 inches (Ball)	..	7.00	23.00 190.00
12 to 15 inches (Ball)	..	8.00	27.50 225.00

LARGE COLLECTED CLUMPS:

Heavy, Bold effects quickly and cheaply. These transplant easily.

- | | | | |
|---|-------|--|--|
| Kalmia (Mountain Laurel)
2 to 4 feet — 3 stems and more
Balled and Burlapped | | | |
| Rhododendron maximum
3 to 5 feet — 3 stems and more
Balled and Burlapped | | | |

express extra	Delivered—New York or Philadelphia	
	200 (truck)	100 (truck)
5		
\$7.50	\$300.00	\$550.00
7.50	300.00	550.00

Truckload Delivered prices to other localities gladly quoted.

Write us.

(Trucks of Laurel and Rhododendron assorted, same prices)



1. *Large Ilex opaca* 4. *Ilex glabra* 7. *Mahonia aquifolium* 10. *Cotoneaster horizontalis* 13. *Berberis verruculosa*
 2. *Ilex crenata* 5. *Cotoneaster salicifolia* 8. *Korean Box (dwarf)* 11. *Berberis gagnepainii* 14. *Hardy English Laurel*
 3. *Young Ilex opaca* 6. *Ilex conera* 9. *Berberis triacanthophora* 12. *Berberis juliana* 15. *Old Burus suffruticosa*

SASSAFRAS

Variifolium (Sassafras Tree)
 60 ft. Zone IV. Handsome pyramid, odd interesting leaves. Tolerant.
 (Each) (10) (100)
 *12 to 18 inches..... \$ 4.50

SCIADOPITYS (Evergreen)

Verticillata (Umbrella Pine)
 20 ft. Zone V. Slow, dense pyramid. Long leaves in whorls. Drain well. Photo on page 6. Unique and rare.
 * 6 to 8 inches X..... \$ 13.00
 * 8 to 10 inches XX..... 22.00
 *10 to 15 inches XXX..... 38.00
 12 to 15 inches, B. & B \$1.00 \$ 9.00 70.00
 15 to 18 inches, B. & B 12.50 100.00
 18 to 22 inches, B. & B 2.50 20.00 150.00

SOPHORA (Pagoda Tree)

Japonica (Japan Scholar Tree)
 60 ft. Zone V. Yellow, pea-like, blooms in August. Picturesque branching.
 * 6 to 8 inches S..... \$ 6.50
 3 to 4 feet..... \$15.00 130.00

SORBUS (Mountain-ash)

Americana (American Mt. Ash)
 20 ft. Zone II. Smaller. Redder berries than the European. Acid.
 4 to 5 feet..... \$2.50
 5 to 6 feet..... 3.00
Aucuparia (European Rowan Tree)
 30 ft. Zone III. Clusters of orange berries from July to September. Handsome. Photo page 7.
 * 2 feet X..... \$ 11.00
 6 to 8 feet..... \$2.50 \$22.50 180.00
 10 to 12 feet..... 3.50 30.00

SPIRAEA (Spiraea)

Anthony Waterer
 3 ft. Zone V. Rose blooms, June to August. Photo page 12. Best Dwarf.
 * 6 to 9 inches X..... \$ 13.00
 18 to 24 inches..... \$.50 \$ 4.00 26.00
Billiardi (Billiard Spiraea)
 6 ft. Zone V. Rose, July, August.
 *18 to 24 inches..... \$ 8.00
Billiardi alba—Form with white flowers.
 *12 to 18 inches..... \$ 6.50
Douglasi (Douglas Spiraea)
 7 ft. Spreading clump. Zone V. Pink flowers in July and August.
 *12 to 18 inches..... \$ 6.00
Fortunci (Callosa rosea)
 6 ft. Zone V. Pink, June and July.
 *12 to 18 inches..... \$ 4.00
 2 to 3 feet..... \$ 2.50 16.00
Opulifolia (Physocarpus) (Ninebark)
 9 ft. Zone IV. White, June. Rapid.
 *12 to 18 inches..... \$ 7.00
 18 to 24 inches..... \$ 2.50 16.00
Reevesiana (Reeve's Spiraea)
 5 ft. Zone VI. White in June.
 *12 to 18 inches..... \$ 7.50
 18 to 24 inches..... \$ 2.50 16.00
Thunbergii (Thunberg Spiraea)
 5 ft. Zone V. White show in April.
 *12 to 18 inches..... \$ 9.00

Trichocarpa (Korean Spiraea)
 6 ft. Zone V. Neat, spreading bush. Garlands of white, June. Photo page 12.
 (Each) (10) (100)
 * 8 to 12 inches..... \$ 10.00
 3 to 4 feet..... \$.70 \$ 5.00 40.00

Van Houttei (Modern "Bridalwreath")
 6 ft. Zone IV. Familiar everywhere for the white May garlands.
 *12 to 18 inches..... \$ 5.50
 18 to 24 inches..... \$ 2.00 14.00
 3 to 4 feet..... \$.50 4.00 22.00
SPRUCE—See Picea (p. 13)

STEPHANANDRA

Flexuosa (Lace-bush)
 6 ft. Zone V. Neat and bushy. Leaves color in autumn. Slight flowers.
 * 6 to 12 inches..... \$ 11.00
 2 to 3 feet..... \$.50 \$ 4.00 35.00

STEWARTIA

Pentagyna (Mountain Stewartia)
 15 ft. Shrubby, Zone V. Humus, moist. Photo page 9. Rare native: large white flowers in July.
 12 to 18 inches..... \$1.00 \$ 9.50
 18 to 24 inches..... 1.50 12.50
Pseudocamellia (False Camellia)
 50 ft. Tree. Zone V. Handsome tree with huge white bloom in August. Photo page 9. Rich soil. Slow.
 18 to 24 inches..... \$1.50 \$13.50
 2 to 3 feet, B. & B.. 2.75 (postpaid)

STRANSVAESIA (Evergreen)

Davidiana
 20 ft. Zone (VI). Good evergreen leaf, but scarlet berries hang all winter into next year.
 18 to 24 inches..... \$.90 \$ 6.00
 3 to 4 feet..... 1.50 12.50
—undulata
 6 ft. Bushy dwarf. Zone VI.
 12 to 15 inch pots..... \$1.25 \$11.00

STYRAX (Snow-bell)

Japonica (Japanese Snowball)
 20 ft. Zone V. Small tree. Loose soil. Studded with white bells in May.
 * 6 to 8 inches..... \$ 7.50
 12 to 15 inches..... \$.65 \$ 5.00
 3 to 4 feet..... 1.25 10.00

SYMPHORICARPOS

Racemosus (Snowberry)
 5 ft. Zone IV. Clay, lime. Useful for showy white berries in August. Photo page 12. Good dwarf shrub.
 *18 to 24 inches..... \$ 9.00
 2 to 3 feet..... \$ 2.00 18.00
 3 to 4 feet..... \$.50 3.00 25.00
Vulgaris (Coralberry)
 5 ft. Zone IV. Thin growth. Berries small, but red and hang late.
 *12 to 18 inches..... \$ 5.00
 2 to 3 feet..... \$.50 \$ 4.00 22.00

SYMPLOCUS (Turquoise Berry)

Paniculata
 20 ft. Zone V. Intricate branching, like Hawthorns, and blooms in May, white. But loaded with bright blue berries, Sept.
 18 to 24 inches..... \$1.50 \$12.50

SYRINGA (Lilac)

Chinensis (Rothmagenensis)
 12 ft. Zone V. Graceful; Lilac, May. Very faithful bloomer. Lime. Sun.
 (Each) (10) (100)
 *12 to 18 inches..... \$ 9.00
 18 to 24 inches..... \$ 3.50 26.00

Japonica (Japanese Tree Lilac)
 30 ft. Zone V. Blue-gray clusters in June and July. Different. Tolerant.
 3 to 4 feet..... \$1.25 \$ 9.00 \$ 60.00
 4 to 5 feet..... 1.50 10.00 80.00

Josikea (Hungarian Lilac)
 12 ft. Bush. Zone V. Violet in June.
 *10 to 15 inches..... \$ 8.00
 3 to 4 feet..... \$.90 \$ 6.50 50.00

Persica (Persian Lilac)
 6 ft. Zone V. Fragrant lilac, May.
 *12 to 18 inches..... \$ 9.00
 3 to 4 feet..... \$.90 \$ 6.00 50.00

Villosa (Late Lilac)
 9 ft. Otherwise like Josikea.
 *12 to 15 inches..... \$ 7.50
 3 to 4 feet..... \$.75 \$ 5.50 45.00

Vulgaris (Old-fashioned Lilac)
 15 ft. Zone IV. Spreads by suckers to huge clumps. Purple, May. Fragrant.
 *12 to 18 inches..... \$ 6.00
 3 to 4 feet..... \$.70 \$ 4.00 30.00

Vulgaris alba—White form of above.
 *12 to 18 inches..... \$ 7.00
 3 to 4 feet..... \$.75 \$ 6.00 45.00

French Hybrids (Photos page 11)
 15 ft. Zone IV. Mostly not real hybrids, but forms of Vulgaris with special color, bloom and fragrance. Sun, lime. Famous and deserving.

*Belle de Nancy—Satin-pink. D.
 *Charles X—Reddish purple. S.
 *Congo—Dark crimson. S.
 *Dr. Maillot—Lilac-pink. D.
 *Doyen Keteleer—Light pink. D.
 *Justi—Blue. S.
 *Marie LeGraye—White. S.
 *Martiensis pallida—Violet-red. D.
 *Michel Buehner—Clear lilac. D.
 *Mmc. Casimir Perier—White. D.
 *Mmc. Lemoine—White. D.
 *Pres. Grevy—Blue. D.
 *Reamur—Dark red. S.
 *Souv. Ludwig Spach—Red. S.
 S—single; D—double flowers.

*Small 1-year plants..... \$ 2.50 \$ 20.00
 1½ to 2 feet..... \$.75 6.00 55.00
 4 to 5 feet..... 1.50 12.50 100.00

TAMARIX (Tamarisk)

Africana—15 ft. Zone V. Pink in April.
 *18 to 24 inches..... \$ 7.50

TAXODIUM (Bald Cypress)

Distichum
 80 ft. Zone V. Is not evergreen, but looks like one. Graceful, feathery pyramid. Loves swamps.
 * 4 to 5 feet..... \$ 25.00
 6 to 8 feet..... \$2.00 \$15.00 100.00
 8 to 10 feet..... 2.50 20.00 150.00



Specimen Japanese Yew—Tree Form

Hedge of Upright Japanese Yew Specimens
Old Specimen Dwarf Japanese Yew T. Cuspidata—Spreading
Hick's Yew (Media)
American Yew (Canadensis)

Two Old Irish Yew Specimens
T. Cusp. Columnaris T. Cusp. Intermedia
English Yew (Baccata) Dwarf Japanese
Spreading English Yew (T. B. repandens)

TAXUS (The Yew) Evergreen

A RACE of dense, hardy, dark green evergreens that promise to be the most important of all for the northeast. Culture: Almost none needed. Any good soil, sun or shade. Slightly acid. Damp or dry. Stands wind fairly well.

Baccata (English Yew)

30 ft. Zone (VI) VII. Photo of small bush above. Spreading and, in old age, a large shrubby tree.

	(Each)	(10)	(100)
* 8 to 12 inches			\$ 10.00
15 to 18 inches, B. & B	\$1.50	\$10.00	80.00
2 to 2½ feet, B. & B.	2.50	18.00	150.00

—fastigiata (Irish)

20 ft. Zone VI. A full column with great character and ruggedness. Photos above.

* 6 to 8 inches X	\$ 4.00	\$ 35.00
12 to 15 inches, B. & B	\$2.75	23.00 200.00
18 to 24 inches, B. & B	5.00	45.00

—repandens (Creeping)

3 ft. Zone VI. Very slow and hugging the ground. Photo above shows dense nature. Rock-garden.

* 4 to 6 inches X	\$ 3.00	\$ 22.00
*10 to 12 inches, B. & B	\$1.00	8.50 70.00
12 to 15 inches, B. & B	2.00	15.00

—washingtoni (Golden)

8 ft. Zone VI. Surprising yellow leaves on a broad bush.

12 to 15 inches, B. & B	\$1.00	\$ 9.00	\$ 80.00
18 to 21 inches, B. & B	1.75	15.00	145.00

Canadensis (American Yew)

Great, fern-like branches spread in all directions. Sheared, looks like photo above. 3 ft. Zone II. Bronze in winter.

* 6 to 8 inches X	\$ 20.00
15 to 18 inches, B. & B	\$1.75 \$15.00
18 to 24 inches, B. & B	2.25 18.00

Canadensis stricta (Upright)

2 ft. Zone II. Dense ascending, stiff branches make this desirable for low edging.

12 to 15 inches, B. & B	\$2.50	\$17.50
15 to 18 inches, B. & B	3.25	30.00

Cuspidata (Japanese Yew Tree)

Trec to 40 ft. Zone III. Pyramidal, upright, bushy. The best hedge Yew for all general purposes. Photo of hedge and specimen above.

* 6 to 8 inches X	\$ 11.00
* 8 to 10 inches X	15.00
* 8 to 10 inches XX	22.00
*12 to 15 inches XX	35.00
*15 to 18 inches XX	45.00
18 to 24 inches, B. & B	\$1.50 \$12.50 110.00
2 to 2½ feet, B. & B.	2.25 19.50 165.00

Cuspidata Spreading

The common form offered for "cuspidata." 12 ft. Zone III. Photo above. A spreading, open bush.

	(Each)	(10)	(100)
* 8 to 10 inches X			\$ 20.00
*10 to 12 inches X			25.00
12 to 15 inches, B. & B	\$1.00	\$ 8.50	70.00
15 to 18 inches, B. & B	1.50	12.00	100.00

—capitata (Upright)

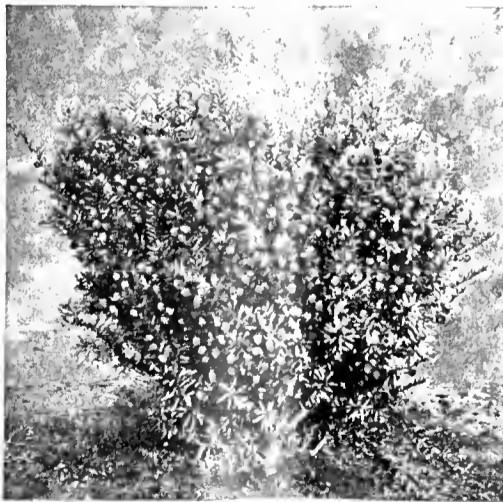
A separate name given in the mix-up to true *Taxus cuspidata*. Cutting-grown, however, and more uniformly dense and upright.

* 8 to 10 inch XX	\$ 22.00
*15 to 18 inch XX	15.00
2 to 2½ ft. B. & B.	\$2.25 \$19.50 165.00

—densa (Compact)

6 ft. Zone III. A mound with bushy, ascending branches. One of the best.

* 4 to 6 inches X	\$ 3.00	\$ 15.00
9 to 12 inches, B. & B	\$1.75	15.00
15 to 18 inches, B. & B	3.50	33.00



2 ft. Kelsey Berrybush Yew

—nana ("brevifolia") (Dwarf)

6 ft. Zone III. Slow growing, spreading, dense dark foliage. Picturesque. Photos of small and large plants above. Substitute for Dwarf Boxwood.

* 6 to 8 inches X	\$ 20.00
* 8 to 10 inches X	25.00
9 to 12 inches, B. & B	\$1.50 \$12.00 90.00
12 to 15 inches, B. & B	2.00 15.00 100.00
15 to 18 inches, B. & B	2.50 17.50 110.00

Cuspidata intermedia (Improved)

10 ft. Like Bush Form, but denser foliage and neater. Photo above. Zone III.

	(Each)	(10)	(100)
12 to 15 inches, B. & B	\$2.25	\$20.00	

—intermedia columnaris (Columnar)

12 ft. Narrow and dense. Photo above.

15 to 18 inches, B. & B	\$2.00	\$17.50	\$140.00
18 to 24 inches, B. & B	2.25	20.00	175.00
3 to 3½ feet, B. & B.	6.50	60.00	

—vermeulen (Upright Brevifolia)

12 ft. Zone III. New. Compacter and denser than any other Yew. Broad base and narrow top. Beautiful pyramid with rather more red berries than most.

6 to 10 inches X	\$ 30.00
12 to 15 inches, B. & B	\$1.50 \$13.50 120.00
2 to 2½ feet, B. & B.	5.50 50.00

Hunnwelliana (Hybrid American Yew)

Canadensis crossed by cuspidata. 6 ft. Zone II. A pyramid of dark green, neat and hardy in extreme North. Browns in winter.

* 6 to 8 inches X	\$.70	\$ 5.00	\$ 42.00
9 to 12 inches, B. & B	1.50	12.00	

Media (Hybrid Japanese Yew)

A cross between baccata and cuspidata that has given rise to new forms.

—Hatfieldii (Hatfield's)

12 ft. Zone IV. A compact cone in outline. The branches are upright and from them spread the leaves. Full of character.

* 4 to 6 inches X	\$ 3.50	\$ 30.00
* 8 to 10 inches X	5.50	50.00
9 to 12 inches, B. & B	\$1.50	12.00
15 to 18 inches, B. & B	3.00	27.50

—hieksii (Hiek's)

10 ft. Zone IV. Strong fat upright shrub. Fine for hedges. Photo of small plants above.

* 6 to 8 inches X	\$ 3.00	\$ 20.00
8 to 10 inches X	3.50	25.00
12 to 15 inches, B. & B	\$1.00	7.50 70.00
18 to 21 inches, B. & B	2.00	15.00 100.00
2 to 2½ feet, B. & B.	3.25	30.00 295.00
3 to 3½ feet, B. & B.	5.00	48.50

—Kelseyi (Berrybush)

3 ft. (♀) Zone IV. Our introduction last year and already attracting favorable comment everywhere. Propagated from the point of view of its wealth of red berries in autumn. Bears young and grows slowly. A dense, full bush. Needles like the Dwarf Yew. Photo of specimen at left.

* 2¼ inch pots	\$ 3.50	\$ 32.00
* 2¼ inch pots X	5.50	50.00
18 to 24 inches, B. & B	\$3.50	32.50
2 to 2½ feet, B. & B.	5.50	50.00



1. Rosenthal's
2. Orientalis
3. Tom Thumb Arborvitae
4. Orientalis aurea nana
5. Hovey's Arborvitae
6. Warreana (Siberian)
7. Pyramidal Arborvitae
8. Globe Arborvitae
9. Golden Tip Arborvitae
10. The type—Thuja occidentalis
11. Vervean's Arborvitae
12. "Little Gem" (dwarf)
13. Douglas' Arborvitae

THUJA (Arborvitae) Evergreens

THE American Arborvitae is the one dwarf and medium size group of evergreens which prefers the wind and cold, the snow and ice, of winter in the extreme north. For this reason, it is an important group to gardeners in Zones II, III, and IV. Arborvitae grows in any good soil and even withstands poor drainage. For best results it should be sheared neatly every summer, being careful to keep the bottom broader than the top. The Canadian Experimental Stations have proved it to be the best evergreen hedge for the north. There is a large assortment of varietal forms in different colors, shapes, and sizes.

Occidentalis (American Arborvitae)

30 ft. Zone II. Pyramidal tree with dense, frond-like, evergreen leaves. Photo of young plant above. Extremely useful and popular.

	(Each)	(10)	(100)
* 4 to 8 inches X.....			\$ 5.00
* 7 to 12 inches X.....			6.50
*18 to 30 inches X.....			12.00
*12 to 18 inches XX.....			45.00
2 to 3 feet, B. & B..	\$1.50	\$11.00	100.00
3 to 4 feet, B. & B..	2.00	15.00	120.00
5 to 6 feet, B. & B..	3.25	25.00	200.00

—douglasi (Douglas Pyramid)

20 ft. Zone IV. Photo above. A narrow column with twisted fern-like foliage.

2 to 3 feet.....	\$2.00	\$15.00	\$120.00
------------------	--------	---------	----------

—douglasi aurea (Golden Douglas)

15 ft. Zone III. Form with bronzy-gold leaves.

* 4 to 6 inches R. C.....			\$ 10.00
* 6 to 10 inches XX.....			21.00
18 to 24 inches, B. & B\$1.00	\$ 9.00		80.00
2 to 2½ feet, B. & B..	1.25	11.00	100.00

—elegantissima (Golden Tip)

15 ft. Zone II. Bright green in winter, gold in spring. Photo above.

* 4 to 6 inches R. C.....			\$ 8.50
* 6 to 8 inches X.....			13.50
10 to 12 inches X.....	\$ 3.25		26.00
18 to 24 inches, B. & B\$1.00	9.00		80.00
2 to 2½ feet, B. & B..	1.25	11.00	100.00

—ellwangeriana (Tom Thumb)

4 ft. Zone II. Two kinds of leaves give feathery appearance. Photo above.

* 4 to 6 inches R. C.....			\$ 8.50
* 6 to 8 inches X.....			13.50
*12 to 15 inches X.....	\$ 3.50		26.00
15 to 18 inches, B. & B\$1.25	10.00		90.00

—globosa (Globe)

4 ft. Zone II. Maintains itself well under all conditions and holds its shape without trimming. A good bedding plant. Photo above.

* 4 to 6 inches R. C.....			\$ 8.50
* 8 to 10 inches X.....			16.00
15 to 18 inches, B. & B\$1.20	\$12.00		65.00
18 to 21 inches, B. & B 2.25	15.00		125.00

—lutea (Peabody)

15 ft. Zone II. Bright yellow column. Good color.

* 4 to 6 inches R. C.....			\$ 9.00
* 8 to 10 inches X.....			14.00
2 to 2½ feet, B. & B.\$1.50	\$12.00		95.00

—Little Gem

2 ft. Zone II. Really dwarf—hugging the ground. Rock garden plant. Dark green. Photo above.

	(Each)	(10)	(100)
* 3 to 4 inches X.....			\$ 3.00
* 6 to 8 inches, B. & B\$1.10	10.00		\$ 22.00
8 to 12 inches, B. & B 1.50	12.00		

—pyramidalis (Pyramidal)

25 ft. Zone II. This is perhaps the best tall form of American Arborvitae. See photo above for shape of young plant. Ideal for formal, narrow hedges.

* 4 to 6 inches R. C.....			\$ 8.50
* 6 to 8 inches X.....			13.00
*10 to 12 inches X.....			20.00
2 to 2½ feet, B. & B.\$1.50	\$12.00		80.00
3 to 4 feet, B. & B..	2.00	15.00	120.00
5 to 6 feet, B. & B..	3.00	26.00	200.00

—rosenthalii (Rosenthal)

8 ft. Zone III. Rugged appearance improves with age. Photo of small plant above.

* 6 to 8 inches X.....			\$ 21.00
2 to 3 feet, B. & B..	\$2.00	18.00	100.00
3 to 4 feet, B. & B..	3.00	27.00	150.00

—vervaencana (Vervean)

10 ft. Zone II. Broad, bushy pyramid. Color varies from gray-green to yellowish and again in winter to bronze.

* 4 to 6 inches X.....			\$ 2.00
* 8 to 10 inches X.....			3.00
2½ to 3 feet.....	\$1.50	11.00	100.00
3 to 4 feet.....	2.25	17.00	150.00

—wareana (Siberian)

12 ft. Zone II. A broad cone, dense and bushy. Slow. Stands exposure. Foliage heavy and crested. Photo above.

* 4 to 6 inches R. C.....			\$ 8.00
2 to 3 feet.....	\$2.00	\$17.00	80.00

Orientalis (Oriental) (Biota)

25 ft. Zone VI. Fast growing column with leaves "set on edge." Interesting, useful. Bronze in winter. Photo above.

* 6 to 8 inches.....			\$ 6.00
* 6 to 8 inches XX.....			11.00
*15 to 18 inches XX.....	\$ 3.00		22.00
18 to 24 inches, B. & B\$1.30	10.00		

—aurea nana (Berekman)

5 ft. Zone VI. A gorgeous dwarf—rich, lush. Golden in spring; bronze, winter. Photo above.

* 4 to 6 inches X.....			\$ 2.50
* 8 to 10 inch grafts.....			35.00
15 to 18 inches, B. & B\$1.75	15.00		95.00
18 to 24 inches, B. & B 2.25	21.00		110.00

TILIA (Linden)

Americana (Basswood)

30 ft. Zone IV. Rich soil, not good in city air. Fragrant white, June.

	(Each)	(10)	(100)
*12 to 18 inches.....			\$ 7.00
6 to 8 feet.....	\$2.00	\$16.00	150.00
8 to 10 feet.....	2.50	20.00	170.00

Cordata (Littleleaf Linden)

90 ft. Zone IV. Dense-headed street tree. Tolerant. Blooms in July.

6 to 8 feet.....	\$2.50	\$22.50	\$180.00
8 to 10 feet.....	3.50	30.00	250.00

Vulgaris (Common European Linden)

30 ft. Zone IV. Street tree, the best flowers of any. June and July.

6 to 8 feet.....	\$3.00	\$25.00	\$210.00
8 to 10 feet.....	3.50	32.50	250.00

TSUGA (Hemlock) Evergreen

Canadensis (Northern Hemlock)

60 ft. Zone IV. In forests, a noble patriarch. But readily sheared to hedge or modest specimen sizes. Humus. Stands shade. Photo p. 5.

* 6 to 9 inches.....			\$ 5.00
* 9 to 12 inches.....			8.00
* 6 to 10 inches X.....			12.00
*12 to 15 inches (with earth)			30.00
*18 to 36 inches XX.....			55.00
18 to 24 inches, B. & B\$1.25	\$10.00		90.00
2 to 3 feet, B. & B..	1.75	14.00	120.00
3 to 4 feet, B. & B..	2.50	20.00	170.00
5 to 6 feet, B. & B..	7.00	60.00	450.00

—compacta (Dwarf)

Dwarf cone, short side branches, tiny leaf.

* 8 to 10 inches, B. & B\$1.10	\$10.00		\$ 80.00
10 to 15 inches, B. & B 1.25	11.00		100.00
15 to 18 inches, B. & B 2.00	17.50		150.00

—Fremdi

Slow, dark, dense pyramid.

* 4 to 6 inches XX.....			\$12.50
6 to 8 inches XX.....			18.00

—pendula sargentii (Weeping)

Dwarf very spreading form. Photo page 5.

*12 to 15 inches, B. & B\$1.25	\$10.00		\$ 85.00
15 to 18 inches, B. & B 1.50	13.50		120.00
18 to 24 inches, B. & B 2.25	20.00		180.00

Caroliniana (Carolina Hemlock)

50 ft. Zone V. Damp, acid preferred. Dense. Striking shadows. Drooping.

* 6 to 9 inches.....			\$ 6.00
*12 to 15 inches.....			8.00
* 6 to 12 inches X.....			17.50
*12 to 15 inches (with earth)			30.00
*18 to 30 inches XX.....			60.00
2 to 3 feet, B. & B.\$3.00	\$25.00		200.00

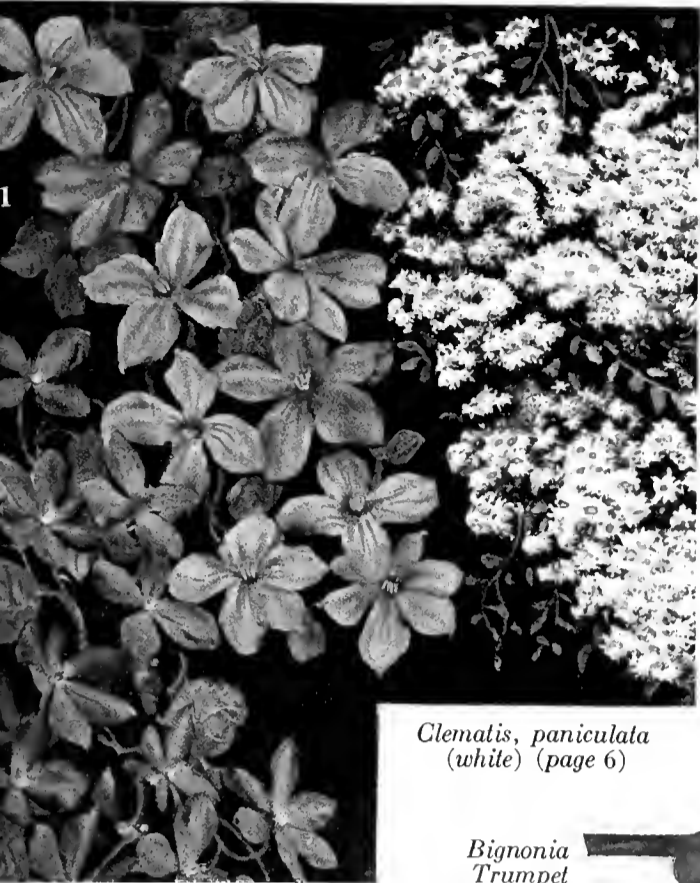
Diversifolia (Japanese Hemlock)

70 ft. Zone V. Graceful, handsome pyramid. Dark, crowded needles.

* 3 to 6 inches.....			\$ 20.00
12 to 18 inches, B. & B\$2.25	\$21.00		180.00

FLOWERING VINES

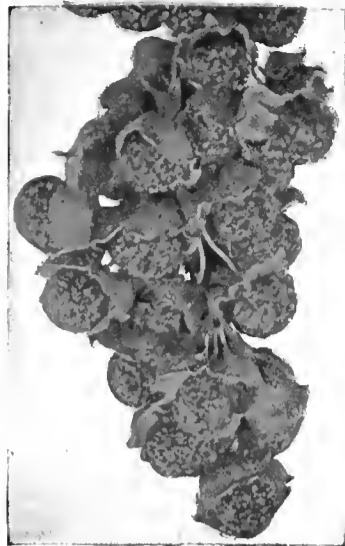
The 7 kinds pictured—1 of each—2-year \$5.00
No. 1 grade—postpaid (East of Iowa)...



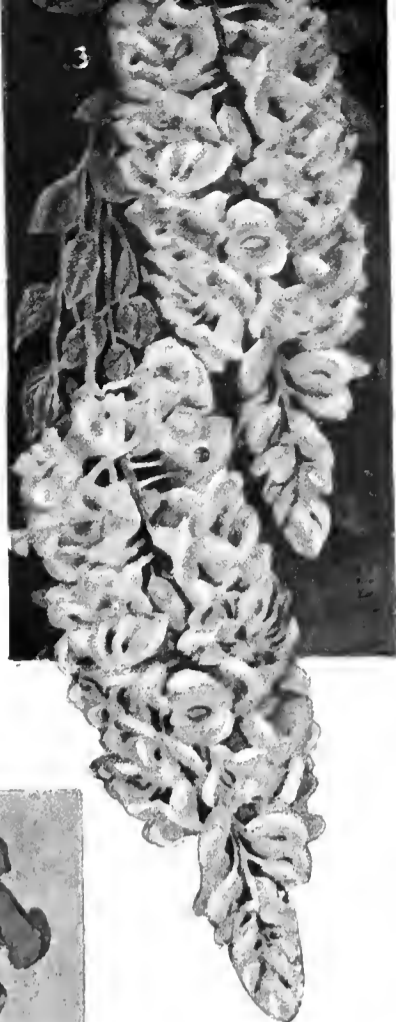
Clematis, paniculata
(white) (page 6)



Lonicera halliana
(page 11)



Celastrus (page 6)



Blue Chinese Wisteria
(see this page)

Bignonia Trumpet
(page 4)

Bignonia Trumpet
(page 4)

ULMUS (Elm)

Americana (American Elm)

100 ft. Zone II. Most beautiful native tree. Tolerant, even of flooded land. Subject to blight near New York.

	(Each)	(10)	(100)
*18 to 24 inches.....			\$ 3.50
* 3 to 4 feet.....			4.50
5 to 6 feet.....	\$.75	\$ 4.50	35.00
6 to 8 feet.....	1.00	6.50	45.00
10 to 12 feet.....	1.75	14.00	110.00
12 to 14 feet.....	2.00	17.50	125.00

—Moline

Very different form. Broad pyramid. Good for narrow streets.

8 to 10 feet.....	\$1.80	\$13.50	\$130.00
12 to 14 feet.....	3.25	30.00	250.00

—Vase Shaped

Selected form; graceful arch. American Elm at its best.

8 to 10 feet.....	\$1.75	\$13.50	\$100.00
12 to 14 feet.....	3.25	30.00	250.00

Pumila (Siberian) (Chinese Elm)

45 ft. Zone III. Neat small, bushy tree. Very tolerant of dry land. Perhaps the fastest growth of any permanently desirable shade tree. Makes an excellent sheared hedge.

*12 to 18 inches.....			\$ 4.00
* 2 to 3 feet.....			6.00
* 3 to 4 feet.....			8.00
5 to 6 feet.....	\$1.00	\$ 8.00	75.00
6 to 8 feet.....	1.50	12.50	90.00
8 to 10 feet.....	2.00	15.00	110.00
1½ inch caliper.....	4.00	20.00	150.00
2 inch caliper.....	4.50	28.00	250.00
2½ inch caliper.....	6.00	48.00	350.00

VIBURNUM (Viburnum)

Acerifolium (Maple-leaf Viburnum)

6 ft. Zone III. Shade. Handsome leaf. *12 to 18 inches..... \$ 7.00

Americanum (Cranberry Bush)

12 ft. Zone I. Bright berries from August all winter. Fall color. *12 to 15 inches..... \$ 10.00

2 to 3 feet.....	\$.70	\$ 5.50	40.00
3 to 4 feet.....	.90	6.50	50.00

Carlesi (Fragrant Viburnum)

5 ft. Zone V. Delicious pink clusters in May. Drain; keep moist in summer. Sun, shelter. By all odds the best.

18 to 24 inches.....	\$.75	\$ 6.50	\$ 60.00
2 to 2½ feet.....	1.10	9.00	75.00
2½ to 3 feet.....	1.35	12.00	100.00
3 to 4 feet.....	1.50	13.50	125.00

Cassinoides (Withe-rod)

6 ft. Zone III. Damp. Neat, with white clusters (June); rich fall leaves. *12 to 18 inches..... \$ 8.00

Dentatum (Arrow Wood)

12 ft. Zone IV. Damp, shade. Cream, May. *18 to 24 inches..... \$ 9.50

2 to 3 feet.....		\$ 4.00	25.00
------------------	--	---------	-------

Dilatatum (Linden Viburnum)

10 ft. Zone V. Full of character. Cream in June; scarlet fruit all winter. * 6 to 8 inches..... \$ 7.50

18 to 24 inches.....		\$ 6.00	45.00
----------------------	--	---------	-------

Lantana (Wayfaring Tree)

15 ft. Zone IV. Bold, striking, fall color. Fruits red, then black. Lime.

	(Each)	(10)	(100)
*12 to 15 inches.....			\$ 9.00
2 to 3 feet.....	\$.75	\$ 6.00	40.00

Lentago (Nannyberry)

25 ft. Zone I. Damp, shade. Black berry. Crimson fall leaf.

*12 to 18 inches.....			\$ 7.50
2 to 3 feet.....	\$.75	\$ 6.50	50.00

Molle (Kentucky Viburnum)

12 ft. Zone V. White in June. Shade. *12 to 15 inches..... \$ 9.00

Opulus (European Cranberry)

12 ft. Zone III. White, May. Fruit and leaf red in autumn. Photo p. 12.

*12 to 18 inches.....			\$ 9.00
2 to 3 feet.....	\$.75	\$ 5.50	45.00
3 to 4 feet.....	1.00	6.50	50.00

Opulus nanum

2-foot dwarf replica. 12 to 15 inches..... \$.75 \$ 6.00 \$ 55.00

Opulus sterile (Snowball)

Bush like Opulus, but flowers much showier and no berries at all. * 8 to 15 inches..... \$ 11.00

Prunifolium (Black Haw)

15 ft. Zone V. Like a Hawthorn, May, white. Black fruit hangs late.

* 2 to 3 feet.....		\$ 4.00	\$ 22.00
--------------------	--	---------	----------

Rhytidophyllum (Leatherleaf Viburnum)

9 ft. Zone (V). Wrinkled evergreen leaves, bright green, shiny. Bold. Red berries. Drain, shelter.

12 to 15 inches, B. & B.....	\$1.00	\$ 9.00	\$ 80.00
2 to 3 feet, B. & B.....	1.55	14.00	110.00

Tomentosum (Doublefile Viburnum)

10 ft. Zone V. Horizontal strings of snowy blooms in June. Neat. *12 to 15 inches..... \$ 11.00

Tomentosum plicatum (Japan Snowball)

Form without fruit, but showier bloom. *12 to 18 inches..... \$ 12.00

2 to 3 feet.....	\$.90	\$ 8.00	70.00
------------------	--------	---------	-------

VINCA ("Myrtle")

(Periwinkle)

Minor

Prostrate. Zone V. Evergreen ground cover with pretty blue flowers in June. Shade; or if sun, then moist. Vigorous.

*Strong clumps.....		\$ 9.00	
Plants from 3-inch pots.....	\$ 2.25	14.50	

VITEX (Chaste Tree)

Agnus-castus (Lilac Chaste Tree)

8 ft. Zone (VI). But a hardy perennial further north. Showy lavender-blue flowers July to frost. Sun, acid.

*12 to 18 inches.....		\$ 6.00	
3 to 4 feet.....		\$ 4.00	30.00

—macrophylla (Bigleaf)

A new form larger in growth, leaf and flower. A trifle hardier. Easier grown.

18 to 24 inches.....	\$.75	\$ 6.50	
----------------------	--------	---------	--

Negundo incisa (Cutleaf Chaste Tree)

10 ft. Zone (V). July and August flowers, not quite so showy.

	(Each)	(10)	(100)
*12 to 18 inches.....			\$ 6.00
2 to 3 feet.....			20.00

WEIGELIA (Diervilla)

Amabilis (Pink Weigelia)

9 ft. Zone V. May. Pink. Drainage. *12 to 18 inches X..... \$ 15.00

Rosea

Profuse Rose. Photo p. 11. *12 to 18 inches..... \$ 8.00

Sessilifolia (Lutea)

4 ft. Zone IV. Yellow June to Aug. 18 to 24 inches..... \$.60 \$ 4.50 \$ 30.00

Hybrida (Named Hybrid Weigelias)

—Candida

Profuse creamy in June. 18 to 24 inches..... \$.50 \$ 3.00 \$ 25.00

—Eva Rathke

Dark red blooms crowd the branches from June to August. * 8 to 15 inches..... \$ 16.50

2 to 3 feet.....	\$.75	\$ 5.50	45.00
3 to 4 feet.....	1.00	7.50	60.00

WALNUT—See Juglans (p. 10) and page 22

WILLOW—See Salix (p. 16)

WISTERIA (Wisteria)

Multijuga (Long-Cluster Wisteria)

25 ft. Vine. Zone V. Fragrant purple clusters three feet long, May and June. Humus, drain, sun.

18 to 24 inches.....		\$ 6.00	\$ 35.00
----------------------	--	---------	----------

—naga noda

Clusters of sensational length. Up to 5 feet. 1-year grafts..... \$2.50

—naga noda, Tree Form

Branches spray from a stout stem. 4-foot stems..... \$10.00

—rosea

Multijuga with pink blooms. 1-year grafts..... \$1.25 \$10.00

Sinensis (Chinese Wisteria)

30 ft. Zone (V). Short, compact violet in May. Fragrant. Sun, drain. Photo above.

3-year grafts.....	\$1.10	\$ 9.00	
--------------------	--------	---------	--

Sinensis Blue—Good blue tone.

Heavy 3 year..... \$1.25 \$ 9.00

YEW—See Taxus (p. 18)

ZANTHORHIZA (Yellow Root)

Apiifolia

2 ft. Zone IV. Avoid lime. Superb ground cover and soil holder. Odd brown flowers in May.

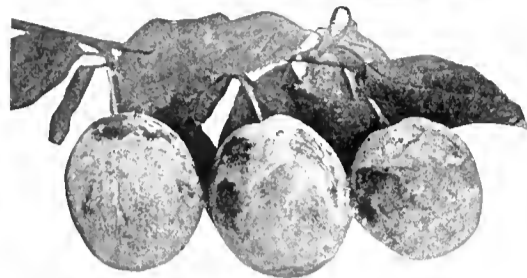
12 to 15 inches.....	\$.40	\$ 3.65	\$ 32.50
----------------------	--------	---------	----------



Bartlett Pear



Burbank Plum



Damson Plum



McIntosh Apple



Montmorency Cherry

HONEST RELIABLE FRUIT TREES

THE special sizes here quoted are selected for best results. In this list of varieties are included only the very best of both new and old types. All trees are grown in the North and are hardy and full of vitality. They are not to be compared with cheap southern-grown stock. Ten assorted fruit trees at the 10 rate. Larger quantities at very low prices quoted upon request. Drainage, sun.

APPLES, STANDARD

5 ft., \$1.25 each; \$10.00 for 10

Ask for special prices for 100 or more

SUMMER VARIETIES

Early Harvest—Yellow; medium size. August.

Red Astrachan—Red; large. August.

Yellow Transparent—Pale yellow; good. August.

AUTUMN VARIETIES

Fall Pippin—Greenish yellow; large. November.

Gravenstein—Red-striped; large. October.

Wealthy—Deep red; white flesh.

WINTER VARIETIES

Baldwin—Red; large.

Cortlandt—A beautiful red Apple; larger than McIntosh and ripening a month later.

Delicious—Large; red.

McIntosh Red—One of the best. Red. November, February.

Northern Spy—Yellow and red; large.

Rhode Island Greening—Greenish yellow; large.

Talman Sweet—Yellow; medium size. November to April.

CRAB APPLES

5 to 6 feet, \$1.25 each

Hyslop—Dark crimson; large.

BEARING-SIZE DWARF APPLES

We have a few trees to offer: specimens 6 feet broad and high, low branched and bushy. Splendid! Now setting fruit and should bear next year. Seven years old. Four kinds only.

Red Astrachan McIntosh Red
Baldwin Rhode Island Greening

Priced \$6.75 each (packed for shipment)

PEACHES

4 to 5 feet, 75 cts. each; \$5.00 per 10

Varieties: In the order of their ripening.

Carman—White, red cheek.
Champion—White and red.
Crawford Early—Yellow.
Belle of Georgia—White, with red cheek.
Elberta—Yellow.
J. H. Hale—Yellow.
Crawford Late—Yellow.

PEARS

5 ft., \$1.25 each; \$10.00 for 10

Anjou—Winter. Bartlett—Summer.
Seckel—Fall. Sheldon—Fall.
Clapp's Favorite—Summer.

PEARS, DWARF

4 feet, \$1.25 each; \$10.00 for 10
Anjou, Bartlett, Clapp's Favorite, Seckel

QUINCE

4 feet, \$1.30 each; \$11.00 for 10
Champion, Orange.

PLUMS

5 feet, \$1.25 each; \$10.00 for 10
The Plum tree will grow anywhere there is good soil.

JAPANESE PLUMS

Abundance—One of the best Japanese Plums. Medium size; rich, bright cherry-red, with distinct bloom; highly perfumed. Flesh yellow, juicy, tender, and excellent quality.

Burbank—Large; nearly globular; clear cherry-red with a thin lilac bloom. Flesh deep yellow, sweet, meaty, and quite firm. Tree vigorous.

Red June—Fair size and quality. Vermilion tinted. Productive. Ripens before Abundance.

EUROPEAN PLUMS

Bradshaw—Very large; dark violet-red. Flesh yellowish green, juicy and pleasant.

Damson—Medium size; blue. Flesh juicy, tender, sweet. Reliable grower. Fine for preserving.

Lombard—Medium, roundish-oval; violet-red. Flesh juicy and pleasant, adhering to the stone.

CHERRIES

4 to 5 feet, \$1.00 each; \$9.00 for 10
SWEET—Black Tartarian, Black; Gov. Wood, Red on White; Windsor, Dark; Yellow Spanish, White.
SOUR—Early Richmond, Red; Montmorency, Red.

DWARF ESPALIER - GROWN FRUITS

Go to your fancy grocer and ask for the most perfect fruit he carries—it will be about one-half the size of a properly grown Espalier Fruit! It will not be as juicy and full of flavor! These facts are instantly proved to you when you see your first ripe fruit on an Espalier Dwarf Fruit Tree. For centuries they have been well known in Europe.

Ten to twelve feet is the maximum height to which true dwarf Espaliers will grow. Little pruning is needed—beyond keeping the small new spurs from reaching more than six inches outside of the main stems. No other training is needed—it's all done for you. When a spur has borne fruit cut it back and let a young spur form there to take its place.

Peaches are an exception; fruit grows only on last season's wood. Keep two spurs coming at every four inch interval along the stem. In March, prune one back and let the other fruit. Then, when fruited, cut it back and from the other by then there should be two new ones for the following year's crop.

Watering and fertilizing are unnecessary except in very poor soil indeed. Spray for disease as with any fruit tree.

In planting against a wall, place the tree six inches away and allow 18 inches root space—requiring a space in all two feet out from the wall.

5 TREES ASSORTED AT 10% DISCOUNT

SHAPES AND PRICES (Packed)

U-form—Width, 2½ feet. 4 to 6 feet, \$6.50.
Double-U—Width, 5 feet. 4 to 6 feet, \$10.75.
Four-Arm—Width, 4 feet. 4 to 6 feet, \$8.75.
Six-Arm—Width, 6 feet. 4 to 6 feet, \$16.50.
6 to 8 feet, \$20.00.
Fans—8 feet high and wide. \$14.00 packed.

VARIETIES NOW READY

Available in all sizes

APPLES
Duchess of Oldenburg
Delicious
Fameuse
McIntosh
Cortlandt
R. I. Greening

PEARS
Bartlett
Flemish Beauty
Clapp's Favorite
Duchess d'Angouleme
Beurre d'Anjou
Seckel

PLUMS
Reine Claude
Abundance
German Prune

U, Double-U, and Fans only

PEACHES
Elberta
Hiley
Yellow St. John
Rochester
Crawford
Champion

NECTARINES
Boston
Red Roman
Lord Napier
Newton
Victoria

APRICOTS
Early Golden
Moore Park
Blenheim



Four-Arm Apple with fruit



McCallister

Burlington

Pecan

Chinese Chestnut

Stabler

Thomas

Wiltz-Mayette

GRAFTED NUT TREES HARDY IN THE NORTH

AT LAST we are able to offer our customers an opportunity to buy and enjoy the remarkable new hybrid nut trees. Hybridizers and experimenters have been working on this problem for years. Hardy types of both English Walnuts and Pecans are now available for the North. Delicious Black Walnuts with easily opened shells . . . Hybrid Hickories with haunting flavor previously unknown even to epicures . . . most amazing of all, these varieties will bear nuts as early as the third or fourth year after planting. The varieties we offer here have been thoroughly tested for some years.

BLACK WALNUTS—IV (*Juglans nigra*)

North America has more and finer native nut trees than any other continent. This Black Walnut is naturally one of our most stately and beautiful native trees and produces one of the finest nuts in the world. It is hardy in Canada and in Florida, growing well in any fertile well drained soil. But the grafted sorts grow faster and the nuts thinner shelled, with plump meat that comes out readily. The flavor is unique and is not lost in cooking (this can be said of no other nut). The new grafted varieties bear their first nuts sometimes in the second year after planting and commonly in the third to fifth year if the tree is properly fertilized. There are several varieties.

Stabler has the thinnest shell. The meat falls out easily in halves or one piece and is of a rich mellow flavor. The tree makes a fine spreading specimen with unusually ornamental foliage.

Thomas is a really rapid-growing tree, hardy and easy to grow. The meat is attractive and tasty, but does not crack as easily as the **Stabler**.

ENGLISH WALNUTS—V (*Juglans regia*)

If these be grafted on Black Walnut roots, the wood ripens much sooner than otherwise. Hence, such trees can stand much colder weather and are now doing well in New England and even Michigan.

Wiltz-Mayette is perhaps the best variety for all purposes. The shell can be cracked in the fingers. The meat is plump, white and not in the least bitter. It is a reliable bearer. The English Walnut requires a lime soil and where this is not natural, it is imperative that lime or crushed limestone be plentifully added to the planting soil. The first crop may be expected in four years.

NOTE: Nut trees are seldom straight when young. There is a bend at the graft, at least. They will, however, straighten out themselves though careful staking helps. Fertilize freely the second year.

2 to 3 feet
\$1.00 each
\$10.00 dozen

3 to 4 feet
\$1.50 each
\$15.00 dozen

4 to 5 feet
\$2.00 each
\$20.00 dozen

5 to 6 feet
\$2.50 each
\$25.00 dozen

7 to 8 feet
\$3.50 each

BLIGHT RESISTANT CHESTNUTS—V

The **Chinese Chestnut** (*Castanea molissima*) is larger than the American and of fine flavor and sweet. It is inured to the Chestnut Blight. For prices of seedlings see page 5.

Grafted Trees: Very much better nut-bearing. Bear about as soon as apples. We strongly recommend these.

HARDY PECANS—Zone V

The quality of the nuts in these varieties is in every way the equal of commercial Pecans. They will bear in three to five years.

Busseron and **Kentucky** are the best varieties. It is advisable to plant one of each kind so that they will cross fertilize. **Busseron** is the best bearer, **Kentucky** best pollen.

HYBRID HICKORIES

Burlington (also called **Marquardt**) resembles the pecan as to the nut. The tree is very easily grown, a rapid grower and extremely hardy. Does well in Minnesota. Very satisfactory tree and delicious flavor. Reliable early bearer. Zone V.

McCallister is a unique tree. Nearly as thin shelled as any pecan, but its flavor is that of the delicious wild shell-bark hickory. The nut is over two inches in length and is larger than any southern pecan. Foliage resembling the pecan—a beautiful tree. Irregular bearer. Zone V.

4 to 5 feet
\$1.75 each

2 to 3 feet
\$1.00 each
\$10.00 dozen
\$75.00 per 100

3 to 4 feet
\$2.75 each
\$27.50 dozen

5 to 6 feet
\$3.25 each
\$32.50 dozen

7 to 9 feet
\$4.00 each
\$40.00 dozen

8 to 10 feet
(Balled)
\$12.00 each

CARE OF NUT TREES

Nut trees have large root systems—some of them have more root than top! You could not plant all the roots, they could not be packed or shipped—but must be pruned off. The tops should be pruned to make up for the loss of roots. We also wax the tops to prevent evaporation. The first two years mulch well with hay or straw and water if drought comes.

BERRY PLANTS RASPBERRIES

Strong plants \$4.00 (100)

Columbian—Purple fruit, delicious for table.

Cuthbert—Medium to large, red, sweet.

Latham—Strong grower, hardy and productive. Fruit is large, deep red and delicious.

St. Regis Everbearing—Producing abundantly throughout the summer; large, bright crimson berries.

BLACKBERRIES

Strong plants \$4.00 (100)

Eldorado—Extra fine and very hardy, large, sweet berry.

Rathbun—Very large, sweet and delicious.

Mersereau—Extra large; brilliant black, sweet, rich and melting, without core; strong grower.

Snyder—Medium size; sweet.

THORNLESS YOUNGBERRY (Plant Pat. 4)

Far the best flavor. This new hybrid has 2 inch, huge berries in profusion. The canes are smooth. Sensational. 6 plants (postpaid) for \$1.00.



Life-size Blueberries

HUGE HYBRID BLUEBERRIES

Two decades of hybridizing and testing and now you can grow blueberries three-quarters of an inch across. Delicious smooth flavor. An acid soil is needed, mulch as for Rhododendrons. The year after planting remove all flower buds. The third year you may leave the flowers and enjoy the first fruit.

PRICES (Named Varieties)

	(Each)	(10)
2-year, 10 to 12 inches, B. & B.	\$1.50	\$13.00
3-year, 15 to 18 inches, B. & B.	1.75	15.00
4-year, 18 to 24 inches, B. & B.	2.25	20.00

Blueberry Culture

Blueberries require an acid soil containing peat or other rotted vegetable matter. They need moderate moisture and good drainage so that the roots can get air.

Set the plants in beds 3 feet apart one way and 4 to 5 feet the other way. Two varieties should be included in every planting, as an exchange of pollen is necessary to produce good crops of berries.

The second year remove the flower buds in order to throw the full strength of the plants into the top and roots. The third summer the flower buds may be left and the plants should produce a good crop.

VARIETIES AVAILABLE

Rubel—Vigorous. Large blue berries in July.

Pioneer—Smaller bush, larger berries. A heavy bearer and early.

Cabot—The earliest. Broad low bush. Delicious berries.

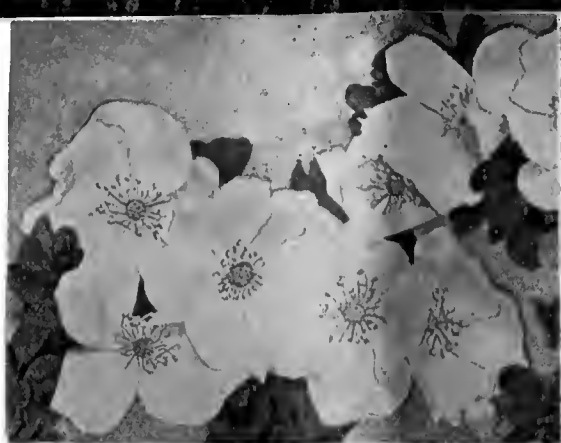
Rancocas—Slender upright bush. Berries larger than **Rubel**. A few days earlier.

Concord—A large bush with huge berries of fine flavor.

Jersey—The largest bush. Vigorous. Also the largest berries. Light blue.



New Dawn



Hugonis



Primrose



Excelsa

Grootendorst

8 ROSES PICTURED—All field grown, 2-year No. 1, budded—A special postpaid offer (East of Iowa) for..... \$7.50



Etoile de Hollande



Radianee



Talisman



A PAGE OF ROSES

WE offer a strong list of Own-Root Roses. For such varieties as we list, rooted cuttings make as good plants, on the whole, as grafting. They are heavily rooted and established in 4-inch pots and shipped direct from one of the largest growers in America. All will bloom next summer if properly planted now. It is an opportunity to buy Roses at low prices. Budded prices at bottom of page.

PRICES:

- 6 plants of one kind \$2.00
 - 6 plants assorted 3.00
 - 25 plants of one kind 7.50
- (Not less than 6 sold)

- HT., Hybrid Tea C., China
- HP., Hybrid Perpetual H.Cl., Hardy Climber
- H. Rug., Hybrid Rugosa M., Moss
- Poly., Polyantha B., Banksia
- Bour., Bourbon Cher., Cherokee

- Alida Lovett—H.Cl. Shell-pink.
- American Beauty—HP. Red, touched crimson.
- American Pillar—H.Cl. Apple-blossom-pink.
- Amoena—Cher. Pink.
- Antoine Rivoire—HT. Creamy white, tinted.
- Bessie Brown—HT. Creamy white.
- Briarecliff—HT. Light pink. Superb.
- Caledonia—HT. Pure white.
- Chaplin's Pink Climber—H.Cl. Fine Pink.
- Charles K. Douglas—HT. Flaming red.
- Climbing American Beauty—H.Cl. Rosy red.
- Cl. White American Beauty—H.Cl. Snowy.
- Columbia—HT. True pink.
- Commonwealth—HT. Solid dark pink.
- Conrad F. Meyer—H.Rug. Flesh-pink.
- Crimson Queen—HT. Deep crimson.
- Crimson Rambler—H.Cl. Crimson.
- Crusader—HT. Velvety crimson.
- Dame Edith Helen—HT. Bright pink.
- Dorothy Perkins—H.Cl. Silver-pink.
- Dr. Huey—H.Cl. Dark crimson, black tint.
- Dr. W. Van Fleet—H.Cl. Flesh-pink. Perfect.
- Duchess of Wellington—HT. Saffron-yellow.
- E. G. Hill—HT. Fine red.
- Elizabeth Rowe—M. Red.
- Etoile de France—HT. Crimson.
- Etoile de Hollande—HT. Dark red.
- Eugene Furst—HP. Deep crimson.
- Eugene Jaquet—H.Cl. Cherry-red.
- Excelsa (Red Dorothy Perkins)—H.Cl.
- Francis Scott Key—HT. Deep red.
- Fran Karl Drusehki—HP. White.
- Gardenia—H.Cl. Light yellow.
- Gen. Jacqueminot—HP. Shining crimson.
- Gloire Lyonnaise—HP. Pale chamois-buff.
- Golden Ophelia—HT. Golden yellow.
- Gruss an Teplitz—C. Bright red.
- Helen Gould—HT. Red.
- Henri Martin—M. Red.
- Hermosa—C. Pink.
- Hiiawatha—H.Cl. Scarlet.
- His Majesty—HP. Rich red.
- Jacotte—H.Cl. Orange-yellow, tipped red.
- Joanna Hill—HT. Golden yellow.
- Jonkheer J. L. Mock—HT. Clear pink.
- Kaiserin Auguste Viktoria—HT. Best white.
- Killarney—HT. Deep seashell-pink.

- Kitchener of Khartoum—HT. Scarlet.
- La Champagne—HT. Chamois-yellow.
- Lady Ursula—HT. Flesh-pink.
- Laevigata—Cher. The white Cherokee.
- Laurent Carle—HT. Velvety crimson.
- Louis Philippe—C. Bright red.
- Luxembourg—HT. Amber-yellow.
- Mme. Butterfly—HT. Pink, shaded apricot.
- Mme. Caroline Testout—HT. Silvery pink.
- Mme. Gregoire Staechelin—H.Cl. Pink.
- Magna Charta—HP. Pink.
- Marie Gouchault—H.Cl. Pink.
- Mary Lovett—H.Cl. White.
- Mary Wallace—H.Cl. Rosy pink.
- Meteor—HT. Dark crimson.
- Mlle. Helen Cambier—HT. Yellow-copper.
- Mousseline—M. White, flushed pink.
- Mrs. Aaron Ward—HT. Golden orange.
- Mrs. Charles Bell—HT. Salmon-pink.
- Mrs. E. P. Thom—HT. Rich yellow.
- Ophelia—HT. Salmon-flesh, shaded rose.
- Paul Neyron—HP. Deep rose.
- Paul's Scarlet Climber—H.Cl. Intense.
- President Herbert Hoover—HT. Orange-pink.
- President Taft—HT. Pink, golden at base.
- Primrose—H.Cl. Canary-yellow.
- Radianee—HT. Beautiful pink.
- Rapture—HT. Apricot, coral, gold.
- Red Columbia—HT. Rich red.
- Red-Letter Day—HT. Intense scarlet.
- Red Radianee—HT. Rich red.
- Rev. F. Page-Roberts—HT. Orange-yellow.
- Rhea Reid—HT. Rich dark red.
- Roserie—H.Cl. Glowing pink.
- Shower of Gold—H.Cl. Deep yellow.
- Silver Moon—H.Cl. Pure white, yellow disc.
- Souv. de la Malmaison—Bour. Pink; double.
- Sunburst—HT. Cadmium-yellow.
- Talisman—HT. Yellow and pink shades.
- Templar—HT. Clear bright red.
- Ulrich Brunner—HP. Cherry-red.
- Veilchenblau—H.Cl. Blue Rambler.
- White Banksia—B. White.
- White Killarney—HT. Pure snow-white.
- White Dorothy Perkins—H.Cl. White.
- White La France—HT. White, tinted pink.
- Yellow Banksia (Lady Banks)—B. Yellow.

PATENTED ROSES

(Field-grown, budded, 2-year No. 1)

Amelia Earhart—HT. Plant Patent No. 63. Large, cream bud, with blushes; flowers graduating from a deep yellow center to an outer collarette of large cream petals with a blush overtone; extremely fragrant. Strong grower; free bloomer. \$1.50 each; \$15.00 per doz.

Better Times—HT. Plant Patent No. 23. The brilliant cerise flowers are large, double, and delicately fragrant. Being produced on long strong stems, they are excellent for cutting. A very free bloomer. \$1.50 each, \$15.00 per doz.

Token—HT. Plant Patent No. 95. A single-toned, sun-ripened apricot—unique color. Free bloomer and has an upright growth in the garden. \$1.50 each, \$15.00 per doz.

Blaze (Paul's Everblooming Scarlet Climber)—Plant Patent No. 10. Seedling of Paul's Scarlet Climber and Gruss an Teplitz. A marvelous, hardy, everblooming scarlet-red Rose. \$1.50 each.

New Dawn (Everblooming Dr. W. Van Fleet)—Plant Patent No. 1. The first really worthwhile everblooming hardy climber. The shell-pink flowers are of good size and exquisite form, with a rich fragrance. Produced on long stems and almost constantly in flower from June until frost. \$1.50 each.

ROSE SPECIES (Wild Roses)

- Hugonis**—Zone V. Yellow in May.

	(Each)	(10)	(100)
2 to 3 feet	\$.75	\$ 6.50	\$ 60.00
- Humilis**—Zone IV. Pink, summer.

*12 inches	\$ 6.50
18 to 24 inches	\$.70 \$ 6.00 50.00
- Lucida (Virginia Rose)**—Zone II. Bright pink. June-July.

*12 to 18 inches	\$ 8.00
18 to 24 inches	\$.70 \$ 6.00 50.00
- Nitida**—Zone IV. Pink in spring.

18 to 24 inches	\$.70 \$ 6.00 \$ 50.00
---------------------------	-------------------------
- Palustris (Swamp Rose)**—Zone IV. Pink. July-August.

* 6 to 12 inches	\$ 5.00
18 to 24 inches	\$.70 \$ 6.00 50.00
- Rubiginosa (Sweetbriar)**—Zone IV. Aromatic leaves.

*12 to 18 inches	\$ 6.50
18 to 24 inches	\$ 6.00 50.00
- Setigira (Prairie Rose)**—Zone V. Pink, summer.

* 6 to 12 inches	\$ 6.00
18 to 24 inches	\$.70 \$ 6.00 50.00
- Wichuriana (Memorial Rose)**—Evergreen trailer. White blooms from July to September.

*12 to 15 inches	\$ 11.00
2-year No. 1	\$.65 \$ 5.00 40.00

FIELD-GROWN; BUDDED 2yr. No. 1 ON ABOVE HT. AND HP., 60 CENTS; H.Cl. 50 CENTS.

PERENNIALS

A collection that blooms all summer — 3 each of the 7 kinds pictured — postpaid

(21 plants) for \$ 4.00 (cast of 2-yr. Iowa)

Pink Cushion Chrysanthemum



Phlox Rheinlander



Pyrethrum grandiflorum



Dianthus plumarius

Delphinium belladonna

Aquilegia, Scott Elliott Hybrids

Gaillardia grandiflora



We have some real rare offerings as well as a few standard sorts. Next year we will double this list. All sizes are stated precisely: One-year seedlings are small and will need a year's nursing. Other sizes are ready for the planting border. Note the low prices—yet quality cannot be improved for sizes offered. 6 at dozen rate; 25 at 100 rate.

ALYSSUM (Madwort). Saxatile. Yellow clusters in early spring. Mat 12 inches high.	3	12	100
2-year clumps.....	.50	\$1.50	\$10.00
ANCHUSA (Alkanet). Italica, Dropmore. Four-foot spike of blue in June and a few later.			
1-year seedlings.....	.75		5.00
2-year clumps.....	.50	1.50	
AQUILEGIA (Columbine). Blackmore & Langdon Hybrids. New. Considered the finest in England. Wide range of shades and colors.			
1-year seedlings.....	.50		3.00
2-year transplants.....	.50	1.50	10.00
Chrysantha. Two months, starting in May. Large; golden.			
1-year seedlings.....	.50		3.00
2-year transplants.....	.50	1.50	10.00
Dobbie's Imperial Hybrids. New long-spurred race. Sturdiest of all. Fine colors.			
1-year seedlings.....	.50		3.00
2-year transplants.....	.50	1.50	10.00
Mrs. Scott Elliott's Hybrids. True strain and extra-long spurs. Good colors.			
1-year seedlings.....	.50		3.00
2-year transplants.....	.50	1.50	10.00
ASTER (Starwort; Michaelmas Daisy). Alpinus, Blue. Dwarf to 10 inches. Showy blooms. May and June.			
2-year clumps.....	.50	1.50	10.00
Alpinus, White. White form. Single.			
2-year clumps.....	.50	1.50	10.00
BAPTISIA (False Indigo). Australis. Dark blue flowers on 2-foot spikes in June.			
2-year clumps.....	.50	1.50	10.00
CAMPANULA (Bellflower). Poscharkskyana. New trailing plant from Siberia. Gray-blue, starry flowers 1 1/2 inches across start in May and continue until frost!			
2-year clumps.....	1.00	3.00	20.00
CHRYSANTHEMUM. Maximum (Shasta Daisy). Alaska. Most popular. Pure white. June, July.			
2-year clumps.....	.50	1.50	10.00
King Edward VII. Vigorous. Large, white blooms, July to Sept.			
2-year clumps.....	.50	1.50	10.00
May Queen (The Memorial Day Daisy). White. 2 ft. Early May.			
2-year clumps.....	.50	1.50	10.00
Koreanum. White with gold center, often turning pink. Hardy.			
2-year clumps.....	.50	1.50	10.00
"Azaleamum" (Pink Cushion). The dwarf Chrysanthemum. 10 inches high; pink flowers in profusion from late August to frost.			
2-year clumps.....	.75	2.25	15.00
DELPHINIUM (Larkspur). Belladonna. A breed that blooms heavily in short spikes in June and September. We offer two varieties:			
Belladonna. Dark blue form. Strong growth.			
1-year transplants.....	.40	1.20	8.00
Cliveden Beauty. Best form of Belladonna. Taller stems, more flowers and a brighter blue.			
1-year transplants.....	.40	1.20	8.00
Chinense. Dwarfier than Belladonna and a month later. Flowers in panicles.			
Blue Butterfly. Dwarf, 1 foot high. Rich blue.			
1-year transplants.....	.40	1.20	8.00
White. Blooms on 3-foot stems.			
1-year transplants.....	.40	1.20	8.00
Blackmore & Langdon Hybrids. English strain recognized as the largest and strongest growing. Colors range from dark blue to pink.			
1-year transplants.....	.40	1.20	8.00
DIANTHUS (Sweet William; Pinks). Barbatus. Old favorite. Blooms in May and June; 2 feet. Plant close. Biennials except in well-drained soil.			
Pink Beauty (Newport Pink). New salmon-pink strain. Gorgeous.			
1-year seedlings.....	.75		5.00
2-year clumps.....	.50	1.50	10.00
Scarlet Beauty. Remarkably intense.			
1-year seedlings.....	.75		5.00
2-year clumps.....	.50	1.50	10.00
Plumarius semperflorens. The old favorite Perpetual Pinks. All colors. All summer.			
2-year clumps.....	.50	1.50	10.00

DIGITALIS (Foxglove). Gloxiniiflora. Blooms in 2- to 4-foot spikes in June and July. Drain well.	3	12	100
White, Rose, or Purple (state which).			
1-year seedlings.....	.75		5.00
2-year clumps.....	.50	1.50	10.00
Shirley Giant Hybrids. Crowded flower-heads 3 feet long. White to deep rose.			
1-year seedlings.....	.75		5.00
2-year clumps.....	.50	1.50	10.00
GAILLARDIA (Basket Flower). Grandiflora superbus. Brilliant yellow and orange. May to November.			
2-year clumps.....	.50	1.50	10.00
Portola Hybrids. Robust, bronzy red with golden tips. Profuse.			
2-year clumps.....	.50	1.50	10.00
Burgundy. Shining deep wine-red, practically no yellow.			
2-year clumps.....	.50	1.50	10.00
The Dazzler. Golden yellow and maroon.			
2-year clumps.....	.50	1.50	10.00
GENTIANA (Gentian). Acaulis Clusi. Huge, dazzling blue trumpets, covering a dwarf green carpet. Rare and the best Acaulis type.			
2 1/4-inch pot-plants.....	1.25	3.75	25.00
GEUM (Aveens). Lady Stratheden. Blooms nearly all summer. Under 2 feet high. Golden yellow.			
2 1/2-inch pot-plants.....	.50	1.50	10.00
Mrs. Bradshaw. Similar. Fiery orange.			
2 1/2-inch pot-plants.....	.60	1.50	10.00
GYPSOPHILA (Baby's Breath). Oldhamiana. Gorgeous novelty. An improved Paniculata; much longer season, until frost. Flowers tinged pink.			
2-inch pot-plants.....	.75	2.25	15.00
HELIOPSIS (Orange Sunflower). Seabra zinniaeflora. A hardy Zinnia in appearance. Golden yellow. July to October. 2 feet high.			
2-year clumps.....	.50	1.50	10.00
Pitcheriana. Golden yellow. Earlier.			
1-year seedlings.....	.75		5.00
2-year clumps.....	.50	1.50	10.00
HEMEROCALLIS (Day-Lily). Gorgeous new hybrids.			
COLLECTION: One of each (6 plants) packed for shipment, \$2.00.			
Amaryllis. Tall and late. Golden orange.....	1.25		4.00
Dr. Regel. Fragrant; yellow. May.....	.50		1.75
Gold Dust. Low and early. Golden.....	.50		1.75
J. R. Mann. Large; apricot. Midseason.....	1.25		4.00
The Gem. Deep orange. Mid-June.....	1.25		4.00
Thunbergi. Pale yellow. July.....	.50		1.75
LINUM (Flax). Perenne. Blue. Freck flowering. Need sun. May to August.			
1-year seedlings.....	.75		5.00
2-year clumps.....	.50	1.50	10.00
MERATIA (Chimonanthus). Praecox. A shrub in the South, but hardy perennial in North. Very fragrant yellow blooms in March and April.			
1-year seedlings.....	.50	1.50	10.00
MYOSOTIS (Forget-me-not). Alpestris. Large; clear blue. Spring.			
1-year seedlings.....	.75		5.00
2-year clumps.....	.50	1.50	10.00
Palustris semperflorens. Bright blue, on foot-high plants. All summer.			
1-year seedlings.....	.75		5.00
2-year clumps.....	.50	1.50	10.00
PHLOX Decussata. The hardy summer-blooming garden Phlox. Four offerings:			
Jules Sandeau. Large; pink. Dwarf.....	.75		2.00
Rijnstroom. Deep pink.....	.75		2.00
Rheinlander. Salmon-pink.....	.75		2.00
Smiles. Bright carmine-rose.....	.75		2.00
Subulata. The Dwarf Moss Pink. Sheets of color in May. Easily grown.			
Rose, Purple, White (state which). 2-year clumps.....	.50	1.50	10.00

PRIMULA (Primrose). Beesiana. Velvety purple, yellow eye.	3	12	100
2 1/2-inch pot-plants.....	.60	\$1.80	\$12.00
Bullejana. Wet land. Bears 4 to 8 tiers of rich apricot flowers in June.			
2 1/2-inch pot-plants.....	.60	1.80	12.00
Bullejana Hybrids. Mixed shades from cream to red. Gorgeous. Rare.			
2 1/2-inch pot-plants.....	.60	1.80	12.00
Burmanica. An improved Beesiana. Rosy purple, yellow eye.			
2 1/2-inch pot-plants.....	.60	1.80	12.00
Cortusoides. Deep rose. Early summer. Dwarf Siberian species.			
2 1/2-inch pot-plants.....	.60	1.80	12.00
Denticulata. Lilac-blue shades.			
2 1/2-inch pot-plants.....	.60	1.80	12.00
Moerheim Hybrids. Lovely pastel colors. Unusual. Very hardy. Yellow, to crimson and lilac.			
2 1/2-inch pot-plants.....	.60	1.80	12.00

Veris (Cowslip).
Dwarf, with fragrant blooms in April and May.
Alba. White.
Giant Munstead. Many light colors.
Gold Lace. Fine mixture of tints.
Lutea. Sulphur-yellow.
Primrose. Light yellow.
Red. A mixture of red shades.
Any one kind of the above, 2 1/2-inch pots, 60 cts. for 3; \$1.80 for 12; \$12.00 per 100

PYRETHRUM (Painted Daisy). James Kelway. Gorgeous velvety red.			
1-year seedlings.....	.75		5.00
2-year clumps.....	.50	1.50	10.00
Grandiflorum, Double. A strain of all colors. Double form.			
2-year clumps.....	.50	1.50	10.00
Roseum Hybrids. May and June. All shades; red to pink and white.			
1-year seedlings.....	.75		5.00
2-year clumps.....	.50	1.50	10.00
SALVIA (Meadow Sage). Azurea grandiflora. Sky-blue. August and September. Larger flowers.			
2-year clumps.....	.50	1.50	10.00
SCABIOSA (Pineushion Flower). Caucasica. Lavender; 18-inch stems from June to September.			
2-year clumps.....	.50	1.50	10.00
STATICE (Sea Lavender). Latifolia. Immense heads (1 1/2 feet in diameter) of blue in July and August.			
2-year clumps.....	.50	1.50	10.00
STOKESIA (Cornflower Aster). Cyanca caerulea. Profusion of light blue flowers in July and August, on 18-inch stems.			
2-year clumps.....	.50	1.50	10.00
TEUCRIUM (Germander). Chamadryis. Showy, evergreen leaves that can be clipped like boxwood. Lavender-pink. July, August.			
2-inch pot-plants.....	.60	1.80	12.00
THYMUS (Thyme). Serpillum. Spreading mats 10 inches high. May be mowed with mower. Dark red. June, July.			
2-inch pot-plants.....	.80	2.40	16.00
Serpillum albus. White form.			
3-inch pots.....	1.00	3.00	20.00
Serpillum carneus. Pink.			
2-inch pots.....	.80	2.40	16.00
Serpillum coccineus. Showy crimson.			
2-inch pots.....	.80	2.40	16.00
Serpillum lanuginosus. Woolly leaves in a 5-inch mat. Red. June to Aug.			
3-inch pot-plants.....	1.00	3.00	20.00
Serpillum rubra. Good red.			
3-inch pots.....	1.00	3.00	20.00
Serpillum purpureus. Purple.			
3-inch pots.....	1.00	3.00	20.00
Serpillum variegatus. Creeping mat of white and green. Yellow, fragrant flowers in June and July.			
3-inch pot-plants.....	1.00	3.00	20.00
TUNICA (Coat-Flower). Saxifraga. Six-inch plants with light pink blooms all summer.			
2-year clumps.....	.50	1.50	10.00



A Spruce Windbreak



Japanese Cypress



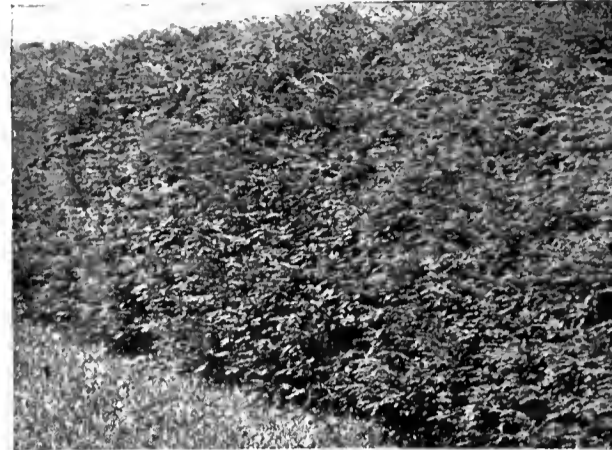
Pine Screen (p. 14)



Spruce (*Picea excelsa*)



Japanese Yew (*Taxus*)



Hemlock (*Tsuga*)

EVERGREEN HEDGES

When winter winds blow, your garden can be sheltered and peaceful—a haven for birds. Also, tender trees and shrubs require protection and a hedge is as good as an unsightly burlap screen. Write for more information.

HOW FAR APART TO PLANT FOR HEDGES?

The best results are obtained from evergreens 12 to 24 inches high, planted 18 inches apart. Plants from 2 to 4 feet high should be set 2 feet apart. Plants 4 to 6 feet high should be set 2½ to 3 feet apart.

JAPANESE YEW HEDGE

This is the hardiest of the Yews (*Taxus*) and should give to America the fine hedges the English Yew gives to Europe. It continues putting on new growth all summer, so may be pruned with sharp knife or shears at any time. Allow it to grow about two to four inches each year—no more. Keep the bottom wider than the top.

A HEDGE OF HEMLOCK (TSUGA) Soft and Dense

One of the finest Evergreen Hedges. Trim it so as to be wide at the bottom and narrow at top. Can be sheared at any time during summer. Allow it to grow 4 to 6 inches a year—cut off the rest of the new growth. To avoid a formal effect, prune in June or early July.

ARBORVITAE (THUJA)

This makes a fine hedge in the North. Prune any time during the Summer. Cut inside the surface—do not mutilate the foliage itself. Can be kept to narrow width. Should increase about 2 or 3 inches height each year.

JAPANESE CYPRESS (CHAMAECYPARIS)

Like the above, but better adapted to climate Zones V and VI. Can be allowed to grow 4 to 6 inches a year and still remain dense and bushy.



Dwarf Boxwood (*Buxus*)

SPECIAL HEDGE OFFERS

	(100)	(1000)
Japanese Yew (Upright)		
*15 to 18 inches XXX.....	\$45.00
Hemlock		
*12 to 15 inches with ball....	\$30.00	\$250.00
Arborvitae		
18 to 30 inches X.....	\$12.00	\$ 80.00
*12 to 18 inches XX.....	45.00	400.00
Japanese Cypress (Plumed Cypress)		
Green and golden varieties (order by color)		
*12 to 15 inches X.....	\$27.00	\$210.00
Norway Spruce		
* 7 to 16 inches X.....	\$10.00	\$ 55.00
*12 to 15 inches XX.....	18.00
Dwarf Boxwood		
* 6 to 8 inches X.....	\$22.00	\$180.00
Japanese Barberry		
18 to 24 inches.....	\$15.00	\$120.00
Ibodium Privet		
*12 to 15 inches.....	\$ 5.50	\$ 32.50

SMALL TREES and SHRUBS for LINING-OUT

Surprisingly few years turn seedlings into specimens. We specialize in small sizes. Through the catalog they are indicated by "*".

SEEDLINGS ("S")

Many varieties are raised from seed. These very small plants must be handled with extra care. They should be planted about four inches apart in beds. Here they are left two years and for the first year, during the heat of the first Summer, should be shaded by a lath screen. In the Autumn, mulch to prevent frost-heaving. At the end of two years, they should be taken from the beds and treated as transplants.

ROOTED CUTTINGS ("R.C.")

Many varieties do not come true to type from seed. These are propagated by cuttings of branches rooted in sand. For this reason, cuttings are much more expensive than seedlings. They require the same care (for the first year) as seedlings, but once they have passed a Winter in the beds they can be treated as transplants.

GRAFTS

Some trees which do not come true from seed will not even take root readily. These varieties are grafted on established roots of related species and when the graft is healed are perfectly hardy and can be treated as transplants. For this reason it is best to buy grafted varieties one year old. See "Young Aristocrats."

TRANSPLANTS ("X")

Evergreens that have been moved, or have had their roots pruned, tend to throw out extra roots near the stem, forming a close compact ball of fibrous roots that can be easily dug up. The transplant is sufficiently sturdy to be planted out in the open field in rows. Here the roots have room to grow, and the tops have room for shapely development.

F. W. KELSEY NURSERY CO.

50 Church St., New York, N. Y.

Established 1878
Members American
Association of Nurserymen

Telephones: COrtland 7-2660 and 2661

L. E. Manning, President
C. N. Skinner, Vice-Pres.
F. T. Kelsey, Secretary