

## **Historic, Archive Document**

Do not assume content reflects current scientific knowledge, policies, or practices.



2

4-6-37

Telephone 5809

# *Kroh Brothers Nursery*

*Cheyenne, Wyoming*

- Plants
- Perennials
- Fruit Trees
- Roses, Evergreens
- Hardy Ornamentals



**1937**

## In Accepting . . . .

the welcome responsibility of contributing to the living beauty of your home and to the community in general, we wish to emphasize that our business is established for the years to come in Cheyenne.

It is only in this way that a competent nursery and landscape service can be of full benefit to the home owner and plant lover.

### Spring Planting Season

From late March until early May, nursery stock is in dormant condition and should be planted at that time. Orders received before the planting season are appreciated and encouraged.

Quotations herein listed are f. o. b. Cheyenne, Wyo. Orders received by mail should be accompanied by cash; or if requested, C.O.D., orders should be accompanied by one-fourth cash. Residents of Wyoming please include sales tax.

---

### *Visitors Welcome*

Visitors are welcome at our place of business at any time. Location: one mile north of Cheyenne on the Yellowstone Highway.

## Nursery Stock to Fit the Climate

The growing and distribution of acclimated nursery stock has been our business for a number of years. With this background it is our privilege to offer the largest assortment of acclimated nursery stock ever assembled in Wyoming.

In growing some types of nursery stock at its best, we find it practical to produce trees, shrubs, and plants both in Wyoming and Northern Colorado. For example: at Loveland, Colo., thousands of fruit trees are grown annually for distribution in the Rocky Mountain region, as well as many varieties of ornamental stock. At Cheyenne, the growing of perennials will be one of our special features in addition to other hardy ornamentals. The similarity of climatic conditions between the places in which our stock is grown and planted, makes its hardiness equally desirable wherever used.

Our variety list consists of trees, shrubs, and plants that have proven satisfactory at Cheyenne, and should be equally useful in other parts of Wyoming. We are at all times glad to suggest varieties where best used.

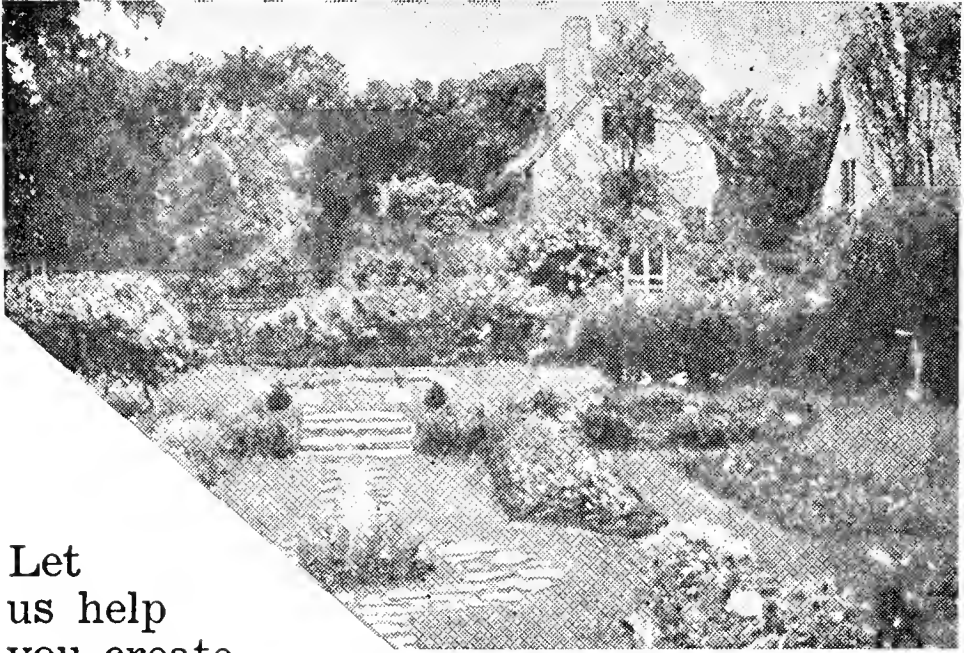
### *Landscape Service*

We offer experienced landscape service; some of the types of service are as follows:

- Planting of nursery stock.
- Landscape planning.
- Rock Garden building.
- Transplanting and rearranging.
- Lawn making.
- Soil conditioning.
- Trimming and spraying.
- Maintenance.

Cultural advice and suggestions of planting selections are gladly given.

# ORNAMENTALS



Let  
us help  
you create  
living beauty in your home landscape.

## Ornamental Shrubs

Our shrubs are strong select plants grown from one to three years longer than light mail-order sizes. We offer no varieties unless they have been tested for hardiness in our Rocky Mountain region.

The numerals following the name is approximate height at maturity in feet.

**ALMOND**, Pink Flowering. 5-6. Branches studded with bright pink flowers before the leaves appear. 18 to 24 in. ea., 75c; 2 to 3 ft. ea., \$1.00.

**AMORPHA, FRUTICOSA**. Indigo Bush. 6-10. Shrub of spreading form, having bright green foliage in locust-like or pinnate arrangement; dark violet-blue flowers in June. 4 to 5 ft. ea., \$1.00.

**BARBERRY**, Japanese. 4-5. Hardy shrub for low hedges, foundation, or groups; rich green foliage turning to red in autumn; red berries. Medium clumps ea., 35c; large, ea., 50c.

**BUCKTHORN**. *Rhamus cathartica*. 8-10. Sturdy shrub with very dark green foliage; black berries. Valuable for use as hedging. 18 to 24 in. ea., 40c; 3 to 4 ft. ea., 75c.

**BUTTERFLY BUSH**, *Magnifica*. 5-6. Grows from ground each season, producing long clusters of lilac flowers. Strong No. 1 plants, ea., 50c.

**ILE DE FRANCE**. The New Butterfly Shrub. For a brilliant display of rich color from July to severe frost we know of no shrub to surpass it. Bears 12 inch spikes of deep, rich claret purple flowers on a well rounded bush about 4 ft. in height. Field grown plants will bloom this summer, ea., 60c.

**CARAGANA.** Dwarf. (3 ft.) Rare dwarf bushy shrub with minute dark green foliage and showy orange pea shape flowers in May. Adapted to limited space, and thrives in dry sunny position. 12 to 18 in. ea., 60c.

**CARAGANA,** Siberian Pea Tree. 10-15. Large shrub for specimens, screens or hedges; attractive locust like foliage, green stems, small yellow pea shape flowers, May. 18 to 24 in. ea., 40c; 2 to 3 ft. ea., 50c; 3 to 4 ft. ea., 75c.

**COTONEASTER,** Acutifolia. 8-10. Graceful, very hardy; dark green foliage; black berries and brilliant foliage in autumn. 18 to 24 in. ea., 60c; 2 to 3 ft. ea., 85c; 3 to 4 ft. ea., \$1.25.

**DOGWOOD.** Stolonifera Coloradensis. 6-8. The best and hardiest of the red stemmed varieties. Red branches add lively color to winter landscape. 2 to 3 ft. ea., 75c.

**DOGWOOD,** Goldentwig. 6-8. Bright yellow twigs, contrasting beautifully with the red variety. 2 to 3 ft. ea., 75c.

**ELDER.** Fern Leaf. 8. Hardy with dark green fernlike leaves; white flowers in June followed by black berries. 3 to 4 ft. ea., 85c.

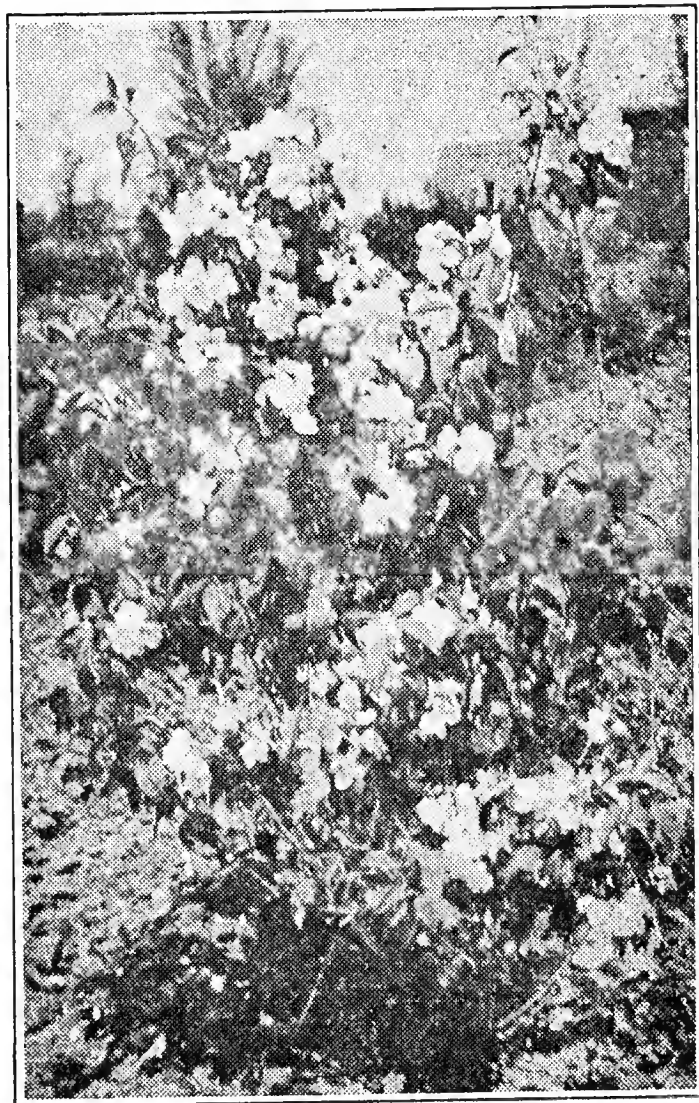
**ELDER,** Golden. 8. An interesting shrub with greenish-gold foliage; is used to put a dash of color in the shrub border. 3 to 4 ft. ea., 85c.

☆

**MOCK  
ORANGE  
VIRGINAL**

See Page 4

☆



**EUONYMOUS** Europacus. 8-10. Orange-red fruit in autumn; dark green foliage turns beautiful autumn color; green stems. 2 to 3 ft. ea., 75c.

**GINNALA MAPLE.** 10-15. A graceful small tree or large shrub. Bright green foliage, is deeply cut. Turns to a brilliant red in autumn. 3 to 4 ft. ea., 85c; 4 to 5 ft. ea., \$1.25; 5 to 6 ft. ea., \$1.50.

(Ornamental Shrubs, Continued)

**FLOWERING CURRANT**, *Ribes Odoratum*. 5-6. A handsome hardy shrub bearing many bright yellow fragrant flowers, April-May. Foliage appears early and assumes beautiful autumn colors. 2 to 3 ft. ea., 60c; 3 to 4 ft. ea., 85c.

**FLOWERING CURRANT**. Alpine. 4. Hardy low growing dense shrub suitable for hedges or general use. Bears many yellow flowers in spring, followed by red berries. Medium size, ea., 75c.

**HONEYSUCKLE**. Red Tatarian. 8-10. One of the best extra-hardy shrubs. This is the rosy red flowering type, blooming in May-June, followed by bright red berries. Foliage bright green, appearing very early in spring. 2 to 3 ft. ea., 50c; 3 to 4 ft. ea., 75c.

**HONEYSUCKLE korolkowi**. Blue Leaf Honeysuckle. 8-10. Foliage is a distinct bluish-green. Rose-pink flowers in pairs in May and June, followed by bright red berries. 2 to 3 ft. ea., 75c; 3 to 4 ft. ea., \$1.00.



**LILAC—Syringa**

This class of shrubs is of great value for Western planting; they are hardy, drouth resistant, and unexcelled during their blooming season for beauty and fragrance.

**Common Purple**. 12-15. The popular old time purple May flowering variety. 3 to 4 ft. ea., 75c.

**Common White**. 12-18. White flowering variety of above. 3 to 4 ft., ea. 75c.

**Hungarian**, *Josikea*. 8-10. Blooms in June, escaping late frost; flowers deep violet; dark shiny green foliage. 2 to 3 ft. ea., 75c; 3 to 4 ft. ea., \$1.00.

**Persian**. *Persica*. 8-10. Flowers little later than Common Lilac; color light lilac; smaller leaves. 2 to 3 ft. ea., 75c; 3 to 4 ft. ea., \$1.00.

**French Hybrid Lilacs**

Very popular hybrids giving range of color, and flowering at an early age. 2 to 3 ft. ea.. \$1.00.

**CONGO**. Deep reddish-purple flowers.

**MME. LEMOINE**. Double, pure white, large fine.

**PRES. GREVY**. Double; very attractive blue shade

---

**MOCK ORANGE**, *Philadelphus Virginal*. .6-8 Medium grower, bearing many beautiful fragrant semi-double flowers over a long season from May on. 2 to 3 ft. ea., 75c; 3 to 4 ft. ea., \$1.00.

**NINEBARK**. Dwarf. 4-5. A dwarf form, with small dark green leaves and white flowers in clusters. 2 to 3 ft. ea., 85c.

**NINEBARK**. 8-10. Well formed shrub with clustered white spirea-like flowers in June. 3 to 4 ft. ea., \$1.00.



**NINEBARK.** Golden. 8-10. An interesting variety having golden yellow leaves becoming bronzy; white flowers in June. 3 to 4 ft. ea., \$1.00.

**POTENTILLA FRUTICOSA,** Shrubby Cinquefoil. 2-3. Dwarf shrub bearing bright yellow flowers throughout the summer; very hardy. For specimens, groups, shade or sun. 12 to 18 in. ea., 50c; 18 to 24 in. ea., 75c.

**PRUNUS BESSEYI.** Sand Cherry. 4. A low spreading bush, extremely profuse in flower and fruit; attractive appearance, and black fruit very useful. 2 to 3 ft. ea., 60c.

**PRUNUS CISTENA,** Purple Leaf Plum. 5-6. Developed from the Western Sand Cherry into a beautiful shrub or small tree. The new foliage is deep blood red shading to bronze green; small pink flowers, May. Adds variety and color. 2 to 3 ft., ea. 85c; 3 to 4 ft. ea., \$1.25; 4 to 5 ft. ea., \$1.50.

**PRUNUS TRILOBA.** Flowering Plum. 5-7. A charming shrub of vigorous growth. Very early in spring before its leaves appear, the whole tree is decked in a cloud of very double, light-pink blossoms. Superior to Flowering Almond. 3 to 4 ft. ea., \$1.25.

**PUSSY WILLOW.** Blue Stem. A large shrub with blue colored bark. Densely flowered with dainty "pussies" in early spring. The hardiest and most satisfactory variety. 3 to 4 ft., ea. 75c.

**RUBUS DELICIOSUS.** 5-6. Forms handsome thornless clumps with prettily lobed foliage and in June bears a profusion of white flowers as large as single roses. 3 to 4 ft. ea., \$1.00.

**SHEPHERDIA argentea.** Buffalo Berry. 8-10. Hardy shrub withstanding extremes of cold and drouth. Its silver gray foliage is excellent for contrast, and edible scarlet berries, very colorful in autumn. 3 to 4 ft. ea., \$1.00.

**SHRUB ROSES.** See under other roses.

**SNOWBALL,** Common. 10-12. Forms many balls of pure white flowers in May-June. 2 to 3 ft., ea. 75c.

**SNOWBERRY,** White. 3-5. Attractive green foliage, pink flowers, June-July. Large white fruit in clusters in fall. 2 to 3 ft. ea., 60c.

**SNOWBERRY,** Red or Indian Currant. 3-5. Has dark close-set foliage and clusters of red berries massed along drooping branches in fall and winter. 2 to 3 ft. ea., 60c.

## **SPIREA**

**Arguta or Garland.** 4-5. One of the earliest shrubs to bloom in the spring; upright, hardy; small light green leaves, covered with single white flowers, April-May. 2 to 3 ft. ea., 60c.

**Frobeli.** 3-4. Red flower clusters like Anthony Waterer, but more vigorous; red spring and autumn foliage. Clumps ea., 50c.

**Van Houtte.** 5-6. "Bridal Wreath." One of the best shrubs. A fountain of white flowers in May-June; foliage and form ornamental the year round. 2 to 3 ft. ea., 50c; 3 to 4 ft. ea., 75c.

**KOREAN.** 5-6. New hardy spirea blooming a little later than Van Houtte, with flowers larger in size. Presents a picturesque appearance, with large dense white flower clusters arranged in somewhat horizontal formation. Beautiful glossy green foliage. 2 to 3 ft., ea. 60c.

(Ornamental Shrubs, Continued)

**SUMAC. Dwarf Cismontana.** A rare selected type that differs in its dwarfer habit, its small red clusters and very dark glossy foliage. Autumn foliage brilliant red. Attains 4 ft. height. 3 to 4 ft. ea., \$1.00.

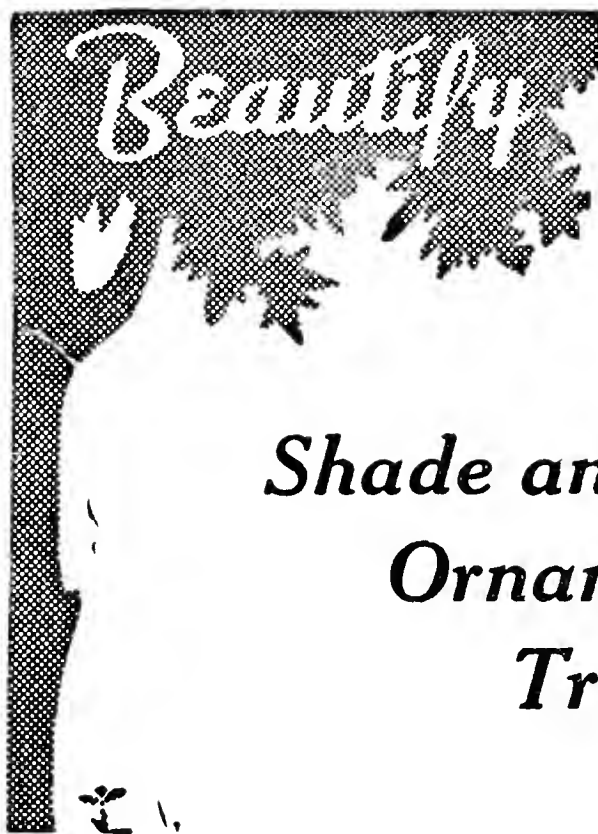
**SUMAC. Fern Leaf.** 10-12. Splendid shredded foliage; red fruit clusters; brilliant autumn foliage. 3 to 4 ft. ea., 75c; 2 to 3 ft. ea., 50c.

**SUMAC. Staghorn.** 15-20. A large shrub or tree. brilliant foliage and scarlet fruit in autumn. 2 to 3 ft. ea., 50c; 3 to 4 ft. ea., 75c.

**TAMARIX Hispida.** 12-15. One of the hardiest and best; has feathery silver foliage, bright coral-pink flowers, June-July. In bloom longer than any other variety. 2 to 3 ft., ea. 50c; 3 to 4 ft., ea. 75c.

**VIBURNUM. Lantana (Wayfaring Tree).** 10-12. Upright growing shrub with heavily veined rich green foliage. Large heads of white flowers in June, followed by bright red fruit. 2 to 3 ft. ea., 75c; 3 to 4 ft. ea., \$1.00.

**VIBURNUM Opulus.** Highbush Cranberry. 10-12. Decorative shrub with white flower clusters in May followed by clusters of scarlet berries. 2 to 3 ft. ea., 75c.



Your  
Property  
with

*Shade and  
Ornamental  
Trees*

Plant shade trees. Create a sheltered environment for your home that you will be proud of, and decorate it with ornamental trees and shrubs.

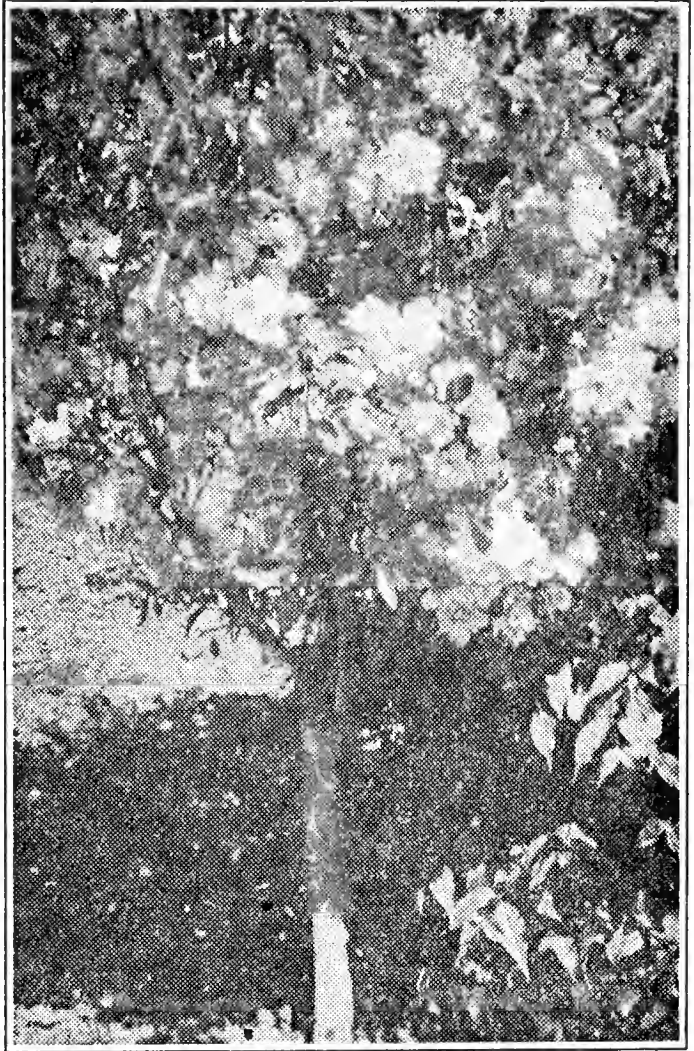
The numerals following the name is approximate height at maturity in feet.

**ASH. Green Ash, 40-50.** One of the most dependable shade trees in dry, cold climates. Makes a round headed tree with attractive green foliage. 5 to 6 ft. each, \$1.00; 6 to 8 ft. each, \$1.50; 8 to 10 ft. each, \$2.25; 1½ to 2 inch caliper each, \$3.00; 2 to 2½ inch caliper, each, \$4.00.

**BIRCH. Cut Leaved Weeping.** 30-40. A very graceful and attractive tree with drooping limbs and cut-leaved foliage; silvery white bark. 5 to 6 ft. ea., \$2.50; 6 to 8 ft. ea., \$3.00.

☆

**BECHTELS  
FLOWERING  
CRAB**



☆

**CRAB.** Bechtels Flowering. 12-15. Bears many rose-like double pink flowers in May. 2 to 3 ft. ea., \$1.00; 3 to 4 ft., each, \$1.50.

**CRAB.** Dolgo. See under fruit, Crab Apples.

**CRAB.** Hopa. (Red Flowering Crab.) Striking Rosy red flowers followed by bright red fruits; attractive foliage. A choice hardy variety. 2 to 3 ft., each 85c; 3 to 4 ft., each, \$1.25.

**BOXELDER.** Ash Leaf Maple. 40-50. A rapid growing tree with light green foliage and spreading head; very hardy and succeeds in many places where other varieties do not thrive. 6 to 8 ft., each, \$1.00; 8 to 10 ft., each, \$1.50.

**ELM.** Chinese. 40-50. This introduction from Siberia is an extremely rapid grower, with slender, almost wiry branches, carrying its dense graceful foliage over a long season.

Chinese Elm is resistant to alkaline soil and drought, as well as insect pests and diseases. It is the most rapid growing dryland tree; planting in low wet places is not advised.

(For Windbreaks See Page 9)

Prices apply to well rooted, correctly shaped trees.

	Price Each	Per 10
3 to 4 ft.	\$ .35	\$ 3.00
4 to 5 ft.	.55	4.50
5 to 6 ft.	\$ .75	\$ 6.50
6 to 8 ft.	1.00	9.00
8 to 10 ft.	1.25	11.00
1¼ to 1½ inch caliper	1.75	15.00
1½ to 2 inch caliper	2.25	20.00
2 to 2½ inch caliper	3.00	25.00

Prices of larger sizes of Chinese Elm up to 4 inch caliper on request.

(Shade and Ornamental Trees, Continued)

**ELM.** American. 60-80. The most popular of all standard ornamental trees in northern U. S. Furnishes immense canopy of foliage. 6 to 8 ft. ea., \$1.25; 8 to 10 ft. ea., \$1.75.

**MOLINE ELM.** 80-100. Fine, shapely, new type of American Elm that many have been looking for; makes a rapid, tall, upright growth. Large leaves. 6 to 8 ft., ea., \$1.25; 8 to 10 ft., ea., \$1.75; 1¼ to 1½ inch caliper ea., \$2.50.

**HACKBERRY.** 50. Habit of growth is very similar to American Elm. Leaves are larger and branches are strong and wiry. Remarkably free from insects and disease. 6 to 8 ft. ea., \$1.75; 8 to 10 ft. ea., \$2.50; 1¼ to 1½ inch caliper, ea., \$3.50; 1½ to 2 inch caliper, ea., \$4.25.

**HONEYLOCUST.** 40-50. A thorny tree with attractive pinnate leaves. Fragrant white flowers in May. Succeeds on most any kind of soil. 5 to 6 ft. ea., \$1.25; 6 to 8 ft. ea., \$1.75; 8 to 10 ft. ea., \$2.50.

**THORNLESS HONEY LOCUST.** This is a Honey Locust strain that is free from thorns. 6 to 8 ft. ea., \$2.00.

**MOUNTAIN ASH.** European. 20-30. Has dense regular form, and rich green fern-like foliage; has many clusters of orange-red berries in summer and fall. 5 to 6 ft. ea., \$2.00; 6 to 8 ft. ea., \$2.50.

**POPLAR.** Bolleanna. 50-60. One of the most attractive trees of any variety, and unquestionably the outstanding poplar. Tall slender shape resembles Lombardy; foliage is rich deep green, lobed, and silvery underneath. Bark is smooth light green. This is not Silver Poplar. 4 to 5 ft. ea., 75c; 6 to 8 ft. ea., \$1.25; 8 to 10 ft. ea., \$1.75.

**POPLAR.** Norway. 60-80. Pyramidal tree of very rare. 8 to 10 ft. ea., \$1.00; 1½ to 2 inch caliper, ea., \$1.75. winter. 3 to 4 ft. ea., 50c; 4 to 5 ft. ea., 75c.

**SILVER POPLAR.** 60-80. A quick grower with grey bark; maple-like foliage is dark green on upper side and white on underside. Makes large friendly tree where others are difficult to start. 6 to 8 ft. ea., \$1.00; 8 to 10 ft. ea., \$1.50; 1¼ to 1½ in. cal. ea., \$2.00; 1½ to 2 in. cal. ea., \$2.75.

**POPLAR sargentii.** Cottonless Cottonwood. 50-60. This is the regular Western Broadleaf Cottonwood that has been propagated from infertile trees, and will not bear cotton; noted for hardiness. 6 to 8 ft. ea., \$1.00; 8 to 10 ft. ea., \$1.50.

**RUSSIAN OLIVE.** 20-25. One of the hardier trees. Fine for hedge, screen, or specimen small tree for contrast. Has narrow silvery foliage and stems; small very fragrant blossoms. 5 to 6 ft. ea., \$1.00; 6 to 8 ft. ea., \$1.25; 8 to 10 ft. ea., \$1.75; 1¼ to 1½ in. cal. ea., \$2.25; 1½ to 2 in. cal. ea., \$2.75.

**WILLOW.** Niobe Weeping. 30-35. Has very attractive golden bark, and long pendulous branches; beautiful in summer and of striking appearance in winter. 3 to 4 ft. ea., 50c; 4 to 5 ft. ea., 75c.

# Windbreak and Hedge Plants

Among the varieties here listed, Caragana, Cottonwood, Russian Olive, and Chinese Elm are very useful for windbreak planting. A second group including Buckthorn, Caragana, Russian Olive and Spirea, is adapted for hedge planting. For more mature effects we refer you to the larger sizes as described under Shrubs and Shade Trees.

	per 25	per 100
BUCKTHORN, 1½ to 2 ft.	3.75	12.00
CARAGANA, 2 to 3 ft.	3.75	12.00
COTTONWOOD, Cottonless, 2 to 3 ft.	2.50	7.50
RUSSIAN OLIVE, 1½ to 2 ft.	3.00	10.00
RUSSIAN OLIVE, 2 to 3 ft.	4.50	15.00
SPIREA VAN HOUTTE, 1 to 1½ ft.	3.75	12.00

## CHINESE ELM FOR WINDBREAK

This variety has also established itself as one of the finest windbreak trees for western conditions—rapid growth—dense masses of branches and foliage—drouth resistant. Branches should be left clear to the ground for windbreak use. We offer one of the largest seedling grades, 2 to 3 ft. in height. Prices gladly quoted on larger quantities, or on smaller sizes. Price per 25, \$1.75; per 100, \$5.00.

Chinese Elm, Russian Olive, and Caragana are the "Big Three" for excellent growth and resisting drouth in windbreak and shelterbelt planting.

---

# CLIMBING VINES

## Strong Two Year Grades

**BITTERSWEET.** 20-25. Twining shrubs thriving in common soils; rich green foliage. Very attractive orange-yellow fruit clusters in fall and winter. Ea., 75c.

**CLEMATIS.** Jackmanni. 10-15. One of the most beautiful vines grown. Open flowers from four to six inches across; rich velvety purple. Blooms profusely from July on. Ea., \$1.00.

**CLEMATIS.** Coccinnea. 5-6. Bright scarlet, heavy petaled flower, bell shaped; blooms from July till frost. Perennial. Ea., 50c.



**Silver Lace Vine**



(Climbing Vines—Continued)

**CLEMATIS PANICULATA.** 15-20. Also called Sweet Autumn Clematis; the rich green foliage is nearly covered by sheets of small fragrant pure white flowers in September. Ea. 50c.

**ENGLMANN IVY.** 30-40. Neat hardy, self-climber on brick or stone walls; brilliant autumn colors. Rapid growing and very dependable. Ea., 50c.

**GRAPE.** Beta. See fruit grapes.

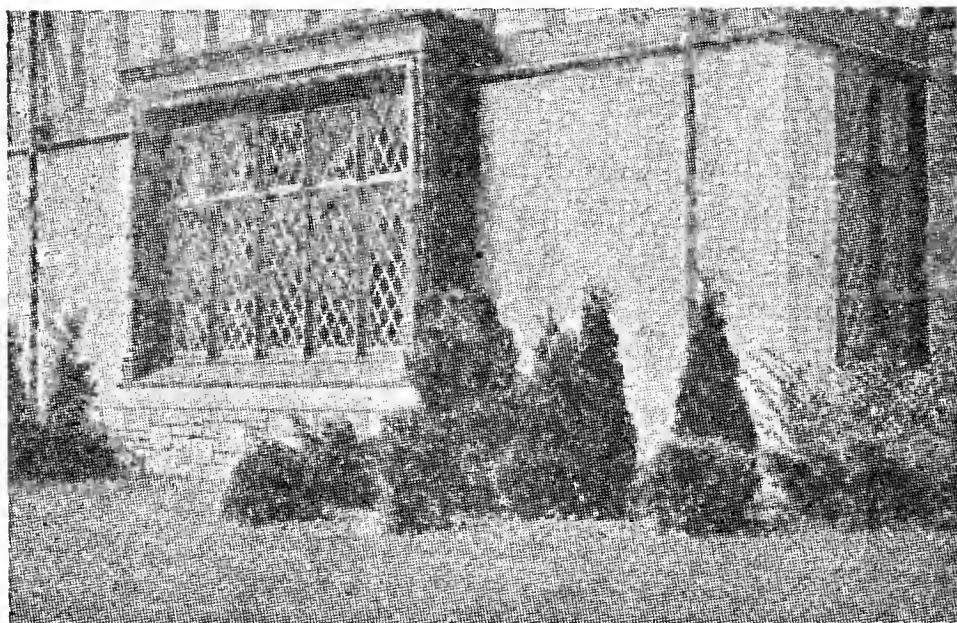
**HONEYSUCKLE.** Scarlet Trumpet. 20-30. Hardy rapid growing vine with clusters of trumpet-shaped scarlet flowers. Ea., 50c.

**MATRIMONY VINE.** 12-15. Hardiness and ability to grow in a variety of soils, make it very dependable. Has small purple flowers followed by pendant scarlet fruit. Ea., 50c.

**SILVER LACE VINE.** *Polygonum auberti*. 20-25. Rapid grower; fresh green foliage decorated with clouds of foamy white, fragrant flowers from July on. Ea. 75c.

---

## *Evergreens*



Modern Landscaping has given evergreens a very important place in home beautification.

Most important of all is the warm, green cheerfulness of varied foliage textures in the winter landscape when other ornamentals are without foliage or flowers. Summer and winter, evergreens give an air of friendliness and distinction to any planting.

Careful skill is devoted to digging our evergreens with ample ball of earth to give assurance of continued successful growth.

### **Junipers**

**PFITZER'S JUNIPER.** A low spreading juniper, one of the best; foliage attractive blue-green. Available sizes from 1½ to 3 ft., at \$2.00 per foot.

**SAVIN JUNIPER.** Low growing type with numerous upright fan-shaped branches; handsome moss green foliage. Available sizes from 1½ to 4 ft., at \$2.00 per foot.

**SCOPULORUM JUNIPER,** or Colorado Silver Juniper. This is the perfectly hardy variety of upright growing juniper; growth narrow and compact; foliage a silvery blue. Available sizes from 2 to 5 ft. at \$1.75 per ft.

**TAMARISCFOLIA JUNIPER.** An excellent creeping form. Foliage of fine texture, and with soft bluish-green hue. A choice dwarf evergreen. Available sizes from 15 to 30 inches, at \$2.50 per foot.

### Pines

**AUSTRIAN PINE.** Pyramidal grower with long, slender, deep green needles. Branches from ground upward, making well formed tree. Available sizes at \$1.50 per foot.

**LIMBER PINE.** Attractive deep green foliage; numerous branches. Successful in poor soils and exposure. Available sizes from 2 to 5 ft., at \$1.50 per foot.

**MUGHO PINE.** The popular low-growing compact pine that fits in so well in foundation plantings, or in specimens or groups. Available sizes at \$2.00 per foot.

**PINON PINE.** A slow growing, choice variety Low round-headed tree, branching from ground. Short foliage of rich warm green; produces delicious edible nuts. Available sizes from 2 to 5 ft., at \$2.00 per foot.

### Spruce

**COLORADO SILVER SPRUCE.** This is the choicest and most beautiful of all evergreens; of symmetrical pyramidal form; foliage rich and silvery blue. Several times transplanted and developed. Available sizes at \$2.50 per foot.

**COLORADO BLUE SPRUCE.** Does not have the striking color of the Silver Spruce, but equal in all other respects, such as form, hardiness, etc. Available sizes at \$1.75 per foot.





Our list of roses represents a very careful selection in all colors from a great number of varieties. Where good all-around merit is desired plus beautiful flowers, and adaptability, choose from the following varieties. You will find a number of choice new creations of recent years as well as some of the old favorites that cannot be replaced because of their lasting merits.

Roses in all their beauty and fragrance can be enjoyed in almost any garden. For best success with Everblooming roses, good fertile soil, several hours daily sunshine, and good thrifty planting stock are required. Where soil is quite alkaline or poor, it should be replaced with better soil for the rose bed; rich mountain dirt is one source recommended. A mound of soil or leaves over the crown of the plant is a good means of winter protection. Climbing roses should be laid down for winter and entirely covered. Hardy Shrub roses need no protection, and are not exacting as to soil.

## ***Everblooming Roses***

Price each 75c; per doz., \$7.50.

### **2 Yr. No. 1 Field Grown Bushes**

(Please Note: There are as many as four grades of roses. Our 2 yr. No. 1 is the best grade you can buy.)

#### **PINK SHADES**

**BETTY UPRICHARD.** Center petals a rich salmon-pink to carmine, outer petals are carmine with coppery shadings suffused orange.

**DAME EDITH HELEN.** One of the largest and most perfectly formed pink roses known; glowing clear pink color on strong stems.

**LOS ANGELES.** Beautifully shaped, fragrant flowers of pale salmon-pink, richly shaded with deep rose and gold.

**MRS. HENRY BOWLES.** Excellent flowers of dark lustrous pink shaded lighter. A recent introduction and a very outstanding pink rose.

**RADIANCE, Pink.** Hardy, vigorous, and prolific. This is a fine all-round garden rose of brilliant rose-pink.



(Everblooming Roses, Continued)

WHITE SHADES

**CALEDONIA.** Large double flowers with edges gracefully rolled back. Color, slightly lemon tinted, changing to pure white. Borne singly on long strong stems.

**K. A. VICTORIA.** A most popular white rose. Bears many large creamy white, perfectly formed flowers; very fragrant.

RED SHADES

**AMI QUINARD** A "black" rose that has attracted unusual attention. Color is a striking, very dark crimson maroon.

**E. G. HILL.** One of the finest red roses. Long buds, high-centered full double flowers; dazzling scarlet maturing to deeper pure red.

**ETOILE DE FRANCE.** This thrifty growing variety produces many large dark crimson, double blossoms; very popular.

**ETOILE DE HOLLANDE.** Many large, velvety crimson flowers produced throughout the summer; richly fragrant. One of the best red Teas for general purposes.

**GRUS AN TEPLITZ.** Bright scarlet shading to velvety crimson; fragrant; very free flowering.

**HADLEY.** Large, double, well formed flowers of rich crimson.

**MARGARET MCGREDDY.** For garden show it is truly excellent. Always in bloom, a thrifty, healthy vigorous grower, producing a profusion of blooms of rich oriental scarlet, passing to carmine rose.

**RED RADIANCE.** This is the bright rosy-red form of Pink Radiance.

YELLOW SHADES

**GOLDEN EMBLEM.** This variety heads the list for a perfectly formed flower; beautiful unfading yellow, opening buds splashed with carmine.

**JOANNA HILL.** A thriftier, more vigorous Sunburst. Clear yellow blooms deepening at center; very profuse.

**SOUVENIR DE CLAUDIUS PERNET.** Blossoms are clear sun-flower yellow with long pointed buds. Erect vigorous grower; bright shiny green foliage.

**SUNBURST.** Rich yellow cupped flowers shaded coppery orange.

**VILLA DE PARIS.** Unadulterated sunflower yellow rose that holds its color remarkably well. In form, character and growth it favors the famous Radiance type.

TWO-TONE SHADES

**AUTUMN.** One of the best of the new introductions. Fine medium sized ovoid buds colored burnt orange; open flowers are double, cupped, and colored burnt orange and yellow, streaked with red.

**DUCHESS OF ATHOLL.** A desirable rose of delightful coloring of vivid orange flushed old rose; double and fragrant.

**EDITH NELLIE PERKINS.** Buds long and pointed, outside of petals cream and blush shaded with orange; inside of petals salmon-pink with golden orange base.

**MADAME BUTTERFLY.** Light salmon with light yellow shadings, a perfect gem. Foliage leathery, stems strong, a fine variety for cut flowers.

**PRESIDENT HERBERT HOOVER.** A gorgeous rose of new color combination. Pointed coppery red buds on rigid stems open into large flowers of dazzling combination of vivid cerise pink, scarlet-orange and gold.

**TALISMAN.** The very popular outstanding rose novelty. Brilliant orange-red buds open to large high pointed bloom of glowing yellow stained with copper-red and orange-rose on inside of petals.

## HYBRID PERPETUAL ROSES

This type makes a strong bush and has its main crop of blossoms in June. Price each, 75c; per doz., \$7.50.

**AMERICAN BEAUTY H. P.** A good bloomer; flowers very large and full, brilliant pink to red, on long stems; fragrant.

**FRAU KARL DRUSCHKI. H. P.** Very large fully double, pure white rose. One of the finest pure white roses.

**PAUL NEYRON. H. P.** Very large, fragrant, clear pink shading to rose; produced by medium sized thrifty plant.

## *Climbing Roses*

**AMERICAN BEAUTY CLIMBER.** Large double flowers of rose crimson. Price ea., 65c.

**DR. VAN FLEET.** Well formed long, pointed, deep pink buds on long stems in clusters that open to a lighter shade of pink. Glossy leaves. Price each, 65c.

**DOROTHY PERKINS.** Beautiful shell-pink flowers are borne in large clusters of small double blooms, very sweet scented. This is the hardiest and thriest of standard climbers. Price each, 50c.

**PAULS SCARLET.** For brilliant color this rose is unsurpassed. Produces clusters of semi-double, vivid dazzling crimson blooms. Price each, 65c.

### NEW DAWN CLIMBER

Plant Patent No. 1

A real honest to goodness hardy EVER-BLOOMING CLIMBING ROSE, producing a constant succession of beautiful roses all summer. Good sized delicate pink flowers of excellent form are borne on long stems above glossy, dark green, very healthy foliage. Blooms on new wood even though old canes are unprotected and may kill back. Medium height trellis; beautiful for embankments, ground cover, etc. Enjoy this marvelous rose in your own garden. Price each, \$1.50.

## *Rugosa Roses*

A valuable hardy type much used in landscape work as specimens or in groups. As a class Rugosas flower abundantly in June, and recurrently till fall; make medium sized bushes; foliage lustrous dark green.

Price Each 75c; per doz., \$7.50

**AMELIA GRAVEREAUX.** Medium double, fragrant flowers in small groups all summer; carmine red flowers on long stems.

**F. J. GROOTENDORST.** Distinctive small red flowers in clusters, with the edge of each petal serrated. Plant is strong grower and bushy; blooms continually until frost.

**DR. EECKENER.** The newest notable addition to this class; highly recommended for shrub use. The cup-shaped flowers are of good size, distinct from the others in its delightful color, luminous buff-pink, with golden suffusion.

## Shrub Roses

These are the hardy bush roses that should be found in every garden planting. The foliage and fruits are as attractive as the flowers which present a blaze of color in June.

**AUSTRIAN COPPER.** No shrub attracts more attention when in bloom. Flowers are single, an intense coppery red on the top side while underside is yellow. Price each, 85c; 3-yr. bushes, each \$1.25.

**PERSIAN YELLOW.** Produces a large number of double yellow roses in June. Price each, \$1.00.

**ROSA RUBRIFOLIA,** Red Leaf Rose. 6-8. One of the hardiest shrub roses with purple-red foliage all summer beautifully studded with starry bright pink blossoms in June. Price each 75c; 3-yr. bushes each, \$1.25.

---

## PERENNIALS

Perennials can be planted almost anywhere, in beds, borders or by themselves, as a foreground for shrubbery and evergreens, and in Rock Gardens. Varieties can be selected to give continuation of bloom in a range of colors from early spring till killing frosts.

Prices of perennials, unless otherwise indicated, 25c each, \$2.50 per dozen.

\*R. G. preceding name indicates Rock Garden plants.

**ACHILLIA,** Perry's White. (2 ft.) Double white; all summer.

\*R. G. **ALLIUM purdomii.** (6 in.) Showy lilac flowers in large umbels.

R. G. **ALLYSSUM saxatile compactum.** "Basket of Gold" (10 in.) Masses of bright yellow flowers in May.

**ANCHUSA ITALICA.** (4 ft.) Blue. June-Sept.

R. G. **ANCHUSA myositidiflora.** (15 in) Sprays of blue "forget-me-not" flowers. May-June. Ea. 35c.

**ANTHEMIS kelwayi.** (3 ft.) Large yellow flowers all summer.

R. G. **ASTER alpinus.** (10 in) Violet-blue. May-June. Ea. 35c.

**ASTER,** Michaelmas Daisy. (4 ft.) Blue, pink, purple; Sept.

**BABY BREATH.** See Gypsophila.

**BAPTISIA australis.** (3 ft.) Spikes of dark blue flowers; June-July.

**BLEEDING HEART.** Graceful racemes of pink, heart shaped flowers in spring. Ea., 50c.

R. G. **CALLIRHOE involucrata.** Trailing plant with crimson poppy-like flowers all summer.

R. G. **CAMPANULA carpatica.** Harebell. (8 in.) Blooms continuously from June on. Blue or white. Ea. 30c.

**CAMPANULA glomerate superba.** (18 in.) Deep violet flowers. June-July. Ea. 30c.

**CAMPANULA persicifolia.** (2 ft.) Large bright blue. June-July. Ea. 30c.

R. G. **CERASTIUM tomentosum.** Snow-in-Summer. Silvery ground cover.

**CHRYSANTHEMUM-PINK CUSHION** or **AMELIA.** A "cushion" of flowers in masses from August till frost; mounds of delicate pink 12 to 15 inches in height. A real gem among the hardiest early-blooming chrysanthemums. Ea., 35c.

(Hardy Perennials—Continued)

**CHRYSANTHEMUM-CARRIE.** (18 in.) Clear deep yellow. Aug.-Sept.

**CHRYSANTHEMUM-EDEN.** (2 ft.) Large deep rose-pink. Sept. Ea. 30c.

**CHRYSANTHEMUM-SEPTEMBER QUEEN.** (18 in.) Solid mass of white flowers. Aug.-Sept. Ea. 35c.

**COLUMBINE.** Rocky Mountain. The beautiful Colorado state flower; petals and spurs deep blue, center creamy white.

**COLUMBINE-RAINBOW BLEND.** (2 ft.) Unsurpassed blend of richest colors in largest sizes. May-June.

**COREOPSIS.** (2 ft.) Yellow daisy-like flowers all summer.

**DELPHINIUM.** Belladonna. Long spikes of clear turquoise blue; blooms from June till frost if cut after blooming.

**DELPHINIUM.** Bellamosa. Good companion for Belladonna; dark blue.

**DELPHINIUM, Chinese.** (2 ft.) Deep blue; finely cut foliage.

**DELPHINIUM HYBRIDS.** Large flowers of varied blue hues in pastel shades. Ea., 30c.

**R. G. DIANTHUS barbatus.** Sweet William. (15 in.) Blooms June-July. Mixed colors. Ea., 20c; \$2.00 per dozen.

**R. G. DIANTHUS latifolius.** (15 in.) Fiery crimson all summer.

**R. G. DIANTHUS plumarius.** Clove Pink. (12 in.) Pink flowers all summer.

**DICTAMNUS.** (18 in.) Very permanent. Attractive foliage; flowers in many spikes of orchid-like blossoms in early summer. Colors white or pink; ea., 35c.

**FERN.** Colorado Male Fern. Large fronds in vase like clusters. Shade and moisture. Ea. 50c.

**GAILLARDIA.** Blanket Flower. Deep red flowers with yellow border, often three inches across from June till fall. Height 2 ft.

**GYPSOPHILA paniculata.** Baby Breath. (2 ft.) Clouds of tiny white flowers in July.

**GYPSOPHILA.** Bristol Fairy. Choice, improved, large flowering, double Baby Breath. Blooms nearly all summer. Grafted roots. Ea., 75c.

**R. G. HELENIUM hoopesii.** (18 in.) Flowers of narrow orange rays; spring. Ea., 30c.

**R. G. HEUCHERA brizoides.** Corabells. Evergreen tufts of foliage surmounted by 18 inch bright pink sprays. Ea. 35c.

**HOLLYHOCKS.** Double. Separate Colors, Red, Pink, White, Yellow. Ea. 20c; \$2.00 per dozen.

**R. G. IRIS pumila.** (8 in.) Dark blue. April. 2 for 35c; \$1.50 per doz.

**LATHYRUS latifolius.** Perennial Sweet Pea. Vine; appearance and habit like annual sweet pea.

**LIATRUS pycnostachya.** Gay Feather. (4 ft.) Long spikes of rich purple flowers; midsummer.

**LILIUM henryi.** (5 ft.) Magnificent bright orange yellow, recurved petals. July-Aug. Ea. 35c.

**LILIUM regale.** Regal Lily. (3-5 ft.) The choice trumpet lily; white suffused pink and yellow. June-July.

**R. G. LILIUM tenuifolium.** Coral Lily. (18 in.) Flashy little lily; deep waxy orange-scarlet flowers. June.

**LILIUM TIGRINUM.** Tiger Lily. (4-5 ft.) Bright orange flowers spotted purple.

---

Prices of perennials, unless otherwise indicated, 25c each, \$2.50 per doz.

## IRIS

### GROUP I. New Varieties



**Alabaster.** Exceptionally fine pure white.

**Amerind.** Popular shade of metallic bronze.

**Candlelight.** Radiant golden center blending violet rose.

**Jackrose.** Prolific, deep pallida red.

**Wm. Mohr.** Bluish-purple with deeper veining. Very large.

### GROUP II. Iris of Special Merit.

**Ambassadeur.** Bronze velvety purple and maroon.

**Isoline.** Silvery lilac, violet and russet.

**Mme. Chobaut.** Buff cream, tinted lilac. Unusual.

**Morning Splendor.** Varying degrees of rich red violet.

**Queen Caterina.** Fine large pale lavender-violet.

### GROUP III. Standard Varieties.

**Caprice,** Rosy red. **Lohengrin,** Silver mauve.

**Pallida Dalmatica.** Large, lavender blue.

**Sherwin Wright,** Clear golden yellow.

**Walhalla,** Bluish purple.

Prices: Group I, 30c each, \$3.00 per doz.; Group II, 20c each, \$2.00 per doz.; Group III, 2 for 25c; \$1.00 per doz.

**LYCHNIS chalconica.** Maltese Cross. (2½ ft.) Heads of fiery crimson flowers. July-Aug.

**NEPETA MUSSINI.** Ground Ivy or Catmint. A low growing compact plant producing masses of beautiful lavender flowers all spring and intermittently during summer. For rockery or border.

**PENSTEMON barbatus.** (4 ft.) Scarlet flowers on long wiry stems. June-Aug.

**R. G. PENSTEMON crandallii.** Creeping mat of evergreen foliage. Early blue flowers in carpet of color. Ea., 30c.

## HARDY PHLOX

This group of perennials is rich in gay color from July on; fragrant.

**B. Comte.** Rich French purple, dwarf; very brilliant.

**Bridesmaid.** White with large crimson center.

**Daily Sketch.** New. Extra large; light salmon-pink; faint carmine eye. Ea., 40c.

**Ethel Pritchard.** French mauve; highly recommended.

**Firebrand.** New. Brilliant vermilion scarlet. Outstanding.



**Michael Buchner.** Pale lavender; strong grower.

**Milly Von Hoboken.** Soft pink; very large florets.

**Mrs. Jenkins.** White; large panicles; free bloomer.

**Rijnstroom.** Lovely rose pink; large, attractive.

**R. P. Struthers.** Rose cherry-red with claret-red eye.

**Siebold.** Orange scarlet with crimson eye.

**POPPY, Oriental.** Recommend Aug.-Sept. planting.

(Hardy Perennials—Continued)

**PLATYCODON. Balloon Flower.** Blooms freely from July till late September, producing loose racemes of bell-shaped flowers. Colors, blue or white.

**PYRETHRUM. Painted Daisy.** Daisy-like flowers, rosy red shades; fern-like foliage.

**RUDBECKIA purpurea.** Purple Coneflower. (3 ft.) Reddish-purple with cone-shaped center. July-Aug.

**SCABIOSA caucasica.** Blue Bonnet. (18 in.) Fine large blue flower on long stems. June-Sept.

**R. G. SEDUM.** Stonecrop. In variety.

**R. G. SEMPERVIVUM.** Houseleek or Hen and Chickens. In variety.

**SHASTA DAISY.** Alaska (Burbank). Large snow-white flowers, blooming over long season.

**SOLIDAGO Golden Rod.** (4 ft.) Golden yellow blooms. Sept.

**SPIRAEA filipendula fl. pl.** (2 ft.) Rare form with double white feathery flowers. June. Ea., 35c.

**STATICE.** Sea Lavender. Plant is low crown of dark leathery leaves, surmounted in late summer with large head of tiny, mistlike, lavender flowers.

**VALERIANA offic. rubra.** Heliotrope. (2 ft.) clusters of fragrant red flowers. July-Aug. Ea., 30c.

**R. G. VERONICA. True Blue.** (12 in.) Cloud of intense blue. June-July. Ea., 30c.

**R. G. VERONICA pectinata.** Prostrate evergreen Foliage grey-green; pink flowers. Ea., 30c.

**R. G. VIOLA.** Tufted Pansy. (6 in.) For rock garden or border edging. Blooms entire summer if flowers are cut. Mixed colors; ea., 20c; \$2.00 per doz.

**YUCCA glauca.** Slender rigid evergreen foliage. Large white flowers tinted purple on 4 ft. spikes. July. Ea., 50c.

---

### PEONIES

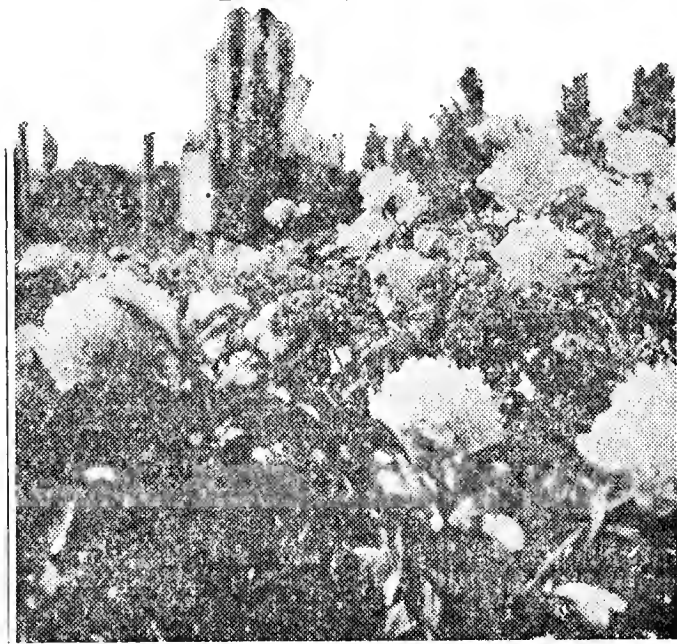
The following varieties have been in frost proof stroage for spring planting. Please note that we have twenty additional choice varieties for fall planting.

**Edulis Superba.** 76. Very early clear deep pink; very fragrant. Ea., 40c.

**Felix Crousse.** 84. One of the best reds; bright ruby red. Ea., 50c.

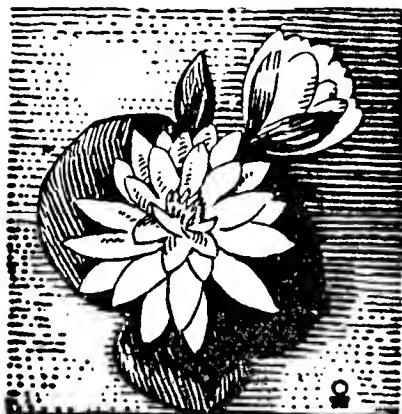
**Festiva Maxima.** 93. Very fine; large, white, center flecked crimson. Early. Ea., 40c.

**Mons. Jules Elie.** 92. Exceptional merit. Glossy lilac-pink shading deeper rose at base; very large; excellent for cutting. Ea., 75c.



# Water Lilies and Plants

The ease with which water lilies are grown requires no previous experience. All that is necessary is sunshine, still water, and rich soil, and not too much shade. Hardy water lilies give an abundance of bloom all summer, opening wide in the morning and closing in the afternoon, and we offer a color range including white, pink, red, and yellow. A water garden can be established in a half-tub.



or a natural, or concrete pool, a foot of manure-enriched soil in the bottom, and a foot of water over the lilies. For winter, lilies may be mulched with or without draining in the larger pool, or stored in the cellar, keeping them cool and moist. Plant from April till August.

**Marliac White.** Snowy white flowers with yellow stamens, 5 to 6 inches in diameter. A desirable free flowering variety. Ea., 75c.

**Marliac Pink.** A most popular free bloomer. Color is an exquisite pale pink; quite large. Ea. 75c.

**Marliac Yellow.** (M. Cromatella). Bright sulphur yellow with broad curving petals; produces a constant procession of large blooms; vigorous. Leaves spotted with maroon. Ea., \$1.00.

**Paul Hariot.** Colorful orange-pink, deepening on following days. One of the best all around varieties, sturdy, profuse; has harmonious color. Ea. \$1.50.

**James Bryden.** Gorgeous vivid rosy crimson blossom, full petalled and broadly cupped; bronzy-red leaves. Very desirable with those familiar with it. Ea. \$2.25.

## Water Plants

To complete the pool.

**Water Hyacinth.** Delicate spikes of lavender flowers as beautiful as an orchid. Floats on water but should be anchored to bloom. 2 for 25c; 5 for 50c.

**Water Poppy.** Trailing plant producing large yellow poppy flowers. Plant like lilies. Ea., 20c; 3 for 50c.

**Floating Heart.** Heart shaped leaves and bright yellow flowers size of half-dollar. Plant like lilies. Ea., 20c; 3 for 50c.

**Parrot Feather.** Feathery green shoots trail over water in soft airy mass. Plant in shallow water. Per bunch, 15c; 4 for 50c.

---

**COLLECTION A:** One each of all water lilies and plants listed above (Catalog Value \$7.45) for \$5.95.

**COLLECTION B:** Marliac Trio, one each, Pink, White, and Yellow; one Parrot Feather and one Water Poppy (Catalog Value \$2.85) for \$2.25.

---

## Gladiola

“Superb Mixture”

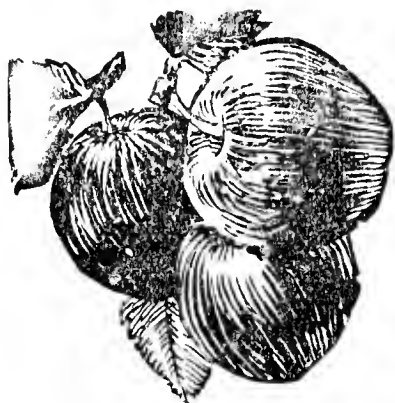
We are pleased to offer this special group of glads at this low price—large flowering size bulbs. One bulb each of twelve famous and strictly choice varieties to the dozen, or ten of each variety to the hundred. Price per dozen 40c; per 100 \$3.00.



# Fruit Trees and Plants

Success with fruits under Wyoming conditions is somewhat variable. In some localities, variety may be limited to only the hardy crab apples, gooseberries, and currants. On the other hand, a number of varieties can be grown (some commercially) in the lower altitudes and protected valleys. As a guide for selecting varieties to meet your growing conditions, we suggest them in order of hardiness as follows:

Group 1, for difficult climate: Crab apples, Gooseberries, Currants, Garden roots. Group II, in addition to Group I we add Yellow Transparent, Wealthy, Cortland, McIntosh, N. W. Greening and Sheriff-varieties of apples; Beta grape. Group III: We here add Plums in variety, Cherries, other varieties of Apples, Strawberries, Raspberries and Early Grapes (the last two should be covered during winter.)



## APPLES

### Summer Varieties

**RED JUNE.** August. Medium size, deep red, good flavor; productive.

**YELLOW TRANSPARENT.** Ripens in August, a splendid early cooking and eating apple; medium to large, pale yellow fruit. Hardy, bears young.

**WHITNEY CRAB.** August. Hardy, good bearer; fruit small to medium, striped red and green, fine for eating and canning.

### Fall Varieties

**ANOKA.** New. Prof. N. E. Hansen, plant genius of Minnesota and originator of this variety says, "The Anoka is without a doubt the earliest and heaviest bearing apple grown today." This remarkable variety bears on one year wood, and often bears the second year after planting. Fruit is large, good flavor; color red striped over yellow. Add 10c per tree.

**WEALTHY.** September. Fine reliable bearer of large red-striped tender, juicy, slightly sub-acid fruit.

### Winter Varieties

**BLACK BEN.** Solid deep red, late keeping variety; one of the most dependable commercial varieties; unexcelled for pies.

**CORTLAND.** New. Beautiful red apple of McIntosh parentage, excellent quality, good keeper; dessert or cooking.

**DARK RED DELICIOUS.** Often referred to as Double Red. A much improved Delicious, turning completely red before it is ripe. Otherwise it has the same fine flavor of Common Delicious.

**YELLOW DELICIOUS.** This beautiful yellow apple is a bright golden yellow, sweetly acid flavor, and commands high market prices. This variety is a good bearer, beginning at early age.

**JONATHAN.** Medium size of finest quality; bright red, fine flavor; moderate grower.



**McINTOSH.** A leading variety. Large solid red, tender, juicy, aromatic. Tree hardy, good bearer. Canadian origin.

**NORTHWESTERN GREENING.** A good winter cooking apple; large, greenish yellow, firm. Productive bearer.

**SHERIFF.** A variety of particular merit for this section. The tree is one of the hardiest and thriftiest, very shapely; bears young; consistent cropper. Apples good size and quality, nearly all over red with orange shading.

**TURLEY or Improved Stayman Winesap.** Produces large red fruit of excellent flavor and quality. Colors on tree much earlier than other Winesaps.

### Crab Apples

**DOLGA.** Has very brilliant red fruit of small size, borne freely. Sprightly flavor; makes rich colored jelly. Fall. Blossoms, fruit, and shape make it desirable as ornamental tree.

**FLORENCE.** Very hardy. A medium size tree bearing abundant crops of small yellow and bright red apples for jellies and preserving. Fall.

**RED SIBERIAN.** Vary hardy. Very thrifty grower producing enormous yields of small, firm, yellow and red apples prized for jelly. Fall.

**WHITNEY.** See summer apples.

Prices apply to varieties described above, except where noted; varieties alike or assorted, your choice

	ea.	10	100
Heavy 4 to 6 ft.	.85	7.50	70.00
Medium 3 to 5 ft.	.70	6.00	55.00



## CHERRIES

Caliper means diameter in inches at the base of the tree trunk. In our practice of producing stocky, well-branched trees so necessary for successful development in our western climate, the height to which we grow them is of secondary importance.

**EARLY RICHMOND.** Ripens about July 1; fruit medium sized, red.

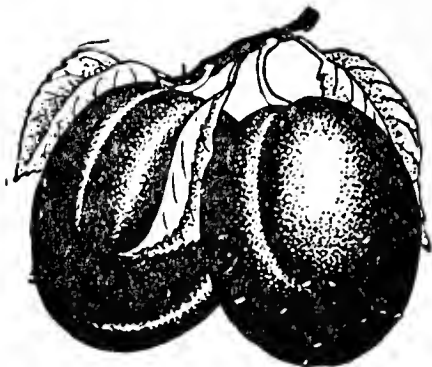
**ENGLISH MORELLO.** Ripens late July. Fruit large, nearly black, very attractive. Starts bearing heavily at early age.

**MONTMORENCY.** The best all around sour cherry grown. Ripens mid-July; fruit large bright red. Leading commercial variety.

Varieties alike or assorted

Caliper in.	Approx. height	ea.	10	100
9-16 to 11-16	3½ ft. and up	.80	7.00	65.00
7-16 to 9-16	3 ft. and up	.60	5.00	45.00
5-16 to 7-16	2 ft. and up	.45	4.00	35.00

# PLUMS



**GERMAN PRUNE.** Medium large, oval, blue. Rich and sweet; popular.

**MONITOR.** Large, firm, fine quality red fruit. Thrifty grower.

**GREEN GAGE.** The sweetest eating and canning plum. Ripens in August, medium to large, greenish yellow color.

**ITALIAN PRUNE.** A valuable plum for dessert, canning, or drying; freestone. Oval shape; purple with thick blue bloom.

**MOORES ARCTIC.** Purplish black skin, with pale blue bloom; flesh greenish yellow, juicy, sweet and pleasant flavor. Medium in size; ripens in late August. One of the hardiest of the European types.

**SUNSET.** This variety has stood the test of time and climate the best of any variety we know of. Medium small in size, of a glowing light red color, and is of sweet delicious flavor. Ripens in August.

**TERRY.** Medium to large, bright red, fine flavor; dependable.

**UNDERWOOD.** Ripens August. Fruit attractive, large red, firm, juicy, freestone. Strong grower.

**WANETA.** August. Fruit very large, deep bright red thin skin, delicious flavor. One of the very best.

**YELLOW EGG.** Fruit large rich yellow; possesses a mild distinctive sweet flavor.

**COMPASS CHERRY-PLUM.** Small, wine red, distinct flavor. Very hardy and early bearer.

Varieties alike or assorted.

	ea.	10
Medium 3 to 5 ft.	.75	6.50

## Small Fruits

For home use and market.

### Currants

Strong 2 yr. plants.

**CHERRY.** A good standard, large, clear red variety. Early. Price each, 30c; per 10, \$2.75; per 100, \$22.50.

**PERFECTION.** The largest berried, most attractive red currant on the market. Price each, 35c; per 10, \$3.00; per 100, \$25.00.

### Gooseberries

Strong 2 year plants. Price each, 30c; \$2.75 per 10; \$22.50 per 100.

**CHAMPION.** A vigorous, very productive variety; planted extensively for commercial use; easy to pick. Large greenish-yellow when ripe.

**JOSSELYN.** A popular variety, bearing sweet, reddish-pink berries when ripe.

# Grapes

Strong 2 yr. vines. Prices except as otherwise noted, 25c each; \$2.25 per 10; \$20.00 per 100.



**BETA.** Very hardy. Small black fruit for jell and juices.

**CONCORD.** The widely planted blue-black grape. Price each, 20c; \$1.75 per 10; \$15.00 per 100.

**DIAMOND.** Prolific, greenish-white, sweet juicy. Champagne variety.

**MOORES EARLY.** Similar to Concord, ripening two weeks earlier escaping early frost.

**FREDONIA.** A new very early delicious black grape, with large berries and bunches. Ripens two weeks ahead of Concord. Price each, 40c; per 10, \$3.50.

# Raspberries



**BLACK CUMBERLAND.** The largest and very best black-cap. Vigorous growth and prolific. Price per dozen, 75c; per 100, \$4.00.

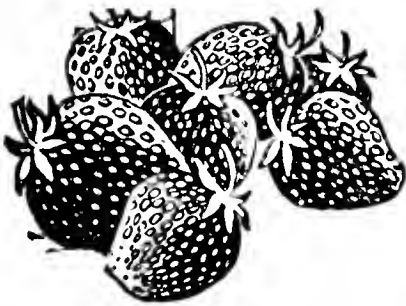
Two year bearing age plants, \$1.25 per dozen; \$7.50 per 100.

**CHIEF.** New disease resistant mate for Latham. ripening 10 days earlier; has the other same fine qualities of Latham. Price per doz., 75c; per 100, \$4.00.

**LATHAM.** The new, most widely planted red raspberry in recent years, displacing old varieties. Prolific, strong mosaic-resistant canes; firm, very large berries. Price per doz., 75c; per 100, \$4.00.

**NEWBURG.** New very promising variety ripening a few days ahead of Latham; disease resistant. Berries very large, bright red, and do not crumble; heavy bearer. Price per doz., 90c; per 100, \$5.00.

**ST. REGIS EVERBEARING.** Harvest one crop without winter protection, and two crops if canes are covered during winter. Berries fair size, crimson, good flavor. Price per doz., 75c; per 100, \$4.00.



# Strawberries

**MASTADON.** Best in size, color, flavor, and yield of all everbearers.

Price per 25, 75c; per 100, \$2.00.

# Garden Roots

**ASPARAGUS.** Mary Washington, the leading rust-resistant variety. 2 yr. No. 1 plants. Price per dozen, 50c; 100, \$2.50.



**HORSERADISH.** Price, 3 for 35c; per doz., \$1.25

**RHUBARB.** Victoria, medium size, tender stalks. Price, 3 for 35c; per doz., \$1.25.

# *Memoranda*

# Our Guarantee

We guarantee all our nursery stock to be as represented, free from disease, absolutely true to name, and to reach the customer in good live growing condition. Any stock proving untrue to name shall, at our option, be replaced free, or original purchase price shall be refunded. Furthermore, at our option, free replacement will be made, or purchase price refunded, for any other causes here mentioned, provided claim is made within five days after arrival of goods. It is hereby mutually agreed, that in no case shall we be liable for a greater sum than original purchase price paid. We do not substitute without purchaser's knowledge or consent.

---

## Index

	Page
Apples .....	20-21
Asparagus .....	23
Cherries .....	21
Currants .....	22
Evergreens .....	10-11
Garden Roots .....	23
Gooseberries .....	22
Gladiola .....	19
Grapes .....	23
Hedge Plants .....	9
Junipers .....	10
Peonies .....	18
Perennials .....	15-18
Pines .....	10
Plums .....	22
Raspberries .....	23
Roses .....	12-15
Shade Trees .....	6- 8
Shrubs .....	2- 6
Spruces .....	11
Vines .....	9-10
Water Lilies and Plants .....	19
Windbreak Trees .....	9

---

If you desire larger quantities of any item listed, or if you desire grades or varieties not listed we shall be glad to quote by letter.



National Agricultural Library  
RECEIVED  
★ NOV 18 1970 ★  
U. S. Department of Agriculture