

## **Historic, Archive Document**

Do not assume content reflects current scientific knowledge, policies, or practices.





# McGREGOR'S YEAR BOOK 1937

PRES. HOOVER  
25¢

E.G. HILL  
24¢

COLUMBIA  
22¢

GOLDEN OPHELIA  
23¢

KAISERINE  
AUG. VICTORIA  
21¢

BRIARCLIFF  
22¢

McGREGOR'S IDEAL  
COLLECTION OF  
EVERBLOOMING GARDEN ROSES

THE FULL COLLECTION	\$ .88
6 VAR. 1YR. PLANTS	
THE FULL COLLECTION	\$ 1.89
6 VAR. 2YR. SIZE	
THE FULL COLLECTION	\$ 3.92
6 VAR. 3YR. SIZE	

See page 6

THE McGREGOR BROS. CO. SPRINGFIELD, OHIO, U.S.A.



# Large 3-Year Size Monthly Blooming Roses

## These Roses Are Also Offered in the One and Two Year Old Plants

Three year size roses are dormant field grown and will be shipped without soil. Best and largest roses you can buy. Order one or more as desired.

### THREE-YEAR SIZE ROSES

All 12—3 yr. monthly roses.....	\$7.38
Any 6—3 yr. monthly roses.....	3.90
Any 3—3 yr. monthly roses.....	2.10
Any one—3 yr. rose at prices given	



**La France 24c**

**SILVER PINK**—All roses must give way to the distinctiveness of the world famous La France. Exquisite pink shaded silvery rose. Vigorous growth; handsome green foliage. Will give satisfaction wherever planted. 1 yr., 24c ea.; 2 yr., 44c ea.; 3 yr., 82c ea.



**Talisman 29c**

**ORANGE RED**—The coloring of this magnificent rose has shadings of yellow, gold and red. Long pointed buds and full flowers, strongly fragrant. The choice of all garden roses, and most popular. 1 yr., 29c ea.; 2 yr., 44c ea.; 3 yr., 79c ea.



**Francis Scott Key 22c**

**GLOWING CRIMSON**—In the ever-popular red roses this new variety makes a handsome bedding rose. Deep, solid, glowing crimson blooms are borne in great profusion throughout the season. Sweet scented. 1 yr., 22c ea.; 2 yr., 42c ea.; 3 yr., 79c ea.



**Mme. Butterfly 21c**

**PINK-YELLOW**—A harmony of light pink, apricot. Unsurpassed by any existing variety. Flowers very double. Every branch carries a bud and bloom. Buds, beautiful Indian-red. Remarkably fragrant. 1 yr., 21c ea.; 2 yr., 40c ea.; 3 yr., 80c ea.



**Sunburst 21c**

**ORANGE COPPER**—Highly prized, fragrant blooms, of an especially deep orange and copper color throughout the summer. It has all the good points of merit; long pointed bud; long stems; extraordinary vigorous. 1 yr., 21c ea.; 2 yr., 45c ea.; 3 yr., 82c ea.



**Red Radiance 21c**

**CERISE RED**—This marvelous rose is of a splendid even shade of cerise red. A strong, vigorous grower and remarkable bloomer. Fragrant. One of the best garden roses. 1 yr., 21c ea.; 2 yr., 43c ea.; 3 yr., 78c ea.



**Rev. F. Page-Roberts**

**ORANGE YELLOW**—The shapely buds are Indian yellow, washed with deep carmine which spreads as the buds open. The fragrant blooms on long strong stems make it ideal for cutting. 1 yr., 24c ea.; 2 yr., 45c ea.; 3 yr., 78c ea.



**Joanna Hill 23c**

**INDIAN YELLOW**—Clear yellow flowers deepening at the center. The best of its type. Long pointed buds of perfect shape and long keeping qualities, borne on long stiff stems. Deliciously fragrant. Magnificent deep green foliage. 1 yr., 23c ea.; 2 yr., 43c ea.; 3 yr., 79c ea.



**Ophelia 23c**

**SALMON FLESH**—An outstanding garden rose, flowers are entrancing shade of salmon flesh shaded with rose. Long, stiff stems. Flowers are delicately fragrant. A great favorite everywhere, and an ideal garden rose. 1 yr., 23c ea.; 2 yr., 42c ea.; 3 yr., 80c ea.



**White Killarney 24c**

**PURE WHITE**—Most exquisite white rose grown. Strong upright, deep green foliage. Free-blooming, flowers of delightful fragrance and immense size. Unusually hardy. Distinctive, and of unusual merit. 1 yr., 24c ea.; 2 yr., 44c ea.; 3 yr., 80c ea.



**La Champagne 22c**

**APRICOT-CHAMOIS**—Strong, robust habit, with large, long buds of beautiful shape, which develop into full blooms of bright chamois shading to yellow with apricot center, and peach-blossom reflex base. 1 yr., 22c ea.; 2 yr., 42c ea.; 3 yr., 79c ea.



**Etoile de Hollande 23c**

**CRIMSON RED**—The most popular red garden rose—a brilliant crimson red. A strong, vigorous grower, free and continuous bloomer. Large, moderately double, fragrant flowers, beautiful in all stages of development. Attractive. 1 yr., 23c ea.; 2 yr., 42c ea.; 3 yr., 78c ea.

### ONE YEAR SIZE ROSES

All 12—1 yr. roses	\$1.82
Any 6—1 yr. roses	1.12
Any 3—1 yr. roses	.57
Any One at Prices Given	

### TWO YEAR SIZE ROSES

All 12—2 yr. roses	\$3.43
Any 6—2 yr. roses	1.98
Any 3—2 yr. roses	1.11
Any One at Prices Given	



# The 1937 MCGREGOR'S YEAR BOOK... A Catalogue of a Thousand Bargains

## Our Guarantee

We guarantee all Roses, Shrubs, Plants, Bulbs and Seeds that we send out to points within the United States, to reach Purchaser in good growing condition. This guarantee is an asset with us, and a safeguard to you.

## With Its Wide Variety of Roses, Plants, Seeds

Presents to You One of the Greatest Catalogues of the Year.

### Special Premiums

Our terms being cash with the order, enables us to give additional plants, bulbs, and seeds on orders amounting to \$1.00 or more, as follows: On \$1.00 worth of goods at single Plant, Bulb or Packet prices, select plants, bulbs or seeds to the value of 20c extra. On a \$2.00 order select 40c extra. On a \$3.00 order select 60c extra. On a \$5.00 order select to the value of \$1.00 extra. On \$6.00 select \$1.20 extra, etc. Large orders, premiums in proportion.

### Surprise Offer \$1.00

As a result of our propagations that must tax the capacity of our greenhouses, we generally have, at the end of the season, a surplus of all kinds of plants. Therefore, beginning June 1, we offer surprise collections of miscellaneous plants of our selection. \$1.00 a collection. 3 collections, \$2.50 by express.

### OUR FREE OFFER

If you send us an order amounting to \$1.00 from a friend or neighbor who is not now a customer of ours, we will send you any one of the beautiful Roses shown in color on the face of cover of this book, free. If order from new customer amounts to \$2.50, we will send you any three of the Roses. If order amounts to \$5.00 we will send you six Roses. (Roses 1-yr. size.)

When sending orders besides your own—from friends or neighbors—please be sure to have these separate orders written on separate sheets. This will save possible mistakes and help in making more prompt deliveries.

### Please Include Postage and Packing Charges for All Mail and Parcel Post Shipments

**NOTICE**—If goods are ordered to be forwarded by mail or parcel post, please add postage, packing and boxing charges for every dollar or part of a dollar's worth of goods ordered, according to our table below. Seeds in packets posted free. This enables us to give our customers the lowest possible selling prices with delivery charges fair to all. Simply add postage and packing charges for every dollar or fraction of a dollar's worth of goods ordered according to the state in which you live. If you live in Alabama add 8 cents for every dollar; if in Illinois add 7 cents; if in Nebraska add 10 cents for every dollar's worth ordered. It is always advisable to have plants of the larger sizes such as heavy shrubs, large decorative plants such as ferns, etc., or plants wanted with full ball of earth, shipped by express if possible. Remember that our premium offer more than offsets postage and delivery charges.

### Please Read This Postage Table Carefully

Alabama .....	8c	Idaho .....	12c	Michigan .....	7c	New York .....	8c	Tennessee .....	7c
Arizona .....	10c	Illinois .....	7c	Minnesota .....	9c	North Carolina .....	8c	Texas .....	9c
Arkansas .....	8c	Indiana .....	7c	Mississippi .....	10c	North Dakota .....	10c	Utah .....	12c
California .....	15c	Iowa .....	9c	Missouri .....	8c	Ohio .....	6c	Vermont .....	9c
Colorado .....	10c	Kansas .....	10c	Montana .....	12c	Oklahoma .....	9c	Virginia .....	7c
Connecticut .....	8c	Kentucky .....	7c	Nebraska .....	10c	Oregon .....	14c	Washington .....	15c
Delaware .....	9c	Louisiana .....	9c	Nevada .....	14c	Pennsylvania .....	7c	West Virginia .....	7c
Dist. of Columbia .....	9c	Maine .....	9c	New Hampshire .....	9c	Rhode Island .....	10c	Wisconsin .....	8c
Florida .....	10c	Maryland .....	8c	New Jersey .....	8c	South Carolina .....	8c	Wyoming .....	12c
Georgia .....	9c	Massachusetts .....	9c	New Mexico .....	11c	South Dakota .....	10c	Canada .....	15c
								Mexico .....	15c

### For A Long Time—More than 60 Years

This book has been our annual messenger to the flower lovers of this and other lands. It comes to you now offering at manufacturers' and growers' prices the stock of one of the largest plant producing establishments in the United States offering something for every garden—everything for some gardens. Long before the telephone was known or the electric light dreamed of, McGregors were staunch and hardy pioneers in the plant growing business. From the beginning the keywords of this great enterprise have been Integrity and Service. Today, as in all these past years, the supreme aim of The McGregor Bros. Co. is unquestioned satisfaction on the part of every customer. We have established a clientele of which any concern may have reason to be proud, and we are taking this opportunity to express our appreciation of this successful existence which many thousands of customers have brought about. It is with natural pride, therefore, that we present to you our New 1937 Year Book. It is, in brief, a floricultural department store at your door, and the sole opportunity of plant buyers to secure many things that make for important additions or complete gardens. Extraordinary values fill its pages. Goods are of the highest McGregor quality. Prices are unprecedentedly low. Every offering helps to provide for a beautiful garden at minimum expense and, we believe, therefore, that this catalogue, which we hope will be found pleasing and helpful, is entitled to the consideration of all buyers.



*The McGregor Bros. Company.*  
Roy McGregor, Pres. and Gen. Mgr.

### Important Information to Buyers

**TERMS**—Please send sufficient money to cover your entire order, by P. O. money order, Express money order, Checks, or Stamps in good condition for smaller amounts. Please do not ask us to send orders C. O. D. When writing about an order please include a copy if possible. Please keep a copy of your order. Always remember to write your complete address on every order. Prices in this catalogue cancel all previous prices. Seed orders, Fruits and Water Plant Collections are mailed separately from plant orders. If you wish orders held for later date, please give instructions.

### PERSONAL SERVICE

If you want Roses, Shrubs, Evergreens, Fruit Trees, Greenhouse Plants, Rock Plants, Perennials, Bulbs, Seeds that may not be in our catalogue, please keep in mind that we can, in all probability, furnish them. Our personal service department is so situated with connections among growers throughout the country, of practically all floricultural and horticultural items, that generally it is possible to secure for our customers almost any item ordered even though our own stock on hand does not include it. The great variety of plants, etc., we carry permits us to include in this catalogue only the most popular varieties of the families they represent, so there are many items other than those shown that are available. Therefore, if you do not find in this catalogue the item you want, write us, marking your communication for Mabel Martin McGregor, Personal Service Department, The McGregor Bros. Company, Springfield, Ohio. Inquiries will be welcomed.

**THE MCGREGOR BROS. COMPANY, SPRINGFIELD, OHIO, U. S. A.**

Mrs. F. Shelton, Vienna, Ill., writes: "I will send an order soon. I have been a satisfied customer for 30 years."



# McGregor's Monthly Blooming Cut Flower Roses

On this page and pages 5 and 6, we have listed some of the best monthly blooming own root roses that can be produced, and which fit best into the varying conditions in all the states in the Union. They make rose growing easy; they eliminate the troubles that come to some of the less experienced rose growers. Many amateurs have planted out roses from the best of budded stock and in a couple of years have only brier growth for their efforts. Therefore, for the less experienced, we recommend the own rooted stock. In the center of this book, in the double page spread are one and two year own rooted plants. These roses in the 1 year size offer more value for the dollar than any other roses.

**For Extra Large 3 Yr. Budded Roses**

(See Page 2)



Sensational Rose, Alex. Hill Gray, 20c

pink. Does well under all conditions. 1 yr., 18c, 3 for 48c, doz. for \$1.60; 2 yr., 38c, 3 for 98c, 6 for \$1.89.

## Alexander Hill Gray 20c

**STRAW YELLOW**—(Monthly blooming.) The best and largest pure yellow Tea Rose. Blooms very large. Fine for bedding and cut flowers. 1 yr., 20c, 3 for 52c, doz. for \$1.80; 2 yr., 39c, 3 for \$1.05, 6 for \$1.96.



Salmon Rose, Dixie, 22c

## Bridesmaid

**CLEAR PINK**—(Monthly blooming.) Good grower. Bud exquisite. An old favorite. Fine clear

## Blumenschmidt

**CITRON YELLOW**—(Monthly blooming.) Pure citron-yellow, edged rose. Splendid bedding sort. Flowers produced throughout the summer. A rose that is admired by all. 1 yr., 18c, 3 for 48c, doz. for \$1.60; 2 yr., 38c, 3 for 98c, 6 for \$1.89.

## Bessie Brown

**SNOW WHITE**—(Monthly blooming.) Perfect in shape, lasting splendidly when cut. Color snow-white, faintly flushed and tinged with pink. A fine, strong, free grower. 1 yr., 20c, 3 for 52c, doz., \$1.80; 2 yr., 40c, 3 for \$1.05, 6 for \$1.96.



Gen. McArthur, Crimson-red, 22c



Commonwealth, Deep Pink, 20c

## Crusader 26c

**VELVETY CRIMSON**—(Monthly blooming.) A big, strong growing variety, robust and rugged in every characteristic. Free flowering, blooms big and double. Rich velvety crimson. A wonder. 1 yr., 26c, 3 for 70c, doz. for \$2.30; 2 yr., 47c, 3 for \$1.24, 6 for \$2.36.



Duchess of Wellington

## Caledonia

**PURE WHITE**—(Monthly blooming.) Large flowers of very double flowers of pure white. A new variety that is fast becoming very popular. A grand garden rose. 1 yr., 22c, 3 for 59c, doz. for \$1.94; 2 yr., 42c, 3 for \$1.10, 6 for \$2.09.



Dame Edith Helen, 27c

## Duc. de Brabant

**LIGHT PINK**—(Monthly blooming.) A bright China rose with coppery yellow center, end of petals suffused with carmine. A charming coloring, free blooming and a good grower. 1 yr., 19c, 3 for 49c, doz. for \$1.70; 2 yr., 39c, 3 for \$1.04, 6 for \$1.92.

## Charles K. Douglas

**VELVETY CRIMSON**—(Monthly blooming.) Flower large, double, sweet fragrance; intense flaming scarlet. Crimson. 1 yr., 26c, 3 for 70c, doz. for \$2.30; 2 yr., 46c, 3 for \$1.22, 6 for \$2.30.



Charles K. Douglas, 26c ea.

## Commonw'ith

**DEEP PINK**—(Monthly blooming.) Flowers are double. Solid color. Few thorns. Vigorous, upright; continuous bloomer. 1 yr., 20c, 3 for 52c, doz. for \$1.80; 2 yr., 40c, 3 for \$1.05, 6 for \$1.96.

## Dixie 22c

**SALMON**—(Monthly blooming.) Lovely salmon-pink cupped flowers. 1 yr., 22c; 2 yr., 42c.

## The Remarkable Green Rose

(Verdiflora)—A most interesting and remarkable rose, much sought because of its oddity. Flowers medium size with small pointed petals, the same color as the foliage. Much has been printed in the news about this curiosity. Blooms constantly, stock limited. Price 32c, 4 for \$1.00, 2 yr., 49c, 3 for \$1.35.

McGregor's Plant Food, sifting top can, 35c.

## F. R. Patzer

**CREAMY BUFF**—(Monthly blooming.) A wonderful variety, exquisite creamy-buff blossoms, back of petals delicate warm pink. 1 yr., 23c, 3 for 61c, doz. for \$2.04; 2 yr., 45c, 3 for \$1.18, 6 for \$2.26.

## Duchess of Wellington 22c

**SAFFRON YELLOW**—(Monthly blooming.) Showy, most continuous bloomer. Intense saffron yellow stained deep crimson. A popular variety of an indispensable color. 1 yr., 22c, 3 for 59c, doz. for \$1.94; 2 yr., 47c, 3 for \$1.24, 6 for \$2.36.

## Gen. McArthur

**CRIMSON SCARLET**—(Monthly blooming.) As fragrant as a rose can be. Richest crimson - scarlet. Delightful fragrance. 1 yr., 22c, 3 for 59c, doz. for \$1.94; 2 yr., 44c, 3 for \$1.11, 6 for \$2.20.



Unusual Rose, Helen Gould, 19c



Caledonia, Purest White, 22c

## Etoile de France

**CRIMSON**—(Monthly blooming.) Gold Medal of France, vigorous grower. Lovely shade of crimson. Very fragrant. 1 yr., 24c, 3 for 64c, doz. for \$2.14; 2 yr., 44c, 3 for \$1.16, 6 for \$2.20.

## Gruss an Teplitz

**RICH SCARLET**. (Monthly blooming.) A rose for everybody. Rich scarlet; very fragrant. 1 yr., 21c, 3 for 56c; 2 yr., 45c, 3 for \$1.18.

## Helen Gould 19c

**WATERMELON RED**—(Monthly blooming.) A grand rose of the highest merit. Bright watermelon red, free grower and bloomer. 1 yr., 19c, 3 for 49c, doz. for \$1.70; 2 yr., 39c, 3 for \$1.04, 6 for \$1.92.



# Monthly Blooming GARDEN ROSES



Kitchener of Khartum—Dazzling Red, 19c

## Pink Hermosa

**SOFT PINK**—(Monthly blooming.) The best known in the rose family. Pleasing shade of pink, very fragrant. 1 yr., 19c, 3 for 49c; 2 yr., 40c, 3 for \$1.05.

## Kitchener of Khartum 19c

**SCARLET**—(Monthly blooming.) Intense scarlet velvety petals; semi-double. 1 yr., 19c, 3 for 49c; 2 yr., 39c, 3 for \$1.04.

## J. L. Mock 22c

**IMPERIAL PINK**—(Monthly blooming.) The flowers large, perfect form, deep imperial pink, highly perfumed. 1 yr., 22c, 3 for 59c, doz. for \$1.94; 2 yr., 45c, 3 for \$1.18, 6 for \$2.26.

## Killarney 22c

**DEEP PINK**—(Monthly blooming.) Deep brilliant and sparkling shell-pink, a most exquisite shade. Queen of Irish roses. 1 yr., 22c, 3 for 59c.



Mrs. R. B. Cant—Rich Rosy Red

## Lady Ursula 19c

**FLESH PINK**—(Monthly blooming.) A rose of vigorous growth; free blooming during entire summer and autumn. Color, a delightful tone of flesh-pink. Tea-scented. 1 yr., 19c, 3 for 49c, doz. for \$1.70; 2 yr., 40c, 3 for \$1.05, 6 for \$1.96.



Laurent Carle—Wonderful Red Rose

## Lady Hillingdon

**DEEP YELLOW**—(Monthly blooming.) A deep shade of yellow which does not fade easily. A grand garden rose that blooms freely. 1 yr., 20c, 3 for 52c, doz. for \$1.80; 2 yr., 44c, 3 for \$1.11, 6 for \$2.20.



Luxembourg—Beautiful Amber Yellow, 19c

## Luxembourg 19c

**AMBERYELLOW**—(Monthly blooming.) Flowers double amber yellow. Especially fine in the South. A fine vigorous growing variety, does well under all conditions. 1 yr., 19c, 3 for 49c, doz. for \$1.70; 2 yr., 40c, 3 for \$1.05, 6 for \$1.96.

## Laurent Carle

**DEEP CARMINE**—(Monthly blooming.) A strong, upright grower, constant and profuse bloomer, with extra large flowers. Very double and deliciously tea-scented. Bright carmine, with scarlet tones. 1 yr., 19c, 3 for 49c, doz. for \$1.70; 2 yr., 39c, 3 for \$1.04, 6 for \$1.92.



Mrs. Aaron Ward, Grand Salmon Yellow Rose

## Louis Phillipe

**VELVETY CRIMSON**—(Monthly blooming.) Handsome variety with extra large rich velvety crimson flowers. Strong and robust grower. Blooms continually. 1 yr., 19c, 3 for 49c, doz. for \$1.70; 2 yr., 39c, 3 for \$1.04, 6 for \$1.92.

## Marechal Neil

**GOLDEN YELLOW**—(Monthly blooming.) The fame of this superb yellow rose, with its large, deep, golden-yellow, fragrant flowers, is world wide. Grand indoor rose for the North, and an outdoor rose for the South. 1 yr., 22c, 3 for 59c, doz. for \$1.94; 2 yr., 45c, 3 for \$1.18, 6 for \$2.26.

## Mme. F. Krueger

**COPPERY YELLOW**—(Monthly blooming.) The striking color of this handsome rose places it at once in the front. Creamy yellow, blush shading. 1 yr., 19c, 3 for 49c, doz. for \$1.70; 2 yr., 39c, 3 for \$1.04, 6 for \$1.92.

## Mme. Jennie Guillemont 19c

**SAFFRON YELLOW**—(Monthly blooming.) Most beautiful. Color deep saffron-yellow, opening canary with dark golden shadings; blooms large. 1 yr., 19c, 3 for 49c, doz. for \$1.70; 2 yr., 42c, 3 for \$1.10, 6 for \$2.05.



Mme. Caroline Testout

## Mme. Caroline Testout

**SATINY PINK**—(Monthly blooming.) Clear, bright satiny pink. Buds beautiful shape, flowers large and extremely showy. 1 yr., 26c, 3 for 70c; 2 yr., 49c, 3 for \$1.30.

## Mme. Melanie Soupert

**SALMON YELLOW**—(Monthly blooming.) Golden-yellow, shaded to orange yellow. Petals beautifully flushed orange pink. 1 yr., 19c, 3 for 49c, doz. for \$1.70; 2 yr., 39c, 3 for \$1.04.



Mme. Melanie Soupert  
Salmon-Yellow, 19c



Lady Ursula  
Soft Pink, 19c

## Meteor 19c

**RICH CRIMSON**—(Monthly blooming.) Forms compact bushes about 2 feet high, covered with crimson-red flowers. 1 yr., 19c, 3 for 49c; 2 yr., 40c, 3 for \$1.05.

## Mrs. Aaron Ward

**SALMON-YELLOW**.—(Monthly blooming.) Deep golden-orange, shading to creamy-yellow. Sweetly scented. 1 yr., 24c, 3 for 64c; 2 yr., 41c.

## Mrs. E. P. Thom

**LIGHT YELLOW**—(Monthly blooming.) Deep lemon-yellow. Sweetly scented. Highly recommended. 1 yr., 26c, 3 for 70c; 2 yr., 47c, 3 for \$1.24.

## Mrs. R. B. Cant

**ROSY RED**—(Monthly blooming.) A fine garden rose of round, full form and solid, even color; clear, bright rosy-red; large, double and fragrant. 1 yr., 19c, 3 for 49c, doz. for \$1.70; 2 yr., 39c, 3 for \$1.04, 6 for \$1.92.



Mrs. E. P. Thom, Charming Light Yellow



Marvelous Outflower Rose J. L. Mock, 22c



# Ever Blooming ROSES

## M. Van Houtte

**STRAW YELLOW**—(Monthly blooming.) Fine straw-yellow color, outer petals bright rosy-crimson suffused with light pink. Vigorous, blooms profusely, deliciously scented. 1 yr., 19c, 3 for 49c; doz., \$1.70, 2 yr., 38c, 3 for 98c, 6 for \$1.89.

## Maman Cochet

**ROSE PINK** — (Monthly blooming.) Flowers superb, extra large, perfectly double. Color clear, rich pink. 1 yr., 19c, 3 for 49c; 2 yr., 39c.



Marie Van Houtte—Lovely Straw Yellow



Rapture—Beautiful Apricot Gold, 22c

# Ever Blooming ROSES

## Pres. Taft 20c

**CORAL PINK** — (Monthly blooming.) Most remarkable of all pink roses. Shining intense deep coral pink, vigorous free branching. Large full flowers. 1 yr., 20c, 3 for 52c, doz. for \$1.80; 2 yr., 44c, 3 for \$1.11, 6 for \$2.20.

## Rapture 22c

**BRIGHT APRICOT**—(Monthly blooming.) Coral suffused with rose and gold. Intensely brilliant. Fragrant; 1 yr., 22c; 2 yr., 45c.



Wonderful Garden Rose—Pink Radiance

## Pink Radiance 21c

**ROSE PINK**—(Monthly blooming.) (Pink American Beauty.) A lovely rose-pink in color. Easily grown and moderately fragrant. Large and full. 1 yr., 21c, 3 for 55c; doz., \$1.85; 2 yr., 43c, 3 for \$1.13, 6 for \$2.14.

## Red Columbia 22c

**RICH SCARLET**—(Monthly blooming.) A beautiful scarlet-crimson of exquisite shade. Beautiful foliage. One of the finest. 1 yr., 22c, 3 for 59c; doz., \$2.00; 2 yr., 44c, 3 for \$1.11, 6 for \$2.20.

## 1937 COVER MCGREGOR'S IDEAL ROSE COLLECTION

**COLUMBIA**—Peach pink; opens to glowing pink. Fine grower, perfect flowers, enormous petals. 1 yr., 22c, 3 for 59c, doz. for \$1.94; 2 yr., 44c, 3 for \$1.15, 6 for \$2.15.

**E. G. HILL**—Scarlet red; considered the best scarlet red. Large blooms, fine for bedding variety. 1 yr., 24c, 3 for 64c, doz. for \$2.14; 2 yr., 48c, 3 for \$1.27, 6 for \$2.40.

**BRIARCLIFF**—Deep pink; found in every cut flower store. Perfect form. The most popular of all roses for weddings. 1 yr., 22c, 3 for 61c, doz. for \$2.04; 2 yr., 44c, 3 for \$1.15, 6 for \$2.15.

**KAISERINE A. VICTORIA** — Creamy white; flowers delicate creamy white. A dependable variety and one by which all white roses are judged. 1 yr., 21c, doz. for \$1.86; 2 yr., 42c, 3 for \$1.10, 6 for \$2.14.

**PRESIDENT HOOVER**—Cerise pink; a dazzling color combination of cerise light pink, flame, scarlet and yellow. Fragrant, highly recommended. 1 yr., 25c, 3 for 68c, doz. for \$2.24; 2 yr., 49c, 3 for \$1.30, 6 for \$2.47.

**GOLDEN OPHELIA** — Golden yellow; delicate tinted salmon flesh with pretty golden yellow suffusions. Admired by everyone. 1 yr., 23c, 3 for 61c, doz. for \$2.04; 2 yr., 47c, 3 for \$1.24, 6 for \$2.36.

Fine collection of 6, in 1 yr. plants.....\$0.88  
Fine collection of 6, in 2 yr. plants..... 1.89  
Fine collection of 6, in 3 yr. plants..... 3.92

## Rhea Reid 21c

**RICH CRIMSON**—(Monthly blooming.) Vigorous. The buds are long and pointed, of a most beautiful rich crimson. 1 yr., 21c, 3 for 55c, doz. for \$1.85; 2 yr., 43c, 3 for \$1.13, 6 for \$2.14.

## Safrano 19c

**APRICOT**—(Monthly blooming.) Flowers bright apricot-yellow changing to orange and fawn. Shade unsurpassed. 1 yr., 19c, 3 for 49c; 2 yr., 39c, 3 for \$1.04.

## Snowflake 19c

**PURE WHITE** — (Monthly blooming.) Flowers of purest white and produced abundantly on long stiff stems. Vigorous grower, delicate fragrance. 1 yr., 19c, 3 for 49c; doz., \$1.70; 2 yr., 39c, 3 for \$1.04, 6 for \$1.92.

## Templar 23c

**GLOWING SCARLET** — (Monthly blooming.) Clear, bright red, exceedingly double. Blooms large and full. Vigorous growth; handsome foliage. Sweetly scented. 1 yr., 23c, 3 for 60c; doz., \$2.04; 2 yr., 46c, 3 for \$1.22, 6 for \$2.30.

## White La France 24c

**CREAM WHITE**—(Monthly blooming.) Extra fine variety. Beautiful light fawn color; almost white. A good strong grower. True La France foliage, distinct. 1 yr., 24c, 3 for 64c; doz., \$2.14.

## Maiden Blush 19c

**BLUSH PINK** — (Monthly blooming.) Beautiful, firm, glossy foliage, like Maman Cochet in appearance; vigorous white shading to pink, immense blooms. 1 yr., 19c, 3 for 49c, doz. for \$1.70; 2 yr., 39c, 3 for \$1.04, 6 for \$1.92.

## Souvenir Malmaison 19c

**SOFT PINK** — (Monthly blooming.) Has no equal. Rich soft pink, double to center. Exquisitely fragrant. A noble rose. 1 yr., 19c, 3 for 49c, doz. for \$1.70; 2 yr., 42c, 3 for \$1.10, 6 for \$2.10.

## The Bride 19c

**PURE WHITE** — (Monthly blooming.) The flowers are very large and double; one of the best varieties for cut flowers. A beautiful pure white. 1 yr., 19c, 3 for 49c, doz. for \$1.70; 2 yr., 39c.



Popular Bedding Rose, Red Letter Day

## Red Letter Day 22c

**SCARLET CRIMSON** — (Monthly blooming.) Exceedingly beautiful. Velvety, brilliant, glowing scarlet-crimson buds. 1 yr., 22c, 3 for 59c, doz. for \$2.00; 2 yr., 44c, 3 for \$1.11, 6 for \$2.20.

## Red Maman Cochet 20c

**ROSE CRIMSON**—(Monthly blooming.) Grows in almost any soil. Flowers long and pointed. Color warm rose-crimson. 1 yr., 20c, 3 for 52c, doz. for \$1.80; 2 yr., 40c, 3 for \$1.05, 6 for \$1.96.



Pure White Rose, Snowflake, 19c

## Souvenir De Notting

**APRICOT YELLOW** — (Monthly blooming.) Seedling of Marechal Niel. Color apricot-yellow, changing clear yellow; long buds. A distinct variety. Awarded many medals. 1 yr., 19c, 3 for 49c; doz., \$1.70; 2 yr., 40c, 3 for \$1.05, 6 for \$1.98.



Cream White Rose, White La France

## White Cochet 20c

**SNOW WHITE** — (Monthly blooming.) Snowy-white in color, sometimes faintly tinged pale blush. Fine for open ground culture. 1 yr., 20c, 3 for 52c, doz. for \$1.80; 2 yr., 42c; 3 for \$1.10, 6 for \$2.09.



# Cherokee or Laevigata **Roses**

**AMOENA** (The Pink Flowering Cherokee Rose)—A glowing pink with golden-yellow center. Resembles huge apple blossoms. 1 year., 27c ea., 3 for 71c; 2 yr., 45c ea.

**LAEVIGATA** (The White Cherokee Rose)—This is the famous Cherokee Rose so well known in California. Large pure white flowers with center filled with golden-yellow anthers. 1 yr., 28c ea.; 2 yr., 46c.

## Banksia Roses

**WHITE BANKSIA (LADY BANKS)**—Pure white flowers in clusters, violet fragrance. 1 yr., 27c ea., 3 yr., 45c ea.

**YELLOW BANKSIA (LADY BANKS)**—Bloom is sulphur-yellow. Delicious violet fragrance. 1 yr., 28c ea., 3 for 74c; 2 yr., 46c ea., 3 for \$1.22.



Hardy June Rose  
Gloire de Lyonnaise, 22c



Best of White June Roses



Hardy June Rose  
Popular Paul Neyron, 22c



Dark Red  
Fragrant Rose,  
His Majesty 20c

## Hardy Fragrant June Roses

**AMERICAN BEAUTY**—Known the world over for its magnificent large-growing crimson flowers. Foliage large; leathery, hardy in all sections; it produces a constant profusion of massive, rich fragrant bloom. 1 yr., 24c ea., 3 for 64c; 2 yr., 44c ea., 3 for \$1.16.

**EUGENE FUERST**—Color deep red, shaded crimson. Profuse bloomer. A most charming rose. 1 yr., 20c ea., 3 for 52c; 2 yr., 39c ea., 3 for \$1.04.

**FRAU KARL DRUSCHKI (WHITE AMERICAN BEAUTY)**—This grand rose has become renowned as the very highest type of its class and the best snow-white rose ever introduced. A strong grower and has the vigor and hardiness of an oak. Flowers immense in size and produced with great freedom. Color a marvelous white, without a tinge of yellow. 1 yr., 24c ea., 3 for 64c; 2 yr., 44c, 3 for \$1.16.

**GENERAL JACQUEMINOT**—Buds and flowers are models of perfection, unequaled in beauty and form, brilliant intensity of color. 1 yr., 21c ea., 3 for 56c; 2 yr., 40c ea., 3 for \$1.05.

**GLOIRE LYONNAISE**—Very large, full flowers. Color white, base of petals canary. 1 yr., 22c ea., 3 for 59c; 2 yr., 43c ea., 3 for \$1.13.

**HIS MAJESTY**—The crimson Frau Karl Druschki. Deep, dark crimson, shaded deep vermilion—crimson towards the edges. Excellent. 1 yr., 20c ea., 3 for 52c; 2 yr., 39c ea., 3 for \$1.04.

**MAGNA CHARTA**—A bright, clear pink, flushed with crimson; very sweet, flowers extra large, with fine form and very double. 1 yr., 20c ea., 3 for 52c; 2 yr., 40c ea., 3 for \$1.05.

**PAUL NEYRON**—A beautiful clear, rose-pink; immense in size, sometimes measuring 6 inches across. 1 yr., 22c ea., 3 for 59c; 2 yr., 43c ea., 3 for \$1.13.

**ULRICH BRUNNER**—Cherry red of immense size. 1 yr., 22c ea., 3 for 59c; 2 yr., 43c ea., 3 for \$1.13.

**SPECIAL OFFER**—Any 3 June roses above, 1 yr. for 59c; any 5 June roses above, 1 yr. for 94c; any 3 June roses above, 2 yr. for \$1.17; any 5 June roses above, 2 yr. for \$1.89.

## Sunny South Rose Collection

### Roses That Bloom and Bloom All Summer

**MONTHLY BLOOMING CLIMBERS**—Roses that bloom and bloom all summer. Cl. Red Radiance, Cl. Kaiserin A. Victoria, Cl. Columbla, Cl. Lady Hillingdon, Cl. Marechal Neil, Cl. Lady Ashtown, Cl. Souvenir of Wootton, Cl. White Maman Cochet, Cl. Madame Caroline Testout, Cl. Gruss an Teplitz. Collection of all 10 above, 1 yr. for \$1.32; all 10 2 yr. for \$3.60; first 5 of collection in 1 yr. for 70c; first 5 of collection in 2 yr. for \$1.90.



Double Sweet-Scented Flowers  
Just Like Bush Roses

## Old Fashioned Moss Roses

### HARDY JUNE BLOOMING

**HENRY MARTIN**—Flowers double and globular, beautifully mossed. Color crimson, sweetly fragrant. 1 yr., 27c ea., 3 for 71c; 2 yr., 48c, 3 for \$1.27.

**ELIZABETH ROWE**—Old favorite, deep pink buds, mossed. Sweetly fragrant. 1 yr., 28c ea., 3 for 74c; 2 yr., 49c ea., 3 for \$1.30.

**MAUSELINE**—Flowers are produced in clusters and are large, full and sweet. Pure white flowers, and buds have an abundance of deep green moss. 1 yr., 26c ea., 3 for 70c; 2 yr., 48c ea., 3 for \$1.27.

**SPECIAL OFFER**—One of each of these 3 old favorite roses, red, white and pink, 1 yr. size, 72c; all three in two-year size for \$1.24.



Pink Moss, Eliz. Rowe, 28c

## Hardy Polyantha or Baby Bush Roses

**ROSA ROULETTI (Miniature Rock Garden Rose)**—A beautiful little rose found growing in Alpine window garden by M. Correvon, the famous Swiss horticulturist; rapidly attaining popularity as a rock garden plant and as an edging subject. Grows six to seven inches tall and blooms from early summer until frost. Flowers rose pink, less than an inch in diameter. Strong plants, 35c ea., 3 for 89c; extra large plants, 60c ea., 3 for \$1.50.

**BABY RAMBLER**—Original Baby Rambler. In bloom all the time. Brightest rosy crimson. 1 yr., 20c ea., 3 for 52c; 2 yr., 38c.

**CATHERINE ZEIMET**—Grows about twenty inches. Double pure white flowers in abundance. 1 yr., 19c ea., 3 for 49c; 2 yr., 37c ea., 3 for 96c.

**CHATILLON ROSE**—Bud small, long pointed; flower medium size, semi-double, bright pink. 1 yr., 22c ea., 3 for 59c; 2 yr., 37c ea., 3 for \$1.05.

**GEORGE ELGER**—Lovely golden-yellow. Free in growth, free in bloom with small, glossy foliage. 1 yr., 19c ea., 3 for 49c; 2 yr., 37c.

**GLORIA MUNDI**—Best of the orange scarlet Polyanthas. You will want this new rose in your garden. 1 yr., 22c ea., 3 for 59c; 2 yr., 40c ea., 3 for \$1.05.

**GRUSS AN AACHEN**—Yellowish-rose colored with salmon-pink and red shadings. Highly recommended. 1 yr., 20c ea., 3 for 52c; 2 yr., 38c, 3 for 98c.

**LA FAYETTE**—Brilliant cherry-crimson flowers. Large, brilliant. For edging rose beds. 1 yr., 22c ea., 3 for 59c; 2 yr., 40c.

**MADEMOISELLE CECIL BRUNNER**—This is the popular Baby Pink or "Sweetheart" Rose. Blush shaded light salmon-pink. 1 yr., 19c ea., 3 for 49c; 2 yr., 37c ea., 3 for 96c.

**MISS EDITH CAVELL**—Bright crimson, white eye; very beautiful. 1 yr., 20c ea., 3 for 52c; 2 yr., 38c ea., 3 for 98c.

**ORLEANS**—Prettiest of all. Deep cerise of Geranium-pink. Center white. 1 yr., 21c ea., 3 for 58c; 2 yr., 39c ea., 3 for \$1.04.

**SALMON SPRAY**—A new variety with very large rose-pink flowers. Strong in growth. 1 yr., 22c ea., 3 for 59c; 2 yr., 40c ea.

**TIP-TOP (BABY DOLL)**—Golden-yellow tipped, clear, bright cerise. Lovely little doll roses. 1 yr., 19c ea., 3 for 49c; 2 yr., 37c ea., 3 for 96c.

**SPECIAL OFFER**—Any 3 Polyantha Roses above, 1 yr. for 58c; any 5 Polyantha Roses above, 1 yr. for 92c; any 3 Polyantha Roses above, 2 yr. for \$1.16; any 5 Polyantha Roses above, 2 yr. for \$1.88.



35c  
Each

Miniature Rock Garden Rose, Roulette, 35c





### Climbing American Beauty 20c

(Soft red)—Blooms anywhere a porch rose will grow. Thousands of flowers. Color soft, growing red, exquisite fragrance. 1 yr., 20c ea., 3 for 52c, doz. for \$1.80; 2 yr., 40c, 3 for \$1.10.

### Mary Wallace

(Rose pink)—Bright, warm rose-pink with salmon base. Glossy foliage. Early bloomer. 18c ea., 3 for 48c, doz. for \$1.60; 2 yr., 39c, 3 for \$1.04.



Grand Pink Climbing Rose Mary Wallace, 18c

### Roserie 18c

(Cerise pink)—Very sweet fragrance and unusually attractive. A porch rose. 18c ea., 3 for 48c, doz. for \$1.60; 2 yr., 38c, 3 for 98c.

### Dorothy Perkins

(Shell pink)—Beautiful shell-pink of sweetest fragrance. Flowers large, double, in clusters. 18c ea., 3 for 48c, doz. for \$1.60; 2 yr., 39c, 3 for \$1.04.

### Hardy Marechal Neil Gardenia

(Yellow)—The exquisite deep yellow buds become lighter when fully matured. They are globular in shape and very fragrant. Free blooming. 18c ea., 3 for 48c, doz. for \$1.60; 2 yr., 39c ea., 3 for \$1.04.



Hardy Marechal Neil, a Grand Rose in Growth and Color



The Blue Rambler

### Blue Rambler

VIOLET BLUE (Veilchenblau)—The blossoms, massed in large umbels, are semi-double. On first unfolding is pink or purplish pink, then turns amethyst, and finally steel blue as the flower fades. 1 yr., 18c ea., 3 for 48c, doz. for \$1.60; 2 yr., 40c ea., 3 for \$1.05.

### White Dorothy Perkins

(White)—Flowers are snowy-white, double, full and of good size; borne in clusters. 19c ea., 3 for 49c, doz. for \$1.70; 2 yr., 39c, 3 for \$1.04.

### Mary Lovett

(Pure white)—Pure waxy white, large broad-petaled flowers. Sweet scented. Vigorous grower; heavy glossy foliage. 17c ea., 3 for 45c, doz. for \$1.50; 2 yr., 38c, 3 for 98c.

### Silver Moon

(Pure white)—Flowers purest white. Pointed, semi-transparent buds show the yellow stamens through the petals. 20c ea., 3 for 52c, doz. for \$1.80; 2 yr., 40c, 3 for \$1.05.

### White Dorothy Perkins

(White)—Flowers are snowy-white, double, full and of good size; borne in clusters. 19c ea., 3 for 49c, doz. for \$1.70; 2 yr., 39c, 3 for \$1.04.

## HARDY CLIMBING ROSES

### Paul's Scarlet Climber 20c

(Dazzling Scarlet)—Flowers in large clusters. Vigorous growth, rich fragrance, perfect hardiness. Blooms large, bright, dazzling scarlet color. 1 yr., 20c each, 3 for 52c; 2 yr., 40c ea., 3 for \$1.05.

### Red Dorothy Perkins 18c

(Crimson maroon)—Flowers crimson maroon, tinged scarlet, very double, produced in trusses. A pillar rose. 18c ea., 3 for 48c, doz. for \$1.60; 2 yr., 38c ea., 3 for 98c.

### Eugene Jacquet 19c

(Cherry red)—Flowers are fragrant cherry-red, borne in the greatest profusion. Improves with age; long blooming period. 19c ea., 3 for 49c, doz. for \$1.70; 2 yr., 39c ea., 3 for \$1.04.



Hardy Climbing Shower of Gold, 20c

### Shower of Gold 20c

(Yellow)—A greatly improved yellow rambler. The flowers are deep golden yellow with deeper orange shading in the center. Metallic foliage. 1 yr., 20c ea., 3 for 58c, doz. for \$2.00; 2 yr., 40c ea., 3 for \$1.10.

### Jacotte 19c

(Yellow)—Large semi-double flowers of bright orange-yellow tinted copper-red, produced in clusters. Luxurious holly-like foliage. 19c ea., 3 for 49c, doz. for \$1.70; 2 yr., 40c ea., 3 for \$1.05.

### Emily Gray

Rich golden yellow flowers produced in clusters on individual stems. Retain their brilliant coloring long after being cut. 1 yr., 20c ea., 3 for 58c, doz. for \$2.00; 2 yr., 40c ea., 3 for \$1.16; 3 yr., 75c each.



### Hardy Climbing Rose Dr. Van Fleet 20c

(Light pink)—Flowers and buds are light pink, borne on individual stems. Strong, healthy foliage. 1 yr., 20c ea., 3 for 58c, doz. for \$2.00; 2 yr., 40c ea., 3 for \$1.05.



Wonderful Climbing Rose, American Pillar, 18c, 39c

### American Pillar 18c

(Crimson pink)—Flowers are crimson-pink, very large and brilliant. Highly recommended. Never troubled with insects. 1 yr., 18c ea., 3 for 48c, doz. for \$1.60; 2 yr., 39c ea., 3 for \$1.04.

### Climbing Primrose

LIGHT YELLOW—A real hardy climbing yellow. Strong vigorous growing; free flowering, good foliage. 22c ea., 3 for 59c, doz. for \$1.94; 2 yr., 40c ea., 3 for \$1.05.

### Climbing Dr. Huey

CRIMSON MAROON—Darkest of all; white at center with golden stamens; vigorous grower. 19c ea., 3 for 49c, doz. for \$1.70; 2 yr., 39c ea., 3 for \$1.04.

### Chaplin's Pink Climber

RICH PINK—A striking novelty. 27c ea., 3 for 70c, doz. for \$2.30; 2 yr., 47c ea., 3 for \$1.27.

### Cl. Bess Lovett

BRIGHT RED—Flowers bright clear red, good size and double; the most fragrant of the climbing roses. 20c ea., 3 for 52c; 2 yr., 40c ea., 3 for \$1.04.

### Climbing Marie Gouchalt

SHELL PINK—New cluster flowering type; shell pink flowers in abundance; rich green foliage not subject to mildew. 22c ea., 3 for 59c, doz. for \$1.94; 2 yr., 42c, 3 for \$1.10.

### Climbing White Amer. Beauty

WHITE—A grand climber; beautiful white double flowers; a rapid grower and free bloomer; disease resistant. 20c ea., 3 for 52c, doz. for \$1.80; 2 yr., 39c, 3 for \$1.04.

### Climbing Trio

Cl. Amer. Beauty, red; Mary Wallace, pink; Gardenia (Hardy Marechal Neil) yellow; 3, 1-yr., 52c; 3, 2-yr., \$1.16.

### The Spanish Beauty 24c

MME. GREGOIRE STAECHELIN (Deep maroon)—(New) Unmatched in color, deep maroon paling carmine. Fragrant blooms, excellent for cutting. 24c ea., 3 for 64c, doz. for \$2.14; 2 yr., 42c, 3 for \$1.10.



The Spanish Beauty, 24c



# Anemone, Pompon, Korean, Single and . . . Large Flowering Hardy Chrysanthemums



Sunset Collection of Hardy Chrysanthemums

## Sunset Collection of Hardy Mums

A special collection of all types of hardy Chrysanthemums Anemone, Pompon, Korean, single and large flowering. All colors, all different, all hardy. A most interesting and specially selected collection that is sure to be pleasing. All 5 for 90c.



Chrysanthemum Chrysolora, yellow

**GOLDEN PEARSON**—A yellow sport of the popular Gladys Pearson. Splendid grower, handsome foliage. 18c ea., 3 for 48c.

## Large Flowering Hardy Mums

**GRANNY SCOVILLE**—A lovely, large fluffy flower of rich coral bronze. Very choice. 31c ea., 3 for 80c.

**WHITE SURPRISE**—White as the name implies. Small, dark green foliage. The growing plants are red stemmed with wonderful tenacity when mature. We are certain this variety will become a peer among the Thanksgiving whites. 16c ea., 3 for 43c.

**ALADDIN** (The Cut and Come Again Mum)—Beautiful flowers of rich golden bronze. 29c ea., 3 for 76c.



Chrys. Granny Scoville

**AMBASSADOR**—A large, incurved, showy white, early. 16c ea., 3 for 43c.

**CHRYSOLORA**—The best yellow for early October. 17c ea., 3 for 45c.

## Five Special Chrysanthemums

**BRONZE DOTY**—Terra Cotta, Bronze.  
**PINK DOTY**—Beautiful shell pink.  
**RED DOTY**—Silvery wine red.  
**WHITE DOTY**—Pure white.  
**YELLOW DOTY**—Golden yellow.  
**SPECIAL OFFER**—The 5 for 60c.



New Korean Chrysanthemum Diana, 34c

## Korean Chrysanthemums

The greatest advance in Chrysanthemums in years. Absolutely hardy without any protection. New pastel shades—flowers in October—very free blooming. Height 2 to 2½ feet.

**APOLLO**—A most profuse bloomer. Flowers 2 inches across. A sparkling combination of bronze, red and gold suffused salmon. 34c ea., 3 for 91c.

**CERES**—Old gold blended with chamois-yellow; dusted with coppery bronze. 35c ea., 3 for 92c.

**DAPHNE**—Flowers 3½ inches across. Lovely daphne-pink with a sheen of lilac rose, and prominent golden stamens. 36c ea., 3 for 94c.

**DIANA**—A charming blend of rose-pink and soft salmon. Petals are triple rayed. Very fine. 34c ea., 3 for 91c.

**MARS**—Deep amaranth-red with a velvety wine red sheen. Very brilliant. 35c ea., 3 for 92c.

**MERCURY**—(Patented)—Bronze red changing to coppery bronze. 3-inch flowers. Early and showy—long lasting as a cut flower. 36c ea., 3 for 94c.

**SPECIAL OFFER**—Any three of the New Korean Mums above, for 89c.

## Single Chrysanthemums

**CAVALIER**—This dazzling single variety will prove very popular. The color is a rich vermilion red that does not fade. 30c ea., 3 for 79c.

**INNOCENCE**—Beautiful pure white single flowers. Very prolific. 29c ea., 3 for 76c.

## Large Flowering Pompon and Button Chrysanthemums

These beautiful varieties are again very popular for outdoor bedding purposes. Quite hardy, and with but a slight covering of leaves or coarse stable litter during the winter will take care of themselves after once planted, and produce an abundant, almost lavish, profusion of bloom.

**DAINTY MAID**—White with pink tints. Small button type. 16c ea., 3 for 43c, doz. for \$1.42.

**DOROTHY TURNER**—A sensational new bronze and old gold. 17c ea., 3 for 45c, doz. for \$1.50.

**ETHEL**—A bright red baby pompon or button type. Gorgeous in color and free flowering. 18c ea., 3 for 48c, doz. \$1.60.

**FIRE BIRD**—This is one of the best early red, large pompons we have seen. 17c ea., 3 for 45c, doz. for \$1.50.

**GOLD MINE**—Flowers of miniature size, pure golden yellow button type. 16c ea., 3 for 43c, doz. for \$1.42.

**UVALDA**—The earliest white large pompon. Sometimes shows slight shade of pink when first opening. 16c ea., 3 for 43c, doz. for \$1.42.

**ROSE CHARM**—A very popular tall, bright rose-pink large pompon. 18c ea., 3 for 48c.



Large Pompon, Yellow Bird

**YELLOW BIRD**—Large flowers of golden yellow. Early. 17c ea., 3 for 45c, doz. for \$1.50.

## Anemone Flowered Chrysanthemums

Special collection Anemone Chrysanthemums, Bronze Buckingham, bronze; Ella Gillford pink; Pink Buckingham, pink; Suzanne Miller, yellow. All four for 48c.



Anemone Flowered Chrysanthemum. Suzanne Miller

## Pink Cushion Chrysanthemums

### THE AZALEA FLOWERED CHRYSANTHEMUM

At the 1933 and 1934 Century of Progress Exhibition in Chicago this beautiful new Chrysanthemum created sensational interest. The plant is dwarf and spreading growth, very hardy, and far more prolific than any other variety. When well established single plants have been known to have 1500 flowers open at one time. In color it is of a very pleasing rose pink. Produces flowers in late August and continues to be a mass of blazing glory until late frost. Strong plants, 35c ea., 3 for 92c, 6 for \$1.76.



35c  
Each

Pink Cushion Chrysanthemum



# Large Flowering Chrysanthemums



Chrysolora, Golden Yellow, 19c

**CHRYSANTHEMUMS** on this page are the large flowering cut flower varieties like you see in the cut flower stores. To grow these for large flowers, let the plants grow with only one or two stems, one bud to each stem, and keep the plants well fertilized. For massive blooms, there is nothing to surpass them.

**LOWEST PRICES IN YEARS**—Chrysanthemums are listed this year at prices lower than we have been able to offer them to our customers for years. All savings are being passed on to our customers. All stock is of the usual quality with safe delivery guaranteed. There are few better investments offered anywhere in our catalog.

## 1937 Chrysanthemum Cover Collection

(ILLUSTRATED IN COLORS ON BACK OF COVER)

**HILDA BERGEN**—Fine bronze, 22c.

**LUSTRE**—Rich pink, 21c.

**GOLD LODE**—Deep yellow, 18c.

**GARNET KING**—Dark red, 27c.

**HONEY DEW**—Light yellow, 18c.

**SMITH'S ENCHANTRESS**, 17c.

**ANGELO**—Light pink, 19c.

**HARVARD**—Rich red, 26c.

**GOLDEN QUEEN**—Bronze yellow, 22c.

**NELLIE ROSS**—Bright yellow, 23c.

**DISTINCTION**—Bright pink, 21c.

**BETSY ROSS**—Pure white, 20c.

The full collection of 12 as shown in colors on back of cover.....\$1.48



Sunglow, Bright yellow

**WHITTIER** (Bright yellow)—Deep yellow flowers having a silk-like finish. Easily grown, splendid stems and foliage. 19c ea., 3 for 49c, doz. for \$1.70.

**SNOW WHITE** (White)—Best incurved commercial white. Vigorous grower. Excellent cut flower variety. Very popular. Large. 18c ea., 3 for 48c, doz. for \$1.60.

**ROSE PERFECTION** (Bright pink)—A magnificent bright rose pink. Large double flowers, well formed. Grows about four feet; foliage bright green. 19c ea., 3 for 49c, doz. for \$1.70.



Mrs. F. D. Roosevelt, 22c

**MRS. F. D. ROOSEVELT** (Bright yellow)—This magnificent reflexed variety is used extensively as a cut flower. Large, golden yellow. Distinctive. 22c ea., 3 for 59c, doz. for \$1.94.

**SILVER SHEEN** (Pure white)—Excellent pure white variety. Good size and fine form. Vigorous grower. Long stiff stems. 18c ea., 3 for 48c, doz. for \$1.60.

**SUNGLOW** (Bright yellow)—Rich golden bronze, mahogany tinged flowers borne on long stiff stems. A great keeper, large incurved variety. 18c ea., 3 for 48c, doz. for \$1.60.



Chrys. Silver Sheen, 18c

**WHITE MISTLETOE** (White with slight pinkish cast)—Ball type, incurved flowers are bluish white in color. Upright and vigorous. 20c ea., 3 for 52c, doz. for \$1.80.

**CHRYSOLORA** (Yellow)—The best yellow for early October. Fine incurved flowers. Tall growing. Luxuriant foliage. Rich golden yellow. 19c ea., 3 for 49c, doz. for \$1.70.

**Thanksgiving Pink**—Flowers are a lovely dark pink, ball shaped, first class. 20c, 3 for 52c.

## Exhibition Mum Collection

**PINK MISTLETOE** (Light Pink)—Light pink flowers of ball type, retain their color long after cutting. 22c ea., 3 for 59c, doz. for \$1.94.

**FRIENDLY RIVAL** (Golden yellow)—One of the darkest yellows grown. Flowers large and gracefully incurved. 18c ea., 3 for 48c.

**PINK DELIGHT** (Rose pink)—Flowers lovely light pink; extensively used for commercial purposes. Incurved flowers. 21c ea., 3 for 56c.

**INDIANOLA** (Light bronze)—Magnificent. 18c.

**OAKLEAF** (Dark Bronze)—Wonderful. 19c ea.

**SPECIAL OFFER**—The full collection of five Exhibition Chrysanthemums for 89c.

**WHITE ENCHANTRESS** (Pure white)—Marvelous pure white variety. Enormous size; long stiff stems. Dark green foliage. Cut flower type. 18c ea., 3 for 48c, doz. for \$1.60.



Chrys. Golden Mistletoe, 20c

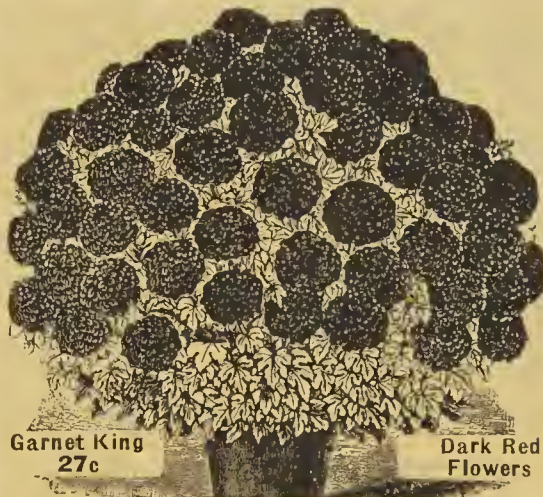
**GOLDEN MISTLETOE** (Light yellow)—Gigantic, round, smooth flowers are borne on good strong stems. They are canary yellow of shining satin-like finish. 20c ea., 3 for 52c, doz. for \$1.80.



Chrys. Quaker Maid, 19c

**QUAKER MAID** (White)—Purest white flower, six inches across. Height 4 1/2 feet. Excellent. 19c ea., 3 for 49c, doz. for \$1.70.

**OCONTO** (White)—An incurved flower of massive size, with strong stem and perfect foliage. Pure white. 19c ea., 3 for 49c.



Garnet King 27c

Dark Red Flowers

## Garnet King 27c

**GARNET KING** (Dark red)—A charming dark red, large flowering variety, which produces an abundance of exquisitely beautiful strong blossoms. 27c ea., 3 for 71c, doz. for \$2.35.



## New Pink Astermum 24c

A new variety of hardy Chrysanthemum, making an unusual large bushy growth. Produces lovely pink flowers in great profusion from mid-summer to frost. Excellent for rockeries or borders. 24c ea., 3 for 70c, doz. for \$2.35.

## Prize Winning Mum Coll.

**JUSTRITE** (Bright Pink)—Flowers beautifully incurved, and perfectly formed. Petals are broad, forming a compact mass of lovely pink. 20c ea.

**GOLDEN HERALD** (Deep golden yellow)—The brightest of the late yellows. Produces several flowers to the stalk. Vigorous. 19c each.

**ROSE GLORY** (Pink)—Wonderful. 18c each.

**AMBASSADOR** (White)—21c each.

**DETROIT NEWS** (Excellent bronze)—22c ea.

**SPECIAL OFFER**—The full collection of Prize Winning Chrysanthemums for 90c.



Chrys. Rose Perfection, 19c

**CHATTANOOGA** (White)—Very popular variety. Snow white in color, strong grower, splendid habits. Long stiff stems. Foliage dark green. 18c ea., 3 for 48c, doz. for \$1.60.

## Golden Wave

(Early yellow)—Extensively used as a cut flower. Immense globular flowers, very full, smooth finish, shining gold in color. Abundant foliage. 21c ea., 3 for 56c, doz. for \$1.86.



Chrys. Golden Wave, 21c

## Gladys Pearson

**GLADYS PEARSON**—Beautiful incurved variety maturing about Thanksgiving. Upper surface of petals is apricot, reverse buff. When placed under light shows bright orange. One of the best. 22c ea., 3 for 59c, 6 for \$1.11.

## Make Money Growing Mums

To give an opportunity to Chrysanthemum societies, clubs, churches, and exhibitors to buy Chrysanthemum plants for resale purposes, or, for growing for selling flowers, we make the following amazingly low prices. (This applies to all varieties offered in this catalog.) 18c varieties: 10 for \$1.42; 25 for \$3.38; \$12.50 per 100. 18c to 20c varieties: 10 for \$1.58; 25 for \$3.68; \$13.50 per 100. 20c to 22c varieties: 10 for \$1.76; 25 for \$4.82; \$14.98 per 100.





The Grand Roosevelt Fern, 23c and 44c

# DECORATIVE FERNS

## and Porch Box Plants



The World Famous Boston Fern 22c

**SPECIAL**—Any three Ferns of the Smaller size for 60c.

**SPECIAL**—Any three Ferns of the larger size for \$1.49.



The Newport Fern 24c and 55c



Deep Green Fronds Bushy and Compact

The Ever Popular Teddy Jr., 22c and 54c



Fluffy Ruffles Fern, 31c and 60c



Ostrich Plume Fern, 22c

### The Famous Ostrich Plume Fern 22c

(Neph. Whitmanii)—One which everyone can succeed in growing. Healthy vigorous grower, with beautiful feathery foliage. Fronds often attain a width of twelve inches, each frond possessing such elegance as to be compared to a beautiful ostrich plume. A grand variety, extremely popular. 22c ea., 2 for 44c. Larger plants 54c ea., 2 for 97c.

### The Popular Teddy Junior Fern 22c

(Neph. Teddy Jr.)—Here is the best fern for every household. Fronds broad and beautifully tapered from base to tip, drooping just enough to make a shapely graceful plant. 22c ea., 2 for 44c. Larger plants 54c ea., 2 for 98c.

### Roosevelt Fern 23c

(Neph. Roosevelt)—Makes a handsome bushy plant. Fronds broad and heavy, often measuring 6 inches across, and five feet long. Gracefully arranged. 23c ea., 2 for 41c. Larger plants 44c ea., 2 for 78c.

### The Newport Fern 24c

(Neph. Scottii) — More dwarf and bushier than the Boston Fern and produces more fronds. Easy grower; a favorite variety. 24c ea., 2 for 44c. Larger plants 55c ea., 2 for 95c.

### The Boston Fern 22c

(Neph. Bostoniensis)—One of the best known ferns in the long years of its cultivation has proven worthy of a place in every home. Easy culture. 22c ea., 2 for 44c. Larger plants 52c ea., 2 for 97c.

### Fluffy Ruffles Fern 31c

(Neph. Superbissima)—Dark green foliage, dense grower. Compact and irregular shaped fronds which give it the name of "Fluffy Ruffles." Heavy overlapping foliage. 31c ea., 2 for 57c. Larger plants 60 ea., 2 for \$1.05.



The Original Sword Fern, 32c

### Original Sword Fern 32c

(Neph. Exaltaia)—Upright in growth—with deep olive green fronds—not as drooping as the Boston which developed from this variety. An excellent distinctive pot plant and adapted to all the general uses of the family. 32c ea., 2 for 58c.

# Ornamental Ferns



Popular Maiden Hair Fern, 22c

### Maiden Hair 22c

(Asiantum Venosum) — An exceedingly beautiful fern, with the most beautiful foliage of all plants. The fronds of this lovely variety are much used in cut-flower work. 22c ea., 2 for 40c, 5 for 95c.

### Silver Fern 28c

(Pteris Argyria) — Extremely showy. Fronds light green with a band of silver markings through the center. Very distinct. 28c ea., 2 for 55c.



Ornamental Silver Fern, 28c

### The Gold Medal Fern-Scholzeii 24c

(Neph. Scholzeii)—An ideal plumed fern with beautiful crested fronds. Distinct compact growth, fronds dense, firm and rigid. Produces a bushy and handsome plant. Highly recommended. 24c ea., 2 for 44c. Larger plants 56c ea., 2 for 98c.



Moss Fern, 21c, 2 for 39c

### The Moss Fern 21c

(Selaginella Emilliana) — Upright growing Moss with numerous feathery stems. Fine as a fern for dishes or as a pot plant. No equal for type. 21c ea., 2 for 39c, 5 for 97c.



The Gold Medal Fern (Scholzeii), 24c and 56c

**McGREGOR'S PLANT FOOD**—A concentrated soluble fertilizer, recommended for ferns, house plants, etc., in sifting top cans. 35c.

### Fern-Dish Ferns

A grand collection of ornamental Ferns, our selection of varieties; kinds most suitable for fern dishes, for table decoration. 5 for 62c.



FERN—Dish Ferns, 5 for 62c



# THE WORLD'S FINEST DAHLIAS



Famous cut flower Dahlia, Buckeye Bride, soft salmon, 40c ea.

**NOTICE**—We offer both Plants and Tubers of most varieties of Dahlias—Tubers can be shipped at once—Plants not ready for delivery until April 1.

## Ambassador 40c

**LIGHT SALMON** (Cactus)—Flowers are yellowish buff shading to salmon-pink. Flowers of perfect form and enormous size. This dahlia was considered one of the outstanding varieties in the last few years. Plants 40c ea., 3 for \$1.05. Tubers 75c ea., 3 for \$2.15.

## Buckeye Bride 40c

**SOFT SALMON** (Formal Dec.)—A lovely geranium pink shading to soft salmon. Very free flowering held correctly on the stem of unusual length. The blooms keep well when cut. Tubers 75c ea. Plants 40c ea., 3 for \$1.05.

## City of Trenton 25c

**BRONZE COPPER** (F. Dec.)—A very fine flower of bronzy copper and strawberry tints. Vigorous grower; long straight stems. Last well when cut. A beautiful addition to any dahlia garden. Plants 25c ea., 3 for 68c. Tubers 42c ea., 3 for \$1.10.

## Bagdad 40c

**DEEP SCARLET** (F. Dec.)—Beautiful scarlet. Extremely vigorous and uniform. Very large long, strong stems. An excellent decorative garden variety. Early bloomer. Tubers 75c ea. Plants 40c each.

## Dorothy Stone 30c

**DEEP ROSE** (Formal Dec.)—Beautiful bright, deep rose pink. Flowers are of unusual size often measuring 7 to 10 inches across. An unusual dahlia with a high rating. Plants 30c ea., 3 for 79c. Tubers 50c ea., 3 for \$1.33.

## Dwight Morrow 40c

**RICH RED** (Formal Dec.)—Deep rich red. Considered the most desirable of all red Dahlias. A vigorous grower greatly admired either in the garden or show room. Massive blooms. Tubers 75c ea. Plants 40c ea., 3 for \$1.05.

## Franklin D. Roosevelt 30c

**SPECTRUM RED** (Inf. Dec.)—A new spectrum red. Bright and glowing. One of the most perfect in habit of growth. Very showy in the garden. Tubers 50c ea. Plants 30c ea., 3 for 79c.

**IMPORTANT**  
Have the soil well drained; do not over-fertilize, and supply humus yearly to your soil.

## Graf Zeppelin 40c

**PURE WHITE** (F. Dec.)—Giant, pure white, deep flower with broad waxy petals. Fine for garden and exhibition purposes, growing taller than any other variety. Stems erect and very long. Plants 40c ea., 3 for \$1.05. Tubers 65c each.

## Honor Bright 40c

**DEEP ORANGE** (F. Dec.)—Excellent deep orange in color. Huge flowers of perfect form borne on long straight stiff stems. Early bloomer, much admired. Tubers 74c ea. Plants 40c ea., 3 for \$1.05.



Jean Trimbee, Violet Purple flowers (1/2 natural size)

## Jean Trimbee 40c

**VIOLET PURPLE** (Semi-Cactus)—Rich violet purple. Large. In a class by itself for beauty of form. Bloom has a high full center. Not unusual to see five fine flowers on one bush at a time. Tubers 75c ea. Plants 40c ea., 3 for \$1.05.

## Imperial Pink 35c

**TRUE PINK** (F. Dec.)—A spectacular dahlia with large flowers of true pink color with rose pink shadings toward the center. Tubers only 35c ea., 3 for 92c.

## Golden Eclipse 40c

**GOLDEN YELLOW** (F. Dec.)—A delightful golden yellow shade. An excellent decorative garden variety. A worthy addition to any collection. Late bloomer. Tubers 75c ea. Plants 40c ea., 3 for \$1.05.



Giant Dahlia Golden Eclipse (1/2 natural size)

## Elite Glory 25c

**BRILLIANT RED** (F. Dec.)—Glowing and most brilliant of reds. Of country-wide fame, retaining its well deserved popularity each year. Produces mammoth flowers of good form and substance. Plants 25c ea., 3 for 68c. Tubers 43c.

## Hillcrest Mandarin

**RED AND GOLD** (Inf. Dec.)—An unusual red and gold color. Large flowers borne on tall straight stems. Extremely vigorous and uniform. Late bloomer. Tubers 35c ea., 3 for 92c.

## McGregor's Garden Dahlia Collection \$1.37

The Greatest Bargain Ever Offered in Dahlias. Six Best Dahlias in Cultivation.

**EDW. T. BEDFORD** (F. Dec.)—This reliable dahlia produces mammoth deep purple flowers on the best stems. Bushes strong and vigorous. Tubers 40c ea.

**COUNTESS OF LONSDALE** (Cactus)—Iridescent shades of salmon-pink and amber. A lovely flower of great richness and appeal. Splendid type of cactus dahlia. Tubers 25c ea.

**AVALON** (F. Dec.)—Clear canary yellow. Large, full flowers of splendid shape. Vigorous grower and blooms freely. One of the best. Tubers 28c ea.

**SPRINGFIELD** (Cactus)—Rich amaranthine red. Splendid garden variety. Outstanding. Tubers 25c ea.

**SAGAMORE** (Dec.)—Amber gold shaded with warm salmon rose and orange buff. Tubers 25c ea.

**GLADYS SHERWOOD** (Colossal Cactus)—Marvelous giant blooms over 10 inches in diameter. Snow white. Tubers 28c ea.

The full collection of six giant Dahlia tubers for \$1.37.



# THE WORLD'S FINEST DAHLIAS

## Golden Goblin 25c

**GOLDEN OCHER** (F. Dec.)—A wonderful variety, easily grown. Flowers are rich golden ocher in color and are large, perfect form, borne on a strong stem. Tubers 40c ea. Plants 25c each.

## Elkridge 25c

**PURE WHITE** — (Semi-Cactus) Bears an abundance of fine pure white flowers, is vigorous, reliable and a good root-maker. Tubers 40c ea. Plants 25c each, 3 for 68c.

## Judge Marean 28c

**RED ORANGE** (F. Dec.)—Rose-red shaded orange yellow and pure old gold. Marvelous flowers, 6 to 8 inches across. 28c ea., 3 for 74c.

## Jane Cowl 27c

**OLD GOLD** (I. Dec.)—Massive deep golden petals. Reverse of petals flesh color. A good grower; fine for cutting. A mid-season bloomer. Tubers, 27c ea., 3 for 71c.

## Jersey's Beauty 24c

**DEEP PINK** (Decorative)—Deep pink. This famous old cut-flower variety has been and still will be universally grown for many years. Very free flowering. Tubers 24c ea., 3 for 64c.

## Kemp's Violet Wonder 40c

**VIOLET ROSE** (Inf. Dec.)—The best violet colored Dahlia. Outstanding color in rich naphthalene violet. Flowers are as perfect in form as possible, borne on stiff stems. Tubers 65c ea. Plants 40c each.

## Kathleen Norris 35c

**LIGHT PINK** (I. Dec.)—Immense graceful flower, measuring 7 to 10 inches. Delicate rose-pink color. Fine for cutting and for the garden. Mid-season bloomer. Tubers 35c ea., 3 for 92c.

## Margaret W. Wilson 28c

**PALE PINK** (Dec.)—Upper side of the petals waxy white, while the reverse of the petals is so colored as to reflect a pink tone on the whole flower. Extra large—much admired. Tubers 28c ea., 3 for 74c.

## Queen of the Garden Beautiful 30c

**CREAM YELLOW** (F. Dec.)—A strong growing variety, free blooming, with enormous flowers of cream yellow, 8 to 10 inches in diameter. A grand garden variety. Tubers, 50c ea. Plants, 30c ea.

## Saladini 25c

**ORANGE** (Dec.)—Beautiful apricot orange evenly suffused carnelian red. Extremely vigorous and uniform. Tubers 40c ea. Plants 25c ea., 3 for 68c.

## Thomas A. Edison

**ROYAL PURPLE** (Dec.)—Large deep royal purple; a cutflower variety of high quality. Tubers 60c ea. Plants 35c each.

## White Wonder 30c

**PURE WHITE** (Inf. Dec.)—Pure white. The newest and very largest of white Dahlias. Enormous waxy petals, the last word for showy decoration. Flowers have reached a size of ten inches across. Tubers 50c ea., 3 for \$1.33. Plants 30c ea., 3 for 79c.



The Prize Winning Dahlia, White Wonder, 30c ea.



World's Finest Free Flowering Dahlia, Satan. Plants 40c ea. Tubers 75c ea.

## Satan 40c

**SCARLET-GOLD** (Semi-Cactus) — Scarlet tipped gold. A new and wonderful variety easily grown. One of the most vigorous dahlias ever introduced. Fine form and good stems. A profuse bloomer. Plants 40c ea., 3 for \$1.05. Tubers 75c each.

## Monmouth Champion

**ORANGE SCARLET** (F. Dec.)—An orange-scarlet self color. Always a prize winner in the formal decorative class. Bushes free branching and blooms profusely. A heavily foliaged, vigorous plant. Tubers 40c ea. Plants 25c each.



Monmouth Champion. Tubers 40c. Plants 25c

## All Color Dahlia Collection

**RED**—Shades of scarlet, maroon, etc. 22c ea.

**YELLOW**—Shades of yellow, changing from dark to light. 22c ea.

**PINK**—Light and dark pink. 22c ea.

**WHITE**—Pure white. 22c ea.

**PURPLE**—Striking contrast with red and pink. 22c ea.

**LAVENDER**—Lovely light and deep shades. 22c ea.

**VARIEGATED**—Fancy varieties. 22c ea.

**Entire Collection of 7 Dahlias 94c**

## Pompon or Lilliputian Dahlias

### Belle of Springfield 27c

**ROSY RED**—A splendid variety and the finest type of pompons, flowers of perfect shape, soft rosy red, borne in profusion on slender stems. 27c ea., 3 for 71c.

### Little Jewel 26c

**PEACH-BLOSSOM PINK**—This is the miniature or pompon decorative; color, peach-blossom pink. 26c ea., 3 for 70c.

### Snowclad 25c

**PURE WHITE**—The best pure white pompon. Flowers of perfect shape. Dark green foliage. 25c ea., 3 for 68c.

### Yellow Gem 24c

**GOLDEN YELLOW**—Very small and dainty. Clear golden yellow in color, fine form. 24c ea., 3 for 64c.

**SPECIAL OFFER**—One each of the four Miniature Pompon Dahlias for 93c.



# McGregor's Flowering and Fancy Leaved Begonias



Mammoth Leaved King of Rex Begonias.

Special — 3 different varieties of richly colored Rex Begonias, 78c.

## Mammoth Leaved Rex Begonia 29c

The most wonderful Begonia in the world. Mammoth leaves of rich metallic lustre, and colors blending from brightest green to beautiful plum hues. Flowers bluish-pink. 29c ea., 3 for 83c. Larger plants 45c ea., 3 for \$1.30.

## Rex Begonia Trio 78c

A special offering of three Rex Begonias, all different, and of the best varieties of the Rex family; strong growers; beautiful foliage. 3 for 78c.

## Speculata Begonia

This variety is of the Rex type the leaves being in the form of grape leaves. Color is a bright green, with a background of chocolate; veins of a light pea-green, the whole leaf spotted with silver. In bloom it is magnificent, the individual white blooms are high and spray-like. 37c ea., 3 for 98, doz. for \$3.30.



The Popular Speculata Begonia, 37c



Attractive Star Begonia, 60c

## Star Begonia 60c

The leaf is very large, deeply cut and star shaped, averaging a foot or more in diameter in well grown plants; foliage rich green with reddish markings; magnificent. Limited supply. 60c ea., 3 for \$1.70.



## Begonia Carmanii

Something new, first class. A Begonia of dense globular growth, medium size leaves of a beautiful glossy deep carmine color. Flowers beautiful clear pink. 29c ea., 3 for 83c, doz. for \$2.40.

## Sensational Novelty of the Begonia Family The New Calla Begonia 98c each

Here is a rare offering of a distinctive Begonia that makes an unusual house plant. As the leaves appear they are pure frosty white with a silvery sheen and as they open become irregularly marked with green—some leaves half white—half green. Flowers are of an exquisite pink color. It is really a house plant of unusual form and beauty and the most unique and distinct Begonia we have ever offered. It must be seen to be appreciated. To insure safe delivery, all Calla Begonias will be sent with ball of earth just as the plants come from the pots. 98c ea., 3 for \$2.75.



## Silvery Rex Begonia

ROBT. GEORGE — Upright grower, showing the Diadema habit of growth. Leaves are large and show the Rex textures. They are blotched and deeply pointed. The markings are very fine, bright silver arranged in a zone. 36c ea., 3 for 94c.



Begonia Prima Donna

## Prima Donna 26c

Foliage green, shaded bronze; flowers light pink, changing to dark pink. 26c ea., 3 for 74c, doz. for \$2.30.



## Begonia Elegance 26c

Beautiful Begonia of bushy habit, medium tall, free flowering. Flowers large, white with a vivid edging of crimson, striking color combination. 26c ea., 3 for 69c, doz. for \$2.30.



## Rex Begonia Louise Closson 36c

Beautiful foliage, deep maroon with band of silvery rose, edged bronze, giving a purplish tint. Oddest color of all Rex. 36c ea., 3 for 98c, doz. for \$3.25.



## Coralline Lucerne 29c

Flowers in immense clusters. Color bright coral-red, changing to delicate pink. 29c ea., 3 for 83c. Stronger plants, 39c ea. Larger plants, 50c.



## Tree Begonia Argentea Guttata

Grows 3 to 4 feet tall. Purple-bronze leaves; white flowers. 27c ea., 3 for 77c. Larger plants, 50c.

**Bargain Offer:** Rex, Speculata, Star, Carmanii, Robt. George, Prima Donna, Elegance, Louise Closson, Coralline Lucerne, Argentea Guttata. One each of these 10 Begonias (val. \$3.35), \$2.98.

**Bargain Offer:** Five flowering Begonias illustrated on this page (not including any Rex or the Star Begonia) totaling a value of \$1.47, for \$1.22.



# Flowering, Fancy Leaved, Bedding Begonias



Double Tuberous Rooted Begonias, 32c

## Double Flowering Tuberous Begonias

The handsomest of our summer-blooming plants, flowering throughout the season in any nook or corner in complete shade. Nothing can exceed the brilliancy of their colors, the delicacy of their tints, the richness of their waxy flowers, the gorgeousness of their effect in masses. On the approach of cold weather they should be taken up, and the bulbs stored away in a warm place. We offer double flowering bulbs in five colors: White, Salmon, Pink, Yellow and Crimson. 32c ea., 3 for 92c, 6 for \$1.76, doz. for \$3.38.

## Begonia Venus

A new and distinctly "different" Begonia. Its dark, glossy, bronze green, deeply cut leaves combined with its free-flowering habit, make it one of the most attractive plants that can be grown. Blooms the year around. 34c ea., 2 for 62c.



Begonia Venus, 34c

## Flowering Begonia Thurstonii, 29c

A large growing plant and a perpetual bloomer. Flowers rosy pink, in clusters, leaves large, like polished jade, of an emerald green color; dull blood red underneath. Always in flower. 29c each, 2 for 54c.

**BEGONIAS** like a warm temperature, an evenly moist soil, consisting of loam, woods earth, sand and well-rotted cow manure mixed. They like plenty of light, but not direct sunshine.



Thurstonii Begonia, 29c



Mme. De Lesseps, 27c

## Unusual Begonia Mme. De Lesseps

The leaves are of silky texture, beautifully spotted with silver. A very strong, free-growing variety that will succeed with any ordinary care. 27c ea., 2 for 51c.

## Beefsteak Begonia

(Feastii)—Spreading habit, circular leaves of heavy texture, red beneath, above a glossy olive-green, oil-like cast. Dainty coral-red flowers. 34c ea., 2 for 60c.



Begonia Marguerite, 21c

## Begonia Marguerite

This beautiful variety is noted for its richly colored foliage and attractive flowers. The leaves are bronzy-green, red beneath, and large trusses of rose colored flowers are freely produced. Grows 1 1/2 to 2 feet high. 21c each, 2 for 39c.



Mammoth Curled Leaf Rex Begonia, 47c; 2 for 81c

## Curled Leaf Rex Begonia

The mammoth leaves are like changeable silk, and show new colors and hues, ranging from purple, silvery rose, to shades of bronze and dark green. The foliage is oddly curled and twisted, with a beautiful spiral like center. A scarce variety—stock limited. 47c ea., 2 for 81c.



Beefsteak Begonia, 34c

## Free Flowering Begonia Rubra

A popular Begonia with pretty wax-like flowers. Its dark, glossy-green leaves combined with its free-flowering habit, make it one of the very best plants for house or conservatory decorations. It produces flowers of scarlet-rose color and blooms constantly. 29c ea., 2 for 54c.



Begonia Rubra, 29c



Flowering Beg. Pres. Carnot, 27c

## Begonia President Carnot

A remarkably strong growing variety, of stiff, upright habit; foliage large and similar in style to Begonia Rubra, but more than twice as large; upper side deep green, under side purplish-red, flowers beautiful coral-red, in large pendant panicles. 27c ea., 2 for 51c.



Hardy Begonia Evansiana, 21c

## Hardy Begonia Evansiana 21c

Perfectly hardy grower, and profuse bloomer, with beautiful foliage. Ideal plant for shady places. Clusters of flowers of a beautiful pink color by the hundreds. Re-establishes itself in the spring without being taken up. Bulb has dormant stage in the winter. Bulbs 21c ea., 3 for 60c.

## Crinkled Leaved Beefsteak Begonia

A new and valuable variety distinctly different from any other sort. Beautifully arranged, magnificent, crinkled, crested and curled, glazed, reddish olive green foliage, topped by clusters of flesh pink flowers. Really the finest and most beautiful Begonia we have. 44c each, 2 for 82c.



Crinkled Beefsteak Begonia, 44c

**Special Begonia Offer:** One each of the popular House Begonias, Beefsteak, 29c; Venus, 34c; and Marguerite 21c. Total value 84c. All three for.....67c



# BARGAINS in House and Garden Plants



Abutilon, Savitzii, Variegated, 23c

## Abutilon Flowering Maples

**RED**—Continuous bloomer, flowers red, veined with crimson. Green foliage. 21c ea., 3 for 56c, doz. for \$1.86.

**WHITE**—Large bell shaped flowers of snowy white, always a mass of bloom. Green foliage. 20c each, 3 for 57c, doz. for \$1.92.

**YELLOW**—Bright golden-yellow flowers; green foliage. Free flowering. 22c each, 3 for 63c, doz. for \$2.10.

(Savitzii) — Leaves beautifully formed, deep green in center, with pure white border. Flowers burnt orange. 23c ea., 3 for 61c, doz. for \$2.04.

## Angel's Trumpet 31c

**RICH FRAGRANCE** (Brugmansia) — Large, showy tropical leaves and trumpet shaped blooms often eight inches long, pure white and as fragrant as jasmine. A pot plant during the winter and garden plant for summer blooming. 31c ea., 3 for 80c, doz. for \$2.79.



Angel's Trumpet, 31c

## Asparagus Sprengerii

**GLOSSY GREEN**—Unsurpassed for window boxes or hanging baskets. Foliage graceful and drooping glossy green. Valuable house plant of easy culture; sprays four to five feet in length. Foliage retains its freshness for an unusual length of time. 17c ea., 3 for 45c, 6 for 86c, doz. for \$1.50.



Asparagus Sprengerii (Feather Fern), 17c



Brazilian Plume Plant, 22c

## Brazilian Plume Plant

(Justicia Sanguinea)—Beautiful salmon-pink, plume-like flowers. Beautiful reddish brown foliage. Suitable for pot culture or bedding. 22c ea., 3 for 59c.

(Justicia Velutina)—Bright rose-pink flowers, and deep green foliage, heavy in texture, and velvety. 23c ea., 3 for 61c.

## Parlor Ivy 16c

(Senecio Scandens)—Strong growing, climbing vine, bright green foliage. Fine for hanging baskets, boxes, trellis work. 16c ea., 3 for 43c, doz. for \$1.42.

## Crassula

**TETRAGONA** — Upright, resembling miniature pine trees. Excellent for dish gardens or individual pots. 17c ea., 3 for 45c, 6 for 86c.



Blue Browallia, 19c

## Browallia

(Speciosa Major) — Beautiful free-flowering pot or border plant. Its marine blue flowers are especially attractive. 19c ea., 3 for 49c, doz. for \$1.70.

## Hardy Double Russian Violet

A beautiful, rare, double blue violet—hardy—more fragrant than any other—stock limited. 33c, 2 for 60c.

## Brazilian Coleus

(Episcia)—A plant of beautiful foliage, copper colored, leaves similar in shape to large sized Coleus foliage. Its chief charms are the slender, trailing habit, the soft hairiness of its leaves, the copper hue which is laid on like paint. The flowers are medium size, bright scarlet. Likes a warm temperature, partial shade and a rich fibrous loam soil. A very beautiful new plant. Price, 49c, 3 for \$1.35.



Brazilian Coleus



## Beloperone Guttata 19c

**HOP PLANT**—The inflorescence of Beloperone is composed of a series of overlapping bracts of floral leaves. These bracts are a rich, golden bronze when exposed to full light. New and interesting. 19c ea., 3 for 49c, doz. for \$1.70.

## Dracaena Sanderiana

Excellent house plant; Glaucous green foliage, attractively edged with a border of creamy white. Leaves about 9 in. long. 89c each.

## Bishop's Cap

(Achania Malvaviscus) — Striking vivid red bell shaped paper-like flowers. Grow to large size in time, always blooming freely. Makes an attractive indoor or outdoor plant. 22c ea., 3 for 59c, doz. for \$1.94.

## Ageratum

Plants suitable for bedding, edging, or as pot plants for summer and winter. Beautiful blue flowers in greatest profusion. 18c each, 3 for 52c, doz. for \$1.80, 25 for \$3.60, 100 for \$12.50.

## Baby Tears

**IRISH MOSS, BABY TEARS, HELXINE**—A compact, dense growing plant with miniature leaves, of neat habit and forming a rounded mass of moss-like foliage of partially creeping or drooping tendency which adds much to its gracefulness. Grows easily under living room conditions. 20c ea., 3 for 52c, doz. for \$1.80.



Large Leaved Arrowhead, 24c

## Arrowhead

(Nephtytis)—Large green, arrow-shaped. Requires considerable moisture. Can be grown in just a bowl of water or can be grown in soil indoors as a foliage plant with good results. 24c ea., 3 for 64c, doz. for \$2.10.



Asparagus Plumosus, 18c

## Asparagus Plumosus 18c

(Asparagus Plumosus) — A plant of delicate beauty. Its bright green foliage is extremely fine and plume-like. 18c ea., 3 for 48c, 6 for 91c, doz. for \$1.60.

## Aloe Variegata 37c

(Partridge Breast Aloe)—A most interesting and valuable plant, making beautiful specimens. Thrives under most adverse conditions. Very fleshy. Markings white and green alternating. Upright growth. Very attractive house plant. Will surely prove desirable. 37c ea., 3 for \$1.05, doz. for \$3.30.

## Agathea 22c

**BLUE DAISY** — The flowers are daisy-shaped, of a delicate light blue, with a yellow disc. It blooms in great profusion from November to April. 22c ea., 3 for 59c, doz. for \$1.94.

## Achyranthes

Red or green, foliage plant used for bedding, lettering or for the border; often seen in parks. The red variety is a perfect blaze at a distance, while the green forms a contrast with the red. 3 for 24c, 6 for 45c, 12 for 80c, 25 for \$1.50.



Agathea (Blue Daisy), 22c



Aloe Variegata, 37c



Baby Tears (Irish Moss), 20c





Bougainvillea Sanderiana, 19c

## Bougainvillea

(Bougainvillea)

**CRIMSON LAKE** — Magnificent clusters of paper-like bells, exquisite shade of crimson, unequaled. 29c ea., 3 for 76c, doz. for \$2.50.

**SANDERIANA**—Brilliant lavender-pink blossoms of strong and rapid growth. A beautiful climber in the South. 19c ea., 3 for 49c, doz. for \$1.70.

## Christmas Cactus 25c

**SCARLET BLOOMS** — Long drooping flowers, borne in great profusion. Stems branching and hanging in bunches. Blooms freely. 25c ea., 3 for 68c, doz. for \$2.24.



Christmas Cactus

## Blue Lily of the Nile 32c

(Agapanthus Umbellatus) — Bright evergreen foliage spreading three feet and surmounted with spikes of bright blue flowers. A fine pot or tub plant. 32c, 3 for 82c.



Cactus No. 1, 30c ea.



Cactus No. 3, 26c ea.

## Rare and Odd Cactus 3 for 64c



Cactus No. 2 25c ea.

Cactus soil should be kept on the dry side. Sprinkle once a week; water the soil heavily once a month in winter; twice a month in summer. Soil should consist of sandy loam, 3 parts, coarse sand and small amount of lime.

**CACTUS NO. 1** — Opuntia Microdasys or Bunny Ear. 30c ea., 3 for 79c, doz. for \$2.64.

**CACTUS NO. 2** — Echinocereus chloranthus. 25c ea., 3 for 68c, doz. for \$2.24.

**CACTUS NO. 3** — Opuntia acantharpa arborescens. 26c ea., 3 for 70c, doz. for \$2.30.

**CACTUS NO. 4** — Echinocereus dasyacanthus. 24c ea., 3 for 64c, doz. for \$2.14.

**CACTUS NO. 5** — Echinocactus horizontalis. 26c ea., 3 for 68c, doz. for \$2.24.

**CACTUS NO. 6** — Echinomastus intertetus. 24c ea., 3 for 64c, doz. for \$2.14.

**SPECIAL OFFER**—One each of the above Cactus including (Old Man) for \$1.72.

## Unnamed Cactus Collection

For those who do not particularly care for named varieties of Cactus, we offer an unusual collection of all different unnamed types. 8 for \$1.39.



Cactus No. 4 24c ea.



Cactus No. 5 26c ea.



Cactus No. 6 24c ea.



Fancy Bedding Coleus

## Fancy Bedding Coleus 11c each

11c ea., 3 for 31c, 6 for 59c, 12 for \$1.00, 25 for \$2.00, 50 for \$3.88, 100 for \$7.50

**BECKWITH GEM**—Dark maroon, edged golden yellow.

**CHRISTMAS GEM**—Immense leaves, bright carmine shading to maroon, margin yellow and green, velvety lustre. 20c ea., 3 for 57c.

**EMPRESS OF INDIA**—Maroon edged yellow.

**FIRE BRAND**—Brilliant scarlet, very showy.

**NERO**—Darkest Coleus grown, nearly black.

**RAGGED CARPET**—Leaves light green splashed bronze.

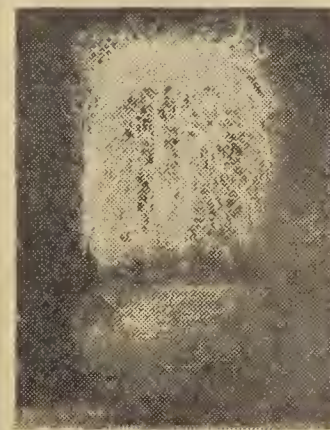
**QUEEN OF THE WEST**—Green streaked with maroon.

**SENSATION**—Crimson-maroon center light red.

**SETTING SUN**—Crimson with brightest golden edge.

**VERSCHAFFELTI**—Maroon center, spotted yellow.

**YELLOW BIRD**—Color golden-yellow. Makes a wonderful contrast when used with the darker varieties.



Old Man Cactus, the most unusual of all the Cactus family, 60c.

## Old Man Cactus 60c

Most interesting of all the Cactus. Cactus is the name applied by the ancient Greeks to prickly plants and adopted for a group of curious fleshy succulents, mostly prickly and leafless. Of the group, there has been for a long time, one outstanding variety, the Old Man Cactus, cultivated for its singular appearance, the long white, soft, curling and twisting hairs at the top and extending down over the plant, likened to the locks of an aged man. Flowers not large and with a short tube. We are pleased to offer from a limited stock this rare item; price 60c ea., 3 for \$1.70.

## Baby Primrose 20c

(Primula Malicoides)—A dainty Primula, with large whorls of delicate pale mauve flowers; very attractive. 20c, 3 for 52c, doz. for \$1.80.

## Japanese Camellia \$1.59

(Japonica)—Leaves glossy green, flowers of exquisite beauty and waxy texture, from pure white to crimson. Requires shade and moisture throughout the hot season. Needs a moderate, uniform temperature. When set with flower buds care must be taken in watering. When left too dry the buds will drop. \$1.59 ea., 3 for \$4.55. By express.



Beautiful Japanese Camellia, \$1.59 each



## Coleus Trailing Queen

Excellent for vases and plant boxes, leaves fiery crimson bordered by a band of deep maroon, with a band of green on the edges. 16c ea., 2 for 28c.

## Copper Plant 20c each

(Acalypha Tricolor) — A beautiful plant with large and highly colored leaves, bright red marked with blotches of crimson-bronze. Produces flowers like the flower spikes of Acalypha Sanderil. This Acalypha is really a bedding plant, as highly and richly colored as crotons. 20c ea., 3 for 52c, doz. for \$1.80.



Copper Plant, 20c

## California Redwood Burl 84c

An interesting and exceedingly beautiful novelty from California's Redwood Forest. Burls are dormant. Sends out feathery light green shoots resembling ferns. Growth will start when placed in a shallow bowl of water. Never let burl dry out and do not put directly in hot sun. 84c, 3 for \$2.44.



Blue Lily of the Nile, 32c



California Redwood Burl, 84c

## Foundation Border Plant Variegated

(Aegopodium)—Largely used around foundations of house and buildings. Foliage strongly variegated with cream and yellow. Spreads rapidly. 22c ea., 3 for 59c, doz. for \$1.94.



Variegated Border Plant



# GIANT FLOWERING CANNAS



3  
for  
37c

Deep Yellow  
Speckled Yellow

The ever popular Canna, Yellow King Humbert

**APRICOT**—(Green foliage, 5 ft.) The flowers have a buff-yellow base, over-spread with salmon-pink. A lovely variety. 3 for 36c, 6 for 65c, doz. for \$1.14.

**EUREKA**—(Green foliage, 4 ft.) Great masses of creamy white flowers. Form a contrast to the crimson and pink varieties. 3 for 37c, 6 for 70c, doz. for \$1.24.

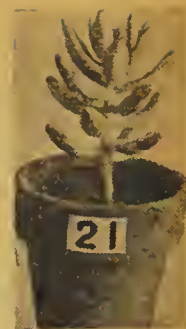
**CITY OF PORTLAND**—(Green foliage, 3½ ft.) Exceptionally fine bedder. Produces rich salmon-pink flowers. 3 for 36c, 6 for 65c, doz. for \$1.14.

**KING HUMBERT**—(Bronze foliage, 4 ft.) One of the largest and finest of the pure yellows grown. Used as a background for low growing flowers. 3 for 39c, 6 for 74c, doz. for \$1.30.

**HUNGARIA**—(Green foliage, 4 ft.) A leader in attractiveness and popularity. Flowers beautiful clear pink, shading to rose, very similar in color to the Paul Neyron rose. 3 for 38c, 6 for 72c, doz. for \$1.26.

**THE PRESIDENT**—(Green foliage, 4 ft.) Immense rich scarlet flowers, seven inches across when open. Strong stalks, superior in quality and quantity of bloom. 3 for 38c, 6 for 72c, doz. for \$1.26.

**YELLOW KING HUMBERT**—(Green foliage, 4 ft.) The soft yellow flowers are beautifully speckled and splashed with scarlet. A well-known variety. Unsurpassed. 3 for 37c, 6 for 70c, doz. for \$1.24.



**Sedum Pachyphyllum**  
(No. 21)

Fleshy leaves. Light green overcast with bluish-white. 18c ea., 3 for 48c.

## Grape Ivy

(*Vitis Rhombifolia*)—A grand new ivy for house culture—a graceful trailing vine with rich dark, glossy green trifoliate leaves. Highly recommended. Excellent for interior decoration. 19c each, 3 for 49c, 6 for 97c, doz. for \$1.70.



Grape Ivy (*Vitis*), 19c, 49c

## Double Nasturtium

(*Golden Gleam*)—Sensational novelty, double yellow flowers, 2 to 3 inches across. Delightfully fragrant. 18c, 3 for 48c, doz. for \$1.60.



Cyclamen or Persian Violet, 27c

## Giant Flowering Cyclamen 27c

**PERSIAN VIOLET** (*Cyclamen Persicum*)—One of our prettiest blooming plants. Blossoms freely and remains a long time in flower. Mixed colors only. 27c ea., 3 for 71c.

## Crown of Thorns 24c

(*Euphorbia Splendens*)—A plant grown more for its curiosity than beauty. The stems are thick, twining and covered with sharp spines. The leaves are bright green and it has an abundance of beautiful coral-pink flowers. 24c each, 3 for 64c, 6 for \$1.22.

## Interesting Cigar Plant

(*Cuphea*)—Scarlet, pendulous flowers; neat, compact habit. Always in bloom, grows bushy, about fifteen inches high, makes an elegant appearance for baskets, pot plants or bedding. 17c each, 3 for 45c.



17c  
Each

Cigar Plant (*Cuphea*), 17c

## Fancy Leaved Crotons 30c

An ideal plant for house or porch decoration. Easily cared for. The multicolored foliage, spotted, splashed and blotched, is unusually attractive. Of value as pot plants, the bright color combinations make a handsome conservatory plant; also attractive in window boxes. 30c ea., 1 each of 3 different varieties for 79c.



Fancy Leaved Crotons, 30c



Fountain Plant  
Bright Carmine Flowers

## Carmine Fountain Plant

(*Thysacanthus Rutilans*)—Most attractive, highly prized, indoor plant. Grows as easily as a Geranium. Long sprays often over twenty inches in length, garnished with tubular flowers of brightest carmine. Its easy growth, length of time it lasts in bloom, and attractive appearance, should place it in every plant collection. 27c ea., 3 for 71c, 6 for \$1.34.



CROWN  
of  
THORNS



Popular Gardenia, 37c

## Gardenia 37c

(*Jasmine Veitchii*)—Rose-shaped flowers are pure white, measuring two and a half inches. They are very waxy in appearance and delightfully fragrant. Attractive plant, flowers fashionable for corsages. 37c ea., 3 for \$1.00.



## Dracaena Terminalis

(*Dracaena Terminalis*)—A superb decorative house plant with rich, crimson foliage, marked carmine-pink and creamy-white exquisite coloring; rapid grower. 75c, 3 for \$2.17.



Comet Flower, 26c

## Comet Flower

**CRIMSON SPIKES**—(*Acalypha Sanderii*)—Leaves dark green, from the axil of each of which springs a long, drooping spike of glowing crimson-scarlet, nearly an inch in diameter and from 18 to 24 inches long, very velvety in texture. 26c ea., 3 for 70c.

## Highly Colored Cineraria 22c

A beautiful late winter or spring blooming house plant. The handsome flowers are produced in large spreading clusters of the richest shades of blue, purple and crimson, many of them strongly marked with white. 22c ea., 3 for 59c.



Highly Colored Cineraria, 22c





**29c**  
Each

Fountain of Gold  
29c ea.

## Fountain of Gold

**GOLDEN SPRAYS** (*Genista Canariensis*)—Delicate sage-green foliage; every twig tipped with exquisite pea-shaped blossoms of a pure canary color. 29c each, 3 for 76c.

## Ornamental Fountain Grass

(*Pennisetum*)—One of the finest varieties of the ornamental grasses; especially attractive as a single specimen; valuable for massing purposes. Purplish plumes. 22c ea., 3 for 59c.



Beautiful Plumed, Fountain Grass

## Climbing Firecracker 22c

(*Manettia Bicolor*)—Easily trained. Can be grown in the house or garden. Flowers scarlet, shading into flame, tipped golden-yellow. 22c, 3 for 59c.



Cl. Firecracker Plant, 22c

## Crassula Monticola

(No. 3)—Very attractive succulent upright bushy little plants. Light green heart-shaped leaves. 20c each, 3 for 52c.



Crassula Monticola



Silver Leaved Dusty Miller, 17c

## Dusty Miller

(*Silvery Foliage*)—Beautiful, silvery gray foliage, deeply cut. Fine for edging beds of Geraniums, Cannas or Salvias; Height 12 to 15 inches. 17c ea., 3 for 45c, doz. for \$1.50.

# Constant Blooming Fuchsias

**BLACK PRINCE**—Brilliant carmine pink corolla, with darker sepals. 19c ea., 3 for 49c, doz. for \$1.70.



Little Beauty Fuchsia, 23c

**ERNEST RENAN**—Sepals white, and corolla reddish-blue, a fine variety. 15c ea., 3 for 39c, doz. for \$1.30.

**LITTLE BEAUTY FUCHSIA**—Fine dwarf Fuchsia. Seldom without flowers, sepals are carmine, and the corolla deep lilac. 23c ea., 3 for 61c.

**LORD BYRON**—Single blooms, red corolla and violet sepals. A striking variety. 21c ea., 3 for 56c, doz. for \$1.86.

**MAD. VAN DER STRASS**—Corolla double white with red sepals, unusually attractive. 17c ea., 3 for 45c, doz. for \$1.50.

**SPECIOSA**—Tube and sepals a bright rose; corolla brilliant carmine. 17c ea., 3 for 45c.

**TENOR**—Sepals red, with double corolla of rich dark purple. 18c ea., 3 for 48c.

**TRAILING QUEEN**—Wine-red flowers, single flowers in drooping clusters. 18c ea., 3 for 48c, doz. for \$1.60.

**SPECIAL FUCHSIA OFFER**—One each of any of 4 fuchsias above for 69c.

**WHITE GIANT** (*Gloire des Marches*)—Brilliant deep scarlet sepals. Corolla double, pure white. 17c ea., 3 for 45c, doz. for \$1.50.

**MCGREGOR'S MAMMOTH PURPLE**—Tall growing, enormous flowers, sepals bright scarlet, purple corollas. 23c ea., 3 for 61c, doz. for \$2.04.



Fuchsia, Irwin's Giant Pink, 20c

## Irwin's Giant Pink Fuchsia

Gigantic flowers of a beautiful salmon pink. The best Fuchsia yet introduced. 20c ea., 3 for 52c.

## Fragrant Erlangea

A magnificent and interesting house and garden plant. Dainty tubular flowers of delicate mauve lilac produced in greatest profusion in dense clusters. The foliage is as delightfully scented as a sweet-scented geranium. Will flower over an especially long period; highly desirable. 19c each, 3 for 49c.



Chinese Evergreen or Lucky Plant, 31c



Fragrant Erlangea, 19c

## Chinese Evergreen or Lucky Plant 31c

(*Aglaonema Modestum*)—The Chinese Evergreen or Lucky plant is no exception to the rule.

This interesting novelty can be grown easily in water or soil. Possibly more satisfactory if planted in soil consisting of leaf mold, rotted manure and crushed charcoal. Small pink flowers. Distinctive green foliage. 31c ea., 3 for 80c.



Grevillea (Silk-Oak), 19c



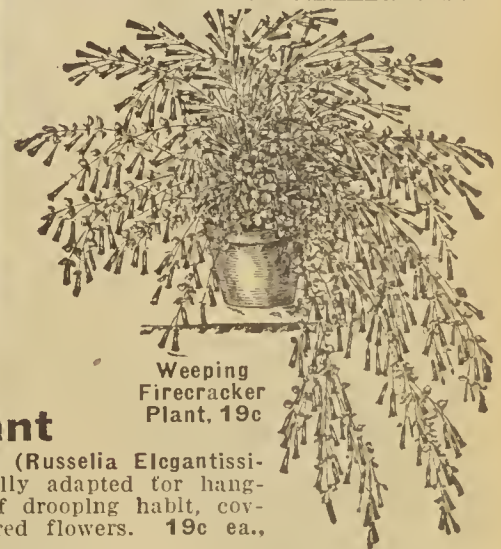
Little Gem Feverfew, 22c

## Weeping Firecracker Plant

**CORAL RED FLOWERS** (*Russelia Elegantissima*)—Semi-trailing especially adapted for hanging baskets, vases, etc., of drooping habit, covered with brilliant coral-red flowers. 19c ea., 3 for 49c.

## White Feverfew 22c

**LITTLE GEM**—The great value of the Feverfew is for cut flowers during the summer. Double pompon flowers of pure white. 22c ea., 3 for 59c.



Weeping Firecracker Plant, 19c

## Beautiful Shaking Fern 26c

(*Pteris Tremula*)—The foliage of this *Pteris* variety is large, very graceful. The slightest movement of the air shakes the leaves. It grows readily. 26c ea., 3 for 70c.



Shaking Fern, 26c



# Giant Flowering Hibiscus

Hibiscus Rosea Sinensis or Greenhouse Hibiscus is a summer flowering plant which always attracts attention, grows easily in ordinary soil and produces constantly single and double flowers of immense size. In the winter the plants can be kept by withholding water and keeping them in a temperature of about fifty degrees.

**CRIMSON (Grandiflora)**—Rich scarlet-crimson flowers; wonderful in size; green glossy foliage. 18c ea., 3 for 48c; larger plants, 50c.

**PEACHBLOW**—Flowers double; rich clear pink with a small deep crimson center. 21c ea., 3 for 56c; larger plants, 50c each.

**SCARLET (Weddingii)**—Flowers of large size, vivid crimson-scarlet color can be seen from a long distance like a flaming torch. 19c ea., 3 for 49c; larger plants, 50c.

**VIOLET TINTED**—Subviolaceous—Flowers enormous size, tinted violet. Will give satisfaction wherever planted, in pots or in the garden. 19c ea., 3 for 49c.

**BARGAIN OFFER**—One each of the 4 colors in small size for 66c. The 4 in large size for \$1.66.



Pink Hibiscus Peachblow, 21c



Fairy Lilies (Zephyranthes)

# Fairy Lilies

(Zephyranthes)—Dainty lilies in miniature Amaryllis. Of easy culture, requiring the same care as Gladiolus bulbs. They can also be planted in pots or flower boxes, using several bulbs to gain the best effect. Flowers pink and white mixed. An old favorite. 10c ea., 3 for 25c, doz. for 96c.

## New Variegated Ivy 26c

(Haeggenberger)—Most outstanding and striking new vine in years. The cream variegation on foliage really predominates. Highly recommended. 26c ea., 3 for 70c, doz. for \$2.30.



New Variegated Ivy, 26c



Tender Hen and Chickens

## Tender Hen and Chickens 19c

Tiny rosettes of soft gray-green formed in abundance around the main plant, giving it the name "Hen and Chickens." (Not hardy.) 19c ea., 3 for 49c, doz. for \$1.70. (Hardy Hen and Chickens, page 34.)



18c

Impatiens (Pink Beauty) 18c



Heliotrope Royal Fragrance

## Heliotrope

ROYAL FRAGRANCE

New, rich, deep violet-blue, marvelously fragrant. 19c ea., 3 for 49c, doz. for \$1.70.



28c Each

Blue Hydrangea, Mousseline, 28c

## Nandina

A showy shrub with large clusters of small red berries in the autumn. Gorgeous orange-red color in winter. Not hardy in northern states. 25c each, 3 for 65c.

## Impatiens

(Sultan's Balsam)

**SALMON QUEEN**—Flowers handsome shade of salmon, tinged with pink. 18c ea., 3 for 48c, doz. for \$1.60.

**PINK BEAUTY**—Clear rose-pink flowers. An unusual, attractive house plant. 21c ea., 3 for 56c, doz. for \$1.86.

**HOLSTII**—Brilliant vermilion flowers. Showy. Very free bloomer. 20c ea., 3 for 52c, doz. for \$1.80.

## Lady Slippers

**CYPRIPEDIUM**—The finest and most showy of our outdoor hardy orchids. Thrives in a moist, peaty soil in shade or partial shade and the flowers are extremely interesting on account of their odd shape and uncommon color and markings. Flowers are rose purple in color. 44c ea., 3 for \$1.16, doz. for \$3.75.



44c

Lady Slipper or Cypripedium, 44c

## Variegated Parlor Ivy 21c

(Glechoma Hederacea)—The foliage of this charming novelty is bright green, marked with pure white, and has a refreshing fragrance similar to mint. Popular for house use. 21c ea., 3 for 56c, doz. for \$1.86.

**WORM EXTERMINATOR**  
Destroys all worms in soils, 35c



Variegated Parlor Ivy



Jewel Flower, Stephelia, 24c

## Jewel Flower 24c

CACTUS LIKE PLANT  
A curious succulent branching plant without leaves, resembling a Cactus producing singular flower star shaped, dark brown spotted with yellow. 24c ea., 3 for 64c, doz. for \$2.14.

## Echeveria Weinbergii No. 15—19c each



Kalanchoe (No. 19)

Waxy leaves forming a perfect rosette. Color light green, overcast with iridescent sheen. 19c ea., 3 for 49c.



Echeveria (No. 15)

## Kalanchoe No. 19—19c each

**KALANCHOE FLAMMEA** (No. 19)—Attractive succulent plant with green foliage tinged red, orange flowers. 19c ea., 3 for 49c.

## Large Flowering Porch Hydrangeas

**BABY BIMBINETT**—Large trusses of ivory rose flowers, dwarf, free flowering and early. 25c ea., 3 for 68c, doz. for \$2.24. Large size 75c ea.

**BOUQUET ROSE**—Well formed flowers of rosy amber, turning to bright pink. 27c ea., 3 for 71c, doz. for \$2.35. Large size 75c ea., 3 for \$2.05.

**E. G. HILL**—Delicate baby pink flowers. Produces a wealth of bloom. Does not fade. 28c ea., 3 for 74c, doz. for \$2.45. Large size 75c ea.

**GENERAL DE VIBRAY**—A well known favorite, large trusses of bright rose colored flowers. 26c ea., 3 for 70c, doz. for \$2.30. Large size 75c ea.

**MME. E. MOUILLERE**—One of the best pure white hydrangeas. Beautiful in combination with other varieties. 25c ea., 3 for 68c, doz. for \$2.24. Large size 75c ea.

**MARECHAL FOCH**—Produces large flower heads of deep bright carmine. A magnificent variety. 35c ea., 3 for 92c, doz. for \$3.15.

**MOUSSELINE**—A new variety, large leaves, and immense flowers of a beautiful plumbeous blue. 28c ea., 3 for 74c, doz. for \$2.45. Large size 75c ea.

**RADIANT**—Large leaved type. Flowers deep rosy carmine. Fine as a pot plant. 27c ea., 3 for 71c, doz. for \$2.35. Large size 75c ea.

**SATINET**—Beautiful rose colored flowers that fairly resemble a piece of satin cloth. 25c ea., 3 for 68c, doz. for \$2.24. Large size 75c ea.

**SOUV. DE MADAME E. CHAUTAUR**—Large flower heads of a delightful shade of bright rose. 26c ea., 3 for 70c, doz. for \$2.24. Large size 75c ea.



## American Wonder Lemon 22c

**FRAGRANT BLOSSOMS**  
—Has fruit in all stages of development, from the size of a pea up to the ripe fruit. Dark green foliage and pure waxy flowers which closely resemble orange blossoms. Richly fragrant. 23c ea., 3 for 59c, 6 for \$1.11, doz. for \$1.94. Extra large plants 60c by express.



American Wonder Lemon, 22c

## Lemon Verbena 19c

**(Fragrant Foliage)**—This plant has the most fragrant foliage of any plant grown. The leaves are delightfully lemon-scented. White flowers. 19c ea., 3 for 49c.



Lemon Verbena, 19c



(Mexican Shell Flower) Tigridia, 27c

## Tigridia 27c

**(Shell-flower of Mexico)**—Colorful orange yellow flowers, beautifully spotted are produced in profusion for a period of two or three months. They are very effective when massed or planted with Gladiolus. 27c ea., 3 for 71c, doz. for \$2.35.



Dwarf Ornamental Holly

## Sweet Alyssum 14c

A delightful plant with large trusses of fragrant double white flowers. Grows easily. 14c, 3 for 37c, doz. for \$1.24.



Lettering Plant. (Alternanthera), 10c each.

## Lettering Plant 10c

**(Alternantheras)**—Beautiful dwarf plants. Adapted for edgings to flower beds or ribbon lines. Two varieties—Crimson foliaged; and yellow and green variegated foliage. These are the plants used in parks and cemeteries for lettering in beds. 10c ea., 3 for 25c, doz. for 80c, 25 for \$1.50, 50 for \$2.75.

## Flame Vine 35c

An exceptionally vigorous southern vine—grows 80 ft.—orange red tubular flowers in clusters. A mass of flames. 35c, 3 for 90c.



Bedding Lantana Michael Schmidt, 18c

## Everblooming Lantanas

**MICHAEL SCHMIDT**—Brilliant yellow, passing into vermilion. 18c ea., 3 for 48c, doz. for \$1.60.

**ALBA PERFECTA**—Pure white, compact habit. 15c ea., 3 for 42c, doz. for \$1.43.

**AURORA**—Clear pink. 16c ea., 3 for 43c, doz. for \$1.42.

**JACOB SCHULZ**—Beautiful dark red, good rich color. 17c ea., 3 for 45c, doz. for \$1.50.

**TETHYS**—New beautiful lemon yellow. Nothing like it. 18c ea., 3 for 48c, doz. for \$1.60.

**SOUTHERN**—Dwarf grower, large flowers, outer florets salmon-pink shaded to pale yellow in the center. 20c ea., 3 for 52c, doz. for \$1.80.

**GOLDEN QUEEN**—Dwarf grower. Beautiful deep golden yellow. 20c ea., 3 for 52c, doz. for \$1.80.

**RADIATION**—Strong grower, outer florets deep wine red shading to pale yellow in center. 17c ea., 3 for 45c, doz. for \$1.50.

**SPECIAL**—1 each of any 4 Perpetual Blooming Lantanas for 60c.

## New Dwarf Holly 36c

**(Malpighia Coccigera)**—One of the most attractive pot plants. Dainty, holly-like leaves, finely cut, pinkish flower, followed by red berries. 36c ea., 3 for 94c, doz. for \$3.25.

## Portulacaria Afra No. 22

One of the best succulents grown. Leaves waxy and heart shaped. 18c ea., 3 for 48c.



Portulacaria Afra No. 22



## Night Blooming Jasmine 21c

**(Cestrum Parqui)**—Well known, highly prized plant. Foliage deep green; richly fragrant; blooms at night. 21c ea., 3 for 56c. Larger plants 50c.



Kalanchoe Coccinea, 31c

## Kalanchoe 31c

**(Globulifera Coccinea)**—A new pot plant of great merit. The brilliant scarlet flowers are in evidence from Christmas until May. Frequently the plant blooms the second time. 31c ea., 3 for 80c, doz. for \$2.79.

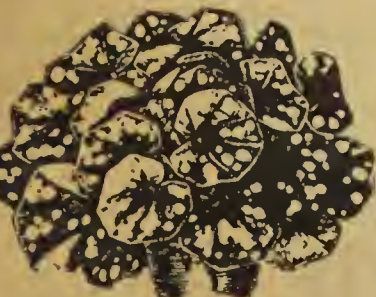


## Lobelia Sapphire

**BLUE FLOWERS**—Beautiful trailing plant, unusually large sapphire-blue flowers with a pretty white eye. Showy and of distinctly trailing habit. 18c ea., 3 for 48c.

## Dwarf Fruiting Orange 22c

**BRIGHT COLORED FRUIT**  
—“Fruits freely, easy to grow beautiful waxy, blossoms, delightfully fragrant.” Dwarf, free flowering variety, suitable for pot culture. NOTICE: Orange plants and lemon plants cannot be shipped into Ala., Ariz., Calif., Fla., Ga., Miss., S. C., and Tex. 22c ea., 3 for 59c, 6 for \$1.11, doz. for \$1.94. Extra large plants 60c ea. by express.



Leopard Plant. (Farfugium), 42c

## Leopard Plant 42c

**(Farfugium Grande)**—An ornamental house plant. Produces leaves, sometimes 10 to 12 inches across, marked with creamy white and yellow spots. 42c ea., 3 for \$1.10.

## Vase Collection 92c

**COLLECTION A**—Flowering and vining plants such as Geraniums, Ferns, Petunias, Draenas, Vines, Wandering Jew, etc. A collection of 10 plants our selection, 92c.

**COLLECTION B**—A larger collection of 18 plants of above assortment, \$1.65.

## Flowering Oxalis 29c per Dozen

Elegant foliage and pretty flowers, blooms quickly after planting. Makes a very showy bed or border.

**DIEPPI WHITE**—Pure white.

**DIEPPI ROSE**—Fine rosy pink.

**DIEPPI YELLOW**—Fine yellow flowers. 29c per dozen; \$1.97 per 100.



Flowering Oxalis







# McGREGOR'S EVERBLOOMING MULTICOLOR ROSE COLLECTION

## This Collection of 10 Monthly Blooming 1-YEAR SIZE GARDEN ROSES

**\$1.42**

The most popular collection of all flowering plants—all colors, hardy with protection. Will bloom all summer and produce wonderful cut flowers. A big value for.....

### These 10 Roses in 2-Year Size

Here is a marvelous collection of garden Roses, of all colors, of a large, 2-year size. A wonderful value at..... **\$2.98**

All plants are guaranteed, to reach purchaser in good condition, to any point in the United States.  
McGREGOR BROS. CO.  
Springfield, Ohio



Antoine Revoire, Red, 19c-39c

**ANTOINE REVOIRE**—Beautiful strong growing variety; large full flowers of rosy-flesh on yellow ground; variegated. Sweetly scented. 1-year 19c ea.; 2-year 39c.



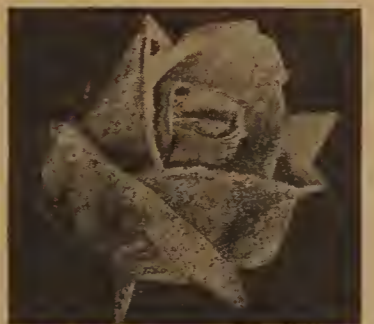
Wellesley, Pink, 19c-39c

**WELLESLEY**—One of the best garden roses. Brilliant pink; dark green foliage. 1-year 19c ea.; 2-year 39c.



Eugene Marlitt, Carmine, 18c

**EUGENE E. MARLITT**—A strong grower; extra large flowers of bright carmine, very double. An abundant bloomer, very fragrant. 1-year 18c ea.; 2-year 39c.



Yellow Cochet, Yellow, 20c

**YELLOW COCHET**—One of the finest yellow roses. Flowers deep, very fragrant. 1-year 20c ea., 2-year 40c.



Crimson Queen, Crimson, 20c

**CRIMSON QUEEN**—Color rich; bright velvety crimson; flowers large and full. Strong robust habit. An abundant bloomer. 1-year 20c ea.; 2-year 40c.



Helene Cambier, Yellow, 18c

**HELENE CAMBIER**—Grand flower, opening canary yellow. Abundant bloomer. Robust. 1-year 18c ea.; 2-year 38c.



Legal Tender, Bronze, 18c

**LEGAL TENDER**—Bronze and gold extra fine. Large Pompon type. Perfect form. 18c ea., 3 for 48c.



Lady Plymouth, Ivory, 20c-40c

**LADY PLYMOUTH**—Delicate ivory cream petals faintly flushed, difficult to describe. Tea perfumed. Strong upright grower, wonderful bloomer. 1-year 20c ea.; 2-year 40c.



Mrs. Charles Bell, Pink, 19c

**MRS. CHARLES BELL**—Described as a shell-pink radiance. Vigorous, scented. 1-year 19c ea.; 2-year 39c.



Bronze Volunteer, Bronze, 20c

**LILAC**—Bright lavender pink in color; easily grown, long stiff stems; beautiful incurved type with wonderful flower heads; a grand variety. 18c ea., 3 for 48c.

McGregor's Fertilizer and Plant Food—A fertilizer especially adapted to roses. Contains all of the nutritive elements to produce a healthy strong growth and a full development of flowers. A large sifting top can, full pound 35c.



Etoile de Lyon, Yellow, 19c

**ETOILE DE LYON**—Bright sulphur yellow. Flowers large, fine form. Perfumed. 1-year 19c ea.; 2-year 39c.



Olivia, Pompon Type, 20c

**LILAC**—Bright lavender pink in color; easily grown, long stiff stems; beautiful incurved type with wonderful flower heads; a grand variety. 18c ea., 3 for 48c.



Madison, Pure White, 18c-38c

**MADISON**—The best pure white Tea Rose. Excellent bloomer. Sturdy habit. 1-year 18c. 2-year 38c.



Rose Charm, Rose Pink, 18c



Titian, Scarlet Crimson, 19c

**TITIAN**—Color scarlet crimson with bronzy red cushion. Vigorous grower and abundant bloomer. Magnificent ball type of perfect form. 19c ea., 3 for 49c.

All 10 Roses 2-Year Size and All 10 Mums **\$3.98**



Ohio State, Yellow, 18c



Volunteer, Yellow, 20c



White Caprice, White, 19c

**INNOCENCE**—Pure white in color gradually changing to soft pink. Profuse bloomer. Lustrous rich, dark green foliage. An indispensable cut flower variety. Upright and vigorous. 18c ea., 3 for 48c.



Innocence, Pure White, 18c

**VOLUNTEER**—Ball type, incurved flowers are yellow in color. Upright and vigorous. Easily grown, splendid stems and foliage. Extensively used as a cut flower. 20c ea., 3 for 52c.

## This Collection of ... 10 Hardy Garden Chrysanthemums

**\$1.25**

Here is a superb collection of large flowering Hardy Pompon, Anemone and Button Mums of all colors; all hardy; live from year to year; grow hundreds of flowers, all for.....

# McGREGOR'S MIKADO COLLECTION OF HARDY CHRYSANTHEMUMS

**EXTRA SPECIAL!—All Chrysanthemums and Roses (1-Year Size) On These Two Pages for \$2.50—EXTRA SPECIAL!**





Kentia Belmoreana, 88c

## Popular Kentia Palm 88c

(*Kentia Belmoreana*) — Represents the best of the Palm family. It has the grace and lightness of the Cocos, but robust in growth and heavy in foliage. Withstands wonderfully dust, changes in atmosphere, and neglect. A rapid and graceful grower. Price, nice plants, 88c.

## Everblooming Pansy Geraniums 34c (Pelargoniums)



Pelargonium, Easter Greeting

**EASTER GREETING**—Flery amarant-red. Gorgeous in coloring. Each of the five petals being marked with a large dark brown or black spot in the center, the spot being bordered with scarlet, daintly penciled with crimson. 34c, 3 for 90c.

**LUCY BECKER**—Grand Novelty, sport of Easter Greeting, and is like it in everything but color, which is rosy-pink. Free blooming. 33c, 3 for 86c.

**MRS. LAYAL**—The coloring and markings of the flowers are most extraordinary—light pink, white, dark purple black, etc., rivaling the pansy in uniqueness of flower. 29c, 3 for 76c.

**SPRINGTIME**—Makes a wonderful pot plant in a short time. In color an unusual shade of salmon-pink, distinctively marked. 32c ea., 3 for 82c.

## Fragrant Oleanders

No plant makes more handsome specimens for tub, pot or box culture. Can be wintered in the cellar. Grow from six to fifteen feet high.

**ROSEA-PINK**—An old favorite; flowers pink, double and sweet. 21c, 3 for 56c.

**LILIAN HENDERSON**—Double white flowers; fragrant like the old favorite Rosea. 19c, 3 for 49c.

**RUBRA-RED**—Semi-double flowers; watermelon-red, very attractive. 20c, 3 for 52c.

**LUTEA-YELLOW**—Strong grower, flower double, color beautiful golden-yellow. A lovely shade. 22c, 3 for 59c.

**SPECIAL OFFER**—One each, white, pink, yellow, and red Oleander described above, for 74c.



Fragrant Pink Oleander, 19c



Giant White Moonvine, 18c

## Giant White Moonvine 18c

(*Ipomoea Maxima*)—Blossoms produced in such wonderful profusion that they completely cover the vine with a veil of glistening white. Fine for porch and lattice shading. 18c ea., 3 for 48c.

## Giant Blue Moonvine 18c

(*Ipomoea Learii*)—The flowers are trumpet shaped, of a rich blue, with five purple rays. 18c each, 3 for 48c, doz. for \$1.60.

## Sky Blue Plumbago 23c

Excellent bedding and pot plants, flowering freely. The potted plants may be kept in a light cellar in winter, during which time they should be watered sparingly. 23c, 3 for 61c.



Sky Blue Plumbago, 23c



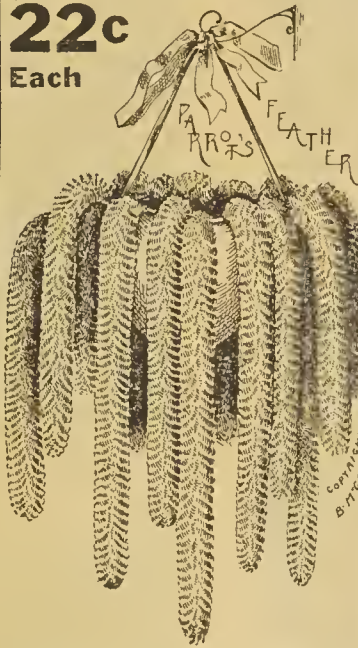
Olea Fragrans, 48c

## Olea Fragrans 48c

**SWEET OLIVE**—The Olea Fragrans is a fragrant house plant, similar to Camellia, and bears small clusters of delicate white flowers in great profusion during the fall and winter. Almost a continuous bloomer. Highly odoriferous both in foliage and flowers. Nice plants. 48c each, 3 for \$1.27.

## Parrot's Feather 22c

(*Myriophyllum Prosperina-corioides*)—Wonderful drooping water plant for water tight vessels and aquariums; can be grown in pots if soil is kept saturated. Feathery foliage. 22c each, 3 for 59c, 12 for \$1.80.



Parrot's Feather, 22c

## Cape Jasmine 24c

Good sized double flower, blooming profusely all summer, shining pale-green foliage. Easy to grow. 24c, 3 for 69c.



McGregor's Giant Pansies

## McGregor's Giant Pansies 6 for 25c

Our Giant Flowering Pansies are of wonderful form, richest coloring, marvelous in size. There is no flower more admired than the pansy. The combination of colors embraces striped, spotted, bordered and fringed; in rainbow colors, with rich velvety textures. 6 for 25c, doz. for 45c, 100 for \$2.10.



Cape Jasmine, 24c



Marantha—Beautiful Foliage

## Maranta 44c

(*Masangeana*)—A novelty. Leaves oval shaped, four in. long, with spots of chocolate-maroon over a beautiful shade of pea-green. Small white flowers. Rare stock limited. 44c ea., 3 for \$1.25.

## Passion Flower 23c

(*Passiflora*)—The passion flower is a tender, trailing or climbing house plant, producing flowers in various shades of blue. The peculiar structure of the flower has long been of great interest, and many curious stories have been woven about it. 23c ea., 3 for 61c.



(Blue) Passion Flower, 23c



Poinsettia The Christmas Flower

## Variegated Palm 37c

(*Phrynium Variegatum*)—Tuberous rooted. The leaves are bright green, beautifully variegated with white and rich cream. Canna like foliage, drooping habit, displaying full beauty of form and variegation. A limited supply ready for delivery March 1. Nice plants. 37c each.



Variegated Palm, 37c (Phrynium)

## Poinsettia

**MEXICAN FIRE PLANT**—Flowers are a most brilliant red; very showy. Well known as a Christmas flower. Does well anywhere, as a house plant. 29c, 3 for 76c.





Philodendron (Queen Ann's Window Vine, 22c

## Philodendron

**QUEEN ANN'S WINDOW VINE**—Popular house plant of trailing habit, pear shaped leaves, variegated gold and white. 22c ea., 3 for 59c; larger size, 38c each.



Royal Purple Plant, 24c

## Royal Purple Plant

(*Strobilanthes Dyeranus*)—Strikingly beautiful, glistening reddish purple, iridescent leaves. Surpasses the finest Coleus or Begonia in the brilliant and exquisite coloring of the leaves. 24c ea., 3 for 56c, doz. for \$1.86.



Leopard or Mottled Hardy Ivy, 17c

## Leopard or Mottled Hardy Ivy 17c

(*Hedera*)—A beautifully mottled leaved Ivy—similar to the Hardy English Ivy in growth with leaves a trifle smaller in size, and attractively marked with creamy white variegations. 17c ea., 3 for 45c, doz. for \$1.50.

## Primula Obconica 24c

Magnificent clusters of flowers arranged in whorls set high above the rich velvety foliage. **Deep Crimson**—Beautiful deep crimson flowers. 23c ea., 3 for 64c. **Caerulean Blue**—A novel variety, deep purple-blue flowers. 24c ea., 3 for 68c.



Primula Obconica. Caerulean Blue, 24c

## Black Calla

(Palestine Lily or Sacred Lily of India)—Interesting variety from the Holy Land. Flowers of a rich purple color 4 to 6 inches across. A real novelty. Supply limited. 49c ea., 3 for \$1.22; extra large 2-yr. bulbs, 98c ea.



Sempervivium Haworthii

## Sempervivium Haworthii 17c

(No. 1)—Light, silver-green and iridescent leaves, forming a rosette. 17c ea., 3 for 45c, doz. for \$1.50.



## Sedum Treleasei

(No. 20) **TRELEA-SEI**—Color light green with pink tints. Leaves fleshy and round. 19c ea., 3 for 49c.



Giant Ruffled Single Petunias

## Giant Ruffled Single Petunias

Blooms all Summer—Unsurpassed for massing in beds and border planting, also fine for basket, vase and window boxes. Bloom early and continue until frost. Plants in mixed colors. 12c ea., 3 for 34c, 6 for 65c, doz. \$1.15.

## Bedding Petunias

**BLUE BIRD** (New)—Deep violet blue flowers, produced in the greatest profusion. A fine variety, admired by all. 13c ea., 3 for 37c, 6 for 70c.

**CELESTIAL ROSE**—A new dwarf and compact variety, having deep rose colored flowers. Fine and attractive. 12c ea., 3 for 34c, 6 for 65c.



Black Calla of India

## Water Plants for Pools, Aquariums 5 for 75c

A collection of water plants, such as White Water Lily, Water Poppy, Yellow Water Iris, Cat-tail, Calamus, Parrot's Feather, Water Hyacinth, Umbrella Plant, Arrowhead, Oxygenating plants, etc. Collection of 5 including White Water Lily, our selection, for 90c. (Collection of 5 not including Water Lily, our selection, for 75c.) Collection of 7 including Water Lily, \$1.35. (Collection of 7 not including Water Lily, 95c.) (Orders for these collections are sent separately from plant orders.)



Attractive Water Plants

## McGregor's Large Flowering Double Petunias 20c

For ease of culture, gorgeous effect, dependability and a continuation of bloom, double petunias are classed as one of the most popular annuals of today. The large handsome double velvety flowers are produced in great profusion throughout the entire summer; effectively used in vases, window and porch boxes as well as for bedding and border planting. We offer these double petunias in mixed colors only at a bargain price of 20c ea., 3 for 52c, 6 for \$1.02, doz. for \$1.80.



Double Fringed Petunias

## Vase Palm



Vase Palm, 17c

(*Dracaena Indivisa*)—A superb decorative plant with slender, drooping leaves. Often called the "Fountain Plant." Very graceful in habit; beautiful green foliage with delicate stripings of yellow and red. The favorite center plant for vase. 17c ea., 3 for 45c; larger plants, 42c each.



Flame Azalea, 98c (See description on page 26.)



Japanese Rubber Plant, 22c

## Japanese Rubber Plant 22c

**CRASSULA** (Tree Echeveria)—Leaves bright green, thick and waxy-like. Excellent for window or table. Requires little care. Leaves withstand the dry air of the home. 22c ea., 3 for 59c.

**FREE**—See our offer of free roses for friend's order, page 3.



Fan Leaved Palm

## Fan Leaved Palm 64c

(*Latania Borbonica*)—The well-known favorite Fan-Palm. Leaves large, fan-shaped, and of a cheerful green color; plant of hardy constitution, easily grown under any and all conditions, and adapted to all decorative purposes. 64c.





Trailing Vinca, 18c

## Trailing Vinca 18c

(Variegated Periwinkle)  
—A beautiful variegated trailing vine admirably adapted for hanging baskets and vases. The leaves are a glossy green, broadly margined, a creamy-white; flowers blue. 18c ea., 3 for 48c. Larger 36c ea., 3 for 94c.

## Strawberry Guava 32c

Flowers pure white, delightfully fragrant. Fruit large, of reddish color, and of sweet and spicy flavor. A luscious tropical fruit that is edible and also charming house plant. 32c ea., 3 for 82c.



Strawberry Guava, 32c

## Tricolor Foliage Plant 24c

(Pedilanthus) — A very pretty narrow-leaved foliage plant. Can also be used for bedding and edging purposes. In winter the light green leaves produce a pinkish border. 24c ea., 3 for 64c.



Tricolor Foliage Plant, 24c

## Flame Azalea 98c

Flowers in flaming combination shades of red, orange and yellow; in large clusters, and extremely hardy. 98c ea. (See illustration, page 25.)

## Snake Plant

(Sansevieria Zeylanica) — Erect, sword-like thick, fleshy dark green leaves, with clouded bars of white. Will go for months without water. 21c ea., 3 for 56c. Larger plants 34c ea., 3 for 91c. Selected plants by express 75c ea.



Snake Plant, 21c

## Strawberry Geranium 21c

(Saxifraga Sarmantosa) — Leaves striped with silver bands, blooms white. Makes one of the most unusual pot, vase, or hanging basket plants we have, the drooping tendrils producing at the joints small plants after the manner of the strawberry runner. 21c ea., 3 for 52c, doz. for \$1.86.

**SPECIAL SNAPDRAGON OFFER**—One each of the six varieties listed on this page for 88c.



Strawberry Geranium, 21c ea.

## McGregor's Giant Snapdragons

(Antirrhinum)

**BUTTERFLY**—A beautiful striped variety, entirely different from solid colored varieties. 18c ea., 3 for 48c.

**GOLDEN KING**—Deep golden-yellow flower spikes unusually large. 16c ea., 3 for 43c, doz. for \$1.42.

**GOLIATH**—Flowers beautiful salmon-rose, shaded apricot. Strong, robust, green foliage. 17c ea., 3 for 45c.

**QUEEN VICTORIA**—Giant flower spikes of the purest white. 16c ea., 3 for 43c, doz. for \$1.42.

**THE CARDINAL**—Brilliant scarlet flowers. Always attracts attention. 18c ea., 3 for 48c, doz. for \$1.60.

**VENUS**—Exquisite flowers of apple-blossom pink suffused white. Prolific bloomer. 17c ea., 3 for 45c, doz. \$1.50.



McGregor's Giant Snapdragon

## Scarlet Plume

POT PLANT

(Euphorbia Jacquini-flora) — An old favorite producing long, graceful sprays of bright orange-scarlet flowers. An excellent subject for the window or conservatory. 21c ea., 3 for 52c, doz. for \$1.86.



Scarlet Plume (Euphorbia) 21c



Kleinia No. 13



Sedum Stahli 18c ea.

## Kleinia No. 13, 17c

(Ficoides) — Long blue pencil shaped leaves of fleshy texture. Beautiful in Japanese Gardens. 17c ea., 3 for 45c.

**OUR GUARANTEE** is an asset with us and safeguard to you, giving absolute security to mail order buyers.

## Golden Striped Snake Plant 41c

(Sansevieria Zeylanica Laurenti) — This variety in addition to having green variegations, has a band of creamy-white on the outer edges of the long sword-like leaves, distinctive. Strong plants, 41c ea., 3 for \$1.08. Larger plants (by express) 89c ea., 3 for \$2.50. Extra large (by express) \$1.35 ea., 3 for \$3.87.



Golden Striped Snake Plant, 41c

## St. Bernard's Lily 24c

(Anthericum) — Handsome pot and vase plant. Dark foliage with broad bands of white. White flower spikes. Propagated by divisions. Water freely when in flower. Nice plants. 24c ea., 3 for 64c.

## Climbing Wax Plant

(Hoya Carnosa) — An interesting, easily managed house plant of climbing habit suitable for growing on a trellis or other support, producing during the summer months large umbels of fragrant waxy white flowers with pink centers. 33c ea., 3 for 90c, doz. for \$2.98.



St. Bernard's Lily, 24c

## Surinam Dwarf Cherry 36c

An unusual decorative plant, ornamental when in bloom and useful for its fruit. The fruits are rich bright red in color and have a delicious flavor. Its dwarf growth makes it suitable for potting. 36c ea., 3 for 94c.



Surinam Dwarf Cherry

## Bedding Salvias

**BLUE SALVIA** — A new color; rich bluish purple. 18c ea., 3 for 48c, doz. for \$1.60.

**WHITE SALVIA** — Flowers creamy white; unusual. 17c ea., 3 for 45c, doz. for \$1.50.

**RED** — Long double spikes of rich, fiery scarlet. 19c ea., 3 for 49c, doz. for \$1.70.



Red Flowering Salvia



Japanese Smoke Plant (Pilea)

## Japanese Smoke Plant 18c

(Pilea Muscosa) — Beautiful, graceful copper colored foliage plant covered with small flowers which burst when watered, giving effect of a smoky vapor coming from bursting of flowers. 18c ea., 3 for 48c, doz. for \$1.60.

## Sedum Stahli

(No. 4.) — Bulb shaped leaves, having appearance of bronze berries. One of the finest sedums we offer. 18c ea., 3 for 48c.



## Chinese Velvet Plant 29c

(*Gynura Aurantiaca*)—One of the handsomest of all the ornamental foliage plants. Leaves heavy, rich purple. Upright branching plant, stems and leaves covered with fine glistening, purple hairs, producing a soft, velvety texture. 29c ea., 3 for 76c, doz., \$2.54.



Chinese Velvet Plant, 29c



## Umbrella Plant

An ornamental plant, handsome as a Palm. Widely known as a house plant, grown either in soil or water. Indispensable for aquariums or pools. 20c ea., 3 for 52c, 6 for \$1.02, doz. \$1.80.



Water Hyacinth, 21c

## Water Hyacinth

(LILAC ROSE FLOWERS)—Forms a lovely rosette of curious, shining green leaves and spikes of the most exquisite flowers imaginable. A valuable water plant. Fine for aquariums, dishes, pools, etc. 21c ea., 3 for 56c, doz. \$1.86.



## Kalanchoe No. 6—19c

(*Tubifolia*)—Long tubular leaves. Dark green speckled brown. 19c ea., 3 for 49c.



Wandering Jew, Multi-colored

## Wandering Jew

(*Tradescantia Multi-Color*)—Foliage beautifully variegated purple, scarlet, yellow and white. Useful for porch boxes, or trailing pot plant. 15c ea., 3 for 39c, doz., \$1.30.

## Pink Wax Plant 21c

(*Mesembry Anthemum*)—Suitable for rock work, hanging baskets; pot plant. Bushy growth; frosted waxlike appearance. Beautiful pink flowers. 21c ea., 3 for 56c, doz., \$1.80.



Pink Wax Plant, 21c

## McGregor's Plant Food

An odorless concentrated soluble fertilizer for all kinds of plants. Especially recommended for ferns and house plants, etc. in sifting top cans. 35c.

## Tobacco Dust 35c

Kills all kinds of insects. Sifting top can. 35c.



Bedding Verbenas, 16c ea.

## Bedding Verbenas 16c

Most useful and popular plant for bedding out, affording constant bloom and a variety of colors and markings. The simplest culture and management. Preference seems to be for mixed beds of Verbenas; we offer them in endless variety unnamed. 16c ea., 3 for 43c, 6 for 80c, doz., \$1.42.



African Violet (*Saintpaulia Ionantha*), 29c

## African Violets 29c

(*Saintpaulia Ionantha*)—One of the most popular of all pot plants of today. The general type of growth is similar to the Cyclamen, leaves soft and hairy, the plant producing flowers of a beautiful blue and similar in appearance to our well known violets. 29c ea., 3 for 83c, doz., \$2.75.



19c EACH

Showy Carmine Flowers



Trailing Velvet Plant, 19c

## Double Violet 24c

LADY CAMPBELL—Double purple, similar to Marie Louise in growth and shape of flower. Good for cut-flower planting. Large, fine flowers, very fragrant. 24c ea., 3 for 64c, doz., \$2.14.

## Trailing Velvet Plant 19c

CARMINE FLOWERS (*Ruellia*)—Beautiful plant for pots, vases and baskets. Of rather low, compact, bushy growth, inclined to droop or trail. Very showy foliage which is of velvety texture and a rich bluish-maroon; bright carmine flowers. May be planted outside in the border for summer. 19c ea., 3 for 49c, doz., \$1.70.

## Star Jasmine 24c

(*Jasmine Grandiflorum*)—A valuable southern trellis plant, beautiful star-shaped flowers, pure white, very fragrant. Nice plants. 24c, 3 for 64c, doz. \$2.14.

This variety is far ahead of any other single violet known. Flowers a true violet blue color that does not fade. The richest and most delicious fragrance. 21c ea., 3 for 56c, doz. \$1.85.

## Watermelon Begonia



Watermelon Begonia, 26c

(*Peperomia Variegata*)—Leaves distinctly variegated white and green, thick and waxy-like and have the appearance of frosted silver. 26c ea., 3 for 70c, doz., \$2.30.

*Peperomia (Green leaf)*—Ornamental house plant; round, leathery, glossy rich green foliage. 18c ea., 3 for 48c.

## Weeping Lantana

LILAC FLOWERS—Graceful, drooping habit, grows very rapidly and blooms continually summer and winter, producing large clusters of flowers of lilac or rosy-pink. Foliage a beautiful dark green. Easily grown and gives wonderful satisfaction. 16c ea., 3 for 43c, 6 for 80c, doz., \$1.42.



Weeping Lantana, 16c

## Variegated Leaved Rubber Plant 98c

(*Ficus Elastica Variegata*)—A handsome variety, having green leaves with large irregular, greenish-yellow or creamy blotches. Admired by all. Large plants 98c ea., by express only.



Variegated Leaved Rubber Plant, 98c

## Wandering Jew 15c

GREEN LEAF (*Tradescantia*)—Bright green, small leaves, trailing habit. Makes lovely pot plant for home decoration. 15c ea., 3 for 39c, doz., \$1.30.

## Viola Jersey Gem 16c

JERSEY GEM—The exquisite flowers are pure, rich violet and delicately perfumed. It is dwarf of habit, a vigorous grower and a continuous bloomer. Makes a very effective bedder. 16c ea., 3 for 43c, doz. \$1.42.



Double Violet Lady Campbell, 24c



# The World's Finest Double Geraniums



New red flowering bedding Geranium Red Fiat

**S. A. NUTT**—A most unusual shade for a Geranium, rich crimson-maroon with extra good foliage making a novelty and a great favorite. Giant flower heads finely formed and constant blooming. 19c ea., 3 for 54c, doz. for \$1.80.

**ANNA BROWN**—Rich red flowers. Exceedingly popular. Profuse bloomer. Strong grower. 19c ea., 3 for 54c, doz. for \$1.80.

**LA FAVORITE**—Double snow-white. Large florets. Strong and vigorous. Finest bedder we have. 20c ea., 3 for 57c, doz. for \$1.92.

**RED FIAT**—(New)—Beautiful shade of rosy scarlet. One of the best new sorts. 26c ea., 3 for 70c, doz. for \$2.30.

**Stars and Stripes** New, scented foliage, flowers double, white; striped with red. Well named "Stars and Stripes." A rare novelty. 33c ea., 3 for 86c, doz. for \$2.97.

**FIAT**—Flowers are an intense salmon pink. Good grower. Always in demand. 20c, 3 for 52c, doz. for \$1.80.

**JEAN OBERLE**—Peach pink shading almost pure white at edge of petals. 18c, 3 for 48c, doz. for \$1.60.

**MADAM LANDRY**—Flowers soft salmon pink. Strong grower. Highly recommended. 19c, 3 for 49c, doz. for \$1.70.

**MRS. LAWRENCE**—Popular "Salmon" Geranium. Soft salmon rose; immense size. 19c, 3 for 49c, doz. for \$1.70.

**ENCHANTRESS FIAT**—New peach blossom pink, shaded to deep rose pink in center. 27c, 3 for 71c, doz. for \$2.35.

**ALPHONSE RICARD**—Brilliant orange red. Florets of huge size. 18c, 3 for 48c, doz. for \$1.60.

**AMERICAN BEAUTY** (New)—Color of American Beauty Rose. 22c ea., 3 for 59c, doz. for \$1.94.

**BEAUTE POITEVINE**—Beautiful shade of shrimp-pink, shading. 20c ea., 3 for 52c, doz. for \$1.80.

**HELEN MICHELL** (New.)—The clearest possible shade of scarlet. 19c ea., 3 for 49c, doz. for \$1.70.

**BEAUTE POITEVINE**—A beautiful variety. Apricot with white eye. 20c, 3 for 52c, doz. for \$1.80.

**IRVINGTON BEAUTY**—Rosy salmon-pink blossoms. A constant bloomer. 20c, 3 for 52c, doz. for \$1.80.

**PINK BEAUTY**—Lovely light pink. Velvety foliage. Exceptionally good. 19c, 3 for 49c, doz. for \$1.70.

**MME. BUCHNER**—Purest white flowers with very large florets. 19c, 3 for 49c, doz. for \$1.70.

**MISSOURI**—Rich red. Exceptionally fine bedder. One of the best. 21c, 3 for 56c, doz. for \$1.86.

**PINK BARNEY**—Double bright pink. Fine for bedding. Producing mass of color. 20c, 3 for 52c, doz. for \$1.80.

**JEAN VIAUD**—Richest deep pink, shading light pink. 22c ea., 3 for 59c, doz. for \$1.94.

**MARQUIS DE MONTMART**—Purple crimson; rich striking color. 23c ea., 3 for 61c, doz. for \$2.00.

**NEW GERANIUM RED BARNEY**—Pleasing rich red. Wonderful bloomer. 20c ea., 3 for 52c, doz. for \$1.80.

**Bargain Offer:** McGregor's World Famous Dozen. One each of American Beauty; Missouri; Alp. Ricard; Jean Oberle; Buchner; Mrs. Landry; Jean Viaud; Pink Beauty; Beaute Poitevine, Fiat; M. de Montmart; and Irvington Beauty; the collection of 12 for \$1.48.

## Special—Flame Flowered Bottle Brush

(*Callistemon Rigidus*)—This new shrub up to this time has been found only in a few private collections. It will occupy an outstanding place because of its rapid growth, attractive evergreen foliage and flowers of flaming scarlet in dense cylindrical spikes. It grows easily in any soil and is hardy in southern states. We offer this new plant with interest and feel that it will meet with popular favor. 29c ea., 3 for 76c, doz. for \$2.50.



Hardy Pinks

## Sweet Wivelsfield 24c

(*Dianthus Hybridus*)—This new hardy double *Dianthus* blooms as freely as the Sweet William. Main colors, reds, crimsons and pinks. Vigorous, bushy. Hardy. Of much value. 24c ea., 3 for 64c, 6 for \$1.22, doz. for \$2.14.

## New Double Hardy Grenadine Carnations



Car. Brilliant Rose

A very important introduction in Hardy Carnations. Large, long stemmed, deliciously clove-scented blooms. Splendid for bedding and for cut-flowers. Extremely free flowering and will grow well anywhere.

**BLACK KNIGHT**—The double deep velvety maroon blooms are very effective. 24c ea., 3 for 68c, doz. for \$2.30.

**BRILLIANT ROSE**—Brilliant shade of rose-pink. Choice variety. 24c ea., 3 for 68c, doz. for \$2.30.

**GLISTENING WHITE**—Shining snow-white. Abundant bloomer. 22c ea., 3 for 63c, doz. for \$2.10.

**GOLDEN YELLOW**—A selected variety of indescribable beauty in yellow coloring. 24c ea., 3 for 68c, doz. for \$2.30.

**SPECIAL OFFER**—1 each of above 4 Grenadine Carnations for 62c.

## The Wonder Flower Crimson King Carnation 26c

(Hardy) Blooms all summer. Exhibited at the World's Fair. Here is the Carnation that everybody has asked for that would live out in the garden during winter. Withstands a temperature of 20 below zero without protection. The best hardy, large flowering carnation ever introduced. Foliage dark olive-green. This plant will stand the Canadian winter in the yard. The stout stems support flowers in great profusion. It blooms all summer long, never a day that you cannot cut blossoms. The color is a rich crimson. The fragrance is delicious. Prices for plants to bloom this summer. 26c ea., 3 for \$1.28, doz. for \$2.30.



## Areca Palm 75c

Dark, glossy green leaves are gracefully curved on slender stems, and the entire foliage is gracefully disposed. Nice plants. 75c.

## Ostrich Plume Palm

(*Phoenix Roebellii*)—Graceful, curving leaves giving it a lightness and airiness unsurpassed. Spreading in habit. Nice plants, by express, \$1.00.



Wonderful Hardy  
Crimson King Carnation, 26c

## Cutflower Carnations

**AVIATEUR**—Brilliant dark red, shaded with richest maroon, surpasses in color the Jacqueminot rose. 22c, 3 for 59c, doz. for \$1.94.

**ENCHANTRESS**—Greatly admired; beautiful light pink satin color; flowers large; freely produced; vigorous growth; superb variety. 22c, 3 for 59c, doz. for \$1.94.

**MATCHLESS**—Largest flowers of the purest immaculate white, very sweetly scented with that delightful old-fashioned clove fragrance. 22c, 3 for 59c, doz. for \$1.94.

**MAINE SUNSHINE**—Clear yellow, strong, vigorous grower with finely formed flowers that are freely produced. Sweet fragrance. 28c, 3 for 74c, doz. for \$2.45.

**BARGAIN OFFER**—The collection of carnations above, all 4 for 82c.



Cut Flower Car. Aviateur



# Single, Fancy Leaved, Tricolor, Sweet Scented and Ivy Leaved Geraniums

## Showy Single Geraniums

**SCARLET WONDER** — Enormous trusses, large florets, richly colored vermilion scarlet. Distinct. 22c ea., 3 for 63c, doz. for \$2.20.

**CALIFORNIA**—A magnificent variety, pansy-like form, flowers rose-pink, with white eye. 23c ea., 3 for 66c, doz. for \$2.30.

**LA FIESTA** — A beautiful variety, flowers bright orange. Stands well in the forefront of single geraniums. 22c ea., 3 for 63c, doz. for \$2.00.

**ALICE OF VINCENNES**—One of the best. Petals edged violet crimson, changing to white in center. 21c ea., 3 for 60c, doz. for \$1.89.

**SPECIAL OFFER**—The four Showy Single Geraniums above for 69c.



Single Geranium Scarlet Wonder, 22c



Single Geranium, Alice of Vincennes, 21c



Geranium Mrs. Pollock, 29c

### Fancy Leaved Single Geranium 29c

**MRS. POLLOCK**—Golden tricolor foliage, flowers orange red, 29c ea., 3 for 83c.

### Bronze Bedder

Foliage yellowish green with a broad zone of a deep chestnut brown, scarlet blossoms. 25c ea., 3 for 72c.



Silver Leaved Ger. Mrs. Parker

### Silver Leaved Geranium

**MRS. PARKER**—The only double flowering variety in the silver-leaved section. While the foliage is deep green with a broad border and margin of pure white, the flower is perfectly double, of clear, bright pink. 34c ea., 3 for 97c.



Ger. Silver Leaved S. A. Nutt, 26c

### Silver-Leaved Geranium 26c

**S. A. NUTT**—Foliage distinctly edged with white. The variegated S. A. Nutt is a strong growing variety; flowers are large, produced in fine trusses, very free bloomer. Brilliant crimson-scarlet. 26c ea., 3 for 74c.



Ger. Happy Thought

### Tri-Color Geranium 27c

**HAPPY THOUGHT** — A tricolor geranium with a very dark green foliage, having a light creamy, almost white edge and a white center. Flowers bright scarlet. A rapid grower, and a free bloomer. 27c ea., 3 for 77c.

## Fragrant Foliaged Geraniums

**CUT-LEAF ROSE (Dr. Livingstone)** — Strongly rose scented foliage. The most popular of all the sweet-scented Geraniums. 16c ea., 3 for 46c.

**SKELETON LEAVED GERANIUM** — Deeply cut foliage, strong growing, rose scented. One of the best. 17c ea., 3 for 48c.



Ger. Cut Leaf Rose



Ger. Lemon Scented

**LEMON SCENTED** — A variety with rather soft thick leaves, strongly lemon scented. Flowers light lilac. An old variety. 18c ea., 3 for 52c.

**NUTMEG**—Light green leaves with fine cut edges. Nutmeg fragrance. Pinkish flowers; red stripe. 19c ea., 3 for 54c.

### Trailing Ivy Leaved Geraniums

**CAESAR FRANC**—Magnificent shade of soft rich crimson, foliage similar to ivy. 25c ea., 3 for 72c.



Souv. Chas. Turner

**ALLIANCE**—Delicate lilac-white, upper petals blotched crimson-rose, ivy-like foliage. 22c ea., 3 for 63c.

**SOUV. CHAS. TURNER** — Bright pink flowers, feathered maroon, ivy-like foliage. 21c ea., 3 for 60c.



### New Cactus Geranium 33c

(Poinsettia Geranium) — Unique and strikingly beautiful. Blooms curled and twisted similar to the Cactus Dahlia. Flowers scarlet crimson, borne on stiff stems well above the foliage. A novelty well worth having. 33c ea., 3 for 88c.



Variegated Leaved Sweet Scented Geranium, Lady Plymouth, 25c

### Variegated Leaved Sweet Scented Geranium

**LADY PLYMOUTH**—Most satisfactory of all the variegated leaved geraniums. Very similar to cut-leaf rose variety in fragrance (rose scented), but the deeply cut green foliage has beautiful white margin, bearing delicate pink flowers. The foliage and flower together make it one of the most unique and beautiful plants. Rapid growing, and of easy culture. 25c ea., 3 for 72c.



Sweet Scented

### Oak Leaf Ger.

Deep green, oak shaped leaves with brown center, strongly walnut scented. Flowers bright pink. Well worth while. A variety that shows a weeping habit. Distinctly different. 19c ea., 3 for 54c.

### New Apple Scented Geranium 23c

Foliage margined white, has velvety texture and is apple scented. Small white flowers. 23c ea., 3 for 65c.



Apple Scented Geranium, 23c



# Hardy Lilies and Summer Flowering Bulbs



Fragrant Regal Lily 20c

## Fragrant Regal Lily 20c

Flowers snowy-white, tinted blush with shades of canary yellow. Blooms July and August; may be forced as a house plant. Perfectly hardy. 20c, 3 for 52c, doz. for \$1.80. Special large bulbs, 38c, 3 for 98c, doz. for \$3.37.



Milk and Wine Lily (Crinum), 29c

## Popular Milk and Wine Lily 29c

Unusual house plant. Usually two flower stalks from each bulb, bearing a cluster of fragrant, lily-like flowers. White, banded wine-red. 29c ea., 3 for 76c, doz. for \$2.54. Larger bulbs, 42c ea., 3 for \$1.10.



Angel's Lily (Ismene), 38c

## Angel's Lily 38c

WHITE FLOWERS—(Ismene)—Summer and winter flowering. Giant Amaryllis-like pure white fragrant blossoms. Can be taken up and after a few weeks' rest, can be potted for winter blooming. 38c ea., 3 for 98c.

## Giant White Amaryllis

(HIPPEASTRUM)—A gorgeous plant. Grows easily in the house. The various colors of Hybrids have been exceedingly popular but it is a rare offering to present a white flowering variety. Frequently as many as six flowers on a single stem. Price: strong flowering bulbs, \$1.00 ea., 3 for \$2.75.



Mammoth Lily of the Valley

## Mammoth Lily of the Valley

MAMMOTH FLOWERING—Exquisite little, hardy plant of which one never tires. Will thrive in any soil and do well in shady places where many other plants fail. Delightfully scented little white bells. 12c ea., 3 for 34c, 6 for 65c, doz. for \$1.10.

## New Wonder Lily 24c

(Lily Philippine) — Wonderful new lily; snowy white flowers, green throat, continual bloomer, fragrant. 24c ea., 3 for 62c.



Giant White Calla, 18c

## Giant White Calla 18c (The Outflower Calla)

Very bushy, having doubly as many leaves and flowers as the old White Calla. The blooms are of snowy whiteness. 18c ea., 3 for 48c, doz. for \$1.60.



Red Spider Lily, 32c

## Spider Lilies

RED—Brick red flowers appear in fall, rising from the ground 10 inches high, bearing 4 or five flowers, with six petals each an inch long. 32c ea., 3 for 82c, doz. for \$2.89.

WHITE—Very similar in habit to the Red variety, with white flowers. 33c ea., 3 for 86c, doz. for \$2.98.



Mexican Scarlet Lily, 32c

## Bright Scarlet Mexican Lily

(Amaryllis Formissima)—Flowers bright velvety scarlet, shading to maroon, having a satiny white stripe in center of each petal. 32c ea., 3 for 82c, doz. for \$2.89.



Gold Banded Lily (Lillium Auratum)

## Hardy Japanese Lilies 36c

(Auratum)—Gold Banded Japanese Lily, ivory-white with a distinct band of bright yellow through center marked with deep purple spots. 36c ea., 3 for 94c, doz. for \$3.25.

GIGANTEUM EASTER LILY—The flowers of this magnificent Lily are trumpet shaped, pure white, gracefully formed and delightfully fragrant. Very free blooming. Price, large, 35c ea., 3 for 92c, doz. for \$3.15.

RUBRUM—Large, wide flowers, recurving at the tips. Very fragrant and hardy; lovely rose spotted crimson. 36c ea., 3 for 94c, doz. for \$3.25.

## Yellow Calla

(Elliottiana)—The flowers are a rich, deep, orange yellow which last a long time. Blooms large, leaves are spotted with white. Easily grown, prefers a rich soil. 42c ea., 3 for \$1.20, doz. for \$4.00.



Richly Colored Gloxinia

## Gloxinias 47c

Handsome, round, hairy leaves, and quantities of flowers in many shades. Mixed colors only. Bulbs 47c ea., 3 for \$1.24.

## Dbl. Tiger Lily

(Tigrinum) — Double, bright orange-red flowers spotted with black. 30c ea., 3 for 79c, doz. for \$2.64.

## Fancy Leaved Caladium

Multi Colored Foliage—Ornamental, gorgeous colorings. Especially valuable for indoor and outdoor culture. Charming conservatory plant. 42c ea., 3 for \$1.10, doz. for \$3.69.



Fancy Leaved Caladiums, 42c

## Hyacinthus Candicans 21c

Flowers white in handsome, pendulous bells arranged on pyramidal spikes. A strong bulb will give from thirty to fifty bulbs. 21c ea., 3 for 56c.

## Tuberose

FRAGRANT DOUBLE—Attain a height of 2 feet. Double flowers, glistening white, deliciously fragrant. 10c ea., 3 for 25c.



Amaryllis Hybrids, 48c

## Amaryllis Hybrids 48c

Wonderful Colors—These flowering plants are produced from crossings of the finest named varieties. Flowers vary from pure white to deepest crimson with beautiful combinations in stripes and variegation. 48c ea., 3 for \$1.27.



42c Each

Yellow Calla (Elliottiana), 42c



# Hardy Climbing Vines



Climbing Vine (Boston Ivy), 18c

## Popular Boston Ivy

(*Ampelopsis Veitchii*)—One of the most popular climbing plants for covering brick or stone walls, buildings, trees, trellises, fences, etc. Clings fast and is self-supporting to smoothest surfaces. Hardy everywhere. 18c, 3 for 48c, doz. for \$1.60; large plants, 37c ea., 3 for 96c.



## Kudzu Vine 23c

(Jack and the Bean Stalk Vine)—An exceedingly rapid grower, 20 ft. a week. Hardy flowers are rich purple. 23c, 3 for 61c; large plants, 38c.



## Climbing Sweet Peas

**PINK BEAUTY** — Bright pink, quite popular. 19c each.  
**CRIMSON KING** — Crimson-red flowers. 22c each.  
**WHITE PEARL**—Pure white. 21c each, 3 for 60c.



## Silver Lace Vine 90c

(*Polygonum Auberti*) — Quick growing, graceful, twining habit. Covers 25 feet in a season. Produces foamy sprays of white flowers. 90c each, 3 for \$2.55.

## Climbing Hydrangea 37c

(*Schizophragma*)—Strong vigorous vine, often growing 30 feet. Flowers similar to hydrangeas. Thrives best in a shady location. 37c ea., 3 for 96c, doz. for \$3.30.



## Large Flowering Clematis

(*Clematis Jackmanii*) — Blue, best known, 65c, 3 for \$1.85.  
(*Clematis*, Mme. Andre)—standard red, 64c, 3 for \$1.75.  
(*Clematis Henryii*) — creamy white, 63c. All 3 for \$1.72.

## Cinnamon Vine

Beautiful leaves, dainty flowers, exquisite perfume, easily grown. Rapid climber. Once planted will last a lifetime. 16c ea., 3 for 43c, 6 for 77c, doz. for \$1.40.

## Hardy English Ivy

(*Hedera Helix*)—Beautifully foliaged dark evergreen vine for shady locations. Also for porch boxes, indoor vases, trellises, etc. 18c, 3 for 48c, doz. for \$1.60; large 4 in. pot plants, 44c ea.



## Ornamental Bittersweet

Strong growing, glossy foliage vine, perfectly hardy, reaching a height of twenty feet. Large clusters of orange crimson berries throughout the winter. 26c, 3 for 70c, 6 for \$1.28, doz. for \$2.30.



## Purple Wistaria

Vigorous, strong-growing vine, lovely, rich violet-blue flowers, flowers deliciously sweet. 1 yr. plants, 32c ea., 3 for 92c, doz. for \$2.89; plants budded from blooming stock, \$1.00 ea., 3 for \$2.17.

## White Wistaria 30c

Flowers pure white; strongly scented flowers. 30c ea., 3 for 79c, doz. for \$2.64; plants budded from blooming stock, \$1.00 ea., 3 for \$2.17.

**SPECIAL OFFER**—One each of the Purple and White Wistaria, 1 yr., 57c. One each larger plants, budded, \$1.80.



## Mountain Rose 23c

(*Antigonon*)—Lovely fast growing climber, with beautiful rose-colored flowers. Resembles roses at distance. Fine for porches, trellises, etc. 23c, 3 for 61c, doz. for \$2.00.



## Scarlet Honeysuckle

**SCARLET HONEYSUCKLE** — Coral or red colored flowers. 22c, 3 for 59c, doz. for \$1.94.

**EVERGREEN HONEYSUCKLE** — Purplish evergreen foliage. Flowers white changing yellow. Sweetly scented. Nice plants. 21c, 3 for 56c, doz. for \$1.86.

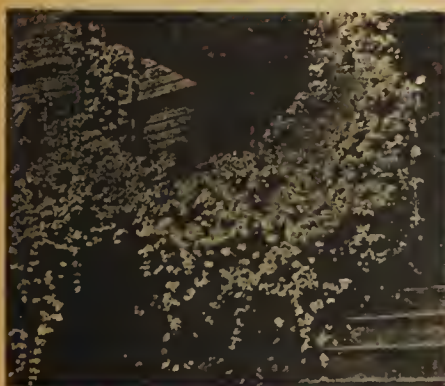
**GOLDEN HONEYSUCKLE** — White flowers; leaves beautifully netted yellow. 18c, 3 for 48c, doz. for \$1.60.



Chinese Matrimony Vine

## Chinese Matrimony Vine 23c

(*Lycium Vulgare* or Box Thorne)—Vigorous, hardy, climbing plant with bright purple flowers, succeeded by bright scarlet berries. 23c ea., 3 for 61c, doz., \$2.00.



Popular Clematis Paniculata, 22c

## Clematis Paniculata

Most satisfactory climbing, flowering plant, strong, rapid growth, dense, cheerful green foliage. Flowers in great profusion, creamy white color, very fragrant. 22c ea., 3 for 63c, doz. for \$2.20; 2 yr. plants, 42c ea., 3 for \$1.10.

## Creeping Myrtle 16c

**BLUE FLOWERED** — Best hardy trailing plant for use as a ground covering where grass will not grow. Valuable for cemeteries and gardens. Bright blue flowers. 16c ea., 3 for 43c, 6 for 80c, doz., \$1.42; per 100, \$10.00.

## Dutchman's Pipe 75c

(*Aristolochia Sipho*)—Large broad leaves produce wonderful shade. Flowers brown resemble a pipe. 75c ea., 3 for \$2.00; larger plants, \$1.25 each.

## Trumpet Creeper 24c

**TRUMPET FLOWER** (*Bignonia Radicans*)—Robust vine, twining tightly, orange-scarlet trumpet-shaped flowers. Grows 50 feet high. 24c, 3 for 64c, doz. for \$2.14; large plants, 50c each.

## Virginia Creeper 28c

(*Ampelopsis Quinquefolia*) Woodbine — Grows anywhere. Rapid, high climbing vine; clings to anything, highly colored foliage in fall. 28c ea.



Dutchman's Pipe



# McGregor's Hardy Garden Perennials

## Shasta Daisy 18c



Alaska Shasta Daisy, 18c

**ALASKA** — (Hardy). Grows 24 in. Plant in sunny location. Blooms June to October). The plants are very tall, well branched, with fine cut foliage and huge white flowers borne in profusion on long stiff stems. The flowers are pure white with gold centers, petals very long and center soft and velvety. Long lasting qualities. Very popular as a cut flower variety. 18c ea., 3 for 48c, doz. for \$1.60.

## PERENNIALS

Hardy Perennials are those plants which die down in winter but start again in the spring from the roots, lasting many years and flowering every year. Beginning in April and lasting until autumn, this popular family of plants produces a constant changing variety of flowers. Perennials are useful for many purposes: rockeries, borders, banks, terraces, edging and cemetery planting and are valuable for cut flowers for the home. Cultivation of Perennials is very simple and easy.



Hardy Alyssum Saxatile, 18c

## Hardy Alyssum 18c

**BASKET OF GOLD or GOLDEN TUFT**

(Saxatile compactum) — A wonderful low growing perennial, producing masses of tiny bright yellow flowers in early spring. Useful as a border plant, or equally as useful in the rock garden. 18c ea., 3 for 48c, 6 for 91c, doz. for \$1.60.

## Lythrum 20c

**ROSEUM SUPERBUM**

—A showy hardy perennial, fine for massing; flowers rosy-lilac produced on long, slender spikes. 20c ea., 3 for 52c.

## Artemisia 20c

**SILVER KING** — A hardy plant of rare and indescribable beauty; bright, finely cut silvery foliage. When cut the foliage can be carried dry indefinitely. 20c each, 3 for 52c, doz. for \$1.80.



Artemisia, Silver King, 20c

## Chinese Bell Flower 23c

(Platycodon) — White—Showy flowers of purest white, veined dark; form large clumps. 22c ea., 3 for 59c. Blue—Rich brilliant blue, flowers in bud have the appearance of inflated balloons. 23c ea., 3 for 61c.



Cup and Saucer Campanula (Calycanthema) 25c

## Campanula 25c

(Calycanthema) (Cup and Saucer) — The best and possibly the most widely cultivated variety of all. Your choice of blue, rose and white. 25c ea., 3 for 68c, doz. for \$2.24.

## Canterbury Bells

(CAMPANULA MEDIUM)

**BLUE**—Extra large blue bells. 24c ea., 3 for 64c, doz. for \$2.14.  
**PINK**—Rich and beautiful pink. 24c ea., 3 for 64c, doz. for \$2.14.  
**WHITE**—The old-fashioned white. 24c ea., 3 for 64c, doz. for \$2.14.



## Golden Glow

**RUDBECKIA**—A hardy perennial and an old favorite, growing as high as 8 ft. Exquisite double blossoms of brightest golden color as large as Cactus Dahlias. 23c ea., 3 for 61c, doz., \$2.04.



Blackberry Lily, 28c

## Blackberry Lily

**SPOTTED FLOWERS** (Belemcada Iridacea) — An interesting hardy perennial plant, which is an old garden favorite. Has shining, black, roundish seeds which give it the name of "Blackberry Lily." Is also sometimes called the "Leopard Flower" because of its orange, spotted red flowers. 28c ea., 3 for 74c, doz. for \$2.45.



Achillea, The Pearl, 19c

## Achillea, Pearl

**CEMETERY PLANT** — A unique hardy border and rock garden plant. Used in all types of hardy gardens. A profusion of small pure white blooms. Flowers during July and August. One of our best cemetery plants. Grows in sun or partial shade. 19c ea., 3 for 49c, 6 for 97c, doz. for \$1.70.

**NOTICE**—Please use our order blank when sending in an order. Additional order blanks will be sent on request.



Long Spurred Aquilegia, 20c

## Aquilegia 20c

(Long Spurred Columblines) — A fine strain in mixed colors, covering shades of pink, lavender, white, yellow and red. A long time favorite. Fine for cutting. 20c each, 3 for 52c, doz. for \$1.80.

## Plumy Bleeding Heart

(Dielytra Eximia) — More dwarf in growth, but otherwise very similar in flower and foliage to the Spectabilis variety. 24c ea., 3 for 64c.



Bleeding Heart (Dielytra Spectabilis)

## Hardy Scabiosa 20c

(Caucasica Hybrids) — Flowers very similar to the Annual Scabiosa, in shades of blue from lavender to dark blue. Very desirable. 20c ea., 3 for 52c.

## Chinese Lantern Plant

**PHYSALIS** — Grows from 1 to 2 ft. high. Produces balloon-like husks, which turn bright red when ripe, and resemble Chinese lanterns. 21c ea., 3 for 56c.



Chinese Lantern Plant, 21c

## Coreopsis

(Lanceolata Grandiflora) — Showy perennial with light green, finely cut foliage, and flowers on long, wiry stems, in all shades of yellow, red and brown. 20c ea., 3 for 52c, doz. for \$1.80.

## Cardinal Flower 27c

**LOBELIA** (Cardinalis) — Rich, fiery cardinal flowers, 10 to 18 spikes 24 to 30 in. long. Most attractive. 27c each, 3 for 77c, doz. for \$2.40.



Cut-flower Coreopsis

## Bleeding Heart 27c

(Dielytra Spectabilis) — Graceful drooping sprays of heart-shaped pink and white combination flowers. An old-fashioned garden favorite, and one of the most charming hardy perennials of easy cultivation. 27c ea., larger plants 48c.

**FOR** quicker, easier and healthier growth feed your plants with McGregor's Plant Food.



# McGregor's Hardy Garden Perennials



Giant Iris Monsignor, 20c

**MONSIGNOR**—(S) Petunla-violet. (F) Crimson with violet border. 20c ea., 3 for 52c, 6 for \$1.00.

## All-Color Iris Bed

A bed of 8 wonderful varieties of Iris, white to dark purple. 8 plants (our selection), 68c.

## Flag Iris-Fleur-de-Lis

Abbreviations: (S)—Standards, meaning upper petals. (F)—Falls, or lower petals.

**LORELI**—(S) Light yellow. (F) Ultramarine, bordered cream. 17c ea., 3 for 45c.

**MME. CHEREAU** — (S. and F.) Clear blue. Beautiful. 16c ea., 3 for 43c.

**PALLIDA DALMATICA**—(S) Silvery lavender; (F) lavender with rosy tinge. 17c ea., 3 for 45c.

**LOHENGRIN** — (S) Rose lavender; (F) darker white beard. 22c ea., 3 for 59c.

**PURPLE PRINCE**—(S and F) Intense, deep dark purple. 19c ea., 3 for 49c.

**MAORI KING** — (S) Rich golden yellow; (F) velvety crimson, margined gold. 22c ea., 3 for 59c.

**QUEEN OF MAY**—(S and F) Soft rosy-lilac, almost pink. 19c ea., 3 for 49c.

**CELESTE**—(S and F) Beautiful shade of soft violet. 17c ea., 3 for 45c.

**HER MAJESTY** — (S) Rose pink; (F) lined darker. 19c ea., 3 for 49c.

**DARIUS**—(S) Rich canary-yellow; (F) Lilac, margined white. 19c ea., 3 for 49c.

## African Daisy

(*Gerbera Jamesoni*)—This Daisy from the Transvaal has been extensively featured by the florists as a cut flower. Single daisy-like flowers varying in color from bluish white and salmon pink to brilliant scarlet, which we can supply only in mixture. 23c, 3 for 65c.



African Daisy (*Gerbera*)

## Helianthemum

**MUTABILE—ROCK ROSE** — Low-growing evergreen plants covered with golden-yellow flowers. 20c ea.

## Hardy Garden Verbena 22c

Much like the bedding variety, purplish heliotrope flowers. Strong growing, free flowering. 22c ea., 3 for 59c, doz. for \$1.94.

## Delphiniums 28c

**WREXHAM HYBRIDS**—The newest and most improved strain, strong vigorous growth, flowers of largest size on immense spikes from palest lavender to the richest blue. 28c ea., 3 for 80c, 6 for \$1.50, doz. for \$2.69.

**GOLD MEDAL HYBRIDS** — Flowers of huge size in both single and double forms. Colors range from palest blue to deep blue and royal purple. 26c ea., 3 for 74c, doz. for \$2.50.

**BELLADONNA HYBRIDS** — Light blue shades predominate in these hybrids. 26c ea., 3 for 74c, doz. for \$2.50.



Delphinium Gold Medal Hybrids



Dbl. Hollyhocks

## Double Hollyhocks 21c

The old-fashioned Hollyhocks still hold a prominent place in American gardens. The double flowers on tall, stately stalks resemble roses at a distance and come in separate colors of crimson, yellow, white, pink and maroon. Any variety, 21c ea., 3 for 60c, doz. for \$2.02.



Hardy Hibiscus (Mallovs)

## Hardy Aster 20c

**CLIMAX**—One of the best and showiest with large, pyramidal spikes of light lavender-blue flowers, with gold centers, free blooming. 20c ea., 3 for 52c.

## Hardy Ferns

These graceful and universally popular plants are of easy culture and afford a wide range of possibilities. A shady nook, where the soil is moist and the drainage good, will prove an ideal location. Strong root clumps of mixed varieties. 28c, 2 for 53c, 3 for 80c, 6 for \$1.50, 12 for \$2.69.



Hardy Fern, 28c ea., 6 varieties, \$1.50



Digitalis, Foxglove, 20c

## Digitalis Foxglove 20c

Striking bell shaped blooms. Grows 2 to 3 ft. high. Choice perennial, white rose, pink, yellow and purple flowers. No plant more worthy of a place in every garden than the showy Foxglove. 20c ea., 3 for 57c, doz. for \$1.92.

## Giant Hibiscus Mallows 21c

**WHITE** — Tall, free-flowering. color white, deep crimson center. 20c, 3 for 57c, doz. for \$1.92.  
**PINK**—Flower clear even pink. 21c, 3 for 60c, doz. for \$2.02.  
**CRIMSON** — New and distinct. Immense striking deep crimson flowers. 23c, 3 for 65c, doz. for \$2.20.

## Variegated Day Lily 26c

(*Funkia Variegata*) — Hardy, grows from 18 to 24 inches high, blooms from June to Sept. Lovely purple flowers. 26c ea., 3 for 74c.



Variegated Day Lily, 26c



Blue Forget-Me-Not, 20c

## Blue Forget-Me-Not 20c

(*Myosotis*) — Should be placed in a shady, moist location. Hardy if given slight protection through winter. Of comparatively dwarf growth. Flowers light blue. 20c ea., 3 for 52c.

## Daisy Double English 19c

(*Bellis Perennis*)—Charming perennial of dwarf, compact growth, growing about 6 in. high. Red-dbl. flowers, 19c; pink-dbl. flowers, 19c; white-dbl. flowers, 19c. All varieties, 3 for 54c, doz. for \$1.82.



Dbl. English Daisy (Bellis), 19c



Gaillardia Grandiflora

## Gaillardia Grandiflora 20c

**BLANKET FLOWER** — Grows 24 inches high, plant in sun or shade. Blooms June to November. Flowers brownish red. 20c ea.

## Achillea 24c

**Filipendulina** (Fern-leaved Yarrow) Dense heads; showy golden yellow flowers. 24c ea., 3 for 68c.

## Cerastium 20c

**SNOW-IN-SUMMER** — Rock or border plant, silvery white foliage, snow-white flowers. 20c ea.

## Gypsophila 42c

**BRISTOL FAIRY**—Flowers double, snow white, two or three times the size of *Paniculata*. Fine sprays from June until frost. 42c ea., 3 for \$1.13, doz. for \$3.90.

## Gypsophila 23c

**BABY'S BREATH**—*Paniculata F. Plena*—3 to 3½ feet. Pure white single flowers. 23c ea., 3 for 63c, doz. for \$2.20.

## Stokesia 20c

**CORNFLOWER ASTER-CYANEA**—Large flowers resembling a single Aster, produced in rich blue, and also white. Your choice of colors. 20c ea., 3 for 52c.



Gypsophila (*Paniculata*), 23c



# Bargains in McGregor's Hardy Garden Perennials



## New Double Pyrethrum 35c

"MIAMI QUEEN"—One of the best new garden plants of years. A colorful perennial blooming freely throughout the summer. The flowers are like other Pyrethrums or Painted Daisies with double Chrysanthemum like centers, with 24-inch stems. A really charming cut flower plant and a rare offering for 1937. 35c ea., 3 for \$1.00, doz. for \$3.75.



### Lemon Lily

(*Hemerocallis Flava*)—Narrow, grass-like foliage. Bright yellow lily-shaped flowers, fragrant. 23c ea., 3 for 61c.



### Alpine Poppy

(*Alpinum*)—Charming miniature poppy, showy flowers, pink, yellow, apricot, orange and white. Mixed, 19c ea., 3 for 49c.

## Hardy Oriental Poppies

**LULA A. NEELEY**—Good, strong stems support flowers of brilliant oxblood red. 48c, 3 for \$1.27.

**MRS. PERRY**—Bright, clear pink; vigorous growth. One of the most beautiful varieties. 33c ea., 3 for 86c.

**ORANGE QUEEN**—A most unusual variety. Flowers beautiful orange color. 21c ea., 3 for 56c, doz. for \$1.86.

**PROSERPINE**—Massive flowers; brilliant scarlet. One of the best varieties. 28c ea., 3 for 74c.



Oriental Poppies

## Blue Bells of Scotland 22c

(*Campanula Rotundifolia*)—Clear blue flowers. Especially suited for crevices in the rock garden or deep slopes. Does well also in light shade. 22c ea., 3 for 59c, doz. for \$1.94.

## Lychnis 20c

**CHALCEDONICA**—Vivid scarlet flowers, one of the brightest plants in the hardy border. 20c ea., 3 for 52c.

**ALBA**—Same as above but white. 20c ea., 3 for 52c.

## Mertensia

**BLUE BELL**—Beautiful early spring plant. Its drooping clusters of delicate light blue blossoms, which gradually fade to pink, are unusually attractive. Grows from 12 to 18 inches high, and blooms from March to May. 27c ea., 3 for 71c.

## Large Flowering Showy Garden Peonies



Large Flowering Peonies, Marguerite Gerard (1/8 size)

**ALBERT CROUSSE**—(Late)—Even delicate sea shell-pink in color. Perfect shape. 42c ea., 3 for 63c.

**AMERICAN BEAUTY**—(Mid-season)—A glowing red in color. Crown type. 42c ea., 3 for 69c.

**AVALANCHE**—(Midseason)—Color, pure snow white, fragrant, very waxy. Crown type bloom. 39c ea., 2 for 59c.

**BERLIOZ**—(Late)—Color, bright currant-red, gradually changing until silver tipped. 42c ea., 2 for 63c.

**BOULE DE NEIGE**—(Early)—Color, milk-white with sulphur center. Cut flower variety. 41c ea., 2 for 62c.

**EDULIS SUPERBA**—(Early)—Color bright clear pink with silvery reflex. Measures seven to eight inches across. 39c ea., 2 for 59c.

**FESTIVA MAXIMA**—(Early)—Pure white in color. Enormous size. Popular for cut flowers. 42c ea., 3 for 63c.

**GOLDEN HARVEST**—(Midseason)—Creamy-pink in color. A striking variety. 39c ea., 2 for 59c.

**LA TULIPE**—(Midseason)—Delicate blush-white, shading to ivory-white, with red tulp markings. 47c ea., 2 for 61c.

**L'ECLANTANTE**—(Midseason)—Double, enormous size. Brilliant crimson in color. Perfect form. 44c ea., 2 for 66c.

**MARGUERITE GERARD**—(Midseason)—Hydrangea-pink. Enormous flat-shaped flowers, bloom in clusters. 39c ea., 2 for 59c.

**MONS. JULES ELIE**—(Early)—Lilac-pink shading to deeper rose at the base. 47c ea., 2 for 61c.

**PHILOMELE**—(Midseason)—Guard petals violet-rose, center golden-yellow, petals cream or amber-yellow. 37c ea., 2 for 56c.

**MESSONIER**—(Midseason)—Color brilliant crimson. Outstanding variety. Popular cut flower type. 38c ea., 2 for 57c.



## Hardy Garden Pinks

**DOUBLE FRINGED — SWEET SCENTED**

**GLADYS CANFIELD**—Large fringed pink, tinted lavender, crimson center. Wonderful for cutting. 18c ea., 3 for 48c, doz. for \$1.60.

**HER MAJESTY**—New double white; plant of strong growth, unusually free blooming. 18c ea., 3 for 48c, doz. for \$1.60.

**SPECIAL OFFER**—1 each of above 4 Hardy Garden Pinks for 62c.

**ABBOTSFORD**—Rose-red, dark center; of strong growth, unusually free blooming. 17c ea., 3 for 45c, doz. for \$1.50.

**SPRINGFIELD**—Light lavender-pink, finely formed flowers, sweet scented. Very popular. 19c ea., 3 for 49c, doz. for \$1.70.

SEE PAGE 28 FOR HARDY AND CUTFLOWER CARNATIONS.



Giant Hardy Primrose (Mixed Colors)

## Hardy Primrose

**POLYANTHUS** (*Veris Hybrids*)—Flower spikes are from 6 to 8 inches long. The individual flowers are large and are of purest white, yellow, orange and crimson. 25c ea., 3 for 68c, doz. for \$2.24.

## Linum 20c

**SCARLET FLAX** (*Ruborum*)—Desirable perennial; fine foliage. Scarlet crimson flowers. 20c each.

(*Alpinum*)—Airy, delicate blue flowers, on graceful stems. 21c each.

## Hardy Hen and Chickens

(*Sempervivum*)—Leaves forming perfect rosettes and used effectively for edging or rockeries. Three distinct varieties. 17c ea., 3 for 45c, doz. for \$1.50.



Hardy Hen and Chickens

## Coral Bells or Fairy Flowers

(*Heuchera Sanguinea*)—Blooms June to September. Flowers bright crimson, free flowering. Foliage similar to that of a Geranium. 24c ea., 3 for 64c.



Coral Bells (Heuchera)

## Geum 17c

(*Coccolneum*)—Mrs. Bradshaw. Attractive double fiery-red blooms. 17c ea., 3 for 48c.

**LADY STRATHEDEN**—New. Rich golden yellow flowers. 17c each.

## Sea Pink 27c

(*Armeria*)—Attractive dwarf plants. Bright green foliage, rosy-red blooms. 27c ea., 3 for 77c.

## Sweet Lavender

(*Statice Latifolia*)—Leathery leaves, purplish blue flowers. Fine for rock garden. 23c ea., 3 for 63c, 12 for \$1.98.



Moss Pink, (Phlox Subulata), 22c

## Moss Pink 22c

(*Phlox Subulata*)—Early spring flowering evergreen foliage. Flowers bright rose. One of the best plants available for use as a ground covering. 22c ea., 3 for 59c, doz. for \$1.94.

## Hardy Bush Plumbago 24c

**LADY LARPENT**—Grows compact, and from July until severe frost is covered with lovely, rich violet-blue flowers. 24c ea., 3 for 64c.



Hardy Bush Plumbago, 24c



# McGregor's Hardy Garden Perennials



Hardy Pink Tunica, 23c

## Tunica Saxifraga 23c

Pretty tufted plant with light pink flowers. Useful for the rockery. 23c ea., 3 for 61c.



Japanese Speedwell or Blue Flowering Veronica, 20c

## Veronica 20c

Bright blue flowers on long spikes all summer and fall. 20c, 3 for 52c.



## False Dragon-head 20c

*Physostegia Virginica* — Long spikes of pink heather like flowers. Brilliant in coloring. 20c ea., 3 for 52c, doz. for \$1.80.

## Yucca 32c

**SPANISH DAGGER OR THREAD PALM (Green leaved)** — Its broad sword-like foliage and tall branched spikes of fragrant drooping creamy white flowers make it an effective hardy plant for all positions. 32c ea., 3 for 82c.

(*Variogata*) — Very similar in growth and flowers to green leaved variety, except foliage being golden striped. 36c, 3 for 94c.



Yucca, Green Leaf, 32c



## Rudbeckia 20c

**PURPLE CONE FLOWER (*Purpurea*)** — Flowers reddish purple, large cone-shaped brown center. 20c ea., 3 for 57c.

## Ground Creeper

(*Pachysandra*) — Evergreen ground covering plant. Grows in shade or sun. Thick green foliage. 19c ea., 3 for 55c, doz. for \$1.90.



Japanese Anemone Huphensis

## Hardy Japanese Anemones

**WHIRLWIND** — Blooms from August until frost. Large silvery white blooms. 27c ea.

**HUPHENSIS** — 12 to 14 in. high. Blooms in August until late autumn. Mauve-rose. 25c each.

**JAPONICA** — Beautiful shades of pink with large open flowers. Blooms from September to mid-November. 23c ea., 3 for 61c.

## Liatris (Blazing Star) 20c

**GAY FEATHER** — Blooms in midsummer and produces long, narrow spikes of rich purple flowers. Attracts butterflies. 20c ea., 3 for 52c, 6 for \$1.02, doz. for \$1.80.

## Brightly Colored Hardy Phlox

**BEACON** — Bright cherry-red. 21c ea., 3 for 56c.

**B. COMPTE** — Brilliant French purple. 21c ea., 3 for 56c, doz. for \$1.86.

**BRIDESMAID** — Pure white, carmine center. 20c ea., 3 for 52c, doz. for \$1.80.

**ECLAIREUR** — Beautiful clear rose. Magnificent. 21c ea., 3 for 56c, doz. for \$1.86.

**ETHEL PRITCHARD** — Delightful French-mauve color. 20c ea., 3 for 52c, doz. for \$1.80.

**ELIZABETH CAMPBELL** — Bright salmon-pink. Dark red eye. 20c ea., 3 for 52c, doz. for \$1.80.

**MISS LINGARD** — Favorite white; early; first class. 23c ea., 3 for 61c.

**MRS. CHAS. DORR** — Beautiful lavender. Favorite. 19c ea., 3 for 49c, doz. for \$1.70.

**MRS. JENKINS** — Pure white flowers. Free bloomer. 20c ea., 3 for 52c, doz. for \$1.80.

**PAINTED LADY** — Silver pink, salmon tints, red eye. 20c ea., 3 for 52c, doz. for \$1.80.

**RIVERTON JEWEL** — Salmon pink; dark crimson eye. Handsome. 20c ea., 3 for 52c.

**R. P. STRUTHERS** — Rosy-carmine with a claret-red eye. 22c ea., 3 for 59c, doz. for \$1.94.

**RYNSTROM** — Paul Neyron, rose color. 21c ea., 3 for 56c.



Rose Pink Phlox Rynstrom

**RHINELANDER** — A rare shade of salmon-pink. Claret-red eye. 21c ea., 3 for 56c.

**SPECIAL FRENCH** — Glowing pink. 27c ea., 3 for 71c.



## Scotch Heather 79c

(*Calluna Vulgaris*) — Low and compact, densely covered with minute green leaves. Pink flowers in great profusion. 79c ea., 3 for \$2.26.

## Double Pink Baby's Breath

(*Gypsophila Repens*) — Double flowers of compact habit; fine for rockeries. 36c ea., 3 for 94c.



Hardy Blue Salvia, 20c

## Blue Flowering Salvia 20c

(*Farinacea*) — Striking blue flowers, a welcome addition to any border. 20c, 3 for 52c, doz. for \$1.80.

## Red Hot Poker Plant

(*Tritoma Pfitzerii*) — A native of Africa. The tall spikes of showy flaming, orange-red flowers give the plant the name of Red Hot Poker. Blooms from July to October. 26c, 3 for 70c. Larger size, 40c each.



Tritoma (Red Hot Poker), 26c

## New Tritoma Towers o'Gold

(*Pauciflora*) — An entirely new and different Tritoma from Africa. Very effective. Spikes of lemon yellow flowers throughout summer. 48c ea., 3 for \$1.27.

**SPECIAL OFFER** — One each of 4 Perennials illustrated — Tunica, Sedum, Sweet Williams and Rudbeckia, for 75c.

## Live Forever 21c

(*Sedum Spectabile*) — Showiest Stonecrop. Grows anywhere. Pink flowers produced abundantly in flat clusters. Leaves thick and leathery. 21c each 3 for 56c, dozen for \$1.86.



Sedum Spectabile Live Forever, 21c

## Hardy Everblooming Sweet Williams 19c

**DIANTHUS BARBATUS** — Any variety, 19c ea., 3 for 49c, doz. for \$1.70.

**SCARLET BEAUTY** — Bright scarlet flowers, remarkable coloring.

**PINK BEAUTY** — Beautiful salmon pink flowers.

**GIANT WHITE** — Large flowers, pure white, effective as Phlox.

**KING OF MAROONS** — Dazzling velvety maroon flowers.



Pink and Scarlet Sweet Williams, 19c each



# McGregor's Hardy Flowering Shrubs

ALL SHRUBS on pages 36, 37 and 38 are shipped, and should be shipped in dormant condition. They remain in this condition or state, until along in May. Therefore, they should be purchased before May 15th. If purchased after that date, orders will be held for fall delivery.



Althea Pink Perfection, 28c

## Altheas 28c (Rose of Sharon)

**ARDENS**—Fully double flowers of a beautiful violet shade. 28c each.  
**DUCHESS DeBRABANT**—Brilliant double red flowers. 28c, 3 for 74c.  
**JEAN d'ARC**—Double white flowers. A free blooming variety. 28c ea.  
**PINK PERFECTION**—Large double flesh pink flowers. 28c, 3 for 74c.  
**COLESTIS**—An extra fine variety. Rich blue, single flowers. 28c each.



Pink Flowering Almond, 34c

## Japanese Desmodium

(*Lespedeza Sieboldi Pendulifolium*)—Stems clustered, gracefully arching, 2 to 4 feet tall, literally loaded with drooping racemes of rose-purple flowers. Leaves rich green, compound, consisting of three elliptic leaflets. This shrub is a native of Japan. Should be cut to the ground each spring before the new growth starts. Nice plants. 39c ea., 3 for \$1.04, doz. for \$3.47.



Rose-purple Desmodium, 39c

## Flowering Crabs

**BECHTEL'S** (*Malus Bechteli*)—Medium sized tree with spreading or ascending branches forming a wide head. Flowers large and very double, attractive, of a delicate pink, or bluish color, and very fragrant. Hardy, succeeds well in all soils. A most remarkable shrub. 85c ea., 3 for \$2.35.

**PARKMANI**—Outstanding and a great favorite. Beautiful tree form. A broad spreading form with very bright rose-colored flowers of a semi-double form. 82c ea., 3 for \$2.26.

**ALDENHAMENSIS**—A new English Flowering Crab. Considered the finest of all red-flowered Crab Apples flowering after most of the other Crabs have finished. Double red. 85c ea., 3 for \$2.35.

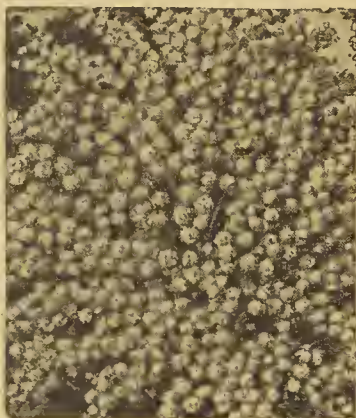


Bechtel's Crab, 85c

## Double Deutzias

**DEUTZIA CRENATA ROSEA PLENA**—Flowers pink, one of best flowering shrubs. 28c ea., 3 for 74c, doz. for \$2.45.

**DEUTZIA, PRIDE OF ROCHESTER**—Large white flowers. Grand shrub. 27c ea., 3 for 71c, doz. for \$2.35.



Pink Deutzias Rosea, 28c

## New Blue Spirea 32c each

(*Caryopteris*)—Handsome, free flowering, 2 to 3 ft. A well-rounded plant covered with whorls of attractive clear blue colored flowers in tiers. 32c each, 3 for 87c.

## Evergreen Cotoneaster 32c

(*Horizontalis*)—Handsome evergreen shrub of unusual merit for planting with shrubbery or in rock gardens. Will grow in any well-drained soil, either in partial shade or full sun. Flowers are white, in small clusters, and are followed by bright red fruit. 32c ea., 3 for 82c, doz. for \$2.89.



Evergreen Cotoneaster, 32c

## Oak-Leaved Hydrangea 65c

(*Quercifolia*)—A grand summer-flowering hardy shrub. Large true oak-leaf shaped foliage, deep green in summer, changing to beautiful colors in fall. Flowers come in huge panicles, creamy white with white or pinkish white rays. The young branches are covered thickly with rusty brown felt-like hairs. Excellent for planting as specimens, or grouping with other shrubs. 65c, 3 for \$1.78.



Oak Leaf Hydrangea, 65c

## Abelia Grandiflora 19c

One of the most beautiful shrubs in cultivation. The graceful arching stems are clothed with dark, glossy leaves which are evergreen in the South, and slowly deciduous in the North. Flowers white, tinged with pink, are borne in profuse clusters from early summer until frost. 19c ea., 3 for 49c, 6 for 97c, doz. for \$1.70. Larger size, 42c, 3 for \$1.10.



Abelia Grandiflora, 19c

## Red Twigged Dogwood

(*Cornus Sanguinea*)—An upright growing shrub with blood-red stems or branches; flowers white. Hardy and vigorous, thriving best in a moist soil. 25c ea., 3 for 68c, doz. for \$2.24.

## Yellow Twigged Dogwood

(*Cornus Flaviramea*)—The yellow stems or branches of this shrub make it very effective in all shrub plantings, and a striking contrast with the Red Twigged variety. 26c ea., 3 for 70c, doz. \$2.30.

## Flowering Almonds

**PINK**—(*Prunus Sinensis*)—Flowers double, rose color. One of the first to bloom in the spring. Very showy. Nice plants 34c ea., 3 for 91c.

**WHITE**—Same as pink variety in growth and habit, but bearing white flowers. They should be planted together. 32c ea., 3 for 82c.

## Flowering Peach 65c

(*Amygdalus*)—To those who admire the peach blossom this beautiful tree will give real joy. Unusually large double flowers which are admirable for cutting. Plant as a single specimen or in groups of three or more. Attains height of ordinary peach tree. Double red (*rubra plena*) or double white (*alba plena*). State color wanted. 65c each, 3 for \$1.75.



Red Leaved Barberry, 19c

## Red-Leaved Barberry

(*Berberis Thunbergii Atropurpurea*)—Easily grown shrub, of medium height, with distinctly red foliage, the heat of the summer even intensifying its brilliancy. Scarlet berries throughout the winter. 2 1/4 in. pot plants 19c ea., 3 for 54c, doz. for \$1.82. Field plants 25c ea., 3 for 72c, doz. for \$2.40. Larger field plants 35c and 50c ea. by express.

## Mint Shrub

Unusual new shrub, attractive lilac purple flowers. Very showy, dense spikes of flowers, aromatic. 49c ea., 3 for \$1.12. (*Elsholtzia*.)

## New Butterfly Bushes

**ALTERNIFOLIA**—Long arching branches of beautiful lilac purple. Dark green foliage. Blooms all summer. 32c ea., 3 for 82c.

**ILLE DE FRANCE**—Produces graceful stems which terminate in tapering panicles of deep violet purple. 30c ea., 3 for 79c.

**LAVENDER GLORY**—(New)—One of the finest Butterfly Bushes grown. Large flowers of light lilac. 34c ea., 3 for 91c.

**MAGNIFICA**—The favorite of all Buddleias, rich violet mauve in color. 23c ea., 3 for 61c.

**WILSONI**—Long pendulous spikes of bright mauve pink. A choice variety. 24c ea., 3 for 64c.



Butterfly Bush

## New Pearl Panicle Flower 38c

(*Colutea*)—A beautiful new shrub growing 8 to 10 ft. high and blooming from June to August. The bright yellow pea-shaped flowers are produced in great abundance. We are fortunate in being able to offer this rare and beautiful shrub. 38c ea., 3 for 98c.



# McGregor's Hardy Flowering Shrubs



Mahonia (Oregon Holly), 58c  
**Mahonia 58c**  
 (Aquifolium or Oregon Holly)  
 — Handsome shrub, green, spiny toothed leaves. Showy bright yellow flowers in May, succeeded by bluish berries. 58c ea., 3 for \$1.50.

**High Bush Cranberry**  
 Grows eight to ten feet, upright spreading branches. Bright scarlet berries, white flowers. Foliage. 50c ea., 3 for \$1.38, 6 for \$2.70.

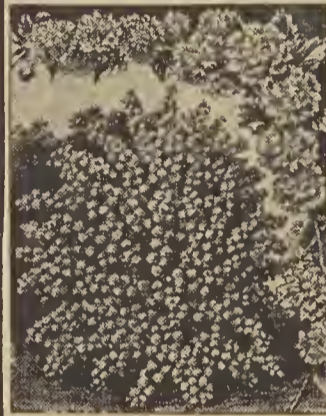


Common Snowball, 28c  
**Common Snowball 28c**  
 (Virburnum Opulus Sterile)—Grows 4 to 8 feet. Flowers in spring. A grand hardy shrub with handsome double white flowers. 28c ea., 3 for 74c, 6 for \$1.38, doz. for \$2.45.



**Red Flowering Dogwood \$1.25**  
 (Cornus Florida Rubra)—Luxurious foliage, glaucous underneath; beautiful rose-red flowers (not the red twiggled shrub). Rare. (Stock limited). \$1.25 ea., 3 for \$4.13.

**Double Yellow Kerria 39c**  
 JAPANESE ROSE—(Flore Pleno)—Flowers are numerous, double bright yellow, large and showy. Perfectly hardy. Grows 4 to 6 feet tall. Flowers in midsummer. Native of Japan; leaves bright green, sharply toothed. 39c ea., 3 for \$1.04, doz. for \$3.47.



Double Yellow Kerria, 39c



Pussy Willow, 24c  
**Pussy Willow**  
 (Salix Caprae)—Well known shrub. Very handsome in flower and greatly esteemed by reason of its earliness. Cut the ends of the branches in January or February; place them indoors in a vase of water and watch them unfold their catkins of silvery pink. 24c ea., 3 for 64c, doz. for \$2.14.

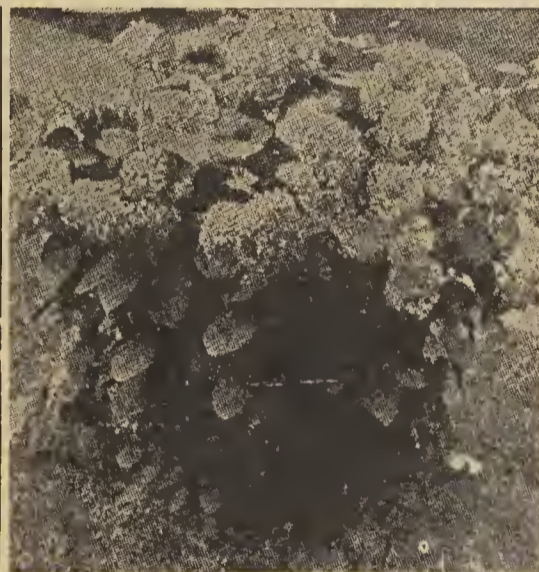


Philadelphus Virginal, 30c  
**Philadelphus Virginal 30c**  
 THE BEST SHRUB INTRODUCED IN RECENT YEARS. (Snowstorm Philadelphus) — A wonderful, new, grand sweet-scented shrub called the Snowstorm Philadelphus for its large double crested sweet-scented flowers. Wonderful for specimen, shrubbery or hedges, blooms from the ground up. Highly recommended. 30c ea., 3 for 79c, doz. for \$2.64. Larger plants, 49c ea., 3 for \$1.30.

**Flowering Cherry**  
 (Prunus Cerasus)—A widely known Japanese plant or medium sized tree made popular by the plantings along the banks of the Potomac.  
 KWANZAN—Crimson buds, dark pink flowers. 85c each.  
 SIEBOLDI—White, flushed pink at tips. 85c each.  
 SPECIAL OFFER—3 each, \$2.40.  
 SHIROTAI—White flowers. 85c each.



Popular Golden Bells, 25c  
**Golden Bells 25c**  
 (Forsythia Viridissima) — Rampant, straggly variety of all and should be planted where it can have room to develop. Flowers bright yellow. One of the first shrubs to bloom. 25c ea., 3 for 68c.



Hydrangea Arborescens (Hills of Snow), 22c  
**Hydrangea Arborescens 22c**  
 HILLS OF SNOW — 4 to 8 feet. Flowers large of pure white. Blooms through early June until August. 22c, 3 for 59c; Larger plants 49c ea., 3 for \$1.30.



**World Famous Bridal Wreath 22c**  
 (Spirea Van Houtte)—(The most popular shrub in America)—Bridal Wreath is the most desirable shrub grown. Will grow anywhere, standing much abuse as to location and soil conditions. Should be given plenty of room and allowed to develop properly. If trimmed at all it should be done immediately after the spring flowering time. Flowers white in clusters, resembling a bridal bouquet. 22c ea., 3 for 59c, 6 for \$1.11, doz. for \$1.94; 2 yr., 39c ea., 3 for \$1.04, 6 for \$1.92, doz. for \$3.47.



Japanese Quince Scarlet fl., 32c

**Japanese Quince 32c**  
 (Cydonia Japonica) — Probably the showiest of its family, producing in the early spring brilliant scarlet or orange-scarlet flowers in clusters all over the plant and making it one of the most dazzling sights imaginable. An excellent specimen shrub and of unusual value for hedges. 32c ea., 3 for 82c, doz. for \$2.89.

**Crepe Myrtle 23c**  
 Free flowering shrub, handsome foliage. Hardy in southern sections. Separate colors. RED and PINK. 23c ea., 3 for 61c. Larger plants 36c each.

**Red Bud or Judas Tree**  
 (Cercis Canadensis)—A handsome ornamental tree, rosy pink blossoms. 38c ea., 3 for 98c, doz. for \$3.37.

**Forsythia Golden Bells 25c**  
 (Forsythia Suspensa) — Branches arching with large leaves. Flowers golden yellow often twisted. 25c ea., 3 for 68c, doz. for \$2.24.

**Pink Bush Honeysuckle 24c**  
 Lonicera Grandiflora Rosea—Similar in growth to white variety Morrowil, excepting flowers, being a bright pink. Either variety. 24c ea., 3 for 64c.

**Cork Bark 32c**  
 (Cork Bark. Euonymus Alatus.) — An attractive ornamental shrub 6 to 8 feet. The flowers appear in May and June. In autumn the foliage changes to a fine rose color. 32c ea., 3 for 82c.

**Spirea Billardia 23c**  
 BILLARD'S SPIREA—Grows 3 to 5 feet, flowers in summer. Tall-growing, with plume-like spikes of deep rose-colored flowers. 23c ea., 3 for 61c, doz. for \$2.04.



Pink Bush Honeysuckle, 24c



# Hardy Flowering Shrubs



Crimson Weigela Eva Rathke

## Crimson Weigela

**EVA RATHKE**—The most distinct and one of the most attractive varieties. Flowers are deep crimson and are produced in great profusion. Nice plants. 26c ea., 3 for 70c, doz. for \$2.30.

**NOTICE**—Prices on larger shrubs than those offered, will be furnished on request.



Pink Flw. Tamarix Africana, 28c

## Tamarix Africana 28c

A handsome shrub of strong growth; fine feathery foliage. Delicate pink flowers. Will grow anywhere; fine for background of shrubs. Beautiful all the year around. In winter for the coloring of the bark and in summer for the light green feathery foliage and large, loose panicles of lavender-pink or lilac purple flowers. 28c ea., 3 for 74c.



Hydrangea Paniculata, 22c

## Hydrangea Paniculata

Grows 4 to 8 feet, perfectly hardy, flowers white, borne on immense pyramidal panicles nearly a foot in length. Commences flowering in July and continues until November. Finest flowering shrub for cemetery plantings. 22c ea., 3 for 59c, doz. for \$1.94. Larger plants, 49c ea., 3 for \$1.30.



Smoke Bush, 52c

## Smoke Bush 52c

**Purple Fringe—Rhus Cotinus**—Beautiful distinct shrub, much admired for its long, plummy, feathery flower stalks. Flowers pale purple of smoky aspect. Highly ornamental. Strong plants. 52c ea., 3 for \$1.39.



## Weigela Rosea

(*Diervilla Florida*)—A showy, free-flowering shrub, with numerous spreading branches. Flowers rose-colored are produced in great profusion. Admirably adapted to small lawns, or gardens, nice plants. 24c ea., 3 for 64c, doz. for \$2.30.

## Dwarf Ornamental Boxwood 24c

Fine plants for bordering ornamental or decorative work. Foliage deepest green, very effective. Nice plants, about 6 to 8 inches high, 24c ea., 3 for 64c, doz. \$2.14; larger plants, 48c ea., 3 for \$1.27.



Sweet Scented Shrub, 32c

## Sweet Scented Shrub 28c

(*Calycanthus Floridus*)—Grows 5 to 8 feet. Flowers in spring. An old favorite and well known for its strawberry-scented flowers of a mahogany-brown color. Perfectly hardy. 28c ea., 3 for 74c, doz. for \$2.45.

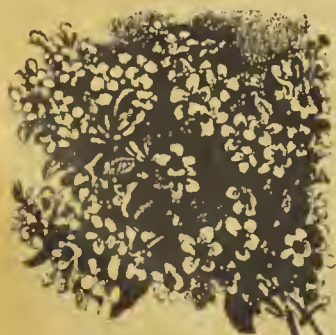


Boxwood

## Snow Garland

(*Spirea Thunbergii*)—25c.—An unusual shrub; slender arching branches, pure white flowers. 25c ea., 3 for 68c, doz. for \$2.24.

## New Chinese Beauty Bush



New Beauty Bush, 19c

(*Kolkwitzia*)—6 to 8 feet, a new shrub from China. A shrub with all the good points a plant can have, wonderful growth, graceful branches, glorious flowers of deep pink stained yellow and hardy everywhere. Related to the Abellas, the new plant exceeds them in beauty. Highly recommended. 19c ea., 3 for 49c, doz. for \$1.70; large sizes 38c ea. and 58c ea., by express.

Prices on large evergreens furnished on request.



Giant Magnolia, Soulangeana

## Giant Flowering Magnolia 89c

(*Soulangeana*)—Most outstanding early spring flowering tree-shrub. Highly ornamental, attaining tree size in time. Flowers 3 to 5 inches across. Absolutely hardy. Large cup flowers pinkish white inside, purple outside. Likes moderately rich porous soil. Each 89c by express. If by mail, add 15c extra.

## The Star Magnolia \$1.00

(*Stellata*)—The earliest to flower. A dwarf species and with pure white, delicately scented semi-double flowers about 3 inches in diameter. A beautiful tree for the lawn. \$1.00 ea., 3 for \$2.65.

## Spirea Anthony Waterer 24c

(*Red Everblooming Spirea*)—A summer blooming spirea of rather dwarf growth; bushy in habit. Pink, woolly flowers borne in flat, erect clusters late in the season. Valuable for edging in front of taller shrubbery, or used as a dwarf hedge. 24c ea., 3 for 64c, doz. for \$2.14. Larger plants, 39c ea., 3 for \$1.04.



Spirea Anthony Waterer, 24c

## Varied Colored New French Lilacs

**CHARLES X**—Single, large clusters of reddish flowers. 42c ea., 3 for \$1.10, doz. for \$3.69.

**CHARLES JOLY**—Double, dark purple, silvery reverse. 43c ea., 3 for \$1.13, doz. for \$3.80.

**MADAM LEMOINE**—Double, pure white; one of the best. 42c ea., 3 for \$1.10, doz. for \$3.69.

**MARIE LE GRAY**—Single, pure white. Excellent. 43c ea., 3 for \$1.13, doz. for \$3.80.

**MICHAEL BUCHNER**—Double, pale lilac Beautiful. 42c ea., 3 for \$1.10, doz. for \$3.69.

**SOUV. DE L. SPAETH**—Single. Very dark purple. 43c, 3 for \$1.13, doz. for \$3.80.

**SPECIAL OFFER**—One of each of the 6 varieties above for \$1.89.



Lilac, Madam LeMoine, White 42c

## Popular White Snowberry 28c each

(*Symphoricarpus Racemosus*)—Grows 3 to 5 feet tall; slender branches. Flowers pure white or pinkish, in loose, often leafy racemes, in summer. The white berries produced in clusters, contrast well against the red of the Japanese Barberry. 28c ea., 3 for 74c, doz. for \$2.45.

**FREE** — Don't overlook our free offer, page 3, for orders from your friends.



Popular White Snowberry, 28c



The Best Flowers

# Challenge The By Planting Your Garden

# Gardening World With McGregor's Flower Seeds

For the Least Money

## NOTICE

For your quick reference in making up your Seed Order we have classified the different seed items on this page and pages 40 and 41 as follows: (A) Annuals, (A-B) Annuals for Beds and Borders, (E) Everlastings, (H) Seed suitable for House Plants, (P) Perennials, and (V) Seed suitable for Vining Purposes.

### Double Hybrid Aquilegia



(P)—The long spurred flowers are of delicate and graceful form, in many colors. Pkt., 10c.

### Cyclamen

(H) (Finest Mixed) — One of the most popular of all the winter blooming plants. Handsome mottled foliage; very free flowering. Flowers pink, white, rose, crimson and purple. Pkt., 20c.

Flowering Cyclamen, Pkt. 20c

### Cactus 20c

(H) A large family of interesting and peculiar plants. A great variety of strange forms and manner of growth. Mixed. Pkt., 20c.



Wonderful Flowering Cactus



Plumed Celosia, Pkt. 10c

### Celosia Plumosa 10c

(A) Improved Feathered Type — This well known annual is becoming more popular every day; grows from 2 to 3 feet high. The flower heads have silky plumes, richly colored, in shades of reds and yellows. Mixed. Pkt., 10c.

### Giant Dahlias



Giant Dahlias

(A) (Extra Choice Mixed) — One of the showiest of all late blooming plants. Remarkably large flowers from seed the first summer. An old garden favorite. Pkt. 20c.

### Forget-Me-Not



Forget-Me-Not

(P) (Myosotis) — A general favorite. Lovely little flowers, which come in blue, pink and white, bloom through May and June. The dense foliage makes this plant very attractive for edging purposes. Mixed Pkt. 10c.

### Shasta Daisy 10c



Shasta Daisy

(ALASKA) (P) The pure white flowers, when fully expanded, are four inches in diameter and are splendid for cutting. A perennial of great value. Pkt., 10c.

### Campanula (Cup and Saucer)

(P) (Calycanthema) — The well known cup-and-saucer Canterbury Bell. White, pink and blue flowers. Probably the most widely cultivated variety of all. Very showy in the garden. Mixed. Pkt., 10c.

### Sweet Alyssum



Alyssum, 8c

(A-B) (Little Gem) — low spreading plant, with white sweet scented flowers; often called Carpet of Snow. Most popular edging plant. Pkt., 8c, 3 pkts. for 20c.

### Coleus 12c



Coleus, 12c

(A-B) (McGregor's Rainbow Mixture) — A grand velvety leaved foliage plant, effectively used for beds and borders, in shades of red, yellow and green. Pkt., 12c.

### Dusty Miller 8c



Dusty Miller, 8c

SILVER-LEAVED (A-B) (Centaurea Gymnocarpa) — A well known bedding and border plant, silvery gray foliage. Pkt., 8c, 3 pkts. for 20c.



Campanula

### Cosmos

(A) Single Early Mixed — The flowers are borne on long graceful stems in shades of white, pink, and crimson. Fern-like foliage. Pkt., 8c.  
(A) Orange Flare — Single, bright orange flowers. A new and distinctly different variety. Pkt., 12c.



Dbl. Dianthus

### Dianthus 10c

(P) (Double Mixed) — Commonly called Sweet Clove, or hardy garden Pinks. Valuable for edging. Fringed fragrant flowers. Pkt., 10c.



Antirrhinums

### Antirrhinum SNAPDRAGON

(A) (Giant Flowered Mixed) — A mixture of the newest tall varieties, including all shades available. Pkt., 10c.  
(A) Rustproof Strain, Mixed — An excellent mixture of all leading colors. New and dependable. Pkt., 20c.



Crego's Aster

### Giant Asters

(A) (Crego's Mixed) — (Wilt Resistant.) Immense, fluffy flowers, 5 inches in diameter. Immune to the wilting disease. Pkt., 12c.

### Alyssum 10c

(P) (Saxatile Compactum) — Useful for beds, borders and rockeries. Bright yellow flowers. Pkt., 10c.

### Cineraria 15c

(H) A showy late winter, or early spring blooming house plant. Flowers produced in clusters, in crimson, blue and purple. Fine mixed. Pkt., 15c.



Cockscomb, 10c

### Cockscomb 10c

CELOSIA CRISTATA (A) (Glasgow Prize) — The crimson flower heads strongly resemble a cock's comb. The plant, rather stiff in form, has rather coarse foliage. Pkt., 10c.

### McGregor's 10c Flower Garden

A great big packet of dozens of varieties of Flower Seeds. Will give daily surprises throughout the summer. One of the most interesting collections we offer. Large pkt., 10c.



10c Flower Garden

### Hardy Carnations

(P) (Grenadine) — Grow from fifteen to twenty inches high. Good range of colors including red, pink, yellow and white. Delicately clove scented, highly valued for their constant bloom and delicate fragrance. Mixed. Pkt., 15c.



Grenadine Carnations

Giant Cineraria, Pkt., 15c



# Cutflower, Bedding, Border and Hardy Plants from Seed



Double Hardy Hollyhocks

## Double Hardy Hollyhocks

(P) (Mixed)—This mixture includes all colors known in double Hollyhocks. Pkt., 10c.



Delphinium Gold Medal Hybrids

## Delphinium

(P) HARDY LARKSPUR — (Gold Medal Hybrids) — Well known, practically in every yard. Long flower spikes, two to three feet long, come in many shades of blue. Pkt., 12c.

## Petunia

### DAINTY LADY

(A) Single Fringed — Flowers daintily fringed; color delicate light yellow, deepening to golden yellow at throat. Semi-dwarf and free flowering, fine for porch boxes or as a cut flower. Pkt., 40c.

## Gloxinia 20c

(H) FINE MIXED — Large, drooping foliage, velvety in texture. Richly colored flowers in shades of pink, crimson, purple, white and spotted. Pkt., 20c.



McGregor's Gloxinias, Pkt., 20c



Globe Amaranth

## Globe Amaranth 8c

BACHELOR'S BUTTON (E) — Flowers are perfect globe-shaped, very double, and come in white, pink, purple, orange and variegated. Very good bloomers. Mixed. 8c pkt.



Kochia, or Summer Cypress

## Kochia 8c

(A) BURNING BUSH or SUMMER CYPRESS — Popular as a hedge and often used as summer evergreens to fit in with blooming plants. In the fall, the entire bush turns to a brilliant crimson. Not hardy. Pkt., 8c; 3 pkts. for 20c.



Poppies, 8c

## Double Annual Poppies 8c

(A) DOUBLE CARNATION FLOWERED — Double fringed flowers. Colors white and many shades of pink, old rose and crimson. Mixed. Pkt., 8c; 3 pkts., 20c.



Hardy Climbing Sweet Peas

## Lathyrus 12c

(P-V) HARDY CLIMBING SWEET PEAS — Vigorous vine growing from ten to twenty feet; fine for covering fences or other unsightly objects. Flowers pink, white and crimson. Mixed. Pkt., 12c.

## Dwarf Marigold

(A) FRENCH DOUBLE HARMONY — A very distinct type. Scabiosa-like in formation with tubular deep orange center petals, flanked by broad velvety dark maroon-brown guard petals. Grows about a foot high and comes into bloom in June. Pkt., 12c.



## Lantana

(A) Used for bedding, border plant, in porch boxes or vases. Constant bloomer. Flowers yellow, orange, rose, crimson and white. Mixed. Pkt., 10c.



## Double Ipomoea

ROSE MARIE (V) — Free flowering double, deep rose-colored Ipomoea. Remain open after the other Ipomoeas have closed for the day. Really the first double Ipomoea ever offered. Pkt., 20c.



## Nasturtiums 8c

(A) Most popular and widely planted annual. Very effective for border planting. Dwarf. Mixed. Pkt., 8c; 3 pkts., 20c.



## Petunia

(A-B) SINGLE BEDDING MIXED — Petunias require little care and grow profusely all summer. Gaining rapid popularity. All colors. Mixed. Pkt., 10c; 3 pkts., 25c.

(A) ELKS PRIDE — One of the most beautiful and largest flowering deep purple petunias grown today. Pkt., 20c.



## Double Nasturtium

(A) GLORIOUS GLEAM HYBRIDS MIXED — These new hybrids comprise all shades of salmon, yellow, cream, red and maroon. The delicately sweet scented, well formed flowers have much longer stems for cut flowers and the foliage is larger and deeper green. Pkt., 18c.

## Moonflower HEAVENLY BLUE

(V) Improved — A rapid growing vine for porch use, fences, etc., grows from ten to twenty feet high. The improved large, rich, sky blue flowers are produced in abundance. Pkt., 15c.



## Larkspur

(A) DOUBLE TALL MIXED — Tall spikes of double flowers in shades of pink, rose, blue, purple and white. Pkt., 10c.



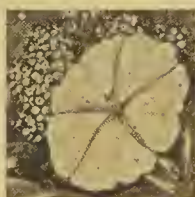
## Helichrysum 10c

STRAW-FLOWER (E) MIXED VARIETIES — All the leading colors in Helichrysums. An ever popular flower for winter bouquets. Pkt., 10c.



## Morning Glories

(V) JAPANESE MIXED — Tender climber. Flowers are spotted, marbled, striped, flaked and splashed. Pkt., 8c.



## Marigold

(A) DIXIE SUNSHINE — Large, brilliant yellow, ball-shaped flowers, composed of dozens of tiny five petaled florets gracefully interlocking, daintily fringed in effect. Very faintly scented with the usual marigold odor. Pkt., 15c.



## Ornamental Gourds

(A) Tender annual with ornamental foliage, strange hard-shelled fruit which can be hand painted for ornaments. Mixed. Pkt., 8c.



Gypsophila

## Baby's Breath

(P) (Gypsophila Paniculata) — Tiny misty-white blooms on stiff, wiry stems. Fine for mixing with other flowers in bouquets. Pkt., 10c.



Double Geranium, Pkt., 12c

## Geranium 12c

(H) DOUBLE AND SINGLE MIXED — Flowers are borne in large trusses, the single florets measuring 2 inches across. Used as a house pot plant or for bedding purposes. Pkt., 12c.

## Double Fuchsia

(H) Highly prized house plant, easily raised from seed. Double flowers. Extra fine mixed. Pkt., 25c.



Large Flowering Double Fuchsia



# Cutflower, Bedding, Border and Hardy Plants from Seed



Hardy Phlox, Mixed Varieties

## Phlox 10c

(P) **HARDY MIXED** — Many shades of pink, rose, violet, crimson and white are found in this mixture. Pkt., 10c.

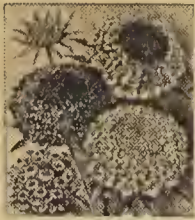
(A) **DRUMMONDI MIXED** — A fine annual easily grown from seed. Rich colors. Pkt., 10c.



Hardy Oriental Poppies

## Oriental Poppies

(P) These wonderful spring flowers, of vivid colors, often measure five inches across. They may be left undisturbed for years. Very striking, planted with tall Iris. Mixed. Pkt., 10c.



Scabiosa

## Scabiosa

(A) **PINCUSHION FLOWER** — Flowers cherry rose, lilac, lavender, blue and white. Strongly resemble a pin-cushion, and last well when cut. Double mixed. Pkt., 10c.

## Linum

(P) **SCARLET FLAX (Grandiflorum Rubrum)** — Crimson flowers. Pkt., 10c.



Tritoma or Torch Lily, Pkt. 10c

## Tritoma 10c

(P) **TORCH LILY OR RED HOT POKER PLANT** — The flower spikes are of gigantic size, the color is a rich orange-scarlet, shading to salmon-rose on edges. Grows 2 to 4 feet high. Pkt., 10c.



Polyantha Baby Rose, Pkt. 15c

## Baby Rose Seed

(H) **Polyantha** — Beautiful little roses borne in many flower clusters of double, semi-double and single flowers. Can be planted as a house plant or used for bedding purposes.



Nicotiana (Flowering Tobacco)

## Nicotiana 10c

(A) **FLOWERING TOBACCO** — One of the most fragrant and easiest annuals to grow. The flowers somewhat resemble the petunia which open toward evening, emitting a powerful perfume. Colors comprise red, pink, rose and white. Hybrid Mixed. Pkt., 10c.



Stocks, 10c

## Stocks 10c

(A) **D.B.L. TALL MIXED** — The sturdy lower spikes covered with rosette blossoms in soft colors combining shades of pink, rose, blue, mauve and white are delightfully fragrant. Pkt., 10c.



Giant Zinnias

## Zinnias 10c

(A) **GIANT EXHIBITION** — Mammoth flowers, in all the leading colors known in Zinnias. Mixed. Pkt., 10c.

(A) **BUTTON OR POMPON** — Tiny double flowers. Useful in table bouquets. All shades. Mixed. Pkt., 10c.



Dbl. Portulaca

## Portulaca

(A) **SUN PLANT** — Grows 4 to 6 inches high. Double flowers resembling miniature roses, in all colors. Will not bloom unless planted in sunny position. Double mixed. Pkt., 10c.

## New Zinnia Fantasy 20c

(A) **FINEST MIXED** — This new Zinnia has created quite a sensation in the past year, and is rapidly gaining popularity. The shaggy ray-like petals give a delicate, refined appearance. Colors include shades of reds, yellow, and orange as well as pastel pinks and cream. Pkt. 20c.



New Zinnia Fantasy, 20c

## Lupinus 10c

(P) The pea-like flowers are borne in spikes a foot or more in length. Flowers come in white, pink, rose, and blue. A fine perennial. Mixed. Pkt., 10c.



Hardy Garden Lupinus

## Hardy Hibiscus

**MALLOWS**  
(P) **GIANT MIXED** — A shrub-like plant with large foliage requiring considerable space. Immense flowers in red, white, pink. Pkt., 10c.

## Large

## Verbenas

(A) **McGREGOR'S MAMMOTH MIXTURE** — The flowers are borne in large trusses three inches in diameter, and come in shades of pink, crimson, blue and white. Pkt., 10c.



Sweet William Dbl. Mixed

## Sweet William 10c

(P) **DOUBLE MIXED** — Well known in all old fashioned gardens. Pink, scarlet and white, fragrant flowers in large clusters. Pkt., 10c.



Sweet Peas

## Sweet Peas

(A) **SPENCER'S MIXED** — Every imaginable shade will be found in this wonderful mixture of large flowered Sweet Peas. Pkt., 10c.



Pink Tunica

## Tunica 10c

(P) Tufted hardy perennial plant growing but a few inches high, bearing numerous elegant pink flowers. Fine for the rock garden. Pkt., 10c.



Pyrethrum, 18c

## Oriental Daisy

(P) (Pyrethrum) — Finest double flowers of pink, crimson and white. Mixed. Pkt., 18c.

## Sweet Violets

(P) **VIOLA ODORATA BLUE** — Sweet scented. Beautiful deep blue flowers. Fine for bedding or house plant. Very popular. Pkt., 12c.



Violets, 12c

## Salvia

(A) **SPLENDENS** — Large, scarlet flower spikes; the old favorite. Highly valued for beds, borders and window boxes. Pkt., 10c.



Salvia, 10c

## Pansies

(A-B) **McGREGOR'S EXTRA CHOICE MIXED** — Best named and largest flowering varieties, including all the rare and exquisite colors known in pansies. Pkt., 20c.



Pansies, Pkt., 20c



Verbenas, 10c



Glossy Green, Climbing Smilax

## Smilax 10c

(V) Glossy, deep green foliage; fine for vases and baskets. Soak the seed twenty-four hours before sowing. Pkt., 10c.

## Schizanthus 10c

(A) **BUTTERFLY FLOWER** — Daintiest flowers, resemble butterflies, in pink, lavender, amber and white. Mixed varieties. Delicate fern-like foliage. Pkt., 10c.







# BIG BARGAINS



**Richly  
Colored  
IRIS  
8 for 68c**

**FLEUR-DE-LIS**—Grand and royal colors. Flowers superb, unsurpassed by any garden perennials. Invaluable for many uses; make a gorgeous sight. A grand collection of named varieties. **8 for 68c.**

**The Sensation of the  
1937 Plant Season  
The New Butterfly Bush  
"LILAC TIME"  
3 for \$2.00**

**(Buddleia Hartwegi)**—Plant novelties come and go and some stay with us for a long time. They come to us as all new things do, more or less untried—they stay with us when their merit reaches the mark. Here is a new plant with all the merit a plant can have, hardy, wonderful growth, graceful, arching branches and glorious flowers of a beautiful lavender lilac. A new plant that should be in every garden. Price, **75c each, 3 for \$2.00.**



New Butterfly Bush, Lilac Time

8 Richly Colored Iris for 68c

**Wrexham Hybrid  
DELPHINIUMS  
5 for 72c**

Colors of this gorgeous flower range in blue shades from the azure of the sky to the deep blue of the ocean depths with indescribable varied tints, with opaline variations. Require little care, perfectly hardy, noble plants and marvelous flowers. A grand collection of **5 for 72c, 12 for \$1.67.**



5 Hybrid Delphiniums for 72c



6 Peony Flowered Garden Dahlias for 82c

**Beautifully Colored  
Peony Flowered  
GARDEN DAHLIAS  
6 for 82c**

The modern decorative dahlia is a wonderful favorite, increasing in popularity. Producing immense flowers with large and broad petals. Peony-flowered dahlias are similar with twisting and curling petals. All strong growers and profuse bloomers. Varieties which we are offering stand out prominently for garden cut flowers. Grand collection of **6 colors for 82c.**

**New, Distinctively  
Colored  
HARDY PHLOX  
6 for \$1.29**

Foremost border plant. Long blooming. Magnificent flower spikes. **COMMANDER**—Cherry-red. **ENCHANTRESS**—Salmon-pink. **RISING SUN**—Soft pink. **INDEPENDENCE**—Pure white. **FIREBRAND**—Reddest of all. **BLUE HILL**—Nearest blue. A collection of **6 new named varieties for \$1.29.**



6 New Hardy Phlox for \$1.29



# Mc GREGOR'S COLLECTION OF GIANT CHRYSANTHEMUMS

This New  
**COLLECTION** of  
Twelve

See page  
10 for  
Single  
Prices

**\$1.48**

HILDA BERGEN  
22¢

LUSTRE  
21¢

GOLD LODGE  
18¢

HONEY DEW  
18¢

SMITH'S ENCHANTRESS  
17¢

FARREN KING  
25¢

ANGELO  
19¢

HARVARD  
26¢

GOLDEN QUEEN  
22¢

NELLIE ROSS  
23¢

DISTINCTION  
21¢

BETSY ROSS  
20¢