

## **Historic, Archive Document**

Do not assume content reflects current scientific knowledge, policies, or practices.



**MICHIGAN GROWN**

# Dahlias



**OAKLEIGH GARDENS**  
**GRAND RAPIDS, MICHIGAN**

**1937**

Roots ..... \$15.00

Plants ..... 7.50



## Golden Beauty

(ID) 1937

Our sensational new introduction for 1937 and for past performance and records a worthy running mate to Miss Oakland. A Certificate of Merit winner at Storrs Trial Grounds where it was noted for its good growth, immense size and stout stems.

Chosen for all the latest and most authentic Honor Rolls and Dahlia Stories including House Beautiful, The Flower Grower, Better Homes & Gardens, Mid West Dahlia News and Central States Dahlia Society. A Dahlia fully worthy of all the honors bestowed upon it.

Golden Beauty is just naturally a large flower, — we cut many blooms twelve to fourteen inches in diameter off the same plant in 1936, — always with the finest centers you have ever seen. This remarkable new Dahlia grows six to seven feet tall, — plant growth vigorous, healthy, with dark green insect-resistant foliage, stout stems that carry the giant blooms in an erect facing position. Truly a perfect variety from every viewpoint.

The color of its center petals is apricot-yellow, splashed with Jasper pink; then the yellow petals become very faintly tinted with alizarin pink throughout so the general tone is a pinkish yellow. Incidentally, a seedling of Jane Cowl—Bing Crosby with all the good features of its parents. A really beautiful Dahlia that will surely make all the giant informal decoratives step in competition.

---

---

# OAKLEIGH GARDENS

GRAND RAPIDS, MICHIGAN  
U. S. A.



*Member*

AMERICAN DAHLIA SOCIETY  
DAHLIA SOCIETY OF OHIO  
DAHLIA SOCIETY OF MICHIGAN



## REFERENCES

Peoples National Bank  
Union Bank of Michigan  
Grand Rapids Association of Commerce

---

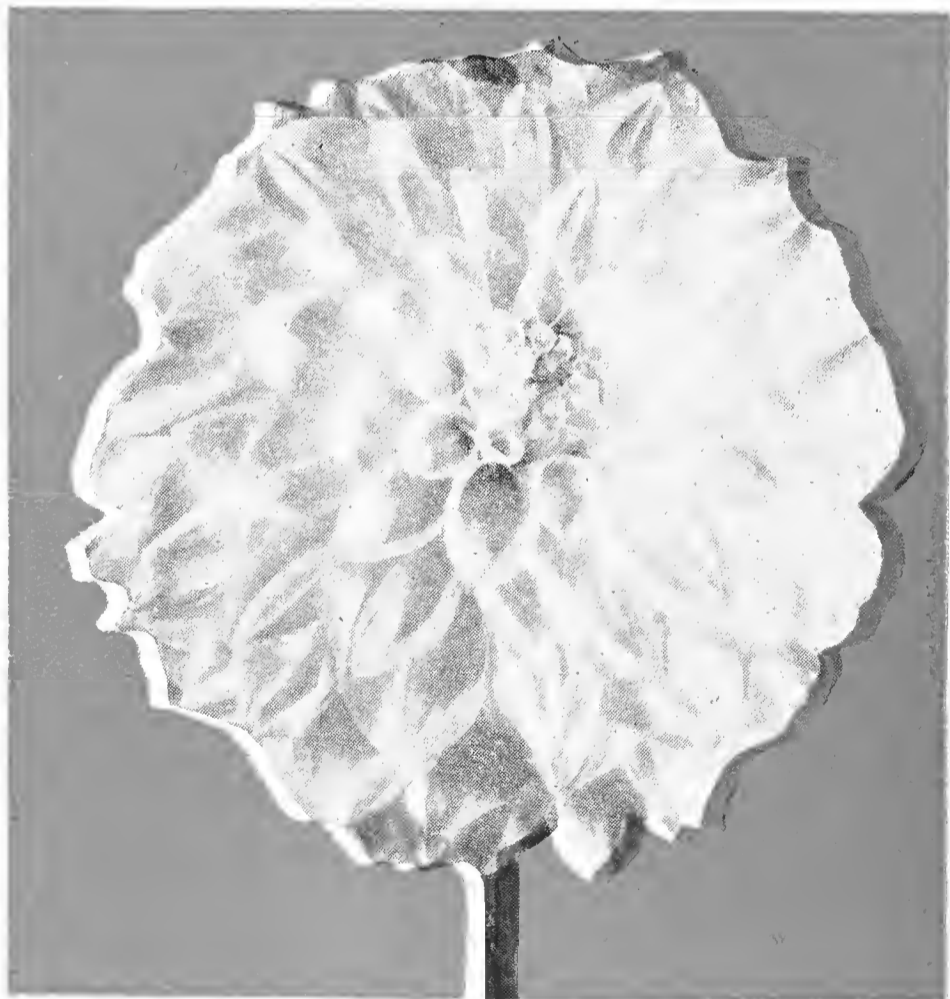
---

# New! a **WHITE** Champion but a **BLUE RIBBON** winner!

## HONORS? YES!

- 1 Certificate of Merit,  
East Lansing, 1935
- 2 Certificate of Merit,  
Storrs, 1936
- 3 Award of Honor,  
Georgia Dahlia Society, 1936
- 4 Outstanding at New York  
Botanical Garden, 1936

Watch the New Honor Rolls for  
MISS OAKLAND!



**MISS OAKLAND**  
*White Champion of  
All Times!*

**G**ROW this pure white, formal decorative dahlia. Thrill to the joy of A NEW CHAMPION. Grown and tested during the past 4 years by scores of reputable amateur and commercial growers from coast to coast. Under all climatic conditions it has been unusually successful, both in the garden and on the exhibition table.

A prolific bloomer. Perfectly formed flowers 7-9 inches in diameter by disbudding, or 5-7 inches if grown naturally. Stems: 12-30 inches long, holding the blooms in an erect facing position. Unexcelled for cut flower or exhibition, with full-centered blooms, always. Plant growth: healthy, vigorous, insect-resistant foliage.

Strong, field-grown divisions .....  
..... \$10 Net

Green plants ..... 5 Net

*We Advise Prompt Reservations to  
Avoid Disappointment*

. . an **Oakleigh** 1937 Introduction . .





## GREETINGS

IT is with distinct pleasure and sincere gratitude that I reflect on the many splendid new relations established during the 1936 season,—and the renewal of mutually pleasant associations with my thousands of regular customers, who, year after year, are so generous with their orders and friendly complimentary letters. Truly, the rapidly growing popularity of Oakleigh quality must be well deserved.

Unfortunately, it was necessary to return many orders late in the spring because we were sold out and I again urge you to place your order early for 1937 to avoid disappointment. Advance bookings already indicate an early sell out. Our Special Collections offer interesting assortments at genuine worthwhile savings and, if you are undecided as to what to order, turn to Page 22 and select one of my Personal Service Offers,—you will be thrilled and delighted with my personal selection.

Our 1936 introductions, Oakleigh Monarch and Oakleigh Princess, have proven their merit from coast to coast and I trust you will include both in your planting program for the coming Season. For 1937, we introduce two more sensational Dahlias,—Miss Oakland and Golden Beauty. Both have proven their qualities by winning Certificates of Merit at official American Dahlia Society Trial Grounds at East Lansing, Michigan, and Storrs, Conn. Both will be sold on an unreserved money-back guarantee and may I suggest that you insist on a similar assurance from the introducer of any new Dahlia, for your own protection.

May I again thank my many friends and customers for their splendid patronage. Please study this little booklet carefully and then promptly reserve your stock to make certain you will get just the varieties you desire. No hurry about the money, if it is not convenient to send at this time,—perfectly all right to mail your order now and remit later at your own convenience. You will find me eager and happy to cooperate with you in every possible way.

*"You Can Depend on Oakleigh."*

Cordially yours,

Lloyd L. Hook



# SPECIAL INFORMATION

*Please Read Carefully*

**A**VOID disappointment by ordering early. Quantities are very limited on some varieties and you will be assured of the best selection by making prompt reservation.

Unless otherwise specified, root orders will be shipped between April 15 and May 1. Earlier shipments not recommended or guaranteed against freezing, drying out or rotting. Green plants are usually shipped between May 15 and June 10.

Please make your order amount to \$2.00 or more. It actually costs us as much to handle a \$2.00 order as it does to ship a \$5.00 or \$10.00 order. The same amount of detail work, inspection, packing, carton and handling is required.

Our quotations include all ordinary transportation charges fully prepaid. If you wish "Special Delivery," add 25c to your remittance. We recommend that green plants should travel Special Delivery to insure prompt and careful handling.

While our terms are invariably "Cash with Order," we will, as a matter of accommodation, book your order upon receipt of a deposit of 25% of the amount of the order — balance to be paid before delivery time. Positively no C.O.D. orders accepted.

Special Planting Instructions accompany every root or plant order. These instructions cover all of the necessary details of Dahlia culture, including: preparation of ground, planting, fertilization, disbudding and pruning, digging root crop and winter storage.

Order early and keep a copy of your order. All orders are acknowledged the same day as received by us and stock is immediately selected and reserved for you.

## EXTRA STOCK ALLOWANCES

(Do not apply to Bargain Offers or Special Collections)

With every order from \$ 5.00 to \$10.00  
— choose 10% extra stock, free.

With every order from \$10.00 to \$25.00  
— choose 15% extra stock, free.

With every order from \$25.00 to \$50.00  
— choose 20% extra stock, free.

*These extra stock allowances cannot be taken as  
Cash Discounts.*

## GUARANTEE

We unreservedly guarantee all stock purchased from us to be true to name and to be satisfactory in every respect. Any stock which proves otherwise will be cheerfully replaced or proper adjustment made immediately. Not responsible in any case for more than actual purchase price.

## Home of Oakleigh Gardens

located at 961 Oakleigh Road, Grand Rapids, Mich., where Trial and Exhibition Gardens are maintained. Visitors are extended a cordial welcome during blooming season.

Oakleigh Road crosses West Leonard Road (U.S.-16) one mile west of City Limits. Our Phone is No. 7-2058.



# General Description of Varieties

**F**OREWORD . . . On account of limited catalog space, our descriptions are necessarily brief, being confined primarily to the color and special growing characteristics. While all of the varieties we list are nationally known and recognized as outstanding leaders of the Dahlia world, we will be glad to supply more complete descriptions upon request.

Abbreviations: FD — Formal Decorative;  
ID — Informal Decorative; SC — Semi Cactus

## **ADIRONDACK SUNSET (ID) 1935**

A brilliant scarlet red and orange colored dahlia that grew and bloomed exceptionally well for us. A strong, vigorous grower with many fine qualities.

Plant \$1.00; Root \$2.00

## **ADORABLE (ID)**

A splendid Dahlia in all respects. Color a vivid peach, shading to an orange yellow. Petals are long and broad and twist gracefully near the tips.....Plants only \$1.00

## **ALTAMONT (ID)**

Rose pink, deepening to American Beauty rose at the center. Artistic and beautifully formed blooms, averaging 7 to 9 inches in diameter.....Root \$ .35

## **ALTMARK (SC) Foreign.**

Color — rose suffused lilac with white center. A free and early bloomer with flowers of good size and fine quality.

Root \$1.00

## **AMELIA EARHART (SC)**

A Semi-Cactus of apricot buff. Base of petals primrose. We found this variety a splendid bloomer — as many as eight immense flowers open at one time.....Root \$2.00

## **AMERICA'S SWEETHEART (ID) 1935**

An immense pure yellow informal of the finest quality. When fully open, the blooms remind one of a giant chrysanthemum. Bush is of medium height and the flowers are held upright on top of an absolutely stiff stem.

Plant \$2.00; Root \$4.00

## **ANDENKEN AN WALTER HAKER (SC) Foreign**

A giant semi-cactus variety. Color, chrome yellow. A strong grower with unusually long stems.....Plants only \$2.00

## **ANDENKEN AN WILHELM LINDENSMIT (SC) Foreign**

A fine new semi-cactus from Europe. Color is salmon on light cream. Tips of petals are lacinated and stems are long and strong.....Plants only \$2.00

## **ANGELO ROSSI (ID)**

A fine large orange buff colored variety. An early and prolific bloomer. 1935 Honor Roll.....Plants only \$2.50

## **ARCTURUS (FD)**

A large scarlet red suffused deep yellow, with a yellow reverse. A strong, vigorous grower with perfect stems and habits. This variety blooms profusely right up to frost and the flowers are splendid for cutting or exhibition.

Root \$1.00

## **AUTUMN SUNSET (ID) 1937**

An outstanding new Dahlia with all the glory, beauty and delicate coloring of an autumn sunset. A strong, vigorous grower with enormous blooms, long stems and perfect habits. Scored 87 at East Lansing.....Plants only \$7.50

- AZURA (ID) 1936**  
 A large deep flower of splendid formation. Rosy lilac with a bluish violet sheen. Plant growth unusually strong and thrifty .....Plant \$3.75; Root \$7.50
- BABY ROYAL (Min.)**  
 We grew about 500 hills of this attractive little miniature and they were the admiration of all of our visitors. Color is salmon pink and apricot with gold shading. A low grower and a very profuse bloomer.....Root \$ .35
- BAERNE (SC) Foreign**  
 Color pink with soft deep salmon glow. A fine semi-cactus with perfect stems and beautiful color effect. Unexcelled for exhibition.....Plants only \$2.50
- BARBARA WALKER (ID) 1935**  
 Color is light vividine yellow, just like velvet. A very beautiful dahlia formation. Very resistant to insects and heat .....Root \$2.00
- BETTY KUNZMAN (ID) 1936**  
 A delightful shade of cream color with delicate etchings of orchid penciled around each petal. Flowers are water-lily shaped, artistically formed and held erect on long, straight stems. A mighty fine variety in all respects.  
 Plant \$2.50; Root \$5.00
- BING CROSBY (ID) 1935**  
 This Dahlia is an improved La Fiesta. Blooms are larger, stems longer and it is a satisfactory variety in every respect. The color is golden yellow, penciled carmine....Root \$2.00
- BLACK KNIGHT (ID) 1935**  
 A strong, healthy grower that produces blooms of immense size on unusually long stems. As the name indicates, the color is dark velvety maroon.....Root \$2.00
- BONNIE BELMONT (SC) 1936**  
 A new semi-cactus of beautiful bright yellow with long, stiff stems. A prize winner in every respect.  
 Plants only \$2.50
- BUCKEYE BRIDE (FD)**  
 Geranium pink — a most delightful shade in Dahlias. A great Dahlia with many splendid qualities. Exceptionally fine cut flower.....Plant \$ .50; Root \$1.00
- CALIFORNIA PEACH (SC) 1936**  
 A fine new Dahlia of real quality and merit. Color is coral pink and petal formation like Satan. On all 1936 Honor Rolls .....Plants only \$5.00
- CHALLENGER (SC) 1936**  
 Brilliant cardinal red of large size and perfect stems. Plant is a strong, vigorous grower with insect resistant foliage. Splendid for exhibition.....Plant \$1.50; Root \$3.00
- CALIFORNIA ROSE (ID) 1935**  
 Clear bright rose. Exquisite coloring, large perfect blooms, fine long stems and healthy growing habits, describe this new variety perfectly.....Root \$2.00
- CALIFORNIA IDOL (ID) 1935**  
 One of the best of the 1935 introductions. It is a splendid grower and the giant yellow blooms are held upright on long stiff stems. This Dahlia has many Show honors to its credit and it will be a popular variety for years to come.  
 Plant \$2.00; Root \$4.00
- CAVALCADE (FD) 1935**  
 A beautiful new shade of old rose or mulberry pink. One of the best cut flower varieties we grow, with 7 to 9-inch blooms on perfect stems. Calvalcade should be in every garden.....Plant \$1.00; Root \$2.00

**CHARLIE CHAPLIN (ID) 1935**

This new variety did exceptionally good for us in 1936. It is a very large Dahlia with perfect growing habits and form. Color is a rich golden yellow tinted orange.

Root \$2.00

**CHINESE LANTERN (ID) 1935**

Color scarlet red, backs of petals orange yellow. We call it an improved Jersey Beacon. A very rugged grower with strong stems and dark leathery foliage.

Plant \$1.00; Root \$2.00

**CITY OF CLEVELAND (ID) 1935**

The color is a bright scarlet splashed with orange and the blooms which average from 8 to 11 inches in diameter are held upright on strong stems.....

Root \$2.00

**CITY OF WELLSTON (FD)**

Rhodamine purple. Flowers of large size and perfect quality on long, straight stems. An early and prolific bloomer and blooms continuously until frost.....

Root \$ .50

**CLARA CARDER (FD) 1936**

This variety is a beautiful shade of cyclamen pink — in a color class by itself. Blooms 10 to 12 inches on strong stems. Plant is a vigorous grower and insect proof.

Plant \$2.50; Root \$5.00

**CLARA BARTON (FD)**

The giant blooms face slightly upward on long, straight stems, 12 inches or more to first set of leaves. Face of petals silvery orchid, reverse of petals deep lavender.

Root \$1.00

**COOMBELANDS (HC) Foreign**

A splendid new foreign variety with exquisite and unique coloring — amber yellow tinted salmon. Blooms are true hybrid cactus, held erect on strong, wiry stems.

Plants only \$1.00

**CORNELIA BRYCE PINCHOT (ID) 1935**

A glowing burgundy red of large size and perfect form. This variety has won many prizes on the show table and is recommended for exhibition purposes.....

Root \$2.00

**DADDY KEMP (ID) 1935**

The blooms of this new variety often reach 14 inches in diameter and 5 inches in thickness. Color is a rich violet red and the plant is a robust grower. Because of the size of the flowers, the stems are inclined to droop. Root \$2.00

**DANCING SULTANA (SC)**

An unusually beautiful variety of bright Oriental color with a golden sheen. The petals curl and twist very artistically. Blooms are of substantial size and good keeping qualities .....

Root \$ .50

**DR. J. M. STOWELL (SC)**

Very large blooms of a beautiful rose amber, shading to gold. A strong grower, prolific bloomer with perfect stems .....

Root \$1.00

**DULCINEA (St.C) Foreign**

Bright pure cardinal red color, — free blooming with long, strong stems. Splendid cut flower variety. Plants only \$2.50

**DWIGHT W. MORROW (ID)**

An immense cardinal red Dahlia — unusually rich in color and quality. This variety always attracts very much attention in our gardens. The massive flowers, which reach a size of 10 inches across by 6 inches deep, are sometimes supported with difficulty by the stems on account of the weight .....

Root \$ .75

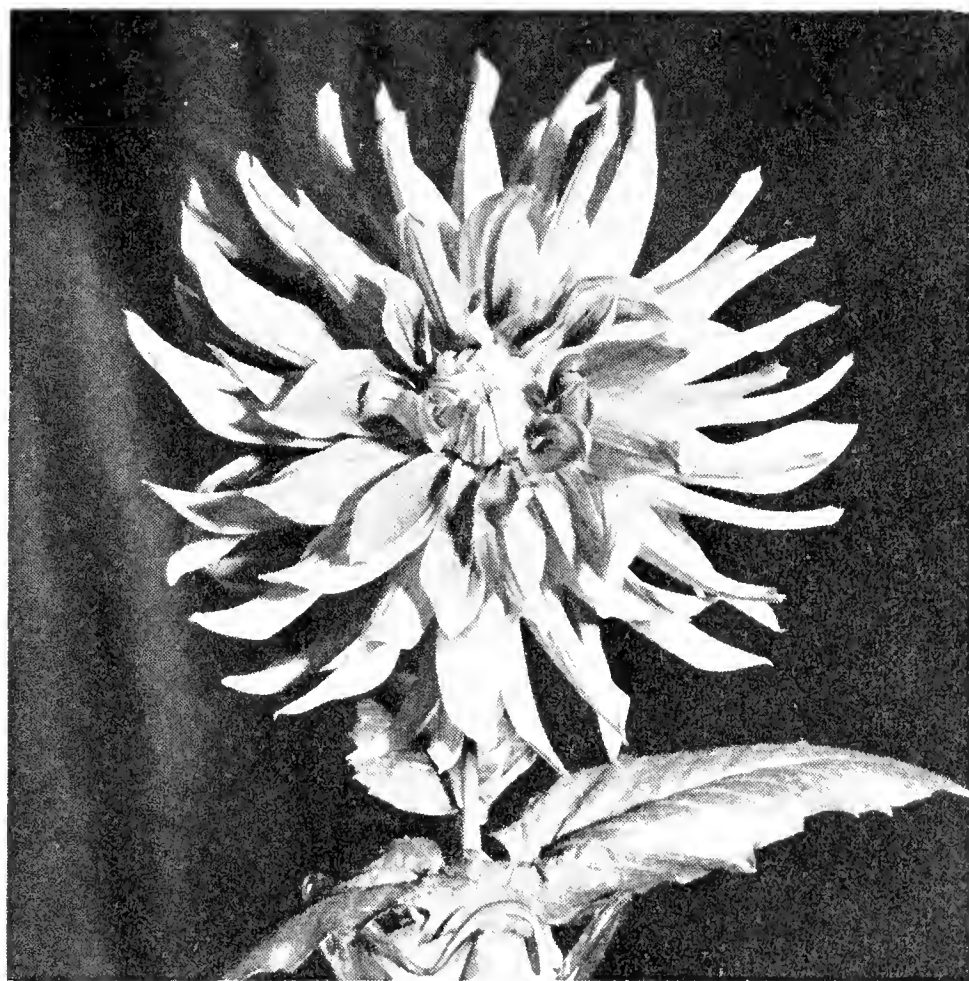
**FORDHOOK EMPEROR (ID)**

Rich salmon, suffused rose. Of enormous size, early, free and continuous blooming.....

Root \$ .50

- EMIL DOKOUPIL (FD) Foreign**  
 This variety just naturally grows large. Its enormous light lavender blooms are held erect on strong stems. Always a satisfactory variety.....Root \$1.00
- FOREST FIRE (ID) 1935**  
 It is, as the name indicates, a flashy color—lemon yellow and rich scarlet. A strong grower and profuse bloomer for such a large Dahlia. Stems are a trifle short unless carefully disbranched.....Root \$2.00
- FORDHOOK MARVEL (FD)**  
 Peach, red and pink. Very large blooms. A strong, healthy grower .....Root \$ .50
- FRANK BERGER (SC) Foreign**  
 Color coral red. Blooms of good size, held erect on fine stems. Formation like Frau Bracht.....Plants only \$1.00
- FRANK MILLER (FD)**  
 Bright golden yellow. Fine, large blooms on long stiff stems. A prolific bloomer and a strong, thrifty grower. Root \$ .50
- FRANK SERPA (ID)**  
 Color is a pinkish lavender and white,—very beautiful. A fine variety that should be in every garden. Blooms are large and stems perfect.....Root \$2.00
- FRAU MARIE KIPKE (SC) Foreign**  
 One of the finest foreign Dahlias we grew in 1936. Color is a vivid orange, tipped yellow,—attracts instant attention. Plant growth perfect with long, strong stems. Plants only \$2.50
- GLORIOUS (Min.) Foreign**  
 A fine miniature decorative variety. Color raspberry red with unexcelled stems for cutting.....Plants only \$1.00
- GOLDEN ECLIPSE (FD)**  
 A large formal decorative of golden yellow shading to a center of warm salmon or flesh color. A vigorous grower, height up to 5 feet, and the flowering habit is good. Exhibition blooms may be cut with stems 3 to 4 feet long. Root \$ .75
- GOLDEN STANDARD (St.C)**  
 A splendid variety of perfect form and quality. Golden tan, blushed with tints of amber and bronze. Blooms are large, held erect facing on stiff slender stems. Always a satisfactory grower.....Plant \$1.00; Root \$2.00
- GOLDEN SWEEPSTAKES (ID) 1936**  
 Color is a pleasing golden buff tinted with apricot at center. Blooms have wavy, recurving petals which curl backwards. Always large in size and stems are strong and long. Perfect growth habits.....Plants only \$3.75
- GRAF ZEPPELIN (FD)**  
 Large, pure white. Blooms of perfect form held high above the foliage. Strongly recommended as one of the best whites .....Root \$ .50
- GRETEL (St.C) Foreign**  
 Color is a bright henna, almost red. Formation like Miss Belgium with heavier and deeper petals. Very prolific bloomer with perfect stems.....Plant \$1.00; Root \$2.00
- HAPPINESS (FD) 1936**  
 This new variety is a bright begonia rose with lemon yellow at base of petals. A fine Dahlia with large blooms, long strong stems and perfect growth habits Root \$5.00
- HEROS (SC) Foreign**  
 Color is coppery brown red and old gold. A beautiful Dahlia of merit and quality.....Plants only \$1.00





Grand Slam

**GRAND SLAM (SC) 1936**

A most exquisite semi-cactus in an unusual and beautiful color combination,—deep pink, citron yellow and light pink. The blooms, which average from nine to twelve inches in diameter, are held well above the bush on stiff stems and the plant is a healthy vigorous grower. Make a Grand Slam with this splendid new variety..... Root \$5.00

**HILLCREST FLUFFY RUFFLES (ID)**

The color of this Dahlia is hard to describe—we would call it a soft apricot—a beautiful new shade in Dahlias. As the name indicates, the blooms are very artistic and unusual and the petals have a waxy, almost artificial appearance ..... Root \$ .75

**HILLCREST NUGGET (ID) 1935**

This is unquestionably one of the finest Dahlias we have ever grown. It has everything a good Dahlia should have—3-foot stems, giant blooms and perfect growing habits. The color is nugget bronze with troubadour red reverse—a most unusual and attractive combination.

Plant \$1.00; Root \$2.00

**HILLCREST ROYALIST (ID)**

A huge, richly colored flower of Burgundy wine red with a background of vermilion-violet—a most striking combination. Our blooms of this variety averaged 10 to 12 inches under ordinary culture.....Root \$ .50

**HI LITE (ID) 1936**

Color is rich velvety carmine, shaded rose red and tipped gold. Blooms are consistently large, of perfect quality and formation. Strong stems hold flowers erect. Healthy vigorous grower.....Root \$5.00

**HUNTS VELVET WONDER (ID) 1935**

Here is a Dahlia of great size and beauty. The color is a rich violet burgundy and the stems and plant growth are unusually good. Fine for exhibition—a sure winner.

Plant \$1.00; Root \$2.00

**JANE COWL (ID)**

Buff salmon and orange. Massive blooms. One of the finest and most popular Dahlias today. A perfect flower, stem and plant.....Root \$ .25

**INDIANA MOON (ID)**

A gorgeous Dahlia of a pleasing combination of colors described as flesh ocher with lines of spinel pink. The exhibition type blooms are supported on exceptionally long and stiff stems.....Root \$ .75

**JESSIE CRAWFORD (ID) 1935**

A fine new novelty of large size and perfect formation. The color is bright orchid or violet red, stems are long and straight and the plant is a splendid grower. Root \$2.00

**JIM MOORE (ID)**

Clear primrose yellow, shading to gold with tints of salmon. A beautiful, well proportioned flower of unusual size and distinction. Rugged plant characteristics. Root \$ .50

**JIMMY FOXX (ID) 1937**

A truly spectacular Dahlia of giant size, 13 x 8 inches. Color, coppery red tinged with henna. Blooms are supported by strong, straight stems. Plant is an exceptionally sturdy grower. This fine Dahlia won the Achievement Medal at the 1936 New York Show, as the best undis-seminated Dahlias; also awarded the Derrill W. Hart Memorial Medal, — highest award for a seedling Dahlia. Also won many other high honors in 1936. You will find this sensational Dahlia on all new Honor Rolls, — a new undefeated champion that should be in your garden.

Plants only \$7.50

**KENTUCKY RED (ID)**

This Dahlia is a favorite with us and our visitors on account of its brilliant scarlet red color — there is no color just like it. Blooms 8 to 11 inches on long, stiff stems. Root \$ .75

**KENTUCKY SUN (FD) 1936**

This Dahlia is just naturally a big bloomer. Color bright golden yellow. Flowers are held erect on nice stems. One of the best of the new yellows.....Root \$5.00

**KING OF THE GARDEN (ID) 1936**

An enormous bright canary yellow flushed with soft orange yellow. A grand variety with strong erect stems, good form and perfect growing habits.....Root \$3.00

**LEMONIA (St.C) Foreign**

A fine large cactus lemon yellow color with giant three-foot stems. A foreign variety of merit and unusual quality. Plant \$1.00, Root \$2.00

**LITTLE DREAM (Min.C) Foreign**

Brilliant rose color with light violet center. Unexcelled for cutting or floral work.....Plants only \$1.00

**LITTLE SNOW QUEEN (Min.C) Foreign**

A small, pure white cactus. Excellent cut flower and keep-in variety with perfect stems.....Plants only \$1.00

**MAD. FRANCOIS PEZANT (HC) Foreign**

The color of this fine foreign hybrid cactus is bright rose. Stems are unexcelled for cutting.....Plants only \$2.00

**MARGRACE (ID) 1936**

Certainly one of the finest Dahlias we have ever grown from every viewpoint. The color is a brilliant scarlet, tipped and striped with gold. Flowers up to 14 inches, on strong stems. Plant growth healthy and vigorous. This Dahlia is 100% and we recommend it strongly.

Plant \$2.50; Root \$5.00

**MARY E. REDFERN (ID)**

A delightful shade of orchid rose. Very large deep flowers of pleasing form, held on long strong stems. The flowers grow well above the bush and it is a splendid Dahlia in all respects.....Plant \$1.00



**MARMION (ID)**

Pure gold, bronze suffusion. Free bloomer on splendid stems. One of the largest.....Root \$ .50

**MAY ROBSON (SC) 1935**

A true pink semi-cactus, slightly deeper in color than Kathleen Norris. A strong vigorous grower and the blooms are held erect on strong stems.....Plant \$2.00

**MIRIAM HOPKINS (SC) 1936**

This new variety was 100% for us in 1936 and ranks among the best six new Dahlias in our estimation. An unusually large semi-cactus of a coppery salmon color,—a greatly improved Amelia Earhart. Blooms average well over 11 inches on the best of stems. A tall vigorous grower and prolific bloomer.....Plants \$3.75; Root \$7.50

**MID WEST (St.C) 1936**

An entirely new color, light purple with tints of rose. Blooms are large, of fine form and always full centered. A straight cactus of great merit.....Plants only \$2.50

**MILTON J. CROSS (ID) 1936**

A magnificent new variety that was the sensation of our 1936 plantings. We had 40 hills and every plant was marvelous. Color is clear gold at center, shading to orange buff,—a rich pleasing combination. Blooms up to 14 inches, on four-foot stems, held erect above foliage. This Dahlia is very strongly recommended and it will surely be popular for years to come.....Plants only \$5.00

**MISS BELGIUM (C)**

One of the best of the cactus varieties, a foreign introduction of unusual merit. Color is scarlet orange, stems are perfect and it is a vigorous grower.

Plant \$1.00; Root \$1.50

**MISS GLORY (SC) 1936**

Another new variety of considerable merit. The color an apricot yellow and the giant blooms are held erect on the best of strong stems. A free and early bloomer with healthy plant growth. Strongly recommended.

Plant \$3.75; Root \$7.50

**MISS LONG ISLAND (ID) 1936**

A tall grower with splendid growing habits and attractive flowers of watermelon pink,—some of the petals show tips of silver. A prolific bloomer with excellent stems and insect resistant foliage.....Root \$3.50

**MISS TOLMIE (IC)**

A very fine new cactus variety that grew and bloomed exceptionally well for us. The color is mauve and cream and the blooms are held erect on strong, stiff stems.

Root \$1.00

**MOOI LIMBURG (FD) Foreign**

Here is a new foreign novelty that is both beautiful and extraordinary. Color is geranium red,—blooms are of perfect quality and form,—plant growth ideal.

Plants only \$2.00

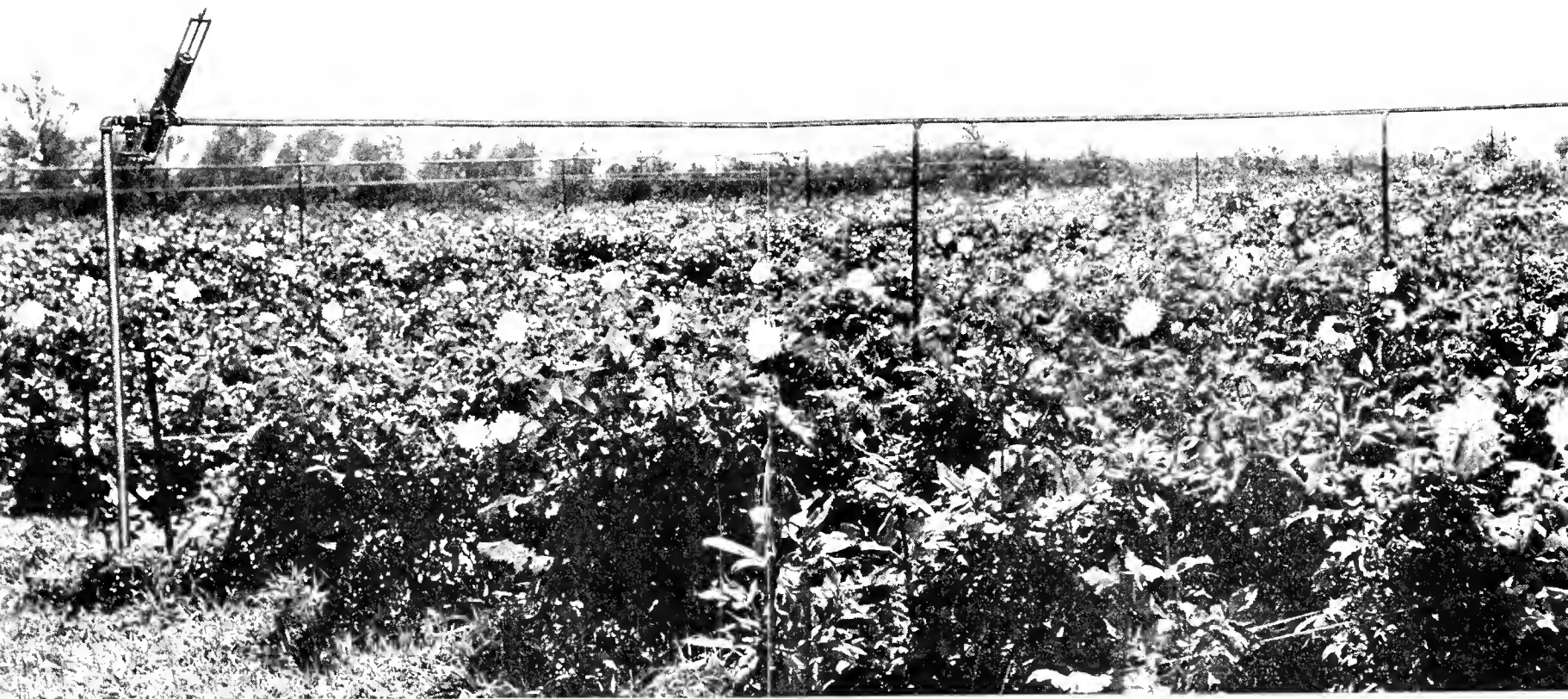
**MONMOUTH CHAMPION (FD)**

Brilliant orange flame color. Beautiful exhibition blooms 10 to 12 inches in diameter. A constant prize winner wherever shown.....Root \$ .25

**MOON GLO (FD) 1936**

This is a lemon yellow, high centered, formal decorative of the exhibition variety. Blooms average 8-10 inches under normal culture, with ideal stems and good plant growth .....Root \$3.50





*Oakleigh Dahlias — Champions of First Mid-West Dahlia Show — are properly protected from drought by the most modern type of automatic overhead irrigation. Just another of the many reasons for the strong, healthy appearance of our plants and the unusual quality and vitality of our tubers. Oakleigh Dahlias, being properly fertilized and irrigated, are always fully matured and easy to winter. There IS a difference. "You can depend on Oakleigh."*



*Partial view of Oakleigh Gardens — Seven acres of strong, healthy, field planted Dahlias — 40,000 hills — 400 varieties. Thousands of visitors from many States viewed this gorgeous planting in 1936. You are cordially invited to inspect our exhibition and field plantings in 1937 during blooming season, where you will always find the latest and best Dahlia introductions — prize winners by actual proof. "You can depend on Oakleigh."*

**MRS. ALFRED BUNYARD (FD) 1936**

Here is a splendid cut flower variety, in a rich golden yellow color. Unexcelled stems and general growing habits. Not a large variety but always attracts favorable comment because of its rich color.....Plants only \$1.75

**MRS. G. M. MIDDLETON (ID) 1935**

This new Dahlia probably attracted as much attention as any variety in our 1936 planting, because of its enormous size and extremely dark red color. Blooms up to 15 inches in diameter on strong, stiff stems and a thrifty grower. Plant \$1.00; Root \$2.00

**MRS. JAMES ROOSEVELT (SC) 1937**

A very beautiful Dahlia in color and formation. The color is grenadine red with streaked yellow reverse. It was our privilege and pleasure to grow and test this new variety last season and it performed splendidly for us,—we are happy to recommend it.....Plants only \$5.00 net

**MRS. CHRISTINE GROVES (FD) 1936**

The color of this new formal is yellow with each petal tipped lavender. Blooms average 8 to 10 inches and are held erect on three-foot stems. A very desirable variety in every respect.....Root \$5.00

**MRS. GEO. LE BOUTELLIER (ID) 1935**

A rich velvety carmine, giant in size and outstanding in all respects. A healthy, vigorous grower with strong stems and insect resistant foliage.....Root \$2.00

**MRS. HERBERT O'CONNOR (IC) 1936**

A beautiful incurved cactus, soft rose pink deepening at center. A profuse and continuous bloomer with dark healthy open foliage. Flowers are of good size, held erect on strong slender stems.....Plant \$2.50; Root \$5.00

**MRS. L. L. HOOK, (FD)**

Blended shades of gorgeous purple, lighter on reverse. Beautiful, large blooms with wide pointed petals. The bush is hardy, tall and positively insect-resisting—never stunts. Root \$1.00

**MRS. W. F. LORD (FD) 1936**

Color a bright gold with tints of peach pink on reverse. The unusual formation and fine long, wide and pointed petals make this new variety outstanding. A Dahlia of Honor Roll merit and distinction that has a bright future. Plants only \$3.75

**MURPHY'S MASTERPIECE (ID)**

One of the most outstanding of recent creations—a consistent prize winner everywhere. The color is dark red and the huge blooms are help upright on stiff, strong stems. The Dahlia can be grown to 14 inches with ordinary care. Plant \$1.00; Root \$2.00

**NANAQUAKET (FD)**

Delicate orchid-pink. A Dahlia of extraordinary beauty and a most prolific bloomer. Immense blooms on fine, long stems .....Root \$ .35

**NEW DEAL (FD) 1935**

A brilliant orange red of huge size and bold formal features. It is an excellent keeper and can stand hot, dry weather. An Honor Roll variety of unusual merit. Root \$2.00

**NOCTORNO (St.C) Foreign**

Color is dark brownish red, nearly black. Blooms of large size and perfect formation. Wiry cut flower stems. Plants only \$1.00



Oakleigh Princess

**OAKLEIGH PRINCESS (SC) 1936**

The sensational new Honor Roll Dahlia. A semi-cactus of immense size and in a beautiful new color, lemon yellow overcast scarlet red. Blooms 8 to 12 inches in diameter without forcing, held erect on strong, stiff stems two to three feet long. A healthy, vigorous grower with tough insect-resistant foliage. Oakleigh Princess is a seedling of Satan and reflects all of the good qualities of its parent. A Certificate of Merit winner in 1935, at A.D.S. Trial Grounds.....Plant \$2.00; Root \$5.00

**OSTER GRUSS (Min. Dec.) Foreign**

Easter Greeting. Pure waxy white blooms held erect on good stems. Very early and free flowering.

Plants only \$1.00

**OLYMPIC SUNSET (SC) 1935**

Color is apricot orange and coral with a blending of lemon yellow, one of the most beautiful varieties in our 1935 planting. A perfect semi-cactus that grows well and blooms profusely .....Root \$2.00

**O.S.U. (ID) 1936**

Named for Ohio State University. A fine new novelty of scarlet with lighter reverse. The artistic petals twist and turn in a most attractive manner. Flowers are large, stems and plant growth perfect. A fine Dahlia.

Plant \$2.50; Root \$5.00

**ORIENTAL GLORY (ID)**

We would term it an orange Jane Cowl. Blooms are large, averaging from 8 to 11 inches in diameter. Stems are stiff and strong. Foliage is a dark green and insect-proof.

Root \$1.00

**PAUL PFITZER (SC)**

A German novelty which has been a distinct success wherever grown. Color is delicate pink and the petal formation like Frau O. Bracht. A strong grower with perfect stems and splendid growing habits..... Plant \$1.00; Root \$2.00

**PRIDE OF AUSTINBURG (ID) 1936**

Color is a bright pink suffused with light yellow, — reverse of petals rich rose. Blooms average well over 10 inches on splendid stems. A profuse bloomer and the plant is a strong, thrifty grower.....Plant \$2.50; Root \$5.00



**PAEONIA (P) Foreign**

A nice novelty from Europe. Color is salmon rose with yellow center. Wonderful for exhibition or table decoration.....Plants only \$1.00



**Persimmon**

**PERSIMMON (Miniature) 1935**

A splendid, new Formal Miniature. As the name implies, it is a pure persimmon color and its brilliant beauty commands instant respect and attention. A most profuse bloomer and the stems are unexcelled for cutting. Bush grows about 3 feet high and the foliage is clean and insect-resisting. An Oakleigh introduction.

Plant \$ .50; Root \$1.00

**PHANTOM (FD) Foreign**

A beautiful bi-color, violet purple tipped white. Blooms of large size and perfect quality.....Plants only \$1.00

**PINK SPIRAL (In.C) Foreign**

A beautiful Holland variety of peach blossom pink with a touch of primrose. The unusual petal formation form a complete spiral arrangement. Highly recommended.

Plant \$1.00; Root \$2.00

**PIONEER CITY BONFIRE (FD)**

A seedling from Girl of Hillcrest. Color, bonfire red. A fine new Dahlia with blooms of large size, long, strong stems and healthy insect resistant foliage. Plants only \$2.50

**POP STEWART (ID)**

This Dahlia is a most beautiful color — pure lilac pink. The large flowers are borne on splendid stems and it is a very profuse, steady bloomer.....Root \$ .35

**PRACHTKERL (SC) Foreign**

A Dahlia of perfect form, immense size and beautiful deep yellow color. This variety was outstanding in our 1936 exhibition plantings.....Plant \$1.00; Root \$2.00

**QUEEN CITY (FD) 1936**

A splendid new Dahlia of real merit and quality. The color is a distinctive pink, halfway between cherry red and old rose. An early, prolific bloomer and unexcelled as a cut flower variety. This Dahlia is a winner and we recommend it strongly.....Plant \$3.75; Root \$7.50

**RED VICTOR (ID) 1936**

A sparkling, brilliant novelty of rose red. An exhibition type that can be grown to immense size. Plant is a strong, healthy grower and profuse bloomer.

Plant \$2.50; Root \$5.00

**RED JUG (SC) 1936**

An outstanding Dahlia in all respects. Dark cardinal red in color, sometimes with petals tipped gold. Stems are long and stiff and plant growth ideal. Highly recommended.....Plant \$2.50; Root \$5.00

**ROBERT E. LEE (SC)**

The color is a bright luminous cardinal red, reflex lighter. The blooms are held, facing upward, on strong stems. An exceptionally prolific bloomer.....Root \$ .25

**RUBY TAYLOR (ID)**

A prize winner which has met with instant approval wherever grown. The color is carmine and the large deep blooms are supported by perfect, long stiff stems.

Root \$1.00

**RUDOLPH'S GIANT (ID) 1936**

One of the new giants of the Dahlia world. Color is clear golden apricot with tints of pastel pink and golden tan. A fine exhibition variety that will win for you in the big bloom class.....Plant \$5.00; Root \$10.00

**SACHSENLAND (SC) Foreign**

Color, pure old gold with luminous orange. A wonderful semi-cactus with long, perfect stems.....Plants only \$1.00

**SAGAMORE (FD)**

Golden amber shaded orange buff. An old reliable variety for exhibition or cut flower work.....Root \$ .35

**SANHICAN PEACH (ID)**

Peach cheek color. Oddly twisted petals. Good stems and habit of growth. A very charming decorative....Root \$ .50

**SATAN (SC)**

No Dahlia has been more sensational and spectacular than this one. Horn-like petals of flaming red, touched gold, perfectly rolled and incurved, give rare form to a flower of unusual brilliancy. The immense blooms, up to 13 inches, are held uprightly on long, cane-like stems.

Root \$1.00

**SIRIUS (SC) 1935**

An outstanding new variety that is often termed the nearest to a blue Dahlia. Its color is a real bluish purple and it is a welcome addition to the range of dahlia colors. A prolific bloomer with large flowers, good stems and perfect bearing .....Root \$1.00

**SONNY BOY (ID)**

A monster old rose, slightly tinged old gold, informal decorative. Without irrigation or forcing, this Dahlia had blooms 12 x 8 inches. The bush is of medium height, insect-resisting, and is a prolific bloomer with good stems.

Plant \$1.00

**SPINNING WHEEL (ID)**

A bi-color of cardinal red with white tipped petals that wave and twist in an unusual manner. An attractive novelty of real merit.....Root \$2.00

**SPOTLIGHT (ID)**

This variety was one of the bright spots of our garden the past season. The color is sulphur yellow and the petals curl and twist in a most fascinating manner. We had many blooms on Spotlight 11 and 12 inches in diameter. The stems are long and straight; foliage, tough and insect-resisting .....Root \$2.00

**TACOMA'S BEAUTY (FD)**

This Dahlia is the type of Jersey's Beauty but with better blooms, color and habits. Deep salmon pink blended with strawberry pink and shading to gold at base of petals. Not only is it a profuse bloomer but the flowers are large and the stems unusually long and straight. One of the best cut flower varieties on the market and a splendid keeper.

Root \$ .75

**TANNENBERG (SC) Foreign**

A very striking, blood red cactus with yellow centers and tips. Strong, wiry stems.....Plants only \$1.00

**THE COMMODORE (ID)**

One of the largest and most spectacular dahlias ever introduced. A brilliant lemon yellow and the blooms average 10 to 14 inches with ordinary care. Plant is a medium grower, wide spreading and of sturdy growth. A prolific bloomer, the bushes being literally covered with blooms throughout the season.....Root \$ .50

**TOWERS EMPIRE (ID) 1935**

Here is a variety we do not hesitate to recommend to our customers. The flowers are large, up to 14 inches, and the color is clear gold with amber shadings. Stems are exceptionally long and straight and hold the huge blooms well above the foliage. An early and prolific bloomer and a rugged, vigorous grower.....Plant \$1.75; Root \$3.50

**TWILIGHT (FD)**

A big, bold formal type, which grew exceptionally well for us the past season. Color, Liseran purple with many petals a pale rose purple. Strong, stiff stems which hold the giant blooms at just the right angle. Foliage is tough and insect-resisting .....Root \$1.00

**WASHINGTON GIANT (ID)**

It is unusual in form and color, a giant in size and the stems are perfect. Color is pure lavender streaked with silver. We had many blooms over 12 inches with normal culture .....Root \$1.00

**WEPEZO (SC) Foreign**

An unusual variety with bluntly pointed florets. Color is a rich scarlet and the blooms are held well above foliage on perfect stems.....Plants only \$1.00

**WEISER HIRCH (St.C) Foreign**

A pure white cactus of unusual beauty and form. Petals are lacinated. A winner in all respects.....Plants only \$1.00

**WHITE ABUNDANCE (FD) Foreign**

An excellent white variety for exhibition or cutting. Blooms are held on strong, erect stems well above the foliage. Winner of many honors in Europe....Plants only \$2.00

**W. H. T. (FD)**

This Dahlia always commands instant attention due to its unusual coloring of rich old rose with mauve shading on reverse. A long stemmed variety of perfect petal formation and healthy growing habits.....Root \$ .50

**WM. H. HOGAN (FD)**

Reddish purple tipped white. Very unusual and always attracts attention. One of the best bi-colors.....Root \$ .50





Wenoka

## WENOKA (FD) 1935

Here is a new formal decorative which is a giant among giants. The color is rosy mauve and the immense blooms are held upright on stems that are as stiff and straight as broom handles — at least 24 inches to first set of leaves. The foliage is like leather, dark green in color, and absolutely insect-resisting.....Plant \$2.50; Root \$5.00

## YOUTH (ID) 1936

A gorgeous bi-color of unusual formation resembling a water lily. Color is American Beauty shading to magenta toward the center, tipped white. A fine exhibition or commercial variety with splendid keeping qualities.

Plants only \$1.75

*"You can depend on Oakleigh."*

If you are not already a member, join and support your local or State Dahlia Society. If there is no Society in your vicinity, join the American Dahlia Society. The dues of \$2.00 per year include a year's subscription to the A.D.S. quarterly Bulletin which alone is worth many times the small investment for dues. Send your application and \$2.00 to C. Louis Alling, 251 Court St., West Haven, Conn. Do it today.

## Oakleigh "Super-Special" Dahlia Seed

**E**NJOY the thrill in 1937 of growing dahlias from seed. — An interesting and enjoyable hobby. Dahlia seed planted in the spring will not only bloom the same year, but will also form a clump of roots that you can divide and plant in succeeding years.

The Dahlia seed that we offer is of the highest quality and is the same seed we plant to obtain new and outstanding creations. Three seedlings from this seed, — Oakleigh Monarch, Golden Beauty and Oakleigh Princess won Certificates. Many other remarkable seedlings are now under further observation and trial in our gardens from this Super-Special seed.

A high percentage of germination and large double flowers may be expected from Oakleigh "Super-Special" seed as this seed is harvested from carefully selected parents and no poms or small flowering varieties are grown near the seed raising garden. Samples of each lot of seed are actually tested and germinated before seed packets are prepared, thereby insuring a high percentage of plants.

Due to the unusual demand for this high grade seed and also the fact that the quantity for disposal is somewhat limited, we urge you to order *early* and avoid disappointment. We guarantee your complete satisfaction in every respect, or your money refunded in full.

*"You can depend on Oakleigh"*

### Prices on "Super-Special" Dahlia Seed

25 Double Mixture Seed.....	\$ 1.00
50 Double Mixture Seed.....	2.00
100 Double Mixture Seed.....	3.50
500 Double Mixture Seed.....	15.00

*Special growing instruction accompany each order.*

#### WIN \$50.00 WORTH OF STOCK — FREE

For the most meritorious and outstanding seedling grown from our "Super-Special" Seed each season, we offer a prize of \$50.00 worth of stock to be chosen from our regular catalog by the winner. Our decision shall be final and we reserve the right to introduce the winning seedling exclusively under our trade name — due credit being given the originator. Seedlings competing for the \$50.00 prize will be tested and grown by us in our Special Trial Garden the following season. To those who grew Oakleigh Seed in 1936, send us your best seedlings for trial.

## Oakleigh "Special" Collection

FOR beginners and novices, here is an offer that is bound to appeal. — Ten (10) roots of good blooming varieties for only \$1.50 postpaid, or twenty (20) roots for \$2.75. A whole garden full of beautiful and colorful dahlias for just a few dollars.

The Oakleigh "Special" collection is made up of standard varieties of dahlias from our regular plantings on which labels have been lost during the growing season, or in digging and storage. Many varieties regularly selling from 50c to \$1.00 each are likely to be found in this mixture and you will be pleasantly surprised at the genuine quality and value.

When ordering, merely specify Oakleigh "Special" collection — 10 roots for \$1.50 — 20 roots for \$2.75, or 30 roots for \$3.75 — all postpaid. Your complete satisfaction guaranteed.

A "Surprise" included *Free* with each order.

---

## Oakleigh "Champion" Mixture

This mixture represents an exceptional and outstanding value. It is made up of certain varieties from our 1936 plantings, on which we do not have sufficient stock to list in our catalog. Regardless of regular value these dahlias are being thrown together in one lot and sold at the low price of \$2.75 for 12 roots or \$5.00 for 24 roots, postpaid.

A large percentage of the dahlias in this "Champion" mixture would ordinarily sell for 75c to \$2.00 a root and we promise you that you will be delighted with these outstanding varieties. Roots will not be labeled or tagged at these low prices. We guarantee a good color assortment and no two varieties alike.

Merely specify "Champion Mixture" — 12 roots for \$2.75, or 24 roots for \$5.00 postpaid. Sold on a money-back guarantee. **FREE:** A named and labeled dahlia, our choice, regular value \$1.00, will be included with every order for 12 roots — or a \$2.00 dahlia, our choice, with every order for 24 roots. Act quickly, as this Free Offer is subject to withdrawal without notice, due to limited quantities.

*"You can depend on Oakleigh"*

*The Mid-West Dahlia News*, published by D. O. Eldredge, 170 Talmadge St., Madison, Wis., is a splendid, interesting and educational magazine — devoted to Dahlia culture and Dahlia welfare. Mr. Eldredge deserves the heartiest support and cooperation of all Dahlia fans. *The Mid-West Dahlia News* is published quarterly and the subscription cost is only \$1.00 per year. Mail your order to Mr. Eldredge TODAY, or send it to us with your Dahlia order.

## Personal Service Offers:

### Big DOUBLE Values

**I**F YOU ARE undecided as to just what varieties to order, why not leave the selection to our judgment with the positive assurance and guarantee of complete satisfaction and extraordinary value for your money?

Here are some Personal Service Offers which will surely please the most critical buyer:

- No. 1 10 Dahlia roots, our choice, all named and labeled, all different, total catalog value \$7.00 or more for only.....\$3.50 postpaid
- No. 2 10 Dahlia roots, our choice, all named and labeled, all different, total catalog value \$10.00 or more for only.....\$5.00 postpaid
- No. 3 10 Dahlia roots, our choice, all named and labeled, all different, total catalog value \$15.00 or more for only.....\$7.50 postpaid
- No. 4 10 Dahlia roots, our choice, all named and different, total catalog value \$20.00 or more for only .....\$10.00 postpaid
- No. 5 15 Dahlia roots, our choice, all named and different, total catalog value \$50.00 or more,—the biggest and best offer of 1937,—15 sensational giants and prize winners, for only.....  
.....\$25.00 postpaid

Note: Order this outstanding assortment and if, on arrival, you are not more than satisfied in every respect, select any one of the fifteen roots with our compliments and return the other fourteen roots for a full and immediate refund.

- No. 6 12 Dahlia Plants, our choice, all named and different, total catalog value \$25.00 or more, for only \$12.50 postpaid. Here is your opportunity to get DOUBLE value for your money,—every Dahlia in this assortment a sure winner.

Remember, all of the Dahlias in the above offers are from our 1937 booklet,—all are outstanding for performance and quality and a wide range of colors will be selected for you, personally.

These are the biggest values of 1937, bar none, and we give you this positive money back guarantee: "If you are not more than satisfied with this stock when you receive it, for any reason whatsoever, return it to us immediately and we will promptly refund your complete payment plus return postage charges."

*"You can depend on Oakleigh"*



Oakleigh Monarch



## 1937 Introductions

In addition to the varieties described in the main section of this booklet, we are growing practically all of the good 1937 introductions of other commercial growers, including:

Miss Ohio

Jimmie Foxx

Great Eastern

Buckeye Glory

Buckeye Star

Jumbo Satan

Dream Girl

Le Joy

Royal Pennant

Autumn Sunset

Freckles

Mrs. Ida Chase

The Whirlwind

Leland Stanford

Pacific Splendor

Purple Mist

Lemon Glo

Fireball

Indian Princess

Mrs. James Roosevelt

and many other new foreign and domestic Honor Roll varieties.

While it has not been our policy to sell new Dahlias that we have not actually grown and tested in our own gardens for at least one season, we will, as an accommodation to our customers, furnish plants of any of these new varieties at the originators' prices, which will be furnished upon request.

## Pompon Dahlias

*Everyone should include a few Poms in their Dahlia plantings. We recommend the following varieties for cutting, — all are profuse bloomers.*

		Per Root
Amber Queen.....	Amber shades .....	\$0.25
Bobby.....	Plum purple.....	.25
Belle of Springfield.....	Brick red .....	.25
Chickie (New).....	Plum color.....	.50
Challenge.....	Cherry red and white.....	.25
Dainty Miss (New).....	Soft pink .....	.50
Daybreak.....	Soft lavender.....	.25
Golden Queen.....	Yellow .....	.25
Jessica.....	Amber tipped red.....	.25
Little Belle.....	Mauve pink .....	.25
Little Dorothy.....	White edged amber.....	.25
Little Herman.....	Red and white.....	.25
Morning Mist (New).....	Pink .....	.50
Snowclad.....	White .....	.25
Spy.....	Scarlet .....	.35
Vivid.....	Bright red .....	.25
Yellow Gem.....	Yellow .....	.35

Your choice, any twelve of the above Poms for only **\$3.00** postpaid. Entire 17 varieties for only **\$4.50**, — one root Minnie Mouse Free with each order for entire 17 Poms.



**Minnie Mouse**

A new Pom which is bound to please the most critical grower. Color is rich Burgundy red with edges of petals tipped white—an unusual and attractive combination. It is an early and profuse bloomer with long perfect stems . . . unexcelled for cutting. An Oakleigh introduction.....Root \$ .75



# 1937 OAKLEIGH Bargain Offers

## Bargain Offer No. A

Any 6 roots of the following varieties for only \$3.00 postpaid.

W. H. T.	Frank Miller
Jane Cowl	Mrs. L. L. Hook
D. W. Morrow	The Commodore
Tacoma's Beauty	Hillcrest Fluffy
Fordhook Emperor	Ruffles
Baby Royal	

Entire 10 roots for only \$4.25

A surprise root, value \$1.00, Free with each order for the entire 10 roots.

## Bargain Offer No. B

Any 5 roots of the following varieties for only \$7.75 postpaid.

Amelia Earhart	City of Cleveland
Daddy Kemp	Spotlight
Jessie Crawford	Twilight
Satan	Bing Crosby

Entire 8 roots for only \$9.50

With each order for entire 8 roots, your Free choice of a root of Forest Fire, Cavalcade or Charlie Chaplin.

## Bargain Offer No. C

Any 4 roots of the following varieties for only \$8.50 postpaid.

America's Sweetheart	Forest Fire
Cornelia B. Pinchot	Charlie Chaplin
Cavalcade	Mrs. G. M. Middleton

New Deal

Entire 7 roots for only \$14.75

With each order for entire 7 roots, your Free choice of a root of Oakleigh Monarch or Oakleigh Princess, — an outstanding offer.

## Bargain Offer No. D

Any 4 Plants of the following varieties for only \$6.75 postpaid.

America's Sweetheart	Oakleigh Monarch
Hunt's Velvet	California Idol
Wonder	Golden Standard
Wenoka	Oakleigh Princess

Entire 7 Plants for only \$9.50

With each order for entire 7 Plants, your Free choice of a Plant of Adorable, Hillcrest Nugget or Cavalcade.

## Bargain Offer No. E

(All Foreign Varieties)  
Any 4 Plants of the following varieties for only \$6.75 postpaid.

Prachtkerl	White Abundance
Lemonia	Paul Pfitzer
Mooi Limburg	Pink Spiral
	Dulcinea

Entire 7 Plants for only \$9.50

With each order for entire 7 Plants, your Free choice of a Plant of Gretel or Miss Belgium.  
Enjoy the thrill of growing these splendid Foreign Varieties.

Amazing Values - Prize Winners - Lowest Prices!

Roots ..... \$5.00

Plants ..... 2.00



## Oakleigh Monarch

Grow this new triple Honor Roll—Certificate of Merit Dahlia. Oakleigh Monarch is all that the name implies—a big, broad-petaled formal type that has created a sensation wherever grown and exhibited.

It is truly a beautiful color—a clear, brilliant cerise red,—quite unlike any other introduction of recent years, and the keeping qualities, for such a large Dahlia, are remarkable. By actual test, blooms of Oakleigh Monarch have kept for seven to ten days in perfect condition.

Oakleigh Monarch scored 86.9 at A. D. S. Trial Grounds, East Lansing, Mich., in 1935, and was one of the most outstanding new varieties on trial. We quote herewith part of official Trial Grounds report: "Flowering habit very good. Stems, straight and strong. Substance, excellent. Keeping qualities, splendid, long lasting. Habit of plant, heavy, vigorous growth, thick densely branching. Health excellent. Diameter of flowers, 8-11 inches; depth, 4 $\frac{1}{4}$ -7 inches. Height of plant, 4-5 feet. ONE OF THE BEST."



## MEDAL OF A.D.S.

Highest Award of First Mid-West  
Dahlia Show — Won by  
OAKLEIGH GARDENS

*"You can depend on Oakleigh"*