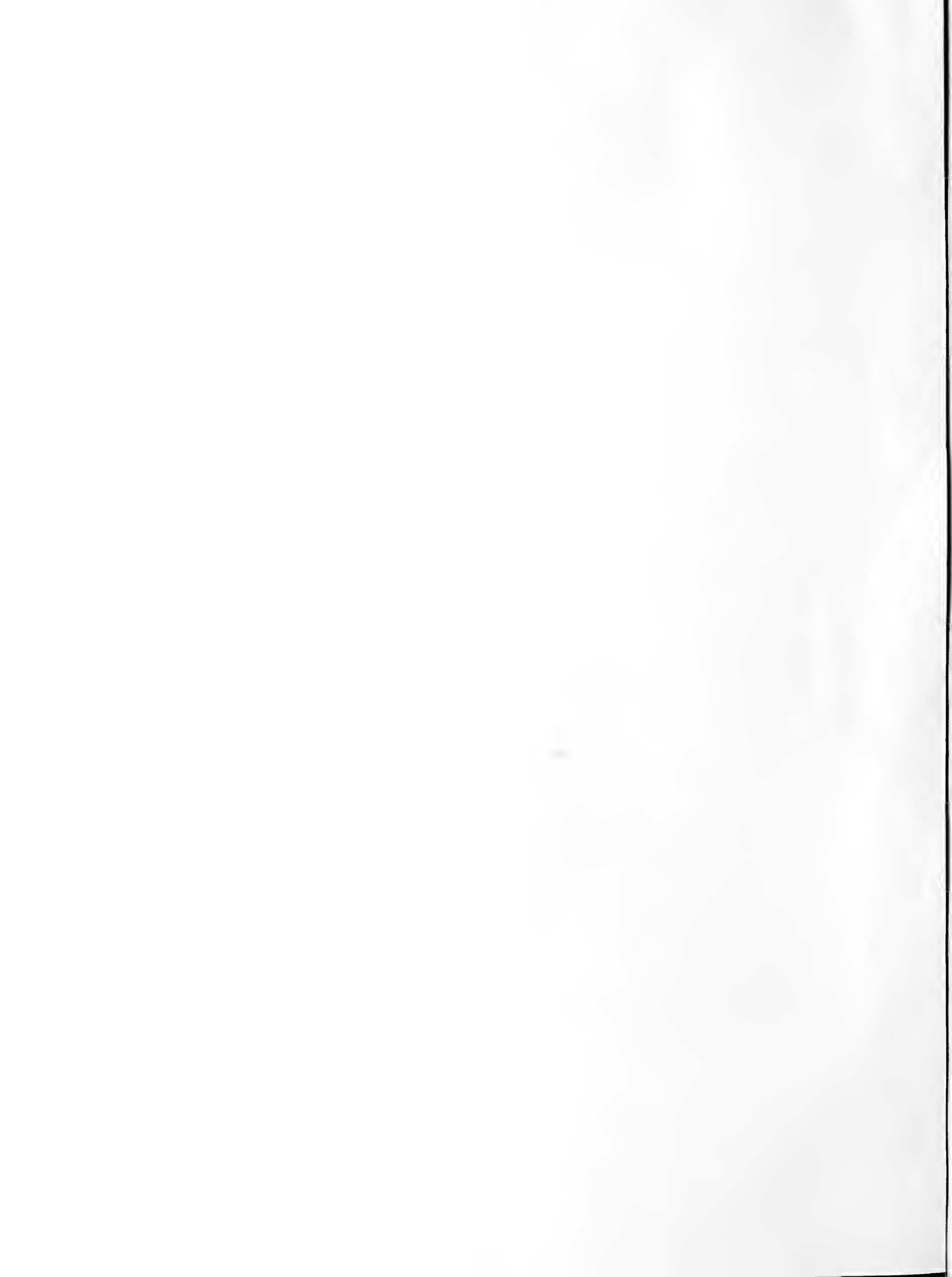


Historic, Archive Document

Do not assume content reflects current scientific knowledge, policies, or practices.



65

LIBRARY
RECEIVED
MAR 1 1937
U. S. Department of Agriculture

Flowers and Foliage

a selected list of
the best and most
dependable varieties
for gardens of
the North

SHRUBS, ROSES, PERENNIAL FLOWERS

grown on the 440-acre
farms of the Northwest's
most complete nursery

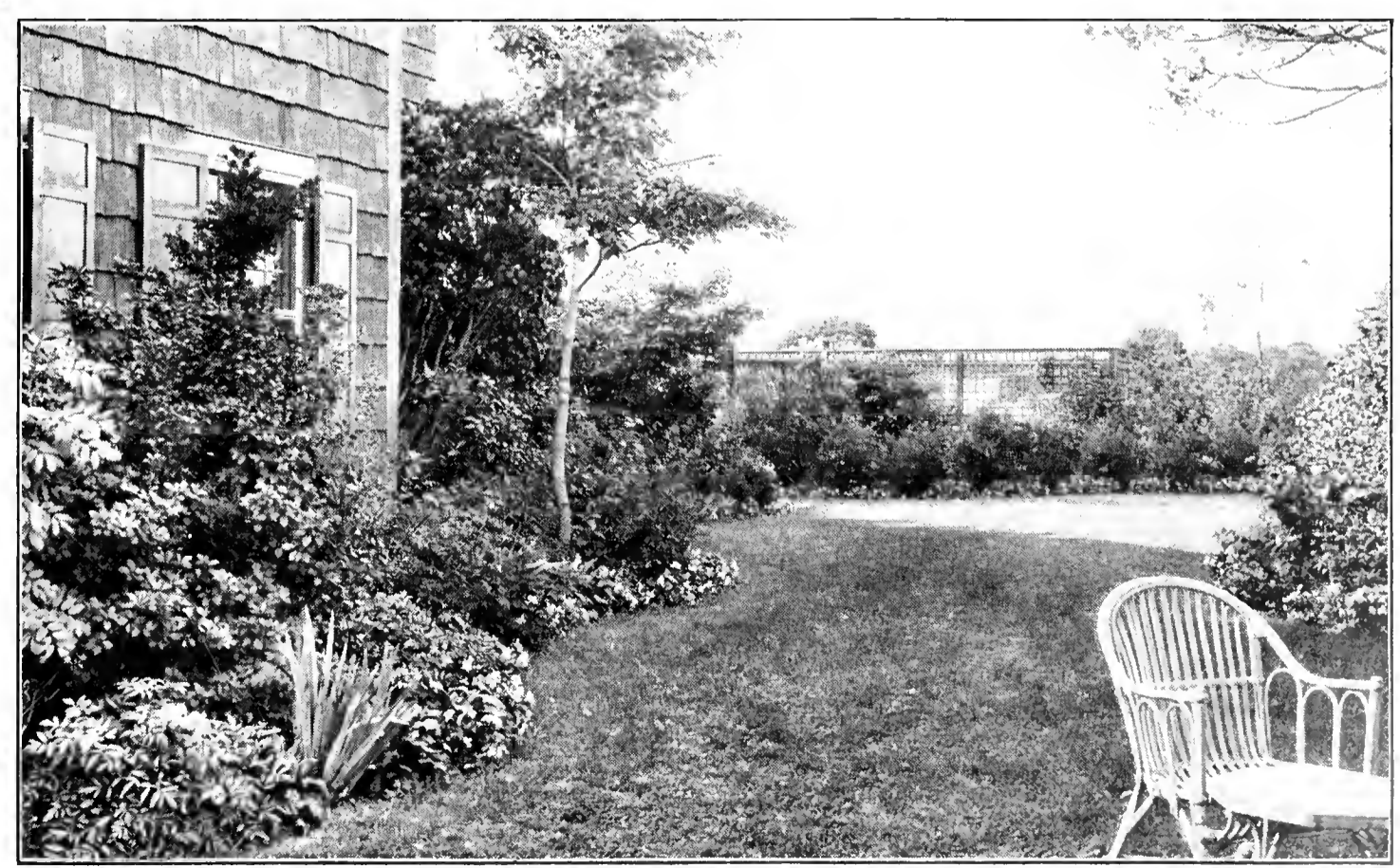
Styles change. The common sorts of a year ago are discarded for the more beautiful Hybrids of today. The plant breeders at our college stations are continually bringing forth beautiful new varieties, greatly improved. As a progressive nursery, we watch new varieties, quick to discard the old and propagate the new. We are fortunate in this Northwest that we have a broad list of beautiful new Hybrids. We call special attention to the new Mock Orange varieties, the new Hybrid Lilacs in a variety of colors, Professor Yeager's High Bush Cranberry, Pygmea Caragana, Snowgarland Spirea and Hopa Red Flowering Crab. We include a selected list of the best plants of the day.

BUILDERS OF BEAUTIFUL GARDENS



The
**NORTHWEST
NURSERY
CO.**

Valley City
North Dakota



TREES AND SHRUBS F



Caragana Pygmaea

Barberry, Japanese This Barberry does not spread rust. One of the best all around shrubs for the Northwest, thriving under all conditions. Graceful branches with tiny, bright green foliage, turning to brilliant crimson in the fall. Covered with small yellow flowers in June, followed by scarlet berries that last almost all winter. Very fine for hedges. 2 to 3 ft.

Buckthorn A well known ornamental hedge plant that stands close pruning without injury. The leaves are rich, healthy green, remaining in perfect condition all summer.

Caragana Arborescens. One of our hardiest desirable shrubs. Covered during early May with bright yellow, pea-shaped flowers, followed by long, slender pods. Pretty as a lawn shrub or for hedges.

Pygmaea. A dwarf, low-growing, dense Caragana with fine limbs and texture. Very valuable for dwarf hedges and borders. 2 to 3 feet.

Coralberry (*Symphoricarpos vulgaris*). Resembles *S. racemosus* in growth but is a little more compact. Flowers in July in dense terminal spikes, followed by dark purplish red berries in clusters. Well adapted for shady places. 3-4 ft.

Cornus Sibirica (Red Twigg'd Dogwood). Spreading, extremely hardy, splendid for hedges or shrub groups. Its panicles of white flowers in June are followed by clusters of berries, but its chief beauty is in its bark which is bright crimson during autumn and winter. Thrives in shade. 5 to 6 ft.

Elegantissima. One of the choicest variegated-leaved shrubs. Purplish red branches and leaves beautifully variegated with silver. 4 to 6 ft.

Cotoneaster Acutifolia Good for hedges. Beautifully formed shrub with thick, glossy leaves turning red in the fall. Flowers during early summer, followed by large, long-lasting black berries. Absolutely hardy, stands partial shade. Splendid in shrub plantings and unexcelled for hedges. 5 to 6 ft.

Cranberry (See *Viburnum*).

Currant Alpine. Good for hedges. Most desirable low shrub, retaining its foliage close to the ground. Desirable for shrubbery borders, fine for shade, excellent for hedges. 4 ft.



Philadelphus Virginal

Currant, Yellow Flowering. Showy yellow flowers in clusters in early spring. Covered later with edible dark brown or black berries. 5 to 8 ft.

Elder Fern Leaf (*Sambucus canadensis laciniata*). Large bush with clusters of large, flat flowers, giving en masse somewhat the effect of the hydrangea. The foliage is lacelike, with a cut fern appearance. Thrives in the shade. 5 to 6 ft.

Elder, Golden. (*S. aurea*). Contrasted with other shrubs, the golden leaves of this Elder give heightened effects in tone and color. The best of our golden-leaved shrubs. 5 to 7 ft.

Honeysuckles are fine ornamental shrubs, well adapted to hedge use.

Fragrantissima. Flowers pink. Heavy foliage, holding till late fall, hence, sometimes called Winter Honeysuckle. Striking colors and red berries,—one of the best shrubs.

Morrowi. One of the best quick growing, compact, "filler" shrubs. Bright green foliage, cream colored blossoms in April, red and coral fruits from June to August. Moist or dry, city or country, shade or sun, it thrives. 6 ft.

Tartarian. Pink. May. Very attractive in blossom, one of the few early, pink-flowering shrubs. Bright red berries stay on all summer. 7 to 9 ft.

Hydrangea Hills of Snow (*Arborescens*). New valuable shrub with large, snow-white blossoms of immense size. Habit excellent, foliage finely finished. Coming into bloom when most shrubs are through flowering (June till early fall), it makes a valuable acquisition in any garden. Does not thrive in the drier prairie sections. 3 to 4 ft.

Hydrangea P. G. August and September. Showiest of autumn-flowering shrubs, bearing immense heads of creamy white flowers turning to rich pink and coppery red with the approach of cold weather. 4 ft.



Honeysuckle Fragrantissima

The New HYBRID LILACS

Throughout the land there is a new enthusiasm due to the many beautiful new Hybrids that have been developed. We now offer Lilacs in white, pink, lavender, red, blue and dark purples, in both single and double flowers. Hybrid Lilacs have no diseases nor pests, nor do they produce suckers. They bloom while young from the top down to the ground. Some are early, some late. The following is a choice list of the best varieties in a good color range.

S—Single

D—Double

Common Purple. Discarded.

Common White. Discarded.

Persian. (See *Rothomagensis*).

Alphonse Lavallee. D. Blue shading to violet; very large.

Belle de Nancy. D. Double flowers in great panicles; satiny rose.

Chas. X. S. One of the best known and most popular of the hybrid improved Lilacs; thrifty, strong grower. Large trusses of reddish purple.

Ludwig Spaeth. S. Deep purplish red in large, long, dense panicles.

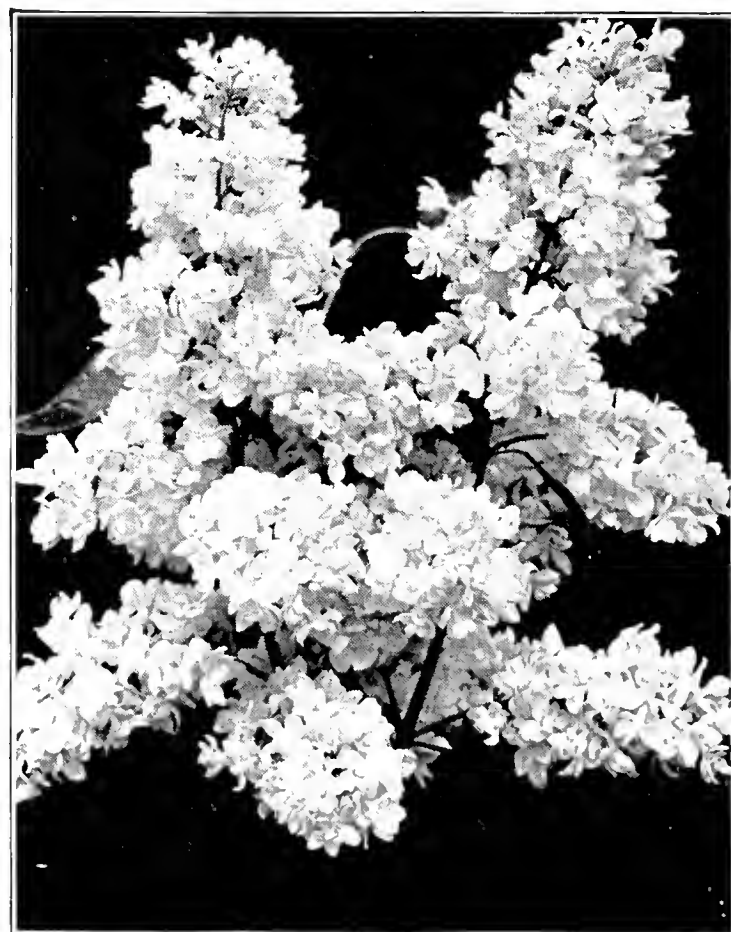
Marie Legraye. S. Large panicles of white bloom in great profusion.

President Grevy. D. A beautiful blue; individual flowers very large and double.

Rothomagensis. A hybrid of the Persian Lilac which grows with the same general form and thrifty habit as the Persian. Bears a great profusion of reddish purple flowers in heavy trusses. Thrives in sunshiny, dry locations.

Wm. Robinson. S. Pinkish red; long spikes; handsome.

Villosa. S. Also known as Summer Lilac. Flowers light purple in bud and nearly white when open. Fragrant; late bloomer. 8 to 10 ft.



Hybrid Lilac, Belle de Nancy

OR THE NORTHWEST

Ginnala Maple A shrubby dwarf tree of true maple foliage, finely cut leaves. Brilliant red foliage in autumn, hardy and easily transplanted, worthy of a place in every garden or park.

Philadelphus Often called Mock Orange and Syringa. The following are the finest varieties:

Coronarius. White. June-July. The old-fashioned Mock Orange, well known to everyone. 7 to 8 ft.

Lemoine. The blooms of this variety are considerably larger than those of the common Mock Orange, though the growth is not so tall. Covered in June with fragrant, semi-double blooms. 4 to 5 ft.

Virginal. Magnificent new variety, moderately tall, with good foliage and compact habit. The flowers (full double, semi-double and single) are the largest, handsomest and most sweetly fragrant of any known variety. 5 to 6 ft.

Dame Blanc. An upright bush with dark rich foliage; flowers in clusters, large, pure white, fragrant and quite double. Hardy and a dependable bloomer. 5 to 6 ft.

Plum, Flowering (See Flowering Cherries and Crabs).

Russian Olive Showy shrub or small tree with peculiar olive-like leaves, light green above and silvery white beneath. For marked foliage contrasts in landscape work. 10 to 15 ft.

Snowball (See Viburnum).

Silverberry Erect shrub with silvery leaves and small, silvery fruits. Very showy. A fine contrast shrub. 10 to 12 ft.

Snowberry (*Symphoricarpos racemosus*). Graceful, spreading shrub, 3 to 5 feet. Flowers are followed by white berries which remain on the bush until winter. Excellent for grouping or massing. Will succeed in dense shade and poor soil where practically nothing else will grow.

Spiraea The Spiraea is a large family. They furnish flowers from early spring until midsummer. Most Spiraea have refined foliage with interesting autumn colors and leaves that hang until winter. The following are the best of the Spiraea family:

Billiardi. 4 to 5 ft. high. Bright pink flowers in spikes. July, August. Extremely hardy.

Callosa Alba. Dwarf white Spiraea of bushy, symmetrical form. Blooms nearly all summer. A valuable small shrub. 2 ft.

Froebeli. Bright rosy red flowers in flat clusters during July and August. One of our finest Spiraea, excellent in the border. Foliage turns purple in fall. Branches willowy. Should be in every garden. 3 ft.

Sorbifolia. Splendid Spiraea with large bright green leaves resembling those of the Mountain Ash. Produces a world of great white feathery blooms about six inches long by four inches in diameter. 3 to 4 ft.

Snow Garland. Semi-dwarf. The Snow Garland is one of the newer varieties that have been developed from a cross between the well known Bridal Wreath and Thunberg's Spiraea. The Snow Garland is the first of the Spiraea family to bloom. In early spring, while tulips are still in flower and before the leaves are out, it bursts into full bloom with a profusion of white flowers that cover its graceful branches like a bank of snow. It is ideal to plant in front of Spiraea Van Houttei. As its flowers begin to fade it seems to pass to the unfolding Bridal Wreath, thus giving six weeks of the much desired Spiraea bloom. The foliage of this plant is very attractive, producing pleasing autumn colors and much of the foliage is retained throughout the winter. Perfectly hardy. 3 to 4 ft.

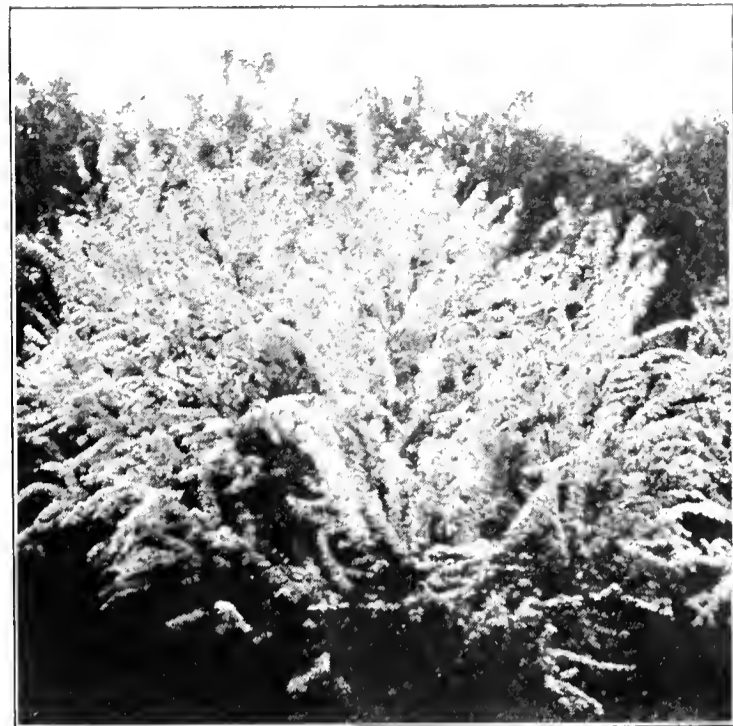
Van Houttei. Often called Bridal Wreath. The long branches, curving and reaching to the ground, are covered the entire length with lovely white blossoms, like a great fountain of snow. It begins to blossom about the time the Snow Garland is through. Extremely hardy, will thrive anywhere. Can be used in any location. Good for hedges. 5 to 6 ft.

Sumac Cut Leaf. A new shrub and one of the most beautiful plants in nature. Of spreading habit, with large, long, finely cut, graceful leaves. Foliage pleasing green, healthy, turning in autumn to hues of pink, crimson and gold. 6 to 10 ft.

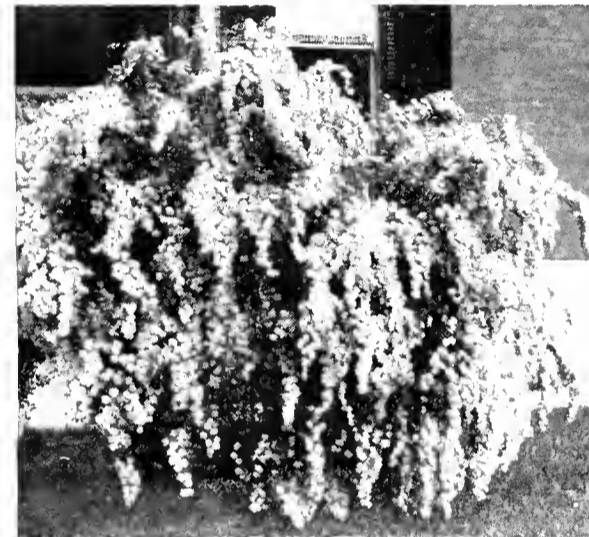
Smooth. Large-growing shrub with smooth bark. Leaves turn in autumn like the preceding. 8 feet.

Viburnum, Snowball That good old bush that hardly seems to need description. Tall growing, absolutely hardy, covered in late May and early June with great masses of snowball-like blooms. Requires plenty of moisture.

Viburnum, High-Bush Cranberry Our American form, developed by Prof. Yeager at the A. C. in Fargo is a handsome shrub. Flowers white, in flat clusters. Large fruit clusters which begin to color in July, remaining on the branches and keeping their brilliant scarlet color until spring. Foliage supplies brilliant autumn coloring. 6 to 7 ft.



Snow Garland Spiraea



Spiraea Van Houttei



Spiraea Froebeli



Flowers and Fruit of High Bush Cranberry

Ninebark, Dwarf A beautiful dwarf shrub from the Rocky Mountains. Flowers and foliage almost identical with Spiraea Van Houttei, but half the size. Turns to scarlet autumn colors. Ideal for hedge or border.

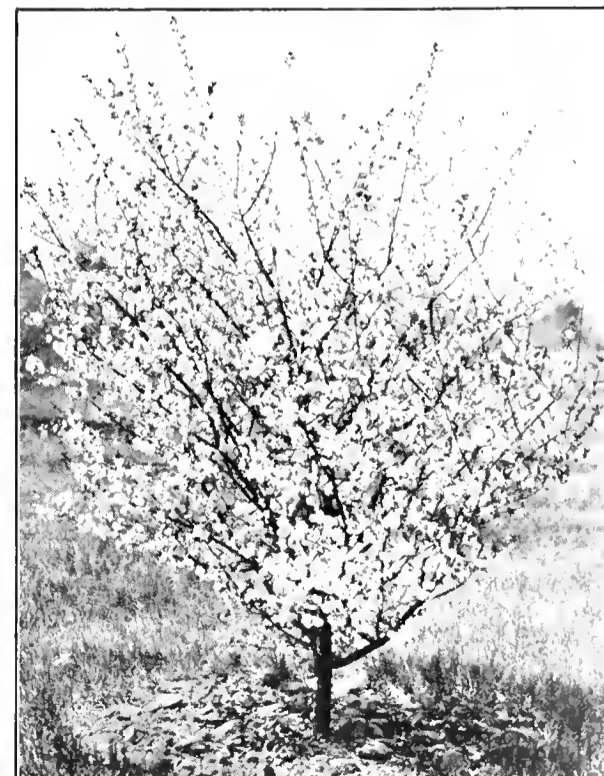
FLOWERING Cherries and Crabs

CISTENA. Purple Leaf Sand Cherry Hybrid produced by Prof. Hansen. Cross between Purple Leaf Sand Cherry and Purple Plum. We consider this the finest of all the purple-leaf shrubs.

DOLGO. (Flowering Crab). Beautiful ornamental thrifty, upright growing tree, heavy dark foliage; fruit is borne in clusters of rich red—red all over. Very striking. We believe this to be the most beautiful fruit tree in existence. Fruit excellent for cooking.

HOPA. (Red Flowering Crab). This beautiful flowering Crab was produced by Prof. Hansen. Thrifty tree covered in spring with masses of double red flowers. Perfectly hardy anywhere in the U. S. Fruits purple. Has recently become very popular.

PRUNUS TRILOBA. (Flowering Almond). An interesting shrub of medium height, bearing early in May, a profusion of delicate pink, rose-like blossoms appearing just before the leaves unfold. Without doubt one of the prettiest shrubs we have. 5 ft.



Flowering Almond



Spiraea Billiardi

HARDY ROSES

The following Rugosa Roses are absolutely hardy, grown on their own roots, hence will not sucker. Rugosa Roses produce bloom throughout the summer and fall. Excellent both for shrubs and flowers. We offer the following list of Hybrid Rugosa Roses:

Agnes. Beautiful new Hybrid Rugosa; pure yellow. Developed by the Government Station at Ottawa, Kansas. Parentage double Rugosa and Persian Yellow. Fine double; wonderful foliage; perfectly hardy. The only known pure yellow Rugosa.

Amelie Gravereaux. The newest and choicest of Rugosa Hybrids. The flowers are a rich red American Beauty color, large, single stem blossoms, of rich fragrance. It is a liberal bloomer—often carrying a dozen blooms within eight weeks after planting. A hardy and thrifty bush of beautiful foliage—a real attraction as a shrub. We consider this new creation the "Rose Par Excellence" for the Northwest.

Belle Poitevine. Double pink Hybrid Rugosa. Foliage heavy, very hardy. One of the most prolific and satisfactory Hybrid Rugosas. Blooms heavily the first season and throughout the summer.

Dr. E. M. Mills. Seedling of Hugonis. The same acacia-like type of foliage, but grows lower, more compact, with long, arching branches. Covered in spring with a wreath of blush pink Roses. Very valuable in foundation or borders.

Grootendorst. Clear bright red. This novelty has become extremely popular. Stocks selling short every year. Flowers are borne in clusters, nearly double with edges beautifully fringed. Blooms continuously from early summer until late fall.

Grootendorst, Pink. This popular new Rose developed from a pink sport bud of the red Grootendorst. Otherwise the same.

Hansa. Deep violet-red. Very large, perfectly double, fragrant. In this fine variety, unlike most of its class, the buds of each cluster open at about the same time, giving the effect at a distance of a single Rose of immense size. The foliage is particularly dark, rich green and the bush absolutely hardy.



Agnes



Amelie Gravereaux

Sir Thomas Lipton. Pure white. Fragrant, perfectly double. The type of bush is similar to the Amelie Gravereaux and makes an excellent white to plant with that beautiful red.

Harrison's Yellow. A perfectly hardy rose, strong growing bush covered in early June with a mass of small semi-double, golden yellow flowers, very fragrant. Thrives in any soil and will stand rather dry conditions. Very dependable.

TENDER ROSES

The following are the best selections of tender roses. These may be grown in the Northwest by giving proper winter covering.

Frau Karl Druschki. A grand white Rose with finely formed large blossoms. A dependable and profuse bloomer.

Gruss an Teplitz. Blooms of medium size, darkest red, in great profusion. Plants very bushy and vigorous. A wonderful Rose for bedding.

Paul Neyron. Great, well-formed blooms of lively pink.

Red Radiance. Vigorous, upright, bushy plants, bearing a continuous supply of very large, beautiful, deep red flowers.

CLIMBING ROSES

Dorothy Perkins. Clear cherry-pink, slightly fragrant flowers borne in great profusion, and lasting for a long time. They are double and the petals crinkled, which gives them a delightful fluffy appearance. Foliage is glossy bright green, and persists until cold weather.

Excelsa. "A Red Dorothy Perkins." An intense crimson, with the edges of the petals a little lighter, produced in immense clusters. Very similar to Crimson Rambler, but much superior to it in color of flower, and in the glossy, disease-resistant foliage.



Hansa

RUGOSA ROSES

Sir Thomas Lipton

HARDY CLIMBING VINES

CLEMATIS, Andre. Flowers large, of a beautiful, bright velvety red; free-flowering and continuous bloomer.

C. Jackmani. Very profuse blooming with flowers from four to six inches in diameter, of an intense violet-purple; borne in continuous masses on the summer shoots. Best sort for general planting.

C. Henryi. Fine bloomer, flowers large, of a beautiful creamy white, generally of from six to eight petals. June to October.

C. paniculata. Of rapid growth, quickly covering trellises and arbors with handsome, clean, glossy foliage. Flowers medium size, fragrant, pure white, borne in immense sheets in September, when few other vines are in bloom; hardy.

HONEYSUCKLE, Scarlet Trumpet (Lonicera). The old garden favorite, blooms all summer, producing the most brilliant orange-scarlet flowers. Foliage rich, glossy green.

IVY, American (Sometimes called Woodbine and Virginia Creeper). A native of the Dakotas. Absolutely hardy and vigorous. A more rapid grower than Engelmann's Ivy but it requires a trellis upon which to climb.

I. Engelmann's (Ampelopsis Engelmanni). The best climbing vine for this climate, to cover brick or stone walls or any rough surface, as it clings without a trellis. It is a very rapid grower, often growing 15 to 20 feet in a single season. In appearance it resembles the Common Virginia Creeper, but the leaves are smaller and the whole vine presents a neater appearance. Striking autumn foliage.

CHINESE MATRIMONY VINE. Especially valuable to cover a bare, rocky or weed-covered bank; of very vigorous growth. Covered with red berries.



SILVER LACE VINE - Polygonum Auberti

A practical hardy vine which has sprung into new popularity. Fine foliage, fresh and shiny which produces an extravagance of large, foamy flower sprays in silvery white from late summer into the fall.

Hardy Perennials

The following is a well selected list of hardy and most dependable perennials. We grow a complete line, but consider the following the best possible assortment for the average garden.

ACHILLEA, THE PEARL

Handsome plant, about two feet, with pure white flowers in greatest profusion all summer. One of the best for cut flowers.

AQUILEGIA - Columbine

The Columbines are justly called one of the most graceful and hardy plants. In bloom from May to July. We offer the following forms and colors:

Caerulea. Blue shades.

Long-Spurred Hybrids. Mixed. This mixture is one of the most desirable and satisfactory, exhibiting a wide range of colors.

CAMPANULA - Canterbury Bells

A striking biennial flower and a favorite everywhere. Plants generously covered with large, bell-shaped flowers of pink, white and blue and make a splendid showing in either the border or shrubby groups.

COREOPSIS

One of the most satisfactory hardy plants for steady bloom in great profusion. Flowers rich golden yellow, of good size, the main crop coming in June. If cut every day, they will continue to bloom the entire summer.

DAISIES, SHASTA

Handsome plant with glistening foliage, dwarf type with large glistening white blossoms in June and July.

DAY LILY - Hemerocallis

These hardy Lilies are still favorites everywhere. They thrive in any location in good soil and are especially well adapted to moist, shady situations.

DELPHINIUM - Larkspur

The tall English Larkspurs are among the most beautiful hardy plants in cultivation. They come in several shades, and increase in size and beauty each succeeding year. The spikes are immense in size and of the most delicate shades of blue. They begin to bloom in June, and if the flowers are cut off near the ground as soon as they have faded, a second and third crop will be produced before the end of the season. It is a good plan to stake the stalks when they attain a height of three feet, as a heavy wind will frequently mutilate them.

Gold Medal Hybrids. A choice strain containing many forms and many shades.

Belladonna. Light sky-blue. Splendid cut flower variety. Used extensively by florists everywhere.

Bellamosa. A dark blue of the type of Belladonna.



Peony, Karl Rosenfield

DIANTHUS - Sweet William

One of the best and most satisfactory old-fashioned plants, producing in early summer a splendid effect of rich and varied colors. We furnish them in assorted colors. Suitable for rockeries and dry, sunny locations.

DICENTRA - Bleeding Heart

Everyone loved the old-fashioned Bleeding Heart that our grandmother always grew in her hardy garden. The long racemes of heart-shaped, pink flowers are always attractive. Comes up early in the spring and flowers immediately.

GAILLARDIA - Blanket Flower

One of the showiest of hardy plants, attaining a height of two feet and succeeding in any soil in a sunny position. Blooms from June till frost, doing best if cut frequently. The colors are gorgeous, centers dark brown, the petals ringed with crimson, orange and vermilion.

GYPSOPHILA - Baby's Breath

The Gypsophila will thrive in any soil, and has a massive root which throws out hundreds of branches with very scant foliage. Covered in summer and fall with delicate, minute white flowers, having the appearance of a mist.

HOLLYHOCKS

Constant seed selection has given us a most beautiful strain of these majestic plants in every conceivable color. The singles are considered the more striking. Ideal to scatter through shrubby beds to furnish color. Single, 6 to 7 ft. Double, 4 to 5 ft.



Phlox, B. Comte

PEONIES

Peonies are today the most popular of all hardy plants. They are at their very best in the North. We are growing the very finest assortment of choice varieties and offer them to our customers at the price of common sorts. The following is an ideal selection for any garden. Each variety offered has been a consistent prize winner at flower shows.

EDULIS SUPERBA. Very large, of perfect shape, fine, brilliant pink, shaded violet. Silvery reflex. One of the best.

FELIX CROUSSE. Large, ball-shaped bloom. Brilliant red, ruby-flame colored center. Exceedingly choice.

FESTIVA MAXIMA. Large, very double, pure white; center petals fringed with red; long stems.

KARL ROSENFELD. Dark crimson, very strong, tall, compact grower and fall bloomer; midseason. Brilliant and striking.

MONS. JULES ELIE. Very large and full flower; flesh-pink. Vigorous grower and free bloomer.

SARAH BERNHARDT. Flowers of remarkable size in clusters; full and double. Apple-blossom-pink with silver tips. Late.



Iris, Quaker Lady

IRIS, GERMAN

This rainbow flower has been crowding the peony in popularity. No flower has seen such marked improvement. The newer varieties are most beautiful in all colors, tints and shades. Easy to place in every garden. We list but a few of the choicest varieties.

Juniata. Clear blue-violet. Large flowers and sweet scented.

Perfection. Lavender-violet, shaded deeper violet.

Pumila. Dwarf; very deep blue. Very early.

Quaker Lady. Blend of lavender, yellow, blue and olive-buff.

Lent A. Williamson. Standards lavender-violet; falls royal purple.

Fryer's Glory. Standards blue and gold; falls purple.

LILY-OF-THE-VALLEY

The earliest of the Lilies. This charming dwarf Lily gives one of the earliest signs of spring. Ideal ground cover for any shady place.

PLATYCODON - Balloon Flower

These plants are closely allied to the Campanula and form neat-branched bushes of upright habit. They grow two feet high, producing their blue or white flowers from July to October.

RUDBECKIA - Golden Glow

One of the most popular hardy plants, a strong grower, attaining 5 to 6 feet and produces in August masses of golden yellow flowers like a Cactus Dahlia.

HARDY GARDEN PHLOX

The following represent the very best in a wide range of colors for gardens of the North.

B. COMTE. French purple or wine color; very brilliant, tall growing with large satiny heads.

CHAMPS ELYSEE. Amaranth-red, very striking and popular.

SPECIAL FRENCH. Beautiful clear pink; very fine.

FEUERBRAND. Flaming orange-scarlet, suffused with carmine, variable in tone. One of the most brilliant. Flowers freely.

DR. CHAS MAYO. White with crimson eye. Excellent.

BULBS for SPRING PLANTING



Dahlias

Dahlias have been greatly improved in recent years, the newer and better varieties only should be planted. The following is a list of choice varieties in a range of colors.

Bonnie Brae. (Cactus). Peach-pink to lavender.

Countess of Lonsdale. (Cactus). Salmon-pink.

Gay Paree. (Cactus). Autumn colors.

Golden Queen. (Decorative). Yellow.

Helen Hollis. (Show). Deep scarlet.

Pride of California. Large; deep red.

Helen Keller. (Peony). Rose-pink.

King of Commerce. (Peony). Burnt orange.

Latonia. (Peony). Buff-yellow.

Maude Adams. (Show). Lavender, pink and white.

Gladioli

The following choice list of Glads is offered our customers at common prices. The list contains prize winners from the best shows.

Aflame. Beautiful orange-saffron.

Ave Maria. Large light blue with purple blotch.

Dr. F. E. Bennett. Deep peach and red overlaid with flame-scarlet.

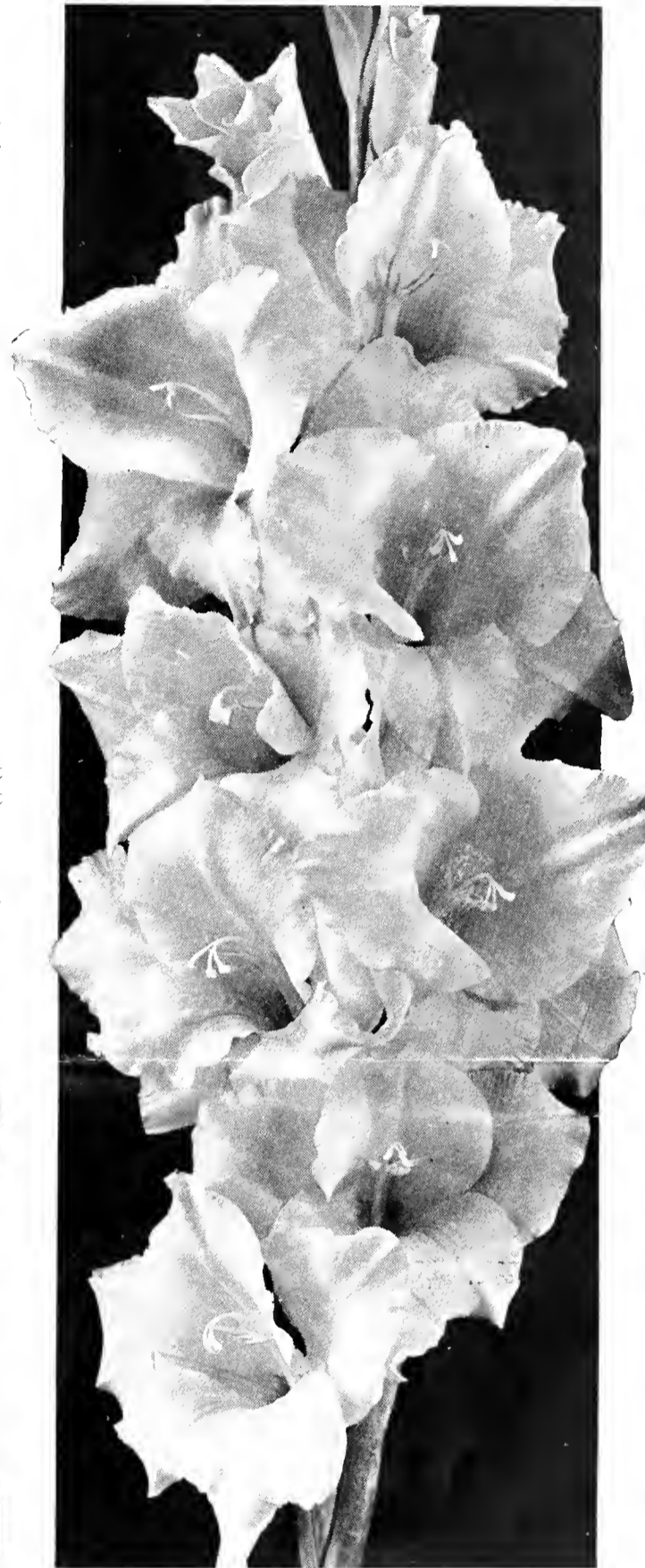
Giant Nymph. La France pink; creamy yellow throat.

Marmora. Silver-gray with rose throat. Very beautiful.

Minuet. Lavender; very popular; winner of many prizes.

Mrs. Leon Douglas. Bright rose with red stripes.

Picardy. Rich salmon-pink; immense spikes.



Gladiolus, Picardy



Beautify your home with plants especially selected for the Northwest

The Amateur's Guide to Landscape Gardening

This little book is designed to assist the home owner to understand the first principles of landscape gardening. It is easy to read and beautifully illustrated. This book will be furnished to our customers free upon request. Ask for it.

The Northwest Nursery Company issues a number of special booklets and circulars. We are glad to send any of these upon request. Prominent among these are: Booklets—How to Plant; Landscaping With Evergreens. Circulars—Raspberries; Apples; Plums; Model Farmstead; Chinese Elm; Caragana; Gladiolus; Dahlias; Hardy Roses.

If Interested

Ask for Our
**ILLUSTRATED
CATALOG OF
TREES, FRUIT, STOCKS
and EVERGREENS**

THE NORTHWEST NURSERY COMPANY

Valley City, North Dakota

"BUILDERS OF BEAUTIFUL GARDENS"

