

Historic, Archive Document

Do not assume content reflects current scientific knowledge, policies, or practices.

63.1

LIBRARY
RECEIVED
★ OCT 14 1937 ★
U. S. Department of Agriculture

ROCKMONT NURSERY

Phillip A. ...

BOULDER, COLORADO



Fall 1937

BUSINESS TERMS

REMITTANCE in full should accompany each order. Residents of Colorado please include 2% Sales Tax. You may remit by Money Order, Check, Stamps of small denomination, or Currency. Please make checks payable to Philip Andrews.

SHIPPING. Perennials are shipped prepaid to all parts of the United States if the order amounts to \$1.00 or more except on a few specified items. Orders for less than \$1.00, except seeds, should be accompanied by 15 cents additional to cover handling costs. We do not ship plants C. O. D. Stock offered is subject to prior sale.

Lilacs, large specimen cacti and evergreens are shipped by express, charges collect. On larger orders for perennials, express delivery is recommended, because it permits a more liberal service as to size of plants and extra count. The second-class express rate has been restored to plants and shrubs, which is often less than Parcel Post.

GUARANTEE. Rockmount Nursery was established in 1893 and has maintained an enviable reputation ever since. Consumers Digest of March, 1937, places Rockmount Nursery first on their list of recommended nurseries. We and other reputable nurseries cannot guarantee the performance of stock after it reaches you, since we have no further control of growing conditions. We guarantee safe delivery, stock true to name, and ship only healthy, vigorous plants. Please advise us immediately upon receipt of shipment if you wish any adjustment. Our nursery is inspected annually by both state and federal authorities, which assures you healthy and pest free plants.

GROWING CONDITIONS. The soil of Rockmount Nursery is exceptionally fertile, and we are provided with both overhead sprinkling system, as well as gravity irrigation. This assures vigorous stock regardless of rainfall. All of our stock is wintered in the field, and tender items which do not survive well are promptly eliminated. This is your assurance of hardiness.

SHIPPING SEASON for perennials begins in late September, lilacs a few weeks later, and continues through October and November. We sometimes ship a few plants in December. All are freshly dug and shipped immediately.

CANADIAN AND FOREIGN. We do not export plants due to official "red tape."

MAILING LIST. Systematic revision of the list causes names to be dropped that have not responded recently. An order or request for a catalogue will place your name back on the list. We prefer that orders be made from our most recent catalogue. If one or more of your friends would be interested in receiving a copy of this catalogue, kindly enclose their addresses when writing or ordering.

DISCOUNTS. On orders for fall delivery, 5% may be deducted from your order of \$5.00 or more, full net payment to be included at time of ordering. 10% may be deducted from orders of \$10.00 or more. Orders less than \$5.00, collections at a reduced price, and all orders where billing is required, are net. If the discount is not taken, a liberal filling of the order will be given to render full value to the customer. Commercial growers are invited to communicate regarding their requirements, using printed letterhead, or enclosing business card.

PREVIEW. Watch our spring catalogue (1938) for a complete line of ornamental shrubs and trees, including the better varieties of roses. The better varieties of hardy water lilies will also be offered at attractive prices. If you wish to plant shrubs this fall other than Lilacs, please consult our spring catalogue of 1937.

NURSERY LOCATION. Rockmount Nursery is located at the south edge of Boulder at 23rd and Bluebell. To reach the nursery, follow the main highway past University of Colorado toward Green Mountain Cemetery. Turn east (left) one block before entering cemetery gateway. Visitors are always welcome.

SPECIAL ANNOUNCEMENT. Due to health requirements and other matters, Mr. D. M. Andrews has retired from active management of Rockmount Nursery, although he will continue certain experimental work. Every effort will be expended to maintain the high standards and courteous service which has been associated with Rockmount Nursery for so many years. Your continued patronage will be much appreciated.

Philip Andrews, present owner.

(Son of D. M. Andrews)

TREES AND SHRUBS

A complete line of hardy trees and shrubs will be offered in our Spring Catalogue for 1938. If you wish to order shrubs for planting this fall, kindly refer to our spring catalogue of 1937. If you haven't a copy available, your name and address on a card will bring the catalogue by return mail.

HARDY PERENNIALS

(*) Indicates Colorado and other western species.

ACHILLEA

(Yarrow)

Tomentosa. An excellent rock plant with bright yellow flowers, 6 to 8 inches tall. Blooms late summer and fall, full sun. Each 30c, Three 75c.

ACONITUM

(Monkshood)

Prefers a moist peaty soil with part shade. Each 30c, Three 75c, Doz. \$2.50.

Anthora. 15 inch, very hardy, pale yellow spikes, June. 100 at \$17.50.

Autumnale. Late, tall purple-violet Monkshood, 3-4 ft.

Fischeri. Large pale blue, two feet, September, October.

ALLIUM

Ordinary soil and moisture, full sun; Each 30c, Three 75c, Doz. \$2.00; except as noted.

Accuminatum. *Rosy umbels of large florets on 6 inch stem. Very attractive bit of color for the dry rock garden.

Brevistylum. *Ten inches. A subalpine from Wyoming requiring moisture. Large deep-rose umbels, showy and early.

Flavum. Yellow onion. A rare yellow-flowered species growing 10 to 12 inches tall.

Geyeri. *Ten inches. Light pink, erect umbels, early.

Purdomii. 6 inches, from Thibet. Very short foliage and large erect umbels of showy lilac, late midseason, distinct and one of the best.

Recurvatum album. *This pure white form is very lovely and the individual florets are like tiny white lilies.

Recurvatum superbum. *Fifteen inches. Taller, more robust and larger flowers than most other varieties. Clear rose color. Three 35c, Doz. \$1.25, 100 \$8.00.

Stellatum. Bright rose umbels on 12 inch stems, late flowering.

Striatum. (Syn. *Nothoscordium*). *Six inches, straw-yellow, fragrant, early.

Textile. *Six inches. White flowered species for very dry soil.

Thibeticum. On the order of *Purdomii* but taller—to 12 inches.

ALYSSUM

Saxatile compactum. Broad masses of yellow flowers in early spring. Excellent for the sunny rockery. 15 inches. Each 25c, Three 60c, Doz. \$1.50.

ANCHUSA

Myosotidiflora. To 15 inches. Sprays of Forget-me-not flowers in April and May, from a rosette of broad foliage. Common soil, best with light shade. Each 35c Three \$1.00, Doz. \$3.00.

ANEMONE

Good peaty soil, light shade. Each 30c, Three 75c, Doz. \$2.50 except as noted.

Hupehensis. Similar to *Anemone Japonica* but coming from China, and a vigorous grower. An abundance of rosy-mauve flowers on 2 to 3 ft. stems during late summer and fall. Light shade and moisture.

Pulsatilla. European Pasqueflower. A very dependable and attractive rock plant. Large blossoms of deep bluish lavender in early spring.

Pulsatilla rubra. A fine maroon-red form of the European Pasqueflower, hardy and floriferous.

Sylvestris. Snowdrop Anemone. Flowers large, pure white, fragrant, on 12 inch stems in May and June. Each 50c, Three \$1.25.

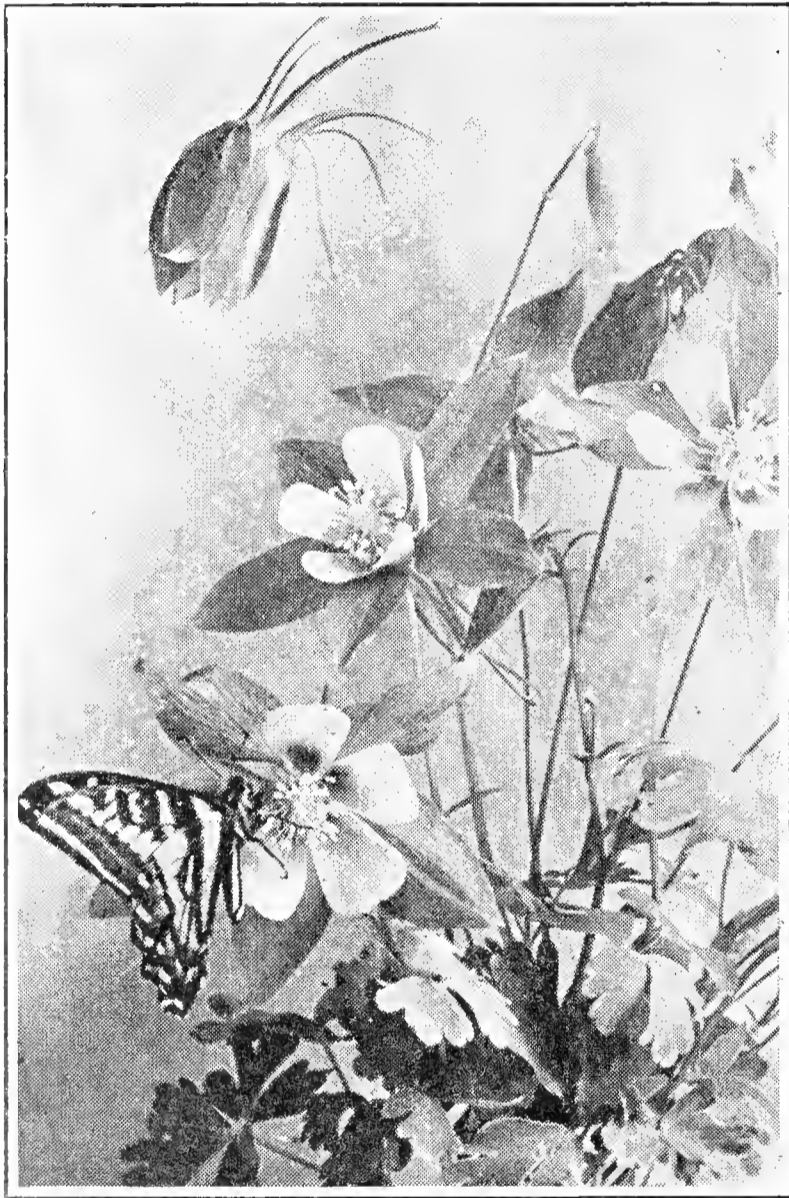
AQUILEGIA

(Columbine)

Coerulea. *Rocky Mountain Columbine; Colorado State Flower. A marvel with 4 inch blossoms, petals white, calyx blue and long spurred. Shipment made from large block of flowering size plants grown from wild seed assuring vigor and purity of color. Requires moist peaty soil and light shade. Each 25c, Three 50c, dozen \$1.50, 25 for \$2.75.

Rainbow Blend Hybrids. The most colorful and brilliant of all hybrid columbines. The present unsurpassed strain is the result of scientific breeding and selection for nearly a score of years. Characterized by clear vivid colors, particularly deep pink and rose, scarlet, vermillion and crimson-reds; all of largest size and with long spurs. White, yellow and pale tints are reduced to a proper minimum. In mixture only. Best in full sun. **Each 25c, Three 50c, Dozen \$1.50, 100 \$10.00.**

Seeds. Rainbow Blend or Coerulea at 25c per packet, $\frac{1}{4}$ ounce \$1.00.



Aquilegia Coerulea

ARENARIA

Grandiflora. Low mat-like plant covering itself with white starlike flowers in spring. A valuable rock plant which comes from the Pyrenees Mountains. **Each 35c, Three 90c.**

ARTEMISIA

Dry soil, full sun. Tiny shrubs with silvery foliage which help to solve the problem of diminutive shrubs for the rock garden. Strictly non-weedy, yet easily grown and not to be confused with rank growing herbaceous species.

Arbuscula. *Low-branched and very dwarf, 4-6 inches. Foliage minute, three-lobed, silvery. The flowering sprays are not attractive and are best removed. Easily grown, evergreen and does not crowd its neighbors. **Each 50c, Three \$1.25.**

Bigelovii. *Fairy sage. Evergreen tufts of gray-green foliage forming 10 inch sprays of silvery luster. Its charming sharply cut foliage is attractive at all seasons, and makes a pleasing foil for colored flowers. **Each 35c, Doz. \$3.00.**

Pedatifida. *Birdfoot Sage. The tiniest shrubby species, evergreen. Forms silvery clumps about 2 inches in height; easily grown but resents wet feet. **Each 35c, Doz. \$3.00.**

ASTER

Moist but well-drained soil, full sun. **Each 40c, Three \$1.00.**

Frondeus. *Large bluish-lavender, flowers in May and June, occasionally throughout summer. 12 inches.

Laevis subalpinus. *Dwarf mountain form of Smooth Aster, lavender-blue, long blooming season during mid-summer.

Nova Angliae, Mrs. Raynor. A deep red-purple variety of medium height, and popular because of its splendid color.

Porteri. Twelve inches. A very free bloomer of mid-summer, pure white, for medium dry position.

CALLIRHOE

Involucrata. Poppy Mallow. *An exceedingly valuable trailing perennial which blooms from June until frost, flowers crimson and cup-like. Prefers dry soil and full sun. **Each 30c, Three 75c, Doz. \$2.50.**

CALTHA

Rotundifolia. *White Marsh Marigold. 6 inches, moist soil or bog. The two inch white flowers appear in early spring from a rosette of dark foliage. **Clumps 40c, Three \$1.00.**

CAMPANULA

Glomerata superba. Flower bells clustered toward the summit of foot high stems, rich purple-violet. Dwarf enough for rock garden, and very superior in color to seedling types. June and July. **Each 35c, Three \$1.00, Doz. \$3.00.**

Persicifolia. Peach-bell. To 2 feet, large blue or white bells. **Each 40c, Three \$1.00.**

Petiolata. *Colorado Harebell, a profusion of exquisite bells of blue for a long season. **Each 30c, Three 75c, Doz. \$2.50.**

CENTAUREA

Rigidifolia. To 3 ft., tassel-shaped heads of dark rose in June and July, forming very permanent clumps with good foliage. Each 40c, Three \$1.00.

CHRYSANTHEMUM

Maximum. The Alaska Shasta Daisy, grown by division from Burbank's original stock and one of the best. Each 30c, Three 75c, Doz. \$2.50.

CLEMATIS

Includes both vines and bushy herbaceous perennials. All are easily grown in a rather light loamy soil with medium moisture. Our Clematis roots are all strong field-grown, and are offered at the uniform price of 50c each, Three for \$1.25. Six any selection for \$2.50. **NOTE**—These prices do not apply to Clematis Jackmani.

Davidiana. Two feet; tubular flowers of clear blue in whorls, fragrant, late summer.

Eriophora. *One foot; silky lacinate foliage; deep purple nodding bells in May or June; partial shade and leaf-mold soil.

Fremontii. *One foot; flower bells of lavender to lilac, leaves oval and very distinct. Easy culture, not too large for rock garden.

Jackmani. Probably the best of the large flowered varieties; violet purple flowers to 6 inches and vine to 10 feet. Potted or bare root. \$1.00 each. Bare root for mail orders. **Note.** This Clematis requires considerable care in transplanting and we cannot be responsible for future results. Only good, strong, live plants are supplied.

Integrifolia. Low bush, very large blue flowers for a long season, petals two inches in length.

Ligusticifolia. *Western Virgin's Bower. Vine of vigorous growth (woody) the showy white flower sprays in August followed by fluffy seed heads.

Paniculata. Vine to 10 ft., fragrant white flowers in great masses during late summer.

Recta. Entirely distinct from the variety grandiflora. The general aspect is similar, but dwarfer.

Recta grandiflora. Two feet; much like Clematis recta but with two inch white flowers in large terminal sprays. Very beautiful and easily grown. Excellent for cut flowers—June to late summer if not allowed to seed.

Scottii. *One foot; bluish pinnate foliage, nodding urn-shaped blossoms, light blue



Clematis Fremontii

to bluish-violet, large and of distinct form. For well-drained sunny position.

Texensis. *Scarlet Clematis. (Syn. C. Cocinea). An herbaceous climber to 10 feet or more, grows rapidly and blooms constantly from June until frost, the brilliant scarlet bells being mingled with the golden seed plumes; hardy and of prime value.

Viticella. Climbing to 12 ft. Flowers blue-purple, two inches across, 2-3 together, June to August. One parent of the hybrid, Jackmani.

CONVALLARIA

Majalis, Parson's Giant. Lily-of-the-Valley. A superb garden type, exceptionally strong growth, large bells on tall stems, followed by red berries. Originally from Sweden, very hardy and a prolific bloomer. Flowering clumps 50c, Three \$1.25, Doz. \$4.00.

DELPHINIUM

Geyeri. *Two feet; grayish foliage and long spikes of intensely blue flowers in June. Rather dry, sunny rock-garden position is suggested. Each 30c, Three 75c, Doz. \$2.50.

Mixed Garden Variety (Perennial). Seed saved from exhibition plants, many types, colors, and shades. In mixture only. One year field seedlings. Four 50c, Doz. \$1.25.

DIANTHUS

Deltoides. Floriferous, brilliant pink, easily grown. Each 25c, Three 60c, Doz. \$2.25.

Deltoides. Alba white, **Graniticus** and **Wisleyi** same prices as above.

Neglectus. An alpine type forming neat little tufts less than 6 inches high, with comparatively large flowers of bright pink. Easily grown and one of the best for the rock garden. Each 30c, Three 75c, Doz. \$2.50.

Plumarius. Blue-gray foliage and flowers in various shades of pink. Each 30c, Three 75c, Doz. \$2.50.

DICENTRA

Oregana (Syn. *D. glauca*). A far-westerner, distinct and worthwhile. Bluish foliage, flowers straw-yellow with violet tip, blooms all summer. Light shade recommended. Each 50c.

Spectabilis. Old fashioned bleeding heart. Very attractive long racemes of heart-shaped pink flowers. Strong plants 50c.

DICTAMNUS

Albus. White *Fraxinella*, Gas Plant. 18 inches; excellent clumps with many spikes of white orchid-like blossoms, early summer. Valuable for both flowers and foliage, very permanent perennial. Prefers full sun, loamy soil. Each 35c, Three \$1.00, Doz. \$3.00.

Rubra. Same, except that color is deep rosy purple.

DODECATHEON

(Shooting Star)

Light moist loam with humus. Plant one or two inches deep in clumps of three to a dozen. Best with light shade and fall planting recommended.

Meadia. An improved strain, propagated from large-flowering types; often more than two feet tall, the umbel bearing 15 to 20 or more cyclamen-like blossoms of unusual beauty; white to pale pink. Each 30c, Three 75c, Doz. \$2.50.

Meadia, Angel Wings. This is a fine pink, differing from Dan Cupid and equally desirable. Each 50c, Three \$1.25.

Meadia, Dan Cupid. Rose-pink of fine color and large size. A superb companion for White Wings. 50c, Three \$1.25.

Meadia, White Wings. A pure white Shooting Star of exceptional size, both of plant and flower; grown from one original plant; magnificent umbels on strong stems. Each 40c, Three \$1.00, Doz. \$2.50.

Multiflorum. *Twelve inches; the best and most easily grown of several Rocky

Mountain species; showy umbels of brilliant rose, and deserving of wide popularity. Small clumps 50c, Three \$1.25.

EUPHORBIA

Myrsinites. A succulent for the rock garden, the large glaucous leaves in spirals, resembling a *Sedum*. Evergreen, flowers in umbellate clusters, yellow. A rock creeper of striking beauty. Each 35c, Three 90c, Doz. \$3.00.



Dodecatheon

Polychroma. Perennial to 1 foot, forming very attractive clumps. Floral leaves are bract-like and whole clump is bright yellow-orange with bloom in early summer; followed by orange-brown fruits. Each 40c, Three \$1.00, Doz. \$3.50.

FERNS

Hardy varieties. For shade, where flowering plants do not thrive. Moist humus soil.

Dryopteris Filix-Mas. Colorado Male Fern. Two feet, grows in shaded spots in the mountains in a moist humus soil. Forms excellent clumps, partly evergreen, thrives with ordinary care. A universal favorite for Colorado gardens. Each 50c, Three \$1.25, Doz. \$4.00.

Onoclea struthiopteris. Ostrich Fern. Vase-like clump of finely cut fronds. Each 35c, Three \$1.00, Doz. \$3.00.

Polystichum achrosticoides. Christmas Fern. Evergreen, hardy and one of the most satisfactory. Each 35c, Three \$1.00, Doz. \$3.00.

FLAX

Yellow. Beautiful yellow flax, for the sunny rock garden. Each 25c, Three 60c.

GERANIUM

Ordinary soil. A distinction should be kept in mind between the rank growing species, and those of small habit in keeping with the rock garden. Price, Each 40c, Three \$1.00.

Atropurpureum. *A large species, low-growing, with a spread of two to three feet. Easily grown, flowering all summer, color deep purple or crimson.

Lancastriense. *A tiny jewel with rose-pink blossoms and delightfully cut foliage. Less than 6 inches high and seldom without flowers. Best in part shade.

Nervosum. *A profusion of white blossoms with thread-like veins of violet. 12 inches tall and spread of 18 to 24 inches.

Sanguineum album. 10 inches, much less invading than the colored form, neat flowers and foliage.

GEUM

Ciliatum. *Rosy pink flowers and tinted seed plumes. An easily grown alpine for the rock garden in humus soil and part shade. Each 30c, Three 75c, Doz. \$2.50.

GILLENIA

American perennials to three feet with the graceful habit of the herbaceous spiraeas. Easy culture, ordinary soil. Either kind, Each 40c, Three \$1.00.

Stipulacea. Finely cut foliage, leafy stipules, flowers rose-white.

Trifoliata. Trifoliata with small stipules.

GLOBULARIA

Cordifolia. Blue flower heads on 8 inch stems from a dark green rosette. Neat rock plant. Each 35c.

GRASSES

Hardy grasses are best planted in the spring. Prices and description of the following appear in our Spring Catalogue: *Erianthus Ravennae*, *Festuca glauca*, *Miscanthus sinensis*, var. *Gracillimus*, *Variegatus* and *Zebrinus*, and *Orizopsis cuspidata*.

HELLIOPSIS

Scabra. *Colorado type, yellow rayed, daisy-like flower. Large blossoms nearly all summer; restrained habit. Each 40c, Three \$1.00.

HEMEROCALLIS

Day Lily, Lemon Lily. Beautiful and thoroughly reliable garden favorites appearing in new shades, larger flowers, different blooming seasons and different growth habits. They will stand much abuse but prefer a moist rich soil. Clumps should be divided every three or four years.

Citrina. 36 inches, August. Pale yellow evening bloomer. Each 75c.

Dumortieri. Rich cadmium-yellow. 2 ft. May-June. Each 50c.

Estmere. A fine apricot-yellow; orange brown on reverse. 2½ ft. June. Each 75c.

Flava. 36 inches. Clear lemon yellow flowers with fine fragrance. May and June. Each 25c.

Flerham. 36 inches. May and June. Large flowers of rich golden-yellow. Fragrant and free blooming. Each 50c.

Golconda. 49 inches. July. Petals are narrow and beautiful chrome-yellow; flower opens wide. Each 75c.

Minor. 12 inches. June. Flowers and foliage are dainty, especially desirable where the Miniature is required. Flowers a pleasing yellow. Each \$2.00.

Ophir. 48 inches. August. Very large flowers of beautiful yellow, on strong, well-branched stems. Excellent substance. Each \$1.25.

Thunbergi. 36 inches. July and August. A sweet scented evening bloomer of fine yellow. Each 50c.

HEPATICA

Acutiloba. Liverwort. This delightful plant from the Eastern woods will succeed in a humus soil with half to almost complete shade. Flowers blue, early spring, the trifoliata leaves almost evergreen. Each 30c, Three 75c, Doz. \$2.50.

HEUCHERA

(Coral Bells)

Also called Alum Root. Charming evergreen tufts of foliage and slender sprays of tiny bells in various colors. Thrive best in half shade in a moist mellow loam and good drainage. Ideal for the cool rock garden. Heucheras bloom in spring but under favorable conditions will bloom most of summer. All Heucheras are 35c each, Three 75c. Note special dozen rates.

Brizoides. Free blooming, delicate coral-pink, 18 inch stems, suitable for cutting. Doz. \$2.00.

Hermes. Pink blossoms.

Pluie de Feu. Clear deep red. A much admired variety.

Rosamundi. Delicate pink, long blooming season. **Doz. \$2.50.**

Sanguinea. Deep red.

Sanguinea alba. White blossoms, free blooming.

HIBISCUS

Mallow Marvels, grown true from root cuttings. To four or five feet and blossoms 8 inches across during late summer and fall. Produces a bright spot in the garden when many other flowers are gone. Flowering roots are 60c each, **Three \$1.50, Set of Four \$2.00.**

Dragon. Clear pink, heavily veined red.

Glory. Extremely brilliant deep rose.

Polar Queen. Very large pure white.

Vivid. Intense crimson-red, suffused scarlet.

HOSTA

(Funkia)

Fortunei Gigantea. A very scarce Plantain Lily with exceptionally large blue-green or glaucous foliage; the flowers white, tinged blue. Does best with shade and moisture. Splendid crowns. **Each 75c.**

Japonica undulata. Variegated Plantain Lily. Beautifully variegated green and yellow foliage, a variety of medium size, best in partial shade. **Each 40c, Three \$1.00.**

Subcordata. A splendid type of large growth with pure white flowers, and broad foliage. Requires shade. **Each 40c, Three \$1.00.**

INCARVILLEA

Delavayi. Garden Trumpet. One foot, pinnate foliage, bearing several large rosy-purple trumpets 3 inches in length. **Each 50c.**

IRIS

75 choice varieties of Long Bearded Iris were listed in a summer catalogue. Only a limited number of these folders were distributed. If you did not receive a copy, your name and address on a card will bring the publication by return mail. This is the time to plant iris for blooms next year.

Iris are ideal for mass plantings on hill sides, along streams, etc. Write for attractive prices on quantities of 25 or more of one variety to be shipped express collect. It will pay you to discard your poorer varieties of iris and replace them with newer and better varieties.

OUR INTRODUCTIONS FOR 1937

These two seedlings were carefully chosen from a large number of new iris in

our gardens. We have been much gratified by the very favorable reception given to these two new varieties.

Boulderado (D. M. Andrews 1937) M. 36 in. Amerind X Magnifica. Flower very large with broad flaring falls and large well arched standards. Standards are golden-bronze, the falls are an apricot-old rose blend—a most pleasing combination. This iris is unusually well branched, very hardy and only a fairly large stock permits its introduction at this low price. Boulderado has been given a very high rating by several nationally known iris authorities. **Price, Each \$10.00.**

Duke of Windsor (D. M. Andrews 1937) M. 36 in. Boulderado X Bruno. Sensation of the year. Remarkable for its enormous blossoms and pleasing colors. Standards are coppery-bronze, slightly purple toward extremities; falls are rich velvety maroon. This bicolor is similar to El Tovar but flowers are much larger and with stronger substance. Beard is golden and blossoms are pleasantly fragrant. The Duke of Windsor is very sturdy, well branched and outstanding in every respect. **Price, Each \$10.00.**

RARE IRIS SPECIES

Iris Siberica

Siberian Iris have no summer dormant season like the tall bearded iris so must be planted during spring or fall. They are excellent for brightening the borders of streams or ponds although they will thrive in most any part of the garden. A well watered soil rich in humus and slightly acid with full sun or light shade is recommended. A profusion of bloom on tall graceful stems emerging from grass-like foliage makes the Siberian Iris especially valuable for your garden.

Blue Flame. Brilliant light blue with white. **Each 50c, Three \$1.25.**

George Wallace. Tall, light blue with deep veining. **Each 30c, Three 75c.**

Emperor. Deep violet. **Each 25c, Three 60c.**

Kingfisher. Rich violet, falls marked with white. **Each 50c, Three \$1.25.**

Wisteria. Falls very large, wisteria blue, suffused deeper blue, standards large. Distinct and very attractive. **Each 75c, Three \$2.00.**

Periwinkle. Violet blue and turquoise. **Each 25c, Three 60c.**

Red Raider. Red toned purple. **Each 50c, Three \$1.25.**

Snow Queen. Pure white. **Each 25c, Three 60c.**

Siberian Iris collection. One each of the ten Siberians listed above sent prepaid. **\$3.00.**

IRIS SPURIA

The Spuria Iris should be planted in the spring or fall like the Siberians and also prefer a damp rich soil. Flower stems may exceed 40 inches in length and the artistic flowers are quite unlike the other beardless species. The spurias are excellent for either border or cut flower use.

A. J. Balfour. 3 ft. Cambridge blue. Each 50c, Three \$1.25.

Lord Wolseley. Blue-purple. Each 40c, Three \$1.00, Doz. \$3.00.

Monneri. Rich golden yellow. Each 75c, Three \$2.00.

Mrs. A. W. Tait. Soft porcelain blue. Each 40c, Three \$1.00.

Ochroleuca. Very tall white with yellow area. Each 25c, Three 50c.

Shelford Giant. Very tall and large. cream with gold. Each \$2.00.

LEPACHYS

Columnaris pulcherrima.* Painted Cone-flower. To 12 inches. petals reddish-brown. Full sun. Each 30c, Three 75c.

LEUCOCRINUM

Montanum. *Sand Lily. Ordinary soil, full sun. Fragrant flowers of crystal white in early spring from a low tuft of grass-like foliage. The crocus-like blossoms continue for several weeks from established clumps. Flowering clumps 35c, Three \$1.00, Doz. \$3.00.

LEWISIA

Bitter-root. Loose gritty soil, with humus. Blooms during early summer.

Rediviva.* Bitter Root. Dry position, full sun. Marvelous rose-pink blossoms like miniature waterlilies from a tiny rosette of small succulent leaves which disappear after flowering. Each 30c, Three 75c, Doz. \$2.50.

Pygmaea.* Least Bitter-root. Alpine, requiring moisture benefited by light shade; flowers of white or deep rose in a tiny rosette of narrow foliage. Three 50c, Doz. \$2.00.

LIATRIS

Full sun, ordinary soil.

Ligulistylis.* Blazing Star. To 15 inches; very large heads. 50-70 florets. in a low corymb-like raceme; for moderately moist position. Flowers purple, bracts, rose-tipped; distinct and valuable. Each 30c, Three 75c, Doz. \$2.50.

Punctata.* Gay Feather. 12 inches; several stemmed with small feathery heads

in dense spikes; for the dry, sunny rocky. Each 30c, Three 75c, Doz. \$2.00.

LILIES

Amabile. Attractive lily from Korea which thrives in well drained sandy loam and part shade. Flowers red and stems 3 to 4 ft. Plant 6 inches deep. Each 40c, Three \$1.00.

Croceum. The Orangeman Lily has bright orange flowers erect and in clusters, blooms in early summer. Best in light shade or among shrubs. Each 40c, Three \$1.00, Doz. \$3.50.

Elegans Aureum. (Syn. Robustum). Orange yellow with dark spots, one of the best for the rock garden. A small lily blooming in early summer. Each 30c, Three 60c, Doz. \$2.00.

Elegans Horsmanni. Dark red lily for the rock garden. Each 30c, Three 60c, Doz. \$2.00.

Hansonii. A large thick-petaled lily of bright orange-yellow color. grows to 4 or 5 feet. Blooms in June. should be planted among shrubs or in light shade. Each 50c, Three \$1.25, Doz. \$4.00.

Henryi. Also called the Yellow Speciosum. An unusually fine hardy lily of deep orange-yellow, blooming in August. Stems to four feet or more. prefers good garden loam with base of stem partially shaded. Each 35c, Three \$1.00, Doz. \$3.00.



Liatris Ligulistylis

Mariposa Lily (Calochortus gunnisoni). Pale lavender to white open bell blossoms on 18 inch slender stems. Excellent for the dry rock garden in full sun. Very hardy. Each 25c, Four 50c, Nine \$1.00, larger quantities 10c each.

Sargentiae. A truly superb lily with large white trumpets, slightly purplish outside, on 4 ft. stems. Blooms in late summer and prefers light shade. Fragrant. Each 40c, Three \$1.00.

Tenuifolium. Coral Lily. June flowering, fragrant, brilliant scarlet. Either sun or light shade, moist loam, to three feet. Each 30c, Three 75c, Doz. \$2.50.

Tigrinum flore pleno. Double Tiger Lily, same color, height and culture as single Tiger Lily. Each 30c, Three 75c, Doz. \$2.50.

Tigrinum nanum. Dwarf Tiger Lily from China. Hardy and prolific blooming in August on 18 inch stems. Each 40c, Three \$1.00, Doz. \$3.00.

Tigrinum splendens. Single Tiger Lily, large orange blossoms, spotted with black, on four foot stems. Very hardy, full sun or light shade, blooms in August and September. Each 30c, Three 75c, Doz. \$2.25.

Umbellatum. Erect flowers in clusters, orange to dark red. Blooms in early summer, full sun or light shade. Each 30c, Three 75c, Doz. \$2.00.

Umbellatum hybrids. Crossed with a large-flowered *L. elegans*, it surpasses in size and profusion of bloom, with a wide color range from pale yellow to deepest red. Grown only in mixture and should be massed for best display of color. Each 30c, Three 75c, Doz. \$2.00.

Willmottiae. A tall late lily with vivid orange-red blossoms. July and August, on stems to five feet, may require staking, best in light shade. Each 50c, Three \$1.25, Doz. \$4.00.

MALVASTRUM

Coccineum.* Scarlet Mallow. Slowly creeping, sending up low half-woody six-inch stems with palmate silvery foliage and light scarlet or brick-red blossoms in terminal clusters. Valuable for naturalizing on dry banks in full sun, and thrives in any soil. Each 30c, Three 75c, Doz. \$2.00, 100 \$10.00.

MERTENSIA

The Rocky Mountain Bluebells range from the dry plain to alpine elevations. With a few exceptions they prefer a moist soil with part shade.

Bakeri.* Distinct for its downy, silvery foliage. Flowers in clusters of intense azure blue, a free bloomer and very early. Each 30c, Three 75c, Doz. \$2.50.

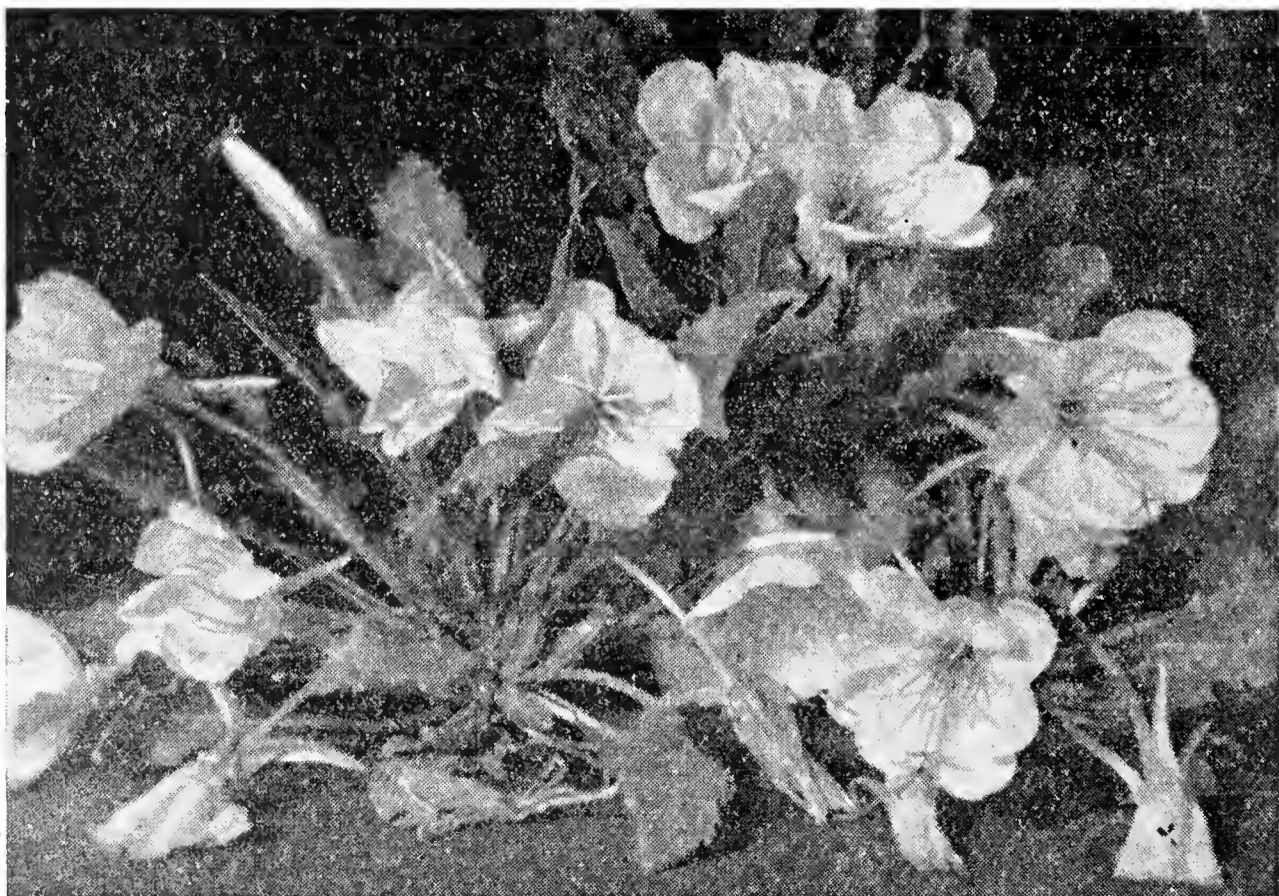
Ciliata.* Mountain Bluebell. A vigorous species of graceful habit for moist position in sun or shade. The drooping sprays of pale blue flowers continue for a long season and the glaucous foliage lasts throughout the summer. Valuable and easily grown. Each 35c, Three 90c, Doz. \$3.00.

Platensis.* La Plata Bluebell. Same culture as *Ciliata*, which it resembles, but its flowers are larger and deeper blue. Each 35c, Three 90c, Doz. \$3.00.

Virginica. This Eastern Bluebell has the largest flowers of all and is very beautiful. Each 30c, Three 75c, Doz. \$2.50.

MIRABILIS

Multiflora.* Wild Four-o'Clock. A foot high, with a spread of 3 feet. Semi-desert species with deep green foliage and a



Oenothera caespitosa

profusion of large purple flowers nearly all summer. Best in a dry sandy loam in full sun. Very easily grown. Flowering plants, Each 75c, Three \$2.00.

NEPETA

Mussini. Grayish foliage and blue flowers. Each 30c, Three 75c, Doz. \$2.00.

Souv. Andre Chaudron. Distinct upright grower to 12 inches; silvery foliage, flowers dark blue, June to August. Each 40c, Three \$1.00.

NOLINIA

Microcarpa.* Bear Grass. Yucca family. Rosette-forming, very narrow foliage which is quite rigid and was used by Indians for baskets and mats. Same culture as yucca; a hardy species for the dry rock garden. Each 50c, Three \$1.25.

OENOTHERA

Evening Primrose, well-drained soil. Several dwarf perennial species are excellent for the dry, sunny rockery.

Brachycarpa.* To 6 inches; the 3-inch blossoms in spring appear in leafy rosettes which form colonies on dry slopes; yellow, turning to orange-red. Each 30c, Three 75c, Doz. \$2.00.

Caespitosa.* Similar in size and habit to brachycarpa, but with white flowers turning to rose; sandy slopes. Each 30c, Three 75c, Doz. \$2.00.

Missouriensis.* A more or less trailing Evening Primrose with large yellow flowers. Each 30c, Three 80c, Doz. \$2.50.

OXYTROPIS

Sericea.* Silky Loco. Large-flowered, in tall racemes from a pinnate-leaved rosette. Varied in color; white, pink, rose, lavender, purple, and crimson. Sunny, well-drained rockery. Each 35c, Three \$1.00, Doz. \$3.00.

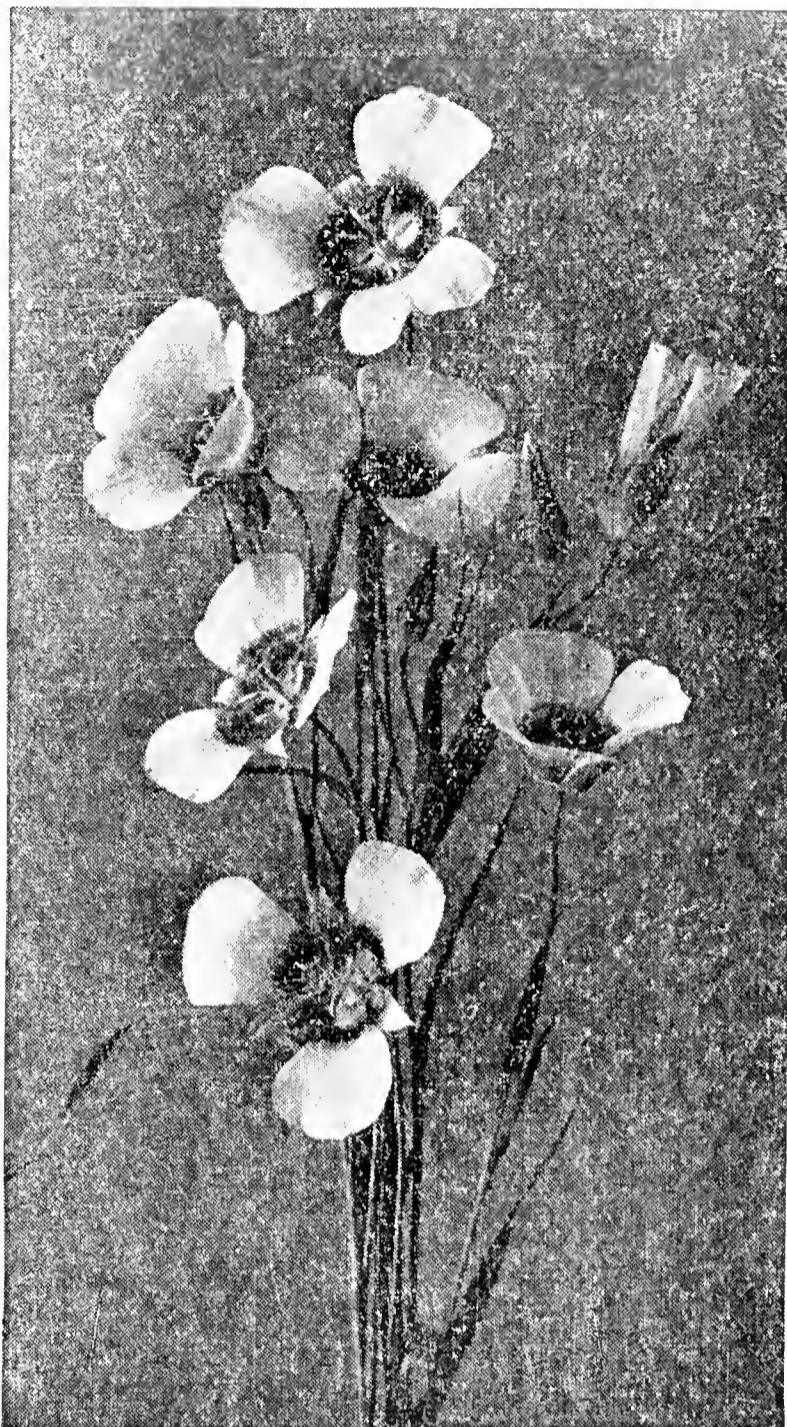
PENTSTEMON

Beard-tongue. Pentstemons flower better and are more permanent on a well-drained slope or elevation in a lean, light soil without much humus. A surfacing of gravel or stone chips is the only mulch required. The leaves when evergreen seem to like the sunshine, even in winter. Plant fall or spring. All Pentstemons are Each 30c, Three 75c, Doz. \$2.25.

Alpinus. Easily grown alpine with compact spike of deep blue.

Angustifolia.* Attractive sky-blue flowers in May; sandy soil.

Crandallii.* A creeping, mat-forming Pentstemon with evergreen foliage. A most valuable rock garden type, fitting itself



Mariposa Lily

among the rocks in a charming manner; hardy and permanent. Flowers early, in shades of pale blue, forming a carpet of color.

Crandallii alba.* White-flowered.

Crandallii rosea.* Color clear rose.

Grandiflorus.* The most splendid of native Pentstemons; about two feet tall, carrying two-inch trumpets of rosy purple.

Humilis.* To 10 inches; dependable, and easily grown. The foliage forms low mats of dark green throughout the season, sending up slender sprays of intensely blue flowers in June. Flowering plants.

Humilis albus.* Pure white.

Jamesii.* Dwarf, lavender to lilac.

Lavendulus.* 12 inches; this mountain form of *Secundiflorus* is dwarfer and makes better clumps; glaucous foliage, flowers deep rosy lilac.

Torreyi.* The Colorado form, early, and exceptionally brilliant scarlet.

PEONIES

Peonies prefer deep, rich garden loam, well drained, full sun and the crown should be planted two inches below the surface. Fertilizer should not be added to newly planted peonies. For hardiness, certainty of performance and general satisfaction, the peony is unexcelled. Fall planting (October and November) is preferable to spring planting, and our plants are noted for their health and vigor. Peonies priced at less than \$1.00 each cannot be shipped prepaid for shipment outside of Colorado.

We would like to remind you that Nimbus, a Rockmont origination was a prize winner at the National Peony Show, Lincoln, Nebraska, 1937.

DOUBLE PEONIES

- Avalanche.** Cream white with touch of crimson. Midseason. **Each 75c.**
- Baroness Schroeder.** Large, flesh-white, fragrant. One of the best. Late mid-season. **Each 75c.**
- Claire Dubois.** Satiny pink, large. Late. Immense, globular form, with long incurved petals. **Each \$1.00.**
- Crystola** (Andrews). Extra large, flat rose type, pure crystal-white without markings or remnants, greenish reflex, rich fragrance. The outstanding white in any collection. **Each \$2.50.**
- Duchess de Nemours.** A very early, fragrant, creamy white. The guard petals are white with a full center of light canary-yellow, deepening to pale green at the base. **Each \$1.00.**
- Eduis Superba.** Dark pink, large flat crown, very fragrant, early. **Each 50c.**
- Felix Crousse.** Brilliant red, globular or bomb shaped flower. Midseason. **Each 75c.**
- Festiva Maxima.** An early true rose type; rich white petals flecked with crimson; large. A good landscape variety. **Each 75c.**
- Flamingo.** (Andrews). Single type with a triple row of strongly incurved petals of glowing pink enclosing the yellow stamens. Short stiff stems, early, a landscape variety. **Each \$1.50.**
- Frances Willard.** Large fragrant blush-white when first open, changing to pure white. Late mid-season. **Each \$1.25.**
- Golden West.** (Andrews). The rose-pink guards enclose a full bomb center of golden to orange-yellow ligules. A sunset color effect of exceptional richness. Early, profuse bloomer. **Each \$2.50.**
- Hespanola.** (Andrews). Deep uniform shell-pink, rose type, durable cutflower. **Each \$1.50.**
- Karl Rosenfield.** Dark crimson; very large, globular, semi-rose type blooms, vigorous grower. **Each 75c.**
- Kelway's Glorious.** Cream white, rose fragrance, immense flower, mid-season. One of the finest. **Each \$2.50.**
- Lady A. Duff.** Pale blush pink, almost white blooms borne in clusters. Large, beautifully formed flower; sweet scented. Midseason. **Each \$1.00.**
- La France.** A very large flower of soft pink with crimson splashes on the guards. True rose type. Late. **Each \$1.50.**
- Laura Dessert.** Creamy white with canary center, large, full, early. **Each \$1.75.**
- Le Cygne.** Highest rated peony. Very large, milk-white, early, rose type. Fragrant. Strong, medium height stems. **Each \$2.50.**
- Longfellow.** Large, brilliant crimson. Mid-season. **Each \$1.25.**
- Majestic.** (Andrews). Flowers of largest size on rather short, ample stems. A perfect rose type, expanding freely, with no tight buds. Color rose-pink, of even tone, with a rich fragrance. **Each \$2.50.**
- Manitou.** (Andrews). Full rose type, developing a flower of great depth. Color cameo-pink; rose-fragrance. **Each \$1.50.**
- Mary Brand.** Large, vivid crimson, rose type, mid-season. **Each 75c.**
- Mme. Ducl.** Soft pink, bomb-shaped. **Each 75c.**
- Mme. Jules Dessert.** Very large, flesh-white, the few stamens in its depths reflecting a yellow glow through its translucent texture. Very floriferous. Late mid-season. **Each \$1.25.**
- Modiste Guerin.** Rose pink. Early. **Each 75c.**
- Mons. Jules Elie.** One of the largest and best of the pure pinks. Early. Tall. **Each 75c.**
- Mons. Martin Cahuzac.** Large, massive, semi-rose type; very dark purple-garnet. The darkest of all peonies. Early mid-season. **Each \$1.50.**
- Montrose.** (Andrews). Large deep-rose, bomb-shaped, prominent guards of identical color. Extremely floriferous, an ideal cut-flower, pleasantly fragrant. **Each \$1.50.**
- Nimbus.** (Andrews). Rose type, a full deep flower of large size. Color white, suffused at first palest blush-buff. Opens freely but slowly, durable cut-flower on tall stems. **Each \$1.50.**

Officinalis rubra. Rich deep crimson, globular flowers, very early. Each 75c.

Philippe Rivoire. Fine dark crimson with a blackish sheen. Richly rose-scented. Medium height, floriferous. Late. Each \$2.50.

Reine Hortense. Tall growing, large rose-pink blossoms, silvered at tips. Mid-season. Each \$1.00.

Richard Carvel. Large, bright crimson, bomb-shaped. Early. One of the best at any price. Each \$1.00.

Sarah Bernhardt. Very large dark rose-pink, edge silver tipped. Floriferous. Medium height, strong stems. Late. Each \$1.00.

Solange. Creamy white, suffused with buff and pale salmon pink. Large, compact, globular form. Medium height. Late. Each \$1.50.

Tenuifolia plena. Fern-leaved Peony. The big double blossoms of brilliant scarlet in early spring crown the clump of feather-leaved short stems. Earlier than *Officinalis*. Fine roots for fall only. Each \$2.00.

Therese. Shell-pink, very large, fragrant. Mid-season. Very high rating. Each \$1.00.

Walter Faxon. Vivid shell-pink with deeper color at base of petals. Tall, mid-season. Each \$1.00.

JAPANESE PEONIES

Ama-No-Sode. Finest and largest of Japanese Pinks. Long petals of rose-pink surround immense centers of crinkled yellow staminodes. Midseason. Each \$3.50.

Calypso. (Andrews). Guards pale amaranth-pink, the full fimbriate center deep Tyrian rose tipped with yellow. Each \$2.00.

Diadem. (Andrews). Center and guards an even color like Felix Crousse to deeper, the broad ligules with yellow-encrusted tips. Each \$2.50.

Fuyajo. Rich dark mahogany red, center petals edged white. Midseason. Each \$1.50.

Margaret Atwood. Pure white, sometimes flushed pink on outside, center golden. Each \$3.00.



Peony, Majestic

Mikado. Rich dark crimson with center of rose-red and buff. Midseason. Each \$1.25.

Shavano. (Andrews). Clear rose-pink, guards broad and overlapping, the full high center composed of long, lacinate ligules, heavily edged with gold. Each \$2.50.

Silver Plume. (Andrews). Very large, silvery pink center. The long, narrow fimbriate ligules of plumose formation create an incomparable effect. Each \$2.50.

Snow Wheel. A very attractive white peony, very popular. Each \$2.00.

Some Kanoko. Large variety with cupped guard petals of dark red, the light buff staminodes tinted with rose-red markings. Very fragrant. Medium dwarf. Midseason. Each \$2.00.

Tokio. Clear rose-pink, very large. Tall, with strong, stiff stems. Midseason. Each \$2.00.

Tomate-Boku. The best pink Japanese peony. Enormous cupped petals of dark old rose-pink. Medium height. Strong stems. Midseason. Each \$7.50.

Yeso. White. Each \$1.00.

PHLOX

A large number of ornamental species from which have sprung several important garden groups. Almost all are easily grown and are hardy north.

Amoena. Early, bright pink, glossy foliage, carpeting habit, height 4 to 6 inches. Each 30c, Three 75c, Doz. \$2.50.

Andicola.* A dwarf white Phlox of the sandhills, not trailing but forming little tufts with sparse foliage. Each 30c, Three 75c, Doz. \$2.50.

Divaricata.* Very early. Beautiful blue-lavender fragrant blooms on 10-inch stems. Prefers shade. Each 30c, Three 75c, Doz. \$2.50.

Glaberrima.* Slender species a foot or two tall; flowers purple. Each 40c, Three \$1.00.

Hoodii.* Doubtless the smallest species; low tufts, an inch high, by two or three inches broad, thickly starred with small white flowers. Each 40c, Three \$1.00.

Ovata. Bright rosy-red flowers on 10-inch stems from mat of green foliage. Early summer; prefers part shade. Each 30c, Three 75c, Doz. \$2.50.

Subulata Nelsoni. Pure white, no eye. Each 35c, Three \$1.00.

Subulata vivid. An improvement over others, being dwarf, compact, and freely branching. Flowers a delightful shade of rose-pink; spring. Each 30c, Three 75c, Doz. \$2.50.

PHLOX—GARDEN VARIETIES

The hardy perennial Garden Phlox is deserving of a prominent spot in your garden, and the bright clear color effect during July, August and September, will well repay your efforts. Well-drained, rich garden loam is recommended in full sun. Phlox requires considerable water during the blooming period, and light shade may be preferable in extremely hot climates.

Flower garden enthusiasts from many states came this summer to visit our Phlox Gardens which are becoming more popular from year to year. Blossoms here are at their best in early August, and we hope that you can see them next season. Rockmont introductions (Colorado, Osceola, Robin Hood, Silverton, Snowcap, and Tanager) have received many favorable comments. Other introductions of equal or superior merit will be announced at a later date.

Africa. Brilliant carmine-red, blood-red eye. Strong stem, medium height. Each 40c, Three \$1.00.

Apollo. New; tall, late white; large flower. Each 50c, Three \$1.25, Doz. \$3.50.

Asa Gray. Rose-pink, suffused crimson center. Each 40c, Three \$1.00.

B. Comte. Rich satiny ox-blood red; very strong grower; tall and late blooming. Each 40c, Three \$1.00, Doz. \$3.00.

Colorado. (Andrews). Scarlet-red (Ridge-way), with pale crimson eye and faint halo. Color is exceptionally clear, the old flowers mostly dropping before bleaching. Stems strong, of medium height. Each 50c, Three \$1.25, Doz. \$3.50.

Coquelicot. Orange-scarlet; brilliant effect. Each 40c, Three \$1.00, Doz. \$3.00.

Daily Sketch. Clear salmon pink with vivid crimson eye. Florets extra large, up to 2 inches across. Vigorous in growth; reaches height of about 3 feet. Each 50c, Three \$1.25.

Eclaireur. Rosy purple with pinkish center; profuse bloomer. Very early and a strong grower. Tall. Each 30c, Three 75c, Doz. \$2.50.

Elizabeth Campbell. Splendid salmon-pink, with lighter shadings toward the center. Medium height. Each 40c, Three \$1.00, Doz. \$3.00.

Enchantress. Salmon-pink with darker eye; of strong habit. Rich, green, glossy foliage. Tall. Each 30c, Three 75c.

F. G. von Lassburg. Midseason white. Each 30c, Three 75c, Doz. \$2.50.

Gefion. Tall, vigorous pink with rose eye. Each 30c, Three 75c.

George Stipp. Deep salmon-pink; tall; strong grower. Each 40c, Three \$1.00.

Graf Zeppelin. Pure white flowers with vermilion-red eye; clear, neat looking, with no suffusing or fading of color. Height about 30 inches. Each 30c, Three 75c.

Gustaf Lind. Beautiful salmon-red. Of dwarf habit, 18 to 24 inches. Each 40c.

Guy Moore. Pale lavender, white eye. Each 40c, Three \$1.00.

H. B. May. Mauve-pink, large suffused eye; late; dwarf. Each 30c, Three 75c, Doz. \$2.50.

Jules Sandeau. Rose-pink, large florets; free bloomer. Very dwarf. Each 30c, Three 75c, Doz. \$2.50.

Karl Foerster. Glowing dark orange-red; medium height. Each 40c.

Leo Schlageter. A new red, early, scarlet-carmine, dark eye. Very brilliant garden effect; long season. Tall, about 3 feet. Each 50c, Three \$1.25, Doz. \$3.50.

Mia Ruys. Dwarf; pure white, large florets. Midseason. Each 40c, Three \$1.00.

Miss Lingard. (Suffruticosa). Very early bloomer; white with faint pink shadings in center. Each 30c, Three 75c.

Mrs. Jenkins. Late flowering white. Each 35c, Three \$1.00.

Nordlicht. Very large; lilac blush, violet-red eye. New. Each 50c, Three \$1.25.

Osceola. (Andrews). Rose, with Tyrian Rose and flush of scarlet. Medium to tall with strong stems and fine foliage. Each 50c, Three \$1.25, Doz. \$3.50.

Pharaon. Large rosy lilac, white star. Each 30c, Three 75c.

Professor Went. Amaranth-purple. Each 30c, Three 75c.

Robin Hood. (Andrews). Between Tyrian rose and amaranth purple, with slightly deeper eye. Very intense color. Stem stout, medium dwarf. Each 50c, Three \$1.25, Doz. \$3.50.

Rosenburg. Rosy purple; large. Each 30c, Three 75c, Doz. \$2.50.

Rosenkavalier. Large trusses of rose red. Good green foliage and mildew resistant. Tall. Each 40c, Three \$1.10.

R. P. Struthers. Cherry flushed salmon with claret red eye; tall. Each 30c, Three 75c.

Silverton. (Andrews). Clear pale lavender, at first suffused light mauve, eye light phlox-purple with a halo. Of medium height and a strong grower, individual florets exceeding $1\frac{3}{4}$ inches. Mass effect, pale lavender-blue. Each 50c, Three \$1.25, Doz. \$3.50.

Snowcap. (Andrews). Broad pyramidal panicle, the large florets effectively arranged to form a huge cap of snowy white. Strong stem, medium to tall, outstanding for the size and excellent form of panicle. Each 50c, Three \$1.25, Doz. \$3.50.

Tanager. (Andrews). Bright rose, with a glow or overlay of scarlet-red. Panicle rather open, branching into an informal profusion of glowing color, the florets of large size. stem medium to dwarf. Each 50c, Three \$1.25, Doz. \$3.50.

Tapis-Blanc. Very dwarf white; early. Each 50c, Three \$1.25.

Widar. Reddish violet, white star. Of medium height and good habit. Each 30c, Three 75c, Doz. \$2.50.

Wm. Tell. Tall bright pink, cerise eye. Each 30c, Three 75c.

Collection A. 2 Colorado, 2 Silverton, 2 Snowcap. 6 plants, \$2.00 Postpaid.

Collection B. 1 plant each of six Rockmont introductions—Colorado, Osceola, Robin Hood, Silverton, Snowcap, and Tanager. \$2.50 Postpaid.

POLEMONIUM

Archibaldii.* Large deep violet bells are borne nearly all summer on 18-inch stems. The best and easiest to grow of several mountain species. Light shade desirable during part of day. Each 50c, Three \$1.25.

POLYGONUM

(Syn. Bistorta)

Calophylla.* Dwarf, white flowers; dark glossy foliage; prefers moist soil with sun or light shade. Each 30c, Three 75c, Doz. \$2.50.

POTENTILLA

Pulcherrima.* Clear yellow flowers on 10-inch stems, foliage silvery. Moist sunny spot, easily grown. Each 35c, Three \$1.00.

PRIMULA

Polyanthus. Mixed colors. Each 30c, Four \$1.00.

RANUNCULUS

Acris. Double, Buttercup-like flowers on 18-inch upright growing stems. Excellent for borders or cut flowers. Prefers moist soil in full sun. Each 30c, Three 75c, Doz. \$2.50.

SALVIA

Summer and fall blooming plants. Thrive best in a rather lean, dry soil with full sun. All Salvias are, Each 35c, Three 90c, Doz. \$2.50.

Azurea.* Azure Sage. 4 feet; summer blooming with large open panicles of azure blue.

Azurea alba.* Same habit and season; flowers snow-white.

Pitcheri.* Dark Azure Sage. Botanically a synonym for azurea, but the form carried under this name is a month later and is a mass of deepest blue flowers until frost.

SAPONARIA

Ocymoides. Prostrate border plant for the rock garden; also suitable for ground cover. Rosy pink flowers in great abundance during spring and early summer. Each 30c, Three 75c, Doz. \$2.00.

SCABIOSA

Caucasica. 2 feet; the flowers of pale blue are borne on slender stems all summer; good cutflower. Each 35c, Three 90c, Doz. \$2.50.

SEDUMS

(Stonecrop)

Most sedums enjoy full sun and well drained soil. They are unexcelled for ground cover, for planting to fill the chinks in a dry stone wall, for planting between flag stones, for grave cover, etc. The rock garden is incomplete without one or more representatives of this group. Our sedums are all hardy and several varieties are evergreen. Price, Each 30c, Doz. of one variety \$2.00, 25 or more of one variety 12c each, except as noted.

Acre Major. (Golden Moss). Attractive green foliage and yellow flowers. Prostrate form which slowly spreads by creeping.

Acre Minor. A miniature of Acre major. An evergreen ground cover with chrome yellow flowers in June.

Altissimum. Evergreen; flowers light yellow; flowering stems erect.

Anacampseros. Nearly evergreen, round glaucous leaves forming rosettes, purplish flowers. Very distinct and popular.

Asiaticum. Elongate green foliage, yellow flowers on 15 inch stems.

Balticum. A tiny dark green mossy type. Emerald green beads on same colored stems, an inch high.

Ellacombianum. Arching stems. Mass of bright yellow flowers in June.

Ewersii. Glaucous evergreen, flowers deep pink. Late summer.

Hybridum. Low growing dark green, dentate foliage, giving rosette effect. Yellow. Flowers on 10-inch stems.

Integrifolium. Dark red to blackish purple, known locally as Kings Crown. Wet ground.

Kamtschaticum. Attractive, prostrate, green foliage, golden in autumn. Flowers orange-yellow, on 6-inch stems.

Kamtschaticum variegatum. Beautifully variegated yellow or dull golden foliage blending with the orange-yellow flowers which are profusely produced in mid-summer.

Lineare. Narrow, flat evergreen foliage in low clumps. Handsome species.

Nicaense Altissium. Upright stems with closely set fleshy pinnate leaves and branching heads of golden yellow flowers on 18-inch stems. Midsummer.

Rhodanthum. Rose-root. Pink flower clusters. For wet ground.

Sieboldii. Glaucous flat foliage, flowers pink, blooms in October.

Spectabile Brilliant. Splendid; deeply colored, bright amaranth-red, September. 12-inch stems. Doz. \$3.00. No price reduction for quantity.

Spurium coccineum. Superior deep red form. 6 inches: July and August. Very fast spreading variety, good for covering sandy banks.

Villosum. Narrow fleshy foliage, yellow blossoms in late summer.

SEMPERVIVUMS

The Houseleeks, popularly known as Hen-and-Chickens, are a valuable asset to the rock garden. Our sempervivums are hardy to 40 below zero, but they make excellent subjects for an inside winter garden. You will find their development in an attractive bowl on your window sill very interesting this winter. Our list includes many rare, new and interesting varieties. They prefer rich light loam with humus, full sun.

Arachnoideum. Cobweb Houseleek. Small rosettes, the tips connected by white cobwebby strands. Each 30c, Three 75c, Doz. \$2.00.

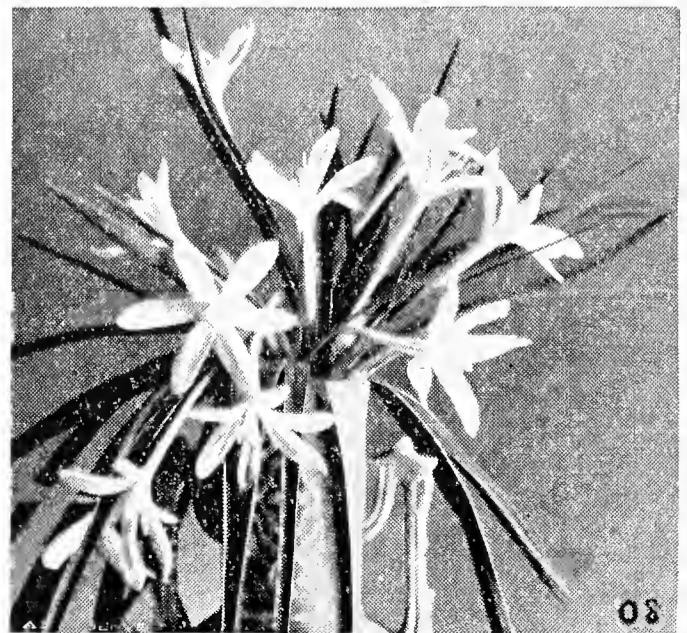
Atroviolaceum. Very large rosettes, to 6 inches, deep purple-red leaves, effective and rare. Each 40c, Three \$1.00.

Blanda Rubicunda. Narrow reddish leaves, center of rosette green. A prolific grower. Each 35c, Three 90c.

Borsch Hybrid. Medium rosettes, the leaves being marbled, green and red, with silky hairs on margins and center. Scarce. Each 50c, Three \$1.25.

Calcareum. Very distinct. Large rosettes, glaucous-blue with conspicuous red-purple tip. Each 40c, Three \$1.00.

Carnollii. Silvery green, reddish tips on outer leaves. Each 40c, Three \$1.00.

**Leucocrinum montanum**

Emerald Giant. Very large. 6-7 inches, clear emerald green. **Each 40c, Three \$1.00.**

Globiferum. Incurved rosettes, reddening in winter, producing numerous offspring. **Each 30c, Doz. \$2.00.**

Hutell. Leaves have fresh green appearance with reddish tips. **Each 40c, Three \$1.00.**

Mauvine. Attractive purplish green leaves, light pink blossoms. **Each 40c, Three \$1.00.**

Moggridgei. Small rosettes. Light bristles give silvery tone, flowers purple. **Each 40c, Three \$1.00.**

Pittonni. Large rosettes, narrow erect leaves. **Each 40c, Three \$1.00.**

Royanum. Large, to 6 inches, light green with reddish purple tips. **Each 35c, Three \$1.00.**

Rubicundum hybridum. Medium rosettes, shaded green to deep red; one of the most highly colored. **Each 40c, Three \$1.00.**

Siebenbergen. Large green rosettes. **Each 40c, Three \$1.00.**

Silverine. Large, green uniformly tinted pale mauve. **Each 50c, Three \$1.25.**

Tectorum. Roof Houseleek. Large rosettes with darker tips of reddish brown, flowers pale red. **Each 30c, Doz. \$2.00.**

Violescens. Grayish violet tinted leaves; large rosettes. **Each 40c, Three \$1.00.**

Collection A. Any five sempervivums from the above list will be sent you postpaid, your choice, and all labeled for **\$1.50.**

Collection B. We will ship you by express collect, 40 fine specimen sempervivums (our choice) for **\$5.00.** All will be labeled and selected from the above list. A generous number of the more expensive varieties will be included. An opportunity to add real character to your rock garden at a very low cost.

SENECIO

Lanatifolius.* Unique for its pectinate-pinnatifid leaves, the edges full and inrolled to form a peculiar wavy margin. The grayish rosettes are evergreen; flowers yellow, aster-like. **Each 40c, Three \$1.00.**

SILENE

Alpestris. Six inches; little panicles of glistening white flowers; early summer flowering clumps. **Each 40c, Three \$1.00.**

Schafta. Moss Champion. Small clumps to 6 inches, flowers rose or purple, appearing in Sept. or Oct. when flowers in the rock garden are scarce. **Each 40c, Three \$1.00.**

SOLIDAGO

Goldenrod. Many are rampant spreaders, but I recommend the following which are well behaved and very lovely.

Capulinse.* Capulin Goldenrod. Two feet, freely branching from a compact crown, very floriferous, individual florets large, like miniature golden aster. New. **Each 50c, Three \$1.25.**

Pallida.* (Syn. *S. speciosa*.) Tall plumes of glowing gold, very fragrant; height 2 feet, forming a compact clump. **Each 40c, Three \$1.00.**

SPIRAEA

The herbaceous Spiraeas are referred by some authors to Filipendula. **Each 40c, Three \$1.00.**

Filipendula. 2½ feet; feathery-cut foliage and sprays of white flowers.

Filipendula, double. Dwarfier, and the flowers appear whiter than the single form.

Uimaria Plena. The double-flowered Meadow-Sweet is one of the most attractive of perennials and thrives best with a moist medium heavy soil.

SYNTHYRIS

A charming group of rock plants with varied foliage, forming rosettes; the low flower spikes sometimes silky, suggesting the popular name, Kittentails. Loamy soil, part shade.

Plantaginea.* Silky blue-gray spikes, to 10 inches with large foliage; ordinary soil, sun. **Each 40c, Three \$1.00, Doz. \$3.00.**

Reniformis.* Oregon. Kidneyleaf. Round evergreen dentate leaves and violet-blue flower spikes in early spring; a gem for moist shade. **Each 40c, Three \$1.00.**

Ritteriana.* Subalpine with splendid foliage and 10-inch spikes of white flowers; rare plant and one of the best; easy culture with part shade and humus. **Each 50c, Three \$1.25.**

TANICETUM

Capitatum.* Rock Tansy. A diminutive cover plant for the dry, sunny rock garden, with silvery gray foliage, evergreen, forming mats an inch high. The yellow spherical flower heads are borne on 3-inch stems. Easily grown, extends slowly, fills small spaces and crevices among rocks, and is absolutely hardy to 50 below zero. Nice clumps, **Each 40c, Three \$1.00, Doz. \$3.50.**

TEUCRIUM

Chamaedrys. Small shrub-like perennial, evergreen, flowers rosy or purple; valuable rock plant for many situations, especially borders. To 12 inches. **Each 40c, Three \$1.00, Doz. \$3.00.**

THALICTRUM

The small *Thalictrums* are excellent for shade, their foliage as graceful as a Maidenhair Fern; easily grown. Each 40c, Three \$1.00.

Venulosum.* Maidenhair Rue. One of the most valuable species for the rock garden; easily grown, elegant foliage and does not exceed 12 inches under our conditions.

Fendleri.* Of larger size to 2 feet; lovely foliage.

THYMUS

Serpyllum coccineum. Mat-forming evergreen with minute foliage. Flowers rosy-red in great profusion during late summer. Full sun or light shade. Clumps, Each 30c, Three 75c, Doz. \$2.50. A more compact form listed as *T. Azoricus*, same price.

TRILLIUM

Woodland plants requiring semi-shade and moisture; should be planted in autumn. Bloom in spring.

Grandiflorum. The large white Wake Robin of the eastern states. Three 50c, Doz. \$2.00.

Recurvatum. Flowers chocolate red. Three 40c, Doz. \$1.50.

Sessile Californicum. Very large white. Three 50c, Doz. \$2.00.

TROLLIUS

Globeflower. Like over-size Buttercups; sulphur-white to yellow and deep orange. All like moisture, shade and a rich humus soil; flower early and often again in autumn.

Albiflorus.* Flowers early, large, sulphur-white; best in wet bog. Flowering clumps, Each 40c, Three \$1.00, Doz. \$3.50.

Europeus. Deeply cupped flowers of pure yellow in early spring. Each 40c, Three \$1.00.

Orange Globe. Tall, to two feet; later flowering season. Each 40c, Three \$1.00.

VALERIANA

Micrantha.* Valerian. Low clumps with 15-inch stems, bearing clusters of small snow-white flowers; shade. Clumps, Each 40c, Three \$1.00.

VERNONIA

Marginata.* Western Ironweed. 3 feet, flower-heads in clusters, deep purple. Each 50c.

VERATRUM

Speciosum.* A large Liliaceous perennial for bog or shady, moist location. Terminal panicle of white flowers. 75c.

VERONICA

Speedwell. Includes a few upright perennials for the border and several low creepers or dwarfs of exceptional value for the rock garden.

Gentianoides. 2 feet. Flowers in loose racemes, blue. Each 30c, Three 75c, Doz. \$2.50.

Incana. One foot, white woolly plant, flowers deep blue in 6-inch racemes; valuable for rockery or border. Each 30c, Three 75c, Doz. \$2.50.

Pectinata rosea. Prostrate, grayish foliage, rose-colored flowers in short racemes, close to the foliage. Each 40c, Three \$1.00.

Rupestris, Heavenly Blue. A gem for the rock garden, mat-forming creeper with dark green foliage and azure-blue flowers in short racemes. Each 40c, Three \$1.00.

Rupestris rosea. Differs from the last in its stronger growth and roseate flowers. Each 40c, Three \$1.00.

Virginica. Tall border perennial to 4 feet, many long racemes of white or pale lilac flowers. Each 40c, Three \$1.00.

VINCA

Periwinkle, or Trailing Myrtle. Valuable evergreen ground covers for sun or shade.

Major. A hardy large-leaved trailer with large blue flowers. Clumps 30c, Three 75c, Doz. \$2.50.

Minor. The common Periwinkle or Myrtle. Each 30c, Three 75c, Doz. \$2.50.

VIOLA

Violet. Nearly all thrive best in part shade and a moist humus soil. Each 30c, Three 75c, Doz. \$2.00.

Confederate. The large lovely blue and white violet from Virginia. Perfectly hardy.

Oderata Blue. Sweet-scented blue violet.

Oderata White. Sweet-scented white violet.

Pedatifida.* Blue, with large flowers and finely cut foliage; much easier to grow than *V. pedata*.

Pubescens. Woodland yellow violet of middle U. S.

Rugulosa.* 10 inches, large foliage, flowers white; slowly spreads by runners.

Nephrophylla and *retusa* are two easily grown blue violets.

Tricolor. Also called "Johnny-jump-up." Doz. \$1.50.

YUCCA

Evergreen plants for deep, well-drained soil. May be placed in large rock gardens.

Angustissima.* Extremely narrow foliage, edged with curled filaments; rare. Each \$1.00, Three \$2.50.

Baccata.* Broad-leaved resembling an agave. The Colorado form is hardy; a desert type and good drainage is essential. Each 50c, Three \$1.25.

Coloma.* (Syn. *Y. neomexicana*.) Desirable for the rock garden because of its small size. With its miniature rosettes of stiff bluish foliage and slender flower stems, no hardy species is more attractive. Each \$1.00, Three \$2.50.

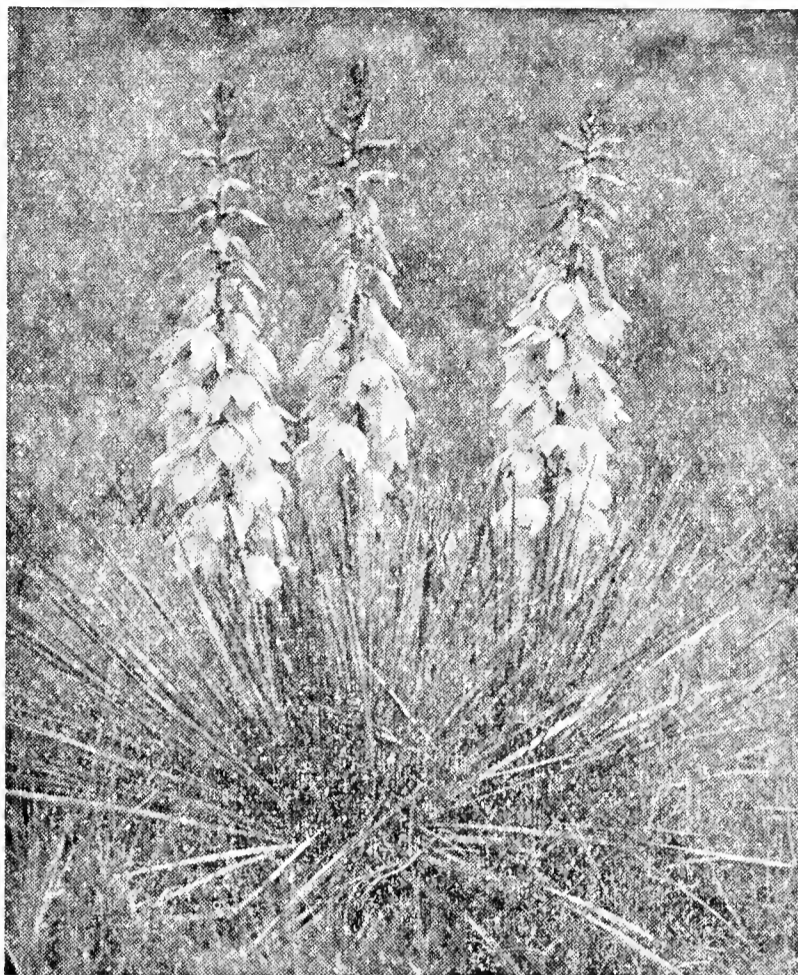
Filmentosa. Best known species, flowers creamy white. Each 75c, Three \$2.00.

Filamentosa variegata. A hardy variegated type and a thrifty grower. The leaves have narrow stripes of green and white like a ribbon grass, tinged red in winter. Each 75c, Three \$2.00.

Glauca.* The common yucca of the plains, known locally as Soapweed. The flowers are large and sometimes tinted purplish outside. Each 50c, Three \$1.00.

Glauca rosea.* Very rare form, outside of perianth tinted rose, grown true from root cutting. Each \$1.50.

Harrimaniae. The smallest and hardiest of all, the foliage glaucous-blue, forming compact many-leaved rosettes. A gem for the rock garden. Fine young plants. Each 40c, Three \$1.00, Doz. \$3.50.



Yucca glauca

FRENCH HYBRID LILACS

(Own Root Plants)

The improved varieties of Lilac are popularly called French Hybrids because many have been originated by French horticulturists. Introduction of the improved Lilacs has caused a phenomenal increase in popularity. This is not difficult to appreciate when beauty, fragrance, long life and freedom from disease and pests are combined with hardiness and certainty of performance. A large number of home gardeners visited our Lilacs during blooming season this year and all enthusiastically proclaimed them the finest that they had ever seen. A vigorous Colorado climate combined with fertile soil, both overhead and gravity irrigation, produces Lilac bushes which we believe are unexcelled.

Our Lilacs are hardier, more vigorous, bloom sooner after planting, and with more certainty each season than the common lilac, either white or purple. Every plant we send out is grown from the beginning on its "own roots." This permits no possibility of sprouting from an understock as with grafted plants; it insures a healthy plant of utmost vigor and long life from a natural root-system.

Time of Shipment, Etc. We have found fall planting of Lilacs to be entirely successful. Shipping season begins in October and continues throughout November. If you order late, a second choice noted on your order may save time, as we do not substitute without your approval. We have a large block of very healthy plants which will soon be large enough to market, but respectfully request that you order only the sizes noted in our fall catalogue. We make no charge for packing Lilacs for shipment and send them express collect, 2nd class rate, unless otherwise advised. Lilacs travel at the purchasers expense.

Fertile soil with ample water and full sun is recommended.

Alba Grandiflora. Tall-growing, single, white 4 to 5 ft., \$1.50; 5 to 6 ft., \$2.00.

Bleuatre. Single, very blue, vigorous, good. Early. 3 to 4 ft., \$2.00.

Capitaine Baltet. Huge trusses of ruddy purple-lilac. Single. New. 18 to 24 in., \$2.00.

Carmen. Double. Very soft pale mauve flower, buds pinkish. Sprays long and loosely filled with small double florets. Strong. 2 to 3 ft., \$1.50; 4 to 5 ft., \$2.50.

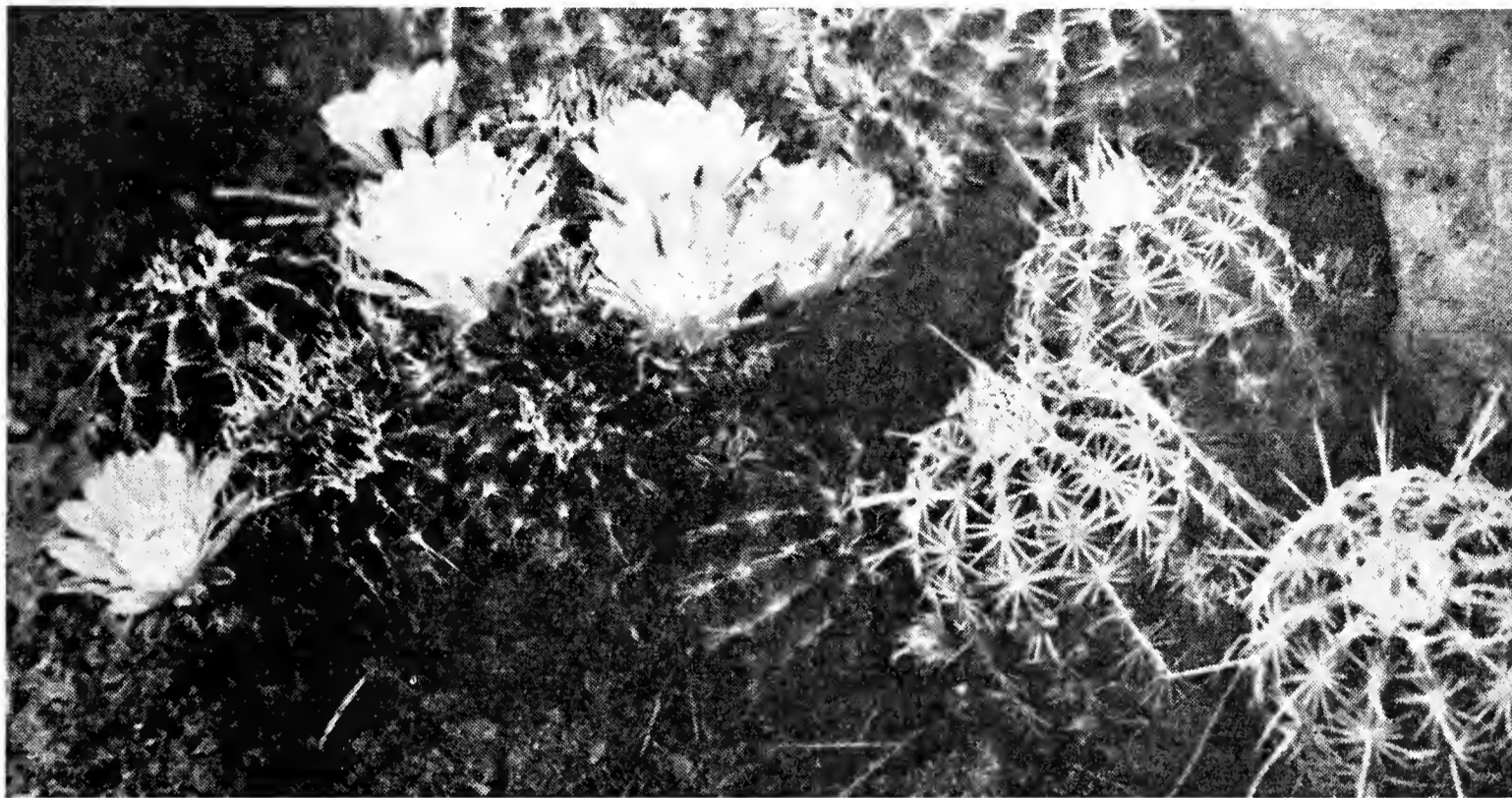
Charles Joly. Double. Deep purple-red flowers with silvery reflex. Tall, slender, erect. 18 to 24 in., \$1.00; 3 to 4 ft., \$1.50; 4 to 5 ft., \$2.00; 5 to 6 ft., \$2.50.

- Congo.** Single. Red-purple or wine. Great size; vigorous. 3 to 4 ft., \$1.50; 4 to 5 ft., \$2.00; 5 to 6 ft., \$2.50.
- Crampel.** Single, pinkish, lilac, quite dwarf. 2 to 3 ft., \$1.25; 3 to 4 ft., \$1.50; 4 to 5 ft., \$2.00.
- Dr. Charles Jacob.** Single, Magenta Lilac. 4 to 5 ft., \$1.50.
- Duc de Massa.** Double. Violet-purple, buds purple. Clusters of medium length, well-filled. Strong-growing. Late. 18 to 24 in., \$2.50; 2 to 3 ft., \$3.50.
- Edith Cavell.** Double, glorious milk-white, buds suffused pale cream color. Florets extra large, spaced rather openly on lengthy panicles. Early. 18 to 24 in., \$2.00; 2 to 3 ft., \$3.00.
- Edouard Andre.** Double, deep pink that does not fade quickly. Panicles medium-sized, not too solidly filled with florets. Low-growing. Profuse. Early. 4 to 5 ft., \$1.75; 5 to 6 ft., \$2.50.
- Emile Lemoine.** Double, pinkish lilac. Good. Late. 5 to 6 ft., \$2.25; 6 to 7 ft., \$3.00.
- Georges Bellair.** Double, dark wine-red. Buds lighter and brighter. Large compact, well-formed truss. 18 to 24 in., \$1.50; 2 to 3 ft., \$2.00; 3 to 4 ft., \$3.00.
- Jeanne D'Arc.** Double, white. Large, and of great beauty. Extra good. 18 to 24 in., \$1.75.
- Lamartine.** Single, bright rose-lavender, large graceful sprays. Strong-growing; blooms profusely. Very early. 5 to 6 ft., \$2.25.
- Leon Gambetta.** Double, rosy mauve with deep pink buds. Heavy racemes, 13 or 14 inches long. Vigorous, free-blooming. Early. 5 to 6 ft., \$3.00.
- Lucie Baltet.** Single, unusual shade of coppery old rose. Sprays medium size and open. Profuse; low-growing. 18 to 24 in., \$1.75; 2 to 3 ft., \$2.50.
- Ludwig Spaeth.** Single, dark rich red-purple. Panicles long and held erect. Tall, very profuse bloomer; vigorous. 3 to 4 ft., \$1.75; 5 to 6 ft., \$2.50.
- Magellan.** Double, lilac-purple, pink tone. 18 to 24 in., \$1.75; 2 to 3 ft., \$2.50.
- Marie Legraye.** Single, pure creamy white, very large florets. Panicles large and rather openly built. Tall, profuse, valuable. 18 to 24 in., \$1.25; 4 to 5 ft., \$1.75.
- Maximowiczi.** Duplex, blue-purple touched with silver on back. Long, heavy, compact panicles. Large. 5 to 6 ft., \$2.25; 6 to 7 ft., \$3.00.
- Miss Ellen Willmott.** Double, creamy white. Immense panicles; large bush. Late. Large florets. 18 to 24 in., \$2.50.
- Mme. Antoine Buchner.** Double. Soft rosy-lilac, rich fragrance. Large florets. Panicles narrow, erect, and frequently a foot long. Tall upright growing bush. Late. 4 to 5 ft., \$2.50.
- Mme. Casimir Perier.** Double, creamy-white flowers. Large panicles. Bush dwarf, compact. 4 to 5 ft., \$1.50.
- Mme. Francisque Morel.** Single, mauve-pink. Immense panicle. Tall, large, profuse, vigorous grower; valuable. A 4-x variety. 2 to 3 ft., \$1.75.
- Mme. Lemoine.** Double, pure snow-white, buds slightly cream-tinted. Immense panicle, long and erect. 2 to 3 ft., \$1.75.
- Paul Thirion.** Double; claret-rose, carmine buds—a rosy-red devoid of purple. Upright, heavy-shouldered, well-filled trusses. 18 to 24 in., \$2.50.
- Pres. Fallieres.** Double. Delicate lavender-rose or orchid shades; florets paling in center to almost white. Panicles large, loose, pointed; sprays spreading and showy. Tall, somewhat slender bush. 2 to 3 ft., \$2.50.
- Pres. Grevy.** Double; beautiful shade of light bluish lilac; immense clusters, very double and symmetrical. Very vigorous. 5 to 6 ft., \$2.25; 6 to 7 ft., \$2.75.
- Pres. Poincare.** Double; claret-mauve, buds deep wine. Large florets and panicles, robust. 2 to 3 ft., \$2.50.
- Princess Alexandra.** Single, white, tall. 4 to 5 ft., \$1.50; 5 to 6 ft., \$2.00.
- Reaumur.** Single; subdued rosy-mauve, buds deep carmine. Profuse bloomer, brilliant effect and rather dwarf. A 4-x variety. 18 to 24 in., \$2.50.
- Rene Jarry Desloges.** Double, light lilac-mauve. Panicles medium sized and erect; bush dwarf. 3 to 4 ft., \$1.75; 4 to 5 ft., \$2.25.
- Ronsard.** Single, bluish lilac, early. Profuse. 2 to 3 ft., \$1.75.
- Senateur Volland.** Single; pinkish light lilac, buds bright pink. Large, somewhat open blooms. Very dainty and floriferous, panicles partly hidden by foliage. 5 to 6 ft., \$1.75.
- Siebold.** Double; old-ivory, buds yellow, quite dwarf. Late. 3 to 4 ft., \$2.00; 4 to 5 ft., \$2.50.
- Toussaint L'Overture.** Single, dark violet-purple. Long, narrow pointed spikes. Bush of medium height. 5 to 6 ft., \$2.75.
- Virginite.** Double, vinous-pink. 4 to 5 ft., \$2.00; 5 to 6 ft., \$2.50.
- Viviand Morel.** Double, bluish lilac, profuse. 4 to 5 ft., \$1.75; 5 to 6 ft., \$2.00.
- Volcan.** Single; reddish-mauve, deeper buds of dark true red. Panicles long and shapely and well-filled, although rather open when in bud stage. Very robust and shapely. One of the latest. 4 to 5 ft., \$2.50.
- Waldeck-Rousseau.** Double. Large, light rosy-lilac florets, buds rather deep pink. Large and loose panicle. Tall, late. 18 to 24 in., \$1.50.

Common Purple Lilac (*Syringa vulgaris*).
An old garden favorite which needs no
introduction. 2 to 3 ft. Each 75c.

Note. For Japanese, Pekin, Persian and
Villosa Lilacs consult our Spring Cata-
logue. If you do not have a copy, a card
will bring a copy by return mail.

COLORADO HARDY CACTI



Echinocereus viridiflorus

A **Desert Garden** of Cactus, Yuccas and some of the flowering plants and bulbs, can be made a unique feature of the dry rockery and will yield a large return of satisfaction for the little care required.

These plants are hardy to the lowest garden temperatures, enduring safely 20 degrees below zero. The precaution to be observed by eastern gardeners is the avoidance of excessive moisture during winter. A raised rockery or elevation of the bed to insure free and quick drainage will best take care of this, and it will make it easy to dry-off the plants gradually in late summer so that they will approach winter in a fully ripened and somewhat shrunken condition, thereby insuring a profusion of bloom the following season. This is quite imperative. If cacti are kept plump and active too late in the season, it impairs their resistance to winter inclemency.

Contrary to a prevailing belief, the soil for cacti should be fertile, and rather rich in humus, but may be overspread with sand or fine gravel. The sandy texture of the ordinary rock garden mixture is suitable, adding a small portion of gravel if convenient.

Our stock is in nursery beds under perfect growing conditions. These freshly lifted specimens, carefully packed for delivery, will produce maximum performance in flowering, and neither in this respect nor in price are they to be compared with "collected" stock.

Prices. The smaller sizes can be included with mail shipments, prepaid. Large specimens will be sent by express, collect. Our liberal count and grading are intended to cover part of the transportation cost.

Coryphantha Missouriensis (Syn. *Mamillaria*). Low and small, dark green, gray spines, yellow flowers, red berries. Flowering size, 30c and 50c; assorted, \$2.00 per dozen.

Coryphantha vivipara. Higher and larger, the purplish spine-tufts on prominent tubercles, flowers deep rose-purple. Flowering plants, 35c and 50c; specimen plants or clusters, 75c to \$1.00.

Echinocereus aggregatus (*Cereus coccineus*). Turkshead Cactus. Single plants cylindrical with prominent ribs, tufted

with straw-colored spines; eventually forming hemispherical masses of many heads. Flowers large and very showy, brilliant scarlet. Clusters of 2-3 heads, 50c and 75c; 4-5 heads, \$1.00.

Echinocereus caespitosus. Tall-cylindrical, with beautifully interlaced spines in various colors. Flowers very large, deep purple. Fine flowering plants, 50c and 75c; clusters, \$1.00 and \$1.50.

Echinocereus goniacanthus. Kingscrown. Dark green, broadly ribbed. Spines very stout and comparatively few, plant of

distinct appearance and very ornamental. Flowers deep scarlet, abundant, large and very showy. Clusters of 2-5 heads, 50c, 75c and \$1.00 each; large specimen clusters, well-shaped and very beautiful, \$2.00 to \$5.00 each, composed of 8 to 20 or more heads.

Echinocereus viridiflorus. Pale green flowers give name to this species, of smaller size but clothed in a lacework of brilliant spines. Single or clustered, always attractive. Flowering size 30c and 50c; specimen clumps, \$1.00; assorted according to size, \$2.00 and \$3.00 per dozen.

Pediocactus Simpsoni (Syn. *Echinocactus Simpsoni*). Pin-cushion. Ball-shaped, densely netted with brown or purplish spines, with a crown of bright pink flowers in early spring. Two to five inches broad. 35c, 50c, 75c and \$1.00 each; assorted, \$2.50 to \$5.00 per dozen.

Rediocactus Simpsoni subalpina. A rare form found at the high altitude of 9,000 feet. The plants are nearly flat, the small spine clusters forming neat stars at the tip of each tubercle. Blooms very early, pale pink; quite distinct. Flowering plants, 50c; clumps, \$1.00.

Opuntia. The rank, large-jointed Prickly Pears are out of keeping with the small rock garden. The following are recommended as distinct, and attractive for their flowers and neat habit. Hardy and not exacting in their culture. Suitable for any sunny, dry slope or terrace, or at the top of a wall.

Opuntia arborescens. Tree or Candelabrum Cactus. Cylindrical stems, freely branching into tree-like form to a height of two feet or taller; flowers deep rose-red, fruit yellow. 50c, 75c and \$1.00 each. A few large specimens at \$2.00.

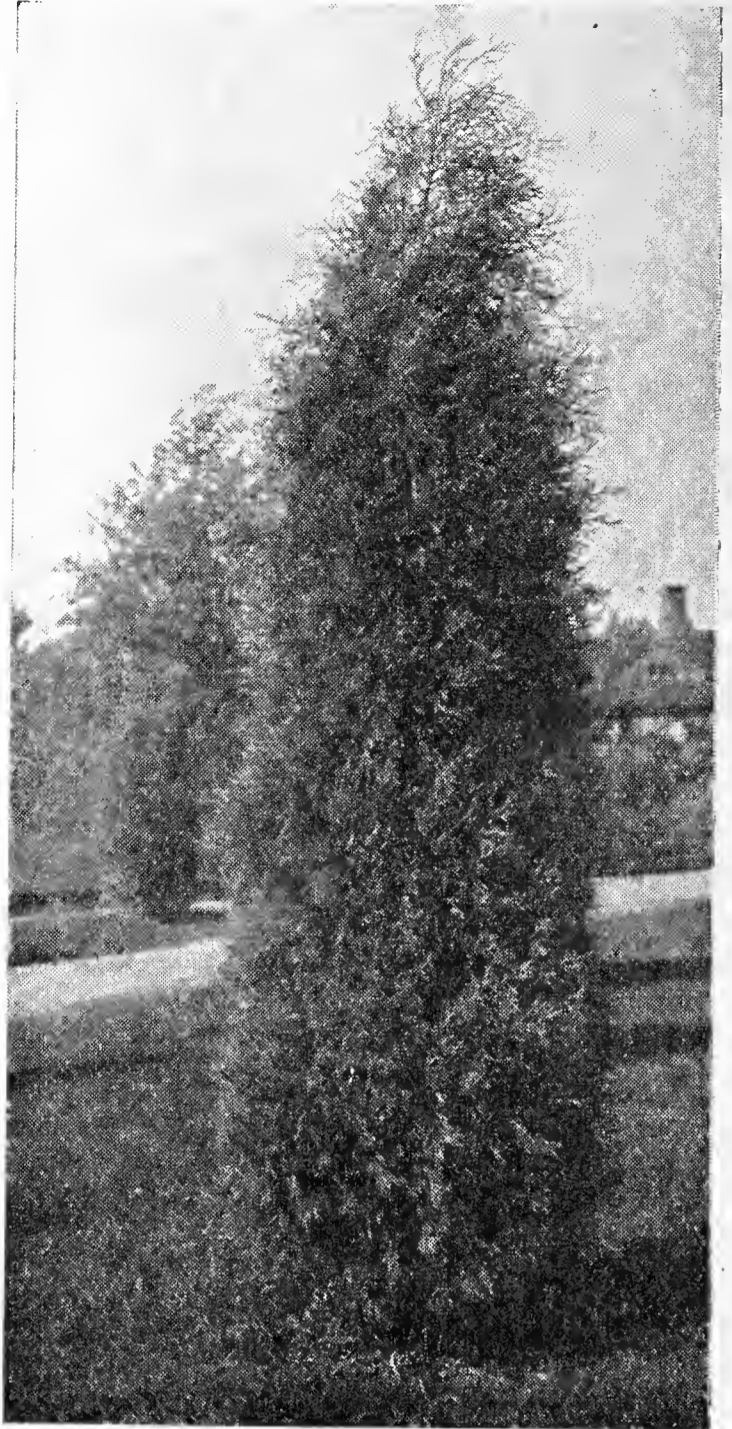
Opuntia Davisii. Lady Finger Cactus. Cylindrical stems branching from the center to form hemispherical clumps, seldom attaining 12 inches. Flowers olive-yellow. Evergreen and the gem of hardy Opuntias for the rock garden. Small flowering plants, 50c; clumps, \$1.00.

Opuntia fragilis. Brittle Cactus. Joints an inch or less in length, very spiny, scarcely flat. The form, *O. fragilis* var. *arenaria*, has flat joints of larger size. Either form, small clumps, 50c each.

Opuntia Rhodantha. Very attractive and distinct for its rose-red flowers; forms neat clumps of medium size. Established flowering plants, 50c.

Opuntia Schweriniana. Nearly alpine, forming neat clumps of oval joints nearly two inches in length; flowers yellow. Small clumps, 50c.

Opuntia hybrids and selected types. Hybrids are frequent among the Opuntias, and I have selected and propagated several of the finest small-growing types; nursery-grown plants.



Juniperus scopulorum

Opuntia, Apache. (*Rutila x polyacantha*.) Thick, oblong joints, connected in an erect clump formation to 10 or 12 inches high. Distinct for its growth and for its numerous and ferocious brown-red spines. Outstanding, and attracts much attention. 50c.

Opuntia, Cimarron (*fragilis x rutila*). A high-altitude form of extra hardiness; small semi-cylindrical joints, strongly tinged red or purple, flowers apricot-yellow. A gem for the small garden. 50c.

Opuntia, Corona (*fragilis x polyacantha*.) Small, ovate, flat joints, the small clumps flowering profusely. Flowers yellow, with red center, and a crown (corona) of red filaments. 50c.

Opuntia mesacantha Gloriosa. A rather large-growing variety with few spines. Flowers very showy, yellow, with a red center and deep red filaments. 50c.

Opuntia Xanthostemma. The red-flowered Opuntia from western Colorado. Very similar to *O. rhodantha*, but makes more compact clumps. 50c.

FERTILIZERS

Plants may not survive the rigors of winter because they enter this unfavorable period in a half-starved condition. Two recommended products are offered at the uniform price of \$1.00 per sack, Three sacks \$2.50; and Eight sacks for \$5.00. Fertilizer travels at expense of purchaser, freight or express. Approximate weights per sack are noted below.

Pulverized Peat and Sheep Manure. Portions equal. Sheep manure provides a concentrated plant food; peat provides humus, lightens the soil, and makes plant food more available. An ideal lawn dressing with nothing to remove, excellent for trees, shrubs, or perennial beds. Each sack weighs approximately 60 lbs.

Pulverized Peat. A concentrated form of humus. May be used to lighten a heavy soil; retains moisture in a sandy soil. Especially valuable in preparing seed beds, or as a mulch in the perennial garden. Each sack weighs approximately 50 lbs.

EVERGREENS

Rockmont Nursery carries a large stock of the following evergreens: Juniper alpina, J. depressa plumosa, J. Pfitzeri, J. Sabina, J. Scopulorum, J. tamariscifolia, J. virginiana tripartita, J. waukegan, Austrian Pine, Mugho Pine, and Colorado Blue Spruce. These are available in a considerable range of sizes. All evergreens are sold with suitable ball of earth and securely wrapped in burlap. Due to the weight of earth required, and difficulty of handling, the larger sizes are not recommended for distant shipment unless they can be moved in carload lots, or shipped by special truck. If your winters are extremely dry and windy, better wait for spring delivery.

Most evergreens prefer full sun and fertile soil. Avoid alkaline conditions if possible.

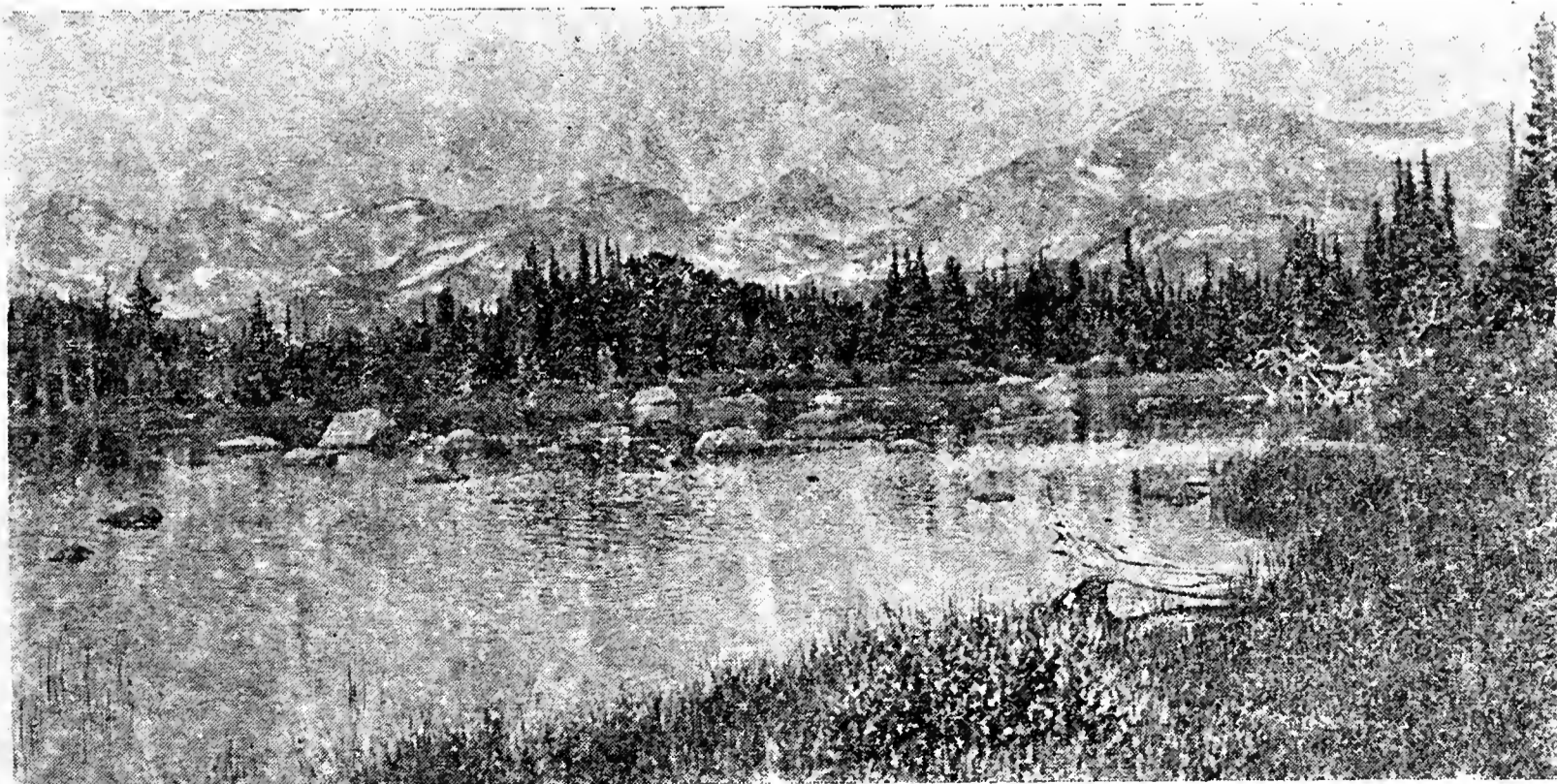
For our distant customers, we are especially recommending a number of evergreens in the following sizes. Individual crates will be furnished in all cases at no extra cost and approximate weights have been noted. Trees may travel by 2nd class express or freight at purchaser's expense.

Colorado Blue Spruce (*Picea pungens glauca*). Trees listed below are true blue ("shiners") and first-class in every way. Two feet tall light, \$3.00 each. (Weight 35 to 45 lbs.) 24 to 30 inches, heavy, \$4.00 each. (Weight 55 to 65 lbs.)

Juniper Sabina. Spreading or creeping form of evergreen, excellent for foundation work. Foliage dark green, graceful branches. 18 to 24 inches, \$3.00 Each. (Weight 30 to 40 lbs.)

Juniper Scopulorum Colorado Silver Cedar. Close symmetrical upright growth to 20 ft., silvery green foliage. May be sheared as desired. Price \$1.50 per foot up to six feet.

Mugho Pine. Dwarf, globose, compact, short needles of dark green; to six feet. 15 to 18 inches, \$2.50 Each; 18 to 24 inches, \$3.50 each. Shipping weight 40 to 65 lbs.



Red Rock Lake, Colorado

INDEX

Achillea	3	Lewisia	9
Aconite	3	Liatris	9
Allium	3	Lilacs	19
Alyssum	3	Lilies	9
Anchusa	3	Lily-of-the-valley, see Convallaria	5
Anemone	3	Malvastrum	10
Aquilegia	3	Mertensia	10
Arenaria	4	Mirabilis	10
Artemisia	4	Monkshood	3
Aster	4	Myrtle, see Vinca	18
Bitter-root, see Lewisia	9	Nepeta	10
Bleeding Heart, see Dicentra	6	Nolinia	11
Bluebells, see Mertensia	10	Oenothera	11
Cacti	21	Onions, flowering, see Allium	3
Callirhoe	4	Oxytropis	11
Caltha	4	Penstemon	11
Campanula	4	Peonies	12
Centaurea	5	Phlox	14
Chrysanthemum	5	Polemonium	15
Clematis	5	Polygonum	15
Columbine, see Aquilegia	3	Poppy Mallow, see Callirhoe	4
Cone flower, see Lepachys	9	Potentilla	15
Convallaria	5	Primula	15
Coralbells, see Heuchera	7	Ranunculus	15
Delphinium	5	Sage, see Artemisia	4
Dianthus	6	Sand Lily, see Leucocrinum	9
Dicentra	6	Salvia	15
Dictamnus	6	Saponaria	15
Dodecatheon	6	Scabiosa	15
Euphorbia	6	Sedum	16
Evening Primrose, see Oenothera	11	Sempervivum	16
Evergreens	23	Senecio	17
Ferns	6	Shasta Daisy, see Chrysanthemum	5
Flax	7	Shooting Star, see Dodecatheon	6
Fertilizers	23	Shrubs	3
Funkia, see Hosta	8	Silene	17
Gas Plant, see Dictamnus	6	Solidago	17
Geranium	7	Spirea	17
Geum	7	Synthyris	17
Gillenia	7	Tanicetum	17
Globeflower, see Trollius	18	Teucrium	17
Globularia	7	Thalictrum	18
Goldenrod, see Solidago	17	Thymus	18
Grasses	7	Trees	3
Heliopsis	7	Trillium	18
Hemerocallis	7	Trollius	18
Hepatica	7	Valeriana	18
Heuchera	7	Vernonia	18
Hibiscus	8	Veratrum	18
Hosta	8	Veronica	18
Incarvillea	8	Vinca	18
Iris	8	Viola	18
Lepachys	9	Yucca	18
Leucocrinum	9		