

## **Historic, archived document**

Do not assume content reflects current scientific knowledge, policies, or practices.



62.71

# DELPHINIUM

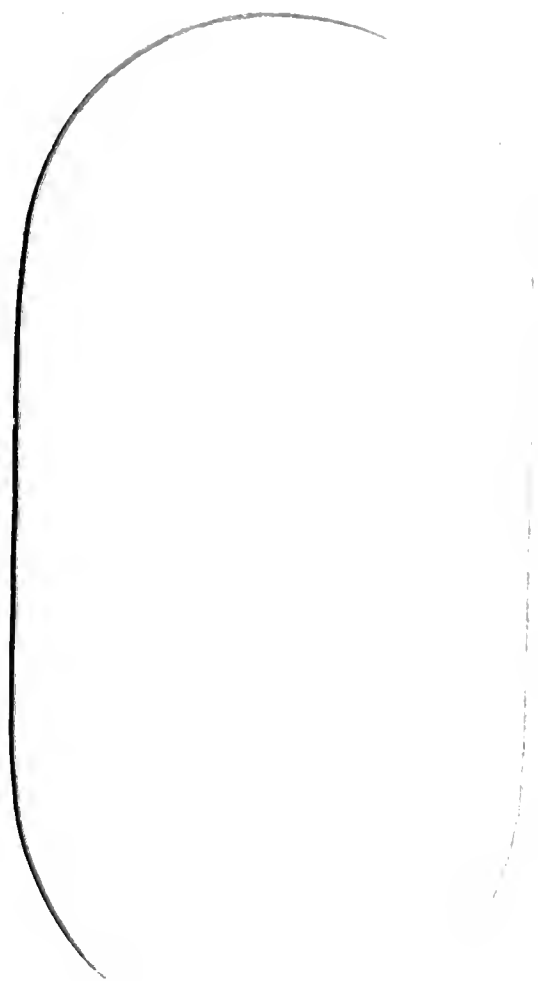
## INFORMATION BOOK

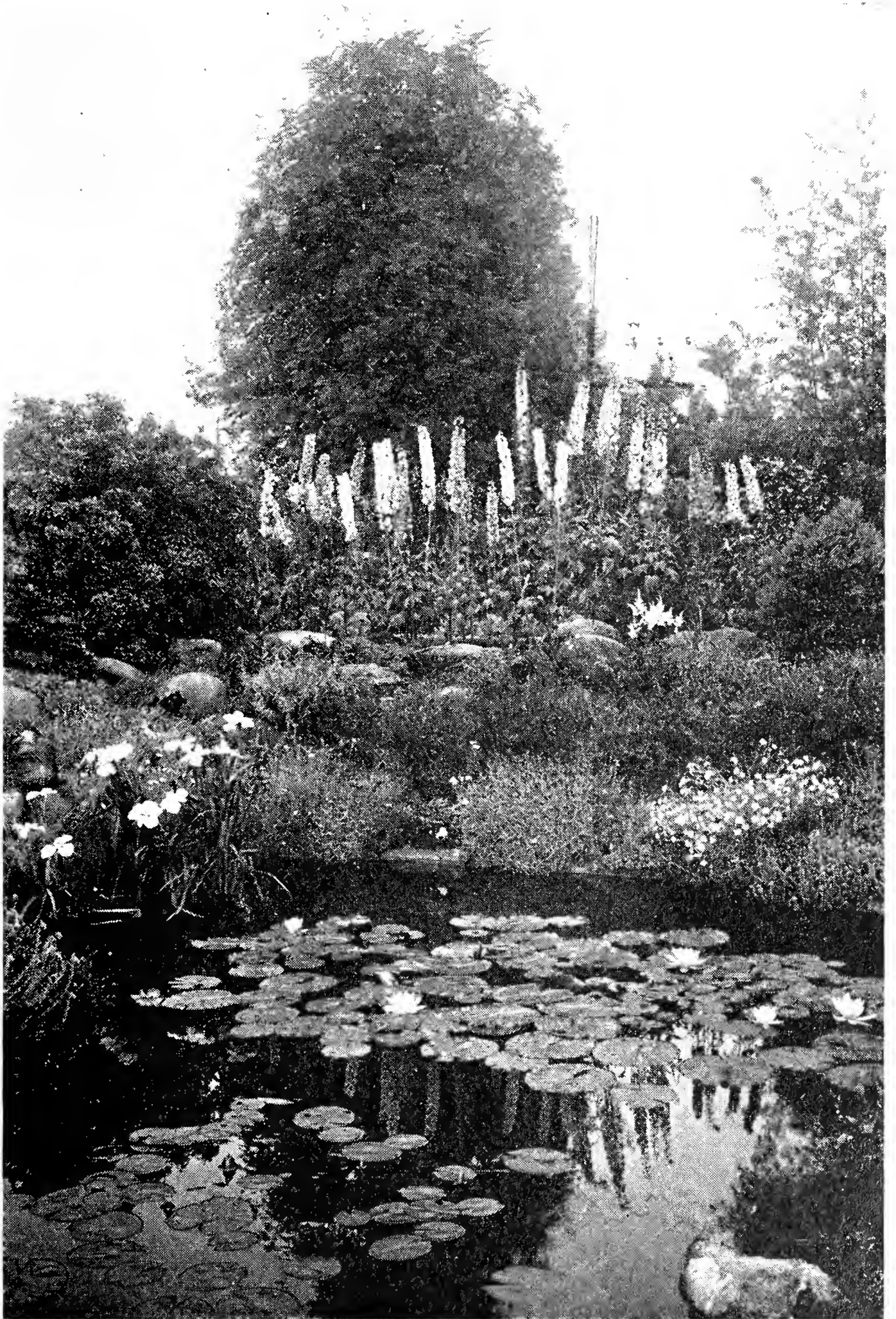


### HOODACRES

Originating Gardens

SUMMER 1937  
SPRING 1938





A section of sunken Alpine Garden and Pool at Hoodacres.

# HOODACRES ORIGINATING GARDENS

First home of the world's only double pure WHITE DELPHINIUMS and where other new plants burst forth from the unseen into earth life. Some of these are announced in this catalog and other introductions will follow. Many new colors and new forms are born here.



I wish to thank those who have reported results on the plants or seed from Hoodacres, and add that any help I am able to give on your plant problems will be cheerfully rendered.

Unusual interest centers about HOODACRES WHITE varieties and the rare new shades made possible only through them, such as the OPALSPIRE Class. The fragrant ones, also. They are coming into prominence both here and abroad and I shall appreciate any items from those growing them, as well as any interesting clippings relating to Delphiniums.

HOODACRES is located directly on the famous Columbia River Highway, easy to reach from Portland. Take Sandy Boulevard to Birdsdales Avenue and the large "Hoodacres Delphiniums" sign on the corner. (Midway between Portland city limits and Troutdale.) The largest displays of Delphiniums in bloom are through June, September and October. Visitors always welcome.

Flower catalogs in general assume the "poetic license" to embellish with exaggerations. We strive to make Hoodacres products better than the descriptions. Let us know if you think we have not succeeded.

**CHAS. F. BARBER**

(Mail and wire address) Troutdale, Oregon.

Phone, Gresham (LD) 5071.

---

## BULGING FILES

Our files are packed through with letters telling of unbounded success growing Hoodacres Delphiniums. They report on both Plants and Seeds, as to extraordinary stature, vigorous growth, size and coloring of blossoms. We have only room for the few scattered through this booklet. And then, just to keep our feet on the ground, come occasional complaints from those who have ignored our carefully worked-out instructions for handling them. You can't hoodwink a Delphinium.



A Typical Wrexham Plant.

# CHASTE WHITE DELPHINIUMS

## The New HOODACRES WHITES

One of the loveliest flowers imaginable is a well grown White Delphinium. Its beautiful formation and glistening purity charm when other white flowers do not appeal, and even one spike introduced in a vase of others makes the high-light, so essential to a perfect picture. Upon the vigorous foundation stock of Hoodacres plantings has been born a new race, called HOODACRES WHITES, a revelation to the world and the dream of many come true; the most surprising Delphinium development of the century.

After many years of skillful endeavor by the breeders of the world to produce a good semi-double White Delphinium, it remained for HOODACRES, in America, to bring forth this remarkable accomplishment. And it has been done with the fewest possible intermediate stages of development. The magnificent spikes of purest white are carried as tall and on just as rugged plants as the ones with color. This will be observed in the photographs reproduced in this booklet. There are no duplicates of these WHITES anywhere in the world.

Albinos of the past have been weak and of little worth. Quite as by magic these white creations came, leaving the hybridizers puzzling as to how it was brought about. But the Unseen is a world of actuality and there all things first exist. All we can do is to co-operate in making the conditions on this plane suitable for the reception of such new things.

---

Be wary of counterfeit "HOODACRES WHITE" Delphiniums. We can be in no way responsible for the character of seeds not grown and packeted here.

---

### JAPANESE IRIS AND A WHITE DELPHINIUM BORDER

Newport, N. H.: "I am happy to report the safe arrival of the Japanese Iris. I planted them immediately in a prepared bed and am able to report growth of the foliage. I have had some breath-taking bloom already from the White Delphinium seeds I bought last year and am going in for a long solid border of Whites, which I know will be the sensation of the county when I get them going."





SHIPS MAST, Hoodacres White, one plant.

## WHITE VARIETIES

**White Sister:** Clear white double flowers of good size and fine form, well set on medium length spikes. Plants \$3.00 each.

**Pearl Necklace:** Large flowers of the purest glistening white and carried on a splendid size spike. This is an outstanding creation with its vigorous growth and luxuriant foliage. Strong plants \$10.00 each.

**Angel's Breath:** The same double, pure white large flowers as above but with a center of fawn. Beautiful combination. Strong plants \$10.00 each.

**Velvabee:** Clear white double flowers with centers black. For the charm of vivid contrast and purity this variety excels. Specimens attain a height of seven and eight feet, with spikes of proportionate lengths. \$12.00 each.

**Vesta:** The same striking black and white contrast as Velvabee, in a single flower. \$4.00.

**The Bride:** Imagine a Pearl Necklace Delphinium with a charming blush in place of the pure white blossom and you have a picture of The Bride. \$5.00 each.

**Bridal Gown:** A Hoodacres white with single blossoms. Handsome flowers and excellent plants. \$3.00 each.

**Pearl Necklace Seedlings:** Excellent specimens; large, pure white and double, but with slight variations from the parent that only the very critical would recognize. Although of greater value they are placed in one class to meet the demand for a true Hoodacres White at \$3.00 each. 15% off on 6 or more.

**Velvabee Seedlings:** Of the same quality as Pearl Necklace Seedlings but possessing the Velvabee characteristics. \$3.00 each.

For **Young Seedlings**—White—see page 9.

White Seeds, page 12.

---

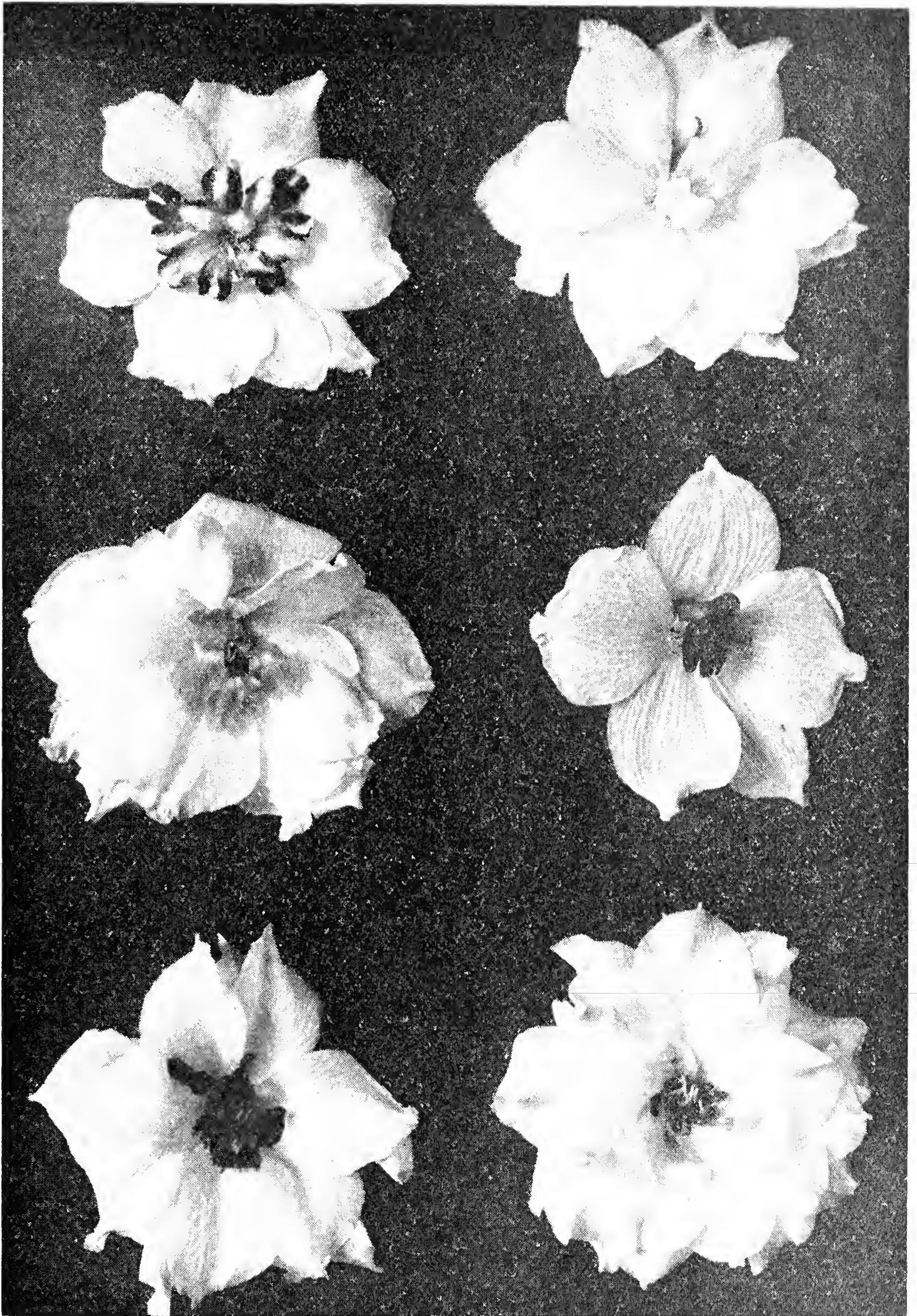
### IN ENGLAND, ALSO

Wellsboro, Pa.: "I saw some Hoodacres Whites flowering in England and they were a revelation to me."

---

### OF COURSE, THE JUDGES KNOW

Littleton, Mass.: "Took first at our Flower Show on your Delphiniums and Columbines. And the Judges were kind enough to write on my card, 'Outstanding Horticultural Excellence'."



The HOODACRES WHITE varieties represented above are, in order of placement: VIKING, PEARL NECKLACE, ANGEL'S BREATH, VESTA, VELVABEE and a many-petaled specimen. (Florets about three-fourths natural size.)

# PLANTS — COLORED VARIETIES

## SELECTED HOODACRES HYBRIDS

Cannot be too highly recommended. From many thousands of plants, we select each season, at time of blooming, by a system of careful checking and labeling, a limited number of exceptional merit that are distinguished into light, medium and dark shades. These are grown into strong blooming specimens before they are sent out and are known as **SELECTED HOODACRES HYBRIDS** and **HOODACRES-WREXHAM HYBRIDS**.

**SELECTED Hoodacres Hybrids** \$1.00 each, 3 for \$2.75, 12 for \$10.00.

**HOODACRES-WREXHAM Hybrids.** Superior for size, coloring and general excellence. \$2.00 each, 3 for \$5.00, 12 for \$18.00.

**Color Selection.** When indicating color preference the classified list on page 10 may be consulted.

## UN-NAMED HOODACRES HYBRIDS

are sold from the general planting, after all doubtful ones have been eliminated when in bloom. Many forms and colors. These give remarkable satisfaction and frequently single specimens are found to be worth the cost of a dozen. The price is low enough to encourage liberal planting. Do you know the pleasure of a Delphinium patch from which to cut freely for indoor decoration? \$3.00 dozen, 2 dozen \$5.00.

**Hoodacres White:** Prices on page 6.

---

**NOTICE.** We now make free delivery on plant shipments to any destination in the United States. Our system of packing carries them in good order.

---

### THE RABBITS JUST LOVED THEM, BUT —

Washington, Pa.: "Our Hoodacres Delphinium have been a perfect joy to us. Never have we had such large plants and beautiful colors. We planted the seed last August and I truly believe every seed germinated. Following your instructions, we covered them with an inch of sand in the cold-frame, and this spring, in spite of the worst winter we have had in years, every little plant came through. They were frosted the last week in May after being set out in the garden, and the rabbits just loved them, but with the exception of about five every one is growing. Several are blooming for the second time and every day is just like Christmas for us, as we have several new Hoodacres Delphinium ready to bloom and we never know what we are going to find when we go to the garden in the morning."

## YOUNG SEEDLINGS — PLANTS

Topmost quality. Spring shipment only. Good condition arrival guaranteed. The demand each spring for small unbloomed plants is now met. They are from August sowings, carried through winter in outdoor frames, insuring splendid vigor for late summer blooming. Prepared to ship safely anywhere on the North American continent. From following seed stock, specimen plants:

· **Complete Range** of Shades and Forms.

**Light Shades** only, finest varieties.

**Dark Shades** only, finest varieties.

**Tall Varieties.**

12 for \$1.50, 24 for \$2.50. Less than 12 and 4 or more 25c each. We pay parcel post charges.

## YOUNG SEEDLINGS — WHITE

Seeds taken from choicest White plants. \$3.00 per dozen, 2 dozen \$5.00, 3 plants \$1.00. Percentage of white plants not guaranteed but produce 80 per cent here.

---

## HOODACRES DELPHINIUMS

—have been developing over a period of more than 25 years. Remarkable for great range of rarest coloring, variety of floret forms and towering spikes of luxuriant bloom, these features rest on the great constitutional vigor of the strain. We are constantly complimented on the root system carried by our plants. And they are grown without irrigation. Also, they bloom twice in the season.

You can now buy genuine Hoodacres Delphinium plants, grown in our own fields and delivered, **transportation free**, in as perfect condition as from 50 miles distant, and at no greater cost than seedlings of indifferent parentage.

---

### LONG TRIP — EXCELLENT ORDER — METHOD OF PACKING

Birmingham, Ala.: "Plants received in excellent order after their long trip. You are to be congratulated on your method of packing. We buy a great many plants. I do not recall having received any so well taken care of."

# SEEDS—OF HOODACRES DELPHINIUMS

One of the most exacting operations at Hoodacres is the protection and collection of seeds from prepared specimen plants. Only such are used—we do not gather from the general planting. All seeds we send out are from the latest harvest season and therefore as fresh as possible.

All Hoodacres seeds are from double flowers, unless otherwise stated, and their seedlings are notably free from the rogues, culls, which too often develop from over-praised stock. Our seeds bring pleasing surprises at every turn.

**COMPLETE RANGE** of Shades and Forms. From finest individual plants. Not the ordinary "mixture" of left-overs. Into this class we are putting each year seeds of the newest things, some of which we have insufficient stock to offer separately. **Nowhere in the world is there offered a mixed packet of Delphinium seeds so filled with new colors and highest quality.** Liberal packet \$1.00.

**BOUNTY BLEND:** A generous packet carefully chosen from field specimens, representing all colors. Not the "mixty-maxty" sort commonly put up. (This supplants our ALLTYPES packet as an improvement.) Pkt. **50c.**

**WREXHAM** Strain alone. From typical plants only. True Wrexham shape is broad and tapering. Pkt. **\$1.00.**

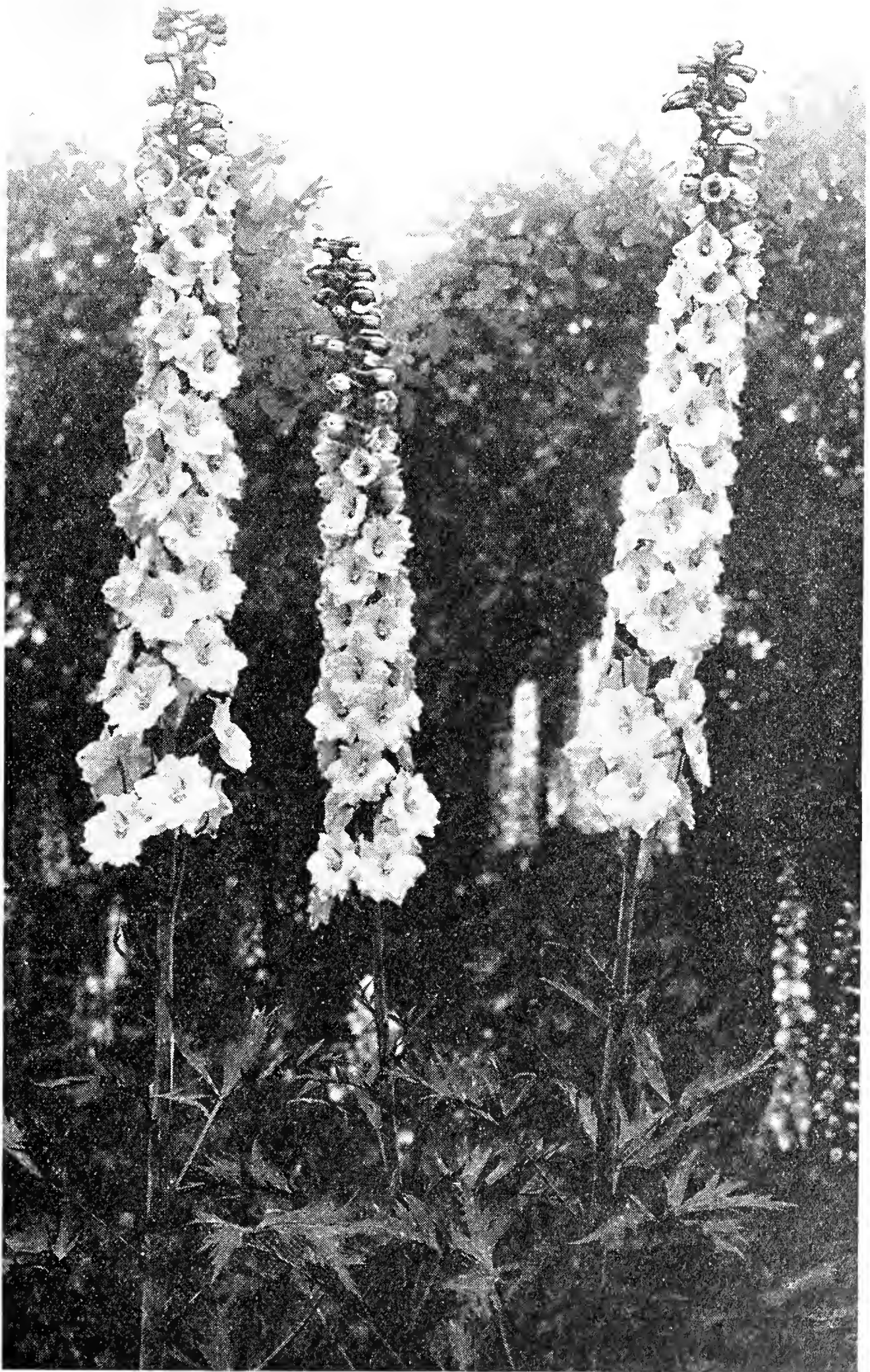
**CONSPICUA:** Extraordinary centers, surprising contrasts. Some of these are deep blue or purple carrying extra large white centers; others are medium shades with immense jet black and all are beautiful. Seeds only, \$2.00 pkt.

**GENTIANET:** Among the double-flowered Delphiniums self blues are not frequently found and the above represents the finest deep shade in this segregated class. It is the color of the gentian flower on sturdy well-developed plants. Pkt. \$2.00.

**MANZANITA:** Deepest red-purple, semi-double with black center and large. Plants strong and symmetrical. One of the most impressive in our fields. Pkt. \$2.00.

**MAUVE MANTLE:** Singularly attractive in the throng of beautifully colored spikes. True mauve and practically a self. Seeds from specimen plants. Pkt. \$1.50.

**MISTLAND BLUE:** In double-flowered Delphiniums self blues are rare. This is a charming medium tone, between azure and intense blue and sometimes called "powder blue." Pkt. \$2.00.



THE BRIDE, Beautifully Blushing.

**OPALSPIRE:** As the name indicates, the tones run close to opal effects. They suggest also mother-of-pearl, delicate pink and pastel shadings. A beautiful development through the Hoodacres Whites. Pkt. \$1.50.

**RED RAMA:** A color that stands out strongest among Delphin-effects. They suggest also mother-of-pearl, delicate pink and pastel shadings. A beautiful development through the Hoodacres Whites. Pkt. \$2.00.

**SUNRISE PINK:** While there is no true rose-pink in perennial Delphiniums, this variety is as near as exists at the present time. It is really a delicate pink-mauve. Pkt. \$1.50.

**THE WONDROUS:** From an assembly of specimen Delphiniums, extraordinary for size of florets, we have selected a group of the best for seed parents, the standard of size being at least two and one-half inches and running light to very dark. \$2.00.

---

## SEEDS OF HOODACRES WHITE

### Originator's True Stock

**DOUBLE WHITE VARIETIES:** Carefully selected mixture from choicest plants. Pkt. \$3.00.

**PEARL NECKLACE:** The Queen of all White kinds. Pkt. \$3.00.

**ANGEL'S BREATH:** The fawn-centered White. Pkt. \$3.00.

**VELVABEE:** The flower of contrast, Black and White. Pkt. \$3.00

**WHITE SISTER:** A smaller form of Pearl Necklace. Pkt. \$2.00.

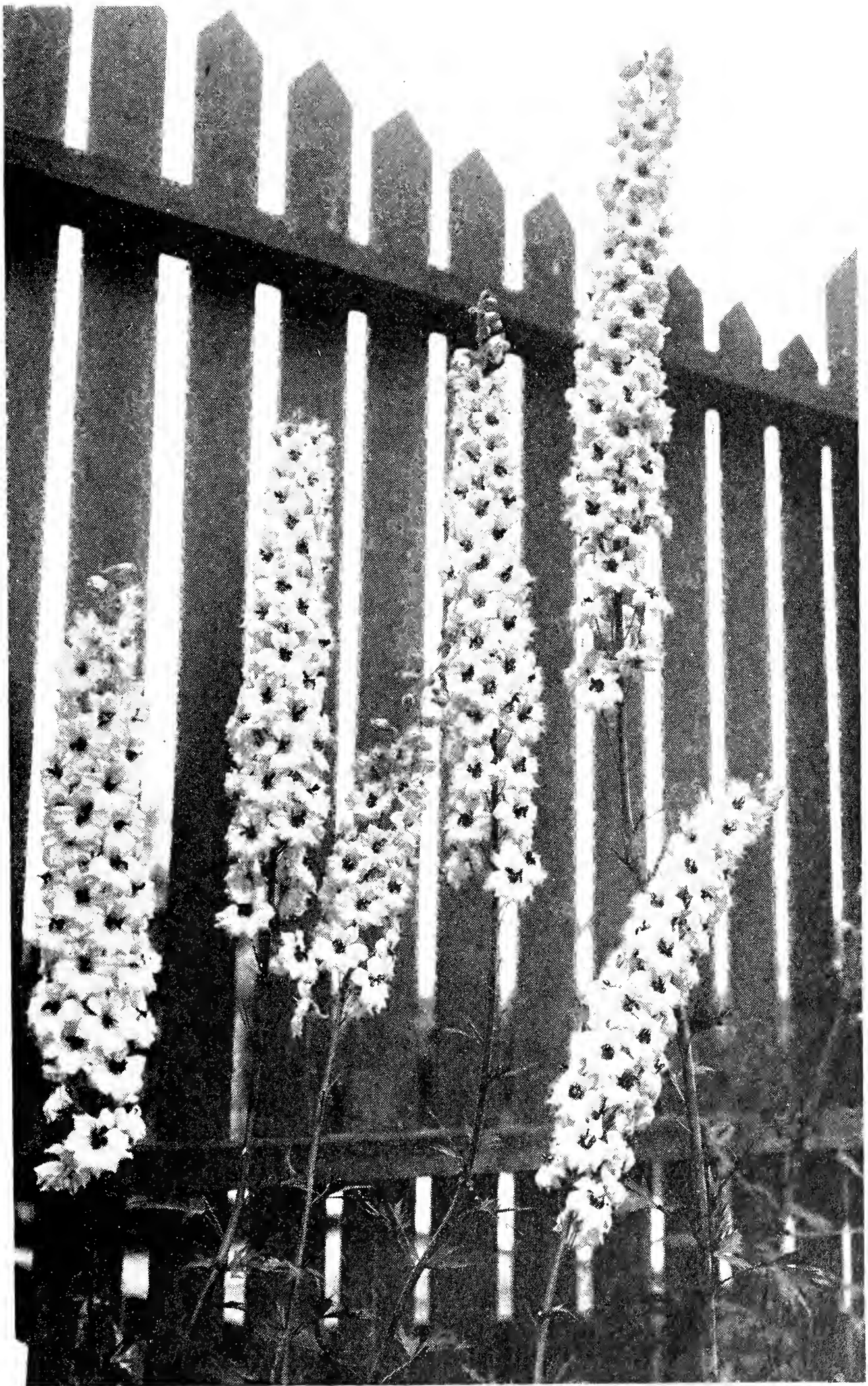
**THE BRIDE:** A pink tinged Pearl Necklace. \$2.00.

**WHITE COMPANY:** Seeds from fine White specimens, grown in the fields with colored kinds. The percentage of white plants will be smaller than from our "Double White Varieties" but many fine things may be expected. \$2.00.

---

**Any seed order from this catalog amounting to \$6.50 for \$5.00. Amounts in excess of \$6.50 at 25% discount. (This does not apply to plants.)**





HOODACRES WHITE, VELVABEE Vaulting an Eight-Foot Fence.

## How to Grow Delphiniums from Seeds

The seed-bed, whether flat, cold-frame or open ground, cannot be too carefully prepared. Avoid any risky element in the soil. We must both encourage the seeds to germinate and have congenial conditions ready for the sensitive infant plants. When pots or flats are used put ample drainage material at the bottom, shards or gravel, and over this some sphagnum or peat moss. A good seed soil is two parts virgin soil or its equivalent; one-half to one part leaf-mold from deciduous trees, one part sharp sand (more in heavy soil). Mix well, sift and put in enough to bring the layer to within an inch or so of the finished surface. On this strata sprinkle a mixture of fine charcoal, bone meal and sulphur in about equal parts, and add remainder of the soil.

Level and press smooth before planting the seeds. The soil should be neither wet nor dry but just nicely moist. Sow the seeds in shallow drills, never more than one-fourth inch deep, and fill with fine clean sand, or sand and soil. **Never let the seed-bed dry out for even a moment**, nor should it be kept soggy.

For August sowing, cold-frames without glass may be used (where they can remain over winter) shading well until germination takes place. They will flower the following summer. Very early spring sowing in gentle heat (greenhouse or hot-bed) will also produce bloom the same season. Once transplanted before going into permanent place induces fuller root system.

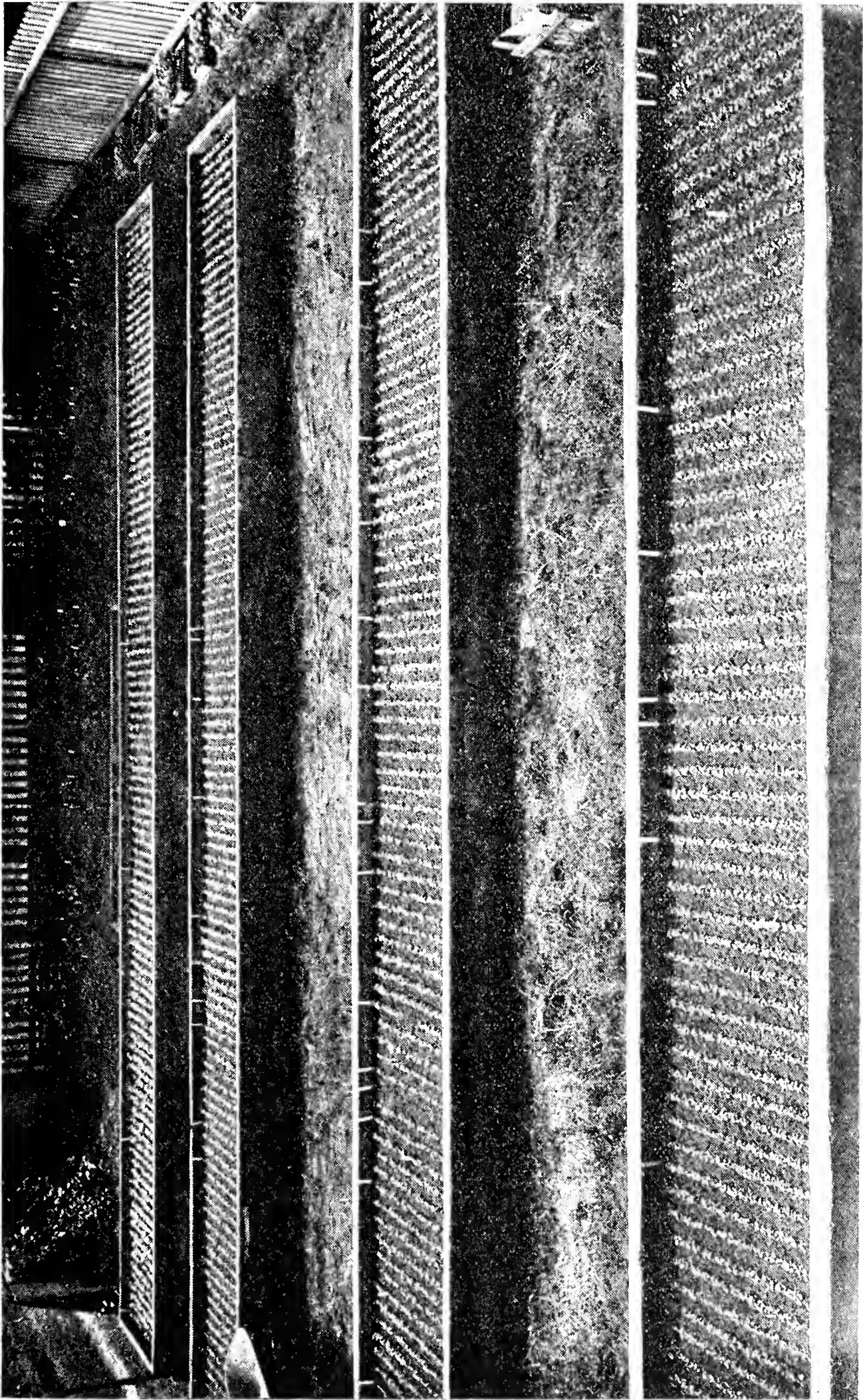
A half-inch layer of sand on top of seed-bed will afford winter protection, and discourage slugs.

Hoodacres seeds are harvested throughout the month of July and are usually ready to send out the first week in August, just in time to be sown for carrying over winter.

It is unsafe to sow out-of-doors after August (except in California and similar climates), as frost will lift the too small plants.

Delphinium seeds are only at their best when fresh and should not be counted upon when more than one year old. The fresher they are the more prompt will be germination. We never send out old harvesting. Count on an average of two weeks for Delphinium seeds to show germination.

Unless otherwise demanded, all seed orders received after June 1st will be filled from the new crop, ready about August 1st. August planting will bloom the following summer.



**August-sown Frames at Hoodacres.** More than forty varieties of Delphinium seeds. Note the remarkable uniformity in germination. The one row in second frame which failed was a hand-pollinated cross with a rare foreign species.

## Delphinium Culture

Plants are safely moved throughout the fall and early spring. Except in very wet, cold soils, autumn planting is strongly recommended. They are not checked when spring growth starts.

After getting well-grown plants, allow a two-foot space for each and open the earth to same depth, and 18 inches in breadth, filling the lowest foot with a mixture of very old manure and garden soil, with a good sprinkling of raw bone meal, thoroughly incorporated with the soil, then tamp.

Where the sub-soil is very heavy, dig the hole six inches deeper and fill that depth with coarse gravel to insure perfect drainage. If the soil is of a clayey nature, incorporate sand and peat moss with a little ground limestone. Then for the upper half add to your very best garden soil this mixture: bone meal, ground charcoal and sulphur. If soil is naturally acid include a little lime. Set crowns two inches below the surface, the roots well spread and soil firmed against them before leveling. Avoid dense shade, roots of trees, and stuffy locations.

When growth first starts in spring, dig around each plant a trowel of bone meal, mixed with an equal amount of hardwood ash. Cut faded spikes to prevent seeding. It is the nature of hybrid Delphiniums to bloom a second time in the season and as the second growth appears the old stalk yellows, is no longer required, and should be cut down. After a short resting period, give another supply of bone meal and ash, being careful not to destroy the fine surface-feeding roots, and water as needed. If the weaker growths are removed when plants are a few inches high, the remaining ones will benefit. Well-grown Delphiniums will bloom the first season after planting and, being true perennials, should, with favorable conditions, increase in size and grandeur each year.

In much heated sections, as the Southern States and Southern California, the best time for watering Delphiniums seems to be in very early morning, as evening sometimes proves unsafe.

As figs do not grow on thistles, no matter how we tend them, no more can you expect show spikes on your Delphiniums if stock is procured from unskilled growers.

---

### HOW THEY GROW ON LAKE ERIE

Erie, Pa.: "The seeds purchased from you in 1934 have developed into plants seven to nine feet high and are wonderful. They were the envy of the Garden Club members who were entertained by me July 8th."

## **SURVIVAL OF THE FITTEST**

### **Hoodacres Delphiniums and Climate**

The Oregon climate seems to have been made for plant breeding. Not only is it favorable for the development of new forms and colors, but it also imparts to them a ruggedness that stands the strain of much more rigorous sections, as in the following representative case:

A man who undoubtedly is the largest amateur Delphinium grower in the world contends with one of the harshest climates—northeastern Maine. Dr. Sinkhovitch of Columbia University has obtained Delphiniums from all the prominent strains of both Europe and America. The winter of 1934-5 was unusually severe, plants buried in ice for a long period, killing off entire perennial gardens; his own plantings also greatly suffered.

Reporting the "tragedies" and referring to his extensive collection he states: "Many of them are planted in the same fields under the same conditions, and which do you think suffered relatively the least? They are the Hoodacres of Charles F. Barber. I came here early, the first of May, and could tell off-hand, without looking at labels, which were Hoodacres."

---

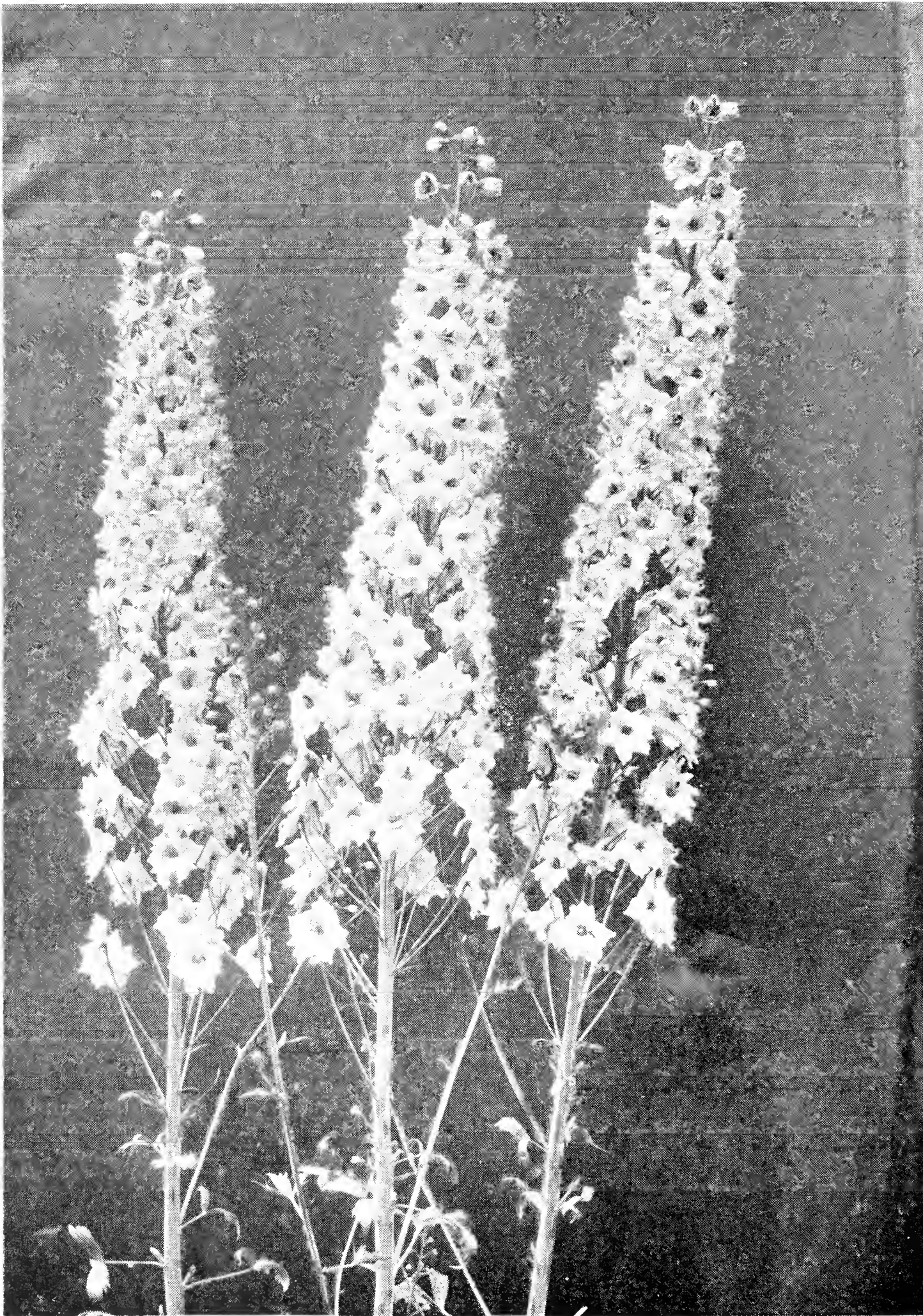
### **DELPHINIUMS IN A NOTED GARDEN**

Western Springs, Ill.: "On Monday of this week I had the opportunity to visit Mr. James Simpson's garden, Sheridan Road, Glencoe, Ill. It was just about the grandest place I was ever in. The Delphiniums were the most beautiful ones I have seen in the Chicago area. He had so many real blues and the flowers were like dollars. Well I know from your pictures these are like you see every day and I imagine yours are much more beautiful. Mr. Mellenthin, the gardener, told us he bought his seed from you and said even your dollar package was very good. Of course, as he said, money doesn't count so much with him, he has to produce the finest that is possible to raise."

---

### **FROM LONG DISTANCE YET FRESH AS WHEN PACKED**

Patton, Pa.: "Have received the Delphinium plants and they were in wonderful condition. I planted them the evening they came and I think they are all growing. Thank you kindly for the care with which the order was filled. Although they came such a long distance they were just as fresh-looking as they must have been when they were first packed. Never have I received plants from anyone in such excellent condition. Will send you my order for Seedlings and Oriental Poppies later."



The IDEAL WREXHAM Form as Developed at Hoodacres.

## Delphinium Pests

The clean garden discourages many enemies, especially the bacterial ones. Decaying litter provides them a good home.

Avoid fresh manure near plants as you would the pestilence. And use any high-powered fertilizer with extreme caution. It is safer to stick to the plain old-fashioned foods that we all know how to deal with.

Before the Delphiniums start growth in spring a lime-sulphur soaking of the soil, at the orchard strength of ten to one, is an excellent precautionary measure.

In some sections there are spasmodic attacks of the so-called "Blight" or "Blacks"; technically it is known as "cyclamen-mite." It produces distortion and blackening of the growing plant. As the roots may not be affected, the plant should be cut to the ground and burned. A weekly spray of "Rototox" should keep it in check. Our Oregon stock is free from this pest.

If there is a tendency to mildew or black-spot, adding Black-leaf 40 to the lime-sulphur at the rate of one tablespoon to three gallons of water, is recommended. Fortunately, Hood-acres is quite free from these disturbances.

Slugs will sometimes leave home merely by the use of sharp sand strewn over the ground, but more persistent breeds may need copper sulphate crystals crushed fine and scattered where they raid. This is very poisonous and must be handled accordingly.

---

### HUNDREDS OF VISITORS AGREE

Anderson, Ind.: "I wish to inform you about the results of the seeds I obtained from you last year. The Seedlings bloomed this June and are in bloom again after the unusually hot dry weather of the summer. The flowers produced have surpassed anything in the Delphinium line I have ever seen. We have had hundreds of visitors to our garden and I think that every one of them agrees with me in regard to your Delphiniums. The color range is far beyond my greatest expectations. Some beautiful White specimens have shown up in the mixed seed. I wish to thank you along with my many friends for the fine products that you are giving the Delphinium world."

---

### THE WORLD'S LEADING GROWERS VS. HOODACRES

Edison, Pa.: "For four years now I have been raising perennial flowers for a hobby and the ones that I love best and take the most interest in are the Delphinium. I have them from seeds of the world's leading growers, including English, and Hoodacres strain has proven the best yet to me."







SUGGESTING THE COLOR RANGE IN HOODACRES DELPHINIUMS

Variety Names — Mistland Blue, Conspicua, single.  
 Sarah Barber, Decoration  
 Manzanita, Chief Grandin

Page Twenty

(These colors are only approximately Nature's  
 effects as they must be mechanically reproduced)

Opalspire, Conspicua  
 Sunrise Pink, Gentianet  
 Mauve Mantle, Rama

Page Twenty-one

# Australian Plant Authority Reports on Hoodacres Seeds

"I was very pleased to receive yours of September 3d with Delphinium seeds enclosed, which you will be interested to know have germinated well. I must congratulate you on your care in packing your seeds. It is probably partly due to this method of packing that the germination is 100% after the long sea voyage.

---

**Delphinium Seeds** started before end of August will carry over winter in a simple cold frame and bloom the following summer. Except in California and the Southern States, outdoor germination will be questionable after August. We send full planting instructions with each seed order.

---

## DOUBLE BLOOMING

The hybrid perennial Delphinium is urgent to repeat its early summer performance and bloom again later. This generosity on their part suggests that we give them a good feeding when the first display passes and not neglect watering.

All Delphinium plants, except Small Seedlings, are one to two years old. **No charge for packing or transportation.**

Fall shipments begin about the middle of September and continue into November.

The Hoodacres method of preparing and packing plants for shipment fits them to stand long journeys in good condition.

**The Test of Seed Trueness:** In a solid planting of seedlings, 60 x 60 feet square, from seeds gathered in our regular white section and bloomed out in 1935 for the first time, 83% of all the plants were White. Such a record for a new Delphinium variety has probably never before been made.

**Seeds, from Seeds,** from seeds that one time in the past came from some fine variety may now utterly lack the original's virtues and be like "The harp that once through Tara's halls \* \* \*"  
The originator's true seeds may cost a little more but the effort is not wasted. Better get the genuine.

Turning Delphinium seeds over to the regular florist to germinate is often risky. We give growers the benefit of over thirty years specializing with them, but the professional resents being told. As aristocrats the Delphinium race insists upon having its own way, too.



One Plant of REX OREGONUS



**Our Visitors from Japan**

# Hoodacres Giant Japs

## PICTURESQUE JAPANESE IRIS FOR AMERICAN GARDENS

Their form, their markings and their color effects are distinctly Oriental, and strike a new and captivating note of garden pleasure. The foliage is upright and ornate, in contrast to the coarse leafage of some other plants.

It is difficult to express by words the many variations in tone that result from nature's use of violet shades and white, embellished with gold, which are the prevailing base colors of the class. Yet they run from the most intense red and blue violets or purple down through their most delicate shadings to pure white. Many of our newest hybrids are particularly charming in tender orchid tones.

Their culture is easy, but exacting as to their simple wants. The soil must be deeply dug and on the acid side which excludes lime and bone meal. Leaf mold and manure may be used quite freely for richness, and to create greater acidity apply in spring a light dressing of Aluminum Sulphate. Then be sure that before and during the blooming season there is no lack of moisture in the soil and if your plants are well chosen you will marvel at their size and opulence. But do not expect them to be at their best the first season after planting.

This list of Japanese Iris is truly one of outstanding originations and not of out-dated mediocrities. Many named varieties have been discarded as too far below our standard and thousands rogued for the same reason. Too many growers are loth to eliminate stocks which have been superseded in quality. If out of a thousand hand-crossed seedlings we get two or three of rare merit we are pleased, but such plants cannot be sold at the price of the ninety-and-nine.

**Amethyst** (19): Large wavy petals of soft amethyst, tall, single. 50c.

**Azure** (68): Great wavy petals of mauve-blue deepening towards the golden arrow at base. Double. 50c.

**Betty** (S57): Feathered raspberry petals with large deep standards. Double. 75c.

**Blue Edge**: An always charming combination—white, with a narrow band of blue. Double. An improved variety in this coloring. 75c.

**Blemona** (S111½): Medium blue, tall and effective. Single. 50c.  
**Blue Danube** (82): Large double, indigo-blue with violet. Rays of white from base. Showy. 50c.

**Charlotte** (27): Bright violaceous-blue with gray-white mottling, yellow bar. Beautiful single. 50c.

**Clarice Childs** (10): Beautiful large single. Petunia-violet, bluer toward gold of base. 50c.

**Cloisonne** (31): Tyrian blue and purple, white feathering towards base with orange arrow. Double. 50c.

**Dancing Girl** (S84): Mulberry purple, large crest. Double. \$1.

**Day Dream** (42): Soft pinkish lilac, lightly veined pale violet-blue, golden base. Single. 50c.

**Dorothy Boynton** (S51): White with violet veins and crested deeper violet. 75c.

**Elbrus** (23): New clear lavender, near azure. Double. \$2.00.

**Fujisan** (51): A perfect flower. Plants most vigorous and abundant bloomer. Shades of fine light blue-lavender. Large double and fairly tall. \$1.00.

**Glorywine** (107): Winy veins on gray white, winy halo to gold shaft. Unusual coloring. Double. \$1.00.

**Ho-o-jo** (169): Large double, "velvety rose". \$1.25.

**Kalhiko** (13): Large splendidly finished flower. Close blending of violet and white, producing a Chinese-blue effect. Late double. \$1.25.

**Kasugano** (142): Fine double, deep pink with deeper pencilings, gold bar, fine size. 75c.

**Kin Lee** (148): Fine large medium-toned double; deep orchid. Holds color well. \$1.00.

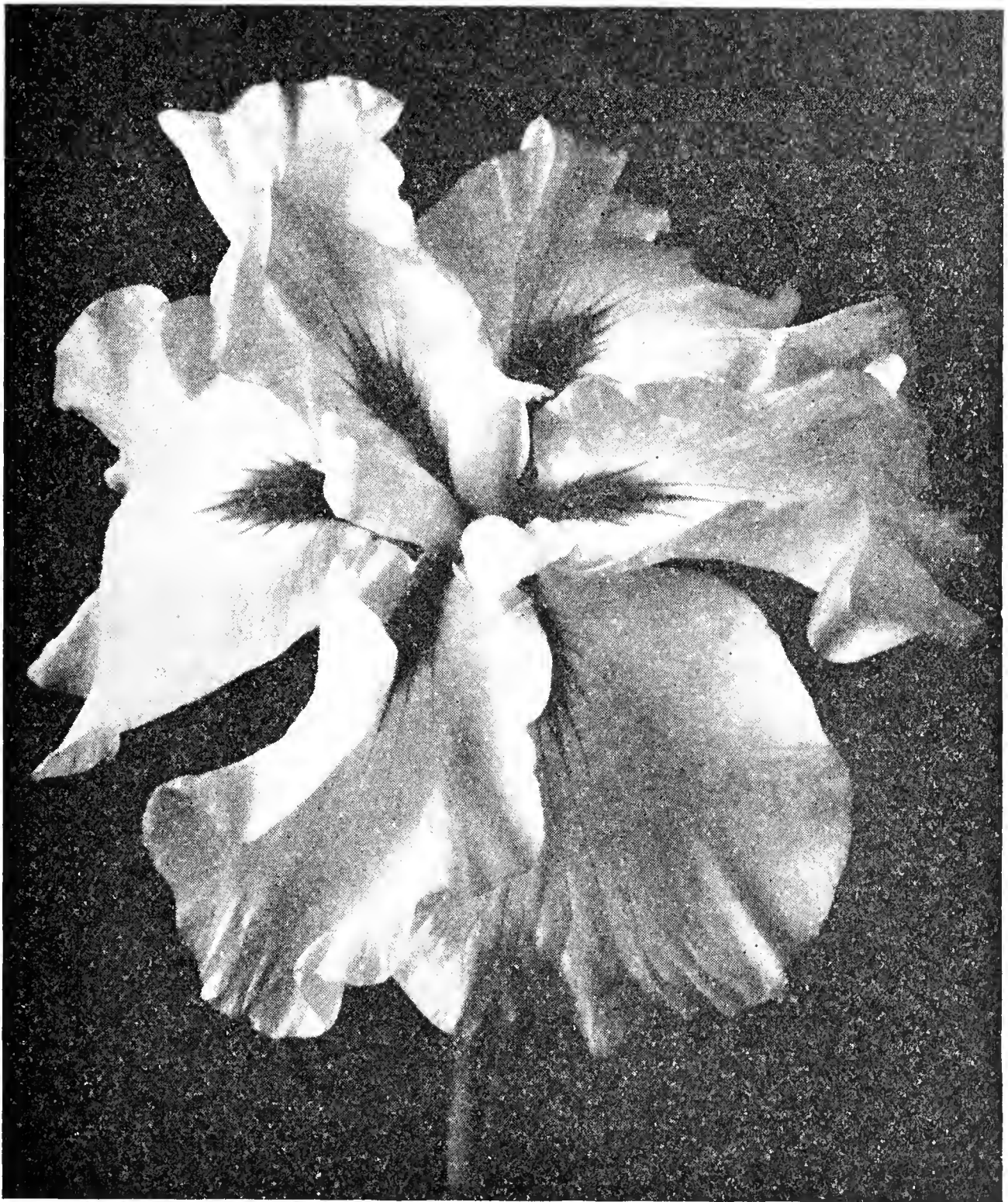
**Light-in-the-Opal** (22): The newest, finest and largest in pink Japs. Double. \$2.00.

**Lucie Marshall** (69): A spectacular large double. Pansy-violet intensified with broad gold spear, surrounded white and white pistils. Universally admired. 50c.

**Moon O'Silver** (S92): Double cream white, bars light gold. 75c.

**Morning Mist** (S87): Fine single white with faint blue overcast. \$1.00.

**Mrs. Fred Honey** (Sm90): Large double flower of velvety mulberry purple, prominent gold bars. Beautiful new variety. \$1.25.



A Hoodacres Achievement: FUJISAN

---

**PLANTS SHIPPED — OREGON TO NEW ZEALAND**

Auckland, New Zealand: "The Japanese Irises arrived in perfect condition and after being in the ground one week are already getting a nice green. The bed they are in was prepared months ago."

---

**GIANT JAPS THE ENVY OF ALL**

Amesbury, Mass.: "The Japanese Iris, Kalhiko and Lucie Marshall, bought of you two years ago, have been the envy of all admirers." (8-6-34)

**Mrs. John Hawker** (Sm45): Unique in its distinct and rare coloring of coerulean blue. Flowers double. Highly valuable to the connoisseur. \$1.50.

**Mu-ra-Saki** (S83): Very large, blue haze, mottled white. Six petals. Double. Outstanding. \$1.00.

**Oregonian** (S106): Plum purple, white flecks, few single. 50c.

**Outrider** (43): Medium violet single, flecked just enough with white to modify the tone. Single. 50c.

**Panoply** (2): One of the newest and tallest single. White flecks on blue, blue pistils, standards bright claret, gold feathering at base. Impressive for size and tone of Chinese blue. 75c.

**Perfect Peace** (S18): A marvelous new flower. Purest white throughout, very large, with tall frilled crest in place of the usual standards. Its waxen purity is most captivating. \$1.50.

**Priscilla** (S41): Double white with purple veins. 75c.

**Pulcher** (63): A combination of white and soft pink, fine coloring, double and good size. Ideal for semi-shade. 50c.

**Red Cloud** (S44): Petals shaded dark red purple. Dbl. 75c.

**Mahogany Glory** (S82): Fine double, rich mahogany red. \$1.

**Redhof** (119): Reddish tone of purple. Double. 50c.

**Ruritana** (5): Enormous blossoms blue-purple. Double. One of the most impressive. \$1.00.

**Smith's Glory** (Sm93): Strikingly large and imposing. Purple with winy veins, giving a russet cast. Bright gold bars. Double and one of the newest. \$1.25.

**White Dress** (84): Tall double white, prolific bloomer over long season. Golden spades at base. 75c.

---

**Discount:** One-fourth off on 5 or more, from prices quoted above.

---

**Bounty Collection:** In addition to above we are growing many varieties ranging from 50c to \$1.00 each, of which we have insufficient stock to list. These together with surplus of our regular kinds we are including in this collection, well balanced for color. \$2.50 for 10, while they last. Delivered.





Among the outstanding Japanese Iris recently orginated here, this one is singularly beautiful. Its name, **PERFECT PEACE**, is well chosen. Pure white — the dark bars represent gold in throat. Note the remarkable crest

# HOODACRES HYBRID HEUCHERA

## "Coral Bells" or "Fairy Flowers"

A new race of these sparkling flowers. Greater size and vigor, many new colors and improved blooming quality. Handsome evergreen foliage, many wiry stems clothed with bells of rich and vivid red shades, also soft pinks and white. Height 12 to 18 inches. Much more vigorous and prolifis of bloom than the older kinds offered by the general nursery. An ideal edging plant for all the year and brilliant with color over a long period. An ornament in the rock garden and a lasting cut-flower. When this plant is grown in colonies it becomes a revelation of beauty. One of our specialties.

**Angelus Bells:** Charming medium tone of coral.

**Carillon:** Near to Queen of Hearts color, but smaller flowers.

**Cathedral Bells:** Vigorous glowing pink.

**Coralie:** Bright rose red, seedling Q. of H.

**Farafene:** Excellent white.

**Gorgeous:** Medium coral; English variety.

**Hermes:** Spray-like flowers, tall, flesh pink.

**Jewel of Allah:** Light pink or "Begonia Rose".

**Light of Allah:** Enchanting tall "Rose Red".

**Matin Bells:** Bright pink, medium tall.

**Rain of Fire:** The well-known "Coral Bells" color.

**Vesper Bells:** Yellowish "Geranium Pink".

Above varieties 30c each, three for 85c, 12 for \$3.00.

**Queen of Hearts:** Deepest glowing coral coral-scarlet. Long blooming. 50c each, 12 for \$5.50.

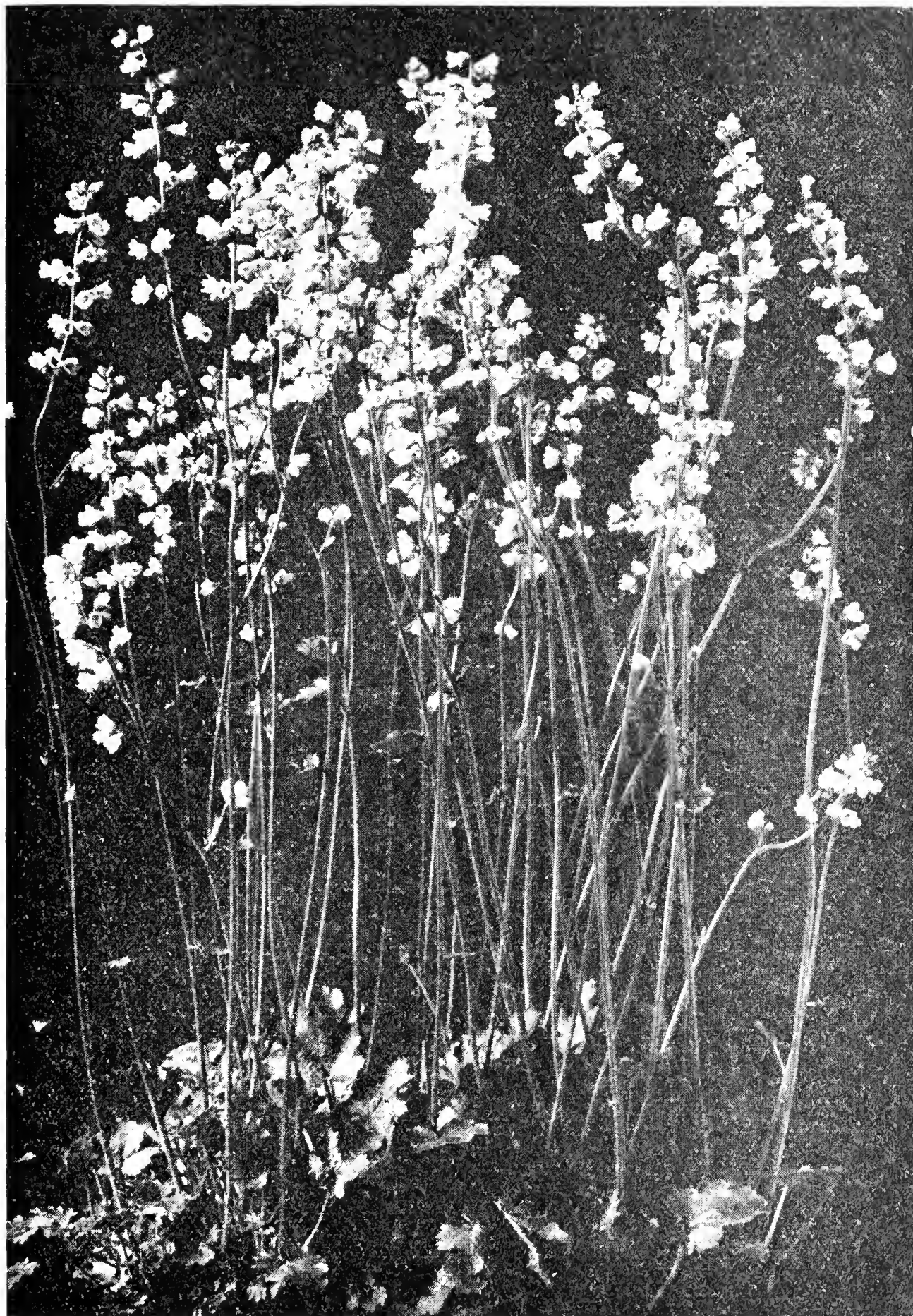
**Heart's Desire:** Outstanding "Begonia Rose". The largest bells of all Heucheras. 75c, 3 for \$2.00.

**Heuchera Seedlings:** Varying shades, mostly corals. \$1.75 per dozen, 6 for \$1.00, 100 for \$12.50.

---

### EASILY GROWN — HEUCHERAS AND DELPHINIUMS

Newark, N. J.: "The Heucheras and Delphiniums you sent me have been wonderful, and so easily grown. They have had no special care. Seeds were planted in the open ground and grew robust plants." (1-16-34)



Hoodacres Hybrid Heuchera

---

### HOODACRES HEUCHERAS IN OHIO

Ohio: "My Pearl Necklace Delphiniums and the Heucheras have been tremendously admired."

## ORIENTAL POPPIES

For splendor they occupy a place of their own. We have eliminated from our plantings all the old small-flowered and common orange kinds.

Plant in neutral soil of good quality, deeply dug, where they are to remain. Their roots are long and brittle.

For best results the Orientals should be moved in late August, as they make a fall growth and should not be disturbed afterwards.

**Australia:** Immense size, rich, deep carmine bowls standing three feet in height. This remarkable Hoodacres variety is one of the two Oriental Poppies which received the highest rating in 1933 by the judges who passed upon the entire field of available kinds. \$1.25 each, 3 for \$3.00.

**Gray's Orange:** An upstanding large orange-scarlet, very little black at throat; attractive. Australian production. \$1.25.

**Lady Moore:** Glowing salmon-pink. Keeps its color and blooms along with Delphiniums; remarkable color combination, 24 in. \$1.00, 3 for \$2.25.

**Lord Lambourne:** Deeply fringed petals, heavily blotched black at throat. 50c.

**Mandarin:** Remarkable Chinese red, very tall and strong grower; rare. \$1.00.

**Mrs. Stobart:** A new and rare English introduction, soft old rose; very unusual. \$1.50.

**The Chosen:** Delicate shrimp pink; tall and large. \$1.50.

**Trilby:** Another outstanding Oriental. Large shapely blossoms of lustrous red, petals crinkled. An important feature is its late-blooming quality which happily extends the season. \$1.50 each.

---

Long lists of Japanese Iris do not by any means imply marked distinctions in color and form, while much depends upon the inherent vigor of the plant itself. We are continually eliminating varieties which are defective in this respect. And we do not hesitate to discard any kind which has been superseded by a better. In blossom size we have practically doubled that of yesterday, and new colorings also are appearing. The reddish, or russet, tones are now coming in, and pinkish mauves, also.



A plant of the great Oriental Poppy, AUSTRALIA, showing why its relative size and sturdy growth makes possible its wonderful color display.

## HEMEROCALLIS — The DAYLILY

Most effective border plants in their greatly improved forms, that bloom after the plethora of flowers is past. Tones of yellow and gold and heights from eight inches to four feet. New shades and largest blossoms. Deeply dug soil, well enriched, will show in size and abundance of blossoms.

We have screened out many of the new varieties which have had fictional praise and list here such as our own tests have demonstrated worthy to recommend.

**Ajax:** Splendid orange-apricot coloring; fairly early blooming. \$1.25.

**Beacon:** Early apricot-orange and good bloomer. \$1.00.

**Calypso:** Large lemon-yellow; the finest of its shade. A Burbank origination. \$1.00.

**Cinnabar:** Much overpraised. Color is mixy, orange-fulvous. 50c each.

**Crown of Gold:** Large deep orange flowers, broadly open. New. \$3.00.

**Dover:** A splendid deep orange, medium height, good-sized flowers. 75c, 3 for \$2.00.

**Flava:** The "Lemon Lily" of other days. Still a good doer, even if the blossoms are not equal to size of newer kinds. Blooms nearly a month in advance of other kinds. 25c.

**George Yeld:** A highly praised English variety. Large orange flowers. \$2.00.

**Hyperion:** Large finely finished canary yellow. Received A.M. from the RHS. \$2.00.

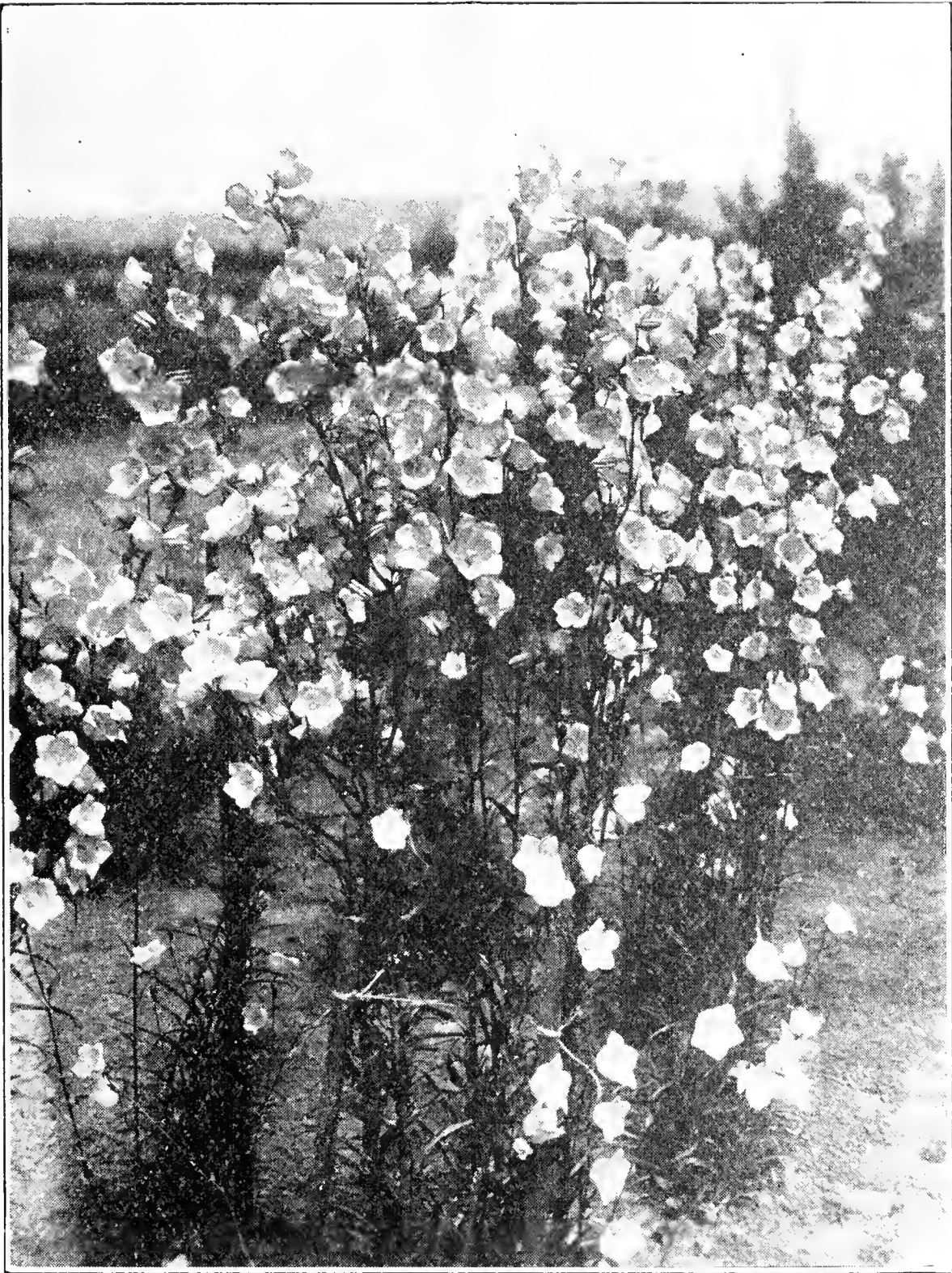
**J. A. Crawford:** So outstanding in color, form and performance that we rate it indispensable. Very large rich apricot yellow, fine height and most vigorous. \$1.00 each, 3 for \$2.50.

**Mikado:** Among Dr. Stout's originations this is the best doer here. Flowers large orange, with a fulvous ring midway of the petals. Medium height. Our stock is sufficient to offer this at a low price. \$1.50 each.

**Margaret Perry:** Originated by Amos Perry, England, and conspicuous for its attractive two-color petals and profuse blooming habit. This is what Cinnabar ought to be. \$2.00 each.

**The Gem:** Fine yellow; a real gem. 75c.

**The entire collection of 13 varieties subject to 25% discount.**



### **SECOND TIME BLOOMING — SURPASS FROM ENGLAND**

Defiance, Ohio: "I purchased a package of Delphinium seed from you last fall; the plants bloomed this spring and are now flowering the second time. I certainly am pleased with them. They far surpass plants from seed I imported from England."

## **HOODACRES Strain of AQUILEGIAS (Columbines)**

The plants with beautiful foliage and always charming flowers, for sun or shade. The Hoodacres strain is notable for its large flowers and long spurs, but especially its new deep colors. Packets contain the deeper colors along with medium and light shades, well proportioned, as Eastern Prince, Copper Queen, Silver Queen, Myrose, Golden Shore, Red Spur, etc. Pkt. 50c. Some of these varieties can be supplied separately.

**SEEDLINGS** from our finest stock, blooming size. \$2.00 per dozen, \$1.25 for 6.

### **FROM PUBLIC GARDENS, KYNETON (Near Melbourne), AUSTRALIA**

"I am pleased with your strain of Aquilegias, now in full bloom. Unique colors among them. Mr. D—— sent me seeds of several English strains at about the same time, so I am comparing them. So far yours are much the best. Your Heucheras are also blooming and are fine."

(Later) "Re Aquilegias: I gave a lecture on these flowers at the last meeting of the Horticultural Society and you may like to know that I took a large bunch of Hoodacres Strain, which proved a revelation to the Society for the beautiful new colors."

### **HOODACRES LONG-SPURRED AQUILEGIAS**

Elizabethtown, Pa. "The Columbines I grew from your seeds are the finest I have ever seen, hence the order for additional ones."

---

## **TOWER BELLS**

Campanulas of the new "Giant" peachbells class, standing four to five feet high with tough stems, clothed their length with great bells of Bradley's Violet. Splendid Delphinium companions, hardy and long blooming. 40c each, 3 for \$1.00, dozen \$3.50.

---

## **LITHOSPERMUM (Gromwell)**

### **Heavenly Blue**

The rock garden is really incomplete without this incomparable blue plant. It is evergreen and trails as a small prostrate shrub. Its mats are covered in May and June with blossoms the size and shape of large Aubrietia flowers, but "heavenly blue" in color. 50c each, 12 for \$5.00.





Individual plant of Hoodacres Aquilegia. Typical for size of blossom and length of spur.

## **HOODACRES AUBRIETIAS**

Semi-trailing alpine perennials. The catalogs list wall, rock-garden and edging plants by the thousands and merit must attach to each one for somebody, somewhere, sometime; but when the casual visitor comes into your garden in spring it will be to ignore most of the demure things, but a good planting of Aubrietias will be a feast for all, and one can afford to forget their congeners for the time. They just will not be outdone in liberality of bloom and insist upon getting started bright and early to carry on for a couple of months and scatteringly still longer. Their hillocks of solid color, violet, purple, blue, crimson and pink tones are glorious. The pale shades from imported seeds are not effective. Our development of these plants over a long period has brought exceptional size and coloring. Plants 30c each or \$3.00 for 12, 3 for 80c.

---

## **ENGLISH HYBRID LUPINS**

Hardy Perrenials. Marvelous new colors. Their time is for a month just before the reign of Delphiniums. Light to deep pink and into rose, yellow, white, lavenders, blues and purples, apricot, orange and others. Finest stock obtainable in Europe. Sow in fall, when possible. Liberal packet 30c.

---

### **HOW NATURE TESTS HOODACRES STOCK**

Kewanee, Ill.: "My seedlings came through the winter in fine condition. I have several Whites of good substance and many of the Opalspire type, all most unusual and outstanding. I wish to say that such seedlings as have bloomed must be pretty tough to go through a winter with weather 26 degrees below zero and a summer with heat as high as 114 degrees. I have the utmost respect for the survivors."

---

### **BEAUTY TO THIS EARTH**

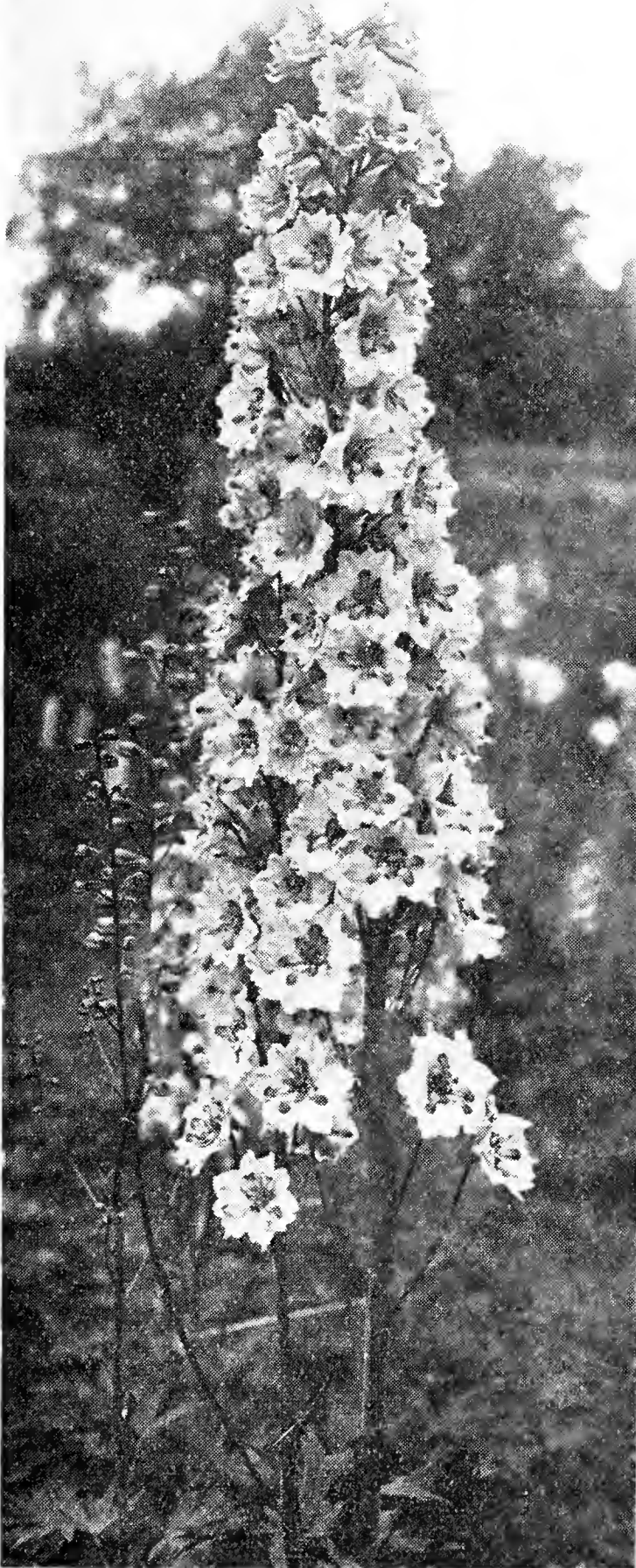
South Bend, Ind.: "It is with the keenest pleasure that I see the gardening season approach, for this year my small garden will be filled in every available space with the stately spires of your exquisite Delphiniums. I wish that I might express my appreciation for the work you have done to bring so much sheer beauty to this earth."

## WHEN DELPHINIUMS BLOOM

If you have seen a garden of Delphiniums in full flower, ranging from the hue of a starless twilight to that of cloudless summer noon, you will know that gardeners could not think wholly of profit and grow Delphiniums.

It is simple enough to lose one's heart to any flower. The loveliness of it grows in the loam of one's heart and blooms there until the season of that flower is anticipated and a hunger comes for the witnessing of it. And the flower stalk rises from amid the foliage, and buds appear, and eagerness hovers the miracle. It will be soon, now. It is in this wise that gardeners watch the Delphinium, and more observantly than any other of the garden's guests.

There are tints past dreaming, as must ever be the case when the creative artistry vies with the fancy of mortals. To walk among them is to feel that providence is not unmindful of beauty, that it takes thought of the nurture of the spirit, and that the Delphiniums hold speech with you. Ben Hur Lampman, the Oregon poet.



A surprising development of petals centre, in the Opalspire class.

## **DELPHINIUM LANTERN SLIDES**

### **Beautifully Colored**

For loan to Garden Clubs when DELPHINIUMS are to be featured.

The set numbers 60 artistic and exceptionally well executed subjects, mostly Delphiniums, with carefully prepared notes and a Delphinium talk. They are available to any accredited Garden Club, without charge, except payment of transportation one way.

In order to make sure of suitable dates application should be made as far in advance as possible.

The usefulness and appreciation of this set of Delphinium reproductions is attested by the fact that they are so often called on for repeat engagements.

---

### **ENJOYING THE HOODACRES COLORED SLIDES**

Cleveland Heights, Ohio: "We have just had the privilege of your exquisite Delphinium slides and they were thoroughly enjoyed by each and everyone in the Lake Shore Garden Club."

Lake Forest, Ill.: "Thank you for the use of the lovely Delphinium slides. We enjoyed them so much and all the Garden Club members were enthusiastic about them—the notes and cultural directions contained in the talk."

Kansas City, Mo.: "Permit me to express, not the measure, but the fact of the extreme pleasure given to the group of 200 women, members of the Kansas City Gardens Association, who were privileged to view the glory displayed in your group of Hoodacres Delphinium slides."

And many more letters to the same effect.

---

### **HOODACRES SPECIALTIES**

A perfect Delphinium garden will contain other things as foils. One of these is the improved Japanese Iris, another is the Hybrid Heuchera, and with both of these we have done extensive hybridizing and development. Also to this list should be added our new, large flowered and highly colored Aubrietias and long spurred Aquilegias. Our Oriental Poppies and Hemerocallis (Daylilies) are the finest new kinds.

## DELPHINIUM SOCIETIES

American Delphinium Society. Secretary, Raymond C. Allen, Department of Floriculture, Cornell University, Ithaca, N. Y. Annual subscription \$2.00.

British Delphinium Society. Secretary, A. J. Moir, No. 3 Warwick Road, Surrey, England. Annual subscription 7/6.

---

### LEANING OVER THE GATES IN NEW ZEALAND

Auckland, N. Z.: "In all my life I have never seen such huge plants, huge flower spikes and huge blooms! The plants were from five to seven feet in height and some of the flower spikes were over three feet in length—the blossoms ranging from 2½ to 3 inches across. Of course we had numbers of people leaning over the gates and several nurserymen came to see them."

---

### LEADING GROWERS OF THE WORLD

Robinston, Maine, September 1933: "I have great regard for your achievements, in fact am convinced that you are the best man in the Delphinium field in America. Since I have plants of all the leading growers in the world, including all the distinguished English growers; my admiration for your work is based on experience."

---

### CONTINUOUS STREAM OF VISITORS

Belleville, Ontario. "Last year I bought a packet of your Complete Range seeds and one of Wrexham. At the present moment the plants are in full bloom and present a sight not soon forgotten. I took eight first prizes with them two weeks ago. There was nothing at the show to equal them. As a result there has been a continuous stream of visitors, all of them amazed at the size and perfection of spike and flower and the range of shades embraced."

---

### HOODACRES SHIPS SAFELY — COAST TO COAST

Calais, Maine: "Received the Seedlings, and they are fine. Let me congratulate you on the condition of them, coming as they did from one coast to the other."

From Emily Post, Edgartown, Mass.: "The plants were too wonderful—I have never seen such splendid clumps. I am sure they will 'behave' beautifully and be a credit to us both."

---

### "PROVE ALL THINGS"

La Jolla, Calif.: "As I said in a former letter, I had tremendous success with your seed last year. As an experiment, I sent to . . . . ., to . . . . ., and also . . . . ., England, and a firm in the South in this country, and yours were the outstanding plants, by far."

## THE DELPHINIUM

When God made you, He must have stood  
In silent, meditative mood  
An aeon or eternity,  
Pond'ring spring-delights to be;  
    And all the blueness of His eyes  
    Came streaming through the sun-lit skies,  
And He made you; but first He stood  
An age in some sweet mystic mood:

And wandering the garden through,  
I came upon your bed of blue,  
    I saw you through the bamboo trees—  
    And oh, the world was filled with peace,  
And deep sweet blueness—and I knew  
God's secret thoughts when He made you.