

Historic, archived document

Do not assume content reflects current scientific knowledge, policies, or practices.

5/30

Boyd's

for
BETTER HOMES

BOYD NURSERY COMPANY

McMINNVILLE, TENN.

To Our Friends...



F. C. Boyd



J. A. Boyd



H. N. Boyd

● This catalog is our only means of contact with the trade, and we believe that every home-owner would be interested in some item that we have listed and we are sure that you or your neighbor will want to consult this book sometime before the planting season is over; therefore, file it and when you are in a planting mood you will have this book giving you the knowledge of 40 years' experience.

● You will find every item described and priced. We are sure you will enjoy looking over our Special Collections and note the very low price we are making to encourage fall planting.

● There are no tricks or catches connected with our bargain sales. We carefully select, pack and ship every item that leaves our nursery. If you have not traded with us in the past you possibly have some doubt about what we say, so just make a small investment on a trial order and give us a chance to prove what we say.

Yours very truly,
BOYD NURSERY COMPANY.

OUR COVENANT TO THE TRADE

Back in the year 1887 my father, the late J. H. H. Boyd, started gathering and selling tree seeds. His intimate and life-long association with trees and plants in the Cumberland Mountains gave him a wonderful opportunity to develop his natural ability in the study of horticulture, and he soon built up a reputation both in the United States and foreign countries. The heritage I cherish most, is his reputation for honest dealings that was left, in which I will ever safeguard.—

A handwritten signature in dark ink, appearing to read "J. H. H. Boyd", with a horizontal line underneath.

WE DO NOT HAVE ANY ORDER TAKERS OR AGENTS EMPLOYED

Imported Holland Tulips

Increasing demand for tulips has caused us to place the largest order from Holland that we have ever made.

Tulips can be planted from September 15th until the ground is frozen.

Here is your chance to have a glorious planting of tulips in all brilliant colors.

We offer ten colors of the very best varieties, at low prices.

Individual colors are sold in lots of not less than six.

PLANTING INSTRUCTIONS

Tulips are very easily grown. They can be planted along the shrub borders, walks, or in the garden. Ordinary soil suited for the garden will grow tulips. Plant them three to four inches apart, three to four inches deep.

L I T E R A T U R E
JAN 10 1933
U. S. Department of Agriculture



BOYD'S DARWIN TULIPS BLOOM EARLY

All Darwin Tulips have a very long stem, cup-shaped flowers of a great variety of colors, as are individually described.

AFTERGLOW—Very large flower, deep violet-rose, heavily bordered amber and buff. The inside shaded with tango red. One of the richest parti-colored varieties, very showy and long seasoned.

BARONNE DE LA TONNAYE—Carmine-rose margined blush pink, base white tinged blue; a beautifully shaped long flower of large size.

FALL IS THE TIME TO PLANT TULIPS FOR EARLY SPRING BLOOMS

Imported Holland Tulips

BARTIGON—Translucent red, fired with crimson. The inner base white and blue. A magnificent forcing variety with strong proportionate stems.

BLEU AIMABLE—Bright violet with distinct blue shading. A very distinct and handsome tulip, rather late.

CLARA BUTT—Soft salmon-pink of satiny finish, with a flush and inner shadows of deepest coral; a lively, dainty color.

FARNCOMBE SANDERS—One of the largest and most beautiful of all tulips. Color brilliant, dark rosy-red, with a clear white base.

INGLESCOMBE YELLOW—Pure canary yellow stamens very fine oval flowers, called the "Yellow Darwin."



PRIDE OF HAARLEM—A popular dependable variety, either as hedder or forcer; bright red suffused purple, creating a brilliant crimson effect.

PRINCESS ELIZABETH—A splendid early forcer of full form; a beautiful coral-rose shade, with distinct light edge and ivory base.

REV. EWBANKS—Silvery heliotrope, darkening to lavender and violet at the base.

WHITE QUEEN—Not pure white, but nearest so in this class. Long closed-up flowers of ash-white, with a nebulous central streak of lavender rose.

Prices—Dozen, 65c. 50 for \$2.00. 100 for \$3.50.

SPRING BLOSSOMS ARE APPRECIATED MOST. PLANT TULIPS

Hardy Perennial Flowers

PHLOX

- ATHIS**—Tall, light salmon, dark eye.
- BRIDESMAID**—Tall, pure white with large, rich crimson eye.
- CHAMPS ELYSEE**—Fine, rich crimson.
- ECLAIREUR**—Flower, large, bright purple-carmine, with lighter center.
- LA VAGUE**—Warm Mauve with emphatic carmine eye. Immense conical heads borne in great profusion.
- MRS. JENKINS**—White blooms in large panicles, free bloomer.
- PANTHEON**—Clear, deep carmine-pink, with faint halo.
- PEARL**—Beautiful, pure white flowers.
- RICHARD WALLACE**—Pure white, with dark eye.
- R. P. STRUTHERS**—Light crimson-pink, dark center.
- Prices -----3 for 55c. 6 for \$1.00 12 for \$1.90



HARDY FERNS

Hardy ferns give natural effect and should be planted more.

MAIDEN HAIR—A graceful species with large deciduous leaves.

	Per 12	Per 100
Prices -----	\$.40	\$3.00

HAY SCENTED FERN—Has thin and delicate leaves from one to three feet long.

	Per 12	Per 100
Prices -----	\$.50	\$3.50

CINNAMON FERN—Stately fern with very large creeping root stocks.

	Per 12	Per 100
Prices -----	\$.60	\$4.00

ROYAL FERN—Vigorous fern with good stout root stocks, 2 to 5 feet tall.

	Per 12	Per 100
Prices -----	\$.60	\$4.00

CHRISTMAS FERN—Beautiful evergreen fern with densely chaffy stripes, 1 to 2 feet long.

	Per 12	Per 100
Prices -----	\$.50	\$3.50

PERENNIAL FLOWERS GIVE NEW GARDEN ENJOYMENT EACH DAY

Boyd's Flowering Bulbs

PAPER WHITE NARCISSUS

Grow your own flowers for Christmas. These are favorites as a decoration for the living room during the cold winter months when flowers are scarce. Their culture is simple: Plant bulbs in shallow bowls filled with pebbles and water; keep in the dark until roots form (about two weeks), then bring into light.

35c per dozen

\$2.00 per 100



Paper White Narcissus

PEONIES

Peonies should be planted in the fall. There is no question as to the popularity of peonies, they bloom at a season of the year when flowers are so much appreciated.

We offer a mixed assortment at very low prices.

Prices -----5 for \$1.00 12 for \$2.00

NOTICE SPECIAL PRICES

Hand this special price list to your friends, but do not do so until you have sent in your own order. Your friends will thank you for it, and we will THANK YOU, TOO.

HYACINTHS

Now is the time to plan for your early spring blooming bulbs. Hyacinths, with their immense spikes of wax-like flowers, their delightful fragrance and their stately form stand at the head of the list of winter-blooming bulbs. The colors, shades and tints range from pure white through blush pink rose, to the deepest red, and from dainty sky-blue to blue-black. During the dark days of February and March these attractive flowers will give the desired charm and atmosphere to your home.

L'INNOCENCE—Nothing finer than this Hyacinth with its large compact spike of pure white bells. Does equally well indoors and out.

GERTRUDE—Deep rose, attractive in form and color. Always satisfactory, both indoors and in the garden.

LA VICTOIRE—Bright vermilion red, very tall flower-bunch, elegant bells, perfect beauty.

KING OF THE BLUES—This deep violet-blue with its large compact truss is one of the best known of the blue Hyacinths. A splendid variety for late blooming.

QUEEN OF THE BLUES—Forget-me-not blue, with silvery gloss with large deep blue spikes.

YELLOW HAMMER—Deep creamy yellow, very compact flower bunch.

Prices -----6 for 90c 12 for \$1.60



Hyacinth

THE LOVE OF FLOWERS AND CULTURE GO HAND IN HAND

Boyd's Flowering Bulbs

GLADIOLUS

Spring is the time to plant gladiolus. We have a large assortment of colors. Write for our spring list.

HARDY LILIES

Lilies remain a favorite, and should find a place in every garden.

DAY LILY—Flowers large, rich golden yellow, marked with Indian yellow.

	Each	Per 12	Per 100
Prices -----	\$.10	\$.60	\$3.00

LEMON LILY—Fragrant, clear yellow, very freely produced in early summer.

	Each	Per 12	Per 100
Prices -----	\$.15	\$1.00	\$8.00

TAWNY DAY LILY—Flowers tawny orange, with wavy margined petals.

	Each	Per 12	Per 100
Prices -----	\$.10	\$1.00	\$8.00

LILY-OF-THE-VALLEY—Just the thing to put into the cool, shaded strip along the walk on the east or north side of your house. They furnish a vast amount of cut sprays, and sweetly perfume the entire yard.

	Each	Per 12	Per 100
Prices -----	\$.15	\$1.50	\$10.00

SPIDER LILY—The large snow-white flowers are very suggestive of the name, resembling a big spider web.

	Each	Per 12	Per 100
Prices -----	\$.15	\$1.50	\$10.00



Crocus

GERMAN IRIS

Iris are becoming more popular each year with their many vari-colored refined blooms borne so early in the spring. Iris seem appropriate in any location, and they will thrive almost anywhere.

Mixed colors of many varieties.

Prices -----12 for 50c 50 for \$1.50 100 for \$2.50



Lemon Lily

CROCUS

Crocus is one of the most popular of the early spring flowers and should be in every garden. A very fine effect may be reached when planted in a round bed in three circles of white, blue and yellow.

Yellow, Blue and White.

Prices -----12 for 40c. 100 for \$3.00

FOREST TREE SEEDLINGS FOR REFORESTATION

We are growing large quantities of forest tree seedlings for reforestation purposes and are making attractive prices on one and two-year seedlings, where they are used for above-mentioned purposes. Write for special quotations, giving quantities wanted.

FLOWERS CONTACT OUR THOUGHTS WITH IMMORTAL THINGS

Boyd-Grown Fruit Trees

When considering fruit trees, and the planting of an orchard, the most important factor is to deal with a nursery that you have confidence in.

It would be a great disappointment to wait several years and find that your favorite apple tree turns out to be something else. We realize the importance of building a reputation with our trade and we put forth every effort to safeguard their trust. As to the quality of our stock. We do everything possible to improve the methods of growing and handling nursery stock.

Thirty years' experience as growers, and general research in the production of nursery stock, we feel would be a help in solving the problems of our trade.

EARLY SUMMER APPLES

EARLY HARVEST—The Early Harvest has been in cultivation for more than one hundred years, this is proof of its excellence. Fruit medium size, pale yellow, sub-acid, ripens in July and August.

RED JUNE—Abundant bearer of good quality. One of the best cooking apples. Ripens July and August.

YELLOW TRANSPARENT—One of the best summer apples. This is a Russian apple. It is very hardy, bearing heavy crops even when young, medium size; color, a rich transparent yellow, with a faint blush.

YELLOW HORSE—Late Summer, large yellow. One of the best cooking apples. Highly satisfactory in the South.

AUTUMN APPLES

GRIMES GOLDEN—This is one of the most popular apples in cultivation; fruit medium size, tender; rich, and aromatic flavor; good eating, raw or cooked.

KINNARD CHOICE—Early Autumn apple, large dark red, very juicy, fine to eat. It is good for market or table.

MAIDEN BLUSH—An old-time apple, hard to beat, color a bright lemon yellow, with a deep crimson blush spreading over on cheek. The flesh is white, crisp, tender and very juicy.

WINTER APPLES

JONATHAN—A delicious apple that always demands highest market prices. Medium size, roundish, yellow, nearly covered with red; flesh, white, fine grained, juicy and tender.

LIMBERTWIG—Old-fashioned mountain apple, dark red, keeps well; good for cooking and eating.

RED DELICIOUS—This outstanding apple that has gained one of the upper places with commercial orchardists. The tree is of free open growth, and very hardy; does well in all sections. Fruit, rich red color; flesh, fine grained, crisp; juicy, melting and delicious.

STAYMAN WINESAP—Here we have an extraordinary apple for all purposes. Succeeds well anywhere, flesh is yellow, juicy, and quality best ranking with the Grimes Golden or any other apple. The tree is a quick and strong grower. Apples keep well.

WINESAP—The old-fashioned variety, medium size fruit, good quality, keeps well. Crisp and juicy.

WINTER BANANA—Fruit has a rich flavor, beautiful yellow, spicy and aromatic. Bears young, very productive.

YELLOW DELICIOUS—A large golden yellow apple, rich in flavor. Trees have wonderful vitality; will thrive most anywhere; bears very young, and has become very popular throughout the country.



Red Delicious

Prices on Apple Trees

	Each	Per 3	Per 10
1 yr. trees, 2-3 ft.....	\$.20	\$.50	\$1.50
1 yr. trees, 3-4 ft.....	.25	.65	2.00
2 yr. trees, 3-4 ft.....	.30	.80	2.50
2 yr. trees, 4-6 ft.....	.35	.95	3.00

PLANT AN ORCHARD FOR YOUR CHILDREN'S SAKE

Boyd-Grown Fruit Trees

PEACHES

The satisfaction derived from peach trees, it seems, would justify anyone planting them. If you have a small plot of ground you can place a few peach trees that will soon furnish fruit; also make nice ornamental shade trees. If you live in the country, it would be unjust to your family to deny them access to a nice peach orchard. It is a wise farmer that gives his wife a chance to stock her pantry with wholesome fruit.

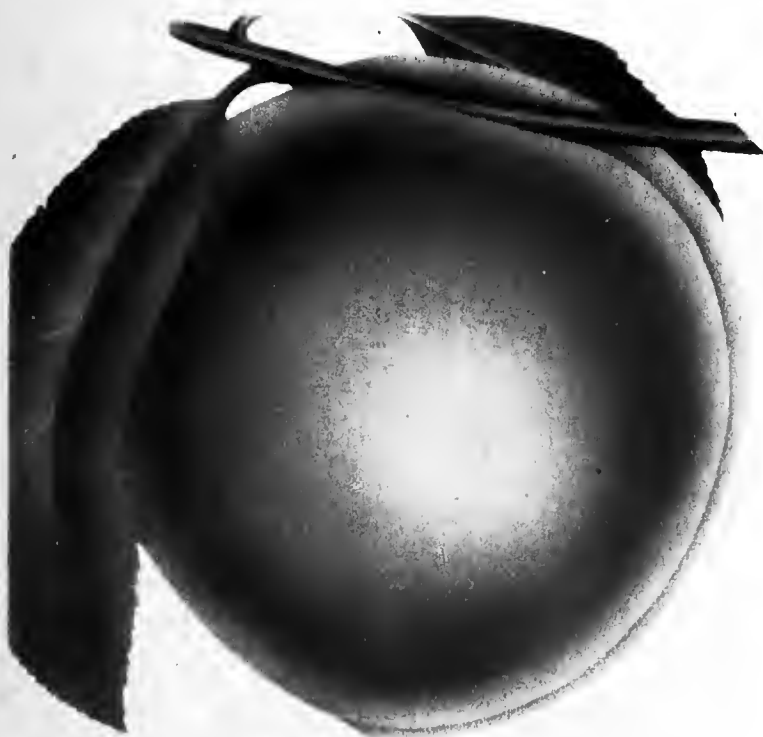
EARLY PEACHES

EARLY ELBERTA (Free)—Similar to Elberta, except it ripens 10 days earlier; clear yellow, with blush; fine grained and sweet. Tree a strong grower, carrying moderate loads of fruit.

MAYFLOWER (Semi-cling)—Earliest of all peaches, red, quality good and bears young.

EARLY ROSE (Free)—Large, red flesh, rich and juicy.

CRAWFORD EARLY (Free)—Large, bright yellow, with blush. One of the best early peaches.



Elberta Peach

PRICES ON PEACH TREES

	Each	Per 10	Per 100
12 to 18 inch-----		\$.70	\$6.00
18 to 24 inch-----	\$.10	.80	7.00
2 to 3 feet-----	.15	1.25	10.00
3 to 4 feet-----	.20	1.75	15.00

Postage should accompany parcel post orders. Add 15% of list price to your order. We will refund the balance. All balled and burlapped plants, and heavy plants cannot be shipped by Parcel Post.

MEDIUM SEASONED PEACHES

BELLE OF GEORGIA (Freestone)—Is extra good eating peach, sweet and delicious. Flesh white, firm and excellent flavor; heavy and regular bearer.

CARMAN (Freestone)—Originated in Texas. The fruit is broadly oval in form, large pointed. Skin a yellowish white, slightly tinged with red. Bears well and robust grower.

J. H. HALE (Freestone)—Ripens a few days before Elberta, very large, golden yellow, blushed red with fuzzless skin; parts freely from the stone. A good firm peach.

GOLDEN JUBILEE (Freestone)—New yellow peach, one of the most hardy peaches known; flesh deep golden yellow all of the way to the seed. Blooms very late; is seldom killed by frost.

SOUTH HAVEN (Freestone)—Originated in Michigan where the winters are very cold, and it has proven to stand cold weather. Color deep golden yellow, with an attractive crimson cheek. We recommend this peach for commercial purposes.

LATE PEACHES

ELBERTA (Freestone)—Is a well-known peach. The best peach of its season for all markets, as it has grand shipping qualities.

CRAWFORD LATE (Freestone)—Large, yellow with blush. One of the best late peaches.

CLINGSTONE PEACHES

RED BIRD—Very early, hardy grower, good bearer; has large fruit of bright color.

INDIAN BLOOD—An old favorite, skin and flesh blood red, excellent for preserving and pickling.

GREENSBORO—Large rather roundish; yellow with splashes of bright red.

GOOD JUDGMENT, GOOD HEALTH, GOOD ORCHARD

Boyd-Grown Fruit Trees

Cherries

Every home should have a few cherry trees. They require very little attention. Spraying is not necessary. They make a handsome shade tree. They can be grown in any waste space or corner. There are several varieties that bear luscious fruit. Their fragrant blossoms are the first sign of spring.

Sweet Cherries

BLACK TARTARIAN—Is a favorite sweet cherry, well adapted to almost any soil and climate. Lives to an old age, fruit medium size, brownish black flesh purplish red, juicy rich and for home use is one of the best.

GOVERNOR WOOD—Few cherries are equal to it in quality or productiveness. Fruit medium size, soft, and of fine flavor, pale yellow with blush.

NAPOLEON—Very large, pale yellow with bright red cheeks, very firm, juicy and sweet, vigorous grower and very productive. One of the best.

Sour Cherries

EARLY RICHMOND—Is favorite sour cherry. It is the good dependable variety that yields such marvelous crops in the garden and lawn. The fruit is dark red, tender, juicy and of excellent quality.

MONTMORENCY—A large, light red cherry of the Richmond class, but larger and more solid, about ten days later.

	Each	Per 3
2-3 feet	\$.45	\$1.25
3-4 feet	.50	1.35

Apricots

EARLY GOLDEN—Small, pale orange in color, flesh orange, moderately juicy, sweet, good. Hardy, productive; profitable market sort. Ripens about August 5th.

MOOREPARK—Fruit large, roundish about 2½ inches in diameter, skin orange in the shade, but deep orange or brownish red in the sun. Flesh quite firm, bright orange, parting from the stone. Ripens in August.

ROYAL—A fine, large French variety. Fruit roundish large oval slightly compressed. Skin dull yellow, with an orange cheek; very faintly tinged with red. Ripens latter part of July.

	Each	Per 3
2-3 feet	\$.30	\$.75
3-4 feet	.35	.90

Pears

Pears should be planted more. They seldom fail to fruit. They are sometimes affected with blight, but the affected branches can be pruned and it has been our observation that the blight has a slight effect on the life of the tree. Some of the oldest fruit we know of are pear trees.

BARTLETT—Bears early, very juicy and highly flavored. Strong grower, and bears abundantly.

GARBER—An upright grower with heavy dark green foliage. Fruit large, juicy, melting, rich and fine. Does well nearly everywhere. September and October.

KEIFFER—Is one of the most popular pear trees grown. Large golden yellow, often blushing in the sun; one of the best for preserving and canning. It is liable to overbear; therefore, special pains should be taken to thin fruit.

PINEAPPLE—Has a distinct pleasing odor, resembling that of the pineapple. This pear is a very attractive yellow with conspicuous brown specks; is very beautiful and has been a popular seller. Ripens in August.

	Each	Per 3
2-3 feet	\$.40	\$1.00
3-4 feet	.50	1.25
4-5 feet	.60	1.65

Plums

No matter how small your planting space you can find room for a few plum trees. They will pay a big dividend in fruit that is ideal for canning and are extra fine to eat from the hand. Plums thrive on almost any land, bear a heavy crop of fruit that seldom fail.

ABUNDANCE—Tree a strong grower and an early and profuse bearer. One of the best known plums.

BURBANK—Fruit large and vigorous, productive, bears young. Excellent quality; cherry red.

KELSEY JAPAN—Color greenish yellow, flushed with red, very large.

WICKSON—One of Burbank's creations, fruit largest of the Japans. Handsome deep, maroon red. Firm, long keeper and fine shipper.

BLUE DAMSON PLUM—Fruit small, oval, skin dark purple, covered with blue bloom, used extensively for preserving.

	Each	Per 3
18-24 inches	\$.20	\$.50
2-3 feet	.25	.60
3-4 feet	.35	.90

BOYD'S PRICES WILL ENABLE EVERYONE TO HAVE AN ORCHARD

Nut Trees—Fruits

Raspberries

COLUMBIAN—The berry is firm, purple, and adheres to the bushes. A strong grower attaining large size. One of the hardest and most productive, and stands at the head for canning, jams, etc.

CUMBERLAND—The largest of all blackcaps, a healthy, vigorous grower, throwing up stout stock, well branched canes, that produce immense crops of magnificent berries.

CHIEF—A new red variety, the difference being in earliness and size. Ideal home berry as well as good market sort.

LATHAM—The color is clear pink and more pleasing than the purplish variety. Fruit twice as large as some other raspberries.

ST. REGIS (Red)—Everbearing, bright crimson berry of large size, firm and meaty. Fruit begins to ripen with the earliest and continues bearing on young canes until October.

Prices on Raspberries:

	Each	Per 10	Per 100
Strong Plants	\$.05	\$.45	\$4.00

Strawberries



KLONDIKE—A good berry, rich blood-red in color, having a fine flavor that is neither sweet nor sour.

BLAKEMORE (Early)—The color glossy light red developing quite evenly on both upper and lower sides, only slightly changed by holding or canning. The vines are extra vigorous, productive, preferring the heavier types of soil.

100 for \$1.00. 500 for \$3.50 1,000 for \$6.00

PROGRESSIVE EVERBEARING—The berries are not as large as some, but are of exceptionally good quality, and they yield well.

100 for \$1.75. 500 for \$5.00. 1,000 for \$7.50

MASTODON EVERBEARING—This new variety is rapidly becoming a prime favorite wherever strawberries are grown. It is of immense size. No home garden should be without them.

100 for \$2.00. 500 for \$7.50. 1,000 for \$10.00

Grapes

CAMPBELL'S EARLY (Black)—A strong vigorous grape that ripens early and bears abundantly.

CATAWBA (Red)—One of the late bearing varieties, especially adapted to the South.

CONCORD (Black)—Too well known to need much description. Concord is extremely hardy, bunches large, compact, bearing large juicy fruit. Will succeed anywhere.

NIAGARA (White)—One of the leading white grapes, very large, yellowish white juicy, skin tough, making it a good shipper.

Each, \$.15. 6 for \$.80. 25 for \$2.75



Niagara Grapes

Nut Trees

Nut trees should be planted on every farm. Nut trees in many cases would pay better than farm crops. Black Walnut timber is very valuable in addition to the fruit it bears.

BLACK WALNUT—One of the best shade trees, valuable timber, as well as nuts. Grows rapidly.

	Each	Per 3
2-3 feet	\$.15	\$.35
3-4 feet25	.65
4-5 feet35	.85

Pecans

MONEYMAKER—Extra good, heavy producer.

STUART—Extremely hardy, nuts good size, plump and well filled.

SUCCESS—Resembles the Stuart, only larger nuts, excellent flavor.

	Each	Per 3
2-3 feet	\$.75	\$2.00
3-4 feet	1.00	2.95

NUT TREES GIVE BOTH SHADE AND FOOD

Flowering Shrubs

The planting of flowering shrubs about a home is an outward expression that the occupants have a desire to do their part in making this a more beautiful world in which to live.

ALMOND (Pink)—The branches are covered with double rose-like flowers, deep pink. Plant in sun.

	Each	Per 3
12-18 inches -----	\$.25	\$.65
18-24 inches -----	.40	1.10

ALTHEA (Rose of Sharon)—Mixed colors; blooms late with very attractive blossoms.

	Each	Per 3
18-24 inches -----	\$.20	\$.50
2-3 feet -----	.25	.65

BARBERRY JAPANESE—The fine green foliage turns to brilliant red in autumn, with beautiful bright berries.

	Each	Per 3
12-18 inches -----	\$.20	\$.50
18-24 inches -----	.25	.65

BARBERRY RED LEAF—Similar to Japanese Barberry except the foliage is of a bronzy red color.

	Each	Per 3
9-12 inches -----	\$.25	\$.65
12-18 inches -----	.35	.90

BUTTERFLY BUSH—Blooms in the latter part of the summer, redish violet flowers, which are very attractive to butterflies.

	Each	Per 3
18-24 inches -----	\$.25	\$.65
2-3 feet -----	.35	.95

CALYCANTHUS (Sweet Shrub)—An old-fashioned shrub chocolate-colored flowers with spicey fragrance.

	Each	Per 3
18-24 inches -----	\$.20	\$.50
2-3 feet -----	.35	.95

CORNUS (Shrub Dogwood)—Red bark, small clusters of flowers succeeded by blue black berries.

	Each	Per 3
18-24 inches -----	\$.20	\$.50
2-3 feet -----	.35	.95

Hydrangea



Spirea Van Houttei

CORALBERRY (Symphoricarpos Vulgaris)—Valuable in shady places. The fruit is purplish red and hangs on well into the winter.

	Each	Per 3
18-24 inches -----	\$.25	\$.65
2-3 feet -----	.35	.95

GRAPE MYRTLE—The most popular and most characteristic of Southern shrubs. We offer crimson, pink and white.

	Each	Per 3
18-24 inches -----	\$.40	\$ 1.10
2-3 feet -----	.50	1.40

CYDONIA JAPONICA—A very early bloomer, crimson flowers, glossy leaves. A very desirable plant.

	Each	Per 3
18-24 inches -----	\$.30	\$.80
2-3 feet -----	.50	1.40

DEUTZIA—Tall plant, white blossoms, very beautiful. Attractive grouped with other plants.

	Each	Per 3
18-24 inches -----	\$.25	\$.65
2-3 feet -----	.35	.95

ELDER—A tall showy shrub, large flat clusters of white flowers, followed by luscious fruit.

	Each	Per 3
18-24 inches -----	\$.25	\$.65
2-3 feet -----	.30	.75

FORSYTHIA (Golden Bell)—The first sign of spring, with their bright yellow flowers. Thrive most anywhere.

	Each	Per 3
18-24 inches -----	\$.25	\$.65
2-3 feet -----	.30	.75

HYDRANGEA P. G.—Very large, showy white flowers tinged with pink, late bloomer.

	Each	Per 3
12-18 inches -----	\$.25	\$.65
18-24 inches -----	.35	.95

WE DO NOT HAVE ANY TRAVELING AGENTS OR ORDER TAKERS

Flowering Shrubs

HYDRANGEA A. G.—White blossoms, upright growth, fine for bedding.

	Each	Per 3
12-18 inches	\$.25	\$.65
18-24 inches35	.95

HYDRANGEA OAK LEAF—A beautiful ornamental shrub, deeply lobed leaves, which are green above, downy and whitened below. Flowers creamy white.

	Each	Per 3
12-18 inches	\$.25	\$.65
18-24 inches35	.95

HYPERICUM (Goldflower)—A bushy low-growing shrub with many flowers in mid summer.

	Each	Per 3
18-24 inches	\$.25	\$.65
2-3 feet35	.95

LILAC (Common Purple)—Old-timer, is still a favorite.

	Each	Per 3
18-24 inches	\$.25	\$.65
2-3 feet35	.95

LILAC PERSIAN—Fragrant flowers of deep reddish color that blooms young.

	Each	Per 3
18-24 inches	\$.25	\$.65
2-3 feet35	.95

LONICERA FRAGRANTISSIMA—Large shrub, fragrant, cream-colored flowers, almost an evergreen, foliage remains until late in the winter.

LONICERA TARTARICA—Ultimate height 6-8 feet, leaves ornate, bright green; flowers pink, borne in great profusion, followed by red fruit.

	Each	Per 3
18-24 inches	\$.25	\$.65
2-3 feet35	.95

RHUS GLABRA (Smooth Sumac)—Excellent for mass planting, large shrub, crimson seed, giving a tropical appearance.

	Each	Per 3
2-3 feet	\$.20	\$.50
3-4 feet30	.80

RHUS CANADENSIS (Aromatic Sumac)—Spreading shrub with clusters or short spikes of small yellow flowers. Foliage turns dark crimson in autumn.

	Each	Per 3
18-24 inches	\$.25	\$.65
2-3 feet35	.95

Collection No. 35

18—Spirea Van Houttei
1-Year Branched Plants **\$1.00**

RHUS COPALLINA (Shining Sumac)—Wonderful color in the fall, rich crimson, produces heads of greenish yellow flowers.

	Each	Per 3
2-3 feet	\$.25	\$.65
3-4 feet35	.95

RHUS COTONOIDES (Common Smoke Tree)—Clouds of purplish flowers, borne in early June.

	Each	Per 3
18-24 inches	\$.25	\$.65
2-3 feet35	.95

RHUS TYPHINA (Staghorn Sumac)—Bold tree-like hairy stems, attractive foliage, which turns scarlet in fall; crimson berries all winter.

	Each	Per 3
2-3 feet	\$.20	\$.50
3-4 feet25	.65

PHILADELPHUS (Mock Orange)—This old-fashioned shrub with creamy white flowers borne in clusters is now a favorite in the gardens.

	Each	Per 3
18-24 inches	\$.25	\$.65
2-3 feet35	.95

Weigelia



Collection No. 36

Grade 18 to 24 Inch

1—Hypericum	\$.25	Special Price \$1.00
1—Bush Honeysuckle ..	.25	
1—Weigelia (Pink)25	
2—Spirea Van Houttei ..	.30	
1—Forsythia25	
1—Cornus Stolonifera ..	.20	

Regular Price .. \$1.50

SHRUBS FURNISH VARIETY FOR EVERY LANDSCAPE PURPOSE

Shrubs—Ornamental Vines

ROBINIA HISPIDA (Moss Locust)—Drooping cluster of rose-colored flowers. Will grow where other plants fail.

	Each	Per 3
18-24 inches	\$.25	\$.65
2-3 feet30	.80

SPIREA VAN HOUTTEI—Probably the most widely planted shrub in cultivation, drooping branches of pure white flowers with rich green foliage.

	Each	Per 3
18-24 inches	\$.15	\$.35
2-3 feet20	.50
3-4 feet30	.80

SPIREA ANTHONY WATERER — Dwarf, very bushy with rosy pink flowers, blooms all summer.

	Each	Per 3
12-15 inches	\$.35	\$.95
15-18 inches50	1.35

COMMON SNOWBALL—The old-fashioned snowball with its large, globular, clusters of snow white flowers in May and June.

	Each	Per 3
18-24 inches	\$.35	\$.95
2-3 feet50	1.35

JAPANESE SNOWBALL—Pure white, double flowers in May.

	Each	Per 3
18-24 inches	\$.50	1.35
2-3 feet65	1.50

WEIGELIA ROSEA—One of the most popular shrubs for blooms, pink flowers, which are borne in wonderful profusion.

	Each	Per 3
18-24 inches	\$.25	\$.65
2-3 feet35	.95

Collection No. 37
18-24 Inches

2—Spirea Van Houttei 1—Spirea Thunbergi 1—Persian Lilac 1—Oak Leaf Hydrangea 1—Deutzia 1—Philadelphus	Special Price \$1.00
--	--

PRIVET (Amur River South)—The most popular of all hedges in the South. Foliage rich green which remains so all winter, with the exception of extreme cold weather.

	Per 10	Per 100
12-18 inches	\$.60	\$3.00
18-24 inches75	4.00
2-3 feet90	6.50

PRIVET (California)—Deep glossy green leaves, fine for the hedges or screening purposes.

	Per 10	Per 100
12-18 inches	\$.40	\$2.25
18-24 inches60	3.00

ORNAMENTAL VINES

Vines and Creepers are indispensable in certain situations. They will grow where it is impossible to get other plants to live. They add grace and charm to the appearance of your home.

AMPELOPSIS VEITCHI (Boston Ivy)—The leaves form a deep sheet of green as they overlap each other. The foliage turns to deep scarlet in the fall.

	Each	Per 3
2-year	\$.35	\$.95

BIGNONIA RADICANS (Trumpet Creeper)—A hardy climbing plant trumpet shaped scarlet flowers appearing in August. Flourishes under almost any condition.

	Each	Per 3
1 year	\$.25	\$.65
2 year35	.95

CLEMATIS PANICULATA—The small flowered, fragrant white "star" variety that blooms so profusely. Easy to establish and attractive in foliage as well as blossoms.

	Each	Per 3
2 year	\$.35	\$.95

CLEMATIS VIRGINIANA (Virgin's Bower)—A hardy vine with a mass of beautiful white flowers. Blooms in September.

	Each	Per 3
2 year	\$.25	\$.65

ENGLISH IVY—The most popular of the evergreen vines, has large, deep green, glossy foliage, and is unexcelled for covering walls in shady places. It is used as a ground cover and many other places where nothing else will grow.

	Each	Per 3
2 year	\$.35	\$.95

HALL'S JAPAN HONEYSUCKLE—A strong, vigorous vine, with pure white flowers, changing to yellow; foliage remains green well into the winter; very fragrant and covered with flowers almost all of the entire summer season.

	Each	Per 3
2 year	\$.20	\$.50

SCARLET HONEYSUCKLE—The flowers are scarlet trumpet shaped, two inches long; very showy splendid for porches, trellises and for climbing on trees.

	Each	Per 3
2 year	\$.35	\$.95

VINES WILL ENABLE YOU TO MAKE UNSIGHTLY SPOTS BEAUTIFUL

Ornamental Flowering Trees

DOUBLE FLOWERING PEACH—Small tree, covered in March with a mass of beautiful flowers. Colors: white, pink and red.

	Each	Per 3
2-3 feet -----	.35	\$.95
3-4 feet -----	.50	1.35

PURPLE LEAF PLUM—Noted for its purple foliage and blush pink flowers in great profusion.

	Each	Per 3
2-3 feet -----	\$.35	\$.95
3-4 feet -----	.50	1.35

DOUBLE FLOWERING PLUM—Double rose pink flowers which appear just before the leaves unfold.

	Each	Per 3
2-3 feet -----	\$1.25	\$3.00



Double Flowering Plum

BECHTEL'S FLOWERING CRAB—One of the most beautiful of the Crabs; bears double pink flowers of an exquisite shade.

	Each	Per 3
2-3 feet -----	\$.75	\$2.00
3-4 feet -----	1.00	2.50

MAGNOLIAS

MAGNOLIA ACUMINATA—Tall broad spreading tree of good size, the greenish yellow flowers are followed by coral colored seed clusters.

	Each	Per 3
4-5 feet -----	\$.75	\$2.00
5-6 feet -----	1.00	2.50

MAGNOLIA GRANDIFLORA—Southern Magnolia Evergreen tree, very glossy green foliage, beautiful blossoms.

	Each	Per 3
3-4 feet, B&B -----	\$1.50	\$4.00
4-5 feet, B&B -----	3.00	8.00

MAGNOLIA LILIFLORIA NIGRA—Flowers are deeper shade rosy purple, slightly later in bloom and likely to miss early frost.

	Each	Per 3
24-30 inches, B&B -----	\$2.50	\$6.50
30-36 inches, B&B -----	3.00	8.00

MAGNOLIA SOULANGEANA—No other spring flowering plant makes so great a show; blossoms before the foliage appears. Tulip shaped, creamy white blooms, purplish outside.

	Each	Per 3
24-30 inches, B&B -----	\$2.50	\$6.50
30-36 inches, B&B -----	3.00	8.00

MAGNOLIA MACROPHYLLA — Wide spreading branches, leaves very large, flowers, creamy white, fragrant.

	Each	Per 3
3-4 feet -----	\$.75	\$2.00
4-5 feet -----	1.00	2.50

MAGNOLIA TRIPETALA—Immense leaves, 10-20 inches long in clusters around the long white flowers.

	Each	Per 3
3-4 feet -----	\$.75	\$2.00
4-5 feet -----	1.00	2.50

Magnolia Grandiflora



FLOWERING TREES ARE THE FIRST MESSENGERS OF SPRING

Boyd's Shade Trees

Trees are nature's greatest gift; there is a friendly comfort among the trees that only trees can give. Look over our list and description of trees and make tree planting a part of your program this fall.

SILVER MAPLE—A rapid growing tree, valuable for quick shade.

	Each	Per 3
4-5 feet -----	\$.40	\$1.10
5-6 feet -----	.50	1.25

NORWAY MAPLE—The hardiest of all maples, a beautiful shade tree, which deserves a place on every lawn.

	Each	Per 3
6-8 feet -----	\$1.50	\$4.00

SUGAR MAPLE—One of the most popular of all maples, foliage dense, turns bright yellow and scarlet in autumn.

	Each	Per 3
6-8 feet -----	\$1.00	\$2.50
8-10 feet -----	1.50	4.00

RED OR SCARLET MAPLE—Thrives in wet situations where no other maple will live. Gorgeous color in autumn.

	Each	Per 3
5-6 feet -----	\$.75	\$1.75
6-8 feet -----	1.00	2.50

Sugar Maple



NATIVE WHITE ASH—Quick growing tree that thrives in almost any soil.

	Each	Per 3
6-8 feet -----	\$1.00	\$2.50

AMERICAN LINDEN—This native tree is very attractive and will grow rapidly when planted in lowland. Makes an excellent shade tree under favorable conditions.

	Each	Per 3
5-6 feet -----	\$.75	\$1.75
6-8 feet -----	1.00	2.50

CUT LEAF WEEPING BIRCH—Very popular for single lawn specimen on account of its rare make-up in foliage and bark.

	Each	Per 3
5-6 feet -----	\$2.50	\$6.50



White Dogwood

RIVER BIRCH—This is a native tree with attractive bark and foliage.

	Each	Per 3
4-5 feet -----	\$.75	\$1.75
5-6 feet -----	1.00	2.50

RED BUD—One of the ornamental trees that thrives almost anywhere and never fails to bloom.

	Each	Per 3
4-5 feet -----	\$.60	\$1.50
5-6 feet -----	.75	1.75

DOGWOOD (White)—Is too well known for comment. For early spring blooms, Red Bud and Dogwood are the most popular of trees.

	Each	Per 3
3-4 feet -----	\$.50	\$1.25
4-5 feet -----	.75	1.75
5-6 feet -----	1.00	2.50

A CHINESE ELM WITHIN SIX YEARS WILL BE A SHADE TREE

Boyd's Shade Trees

PINK FLOWERING DOGWOOD—Similar to the white dogwood except it has pink blooms, which make it a very attractive tree in the spring.

	Each	Per 3
2-3 feet -----	\$1.25	\$3.00
3-4 feet -----	1.75	4.50
3-4 feet, B&B -----	2.15	5.75

WEeping WILLOW—One of the most graceful of all willows. Makes a round-topped tree. Pendent branches are most effective.

	Each	Per 3
4-5 feet -----	\$.50	1.25
5-6 feet -----	.75	1.75

AMERICAN SYCAMORE—A native tree well adapted to street planting, quick grower.

	Each	Per 3
4-5 feet -----	\$.50	\$1.25
5-6 feet -----	.75	1.75



Weeping Willow

SOUR GUM—One of the finest trees known for the flaming scarlet of their fall coloring. Very attractive at all season.

	Each	Per 3
3-4 feet -----	\$.50	\$1.25
4-5 feet -----	.75	1.75

AMERICAN PERSIMMON—Native of Southern states, but the fruit will ripen in the North.

	Each	Per 3
3-4 feet -----	\$.35	\$.95
4-5 feet -----	.50	1.25

LOMBARDY POPLAR—A tall, shaft-like column of a tree that grows quick and often reaches a height of from 60 to 80 feet.

	Each	Per 3
3-4 feet -----	\$.25	\$.60
4-5 feet -----	.35	.95
5-6 feet -----	.50	1.25

Tree Collection No. 38

3-4 Feet

- 1—Lombardy Poplar
- 1—Red Bud
- 1—Silver Maple
- 1—Chinese Elm

\$1.00

CHINESE ELM—A rapid growing tree that does well in dry situations. For quick shade plant Chinese Elm.

	Each	Per 3
4-5 feet -----	\$.65	\$1.60
5-6 feet -----	.75	1.75
6-8 feet -----	1.00	2.75

SWEET GUM—A native tree that makes an excellent shade tree, glossy foliage in summer. The brilliant splash of crimson color in autumn is very attractive.

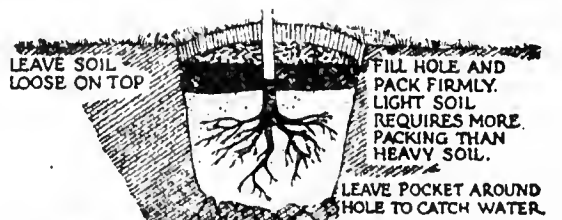
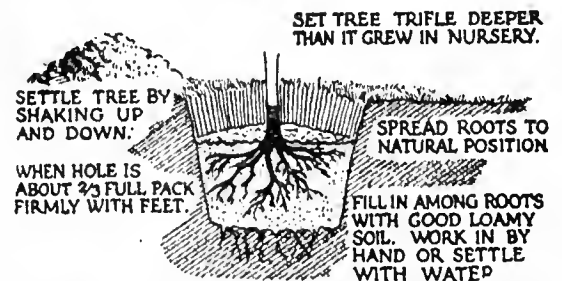
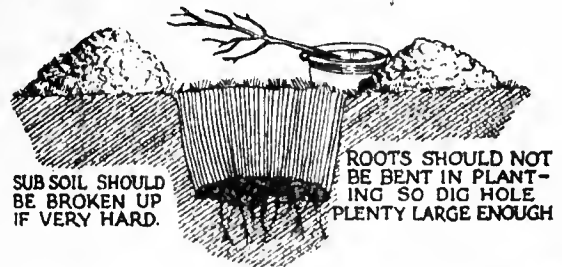
	Each	Per 3
4-5 feet -----	\$.75	\$1.75
5-6 feet -----	1.00	2.50

TULIP TREE—A tall stately tree that grows very fast when established. Its leaves are large, very dark green flowers, tulip shaped yellowish tinge.

	Each	Per 3
4-5 feet -----	\$.50	\$1.25
5-6 feet -----	.75	1.75

How to Plant a Tree

SET TREE IN TUB OF WATER WHILE DIGGING HOLE.



IMPORTANT: WE DO NOT ENCOURAGE THE USE OF MANURE. IF WELL DECAYED AND MIXED WITH SOIL IT SHOULD BE USED ONLY ON THE TOP

WRITE FOR OUR SPECIAL PRICES ON REFORESTATION

Coniferous Evergreens

Coniferous evergreens, which means cone bearing to distinguish them from other trees of the evergreen family which have broad leaves, flowers and fruits.

There is no end to their uses just as there is no end to their infinite variety. You will find listed almost all of the popular varieties and their descriptions.

JUNIPERS

PFITZER JUNIPER—A graceful spreading evergreen with sweeping fronds of gray-green foliage. Very widely used for a low-growing plant.

	Each	Per 2
15-18 inches -----	\$1.65	\$3.00
18-24 inches -----	2.00	3.50
24-30 inches -----	2.50	4.50

CANNARTI JUNIPER—This pyramidal variety, differing from most Junipers in color and form, is very attractive in mass planting.

	Each	Per 2
4-5 feet -----	\$3.75	\$6.00
5-6 feet -----	5.00	8.00

SAVIN JUNIPER—Especially suitable for hillside planting or among rocks like a prostrate shrub in habit and useful for all low planting.

	Each	Per 2
12-15 inches -----	\$1.35	\$2.25
15-18 inches -----	1.65	2.75

IRISH JUNIPER—Grows columnar, very erect, foliage sage green and very compact. Very popular where a slender plant is wanted.

	Each	Per 2
2-3 feet -----	\$1.35	\$2.50
3-4 feet -----	1.65	3.00
4-5 feet -----	2.00	3.50

MEYER JUNIPER—Dwarf and of irregular habit of growth. The color is iridescent, the general effect being silvery blue, the tips taking a purple tint in winter.

	Each	Per 2
12-15 inches -----	\$1.50	\$2.50
15-18 inches -----	1.75	3.00

PICEA (Spruce)

NORWAY SPRUCE—The most popular spruce, due to its hardiness. Makes rapid growth and is easily transplanted. It is used extensively for Christmas trees.

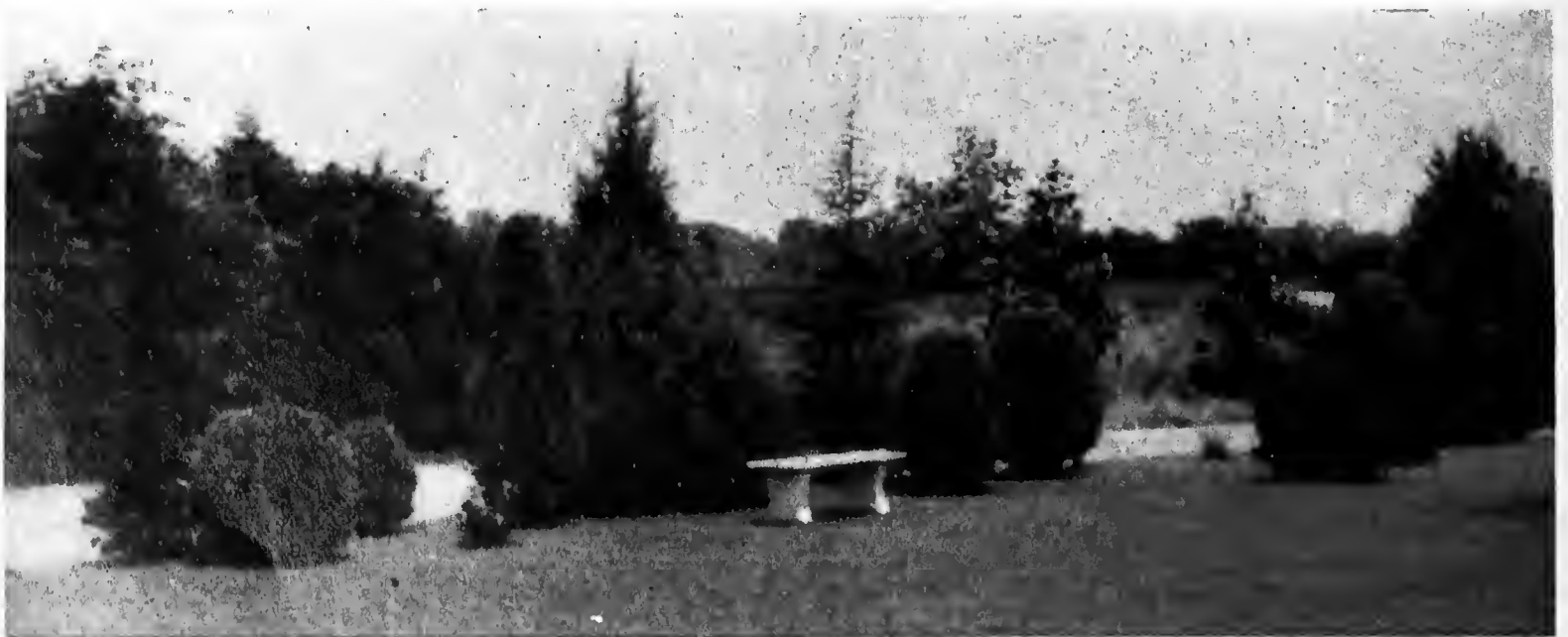
	Each	Per 2
15-18 inches -----	\$.85	\$1.50
18-24 inches -----	1.00	1.75
24-30 inches -----	1.50	2.50

WHITE SPRUCE—A very hardy evergreen with light green foliage and similar in many respects to the Norway Spruce, except that it is of decidedly slower growth in our locality and can safely be used where a medium size or smaller tree is wanted.

	Each	Per 2
18-24 inches -----	\$1.15	\$1.90
24-30 inches -----	1.35	2.35



Norway Spruce



A FEW SPECIMEN PLANTS ON BOYD'S LAWN

Coniferous Evergreens

PINUS (Pine)

SCOTCH PINE—One of the hardiest of the pines, dense growth with bluish green foliage.

	Each	Per 2
3-4 feet -----	\$2.00	\$3.50
4-5 feet -----	2.50	4.00

MUGHO PINE—A low spreading pine, very much used in lawn planting. Stout, bright green needles of medium length.

	Each	Per 2
12-15 inches -----	\$1.50	\$2.50
15-18 inches -----	2.00	3.50



American Arborvitea

RETINOSPORA (Green Cypress)—Green, feathery foliage, should be kept sheared for best results. Pyramidal in habit of growth.

	Each	Per 2
4-5 feet -----	\$1.50	\$2.50
5-6 feet -----	2.00	3.50

AMERICAN ARBOR VITEA—This variety is especially useful for high hedges and screens, as well as for general planting.

	Each	Per 2
3-4 feet -----	\$1.00	\$2.50
4-5 feet -----	1.25	1.75

CHINESE ARBORVITEA—Similar to American Arborvitea. It may be used in combination or groups or planted as a single specimen, but both varieties are inclined to grow open when not sheared.

	Each	Per 2
4-5 feet -----	\$1.50	\$2.50

BERKMAN GOLDEN ARBORVITEA—A beautiful, dwarf compact variety of golden color. For urns, small gardens, cemetery lots or brightening up foundation planting.

	Each	Per 2
15-18 inches -----	\$1.25	\$2.00
18-24 inches -----	1.50	2.50

PYRAMIDAL ARBORVITEA—Strikingly attractive spreading very little at its base and retaining its shape without shearing. The color is deep, rich green. For corners, or in front of pillars.

	Each	Per 2
30-36 inches -----	\$1.50	\$2.50
3-4 feet -----	2.00	3.50
4-5 feet -----	2.50	4.00

HEMLOCK—It grows rapidly in the open lawn. In confined places it adapts itself to all conditions, and if kept sheared can be well used as foundation plant.

	Each	Per 2
30-36 inches -----	\$2.00	\$3.50
3-4 feet -----	2.50	4.50
4-5 feet -----	3.50	6.00



A BLOCK OF BOYD'S EVERGREENS

Broad Leaf Evergreens

Broadleaf evergreens can be used effectively in any number of situations as screens, background or individual specimens. Be sure to use them in your planting.

ABELIA GRANDIFLORA—Does well in shady places as well as sunny locations and will adapt itself to all types of soil. It is one of the most attractive of all plants. The leaves are very glossy, dark green. Blooms are white lasting from July until September.

	Each	Per 3
18-24 inches -----	.30	\$.75
2-3 feet -----	.50	1.25
3-4 feet -----	.65	1.75

NANDINA DOMESTICA—Leaves deep glossy green, white flowers are followed by masses of bright red berries which are retained all winter. Extensively used in landscaping.

	Each	Per 3
18-24 inches, B&B -----	\$1.00	\$2.50
24-30 inches, B&B -----	1.25	3.00
30-36 inches, B&B -----	1.50	4.00

BOXWOOD (Buxus Sempervirens)—Are becoming more popular each year. They stand the soot and dirt better than almost any evergreen. The Sempervirens are the tree type which grows larger than the Dwarf Boxwood, and is a faster grower. It may be clipped or trained to pyramidal form, globe-shaped or allowed to grow naturally.

	Each	Per 3
12-15 inches -----	\$1.50	\$4.00
15-18 inches -----	1.75	4.75
18-24 inches -----	2.50	6.50
24-36 inches -----	3.50	10.00



Boxwood as a Hedge



Broadleaf Evergreens as a Screen

BOXWOOD (Buxus Suffruticosa)—This is the very dwarf variety so highly esteemed for small hedges, window planting and other places where small evergreen are suited.

	Each	Per 3
8-12 inches -----	\$1.00	2.65
12-15 inches -----	1.50	4.00

AMERICAN HOLLY—A small tree making a handsome dense growth and may be clipped to any form. Spiny angular leaves and red berries seen so much at Christmas time.

2-3 feet -----	\$1.50	\$4.00
3-4 feet -----	2.50	6.50

JAPANESE HOLLY (Ilex Crenata)—Of dense compact growth with small leaves. Inconspicuous greenish white blooms in spring followed by purplish black berries in fall.

	Each	Per 3
15-18 inches -----	\$2.00	\$5.00
18-24 inches -----	2.50	6.50

MOUNTAIN LAUREL—A husky evergreen shrub, covered with large glossy green leaves in clusters. It produces great quantities of delightful pink and white flowers in the latter part of June.

	Each	Per 3
12-18 inches -----	\$1.00	\$2.50
18-24 inches -----	1.50	4.00

RHODODENDRON MAXIMUM—Most beautiful of native Rhododendron. Produces in early May a wealth of unusually large flowers in good-sized clusters of rosy white.

	Each	Per 3
12-18 inches -----	\$1.00	\$2.75
18-24 inches -----	1.50	4.00

BROADLEAF EVERGREENS ADD CHARM TO YOUR PLANTING

Boyd's Roses

MONTHLY BLOOMERS WHITE

FRAU KARL DRUSCHKI—Very large, perfect form and snow white; vigorous grower and free bloomers.

KAISERIN AUGUSTE VICTORIA (HT)—Well formed, cream colored buds opening into white flowers. Free blooming; hardy.

PINK

COLUMBIA—A new rose. A large, fully double rose; pink; of lasting quality. Very vigorous grower.

J. L. MOCK—Clear imperial pink; perfect form and highly perfumed. The strongest grower of the Hybrid Tea class. Awarded two gold medals, one silver medal and five first prizes in Europe.

KILLARNEY—One of the most beautiful Roses grown; strong, vigorous, perfectly hardy; flowers are very large, buds long and pointed. Color a brilliant shining pink.

DAME EDITH HELEN (HT)—One of the largest and most perfectly shaped pink Roses known. Flowers uniformly well shaped. The most perfumed of all pink roses.

MRS. CHAS. BELL (HT)—Famous salmon pink, sport of Radiance, with all its good qualities. No other Rose has just the same lovely color.

PAUL NEYRON—Said to be the largest Rose in cultivation; bright, clear pink, very fragrant; hardy and strong grower.



Luxembourg

PINK RADIANCE—Buds brilliant rose pink, the well-formed open flowers shining pink with lighter tints on the reverse of the petals. A splendid grower with wonderful habit.

RED

HADLEY—Deep rich, velvety crimson. Well formed buds on long still stems. Very fragrant; free producer of flowers.

ETOILE DE HOLLANDE—It is said that this is the best red Hybrid Tea. Its gigantic flowers of velvety crimson color hold up remarkably well, getting lighter in shade instead of "bluing" with age. Thrives everywhere and produces a fine lot of blooms throughout the season.

RED RADIANCE—Even better in habit than its parent, Radiance. The flowers are large, globular, of clear and even shade of deep rose red, and are borne in strong individual canes which are freely produced all summer.

YELLOW

LADY HILLINGDON—Apricot yellow shaded to orange on the outer petals, becoming deeper and more intense in the center of the bloom. A strong and healthy grower.

LUXEMBOURG—Long, pointed buds of beautiful bronze-yellow, and very fragrant. One of the best yellows for your Rose garden.

SUNBURST—Orange-copper or golden orange and golden yellow, all intense shades, giving an extremely brilliant effect. A giant Rose, long stems, long pointed buds, vigorous and free bloomer, good forcer, and also an excellent bedder.



Radiance

	Each	Per 6	Per 10
Above two-year plants.....	\$.35	\$2.00	\$3.75

WHEN ORDERING, PLEASE GIVE NUMBER OF BARGAIN COLLECTION

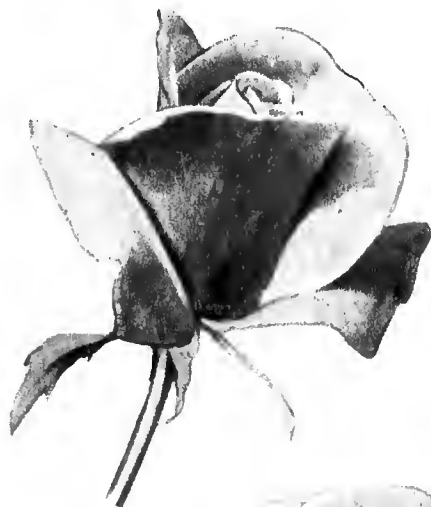
Boyd's Roses

SPECIAL ROSES

TALISMAN—Multi-colored. Glorious combination of orange, yellow and rose red. The fragrant flowers are much more highly colored in autumn.

PRESIDENT HERBERT HOOVER (HT)—A most popular Rose. It is maroon, orange and gold, rioting in a most contrasting fashion. Long pointed buds; rigid stem. A fine garden Rose, blooming well into the autumn.

	Each	Per 6	Per 12
Above two-year plant.....	\$.45	\$2.40	\$4.50



Talisman
Rose



President
Herbert Hoover

CLIMBING ROSES

DR. W. VAN FLEET—A double flesh pink climber. Open flowers are four inches in diameter. Fine for cut flowers.

PAUL'S SCARLET—Vivid scarlet, shaded crimson; large semi-double flowers, lasting a long time and making a brilliant display. Winner of National Rose Society's gold medal as best climbing Rose.

MARY WALLACE—Very large, double, rose pink blooms with salmon base. A most desirable new variety.

	Each	Per 6	Per 12
The above are two-year plants...	\$.35	\$2.00	\$3.75



Mary Wallace

BOYD'S FIELD GROWN ROSES

Plan and Plant

READ AND THINK

REFORESTATION: *This is your opportunity to turn waste land into a yielding profit. We offer a variety of TREE SEEDLINGS that should fit most any soil condition. Place your order now for immediate shipment.*

BLACK LOCUST. Plant Black Locust seedlings on waste land and in a few years you will have a cash income from land that would be a total waste.

	Per 100	Per 1000
4-6 inch	\$.50	\$ 3.00
6-12 inch75	5.00
12-18 inch	1.00	7.00
18-24 inch	1.25	9.00
2-3 feet	2.00	15.00
3-4 feet	3.00	25.00
4-6 feet	6.00	50.00

BLACK WALNUT. If planted now will double the price of your land in a short time. Black Walnuts are coming more in demand year by year as a nut crop and they will surprise you in their growth and the short time it will take to have a paying investment.

	Per 100	Per 1000
6-12 inch	\$1.25	\$10.00
12-18 inch	2.00	15.00
18-24 inch	2.50	20.00

ASH (White and Green). This is a most valuable timber and quick grower. It will grow almost anywhere. Plant ash and you will soon have timber to sell and for home use.

	Per 100	Per 1000
6-12 inch	\$.75	\$ 6.00
12-18 inch	1.00	8.00
18-24 inch	1.25	10.00

OSAGE ORANGE (Maclura). This, one of the most hardy of trees will grow in almost any situation. It is well adapted to plant creek banks to check flood waters. It has long and powerful roots that make it almost impossible to wash up.

Two year seedlings.

	Per 100	Per 1000
6-12 inch	\$.60	\$ 4.00
12-18 inch	1.00	7.00
18-24 inch	1.25	10.00

TULIP POPLAR (Yellow Poplar), is a rapid grower which is valuable for lumber. This is a stately tree that will grow very tall. On account of its popularity as a lumber tree, it is very scarce. Every farm should plant tulip Poplar.

	Per 100	Per 1000
6-12 inch	\$.75	\$ 6.00
12-18 inch	1.00	8.00
18-24 inch	1.50	10.00
2-3 feet	2.00	15.00

CATALPA SPECIOSA (True Western). A very hardy fast growing tree which is planted mostly for posts and can be used in many other ways. It will thrive where many trees will perish.

	Per 100	Per 1000
6-12 inch	\$.50	\$ 3.50
12-18 inch	1.00	5.00
18-24 inch	1.25	8.00
2-3 feet	2.00	15.00

RED BUD (Cercis Canadensis). Native tree well adapted to rough rocky ground. It is a beautiful sight when in bloom in the early spring, a mass of rosy pink flowers.

	Per 100	Per 1000
6-12 inch	\$1.25	\$10.00
12-18 inch	1.50	12.00
18-24 inch	2.00	15.00
2-3 feet	2.50	20.00

AMERICAN BEECH. Magnificent, compact tree. One of the aristocrats of the forest. Beech mast is valuable for hog feed and the timber is used for many purposes.

	Per 100	Per 1000
4-6 inch	\$.60	\$ 4.00
6-12 inch75	5.00
12-18 inch	1.00	7.00
18-24 inch	1.25	10.00

OAKS (Chestnut and White)... All the Oaks are useful trees. They are well adapted to almost any soil and can be used for many purposes about the farm.

	Per 100	Per 1000
4-6 inch	\$1.50	\$12.00
6-12 inch	2.00	15.00
12-18 inch	2.50	20.00

Acer Rubrum (Red or Scarlet Maple)

MAPLES (Acer Saccharum) Sugar Maple. The maples are well known trees in this country.

	Per 100	Per 1000
6-12 inch	\$1.00	\$ 8.00
12-18 inch	1.50	10.00
18-24 inch	2.00	15.00

HALL'S JAPAN HONEYSUCKLE (Lonicera Halliana). This honeysuckle is being used to check erosion where other plants will not grow. If once started they will hold any bank from erosion. These are used extensively by railroads and highway departments.

	Per 100	Per 1000
1 yr. transplanted	\$5.00	\$40.00
1 yr. tr. No. 3	3.00	25.00
2 yr. heavy	9.00	75.00
2 yr. light	6.00	50.00

If you want other varieties of Forest Trees Seedlings, write us.

ALL OF THE ABOVE ARE SEEDLINGS. IF YOU WANT HEAVY, TRANSPLANTED STOCK, REFER TO OUR DESCRIPTIVE CATALOG.

We have lots of nice shade trees, especially White Flowering Dogwoods, Red Bud, American Linden, Hard Maple and Silver Maple at special prices. Sizes up to ten (10) feet.

BOYD NURSERY COMPANY

McMINNVILLE, TENNESSEE

Index

	PAGE		PAGE
BULBS		VINES	
Tulip	8 and 4	Boston Ivy	14
Narcissus	6	Trumpet Creeper	14
Hyacinths	6	Clematis	14
Lilies	7	English Ivy	14
Crocus	7	Honeysuckle	14
HARDY PERENNIALS		FLOWERING TREES	
Phlox	5	Peach	15
Peonies	6	Plum	15
Iris	7	Crab	15
FRUIT TREES		Magnolia	15
Apples	8	SHADE TREES	
Peaches	9	Maples	16
Cherries	10	Ash	16
Apricots	10	Linden	16
Pears	10	Birch	16
Plums	10	Dogwood	16
SMALL FRUITS		Red Bud	16
Raspberries	11	Pink Flowering Dogwood	17
Strawberries	11	Willow	17
Grapes	11	Sycamore	17
NUT TREES		Sour Gum	17
Walnut	11	Sweet Gum	17
Pecans	11	Persimmon	17
FLOWERING SHRUBS		Poplar	17
Almond	12	Elm	17
Althea	12	CONIFEROUS EVERGREENS	
Barberry	12	Junipers	18
Butterfly Bush	12	Spruce	18
Calycanthus	12	Pines	19
Cornus (Dogwood)	12	Arbor Vitae	19
Coralberry	12	Hemlock	19
Crape Myrtle	12	BROADLEAF EVERGREENS	
Cydonia Japonica	12		20
Deutzia	12	ROSES	
Elder	12		21 and 22
Forsythia	12		
Hydrangea	12 and 13		
Hypericum	13		
Lilac	13		
Lonicera	13		
Philadelphus	13		
Rhus (Sumac)	13		

ORDERS

Write plainly and give explicit directions, otherwise we will forward according to our best judgment. All goods travel at purchaser's risk. We assume no responsibility for the goods after delivery to the forwarding companies.

We use every care to secure prompt deliveries, but we are not liable for delay or damage in transit. Our responsibility in this respect ends upon delivery in good order to transportation company; but we will gladly render all the aid we can in case claim becomes necessary.

TERMS

Cash with order unless otherwise arranged. Six per cent interest charged on overdue bills. Five plants at 10 rates; fifty at 100 rates. All quotations in this list are net for the goods packed—no extra charges for packing and delivering to carriers.

Customer pays carriage charges. If delayed, or lost on the road, notify us and we will do all possible to get it through, or collect claim, but are not responsible for carrier's neglect. We advise express shipments as cost is little more than freight on small lots, and stock gets through quicker and safer. Light packages can go by parcel post.

Postage should accompany parcel post orders. (15 per cent of list price).

GUARANTEE

We are very careful to keep each variety true to name as labeled and are ready at any time to replace, upon proper proof, any that may prove otherwise, free of charge, or refund the amount paid, but it is mutually agreed between the purchaser and ourselves that we shall at no time be liable for an amount larger than the original purchase price.

CLAIMS

Claims, to receive consideration, must be made within ten (10) days after receipt of goods.

Everything is offered subject to being unsold on receipt of order and subject to shortage or failure of crops and other causes beyond control. By placing orders, buyers are considered to agree with these terms.

Certificate of inspection will be sent with each shipment.

We are members of the American Association of Nurserymen.

REFERENCE—Dun and Bradstreets, any bank or business house in McMinnville.

NO ORDERS FOR LESS THAN ONE DOLLAR

Boyd's FAMILY ORCHARD

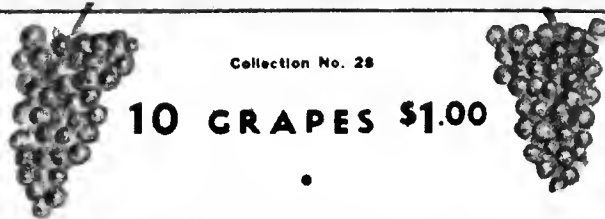


Collection No. 25

10 APPLES \$1.00
2 to 3 Feet

RED DELICIOUS
GRIMES GOLDEN
YELLOW DELICIOUS
RED WINESAP
EARLY HARVEST
KINNARD CHOICE
YORK IMPERIAL
LIMBERTWIG
JONATHAN
STAYMAN WINESAP

Description Inside Catalog

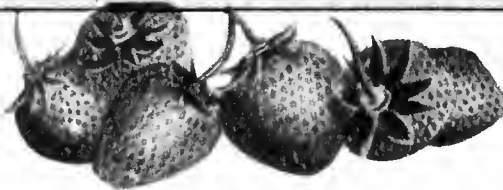


Collection No. 28

10 GRAPES \$1.00

4 CONCORD
4 MOORE'S EARLY
2 CAMPBELL'S EARLY

ALL COLLECTIONS 1 YEAR TREES AND PLANTS



Collection No. 29

100 STRAWBERRIES \$1.00

50 BLAKEMORE
25 AROMA
25 CHAMPION



Collection No. 32

10 PEACHES \$1.00
2 to 3 Feet

ELBERTA
J. H. HALE
HEATH CLING
GOLDEN JUBILEE
BELLE OF GEORGIA
SHIPPER'S RED
RED BIRD
CARMAN
EARLY ROSE
INDIAN BLOOD

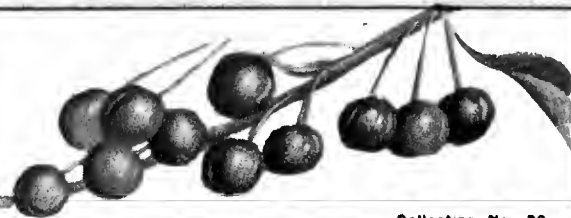
Description Inside Catalog



Collection No. 26

4 PEARS \$1.00

2 BARTLETT
1 GARBER
1 KIEFFER



Collection No. 30

2 CHERRIES

1 EARLY RICHMOND
1 GOVERNOR WOOD

\$1.00



Collection No. 33

4 APRICOTS \$1.00

2 EARLY GOLDEN
1 MOORPARK
1 ROYAL



Collection No. 31

\$2.00
BACKYARD
COLLECTION

APPLES

1 WINESAP
1 EARLY HARVEST
1 GRIMES GOLDEN

PEACHES

1 ELBERTA
1 J. H. HALE
1 EARLY ROSE

PLUM

1 KELSEY JAPAN

PEARS

1 BARTLETT

CHERRIES

1 EARLY RICHMOND

GRAPES

2 CONCORD
1 NIAGARA



Collection No. 34

7 PLUM TREES \$1.00

2 WICKERSON
2 BLUE DAMSON
2 KELSEY JAPAN
1 ABUNDANCE



25 Collection No. 27 **\$1.00**

RASPBERRY PLANTS

15 ST. REGIS
10 CUMBERLAND

A description of fruits can be found inside catalog.
POSTAGE SHOULD ACCOMPANY PARCEL POST ORDERS
Add 15% of list price to your order. Your balance will be refunded.

BOYD NURSERY COMPANY
McMINNVILLE, TENNESSEE