

Historic, archived document

Do not assume content reflects current scientific knowledge, policies, or practices.

23173

1238

RETURN POSTAGE GUARANTEED

A. E. WOHLERT

NARBERTH, PENNA.

SEC. 562 P. L. & R.
U. S. POSTAGE
PAID
NARBERTH, PA.
PERMIT NO. 1

LIBRARY
RECEIVED
★ MAR 15 1938 ★
U. S. Department of Agriculture

SPECIALIST IN
FLOWERING TREES
AND
WISTARIA

Mr. S. W. Reed,
U.S. Dept. of Agr.,
Bureau of Plant Industry,
Washington, D. C.

SPECIAL OFFERS
AND
CHOICE COLLECTIONS

PLEASE DO NOT DELAY

SPECIAL COLLECTION OF FLOWERING TREES

These Prices Effective Only During Spring Season

"IMMEDIATE" Collection—Trees old enough to bloom freely.

- 1 Flowering Hawthorn, double scarlet, 8-9 feet.
- 1 Japan Cherry Sargentii, single, deep pink, 7-8 feet.
- 1 Magnolia Soulangeana, single, pink, 8 feet.
- 1 Magnolia Yulan, snow white, 8 feet.
- 1 Japan Cherry Kwanzan, deep pink, 8 feet.
- 1 Flowering Crab Hopa, single, red, 8 feet.
- 1 Flowering Crab Eleyi, single, red, 8 feet.

\$67.50 Value—Special this Spring, only \$59.50

"GEM" Collection—Very hardy varieties.

- 1 Flowering Crab Atrosanguinea, carmine, 3-4 feet.
- 1 Flowering Crab Floribunda, pink, 3-4 feet.
- 1 Flowering Crab Hopa, red, 3-4 feet.
- 1 Flowering Crab Eleyi, red, 3-4 feet.
- 1 Flowering Peach, double red, 3-4 feet.
- 1 Flowering Peach, double white, 3-4 feet.

\$8.00 Value—Special this Spring, only \$6.50

"BLENDING COLOR" Collection—Red, pink and white; weeping, upright and spreading.

- 1 Flowering Cherry Kofugen, double, deep pink, late, 5-6 feet.
- 1 Flowering Cherry Yoshino, single, pale pink, early, 5-6 feet.
- 1 Flowering Cherry Naden, double, pale pink, late, 5-6 feet.
- 1 Flowering Cherry Weeping, double, pink, early, 4-5 feet.
- 1 Flowering Cherry, Autumnalis, winter flowering, double, 4-5 feet.
- 1 Flowering Crab Atrosanguinea, single, carmine, 5-6 feet.
- 1 Flowering Crab Floribunda, single, pale pink, 5-6 feet.
- 1 Flowering Crab Hopa, single, rose, fragrant, 5-6 feet.
- 1 Flowering Crab Spectabilis, double, pink, fragrant, 5-6 feet.
- 1 Flowering Peach, double, red, early, 4-5 feet.
- 1 Flowering Peach, double, white, early, 4-5 feet.
- 1 Flowering Peach, double, pink, early, 4-5 feet.

\$38.00 Value—Greatest Value for only \$29.50

"HARDY" Collection—For cold sections.

- 1 Flowering Crab Atrosanguinea, carmine, single, 5-6 feet.
- 1 Flowering Crab Scheideckeri, pink, double, 5-6 feet.
- 1 Flowering Crab Hopa, rose, single, fragrant, 5-6 feet.
- 1 Flowering Crab Spectabilis, pink, double, fragrant, 5-6 feet.
- 1 Flowering Crab, red tip, deep pink, single, 5-6 feet.
- 1 Flowering Crab Eleyi, red, single, 5-6 feet.
- 1 Flowering Crab Floribunda, pale pink, single, 5-6 feet.
- 1 Flowering Crab Theifera, delicate pink, 5-6 feet.

\$16.00 Value—No orders taken after April 25th \$12.75

"MAGNOLIA" Collection No. 1—For a beautiful garden.

- 1 Magnolia Soulangeana, pink, 5-6 feet.
- 1 Magnolia Yulan (Conspicua), white, 5-6 feet.
- 1 Magnolia Nigra (Purpurea), black tulip color, 5-6 feet.
- 1 Magnolia Liliflorum, rusty red, 5-6 feet.

\$40.00 Value—This Spring, only \$34.50

"MAGNOLIA" Collection No. 2—All flowering size.

- 1 Magnolia Alexandrina, deep pink, 3 feet.
- 1 Magnolia Nigra, black tulip color, 3-4 feet.
- 1 Magnolia Soulangeana, pink, 3-4 feet.
- 1 Magnolia Conspicua, white, 4-5 feet.

\$20.00 Value—Up to April 15th, only \$16.95

SPECIAL:

Three Magnolias, 7 to 8 feet high, one of each sort:

Soulangeana, Yulan and Nigra—for **\$50.00**
Or—Three of any one kind—for **\$50.00**

TRY THESE, TOO!!!!

3 Flowering Peach, assorted colors, one pink, one red and one white—for **\$2.95**
6 Flowering Peach, **new** varieties, delicate colors as well as strong reds—for **\$15.00**
5 Japan Roseflowering Cherries, assorted varieties, our selection, 3-4 feet—for **\$6.50**

SPECIAL PERENNIAL OFFERS

Orders Taken at These Prices Only During March and April

Shipments Will Be Made at Proper Time for Planting

Cut Flower PERENNIALS—Covering a long season.

- 12 Achillea Perry's White, white, 24 inches.
- 12 Aster Star of Wartburg, blue, 18 inches.
- 12 Anthemis Tinctoria, yellow, 30 inches.
- 12 Armeria Formosa Hybrids, pink, 18 inches.
- 12 Artemesia Silver King White Sprays, 24 inches.
- 12 Aster Enfante De Vitris, blue, 36 inches.
- 12 Delphinium Belladonna, light blue, 36 inches.
- 12 Dianthus Sweet Scented Pinks, pink, 14 inches.
- 12 Gaillardia Grandiflora, brown, red and yellow, 18 inches.
- 12 Gypsophila Paniculata, white, 24 inches.
- 12 Heliopsis, Excelsa, large yellow, 30 inches.
- 12 Heliopsis Pitcheriana, yellow, 36 inches.
- 12 Siberian Iris Blue, blue, 36 inches.
- 12 Liatris Pycnostachya, lavender, 36 inches.
- 12 Lilium Tigrinum, spotted orange, 36 inches.
- 12 Lythrum Roseum Superbum, deep rose, 36 inches.
- 12 Shasta Daisy Alaska, white, 24 inches.
- 12 Statice Latifolia, lavender, 26 inches.
- 12 Veronica Blue Fay, light blue, 24 inches.
- 12 Veronica Longifolia Hybrids, deep to light blue, 24 inches.

240 PLANT ASSORTMENT—FOR \$30.00

PERENNIAL Rock Garden Plants.

- 12 Arabis Alpina Rosea, pink, 6 inches.
- 12 Artemesia Stelleriana, silver white, 18 inches.
- 12 Aster Alpinus Blue, blue, 8 inches.
- 12 Aster Amellus Elegans, blue, 12-15 inches.
- 12 Delphinium Chinese Blue, blue, 15-18 inches.
- 12 Dianthus Deltoides Alba, white, creeper.
- 12 Dianthus Deltoides Brilliant, brilliant carmine, creeper.
- 12 Dianthus Plumarius, Sweet Scented Pinks, pink, 10-12 inches.
- 12 Dianthus Rose Cushion, pink, 4 inches.
- 12 Dwarf Aster, Lady Henry Maddock, pink, 12 inches.
- 12 Geranium Sanguineum, lilac rose, semi-creeper.
- 12 Iris Pumila Cyanea Blue, blue, 6-8 inches.
- 12 Forget-Me-Not (Myosotis Semperflorens), blue, 6 inches.
- 12 Phlox Subulata Lilacina, lilac, 6 inches.
- 12 Phlox Subulata Moerheimi, pink, 6 inches.
- 12 Prunella Grandiflora, blue, 4-6 inches.
- 12 Sedum Spurium Coccineum, rosy crimson, 6 inches.
- 12 Sempervivum, 4-6 inches.
- 12 Tunica Saxifraga, lilac rose, 6 inches.
- 12 Violet, Single Russian, blue, 8 inches.

240 PLANT ASSORTMENT OF PROVEN MERIT FOR \$30.00

Above plants are fully developed and of a size that will give immediate results after planting.

JAPANESE FLOWERING QUINCE

JAPANESE FLOWERING QUINCE (*Chaenomeles*), commonly called "Japonica," has always been popular because it blooms early. The orange or scarlet is more commonly known, but it is now possible to get some real choice sorts that have large flowers in brilliant colors.

Columbia, creamy yellow tinted rose.

1½-2 feet @ \$1.45; 2-3 feet @ \$1.95.

Corallina, exceptionally fine, rather slow growing. Flowers are coral or salmon-apricot borne in great profusion over a very long period.

1½-2 feet @ \$1.95; 2-3 feet @ \$2.45.

Grandiflora, lemon and pink.

2-3 feet @ \$1.95.

Kermesina semiplena, flesh pink to rich red.

2-3 feet @ \$1.95.

Lagenaria atrococcinea, brilliant scarlet.

1½-2 feet @ \$1.45; 2-3 feet @ \$1.95.

Rosea grandiflora, flesh pink, large flowers.

1½-2 feet @ \$1.45.

Semperflorens, rose pink.

1-1½ feet @ \$1.25.

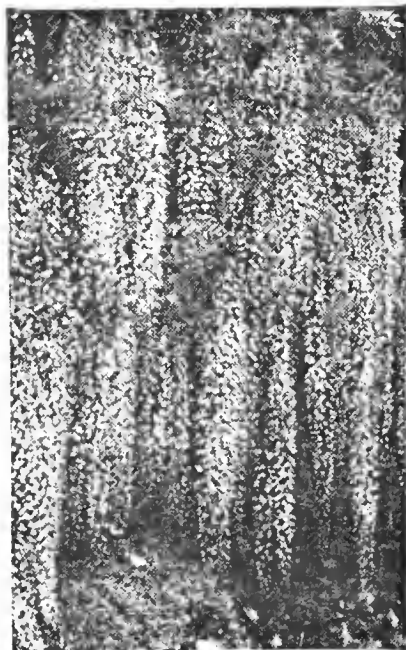
Superba perfecta (dwarf). The flowers of this beautiful miniature variety are creamy yellow, tinted pink, gradually changing to rose. Blooms freely in fall as well as in the spring.

1½-2 feet @ \$1.95.

SEEDLINGS: A fine lot of seedlings grown from carefully hybridized seeds. While they have not yet produced, we have high expectations and some exceptionally fine varieties should result. They are two years old, not yet well branched.

5 plants for \$2.45.

WISTARIA



Longcluster Wistaria Naga

Noda, producing flower clusters 4 feet long. Lovely, lavender, fragrant flowers.

1 yr., \$1.50; 3 yrs., \$3.50;

5 yrs., \$5.50; 6 yrs., \$7.50;

7 yrs., \$10.00; 8 yrs., \$12.50.

Tree Form or Standards,

\$10.00 each.

A. E. WOHLERT
THE GARDEN NURSERIES
NARBERTH, PA.



“PORTRAITS OF DOGWOOD”

A book by Adolf Muller, containing pictures in natural color, faithfully reproduced from photographs taken last spring. Any one of these pictures is worth the price of the book, One Dollar per copy. The manuscript contains about 5000 words, a short story of the Dogwood we all know.

When spring comes, and the flower-show parade is on, the climax is reached when the Dogwoods bloom. Then it seems as if the final act takes place. The Dogwoods simply take over the show, as it were, and officially close the season; the curtain falls, and the great display of flowers on trees is over till another season.

Now, this hero of all grandees among flowering trees is an uncrowned native American. When you read this book, perhaps you will feel as I do, that here and now is the time to give this marvel of trees its due. Further than that, to look around outdoor America, and see a veritable storehouse of native American trees and flowers that are unsung and unapplauded, but awaiting our approval.

Certainly you will experience a vivid interest if you will take time to get acquainted with our own American native trees. So please grant me a hearing by reading this really beautiful, artistic book (written by an ardent admirer) or at least have a look at a copy of it.

This book and the author caused more than a quarter million Dogwoods to be planted in Pennsylvania.

Price \$1.00 per copy

PACHYSANDRA TERMINALIS

Pachysandra Terminalis (Japanese Spurge) for those dry or shady places. Will thrive in places where it is too shady for grass. A beautiful evergreen plant growing twelve inches high, and when spaced about six to eight inches apart makes a beautiful ground cover, or a perfect border for flower beds.

One-year-old Plants **\$8.00 per 100, \$40.00 per 1000**