

## **Historic, archived document**

Do not assume content reflects current scientific knowledge, policies, or practices.



"HOME  
LANDSCAPES"

*A Guide to More Attractive  
Home Yards and Gardens*

*Spring 1938*

HOLM & OLSON  
*St. Paul, Minnesota*



# HOW WE SERVE YOU

## Please Read Our Liberal Terms and Policies

**When to Order.** Try to make up your order and send it in soon after this catalog reaches you. Early orders enable us to reserve for you the plants wanted and to give you the first selections. **Your order will be shipped just when the weather is most favorable** and at just the right time for planting.

**How to Order.** Send in your orders by whatever means you prefer and we assure you of prompt, careful attention. For your convenience a special addressed order blank is placed in this catalog, ready for your use. This can be mailed without an envelope and postage is prepaid by us.

**Give Shipping Instructions.** Tell us how you want shipments made; whether by Freight, Parcel Post (suitable only for small packages) or Express, and indicate any special routing. We recommend Express as most advantageous and desirable excepting on heavy, bulky shipments. When not instructed we will use our best judgment.

**No Packing Charge.** Catalog prices are all based on stock F. O. B. St. Paul and no charge is made for packing. Twin-City deliveries are made free of charge to any St. Paul or Minneapolis address.

**Terms.** Cash with order is expected and money should be sent by check, post office order or bank draft. If credit is to be arranged please advise us in ample time and furnish the usual business references. All accounts are due by the 10th of the month following date of purchase.

## The H. & O. Liberal Plant Guarantee

**First.** You are assured that you will receive the best quality of live, healthy plants, properly packed to reach you safely. If any plant proves untrue to variety ordered it will be re-supplied without charge.

**Second.** We agree to re-supply any plants that may fail to become established the first season after planting at one-half of the original cataloged purchase price. Requests for any such replacements must reach us before October 1st of that season and the account must be paid in full when due.

*Our very liberal replacement agreement is possible only because we have full confidence in the vitality and sturdiness of our plants and know they will succeed with normal care and attention.*

**Full Planting Instructions** are sent with the acknowledgment of every order. Consult us freely for any further information you may need. We want the opportunity to help you and no expense will be spared to make every order we send you give entire satisfaction.

## Your Correspondence Is Always Welcome

Holm & Olson—The Park Nurseries  
Offices—20-24 W. 5th S. Saint Paul.

---

## You Will Enjoy a Visit to Our Display Gardens

The lily pool, cascade and rock garden are new additions to our interesting plant and flower exhibits at the PARK NURSERIES at 1200 St. Clair Street (just beyond Lexington and St. Clair) in St. Paul. Beginning with a gorgeous display of spring flowers there follow attractions that will delight you throughout all the season.

You are cordially welcome at our Display Gardens and Nursery where you can make personal selections of stock if you wish. Come often and bring your friends.



A partial view of Mr. Phil J. Noonan's home grounds—"A Little Bit o' Heaven"—at Alexandria, Minn., planned by Holm & Olson, Landscape Architects. An outstanding Minnesota garden of rare charm and beauty maintained by Mr. Noonan and generously shared with his friends and the public.

## "Home Landscapes"-1938

This catalog will tell you about many choice and hardy Trees, Shrubs and Plants, the growth and beauty of which you can enjoy right in your own home yard. The varieties are those that are adapted to the soils and climate of these North-Central States.

*For Your Increased Enjoyment of Your Grounds . . .  
May We Help You With . . .*

### **1 Selected PLANT MATERIALS,**

Shrubs and Hedges  
Evergreens and Shade Trees  
Perennials and Roses  
Vines and Hardy Fruits  
Lawn Seed and Fertilizers

### **2 Complete GARDENING SERVICE**

Landscape Designing  
Construction and Planting  
Maintenance and Supervision  
Tree Surgery and Repair  
Consultation and Advice

All available within one organization and at moderate cost

Your Inquiries Are Always Welcome

**THE PARK NURSERIES - - - HOLM and OLSON, Inc.**

20-24 West Fifth St. - - - Saint Paul, Minnesota

(Established 1895)

(Local branch of Landscape and Nursery Departments at Rochester, Minn.)

## Practical Landscaping Advice—

*Let Holm and Olson  
Help You Plan,  
That's Part of Our Service*

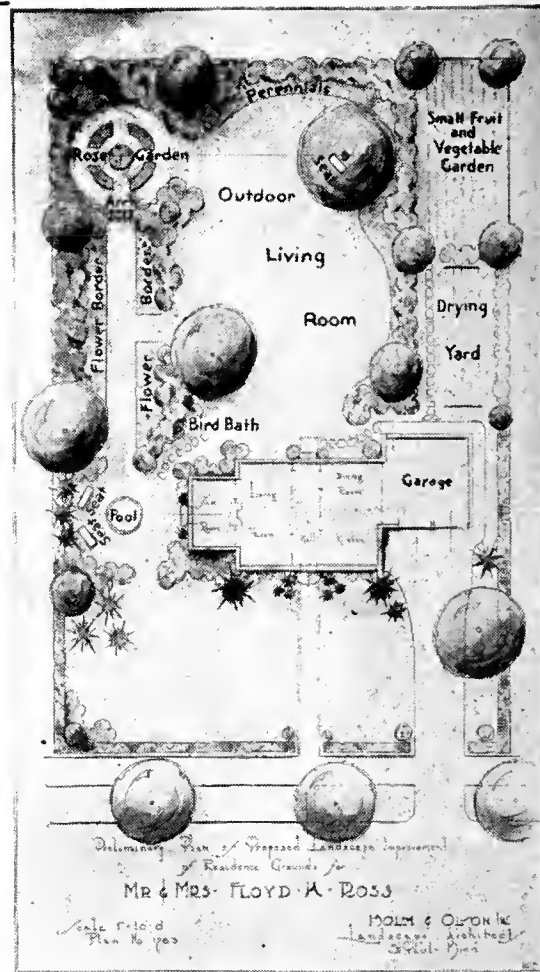
Your greatest satisfaction and pleasure with your yard is made certain when the landscaping is properly planned and planted.

Make full use of our experienced designers. Let us outline ways for you to get the most pleasing results on your grounds quickly and economically.

Start right. We will help you with a definite, complete plan prepared to meet your own personal situation. Careful cost estimates will be given.

The plan can be followed in part each season if you prefer.

**The helpful advice of our Landscape Architects is available to all our customers. Please ask us for full information.**



A landscape plan will show you just what and where to plant

**COMPLETE GARDENING SERVICE FOR TWIN-CITY PROPERTIES.** In the Twin-Cities and in Rochester and vicinity our local organizations of skilled gardeners are ready to serve you on call. Cost estimates will be given on **Planting, Garden Construction, Lawn Making, Tree Repair, Trimming of Trees and Shrubs** and **General Maintenance**.

**(Important Note:** For your protection we carry full workmen's liability insurance.)

**FOR OUR CUSTOMERS OUT-OF-TOWN.** We help you **Plan-By-Mail**. Send us a sketch and measurements of your grounds. We will suggest ways of making your property most attractive. Experienced foremen can be sent to oversee the actual planting and construction if you so desire.

**Special Out-of-Town Consultation.** For larger public and private properties a personal call by our Landscape Architects may be to your advantage. These special trips can be arranged by appointment. The charges are moderate.

These pictures tell the story. Note the remarkable results of well-planned landscape improvements. Property of Mr. Leopold Pistner, St. Paul, planned and planted by Holm & Olson.

Your own home grounds can be made equally attractive. Phone or write for full information. You will be surprised to learn the moderate costs.



1. The "house" before planting



2. The "home" several seasons later

## Modern Gardening—

*In Your Garden You Can Know  
the Delights of*

### *"Living out-of-Doors"*

Right in your own home yard, no matter what its size, there is an opportunity to create a shelter-spot. There, in sheltered seclusion, you can find rest and ease in the quiet beauty of the out-of-doors.

#### **Simplicity of Arrangement**

A delightful "out-of-doors living room" can be made without elaborate settings. All that is needed is a tasteful and proper arrangement of plantings and simple accessories that provide comfort and relaxation.

#### **Home Grounds Should Have Privacy**

A sense of privacy in the yard, some shelter from the public gaze, is much to be desired. This partial seclusion can readily be secured through taller plantings made along the lot boundaries.

Within this sheltering "wall-of-green" there are ideal locations, in an inner border, for all those flowering plants you particularly love.

While protecting and sheltering the private lawn area the lot boundary planting can be a border of both flower and foliage of unusual beauty.



Suitable plantings will make your yard a place to use and enjoy. We will help you plan just such a delightful corner for your yard.

#### **You Can Develop Your Yard So That it Invites Use**

An open central area of well-kept lawn beckons the foot-steps. A shapely tree or two for protection with suitable garden seat or chairs in their cool shadows will create a lure to the garden that is irresistible.

Children play safely in such a foliage-protected yard and the entire household turns gratefully to such surroundings for healthful pleasure and recreation.

**Let us help you plan and develop your grounds for your greatest use and enjoyment. For over 40 years we have been of service to home owners throughout the Northwest. Your inquiries are invited.**



A garden spot that "beckons." Developed by Holm & Olson for Mrs. A. W. Lindeke, Saint Paul.



The beauty of appropriate shrub and evergreen plantings add permanently to the charm of this attractive home. Property of Mr. H. D. Wells, Minneapolis.

## Hardy Shrubs for Flower and Foliage

### Sturdy Varieties for Northern Gardens

A large area of our nursery and the skill of experienced gardeners is devoted to developing our shrubs into sturdy, handsome plants that will quickly bring attractiveness to your home grounds.

Much of the beauty in the landscape planting of the home yard is supplied by shrubs. Their uses are many and the cost is nominal.

It is the softening grace of the dwarf and medium-height shrubs when planted about the house foundations that creates the transformation from bareness to beauty. The taller shrubs find their proper place as specimens in the lawn or in the border along the lot boundaries to give privacy or to screen out unattractive views.

**PLEASE NOTE:** The figures following the shrub name show the approximate height of growth.

#### Flowering Almond

**Double Flowering Almond** (*Amygdalus rosea*). 4 to 5 ft. A symmetrical upright shrub with a striking display of pink, rose-like flowers along the branches in early spring. One of the earliest shrubs to bloom. A white-flowering variety is also offered.

2 to 3 ft.-----\$0.60  
3 to 4 ft.----- .80

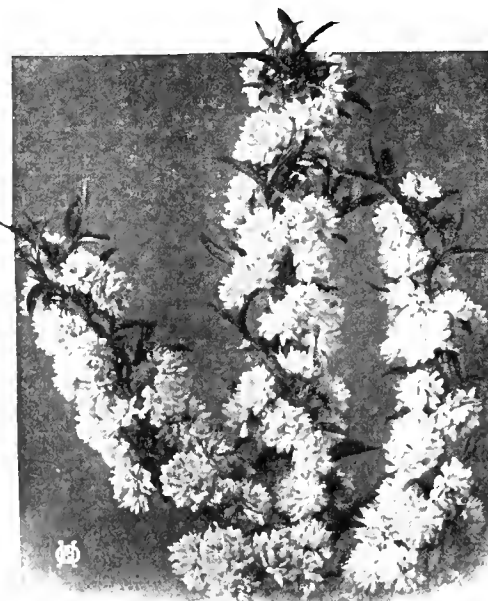
#### Buckthorn

**Buckthorn** (*Rhamnus cathartica*). 8 to 10 ft. Very dependable dense-growing shrub with lustrous leaves and black berries. A twiggy growth that permits of trimming to any desired form or outline. (See page 17 for hedge prices and sizes.)

2 to 3 ft.-----\$0.35  
3 to 4 ft.----- .50

#### Caragana

**Caragana.** See Siberian Pea Tree, page 8.



The Pink Flowering Almond is very colorful in early spring

#### Barberry

**Japanese Barberry** (*Berberis thunbergii*). 2½ ft. The most popular hardy dwarf shrub with low, spreading growth to form a dense bush. Red berries, brilliant fall foliage color. Grows most anywhere—in partial shade, sunny, moist or dry places. (For hedges please see page 17.)

12 to 18 in.-----\$0.30  
18 to 24 in.----- .45

#### The New Red-Leaved Barberry

**Red-Leaved Barberry.** 2½ ft. Similar in growth to the Japanese Barberry but has rich, bronze-red leaves that hold their red color all summer. A bright contrast to other shrubs. Plant in full sun for best leaf color. One of the best of the newer plants.

12 to 18 in.-----\$0.50  
18 to 24 in.----- .75

#### Bridal Wreath

**Bridal Wreath.** See under Spiraea, page 8.

VISIT OUR DISPLAY GARDENS, ROCKERY AND POOL AT 1200 ST. CLAIR ST.



**The True-Hedge Columnberry**

(Illustrated to the right)

**A New Ornamental Plant**

This splendid shrub (Plant Patent No. 110) is a very hardy, dense and upright-growing Barberry. Its handsome, glossy leaves thickly cover its pyramidal form. Perfect for a low hedge or as specimen plants in the garden or shrub borders.

12 to 15 in.-----\$0.40 each; 10 for \$3.00  
15 to 18 in.----- .50 each; 10 for 4.00

**Coralberry**

**Coralberry** (*Symphoricarpos vulgaris*). 3 to 4 ft. A medium height, graceful, native shrub that grows well in sun or shade. Red berries cluster the ends of the branches in late summer.

2 to 3 ft.-----\$0.50 3 to 4 ft.-----\$0.75



The unusual white and green leaves of the Silver Dogwood

**Currants (Ornamental)**

**Mountain Currant** (*Ribes alpinum*). 4 ft. Excellent, dense-growing, very hardy ornamental shrub. Stands shearing and will grow in shade. Probably the most generally useful of all the dwarf shrubs. (For hedges see page 17.)

12 to 18 in.-----\$0.40 18 to 24 in.-----\$0.60

**Yellow-Flowering Currant** (*Ribes aureum*). 6 ft. A substantial, spreading bush with large, yellow, fragrant flowers in spring. Stands shade. A very popular old-fashioned shrub.

2 to 3 ft.-----\$0.60 3 to 4 ft.-----\$0.80  
4 to 5 ft.-----\$1.25

**Dogwood (Cornus)**

**Golden Dogwood** (*Cornus siberica aurea*). 6 ft. Highly valued for its bright yellow branches in fall and winter and particularly attractive when planted near the red-barked variety. White flowers.

2 to 3 ft.-----\$0.50 3 to 4 ft.-----\$0.75

**Red-Twigged Dogwood** (*Cornus siberica*). 6 ft. A hardy, vigorous bush with bright coral-red branches which make the sturdy shrub attractive in all seasons. Strong and erect in growth.

2 to 3 ft.-----\$0.50 3 to 4 ft.-----\$0.75

**Silver Dogwood** (*Cornus elegantissima*). 6 ft. The green leaves are striped and margined with white. Red colored bark. An unusual plant making a bright spot of color in the shrub group.

2 to 3 ft.-----\$0.75 3 to 4 ft.-----\$1.00

**Cotoneaster**

**Cotoneaster acutifolia**. QUINCE BERRY. 6 ft. A neat, clean shrub with dark, glossy green leaves. A dense-growing and highly ornamental bush all season with a striking, bright yellow fall coloration. (For hedges see page 17.)

18 to 24 in.-----\$0.40 2 to 3 ft.-----\$0.60  
3 to 4 ft.-----\$0.90

**Elderberry (Sambucus)**

**Black-Fruited Elder** (*Sambucus canadensis*). 6 ft. The old-fashioned favorite with large clusters of fragrant white flowers and edible black fruit. A rapid-growing, hardy shrub that stands partial shade.

2 to 3 ft.-----\$0.50 3 to 4 ft.-----\$0.80

**Cut-Leaved Elder** (*Sambucus nigra laciniata*). 6 ft. Lacy, fern-like leaves that make a pleasing contrast with other shrubs. The branches are spreading and gracefully drooping.

2 to 3 ft.-----\$0.50 3 to 4 ft.-----\$0.80

**Golden Elder** (*Sambucus aurea*). 7 ft. A handsome wide-spreading shrub with bright yellow leaves all season. It shows its brightest color when planted in a sunny spot.

3 to 4 ft.-----\$0.80 4 to 5 ft.-----\$1.00

**Red-Berried Elder** (*Sambucus racemosa*). 7 ft. Big clusters of bright red berries in July. A large native shrub of spreading growth.

3 to 4 ft.-----\$0.85 4 to 5 ft.-----\$1.00

**Euonymus (Strawberry Bush)**

**Euonymus alatus**. WINGED STRAWBERRY BUSH. 6 to 8 ft. The bark on its horizontally-growing branches has a curious winged development. The leaves are clean and lustrous and have a brilliant fall color. Rose colored berries in fall.

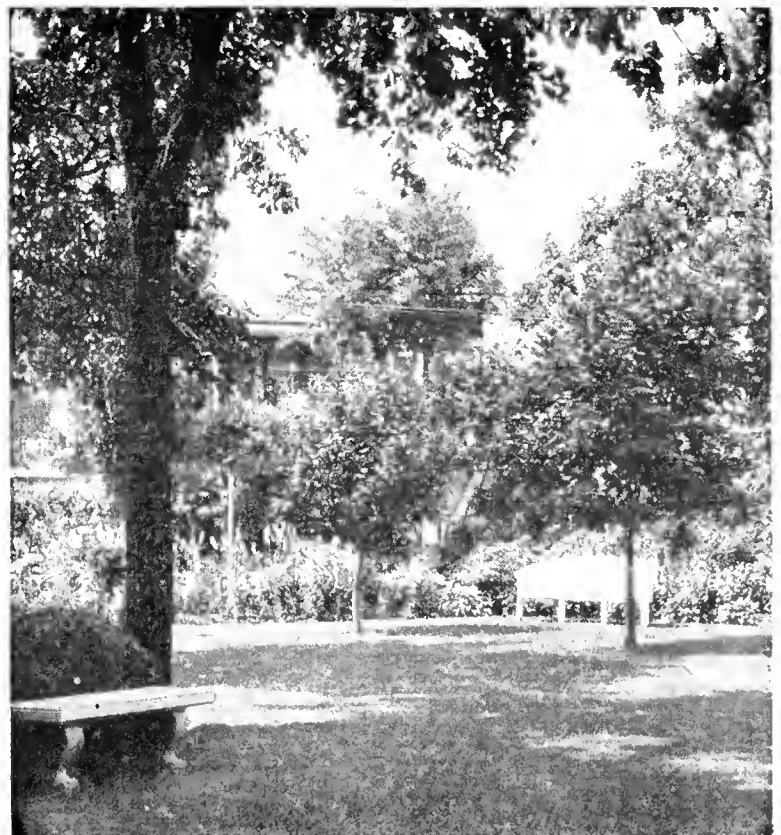
2 to 3 ft.-----\$0.80 3 to 4 ft.-----\$1.00

**Euonymus americana**. STRAWBERRY BUSH. 8 ft. An admirable, hardy shrub with upright, slender, green branches; neat foliage and pink colored fruits. Bright fall foliage color.

2 to 3 ft.-----\$0.60 3 to 4 ft.-----\$0.90



The new True-Hedge Columnberry



The border planting of flowering shrubs and perennials gives privacy and makes this yard inviting for use.

**FLOWERING SHRUBS—Continued**

**Golden Bell (Forsythia)**

**FORSYTHIA, suspensa.** GOLDEN BELL. 5 ft. A graceful, drooping shrub with golden, bell-shaped flowers in spring. Needs winter protection in Minnesota.

2 to 3 ft. -----\$0.60

**HIGHBUSH CRANBERRY.** See Viburnum, page 9.

**The Honeysuckles (Lonicera)**

**Pink Honeysuckle** (*Lonicera tatarica rosea*). 8 ft. The popular pink to rose flowering Honeysuckle bush. Bright red berries follow the blossoms. Very hardy, rapid-growing shrub that thrives well in sun or partial shade.

18 to 24 in.-----\$0.40      2 to 3 ft.-----\$0.55  
3 to 4 ft.----- .80      4 to 5 ft.----- 1.00

**Morrow's Honeysuckle** (*Lonicera Morrowi*). 5 to 6 ft. Compact yet spreading growth with gracefully curved branches. Cream-yellow flowers cover the stems in May followed by red berries in July.

2 to 3 ft.-----\$0.55      3 to 4 ft.-----\$0.80

**White Honeysuckle** (*L. tatarica alba*). 8 ft. A hardy bush honeysuckle with white flowers. The general appearance and type of growth is similar to the Pink flowering variety.

2 to 3 ft.-----\$0.55      3 to 4 ft.-----\$0.80



The Honeysuckle has bright red ornamental berries. The birds like them too.

**Juneberry (Amelanchier)**

**Juneberry** (*Amelanchier canadensis*). 15 ft. Good native shrub with white flowers early in spring and black fruit that attracts birds. A tall and desirable background shrub.

2 to 3 ft.-----\$0.60      3 to 4 ft.-----\$0.75

**The Mockoranges (Syringa)**

**Double-Flowering (Virginal) Mockorange.** 4 to 5 ft. Magnificent new variety with large, creamy-white and fragrant double flowers. Full bloom in spring followed by occasional flowers all season. Excellent foliage and a shrub that always attracts attention.

18 to 24 in.-----\$0.50      2 to 3 ft.-----\$0.65  
3 to 4 ft.-----\$0.85

**Golden Mockorange** (*Philadelphus aureus*). 3 ft. Bright golden-yellow leaves made this dwarf shrub very valuable to color shrub groups. Cheerful and attractive all through the summer.

12 to 18 in.-----\$0.55      18 to 24 in.-----\$0.80  
24 to 30 in.-----\$1.00

**Lemoine's Mockorange** (*Philadelphus Lemoinei*). 5 ft. A hardy erect fine-leaved shrub. Its slender branches bear an abundance of fragrant white flowers in June. Particularly desirable in house foundation plantings.

18 to 24 in.-----\$0.40      2 to 3 ft.-----\$0.60  
3 to 4 ft.-----\$0.85

**Sweet Mockorange** (*Philadelphus coronarius*). 8 ft. A popular, old-time favorite. Big, pure-white and delightfully fragrant flowers in June that give the plant its name. A splendid ornamental and hardy tall shrub.

18 to 24 in.-----\$0.40      2 to 3 ft.-----\$0.50  
3 to 4 ft.----- .80      4 to 5 ft.----- 1.00



The Sweet-Mockorange has delightfully fragrant flowers

**The Hydrangeas**

**Hydrangea, Large Flowering** (*H. paniculata grandiflora*). 4 ft. Magnificent, conical flowers of white that have a pink color in fall and are often cut for winter house decoration. The largest and most handsome flowers of all hardy shrubs.

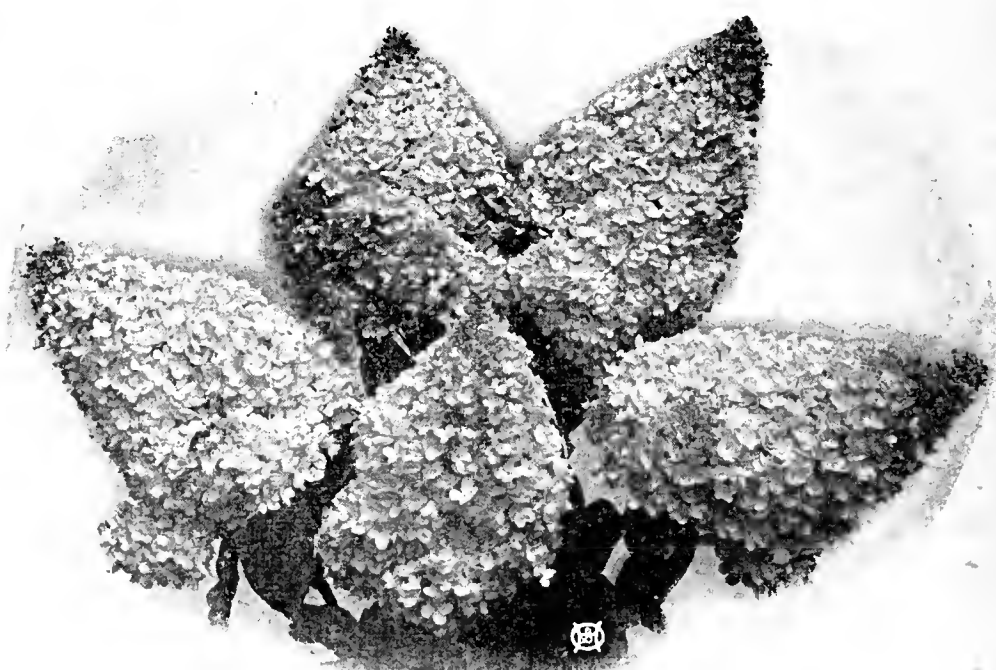
18 to 24 in.-----\$0.55      2 to 3 ft.-----\$0.80

**Hydrangea Snowhill** (*H. arborescens grandiflora*). 3½ ft. Large white snowball-like flowers from June to frost. A pleasing bush in every way with large leaves and spreading growth. Likes partial shade. Always admired in house-foundation plantings.

18 to 24 in.-----\$0.55      2 to 3 ft.-----\$0.80

**Tree Form Hydrangea.** A single-stemmed, tree form of the large-flowering Hydrangea.

3 to 4 ft. -----\$1.40



The Large-Flowered Hydrangea P. G. They make a colorful winter bouquet.

VISIT OUR DISPLAY GARDENS, ROCKERY AND POOL AT 1200 ST. CLAIR ST.

# Lilacs - - for Fragrant Beauty

Dependable and absolutely hardy, the growth and beauty of the Lilac is enjoyed and admired by everyone. Throughout our northern states the Lilac thrives splendidly and quickly grows into a magnificent shrub.

## Enjoy the New French Lilacs

**FRENCH HYBRID LILACS** are modern improvements of the old-fashioned lilac. The flowers are gorgeous in coloring and much larger in size. The French Lilacs bloom when young and bear year after year a profusion of delightful blossoms.



The Lilacs bring both fragrance and beauty to the garden

We offer a wide assortment of the better free-blooming kinds of  
**New French Lilacs**

- Alphonse Laval.** Large double flowers of blue violet. Tall, robust growing.
- Belle de Nancy.** Double flowers of satiny-pink effect. One of the best pinks.
- Chas. Joly.** Double dark wine-colored flowers. One of the best.
- Chas. X.** Single. Long trusses of large, reddish-purple flowers. Old favorite.
- Ludwig Spaeth.** Single. Long trusses of dark purplish-red flowers.
- Marie Legraye.** Excellent single white. Plants bloom when young.
- Michael Buchner.** Double. Clear pale bluish-lilac in long clusters.
- Madame Lemoine.** Double. Pure white flowers in profusion.
- Miss Ellen Willmott.** Double. Unusually large white flowers.
- President Grevy.** Double. Light blue. Large individual flowers.

### PRICES OF NEW FRENCH LILACS LISTED ABOVE

2 to 3 ft.-----\$1.00      3 to 4 ft.-----\$1.25

**Persian Lilac** (*Syringa persica*). 7 ft. Has small leaves and open graceful growth. Light purple flowers in May. Lacks the heavy, coarse appearance of the common lilac.  
2 to 3 ft.-----\$0.60      3 to 4 ft.-----\$0.80  
4 to 5 ft.-----\$1.10

**Purple Lilac** (*Syringa vulgaris*). 10 ft. The old-fashioned, fragrant lilac. A hardy and dependable shrub that everyone admires. Offered also in white-flowering variety.  
18 to 24 in.-----\$0.40      2 to 3 ft.-----\$0.50  
3 to 4 ft. ----- .75      4 to 5 ft.----- 1.00

**Villosa Late-Flowering Lilac.** 10 ft. Unusually ornamental in rich dark foliage with pinkish-lilac flowers in June. A choice Japanese variety that flowers two weeks later than the other types.  
2 to 3 ft.-----\$0.60      3 to 4 ft.-----\$0.80  
4 to 5 ft.-----\$1.00

### Locust—Pink Flowering

**Locust, Pink Flowering or Rose Acacia** (*Robinia hispida*). 5 ft. Always admired for its sprays of rose-colored flowers in clusters in June. Pea-like soft green foliage like the Locust tree.  
3 to 4 ft.-----\$1.00      4 to 5 ft. (heavy)-----\$1.25

### The Ninebarks (*Physocarpus*)

**Dwarf Ninebark** (*Physocarpus monogynus*). 3½ ft. A desirable addition to the list of hardy, dwarf shrubs. Native of Colorado. Makes a full bush of upright growth with small leaves. Bears white flowers in spring. Grows well in most any soil.  
2 to 3 ft.-----\$0.60      3 to 4 ft.-----\$0.75

**Golden Ninebark** (*Physocarpus aureus*). 6 ft. A full-branched bushy, golden-leaved shrub. Makes a pleasing color contrast in shrub groups.  
2 to 3 ft.-----\$0.50      3 to 4 ft.-----\$0.75  
4 to 5 ft.-----\$1.00

**Tall Ninebark** (*Physocarpus opulifolius*). 7 ft. A vigorous, large-leaved shrub that is excellent for use as a screen or background planting. The white flowers of spring are followed by red seed pods.  
2 to 3 ft.-----\$0.50      3 to 4 ft.-----\$0.75  
4 to 5 ft.-----\$1.00

### The Plums—Ornamental Varieties

**Pink-Flowering Plum** (*Prunus triloba*). 5 ft. A great attraction in early Spring when the branches carry clusters of large, double, pink rose-like flowers. Similar to the Flowering Almond but a more desirable and hardier shrub.  
2 to 3 ft.-----\$0.60      3 to 4 ft.-----\$0.80

**Purple-Leaf Plum** (Newport). 10 ft. A shrub of substantial size that has dark, purple-colored leaves all summer. Makes a striking color contrast in shrub plantings or as a lawn specimen.  
2 to 3 ft.-----\$0.65      3 to 4 ft.-----\$0.80  
4 to 5 ft.-----\$1.25

We can help you make your home yard more useful and more enjoyable.

You are invited to consult with our Landscape Designers.



**FLOWERING SHRUBS—Continued**

**Roses—Hardy Bush Varieties**

**Rose, Red Leaved** (*Rosa rubrifolia*). 3 ft. A hardy rose with red leaves all summer. Makes a beautiful contrast in the shrub groups. The blossoms are of a bright pink and are followed by red fruits. Upright in growth with slender, purple branches.  
 Strong Plants -----\$0.60 Extra size -----\$0.75

**Rugosa Rose.** 4 ft. A splendid shrub with the unusual attraction of large, pink flowers, handsome deep green foliage and bright fruit pods. Introduced from Japan and has proven extremely hardy and vigorous in growth.  
 Strong Plants -----\$0.60 Extra size -----\$0.75

**Smooth Wild Rose** (*Rosa blanda*). 5 ft. A sturdy, native shrub rose with dark red stems almost without prickles. The abundant pink flowers are followed by scarlet fruits. Splendid in the shrub border or on exposed slopes.  
 Strong Plants -----\$0.60 Extra size -----\$0.75

PLEASE SEE PAGES 27 TO 29 FOR COMPLETE LIST OF ROSES.

**Russian Olive (Oleaster)**

**Russian Olive** (*Elaeagnus angustifolia*). 12 ft. A hardy tall shrub with willow-like leaves of rich silvery white. Suited for background plantings and very hardy. Yellow fruits follow the inconspicuous flowers of spring.  
 2 to 3 ft. -----\$0.50 3 to 4 ft. -----\$0.75

**Snowberry (Symphoricarpus)**

**White Snowberry** (*Symphoricarpus racemosus*). 4 ft. Slender, graceful shrub with large waxy white berries in September that remain far into the winter. Splendid for planting in front of larger shrubs and under trees.  
 2 to 3 ft. -----\$0.50 3 to 4 ft. -----\$0.80



*Spiraea* Snow-Garland (*Thunbergi*). Blooms before its leaves appear.

**Siberian Pea (Caragana)**

**Siberian Pea Tree** (*Caragana arborescens*). 8 ft. A tall shrub of upright growth with bright green pea-like leaves. Yellow flowers in May followed by ornamental seed pods. Stands poor soils and dry locations.  
 2 to 3 ft. -----\$0.50 3 to 4 ft. -----\$0.75  
 4 to 5 ft. -----\$1.00



*Spiraea* Crimson (*Anthony Waterer*)—a dwarf shrub with crimson flowers all summer

# The Spiraeas

The many varied and interesting types of Spiraeas make them, as a group, the most popular and most generally planted of all the hardy shrubs. We list the better and dependable varieties that are all easy to grow.

**Bridal Wreath** (*Spiraea Van Houttei*). 5½ ft. Most admired of all shrubs. A graceful bush with arching branches that is a snowbank of flowers in late May. Grows well in most any situation.  
 18 to 24 in. -----\$0.25 2 to 3 ft. -----\$0.40  
 3 to 4 ft. ----- .60 4 to 5 ft. ----- 1.00

**Callosa Rosea Spiraea.** 3 ft. A splendid medium height shrub. Rose colored flowers in flat-topped clusters all season. Well suited for house-foundation plantings.  
 12 to 18 in. -----\$0.35 18 to 24 in. -----\$0.50  
 24 to 30 in. -----\$0.75

**Crimson Spiraea** (*S. Anthony Waterer*). 2 ft. A free-flowering dwarf shrub of compact form. Rosy-crimson flowers in flat-top clusters all summer. A pleasing color combination planted with Snowhill Hydrangea.  
 12 to 18 in. -----\$0.40 18 to 24 in. -----\$0.60 24 to 30 in. -----\$0.75

**Garland Spiraea** (*S. Arguta*). A cloud of dainty white blossoms in May. Graceful and attractive all season with long light-green leaves.  
 18 to 24 in. -----\$0.40 2 to 3 ft. -----\$0.55  
 3 to 4 ft. -----\$0.80

**Golden Spiraea.** Please see under NINEBARK, Golden; page 7.

**Japonica Spiraea** (*Callosa alba*). 2½ ft. A good dwarf shrub with white flowers all summer. A white-flowering companion plant to the Crimson Spiraea.  
 12 to 18 in. -----\$0.40 18 to 24 in. -----\$0.60

**Korean Spiraea** (*S. Trichecarpa*). 5 ft. A new hardy shrub from China. Larger flowers and later blooming season than Bridal Wreath. Handsome glossy-green leaves.  
 2 to 3 ft. -----\$0.60

**Pink Summer Spiraea** (*S. Billardi*). 5 ft. Spikes of pink flowers at the end of the stems in July and August. Blooms when other shrubs are out of flower.  
 3 to 4 ft. -----\$0.75 4 to 5 ft. -----\$1.00

**Plume Spiraea** (*S. Sorbifolia*). 4 ft. Leaves resemble a Mountain Ash. Flowers are in plummy spikes of white in July.  
 2 to 3 ft. -----\$0.50 3 to 4 ft. -----\$0.75

**Ninebark** (*S. Opulifolia*). Please see NINEBARK, page 7.

**Snow Garland** (*S. Thunbergi*). 3 ft. Light, feathery leaves on slender branches that are mass of white blossoms in early spring. A refined appearance all summer.  
 18 to 24 in. -----\$0.45 2 to 3 ft. -----\$0.60

VISIT OUR DISPLAY GARDENS, ROCKERY AND POOL AT 1200 ST. CLAIR ST.

FLOWERING SHRUBS—Continued

The Sumacs (Rhus)

**Fragrant Sumac** (*Rhus aromatica*). 3 ft. Excellent, medium-height hardy shrub. Three-parted, fragrant leaves and bright autumn color. Stands shade.

18 to 24 in.-----\$0.40    2 to 3 ft.-----\$0.60

**Tall Fern-Leaved Sumac** (*Rhus typhina laciniata*). 9 ft. Has fronds of delicate, lacy leaves that turn crimson in fall. A hardy, tall shrub to make a pleasing foliage variation in shrub groups.

2 to 3 ft.-----\$0.60    3 to 4 ft.-----\$0.85

Tamarix

**Tamarix Pentandra.** SUMMER TAMARIX. 7 ft. A striking plant with feathery leaves and open clusters of pink flowers at the end of the branches in June and July. Useful in bouquets. The foliage is unlike any other shrub and makes a striking picture.

2 to 3 ft.-----\$0.60    3 to 4 ft.-----\$0.80



The High-Bush Cranberry. Clusters of bright red berries.

The Viburnums (Snowball)

Viburnums are hardy, full-shaped bushes. Very ornamental in foliage, flower and fruit.

**Arrow-Wood** (*Viburnum dentatum*). 8 ft. An upright bush with glossy green leaves. The flat clusters of creamy-white flowers in June are followed by ornamental black berries. A tall shrub, handsome in every way.

18 to 24 in. -----\$0.40    2 to 3 ft.-----\$0.60  
3 to 4 ft. -----\$0.85

**Highbush Cranberry** (*Viburnum opulus*). 8 ft. Named for its big clusters of edible red berries that follow the flat-topped white flowers. A full, handsome shrub with brilliant fall foliage color.

18 to 24 in. -----\$0.40    2 to 3 ft. -----\$0.60  
3 to 4 ft. -----\$0.80

**Snowball** (*Viburnum opulus sterile*). 8 ft. The popular, familiar "snowball" bush with white flowers in June.

2 to 3 ft. -----\$0.60    3 to 4 ft. -----\$0.80

**Wayfaring-Tree** (*Viburnum lantana*). 9 ft. Unusual, leathery, dark green, crinkled leaves. Red berries that ripen to black follow the white flowers. An excellent, tall, full, border shrub.

2 to 3 ft. -----\$0.60    3 to 4 ft. -----\$0.85  
4 to 5 ft. -----\$1.25



Snowberry has pendulous clusters of large, white berries. Described on page 8.

Thorn Apple

**Thorn Apple, Red Haw** (*Crataegus*). 10 to 12 ft. A native white-flowering Hawthorn. Very handsome red fruits that are favored by the birds. A splendid specimen or background shrub with horizontally spreading branches.

4 to 5 ft. -----\$2.00

The Weigelas

(Weigelas need favorable and protected positions—not recommended for planting north of the Twin-Cities.)

**Eva Rathke Weigela.** 4 ft. Well covered with crimson trumpet-shaped flowers in July. Very free blooming.

18 to 24 in.-----\$0.65    2 to 3 ft.-----\$0.80

**Weigela Rosea.** 5 ft. Well rounded bush that has a profusion of bright pink bell-shaped flowers in late June.

18 to 24 in.-----\$0.60    2 to 3 ft.-----\$0.80



We will help you create just such an inviting corner in your yard

PLANTING INSTRUCTIONS ALWAYS SUPPLIED

Our booklet of practical planting information that makes it easy for you to do your planting properly will be sent, without charge, with your order.

# Evergreens . .

EVERGREENS are the aristocrats of the plant world. They give dignity and charm to the home grounds.

In summer and winter alike Evergreens will bring the freshness and beauty of the woods right into the yard about your home.

Some years ago Evergreens were used only sparingly but today—

## Modern Gardening Favors Evergreens

The striking attractiveness that is so evident in the surroundings of the newly-landscaped homes is largely the result of the generous use of evergreens in the planting. The present moderate cost and the compelling beauty of the evergreens gives them this deserving popularity.

## The New Evergreen Varieties

Fortunate we are indeed to have available many new evergreen varieties that were unknown in the past. By a wise selection and arrangement of these modern evergreen forms, a fresh interest and beauty can be given to older plantings and an unusual attractiveness to new ones.

## We Help You Make Selections

Whether your yard plantings are now established or still to be placed you have equal opportunity to use evergreens to heighten the attractiveness of your home. We will be happy to help you make suitable selections.

SPECIAL BOOKLET — "How to Landscape Your Grounds with Evergreens." Describes the various types of evergreens with suggestions as to planting arrangements. Sent without charge on request.



A house planting in the modern mode—with Red Cedar, Arborvitae, Savin Juniper and Mugho Pines

## Evergreens for the House Foundation Planting

The dwarf-type evergreens with compact growth and refined foliage are particularly suited for planting about the building. For this purpose use such varieties as the Globe Arborvitae, Pfitzer and Savin and Bar Harbor Junipers and Mugho Pines.

At house corners and by the doorway where taller evergreens are desired the Scopulorum Juniper, Red Cedar and American and Pyramidal Arborvitae are adapted.

## Evergreens for the Lawn

For lot boundary and screen plantings and for lawn groups and specimens the taller-growing and spreading evergreens are needed. The Pines, the Spruces and untrimmed Red Cedars and American Arborvitae are suited to this use.



The rich color of stately Colorado Spruce makes a gorgeous background and shelter for this secluded garden spot. Grounds of Mr. Clyde Williams, Minneapolis.

For All-Year-Around Beauty — Plant

# Cheerful Evergreens

EVERGREENS grow naturally in our northern soils and climate. They are therefore particularly appropriate and well suited for use in the landscape plantings about our homes throughout this section.

At the Park Nurseries the Evergreens are given particular attention to develop their full beauty of symmetrical growth. They are dug with solid root balls so that they can be moved without loss of vitality. Full planting directions are always given to assure you the best results.

To help you realize how much growing-time you can save when you plant Evergreens of substantial size WE GIVE THE AGE, AS WELL AS THE SIZE, OF THE OLDER TREES along with their prices.

NOTE: The figures following the name show the approximate height at maturity.

## The Arborvitae—Thuja

**American Arborvitae** (*Thuja occidentalis*). 20 ft. A native evergreen with soft, lacy, fan-shaped foliage. The tree is bushy at the bottom and tapers toward the top. Stands trimming well.

2 to 3 ft., 8 yr.-----	\$3.00	3 to 4 ft., 10 yr.-----	\$ 4.00
4 to 5 ft., 11 yr.-----	5.50	5 to 6 ft., 12 yr.-----	8.00
6 to 7 ft., 13 yr.-----	\$11.00		

Larger trees priced on request.

**Globe Arborvitae** (*Thuja occidentalis globosa*). 4 ft. A dwarf, compact little evergreen that grows naturally into a ball-like form. Well suited for borders, foundation plantings, tubs and urns.

18 to 24 in. spread, 11 yr.-----	\$3.50
24 to 30 in. spread, 12 yr.-----	5.50

**Pyramidal Arborvitae** (*Thuja occidentalis pyramidalis*). 18 ft. An attractive, solid pyramid of soft green that retains its outline without shearing.

18 to 24 in., 7 yr.-----	\$1.75
2 to 2½ ft., 9 yr.-----	2.50
2½ to 3 ft., 10 yr.-----	3.25
3 to 4 ft., 12 yr.-----	4.50
4 to 5 ft., 13 yr.-----	6.50
5 to 6 ft., 14 yr.-----	10.00

**Siberian Arborvitae** (*Thuja wareana siberica*). 8 ft. A symmetrical, compact evergreen of conical outline with broad base. Rich green leaves. Very useful in foundation plantings.

18 to 24 in., 10 yr.-----	\$3.00
2 to 2½ ft., 11 yr.-----	4.50
2½ to 3 ft., 13 yr.-----	5.50
3 to 3½ ft., 15 yr.-----	7.00



American Arborvitae

## The Cedars and Junipers

**Bar Harbor Juniper** (*Juniperus sabinna horizontalis*). 2 ft. A true creeper, resting close to the ground, of a beautiful greenish-blue color. A native of the coast of Maine, it has unusual hardiness. Introduced by the Arnold Arboretum. A perfect dwarf evergreen.

18 to 24 in., 9 yr.-----	\$3.00	24 to 30 in., 11 yr.-----	\$4.00
30 to 36 in., 13 yr.-----	\$5.00		

**Chandler's Silver Cedar** (*Juniperus scopulorum chandleri*). 15 ft. A new, pyramidal type Cedar of striking beauty. Bright silvery-green foliage that holds its color all year through. The growth is compact and symmetrical making it a superb, ornamental evergreen. Very hardy and drought resistant.

2 to 3 ft., 8 yr.-----	\$ 6.50	3 to 4 ft., 10 yr.-----	\$ 9.00
4 to 5 ft., 11 yr.-----	11.00	5 to 6 ft., 12 yr.-----	14.00

**Chinese Cedar** (*J. Chinensis*). 15 ft. A broad-based, pyramidal evergreen with bright green foliage. Native of Asia. Stands cold winter and summer drought. A splendid ornamental evergreen for planting on each side of the doorway, at the house corners or as background or accent points in the garden.

2 to 3 ft., 7 yr.-----	\$3.00	3 to 4 ft., 9 yr.-----	\$4.50
4 to 5 ft., 10 yr.-----	6.00	5 to 6 ft., 11 yr.-----	7.50
6 to 7 ft., 13 yr.-----	\$9.00		



Chinese Juniper

### MODERNIZE WITH EVERGREENS

You can add fresh color and new interest to older plantings with a few choice Evergreens.



Siberian Arborvitae



Sargent's Juniper (Page 12)



Pfitzer's Juniper (Page 12)

**EVERGREENS—Continued**

**Continuing—The Cedars and Junipers**

**Golden Juniper** (*Juniperus communis depressa aurea*). 2 ft. A dwarf-growing evergreen with many erect, spreading stems. Its brilliant golden color makes it a bright spot in evergreen groups.

18 to 24 in., 9 yr.-----\$3.50      24 to 30 in., 10 yr.-----\$5.00

**Pfitzer's Juniper** (*Juniperus pfitzeriana*). 6 ft. A graceful, bushy evergreen suited to foreground plantings and particularly adapted to house foundation Evergreen groups. Foliage is an attractive greenish-blue. The branches are spreading and gracefully drooping. Stands the city's dust and soot well. Illustration page 11.

12 to 18 in., 7 yr.-----\$2.50      18 to 24 in., 9 yr.-----\$3.00  
 24 to 30 in., 10 yr.----- 4.25      30 to 36 in., 12 yr.----- 5.50  
 3 to 4 ft., 13 yr.----- 7.00      Large specimen plants-----\$8.00 to \$15.00

**Prostrate Juniper** (*Juniperus canadensis depressa*). 3 ft. A low, much-branched evergreen shrub that grows closely to the ground. Excellent in the rock garden and for planting in the foreground.

12 to 18 in., 5 yr.-----\$2.00      18 to 24 in., 7 yr.-----\$2.50  
 24 to 30 in., 8 yr.----- 3.00      30 to 36 in., 10 yr.----- 4.00

**Red Cedar** (*Juniperus virginiana*). 25 ft. Useful wherever a pyramid of rich green is wanted. Probably the most useful of all evergreens because of its beauty, hardiness and adaptability. Can be kept trimmed and shaped to most any outline. Grows naturally to a tall pyramid with broad base.

24 to 30 in., 7 yr.-----\$2.75      30 to 36 in., 8 yr.-----\$ 3.75  
 3 to 4 ft., 9 yr.----- 5.50      4 to 5 ft., 10 yr.----- 6.75  
 5 to 6 ft., 11 yr.----- 8.25      6 to 7 ft., 12 yr.----- 10.50  
 Large specimen Cedars priced on request.

**Sargent's Juniper** (*Juniperus sargentii*). 15 in. A new perfect dwarf evergreen. Makes a neat, low, wide-spreading growth of bright green. The most valuable of all junipers for a close ground cover. A rare variety of distinct character introduced from northern Japan by Prof. Sargent.

18 to 24 in., 10 yr.-----\$3.25      24 to 30 in., 12 yr.-----\$4.25  
 30 to 36 in., 14 yr.-----\$5.50

**Savin's Juniper** (*Juniperus sabina*). 4 ft. A thickly branched, low-spreading shrub form. Quite hardy and very desirable wherever a low type evergreen is wanted. A native of Alpine mountain regions and thrives well under Minnesota conditions. Stands city atmospheric conditions.

12 to 18 in., 8 yr.-----\$2.00      18 to 24 in., 9 yr.-----\$3.00  
 24 to 30 in., 10 yr.----- 3.75      30 to 36 in., 12 yr.----- 4.50  
 Larger, mature specimens-----\$6.00 to \$15.00

**Scopulorum Juniper** (Black Hills Blue Cedar) (*Colorado Juniper*). 15 ft. A close-growing, pyramidal evergreen of light-blue to silvery color. Stands drouth and intense heat and cold. A very hardy ornamental of unusual beauty.

18 to 24 in., 6 yr.-----\$3.50      24 to 30 in., 7 yr.-----\$5.00  
 30 to 36 in., 8 yr.----- 6.00      3 to 3½ ft., 9 yr.----- 7.00  
 3½ to 4 ft., 10 yr.----- 8.00      4 to 5 ft., 11 yr.----- 9.25  
 5 to 6 ft., 12 yr.-----\$12.50



Red Cedar and Scopulorum Juniper both have this pyramidal growth

**The Douglas Fir**

**Douglas Fir** (*Pseudotsuga douglasi*). 40 ft. The large bluish-green needles are soft and fragrant. A dependable and handsome large-growing tree of conical shape. Splendid for lawn specimen or in the background of an evergreen group.

2 to 3 ft., 9 yr.-----\$3.75      3 to 4 ft., 11 yr.-----\$ 4.50  
 4 to 5 ft., 13 yr.----- 7.50      5 to 6 ft., 14 yr.----- 11.50

**The Pines**

**Austrian Pine** (*Pinus nigra*). 50 ft. A decorative, vigorous and tall-growing tree. Long, slender, dark-green needles. Its rapid growth and highly ornamental foliage make it very desirable wherever a tall evergreen on the lawn is wanted.

2 to 3 ft., 8 yr.-----\$4.00      3 to 4 ft., 9 yr.-----\$ 5.50  
 4 to 5 ft., 11 yr.----- 7.50      5 to 6 ft., 12 yr.----- 12.50  
 6 to 7 ft., 13 yr.-----\$16.00

**Dwarf Mugho Pine** (*Pinus mughus*). 4 ft. Very popular compact and dwarf-growing evergreen. Unexcelled for planting about the foundation lines or in front of taller evergreens. In the spring the new growth resembles miniature candles at the end of each branch. Illustration page 13.

12 to 18 in. spread, 8 yr.-----\$2.25  
 18 to 24 in. spread, 9 yr.----- 3.00  
 24 to 30 in. spread, 12 yr.----- 3.50  
 30 to 36 in. spread, 13 yr.----- 4.50

**Mountain Pine** (*Pinus montana*). 6 ft. Taller and more open growing than the Mugho pine. Desirable as a lawn specimen or in the foreground of taller varieties.

24 to 30 in., 9 yr.-----\$3.75      2½ to 3 ft., 10 yr.-----\$4.50  
 3 to 3½ ft., 12 yr.-----\$6.00

**Scotch Pine** (*Pinus sylvestris*). 60 ft. A hardy, tall pine of picturesque growth. Very suitable for background and windbreak plantings. The needles are dark green, shorter and stiffer than the Austrian Pine. Stands dry and exposed situations.

2 to 3 ft., 8 yr.-----\$3.00      3 to 4 ft., 9 yr.-----\$4.00  
 4 to 5 ft., 11 yr.-----\$5.50



Evergreen lawn group. Grounds of Mr. W. H. Riedel, White Bear.

VISIT OUR DISPLAY GARDENS, ROCKERY AND POOL AT 1200 ST. CLAIR ST.





A colorful, well-arranged Evergreen lawn planting. Austrian Pine and Blue Spruce in the background with Siberian Arborvitae and Mugho Pines in front.

**The Spruces—Picea**

**Black Hills Spruce** (*Picea canadensis albertiana*). 30 ft. A native of the Black Hills and the hardiest of all spruces. The growth is a rounded, compact pyramid with branches low to the ground. Foliage is a bright fresh green. Stands dry soils and open exposures and is always an ornamental specimen.

12 to 18 in., 8 yr.-----	\$1.50	18 to 24 in., 10 yr.-----	\$2.00
24 to 30 in., 11 yr.-----	3.00	30 to 36 in., 12 yr.-----	3.50
3 to 4 ft., 13 yr.-----	4.50	4 to 5 ft., 15 yr.-----	7.00
5 to 6 ft., 17 yr.-----	\$10.00		

**Blue Spruce, "Colorado"** (*Picea pungens glauca*). 35 ft. The most admired of all evergreens because of its luxuriant, rich, silvery-blue needles. Outstanding as a lawn specimen. Our Blue Spruce trees have an unusually bright color and are full branched and solid specimens.

18 to 24 in., 10 yr.-----	\$ 3.00	2 to 2½ ft., 11 yr.-----	\$ 4.00
2½ to 3 ft., 12 yr.-----	5.50	3 to 3½ ft., 13 yr.-----	7.00
3½ to 4 ft., 15 yr.-----	8.25	4 to 4½ ft., 16 yr.-----	10.50
4½ to 5 ft., 18 yr.-----	13.00	5 to 5½ ft., 19 yr.-----	17.00
5½ to 6 ft., 20 yr.-----	20.00	6 to 7 ft., 22 yr.-----	25.00

Larger, full-grown trees priced on request.

**Colorado Spruce** (*Picea pungens*). 35 ft. An attractive, hardy spruce of even full-branched growth. Similar to the Blue Spruce but with less blue color. Grows easily in most any situation and makes a shapely, sturdy tree.

18 to 24 in., 10 yr.-----	\$ 2.25
24 to 30 in., 11 yr.-----	3.00
30 to 36 in., 12 yr.-----	4.00
3 to 3½ ft., 13 yr.-----	5.00
3½ to 4 ft., 15 yr.-----	6.00
4 to 4½ ft., 16 yr.-----	8.25
4½ to 5 ft., 18 yr.-----	10.00
5 to 6 ft., 20 yr.-----	13.00
6 to 7 ft., 22 yr.-----	18.00

Larger, full-grown trees priced on request.

**Norway Spruce** (*Picea excelsa*). 50 ft. Rapid growing evergreen of open, graceful outline. Deep-green foliage; wide-spreading and drooping. A tall, picturesque tree.

3 to 4 ft., 9 yr.-----	\$4.00
4 to 5 ft., 11 yr.-----	5.50

**Full Grown Evergreens**

We have many choice, older and larger Evergreens not cataloged. Prices given on request.

**The Yews—Taxus**

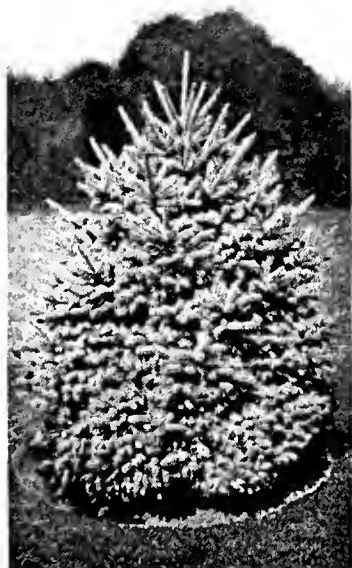
In favored locations through Eastern Minnesota the Yews seem reasonably hardy. Sometimes there may be winter browning but the fresh new growth of spring quickly covers the plant. Because of its deep green foliage, red berries and medium size the Yew is a highly-prized ornamental.

**Yew, Japanese** (*Taxus cuspidata*). 5 ft. A very ornamental, medium-size Evergreen with clean, waxy, dark-green leaves. Grows close, upright and compact. The fruit is a red berry.

12 to 18 in., 9 yr.-----	\$3.00	18 to 24 in., 10 yr.-----	\$5.00
--------------------------	--------	---------------------------	--------

**Yew, Dwarf Japanese** (*Taxus cuspidata nana*). 2½ ft. A dwarf and very compact Yew with rich, dark-green foliage.

10 to 12 in., 9 yr.-----	\$3.00
12 to 15 in., 10 yr.-----	4.50
18 to 24 in., 12 yr.-----	6.00



Black Hills Spruce



The Colorado Blue Spruce



Well-placed shade trees and foundation plantings make this home of Mr. R. F. Kennedy (Minneapolis) unusually attractive

# Shade and Ornamental Trees

for Shade, Shelter and Lasting Beauty About Your Home

THE attractiveness and comfort that good trees bring to the home property is appreciated by everyone. The preservation of existing trees and the planting of new growth is truly of first importance in your landscape improvements. We will gladly help you select suitable varieties for your grounds.

Since trees reach their maturity slowly you can save years of waiting by using larger sizes. That you may better judge the time saved by planting older stock we give both the size and the approximate age with the prices in our catalog listing.

PLEASE NOTE: In the descriptions the figures following the name indicate the approximate height of growth.

## The Ash

**American White Ash** (*Fraxinus americana*). 60 ft. A native tree of straight, trim growth. Splendid for lawn or boulevard. A clean tree not troubled generally by insects and dependably hardy through the north.

6 to 8 ft. ....	\$1.00
8 to 10 ft. ....	1.50
10 to 12 ft., 7 yr. ....	2.50
2 in. diam., 8 yr. ....	3.00
2½ to 3 in. diam., 10 yr. ....	4.00

## The Birches

**Cutleaf Weeping Birch**. 35 ft. A graceful white-barked, weeping tree. Tall and slender with branches bending to the ground. Delicately-cut leaves. Very popular for lawn planting.

5 to 6 ft. ....	\$2.50
6 to 8 ft. ....	3.50

**White or Paper Birch**. 40 ft. Upright and rapidly growing with grayish-white bark. Very attractive as a specimen or when planted near Evergreens.

5 to 6 ft. ....	\$1.25
6 to 8 ft. ....	1.75

## The Flowering Crabs

**Bachtel's Double Flowering Crab**. 15 ft. Covered in spring with rose-like double pink flowers. A splendid, symmetrical, small lawn tree, and very attractive when planted with tall shrubbery.

3 to 4 ft. ....	\$1.50	4 to 5 ft. ....	\$2.25
5 to 6 ft. ....	\$3.25		

**Dolgo Crab**. A splendid lawn tree of symmetrical shape that is beautiful in both flower and fruit. The long, conical and edible fruits are an intense bright red and cover the tree.

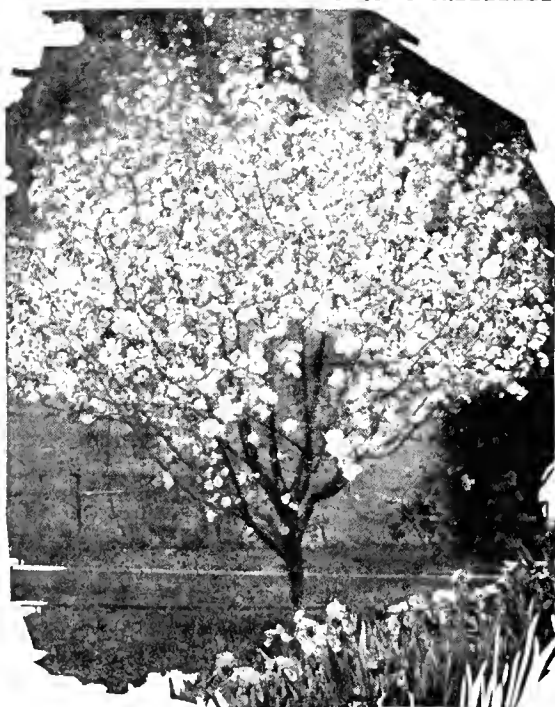
4 to 5 ft. ....	\$1.25
5 to 6 ft. ....	1.75

**Flame Crab**. New. A medium size, profusely-flowering tree. The brilliant red, edible fruits cover the branches from September to January.

3 to 4 ft. ....	\$1.25
4 to 5 ft. ....	2.00

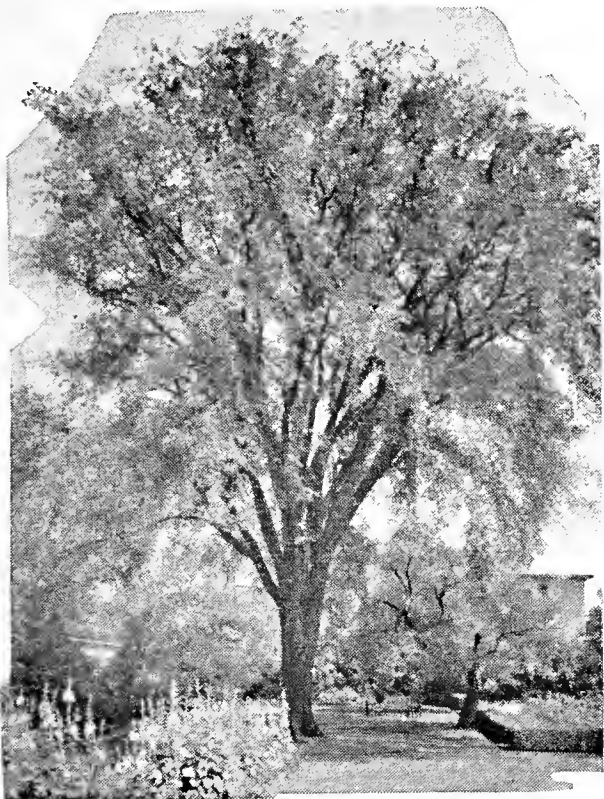
**Hopa Crab**. 15 ft. A new ornamental tree with abundant rose-colored flowers that cover the branches in May. Both leaves and branches tinted red. Strikingly ornamental red fruits that hang on until late fall.

3 to 4 ft. ....	\$1.00
4 to 5 ft. ....	1.25
5 to 6 ft. ....	1.75



BECHTEL'S DOUBLE FLOWERING CRAB  
Beautiful rose-like Flowers in Springtime

VISIT OUR DISPLAY GARDENS, ROCKERY AND POOL AT 1200 ST. CLAIR ST.



The American Elm—a majestic, native tree with wide-spreading branches

### The Catalpa

**Western Catalpa** (*Catalpa speciosa*). 40 ft. Unusually large heart-shaped leaves and fragrant white flowers. An interesting lawn tree.

6 to 8 ft. ....	\$1.25
8 to 10 ft. ....	2.00
2 to 2½ in. diam., 7 yr. ....	3.50

### The Hackberry

**Hackberry** (*Celtis occidentalis*). 50 ft. A hardy, native long-lived tree with rough bark. The foliage somewhat resembles the Elm. Wide spreading tops giving good shade.

6 to 8 ft. ....	\$1.50
8 to 10 ft. ....	2.00
10 to 12 ft. ....	2.75
2 to 2½ in. diam., 12 yr. ....	5.00
2½ to 3 in. diam., 14 yr. ....	7.00

### Horsechestnut

**Horsechestnut (Buckeye)** (*Aesculus hippocastanum*). 40 ft. Five-fingered leaves. Covered in May with white flowers that stand up like candles. A most unusual and desirable lawn tree.

6 to 8 ft. ....	\$ 5.00
2 to 2½ in. diam., 9 yr. ....	10.00



A young Linden Tree from our Nursery. Note the well-developed top and the full fibrous roots.

### The Elms

**American Elm** (*Ulmus americana*). 60 ft. A gracefully-arching and wide-spreading tree that is unquestionably the most popular tree in America for shade, street and lawn planting. It is tough grained and fast growing which places it at the head of the "permanent" class of ornamental trees. Very hardy.

6 to 8 ft. ....	\$1.00	8 to 10 ft. ....	\$1.25
10 to 12 ft., 7 yr. ....	2.25	2 to 2½ in. diam., 9 yr. ....	2.75
2½ to 3 in. diam., 11 yr. ....	\$3.75		

Larger specimen Elms priced on request.

**Chinese Elm** (*Ulmus pumila*). 40 ft. A new and valuable tree from Asia. Bushy head and smaller leaves than the American Elm. Suited for lawn planting and windbreaks. Grows rapidly and stands poor soils and dry conditions.

6 to 8 ft. ....	\$1.25	8 to 10 ft. ....	\$1.75
10 to 12 ft., 5 yr. ....	2.50	2 to 2½ in. diam., 7 yr. ....	3.00
2½ to 3 in. diam., 9 yr. ....	\$4.00		

Larger Chinese Elms priced on request.

### Linden—Basswood

**American Linden (Basswood)** (*Tilia americana*). 70 ft. A stately tree with broad, heartshaped leaves; fragrant white flowers. Quite hardy, native; fine for lawn or street planting.

6 to 8 ft. ....	\$1.25	8 to 10 ft. ....	\$1.75
10 to 12 ft., 7 yr. ....	2.75	2 in. diam., 9 yr. ....	3.50
2½ to 3 in. diam., 11 yr. ....	\$4.50		

Larger specimen Lindens priced on request.

### The Maples

**Norway Maple** (*Acer platanoides*). 50 ft. A handsome lawn and shade tree forming a perfect rounded head of broad, dark green leaves.

6 to 8 ft. ....	\$2.25	8 to 10 ft. ....	\$3.25
10 to 12 ft., 8 yr. ....	4.25	2 to 2½ in. diam., 10 yr. ....	5.50
2½ to 3 in. diam., 12 yr. ....	\$7.50		

Larger Norway Maples priced on request.

**Purple Leaf Maple** (*Acer platanoides* Schwedler). 40 ft. Leaves are bright reddish-purple in spring toning to a deep purplish-green later. Highly prized for lawn planting.

6 to 8 ft. ....	\$3.00	8 to 10 ft. ....	\$4.50
10 to 12 ft., 10 yr. ....	6.00	2 to 2½ in. diam., 12 yr. ....	8.50

**Silver Maple** (*Acer dasycarpum*). 60 ft. The leaves are light green with silvery green beneath. A native rapid-growing tree that succeeds anywhere.

6 to 8 ft. ....	\$1.00	8 to 10 ft. ....	\$1.50
10 to 12 ft., 5 yr. ....	2.25	2 to 2½ in. diam., 7 yr. ....	2.75

**Sugar Maple (Hard Maple)** (*Acer saccharum*). 70 ft. A symmetrical, hardy native tree of great beauty. Forms a dense oval head of dark green leaves. Brilliant fall coloration.

6 to 8 ft. ....	\$2.00	8 to 10 ft. ....	\$3.00
10 to 12 ft., 10 yr. ....	4.25	2 to 2½ in. diam., 12 yr. ....	6.00

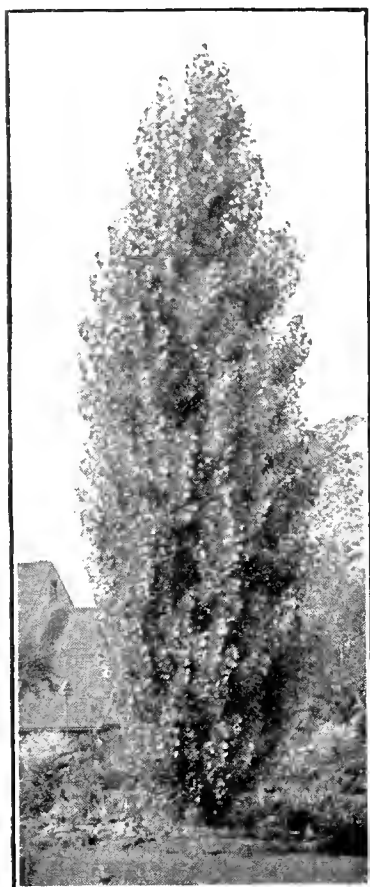
**Tatarian Maple** (*Acer tataricum* Ginnala). 15 ft. A very hardy, shrub-like tree for lawn specimen or with tall shrubs in the border. Fall coloring a bright red.

3 to 4 ft., bushy ....	\$0.75	4 to 5 ft., bushy ....	\$1.00
5 to 6 ft., bushy ....	\$1.50		



The Norway Maple—a full, shapely tree ideal for the lawn

SHADE and ORNAMENTAL TREES—Continued



Use the Bolleana and Lombardy Poplar for this sky-line effect

The Mulberry

**Russian Mulberry** (*Morus tatarica*). 20 ft. A bushy-topped small tree with lobed leaves. Useful as a lawn specimen or in the shrubbery border. The sweet, edible fruit is relished by the birds.

8 to 10 ft. -----\$3.00

**PLUM, Purple Leaf.** Please see under shrubs—page 7.

The Mountain Ash

**Mountain Ash** (*Sorbus aucuparia*). 30 ft. White flowers in May followed by bright orange-red berries, which hang on for months. Very ornamental. Used as a specimen on the lawn or as an accent in the border.

6 to 8 ft. -----\$2.00

8 to 10 ft. -----2.50

10 to 12 ft., 8 yr. -----3.00

2 in. diam., 10 yr. -----4.00

The Poplars

**Bolleana Poplar** (*Populus bolleana*). 40 ft. Upright, columnar growth with smooth, gray-green bark. Glossy, green leaves with downy white undersides. Makes a strong vertical accent.

6 to 8 ft. -----\$1.50      8 to 10 ft. -----\$2.50

10 to 12 ft. -----3.50      2 to 2½ in. diam., 6 yr. ---4.50

**Carolina Poplar—Norway Variety** (*Populus eugenei*). 50 ft. A hardy, quick-growing tree with bright-green and dense foliage. Grows anywhere.

6 to 8 ft. -----\$1.00      8 to 10 ft. -----\$1.25

10 to 12 ft. -----1.50      Larger sizes -----\$3.00 to \$10.00

**Lombardy Poplar** (*Populus fastigiata*). 40 ft. A tall picturesque, spike-like tree. Erect and pyramidal in form. Planted for landscape effect, as an accent or for screening purposes. Grows quickly. Seldom spreads over 8 ft. wide and can be used to advantage in places of restricted size between buildings, in small lawns and along narrow avenues.

6 to 8 ft. -----\$1.00      8 to 10 ft. -----\$1.25

10 to 12 ft. -----\$2.00

The Willows

**Golden Willow** (*Salix vitellina aurea*). 35 ft. A symmetrical, round-topped tree. Rapidly growing with branches of rich golden yellow. Very hardy.

6 to 8 ft. -----\$1.50

8 to 10 ft. -----2.00

**Niobe Weeping Willow.** 30 ft. Golden bark and graceful weeping branches that sweep the ground. A much-admired lawn tree.

6 to 8 ft. -----\$2.00

8 to 10 ft. -----2.75

**Wisconsin Weeping Willow.** 30 ft. The hardiest of the weeping willows. Very desirable for a quick growing, ornamental lawn specimen. Dark colored bark.

6 to 8 ft. -----\$2.00

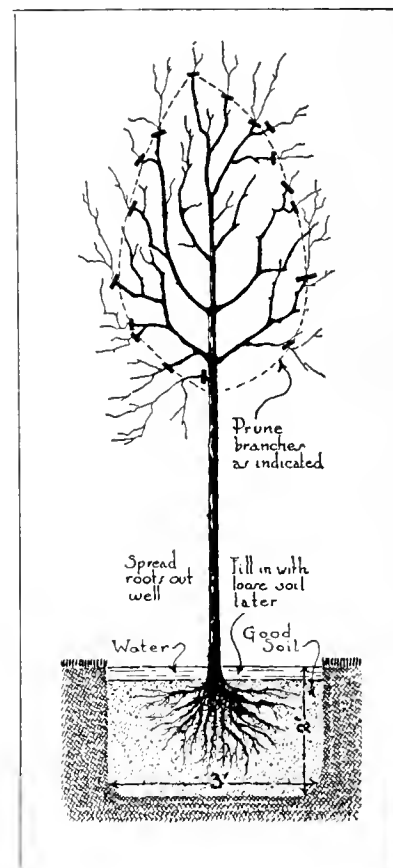
8 to 10 ft. -----2.75

The Black Walnut

**Black Walnut** (*Juglans nigra*). The familiar nut-bearing tree. Grows slowly to majestic size.

6 to 8 ft. -----\$2.00

HOW TO PLANT A TREE  
Plant firmly, trim the tops and water well



Our booklet of practical planting information will be sent with your order.

A ROCK GARDEN WILL ADD NEW INTEREST TO YOUR YARD

You Can Quite Easily Build and Plant This Modern Gardening Feature



A rock garden and pool need only take a moderate area and can be enjoyed in even a small yard. We can supply the rocks, soil, plants and helpful suggestions.

A SPECIAL ROCK GARDEN BOOKLET

Tells how to properly place, build and plant a rock garden on the home grounds. Sent on request—without charge.

A Specially Priced Collection

HARDY ROCK GARDEN PLANTS

A careful selection of 15 choice perennials—3 each of 5 of the best rock-garden varieties.

SPECIAL GROUP—15 PLANTS—Price -----\$3.00

(Please state if for sun or shade)

# Climbing Vines For Shade and for Beauty

Bring foliage and flowers to porch, house, fence and arbor.

- BITTERSWEET** (*Celastrus scandens*). A hardy rapidly-growing native climber with glossy leaves and often with red berries in the fall.  
 Strong 2 yr. plants -----\$0.50    Extra size -----\$0.75
- BOSTON IVY** (*Ampelopsis veitchii*). A small-leaved ivy that clings to walls closely. Needs protection in Minnesota. Excellent for low walls or piers.  
 Strong 2 yr. plants -----\$0.60    Extra size -----\$0.85
- DUTCHMAN'S PIPE** (*Aristolochia siphon*). The heavy, heart-shaped, close-growing leaves make this vine unexcelled for shade and screens.  
 Strong 2 yr. plants-----\$1.00
- ENGELMAN'S IVY** (*Ampelopsis engelmannii*). Clings without support to brick, stone or plaster. Grows rapidly and is absolutely hardy. Crimson fall color.  
 Strong 2 yr. plants -----\$0.50    Extra size -----\$0.75
- GRAPE, Hardy Beta.** A rapid growing vine with handsome foliage for pergolas, arbors and fences. Desirable fruit of tart flavor for eating or preserving.  
 Strong 2 yr. plants -----\$0.50    Extra size -----\$0.75
- HONEYSUCKLE, Scarlet Trumpet** (*Lonicera sempervirens*). A graceful twining vine for small lattices. The bright, scarlet flowers are very attractive.  
 Strong 2 yr. plants-----\$0.60
- MATRIMONY VINE** (*Lycium chinensis*). A good trailer to cover slopes. Large red berries follow the bright purple flowers.  
 Strong 2 yr. plants -----\$0.50
- VIRGINIA CREEPER** (*Ampelopsis quinquefolia*). A useful native, vigorous vine for covering fences and arbors.  
 Strong 2 yr. plants-----\$0.50    Extra size-----\$0.75



The large, purple flowers of the Jackmani Clematis

## Clematis—Queen of Flowering Vines

- Purple Clematis** (Jackmani). The popular, large-flowering clematis with gorgeous flowers of velvety, violet-purple. Beautiful on a trellis or lattice.  
 Strong, potted plants-----\$1.25    Extra size-----\$1.50
- Red Clematis** (Mme. Ed. Andre). Large, rosy-carmine flowers.  
 Strong, potted plants -----\$1.25
- Scarlet Clematis** (Coccinea). Has bell-shaped, closed flowers of coral red. Delightful on a small trellis.  
 Strong, potted growing plants-----\$1.25 each
- Sweet Clematis** (Paniculata). A dependable flowering vine for fence or lattice. In late summer it is covered with great sheets of fragrant, white starry flowers.  
 Strong, growing plants -----\$1.00

### We Start Your Clematis Vines for You

For your best results we supply all Clematis in strong plants that are potted and in active growth when delivered. Remove the plant from the pot and plant the top of the earth ball three inches below the ground level.

# Hardy Hedges For Ornament and Protection

A hedge makes an ornamental wall-of-green that will protect and give privacy to your yard. The varieties we list are all sturdy-growing shrubs adapted for hedges. All are of proven hardiness. Space the plants one foot apart for a close, tight hedge.

PLEASE NOTE—25 or more plants sold at the 100 rate.



Buckthorn makes a close wall of green

- BARBERRY, Japanese.** Makes a neat low boundary. Small leaves. Red berries. Stands trimming.  
 12 to 18 in.-----\$25.00 per 100  
 18 to 24 in.----- 30.00 per 100
- BUCKTHORN.** A very hardy and dense-growing ornamental hedge. Rich green leaves that are always attractive. Highly recommended.  
 2 to 3 ft., bushy plants--\$17.50 per 100  
 3 to 4 ft., bushy plants-- 20.00 per 100

- ALPINE CURRANT.** A dense, low and close-growing hedge. Stands shade and heavy shearing. The most popular of the low, hardy hedge plants.  
 12 to 15 in.-----\$30.00 per 100  
 15 to 18 in.----- 40.00 per 100

- COLUMNBERRY—True Hedge.** A new and excellent low hedge. A close-growing and upright Barberry that needs no trimming. Illustrated on page 5.  
 12 to 15 in.-----\$25.00 per 100  
 15 to 18 in.----- 30.00 per 100

- HONEYSUCKLE** (Tartarian). A rapid-growing tall hedge with pink flowers and red berries.  
 2 to 3 ft.-----\$35.00 per 100

- SIBERIAN PEA** (Caragana). Very popular for a tall, strong-growing hedge. Unusually hardy even in exposed situations.  
 2 to 3 ft.-----\$18.00 per 100  
 3 to 4 ft.----- 22.00 per 100

### HEDGE PLANTING SUGGESTIONS.

For a close, dense hedge space the plants 12 inches apart. A single row is sufficient when our bushy, well-branched shrubs are used. Detailed planting directions will be sent with your order.

- SPIRAEA—Bridal Wreath.** The most popular of the flowering hedge plants. Can be trimmed or allowed to grow naturally. Space 18 inches apart.  
 2 to 3 ft.-----\$25.00 per 100  
 3 to 4 ft.----- 35.00 per 100



You too can have flowers to enjoy all summer from a border of perennial plants. We will help you select suitable varieties and suggest a pleasing arrangement.

## Flowering Perennials

### The Hardy Garden Flowers That Bloom From Year to Year

You will find listed here not only the older favorites but many new, choice varieties and novelties. The height, season and color of flower is given.

**H. & O. Perennials are sturdy 2 year old, field-grown plants that are dug freshly to your order.**

\*ROCK GARDEN PLANTS. Varieties marked with a star (\*) are adapted to rockeries.

#### 1938 PRICES FOR PERENNIALS

(unless otherwise noted)

Strong, 2 yr. field plants 30 cents each; 4 for \$1.00

Extra size, 40 cents; 4 for \$1.50

(For shipment by parcel post please add 10%)

**ACONITUM fischeri.** MONKSHEAD. 3 ft. Strong spikes of dark blue, helmet-shaped flowers. September and October. 35 cts.

**ALASKA DAISY.** Large white and yellow daisy.

\***ALYSSUM saxatile compactum.** GOLDEN TUFT. 12 in. Masses of yellow flowers in early spring. For rockery or border.

**ANCHUSA italica,** Dropmore. ALKANET. 4 to 5 ft. Turquoise blue flowers in June and July. Large heavy leaves.

\***Anchusa Myosotidiflora.** 12 in. Unusual perennial from Russia. Light blue, forget-me-not flowers rise above the clump of heart-shaped leaves. Sun or shade. Blooms May and June.

**ACHILLEA.** PERRY'S BALL-OF-SNOW. 1½ ft. Pure white flowers like a small pompon chrysanthemum. Blooms June to September.

\***ANEMONE pulsatilla.** PASQUE FLOWER. 9 in. Cupped flowers of violet to purple in April and May. 35 cts.; 3 for \$1.00.

**ANTHEMIS tinctoria kelwayi.** HARDY MARGUERITE. 1½ ft. Daisy-like flowers of golden yellow. June to October.

\***AQUILEGIA canadensis.** NATIVE CANADA COLUMBINE. 2 ft. Flowers red and yellow. June to August.

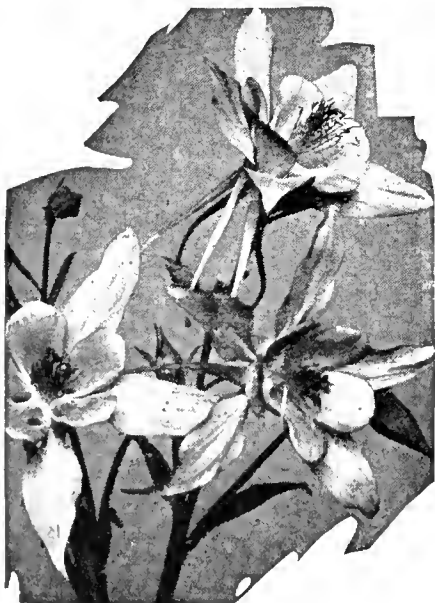
**Aquilegia chrysantha.** GOLDEN COLUMBINE. 2 ft. Yellow flowers with long spurs. June to August.

**Aquilegia, "Crimson Star."** (New). 2 ft. Entirely new color in Columbines—crimson and white combination. Unusual and effective. Large flowers. 35 cts. each; 3 for \$1.00.

**Aquilegia helenae.** BLUE COLUMBINE. 1½ ft. June to August. Bright blue with long white spurs.

**Aquilegia Hybrids.** Long-spurred flowers in a variety of beautiful colors. Choice for garden display or cutting.

\***ARABIS alpina.** ROCKCRESS. An early blooming dwarf border plant. Covered with white flowers in April and May.



Aquilegia or Columbine



Hardy Aster. Blooms in Sept. and Oct.

VISIT OUR DISPLAY GARDENS, ROCKERY AND POOL AT 1200 ST. CLAIR ST.

## FLOWERING PERENNIALS—Cont.

\* **ARMERIA** *Lauchena*. 9 in. A dwarf variety of Sea Pink with bright rosy-red flowers in May and June.

**ARTEMISIA** *lactiflora*. 3 to 4 ft. MOUNTAIN FRINGE. Plumes of sweetly scented creamy white flowers. August to September.

**Artemisia**, *Silver King*. 3 ft. A hardy perennial with silver-gray foliage.

## 3 NEW HARDY ASTERS

**Aster**, "*Amethyst*." 3 to 4 ft. Purple-blue flowers produced by the hundreds in September and October. 40 cts. each; 4 for \$1.50.

**Aster**, "*Dazzler*." 3 to 4 ft. Entirely new color. Semi-double rosy red. September and October. 40 cts. each; 4 for \$1.50.

**Aster** *Frikarti*. New. 3 ft. Large, lavender-blue asters from July to frost. A delightful flower for display and cutting. 50 cts. each.

**Aster** *novae-angliae*. NEW ENGLAND ASTER (Michaelmas Daisy). 4 to 5 ft. Hardy purple Aster. September and October.

**Aster**, *Lil Fardell*. 4 to 5 ft. Showy flowers are rich, mauve pink. September and October.

**ASTILBE**, "*Betsy Cuperus*." (New). 4 ft. Dainty flowers of white with pink centers in graceful spikes 18 inches long. June. 50 cts. each.

**Astilbe**, "*Peach Blossom*." (New). 2 ft. Bears long plumes of delicate light-pink flowers. Excellent flower border plant. June. 50 cts. each.

**Astilbe**, *Hybrids*. 3½ ft. Showy garden plant of easy culture. Airy plumes of pink or white flowers. June and July. 50 cts.; 3 yr., 75 cts.

**BABYSBREATH**. See *Gypsophila*, page 21.

**BLEEDING HEART** (*Dicentra spectabilis*). 18 in. Rose-crimson heart-shaped flowers. The old garden favorite. April and May. 40 cts.; extra size, 75 cts.

**BOCCONIA** *cordata*. PLUME POPPY. 6 ft. Fine for background. Creamy white plummy flowers in August.

**BOLTONIA** *asteroides*. FALSE STARWORTH. 4 to 5 ft. Pure white, aster-like flowers. August.

PRICES—Unless noted, 30 cts. each;

4 for \$1.00.

Extra size, 40 cts. each; 4 for \$1.50.

(For parcel postage add 10%)

\* **CAMPANULA** *carpatica*. CARPATHIAN HAREBELL. 8 to 10 in. Bell-shaped, light blue flowers in July and August.

**Campanula** *calycanthema*. CUP-AND-SAUCER. 3 ft. Erect plants. Large cup and saucer flowers. June and July. Colors mixed in rose, white and blue.

\* **Campanula** *garganica*. (New). Compact rosettes of glossy foliage from which spread branches 10 to 12 inches long bearing light blue, star-shaped flowers. June. Excellent for the rock garden. 40 cts. each; 3 for \$1.00.

**Campanula** *glomerata*. CLUSTERED BELL-FLOWER. 18 in. Globular dark blue flowers topping each stem. June and July.

**Campanula** *medium*. CANTERBURY BELLS. 3 ft. A biennial. Large bell-shaped flowers of rose, blue and white. July.

**CENTAUREA** *montana*. PERENNIAL CORN-FLOWER. 1½ ft. Violet blue flowers. July to September.

\* **CERASTIUM** *tomentosum*. SNOW-IN-SUMMER. 6 in. Creeping, branching perennial with silvery-white leaves and a mass of snow white flowers in May.

## A NEW CUT-FLOWER CLEMATIS

**Clematis** *Mandschurica*. 3 ft. Bears abundantly attractive white Clematis flowers July to September. Unexcelled for cutting. Always attracts attention. Strong plants, 50 cts.; 3 for \$1.40.

**CLEMATIS** *dauidiana* and *Clematis* *recta*. 3 to 4 ft. Bush forms of Clematis with blue and white flowers respectively. Very desirable in the perennial border. 50 cts. each; extra size, 75 cts. each.

**COLUMBINE**. See *Aquilegia*, page 18.

**COREOPSIS** *lanceolata grandiflora*. TICKSEED. 2 ft. Golden yellow flowers on long graceful stems from June until frost. Fine for cutting.

**DAY LILY**. See *Hemerocallis*, page 21



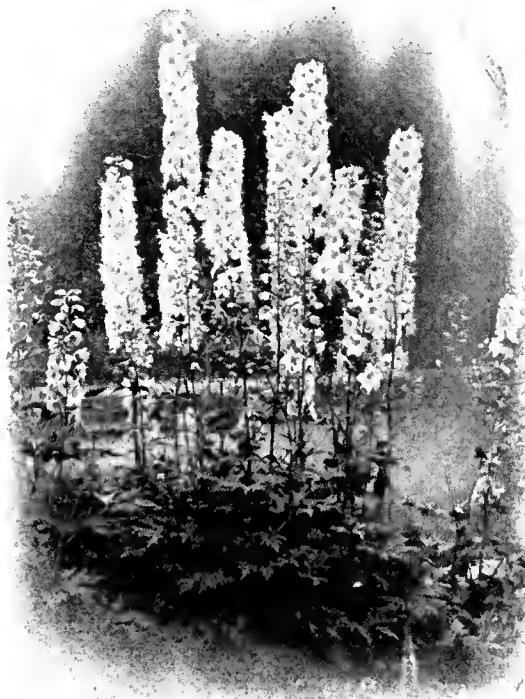
Alaska Daisy  
Popular garden cut flower



Golden yellow Coreopsis blooms  
all summer



Aconitum gives a note of blue to  
the garden in late summer.



Hardy Larkspur (*Delphinium* Hybrids)



*Dianthus Plumarius*—the dainty  
fragrant Clove Pink

\* Varieties marked with a star (\*) are adapted to rockeries.



Evening Primrose (*Oenothera*). The cheerful golden-yellow flowers cover the plant and make a brilliant garden display.



Gaillardia—Rich red and yellow in color—in bloom all summer through. Splendid, popular cut flower



Heuchera—Coral Bells—a dainty border plant



Hemerocallis (Daylily) will grow in shade. Offered in many new varieties



Variegated Plantain Lily (*Funkia*)

## FLOWERING PERENNIALS—Cont.

**DAISY, Alaska.** 12 to 15 in. An improved Daisy that blooms in middle to late summer. White flowers with yellow center.

**Daisy, Shasta.** 18 in. The popular June flowering white daisy.

### DELPHINIUM—LARKSPUR

**DELPHINIUM Belladonna.** LARKSPUR. 3 to 4 ft. Clear turquoise blue flowers of delicate beauty. Blooms freely over a long period.

**Delphinium Bellamosum.** 3 to 4 ft. A dark blue Larkspur of free-blooming habit.

**Delphinium chinense.** SLENDER LARKSPUR. 3 ft. Heads of bright blue flowers in open sprays from June until frost. Finely cut, fern-like foliage.

**Delphinium chinense alba.** White flowering form of Slender Larkspur.

**Delphinium, "H. & O. Hybrids."** 4 to 5 ft. Our own selected strain of large flowering Larkspurs in a wide range of light and dark colors.

**Delphinium, "ICEBERG."** NEW WHITE LARKSPUR. 4 to 5 ft. Semi-double white flowers on sturdy plants. Striking in contrast when planted with the blues. Strong plants 50 cts. each; 4 for \$1.50.

**Delphinium, LAMARTINE.** 4 ft. Deep blue with white eye. Foliage good; disease resistant. 35 cts. each; 3 for \$1.00.

**Delphinium, NEW HOLLYHOCK.** Very full spire-shaped (like a hollyhock) heads of single and double flowers in many shades of blue. Tall and sturdy growth. Unusual. The best of the English selections. Price 50 cts. each; 4 for \$1.50.

**DIANTHUS barbatus.** SWEET WILLIAM. 18 in. Flowers in variation of red, white and rose colors. May to July.

\***Dianthus caesius.** CHEDDAR PINK. 7 in. Fragrant rose colored flowers cover this globular little plant in June.

\***Dianthus deltoides.** MAIDEN PINK. 9 in. A profusion of small crimson flowers cover the dwarf plant in June and July.

\***Dianthus plumarius.** CLOVE PINK. 9 in. The fragrant white to scarlet flowers bloom in early summer. Grass-like leaves.

Prices—unless noted—30 cts. each;  
4 for \$1.00.

Extra size—40 cts. each; 4 for \$1.50.  
(For parcel post add 10% postage)

**DICTAMNUS fraxinella.** GAS PLANT. 3 ft. Heavy spikes of deep pink, purple-veined flowers in June and July. Flowers and foliage both fragrant. (White variety also offered.) 50 cts. each.

\***DICENTRA eximia.** PLUMY BLEEDINGHEART. 9 to 12 in. Rosy pink heart-shaped flower in bloom from May through August. Delicate, finely cut foliage. 40 cts. each.

**Dicentra spectabilis.** BLEEDINGHEART. 18 in. 40 cts.; extra size, 75 cts.

**DIGITALIS.** GIANT SHIRLY FOXGLOVE. 4 ft. Long flower heads of bell-shaped blossoms. Colors, rose, shell pink and blue mixed. July.

**ECHINOPS ritro.** GLOBE THISTLE. 3 ft. Bell-shaped metallic blue flowers, thistle-like foliage. July to September.

\***EUPHORBIA polychroma.** A rare border and rock garden plant. Grows to 1 ft. in compact form. Covered in June with lemon-yellow rose-like flowers.

\***FERNS, Hardy.** We offer a selection of the best strong-growing native hardy ferns suitable for yard plantings.

\***FORGET-ME-NOT** (*Myosotis semperflorens*). 10 in. Dainty blue flowers with yellow eye from May to September. Fine dwarf border plants. Likes shade and moist places.

\***FUNKIA (Hcsta) caerulea.** BLUE PLANTAIN LILY. 15 in. Drooping flowers of blue in July and August. Excellent border plant. Dark green glossy foliage. Stands shade.

**Funkia subcordata.** WHITE PLANTAIN LILY. 18 in. Fragrant white, lily-like flowers in August and September. Bright glossy foliage. 50 cts.

\***Funkia Variegata.** STRIPED PLANTAIN LILY. 15 in. Broad, waxy foliage, beautifully variegated with white. Very attractive border plant. Blue flowers in July. Stands shade.

**GOLDEN GLOW.** See *Rudbeckia*, page 23.

\*Rock Garden Plants. Varieties marked with a star (\*) are suitable to plant in rockeries.



## FLOWERING PERENNIALS—Cont.

**GAILLARDIA grandiflora.** BLANKET FLOWER. 2 ft. Rich red and crimson petals with broad border of yellow. June to October. Unsurpassed for cutting.

\***GLOBULARIA.** GLOBE DAISY. 8 in. Dainty, tufted little plant from Asia with bright lavender-blue flowers June to September.

**GYPSOPHILA paniculata.** BABYSBREATH. 2 to 3 ft. Unexcelled cut flowers. Tiny white blossoms cover the plant through July and August.

**DOUBLE BABYSBREATH Gypsophila.** BRISTOL FAIRY. Full, double, snow-white flowers in large sprays. True, grafted variety 60 cts.; extra strong \$1.00.

**HELIENIUM autumnale superbum.** YELLOW STAR. 4 to 5 ft. Golden-yellow flowers in August and September. Excellent cut flower. 35 cts.; 3 for \$1.00.

**Helenium Riverton Gem.** 3 ft. Old gold shaded with terra cotta and red. For cutting or garden show. August to frost. 35 cts. each; 3 for \$1.00.

\***HELIANTHEMUM, Buff Beauty.** ROCK or SUN ROSE. 10 in. Attractive low-growing plant forming broad clumps of evergreen foliage, covered with bright flesh-pink flowers in June and July.

**HELIOPSIS pitcheriana.** ORANGE SUNFLOWER. 3 ft. Single, thick-textured flowers of deep golden yellow. June to September.

## HEMEROCALLIS—DAY LILY

**HEMEROCALLIS Dumortieri.** STRIPED DAY-LILY. 20 in. A medium-height, rich cadmium yellow lily with brown stripes on the outside of flower. June.

**Hemerocallis flava.** LEMON DAYLILY. 2½ ft. Sweetly scented lemon-yellow flowers in June and July.

**Hemerocallis fulva.** TAWNY DAYLILY. 3 ft. Orange lily. July. Strong growing and sturdy.

**Hemerocallis, Judge Orr.** A large-flowering, tall, free-blooming golden yellow lily. June.

**Hemerocallis Middendorffi.** 2 ft. Rich yellow lilies in July. Follows Flava variety in blooming.

**Hemerocallis Thunbergi.** 2½ ft. A late, yellow-blooming lily. July.

## NEW DAYLILY, HYBRIDS

## New, Colorful, Giant-Flowering Types

**Anna Betscher.** Round, broad petaled, rich buttercup yellow. July. \$1.00.

**Goldeni.** Well-rounded, deep golden flowers. July. 75 cts.



The Orange Candlestick Lily (Lilium Elegans)—gay and colorful



Rubrum Lily—White, spotted with rich crimson



Pyrethrum Hybridum or Persian Daisy. Flowers in pink, white and red. Perfect for garden show and for cutting.



Platycodon or Balloon Flower. Star-shaped flowers of blue or white through middle Summer. Very hardy and dependable and always blossoms abundantly.



The Regal Lily

Prices—unless noted—30 cts. each;  
4 for \$1.00.  
Extra size—40 cts. each; 4 for \$1.50.  
(For parcel post shipment add 10%)

## NEW, GIANT-FLOWERING DAYLILIES—Cont.

**Gypsy.** Deep orange with red shadings. Late June. \$1.00.

**Hyperion.** Outstanding in flower and growth. Immense lemon-yellow. Late July. \$1.50.

**Mikado.** Striking deep-orange with maroon bars. June. \$2.00.

**Mrs. Austin.** Broad-petaled round flowers of deep orange. Mid-July. \$1.00.

## THE LARGE-FLOWERING LILIES

Our specially-prepared, potted and growing Lilies are sure to bloom. The graceful growth, and gorgeous flowers make the Lilies the attraction spot of the garden.

When planting remove from pot and plant the earth ball 5 inches below ground level.

**AURATUM.** GOLDBANDED LILY. 3 ft. Fragrant white flowers spotted crimson with central yellow band. Red anthers. July and August. Started and potted plants 50 cts. each; 6 for \$2.50.

**REGALE.** REGAL LILY. Large fragrant white flowers that are striped pink outside and have yellow shadings within the cup. July. Large bulbs, 30 cts.; 4 for \$1.00. Started plants 50 cts.; 6 for \$2.50.

**SPECIOSUM ALBUM.** WHITE SHOW LILY. 3 ft. White flowers with recurved petals. August and September. Started potted plants, 60 cts.; 6 for \$3.00.

**SPECIOSUM RUBRUM.** CRIMSON SPOTTED LILY. 3 ft. A fragrant lily, under-color white, shaded and spotted with crimson. August and September. Started potted plants, 50 cts.; 6 for \$2.50.

**Lily Elegans.** ORANGE CANDLESTICK LILY. 18 in. Very hardy variety producing orange-red flowers in great numbers. July. Bulbs, 30 cts.; 4 for \$1.00.

\***Lily Tenuifolium.** CORAL LILY. 12 to 18 in. A graceful little plant bearing many coral-red lilies in June. Hardy. Fine for rock gardens. Large bulbs, 30 cts. each; 4 for \$1.00.

**Lily Tigrinum, fl. pl.** DOUBLE TIGER LILY. 3 to 4 ft. An improved variety of this old favorite. Orange-red spotted black. July and August. Large bulbs, 30 cts. each; 4 for \$1.00.

\*Varieties marked with a star (\*) are adapted to rockeries.

## FLOWERING PERENNIALS—Continued

Prices—unless noted—field plants, 30 cts. each; 4 for \$1.00.  
Extra size plants—40 cts. each; 4 for \$1.50.  
(For shipment by parcel post please add 10% for postage.)

\***HEUCHERA Pleu-de-Feu.** ALUMROOT. 18 in. Tuft of handsome evergreen leaves with delicate, crimson flower bells on slender stems. July. 35 cts.; extra strong, 50 cts.

\***Heuchera sanguinea.** CORALBELLS. 18 in. A variety of the above with bright coral-red flowers. 35 cts.; extra strong, 60 cts.

**HIBISCUS.** ROSEMALLOW. 4 to 5 ft. Giant, funnel-shaped flowers of red, white or pink on sturdy plants. July and August. 35 cts.; 3 for \$1.00.

## HOLLYHOCKS

**HOLLYHOCK, single.** ALLEGHENY MAMMOTH. 5 to 7 ft. Single flowers of delicately fringed petals. Mixed colors. July and August.

**Hollyhock.** DOUBLE FLOWERING. 5 to 7 ft. Yellow, white, pink and red colors. July and August.

**IRIS.** *Fleur-de-Lis.* See list, page 25.

**LARKSPUR.** See *Delphinium*, page 20.

**LATHYRUS latifolius.** PERENNIAL SWEET PEA. Semi-climbing plants with showy pea flowers of deep pink over a long season. 35 cts.; 3 for \$1.00.

**LILY-OF-THE-VALLEY.** 8 to 10 in. Pure white, dainty bell-shaped flowers in May and June. Bulb clusters, 25 cts. each. Heavy clumps 40 cts.

\***LINUM perenne.** BLUE FLAX. 18 in. Graceful foliage with delicate flowers of pearly blue. May to August.

**LUPINUS Polyphyllus.** LUPINE. 3 to 4 ft. Azure blue, pea-shaped flowers in long spikes. Late May and June.

**LYCHNIS chalconica.** JERUSALEM CROSS. 2½ ft. Flowers of vermilion scarlet in immense heads. June to mid-July.

\***Lychnis viscaria splendens.** GERMAN CATCHFLY. 12 in. A bright, pink-flowering border perennial. Flowers of one-half inch size in loose clusters. June and July.

## ORIENTAL POPPIES IN NEW COLORS

**Poppy, Oriental. New Named Varieties—**40 cts. each, as follows:  
**Beauty of Livermore.** Crimson with dark shadings.

**Mrs. J. Harkness.** Bright salmon, rose scarlet.

**Mrs. Perry.** Salmon pink, shaded apricot. "Best Pink Poppy."  
**Olympia.** Brilliant flame-scarlet shaded with golden salmon. Semi-double.

**POPPY, Oriental** (*Papaver orientale*). 2½ ft. Massive cup-shaped flowers of deep scarlet.

\***Poppy, Iceland** (*Papaver nudicaule*). 12 in. Cup-shaped flowers of clear colors, white, yellow and orange scarlet. Bloom all summer.

**LYTHRUM roseum.** ROSE LOOSESTRIFE. 3 to 4 ft. Tall spikes of rose-colored flowers. July to September.

**MONARDA didyma.** OSWEGO TEA. 3 ft. Compact heads of bright red flowers. Aromatic foliage. June to September.

\***OENOTHERA Fraseri.** EVENING PRIMROSE. 12 in. Large golden-yellow poppy-like flowers from June to August.

**PACHYSANDRA terminalis.** 6 to 9 in. A handsome trailing plant for ground cover. Stands shade. 25 cts. each; 12 for \$2.50.

\***PENSTEMON, "Blue Gem."** BEARD TONGUE. (New.) 12 in. Attractive azure-blue flowers from June to September. Splendid border and rockery plant.

**PEONIES.** See list, page 26.

**PERSIAN DAISY.** See *Pyrethrum Hybridum*, page 22.

**PHLOX.** See complete list, page 24.



Garden shelter and perennial flower border. Grounds of Mrs. Jas. Jennison, Mpls.

**PHYSALIS francheti.** CHINESE LANTERN PLANT. 2 ft. Brilliant orange colored seed pods or "lanterns" in September.

**PHYSOSTEGIA "vivid."** FALSE DRAGON-HEAD. 2 ft. Spikes of deep pink, bell-like flowers in September. Excellent cut flowers. 35 cts.; 3 for \$1.00.

**PLATYCODON grandiflorum.** BALLOON FLOWER. 18 in. Star-shaped blue or white flowers at the tip of each branch. Compact, bushy growth. June to September.

**PYRETHRUM Hybridum.** PERSIAN DAISY. 2½ ft. Daisy-shaped flowers in white to shades of pink, rose and red. Splendid for cutting. May and June.



Viola "Jersey Gem"—a delightful violet-blue border plant



Rudbeckia Purpurea—Purple Cone Flower



Trollius ledebouri (Orange Globe Flower)

\*Rock Garden Plants. Varieties marked with a star (\*) are suitable to plant in rockeries.

**FLOWERING PERENNIALS—Continued**

Prices—unless noted—30 cts. each; 4 for \$1.00.  
 Extra size—40 cts. each; 4 for \$1.50.  
 (For parcel post shipment please add 10%)

- Pyrethrum Uliginosum.** GIANT DAISY. 4 to 5 ft. Large white flowers in August and September. Splendid for cutting.
- RUDBECKIA laciniata.** GOLDEN GLOW. 5 to 6 ft. The popular double yellow blossoms of August and September.
- Rudbeckia purpurea.** PURPLE CONE FLOWER. 3 to 4 ft. Rose-purple flowers with tall, brown center. August to October.
- SALVIA pitcheri.** MEADOW SAGE. 3 to 4 ft. Every stem tipped with spikes of pretty sky-blue flowers. August and September.
- \*SCUTTELARIA.** SKULLCAP. 12 in. A wiry plant with blue snapdragon-like flowers in July and August.

**\*SEDUM—Stonecrop**

The best of the hardy plants for rockeries.

- \*Sedum Acre.** GOLDEN MOSS. Bright yellow flowers cover the dwarf plant in June and July. 25 cts.
- \*Sedum Album.** 2 to 3 in. A spreading plant with thick, waxy round leaves. White flowers in May. 25 cts.
- \*Sedum Eversi.** 8 in. Blue-gray leaves, large heads of rose-colored flowers. September and October. 25 cts.
- \*Sedum Kamchaticum.** Prostrate plant with orange-yellow flowers. Golden fall foliage. 25 cts.
- \*Sedum Sarmentosum.** Low and spreading. Excellent for filling seams between rocks. Yellow flowers in June. 25 cts.
- \*Sedum Stoloniferum.** Flat succulent leaves on stems that cling to the ground, pink flowers in August. 25 cts.
- \*Sedum spectabile.** BRILLIANT STONECROP. 18 in. Pink and rosy red flowers in heavy, flat clusters. Aug. and Sept.
- \*Sedum Spurium.** "BRONZE CARPET." 6 in. Rapidly-spreading with rosy-crimson flowers. July and August. 25 cts.

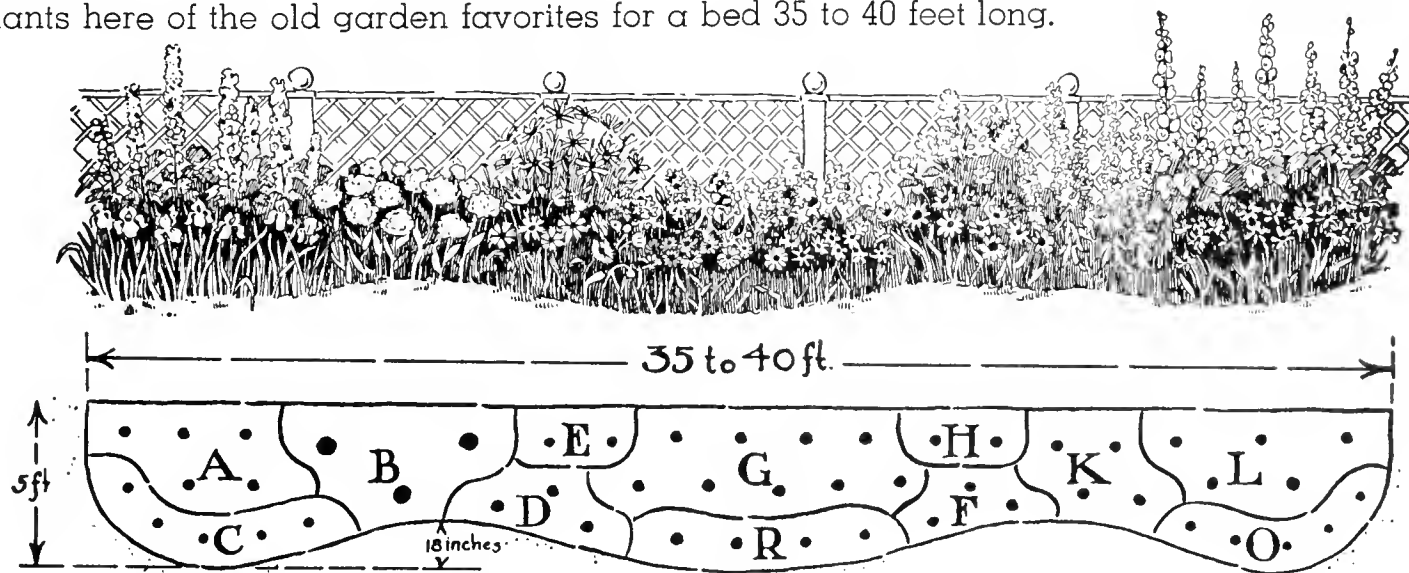
\*Varieties marked with a star (\*) are adapted to rockeries.

- \*SEMPERVIVUM "Hardy Hen and Chickens."** Produces small rosettes of thick and rubbery leaves. A splendid rock garden plant.
- STATICE latifolia.** SEA LAVENDER. 2 ft. Delicate purple-blue flowers cover the branching top in August and September. 35 cts.; 3 for \$1.00.
- THALICTRUM adiantifolium.** MEADOW RUE. 2½ ft. Graceful foliage like a Maiden Hair fern. Clusters of open, white flower balls in June. 35 cts.; 3 for \$1.00.
- Thalictrum dipterocarpum.** 3½ ft. Dainty flowers of lilac mauve with yellow center, in graceful sprays. August and September. Unexcelled cut flowers. Likes partial shade and needs winter protection. 40 cts.; extra size 60 cts.
- TROLLIUS, Asiaticus.** YELLOW GLOBE FLOWER. 2 ft. A Glorified Buttercup. Handsome dark green foliage with yellow cup-like flowers in May and June. 40 cts.; extra size 60 cts.
- Trollius ledebouri.** ORANGE GLOBE FLOWER. 2½ ft. Strong-growing, hardy perennial with handsome foliage and large orange flowers. 40 cts. each; extra size 60 cts. each.
- VALERIAN officinalis.** HARDY GARDEN HELIOTROPE. 3 ft. Sweetly fragrant, gray-pink flowers in June and July.
- VERONICA longifolia.** JAPANESE SPEEDWELL. 2 ft. Long spikes of attractive blue-violet flowers. August and September. A good garden and cut flower.
- \*Veronica rupestris.** Grows 3 in. high with thickly matted, deep green foliage. Excellent for rock garden plantings. Well covered with bright blue flowers in early June.
- Veronica Spicata.** SPEEDWELL. 1½ ft. Spikes of blue flowers. June to September. Excellent garden plant.
- \*VIOLA.** JERSEY GEM. 8 in. Rich green foliage with blue flowers like small pansies. May to September. Splendid border plant and a delightful, dainty cut flower.
- \*YUCCA filamentosa.** ADAM'S NEEDLE. 4 ft. Stiff, sword-shaped leaves with tall spikes of white, drooping flowers in July. 50 cts. each; extra size 75 cts.

## You Will Like This Popular Perennial Collection

### A COMPLETE BACK YARD PERENNIAL BORDER TO GIVE YOU FLOWERS ALL SUMMER

Plant this border of hardy perennials along the property line and enjoy flowers from May to October. Enough plants here of the old garden favorites for a bed 35 to 40 feet long.



Key	No.	Variety	Color
A	5	Hybrid Larkspur	Blue Shades
B	3	Peonies—Asst.	Pink, white, red
C	5	Iris—Assorted colors	Many colors
D	3	Coreopsis	Golden yellow
E	2	Tall Fall Daisy (Pyrethrum)	White Daisy
H	2	Yellow Star (Helenium)	Bright yellow
G	9	Hardy Phlox—Assorted	Pink, white, red
R	4	Shasta Daisy	Yellow and white
F	3	Gaillardia (Blanket Flower)	Red with yellow
K	4	Belladonna Larkspur	Sky blue
L	5	Hollyhocks—Double Asst.	Many Colors
O	5	Persian Daisy	Pink, white, red
Total	50	Popular hardy flowering plants.	

### This Colorful Garden—50 Hardy Perennials

All strong, field-grown stock—selected for a long season of bloom and harmonious colorings—

A \$15.00 Value Offered at a

SPECIAL COMBINATION PRICE OF  
 (with full planting instructions)

**\$12.50**

You can quite easily find a suitable place for this attractive flower border in your own yard. We suggest planting in the sunny foreground of a fence, hedge or boundary group of shrubs.

# Hardy Phlox

## For Brilliant Flowers in Mid-Summer

THE PHLOX is without doubt the most colorful and most popular of all the perennials. The showy flowers are the brightest spot in the garden during middle to late summer.

The recent Phlox introductions are marked improvements over the older types. We offer a very careful selection of the better and newer varieties.

PRICES OF PHLOX (Unless otherwise noted)  
STRONG PLANTS—30 CTS. EACH; 4 FOR \$1.00.  
EXTRA SIZE—40 CTS. EACH; 4 FOR \$1.50.

(For shipment by parcel post please add 10% for postage.)

### The Red Phlox

**B. Comte.** A deep shade of red-plum. Tall growing.

**Beacon.** A pleasing cherry-red. Tall growing. Large flowers.

**Champs Elysees.** Big clusters of dark purplish-crimson flowers.

**Comus (New).** Clear cherry-red overspread with bright scarlet. Medium height; flowers very large. 35 cts.; 3 for \$1.00.

**Debs.** A bright fiery crimson. No other like it. 40 cts. each.

**Fireglow.** A new, brilliant color. Flaming scarlet that is often vermilion. Large flowers freely produced. 35 cts.; 3 for \$1.00.

**Leo Schlageter (New).** One of the most pleasing full rich scarlets with orange cast. Tall. 3 ft. 40 cts.; 4 for \$1.50.

**R. P. Struthers.** A choice soft red. Tall and free blooming.

**Saladin (New).** Brilliant orange-scarlet red with deeper eye. Strong growing. Blooms freely. 40 cts.; 4 for \$1.50.

### Lavender and Blue Phlox

**Blue Hill.** Considered the nearest to a clear blue-colored phlox. 35 cts.; 3 for \$1.00.

**Caroline Vandenberg (New).** Very large flowers of light-blue tones. 35 cts.; 3 for \$1.00.

**Miss Ethel Pritchard.** A new French-mauve colored phlox. General color effect is light blue. Good sized flowers in large clusters. 35 cts.; 3 for \$1.00.

### The White Phlox

**Bridesmaid.** White flowers with a crimson-carmine eye.

**Frau Anton Buchner.** Considered one of the finest white Phlox. The flowers are large and perfectly formed.

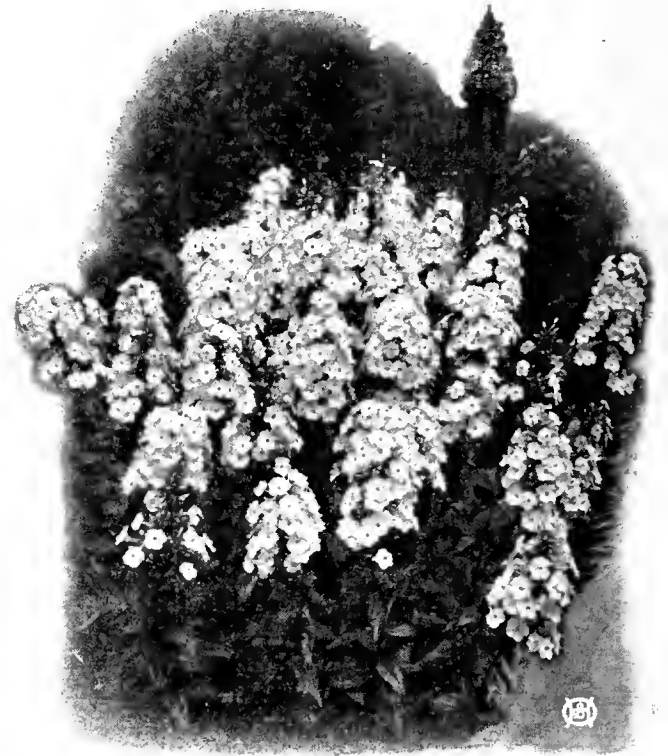
**Innocence (New).** A tall, sturdy plant with unusually large white flowers.

**Miss Lingard.** Very early blooming and fragrant. Glossy green foliage. Immense heads of white flowers.

**Mrs. Jenkins.** A dependable free-flowering pure white.



Phlox makes a colorful border of mid-summer flowers



Hardy Phlox—the most popular of all the perennials. The large, showy flowers in many bright colors are borne on strong, sturdy plants.

### The Pink Phlox

**Columbia (New. Plant Patent).** A soft cameo-pink flower, long lasting and borne profusely. Very vigorous plant with rich green foliage resistant to insects and diseases. 50 cts. each; 3 for \$1.25.

**Enchantress.** A strong-growing plant with clear salmon-pink flowers that have a darker eye.

**Daily Sketch.** New English novelty. Grows to 3 ft. Big flower heads with extra large florets. A bright salmon pink with vivid crimson eye. 40 cts. each; 3 for \$1.10.

**Mrs. Harding (New).** A deep rose-pink with salmon shadings. Large heads of flowers. 35 cts. each; 3 for \$1.00.

**Pantheon.** Deep salmon-pink petals with lighter centers.

**Pink Beauty.** A clear mauve-pink that blooms early with Miss Lingard variety—a month before the later Phlox.

**Rheinlander.** A very beautiful salmon-pink with deeper center. Flower heads are large and held on strong stems.

**Rijnstroom.** A lovely rose-pink, much like Paul Neyron rose. Very large flower heads. Strong grower.

**Rising Sun.** A new variety of soft salmon-pink.

**Salmon Glow (New).** Large, rich, pink, shaded salmon. 40 cts.; 3 for \$1.10.

**Thor.** Rich, salmon-pink with crimson eye.

### The Dwarf Early Phlox

For Borders and for Rock Gardens

**PHLOX SUBULATA.** A mass of bloom in early spring covers the delicate moss-like foliage. Excellent for rockery and border, and invaluable for carpeting the ground or covering graves.

Pink Dwarf Phlox

White Dwarf Phlox

Lilacina—lovely pale blue

30 cts. each; 4 for \$1.00.

**"VIVID" (New).** An improved early, dwarf pink with unusually brilliant clear pink flowers. 30 cts. each; 4 for \$1.00.

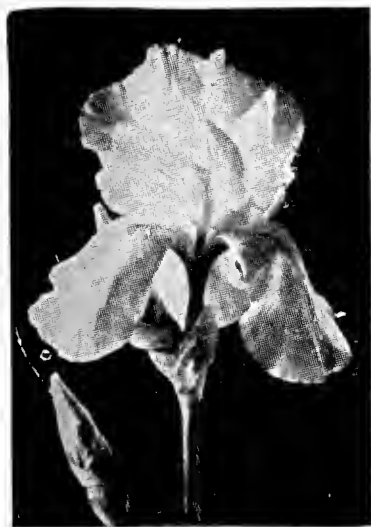
**PHLOX DIVARICATA (Wild Sweet William).** Large fragrant lavender flowers on 9 inch stems in April and May. Likes shade.

### SPECIAL—HOME YARD PHLOX COLLECTION

Ten field-grown roots, 2 each of 5 popular varieties—light pink; white; deep pink; red and lavender.

SPECIAL GROUP PRICE—10 Plants ----- \$2.25  
(Postage 15 cts. extra)

# Iris — The Rainbow Flower



"The Orchid of the Garden"

"ORCHIDS OF THE GARDEN" is a descriptive name often given to the hardy Iris. Everyone can succeed with them for they will thrive and blossom abundantly in most any soil. There are few garden flowers that are as gay and colorful and certainly none that are so simple of culture.

**Planting Directions.** Select an open sunny spot. Plant the roots just barely beneath the ground surface. Use bone-meal, rather than manure for a fertilizer.

From the many choice Iris varieties now available, we recommend those listed as very hardy and dependable in blooming. **For ease in selecting they are grouped according to color effect.**

In the description the "S" refers to the "Standards" (upright petals), and "F" to the "Falls" (lower petals).

Prices are for strong, sturdy root divisions. A 10% discount is allowed from the "each" price when 5 or more of a variety are ordered. (Please add 3c per root for shipment by Parcel Post.)

## Light Blue Iris

	Price Each
Lord of June. An immense clear lavender blue .....	\$0.25
Pallida Dalmatica. Bright lavender blue. Always admired...	.25
Princess Beatrice. Silvery blue-lavender. Sweet scented.....	.25

## Dark Blues and Purples

Blue Banner. A bright and cheery blue .....	\$0.30
Buto. A large flower of deep, rich royal purple .....	.25
Germaine Perthuis. (S) violet purple; (F) royal purple.....	.30
Lent Williamson. (S) soft violet; (F) royal purple.....	.25
Majestic. (S) blue violet; (F) velvety raisin purple.....	.25
Monsignor. (S) blue violet; (F) purple .....	.25
Morning Splendor. (S) Petunia violet; (F) red purple .....	.25
Parc de Neuilly. A reliable violet purple .....	.25
Perfection. (S) light blue; (F) rich dark velvet.....	.25
Souvenir de Mme. Gaudichau. Rich deep purple.....	.25
Swazi. (S) blue violet; (F) dark pansy-violet .....	.40
Tenebrae. Rich purple effect. Large flower .....	.25

## Brown-Purple Iris

Ambassadeur. (S) red violet; (F) purple maroon .....	\$0.25
Bruno. (S) bronzy heliotrope; (F) rich, violet purple.....	.30
Grace Sturtevant. Deep velvety brown .....	.35

## Pink-Toned Iris

Dream. Lovely rose-pink with orange beard .....	\$0.25
Frieda Mohr. (S) light pink-lilac; (F) lilac rose .....	.35
Midgard. A delightful rose-pink effect with yellow shadings	.25
Susan Bliss. A deep pink tone .....	.30

## Pastel Shades

Asia. A soft, silvery lavender-violet blend. Fragrant.....	\$0.25
Dolly Madison. Light mauve-lilac shaded gold.....	.30
Mother of Pearl. Soft lavender with pearly sheen .....	.25
Quaker Lady. A smoky-lavender in effect .....	.25

## Red-Toned Iris

Caprice. (S) red purple; (F) deeper claret.....	\$0.25
Indian Chief. (S) violet red; (F) velvety crimson .....	.30
Medrano. Red maroon in effect .....	.25
Seminole. Wine red in effect .....	.25

## White Iris

Los Angeles. A large ivory white with blue touch .....	\$0.40
Snow White. Tall, strong growing white... ..	.30
Taj Mahal. A tall white of pure color.....	.25

## Yellow Iris

Clara Noyes. Orange-yellow with apricot tones .....	\$0.50
Coronation. Large flowers of deep golden yellow .....	.30
Gold Imperial. Clear yellow with bright orange beard .....	.25
Prairie Gold. A deep rich yellow .....	.25
Shekinah. Clear soft yellow .....	.25

## Contrasting Colors

	Price Each
Iris King. (S) buff yellow; (F) maroon .....	\$0.25
Rhein Nixe. (S) white; (F) pansy violet .....	.25
Salonique. White standards, red purple falls .....	.25

## Iris Prize-Winners

Superb new varieties that excel in form and color.

Black Wings. Rich, velvety blue-black. Very dark. Deepest midnight blue overlaid with a black sheen .....	\$1.25
Depute Ncmblot. (S) Rosy purple overlaid with gold; (F) claret-crimson. A giant in growth up to 48 inches. Tall, full-petaled, courtly. In every way a great Iris.....	.60
Evolution. Bronze buff with heliotrope blue. One of the finest blends. Tall plant of unusual vigor and fine foliage.....	.40
Pres. Pilkington. Pastel blend of pale buff and rose flush. A large, magnificent flower of exquisite coloring .....	.70
Rameses. A stalwart giant (38 ins.) of golden buff and rosy pink. Rampant growth and free flowering.....	.40
Talisman. A rich combination of yellow and rose pink. The general effect is a warm apricot tone in the mass.....	.40
Wm. Mohr. A frilled flower of soft lilac and violet. As different an Iris as one can have—a huge exotic blossom that never fails to attract attention in the garden or flower show .....	.40

## Dwarf Iris (Pumila)

A very early-flowering, low-growing Iris. Suited for rock gardens and to edge beds and borders. Blooms in April.

Yellow, Blue, Purple, White and Cream colors  
Each 25 cts.; 6 for \$1.25.

## Siberian Iris

Very attractive for garden display and particularly for cutting. Flowers on graceful stems; foliage narrow and grass-like.

Siberian Blue and Siberian White  
Each 25 cts.; 6 for \$1.25.

## Japanese Iris

A large flowering Iris that blooms in July. Not as hardy as the Germanica type. We offer choice plants in White, Light Blue, Violet Blue, Reddish Crimson. Strong roots, 40 cts. each; 3 for \$1.00.



Siberian Iris—graceful in growth, splendid for cutting

## SPECIAL "RAINBOW" IRIS COLLECTION

A choice collection of colorful Iris. Eight strong roots—one each of pink-toned, white, red-toned, lavender, yellow, blue, purple and pastel.

A real "Rainbow Collection"—8 Plants,  
Price .....

(Parcel post 15 cts. extra.)

# Gorgeous Peonies

Always Hardy—Always Beautiful

A COLLECTION of many of the world's finest Peony creations are listed here at moderate prices. We supply only strong, substantial roots of 3 to 5 eye divisions and all freshly dug.

QUANTITY PRICE—5 or more Peonies (your selection) sold at 10% discount from the each price.

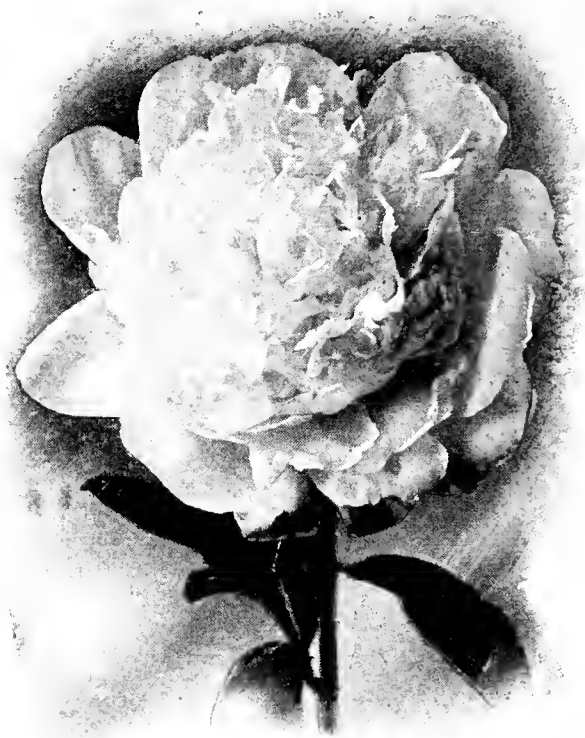
For parcel post shipments add 6c per root.

## White Double Peonies

ALSACE LORRAINE. A rich, creamy white. Mid-season .....	\$0.75
AVALANCHE. Large cone-shaped ivory-white .....	.75
COURONNE d'OR. Snow white with golden stamens.....	.60
ENCHANTRESSE. Big, globular, late creamy-white .....	.75
FESTIVA MAXIMA. Splendid white with crimson flakes .....	.60
FRANCES WILLARD. Mid-season, exquisite pure white .....	1.00
LE CYGNE. A large, perfect flower of pure white.....	2.00
MME. JULES DESSERT. Cream, with buff and salmon tints.....	1.00
MONS. DUPONT. Large flower with crimson blotch. Tall .....	.50
MRS. A. M. BRAND (New). A large pure white. Exquisite fragrance.....	3.00
PRIMEVERE. The best yellow-tinted peony .....	1.00

## Red Double Peonies

AUGUSTE DESSERT. Velvety red with silver tips .....	\$1.00
CHARLES McKELLIP. A deep bright red .....	1.00
CHERRY HILL. Deep garnet with bright sheen .....	1.00
GROVER CLEVELAND. Large dark crimson .....	1.00
KARL ROSEFIELD. Rich glowing crimson .....	.75
LONGFELLOW. Cherry with crimson tones .....	1.00
LORA DEXHEIMER. A flaming crimson red .....	.75
MARY BRAND. Abundant blooming clear red .....	.75
MONS. MARTIN CAHUZAC. Darkest maroon-red peony.....	1.25
TENUIFOLIA FL. PL. Fern-leaf peony. Very early double crimson with fern-like leaves .....	2.00



The Peony—largest flowering of all perennials

## Pink Double Peonies

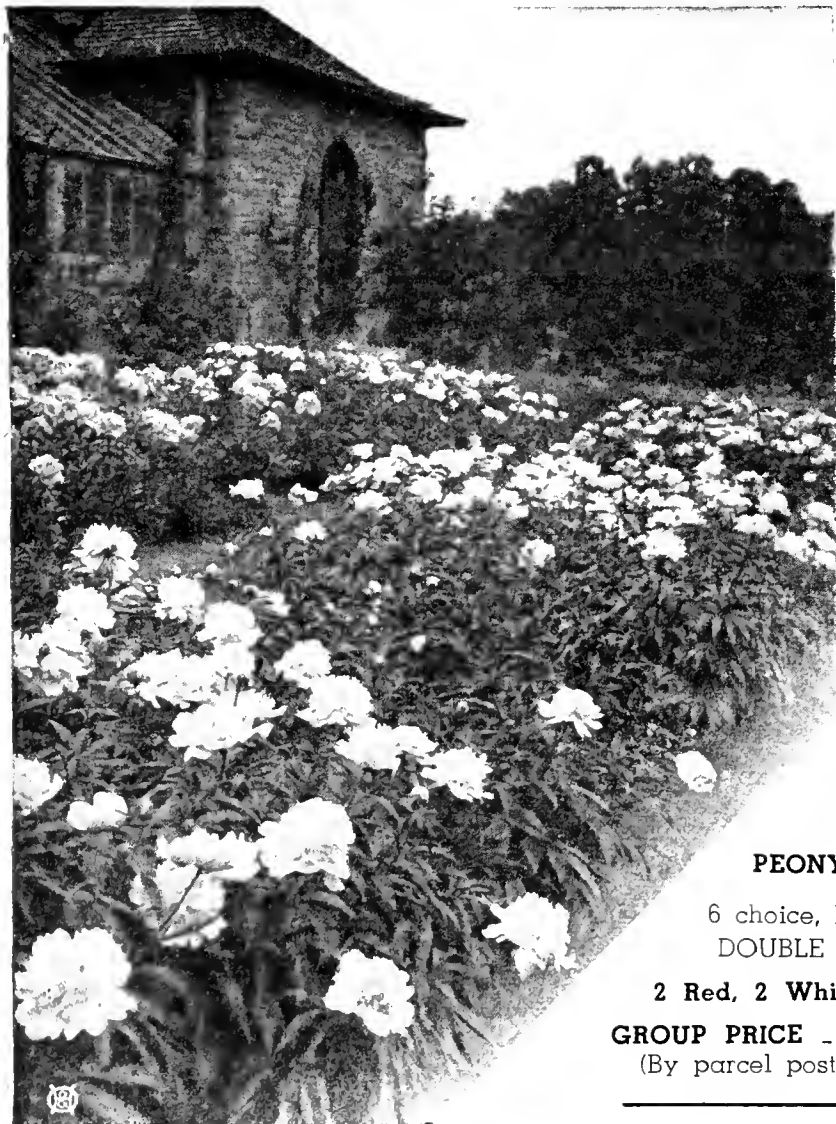
CLAIRE DUBOIS. A late globular clear violet-rose.....	\$0.75
FLORENCE MACBETH. Very large, soft blush-pink .....	2.50
KELWAY'S QUEEN. Large double, bright rose pink .....	1.50
LADY ALEXANDRA DUFF. Very large, soft pink. Fragrant .....	.75
LA FEE. A strikingly beautiful soft pink blend .....	1.50
LA FRANCE. Fragrant apple-blossom pink. Tall, sturdy.....	1.00
LAMARTINE. Dark, old-rose pink .....	1.50
MARTHA BULLOCH. Enormous flowers of shell pink .....	1.50
MME. EMILE GALLE. Sea-shell pink with lavender tones.....	1.00
MONS. JULES ELIE. Like a giant pink chrysanthemum.....	1.00
MRS. JOHN KLEITSCH (New). A glorious, fragrant pink.....	3.00
MYRTLE GENTRY (New). Clear pink with salmon tint.....	3.00
PHOEBE CARY. A large soft rose pink. Fragrant.....	1.00
PRESIDENT WILSON. A soft rose to shell pink.....	2.00
REINE HORTENSE. Delicate pink with crimson flecks.....	.75
SARAH BERNHARDT. Apple-blossom pink .....	.75
SOLANGE. Cream with deep orange-salmon pink.....	1.00
SOUV. DE LOUIS BIGOT. Rich salmon pink.....	1.00
THERESE. Exquisitely lovely bright pink.....	1.25
WALTER FAXON. Vivid and outstanding salmon pink.....	1.25

## The New Jap and Single Peonies

Unusually Lovely Flowers of Great Charm and Beauty

The outer row of large petals surrounds a center of smaller petals or brilliant yellow stamens. The flowers are strikingly decorative both in the garden and for cutting.

ALEIFLORA. Silky white with yellow center. Fragrant.....	\$0.75
EXQUISITE (Jap). Pure white border petals with center of white and yellow. Sturdy growth .....	1.25
LACINIATA. Early-flowering red with cut-leaf foliage .....	.75
LE JOUR. Largest single white peony. Gold center .....	1.00
L'ETINCELANTE. Deep clear pink, cup-shaped with silvery tips .....	1.00
MIKADO (Jap). Crimson. Like a giant red poppy .....	1.00
PRIDE OF LANGPORT. Brilliant soft peach-pink, very large .....	1.25



### SPECIAL HOME-YARD PEONY COLLECTION

6 choice, large-flowering DOUBLE PEONIES

2 Red, 2 White, 2 Pink

GROUP PRICE .....\$2.50

(By parcel post, 20c extra)

VISIT OUR DISPLAY GARDENS, ROCKERY AND POOL AT 1200 ST. CLAIR ST.

# The New Rugosa Roses

## Dependable and Hardy All Through the North

THE new Rugosa Roses are full and double, sweetly fragrant and the flowers appear abundantly and almost continuously from June until October. The plants are hardy and survive without special winter covering.

We offer **strong, dormant plants** that will bloom this year.

**Amelia Gravereaux.** Double fragrant flowers of bright cerise red. Price, strong plants, 75 cts.; extra size, \$1.00.

**Belle Poitvine.** Clusters of double, magenta-pink roses over a long season. Price, strong plants, 75 cts.; extra size, \$1.00.

**Dr. Eckener (New).** Large semi-double flowers of salmon-pink with gold at base of petals. A new and unusual rugosa hybrid. Price, \$1.00 each.

**F. J. Grootendorst.** Full clusters of smaller, bright-crimson roses. Always in bloom. Price, strong plants, 75 cts.; extra size, \$1.00.

**Hansa.** Double, fragrant, wine-red flowers. Handsome dark green foliage. Sturdy growth and long season of bloom. Price, 60 cts.; extra size, 80 cts.

**Hugonis.** An early flowering shrub rose with sprays of light yellow roses along the graceful branches. Strong plants, 75 cts.

**Rugosa Rubra.** Japan Rose. Handsome crinkled leaves and large, single rose flowers of pink to rosy red. Red fruit. Price, 60 cts.; extra size, 80 cts.



Clusters of red flowers all season on the hardy Grootendorst Rugosa Rose

**Sarah Van Fleet (New).** Semi-double, soft, rose-pink flowers. Continuous in bloom. Price, 75 cts.

**Sir Thos. Lipton.** A free-blooming, fragrant double white. Price, 75 cts.; extra size, \$1.00.

### SPECIAL COLLECTION—DOUBLE FLOWERING RUGOSA ROSES

Hardy Roses that bloom all season. Need no winter covering. Plant them in a sunny spot near house or in the garden.

1 GROOTENDORST—Crimson

1 BELLE POITVINE—Rosy pink

1 SIR THOS. LIPTON—White

1 HANSA—Wine red

4 STRONG STURDY PLANTS TO BLOOM THIS YEAR.....\$2.85

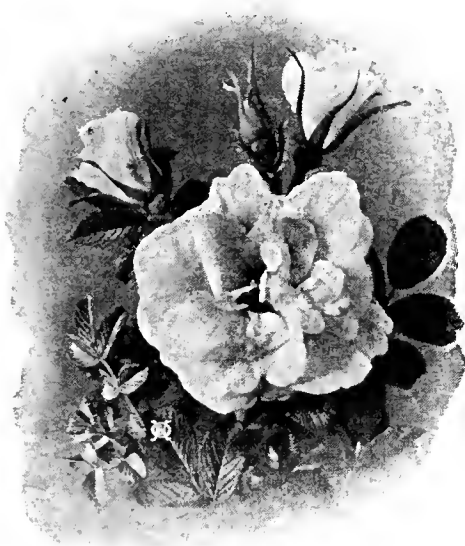
## THE BABY RAMBLER ROSES (Dwarf Polyantha)

The Baby Ramblers are small size bushes, very popular because of their dwarf size and heavy flowering. The roses are borne in full clusters and are in bloom continuously throughout the summer.

Plant the Baby Ramblers in beds alone or in front of the taller roses.

**Pink Baby Rambler** (Ellen Poulsen). Clusters of deep, brilliant-pink, quite fragrant flowers until frost. **Potted, growing plants, \$1.00.**

**Red Baby Rambler** (Miss Edith Cavell). Bears heavy, open clusters of crimson-scarlet roses. **Potted, growing plants, \$1.00.**



Rosa Rugosa—Japanese Rose

## THE HARDY BUSH-ROSES

These hardy bush or shrubby roses are very useful for planting in with the usual flowering shrubs in borders or in boundary groups. They are particularly suited for planting on banks, slopes and in locations where a naturalistic effect is desired.

**Blanda.** Soft pink flowers on thornless stems 3 to 4 ft. high. Red fruit in fall. Price, strong plants, 60 cts.; extra size, 75 cts.

**Harrison's Yellow.** The best hardy yellow-flowering bush rose. Semi-double golden yellow. Price, strong plants, 75 cts.

**Rubrifolia.** Pink flowers. Reddish-purple leaves all summer. Price, strong plants, 60 cts.; extra size, 75 cts.

**Sweet Briar, Rubiginosa.** The old favorite Sweet Briar fragrant pink rose with aromatic leaves. Price, strong plants, 75 cts.



Roses in a naturalistic planting to festoon a wall



The "Queen of Flowers"

# H. & O. Roses

Make Your Garden  
Glow with Color.

A Choice Assortment of the Better Roses for Outdoor Planting

## THE REASONS WHY H. & O. PREPARED, POTTED ROSES ARE BETTER

These **Specially Prepared Roses** are all carefully selected 2 and 3 year old field plants. They have been started early in 6 inch pots and are in healthy, active growth when you receive them. Plant them right into your garden and they will produce results quickly. **With these started potted rose plants you are certain of beautiful roses to enjoy this season.**

## The Hybrid-Tea Roses - Monthly Everblooming

These Everblooming Varieties will flower for you all summer.

PRICES—Strong plants—started and growing in pots—\$1.00 each; 5 for \$4.50.

### Pink and Rose Colors

- BETTY UPRICHARD.** Very fragrant flowers of salmon-pink tinted with copper pink on outside. Long-pointed buds.
- COLUMBIA.** A pleasing shade of rose-pink delightfully scented. Free in bloom and vigorous growth.
- DAME EDITH HELEN.** A brilliant soft pink. Long pointed buds and huge, full flowers. Highly perfumed.
- LOS ANGELES.** Luminous flame-pink, toned with coral and gold. Fragrant. The pointed buds expand into perfect flowers.
- RADIANCE.** Large, double blooms of bright rose pink. A popular variety that succeeds everywhere. Long blooming season.
- WILLOWMERE.** Brilliant pink with golden tinge. Vigorous upright growth with continuous bloom.

### Scarlet and Crimson Roses

- AMI QUINARD.** Very dark crimson-maroon. Tall.
- E. G. HILL.** Full double flowers of deep, maroon-red.
- ETOILE DE HOLLANDE.** Large, bright crimson red. Free bloomer. The most popular red garden rose. Well-formed flowers.
- GRUSS AN TEPLITZ.** Lovely, fragrant, bright crimson. Always in bloom and succeeds everywhere. Large, bushy plants.
- MARGARET MCGREDY.** Opens a vivid scarlet turning later to brick red. Seldom out of bloom. Large, long-pointed buds.
- MCGREDY'S SCARLET.** Large, fragrant, full, double flowers of brilliant scarlet with orange base. Vigorous.
- RED RADIANCE.** Bright rosy red. Very large full flowers on a vigorous plant. Very free in blooming.
- SENSATION.** Sweet-scented, double flowers of crimson-scarlet. Strong, vigorous grower.

### White Monthly Roses

- KAISERIN AUGUSTE VIKTORIA.** Creamy buds developing into bright snow-white blooms. Fragrant. The perfect white rose.
- KILLARNEY WHITE.** Long pointed buds with lovely, pure white, moderately fragrant flowers.

### A Special Rose Collection 4 MONTHLY ROSES

All choice varieties

1 Pink                      1 Yellow  
1 White                     1 Red

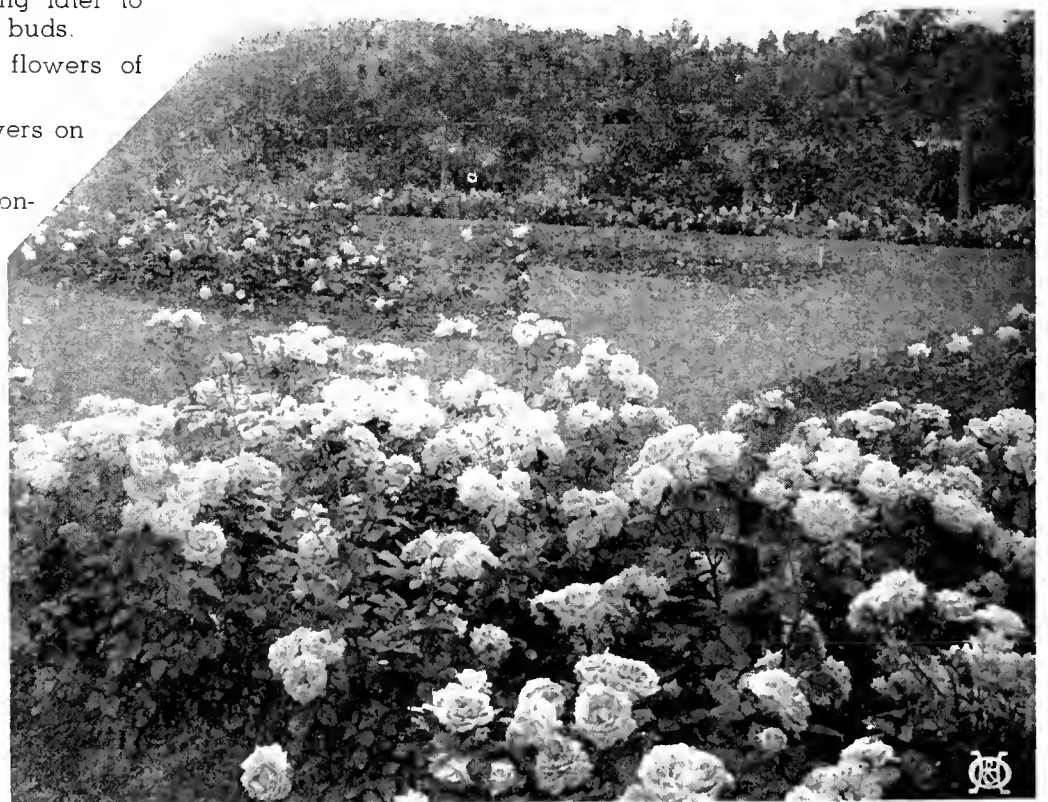
4 Growing Rose Plants

SPECIAL PRICE ----- \$3.50

(Express extra)

### Yellow and Copper Shades

- AUTUMN.** Deep old-gold flowers. Leaves dark and glossy.
- GOLDEN DAWN.** Very double, fragrant lemon-yellow blossoms. Remarkably fine foliage. Vigorous and free-flowering.
- JOANNA HILL.** Deep creamy white tinted with salmon and ochre-yellow. Strong stems. Popular as a cut flower.
- LUCIE MARIE.** Butter-cup yellow flushed with orange. Fragrant.
- MME. ED. HERRIOT.** Coral-red, shaded yellow and rosy scarlet.
- MRS. AARON WARD.** Little buds of golden buff opening to double flowers of Indian-yellow. Unusually abundant flowers.
- MRS. E. P. THOM.** A superior yellow garden rose. Rich unfading lemon-yellow flowers. Fine, long buds.
- PADRE.** Bright coppery scarlet with yellow center. Free-flowering variety. Vigorous, upright grower.
- REV. F. PAGE ROBERTS.** Glowing, coppery-red buds opening to huge yellow flowers tinted buff. Apple-like fragrance.
- SOUVENIR DE CLAUDIUS PERNET.** One of the best of the modern yellow everblooming roses. Striking sunflower yellow.
- TALISMAN.** Fragrant flowers of glowing golden-yellow, tinted copper, red and orange. The most vividly colored rose.



Everyone loves Roses. There is a place for some in your yard.

VISIT OUR DISPLAY GARDENS, ROCKERY AND POOL AT 1200 ST. CLAIR ST.



# The New "Patented Roses"

A CAREFULLY selected assortment of the most recent "patented" Rose varieties—for those who want something new and different.

Selected from the best of the NEW ROSES in America and Europe, these improved varieties will bring a refreshing note to old gardens and a thrill to the beginner.



WE SUPPLY THESE NEW ROSES IN POTTED, GROWING PLANTS SURE TO BLOOM FOR YOU THIS SEASON.

**ALEZANE.** (Plant Patent No. 116.) Urn-shaped, reddish brown buds unfurling to a full flower of rich apricot and yellow. Vigorous growth; dark green foliage. Potted plants \$1.35.

**BLAZE.** (Plant Patent No. 10.) A marvelous, everblooming scarlet red climbing rose, vigorous grower and blooms over a long season. Price, potted plants, \$1.25 each.

**BETTER TIMES.** (Plant Patent No. 23.) Large, double, fragrant flowers of brilliant cerise. Free and full bloomer. Long stems. Potted plants \$1.35.

**CARILLON.** (Patent No. 136.) A cheerful, open flower of sparkling flame and coral colors. One of the new Floribunda continuous blooming type. A branching plant with an abundance of flowers. Potted plants \$1.10.

**COUNTESS VANDAL.** (Plant Patent No. 38.) Lovely, coppery pink and gold with long, pointed buds. Potted plants \$1.10.

**GLOAMING.** (Patent No. 137.) Soft, satiny pink with salmon and amber markings. Large flowers with delightful fragrance. Potted plants \$1.35.

**GOLDEN CLIMBER.** (Patent No. 28.) Rich, golden blooms 4 to 5 inches in diameter, produced singly on long stems. Rich, glossy leaves. Price, potted plants, \$1.10 each.

**MARY HART.** (Plant Patent No. 8.) Deep blood-red with overglow of amber. The Red Talisman. Potted plants \$1.10.

**MATADOR.** (Patent No. 170.) Large full flower of scarlet crimson with pleasing perfume. Vigorous, sturdy, healthy plant. Potted plants \$1.35.

**NEW DAWN.** (Plant Patent No. 1.) Everblooming climber; large exquisite flowers of delicate pink on long stems. Fragrant blossoms; bronze-green foliage. Potted plants, \$1.60.

**NIGRETTE.** (Plant Patent No. 87.) The Black Rose. Deep, rich, dark maroon. Fragrant. Slender growth but continuous in bloom. A European sensation. Potted plants \$1.25.

**TEXAS CENTENNIAL.** (Plant Patent No. 162.) An unusually brilliant rose of blood red toning to cherry-red in the center. Large flowers of broad, thick petals. Potted plants \$1.25.

## The June Flowering Roses - "Hybrid Perpetuals"

These are the hardiest of the large-flowering Garden Roses, with blooming season largely in June and July. Their extremely large flowers on strong sturdy bushes make June the month of Roses.

PRICES—H. & O. Specially Prepared, Growing, Potted Plants—\$1.00 each; 5 for \$4.50.

**Frau Karl Druschki.** A large silvery white. The ideal white rose.

**General Jacqueminot.** Brilliant crimson. Very fragrant.

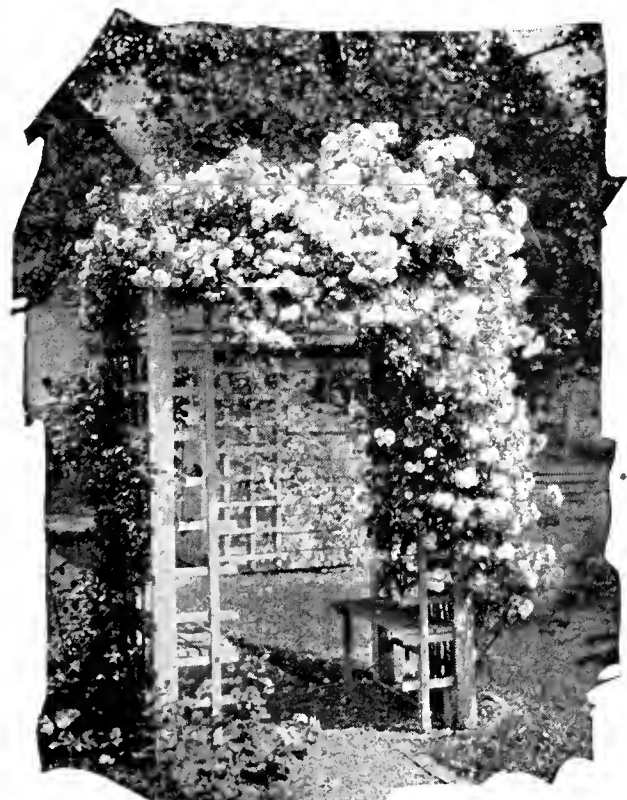
**Magna Charta.** Fragrant, bright pink tinted with carmine.

**Mme. Albert Barbier (New).** Full cupped flowers of fawn-yellow, shaded white and pink. Fragrant, strong growing and long season of bloom. A new and unusual color for a Hybrid Perpetual.

**Paul Neyron.** Beautiful deep rose. The largest of all.

**Prince Camille de Rohan.** Very dark red. Delicate fragrance.

**Ulrich Brunner.** Bright cherry crimson. An old favorite.



Climbing Roses for the garden trellis

## The Climbing Roses

For House-Wall and Garden-Trellis

H. & O. SPECIALLY PREPARED POTTED PLANTS

Plant Climbing Roses near the porch or on the house walls to have their fragrance and color close at hand. Use them in the garden also to decorate lattices, arbors or pergolas and as festoons over walls.

PRICES H. & O. POTTED, GROWING CLIMBERS

Each 80 cts.; 5 for \$3.50—unless otherwise noted.

**Climbing American Beauty.** Large, double flowers of bright rose pink. Strong grower.

**Dorothy Perkins.** Big clusters of soft, shell-pink roses. Flowers profusely.

**Dr. Van Fleet.** Exquisite, large, light pink flowers on long stems. Fragrant.

**Excelsa.** Double crimson flowers in clusters. (The improved "Crimson Rambler.")

**Paul's Scarlet Climber.** Loose clusters of large-sized, double flowers of bright scarlet red. Unexcelled brilliance.

**Primrose.** Canary yellow roses of double form in profusion. Fine for cutting.

The new Climbers, "Blaze," "New Dawn" and "Golden Climber" are listed above under New Rose Creations.

# Delicious Fruits—for the Home Garden

## These Hardy Varieties Are Easy to Grow

Know the Delight of Eating Fruit Fresh from Your Own Garden.

### The Hardy Apples

Price—Strong Trees, 4½ to 6 feet, \$1.00 each.

**ANOKA.** Large yellow, red-striped fruit of fine flavor in August. Bears early on young trees—often fruiting second year after planting. \$1.25 each.

**BEACON.** (New Minn. Variety.) An early-ripening, highly-colored, deep red apple of good size. Valued for both eating and cooking. \$1.25 each.

**DUCHESS.** Yellow with red stripes. Ripens early. A large size popular September fruit. Bears heavily. Free from blight.

**HARALSON.** Deep red winter apple. Fine quality. A new hardy and dependable Minnesota apple. \$1.25 each.

**NORTHWESTERN GREENING.** Large fruit of pale green. A high-quality, long-keeping, cooking apple.

**WEALTHY.** A fine-quality red apple that fruits abundantly. A very popular Minnesota variety. Season, September to January.

**YELLOW TRANSPARENT.** An early table fruit of medium size. Yellow color and crisp flesh.

### Hardy Crab Apples

Price—Strong Trees, 4½ to 6 feet, \$1.00 each.

**DOLGO.** Good flavored, highly ornamental bright red fruit. Makes excellent jelly. Ripe in September. \$1.25 each.

**TRANSCENDENT.** Medium-size yellow apple, blushed with carmine—crisp and juicy flesh, acid in flavor.

**WHITNEY.** Best of the sweet crabapples. Large, well flavored and early red fruit.

### Hardy Plums

The best from the Minnesota State Fruit-breeding farm.

Price—Strong Trees, 4½ to 6 feet, \$1.00 each.

**LaCRESCENT.** Our best quality yellow plum. Sweet and juicy fine-grained flesh.

**MONITOR.** Large, dark red clingstone. Late mid-season.

**SUPERIOR.** (New introduction.) Large, conic-shaped, deep red juicy fruit. Small pit. Nearly free-stone.

**TONKA.** Semi-freestone, red fruit, fine flavored. Mid-season.

**UNDERWOOD.** Early ripening attractive red plum. A very popular hardy variety. Trees bear annually.

### Cherries & Cherry-Plums

Price—Strong Trees, \$1.00 each.

**OKA CHERRY.** New hardy and productive hybrid from So. Dak. Low-headed tree producing tremendous crops of large red fruit. Color, rich purple-red inside and out. Flavor delicious for dessert or preserving.

**ZUMBRA.** Large dark red fruit with small pit. Ripens in August. Often bears second year after planting.

**NICOLLET.** Very close in color, size and flavor to a true cherry and much hardier.

**WRAGG.** Heavy bearer of dark red, meaty fruit. The hardiest true cherry.

### New Hansen Bush-Cherries

A hardy, ornamental shrub, grows to 4 ft. Attractive white flowers in spring with abundance of plum-like fruit in fall. For eating and preserving. Price—2 to 3 ft. size—60 cts. each.

### Hardy Pears

**PATTENS No. 5.** The hardiest of the pears and, after extensive trial, now recommended for Minnesota. Produces abundant, rather small but excellent quality fruit. 4 to 5 ft., \$1.00.



Duchess of Oldenburg Apple

### Grapes

Price—Strong Plants, 35 cts. each; \$2.50 per 10.

**BETA.** A medium size, black grape with sprightly flavor. Unusual hardiness and a heavy bearer.

**CONCORD.** The large, black grape. Always popular.

### Raspberries

Price—\$1.00 for 12; \$4.25 per 100.

**CHIEF.** The new Minnesota introduction. Early and heavy crops of firm, large, red berries. Very hardy.

**LATHAM.** Large red berries in abundance. Later than Chief. A hardy Minnesota variety with fruit of very attractive color.

### Currants

Price—Strong 2-year Plants, 50 cts.; \$4.50 per 10.

**PERFECTION.** Heavy clusters of very large, red fruit.

**RED LAKE.** New Minnesota currant. Erect bush. Large red fruit in heavy clusters. Excellent flavor.

### Gooseberries

Price—Strong 2-year Plants, 50 cts.; \$4.00 per 10.

**CARRIE.** A popular, dependable, heavily-fruiting variety that ripens red. Often called the Thornless Gooseberry.

**COMO.** Large, full berries that keep their green color even when ripe. A new, improved Minnesota fruit.

### Strawberries

**SENATOR DUNLAP.** June-bearing. Considered the most dependable, all-purpose strawberry. Large crops of big, deep red berries.

Price—Strong Plants, 30 cts. dozen; \$1.50 per 100.

**MASTODON.** Everbearing (New). Largest berries of any variety. Gives ripe strawberries 40 days after planting.

Price—Strong Plants, 50 cts. dozen; \$2.50 per 100.

**WAYZATA.** New Minnesota variety. Everbearing. Particularly large, deep-red berries of a delicious, sugary flavor. Bears over a long season.

Price—75 cts. per dozen; \$4.50 per 100.

### Asparagus

**Washington Rust Proof.** An excellent green asparagus.

Price—Strong Roots, 40 cts. dozen; \$3.00 per 100.

### Rhubarb or Pie Plant

**STRAWBERRY.** Early and tender. 20 cts. each; dozen \$2.00.

**McDONALD.** (New.) Highly colored red stalk, very succulent and tender. A splendid improved variety. Yields heavily and plants will last a life-time. Price 50 cts. each; \$5.00 per 12.

# Fertilizers and Mulches

## Lōma The Perfect Plant Food for Everything Green that Grows

Efficient—Easy to Handle—Odorless

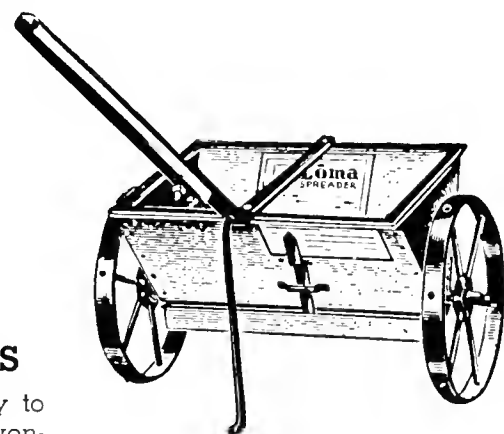
LOMA contains all the necessary plant foods needed to properly nourish grass, flowers, evergreens, trees and shrubs.

**For the Lawn.** Allow 40 lbs. to 1000 sq. ft.

**For the Garden.** Apply along the rows and around the plants. Full directions for all uses on each package.

### 1938 LOMA PRICES

10 lbs., 85 cts.; 25 lbs., \$1.50; 50 lbs., \$2.50; 100 lbs., \$4.00



### LOMA SPREADERS

Useful—Well-built. Easy to operate. Spreads Loma evenly and accurately.

Junior Model Spreader—holds 18 lbs. Price \$2.50.

16 Inch Spreader—holds 35 lbs. Price \$5.50.

30 Inch Spreader—holds 75 lbs. Price \$10.50.

All have mechanical agitators and shut-off control.

### Bone Meal

**BONE MEAL.** A selected, finely-ground meal of animal bone that contains valuable nitrogen and phosphoric acid plant food. A safe and excellent fertilizer for peonies, roses and all garden plants. Our Bone Meal has been slightly steamed to soften it and to hasten its fertilizing action. Apply to flower borders one lb. to 15 sq. ft. and cultivate in. Use generously around trees and shrubs.

10 lbs., 65 cts.; 25 lbs., \$1.00; 50 lbs., \$1.60; 100 lbs., \$2.85.

### Sulphate of Ammonia

**SULPHATE OF AMMONIA.** A quick-acting plant growth stimulant containing about 25 per cent ammonia. Use sparingly about garden plants to stimulate rapid development. For lawns apply in a solution at rate of 5 lbs. per 1,000 sq. ft. Water down thoroughly. In the garden do not let it touch green growth.

10 lbs., 65 cts.; 25 lbs., \$1.10; 50 lbs., \$1.75; 100 lbs., \$3.00.

### Melo-Grond—Prepared Sheep Manure

**MELO-GROND.** A balanced mixture of SHEEP MANURE and BONE MEAL (far superior to straight Sheep Manure). A natural, organic plant food that will stimulate the growth of all plants. For lawns use 50 lbs. per 1000 sq. ft. and water well. Inexpensive and efficient.

50 lb. bag, \$1.75; 100 lb. bag, \$2.75.



### Vigoro—A Good General Fertilizer

**VIGORO.** A prepared plant food for lawns, vegetable and flower gardens. Directions on package. Allow 40 lbs. per 1,000 sq. ft. for lawns. Odorless—easy to use.

An important aid to more attractive lawns and flower gardens. Contains all the needed plant foods and is free of weed seeds.

25 lbs., \$1.50; 50 lbs., \$2.50; 100 lbs., \$4.00.

### NUTRIA PEAT—the Mulch That Improves Soils and Prevents Drouth.

**NUTRIA PEAT** is a prepared, granulated, natural peat. It is clean, odorless and pleasant to handle. **NUTRIA PEAT** will lighten and open up heavy and clay soils and will improve and build up the texture of light and sandy soils.

It holds 15 times its weight in water. It holds moisture, mellows the soil and prevents crusting.

**NUTRIA PEAT** makes a splendid top dressing for both new and old lawns. It is exceedingly valuable for mulching around garden plants, trees, evergreens and shrubs.

#### PRICES OF NUTRIA PEAT

Per bag (about 3 bu.), 90 cts.; 2 bags, \$1.50; 3 bags, \$2.00. (1 bag weighs 90 to 100 lbs. and covers 100 sq. ft. to depth of 1/2 in.)  
Bulk Peat, 2 cu. yd. load, (Twin City delivery only), \$5.00

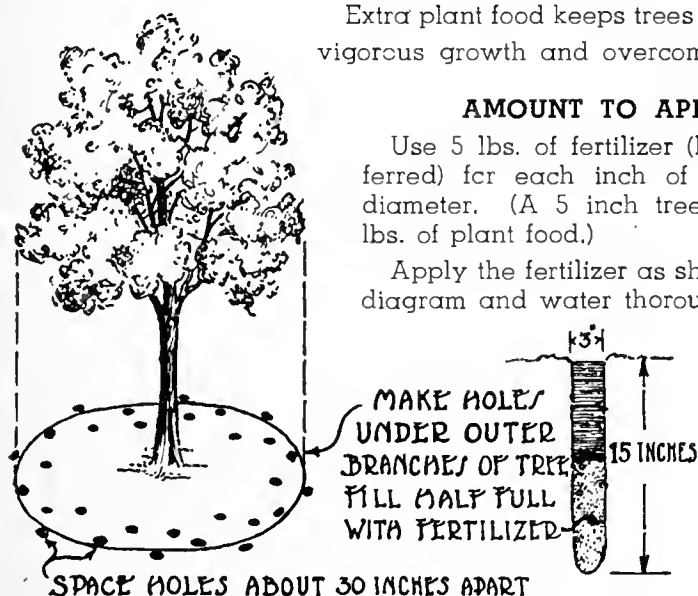
### How to Fertilize Your Trees

Extra plant food keeps trees in healthy, vigorous growth and overcomes drouth.

#### AMOUNT TO APPLY

Use 5 lbs. of fertilizer (LOMA preferred) for each inch of tree trunk diameter. (A 5 inch tree needs 25 lbs. of plant food.)

Apply the fertilizer as shown in the diagram and water thoroughly.



### The Improved Water Lance

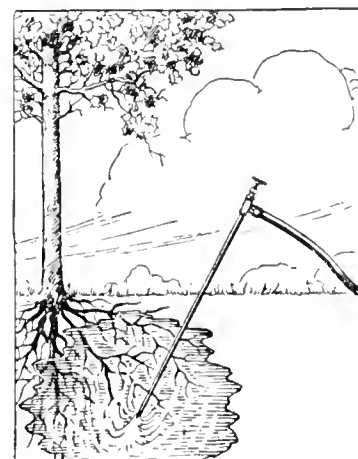
For watering the roots of trees and shrubs. Saves time—saves water—gets results.

This handy device is very simple to use. It connects right to your garden hose.

In 2 minutes use it supplies more water right to the plant roots where it is needed than by 2 hours of the old surface watering. We recommend it.

Price—\$1.50

(Postage 20c extra.)



# H. & O. "High Test" Lawn Grass Seed

## The Best Seed for a Perfect Lawn

**G**OOD lawns can only follow the use of clean, pure seed of high germination test. H. & O. High Test Seed is dependably good—selected, re-cleaned seed that is the best in quality that we can secure.

**SPECIAL MIXTURES.** For general use and for "shady spots" and "terraces" we offer special seed mixtures. These are prepared from our own actual experiences of many years in gardening and lawn making. The seed varieties and the proportions used are based on these actual tests.

There are no cheap annual or short-lived grasses such as Timothy in H. & O. mixtures.

**AMOUNT OF SEED TO SOW**—Allow one pound of seed to every 200 square feet of new lawn area. For re-seeding on old lawns one pound of seed to 400 square feet will be sufficient.

Send for "HOW TO MAKE A LAWN." This booklet tells you how to make and care for a lawn. It gives practical and helpful information. Mailed on request.

Prices are given for seed packed and ready to ship. Please add 6c per lb. for parcel post if shipment of seed by mail is wanted.

### "Velvet Sod" Seed

"Velvet Sod" contains Creeping Bent seed.

"Velvet Sod" Lawn Seed is an unusually high grade and careful mixture of permanent fine-bladed, rich green grasses. Specially prepared to meet the climatic conditions of our northern states. Its high weight of 27 lbs. per bushel indicates its purity and freeness from chaff and adulteration. We use this seed on all our own gardening work and recommend it as the best seed obtainable.

1 lb. 50c; 5 lbs. \$2.25; 10 lbs. \$4.00; 20 lbs. \$7.50.

### Shady-Side Seed

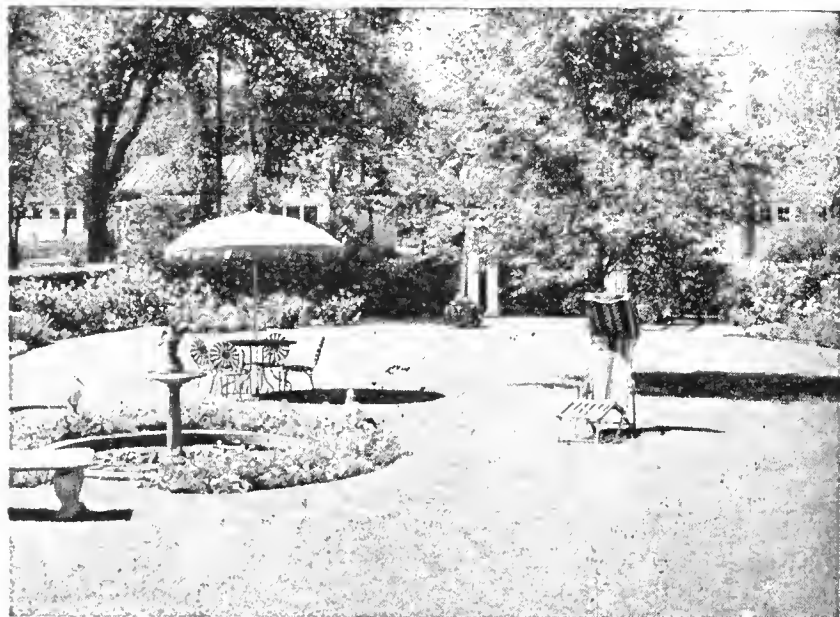
Where ordinary grasses will not grow we suggest sowing this special "shady-side" mixture which contains varieties naturally tolerant to shade. (Extra attention to fertilizing and watering is very important under these shade conditions and a light re-seeding each spring helps maintain the sod.)

1 lb. 55c; 5 lbs. \$2.50; 10 lbs. \$4.75; 20 lbs. \$9.00.

### Terrace Seed

On a slope the usual lawn mixtures are disappointing. For terraces we suggest this special mixture of spreading, deep rooting grasses that are resistant to drought and will thrive under unfavorable conditions.

1 lb. 55c; 5 lbs. \$2.50; 10 lbs. \$4.75; 20 lbs. \$9.00.



"Velvet Sod" Seed makes a perfect lawn



Sow "Velvet Sod"—the best grass seed. "Velvet Sod" mixture contains creeping bent.

### White Clover Seed

The best imported white Dutch clover with small leaves and dense growth. Very often sown with other grasses, particularly in a new lawn, where it helps cover the ground, thicken the sod and so tends to crowd out weeds.

½ lb. 35c; 1 lb. 60c; 5 lbs. \$2.85; 10 lbs. \$5.50.

### Kent Wild White Clover

A new, true perennial clover from Southern England. Its possibilities are not yet fully determined but its close, dwarf and wide-spreading growth makes it suitable for lawns and slopes.

¼ lb. 75c; ½ lb. \$1.30; 1 lb. \$2.50.

### Kentucky Blue Grass

A beautiful grass that should be the main constituent of every good lawn here in the north. It is sometimes used alone but as it develops slowly, it becomes better established if sown in a mixture. Our seed is a very choice grade of carefully re-cleaned extra heavy seed with an average weight of 21 lbs. per bushel.

1 lb. 35c; 5 lbs. \$1.50; 10 lbs. \$2.90; 20 lbs. \$5.40.

### Red Top Grass

Red Top is a fine-leaved grass that germinates and develops very quickly. It is of particular value in getting a new sod established. For a permanent lawn it should not be sown alone.

1 lb. 35c; 5 lbs. \$1.50; 10 lbs. \$2.90; 20 lbs. \$5.40.

### Creeping Bent Grass

**Sea Side Bent**—A true, unmixed creeping bent seed. It produces a thick, low and close-growing turf for lawns and golf greens. (Creeping Bent sod requires often and close cutting and special attention in fertilizing.)

1 lb. \$1.00; 5 lbs. \$4.75; 10 lbs. \$9.25; 20 lbs. \$18.00

### Creeping Bent Sod Plugs

The Improved Minnetonka Strain

The specially prepared sod plugs provide an easy, modern way to introduce Creeping Bent into an old sod or to establish a new lawn.

Set the plugs firmly 12 inches apart. They will spread and touch in a season's time.

Carton—100 Bent Grass Plugs.....\$1.20

5 Cartons \$5.00—10 Cartons \$9.00

(1 carton is enough for 100 sq. ft. of new or old lawn.)

(Shipping weight per carton about 12 lbs.)

# 1938 General Catalog Index

Page	Page	Page	Page	Page
<b>A</b>				<b>S</b>
Acer ----- 15	Coralberry ----- 5	Gooseberries ----- 30	Monkshood ----- 18	Salix ----- 16
Achillea ----- 18	Coreopsis ----- 19	Grapes ----- 17-30	Mountain Ash ----- 16	Salvia ----- 23
Aconitum ----- 18	Cornflower, Perennial ----- 19	Grass Seed ----- 32	Morus ----- 16	Sambucus ----- 5
Adam's Needle ----- 23	Cornus ----- 5	Gypsophila ----- 21	Mulberry ----- 16	Scutellaria ----- 23
Aesculus ----- 15	Cotoneaster ----- 5		Myosotis ----- 20	Sedum ----- 23
Alaska Daisy ----- 20	Crab, Flowering ----- 14	<b>H</b>		Sempervivum ----- 23
Almond, Flowering ----- 4	Cranberry, High-bush ----- 9	Hackberry ----- 15	<b>N</b>	Shasta Daisy ----- 20
Alyssum ----- 18	Crataegus ----- 9	Harebell ----- 19	Ninebark ----- 7	Shrubs ----- 4
Amelanchier ----- 6	Creeping Bent Grass ----- 32	Hedger ----- 17		Siberian Pea Tree ----- 8
Ampelopsis ----- 17	Currant, Flowering ----- 5	Helenium ----- 21	<b>O</b>	Snowball ----- 9
Anchusa ----- 18	Currant, Mountain ----- 5-17	Helianthemum ----- 21	Oenothera ----- 22	Snowberry ----- 8
Anemone ----- 18	Currants, Fruiting ----- 30	Heliopsis ----- 21	Oleaster ----- 8	Sorbus ----- 16
Anthemis ----- 18		Hellotrope, Garden ----- 23	Olive, Russian ----- 8	Speedwell ----- 23
Apples ----- 30	<b>D</b>	Hemerocallis ----- 21	Oswego Tea ----- 22	Spiraea ----- 8-17
Aquilegia ----- 18	Daisy, Alaska and Shasta ----- 20	Hen and Chickens ----- 23		Spruce ----- 13
Arabis ----- 18	Daisy, Giant ----- 23	Heuchera ----- 22	<b>P</b>	Statice ----- 23
Arborvitae ----- 11	Daisy, Persian ----- 22	Hibiscus ----- 22	Pachysandra ----- 22	Stonecrop ----- 23
Aristolochia ----- 17	Day Lily ----- 21	Hollyhocks ----- 22	Papaver ----- 22	Strawberries ----- 30
Armeria ----- 19	Delphinium ----- 20	Honeysuckle ----- 6-17	Pears ----- 30	Strawberry Bush ----- 5
Arrowwood ----- 9	Dictamnus ----- 20	Horsechestnut ----- 15	Pea Tree, Siberian ----- 8-17	Sumac ----- 9
Artemisia ----- 19	Dicentra ----- 19-20	Hydrangea ----- 6	Peat ----- 31	Sweet William ----- 20
Ash ----- 14	Digitalis ----- 20		Penstemon ----- 22	Symphoricarpus ----- 5-8
Asparagus ----- 30	Dogwood ----- 5	<b>I</b>	Peonies ----- 26	Syringa ----- 6-7
Asters ----- 19	Dutchman's Pipe ----- 17	Iris ----- 25	Perennials, Hardy ----- 18	
Astilbe ----- 19		Ivy ----- 17	Philadelphus ----- 6	<b>T</b>
<b>B</b>			Phlox ----- 24	Tamarix ----- 9
Babysbreath ----- 21	<b>E</b>	<b>J</b>	Physocarpus ----- 7	Taxus ----- 13
Balloon Flower ----- 22	Echinops ----- 20	Jerusalem Cross ----- 22	Physostegia ----- 22	Thalictrum ----- 23
Barberry ----- 4-17	Elaeagnus ----- 8	Juglans ----- 16	Physalis ----- 22	Thorn Apple ----- 9
Basswood ----- 15	Elderberry ----- 5	Juneberry ----- 6	Picea ----- 13	Thuja ----- 11
Betula ----- 14	Elm ----- 15	Juniper ----- 11-12	Pie Plant ----- 30	Tilia ----- 15
Birch ----- 14	Engelman's Ivy ----- 17		Pines ----- 12	Trees ----- 14
Bittersweet ----- 17	Euonymus ----- 5	<b>L</b>	Pinks ----- 20	Trollius ----- 23
Blanket Flower ----- 20	Euphorbia ----- 20	Lantern Plant, Chinese (Physalis) ----- 22	Plantain Lily ----- 20	
Bleeding Heart ----- 19-20	Evergreens ----- 10 to 13	Larkspur ----- 20	Piatycodon ----- 22	<b>U</b>
Bocconia ----- 19		Lathyrus ----- 22	Plum, Flowering ----- 7	Ulmus ----- 15
Boltonia ----- 19	<b>F</b>	Lavender, Sea ----- 23	Plum, Purple Leaf ----- 7	
Bone Meal ----- 31	Ferns ----- 20	Lawn Grass Seed ----- 32	Plums, Fruiting ----- 30	<b>V</b>
Boston Ivy ----- 17	Fertilizers ----- 31	Lilac ----- 7	Poplar ----- 16	Valerian ----- 23
Bridal Wreath ----- 8-17	Fir ----- 12	Lilies ----- 21	Poppy ----- 22	Veronica ----- 23
Buckthorn ----- 4-17	Flax ----- 22	Lily-of-the-Valley ----- 22	Primrose, Evening ----- 22	Viburnum ----- 9
	Forget-me-not ----- 20	Linden ----- 15	Pyrethrum ----- 22, 23	Vines and Creepers ----- 17
<b>C</b>	Forsythia ----- 6	Linum ----- 22	Prunus triloba ----- 7	Viola ----- 23
Campanula ----- 19	Foxglove ----- 20	Locust, Flowering ----- 7		Virginia Creeper ----- 17
Canterbury Bell ----- 19	Fraxinus ----- 14	Loma ----- 31	<b>R</b>	
Caragana ----- 8-17	Fruits ----- 30	Lonicera ----- 6-17	Raspberries ----- 30	
Catalpa ----- 15	Funkia ----- 20	Loosestrife ----- 22	Regal Lily ----- 21	<b>W</b>
Cedar ----- 11-12		Lupine ----- 22	Rhamnus ----- 4-17	Walnut, Black ----- 16
Celastrus ----- 17	<b>G</b>	Lychnis ----- 22	Rhubarb ----- 30	Water Lance ----- 31
Celtis ----- 15	Gaillardia ----- 21	Lycium ----- 17	Rhus ----- 9	Wayfaring Tree ----- 9
Centaurea ----- 19	Gas Plant ----- 20	Lythrum ----- 22	Ribes ----- 5-17	Weigela ----- 9
Cerastium ----- 19	Globe Flower ----- 23		Robinia ----- 7	Willow ----- 18
Cherries ----- 30	Globe Thistle ----- 20	<b>M</b>	Rock Gardens ----- 16	
Chinese Lantern ----- 22	Globularia ----- 21	Mallow ----- 22	Rock Rose ----- 21	<b>Y</b>
Clematis ----- 17-19	Golden Bell ----- 6	Maple ----- 15	Rosa Rugosa ----- 8-27	Yellow Star ----- 21
Columnberry ----- 5-17	Golden Glow ----- 23	Marguerite, Hardy ----- 18	Rose, Red Leaved ----- 8-27	Yew ----- 13
Columbine ----- 18	Golden Tuft ----- 18	Matrimony Vine ----- 17	Roses ----- 8-27-28-29	Yucca ----- 23
Coneflower, Purple ----- 23		Mock Orange ----- 6	Rudbeckia ----- 23	
Coral Bell ----- 22		Monarda ----- 22	Russian Olive ----- 8	

Entrust the care of your valuable trees, lawn and landscape plantings to our skilled and experienced gardeners.

**"H. & O."**

**RESPONSIBLE  
GARDENING SERVICE**



**ESTIMATES GIVEN**

**For**

**TREE TRIMMING**

**HEDGE TRIMMING**

**LAWN MAKING**

**ROCK GARDENS**

**SHRUB PRUNING**

**LAWN FERTILIZING**

**TREE REPAIR WORK**

**GARDEN CONSTRUCTION**

**GENERAL SUMMER CARE OF LAWN AND GARDEN**

**HOLM & OLSON, INC. - THE PARK NURSERIES**

**Offices—20-22-24 W. Fifth St.**

**Nurseries—1200 St. Clair St.**

**SAINT PAUL**

**Phone Mpls., Midway 2772  
Saint Paul, Cedar 7391**