

Historic, archived document

Do not assume content reflects current scientific knowledge, policies, or practices.

S P R I N G 1 9 3 8

NEOSHO

Flowers
GUIDE

Yours for Growing Satisfaction"



NEOSHO NURSERIES CO.

NEOSHO

MISSOURI

BETTER TREES AND SHRUBS



A. E. WESTON, President and General Manager

"An Honest Confession is good for the Soul"

MR. BILL NOEL, the husband of one of our good customers, writes as follows in a personal letter to our president, A. E. Weston

Dear Mr. Weston:

For twenty-five years whatever we have raised on our farm in the way of fruits and flowers, my wife deserves all the credit, for she has not only done the ordering and paying for the trees and plants, but she has cared for them as well. I have always thought I was too busy with my other work to give her the proper cooperation along this line.

Now, after twenty-five years it finally dawns on me that our fruits and flowers that I have had so little to do with are the most worth while projects on our whole farm and I have definitely made up my mind this year to have a part in growing a real home orchard. Please suggest a selection of 50 trees for an ideal home orchard, and tell me what will be the cost in the best grade of trees you can furnish.

Yours very truly,
BILL NOEL, Missouri.

How many others will wait 25 years before seeing the light? Why not profit by Bill Noel's experience and awakening?

HERE BELOW IS MR. WESTON'S SELECTION FOR MR. NOEL

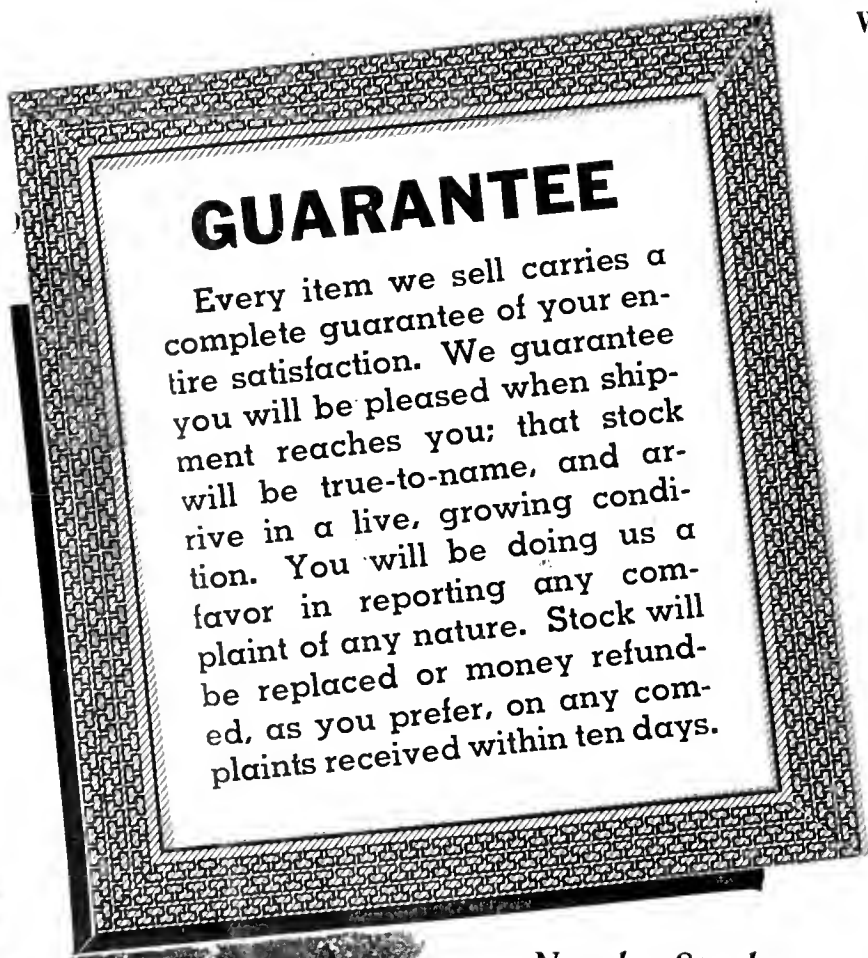
- | | | |
|-----------|--|-------------------------|
| 16 Apple: | 1 Yellow Transparent | 2 Dark Red Delicious |
| | 1 Red Duchess | 2 Dark Red Stayman |
| | 1 Wealthy | 2 Yellow Delicious |
| | 2 Grimes | 2 Winesap |
| | 3 Dark Red Jonathan | |
| 12 Peach: | 2 Early Rose | 2 Early Elberta |
| | 1 Golden Jubilee | 2 J. H. Hale |
| | 1 Alton | 2 Belle of Georgia |
| | 2 Hale Haven | 1 Heath Cling |
| 6 Plum: | 2 America | 6 Pear: 2 Lincoln |
| | 2 Waneta | 2 Bartlett |
| | 2 Endicott | 2 Seckel |
| 6 Cherry: | 2 Early Richmond | 2 Apricot: 2 Superb |
| | 4 Montmorency | 2 Nectarine: 2 Surecrop |
| | The above selection 50 Trees, Extra Large Size, | \$30.00 |
| | The above selection 50 Trees, Large Size, | \$24.58 |
| | The above selection 50 Trees, Medium Size, | \$17.32 |
| | F. O. B. Neosho | |
| | The above selection 50 Trees, Parcel Post Grade, | \$11.47 |
| | Prepaid | |

President and General Manager

THE NEOSHO NURSERIES CO.
NEOSHO - - - MISSOURI

*Neosho Stock
Assures "Growing
Satisfaction"!*

**You Must Be Absolutely
Satisfied--Says the Neosho
Guarantee!**



GUARANTEE

Every item we sell carries a complete guarantee of your entire satisfaction. We guarantee you will be pleased when shipment reaches you; that stock will be true-to-name, and arrive in a live, growing condition. You will be doing us a favor in reporting any complaint of any nature. Stock will be replaced or money refunded, as you prefer, on any complaints received within ten days.



A section of the formal gardens adjoining our office at storehouse building on U. S. Highway No. 60 and No. 7 at the edge of Neosho Missouri.

A competent office force under personal direction of our Treasurer and Office Manager, G. B. Williams, insures prompt and efficient service to our Mail Order customers, and a courteous reception to those who can drive direct to the Nursery to make their selection.



WE SERVE THEM FAR AND NEAR

Group at center table shows Mr. Williams waiting on Mr. and Mrs. R. M. White, customers from Soochow, China, who have planted and had splendid success with our roses.

MOTHER NATURE HAS BEEN KIND TO US THIS YEAR

37 INCHES OF RAINFALL UP TO OCTOBER FIRST ACCOMPANYING A PERFECT GROWING SEASON

Has given us 1-year grafted apple that measure 4-5 ft. in height, shrubs 2-3 ft. high, in one year, and growth on other trees and plants in proportion.

Yet our National Reputation for Quality and Service cannot all be attributed to good fortune in one year's growing season, but rather to 25 years' continued effort in selecting the finest strains of different varieties, building our soil up to the highest state of fertility, and most essential of all, the building of a highly trained organization of skilled workmen cooperating to give you "Growing Satisfaction."

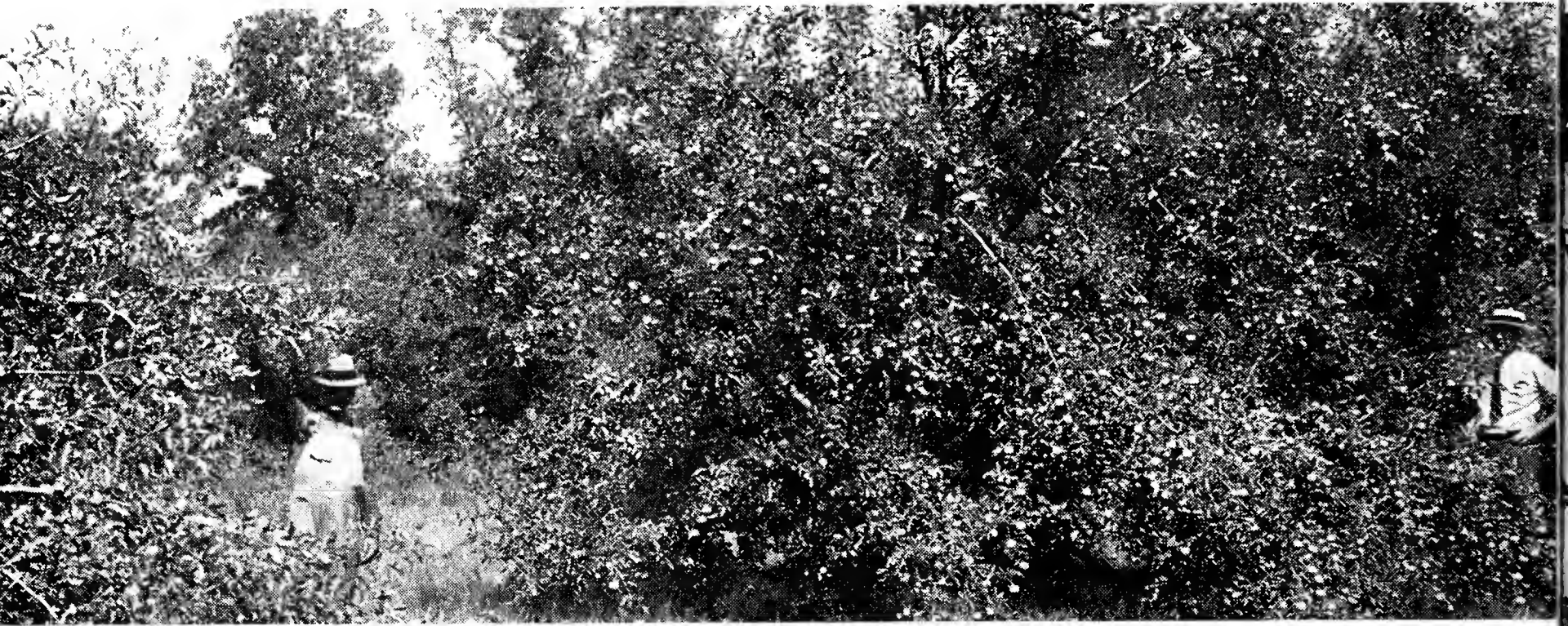
An experienced and well trained grading and shipping crew superintended by Hurley Kritz will give your order individual attention and carefully pack same for shipment to preserve the vitality of our well grown trees and plants.



View of our Shipping Room. Other Nurserymen say we have the finest storage and shipping facilities in Nursery industry.

COMMERCIAL FRUIT GROWERS

BECAUSE THEY PRODUCE PROFITABLE, PRODUCTIVE ORCHARDS



Whether You're Growing Fruit for Home Use or Profit You'll Want the Finest Grade at Attractive Prices So Take Advantage of Neosho's Famous Quality and Superior Values

FREE! Premiums With Early Orders

"Yours for Growing Satisfaction"

This is our slogan and it is kept constantly before every member of our organization, not only to impress them with the fact that we must supply a superior product, but we must help each customer to enjoy growing satisfaction.

By ordering EARLY you not only help us give YOU and our many other customers prompt and satisfactory service . . . but you may also get one or two of these Premium Items or Groups absolutely FREE. Take advantage. Order EARLY.

Make Extra Savings
With—



Throughout this catalog, you will see Special Money-Saving Offers . . . under the heading . . . "RED SEAL BARGAINS." These are offered especially to induce new customers to try Neosho stock. For we are certain that once you try Neosho plants and trees . . . the results will make you a regular customer. Red Seal Bargains are also offered to our regular customers.

Another Reason We Offer Red Seal Bargains is that each year we have extra good success on certain items . . . so we wish to pass this on in savings to our customers.

Take Advantage of Red Seal Bargains . . . and make worthwhile savings!

Your Choice of 6 Different Valuable Premiums—for Getting an Order of \$5, \$10, or More to Us Early—Before the Rush of Our Spring Season

- LOOK! Select Any ONE of These Premium Items or Groups, FREE - - - if Your Order Amounts to \$5 or More.
- LOOK! Select Any TWO of These Premium Items or Groups, FREE - - - if Your Order Amounts to \$10 or More.

- 1 SHRUB—Choice of:
Summer Lilac, Snow Garland, Monthly Blooming Red Spirea.
- 1 SHADE TREE 3-4 ft.—Choice of:
Chinese Elm or Lombardy Poplar.
- 3 Concord Grape Vines.
- 12 Asparagus Roots.
- 1 Apple Tree.
- 1 Peach Tree.

Order within 10 days of receipt of catalog and get the above premiums.

PREFER NEOSHO NURSERIES TREES

BECAUSE THEY PRODUCE PRIZE-WINNING FRUIT



"I Was Disappointed With My Orchard Results . . . —UNTIL I BOUGHT NEOSHO STOCK"

. . . Writes O. W. Johnston, Tuskegee, Oklahoma

Here's His Letter—"When I started planting fruit trees in 1918, I bought trees from every nursery that came along, with mighty disappointing results; finally I got one of your catalogs and began buying trees from you. I now find it a pleasure to grow fruit in Oklahoma.

"I picked 30 bushels of salable apples from one of your 12-year-old trees. The people cannot believe such apples can be grown in Oklahoma. The 500 trees I got from you last fall did more than I ever expected after it turned so dry and hot; despite this they made a fine growth."—O. W. Johnston, Tuskegee, Okla.

GROWERS EVERYWHERE PRAISE NEOSHO

Many prominent orchardists throughout the country have been buying Neosho Fruit Tree Stock for many years. Many who used to buy from other nurseries now buy from Neosho exclusively. Many hundreds of letters like those on this page and elsewhere have been received from customers who were so well satisfied with their purchases that they wrote to tell us about their satisfaction.

All these facts prove the outstanding **quality** of Neosho Nursery Stock. When you plant an orchard, remember that the price of the trees is a small item compared with the cost of bringing them into profitable bearing. A few pennies saved on the original cost of the tree may mean disappointment and the loss of years of time and labor.

Save yourself trouble, expense and possible serious losses by buying Neosho Nursery Stock.

Corn Crop Failed But Neosho Apples Produced Fine Yield

"From 100 Rome Beauty trees set in 1920, bought of Neosho Nursery Co., we harvested this drouth year, when the corn planted in our county won't average 2 bushels per acre, 580 bushels of apples, of which some trees picked 20 bushels."

(Signed) Claud Ator,
Rockport, Illinois.

Another Successful Orchard

"I am giving you my order for 250 apple and peach trees this fall because my neighbor, Mr. R. F. Bolton, who purchased his trees from you ten years ago, now has the finest orchard in our community. If I can only grow an orchard like his, I certainly will be proud."

(Signed) O. S. Kaup,
Marionville, Missouri.

Have Borne Exceptionally Nice Fruit

"As I have bought some trees of you for each of last four years, I thought you might be interested in knowing if

they grew and proved satisfactory. In every purchase, the trees were very nice, and the ones I bought four years ago have borne some exceptionally nice fruit. The Champion and Hale peaches and Delicious and Stayman Winesap apples were very nice. The only trees I lost were some set in 1933; this loss was due to an extra late freeze after the trees had started new growth."

(Signed) James M. Pettegrew,
Mesilla Park, New Mexico.

600 Apple Trees Do Fine

"The 600 apple trees I purchased from you eight years ago are doing fine; it is remarkable how they came through this summer, despite the worst drouth we have ever known in this part of the country. At the same time we lost quite a number of trees out of an orchard purchased from another nursery.

"When I need more trees they will come from Neosho Nurseries Company, as I have learned from experience that you can depend upon getting

true-to-name varieties, the best of service and fair treatment."

(Signed) Oscar Reitz,
Cassville, Mo.

Always Well Pleased

"We have now been buying trees from you since 1923 and have always been well pleased with the stock. We now have 3,000 of your trees. One of your 11-year-old trees was loaded with 12 bushels of fruit this summer."

(Signed) W. P. Murray,
Pellston, Michigan.

O. W. Johnston and family are proud of their Neosho apples.



BUY DIRECT from the GROWER--SAVE!



Nature-Blessed Ozark Weather and Soil . . . Enable Us to Develop Hardy, Vigorous Plants!

There's a reason for Neosho's superior plants and trees! Mother Nature has blessed this famous Ozark region . . . with favorable weather conditions . . . a long growing season . . . and wonderfully fertile soil. We own and operate 400 acres of Ozark Hagerstown silt, loam soil . . . long recognized by horticulturists as the finest type of soil to produce plants with strong, vigorous root systems.

This Gives Us a Great Advantage in Producing the Finest Trees and Plants . . . at lowest possible cost. And it gives you an advantage, too . . . as we pass this saving on to our customers.

When You Plant . . . You are Making an Investment—So it pays to plant the highest quality nursery stock . . . especially when you can get it at Neosho's lower prices. Make your investment permanently profitable . . . with ever-increasing value . . . by starting right with superior Neosho plants and trees!

We GUARANTEE True-to-Name Stock!

We **guarantee** that every plant or tree you order from us will be true-to-name. In case of proof of untruthfulness-to-name . . . we agree either to replace with stock of equal value . . . or refund the purchase price . . . but shall not be liable for any greater amount.

However, we assure you that you will have no cause to call on us to make good this guarantee. For our accurate records . . . careful workmen . . . and proper intent . . . insure that every Neosho tree or plant shipped IS true-to-name.

No Extra Middleman's Profit to Pay . . . When You Buy From Neosho

Ordering from Neosho is like buying "direct from the factory." For our factory is the good earth. We raise our own plants, and sell **direct from the ground to you** . . . doing away with the middleman. What would ordinarily be the middleman's profit . . . is passed on to you in lower prices. So order at Neosho's lower direct-from-the-grower prices . . . and get the highest quality stock . . . at the lowest possible cost!

We Constantly Add New Improved Varieties

You always get the best . . . in making selections from Neosho stock. For we are constantly improving and are continually adding to our list, the newer and improved varieties.

TERMS AND RATES

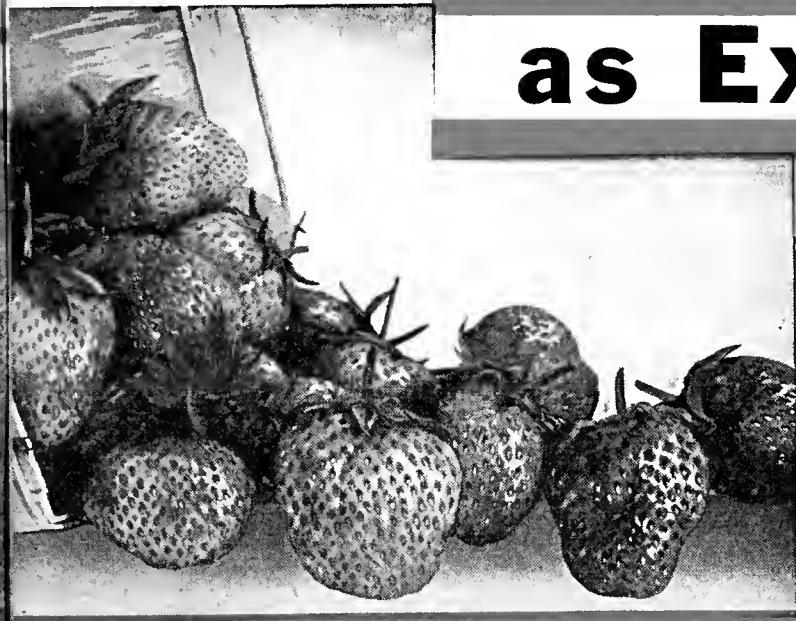
TERMS: All prices, unless otherwise specified, are f. o. b. Neosho; 10% deposit with order, balance when you are ready for shipment.

RATES: Each rate, 1-4 trees—5-rate, 5-24 trees—25-rate, 25-99 trees—100-rate, 100 or more. **Different Varieties and Kinds of Fruit Trees May Be Combined** for the benefit of rates—for instance: 50 apple, 5 cherry, 2 pear, 40 peach and 3 plum may be figured at the 100 rate.

We have never offered better nursery values and finer quality than are shown in this catalog



Order Early and Get FREE Premiums as Explained on Page 3



Have Your Own Strawberry Patch . . .
For Table or Sale . . . Get Neosho
Superior Quality . . . Sent Postpaid.

STRAWBERRIES — Standard Varieties

	Per 25	Per 50	Per 100	Per 200
Aroma	\$0.35	\$0.55	\$0.85	\$1.50
Blakemore				
Dunlap				
Ozark Early				
Gem—Everbearing.	.65	1.00	1.75	

HERE is a fruit at its best when picked fully ripe and fresh. And when strawberries and cream, shortcakes and luscious strawberry pies are foods a king might envy—why not have a strawberry patch of your own? The new Neosho everbearing varieties produce fruit all summer long. The berries listed offer blight-resistant varieties of satisfying Neosho quality, both for commercial and home growing.

Aroma (Midseason to Late)—A richly colored large berry, deliciously aromatic in flavor. Ripens over a long season. Its chief merits are resistance to disease, productiveness and attractiveness, firmness and high quality of the fruit. Best adapted to silt or clay soils. 125,000 crates, 24 quarts each, are shipped out of Neosho per year, practically all Aroma. They are sent to New England, Canada, Colorado, Texas and numerous other states.

Blakemore—A new variety introduced and highly recommended by the U. S. Department of Agriculture; it is a cross between Premier and Missionary. A fine quality berry of light red color, good size; and an extra heavy producer. Flesh is firm with solid center, a fine shipping berry and ripens a week earlier than Aroma.

Ozark Early (Extra Early)—Dark red, excellent quality berry; large for their season. The plant is vigorous and productive.

Gem (a New Outstanding Everbearer)—Combines all the good qualities of many other varieties so that it's the ideal everbearer. It's a large, firm, good quality, fine flavored berry, a very heavy cropper, but the wonderful part is that it's a fine plant maker so that you have no trouble developing a good bed the first season.

(Senator) Dunlap (Midseason)—One of the most widely planted varieties. Noted for dependability and productiveness. A medium sized handsome berry, deep glossy red, exceedingly juicy; very good quality. Plants are very hardy and drouth-resistant. Adapted to any type of soil.

"I have planted and fruited a good many of your trees in the past 12 years and have always found them good, healthy, vigorous stock that bore true-to-name fruit."—Stanley R. Gilbert, Bowie, Maryland.

Neosho
Plants
for
Growing
Satisfaction

Write for Special Rates on Large Quantities!

DORSETT--The New Outstanding Strawberry

A bright, flaming red strawberry . . . that fairly sparkles its rich, tempting goodness. Marvelous quality and beauty. Wonderful producer and generous plant-maker. Splendid shipper. Sent Postpaid!

Per 25	Per 50	Per 100	Per 200
\$0.50	\$0.85	\$1.40	\$2.50

Take Advantage of This Unusual Offer!



- 4 Apple
- 4 Peach
- 2 Cherry
- 2 Plum

Size of trees, 2½ - 4 ft. Take your choice of any variety listed in this catalog. Be sure to order early!

12
FRUIT
TREES
for only

FREE

With this Offer
1 Golden Bell and 1
Spirea Van Houttei

\$2⁶⁹
Prepaid

Field of Neosho
Blakemore
Strawberry
Plants
Grown by
Fred Volot,
Mattoon,
Illinois



Section of Apple
Display of New-
ton County Har-
vest Festival at
Neosho, Mo. Many
of the Prize-Win-
ning Displays
were grown on
Neosho Trees.

Frost Proof PEACHES

are widely advertised but grossly exaggerated, for any reliable authority will tell you there is no such animal. But I can tell you what are the Four Hardest Varieties for this section.

They are—

FRANKS—MIKADO—ALTON—ARKANSAS SEEDLING

The Missouri Experiment Station tells me that in the spring of 1936 that Franks and Mikado stood temperatures of 17 above zero while in full bloom and still produced one-half crop.

I have seen Alton and Arkansas Seedling with my own eyes covered with a 3-inch snow while in full bloom and still produce a full crop.

INCREASE YOUR PROFIT AND INSURE REGULAR ANNUAL CROPS WITH THE NEW IMPROVED AND HARDY VARIETIES BELOW

ALTON (White Semi-Freestone) (Midseason)—A large, handsome white fleshed peach. Tree is hardy and productive. Ripens July 15th.

ARKANSAS SEEDLING—White cling. Late.

HALE HAVEN—A marvelous new, extra high quality, heavy producing, large yellow freestone; ripening two weeks ahead of Elberta.

GOLDEN JUBILEE—Extra high quality, producing large crops of large, yellow freestone, ripening four weeks ahead of Elberta.

MIKADO—Extra large, high quality, heavy producing yellow cling, ripening six weeks ahead of Elberta.

FRANKS—This peach, highly recommended by Missouri Experiment Station, has proven the hardest and most profitable peach on these grounds. Fine flavored, large yellow cling covered with red; ripening the 5th of September.

1-YEAR TOP, 2-YEAR ROOT—IMPROVED VARIETIES

Diameter	Each	5-Rate	25-Rate	100-Rate
11/16 in.	\$0.60	\$0.55	\$0.50	\$0.45
9 11/16 in.50	.45	.40	.35
7 9/16 in.40	.35	.32	.30

JUNE BUDS (Postpaid)

Alton, Arkansas Seedling, Golden Jubilee, Hale Haven, Franks, Mikado		Per 25	Per 100
Height			
18-24 in.		\$4.00	\$14.95
12-18 in.		3.50	11.95

PEACH—STANDARD VARIETIES

1-YEAR TOP, 2-YEAR ROOT

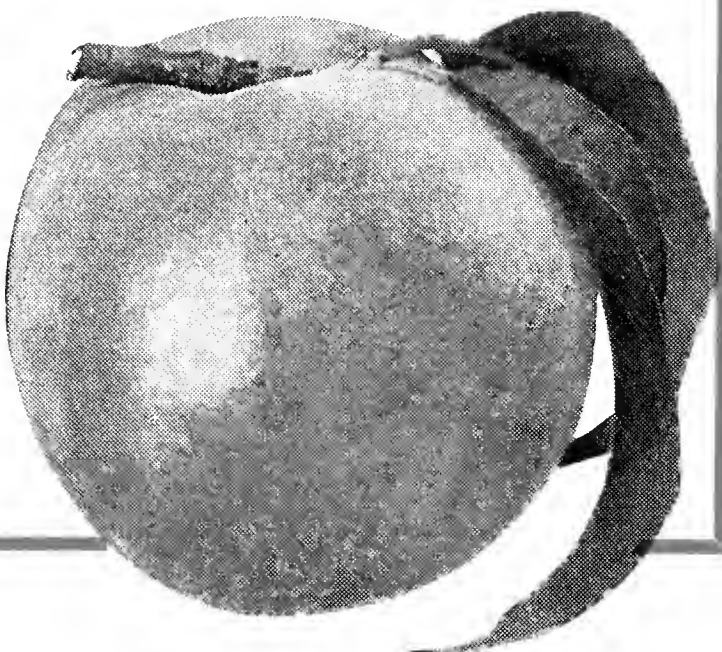
Diameter	Height	Each	5-Rate	25-Rate	100-Rate
11/16 in.	5-7 ft.	\$0.50	\$0.45	\$0.40	\$0.35
9 11/16 in.	4-6 ft.	.45	.40	.35	.30
7 9/16 in.	3-5 ft.	.35	.30	.27	.25
5/16 up			.25	.20	.18

JUNE BUDS (Postpaid)

Height	Per 25	Per 100
18-24 in.	\$2.75	\$9.95
12-18 in.	2.25	7.95

SEEDLING PEACH—For Fence Rows and Windbreaks

3-4 ft. 100 for.....	\$6.95
2-3 ft. 100 for.....	4.95



YOU never know how really good peaches can be until you have tasted the sun-ripened fruit from your own trees. They can be grown almost as far north as apples, and succeed well farther south. The varieties listed have been selected to give a bearing season covering two to three months, and include successful and popular kinds for home or commercial production. All of Neosho high-quality stock, and represent outstanding values.



“Neosho PEACHES Sell for Double the Price of Others” . .

—Says B. E. Smith, Alexandria, Louisiana.

Read his letter:

“We are inclosing picture of one of the peach trees bought from you, showing some peaches not yet harvested. Your trees are certainly wonderfully hardy and grow the most delicious fruit. We have used now 6,000 of your trees, and the fruit from them sells for double the price of other fruit on our market.”—B. E. Smith, President Land & Lumber Co., Inc.

Greater Yield... More Delicious Fruit... from... NEOSHO GRAPES



Neosho Grapes and Vines Are the Most Dependable

NO fruit yields so freely of delicious fruit with so little care as the grape. Grapes thrive and produce, even when neglected, but a little care and attention brings a great reward in quantity and quality fruit. Grapes are hardy and vigorous and begin to bear the second year after planting. The varieties we offer have proven superior in productiveness, reliability and quality.

You are allowed the regular quantity price on total number of plants you order, regardless of different varieties.

Agawam (Red)—The most popular and widely grown of the Red Grapes. Bunches are large. Berry is large, rich, sweet and aromatic. Vine is vigorous and self-fertile. Ripens after Concord and can be kept much longer, and improves in flavor.

Brighton (Red)—A handsome high quality red grape; clusters and berries are large. Vigorous, productive, dependable, adaptable to various soils.

Campbell Early (Black)—Bunch and berry are large; high quality. Ripens about two weeks before Concord. Blooms midseason.

Catawba (Red)—The last to ripen; bunch and berries are large; the flesh is juicy, pulpy and possesses a delightful sugary flavor.

Concord (Black)—The most widely planted grape. Superior in hardiness, productivity and regularity in bearing and in ability to withstand disease and insects. Bunch and berry good size. It is the leader for making grape juice. No other grape has been able to compete with it on the market, as it can be produced so cheaply. Blooms midseason.

Delaware (Red)—The standard of quality; the best table grape. Unusually hardy; usually bears abundantly. Ripens a few days earlier than Con-

cord. It commands the highest prices, and is valuable north and south for both home use and market. Blooms rather late.

Diamond (Green)—Seldom surpassed in quality and beauty. It is the hardiest, most productive and vigorous of the green grapes. A good keeper and shipper. It deserves a high place among the best for commercial and home vineyards. Can be grown as widely as Concord. Blooms midseason.

Moore's Early (Purplish-black)—The most widely planted early commercial grape. Ripens two weeks earlier than Concord. Good quality. It is best described as an early Concord. Blooms midseason.

Niagara (Green)—The most widely planted green grape. Larger bunches and berries than Concord, as good, or better quality. Productive, vigorous, adaptable. Ripens about with Concord. Blooms midseason.

Worden (Black)—Much better quality, larger berries and bunches and handsomer than Concord and is equally healthy, hardy, vigorous and productive. Ripens a week to ten days earlier than Concord.

CYNTHIANA America's Best Grape for Wine

2-Year No. 1 (Special Wine Type)

Each Rate	5 Rate	25 Rate
\$0.25	\$0.20	\$0.18

Though in no sense a table grape, it makes a rich, dark red, heavy bodied wine of wonderful flavor and aroma. Vine is a vigorous grower, hardy and heavy producer. Berries are small, round, black, in long, compact bunches. Ripens late, middle to last of September.

	Each	5	25	100
Cynthiana (Special wine type.)				
Commercial Grade	.20	.15	.12	.10
Cynthiana (Special Wine type.)				
Select Vines.....	.25	.20	.18	.16

GRAPES—3 New and Outstanding Varieties

1-Year Rooted Cuttings for Spring Shipment Only

	Each	5- Rate	25- Rate	100- Rate
GOLDEN MUSCAT	\$0.75	\$0.65	\$0.55	\$0.50
The finest grape grown. Large, golden berries in immense bunches.				
Fredonia	}25	.22	.20
Caco				

GRAPES—2-Year Select Vines (Not Prepaid)

Neosho Extra Heavy, Select 2-Year Vines often bear one year after planting—Wonderful roots, full of vitality

	Each	5- Rate	25- Rate	100- Rate
Concord	\$0.12	\$0.10	\$0.08	\$0.07
Moore Early	.15	.12	.09	.08
Agawam	}20	.17	.15
Catawba				
Campbell				
Early				
Diamond				
Delaware				
Niagara				
Worden	.12			

GRAPES—1-Year (Postpaid)

	5- Rate	25- Rate	100- Rate
Concord	\$0.07	\$0.05½	\$0.04½
Moore Early	.09	.07	.05½
Agawam	}13	.11
Catawba			
Campbell Early			
Diamond			
Delaware			
Niagara			
Worden			

PEACH VARIETIES

Arp Beauty (Yellow Semi-Clingstone)—The earliest good yellow peach; heavily blushed with red, excellent quality. Ripens July 1st.

Belle of Georgia (White Freestone) (Midseason)—An unusually handsome large peach. Creamy white blushed with red; good quality. Ripens August 1st.

Carman (White Semi-Freestone) (Early)—A general favorite. Succeeds in a great variety of soils and withstands trying climates. Bears abundantly; remarkably hardy in wood and bud. Ripens July 12th.

Champion (White Freestone) (Midseason)—An exceptionally high quality, attractive, hardy white peach. It has a peculiar honeyed sweetness; ideal for home use and local markets. Ripens August 1st.

Crosby (Yellow Freestone) (Late)—Notable for hardiness of tree and bud. Tree is rather small grower, but unusually vigorous, healthy and productive. Ripens August 15th.

Elberta (Yellow Freestone) (Midseason)—The most widely planted commercial peach. Very large, golden yellow. Tree is very productive, yielding large quantities of uniform, highly colored fruit. Ripens August 10th.

Early Elberta (Yellow Freestone) (Midseason)—Superior in quality, flavor and appearance to all other Elbertas and ripens 3 to 5 days ahead. Be sure to get our special strain.

Late Elberta (Yellow Freestone)—A large yellow peach with red cheek of Elberta type, ripening last of August, extending the Elberta season 20 days.

Elberta Cling (Yellow Clingstone) (Midseason)—The best yellow Clingstone; especially fine for canning, preserving and pickling; large, yellow, round. Ripens August 15th.

Erose (Early Rose; red and white Clingstone) (Early)—This peach originated in Georgia and was introduced by us. It has a delicious sweet flavor, red flesh, medium size. The best early peach. Ripens July 5th.

Greensboro (White Semi-Freestone) (Early)—A leading early white peach. Large, vigorous, healthy trees, early bearing and exceptionally prolific. Ripens July 1st.

J. H. Hale (Yellow Freestone) (Midseason)—Very large in size; beautiful yellow overlaid with red, and has a firm, fine grained yellow flesh of good quality. It colors up a week before maturity, ripens 3 to 7 days ahead of Elberta.

Heath Cling (White Clingstone) (Very late)—Best to preserve or pickle whole. Exceptionally good keeper. Ripens September 20th.

Hiley (White Freestone) (Midseason)—Hiley is the earliest commercial Freestone white fleshed peach; better in quality than most of its season. Flesh is firm, sweet. Good shipper. Ripens July 20th.

Krummel (Yellow Freestone) (Very late)—A large peach, one side a little larger than the other. A rich golden yellow blushed with carmine. Good quality. A good keeper and shipper. Ripens September 10th.

Late Crawford (Yellow Freestone) (Late)—Its high quality, scarcely equaled in richness of flavor. Adaptable to a wide range of soil and climate. Ripens August 18th.

Mayflower (White Semi-Clingstone) (Very early)—Earliest peach to ripen. Good size and quality. Ripens June 25th.

Red Bird (Semi-Clingstone)—An unusually large, early commercial variety. Creamy-white covered with bright red; a most handsome peach. Ripens July 1st.

Rochester (Yellow Freestone)—Large, with very sweet, delicious flavor. Keeps and ships well. Strong grower, hardy; bears young and regularly. Ripens July 25th.

EXTRA PROFITS FOR YOU IN

IMPROVED NEOSHO VARIETIES

DARK RED DELICIOUS DARK RED JONATHAN
LODI DARK RED STAYMAN TURLEY
DOUBLE WORKED GRIMES GOLDEN RED DUCHESS
RED ROME BEAUTY YELLOW DELICIOUS

These improved varieties produce fruit that commands a ready market at high prices. The Neosho Stock of these varieties has been developed and proven in test orchards and is of exceptionally high quality, hardiness and productivity.

← 2-Year Apple IMPROVED VARIETIES

Excelsior —Yellow-red cheek.	Hyslop —Dark purplish red.					
Florence —Yellow-pink cheek.	Whitney —Yellow striped.					
Diameter	Height	Each	5-Rate	25-Rate	100-Rate	250-Rate
9/16 in. up	4-6 ft.....	\$0.70	\$0.65	\$0.60	\$0.50
7/16 in. up	3-5 ft.....	.50	.45	.40	.35	.32
5/16 in. up	2-3 ft.....	.35	.30	.25	.21	.20

IMPROVED VARIETIES					
1-YEAR GRAFTS (EXCEPT DW GRIMES)					
4-5 ft.....	\$0.50	\$0.45	\$0.40	\$0.33	\$0.31
3-4 ft.....	.40	.35	.30	.25	.23
2-3 ft.....	.30	.27	.25	.19	.18

Dark Red Delicious—Has all the good qualities of the common Delicious but colors up a solid red two or three weeks before the common Delicious begin to color. This means greater profits for the grower because of Earlier Picking, Earlier Marketing, More Extra Fancy Grade, No Windfalls, Better Color and Better Keeping Qualities.

Dark Red Jonathan—Plant Dark Red Jonathan and increase your profits. An Improved strain of Jonathan and you have the finest and most profitable variety of Jonathan obtainable. Dark Red Jonathan attains a brilliant solid red color two weeks before ripening, gaining benefit of higher prices on early market and eliminating windfalls.

Dark Red Stayman—You are all familiar with the wonderful quality of Stayman. Dark Red Stayman is a marvelous improvement in color and keeping qualities. Its solid dark red color makes it a universal favorite.

Earlier Picking—Earlier Marketing—Fewer Windfalls More Extra-Fancy Fruit—Better Keeping

Red Rome Beauty—Identical with Rome Beauty except that it colors early and more red. Hence it is more profitable to the grower.

Red Duchess—This is a strain of the Duchess. The only difference is that it colors better and earlier, a big advantage for the commercial grower.

Yellow Delicious—A beautiful, large yellow apple of wonderful flavor and quality.

Double-Worked Grimes Golden—Triple the life of your Grimes Golden by planting our special process double-worked trees, which means we top-work our Grimes onto a hardy trunk eighteen inches above the ground to overcome the susceptibility of this variety to collar rot. Grimes Golden is the best quality and most profitable yellow apple, a rich golden color, fine flavor and aroma, an ideal dessert apple and an equally fine cooker.

Turley—A fine quality apple of beautiful red color of Stayman type that absolutely does not crack. Indiana's latest gift to the apple industry and their most profitable apple.

Lodi—Twice as large as Yellow Transparent and yet still maintains that wonderful transparent color and quality. Tree a thriftier grower and will produce twice as many bushels of apples. Ripens 4 to 5 days after Yellow Transparent.

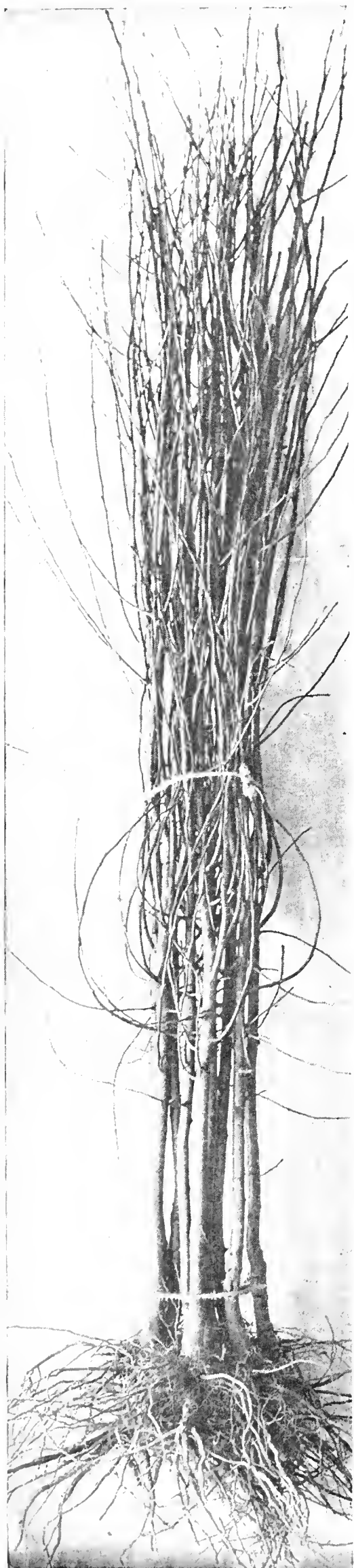
After 20 years' labor in crossing Jonathan and Ben Davis the Missouri Fruit Experimental Station has introduced three new varieties which we are now offering to the public for the first time.

Wright—Practically identical with Jonathan in color and quality, somewhat larger, ripens a week to ten days later. Hangs on tree better and is a vigorous grower of good foliage.

Couard—Quality midway between Jonathan and Ben Davis, might be termed Winther Jonathan.

Whetstone—Is the largest and latest cross; a barrel filler but lacking quality.

We offer these trees for \$1.00 each. Or one tree free with every \$5.00 purchase of apple.



See the sturdy trunks and the clean abundant root systems on these two year Jonathan.

NEW, IMPROVED APPLE VARIETIES

2-YEAR APPLE—STANDARD VARIETIES

Diameter	Height	Each	5-Rate	25-Rate	100-Rate	250-Rate
9/16 in. up	4-6 ft.....	\$0.60	\$0.55	\$0.50	\$0.45
7/16 in. up	3-5 ft.....	.40	.35	.30	.28	.26
5/16 in. up	2-3 ft.....	.25	.20	.18	.16	.15

1-YEAR GRAFTS—STANDARD VARIETIES

4-5 ft.....	\$0.40	\$0.35	\$0.30	\$0.28	\$0.26
3-4 ft.....	.30	.25	.22	.20	.18
2-3 ft.....	.20	.17	.15	.14	.13

Jonathan (Fall)—A grand, good apple; once tasted, always wanted. Bright solid red. It has an aromatic flavor and juice full of snap and sparkle. Medium size; very good to best quality. Bears young; produces good crops regularly. Fine for home and commercial planting.

King David (Fall)—Bears heavy crops year after year. Medium size; very dark rich garnet red, showing almost a purplish-black on the sunny side. Tree is a hardy, vigorous grower, comes into bearing young. Often used as a filler.

Maiden Blush (Late Summer)—Striking, highly colored, yellow apple, with a deep crimson blush on one cheek. Round, flat, medium size; a good eating and excellent cooking apple.

Mammoth Black Twig or Arkansas (Winter)—A large apple of good quality; a dull green or deep yellow over-spread with red; good quality, excellent keeper.

Paragon Winesap (Winter)—Paragon has the large size and very good quality of the Stayman, combined with the dark red color of the old Winesap.

Rome Beauty (Winter)—Large, roundish, oblong apple, handsomely colored and striped with bright red; good quality. Splendid storage apple; a splendid bearer; blooms late.

Stayman Winesap (Winter)—The largest of the Winesap family. Striped and splashed with dark crimson. Splendid quality. Reliable annual cropper.

Sweet Bough (Midsummer)—A sweet apple, juicy, good to very good for dessert, excellent for cooking. Begins to ripen about the first week in July. Color is a greenish yellow changing to yellowish white.

Wealthy (Late Summer)—A most dependable and widely planted late summer apple; bright red striped; medium to large size. Ripens over a long season. Very good quality. Tree is an upright grower; often used as a filler; very hardy; bears young.

Wilson June (Midsummer)—A deep, solid crimson like a Red June; large; good quality. Hardy, vigorous, very productive, bears young. Most beautiful of its season; good shipper.

Winesap (Winter)—One of the oldest and most popular apples; a good shipper and an exceptionally good keeper in ordinary and cold storage. Splendid bright red, indistinctly striped with dark purplish-red; good quality. Medium size. Hardy; a heavy, regular bearer.

Yellow Transparent (Early Summer)—The best extra early apple; medium size; a beautiful clear yellow, with smooth, waxen, brilliant skin. Unexcelled for pies, tarts and apple sauce. Tree is extremely hardy, upright and compact grower; often used as a filler; a reliable cropper.

York Imperial (Winter)—Bright pin striped with dark red; fair quality. Its oblique or lopsided shape is a notable characteristic. A very regular bearer; seldom fails.

Winter Banana (Winter)—Very showy, bright yellow, with a pinkish-red cheek noted for its brilliant, transparent, waxen appearance.

Yellow Newton (Albamarie Pippin) (Winter)—Medium to large, beautiful yellow, high quality apple. Excellent for both dessert and culinary purposes.

Northern Spy (Winter)—Delicious flavor; old favorite in North and New England.

Willow Twig (Winter)—Medium to large pinkish-red apple, of good quality. Excellent commercial variety, because of its exceedingly long-keeping qualities; rather early and regular bearer.

CRABAPPLES

Diameter	Height	Each	5-Rate
9/16 in. up	4-6 ft.	\$0.65	\$0.60
7/16 in. up	3-5 ft.	.50	.45
5/16 in. up	2-3 ft.	.35	.30

Crabapples should be planted for beauty of tree and fruit, as wind-breaks, and for the value of the fruit. They are delicious for cooking, preserving and jellies.

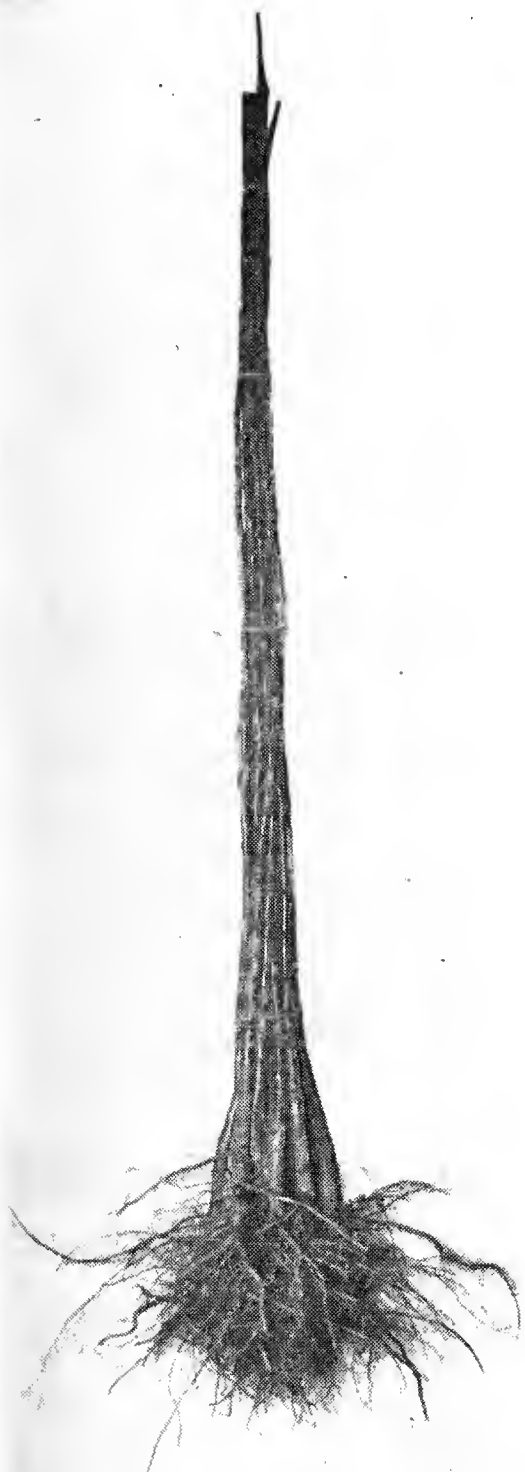
Excelsior (Fall)—Very large for a crabapple; nearly as large as a medium-sized apple. Very attractive yellow, almost covered with bright red; excellent in quality for dessert and for culinary uses.

Florence (Late Summer)—Medium size, yellowish-white, mostly over-spread with brilliant pinkish red. Bears very young, is very productive, reliable cropper.

Hyslop (Early Winter)—Large, very brilliantly colored, dark red or purplish, over-spread with thick blue bloom; good for culinary purposes.

Whitney (Late Summer)—Large, yellow striped with red; good to very good quality.

Section of growing block of Neosho Apple Trees. Note how stocky and strong they are.



Neosho 1-yr. Apple Grafts. One-year Grafts that made 4-5 ft. grade summer of 1937.

Ben Davis (Winter)—Roundish, large, red striped apple of second rate quality, but good for cooking.

Black Ben (Winter)—The best of the Ben Davis family. It attains a much higher color than Ben Davis or Gano. The tree is hardier, more vigorous and more prolific than Ben Davis. Fruit is large, solid dark red.

Delicious (Winter)—Who is not familiar with this popular apple? Who does not appreciate its unexcelled flavor, its beauty of form and color, its fragrant aroma? It finds a ready sale at high prices. The tree is vigorous, hardy and is fruiting in nearly every state.

Duchess of Oldenburg (Midsummer)—Attractive yellow apple, with red stripes; medium size. One of the most profitable summer varieties. Can be planted close and is often used as a filler. Comes into bearing young. Bears heavy crops annually; great market apple and especially good cooker.

Early Harvest (Midsummer)—A yellow, medium-sized apple of very good quality for either dessert or cooking. Comes into bearing young.

• PLUMS • PRUNES • APRICOTS



Here's Delicious Fruit for Table, Canning, Drying, Jams, Jellies, Preserves.

Diameter	Height	Each	5-Rate	25-Rate
1 1/16 in.	4-6 ft.....	\$0.65	\$0.60	\$0.55
9/16 in.	3 1/2-5 ft.....	.55	.50	.45
7/16 in.	3-4 ft.....	.40	.35	.32

PLUM (June Buds) (Postpaid) in the following varieties:
Abundance, America, Burbank, Endicott, Italian Prune,
Omaha, Waneta

Height	Per 12	Per 25	Per 100
2- 3 ft.	\$2.60	\$4.95	\$17.95
18-24 in.	1.98	3.95	13.95
12-18 in.	1.50	3.00	10.95

All of these fruits are excellent when eaten fresh, and are fine for making jams, jellies and preserves and for canning or drying. The varieties below . . . at Neosho's low direct-from-grower-to-you prices . . . give you a wide choice among the most popular and successful kinds. And, as always, you can depend on Neosho Trees to give you "Growing Satisfaction."

Abundance (Early) — A pinkish-red Japanese plum. Medium size. Flesh is yellow; sweet, aromatic. Tree is a vigorous grower.

America (Midseason)—Beautiful yellow, red cheek, juicy, sweet. Very good for cooking. Very hardy. Blooms mid-season.

Burbank (Midseason)—A dark red, roundish Japanese plum, good quality and shipper. The flesh is a deep yellow, firm, very juicy, aromatic and sweet.

Compass Cherry-Plum—Very hardy, bears young, often second year. Fruit is nearly inch in diameter, bright red; sweet, juicy and fine flavor.

Damson French (Late)—Largest and best quality of the Damsons. Dull purplish-black color. Flesh sweet, good

quality. Tree large, hardy and productive. Blooms midseason.

Damson Shropshire (Late) — The most widely planted Damson. Oval shape; purplish-black. Tree is strong, vigorous grower, quite hardy.

Endicott (Midseason)—Endicott combines the high quality of the European with the hardiness and adaptability of the Japanese. One of the sweetest, juiciest plums. It averages very large in size. Red.

Sapa (Hansen Hybrid)—A large size purple plum for Hansen Hybrid, with purple flesh full of rich juice of fine flavor. Bears heavy crops annually and begins fruiting the first year after planting. Succeeds everywhere, ripens middle of July. Fine for canning.

Omaha (Early)—A large, round, coral-red plum. Flesh is yellow and sweet. Strong, vigorous grower, hardy and productive.

Reine Claude (Green Gage) (Mid-season)—A large, roundish, oval plum; light greenish-yellow. Firm, sweet, very juicy, aromatic; good to very good in quality. Tree is productive and hardy.

Waneta—A Hansen Hybrid—Exceptionally hardy, withstanding extremely hot and dry weather. Often bears second year. Color purplish-red, 2 inches in diameter.

Wild Goose (Very Early)—An old-time favorite, bright red; medium size. Flesh is yellow, very sweet, quality fair to good. Good shipper and keeper.

APRICOTS, NECTARINES AND SPECIAL PLUMS

✓ APRICOT—Superb

Such delightfully luscious fruit as the Apricot really should be planted more than it is, especially since it ripens just after the early cherries and before the best peaches. Apricots will stand more winter cold than peaches, although the bloom is more apt to be injured by spring frosts. A northern or western slope is best so the opening of the buds will be retarded and the danger of frost damage lessened.

✓ NECTARINE—Sure Crop

A cross between peach and plum. Has smooth skin like a plum and seed like a peach. Flesh and flavor of both plum and peach. Quality unusually pleasing. Color beautiful bright red; size about same as medium size peach.

Italian Prune (Late)—The largest, best and most widely grown of the prunes. Rich, purplish-black. Very large size, flesh yellow, aromatic, juicy, sweet.

President Plum—The largest of all the plums. A beautiful dark purplish-black with a heavy bloom. Ripens late, 10th of September. A wonderful rich flavored freestone, solid flesh plum. A fine, profitable market plum and splendid for home use as well.

French Damson—The finest improved Damson; much larger than Shropshire; the tree a strong grower and the fruit when well ripened is delicious to eat as fresh fruit. Freestone.

Nectarine (Surecrop)



	Height	Each	5-Rate	25-Rate
Surecrop Nectarine....	4-6 ft.	\$0.75	\$0.70	\$0.65
Superb Apricot	3-5 ft.	.65	.60	.55
French Damson Plum..	3-4 ft.	.50	.45	.40

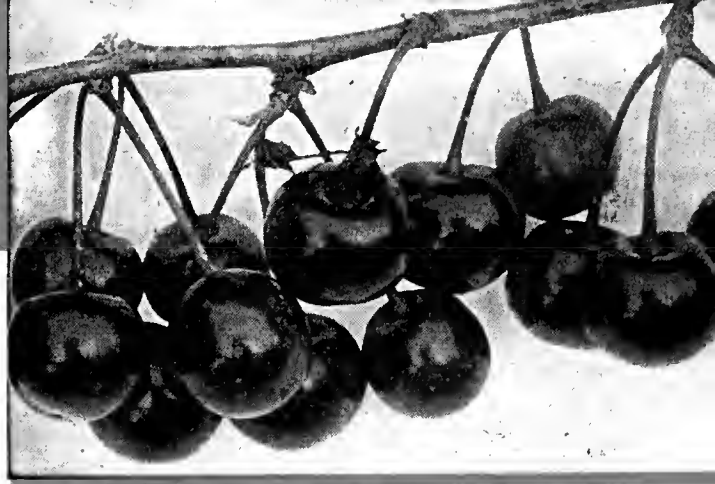
JUNE BUDS

	Per 12	Per 25	Per 100
Surecrop Nectarine. {	2- 3 ft. \$3.20	\$6.20	\$22.95
Superb Apricot. {	18-24 in. 2.58	5.20	18.95
	12-18 in. 2.10	4.20	15.95



Apricot (Superb)

Delicious Fruit . Beautiful Bloom . Easy to Grow!



Montmorency Cherries. The most dependable hardy, productive and adapted to widest range of climate.

• NEOSHO CHERRIES •

Cherry trees are as desirable for their beautiful blooms in springtime . . . as they are for their delicious fruit. And what pies cherries make! Tender golden crust. Luscious red cherries . . . dripping rich, sweet juices. What could make a finer dessert for any meal? Cherry trees are easy to grow . . . and Neosho stock assures success. Order Neosho cherry trees at our low direct-from-grower-to-you prices!

CHERRIES - SOUR

Early Richmond, Montmorency, English Morello

Diameter	Height	Each	5-Rate	25-Rate	100-Rate
9/16 in.	3½-4 ft.	\$0.70	\$0.65	\$0.60	\$0.55
7/16 in.	3-4 ft.	.55	.50	.45	.42
5/16 in.	2-3 ft.	.40	.35	.32	.30

Montmorency (Sour) — The most widely planted cherry. Productive and a regular bearer. Colors early before ripe—a distinct advantage for shipping. The fruit is roundish, plump and a beautiful glowing red. It hangs in clusters, making picking easy. The fruit does not crack or rot, even in very hot, rainy weather. It hangs on without dropping after it is dead ripe. The flesh is rich, sprightly and pleasant. A good shipper and a good canner. Does not mash down in the box.

The tree is the largest, most vigorous grower of the sour cherries. A very reliable cropper. Bloom seldom injured by late frost or severe winter freezes. Ripens in Southwest Missouri first week in June.

Early Richmond (Sour)—The favorite early sour cherry. Fruit is medium size. A good canner. Tree is medium size. Ripens about a week earlier than Montmorency.

CHERRIES - SWEET

Napoleon, Governor Wood, Black Tartarian, Windsor

Diameter	Height	Each	5-Rate	25-Rate
9/16 in.	3½-4 ft.	\$0.70	\$0.65	\$0.60
7/16 in.	3-4 ft.	.55	.50	.45
5/16 in.	2-3 ft.	.40	.35	.32

A sweet cherry planted alone is not likely to bear fruit, because it is self-sterile. Plant a Black Tartarian with any other sweet cherry.

Black Tartarian (Sweet) — Most widely planted sweet cherry east of the Mississippi. Beautiful, lustrous, purplish-black when ripe. Medium size for sweet cherry; very good quality. The tree is a very large, vigorous, upright grower. Very productive and regular bearer. Early.

Gov. Wood (Sweet)—Yellowish-white tinted with crimson; large. Very good quality; ripening early, with Black Tartarian; blooms early.

Napoleon (Sweet)—The best yellow cherry. Often sold and grown as Royal Ann. Best of the sweets for dessert and canning.

Windsor (Sweet)—Dark red, almost black; large. Good to very good quality, ripening late; blooms early.

Seneca Cherry—A real sweet cherry for the Mid-West; tree a marvelous grower, several specimens measuring 20 ft. high and 10 ft. spread at seven years' growth. It is the earliest fruit of the season, ripening ahead of strawberries. Not subject to leaf-spot. A good producer of large, dark red, sweet cherries of fine quality.

Neosho Improved Strain of Royal Anne—Adapted to Ozark conditions; extra large, golden yellow with pink cheek cherry, heart-shaped on long stems; ripens with Montmorency.

Each \$1.00, 5 for \$4.50

English Morello (Sour) — Fruit is small, dark red colored; very sour, but loses some of its sourness if left on the tree until fully ripe. First class for canning and preserving. Stands lower temperature and severe drought than any of the other leading varieties. Tree is small. Bears young.

LUSCIOUS PEARS for TABLE or MARKET



PEAR - STANDARD

(Varieties described below)

Kieffer, Lincoln, Seckel, Anjou, Bartlett, Flemish, Winter Nelis.

Diameter	Height	Each	5-Rate	25-Rate	100-Rate
9/16-11/16"	4-5'	\$0.80	\$0.70	\$0.65	
7/16- 9/16"	3½-4'	.60	.50	.45	
5/16- 7/16"	2½-3'	.45	.40	.35	

Lincoln (Summer)—Large, yellow; quality good to very good; similar to Bartlett, but more resistant to blight. Succeeds farther south than Bartlett can be grown. It has stood the severest tests of intense, moist, summer heat and low altitude of the climate of Lincoln, Illinois, where it was originated by W. E. Jones. Comes into bearing early and bears heavy crops annually; very hardy. Blooms midseason.

Seckel (Fall)—The standard of excellence for quality. Small, yellowish brown with russet red cheek; should be first choice for family orchard. Slow grower, dependable, productive and very hardy, notably free from blight. Blooms midseason.

Winter Nelis (Winter)—The latest, best keeping pear. Can be held in cold storage until spring. Medium sized, roundish, yellow, russeted pear with a short, heavy neck. Flesh fine grained, sweet, aromatic, very good quality.

Anjou (Fall)—Large, heavy, greenish-yellow with dull red cheek often russeted. Very good quality and keeps late.

Bartlett (Late Summer)—The leading commercial variety, one of the most popular for dessert and canning. Large, clear yellow with blush on sunny side. Flesh is white, fine grained, juicy and sweet. Tree is vigorous, very productive, hardy, bears young.

Flemish Beauty (Early Fall)—Large, pale yellow, mostly russeted. Very juicy and sweet.

Kieffer (Winter)—Large, yellow russeted; flesh white, rather coarse. A market and kitchen variety that succeeds farther south where other varieties fail. Tree hardy, very vigorous, resistant to blight. Blooms early.

Douglas Pear—Is called Blight-Proof because it is practically immune from blight. A large, handsome pear of Bartlett quality that ripens in early fall and comes into bearing the second or third year. Golden yellow flushed with pink; tender, juicy, excellent flavor.

Each \$1.00, 5 for \$4.50

Dear Sir:—Received the order O. K. and was very much pleased, was far better than I expected it to be. I have also passed the good news on to my neighbors. No doubt you will hear from some of them in the near future.—Henry Courtois, Columbus, Kas.

PEAR - DWARF

(Varieties described below)

Anjou, Bartlett, Seckel, Duchess d'Angouleme.

You are allowed the regular quantity price on total number of plants you order, regardless of different varieties.

Diameter	Each	5 Rate
¾ in. . .	\$1.00	90¢

90¢

Each in 5 lots

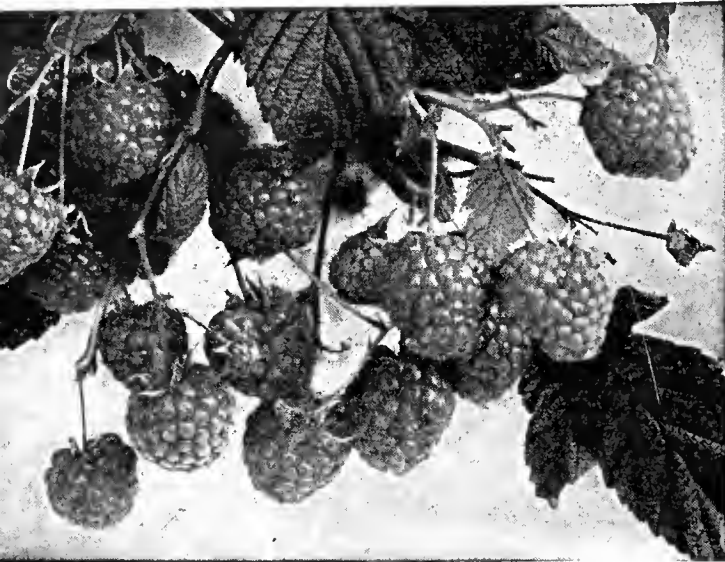
QUINCE

Diameter	Each	5 Rate
¾ in. . .	\$1.00	90¢

90¢

Each in 5 lots

IMPROVED NEOSHO RASPBERRIES



Improved Neosho Strains Produce Large Fruit of Superior Flavor. Get Them at Our Low Direct-From-Grower-to-You Prices

3 1/2c
EACH
IN 100 LOTS
POSTPAID

● RASPBERRIES — BLACK AND RED

Variety	Per 10	Postpaid Per 25	Per 100
Cumberland (Black)	50c	\$1.00	\$3.50
Cuthbert (Red)			
Latham (Red)			
St. Regis Everbearing (Red)			
Chief (Red)			

You are allowed the regular quantity price on total number of plants you order, regardless of different varieties.

PRIZED for their delicious flavor, raspberries make their welcome appearance as the strawberries reach the end of their most productive season. Great improvement in size of fruit, flavor and productive qualities of raspberries has been made in recent years, and the Neosho varieties listed among the best. Raspberries are among the favorite small fruits. Eaten fresh, they are delicious and they are splendid for jellies, jams and canning.

Chief—The latest and best addition to Red Raspberry varieties. Might well be called Early Latham. It has all of Latham's good qualities plus the distinct advantage of ripening ten days earlier, yielding heavier and of much better flavor and shipping qualities.

Cumberland (Black) (Midseason)—The most widely planted black raspberry because of its productiveness and quality. Berries are extra large, fine and sweet.

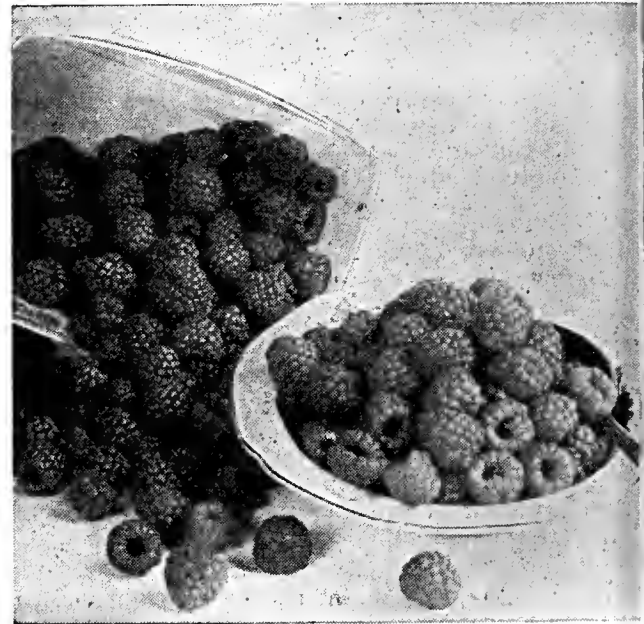
Cuthbert (Red) (Late)—The best red because of its superior quality and flavor. Berries are large, rich crimson, firm and one of the best for canning.

Latham—Rich brilliant red, large and firm berry. Perfectly hardy, very heavy producer and most resistant to Mosaic. Originated in Minnesota.

St. Regis (Red) (Everbearing)—Bright red, small to large berries. Canes are hardy, prolific, healthy, drought-resistant. Bears very early; after old canes have borne, the young canes begin bearing and produce until frost. Very thorough cultivation is necessary, otherwise berries of first crop will be small and no second crop may form. Succeeds further south than other varieties.

Grateful His Trees Came From Neosho

Mr. Hommel has purchased twenty-eight orders of Neosho trees, amounting to \$1,156.00, during the past fifteen years. He writes us as follows: "Every tree in my orchard is a picture, and I am everlastingly grateful that the trees came from Neosho Nurseries. I cannot recommend too highly your stock to anyone who is anticipating purchasing apple trees or any other fruit."—R. S. Hommel, "Elkhart Orchards," Knoxville, Tenn.



CURRENTS and GOOSEBERRIES

Currants and gooseberries are among our finest fruits for making jellies, jams, pies, preserves, tarts, etc. Being

rich in pectin, they are especially valuable in jelly-making, either alone or when blended with other fruits.

CURRENTS—2-Year No. 1 Plants

Variety	3 for	12 for
London Market, red.	\$0.75	\$2.60
White Grape, white.	.75	2.60
Perfection Red, large	.95	2.95

Postpaid

GOOSEBERRIES—2-Year No. 1 Plants

Variety	3 for	12 for
Houghton, Oregon	\$0.75	\$2.60
Champion		

Postpaid

● Youngberry ●

(A NEW INTRODUCTION)

The Youngberry is a cross between a Loganberry and a Dewberry. Berries extra large, often two inches long. Color dark purplish-red. Flavor very much like Red Raspberry. Imagine a fruit of the quality of Red Raspberry and the size of a Dewberry. Very productive; fine for home use and local market. Hardy as far north as Kansas City.

Per 10	Per 25	Per 100
65c	\$1.25	\$4.50

Postpaid



Red Currants—Jelly-makers supreme

CURRENTS

London Market (Midseason to Late)—Very hardy. Medium to large, dark red, rather acid. Clusters compact.

Perfection (Midseason)—Large, bright red berry in long, compact clusters; sprightly, sub-acid. Vigorous and productive.

White Grape—The best white currant. Large clusters of white or golden-green berries, mildly acid in flavor.

Every Neosho Tree Grew

"I want to buy about 35 apple trees for replacement. These trees were set this spring under very favorable conditions, but did not even start to bud; the nursery they came from refused to make them good. I set 13 trees from your nursery; every tree grew and done well."—N. C. Barnes, Meadville, Mo.

Well Satisfied

"The 73 peach, 40 apple, 6 plum, 2 pear and 3 grape were received in fine

GOOSEBERRIES

Oregon (Champion)—A large green berry, season late. Very productive, rarely attacked by mildew. An improved variety which combines the large size and high quality of the Downing with the productiveness and vigor of the Houghton.

Houghton—Medium; red, thin skinned, juicy, sweet, excellent quality; very productive.

shape—all are nice and I am well satisfied."—John E. Dille, Moravia, Ia.

"Better Stock Than I Paid For"

"In the spring of 1926 I purchased 419 trees from the Neosho Nurseries; this stock proved better stock than I contracted and paid for. Very few trees have had to be reset.

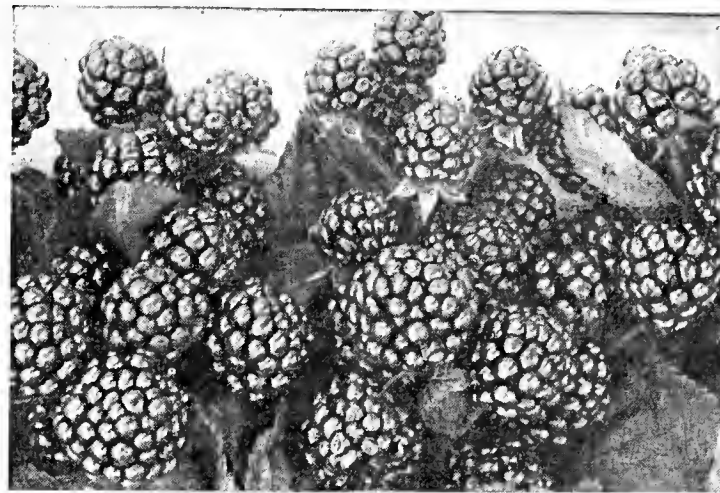
Several of the leading apple growers of the district have seen this orchard and pronounce it one of the best young orchards they have ever seen. It is now coming into full bearing."—W. G. Mullens, Ritchey, Mo.

Neosho Blackberries and Dewberries

Choose Neosho Stock! Be Assured of Thrifty Vigorous Plants . . . That Produce Fruit of Finest Flavor. And Save at Our Direct-From-Grower Prices.

Postpaid

3¹/₂ Each
in 100 Lots



✓ **Lucretia Dewberries (Very Early)**—The best known and most widely planted dewberry. The berries are large, long, firm and good quality; very sweet if left on the vines a day or two after they would be picked for shipping.

BLACKBERRIES AND DEWBERRIES

	Per 10	Per 25	Per 100
Eldorado	65c	\$1.25	\$4.50
Early Harvest	50c	\$1.00	\$3.50
Lucretia Dewberry			
McDonald			

BLACKBERRIES possess a rich fullness of flavor which is only realized when the fruit is fully ripened. You will be delighted with this fruit when grown in your own garden. Dewberries are similar to blackberries in character and flavor, but are borne on trailing vines. Both are easy to grow and bear abundantly the second year. By choosing Neosho stock you are assured thrifty, vigorous plants which will produce fruit of fine flavor.

Early Harvest (Early)—Glossy black, medium size, good quality, not very hardy, requiring protection in the north.

Eldorado (Midseason)—Medium to large, jet black, sweet and melting, very good quality, very hardy. Vigorous and productive.

McDonald (Very Early)—A blackberry-dewberry hybrid. It is large, oblong, very good quality; drought-resistant, vigorous grower; plant in rows 8 to 10 feet apart. The vine trails on the ground the first season like the dewberry, but grows upright the next year. Grown in Missouri, Oklahoma and Texas. Not hardy and is self-sterile. Plant every fourth row with Lucretia Dewberry or Early Harvest to develop good berries.

100% Satisfied With Neosho

"I will state I received my 1000 Strawberry Plants O. K. and got 100% stand. And will also state the 30 mixed fruit trees I received last November, I think the way they are starting off, will be 100% stand. I have some little Belle of Georgia peaches set out last spring full of bloom this time, and I can say I'm 100% satisfied with your goods."—Brown Robinson, Rocheport, Mo.

EARLY SPRING VEGETABLES

Rhubarb and Asparagus are among the most welcome of the early Spring vegetables . . . and deserve a place in every garden. Plant Neosho roots . . . and be sure of finest vegetables for

your own table or for sale. Don't forget Neosho's direct-from-grower-to-you prices save you money. Order these early Spring vegetables in plenty of time for planting!

ASPARAGUS—Mary Washington

The most resistant to rust, and is superior in size, color, flavor.

	Per 25	Per 100
1-year (Postpaid) ...	\$0.50	\$1.50
2-year (Postpaid)60	2.00

RHUBARB—Our roots are grown from Myatts Linnaeus seed . . . a large, tender pink variety.

	6 for	12 for	25 for
½ in. (Postpaid)	30¢	55¢	\$1.00
¾ in.	45¢	75¢	1.25

HORSERADISH—True Maliner Kren, which is noted for its superior flavor, vigorous growth and large size roots.

	3 for	12 for
Cuttings (Postpaid)	\$0.20	\$0.60
Crowns (Postpaid)	.35	1.00

Says Neosho Quality Is Superior

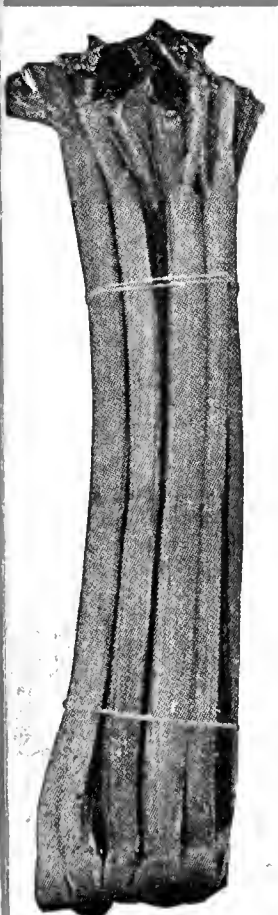
"The service rendered by your company has always been most satisfactory and the quality of stock superior to that received from other sources, hence for the last few years I have ordered all my trees from you."—R. W. Robertson, Pollock, La.

Wishes to Thank Neosho

"Order arrived in good condition. I wish to thank you for your kindly, thoughtful, prompt handling of the order."—Mildred Stahley, New York.

Certainly a Fine Order

"Arrived in fine shape. This order, like the one I got of you a year ago last spring, certainly was fine, with good roots."—J. D. Bell, Missouri.



Rhubarb



Asparagus

SEE WHAT YOU GET

FOR ONLY **\$3.95** Prepaid



100 Fine Plants

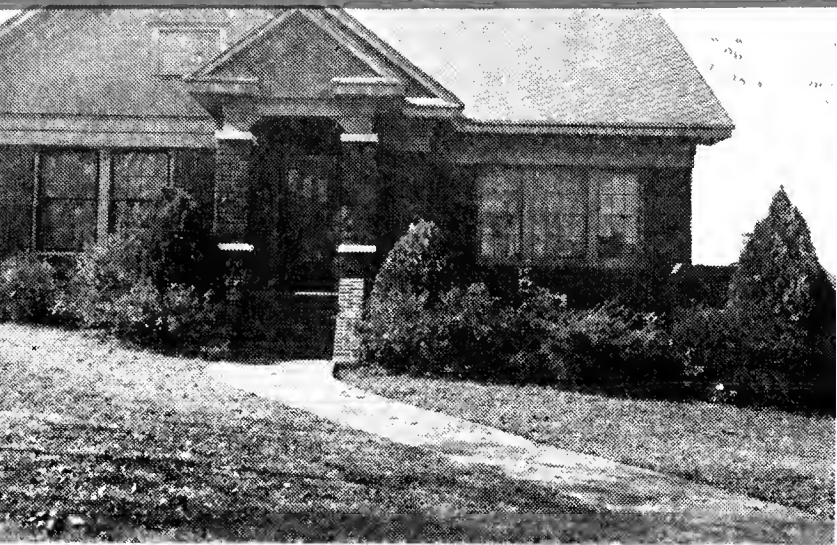
- 25 Cuthbert Raspberry (red)
- 25 Cumberland Raspberry (black)
- 25 McDonald Blackberry
- 25 Eldorado Blackberry

Planting distance 4½x2½ ft.

Take advantage of this opportunity to get 100 sturdy, vigorous Neosho Blackberry and Raspberry plants at low price. These are regular, first quality Neosho stock. Order now!

FREE With This Offer 25 Asparagus, and 25 Aroma Strawberry.

Beautify Your Home With Neosho



DIRECT - FROM - THE

To make your home actually complete . . . you will want to add to the handcraft of man . . . Nature's charming touch of beautiful shrubbery. Perhaps a green, clipped hedge around the grounds . . . handsomely straight, trim and protective. Maybe graceful shrubbery . . . showering out a glorious color pageant of white, pink, lilac, red, orange . . . against a waving profusion of green. Or, it may be a colorful combination of both that you desire.

But regardless of what varieties you select . . . for surest, quickest, most beautiful results . . . plant Neosho shrubs. Neosho assures you "Growing Satisfaction." Finest quality, fast-growing, sturdy, healthy stock with strong root systems. And prices so low they will surprise you. Select from the wide range of varieties and low prices below!

Group 1

Offers you an unusually wide range of beautiful varieties. Have famous strong, healthy Neosho root systems. Low price made possible . . . because Neosho sells direct-from-the-grower to you . . . saving you the middle-man's profit. Order this finer quality stock . . . at these money-saving prices. Varieties described below.

Prepaid Post, each **20¢**
 Select (not prepaid), each **30¢**
 Specimen (not prepaid), each . . . **40¢**

Japanese Barberry—Makes good trimmed or untrimmed hedge. Its thorns make it a very effective barrier. The hardiest of the low hedges. Foliage turns orange and red in the fall and carries bright red berries all winter. Plant 18 inches apart.

Butterfly Bush (Farquhar) (Buddleia Magnifica)—5' to 6'—Sometimes called Summer Lilac as its dark lilac blossoms continue in flower most of the summer. An improved type with darker blooms. Cut back to ground in later winter.

Coralberry (Symphoricarpos Vulgaris)—3' to 4'—Graceful arching branches covered with dark red berries all winter. Endures shade and dry soil.

Dentzia, Pride of Rochester—6' to 8'—You should try this in your border plantings as it is of fast upright growth, blossoming in May with many double white flowers borne thickly in

wreaths along its branches. Always popular.

Jethead (Rhodotyphus Kerroides)—4' to 5'—One of the best shrubs for planting in shaded locations. A rounded shrub with beautiful yellowish green corrugated foliage and large, single white flowers in May, followed by shiny black berries or seeds.

Mock Orange (Philadelphus)—No garden is complete without the delightful fragrance and pure white blossoms of the Mock Orange.

—Old-Fashion—8' to 12'—A hardy, vigorous shrub of upright growth. Single flowers pure white, fragrant and borne in great profusion. Endures shade.

Snowberry (Symphoricarpos Racemosus)—3' to 4'—A graceful plant with small foliage, dense twiggy branches which bear in the fall a profusion of waxy white berries. Good for shady locations in foundation planting.

Spirea Froebell—A medium grower, 3' to 4' tall, with crimson flowers in small clusters all summer. Very hardy.

Spirea Van Houttei—Nothing is more beautiful than a hedge of Spirea in full bloom. It also has very good foliage through the summer. Best used as untrimmed tall hedge. Plant 2 feet apart.

"Trees arrived in good condition on Nov. 10th. I have never received better stock and am well pleased with them. When in need of more nursery stock, you will hear from me."—H. Roddick, Sr., Hammond, Illinois, Nov., 1937.

"Received your shipment of trees and roses in good shape. Same seemed to be of good, healthy stock and am well pleased with them. The weather and soil were ideal for planting and they were planted the same day received."—H. O. Phares, Shelbyville, Ind.

FREE

With each order of shrubs amounting to \$3.00, FREE 1 Summer Flowering Crimson Spirea

SAVE MONEY

Buy more than one shrub, either alike or assorted.

	5 for	12 for
20c Shrubs	\$0.90	\$2.00
25c Shrubs	1.10	2.50
30c Shrubs	1.35	3.00
35c Shrubs	1.55	3.50
40c Shrubs	1.85	4.00
45c Shrubs	2.10	4.50
50c Shrubs	2.35	5.00
60c Shrubs	2.55	6.00



Shrubs • That Thrive and Grow!

- GROWER-TO-YOU PRICES •

GROUP 2

Prepaid Post Grade.....**25¢**
Select Grade (Not prepaid)....**40¢**
Specimen Grade (Not prepaid)..**50¢**

Save Money on Quantities.
See previous page —

Aronia Melanocarpa (Black Chokeberry)—8' to 10'—Delicate white flowers, May. Black berries. Half-shade.

Aithea, or Rose of Sharon (Hibiscus Syriacus)—8' to 12'—Upright grower with hollyhock-like flowers in white, red, pink or purple, according to variety, in July to September. Greatly used for screens and hedges.

Barberry, Redleaf (Berberis Thunbergii Atropurpurea)—3' to 4'—A new variety with rich lustrous bronze red leaves which become more brilliant through summer. Unequaled in color value. The most promising shrub introduced in past ten years.

Beautyberry (Callicarpa Purpurea)—4' to 5'—Here is just the shrub for unusual color in late summer and early fall, blooming in August with clusters of pink flowers which are followed by beautiful dense clusters of real violet berries. Needs protection in North.

Butterfly Bush (Farquhar) (Buddleia Magnifica)—5' to 6'—Sometimes called Summer Lilac as its dark lilac blossoms continue in flower most of the summer. An improved type with darker blooms. Cut back to ground in later winter.

Deutzia Gracilis Rosea—3' to 4'—A dense low growing shrub. In April covered with pink flowers in graceful, nodding sprays.

Deutzia Lemoinei—4' to 5'—A hardy spreading grower with showier later white flowers than Gracilis. Endures partial shade.

Desmodium (Lespedeza Penduliflorum)—4' to 6'—A beautiful shrub with small narrow leaves, arched branches and beautiful drooping sprays of liquid purple flowers. Tops die back in winter. Blooms August and September.

Dogwood, Red Twigged (Cornus Stolonifera)—6' to 8'—Valued especially for coral-red stems in winter.

Golden Bell (Forsythia)—6' to 8'—This splendid family of shrubs is one of the first to light your garden with masses of golden yellow flowers before the leaves appear in early spring. Foliage is handsome deep green turning to deep bronze in fall.

Honeysuckle (Lonicera)—One of the most desirable family of shrubs as they are extremely hardy, trim looking, free from disease, and all have attractive foliage. Three varieties follow:

—**Tatarian (Pink)**—6' to 8'—Attractive pink flowers followed by bright red berries.

—**Tatarian (Red)**—6' to 8'—Conspicuous light crimson flowers in early summer.

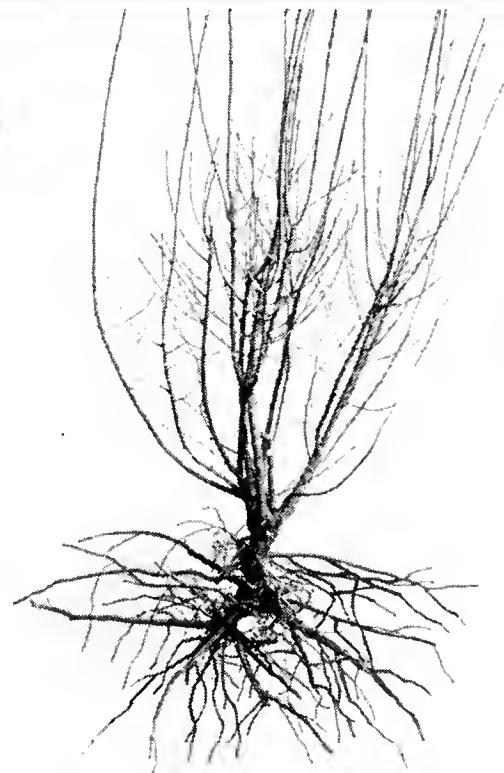
—**Morrowi (Japan Bush Honeysuckle)**—8' to 10'—Dense wide flung branches. The small bloom is creamy white, with blood red berries following bloom. Gray-green foliage. Especially suited for foliage screen. Does well in most any soil.

Mock Orange (Philadelphus) — No garden is complete without the delightful fragrance and pure white blossoms of the Mock Orange.

—**Lemoine**—4' to 6'—Erect fine leaved, slender stemmed. Creamy white flowers with a distinct fragrance. Good foundation shrub.

Mock Orange, Virginai (Philadelphus Virginails)—6' to 8'—A wonderful new variety. Good foliage and flowers run double, semi-double and single, are largest and most sweetly fragrant of any known variety, with longest early and intermittent blooming season.

Privet, Regels (Ligustrum Regelianum)—4' to 6'—A very hardy type with dark, shiny leaves. Numerous branches are horizontally spreading with graceful drooping ends. Very desirable for foundation plantings and endures shade.



Neosho Stock Has Bushy Tops—Strong Root Systems

Quince, Japan (Cydonia Japonica)—4' to 6'—Completely covered with dazzling scarlet flowers before leaves appear in spring. Deep green foliage.

Spirea Billardi—4' to 5'—An upright grower with dense spikes of rose pink flowers that crown sparsely twigged, erect branches.

Spirea Thunbergi—4' to 6'—We think this one of the best shrubs grown for foundation plantings. Forms a dense, feathery bush, with a pleasing shade of yellowish green foliage changing in fall to bright red and orange. White single flowers in April.

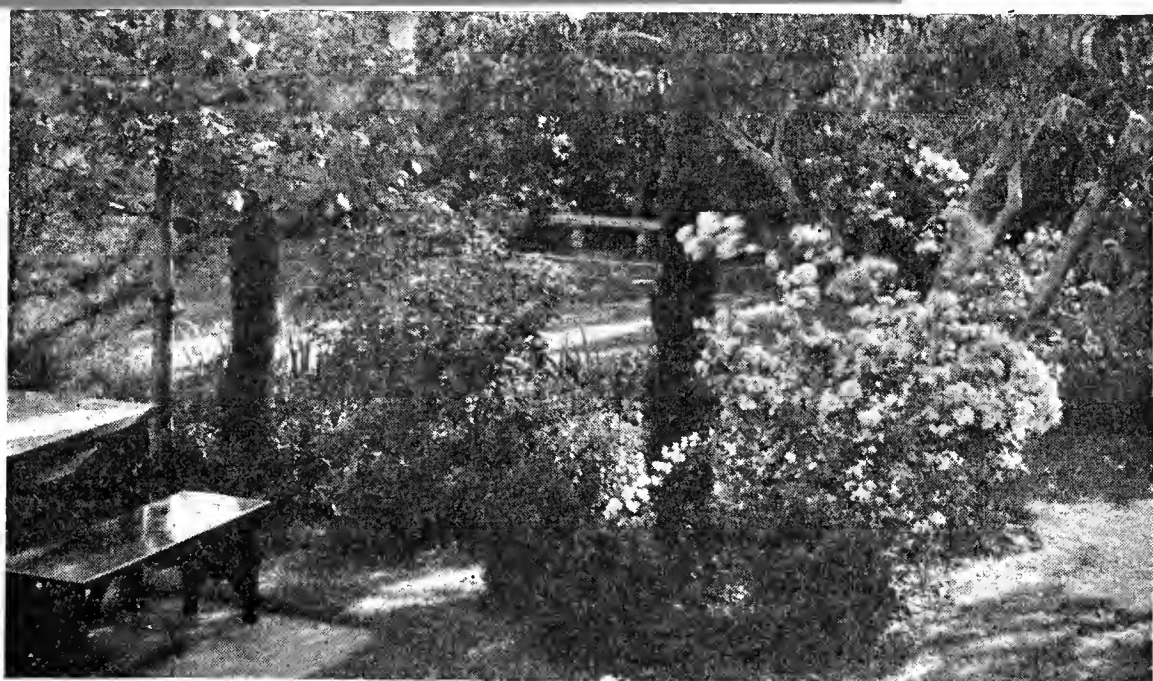
Spirea Dwarf—White or pink.

Spirea, Anthony Waterer—2' to 3'—Would you like a shrub that is of dense rounded growth, beautiful dark small foliage, that blossoms with large, brilliant rosy crimson flower clusters all summer? If you would, you can't go wrong on this one.

Business houses and manufacturing plants have learned the value of attractive surroundings.



BEAUTIFUL SHRUBS TO BRIGHTEN YOUR GROUNDS • No Finer Quality Shrubs Than These at ANY PRICE



GROUP 3

Prepaid Post Grade.....**30¢**
 Select Grade (not prepaid)...**45¢**
 Specimen Grade (not prepaid) **60¢**

Save money on quantities.
 See previous page.

—**Rosa Rugosa Alba**—Large, clear white flowers.

—**Rosa Rugosa Rubra**—Has large, rosy crimson flowers.

Spirea, False (Sorbaria Sorbifolia)—4' to 5'—Handsome soft wooded shrub of quick development, with profuse bloom in June-July of long feathery panicles, pure white. Partial to rich, moist soil and partial shade. Fresh green leaves like Mountain Ash.

Spirea Koreau—6' to 8'—A handsome new introduction, somewhat like Van Houttel, but with larger flowers and blooming about two weeks later. Thrifty in growth and perfectly hardy.

Spirea Prunifolia—6' to 8'—Blossoms early with small double white blooms. Dark green foliage turning orange in fall.

Sumac, Fragrant (Rhus Aromatica)—3' to 4'—Small yellow flowers followed by red seeds. Leaves turn scarlet. Stands dry, hot locations.

Sumac, Smooth (Rhus Glabra)—10' to 15'—Grows to small tree with beautiful foliage, which colors brightly in autumn; inconspicuous flowers in June, followed by attractive crimson brown fruits. See Trees.

Sumac, Staghorn (Rhus Typhina)—10' to 15'—Picturesque and rugged with brilliant foliage in fall. See Trees.

Tamarix Hispidia—8' to 12'—Densely bushy, a foaming mass of glaucous foliage. Flowers in extra large panicles bright coral pink in June and intermittently thereafter.

Tamarix Africana—8' to 12'—A large grower with fine feathery blue-green foliage and long panicles of pink flowers in May.

Weigela Eva Rathke—Crimson flowers in May or June. Grows 4' to 5' high.

Weigela Rosea—6' to 8'—This is an old favorite with a abundant showy trumpet-shaped flowers of light pink in May. Rather coarse foliage, but very effective in groups or mass planting.

Heckrottii Honeysuckle (Blooms all summer)—A low semi-bush half-vine-type of Honeysuckle. Extra large trumpet coral and orange blossoms.

GROUP 4

Prepaid Post Grade.....**40¢**
 Select Grade (Not prepaid)...**55¢**
 Specimen Grade (Not prepaid) **75¢**

Almond, Double Flowering—5' to 6'—In early spring branches are covered with beautiful double pink blossoms before leaves appear.

Beauty Bush (Kolkwitzia Amabilis)—6' to 8'—A new shrub from China. Graceful arching branches and pink trumpet shaped blossoms.

Hydrangea, Arboreseus Grandiflora—4' to 5'—A most popular shrub with flowers similar to the familiar "Snowball" in appearance, snowy white and imposing. July-September. By cutting bush to the crown each spring, it can be kept round and dense at 3' to 5'. Endures partial shade.

Hydrangea, Paniculata Grandiflora—5' to 6'—Produces massive plumes, first snow white, then pink, then reddish bronze and green, from August until October. Beautiful as specimen shrub or in masses.

Kerria Japonica (Globe Flower)—4' to 6'—Bright green stems and attractive foliage. The blossoms are bright yellow, single and unusually attractive. Blooms in May and a few blooms all summer.

Snowball (Viburnum Sterile)—8' to 12'—This old-fashioned shrub grows most anywhere and always flowers so abundantly. It is indeed beautiful and should be in everyone's yard. Beautiful large clusters of white flowers.

Butterfly Bush (Ile de France)—New, improved variety; dark rich purple, June to September.

Calycanthus Sweet Shrub (Calycanthus Floridus)—4' to 6'—An old-fashion shrub with chocolate colored flowers all summer. Spicy fragrance. Best in partial shade.

Elder Golden (Sambucus Canadensis Aurea)—8' to 12'—Yellow foliage all season.

Honeysuckle, Fragrantissima—6' to 8'—Small round, leathery leaves showing darkest shade of green. Practically evergreen if in sheltered position. Very early clusters of tiny pink and white flowers, sweetly fragrant. Berries following bloom. Gray-green foliage. Especially suited for foliage screen. Does well in most any soil.

Hugonis Rose—6' to 8'—A dense attractive shrub with slender branches covered with single clear yellow flowers. Foliage turns purple in fall. Well adapted for either specimen or mass planting.

Lilac—Persian—6' to 8'—A graceful shrub with pale lilac flowers in broad panicles in late spring. Rich green foliage. Blossoms second season after transplanting.

Pearl Bush (Exochorda Grandiflora)—8' to 10'—If you want an unusual shrub for your border, large pure white flowers in great profusion. Buds resemble pearls along stems, and when in full bloom plant has appearance of snowbank.

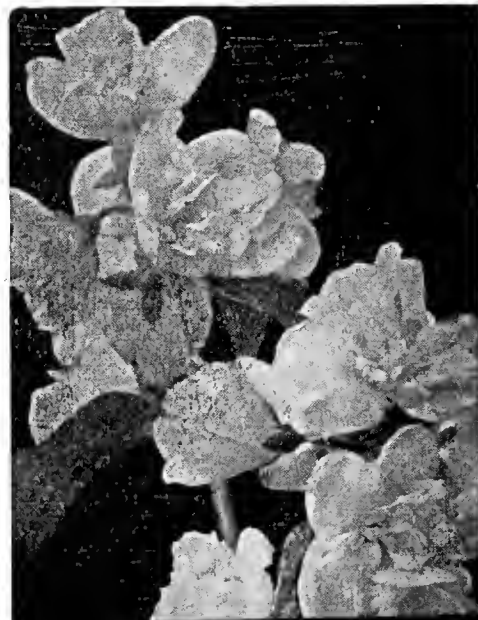
Rugosa Rose—6' to 8'—Exceptionally hardy shrubs which thrive under difficult conditions. Branches spiny and foliage is a shiny dark green and not susceptible to attacks by insects.

FRENCH OR HYBRID LILACS

—6' to 8'—These are budded types having small leaves and larger blossoms, bloom later in season. Blossom second season after transplanting. Wine single; Blue double; White double.

Lilac, Budded—Double blue, double white and purplish red (single).

Size	Each
Select.....	\$0.75
Specimen.....	\$1.00



ORDER THIS COMBINATION



12
 BEAUTIFUL
 SHRUBS
259
 PREPAID

What a bargain! Your choice of 2 or more each of any varieties... the total not to exceed 12 plants. Hardy, vigorous Neosho shrubs... that thrive and grow speedily. Order now!

Jetbead	Mock Orange
Redleaf Barberrry	Virginalis
Persian Lilac	(double)
Spirea Froebels	Japan Quince

FREE with this offer, 6 Gladiolas and 6 Iris.

• Neosho Hedges Grow Faster! •

PRICED LOW AS 4^C EACH
In 100 Lots



Note the beauty of this Barberry Hedge-Lined Driveway

A TRIM, sturdy hedge gives your grounds the privacy you wish . . . yet has a friendly, welcoming appearance. Costs less than a fence . . . and increases in beauty and value with age.

A hedge plant 2 feet tall with one or two branches will not produce a hedge as soon as one 18 inches tall with three or four canes. Bear this in mind when ordering hedge, the number of canes is as important as the height. Our plants have unusually heavy root systems.

And remember . . . you get Neosho hedges at a saving . . . because of our lower direct - from - grower - to - you prices.

California Privet—Has rich glossy green foliage which stays very late in the fall. One of the best plants for trimmed hedges. Not hardy north of Kansas City, Missouri. Plant 8 to 10 inches apart.

Amur Privet, North—Hardy, good foliage which is rich green. Can be trimmed in any shape or height. Plant 8 to 10 inches apart.

Japanese Barberry—Makes good trimmed or untrimmed hedge. Its thorns make it a very effective barrier. The hardiest of the low hedges. Foliage turns orange and red in fall and carries bright red berries all winter. Plant 18 inches apart.

Spirea Van Houttei—Nothing is more beautiful than a hedge of Spirea in full bloom. It also has very good foliage through the summer. Best used as untrimmed tall hedge. Plant 2' apart.

CALIFORNIA PRIVET (<i>Ligustrum Ovalifolium</i>)				
	Number of Canes	Per 25	Per 50	Per 100
12-18-in.	3 or more.....	\$1.50	\$2.50	\$4.00
18-24-in.	3 or more.....	2.00	3.50	6.00
AMUR PRIVET (North) AND IBOLIUM PRIVET				
12-18-in.	3 or more.....	2.00	3.50	6.00
18-24-in.	3 or more.....	2.50	4.50	8.00
BARBERRY JAPANESE				
12-15-in.	3 or more.....	4.50	8.50	16.00
15-18-in.	4 or more.....	6.00	11.00	20.00
18-24-in.	5 or more.....	7.00	13.00	24.00
SPIREA VAN HOUTTEI				
12-18-in.	2 or more.....	2.80	5.50	10.00
18-24-in.	3 or more.....	3.75	6.50	12.00
2-3-ft.	4 or more.....	5.00	9.00	16.00

Kill Insects, Worms, Fungus with PLANT HEALTH

Neosho All-Purpose Dust—Our own special formula. Kills eating insects, such as cut-worms, bag worms and canker worms. Controls fungus diseases, such as mildew and Black Spot. Controls sucking insects, such as Aphis and Red Spider.

Keeps your shrubs, roses, evergreens and perennials in healthy

condition. Remember, an ounce of prevention is worth a pound of cure. Start your dusting when leaves appear and continue at regular intervals. Will adhere to foliage better if applied when foliage is damp.

3 lbs. Postpaid

\$1.00

Fertilize with VIGORO

Keep your roses, shrubs, evergreens and lawn in a thrifty, growing condition . . . with frequent applications of Vigoro. A little fertilizer gets wonderful results.

5 lbs. 25 lbs. 100 lbs.
50¢ \$1.50 \$4.00



FREE—a Landscape Plan to Suit Your Own Grounds . . . with Your Order of Plant Materials to the Amount of \$15 or More!

The service of our Landscape Architect, Mr. M. V. Woodard, is available to all. From information you can send us he will prepare an actual Landscape Plan, built to fit your own needs and grounds, that will then become a working plan for the final development. Send us the following data and it will be given our immediate attention. Accompany your request for a Landscape Plan with a deposit of \$5.00. This will be credited in full on your first order of plant materials to the amount of \$15.00 or more.

Just make a rough sketch (need not be drawn to scale) showing this information:

- (1) All dimensions of building and lot.
- (2) Location of buildings and trees on lot.
- (3) Points of compass. (4) Location of drives and walks. (5) Where windows on first floor and basement are placed. (6) Any other information or kodak views which will help us in visualizing your grounds.

This illustration shows how our Landscape Architect can lay out a plan for your home grounds; as elaborate or as simple as may be desired. A home planting plan may be developed over a period of years. Ask us for details.



Etoile de Hollande

GORGEOUS, COLORFUL, • TWO-YEAR No. 1 HARDY

Truly are roses the aristocrats of the garden! The soft, blushing beauty of their delicate petals . . . the lovely, alluring fragrance of their perfume . . . gives them a queenly magnificence, beyond the reach of any other plant. And now you can easily grow gorgeous roses . . . by planting Neosho stock. For Neosho roses have been carefully selected and developed for easy-growing characteristics . . . exquisite bloom . . . and fine foliage!

Read What These Neosho Customers Write!

Neosho Rose Garden Attracts Attention

"In this locality the market is flooded with inferior nursery stock which sells at a low price and is worth less. As a result my rose garden with your good 2-year-old Neosho field grown roses attracts the attention of everyone who sees it. Some of my roses measured over 5 inches in diameter, and my dozen plants bought from you last year have been a solid mass of bloom for the past month. On one Talisman bush I counted nine large roses and fourteen buds all at the same time. Am always glad to recommend your Company to my friends."—J. M. McCANN, Independence, Mo.

Says Neosho Plants Are Sturdy and Easy to Grow

"I received my order of plants and, as usual, they are sturdy plants and were carefully packed. I would like to take this opportunity to express my satisfaction with everything I have ever bought from you; it is all healthy stock and consequently easy to grow."—Mrs. Sam Allen, Sapulpa, Okla.

HERE'S HIGHEST QUALITY ROSES—AT LOWEST PRICES		
Each	6 for	12 for
45c	\$2⁵⁰	\$4⁷⁵

POSTPAID

ROSE VARIETIES

Betty Uprichard—One of the finest new roses; with brilliant copper red buds and semi-double salmon pink flowers, stained with copper pink on the outside. A profuse bloomer and an outstanding variety.

Columbia—This beautiful rose produces long stemmed pointed flowers of a vivid pink throughout the entire season. Fragrant, and a good, vigorous grower.

Etoile de Hollande—The finest dark red rose for general purposes. Long pointed buds opening to immense size, velvety crimson and produced with great freedom throughout the season. One of the best Red Hybrid Teas grown.

Frau Karl Druschki (Snow Queen)—Large snow-white double flowers in June and some in fall. Strong grower.

Hadley—Flowers large and well formed. Flowers freely with long pointed buds, rich crimson in color, and sweetly scented.

J. L. Mock—The gorgeous double flowers are produced with the greatest freedom on long stiff stems and are a deep imperial pink, the outside of petals a silvery rose white.

Kaiserin Augusta Victoria—We think this is the best white with soft pearly white blossoms tinted with a slight lemon in center. Fragrant and with beautifully formed flowers on long graceful stems. A strong, free, healthy grower.

Lady Hillingdon—The always popular, beautiful apricot-yellow rose with lovely buds and exquisitely formed open blooms produced continuously. A strong, vigorous grower and free flowering.

Luxemburg—The best yellow rose for our section. A fine, large, fully double, rich golden yellow blossom, vigorous habit. You can't go wrong on this one.

Mrs. Chas. Bell—A new member of the Radiance family, with lovely shell pink buds and blooms of fine globular form, with shadings of soft salmon, sweetly perfumed. One of the best.

Pres. Hoover—Large flowers of cerise pink, flame, scarlet and yellow with broad, thick petals; very fragrant. Handsome foliage. A great improvement over Talisman.

Radiance—Plants of wonderful foliage and vigor, constantly producing large, brilliant rose-pink blooms of excellent globular shape and intense fragrance. There are more Radiance roses grown and planted than any other dozen varieties put together.

Red Radiance—The same good habit and blooming qualities of Radiance, but a bright cerise-red in color.

Talisman—A glorious multi-colored rose, unfolding its broad thick petals from the beautifully pointed bud. Vivid cerise-pink, softly flamed with yellow, orange and scarlet. Delightfully fragrant. The most vivid color yet produced in roses.

OUTSTANDING VARIETIES

Each	6 for	12 for
\$0.50	\$2.80	\$5.40

Condessa de Sastoga—Three-toned, red and copper inside, yellow outside.

Edith Nettie Perkins—Pale salmon overlaid with gold.

Editor McFarland—Deepest pink garden rose. Perfectly formed buds clear, brilliant pink; long stems, fragrant. Vigorous, healthy grower.

Joanna Hill—A clear yellow rose, with long pointed buds opening to semi-double flowers; profuse bloomer.

Chas. P. Kilham—A glowing scarlet flushed with orange; a strong grower, free flowering, sweetly scented. Long, pointed buds opening to perfectly formed, full double flowers.

Mrs. Pierre S. DuPont—Buds are reddish gold, opening into beautiful yellow flowers.

Margaret McGredy—This extraordinary rose has found unstinted praise everywhere shown. Large buds opening to double cupped flower with brilliant red petals on hinges of deep gold. Seldom out of bloom.

Mrs. G. A. Van Rossem—A most striking blending of dark vivid orange and apricot. Frequently has touches of bronze on reverse of petals. Deeply impressed maroon veins. Flowers large and perfectly formed.

Roslyn—Beautiful tapering buds, large double flowers of golden yellow; one of the finest new yellow roses.

E. G. Hill—Beautiful long buds of perfect form. High centered flower of dazzling scarlet, shading to a deeper red as it develops. Free bloomer.



LOOK AT THIS!

Blue Ribbon Collection

6 Outstandingly Beautiful Roses

	Reg. Price
Countess Vandal	\$1.00
Etoile de Hollande45
E. G. Hill45
Pierre S. DuPont50
Pres. Hoover45
Margaret McGredy45
	\$3.30

\$2⁶⁸

FRAGRANT ROSES • • •

FIELD GROWN

You may choose from a large selection of the finest quality roses grown . . . both standard and patented plants. And you will be surprised at our low prices. Take advantage of this opportunity to get finest quality roses . . . at a saving. Select the varieties you wish . . . and order today!

NEWEST, IMPROVED, PATENTED VARIETIES

Blaze—Plant patent No. 10. The climbing rose sensation of America. Large flowers of the most dazzling scarlet red are produced freely from the top of the plant to the bottom (and it grows 10 to 12 feet tall). Hardy as Paul's Scarlet. Throughout the summer, new shoots burst forth with their brilliant blooms.

Each \$1.00; 3 for \$2.50, postpaid.

Nigrette—Plant patent No. 87. No rose in recent years has created such a sensation as this rose. The flowers are a deep maroon with a blackish velvety sheen, deliciously fragrant and produced very freely. In fact, it is always in bloom—a healthy, vigorous grower. We like it.

Each \$1.50; 3 for \$3.75, postpaid.

Countess Vandal—Plant patent No. 38. Extra long pointed buds of copper open into glorious flowers of coppery bronze suffused with pink and gold. As the flower ages, the petals roll back, and the bloom is lovely at all stages. It is hardy, a vigorous grower and free bloomer. Easily one of the world's great roses. At our new low price, all can now have this lovely rose. Pictured on front cover.

Each \$1.00; 3 for \$2.50, postpaid.

Mary Hart—Plant patent No. 8. A striking red sport of Talisman; deep velvety blood red flowers.

Each \$1.00; 3 for \$2.50, postpaid.

HARDY CLIMBING ROSES

Each \$0.45	6 for \$2.50	12 for \$4.75	EXCEPT AS NOTED
-----------------------	------------------------	-------------------------	--------------------

American Beauty—A strong grower with large flowers of a pleasing rose-pink. Very good for cutting.

American Pillar—A single flowering variety with large flowers of a lively pink with white center and yellow stamens.

Dr. Van Fleet—Long pointed buds of a rich flesh-pink. Splendid for cutting.

Dorothy Perkins—The ideal pink rambler with numerous clusters of beautiful double shell pink flowers. A vigorous grower and ideal to cover fences.

Excelsa—The red Dorothy Perkins. Radiant blood red clusters fairly covering the thrifty vines.

Gardenia—Deep golden flowers passing to creamy white. Quite hardy.

Mme. Gregoire Staechelin (Spanish Beauty)—Considered the finest pink climbing rose. Flowers borne singly on long stems. Vigorous grower, soon covers the porch or arbor.

Each 65c; 3 for \$1.75, postpaid.

Jacotte—An orange-apricot-copper colored climber of the loveliest.

Each 80c; 3 for \$2.25, postpaid.

SHRUB ROSES--HARDY AS OAKS

Rugosa Alba—Single pure white flowers, highly scented, followed by pretty berries. Strong grower.

Rugosa Rubra—Flowers bright rosy crimson, fragrant.

Each 40c 3 for \$1.15, postpaid

Sir Thomas Lipton—A vigorous grower to 6' high, very hardy and produces semi-double white fragrant flowers, at intervals all summer.

Hugonis Rose—A dense bush growing 6' to 8' tall. In May covered with shimmering yellow flowers 2" across, single, set closely to red-maroon canes. Grows like Spirea V. H. in habit.

Each 50c 3 for \$1.35, postpaid



Lady Hillingdon

DWARF POLYANTHA

"Baby" Roses

Here are the ideal roses for bedding purposes. Also are useful in foundation plantings for additional color. They form shapely, compact, bushy plants about 12 or 18 inches high, producing from spring until frost, their clusters of small flowers. Your choice of colors: Red, Pink, White. Postpaid.

Each \$0.50	6 for \$2.80	12 for \$5.40
-----------------------	------------------------	-------------------------

LARGE FLOWERING BABY ROSES

Hardy as Spirea. Always in bloom. Require no spraying. All they ask is a little cultivation. Plant these roses by the dozen.

Else Poulsen—Rose pink

Lafayette—Light cherry red

Cecile Brunner (Sweetheart Rose)—Sea shell pink

Gloria Mundi—Brilliant orange scarlet, large clusters

Each \$0.60	6 for \$3.15	12 for \$5.95
-----------------------	------------------------	-------------------------

Postpaid

7
ROSES
FOR
\$2²⁸

Another money-saving Red Seal Bargain for you.

	Reg. Price
2 Red Radiance	\$0.90
2 Pink Radiance90
2 Mrs. Chas. Bell.....	.90
1 Kaiserin Victoria45
	\$3.15

Cheerful Neosho Evergreens



Neosho Supplies You With Highest Quality Evergreens Direct From the Ground.

Rich shades of green, blue and gold can be had in Evergreens to brighten and beautify the surroundings of your home 365 days out of the year.

We grow our own, they come right from the ground to you, with all their vigor and vitality preserved, and at most reasonable prices for trees.

JUNIPERS as Low as

\$1.50
EACH

This family includes both erect and prostrate forms and is the hardiest species for our middle western climate, withstanding our hot, dry summers and changeable climate most satisfactorily.

Elegantissima Juniper (Juniperus Virginiana Elegantissima)—5' to 6'—A wide spreading grower with light green foliage, the ends of which are tipped with bright gold in spring. The plant presents a soft, graceful appearance.

3-3½ ft. \$3.75 3½-4 ft. \$4.75

PROSTRATE FORM JUNIPERS

Especially desirable for foundation plantings and rockeries.

Andorra Juniper (Juniperus Depressa Plumosa)—1' to 2'—A low spreading variety with silver green foliage in summer, turning a rich purple in winter. Quite desirable.

15-18 in. \$1.50 2-3 ft. \$2.65
18-24 in. \$2.00 3-3½ ft. \$3.25

Pfitzer's Juniper (Juniperus Chinensis Pfitzeriana)—4' to 5'—A choice semi-prostrate type with spreading branches of rich blue-green foliage. Very hardy.

18-24 in. \$2.50 2-2½ ft. \$3.25
2½-3 ft. \$4.50

Savins Juniper (Juniperus Sabina)—4' to 5'—A low grower with spreading fan-shaped branches of rich dark green foliage.

2-2½ ft. \$2.50 2½-3 ft. \$3.25
3-3½ ft. \$4.50

ERECT FORM JUNIPERS

Ideal for Accent Points and Specimens

Cannarti Juniper (Juniperus Virginiana Cannarti)—12' to 15'—A dense columnar form with rich deep green foliage. Attractive blue berries. Can be kept sheared into narrow column. Very hardy. One of the best types developed in recent years.

3-4 ft. \$4.50 4-5 ft. \$5.50
5-6 ft. \$6.50

Chandler's Silver Scopulorum—The finest Pyramidal Juniper. Soft, compact foliage, silver color, straight central leader.

3-3½ ft. \$4.00 3½-4 ft. \$5.00

Silver Juniper (Juniperus Virginiana Glauca)—15' to 20'—A beautiful type developing into a tall column with distinct silvery gray foliage. Can be trimmed as desired.

3-4 ft. \$4.50 4-5 ft. \$5.50

Chinese Juniper (Juniperus Chinensis)—12' to 15'—Compact, broad, columnar form with bluish green prickly foliage.

3-4 ft. \$3.50 4-5 ft. \$4.50
5-6 ft. \$5.50 6-8 ft. \$7.50

Platte River Juniper (Juniperus Virginiana)—15' to 20'—A narrow, compact pyramidal type with bright green foliage in spring, gradually darkening in summer. Best transplanted in spring.

3-4 ft. \$3.50 4-5 ft. \$4.50
5-6 ft. \$5.50 6-8 ft. \$7.50

Spiny Greek Juniper (Juniperus Excelsa Stricta)—A cone shaped Juniper with prickly foliage of rich steel-blue, green. Grows to 10' tall.

18-24 in. \$1.75 2½-3 ft. \$2.65
2-2½ ft. \$2.35

Norway Spruce

3-4 ft. \$3.50 4-5 ft. \$4.50

Black Hill Spruce

2-3 ft. \$2.50 3-4 ft. \$3.50
4-5 ft. \$5.25

Concolor Fir

3-3½ ft. \$5.50

Douglas Fir

3-4 ft. \$3.50 4-5 ft. \$4.50

Cedrus Atlantica

4-5 ft. \$4.75 5-6 ft. \$6.00
6-7 ft. \$7.50

Platte River
(Juniperus Virginiana)

Best He Has Seen

"I have today been informed by my brother, John Bonk of Waverly, Missouri, that he has received the trees I ordered from you and that they are the best he has seen. I was very much pleased to hear this, and you may rest assured that any trees I may need in the future will be ordered from you."—Frank Bonk, Chicago, Ill.

Says Trees Fine as Can Be

"I received the trees in good shape. They are fine ones, too. I put them out as directed. They are fine as they can be."—Virgle F. Powell, Gillham, Ark.

"Certainly Are Good Stock"

"My order reached me in perfect condition and I am satisfied with trees. They certainly are good stock, and I will try to do my best with them. I followed planting directions."—Theo. Gallardo, Walker Route, Prescott, Ariz.



Here's an attractive setting of evergreens. The scene will be much more beautiful when the ground is covered with snow.

Brighten the Winter Landscape

FAVORABLE climatic conditions, rich soil and a long growing season are combined here at Neosho in our Nurseries to promote rapid growth of beautiful, hardy specimen Evergreens. They are frequently root pruned to make them transplant easily, and they are dug with a generous ball of earth and carefully burlaped to insure success in transplanting. When you buy Evergreens from Neosho you get better developed trees that insure satisfactory results.



ARBOR VITAE

Hardy Neosho Specimens that add great beauty to your yard . . . both winter and summer. Varieties listed below, and priced as **LOW** as

\$1²⁵

Berkman's Golden Arbor Vitae (Biota Aurea Nana)—6' to 8'—A broad compact globular form with tips of foliage a bright golden color. Quite striking.

18-24 in. **\$2.00** 2½-3 ft. **\$3.25**
2-2½ ft. **\$2.50** 3-3½ ft. **\$4.25**

Gold Spire Arbor Vitae (Biota Aurea Conspicua)—12' to 15'—A Chinese variety of pyramidal form with golden foliage suffused with green. A good plant for contrast.

3-4 ft. **\$2.75**

Baker's Pyramidal Arbor Vitae—A Chinese Pyramidal variety of beautiful dark green foliage, very compact and symmetrical.

2-3 ft. **\$1.25** 3½-4 ft. **\$2.65**
3-3½ ft. **\$1.95**

Bonita Globe Arbor Vitae—A round, globe shaped Chinese variety which does not require shearing; fine green foliage.

3-4 ft. **\$2.25** 4-5 ft. **\$3.25**

Colorado Spruce, Blue or Green (Picea Pungens)—40' to 50'—Vigorous and hardy, making fine broad based pyramidal specimens.

Blue 2-2½ ft. **\$4.50** 2½-3 ft. **\$6.00**
Green 2-2½ ft. **\$3.00** 2½-3 ft. **\$4.00**

PINES **\$2⁰⁰**
as **LOW** as
(Varieties listed below)

Austrian Pine (Pinus Nigra)—50' to 60'—Dark green foliage with needles 4 inches long and borne in pairs. A rapid grower but retains its lower branches. Fine for specimens or screens.

Scotch Pine (Pinus Sylvestris)—50' to 60'—Shorter and softer needles than Austrian. A rapid grower also, making it valuable for protective screens.

2-3 ft. **\$2.00** 4-5 ft. **\$4.50**
3-4 ft. **\$3.00** 5-6 ft. **\$5.50**

Mugho Pine (Pinus Montana Mughus)—1' to 3'—The only genuine dwarf pine. Needles short and stiff. Assumes a globular form; very dense. Good in foreground of foundation plantings.

15-18 in. **\$2.00** 18-24 in. **\$2.95**

Abelia Grandiflora—2' to 4'—Leaves glossy green. Blooms profusely from July to September with small white flowers blushed with pink. Holds foliage all winter in south. Not hardy north of Arkansas-Oklahoma.

2-3 ft. **\$1.00** 3-4 ft. **\$1.50**

Pfizer's Juniper

Cotoneaster Horizontalis—2' to 3'—Low spreading plants with small shiny leaves and bright berries that remain on branches well into winter. Very choice for rock gardens and foreground in foundation plantings.

2-2½ ft. **\$2.00**

Cotoneaster Franchetti.

3-4 ft. **\$2.65**

Nandina—A dwarf Jap plant with delicate foliage which colors a brilliant orange red in fall—clustered with bright red berries in autumn. Not hardy north of Neosho.

15-18 in. **\$1.35** 18-24 in. **\$1.95**

Oregon Holly (Mahonia Aquifolia)—2' to 4'—A beautiful evergreen shrub with smooth shining holly leaves, small bright yellow flower clusters in May and blue berries. The leaf color varies during year, assuming various shades of green with flecks of red and bronze. Will stand extreme cold.

15-18 in. **\$1.35** 18-24 in. **\$1.95**

Julianne Barberry—A new hardy evergreen Barberry. An upright, slow-growing shrub with narrow glossy foliage which colors a deep bronze in winter.

18-24 in. **\$1.50** 2-2½ ft. **\$2.00**

We specialize in growing the finest types of Evergreens suited to the Mid-West. This picture shows only one of our several blocks of Evergreens and these rows are a quarter of a mile long. There are 35,000 Evergreens in this one block. Our Evergreens are all balled and burlapped.



• NEOSHO ORNAMENTAL



Sugar Maple

FREE SHADE TREES CAN BE HAD FOR THE DIGGING AND HAULING. Did it ever occur to you to go out in the woods and dig a shade tree yourself, or to hire someone to do so for you? Why not? The tree itself will cost you nothing and your only expense is the cost of digging and hauling. It would be a great idea if they would only grow, but experience will prove that only one out of ten woods-dug trees grow, because you cannot get an adequate root system with them. In the nursery row we not only prune the top to make them shapely, but we root-prune our trees so that we develop a root system in close to the trunk; that enables us to deliver to you a tree that can be successfully transplanted. So for the sake of economy and results as well buy—Neosho Nursery Grown, Root-Pruned Shade Trees.

Ash, Mountain, European (Sorbus Aucuparia)—20' to 30'—Handsome foliage turning to orange-scarlet in fall. The white flowers appearing in May are followed by large clusters of red fruits which remain most of the winter.

6-8 ft. Each **\$2.50**

Ash, White (Fraxinus Americana)—50' to 60'—One of the most desirable trees for landscape and street planting. The trunk is straight and smooth. Exceptionally clean and rapid growing, with handsome foliage which in autumn colors a mellow gold tinged with bronzy purple. It is easily transplanted and prefers a rich loamy soil with sunny exposure but grows well in any well-drained location.

6-8 ft. Each **\$0.85** 3 for **\$2.25**
 8-10 ft. Each **1.25** 3 for **3.30**
 3-3½ in. **\$2.75** 3½-4 in. **\$4.00**

Green Ash—
 2½-3 in. **\$2.50** 3-3½ in. **\$3.75**

Elm, American (Ulmus Americana)—80' to 100'—A noble native tree of majestic height and graceful drooping branches with handsome leaves. One of the best types for wide spread shade in the yard. Indispensable for park and avenue plantings.

5-6 ft. **\$0.75**

6-8 ft. Each **\$1.00** 3 for **\$3.50**

Maple, Hard or Sugar (Acer Saccharum)—60'—We believe this is the king of shade trees. Straight and symmetrical, resistant to diseases and long lived. Its handsome foliage is a blaze of color in the fall. Cannot be excelled for street and lawn planting. While its growth is not as rapid as many softer wooded trees, it is much more permanent and desirable.

5-6 ft. Each **\$1.50** 3 for **\$4.15**
 6-8 ft. Each **1.95** 3 for **5.25**
 8-10 ft. Each **2.75** 3 for **7.25**
 10-12 ft. Each **3.50**

Schwedler's Maple—Purple leaf hard maple.
 6-8 ft. **\$3.00**

Oak, Pin (Quercus Palustris)—30' to 60'—A charming medium size cone shaped tree, distinguished by its straight trunk, the drooping tendency of its lower limbs and its fine, sharply pointed, deeply cut leaves. Long lived and a fast grower in moist soils.

6-8 ft. Each **\$2.00**
 8-10 ft. Each **2.75**

Weeping Willow, Wisconsin (Salix Blanda)—25' to 40'—A hardy tree with slender drooping branches.

Willow, Golden Weeping (Salix Niobe)—20' to 30'—Golden bark, drooping branches.

6-8 ft. Each **\$1.75** 3 for **\$4.95**

American Linden or Basswood—
 6-8 ft. **\$1.75**

Box Elder—
 6-8 ft. **\$0.90** 8-10 ft. **\$1.25**

NEOSHO SPECIAL STRAIN OF CHINESE ELM

Grown True to Type by Our Special Budding Process. Here Below You Will See Pictures of Both Neosho Large Leaf and Regular Chinese Elm.

H. A. Adams of Kansas City, Mo., sends this picture of a Broadleaf Chinese Elm. This was a 6-8 ft. tree when planted two years ago and it is now 24 feet tall. The adjoining American Elms were infested with aphid and other insect pests while this tree was immune from these pests.

Regular Chinese Elm, 5 years old



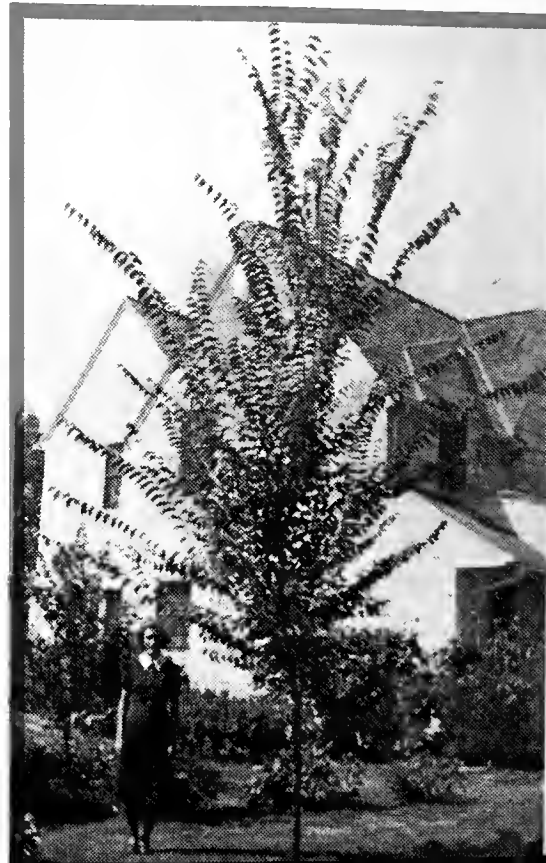
Elm, Chinese (Ulmus Pumila)—30' to 50'—A very fast grower, enduring drought and extremes of temperature, very free from diseases and insect injury. Leaves out early in spring and sheds them late in fall. Leaves smaller, branches more slender than American Elm. Hardy.

Regular Chinese Elm—

4-5 ft.	\$0.60
5-6 ft.75
6-8 ft.	1.25
8-10 ft.	1.95
2-2½ in. diameter.	2.50
2½-3 in. diameter.	3.00
3-4 in. diameter.	5.00

Elm, Chinese (Special Strain)—30' to 50'—Broad Leaf. A brand new improved sort of this popular tree, developed in our nursery. Is a faster grower, has larger leaves of a dark green color. Very desirable. Cannot be purchased elsewhere.

Special Large Leaf Chinese Elm—
 5-6 ft. **\$1.00** 6-8 ft. **\$1.40**



AND SHADE TREES •

TREES form the walls of our outdoor living rooms . . . where we may rest and relax. They are indispensable in the scheme of landscaping . . . and bring treasured shade and coolness. Neosho Shade and Ornamental Trees offer the widest variety in form, coloring, and beauty of flower and fruit!

And whether you plant one or many Neosho trees . . . you can feel certain they will make strong, vigorous growth . . . increasing in beauty from year to year. That's because Neosho Shade and Ornamental Trees are selected as to variety and stock for rapid growth and resistance to blight. All Neosho Trees are straight and shapely, the larger sizes well branched. Roots are heavy and carefully dug. Every item offers exceptional value. Choose Neosho trees, and you will be assured "Growing Satisfaction"!



Dogwood, White Flowering (Cornus Florida)—20' to 25'—Few trees in the middle west can compare with the beauty of the Dogwood in full bloom. Flowers immense, a clear white, 3 in. across and are produced in great abundance before leaves appear. Foliage grayish green, turning to blood red in fall.

2-3 ft. Each **\$1.25**
3-4 ft. Each **\$1.75**

Dogwood (Cornus Rubra)—Same in habit of growth and flower as White Dogwood, excepting flower is beautiful pink. Very showy.

2-3 ft. Each **\$1.75**
3-4 ft. Each **\$2.50**

Carolina Poplar—

8-10 ft. **\$0.75** 3 for **\$1.95**
10-12 ft. **.90** 3 for **2.50**

Poplar, Lombardy (Populus Nigra Italica)—60'—A narrow, steeple-like tree, strikingly picturesque, valuable as specimens, as screens, in mixed plantings for contrast with broader trees and behind buildings. Rapid growing.

5- 8 ft. Each **\$0.40** 3 for **\$1.05**
6- 8 ft. Each **.50** 3 for **1.35**
8-10 ft. Each **.75** 3 for **1.95**
10-12 ft. Each **.90** 3 for **2.50**

Red Flowering Peach—Bright red, profuse flowering small tree.

3-4 ft. Each **\$0.80**
4-5 ft. Each **1.00**

Plum, Purple Leaves (Prunus Pissardi)—10' to 12'—Low growing tree or tall shrub. Can be used either as specimen or in shrub groups for accent. Leaves are rich reddish-purple all summer.

3-4 ft. Each **\$1.00**
4-5 ft. Each **1.25**
5-6 ft. Each **1.40**

Mulberry, Tea's Weeping—Grafted on stems 5' to 6' high. Slender drooping branches.

2-yr. Head Ea. **\$2.25**

Umbrella Catalpa (Catalpa Bignonioides Nana)—10' to 12'—A round headed tree, the top being umbrella shaped. Leaves are large and make a dense shade. Ideal for formal or balanced plantings. Can be kept compact and symmetrical by small amount of trimming.

1 yr. Heads, 4½ ft. stems, Ea. **\$1.50**
2 yr. Heads, 5 ft. stems, Ea. **2.00**

Willow, Pussy (Salix Discolor)—15' to 20'—This tree produces in early spring showy catkins that are very ornamental. Best grown in bush form. Makes ideal background for rock garden.

3-4 ft. Each **\$0.60**

White Fringe (Chlonanthus Virgintica)—15' to 25'—Has large clusters of feathery white flowers in May, followed by bluish-back berries. Leaves large and attractive. Can be used as shrub borders where height is desired.

2-3 ft. Each **\$1.25**
3-4 ft. Each **1.75**

Paul's Scarlet Thorn—Deep crimson, double flowers.

3-4 ft. Each **\$1.50**
4-5 ft. Each **1.95**

Hercules Club—

4-5 ft. **\$1.00** 5-6 ft. **\$1.50**

Flowering Crab, Bechtels (Malus ioensis)—10' to 15'—Forms a rounded compact, low tree, which is a profusion of double pink, fragrant flowers in May. Foliage is attractive and ornamental, fruits follow the flowers. Useful as specimen or in tall shrub groups.

2-3 ft. Each **\$0.75**
3-4 ft. Each **1.00**

Red Bud (Cercis Canadensis)—15' tall, with irregular shape and large, round, dark green leaves. Flowers appear before the leaves and are an unusual shade of dark pink.

4-5 ft. Each **\$1.00**
5-6 ft. Each **1.25**
6-8 ft. Each **1.50**

Russian Mulberry (Morus Alba Tatarica)—20' to 25'—Small white or black fruits. Use for hedges or windbreaks. Very hardy.

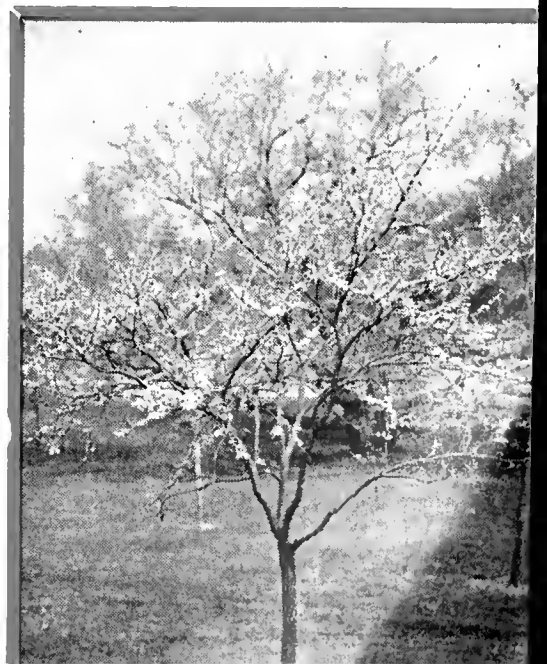
6-8 ft. **\$0.75** 8-10 ft. **\$1.00**

American Persimmon—

5-6 ft. **\$1.00**



Lombardy Poplar rows in our nursery





ADD CHARM TO YOUR GROUNDS WITH A NEOSHO ROCK GARDEN

Get Finest Quality, Fast-Growing Plants . . . at Our Low Direct-from-Grower-to-You Prices!

LOOK at the charming rock garden above! You can have one just as beautiful . . . by planting Neosho Rock Garden Plants. They thrive and grow quickly . . . because they

have the famous strong Neosho root systems. And they grow in the most seemingly unpromising locations. Order from the many varieties described below!

NOTE You are allowed the regular lower quantity prices on the total number of plants you order . . . regardless of different varieties. You get any combination of varieties in this group you wish . . . at the regular low quantity prices.

- Jules Sandeau—Lovely watermelon pink.
- Mrs. Chas. Dorr—Lavender.
- Thor—Salmon pink.
- Ethel Prichard—French Mauve.

COLUMBIA PATENTED

Columbia, Patented. A marvelous new phlox, a wonderful color. Extremely hardy, a vigorous grower; immense cameo pink blossoms.

Each 50¢ 3 for \$1.25
Postpaid

Take Advantage of These Money-Saving Prices!

(Varieties listed below)

Each 25c	3 for 60c Postpaid	12 for \$1⁹⁵
--------------------	---------------------------------	-----------------------------------

Alyssum Saxatile (Basket of Gold)—Broad masses of bright yellow flowers in early spring. 1' tall. Needs good drainage.

Arabis Alpina (Rockcress)—Pure white flowers produced in dense masses in April and May. 1' tall.

Cerastium Tomentosum (Snow-in-Summer)—A low growing plant with silvery white foliage, producing abundance of snow white flowers in May.

Forget-Me-Not (Myosotis)—Dainty rich blue flowers with yellow eye produced freely all summer. Will thrive in moist, shady borders.

Pansies, Hardy (Viola)—Best edging plant, remaining in full bloom from May until October if not allowed to go to seed. Pure rich violet and yellow shades.

Helianthemum (Rock Rose)—Form dense masses of pleasing foliage studied with small brilliant flowers of various colors. Must have full exposure to the sun. 9".

Iberis Gibraltarica (Candytuft)—A sheet of white flowers in spring completely covering its rich dark green foliage. 1' tall.

Linum Perenne (Flax)—Elegant, feathery leaved, free flowering, hardy perennials with transparent yellow blossoms. Dry, sunny location.

Phlox Subulata—An early spring flowering type with pretty moss-like evergreen foliage which is completely hidden under masses of pink bloom in April and May.

Saponaria (Soapwort)—Pretty prostrate rockery plant, flowers rosy-pink in great abundance in May and June.

Sedum Stolonifera (Stonecrop)—Evergreen leaves, flowers purplish pink in July and August. 6".

Sedum Spectabile—18" rose colored flowers, August-September.

Thymus (Thyme)—Prostrate creeping plant with fragrant foliage with rosy purple or crimson flowers in June and July.

Tunica Saxifraga (Coat Flower)—Slender graceful plants with hairlike stems covered with small Baby's Breath-like flowers of light pink all summer.

PHLOX

(Varieties listed below)

Each 25c	3 for 65c Postpaid	12 for \$1.95
--------------------	---------------------------------	-------------------------

Phlox—Beautiful border plants, most effective in late summer and early fall. Large flower heads of various brilliant colors. Never let go to seed. In these five beautiful varieties:

- Phlox Beacon—Brilliant cherry red, 36" tall.
- Phlox Rijnstroom—Lovely rose pink, 36" tall.
- Phlox Rhenlander—Large salmon pink, 36" tall.
- Phlox Special French—Clear pink.
- Phlox Miss Lingard—White with faint pink shadings. 36" tall.
- Phlox Flebrand—Brilliant orange scarlet.

NEW DWARF BRONZE SUMMER FLOWERING CHRYSANTHEMUM

This wonderful plant is our own introduction and originated here on our own grounds. It has met every test and delights every one who sees it. Can be secured only from Neosho Nurseries Co.

A dwarf compact plant covered with bronze blossoms from August until frost.

Each 60¢, 3 for \$1.50

PINK CUSHION

—Dwarf Summer Flowering—A dwarf compact plant covered with pink blossoms from late July until frost.

Each 40¢ 3 for \$1.00
Postpaid

OLD-FASHIONED BLEEDING HEART

Each 40¢ 3 for \$1.00
Postpaid

Special Perennial Offer!

12 Beautiful Perennials

Postpaid \$1.49

- 3 Anemone
- 3 Balloon Flower
- 3 Shasta Daisy
- 3 Eupatorium
- 1 Dwarf Pink Mum Free



Phlox Subulata

Neosho Perennials Give Colorful Charm

Year After Year

First Cost is the Last... and is Surprisingly Low, at Neosho's Direct-from- Grower-to-You Prices!

FEW plants yield such a rich return of pleasing color with little effort as hardy Neosho Perennials. Once planted, they return year after year to delight the gardener anew with their charming color of bloom and foliage—or their alluring fragrance. Neosho Perennials include familiar favorites and new improved varieties of outstanding Neosho Quality.

Anchusa—Tall spikes of beautiful blue flowers in June and intermittently all summer.

Anthemis (Tinctoria) — Handsome finely cut foliage and large golden yellow flowers all summer. Excellent cut flowers.

Aster—Autumn flowering perennials, in various colors. 2'-3' high.

Aster Feltham Blue—A free flowering blue.

Aster Novae Angliae Roseum Superbum—Almost red and a profuse bloomer.

Baby's Breath (Gypsophila)—Numerous feathery panicles of small, starry white flowers borne in profusion on thread-like stalks in early summer.

Balloon Flower (Platycodon)—Large showy bell-shaped flowers of deep blue produced on 20" spikes all summer.

Canterbury Bells (Campanula)—Two or three-foot spikes of various colored large bell-shaped flowers during May and June. A biennial.

Carnations—Hardy Garden. One of the most popular and useful flowers. Mixed colors.

Chinese Lantern (Physalis)—All colors.

Clove Pinks (Dianthus)—Rich colored flowers of spicy fragrance on spikes 12" to 18" high. Handsome glaucous green foliage. Will bloom all summer if flowers are cut.

Columbine (Aquilegia)—A graceful and beautiful perennial of various colors, blooming in spring. Should be planted in partial shade 12" apart.

Coreopsis (Tickseed)—Foliage small, with large bright yellow, daisy-like flowers from June through August. One to two feet high. Excellent in masses in border. Good for cutting.

Delphinium (Larkspur) — Beautiful stately spikes 4' to 6' tall of various blue shades in June.

Delphinium (Bellamosa)—Dark blue.

Delphinium (Belladonna)—Sky blue.

Delphinium (Gold Medal Hybrids)—Shades of deepest indigo, royal purple and pastel tones.

A Perennial Garden Provides Blooming Flowers Early and Late



These Low Direct-to-You-Prices Mean Big Savings!

Each	3 for	12 for
20c	55c	\$1.65
	Postpaid	

NOTE— You are allowed the regular lower quantity prices on the total number of plants you order . . . regardless of different varieties. You get any combination of varieties in this group you wish . . . at the regular low quantity prices.

Eupatorium Coelestinum (Hardy Ageratum)—Light purple flowers similar to Ageratum, in flower from August until frost. 12" to 24".

Foxglove (Digitalis)—Flower heads over 3' long crowded with bell-shaped blossoms in colors from white and shell pink to deepest rose in June and July.

Gaillardia (Blanket Flower)—One of the most desirable hardy plants, has large daisy-like flowers 2 to 3 in. across, brilliant yellow at tips shading to maroon at center, profusely borne on strong stems 2 or 3 ft. high. Blossoms from June through October. Good for cutting.

Hollyhocks—Double. Old-fashioned flower. 6'-8' tall.

Lemon Lily (Hemerocallis)—Sweet scented, clear yellow lily-like flowers on erect stems 2' to 3' high in June and July. Leaves are long and narrow.

Ornamental Grass (Eulalia Japonica)—Long narrow, graceful foliage, and when in flower the attractive silvery grey plumes are 6' to 7' high.

Oriental Poppy (Papaver)—Large open flowers 6" to 8" across, brilliant orange-scarlet, borne on strong hairy stems 2' to 3' high. Foliage large, rough grayish green, becomes unsightly after blooming in June.

Painted Daisy (Pyrethrum)—Showy daisy-like flowers of all shades of color except blue and yellow, on long stems in May and June. Elegant, finely cut foliage. 18" to 24" high.

Plaintain Lily (Funkia)—Handsome large green foliage with lily-like blue flowers on spikes 2' to 3' tall, from July to August.

Physostegia False-Dragon-Head (Virginica)—Handsome long spikes of delicate pink flowers July to October.

Red Hot Poker (Tritoma)—Long narrow, grassy leaves, drooping tubular flowers of rich orange-scarlet on long dense spikes in August to October.

Shasta Daisy—Large white flowers on long stems from June through July. Excellent for cutting.

Santolina—A dwarf evergreen perennial with delicate silvery white foliage. Useful as rock or border plants. Also used to edge beds and walks. 1'.

Statice Latifolia—Heads of minute purplish, blue flowers in July-August. These if cut and dried last for months.

Stokesia—Cornflower Aster. A handsome perennial with china Aster-like flowers that appear late in the season on erect leafy stems 1' to 2' high. Blooms from July through October.

Sweet William (Dianthus Barbatns)—Brilliant flower heads of pink, white and crimson shades on leafy erect stems. 10" to 18" high in May and June. Really a biennial.

Sweet Pea—Hardy. Trailing habit. Pink or white.

HARDY DWARF ASTERS

Countess of Dudley—Pink. 10"
Marjorie—Rose Pink. 12"
Victor—Lavender Blue. 8"

EACH 40c 3 FOR \$1.00



1 New Dwarf
Bronze Mum
1 Pink Cushion
Mum

1 New Dwarf Aster
All 3 for **\$1.25**

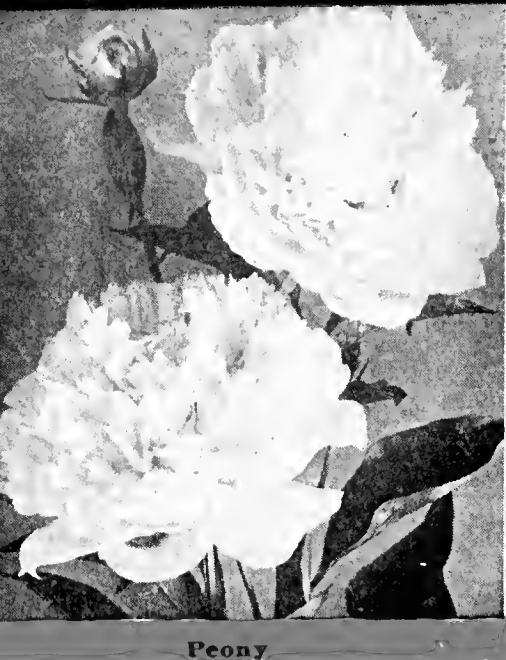
Hints for Successfully Growing Perennials--

Clay soil should be made lighter with manure and sand. It pays to mix in thoroughly well-rotted manure or bonemeal in good soil that has been deeply dug.

Set plants a little deeper than they stood in the nursery and spread out the roots. Plants moved in full growth should always be cut back.

Cultivate during the growing season to preserve moisture, to aerate the soil, and to keep down weeds.

In dry spells, water thoroughly at intervals rather than frequent sprinklings.



Peony

STRONG, VIGOROUS INTO GLORIOUS BEAUTY

Get these Finest Quality Bulbs
at Our **LOW DIRECT-FROM-
THE-GROWER-TO-YOU
PRICES**

4^c
Each
in 25 Lots

Bulb growing flowers are a joy to grow because the magnificent, rich colored blooms are the finest that you can produce. Start this year.

Prize-Winning Dahlias

We offer this year a new list of Dahlia varieties. Every one an outstanding, prize-winning show variety; finer sorts cannot be had from any source at any price.

NOTE—You are allowed the regular quantity prices on the total number of plants you order . . . regardless of different varieties. You get any combination of varieties in this group you wish . . . at the regular low quantity prices.

POSTPAID

Each **40¢** 3 for **\$1.00** 12 for **\$3.60**

- Edna Ferber**—Cactus; glistening coral shading to old gold at base; petals slightly twisted. Blossoms 8-10 in.
- Emperor**—Informal decorative; deep crimson, tall grower, generous bloomer, blossoms 4-6 in. diameter.
- Jane Cowl**—Informal decorative; bronze, buff and salmon; one of the best. Blossoms 8-10 in.

- Jersey Beacon**—Formal decorative; orange-scarlet, 6-8 in. blossoms.
- Mrs. Ida De Ver Warner**—Formal decorative; bright lilac-rose; blossoms 6-8 in.
- Margaret Woodrow Wilson**—Creamy white with pink back; very dependable; 6-8 in. blossoms.
- Sagamore**—Formal decorative; gold, generous blossoms 6-8 in.

POSTPAID

Each **60¢** 3 for **\$1.65** 12 for **\$5.95**

- Fort Monmouth**—Cactus; giant rich crimson or maroon-twisted petals; blossoms 10-12 in.
- For best results, plant May 1st; plant 8 inches deep and cover 3 inches deep and gradually work dirt to plant; in case of heavy rain, may have to uncover.

- Kathleen Norris**—Semi-formal; gigantic rose pink; good bloomer; blossoms 8-10 in.
- Queen of Garden Beautiful**—Formal decorative; immense yellow blossoms 6-8 in.
- Treasure Island**—Formal decorative; bright apricot with gold and rose shadings; blossoms 8-10 in.

30^c
Each
in 12 Lots

GLADIOLI

Extra fine Bulbs, guaranteed to bloom this year. Choose from these named varieties.

5^c
Each
in 12 Lots

NOTE—You are allowed the regular quantity price on total number of plants you order, regardless of different varieties.

Postpaid

6 for **35¢** 12 for **59¢**

- Mrs. Pendleton**—Pink.
- Scarlet Princess**—Scarlet.
- Alice Tiplady**—Yellow.
- Willbrink**—Lavender pink.
- Albania**—White, late.
- Giant Nymph**—Light pink.
- Schwaben**—Creamy yellow.
- Autumn Queen**—Creamy yellow.
- Tycho Zang**—Salmon pink.
- Capt. Boynton**—Lavender.
- W. H. Phipps**—La France pink.
- Los Angeles**—Shrimp pink.

GLADIOLI

Rainbow Collection

Complete color assortment—Our selection of varieties.

25 for . . . 95c

Postpaid

Special Garden Assortment

**24 Beautiful Assorted
Bulbs and Roots**

Regular
\$2.65
Value
for
\$1.95

Our Selection of Varieties

Here is a wonderful collection of different colors and variations of roots and bulbs . . . that will grow into delightful beauty for your grounds. Regular high quality Neosho plants . . . with the strong Neosho health and vigor . . . that assures success. Here's what you get at this amazingly low price:

- 3 Peonies
- 6 Iris
- Red
- 3 Dahlias
- White
- 12 Gladioli
- Pink

Postpaid



SPECIAL!!
Dahlia Collection
Our Selection

10 FOR \$1.25

POSTPAID

Lilies • 22^c
AS LOW AS

Each
in 3 Lots

- Regale Lily, postpaid, 3 for.. **\$0.65**
- White Day Lily, postpaid, 3 for.... **1.10**
- Gold Banded Lily, postpaid 3 for.... **1.10**
- Emerald Lily..... **.95**
- Fire Lily..... **.75**
- Lily of the Valley (clumps of 10 pips) 3 clumps for.... **1.25**

BULBS • THAT GROW FOR YOUR GROUNDS

Have Beautiful Flowers from April Throughout June . . . By Planting Neosho Peonies and Iris. They Are Amazingly Easy to Raise . . . Bloom Every Year.



German Iris

PEONIES PRICED AS LOW AS 30^c EACH

There's a wealth of varieties to select from in this group. Healthy, strong, vigorous bulbs that thrive and bloom for years. In Lots of 3

	Each	Lot of 3
Avalanche —A beautiful, large free blooming, pure white; late.....	\$0.50	\$1.35
Augustin d'Hour —Solferino red; extra large; midseason.50	1.35
Eugene Verdier —Large, exquisite late pink of unusual beauty.60	1.65
Felix Crousse —A brilliant ruby red, large, late bloomer; a Neosho favorite. Rating 84	.60	1.65
Couronne d'Orr —A crown of gold and white.	.35	.90
Duc de Wellington —A fragrant, large flowering white35	.90
Duchess de Orleans —Midseason pink.....	.35	.90
Karl Rosenfield —Crimson, mid-season; red. Rating 88.50	1.35
Edulis Superba —Early, clear deep pink. Rating 76.35	.90
Festiva Maxima —Not a new variety, but one of the best; large, double white with carmine tips. Rating 93.....	.35	.90
Meissonier —Reddish purple, mid-season.....	.35	.90
Nigricans —Dark red; very late.....	.50	1.35
Richard Carvel —A very early, large crimson	.75	2.00
Mme. Jules Dessert —Salmon white; mid-season favorite. Rating 92.....	.60	1.65
Walter Faxon —A vivid, bright pink; extra large. Rating 93.....	.85	2.00
Therese —Almost perfect, extra large shell pink. Rating 98.....	1.00	2.75

DECORATION DAY PEONY COLLECTION

3 White }
1 Pink } **PEONIES 5**
1 Red }

for only
\$1.10

Our selection of varieties. Guaranteed to be valued in excess of \$1.75.

POSTPAID
Reg. \$1.75 Value

• CANNAS •

- King Humbert (Red)**—Bronze foliage, 4'.
- King Humbert (Yellow)**—Bronze foliage, 4'.
- President**—Scarlet, large flowers, green foliage, 4'.
- Shenandoah**—Salmon pink, bronze foliage, 4'.
- Wintzer's Colossal**—Vivid scarlet, green foliage, 5'.

Postpaid

3 for 50c 6 for 85c 12 for \$1.45

• CALADIUM •

(Elephant Ear) Postpaid
3 for 50¢ 6 for 85¢

• JAPANESE IRIS •

A charming, different type of Iris that continues your blooming season up into June. Every flower lover should add this group to their garden.

Postpaid
3 for 50¢ 12 for \$1.85

- Gekka-no-nami**—Glistening, creamy-white.
- Koko-no-iro**—Enormous, double, violet-purple, with gold throat.
- Mouiki-no-taki**—Bright, rosy, crimson, feathered with white.
- Uchiu**—Largest size, longest stems, sky blue with golden center.

• Iris

Iris are often called hardy orchids because of the richness and beauty of the flowers. They vary in height from 1 to 3 feet, are very easy to grow and blossom in exquisite shades of many beautiful colors. The Japanese blossom after the German varieties are through flowering.

POSTPAID

3 FOR 30c

12 FOR 95c

- IRIS—(Germanica Varieties)**
- American Black Prince**—Dark purple, 24" stem.
- Celeste**—Pale, azure blue, 30".
- Lent A. Williamson**—Violet, golden beard, 42".
- Madam Chobaut**—Orange and red.

- Queen Caterina**—Pale violet, 38".
- Queen of May**—Rose and lilac, 2-3'.
- San Souci**—Yellow and brown, 2'.
- Siberian Orientalis**—Intense blue, narrow leaves.
- Madame Chereau**—White and lavender, 30".

PRIZE WINNERS—(Germanica Varieties)

POSTPAID

3 FOR 65c

12 FOR \$1.95

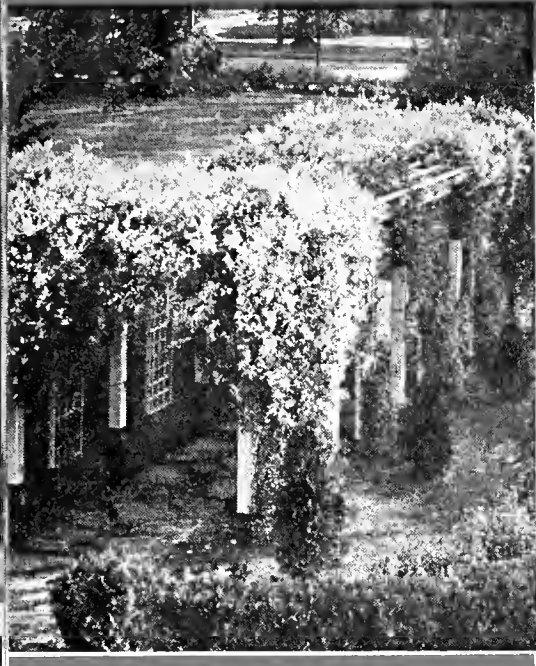
- Afterglow**—Lavender and buff, 36".
- Ambassadeur**—Velvety purple, 42".
- Susan Bliss**—Deep rose pink, 40".

- Mother of Pearl**—Pale lavender, 44".
- Opera**—Violet red, 24".

SPECIAL MEMORIAL DAY IRIS COLLECTION

12 Iris, different colors, our selection.
12 for 75¢, Postpaid

LUXURIANT FOLIAGE AND PROFUSE BLOOM IN NEOSHO VINES •



Silver Lace Vine

American Ivy or Virginia Creeper—A valuable and extensively used vine with deeply cut leaves which color a beautiful crimson in fall. Fine for covering trees, rocky slopes, walls, etc.

Postpaid, Each **40¢** 3 for **\$1.05**

Boston Ivy—Clings to smooth surface. Colors in fall.

Postpaid, Each **50¢** 3 for **\$1.35**

English Ivy—Evergreen leaves. Clings to walls. Plant on north or east exposure.

Postpaid, Each **40¢** 3 for **\$1.05**

Bittersweet—Very hardy, with large orange-crimson fruits all winter.

Postpaid, Each **50¢** 3 for **\$1.35**

Have Finest Grade Vines . . . at a Saving . . . By Taking Advantage of Lower Prices Made Possible by Neosho Direct-from-Grower Selling

VINES add much to the beauty of the home. You are sure of luxuriant foliage and profuse bloom when you buy strong, two-year-old, field-grown Neosho stock. Exceptional values in popular varieties.

Clematis Japanese (Paniculata)—Good foliage. Countless small star-like flowers in August and September.

Postpaid, Each **50¢** 3 for **\$1.35**

Clematis Jackmani—A large flowering type, velvety violet-purple in mid-summer.

Clematis Madam Edouard Andre—Very large single crimson-red flowers in mid-summer. For arbors or trellis.

Clematis Ramona—Same as Jackmani, with sky-blue flowers.

Postpaid, Each **70¢** 3 for **\$1.95**

Halls Honeysuckle—One of the best ground covers, its white and yellow blossoms are extremely fragrant. Will grow in shade.

Postpaid, Each **35¢** 3 for **90¢**

Scarlet Trumpet Honeysuckle—Heavy growth. Orange-scarlet flowers.

Postpaid, Each **40¢** 3 for **\$1.05**

Silver Lace Vine—A new vine, grows 25 feet a year. Sprays of white flowers in fall.

Postpaid, Each **70¢** 3 for **\$1.95**

Trumpet Vine—A robust woody vine. Its orange scarlet trumpet-shaped blossoms cluster at tip of branches. Leaves light green. Will climb to great heights on trunks of trees.

Postpaid, Each **40¢** 3 for **\$1.05**

Wisteria, Japanese (Grafted)—Large grape-like clusters of purple flowers in late spring. Sure to bloom.

Postpaid, Each **70¢** 3 for **\$1.95**

GRASS SEED as Low as

Have beautiful, green velvety lawns . . . by using Neosho superior grass seed. 4 varieties, priced below.

25c

PER LB.
in 5-lb. size
Postpaid

Neosho Superior Lawn Mixture—

1 lb. **\$0.35** 3 lbs. **\$0.80** 5 lbs. **\$1.35**

Composed of finest quality seeds mixed according to our special formula.

Neosho Dense Shade—

1 lb. **\$0.40** 3 lbs. **\$1.00** 5 lbs. **\$1.50**

Kentucky Blue Grass—

1 lb. **\$0.30** 3 lbs. **\$0.80** 5 lbs. **\$1.25**

(24 pounds to the bushel)

Here are More Letters of Praise for Neosho Stock!

Had Fine Results With Orchard
"I am planning to set an orchard and would like for you to send me a catalog and prices. I ordered an orchard from you several years back and have had fine results. We are especially proud of the Early Elbertas. Do you still have that same variety? Please send prices right away as I want to send an order."—W. S. Dennis, Nevada, Mo., Oct. 25, 1935.

Complete Grower Satisfaction
"I have complete grower satisfaction. Everything I got from you is growing nicely."—C. K. Ryan, Mound Valley, Kans., Sept. 7, 1935.

Neosho Stock Did Extra Well
"I got a splendid growth on the trees I got from you last April. They did extra well when they were transplanted on the 12th of April. Am well pleased with your trees."—Geo. F. Filbert, Cabool, Mo., Sept. 7, 1935.

NUT TREES

Budded and Grafted Improved Variety **\$1.95 EACH**

Thomas Black Walnut—Unusually large kernels with single thin partition so that kernels come out readily in halves. Extra fine quality.

4-6 ft. **\$1.95**

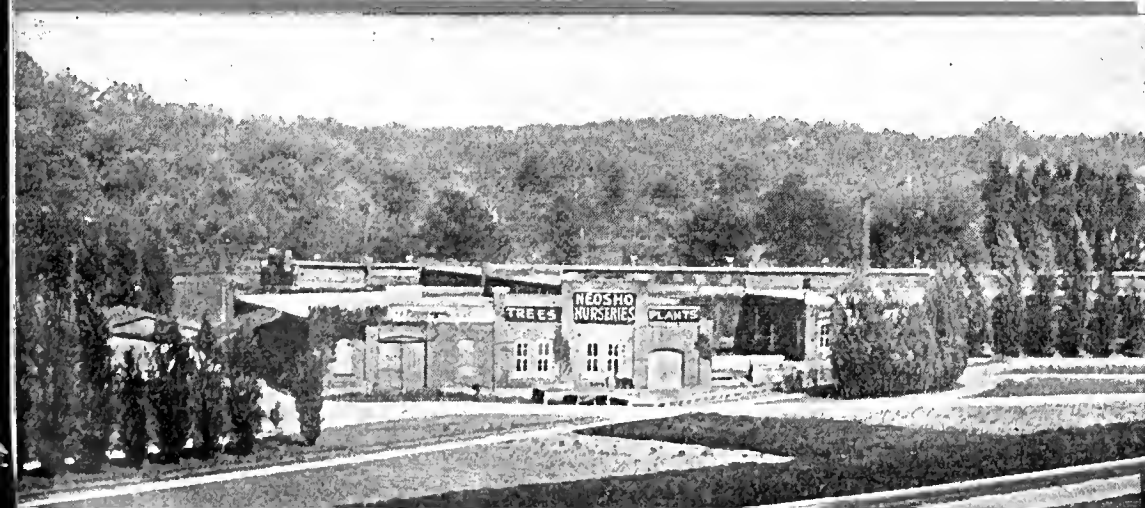
Butterick Pecan—A hardy thin shelled grafted Pecan of fine quality suitable for northern planting.

4-6 ft. **\$2.75**

Stuart Pecan—The most widely planted of the southern varieties, large size, fine quality, can be grown farther north than any other of the southern group.

4-5 ft. **\$1.95**

BIRD'S-EYE VIEW OF OFFICE AND STOREHOUSE



Showing group of large brick buildings in which are housed our general offices, shipping department, storehouses, etc., at Neosho, Mo. Our facilities for the storage, handling and shipping of nursery stock are unexcelled.

PROPER PLANTING

Trees, shrubs, and flowers require immediate and careful attention for successful results in planting. They must not be exposed to the wind or sun before planting, and should be cultivated and watered after planting to assure quick establishment.

HANDLING UPON ARRIVAL

Receive your stock without delay and plant just as soon as possible. Plants received in freezing weather should not be opened until they have been put in a cool but frost-proof cellar and gradually thawed out. The stock will not be injured if gradually thawed out in this way.

Stock which seems somewhat dry upon opening, should be buried in wet soil for a day or so. This will quickly liven the stems and make them ready for planting. Small bundles may be placed in tubs of water for the same results.

If possible plant at once. If weather conditions do not permit immediate planting, place bundles or boxes in a cool but frostproof cellar. Should planting be delayed more than one or two days, unpack stock and heel-in in a well-drained location.

Spade and plow thoroughly and deeply, raking or harrowing the soil fine and leveling off to facilitate planting. Dig holes generously wide and deep to receive root system without crowding or cramping roots. Loosen the soil in the bottom of the hole so that the roots may grow "in" readily. Poor soil may be benefited by spreading manure in sometimes in advance of planting.

PRUNING BEFORE PLANTING

Pruning stock at the time it is transplanted assures more rapid recovery, providing less heavy top to be supported by the roots which themselves are burdened with the task of re-establishing tiny feeding rootlets. Use a sharp knife or shears.

Trees. Remove about one-third of the top from average heavy tops, by clipping branch ends and removing small branches and interfering limbs. Cut off frayed or bruised roots just above the point affected. Leave one branch or stem to develop into a leader.

Shrubs. Thin out the tops of many branched shrubs, removing old wood, and cut back average plants about one-third. Hydrangeas should be cut back to the ground. Remove frayed or damaged roots as directed above for Trees.

Fruit Trees. Trim roots as advised for Trees above. Peach, Cherry, Apple, Pear and Plum stocks in branched sizes, should be pruned so that three to five branches, well placed about the trees, should remain. Leave a leader for developing. One year grades, usually whips, should be topped to the desired heading out, usually from 12 to 30 inches.

Raspberry, Blackberry, etc. Are usually supplied cut back. Tops should be removed to about 6 inches from ground when planted.

Grapes. Cut back roots proportionately to development. Tops should be removed, leaving one stem with three to four buds.

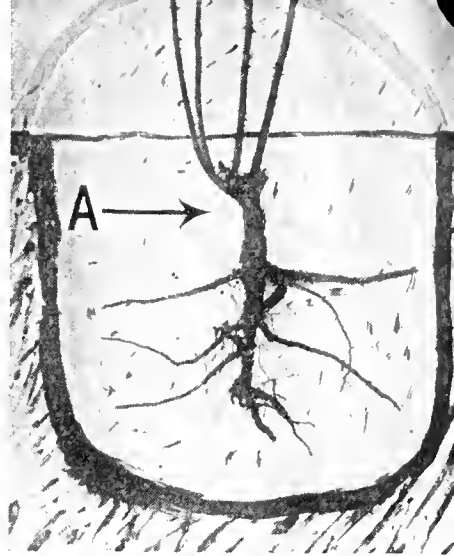
Roses. Cut roots as advised for trees and shrubs, removing bruised and broken parts. Cut tops back to three to four buds on each stem.

Privet Hedge. Cut tops back to four to six inches above the ground to insure dense base growth. Set slightly deeper than stocks stood in the nursery.



ROSES

Roses require thorough cultivation of the soil and are gross feeders, necessitating rich ground or heavy fertilizing for best results. Plant all graft-joints so that they are at least three inches below ground level to prevent the strong root system of the rose stock from sending up shoots which will smother the budded top variety.



BULBS

Spring blooming bulbs, such as tulips, narcissus, hyacinths, etc., should have good garden soil with natural drainage. Sand added to heavy ground will greatly benefit bulbs.

Cannas, Dahlias, Gladioli and Lilies require good garden soil, a sandy loam being productive of best results. Place lily bulbs slightly on their sides so that water may drain away and prevent rotting in wet seasons.

PLANTING TREES AND SHRUBS

Set trees one or two inches deeper than they stood in the nursery, as shown by the collar or bark at top of roots. Shrubs should be set at the same depth or slightly deeper than in the nursery. Spread roots out naturally and work in pulverized soil about the roots, tramping firmly with the feet. If soil is dry, water well before hole is filled with soil. Lastly, fill the hole level, but do not mound up, as this tends to shed water away from roots and holds back growth. Don't tramp down the top soil, but leave loose to prevent baking and cracking.

Evergreens should be set a trifle lower than they stood in the nursery. Dig the hole a foot larger than the ball of earth about the roots and fill in with good loamy soil, packing firmly by tramping or settling by filling hole with water. Loosen burlap at top of ball and roll back or cut off, but don't remove entire burlap covering.

Perennials are best planted with trowels, dibbles, or similar hand tools. Remove badly injured or dried up leaves. Trim long straggling roots back and cut out bruised or damaged parts. Plant so that roots spread out or extend down naturally. Don't crowd into small holes. Plants with crowns should have the crowns slightly below or at the surface of the ground.

Grapes should be planted along the same lines as shrubs. They require rich soil for best results and a few bones placed in the bottom of the hole will provide rich feeding later on. Trim roots slightly and cut back tops well.

Plant Rhubarb 3 feet apart with buds one inch below ground level; **Asparagus** one foot apart in furrows 6 inches deep. Fertilize Rhubarb with manure every year; also Asparagus when through cutting in June.

Currants and Gooseberries should be set about 4 feet apart and cut back about one-half. Every year after fruit has been gathered trim off old wood and burn. **Raspberries and Blackberries** should be set 3 to 4 feet apart. After fruiting cut out old canes and burn, leaving a few vigorous new stems for the following year's crop.

HEELING-IN STOCK TEMPORARILY

Dig a trench sufficiently deep and wide to receive roots and at least a third of the top without crowding or breaking roots. Lean the stock bundles or trees at an angle to save extra digging. Fine soil should be used so that the roots can be packed well to prevent air-pockets and drying out. Water when the ground is dry and heap the soil well about the stems of the stock. If trees or shrubs are to be heeled-in over winter, they should be well covered and all packing material removed to prevent mice from nesting and damaging stock.

AFTER CARE

Frequent cultivation after planting will maintain a dust mulch on top of the soil to conserve moisture and continue growth. Hoeing rather shallow gives best results in this respect and keeps beds free from weeds and orderly in appearance.

In dry spells, artificial watering is strongly advised. Don't sprinkle. Water thoroughly. If a hose is used, remove the nozzle and let the water soak into the ground until saturated down to the roots. No further water is needed for several days if this is followed. Watering in the evening or in early morning is best.

Fertilizing in the fall acts as a winter mulch and enriches the soil for the next season's showing. Manure should be applied on top of the soil. It may be spaded in when well-rotted, but should never be placed next to the roots of plants.

Shrub beds and circles cut about trees look much better when trimmed up with a spade occasionally during the summer. Ragged edges about shrub areas and weedy beds destroy much of the beauty of plantings.

SPECIAL MONEY-SAVING OFFERS!

\$1.00 -- BARGAINS -- \$1.00

6 APPLE TREES, 2-3 ft. **\$1.00**
Black Ben, Jonathan, Winesap,
Delicious, Wilson Red,
Yellow Transparent **Postpaid**

6 PEACH TREES, 2-3 ft. **\$1.00**
Bell of Georgia, J. H. Hale, Heath
Cling, Early Rose, Rochester **Postpaid**

5 CHERRY TREES, 2 ft. **\$1.00**
Montmorency **Postpaid**

5 PLUM TREES, June Buds **\$1.00**
Endicott, Abundance,
Compass, Wild Goose **Postpaid**

15 GRAPE VINES, Commercial **\$1.00**
Grade
Concord, Moore's Early **Postpaid**

20 SEEDLING PEACH TREES, 2-3 ft. **\$1.00**

3 PEAR TREES **\$1.00**

25 RASPBERRIES **\$1.00**
Cumberland, Cuthbert,
St. Regis (Everbearing),
Chief, Latham **Postpaid**

50 ASPARAGUS **\$1.00**
Martha Washington **Postpaid**

100 STRAWBERRIES **\$1.00**
25 Blakemore, 25 Aroma,
25 Everbearing, 25 Dorsett **Postpaid**

3 DWARF, SUMMER FLOWERING, **\$1.00**
HARDY CHRYSANTHEMUM
2 Pink, 1 Bronze; Divisions **Postpaid**

3 ROSES, Everblooming 2-yr. Field **\$1.00**
Grown
Our Selection
1 Red, 1 Pink, 1 White **Postpaid**

7 PERENNIALS **\$1.00**
Shasta Daisy, Balloon Flower, Lemon
Lily, Foxglove, Hollyhock, Eupatorium
Physostegia **Postpaid**

25 GLADIOLI, Mixed Colors **\$1.00**
1 DARK RED DAHLIA **Postpaid**

10 IRIS, Mixed Colors, Good Varieties **\$1.00**
2 PEONIES, 1 Red, 1 White **Postpaid**

3 SHADE TREES, 3-4 ft. **\$1.00**
Chinese Elm **Postpaid**

4 REDLEAF BARBERRY, 12-15 in. **\$1.00**

4 SPIREA ANTHONY WATERER, **\$1.00**
12-18 in.

6 JAPANESE BARBERRY, 12-15 in. **\$1.00**

7 SPIREA VAN HOUTTEI, 12-15 in. **\$1.00**

15 CALIFORNIA PRIVET, 12-18 in. **\$1.00**

4 CLIMBING VINES **\$1.00**
2 Hall's Honeysuckle,
1 Clematis Japanese,
1 Scarlet Trumpet Honeysuckle **Postpaid**

3 LBS. SUPERIOR MIXTURE **\$1.00**
GRASS SEED

SILK TREE, 3-4, 3 for **\$1.00**
Postpaid

ONE YEAR SHRUB SPECIAL

Good Until March 15th Only

10 Plants for..... **\$1.00** Postpaid

Plants 6-8 inch and 8-10 inch sizes.

Your choice of any of the following varieties: Tamarisk Africana, Weigela Rosea, Jap. Bush Honeysuckle, Jetbead, Mock Orange (White Boquet), Snowberry, Spirea A. W., Spirea Thunbergi, Spirea Froebeli, Butterfly Bush, Althea, Beautyberry, Deutzia Pride of Rochester, Aronia (Black).

Your order for this Special must be in our hands by March 15th.

ROSE LOVERS' ECONOMY SPECIAL

5 Choice Varieties— **\$1.98**
1 Radiance, Red
1 Radiance, Pink
1 Mrs. Chas. Bell, shell pink
1 Kaiserin Augusta Victoria, white
1 Lady Hillingdon, yellow **Postpaid**

FREE—With This Offer:

1 Hall's Honeysuckle Vine
1 Crimson Spirea, monthly blooming

12 Beautiful Shrubs \$2.59 Prepaid

What a bargain! Your choice of 2 or more each of any varieties . . . the total not to exceed 12 plants. Hardy, vigorous Neosho shrubs . . . that thrive and grow speedily. Order now!

Jetbead
Summer Lilac
Persian Lilac
Spirea Froebels
Japan Quince
Mock Orange Virginalis (double)

FREE—With this offer, 6 Gladioli and 6 Iris.

NEOSHO NURSERIES Co.

"Yours for Growing Satisfaction"

NEOSHO, Mo.