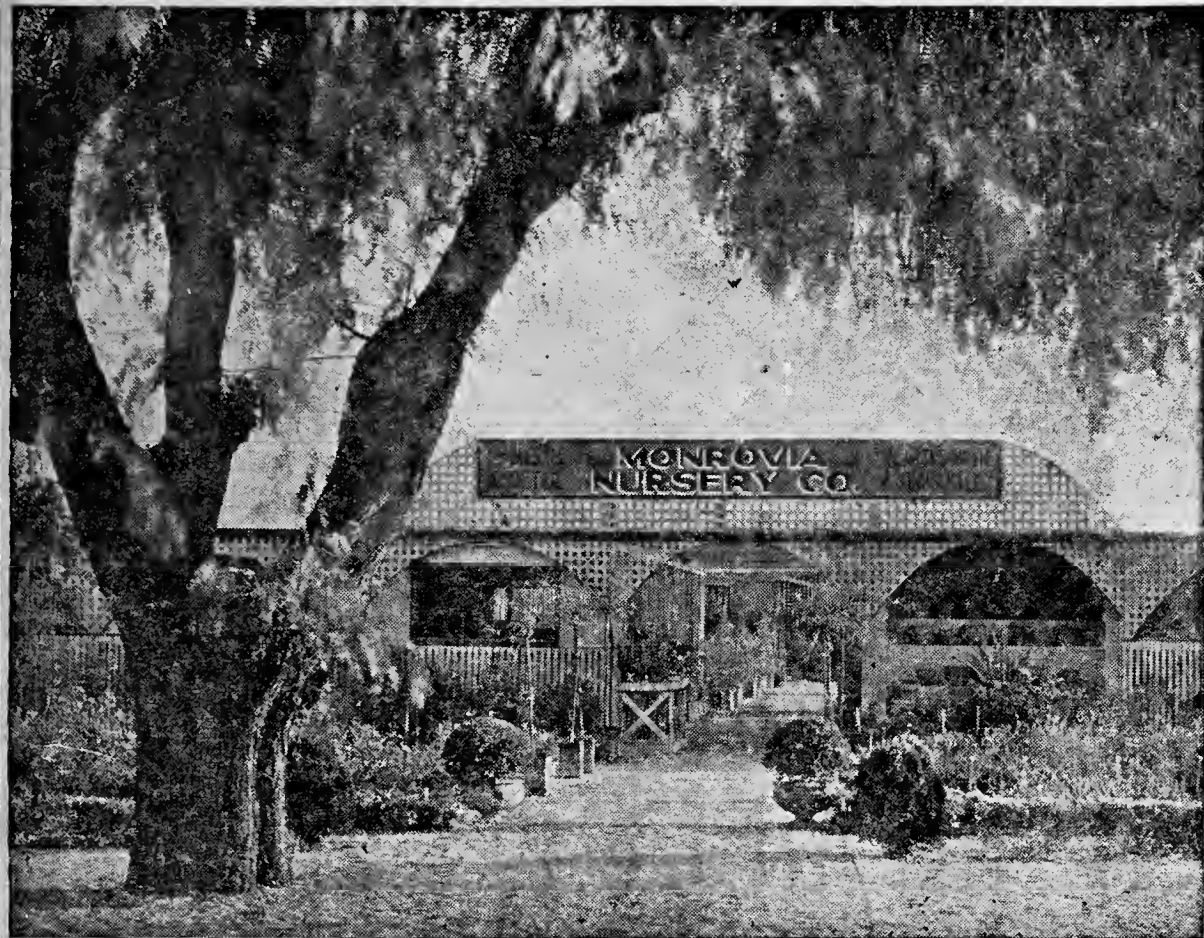


Historic, Archive Document

Do not assume content reflects current scientific knowledge, policies, or practices.



6200
OFFICE and SALESYARD

MONROVIA NURSERY CO.

600 WEST DUARTE ROAD

Phone Monrovia 96

MONROVIA, CALIF.



1937-38

~~~~~  
**WHOLESALE PRICE LIST**  
~~~~~

Contents

Page

Lining Out Stock..... 1- 7

Flat Stock..... 9

Gallon Can Stock.....10-16

5-Gallon Can Stock....17-20



TERMS—5% discount allowed on C.O.D. or Cash with orders. Customers having established credit with us, 60 days net. Legal rate of interest will be charged on all accounts over 60 days.

Quantity Discounts—Note under heads of Lining Out Stock.

Delivery—Free Delivery to most points in Southern California. To more distant points we will use safest and cheapest method. There will be a slight charge for packing materials used. Unless instructions are given we will use the method we think best.

Non-Warranty—We give no warranty express or implied as to description, quality, productiveness, or any other matter, of any nursery stock, trees or plants we sell. Other than the original price of the stock at the date of sale.

This list cancels all previous issues. Prices subject to change without notice.

File for Reference—Oct. 1, 1937

LINING OUT STOCK

A

Variety	Description	Size	Price
Abelia floribunda.	New red Mexican Abelia.....	(C) 2"	.10
Abelia grandiflora.	Blush pink flowers.....	(C) 2"	.07
Abelia schumani.	Pinkish lavender flowers larger than grandiflora.....	(C) 2"	.10
Abutilon megapoticum.	Russet yellow flowers semi-vine	(C) 2"	.08
Abutilon striatum.	Orange flowering, maple....	(C) 2"	.06
Abutilon.	Yellow.....	(C) 2"	.06
Acacia baileyana.	Bluish-green foliage.....	(S) 2"	.08
Acacia cultriformis.	Triangular shaped grayish foliage, yellow flowers.....	(S) 2"	.08
Acacia dealbata.	Green fern-like foliage yellow flowers	(S) 2"	.06
Acacia dealbata decurrens	(S) 2"	.06
Acacia farnesiana.	Fragrant acacia.....	(S) 2"	.06
Acacia floribunda.	Everblooming acacia.....	(S) 2"	.06
Acacia latifolia.	Broad leaf bush tree.....	(S) 2"	.06
Acacia melanoxylon.	Black Acacia.....	(S) 2"	.06
Acacia podalyriaefolia.	Round gray foliage.....	(S) 2"	.08
Acacia verticillata.	Needle acacia.....	(S) 2"	.06
Adenocarpus foliosus.	New. Splendid foliage plant with grass green leaves and small yellow peas shaped flowers.....	(S) 2"	.10
Ampelopsis sempervirens.	Evergreen ampel- opsis	(C) 2"	.06
Ampelopsis veitchi.	Boston Ivy.....	(S) 2"	.06
Amygdalus alba nana.	Dwf. white flowering almond	(C) 2"	.08
Amygdalus rosea nana.	Dwf. pink Almond....	(C) 2"	.08
Antigonon leptopus.	Rosa de Montana.....	(S) 2"	.08
Aralia sieboldi.	Rice paper plant.....	(S) 2"	.08
Aralia japonica.	Chinese rice paper plant.....	(S) 2"	.08

<p>Arbutus unedo. Strawberry tree. This beautiful holly leafed shrub is one of the finest shrub we can recommend. With its white bell shaped flowers in the summer and large cluster of brilliant red strawberry-like berries on that ripen about Christmas</p>	(S) 2"	.08
--	--------	-----

Aster fruticosus. Shrub aster. Evergreen shrub; masses of deep lavender flowers in the spring	(C) 2"	.10
Azalea Kurume; 35 Selected Varieties.....	(C) 2"	.10

B

Barleria cristata. Small shade loving shrub glossy green leaves with lavender flowers..	(C) 2"	.08
Bauhenia purpurea. Orchid tree.....	(S) 2"	.08
Begonia Luminosa. Red and Pinks.....	(C) 4"	.15
Begonia Rex type. Beautiful foliage.....	(C) 4"	.15
Beloperone splendens. Parrots feathers.....	(C) 2"	.07
Beloperone alba. Vigorous grower with large tubular flowers	(C) 2"	.10
Bignonia cherere. Red trumpet vine.....	(C) 2½"	.08
Bignonia cherere. Selected type will bloom much earlier	2½"	.12
Bignonia tweediana. Yellow trumpet vine.....	(S) 2½"	.06
Bignonia venusta. Orange trumpet vine.....	(C) 2½"	.08
Bignonia violacea. Lavender trumpet vine.....	(C) 2½"	.08
Bilbergia nutans	(D) 4"	.15
Buddleia lindleyana. Dwf. buddleia 2-3 ft. crim- son purple flowers. Good bloomer.....	(C) 2"	.06
Buddleia madagascarensis. Orange yellow.....	(C) 2½"	.06

LINING OUT STOCK

C

Variety	Description	Size	Price
<i>Callistemum rigidus</i> .	Red bottle brush.....	(S) 2"	.06
<i>Callistemum lanceolatus</i> .	Red bottle brush.....	(S) 2"	.06
<i>Callistemum viminalis</i> .	Tall semi-weeping plant, with scarlet flowers.....	(S) 2"	.08
<i>Calothamnus quadrifridus</i> .	Needle-like foliage rich crimson heather-like flowers.....	(S) 2"	.10
<i>Camphora officinalis</i> .	Camphor tree.....	(S) 2"	.08
<i>Cantua buxifolia</i> .	Magic flower; large cluster of orange tubular flowers in spring.....	(C) 2"	.08
<i>Carissa grandiflora</i> .	Natal plum.....	(C) 2"	.08
<i>Casuarina stricta</i> .	Beef oak.....	(S) 2"	.06
<i>Ceanothus cyaneus</i> .	Native California Lilac.....	(S) 2"	.08
<i>Clematis paniculata</i>	(S) 2"	.06
<i>Cedrus deodora</i> .	Deodor cedar.....	(S) 2½"	.08
<i>Cedrus deodora</i>	(S) 4"	.15
<i>Ceratonia siliqua</i> .	Carob tree. (St. John's Bread)..	(S) 2½"	.08
<i>Chamacyparis lawsoniana alumi</i> .	Blue laswon..	(C) 2½"	.10
<i>Chorizema illicifolia</i>	(C) 2"	.08

Chorizema varium. A great improvement over the *Chorizema illicifolia*. The flowers are much darker and more brilliant. This is our second season on this new chorizema, and we were completely sold out last season.....(C) 2" .10

<i>Choisya ternata</i> .	Mock orange.....	(C) 2½"	.10
<i>Cistus ladaniferous maculatus</i> .	Brown-eyed rock rose	(C) 2"	.08
<i>Cistus purpurea</i> .	Orchid with deep rose at base of petals. Quite hardy.....	(C) 2"	.10
<i>Cistus villosus</i> .	Purple, bush grower.....	(C) 2"	.06
<i>Convolvulus mauritanicus</i> .	Bright blue flowers. Excellent ground cover.....	(C) 2"	.06
<i>Cocculus laurifolia</i> .	Erect shrub with pointed evergreen foliage which is a deep green..	(C) 2½"	.10
<i>Coronilla glauca</i> .	Grayish green foliage with masses of bright yellow flowers. Good substitute for <i>Genista fragrans</i>	(S) 2"	.08
<i>Coprosma baueri</i> .	Wax plant.....	(S) 2"	.06
<i>Cotoneaster coolidgei</i> .	New. Red berries.....	(C) 2"	.08
<i>Cotoneaster horizontalis</i> .	Prostrate red berries; quite hardy.....	(C) 2"	.08
<i>Cotoneaster franchetti</i> .	Upright orange berries	(S) 2"	.05
<i>Cotoneaster pannosa</i> .	Erect; red berries.....	(S) 2"	.05
<i>Cotoneaster pannosa nana</i> .	Dwf. Fine for low planting; red berries.....	(C) 2"	.08
<i>Cotoneaster parnayi</i> .	Cluster of red berries upright; very graceful.....	(S) 2"	.08
<i>Cotoneaster salicifolia</i> .	Red berries. Weeping...	(C) 2"	.08
<i>Cuphea hysophyla</i> .	Low everblooming shrub; dotted with small pink flowers.....	(C) 2"	.06
<i>Cupressus sempervirens</i> .	Italian cypress.....	(C) 2¼"	.10
<i>Cupressus sempervirens</i> .	Royal Italian cypress	(C) 2¼"	.10
<i>Cydonia japonica rosea</i> .	Pink flg. quince.....	(C) 2"	.08
<i>Cydonia japonica</i> .	Scarlet red. flg. quince.....	(C) 2"	.08

D

<i>Diosma pulchrum</i> .	New breath of Heaven; pink	(C) 2"	.08
<i>Diosma reevesi</i> .	White breath of Heaven.....	(C) 2"	.08
<i>Dracaena indivisa</i>	(S) 2"	.06

LINING OUT STOCK

E

Erica blanda. Rosy-red tubular flower.
 Low and compact. This is the only
 everblooming heather(C) 2" .08

Variety	Description	Size	Price
Erica codonoides.	Best white heather.....	(C) 2"	.08
Erica cuprisoides.	New pink.....	(C) 2"	.10
Erica hyalina.	Orange flowers; excellent bloomer	(C) 2"	.08
Erica mediterranea Hybrid.	Dwf. purplish pink	(C) 2"	.08
Erica melanthera.	Scotch heather.....	(C) 2"	.08
Erica melantherea rosea.	Deep pink flowers very showy	(C) 2"	.08
Erica persoluta rosea.	One mass of rose pur- ple flowers	(C) 2"	.08
Erica Pres. Felix Faure.	Red flowers; excel- lent bloomer	(C) 2"	.08
Erica regerminans	(C) 2"	.08
Erica regerminans.	Rubra-red flowers.....	(C) 4"	.25
Escallonia glasnevensis.	Apple blossom escal- lonia, compact grower.....	(C) 2"	.08
Escallonia montevidensis.	White escallonia.....	(C) 2"	.08
Escallonia rosea.	Tall rose-pink.....	(C) 2"	.08
Escallonia rosea nana.	Dwf. rose flowers.....	(C) 2"	.08
Eucalyptus citriodora.	Lemon gum.....	(C) 2"	.07
Eucalyptus ficifolia.	Scarlet flowers.....	(S) 2"	.08
Eugenia hookeriana.	Large leaf variety.....	(S) 2"	.05
Eugenia myrtifolia.	Small leaf.....	(S) 2"	.05
Eugenia uniflora.	Curinam cherry.....	(S) 2"	.08
Euonymous japonica.	Plain green.....	(C) 2"	.08
Euonymous japonica aurea marg.	Golden edge	(C) 2"	.08
Euonymous japonica aureo-variegata.	(C) 2"	.08
Euonymous japonica pulchello var.	(C) 2"	.08
Euonymous radicans var. Creeping euoymus.	(C) 2"	.08
Eustomis russeliana	(S) 2"	.08

F

Fabina Imbricata.	Long white tubular flower....	(C) 2"	.08
Feijoa sellowiana.	Pineapple guava.....	(S) 2"	.08
Ficus minima.	Dwf. creeping fig, does not grow rank, and has much deeper green foliage than the ficus repens.....	(C) 2"	.08
Ficus repens.	Climbing fig.....	(C) 2"	.08
Fuchsia arabella.	White with red center.....	(C) 2"	.07
Fuchsia Amy Lye.	White with sgl. Watermelon red center	(C) 2"	.07
Fuchsia Feu tryphylla.	Red tubular flowers, very dark green foliage.....	(C) 2"	.07
Fuchsia Henry Henkle.	Pink tubular flowers with reddish foliage.....	(C) 2"	.07
Fuchsia Phenomenal.	Red, dbl. purple center..	(C) 2"	.07
Fuchsia Storm King.	Red, dbl. white center....	(C) 2"	.07
Fuchsia Trailing Queen.	Red trailing.....	(C) 2"	.07
Fuchsia Trailing Queen.	Red trailing.....	(C) 4"	.20

G

Gardenia grandiflora	(C) 2"	.10
Gardenia grandiflora	(C) 4"	.20
Gelsemium sempervirens.	Carolina Jasmine.....	(C) 2"	.10
Genista fragrans.	Sweet Broom.....	(C) 2"	.07
Genista monosperma.	White broom.....	(S) 2"	.10

LINING OUT STOCK

Variety	Description	Size	Price
Genista newrensis.	Mahogany—red and yellow sweet peas shaped flowers.....	(C) 2"	.10
Ghinko biloba.	Maiden Hair Tree.....	(S) 3"	.10
Grevillea banksi.	Large shrub with spikes of brilliant red flowers.....	(S) 2"	.08
Grevillea robusta.	Silk oak.....	(S) 2"	.06
Grevillea thelemanniana.	Everbloomer; cluster of red flowers.....	(C) 2"	.08
Guava.	Red strawberry.....	(S) 2"	.06
Guava.	Yellow strawberry.....	(S) 2"	.06
Grewia Caffra.	Purple star shaped flowers; with yellow at center.....	(S) 2"	.08

H

Hardenbergia comptoniana.	Graceful vine with racemes of blue flowers.....	(S) 2"	.08
Hardenbergia monophylla.	Spike of blue flowers.....	(S) 2"	.08
Hakea laurina.	Sea Urchin; brilliant red flowers.....	(S) 2"	.07
Hakea suaveolens.	Needle-like foliage; white flowers. Good for hot and dry section.....	(S) 2"	.07
Hedera canariensis.	Giant leaves.....	(C) 2"	.10
Hedera hibernica var.	Irish Ivy. Small leaf.....	(C) 2"	.06
Hedera helix.	English Ivy.....	(C) 2"	.06
Hedera maderensis var.	Var. Large leaf ivy.....	(C) 2"	.06

Helianthemum Lasianthus.	Yellow flower with purple at the center. Low and bushy.....	(C) 2"	.10
---------------------------------	---	--------	-----

Helianthemum ocymoides.	Spanish Sun Rose. New.....	(C) 2"	.10
Heliotrope.	Black prince.....	(C) 2"	.08
Hibiscus mimiflora.	Sgl. red.....	(C) 2½"	.10
Holmskioldia sanguinea.	Rambling vine with large cluster of brick red flowers.....	(C) 2"	.10
Hydrangea chisholm.	Beautiful dbl. pink.....	(C) 2½"	.10
Hydrangea hortensis	(C) 2½"	.08
Hydrangea hortensis. var.	(C) 2½"	.10
Hymenosporum flavum.	Small slender tree with masses of small creamy flowers.....	(S) 2"	.10
Hypericum moserianum.	Dwf. gold flowers.....	(C) 2¼"	.07
Hypericum patulum henryi.	Gold flower.....	(C) 2¼"	.07

I

Iochroma lanceolata.	Blue iochroma.....	(C) 2½"	.07
Iochroma fuchsioides.	Red iochroma.....	(C) 2½"	.07

J

Jacaranda mimosaeifolia	(S) 2"	.07
Jasminum grandiflorum.	Spanish Jasmine; white.....	(C) 2¼"	.08
Jasminum gracillium.	Pinwheel jasmine.....	(C) 2½"	.08
Jasminum poeticus.	Vigorous growing vine with glossy deep green leaves covered with small white star shaped fragrant flowers.....	(C) 2¼"	.08
Jasminum revolutum.	Italian jasmine, very fragrant.....	(C) 2½"	.06
Jasminum florida.	Dwarf with masses of small yellow flowers.....	(C) 2½"	.08
Jasminum stephanens.	Hardy pink jasmine.....	(C) 2¼"	.08
Juniperus chinensis pfitzeriana.	(C) 2¼"	.09
Juniperus chinensis procumbens.	Trailing Juniper.....	(C) 2½"	.10
Juniperus excelsa stricta.	Greek Juniper.....	(C) 2¼"	.08
Juniperus sabina	(C) 2"	.08
Juniperus sabina tamariscifolia	(C) 2"	.10
Juniperus sabina tamariscifolia.	Spreading Juniper with dark green foliage.....	(C) 4"	.20
Juniperus virginiana.	Red cedar.....	(S) 2"	.12

LINING OUT STOCK

K	Variety	Description	Size	Price
	Kolkwitzia amabilis.	Beauty bush hardy shrub with masses of pink flowers in spring.....	(C) 2"	.08
L				
	Lagerstromia dwf.	Lavender crepe myrtle.....	(C) 2"	.10
	Lagerstromia pink.	Crepe myrtle.....	(C) 2"	.08
	Lagerstromia red.	Crepe myrtle.....	(C) 2"	.08
	Lagerstromia Watermelon red.	Crepe myrtle.....	(C) 2"	.10
	Lagerstromia white.	Crepe myrtle.....	(C) 2"	.12
	Lantana dwf. pink.	(C) 2"	.06
	Lantana radiation.	(C) 2"	.06
	Lantana tall silver pink.	(C) 2"	.06
	Lantana sellowiana.	Trailing.....	(C) 2"	.06
	Lantana White.	(C) 2"	.06
	Lantana dwf. yellow.	(C) 2"	.06
	Laurus cerasus.	English laurel.....	(C) 2½"	.09
	Laurus Lusitanica.	Portugal laurel.....	(C) 2"	.08
	Lavendula dentata.	French lavender.....	(C) 2"	.06
	Lavendula vera.	English lavender.....	(C) 2"	.06
	Leonotis leonoris.	Lions tail.....	(S) 2"	.06
	Leptospermum chapmani.	Small compact foliage with wax-like flowers.....	(S) 2"	.08
	Leptospermum grandiflora.	Largest white flowers.....	(S) 2"	.06
	Leptospermum laevigatum.	Australian tea tree..	(S) 2"	.06
	Leptospermum reevesii.	Compact leptospermum laevigatum.....	(S) 2"	.08
	Leptospermum scoparius nicholsi.	Red flowers..	(S) 2"	.07
	Libocedrus decurrens.	Incense cedar.....	(S) 2"	.08
	Ligustrum ciliatum.	(C) 2"	.08
	Ligustrum henryi.	(C) 2"	.06
	Lilac.	Persian; cut leaf.....	(C) 2"	.06
	Linum flavum (Reinwardia).	(C) 2"	.06
	Lippia citriadora.	Lemon verbena.....	(C) 2"	.06
	Lonicera implexa.	Bush honeysuckle.....	(C) 2"	.10
	Lonicera halliana.	Halls honeysuckle.....	(C) 2"	.06
	Lonicera sempervirens.	Coral honeysuckle.....	(C) 2"	.08
	Loquat seedling.	(S) 2½"	.08
	Loropetalum chinensis.	New beautiful shrub with masses of cream flowers.....	(C) 2"	.08
M				
	Mackaya bella.	Deep green glossy foliage, delicate lilac trumpet flowers. Excellent for shade	(C) 2"	.08
	Mahonia aquifolia.	Oregon grape.....	(S) 3"	.10
	Magnolia grandiflora.	Southern magnolia.....	(S) 2¼"	.08
	Mandevillea suaveolens.	Chilean jasmine.....	(S) 2"	.08
	Melaleuca decussata.	Graceful shrub with lavender spikes.....	(S) 2"	.06
	Melaleuca hypericifolia.	Spikes of rich red flowers.....	(S) 2"	.06
	Melaleuca lateritia.	Flowers rich scarlet.....	(S) 2"	.06
	Melaleuca nesphyla.	Rose pink flowers.....	(S) 2"	.06
	Menziesia purpurea.	New orchid flowers; heather-like foliage.....	(C) 2"	.08
	Musa ensete abyssinian banana.	(S) 3"	.10
	Myoporum laetum.	Glossy green leaves.....	(C) 2¼"	.08

Myrtus buxifolia. Much superior to *Myrtus communis*. Foliage darker green. Leaves much glossier and quite a sturdy and hardy grower..... **(C)** 2¼" .03

LINING OUT STOCK

Variety	Description	Size	Price
<i>Myrtus communis</i> .	Roman myrtle.....	(C) 2"	.08
<i>Myrtus communis</i>	Var.....	(C) 2"	.08
<i>Myrtus communis</i>	<i>compacta</i>	(C) 2"	.08

Myrtus minima. Dwf. myrtle; grows very compact and uniform. It has been proven as excellent material for dwf. hedging or miniature planting. Grows 12 or 15 inches.....(C) 2" .10

N

<i>Nandina domestica</i> .	Heavenly bamboo.....	(S) 2"	.08
<i>Nerium</i>	Dbl. red.....	(C) 2½"	.07
<i>Nerium</i>	Mrs. Roeding. Dbl. salmon.....	(C) 2½"	.07
<i>Nerium</i>	<i>rosea</i> . Dbl. pink.....	(C) 2½"	.07
<i>Nerium</i>	<i>rosea</i> var. Var. dbl. pink.....	(C) 2½"	.06
<i>Nerium</i>	sgl. Pink.....	(C) 2½"	.08
<i>Nerium</i>	sgl. Red.....	(C) 2½"	.08
<i>Nerium</i>	Sister Agnes. Sgl. White.....	(C) 2½"	.07

O

Olive	Manzanillo.....	(C) 2½"	.10
-------	-----------------	---------	-----

P

<i>Parkinsonia aculeata</i> .	Jerusalem thorn.....	(S) 2"	.08
<i>Passiflora edulis</i> .	Fruiting passion vine.....	(S) 2"	.08
<i>Passiflora manicarta</i> .	Red flowering passion vine.....	(S) 2"	.08
<i>Philadelphus coronarius</i> .	Syringa.....	(C) 2"	.08
<i>Philadelphus mexicanus</i> .	Climbing fragrant dbl. flowers.....	(C) 2"	.08
<i>Pinus canariensis</i> .	Canary Island Pine.....	(S) 2"	.08
<i>Pinus halepensis</i> ,	Aleppo Pine.....	(S) 2"	.06
<i>Pinus pinea</i> .	Stone pine.....	(S) 2"	.08
<i>Pinus radiata</i> .	Monterey Pine.....	(S) 2"	.06
<i>Pittosporum eugenoides</i> .	Best substitute for eugenia in cold climate.....	(S) 2"	.06
<i>Pittosporum heterophylla</i>	dwf.....	(S) 2"	.08
<i>Pittosporum nigricans</i>	(S) 2"	.06
<i>Pittosporum phillyraeoides</i> .	Willow pittosporum.....	(S) 2"	.08
<i>Pittosporum rhombifolia</i> .	Golden pittosporum.....	(S) 2"	.08
<i>Pittosporum tobira</i>	(S) 2"	.06
<i>Pittosporum tobira</i> .	var.....	(C) 2"	.10
<i>Pittosporum undulatum</i>	(S) 2"	.06
<i>Pittosporum crassifolium</i>	(S) 2"	.08
<i>Pittosporum viridiflorum</i> .	Cape pittosporum.....	(S) 2"	.06
<i>Pleroma splendens</i> .	Princess flowers.....	(C) 2"	.08

Pleroma grandiflora. This is a great improvement over the *P. splendens* in that it grows much bushier and compact and the flowers are larger and more abundant. Flowers are deep purple.....(C) 2" .08

<i>Plumbago capensis</i>	(C) 2"	.08
<i>Podocarpus elongatus</i>	(S) 2"	.03
<i>Polygala dalmasiana</i>	(C) 2"	.08
<i>Prunus laurus cerasus</i> .	English laurel.....	(C) 2½"	.09
<i>Punica granatum nana</i> .	Dwf. pomegranate.....	(S) 2"	.06
<i>Pyracantha formosana splendens</i> .	One mass of rich red berries at Christmas.....	(C) 2"	.08
<i>Pyracantha lalandi</i> .	Orange berry, upright.....	(C) 2"	.03

LINING OUT STOCK

Pyracantha Rosedale. Our introduction. It produces clusters of crimson berries along the branches like bunches of grapes. Bears very well and grows fast. It is the most attractive pyracantha that we have ever found.....(C) 2" .10

Variety	Description	Size	Price
Pyracantha yunnanensis.	Low spreading with red berries.....	(C) 2"	.08

R

Raphiolepis Indica.	Indian Hawthorn.....	(S) 2"	.08
Raphiolepis umbellata-ovata	(S) 2"	.08
Rhus integrifolia.	(S) 3"	.10
Rosemarinus officinalis.	Rosemary.....	(C) 2"	.06
Ruellia mucrantha.	Bush shrub; large bell-shaped flowers.....	(C) 2¼"	.08

S

Salvia leucantha.	Purple salvia.....	(C) 2"	.06
Schinus mollis.	Pepper tree.....	(S) 2"	.06
Schinus terebinthefolius.	Brazilian pepper.....	(S) 2"	.08
Seaforthia elegans.	(S) 6"	.35
Sequoia sempervirens.	Redwood.....	(S) 2"	.08
Solanum rantionetti.	Semi-climber, bush; clusters of violet flowers.....	(C) 2"	.08
Sollya heterophylla.	Australian blue bell, creeping vine.....	(S) 2"	.08
Spartium junceum.	Spanish broom.....	(S) 2"	.06
Spirea Anthony Waterer.	Pink spirea.....	(C) 2"	.08
Spirea prunifolia.	Shoe button bridal wreath....	(C) 2"	.06
Spirea reevesi.	Dbl. bridal wreath.....	(C) 2"	.06
Spirea van houttei.	Sgl. bridal wreath.....	(C) 2"	.06
Strobilanthus diaranus.	Red foliage.....	(C) 2"	.08

T

Tamarix coolidgei.	Ever-bloomer.....	(C) 2"	.06
Tamarix hispanica.	Winter flowering.....	(C) 2"	.06
Tecoma garrocha.	Semi-vine with clusters of tubular orange flowers.....	(C) 2½"	.06
Thumbergia gibsoni.	Brilliant orange flowers; creeper	(C) 2"	.10
Thuja aurea nana.	Golden arborvitae.....	(C) 2½"	.10

U

Ulmus parvifolia.	Evergreen elm.....	(S) 2"	.08
--------------------------	--------------------	--------	-----

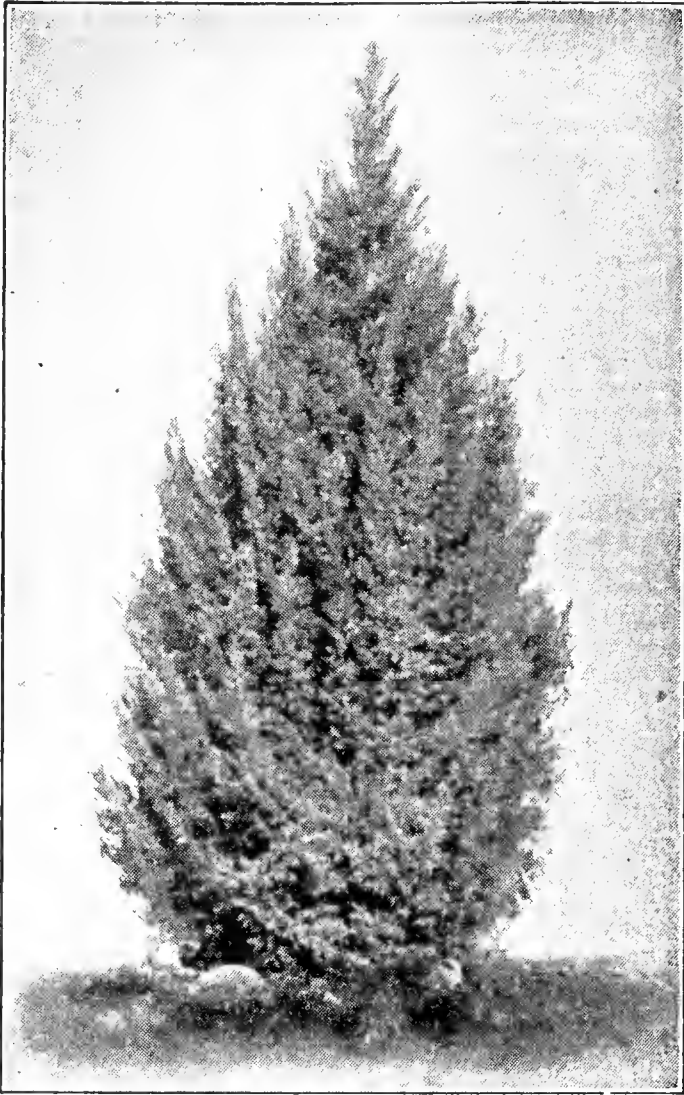
V

Viburnum japonica.	(C) 2½"	.08
Viburnum odoratissima.	Fragrant snowball.....	(C) 2½"	.10
Viburnum opulus sterile.	Eastern snowball.....	(C) 2½"	.08
Viburnum suspensum (sandanqua)	(C) 2½"	.08
Viburnum tinus.	(C) 2¼"	.07

W

Washingtonia Robusta.	(S) 2½"	.08
Weigelia Eva Rathke.	Red weigelia.....	(C) 2"	.08
Weigelia rosea.	Pink weigelia.....	(C) 2¼"	.06
Weigelia rosea var.	Pink weigelia.....	(C) 2¼"	.06
Wistaria chinensis sldg.	(S) 2½"	.06

SPECIMEN TREES



ARIZONA CYPRESS



THUYA AUREA NANA

FLAT STOCK

Variety		Price
A		
<i>Arenaria caespitosa</i>	(D)	1.00
B		
<i>Buxus japonica</i> . Japanese Boxwood.....	(C)	1.25
C		
<i>Cotoneaster pannosa</i>	(S)	2.50
<i>Cotoneaster parnayi</i>	(S)	3.00
<i>Coprosma baueri</i>	(S)	2.50
<i>Cupressus arizonica</i> . Arizona cypress.....	(S)	1.00
<i>Cupressus macrocarpa</i> . Monterey cypress.....	(S)	1.00
E		
<i>Eucalyptus cornocalyx</i> . Sugar gum.....	(S)	2.50
<i>Eucalyptus globulus</i> . Blue gum.....	(S)	1.50
<i>Eucalyptus polyanthema</i>	(S)	2.50
<i>Eucalyptus Rudis</i> . Desert gum.....	(S)	2.50
<i>Eucalyptus Viminalis</i>	(S)	2.50
<i>Euonymus japonica</i> . Plain green.....	(C)	4.00
<i>Euonymus japonica-aurea</i> . Marginata.....		4.00
<i>Eugenia hookeri</i>	(S)	1.50
<i>Eugenia myrtifolia</i>	(S)	1.50
F		
<i>Feijoa sellowiana</i> . Pineapple guava.....	(S)	3.00
G		
Guava strawberry red.....	(S)	3.00
L		
<i>Leonotis leonoris</i> . Lions tail.....	(S)	1.00
<i>Ligustrum japonica</i> . Japanese privet.....	(S)	1.00
<i>Ligustrum nepalense</i> . Nepal privet.....	(S)	.85
M		
<i>Myrtus compacta</i> . Cutting best type.....	(C)	4.00
P		
<i>Pittosporum nigricans</i>	(S)	2.00
<i>Pittosporum undulatum</i>	(S)	2.00
<i>Pittosporum Tobira</i>	(S)	2.00

GALLON CAN STOCK

A

Variety	Description	Price
<i>Abelia floribunda</i> .	New Mexican abelia red.....	.25
<i>Abelia grandiflora</i> .	(<i>Ruprestris</i>).....	.20
<i>Abelia schumani</i> .	New pink abelia.....	.25
<i>Abutilon megapotamicum</i> .	Flowers red and yellow, graceful habit.....	.20
<i>Abutilon striatum</i> .	Orange flowering maple.....	.20
<i>Abutilon</i> .	Pink flowering maple.....	.20
<i>Abutilon sanguinea</i> .	Red flowering maple.....	.20
<i>Abutilon yellow</i> .	Yellow flowering maple.....	.20
<i>Acacia Baileyana</i> .	Blue-gray foliage.....	.20
<i>Acacia cultriformis</i> .	Triangular gray leaves.....	.20
<i>Acacia dealbata</i> .	Fern-like green foliage.....	.20
<i>Acacia floribunda</i> .	Ever-blooming acacia.....	.20
<i>Acacia latifolia</i> .	Broad leaf, makes bushy tree.....	.20
<i>Acacia melanoxylon</i> .	Black acacia.....	.20
<i>Acacia podalyriafolia</i> .	Round gray leaves.....	.25
<i>Acacia verticillata</i> .	Needle acacia.....	.20
<i>Adenocarpus foliosus</i> .	New. Bright yellow pea shaped flowers; compact grass-green foliage.....	.30
<i>Althea purpurea</i> .	Orchid Rose of Sharon.....	.20
<i>Althea rosea</i> .	Pink Rose of Sharon.....	.20
<i>Althea dbl</i> .	White.....	.20
<i>Ampelopsis sempervirens</i> .	Evergreen ampelopsis.....	.20
<i>Ampelopsis veitchi</i> .	Boston Ivy.....	.20
<i>Ampelopsis veitchi var.</i>	Foliage smaller but very attractive; not quite as rampant as green Boston Ivy.....	.20
<i>Amygdalus nana</i> .	Dwf. White flowering almond.....	.20
<i>Amygdalus rosea nana</i> .	Dwf. Pink flowering almond.....	.20
<i>Antignon leptopus</i> .	Rose de Montana.....	.25
<i>Aralia sieboldi</i> .	Glossy rice paper plant.....	.20
<i>Aralia papyrifera</i> .	Japanese rice paper plant.....	.20
<i>Arbutus unedo</i> .	Strawberry tree.....	.25
<i>Aster fruticosus</i> .	Shrub. Aster; compact shrub with an abundance of small bright blue flowers in early spring.....	.25
<i>Azara microphylla</i> .	Small green leaves with arching stem.....	.25

B

<i>Bauhinia purpurea</i> .	Orchid tree.....	.20
<i>Beloperone tomentosa</i> .	False hops.....	.20
<i>Beloperone alba</i> .	New large vigorous grower, with white tubular flowers.....	.25
<i>Berberis knighti</i> .	Barberry.....	.25
<i>Berberis stenophylla</i>25
<i>Bignonia cherere</i> .	Scarlet trumpet vine.....	.25
<i>Bignonia cherere select.</i>	Selected from large leaf plants; will bloom much earlier.....	.35
<i>Bignonia tweediana</i> .	Yellow trumpet vine.....	.20
<i>Bignonia venusta</i> .	Orange trumpet vine.....	.35
<i>Bignonia violacea</i> .	Lavender trumpet vine.....	.35
<i>Bougainvillea braziliensis</i> .	Purple bougainvillea.....	.35
<i>Bougainvillea crimson lake</i> .	Scarlet bougainvillea.....	.45
<i>Bouvardia coral gem</i> .	Deep rose pink.....	.25
<i>Bouvardia humboldti</i> .	White bouvardia; very fragrant.....	.25
<i>Buddleia hartwigi</i> .	Purple.....	.20
<i>Buddleia lindleyana</i> .	Dwf. Crimson purple.....	.20
<i>Buddleia madagascarensis</i> .	Orange yellow.....	.20
<i>Buxus japonica</i> .	Japanese boxwood.....	.20
<i>Buxus japonica</i> .	Globe.....	.30
<i>Buxus japonica</i> .	Pyramid.....	.30

GALLON CAN STOCK

C

Variety	Description	Price
<i>Callistemon rigdus</i> .	Red bottle brush.....	.20
<i>Callistemon lanceolatus</i> .	Red.....	.20
<i>Campanula muralis</i> .	The best blue campanula.....	.25
<i>Camphora officinalis</i> .	Camphor tree.....	.20
<i>Cantua buxifolia</i> .	Cluster of orange tubular flowers; weeping habit.....	.20
<i>Carrissa grandiflora</i> .	Natal plum; red fruit; white star-shaped flowers; fragrant.....	.25
<i>Cassia naiborensis</i>20
<i>Casuarina stricta</i> .	Beef Oak.....	.20
<i>Catha edulis</i> Khat.	Large glossy foliage with reddish tint.....	.20
<i>Ceanothus cyaneus</i> .	Dark blue California Native Lilac.....	.25
<i>Cedrus deodora</i> .	Deodora cedar.....	.25
<i>Ceratostigma larpentae</i> .	Deep blue dwf.....	.20
<i>Cerostigma willmottiana</i> .	Dark blue.....	.35
<i>Ceratonia siliqua</i> .	Carob tree (St. John's Bread).....	.25
<i>Cestrum elegans</i> .	Clusters of red tubular flowers.....	.20
<i>Cestrum parqui</i> .	Night blooming jasmine.....	.20
<i>Chamaerops excelsa</i> .	Windmill palm.....	.35
<i>Chamacyparis lawsoniana alumni</i> .	Blue Lawson.....	.25
<i>Chorizema illicifolia</i>20
<i>Chorizema varium</i> .	New. Brilliant deep copper; hardy growing habit, upright.....	.25
<i>Choysia ternata</i> .	Mexican orange.....	.30
<i>Cistus landaniferous maculatus</i> .	Brown-eyed rock rose.....	.20
<i>Cistus purpurea</i> .	New. Orchid rock rose.....	.30
<i>Cistus villosus</i> .	Pink rock rose. Very good bloomer; compact growth.....	.25
<i>Clematis paniculata</i> .	Sweet autumn clematis.....	.20
<i>Cocculus laurifolia</i> .	Deep glossy green pointed foliage; excellent for evergreen planting.....	.25
<i>Convolvulus mauritanicus</i> .	Blue creeper.....	.15
<i>Convolvulus Cneorum</i> .	White flowering.....	.35
<i>Coprosma bauri</i> .	Wax plant.....	.20
<i>Cornilla glauca</i> .	Beautiful gray-green foliage, shrub; covered with masses of pea-shaped yellow flowers; very good substitute for genista fragrance.....	.20
<i>Correa alba</i> .	Grayish, with white star-like flowers.....	.20
<i>Cotoneaster coolidgii</i>20
<i>Cotoneaster franchetti</i> .	Orange berries.....	.15
<i>Cotoneaster glaucifolia</i> .	Prostrate, gray foliage, red berries.....	.25
<i>Cotoneaster horizontalis</i> .	Prostrate red berries.....	.25
<i>Cotoneaster pannosa</i> .	Upright, red berries.....	.20
<i>Cotoneaster pannosa nana</i> .	Dwf. pannosa.....	.20
<i>Cotoneaster parnayi</i> .	Clusters of rich red berries on arching pendulous branches.....	.20
<i>Cotoneaster salicifolia</i> .	Red berries, arching branches.....	.20
<i>Cuphea hyssophilla</i> .	Low shrub with masses of small pink flowers nearly all year.....	.20
<i>Cupressus arizonica</i> .	Arizona cypress.....	.20
<i>Cupressus macrocarpa</i> .	Monterey cypress.....	.15
<i>Cupressus sempervirens</i> .	Italian cypress.....	.25
<i>Cupressus sempervirens</i> .	Royal Italian cypress.....	.30
<i>Cydonia japonica rosea</i> .	Pink flowering quince.....	.20
<i>Cydonia japonica sanquinea</i> .	Scarlet flowering quince.....	.20

D

<i>Diosma pulchrum</i> .	Pink Breath of Heaven.....	.25
<i>Diosma reevsi</i> .	White Breath of Heaven.....	.25
<i>Dombeya Wallichii</i> .	Large leafed shrub; with large clusters of deep coral pink flowers.....	.35
<i>Dracena indivisa</i>20
<i>Duranta plumieri</i> .	Golden Dew Drop; golden berries; blue flowers.....	.20

GALLON CAN STOCK

Variety	Description	Price
Erica blanda.	Pink French heather.....	.25
Erica hyalina.	Coral French heather.....	.25
Erica malanthera rosea.	Deep rose.....	.20
Erica Pres. Felix Faure.	Red French heather.....	.25
Erythrina Crista Galli.	Coral tree.....	.25
Escallonia glasnensis.	Apple blossom escallonia.....	.20
Escallonia rosea.20
Escallonia rosea nana.	Dwf. pink escallonia.....	.20
Eucalyptus citriodora.	Lemon gum.....	.20
Eucalyptus coronocalyx.	Sugar gum.....	.20
Eucalyptus ficifolia.	Scarlet flowering Eucalyptus.....	.25
Eucalyptus globulus.	Blue gum.....	.15
Eucalyptus polyanthema.20
Eucalyptus pulverelenta.	Round gray leaves circling leaf stem25
Eucalyptus rostrata.	Red gum.....	.20
Eucalyptus rudis.	Desert gum.....	.20
Eugenia hookeri.	Large foliage and large clusters of wine red berries.....	.20
Eugenia myrtifolia.	Brush cherry.....	.25
Eugenia myrtifolia var.20
Eugenia Smithi.	Clusters of delicate lavender colored berries35
Eugenia uniflora.	Surinam Cherry.....	.25
Euonymous japonica.	Plain green.....	.20
Euonymous japonica aureo-variegata.	Golden center.....	.20
Euonymous japonica aureo-marginata.	Golden margin.....	.20
Euonymous Radicans var.	Dwf. Euonymous; spreading type20
F		
Feijoa sellowiana.	Pineapple guava.....	.20
Ficus repens.	Creeping fig.....	.20
Ficus minima.	Dwf. creeping fig; grows compact and tight not rampant grower; deep green color.....	.25
Fuchsia Amy Lye.	White with sgl. watermelon center.....	.20
Fuchsia Arabella.	White with dbl. red center.....	.20
Fuchsia feu tryphylla.	Red tubular flowers; deep green foliage20
Fuchsia Henry Henkle.	Pink tubular flowers; deep green foliage20
Fuchsia Illisa.20
Fuchsia Minister Borchard.20
Fuchsia Phenomenal.	Red; dbl. purple center.....	.20
Fuchsia Storm King.	Red; dbl. white center.....	.20
Fuchsia Sunset.20
G		
Gardenia grandiflora.35
Genista fragrans.	Sweet broom.....	.20
Genista monosperma pendula.	White weeping broom.....	.25
Gelsemium sempervirens.	Carolina jasmine.....	.35
Gerbera jamesoni.	Hybrid; mixed colors.....	17½
Grevillea banksi.	Large shrub with cluster of comb-like flowers20
Grevillea robusta.	Silk Oak.....	.20
Grevillea thelemanniana.	Humming bird bush; everblooming25
Ginko biloba.	Maiden hair fern tree.....	.25
Guava.	Lemon.....	.20
Guava.	Red strawberry.....	.20
Guava.	Yellow strawberry.....	.20

GALLON CAN STOCK

H	Variety	Description	Price
	Hakea laurina.	Sea urchin; brilliant red flowers.....	.20
	Hakea suaveolens.	Needle-like foliage; white flowers; good for hot and dry sections.....	.20
	Hardenbergia rubicunda.	Large crimson flowers.....	.25
	Hedera canariensis.	Large leaf ivy. Algerian ivy.....	.25
	Hedera canariensis var.	Var. large leaf ivy.....	.20
	Hedera helix.	English ivy.....	.15
	Hedera helix hibernica.	Irish ivy; small leaf var.....	.20
	Heliotrope Black Beauty.	Upright grower, nearly blue-black.....	.25
	Heliotrope Black Prince.	Upright growth, deep blue, very fragrant.....	.20
	Hellianthemum lasianthus.	Portuguese sun rose; low spreading; best selling low shrub.....	.25
	Hellianthemum ocymoides.	Spanish Sun Rose; grayish foliage; mass of yellow in spring and summer.....	.25
	Hibiscus buff.	Large sgl. buff; apricot shade.....	.35
	Hibiscus peach blow.	Large dbl. pink.....	.35
	Hibiscus.	Sgl. scarlet.....	
	Hibiscus Prince Takamatsu.	Large brilliant red.....	.50
	Hibiscus.	Dbl. orange.....	.35
	Hibiscus.	Dbl. yellow.....	.50
	Hibiscus.	Sgl. pink with red throat.....	.35
	Holmskioldia sanguinea.	Semi-vine with orange to brick-red bracts of flowers.....	.30
	Hydrangea hortensis.20
	Hydrangea hortensis chisholm.	Dbl. hydrangea.....	.25
	Hydrangea Trophy.	Delicate pink.....	.30
	Hydrangea Giant.	Pure white.....	.30
	Hymenosporum flavum.	Small evergreen tree with masses of small cream-colored flowers.....	.35
	Hypericum moserianum.	Dwf. gold flower.....	.20
	Hypericum Patulum Henryi.	Gold flower.....	.20
I			
	Ilex aquifolia.	English Holly.....	.35
	Ilex cornuta.	Chinese Holly.....	.35
	Iochroma fuchsioides.	Red Iochroma.....	.20
	Iochroma Lanceolata.	Blue Iochroma.....	.20
	Itea illicifolia.	Deep green serrated holly-like leaves; grows faster, hardier than English Holly.....	.35
J			
	Jacaranda mimosaeifolia.20
	Jasminum grandiflora.	Spanish jasmine. White flowers.....	.20
	Jasminum gracillium.	Large white. Pinwheel jasmine.....	.25
	Jasminum florida.	New, upright habit; numerous small brilliant yellow flowers; vigorous grower with beautiful foliage.....	.25
	Jasminum poeticum.	Glossy deep green foliage with masses of star-like white flowers. The shiny leaves make it always have a very clean appearance.....	.25
	Jasminum primulinum.	Primrose Jasmine. Yellow flowers.....	.20
	Jasminum stephanense.	Very fragrant pink flowers, the hardest of the jasmine; will stand quite cold climates.....	.35
	Juniperus communis depressa.25
	Juniperus excelsa stricta.	Upright type.....	.25
	Juniperus hibernica fastigiata.	Irish Juniper.....	.25
	Juniperus pfitzeriana.25
	Juniperus procumbens.	Prostrate creeping juniper.....	.35
	Juniperus sabina.25
	Juniperus sabina tamariscifolia.	Outstanding creeping Juniper.....	.35
K			
	Kerria japonica.	Dbl. Japanese Rose. Yellow flowers.....	.20

GALLON CAN STOCK

L

Variety	Description	Price
Lagerstromia.	Dwf. Lavender.....	.25
Lagerstromia indica rosea.	Pink crepe myrtle.....	.20
Lagerstromia indica rubra.	Red crepe myrtle.....	.20
Lagerstromia.	Watermelon red.....	.25
Lagerstromia.	White.....	.35
Lantana.	Dwf. cream.....	.20
Lantana.	Dwf. Pink.....	.20
Lantana.	Dwf. Yellow.....	.20
Lantana	radiation.....	.20
Lantana.	Silver Pink.....	.20
Lantana sellowiana.	Trailing lantana.....	.20
Lantana.	Tall Orange.....	.20
Lantana.	Tall Yellow.....	.20
Lantana.	White.....	.20
Lavatera olbia.	Large mallow, with reddish purple flowers.....	.20
Lavendula dentata.	French lavender.....	.20
Lavendula vera.	English lavender.....	.20
Leptospermum chapmani.	Small compact foliage; with waxy flowers; very showy when in bloom.....	.20
Leptospermum grandiflora.20
Leptospermum laevigatum.	Australian tea tree.....	.20
Leptospermum Reevsi.	Red flowers.....	.20
Leptospermum scoparium Nicholssi.	Red flowers.....	.20
Libocedrus deccurens.	Incense cedar.....	.25
Ligustrum ciliatum.20
Ligustrum henryi.20
Ligustrum japonica.	Japanese privet.....	.15
Ligustrum Nepalense.	Nepal privet.....	.15
Ligustrum Texanum.	True Nepal privet; large, glossy, deep green foliage.....	.25
Ligustrum ovalifolium var.	Var. California privet.....	.15
Lilac.	Persian cut leaf.....	.20
Linum flavum (reinwardia).	Yellow flax.....	.20
Lippia citriodora.	Lemon verbena.....	.20
Lemon.	Meyer dwf.....	.50
Loncera halliana.	Halls Japanese honeysuckle.....	.20
Lonicera implexa.	Bush honeysuckle.....	.35
Lonicera sempervirens.	Coral honeysuckle. Vigorous growing vine with orange scarlet flowers; blooms nearly always. Very attractive light green foliage.....	.20
Loropetalum chinensis's.	Evergreen shrub with masses of clusters of yellowish white flowers in March and April.....	.25
Loquat.	Advance.....	.40
Loquat.	Seedling.....	.20

M

Mackaya bella.	Glossy green leaves with trumpet-shaped lavender flowers.....	.20
Magnolia grandiflora.	Southern Magnolia.....	.20
Mahernia verticillata.	Honeybell. A very pretty twiggy bush with masses of yellow bell-shaped flowers in winter and summer.....	.35
Mahonia aquifolia.	Oregon grape.....	.25
Malvaviscus arboreus.	Turks cap.....	.20
Mela'euca decussata.	Graceful shrub with lavender spikes.....	.20
Melaleuca hypericifolia.	Red flowers.....	.20
Melaleuca lateritia.	Scarlet flowers.....	.20
Menziesia purpurea.	Resembles heather with orchid bell-shaped flowers.....	.20
Myoporum laetum.	Bright green fleshy leaves.....	.20
Musa ensete.	Abyssinian banana.....	.25
Myrtus buxifolia.	New large leafed. The best large leaf type.....	.25
Myrtus communis.	Roman myrtle.....	.20
Myrtus communis compacta.20
Myrtus communis var.20
Myrtus communis minima.30

GALLON CAN STOCK

N	Variety	Description	Price
	Nandina domestica.	Heavenly bamboo.....	.20
	Nerium.	Dbl. red.....	.20
	Nerium Mrs. Roeding.	Dbl. salmon.....	.20
	Nerium rosea var.	Dbl. pink.....	.20
	Nerium Sister Agnes.	Sgl. white.....	.20
 O			
	Olive Manzanillo35
	Osmanthus fragrans35
 P			
	Pampas grass20
	Parkinsonia aculeata.	Palo Verde Tree.....	.20
	Passiflora manicarta.	Red flowered passion vine.....	.35
	Passiflora mollisma.	Pink flowered passion vine.....	.20
	Philadelphus coronarius.	Syringa.....	.20
	Philadelphus mexicanus.	Dbl. flowered Syringa.....	.20
	Photinia arbutifolia.	California Holly.....	.35
	Photinia serrulata35
	Phormium tenax.	New Zealand Flax.....	.20
	Phlox perennial.	Mrs. Jenkins, white.....	.15
	Pinus canariensis.	Canary Island Pine.....	.20
	Pinus halepensis.	Aleppo Pine.....	.20
	Pinus pinea20
	Pinus radiata.	Monterey Pine.....	.20
	Pittosporum eugenoides20
	Pittosporum nigricans20
	Pittosporum phillyraeoides25
	Pittosporum tobira20
	Pittosporum tobira var.25
	Pittosporum undulatum20
	Pleroma grandiflora.	New. Large flower; bushy.....	.20
	Plumbago capensis20
	Poinsettia pulcherrima20
	Polygala delmaisiana25
	Prunus illicifolia integrifolia.	Catalina Cherry.....	.25
	Prunus laurus cerasus.	English laurel.....	.25
	Punica granatum nana.	Dwf. pomegranate.....	.20
	Pyracantha atlantoides25
	Pyracantha formosiana splendens.	Rich red berries.....	.25
	Pyracantha kansuensis.	Quantities of small orange red berries20
	Pyracantha lalandi.	Orange berries.....	.20
	Pyracantha Rosedale.	New. Masses of brilliant scarlet berries35
	Pyracantha Rosedale.	Staked.....	.40
	Pyracantha yunnanensis.	Low spreading, red berries.....	.20
 Q			
	Quercus agrifolia.	California live oak.....	.20
 R			
	Rhapiolepsis ovata20
	Ribbon grass20
	Rhus integrifolia35
	Rosemarinus officinalis.	Rosemary.....	.20
	Russelia sarmentosa20
	Ruellia macrantha.	Bush shrub. Large bell-shaped rose-purple flowers.....	.25
	Rhynchospermum jasminoides.	Star jasmine; beautiful green foliage climber, covered with clusters of star-shaped flowers; very fragrant.....	.50

GALLON CAN STOCK

S

Variety	Description	Price
<i>Salvia leucantha</i> .	Purple salvia.....	.20
<i>Salvia splendens</i> .	Scarlet salvia.....	.15
<i>Saxifraga</i>25
<i>Schinus molle</i> .	California pepper tree.....	.20
<i>Schinus terebinthefolius</i> .	Brazilian pepper tree.....	.20
<i>Sequoia sempervirens</i> .	Redwood.....	.25
<i>Sollya heterophylla</i> .	Australian creeping bluebell.....	.25
<i>Solanum rantonetti</i>25
<i>Spartium junceum</i> .	Spanish broom.....	.20
<i>Spirea Anthony Waterer</i> .	Pink bridal wreath.....	.20
<i>Spirea prunifolia</i> .	Button spirea.....	.20
<i>Spirea reevsi</i> .	Dbl. bridal wreath.....	.20
<i>Spirea van houttei</i> .	Sgl. bridal wreath.....	.20
<i>Statics perezii</i>15
<i>Strobilianthus diaranus</i> .	Foliage plant, leaves shaded blue-rose and lilac-purple.....	.20

T

<i>Tamarix coolidgei</i> .	Very good bloomer, deep pink.....	.20
<i>Taxus romana</i>40
<i>Tecoma capensis</i> .	Orange red trumpet flowers; semi-vine.....	.20
<i>Teucrium chamaedrys</i> .	Dwf. pink.....	.20
<i>Thuya aurea nana</i> .	Golden arborvitae.....	.30
<i>Thunbergia gibsoni</i> .	Bright orange, creeper.....	.25

U

<i>Ulmus parvifolia</i> .	Evergreen elm.....cuttings	.35
<i>Ulmus parvifolia</i> .	Evergreen elm.....seedlings	.25

V

<i>Veronica buxifolia</i>20
<i>Viburnum japonica</i>25
<i>Viburnum odoratissima</i>35
<i>Viburnum opulus sterile</i> .	Eastern snowball.....	.20
<i>Viburnum Robusta</i>20
<i>Viburnum suspensum</i>25
<i>Viburnum tinus</i> .	<i>Laurus tinus</i>20

W

<i>Weigelia Eva Rathke</i> .	Red.....	.25
<i>Weigelia rosea</i> .	Pink.....	.20
<i>Weigelia rosea var.</i>	Pink.....	.20
<i>Woodwardia ferns</i>25
<i>Wistaria chinensis</i> .	Chinese wistaria seedlings.....	.20
<i>Wistaria grafted</i> .	Purple.....	.35



5 GALLON CAN AND BALLED STOCK

Variety	Description	Price
Abelia floridbunda.	Red Mexican abelia.....	1.00
Abelia grandiflora.	Blush pink flowers. B.B. & 5 gc.....	.85
Abelia schumani.	Pinkish-lavender flowers larger than grandiflora. B.B. & 5 gc.....	1.00
Abutilon megapoticum.	Russet yellow flowers, semi-vine..	.85
Acacia Baileyana.	Gray foliage, yellow flowers.....	1.00
Acacia dealbata.	Green fern like foliage.....	.85
Acacia floribunda.	Everblooming acacia.....	.85
Acacia melanoxylon.	Black acacia.....	.85
Acacia podlyriaefolia.	Round gray foliage.....	.85
Adenocarpus foliosus.	New. Splendid foliage plant with grass green leaves and small pea shaped flowers. B.B. and 5 gc.....	1.00
Arbutus unedo.	Strawberry tree.....	1.00
Aucuba japonica var.	Gold dust plant.....	1.25
B		
Bauhinia purpurea.	Orchid tree.....	1.00
Berberis darwini85
Bignonia cherere.	Red trumpet vine.....	1.00
Bignonia cherere.	Selected type will bloom much earlier...	1.25
Bignonia venusta.	Orange trumpet vine.....	1.25
Bignonia violacea.	Lavender trumpet vine.....	1.25
Bougainvillea brazilensis.	Purple.....	1.50
Bougainvillea crimson lake.	Scarlet.....	1.50
Bouvardia humboldti.	White, fragrant.....	1.00
Brunfelsia.	Blue flowers fading toward the center, dark green foliage shrub.....	1.50
Buddleia lindleyana, Dwf. buddleia,	2-3 ft., crimson purple flowers, excellent bloomer.....	.75
C		
Callistemum rigidus.	Red bottle brush.....	.75
Camphora officinalis.	Camphor tree.....	1.00
Casuarina stricta.	Beef oak.....	.75
Catha edulis.	Beautiful glossy leaves shaded with red, Excellent landscape subject.....	.75
Ceanothus cyaneus.	Native Calif. lilac.....	1.00
Cedrus atlantica.	B.B. 4 ft.....	1.25
Cedrus deodora.	Deodor cedar. B.B. 2-3'.....	.70
Cedrus deodora.	B.B. 3-4'.....	1.25
Cedrus deodora.	B.B. 4-5'.....	1.50
Cerostigma willmottiana.	Dark blue.....	1.00
Cercocarpus betulafolia.	Mountain mahogany.....	1.00
Chamacecyparis lawsoniana alumni.	Blue Lawson. B.B.....	1.00
Chorizema varium.	New. Brilliant orange-copper flowers; deep green foliage, sturdy growth.....	1.00
Choysia ternata.	Mexican orange. B.B.....	1.00
Cistus ladaniferous muculatus.	Brown-eyed rock rose.....	.75
Cistus purpurea.	New. Orchid rock rose.....	.85
Cocculus laurifolia.	Glossy, rich deep foliage; excellent for landscape work	1.00
Coprosma baueri.	Wax plant.....	.75
Cotoneaster franchetti.	Orange berries.....	.75
Cotoneaster horizontalis.	Prostrate red berries.....	1.00
Cotoneaster Coolidgii.	B.B.....	1.00
Cotoneaster pannosa.	Upright, red berries.....	.75
Cotoneaster pannosa nana.	Dwf. pannosa.....	.85

5-GALLON CAN AND BALLED STOCK

Variety	Description	Price
<i>Cotoneaster parnayi</i> .	Cluster of rich red berries arching pendulous branches85
<i>Cotoneaster salicifolia</i> .	Arching pendulous branches, red berries	1.00
<i>Cupressus arizonica</i> .	Arizona cypress.....	.85
<i>Cupressus macrocarpa</i> .	Monterey cypress.....	.75
<i>Cupressus sempervirens</i> .	Italian cypress. B.B.....	.85
<i>Cupressus sempervirens</i> .	Royal Italian cypress. B.B.....	.95

D

<i>Diosma pulchrum</i> .	Pink Diosma, B.B.....	.90
<i>Dombeya wallichii</i> .	Large pink cluster of flowers.....	1.00
<i>Duranta plumieri</i> .	Golden Dew Drop.....	.75

E

<i>Erica blanda</i> .	Bushy pink tubular flowers; heather. B.B...	.85
<i>Erica codonoides alba</i> .	White flowering heather. B.B.....	.75
<i>Erica melanthera rosea</i> .	Deep rose. B.B.....	.85
<i>Escallonia glasnevensis</i> .	Apple blossom escallonia; compact grower and blooms well. B.B.....	.75
<i>Escallonia montevedensis</i> .	White flowering escallonia B.B.75
<i>Escallonia rosea nana</i> .	Dwf. pink flg. escallonia. B.B.....	.75
<i>Eucalyptus citriodora</i> .	Lemon gum.....	.85
<i>Eucalyptus ficifolia</i> .	Scarlet flowers.....	1.00
<i>Eucalyptus globulus</i> .	Blue gum.....	.75
<i>Eucalyptus pulverelenta</i> .	Round gray leaves circling leaf stem75
<i>Eugenia hookeri</i> .	Large foliage and clusters of wine red berries75
<i>Eugenia myrtifolia</i> .	Brush cherry.....	1.25
<i>Eugenia myrtifolia</i> var.	1.25
<i>Euonymus japonica</i> .	Plain green. B.B.....	.85
<i>Euonymus japonica aureo-variegata</i> .	Golden Center. B.B.85
<i>Euonymus pulchellus</i> var.	Var. dwf. B.B.....	.65

F

<i>Feijoa sellowiana</i> .	Pineapple guava.....	.85
----------------------------	----------------------	-----

G

<i>Gardenia grandiflora</i> .	B.B.....	1.25
<i>Gardenia mystery</i> .	B.B.....	1.25
<i>Genista fragrans</i> .	Sweet broom.....	.75
<i>Genista monosperma pendula</i> .	White weeping broom.....	1.00
<i>Ghinko biloba</i> .	Maiden Hair Fern tree. b.r.....	.75
<i>Grevillea banksii</i> .	Large shrub with spike of brilliant red flowers85
<i>Guava</i> .	Red strawberry.....	.75
<i>Guava</i> .	Yellow strawberry.....	.75

H

<i>Hardenbergia rubiconda</i> .	Large crimson flowers.....	.85
<i>Hedera maderensis</i> var.	Var. large leaf ivy.....	.85
<i>Helianthemum lasianthus</i> .	Portuguese sun rose. Low spread	1.00
<i>Helianthemum ocymoides</i> .	Spanish sun rose, yellow flowers	1.00
<i>Hibiscus sgl. pink</i> .	New sgl. pink with red throat.....	1.25
<i>Hibiscus Prince Takamatsu</i> .	New. Sgl. scarlet hibiscus.....	1.75
<i>Hypericum moserianum</i> .	Dwf. gold flower.....	.75
<i>Hypericum patalum henryi</i> .	Gold flower.....	.75
<i>Hydrangea hortensis</i>85
<i>Hydrangea hortensis alba-marginata</i>85
<i>Hydrangea hortensis chisholm</i> .	Dbl. Hydrangea.....	.85
<i>Hymenosporum flavum</i> .	Small evergreen tree with masses of small cream colored flowers.....	1.00

5-GALLON CAN AND BALLED STOCK

I

Variety	Description	Price
<i>Ilex cornuta</i> .	Large cluster of scarlet red berries. B.B.....	1.25
<i>Iochroma fuchsioides</i> .	Red iochroma.....	.85

J

<i>Jacaranda mimosaefolia</i>		1.00
<i>Jasminum grandiflora</i> .	Spanish jasmine. White flowers.....	1.00
<i>Jasminum gracillium</i> .	Pinwheel Jasmine.....	1.00
<i>Jasminum poeticus</i> .	Vigorous growing vine with glossy deep green leaves covered with small star shaped fragrant flowers	1.00
<i>Jasminum primulinum</i> .	Primrose jasmine. Yellow flowers..	.85
<i>Jasminum stephanense</i> .	Hardy pink jasmine.....	1.00
<i>Juniperus communis depressa</i> .	B.B.....	.85
<i>Juniperus chinensis pfitzeriana</i> .	B.B.....	1.00
<i>Juniper sabina tamariscifolia</i> .	B.B.....	1.25

K

<i>Kerria japonica</i> .	Japanese rose; dbl. yellow flowers.....	.75
--------------------------	---	-----

L

<i>Lagerstromia rosea</i> .	Pink crepe myrtle.....	.85
<i>Lagerstromia rubra</i> .	Red crepe myrtle.....	.85
<i>Lagerstromia rubra</i> .	Red crepe myrtle standards.....	1.00
<i>Laurus lusitanica</i> .	Portuguese laurel.....	1.00
<i>Leptospermum chapmani</i> .	Small compact foliage with wax-like flowers. We consider this to be the best.....	.85
<i>Leptospermum laevigatum</i> .	Australian tea tree.....	.85
<i>Leptospermum reevsi</i> .	Laevigatum compacta.....	.85
Lemon Meiers .	Meiers dwf. lemon.....	1.25
<i>Ligustrum texanum</i> .	True Nepal privet; large glossy deep green foliage.....	1.00
Lilac .	Cut leaf persian lilac. b.r.....	.50
<i>Lonicera hildebrandi</i> .	Large fragrant creamy flowers, vigorous growing clean vine.....	3.00
<i>Lonicera implexa</i> .	Bush honeysuckle.....	1.00
<i>Lonicera sempervirens</i> .	Vigorous growing vine with orange scarlet flowers; blooms nearly always very attractive light green foliage.....	.75
Loquats .	Advanced. B.B.....	1.25
Loquats .	Seedling. B.B.....	.75

M

<i>Magnolia grandiflora</i> .	Southern Magnolia. B.B.....	.85
<i>Mahonia illicifolia compacta</i> .	B.B.....	1.25
<i>Melaluca decussata</i> .	Graceful shrub with lavender spike flowers75
<i>Melaluca hypericifolia</i> .	Spikes of rich red flowers.....	.75
<i>Musa ensete</i> .	Abyssinian banana.....	1.00
<i>Myrcene africanus</i> .	New small round leaves; excellent foliage plant for shade. B.B.....	1.25
<i>Myrtus buxifolia</i> .	New large leaf. The best large leaf type, with dark green foliage. B.B.....	.85
<i>Myrtus communis compacta</i> .	Compact myrtus.....	.85
<i>Myrtus mimina</i> .	Very compact dwf. myrtus. B.B.....	1.00

N

<i>Nandina domestica</i> .	Heavenly bamboo.....	.85
<i>Nerium</i> .	Dbl. pink. B.B.....	.85
<i>Nerium</i> .	Sgl. pink. B.B.....	.85
<i>Nerium</i> .	Sgl. Deep pink. B.B.....	1.00
<i>Nerium var.</i>	B.B.....	.75
<i>Nerium</i> .	Dbl. red. B.B.....	.85
<i>Nerium</i> .	Sgl. Cherry red. B.B.....	1.00
<i>Nerium Mrs. Roeding</i> .	Dbl. salmon.....	.75
<i>Nerium Prof. Bodkin</i>		1.00
<i>Nerium Sister Agnes</i> .	Sgl. white.....	.85

5-GALLON CAN AND BALLED STOCK

O

Variety	Description	Price
Olive manzanillo.	B.B.	2.00
Osmanthus fragans.	B.B.	1.25
Osmanthus aquifolia		1.00

P

Pampas grass		.85
Parkinsonia aculeata.	Jerusalem thorn	1.00
Passiflora edulis.	Fruiting passion vine	.85
Phormium tenax var.	New Zealand flax var.	.85
Photinia serrulata		1.00
Pittosporum eugenoides		.75
Pittosporum tobira		.85
Pittosporum tobira	var.	1.00
Pittosporum undulatum		.85
Pleroma grandiflora.	New. Large flowers; bushy	.85
Plumbago capensis		.85
Polygala dalmaisiana.	B.B.	.85
Prunus laurus cerasus.	English laurel. B.B.	1.00
Pyracantha formosiana splendens.	Rich red berries	.85
Pyracantha kansuensis.	Quantities of small orange red berries	.85
Pyracantha lalandi.	Orange berries	.85
Pyracantha Rosedale.	New. Masses of brilliant scarlet berries	1.00
Pyracantha Rosedale.	Staked	1.25
Pyracantha yunnanensis.	Low spreading, red berries	.85

R

Rhus integrifolia		.85
Rhyconchospermum jasminoides.	Star jasmine; white star shaped flowers, very fragrant; dark glossy green foliage	1.75
Ruellia macrantha.	Bushy shrub; with large bell-shaped rose purple flowers	.85

S

Schinus molle.	Calif. pepper tree	.85
Sequoia sempervirens.	Redwood	.85
Solanum rantionetti		.85
Spartium junceum.	Spanish broom	.75
Spirea Anthony Waterer.	Pink spirea. b.r.	.35
Sollya heterophylla.	Australia creeping blue bell	.85
Sterculia acerifolia.	Flame tree	.85

T

Tecoma capensis		.85
Tomatoes.	Fruiting tree tomato	1.00
Thuja beverlyensis.	Tall golden arborvitae. B.B.	1.00
Thuja beverlyensis.	Tall golden arborvitae	1.00

U

Ulmus chinensis parvifolia.	Evergreen elm; seedling	1.25
Ulmus chinensis parvifolia.	Evergreen elm; cutting	1.50

V

Viburnun japonica.	B.B.	.85
Viburnun odoratissima		1.00
Viburnum opulus sterile.	Eastern snowball	.85
Viburnum suspensum	(sandanqua)	1.00
Viburnum tinus.	Laurus tinus	.85

W

Weigelia Eva Rathke.	Red	.85
Weigelia rosea var.	Pink	.75
Wistaria chinensis		1.25

IMPORTANT

We urge you to place your order as soon as possible, as there is a great shortage of quality Nursery Stock. An early order will enable us to fill it more completely with the best stock.



600 W. Duarte Road
Monrovia California
Phone 96

MONEY MAKERS

Abelia floribunda. New, Mexican abelia. It has rich glossy foliage on pendulous branches with tubular reddish flowers.

2" pots..... .15 Gal. cans..... .35 5 gal..... 1.00

Arbutus unedo. One of the fastest selling items which we have ever raised. This holly leaved beautiful shrub. With its white bell-shaped flowers during the summer and the unusual strawberry fruit at Christmas time, making this shrub an all-year plant.

2" pots..... .08 Gal. cans..... .25 5 gal..... 1.00

Aster fruticosus. Shrub aster compact evergreen shrub; masses of deep lavender flowers in spring. Grows about three feet high, quite hardy.

2" pots..... .10 Gal. cans..... .75 5-gal. can..... 1.00

Cotoneaster parnayi. The outstanding of all cotoneasters. With its dark glossy green foliage, and huge clusters of rich red berries that nearly set the shrub on fire. We believe this to be the best of all cotoneasters.

2" pots..... .08 Gal. cans..... .20 5 gal..... .85

Erica Blanda. This low, compact growing Erica. Rosy-red tubular flowers. Is the fastest selling Erica which we have ever raised. Because it is the only everblooming Erica.

2" pots..... .08 Gal. cans..... .25 B. B..... .85

Jasminum florida. New. Upright habit, numerous small brilliant yellow flowers; vigorous grower. With beautiful foliage.

2" pots..... .08 Gal. cans..... .20

Myrtus buxifolia. Much superior to Myrtus communis. Foliage darker green. Leaves larger and much glossier. Quite a sturdy grower and quite hardy.

2" pots..... .08 Gal. cans..... .20 5 Gal. cans .85

Myrtus minima. New, dwarf myrtle; grows very compact and uniform. It has been proven as excellent material for dwarf hedging or miniature planting. Grows to 12 or 15 inches.

2" pots..... .10 Gal. cans..... .30

Pyracantha Rosedale. New introduction of ours. Produces masses of crimson berries along the branches that stand out with brilliance in winter. Berries abundantly and grows rapidly. Most attractive pyracantha we have ever found.

2" pots..... .10 Gal. cans..... .35