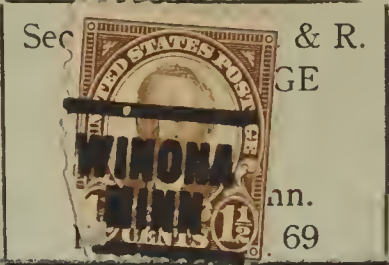


## **Historic, archived document**

Do not assume content reflects current scientific knowledge, policies, or practices.



7500  
RETURN POSTAGE GUARANTEED



LIBRARY  
AUG 6 1938  
U. S. Department of Agriculture

43  
Northern Field Seed Co., Inc.  
WINONA, MINN.

S  
E  
E  
D  
S

U. S. DEPARTMENT OF AGRICULTURE,

WASHINGTON, D. C.

BUREAU OF PLANT INDUSTRY  
Fruit and Vegetable Crops and Diseases

GPO 8-3591

W. H. H.



Today's Values  
 Subject to Market Changes  
 Quotations F. O. B. Winona  
 No Cartage, Bags Extra  
 TERMS---NET CASH---NO DISCOUNT



# Northern Field Seed Co.

INCORPORATED

## Wholesale Seeds

Phone 4162-5151 WINONA, MINN. Feb. 1, 1938

Branch Distributors:

DUBUQUE SEED CO., Dubuque, Iowa

A. GRAMS & SONS, LaCrosse, Wis.

### Alfalfa

100 lbs.	
Minn. "Lake of Woods"	\$40 00
Minn. Common, "Fancy"	38.00
Minn. Common, "Choice"	36.00
Montana grown	38.50
Kansas grown	34.50
Nebraska grown	37.50
Idaho grown	38 00
Canadian Variegated	38.50
Cossack, Northern grown	42.00
Cossack, Blue Tag	

### Grimm

Canadian Registered No. 1	44 00
Minn. Blue Tag	
Blackfoot Blue Tag	46.00
Blackfoot Red Tag	43.00

### FOR BETTER NITROGEN FIXATION



BETTER CROPS AND BETTER SEED SALES  
 Sold on a Money Back Guarantee  
 Dealer Retail

Prices		
Alfalfa, All clovers		
1/2 Bu. (Inoculates 30 lbs. Seed)	\$0.18	\$0.30
1 Bu. (Inoculates 60 lbs. Seed)	.30	.50
2 1/2 Bu. (Inoculates 150 lbs. Seed)	.60	1.00
Peas, Vetch, Soy Beans, Cow Peas, Beans, Peanuts, Lespedeza		
1 Bu. (Inoculates 60 lbs. Seed)	.18	.30
2 Bu. (Inoculates 120 lbs. Seed)	.30	.50
5 Bu. (Inoculates 150 lbs. Seed)	.60	1.00
10 Bu. (Pea, vetch and soy)	1.25	1.75
20 Bu. (bean cultures only)	1.65	2.75
Garden Size	.09	.15



ALFALFA, all CLOVERS		LESPEDEZA	
Size	Dealer Retail	Size	Dealer Retail
1/2 bu. ea.	.19 \$ .33	1 bu. ea.	.19 \$ .33
1 bu. ea.	.32 .53	2 bu. ea.	.32 .50
2 1/2 bu. ea.	.65 1.00	5 bu. ea.	.65 1.00
VETCH, AUSTRIAN PEAS, CANADIAN PEAS, BEANS		PEANUTS, SOY BEANS, COW PEAS, LIMA BEANS	
1/2 bu. ea.	.16 \$ .25	1 bu. ea.	.19 \$ .36
1 bu. ea.	.26 .40	2 bu. ea.	.32 .50
*1 1/2 bu. ea.	.39 .60	5 bu. ea.	.65 1.00
5 bu. ea.	1.10 1.70	10 bu. ea.	1.04 1.60
*12 1/2 bu. ea.	2.60 4.00	*25 bu. ea.	1.95 3.00
**100 lb. & 12 1/2 bu. size, packed only for Vetch & Peas		*25 bu. size packed only for Soy Beans, Cow Peas, Peanuts	
NITRAGIN GARDEN SIZE for Garden Peas, Beans, Sweet Peas, Lima Beans and Lupines. Packed 1 doz. to Carton. Dealer Price...80c per carton. Retail Price...10c. each.			

### Clover & Timothy

#### Medium Red Clover

Minnesota-Wisconsin Grown

100 lbs.	
"K"	40.00
"Fancy"	39.00
"Choice"	38.00
"Dream"	37.50

#### Mammoth Red Clover

"K"	40 00
"Fancy"	39 00
"Choice"	38 00

#### Alsike Clover

"K"	34 00
"Fancy"	33 00
"Choice"	32 00
"Santa"	31 00

#### Sweet Clover

"K" White Blossom	12 00
"Fancy" White Blossom	11 50
Grundy County (Dwarf)	12 50
Yellow Blossom	12 50

#### Timothy

"K" (Wenonah)	4 00
"Fancy"	3 90
"Choice"	3 75

#### Timothy & Alsike Mixed

No. 1 (about 30% Alsike)	12.50
No. 2 (about 20% Alsike)	10 00

Hardy northern grown Alfalfa, Medium and Alsike Clover production was the shortest ever recorded. Order now while good qualities are still available.

### Forage

#### Millet

100 lbs	
German	\$ 4 00
Japanese	2.75
Siberian	2.50
Prose, White	2 75
Proso, Red	2.00

#### Sudan

Extra Fancy	3 50
-------------	------

#### Dwarf Essex Rape

Bag Lots	8 00
Broken Lots	8.50

#### Cane

Amber, for fodder	3 00
-------------------	------

#### Soy Beans

Manchu	2 75
Illini	2 75

#### Field Peas

Extra Fancy	5.00
-------------	------

#### Winter Vetch

Per 100 lbs.	11.00
--------------	-------

### Grass & Lawn Seed

#### Lawn Seed

100 lbs.	
"K"	\$18.00
"Park Terrace"	17.00

#### White Clover

"Fancy"	40.00
---------	-------

#### Red Top

Solid Seed	13.00
------------	-------

#### Kentucky Blue Grass

"K"	12.50
-----	-------

#### Rye Grass

	8.25
--	------

#### Reed Canary Grass

Minn. grown	30.00
-------------	-------

#### Bromus Inermis

Minn. grown	18.00
-------------	-------

#### Vigoro

	Retail	Wholesale
100 lb. Bag	\$4 00	\$2.75
50 lb. Bag	2.50	1.70
25 lb. Bag	1.50	1.00
10 lb. Package	.85	.56
5 lb. Package	.45	.29
1 lb. Package	.10	.06

NOTICE—We give no warranty, either express or implied, as to description, quality, productiveness, or any other matter of any seeds we send out and will not in any way be responsible for the crop. If the purchaser does not accept the goods on these terms he must notify us at once and we will give instructions for disposition of goods.

NORTHERN FIELD SEED CO.

### Miscellaneous

#### Flax

	Bu.
Red Wing	\$ 2.75
Bison	2.75

#### Buckwheat

	100 lbs.
Silverhull	2.75

#### Garden Seed

We carry a complete line of all standard varieties at wholesale prices.

#### New Improved CERESAN

Low Cost Dust Disinfectant for Wheat, Oats, Barley  
 1 lb. Treats 32 bushels

Sizes of Pkg.	Retail Price per Package	Dealer Price per Case	Package per Case
---------------	--------------------------	-----------------------	------------------

1-lb. tin	\$.70	\$ 5 60	1 dozen
5-lb. tin	3.00	13 20	1-2 dozen

#### New Improved SEMESAN, Jr.

A Dust Disinfectant for Seed Corn  
 4-oz. Treats 2 bus. of Shelled Corn

4-oz. tin	.30	7 00	3 doz.
1-lb. tin	.75	6 00	1 doz.

#### New Improved SEMESAN BEL

A Dip Disinfectant for Seed Potatoes

1-lb. Treats 70 to 80 bushels of Potatoes			
4-oz. tin	.45	10 55	3 doz.
1-lb. tin	1.50	12 00	1 doz.
5-lb. tin	6 75	29 70	1-2 doz.

#### SEMESAN

General Disinfectant for Vegetable and Flower Seeds or Bulbs, and Certain Plant Diseases

2-oz. tin	.35	8 20	3 doz.
1-lb. tin	2.25	18 00	1 doz.

### Seed Corn

#### Hybrid - Certified Blue Tag

Minnesota or Wisconsin Grown (90-100-110 day)

	Bu.
Flat or Edgedrop	\$ 6.00
Medium Flat	5.50
Round	3.50

(Round kernels produce the same crop as flat seed.)

#### Standard - Certified Blue Tag

Minnesota or Wisconsin Grown

Minn. No. 13	2 25
Golden Glow	2.25

#### Standard

Minnesota or Wisconsin Grown

Wis. No. 8 or Minn. No. 13	2.00
Wis. No. 12 or Golden Glow	2.00
Wis. No. 25	2.00
Silver King or Wis. No. 7	2.00

#### Nebraska Grown

Wis. No. 8	1.75
Wis. No. 12	1.75
Wis. No. 7	1.75
Leaming	1.75

#### Silo

Minnesota Grown

Minn. No. 13	1.50
Golden Glow	1.50
Ideal	1.50

#### Grain Bags

Seamless A, per 100	29.00
---------------------	-------



# SOW Northern Grown Seeds

## KEEP FOR REFERENCE

ARTICLE	Quantity Sown Per Acre Pounds	Pounds to Bu.
Alfalfa .....	15 to 20	60
Alsike Clover .....	4 to 6	60
Alsike and Timothy Mixed .....	12 to 15	
Barley .....	72 to 96	48
Barley, for Nurse Crop.....	50 to 72	48
Blue Grass ( Kentucky ).....	20	14
Blue Grass ( Canadian ).....	20	14
Brome Grass .....	18 to 20	14
Buckwheat .....	.60 to 70	52
Cane, Broadcast .....	.35 to 60	50
Cane, in Drills.....	8 to 12	50
Corn, Field.....	8 to 10	56
Corn, Sweet.....	12	45 to 50
Fescue, Red or Creeping.....	30	14
Flax .....	28	56
Lawn Grass, 1 lb. for 300 sq. feet .....	100 to 125	
Lespedeza .....	25 to 30	25
Meadow Fescue .....	.25 to 30	22
Millet, Common or German .....	25 to 30	50
Millet, Hungarian. ....	48	48
Millet, Japanese .....	25 to 30	35
Oats .....	64 to 96	32
Oats, with Peas for Hay. ....	32 to 48	32
Orchard Grass.....	12 to 20	14
Pasture Mixture .....	20 to 25	
Peas, Canadian Field, Yellow.....	.90 to 120	60
Peas, Canadian Field, Yellow with Oats.....	.90 to 120	60
Peas, Marrowfat with Oats.....	180 to 210	60
Rape Dwarf Essex .....	4 to 8	50
Red and Mammoth Clover .....	.10 to 15	60
Red Top, Solid Seed .....	8 to 10	36
Red Top, Unhulled .....	20 to 25	14
Red Canary Grass.....	4 to 6	44
Rye .....	75 to 112	56
Rye Grass .....	25 to 35	24
Soy Beans, Broadcast .....	45 to 90	60
Soy Beans, in Drills .....	.30 to 45	60
Speltz .....	60 to 100	42
Sudan Grass, Broadcast .....	.50 to 40	32
Sudan Grass, in Drills .....	.7 to 10	32
Sunflower .....	6 to 8	32
Sweet Clover .....	15 to 20	60
Timothy .....	9 to 12	45
Vetch with Oats .....	40 to 60	60
Wheat .....	75 to 90	60
White Clover .....	.6 to 8	60

## Northern Field Seed Co.

WINONA, MINN.

# IMPORTANT

There is a serious shortage of good Red Clover, Alsike and Alfalfa for 1938 seeding. Only domestic (home grown) and Canadian grown Red Clover seed and Alfalfa are recommended. Northern grown seeds are the safest to plant. Foreign grown Clovers and Alfalfas are less winter hardy and more subject to damage by insects and disease and produce smaller hay yields. The losses from using foreign grown seeds not adapted for this section warrant paying higher prices for domestic seed. A reduction in the cost of seeding is made possible with a good, firm, well prepared seed bed and by the use of Alsike and Timothy in the mixture.

We do not handle any European Red Clovers.

We advise ordering early while stocks are complete.

**NORTHERN FIELD SEED CO.**  
WINONA, MINN.