

Historic, archived document

Do not assume content reflects current scientific knowledge, policies, or practices.

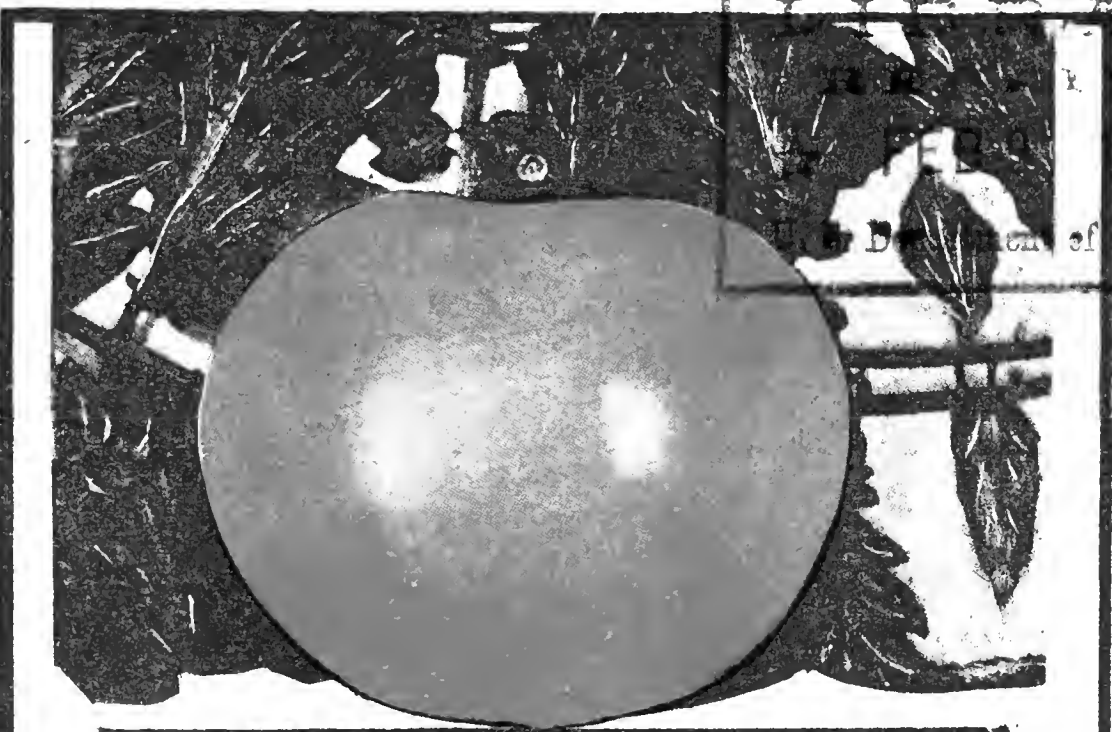
52.15



Quality

Vegetable

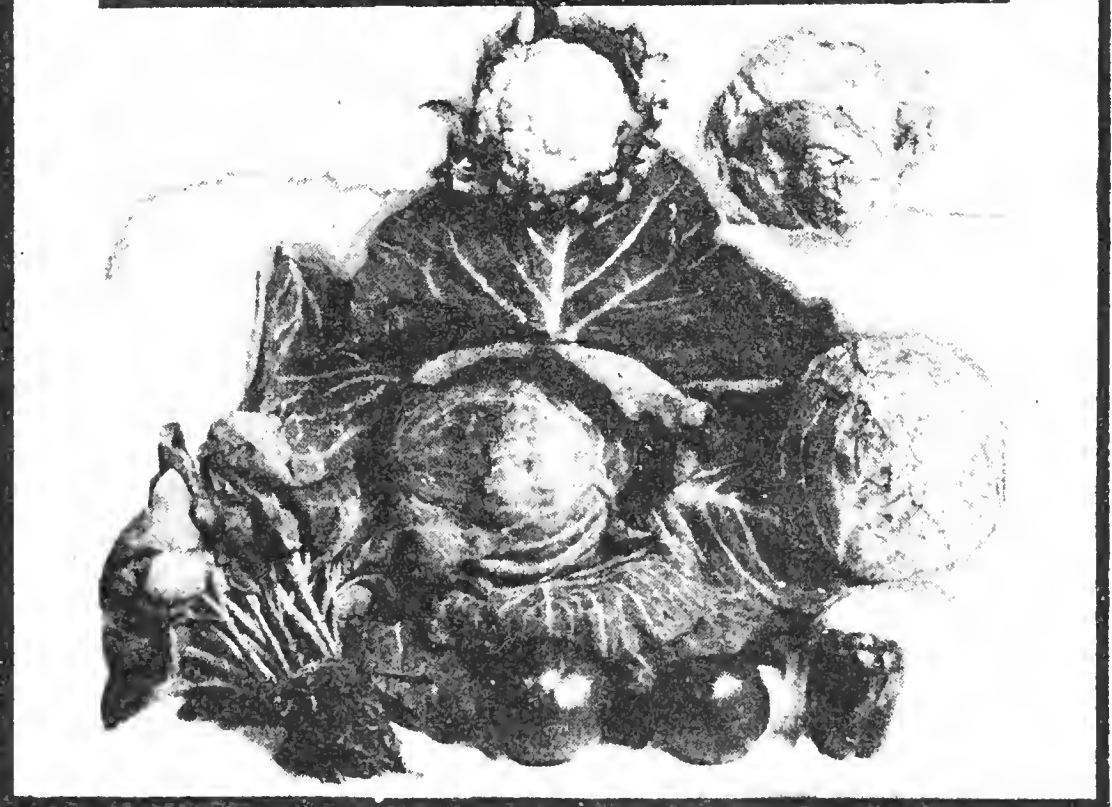
PLANTS



U. S. DEPARTMENT OF AGRICULTURE
BUREAU OF VEGETABLE CROPPING
WASHINGTON, D. C.

1
9
3
8

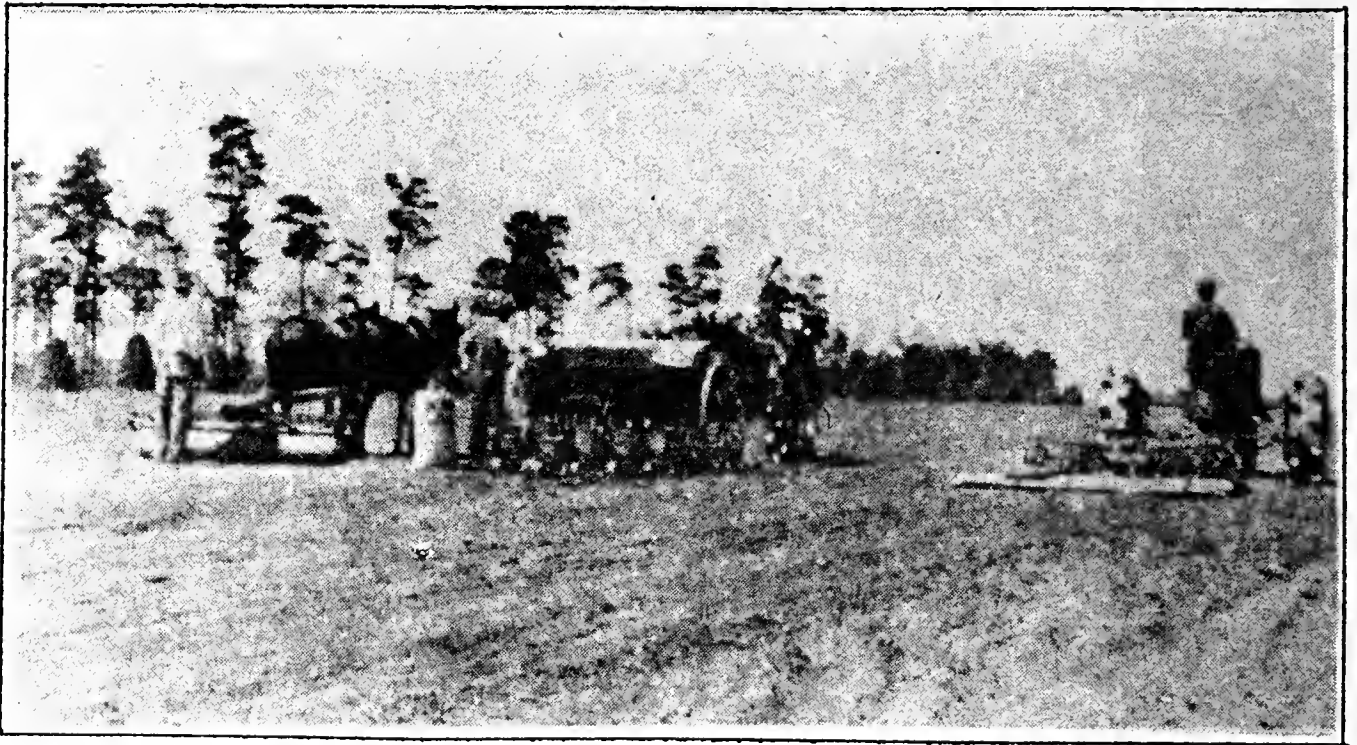
1
9
3
8



OMEGA PLANT FARMS, Inc.

Omega, Georgia

OMEGA PLANT FARMS, INC., OMEGA, GEORGIA



Planting Cabbage Seed. We own \$10,000.00 Worth of Farm Machinery Used Only for the Growing, Cultivating and Spraying of Vegetable Plants.

Please send me your catalog for 1938. I have used your plants in the past and find them the best ever.

Yours truly,
Mrs. Eldora Edwards
Benton, Mo.

I was well pleased with my plants I ordered last year. They did exceptionally well.

W. C. Tidwell,
Alton, Ill.

Please ship us 5,000 cabbage plants. We have had many quotations from dealers but none from you. We are satisfied, from around twelve years almost exclusive ordering from you, that your prices are in line with others.

Adame County Co-Operative Marketing Ass'n.,
Natchez, Mississippi.

Received my plants I ordered from you. I have ordered from you for ten years and always pleased with them.

Alfred Warner,
Alfred, Ohio

VEGETABLE PLANTS OUR ONLY BUSINESS!

TO THE TRADE

IT IS WITH MUCH pleasure we present to our customers and friends our 1938 catalog of vegetable plants. We want to thank you for past business and ask a continuance of your patronage upon our record of service in handling your orders.

Your profits from vegetables this year will depend upon you getting the best quality plants. In our twenty-two years' experience growing and shipping plants we have learned where to get the best seed and how to grow and pack vegetable plants that give satisfaction in every particular. All our plants are grown from the very best seed obtainable, upon land especially adapted to the growing of plants and in a climate of just enough sunshine and cold to grow for the best quality.

We have the land, a large force of experienced men and equipment for handling plants properly and we know our service is second to none, regardless of the size of your order.

Your diversified program should include plenty of vegetables for home use and some for local markets. You will sell on the early and high market by using our strong, healthy field-grown plants.

OUR GUARANTEE—Knowing that seed or plants of the highest quality will often fail through improper treatment due to several reasons, we will not be responsible for the crop. However, we will refill or refund the purchase price on any order of plants not entirely satisfactory.

HOW TO ORDER PLANTS—All plants are sold on cash basis, so make remittance by postoffice or express money order, drafts or checks. This will save extra cost to you in making collections and returning money to us by postoffice and express companies. However, we will make shipments C. O. D. if you prefer them that way. Be sure and state date you want shipment made.

WHAT TO DO WHEN PLANTS ARRIVE—Unpack immediately and if weather is unfavorable for transplanting in the fields put on damp moss, or pack in cellar or trench them in ground until ready to set.

OUR FROST-PROOF CABBAGE PLANTS are grown in the open fields and have been known to stand a temperature of 14 degrees above zero here without injury. They can be set much earlier than hot-bed, or cold-frame plants. The tops will not make much growth during the cold weather, but the roots will develop and have a good root system, and when the weather opens up they will make hard headed Cabbage much earlier than home-grown plants. It requires ten to fifteen thousand plants per acre.

Be Sure to Give Shipping Date!

Frost-Proof Cabbage Plants



We can supply the following varieties:

EARLY JERSEY WAKEFIELD—Best early and extensively used for home and market. Firm pointed heads with few outside leaves.

CHARLESTON WAKEFIELD—Larger and less pointed than Early Jersey, and about ten days later.

COPENHAGEN MARKET—Early round-headed variety, popular in all markets, very firm and of the highest quality.

GOLDEN ACRE—Earliest round head variety, little smaller than Copenhagen Market and about a week to ten days earlier.

EARLY FLAT DUTCH—Sure-heading, compact and early. Heads flattened and solid, larger than other varieties.

ALL SEASON—A desirable variety for early or late use. Very large flat heads.

GLORY or ENKHUIZEN—Attractive medium early. Large, round, solid heads of remarkably fine flavor.

YELLOW RESISTANT VARIETIES
For Shipment during April, May and June.

GOLDEN ACRE
(Resistant)

MARION MARKET—(Resistant Copenhagen)

WISCONSIN ALL SEASON—(Resistant)



Either of the above varieties of plants at the following prices:

By Mail—Postpaid		Mail or Exp.—Not Prepaid	
200 Plants	-----\$.50	1,000 Plants	-----\$.85
500 Plants	----- .90	5,000 Plants	----- 4.00
1,000 Plants	----- 1.75	10,000 Plants	----- 7.50

Express Billing Weight, 18 lbs. per Thousand Plants.

GEORGIA or CABBAGE COLLARD PLANTS—Same price as Cabbage Plants.

Cabbage plant growing stations: Omega, Ga., Clarksville, Ga., and Ruskin, Florida.

WE SHIP CABBAGE PLANTS 12 MONTHS IN THE YEAR

Bermuda Onion Plants

The Onion Plant business has grown in this section for the past few years until today Georgia is about as heavy shipper as Texas and, frankly, we know our plants are better than Texas grown plants. Onions grown from plants will keep much better than grown from sets, and you will always be glad you included Onion plants with your order. Set from thirty to sixty thousand plants per acre. We can supply the following varieties:



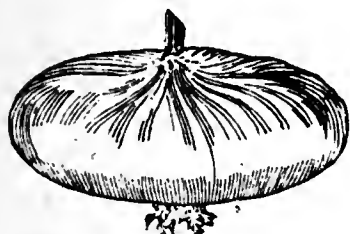
CRYSTAL WHITE WAX—

This is a very popular variety, an absolutely pure white Onion of waxy appearance. The sweetest and mildest of all the Bermuda Onions. There is a good demand for this on account of its handsome appearance.

WHITE or YELLOW—This is a straw colored variety, exceedingly mild in flavor and very early. A very profitable sort for market gardeners and truckers.

PRIZETAKER—This variety is famous all over the country producing large Onions. They are straw color, extremely mild flavor and good keepers.

RIVERSIDE SWEET SPANISH—Sparkling white flesh. Mild, sweet, good quality and splendid keeper.



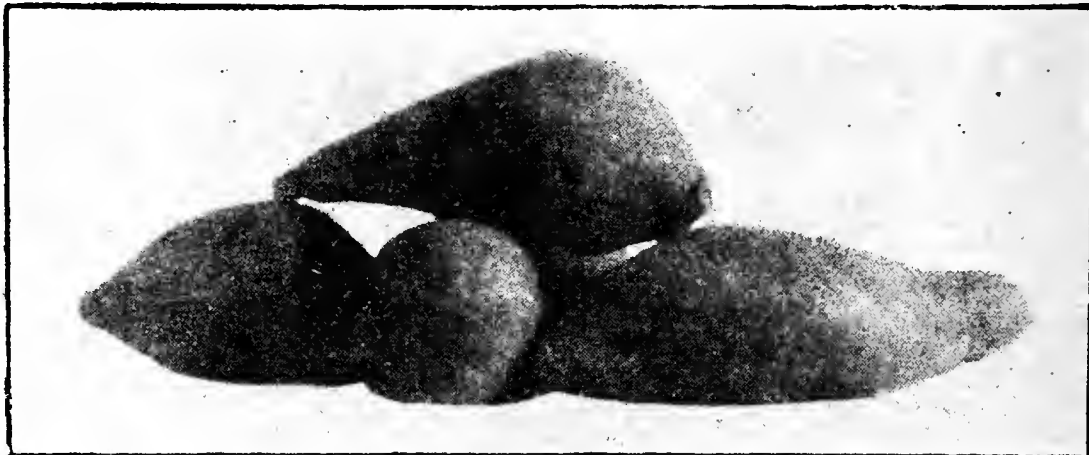
You will notice only vegetable plants listed in this catalog. We devote our time to the growing and shipping of plants and find we can serve you better by doing this one thing well.

Bermuda Onion Plant Prices

By Mail—Postpaid		Mail or Exp.—Not Prepaid	
200 Plants	-----\$.40	1,000 Plants	-----\$.75
500 Plants	----- .60	5,000 Plants	-----3.50
1,000 Plants	-----1.00	10,000 Plants	-----6.00

Billing Weight 7 lbs. per Thousand Plants

VARIETIES ARE LABELED



SWEET POTATO PLANTS

Our Sweet Potato Plants are certified stock, open field grown but not frost-proof, and will be ready for shipment about April 1st on through May and June. We will have the improved Porto Rico and Maryland Golden varieties to offer this season.

By Mail—Postpaid	Mail or Exp.—Not Prepaid
200 Plants-----\$.50	1,000 Plants-----\$ 1.50
500 Plants-----1.10	5,000 Plants-----7.25
1,000 Plants-----2.00	10,000 Plants-----14.00

Billing Weight, 20 lbs. per Thousand Plants

PEPPER PLANTS

All Pepper Plants are open field grown, but are not frost-proof. Plants may be set in open earlier than hot-house plants, as they are hardened by March winds and have been known to withstand light frost. Pepper Plants ready for shipment around April 1st on through June. We offer World Beater, Ruby Giant, Pimento, California Wonder and Long Hungarian varieties.



By Mail—Postpaid	Mail or Exp.—Not Prepaid
100 Plants-----\$.40	1,000 Plants-----\$ 2.25
500 Plants-----1.50	5,000 Plants-----11.00
1,000 Plants-----3.00	10,000 Plants-----20.00

Don't forget, we are as near you as your mail box or telephone. Please call or write us when we can be of any service to you regarding plants or any other business in our territory.

**WHY GAMBLE WITH CHEAP PLANTS? GET THE BEST!
BUY OMEGA BRAND PLANTS**

Field of Tomato Plants



SPECIAL NOTICE TO SEEDSMEN

Order a crate of our Frostproof Cabbage or Onion Plants today. Have them on display early and notice the customers they will attract. Not only will they call for plants, but they will buy a variety of seed while there. Get our Special Dealer prices and terms.

**THE QUICKEST WAY TO MAKE VEGETABLES IS TO SET
OUR OPEN-FIELD GROWN PLANTS**

**OUR MAXIMUM SHIPPING CAPACITY IS SEVEN CARS
OF PLANTS PER DAY!**

Certified Tomato Plants

The Tomato Plant industry has grown with us until now it is our largest acreage. We are now prepared to give you certified Tomato



Plants. This certification shows that plants are true to name and are free of insects and injurious diseases, and have been grown under the supervision of a State Plant Pathologist. We will have five hundred acres for this season and can take care of your orders, whether for one hundred plants or a car load. Tomato plants are six to ten inches high, about the size of a cedar pencil, with good root system. Plants are packed with roots wrapped in damp sphagnum moss, in well ventilated crates, and can be set in the fields immediately when they reach you. Send your orders in

for Tomato Plants at the same time you do Cabbage, or when ready, and be sure to state date you want shipment made. Set from four to six thousand plants per acre.

EARLIANA—A red early Tomato; very popular for home use.

JOHN BAER—About ten days later than Earliana; bright red and very attractive.

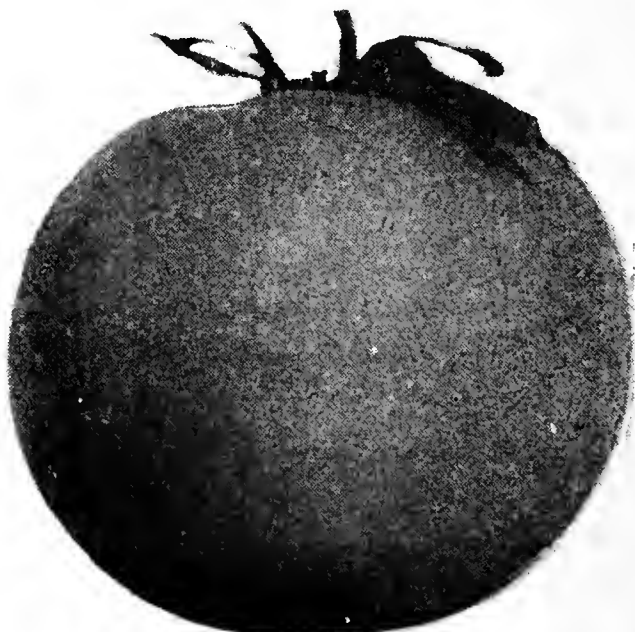
BONNY BEST—Favorite bright scarlet early variety, very vigorous growth and heavy yielder.

RUTGERS—The new variety developed by New Jersey Agriculture Experiment Station. Produces a vigorous plant, fruit resembles Marglobe but ripens a few days earlier and a brighter scarlet color.

MARGLOBE—This variety is recommended for its resistance to wilt and nail head rust. Fruits are medium size, smooth, red and globular shape. It is a good second early and continues to bear until frost.

PRITCHARD (SCARLET TOPPER)—An early heavy cropper, fruits globular shaped, and intense rich scarlet color. Fine all purpose tomato.

Tomato Plant Growing Stations: Gainesville, Florida, and Omega, Georgia.



TOMATO PLANTS ARE NOT FROSTPROOF

OMEGA PLANT FARMS, INC., OMEGA, GEORGIA

GREATER BALTIMORE—This variety is excellent for canning. Produces a large, solid, smooth fruit of bright red color and excellent quality.

TOMATO PLANT PRICES

Tomato plants for shipment during March, April, May and June at the following prices:

By Mail—Postpaid		Mail or Exp.—Not Prepaid	
100 Plants	-----\$.50	1,000 Plants	-----\$ 1.65
200 Plants	----- .90	5,000 Plants	----- 8.00
500 Plants	-----1.60	10,000 Plants	-----15.00
1,000 Plants	-----2.60	50,000 Plants	-----72.50

Express Billing Weight, 25 lbs. per Thousand Plants

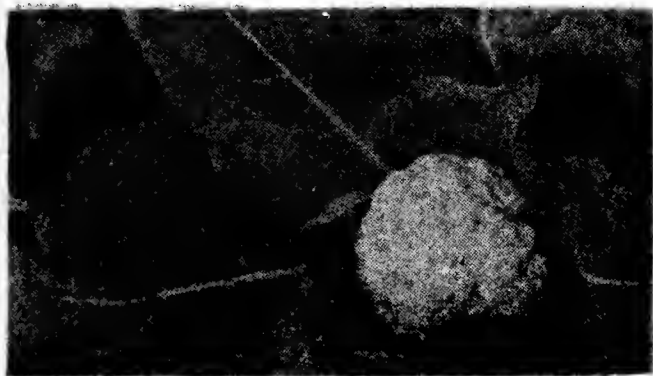
We produced on our own farms and shipped by mail, truck and express last season seventy-six car loads of tomato plants. We are increasing our acreage about twenty percent for 1938.

CAULIFLOWER PLANTS

Strong, field grown plants—March, April and May shipments.

EARLY SNOWBALL—Extra early. Plants short and stocky producing round heads. Pure white. Perfectly solid.

VETCHES' AUTUMN GIANT—Very vigorous grower, large dense foliage, firm heads.



By Mail—Postpaid	
100 Plants	-----\$.75
500 Plants	-----2.50
1,000 Plants	-----4.00

Express
Charges
Collect
Per Thousand-----\$3.25

FLORIDA HIGH BUSH AND BLACK BEAUTY EGG PLANTS

April, May and June shipment.

By Mail—Postpaid	
100 Plants	-----\$.40
500 Plants	-----1.50
1,000 Plants	-----3.00

Express
Charges
Collect
Per Thousand-----\$2.50



**THE QUICKEST WAY TO MAKE VEGETABLES IS TO SET
OUR OPEN-FIELD GROWN PLANTS**

OMEGA PLANT FARMS, INC., OMEGA, GEORGIA



Spraying Tomato Plants



We use the wirebound crate for shipping, which assures you of Plants arriving in good condition.

1500 ACRES of VEGETABLE PLANTS for 1937!

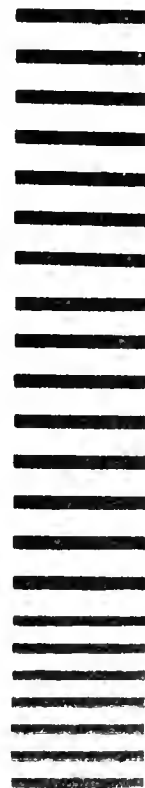
FROM.....

P. O.

R. F. D. STATE.....

No Postage
Stamp Necessary
If Mailed in
U. S. A.

BUSINESS REPLY LETTER
FIRST CLASS PERMIT NO. 1, SEC. 384½, PLR, OMEGA, GA.

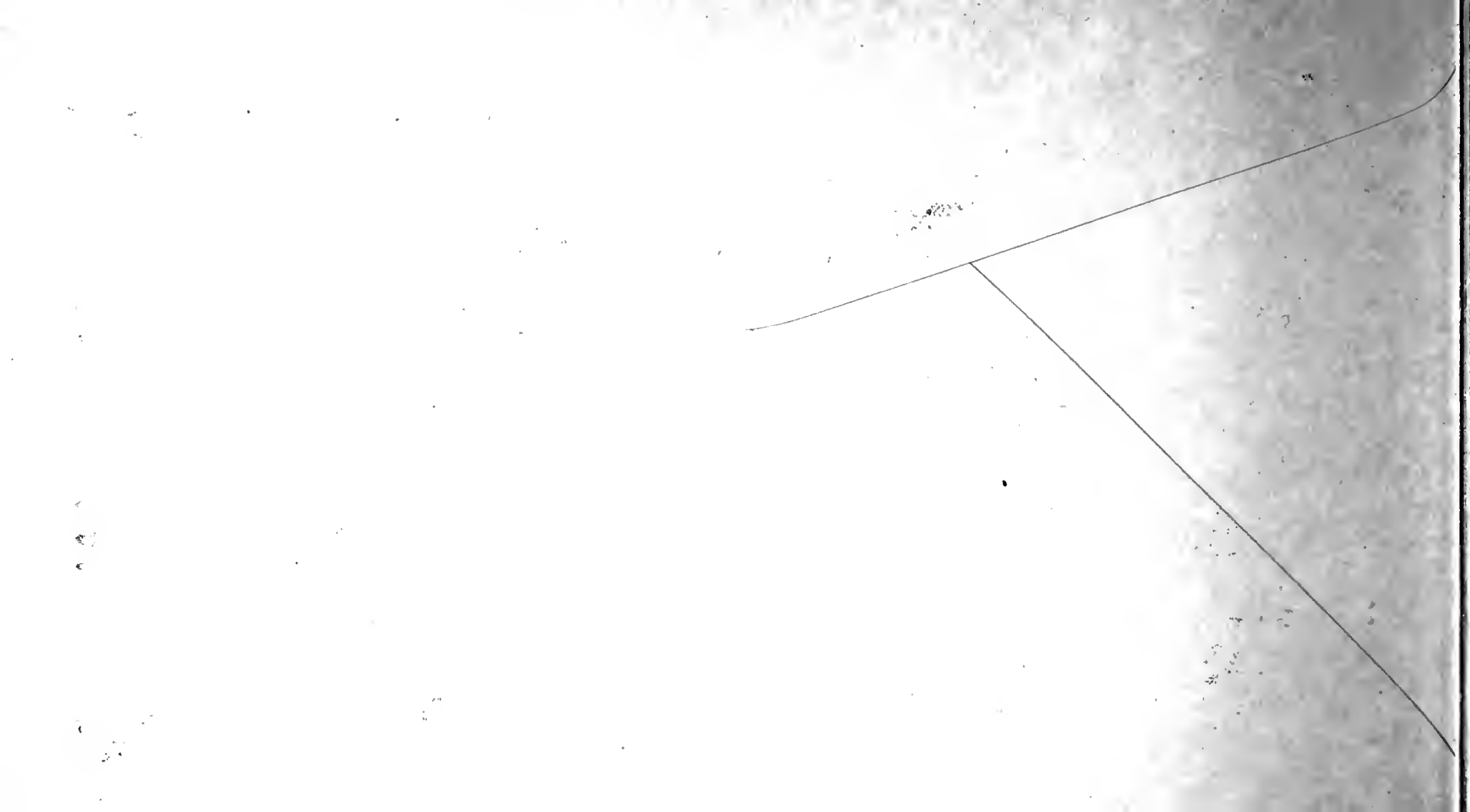


OMEGA PLANT FARMS,

Omega,

Georgia

Postage Will
Be Paid By
Addressee



OMEGA PLANT FARMS, INC., OMEGA, GEORGIA

LETTUCE PLANTS ICEBERG AND NEW YORK IMPROVED

By Mail—Postpaid	
100 Plants	-----\$.40
200 Plants	----- .75
500 Plants	-----1.50
1,000 Plants	-----2.50
Mail or Exp.—Not Prepaid	
1,000 Plants	-----\$ 1.60
5,000 Plants	----- 7.50
10,000 Plants	-----14.50



BROCCOLI PLANTS

Ready February, March, April and May. Green Sprouting variety. Same price as Lettuce Plants.

SPECIAL OFFERS

HOME GARDEN COLLECTION, NO. 1

100 Cabbage	
100 Onion and	
50 Cauliflower plants, all prepaid for	-----75c
This collection ready for shipment during March to June.	

HOME GARDEN COLLECTION, NO. 2

100 Cabbage	
100 Onion	
100 Sweet Potato	
100 Tomato and	
50 Pepper Plants all prepaid for	-----\$1.50
This collection ready for shipment during April, May and June.	

HOME GARDEN COLLECTION, NO. 3

100 Cabbage	
100 Onion	
100 Lettuce and	
100 Collard Plants, Prepaid	-----\$1.00
Ready March, April, May and June.	

The past season we sold over a hundred million plants. Our customers included the larger canners and growers as well as market and home gardeners of cabbage, onion, tomato and pepper plants and we had less than one-half of one per cent complaints. If you are one of our customers, you know our quality. If you have never used our plants and want references as to quality and grade of plants we ship out we will be glad to supply you with references from your state as well as every state in the Union.

**DON'T TAKE CHANCES—BUY OMEGA BRAND—
BETTER PLANTS**

OMEGA, GEORGIA

So many of our customers have asked where Omega is located until we have this map showing Omega is right in the center of Georgia plant section.



98 per cent of our orders are shipped the day received or wanted. Rains sometime delay shipments but your plants should reach you in two to five days from date you want shipment made.

OMEGA PLANT FARMS
OMEGA, GEORGIA
