

Historic, archived document

Do not assume content reflects current scientific knowledge, policies, or practices.



A Nursery Catalog devoted to the enhancement of the home
and the profitable planting of the garden and orchard.

We solicit your order on the basis of QUALITY • EXPERIENCE
SERVICE • ECONOMY

1938

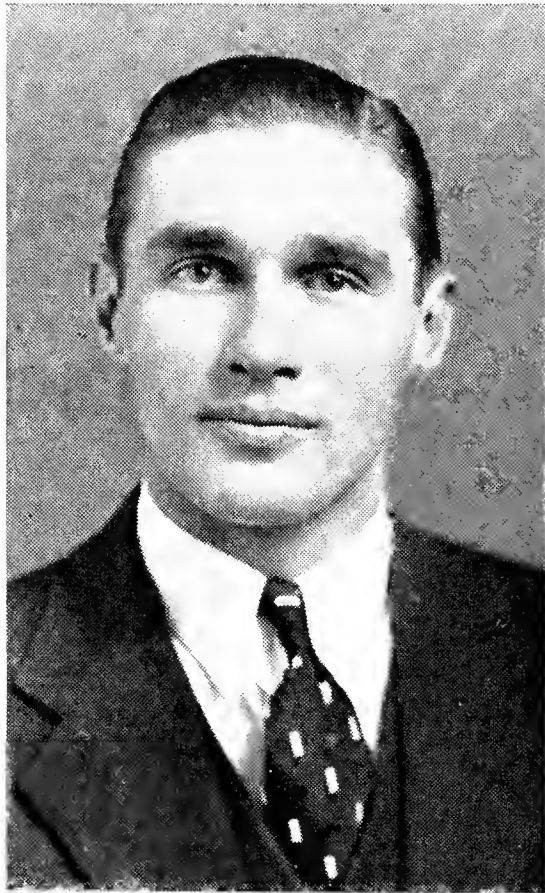
RICH & SONS NURSERY

ROUTE NO. 4

HILLSBORO, OREGON

TO OUR CUSTOMERS

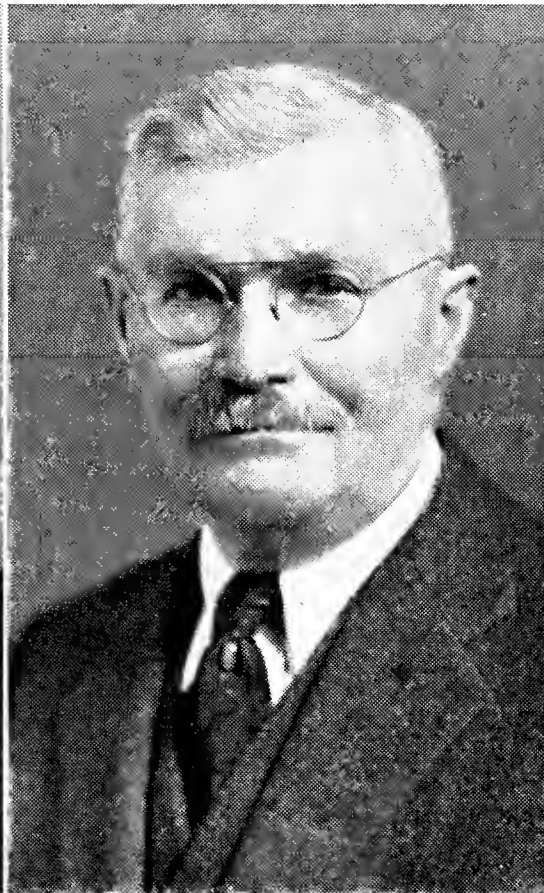
Rich & Sons Nursery, after forty years' experience in growing high grade trees for the wholesale trade, are entering the retail field in anticipation of being of valuable service to gardeners and orchardists on the Pacific Coast. Just a word about our personnel, whom we introduce as follows:



AT YOUR SERVICE

AMOS RICH

Youthful and experienced.
14 years in the business.



CHRIS R. RICH

Still actively engaged after forty years' of experience in growing nursery stock on an enormous scale.



EXPERIENCE COUNTS

SAMUEL J. RICH

Started from the bottom up.
19 years' of nursery experience.

Rich and Sons come to you with a personnel whose forty years is your assurance of dependability and service. During that time we have grown more nursery stock than any other nursery on the Coast.

Our staff of employees is composed of men who have had from ten to thirty years' experience in growing, grading and packing nursery stock. This is your guarantee of well graded, well grown stock when you buy from us.

We take pride in offering the best possible in service and quality at the lowest possible cost to the planter. Trees and shrubs can be purchased for less than we sell them, but Rich & Sons supply trees that are **WORTH** more. Our trees are all hardy, thrifty, productive, and free from disease, and will repay many times over the additional few cents they may cost. Buy Rich & Sons trees with confidence.

Rich & Sons expend considerable time, effort, and money in procuring new varieties of merit to guarantee their availability to the planter. We do not list outmoded varieties that have lost their value or grown in disfavor. Buy our up-to-date trees.

LOCATION

Our nurseries are located in the fertile Willamette Valley, Oregon, which is recognized internationally as the best place to grow nursery stock. Our rainfall is sufficient so that irrigation is not necessary, resulting in heavy trees of a hardy thrifty nature. Our trees thrive in all locations where trees will grow.

NOTICE

Rich & Sons have many shade trees, shrubs, and evergreens that are larger or smaller than those listed in this catalog. If you have some special planting to make, write us about it, since we likely have something suitable in our large nurseries.

TO COMMERCIAL PLANTERS

Since we grow high grade trees in very large quantities we are in a position to offer commercial planters very low rates on larger quantities of nursery stock. Please write for our very low quantity rates. We believe we can give you the biggest saving on the Coast.

GUARANTEE

Rich & Sons guarantee their stock to please you. We guarantee it to arrive at the purchaser's nearest shipping point in perfect growing condition, free from diseases and absolutely true to name.

We never substitute on commercial varieties, but do feel at liberty to substitute on small orders unless requested not to, in each case, however, we put the true name of the plant on the label. Furthermore, any such substitutions may be exchanged if not satisfactory. All claims for shortage or any other reason must be reported within ten days.

TERMS

Our terms are 25% cash with order, balance C. O. D. We allow 5% discount for full payment with order, or 10% additional stock. We pay the shipping expenses to Rocky Mountains, excepting where noted. No packing charge. Premiums with order over \$3.00. Prices slightly lower at nursery if called for.

We are in a position to make shipments to foreign countries. Write us about this service.

PLANTING GUIDE AND CHART

Number of Shrubs or Plants for an Acre			Suitable Distance for Planting	
No. Feet Apart	Square Method	Triangle Method	No. Feet Each Way	
1x1	43,560	50,300	Apples	25 to 35
2x2	10,890	12,575	Pears	20 to 25
3x3	4,840	5,890	Cherry, Sweet	25 to 35
4x4	2,722	3,145	Cherry, Sour	20 to 25
5x5	1,742	2,010	Plums	20 to 25
6x6	1,210	1,600	Prunes	20 to 25
7x7	888	1,020	Peaches	20 to 25
8x8	680	785	Apricots	20 to 25
9x9	537	617	Nectarines	18 to 20
10x10	435	505	Quince	15 to 18
11x11	360	414	Almonds	20 to 28
12x12	302	349	English Walnuts	40 to 60
13x13	257	295	Filberts	20 to 25
14x14	222	255	Currants	3 to 7
15x15	193	222	Gooseberries	4 x 8
16x16	170	190	Raspberries	3 x 8
17x17	150	172	Blackberries	5 x 8
18x18	134	158	Strawberries:	
19x19	120	138	Field: 18 to 24 in. x 3 to 3 1/4 ft.	
20x20	108	125	Garden: 1 x 2 ft.	
22x22	90	104	Grapes	8 x 10 ft.
24x24	76	88	Asparagus	8 in. x 3 ft.
25x25	69	80		
27x27	60	69		
30x30	43	55		
33x33	40	46		
35x35	35	40		
36x36	33	38		
40x40	27	31		

Write for low quantity prices.

FRUIT TREES

Fruit trees are our specialty. We grow them in great quantities and are able to fill orders for large commercial plantings. We will furnish first-class stock in whatever grades we are able to supply when your order arrives. We encourage you to order early while stocks are complete. Write for our special prices to Commercial Planters.

Our fruit trees are graded according to the standards of the American Association of Nurserymen, which means that they average 50% larger for each grade than the trees sold by most nurseries in the Northwest, AND THEY WILL COST YOU NO MORE. Our trees are grown from scions taken from bearing trees so far as is practicable, assuring good strains.

APPLES	Each	10
3-4 feet	\$0.45	\$4.00
4-6 feet50	4.50
2-year selected branched75	6.50

Baldwin. Large; round; bright red; crisp. Tree vigorous and productive. January to April.

Banana. See winter Banana.

Black Rome Beauty. Like the Rome Beauty excepting that its color is a very dark red and it has a much better flavor. November to February. Good commercial variety.

Cortland. New. Large; red; juicy; fine shipper. Similar to Improved McIntosh.

Delicious. The great commercial variety of the Northwest. The famous "five point" apple. Red striped. November to March.

Duchess of Oldenburg. Large; round; streaked with red. Vigorous; hardy, and productive. An excellent variety for the orchard. Sept.

Early McIntosh. A new variety of fine merit. Bright red, round-oblate shape. Tree hardy, vigorous productive. Cross between McIntosh and Yellow Transparent. Ten days later than Yellow Transparent. Add 10c.

Gravenstein. Large; striped; juicy and tender; vigorous and productive. Best sauce apple. August and September.

Grimes Golden. High quality; medium large; yellow. Tree hardy and productive. November to March.

Jonathan. Medium to small. Yellow skin nearly covered with lively red. Fine grained and tender. Tree slender and spreading. Good commercial sort. November to April.

King of Tompkins County. Large; striped red and yellow. Vigorous grower. Oct.-Nov.

Lady. Beautiful dessert apple. Lemon with bright red cheek. Very small; crisp and juicy. Useful for ornaments. Prolific. Dec. to May.

Lodi. This is a new improved Yellow Transparent. It is larger and ripens a little later. More vigorous. Add 10c.

McIntosh Red. Medium size; red; white flesh, tender, juicy. Productive. Very hardy. Nov. to February.

McIntosh Black. Same as McIntosh Red, excepting that it is very much darker in color and more attractive.

Northern Spy. An old favorite. Large; striped. Flesh white and tender. Strong, upright grower. January to May.

Orengo. Red; crisp; juicy. Small core. An excellent apple for the roadside stand. October to January. (Seedling of Northern Spy.)

Ortley. (White Bellflower). Large; oblong; yellow. Flesh white; tender; juicy; fine grained. Unexcelled for salads. Nov. to Feb.

Red Astrachan. Large; beautiful red; juicy; acid. Vigorous; productive. August.

Red Delicious. Same as Delicious excepting it is solid red and juicier. A wonderful apple. The leading seller among apple trees. A great commercial variety. Nov. to March.

Red Gravenstein. A beautiful Gravenstein with solid red color. Ideal for roadside selling. August to October.

Red Rome Beauty. Like Rome Beauty, excepting for darker color. A leading commercial variety. A good baking apple.

Red June. Medium size. Brilliant red; flesh white; ripens early. Early bearer. Good market variety.

Rome Beauty. Large; yellow ground, with red stripes. Productive. Good baking apple. November to March.

Spitzenberg, Esopus. Medium to large; deep red; flesh yellow. Good commercially. Fine for baking. November to April.

Stayman Winesap. Large; red striped; juicy; tender. Fine flavored. Good orchard variety. December to April.

Talman Sweet. Medium; pale yellow; very sweet; baking. November to April.



Wagener. Medium. Red blush; firm. Productive. Bears young. December to May.

Winesap. Medium; dark red; prolific bearer. Best keeping apple. Good market variety in West. December to May.

Winter Banana. Very large; golden yellow; red cheek. Fine flavor. Vigorous grower; productive. October to May.

Yellow Bellflower. Large; yellow; tender; juicy. Winter.

Yellow Delicious. Beautiful yellow; conical; fine flavor. Vigorous; productive. Commercial variety. December to April.

Yellow Newtown Pippin. One of best quality apples. Very firm; juicy; crisp; delicious. Commercial variety. December to May.

Yellow Transparent. The most popular early variety. Yellow; acid; tender; juicy. Early, abundant bearer. July to August.

CRABAPPLES

	Each	10
3-4 feet	\$0.45	\$4.00
4-6 feet50	4.50
2-year selected branched75	6.50

Hyslop. Medium size; red with yellow flesh. Productive. Keeps well.

Red Siberian. Yellow; scarlet cheek; bears young. September-October.

Transcendent. Striped red; very productive; Good for sauce, pies, eating fresh or dried; cider. September-October.

Whitney No. 20. An improved seedling of the Whitney. Very large; red; very productive; good eating. August.

PEARS

	Each	10
3-4 feet	\$0.45	\$4.00
4-6 feet50	4.50
Selected 2-yr. branched trees	.75	6.50

Write for especially low quantity prices.

Bartlett. Large size; sometimes has red blush. Buttery; juicy; fine flavored. Very popular canner. We grow the good canning variety. August and September.

Beurre Bosc. Large; long necked pear; russet; half melting; juicy; delicious. One of the best autumn pears. Sept. and Oct.

Beurre Clarigeau. Very large; red and yellow; high flavor. Commercial variety. Oct.-Nov.

Beurre d'Anjou. Large; buttery; melting; vinous flavor. Commercial variety. Oct. to Jan.

Clapp's Favorite. Large; lemon-yellow; vinous. August and September.

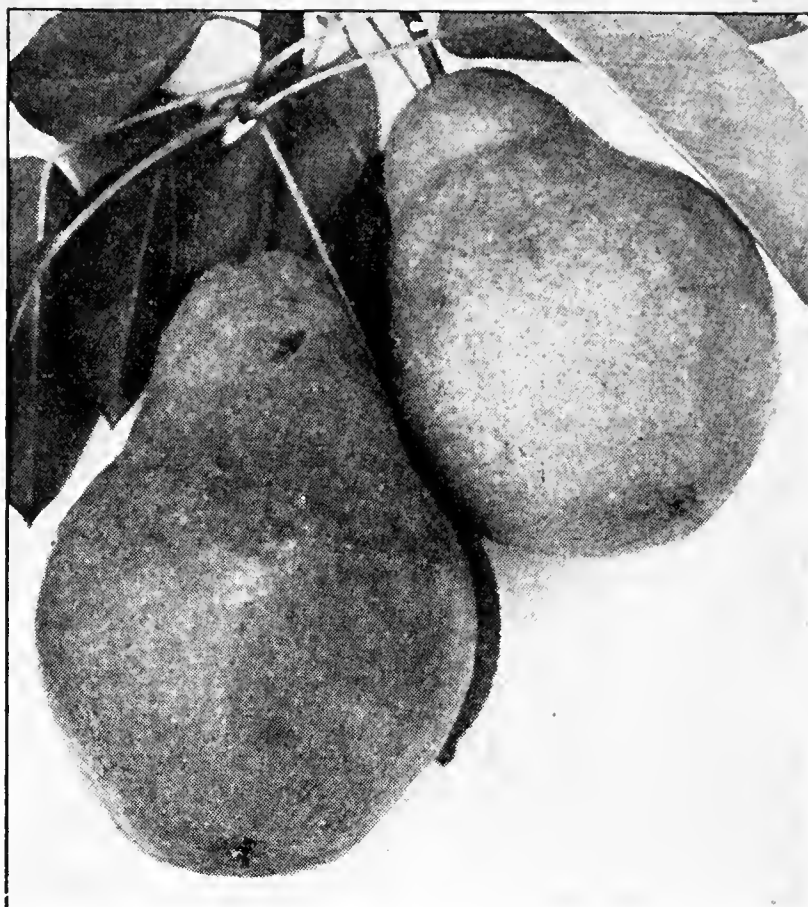
Doy-Comice. Large; crimson cheek; melting; perfumed; flesh; luscious. Oct. and Nov.

Fall Butter. Medium; pale yellow; fine flavor. October and November.

Flemish Beauty. Large; beautiful; juicy; melting. Good market variety. Sept. and Oct.

Keiffer's Hybrid. Good color; rather coarse. Very blight resistant; good grower. October and November.

Seckel. Small; rich; yellowish brown; spicy. Good pickling. September and October.



BARTLETT PEARS

Winter Bartlett. Shape similar to Bartlett. Good keeper. December to February.

Winter Nelis. Medium; fine grained; good keeper. December to February.

CHERRIES - Sweet

	Each	10
3-4 feet	\$0.50	\$4.50
4-6 feet60	5.50
Selected 2-yr. branched85	7.50

Have you selected pollenizers?

Bing. Very large; black; firm; very rich. Good shipping and canning variety. July.

Black Republican. Firm; juicy; good keeper. Pollinizer.

Black Tartarian. Large; juicy; rich; good flavor. One of the best early cherries. Pollinizer. June.

Centennial. Color of Royal Ann. Very firm; good shipper. Pollinizer.

Lambert. Largest cherry; purplish black; very good flavor; heart-shaped; good shipper. Follows Bing. Productive.

Deacon. Very large, black cherry of best quality; pollinizer.

Golden. Medium; rich yellow; sweet; productive.

Hoskins. Large; black; flavor similar to Tartarian; pollinizer.

Oxheart. (Major Francis). Early; red; soft. June.

Royal Ann. (Napoleon Biggareau). Pale yellow with bright red cheek; firm; juicy; sweet. Good shipper, canner and maraschino cherry.

Royal Stewart. Seedling of Royal Ann. Very productive. Pollinizer.

Windsor. Medium size black cherry. Remarkably productive. Good pollinizer. Vigorous; hardy.

CHERRIES - Sour

Prices same as sweet cherries.

- Baldwin.** Early, Morello type; rich dark red color; sweetest of the Morellos. The favorite of those who know it. June.
- Early Richmond.** (Kentish). Medium; dark red; acid. Good cooking. Very hardy. June.
- English Morello.** Medium; blackish red; rich; acid; productive. July.
- Late Duke.** Late; light red; large; ripens unevenly, making it ideal for the home orchard. July.
- May Duke.** Large; red; juicy; early. June.
- Montmorency Large.** Large red cherry. Leading commercial variety. July.
- Ostheim.** Fruit large; round; rich. Hardy. July.

PEACHES

	Each	10
2-3 feet	\$0.35	\$3.00
3-4 feet45	4.00
4-6 feet50	4.50
Selected extra large, branched	.65	6.00

Write for quantity prices.

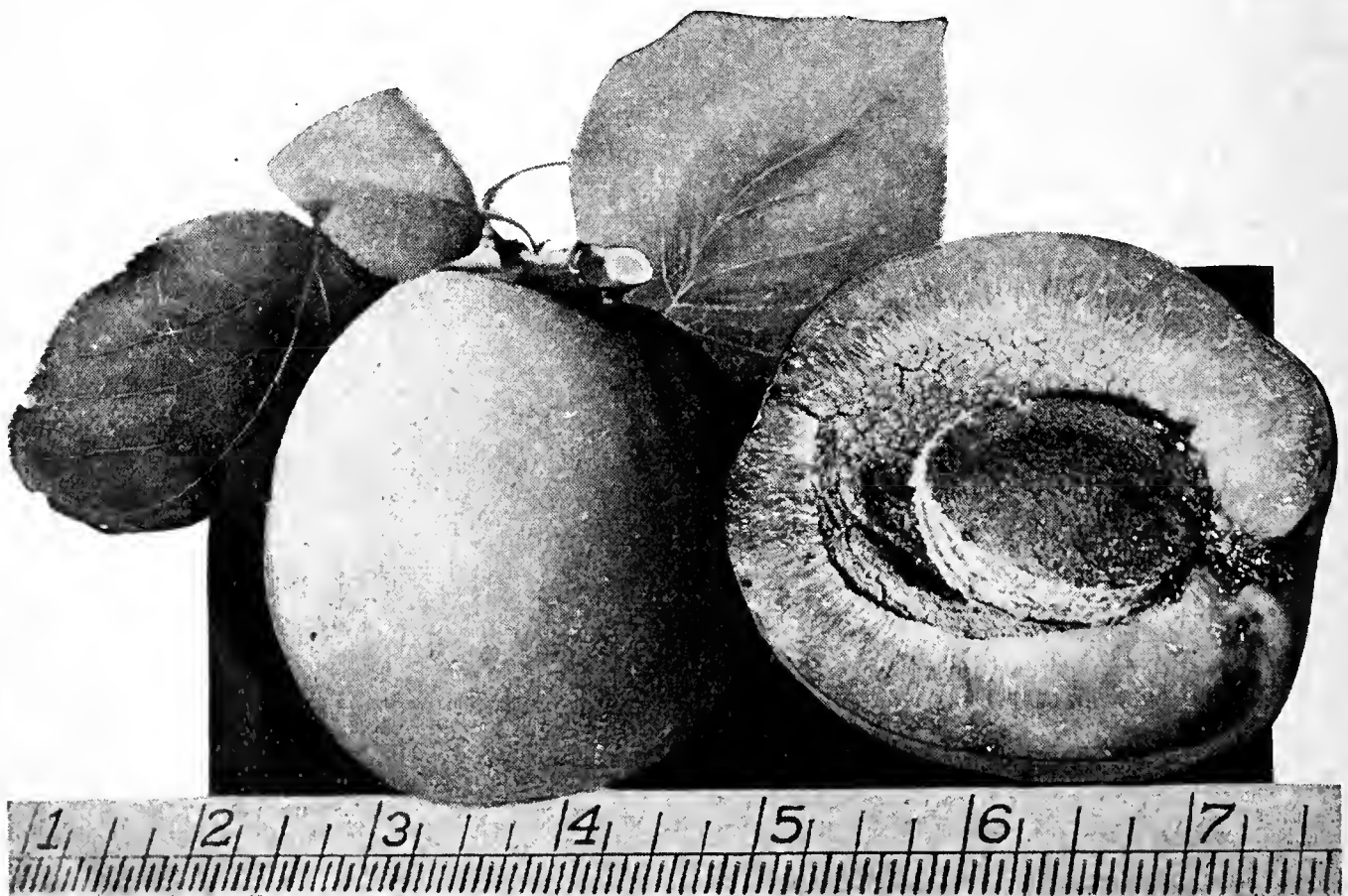
- Alexander.** Medium size. Greenish white, nearly covered with red. Juicy; sweet; productive. Two weeks ahead of Hale's Early.
- Crawford's Early.** Large; yellow with red cheek. Good quality. Very popular. Freestone. Aug.
- Crawford's Late.** Large; greenish-yellow with red cheek; flesh yellow; tree vigorous; medium producer. Free. September.
- Early Charlotte.** Seedling of Crawford. Better color; good quality; excellent flavor. Ten days later than Early Crawford.
- Early Elberta.** Yellow with beautiful mottled red cheek; large juicy; yellow meat. Freestone. Commercial variety. August.
- Elberta Improved.** Larger and better quality than Early Elberta. Freestone. August. Valuable variety.
- Elberta, Standard.** The old type Elberta, popular for drying. Hardy and vigorous. Late August and September.

GOLDEN JUBILEE

Golden Jubilee. This is the outstanding new peach. It is a first quality peach with yellow meat, entirely freestone. It is large and handsome with a red cheek. Firm; juicy; and a remarkable shipper. It will stand up very well on the fruit stand without losing its attractiveness and good qualities. Heavy bearer; vigorous and self-sterile. Three weeks earlier than the Elbertas. Good canner.

The earliest first quality eating and canning peach.

- Hale's Early.** Semi-cling; medium size; greenish white with red cheek; good quality; good early peach. July.
- Indian Blood.** Clingstone; claret-red; flesh red; juicy; refreshing. Frequently used for pickling. August and September.
- J. H. Hale.** Free. Very large; globular; deep yellow overlaid red. Very solid flesh. A leading commercial variety. September.
- Lovell.** Clingstone. Large; round; flesh yellow; good canning, drying, shipping peach. Sept.
- Lemon.** Cling. Beautiful large lemon-shaped peach; firm, yellow flesh. August.
- Mayflower.** Heavy bearing; extremely early; good color. Demands high price because of its season. White flesh; clingstone; juicy. June.
- Mitchell's Late.** A new extremely late peach. Fair color; good quality; yellow meat; firm. Late October. Add 10c. Freestone.
- Muir.** Free. Pale yellow; firm; good drying; non-acid. September.
- Orange Cling.** Very large; red cheek; flesh golden yellow; rich and sweet; immense bearer; good canning; shipping, or drying. Early August.
- Palora Cling.** Beautiful peach; fine for canning, drying, shipping.
- Peak Cling.** Valuable canning and drying sort.



Phillip's Cling. Large; yellow; firm; favorite canner. September.

Rochester. Semi-cling. Earlier than Crawford; does not split at the point; the favorite for canning among those who know it. Very good flavor. Has a tendency to overbear, as a result fruit is usually only medium in size; hardy. We recommend it highly. August.

Salway. Free; large; yellow with deep red cheek; firm; sweet. An excellent, showy, late market variety. September.

Slappy. Freestone. Yellow; large; good bearer; fine grained; good flavor; good canner; hardy tree. August.

Triumph. Semi-cling. Medium size; downy, dark orange-yellow; nearly covered with red; yellow flesh; good quality. June. The best of the extremely early peaches. Attractive, good seller.

Tuscan Cling. Very large; early yellow cling. Good quality. Good canner. Ripens with Early Crawford.

Peach Apricot. Very large; somewhat coarse; juicy; high flavor. July.

Royal. Large; oval; yellow and orange; firm and juicy. Very productive. July.

Tilton. Large; good color; rich flavor; frost resisting. Long the favorite in the Northwest. July.

Wenatchee Moorpark. Very large; orange with red cheek; firm; juicy; good flavor. The most popular tree today.

PLUMS and PRUNES		
	Each	10
3-4 feet	\$0.45	\$4.00
4-6 feet50	4.50
Selected, 2 year, branched...	.75	6.50

Write for very low quantity rates.

Beauty. A very beautiful full dark red colored Japanese plum that deserves a place in every family orchard because of its productivity and earliness—ripening before the cherries are gone. Clingstone. Early July.

Bradshaw. A large, attractive, reddish-purple plum with sweet, juicy flesh. Semi-free. Good market plum. September.

Burbank. Hardy; prolific; Japanese variety. Large; well colored fruit; sweet; aromatic. Cling. September.

Columbia. Very large fruit; brownish purple; very rich and sugary. August.

Damson, Shropshire. Small; oval; purplish-black; juicy; tart. Fine for jam. Clingstone. September.

The New Famous "Three Vs"

Valiant. Freestone. A new Canadian variety; very hardy; Elberta type; fruit large; oblate; yellow blushed with red; good quality; firm. First of September. One commentator says: "A thousand times better than Elberta." Add 10c.

Vedette. Similar to Valiant but ripens a week earlier. Productive; freestone. Better than its parent—the Elberta. Very hardy. Add 10c.

Veteran. The latest of the three "Vs". Ripening after Valiant. Large, round freestone of excellent quality. Very hardy. Add 10c.

NECTARINES		
	Each	10
3-4 feet	\$0.45	\$4.00
4-6 feet50	4.50
Selected, extra large, branched	.65	6.00

Varieties adapted to the Northwest.

Boston. Very large; handsome; deep yellow with red blush; pleasant, peculiar flavor. Good market variety. Free.

New White. Large; white; rich; juicy; freestone. August.

Stanwick. Very large; pale greenish-white shaded to deep violet in the sun. August.

APRICOTS		
	Each	10
3-4 feet	\$0.45	\$4.00
4-6 feet50	4.50
Selected, extra large, branched	.65	6.00

Blenheim. Large; oval; yellow; regular bearer. Good canning, shipping, and drying; a favorite in California.

CHINESE

Chinese. A recent introduction of great promise. Very hardy; resembles Tilton, which it surpasses for size and hardiness. Vigorous. Sometimes called Mormon cot.



PRUNES

Date. (Coates 1418). One of the sweetest prunes. Good size; reddish-purple; solid, drying out better than the Italian. A very tasty product either dried or fresh. Sept.

Fellenberg—(See Italian).

French, Improved. A larger French prune. Very sweet; valuable drier. September.

German. Medium; long; good drier; dark purple color. Similar to Italian. September.

Grand Duke. Large purple; very prolific bearer. September.

Green Gage. Small; good flavor. An old favorite. August.

Hungarian Prune. Very large; dark red; juicy; sweet; productive; good shipper. Sept.

Imperial (Epineuse). Large; reddish purple; thin skin; sweet and juicy. Good drying prune. Late August.

Italian. This is too well known to need description. A great favorite both East and West for shipping; canning; preserving; drying. Productive; September.

Jefferson. Large; yellow, reddened in the sun; juicy and delicious. August.

Kelsey Japan. Very large; reddish-purple; early and prolific bearer. Said to be the largest plum. Good shipper.

Maynard. Large; juicy with a rich flavor; good shipper and keeper; very attractive.

Peach Plum. Large and attractive. Very good. Productive. August. Leading commercial plum in the Northwest.

Petite (French). Medium size; sweet; juicy. Good drying prune. September.

President. Large plum of good flavor and color. Late.

Reine Claude. Large; greenish-yellow, spotted with red; firm; juicy; sugary; fine quality. Very productive. September.

Santa Rosa. A Japanese plum of large size; exquisite flavor; beautiful dark-red color; firm; juicy; very good shipper; small pit. August.

Satsuma. (Blood Plum). Large; skin and flesh are blood-red; pleasant flavor. Very small stone. September.

Shiro. A yellow skinned, yellow fleshed plum of good quality. Very productive; large; fine flavor. Good market variety.

Silver. A valuable prune because of its size and superior flavor. A good general purpose variety. September.

Standard. A fine quality, canning or market prune of the Italian type.

Sugar. A purple plum of very high sugar content. Three weeks earlier than the French and much larger.

Tragedy. Medium size; dark purple; yellowish-green flesh; rich and sweet. Good shipper. July.

Yellow Egg. Another old favorite for cooking, jam, etc. Still a very popular plum. A little coarse but sweet; productive. August.

QUINCES	Each	10
3-4 feet	\$0.65	\$6.00
4-6 feet	.75	6.50
Selected, 2-year, branched	1.00	8.50

Bourgeat. This and Rea's Mammoth are two of the least known quinces, though we consider them to be the best. Bourgeat is a healthy, productive variety, which grows large and has a great bearing surface. The fruit is of good quality and keeps well. A French variety.

Champion. Large, pear-shaped fruit. Cooks nicely; productive.

Orange. Large yellow fruit of good quality.

Pineapple. Early. Similar to Orange, but is smoother.

Rea's Mammoth. The largest of the quinces. Seedling of the Orange, which it resembles in color. Hardy and productive.

NUT TREES

ALMONDS	Each	10
3-4 feet	\$0.50	\$4.50
4-6 feet	.55	5.00
Selected, extra large, branched	.75	6.50

I X L. Large, full kernel; soft shell; hulls easily. Vigorous grower.

Drake's Seedling. Very abundant and regular bearer; pollinizer.

Nonpariel. Large, full kernel, thin shell. Tree has weeping habit.

BUTTERNUTS

A mild white walnut adapted to the coastal regions; not suited to dry regions.

Price \$1.50, selected trees.

CHESTNUTS	Each	10
2-3 feet	\$0.75	\$6.50
3-4 feet	.85	7.50
4-6 feet	1.00	8.50

American Sweet. Smaller fruit than Italian but very sweet.

Italian or Spanish. Large sweet fruit. A very beautiful, and a good shade tree.

FILBERTS	Each	10
2-3 feet, transplanted, nursery grown	\$0.45	\$4.00
3-4 feet	.55	5.00
4-6 feet	.65	6.00

Layered plants 5c less per tree.

Barcelona. The champion filbert of the market. Round; golden brown color; fullkerneled; rich flavor.

DuChilly. Large oblong nut; soft shell; clean light brown. Pollinizer for Barcelona. Slow grower.

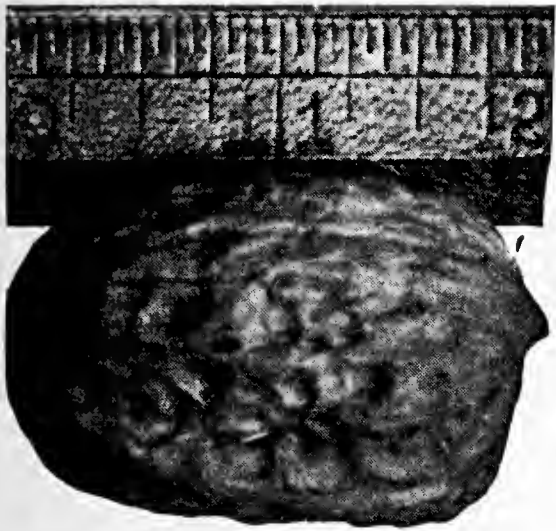
Daviana. DuChilly type; softer shell; golden brown color; rather light bearer; good pollinizer for all varieties.

PLANT FILBERTS FOR PROFIT

WALNUTS

	Each	10
3-4 feet	\$1.00	\$ 8.50
4-6 feet	1.25	11.00
6-8 feet	1.50	13.50

Write for commercial rates.



Franquette Grafted. This is the variety that is making the walnut industry of the Pacific Northwest. It is large and uniform in size; rather long, allowing a larger kernel than

the shorter types. Shells easily but is not soft shelled. The shell does not split readily, assuring the full flavor and crispness of the kernel. This is a beautiful shade and street tree. Profitable as well as ornamental. An asset to any property. Very prolific.

ENGLISH WALNUT

	Each	10
3-4 feet	\$0.75	\$6.50
4-5 feet85	7.50

Franquette Seedling. This is a very valuable tree because of its vigor, hardiness and productivity. The nut is of the same type as the Franquette, excepting that it is usually smaller. This tree is now being planted in the Eastern states where Franquettes are not hardy.

CALIFORNIA BLACK

	Each	10
4-6 feet	\$0.65	\$5.50
6-8 feet85	7.50

Write for commercial rates.

A hard, spherical nut; smooth; the kernel is rich and oily. A rapid growing tree.

SMALL FRUITS

WRITE FOR PRICES ON LARGE QUANTITIES

GRAPES

	Each	10
Selected, 2-year plants	\$0.25	\$2.00
Selected, 1-year plants20	1.50

Black Hamburg. A fine tender grape. Grows large, compact bunches. Berries are large and oblong.

Brighton. Medium sized red berries; sweet; aromatic and of the best quality.

Burgundy. A small grape, growing in rather small bunches, but very compact; delicious; wine grape.

Catawba. Large; dark copper-red; rich, musky flavor.

Campbell's Early. Black. Very large berries and large clusters; very rich flavor; thin skinned; small seeds; good for juice. The berries do not spoil readily on the vines after ripening. An excellent commercial variety.

Concord. Big bunches of large sweet berries; deep blue. Unexcelled for juice and general purpose.

Delaware. Bunches small, compact; berries small and round; thin skinned; light red; juicy, sweet, good.

Island Belle. Similar to Campbell's Early.

Moore's Early. A good blue-black grape of superior quality; the earliest good American grape; rich; thick fleshed. Rather light bearer, but valuable commercial variety.

Moore's Diamond. A good quality white grape; large compact bunches. Ripens about two weeks before Concord.

Niagara (White Concord). The Concord of the white grapes. Very large bunches of large berries; finest quality. Good market variety.

Sweetwater. Long compact bunches of clear white berries. One of the best flavored grapes; juicy and sweet. Subject to mildew.

Salem. Vigorous vine; large berries. Catawba color; very sweet and sprightly.

Thompson Seedless. Immense bunches of perfectly white, sweet, seedless berries. Good drying.

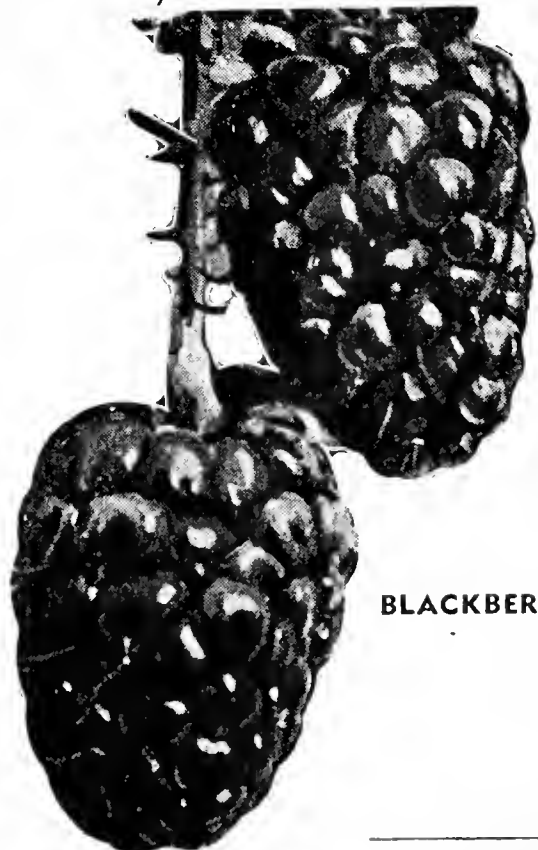
Tokay, Flame. Large bunches; grapes large; light red; firm; sweet. A favorite market grape.

Worden. Blue-black. Exceeds its parent, the Concord in size; fruit better flavor and ripens a few days earlier.

BLACKBERRIES

Prices same as Currants.

Cory's Thornless. A superior berry from the standpoint of quality; usefulness, and productivity. Being entirely free from thorns it is much easier to work with. A good home or market variety.



BLACKBERRIES

Evergreen. Ripens late and in succession. A good canning berry.

Himalaya Giant. A large, sweet berry; unexcelled for use fresh or for pies, jellies and jams. Vigorous grower.

Mammoth. A very sweet, almost seedless berry.

Lucretia Dewberry. Very large; early; soft, sweet and luscious; hardy and productive.



BOYSENBERRIES

The outstanding introduction in the berry line. It is superior to the youngberry in quality; the fruit is larger; better flavored. It is hardier as has been demonstrated by the fact that it withstood cold weather that froze youngberry vines.

1-yr. 20c each; 15c in 10 lots; 10c in 50 lots; 7½c in 100 lots.

2-yr. 25c each; 20c in 10 lots.

YOUNGBERRIES

Heavy yielding vines; large luscious berries, with a new flavor. Excellent for all uses.

1-yr. 15c each; 10c in 10 lots; 8c in 50 lots.

2-yr. 20c each; 15c in 10 lots; 12c in 50 lots.

LOGANBERRIES

A well known berry in the Northwest. Long, red; acid. Good cooking.

Same prices as Youngberries

STRAWBERRIES

	25	100	250
	\$0.50	\$1.00	\$2.00

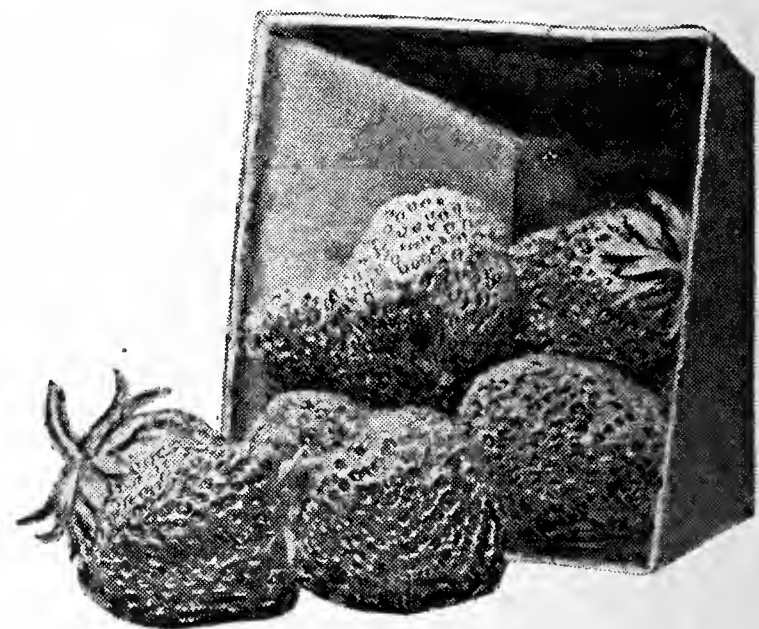
Dorsett. New. An early red variety; firm and productive; very high quality; a wonderful market berry.

Fairfax. New. Early; glossy, dark red; large, firm berries; very productive. The best tasting berry produced.

Improved Oregon. A favorite in the Northwest, producing enormous berries of high quality; delicious; sweet.

Marshall. Blood red; a good market variety.

Red Heart. A new berry exceeding every other strawberry for canning. It is firm; bright red to the core; does not shrink when canned or preserved. Canneries pay a premium for this variety. Often bears two crops.



EVERBEARING STRAWBERRIES

	25	100	250
	\$0.50	\$1.50	\$3.50

Mastodon. Prolific, with glossy red, juicy, well flavored berries; large. Valuable for market.

Progressive. Good flavor; attractive; medium large.

Rockhill. Large attractive berries of superb flavor. \$1.50 for 25, and \$5.50 per 100.

CURRENTS

	Each	10	25
Selected, 2 year plants.	\$0.15	\$1.25	\$1.00

Cherry. Large; deep red; bunches short. Productive.

Fay's Prolific. Large size; fine flavor; very prolific bearer.

Perfection. The queen among currants. Bright red; large full bunches; productive. Rich flavored; easily picked.

GOOSEBERRIES

Prices same as Currants.

Houghton. Medium size fruit; abundant bearer; vigorous grower. Oregon Champion preferable.

Oregon Champion. Large; light green; very sweet; juicy; fine flavored. Productive and free from mildew. The best.

RASPBERRIES

	Each	10	25	100
Chief (Red)	\$0.15	\$0.85	\$2.00	\$3.75
Cumberland (Black)	.15	.85	1.75	3.50
Gregg (Black)	.15	.85	1.75	3.50
Lloyd George (Red)	.15	.85	1.75	3.50
Plum Farmer	.15	.85	1.75	3.50
Cuthbert (Red)	.15	.85	1.75	3.50
St. Regis (Red)	.15	.85	1.75	3.50
Newburgh (Red)	.15	1.00	2.35	7.75

Write for prices on larger quantities.

ASPARAGUS

2-year, 12 for 40c; 25 for 70c; 100 for \$1.85
Washington. Large stalks; heavy yielder; tender.

HORSERADISH

Six for 50c; 12 for 75c; 25 for \$1.00

RHUBARB

Each 15c; 5 for 50c; 10 for 85c

Write for quantity prices.

Mammoth Victoria. Large; early; tender.

Australian Crimson Giant. The earliest and sweetest of all rhubarb. Long tender stalks; light red.

Dodge Prolific. Very large stalks; tender; good canner.

Riverside Giant. A new introduction; large; fine; excellent canner.

Strawberry. Valuable for its attractive color when cooked. Especially adapted for home use.

ASSORTED FRUITS

FIGS

	Each	10
Black Mission	\$0.75	\$6.50
Duro Black75	6.50
Lattarula, White85	7.50

GRAFTED PERSIMMONS

Each \$1.50; 10 for \$12.50

GRAFTED MULBERRIES (Morus)

3-4 feet, branched\$1.25

4-5 feet, branched 1.50

Downing. A valuable everbearing variety. A good shade tree. Medium size berries.

Noir of Spain. A very large black berry; delicious; more tart than other mulberries. Beautiful foliage.

SHADE AND ORNAMENTAL TREES

AILANTHUS GLANDULOSA

(Tree of Heaven)

Japanese Origin; rapid grower with long elegant, feathery foliage. Useful to produce tropical effect. 3-4' 60c; 4-5' 75c; 5-6' 85c; 6-8' \$1.00.

BEECH (Fagus)

Copper (Fagus sylvatica riversi). Purple foliage; compact symmetrical growth; crimson foliage in spring changing to purple in autumn. 2-3' \$2.50; 3-4' \$3; 4-5' \$3.50.

European (Fagus Sylvatica). Beautiful symmetrical tree growing 60-80 feet high. Bright green foliage. 4-5' \$1.50; 5-6' \$1.75; 6-8' \$2.00.

Greenleaf Weeping (F. S. Pendula). Top grafted on European makes an unusual specimen tree, with long trailing branches. 2-3' \$1.50; 3-4' \$3.00; 4-5' \$3.50.

BIRCH (Betula)

Cutleaf Weeping (B. Laciniata). The most graceful and beautiful of all weeping trees. White bark on older wood. 5-6' \$1.00; 6-8' \$1.50.

European White (Betula alba). Medium size tree; upright habit; small, dense foliage; white bark. 5-6' 75c; 6-8' \$1.00; 8-10' \$1.50; 10-12' \$2.00.

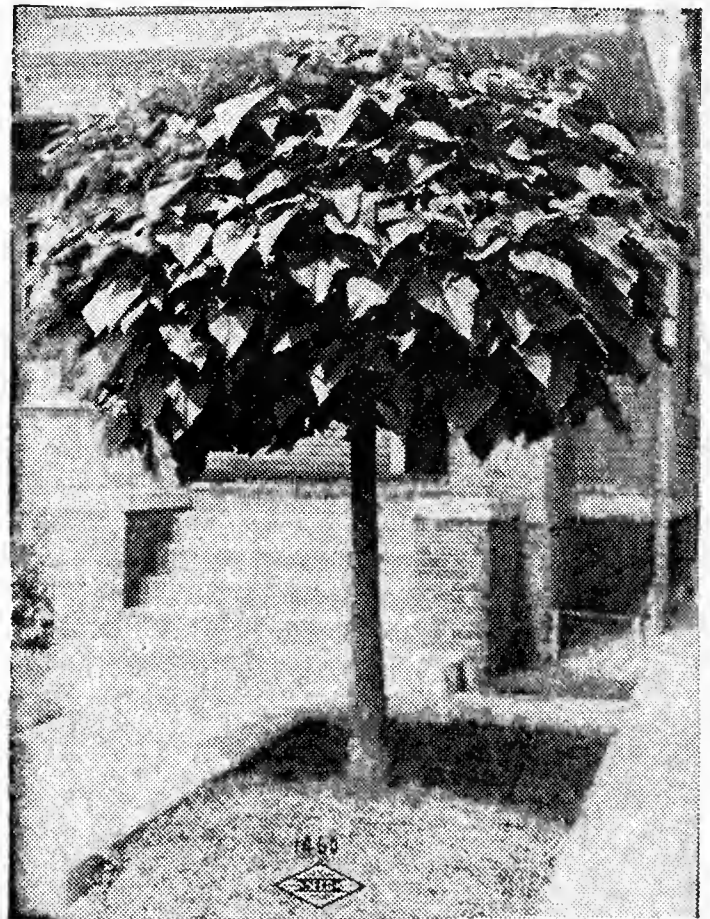
Copperleaf (B. pupurea). Like white birch, excepting foliage is purple. Very attractive. 5-6' \$1.25; 6-8' \$1.75.

Young's Weeping Birch (B. pendula youngii). Top grafted. Very beautiful pendulous branches falling to the ground. 3-4' \$2.00; 4-5' \$2.50.

BOXELDER (Look under Maples)

CATALPA

Speciosa. Large, heart-shaped leaves; compound pannicles of white flowers tinged with violet, purple and yellow. 5-6' \$1.00; 6-8' \$1.25; 8-10' \$1.75.



CATALPA

Bungei. Grafted on 6-foot stems; makes a compact, umbrella-shaped top. Leaves large, heart-shaped, velvet green. 6-foot Standards \$2.50.

CHERRY; JAPANESE FLOWERING (Cerasus)

The flowering cherries are particularly beautiful because of the very large soft colored blossoms, followed by attractive foliage. They are worthy of a greater place in landscape use.

Prices, except where noted, 2-3 ft. 85c; 3-4 ft. \$1.00; 4-5 ft. \$1.25.

Kwanzan (Prunes sekiana). Double dark pink blossoms. 30 ft. Attractive foliage. Every yard should have one.

Kofugen (*P. fugenzo*). Large double pink flowers. 30 ft.

Amanagowa. Semi-double. Light pink; pyramidal.

Amaholis. Double light pink; compact.

Beni Higan. Single, pale pink. Very graceful.

Dazen. Double pink.

Double Red. Very attractive.

Kuramayawa. Double pink, shades to white.

Lamesiana Erector. Double dark pink.

Miyako. Double white; spreading type.

Mt. Fuji (*P. shirotae*). Large double pure white blossoms. 25 ft.

Naden. Very double, deep pink.

Ojochin. Semi-double pink.

Okiku Zakura. Double, pink, extra large blossoms.

Pink Pearl. Double pink, early blooming.

Siebold. (*P. sieboldi*). Double, shell pink.

Serrulata sekiyanes. Pink, shaded to white.

Yoshino. Single pale pink.

Double Flowering Weeping Cherry. A beautiful weeping tree, topgrafted at about 6 feet. The blossoms come before the leaves giving the appearance of a pink fountain. The double pink blossoms make a very charming display. 5-6' Stem No. 1, \$1.50; Selected 2-year tops, \$2.00.

Single Weeping Cherry: Shidare-Higan (*P. subhirtella Pendula*). Like the double flowering excepting the blossoms are single and the branches a little more graceful. 5-6' Stem No. 1, \$1.50; Selected 2-year tops, \$2.00.



BECHTEL'S DOUBLE FLOWERING CRAB

CRABS, FLOWERING (*Malus*)

Bechtel's Double Flowering Crab. (*M. ioensis plena*). Large, double, pink, roselike flowers, remarkably beautiful and fragrant.

Carmine (*Atrosanguinea*). Very profuse bloomer. Graceful habit; carmine flowers; red branches.

Eley's Purple Crab. (*M. eleyi*). One of the most colorful of the purple crabs. In the spring it is a mass of light red bloom against a background of purple branches. The leaves following are a light reddish-purple; bears light red fruit. Ten ft.

Japanese flowering. (*M. floribundi*). Covered with rose-colored blossoms in the spring, appearing with the leaves. Graceful.

Heleriana. Weeping; rose-red; semi-double; very graceful.

Kado. Pink blossoms; spreading habit; attractive fruit.

Redvein. (*M. niedzwetskyana*). Veins and edges of leaves tinged red. Single rose colored blossoms. Large red fruit; red flesh.

Parkman (*M. halliana parkmanii*). Double pink and red blossoms; glossy leaves; spreading habit.

Purple Crab (*M. purpurea*). Tall; purple leaves, branches and fruit.

Scheidecker (*M. scheideckeri*). Free blooming; pale pink blossoms. 3-4' 75c; 4-6' \$1.00; selected large, well branched, \$1.50.

DOGWOOD (*Cornus*)

Cornus nuttali (Pacific). Native dogwood; nursery grown. Large greenish-white blossoms; followed by deep orange-red berries in the fall. 4-5' \$1.00; 5-6' \$1.25.

Cornus florida. White blossoms. 24-30" \$1.00; 30-36" \$1.25.

Double White Flowering. 2' grafted \$2.25; 3' \$2.75.

Pink Flowering Dogwood (*Cornus rubra*). Light red blossoms; most popular of the flowering dogwoods. 2' grafted \$2.25; 3' \$2.75..

ELM (*Ulmus*)

Camperdown Weeping (*U. Campestris Camperdowni Pendula*). Beautiful foliage on weeping branches. Top-grafted on cork barked elm. Ideal for a specimen lawn tree or shade tree. Well developed heads. 6' stems \$2.75; selected 2 or 3-year \$3.75.

Cork Barked (*Ulmus racemosa*). A cork-barked tree; upright grower; beautiful foliage; makes rapid growth. 5-6' \$1.50; 6-8' \$1.75; 8-10' \$2.00.

Chinese (*Ulmus pumila*). Rapid growing tree; compact, pyramidal growth; adapted to almost any climate or soil.

Chinese (*Ulmus parvifolia*). Similar to above excepting that foliage is smaller and the tree more graceful in appearance. 5-6' 75c; 6-8' \$1.25.

GOLDEN CHAIN (*Laburnum Vulgare*)

Bears long pendent racemes of yellow flowers in June; showy and beautiful. 5-6' \$1.25; 6-8' \$1.50.

HAWTHORNE (*Craetagus*)

Carriere. Beautiful foliage; large, bright red berries.

Double Pink. Early blooming; pale pink blossoms.

Paul's Double Scarlet (*C. O. Splendens*). The best of the flowering hawthornes. Blooms very profusely.

Double White (*C. O. alba plena*). 5-6' \$1.00; 6-8' \$1.50.

HORSECHESTNUT (*Aesculus*)

White Flowering Horsechestnut (*Aesculus hippocastanum*). A very beautiful tree forming a round head. Large showy white flowers in spring. 4-5' 90c; 5-6' \$1.00; 6-8' \$1.50; 8-10' \$2.00.

Red Flowering Horsechestnut (*AE. carnea*). Same as white, excepting it has red flowers; blooms a little later; grows more slowly. Grafted—2-3' \$2.75; 3-4' \$3.25; 5-6' \$3.75; 6-8' \$4.00.

JUDAS TREE — (See Redbud)

EUROPEAN LINDEN (*Tilia europea*)

An ideal shade tree, forming a large head. Has beautiful large leaves; very fragrant blossoms. 4-5' \$1.00; 5-6' \$1.25.

LOCUST (*Robinia*)

Black (*R. pseudoacacia*). Large tree with feathery foliage and drooping racemes of fragrant pea-shaped flowers. 5-6' 65c; 6-8' 75c; 8-10' \$1.00; 10-12' \$1.75; 12-15' \$2.50.

Rose Locust or Rose Acacia (*R. Hispida*). Top-grafted; light green foliage, very attractive; particularly noted for its very long clusters of beautiful rich rose, pea-shaped blossoms borne in the spring and through the summer. A source of constant enjoyment. 4-5' \$2.00; 5-6' \$2.50.

MAIDEN HAIR TREE (*Ginkgo Biloba*)

An odd Japanese tree with foliage similar to the Maidenhair fern. It is said to be the first tree that grew on earth. 4-5' \$1.75; 5-6' \$2.25.

MAPLE (*Acer*)

Globe Norway. Very compact, globe-shaped, head top grafted at 6 ft. Foliage like Norway. Selected trees, \$3.50.

Norway (*Acer platanoides*). The hardy nature of this tree as well as its beautiful deep green foliage and well-shaped head makes it an outstanding shade or street tree. 5-6' 75c; 6-8' \$1.00; 6-8' branched \$1.25; 8-10' branched \$1.75.

Red Japanese Laceleaf (*Palmatum rubrum dissectum*). A very showy, dwarf weeping specimen with decided cutleaf leaves of rich red color. Grafted 12-18" \$2.50; 18-24" \$3.00.

Japanese Ribbonleaf (*A. P. rubrum*). Beautiful redleafed maple; grows about five or six feet. 2-3' \$2.75.

Japanese palmatum. Feathery green foliage, turning to beautiful colors in fall. 3-4' \$1.25; 4-5' \$1.50.

Sycamore Maple (*Acer pseudo-platanes*). Good shade tree; large leaves; makes rapid growth; spacious head. 6-8' branched \$1.75; 8-10' branched \$2.00.

Sycamore Maple (*A. pseudo platanus purpurea*). Similar to above excepting leaves are purple on under side. 6-8' \$1.75; 8-10' \$2.00.

Schwedler (*A. Schwedleri*). This is a bright red leaved Norway. The foliage shading to greenish bronze in summer. 5-6' \$1.25; 6-8' \$1.35; 6-8' Br. \$1.50; 8-10' Br. \$2.

Silver or Soft Maple (*Dasycarpum*). A very hardy variety with comparatively small semi-cut leaves, bright green on surface and silver underneath. Grows rapidly and large. 5-6' 90c; Br. 6-8' \$1.25; Br. 8-10' \$1.75; Br. 10-12' \$2.00; Br. 12-14' \$2.50.

Sugar or Rock Maple (*saccharum*). Its pyramidal form, upright growth and adaptability to different types of soil make it a valuable shade tree. Very hardy. 6-8' \$1.25; 8-10' \$1.75.

Variegated Boxelder (*A. negundo argentea vari*). A beautiful lawn tree with silver or gold variegated leaves which make it very attractive. 4-5' \$1.25; 5-6' \$1.50.



SILVERLEAF MAPLE

SUGAR MAPLE

NORWAY MAPLE

Boxelder (*A. negundo*). A rapid growing; hardy shade tree. Silver green bark. 8-10' \$1.75.

Variiegated Sycamore Maple (*A. pseudo platanus vari*). A beautiful tree of the sycamore type with silver variegated leaves. 4-5' \$1.75; 5-6' \$2.00.

Vine Maple. A small, viny maple tree with semi-cut leaves; attractive green leaves during summer, turning to beautiful hues of yellow to dark red in fall. Highly prized in altitudes below 1000 feet. 3-4' \$1.00; 4-5' \$1.25; 5-6' \$1.50.

Weir Cutleaf Maple. A variety of soft maple with deeply cut foliage. Very attractive. 4-5' \$1.00; 5-6' \$1.25; 6-8' \$1.50.

MOUNTAIN ASH (*Sorbus aucuparia*)

Erect growing trees; smooth bark; fine leaves; dark orange-red berries; very attractive. Popular. 4-5' 90c; 5-6' \$1.00; 6-8' \$1.25.

MULBERRY (Morus)

Russian (*Alba tatarica*). Rapid growing tree; fruit medium size and produced in abundance. 5-6' \$1.00; 6-8' \$1.25; 8-10' \$1.75.

Teas Weeping (*Morus alba pendula*). A weeping form of the Russian Mulberry; attractive leaves; forms a perfect umbrella with the branches falling to the ground. Very tasty berries borne in abundance. Top-grafted at 6 feet. 1-year heads, \$4.00; 2-year heads, selected, \$5.00.



RED OAK

OAK (Quercus)

Pin Oak (*Q. palustris*). The foliage is dense, finely divided and of a beautiful shining green that colors to sparkling red and yellow in fall. Does well in either wet or dry soil; grows rapidly; valuable for street or park plantings.

Red Oak (*Q. rubra*). Has large, bright green leaves that turn to a purplish scarlet hue in fall; becomes large.

Scarlet Oak (*Q. coccinea*). Rapid growing, hardy tree especially noted for its beautiful fall coloration. It is attractive at any season because of its good habits of growth and its deeply lobed leaves in summer. 4-5' \$1.00; 5-6' \$1.25; 6-8' \$1.75.



FLOWERING PEACH

FLOWERING PEACH (Amygdalis)

Bicolor. Large double red and white blossoms.

Burbank. The most double of the flowering peaches; it is particularly striking because of the profusion of blossoms it bears in early spring.

Wrigley's Pink. Large rose-pink blossoms. Early.

Double Red Flowering. Beautiful red.

Blood Leaf. Noted for its blood-red foliage, and rapid growth. 3-4' 50c; 4-5' 55c; 5-6' 60c.

Weeping Peach. It has a decided weeping habit, combining with brilliant double red blossoms to make it an outstanding flowering peach. 3-4' 85c.

PLANETREE (Platanus)

European Sycamore (P. Orientalis). A lofty, wide spreading tree; highly ornamental; handsome foliage; free from insects and disease. 5-6' \$1.00.

PLUM, FLOWERING (Prunus)

Prices, except where noted: 3-4' 60c; 4-6' 75c; 6-8' 90c; 8-10' selected \$1.50.

Bliriana. Has very large, beautiful double pink blossoms that appear in early spring. The foliage is a rich purple turning to a greenish tint in summer, with purple under foliage. A very valuable tree.

Newport. Pleasant brilliant reddish-purple foliage. The fruit is bright scarlet and edible. 4-5' \$1.00.

Negri. Very dark purple foliage. Dark colored edible fruit. Wood is red colored inside. 3-4' 75c; 4-5' \$1.00.

Pissardi. Dark purplish foliage. Fruit medium size and edible. The best known flowering plum.

Prunus triloba. Bears long spikes of rich double pink blossoms. Particularly appealing while in full bloom. Small leaves; green colored.

Thundercloud. This and the Vesuvius have the most beautiful foliage of any of the flowering plums. The leaves appear a rich red color and gradually become darker, turning to a very rich purple. Large, shiny leaves.

Vesuvius. True to its name it appears to erupt in spring, showing beautiful brownish purple foliage. Very attractive. Small pale pink blossoms.

POPLARS (Populus)

Balm of Gilead (P. Candicans). Large shiny, rich green foliage; pyramidal growth. Buds coated with fragrant wax. 6-8' 75c; 8-10' \$1.00.

Write for quantity prices for windbreaks or screens.

Bolleana. Silver green leaves covered on under side with silver bloom. Tall erect growing tree. Beautiful. 5-6' 90c; 6-8' \$1.25.

Chinese. (Simoni). Similar to Lombardy in growth. Beautiful specimen; glossy green leaves; excellent windbreak. 6-8' \$1.50.

Carolina (P. Eugenei). Rapid growing, wide spreading tree with bright green foliage.

Lombardy (P. nigra italica). Erect growing tree; dark glossy green foliage. Forms a striking shaft when large. Ideal for accent and windbreaks. 6-8' 75c; 8-10' \$1.00.

Silver (P. alba nivea). Habit more like Carolina, but foliage deep lobed and silver colored like Bolleana. 6-8' \$1.25; 8-10' \$1.50.

SWEETGUM (Liquidamber)

Very attractive star like leaves that turn to gorgeous colors in fall and remain that way indefinitely before dropping. An outstanding tree for fall color effects. 3-4' \$1.25; 4-5' \$1.50.

TULIPTREE (Liriodendron tulipifera)

Beautiful green fiddle shaped leaves; orange-yellow tulip-shaped blossoms. Large spreading tree. Fine for shade. 3-4' \$1.00; 4-5' \$1.25.

WILLOW (Salix)

Babylon (S. babylonica). Becomes large, always maintaining its graceful appearance. Its weeping branches make it very attractive. 5-6' 75c; 6-8' \$1.00; 8-10' \$1.50.

Golden (vitellina). Attractive because of its rich yellow twigs.

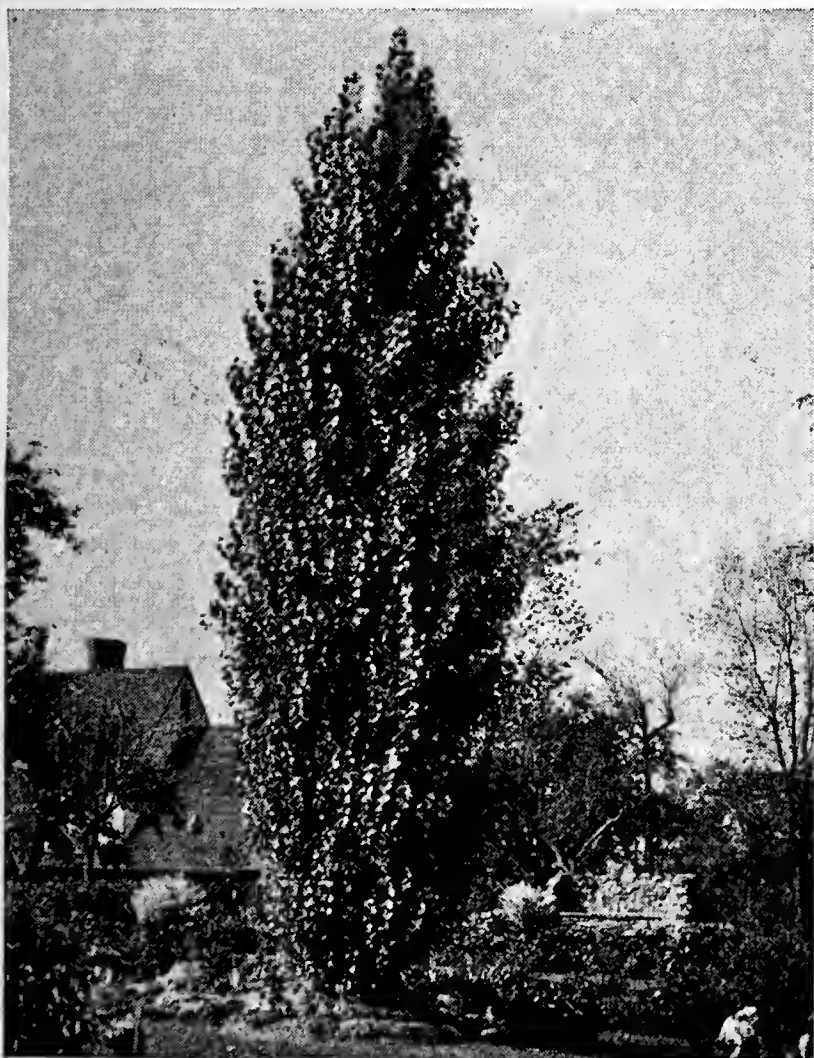
Golden Weeping (S. niobe). Golden bark. Habits similar to Babylon. Add 10c.

Kilmarnock. This is topgrafted and of a very drooping nature. Bears large attractive catkins. Desirable specimen. 5-6' stems \$4.50.

Wisconsin Weeping (S. blanda). Foliage similar to Babylon but the trunk grows more erect and the branches droop gracefully.

Pussywillow (S. caprea). Attractive for its many very large silver gray catkins. Upright growth.

Umbrella. Very attractive willow with an entirely natural, decided umbrella shape.



LOMBARDY POPLAR

DECIDUOUS SHRUBS



FLOWERING ALMOND

ALMOND (*Prunus*)

Pink Flowering (*P. g. albiplena*). An abundance of double pink blossoms on graceful drooping branches. 2-3' 50c; 3-4' 75c.

White Flowering (*P. g. sinensis*). Double white blossoms.

ALTHEA, ROSE OF SHARON (*Hibiscus syriacus*)

2-3' 50c; 3-4' 75c.

Boule de Feu. Red.

Lady Stanley. Rosy white.

Paeoniflora. Rosy purple.

AZALIA

(Plant Azalias with Peat Moss)

AZALIAS ARE NOT PREPAID

Altaclarensis. Large coppery yellow flowers. Mollis type.

Mollis. The rich salmon, orange and flame shades of the Mollis which appear in May before the leaves, make it one of the very showiest shrubs. It is compact; blooms profusely. 9-12" \$1.00; 12-15" \$1.50.

Occidentalis. Fragrant white blossoms tinged with pink.

BARBERRY (*Berberis*)

Japanese (*B. thunbergi*). Red berries. Good hedging plant. Useful for group planting. Foliage turns red in fall. 50c.

Thunbergi atropurpurea. Red leafed. Same as above excepting foliage is a dark purplish color all summer. 60c.

BEAUTYBUSH (*kolkwitzia*)

Feathery foliage; delicate pink trumpet shaped blossoms. A valuable addition to the border planting. 85c.

BUTTERFLY BUSH (*Buddlea*)

Magnifica. Beautiful dark purple blooms born on long slender, arching stems from June to frost in fall. Grows rapidly, almost evergreen. Medium 60c; Large 75c.

BLUE SPIREA (*Caryopteris*)

Downy gray leaves; bright blue flowers produced in large clusters. 85c.

CARAGANA (*Siberian Pea Trees*)

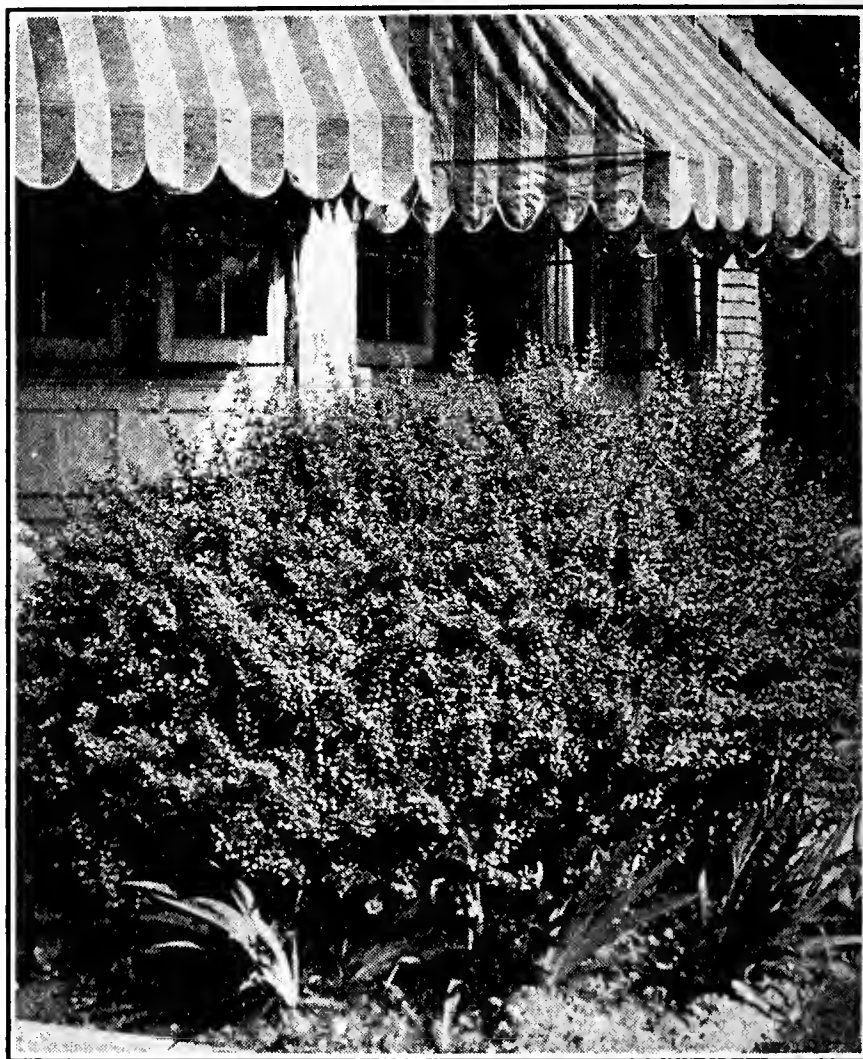
Very attractive for its foliage and for the clusters of fragrant rich yellow blossoms borne on drooping clusters. 5-6' \$1.00; 6-8' \$1.25.

CORALBERRY (*Symphoricarpus vulgare*)

Purplish red fruit which remains on the shrub most of the winter. Rose colored flowers; delicate foliage. 50c.

CRANBERRY BUSH (*Eup. Viburnum opulus*)

Red berries, resembling cranberries, which stay on till late fall. 3-4' 75c.



BARBERRY THUNBERGI

DAPHNE (*Mezereum*)

Light pink blooms in February and March. Red berries during fall and winter. \$2.00.

DEUTZIA

Lemoine. Pure white blossoms borne profusely. Dwarf habit.

Gracilis. Beautiful white blossoms. Shrub very dwarf. Small foliage.

Pride of Rochester. Double white flowers. Excels others in size of blossoms and profuseness.

Rosea (*D. scabra plena*). White flowers tinged with pink on reverse side. **50c each.**

PURPLELEAF FILBERT (*Corylus purpurea*)

Rich purple foliage. Bears an abundance of rich flavored nuts; the kernels have a purple skin. **\$1.00 each.**



FORSYTHIA

FORSYTHIA

Fortunii. Upright growth; yellow flowers. Deep green foliage.

Intermedia. Foliage glossy green; flowers bright golden.

Suspensa. Drooping branches. Blooms in March. **2-3' 50c; 3-4' 75c.**
ers against a background of green foliage. **2-3' 75c.**

HONEYSUCKLE (*Lonicera*)

Morrowi. Upright growth. White flowers followed by wine colored berries.

Rosea (Pink Tartarian). Great masses of pink blossoms. Red berries. **2-3' 50c; 3-4' 65c.**

HYDRANGEA

Opuloides otaksa. Blue or pink. Profuse double blossoms. **2-3' \$1.75.**

Paniculata Grandiflora. Large cone-shaped blossoms in August; white changing to pink at maturity. **18-24" 50c; 2-3' 65c.**

Paniculata Grandiflora. Tree form. Same as above excepting trained to tree form. **3-4' \$1.00.**

KERRIA JAPONICA

Graceful slender shrub bearing double yellow rose-shaped blossoms from early summer till fall. **18-24" 50c; 2-3' 65c.**

LILAC (*Syringa*)

Common purple or white. **2-3' 60c; 3-4' 75c.**

MAGNOLIA (*Soulangiana*)

White, tinged with purple. **18-24" \$3.50; 24-30" \$4.00.**



MOCKORANGE

MOCKORANGE (*Philadelphus*)

Coronarius. Pure white fragrant blossoms.

Lemoine. Semi-dwarf; slender branches; fragrant white blossoms.

Virginal. Semi-double white; continuous bloomer. **2-3' 50c; 3-4' 65c.**

QUINCE (*Cydonia Japonica*)

A thorny shrub with beautiful large red or orange-red blossoms. An old favorite shrub. **18-24" 60c; 2-3' 85c; 3-4' \$1.25.**

SNOWBALL (*viburnum*)

Opulus sterile (Common). The large flowered snowball familiar to all. Blooms in May. **2-3' 65c; 3-4' 75c.**

Carlesi. Fragrant, early pink blooming snowball. **15-18" \$1.50; 18-24" \$2.00.**

Plicatum (Japanese). Huge snowballs against a background of rough foliage. **2-3' 75c.**

Tomentosum (Double file). Large white flow-

SNOWBERRY (Symhoricarpus racemosus)

Pink flowers in spring; good foliage in summer, and large waxy white berries during fall and winter. 2-3' 65c.

TAMARIX AFRICANA

Early light pink blossoms; deep green foliage and chocolate colored bark. 2-3' 75c.

WEIGELIA

Eva Rathke. Bright deep crimson flowers blooming most of the summer; bronzed foliage.

Rosea. Light rose colored blossoms; not so dwarf as Eva Rathke. Profuse blooming. 18-24" 50c; 2-3' 65c.

SPIREA

Anthony Waterer. Everbearing. Large flat crimson blooms.

Bridalwreath (prunifolia). Small pearly-white double blooms on graceful branches; foliage round and shiny.

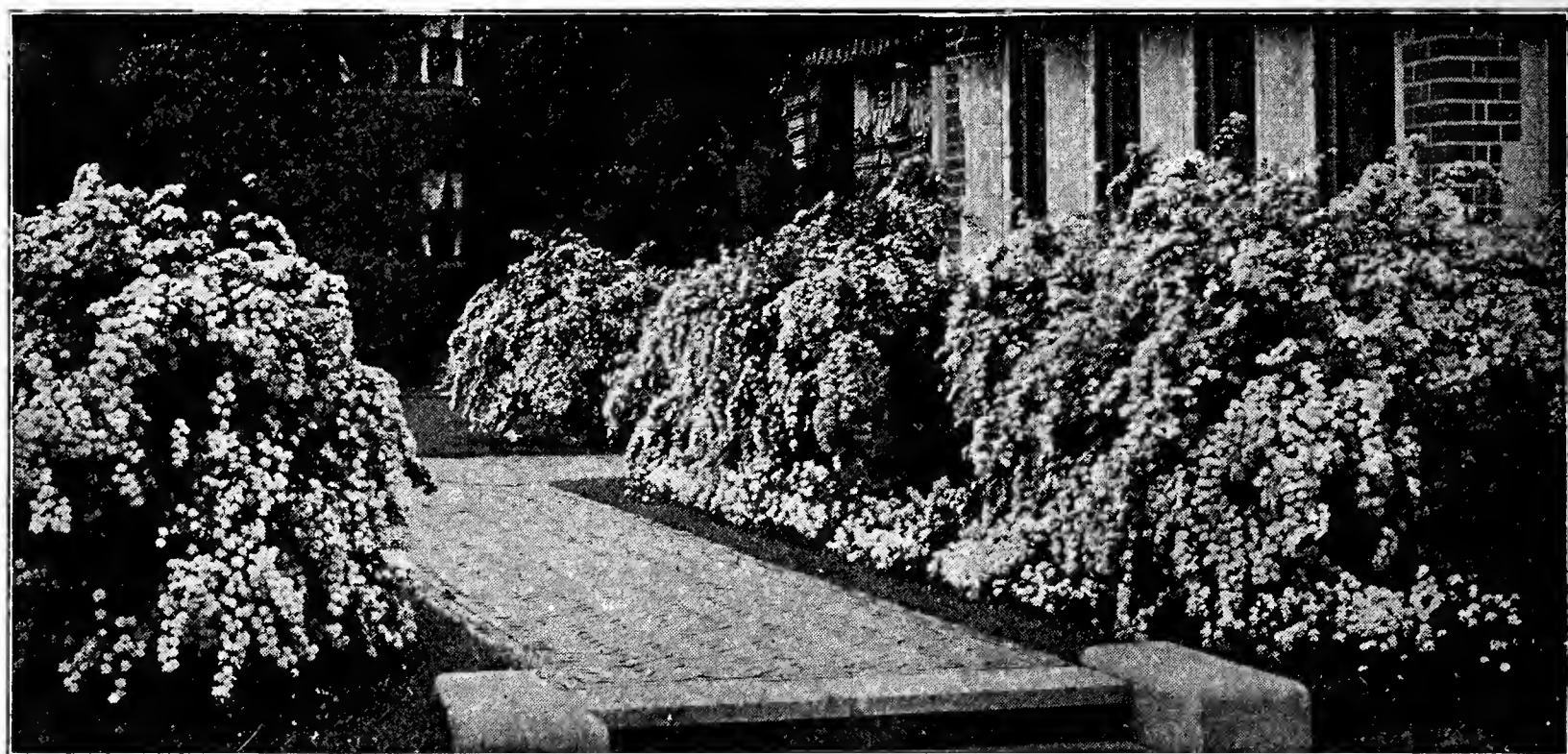
Garland (arguta). Large white sprays. Good specimen border or hedge plant.

Japanese pink (Callosa rubra). Same type as Waterer excepting pink.

Japanese White (Callosa alba). Same, excepting white.

Thunbergi. Beautiful delicate white sprays on graceful slender branches.

Vanhoutte. Upright. Clusters of white blossoms. Most widely used. 50c each.



SPIREA VANHOUTTE

EVERGREENS--CONIFERS

(NOT PREPAID)

ABIES CONCOLOR (White fir)

Hardy. Silvery green foliage; compact symmetrical growth. \$3.00.

ARBORVITAE (Thuja)

Berckmans (T. occ. aureanana). Compact growth, gold tipped foliage turning to light green when mature. Dwarf. 9-12" 95c; 12-15" \$1.35.

Golden Column (beverleyensis). Gold tipped; pyramidal shaped. 24-30" \$2.00.

Goldspot (T. occ. aureovariagata). Pyramidal; variegated foliage green and gold. Compact. 24-30" \$1.65.

Pyramidal (T. occ. pyramidalis). Tall, columnar growth. Compact. Well known. 2-3' \$1.50; 3-4' \$2.50.

Siberian (Wareana). Low, pyramidal. Broad base. 18-24" \$1.75.

Woodward (T. occ. Woodwardi). Dense, deep green foliage; globe shaped. 15-18" \$1.75.

CEDAR (Deodar)

One of the most graceful evergreens, growing very tall with silvery foliage on drooping branches. 3-4" \$2.75.

CRYPTOMARIA (japonica elegans)

Plume. Bronze-green foliage turned to almost red in fall; very plumelike. 24-30" \$2.25.

CYPRESS

Blue cypress (Alumi). Rich blue foliage; upright symmetrical growth. 24-30" \$1.50; 30-36" \$2.00.

Birdnest (Nestoides). Beautiful low spreading type. 10-15" \$1.85; 15-18" \$2.25.

Lawson (Erecta viridis). Habit like Alumi; foliage vivid green. 24-30" \$1.75; 30-36" \$2.25.

Italian cypress (Cupressus sempivirens). Tall; slender; erect; compact, and feathery. 3-4' \$2.00.

Lawson (Cham. lawsoniana). Erect, pyramidal type with foliage varying from green to blue. 24-30" \$1.50; 30-36" \$2.00.

Golden Cypress (Stewarti). Golden tipped variety. 24-30" \$2.00; 30-36" \$2.50.

Wissel (Cham. law wisseli). Compact columnar growth. Dense, blue green foliage. 24-30" \$2.50; 30-36" \$3.00.

False arborvitae (Thojopsis dolobrata). Semi-dwarf; globular. 18-24" \$2.00; 24-30" \$2.25.

HEMLOCK, MOUNTAIN (*Tsuga mentensiana*)

Graceful drooping foliage. Pyramidal. 24-30" \$2.25.

JUNIPERS

Chinese Creeping (*J. procumbens*). 12-15" \$2.00; 15-18" \$2.25.

Irish Juniper (*Fastigiata*) Bluish green foliage; erect, compact, slender. Excellent accent shrub. 24-30" \$1.75.

Irish (*Hibernica*). Columnar, bluish green foliage. 24-30" \$1.50; 30-36" \$1.85.

Pfitzer's Juniper. (*J. chinensis pfitzeriana*). Spreading type. Ideal for banks; very drought resistant; olive-green foliage. 15-18" \$1.50; 18-24" \$2.00.

Pfitzer's variegated. Variegated foliage. 15-18" \$1.50; 18-24" \$2.00.

Savin's (*J. sabina*). Prostrate type; hardy. Excellent for terraces. Deep green foliage. 15-18" \$1.50; 18-24" \$2.00.

Savin's tamarix (*J. sabina tamariscifolia*). One of the best trailing junipers. Particularly fine foliage. Adapted to terraces, rockeries, etc. 12-15" \$1.50; 15-18" \$2.00.

Spiny Creek (*J. excelsa stricta*). Low, pyramidal type; very dense, light green foliage. 15-18" \$1.25; 18-24" \$2.00; **Select 3-4'** \$3.50.

MONKEY PUZZLE (*Araucaria imbricata*)

A fine tree, of regular pyramidal form. Leaves bright green, broad thick, pointed and overlapping each other.

PINE (*Mugho*)

Dwarf habit; rich green foliage. The new growth in spring gives it the appearance of being set with candles. 12-15" \$1.50; 15-18" \$2.00.

RETINOSPORA

Moss (Cham. squarrosa). Feathery blue foliage; tufty, compact growth. 24-30" \$2.25; 30-36" \$3.00.

Golden (*Obtusa crispis*). Free growing; golden tipped foliage. 24-30" \$2.50; 30-36" \$3.75.

Plume (*R. plumosa*). Small, feathery, light green foliage. 30-36" \$2.50.

Threadbranch (*R. filifera*). Dwarf with tips drooping. Very delicate and attractive foliage. 30-36" \$3.00.

SPRUCE (*Picea*)

Colorado Blue (*P. Pungens glauca*). An elegant tree with rich blue foliage. Erect and stately. 15-18" \$3.00; 18-24" \$4.00.

Colorado Green (*P. Pungens*). Greenish blue type of above. 18-24" \$1.50; 24-30" \$2.

Engelman's (*P. Engelmanni*). Steel blue foliage. 24-30" \$2.50; 30-36" \$3.00.

Koster's Blue (*P. P. G. Kosteri*). Deeper blue than Colorado and grafted onto that variety. Slower growth. 2-3' \$4.50.

YEW (*Taxus*)

English (*T. baccata*). Large dense green foliage. Lends itself to shaping. Red berries in fall. 18-24" \$2.00; 24-30" \$2.50.

Irish (*T. baccata fastigiata*). Tall, slim growth; dark green foliage. Set in fall with attractive red berries. 18-24" \$2.00; 24-30" \$2.50.



PFITZER'S JUNIPER

BROAD LEAVED EVERGREENS

(NOT PREPAID)



FIRETHORN

ABELIA GRANDIFLORA

Glossy foliage. Pink trumpet shaped blossoms borne continuously till frost. 2-3' 90c; 3-4' \$1.50.

AUCUBA

Goldust. Large green leaves speckled with gold. Valuable for shady places. Large bright red berries. Plant with greenleaf for mating. 15-18" \$1.25; 18-24" \$1.50.

Greenleaf. Glossy green leaves. Large bright red berries if planted with a pollinizer. Likes shade. 15-18" \$1.25; 18-24" \$1.50.

AZALIA (Hinodegiri)

Very dwarf; early blooming; brilliant crimson. 6-9" spread 75c; 9-12" spread \$1.25; 15-18" spread \$2.50.

BARBERRY

Darwin. Glossy, holly-shaped leaf; attractive yellow blossom followed by purple berries. 15-18" \$1.25; 18-24" \$1.50.

Dwarf (dulcis nana). Very dwarf; dark green foliage. 9-12" 85c; 15-18" \$1.35.

Magellan (buxifolia). Dwarf shrub graceful; dark green foliage, orange flowers followed by purple berries. 12-15" \$1.25.

BOXWOOD

Truetree. Dark green foliage; small leaved. Used often for specimens sheared in various shapes. 15-18" \$2.00; 18-24" \$2.50.

Truetree, variegated. Silver variegated foliage. Same prices.

Truedwarf. A very dwarf boxwood used for specimens, very low hedges or window boxes. 6-9" 40c; 10 for \$3.00; 9-12" 50c; 10 for \$4.00.

BROOM

Kew. Globe shaped; bright yellow blossoms; slow growing; very compact. 18-24" \$1.25; 2-3' \$1.50.

Paradise. Yellow with dark crimson wings. graceful. 2-3' \$1.50.

Spanish. Fragrant yellow blooms. Very graceful foliage. 2-3' 75c; 3-4' \$1.00.

CAMELLIA

Large waxy green leaves. Large roselike blooms in various shades of red, pink, white and variegations. 12-15" \$1.50; 15-18" \$2.00.

COTONEASTER

Franchetti. Graceful pendulous branches. Orange red berries. 2-3' \$1.00; 3-4' \$1.25.

Horizontalis. Spreading type. Covered with bright red berries in fall and winter. Foliage turns to attractive colors in fall. 12-15" 75c; 15-18" \$1.00.

Willowleaf. Very attractive silver green foliage. Red berries. 2-3' 85c; 3-4' \$1.00.

DAPHNE

Garland Flower (Cneorum). Low spreading shrub; covered with a profusion of delicate pink, fragrant blossoms in spring and again in late summer. 4-6" 75c; 6-9" \$1.25; 9-12" \$1.50.

Odora. White bordered waxy green leaves; compact growth. Very early blooming. Very fragrant pink flowers in clusters. 9-12" \$1.25; 12-15" \$1.75; 15-18" \$2.25.

EUYONOMOUS

Evergreen. Dark, glossy green foliage; dense and compact; showy.

Silveredge Winter Creeper (Radicans argenteo-marginatus). Compact growing shrub with dark glossy foliage trimmed with a border of rich gold. 15-18" 85c; 18-24" \$1.00.

FIRETHORN (Pyracantha)

Lalandi. Upright growth. Covered with immense clusters of orange berries in fall. 2-3' \$1.25; 3-4' \$1.75.

Yunnan. Low spreading type. Glossy green leaves; scarlet berries. (Prices same as above for Lalandi).

HEATHER (Erica)

Carnea rosea. Low growing; completely covered with lavender blossoms from January to April. 6-9" 50c; 9-12" 75c.

Irish Belle. Attractive purple blossoms in July and August. 12-15" 75c; 15-18" \$1.00.

Mediterranean. Dwarf; fall and winter blooming; pink. 10-12" 60c; 12-15" 75c.

Red Heather. 6-9" 75c; 9-12" \$1.00.

Scotch Heather. The common Scotch purple flowering variety. 12-15" 75c; 15-18" 95c.

HOLLY (Ilex)

English, with berries. Grafted plants with berries. 15-18" \$1.85; 18-24" \$2.00; 2-3' \$3.00.

English, without berries. 15-18" \$1.50; 2-3' \$2.50.

English, variegated. 15-18" \$2.00; 18-24" \$2.25; 3-4' \$3.00.

Dutch. Large glossy leaves. Many red berries; thornless. (Same prices as English variegated).

LAUREL

English. We have the dark green strain which remains attractive the year 'round. Good specimen or screen plants. See hedge plants. 15-18" 65c; 18-24" 75c; 2-3' \$1.25.

Portugal. Dwarf habit; rich green foliage against red stems. Black berries. 15-18" \$1.50; 18-24" \$2.00.

Laurestinus. A dense growing shrub; sets many clusters of buds in fall which open into white flowers in early winter. 15-18" \$1.00; 18-24" \$1.50.

MAGNOLIA

Grandiflora. Large leaves; great large flowers, white to lavender. June. 2-3' \$3.00; 3-4' \$3.50.

Soulangeana. (See Deciduous Shrubs) 18-24" \$3.50.

OREGON GRAPE

Glossy foliage; fragrant, attractive yellow blossoms, blue berries. 12-15" \$1.00; 15-18" \$1.50.

PRIVET

Golden. Very showy, golden variegated variety. 2-3' 75c; 3-4' \$1.50.

Lodense. Semi-evergreen, very dwarf compact shrub. Leaves turning to dark red in fall. 85c.

(See Hedge Plants for other varieties).

RHODODENDRON

Hybrid seedlings. Assorted colors; good shades. 12-15" \$1.65; 15-18" \$2.00.

(List of named varieties of Rhododendrons and prices sent on request.)

SKIMMIA

Low, compact plant; glossy dark green leaves; large red berries on female plants during winter. Needs male plant for pollinizer. 12-15" \$1.85.

HEDGE PLANTS

BOXWOOD TRUEDWARF

(Description on page 20.)

10 plants \$2.50; 50 plants \$10.00.

LAUREL, ENGLISH

12-18", 10 plants \$4.25; 50 plants \$18.75

18-24", 10 plants \$5.25; 50 plants \$24.75

OREGON GRAPE

8-10", 10 plants \$1.50; 50 plants \$6.75

HOLLY, ENGLISH

18-24", 10 plants \$ 7.50; 50 plants \$32.50

24-30", 10 plants \$10.00; 50 plants \$40.00

30-36", 10 plants \$12.50; 50 plants \$50.00

PRIVET

California. Large glossy leaves; semi-evergreen. 10 plants 85c; 50 plants \$3.50.

English. Small leaves.

10 plants 85c; 50 plants \$3.50.

Lodense. Dwarf hedges.

10 plants \$1.50; 50 plants \$6.75.

VINES AND CREEPERS

BITTERSWEET

Hardy ornamental vine. Crimson berries all winter. 2-year 50c each. Two or more 45c each.

CLEMATIS

Jackmani. Large purple blossoms. 2-year \$1.00; three for \$2.75.

Henryi. Single white.

2-year \$1.00; three for \$2.75.

HONEYSUCKLE

Hall's Japan; fragrant white blossoms. Almost evergreen. 50c each; Three or more 45c ea.

IVY

Boston. Clings to any surface.

50c each; three for \$1.35.

English. Ideal for a cover plant.

40c each; three for \$1.00.

SILVER LACE VINE

Rapid growing vine; glossy green foliage; feathery white blossoms.

65c each; three for \$2.00.

VIRGINIA CREEPER

50c each; three for \$1.00.

WISTARIA

Longcluster purple, \$1.00; **Longcluster grafted,** \$1.25; **Chinese white,** \$1.00.

ROSES

ROSES	Each	Three	12
2-year No. 1, selected.	\$0.50	\$1.35	\$4.25
2-year plants, medium.	.35	1.00	3.00

HYBRID TEAS

Angele Pernet, orange-apricot.
Autumn, burnt orange.
Betty, coppery-rose.
Betty Uprichard, coppery pink.
Bloomfield Flame, bright red.
Chateau de Clos Vouget, dark red.
Crusader, dark red.
Cuba, orange scarlet.
Duchess of Athol, orange.
Etoile de Feu, orange red.
Etoile de Holland, scarlet.
Frau Karl Druschki, white.
General Jacquemont, red.
Golden Dawn, bright yellow.
Golden Emblem, yellow.
Gruss en Teplitz, red.



PRESIDENT H. HOOVER

Pres. H. Hoover, orange to scarlet.
Paul Neyron, red.
Red Letter Day, single red.
Sensation, scarlet.
Shot Silk, cherry red.
Souv. de Geo. Pernet, red.
Sister Theresa, yellow.
Sunkist, creamy white, orange copper.
Talisman, gold to copper red.

Hadley, dark crimson.
Hollywood, dark rose red.
Hoosier Beauty, crimson.
Imperial Potentate, pink.
Joanna Hill, clear yellow.
K. of K., velvety scarlet.
Los Angeles, flame pink.
Lulu, orange pink.
McGredy Scarlet.
Margaret McGredy, oriental red.
Mme. Caroline Testout, pink.
Mme. Ed. Herriott, coral red.
Mme. Jules Bouche, white, salmon cen.
Mrs. Sam McGredy, copper.
Moss Red.
Mrs. G. A. Van Rossem, red.
Olympiad, oriental scarlet.
Ophelia, pink.
Padre, coppery scarlet.
Portadown Ivory.
Ulrich Brunner, Red.
Ville de Paris, yellow.
Western Gold.
Willowmere, pink with gold glow.
La France, silvery pink.

POLYANTHA ROSES

Jessie, orange-red.
Crimson.
Edith Cavell, deep crimson.
Gloria Mundi, orange.
Ideal, dark scarlet.
Kirsten Paulsen, bright scarlet.
Triomphe d'Orleans, cerise-red.

CLIMBING ROSES

American Beauty, crimson.
American Pillar, crimson pink.
Dorothy Perkins, pink, red or white.
Dr. Van Fleet, flesh pink.
Etoile de Holland, scarlet.
Golden Dawn, bright yellow.
Golden Emblem, yellow.
Gruss en Teplitz, red.
Hadley, dark crimson.
Hoosier Beauty, crimson.
Lady Hillingdon, yellow.
Marechal Neil, yellow.
Mme. Ed. Herriott, coral red.
President Hoover.
Paul's Scarlet.
Silver Moon.
Shot Silk, cherry red.
Sunburst, yellow.
Tausendschoen, pink.
Red Radiance.
Cecil Brunner, cream-pink.

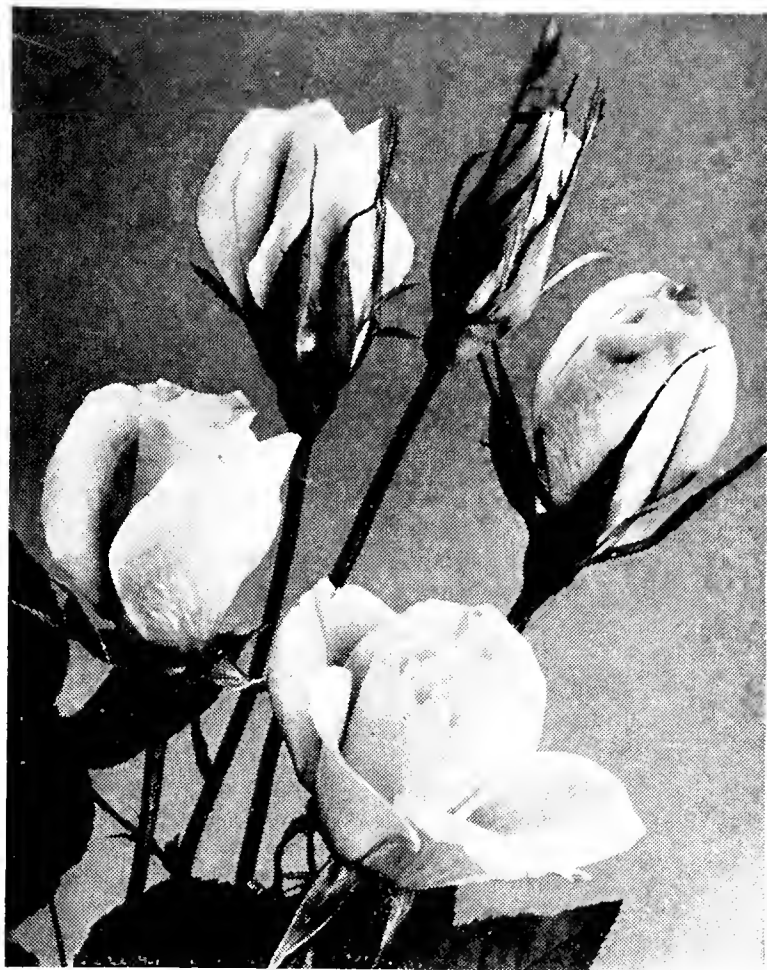
PATENTED ROSES

Better Times. Plant Patent No. 23. Large, double, brilliant cerise flowers, delicately fragrant. Long stems, excellent for cutting. **\$1.25 each.**

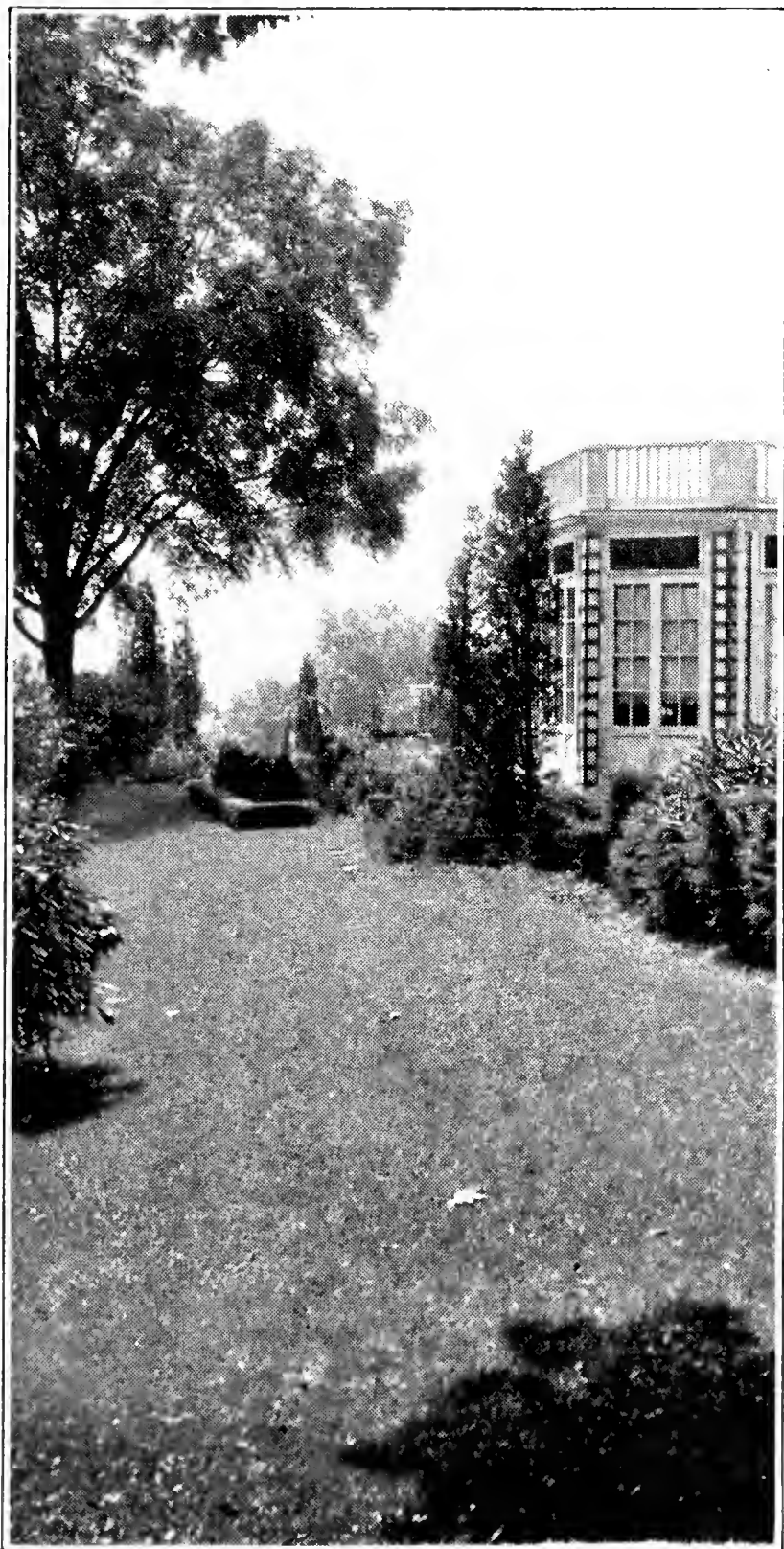
Eclipse. Plant Patent No. 172. This is the outstanding recent introduction. It is a long stemmed, stream-lined, yellow rose, very distinctive in appearance. Very disease resistant. Gold Medal of the American Rose Society, 1936. **\$1.50 each.**

Texas Centennial. Plant Patent No. 162. A red sport of President Hoover. Blood-red toning to cerise-red in center. **\$1.00 each.**

Countess Vandal. Plant Patent No. 38. Long pointed buds of pink and copper. Nice foliage, vigorous plants. **\$1.00 each.**



ECLIPSE



THE PLANT FOOD THAT BRINGS SUCH AMAZING RESULTS TO MILLIONS OF GARDENERS IS **NOT EXPENSIVE**

No need to deny yourself the many advantages of Vigoro because you think it expensive. The fact is, Vigoro is the most economical plant food you can buy!

You, too, can grow luxuriant, colorful blossoms . . . deep green, weedless lawns. Start feeding your plants with VIGORO . . . the clean, sanitary, odorless plant food that is scientifically made for plant feeding.

Vigoro assures proper nourishment to all your growing things. It contains in proper proportions all 11 essential plant food elements.

VIGORO

Complete plant food

100 lb. bag	\$3.75
50 lb. bag	2.40
25 lb. bag	1.40
10 lb. bag70
5 lb. bag45
1 lb. bag10

A PRODUCT OF SWIFT

CLIMBING ROSES

BLAZE. Plant Patent No. 10. This is a remarkable red rose, frequently referred to as the everblooming Paul's Scarlet Climber. **\$1.00 each.**

DOUBLOONS. Plant Patent No. 152. A radiant yellow rose. Blooms for a long period and frequently repeats later in the season. Considered the best yellow climbing rose introduced. **\$1.50 each.**

Golden Climber. Plant Patent No. 28. Excellent quality, golden flowers on very long stems. Fine for cutting. Fragrant. **\$1.00 ea.**

RUGOSAS

F. T. Grootendorst, small, bright red double.
Pink Grootendorst.
Rugosa Alba, white.
Rugosa Rubra, red.

40c each; \$3.95 per dozen.

STANDARD OR TREE ROSES

Autumn	Mrs. Sam McGredy.
Dame Edith Helen	Olympiad
Etoile de Holland	Pres. Hoover.
Margaret McGredy.	Rapture.
Mme. Ed. Herriott.	Talisman.

\$1.95 each; 3 for \$5.50.

PEONIES

Albert Crousse, pink.
Delachi, red.
Edulis Superba, deep pink, early.
Felix Crousse, brilliant red.
Festiva alba, white
Festiva Maxima, large white, crimson spots.
Golden Harvest, three shades.
Officianalis Rosea, early pink.
Officianalis Rubra, early double red.
 60c each; 3 for \$1.50
 Red, White or Pink Assorted—
 40c each; 3 for \$1.00.

ROSE COLLECTION

2-year No. 1

Angele Pernet, orange-copper
Chateau de Clos Vouget, dark red
Frau Karl Druschki, white
Gruss en Teplitz, red
President Hoover, orange to scarlet
Shot Silk, cherry red
Talisman
Paul's Scarlet Climber
Tausendschoen, pink climber
Golden Emblem, yellow
Crimson Rambler
Hoosier Beauty, red

12 FINE ROSES

Special Price, Prepaid, \$3.25

Value: \$5.40

SHRUB SELECTION

\$4.95 Prepaid

1 Butterfly Bush	1 Heather
2 English Laurel	2 Jap. Quince
2 Forsythia	2 Spirea

10 SHRUBS IN ALL

Regular \$5.85

SPECIAL ORCHARD SELECTION

APPLES—	PEARS—
1 Double Red Delicious	1 Bartlett
1 Yellow Transparent	1 Bosc
1 Grimes Golden	1 Anjou
1 Gravenstein	CHERRIES—
1 Spitzenberg	1 Royal Ann
PLUMS—	1 Oxheart
1 Date	1 Lambert or Bing
1 Italian	1 Sour Cherry
1 Beauty	3 Peach Trees
1 Green Gage	
1 Quince	

Total of 20 Trees, 4-6 feet

Special price of trees, \$7.95, prepaid

Regular \$10.65 Value.

GARDEN SELECTION

SPECIAL \$5.65, Prepaid

100 Imp. Ore. Strawberries
 10 Raspberries
 5 Boysenberries
 10 Currants—Perfection
 5 Oregon Champ. Gooseberries
 6 Assorted Grapes
 10 Rhubarb Plants

Regular Value \$6.82

PERENNIALS, ETC. (Postpaid)

Assorted varieties of the following:
 20c each; 3 for 50c.

Canterbury Bells.
Delphinium, blue shades.
Foxglove.
Hollyhock.
Oriental Poppy.
Phlox.
Primroses.
Violets.
Saxifraga, clumps, 35c; 3 for \$1.00.