

## **Historic, archived document**

Do not assume content reflects current scientific knowledge, policies, or practices.



---

# SHAFFER'S

## PLANT AND SEED GUIDE

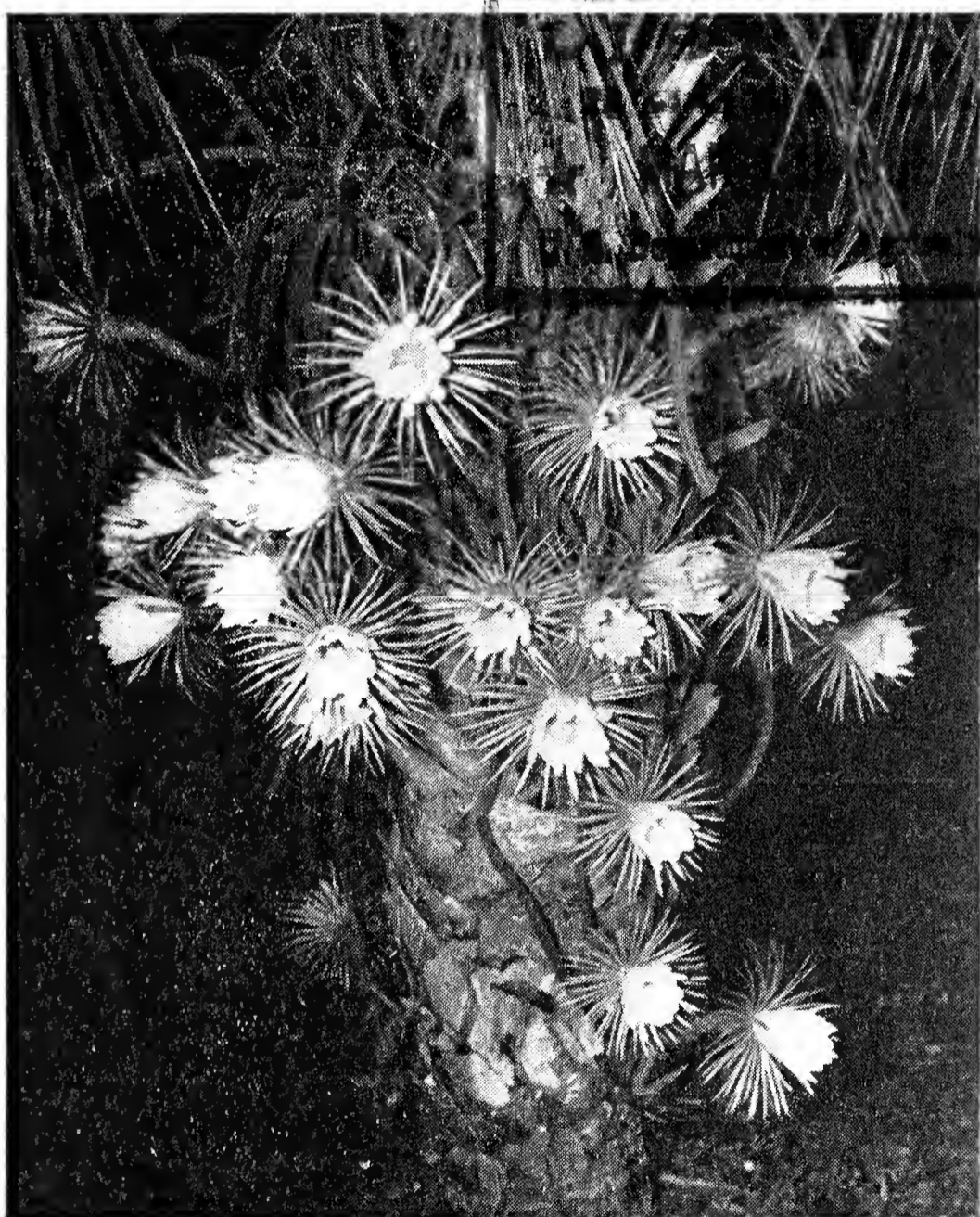
---

TROPICAL AND SUB-TROPICAL  
PLANTS AND SEEDS

For Northern Gardens And For General Planting  
In Warm Climates

FLOWER AND VEGETABLE SEED  
For All Climates Both North And South

HORTICULTURAL BOOKS  
By Leading Plant Authorities



**QUEEN OF THE NIGHT (*Selenicereus* sp.)**

Large pure white flowers born on long rat-tail-like climbing branches. Flowers open at night. Easily grown. One of the most beautiful climbing cacti.

Small, 15c; Med. 35c; Large, 65c.

# SHAFFER NURSERIES

NORTH HIGHLAND AVENUE

CLEARWATER

FLORIDA

---

# PLEASE READ THESE

## DIRECTIONS

**Size of Plants Offered:** For those who do not wish to buy the larger sized plants we offer small rooted plants, small divisions or bulbs at a low price. **Medium** are much larger plants three to four inch pot size. **Large** are good sized plants five to six inch pot grade.

**Cash with Order:** Remit by Post Office money order, Express money order, draft or check. If you send cash, register your letter. We cannot be held responsible if these directions are not followed. No goods sent C. O. D.

**Substitution:** Please list the names of some plants or seeds which we may substitute for any which may be sold out of stock.

**Shipping Instructions:** We pay the postage (or at our option express) on all seeds, plants or bulbs listed in this catalogue to any point located in the United States or its possessions providing the order amounts to one dollar or more. To orders of less than \$1.00 please add 10c to help pay postage and packing. All plants shipped prepaid are carefully packed in damp moss without soil.

We will ship plants with soil attached, **not prepaid** by express, if so ordered, in which case no extra charge will be made for extra packing and crating. We recommend to our customers to have their plants, roots or bulbs forwarded **not prepaid by express**, as our experience shows that this method is usually the most satisfactory, except on small packages.

**Time of Shipment:** We have no dormant season in South Florida so shipments are made at any time of the year. In extreme cold weather we recommend that shipments be made by express **Not Prepaid**. We make no charge for extra packing or crating.

**Safe Arrival of Packages:** We guarantee safe arrival of all goods sent by express to any point within the United States proper. Goods sent in any other way travel at purchaser's risk. Claims for damages must be made immediately upon receipt of goods. We cannot be held responsible for failure after delivery of goods in good condition.

**Guarantee:** We exercise every care to have all our plants true to name but should any prove untrue to name the Shaffer Nurseries shall be liable only for the sum paid for the stock which may prove untrue.

**Foreign Shipments:** Please remit U. S. Funds. Add 25% of the value of your order to cover regular postage and special packing. Transit and surcharges as well as any costs for consular invoices of clearance papers also permits, inspection papers, etc. must be included with your order as may be required by your country. Customs duties cannot be prepaid. All of our shipments are sent under State of Florida, U. S. A. Nursery Inspection Certificate. Canadian Patrons must secure a permit from the Department of Agriculture, Ottawa, before shipment can be made into Canada.

## SHAFFER NURSERIES

N. Highland Ave.

Clearwater, Florida

**FOR COLD CLIMATES.** These plants make beautiful, interesting odd and unusual house plants in winter and can be moved out doors in summer. We suggest that before the ground freezes a supply of good soil be placed where it will be available for use in potting plants during the winter.

**FOR WARM CLIMATES—Free from frost.** Plant in permanent locations in open ground, window boxes, pots, etc.

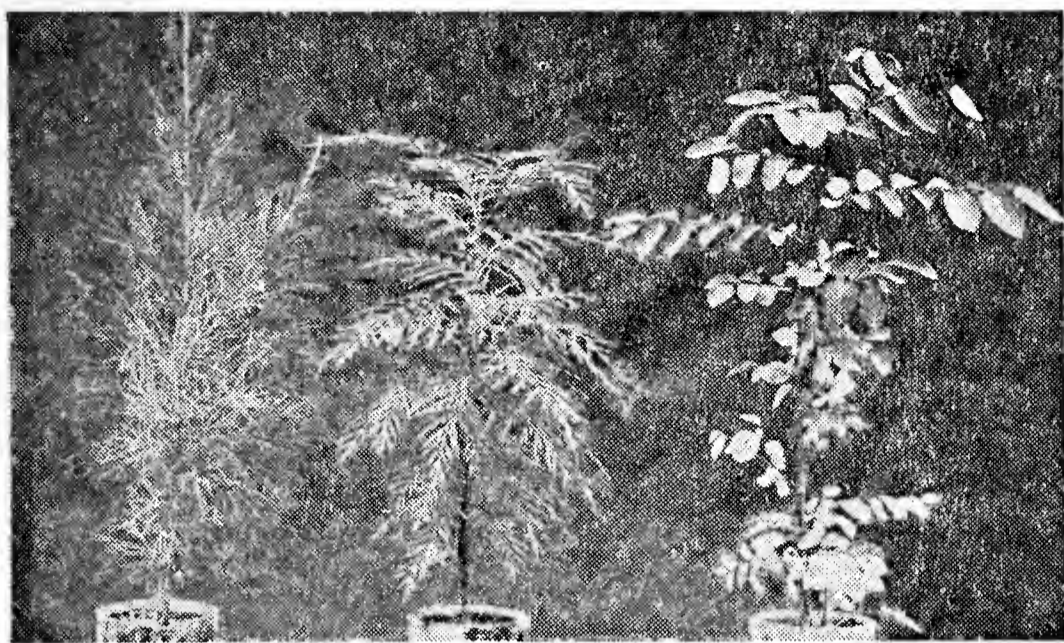


Fig. 1

2

3

Fig. 1—Australian Pine. Fig. 2—Australian Silk Oak.  
Fig. 3—Snow Bush.

### FLOWERING AND DECORATIVE TREES

**AUSTRALIAN PINE, Beefwood or She-Oak** (*Casuarina*). Odd, fine, feather-like, jointed, slender branched, dark green, leafless, tress of striking appearance. *C. cunninghamiana* will stand temperatures of 18° to 20° F. *C. equisetifolia* will stand salt spray. Seed per pkt 10c. Plants, Small, 15c; Med. 25c; Large, 50c.

**AUSTRALIAN SILK OAK** *Grevillea robusta*. Very finely cut, fern-like leaves. A beautiful pot plant and an attractive shade tree in Florida and California with bright orange flowers. Seed per pkt 10c. Plants, Small 15c; Med. 35c; Large, \$1.00.

**BANYAN TREE** *Ficus bengalensis*. Large attractive, prominent nerved leaves; rooting from the branches; red fruits. Small. 25c; Med. 50.c; Large, \$1.00

**CALAMONDIN.** The best, most attractive small ornamental citrus tree or lawn specimens in Florida being unusually hardy. Fruit dark orange color, very acid and the size of a small lime. Used the same as lemons. Makes a good tub plant. Seed per pkt 20c. Plants Small, \$1.00; Med. \$3.00; Large, \$6.00.

**CAMPHOR TREE** *Cinnamomum camphora*. Evergreen tree with light green shining leaves which have a camphor-like odor. Seed per pkt 10c; Plants, Small 20c; Med. 35c; Large 75c.

**CHINESE TALLOW TREE** *Sapium sebiferum*. Cultivated in China for the wax of the seed covering which is used for candles, soap and cloth dressing. A beautiful tree 25 to 30 feet high with leaves that turn to a beautiful red color. Med. 40c; Large, 75c.

**CHINA-BERRY OR PRIDE OF INDIA** *Melia azedarach*. Makes a beautiful umbrella shaped, dark green, very dense tree, Small lilac flowers. Hardy in Georgia.

Seed per pkt 10c. Plants, Small, 10c; Med. 35c; Large, 75c.

**DAHOON HOLLY** *Ilex cassine*. Leaves evergreen. Tree covered in fall with red berries. Native Florida Holly. Seed per pkt 10c. Plants, Small, 10; Med. 50c; Large, \$1.00.

**EUCALYPTUS.** Fast growing trees with beautiful foliage. **Small, 15c; Med. 50c; Large \$1.00.**

**INDIA RUBBER PLANT** *Ficus elastica*. Very large long, pointed, shining, dark green, smooth leaves.

**Small, 25c; Med. 50c; Large, \$1.00**

**JACARANDA OVALIFOLIA.** Fern-like foliage, flowers lavender-blue in large panicles, very showy.

**Small, 25c; Med. 50c; Large, \$1.00.**



**Fig. 4**

**5**

**6**

**Fig. 4—BANYAN TREE. Fig. 5—LAUREL LEAVED RUBBER. Fig. 6—INDIA RUBBER PLANT.**

**JERUSALEM THORN** *Paukinsonia aculeata*. Small thorny interesting tree with green bark, pendulous branches bearing long narrow leaves. A mass of bright yellow flowers in spring. **Seed per pkt 10c. Plants, Small, 15c; Med. 35c; Large 75c.**

**LAUREL LEAVED RUBBER** *Ficus nitida*. A beautiful, wax-like, dark green, small leaved species.

**Small, 25c; Med. 50c; Large, \$1.00.**

**MAGNOLIA GRANDIFLORA.** Tall stately, evergreen, glossy, leaved tree, with huge, white, fragrant flowers six inches or more across. Hardy north to Virginia. **Seed per pkt 10c. Plants, Small 25c; Med. 50c; Large, \$1.50.**

**MOUNTAIN EBONY** *Bauhinia purpurea*. Covered in spring time with orchid-like rosy purple flowers. Roundish green leaves. **Small, 20c; Med. 50c; Large, 75c.**

**NATAL ORANGE:** *Strychnos spinosa*. A low growing tree from South Africa with slender branches and small dark green leaves. Fruit the size and color of an orange, aromatic, edible. Interesting pot plant.

**Small, 30c; Med. 60c; Large.....**

**ORANGE TREES.** Grown from seed. With their bright evergreen foliage make an attractive pot plant for the north. **Small, 15c; Med. 25c; Large, 50c.**

**PUNK TREE** *Melaleuca leucadendron*. Thick, spongy, almost white bark, pendulous branches, oblong leaves, spikes of creamy white flowers. **Small, 20c; Med. 35c; Large, \$1.00.**

**ROYAL POINCIANA** *Poinciana regia*. Dense feathery mass of leaves. Blooms orange scarlet 2 to 3 inches across literally hiding the leaves. **Small, 25c; Med. 50c; Large, \$1.00.**

**WOMANS TONGUE TREE** *Albizia julibrissin*. Beautiful feathery foliage and fragrant pink powder puff like flowers. **Small, 25c; Med. 50c; Large, \$1.00**

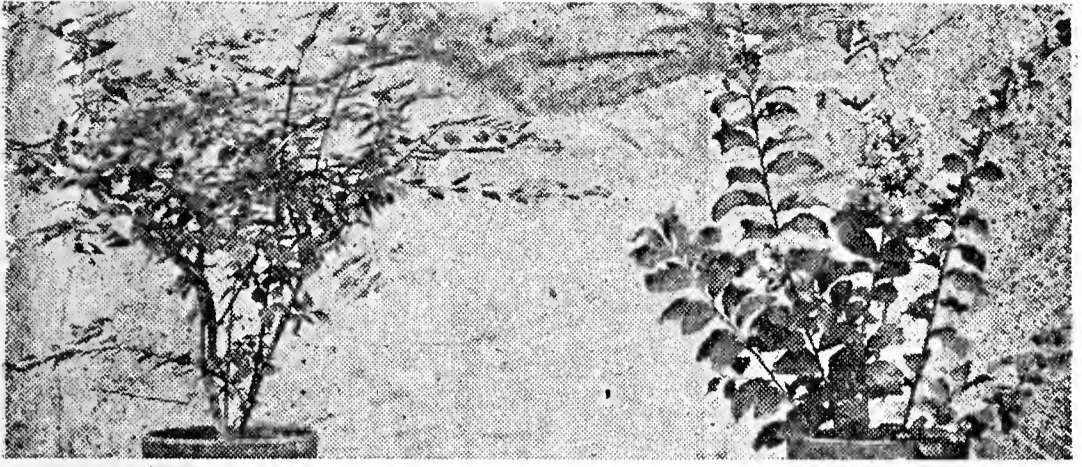


Fig. 7—ABELIA GRANDIFLORA

Fig. 8—CRAPE MYRTLE

### FLOWERING SHRUBS

**ABELIA GRANDIFLORA.** Leaves small, metallic bronze in winter. Flowers pinkish white. Hardy north to Virginia. Small, 15c; Med. 35c; Large, \$1.00.

**ACACIA FARNESIANA OR POPINAC.** Very fine pinnate foliage giving a thin airy effect. Seed per pkt 10c. Plants, Small, 20c; Med. 50c; Large, \$1.00.

**ANGEL'S TRUMPET** *Datura arborea*. The large, pendulous, trumpet-shaped white flowers, six inches wide open in the evening, and are as fragrant as the jasmine. Small, 15c; Med. 35c; Large, 50c.

**DOUBLE YELLOW DATURA SEED** per pkt 10c

**BOTTLE BRUSH** *Callistemon rigidus*. Thick, narrow, sharp pointed leaves, dense spikes, large, red flowers. Seed per pkt 10c. Plants, Large \$1.00

**BRAZILIAN PEPPER** *Schinus terebinthifolius*. Dark green leaves. Red berries in clusters about Christmas time. Can be used for holly. Seed per pkt 10c. Plants, Small, 15c; Med. 25c; Large, 50c.

**BUTTERFLY BUSH** *Buddleia*. White, blue and yellow varieties. Fast growing with light green leaves, more or less silver underneath. Small, 15c; Med. 35c; Large, 75c.

**CAPE JASMINE OR GARDENIA FLORIDA.** Dark glossy green leaves, wonderful large white waxy blooms with perfume second to none. The old double flowered jasmine of the South. Hardy in Georgia. Small, 20c; Med. 50c; Large, \$1.50

**CHERRY LAUREL** *Laurocerasus caroliniana*. Beautiful, glossy, broad leaved evergreen, easily sheared into shape. Hardy in Georgia. Small, 15c; Med. 35c; Large, 75c.

**CHINESE PRIVET.** Small bright green leaves, can be sheared into almost any shape. Hardy to Virginia. Small, 10c; Med. 20c; Large, 75c.



Fig. 9— Chinese Hibiscus

**CHINESE HIBISCUS** *H. rosa-sinensis*. The large flowered hibiscus found in almost every door-yard in Florida. Single scarlet, salmon, light pink, varieties.

Small, 15c; Med. 25c; Large, 50c.



Fig. 10

11

12

13

Fig. 10—*Jasminum Maid of Orleans*. Fig. 11—*Jasminum Floridum*. Fig. 12—*Jasminum Primulinum*. Fig. 13—*Gardenia*.

**CIGARETTE PLANT** *Cuphea micropetala*. Small narrow leaves. small beautiful, tubular, scarlet and yellow flowers continuously. **Small, 15c; Med. 35c; Large, 75c.**

**COTTON ROSE or Pink Ball, *Assonia wallichii***. Large velvety heart shaped leaves, spherical clusters pink flowers 4 to 5 inches in diameter. **Small, 10c; Med. 35c; Large, 75c.**

**CORAL-TREE OR CHEROKEE BEAN: *Erythina herbacea ver arborea***. Native Florida shrub with racemes of scarlet flowers followed by bright scarlet beans. Odd 3 lobed leaves. **Plants, Small, 30c; Med. 60c; Large, \$1.00**

**CRAPE MYRTLE *Lagerstroemia Indica***. Large panicles, pink, beautiful fringed flowers. Hardy north to Virginia. **Plants, Small, 15c; Med. 35c; Large, 50c.**

**DAY BLOOMING JESSAMINE *Cestrum diurnum***. Fast growing with glossy green leaves producing quantities of small white flowers throughout the year. **Small, 15c; Med. 35c; Large, 50c.**

**DWARF POINCIANA *Caesalpinia***. Large green pinnate foliage, terminal clusters, gorgeous red and yellow flowers. Seed per pkt 10c. **Plants, Small, 20c; Med. 35c; Large, 60c.**

**EHRETIA ELLIPTICA**. A very hardy shrub or small tree for Florida. Very dark, evergreen leaves. Clusters off small fragrant white flowers followed by small yellow berries with edible pulp. **Small, 30c; Med. 50c; Large,-----**

**ELFIN HERB *Cuphea hyssopifolia***. A dainty little shrub 8 to 12 inches tall; very small leaves; almost constantly covered with small lavender flowers. Excellent small pot plant. **Small, 15c; Med. 25c; Large, 50c.**

**FLAME-OF-THE-WOODS *Ixora incarnata***. Glossy light green foliage and large heads of flaming bright red flowers. Fine pot plant. **Small, 25c; Med. 50c; Large, \$1.00.**

**GARDENIA VEITCHII**: An improved type for pot culture, flowering more freely and for a longer period than the Florida variety. **Small, 25c; Med. 60c; Large, \$1.50.**

**GOLDEN DEWDROP *Duranta plumieri***. Medium sized leaves on graceful, pendulous branches. Delicate lilac flowers followed by grape-like bunches of yellow fruit. Seed per pkt 10c. **Plants, Small, 15c; Med. 35c; Large, 50c.**





Fig. 14--Allamanda.

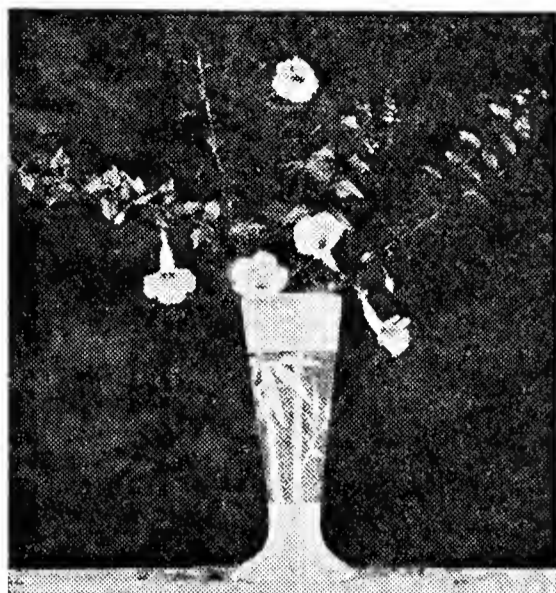


Fig. 15--Thunbergia Erecta.

**GOLDEN TRUMPET: Allamanda.** One of the most gorgeous tropical plants grown in Florida. Can be grown either as a vine or shrub. Flowers large, pure golden yellow, contrasting beautifully with the glossy green foliage. **Small, 25c; Med. 50c; Large, 75c.**

**HYDRANGEA HORTENSIS.** Large pink flowers if planted in soil treated with lime and blue flowers if planted in acid soil. **Small, 15c; Med. 50c; Large, 75c.**

**IWATA PRIVET Ligustrum iwata.** Small round leaves with a light green spot in the center of each. Can be sheared. **Small, 25c; Med. 50c; Large, \$2.00.**

**JAPANESE YEW Podocarpus Macrophylla.** Beautiful evergreen shrub resembling English Yew. Stands shearing well making splendid tub specimens.

**Small, 25c; Med. 75c; Large, \$1.50**

**JASMINE SAMBAC (Grand Duke).** Very double, intensely fragrant, white flowers. Dark green shining foliage. **Small, 15c; Med. 50c; Large, \$1.00.**

**JASMINUM FLORIDUM.** Small stiff, shining, very dark green leaves. Flowers, small, yellow, freely borne

**Small, 15c; Med. 35c; Large, 50c.**

**JASMINUM MAID OF ORLEANS:** Large semi-double pure white sweet scented flowers. Similar to Grand Duke but a much better grower. **Small, 25c; Med. 40c; Large, \$1.00.**

**JASMINUM PRIMULINUM.** One of the best jasmines. Graceful, drooping habit with large yellow flowers.

**Small, 15c; Med. 35c; Large, 50c;**

**KING'S MANTLE Thunbergia erecta.** Low dense shrub with small dark green leaves and dark blue gloxinia-like tubular flowers 2 inches across. **Small, 15c; Med. 35c; Large, 50c.**

**LANTANA GRAND SULTAN.** Flowers open orange turning to intense red. Strong grower. One of the best. **Small, 15c; Med. 35c; Large, 50c.**

**LANTANA GOLDEN QUEEN.** Beautiful semi-dwarf, golden yellow flowers. **Small, 15c; Med. 35c; Large, 50c.**

**LANTANA DELICATISSIMA.** Everblooming, pinkish lavender, dwarf trailing, small leaved type. Unexcelled for hanging baskets, porch boxes, etc. **Small, 15c; Med. 35c; Large, 50c.**

**LUCKY NUT or TIGER APPLES Thevetia veriifolia.** Narrow shining leaves and bell-shaped yellow flowers 3 inches long followed by large seeds. **Small, 20c; Med. 35c; Large, 50c.**

**MALPIGHIA COCCIGERA, Dwarf Holly.** A charming very small shrub with holly-like small, prickly leaves and bright pink flowers, scarlet berries. **Small, 15c; Med. 35c; Large, 65c.**

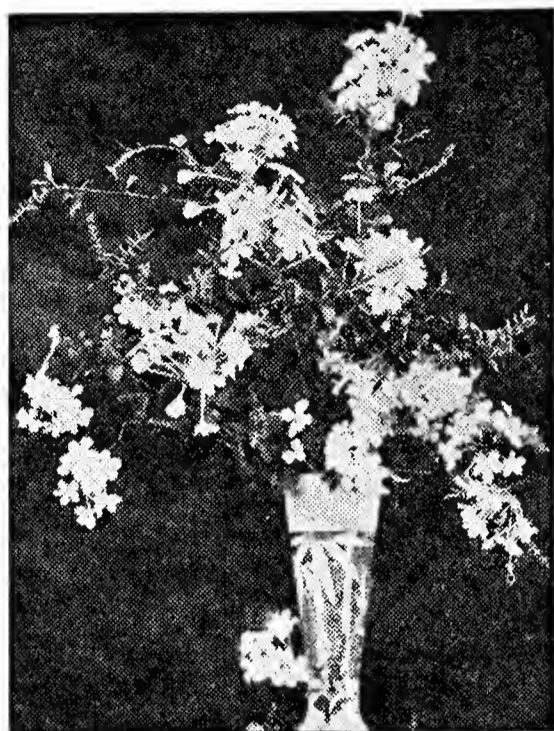


Fig. 16—Plumbago Capensis.

**NIGHT BLOOMING JESSAMINE** *Cestrum nocturnum*. Fast growing with glossy green leaves. Masses of small greenish white flowers, intensely fragrant at night, blooming at intervals throughout the year.

**Small, 15c; Med. 35c; Large, 50c.**

**OLEANDER** *Nerium oleander*. Large loose clusters double pink flowers. Distinctive long green attractive leaves. We also have a white variety.

**Small, 15c; Med. 35c; Large, 75c.**

**PINWHEEL FLOWER** or **CRAPE JESSAMINE** *Taebarnaemontana*. Dark green glossy leaves similar to the gardenia. Blooms pure white and fragrant.

**Small, 15c; Med. 35c; Large, 75c.**

**PLUMBAGO CAPENSIS.** Small, light green shrub covered with beautiful sky blue flowers almost all of the time.

**Small, 15c; Med. 35c; Large, 60c.**

**POINSETTIA** *Euphorbia pulcherrima*. Brilliant red bracts surrounding the small yellow flowers. Much used by florists for decoration at Christmas time.

**Small, 15c; Med. 35c; Large, 75c.**

**PRINCESS FLOWER:** *Tibouchina*. A lovely purple flowered shrub, with soft velvety foliage.

**Small, 25c; Med. 60c; Large, -----**

**RAPHIOLEPIS** or **INDIAN HAWTHORNE.** Slow, low growing shrub, with thick, dark, heavy leaves. Flowers light pink, fragrant. Blue flowers. **Seed per pkt 10c.**

**Plants, Small, 20c; Med. 50c; Large, \$1.00.**

**SEA GRAPE, Cocoloba uvifera.** Native Florida shrub found growing right down to the edge of the salt water in sandy soil. Large heart-shaped roundish leaves, veined with red. Edible fruit in clusters like grapes, used for jelly. **Small, 35c; Med. 75c; Large, \$2.50.**

**SEVERINIA BUXIFOLIA.** Very slow growing, dwarf green pointed small leaves. Glossy black berries. Related to the orange. **Seed per pkt 10c. Plants, Small 10c; Med. 35c; Large, 75.**

**SPICEBERRY** *Ardisia crenulata*. Excellent pot plant large bunches red berries at Christmas time which hold on for several months. **Seed per pkt 10c. Plants, Small, 15c; Med. 35c; Large, 75c.**

**STAR JASMINE** *Jasminum gracillimum*. Grows both as a vine or shrub. Dark green leaves and snow white flowers. **Small, 15c; Med. 35c; Large, 50c.**

**SURINAM CHERRY** *Eugenia uniflora*.—New leaves almost red, changing to bright glossy green. The bright red subacid cherries are very good to eat. **Plants, Small, 10c; Med. 35c; Large, 50c.**

**SWEET OR GERMAN MYRTLE** *Myrtus communis*. Very fine, compact, fragrant foliage. White flowers. **Small, 15c; Med. 35c; Large, 75c.**

**THRYALLIS BRAZILIENSIS**. Recently introduced by U. S. Dept. of Agr. Bears a mass of bright yellow flowers on a small shrub. Flowers good for cutting. **Seed per pkt 10c. Plants, Small, 15c; Med. 35c; Large, 50c.**

**TURKS CAP** *Malvavaviscus arboreus*. Light green large leaves and pendent scarlet flowers. Constant bloomer. **Small, 15c; Med. 25c; Large, 50c.**

**VIBURNUM ODORATISSIMUM**. Large, rough, bright green leaves and fragrant spikes of white bloom. **Small, 30c; Med. 50c; Large, 75c.**

**VITEX NEGUNDO**. An attractive small shrub with lilac blue flowers which are produced on very small pot plants. Will grow in poor soil and is hardy. **Small, 25c; Med. 40c;**

**WAX PRIVET** *Ligustrum lucidum*. Broad, wax-like dark green, rich appearing evergreen leaves. Can be sheared. **Small, 25c; Med. 50c; Large, \$2.00.**

**YELLOW ELDER** *Stenolobium sambucifolia*. Foliage light green, beautiful masses yellow flowers twice a year. **Small, 25c; Med. 45c; Large, 75c.**

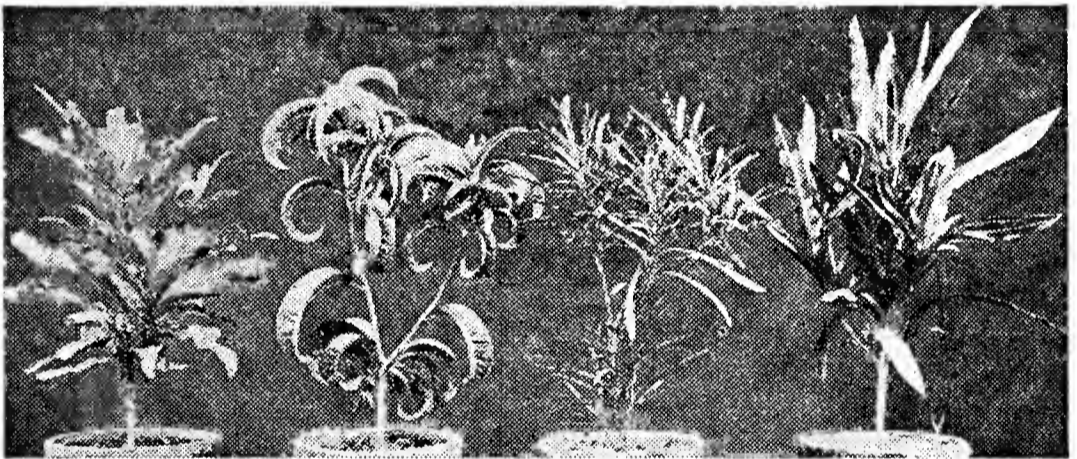


Fig. 16½—Crotons. 4 Types

#### SHRUBS WITH VARIEGATED LEAVES

**ARALIA GUILFOYLEI**. Aristocratic foliage plant, leaves marked with cream and white. **Small, 25c; Med. 50c; Large, \$1.00.**

**COPPER LEAF** *Acalypha marginata*. Leaves larger, green margined with shades to red, pink and cream. **Small, 10c; Med. 35c; Large, 75c;**

**ARALIA BALFOURI**. Splendid foliage plant with variegated green, cream and white round leaves. **Small, 35c; Med. 50c; Large, \$1.25.**

**CROTONS** *Phyllaurea variegata*. The most popular variegated tropical plants. Leaves of many shapes and colors, green, yellow, dark and light red, mixed, etc. We keep at least six kinds. **Small, 15c; Med. 35c; Large, \$1.00**

**FIRE DRAGON** *Acalypha mosaica*. Mosaic-leaved showing all shades of green, yellow and red. Very attractive pot plant. **Small, 10c; Med. 35c; Large, 75c.**

**MANDARIN'S GOWN** *Acalypha tricolor*. Large light and dark red leaves. About the highest-colored foliage plant known. **Small, 10c; Med. 35c; Large, 75c.**

**SERISSA FOETIDA.** Miniature shrub with small variegated green and white leaves; small delicate white flowers. Good rock and window garden plant.

Small, 10c; Med. 25c; Large, 40c.

**SNOW BUSH** *Phyllanthus*. Variegated roundish, white, green and pink leaves. Small, 15c; Med. 35c; Large, 75c. ---

### FRUITS

**CALAMONDIN.** See Flowering and Decorative Trees.

**LOQUAT** *Eriobotrya japonica*. Large, handsome, evergreen, rough leaves. Deliciously flavored, yellow fruit, size of plums. Small, 15c; Med. 35c; Large, 75c.

**NATAL PLUM** *Carissa grandiflora*. A handsome dense shrub with very dark green leaves, white star shaped flowers followed by beautiful red fruits size and shape of plums of agreeable acid flavor. Small, 20c Med. 50c; Large, \$1.00.

**PAPAYA OR MELON TREE** *Carica papaya*. Very large, decorative, cut leaves. White flowers with delicious fragrance. Large, melon-like fruits esteemed for dessert and as an aid to digestion. Seed per pkt 10c. Plants, Small, 20c; Med. 35c; Large, 60c.

**RED CATTLEY GUAVA.** Handsome broad evergreen leaves. Fruit size of small plums, red, borne in large bunches, juicy, subacid, fine for eating out of hand and for jelly. Small, 20c; Med. 35c; Large, 50c.

**TROPICAL GUAVA** *Psidium guajava*. Large, yellow, subacid fruit, making excellent jelly and good to eat with cream and makes very good sauce.

Small, 15c; Med. 25c; Large 50c.

**SURINAM CHERRY.** Red Cherries. (See Flowering Shrubs.) Small, 10c; Med. 36c; Large, 50c.

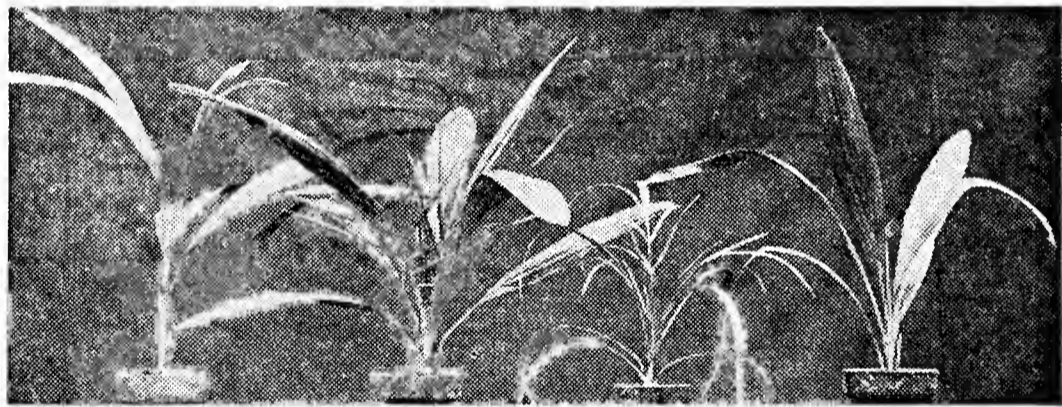


Fig. 20

21

22

23

Fig. 20—Rough Palm. Fig. 21—Branching Date Palm. Fig. 22—Pigmy Date Palm. Fig. 23—Plumy Coconut.

### PALMS AND CYCADS

**BLUE COCONUT** *Cocos Australis*. Gracefully recurved blue-grey-green leaves, dwarf, easily grown. Seed per pkt 10c Plants, Small, 15c; Med. 50c; Large, \$1.50.

**BRANCHING DATE PALM** *Phoenix reclinata*. Foliage about the same as Canary Island Date but the plant suckers freely making large, thick clumps. Splendid house palm. Seed per pkt 10c. Plants, Small, 15c; Med. 35c; Large, \$1.00.

**CABBAGE PALMETTO PALM** *Sabal Palmetto*. Light, gray-green, graceful, fan-like leaves. Leaf bud can be cooked and eaten like cabbage. Seed per pkt 10c. Plants, Small, 10c; Med. 25c; Large, ---

**CANARY ISLAND DATE** *Phoenix canariensis*. Dense crown of large elegant, curving, stiff, feathery leaves. Seed per pkt 10c. Plants, Small, 15c; Med. 25c; Large, 75c.

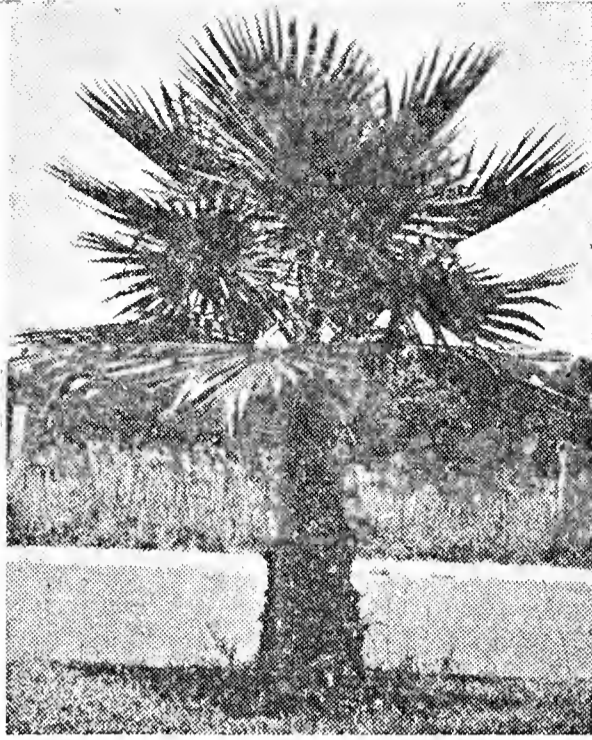


Fig. 24—Thread Palm.

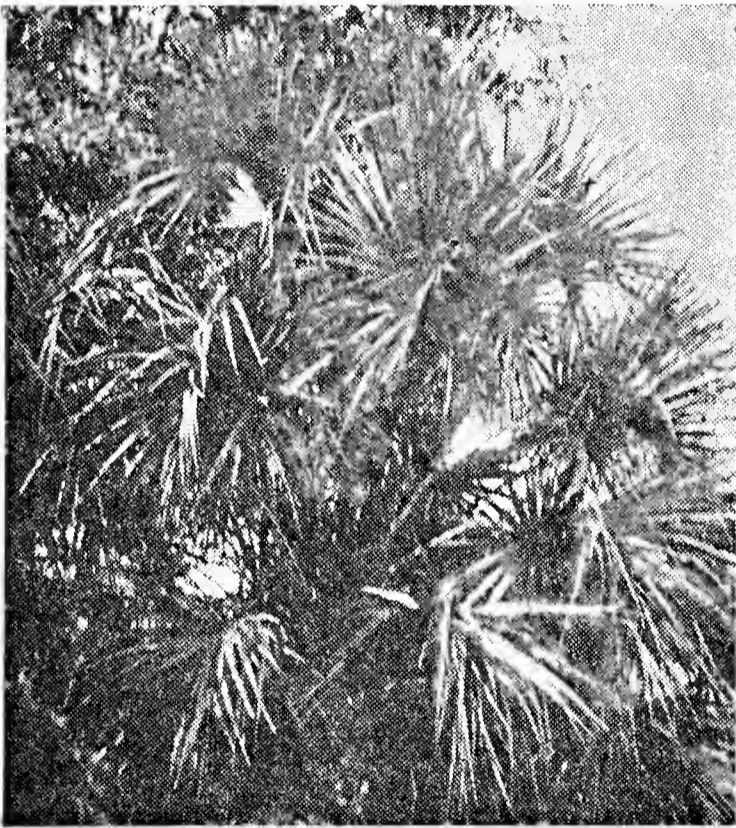


Fig. 25—Cabbage Palmetto.

**COONTIE or COMPTIE** *Zamia integrifolia*. A dwarf cycad, excellent for tubs and urns in dry, sunny positions. **Small, Med. 50c; Large, \$1.50**

**GOLDEN FEATHER PALM** *Areca lutescens*. Gracefully arched leaves on golden stems. One of the very best for pot culture, suckering freely making compact tub specimens for home decorations. **Small, 20c; Med. 50c; Large, \$1.25.**

**PIGMY DATE** *Phoenix roebeleni*. Slow growing, dwarf, fine, dainty leaved palm of airy appearance. One of the very best for conservatory and patio use. **Seed per pkt 10c. Plants, Small, 25c; Med. 50c; Large, \$1.50.**

**PLUMY COCOANUT** *Cocos plumosa*. A magnificent tall, graceful palm with long feathery, dark green leaves. **Seed per pkt 10c; Plants, Small, 15c; Med. 35c; Large, 75c.**

**ROUGE PALM** *Dictyosperma rubra*. Dark green pinnate leaves edged with red. Especially good for conservatories. **Small, 15c; Med. 35c; Large, 75c.**

**ROYAL PALM** *Oreodoxa regia*. The most magnificent palm of the tropics, white column-like trunk, giant glossy green leaves. Seed per pkt 10c. Plants, Small, 15c; Med. 50c; Large, \$1.50.

**SAGO PALM** *Cycas revoluta*. Handsome cycad with dense, symmetrical crown of stiff dark green fern shaped leaves. Small ----- Med. 50c; Large, \$1.50.

**SAW PALMETTO** *Serenoa serrulata*. Dwarf, fan-leaved creeping palm found all over Florida.

Seed per pkt 10c. Plants, Small, 15c; Med. 25c; Large, -----

**THREAD PALM** or **Chinese Fan Palm** *Washingtonia robusta*. Leaves large, fan shaped, furnished with white threads. Seed per pkt 10c. Plants, Small, 15c; Med. 50c; Large, \$1.00.

#### VINES.

**AIR POTATO** *Dioscorea* sp. Rampant growing vine with glossy, green leaves. Tubers borne on the vine above the ground. Small, 10c; Med. 25c; Large, 35c.

**BIRD VINE** *Aristolocia*. Flowers blackish purple veined and bloched with cream. Odd rooster shaped.

Seed per pkt 10c. Plants, Small, 10c; Med. 35c; Large, 50c.

**CALICO FLOWER**, *Aristolochia elegans*. A most desirable, dense foliage, evergreen vine for the warm greenhouse. Flowers 3 to 4 inches across, blackish purple, veined and blotched with cream. Small, 20c; Med. 35c; Large, 75c.

**CAPE HONEYSUCKLE** *Tecoma capensis*. Thrifty growing shrub-like vine with beautiful evergreen feathery leaves and orange red flowers borne constantly.

Small, 15c; Med. 50c; Large, \$1.00.

**CAROLINA YELLOW JESSAMINE** *Gelsemium semper-virens*. Small, glossy, evergreen leaves. A profusion of pure yellow, very fragrant flowers. Small, 25c; Med. 35c;

**CAT'S CLAW VINE** *Bignonia unguis-cati*. Delicate appearing fast growing vine clinging with cat-like claws. Bright golden flowers about 2 inches across.

Seed per pkt 10c. Plants, Small, 10c; Med. 35c; Large, 50c.

**CHAIN OF LOVE** or **Pink Vine**, *Antigonon leptopus*. Light green heart shaped leaves, long racemes, lovely small pink flowers. Seed per pkt 10c. Plants, Small 15c; Med. 35c; Large, 50c.

**CHINESE PAPER FLOWER** *Bougainvillea glabra sande-riana*. Great masses magenta-purple flowers borne during the greater part of the year especially during the winter and spring months. Small, 20c; Med. 35c; Large, \$1.00

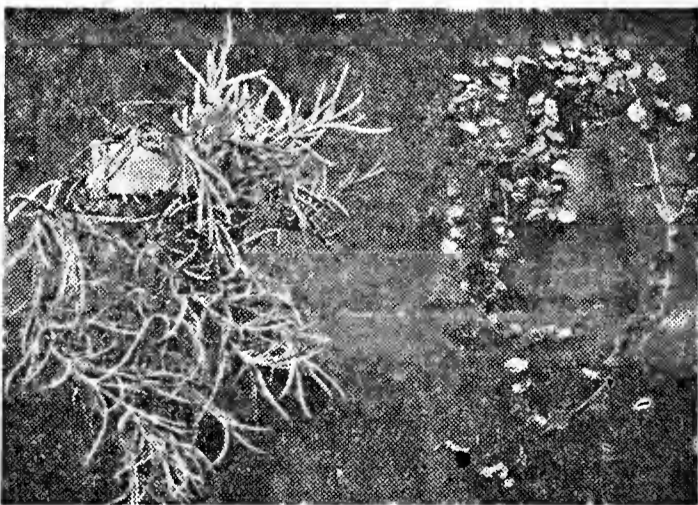


Fig. 26

27

Fig. 26— Ice Plant. Fig. 27—Climbing Fig.

**CLIMBING FIG** *Ficus repens*. The best tropical clinging vine for covering most any kind of wall surface. Close growing and neat. Small, 15c; Med. 35c; Large, 50c.

**CONFEDERATE JASSAMINE** *Trachelospermum jasminoides*. Dark, glossy, heavy leaves. Soft, white, fragrant flowers. Hardy in Georgia. **Small, 35c; Med. 50c; Large, \$1.25.**

**CORAL HONEYSUCKLE** *Lonicera sempervirens*. Tubular, scarlet flowers. Hardy.  
**Small, 15c; Med. 35c; Large, 50c.**

**CRAB'S EYE VINE or WEATHER PLANT, Arbus Precatorius**. Fast growing twining vine, with fine pinnate leaves which hang vertically in dark cloudy weather. Rose to white flowers, followed by very hard, glossy, scarlet seeds, each with a jet black eye. Seeds used frequently as beads but should not be put in the mouth as they are poison to eat. **Seed per pkt 10c.**

**CRIMSON LAKE BOUGAINVILLEA**. Rich glowing crimson flowers, beautiful beyond description. Very desirable window garden plant.  
**Small, 25c; Med. 50c; Large, \$1.50.**

**ENGLISH IVY** *Hedera helix*. Woody, root climbing vine, handsome, evergreen foliage.  
**Small, 25c; Med. 35c; Large, -----**

**FLAME VINE** *Bignonia venusta*. Probably attracts more attention than any other vine in Florida. Vigorous growing covered with huge masses of orange red flowers in spring sometimes completely hiding the foliage.  
**Small, 20c; Med. 35c; Large, \$1.00.**

**GRAPE IVY, Vitis Rhombifolia**. A graceful trailing vine, rich, dark, glossy green leaves. Wonderful new ivy for house culture. **Small, 20c; Med. 45c; Large, \$1.00.**

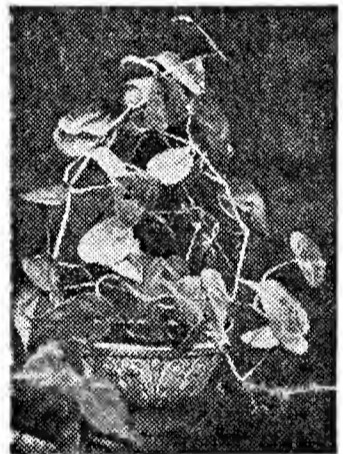


Fig. 28—Sky Vine. Fig. 29—Philodendron Cordatum

**HALLS HONEYSUCKLE**. Flowers white, turning yellow, fragrant. Hardy. **Small, 15c; Med. 35c; Large, 50c.**

**HUNTER'S ROBE** *Pothos aureus*. Green heart shaped leaves streaked with yellow. Climbs by aerial roots.  
**Small, 25c; Med. 35c; Large, 50c.**

**LOVE CHARM** *Bignonia speciosa*. Glossy dark green leaves and great clusters of large trumpet shaped lavender purple flowers. **Small, 25c; Med. 60c; Large, \$1.00.**

**PARADISE FLOWER** *Solanum wendlandi*. Coarse pinnate leaves but elegant sky-blue flowers.  
**Small, 20c; Med. 35c; Large, 50c.**

**PHILODENDRON CORDATUM**. The most satisfactory vine for window gardens or hanging baskets. Dark green heart-shaped leaves. **Small, 15c; Med. 25c; Large, 35c.**

**PILEA NUMMULARICEFOLIA or Creeping Charlie**. This small, fast growing, light green, easily grown vine is unsurpassed as a hanging basket subject or for a miniature ground cover. **Small, 15c; Med. 30c; Large, 60c.**

**SENSITIVE BRIAR, Morongia angustata**. Native Florida Sensitive plant. Leaves close when disturbed. Flowers

bright pink in heads  $\frac{3}{4}$  in. in diameter. **Strong roots, 50c;**  
**SMILAX LAURIFOLIA** Bamboo Vine. Native Florida evergreen smilax much used for decoration by florists. Grows in swamps. Give plenty of water. **Seed per pkt 10c.**  
**SMILAX SEED.**.....Mixed wild Florida types per pkt 10c.

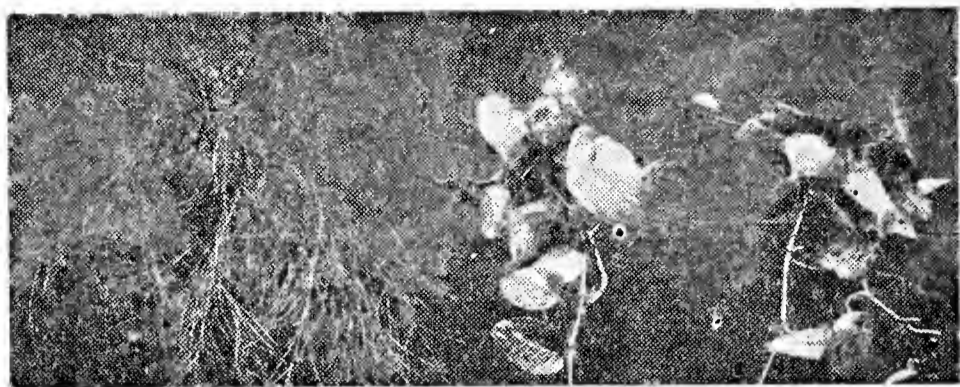


Fig. 30

31

32

Fig. 30—Coral Plant. Fig. 31—Hunter's Robe. Fig. 32—Philodendron Cordatum.

**SKY VINE** *Thunbergia grandiflora*. Very fast growing across. Constant bloomer. **Small, 15c; Med. 50c; Large, \$1.00.**

**TETRASTIGMA HARMONDII**. A tender vine with clean smooth glabrous leaves and edible berries. Philippine Isles. **Small, 35c; Med. 65c; Large, \$1.50.**

**TROPICAL BLEEDING HEART** *Clerodendron thomsonae*. Rapid growing vine with long panicles of red and white flowers resembling northern bleeding heart bloom. **Small, 15c; Med. 35c; Large 50c.**

**TROPICAL MATRIMONY VINE** *Colanum seaforthianum*. Handsome trailing vine, delicate blue flowers, followed by red berries. **Small, 15c; Med. 35c; Large, 50c.**

**VARIGATED PARLOR IVY OR GROUND IVY**, *Nepeta hederacea variegata*. A beautiful easily grown vine, excellent for ground cover or hanging baskets. Leaves are a soft light green color, variegated with pure white, emitting a refreshing mint-like fragrance. **Small, 15c; Med. 35c; Large, 75c.**

## BAMBOOS AND GRASSES

**BAMBOO** *Bambusa multiplex distica*. Dwarf variety making dense clumps, 10 to 12 feet. **Bambusa multiplex var., argentea-striata**. Variegated leaves and stems 15 to 20 feet high. **Bambusa multiplex**. Plain green type 15 to 30 feet high. **Small, ..... Med. \$1.25; Large, \$2.50.**

**GARDENERS GARTER** *Arundo donax variegata*. A beautiful Bamboo Reed growing to 12 ft. Young growth strikingly variegated with white. Has immense flower-plumes. Very tropical. Hardy if roots are protected from freezing. Tops should be cut back to the ground each spring. **Small, 30c; Med. 50c; Large, \$1.00.**

**ST. AUGUSTINE GRASS**. The interesting creeping lawn grass of Florida. **St. A. G. Variegata** is a variegated green and white type suited for pot culture.  
**Small, 10c; Med. 25c; Large, 75c.**



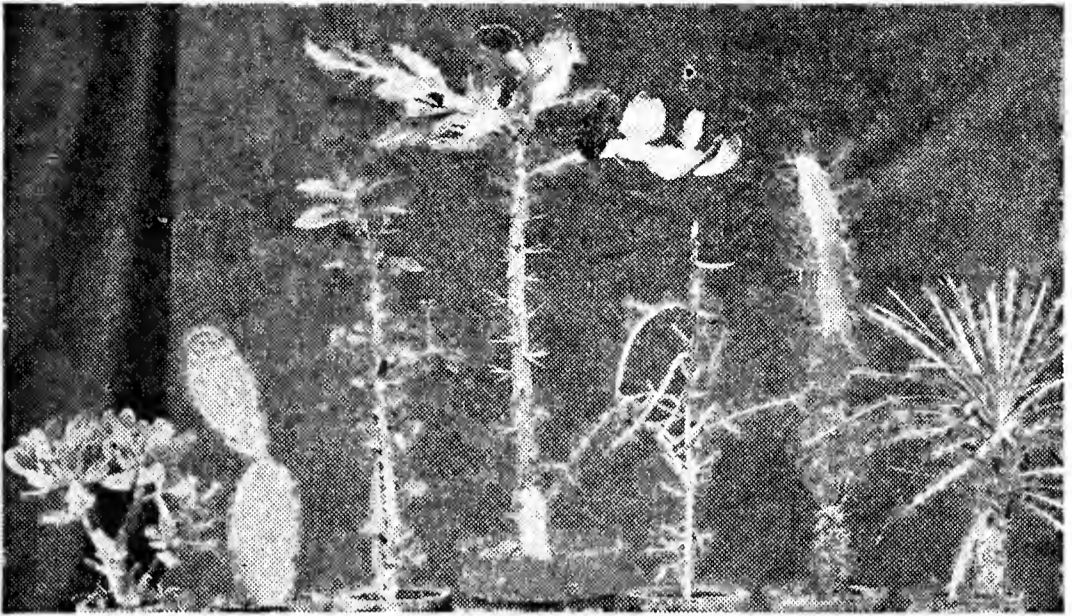


Fig. 33      34      35      36      37      38      39  
 Fig. 33—Jade Plant. Fig. 34—Opuntia sp. Large. Fig. 35—Crown of Thorns. Fig. 36—Opuntia Braziliensis. Fig. 37—Pencil Cactus. Fig. 38—Cereus triangularis. Fig. 39—Spanish Bayonet.

### CACTUS

**PENCIL CACTUS** *Opuntia frutescens*. A very slender, upright, much branched, miniature cactus. Very odd.

Small, 15c; Med. 35c; Large, 50c.

**NIGHT BLOOMING CEREUS** or Strawberry Pear Cactus *Cereus triangularis*. An odd climbing night blooming triangle-shaped stemmed cactus. Flowers large and beautiful. Small, 20c; Med. 40c; Large, 75c.

**NIGHT BLOOMING CEREUS OR QUEEN OF THE NIGHT**, *Selenicereus* sp. Long 5 sided rat-tail-like branches. Flowers large, pure white. Very easily grown, one of the best climbing varieties. See photograph on front cover of this catalogue. Small, 15c; Med. 35c; Large, 65c.

**NIGHT BLOOMING QUEEN CACTUS**, *Phyllocactus* sp. A flat, spineless, branched, climbing, type with very large beautiful white flowers. Small, 25c; Med. 50c; Large, 75c.

**OPUNTIA BRAZILIENSIS** from Brazil. Beautiful thin dark green, rounded foliage with few thorns. Numerous citron yellow flowers. Easily grown.

Small, 10c; Med. 35c; Large, 75c.

**OPUNTIA** sp Large. Native Florida large types. Yellow flowers. Small, 10c; Med. 25c; Large, 50c.

**OPUNTIA** sp Small. Native Florida small types. Yellow flowers. Small, 10c; Med. 25c; Large, 50c.



Fig. 40      41      42      43  
 Fig. 40—Dwarf Century Plant. Fig. 41—Aloe Arborescens. Fig. 42—Golden Striped Snake Plant. Fig. 43—Striped Century Plant.

**RAPSALIS.** A small many branched, compact growing, cactus resembling a succulent. A very odd plant from South America. **Small, 20c; Med. 35c; Large -----**

#### CACTI-LIKE AND CENTURY PLANTS

**AFRICAN BOWSTRING HEMP** *Sansevieria guineensis*. Valuable fiber plant. About the toughest plant known. Will stand downright neglect and hardship. Leaves long sword shaped, stiff cactus like, dark green, beautifully mottled with white. **Small, 15c; Med. 35c; Large, 50c.**

**BEAR GRASS** *Yucca filamentosa*. Low growing with tall spikes of snow white waxy flowers. Hardy. **Small, 15c; Med. 35c; Large, 75c.**

**BLUE CENTURY PLANT** *Agave neglecta*. Rich blue-green leaves, wide, gracefully recurved. Handsome and very decorative. **Small, 15c; Med. 35c; Large, 75c.**

**CROWN OF THORNS** *Euphorbia Splendens*. Very odd and interesting cactus like plant with thorns and showy bright red flowers produced at all seasons.

**Small, 15c; Med. 50c; Large, \$1.00.**

**DWARF CENTURY PLANT** *Agave miradorensis*. Leaves short, compact, recurving beautifully, rare. **Small, 50c; Med. \$1.00; Large, \$2.50.**

**FALSE SISAL** *Agave decipiens*. Green, rather soft, out-curved leaves. One of the best century plants for pot culture. **Small, 10c; Med. 25c; Large, 75c.**

**GOLDEN STRIPED SNAKE PLANT** *Sansevieria Laurenti*. Long sword shaped, mottled green leaves, with a broad, striking band of yellow down the edge of each leaf. **Small, 15c; Med. 35c; Large, 75c.**

**RATTLESNAKE PLANT** *Sansevieria zeylanica*. Long narrow, dark green, erect, sword shaped leaves, very pointed, barred with white. Highly recommended as a pot plant in dark rooms. Stands neglect well.

**Small, 10c; Med. 25c; Large, 50c.**

**RIBBON PLANT** *Pandanus veitchi*. Long green leaves striped with white resembling a pineapple plant. Produces a tropical effect. **Small, 25c; Med. 50c; Large, \$1.00.**

**SISAL HEMP SMOOTH CENTURY PLANT.** Leaves, erect, straight, sword-like, dark shining green. Very formal. **Small, 15c; Med. 50c; Large, 75c.**

**SPANISH BAYONET** *Yucca aloifolia*. Narrow stiff, dark green, erect leaves and large spikes of white flowers. Will bear neglect. Seed per pkt 10c. Plants, **Small, 15c; Med. 35c; Large, 75c.**

**STRIPED CENTURY PLANT** *Agave americana variegata*. Large grotesque twisted leaves, dark green and striped yellow on the edge. **Small, 15c; Med. 35c; Large, \$1.00.**

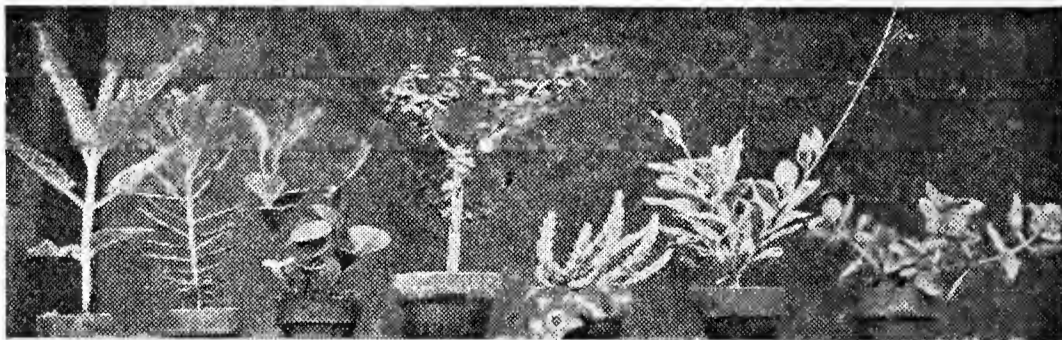


Fig. 44      45      46      47      48      49      50

Fig. 44—Sprouting Leaves. Fig. 45—*Kalanchoe Tubiflora*. Fig. 46—*Peperomia Obtusifolia*. Fig. 47—Elephant Feed. Fig. 48—Starfish Flower. Fig. 49—Tropical Snow on the mountain. Fig. 50—*Crassula Quadrifida*.

ARTICLES WANTED	PRICE
Carried Forward	
Total	

**PLACES TO USE IN CASE OF SHORTAGE**

---



---



---



---



---



---



---



---



---



---

Please add names of FIVE friends who buy plants or plant to plant orders, or one extra pack-orders, our selection.

NAME	POST OFFICE	STATE







## SUCCULENTS

**ALOE ARBORESCENS.** Medicine Cactus. Very decorative resembling a cactus with recurving gray green leaves bearing soft thick spines. Culture very easy.

Small, 15c; Med. 35c Large, 75c.

**CRASSULA QUADRIFIDA.** Thick fleshy leaved vigorous-grower with beautiful pink and white flowers in winter. Small, 10c; Med. 35c; Large, 50c.

**DREAM PLANT** or **Tropical hen and chickens** *Echeveria Weinbergia*. Thick leaved rosettes of rosy tinted grey green shining wax-like leaves. Very attractive. Small, 10c; Med. 15c.

**ELEPHANT FEED** *Portulacaria afra*. Unique small glossy green leaved very attractive plant. A favorite food of the elephants in their native land.

Small, 15c; Med. 25c; Large, 50c.

**FLORIDA-LIVE-FOR-EVER** *Bryophyllum pinnatum*. . . . An odd rapid growing succulent with wide fleshy green leaves. Flowers reddish bronze in form of bladders. New plants easily grown from leaves.

Small, 10c; Med. 25c; Large, 50c.

**GIANT STARFISH FLOWER,** *Stepelia gigantea*. Small plant bearing enormous light yellow, brown marked, star-shaped flowers 12 inches in diameter. Small, 30c; Med. 60c; Large, -----

**ICE PLANT** *Mesembryanthemum roseum*. Low growing, sun loving plant with fleshy leaves, covered in spring with rosy pink blooms about an inch across.

Small, 15c; Med. 25c; Large, -----

**JADE PLANT** or **JAPANESE RUBBER PLANT** *Crassula arborescens*. Very thick leaved fleshy succulent and most attractive pot plant. Small, 15c; Med. 35c; Large, 75c.

**KALANCHOE GLOBULIFERA COCCINEA.** One of the most beautiful new pot plants. The brilliant, long lasting scarlet flowers appear from Christmas to May. Make compact plants 8 to 12 inches high. Small, 25c; Med. 45c;

**MONKEY CANDLE** *Euphorbia arboreus*. Odd, branched, green stemmed plant, almost no leaves. Attractive in dish gardens. Small, 10c; Med. 25c; Large, -----

**RED BIRD CACTUS** *Pedilanthus tithymaloides*. Small red flowers on tips of odd zig zag bright green stems; leaves light green. Small, 10c; Med. 25c; Large, 40c.

**SPROUTING LEAVES** *Kalanchoe Diagremontrium*. . . A fleshy leaved succulent with large mottled brown and green leaves from which are produced large numbers of young plants. A real oddity. Old plants produce beautiful flowers. Small, 10c; Med. 25c; Large, 50c.

**KALANCHOE SOMALIENSIS.** A pink, leaved type excellent indoor subject. Small 20c; Med. 35c; Large, -----

**KALANCHOE Tubiflora.** Cylindrical mottled fleshy leaves producing large numbers of young plants from the leaf tips. A beautiful oddity bearing large red flowers from old plants. Small, 10c; Med. 25c; Large, 50c.

**STARFISH** or **JEWEL FLOWER** *Stapelia*. Startling animal-like flowers. A strange denizen of the South African deserts. Grow it and prove to your friends that it is real. Cactus-like, 4 to 8 inches high.

Small, 15c; Med. 35c; Large, 50c.

**VARIEGATED DEVIL'S BACKBONE** *Pedilanthus tithymaloides variegatus*. Variegated light cream and green leaves occasionally tinged with pink on zig zag green stems, pointed small red flowers. Small, 15c; Med. 25c; Large, 50c.

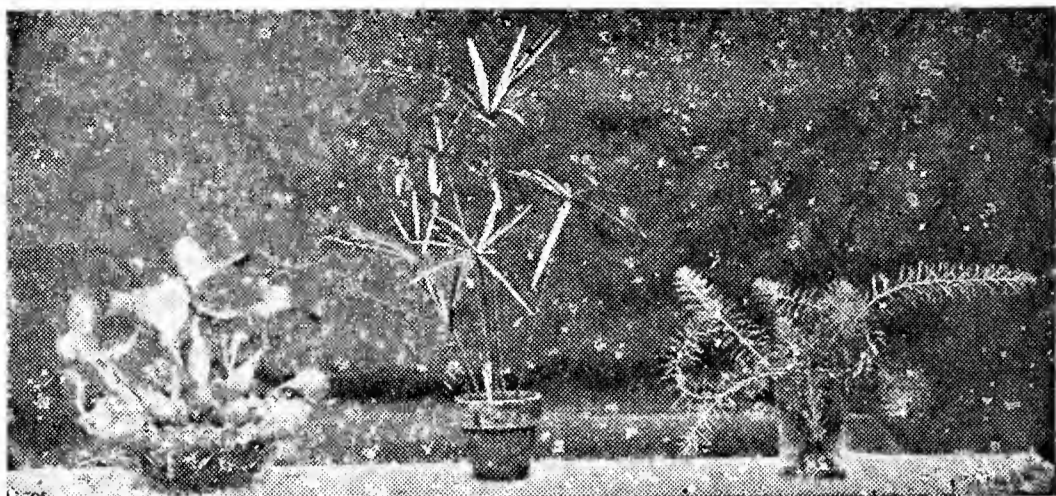


Fig. 51

Fig. 52

Fig. 53

Fig. 51—Water Hyacinth. Fig. 52—Umbrella Plant  
Fig. 53—Parrot's Feather.

### WATER PLANTS

**PARROT'S FEATHER** *Myriophyllum proserpinacoides*. A very beautiful fast growing, fine feathery water plant. Small, 15c; Med. 25c; Large, 50c.

**UMBRELLA PLANT** *Cyperus alternifolius*. Always presents an attractive appearance as a pot plant or in the water garden. Small, 10c; Med. 25c; Large, 50c.

**WATER HYACINTH** *Piaropus crassipes*. A beautiful floating water plant with bright blue flowers borne in hyacinth like spikes. One of the very best water garden plants. Small, 15c; Med. 25c; Large, 50c.



Fig. 54—Air Pines and Spanish Moss growing on a limb of a Cypress Tree.

### AIR PLANTS

Hang these plants fastened to rough bark in moss in the air above your other plants and sprinkle when watering your plants.

#### **BUTTERFLY ORCHIDS** (*Epidendrum Tampense*) (See Illustration on Back Cover Page)

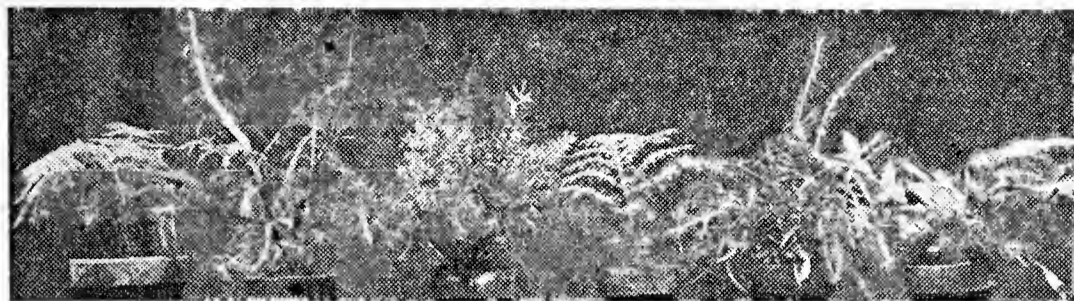
These dainty and graceful little orchids are found growing on the bark of trees in the dense jungles of Florida, where each Spring, they put forth great numbers of neat greenish brown flowers variously marked with bright rose purple. Each flower is about one inch across and lasts many days. The plants are very easily grown fastened to rough bark and sprinkled with water.

Miniature plants, 15c; Larger plants 25c-50c-\$1.00. Small flowering sized plants established on cypress wood, 50c.



**AIR PLANT or AIR PINE Tillandsia.** Resembles pineapple plants, growing upon large trees. Flowers purplish blue or white. A real oddity. **Small, 10c; Med. 25c; Large, \$1.00.**

**SPANISH MOSS Dendropogon usneoides.** The well known wild, long moss found growing all over Florida. Beautiful and odd. **Small, 10c; Med. 25c; Large, \$1.00.**



**Fig. 55** ..      **56** ..      **57** ..      **58** ..      **59** ..      **60**  
 Fig. 55—Lace Asparagus Fern. Fig. 56—Tape Worm Plant. Fig. 57—Asparagus Fern. Fig. 58—Artillery Plant. Fig. 59—Pteris Fern. Cut Leaved. Fig. 60—Pteris Fern Variegated.

### FERNS

**ASPARAGUS FERN Asparagus sprengeri.** Fine for urns, pots and porch boxes. The white flowers and red berries are very attractive. **Plants, Small, 10c; Med. 25c; Large, 50c.**

**BOSTON FERNS Plain Boston.** Fine cut leaved type, sword leaved and crested. **Small, 10c; Med. 35c; Large, .....**

**LACE ASPARAGUS FERN Asparagus plumosus.** The very fine, fern leaved, climbing plant used by florists for cut flowers. **Small, 10c; Med. 25c; Large, 75c.**

**MAIDENHAIR FERNS Adiantum hispidulum.** The forked fan like leaves with their minute hairs and small pinnae make an unusual pretty fern.

**Small, 15c; Med. 25c; Large, .....**



**Fig. 61**

**62**

**63**

**64**

Fig. 61—Maranta bicolor. Fig. 62—Adiantum hispidulum.. Fig. 63—Adiantum Wrighti. Fig. 64—Adiantum cuneatum.

**Adiantum cuneatum.** The well known fine-leaved dark green variety. A fine pot plant and the cut fronds are beautiful flower arrangements. **Small, 15c; Med. 35c; Large, \$1.25.**

**Adiantum Hybridum.** Slightly larger growing than cuneatum. A very choice house plant. **Small 25c; Med. 40c; Large, \$1.25.**

**Adiantum Wrighti.** A large growing type and very hardy for growing in the house. **Small, 25c; Med. 40c; Large, \$1.25.**

**WALKING MAIDENHAIR FERN, Adiantum caudatum.** An odd, delicate, rapid growing trailing maidenhair fern which forms new plants on the ends of each frond. Easy culture. **Small, 25c; Med. 45c; Large, .....**

**TABLE FERNS. Pteris variegated green and white.** One of the best table ferns. **Small, 15c; Med. 25c; Large, 40c.**

**Pteris cut leaved.** Slender long finely cut leaves. Very attractive green leaved type. **Small, 15c; Med. 25c; Large, 40c.**

**MIXED FERN SPORES.** Sow this mixture of fern seed in peat and sand; keep at a temperature of 60° and grow your own ferns. This mixture contains many choice varieties. **Small, pkt 15c; Large pkt 50c.**

**ACROSTICHUM AUREUM.** This native Florida Fern works in well in large ferneries growing from 2 to 6 feet high. Strong leathery glossy leaves. **Small, 20c; Med. 35c; Large 75c.**



**Fig. 65                      66                      67                      68                      69**

Fig 65—*Serissa Foetida* (See Shrubs). Fig. 66—Variegated Devil's Backbone. Fig 67—Royal Purple Plant. Fig. 68—*Talinum patens*. Fig. 69—Moses-in-the-Cradle.

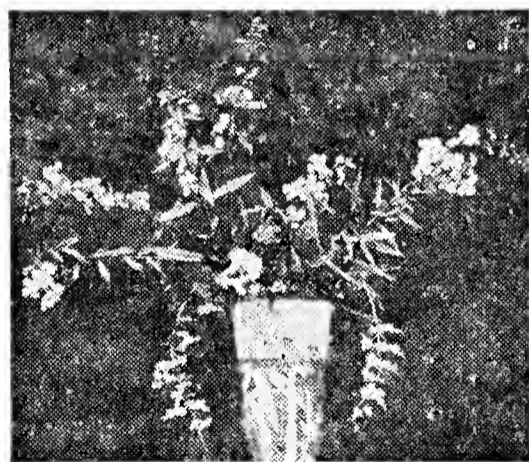
**PLANTS WITH HERBACEOUS-LIKE TOPS**

**ALTERNANTHERA.** Small red leaved plant resembling small colors. **Small, 10c; Med. 25c; Large, -----**

**ALTERNANTHERA AUREA SP.** The semi-trailing habit of this small yellow variegated leaved, rapid growing plant, makes it especially adaptable to pot culture. **Small, 10c; Med. 20c; Large, 40c.**

**AMAZON LILY *Eucharis amazonica*.** Large dark green leaves, flowers large white, very fragrant. One of the best bulbs for pot culture. **Small, 35c; Med. 75c; Large, \$1.00.**

**ANGEL WING BEGONIA (*Argentia Guttata*)** Tall growing, red and purple leaves marked with silver dots. **Small, 25c; Med. 50c; Large, -----**



**Fig. 70—Angelonia**

**ANGELONIA .** One of the very best pot plants. The spikes of blue larkspur-like flowers are produced freely. **Small, 15c; Med. 35c; Large, 75c.**

**ARROW-ROOT *Maranta arundinacea variegata*.** Beautiful variegated green and white canna-like foliage. Needs moisture. **Small, 15c; Med. 50c; Large, 75c.**

**ARTILLERY PLANT or ARTILLERY FERN *Pilea microphylla*.** A rapid growing, dense, light green, fern like plant. Very attractive house plant. **Small, 10c; Med. 25c; Large, 50c;**

**ARTILLERY FERN.** Small type with very fine foliage, very beautiful and of easy culture. **Small, 10c; Med. 25c;**

**ASPIDISTRA LURIDA.** Large broad strap like leaves doing well in dark halls with little light or attention.

Small, 15c; Med. 50c; Large, 75c.

**BEEFSTEAK BEGONIA (Feastii.)** Low spreading, circular leaves, red beneath, glossy green above, thick and fleshy. Dainty coral flowers. Small, 25c; Med. 40c; Large, \$1.25.

**BILLBERGIA THYRSOIDEA.** An evergreen epiphytal herb with broad spine-margined concave, green leaves. Showy spikes of bright red flowers. Plant in pots or wooden cribs with light material about their roots. Give plenty of water in summer and sparingly in winter.

Small, 35c; Med. 65c; Large, \$1.25.

**BLUE SAGE** *Daedalacanthus nervosus.* Prominent veined, dark green leaves; fine heads of dark blue flowers in winter. Small, 15c; Med. 25c; Large, \$1.00.

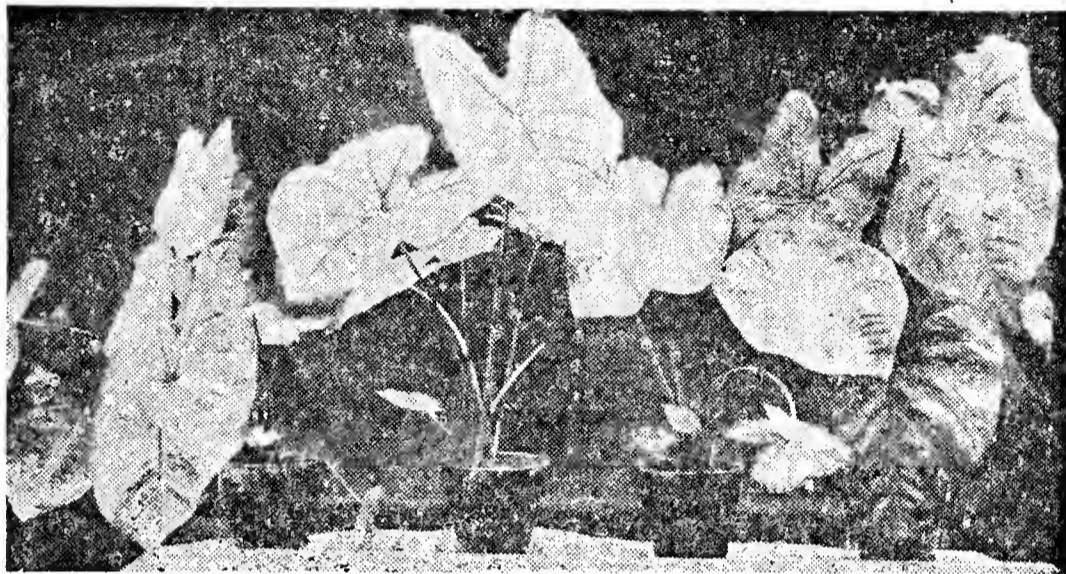


Fig. 71—*Caladium Fancy Leaved.*

**CALADIUM FANCY LEAVED** or **Dwarf Elephant Ears.** Equaled by no other fancy foliage bulb plant. Always beautiful. We have many color combinations.

Small, 15c; Med. 25c; Large, 40c.

**CARDINAL'S GUARD** *Jacobinia coccinea.* Upright herb to 5 feet, large glossy green leaves. Bright crimson flowers in terminal spikes. Everbloomer. Give plenty of water. Small, 15c; Med. 35c; Large, 60c.

**CHINESE EVERGREEN** or **LUCKY PLANT**, *Aglaonema* sp. Upright, slow growing plant with dark evergreen pointed calla like leaves. One of the very best foliage pot plants for growing indoors, in soil or in water. Small, 30c; Med. 45c; Large, \$1.00.

**CHRYSANTHEMUM.** Showy semi-double flowered bushy types, colors, yellow or pink. Small, 15c; Med. 25c;



Fig. 72 ..      73 ..      74 ..      75 ..      76

Figs 72 & 73 *Coleus* light and dark red variegated types. Fig. 74—*Dracaena Godseffiana.* Fig. 75—*Alternanthera* with red leaves. Fig. 76—*Elfin Herb* (See shrubs).

**COLEUS.** Highly colored foliage plants. Mixed varieties. Small, 15c; Med. 25c; Large, -----

**CORAL OR FIRE CRACKER PLANT** *Russelia juncea*. Long recurving, wiry stemmed, rush-like plant, bearing coral red flowers almost constantly. **Small, 15c; Med. 35c; Large, 50c.**

**CREEPING CLUB MOSS** *Selaginella*. Elegant fronds of peacock-blue, green and bronze. Use for ground cover in dark, damp place. **Small, 15c; Med. 35c; Large, -----**

**CLUB MOSS OR MOSS FERN.** Tall type, green-like fern. 3 to 5 inches. **Small, 25c; Med. 50c; Large, -----**



Fig. 77—*Cryptanthus acaulis* growing in a flat filled with peat moss. Top view.

**CRYPTANTHUS ACAULIS.** A very attractive, odd, small rosette like, low growing, sea-green, long pointed, spreading leaved pot plant from Brazil. Requires little attention. Grows best in light peaty soil in a shaded location. **Small, 15c; Med. 30c; Large, 50c.**

**CRYPTANTHUS acaulis ruber.** Similar to the above with beautiful reddish leaves. **Small, 15c; Med. 30c; Large, 50c.**

**CRYPTANTHUS a. rosa picta.** A rare form with beautifully variegated pink and green leaves.  
**Small, 20c; Med. 35c; Large, \$1.00.**

**DRACAENA GODSEFFIANA.** Branches low and freely with small smooth leaves spotted with creamy white and yellow. Suited for fern dishes. **Small, 35c; Med. 50c; Large, \$1.00.**

**ENGLISH VIOLETS.** Single, fragrant, blue flowers.  
**Small, 10c; Med. 25c; Large, -----**

**FITTONIA VERSCHAFFELTI.** Low growing, large handsome, variegated leaves with bright pink veins. Trailing. Makes a showy display. **Small, 30c; Med. 40c;**

**GIANT ELEPHANTS EAR** *Xanthosoma*. A giant; growing six to ten feet high with huge green leaves three feet or more across. **Small, 10c; Med. 50c; Large, \$1.50.**

**GINGER Sp.** Lily-like plant. Roots have strong odor like ginger. **Small, 10c; Med. 25c; Large, 50c.**

**GINGER LILY or BUTTERFLY LILY** *Hedychium coronarium*. Grows best in moist soil where it forms dense clumps (3 to 6 feet high) of stalks bearing canna like leaves and masses of fragrant, pure white butterfly shaped flowers all summer. Hardy if roots do not freeze. **Small, 30c; Med. 50c; Large, \$1.00.**

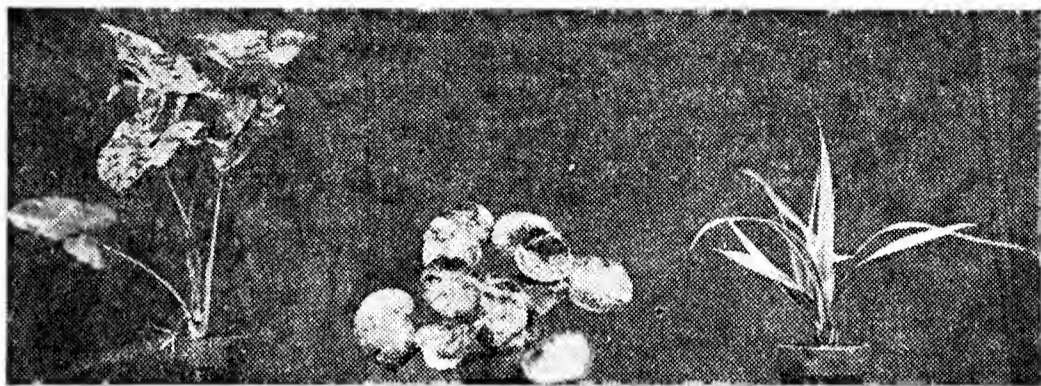
**LAVENDER BELL** *Strobilanthes anisophyllus*. An excellent pot plant with narrow leaves and countless lavender flowers in winter and early spring.  
**Small, 20c; Med. 40c; Large, 75c.**

**LIATRIS SP. Blazing Star or Gay Feather.** Beautiful native Florida plants producing large spikes of rosy purple flowers. **Each 20c.**

**LIRIOPE VARIEGATA.** A variegated green and white low growing plant similar to *Ophiopogon*, with spikes of lilac flowers resembling Grape Hyacinthus.  
**Small, 25c; Med. 50c; Large, -----**

**MARANTA bicolor.** Low growing (six to twelve inches), round, light green leaved plant with dark chocolate brown squarish patches between the midrib and margin of the leaf. Very tropical appearing. Needs shade and moisture. **Small, 25c; Med. 50c; Large, 75c.**

**MOSES-IN-THE-CRADLE** *Tradescantia discolor.* Upright purple and green leaves about 12 inches high. Very decorative. Flowers in a boat-like case.  
**Small, 10c; Med. 25c; Large, 50c.**



**Fig 78**

**79**

**80**

Fig. 78—*Nepthytis liberica*. Fig. 79—Beefsteak Begonia. Fig. 80—Ribbon Plant. See Cacti-like Plants.)

**NEPHTYTIS LIBERICA.** A climbing and trailing plant with calla-like leaves growing well in soil or water. Fine for wall vases. **Small, 15c; Med. 25c; Large, 50c.**

**PELLONIA.** An excellent rock garden subject for damp, warm, shaded locations or under greenhouse benches. Very low creeping, succulent stems bearing beautifully colored dark bronzy, olive-green, variegated leaves often flushed with violet or red. We offer two types, one slightly more dwarf and highly colored.

**Small, 15c; Med. 30c; Large, -----**

**PEPEROMIA OBTUSIFOLIA.** A begonia-like, heavy waxy, leaved plant about 6 to 12 inches high. Attractive house plant of easy culture. **Small, 10c; Med. 25c; Large, 50c.**

**CHINESE VELVET PLANT,,** *Gynura aurantiaca.* The wide pubescent leaves reflect a soft purple warm color in the sunlight. A very interesting plant of easy culture. **Small, 20c; Med. 35c; Large,-----**

**ROYAL PURPLE PLANT,** *Strobilanthes Dyeranus.* Strikingly beautiful and universally popular because of its glistening, reddish purple, iridescent leaves, surpassing the finest coleus or croton in its brilliant coloring. Easy to grow. **Small, 20c; Med. 35c; Large, \$1.00.**

**SHELL LILY or SHELL FLOWER,** *Alpinia nutans.* Strong growing tuberous plant with long leaves emitting a strong ginger-like odor when crushed. Mottled yellow orange flowers resemble seashells. Grows 4 ft. or more tall and needs plenty of water. **Small, 30c; Med. 50c; Large, \$1.00.**

**SHRIMP PLANT** *Beloperone guttata.* An attractive novelty with hop-like flowers resembling a pink shrimp. Don't fail to order one of these easily grown oddities.

**Small, 20c; Med. 35c; Large, -----**

**SNAKES BEARD** *Ophiopogon jaburan.* A low dark green grass-like plant good for dish gardens and small borders. **Small, 10c; Med.25c; Large, 50c.**

**ST. BERNARD'S LILY** *Antharicum.* Drooping, long narrow, green and white striped foliage. Large spikes white flowers. Suited for dish gardens and small pots.

**Small, 25c; Med. 50c; Large, -----**

**STRAWBERRY GERANUM or Aaron's Beard,** *Saxifraga sarmentosa.* This hanging basket plant with its runners and round, white veined leaves is an old favorite.

**Small, 10c; Med. 25c; Large, 50c.**

**SANCHEZIA.** Wide smooth leaves with pink midribs and yellow veins. Stems dark red. Easily grown and very attractive. **Small, 20c; Med. 35c; Large, -----**

**SULTANA or EVERBLOOMING IMPATIENS.** One of the best old time free blooming house plants. Beautiful pink flowers. **Small, 15c; Med. 30c; Large, -----**

**TAPE WORM PLANT** *Muehlenbeckia platyclada*. Very odd, flat, jointed, ribbon-like, glossy branches. White flowers followed by bright red and purple fruits. Unusual curiosity from the Solomom Isles.

**Small, 20c; Med. 50c; Large, \$1.00.**

**TRAVELERS PALM** *Ravenala Madagascariensis*. A banana like plant with leaves giving a flat or fan shape appearance. Called traveler's tree from the clear watery sap in leaves which affords a refreshing drink.

**Small Plants \$1.50.**

**TROPICAL SNOW-ON-THE-MOUNTAIN** *Talinum patens variegata*. A small handsome variegated house and rock garden plant with green and white foliage. Abundance of light pink flowers. **Small, 10c; Med. 25c; Large, 50c.**



**Fig. 81**

**82**

**83**

**84**

Fig. 81—Giant Wandering Jew. Fig. 82—Purple and Green Variegated Wandering Jew. Fig. 83—Red Wandering Jew. Fig. 84—Green and White Wandering Jew.

**WANDERING JEW** *Tradescantia* sp. **Giant Wandering Jew.** Leaves 6 to 12 inches long, purple and green. Very odd. **Small, 15c; Med. 25c; Large, -----**

**Purple and Green Wandering Jew..** Very showy.

**Small, 10c; Med. 20c; Large, -----**

**Plain Green type** with beautiful blue flowers.

**Small .05c; Med. 15c; Large, -----**

**Red Wandering Jew.** **Small, 10c; Med. 20c; Large, -----**

**Green and White Wandering Jew.**

**Small, 15c; Med. 25c; Large, -----**

**GIANT WANDERING JEW** with red and purple highly colored stems. **Small, 15c; Med. 25c; Large, -----**

**WAX LEAF** *Wedelia*. Closely trailing, dark green, waxey leaved plant with yellow daisy like flowers. Useful as a ground cover and for hanging baskets.

**Small, 15c; Med. 25c; Large -----**

### **BANANA**

**BANANA** *Musa*. Lady finger variety bearing small delicious fruit; very large beautiful leaves.

**Small, 50c; Med. \$1.00 Large, \$2.00.**



Fig. 85—Crinum Flowers.

### BULBS

**AMARYLLIS HYBRIDS** . Giant-flowered Amaryllis, beautiful light, dark red and pink shades. Very easy to grow. Offered in mixture only. **Small, 15c; Med. 30c; Large, 60c.**

**BARBADOS LILY** *Amaryllis equestre*. Glorious large bright red flowers. **Small, 10c; Med. 20c; Large, -----**

**CRINUM**. Large flowering Florida lilies related to amaryllis, much larger. Flowers very large and spider like.

**Crinum Kirki**. Flowers large white with a reddish purple stripe on the outside of each petal, giving the flower a pink tinge on the inside when open. **Med. 35c; Large, 60c. ---**

**Crinum Longifolium Album**. One of the most hardy crinums, enduring the winters of the middle states if protected with litter during cold weather. Large clusters of fragrant white flowers. **Small, 25c; Med. 45c; Large, 75c.**

**Crinum Agustum**. A very large growing plant 4 feet high and 6 to 8 feet in diameter. Nearly 20 flowers to each umbel. Glossy purplish crimson buds which are pink after opening. Propagates very slow. **Very Large bulbs by express collect, \$2.50 each.**

**Crinum sp.** Unknown. A very large plant with spider-like pure white flowers. Available in very large bulbs only. **By express collect, \$1.50 each.**

**ZEPHYRANTHES ROBUSTA**. A strong growing type with purplish pink, crocus like flowers 8 to 10 inches high. **Small, 10c each; Large bulbs, 20c.**

**DAY LILY Hemerocallis**. Double orange flowers on tall stalks extending above the light green leaves. **Small, 15c; Med. 25c; Large, 75c.**

**EASTER LILIES**. Large, white, sweet scented flowers. **Bulbs, Small, 10c; Med. 20c; Large, 30c.**

**TUBEROSE BULBS**. Produce deliciously fragrant spikes of blooms.

**Bulbs 10c each**

### BARGAIN COLLECTIONS

5 Miniature Air Pines .....	10c.
12 Flowering Plants, all different, our selection. Postpaid .....	\$1.00
12 Palms, six varieties, our selection. ... Postpaid .....	\$1.00
10 Decorative Foliage Plants, all different, our selection. Postpaid .....	\$1.00

- 12 Succulent Plants, all different, our selection.  
 Postpaid ..... \$1.00
- 30 Ornamental House Plants, all different, our selection. Postpaid ..... \$2.50
- 50 Tropical and Subtropical Plants, all different, our selection. Postpaid ..... \$4.50
- Large surprise package of mixed Florida plant seeds containing both wild and tame plants ..... 25c.
- Have lots of fun with these strange plants.



# GARDEN BOOKS

**Authoritative Books Answer Your Questions.**

Why not include one or more of these leading plant authorities in your order.

## NEW BOOKS

**"Hardy Californians"** by Lester Rowntree. 100 photographs. Native California Flowers. \$3.50

**"Adventures With Hardy Bulbs"** by Louise Wilder. 100 varieties of bulbous plants listing many new types. \$5.00.

**"Garden Flowers in Color"** by G. A. Stevens. 400 color plates, annuals perennials, shrubs, trees and vines. 310 pages. New Edition, \$1.98.



**"Wild Flowers"** by Homer D. House, 626 pages 364 color photographs of wild flowers in natural size. \$3.95.

## Leading Horticultural Books

**The Book of Bulbs** by F. F. Rockwell. 187 beautiful photographs and drawings. The best and most complete bulb book. 264 pages \$2.00.

**The Cactus Book** by Dr. A. D. Houghton. Select the right kinds for your climate. How to grow cactus. 18 illustrations. 145 pages, \$2.25.

**The Standard Cyclopedia of Horticulture**, by L. H. Bailey. The universal authority on every horticultural question. Three volumes, 4000 illustrations, 3637 pages; durable, dark-green buckram. \$15.00.

**The Mushroom Handbook**, by Louis C. C. Krieger. Most complete book on mushrooms published. 32 color plates, 512 pages, 158 illustrations. \$3.50.

**American Ferns**, by Edith Roberts and Julia Lawrence. 70 ferns discussed, 49 illustrations, 87 pages. \$2.50.

**HORTUS, A Concise Dictionary of Gardening**, by L. H. and Ethel Bailey. Easy to use, accurate, non-technical. Includes every kind of ornamental fruit and vegetable plant grown today with brief information on their uses, cultivation, hardiness, propagation, soil, color, identification, etc. 35 illustrations, 652 pages. \$5.00.

**Plant Names**, by T. S. Lindsay. Easy to understand the jaw-breaker names. 99 pages. \$1.00.

**Black's Gardening Dictionary**, by E. T. Ellis. 1254 pages. \$3.00.

**Rhododendrons and Azaleas**, by Clement G. Bowers. 28 full-color plates, 83 illustrations in black and white. 900 species and 2000 varieties treated in the text. Propagation, hybridization, transplanting, soil preparation and care of the plants. 526 pages, 8x10 inches. \$10.00.

**The Cultivated Conifers in North America**, by L. H. Bailey. The most authoritative book on conifers that has been written. Covers 39 genera, 275 species, 404 pages, 162 illustrations. \$7.50.

**Evergreens for the Small Place**, by F. F. Rockwell. 67 illustrations, 84 pages. \$1.25.

**Fertilizers**, by E. B. Voorhees. Fertilizers for flowers, lawns, gardens and field crops. 29 illustrations, 310 pages. \$2.50.

**Principles of Fruit Growing**, by L. H. Bailey. Practical information for growers of every kind of tree and bush fruits. 186 illustrations, 432 pages. \$2.50.

**Bush Fruits**, by F. W. Card. Practical pointers on berry crops. 85 illustrations, 411 pages. \$2.50.

**Peach Growing**, by H. P. Gould. 78 illustrations, 426 pages. \$2.50

**Cyclopedia of Hardy Fruits**, by U. P. Hedrick. Covers all hardy fruits grown in North America. 366 pages, 312 drawings, 16 photographs in color. \$3.00.

**Cultivation of Citrus Fruits**, by H. H. Hume. Practical details on cultivating, pruning, packing and the control of insects and diseases. 240 illustrations, 561 pages. \$3.50.

**The Flower Garden Primer**, by Julia Cummings. Practical all-round book for the home gardener. 319 pages, 46 illustrations. \$3.00.

**The Living Garden**, by E. J. Salisbury. One of the most informative horticultural books of the 20th century. Tells how plants live, multiply and grow. 320 pages, 78 illustrations. \$3.00.

**The Gardener's How Book**, by Chesla C. Sherlock. Tells just how, when and what to do to make your garden a success. 351 pages, illustrated. \$3.50.

**Everyman's Garden**. A story-like guide for the flower grower, by Max Schling. How to make a garden. Illustrated, 100 pages. \$2.00.

**What Happens in My Garden**, by Louise B. Wilder. Some of the best rock garden information, also bulbs, small plants, perennials, etc. \$3.00

**Informal Gardens**, by H. Stuart Ortloff. 104 pages, 17 illustrations. \$1.60.

**Manual of Gardening**, by L. H. Bailey. Complete and practical information on planting and landscaping your home grounds. 539 pages, 350 illustrations. \$3.00.

**The Home Garden Handbooks**, by F. F. Rockwell. Each volume has from 30 to 70 illustrations and about 90 pages. \$1.25 per volume. Titles now published are:—**Rock Gardens, Dahlias, Irises, Gladiolus, Roses, Peonies, Evergreens, Shrubs, Lawns.**

**Home Flower Growing**, by E. C. Volz. A real flower garden encyclopedia all about your garden, your garden club, exhibits, flower show, etc. 151 illustrations, 364 pages. \$3.50.

**Around the Year in the Garden**, by F. F. Rockwell. For the busy gardener, what to do every week in the year, told in 52 chapters. Covers vegetable and flower gardens. 88 illustrations, 350 pages. \$2.50.

**Adventures in a Suburban Garden**, by L. B. Wilder. Practical information about the uses and behavior of over 500 new and old varieties of plants. 19 illustrations, 265 pages. \$2.00

**Garden Maintenance**, by H. S. Ortloff and H. R. Raymore. How to care for your garden, plants, soil, spray, fertilize. Illustrated. \$2.50.

**Annuals in the Garden**, by H. S. Ortloff. Illustrated, includes planting plans and lists. \$1.25.

**Perennial Gardens**, by H. S. Ortloff. Plans and planting lists, illustrated, 92 pages. \$1.25.

**Daylilies**, by Dr. A. B. Stout. The first book on day lilies, 114 pages, illustrated in color. \$3.00.

**Garden Cinderellas (Lilies)**, by H. M. Fox. Expert information on growing lilies. Names every lily in cultivation. 51 illustrations, many in color, 269 pages. \$5.00.

**Lilacs in My Garden**, by Alice Harding. New varieties, methods of growing. 88 pages, 7 illustrations. \$1.50

**"Wild Flowers"** by Homer D. House. 626 pages. 364 color photographs of wild flowers in natural size. \$3.95.

**Old Roses**, by Ethelyn Keays. Development 1596 to 1880. 35 half-tone and many other illustrations, 218 pages. \$3.00.

**The Rose in America**, by J. Horace McFarland. Complete guide to successful growing, newest information: 66 illustrations, 233 pages. \$3.00.

**Modern Roses**, by J. Horace McFarland. Catalogue of 2511 varieties with description and history. 79 illustrations, (48 in color.) 292 pages. \$5.00

**Climbing Roses**, by G. A. Stevens. 220 pages, 31 color plates, 32 half-tones. \$2.00.

**How to Grow Roses**, by Robert Pyle. 138 illustrations, (45 in color,) 211 pages. \$2.00

**Chinese Garden Architecture**, by E. L. Howard. 51 illustrations in large quarto volume. \$6.00.

**Garden Pools; Large and Small**, by Ramsey and Lawrence. 41 illustrations, 122 pages. \$2.50.

**The Outdoor Living Room**, by L. W. Ramsey and C. H. Lawrence. Profusely illustrated. Principles apply in every climate. \$2.50

**California Gardens**, by W. S. Dobyms. 220 beautiful photographs. \$2.00

**Patio Gardens**, by Helen M. Fox. Spanish gardens and art. 98 illustrations, 247 pages. \$2.50.

**The Garden Club Manual**, by Edith R. Fisher. Organization and Management. \$2.00.

**How Plants get their Names**, by Dr. L. H. Bailey. More than 4500 names, defined and pronounced. 209 pages, illustrated. \$2.25.

**Flower Arrangement**, by F. F. Rockwell and Esther Grayson. 199 pages, 33 half tones and many drawings. \$3.00.



**Gardening in the Lower South**, by H. H. Hume. The first and only complete garden guide for the South. Tells what flowers to plant, how to have fresh vegetables throughout the year, how to grow fruits, what trees and evergreens grow best and all about southern soils, fertilizing, lawn making, palms, roses, azaleas, bulbs bamboos, vines and other plants. 102 illustrations, 472 pages. \$5.00.

**The Tropical Crops**, by O. W. Barrett. Hundreds of plants that may be grown successfully in southern sections of the United States described. Citrus Fruits, sugar cane, rubber, rice, and cotton are especially valuable. 34 illustrations, 463 pages. \$4.00.

**The Plant World of Florida**, by Dr. Henry Nehrling. For 43 years this painstaking German horticulturist gardened in Florida and kept records of his experience. Descriptions and cultivation notes on 154 trees, 120 shrubs, 219 palms and numerous flowers, plants and vines. 304 pages, 27 illustrations. \$3.50

**The Tropical Garden**, by Loraine E. Kuck and Richard C. Tongg. Dry Gardening, Patios, Tropical Water and Rock Gardens, Beach and Mountain Gardens, Lawns, Tropical Plants, Exotics. 361 pages, 46 illustrations. \$3.00.

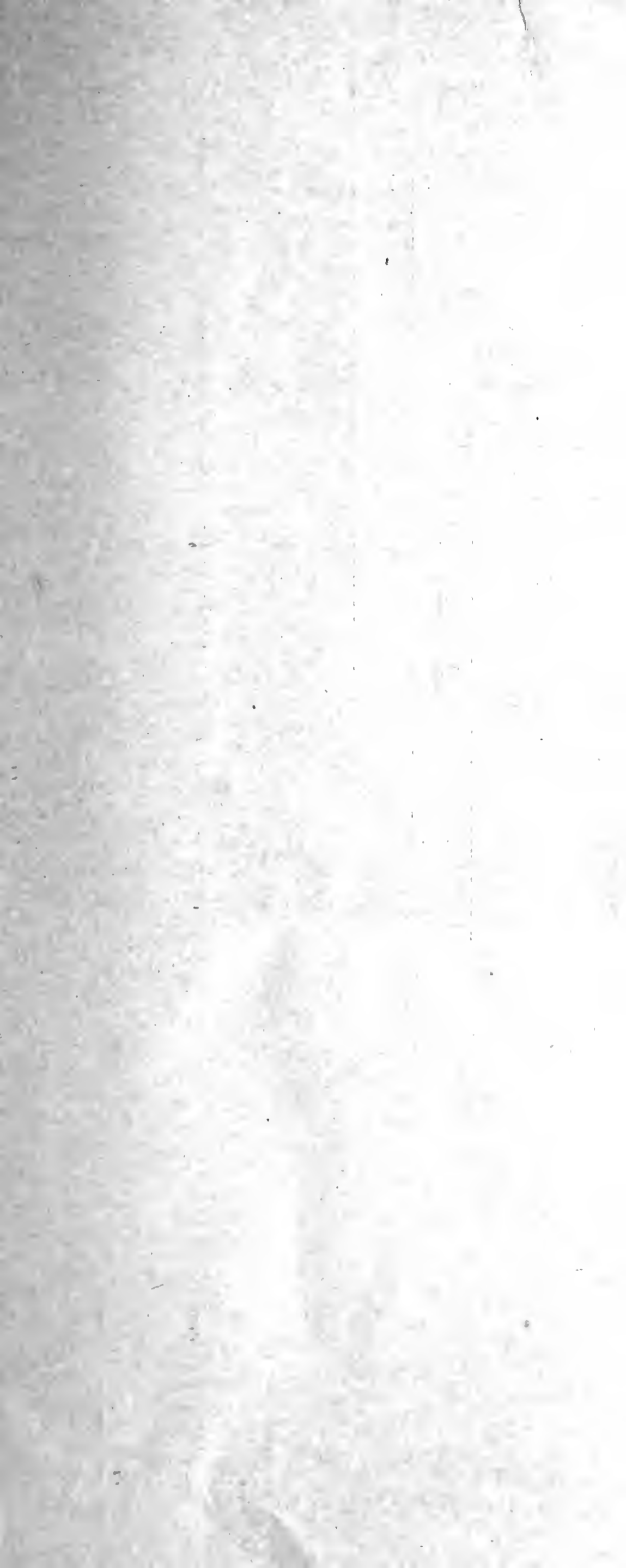
**The Herb Garden**, by Frances Bardswell. 16 color illustrations, 189 pages. \$3.00.

**The Fragrant Path**, by Louise B. Wilder. All about fragrant flowers and plants. Illustrated, 407 pages. \$3.00.

**Gardening with Herbs for Flavor and Fragrance**, by Helen Morgenthau Fox. 12 Illustrations, 334 pages. \$2.50.

**Spraying, Dusting and Fumigating of Plants**, by A. F. Mason. 237 illustrations, 570 pages. \$3.00.

- Insects and Diseases of Ornamental Trees and Shrubs**, by E. P. Felt and W. H. Rankin. 243 photographs and drawings. \$5.00.
- The Care of Ornamental Trees**, by C. F. Greeves-Carpenter. 7 illustrations, 70 pages. \$1.25.
- The Design of Small Properties**, by M. E. Bottomley. 52 carefully designed plans. Check list of nearly 600 plants. 64 illustrations, 233 pages. \$2.50.
- Landscaping the Home Grounds**, by L. W. Ramsey. 175 illustrations, 170 pages. \$2.00.
- Western American Alpines**, by I. N. Gabrielson. 260 pages, 124 illustrations. \$3.50.
- A Simple Guide to Rock Gardening**, by J. L. Cotter. 126 pages. \$1.25.
- Rock Garden and Alpine Plants**, by H. Correvon. Lists 542 kinds of rock and alpine plants. 33 illustrations, (17 in color) 560 pages. \$3.00.
- American Alpines in the Garden**, by A. McCully. 19 illustrations, 262 pages. \$2.50.
- Azaleas and Camellias**, by H. H. Hume. Information for both indoors and outdoors. 14 illustrations, 90 pages. \$1.50.
- Principles of Vegetable Gardening**, by L. H. Bailey. How to grow 70 vegetable crops. 250 illustrations, 490 pages. \$4.00.
- The Home Vegetable Garden**, by E. M. Freeman. 8 illustrations, 214 pages. \$1.75.
- Subtropical Vegetable Gardening**, by P. H. Rolfs. 38 illustrations, 327 pages. \$2.50.
- The Manual of Weeds**, by Ada E. Georgia. Nearly 400 drawings including every known weed in the United States or Canada. \$3.00.
- Weeds**, by W. C. Muenscher. Identification of weeds of the northern United States and Canada. 551 pages, 312 weeds illustrated. \$6.00.
- Landscape gardening**, by O. C. Simonds. Practical general landscape planning as applied to all conditions. 61 illustrations, 348 pages. \$2.50.
- Nut Growing**, by R. T. Morris. Up-To-Date. 33 illustrations, 219 pages. \$2.50.
- Pecan Growing**, by Stuckey and Kyle. 49 illustrations, 233 pages. \$3.00.
- The Pruning Manual**, by L. H. Bailey. 381 illustrations, 400 pages. \$2.50.
- The Nursery Manual**, by L. H. Bailey. The propagation of plants in the nursery, etc. 240 illustrations, 456 pages. \$3.00.
- The Modern Nursery**, by Alex Laurie and L. C. Chadwick. The latest practical information all phases of plant propagation culture, and handling. Location, buildings, soil fertilizers, culture, storage, packing, office, management, marketing, laws, quarantine, plant patents. 52 tables, 107 illustrations, 500 pages, washable fabric binding. \$5.00.



TROPICAL AND SUB-TROPICAL PLANTS AND SEEDS  
**SHAFFER NURSERIES**

North Highland Avenue

CLEARWATER

FLORIDA

Return Postage

U. S. DEPARTMENT OF AGRICULTURE,

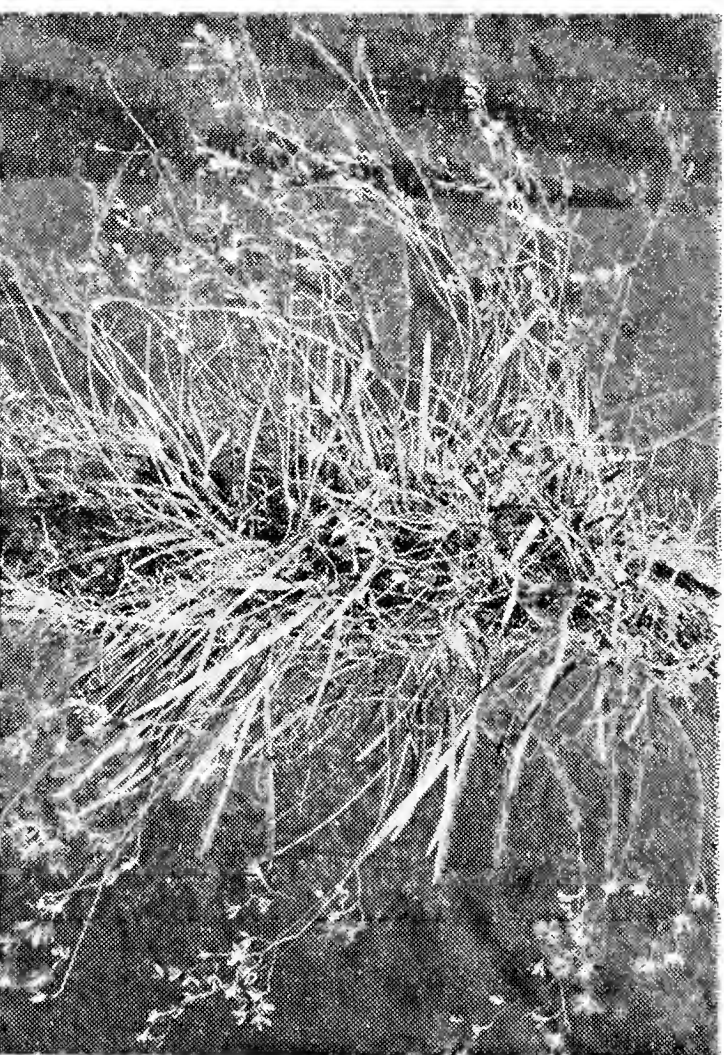
WASHINGTON, D. C.

POSTMASTER:

If forwarded to a new address  
Notify sender on form 35.  
Postage for notice guaranteed

BUREAU OF PLANT INDUSTRY  
Fruit and Vegetable Crops and Diseases  
W. R. N.

SEC. 562 P. L. & R.



BUTTERFLY ORCHIDS (Epidendrum Tampense)

PRO. 8-3591

