

Historic, archived document

Do not assume content reflects current scientific knowledge, policies, or practices.

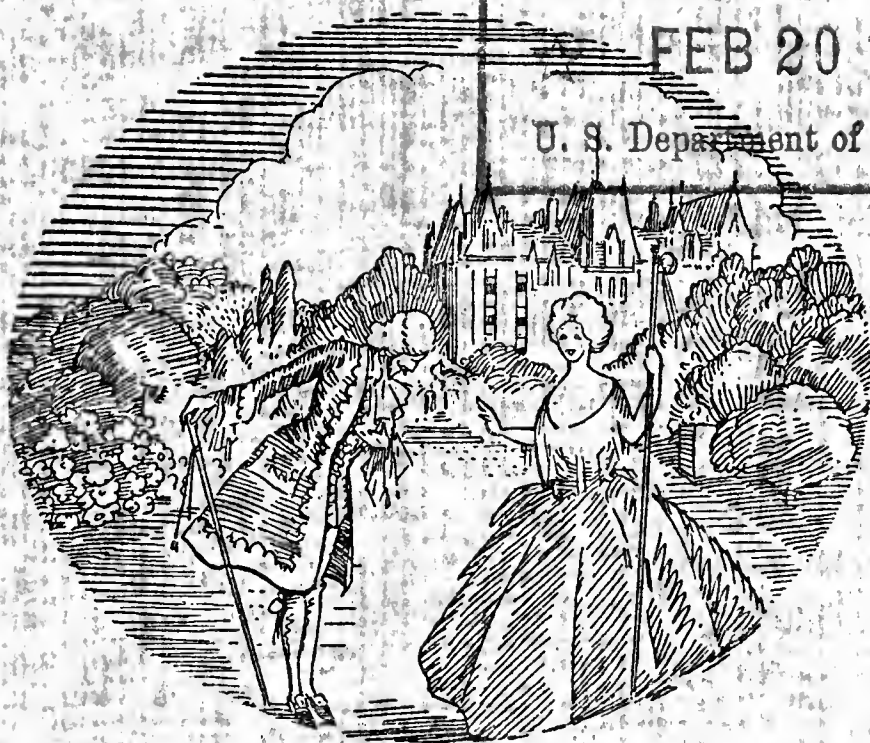


6261

BAGATELLE NURSERY

P. M. KOSTER, *Manager*

LIBRARY
RECEIVED
FEB 20 1939 ★
U. S. Department of Agriculture.



"C'est une bagatelle"

WHOLESALE
PRICE LIST
1939

Huntington Station, Long Island

MEMBERS OF
Long Island Nurserymen's Association
American Association of Nurserymen

Chateau de Bagatelle

On a wager with Marie Antoinette, in 1780, the Comte d'Artois (later Charles X, the second King of the Restoration), built an entrancing little chateau with its charming gardens in the incredibly brief time of 64 days. The outlay was three million francs.

"C'est magnifique!", cried Marie Antoinette, on catching her first glimpse of the beauty spot which became an enduring reminder of her wager.

"Mais, non. C'est une bagatelle" answered the gallant Comte d'Artois. So in this romantic manner the name "Bagatelle" originated.

The gardens of the Chateau de Bagatelle, near Paris, are now used as testing grounds to determine the value of new roses, sent from all parts of the world. A most interesting place! So is the Bagatelle Nursery with its specimen evergreens, ornamental trees, Rhododendrons and new Azaleas. A cordial welcome awaits you.

Conditions of Sale

PRICES

The prices named in this list cancel all prices and sales conditions quoted in previous lists and offers. They are based on current market quotations, are subject to change without notice and are **f.o.b. Nursery.**

Balling and burlapping free of charge for evergreens and other material which is usually dug with balls of earth. Arrangements can be made, at an additional charge, to ball and burlap Deciduous Stock.

CLAIMS

Claims should be made in writing; we can not entertain any claims that are not made within ten days after receipt of the stock.

DISCOUNTS

2% discount will be allowed for payment in 10 days from date of invoice.

10% discount on prices for quantities of one hundred or more of one size and variety.

TERMS

All accounts are due first of second month following date of invoice. Cash or satisfactory trade or bank references must accompany all orders from purchasers unknown to us. Interest at 6% per annum will be charged on all overdue accounts.

PACKING

Packing is charged at the actual cost of the material used.

CARLOADS

We can ship by Express and Freight via Long Island Railroad connecting in New York with all other railroads and boatlines. No charge will be made for loading carload lots.

TRUCKS

We deliver by truck within a reasonable distance. We will be glad to make arrangements about delivery by truck at the time the order is placed.

Alphabetical List

Unit Price
Per 10

ACER palmatum atropurpureum novum

An outstanding variety of the Purple Japanese Maple with broader foliage of a darker colour.

2	to	2½	ft.....	1.50
2½	to	3	ft.....	2.25
3	to	4	ft.....	3.00
4	to	5	ft.....	4.50
5	to	6	ft.....	6.00

— palmatum dissectum atropurpureum

12	to	15	in.....	1.00
15	to	18	in.....	1.50

— platanoides

Norway Maple

1½	to	2	in.....	2.25
2	to	2½	in.....	3.00
2½	to	3	in.....	3.75
3	to	3½	in.....	5.00
3½	to	4	in.....	7.50
4	to	5	in.....	12.50
5	to	6	in.....	25.00

— — schwedleri

Schwedler Maple

1	to	1½	in.....	1.50
1½	to	2	in.....	2.00
2	to	2½	in.....	2.50
2½	to	3	in.....	3.00

ABIES homolepis

Niko Fir

2½	to	3	ft.....	2.00
3	to	4	ft.....	2.50
4	to	5	ft.....	3.00

— veitchi

Veitch Fir

2½	to	3	ft.....	2.00
3½	to	4	ft.....	2.50

AZALEA amoena

Amoena Azalea

Bright rosy purple flowers. One of the hardiest of the Japanese Azaleas.

12	to	15	in.....	.75
15	to	18	in.....	1.00

— hinodegiri

Hinodegiri Azalea

Carmine red flowers. Very hardy.

6	to	8	in.....	.35
8	to	10	in.....	.50
10	to	12	in.....	.75
12	to	15	in.....	.90
15	to	18	in.....	1.25
18	to	21	in.....	1.50

*Unit Price
Per 10*

Azalea Kaempferi Hybrids

Azalea Kaempferi Hybrids are gaining in popularity every year, which they fully deserve. They inherited the vertical growth from Azalea Kaempferi, one of the parents and also its hardiness. Both qualities make them very desirable for landscape plantings. The delicate pastel colored flowers are large and do not burn even in the full sun. They are also desirable for forcing; at three consecutive Flower Shows in New York, they were awarded Gold Medals. They were also awarded Gold Medals in various European cities.

The cover of the catalog of the 1937 New York Flower Show consisted of the colored plate of Azalea Othello, which illustrated an article on Azaleas in the 1936 March issue of House & Garden.

OUTSTANDING FEATURES ARE:

1. Thorough hardiness (16 degrees below zero).
2. Rapid growth.
3. Extreme floriferousness.
4. Large flowers (some measure 2½ in. across).

Carmen

Delicate rose like Moss Pink (Phlox subulata).

Fedora

Rose, like the outer petals of the Bleeding Heart. Very large flowers.

Louise

Carmine, a lighter tint than that of Azalea Hinodegiri.

Othello

Salmon pink, the colour of the open flower of the rose Mme. Edouard Herriot.

9	to	12	in.....	.50
12	to	15	in.....	.60
15	to	18	in.....	.75
18	to	21	in.....	1.00
21	to	24	in.....	1.25
3	to	4	ft.....	15.00

AZALEA poukhanensis Korean Azalea

Pink-lavender flowers. Blooms in May.

15	to	18	in.....	1.00
18	to	21	in.....	1.25

— **mucronulata**

The earliest of all Azaleas to bloom; violet rose.

12	to	15	in.....	1.00
15	to	18	in.....	1.50

— **schlippenbachi**

12	to	15	in.....	1.25
15	to	18	in.....	1.50

Unit Price
Per 10

Native Azaleas

They prefer an acid soil, like all ericaceous plants and are thankful for a heavy mulch preferably of oak leaves.

AZALEA calendulacea Flame Azalea
Brilliant orange and scarlet flowers in several shades.

1½	to	2	ft.	1.50
2	to	2½	ft.	2.00
2½	to	3	ft.	2.50

— **nudiflora** Pinxterbloom

Pale rose or pink flowers in May.

15	to	18	in.	1.20
1½	to	2	ft.	1.50
2	to	2½	ft.	2.00

— **rosea** Downy Pinxterbloom

Generally considered to be a variation of Azalea nudiflora. Possesses a stronger fragrance.

15	to	18	in.	1.20
1½	to	2	ft.	1.75
2	to	2½	ft.	2.25

— **vaseyi** Pinkshell Azalea

Very early. A most delicate shell pink.

1½	to	2	ft.	1.75
2	to	2½	ft.	2.50
2½	to	3	ft.	3.00

— **viscosa** Honeysuckle Azalea

The white to pink flowers appear in July in great trusses, very fragrant. The latest to bloom.

2	to	2½	ft.	1.75
2½	to	3	ft.	2.00

BUXUS sempervirens Bush Boxwood

9	to	12	in. Balls	.60
12	to	15	in. Balls	.75

— — **suffruticosa** Dwarf Box Edging

4	to	6	in.	.10
6	to	8	in.	.15

CERCIS chinensis Chinese Redbud

2½	to	3	ft.	.60
3	to	4	ft.	.75

CORNUS florida White Flowering Dogwood

5	to	6	ft.	3.00
6	to	8	ft.	4.00
8	to	10	ft.	5.50

— — **plena**

Double White Flowering Dogwood

4	to	5	ft.	2.00
7	to	8	ft.	7.50
8	to	9	ft.	10.00

— — **rubra**

Red Flowering Dogwood

4	to	5	ft.	2.00
5	to	6	ft.	3.50
6	to	7	ft.	5.00
7	to	8	ft.	6.50

Unit Price
Per 10

CHAMAECYPARIS lawsoniana alumi

Scarab Cypress

7	to	8	ft.	10.00
8	to	10	ft.	15.00
10	to	12	ft.	20.00
12	to	14	ft.	25.00

— — **triumph of boskoop**

Blue Lawson Cypress

2½	to	3	ft.	.85
3	to	4	ft.	1.25

— **obtusa gracilis** Slender Hinoki Cypress

2	to	2½	ft. spread	1.50
2½	to	3	ft. spread	1.75
3	to	4	ft. height	2.50
4	to	5	ft. height	3.00

— — **nana** Dwarf Hinoki Cypress

6	to	9	in.	.85
9	to	12	in.	1.00
12	to	15	in.	1.50

— — **tetragona aurea**

9	to	12	in.	.85
12	to	15	in.	1.00

— — **youngi** Young Golden Cypress

3	to	4	ft.	1.25
4	to	5	ft.	1.75

— **pisifera** Sawara Cypress

6	to	7	ft.	4.00
7	to	8	ft.	5.00

— — **aurea** Golden Sawara Cypress

6	to	8	ft.	4.50
8	to	10	ft.	7.50

— — **filifera** Thread Cypress

3	to	4	ft.	1.50
4	to	5	ft.	2.50

— — **plumosa** Plume Cypress

2½	to	3	ft.	1.00
3	to	4	ft.	1.25
4	to	5	ft.	1.75

— — — **aurea** Golden Plume Cypress

2½	to	3	ft.	1.25
3	to	4	ft.	1.50
4	to	5	ft.	2.00
5	to	6	ft.	3.00

— — **squarrosa veitchi** Moss Cypress

2½	to	3	ft.	1.25
3	to	4	ft.	1.50
4	to	5	ft.	2.00

CRYPTOMERIA jap. dacrydioides

Fern Cryptomeria

6	to	8	ft.	5.00
8	to	10	ft.	7.50

— — **lobbi** Lobb Cryptomeria

3½	to	4	ft.	1.00
4	to	5	ft.	1.75
5	to	6	ft.	2.50
10	to	12	ft.	15.00
12	to	14	ft.	20.00



CRYPTOMERIA JAPONICA LOBBI

*Unit Price
Per 10*

ENKIANTHUS campanulatus

Redvein Enkianthus

2½ to 3	ft.....	.75
3 to 4	ft.....	1.25
4 to 5	ft.....	1.50

FAGUS sylvatica

European Beech

All perfectly shaped pyramids, one leader, furnished to the ground. Nothing better to plant for sheared tall hedges.

4 to 5	ft.....	1.75
5 to 6	ft.....	2.50
6 to 7	ft.....	3.00

— — **fastigiata**

Columnar Beech

3 to 4	ft.....	1.25
4 to 5	ft.....	2.00

— — **pendula**

Weeping Beech

3 to 4	ft.....	2.00
4 to 5	ft.....	3.00
5 to 6	ft.....	4.00

— — **riversi**

Rivers Purple Beech

3 to 4	ft.....	2.00
4 to 5	ft.....	3.00
5 to 6	ft.....	5.00

GINGKO biloba

Maidenhair Tree

1 to 1½	in.....	1.75
1½ to 2	in.....	3.00

ILEX crenata

Japanese Holly

2½ to 3	ft., bushy.....	1.75
3 to 4	ft., bushy.....	2.50
4 to 5	ft., bushy.....	3.00

Unit Price
Per 10

JUNIPERUS chinensis columnaris

Columnar Chinese Juniper

3	to	4	ft.....	2.00
4	to	5	ft.....	2.50
8	to	10	ft.....	7.50
10	to	12	ft.....	12.50

— — **femina**

Reeves Juniper

2½	to	3	ft.....	1.00
3	to	4	ft.....	1.25
4	to	5	ft.....	2.00

— — **pfitzeriana**

Pfitzer Juniper

18	to	24	in. spread.....	1.00
2	to	2½	ft. spread.....	1.50
2½	to	3	ft. spread.....	2.00
3	to	4	ft. spread.....	2.50
4	to	5	ft. spread.....	3.50
5	to	6	ft. spread.....	5.00
6	to	7	ft. spread.....	7.50
7	to	8	ft. spread.....	10.00
8	to	10	ft. spread.....	12.50

— **excelsa stricta**

Greek Juniper

Suitable size for window boxes.

15	to	18	in.....	.50
1½	to	2	ft.....	.65
2	to	2½	ft.....	.85

— **squamata meyeri**

Meyer Juniper

15	to	18	in.....	1.00
18	to	24	in.....	1.25
3	to	4	ft.....	7.50

— **virginiana burki**

Burk's Redcedar

2½	to	3	ft.....	1.00
3	to	4	ft.....	1.25
7	to	8	ft.....	7.50

— — **cannarti**

Cannart Redcedar

2½	to	3	ft.....	1.00
3	to	4	ft.....	1.25
4	to	5	ft.....	2.00
5	to	6	ft.....	3.00
6	to	7	ft.....	5.00

— — — **glauca**

Silver Redcedar

2½	to	3	ft.....	1.00
3	to	4	ft.....	1.25
6	to	7	ft.....	5.00
7	to	8	ft.....	10.00

— — **keteleeri**

Keteleer Redcedar

2½	to	3	ft.....	1.00
3	to	4	ft.....	1.25
4	to	5	ft.....	2.00
10	to	12	ft.....	12.50

— — **von ehren**

Spreading Redcedar

3	to	3½	ft. spread.....	2.00
3½	to	4	ft. spread.....	3.00

*Unit Price
Per 10*

LABURNUM vossi Golden Chain

Whips, 5 to 6 ft..... 1.50
Standards, 6 ft., 2-year heads 2.50

Magnolia

For several years, after Quarantine 37 became effective, Magnolias were very scarce and high priced. We are now able to offer the best varieties at reasonable prices. They are fine plants symmetrically shaped and, being properly transplanted, safe to move.

MAGNOLIA glauca Sweetbay

Creamy white fragrant three inch flowers in May and June.

3 to 4 ft..... 1.75
4 to 5 ft..... 2.50

— **liliflora nigra** Purple Lily Magnolia

Long brownish purple flowers. Darkest of all.

2 to 3 ft..... 1.00
3 to 4 ft..... 1.25
4 to 5 ft..... 2.00

— **parviflora** Oyama Magnolia

This Magnolia blooms while the plant is in full leaf contrary to other varieties which flower before the foliage appears. It flowers much later and consequently the blooms escape being hurt by late frosts. The pure white waxy flowers are cup shaped with a very prominent center of crimson stamens. They will appear throughout the summer and autumn. We have a large stock in various sizes at reasonable prices.

2½ to 3 ft..... 1.75
3 to 4 ft..... 2.50
4 to 5 ft..... 4.00
5 to 6 ft..... 6.00
6 to 7 ft..... 8.50

— **soulangiana** Saucer Magnolia

Purplish pink cups, 4 to 6 inches across.

2½ to 3 ft..... 1.00
3 to 4 ft..... 1.50
4 to 5 ft..... 2.50

— — **alba** White Saucer Magnolia

Pure white large flowers.

7 to 8 ft..... 7.50

— — **lennei** Lenne Magnolia

Rosy purple pear-shaped cups. Flowering late, often blooming a second time.

2½ to 3 ft..... 1.25
3 to 4 ft..... 1.75
4 to 5 ft..... 2.75

*Unit Price
Per 10*

Malus

Flowering Crabs are the rivals of Flowering Cherries. In fact, they are considered by many to excell them in beauty. They flower most profusely in a great variety of color, pure white, pink, white and pink, carmine, while in the fall, lasting until winter, the trees are covered with fruit, small tiny apples, yellow, orange, red and carmine, according to varieties. Moreover they are perfectly hardy, frost will not kill the flower-buds.

MALUS arnoldiana

Flowers semi double, coral pink changing to white, fruit yellow.

— **eleyi**

Light purple foliage, later turning to green. Single, carmine flowers and carmine fruit in great abundance. The little apples $\frac{3}{4}$ in. across, make an excellent, beautifully colored jelly.

— **floribunda**

Bright pink buds, the open, single flowers white, forming a beautiful contrast of colors. Reddish yellow fruit.

— **halliana parkmanni**

Double, bright rose flowers, fruit purplish red.

— **niedzwetzkyana**

Young foliage tinged purple, later turning to green. Flowers single, carmine. Fruit carmine, much larger than the fruit of the other varieties but not so abundant.

— **theifera**

Exceedingly floriferous, flowers delicate rose, changing to blush white; fruit greenish yellow.

3	to	4	ft., young plants..	.75
4	to	5	ft., young plants..	1.00
5	to	6	ft., several yrs. old	2.50
6	to	8	ft., several yrs. old	3.50

We have some very large specimen plants; will be glad to give descriptions and prices.

OXYDENDRUM arboreum

Sourwood

5	to	6	ft.....	1.75
6	to	7	ft.....	2.00

		<i>Unit Price</i>
		<i>Per 10</i>
PICEA excelsa		Norway Spruce
2½ to 3	ft.....	.75
6 to 7	ft.....	4.00
7 to 8	ft.....	6.00
8 to 10	ft.....	7.50
10 to 12	ft.....	10.00
— omorika		Serbian Spruce
12 to 15 in.	transpl. seedlings	.10
15 to 18 in.	transpl. seedlings	.15
18 to 24 in.	transpl. seedlings	.20

Picea pungens kosteri

Koster Blue Spruce

All our Koster Blue Spruce are grafted, the cions used are selected with the greatest care from plants we know to be true "Kosters". Even our very young plants are "staked" in order to secure well shaped plants with perfect leaders.

It was our Mr. Koster who, in 1886, grafted the first five cions of the Koster Blue Spruce which originated in his father's nursery.

10 to 12 in.	for lining out.	.65
12 to 15 in.	1.00
15 to 18 in.	1.25
1½ to 2 ft.	1.75
2 to 2½ ft.	2.50
2½ to 3 ft.	3.25
3 to 4 ft.	4.50
5 to 6 ft.	10.00
6 to 7 ft.	12.50

— — kosteri pendula

Koster Weeping Blue Spruce

The Weeping Koster Spruce equals, in fact surpasses the upright growing variety in color. It grows up into a most artistic shape.

8 to 12 in.	for lining out.	1.00
12 to 15 in.	1.50
15 to 18 in.	2.00

PIERIS floribunda

Mountain Andromeda

12 to 15 in.	1.00
15 to 18 in.	1.25

— japonica

Japanese Andromeda

15 to 18 in.	1.00
1½ to 2 ft.	1.50
2 to 2½ ft.	2.00
2½ to 3 ft.	2.50

Unit Price
Per 10

PINUS cembra

Swiss Stone Pine

2½	to	3	ft.....	2.50
3	to	4	ft.....	3.00
4	to	5	ft.....	4.00

— **nigra**

Austrian Pine

4	to	5	ft.....	2.25
5	to	6	ft.....	3.00
6	to	7	ft.....	4.00
7	to	8	ft.....	5.00
8	to	10	ft.....	7.50
10	to	12	ft. specimen.....	20.00
12	to	14	ft. specimen.....	25.00

We have a quantity of large plants, 7 to 10 ft. for windbreaks. Please ask for prices.

— **resinosa**

Red Pine

3½	to	4	ft.....	1.25
4	to	5	ft.....	1.75
5	to	6	ft.....	2.50

— **thunbergi**

Japanese Black Pine

12	to	15	in., 2 yrs. transpl.	.20
15	to	18	in., 2 yrs. transpl.	.25

PLATANUS orientalis

European Plane Tree

3½	to	4	in.....	10.00
4	to	5	in.....	15.00
5	to	6	in.....	25.00

Prunus serrulata

Japanese flowering Cherries are known all over America as one of the finest Spring flowering trees.

PRUNUS serrulata fugenzo

Kofugen

The finest of Japanese Cherries. Also known as Benifugen or James H. Veitch. As a specimen tree for the lawn Kofugen is excellent, the flowers open rather late and fade very little.

Whips, brnchd,	4 to 5 ft.,	1 yr.	.65
Standards,	6 ft.,	2 yr. heads..	2.50

Pyramids:

4	to	5	ft.....	2.50
5	to	6	ft.....	3.00
8	to	10	ft., very heavy...	15.00
10	to	12	ft., very heavy...	20.00

— — **shirotae**

Mount Fuji

Large double white fragrant flowers.

Half Standards,	4 yr. Crown..	3.50
Half Standards,	hvy specimn.	25.00

*Unit Price
Per 10*

PRUNUS subhirtella pendula

Weeping Jap. Cherry

Small pink flowers, very early.



Very heavy specimen.....15.00

PSEUDOTSUGA douglasi Douglas Fir

5 to 6 ft..... 2.00

6 to 7 ft..... 3.00

QUERCUS palustris Pin Oak

1½ to 2 in..... 3.50

2 to 2½ in..... 5.00

— rubra Common Red Oak

2 to 2½ in..... 4.00

2½ to 3 in..... 6.00

3 to 4 in..... 7.50



QUERCUS PALUSTRIS AND RUBRA

Rhododendron Hybrids

NAMED VARIETIES

The Bagatelle Nursery makes a specialty of growing Rhododendrons and have first class facilities to do so. Experiments, at great cost, have been made in the last five years to test hardiness as for outside planting in the vicinity of New York; only the hardiest varieties should be chosen.

Varieties marked * need winter protection.

We have indicated behind each variety the maximum height available from 12 inches up.

America

Red, very pronounced blotches. (2 ft.)

Album elegans

Opening buds lilac, the open flowers white. (4 ft.)

Amphion

Clear pink with white center, very large truss. (2½ ft.)

Catawbiense grandiflorum

Light purple, a very pleasing color. (2 ft.)

Dr. Dresselhuys

One of the very best reds grown, the same color as Chas. Dickens, a much better grower. (4 ft.)

Dr. Lovink

Approaches Dresselhuys in color but is not as good a grower. (2½ ft.)

***Goethe**

Very large individual flowers, nearly white with pronounced light purple fringes, an unusual variety. (3 ft.)

Ignatius Sargent

Light clear red, very fine truss. (2½ ft.)

Kettledrum

A very good red but straggly grower. (1½ ft.)

***Madame de Bruin**

Crimson carmine, flowers of great substance, very large truss. (2½ ft.)

One of the finest varieties for forcing not only for its gorgeous flowers, but also on account of its fine foliage.

Mrs. C. S. Sargent

Dark pink, a fine color, one of the best. (2½ ft.)

Mrs. P. den Ouden

Red, similar to Dresselhuys. (2½ ft.)

*Unit Price
Per 10*

NAMED VARIETIES—Continued

Nova Zembla

A very good red with pronounced dark blotches, a dense grower. (2 ft.)

Parsons Gloriosum

Pink shaded purple, excellent foliage. (2 ft.)

Roseum elegans

Pink shaded lilac changing to pink when open; the best foliage of all, very hardy. (4 ft.)

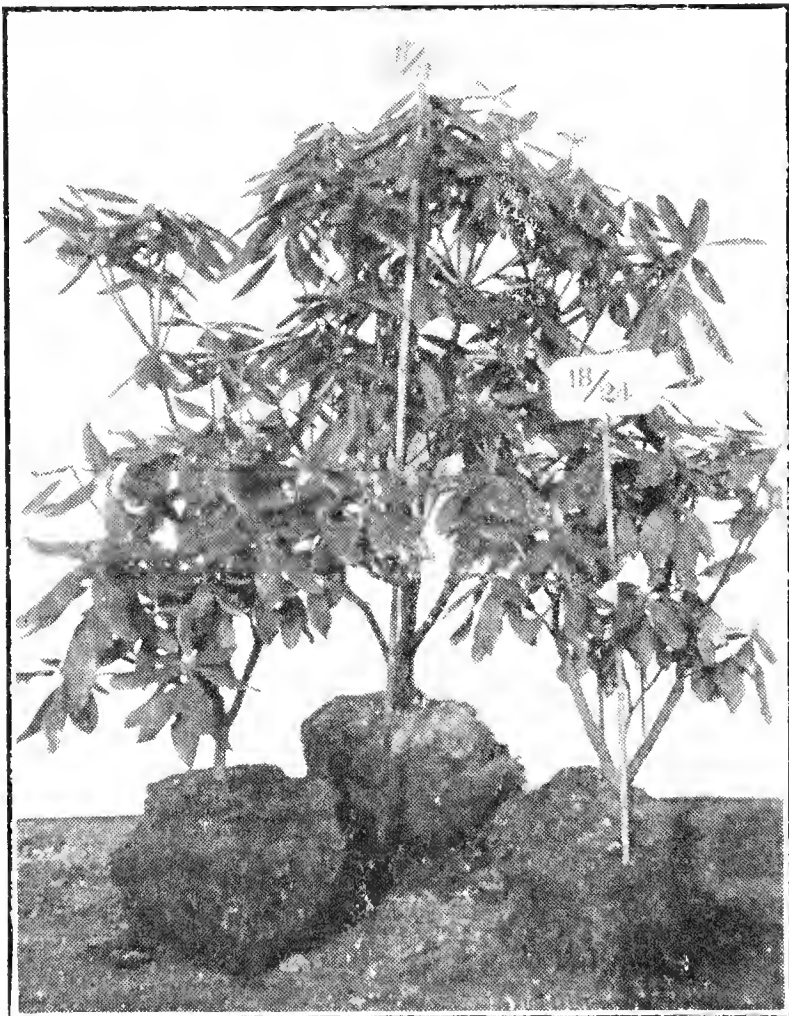
Roseum superbum

A shade lighter than the former, somewhat later flowering. (2 ft.)

Prices for well shaped bushy plants, in assorted colors:

12	to	15	in.....	1.00
15	to	18	in.....	1.50
18	to	24	in.....	2.25
2	to	2½	ft.....	2.75
2½	to	3	ft.....	3.75
3	to	3½	ft.....	5.00
3½	to	4	ft.....	7.50

We offer Rhododendrons grafted in January, 1939, for delivery in June, 1939, for lining out, in assorted varieties, per 100, \$60.00, provided we receive your order before June 1st.



GRAFTED RHODODENDRON

Two plants 1½ to 2 ft. - One plant 3 to 3½ ft.

*Unit Price
Per 10*

Hybrid Seedlings

We have a considerable quantity of Rhododendrons grown from seed. The very severe winters of 1933-36 have weeded out those that were not hardy. The colors are very good but we cannot guarantee any specific color.

1½ to 2 ft.....	1.25
2 to 2½ ft.....	1.75
2½ to 3 ft.....	2.25
3 to 3½ ft.....	3.00
3½ to 4 ft.....	3.50
4 to 5 ft.....	4.00

Native Varieties

The Native Rhododendron we offer are *nursery grown*; they are far superior to collected stock. We will be very glad to send you prices for collected plants in carload lots either of one variety of one size or mixed varieties in sizes from 1½ to 5 ft.

Carolinianum

Carolina Rhododendron

Compact clusters of very fine clear pink flowers blooming profusely the latter part of May. It is a compact grower with good foliage though considerably more narrow than the foliage of the Hybrids.

15 to 18 in.....	1.25
18 to 24 in.....	1.75
2 to 2½ ft.....	2.25

Catawbiense

Catawba Rhododendron

Large trusses of dark rose flowers shaded lilac; good but compact grower, good foliage.

1½ to 2 ft.....	1.50
2 to 2½ ft.....	2.00
2½ to 3 ft.....	2.75
3 to 3½ ft.....	3.50

Maximum

Rosebay Rhododendron

Used largely for massing in the background of plantings of Hybrid Rhododendron. The flowers ranging from white to light pink, some darker. are quite small and partly hidden by the young foliage. They flower the end of June or the beginning of July, much later than the Hybrids.

2 to 2½ ft.....	2.00
2½ to 3 ft.....	2.50
3 to 4 ft.....	3.50
4 to 5 ft.....	5.00

*Unit Price
Per 10*

SALIX babylonica Babylon Weeping Willow

One of the oldest but still one of the most attractive willows, graceful and colorful.

4	to 5	ft.....	.65
5	to 6	ft.....	.85

SCIADOPITYS verticillata Umbrella Pine

1½	to 2	ft.....	2.00
2	to 2½	ft.....	2.50
2½	to 3	ft.....	4.00

SORBUS aucuparia European Mountain Ash

1½	to 2	in.....	2.00
2	to 2½	in.....	2.75
2½	to 3	in.....	3.75

SYRINGA vulgaris

The following varieties represent the very best, they are not arranged in alphabetical order but according to color-groups, singles and doubles. This facilitates selecting a well balanced collection. Of the varieties marked * we have some large plants to offer.

WHITE

Single:

*Jan van Tol, pure white, bold trusses of large individual flowers, profuse bloomer.

Mont-Blanc, large panicles of pure white flowers.

Vestale, pure white, perfectly shaped.

Double:

Edith Cavell, handsome clusters, buds suffused cream.

Madame Lemoine, very large flowers.

*Miss Ellen Willmott, imbricated flowers of perfect form.

PINK AND RED SHADES

Single:

*Ruhm von Horstenstein, long, massive pink trusses.

*Lamartine, large rosy mauve clusters. A cross between Syringa vulgaris and Giraldi, flowering almost two weeks before the other varieties.

*Reaumur, violet carmine and satiny rose, very fine.

Double:

*Edouard Andre, clear rose or nearly pink.

Leon Gambetta, pinkish lilac, enormous trusses.

Mrs. Edward Harding, bright carmine panicles, very fine.

*Unit Price
Per 10*

BLUE SHADES

Single:

Cavour, slate blue, large upright clusters.

Capitaine Baltet, handsome panicles of a bluish shade.

Double:

Jean Mace, bluish mauve, a distinct variety, very free.

*Katharine Havemeyer, perfectly shaped cobalt blue flowers, broad imbricated lobes.

President Grevy, huge, blue trusses, a very fine color.

LILAC

Single:

Charles X. fine lilac clusters, shaded violet.

Hugo Koster, well shaped lilac flowers, shaded red.

Maurice Barres, pale azure lilac, very large flowers.

Double:

Michael Buchner, very free flowering, pale lilac.

President Faillieres, very large, pale lavender flowers.

Mme. Antoine Buchner, soft lilac, a very late variety.

VIOLET SHADES

Single:

Souvenir de L. Spaeth, large purple violet flowers.

Marechal Lannes, bluish violet, large individual flower.

Double:

Charles Joly, dark violet purple with silver reverse.

Waldeck Rousseau, long, broad deep violet trusses.

One year old, grafted plants 15 to 18 in. .25

Two year old, grafted plants 1½ to 2 ft. .60

Larger plants, marked *, 2½ to 3 ft... 1.50

Larger plants, marked *, 3 to 4 ft... 2.50

*Unit Price
Per 10*

TAXUS cuspidata Spreading Japanese Yew

12 to 15 in. diam.....	.60
15 to 18 in. diam.....	.85
18 to 24 in. diam.....	1.00
2 to 2½ ft. diam.....	1.75
2½ to 3 ft. diam.....	2.50

— — **capitata** Upright Japanese Yew

1½ to 2 ft.....	.85
2 to 2½ ft.....	1.25
2½ to 3 ft.....	2.50
3 to 3½ ft.....	3.00
3½ to 4 ft.....	4.00
4 to 5 ft.....	5.00
5 to 6 ft. perfect spec...	7.50
6 to 7 ft. perfect spec...	10.00



TAXUS CUSPIDATA CAPITATA 6 to 7 Ft.

THUJA occidentalis American Arborvitae

4 to 5 ft.....	1.25
5 to 6 ft.....	2.25
6 to 7 ft.....	3.50
7 to 8 ft.....	5.00
10 to 12 ft. perfect spec...	10.00

For picture of specimen plants see page 19.



THUJA OCCIDENTALIS 10 to 12 Ft.

		<i>Unit Price Per 10</i>
— —	douglasi aurea	Douglas Golden
3	to 4 ft.....	1.10
4	to 5 ft.....	1.50
— —	globosa	
12	to 15 in., ball shaped....	.50
15	to 18 in., ball shaped....	.75
18	to 24 in., ball shaped....	1.00
— —	lutea	George Peabody Arborvitae
2½	to 3 ft.....	.85
3	to 4 ft.....	1.00
— —	pyramidalis	Pyramidal Arborvitae
4	to 5 ft.....	1.50
5	to 6 ft.....	2.00
— —	rosenthali	Rosenthal Arborvitae
2½	to 3 ft.....	.85
3	to 4 ft.....	1.50
4	to 5 ft.....	2.00
— —	spiralis	Moss Arborvitae
4	to 5 ft.....	1.50
5	to 6 ft.....	2.00
6	to 7 ft.....	2.50
— —	warena	Siberian Arborvitae
2	to 2½ ft.....	.65
2½	to 3 ft.....	1.00

Unit Price
Per 10

THUJA orientalis aurea conspicua		Goldspire Arborvitae
3	to 4 ft.....	1.75
— — — nana		
		Berckman's Golden Arborvitae
9	to 12 in.....	.50
12	to 15 in.....	.65
15	to 18 in.....	.85
3½	to 4 ft.....	7.50
— — beverleyensis		
3	to 4 ft.....	1.50
4	to 5 ft.....	2.00
5	to 6 ft.....	2.75
— plicata atrovirens		Giant Arborvitae
8	to 10 ft.....	5.00
10	to 12 ft.....	6.00
TSUGA canadensis		Canada Hemlock
2½	to 3 ft.....	1.00
3	to 4 ft.....	1.50
4	to 5 ft.....	2.50
5	to 6 ft.....	3.50



TSUGA CANADENSIS 3 to 4 Ft.

— caroliniana		Carolina Hemlock
2½	to 3 ft.....	1.25
3	to 4 ft.....	1.75
4	to 5 ft.....	3.00
ULMUS pumila		Chinese Elm
1½	to 2 in.....	2.00
2	to 2½ in.....	3.00
2½	to 3 in.....	4.00
3	to 3½ in.....	5.00
WISTERIA sinensis		Chinese Wisteria
6	to 7 ft. specimen	
grown in tubs.....		10.00



FAGUS SYLVATICA
(European Beech)

The picture shows one of a large block of perfectly shaped pyramids, furnished to the ground. They have one leader; the cane shows the size (6 to 7 ft.) Nothing better for hedges.

BAGATELLE NURSERY
P. O. Huntington Station, L. I.

*We Cordially Invite You to
Visit Our Nursery*

HOW TO REACH US:

By train: Come to Huntington, Wyandanch or Babylon. Notify us of your arrival, and we will be glad to call for you.

Tel. Farmingdale 850.

By automobile from New York: Take Grand Central Parkway, leave Parkway at the sign "Union Ave", the farthest eastern end of the present construction. Then turn left and when reaching the Jericho Turnpike proceed east. Our Sales Office is a few hundred feet before (west of) Route 110 on the Jericho Turnpike at Huntington, next to Dahlstroms famous restaurant. To reach the nursery turn right (south) from the Turnpike on Route 110, and follow signs.

BAGATELLE NURSERY

P. M. KOSTER,
Manager

Post Office
Huntington Station, N. Y.

BAGATELLE NURSERY

**P. O. Huntington Station
Long Island, N. Y.**

Telephone
Farmingdale 850

Sales Office: Jericho Turnpike

Telephone
Huntington 3022