

## **Historic, Archive Document**

Do not assume content reflects current scientific knowledge, policies, or practices.



63.1  
Great  
Britain  
1913 T-Z



By Special Appointment to  
His Majesty the King.

# VEITCH'S CARNATIONS AND PICOTEES. 1912-13.



Also at Coombe Wood,  
Langley, and  
Feltham.

**JAMES VEITCH & SONS, Ltd.,**  
Royal Exotic Nursery,  
**CHELSEA, LONDON.**

## VISITORS

will be cordially welcomed at all our Nurseries on all week days except Bank Holidays. (See map on opposite page.)

The various Branches are as follows:—

**Royal Exotic Nursery,  
544, King's Road,  
Chelsea, London.**

Telephone : 1642, Western.  
Telegrams : Veitch, Chelsea.

Vegetable and Flower Seeds, Bulbs and all Garden Tools and Sundries. Stove and Greenhouse Plants, Orchids, Palms, Ferns, Bay-Trees in tubs, etc. All requirements for London Houses, and Gardens.

**Coombe Wood,  
Kingston Hill.**

Station—NORBITON.  
(L. & S. W. R., Kingston Line).  
Cabs at the Station

Hardy Ornamental Trees and Shrubs, Avenue Trees, Yews. American Plants, Climbers, Rhododendrons, Conifers, Bamboos, Hardy Water Lilies and Aquatic Plants, etc. Roses in Pots.

**Langley, near Slough.**

Station—SLOUGH (G. W. R.)  
(1 mile to Langley  
New Town Entrance)  
Cabs at the Station

Apple, Pear, and Cherry Trees, Currants and Gooseberries, Strawberries, Hardy Herbaceous Perennials and Alpine Plants, Roses in the open ground. Choice Seed Cultures.

**Feltham, Middlesex.**

Station—FELTHAM (L. & S. W. R.,  
Windsor and Reading Line)  
10 Minutes' walk

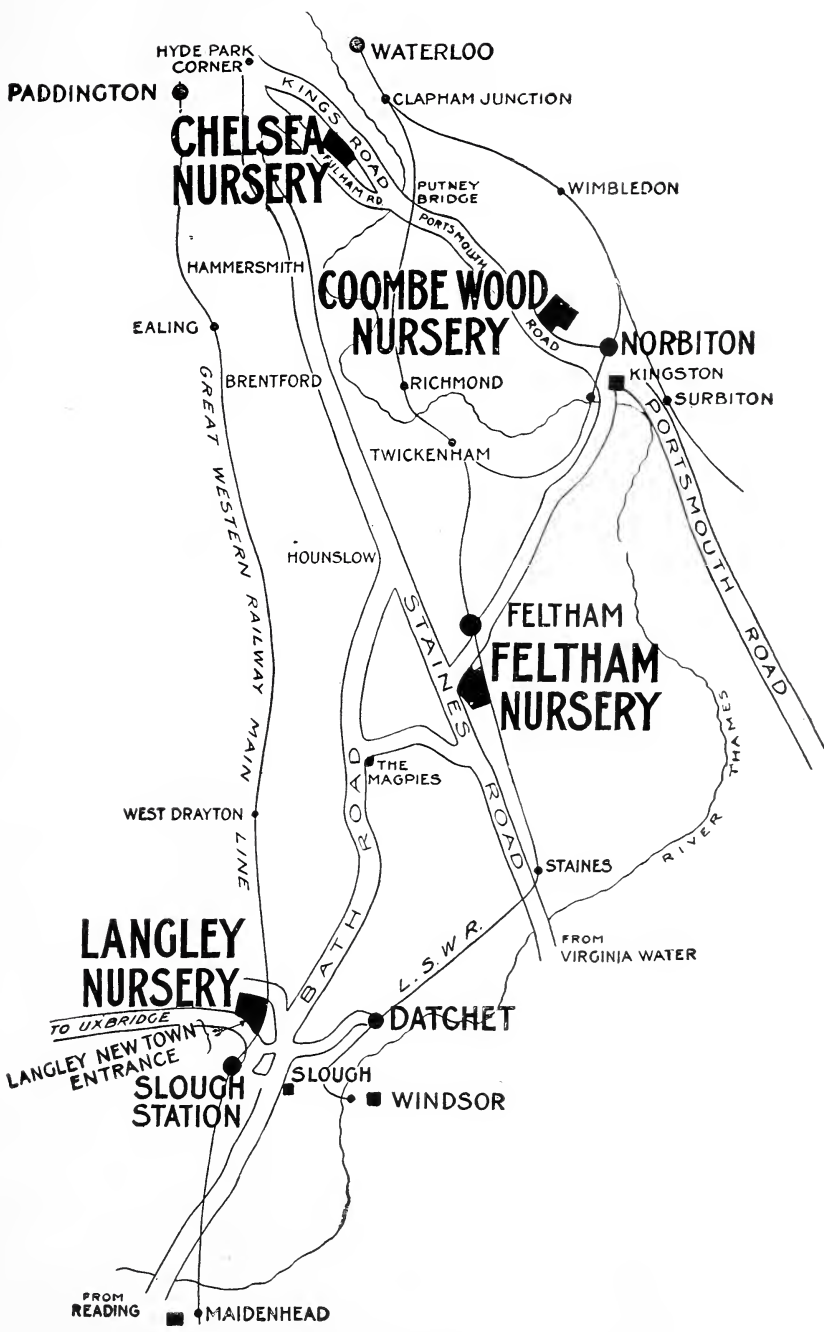
**SPECIALITY.**  
**A magnificent stock of  
Fruit Trees in pots for the  
Orchard House.**

Trained Peaches, Nectarines, Apricots, Plums, Cherries, Apples, Pears, etc., Grape Vines and Fig Trees in pots, Raspberries, Asparagus, Seakale, Rhubarb, etc.

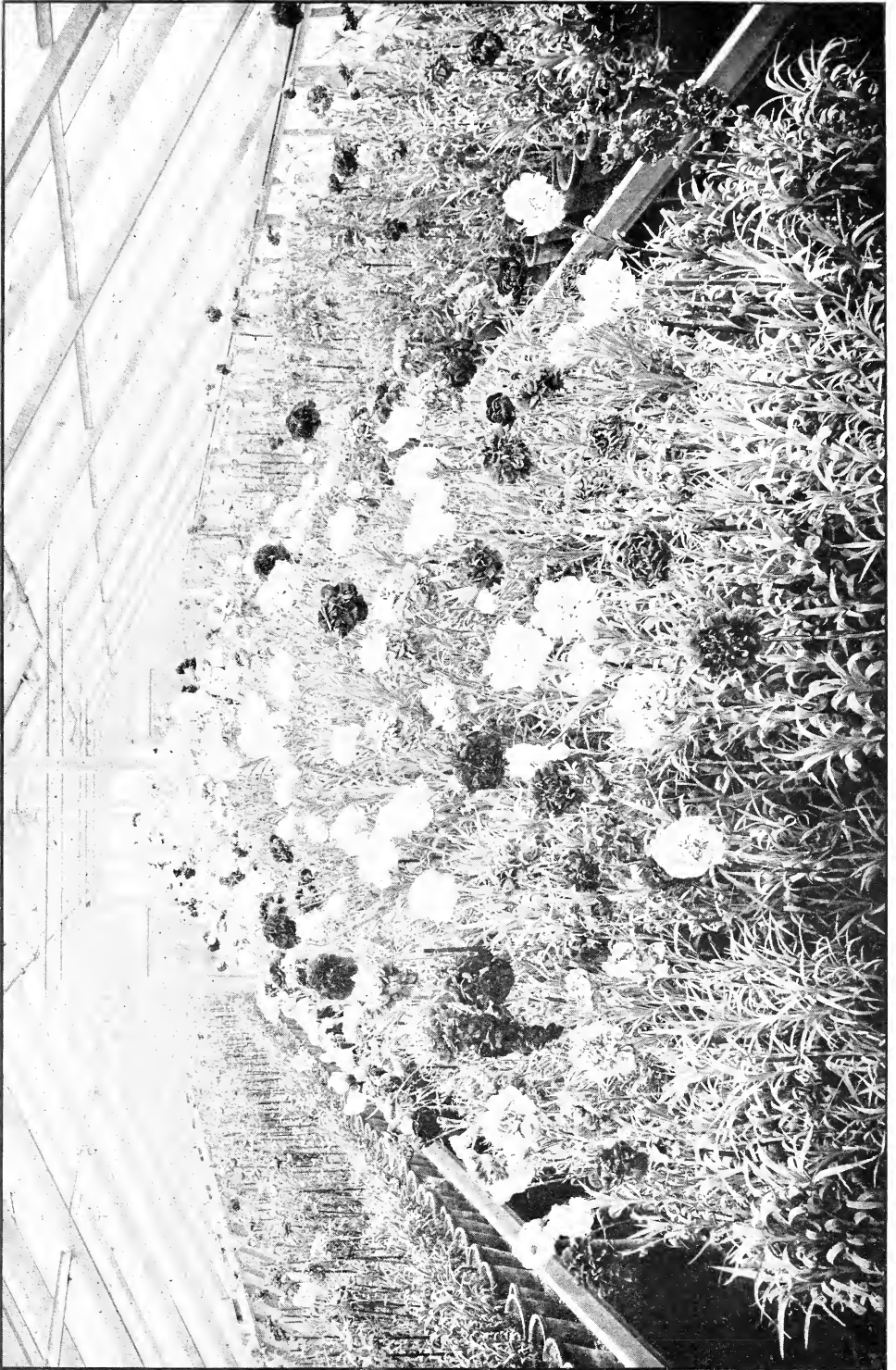
Begonias, **Carnations**, Chrysanthemums, Camellias, Dahlias, Gloxinias, Fuchsias, etc. Seed Trial Grounds.

All Letters and Remittances should be addressed to the Firm  
at Chelsea.

**JAMES VEITCH & SONS, Ltd.**



Map showing the positions of Messrs. Veitch's Nurseries.



One of our Carnation Houses at Feltham.



## PERPETUAL-FLOWERING CARNATIONS.

These require greenhouse culture, except from June to September, when they grow better in an open position out-of-doors, where some protection should be afforded them against heavy rains. Stop the shoots early to produce bushy plants. For green-fly fumigate under glass, and syringe with insecticide in the open. Place the plants near the light and give plenty of fresh air. Winter temperature 55%, with dry atmosphere and ventilation whenever possible.

**A GOOD POTTING SOIL.**—Four parts fibrous loam, one part decayed manure, one part leaf-mould. Pot firmly and see that drainage is good.

**A.M.**—Award of Merit from the Royal Horticultural Society.

### NOVELTIES FOR 1912.

	Price Each.
<b>Baroness de Brienen</b> , very rich salmon, flowers large, petals fringed	3/6
<b>Coronation</b> , rose, sweetly scented, good stems, calyx perfect	3/6
<b>Duchess of Devonshire</b> , dark crimson, sweetly scented, strong grower	5/-
<b>Elektra</b> , deep orange, pink picotee edge, free-flowering	3/6
<b>Empire Day</b> , bright salmon-pink	3/6
<b>Fairmount</b> , heliotrope, large flowers, an improvement on <i>Mikado</i>	3/6
<b>Geisha</b> , glistening heliotrope with suffusion of salmon at base of petals, fragrant	3/6
<b>Lady Northcliffe</b> , bright salmon-pink, growth strong and healthy, free-flowering	3/6
<b>La Rayonnante</b> , deep sulphur-yellow, growth robust	3/6
<b>Mandarin</b> , orange-yellow, broad cerise-pink markings, good habit	3/6
<b>Sultan</b> , dark crimson, fringed petals, strong grower	3/6
<b>Sunstar</b> , deep yellow slightly splashed pink	3/6
<b>Triumph</b> , bright crimson, good calyx, free-flowering	3/6
<b>Wivelsfield Wonder</b> , white, flaked with rose-pink, healthy grower	3/6
<b>Wodenethe</b> , the largest white, very fragrant	3/6

### GENERAL COLLECTION.

#### GOOD FLOWERING PLANTS.

1/6 each, 18/- to 24/- per dozen, except where otherwise priced.

For spring prices of plants in small pots, see special list published in February.

<b>Admiration</b> , a beautiful shade of light pink, of excellent form, habit of plant ideal	
<b>Alma Ward</b> , white, marked with light pink, very large and fragrant	
<b>Aristocrat</b> , bright cerise-pink, fine large flowers with good habit	
<b>Bay State</b> , white marked with carmine, stiff stems	
<b>Beacon</b> , a fine early scarlet with strong stems. A.M.	
<b>Black Chief</b> , rich dark velvety crimson, an improvement on <i>Harlowarden</i> , sweetly scented, robust habit, a good variety	
<b>Bonfire</b> , very fine scarlet, habit strong and free	2/6
<b>Bridesmaid</b> , salmon-pink, darker than <i>Enchantress</i> , fragrant	
<b>Bright Spot</b> , bright dark pink, early and continuous	2/6
<b>Britannia</b> , a very fine large scarlet, free-flowering, long stiff stems. A.M.	
<b>Carola</b> , an exceptionally large dark glossy crimson of strong growth and very fragrant. A first rate variety superior to any of its colour. A.M.	
<b>Colossus</b> , deep rose-cerise, large and fragrant	2/6
<b>Conquest</b> , light pink overlaid with rose, habit of <i>Lawson</i>	
<b>Dorothy Gordon</b> , deeper than <i>Rose Enchantress</i> , large flowers on long stiff stems	
<b>Edith Waters</b> , bright cerise, fine flower	

**PERPETUAL-FLOWERING CARNATIONS—continued.**

	Price Each.
<b>Enchantress</b> , very pretty pink, one of the finest varieties offered. A.M.	
<b>Fireglow</b> , yellow flaked with red, sound calyx	<b>2/6</b>
<b>Gloriosa</b> , pure light pink, perfect form, very free-flowering	<b>2/6</b>
<b>Harlowarden</b> , rich deep crimson, extra large long stiff stems, one of the best. A.M.	
<b>Helen Gould</b> , a lovely sport from <i>Enchantress</i> ; clear pink with carmine streaks	
<b>Jessica</b> , pure white with scarlet streaks; good form. A.M.	
<b>J. Whitcombe Riley</b> , a pure self-yellow, free-flowering	<b>2/6</b>
<b>Lady Alington</b> , rich salmon-pink, full flower, sweetly scented. A.M.	<b>2/6</b>
<b>Lady Dainty</b> , white, faintly flaked with purple, very fragrant, habit and formation of flower similar to <i>Lady Bountiful</i>	
<b>La Mode</b> , heliotrope with pink centre, long stiff stems	<b>2/6</b>
<b>Lawson Enchantress</b> , a seedling from <i>Enchantress</i> , very fine	
<b>Mary Tolman</b> , deep flesh pink, good habit	
<b>May Day</b> , satin-pink, fine strong stems and good calyx, very free flowering	
<b>Mikado</b> , fine deep heliotrope; good shape, very fragrant, vigorous grower	
<b>Mrs. C. F. Raphael</b> , cherry-red, very large, clove fragrance. A.M.	<b>5/-</b>
<b>Mrs. Charles Knopf</b> , a deeper shade of pink than <i>Enchantress</i> , very large well built flowers with good calyx	
<b>Mrs. C. W. Ward</b> , deep pink, perfect flower, full centre, vigorous grower	
<b>Mrs. H. Burnett</b> , a pleasing shade of rose-pink, free-flowering and vigorous	
<b>Mrs. Tatton</b> , white, overlaid with pink, very fragrant. A.M.	
<b>Mrs. T. W. Lawson</b> , a perfect rose-pink; very fragrant; strong grower. A.M.	
<b>Mrs. W. B. Clode</b> , deep salmon-rose, very fragrant	
<b>Mrs. W. J. Hunter</b> , cherry-red, good calyx, fragrant	
<b>Niagara</b> , fine large white flowers on long stiff stems, very fragrant	
<b>O. P. Bassett</b> , large and red flowers borne on good stems. A.M.	
<b>Orpheus</b> , yellow pencilled with carmine and white	<b>2/6</b>
<b>Pink Delight</b> , a very free-flowering pink variety with strong stems and good calyx	
<b>President Seelye</b> , a superb white, large, well formed and fragrant flower	
<b>Princess Charming</b> , flesh-pink, long erect stems, free-flowering	<b>2/6</b>
<b>Red Mrs. T. W. Lawson</b> , a fine red form of the well known variety	
<b>Regal Mauve</b> , a distinct shade, large flower	
<b>Regina</b> , rich salmon-pink, large flower, very fragrant	<b>2/6</b>
<b>Rex</b> , rose-pink, medium, free and continuous flowering	<b>2/6</b>
<b>R. F. Felton</b> , rosy-pink, large, vigorous and free-flowering. A.M.	<b>2/6</b>
<b>Rival</b> , salmon-cerise, large well formed flower, petals fimbriated, habit good	
<b>Rose Doree</b> , a lovely cherry-red with an orange-tint, habit and calyx good. A.M.	
<b>Rose Enchantress</b> , clear rose sport from <i>Enchantress</i> ; early, strong stems	
<b>Royal Purple</b> , a fine purple of good size, strong erect habit with good foliage	
<b>Ruby</b> , a beautiful scarlet-crimson of good habit, very free and continuous	
<b>Sangamo</b> , brilliant glistening pink, habit good, very free flowering	
<b>Scarlet Glow</b> , exceptionally bright scarlet, good stem and perfect calyx	
<b>Shasta</b> , pure glistening white, good calyx, strong flower stems	
<b>The Constant</b> , beautiful light pink excellent habit, calyx perfect	
<b>Vinca</b> , purple, large, strong grower	
<b>Wanoka</b> , deep crimson, flowers of good form and size, strong flower stems	
<b>White Enchantress</b> , a pure white sport from <i>Enchantress</i> ; very useful	
<b>White House</b> , large pure white, sweetly scented. A.M.	<b>2/6</b>
<b>White Lawson (Improved)</b> , flowers very free and large	
<b>White Perfection</b> , a very large pure white; very free and lasts well	
<b>White Wonder</b> , pure glistening white, an improvement on <i>White Perfection</i>	<b>2/6</b>
<b>Winsor</b> , clear silvery pink, large flower. A.M.	

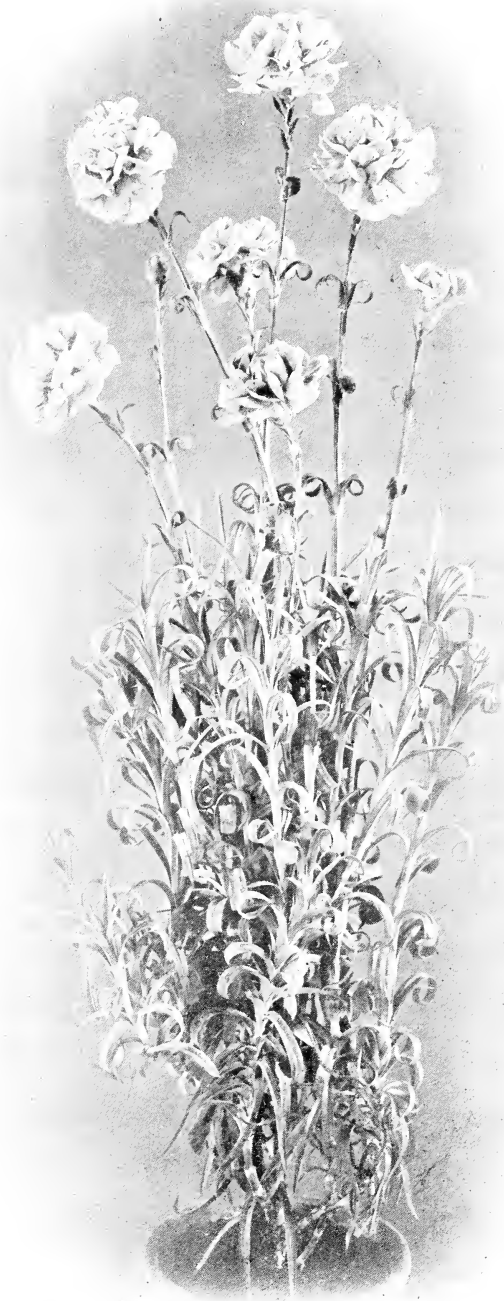




**SIX GOOD TYPES OF PERPETUAL-FLOWERING  
CARNATIONS**

- 1 Enchantress**
- 2 Mrs. T. W. Lawson**
- 3 Britannia**

- 4 White Enchantress**
- 5 Rose Enchantress**
- 6 Mikado**



**Malmaison—Duchess of Westminster.**

## MALMAISON CARNATIONS.

Young Plants from October to March. After this date the plants are in larger pots and the prices somewhat higher.

A rather dry atmosphere is desirable during the Winter months and care should be taken not to overwater the plants. Ventilate freely whenever possible, keeping plants near the glass at all times. Fumigate for green-fly, and syringe with insecticide in case of Red Spider.

	Each.
<b>Albion</b> , fine dark salmon-red ; good dwarf habit	1/-
<b>Baldwin</b> , dark pink, very large petals, full flower	1/-
<b>C. P. Little</b> , a true yellow Malmaison, flowers of excellent build and good size	2/6
<b>Dragut</b> , deep cherry-red ; large flowers, very fragrant	1/6
<b>Duchess of Westminster</b> , deep rose-pink ; early and robust ; see illus. page 8	1/6
<b>Florizel</b> , a distinct and beautiful shade of rose ; very sturdy habit	1/-
<b>H. J. Jones</b> , rich deep crimson, very large and full ; clove scented	1/-
<b>Hercules</b> , rich crimson-maroon, distinct shade ; very large and handsome, A.M.	1/6
<b>Horace Hutchinson</b> , a bright glowing scarlet, very robust in habit	1/-
<b>Irene</b> , a delightful pink with salmon sheen, very large, has a very fine constitution	1/6
<b>Ivanhoe</b> , salmon-scarlet, very bright	1/-
<b>Jane Seymour</b> , a distinct shade of salmon-pink	1/-
<b>Juliette</b> , very pretty cerise	1/-
<b>King Oscar</b> , bright crimson, fine massive bold flower	1/-
<b>Lady Coventry</b> , a distinct scarlet-cerise, clove scented, enormous flower	1/-
<b>Lady Grimston</b> , pinkish white marked with bright rose ; flowers of good form	1/-
<b>Lady Mary Hope</b> , clear deep terra-cotta, large and full, stems stiff and erect	3/6
<b>Lady Rose</b> , a grand bright rose colour ; gigantic flowers	1/-
<b>Lois Sturt</b> , clear pale buff, of good form	1/6
<b>Lord Rosebery</b> , dark rose ; petals smooth and cupped ; very robust	1/-
<b>Lord Welby</b> , very large dark crimson flowers, of good substance	1/6
<b>Maggie Hodgson</b> , dark velvety crimson ; very strong clove fragrance	1/-
<b>Maggie Nettlefield</b> , a fancy variety, blush pink with a deeper pink vein, very large and richly perfumed	1/6
<b>Marmion</b> , very large, bright cherry-red, margin white, strong clove scent	1/6
<b>Mercia</b> , a distinct salmon-pink ; fine form and good dwarf habit	1/-
<b>Monk</b> , a pretty salmon-pink tint ; very large, and of good form	1/-
<b>Mrs. de Satge</b> , bright scarlet ; dwarf stiff habit, one of the best	1/-
<b>Mrs. Everard Hambro</b> , a distinct crimson-rose ; very large massive flowers	1/-
<b>Mrs. Martin R. Smith</b> , very large rose-pink flowers	2/6
<b>Mrs. Torrens</b> , pretty shade of salmon-pink ; flowers exceptionally large	1/-
<b>Mrs. Trelawny</b> , dark salmon ; fine constitution, see illustration page 10	1/-
<b>Nautilus</b> , flesh colour ; very large bloom of refined appearance	1/-
<b>Nell Gwynne</b> , the best white ; strong growth, large flowers	1/6
<b>Prime Minister</b> , very bright scarlet, sweetly scented ; easily grown	1/-
<b>Princess May</b> , flowers of large size, rich deep rose	1/-
<b>Ritt-Meister</b> , distinct apricot-yellow, strong and vigorous	1/-
<b>Robert Burns</b> , an excellent bright salmon variety, very fine form.	1/-



**Malmaison—Mrs Trelawny,**

**GENERAL COLLECTION OF MALMAISON CARNATIONS—continued.**

	Price Each.
<b>Sir Charles Freemantle</b> , rich deep rose-pink, very large blooms	1/-
<b>Sir Evelyn Wood</b> , ground colour salmon-pink, striped with a darker shade	1/-
<b>Soult</b> , a distinct salmon-pink colour	1/-
<b>Souvenir de la Malmaison</b> , blush	1/-
<b>Souvenir de la Malmaison</b> , (pink) <i>Princess of Wales</i>	1/-
<b>Souvenir de la Malmaison</b> , rose	1/-
<b>Sunrise</b> , straw-yellow flaked with delicate pink, habit of growth and stem, good	3/6
<b>Sunset</b> , rich apricot, flaked and shaded with reddish bronze, flowers of good size	2/6
<b>The Churchwarden</b> , bright crimson-scarlet, large and full	1/-
<b>The Colonel</b> , Cherry-red, perfect in form and petals, sound calyx	1/6
<b>The Queen</b> , terra-cotta colour, very distinct and attractive	1/-
<b>Thora</b> , blush-white, changing to pure white when fully expanded, very choice	1/-
<b>Trumpeter</b> , dark crimson, sweetly fragrant and very robust	1/-
<b>Yaller Gal</b> , bright yellow, of excellent form	1/-

## BORDER CARNATIONS.

These are quite hardy and very easily cultivated in any good garden soil. The addition of mortar rubbish or broken shells is beneficial. Plant firmly in October or November. Plants that have been kept in pots through the winter may be planted in March. Green-fly and thrips are troublesome. Fumigate plants in pots and syringe with insecticide in the open.

### NEW BORDER CARNATIONS.

	Price	Each	Pair
<b>Annie Laurie</b> , delicate blush self, stout stems		2/6	4/6
<b>Canary Bird</b> , canary-yellow suffused pink		2/6	4/6
<b>Furthest North</b> , a grand white self		2/6	4/6
<b>Golden Oriole</b> , golden-buff self		2/6	4/6
<b>Greyhound</b> , lavender self, strong grower		2/6	4/6
<b>Irma</b> , rich royal purple, healthy grower and constant bloomer		3/6	6/6
<b>Jean Douglas</b> , scarlet self, flowers large and well formed		2/6	4/6
<b>Lord Nelson</b> , ruby-crimson self. A.M.		2/6	4/6
<b>Montrose</b> , white ground marked bright scarlet		2/6	3/6
<b>Mrs. Andrew Brotherstone</b> , purple spotted with white markings, a unique variety. A.M.		3/6	6/6
<b>Mrs. Elliot Douglas</b> , large yellow self of fine form. A.M.		3/6	6/6
<b>Rosy Morn</b> , rose self. A.M. -		2/6	4/6
<b>Sweetheart</b> , delicate apricot marked and suffused pink		2/6	4/6
<b>Virginia</b> , buff ground suffused pink		2/6	4/6

## BORDER CARNATIONS—GENERAL COLLECTION.

### SELS AND FANCIES.

Healthy Plants in pots from October to March.

9d. each except where otherwise priced.

	Price	Each	Pair
<b>Agnes Sorrel</b> , rich maroon, well formed petals of good substance. A.M.			
<b>Alice Ayres</b> , white, splashed with carmine, vigorous grower			
<b>Alice Byron Stewart</b> , apricot ground fancy, marked with rich rose		1/-	1/8
<b>Amazon</b> , orange-buff self with a diffusion of scarlet		1/6	2/6
<b>Amy Robsart</b> , a fine bold white, large and well-formed flowers on erect stems		1/-	1/8
<b>Ann Hathaway</b> , deep clear yellow self, of perfect form and colour		1/-	1/8
<b>Argonaut</b> , splendid crimson-scarlet		1/-	1/8
<b>Banner</b> , scarlet, large fine full-sized variety. A.M.			
<b>Banshee</b> , lavender, flaked with scarlet, petals smooth, of perfect form			
<b>Benbow</b> , buff, a large and finely-formed flower			
<b>Bendigo</b> , purplish-blue, nearest approach to a true blue ; very distinct			
<b>Blondel</b> , very fine large scarlet with good petals		1/-	1/8
<b>Bob Acres</b> , a scarlet self of superb form		1/6	2/6
<b>Bombardier</b> , yellow ground barred crimson-maroon		2/6	4/6
<b>Bridegroom</b> , a grand pink self		1/-	1/8
<b>Brigadier</b> , a good large scarlet of very fine form		1/-	1/8
<b>Cæsar and Pompey</b> , pure white, marked scarlet and maroon ; distinct		1/-	1/8
<b>Cardinal</b> , handsome scarlet of perfect form		1/-	1/8
<b>Cecilian</b> , delicate rose, very large and sweet scented, free flowering		1/-	1/8
<b>Cecilia</b> , clear yellow self, much admired		1/-	1/8
<b>Celestial</b> , yellow-ground fancy, maroon and red markings		1/-	1/8
<b>Comet</b> , dark maroon, large well-formed flowers ; fine border variety			



## BORDER CARNATIONS.

### GENERAL COLLECTION OF SELFS AND FANCIES—contd.

9d. each except where otherwise priced.

	Price	Each	Pair
<b>Crimson Clove</b> , a fine old variety that requires no description of merit			
<b>Cupid</b> , clear rose self, the colour of <i>Lady Hermione</i> ; very fine	1/-		1/8
<b>Daffodil</b> , clear yellow self, very fine	1/-		1/8
<b>Daniel O'Connor</b> , yellow ground marked maroon and splashed scarlet			
<b>David Abercrombie</b> , yellow ground fancy suffused with rosy mauve slightly splashed with rosy mauve	1/-		1/8
<b>Delia</b> , fine rose self	2/6		4/6
<b>Delicia</b> , white ground well marked with pink and crimson, the best in this class	1/-		1/8
<b>Devonian</b> , yellow ground splashed with bright rose	1/-		1/8
<b>Donald MacDonald</b> , yellow ground edged and suffused bright crimson, very large	2/6		4/6
<b>Duchess of Fife</b> , clear bright pink ; good for forcing			
<b>Duchess of Wellington</b> , deep lavender, large flowers, exquisite form	1/-		1/8
<b>Duke of Norfolk</b> , a handsome scarlet self, flowers of fine quality and form			
<b>Elizabeth Shiffner</b> , bright golden orange, handsome form	1/-		1/8
<b>Ellen Douglas</b> , lovely silver-grey, perfect form, sweetly clove scented	1/-		1/8
<b>Enid</b> , a charming rose-pink self, very fine			
<b>Eros</b> , a fine large yellow of robust habit, flowers of good form	1/-		1/8
<b>Erl King</b> , large well-formed fancy, buff ground prettily marked with rose	1/-		1/8
<b>Etna</b> , very fine scarlet self	1/-		1/8
<b>Exmouth Rival</b> , rich apricot, heavily edged and flaked with scarlet	1/-		1/8
<b>Father O'Flynn</b> , yellow ground, heavily edged and barred rosy crimson	1/-		1/8
<b>Forester</b> , yellow ground marked red and crimson. A.M.	1/6		2/6
<b>Francis Samuelson</b> , soft, clear apricot yellow, one of the finest in its class			
<b>Francis Wellesley</b> , deep carmine-rose self with well-formed flowers			
<b>George Macquay</b> , pure white			
<b>Gloire de Nancy</b> , a good white clove carnation			
<b>Gloriosa</b> , apricot ground heavily marked scarlet	1/-		1/8
<b>Goldfinch</b> , an apricot-yellow self ; excellent border variety, of good form	1/-		1/8
<b>Grand Dame</b> , apricot-ground beautifully marked with lavender ; a large flower of fine form	1/-		1/8
<b>Grey Friar</b> , lavender tinged with rosy-red, distinct, very handsome	1/-		1/8
<b>Gulnare</b> , deep rich maroon, flowers of largest size, petals broad			
<b>Guinevere</b> , buff suffused with pink ; fine form and very pretty	1/-		1/8
<b>Hadzor</b> , dark salmon self			
<b>Harlequin</b> , canary yellow marked on petals and margin with rose and crimson	1/-		1/8
<b>Harry Lauder</b> , buff and yellow ground fancy suffused and edged bright rose	1/-		1/8
<b>Helena</b> , heavily marked scarlet on buff ground, good form and large	1/-		1/8
<b>Helen, Countess of Radnor</b> , deep crimson	1/-		1/8
<b>Herbert J. Cutbush</b> , glowing scarlet self, flowers of good form ; calyx good			
<b>Hercules</b> , apricot-ground edged and suffused bright rosy scarlet	1/-		1/8
<b>Ibis</b> , scarlet self ; very large flowers of good form	1/-		1/8
<b>Ilene</b> , blush-white self, large	1/6		2/6
<b>Irene Vaughan</b> , rich carmine-pink ; vigorous and free			
<b>Isinglass</b> , rich scarlet ; this is a splendid carnation. A.M.			
<b>Ivo Sebright</b> , delicate rose colour, intermixed with slashes of heliotrope			
<b>John Guy</b> , yellow-self			
<b>John Knox</b> , very dark crimson, fine shape	2/6		4/6
<b>John Ridd</b> , yellow ground suffused with rosy red, very large	1/6		2/6
<b>John Pope</b> , a grand rose self, of splendid form and quality ; one of the best	1/-		1/8

## BORDER CARNATIONS.

### GENERAL COLLECTION OF SELFS AND FANCIES—contd.

9d. each except where otherwise priced.

	Price	Each	Pair
<b>Juno</b> , apricot ground heavily marked with bright rose		1/-	1/8
<b>Kate Nickleby</b> , a white self with large flowers		1/-	1/8
<b>King Arthur</b> , a very fine crimson ; strong grower		1/6	
<b>King of Spain</b> , fiery red ground fancy marked with rich maroon		1/6	2/6
<b>King Solomon</b> , apricot yellow curiously marked with crimson and maroon		1/-	1/8
<b>Kissing Cup</b> , salmon pink of excellent form		1/-	1/8
<b>Lady Ardilaun</b> , a shade of buff yellow, rose and lavender grey		1/-	1/8
<b>Lady Gay</b> , a large white-ground fancy prettily marked with bright red		1/-	1/8
<b>Lady Hermione</b> , bright rosy salmon, large, very smooth and good petals		1/-	1/8
<b>Lady Linlithgow</b> , a charming bright rose self of exquisite shape			
<b>Lady Roscoe</b> , a handsome blush-white, large and of splendid form, very erect		1/-	1/8
<b>Lara</b> , light buff heavily marked with rose		1/-	1/8
<b>Lass O'Gowrie</b> , white ground marked red		1/6	2/6
<b>Leslie</b> , buff ground edged and suffused with rosy mauve		2/6	4/6
<b>Liberte</b> , yellow ground marked with maroon and crimson ; one of the best		1/-	1/8
<b>Lieut. Shackleton</b> , yellow ground fancy suffused and splashed pale pink. A.M.		1/6	2/6
<b>Linkman</b> , yellow ground heavily marked scarlet		1/-	1/8
<b>Lord Steyne</b> , well formed fancy, richly marked crimson on yellow ground		1/-	1/8
<b>Maggie Morton</b> , pure white lightly marked bright rose		1/6	2/6
<b>Mandalay</b> , a deep rose self, producing large full flowers very freely		1/-	1/8
<b>Mandarin</b> , yellow ground, heavily edged and marked rose		1/-	1/8
<b>Margaret Thurston</b> , yellow ground, heavily edged and marked scarlet		1/-	1/8
<b>Maud Allen</b> , fine yellow		1/-	1/8
<b>Medusa</b> , buff suffused with rose-mauve		2/6	4/6
<b>Melton Prior</b> , rich yellow ground heavily marked bright scarlet		1/6	2/6
<b>Mephisto</b> , a fine crimson ; a good border variety			
<b>Midas</b> , orange-buff with suffusion of scarlet, the flowers are large and full			
<b>Millie</b> , white ground fancy, delicately marked rose-red ; exquisite form		1/-	1/8
<b>Miss A. Campbell</b> , yellow self flowers ; very large and good shape		1/-	1/8
<b>Miss Ellis</b> , a charming deep lavender tint, distinct in colour ; excellent form		1/-	1/8
<b>Miss Maud Sullivan</b> , a delicate rose-pink self ; very beautiful		1/-	1/8
<b>Miss Theodosa Meade</b> , a fine yellow self border carnation, vigorous grower, free bloomer, large flower, good calyx ; one of the best		1/-	1/8
<b>Miss Willmott</b> , bright pink, perfect form ; one of the best, A.M.		1/-	1/8
<b>Mrs. Charles Baring</b> , deep yellow, distinctly margined and marked crimson			
<b>Mrs. Everard Martin Smith</b> , a grand white with splendid petals. A.M.		1/6	2/6
<b>Mrs. F. Cooper</b> , salmon-pink			
<b>Mrs. Flight</b> , one of the best pink selfs ; good for exhibition purposes			
<b>Mrs. Forbes</b> , a good bright yellow		1/-	1/8
<b>Mrs. Fred Gardener</b> , apricot ground fancy marked deep rose, perfect form		1/-	1/8
<b>Mrs. F. Watts</b> , pure white, very free ; good flower			
<b>Mrs. G. A. Reynolds</b> , apricot self, very beautiful. A.M.		1/6	2/6
<b>Mrs. George Marshall</b> , glowing crimson, self		1/-	1/8
<b>Mrs. Griffith Jones</b> , a distinct apricot self, perfect form and good substance		1/-	1/8
<b>Mrs. Guy Sebright</b> , very distinct rose			
<b>Mrs. Henwood</b> , pure white, perfect form and finish. A.M.		1/6	2/6
<b>Mrs. Howard Green</b> , salmon-rose			
<b>Mrs. J. L. Gibson</b> , buff ground marked lilac rose		1/6	2/6
<b>Mrs. Leo. Hunter</b> , yellow ground marked bright purple			

## BORDER CARNATIONS.

### GENERAL COLLECTION OF SELFS AND FANCIES—contd.

9d. each except where otherwise priced.

	Price Each	Pair
<b>Mrs. Macrae</b> , very fine dark scarlet. A.M.		
<b>Mrs. Penton</b> , buff ground heavily marked bright rose. A.M.	2/6	4/6
<b>Mrs. Robert Berkeley</b> , apple-blossom pink self, a splendid colour. A.M.	3/6	6/6
<b>Mrs. Nicholson</b> , one of the best pink-coloured carnations		
<b>Mrs. R. Hole</b> , soft apricot ; a well-known variety		
<b>Mrs. Robert Gordon</b> , a charming pink self, large flower	1/-	1/8
<b>Mrs. Robert Morton</b> , fine deep apricot-yellow, flowers large and well formed	1/-	1/8
<b>Mrs. Webber Incledon</b> , pink self flowers of very handsome form		
<b>Muleteer</b> , very distinct fancy, buff ground		
<b>Oriel</b> , buff and yellow ground fancy suffused with bright rose		
<b>Osprey</b> , buff ground fancy curiously marked and spotted with scarlet	1/-	1/8
<b>Pascal</b> , yellow ground fancy lightly suffused with bright crimson, perfect shape	1/-	1/8
<b>Pasquin</b> , a distinct and handsome fancy	1/-	1/8
<b>Persephone</b> , reddish lavender, flaked rose	1/-	1/8
<b>Primate</b> , white		
<b>Queen Eleanor</b> , buff ground fancy marked and edged with scarlet	1/6	2/6
<b>Raby Castle</b> , bright salmon-pink		
<b>Reginald Godfrey</b> , bright scarlet	1/-	1/8
<b>Renown</b> , buff ground fancy well marked with fiery red	1/6	2/6
<b>Red Rover</b> , scarlet self, well-formed flowers, free growing variety		
<b>Rhoda</b> , white ground fancy, flowers large, marked with lavender and rose	1/-	1/8
<b>Richness</b> , rich yellow ground fancy, edged and striped with scarlet	1/-	1/8
<b>R. Morton</b> , buff and yellow ground fancy suffused with bright crimson, large	1/-	1/8
<b>Robert Berkeley</b> , rich bright scarlet, very fine form. A.M.	1/-	1/8
<b>Rony Buchanan</b> , terra-cotta ground colour, petals marked with glowing rose	1/-	1/8
<b>Roy Morris</b> , large rich scarlet	1/-	1/8
<b>Ruby</b> , a distinct ruby tinted self of fine form	1/6	2/6
<b>Sadek</b> , a superb deep rose flower ; fine form		
<b>Salamander</b> , a good red border variety		
<b>Sam Weller</b> , yellow ground fancy, edged and marked with red and crimson		
<b>Siegfried</b> , yellow ground fancy suffused and streaked with light purple	1/-	1/8
<b>Sir Galahad</b> , one of the best petalled self whites in commerce	1/-	1/8
<b>Sir Launcelot</b> , a yellow ground fancy, marked scarlet ; large good form	1/-	1/8
<b>Sir Walter</b> , yellow ground fancy suffused with rosy crimson, large flower		
<b>Skirmisher</b> , apricot ground edged and suffused mauve and rose	2/6	4/6
<b>Splendour</b> , a handsome purple self, excellent habit	1/-	1/8
<b>Tallifer</b> , bright salmon-pink self	1/-	1/8
<b>Tantalus</b> , yellow ground, edged and suffused with pink	1/-	1/8
<b>The Bride</b> , white ground fancy lightly marked with bright rose	1/-	1/8
<b>The Dawn</b> , bright pink flowers, freely produced ; excellent border variety		
<b>The Nizam</b> , pure white, lightly marked with scarlet ; the best of its class	1/-	1/8
<b>Theodore Galton</b> , salmon-scarlet	1/-	1/8
<b>Titan</b> , fine white self	1/-	1/8
<b>Triton</b> , a fine maroon self, good form		
<b>Trojan</b> , pure white, the habit and size are good		
<b>Tubal</b> , crimson self, clove scented, a splendid flower	1/6	2/6
<b>Twilight</b> , lilac-purple, flaked and marked with scarlet ; a very handsome fancy	1/-	1/8
<b>Viscountess Ebrington</b> , yellow self, a charming border variety, large flower	1/-	1/8
<b>W. H. Parton</b> , the best of the maroon selfs	1/-	1/8

## YELLOW GROUND PICOTEES.

Ready from October to March.

### NEW PICOTEES.

	Each	Pair
<b>Ariel</b> , clear yellow ground, medium bright rose edge, good grower	3/6	6/6
<b>Corona</b> , yellow ground edged bright purple, extra large bloom	2/-	
<b>F. W. Goodfellow</b> , yellow ground, heavy rose edge, good petals	2/6	
<b>Gloria</b> , deep yellow ground heavily edged with light bright rose, strong grower and free-flowering	3/6	6/6

### GENERAL COLLECTION.

9d. each except where otherwise priced.

	Each	Pair
<b>Alcinous</b> , yellow ground edged with rose		
<b>Archie Brown</b> , rich deep yellow ground, bright purple, wire-edged		
<b>Badoura</b> , clear deep yellow ground, distinct rose margin: handsome		
<b>Burgomaster</b> , medium purple edge, one of the best		
<b>Dalkeith</b> , clear yellow, with heavy crimson margin		
<b>Empress Eugenie</b> , rich yellow, rose-coloured margin; petals broad		
<b>Galatea</b> , good yellow, medium margin of rose-red colour, very handsome		
<b>Gertrude</b> , yellow with broad margin of bright rose, flowers of good form		
<b>Goblin</b> , rich yellow ground, light purple edge		
<b>Gretchen</b> , yellow with rose-coloured margin, finely-formed petals		
<b>Her Majesty</b> , yellow heavily edged with purple, strong grower	1/-	1/8
<b>H. Falkland</b> , grand yellow, edged with bright rose, one of the best		
<b>John Ruskin</b> , clear yellow, edged light rose	1/-	1/8
<b>Lady Douglas Galton</b> , bright purple wire-edged flower of fine quality		
<b>Lady St. Oswald</b> , fine yellow, margined with bright red, well-formed petals		
<b>Leonora</b> , pure yellow, heavily edged with rose		
<b>Margaret Lennox</b> , clear yellow, heavily edged with rosy-scarlet	1/-	1/8
<b>Mrs. Walter Heriot</b> , fine yellow edged with clear rose, one of the best		
<b>Mohican</b> , deep yellow, light rosy-red margin, flowers large and full		
<b>Nelly Bligh</b> , clear yellow, heavy rose margin		
<b>Onward</b> , yellow, light purple edge, one of the best	1/-	1/8
<b>Ophir</b> , yellow, medium rose edge, fine form	1/-	1/8
<b>Othello</b> , deep yellow with broad margin of crimson, very distinct		
<b>Peregrine</b> , yellow ground, rose-coloured margin		
<b>Primrose</b> , yellow ground, with rose-coloured margin, perfect in form		
<b>Santa Claus</b> , yellow, edged purple		
<b>Sarchedon</b> , yellow, with a heavy red edge, excellent form and quality		
<b>Togo</b> , deep yellow, heavy crimson edge, a fine flower		

## WHITE GROUND PICOTEES.

1/- each.

9/- per dozen.

H Heavy edge.

L Light edge.

The others are intermediate.

### Rose and Scarlet-edged—

Favourite. L  
Fortrose. L  
Mrs. Rudd. L  
Mrs. Sharpe. H  
Psyche. L  
W. E. Dickson. H

### Crimson or Red-edged—

Aeme. L  
Brunette. H  
Grace Darling. L  
Thomas Williams. L  
Mrs. Bower. L  
Mrs. Gorton

### Purple-edged—

Calypso. H  
Amy Robsart  
Her Majesty. L  
Lavinia. L  
Polly Brazil. L  
Queen of Spain. H

## FLAKED CARNATIONS.

1/- each.

9/- per dozen.

### Scarlet Flakes—

Guardsman  
H. Shoesmith  
Sportsman  
Recorder  
Richard Dean  
Torchlight. 1/6 each

### Rose Flakes—

Dolly Vardon  
Hebe  
Merton  
Mrs. Rowan  
Pandora  
Tudor

### Purple Flakes—

Charles Henwood  
Earl Stamford  
Florence Nightingale  
Gordon Lewis  
Mrs. Douglas  
Mayor of Nottingham

## BIZARRE CARNATIONS.

1/- each.

9/- per dozen.

### Scarlet Bizarres—

Admiral Curzon  
Dr. Hogg  
George  
Gilbert  
Joseph Crossland  
Robert Houlgrave

### Pink and Purple Bizarres—

Fred Phillips  
Harmony  
Melody  
Princess Beatrice  
Sarah Payne  
William Skirving

### Crimson Bizarres—

Arline  
Bruce Findlay  
Little Dick  
Master Fred  
Phoebe  
Virgil

## PINKS.

All the best named varieties for forcing, massing, or for open border.

6/- per dozen.

40/- per 100.

In addition to this Catalogue we publish the following Lists and Catalogues, which we shall be happy to forward post free on application :—

VEGETABLE and FLOWER SEEDS, GARDEN TOOLS] and SUNDRIES.

HARDY TREES and SHRUBS.

HARDY HERBACEOUS PERENNIALS and ALPINE PLANTS.

INDOOR PLANTS.

FRUIT TREES.

BULBS and FORCING PLANTS.

NEW HARDY PLANTS FROM CHINA.

CHRYSANTHEMUMS.

BEDDING PLANTS.

HARDY WATER LILIES.

ROSES.

STRAWBERRIES.

DAHLIAS.

JAMES VEITCH & SONS, Ltd.,  
Royal Exotic Nursery,  
CHELSEA, LONDON.