

Historic, Archive Document

Do not assume content reflects current scientific knowledge, policies, or practices.



By Special Appointment to
His Majesty The King.

**NEW HARDY PLANTS
FROM WESTERN CHINA**

(Introduced through Mr. E. H. Wilson).

**AUTUMN
1913**

**JAMES VEITCH & SONS,
LTD.
CHELSEA.**

The plants in this list may be seen growing at our Coombe Wood Nursery, Kingston Hill, where visitors will be welcome on all week days except Bank-holidays.

The nearest Railway Station is Norbiton, on the Kingston branch of the London and South Western Railway, but the Nurseries may also be reached from Kingston and Surbiton stations, the latter being on the same Company's Main Line, or by Motor-bus (Service 85) from Putney Bridge Station or Putney Station, L.S.W.

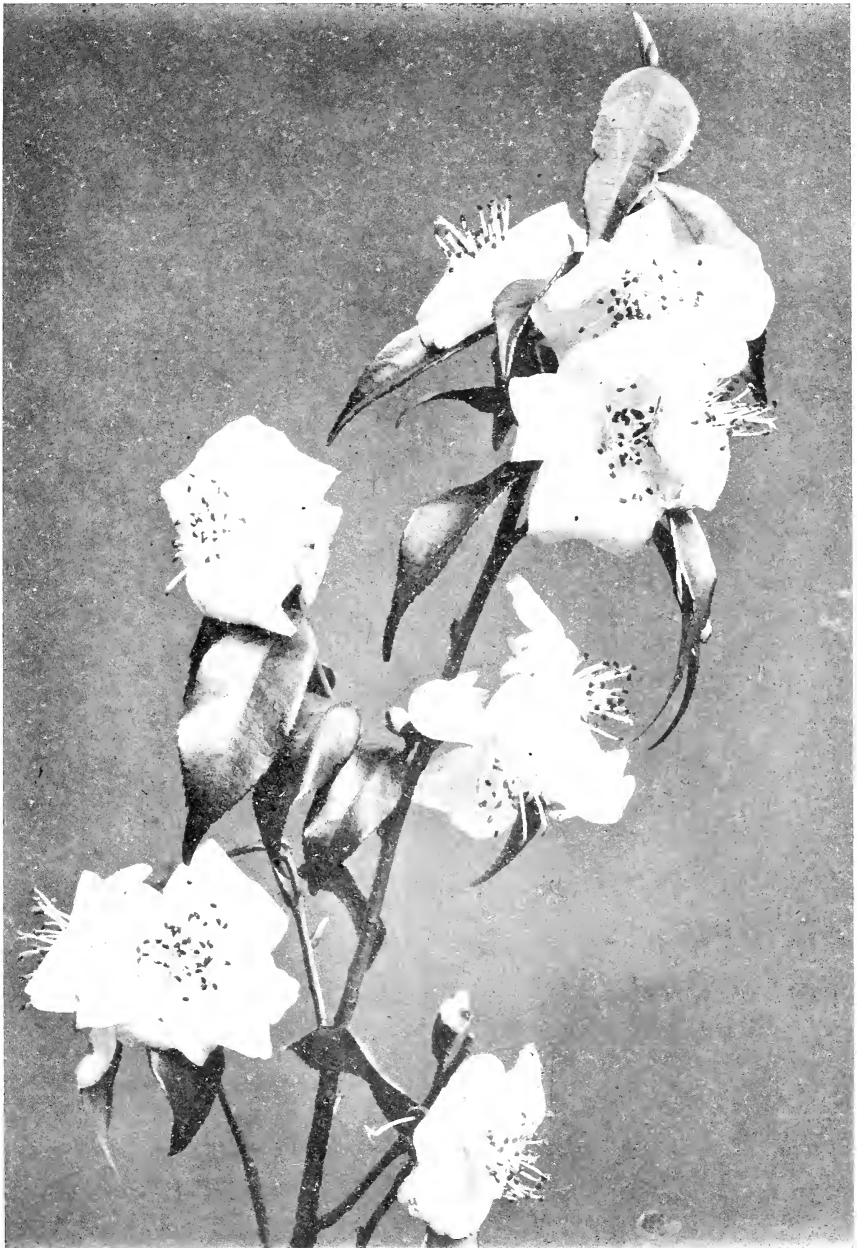
Cabs are always in waiting at all these Stations. Trams run from Surbiton to within ten minutes' walk of the Nursery.

Our very complete collection of Hardy Ornamental Trees and Shrubs, both flowering and foliage, Conifers, Rhododendrons, etc. is grown at the Coombe Wood Nursery.

Full illustrated Catalogue free on application.

Also
at {
COOMBE WOOD
LANGLEY and
FELTHAM

JAMES VEITCH & SONS, Ltd.,
ROYAL EXOTIC NURSERY,
CHELSEA, LONDON.



Camellia cuspidata. (Described on page 4).

NEW HARDY PLANTS FROM WESTERN CHINA.

(Introduced through Mr. E. H. Wilson.)

AUTUMN, 1913.

As the stocks of some of the new plants now offered for the first time are limited we can only offer them as far as unsold, orders will be executed in strict rotation.

ACANTHOPANAX RICINIFOLIA

Price
Each

A decorative deciduous tree attaining a height of from 18 to 25 feet, bearing bold Aralia-like foliage. The stems throughout the entire plant are thickly studded with very strong spines

5/-

ACER TETRAMERUM LOBULATUM

Of fairly rapid growth this graceful small leaved Maple may with advantage be planted in association with broad leaved species. The leaves which resemble those of a Birch but with a margin cut into lobes, are of a very bright green

5/-

CAMELLIA CUSPIDATA

A very hardy evergreen species, closely allied to *C. Sasanqua*. The white flowers are very freely produced in early spring and contrast well with the neat deep green shining leaves. A most attractive shrub of good habit for a specimen plant. See illustration p. 3
Award of Merit from the Royal Horticultural Society.

7/6

COTONEASTER AMENA

A semi-evergreen species of a very dense growing habit, with small neat ovate leaves. Flowers white, in corymbs of 6 to 10 each, superseded in autumn by bright red globose fruits. Quite distinct and particularly suitable as a specimen plant

3/6

COTONEASTER BULLATA

A new semi-evergreen species, with dark green ovate-elliptic leaves. Of rapid growth it quickly forms an attractive shrub 10 to 12 feet in height. The flowers are cream-white and freely produced in dense corymbs during May followed by deep scarlet fruits in early autumn
Award of Merit from the Royal Horticultural Society.

3/6

COTONEASTER HARROVIANA

An evergreen species with lanceolate leaves and dense corymbs of white flowers borne on long pendulous growths during May. The young stems and also the fruits are of a bright reddish brown colour. Suitable as a specimen or for a wall-plant

3/6

ILEX YUNNANENSIS

A slow growing evergreen shrub densely furnished with small ovate leaves the margins of which are crenate and spineless

7/6

LIGUSTRUM PRATTII

The small oblong leaves of this fine new evergreen species are bright shining green and borne very thickly in pairs. Its white flowers are freely produced during July. On account of its free branching habit, very neat growth and dense foliage it is suitable as a specimen or for dwarf hedge planting

3/6

PHILADELPHUS DELAVAYI

A strong growing deciduous shrub the young growths of which are rigid and upright. Leaves deep green ovate-acuminate. The pure white flowers of this new species are very fragrant and produced during July when other species and varieties have finished flowering

3/6

NEW HARDY PLANTS FROM WESTERN CHINA (continued).

ROSA SETIPODA

A new species of robust habit growing to a height of 7 to 10 feet. Flowers single, silvery pink shaded rose, produced in clusters of 9 to 16

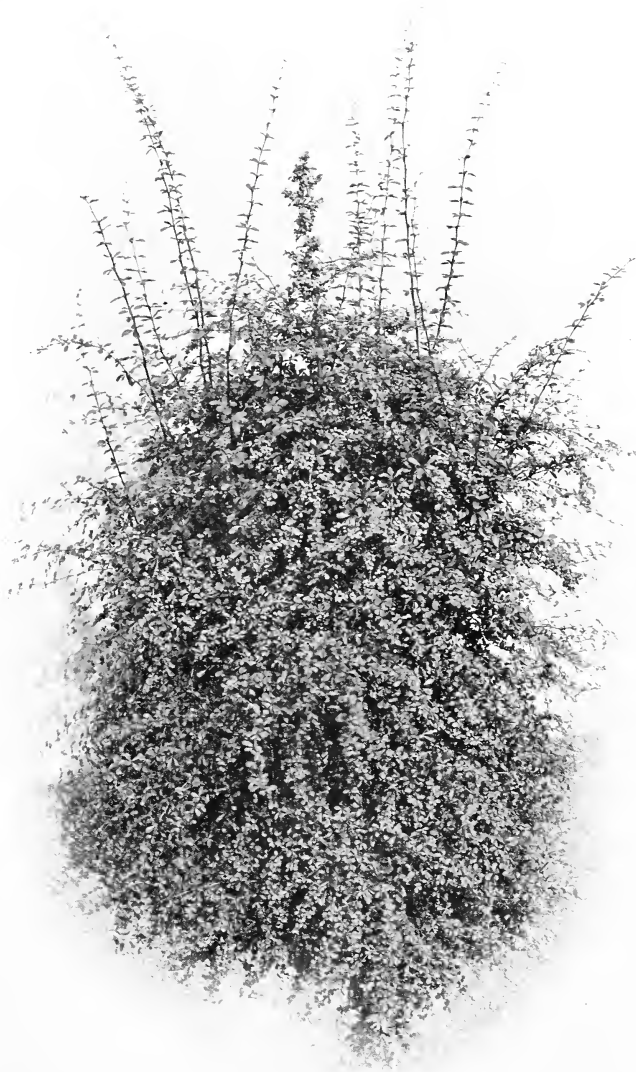
**Price
Each**

5/-

VIBURNUM BUDDLEIFOLIUM

A fine evergreen specimen shrub with large broadly lanceolate leaves about 3½ inches in length. Flowers cream-white, produced in terminal corymbose panicles during May

5/-



***Berberis brevipaniculata.* (Described on page 17)**



Berberis verruculosa. (Described on page 17).

NEW HARDY CHINESE PLANTS OF BOTANICAL INTEREST.

Now offered for sale for the first time.

AUTUMN, 1913.

ACER FRANCHETII

**Price
Each**

A deciduous shrub growing about 10 ft. high, allied to *A. villosum*, from which it may be distinguished by its trilobed slightly toothed leaves, and the simple inflorescence. A common tree in Hupeh, China

5/-

ACER HENRYI

A Chinese species of the *Negunda* section of *Acer*. The petioles of the long leaves have three ovate acuminate leaflets. The seed wings are long and of a bright red colour when young

5/-

ACER OLIVERIANUM

A fine deciduous species attaining a height of 15 feet, somewhat resembling *A. palmatum* in habit but differing in having 5 lobed leaves of a pale green colour. Introduced from the Province of Hupeh, China

5/-

ACER PICTUM MONO

A distinct form of the type introduced from the Province of Hupeh. Leaves 3 to 5 lobed with attenuated apices, upper surface shining green, underneath covered with a soft velvety pubescence

7/6

ARISTOLOCHIA HETEROPHYLLA

A quick growing deciduous climber with leaves of variable forms. Flowers yellow marked with dark brown, the perianth tube being very sharply bent and the limb 3 lobed

3/6

BERBERIS CORYI

During autumn the bright coral-red fruits of this species hang in very conspicuous clusters, succeeding yellow flowers that are freely produced in July. A dense growing deciduous shrub of upright habit. Leaves small and very abundant

5/-

BERBERIS GERALDII

A strong growing deciduous shrub with bright green foliage. Flowers deep yellow followed in autumn by dense panicles of coral-red fruits

5/-

BERBERIS STAFFIANA

A dense growing deciduous species of neat dwarf habit. Leaves small, toothed and very dark green. Flowers bright yellow in July followed in autumn by short panicles of bright coral-red fruits

5/-

Award of Merit from the Royal Horticultural Society.



Clematis Armandii. (Described on page 20).

NEW HARDY CHINESE PLANTS OF BOTANICAL INTEREST (continued)

AUTUMN, 1913.

CATALPA VESTITA

A strong growing deciduous tree with bright green foliage. Flowers rosy-pink. Should be planted in a protected position

**Price
Each**
5/-

CERCIS SINENSIS

A strong growing deciduous shrub with deep green cordate leaves. The Chinese Judas Tree.

5/-

CORNUS PAUCINERVIS

A small growing free-flowering shrub, resembling the American *Cornus stricta*. It is a native of Central and Western China

2/6

COTONEASTER DIELSIANA ELEGANS

An evergreen shrub growing 6 to 8 ft. high of very neat habit and densely furnished with small ovate leaves. Flowers pink-white, followed by coral-red fruits

2/6

COTONEASTER SALICIFOLIA

A semi-evergreen shrub, the young growths of which are pendulous bearing ovate-acuminate deep green leaves. White corymbs of flowers during May are followed in autumn by scarlet fruits. Suitable for a wall

2/6

COTONEASTER SALICIFOLIA GLACIOSA

An evergreen variety of graceful drooping habit with small deep green lanceolate leaves. Corymbs of white flowers give place to deep red fruits. Makes a very neat specimen lawn plant

2/6

COTONEASTER SALICIFOLIA RUGOSA

A semi-evergreen distinguished from the type by the smaller rugose foliage, and larger coral-red fruits

2/6

DEUTZIA LONGIFOLIA

A deciduous shrub 3 to 6 ft. in height with deep green lanceolate leaves. Flowers rose coloured and freely borne, during May, in dense pyramidal corymbs on the previous year's growths. It comes nearest to *D. Veitchii*

2/6

DEUTZIA MOLLIS

A distinct deciduous species. Leaves, ovate, with stellate hairs on upper surface and clothed beneath with a soft pubescence. Flowers white, in a flattish corymb

3/6

DIPELTA FLORIBUNDA

A free growing deciduous shrub about 4 ft. high, with ovate-lanceolate leaves. The pale rose tubular flowers have a deep orange throat and are freely produced in clusters from the leaf axils during May

5/-

DIPELTA VENTRICOSA

A handsome deciduous shrub growing from 7 to 12 ft. in height that promises to become a good garden plant. Leaves opposite, ovate-lanceolate. The tubular flowers are produced freely in axillary clusters. The flower tube is deep rose externally with a whitish yellow interior and deep orange throat. It is also interesting botanically on account of the large persistent calyx lobes

5/-

NEW HARDY CHINESE PLANTS OF BOTANICAL INTEREST (continued)

AUTUMN, 1913.

DIPTERONIA SINENSIS

**Price
 Each**

A deciduous tree 10 to 15 ft. in height, allied to the Maple. The individual white flowers are small but being produced in dense terminal panicles the effect is striking. Leaves impari-pinnate, leaflets ovate-lanceolate, serrated margin

10/6

ILEX SP. NOVA. W. 781

An interesting new evergreen shrub of prostrate habit. Leaves lanceolate, toothed and spined, of a bright olive green

5/-

ILEX SP. NOVA. W. 1169

An evergreen of straggling habit, leaves alternate, lanceolate-acuminate, slightly toothed.

10/6

ILEX SP. NOVA. W.S. 1269

A new Chinese species of pendulous habit, leaves 3 to 4 inches in length, lanceolate, acuminate, toothed

5/-

ITEA ILICIFOLIA

A fine evergreen shrub, the leaves of which resemble those of a Holly, being coriaceous with a spinous toothed margin. The remarkable inflorescence is solitary and terminal and consists of a single raceme 9 in. to 12 in. long, densely covered with small white flowers

3/6

MICROMELES FOLGNERI

A deciduous tree 20 to 25 ft. high. Corymbs of cream-white flowers are produced during May. Leaves ovate-lanceolate, dentate, deep green on upper surface and silver grey beneath. A very ornamental tree of graceful habit

2/6

MICROMELES FOLGNERI PENDULA

A gracefully drooping variety of the above suitable for a lawn specimen

3/6

OSMANTHUS DELAVAYI

The pure white flowers of this dwarf evergreen are very fragrant and remain open for a long time in spring. Leaves small, ovate-acuminate, dentate

3/6

PAEONIA DELAVAYI

An interesting herbaceous perennial the leaves of which are very much divided into narrow segments. The single flowers produced in June are a deep reddish chocolate colour with yellow stamens

5/-

PHILADELPHUS TOMENTOSUS (Chinese form)

A strong growing species with large deep green ovate leaves. Flowers white and fragrant, late blooming

2/6

PICEA SP. NOVA. W. 1282

5/-

" " " **W. 1309**

5/-

" " " **W. 1515**

Undetermined

5/-

" " " **W. 1530**

Species

5/-

" " " **W. 1834**

5/-

" " " **W. 1836**

5/-



Cocculus heterophyllus. (Described on page 20).

NEW HARDY CHINESE PLANTS OF BOTANICAL INTEREST (continued).

AUTUMN, 1913.

PRUNUS THIBETICA

A deciduous tree attaining a height of 15 to 20 feet producing blush pink single flowers in early spring. A very ornamental species.

**Price
Each**
3/6

PYRUS VEITCHII

A deciduous tree growing to 15 to 20 feet in height, producing blush-pink flowers followed later by showy purplish-crimson fruits in clusters of about 10 each. Leaves ovate, crenate, deeply veined

10/6

Award of Merit from the Royal Horticultural Society

RHODODENDRON ARGYROPHYLLUM

A common species of western Szechuan and one that is very variable in habit, flowers pale pink. Leaves lanceolate, dark green above surface and silver-grey below

5/-

RHODODENDRON CALOPHYTUM

A very strong growing species attaining a height of 6 to 20 feet, producing exceptionally large pale green oblong-lanceolate leaves and large loose trusses of rosy-pink flowers, the long pedicels of which are deep scarlet.

5/-

RHODODENDRON COOMBENSE

A dwarf growing species with crimson-purple flowers. Leaves ovate-lanceolate, petioles and young stems wine-red

5/-

RHODODENDRON DAVIDII

A species of good branching habit densely foliated with deep green oblong-lanceolate leaves that have a whitish-grey under-surface. The flowers vary from rose-pink to white and are produced freely on young plants

5/-

RHODODENDRON DECORUM

A very strong grower that is much hardier than the Himalayan form. Flowers white with green markings, fragrant. Leaves large, oblong-lanceolate, deep green above, grey below

3/6 & 5/-

RHODODENDRON HARROVIANUM

A very hardy species with violet-purple flowers borne in trusses of 3 to 6, during April. Leaves deep green, narrowly lanceolate. Flowers freely in a young state

2/6

RHODODENDRON OREODOXA

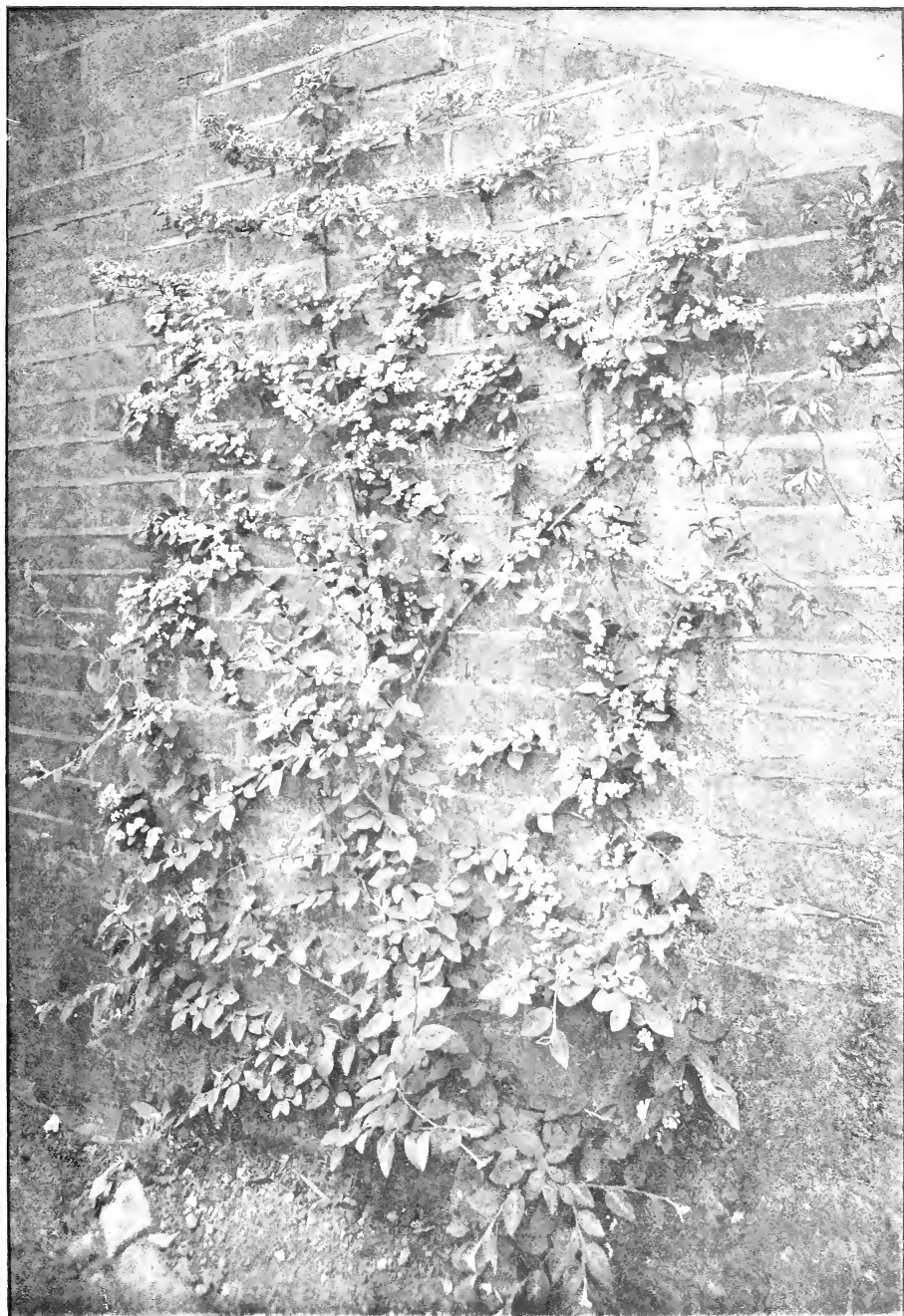
A new species, allied to *R. Fargesii*, of neat dense-growing habit producing freely on young plants flowers that vary from white to rose. Leaves elliptic, deep green above, grey below

5/-

RHODODENDRON RIRIEI

A distinct slow-growing species with white flowers borne in short racemes of about 10 each. Leaves oblong-lanceolate, deep green above, grey below. Named in compliment to the Rev. B. Ririe of the China Inland Mission, Kiating, Western Szechuan.

5/-



Cotoneaster reflexa. (Described on page 20).



Deutzia Veitchii. (Described on page 20).

NEW HARDY CHINESE PLANTS OF BOTANICAL INTEREST (continued).

AUTUMN, 1913.

RHODODENDRON YUNNANENSE

**Price
Each**

A decorative species of neat bushy habit with small lanceolate acuminate leaves. The flowers are pale lavender spotted with brown, produced very freely on quite small plants

2/6

ROSA OMEIENSIS

An interesting species growing 4 to 6 feet in height, with small white single flowers in June. The attractive feature is the peculiar fruits which are pear-shaped, the narrow end being of a bright orange and the thick portion a very bright red

5/-

SCHIZANDRA HENRYI

A deciduous climber from the Province of Hupeh, Central China. Leaves broadly ovate, bright shining green. Botanically, the creamy-white flowers are interesting

3/6

SYRINGA PINNATIFOLIA

A deciduous shrub 6 to 8 feet high with very distinct pinnate leaves, leaflets lanceolate-acute. Flowers white in terminal panicles

2/6

TETRACENTRON SINENSE

A deciduous tree attaining a height of 20 to 50 feet with alternate ovate-elliptic leaves with serrated margins. The flowers are small on drooping spikes and of much botanical interest

10/6

TILIA MIQUELIANA CHINENSIS

A Chinese form of the type, introduced to cultivation from the Province of Hupeh, Central China

3/6

TILIA TONSURA

A Chinese lime tree of neat habit, attaining a height of 20 feet. Leaves cuspidate, small, bright green, pubescent, margins serrated

5/-

TSUGA CHINENSIS

A fine conifer distinguished by its spreading branches, entire linear leaves and large sub-globose cones. Introduced from the Province of Hupeh, China, where it is known by the natives as "The Sha" or Iron Wood

5/-

VIBURNUM HARRYANUM

A dense dwarf evergreen with small deep green round leaves arranged on the wiry stems in whorls of three each. It has not yet flowered in this country but is quite distinct from any other species

5/-

VIBURNUM PROPINQUUM

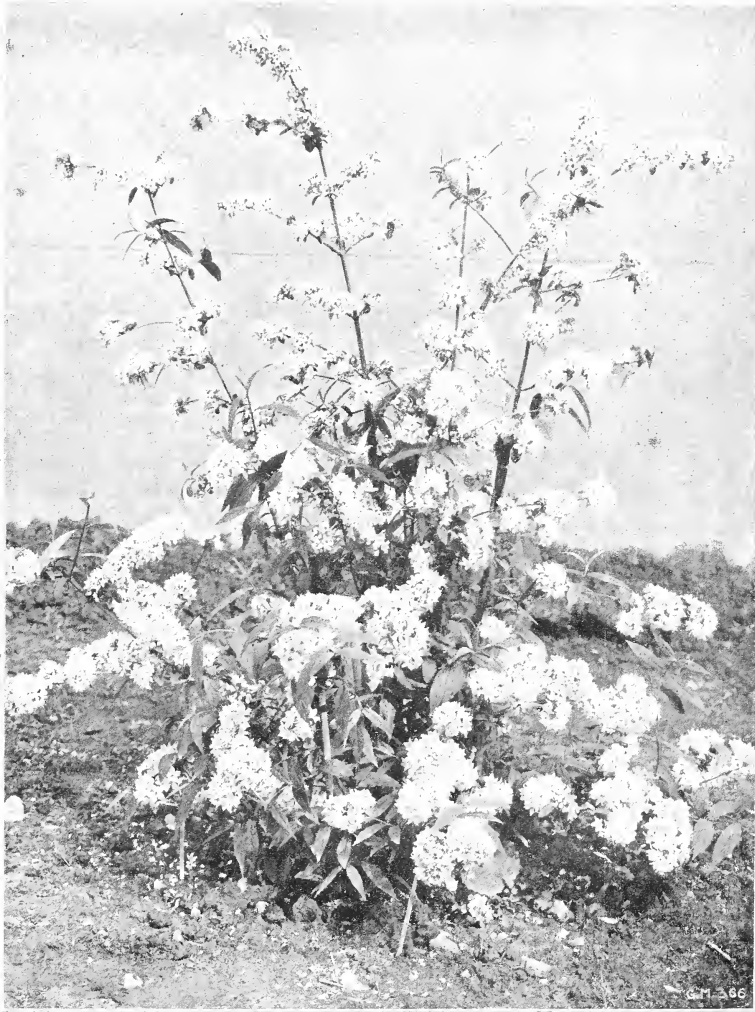
A dwarf evergreen of spreading habit, with shining ovate-lanceolate leaves, producing terminal corymbs of white flowers during May

2/6

VIBURNUM VEITCHII

An evergreen species with white flowers in terminal corymbose panicles. Leaves elliptic, cordate at the base, margin coarsely dentate, under-surface tomentose. Forms a shapely well furnished shrub

5/-



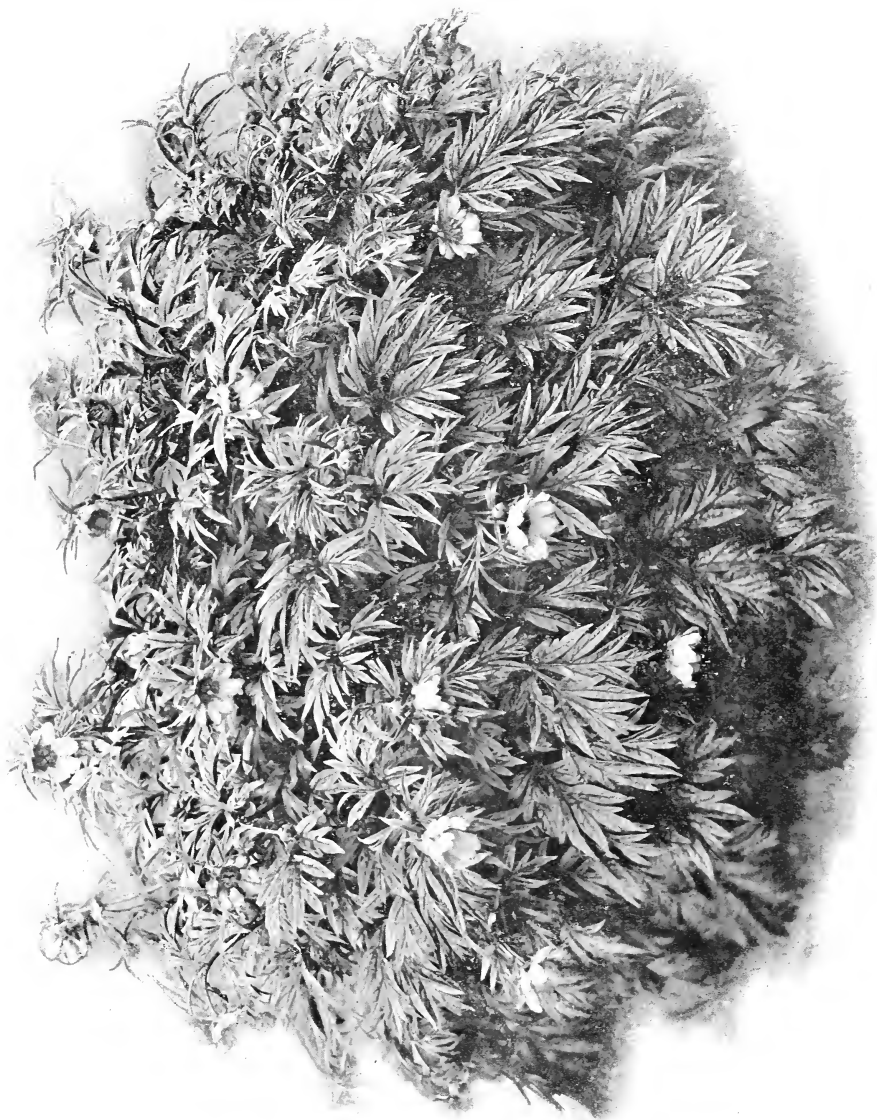
Deutzia Wilsonii. (Described on page 20).

CHINESE PLANTS OF RECENT INTRODUCTION

	Price Each
ACER DAVIDII A deciduous tree which will attain the height of 20 to 30 feet. The blackish-green bark throughout the entire tree is striated with pure white and is very attractive	3/6
ACER GRISEUM A deciduous species attaining a height of 15 to 25 feet. The pale chestnut brown bark peels off during autumn in broad flakes similar to that of the Silver Birch	5/-
ACTINIDIA CHINENSIS FOEMINA The female form, the flowers of which are deeper coloured than the male. In all other particulars and in habit of growth it is similar to the now well-known male form	7/6
ARISTOLOCHIA MOUPINENSIS Of rapid growth reaching 12 to 15 ft. in a season. flower tube about 2½ inches in length, yellowish green with purple markings. <i>Fig. in Botanical Magazine T. 8325.</i>	3/6
BERBERIS BREVIPANICULATA A deciduous species of upright growth forming a dense bush 4 to 6 feet high. Stems bright red, flowers pale yellow, rosy red berries in Autumn. <i>See illustration p. 5.</i>	1/6
BERBERIS DICTYOPHYLLA The young stems being whitish grey stand out prominently against the dark green foliage. Coral-red fruits in autumn	2/6
BERBERIS GAGNEPAINII An elegant evergreen Barberry of compact growth. The pale yellow flowers are succeeded by glaucous purple berries <i>Illustrated in Gard. Chron. 1909. Vol. II. p. 226 fig. 96.</i>	2/6
BERBERIS POLYANTHA A deciduous shrub 5 to 6 ft. high, flowers yellow, followed by coral-red fruits	1/6
BERBERIS VERRUCULOSA A dense growing evergreen shrub about 2 feet high. Leaves ovate, spiny, shining above, glaucous beneath. Flowers yellow, violet purple fruits. <i>See illustration p. 6</i>	2/6
BETULA ALNOIDES PYRIFOLIA A deciduous tree attaining a height of 20 to 40 feet. Leaves ovate-acuminate, resembling those of a <i>Pyrus</i>	3/6
CATALPA FARGESII A deciduous tree. Flowers pale purple, leaves five-lobed glabrous deep green	3/6
CELASTRUS HYPOGLAUCUS A deciduous species with large leaves, deep pea-green above, glaucous beneath.	1/6
CELASTRUS LATIFOLIUS A deciduous shrub with large broadly ovate dark green leaves. Flowers greenish white borne in terminal panicles	1/6



Juglans Cathayensis. (Described on page 22).



Paeonia Veitchii. (Described on page 25.)

CHINESE PLANTS OF RECENT INTRODUCTION (continued).

	Price Each
CLEMATIS AKEBIOIDES A deciduous climber of fairly strong growth, flowers small, pale yellow	1/6
CLEMATIS ARMANDII An evergreen species with dark green leaves and pure white flowers Flowers early in April. <i>See illustration p. 8</i> <i>Fig. in Botanical Magazine T. 7897.</i>	3/6
CLEMATIS GOURIANA A deciduous climber, producing dense clusters of small fragrant cream-yellow flowers during August and September	1/6
CLEMATIS NUTANS A perfectly hardy sub-shrubby climber. The cream white, flowers are very fragrant and freely produced during July and August	1/6
COCCULUS HETEROPHYLLUS A deciduous climber of rapid growth, particularly suitable for pillars and pergolas. <i>See illustration, p. 11</i>	2/6
COCCULUS THUNBERGII An evergreen climber of free growth, leaves deep green, ovate lanceolate. Suitable for pergolas	2/6
COTONEASTER ACUTIFOLIA This is the true species. The plant now in cultivation under this name is not true. A deciduous shrub with dark glossy green ovate leaves. A good subject for covering walls	1/6
COTONEASTER REFLEXA A free-growing deciduous species with ovate leaves, particularly suitable for covering a wall. <i>See illustration p. 13</i>	1/6
DAPHNE RETUSA A dwarf evergreen shrub of compact and shapely habit. The sweetly fragrant flowers are white shaded with rosy violet <i>Fig. in Botanical Magazine T. 8430.</i>	7/6
DECAISNEA FARGESII A deciduous tree with handsome pinnate leaves about one foot in length. Recommended for the blue colour of its curious hanging fruits <i>Fig. in Botanical Magazine T. 7848</i>	2/6
DEUTZIA VEITCHII This is the best of the Chinese Deutzias introduced by Mr. E. H. Wilson, being deeper coloured and larger flowered than <i>D. longifolia</i> . Award of Merit from the Royal Horticultural Society. <i>See illustration p. 14</i>	3/6
DEUTZIA WILSONII A vigorous growing species the flowers of which are individually very large, pure white and freely produced on the ripened wood of the previous season's growth. <i>See illustration p. 16</i>	2/6
ELEUTHEROCOCCUS HENRYI A deciduous shrub densely furnished with five-foliolate leaves. The grey stems are very spiny and are terminated by globular heads of flowers followed by purple-black fruits	2/6



Populus lasiocarpa. (Described on page 25).

CHINESE PLANTS OF RECENT INTRODUCTION (continued).

	Price Each
EUCOMMIA ULMOIDES	
A quick growing deciduous tree. Particularly interesting for its caoutchouc properties <i>Figured in Hooker's Icones Plantarum, Vol. 24, Pl. 2361.</i>	3/6
EUONYMUS SANGUINEA	
A small deciduous tree of good branching habit. The colour effect in autumn is particularly pleasing, as the foliage assumes a purplish-crimson tint	2/6
EUPTELEA DAVIDIANA	
A small deciduous tree, growing 10 to 20 feet high, with neat orbicular leaves that become finely coloured in the autumn	2/6
FRAXINUS BRACTEATA	
A deciduous tree of neat habit with light elegant pinnate foliage, deep glossy green above, bright green beneath	5/-
HYDRANGEA ASPERA	
A deciduous shrub 2 to 3 feet high. The roundish corymbs of pale mauve flowers are borne very freely during August, the outer row being sterile	2/6
HYDRANGEA XANTHONEURA	
A strong growing deciduous species, 4 to 6 feet high, with flat corymbose heads of cream-white flowers in August	2/6
ILEX FARGESII	
An evergreen shrub, 4 to 10 feet high, very unlike a holly. Leaves narrowly lanceolate, spineless, leathery	5/-
ILEX VEITCHII	
A new species that is best described as a large leaved and stronger growing form of <i>I. Pernyi</i>	3/6
IRIS WILSONII	
A new species resembling <i>I. Sibirica</i> in habit. Flowers pale yellow, outer segments veined red-brown <i>Figured in Botanical Magazine T. 8340.</i>	1/-
JUGLANS CATHAYENSIS	
A new species of Walnut with black fruits. A handsome ornamental deciduous tree. <i>See illustration p. 18</i>	7/6
LIGUSTRUM HENRYI	
A neat and attractive evergreen shrub with glossy dark green ovate leaves	1/6
LIQUIDAMBAR FORMOSANA	
The Feng Tree of the Chinese, who utilise the timber for making tea Chests	5/-
LONICERA HENRYI	
A free-growing evergreen climber. Flowers small, chocolate and orange coloured, superseded by bluish purple fruits <i>Figured in the Botanical Magazine T. 8375.</i>	1/6
LONICERA NITIDA	
An evergreen shrub of very neat habit, 3 to 6 feet high. Branches erect growing, densely covered with small ovate leathery leaves that have a brilliant gloss on the upper surface. A most distinct Bush Honeysuckle	2/6



Potentilla Veitchii. (Described on page 25).



Primula Mrs. R. V. Berkeley. (Described on page 25).

CHINESE PLANTS OF RECENT INTRODUCTION (continued).

	Price Each
LONICERA PILEATA	
A dwarf spreading evergreen honeysuckle with very small neat leaves of pale green colour. A most desirable subject for the rock garden <i>Award of Merit from the Royal Horticultural Society.</i> <i>Figured in Botanical Magazine T. 8060.</i>	1/6
LONICERA PROSTRATA	
The quick growing scandent habit of this deciduous species recommends it as especially suitable for covering banks, etc.	1/6
MAGNOLIA DELAVAYI	
An evergreen species. Flowers large, creamy-white, thick massive foliage, an excellent wall plant, requires a protected situation <i>F.C.C. from the Royal Horticultural Society.</i> <i>Figured in Botanical Magazine T. 8282.</i>	7/6
OSMANTHUS ARMATUS	
An evergreen shrub of slow growth. Leaves oblong-lanceolate 4 to 6 inches long, 1½ inches broad, very coarsely toothed. Flowers cream white, fragrant, produced in Autumn	3/6
PÆONIA VEITCHII	
A remarkable feature of this new herbaceous perennial is the production of several blooms on the same stem. Purplish-crimson single flowers. <i>See illustration p. 19</i> <i>Illustrated in Gard. Chron. 1909. Vol. II. p. 2, fig. 1.</i>	2/6
POPULUS LASIOCARPA	
The ovate cordate leaves of this new Poplar are extremely large and attractive, measuring 10 to 12 inches in width. They are bright green in colour, whilst the petiole, midrib and principal veins are of a rich red hue. <i>See illustration p. 21</i> <i>From the Royal Horticultural Society.</i>	5/-
POTENTILLA VEITCHII	
A semi-evergreen shrub of neat rounded habit, growing 3 to 4 feet high, producing sprays of snow-white flowers from May till late Autumn <i>See illustration p. 23</i>	2/6
PRIMULA PULVERULENTA Var. Mrs. R. V. Berkeley	
In habit of growth and hardiness the variety now offered is identical with <i>P. pulverulenta</i> . Flowers cream-white with rich orange eye, borne in whorls on white mealy stems, 2 to 3 feet high. A fine contrast to the now well-known crimson species. <i>See illustration p. 24</i>	3/6
RHEUM ALEXANDRÆ	
The pale yellow leaf-like bracts of this distinct Rhubarb are borne on the flowering stems which are 2 to 3 feet high, above very dark glossy green foliage, and present, early in June, a striking appearance in the herbaceous border	1/6
RHODODENDRON CONCINNUM	
Of dwarf densely branched habit. Flowers pale yellow faintly spotted on the upper petal. A perfectly hardy species. <i>See illustration p. 26</i>	3/6
RHODODENDRON MICRANTHUM	
A perfectly hardy free-flowering shrub growing 4 to 8 feet high. The small white flowers are borne abundantly on erect terminal racemes during May <i>Figured in Botanical Magazine T. 8198.</i>	2/6



Rhododendron concinnum. (Described on page 25).



Spiræa Veitchii. (Described on page 31).



Stranvæsia undulata. (Described on page 31).

CHINESE PLANTS OF RECENT INTRODUCTION (continued).

	Price Each
RHODODENDRON SUTCHUENENSE	
A very fine species with bright rose-pink flowers, 3 inches in diameter, which are borne in dense trusses during March. Foliage large, thick and leathery	7/6 & 10/6
<i>Figured in Botanical Magazine T. 8362.</i>	
RODGERSIA SAMBUCIFOLIA	
A perennial herbaceous species with large pinnate deep bronze-green leaves. Panicles of cream-white flowers during July	1/6
ROSA MOYESII	
A very distinct species, flowers large, rich deep red, petals of great substance	2/6
<i>Award of Merit from the Royal Horticultural Society.</i>	
ROSA WILLMOTTIÆ	
<i>Named after the celebrated Amateur Miss Willmott.</i>	
A very pretty species with single rosy carmine flowers, these are freely produced during June	2/6
<i>Figured in Botanical Magazine T. 8186.</i>	
RUBUS CHROOSEPALUS	
A deciduous species, leaves simple similar to those of <i>Tilia alba</i>	1/6
RUBUS HENRYI	
An evergreen species of neat trailing growth. Leaves deep shining green, deeply trifid, margin serrated. Suitable for pergolas	1/6
RUBUS SWINHOEI	
A very strong growing semi-evergreen bramble. Leaves borne on graceful arching growths 12 to 14 feet in length, the stems of which are purplish grey	1/6
RUBUS VEITCHII	
A handsome deciduous shrub with neat grey foliage. The stems are pubescent and of ornamental value during the winter	5/-
SARCOCOCCA HUMILE	
An evergreen shrub of very dwarf habit, suitable for dry soils or planting under trees, leaves bright green	1/6
SARCOCOCCA RUSCIFOLIA	
The bright shining green foliage, resembling that of the " <i>Butcher's Broom</i> ," and its compact habit make this a valuable addition to the few evergreen shrubs that thrive under trees	1/6
<i>Award of Merit from the Royal Horticultural Society.</i>	
SCHIZOPHRAGMA INTEGRIFOLIA	
A deciduous climber remarkable for having the inflorescence surrounded by conspicuous white bracts	2/6
SENECIO CLIVORUM SUB-CRENATA	
Rather less robust in habit than the type and of more compact growth. Rich orange-yellow flowers in August	1/-
SPIRÆA HENRYI	
Numerous rounded corymbs of white flowers borne on long arching growths of the previous season	2/6
<i>Figured in Botanical Magazine T. 8270.</i>	



***Sycopsis sinensis*. (Described on page 31).**

CHINESE PLANTS OF RECENT INTRODUCTION (continued)

	Price Each
SPIRÆA MOLLIFOLIA A shrub of prostrate habit. Suitable for banks and rockeries	2/6
SPIRÆA VEITCHII A particularly handsome deciduous species that forms a compact shrub with thin growths 6 to 8 feet long. Corymbs of pure white flowers produced freely. It is the finest of the Chinese spiræas. <i>Award of Merit from the Royal Horticultural Society. See illustration p. 27 Figured in the Botanical Magazine T. 8383.</i>	3/6
SPIRÆA WILSONII A new species from <i>W. Hupeh</i> , producing corymbs of white flowers during June and July	2 6
STRANVÆSIA UNDULATA A handsome evergreen plant with orange-red fruits <i>See illustration p. 28</i>	2/6
SYCOPSIS SINENSIS An interesting evergreen shrub of neat habit, attaining a height of 10 to 15 feet. <i>See illustration p. 30</i> <i>Figured in Hooker's Icones Plantarum, 1890. T. 1931.</i>	2/6
TILIA OLIVERI A useful addition to the Arboretum	2/6
VIBURNUM CORIACEUM A fine evergreen shrub attaining a height of 12 to 15 feet. Flowers cream-white	2/6
VIBURNUM DAVIDII A fine evergreen species of neat dwarf habit and well furnished with ovate leaves 4 to 6 inches long. Flowers white, followed by small oval blue fruits <i>Award of Merit from the Royal Horticultural Society. See illustration p. 32</i>	7/6
VIBURNUM HENRYI A choice evergreen shrub with lanceolate, glossy green leaves. The panicles of coral-red fruits in Autumn present a highly ornamental effect <i>See illustration p. 33</i>	3/6
VIBURNUM PHLEBOTRICHUM A deciduous shrub, producing corymbs of white flowers in May followed by handsome scarlet fruits in Autumn	1/6
VIBURNUM THEIFERUM Distinguished from the preceding species by its larger leaves borne on longer stalks and its more vigorous habit	1/6
VIBURNUM UTILE An evergreen species with ovate coriaceous leaves. The white flowers are very freely produced in terminal corymbs early in April <i>Figured in Botanical Magazine T. 8174. See illustration p. 34</i>	3/6
VITIS SINENSIS A species with very variable bright green leaves. Suitable for Pergolas	2/6

We also offer a collection of 36 New Chinese Plants unnamed in 15 species consisting of Pyrus, Acer, Betula, Viburnum, Spiræa, Philadelphus, Lonicera, etc. The set 30/-



Viburnum Davidii. (Described on page 31).



Viburnum Henryi. (Described on page 31).

Showing panicles of coral-red fruits.



Viburnum utile. (Described on page 31).

CYTISUS DALLIMOREI

This beautiful and very distinct hybrid, between *C. albus* and *C. scoparius* Andreanus was raised and first flowered in the Royal Gardens, Kew. It was named in compliment to Mr. Dallimore who had charge of the Arboretum. The flowers are pale rose shaded with mauve, very freely produced in May and June. The plant is a strong grower and has a good branching habit developing into a dense twiggy bush, covered with small trifoliate leaves, suitable as a specimen or for a massed bed. It was granted an Award of Merit by the Royal Horticultural Society at the Temple Show of 1910, when the unique colour of the flowers attracted much attention, and we recommend it as a fine addition to the summer-flowering shrubs

Price 3/6 each.

**JAMES VEITCH & SONS, Ltd.,
CHELSEA,
LONDON.**

AUTUMN 1913.



INDEX.

	PAGE		PAGE		PAGE
Acanthopanax riciniifolia	4	Dipelta floribunda	9	Rhododendron calophyllum	12
Acer Davidii	17	" " ventricosa	9	" " concinnum	25
" Franchetii	7	Dipteronia sinensis	10	" " coimbense	12
" griseum	17	Eleutherococcus Henryi	20	" " Davidii	12
" Henryi	7	Eucommia ulmoides	22	" " decorum	12
" Oliverianum	7	Euonymus sanguinea	22	" " Harrovianum	12
" pictum mono	7	Euptelea Davidiana	22	" " micranthum	25
" tetramerum		Fraxinus bracteata	22	" " oreodoxa	12
lobulatum	4	Hydrangea aspera	22	" " Ririei	12
Actinidia chinensis foemina	17	" " xanthoneura	22	" " sutchuenense	29
Aristolochia heterophylla	7	Ilex Fargesii	22	" " yunnanense	15
" " moupinensis	17	" " sp. nova W. 781	10	Rodgersia sambucifolia	29
Berberis brevipaniculata	17	" " " W. 1169	10	Rosa Moresii	29
" Coryi	7	" " " W.S. 1269	10	" " omeiensis	15
" dictyophylla	17	" " Veitchii	22	" " setipoda	5
" Gagnepainii	17	" " yunnanensis	4	" " Willmottiae	29
" Geraldii	7	Itea ilicifolia	10	Rubus chroosepalus	29
" polyantha	17	Iris Wilsonii	22	" " Henryi	29
" Stapfiana	7	Juglans cathayensis	22	" " Swinhoei	29
" verruculosa		Ligustrum Henryi	22	" " Veitchii	29
Betula alnoides pyrifolia	17	" " Prattii	4	Sarcococca humile	29
Camellia cuspidata	4	Liquidambar formosana	22	" " parisiioides	29
Catalpa Fargesii	17	Lonicera Henryi	22	Schizandra Henryi	15
" vestita	9	" " nitida	22	Schizophragma integrifolia	29
Celastrus hypoglauca	17	" " pileata	25	Senecio chlororum	
" latifolius	17	" " prostrata	25	" " sub-crenata	29
Cercis sinensis	9	Magnolia Delavayi	25	Spiraea Henryi	29
Clematis akebioides	20	Micromeles Folneri	10	" " mollifolia	31
" Armandii	20	" " " pendula	10	" " Veitchii	31
" Gouriana	20	Osmanthus armatus	25	" " Wilsonii	31
" nutans	20	" " Delavayi	10	Stranvesia undulata	31
Cocculus heterophyllus	20	Paeonia Delavayi	10	Sycopsis sinensis	31
" Thunbergii	20	" " Veitchii	25	Syringa pumatifolia	15
Cornus paucinervis	9	Philadelphus Delavayi	4	Tetracentron sinense	15
Cotoneaster acutifolia	20	" " tomentosus	10	Tilia Miqueliana chinensis	15
" amoena	4	Picea sp. nova W. 1282	10	" " Oliveri	31
" bullata	4	" " " W. 1309	10	" " toursura	15
" Dielsiana		" " " W. 1515	10	Tsugit chinensis	15
" " elegans	9	" " " W. 1530	10	Viburnum buddleifolium	5
" " Harroviana	4	" " " W. 1834	10	" " coriaceum	31
" " reflexa	20	" " " W. 1836	10	" " Davidii	31
" " salicifolia	9	Populus lasiocarpa	25	" " Harryanum	15
" " " glaciosa	9	Potentilla Veitchii	25	" " Henryi	31
" " " rugosa	9	Primula pulverulenta,		" " phlebotrachium	31
Daphne retusa	20	var. Mrs. R.V. Berkeley	25	" " propinquum	15
Decaisnea Fargesii	20	Prunus thibetica	12	" " theiferum	31
Deutzia longifolia	9	Pyrus Veitchii	12	" " utile	31
" " mollis	9	Rheum Alexandrac	25	" " " Veitchii	15
" " Veitchii	20	Rhododendron		Vitis sinensis	31
" " Wilsonii	20	" " argyrophyllum	12		

In addition to this Catalogue we publish the following Lists and Catalogues, which we shall be happy to forward post free on application:—

HARDY ORNAMENTAL TREES & SHRUBS, CONIFERS, Etc.

HARDY HERBACEOUS PERENNIALS, BOG & WATER PLANTS, Etc.

INDOOR PLANTS, ORCHIDS, PALMS, FERNS, BAYS, Etc.

FRUIT TREES.

ROSES.

CARNATIONS.

BULBS AND FORCING PLANTS.

HARDY WATER LILIES.

CHRYSANTHEMUMS.

STRAWBERRIES.

DAHLIAS.

BEDDING PLANTS.

Also at

COOMBE WOOD,
LANGLEY and
FELTHAM

JAMES VEITCH & SONS, Ltd.,

ROYAL EXOTIC NURSERY,

CHELSEA, LONDON.