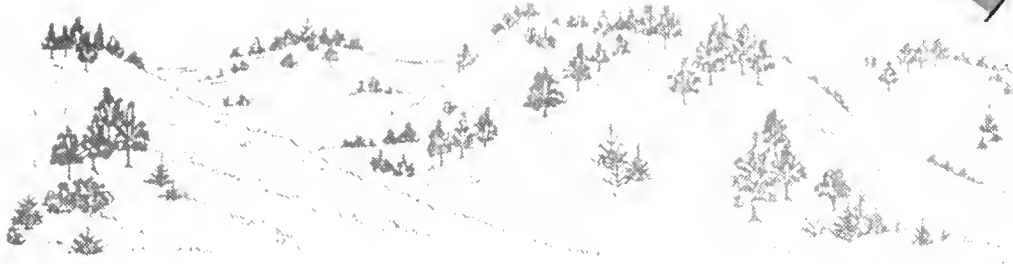


## **Historic, archived document**

Do not assume content reflects current scientific knowledge, policies, or practices.





# Flor-Acre Gardens

MR. AND MRS. H. A. VALERIUS  
 On Dunes Highway U. S. 12  
**BRIDGMAN - MICHIGAN**  
 Return Postage Guaranteed

U. S. Dept. of Agri.  
 Bureau of Plant Industry  
 Division of Hort. & Veg. Crops  
 Washington, D. C.

LIBRARY RECEIVED  
 APR 17 1939

## BETTER HARDY PLANTS FOR 1939

# HARDY GARDEN CHRYSANTHEMUMS

For a Gay and Glorious Display this Fall

They give us the last cheery blooms for the year. Plant in a well drained rich soil after May 1st. Pinch back when the plants are a foot high to make bushy plants. About December 15th. cut down the old tops and cover the plants four to six inches deep with straw, leaves, or loose litter for the winter.

Plants ready after May 1st.

**ARABY.** Double. A unique purple shade that everyone likes. 35c each.

**CARRIE.** Double. Beautiful yellow. Late August and onwards. 3 for 60c; \$2.00 per dozen.

**CLIO.** Single. Dwarf compact plants. Masses of deep carmine-rose duplex flowers. Early September onwards. 3 for 60c; \$2.00 per dozen.

**CRIMSON SPLENDOR.** Single. A large crimson-red flower with golden eye and four inches across. Late September onwards. 3 for 60c; \$2.00 per dozen.

**EARLY BRONZE.** Large pompon. The most popular 'Mum' in our gardens last fall. Bright yellowish-bronze. Late August onwards. 2 feet high. 3 for 60c; \$2.00 per dozen.

**JEWELL.** Large pompon. Flowers are compact balls one and one-half inches in diameter. Bright pink color with a lilac undertone. Early October onwards. Not perfectly hardy, but worth planting each year. 3 for 60c; \$2.00 per dozen.

**JUDITH ANDERSON.** Button pompon. A mass of clear buttercup-yellow. Early October onwards. Compact mounds one and one-half feet high by 2 feet across. 3 for 60c.

**L'ARGENTUILLOIS.** Double. Deep bronze; tipped gold. Mid-September onwards. 3 for 60c; \$2.00 per dozen.

**MURILLO.** Double. A reliable old rose color. Early October onwards. 3 for 60c; \$2.00 per dozen.

**NIOBE.** Finest of the single whites. Mid-September onwards. 3 for 60c; \$2.00 per dozen.



We offer strong young plants. Young plants produce the most bloom. We have devoted much time and effort to the selection and production of newer, better, and hardier varieties as they appear. You may rest assured that the new ones that are constantly entering our lists are improvements over older varieties that have been discontinued. And further we are offering only those that can be depended upon to be in full bloom before October 15th, so as to escape severe frosts and freezing weather.

**PINK CUSHION.** Its cushion is completely covered with double pink blossoms that resemble an Azalea from late August until frost. 500 to 1000 blooms on a single plant. One foot high. Use as single specimens or as groups in border or rock garden. 3 for 60c; \$2.00 per dozen.

**SEPTEMBER QUEEN.** Double. Pure white. Late August and September. Dwarf. Especially desirable because of its earliness. 3 for 60c; \$2.00 per dozen.

**VESTA.** Single. Deep golden orange. Mid-September onwards. 3 for 60c; \$2.00 per dozen.

**WARRIOR.** Semi-double flowers of a deep crimson-maroon with golden reverse and a bright yellow center. 3 for 60c; \$2.00 per dozen.

### Excellent Fall Bloomers

**HARDY AGERATUM—Eupatorium coelestinum**  
 Umbels of a beautiful lavender-blue from August until frost. 18-24 inches high. Invasive. Lovely in a fall garden with chrysanthemums. 3 for 60c.

**FORMOSA LILY—L. formosanum**  
 Most remarkable Lily introduced in recent years. The white trumpets are much longer and narrower than those of the Regal Lily and bloom in September and October. Easy culture in well drained soil. Plant 6 inches deep. 3 for 60c or \$2.00 per dozen.

**FALSE DRAGONHEAD—Physostegia virginica Vivid**  
 Spikes of exceedingly showy deep pink flowers in September. 15 inches high. 25c each.

**SALVIA PITCHERI.** A beauty. Rich deep blue flowers in September, when blue flowers are scarce. 3 to 4 feet high. 3 for 60c.

# HARDY PLANTS For

## MARGUERITE—Anthemis Perry's Variety

Large lemon yellow daisies that will last a week or more when cut. Blooms all summer, 18 inches high. Will grow in the driest and poorest of soils. Self sows freely and seedlings must be weeded out or they will crowd out other plants. 3 for 50c; \$1.80 per dozen.

## MARGUERITE—Anthemis Sancta-johannis

Similar to Perry's Variety, but a rich glowing orange color. 3 for 60c.

## SILVER KING ARTEMISIA

Its sprays of bright frosted silvery white foliage give an unforgettable effect all summer and also it may be cut to mix in winter bouquets. 2 feet high. 3 for 60c; \$2.00 per dozen.

## CARPATHIAN HAREBELL—Campanula carpatica

Compact upright plants with large open, pendant blue bells on wiry six inch stems from June to August. Lovely in rock garden in sun or shade. 3 for 60c; \$2.00 per dozen

## BLUEBELLS OF SCOTLAND—Campanula rotundifolia

Desirable rockery plants for sun or shade. Eight inch panicle spikes of dainty little blue drooping bells all summer. 3 for 60c; \$2.00 per dozen.

## CARNATION HARDY HARVARD

This new carnation is very much improved over Crimson King. It has larger flowers, and more showy in its deep crimson color from the middle of July to October. Further, it is hardier—standing winter temperature of 20 degrees below zero. Fine potted plants. 3 for 75c; \$2.50 per dozen.

## SHASTA DAISY CHIFFON

New. Daintily frilled—double row of narrow gracefully frilled and flared white petals surrounding the yellow center. 15 inches high. Exquisite. 3 for \$1.00.

## SHASTA DAISY SUPREME

And it is supreme. Large snow-white daisies on 18 inch stems are 5 inches in diameter. June to August. 3 for 60c; \$2.00 per dozen.

## COREOPSIS MAYFIELD GIANT

A highly improved variety of the old ever-popular Coreopsis lanceolata. Bold golden yellow daisies during the entire summer if the old flowers are kept picked or cut off. 2 feet tall. 3 for 50c; \$1.80 per dozen.



## DELPHINIUM

One of the five dominant perennial border plants. Fortunately they can be grown in every garden, but in the hot, dry parts of the country they do not live so long. Long spikes of closely set lovely blue flowers in June and intermittently till frost. Grows best in a rich soil that is well supplied with lime. 3 to 5 feet tall. Effective when planted with Madonna or Regal Lilies. The following varieties are superb: **Belladonna Improved.** Larger flower and more sturdy growth makes it the finest light blue today. 3 for 50c; \$1.80 per dozen.

**Bellamosum Improved.** A larger dark blue with flowers of a deeper, richer and more uniform color. 3 for 50c; \$1.80 per dozen.

**Blackmore and Langdon Hybrids.** This English strain is one of the best developments in the Delphinium family. Exceedingly beautiful in various shades of blue. 3 for 60c.

**Summer Cloud.** Pure white. 3 for 60c.

## FOXGLOVES—Digitalis

This Shirley Strain produces tall graceful spikes of bell-shaped flowers. Colors range from rose through pinks to white. June and July. 3 feet tall. 3 for 60c; \$2.00 per dozen.

## PURPLE CONEFLOWER—Echinacea purpurea

Large purplish-pink daisy-like flowers with a large brown cone-shaped center on 2 to 3 feet stems. July to October. 3 for 60c; \$2.00 per dozen.

## GAILLARDIA

One of the most desirable and easily grown perennials. A light soil is best for their successful culture. They cannot be depended upon to survive the winter on heavy clay soils, but do splendidly on soils of a light or medium character. They bloom throughout the summer. 1½-2 feet. Varieties follow:

**Burgandy.** A rich deep red Gaillardia: occasionally a flower is tipped with gold. 3 for 50c; \$1.80 per dozen.

**Goblin.** New. Dwarf, compact, bushy plants 12 to 15 inches high which are covered during the summer with flowers of golden yellow with deep red borders. 3 for 50c; \$1.80 per dozen.

**Portola.** This Gaillardia has rich crimson rays that are tipped yellow. 3 for 50c; \$1.80 per dozen.

**Pure Gold.** New. Large pure yellow. 3 for 60c.

## BABY'S BREATH BRISTOL FAIRY—Gypsophila

The best of the cut flower varieties with very large, pure white double flowers in misty sprays continuously throughout the summer. 2-3 feet tall. Priced very low this year. 3 for \$1.00.

**BABY'S BREATH ROSY VEIL.** A new dwarf pink double-flowering Baby's Breath. 12 inches. Our customers like it. 35c each.

## HELEN'S FLOWER—Helenium autumnale rubrum

Broad branching very showy plants in August and September when the 3 to 4 foot high plants are covered with bright terra-cotta red daisy-like flowers, 1½ inches in diameter. 3 for 60c; \$2.00 per dozen.

## DAY LILY—Hemerocallis thunbergii

Leafless stems topped by large yellow flowers belonging to the Lily family arise from showy, well-rounded bushes of reed-like curving foliage in July. 3 feet tall. 3 for 60c; \$2.00 per dozen.

## HIBISCUS

Perennial shrub-like plants with large pink, white or red single Hollyhock-like flowers. July and August. 5 feet tall. State color. 25c each.

## HOLLYHOCK CHATERS PRIZE

Colossal spikes of double red, pink, or white flowers. Found in every old-fashioned garden. Valued interspersed amongst shrubbery or as accents in the hardy border. June and July. 4 to 6 feet tall. State color. 3 for 50c; \$1.80 per dozen.

## PLANTAIN LILY—Hosta or Funkia

Very valuable shade plants; also will grow in sun. Their broad massive foliage makes them attractive for the border even when not in flower. Following varieties are offered: **Coerulea.** Deep green leaves and blue pendant flowers in July and August. 1½ feet high. 3 for 60c; \$2.00 per dozen. **Subcordata grandiflora.** Light green leaves and waxy white lilies of larger size in August. 18 inches high. 3 for 75c; \$2.50 per dozen.

## LAVENDER—Lavandula vera

A fragrant shrubby perennial whose lavender spikes from June to August are known to almost everyone. 15 inches high. 3 for 60c; \$2.00 per dozen.

## BLAZING STAR—Liatris pycnostachya

Long, narrow, plummy spikes of lavender-purple appear in August. 3-4 feet. Blooms from the top downward rather than from the bottom upward. Plant behind Silver King Artemisia for beautiful effect. 3 for 60c; \$2.00 per dozen.

## LILIES

All the world loves them. They need perfect drainage and are best planted in the fall, although the following varieties give good results when planted in early spring.

**Regal Lily.** One of the finest, easiest and most popular. Pure white, shaded pink on the reverse of the petals. Late June and July. 3-4 feet. 3 for 60c; \$2.00 per dozen.

**Coral Lily (L. tenuifolium).** A charming little gem of the family with deep scarlet flowers on 12-18 inch stems in June. Everyone adores it. 3 for 50c; \$1.80 per dozen.

**Tiger Lily.** An old favorite with very easy culture. A deep orange Lily with black spots. August. 4 to 5 feet high. 3 for 60c; \$2.00 per dozen.

# OR SUMMER

# BLOOM

## BLUE FLAX—*Linum perenne*

Slender, graceful ornamental 12-in stems terminated with pretty pearly blue saucer-shaped flowers. New ones appear each morning throughout the summer. Not suitable for heavy, damp soils. 3 for 50c.

## MALTESE CROSS—*Lychnis chalcedonica*

Umbels of vivid scarlet flowers on 2-3 feet stems in July. A long bloomer that reblooms if bloomed-out flowers are removed. 3 for 60c.

## BLACKBERRY LILY—*Pardanthus chinensis*

A good old-fashioned hardy perennial. Foliage looks like Iris. Flowers like a small orange *Hemerocallis*; followed by fruits like a blackberry. July, 2 to 3 feet. 3 for 60c.

## BALLOON FLOWER—*Platycodon grandiflorum*

Neat plants of upright habits. Large showy deep blue bells, preceded by blue balloons, on 2 to 3 feet stems in July and August. Considered one of the most beautiful plants for the garden. 3 for 60c; \$2.00 per dozen.

**SCABIOSA HOUSE'S HYBRIDS.** Charming lacy solid center daisy-like flowers on long stems suitable for cutting or for border use, 15 to 18 inches high. June and July. Shades of blue. 25c each.

**SCABIOSA FISCHERI.** This *Scabiosa* has smaller flowers of a deeper shade that bloom from July till frost. Very fine for table cutting. 3 feet. 3 for 60c.

## SEDUMS

The low growing varieties are gems for the rock garden and thrive in dry, sunny situations. Most of them are evergreen. Showy *Stonecrop*, which is not evergreen, makes a great showing late in the summer and early fall in the flower garden. Better varieties follow:

**Elegans.** Pretty glaucous, bluish green bushlets, 3-4 inches high. 3 for 60c; \$2.00 per dozen.

**Ellacombianum.** Amongst the first five most desirable Sedums for the rock garden. A 6-inch bushy green mound, that takes on glorious colors of orange and red in Autumn, and yellow flowers in July. 3 for 50c; \$1.80 per dozen.

**Sarmentosum.** The best Sedum for a ground cover for hot, dry places. Grows rapidly. Very prostrate. 3 for 50c; \$1.80 per dozen.

**Spectabile Brilliant.** (Showy *Stonecrop*). Broad succulent green leaves on 12 to 15 inch stems with large showy rosy-crimson umbels in August and September. 3 for 60c; \$2.00 per dozen.

**Spurium.** Prostrate branches with terminal rosettes of bronzy leaves which turn red in winter. Pink flowers in June. 4 to 6 inches high. 3 for 50c; \$1.80 per dozen.

## SEMPERVIVUM—Hens and Chickens

Interesting plants forming rosettes of succulent leaves. Very attractive amongst rocks.

**Atroviolaceum.** Deep purplish red leaves on rosettes 6 inches in diameter. 3 for 60c.

**Royanum.** A large green form. 3 for 60c.

**Violescens.** A bluish-gray leaved type. 3 for 60c.

## STOKES ASTER—*Stokesia laevis*

One of the better late summer-flowering plants. Large double Aster-like flowers on 12-inch stems in July and August. Everyone likes it. 3 for 60c; \$2.00 per dozen.

## THYME—*Thymus*

Prostrate creeping, 4 inches high, perennials with fragrant foliage. Suitable for margins of dry, sunny banks, slopes, or rock garden.

**Lemon Thyme** (*T. citriodorus*). Broad mats of lemon-scented foliage and pink flowers. 3 for 60c.

**Woolly Thyme.** (*T. lanuginosus*). Woolly leaved, quick spreading, prostrate plant. Perfect drainage must be supplied. 3 for 60c.

**Crimson Thyme** (*T. serpyllum coccineus*). Lovely red foliaged mat in early spring. Sheet of small crimson flowers in June and July. 3 for 60c.

## TRITOMA PFITZERI—Red Hot Poker

Produces an illusion of flaming fire. Rich orange spikes with a shade of scarlet, in August and September. Grass-like foliage, 2 feet tall. Very effective in the border or formal beds in full sun. Needs a little winter protection. 3 for 60c; \$2.00 per dozen.

**TRITOMA TOWERS OF GOLD** This so-called Poker Plant is a rich lemon-yellow type. Good. 3 for \$1.00.

## GLOBEFLOWER—*Trollius ledebouri* Golden Queen

Large cup-shaped flowers of golden orange with exceedingly showy stamens in June, 1½ feet high. Needs good loam with ample moisture. 50c each.

## DOUBLE COATFLOWER—*Tunica saxifraga rosea* fl. pl.

Slender stemmed, graceful rock or wall plants covered with lovely double pink *Baby's Breath*-like flowers all summer. Really choice and very desirable. 3 for 60c.

## SPEEDWELLS—*Veronica*

Showy plants for garden and rockery use, according to their size. All are easy culture. Varieties are:

**Corymbosa stricta.** Dense plummy spikes of azure blue from July to August, 6 inches high. 3 for 60c.

**Pink Woolly Speedwell** (*Veronica incana rosea*). New. Lovely pink spikes, 6 to 8 inches high, in July. Silvered foliage. Very fine. 3 for 60c; \$2.00 per dozen.

**Blue Spire.** New. Supercedes *Veronica spicata*. Deep blue spikes in July and August. 3 for 75c.

**Clump Speedwell** (*Veronica longifolia subsessilis*). One of the best plants for the hardy border and the best blue flowered perennial for August bloom. Attractive foliage and thick spikes of very deep blue, 18 inches high. Our very low price for this Spring only is: 3 for 60c; \$2.00 per dozen.

## TURTLE-HEAD—*Chelone Lyoni*

Showy heads of purplish-pink flowers in spikes and resembling turtle-heads, 2-3 feet high and blooms in August. 3 for 60c.

## Daphne Cneorum

A lovely, low-growing plant at all times, but at its best during May and June, when it is completely covered with clustered bright pink, delicately perfumed, blooms. Some flowers appear again in Autumn. A splendid 8 to 12 in high plant for the rock garden or as an edging plant in front of evergreens and shrubs. It prefers a sunny position in a well drained soil. Protect the evergreen foliage from winter-burning with a little straw. Bushy plants, 9-12 inches across. \$1.00 each.

## Pansies

This year we have four fine large beds of pansies. Last year thousands of people were delighted with the brilliance and beauty of our pansy beds. Stop in at our nursery this spring and get your pansies freshly dug—not those that have stood around in baskets in front of some grocery store for a week or more. Plant as early as possible for best results. You get the best in Pansies when you get our Harrold's Improved Swiss Giants in mixed colors.



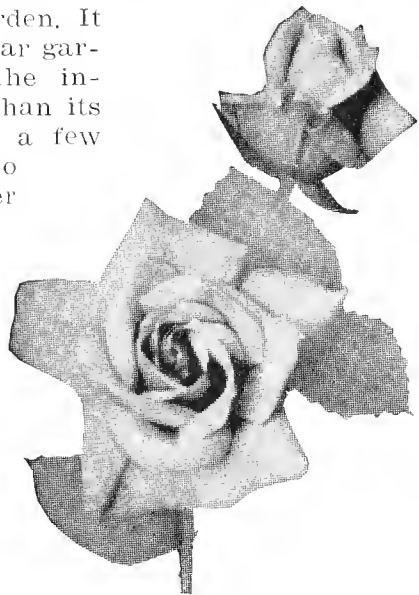
## Bleeding Heart

*Dicentra spectabilis*

Everyone loves the old-fashioned Bleeding Heart. Long drooping racemes of large pink heart-shaped flowers in May and June. Two feet high. Grows in sun or shade. You should have some of our strong clumps. 40c each.

# Dependable Roses

Roses are grown in every garden. It may be classed as the most popular garden flower today, because of the individuality of its blooms rather than its landscape effect. We are listing a few varieties that we have found to be good and amongst the better kinds under average conditions. You will note that they are reasonably priced for 2 year No. 1 field grown plants. No better plants are obtainable. No poorer grades are offered as assured success is obtained only with No. 1's. These are Northern grown and hence, are worth twice as much as Southern grown ones.



- ETOILE DE HOLLANDE.** Brilliant red and free flowering.
- MRS. E. P. THOM.** Best clear yellow. Strong grower.
- MRS. HENRY BOWLES.** One of the most perfect pink roses.
- ELSE POULSEN.** An extra-large flowered Polyantha or cluster Rose. Single, bright rose-pink. A beauty.
- PAUL'S SCARLET CLIMBER.** The most popular of all climbing Roses. None can compare with it for brilliancy of color in its vivid scarlet.
- ROSE PRICES:** All are 60c each or 3 or more 55c each.

# Spring Blooming Perennials

The dwarf kind of Spring Blooming Perennials—12 inches and under—are on another page under the classification of Spring Blooming Rock Plants. Their heights and habits make them adaptable for many other uses than just for the rock garden.

## AQUILEGIA—Columbine

Columbines grow in ordinary soil, but develop better, grow larger and last longer when grown in partial shade in a soil containing lots of humus. The foliage is ornamental whether the plant is in or out of bloom. We offer two of the best varieties:

**Crimson Star.** Large flowers with crimson sepals and spurs and white corolla. An entirely new color in Columbines. 3 for 60c; \$2.00 per dozen.

**Dobbies Imperial Hybrids.** This is the best strain of the lovely long-spurred hybrid Columbines. Range of colors as of the rainbow. For shade or sun. 2 feet. Mixed colors. 3 for 60c; \$2.00 per dozen.

## CANTERBURY BELLS—Campanula medium

These are biennials, but they are always a favorite. Large beautiful rose or blue bells in late May and June. 2 feet tall. State color. 3 for 50c.

## MEMORIAL DAISY (Or Improved Hartje and Elder Daisy)

This is the newly improved variety with larger single white daisies and longer stems. In full bloom for Memorial Day. 18 inches tall. Very good for cutting. 3 for 60c; \$2.00 per dozen.

## PAINTED DAISY—Pyrethrum James Kelwayi

The Painted Daisy is known to all. This is a large flowered single red one. 18-24 inches high. June bloomer. About 80% of the plants will be true red; the remainder will be pink to rose. An excellent variety you will agree. 3 for 60c; \$2.00 per dozen.

Painted Daisy roseum. Pink shades. 3 for 60c.

## SWEET WILLIAM—Dianthus barbatus

A well-known, attractive, free-flowering hardy biennial. May and June. Splendid effect in beds and borders. Reseeds itself readily. Following varieties are best:

Blood-Red. 3 for 50c.

Pink Beauty. Salmon-pink. 3 for 50c.

Exhibition Auricula-eyed. 3 for 50c.

# Gleanings

**PLANT EARLY**—as soon as your soil is in a workable condition. Early planting and successful results go hand in hand.

**USE A BALANCED FERTILIZER**—plant food should be dug into the bed where flowers are planted or are to be planted. VIGORO is an excellent garden fertilizer. The kind we use may be secured at our nursery.

**SECURE STRONG TWO YEAR, TRANSPLANTED FIELD GROWN PLANTS.** This size, with very few exceptions, is the first essential to garden success. These are the kind of plants we grow for you. Do not be satisfied with skimpy plants out of a seed bed or distorted, crowded plants out of a row which some companies call field grown.

**FOR A WELL LANDSCAPED GARDEN EFFECT,** plant three or more plants of a kind in a group. Large gardens may use a dozen or more of a kind in a group.

**WE OFFER ONLY THE BEST KINDS OF PERENNIALS AND ROCK PLANTS.** Each year we try out new varieties of plants and continually keep discarding the poorer kinds of plants that we feel are unfit for your garden when they are compared with the better varieties.

**FALL PLANTING** is satisfactory for most of the plants offered in this folder, excepting Chrysanthemums, Asters and Tritomas. Usually Iris, Peonies, Virginia Bluebells (Mertensia), Oriental Poppies and many Lilies are better planted in late summer or fall. Our fall folder will describe and price them.

**PLANTS WILL BE SHIPPED BY PARCEL POST OR EXPRESS** at our option, unless specific shipping instructions are received with order. Transportation charges are paid by the customer. We will send you a notice of the exact cost of transportation after the plants are sent, provided we ship by parcel post.

**IF IT IS MORE CONVENIENT, CALL AT OUR NURSERY FOR YOUR PLANTS** at any time during the spring planting season. We are located one and one-half miles south of Bridgman on the US-12 Highway.

**VISITORS ARE ALWAYS WELCOME** at our gardens.

**PRICES.** If you cannot use three or more plants of a kind, the plants listed at 3 for 60c are 25c each and those 3 for \$1.00 are 35c each.

Prices in this folder may or may not be effective after June 1, 1939.

# Hardy Asters

They are becoming more popular every year for the Fall gardens. They bloom very profusely during late August and September. Following varieties are the best.

**CHARLES WILSON.** A striking bright red. The finest of its color to date. A compact bush and very free-flowering. 3 for 60c; \$2.00 per dozen.

**HARRINGTON'S PINK.** New. Most outstanding hardy Aster recently introduced. Certainly is a beauty. Large flowers of a luminous true pink on bushy plants. 3 feet high 50c each.

**MARJORIE.** Dwarf, 12 inch, compact mounds covered with bright rose-pink flowers. 3 for 60c; \$2.00 per dozen.

**MT. EVEREST.** New. The best white Aster. Plants are well shaped pyramids with an abundance of lateral branches right down to the ground. 4 feet. 3 for 60c; \$2.00 per dozen.

**QUEEN MARY.** Pleasing blue Aster, tinted lavender, arranged gracefully on branching panicles. 4 feet. 3 for 60c; \$2.00 per dozen.

**RYECROFT PURPLE.** Large rich purple flowers on 5 foot stems in late September and October. No other Aster like it. 3 for 60c; \$2.00 per dozen.

**SKYLANDS QUEEN.** Very large medium blue with a lavender sheen. Early. Showiest of all blues in its season. 3 feet 3 for 60c; \$2.00 per dozen.

**VICTOR.** Dwarf, 9 inch, compact mounds covered with clear lavender-blue flowers. 3 for 60c; \$2.00 per dozen.

**YPRES.** A compact pyramidal plant. 2 feet tall, literally covered with neat rosy-pink flowers, closely set on stems from the ground to its tip. 3 for 60c; \$2.00 per dozen.

10

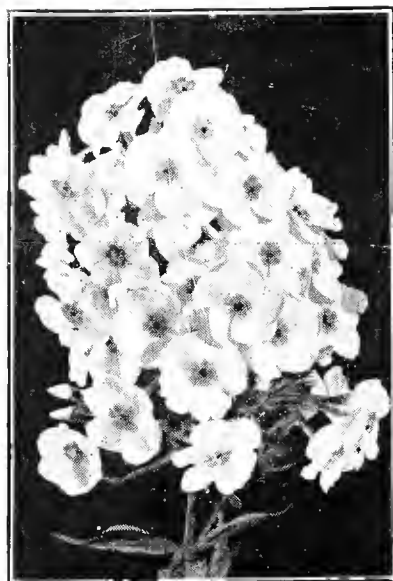
# ❖ Hardy Phlox ❖

## America's Most Popular Perennial

Phlox are the most effective and useful garden plants during July, August and September. No plants can equal their vivid display of color. Their panicles of crimson and wine, glistening pink and salmons, pure shining whites, violets and purple-blues create a garden of brilliance. The vast array of varieties being offered today is apt to be confusing to many people. To aid you we have discontinued growing all poorer and antiquated varieties and offer you only those varieties that have better colors, more freedom of bloom, stronger habits, and greater freedom from disease. Phlox prefer a soil that has been deeply enriched with rotted manure or Vigoro or both, and should be watered, preferably, early enough in the day so that the foliage and flowers will dry before night. Plant 12 to 18 inches apart and they will look so much better if you will plant 3 or more plants of a kind in a group. Do not let your plants go to seed. Remove faded flower heads and new blooms will come from the young lateral branches.

### Phlox Prices

Strong, field grown plants; unless otherwise stated, plants are 25c each; 3 of one kind for 60c; or \$2.00 per dozen of a kind.



**AFFICA.** Brilliant carmine-red, with blood-red eye. Strong plant and not subject to mildew. A most popular red.

**ALDENHEIM TRIUMPH.** Soft pink with cherry-red eye.

**B. COMPTE.** Rich, satiny, amaranth-red. Darkest red of all. Late bloomer.

**BARON VON DEDUM.** Salmon-rose. Long bloomer and very popular.

**BEACON.** Cherry-red. Tall.

**BORDER QUEEN.** Watermelon pink — an improved Jules Sandeau. Florets large as a silver dollar. New, Disease resistant and an early bloomer.

**DAILY SKETCH.** Choice. Immense trusses and extra large florets of glistening salmon-pink with carmine eye. 35c each or 3 for 1.00.

**DELHI.** Best white with red eye.

**DIPLOMAT.** Largest and purest white yet offered. Heavy deep green foliage.

**ECLAIREUR.** Rosy-purple. Tall strong grower.

**E. I. FARRINGTON.** Soft salmon pink with bright eye. Very pretty. Better than Columbia or Lillian.

**ENCHANTRESS.** Soft salmon pink with dark eye. Dwarfier and deeper color than E. I. Farrington.

**GUY MOORE.** Crushed strawberry. A new shade.

**HANS VOLMULLER.** Soft violet blend with white.

**LEO SCHLAGATER.** Brilliant scarlet in large heads. 35c each.

**MISS LINGARD.** White. June and July bloom, which is a month ahead of all others. Splendid foliage.

**MRS. W. G. HARDING.** A deep rose; faintly flushed scarlet. Choice and new. A real buy.

**PAINTED LADY.** Silvery pink with cherry-red eye.

**P. D. WILLIAMS.** Enormous flowers in pyramidal trusses. Soft rose pink with darker center. 35c each or 3 for \$1.00.

**ROSALINDA.** An amaranth pink form of Miss Lingard. Blooms at the same time.

**ROYAL PURPLE.** Best purple-blue.

**RUBY.** Splendid crimson-red.

**SALADIN.** Brilliant orange-scarlet. Very showy. 35c each, 3 for \$1.00, or \$3.00 per dozen.

**SALMON GLOW.** A lively pink with salmon shadings; the effect being a bright salmon. 35c each.

**SWEETHEART.** Very large flowers of deep salmony-rose. New. 35c each or 3 for \$1.00.

**WM. KESSELRING.** Violet with white eye.

## Phlox Subulata — Moss or Mountain Phlox

### One of the Best Loved and Best Known of Rock Garden Family

These low spreading plants, with mossy evergreen foliage and solid sheets of flowers in late April and May, have endeared them to everyone. They are about 6 inches high and make clumps from one to two feet across, depending upon the kind. All are sun lovers and very drought-resistant. The soil should be well drained and not too rich. Excellent for the rockery, front of the hardy border, and for covering terraces, dry hillsides and graves. Plant 8 inches apart.

PRICES: Unless otherwise stated, plants are 25c each; 3 of one kind for 60c; or \$2.00 per dozen of a kind.

**CITY OF HOLLAND.** White flowered form. Lovely.

**AUTUMN ROSE.** Blooms in May and early June and again in September and October. Bright rose with large red center.

**BLUE HILLS.** Blue flowers, tinged lavender.

**BRILLIANT.** The most colorful display of all, a bright crimson-red. Admired by all.

**CAMLA.** Considered one of the best of this section. Subulata form, but more loose and graceful in habit. The very large flowers are a lovely shade of glistening salmon-pink. It flowers freely in May and intermittently throughout the summer and fall. Rare. 35c each.

**EMERALD CUSHION.** New. Neat compact cushions of emerald green foliage. Very large flowers of lively pink. Different from all others. 35c each.

**ROCHESTER.** New. Very vigorous and spreading. Covered with large rosy-red flowers. 35c each.

**ROSEA.** The well-known popular rosy-pink variety. A great spreader.

**SAMPSON.** New. Same color flower as Rochester, but more neat and compact and not so spreading. 35c each.

**VIVID.** A compact grower. Bright clear pink with a darker eye.





# Spring Blooming Rock Plants



In addition to being good rock plants, most of these plants have other places in which they may very well be used, depending upon the height and habit needs; such as the perennial border or garden, terrace plantings, rock walls, covering hillsides edging and a few for shady locations. The Dwarf Phloxes, which are amongst the finest of Spring Blooming Rock Plants, are listed on another page.

**ALLIUM RUBY GEM.** Upright chive-like plants with many long lasting deep rose one-inch globe-like flower heads on 8 inch leafless stems in June. 3 for 60c; \$2.00 per dozen.

**BASKET OF GOLD—*Alyssum saxatile compactum***

Cheeriest of the early spring blooming plants. Never fails to delight. Masses of golden yellow flowers in April and May. 12 inches high. Indispensable for the rockery or front of border. Needs good drainage. 3 for 50c; \$1.80 per dozen.

**DOUBLE ROCK CRESS—*Arabis albida flora plene***

Double white flowers, resembling Stocks, on 8 inch stems in late April and May. Ornamental foliage. Drought resistant and thrives in poor soil. Shear back immediately after flowering to maintain neat clumps. 3 for 60c; \$2.00 per dozen.

**SNOW-IN-SUMMER—*Cerastium tomentosum***

A real good name. Broad prostrate spreading mats of silvery foliage. White flowers in May. 6 inches high. Sun-loving. 3 for 60c; \$1.80 per dozen.

**GARDEN PINKS—*Dianthus***

No garden is complete without a liberal planting of the various Pinks. They may be used in the rock garden, rock wall, or massed in the border. No place too hot or dry for them. Soil should be well drained and contain some lime. Best varieties are:

**Bristol Beauty.** Very large flowers of the double Clove Pink type, almost carnation size. A lovely rich pink color and very fragrant. Fine for garden display and cutting. 8 to 12 inches high. Begins blooming in June and blooms throughout the summer. 3 for 60c; \$2.00 per dozen.

**Bristol Purity.** Same type as Bristol Beauty in double white flowers. 3 for 60c.

**Rose Cushion.** This compact Cushion Pink is one of the most desirable of the Pinks for the rock garden. It does not sprawl and when not in flower the plant is a neat little round mound. Rosy-pink flowers in June. 6 inches high. 3 for 60c; \$2.00 per dozen.

**Rose Dawn.** Same color and habit as Rose Cushion, but glaucous-blue foliage. 3 for 60c; \$2.00 per dozen.

**Spring Beauty.** Double giant-flowered carnation-like in form and size and with a beautiful color range. Very fragrant. 3 for 60c; \$2.00 per dozen.

**PLUMY BLEEDING HEART—*Dicentra eximia***

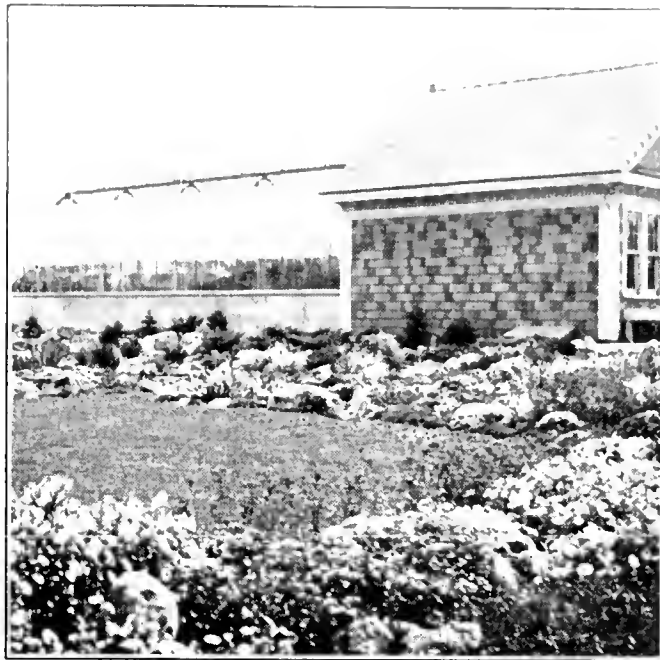
A compact plant with finely cut fern-like leaves and racemes of small pink heart-shaped flowers throughout the summer. Grows in sun or shade so can be used in the rock garden, perennial garden or wild flower garden with equal success. 1 foot tall. Every garden needs it. 3 for 60c; \$2.00 per dozen.

**SILVERY SPURGE—*Euphorbia myrsinites***

Valued for its prostrate bluish foliage branches. Attractive appearance when hanging over rocks. 6 inches high. 3 for 60c.

**CUSHION SPURGE—*Euphorbia polychroma***

Very effective as specimens in the rock garden. Always attracts much interest. Mounds of yellow flower bracts in May. 12 inches high. Best in poor soil. 3 for \$1.00.



**SUN ROSES—*Helianthemum***

Low, spreading, evergreen shrubby plants. Very good for mass effects in sunny rock gardens, terraces, and hillsides. Prefers sandy soil.

**Apricot.** Single saucer-shaped apricot flowers. 3 for 60c; \$2.00 per dozen.

**Buttercup.** Single golden yellow saucer-shaped flowers. 3 for 60c; \$2.00 per dozen.

**Fireball.** Double dull red flowers. 3 for 60c; \$2.00 per dozen.

**Rhodanthe carneum.** Single saucer-shaped pink flowers. Silvery foliage. 3 for 60c; \$2.00 per dozen.

**SNOWFLAKE CANDYTUFT — *Iberis sempervirens* Snowflake**

The best variety of the well-known Hardy Candytuft. Dwarf evergreen bushlets completely hidden by dense heads of larger pure white flowers in May and June. 8 inches high. 3 for 60c; \$2.00 per dozen.

**DOUBLE LYCHNIS—*Lychnis viscaria splendens* fl. pl.**

Umbels of double, deep red fragrant flowers in June on 12 inch spikes. Brilliant. 3 for 60c.

**CATMINT—*Nepeta mussini***

From masses of soft gray foliage come clouds of lavender-blue flowers from May through July. 8 to 12 inches high. 3 for 60c.

**PRIMROSES—*Primula veris***

A flower that everybody loves. Most beautiful and interesting of May bloomers. 6 inches high. Lovely when massed in a half shady spot or when planted behind stones in the rock garden. Mixed colors of white, yellow, and rich red. 3 for 60c; \$2.00 per dozen.

**SOAPWORT—*Saponaria ocymoides splendens***

Prostrate, trailing plant, 2-3 feet in diameter with a cloud of dainty pink flowers in late May and June. 6 inches high. 3 for 60c.

**DOUBLE COAT FLOWER—*Tunica saxifraga rosea* fl. pl.**

Slender-stemmed graceful rock or wall plants covered with lovely, small double pink Baby's Breath-like flowers all summer. 6 inches high. 3 for 60c; \$2.00 per dozen.

**WOOLLY SPEEDWELL—*Veronica incana***

White woolly plants with 6 inch blue spikes in June. Attractive plants throughout the year. Useful in rockery or for edging paths and flower beds. 3 for 60c; \$2.00 per dozen.

**ROCK SPEEDWELL—*Veronica rupestris***

Splendid prostrate creeping plants with dainty spikes of bright blue flowers in May. 3 for 60c; \$2.00 per dozen.

**VIOLA—Tufted Pansies**

Very popular bedding plants blooming from early spring until late Autumn, if old blooms are kept picked off. Best in rich soil and will thrive in a bit of shade. Very beautiful planted in masses. Partially perennial. Following varieties are excellent:

**Admiration.** Deep violet. 3 for 45c; \$1.50 per dozen.

**Arkwright Ruby.** New. Ruby-red velvety appearance outlined with maroon in center. 3 for 45c; \$1.50 per dozen.

**Chantreyland.** The finest pure apricot yet developed. Superior to the older Apricot. 3 for 45c; \$1.50 per dozen.

**Yellow Queen.** The finest deep golden yellow. 3 for 45c; \$1.50 per dozen.

