

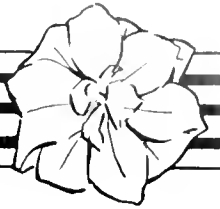
Historic, archived document

Do not assume content reflects current scientific knowledge, policies, or practices.



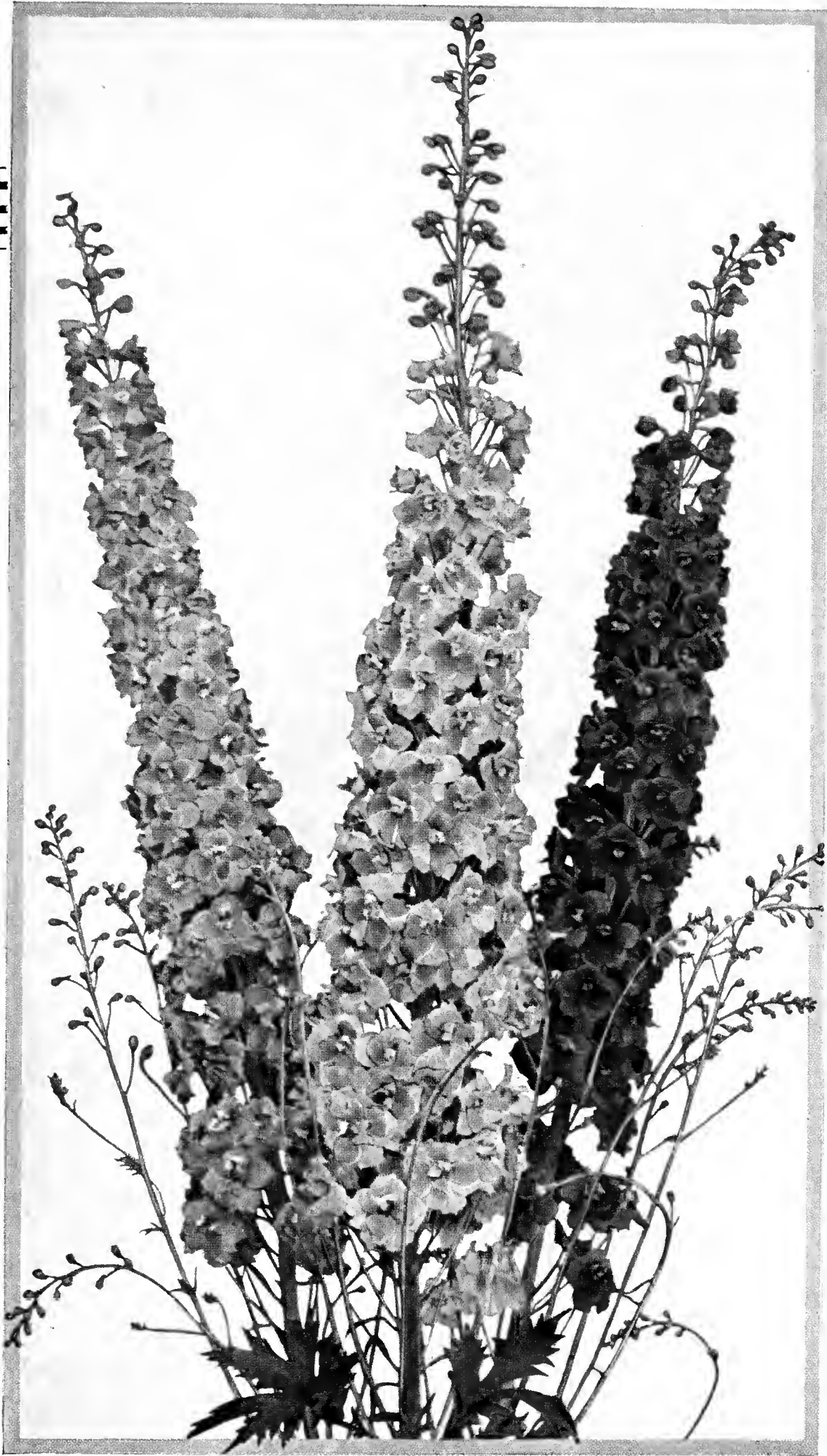
257

1938



1939

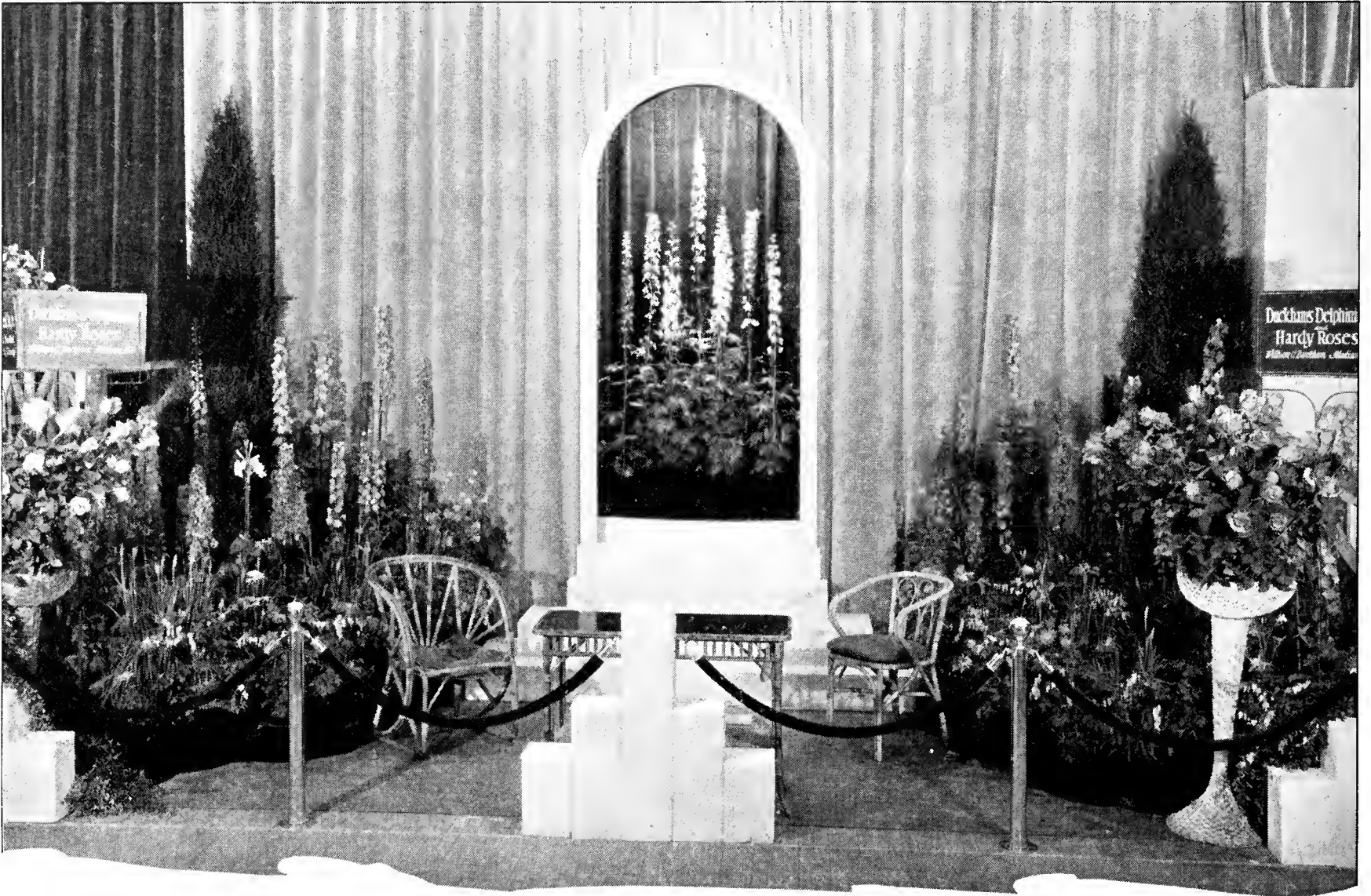
LIBRARY
RECEIVED
★ FEB 16 1939 ★
U. S. Department of Agriculture



Duckham's

GOLD MEDAL

DELPHINIUMS



Our exhibit at the International Flower Show which won the Gold Medal for display of Delphiniums

DUCKHAM'S DELPHINIUM FOOD

SO MANY of our customers have inquired about the fertilizer we use for our Delphiniums that we have decided to catalogue it.

It is the same material we use to keep our plants full of vim and vigor, making possible all the gold medals and other awards our Delphiniums have brought home from the shows.

This material will be known as Duckham's Delphinium Food, and if used according to directions will keep your plants at the peak of perfection all the time.

100-lb. bag \$8, f.o.b.
Madison, N. J.



TO MANY PEOPLE who garden, the name Duckham means Delphiniums, and we are proud of our Delphiniums which we believe are the finest obtainable in this country, but we want the gardeners of America to know that Delphiniums are not the only plants that Duckham grows and sells.

This Catalogue lists a complete line of garden material—practically every family of plants necessary for a good garden will be found herein.

If you have never grown our perennials and roses, we would like to discuss a trial order with you. Yes, we have roses for forcing as well as other greenhouse material.

Among the many gold medals won by Duckham's Delphiniums are four from the International Flower Show at New York, awarded for our Delphinium display in 1932, 1933, 1934, 1935, the only gold medals which have been awarded to Delphiniums at this important show. The members of the Horticultural Society of New York grow wonderfully fine flowers, so we are quite proud of the gold medal they awarded our exhibit of Superior Delphiniums at their great show. Another gold medal which we prize very much is one awarded us by the Society of American Florists.

Whether we show them ourselves, or they are exhibited by our customers, Duckham's Delphiniums usually win; so if you want to carry off the honors this summer, plant Duckham's Super-Hybrids this spring.

NEW TYPES OF AMAZING SIZE AND INFINITELY MORE BEAUTIFUL COLORS ARE PRESENTED IN

Duckham's Delphiniums

Superb forms and colors that have awakened a new interest in these most charming old-fashioned flowers

FOR YEARS and years the Delphinium or old-fashioned Larkspur has been a favorite for the hardy border.

However beautiful the old varieties were, they are not to be compared with the modern types, the choicest of which are still in the hands of a few specialists who devote their whole time to bringing them to a still higher state of perfection.

Our Delphiniums are now well known in every state from Maine to California. At every flower show where they have been exhibited they have invariably outclassed every competing group. For four years our exhibits have carried off the highest honors with four special Gold Medals at the great New York show, where the world's finest Delphiniums have been shown.

Single, semi-double, and double flowers, glorious color shading from indigo-blue to pale mauve, lavender, soft pink, and white, cover one-half to two-thirds of the giant 5- and 6-foot spikes. Every dozen plants include practically the entire color-range of this magnificent strain.

Since the last issue of our Catalogue, we have once more won the highest awards for our Delphiniums at the leading shows in America. Some of the new colors and unique forms are truly amazing in their beauty. We keep in continuous touch with the English sources of the hybrids we originally imported and distributed in America, and have been fortunate in securing special favors from them by receiving consignments of their very choicest creations. Adding these to our already famous strain has made it unique and outstanding in superiority.

Young plants which produced their first flowers fall of 1936, and which are offered for spring planting, will bring many delightful surprises to those who order now.

The spikes are of huge proportions and interestingly variable; some are broad at the base, tapering to a fine point; some columnar, of uniform diameter; others so compact that the florets overlap; while others have a graceful open formation.

The flowers range from the singles with their individual charm, the heavier semi-doubles, to the doubles with two distinct rows of petals; they are all wonderfully beautiful.

Helpful Hints on Growing Delphiniums

In choosing a site for your border, select one with a southern aspect, sheltered from the north by wall, hedge fence, or shrubbery. Don't plant them in low-lying, damp ground. Delphinium like well-drained, clayey soil, deeply dug, and heavily fertilized with rotten manure.

Prepare the soil several weeks before planting. Leave it in the rough after spading in the manure to give it time to settle and permit the manure to mix with it thoroughly. Spade second time before planting.

Choose a clear, dry day for the work. Unpack the plants immediately on arrival. Keep them away from cellar or boiler heat.

Plant at least 3 feet away from other plants in the border, preferably in the back row. Make holes wide enough to accommodate the roots spread out. Hold crown of plant level with surface of bed, spread out roots, pack earth between and over them. Place a stout 5-foot stake in hole to tie and protect the growing shoots later.

Plant in the spring as early as possible—when soil is in a workable, friable form. Plant in the fall from September 15 to November 15. Either season is good if proper attention is given to planting details.

Apply Duckham's Delphinium Food at intervals of a few weeks in summer. Water regularly and often. Cut away old (first) flower-spikes after blooming to induce a second crop.

One teaspoonful of Black-Leaf 40 and one tablespoonful of Bordeaux mixture in one gallon of soapy water, sprayed on frequently and thoroughly, will keep the plants healthy and free of insects.

Join the Delphinium Society of America. We will forward your application



WILLIAM C. DUCKHAM CO. ♦ MADISON, NEW JERSEY

DUCKHAM'S

Delphiniums

Duckham's Super-Hybrids

Where personal selection is made by a customer in our fields during the summer, we charge according to the merit of each plant selected.

For those who cannot visit our grounds, but who desire some of these extra-choice types, we went over the fields last year and marked a number of the best, and now offer these as Super-Hybrids. The colors cover the complete range from deepest indigo-blue and violet to the faintest lavender, mauve and peach-check hues, almost bordering on true pink. We find deep blue with white and a brown "bee"; violet-purple, purple, and light blue with a black "bee"; lavender, pink, light blue, with a yellow "bee," and a host of other four-tone effects, all in the one flower.

Such combinations are unusual and it is these that have made our Delphiniums world famous. It is such combinations that have caused them to be termed "Wonders of the Wily Ways of Wizards" in plant-hybridization. The prices are \$1.50, \$3, and \$5 each, and up.

The Regular Grade

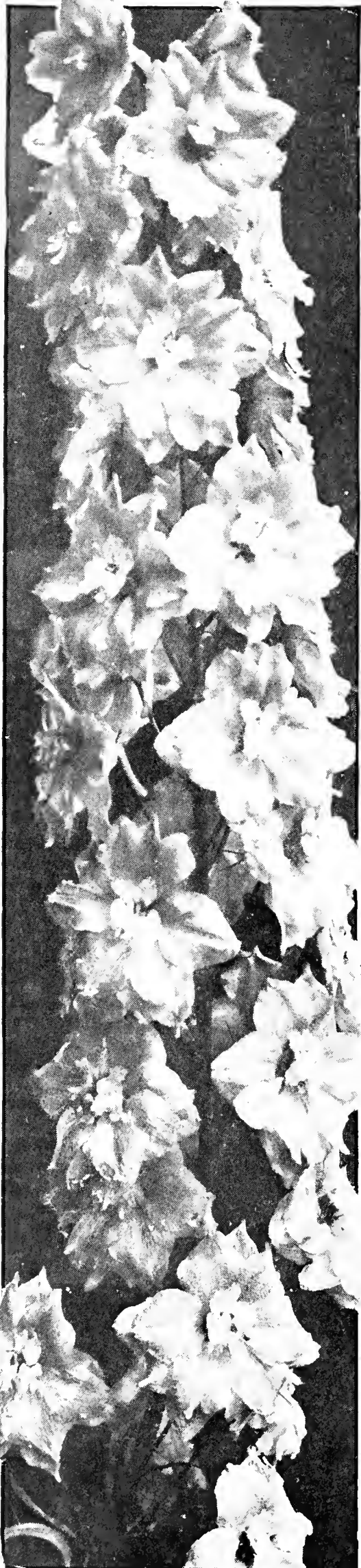
Duckham's Delphiniums are the result of years of careful breeding and selection from the world's finest named varieties; our endless striving for stronger, healthier plants with larger flowers of new combinations of color. Our plants are all extremely hardy, and well-established clumps in the border provide, year after year, wonderful spikes of majestic size and great beauty.

Price for Duckham's Delphiniums, Regular Grade, covering the entire color-range from mauve and lavender to deep blue and violet: Mixed colors, or selected light or dark shades, \$1 each; \$4.75 for 6; \$8 for 10; \$75 per 100.

Delphinium Seed

For those who like to raise their own plants from seed, we offer a limited quantity selected from our finest plants (the same seed we are planting ourselves this year). Pkt. \$2. Cultural directions enclosed with each order.

When sowing Delphinium seed, use Steri-loam. See page 19.



Hollyhock Delphinium



Delphinium Flowers



Hardy Perennial Plants

EVERY garden must depend to a large extent upon Hardy Perennial Plants for its continued beauty and charm. Beginning with the first crack of spring, these good old standbys continue in bewildering succession to display ever-changing aspects of floral beauty. Best of all, these plants are *permanent*, and, when once properly planted, remain year after year, increasing in size and vigor. Thus they confer upon the garden an atmosphere of permanence and tranquility which is necessary to the fulfillment of its purpose.

We recommend all of the Hardy Perennial Plants offered in this section for embellishing your garden beds and borders. We have selected these varieties from a much longer list as the best representatives of their respective classes.

Among them will be found an extended group of dwarf and creeping plants particularly adapted to rock-garden use, representing the result of long-continued special study and selection. Such plants are indicated in this list by a ★.

The generous, big field-clumps which I send out should furnish abundant blooms the first year, fulfilling their purpose in realizing the color schemes already planned and anxiously awaited.

Arranging and Planting Hardy Flower Borders

Preparing the Ground. The ground for a Perennial bed should be spaded at least 8 to 10 inches deep, and twice that if the ground is at all poor. The best practice is to remove the top 8 inches of ground entirely and spade into the bottom of the bed a liberal quantity of well-rotted manure or fertilizer, returning the top-soil after breaking it up very fine and mixing with a small amount of some effective artificial fertilizer. This work should be done several weeks in advance of planting the bed.

Planting. A gardener's trowel is the most practical tool for setting out plants of ordinary size. Before beginning it is well to lay the plants on the ground in the bed as they are indicated in the sketch or diagram, and then plant them as quickly as possible to prevent the roots from drying out. Always set plants just a little deeper than the old soil-line, and make the roots very firm in the ground. Loose planting is the cause of a great deal of loss.

Arrangement. In planting such borders, always give careful consideration to the height of the plants as indicated all through this Catalogue. Tall plants should be kept to the back of the border, those of medium height in the middle, while dwarf or smaller plants should be kept in the front. This should be varied a little, so that in some places tall plants come in the front of the border, partially concealing some lower plants beyond them. This device is especially effective in straight borders, adding a little air of mystery and surprise, such as is accomplished naturally in curved borders. The color of the flower is important, and the time of year in which they bloom is even more so. An effort should be made to have a few flowers in bloom throughout the border all season.

Winter Care. A light cover of dry litter, such as grass-clippings, leaves, or strawy manure is very beneficial after the first frost has nipped things down in late autumn. If manure is used, it may be raked in the ground in the spring, adding a very desirable element of fertility.

HARDY PERENNIAL PLANTS

VARIETIES MARKED ★ ARE SUITABLE FOR THE ROCK-GARDEN



Alyssum saxatile compactum

ACHILLEA · Milfoil

A. Ptarmica, The Pearl. Indispensable in every border, both for grace and usefulness for indoor decoration. The small, clustered flowers are pure white and literally smother the foliage by their profusion. 2 feet. June to September. 35 cts. each; \$3.50 per doz.

A., Perry's White. A choice variety for cutting and an excellent filler. The flowers are the whitest of all Achilleas, and an outstanding favorite with florists for summer flowers. 1 to 2 feet. June to August. 25 cts. each; \$2.50 per doz.

ACONITUM · Monkshood

A. Fischeri. A very attractive, erect, hardy plant, with odd blue and white flowers in autumn. Not unlike the delphiniums in general effect, but not nearly so large or so tall. Particularly good in shady borders. 40 cts. each; \$4 per doz.

A. Napellus bicolor. This is one of the tallest and finest of the Aconites, and a fine subject to group among the rear plants in the border. Grows 4 feet high, with huge spikes of blue and white flowers from June to August. 40 cts. each; \$4 per doz.

A. Napellus, Sparks' Variety. A tall variety with branching spikes of blue flowers. The darkest Aconitum, and has a long flowering period. 5 to 6 feet. July, August. 40 cts. each; \$4 per doz.

ALLWOODI

Everblooming Hardy Pinks

This new race of the Dianthus family flowers perpetually during spring, summer, and autumn. No plant is hardier or of easier cultivation, and its free-flowering qualities have rendered it exceedingly popular. The flowers range through many shades of light, medium, and dark pink and crimson, and all are deliciously fragrant. Mixed, 35 cts. each; \$3.50 per doz.

ALYSSUM

★**A. saxatile compactum.** Splendid tufted plant a foot or more high, covered with a mass of golden yellow flowers. 30 cts. each; \$3 per doz.

★**A. spinulosum roseum.** A rare plant with handsome silvery gray foliage. This neat, small-leaved species remains longer in beauty than any of the others. 50 cts. each; \$5 per doz.

ANCHUSA

A. myosotidiflora. Surprisingly fine ground-cover plant with large, broad leaves topped by graceful panicles of bright blue flowers resembling forget-me-nots. Excellent in shady places. April, May. 35 cts. each; \$3.50 per doz.



Anemone japonica

ANEMONE

★**A. hupehensis.** *Early Anemone.* Sturdy, dwarf Anemone, 1½ to 2 feet high, and resembling the Japanese Anemone in many respects, but blooms earlier, is not so tall, and much more richly colored. It is a fine plant for very large rock-gardens and comes into bloom in early August, continuing until frost. It will succeed in half-shady places. We recommend it especially for perennial borders and for cut-flowers. 35 cts. each; \$3.50 per doz.

A. japonica alba. Single, pure white flowers, showing yellow anthers, from late September on. 35 cts. each; \$3.50 per doz.

A. japonica, Queen Charlotte. Large, semi-double, bright pink flowers, broad and perfectly formed, abundantly produced in September. Fine for cutting.

A. japonica rosea superba. Large, single, light silvery pink flowers in late September.

A. japonica, Whirlwind. Semi-double, large, snowy white flowers profusely produced from late September on.

A., September Charm. Delicate silvery pink flowers shaded with rose and mauve, coming into full bloom by September 20.

All Anemones, 50 cts. each; \$5 per doz., except where noted

ANTHEMIS

A. tinctoria. *Hardy Marguerite.* Deep golden yellow, daisy-like flowers, ideal for decorative purposes. 1½ to 2 feet. June to September. 35 cts. each; \$3 per doz.

AQUILEGIA · Columbine

A., New English Improved Long-spurred. With their odd shapes and delightful color shadings Columbines rank high among the best hardy garden plants. They thrive almost anywhere but prefer a partially shady and moist position. This strain is, perhaps, the best and most beautiful in existence, having flowers with very long spurs and most charming colors, including Pink, Blue, Lavender, Red, Cream, and White—all decidedly new and interesting. 30 cts. each; \$3 per doz.

A., Crimson Star. (New.) Large flowers of deep crimson with spurs 1½ inches long and a creamy white center which forms a striking contrast. 50 cts. each; \$5 per doz.

A., Mrs. Nicholls. A glorified *A. cærulea* (Rocky Mountain Columbine) with larger flowers, longer spurs, and a stronger plant. 50 cts. each; \$5 per doz.

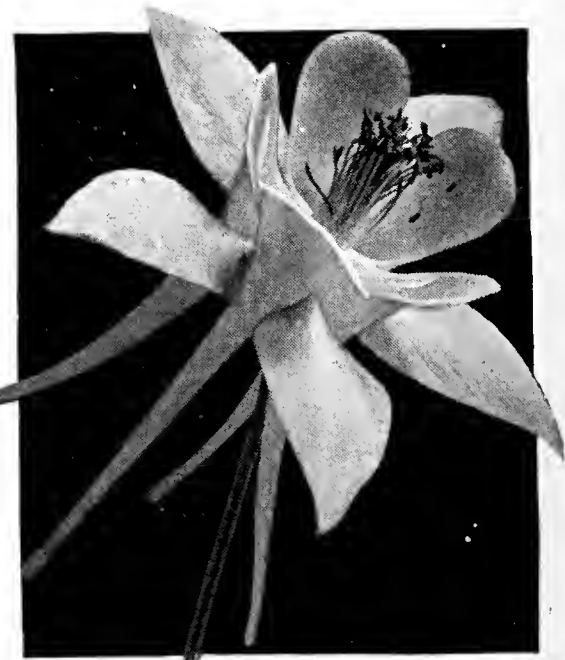
ARABIS

★**A. alpina.** Mats of gray-green foliage buried in a snowy cloud of pure white flowers. 30 cts. each; \$3 per doz.

ARTEMISIA

★**A. Abrotanum.** Decorative border plant with aromatic green foliage and spires of tiny yellowish white flowers. 30 cts. each; \$3 per doz.

A., Silver King. Unquestionably one of the best all-round decorative plants. Its bright silvery stems and foliage are of great value as a filler for bouquets, sprays, baskets, and all sorts of floral combinations. By cutting and drying the stems it is very valuable in winter. A very showy border plant 30 inches high. 35 cts. each; \$3.50 per doz.



Aquilegia, Crimson Star

HARDY PERENNIAL PLANTS

ARMERIA

A., Bees' Ruby. Attractive, dwarf plant with stout stems and large, globular heads of brilliant ruby-red flowers. 50 cts. each; \$5 per doz.

ASTER, DWARF HYBRIDS

A new addition to perennial borders and rock-gardens. They are hybrids of *A. dumosus* and are compact, mound-like, little plants, 6 to 18 inches tall, and completely covered for several weeks in September and October with their dainty little flowers. We offer seven varieties.

Countess of Dudley. Clear pink flowers with yellow eyes. 1 foot.

Daphne. Bushy grower of branching habit with flowers of soft pink. 12 to 15 inches.

Marjorie. Clear bright rose-pink flowers. 6 to 8 inches.

Nancy. Pale flesh-pink flowers. 9 inches.

Remembrance. Lilac-pink. 15 inches.

Ronald. Pleasing shade of lilac-pink. 1 foot.

Victor. Pale lavender-blue. 6 inches.

All Dwarf Hybrid Asters, \$3 per doz.; \$20 per 100

HARDY ASTERS

The many species, widely distinct from each other in habit and form, are, with a few exceptions, all native of North America. It is in Europe, however, that our Asters have been most highly appreciated. Many improvements have been made by European growers, and many hybrid forms have been produced by crossing the different species.

A., Duckham's Celestial Queen. A vigorous, well-branched Michaelmas Daisy of medium growth that simply covers itself with a cloak of thickly massed, lavender-blue flowers. The individual flowers average 1½ to 2 inches in diameter and form very large flower-heads. A splendid and most desirable color for the fall garden or for cutting. 50 cts. each; \$5 per doz.

A., Barr's Pink. A lovely light mallow-pink with stiff petals and a brilliant golden center, growing from 3 to 4 feet high.

A., Blue Gem. Clear blue flowers with large yellow center, borne in large trusses.



Baptisia australis

HARDY ASTERS, continued

A., British Queen. A soft lavender-blue, semi-double, unusually large flower with pale yellow center. Vigorous, well-branched plant. 4 feet. Early September.

A., Climax. Plants branching, with lovely lavender-blue flowers 1 to 2 inches in diameter. 4 to 5 feet. August to October.

A. Frikarti (Wonder of Staefa). Dwarf, summer-blooming Aster, 2 to 3 feet high, with flowers, 2 to 2½ inches across, of vivid lavender-blue, with striking orange centers. Delightful for cutting. 50 cts. each; \$5 per doz.

A. hybridus luteus. *New Hybrid Yellow Aster.* Quite a new departure in color—a clear yellow shade. Rather small flowers gracefully arranged in large, long-stemmed trusses. 45 cts each; \$4.50 per doz.



Aster, Mauve Cushion

★**A., Mauve Cushion.** Dwarf, compact plant covered in autumn with starry pinkish white flowers. 30 cts. each; \$3 per doz.

A., New Pink. Large, bright rosy pink flowers. Plant of free-branching habit. A charming new color in hardy Asters.

A., Red Rover. Deep rosy red flowers with golden centers. The first red fall Aster. 3 to 4 feet. September to frost.

A., Skylands Queen. (New.) Extremely large heads of rich blue flowers. Very bushy and compact. Dwarfier than Celestial Queen.

A., White Climax. (New.) Like Climax, but pure white. 4 to 5 feet. August to October.

All Asters, 35 cts. each; \$3 per doz., except where noted

AUBRIETIA HYBRIDS

Extremely showy, trailing plants covered with a mass of brilliant pink, purple, blue, and lavender flowers. 35 cts. each; \$3.50 per doz.

BAPTISIA AUSTRALIS

Vigorous perennial plant of the Pea family, with vivid green foliage and drooping spires of lupine-like flowers in early summer. A very brilliant border plant. 35 cts. each; \$3.50 per doz.



Campanula Medium

BOLTONIA

B. latisquama. Flowers resemble large white daisies or single asters and are borne in great profusion. 4 to 6 feet. July to Oct. 35 cts. each; \$1 for 3; \$3.50 per doz.

BUDDLEIA · Butterfly Bush

B., Fortune. Plant Patent No. 206. A new Butterfly Bush of neat habit, about 4 feet high and almost as much across. A much neater and more desirable plant than any of the older varieties. The color is pure lilac with a brilliant orange eye in each flower. \$1 each; \$10 per doz.

B., Ile de France. (New.) Richest and darkest of its race. The flowers are glowing claret-purple, packed into thick spikes a foot long. Very vigorous bushes and extremely free flowering. 50 cts. each; \$5 per doz

CAMPANULA

Bellflower

A very important class of plants varying in height, all beautiful and easy to cultivate.

★**C. carpatica.** *Harebell.* Makes excellent tufts of beautiful foliage and sends up slender stems bearing erect, cup-like, bright blue flowers throughout most of the summer. 30 cts. each; \$3 per doz.

C. Medium. *Canterbury Bells.* Old-fashioned, well-known, biennial plants of inexpressible loveliness, indispensable in every hardy plant border. 2 feet. June, July. **Double Rose, Single Blue, Lilac, or Double Blue.** 65 cts. for 3; \$2.50 per doz.

C. persicifolia. *Peach-Bell.* Broad, single, purple, bell-shaped flowers arranged along a tall and very graceful spike. 2 to 3 feet. June, July. \$1 for 3; \$3 per doz.

C. persicifolia grandiflora. Blue. 30 cts. each; \$3 per doz.

C. persicifolia grandiflora, Telham Beauty. Very large flowers of China blue, silvery shading. 40 cts. each; \$4 per doz.

Hardy Chrysanthemums

THE Hardy Chrysanthemums, Nature's farewell gift to autumn, are among the most important flowers in the garden. Coming into bloom at the end of the season, and lasting long after frosts have killed everything else, they furnish not only wonderful garden coloring, but great quantities of cut-flowers for the house which last longer in water than almost any other flower we grow.

They are easy to grow, requiring only rich soil and plenty of water, have very few enemies, and, being hardy, go through winter with a light covering.

There are several types. The most popular are the Singles, having one or more rows of ray petals; the Pompons, small, rounded, double flowers; and the Decorative, or Aster type, double flowers, 3 inches or more in diameter.

The New Korean Hybrids

The most interesting development in garden Chrysanthemums in many years has been the Korean hybrids introduced a few years ago. These lovely hybrids, which until this year were all singles, brought new shades and new tints to the Chrysanthemum family, also new Chrysanthemum scents: the old Chrysanthemums had a pungent scent which was not agreeable to everyone; the new Korean Hybrids have this much modified and, in addition, sweet fragrance much like modern roses.

Another virtue of these hybrids is their greater hardiness; they will stand many more degrees of frost than the old Chrysanthemums; also they bloom more freely than most old varieties, a few plants furnishing arm-loads of long-stemmed cut-flowers.

Agnes Selkirk Clark. Single, 3-inch flowers of a blend of bronzy pink, apricot, and salmon—an exquisite autumn color for the garden. The 2½-foot plants are in full bloom in late September. 50 cts. each; \$5 per doz.

Apollo. Bronze, red, and gold suffused salmon. Flowers single—fully 2 inches across—in very large sprays. The plants begin to bloom in early October and continue for three or four weeks. 25 cts. each; \$2.50 per doz.

Ceres. Soft coppery bronze, combined with old-gold and chamois-yellow. The petals of mature flowers appear as if dusted with gold. October 10. Height, 2 to 2½ feet. 25 cts. each; \$2.50 per doz.

Daphne. A blending of daphne-pink with an undertone of lilac-rose, a combination made beautiful by the golden yellow stamens. The flowers are about 3½ inches across, in graceful sprays, mid-October. Height, 2 to 2½ feet. 25 cts. each; \$2.50 per doz.

Diana. An unusual and charming color—Chatenay-rose-pink, mingled with lilac-rose and soft salmon. Three rows of petals. Begins to bloom about October 10. Height, 2 feet. 25 cts. each; \$2.50 per doz.

Ember. A fine weather-resisting double Chrysanthemum of a combination of coral and orange shades that have a bronzy appearance, 2½ inches in diameter. Mid-October. Height, 2½ feet. 75 cts. each.

Hebe. Very fragrant, silvery pink, single flowers from late September until frost. Plants are about 2½ feet tall and very profuse with their bloom. 35 cts. each; \$3.50 per doz.

King Midas. A large, double Chrysanthemum, 4 inches in diameter, of a charming shade of soft yellow occasionally shaded faintly with bronze. Late September. Height, 2½ feet. 75 cts. each.

Indian Summer. This new Korean Hybrid is a splendid double, some 3 inches in diameter, of a warm chestnut-orange, a delightful fall color, and is just shaggy enough in form to be distinct. It is more frost-resistant in the flower than any double we can think of. Growth is erect and sturdy. 50 cts. each; \$5 per doz.

Louise Schling. Large flowers, 3 inches or more across, with three or four rows of petals, fluffy and distinct in appearance. Glowing salmon-red in color, changing to soft bronze-salmon. October 5. 25 cts. each; \$2.50 per doz.

Mars. Possibly the most brilliant of this remarkable group. Amaranth-red, changing to wine-red, overlaid with a velvety sheen. 2 to 2½ feet. Mid-October. 25 cts. each; \$2.50 per doz.

Mercury. Glowing salmon-red, single flowers. Tall, branching plants. The first of the Korean Hybrids. 35 cts. each; \$3.50 per doz.

Nancy Copeland. Flowers 3½ inches across, of spectrum-red with an opalescent sheen, varying in the autumn light. A delightful variety 2½ feet tall. Late September. 50 cts. each; \$5 per doz.

Pink Lustre. Single, 3½-inch flowers with 3 or 4 rows of petals. A delightful shade of orchid. Very distinct. Height, 2½ to 3 feet. In full bloom in late September. 50 cts. each; \$5 per doz.

Romany. The second of the double Koreans and a beauty—a soft, glowing red with a bronzy tone, illuminated by the gold petal reverse appearing in the center of the flower. Flowers are 3½ inches across and last a long time as a cut-flower. 50 cts. each; \$5 per doz.

The Moor. The 3-inch, double flowers are port-wine-red or amaranth-purple—an intense and very brilliant color in the garden. Late September. Height, 2 feet. 75 cts. each.



Chrysanthemum coreanum Hybrid, Daphne

The Single Koreans

Aphrodite. Single flowers over 3 inches in diameter, of a soft shade of pink, changing to tinted ivory as the flowers mature. Low plants hidden by the mass of bloom. October 5.

Orion. Brilliant canary-yellow fairly glistening in the autumn sunlight. The single flowers are about 3 inches across and come in large, branching sprays. October 5.

Saturn. A striking variety of sparkling orange and bronze, with an orange ring surrounding the golden yellow centers of the 3-inch flowers; deliciously fragrant. October 5.

Venus. Rhodanthe pink—a new shade in Chrysanthemums—a charming combination of lilac, rose, and lavender. The 2½-inch flowers are fragrant. October 1.

Vulcan. Carmine-red, shading to garnet-crimson and then to bronzy crimson—a real warm coloring. Two rows of petals and very sweet.

The above Single Koreans are 35 cts. each; \$3.50 per doz.

HARDY PERENNIAL PLANTS



Carnation, Chabaud's

OTHER HARDY GARDEN CHRYSANTHEMUMS

A proper selection of Hardy Chrysanthemums prolongs the flowering season in the garden many weeks beyond its usual close. The borders will glow with color in October and November if a collection of well-chosen Hardy Chrysanthemums has been planted. Great strides have been made in the past few years in the development of brightly colored, early-flowering types which escape the severe frosts by blooming earlier than the varieties of several years ago. We offer a choice collection. The pot-plants which we send out, although not very large, will positively bloom the first season if planted in a reasonably rich, light, well-drained soil and given reasonable cultivation throughout the summer.

Amelia (Azaleamum and Pink Cushion).

Dwarf, cushion-like plants blooming in September, with small flowers opening pink and aging white. Plants 1 foot high with 2-foot spread, hidden by the mass of bloom. Extra good. 25 cts. each; \$3 per doz.

Astrid. The first Arcticum Hybrid. Large, single flowers of amber-pink. Plants of medium height, unusually free and extra hardy. 50 cts. each; \$1.25 for 3; \$5 per doz.

Barbara Cumming. Attractive, large, full flowers of shining yellow, shaded to orange-bronze. Blooms from August until late October. 25 cts. each; \$2.50 per doz.; \$15 per 100.

Brown Bess. A very desirable reddish brown Button of low growth, utmost freedom, and extreme hardiness. 30 cts. each; \$3 per doz.

Cavalier. A dazzling, single, rich vermilion-red variety which does not fade. Free flowering, of fine, robust, branching habit, and makes a gorgeous display from October 15 on. \$3 per doz.; \$20 per 100.

Dazzler. An informal, single variety, with whirling, ragged petals of dazzling scarlet. Unbeatable for late display. Blooms from middle of October on. 25 cts. each; \$2.50 per doz.

Early Bronze. Charming dwarf variety with huge sprays of medium-sized, bright coppery bronze flowers which pale to buff-yellow as they develop. 25 cts. each; \$2.50 per doz.

Granny Scovill. Lovely flowers, 4½ inches across, of nice, fluffy form. Color is warm coral-bronze. Dwarf, branching grower 2 feet high, with healthy foliage. In full bloom Oct. 10. \$2.50 per doz.; \$15 per 100.

Grenadier. Single, 3½-inch flowers of bright crimson-red with a bronzy sheen. Strong growth. Early October. 30 cts. each; \$3 per doz.

Innocence. A dwarf-growing Korean Hybrid, 12 to 18 inches high and with a spread of 2 feet, so completely covered with flowers that the plant is obscured when in bloom. Single flowers, white at first, changing to soft pink. 25 cts. each; \$2.50 per doz.

Jean Treadway. A 3-inch Decorative with double flowers of sparkling pink having a dark rose-pink center, changing to soft lilac-pink with age. September 30. Medium height. 25 cts. each; \$2.50 per doz.

October Dawn. Large, full-petaled flowers of soft daybreak-pink, free from blends or contrasting tints. Begins blooming in early October and continues until frost. 35 cts. each; \$3.50 per doz.

R. Marion Hatton. A superb variety for massed planting, providing a most profuse display of rather small, double, clear light yellow flowers of great beauty from late September until freezing weather. 25 cts. each; \$2.50 per doz.

Ruth Cumming. A double, Aster-shaped flower of rich reddish bronze with terracotta shades; ages soft bronze. October 10. 25 cts. each; \$2.50 per doz.

Ruth Hatton. An exceptionally prolific variety of vigorous and bushy growth. A Decorative Pompon with a lemon-yellow center when first opening, aging ivory-white. October 10. 25c. each; \$2.50 per doz.

September Queen. An extra-early pure white variety with large, single, aster-like flowers. 25 cts. each; \$2.50 per doz.

CHRYSANTHEMUM

C. coreanum. A relatively new, extremely hardy, pure white daisy from eastern Asia. It has interesting, compact foliage from which arise 2-foot, branching stems bearing huge sprays of dazzling white flowers in early autumn. One of the finest decorative border plants that we know for sunny places. 35 cts. each; \$3.50 per doz.

C. leucanthemum. This is the original form of the Shasta Daisy. A graceful, long-stemmed, white flower borne in profusion in midsummer. 30 cts. each; \$3 per doz.

C. maximum (Shasta Daisy), King Edward VII. Pure white flowers of fine form with luminous golden centers. It thrives almost anywhere, and provides quantities of blooms for indoor decoration. 2 to 3 feet. June to August. 35 cts. each; \$3.50 per doz.

CHRYSANTHEMUM MAXIMUM (SHASTA DAISY), ALASKA

A very greatly improved form of the old-time Shasta Daisy, providing long-stemmed, dazzling white flowers with brilliant golden centers. Blooms in late summer. 40 cts. each; \$4.50 per doz.

CARNATION

C., Chabaud's. Very fine, double, fragrant flowers of mixed colors. Fine for cutting. Hardy. 35 cts. each; \$3.50 per doz.

CARYOPTERIS

C. mastacanthus. Blue Spirea. A handsome dwarf shrub about 3 feet high bearing foamy lavender-blue flowers in great profusion from early in September until cut by frost. 50 cts. each; \$5 per doz.

CENTAUREA

C. montana. Perennial Cornflower. Grows 2 feet high, bearing large, violet-blue flowers from July to September. 35 cts. each; \$3.50 per doz.

CIMICIFUGA

C. racemosa simplex. Bugbane. This handsome plant should not be overlooked as it is, without doubt, one of the most beautiful perennials. The dense spikes of feathery white flowers are borne on tall, graceful stems 3 to 4 feet high, making them excellent for cutting and ideal for vases. Grows best in half-shade. 75 cts. each; \$65 per 100.

CLEMATIS

C., Anemone-flowering (C. montana undulata). This new Clematis is a gem among climbing plants. It is a strong, vigorous grower, perfectly hardy, disease- and insect-proof, and will succeed and flourish under the most adverse conditions. The anemone-like, white blooms, flushed mauve-pink, 1½ to 2 inches in diameter, expand the last week in April, about the time when wisterias have finished, continuing through May in great profusion. The best spring-flowering climber, of which there are few. Strong, 1-year, field-grown plants, 75 cts. each; \$7.50 per doz.

COREOPSIS

C. grandiflora. Large, orange-yellow flowers on long, graceful stems. One of the best yellow cut-flowers; blooms incessantly. 2 feet. 25 cts. each; 65 cts. for 3; \$2.50 per doz.



Chrysanthemum, Amelia

HARDY PERENNIAL PLANTS



Dianthus (Hardy Pinks)

DAPHNE

D. Cneorum. *Garland Flower.* Most attractive, dwarf, bushy evergreen shrub, producing richly perfumed, rose-pink blossoms, May and August. 75 cts. each; \$7.50 per doz. and up, according to size.

DELPHINIUMS

See pages 3 and 4; also Larkspur on page 11.

DIANTHUS · Hardy Pinks

D., Beatrix. This beautiful Pink is making friends everywhere. The fragrant flowers are a delightful shade of salmon-pink and are produced in profusion during May and June; if kept cut, there will be bloom all summer. We know you will like Beatrix. 3-in. pots, \$1 for 3; \$3.50 per doz.

★**D. deltoides.** Matted, creeping plants which spread rapidly and send up 12-inch stems bearing clusters of vivid pink flowers. 30 cts. each; \$3 per doz.

D., Mother. White. 30 cts. each; \$3 per doz.

D., Mrs. Sinkins. The genuine, old-fashioned, double, white, English border Pink. 35 cts. each; \$3.50 per doz.

DICENTRA SPECTABILIS

Bleeding-Heart

A very popular old-fashioned border plant with beautiful foliage and long, drooping sprays of pretty pink, heart-shaped blooms. 1½ feet. May, June. 50 cts. each; \$5 per doz.

DIGITALIS · Foxglove

The tall flower-spikes of the Foxglove are particularly handsome when grown among shrubbery or naturalized in odd places in bold masses. 3 to 4 feet. July, August. **White, Yellow, Alba** (White), **Gloxiniæflora**, and **The Shirley.** 35 cts. each; \$3.50 per doz.

ERIGERON

E., Blue. A summer-blooming Aster, somewhat like a Michaelmas Daisy, with sprays of delicate lavender-blue flowers. 35 cts. each; \$3.50 per doz.

DORONICUM

D. excelsum. An extremely showy spring-blooming flower of the chrysanthemum family, producing immense, brilliant yellow daisies on long stems ideal for cutting. A rare and choice perennial. 35 cts. each; \$3.50 per doz.

D. magnificum. *Leopard's-Bane.* Very attractive early yellow daisy with large flowers on stiff stems. Useful for cutting. 1½ to 2 feet. May, June. 35 cts. each; \$3.50 per doz.

ENGLISH IVY

Pot-grown plants, \$25 per 100.

EUPATORIUM

E. cœlestinum. *Mist Flower.* One of the finest hardy plants with heads of light purple flowers similar to ageratum; in flower from August until frost. Good cut-flower. 1 to 2 feet. 40 cts. each; \$4 per doz.

GAILLARDIA

G., Duckham's New Hybrids. *Blanket Flower.* The Gaillardias, among the most successful of hardy perennials, give a most striking effect when planted in bold groups or in a bed by themselves, and are equally effective in mixed borders. They seem to thrive in extreme drought and the greater the scarcity of other flowers, the more their utility is demonstrated. They bloom perpetually from June to November. 50 cts. each; \$1.25 for 3; \$4.50 per doz.

G., Mr. Sherbrook. A new English variety with rich golden yellow flowers having pale yellow centers. One of the easiest to grow, provided it is in full sun. A fine cut-flower. 50 cts. each; \$5 per doz.

G., Torchlight. (New.) Flowers are golden yellow with a rich maroon-red center and often measure 5 inches across, with stronger and stiffer stems than in former varieties. Fine for cutting. 40 cts. each; \$4.50 per doz.

GYPSOPHILA

G. Bodgeri. The 1½-foot plants bloom freely in July and more or less throughout the summer. Flowers are double, pure white on opening, changing to soft pink. 50 cts. each; \$1.25 for 3; \$5 per doz.

G. paniculata. *Baby's Breath.* A very valuable perennial because of its light, graceful form and the charm it adds to mixed bouquets of other flowers. The small blooms are borne in great quantities. 2 to 3 feet. July, August. 35 cts. each; \$3.75 per doz.

G. paniculata, Bristol Fairy. A very greatly improved Baby's Breath having flowers almost three times as large as the old Paniculata, and which remains pure snow-white under all conditions. One of the finest cut-flowers. Strong, field-grown plants, 75 cts. each; \$7 per doz.

GEUM · Avens

Desirable for borders or rock-gardens. The flower-stems stand boldly over the prostrate, deep green foliage. 1 to 1½ feet. June to September.

G., Deep Crimson. An excellent garden form with strawberry-like flowers of deep dark red. Pretty in the border. 30 cts. each; \$3 per doz.

GEUM, continued

G., Mrs. Bradshaw. Double, brilliant orange-scarlet flowers throughout the summer. 30 cts. each; \$3 per doz.

G., Lady Stratheden. (New.) Fine, double, yellow blooms of same type as Mrs. Bradshaw. 30 cts. each; \$3 per doz.

HELENIUM

Showy autumn daisies of great value for garden display in bold masses, and effective when cut. 3 to 4 feet. August, September.

H. autumnale rubrum. Deep bronze-red, changing to terra-cotta. 5 to 6 feet. September. 40 cts. each; \$4 per doz.

H., Riverton Beauty. Long-stemmed, brownish crimson flowers. Very popular. 40 cts. each; \$1 for 3.

H., Riverton Gem. Produces a great profusion of bronzy orange flowers. 40 cts. each; \$1 for 3.

HEUCHERA · Coral Bells

Charming plants for the border or a half-shady place. The red variety is a good rock-plant.

★**H. sanguinea.** Graceful spikes of dazzling crimson flowers in greatest profusion. 1½ feet. 50 cts. each; \$5 per doz.

HOLLYHOCK

H., Duckham's Improved Strain. My strain is indeed very wonderful, with extremely large, double flowers in unusual colors. 6 to 8 feet. July to September. **Rich Crimson, Bright Rose, White, Scarlet, and Salmon-Rose.** 35 cts. each; \$3.50 per doz.

IBERIS

★**I. sempervirens.** Stunning half-shrubs a foot or more high, densely covered in spring with a mass of snow-white flowers. 30 cts. each; \$3 per doz.



Helonium, Riverton Gem

HARDY PERENNIAL PLANTS

GERMAN IRIS · Fleur-de-Lis

These popular flowers like well-drained soil and plenty of sunlight. Massed on the edge of the border or near the brinks of ponds or streams, the effect is remarkably fine. I offer them in five separate shades selected from the better named varieties.

Light Blue and Lavender **Bronze Shades**
Deep Blue and Violet **Yellow Shades**
White and Light Shades

65 cts. for 3; \$2.50 per doz.; \$15 per 100

JAPANESE IRIS

I. Kaempferi

The varieties of this handsome species enjoy almost unlimited quantities of fertilizer and will develop sturdy growth and amazing blooms if they are given plenty of water. They are at their best in July.

Betty F. Holmes. (New.) A giant double variety of pure white with a lemon blotch. The finest double white Japanese.

Fanny Hamlet Childs. Double; violet-purple, mottled and splashed with white.

Fascination. Double; light blue, with faint white veins and pink tinge.

Lilla Cox. Double; light blue, with white veins radiating from a yellow center.

Marjorie Parry. Double; delicate light mauve, tufted center. An extra-fine variety.

Repsime. Double; blue, veined white.

Rose H. Scheepers. Double; mauve-gray, overlaid with blue.

Schenley. Double; rose-red, center overlaid with blue.

Shadow. Reddish purple, velvety sheen; three petals.

Violet Giant. An enormous semi-double flower of rose-violet. This is the largest Japanese Iris we have ever seen.

All Japanese Irises, 60 cts. each; \$6 per doz.
One of each of above 10, \$5



Japanese Iris (Iris Kaempferi)

LARKSPUR · Delphinium

D. Belladonna. The most continuous-blooming and most useful Delphinium for cutting. The clear turquoise-blue of its flowers is not equaled for delicacy and beauty by any other flower. 35 cts. each; \$3.50 per doz.

D. Bellamosum. A dark blue form of the popular Belladonna. 35 cts. each; \$3.50 per doz.

D. chinense. Stunning border plant with spikes of vivid blue flowers of almost dazzling brilliance. Good for cutting. 35 cts. each; \$3.50 per doz.

See also pages 3 and 4

LAVANDULA

L. vera. This, the true Sweet Lavender, grows about 1½ feet high and has delightfully fragrant blue flowers in July and August. 25 cts. each; \$2.50 per doz.

LIATRIS

L. scariosa. Blazing Star. Brilliant purple flowers in long showy spikes in September, much later than the others. A very imposing plant. 4 to 5 feet. 30 cts. each; 90 cts. for 3; \$3 per doz.

L. scariosa alba. A dainty, feathery, pure white form of the above. 50 cts. each; \$5 per doz.

L. pycnostachya. Kansas Gayfeather. Tall, rocket-like plants, bearing club-like spikes of intense lavender-purple flowers which begin to bloom at the top of the stem and proceed downward. 30 cts. each; \$3 per doz.

LILIUM

L. candidum. Madonna or Annunciation Lily. This is the old-fashioned garden Lily, and one of the most beautiful. Ready in July and August. Fine companion to my hybrid delphiniums. 50 cts. each; \$5 per doz.; \$40 per 100.

LILY-OF-THE-VALLEY

Convallaria majalis

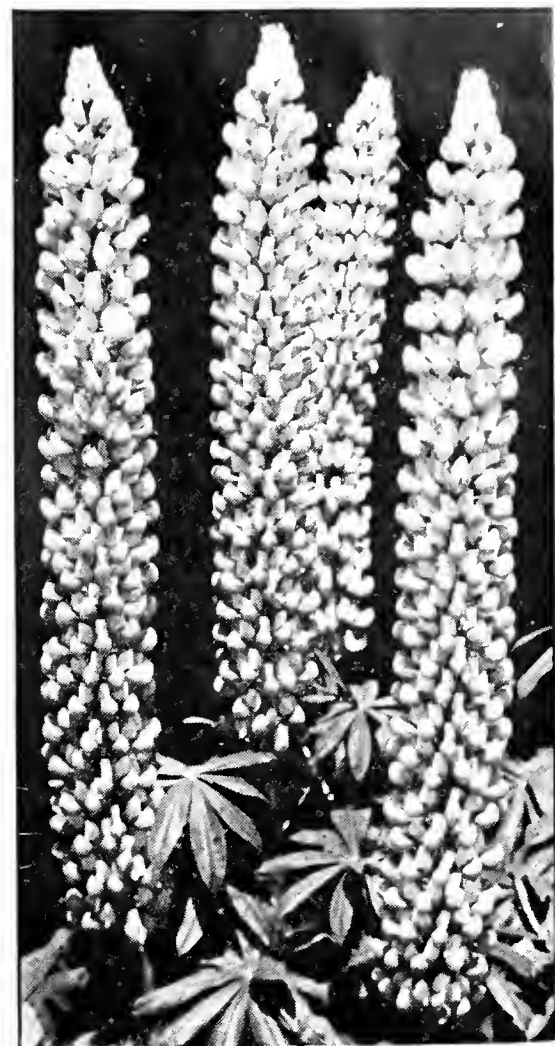
This popular and fragrant ground-cover plant repays good treatment. Grand for massing near shrubs or along shaded borders. Strong field-clumps, 35 cts. each; \$3.50 per doz.

LINUM PERENNE

A gray-leaved, smooth-stemmed plant, 2 to 3 feet high, covered in early summer with brilliant blue flowers which are open only in sunlight. If cut back will bloom again abundantly in autumn. 30 cts. each; \$3 per doz.

LUPINUS

L., New Polyphyllus Hybrids, Mixed. *Lupine.* Both in the garden and as a cut-flower, the Lupine has always been a favorite. English plant hybridists, always busy with new things, have recently introduced a magnificent strain of new colors which includes many shades and delicate tints heretofore unknown in Lupines, including bronze, yellow, orange, pink, dark brown, and lavender. 35 cts. each; \$3.50 per doz.



Russell Lupins

The Sensation of 1938

Developed by an English gardener who has devoted the closing years of his life to them. Large solid spikes made up of white, lemon, yellow, pink, apricot, red, blue, purple, and maroon, with gorgeous bicolors. 3-in. pots, \$2.25 for 3; \$7.50 per doz.; \$60 per 100.

LYCHNIS Viscaria splendens

Mat-like perennial which throws up woody blooming stalks in midsummer, crowned with heads of vivid magenta-pink flowers. A very striking and showy garden subject. 35 cts. each; \$3.50 per doz.

MYOSOTIS · Forget-me-not

M. alpestris, Royal Blue. The dainty Forget-me-not loves a cool, moist soil, and, like the pansy, blooms most freely in spring. Royal Blue is a rich deep blue of remarkable free-flowering habit. 6 to 12 inches. May. 25 cts. each; 65 cts. for 3; \$2.50 per doz.

NEPETA

N. nervosa. An improved Nepeta. Trailing, aromatic plant with heads of clear light blue flowers. 30 cts. each; \$3 per doz.

N. Mussini. A trailing, aromatic plant with velvety, gray-green foliage and lavender-blue flowers. 30 cts. each; \$3 per doz.

PANSY · Heartsease

My strain of Pansies is well known, for I have taken no end of pains to develop it by careful "roguing" each year. Visitors at my trial-grounds proclaim it the best they have seen. 6 inches. Specify color desired.

All Pansies, \$1 per doz.; \$8 per 100

HARDY PERENNIAL PLANTS



Phlox subulata

PAPAVER · Poppy

- P. nudicaule, Sunbeam Mixed.** *Iceland Poppy.* A beautiful class of hardy Poppies, bearing cup-shaped flowers, ranging in color from pure white to yellow and orange-scarlet, on long stems. 1 foot. May to August. 30 cts. each; \$3 per doz.
- P. orientale.** *Oriental Poppy.* The old Oriental Poppy is well known and has brilliancy of color. 30 cts. each; \$3 per doz.
- P., Gartref Hybrids.** Large, 4 to 5 inches. Beautiful art shades. 20 cts. each; \$3 per doz.
- P., Coonara Hybrids.** Charming shades of rose, pink, apricot; large; single. 30 cts. each; \$3 per doz.

PHLOX

- P. decussata.** Hardy border Phloxes succeed in almost any soil enriched with manure in spring, and given an occasional soaking of water in hot weather.
- P., Columbia.** Plant Patent No. 118. Cameo-pink with a light blue eye. A perfect flower and an unusually good plant. Height, 2½ feet. 50 cts. each; \$4 per doz.
- P., B. Comte.** Rich purple.
- P., Daily Sketch.** Extra-large flowers in large heads; light salmon-pink with faint carmine eye. An outstanding new Phlox.
- P., Diplomat.** White.
- P., Enchantress.** Salmon-red.
- P., Firebrand.** Fiery red.
- P., Jules Sandeau.** Pink, light center.
- P., Leo Schlageter.** Vivid crimson-scarlet.
- P., Mia Ruys.** Large; white.
- P., Mrs. Milly van Hoboken.** Soft pink.
- P., Salmon Glow.** Lovely plain pink with salmon shades. 50 cts. each; \$5 per doz.
- ★ **P. subulata alba.** Early-flowering, creeping plant with mossy foliage and dazzling white flowers. 30 cts. each; \$3 per doz.
- ★ **P. subulata, Vivid.** Gorgeous, bright rose-colored flowers. 30 cts. each; \$3 per doz.
- P. suffruticosa, Miss Lingard.** Everblooming white Phlox with shiny foliage.
- P., Thor.** Deep salmon-pink.

All Phloxes, 35 cts. each; \$3.50 per doz., unless otherwise noted

SALVIA · Sage

- S. azurea.** The graceful flowers are a delightful shade of pale blue and come in graceful spikes. 3 feet. July to October. 40 cts. each; \$4 per doz.

PHYSOSTEGIA

- P. virginiana.** Flowers about an inch long, on 4-foot spikes, varying from pale lilac-pink to white. 35 cts. each; \$3.50 per doz.
- P., Vivid.** Sturdy, dwarf plant, 18 to 24 inches high, with dense spikes of striking magenta-pink flowers in late summer and autumn. 35 cts. each; \$3.50 per doz.

PLATYCODON · Balloon Flower

- P. grandiflorum.** Large, showy, deep blue flowers somewhat like *Campanula persicifolia*. 1½ feet. June, July. 25 cts. each; \$2.50 per doz.
- P. grandiflorum album.** White-flowered form of the above. Very beautiful. 25 cts. each; \$2.50 per doz.

PRIMULA

- P. polyantha.** *Blue-flowered Primrose.*
- P., Large-flowered Bedding Hybrids.** *Bunch-flowered Primrose.* Extra-choice strain; rich colors. Dwarf, upright habit.
- P., Munstead Strain.** White and yellow.
- P., Crimson, Yellow, Flame, Fancy, White.**
- P. veris.** Useful for woodland planting.

All Primroses, 30 cts. each; \$3 per doz.



Scabiosa

PYRETHRUM

- P., Duckham's New Hybrids.** *Persian Daisy.* For profusion of flowers in season, nothing can surpass the charming variety of the Pyrethrums. The mixed varieties I offer are especially rich in the charming pink shades. 2 to 3 feet. May to September. 35 cts. each; \$3.50 per doz.

RUDBECKIA

- R. Newmani.** *Black-eyed Susan.* Useful border plant for sunny places. Brilliant yellow daisies with striking blackish brown centers. 35 cts. each; \$3.50 per doz.
- R. purpurea.** *Coneflower.* Peculiar reddish purple flowers like huge daisies. Thrives in ordinary soil. 3 feet. July to October. 35 cts. each; 90 cts. for 3; \$3.50 per doz.

SIDALCEA

- S., Hybrids.** Very interesting plant of Mal-low family, with the habit of dwarf holly-hock. Shades of pink, rose, and light crimson. Blooms profusely greater part of the summer. Useful for cutting. 30 cts. each; \$3 per doz.

SCABIOSA

- S., Constancy.** Flowers of powder-blue. 50 cts. each; \$5 per doz.
- S., Isaac House Hybrids.** Large, gracefully fringed and ruffled flowers in shades of violet-blue. Blooms well during June and July and is excellent for cut-flower use. 50 cts. each; \$5 per doz.

Scabiosa, Duckham's New Hybrids. An improvement on the old Scabiosa, in both form and color. Flowers are lavender and blue, like the shade of that extremely popular annual, Blue Lace Flower. Those who are familiar with the latter will surely want our new Scabiosas. The assortment also contains a liberal proportion of rich blue and white shades. 3 feet. June to September. 50 cts. each; \$5 per doz.

SEDUM

- ★ **S. spectabile.** Bold, fleshy-leaved plants, with broad heads of dull rose-colored flowers. Excellent for strong effects. 30 cts. each; \$3 per doz.

STOKESIA · Cornflower Aster

A most charming hardy perennial which, for many seasons, has been the most-admired flower on our grounds. The plants grow 1½ to 2 feet high, bearing freely, from early June until late in October, handsome lavender-blue centaurea-like blossoms, which measure from 4 to 5 inches across. It is of the easiest culture.

- S. laevis lilacina grandiflora.** A new Stokesia resembling *Scabiosa caucasica*, a silvery blue shade with flowers produced on 18 to 20-inch stems. 35 cts. each; \$3.50 per doz.

THALICTRUM · Meadow-Rue

- T. adiantifolium.** Leaves resemble maiden-hair fern. Small yellow flowers. 1 foot. June, July. 30 cts. each; \$3 per doz.
- T. diptercarpum.** Beautiful blue-gray leaves. Purplish yellow flowers with yellow stamens. July to October. 35 cts. each; \$3.50 per doz.
- T. glaucum.** Blue-gray leaves rather finely cut, with heads of Chinese yellow, fragrant flowers. 3 to 4 feet. July. 30 cts. each; \$3 per doz.



Platycodon

HARDY PERENNIAL PLANTS

THERMOPSIS

T. caroliniana. A fine plant, with clover-like foliage and long spikes of bright yellow, pea-shaped, lupine-like flowers. 4 feet. June, July. 50 cts. each; \$5 per doz.

TRITOMA

T., Duckham's New Hybrids, Mixed. *Flame Flower.* A wonderful range of vivid as well as delicate pastel shades. Not the stiff, top-heavy form of the old Red-Hot Poker, but a long-stemmed, graceful, light flower-spike that adapts itself to all decorative schemes. Colors are yellow, orange, buff, scarlet, and crimson-salmon. Blooms from June to August. \$4.50 per doz.; \$30 per 100.

TROLLIUS · Globe Flower

T., Golden Queen. (New.) Handsome, dark green foliage and rich golden yellow flowers with orange centers, blooming from May to July. They are well adapted for half-shady or sunny positions and are fine for moist places and edges of water-gardens. 50 cts. each; \$5 per doz.

VIOLA

These splendid small hardy plants are much prized for their quaint little flowers, each self-color having a delightful charm of its own.

V. cornuta, Little Gem. A miniature form of Jersey Gem with the same nicely formed flowers but only half as large and a shade or two darker. 30 cts. each; \$3 per doz.

V. cornuta, Yellow. A fine pure yellow Viola blooming over a long season. 30 cts. each; \$3 per doz.

V., Chantreyland. Lovely new variety with somewhat rounded flowers of rich apricot. Color is purer than the older apricot varieties. 30 cts. each; \$3 per doz.

VIOLA, continued

V., Apricot Queen. Here we have a true Cornuta type in the beloved Viola, with a most unusual color. Continuous bloomer with a real credit mark for complete dependability. 30 cts. each; \$3 per doz.

V., Gypsy Queen. A rare Viola of rich terracotta and bronze; a striking addition to this lovely family. 30 cts. each; \$3 per doz.

V., Jersey Gem. A specially selected beautiful violet-blue variety which blooms unceasingly all season. A rare and choice sort. 30 cts. each; 75 cts. for 3; \$3 per doz.

VERONICA · Speedwell

V. spicata. Medium height with deep blue flowers in slender spikes a foot or more long. Grows best in full sun. 30 cts. each; 75 cts. for 3; \$3 per doz.

VINCA

V. minor, Bowles' Variety. Darker, richer foliage and deeper colored flowers produced over a longer period than the old *V. minor*. 30 cts. each; 75 cts. for 3; \$3 per doz.

Use Duckham's Delphinium Food. See page 2



Viola, Jersey Gem



A beautiful border of Duckham's Delphiniums and other perennials

Special Offers of Hardy Plants

To enable people to obtain the very best garden effects, and to make the task of selection as easy as possible for those who have very little time to give to gardening, we shall be glad to select a group of 50 Hardy Perennials of the finest types, in lots of 5 of each kind, to make an adequate representation of each variety. Such a Collection will make a charming little garden from which an abundance of splendid flowers can be cut for house and table decoration from June until late autumn.

OFFER No. 1

50 Perennial Plants, carefully labeled and packed, our selection, for. . . . **\$10.00**

OFFER No. 2

75 Perennial Plants, carefully labeled and packed, our selection, for. . . . **\$14.50**

OFFER No. 3

100 Perennial Plants, carefully labeled and packed, our selection, for. . . . **\$18.50**

Duckham's Glorious Roses

ALTHOUGH this is not an unusually long list of Roses, we believe that we have selected the best of each type and color—varieties that are reasonably easy to grow and that anyone can succeed with.

Our Roses are all two-year, field-grown plants, raised in the United States. They are well ripened and have been carefully cared for, so that they will give you the best of service.

Most of them are budded on Multiflora understock, which is renowned for hardiness and vigorous growth. We believe in our Roses and feel sure that you will like them.

DUCKHAM'S SPECIAL OFFER—TEN ROSES FOR \$7.50

For beginners who do not know the different varieties of Roses, and for those who simply want a collection of the best sorts possible, we have selected 10 Roses, covering the different colors, which we believe are 10 of the best Hybrid Teas in commerce today. They are good growers with healthy plants, blooming freely until frost. Anyone can grow them. We believe that this is the finest collection ever offered to the Rose-lovers of America.

Briarcliff. Pink.

Charles K. Douglas. Red.

Editor McFarland. Pink.

Golden Dawn. Pale yellow.

Imperial Potentate. Pink.

McGredy's Scarlet. Red.

Mrs. E. P. Thom. Yellow.

Mrs. Pierre S. du Pont. Yellow.

President Herbert Hoover. Multi-colored.

Talisman. Multi-colored.

One strong plant of each of above 10 Roses for \$7.50

Everblooming Hybrid Teas

The finest of the Hybrid Tea family, both the latest novelties and the old proved kinds which should be in every garden.

Alezane. Plant Patent No. 116. Bud large, urn-shaped, reddish brown; flowers cupped, opening to sorrel, unfurling from sorrel to rich apricot, and reverse of petals sorrel veined yellow. Petals not affected by hot or wet weather. Growth very vigorous, with upright, branching habit. \$1.25 each; \$12.50 per doz.

Alice Harding. Plant Patent No. 202. Perfectly formed flowers of rich golden yellow which do not fade white. For exhibition purposes Alice Harding tops the field of yellow Roses. You will want the fragrant flowers for the house, too. Fine bushy plants which are not stingy. \$2 each; \$20 per doz.

Amelia Earhart. Plant Patent No. 63. A large, ovoid cream bud, with blushes; flowers very full, graduating from a deep yellow center to an outer collarette of large cream petals with a blush overtone; extremely fragrant. Strong grower; free bloomer. Leathery, dark green foliage. \$1.25 each; \$12.50 per doz.

Autumn. The buds are deep burning bronze with fiery tones, opening to immense, double flowers of fiery bronze and rich old-gold, changing as the flowers mature to an extraordinary mixture of rose, yellow, and coppery tones. 75 ets. each; \$7.50 per doz.

Better Times. Plant Patent No. 23. A striking new Rose of the Columbia family. The long buds are brilliant cerise-erimson and open to very striking double flowers of vivid cerise-red which are delicately fragrant. \$1.25 each; \$12.50 per doz.

Betty Uprichard. Standard variety with an excellent, vigorous plant and healthy foliage. The large flowers are salmon suffused with orange on the inside and coppery carmine on the reverse. Its petals have great substance and the flowers last a long time without fading. Spicy fragrance. 75 ets. each; \$7.50 per doz.

Briarcliff. Long-pointed buds of deep pink open to large flowers of deep rose-pink with lighter outer petals. Fragrant. A lovely Rose. 75 ets. each; \$7.50 per doz.

Carillon. Plant Patent No. 136. Its long-pointed buds are orange-scarlet, contrasting pleasingly with the green sepals; the fully open bloom is large (4 inches in diameter), with the inner petals irregularly but artistically arranged. Strong branching plants with glossy foliage. \$1 each; \$10 per doz.

Charles K. Douglas. One of the finest red varieties. A constant bloomer all season on very strong, branching plants. The 4-inch flowers have 25 to 30 petals and are brilliant scarlet-crimson, with an occasional white line marking the center petals. A thoroughly dependable and desirable variety. 75 ets. each; \$7.50 per doz.

Countess Vandal. Plant Patent No. 38. One of the most popular and one of the very best of the new garden Roses. Its slender buds of coppery bronze, suffused with soft golden pink, are a constant delight. The open flower is a perfect blending of pink, copper, gold, and salmon. It is one of the finest flowers for cutting among the new varieties. Plants are of a little better than average height, with attractive, healthy foliage. \$1 each; \$10 per doz.



Better Times. Plant Patent No. 23

Everblooming Hybrid Tea Roses



President Herbert Hoover

Crimson Glory. Plant Patent No. 105. Well-branched, compact bushes of good symmetry, laden with magnificent, large, urn-shaped buds which open to flowers of an intense deep and vivid crimson, shaded with deep red and mellowed by a velvety nap. A Silver Medal variety which has proved within its few years of existence a favorite with all Rose-lovers. \$1.25 each; \$12.50 per doz.

Eclipse. Plant Patent No. 172. The sensation of the year. Awarded prizes in Rome, Paris, and America. The long, streamlined buds enhanced by ornamental sepals, are a rich gold without shading. Petals are large and tough but not numerous, averaging 20 to 25 with more in the autumn. The color of this flower is very good and the shape of the buds is unique. Eclipse will be grown for its superb buds for cutting. Plants are vigorous, with healthy foliage. \$1.50 each; \$15 per doz.

Edith Nellie Perkins. One of the first Roses to bloom in the spring, this lovely variety is a joy all through the season. Its pointed buds of cream-orange and rosy carmine are splendid for cutting. The high-centered flower is salmon and gold on the inside of the petals, with the reverse rosy carmine, and gold extending half-way up the petals. One of the most beautiful Roses we have ever grown. The flowers are fragrant and the average-sized plants carry healthy foliage. 75 cts. each; \$7.50 per doz.

Editor McFarland. Finest dark pink Rose in the world. The very strong, branchy plants bloom continuously from early in the season until stopped by frost, with each flower perfect in form. One of the nicest and the longest lasting cut-flower that we know of. The color of the perfect buds is a brilliant deep pink. This same unchanging pink is retained in the open flower and lasts until the petals fall. Fragrant. \$1 each; \$10 per doz.

Etoile de Hollande. Introduced in 1919, this grand variety quickly took its place as the finest red Rose in the world. The magnificent flowers, with great, broad petals, are a rich shade of scarlet-crimson, velvety to the last degree. They have the delicious fragrance of the old-time June Roses. Plants are quite strong and bushy, with distinctive, very rich foliage. 75 cts. each; \$7.50 per doz.

Gloaming. Plant Patent No. 137. A cut-flower variety also of great value to the garden. The large buds are carried on long, rigid stems amply clothed with handsome foliage. Plant is vigorous and branching, fairly tall growing. The bloom is large and full, well formed, and long lasting, either in water or on the plant, and the color is a soft satiny pink, heavily laden with salmon and amber. Delightful fragrance. \$1.25 each; \$12.50 per doz.

Glowing Sunset. Plant Patent No. 104. The long, pointed buds open to full, double flowers of a most artistic form with the inner petals lengthened and twisted in the bizarre manner of a choice cactus dahlia. The color is an indescribable blend of orange-yellow and rose-pink. Their alluring fragrance endears them to everyone. It is a free and continuous bloomer. \$1.25 each; \$12.50 per doz.

Golden Dawn. An Australian variety having a splendid plant with beautiful disease-resistant foliage and a large, fully double flower carrying delicious fragrance. The glorious flowers are so freely produced that we think little of the fact that the color is not as brilliant as the name. Instead of golden, as we understand the flowers are in Australia, here they are pale straw-yellow with pinkish tints on the outside of the petals. \$1 each; \$10 per doz.

Hinrich Gaede. A striking flower of luminous vermilion, blended with golden yellow. The blooms are large, fragrant, and freely produced on vigorous plants. An outstanding novelty. \$1.25 each; \$12.50 per doz.

Imperial Potentate. Especially long buds, opening into large, double flowers of beautiful rose-pink. An outstanding Rose of exhibition quality, every flower suitable for cutting. 75 cts. each; \$7.50 per doz.

Lady Alice Stanley. A standard variety with massive buds and fully double, very sweet flowers, the outside of the petals coral-rose, the inside pale flesh-pink. A strong and free-blooming plant. One of the very best and most dependable Roses for both bedding and cutting. 75 cts. each; \$7.50 per doz.

Margaret McGredy. The large, long-pointed buds are deep Oriental red, which color is retained as the flowers open, finally passing to carmine-rose. Flowers are large, quite double, cup-shaped, and fragrant. Plants are very strong, branchy, and one of the best bloomers in the garden. 75 cts. each; \$7.50 per doz.

Matador. Plant Patent No. 170. A new Rose with splendidly formed flowers of velvety scarlet-crimson. The pile on these petals is so deep the sunlight is reflected like a sunbeam. The outside of the petals is quite a lot darker. Flowers are richly fragrant and freely produced. Plants are a little better than medium height, with attractive, healthy foliage. \$1.25 each; \$12.50 per doz.

Max Krause. Vigorous, disease-resistant, golden yellow Rose with apricot tones in the depth of the petals. Blooms are huge and massive, held upright on rigid stems. A striking and most promising novelty. \$1 each; \$10 per doz.

McGredy's Scarlet. Possibly in Ireland, where it originated, the color is scarlet, but here it is just "red." The flowers have fine form good size, and are fully double. Plants are extra vigorous, with good foliage and bloom all the time. 75 cts. each; \$7.50 per doz.

Mme. Butterfly. Buds and flowers are both of perfect form, of soft light pink, tinted yellow at the base of the petals, delightfully fragrant, and vigorously produced on a plant of only average height. 75 cts. each; \$7.50 per doz.

Mme. Jules Bouche. Standard white variety having nicely formed flowers of creamy white with a slight pink tint in the heart of the flower. The fully double flowers are fragrant and are quite freely produced on tall, rather slender plants with healthy foliage. 75 cts. each; \$7.50 per doz.

Mrs. Charles Bell. The salmon Radiance, with a plant and shape of flower just like the popular Radiance. This beautiful variety enjoys a tint not carried by any other garden Rose—shell-pink-salmon, just about the clearest, cleanest tint possible for nature to produce. 75 cts. each; \$7.50 per doz.

TRI-OGEN. An insect spray and fungicide which gives complete protection against insects and diseases. Tri-ogen is easy to use and is economical; it saves time and labor. The materials are mixed in the sprayer, and all Rose troubles are taken care of at one time. If used every 10 days from time first leaves appear, plants can be kept healthy all season.

A. Small Kit (makes 16 qts.; protects 12 to 20 roses all season) . \$1.50
B. Medium Kit (makes 64 qts.; protects 50 to 80 roses all season) . 4.00

C. Large Kit (makes 32 gals.; protects 100 to 160 roses all season) . \$6.00
D. Estate Kit (makes 128 gals.; protects 400 to 600 roses all season) . 20.00

Everblooming Hybrid Tea Roses

Mrs. Erskine Pembroke Thom. An American variety which is one of the best yellow garden Roses we have today. Nice plants with upright, vigorous growth and dark bronze foliage. The buds are of lovely form, deep yellow, and open to shapely flowers of deep lemon-yellow. Fragrant. 75 cts. each; \$7.50 per doz.

Mrs. Henry Bowles. A grand pink Rose of lovely form, the high-centered flowers being a warm shade of pink flushed with salmon, somewhat darker on the outside of the petals than inside. It is a beautiful, long-lasting cut-flower. 75 cts. each; \$7.50 per doz.

Mrs. Pierre S. du Pont. A lovely yellow Rose producing more flowers per plant than any other variety we have seen. The nicely formed buds are very deep yellow—almost orange—and open to rich orange-yellow flowers, fully double, which retain their color. Flowers are deliciously fragrant, with the scent of a well-made Rose *pot pourri*. The plants are of only medium height but quite bushy and bloom all the time. 75 cts. each; \$7.50 per doz.

President Herbert Hoover. One of the best garden Roses of today. The plants are unusually vigorous and produce their beautiful flowers on 1½- to 2-foot stems. Its long-pointed buds open to very large, rather loose flowers of 25 petals. The color is flaming scarlet and yellow, all mixed and blended with cerise-pink. It is moderately fragrant. 75 cts. each; \$7.50 per doz.

Radiance. The standard pink Rose of this country. Its very vigorous plants bloom continuously, producing large, cupped, double flowers of earmine-pink, lighter on the inside of the petals, and deliciously fragrant. 75 cts. each; \$7.50 per doz.

Red Radiance. A cerise-red sport of the popular Radiance. It has the fine plant, freedom of bloom, and rich fragrance of Radiance. Everybody's red Rose. 75 cts. each; \$7.50 per doz.

R. M. S. Queen Mary. Plant Patent No. 249. A sensational Rose which we believe is going to be very popular both in the garden and under glass. The flowers are a lovely blend of salmon, pink, and orange, a "warm" color which everyone likes. It is fragrant. The plants are bushy and productive. \$2 each; \$20 per doz.

Rome Glory. Plant Patent applied for. A great big, loose Rose of lustrous cerise-red which fairly glows under electric light. The plants are extra strong and extra hardy, and you should get several of them, as you will not be able to resist cutting the flowers. \$2 each; \$20 per doz.

Talisman. A standard variety with large, fragrant flowers of orange, yellow, and rose-red. Very gay in autumn. Strong plants, blooming freely. 75 cts. each; \$7.50 per doz.

Texas Centennial. Plant Patent No. 162. A vermilion-red sport of President Herbert Hoover, producing its attractive flowers on similar 1½- to 2-foot stems. There is a touch of gold at the base of the petals which warms up the red and continues while the flower ages to a deep rich pink. \$1 each; \$10 per doz.

ROSA ROULETTI

A miniature Rose rarely over 6 inches tall, bearing all season, from spring to frost, perfectly formed little double flowers less than 1 inch in diameter, of a delightful shade of pale rose-pink. They are perfectly hardy and make excellent little specimens for the rock-garden, or, when planted 6 inches apart, make a perfect edging for a large Rose-bed. 75 cts. each; \$7.50 per doz.

TOM THUMB. Plant Patent No. 169

Although the plant is somewhat smaller, the flower is practically a red *Rosa Rouletti*. For rock-gardens, children's gardens, or for edgings for flower-beds it is unsurpassed. The tiny flowers are glowing crimson with a white center, and are produced in continuous succession all season. Plant in poor soil and do not fertilize. 75 cts. each; 2 for \$1.25.

Standard or Tree Roses

The beautiful Tree Roses are made by budding, 3 feet or more above the ground, on a cane of some very hardy Rose, the variety desired. These form bushy heads and are really Rose Trees. They make delightful accents in the Rose-garden, and for some reason most varieties produce finer flowers when grown as one of these trees than on the natural dwarf plants.

It is necessary to stake them at time of planting, and each stake should be tied firmly to the cane. All buds below the head should be carefully rubbed off as they appear. In winter-time it is best to loosen the roots on one side, lay them down, and cover with earth. We are listing the following six varieties, description of which will be found in the main Hybrid Tea list.

Betty Uprichard. Carmine and salmon.

Etoile de Hollande. Crimson.

Frau Karl Druschki. White.

Mrs. E. P. Thom. Yellow.

Radiance. Pink.

Red Radiance. Red.

All Standard Roses, \$3 each; \$30 per doz.

Polyantha Roses

Cecile Brunner. The little "Sweetheart" Rose is a favorite everywhere. Its tiny, symmetrical pink buds open into perfect little Roses of bright pink on a yellow ground. Plants are low growing and quite bushy.

Gloria Mundi. The finest of the striking orange-scarlet shades. Plants are of uniform growth, with great clusters of these brilliant little flowers.

Gruss an Aachen. This cross between the Hybrid Teas and Polyanthas has a plant much like the Polyantha, but with large, fully double flowers of Hybrid Tea quality. While on short stems and not good for cutting, the lovely flesh-pink, salmon, and yellow flowers are a continuous delight in the garden.

Ideal. The finest of the dark red Polyanthas. Medium-sized plants are very free with their semi-double, dark red flowers which hold their color much better than most reds.

Sunshine. The finest of the "yellow" Polyanthas. It is a delightful little Rose which opens golden orange with bronzy tints and ages pale yellow. Flowers are fully double and borne in clusters on nice stems. The plant is quite low, growing not over a foot in height. A very beautiful and desirable little Rose. One of the most fragrant of all Roses. A few buds of this little Polyantha taken into the house will perfume an entire room for some time. \$1 each; \$10 per doz.

All Polyantha Roses, unless otherwise noted, 75 cts. each; \$7.50 per doz.



Polyantha Roses

Choice Hardy Climbing Roses

THEY are most various, these Climbing Roses, both in their unparalleled beauty and their easy adaptability to many situations and uses. Use them for covering or screening objectionable objects; for decorative arches, or to cover summer-houses or garden-seats; on a trellis at the porch or trained about an entry or a window. Let them clamber along a fence or twine about a pergola, or even make a hedge of them by tying in and clipping back the branches. Anyone with a square yard of ground at his disposal can have one splendid Climbing Rose upon it, and it is doubtful if he could put the ground to any better use.

Best of all, perhaps, is to grow them as pillars, which takes the least space; and anyone who likes Roses will want to crowd as many of them as he can into his garden. To make a pillar, plant a stout, straight post with the Rose, and train the plant straight up to the top, or wind it about the support, keeping it cut off at the top, and the stray shoots tied in or cut off. The second season after planting, the pillar will be a mass of flowers from top to bottom and an object of admiration and delight to everybody.

All Hardy Climbing Roses, unless otherwise noted, 75 cts. each; \$7.50 per doz.; \$65 per 100



Blaze. HW. Plant Patent No. 10. A marvelous, everblooming seedling of Paul's Scarlet Climber and Gruss an Teplitz. This is probably the most famous Climbing Rose ever produced, and has aroused unparalleled attention from coast to coast. It makes vigorous growth, producing huge clusters of moderately large, blazing red flowers in the early summer, and continues to bloom with unusual freedom throughout the season until freezing weather. \$1 each; \$10 per doz.

Dorothy Perkins. Famous and beautiful, old Dorothy is still among the best. Very vigorous, with lovely waxy foliage and great clusters of frilly, shell-pink flowers, tiny but exquisitely shaped, it has a place in the affections of every flower-lover that nothing else can fill. Unequaled for covering arches, trellises, and summer-houses, and useful wherever a rapid-growing screen or cover is needed.

Dr. W. Van Fleet. The flowers are of the palest possible shade of flesh-pink, with a slightly darker center, and they are likely to acquire deeper color late in the season, as it blooms over a long period and frequently throws a few flowers in late summer and fall. Unquestionably it is the most popular Climbing Rose in the country today.

Easlea's Golden Rambler. Plant Patent No. 114. Large, well-formed, double flowers of rich deep golden yellow with a sheen of light orange. The flowers are arranged in large clusters and their desirability is greatly enhanced by their pleasing rich fragrance. It proved entirely hardy last winter. \$1.50 each; \$15 per doz.

Emily Gray. This is a lovely golden yellow Climbing Rose with large, beautifully formed flowers and handsome, shining foliage. It is a wonderful and almost unbelievable sight when in full bloom, and people invariably go into ecstasies over it. Unfortunately, it requires winter protection in cold climates, but if it is grown as a pillar it can be easily wrapped with burlap or covered with a few boughs to shelter it through coldest seasons.

Gardenia. A fine, very vigorous climber with beautiful shiny Wichuraiana foliage and lovely, long-pointed, yellow buds opening to medium-sized flowers of creamy white with rich yellow centers. A very beautiful Rose in the garden and a delightful flower for cutting.

Jacotte. Large, semi-double flowers of orange-yellow, tinted copper-red, borne in clusters. Strong, profusely blooming plant. The blooms measure 3 inches and over in diameter. Early to mid-season. One of the sensational new Roses carrying the brilliant orange color into the Hardy Climbers.

Mary Wallace. Queen of the large-flowered pink climbers and regarded as the best of its class. The blooms are large and cup-like, glowing pink, with a golden undertone, and are borne in clusters at the ends of long stems.

Mme. Gregoire Staechelin. This superb new climber has rapidly come into highest favor for the supreme beauty and lavishness of its glorious ruffled flowers. The long-pointed buds are crimson as the sepals divide, then the firm outer petals show splashes of carmine as the flower opens, with an iridescent pearl-pink inside, and it is richly perfumed.

Mrs. Arthur Curtiss James (Golden Climber). HW. Plant Patent No. 28. Here is the finest, hardiest, and most reliable golden yellow Climbing Rose ever introduced into this country. Plants have all the enormous vigor of the famous Mary Wallace and are apparently as hardy as any of the popular Climbing Roses. The flowers are large and shaped identically like the finest Hybrid Teas. They open rich golden yellow and remain without serious fading for several days. \$1.50 each; \$15 per doz.

New Dawn. Plant Patent No. 1. A sport from Dr. W. Van Fleet which is universally acknowledged as the best and most popular American Climbing Rose. This new variety is identical in every way with its parent in size and formation of its flowers, color, etc., but blooms continuously throughout the summer and fall months. The first good Everblooming Climber introduced. \$1.50 each; \$15 per doz.

Paul's Scarlet Climber. Not so vigorous as other climbers, this striking Rose is ideal for growing as a pillar, over which it will hang its clusters of large, well-formed shining scarlet flowers in greatest profusion. One of the most spectacular of Roses, it is becoming widely known and tremendously popular.

Primrose. A strong, vigorous grower and as hardy as Dr. W. Van Fleet and similar varieties. The light primrose-yellow flowers, about 2½ inches in diameter, are borne in trusses of from 2 to 5, on long stems. The plant is of vigorous, climbing habit, and is a noteworthy addition to the yellow Climbing Roses.

Princess van Orange. Plant Patent No. 106. This is a sensational new climbing sport of Gloria Mundi. It has strong growth and rich green foliage. Its branches are literally covered with masses of blazing orange-scarlet flowers in great trusses. The most talked-of European climbing novelty in many years. \$1 each; \$10 per doz.

Silver Moon. Tremendous vigor and excellent polished foliage commend this Rose, even without the attraction of its tapering golden white buds and its magnificent, semi-double, saucer-like flowers of purest white, illumined at the center with a giant frill of golden stamens.

ROSA HUGONIS

A fine shrub Rose which is perfectly hardy anywhere and which does best if planted in poor soil and neither pruned nor fed. The plant grows about 5 to 6 feet tall, with slender, arching branches of an interesting shade of brownish red. The foliage is very small and fern-like, making an attractive shrub when not in bloom. Flowers are of a soft yellow, single, about 2 inches in diameter, deliciously fragrant, and appear all at once very early in the season. A plant not showing a bloom one day will be covered with flowers the next morning. It makes a wonderful lawn specimen, or when planted close is a perfect Rose-hedge. 75 cts. each; \$7.50 per doz.

Tender Bedding and Greenhouse Plants

AGERATUM

FRASERI. Splendid, compact summer bedding plants; about 10 inches high. Flowers clear, bright blue. Doz. 100
2-inch plants.....\$1 50 \$10 00
3-inch plants..... 2 00 15 00

BEGONIAS

LADY MAC. Pink. 2½-inch pot-plants, \$50 per 100.

MELIOR. Pink. 2½-inch pot-plants, \$47.50 per 100.

BUDDLEIA

ASIATICA. Excellent greenhouse plant, producing long blooms of intensely fragrant white flowers in late December and early January. \$20 per 100.

CARNATIONS

GIANT LADDIE. The 3- to 5-inch flowers are salmon-pink.

MAINE SUNSHINE. Clear yellow. The finest of all yellows.

SATELLITE. Shapely flowers of orange-scarlet. Distinct.

WANDA. Large, crimson flowers with a shade of mahogany.

WOBURN. Large; crimson. The best crimson so far.

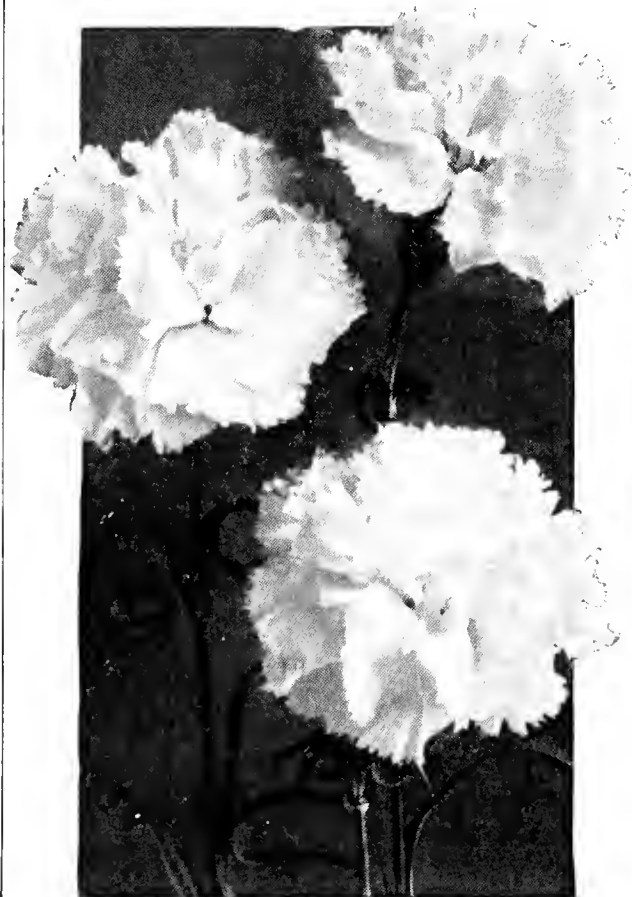
All Standard Varieties, \$20 per 100

CALCEOLARIA

Hybrids. 2½-inch pot-plants, \$30 per 100.

EUPHORBIA

JACQUINÆFLORA (*E. fulgens*). Extremely decorative greenhouse plant with drooping sprays of bright scarlet flowers. \$35 per 100.



Carnations

HARDY ENGLISH IVY *Hedera Helix*

This well-known, popular evergreen vine is invaluable for covering walls, etc., and makes an excellent ground-cover in shady places where grass will not grow. Very desirable for cemetery work and for edgings of window-boxes. Nice bushy plants with long runners.

3-inch pots, dwarf.....	\$30 00
4-inch pots.....	35 00
4-inch pots, staked.....	50 00

POINSETTIAS

Stunning Christmas plant with showy scarlet bracts. We have what we think is the finest strain in existence of this spectacular plant. Unusually large flowers of gorgeous color. \$35 per 100.

GARDENIA

VEITCHI. Best forcing variety for market. Strong plants, from 2½-in. pots, 50 cts. each; \$45 per 100.

CALIFORNIA. Very large-flowering variety. \$1 each; \$75 per 100.

HELIOTROPE

ROYAL FRAGRANCE. Deep, rich violet-blue. A dwarf variety with the most fragrant flowers of all. The plants are sturdy and bloom from June until frost. A bed of Royal Fragrance is just about the nicest thing one could have in the garden. 3-in. pots, 40 cts. each; \$3.50 per doz.; \$25 per 100.

LANTANA

A splendid, aromatic bedding plant with clusters of vivid yellow and scarlet flowers all summer. \$15 per 100.

LEMON VERBENA

Fine garden herb with scented foliage. 2½-inch pot-plants, \$10 per 100.

FERNS

Adiantum Cuneatum Croweanum

The hardiest of the Maidenhair Ferns, and very suitable for pot-culture or for growing in the bench for cut-fronds. Ready June 1.

	Each	100
3-inch pots.....	\$0 25	\$20 00
4-inch pots.....	50	35 00
5-inch pots.....	75	60 00

Duckham's Forcing Roses

Of the many hundreds of Roses that have been recommended for growing under glass, the number that force well, under all conditions, are comparatively few—and the following are about the best of them. I offer strong, well-rooted plants, grafted or budded on Manetti, the most satisfactory understock for producing abundant bloom.

ORDER YOUR ROSES NOW. Have them the size you want them when you are ready for them. All our Forcing Roses are delivered by truck within a radius of 60 miles of Madison, insuring delivery in perfect condition

BETTER TIMES. Plant Patent No. 23. A brilliant cerise sport of the ever-popular Briarcliff, which it resembles in other respects. The most popular Rose of its coloring ever produced.

BRIARCLIFF. Rich, unshaded rose-pink flowers of beautifully modeled form. A popular, vigorous, and prolific variety. The most perfect of all the pink Roses.

JOANNA HILL. Clear yellow buds and blooms with orange tones in the center. Growth and blooming qualities unusually good.

MME. BUTTERFLY. A well-known favorite and always dependable. Large, light pink flowers shaded apricot and gold. Beautiful in form, coloring, and richly perfumed.

MRS. F. R. PIERSON. Well-known, popular sport of Premier, with huge buds and bright, full-petaled flowers of glowing ruby-crimson.

PREMIER SUPREME. A glorified Premier, with very full buds opening to high flowers of richest rose-pink. Healthy and vigorous.

RAPTURE. A deeper-toned variation of the famous Mme. Butterfly, with luscious pink and shining golden tints in its perfect flowers.

R. M. S. QUEEN MARY. Plant Patent No. 249. An irresistible Rose in daylight, but under electric light the tints and shadings of this lovely flower are hypnotizing. It is a blend of salmon and pink, warmed with gold. Unusually fine plants that bloom freely. 2½-in. pots, \$60 per 100; 3-in. pots, \$70 per 100; 4-in. pots, \$80 per 100.

SOUVENIR. Plant Patent No. 25. Stunning, pure golden yellow sport of Talisman with all the good qualities of its parent. Free flowering, profitable yellow.

SOUVENIR DE CLAUDIUS PERNET. The dean of all our modern yellow Hybrid Teas and a most excellent deep golden yellow flower, especially in hot weather. Budded stock only.

TALISMAN. Most popular and best-known highly colored Rose in commerce. Red and yellow, pink and gold. Blooms all the time.

TEMPLAR. Clear rich red flowers brightened with scarlet, richly fragrant. Extremely free flowering. The most profitable red.

2½-in., \$40 per 100; 3-in., \$50 per 100; 4-in., \$60 per 100, except where noted

ORDER TO
WILLIAM C. DUCKHAM
MADISON, NEW JERSEY

Date.....

Your Name.....
Very Plain

Post Office..... P. O. Box.....

County..... State.....

Street No..... Forwarded by.....
Mail, Express, or Freight

Please do not write here

Amount Enclosed Cash, \$..... Money Order, \$.....

Supt.'s Name..... Draft or Check, \$.....
State how much money you enclose

QUANTITY	NAME OF ARTICLE	Dollars	Cents
	Delphinium, Mixed.	\$5 for 6; \$9 per doz.	
	Special Offer of 10 Roses.	\$6.50 for the 10	
	Phlox, Our Selection.	\$1.50 for 6	
	Japanese Iris, Our Selection.....	1 each of 10 varieties for \$5	
	Scabiosa, Duckham's New Hybrids.....	\$2.50 for 6	
	Viola, Jersey Gem.....	\$1.25 for 6	
	Steriloam.	\$1.25 for 10 lbs.	
	See page 19 for prices on larger quantities		

In making your order, please give the price, to avoid delays and errors.

QUANTITY	NAME OF ARTICLE	Dollars	Cents
	<i>Brought forward</i>		
	<i>Total</i>		

In making your order, please give the price, to avoid delays and errors.

WM. C. DUCKHAM COMPANY

MADISON,

NEW JERSEY



Duckham's

STERILOAM

TRADE MARK

MAKES EVERY GOOD SEED GROW

Gardeners everywhere have realized that the use of sterilized soil is the only way to get 100 per cent results in the germination of seeds. With the use of STERILOAM (the balanced seedling soil) results are guaranteed.

STERILOAM is free from weed seeds. Seedlings will not damp off.

If you want to prevent seed-losses—if you want your seeds to develop into healthy, hardy plants—strong, virile and true to type—use Duckham's STERILOAM. And you will find it just as good for house-plants of every description; in flower-pots for

prize plants; in growing plants of all kinds for display or competitive shows; and in the greenhouse.

STERILOAM is put up in 10-pound cans, 25-, 50-, and 100-pound bags. A trial will convince you that your seed-germination will be a revelation to you.

Send orders direct to William C. Duckham Company or ask your favorite seed-store for it.

Prices

10-lb. cans \$1.25	50-lb. bags \$3.50
25-lb. bags 2.00	100-lb. bags 6.00

The only sure way to get 100% Seed Germination

Business Terms and Shipping Instructions

To insure early deliveries of Roses and Hardy Plants, and to avoid disappointments, it is necessary to order early.

Payments. Cash or satisfactory references required from all correspondents unknown to me.

Plants by Parcel Post. If to be sent by parcel post, add postage as follows: Single plants, 5 cts.; 3 plants, 10 cts.; 6 plants, 15 cts.; 12 plants, 25 cts. I accept no responsibility for delays or conditions that may prove injurious to the contents.

Plants by Express. I recommend this mode of transit for more than 18 to 24 plants. All orders are carefully packed by expert hands, but I accept no responsibility for delays over which I have no control that may cause injury to the contents. I can make no adjustments unless complaints are made within five days after receipt of goods. Always state how you wish your order shipped, **express or parcel post. Express rates reduced 25 per cent.**

Responsibility. Although exercising the utmost care in packing and routing orders, I cannot be responsible for damage due to the negligence or rough handling of common carriers. If the container appears damaged on arrival, sign for it as **damaged** and make claim on the express company. If considerable delay in transit would indicate fatal damage to contents, refuse delivery.

I guarantee my stock to be extra strong, but assume no responsibility after shipment has been made. I also wish to emphasize the fact that all roses and plants I send out are vigorous, healthy, and true to name.

All shipments should be opened and unpacked immediately on arrival; if dry, the plants should be watered and planted as soon as possible.

Substitution. In ordering, kindly give a second choice, if possible, as many varieties are sold out as the planting season progresses.

In the event that I should be sold out of any variety ordered, I will substitute the nearest variety of equally good stock and similar color, unless the order is marked "*No Substitution.*"

Order Early—Because now our stocks are complete and you may be sure of receiving the best plants.



SYMPHONY



CALIPH



MANDARIN

Three New Iridescent Chrysanthemums

The Chrysanthemums pictured above are the first of a new race, hybrids of Chrysanthemum and Pyrethrum. You will find them interestingly different. **3-in. pots, 3 plants \$1.90, doz. \$7.50.**



ASTER FRIKARTI

From 3-in. pots. **3 for \$1.25**



BUDDEIA, Charming
From 3-in. pots. **\$1.00 each**



AQUILEGIA

English Improved Long-Spurred

Field-Grown Plants **3 for 90 cts.**



New Dwarf KOREAN CHRYSANTHEMUM
Pygmy Gold

3 plants for \$1.25

William C. Duckham Co.

MADISON, NEW JERSEY