

Historic, archived document

Do not assume content reflects current scientific knowledge, policies, or practices.

62.73

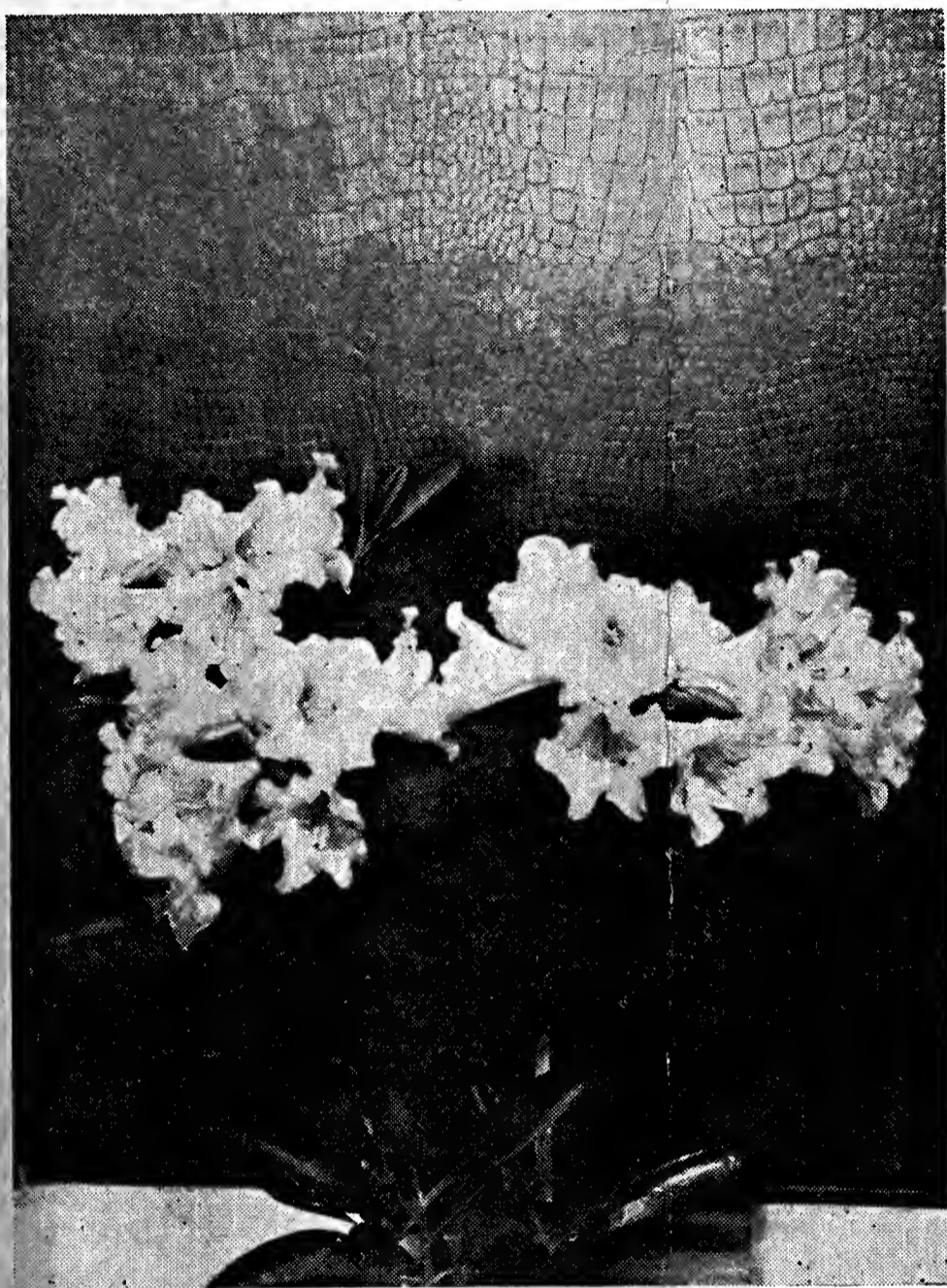
LIBRARY
RECEIVED

★ MAR 8 1939

U. S. Department of Agriculture

Rhododendrons and Azaleas

SPRING 1939



DECATROS

THIS hybrid flowered here at a very early age and seems to be satisfactorily hardy. The flowers resemble *R. decorum* in size and form, but though they retain little of the fragrance of that species they are much hardier. The colors vary from white to light rose with yellow shadings and sometimes a deep crimson spotting in the throat.

JOSEPH B. GABLE

STEWARTSTOWN, PA.



- ANNELIESIAE—Arborescens X calendulaceum. 8-12 in., \$1.00
- ARBOREUM ALBUM X PINK CALOPHYTUM—Should have large blush flowers and splendid foliage. A small tree. Much hardier than Arboreum. 6 in., \$1.50
- ARBOREUM ALBUM X WHITE CALOPHYTUM—Identical with the above except flowers should be pure white. 6 in., \$1.50
- ATLANTICUM—An azalea. Low growing. White to rose fragrant flowers. Hardy. 6 in. pots, \$1.00
- ATSONII=ASTROSANGUINEUM X THOMSONII—This cross of a red hybrid with a red species should produce some interesting results. 12-18 in., \$2.00
- AUCKLANDII X WILLIAMSIANUM—A queer cross but it may be good. 3 in. pots, \$1.00
- BOULE DE NEIZE X FORTUNEI—large light colored flowers. 18-24 in., \$3.00
- BRACHYCARPUM—Creamy white and pink flowers, 8 to 10 feet. Hardy. 6-8 in. heavy, \$1.00. 10-12 in., \$2.00
- CALENDULACEUM—The Flame azalea with orange to scarlet flowers. 3 in. pots, 50c. 2 to 3 ft., \$2.50
- CALOPHYTUM—A small tree with magnificent foliage and large trusses of white or pink flowers. 4 in. pots, 50c. 6 in. pots \$1.50
- CAMPYLOCARPUM X DISCOLOR—A fine English hybrid and possibly hardy. 4 in. pots, \$1.00
- CAROLID—A Carolinianum hybrid. A profuse bloomer. 12-18 in., \$2.00
- CAROLINIANUM—Grows 3 to 4 feet and hardy. Early pink flowers. 2 to 3 ft., \$3.00
1 to 2 ft., \$2.00. 6 in. 50c
- CAROLINIANUM ALBUM—As above with white flowers. 2 to 3 ft., \$2.00
- CATAWBIENSE—Our very hardy native with rose purple flowers. 2 to 3 ft., \$4.00. 1½ to 2 ft., \$3.00
- CATAWBIENSE HYBRID SEEDLINGS—Various colors. 18-24 in., \$2.00. 6-12 in., 50c. 1-1½ ft., \$1.00
- CATAWBIENSE X FORTUNEI—A fine large growing hybrid with good foliage and large light rose pink flowers. 3 in. pots, 50c. 2-3 ft., \$5.00
- CATAWBIENSE X MICHAEL WATERER—Plant rather dwarf, flowers dark purple red. 18-24 in., \$2.00
- CAUCASICUM—A dwarf shrub with white flowers tinted rose. 2 in. pots, 50c
- CHRYSANTHUM—Dwarf to 1 foot with pale yellow flowers. Hardy. 4-6 in., \$1.00. 6-12 in., \$1.50
- CHRYSEUM—A very dwarf member of the lapponicum series with bright yellow flowers. 3 in. pots 75c
- CONEMAUGH—A hybrid of R. racemosum and R. mucronulatum that produces its rose colored flowers abundantly very early in spring. Upright in growth. 6-12 in., \$1.00
- CONESTOGA—A very attractive dwarf rhodo. Flowers early rose in great profusion. Seedling 6-8 in., 75c
- CONEWAGO—A hybrid of R. carolinianum and R. mucronulatum. 6-12 in., \$1.00
- DECATROS=DECORUM X ASTROSANGUINEUM—This hybrid produces large flowers of pink and blush shades. Fragrant. 2-3 ft., \$3.00
- DECORUM—Grows from 12 to 20 feet with white sweet scented flowers. 4 in. pots, 50c
- DECORUM X LODERI—Has never bloomed here. 4 in. pots, 50c
- DETONSUM—Rose pink flowers with crimson spots. 9-12 ft. and probably hardy. 6 in. pots, \$2.00
- DISCOLOR—Late flowering with large white or pink flowers, this species reaches 20 feet or more and has proven hardy here. 4 in. pots, 50c

- FARGESII—A handsome shrub with pink flowers in abundance. 4 in. pots, 75c
- FASTIGIATUM—One of the best dwarf alpine rhododendrons for the rock garden. Flowers purple or violet blue, large for so small a plant. 4 in., \$1.00
- FORTUNEI—Bluish pink fragrant flowers and dependably hardy. This species becomes a tree of 15 to 20 feet. The corolla is seven lobed instead of the usual five and we strongly recommend this species. Requires some shade. 12 to 18 in., \$2.00. 18-24 in., \$3.00
- HINODEGIRI X POUKHANENSE—A compact growing azalea much hardier than Hinodegiri and with larger purple flowers. 12-18 in., \$1.50
- HIPPOPHAEIODES—Grows to a shrub of 2 or 3 ft. with lavender blue flowers. 4 in. pots, \$1.00
- HORAEUM—Procumbent, red flower. 2 in. pots, 50c
- INDICUM (macrantha) hybrids—Colors unknown. 10-12 in., \$1.00
- JAPONICUM—Deciduous species of the azalea series with yellow to orange flowers. Hardy. 8-12 in., \$1.00
- KAEMPFERI—Another Japanese azalea of pink salmon and orange shades. Evergreen in mild climates but hardy in New England where its leaves mostly fall. 2-3 ft., \$2.50
- KAEMPFERI HYBRIDS—This strain developed from a hybrid of Kaempferi and Poukhanense, the two hardiest Japanese azaleas, has flowers of many shades. Standing in nursery rows in the open field during the 1933-34 winter when the temperature fell to over 20° below zero and flowering nicely speaks more for their hardiness than anything we can say. Originated and introduced by us. 2-3 ft., \$2.50. 18-24 in. \$1.50
- KEISKEI—A low compact shrub with lemon yellow flowers. Suitable for the rock garden. Flowering size plants. 12-18 in., \$2.00
- KELETICUM—A dwarf alpine with deep purplish crimson flowers and deeper markings. 3 in. pots, 75c
- LAETVIRENS—Late purplish pink flowers. Good foliage. 8-12 in., \$1.00
- LITIENSE—A yellow flowered species. Small plants. 4 in. pots, \$1.00
- LODERI—Seedlings of this "ne plus ultra" of English hybrids which seems fairly hardy here. 8-12 in., \$1.00
- LUTEUM—This old world azalea better known as "pontica" has fragrant yellow flowers. 6-12 in., 75c. 18-24 in., \$2.00
- LUTEUM HYBRIDS—Mostly yellow and pink shades. Hardy. 6-12 in., 75c
- MACROSEPALUM—Flowers Rose. 12-18 in., \$1.00
- MAXIMUM—Light pink or white flowers in July. Very hardy. Grown from seed we consider these superior to collected plants. 6 to 12 in., 50c. 1 to 2 ft., \$1.00. 2 to 3 ft., \$2.00
- MICRANTHUM—Hardy. Small white flowers in June in great profusion. 1½ to 2 ft., \$2.00
- MINUS—A hardy but little known American rhododendron resembling R. carolinianum but flowering in June. 2 to 3 ft., \$2.00
- MOLLIS—A popular azalea of yellow and orange shades. 6-12 in., 50c. 18-24 in., \$2.00
- MUCRONULATUM—Very early rose purple flowers with Forsythia. Hardy. 12-18 in., \$1.00. 18-24 in., \$2.00
- NUDIFLORUM—The common native azalea commonly but erroneously called the "bush honeysuckle." 12-18 in., \$1.00. 18-24 in., \$1.50. 2 ft., \$2.00
- NUDIFLORUM X JAPONICUM—A very hardy hybrid with pink or rose flowers flushed with yellow and orange shades. 2-3 ft., \$2.50
- OCHRACEUM—Color unknown. Seems hardy. 6-12 in., \$1.00
- ORBICULARE X WILLIAMSIANUM—Dwarf with pink flowers. Fine, compact habit. 6 in. pots, \$1.00

- PENNSYLVANICUM—A natural hybrid of *R. atlanticum* and *R. nudiflorum*. Early fragrant white flowers. 2-3 ft., \$2.00
- PEREGRINUM—This grows to a small tree with white flowers marked with bright red spots and lines. 4 in. pots, \$1.00
- PLEISTANTHUM—Said to have violet colored flowers. 12-18 in., \$1.00
- PONTICUM—Purple flowers. 18-24 in., \$1.50
- POUKHANENSE—A hardy low growing Japanese azalea with fragrant lilac tinted flowers. 1½-2 ft., \$2.50
- POUKHANENSE X HEXE—This hybrid produced here has deep red purple flowers of large size. Many of them hose in hose. 12-18 in., \$1.00. 18-24 in., \$1.50
- POUKHANENSE X LEDIFOLIA ALBA—Large flowers of pale bluish lavender heavily spotted carmine. Very hardy and good plant habit. 10-12 in., \$1.00
- RACEMOSUM 59717 Rock—We recommend this as a very hardy form of this delightful rock garden subject. Clear pink flowers in late April or early May. 6-12 in., \$1.00. 10 to 18 in., \$3.00
- RACEMOSUM 19404 FORREST—Considered the best form in England where it grows but a few inches high with bright pink flowers. Fine for rock garden. 6-12 in., \$2.00
- RACEMOSUM X KEISKEI—A dwarf with pink flowers flushed with yellow. 3 in. pots, \$1.00
- RETICULATUM—Better known as azalea *Rhombica* or *dilatata*. Bright purple flowers. 1½-2 ft., \$1.00
- RHOMBICUM—See *reticulatum*.
- ROSEUM—Early fragrant pink flowers. 6-8 in., 50c
- SCHLIPPENBACHII—The largest leaves and flowers of any hardy azalea species and by many considered the loveliest when covered with its great pink flowers. 12-18 in., \$1.00. 18-24 in., \$2.00. 2-3 ft., \$3.00
- We have a large stock of this and will be pleased to quote in quantity.
- SMIRNOWII—Very hardy and slow growing with rose pink flowers of good size, this species is immune from the lace wing fly. 6-12 in., \$1.00. 12-18 in., \$2.00
- SMIRNOWII HYBRIDS—These seedlings will have good size flowers of pink and rose shades. 8-12 in., \$1.00. 12-18 in., \$1.50
- VASEYI—Its very early pink flowers make it one of the loveliest azaleas. 2-3 ft., \$2.00
- VERNICOSUM—Clear pink fragrant flowers. 4 in. pots, \$1.00
- WARDII—Flowers bright yellow. 3 in. pots, 50c
- WARDII X DISCOLOR— 4 in. pots, \$1.00

RARE HOLLIES

- ILEX PERNYI—A Chinese species with small dark green leaves. Grown from cuttings. 10-12 in. plants, \$1.00
- ILEX AQUIFOLIUM VAR. PYRAMIDALIS—A compact growing variety of the English holly with fine red berries and quite hardy here. 12-18 in. plants, \$1.00



As former customers will notice there are a number of species omitted from this list that have appeared in former ones. Some have been dropped as unsatisfactory but others have been found altogether suitable and only await the time when a new stock is again available to reappear on our list.

We also grow a number of rare hollies, yews, firs, magnolias, spruces, pines, etc. If interested write stating species or variety wanted and we will immediately quote prices if in stock.

Packing extra at cost on small orders. Orders of \$10.00 and more packed free. Terms cash with order from parties unknown to us.