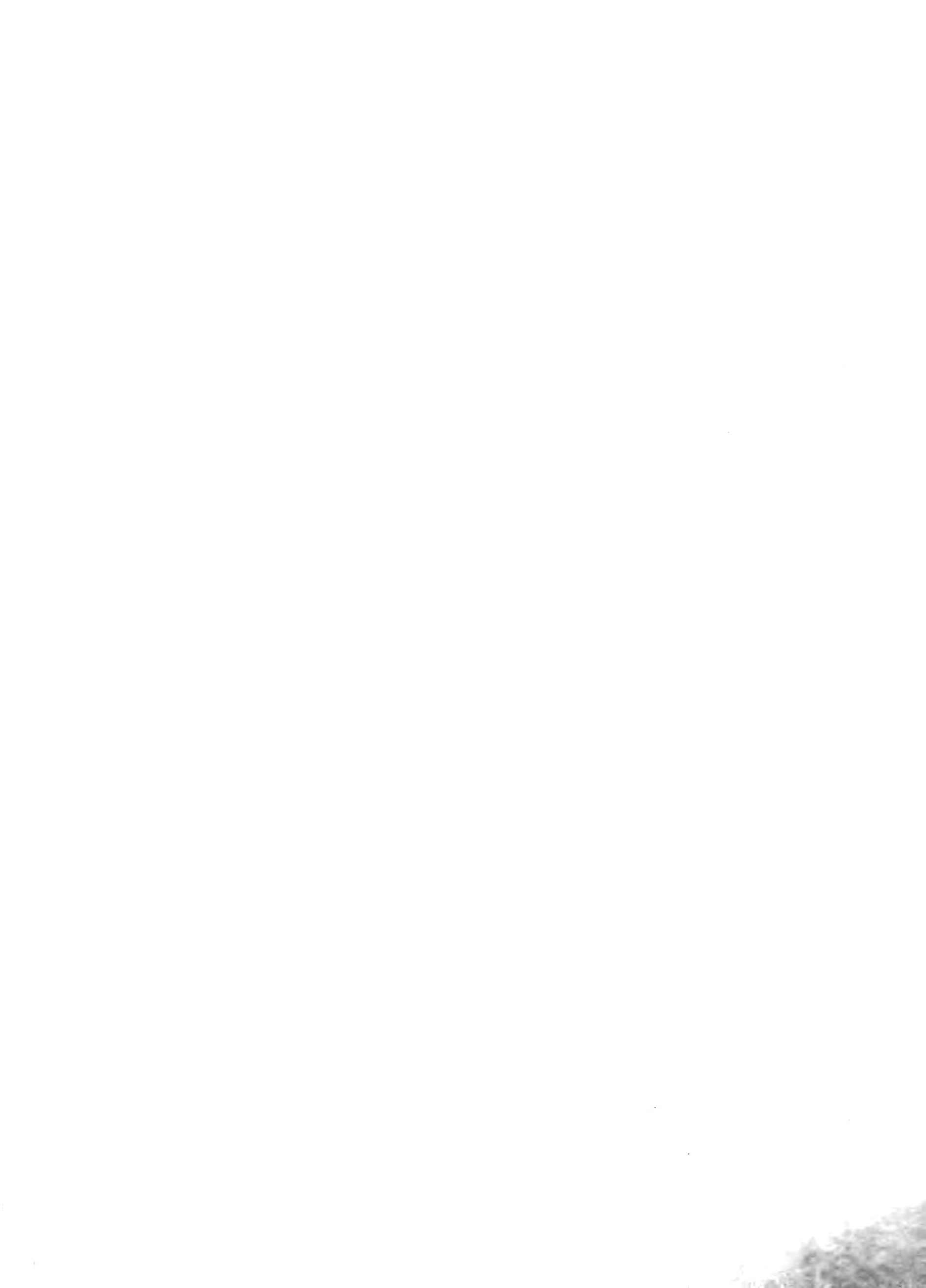


## **Historic, archived document**

Do not assume content reflects current scientific knowledge, policies, or practices.





Elsa Späth



Montana undulata



Kermesina

**CLEMATIS**  
*The Aristocrat  
of the  
Climbing Plants*



Belle of Woking



Duchess of Albany



Ville de Paris

**JAMES I. GEORGE & SON**

FAIRPORT, NEW YORK

# CLEMATIS—A N

## Large-flowering Hybrids

2-yr. plants, grown on own roots

	Each
<b>Ascotiensis.</b> Tapering buds; azure-blue petals.	\$1 25
<b>Belle of Woking.</b> See color illustration.	1 50
<b>Comtesse de Bouchaud.</b> See color illustration.	1 25
<b>Crimson King.</b> See color illustration.	2 00
<b>Duchess of Albany.</b> See color illustration.	1 25
<b>Duchess of Edinburgh.</b> See color illustration.	1 00
<b>Elsa Spath.</b> See color illustration.	1 25
<b>Empress of India.</b> Light violet-purple, with dark markings.	2 00
<b>Gipsy Queen.</b> Jaekmani hybrid with velvety purple flowers.	1 50
<b>Henryi.</b> See color illustration.	1 00
<b>Huldine.</b> Translucent, pearly white with reverse markings of mauve-pink.	2 00
<b>Jackmani.</b> See color illustration.	1 00
<b>Jackmani rubra.</b> A red form of the popular Jackmani.	2 00
<b>Jackmani superba.</b> An improved violet-purple form of Jackmani.	2 50
<b>Kermesina.</b> See color illustration.	1 00
<b>King Edward VII.</b> A violet and crimson combination.	1 50
<b>King of the Belgians.</b> Light mauve with blue bars.	2 00
<b>Lady Betty Balfour.</b> A summer-flowering rich purple variety.	1 50
<b>Lady Caroline Neville.</b> French white with mauve bars.	1 50
<b>Lady Northcliffe.</b> Lavender, blue, and purple are blended in this hybrid.	1 50
<b>La France.</b> Deep cobalt-blue with dark anthers.	2 00
<b>Lawsoniana.</b> See color illustration.	1 25
<b>Lord Neville.</b> See color illustration.	1 25
<b>Mme. Baron-Veillard.</b> See color illustration.	Each \$1 00
<b>Mme. Edouard André.</b> See color illustration.	1 00



Crimson King



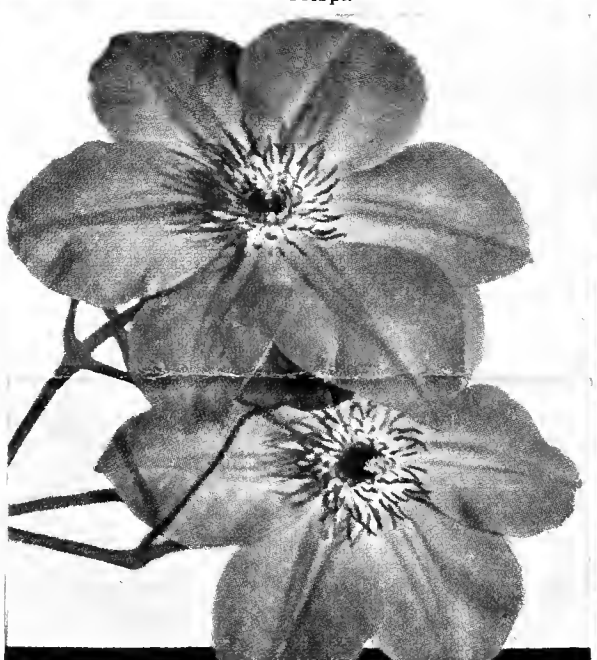
Mme. Baron-Veillard



Crispa



Duchess of Edinburgh



Lawsoniana



Lord Neville

ONLY in recent years have American gardeners been able to enjoy the rare beauty of the many Clematis hybrids. These European garden treasures are notable for their spectacular flowers. Outstanding in color and in form, they lend dignity and charm to any garden. Grown on trellises, arbors, pergolas, old tree-stumps, and walls, these climbing plants often flaunt their beauty in high places where they may be enjoyed from many parts of the garden. There are hybrids for almost every part of the garden since they vary from 6 to 12 feet or more in height.

Both the large- and the small-flowered varieties are well worth growing. While the large-flowered forms provide great richness of color, the small-flowered kinds impress us with their curiously formed flowers.

From a decorative standpoint these Clematis hybrids are most useful. They last well when cut and lend themselves to many unique arrangements.



VILLE DE PARIS



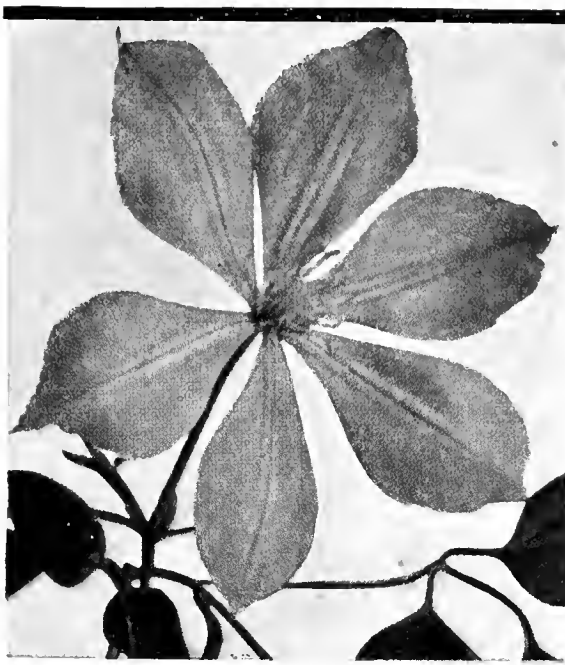
# W Garden Treasure

	Each
<b>Mr. G. J. Patijn.</b> Unique, double, pale blue flowers.....	\$2 50
<b>Mrs. Cholmondeley.</b> See color illustration..	1 25
<b>Nelly Moser.</b> Pale mauve and white with red bars.....	1 50
<b>Prins Hendrik.</b> Large azure-blue flowers with ruffled petals.....	1 50
<b>Ramona.</b> Large lavender-blue flowers with dark anthers.....	1 00
<b>The President.</b> Rich reddish plum-violet blooms.....	1 50
<b>Ville de Lyon.</b> Carmine-red with darker centers.....	1 00
<b>Ville de Paris.</b> See color illustration.....	1 00
<b>W. E. Gladstone.</b> A new hybrid with large lilac blooms.....	2 00
<b>William Kennett.</b> Deep lavender flowers of exceptional size.....	1 25

## Small-flowering Varieties

2-yr. plants, grown on own roots

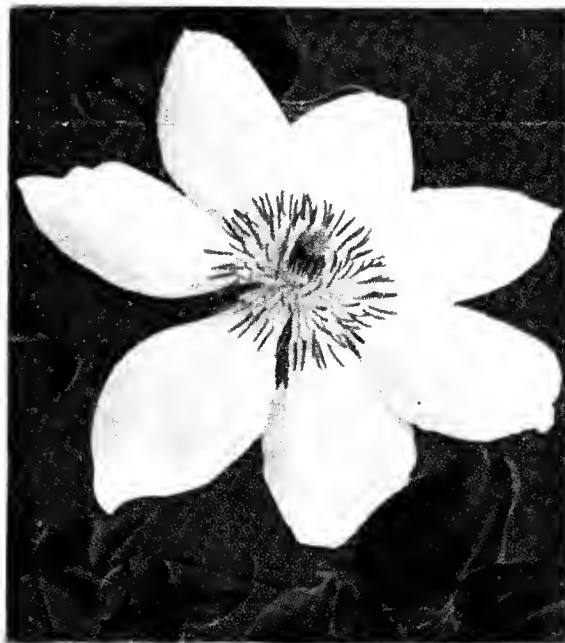
	Each
<b>Crispa.</b> See color illustration.....	\$0 85
<b>Flammula.</b> Similar to <i>Paniculata</i> . Not hardy north of Long Island.....	50
<b>Jouiniana, Spingarn Variety.</b> Blooms in late summer with showy sprays of lavender flowers.....	1 50
<b>Montana rubens.</b> Rose, changing to deep pink. Blooms in May and June.....	85
<b>Montana undulata.</b> See color illustration..	85
<b>Paniculata.</b> Familiar autumn-flowering form. Fragrant white flowers.....	50
<b>Recta.</b> Shrubby form with clusters of fragrant white flowers.....	50
<b>Tangutica obtusiuscula.</b> See color illustration.....	85
<b>Texensis.</b> See color illustration.....	85
<b>Troutbeckiana.</b> A recently discovered lavender-flowering form.....	2 00
<b>Virginiana.</b> A native species with white flowers in late summer.....	50



Mrs. Cholmondeley



Comtesse de Bouchaud



Henryi



Texensis



Tangutica obtusiuscula



Mme. Edouard André



## ON GROWING CLEMATIS

**SOIL.** A rich well-drained loam, loosened by the addition of sand or peat moss, is best. Roots packed in moss should be carefully removed and set in a hole large enough to accommodate them without crowding. Make certain that the collar of the plant is set 2 to 3 inches below the surface of the soil. Firm the soil well around the roots. Water frequently in dry weather.

**LOCATION.** A partially shaded location is ideal. If planted in full sun, shade the lower stems with low-growing plants. A mulch of peat moss is beneficial.

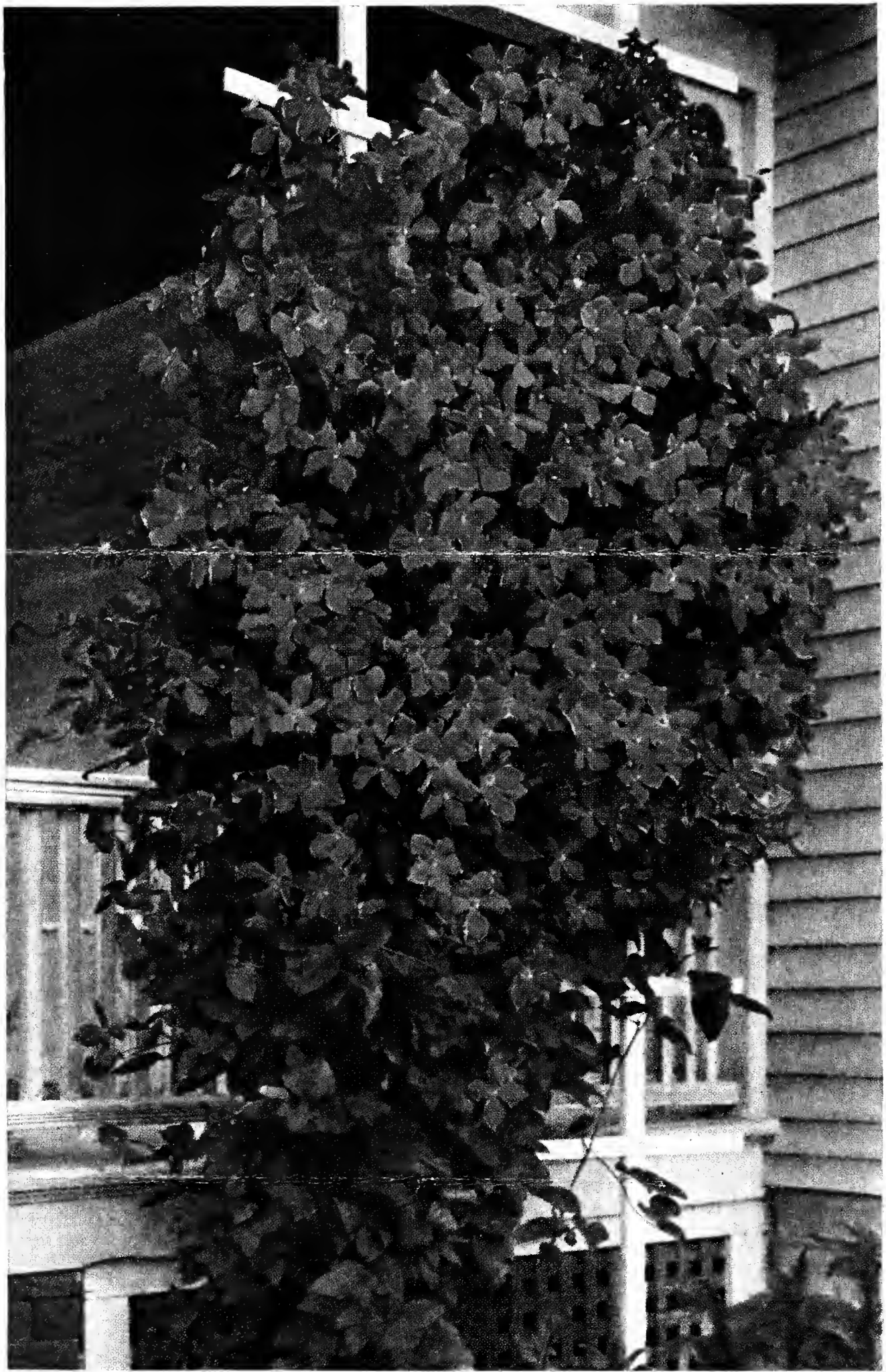
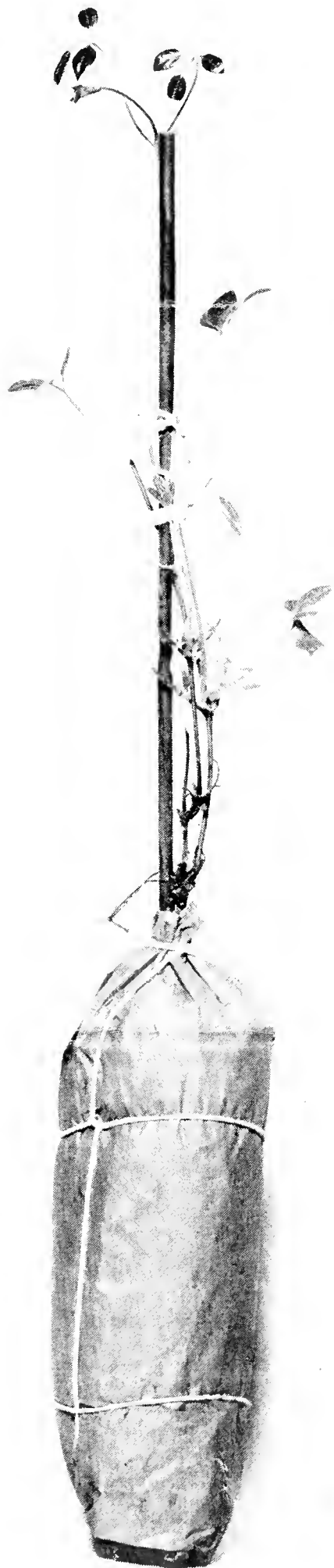
**FERTILIZING.** Well-rotted manure is preferred with fertilizer as a good second. Work it well into the soil without disturbing the roots. Use a little lime occasionally.

**TRELLIS.** Provide a support at once—a trellis, wire netting, old stumps, low shrubs, dead branches, or stone walls.

**WINTER MULCH.** With fall planting of Clematis use a mulch of straw, leaves, or peat moss for the first winter to prevent the soil from freezing and thawing, which sometimes damages the stems if they are unprotected. Mice and rabbits may be kept from eating the tops by filling the soil up around the stems or by putting small screens around them.

**PRUNING.** Summer- and fall-blooming Clematis should be pruned back to 2 to 3 feet in early spring. Early spring bloomers flower on last year's wood, so remove only dead wood in very early spring.

A CLEMATIS PLANT  
READY  
FOR SHIPMENT



**CLEMATIS JACKMANI.** A vine of overwhelming gorgeousness suitable for trellis or porch decoration. Easy to grow. Blooms over a long season. Perfectly hardy and attracts favorable attention everywhere.

**I**T IS important to remind our garden-minded friends that all our plants are grown in sterilized soil to eliminate the damage done by nematodes or eelworms. By taking this precaution it is possible to ship all plants free of disease. Each plant is carefully packed for shipping as indicated in the illustration opposite, and complete planting directions are sent with each order.

**JAMES I. GEORGE & SON**  
FAIRPORT, NEW YORK