

## **Historic, archived document**

Do not assume content reflects current scientific knowledge, policies, or practices.





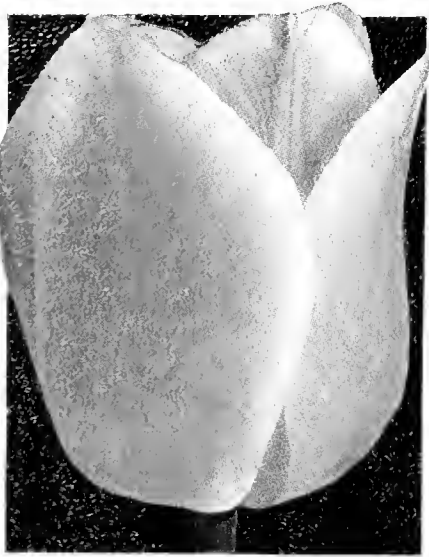
Experienced gardeners accord high praise to our Superior Quality plants and bulbs. For beds, for wall gardens, for rock-gardens, or for perennial borders they have no superiors. A special catalog of this quality plant material will be mailed on request.

127A 137  
Bulbs

FOR  
FALL PLANTING  
1939

CARL GIESSLER, INC., <sup>NEW</sup> ADDRESS 202 East 58th St., NEW YORK

# TULIPS— *The chalice-flowers of the May Garden*



LA FRANCE. Ideal Darwin



DUKE OF WELLINGTON  
Ideal Darwin



SCOTCH LASSIE  
Ideal Darwin



YELLOW GIANT. Darwin



KING GEORGE V. Darwin



APHRODITE. Darwin



AL JOLSON. Ideal Darwin



HELEN WILLS. Ideal Darwin



CITY OF HAARLEM. Darwin



## IDEAL DARWIN TULIPS

This group is a superior race bred from Darwin Tulips. The outstanding characteristics are earlier and longer bloom-period, clear bright colors, and large flowers of good substance. Unsurpassed for show in the garden, the long stems make them fine for cut-flowers.

**Al Jolson.** American-Beauty-red with a broad lighter edge. Exquisitely formed flowers on long stems. 26 in. \$1 per doz.; \$7 per 100. See color, page 2.

**Camellia.** Soft satiny rose-pink flower with large white base. 27 in. \$1 per doz.; \$7 per 100.

**Duke of Wellington.** Pure white with cream-colored anthers. Large flowers on stiff stems. 26 in. \$1 per doz.; \$7 per 100. See color, page 2.

**Gloria Swanson.** Very large, crimson-red flower with bluish base. 32 in. \$1 per doz.; \$7 per 100.

**Helen Wills.** A fine blue-lavender Tulip carried on strong stems. 28 in. \$1 per doz.; \$6.00 per 100. See color, page 2.

**Insurpassable.** Truly a mammoth Tulip. The great orchid-lavender blooms are carried on tall, strong stems. 28 in. \$1.50 per doz.; \$10 per 100.

**La France.** A beautiful soft rose-pink. Strong grower. 28 in. \$1 per doz.; \$6.75 per 100. See color, page 2.

**Margaux.** Enormous, deep wine-red flowers on strong stems. One of the finest. 30 in. \$1.50 per doz.; \$9 per 100.

**Mermaid.** Delicate flesh-pink, oval-shaped flowers. A sturdy grower. 30 in. \$1 per doz.; \$6.50 per 100.

**Pansy Blue.** Lavender-blue, suffused rosy lilac. Should be used in place of Rev. II. Ewbank and Dream. 28 in. 75 cts. per doz.; \$5 per 100.

**Scotch Lassie.** Purest deep lavender flowers lasting three to four weeks in the garden or cut. 29 in. \$1.25 per doz.; \$8.50 per 100. See color, page 2.

**Starlight.** Fine lemon-yellow with deep yellow base. 26 in. \$2.50 per doz.; \$18 per 100.

**Tollens.** Very deep dark scarlet, shaded purple-red, with lighter edge; large flower. 30 in. \$1.25 per doz.; \$7.50 per 100.

**White Giant.** The perfect pure white Tulip. Blooms early and lasts longer than most varieties. 30 in. \$1.50 per doz.; \$9.50 per 100.

## DARWIN TULIPS

Darwin, Breeder, and Cottage Tulips are classified as May-flowering. While the Cottage varieties, as a rule, grow a few inches shorter, the main distinction is in the color-range. Plant the bulbs 6 inches deep and about 6 inches apart. Although they may be planted until late December, we recommend planting between October 10 and November 15.

**Afterglow.** Clear dark salmon, suffused orange and edged light orange. The name is really descriptive. 26 in. 85 cts. per doz.; \$6 per 100.

**Anton Mauve.** Large, deep lilac-blue flower. 30 in. 75 cts. per doz.; \$5.50 per 100.

**Aphrodite.** Clear silver-pink. Large, oval flowers on strong stems. 30 in. 85 cts. per doz.; \$6 per 100. See color, page 2.

**Baronne de la Tonnaye.** Bright rose-pink, margined light rose. 26 in. 75 cts. per doz.; \$5 per 100.

**Black Eagle.** Large, glistening deep shining purple flowers on stiff stems. 28 in. 80 cts. per doz.; \$5.50 per 100. See color, page 5.

**City of Haarlem.** Large, bright scarlet flowers; black center. 26 in. \$1 per doz.; \$7 per 100. See color, page 2.

**Clara Butt.** Clear pink, flushed salmon-rose. 21 in. 75 cts. per doz.; \$5 per 100.

**Dresden China.** Long stems bearing lovely soft rose-pink flowers edged light rose. Highly recommended for its beauty and substance. 28 in. \$1 per doz.; \$7 per 100.

**Farncombe Sanders.** Vivid cerise-scarlet with rose sheen. 25 in. 75 cts. per doz.; \$5 per 100.

**King George V.** Large, bright salmon-rose flowers on stiff stems. 30 in. \$1 per doz.; \$7 per 100. See color, page 2.

**La Tulipe Noire.** Maroon-black flowers with a rich velvety sheen. 26 in. \$1 per doz.; \$6 per 100.

**Paul Baudry.** Bright violet-purple. Very large flowers on strong stems. Highly recommended. 28 in. 85 cts. per doz.; \$6 per 100.

**Pride of Haarlem.** Very large, brilliant rose-carmine flowers. 26 in. 75 cts. per doz.; \$5 per 100.

**The Bishop.** Pure violet. Large flower on strong stem. 29 in. \$1.25 per doz.; \$8 per 100.

**Venus.** Large, pure silvery rose flower on stiff stems. 28 in. 85 cts. per doz.; \$5.50 per 100.

**Yellow Giant.** Deep golden yellow, globular flowers. 29 in. \$1 per doz.; \$7 per 100. See color, page 2.

**Zwanenburg.** Pure white with black anthers. 28 in. \$1 per doz.; \$6.50 per 100.

**Darwin Formula.** A balanced color-range from top-sized bulbs. \$5 per 100; \$45 per 1000.



## COTTAGE TULIPS

**Advance.** Outstanding for size, color, and height. Huge orange-scarlet flowers on 30-inch stems. Early. \$2 per doz.; \$14 per 100.

**Ambrosia.** Rich amber with a rosy glow. Large, beautifully shaped flowers on strong stems. 27 in. 85 cts. per doz.; \$6 per 100.

**Belle Jaune.** The finest deep bright golden yellow. Light base, yellow anthers. 28 in. \$2.50 per doz.; \$18 per 100.

**Carrara.** Large, cup-shaped, pure white flowers with yellow anthers. Lovely. 25 in. \$1 per doz.; \$6 per 100. See color, page 5.

**Crimson Rambler.** Large, long-lasting, bold flowers of dark carmine-scarlet. 28 in. \$1.35 per doz.; \$8.50 per 100.

**Dido.** Rich deep orange-rose, with orange edge. Will attract attention. 28 in. 75 cts. per doz.; \$5 per 100. See color, page 5.

**Grenadier.** Brilliant orange-scarlet with yellow base. Spectacular. 21 in. 75 cts. per doz.; \$5 per 100. See color, page 5.

**Honeymoon.** Lovely soft primrose-yellow with elongated petals. 26 in. 85 cts. per doz.; \$6 per 100.

**Marjorie Bowen.** Buff-salmon, passing to clear deep pink. Clear thin white line down center of each petal. A distinctive variety. 26 in. \$1 per doz.; \$7.50 per 100. See color, page 5.

**Moonlight.** Soft luminous pale yellow egg-shaped flowers. 25 in. 75 cts. per doz.; \$5 per 100.

**Mrs. Moon.** Rich golden yellow flowers with reflexed pointed petals. 25 in. 75 cts. per doz.; \$5 per 100. See color, page 5.

**Picotée.** White, long-pointed petals, margined deep rose. Dainty. 26 in. 75 cts. per doz.; \$5 per 100.

**Red Rocket.** Rich crimson-scarlet with blue-black base. Petals slightly pointed. 27 in. 85 cts. per doz.; \$5.50 per 100.

**Rosabella.** Lovely salmon-rose with white edge. 26 in. 85 cts. per doz.; \$6 per 100.

**Chinese Lantern Tulip, Good Gracious.** A blending of pink, salmon, orange, and yellow, giving a general effect of orange-apricot. The large, globular flowers remind one of delicate painted illuminated Chinese lanterns. 25 in. \$1.25 per doz.; \$9 per 100.

## BREEDER TULIPS

**Baccius.** Dark violet-blue; outside deeper blue. The bluest of all Tulips. 32 in. \$1 per doz.; \$6 per 100.

**Creation.** Bright orange, delicately shaded bronze. Finest in this color class. 26 in. \$1 per doz.; \$7 per 100.

**Fairy.** Reddish mahogany, shaded bronze; very large blooms. 27 in. 75 cts. per doz.; \$5 per 100.

**Indian Chief.** Bright reddish mahogany, flushed copper, with bright yellow base. A flower of wonderful substance on strong stems. 34 in. \$1.50 per doz.; \$10 per 100. See color, page 5.

**Jessey.** Large coffee and blue flushed bronzy red. A glorified Louis XIV. Very long, strong stem. 36 in. \$1.50 per doz.; \$11 per 100.

**Louis XIV.** Luminous dark purple with broad margin of golden bronze. 39 in. \$1 per doz.; \$6 per 100. See color, page 5.

**Stephanie.** Delicate lilac, shaded violet, with a lighter edge. A gigantic flower on strong stem. 32 in. \$2.25 per doz.; \$16 per 100.

**Breeder Formula.** A balanced color-range of top-size bulbs. 85 cts. per doz.; \$6 per 100.

## LILY-FLOWERED TULIPS

This group of Cottage and hybrid varieties has long, beautifully reflected petals. They are lovely in the garden and for cutting as well as for rock-garden planting.

**Golden Emblem.** Golden yellow flowers of perfect form on straight, strong stems. 23 in. \$1.50 per doz.; \$10 per 100.

**Martha.** Cerise-red with white center. 25 in. \$1 per doz.; \$7.50 per 100.

**Mrs. Moon.** Rich golden yellow. Just plain lovely. 25 in. 75 cts. per doz.; \$5 per 100.

**White Duchess.** Pure white flower of exquisite beauty; well-recurved petals. 26 in. \$1.75 per doz.; \$14 per 100.

**Sirene.** Beautiful cerise-pink with pale pink margin. 26 in. 75 cts. per doz.; \$5 per 100.

### COLLECTION:

12 each of above 5 varieties (60 in all). \$5.50  
25 each of above 5 varieties (125 in all). \$9.50  
100 each of above 5 varieties (500 in all). \$38.00

### Chameleon Tulip, Peasant Maid.

Flower opens white with picotée edge which deepens each day until it is a rich cerise-pink with white base. Blooms are large, appearing with the Darwin group. 28 in. \$1.25 per doz.; \$8 per 100.



## STAINLESS STEEL BULB TROWEL

A real tool which stays sharp, clean, and will not rust. The sharp point makes planting a pleasure whether working in garden soil or cutting through turf. It is also the best size Trowel for transplanting seedlings and small pot-plants. \$2.15, postpaid.

*Here are TULIPS to bring  
the glamour of the Springtime!*



LOUIS XIV. Breeder



SIRENE. Lily-Flowered



INDIAN CHIEF. Breeder



GRENADIER. Cottage



CARRARA. Cottage



MRS. MOON. Cottage



MARJORIE BOWEN. Cottage



DIDO. Cottage



BLACK EAGLE. Darwin



FANTASY

## FANTASY TULIP

Large, luminous, salmon-pink flowers with a deeper tone inside. The petals are heavily frilled, and marked with a deep green feather. 85 cts. per doz.; \$6 per 100.

## TRIUMPH TULIPS

A new race of Tulips, the result of crossing Darwins with Single Early varieties. They bloom after the Earlies and before the May-flowering kinds. The blooms are very large and are carried on long, strong stems. Very good lasting qualities.

**Aviateur.** Deep carmine-red with cream-yellow margin. 22 in. 85 cts. per doz.; \$6 per 100.

**Denbola.** Amaranth-red with cream-white border. 20 in. \$1 per doz.; \$7.50 per 100.

**Essen.** Purple-red, edged white; white base. 20 in. \$1 per doz.; \$7.50 per 100.

**Kansas.** Pure snow-white; inside base lemon-yellow. 22 in. 80 cts. per doz.; \$6 per 100.

**Mr. Zimmerman.** Light fuchsia-red; lower part of petal white. Very striking. 20 in. 80 cts. per doz.; \$6 per 100. See color illustration.

**Pres. Hindenburg.** Blood-red with slight yellow edge, white and blue center. 22 in. \$1 per doz.; \$6.50 per 100.

**Telescopium.** Large, elongated flowers of reddish violet. 22 in. 80 cts. per doz.; \$6 per 100.

**Ursa Minor.** Large, bright golden yellow flower. 18 in. \$1 per doz.; \$6.50 per 100.



MR. ZIMMERMAN. Triumph

**MR. KERBERT.** Large, sparkling pure white base; the upper two-thirds of flower is a luminous rose-pink; primrose-yellow anthers. An outstanding variety. \$1.25 per doz.; \$7.50 per 100.

### Triumph Tulips for Forcing

The bulbs should be planted as soon as received. Bulb pans or azalea pots may be used to advantage. Keep the bulbs in a cool place until January 15 or later and bring into bloom at 50° to 60° temperature. The large flowers and comparatively short stems make Triumph Tulips ideal for forcing under glass.

## TULIPA GRULLEMANNI

This new type has been obtained by crossing May-flowering Tulips with a species variety. The outstanding characteristics are unique coloring and size of flowers combined with extremely large centers. They will outlast any Tulip known, both in the garden and under glass.

**Grisilde.** Inside creamy white, turning primrose-yellow; outside white with faint red spray on center of petals; large greenish black base. Beautiful oblong-shaped flower of great substance. 26 in. \$1.25 per doz.; \$8 per 100.

**Inga Hume.** Inside deep yellow, slightly sprayed red; outside red with broad, sharply lined yellow edge; large black base. Perfectly formed large flowers on straight stems. 20 in. \$1.50 per doz.; \$9.50 per 100.



DENBOLA. Triumph



De WET. Single Early

## SINGLE EARLY TULIPS

**De Wet.** A burst of gold and red.

**Diana.** Large, pure white flowers on strong stems.

**Keizerskroon.** Bright crimson-scarlet, edged clear yellow.

**Pres. Lincoln.** Purple.

**Prince of Austria.** Brilliant orange-scarlet.

**Rising Sun.** Deep golden yellow.

**Rose Luisante.** Brilliant deep rose-pink.

**All above varieties, 85 cts. per doz.; \$6 per 100**

## BOTANICAL TULIPS

Native species collected from Central Asia, Asia Minor and the Mediterranean section. Some species bloom in early March and other kinds continue the flowering period until late May. Try a collection for long season bloom. See color, page 7.

**Acuminata.** The long yellow petals are streaked with red and twist into thread-like points. Very unusual. 15 in. \$1.75 per doz.; \$11 per 100.

**Clusiana.** The charming Lady or Peppermint Tulip. Inside white; outside cherry-red. Flowers close each evening. 14 in. 85 cts. per doz.; \$6 per 100.

**Eichleri.** Large, bright crimson-scarlet flowers with black centers marked with yellow. 12 in. 85 cts. per doz.; \$6 per 100.

**Fosteriana.** Very large scarlet flowers on 16-inch stems. In the rockery or border, they look like dwarf Oriental poppies. \$2.25 per doz.; \$16 per 100.

**Fosteriana, Red Emperor.** Immense scarlet-red flowers, black base. 17 in. \$2.50 per doz.; \$20 per 100.

**Kaufmanniana.** Creamy white tinged rose-red; yellow center. Known as the Water-Lily Tulip. 6 in. \$1.15 per doz.; \$8 per 100.

**Marjoletti.** Soft primrose-yellow; carmine base. 14 in. 75 cts. per doz.; \$5 per 100.

**Sylvestris.** The sweet-scented wild English Tulip. Pure yellow flowers, usually in pairs. 16 in. 85 cts. per doz.; \$6 per 100.

### COLLECTION:

6 each of above 8 varieties ( 48 in all ) . \$5.25  
12 each of above 8 varieties ( 96 in all ) . \$10.00  
25 each of above 8 varieties ( 200 in all ) . \$18.00

**T**HE PRICES quoted in this catalogue are based on large-sized bulbs of fine quality only. In cases where our stock is sold out of any variety ordered, we will substitute another of greater value, using the true name of substitute. If not satisfactory, such bulbs may be returned at our expense. We pay delivery charges east of the Mississippi.



# *Bulbous Treasures for Nooks and Crannies!*



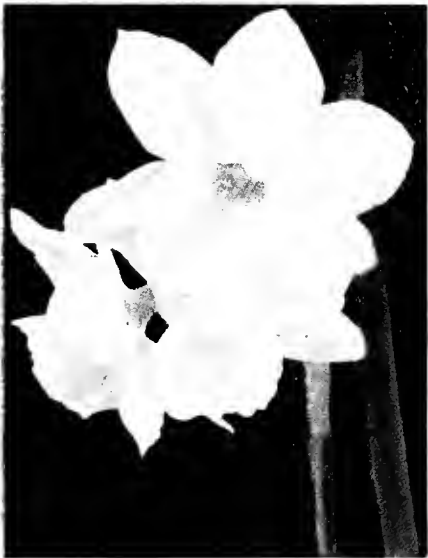
KAUFMANNIANA. Botanical



EICHLERI. Botanical



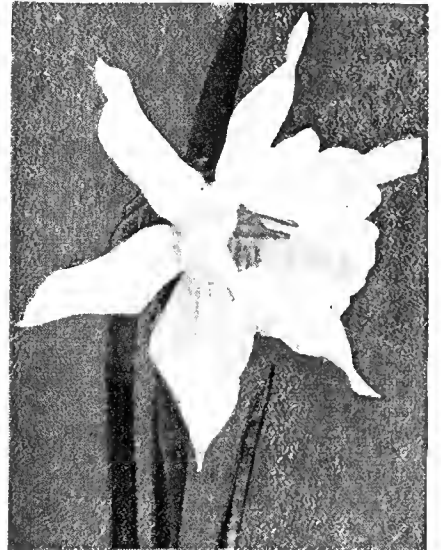
CLUSIANA. Botanical



THALIA



MARJOLETTI. Botanical



W. P. MILNER



BULBOCODIUM CONSPICUUS



FOSTERIANA, RED EMPEROR. Botanical



JONQUILLA SIMPLEX

# PLANT NARCISSI LAVISHLY—They



**M**ASS PLANTING in a natural setting makes a beautiful display in early spring. The bulbs soon multiply, giving a greater show and more flowers for cutting each year. Plant them closely in solid drifts under shrubs, trees, and through the woodlands for an immediate naturalized effect. We recommend Oregon-Grown Narcissi for the highest quality flowers and bulbs. Our prices are based on that quality.

**All-Types Mixture. \$5.50 per 100; \$50 per 1000. Large Trumpet Mixture. \$8 per 100; \$70 per 1000**

## NARCISSI

For a beautiful display in early spring, Narcissi are essential. Once established, they multiply rapidly and give a lasting profusion of bloom. The bulbs should never be planted deep. Varieties making large bulbs should be planted 6 inches deep, small bulbs at 4 inches. As they start rooting early in the fall, we advocate planting in

September and October for best results the following year. We have eliminated some of the old varieties which have been superseded by newer kinds far superior and now selling at popular prices. Plant them freely as they are a permanent investment.

### LARGE TRUMPET

- Emperor.** Primrose-yellow perianth with darker trumpet.  
Double-nose bulbs, \$1.25 per doz.; \$9 per 100.  
Round bulbs, \$1 per doz.; \$7.50 per 100.
- Empress.** Creamy white perianth; light yellow trumpet.  
Double-nose bulbs, \$1.25 per doz.; \$9 per 100.  
Round bulbs, \$1 per doz.; \$7.50 per 100.
- King Alfred.** Large, rich golden yellow frilled trumpet. \$1.75 per doz.; \$12 per 100.  
**Oversize bulbs.** Extra-large mother bulbs, \$18 per 100.
- Minister Talma.** The improved Golden Spur. Very early. All yellow blooms. For early forcing. \$1.75 per doz.; \$12 per 100.
- Mrs. E. H. Krefage.** Pure white perianth; light lemon-yellow trumpet. Very lovely. \$2 per doz.; \$14 per 100.
- Mrs. R. O. Backhouse.** Ivory-white perianth, with long, slim trumpet of apricot-pink. \$2 each; \$20 per doz.
- Olympia.** Truly a regal Narcissus of deep chrome-yellow with large, fully expanded, heavily frilled trumpet on long stem. \$1.40 per doz.; \$10 per 100.
- Spring Glory.** Pure yellow trumpet; white perianth. Excellent stem. A fine bicolor variety. \$1.25 per doz.; \$9 per 100.

### MEDIUM TRUMPET VARIETIES

- Alcida.** (Barri.) Giant flower; pure white perianth opening flat; individual petals 1½ inches wide; broad citron-yellow cup with blood-orange frill. Free flowering and late. \$1.75 per doz.; \$13 per 100.
- Bernardino.** (Incomparabilis.) Perianth creamy white; frilled and fluted cup yellow, edged deep orange. \$1.15 per doz.; \$7.50 per 100.
- Conspicuous.** (Barri.) Bright yellow perianth; short, broad cup edged orange-scarlet. \$1.15 per doz.; \$7.50 per 100.
- Croesus.** (Incomparabilis.) Light canary-yellow perianth; broad, fluted cup of rich orange to the base. Very free flowering. \$1.50 per doz.; \$9 per 100.
- Diana Kasner.** (Barri.) Pure white perianth; large, fluted golden yellow cup with a blood-red frill. An exhibition variety. \$1.50 per doz.; \$9 per 100.
- Dosoris.** (Barri.) Pure white overlapping perianth; finely frilled cup of red-orange. \$1 per doz.; \$6.50 per 100.
- Francisca Drake.** (Incomparabilis.) Gorgeous, pure white, broad, overlapping petals form the perianth; cup wide and deep, golden yellow at the base, changing to flame-orange at the densely frilled edge. 50 cts. each; \$4 per doz.; \$33 per 100.
- Hera.** (Leeds.) Broad-petaled, creamy white perianth; star-shaped creamy white cup edged primrose. \$1.50 per doz.; \$9.50 per 100.
- John Evelyn.** (Incomparabilis.) Our favorite will be your favorite once you have grown this lovely variety. The broad, pure white perianth opens wide and flat, cup is very large and broad and a deep shade of lemon-yellow. It is densely frilled to the base. \$2 per doz.; \$14 per 100.
- Mrs. Nette O'Melveny.** (Leeds.) A pure white perianth; cup clear lemon-yellow with orange picotee. Tall and very graceful. \$1.25 per doz.; \$9 per 100.
- Red Beacon.** (Barri.) Creamy white, overlapping perianth with a fluted cup of orange-red. \$1.75 per doz.; \$12 per 100.

Other varieties of Narcissus on page 10

*bring warmth and color to the April garden*



MRS. E. H. KRELAGE



JOHN EVELYN



DOSORIS



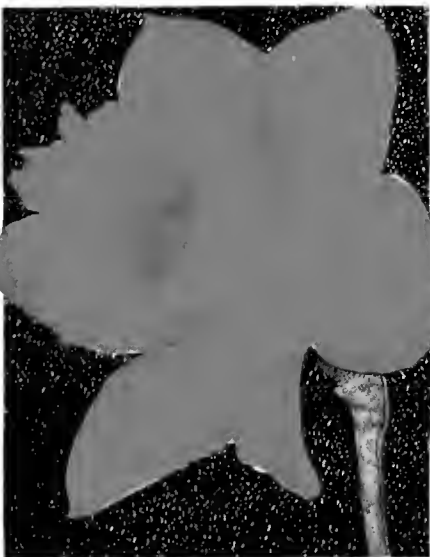
EMPRESS



MRS. R. O. BACKHOUSE



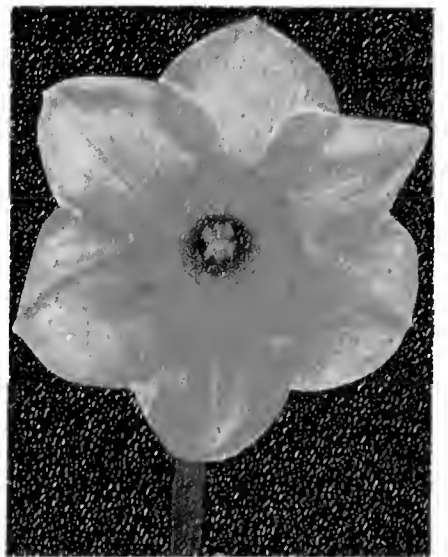
RED BEACON



OLYMPIA



SPRING GLORY



CROESUS

**Medium Trumpet Narcissus, continued**

**Seagull.** (Barri.) Large, broad-petaled, pure white perianth; cup, light yellow with red picotee edge. Free flowering, tall, and late blooming. \$1.15 per doz.; \$7.50 per 100.

**Sir Watkin.** (Incomparabilis.) Perianth sulphur-yellow; moderately large yellow cup tinged deep yellow. Very early. \$1.15 per doz.; \$7.50 per 100.

**Sunrise.** (Barri.) Pure white perianth with distinct golden rays extending up each petal; small, clear deep yellow-orange cup. \$1.50 per doz.; \$10 per 100.

**Will Scarlett.** (Incomparabilis.) The perianth petals are pure white and slightly reflexed; large, yellow cup, edged flaming orange-scarlet. \$1.40 per doz.; \$9.50 per 100.

**SHORT-CUP VARIETIES**

**Poeticus ornatus maximus.** The improved Ornatus. Pure white, broad, overlapping petals with deep orange-red eye. Large and free flowering. \$1.15 per doz.; \$7.50 per 100.

**Poeticus recurvus.** The old Pheasant's Eye. Pure white with orange cup. Sweet scented and late blooming. \$1 per doz.; \$7 per 100.

**POETAZ OR BUNCH-FLOWERED VARIETIES**

**Cheerfulness.** Beautifully doubled pure white flowers in clusters on long stems. \$1.50 per doz.; \$10 per 100.

**Laurens Koster.** Creamy white perianth; lemon-yellow cup. Free flowering. \$1.25 per doz.; \$8 per 100.

**TOP-SIZE EXHIBITION HYACINTHS**

The top-size Hyacinths are the largest bulbs produced in Holland. We recommend them particularly for forcing and for exhibition. Our bedding size are slightly smaller bulbs but of the same age as top-size varieties, producing flowers and spikes slightly smaller than the larger grade. We recommend this size for general bedding purposes.

**BLUE SHADES**

**Bismarck.** Light lavender-blue.  
**Duke of Westminster.** Deep purplish blue.  
**Grande Maitre.** Deep porcelain-blue.  
**Myosotis.** Clear light blue.

**WHITE VARIETIES**

**L'Innocence.** Long spikes. Early.  
**La Grandesse.** Heavy spikes; close trusses.

**YELLOW VARIETY**

**City of Haarlem.** Bright yellow.

**PINK AND RED SHADES**

**La Victoire.** Bright carmine.  
**Lady Derby.** Delicate rose-pink.  
**Princess Margaret.** Salmon-pink.  
**Queen of the Pinks.** Bright clear pink.  
 \$2.50 per doz.; \$18 per 100

**BEDDING HYACINTHS**

Light Blue	Red
Dark Blue	Pure White
Pink	Yellow
\$1.25 per doz.; \$9 per 100	

**DOUBLE-FLOWERING VARIETIES**

**Mary Copeland.** The long petals are pure creamy white, interspersed with shorter petals of lemon and brilliant orange. A truly lovely semi-double variety. 75 cts. each; \$8 per doz.; \$60 per 100.

**Twink.** Long, soft primrose-yellow petals, interspersed with shorter clear orange petals. Delightfully sweet scented and most adaptable for landscaping, show and cutting. \$2.50 per doz.; \$16.50 per 100.

**NARCISSI MIXTURES**

**Trumpet Varieties, Mixed.** A well-blended mixture of only the large trumpet varieties. Only good-sized bulbs used. \$8 per 100; \$70 per 1000.

**Naturalizing Mixture.** Made up of large, medium, and short-cup varieties and recommended for mass plantings under shrubs, trees, and in the woodlands. This mixture gives a long blooming period. \$5.50 per 100; \$50 per 1000.

**NARCISSI FOR THE ROCK-GARDEN**

**Bulbocodium conspicuus.** The golden yellow, miniature Hoop-Petticoat Daffodil growing 6 inches high. \$1 per doz.; \$6 per 100.

**Cyclamineus, February Gold.** A miniature trumpet Narcissus. Golden yellow perianth; trumpet tinged orange. Height 6 inches. \$3 per doz.; \$24 per 100.

**Jonquilla Simplex.** The true single sweet-scented Jonquil. Delightfully fragrant, golden yellow flowers in clusters on 8-inch stems. \$1 per doz.; \$6.50 per 100.

**Jonquilla Campernelle, Double.** Pure golden yellow, double flowers with a delightful fragrance. Height 8 inches. \$1 per doz.; \$7.50 per 100.

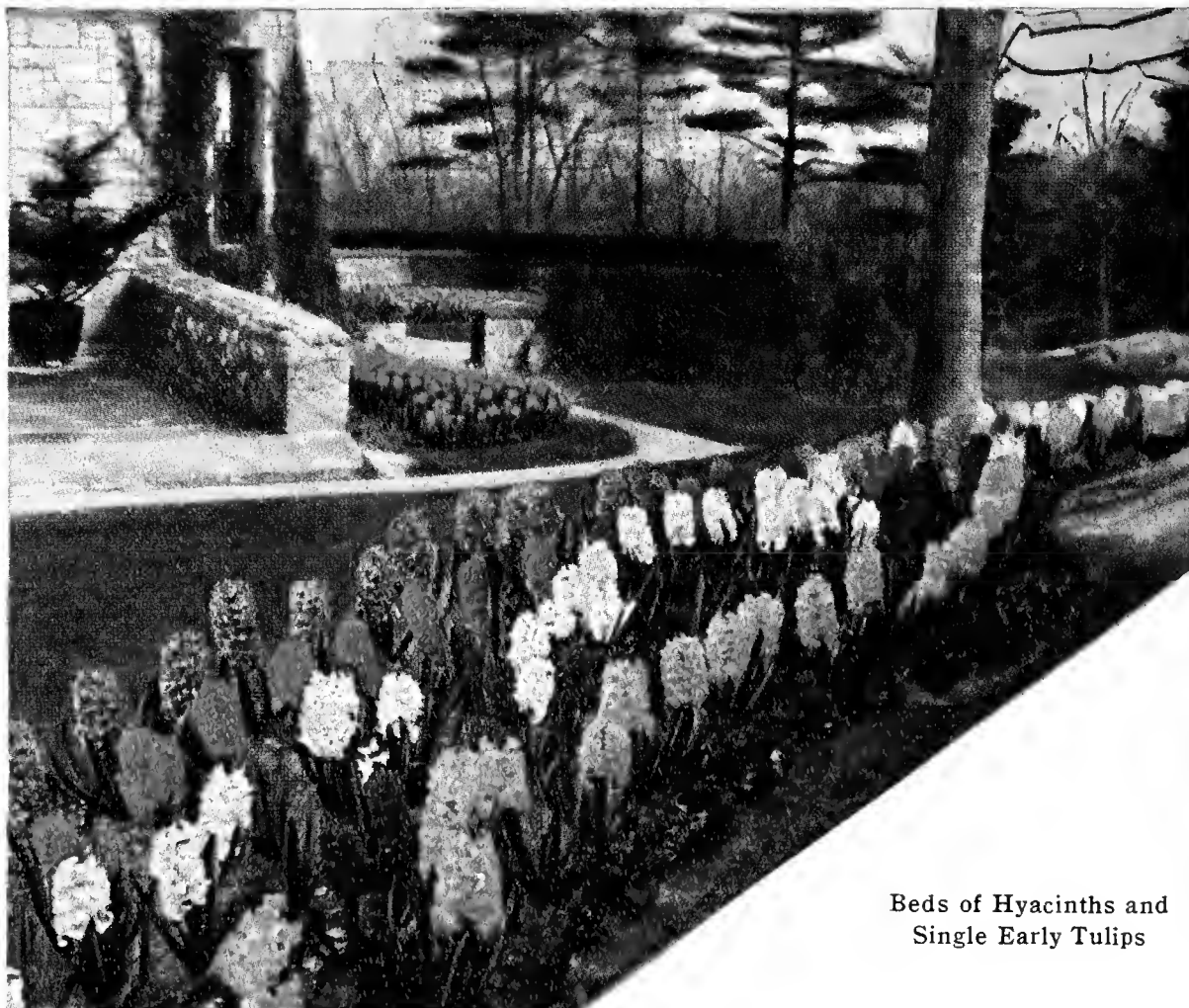
**Jonquilla Campernelle, Single.** Similar to Jonquilla Simplex but earlier flowering. \$1 per doz.; \$7.50 per 100.

**Thalia.** (Triandrus Hybrid.) Three lovely pure white flowers on each stem. A unique variety particularly suited for rock-gardens and cutting. \$3 per doz.; \$20 per 100.

**W. P. Milner.** A pure white, large-trumpet Narcissus in miniature. Free flowering. Grows only 10 inches high. \$3 per doz.; \$23 per 100.

**OREGON-GROWN NARCISSI BULBS**

All of our Narcissi bulbs are grown in the rich soil and favorable climate of Western Oregon, a district which is producing better bulbs than we have been able to get from across the seas. They have passed inspection both by the Oregon State and Uncle Sam's inspectors. We know that if you will try these bulbs once you will come back for more.



Beds of Hyacinths and Single Early Tulips

*Plant Narcissi for dividends every year!*



CHEERFULNESS



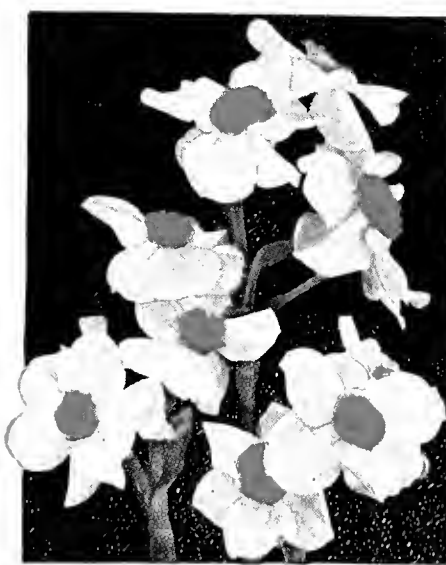
POETICUS ORNATUS  
MAXIMUS



FRANCISCA DRAKE



BERNARDINO



LAURENS KOSTER



SIR WATKIN



DIANA KASNER



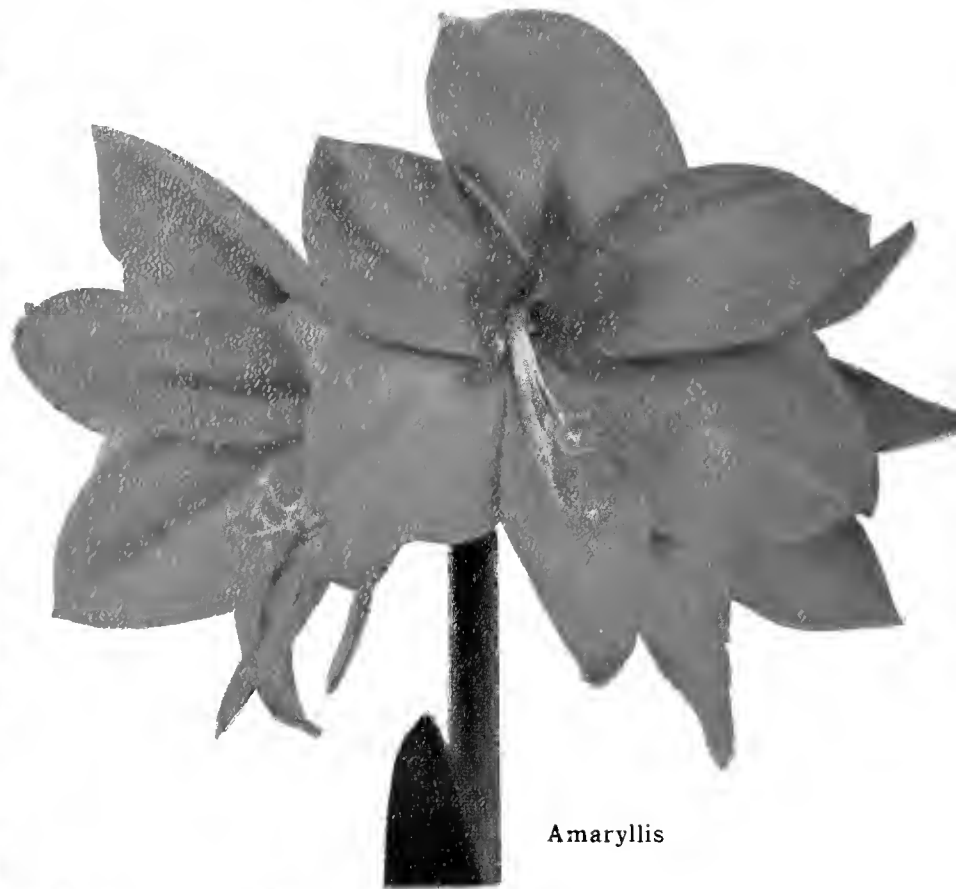
TWINK



FEBRUARY GOLD



Autumn-Flowering Crocus



Amaryllis

## Miscellaneous Hardy Bulbs and Roots ... for Fall Planting

**CAMASSIA Leichtlini.** Large, daisy-like flowers,  $1\frac{1}{2}$  inches across, blue shades, borne in clusters on spikes 4 feet high. Plant the bulbs 4 inches deep in masses. Very hardy. \$1.50 per doz.; \$9 per 100.

**CROCUS.** Charming in rock-gardens, borders, and lawns. We supply only top-size bulbs.

**Ivanhoe.** Rich dark violet-blue.

**Mammoth Yellow.** Golden yellow.

**Maximilian.** Sky-blue.

**Fallas.** White, lilac stripes.

**Purpurea Grandiflora.** Dark purple.

**Striped Beauty.** Striped white and dark mauve.

**Snowstorm.** Large, pure white flowers.

**Mammoth Mixture.** A well-balanced mixture made from the above varieties.

Any of above Crocus, 50 cts. per doz.;  
\$3 per 100; \$28 per 1000

50 bulbs sell at the 100 rate;  
250 at the 1000 rate

**Sieberi.** Delicate blue with gold in the throat, often blooming in late February. Also highly recommended for growing in the greenhouse for blooms from Christmas on. 75 cts. per doz.; \$4.50 per 100.

**Autumn-flowering Crocus, Speciosus.** Large, bright blue flowers beautifully veined; orange-red anthers and bright yellow throat. Very hardy in the garden and excellent for growing in dishes in the house. 75 cts. per doz.; \$3.50 per 100.

**FRYLLARIA imperialis** (Crown Imperial). The 3 to 4-foot sturdy stems bear clusters of nodding, bell-shaped, red flowers, topped by a crown of bright green foliage. Planted in sunny spots, they may be left undisturbed for years. \$4 per doz.; \$39 per 100.

### EREMURUS

These beautiful Foxtail Lilies are now obtainable at a moderate price. In very early spring the leaves are produced in dense rosettes, from which graceful, sturdy stems rise 6 to 10 feet high. These flower stalks are clothed for half their length with closely set starry blooms which last over three weeks. By selecting early and late varieties you will have blooms from late May until end of July.

**CULTURE.** Good drainage and a sunny location are essential features. They prefer a deep, sandy loam to which has been added a liberal quantity of well-rotted cow-manure. Cover the top of the root-crown with 5 inches of soil. A sprinkling of rough coal-ashes or small clinkers pressed around the crown will facilitate drainage. The plant dies down shortly after blooming, and in early spring new growth appears which should be protected with salt hay or litter.

**Bungei.** Deep citron-yellow flowers on spikes 5 feet high. Early July. \$1.25 each.

**Elwesi.** Enormous spikes of soft pink flowers reaching a height of 10 to 12 feet. Early June. \$2.50 each.

**Elwesi albus.** Same as above, but pure white. \$2.50 each.

**Himalaicus.** Lovely cream-white blooms closely set on spikes 6 to 8 feet high. Early June. \$2 each.

**Himrob.** Exquisite spikes of light pink flowers growing 8 to 10 feet tall. Early June. \$2 each.

**Robustus.** Very vigorous. Deep pink spikes of flowers on stems 10 feet high, in mid-June. \$2.50 each.

**Shelford.** Dense spikes of coppery orange on stems 6 feet high. July. \$1.75 each.

**Shelford Moonlight.** Identical in every respect with Shelford but pale yellow in color. \$2.50 each.

**COLLECTION: One each of the above 8 varieties, heavy specimen roots, \$15**

**IRIS reticulata.** The violet-scented Iris so suitable for rock-work. Its flowers closely resemble the English and Dutch Iris, the color is deep violet-blue with a yellow blotch. Very dwarf and extremely hardy. Early April blooming. Top-size bulbs only. \$3 per doz.; \$21 per 100.

**IRIS, English.** The hardiest of all Bulbous Irises. Grows easily and is sure to bloom. Flowers immediately after the Dutch Iris. Plant 5 inches deep, in groups of six or more, in October.

**Blue Celeste.** Light lavender-blue.

**King of the Blues.** Brilliant deep purple-blue.

**Mont Blanc.** Purest white.

**Othello.** Rich wine-red.

**Sunset.** Delicate lavender.

All English Iris, \$1.25 per doz.;  
\$8 per 100

#### COLLECTION:

12 each of above 5 varieties, \$5

**IRIS, Dutch.** Unsurpassed for cut-flowers, these bulbs may be grown in the garden or forced in the greenhouse. For outdoor culture, plant by late October, setting the bulbs 5 inches deep and giving the usual winter protection of salt hay or other material. For forcing, they must be carried very cool until well established.

**Jacob De Wit.** Standards purple-blue; falls deep blue with yellow stripe.

**Therese Schwartz.** Standards cornflower-blue; falls pure white, with narrow orange stripe.

**White Excelsior.** Pure white with broad falls.

**Violet Queen.** Uniform light violet-blue; very large.

**Yellow Queen.** Standards and falls deep golden yellow.

All Dutch Iris, \$1 per doz.; \$6.50 per 100



Iris, Wedgwood



Ranunculus

## BULBS for Forcing

**AMARYLLIS, Giant Hybrids.** A large-flowering strain in separate shades of white, pink, and red. \$1 each; \$10 per doz.; \$80 per 100.

**ANEMONE.** We offer only bulbs from carefully selected, large-flowering strains.

**Blue Poppy.** Large, single flowers in blue shades.

**His Excellency.** Semi-double, large, bright red flowers with black centers.

**St. Brigid, Creagh Castle Strain.** A wide range of brilliant colors.

**All Anemones, \$1 per doz.; \$7 per 100**

**CALLA Elliottiana.** Deep golden yellow. Leaves dark green, spotted white. Large bulbs only. 75 cts. each; \$7 per doz.; \$50 per 100.

**FREESIAS.** Shipment from late August on. Top-size bulbs only, except for Elder's White, which gives best results from slightly smaller bulbs.

**Elder's Giant White.** Plant Patent No. 17. Large; white. Late. \$1.50 for 25; \$5 per 100.



Anemone, St. Brigid

### FREESIAS, continued

**Golden Daffodil.** Deep golden yellow. \$1.25 for 25; \$4 per 100.

**Isoline.** Amber-rose; yellow throat. \$4 for 25; \$15 per 100.

**Mary Louise Fisher.** Light blue. \$1.25 for 25; \$4 per 100.

**Mendota.** Late. Deep golden yellow. \$1.25 for 25; \$4 per 100.

**Mrs. Marc Peters.** Deep salmon-rose. \$1.50 for 25; \$5 per 100.

**Purity.** Pure white. Early forcing. \$1.25 for 25; \$4 per 100.

**GLADIOLUS tristis.** Cream-white flowers on 3-foot stems; very fragrant. Grown as a pot-plant and for cutting. \$2 per doz.; \$12 per 100.

**HYACINTHS.** All varieties listed elsewhere in this folder may be forced into bloom from February on. The French-grown white Romans may be brought into flower from mid-December on.

**White Romans.** (French.) Pure white flowers in sprays. \$2 per doz.; \$15 per 100.

**IRIS, Wedgwood.** Standards dark blue; falls light blue. Excellent forcing variety. It should be grown cool. \$3 for 25; \$11 per 100.

**LEUCOCORYNE ixioides odorata** (Glory-of-the-Sun). Flowers similar in form and color to Chionodoxa but much larger, bright blue, with white centers, borne in clusters on 18-inch stems. Same cultural requirements as freesias. Jumbo bulbs, \$1.75 per doz.; \$13 per 100.

**LILY-OF-THE-VALLEY.** Only the finest of sand-grown pips, specially packed and retarded. Very satisfactory for house-culture, blooming in three weeks. \$1.50 per doz.; \$10 per 100.

**LILIES (Lilium), Harrisii** (Bermuda Easter Lily). Single-crown bulbs, July delivery. 11 to 13 in., \$14 per doz.; \$50 for 50.

**NARCISSUS, Paper-White.** One of the finest bulbs for growing under glass or in the home. Bulbs started before December 1 should be kept out of direct light for two weeks. Jumbo bulbs, \$1 per doz.; \$7 per 100. Mammoth bulbs, 75 cts per doz.; \$5 per 100.

**Soleil d'Or.** Yellow with orange cup. Later blooming than the Paper-Whites. Jumbo bulbs, \$1.75 per doz.; \$12 per 100.

**ORNITHOGALUM.** A native of South Africa which forces easily under glass, giving ideal plants for pot-culture and cutting. As a cut-flower, the blooms last at least three weeks. Should be grown very cool.

**Arabicum** (Star-of-Bethlehem). Large umbel of white florets with black bases on 18-inch stems. 85 cts. per doz.; \$6 per 100.

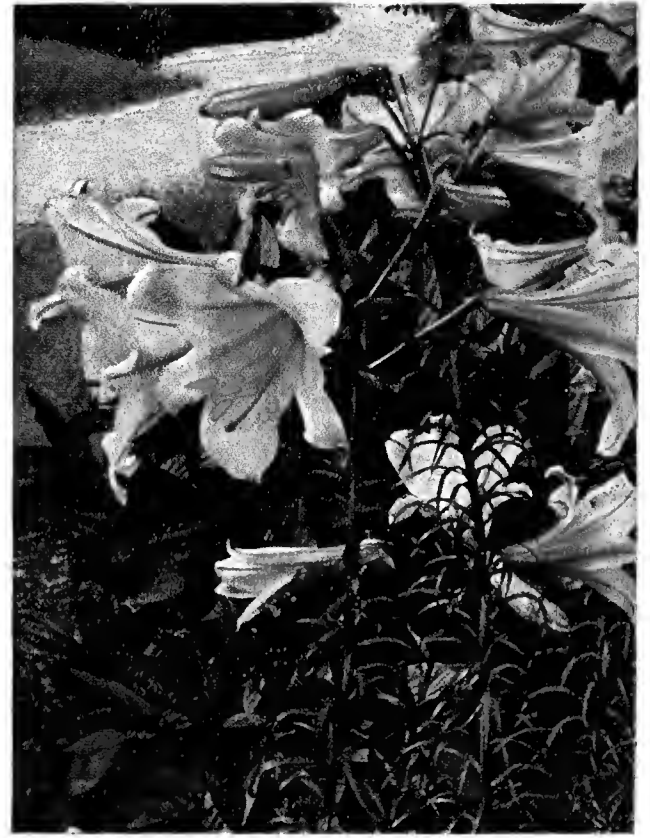
**Aureum Hybrids.** Large, full spikes of rich golden yellow flowers on 12- to 15-inch stems. The texture of the flower is wax-like and far superior to all other varieties. \$1.75 per doz.; \$12 per 100.

**Thyrsoides** (Chincherinchee Lily). Straw-colored buds, opening to pure white, on stems 12 to 15 inches tall. An excellent variety for pots. 85 cts. per doz.; \$6 per 100.

**RANUNCULUS, Tecolote Jumbo Mixture.** The finest of all giant double Ranunculus. This strain includes brilliant shades of yellow, orange, pink, and red. Flowers resemble huge double buttercups. \$1 per doz.; \$7 per 100.



Border of Peonies and Iris



Regale Lily

## HARDY GARDEN LILIES for Lasting Beauty, Graceful Form and Delightful Fragrance

Plant them throughout your garden as well as woodland borders, paths and other natural settings which will enhance their beauty. Stem-rooting Lilies produce roots growing close to the surface. Best results will be obtained if you broadcast seed of low-growing annuals each spring to shade the surface and prevent drying out of the soil.

VARIETY	Depth of planting in inches	Blooming period	Color	Height in feet	Remarks		Price	
					s.—sun	s.s.—semi-shade	Doz.	100
<b>Candidum.</b> (Madonna Lily)	BR. 2	June	Pure white, very fragrant	4-5	s., s.s.		\$4 00	\$30 00
Large bulbs.....							5 50	40 00
Selected large bulbs.....							6 50	50 00
Jumbo bulbs.....							3 50	25 00
<b>Formosanum.</b> True.....	BR. 6	Sept.—Oct.	Inside pure white; outside tinted rose	5-6	s., s.s.		5 00	38 00
<b>Hansoni</b> .....	BR. 6	June	Rich orange-yellow, brown spots	4-5	s., s.s.		3 00	18 00
<b>Regale</b> .....	SR. 8	June, July	White, reverse pink, yellow throat	3-5	s., s.s.		4 50	35 00
<b>Speciosum album</b> .....	SR. 8	Aug., Sept.	Pure white; yellow anther	3-5	s., s.s.		4 50	35 00
" <b>rubrum magnificum</b> .....	SR. 10	Aug., Sept.	Rich pink, deeper in center; crimson spots	4-5	s., s.s.		4 50	35 00
" <b>Melpomene</b> .....	SR. 10	Aug., Sept.	Carmine-pink, white margin	4-5	s., s.s.		5 00	38 00
" <b>Henryi</b> .....	SR. 10	Aug., Sept.	Orange spotted reddish brown	4-5	s., s.s.		3 00	20 00
<b>Superbum</b> .....	SR. 5-6	Aug.	Crimson-orange	4-6	s., s.s., sh.		2 50	18 00
<b>Tenuifolium</b> .....	SR. 4-5	June, July	Deep scarlet	1½-2	s., s.s.		3 00	20 00
<b>Umbellatum erectum</b> .....	SR. 8	June	Rich red	2-3	s., s.s.			

## PEONIES

Peonies should always be planted in the fall, preferably in September or early October. They will grow in practically any garden soil. In poor soil, the hole should be dug at least 18 inches below the surface level and a quantity of manure incorporated with some soil

placed to a depth where the roots will not come in contact with it. The eyes, which are well formed at that time, should be covered from 1 to 2 inches deep. Deeper planting will result in heavy bushes but no bloom. Numbers represent points, 10 being perfect.

**We supply only field-clumps, not divisions**

	1-yr.	2-yr.
<b>Baroness Schroeder.</b> 9.0. Cream-white, tinted flesh. Late.....	\$1 25	\$1 75
<b>Canari.</b> 7.0. Midseason. Flesh-white guard petals, canary-yellow center.....	85	1 25
★ <b>Charles McKellip.</b> 7.8. Midseason. Deep pink.....	85	1 25
<b>Chestine Gowdy.</b> 8.4. Late. Lavender-pink and creamy yellow.....	1 50	2 25
★ <b>Couronne d'Or.</b> 8.1. Late. White reflecting pale yellow, center edged carmine.....	85	1 25
<b>Duchesse de Nemours.</b> 8.1. Early. White with sulphur-yellow center.....	85	1 25
<b>Edulis Superba.</b> 7.6. Early. Deep rose-pink.....	85	1 25
★ <b>Felix Crousse.</b> 8.4. Midseason. Uniform bright red.....	85	1 25
★ <b>Festiva Maxima.</b> 9.3. Early. Large; white with carmine edges on center petals.....	1 00	1 50
<b>Francois Rousseau.</b> 8.2. Early. Bright red.....	85	1 25
<b>Karl Rosenfield.</b> 8.8. Midseason. Rich crimson.....	1 00	1 50
<b>La Rosiere.</b> 8.3. Midseason. Ruffled; white.....	1 00	1 50
★ <b>Mme. Auguste Dessert.</b> 8.6. Midseason. Beautiful violet-rose, shaded crimson.....	1 15	1 75
<b>Mme. Calot.</b> 8.1. Early. Pink, center straw-pink.....	1 00	1 50
★ <b>Mme. Forel.</b> 7.7. Late midseason. Large; silvery pink.....	1 00	1 50

	1-yr.	2-yr.
<b>Marguerite Gerard.</b> 8.4. Midseason. Flesh-pink.....	\$1 00	\$1 50
<b>Pierre Reignoux.</b> 7.4. Early midseason. Light Tyrian rose.....	1 00	1 50

**Collection: 1 each of 6 varieties, 1-yr. roots, \$5; 2-yr. roots, \$7.50**  
**1 each of 17 varieties, 1-yr. roots, \$15; 2-yr. roots, \$23**

### Very Choice Varieties

	1-yr.	2-yr.
<b>Adolphe Rousseau.</b> 8.5. Early midseason. Rich crimson-maroon.....	\$1 75	\$2 50
★ <b>Frances Willard.</b> 9.1. Late midseason. Very large; ivory-white, center edged carmine.....	1 75	2 50
★ <b>Mme. Jules Dessert.</b> 9.4. Late midseason. Flesh-white. Very reliable.....	1 75	2 50
<b>Mons. Martin Cahuzac.</b> 8.8. Midseason. Dark blackish maroon.....	2 75	4 00
★ <b>Primevere.</b> 8.6. Midseason. Outer petals sulphur-white, center deep canary-yellow.....	2 50	3 75
★ <b>Richard Carvel.</b> 8.8. Early. Bright crimson.....	2 25	3 50
★ <b>Sarah Bernhardt.</b> 9.0. Late. Very large; rose-pink.....	1 75	2 50
<b>Theres.</b> 9.8. Midseason. Extremely large, loose, shell-pink flowers.....	2 75	4 00

**Collection: 1 each of varieties marked (★), 1-yr. roots, \$15; 2-yr. roots, \$24**



# FIND A PLACE FOR THESE ♦ ♦ ♦ ♦ *in Your Garden* ♦ ♦ ♦ ♦

## THE HERALDS OF SPRING

By including all the varieties in this classification, you will have bloom in your garden from February until tulip-time. This type of bloom lends itself best to mass planting under shrubs in the rock-garden, and in clumps in the border. They soon naturalize themselves and spread freely.

**25 or more bulbs sell at the 100 rate; 250 or more at the 1000 rate**

**CHIONODOXA sardensis** (Glory-of-the-Snow). Deep gentian-blue, star-shaped flowers in clusters on 4-inch stems. 50 cts. per doz.; \$2.50 per 100; \$20 per 1000.

**ERANTHIS hyemalis** (Winter Aconite). The earliest spring bulb to bloom. Starry golden yellow cups on 3-inch stems. Frilled deep green foliage. 50 cts. per doz.; \$3 per 100; \$28 per 1000.

**FRITILLARIA meleagris**. Lovely bell-shaped flowers which hang in clusters like miniature Chinese lanterns. They are shades of purple with deep spots. 60 cts. per doz.; \$4 per 100; \$30 per 1000.

**GRAPE HYACINTH, Heavenly Blue** (*Muscari*). Follows *Scilla sibirica* in bloom. The bright deep blue, miniature hyacinth-like flowers form dense spikes about 6 inches high. 50 cts. per doz.; \$3 per 100; \$28 per 1000.

**SCILLA campanulata, Excelsior**. Bright deep blue flowers on spikes 15 inches tall. Blooms during early May. Sometimes called "English Bluebell." 50 cts. per doz.; \$3 per 100; \$25 per 1000.

**S. campanulata, Rose Queen**. Rosy pink form of above. 50 cts. per doz.; \$3 per 100; \$25 per 1000.

**S. nutans** (Wood Hyacinth). Best variety for naturalizing. May flowering. Mid-blue. 50 cts. per doz.; \$3 per 100; \$25 per 1000.

**S. sibirica** (Blue Squill). Blooms immediately after the Chionodoxas, with clusters of nodding brilliant indigo-blue flowers. 50 cts. per doz.; \$3.25 per 100; \$30 per 1000.

**SNOWDROPS** (*Galanthus Elwesii*). Lovely white nodding flowers on 3-inch stems, beginning to bloom in late February. Naturalize readily. 50 cts. per doz.; \$3 per 100; \$25 per 1000.

### SPECIAL COLLECTIONS:

- 12 bulbs each of above 9 varieties (108 in all) ..... \$4.00
- 25 bulbs each of above 9 varieties (225 in all) ..... \$7.00
- 100 bulbs each of above 9 varieties (900 in all) ..... \$25.00



*Scilla campanulata*



*Eranthis hyemalis*



Snowdrops



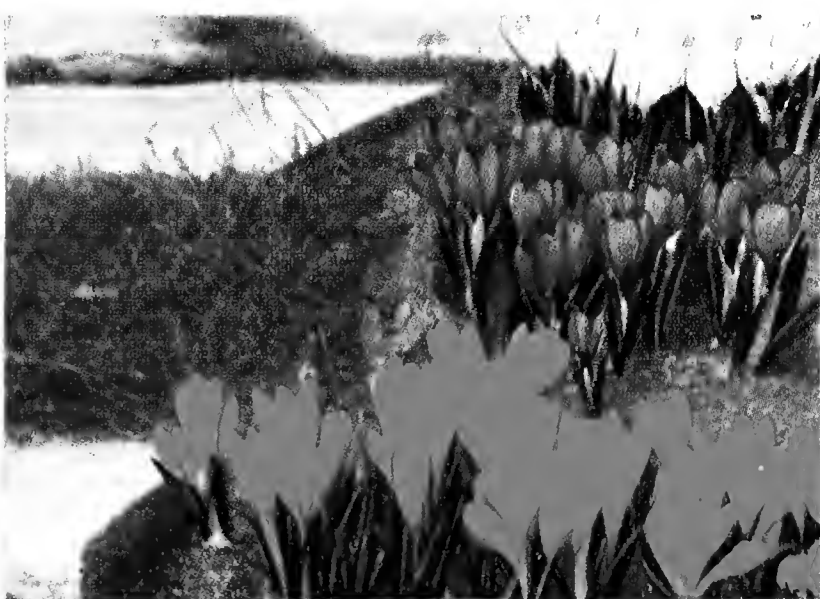
*Fritillaria meleagris*



*Fritillaria imperialis*  
See page 12



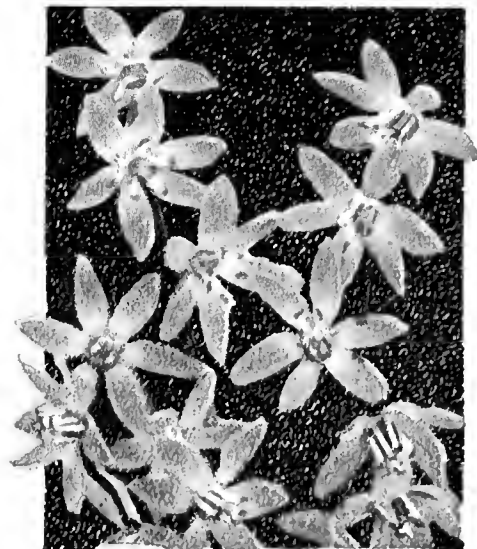
*Chionodoxa sardensis*



Giant-flowering Crocuses. See page 12



*Muscari*, Heavenly Blue



*Scilla sibirica*, Blue

# Roses for Fall Planting

**CULTURE.** Roses thrive in any good garden soil which is not too sandy. Dig the bed as deeply as possible (at least 18 inches), turning the soil over thoroughly and working in some well-rotted manure and bone-meal. Place the plants in pails of water until the holes are dug and ready to receive each plant. Dig holes deep and large enough to allow the roots to spread out and down. Set the plant into the hole so that the graft (swollen part) is 1 to 2 inches below the surface of the soil. Fill in a little at a time, tramping the soil tightly until the hole is nearly filled. Then pour in several quarts of water; after this soaks in, hill up the earth around the stems to a height of 8 inches. After the ground is frozen hard, mulch the bed with salt meadow hay.

For summer care, see our Spring Catalogue.

Shipments made from early October until the ground freezes.



TALISMAN



PRES. HERBERT HOOVER

## HYBRID TEA ROSES

**Ami Quinard.** Dark maroon, black lustre.

**Betty Uprichard.** Salmon-pink inside, outside copper-pink.

**Caledonia.** White; large.

**Charles K. Douglas.** Brilliant crimson.

★ **Condesa de Sastago.** Golden yellow and nasturtium-red.

**Cynthia.** Rich Oriental red.

**Edith Nellie Perkins.** Bright salmon-pink, flushed gold.

**Étoile de Hollande.** Deep rich red.

**Gaiety.** Cupped flowers of orange, silver, and Indian red.

★ **Glowing Carmine.** Large bright carmine flowers.

**Golden Dawn.** Faultless flower of pale yellow.

**Grenoble.** Beautiful clear scarlet-red.

**Hinrich Gæde.** Bright nasturtium-red; very fragrant.

**Irish Hope.** Medium red; attractive bud.

★ **Lucie Marie.** Buttercup-yellow, tinted apricot-rose.

**Mme. Joseph Perraud.** Buds nasturtium-orange, opening buff.

**Mme. Jules Bouche.** Large white flowers tinged pink.

**Margaret McGredy.** Orange-scarlet—unfading.

★ **McGredy's Ivory.** Delicate creamy white, yellow at base.

**McGredy's Scarlet.** Light scarlet, orange base.

**Miss Rowena Thom.** Very large, medium pink blooms.

**Mrs. E. P. Thom.** Rich golden yellow; large bud and beautiful flower.

**Mrs. Jennie Deverman.** Deep orange-pink.

**Mrs. Pierre S. du Pont.** Rich golden yellow.

**Mrs. Sam McGredy.** Gold, orange, salmon, and copper.

**National Flower Guild.** Light red. Pointed buds.

★ **Pink Dawn.** Buds deep rose-pink, opening orange-pink.

**President Herbert Hoover.** Multicolor—copper-red and pink, tinged golden orange.

**President Plumecocq.** Fiery apricot.

★ **Rapture.** Delicate pink, flushed yellow.

**Roslyn.** Golden yellow.

**Rouge Mallerin.** Scarlet-red; full and well formed.

**Sir Henry Segrave.** Light lemon-yellow; fragrant.

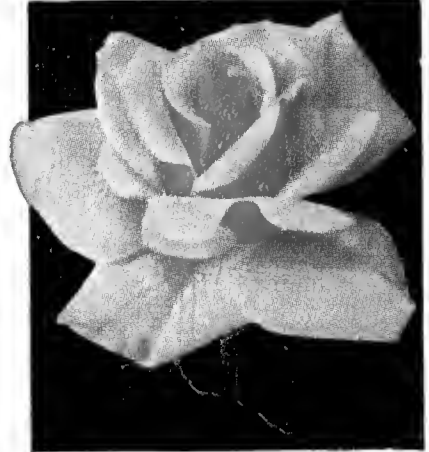
**Sister Therese.** Chrome-yellow; buds marked carmine.

★ **Souv. de Jean Soupert.** Golden yellow buds opening cream-yellow; very fragrant.

**Talisman.** Copper, red, gold, and pink.



GOLDEN DAWN



EDITH NELLIE PERKINS



RAPTURE



MRS. E. P. THOM

## CLIMBING ROSES

**Mary Wallace.** Large-flowered pink climber.

**Mercedes Gallart.** Full; cerise-red. Everblooming.

**Paul's Scarlet Climber.** Popular brilliant scarlet-red.

**Primrose.** Large, double, primrose-yellow blooms.

**Roserie.** Light pink. Almost thornless. Everblooming

**Silver Moon.** The best hardy white climber. Single blooms.

**Spanish Beauty.** Huge, double, fragrant flowers of delicate pink stained crimson in bud.

**Prices of all Roses listed, except patented varieties:**

1 to 5 @ 85c. each	12 to 24 @ 75c. each	50 to 99 @ 55c. each
6 to 11 @ 80c. each	25 to 49 @ 60c. each	100 or more @ 50c. each

Collection { 1 each of 7 varieties marked ★, \$5.50  
3 each of 7 varieties marked ★, \$14.50  
6 each of 7 varieties marked ★, \$24.00

There is no charge for packing, but add 10 per cent if wanted by Parcel Post

## PATENTED ROSES

**The New Dawn Climbing Rose.** Plant Patent No. 1. The Everblooming Dr. W. Van Fleet sport. \$1.50 each.

**Blaze.** Plant Patent No. 10. The Everblooming Paul's Scarlet Climber. Brilliant scarlet, slightly fragrant. \$1 each.

*We cannot guarantee any Patented Rose Stock, as we are not allowed to propagate it*

**CARL GIESSLER, INC.**

202 East 58th Street, NEW YORK CITY



CONDESA DE SASTAGO



ETOILE DE HOLLANDE