

Historic, archived document

Do not assume content reflects current scientific knowledge, policies, or practices.

3025 Chamberlayne Ave., Richmond, Va.

FLOWERING SHRUBS

Comprising the best in all varieties. Suitable for general planting. Careful selection of these will give you the most beautiful landscape planting and a wealth of blooms from Spring to Fall.

Prices, except those marked (*)
1½-2 ft. Each 35c., 10 for \$3.00 2-3 ft. Each 50c., 10 for \$4.00

Prices, Shrubs marked (*)
1½-2 ft. Each 75c. 2-3 ft. Each \$1.00

ALTHAEA (*Rose-of-Sharon*).
All Colors. Single and double.

AMELANCHIER
White flowers. Early blooms.

*BUDDLEIA (*Butterflybush*).
Rose purple flowers.

*CALLICARPA (*Beautyberry*).
Blue flowers. Violet fruit.

CALYCANTHUS (*Sweetshrub*).
Red, brown flowers. Fragrant.

CARYOPTERIS (*Blue Spirea*).
Blue flowers. Late.

*CAPE-JASMINE (*Gardenia*).
White flowers. Fragrant, from pots.

*CRAPEMYRTLE.
Pink, Purple, and Red.

*CYDONIA (*Japanese Quince*).
Scarlet flowers.

DEUTZIAS.
crenata. White.
scabra. White to pink.
**gracilis*. Dwarf white.
lemoinei. White.

EXOCHORDA (*Pearlbush*).
White blooms. Beautiful.

FORSYTHIA (*Golden Bell*).
intermedia. Early.
spectabilis. Early and tall.
suspensa. Drooping.
viridissima. Heavy, erect.

*FRINGE (*Smoketree*).
*White.
*Purple.

*FLOWERING ALMOND.
White and Pink.

*FLOWERING CRABAPPLE.
Double pink flowers.

GOLDEN ELDER.
White flowers. Golden foliage.

*HALESIA (*Silver Bell*).

HONEYSUCKLE BUSH.
fragrantissima. Winter blooming.
tatarica. Pink blooms.
morrowi. White flowers, red fruit.

HYDRANGEAS.
**paniculata*. Tall growing.
**paniculata*. Tree shape.
arborescens. Long blooming period.
otaksa. Blue and pink. Tender (small plants).
**French*. Pink, tender (small plants). Field grown and pots.

HYPERICUM.
aureum. Yellow flowers, low.
moserianum. Yellow flowers; tall.
prolificum. Yellow flowers; medium.

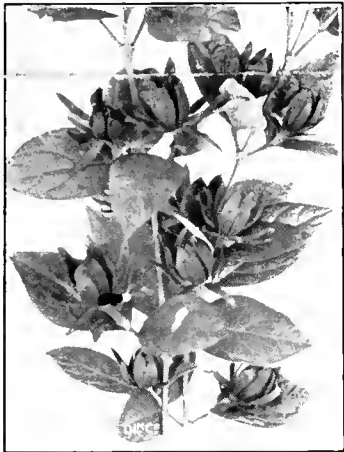
*JAPANESE FLOWERING CHERRY.
Double pink.

JASMINUM.
Yellow. Yellow flowers early.
humile. Blooms continuously.

*KERRIA.
japonica floreplena. Double yellow.
White. White flowers, blue berries.



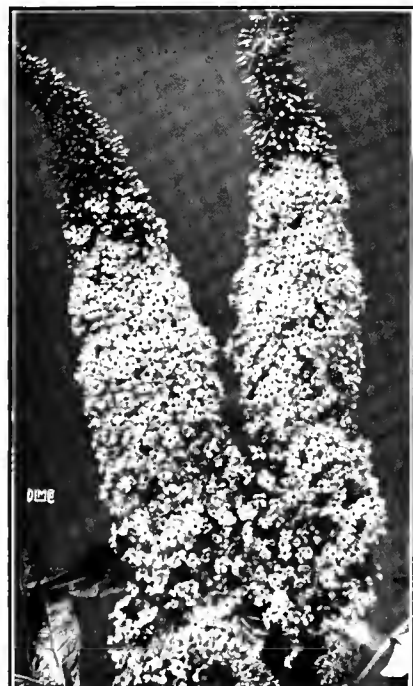
ALTHAEA



CALYCANTHUS



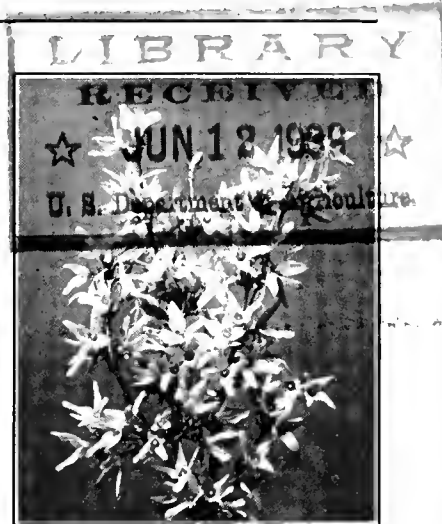
DEUTZIA GRACILIS—SLENDER DEUTZIA



BUDDLEIA



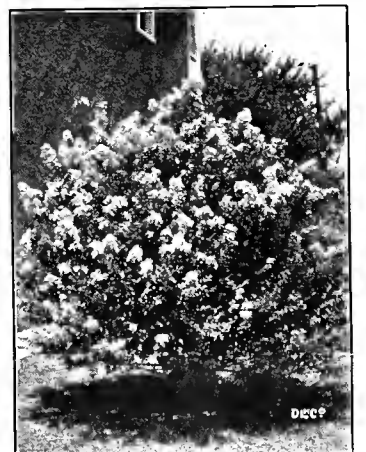
SYMPHORICARPOS



FORSYTHIA GOLDEN BELL



HYDRANGEA—HILLS OF SNOW



CRAPEMYRTLE



HYDRANGEA PANICULATA

We have lots of varieties not listed here Write us for prices if interested Large size Specimen Shrubs and Evergreens for immediate effect also

Hood's Flowering Shrubs & Landscape Be

W. T. Hood & Company, Inc.

FLOWERING SHRUBS (Continued)

SYRINGA (Lilacs).

- Purple.** Old-fashioned type.
- White.** Old-fashioned type.
- Charles X.** Hybrid red purple.
- Mme. Lemoine.** New double white.
- Mme. Buchner.** New double pale lilac.

PHILADELPHUS (Mockorange).

- grandiflora.** Tall growing.
- coronarius.** Large blooms.
- *virginalis.** The best of all.

PAUL'S THORN.

- *Red Flowers.** Rapid growing.
- *White Flowers.** Grows tall.

SPIRAEAS.

- Crimson (Anthony Waterer).** Dwarf, red flowers.
- billiardi.** Rose pink flowers.
- douglasi.** Deep pink flowers.
- opulifolia aurea.** Gold foliage.
- Lace Leaved (Reevesiana).** Double white flowers.
- Bridalwreath (Prunifolia).** Small clusters, white blooms.
- Bridal Bower (Vanhouttei).** Profusion white flowers.
- Blue Spirea.** Dwarf blue flowers.



SPIRAEA PLANTING

SYMPHORICARPOS (Snowberry).

- Red.** Red flowers. Purple berries.
- White.** White flowers. White berries.

VIBURNUM (Snowball).

- Common.** White flowers. Medium tall.
- Japanese.** Improved type.
- *carlesi.** Pink and white. Colors beautiful in Fall.

WEIGELA.

- candida.** White flowers. Rapid grower.
- Eva Rathke.** Red flowers.
- rosea.** Pink flowers.
- Variegated.** Pink, white flowers; foliage variegated.
- floribunda.** Crimson.

• • •

Special!

SPIRAEA HEDGE

Nothing is more beautiful than a hedge of **Spiraea vanhouttei**.

We have made this special price so you can enjoy one.

Splendid, 2-foot high, well grown plants

50 for.....\$9.00
100 for.....17.50

DON'T MISS THIS SPECIAL

Shrub Collection

- 3 DEUTZIAS
 - 1 LILAC
 - 1 MOCKORANGE
 - 4 SPIREAS
 - 3 WEIGELAS
- 12 Large Size,

Healthy Flowering Shrubs
Our selection of varieties—
Good Value: All for \$2.50



SPIRAEA ANTHONY WATERER



PHILADELPHUS VIRGINALIS

Buy
healthy
well
grown
Flowering
Shrubs
Send your
order
Today



SYRINGA



FLOWERING ALMOND

BULBS
100
Tulips
Rainbow
Mixture
single or
double
flowering
for
\$3.25



PHILADELPHUS CORONARIUS

tification at Low Cost & Plan to Plant Now

KOREAN HYBRID CHRYSANTHEMUMS



APOLLO



CERES



MARS



DAPHNE

PERENNIALS

ANCHUSA.....*Forget-me-not*
 Low plants with blue flowers; good ground cover.
 AQUILEGIA.....*Columbine*
 Mixed Hybrids. All colors. Fine for cutting.
 ASTER.....*Michaelmas Daisy*
 Very desirable for cutting—blue flowers.
 BOCCONIA.....*Plum poppy*
 CARNATIONS, HARDY.....*Dianthus*
 CHRYSANTHEMUM.....*Shasta Daisy*
 Hardy—All Colors—Large and Pompons.
 COREOPSIS.....*Goldenwave*
 DELPHINIUM.....*Larkspur*
 Belladonna Gold Medal Hybrids
 DIANTHUS.....*Sweet-william*
 DIGITALIS.....*Foxglove*
 FUNKIA.....*Plantain lily*
 GAILLARDIA.....*Blanket flower*
 GYPSOPHILA.....*Baby's breath*
 HEMEROCALLIS.....*Day lilies*
 HOLLYHOCKS.....*Althaea*
 PAPAVER.....All colors
 PENTSTEMON.....*Pentstemon*

Prices:

Each.....\$0.25
 Doz.....2.50
 50 for.....9.00
 100 for.....16.00

PHLOX, HARDY.....*Phlox*
 Miss Lingard.....Waxy white, lavender eye
 Enchantress.....Pink, carmine eye
 Lothair.....Bright crimson
 Thor.....Salmon, red eye
 Jules Sandeau.....Pure pink
 Rheinlander.....Salmon pink
 Rijnstroom.....Rose pink
 PHLOX subulata.....*Moss Phlox*
 Ground Phlox.....Beautiful
 PHYSALIS.....*Chinese Lantern*
 PHYSOSTEGIA.....*False dragonhead*
 RUDBECKIA.....*Coneflower*
 SEDUMS.....*Stoncrop*
 Spectabile. Tall. Dwarf Mixed
 STOKESIA.....*Cornflower*
 TRITOMA.....*Red Hot Poker*
 THYMUS.....*Thyme*
 VERBENA.....*Verbena*
 VERONICA.....*Speedwell*
 VIOLA.....*Violet*



GAILLARDIA SUN GOD



COREOPSIS



RIJNSTROOM PHLOX

•
BULBS
 100
 Tulips
 Rainbow
 Mixture
 large
 flowering
 Darwins
 for
\$3.20
 •

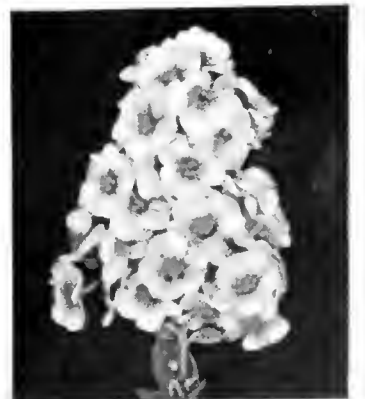


CHRYSANTHEMUMS

•
 Buy
 the Best
 It
 doesn't
 pay
 to buy
 cheap
 Perennials
 Send your
 order
 Today
 •



AQUILEGIA (COLUMBINE)



THOR PHLOX

The Best in New Proven Perennials

PERENNIALS



RUDBECKIA

ASTERS, New Dwarf Border.

Lady Henry Maddocks.

Pale pink

Marjorie.....Rose pink

Ronald.....Lilac pink

Snow Sprite.....White

Victor.....Lavender

CHRYSANTHEMUMS.

Korean Hybrids

Apollo.....Bronze—Old gold

Diana.....Salmon pink

Ceres.....Yellow bronze

Mars.....Wine red

Daphne.....Lilac pink



TRITOMA

DICENTRA.....*Bleedingheart*

HEUCHERA.....*Coralbells*

HIBISCUS.....*Giant Mallows*

PAPAVER.....*Oriental Poppies*

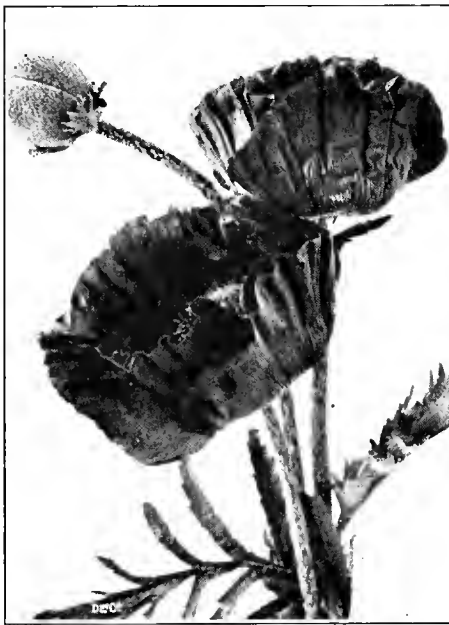
PEONIES.....*Mixed Colors*

Price of above Perennials: 35c. each, \$3.50 per dozen

New Pink Cushion Mum

A dwarf growing variety—flowers small and of a beautiful pink color. Fine for borders. **Strong plants, 25c. each.**

We have this new Mum in red, bronze and white. Price 40c. each.



PAPAVER ORIENTALE

Perennial Collection "A"

All good, sturdy plants

25 Low Growing

50 Medium Tall

25 Tall

Good assortment of colors and varieties
\$12.50, prepaid

BULBS

100 Darwin Tulips, Rainbow Mixture, \$3.20

100 Rembrandt Mixed Tulips, \$5.50

100 Tulips, Rainbow Mixture, Single or Double-flowering \$3.25

• • •

Ask for Our New Fall 1937
HOLLAND BULB CATALOG

• • •

Perennial Collection "B"

15 Dwarf Growing

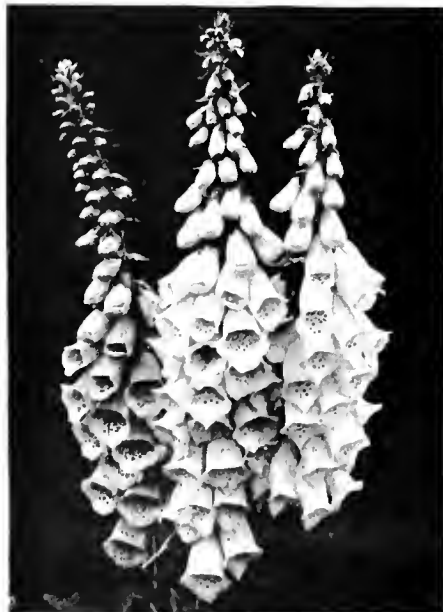
20 Medium Growing

15 Tall Growing

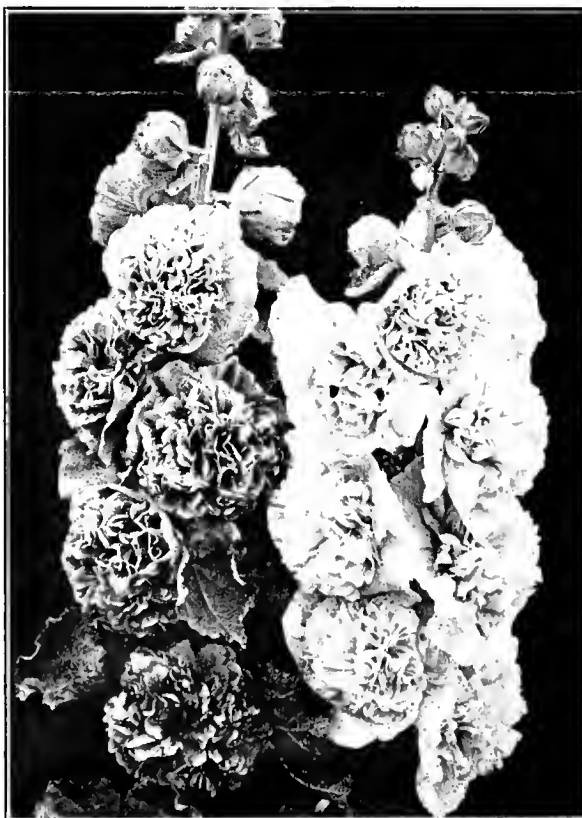
A Well-balanced Collection—
Dandy Plants

\$7.00 prepaid

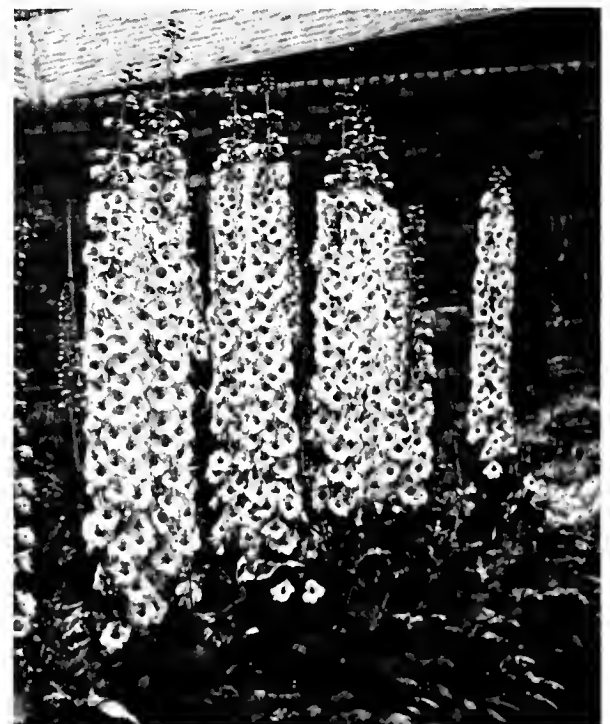
Our
BULB CATALOG
gives full information and
new low prices



DIGITALIS



DOUBLE HOLLYHOCKS



DELPHINIUM