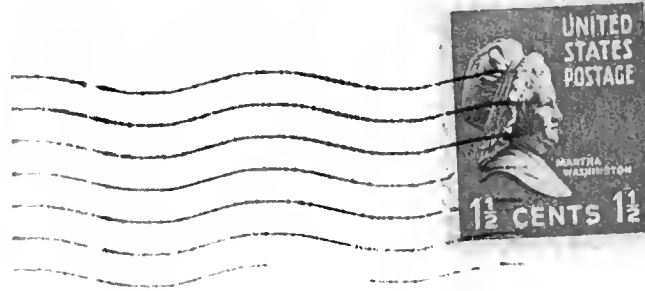


## **Historic, archived document**

Do not assume content reflects current scientific knowledge, policies, or practices.



From: Howell's  
Shellman  
LILLIES 23



U. S. DEPARTMENT OF AGRICULTURE,

WASHINGTON, D. C.

BUREAU OF PLANT INDUSTRY  
Fruit and Vegetable Crops and Diseases

• P O 8-3591

Water Garden  
Georgia

COLORS



62.13

WATER LILIES -- HARDY AND TROPICAL.

MARLIAC WHITE. Large pure white blooms, a good growing plant that blooms easily, sure to please.	\$1.00
GLADSTONE. A strong growing plant, flowers pure white and large, often 8 inches across, the best white.	\$1.00
W. B. SHAW. This lily grows easily, is one of the best pinks, flowers are a good rose pink and fragrant.	\$1.00
EUGENIE DE LAND. Nice large blooms, deep rose pink, a strong growing plant that is good.	\$1.00
HELEN FOWLER. One of the best rose pink lilies with medium blooms, a plant that is sure to bloom.	\$1.00
MARLIAC ROSE. Deep rose colored blooms, cup shaped and fragrant, a good free blooming lily.	\$1.00
PYGMY YELLOW. Small bright yellow blooms, grows easily in a pot, small corner, or the tub garden.	.75¢
MARLIAC YELLOW. Blooms are bright chrome-yellow, plants grow compact and vigorous, very free flowering.	\$1.00
SUNRISE. A strong growing lily with very large yellow blooms that open early, a good free bloomer.	\$1.00
ROSE AREY. Uniform deep rose pink blooms, easy to grow one of the very best free flowering lilies.	\$1.00
JAMES BRYDON. Cup shaped rosy crimson blooms, compact medium growing, unusual and beautiful lily.	\$1.00
COMANCHE. Blooms are a rich apricot shade, changeing to deeper color, strong growing and free blooming.	\$1.00
GLORIOSA. Beautiful rose red blooms 6 inches across, a medium growing lily that blooms all Summer.	\$1.00
CONQUEROR. Blooms are large and bright red, vigorous growing lily that blooms very free.	\$1.50
<u>TROPICAL LILIES.</u> All are easy to grow and fragrant.	
DAUBEN. Light blue blooms borne freely, medium growing.	.75¢
AUGUST KOCH. Deep blue blooms, vigorous, good bloomer.	\$1.00
PANAMA PACIFIC. Rich purple, good free bloomer.	\$1.50
MRS. SAWYER. Deep pink, very vigorous & free blooming.	\$1.90

A WELL ARRANGED LILY POOL IS VERY ATTRACTIVE.

Order from HOWELLS WATER GARDEN, Shellman, Georgia.

WATER LILIES - HARDY AND TROPICAL

- MARILYN WHITE.** Large pure white blooms, a good growing plant that blooms early, sure to please. \$1.00
- GLADSTONE.** A strong growing plant, flowers are white and large, often 3 inches across, the best white. \$1.00
- W. B. SHAW.** This Lily grows early, is one of the best pink, flowers are a good rose pink and fragrant. \$1.00
- HUGGINS DE LANT.** This large bloom, deep rose pink, a strong growing plant that is good. \$1.00
- HELEN BOWLER.** One of the best rose pink lilies with double blooms, a plant that is sure to please. \$1.00
- MARILYN ROSE.** Deep rose colored blooms, cup shaped and fragrant, a good free blooming Lily. \$1.00
- PIPER YELLOW.** Small bright yellow blooms, grows early in a pot, small specimen of the best when. \$1.00
- MARILYN YELLOW.** Blooms are small, yellow, very early, grow compact and vigorous, very good. \$1.00
- SUNRISE.** A strong growing Lily with very large and early blooms that open early, a good specimen. \$1.00
- ROSE ARMY.** Uniform deep rose pink blooms, early to open one of the very best free blooming lilies. \$1.00
- JAMES BRYTON.** Cup shaped rose pink blooms, double, medium growing, fragrant and beautiful. \$1.00
- COMMANDER.** Blooms are a rich salmon shade, very early to deeper color, strong growing and free blooming. \$1.00
- GLORIOSA.** Beautiful rose red blooms 6 inches across, a medium growing Lily that blooms early. \$1.00
- CONQUEROR.** Blooms are large and bright red, very early growing Lily that blooms very true. \$1.00
- TROPICAL LILIES.** All are early to good blooming. \$1.00
- MAJESTY.** Light blue bloom, some double. \$1.00
- AGUST ROCH.** Deep blue bloom, very early. \$1.00
- PAHAMA PACIFIC.** Rich purple, good free blooming. \$1.00
- MRS. SAYRE.** Deep pink, very early blooming. \$1.00
- A WHITE APPEARING LILY BLOSSOM.** \$1.00
- Order from HOWELL'S WATER LILIES.** \$1.00

AQUATIC AND BOG PLANTS

ANACHARIS. A nice green cluster under water, tiny white blooms, good for fish, good oxygenator, Nice bunch		25¢
WATER HYACINTH. Floats, keep together and dust a little bone meal on the plants, fish spawn on the roots.	6 for	25¢
AZURE HYACINTH. A floating vine that blooms all Summer, rich blue blooms, quick rank growing.	Plants	25¢
ARROW HEAD. quick growing edge plant, shallow water, arrow shaped leaves, white blooms on stems.	6 for	25¢
SAGITTARIA. Tall strap leaves, small white blooms, quick growing, good oxygenator.	6 for	25¢
VALISNERIA. Long narrow leaves, grows easily, bottom runners, good for the pool and the fish.	6 for	25¢
PICKEREL RUSH. Easy growing bog plant, blue blooms on tall stems, makes a quick showy growth.	2 for	25¢
YELLOW IRIS. Grows in bog or water, iris leaves in clusters, yellow blooms on tall stems.	Plants	25¢
WATER POPPY. Small floating leaves, yellow blooms, plants throw out runners, bloom all Summer.	2 for	25¢
WATER CLOVER. A beautiful clover growth, small leaves floating on the water, shades the fish.	2 for	25¢
PARROTT FEATHER. Feathery green foliage on long trailing stems, makes a quick and beautiful growth. Nice bunch		25¢
IMPERIAL TARO. Two foot tall stems carrying green leaves blotched with dark violet, easy to grow, showy.	Plants	25¢
BLUE STEM TARO. Deep green leaves on stems colored dark blue, very showy, easy to grow.	Plants	25¢
UMBRELLA PALM. Slender stems, umbrella shaped slender leaves, grows in bog or water.	Plants	25¢
WATER CANNA. (Thalia) Canna like leaves two feet high, queer blue blooms on tall stems, showy plant.	Plants	25¢
PRIMROSE WILLOW. Narrow leaves on plants 2 to 3 feet tall, bright yellow blooms all Summer.	Plants	25¢
ELEPHANT EAR. Large showy green leaves on tall stems, A showy plant for shallow water.	Plants	25¢

Except the two first plants, all above will grow in water 2 to 6 inches deep. An excellent addition to your pool.

Order from HOWELLS WATER GARDEN, Shellman, Georgia.

QUALITY CONTROL

ATTACHED, A... (mirrored text)

WATER... (mirrored text)

AN... (mirrored text)

ARROW... (mirrored text)

GA... (mirrored text)

VAL... (mirrored text)

TI... (mirrored text)

YE... (mirrored text)

WA... (mirrored text)

HA... (mirrored text)

PA... (mirrored text)

IN... (mirrored text)

BL... (mirrored text)

LA... (mirrored text)

WA... (mirrored text)

TR... (mirrored text)

LI... (mirrored text)

GR... (mirrored text)



SOME    CULTURE    NOTES    

Place the lily pool in full sunshine, there will be more blooms and the plants will grow better.  
Soak the new pool several times before putting in fish.  
Do not use plant boxes that are too small, 20 to 24 inches square is right, water lily roots need surface room.  
Use rich stiff garden loam that is not trashy, for the plant boxes, mix one pint of bone meal to each bushel of soil.  
Keep gold fish in the lily pool and no mosquitoes will be raised.  
Plenty of plants, some hardened plaster paris, and snails will keep the pool clear, run in some fresh water each week.  
Plant hardy lilies in April, or in the Summer months, plant tropical lilies anytime after June 1st.  
Settle plants into the soil with buds just out, top of soil should be about eight inches from surface of the water.  
Cover top of plant boxes with large gravel, so fish cannot dig out the lily roots, and retard their growth.

A WELL KEPT LILY POOL IS A PLACE OF INTEREST IN THE FLOWER GARDEN.

EGYPTIAN SACRED LOTUS. Large pink blooms, umbrella like leaves on tall stems high above the water, very fragrant. Tubers \$1.00

AMERICAN YELLOW LOTUS. Large yellow blooms standing high above the water, native and easy to grow. Tubers \$1.00

Plant lotus as dormant tubers, about April 1st. in 6 inch water Fertilize same as lilies. Place tubers in the rich soil horizontal, do not break the buds, give plenty of room.

-----  
JAPANESE SNAILS. (Live bearing) are the best for eating away the algae and keeping the pool clear. Good size, 8 for \$1.00  
-----

TERMS AND SHIPPING.

Please send cash, check or money order, with your order for lilies and plants.  
Lilies and plants will be sent by express, or small packages can be mailed if sufficient postage is included.  
All plants and lilies are shipped in damp moss, and usually arrive in good condition, place the plants in water when received, and do not let them get dry.

-----  
Send the order early, and plants will be shipped at the best time for planting, or sooner if you desire.  
-----

Order from HOWELLS WATER GARDEN, Shellman, Georgia.

