

## **Historic, archived document**

Do not assume content reflects current scientific knowledge, policies, or practices.



# HALLAWELL'S

*Flower Seeds  
Lawn Seeds  
and*

## BULBS

SAN FRANCISCO

## FALL

# 1939

HYACINTH  
*Blue Danube*





*Double  
Flowering*  
**TULIPS**  
*3 Fine Varieties*

COXA—(Illustrated)  
BLUE CELESTE—Violet-blue  
EPICURE—Old gold

Collections of above 3  
No. B-39

- |     |                         |        |
|-----|-------------------------|--------|
| (a) | 4 each (12 bulbs).....  | \$ .95 |
| (b) | 6 each (18 bulbs).....  | 1.35   |
| (c) | 12 each (36 bulbs)..... | 2.50   |
| (d) | 25 each (75 bulbs)..... | 4.85   |

*Separately packaged and  
named; order by collection num-  
ber and letter.*

*Tulip Coxa*  
85c per 12; \$6.50 per 100; \$60.00 per 1000.

*Botanical*  
**TULIPS**

*(Wild Tulip Species)*

Graceful and charming in the rock garden or for small groupings in odd places in the garden. (See catalog text for complete descriptions and prices.)

EICHLERI—(Illustrated)  
KAUFMANNIANA (Water Lily Tulip)  
CLUSIANA (Candystick Tulip)  
MARJOLETTI (Savoyan Tulip)

Collection of above 4  
No. B-49

- |     |                         |        |
|-----|-------------------------|--------|
| (a) | 3 each (12 bulbs).....  | \$ .95 |
| (b) | 6 each (24 bulbs).....  | 1.70   |
| (c) | 12 each (48 bulbs)..... | 3.25   |

*Separately packaged and  
named; order by collection num-  
ber and letter.*



*Tulip Eichleri*  
75c per 12; \$5.00 per 100; \$45.00 per 1000.

## HALLAWELL'S HYACINTHS

Hyacinths are very fragrant and come in a great variety of colors. They make a magnificent display when grown outside in a bed. They are also very satisfactory when grown in pots. We are listing the single type only, as they are far superior to the double, and more certain to bloom. For outdoor culture, set the bulbs so that the tops will be 4 or 5 inches below the surface and 6 to 10 inches apart. For pot culture use a 4-inch pot for a bulb or a large pot for two or three bulbs, and leave the tops of the bulbs just above the surface. After potting give a good watering and set away in a cool dark place until thoroughly rooted, which takes from 8 to 10 weeks. During this time do not allow them to become dry. They may then be set in a cool light place until the flower spikes have developed, when they may be placed wherever desired.

Six of a variety at the dozen rate; 50 at the 100 rate.

### EXHIBITION HYACINTHS

Selected bulbs of large size, suitable for growing in pots or out-of-doors.

**BLUE DANUBE.** Lovely pale violet-blue; a grand spike of pleasing fragrance, above dark green foliage. A good February forcer.

\$4.00 per 12; \$27.50 per 100.

#### PINK AND RED SHADES

**GERTRUDE.** Bright rosy pink; a sturdy grower and one of the finest of its color.

**GIGANTEA.** Very showy variety, blush pink in color, and with small dainty bells.

**KOH-I-NOOR.** Large spike of lovely salmon pink flowers.

**LADY DERBY.** Large, compact trusses of beautiful clear rose-pink flowers.

**LA VICTOIRE.** Brilliant for bedding with its large spikes of shining carmine-red bells.

**ORANGE BOVEN**—Reddish orange; distinct. Does well grown in bulb fibre.

**QUEEN OF THE PINKS.** Fine large trusses of very lovely rosy pink flowers.

\$2.00 per 12; \$14.00 per 100.

#### BLUE SHADES

**BISMARCK.** A fine broad spike of clear sky blue. May be used for early forcing.

**DUKE OF WESTMINSTER.** Deep, glistening blue florets with white centers. A striking variety.

**GRAND MAITRE.** Dark porcelain blue with long spikes and strong stems.

**KING OF THE BLUES.** Deep violet-blue; splendid trusses. One of the best known blue varieties.

**PERLE BRILLIANT.** Beautiful light blue; splendid spikes of large bells. An outstanding variety.

**QUEEN OF THE BLUES.** Clear light blue. Large well formed trusses on strong stems.

\$2.00 per 12; \$14.00 per 100.

#### YELLOW SHADES

**CITY OF HAARLEM.** A fine yellow Hyacinth. Large trusses of soft yellow flowers.

**YELLOW HAMMER.** Creamy yellow bells in a large compact truss.

\$2.00 per 12; \$14.00 per 100.

#### WHITE SHADES

**L'INNOCENCE.** Fine compact spikes of lovely pure white bells. A most satisfactory white Hyacinth.

\$2.00 per 12; \$14.00 per 100.

**MIXTURE** of above named Exhibition Hyacinths.

\$2.00 per 12; \$14.00 per 100; \$132.50 per 1000.

### BEDDING HYACINTHS

These are good strong bulbs averaging over 6 inches in circumference, and will produce fine flowers.

**GIGANTEA.** Blush pink.

**QUEEN OF PINKS.** Rosy pink.

**LA VICTOIRE.** Carmine red.

**L'INNOCENCE.** Pure white.

**PERLE BRILLIANT.** Light blue.

**KING OF BLUES.** Deep blue.

**CITY OF HAARLEM.** Yellow.

**MIXTURE** of all colors.

Each of above: \$1.15 per 12; \$8.00 per 100; \$75.00 per 1000.

### BEDDING HYACINTH COLLECTIONS

No. B-89

- |   |        |
|---|--------|
| (a) 1 each of 7 varieties (7 bulbs).....  | \$0.75 |
| (b) 3 each of 7 varieties (21 bulbs)..... | 1.95   |
| (c) 5 each of 7 varieties (35 bulbs)..... | 3.15   |
- (Separately packaged and named; order by collection number and letter.)



### Complete Collections of EXHIBITION HYACINTHS

No. B-79

- |  |        |
|--|--------|
| (a) 1 each of 16 varieties (16 bulbs)..... | \$2.80 |
| (b) 2 each of 16 varieties (32 bulbs)..... | 5.25   |
| (c) 3 each of 16 varieties (48 bulbs)..... | 7.25   |
- (Separately packaged and named; order by collection number and letter.)

## HALLAWELL'S SELECT TULIPS

Tulips will grow in any good garden soil, to which may be added a little bone meal. If soil is heavy, place a handful of sand at the base of each bulb. Well rotted cow manure may be used if dug in ten days or more previous to planting.

Plant Tulips so that in light soils the tops of the bulbs are 6 inches below the surface, and in heavier soils, 5 inches. Plant bulbs about 5 or 6 inches, or more, apart. After planting, give a thorough watering; continue watering every week if no rain has fallen in the meantime.

Six of a variety at the dozen rate; 50 at the 100 rate; 250 at the 1,000 rate.



*A group planting in our nursery garden*

### DARWIN TULIPS

The most satisfactory of all Tulips. They are stately in appearance, attaining a height of 24 to 30 inches, and producing beautiful globular flowers of heavy texture in a large range of colors. They bloom in March and April and are unsurpassed for bedding and cutting.

The figure following the name indicates the relative time of flowering.

- AFTERGLOW (4).** Beautiful blending of deep rosy orange with salmon edges. The inside is glossy orange with yellowish base. Height 26 inches.  
75c per 12; \$5.00 per 100; \$45.00 per 1000.
- ANTON MAUVE.** An enormous flower of graceful form. Mauve lilac in color, with silvery edge. Height 32 inches.  
85c per 12; \$6.00 per 100; \$55.00 per 1000.
- ANTON ROOZEN (2).** Large flowered vivid rosy pink with lighter edge. Height 28 inches.  
75c per 12; \$5.25 per 100; \$47.50 per 1000.
- BARON DE LA TONNAYE (4).** Bright rose margined blush. A popular bedding variety. Height 26 inches.  
75c per 12; \$5.00 per 100; \$45.00 per 1000.
- BARTIGON (1).** Massive fiery red flowers on strong stems. A showy and dependable variety. Height 26 inches.  
75c per 12; \$4.75 per 100; \$42.50 per 1000.
- BETSY ROSS (3).** Orange with frosty sheen; white midribs inside. Height 24 inches.  
\$1.00 per 12; \$7.50 per 100; \$68.00 per 1000.
- BLEU AIMABLE (4).** Pale lavender. A beautiful flower of attractively distinct shape. Height 25 inches.  
75c per 12; \$5.50 per 100; \$49.00 per 1000.
- BLUE EAGLE (2).** Shining intense blue-purple flowers of great size and fine form. Outstanding in our trial garden. Height 28 inches.  
75c per 12; \$5.50 per 100; \$50.00 per 1000.
- CITY OF HAARLEM (2).** Immense vermilion scarlet. The blue-black base with white halo, gives a striking effect to the open flower. Height 28 inches.  
\$1.00 per 12; \$7.25 per 100; \$65.00 per 1000.
- CLARA BUTT (4).** Lovely salmon rose flowers of large size on fine stems. Splendid variety for bedding. Height 22 inches.  
75c per 12; \$4.75 per 100; \$42.50 per 1000.
- DRESDEN CHINA (2).** Lovely soft pink with light edge. Large flowers, stately borne on tall straight stems; very effective over pale yellow alyssum or primroses. This was one of the first Darwins to bloom in our trial garden. Height 28 inches.  
\$1.25 per 12; \$9.00 per 100; \$81.00 per 1000.
- ECLIPSE (2).** Brilliant deep crimson with blue base. Tall stiff stems and enormous flowers. Height 25 inches.  
\$1.75 per 12; \$12.00 per 100; \$110.00 per 1000.
- FARNCOMBE SANDERS (2).** Scarlet with rosy sheen and clear white base. One of the finest of Darwin Tulips, and famous as a bedding variety. Height 28 inches.  
75c per 12; \$5.00 per 100; \$45.00 per 1000.
- FEU BRILLIANT (2).** Glowing scarlet flowers of large size and attractive shape. Height 26 inches.  
90c per 12; \$6.50 per 100; \$58.00 per 1000.
- FLAMINGO (3).** Beautiful shell pink flowers with satin sheen and pointed petals. Height 26 inches.  
75c per 12; \$5.50 per 100; \$50.00 per 1000.

Orders for bulbs amounting to \$1.00 and more are PREPAID within the U. S. A.

**DARWIN TULIPS—Continued**

**GIANT LILAC (3).** Enormous plum-purple or dark lilac flowers on fine stems. Selected for listing from our trial garden. Height 28 inches.

\$1.00 per 12; \$7.00 per 100; \$65.00 per 1000.

**INGLESCOMBE YELLOW (4).** Rich and glossy canary yellow. Large globular flower of fine form. Height 20 inches.

75c per 12; \$4.75 per 100; \$42.50 per 1000.

**KING GEORGE V (1).** Immense flowers of brilliant cherry-red with scarlet glow. Height 30 inches.

\$1.00 per 12; \$7.00 per 100; \$63.00 per 1000.

**KING HAROLD (3).** Rich deep mahogany-red with purple-black base. Fine large flowers on sturdy stems. Height 24 inches.

75c per 12; \$5.00 per 100; \$45.00 per 1000.

**LA FIANCEE (3).** Rich rose, shading to old rose and delicate pink at edges. A splendid large flowered variety. Height 30 inches.

85c per 12; \$6.50 per 100; \$60.00 per 1000.

**LA TULIPE NOIRE (3).** Very deep maroon with velvety sheen. The darkest of Tulips. Height 25 inches.

85c per 12; \$6.00 per 100; \$55.00 per 1000.

**MADAME KRELAGE (2).** Large bright rosy pink, margined pale silvery rose. Height 28 inches.

75c per 12; \$4.75 per 100; \$42.50 per 1000.

**MASSACHUSETTS (5).** Vivid pink, edged rosy white; very late bloomer. Height 26 inches.

75c per 12; \$5.25 per 100; \$47.50 per 1000.

**MELICETTE (3).** Pure lavender; inside deep lavender-violet with beautiful blue base. Height 25 inches.

80c per 12; \$5.75 per 100; \$52.50 per 1000.

**PRESIDENT TAFT (3).** Large, deep crimson flowers of good substance on long stiff stems. Superb for bedding. Height 28 inches.

85c per 12; \$6.50 per 100; \$60.00 per 1000.

**PRIDE OF HAARLEM (1).** Deep rose suffused and brightened with scarlet. Fine large flower on a strong stem. Height 28 inches. 75c per 12; \$4.75 per 100; \$42.50 per 1000.

**PRINCE OF THE NETHERLANDS (3).** Glowing cerise-scarlet edged rose, with pale blue base. Extra large flower. Height 31 inches.

95c per 12; \$7.00 per 100; \$63.00 per 1000.

**PRINCE OF WALES (2).** Very bright cherry red; the finest in its color class. Enormous flowers of remarkable brilliance. Height 28 inches.

80c per 12; \$5.75 per 100; \$52.50 per 1000.

**PRINCESS ELIZABETH (2).** Clear deep pink, deepening in color as the flowers open; white base. Fine for forcing, and a lovely garden variety. Height 26 inches.

75c per 12; \$5.00 per 100; \$45.00 per 1000.

**PRINCESS MARY (2).** Bright carmine rose, silvery edge, and blue base inside with white halo. A fine large flowered variety for exhibition. Height 28 inches.

\$2.00 per 12; \$14.00 per 100; \$125.00 per 1000.

**PROFESSOR RAUWENHOF (3).** Brilliant cherry red, shaded salmon; an enormous flower. Height 28 inches.

75c per 12; \$5.00 per 100; \$45.00 per 1000.

**REVEREND EW BANK (2).** Soft heliotrope lilac. Large flowered, and splendid for bedding with yellow tulips. Height 22 inches.

75c per 12; \$4.75 per 100; \$42.50 per 1000.

**SARAZEN.** Rich salmon-rose with shading of bronze; pure white base inside. Height 25 inches.

85c per 12; \$6.00 per 100; \$55.00 per 1000.

**VENUS (2).** Very large silvery rose with pale blue and white base. The stems are long and strong. Height 28 inches.

85c per 12; \$6.00 per 100; \$55.00 per 1000.

**YELLOW GIANT (2).** Large golden yellow flower with black anthers; magnificent. The best of the yellow varieties. Height 29 inches.

85c per 12; \$6.00 per 100; \$55.00 per 1000.

**ZWANENBURG (2).** Pure white with black anthers. Large, well formed flowers of good substance. A splendid and stately variety. Height 28 inches.

85c per 12; \$6.50 per 100; \$60.00 per 1000.

**DARWIN BEDDING MIXTURE.** A mixture of good Darwin varieties.

70c per 12; \$4.50 per 100; \$41.00 per 1000.

**HALLAWELL'S SPECIAL MIXTURE** of fine Darwin varieties.

75c per 12; \$5.00 per 100; \$45.00 per 1000.

**FANCIER'S COLLECTION**

No. B-99

For the gardener who desires named specimens of many varieties, this assortment is recommended.

Two bulbs each of the 36 Darwin Tulips listed; each variety separately packaged and named. Total of 72 bulbs for \$5.25.

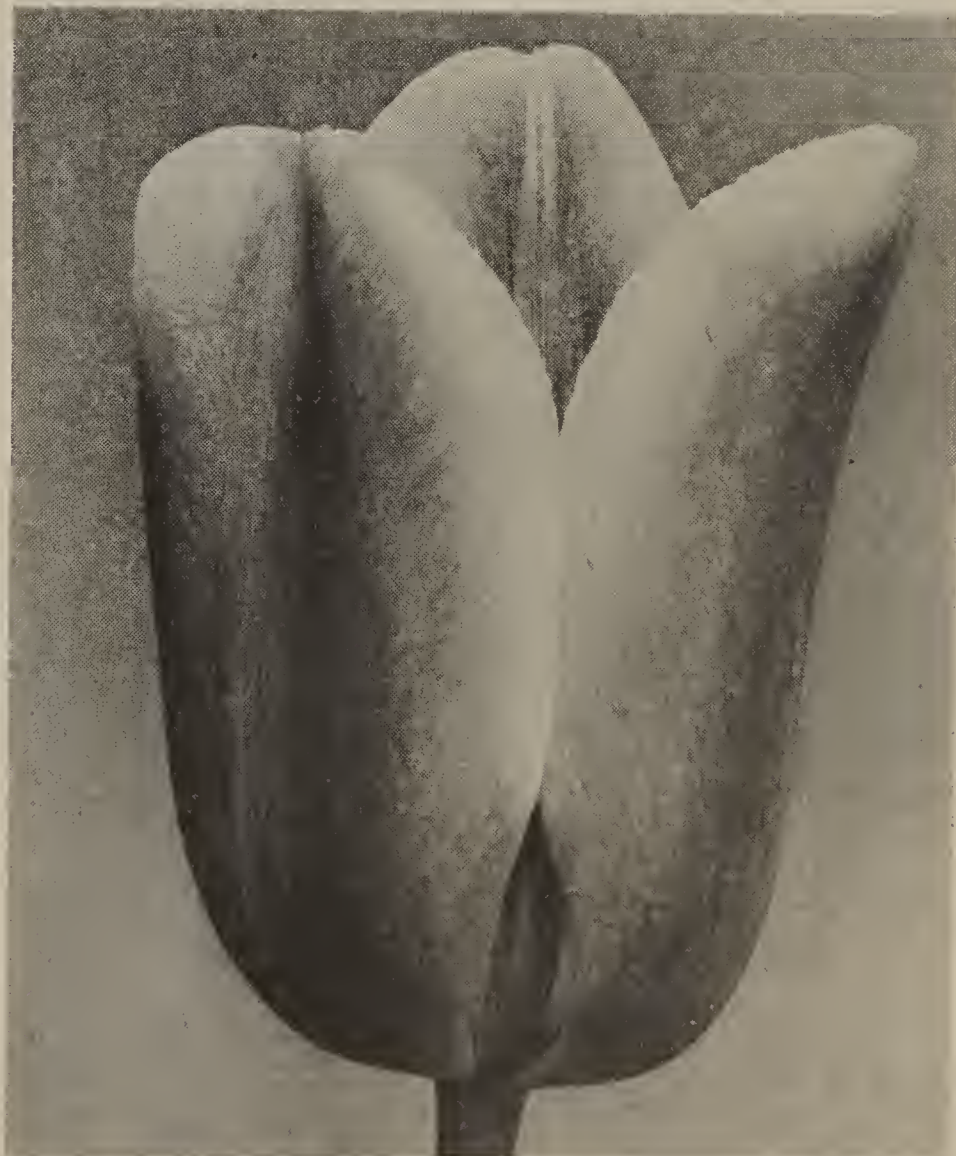
**EXTRA VALUE COLLECTIONS**

No. B-109

The following 6 varieties comprising a full range of color; each separately packaged and named.

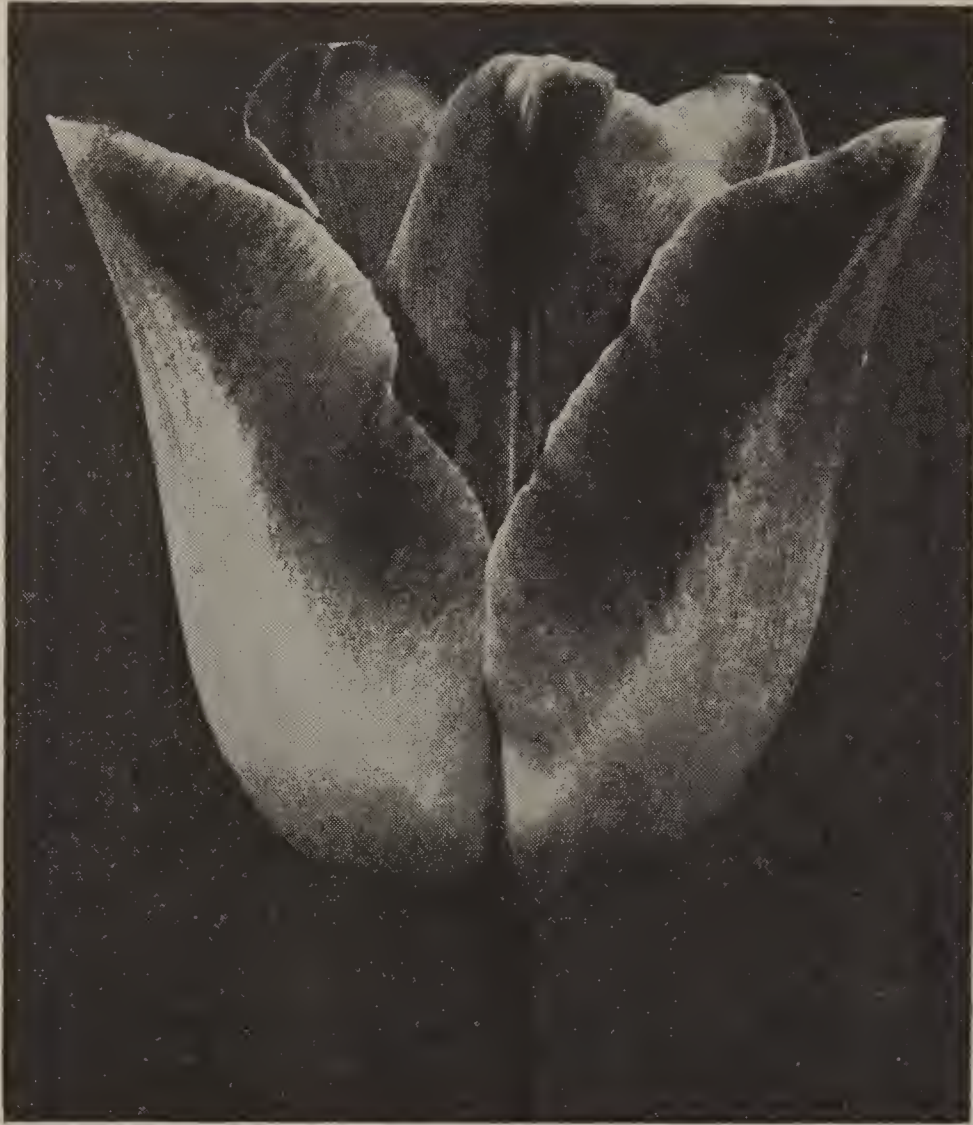
Bartigon	Ing. Yellow	Pride of Haarlem
Clara Butt	King Harold	Reverend Ewbank
(a) 12 bulbs,	2 each of 6 varieties.....	\$ .75
(b) 36 bulbs,	6 each of 6 varieties.....	1.95
(c) 90 bulbs,	15 each of 6 varieties.....	4.35

(Order collections by number and letter.)



*Improved Darwin Type*

Add 25c for packing and postage on orders for bulbs amounting to LESS than \$1.00



*Triumph Tulip, Zimmerman*

### TRIUMPH TULIPS

A new race of Tulips, the result of the crossing of Single Early varieties with Darwins. They bloom in the interim between the two, and are characterized by large flowers, sturdy stems, and vigorous growth.

**ALGIBA.** Clear heliotrope shading lighter at the edges. Long lasting flower of cylindrical form. Height 20 inches.

80c per 12; \$5.75 per 100; \$52.50 per 1000.

**AVIATEUR (3).** Shining carmine-red, bordered white; good forcer. A striking variety which showed well in our trial garden. Height 22 inches.

85c per 12; \$6.50 per 100; \$60.00 per 1000.

**FLORA (1).** Dark buff, melting into apricot. A fine flower on tall, stout stems. Another trial ground proven variety. Height 25 inches.

85c per 12; \$6.50 per 100; \$60.00 per 1000.

**KANSAS.** Magnificent glistening pure white of superb form, suitable for medium early forcing. Height 22 inches.

80c per 12; \$5.75 per 100; \$52.50 per 1000.

**TELESCOPIUM.** Violet, tinted rose-red, inside wine red. Large flowers of fine substance on strong stems; a very good forcing variety. Height 24 inches.

75c per 12; \$5.50 per 100; \$50.00 per 1000.

**ZIMMERMAN.** Vivid rose-pink, edged deeper rose. A long, well shaped flower, and a vigorous grower. Height 22 inches.

75c per 12; \$5.50 per 100; \$50.00 per 1000.

#### TRIUMPH TULIP COLLECTIONS

No. B-149

All 6 varieties listed.

(a) 2 of each (12 bulbs).....\$ .85

(b) 5 of each (30 bulbs)..... 1.90

(Separately packaged and named; order by collection number and letter.)

### BREEDER TULIPS

This fine type is very similar to the Darwin in its tall, strong growth, and with even larger flowers. Breeder Tulips bloom about the same time, but have an entirely different range of colors, comprising bronze, terra-cotta, orange-brown and artistic tones that are lacking in the Darwins.

The figure following the name indicates the relative time of flowering.

**APRICOT (3).** Ruddy apricot, edged bronzy buff, with yellow base and olive halo. Height 25 inches.

85c per 12; \$6.00 per 100; \$54.00 per 1000.

**BACCHUS (3).** Dark violet-blue with dark bloom on outside of petals; large, long flower. Height 28 inches.

85c per 12; \$6.00 per 100; \$54.00 per 1000.

**BRONZE QUEEN (4).** Soft buff shaded bronze; inside tinged golden bronze. Height 28 inches.

75c per 12; \$5.00 per 100; \$45.00 per 1000.

**CARDINAL MANNING (4).** Dull wine-red flushed rosy bronze, changing to rosy violet. Height 30 inches.

85c per 12; \$6.00 per 100; \$54.00 per 1000.

**DILLENBURG (4).** Rich salmon-orange with lighter edge. Large, beautifully formed flowers. Height 26 inches.

85c per 12; \$6.00 per 100; \$54.00 per 1000.

**GARIBALDI (3).** Long flowers of buff-orange. Gorgeous in a noon light, and effective in a pastel garden. One of our trial garden selections. Height 26 inches.

85c per 12; \$6.50 per 100; \$60.00 per 1000.

**LOUIS XIV (3).** Immense globular flower. Rich purple with golden bronze margin; inside bronzy purple. Height 28 inches.

85c per 12; \$6.00 per 100; \$54.00 per 1000.

**LUCIFER (3).** Dark orange with rosy bloom; inside scarlet-orange. Enormous flowers of brilliant tone. Height 26 inches.

\$1.00 per 12; \$7.00 per 100; \$65.00 per 1000.

**PANORAMA (2).** Extra large flowers; deep orange in color, shaded mahogany. Height 24 inches.

85c per 12; \$6.00 per 100; \$54.00 per 1000.

**ST. JAMES (2).** A beautiful large Tulip. The color is chestnut brown flushed bronze, gradually shading to gold at the margin. Height 28 inches.

85c per 12; \$6.00 per 100; \$54.00 per 1000.

**YELLOW PERFECTION (2).** Light bronze-yellow, edged and shaded deep golden yellow. Height 24 inches.

85c per 12; \$6.00 per 100; \$54.00 per 1000.

**BREEDER TULIP MIXTURE.** Made up from named varieties.

75c per 12; \$5.75 per 100; \$52.50 per 1000.

#### BREEDER TULIP COLLECTION

No. B-119

Two bulbs each of the 11 varieties listed above. (22 bulbs.) \$1.85 for the Collection.

(Each variety separately packaged and named; order by number.)

### VARIOUS TULIPS

**REMBRANDT TULIPS, ASSORTED.** The large flowers are striped and feathered, and come in a variety of pleasing colors. The stems average 18 to 22 inches in length.

85c per 12; \$6.00 per 100; \$55.00 per 1000.

**FANTASY.** A remarkable Parrot Tulip with stronger stems than other varieties of this type. Salmon-rose with fantastically serrated petals with green markings. Height 26 inches.

75c per 12; \$5.50 per 100; \$50.00 per 1000.



### COTTAGE OR MAY TULIPS

These follow the earlier tulips in bloom, thus prolonging the tulip season. Often overlooked in favor of the popular Darwins, this group includes some of the finest introductions of recent years.

The figure following the name indicates the relative time of flowering.

**ADVANCE (3).** A noble tulip; red with a flush of roseate orange. Long bold flowers, borne on sturdy stems, it is truly an "advance" in tulips. Height 24 inches.

\$2.00 per 12; \$15.00 per 100; \$135.00 per 1000.

**ALABASTER (2).** Pure white, goblet-shaped flower, with small yellow center and ivory stamens; strong stems. This appeared to be the best white variety in our tulip trials. Height 24 inches.

\$1.00 per 12; \$7.50 per 100; \$67.50 per 1000.

**DIDO (3).** Deep rick pink with salmon suffusion, and slightly edged orange. Height 28 inches.

75c per 12; \$5.00 per 100; \$45.00 per 1000.

**GESNERIANA MAJOR (3).** Brilliant crimson-scarlet with blue-black base. A superb variety with pointed petals. Height 28 inches.

75c per 12; \$5.50 per 100; \$50.00 per 1000.

**HENRI CORREVON (3).** Massive and nobly formed flowers of clear geranium-red, with white center and ivory stamens. Stems are long and sturdy. This fine variety completely dominated our tulip trial garden. Height 28 inches.

\$2.00 per 12; \$15.00 per 100; \$145.00 per 1000.

**JEANNE DESOR (3).** Striking combination of deep orange-yellow and scarlet. Long, well formed flowers on strong stems. Height 28 inches.

\$1.00 per 12; \$7.00 per 100; \$65.00 per 1000.

**LEDA (3).** Glowing salmon pink with lighter edge. The large cup-shaped flower stands on a tall stem, and has exceptional lasting qualities. A greatly admired tulip in our trial garden. Height 26 inches.

85c per 12; \$6.00 per 100; \$55.00 per 1000.

**MARCELLINA (2).** Lily-flowered type; carmine rose with lighter edge and white center.

85c per 12; \$6.50 per 100; \$60.00 per 1000.

**MOONLIGHT (1).** Very long oval shaped flowers of a soft canary yellow. Height 25 inches.

75c per 12; \$5.50 per 100; \$50.00 per 1000.

**MRS. MOON (3).** Golden yellow with reflexed pointed petals. Height 26 inches.

75c per 12; \$5.50 per 100; \$50.00 per 1000.

**ORANGE KING (4).** Glistening deep orange; inside deep orange scarlet with yellow base. The large globular flowers are sweet scented. Height 24 inches.

75c per 12; \$5.00 per 100; \$45.00 per 1000.

**PRIDE OF INGLEScombe (3).** Pure white, margined carmine-rose. A long pointed flower. Height 26 inches.

75c per 12; \$5.50 per 100; \$50.00 per 1000.

**ROSABELLA (4).** Apple blossom pink. A large flower of graceful form. Height 26 inches.

75c per 12; \$5.50 per 100; \$50.00 per 1000.

**SCARLET EMPEROR.** Glowing scarlet red with clear yellow center; a long, large flower. Height 24 inches.

\$1.50 per 12; \$10.00 per 100; \$90.00 per 1000.

**WORLD'S FAIR (3).** Brilliant rose with white base and light colored stamens. An imposing flower, borne on a fine stem. Height 25 inches.

\$1.90 per 12; \$13.50 per 100; \$125.00 per 1000.

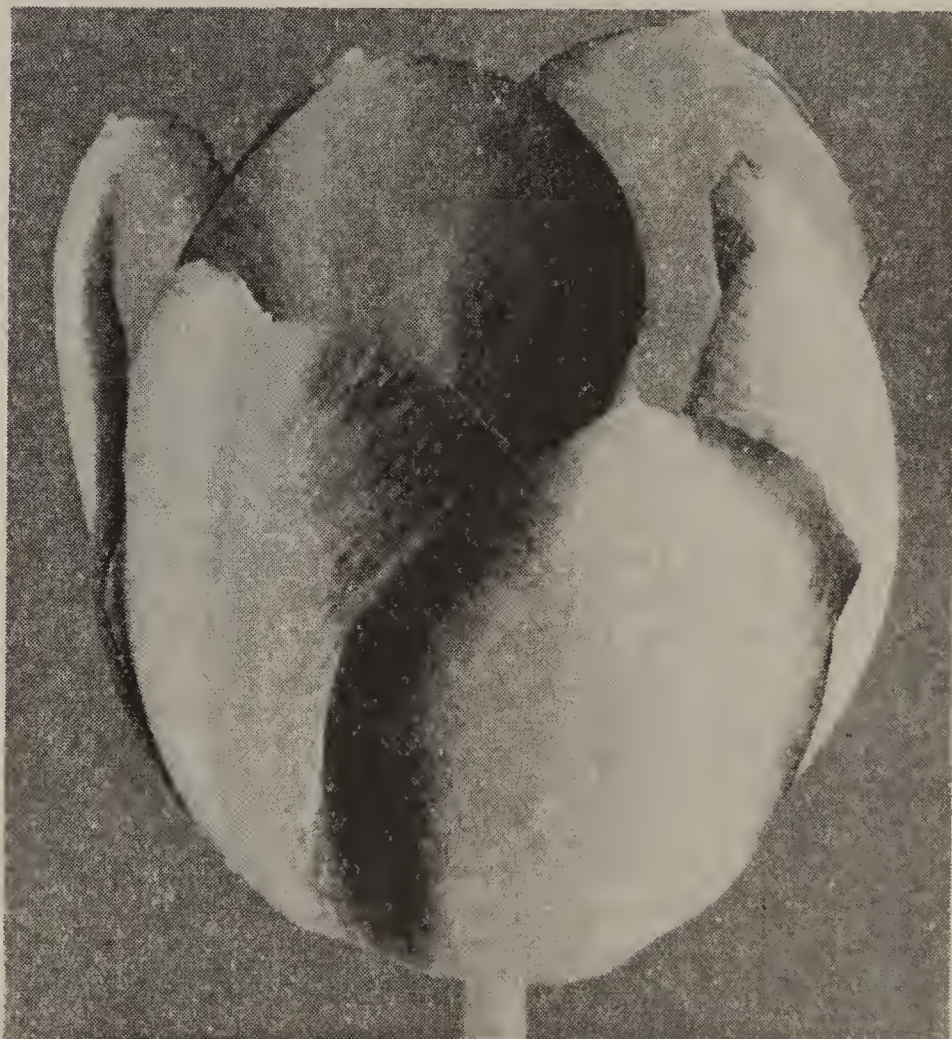
**COTTAGE MIXTURE.** A special mixture made up from named varieties.

75c per 12; \$5.25 per 100; \$47.50 per 1000.

**TULIPS—Continued on next page**



*Cottage Tulip, Advance*



*Cottage Tulip, Jeanne Desor*

#### COTTAGE TULIP COLLECTION

No. B-129

Two bulbs each of the above 15 varieties (30 bulbs).

A splendid assortment.

\$2.85 for the Collection.

(Separately packaged and named; order by collection number.)



*Wild Tulip, Clusiana*

## WILD TULIP SPECIES

**CLUSIANA** (Little Lady or Candystick Tulip). The dainty flowers are small but quite distinct. Outer petals, white with cherry stripes. Grows to a height of about 9 inches, and should be planted in light soil at a depth of 6 inches.

75c per 12; \$5.50 per 100; \$50.00 per 1000.

**EICHLERI**. Large crimson flowers, with glistening black center marked with gold. The petals are pointed. Equally effective in border or rock garden. Height 11 inches.

75c per 12; \$5.00 per 100; \$45.00 per 1000.

**KAUFMANNIANA** (The Water Lily Tulip). Large creamy flower brilliantly marked carmine, with yellow center. Blooms early, and the flower which opens flat, is carried on a stem usually 10 inches in height. Splendid for naturalizing in shady places. Plant 6 inches deep.

\$1.25 per 12; \$8.50 per 100; \$78.50 per 1000.

**MARJOLETTI**. Soft primrose, shaded carmine-red; a small flower of very attractive color. Height 14 inches. Plant the bulbs at a depth of 6 inches.

.80c per 12; \$5.75 per 100; \$52.50 per 1000.

## IMPORTED PEAT

A fine humus material for mixing into the soil. 10 lbs. 60c; half-bale \$2.00; extra large compressed bale, \$3.75; 2 bales for \$7.00 f.o.b. S. F. Price subject to change without notice. One bale will cover 300 square feet, 1 inch thick; moisten a day or so before using.

## DOUBLE MAYFLOWERING TULIPS

**COXA** (3). Large, full double flowers, scarlet, tipped pure white. Height 22 inches.

85c per 12; \$6.50 per 100; \$60.00 per 1000.

**BLEU CELESTE** (4). Huge flower of soft violet-blue, resembling a peony when in full bloom. A color desired by the landscaper for its blending qualities, and fine for indoor decoration. Height 20 inches.

85c per 12; \$6.50 per 100; \$60.00 per 1000.

**EPICURE** (4). Old gold with orange-yellow glow. An attractive and dependable variety. Height 20 inches.

\$1.00 per 12; \$7.00 per 100; \$65.00 per 1000.

## MENDEL TULIPS

A race of tulips resulting from crossing Darwin Tulips with a very early variety, obtaining the good qualities of both. Mendel Tulips are valuable for early forcing, and for bedding will flower several days earlier than Darwin varieties. The following were chosen as the best of several Mendels in our trial garden.

**GALLICURCI** (1). Dominant rose-red with white edge; striking. Height 22 inches.

\$1.75 per 12; \$12.00 per 100; \$108.00 per 1000.

**HILLEGARDA** (1). Bright deep scarlet. One of the earliest for forcing. Height 20 inches.

85c per 12; \$6.50 per 100; \$60.00 per 1000.

**NANSEN** (2). Currant-red with dark center. A fine large flower and sturdy forcer. Height 20 inches.

85c per 12; \$6.50 per 100; \$60.00 per 1000.

**PROF. ZEEMAN** (1). A splendid large flower of deep salmon pink with orange suffusion. Height 20 inches.

85c per 12; \$6.00 per 100; \$55.00 per 1000.

**THE ROSE** (1). Vivid old rose with white base; good forcer. Height 18 inches.

85c per 12; \$6.00 per 100; \$55.00 per 1000.

**WEBER** (2). White with border of pink. A large, noble flower of great substance on tall stems. Much admired in the tulip gardens at the Exposition.

85c per 12; \$6.00 per 100; \$55.00 per 1000.

## MENDEL TULIP COLLECTIONS

No. B-139

All 6 varieties listed.

(a) 2 of each (12 bulbs).....	\$1.00
(b) 4 of each (24 bulbs).....	1.90
(c) 6 of each (36 bulbs).....	2.75
(Separately packaged and named; order by collection number and letter.)	

## PREPARED BULB FIBRE

This is a very good material in which to grow bulbs, and it is especially adapted for use in the home, being clean and odorless.

It contains all the necessary plant food for almost all kinds of plants.

Before using it should be thoroughly moistened, and the bulbs planted in the same way as if soil were used. A special feature of this material is that bulbs can be grown in jardinières, fern dishes and other receptacles which have no drainage. After watering, the jardinière or dishes should be turned on side to drain off surplus water.

The treatment after planting in this material is the same as when planted in soil.

Fibre comes moist (postage additional): 1 lb. 15c; 2 lbs. 25c; 10 lbs. \$1.00; 25 lbs. \$2.25.

## DAFFODILS AND NARCISSUS

Daffodils, Narcissus and Jonquils have a preference for a free loamy soil to which bone meal should be applied at the rate of 3 pounds per 100 square feet. Plant Daffodils so that the tops of the bulbs are 4 inches below the surface and 4 to 6 inches apart. Do not cut the leaves after blooming but let them die back; if cut back severely they will not flower the following spring. Six of a variety at the dozen rate; 50 at the 100 rate; 250 at the 1000 rate.

### LARGE TRUMPET DAFFODILS

The figure following the name indicates relative flowering time.

**AEROLITE (2).** Large golden trumpet with primrose perianth. Unusual for the great width of the flat opening outer petals and splendid lasting qualities of the flower. Extra size bulbs.

\$1.50 per 12; \$11.00 per 100; \$100.00 per 1000.

**DIOTIMA.** New super giant yellow daffodil. Star-shaped perianth of medium deep primrose, and bold trumpet more deeply colored. Height 24 inches.

\$2.50 each; \$25.00 per 12.

**EMPEROR (4).** Pure yellow trumpet of good size and rich primrose perianth with wide overlapping petals.

Large: 85c per 12; \$6.00 per 100; \$54.00 per 1000.

Extra: \$1.00 per 12; \$7.50 per 100; \$70.00 per 1000.

**GLORY OF SASSENHEIM (3).** Long, golden yellow trumpet and creamy white perianth. Larger flowered, and preferable to Spring Glory.

\$1.10 per 12; \$8.00 per 100; \$72.50 per 1000.

**HECTOR TREUB (1).** Uniform golden yellow of beautiful proportions; overlapping petals; early forcer. Described as an improvement over King Alfred.

\$1.50 per 12; \$11.00 per 100; \$100.00 per 1000.

**KING ALFRED (1).** Golden yellow; the trumpet is of beautiful form with deeply frilled mouth; extremely large, bold flower and strong grower.

Large: \$1.00 per 12; \$7.50 per 100; \$70.00 per 1000.

Extra: \$1.50 per 12; \$10.00 per 100; \$90.00 per 1000.

**LA VESTALE (1).** Giant trumpet type with pure ivory-white perianth, and cream yellow trumpet. Tall, with flowers of good substance.

\$3.25 per 12; \$24.00 per 100.

**MRS. E. H. KRELAGE (4).** A charming variety with pure white perianth and a creamy white trumpet of perfect form which fades to a pure white as the flower matures. Extra size bulbs.

\$2.00 per 12; \$14.50 per 100; \$130.00 per 1000.

**OLYMPIA (4).** Giant flower similar to "Emperor" with yellow trumpet and lighter perianth. A magnificent variety of strong growth. Extra size bulbs.

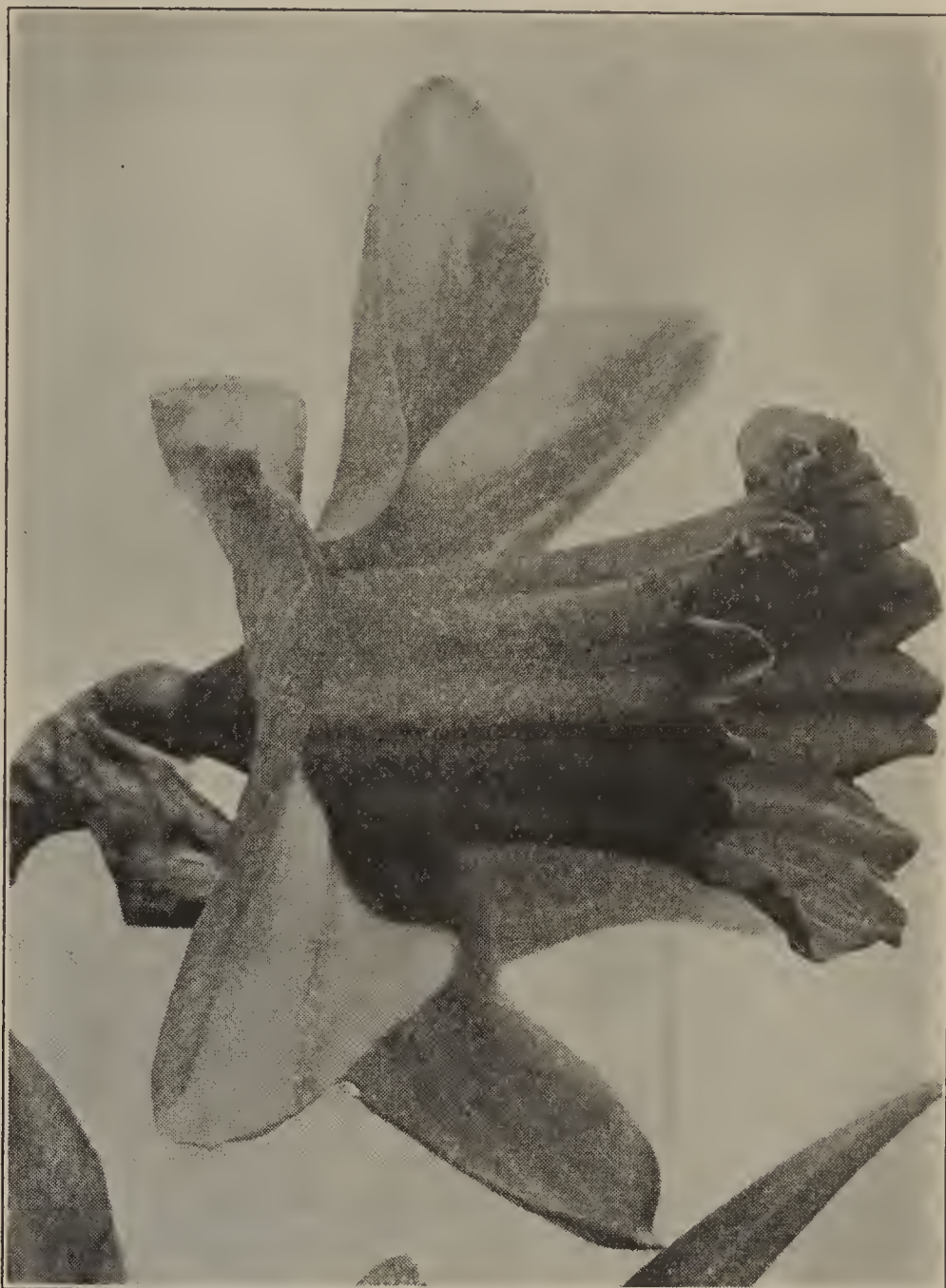
\$1.50 per 12; \$11.00 per 100; \$100.00 per 1000.

**TRESSERVE (3).** Rich yellow trumpet with canary-yellow perianth; an extremely large flower of beautiful form. Extra size bulbs.

\$1.15 per 12; \$8.50 per 100; \$77.50 per 1000.

**TRUMPET MIXTURE.** A splendid mixture of long Trumpet types.

75c per 12; \$5.00 per 100; \$45.00 per 1000.



*Daffodil Tresserve*

### DOUBLE DAFFODILS

**THE PEARL (2).** Dainty, creamy white interspersed with sulphur yellow at center. Moderately double.

\$1.00 per 12; \$7.00 per 100; \$65.00 per 1000.

**VON SION (1).** The largest double yellow trumpet variety; free flowering and very popular.

75c per 12; \$5.50 per 100; \$50.00 per 1000.

### POLYANTHUS NARCISSUS

**PAPER WHITE GRANDIFLORA (1).** Pure white star-shaped blossoms in clusters; very early free flowering and fragrant. Extra large size.

75c per 12; \$5.00 per 100; \$45.00 per 1000.

**GRAND SOLEIL D'OR (3).** A rich, clear yellow with orange cup; very fragrant and handsome. Large bulbs.

\$1.00 per 12; \$7.00 per 100; \$62.50 per 1000.

**CHINESE SACRED LILY (2).** Fragrant white star-shaped blossoms with yellow cups; flower very early and freely. Large bulbs.

\$1.00 per 12; \$7.00 per 100; \$62.50 per 1000.

### TRUMPET DAFFODIL COLLECTIONS

No. B-159

Eight varieties; extra size bulbs.

(All excepting Diotima and La Vestale)

(a) 1 of each ( 8 bulbs).....	\$1.00
(b) 3 of each (24 bulbs).....	2.75
(c) 5 of each (40 bulbs).....	4.50
(d) 8 of each (64 bulbs).....	7.00

(Separately packaged and named; order by collection number and letter.)

*John Evelyn**Bath's Flame*

### SWEET SCENTED JONQUILS

CAMPERNELLE RUGULOSUS SINGLE. Rich yellow fragrant flowers, two to four on a stem.

75c per 12; \$5.75 per 100; \$52.50 per 1000.

SINGLE SWEET SCENTED (Jonquilla Simplex). The very small blossoms are a rich yellow and most fragrant; very free flowering. Excellent for the rockery.

70c per 12; \$4.75 per 100; \$42.50 per 1000.

### CROWN DAFFODILS

BARRII CONSPICUUS (3). Broad primrose yellow perianth, with a short broad crown, edged with orange-scarlet. A splendid variety for naturalizing.

75c per 12; \$5.50 per 100; \$50.00 per 1000.

BATH'S FLAME (1). Yellow perianth, deep yellow cup, with broad edge of orange-scarlet. Petals very long, giving the flower a distinct and outstanding character. Long stems.

\$1.15 per 12; \$8.50 per 100; \$80.00 per 1000.

CROESUS (2). Wide, over-lapping outer petals; creamy yellow in color. The broad fluted crown is a rich orange. A lovely, free flowering variety.

\$1.00 per 12; \$7.00 per 100; \$65.00 per 1000.

DIANA KASNER (3). Large fluted, rich yellow cup with scarlet edge, encircled in artistic contrast with a snow white perianth.

\$1.00 per 12; \$7.00 per 100; \$65.00 per 1000.

FIRETAIL (3). The broad petals of the creamy white perianth, and the brilliance of the orange-scarlet cup, combine to make this one of the most popular varieties of its type.

\$2.00 per 12; \$14.00 per 100; \$125.00 per 1000.

HERA. The perianth is broad petaled and creamy white, while the deeply frilled cup is of the same shade, with a dainty edging of light primrose.

\$1.00 per 12; \$7.50 per 100; \$70.00 per 1000.

JOHN EVELYN. A striking new variety with a pure white perianth 4 to 5 inches across. The flat lemon-yellow cup, 2 inches in diameter, is densely frilled and deeply fluted.

\$1.50 per 12; \$11.00 per 100; \$100.00 per 1000.

LORD KITCHENER (1). Broad, flat, pure white perianth, pale primrose crown. A splendid flower.

\$1.00 per 12; \$7.50 per 100; \$70.00 per 1000.

LUCIFER (2). A distinct variety; the perianth is pure white and the crown a brilliant orange, forming a beautiful contrast.

\$1.00 per 12; \$7.50 per 100; \$67.50 per 1000.

LUCINIUS. A distinctive and excellent variety. Large, rich golden yellow cup, with perianth of the same color.

\$1.00 per 12; \$7.50 per 100; \$70.00 per 1000.

RED BEACON. A most striking and attractive variety, with the contrast of its fluted cup of fiery orange-red, against an ivory-white perianth.

\$1.25 per 12; \$9.00 per 100; \$82.50 per 1000.

SILVER STAR. Broad petaled perianth of pure creamy white, with finely proportioned, broad trumpet of pale primrose.

\$1.50 per 12; \$11.00 per 100; \$100.00 per 1000.

CROWN DAFFODIL AND NARCISSI MIXTURE. A well balanced assortment.

75c per 12; \$5.00 per 100; \$45.00 per 1000.

### CROWN DAFFODIL COLLECTIONS

No. B-169

All 12 varieties

(a) 1 of each (12 bulbs).....	\$1.25
(b) 3 of each (36 bulbs).....	3.45
(c) 5 of each (60 bulbs).....	5.45
(Separately packaged and named; order by collection number and letter.)	

Orders for bulbs amounting to \$1.00 and more are PREPAID within the U. S. A.

## MINIATURE DAFFODILS

(For the Rock Garden)

**BULBOCODIUM CONSPICUUS** (Hoop Petticoat).

This variety grows only 6 inches tall with fine rush-like foliage. The flowers are bright golden yellow of hoop petticoat form. Prefers a dampish, sandy peat soil. Plant 2 to 2½ inches deep.

75c per 12; \$5.00 per 100; \$45.00 per 1000.

**TRIANDRUS AGNES HARVEY**. Dainty white miniature flowers of slightly drooping habit; one to three on each stem. Height 13 inches.

\$2.50 per 12; \$17.50 per 100.

**TRIANDRUS ALBUS** (Angels' Tears). It is of slender growth and produces a cluster of elegant little creamy white flowers with globular cup and reflexing perianth as in the Cyclamen; height 6 inches. Prefers gritty soil between the rocks and the bulbs should be left undisturbed to establish themselves. Plant 2 to 2½ inches deep.

\$1.50 per 12; \$10.00 per 100; \$90.00 per 1000.

## POET'S NARCISSUS

Plant the bulbs so that the tops are 3 inches below the surface and 4 to 6 inches apart.

**POETICUS ORNATUS MAXIMUM** (2). Pure white flowers with orange cup, edged with crimson; fine for cutting.

75c per 12; \$5.00 per 100; \$45.00 per 1000.

**POETICUS HOMER** (3). Snowy white petals with dark red rimmed eye; a fine variety.

75c per 12; \$5.50 per 100; \$50.00 per 1000.

**POETAZ FRANS HALS** (2). The finest of the Poetaz group; creamy white perianth and sparkling yellow cup.

65c per 12; \$4.50 per 100; \$41.00 per 1000.

**POETAZ ORANGE CUP** (1). Creamy white with conspicuous orange edges to the cup. A delightful variety with 6 to 8 florets to a stem.

\$1.15 per 12; \$8.00 per 100; \$75.00 per 1000.

### POET'S NARCISSUS COLLECTIONS

No. B-179

All 4 varieties

(a)	3 of each (12 bulbs)	.....\$ .85
(b)	6 of each (24 bulbs)	..... 1.55
(c)	12 of each (48 bulbs)	..... 2.95

(Separately packaged and named; order by collection number and letter.)

## ALSTROEMERIA

**AURANTIACA**. A variety of Chilean Lily, with spikes of lily-like flowers which are orange-yellow, spotted red. Fine as a cut flower, owing to its lasting qualities. They grow 2 feet tall and bloom in July. Set the tubers not less than 6 inches deep. Place some sand around them to afford drainage; usually do not bloom until the second season.

20c each; \$2.00 per 12; \$14.00 per 100.

## AMARYLLIS

**VITTATA HYBRIDS** (Hippeastrum). This is pre-eminently a window garden variety producing under simplest conditions, one or two spikes which are crowned with from three to six gigantic blooms, ranging in color from pure white grounds with varied markings of rose or red to self colors as crimson, scarlet, cerise, etc. Cultural leaflet free on request. Large strong bulbs.

Red Shades: 65c each; \$7.00 per 12.

Assorted Shades: 60c each; \$6.00 per 12.



*Agnes Harvey*



*Anemone, Giant Single*

## ANEMONES

The blossoms of the single variety resemble Poppies. The flowers are very beautiful and come in a great variety of dazzling colors. They flower early in spring and make a pretty display when planted in a bed or a border.

Set the tops of the bulbs 1 inch below the surface and 6 inches apart. Avoid over-watering before growth starts. They succeed best in a rich and rather heavy soil. **DE CAEN** or Giant Single Mixed. Large size bulbs.

60c per 12; \$4.50 per 100; \$40.00 per 1000.

**ST. BRIGID**. A distinct strain producing large flowers, mostly semi-double, with finely divided petals in a large variety of colors. Large bulbs.

75c per 12; \$5.00 per 100; \$45.00 per 1000.

Add 25c for packing and postage on orders for bulbs amounting to LESS than \$1.00



*Tuberous Begonia*

## BEGONIA—TUBEROUS ROOTED

The marked improvements made in the colors, size and type of flowers, are bringing Tuberous Rooted Begonias into greater use for pot culture, as well as for bedding out in partial shade. Cultural leaflet on request.

Six of a variety at the dozen rate; 50 at the 100 rate.

### SINGLE

Dark Red, Orange, Rose Pink, Apricot, White, Yellow. Large tubers.

15c each; \$1.50 per 12; \$11.00 per 100.

### SINGLE FRILLED

Dark Red, Orange, Rose Pink, Light Pink, Salmon, White, Yellow. Large tubers.

15c each; \$1.50 per 12; \$11.00 per 100.

### DOUBLE CAMELLIA TYPE

Apricot, Dark Red, Copper, Deep Pink, Light Pink, Orange, White, Yellow. Large tubers.

15c each; \$1.50 per 12; \$11.00 per 100.

### CRESTED OR BEARDED

Assorted Colors only:

15c each; \$1.50 per 12; \$11.00 per 100.

### TRAILING DOUBLE BEGONIAS

A splendid subject for hanging basket, wall pockets, and pots. (Lloydii.) Apricot, Scarlet, Orange, Rose, White, Yellow.

15c each; \$1.50 per 12; \$11.00 per 100.

### CARNATION FLOWERED TYPE

Assorted Colors only:

15c each; \$1.50 per 12; \$11.00 per 100.

### DUPLEX TYPE

Assorted Colors only:

15c each; \$1.50 per 12; \$11.00 per 100.

## CALLA—ZANTEDESCHIA

**PINK CALLA** (Rehmannii). Medium sized flowers of rose pink, shading to cerise when fully open. An unusual Calla. Height 10 inches.

75c each; \$2.00 for 3; \$7.00 per 12.

**YELLOW CALLA** (Elliottiana). The true yellow-flowering Calla. The flowers are bright yellow and the foliage dark green, spotted white. Plant bulbs 1 inch deep in well drained soil after cold weather is over.

20c each; \$1.50 per 12; \$11.00 per 100.

Extra Large Bulbs: 30c each; \$3.00 per 12; \$20.00 per 100.

**WHITE CALLA** (Aethiopica). Strong bulbs.

15c each; \$1.25 per 12; \$9.00 per 100.

## CALOCHORTUS

**MARIPOSA TULIPS**. The three-petaled flowers are cup-shaped and wonderfully marked with eyes, dots, and pencilings in rich colors. Plant 2 inches deep in well-drained soil in a sunny position.

60c per 12; \$4.00 per 100; \$37.50 per 1000.

## CHIONODOXA

**LUCILIAE** (Glory of the Snow). A dwarf early spring flowering bulb with brilliant sky blue flowers with a white center. Grows well in any good garden soil, and is excellent for rockeries or borders. Should be planted close together and 1 inch deep.

40c per 12; \$2.50 per 100; \$22.50 per 1000.

## CROCUS

One of the earliest spring flowering bulbs. They are effective when planted in a lawn or in a border 3 or 4 rows deep. Set the tops of the bulbs 2 inches below the surface and 2 to 4 inches apart. For pot culture, plant 6 or 8 bulbs in a pot, 1 inch deep.

### LARGE NAMED VARIETIES

**BARON BRUNOW**. Deep purple; large and free flowering.

**MONT BLANC**. Lovely pure white; extra large flowers.

**SIR WALTER SCOTT**. White, striped lilac; extra large.

**MAMMOTH YELLOW**. Rich golden yellow; free flowering.

**MAMMOTH MIXTURE**. Fine assortment of named varieties.

Each of the above:

50c per 12; \$3.25 per 100; \$29.00 per 1000.

### COLOR MIXTURES

Blue and Purple, Striped, White, Yellow, All Colors Mixed.

Each of the above:

35c per 12; \$2.00 per 100; \$18.00 per 1000.

### AUTUMN FLOWERING SPECIES

(Illustrated on back cover)

**SPECIOSUS**. Bright lilac-blue, orange anthers, and yellow throat.

**ZONATUS**. Rosy lilac with orange style and anthers.

Each of above:

65c per 12; \$4.25 per 100; \$40.00 per 1000.

## GLOXINIA

(January delivery.)

Beautiful pot plants for greenhouse culture. The magnificent tube-shaped flowers measure 3 to 4 inches across.

**Black Prince** (intense blue), **Brunhilde** (pure white),

**Delicate Pink**, **Sky Blue**, **Wandsbek Blut** (ruby red).

20c each; \$1.50 per 12; \$11.00 per 100.

## DIELYTRA—BLEEDING HEART

(December delivery.)

**SPECTABILIS.** An old-fashioned favorite. Its long racemes of graceful, heart-shaped pink flowers are very attractive. Does well in any part of the hardy borders, and especially valuable for shady places.

Large Clumps: 60c each; \$6.00 per 12.

## ERANTHIS—WINTER ACONITE

**HYEMALIS.** One of the earliest spring flowers; golden yellow buttercup-shaped flowers. Foliage remains long after the flower. Suitable in moist situations or under trees. Plant 1 inch deep and 3 inches apart.

45c per 12; \$3.00 per 100; \$27.50 per 1000.

## ERYTHRONIUM

(Dog's-tooth Violet—Trout Lily—Fawn Lily)

Charming woodland plants with richly-mottled leaves, bearing small lily-like flowers from February into April. The colors range from white, through shades of pink, to lavender and yellow.

They are hardy in the coldest regions, and at their best naturalized in groups in lightly-shaded corners or crevices in rockwork, in loose gritty soil containing old leaf mold. Plant upright 2 or more inches apart, covering the tip with 2 or 3 inches of soil. Do not permit the bulbs to become dry out of the ground.

Not recommended for the warmer regions unless the natural requirements of cool shade and moisture can be simulated.

Mixture of colors:

65c per 12; \$4.50 per 100; \$40.00 per 1000.



*Crocus*



*Freesia, Purity Superflora*

## FREESIAS

These can be planted from August to November, but early planting is preferable. They bloom in February and March, and the flowers which are fragrant, are largely used for cutting and last well.

Set the tops of the bulbs 1 to 2 inches below the surface, and 3 inches apart.

**PURITY SUPERFLORA.** Finest of the white varieties and a good forcing and cutting variety. Early flowering. Medium Bulbs: 25c per 12; \$1.75 per 100; \$15 per 1000. Large Bulbs: 40c per 12; \$3.00 per 100; \$27.00 per 1000.

**BLUE BIRD.** Rich blue; a fine standard variety. 50c per 12; \$3.50 per 100; \$31.50 per 1000.

**MARC PETERS.** Attractive deep rosy salmon; early blooming with long strong stems. Perhaps the finest colored Freesia variety.

50c per 12; \$3.50 per 100; \$31.50 per 1000.

**MENDOTA.** Deep golden yellow; very sturdy grower with long strong stems.

50c per 12; \$3.50 per 100; \$31.50 per 1000.

**SUNSET.** Glorious flame-orange; an exceptionally beautiful and strong growing variety.

50c per 12; \$3.50 per 100; \$31.50 per 1000.

**HALLAWELL'S SELECT MIXTURE.** Contains the above varieties (excepting white) and many others.

45c per 12; \$3.00 per 100; \$27.50 per 1000.

## GLADIOLUS—EARLY FLOWERING

(Baby Gladiolus)

This type of Gladiolus blooms in May or earlier. The flowers are borne on good stems; excellent for cutting. Plant 2 to 3 inches deep and 4 inches apart.

**APOLLO.** Orange-salmon; fine.

**BRILLIANT.** Deep scarlet, tinted carmine.

**THE BRIDE.** Pure white, daintily flecked with carmine in the throat.

**PEACH BLOSSOM.** Beautiful rosy blush, blotched with rose and cream.

Each of above or mixture:

60c per 12; \$4.00 per 100; \$36.00 per 1000.

## HALLAWELL'S GLADIOLUS

### SELECTION OF THE FINEST VARIETIES

Six of a kind at the dozen rate; 50 at the hundred rate;  
250 at the thousand rate.

**ALBATROSS.** A most desirable white. Tall, graceful spikes of large well-placed pure white flowers.

50c per 12; \$3.50 per 100; \$27.50 per 1000.

**AVE MARIA.** Perfectly formed, exquisite light blue flowers.

60c per 12; \$4.00 per 100; \$32.50 per 1000.

**BAGDAD.** A charming Gladiolus of smoky old-rose. The throat is lighter and color deepens toward the edge of petals.

50c per 12; \$3.50 per 100; \$27.50 per 1000.

**BETTY NUTHALL.** Glowing orange-pink with light yellow throat. Strong grower, good spike and perfect placement.

50c per 12; \$3.50 per 100; \$27.50 per 1000.

**CORYPHEE.** A delightful color of soft pink with white throat. Charming in baskets and flower arrangements.

50c per 12; \$3.50 per 100; \$27.50 per 1000.

**COMMANDER KOEHL.** Rich, deep-scarlet red with no markings or blotches. Wide open flowers on tall spikes.

60c per 12; \$4.00 per 100; \$32.50 per 1000.

**DR. F. E. BENNETT.** Brilliant flame-scarlet. Tall, strong stems with many open at one time.

50c per 12; \$3.50 per 100; \$27.50 per 1000.

**GATE OF HEAVEN.** A new ruffled variety with large, bold flowers of a rich yellow shade.

60c per 12; \$4.00 per 100; \$32.50 per 1000.

**GOLDEN DREAM.** Clear, deep golden yellow. Tall spikes of many open flowers.

50c per 12; \$3.50 per 100; \$27.50 per 1000.

**J. S. BACH.** Salmon, shading lighter in the throat. Many florets open at one time, finely arranged on the spike.

75c per 12; \$5.00 per 100; \$45.00 per 1000.

**KING ARTHUR.** Large ruffled florets of bright rosy lavender.

50c per 12; \$3.50 per 100; \$27.50 per 1000.

**MARGARET PETER.** White with red blotch. A fine Australian origination.

75c per 12; \$5.00 per 100; \$45.00 per 1000.

**MARMORA.** A most unusual shade of lavender-gray with pale purplish blotch. Tall spikes with many open flowers.

50c per 12; \$3.50 per 100; \$27.50 per 1000.

**MINUET.** Fine clear lavender. Splendid cut flower variety.

60c per 12; \$4.00 per 100; \$32.50 per 1000.

**MOTHER MACHREE.** Lavender-gray with edges of petals overlaid salmon pink. An interesting color combination.

65c per 12; \$4.50 per 100; \$37.50 per 1000.

**MOORISH KING.** The finest and largest flowered of the deep mahogany-red Gladiolus.

75c per 12; \$5.00 per 100; \$45.00 per 1000.

**MRS. LEON DOUGLAS.** Luminous, coral-rose, marked with stripes of vivid scarlet. A very fine Gladiolus.

50c per 12; \$3.50 per 100; \$27.50 per 1000.

**PELEGRINA.** Dark violet-blue, blotched slightly darker on two lower petals. One of the finest dark-blue shades.

50c per 12; \$3.50 per 100; \$27.50 per 1000.

**PFITZER'S TRIUMPH.** Large amaryllis-like flowers of bright scarlet with cherry-red blotch in the throat.

50c per 12; \$3.50 per 100; \$27.50 per 1000.

**PICARDY.** Glowing, shrimp or flesh-pink, without any markings. A very beautiful Gladiolus.

50c per 12; \$3.50 per 100; \$27.50 per 1000.



*Moorish King*

**STAR OF BETHLEHEM.** A magnificent glistening white variety, acclaimed the world's best white Gladiolus by fanciers.

60c per 12; \$4.00 per 100; \$32.50 per 1000.

**TROUBADOUR.** An outstanding purple Gladiolus which was featured at the recent Chicago Exposition.

60c per 12; \$4.00 per 100; \$32.50 per 1000.

**WASAGA.** Wide open, waved flowers of rich, golden-buff color. Beautiful in artistic flower arrangements.

50c per 12; \$3.50 per 100; \$32.50 per 1000.

**WUERTEMBURGIA.** Brilliant scarlet with contrasting cream blotch. One of the best Pfitzer introductions.

60c per 12; \$4.00 per 100; \$32.50 per 1000.

**RAINBOW MIXTURE.** A fine mixture of large flowering Gladiolus in a good variety of colors.

40c per 12; \$2.50 per 100; \$22.50 per 1000.

**HALLAWELL'S SELECT MIXTURE.** A mixture of the best named sorts in a great variety of colors.

60c per 12; \$4.00 per 100; \$32.50 per 1000.

### COMPLETE GLADIOLUS COLLECTION

No. B-209

Two bulbs each of the above 24 named Gladiolus,  
each variety labeled separately.

Total of 48 bulbs for \$2.35.



## HARDY IRIS OR FLAGS

This type has beautiful orchid-like flowers and broad evergreen foliage. Suitable for planting in borders in light shade or sun. Hardy Iris require little care and thrive in almost any kind of soil that is well drained. In heavy soil we suggest adding a small amount of lime or wood ashes. Plant 2 inches deep and 15 inches apart.

Transplant about every third year to prevent overcrowding.

- ANNA-MARIE CAYEUX. 32 in. Outstanding French origination, pinkish violet in effect, but predominantly Chinese-violet. 35c each; 3 for 75c.
- AVIATOR NUNGESSOR. 40 in. Early. Standards light frosty bronze, falls Van Dyke red. 35c each; 3 for 75c.
- BRUNHILDE. 40 in. Mid-season. Intense cobalt-blue; a most magnificent Iris. \$2.00 each.
- CALIFORNIA GOLD. 36 in. Late. Deep clear golden yellow. A sensational Iris, widely acclaimed as the best of the yellow Irises. \$1.50 each.
- CHEERIO. 40 in. Rich red in effect, with a flush of dull gold on the standards. An exceptionally fine Iris. \$1.50 each.
- CHINA ROSE. 36 in. Orchid-rose with bronze undertone at bottom of standards. A favorite. 40c each.
- DAUNTLESS. 40 in. Mid-season. Luminous velvety rose-red; a favorite in its color class. 35c each; 3 for 90c.
- EL CAPITAN. 38 in. Magnificent, light violet-blue. One of the largest grown. 35c each; 3 for 75c.
- FRIEDA MOHR. 45 in. Brilliant lavender or orchid-pink. Very stately and beautiful. 25c each; 3 for 50c.
- GOLD TOP. 36 in. Standards old gold; falls red-violet edged gold. 25c each; 3 for 50c.
- GRACE STURTEVANT. 30 in. Mid-season. Dark red-brown standards, with darker velvety falls; brightened by a brilliant orange-yellow beard. 25c each; 3 for 60c.
- HAPPY DAYS. 40 in. Early. One of the most sensational of the newer introductions. Huge flowers of clear, glistening yellow, borne seven or eight to each branch. \$1.50 each; 3 for \$3.75.
- HELIOS. 36 in. Beautiful light yellow with delicate light brown lining on the falls. 25c each; 3 for 50c.
- HIDALGO. 48 in. Very large lavender-blue of fine size and form, with many flowers open at one time. 25c each; 3 for 50c.
- INDIAN CHIEF. 32 in. Bronzy-violet standards with carmine falls. 25c each; 3 for 50c.
- INGENIEUR WINSSINGER. 30 in. Mid-season. Rich deep bronze flowers of fine finish. 35c each; 3 for 75c.
- JEAN AICARD. 36 in. Early. Violet-blue standards and red-violet falls; clearer and brighter than Magnifica. 35c each; 3 for 75c.
- MIRASOL. 30 in. Pure deep chrome yellow of fine form. One of the very good deep yellow Irises. 25c each; 3 for 50c.
- NEON. Late. Bronzy gold standards, and velvety carmine falls; one of the brightest Irises in the garden. \$1.00 each; 3 for \$2.50.
- PACIFIC. 32 in. Mid-season. Light bluish-violet; a fine large Iris with flaring falls. 35c each.
- PROF. MITCHELL. 30 in. Mid-season. Huge red-violet flowers; the largest variety of its color. \$1.00 each; 3 for \$2.50.
- PURISSIMA. Pure white of fine form and heavy substance; of vigorous growth with tall branched stems. 35c each; 3 for 75c.
- RONDA. 24 in. A low growing Iris; ideal for the border. Vividly effective flowers; rosy lavender standards and crimson falls. 25c each; 3 for 60c.
- RUBEO. 48 in. Standards deep glistening-rose; falls broad and of rich deep maroon. 50c each; 3 for \$1.25.

### FANCY IRIS COLLECTION

No. B-189

Frieda Mohr, Gold Top, Grace Sturtevant, Mirasol, Ronda, Shasta.

1 each of the above 6 standard varieties, \$1.00.

### SUPERB IRIS COLLECTION

No. B-199

China Rose, Happy Days, Sacramento, Shining Waters, Tiger Tiger, William Mohr.

1 each of the above 6 superb varieties, \$3.25.

Both Collections (12 varieties) for \$4.15.

- SACRAMENTO. 40 in. Late. Large white-ground flowers, veined at the edges with red-purple, and with brightly contrasting orange beard. 35c each; 3 for 90c.
- SAN FRANCISCO. 40 in. Large white flowers; standards and falls distinctly edged with lavender-blue. 25c each; 3 for 60c.
- SHASTA. 36 in. A free flowering white. Strong grower and well branched. 25c each; 3 for 50c.
- SHINING WATERS. 48 in. Mid-season. Lovely pale blue flowers on tall stems, each carrying twelve or more buds. 75c each; 3 for \$2.00.
- TIGER TIGER. 24 in. A distinct red Iris. Very bright and of good size. Standards are brown and the falls red. 50c each; 3 for \$1.35.
- WILLIAM MOHR. 24 in. Standards pale lilac, flushed darker and entire flower beautifully veined violet. 35c each; 3 for 75c.



Hardy Iris

## DUTCH IRIS

An early, improved type of Spanish Iris producing extra large flowers on strong stems. Plant the bulbs 6 to 8 inches apart and set the tops 2 to 3 inches below the surface.

**IMPERATOR.** Brilliant blue with orange-yellow blotch on lip.

65c per 12; \$4.00 per 100; \$37.50 per 1000.

**INDIAN CHIEF (W. Verschuur).** Violet bronze with bronze falls.

75c per 12; \$5.00 per 100; \$45.00 per 1000.

**J. MATHAM (Blue Skies).** Beautiful pale cornflower-blue self color.

65c per 12; \$4.50 per 100; \$40.00 per 1000.

**LEONARDO DA VINCI.** Standards creamy white, falls canary yellow with orange stripe. Very large flower, and early.

60c per 12; \$4.00 per 100; \$37.50 per 1000.

**THERESE SCHWARTZE.** Lovely lavender and white.

65c per 12; \$4.00 per 100; \$37.50 per 1000.

**WEDGEWOOD (Tingitana Hybrid).** A large flower with blue standards, and lighter blue falls. An excellent early forcer, or will bloom with late daffodils.

75c per 12; \$5.00 per 100; \$45.00 per 1000.

**WHITE EXCELSIOR.** Fine pure white with narrow feather of golden orange on lip.

65c per 12; \$4.50 per 100; \$40.00 per 1000.

**YELLOW QUEEN.** Pure golden yellow. Excellent for forcing or outside growing.

65c per 12; \$4.50 per 100; \$40.00 per 1000.

**MIXTURE** of named varieties.

65c per 12; \$4.50 per 100; \$40.00 per 1000.

## JAPANESE IRIS

(Iris Kaempferi)

This variety of Iris produces the largest and finest flowers in a great variety of colors. They are hardy, and do best in sunny situations which receive plenty of moisture during the growing season. They bloom for six weeks during June and July. The flowers measure 6 to 8 inches in diameter and are borne on long stems.

**ELEANOR PARRY.** Double blue.

**FASCINATION.** Beautiful mauve-pink, veined white; double.

**GOLD BOUND.** Creamy white with gold bands; double.

**KOKO-NO-IRO.** Six large, royal purple petals; yellow center.

**MAHOGANY.** Large double, purple-mahogany-red; late.

**PURPLE AND GOLD.** Violet-purple, golden throat; double.

Each of the above varieties:

35c each; \$1.00 per 3; \$3.50 for 12.

**MIXTURE** of above varieties:

30c each; 85c per 3; \$3.00 for 12.

## LACHENALIA—CAPE COWSLIP

Useful and interesting small bulbous plants from South Africa. May be grown out-of-doors in mild climates, or indoors in pots or baskets. Plant five or six bulbs in a 6-inch pot, in sandy loam containing leaf mold, and place in a cold frame or on a protected porch. Later, move to the greenhouse or into the house for flowering.

**PENDULA SUPERBA.** Pendulous cylindrical flowers about one inch in length, loosely borne on a spike 12 inches or more high. Flowers are brilliant coral red, tipped purple and green. An early sort, in bloom by Christmas from an early planting.

\$2.50 per 12; \$17.50 per 100.

## IRIS FIMBRIATA

A variety with small, lovely orchid-like flowers of lilac and gold; the flower stems which usually appear in February are much branched and the individual flowers are so numerous that the display continues for weeks.

25c each; 70c for 3; \$2.50 per 12.

## IXIAS

They are much admired for their brilliant colors and graceful flower stalks, which resemble a miniature Gladiolus. They come in several shades and are fine for cutting, lasting several days in water. The bulbs should be planted 1 inch deep and 3 inches apart, and for best effect should be in beds or groups of 25 to 100 or more bulbs.

**SPLENDID MIXTURE.** Containing many varieties and colors.

35c per 12; \$2.50 per 100; \$22.50 per 1000.

## LILY OF THE VALLEY

(December delivery.)

Suitable for pot culture or outdoors. For outdoor culture they require a loose, rich soil and a moist, shady position. Set so that the tips are slightly above ground and at a distance of three or more inches apart.

Potting and Forcing Type:

\$1.50 per 12; \$10.00 per 100.

Clumps for outdoor growing:

60c each; \$6.25 per 12; \$47.50 per 100.



*Glory of the Sun*

## LEUCOCORYNE

**GLORY OF THE SUN (L. ixioides odorata).** The sweet-scented flowers are ethereal blue with yellow in the center, and last well after cutting. Planted 2 inches deep in a sunny, well-drained position, they bloom the first year under favorable conditions. Top size bulbs.

55c for 3; \$2.00 per 12; \$14.00 per 100.

LILIUM—LILY

Lilies are benefited by shade about the roots and stems, but do not do well with shade about their heads, so should be planted among fairly dwarf growing shrubs, ferns or herbaceous plants to give the mature stem the protection it craves from the too great heat of the sun and to keep the ground around the bulb more or less cool.

The soil for lilies should be fibrous and rooty, some leaf mold or peat added, and deeply dug. Sharp sand placed around the bulb insures good drainage. Charcoal and sulphur sprinkled about in planting tend to ward off attacks of worms and blue mold.

Plant 1 foot apart and at depths specified below. Water only lightly until they are well rooted, but liberally when about to bloom; keep free from aphid or green fly at all times.

Lily bulbs are for November-December delivery, except CANDIDUM, which should be ordered in October for early planting.

**AURATUM PLATYPHYLLUM.** This is a robust growing and an improved form of Auratum; the stem is stouter and attains a greater height; the leaves are much broader, the enormous flowers are white, richly spotted yellow. Plant 9 inches deep. Northern domestic grown bulbs.

50c each; \$4.50 per 12; \$32.50 per 100.

Extra large: 65c each; \$6.50 per 12; \$50.00 per 100.

**BATEMANNIAE** (*L. dauricum* var.). Large, clear glowing apricot flowers, from 4 to 6 in a cluster, on stems 3 feet high. Plant 4 to 5 inches deep. July flowering.

35c each; \$3.25 per 12; \$22.50 per 100.

**CANDIDUM** (St. Joseph or Madonna Lily.) A very hardy early flowering lily; the pure white flowers are fragrant and are borne on long stems. The best white lily to plant out of doors. Succeeds best when fully exposed to the sun. Plant not over 1 to 2 inches deep. (Order in October, as bulbs must be planted early.) Holland-grown bulbs.

Mammoth size: 35c each; \$3.50 per 12; \$27.50 per 100.

**HANSONI.** Waxy, bright orange-yellow flowers with reflexed petals, on plants 4 to 5 feet high. Plant 6 to 8 inches deep in semi-shade among low shrubs, and cover with loose straw or mulch to retard starting. June flowering.

50c each; \$4.50 per 12; \$32.50 per 100.

**HARRISII** (Bermuda Easter Lily). A taller and larger flowered form of *L. longiflorum*, especially adapted for Easter forcing. Bermuda-grown bulbs.

50c each; \$5.00 per 12; \$35.00 per 100.

**HENRYII** (the Yellow Speciosum). The flowers are a rich apricot-yellow with a few brown spots; grows 3 to 5 feet high; very hardy and free flowering. Plant 9 inches deep. Northern domestic-grown bulbs.

Large size: 35c each; \$3.25 per 12; \$22.50 per 100.

**PARDALINUM** (Leopard Lily). Large numbers of flowers having reflexed petals; bright orange, spotted maroon, tipped orange-scarlet. An easily grown hardy lily, thriving in the shade or cool and moist sunny situation. Height 5 to 7 feet; July flowering; plant 4 inches deep.

30c each; \$2.50 per 12; \$17.50 per 100.

**REGALE.** A magnificent hardy lily from China; vigorous; 3 to 5 feet high, bearing one to several handsome white fragrant flowers; slightly shaded pink outside and the lower inner surface primrose-yellow. It seems to thrive in any good, well-drained soil and prefers full sun. Plant 9 inches deep. Northern domestic-grown bulbs.

20c each; \$1.50 per 12; \$10.00 per 100.

Extra large: 25c each; \$2.00 per 12; \$15.00 per 100.



*Umbellatum*

**SPECIOSUM ALBUM.** A beautiful lily with large white reflexed flowers of great substance, with a greenish band running through the center of each petal. Plant 9 inches deep. Holland-grown bulbs.

40c each; 4.50 per 12; \$32.50 per 100.

**SPECIOSUM RUBRUM** (Pink Tiger Lily). A strong, vigorous grower, having stems 3 to 4 feet tall, with bright blossoms, which are white, shaded rose and spotted deep red. Plant 9 inches deep. Holland-grown bulbs.

30c each; \$2.50 per 12; \$17.50 per 100.

**SPECIOSUM RUBRUM MAGNIFICUM.** This variety is similar to the Rubrum, but is deeper crimson. Plant 9 inches deep. Holland-grown bulbs.

35c each; \$3.00 per 12; \$22.50 per 100.

**TENUIFOLIUM** (Siberian Coral Lily). A charming little lily with strongly recurved petals of waxy texture; dazzling coral-red. Excellent for a partially shaded rock garden or border; 1 to 2 feet tall blossoms profusely in May and June. Plant 6 inches deep. Holland-grown bulbs.

15c each; \$1.00 per 12; \$7.50 per 100.

**TIGRINUM GIGANTEUM** (Improved Tiger Lily). A very hardy and free flowering sort; the blossoms are a bright orange color, spotted black. Plant 9 inches deep. Holland-grown bulbs.

20c each; \$1.75 per 12; \$12.00 per 100.

**UMBELLATUM.** One of the earliest lilies, blooming in June. Very free flowering with large umbellate heads of orange-red. Height 2 feet. Plant 4 inches deep. Holland-grown bulbs.

20c each; \$1.75 per 12; \$12.00 per 100.

**WILLMOTTIAE** (*L. warleyense*). A graceful lily with slender foliage, producing numbers of recurved flowers; orange-red with brown spots. Height 4 to 5 feet; July flowering; plant 4 inches deep.

50c each; \$5.00 per 12; \$37.50 per 100.



*Grape Hyacinths*

### MUSCARI—GRAPE HYACINTH

These are dainty little flower spikes bearing curious ball-shaped bells in white and blue. Thriving either in partially shaded or sunny locations.

**ARMENIACUM.** Very large flowers of a deep cobalt-blue carried on long stems. Wonderfully fragrant and excellent for cutting; blooms later than Heavenly Blue.

45c per 12; \$3.00 per 100; \$27.50 per 1000.

**HEAVENLY BLUE.** Flowers clear deep blue, changing to lighter blue; very strong grower, producing much larger spikes than the ordinary sort.

45c per 12; \$2.75 per 100; \$25.00 per 1000.

**PEARLS OF SPAIN.** Pure white; very lovely when planted with the blue variety.

50c per 12; \$3.50 per 100; \$31.50 per 1000.

**PLUMOSUM (Plume Hyacinth).** Feathery plumes of soft violet. Very attractive.

60c per 12; \$4.00 per 100; \$37.50 per 1000.

### ORNITHOGALUM

**ARABICUM (Star of Bethlehem).** Beautiful variety, throwing up a tall spike bearing numerous large, milk-white star-shaped flowers, with a black center, and having a distinct aromatic perfume. They are of the easiest culture.

75c per 12; \$5.00 per 100; \$45.00 per 1000.

**THYRSOIDES FL. PL.** Double form of the South African Chinchinchee, noted for the exceptional lasting qualities of the flowers. Buds are straw-colored, opening to pure white.

\$1.00 per 12; \$7.00 per 100; \$65.00 per 1000.

### HERBACEOUS PEONIES

Plant them in deep rich soil, setting the roots so that the crowns are covered with 2 inches of earth. If planted too deeply they are not likely to bloom freely. (November delivery.)

**ALBERT CROUSSE.** Large shell-pink.

**EDULIS SUPERBA.** Deep rose pink, shading lighter.

**FELIX CROUSSE.** Rich, brilliant ruby red.

**FESTIVA MAXIMA.** Pure white.

**MARGUERITE GERARD.** Delicate Hydrangea-pink, changing to creamy white; petals flecked carmine at tips.

**MME. CALOT.** Hydrangea pink with darker shadings. Very fragrant and free blooming.

Strong Clumps: 50c each; \$5.50 per 12.

## RANUNCULUS

Attractive spring flowering bulbs producing flowers on stems 12 to 15 inches high. Very showy in beds or borders. Plant 2 inches deep with the claw-like projections downward, in a well-drained soil which has been previously watered and allowed to mellow. Little if any additional moisture should be required until the plants appear. October to December are the best planting months.

**HYBRID MIXTURE.** Large size bulbs.

50c per 12; \$3.50 per 100; \$30.00 per 1000.

**SEPARATE SHADES OF RED, ORANGE, OR YELLOW.**

65c per 12; \$4.50 per 100; \$40.00 per 1000.

## SNOWDROPS—GALANTHUS

Universal favorites which flower very early. Plant 2 inches deep and 2 to 3 inches apart.

**ELWESII.** A large type of the single Snowdrop.

60c per 12; \$4.00 per 100; \$36.00 per 1000.

## HARDY PHLOX

Ready in November. Prices are postpaid.

Hardy Phlox thrive in soil which has been deeply enriched. They require plenty of water during the summer months, and in hot climates should have light shade. California grown stock is offered.

The following: 30c each; 3 for 75c; \$2.50 for 12.

**BRIDESMAID.** Pure white with crimson eye; distinctive. Medium height.

**ECLAIREUR.** Deep wine red with lighter eye. Early and vigorous. Tall.

**JULES SANDEAU.** Large trusses of large, bright rose-pink flowers. Dwarf.

**MRS. JENKINS.** Fine trusses of pure white flowers; late. Tall.

**PROF. SCHIELMANN.** Beautiful lilac-rose, the best in its color class; late. Tall.

**RHEINLANDER.** Large florets of beautiful salmon-pink, with cherry-red eye. Medium.

**RIJNSTROOM.** Heavy trusses of lively rose-pink; strong grower. Tall.

**SALADIN.** Glowing orange-scarlet with deeper eye; very large flowers. Tall.

**WIDAR.** Large two-toned florets; lavender-violet with white eye. Medium.

The following: 40c each; 3 for \$1.00; \$3.50 for 12.

**LEO SCHLAGETER.** Dazzling scarlet with an orange cast, a grand variety; early. Tall.

**LEUCHTFEUER.** Deep salmon with orange glow. Immense heads of unusually large florets. Dwarf.

**ROSENKAVALIER.** Large trusses of rosy red florets; strong grower and mildew resistant. Tall.

### SCILLA—WOOD HYACINTH

Charming bell-shaped flowers that do well under trees or in other shady situations. Blooms very early. Plant 3 inches deep and 4 to 6 inches apart.

**CAMPANULATA ALBA.** Pure white bells; height 12 inches.

**CAMPANULATA BLUE.** Porcelain blue; height 15 inches.

**CAMPANULATA ROSEA.** Lavender-pink; height 15 inches.

**CAMPANULATA MIXTURE.** All colors.

Each of above:

40c per 12; \$3.00 per 100; \$27.00 per 1000.

**SIBIRICA (Blue Squill).** One of the prettiest early spring blooming bulbs, with sprays of exquisite rich blue flowers. Height 4 inches.

60c per 12; \$4.00 per 100; \$36.00 per 1000.

**SIBIRICA SPRING BEAUTY.** Lovely delft blue. The flowers are larger than those of the ordinary Sibirica.

\$1.25 per 12; \$9.00 per 100; \$85.00 per 1000.

### SNOWFLAKES—LEUCOJUM

These are similar to Snowdrops but of stronger growth. The flowers are white, tipped with green, and are borne on stems 1 to 2 feet high.

75c per 12; \$5.00 per 100; \$45.00 per 1000.

### SPARAXIS

The showy flowers are borne on stiff, wiry stems about 9 inches high. The colors are of the most pleasing combinations with throat markings of an entirely different color from the balance of the flower. Plant bulbs 2 inches deep and 3 or more inches apart.

**ALL COLORS MIXED.**

40c per 12; \$3.00 per 100; \$27.00 per 1000.

### SPIRAEA—ASTILBE

While these can be used for outdoor planting, in partial shade where they will bloom during the summer, their great value lies in their ease of culture as a house plant.

**GLADSTONE.** Finest white, very large flowers.

**QUEEN ALEXANDRA.** Beautiful delicate pink.

**RUBENS.** Deep pink shaded carmine.

Extra large clumps: 60c each; \$6.00 per 12.



*Sparaxis*

### TIGRIDIA—TIGER FLOWER

(December delivery.)

The gorgeous colored blossoms are short-lived, but are produced continuously during the summer. Plant 2 to 3 inches deep and 4 to 8 inches apart in a sunny position, and place sand under to afford drainage.

**Bright Red, Orange, Yellow, Rose-Pink, White (red spots).**

15c each; \$1.50 per 12; \$11.00 per 100.

### TRITONIA CROCATA

**ORANGE PRINCE.** Attractive orange-red flowers about 2 inches across with a transparent blotch at the base of each petal. One foot tall; bloom in May. Plant bulbs 2 inches deep and 3 inches apart.

50c per 12; \$3.50 per 100; \$32.50 per 1000.

### WATSONIA

Watsonias are similar to Gladiolus, and bloom during June and July. The spikes grow 3 to 4 feet tall and bear a dozen or more flowers. They bloom freely and thrive best in a sunny situation. Set the bulbs 3 inches deep and 8 inches apart.

**HYBRID MIXTURE.** The bulbs vary in size according to variety, some of the best sorts having quite small bulbs.

75c per 12; \$5.50 per 100; \$50.00 per 1000.



*Tigridia (Tiger Flower)*

#### Bulbs POSTPAID

Orders for bulbs amounting to \$1.00 or more, are sent postpaid or express prepaid anywhere within the U. S. A. (Add 25c for packing and postage on lesser orders.)

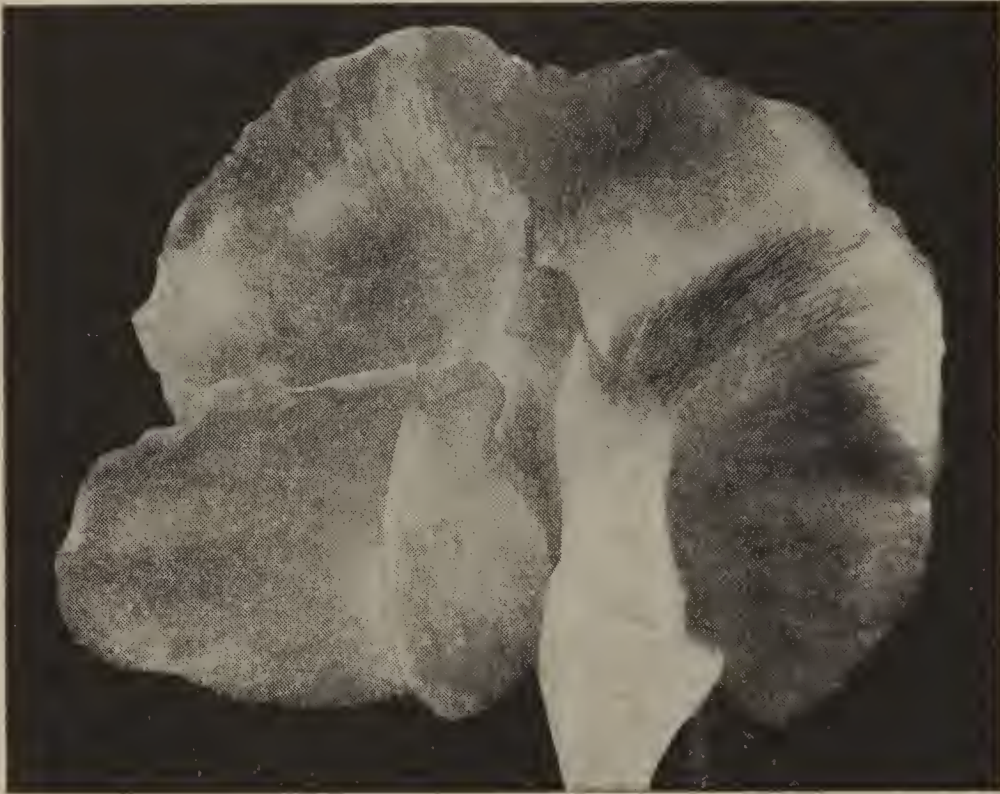
6 of a variety at the 12 rate; 50 at the 100 rate; 250 at the 1000 rate.

# HALLAWELL'S SWEET PEAS

**CULTURE**—Dig a wide trench to a depth of 12 inches and after breaking up the bottom of trench fill in with several inches of peat or leaf mold to which add a liberal amount of bone meal; fill in the balance of the trench with good top soil. Tamp the soil down firmly and water thoroughly to the base. Let stand a few days until moderately moist. Never put the seed in too wet soil. Pulverize the surface well by raking, make rows and plant seed about one inch deep, and two inches apart. Do not water until all the seed is up, at least half an inch out of the soil.

## GIANT WAVED AND RUFFLED SPENCER

For Spring and Summer Blooming



### STANDARD VARIETIES

Price of each: Pkt., 10c; oz. 30c.

- AUSTIN FREDERICK IMPROVED**—Giant lavender, very fine.  
**AVALANCHE**—Glistening white of great substance.  
**CHIEFTAIN**—Large clear satiny mauve (deep lavender).  
**CHLOE**—Deep shell pink, cream ground; duplexed flowers.  
**CRIMSON KING**—True crimson; large, bold flowers on long stems.  
**DAMASK ROSE**—A beautiful rosy crimson shade; of splendid formation.  
**GOLD CREST**—Orange tinted salmon; should be shaded when in bloom.  
**GOLD FINCH**—Gold and rich pink; fine color combination.  
**HAWLMARK PINK**—Rich rose-pink, deeply flushed and shaded with salmon.  
**MRS. A SEARLES**—Orange-cerise merging into a soft oriental-red.  
**PINKIE**—Unusually large flowers and clear rose-pink.  
**POWERSCOURT**—Clear pure lavender; the best lavender.  
**ROSIE**—Giant flowered deep pink; of heavy texture and borne on long stout stems.  
**SEXTET QUEEN**—Pure white; 5 to 6 blossoms on a stem.  
**SONNY BOY**—Vermilion crimson, outstandingly brilliant.  
**SPLENDOR**—Reddish maroon of splendid form.  
**STATIONMASTER**—Hydrangea pink; large waved flowers on fine long stems.  
**WELCOME**—A really sun-proof vivid deep scarlet.  
**YOUTH**—Large pure white with margin of clear pink. Developed especially for its fragrance.

### NEWER INTRODUCTIONS

Price of each: Pkt. 15c; oz. 40c.

- AFFECTION**—Light coral pink on cream ground.  
**AMBITION**—Fine new rosy lavender.  
**BONNIE RUFFLES**—Salmon pink on cream ground; beautifully ruffled and duplexed.  
**BLUE (Ruffled)**—Lovely mid-blue; ruffled and duplexed.  
**CAPRI**—Giant waved light blue with long stems; a very beautiful variety.  
**CHEERIO**—Mammoth deep Begonia rose suffused with gold.  
**CRIMSON (Ruffled)**—Rich velvety crimson.  
**CRINKLES (Ruffled)**—Cerise-pink with coral suffusion.  
**DERBY DAY**—Sparkling crimson; vigorous.  
**EXQUISITE (Ruffled)**—Sparkling salmon-cerise; ruffled.  
**FLAGSHIP**—Clear deep blue; an improvement over the variety Fortune.  
**FLUFFY RUFFLES (Ruffled)**—Light cream pink; long stems and beautifully ruffled flowers.  
**GIGANTIC**—Giant ruffled white; black seed. The finest white.  
**HIGHLANDER**—Pure clear lavender; large bold flowers on strong stems.  
**HOLLYBERRY**—Large flowers; rich scarlet, orange suffusion.  
**KING LAVENDER**—Clear lavender; fine stems and a robust grower.  
**LADY RUFFLES**—Soft pink on white ground.  
**LEVIATHAN**—Rich maroon; huge flowers on long stems.  
**MASTERCREAM**—Rich deep cream; black seeded. One of the finer new introductions.  
**PINK FRILLS**—Rich, salmon cream pink.  
**PURPLE (Ruffled)**—Rich rosy purple; nicely ruffled.  
**ROSE (Ruffled)**—Soft, rich rose; perfectly ruffled.  
**TANGERINE IMPROVED**—Rich orange; should be shaded when in bloom.

**HALLAWELL'S SPENCER MIXTURE.** This mixture is a beautiful blend of the best varieties of Spencers in the proper proportion and includes all the latest novelties. Pkt. 10c; oz. 25c; 1/4 lb. 65c; 1/2 lb. \$1.15; lb. \$2.  
**CUPID SPENCER MIXED.** Very dwarf and bushy, growing 1 foot high and spreading to about 2 feet in diameter; very effective when planted in a border. Mixture of all varieties. Pkt. 10c; oz. 50c; 1/4 lb. \$1.50.

**NEW SUPERB COLLECTION.** Containing one packet each of 12 fine varieties of our selection, including some of the newer introductions: \$1.00.

**SPECIAL SPENCER COLLECTION.** One packet each of six splendid varieties of our selection, 50c.

### NITRAGIN INOCULATOR

A nitrogen gathering bacteria for inoculating the seeds of Sweet Peas and Garden Peas. Full directions on the package. Garden size, 10c postpaid.

## EARLY SPENCER SWEET PEAS For Winter and Early Spring Flowering

Large wavy Spencer type Sweet Peas, flowering from four to six weeks earlier than the Late Spencers and blooming freely for a long season. They are particularly suitable for winter flowering in sub-tropical climates.

Any of following: Pkt. 15c; oz. 60c.

APOLLO. Soft salmon-cerise; long strong stems.  
BALL ROSE IMPROVED. Large, rich rose pink.  
BLUE BONNET. Clear rich blue; attractive.  
BLUE DANUBE. Enchanting mid-blue; large ruffled flowers on long strong stems.  
BRIDESMAID. Sparkling deep silvery pink; extra long stems and vigorous growth.  
CATTLEYA. Large flowers of rich rosy lilac; striking.  
CHIME—Light coral pink; a fine new variety.  
DAPHNE—Soft salmon-pink on cream ground. An abundance of flowers on vigorous vines.  
FRAGRANCE. Mammoth clear, uniform lavender.  
GLORIA. Sparkling salmon rose; long stems.  
HARMONY. Clear lavender; one of the best lavenders.  
HOPE. Large pure white; black seeded.  
JOSIE. Beautiful rose pink; extra long stems.  
LADDIE IMPROVED. New long stemmed giant rose pink.  
MARS—Clear crimson; long stems, floriferous, and very vigorous.  
MEMORY. A fine large clear rosy lavender.  
MRS. REDDICK. Brilliant salmon flesh pink; long stems and exceptionally large wavy flowers.

ORIENTAL. Rich deep cream; black seeded.  
OTHELLO. Deep maroon; a standard variety.  
PRIDE. Pure deep cerise; long stemmed.  
SEQUOIA. Enormous rich golden cerise. An exceptionally fine variety with long, strong stems.  
SHIRLEY TEMPLE. Giant waved flowers of soft rose pink.  
SUNRAY. Scarlet cerise with salmon sheen; a striking variety.  
SUSANNA. Rich carmine red flowers on good stems.  
TOP HAT. New and distinct deep velvety violet-blue. Mammoth flowers with waved standard; long stems.  
VALENCIA. Vivid sunproof orange with long stems.  
VULCAN. The most vivid orange scarlet. Sunproof and long stems.  
WHITE CHAMPION. Long stemmed pure white. One of the best white seeded varieties.  
EARLY COLLECTION. Six fine varieties of our selection for 65c.  
HALLAWELL'S CHOICE MIXTURE. A select formula mixture. Pkt. 15c; oz. 40c; 1/4 lb. \$1.25.

## MISCELLANEOUS FLOWER SEEDS FOR FALL PLANTING

### ABRONIA GRANDIFLORA—

#### *Sand Verbena*

Hardy perennial trailing plant with clusters of sweet scented rosy lilac flowers. Pkt. 10c; 1/4 oz. 30c.

### ACROCLINIUM

Annual "Everlasting," 15 inches in height. Sow seed in the open in the fall. **Double Pink:** Pkt. 10c; 1/4 oz. 25c.  
DOUBLE HYBRIDS. Larger flowers in a mixture of pastel shades. Pkt. 15c; 1/4 oz. 45c.

### AGATHEA COELESTIS—*Blue Daisy*

Sky blue flowers with yellow disc growing 1 foot tall; half hardy perennial. Sow the seed in boxes to transplant. Pkt. 10c; 1/8 oz. 30c; 1/4 oz. 50c.

### ALYSSUM

Dainty subject for borders, edgings and rockwork. For winter bloom, sow in the open in the early fall.

MARITIMUM (Sweet Alyssum). Fragrant white flowers all summer. Hardy annual. Pkt. 10c; oz. 40c; 1/4 lb. \$1.15.

MARITIMUM CARPET OF SNOW. Dwarf flat growth; fine for edgings. Hardy annual. Pkt. 10c; 1/4 oz. 30c; oz. 85c.

LILAC QUEEN. Flowers light lilac; compact growth. Hardy annual suited for bedding or borders. Pkt. 10c; 1/4 oz. 35c.

SAXATILE COMPACTUM (Gold Dust). Bright yellow flowerheads; grayish foliage. Hardy perennial. Pkt. 10c; 1/4 oz. 40c.

SAXATILE SILVER QUEEN. Pale yellow, good compact habit. Hardy perennial. Pkt. 15c; 1/8 oz. 65c.

### ANAGALLIS—*Pimpernel*

Lovely dwarf hardy annual plants, 6 inches high. Sow the seed in the fall where the plants are to remain.

GRANDIFLORA BLUE. Pkt. 15c; 1/4 oz. 35c.

GRANDIFLORA MIXED. All shades. Pkt. 10c; 1/4 oz. 25c.

### ANCHUSA

Hardy annuals and perennials producing brilliant blue, Forget-me-not like flowers.

BLUE BIRD. Flowers are a vivid indigo-blue. Compact plants 18 inches in height; annual. Pkt. 15c; 1/4 oz. 30c.

CAPENSIS (Cape Forget-me-not). Azure blue flowers; grows 2 feet high and blooms all summer; annual. Pkt. 10c; 1/4 oz. 25c.

ITALICA LISSADELL. Sprays of extra large, bright gentian blue flowers. Height 5 ft.; perennial. Pkt. 15c; 1/4 oz. 35c.

### ANEMONE

Spring blooming flowers in a great variety of colors. The woolly seed should be rubbed with sand and the two may be sown together in the fall for next season's bloom.

DE CAEN (Monarch Strain). Mixed colors; giant single flowers on fine stems. Pkt. 15c; 1/8 oz. 75c.

ST. BRIGID (Select Strain). Mixed colors; giant semi-double and double flowers. Pkt. 25c; 1/8 oz. \$1.00.

### ARCTOTIS

GRANDIS (African Lilac Daisy). Pearl white flowers with mauve center, with reverse of the petals pale lilac. Annual 2 to 2 1/2 feet in height. Pkt. 10c; 1/4 oz. 25c.

GIANT HYBRIDS. Flowers 2 1/2 to 3 inches in diameter in a rich range of colors. Annual; height 12 inches. Pkt. 25c; 1/8 oz. \$1.25.



*Snapdragon, Super Majestic*

### ANTIRRHINUM—*Snapdragon*

For early flowering sow in the fall, protecting the plants from frost. The new varieties under normal conditions produce 85 per cent or more of plants that will be resistant to rust.

#### MAXIMUM TYPE

(Rust Resistant, Height 3 to 4 feet)

ALASKA. Pure white.	DAFFODIL. Rich yellow.
CAMPFIRE. Luminous scarlet, yellow lip.	FAIR LADY. Pink, white tube.
CANARY BIRD. Canary yellow.	INDIAN SUMMER. Coppery orange scarlet.
CHRISTMAS CANDLE. Bright flame, cream tube.	LOVELINESS. Soft rose pink.
COPPER SHADES. Copper and bronze shades.	SALMON ROSE SHADES. Bright yellow lip.
CRIMSON MONARCH. Rich crimson.	

Above separate colors: Pkt. 20c; 1/16 oz. 50c.

HALLAWELL'S SELECT MIXTURE. A selected strain containing many new shades. Pkt 15c; 1/8 oz. 65c.

#### SUPER MAJESTIC TYPE

(Rust Resistant, Height 20 to 30 inches)

AUTUMN GLOW SHADES. Old rose, yellow lip.
HARMONY SHADES. Terra cotta and yellow.
ORANGE SHADES. Deep and light shades.
RED ROCKET—Fiery red.
RED SHADES. Crimson, garnet, and ruby.
ROSE SENSATION—Finest rose pink.
ROSE SHADES. Begonia-rose shades.
SILVER PINK. Lovely clear pink.

Above separate colors: Pkt. 25c; 1/32 oz. 75c.

Collection of one packet each of 6 colors, \$1.25.

HALLAWELL'S SUPER MAJESTIC MIXTURE. Pkt. 25c; 1/16 oz. 75c.

#### INTERMEDIATE TYPE

(Rust Resistant, Height 18 to 24 inches)

HALLAWELL'S INTERMEDIATE MIXTURE. Pkt. 15c; 1/8 oz. 60c.

### BARTONIA AUREA—*Mentzelia Lindleyi*

Annual California wild flowers producing showy golden yellow flowers. Sow where plants are to remain. Pkt. 10c; 1/4 oz. 25c; oz. 75c.

### AQUILEGIA—*Columbine*

A hardy perennial of graceful habit growing 2 to 3 feet high. The attractive long spurred flowers produce an unusual wealth of color from May to July.

CHRYSANTHA (Golden Spurred). Golden yellow. Pkt. 15c; 1/16 oz. 45c.

BLUE HYBRIDS. Shades of blue. Pkt. 25c; 1/16 oz. 65c.

PINK HYBRIDS. Pink shades. Pkt. 25c; 1/16 oz. 65c.

ORANGE AND SCARLET HYBRIDS. Fine. Pkt. 25c; 1/16 oz. 65c.

HALLAWELL'S SELECT HYBRIDS. An exceptionally fine strain of Long Spurred Hybrids. Pkt. 25c; 1/16 oz. 75c.

LONG SPURRED HYBRIDS MIXED. Pkt. 15c; 1/8 oz. 50c.

DOUBLE MIXED. Short incurved Spurs. Pkt. 15c; 1/8 oz. 30c.

### ASTER PERENNIAL—*Michaelmas Daisy*

Beautiful hardy fall flowering perennials.

WARTBURG STAR (Sub-coeruleus)—A new, earlier and larger flowering variety of this type. Lavender-blue flowers with yellow centers borne from May to July. Height 18 to 24 inches. Pkt. 25c; 1/8 oz., \$1.00.

NEW LARGE FLOWERED—Mixed, 1 to 3 feet tall. Pkt., 15c; 1/8 oz., 60c.

### AUBRIETIA

One of the most beautiful of dwarf, creeping plants for massing in rockeries or in borders, forming brilliant sheets of color for many weeks in the spring. Hardy perennial.

BOUGAINVILLEI—Dark blue. Pkt. 25c; 1/8 oz. 60c.

GRAECA—Light purple, very free blooming. Pkt. 15c; 1/8 oz. 50c.

LARGE FLOWERED HYBRIDS—Pkt. 15c; 1/8 oz. 45c.

### BELLIS PERENNIS—*English Daisy*

Hardy perennial, blossoming freely all spring and summer.

Plant is about 4 inches high and is valuable for borders.

GIANT ROSE, WHITE, or MIXTURE. Pkt. 15c; 1/8 oz. 60c.

GIANT QUILLED ETNA. Rich red. Pkt. 25c; 1/8 oz. 75c.

GIANT QUILLED MONTEROSA. Rose. Pkt. 25c; 1/8 oz. 75c.

SINGLE LAWN DAISY. Pkt. 15c; 1/8 oz. 50c.

### CALCEOLARIA

Annual greenhouse plant producing a mass of beautiful pouch-shaped flowers in spring. Sow the seed in the early fall.

COVENT GARDEN STRAIN. Large flowers in many colors. Pkt. 50c.

### CAMPANULA—*Canterbury Bells*

#### PERENNIAL VARIETIES

PERSICIFOLIA GRANDIFLORA (Peach Bell). Large flowered. Height 4 feet. BLUE, WHITE, MIXED. Pkt. 15c.

PERSICIFOLIA TELHAM BEAUTY. Immense bell-shaped flowers of pale china-blue, produced on long stems. Pkt. 25c.

PYRAMIDALIS (Chimney Bellflower). Large flowers on tall spikes. BLUE, WHITE, MIXED. Pkt. 15c; 1/8 oz. 50c.

CARPATICA (Carpathian Harebell). For rockeries; height 9 inches. BLUE, WHITE, MIXED. Pkt. 10c; 1/4 oz. 50c.



### CALENDULA—Cape Marigold

Free flowering hardy annuals which are excellent for bedding and cutting. Sow in the open and thin or transplant to one foot apart.

- ORANGE SUNSHINE. Clear orange. Pkt. 15; 1/2 oz. 35c.
- SUNSHINE (Chrysantha). Large double, buttercup-yellow flowers with long loose petals, on exceptionally long, stout stems. Pkt. 15c; 1/2 oz. 35c; oz. 60c.
- ORANGE KING (Hallawell's Special Strain). Very large, deep orange-red with dark center. Pkt. 10c; 1/2 oz. 35c; oz. 60c.
- LEMON KING ("Extra Select"). Very large, rich lemon-yellow. Pkt. 10c; 1/2 oz. 25c; oz. 40c.
- BALL APRICOT. Pkt. 15c; 1/4 oz. 35c; oz. \$1.00.
- BALL GOLD. Deep golden yellow of extra large size; fine long stems. Pkt. 15c; 1/4 oz. 35c; 1/2 oz. 60c; oz. \$1.00.
- BALL ORANGE. Immense rich orange flowers carried on long stems. Pkt. 15c; 1/4 oz. 35c; 1/2 oz. 60c; oz. \$1.00.
- CAMPFIRE (Sensation). Large double, brilliant orange colored flowers. Pkt. 15c; 1/4 oz. 30c; oz. 85c.
- RADIO. Medium size, clear orange flowers. The petals are beautifully quilled. Pkt. 10c; 1/2 oz. 30c; oz. 50c.
- MIXED. Pkt. 10c; oz. 25c; 1/4 lb. 85c.
- HALLAWELL'S SPECIAL MIXTURE. Pkt. 15c; oz. 45c; 1/4 lb. \$1.35.

### CANDYTUFT

Hardy annuals and perennials for beds and borders. Seeds sown in autumn produce flowers early in the spring.

#### ANNUAL VARIETIES—Height 12 to 15 inches

- |              |          |         |
|--------------|----------|---------|
| ALBIDA WHITE | CARMINE  | CRIMSON |
|              | LAVENDER |         |

Each of above: Pkt. 10c; 1/2 oz. 30c.

- ROSE CARDINAL. Rosy cardinal. Pkt. 10c; 1/4 oz. 25c.
- SPLENDID MIXED. Pkt. 10c; 1/2 oz. 25c; oz. 40c.
- GIANT HYACINTH FLOWERED. Long spikes of white flowers. Best sort for cut flowers: 1 1/2 feet. Pkt. 10c; 1/4 oz. 35c.

#### PERENNIAL VARIETIES

- SEMPERVIRENS. Pure white. Pkt. 15c; 1/8 oz. 50c.
- GIBALTARICA. Lilac shading white. Pkt. 10c; 1/4 oz. 50c.



Cineraria, California Super Giants

### CARNATION

The Chabaud and Enfant de Nice Carnations are the most satisfactory garden types as they bloom within five or six months after being sown.

#### CHABAUD'S EVERBLOOMING.

- |             |         |           |            |
|-------------|---------|-----------|------------|
| Cardinal    | Crimson | Deep Rose | Flesh Pink |
| Salmon Rose |         | White     | Yellow     |

Each of above: Pkt. 15c; 1/8 oz. 85c.

CHABAUD'S GIANT MIXED. Pkt. 15c; 1/8 oz. 75c.

#### ENFANT DE NICE.

- |     |      |              |       |         |
|-----|------|--------------|-------|---------|
| Red | Rose | Light Salmon | White | Striped |
|-----|------|--------------|-------|---------|

Each of above: Pkt. 25c; 1/8 oz. \$1.50.

ENFANT DE NICE MIXTURE. Pkt. 25c; 1/8 oz. 75c.

### CENTAUREA

CYANUS DOUBLE (Bachelor Button or Cornflower).

- |      |      |       |       |      |
|------|------|-------|-------|------|
| Blue | Pink | White | Mauve | Ruby |
|------|------|-------|-------|------|

Each of above: Pkt. 10c; 1/4 oz. 25c.

Collection of one packet each of the above, 45c.

CYANUS DOUBLE MIXED. Pkt. 10c; 1/4 oz. 20c; oz. 50c.

JUBILEE GEM. Height 1 foot. Pkt. 20c; 1/8 oz. 60c.

IMPERIALIS (Royal Sweet Sultan).

- |              |          |            |
|--------------|----------|------------|
| Amaranth Red | Lavender | Pure White |
| Rose         | Purple   |            |

Each of above: Pkt. 10c; 1/4 oz. 30c.

IMPERIALIS MIXED. Pkt. 10c; 1/4 oz. 25c; oz. 75c.

#### VARIOUS CENTAUREAS

SUAVEOLENS. Yellow Sweet Sultan. Pkt. 10c; 1/4 oz. 30c.

AMERICANA. Rosy lavender. Pkt. 10c; 1/4 oz. 25c.

MONTANA (Perennial Cornflower). Violet blue; hardy perennial; height 2 feet. Pkt. 10c; 1/4 oz. 40c.

CANDIDISSIMA (Dusty Miller). Perennial. Pkt. 15c; 1/4 oz. 70c.

### CHEIRANTHUS—Siberian Wallflower

An exceedingly showy rock and border plant. Brilliant flowers throughout spring and summer if seed pods are removed. Best treated as an annual; height 1 foot.

ALLIONI ORANGE—Pkt. 10c; 1/4 oz. 25c; oz. 60c.

GOLDEN BEDDER—Yellow. Pkt. 15c; 1/4 oz. 35c.

### CINERARIA

These plants are invaluable for the decoration of the conservatory or for bedding outside in partial shade. Sow in boxes in the fall for spring blooming.

CALIFORNIA SUPER GIANTS MIXED. The huge flowers, of many beautiful shades, measure from 3 to 5 inches across and are borne in immense rounded trusses above the dark green foliage. Height 15 to 18 inches. Pkt. 50c; large pkg. \$1.25.

SUPER GIANT, BLUE SHADES. Pkt. 50c.

SUPER GIANT, SALMON SHADES. Pkt. 50c.

AZURE BLUE. Bright sky blue. Pkt. 35c.

MATADOR. Terra cotta red. Large flowered. Pkt. 35c.

GOOD MIXTURE. Semi-dwarf, large flowered. Pkt. 25c.

DWARF PRIZE. Dwarf compact plants with large flowers in various colors, not over a foot high. Pkt. 50c.

MULTIFLORA NANA MIXED. Dwarf plants 10 inches high with masses of small flowers measuring 3/4 inch in diameter. Pkt. 35c.

STELLATA (Star-Flowering Cineraria). Tall growing. Pkt. 25c.

STELLATA FELTHAM BEAUTY. Similar to above but is dwarfier, with larger flowers and broader petals. Many have white centers. Pkt. 35c.

**DELPHINIUM—Perennial Larkspur**

One of the most popular perennials for garden display and cutting. Seeds sown in beds or boxes during the fall, will produce blooming plants for the following season.

**PACIFIC GIANT STRAIN**

A remarkably fine new Hybrid type Delphinium, producing stately spires on slender, wiry stems. Nearly 100 per cent of the plants bear florets which are double, and 2½ inches or more across.

BLUE SHADES, PASTEL SHADES, or MIXTURE.

Each: Pkt. 50c.

MAMMOTH WHITE. Magnificent! Pkt. 65c.

**AZURE FAIRY.** An annual type with large azure-blue blossoms. Height, 1 foot. Pkt. 15c; ⅛ oz. 40c; ¼ oz. 70c.

**BLUE BUTTERFLY.** Intense deep blue; same habit of growth as Azure Fairy. Pkt. 15c; ⅛ oz. 40c; ¼ oz. 70c.

**BELLADONNA (Improved).** Beautiful, large flowered, light turquoise-blue. Pkt. 20c; ⅛ oz. 65c.

**BELLAMOSUM (Improved).** Deep blue. Pkt. 20c; ⅛ oz. 65c.

**CARDINALE (Scarlet Larkspur).** Blooms in June and July; height 3 to 5 feet. Pkt. 15c; ⅛ oz. 60c.

**WREXHAM (HOLLYHOCK) STRAIN MIXTURE.**

Enormous spire-like spikes of large flowers in a rich range of blue and pastel shades. Pkt. 35c; ⅛ oz. 85c.

**WREXHAM DEEP BLUE SHADES.** Pkt. 50c; ⅛ oz. \$1.25.

**WREXHAM LIGHT BLUE SHADES.** Pkt. 50c; ⅛ oz. \$1.25.

**HALLAWELL'S IMPROVED HYBRIDS.** A specially selected strain with large handsome flower spikes; contains all colors from lightest to deepest blue. Pkt. 15c; ⅛ oz. 75c.

**CHRYSANTHEMUM—Painted Daisy**

Spring and summer blooming annuals bearing large single flowers of striking beauty; height 2 to 2½ feet.

**CARINATUM SINGLE MIXED.** Pkt. 10c; ¼ oz. 20c; oz. 50c.

**CARINATUM DOUBLE AND SINGLE MIXED.**

Double and semi-double flowers in a great variety of colors. Pkt. 10c; ¼ oz. 25c; oz. 75c.

**NIVELLI (Annual Marguerite).** A new early variety with pure, deep yellow flowers. Pkt. 10c; ¼ oz. 25c; oz. 75c.

**MAWII.** Hardy perennial with rich pink flowers 2 inches across. The plants are 1 foot high with silvery foliage. Useful for border or rockery. Pkt. 25c; ⅛ oz. 85c.

**CLARKIA**

Hardy annual of easy culture, bearing bright colored double flowers in great profusion; height about 18 inches. Sow seed in the fall for early blossoms in the spring.

**Brilliant (carmine-rose) Purple Prince Salmon Queen  
Scarlet Beauty White**

Each of above: Pkt. 10c; ¼ oz. 35c.

**DOUBLE MIXTURE.** Extra select. Pkt. 10c; ¼ oz. 30c; oz. 90c.

**SINGLE AND DOUBLE MIXTURE.** California Wild Flower. Pkt. 10c; ¼ oz. 25c; oz. 65c.

**COLLINSIA BICOLOR**

A free flowering annual growing from 1 to 2 feet with violet and white flowers; prefers shade. Sow seed in the open ground any time in the fall. Pkt. 10c; oz. 35c.



*Delphinium, Pacific Giants*

**COREOPSIS**

Perennial with graceful foliage and beautiful golden flowers. Sow the seed in boxes and transplant 1 foot apart.

**GRANDIFLORA (Single).** Pkt. 10c; ¼ oz. 25c; oz. 75c.

**SUNBURST (Semi-double).** Beautiful golden yellow semi-double flowers. Pkt. 20c; ¼ oz. 45c.

**MAYFIELD GIANT.** Taller and more vigorous than Grandiflora, with longer and firmer stems and larger flowers of rich golden yellow. Pkt. 15c; ¼ oz. 50c.

**CYNOGLOSSUM—Chinese Forget-Me-Not**

A hardy biennial of the easiest culture; plants about 18 inches high producing sprays of bright blue flowers.

**AMABILE BLUE.** Intense deep blue. Pkt. 10c; ¼ oz. 25c.

**FAIRY BLUE.** Bright Cambridge blue. Pkt. 15c; ¼ oz. 35c.

**FIRMAMENT—**Bright blue; compact. Pkt. 35c.

**CYCLAMEN**

A tender bulbous perennial, used in greenhouses and window gardens. Sow seed in the fall or early spring.

CHERRY RED. Bright cherry-red. Pkt., 10 seeds, 25c.

PEARL OF ZEHLENDORF. Dark salmon. Pkt., 10 seeds, 25c.

ROSE OF MARIENTHAL. Carmine eye. Pkt., 10 seeds, 25c.

ROSE OF ZEHLENDORF. Light salmon. Pkt., 10 seeds, 25c.

WHITE LADY. Giant pure white. Pkt., 10 seeds, 25c.

GIANT MIXED. Pkt., 12 seeds, 25c; 100 seeds, \$1.85.

**DIANTHUS—Pinks**

Hardy annuals and perennials about 1 foot in height, bearing beautifully colored, single and double blossoms in profusion. Sow seed during the fall, in boxes to transplant.

**ANNUAL VARIETIES**

HEDDEWIGI, FL. PL. (Japan Pink). Large double flowers in a fine mixture of colors. Pkt. 10c;  $\frac{1}{4}$  oz. 25c.

CHINENSIS (Indian Pink). Double mixed. Pkt. 10c;  $\frac{1}{4}$  oz. 25c.

LACINIATUS SINGLE MIXED. Fringed. Pkt. 15c;  $\frac{1}{4}$  oz. 35c.

DIADEMATIS MIXED. Double diadem pink. Pkt. 10c;  $\frac{1}{4}$  oz. 30c.

**PERENNIAL VARIETIES**

CAESIUS (Cheddar Pink). Fine rock plant; dense tufts 3 inches high; bright pink flowers. Pkt. 15c;  $\frac{1}{4}$  oz. 50c.

DELTOIDES BRILLIANT (Maiden Pink). A charming creeping variety for the rock garden, with rich rosy crimson flowers in June and July. Pkt. 15c;  $\frac{1}{8}$  oz. 50c.

PLUMARIUS CYCLOPS (Clove Pink). Large single and semi-double fringed flowers in various rose and red shades with clove-like fragrance. Pkt. 15c;  $\frac{1}{4}$  oz. 60c.

PLUMARIUS DOUBLE MIXED. Double and semi-double flowers in various colors; fragrant. Pkt. 15c;  $\frac{1}{8}$  oz. 45c.

PLUMARIUS (Pheasant's Eye Pink). A single Clove Pink with fringed flowers; various colors. Pkt. 10c;  $\frac{1}{4}$  oz. 25c.

PLUMARIUS NANUS DOUBLE MIXED. Dwarf. Pkt. 15c;  $\frac{1}{8}$  oz. 50c.

PLUMARIUS DOUBLE WHITE. Pkt. 20c;  $\frac{1}{8}$  oz. 75c.

RARE SPECIES MIXTURE. For rock gardens; includes a large number of varieties. Pkt. 25c;  $\frac{1}{8}$  oz. 60c.

**DIASCIA BARBERAE—Twin Spur**

Attractive summer blooming plant with salmon-pink flowers; fine for rockeries; hardy perennial. Sow the seed in boxes to transplant. Pkt. 15c;  $\frac{1}{8}$  oz. 50c.

**DIGITALIS—Foxglove**

Handsome hardy biennials and perennials of stately growth with long spikes of various colored flowers; fine for shrubberies and half shady places. Sow seed in boxes, or in the open in a cool place.

GLOXINIAEFLORE MIXED. Pkt. 10c;  $\frac{1}{4}$  oz. 30c.

GIANT SHIRLEY. Spikes 3 to 4 feet long, carrying handsomely blotched and spotted flowers in white to dark rose colors. Pkt. 15c;  $\frac{1}{4}$  oz. 35c.

LUTZII HYBRIDS. Charming pale apricot colored flowers. Perennial, 6 feet high. Pkt. 15c;  $\frac{1}{8}$  oz. 40c.

**GERBERA—Transvaal Daisy**

The large Marguerite-like flowers come in shades of pink, salmon, red and yellow, on long stiff stems. They require a warm, sunny position, good drainage, and protection from frost. Sow in boxes in light soil and transplant when large enough to handle. Pkt. 25c; 100 seeds, 75c.

**ESCHSCHOLTZIA—California Poppy**

A hardy annual. Sow seed in the fall where the plants are to remain, as they do not transplant well.

AURANTIACA (True California Poppy). Rich deep orange. Pkt. 10c; oz. 25c;  $\frac{1}{4}$  lb. 75c; lb. \$2.50.

BRILLIANT MIXED. Rich in shades of crimson, pink and orange-scarlet. Pkt. 10c; oz. 40c;  $\frac{1}{4}$  lb. \$1.25; lb. \$4.00.

NEW HYBRIDS MIXED. New, large flowering, erect type, containing a large percentage of new shades in Eschscholtzias. Pkt. 15c;  $\frac{1}{4}$  oz. 40c; oz. \$1.25.

**GAILLARDIA—Blanket Flower**

Showy garden plant, with brilliant flowers in scarlet and yellow; height  $1\frac{1}{2}$  to 2 feet high. Sow in the fall to insure strong plants for next season's blooming; perennial.

PORTOLA HYBRIDS. Semi-double blooms of magnificent size, with broad overlapping petals golden tipped around centers of bronzy red. Pkt. 15c;  $\frac{1}{8}$  oz. 40c.

GRANDIFLORA SUPERB MIXED. Single perennial in shades of reddish brown and yellow. Pkt. 10c;  $\frac{1}{4}$  oz. 35c.

**GEUM**

A showy hardy perennial with large double flowers borne on long stems. Useful for cutting and in borders.

MRS. BRADSHAW. Brilliant scarlet. Pkt. 15c;  $\frac{1}{8}$  oz. 50c.

LADY STRATHEDEN. Golden yellow. Pkt. 15c;  $\frac{1}{8}$  oz. 60c.

MIXED. Mixture of above varieties. Pkt. 15c;  $\frac{1}{8}$  oz. 50c.

**GYPSOPHILA—Baby's Breath**

A free flowering plant 2 to 3 feet in height, bearing a profusion of small star-shaped flowers. Sow the seed of the annual varieties in the open, and the perennial varieties in boxes to transplant.

ELEGANS GRANDIFLORA WHITE. The London Market Strain. Annual; for use in bouquets. Pkt. 10c; oz. 25c;  $\frac{1}{4}$  lb. 75c.

ELEGANS CARMINEA. Carmine rose. Pkt. 10c; oz. 35c.

PANICULATA. Fine for bouquets; white flowers; perennial. Pkt. 10c;  $\frac{1}{4}$  oz. 25c.

PANICULATA DOUBLE SNOW WHITE. A fine double white perennial sort. Pkt. 25c;  $\frac{1}{8}$  oz. 75c.



*Gypsophila, Elegans White*



*Godetia, Kelvedon Glory*

### GODETIA—Satin Flower

Showy hardy garden annuals. Fine in beds and masses, and the flowers last exceptionally well after cutting.

#### DOUBLE GLADIOLUS FLOWERED

CARMINEA      CHERRY RED      MAUVE  
ROSY MORN      WHITE

Each of above: Pkt. 10c; 1/4 oz. 35c.

DOUBLE MIXTURE. Pkt. 10c; 1/4 oz. 25c; oz. 75c.

AZALEA FLOWERED MIXTURE. A fine color range of double flowers borne on bushy plants 15 to 18 inches in height. Pkt. 15c; 1/4 oz. 40c.

#### SINGLE VARIETIES

DUKE OF YORK. Satiny crimson-carmine. Height 20 inches; splendid for cutting. Pkt. 10c; 1/4 oz. 35c.

KELVEDON GLORY (New). Glowing deep salmon-orange; free flowering and robust growth. Pkt. 15c; 1/8 oz. 45c.

LORD ROBERTS. Glowing red; compact. Pkt. 10c; 1/4 oz. 35c.

PURITY. Glistening satiny white. Excellent cut flower; height 18 inches. Pkt. 15c; 1/8 oz. 45c.

ROSAMOND. Glossy pink; compact. Pkt. 10c; 1/4 oz. 35c.

SYBIL SHERWOOD. Bright salmon-pink softened by an undefined edging of white. 18 inches. Pkt. 15c; 1/4 oz. 50c.

SEMI-DWARF MIXTURE. Pkt. 10c; 1/4 oz. 25c; oz. 75c.

AMOENA—Single mauve-violet. A California Wild Flower. Pkt. 10c; oz. 60c; 1/4 lb. \$1.75.

### HELIOTROPE

The small flowers are borne in graceful clusters, and are very fragrant. Half-hardy perennial; plant out after danger from frost.

REGAL. Improved variety of dwarf habit with immense heads of flowers in shades of blue. Pkt. 20c; 1/8 oz. 50c.

FINEST MIXED. A choice mixture. Pkt. 15c; 1/8 oz. 40c.

### HEUCHERA—Coral Bells

Low growing summer flowering hardy perennial with heart-shaped leaves, bearing graceful sprays in great profusion. Suitable for border or rockery.

SANGUINEA SPLENDENS. Coral red. Pkt. 25c; 1/8 oz. 85c.

### GILIA

Hardy annual California wild flower. Sow the seed in the open either in the fall or spring.

CAPITATA. A slender branching plant 1 1/2 to 2 feet high; flowers light blue in globular heads. Pkt. 10c; 1/2 oz. 25c.

TRICOLOR (Bird's Eyes). Flowers pale lilac, yellow toward the center, with five purple spots. Height 9 to 12 inches. Pkt. 10c; 1/2 oz. 25c; oz. 40c.

### HOLLYHOCK

Hollyhocks make a fine row in a garden, or a good background next to a building or high fence. Hardy perennial; upright stately growth, 5 to 8 feet in height.

DOUBLE VARIETIES: BRIGHT RED, CANARY YELLOW, ROSE PINK, MAROON, NEWPORT PINK, WHITE, SALMON ROSE.

Each of the above: Pkt. 10c; 1/4 oz. 65c.

DOUBLE, ALL COLORS MIXED. Pkt. 10c; 1/4 oz. 60c.

TRIUMPH MIXED. Early flowering strain bearing fringed double and semi-double flowers. Pkt. 15c; 1/8 oz. 45c.

ALLEGHENY FRINGED. The large flowers are single and beautifully fringed. Mixture. Pkt. 10c; 1/4 oz. 40c.

SINGLE MIXTURE. Pkt. 10c; 1/4 oz. 25c.

### LARKSPUR

Free flowering hardy annual growing 3 to 4 feet high, long spikes of flowers on long stems rendering them of exceptional value for cutting purposes. The seed is slow in germinating, and the bed must be kept moist.

#### DOUBLE GIANT IMPERIAL

BLUE BELL. Clear light blue. Pkt. 15c; 1/4 oz. 40c.

BLUE SPIRE. Intense deep blue. Pkt. 15c; 1/4 oz. 40c.

CARMINE KING. Deep carmine rose. Pkt. 15c; 1/4 oz. 40c.

DAINTINESS. Delicate lavender. Pkt. 15c; 1/4 oz. 40c.

EXQUISITE PINK IMPROVED. Soft pink shaded salmon. Pkt. 15c; 1/4 oz. 40c.

EXQUISITE ROSE. A beautiful shade of rose, several tones deeper than the preceding variety. Pkt. 15c; 1/4 oz. 40c.

GLORIA. Deep rose. Pkt. 15c; 1/4 oz. 40c.

LILAC SPIRE. Beautiful lilac color. Pkt. 15c; 1/4 oz. 40c.

MISS CALIFORNIA. Salmon pink. Pkt. 15c; 1/4 oz. 40c.

WHITE KING. Large flowered white. Pkt. 15c; 1/4 oz. 40c.

WHITE SPIRE. Pure white. Pkt. 15c; 1/4 oz. 40c.

SUPERB MIXTURE. Pkt. 15c; 1/4 oz. 40c; oz. \$1.25.

STOCK FLOWERED MIXTURE. Pkt. 10c; 1/4 oz. 25c; oz. 65c.

### LILIUM

PHILIPPINENSE FORMOSANUM (Dream Lily). A fine garden Lily with large white flowers of the Easter Lily type. Pkt. 25c.

REGALE. The trumpet-shaped flowers are white, slightly suffused pink with canary yellow at the center. Hardy and delightfully fragrant. Pkt. 15c; 1/4 oz. 50c.

### LINARIA MAROCCANA

Showy hardy annuals with small Snapdragon-shaped flowers. Grows 12 to 14 inches tall; desirable for edgings and rockeries. Sow the seed in the open ground.

EXCELSIOR MIXED. All colors. Pkt. 10c; 1/4 oz. 25c.

FAIRY BOUQUET. Compact plants 10 to 12 inches in height. Large flowers in a wide range of distinct colors. A gem for the border or rock garden. Pkt. 15c; 1/8 oz. 60c.

**LINUM—Flax**

RUBRUM (Scarlet Flax). A hardy annual, about 1½ feet high. Of slender and graceful appearance, with bright red flowers borne in great profusion. Pkt. 10c; oz. 35c.

PERENNE. Bright blue, 18 inches tall; hardy perennial. Pkt. 10c; ¼ oz. 25c.

**LOBELIA**

A half hardy annual 4 to 6 inches high; is of compact growth, and covered with small bright flowers. Used for ribbon work and borders or hanging baskets. Sow the seed in boxes in late fall, and transplant when ready.

CAMBRIDGE BLUE. Fine light blue flowers, compact habit, 6 inches; very free blooming. Pkt. 25c; ⅛ oz. 50c.

CELESTIAL BLUE. Bright blue flowers with tiny white throats; foliage green; dwarf compact and very free flowering. Pkt. 10c; ⅛ oz. 40c.

CRYSTAL PALACE COMPACTA. The variety most used for borders; deep blue flowers and dark foliage; 6 inches. A constant bloomer. Pkt. 15c; ⅛ oz. 50c.

BLUE EMPEROR. Sky blue; compact. Pkt. 15c; ⅛ oz. 45c.

GRACILIS. Light blue; trailing. Pkt. 10c; ⅛ oz. 35c.

KERMESINA COMPACTA. A pretty crimson color with large white eye; very compact. Pkt. 25c; ⅛ oz. 50c.

SAPPHIRE. A superb variety of pendulous habit; large deep blue flowers with conspicuous white eye; suitable for window boxes and hanging baskets. Pkt. 15c; ⅛ oz. 35c.

SPECIOSA. Deep blue; trailing, dark foliage. Pkt. 10c.

TENUIOR. Upright habit; about 15 inches high, with large deep blue flowers. Useful for pots. Pkt. 15c; ⅛ oz. 35c.

WHITE LADY. Snow white flowers; compact. Pkt. 15c.

CARDINALIS (Queen Victoria). A perennial sort growing 18 to 24 inches, with spikes of deep crimson flowers; foliage dark red. Succeeds best in moist ground. Pkt. 35c.

**LUPINUS—Lupin**

Hardy annuals and perennials bearing spikes of pea-shaped flowers. Sow in the open ground and thin.

**ANNUAL SORTS—Height 2 feet**

ANNUAL SORTS MIXED. Pkt. 10c; oz. 30c; ¼ lb. \$1.00.

GIANT FLOWERED MIXED. Pkt. 15c; ¼ oz. 25c.

NANUS. Dwarf California Wild Flower; flowers blue and white. Pkt. 10c; oz. 35c; ¼ lb. \$1.00; lb. \$3.00.

**PERENNIAL SORTS—Height 4 feet**

NEW RUSSELL LUPINS. An English introduction proven to be the last word in perennial Lupins, and to contain a wonderfully complete range of colors. Awarded the Gold Medal of the R. H. S. in June, 1937. Originator's re-selected stock. Pkt. of 12 seeds 25c; pkt. of 50 seeds 65c.

RUSSELL STRAIN. A recultivated strain grown by a European specialist. Pkt. 15c; ⅛ oz. 70c.

POLYPHYLLUS WHITE. Pkt. 10c; ¼ oz. 25c.

POLYPHYLLUS BLUE. Pkt. 10c; ¼ oz. 25c.

POLYPHYLLUS MOORHEIMI. Pink and white. Pkt. 15c; ¼ oz. 40c.

POLYPHYLLUS NEW REGAL HYBRIDS. Tall, perennial variety in various colors. Pkt. 15c; ¼ oz. 50c.

**MATHIOLA**

BICORNIS (Evening Scented Stock). This hardy annual has purplish lilac flowers, but is grown principally for its fragrance. Height 1 foot. Sow seeds in the open. Pkt. 10c; ¼ oz. 25c; oz. 60c.

**MATRICARIA—Feverfew**

Free flowering hardy perennial plants with small double button-like flowers. Sow seed in boxes to transplant.

GOLDEN BALL. Compact habit; suitable for edging; small double yellow flowers. Pkt. 15c; ⅛ oz. 50c.

**MIGNONETTE—Reseda**

A fragrant hardy annual which grows easily from seed sown out in the garden and thinned to 4 or 6 inches.

GOLIATH. Enormous red spikes; fragrant. Pkt. 10c; ¼ oz. 35c.

GIANT FLOWERED MACHET. Large florets of a gray color, deliciously scented. Pkt. 10c; ¼ oz. 25c.

SWEET SCENTED (Reseda Odorata). The spikes are small, but very sweet scented. Pkt. 10c; oz. 25c.

**MIMULUS**

Free flowering, half hardy perennial, growing from 6 inches to 1 foot high. Useful for window gardens and pot work or for garden in a moist, shady situation.

MOSCHATUS (Musk Plant). Small, yellow blossoms, spotted lightly with brown. Pkt. 15c; ½ oz. 60c.

QUEEN'S PRIZE (Tigrinus Improved). Large spotted flowers in various colors. Pkt. 15c; ⅛ oz. 45c.

**MYOSOTIS—Forget-Me-Not**

A hardy perennial of easy culture which thrives in a cool, moist location; grows 6 to 12 inches high.

ALPESTRIS. Blue. Pkt. 10c; ¼ oz. 35c; oz. \$1.00.

INDIGO (Royal Blue). Rich indigo-blue. Pkt. 10c; ¼ oz. 50c.

WHITE. Pkt. 10c; ¼ oz. 35c.

PINK. Pkt. 10c; ¼ oz. 50c.

BLUE PERFECTION. Dwarf indigo-blue. Pkt. 15c; ⅛ oz. 60c.

BLUE BIRD. Large dark blue flowers on long stems.

Suitable for winter-blooming. Pkt. 15c; ⅛ oz. 60c.

VICTORIA. Sky blue; dwarf habit. Pkt. 15c; ⅛ oz. 50c.

ROBUSTA GRANDIFLORA. Strong grower, with clear blue flowers; 10 inches tall. Pkt. 15c; ⅛ oz. 40c.

PALUSTRIS SEMPERFLORENS. Dwarf blue: blooms over a long season. Pkt. 15c; ⅛ oz. 60c.

**NEMESIA**

Annual growing to about 12 inches. The flowers of this improved strain come in a variety of lovely bright shades, making a splendid effect in beds or borders. May also be used as a pot plant.

STRUMOSA BLUE, ORANGE, ROSE, or SCARLET.

Each: Pkt. 20c; ⅛ oz. 85c.

STRUMOSA GRANDIFLORA MIXED. Pkt. 15c; ⅛ oz. 60c.

TRIUMPH MIXED. Compact; 8 inches. Pkt. 15c; ⅛ oz. 60c.

BLUE GEM. Dwarf blue for edging. Pkt. 20c; ⅛ oz. \$1.00.

**NEMOPHILA**

Hardy annual California wild flower, growing about 8 inches high. Has small cup-shaped flowers in blue and white shades. Sow in the open ground in the fall or spring.

INSIGNIS (Baby Blue Eyes). Sky blue with white eyes. Pkt. 10c; oz. 30c; ¼ lb. \$1.00; lb. \$3.00.

DISCOIDALIS. Brownish purple; white edge. Pkt. 10c; oz. 35c.

MACULATA. White with large deep purple blotch on each petal. Pkt. 10c; oz. 35c.

MIXED. Pkt. 10c; oz. 30c; ¼ lb. \$1.00; lb. \$3.00.

## PANSY

### GENEVA GIANTS

Originator's seed of this superb strain. Truly giant flowers of splendid form and substance, in rich shades and striking color combinations. Unquestionably the finest strain of Pansies in cultivation.

GENEVA GIANT SPECIAL MIXTURE. Pkt. 50c; larger pkt. 75c;  $\frac{1}{8}$  oz. \$1.50;  $\frac{1}{4}$  oz. \$2.25;  $\frac{1}{2}$  oz. \$7.50.

### SEPARATE COLORS

FIRE BEACON (New). Wallflower-red shaded orange; an outstanding introduction.

ALPINE SNOW. Large, pure snow-white.

BERNA. Exceptionally large velvety violet-blue.

CRIMSON QUEEN. Rich dark red with deeper center.

EIGER. Deep yellow with rich dark eye.

GOLDELSE. Largest pure yellow Pansy.

THUNER SEA. Beautiful bright gentian blue, with darker velvety center.

Each of above: Pkt. 50c; large pkt. \$1.25.

### GIANT PANSIES

ALPENGLOW. Rich velvety red. Pkt. 25c; large pkt. 65c.

LAKE OF THUN or ULLSWATER. Rich ultramarine-blue with a dark blue blotch on each petal. Pkt. 25c; large pkt. 65c.

RHINEGOLD. Golden yellow with deeper brown blotches on the three lower petals. Pkt. 25c; large pkt. 65c.

HALLAWELL'S SUPERB MIXTURE. A bright colored mixture similar to Geneva Giants. Pkt. 50c; large pkt. \$1.25.

SUPER SWISS GIANTS MIXED. Flowers of mammoth size in a good range of colors; the rich dark colors predominating. Pkt. 35c;  $\frac{1}{8}$  oz. \$1.00;  $\frac{1}{4}$  oz. \$1.85.

STEELE'S JUMBO MIXTURE. Giant sized flowers in a fine wide range of bright colors. Pkt. 50c; large pkt. \$1.25.

### BEDDING PANSIES

ADONIS. Light blue.

CARDINAL. Brilliant red.

EMPEROR WILLIAM.

Dark navy blue.

FIRE KING. Golden yellow, upper petals crimson.

GOLDEN QUEEN. Pure golden yellow.

Each of above: Pkt. 15c;  $\frac{1}{8}$  oz. 60c.

PARISIAN MIXED. Fine for bedding. Pkt. 15c;  $\frac{1}{8}$  oz. 60c.

MASTERPIECE MIXTURE, RUFFLED. Pkt. 25c;  $\frac{1}{8}$  oz. 75c.

LORD BEACONSFIELD.

Lavender, and heliotrope.

PRINCE HENRY. Rich

dark blue.

SNOWFLAKE. Pure white.

YELLOW KING. Golden yellow with dark eye.

### PENTSTEMON

One of the most satisfactory flowers for the hardy perennial border. Grows 2 feet high, and will bloom the first season if seed is sown early.

GIGANTEUS. New giant variety; largest blooms in many rare shades. Extra select strain. Pkt. 15c;  $\frac{1}{8}$  oz. 45c.

MINIATURE HYBRIDS. A new hybrid variety producing in profusion, small flowers in a good range of colors. Good for cutting;  $2\frac{1}{2}$  to 3 feet high. Pkt. 20c;  $\frac{1}{8}$  oz. 45c.

BLUE GEM. Flowers very bright blue; desirable for rock gardens. Height 1 to 2 feet. Pkt. 15c;  $\frac{1}{8}$  oz. 50c.



*Pansy, Geneva Giants*

### NIGELLA—*Love-in-a-Mist*

A hardy annual, 18 inches high, with oddly shaped blossoms and curious seed pods. Sow seeds in the open.

MISS JEKYLL. Cornflower blue. Pkt. 10c;  $\frac{1}{2}$  oz. 25c.

### POPPY—*Papaver*

#### ICELAND

Hardy perennials flowering the first year from seed if sown early. The plants are of graceful compact habit with low fern-like foliage, bearing brilliant flowers in endless profusion. Most useful for cutting when picked in the bud.

THE EMPEROR (New). Large flowered rich, deep orange. Pkt. 20c;  $\frac{1}{8}$  oz. 75c.

THE EMPRESS (New). Large flowered salmon-rose shades. Pkt. 20c;  $\frac{1}{8}$  oz. 75c.

YELLOW WONDER (New). Bright buttercup yellow, large flowers. Pkt. 20c;  $\frac{1}{8}$  oz. 75c.

GIANT WHITE. Pkt. 15c;  $\frac{1}{8}$  oz. 50c.

SANDFORD'S GIANT STRAIN. Immense flowers in a beautiful color range, on long strong stems. Pkt. 25c;  $\frac{1}{8}$  oz. 60c.

SUNBEAM MIXTURE. A large flowered and strong growing strain, in a rich color range. Pkt. 15c;  $\frac{1}{8}$  oz. 50c.

#### ORIENTAL POPPIES

PRINCE OF ORANGE. Orange-scarlet. Pkt., 15c;  $\frac{1}{8}$  oz. 50c.

PRINCESS VICTORIA LOUISE. Salmon, varies in color. Pkt. 15c;  $\frac{1}{8}$  oz. 75c.

REMBRANDT. Magnificent scarlet. Pkt. 15c;  $\frac{1}{8}$  oz. 75c.

ORIENTALE HYBRIDS. A splendid mixture of all shades. Pkt. 15c;  $\frac{1}{4}$  oz. 65c.

#### ANNUAL VARIETIES

SHIRLEY SINGLE. Finest mixture. Pkt. 10c; oz. 40c.

ELDORADO. Double Shirley Mixture. Pkt. 10c;  $\frac{1}{4}$  oz. 25c.

AMERICAN LEGION. An improved Flanders Poppy with large single flowers of a rich dazzling orange-scarlet color. Height 2 feet. Pkt. 10c; oz. 50c.

CARNATION FLOWERED MIXED. Large double fringed; all colors. Pkt. 10c; oz. 30c.

PEONY FLOWERED MIXED. Large double, straight edged petals; all colors. Pkt. 10c; oz. 30c.

**PHLOX**

**DRUMMONDII.** For beds and massing nothing can surpass these beautiful annuals. They produce immense trusses of large, brilliant flowers throughout the spring and summer. Sow the seed in boxes in the fall for early flowers.

**SALMON GLORY.** Giant florets of pure salmon, with creamy eye. Pkt. 35c;  $\frac{1}{8}$  oz. \$1.25.

**GIANT ART SHADE MIXTURE.** Pkt. 25c;  $\frac{1}{4}$  oz. 85c.

**CARNEA.** Pale pink with KERMESINA. Deep carmine with white eye.

**CHAMOIS ROSE.** Lovely PURE WHITE.

chamois rose with tiny SOFT LILAC.

carmine eye. VIOLET.

**COCCINEA.** Deep, vivid YELLOW (Isabellina). scarlet. Primrose.

Each of above: Pkt. 10c;  $\frac{1}{4}$  oz. 60c.

**FINE MIXED.** A choice mixture of all colors of the larger types. Pkt. 10c;  $\frac{1}{4}$  oz. 50c; oz. \$1.50.

**DWARF MIXTURE.** Pkt. 15c;  $\frac{1}{4}$  oz. 75c.

**CUSPIDATA MIXED.** Starred and fringed. Pkt. 10c;  $\frac{1}{4}$  oz. 65c.

**PHACELIA**

**CAMPANULARIA.** Hardy California wild flower. Clear deep blue flowers with contrasting white stamens. Height 9 inches. Pkt. 10c;  $\frac{1}{4}$  oz. 25c; oz. 75c.

**WHITLAVIA (Wild Canterbury Bell).** Large bell-shaped flowers hanging in open, airy clusters; color violet-purple. Hardy annual 1 to 1 $\frac{1}{2}$  feet high. Sow seed of both varieties in the open. Pkt. 10c;  $\frac{1}{4}$  oz. 25c; oz. 75c.

**PYRETHRUM**

**AUREUM (Golden Feather).** Small cut leaves of bright golden yellow. A hardy perennial, much used for edging and borders. Sow seed in boxes to transplant. Pkt. 10c;  $\frac{1}{4}$  oz. 25c.

**SELAGINOIDES.** Foliage bright golden yellow, finely serrated; fine for borders and edging. Pkt. 10c;  $\frac{1}{4}$  oz. 30c.

**ROSEUM SINGLE HYBRIDS.** A hardy perennial bearing large Daisy-like flowers with bright yellow centers; height 2 feet. Pkt. 25c;  $\frac{1}{8}$  oz. 75c.

**HYBRIDUM FL. PL.** Seeds selected from the finest double flowers; variable. Mixed colors. Pkt. 25c;  $\frac{1}{8}$  oz. 75c.



*Iceland Poppy, The Emperor*



*Primula Malacoides*

**PRIMULA—Hardy Sorts**

**AURICULA.** The Primrose of the Alps. Flowers variously colored and fragrant. Pkt. 20c.

**BULLEYANA.** The flowers shade from buff through apricot to orange. The plant is perfectly hardy and is also worth growing in pots. Height 2 feet. Pkt. 20c.

**MALACOIDES.** Small, light lilac flowers; very early and profuse bloomer. If sown in the early fall, a fine display of bloom can be obtained during the winter months. Pkt. 15c;  $\frac{1}{8}$  oz. 90c.

**MALACOIDES TRUE ROSE.** A new variety with rich, bright pink flowers. Pkt. 25c; large pkt. 65c.

**PRINCESS MARY (Malacoides).** Rose pink. Pkt. 35c.

**MALACOIDES SNOW QUEEN.** Large flowered pure white. Pkt. 25c; large pkt. 65c.

**PULVERULENTA BARTLEY STRAIN.** Strong growing hardy Primula with tiers of flowers in pink shades, on tall sturdy stems. Valued for shaded and damp places. Pkt. 35c.

**POLYANTHUS.** A hardy spring blooming sort; colors mostly red and yellow. Choice mixture. Pkt. 15c;  $\frac{1}{8}$  oz. 75c.

**POLYANTHUS GIANT SUPERB MIXED.** Extra choice strain, most carefully selected for habit, rich colors and size of bloom. Pkt. 25c; large pkt. 65c.

**POLYANTHUS GIANT MUNSTEAD STRAIN.** Large flowers in fine shades of yellow and white. Pkt. 25c;  $\frac{1}{8}$  oz. 75c.

**POLYANTHUS YELLOW.** Pkt. 25c;  $\frac{1}{8}$  oz. \$1.00.

**VULGARIS.** Yellow English Primrose. Pkt. 15c;  $\frac{1}{8}$  oz. 60c.

**RANUNCULUS**

These spring blooming plants grow 1 foot or more high. The flowers are double and semi-double, last well after cutting, and come in a wide range of brilliant colors. SCARLET, ORANGE, PINK, and YELLOW. Each: Pkt. 35c.

**HALLAWELL'S NEW HYBRID MIXTURE.** Pkt. 25c;  $\frac{1}{8}$  oz. \$1.25

**RHODANTHE—Everlasting**

A charming annual for winter bouquets. The blossoms should be gathered before fully expanded, and dried in the shade. Sow seed in the open in mild sections.

**PINK.** Pkt. 10c;  $\frac{1}{4}$  oz. 25c.



*Scabiosa, Rosette*

## SCABIOSA

Sow the seed any time in the fall or spring, either in boxes to transplant or in the open ground. Height 3 feet; splendid for cutting.

### ANNUAL VARIETIES

AZURE FAIRY FIRE KING KING OF BLACKS  
PEACH BLOSSOM SHASTA WHITE

Each of above: Pkt. 10c;  $\frac{1}{4}$  oz. 30c.

BLUE MOON. Giant flowered deep lavender-blue. Pkt. 25c;  $\frac{1}{8}$  oz. 65c.

GIANT LOVELINESS. Varying tones of soft, delicate salmon-rose. Pkt. 15c;  $\frac{1}{4}$  oz. 50c.

GIANT ROSETTE. Deep rose. Pkt. 25c;  $\frac{1}{8}$  oz. 50c.

GIANT HYBRIDS. Giant size flowers. Pkt. 15c;  $\frac{1}{4}$  oz. 50c.

### PERENNIAL VARIETIES

CAUCASICA (Blue Bonnet). Lilac-blue; especially valuable for cutting. Height 3 feet. Pkt. 15c;  $\frac{1}{8}$  oz. 60c.

COLUMBARIA. Orchid-pink flowers slightly smaller than *Caucasica*, but a good companion. Pkt. 15c;  $\frac{1}{8}$  oz. 75c.

HOUSE'S HYBRIDS. An improvement over the *Caucasica* with larger flowers and longer stems. The colors range from lavender to dark blue. Pkt. 25c;  $\frac{1}{8}$  oz. 65c.

## SALVIA—*Flowering Sage*

AZUREA GRANDIFLORA. Sky blue. Hardy perennial; height 3 to 4 feet. Pkt. 15c;  $\frac{1}{8}$  oz. 40c.

FARINACEA BLUE BEDDER. Flowers deep blue; hardy perennial. Pkt. 25c;  $\frac{1}{8}$  oz. 40c.

CARDUACEA (Thistle Sage). Hardy annual California wildflower. Rich lavender flowers; height 1 to 2 feet. Pkt. 10c;  $\frac{1}{4}$  oz. 35c.

## SCHIZANTHUS—*Butterfly Orchid*

HALLAWELL'S SELECT MIXTURE. An especially fine strain with very large, well shaped flowers, in a wide range of colors. They make splendid pot plants and are very useful in the flower border as the plants are compact and bushy. Pkt. 25c;  $\frac{1}{8}$  oz. 65c.

WISETONENSIS (Excelsior Strain). A choice strain with large flowers in a wide range of colors. Pkt. 25c;  $\frac{1}{8}$  oz. 65c.

MIXED. A mixture of the regular type. Pkt. 10c;  $\frac{1}{4}$  oz. 25c.

PANSY FLOWERED MIXTURE. Pkt. 35c;  $\frac{1}{8}$  oz. 85c.

## STOCKS

### EARLY GIANT IMPERIAL

ANTIQUE COPPER. Copper red.	GOLDEN ROSE. Rose, golden sheen.
BUTTERCUP. Canary yellow.	LAVENDER. Pure lavender.
CHAMOIS. Ivory, tinted old rose.	OLD ROSE.
DARK BLUE. Rich dark blue.	ROSE. Rose-pink.
FIERY BLOOD RED.	SANTA MARIA. Large pure white.
FLESH. Delicate pink.	SHASTA. Pure white; base-branching.

Each of above separate colors: Pkt. 15c;  $\frac{1}{8}$  oz. 50c.

Collection of 6 packets of any of above, 75c.

CHOICEST MIXTURE. Pkt. 15c;  $\frac{1}{8}$  oz. 75c;  $\frac{1}{4}$  oz. \$1.25.

### SUPER GIANT IMPERIAL

This new type is a distinct improvement over the Giant Imperial group. The plants are base branching, producing a dozen or more huge flower spikes.

BLUSH PINK (New)	ROSE CHARM. Deep rose.
DARK BLUE	ROSELIGHT. Rose pink.

Each of above: Pkt. 25c;  $\frac{1}{8}$  oz. 85c.

### GIANT PERFECTION

AMERICAN BEAUTY. Deep rose.	HEATHAM BEAUTY. Rose shaded terra cotta.
PINK (Abundance). Lavender-pink.	PALE BLUE (May Queen).
FLESH (Beauty of Nice).	WHITE (Snowdrift).
OLD ROSE (Belle of Naples).	YELLOW (Monte Carlo).
CRIMSON (Crimson King).	LAVENDER (Parma Violet).
	PURPLE (Summer Night).

Each of above separate colors: Pkt. 15c;  $\frac{1}{8}$  oz. 75c.

Collection of 6 packets of any of the above varieties, 75c.

GIANT PERFECTION MIXED. Pkt. 15c;  $\frac{1}{8}$  oz. 65c.

### GIANT EXCELSIOR

(Improved Column Type)

These produce but one enormous spike 2 to 2 $\frac{1}{2}$  feet high and can be planted close together.

CHAMOIS PINK. Apricot or chamois-pink.	OLD ROSE. Rich color.
DEEP ROSE. Brilliant deep rose.	RUBY. Rich crimson-red.
LILAC LAVENDER. Rich bright lavender.	WHITE. White faintly tinged pink.

EXCELSIOR MIXTURE. Mixture of all colors.

Each of above: Pkt. 50c;  $\frac{1}{2}$  oz. 75c.

Collection of 1 packet each of 6 colors, \$2.50.

## SAPONARIA

OCYMOIDES. A handsome dwarf trailing plant with bright rose colored flowers. Suitable for rock work or borders. Hardy perennial. Pkt. 15c;  $\frac{1}{4}$  oz. 35c.

VACCARIA. A useful annual variety, bearing an abundance of satiny pink flowers somewhat like an enlarged *Gypsophila*; fine for cutting; 2 feet tall. Pkt. 10c; oz. 30c.

## SHASTA DAISY

A fine perennial plant bearing large white single blossoms with yellow centers; an excellent cut flower.

ALASKA. The finest variety. Pkt. 15c;  $\frac{1}{8}$  oz. 35c.

GIANT DOUBLE. Variable in type of flower. Pkt. 35c.

## SILENE—*Catchfly*

Pretty dwarf plants used mostly for borders, growing 6 inches high. A hardy annual which is easily grown.

PINK, RED, WHITE, or MIXED. Pkt. 10c;  $\frac{1}{4}$  oz. 25c.



**STATICE—Sea Lavender**

Splendid hardy annuals for the border or rockery, producing panicles of small flowers which can be dried and used for winter bouquets. Start the seed in boxes and transplant to a sunny position.

ROSEA SUPERBA DARK BLUE WHITE YELLOW

Each of above: Pkt. 10c; 1/2 oz. 30c.

MIXED. Pkt. 10c; 1/2 oz. 25c; oz. 40c.

SUWOROWII. Hardy annual producing long spikes of bright rose-colored flowers. Pkt. 10c; 1/4 oz. 50c.

CASPIA. Small pale lavender flowers; fine for bouquet work. Pkt. 15c; 1/8 oz. 85c.

LATIFOLIA. Large branching heads of clear mauve flowers. Hardy perennial. Pkt. 10c; 1/8 oz. 40c.

PEREZII. Deep blue; splendid specimen plant. Perennial. Pkt. 20c; 1/8 oz. 50c.

**SWEET ROCKET—Hesperis**

Hardy perennial, growing 2 to 3 feet, bearing spikes of fragrant purple and white flowers.

PURPLE or MIXED. Pkt. 10c; 1/4 oz. 20c; oz. 50c.

**SWEET WILLIAM—Dianthus barbatus**

Low growing free-flowering hardy perennial, with flowers of rich and varied colors. Seed sown in boxes in the early fall will bloom the first season.

CRIMSON SHADES. Single. Pkt. 10c; 1/4 oz. 25c.

NEWPORT PINK. Salmon-rose; single. Pkt. 10c; 1/4 oz. 40c.

SCARLET BEAUTY. Single. Pkt. 10c; 1/4 oz. 40c.

WHITE. Single pure white. Pkt. 10c; 1/4 oz. 25c.

SINGLE MIXTURE. Pkt. 10c; 1/4 oz. 25c; oz. 60c.

GIANT DOUBLE MIXED. Pkt. 10c; 1/4 oz. 30c.

HOLBORN GLORY. Large flowers with eyes, in a beautiful assortment of light shades. Pkt. 10c; 1/4 oz. 30c.

**THALICTRUM—Meadow Rue**

DIPTEROCARPUM. Dainty rosy purple flowers in graceful sprays. Hardy perennial; 4 to 5 feet. Pkt. 25c.



*Giant Verbena*

**VERBENA—Vervain**

Half-hardy perennial plants for bedding purposes. Sow the seed early in a hot bed for spring blooming.

APPLE BLOSSOM. White shading to cameo pink. Pkt. 20c.

LAVENDER GLORY. Lavender with eye. Variable. Pkt. 20c.

LUCIFER. Intense deep cardinal scarlet. Pkt. 15c.

LUMINOSA. Luminous flame pink shaded salmon. Pkt. 15c.

ROSEA STELLATA. Pink with white eye. Pkt. 15c.

ROYALE. Royal blue, creamy yellow eye. Pkt. 20c.

WHITE. Pkt. 15c.

HALLAWELL'S GIANT MIXTURE. Extra large flowering varieties with white eyes. Pkt. 15c; 1/4 oz. 75c.

MAMMOTH MIXED. Smaller flowers. Pkt. 10c; 1/4 oz. 50c.

ERINOIDES (Moss Verbena). Produces a carpet of moss-like foliage, and bears heads of purplish blue flowers in profusion. Pkt. 10c; 1/4 oz. 50c.

VENOSA (Hardy Garden Verbena). Purplish Heliotrope-colored flowers in profusion. Pkt. 10c; 1/4 oz. 60c.

**VIOLA—Tufted Pansies**

ARKWRIGHT RUBY. Dark crimson-scarlet with central markings. Pkt. 35c; 1/8 oz. \$1.15.

BLUE PERFECTION. Deep purplish blue. Pkt. 15c; 1/8 oz. 75c.

CHANTREYLAND. Pure apricot; free flowering. Pkt. 25c; 1/8 oz. 85c.

JERSEY GEM. Forms a large compact plant. The flowers are a deep violet-blue with an occasional very slight variation in tint. Pkt. 25c; 1/2 oz. \$1.00.

LUTEA GRANDIFLORA. Fine yellow. Pkt. 15c; 1/8 oz. 60c.

PAPILIO. Lavender with white eye. Pkt. 15c; 1/8 oz. 70c.

VIOLET PERFECTION. Papilio type. Pkt. 15c; 1/8 oz. 70c.

WHITE PERFECTION. Large white. Pkt. 15c; 1/8 oz. 70c.

MIXED COLORS. Pkt. 15c; 1/8 oz. 70c.



*Viola, Blue Perfection*



*Viscaria*

**VISCARIA**

Beautiful hardy annual with flowers similar in shape to a single Pink. Height 1 foot. For early flowering, sow seed in the open in the fall.

- CANDIDA. Pure white. Pkt. 10c; 1/4 oz. 30c.
- CARNEA. Delicate pink; compact. Pkt. 15c; 1/8 oz. 30c.
- DELPHINIUM BLUE. Bright blue. Pkt. 15c; 1/8 oz. 35c.
- FIRE KING. Brilliant scarlet. Pkt. 15c; 1/8 oz. 50c.
- OCULATA ROSE. Rose, dark eye. Pkt. 10c; 1/4 oz. 30c.
- MIXED COLORS. Pkt. 10c; 1/4 oz. 25c; oz. 75c.

**VIRGINIAN STOCK—*Malcomia***

Low growing and profuse blooming hardy annual. Can be had in continuous bloom by sowing the seed in the open at frequent intervals.

- CRIMSON GEM. Compact. Pkt. 10c; 1/4 oz. 25c; oz. 75c.
- ROSE. Bright lavender-rose. Pkt. 10c; 1/2 oz. 25c; oz. 45c.
- WHITE. Pure white. Pkt. 10c; 1/2 oz. 25c; oz. 45c.
- MIXED COLORS. Pkt. 10c; large pkt. 25c; oz. 35c.

**WALLFLOWER—*Cheiranthus***

An old fashioned perennial growing 1 to 2 feet high, and bearing long stems of fragrant flowers.

- SINGLE BLOOD RED, CLOTH OF GOLD, FIRE KING, GOLIATH, and PRIMROSE. Each: Pkt. 10c; 1/4 oz. 30c.
- SINGLE EXTRA FINE MIXED. Pkt. 10c; 1/4 oz. 20c; oz. 50c.
- DOUBLE EXTRA CHOICE MIXED. Pkt. 15c; 1/8 oz. 75c.
- PARISIAN. A single early flowering type which may be treated as an annual. MIXED. Pkt. 10c; 1/4 oz. 25c; oz. 75c.

**Wild Flowers of California**

- |                   |                       |
|-------------------|-----------------------|
| Bartonia aurea    | Leptosyne maritima    |
| California Poppy  | Lupine nanus          |
| Clarkia elegans   | Nemophila insignis    |
| Collinsia bicolor | Phacelia campanularia |
| Gilia capitata    | Phacelia Whitlavia    |
| Godetia amoena    | Salvia carduacea      |

Each of above: 10c per pkt.

Collection of one packet each of the above 12 best hardy sorts for \$1.00.

California Wild Flower Mixture. Pkt. 10c; oz. 50c; 1/4 lb. \$1.50; lb. \$5.00.

Mixture of Wild and Hardy Cultivated Flower Seeds. Pkt. 10c; oz. 35c; 1/4 lb. \$1.00; lb. \$3.00.

**VEGETABLE SEEDS FOR FALL PLANTING**

BEET			CAULIFLOWER			PARSLEY						
Pkt.	Oz.	1/4 lb.	Pkt.	Oz.	1/4 lb.	Pkt.	Oz.	1/4 lb.				
Crosby's Egyptian	.10	.15	.45	Early Snowball	.15	2.50	.....	Double Curled	.10	.20	.40	
Detroit Dark Red	.10	.15	.45	California Wonder	.10	2.00	.....	Extra Curled	.10	.20	.45	
Early Wonder	.10	.15	.45	<b>ENDIVE</b>			<b>PEAS</b>					
Imp. Blood Turnip	.10	.15	.45	Green Curled	.10	.15	.45	American Wonder	.10	.20	.35	
<b>SWISS CHARD</b>			Broad Leaved (Escarolle)	.10	.15	.45	Carter's Daisy or					
Improved Silver	.10	.15	.40	<b>KALE</b>			Dwarf Telephone	.10	.20	.35		
Giant Lucullus	.10	.15	.40	Green Curled Scotch	.10	.15	.45	Laxton's Progress	.10	.20	.35	
<b>BROCCOLI</b>			Jersey	.10	.15	.45	Stratagem	.10	.20	.35		
California Wonder	.10	2.00	.....	<b>KOHL RABI</b>			Telephone	.10	.20	.35		
Italian Green Sprouting	.10	.35	1.00	Early White Vienna	.10	.30	1.00	<b>RADISH</b>				
<b>BRUSSELS SPROUTS</b>			Early Purple Vienna	.10	.30	1.00						
Dwarf Perfection	.10	.35	1.00	<b>LETTUCE</b>			Crimson Giant	.10	.20	.35		
<b>CABBAGE</b>			Big Boston	.10	.20	.50	Early Scarlet Turnip	.10	.20	.35		
Copenhagen Market	.10	.35	1.15	Chicken	.10	.20	.45	Early Scarlet Globe	.10	.20	.35	
Early Dwarf Flat Dutch	.10	.30	1.00	Early Curled Simpson	.10	.20	.50	Scarlet Turnip White Tip	.10	.20	.35	
Early Jersey Wakefield	.10	.35	1.15	Hanson	.10	.20	.50	Icicle	.10	.20	.35	
Early Winnigstadt	.10	.30	.85	Los Angeles	.10	.20	.50	<b>SPINACH</b>				
Danish Ball Head				Mignonette	.10	.20	.60	Bloomsdale	.10	.....	.20	
(The Hollander)	.10	.40	1.25	Romaine	.10	.20	.50	Prickly Seeded	.10	.....	.20	
American Drumhead Savoy	.10	.40	1.25	<b>ONION</b>			<b>TURNIP</b>					
Chinese Wong Bok	.10	.25	.85	Australian Brown	.10	.25	.80	Early Snowball	.10	.15	.30	
<b>CARROT</b>			Bunching Onion (White)	.10	.30	.90	Golden Ball	.10	.15	.30		
Chantenay	.10	.20	.45	Crystal Wax	.10	.30	.90	Purple Top White Globe	.10	.15	.30	
Danvers Half Long	.10	.20	.45	Red Wethersfield	.10	.30	1.00	<b>RUTABAGA</b>				
Oxheart	.10	.20	.35	Riverside Sweet Spanish	.10	.30	1.00	American Purple Top	.10	.15	.30	
French Forcing	.10	.20	.45	Yellow Flat Danvers	.10	.35	1.00					
Imp. Long Orange	.10	.20	.45									

All seeds priced at 50c per pound or more are POSTPAID within the U. S. A.



EVERGREEN LAWN MIXTURE and PARK LAWN MIXTURE are especially recommended for residence, park, and country club lawns. Both are Hallawell formula mixtures, and contain the most desirable grasses.

## LAWN GRASSES

**To Make a Lawn**—Spade deeply, adding a good humus material, sheep manure or other organic fertilizers which contain no weed seeds. Rake to the desired grade and water thoroughly to settle the soil evenly. If this preparation is made two weeks in advance of sowing, the surface weed seeds will have germinated and may be removed. Now rake for the final grade and broadcast the seed at the rate of one pound to 150 square feet, except where other quantities are suggested.

To prevent surface drying and crusting cover the seed lightly with a mixture of soil and moistened peat moss. Sprinkle carefully, using a fine spray to prevent washing. Water thoroughly, but avoid applying too much in one place to form puddles, which may float the seed and mulch into low spots. Sprinkle daily until seed has germinated, and when the grass has grown about one or two inches, pull all weeds and mow. To maintain deep velvety green turf apply a good commercial fertilizer three or four times a year.

For steep banks or slopes, burlap is sometimes used instead of mulch. It keeps the surface moist and prevents washing. Remove the burlap as soon as the seed germinates.

All of our grass seeds are the best grade. Please write for prices on larger quantities and quotations will be made promptly on the basis of the current market. Prices fluctuate and quotations below are not guaranteed.

WE PAY POSTAGE anywhere within U. S. on items of grass seeds priced at 50c per pound or more.

**HALLAWELL'S EVERGREEN LAWN MIXTURE.** A blend of several deep green, fine bladed grasses, producing a good thick turf and remaining green both winter and summer. It thrives in heavy or black soils. Lb. 75c; 5 lbs. \$3.50; 10 lbs. \$6.75.

**HALLAWELL'S PARK LAWN MIXTURE.** A blend of hardy, fine-bladed grasses to which is added a small amount of White Clover. It provides an excellent turf which will withstand hard usage. Sow one pound to 100 square feet. Lb. 60c; 5 lbs. \$2.65; 10 lbs. \$5.00.

**HALLAWELL'S SHADY NOOK MIXTURE.** A blend of suitable lawn grasses which thrive in the shade and under trees. Lb. 90c; 5 lbs. \$4.25; 10 lbs. \$8.25.

**CHEWING'S FESCUE.** Produces a dense, lasting turf, succeeding even under adverse conditions. Lb. \$1.00; 5 lbs. \$4.85; 10 lbs. \$9.25.

**KENTUCKY BLUE GRASS.** Hallawell's Select Grade—Specially re-cleaned. Lb. 65c; 5 lbs. \$3.00; 10 lbs. \$5.75. Standard Grade—Thoroughly re-cleaned seed. Lb. 50c; 5 lbs. \$2.35; 10 lbs. \$4.65.

**PACEY'S RYE GRASS, IMPORTED** (Pacific Rye Grass). The best, and finest bladed perennial rye grass. Use one pound to 100 square feet. Lb. 45c; 5 lbs. \$2.15; 10 lbs. \$4.00.

**SEASIDE BENT** (Coos County Bent). A true creeping bent which roots at each joint where it contacts the soil, producing a thick, smooth, and enduring turf. Once established, the growth is upright, of fine texture, and a beautiful rich green. Seaside Bent succeeds for golf course and lawn under varied soil and climatic conditions. Sow one pound to 500 square feet. Certified seed. Lb. \$1.50; 5 lbs. \$6.75; 10 lbs. \$12.50.

**ASTORIA BENT.** Spreads from underground rootstalks, and produces a splendid rich green turf of upright growth and fine texture. Sow one pound to 500 square feet. Certified seed. Lb. \$1.50; 5 lbs. \$7.00; 10 lbs. \$13.50.

**RED TOP GRASS.** Gives a quick effect and succeeds on all soils, though doing best on moist soils. Should be in all lawn mixtures. Lb. 50c; 5 lbs. \$2.35; 10 lbs. \$4.50.

**ROUGH STALKED MEADOW GRASS** (*Poa trivialis*). An ideal perennial shade grass. Requires plenty of moisture. Lb. 95c; 5 lbs. \$4.50; 10 lbs. \$8.50.

**WHITE CLOVER.** Highest quality re-cleaned seed. Sow one pound to 300 square feet. Lb. 90c; 5 lbs. \$4.25; 10 lbs. \$8.25.



*Tulips in the shrubbery border at our nursery gardens*

### TULIP SHOW

Visit the nursery often during the spring months. See the hundreds of varieties of tulips and other flowers in bloom, and choose varieties best suited to your garden.

# HALLAWELL SEED COMPANY, Inc.

SAN FRANCISCO, CALIFORNIA

Store and Offices—256-258 Market Street

Telephone SUTter 8981

Nursery and Greenhouses—Quintara St. and 23rd Ave. Telephone MONTrose 2741

Visitors are always welcome at our Gardens, located in the Sunset District, and which are open from 8 A. M. to 5 P. M., daily excepting Sundays. Directions: Take the No. 17 car to Quintara Street and 20th Avenue, and walk three blocks west.

We carry a full assortment of Ornamental Shrubs, Perennials, Roses, Fruit Trees and Berries in season.

PLEASE ADDRESS ALL CORRESPONDENCE TO 256 MARKET STREET

### WHEN AND HOW TO ORDER BULBS

The best time to order your bulbs is just as soon as this catalog reaches you. The bulbs may not have arrived by then, but your order will be given immediate attention, and filled just as soon as the stock arrives. At the first of the season there are no sorts sold out, and besides the bulbs flower better when planted early.

Six bulbs of any one variety will be supplied at the rate for 12; 50 at the 100 rate; and 250 of a variety at the 1,000 rate. Prices are subject to change without notice.

We prepay transportation charges within the U. S. A. on orders for bulbs amounting to \$1.00 or more; on orders for less than \$1.00 a packing and handling charge of 25c is to be included.

### HOW TO HANDLE BULBS WHEN THROUGH BLOOMING

Spring flowering bulbs may be left in the ground after blooming provided they are in an isolated place where they can remain dry throughout the summer, but in most gardens the space is too limited to warrant this as continuation of bloom is desired. If this is the case, it is advisable to lift the bulbs carefully after they are through blooming, preferably a few weeks later, and transplant them closely together in any convenient corner of the garden. Give them one good watering and let them remain until the foliage has died down completely, at which time the bulbs will be fully ripened and can be dug and stored away in shallow trays in a cool, airy place until the proper time to set them out again. Never cut off the foliage when green as this will weaken the bulbs and often prevent them from blooming. If bulbs are left in the ground after the blooming season, where other plants are growing they may rot or fail to bloom the following season as they will not have the proper rest.

**Non-Warranty**—Most of the failures with seeds and bulbs are due to causes entirely beyond our control, such as unfavorable weather, too deep or too shallow planting, slugs, etc.; therefore, Hallawell Seed Co. gives no warranty, express or implied, as to description, purity, productiveness, or any other matter of any seeds, plants, bulbs, etc., they send out, and will be in no way responsible for the crop.





From

---

---

---

**HALLAWELL SEED CO.**

**256 Market Street**

**San Francisco, California**

HALLAWELL'S  
*For Your Garden*





*Calendula, Campfire Improved*  
Pkt., 20c;  $\frac{1}{4}$  oz., 35c; oz., \$1.00.



*Iceland Poppy, The Emperor*  
Pkt., 20c;  $\frac{1}{8}$  oz., 75c.



*Phlox gigantea, Salmon Glory*  
Pkt., 35c;  $\frac{1}{16}$  oz., \$1.25.



*Scabiosa, Blue Moon (annual)*  
Pkt., 25c;  $\frac{1}{16}$  oz., 65c.

# HALLAWELL'S

## *Giant Darwin*

### TULIPS

#### *6 Superb Varieties*

CITY OF HAARLEM—Scarlet  
DRESDEN CHINA—Soft pink  
GIANT LILAC—(Illustrated)  
VENUS—Silvery rose  
YELLOW GIANT—Magnificent  
ZWANENBURG—Stately white

Collections of above 6  
No. B-59

(a)	2 each ( 12 bulbs)	.....	\$1.00
(b)	4 each ( 24 bulbs)	.....	1.85
(c)	10 each ( 60 bulbs)	.....	4.35
(d)	25 each (150 bulbs)	.....	9.95

*Each variety separately packaged and named; order by collection number and letter.*



*Darwin Tulip, Giant Lilac*

\$1.00 per 12; \$7.00 per 100; \$65.00 per 1000.



## *Fall Flowering*

### CROCUS

These dainty and showy little flowers are lovely in the outdoor garden, and easily grown indoors in pots or bowls containing bulb fibre or pebbles. Planted from September to November, they will flower in a month or so afterward, adding a welcome touch of color at a most needed time.

Plant 2 to 3 inches deep and the same distance apart in the garden, and one inch below the surface in pots.

**SPECIOSUS**—Bright lilac-blue flowers with orange anthers and yellow throat. Deeper in color and later than Zonatus; plant both for a succession of bloom. 65c per 12; \$4.25 per 100; \$40.00 per 1000.

**ZONATUS**—Rosy lilac with orange style and anthers; the earliest to bloom. 65c per 12; \$4.25 per 100; \$40.00 per 1000.

*All bulbs are sent PREPAID within the U.S.A.*